

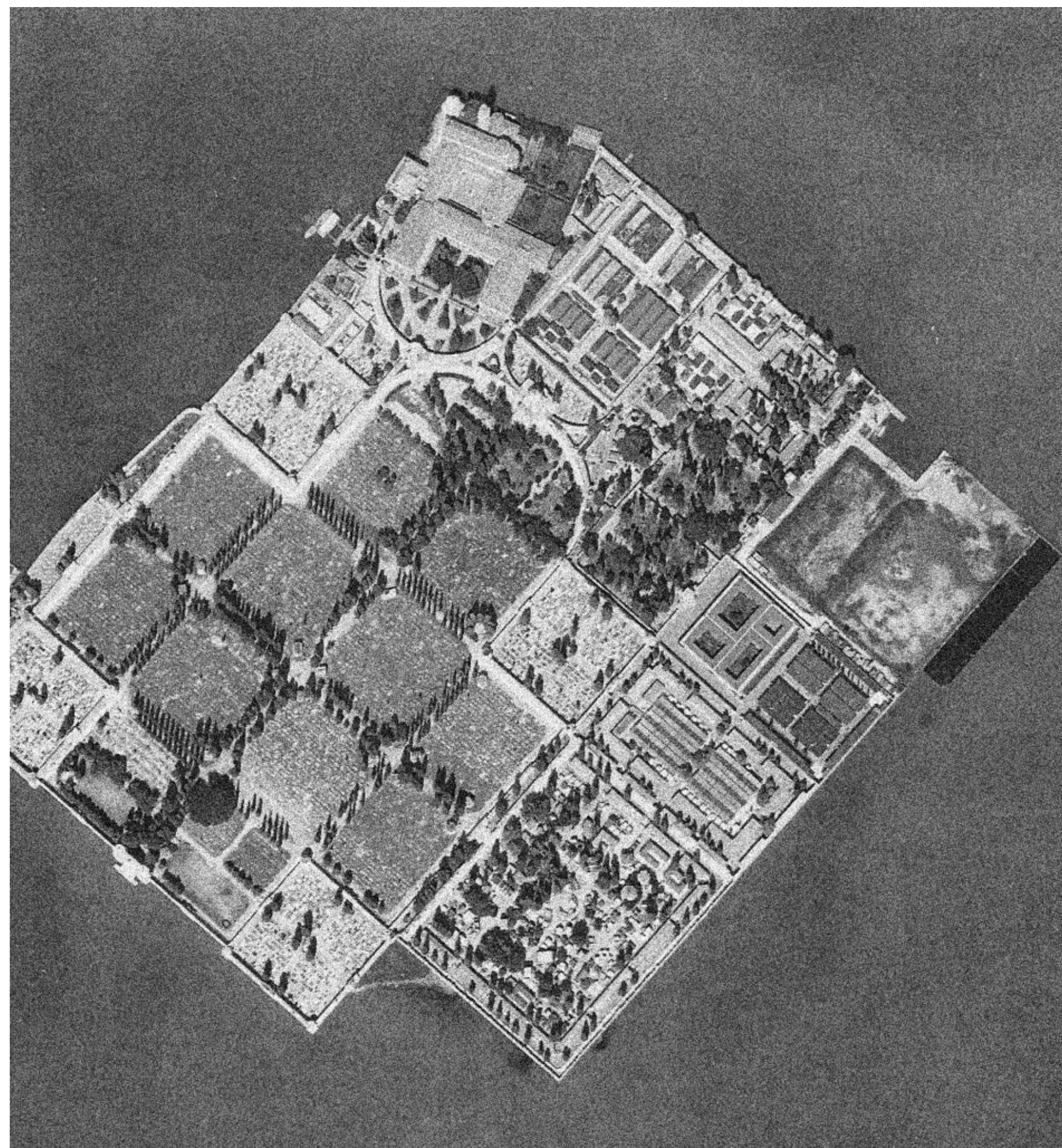
IN PASSING

A funerary site of qualitative time



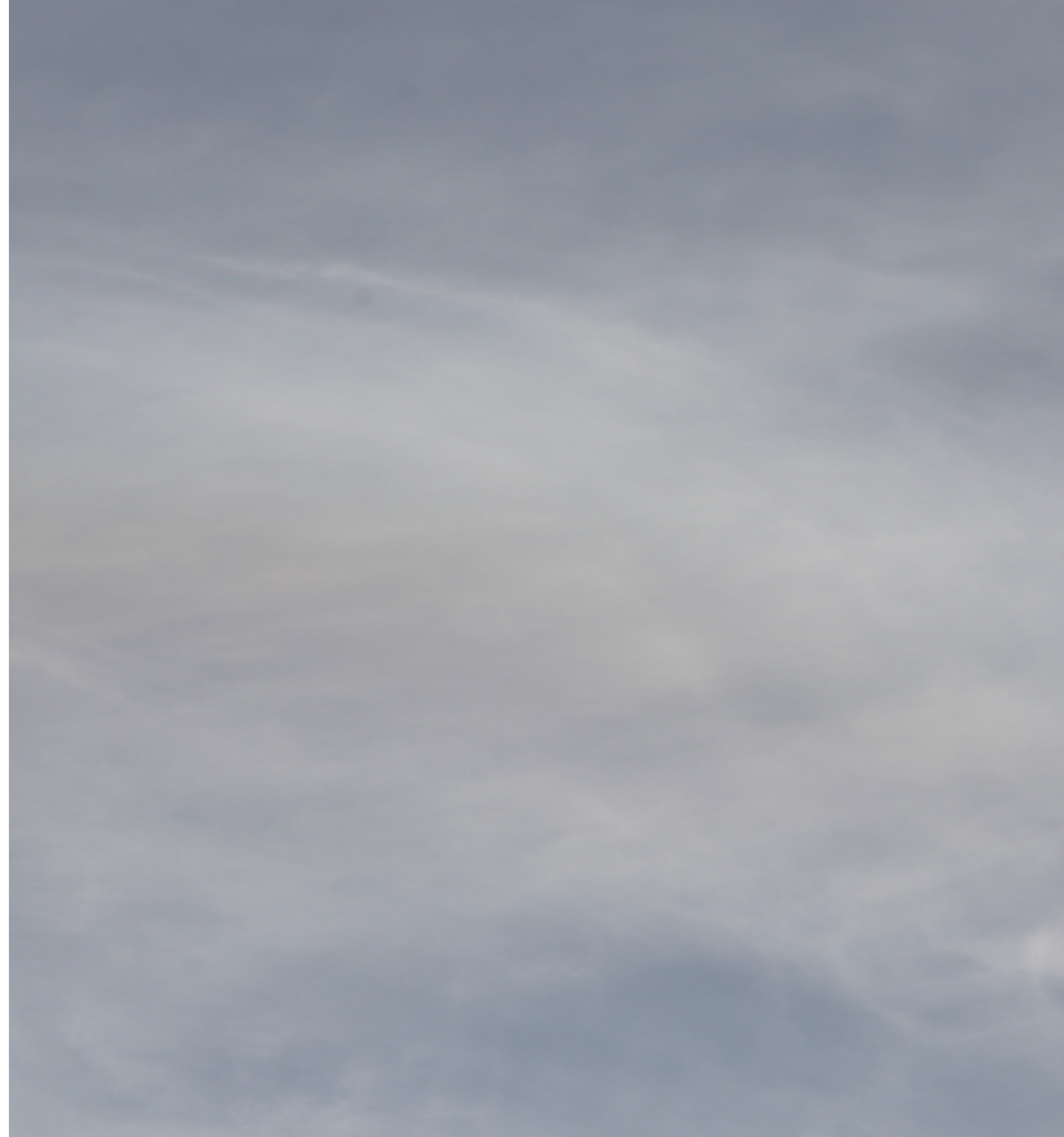
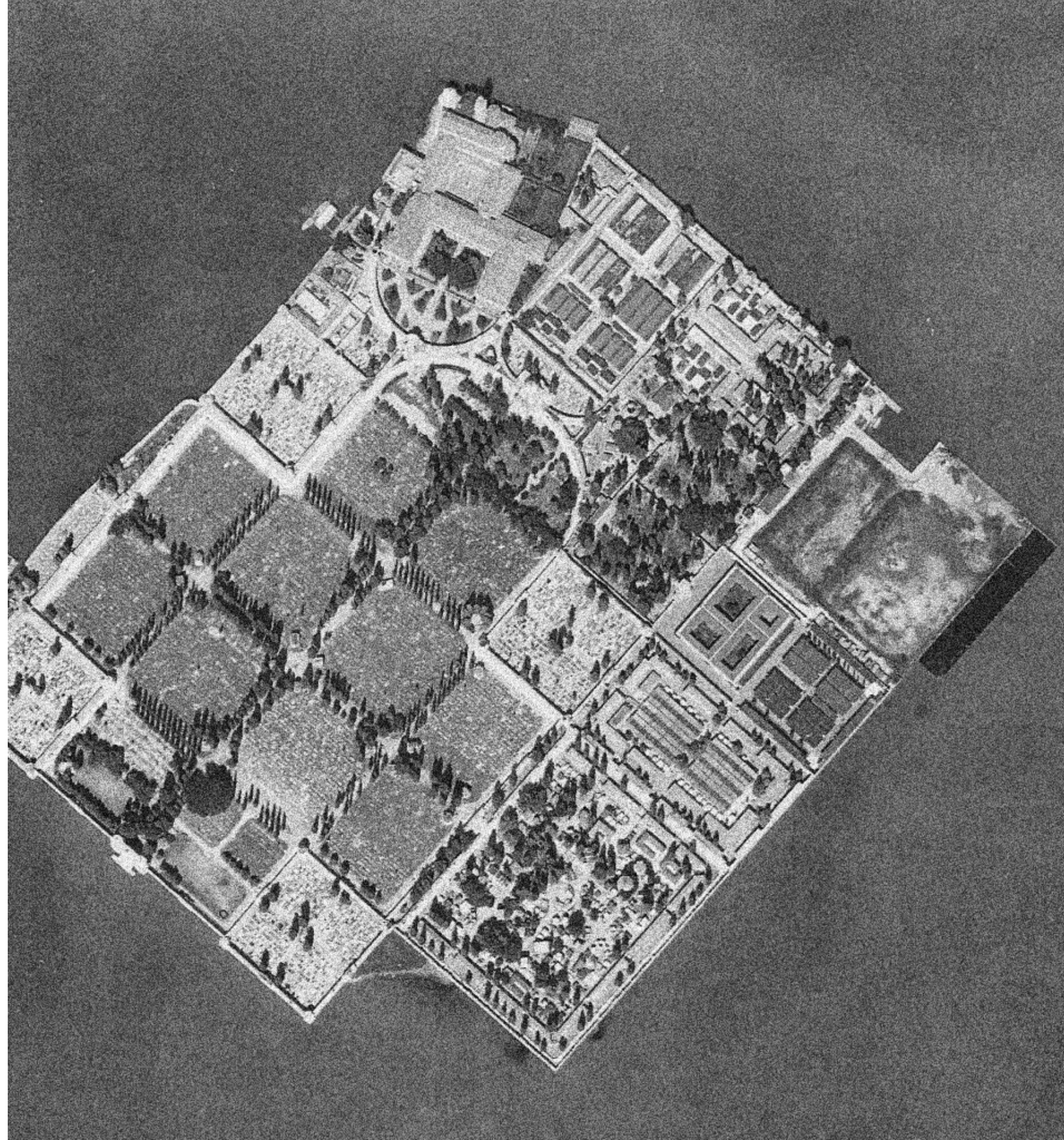
Graduation project DAE, 2022

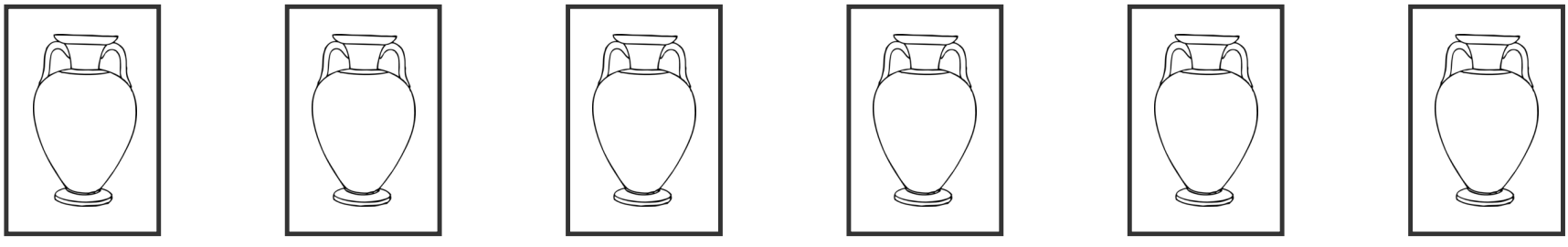
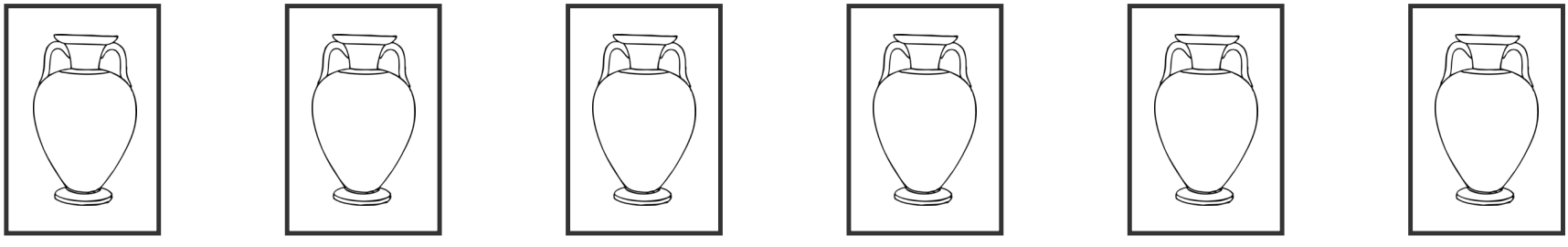
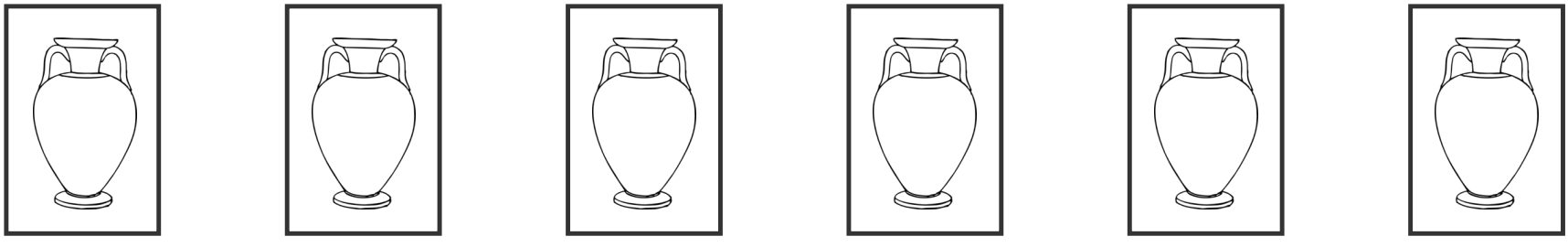
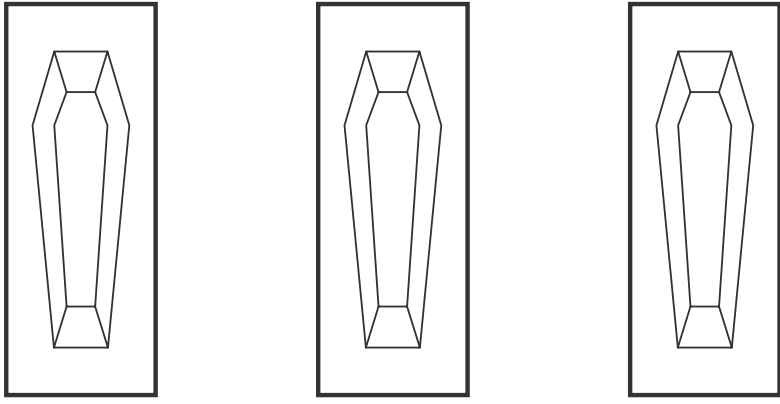
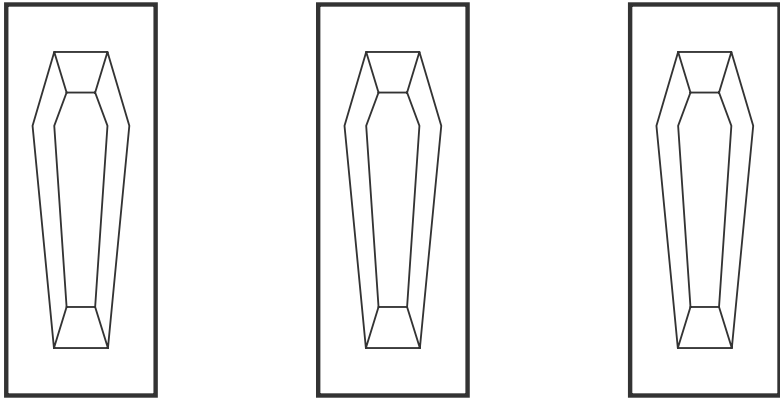
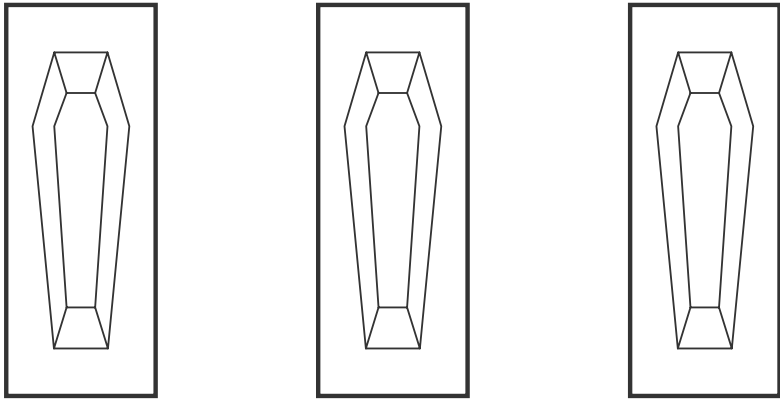




San Michele Cemetery, Venice.







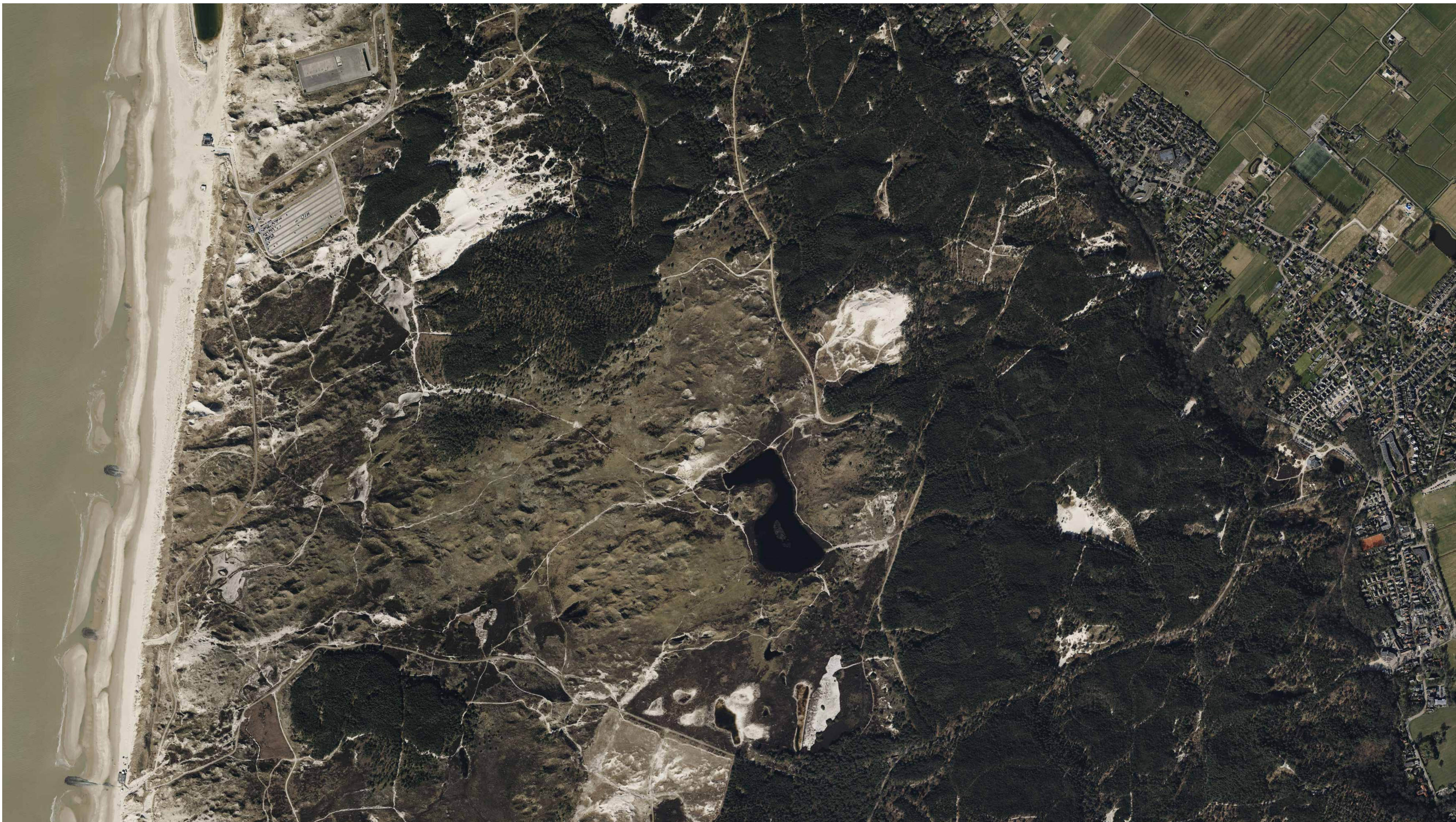




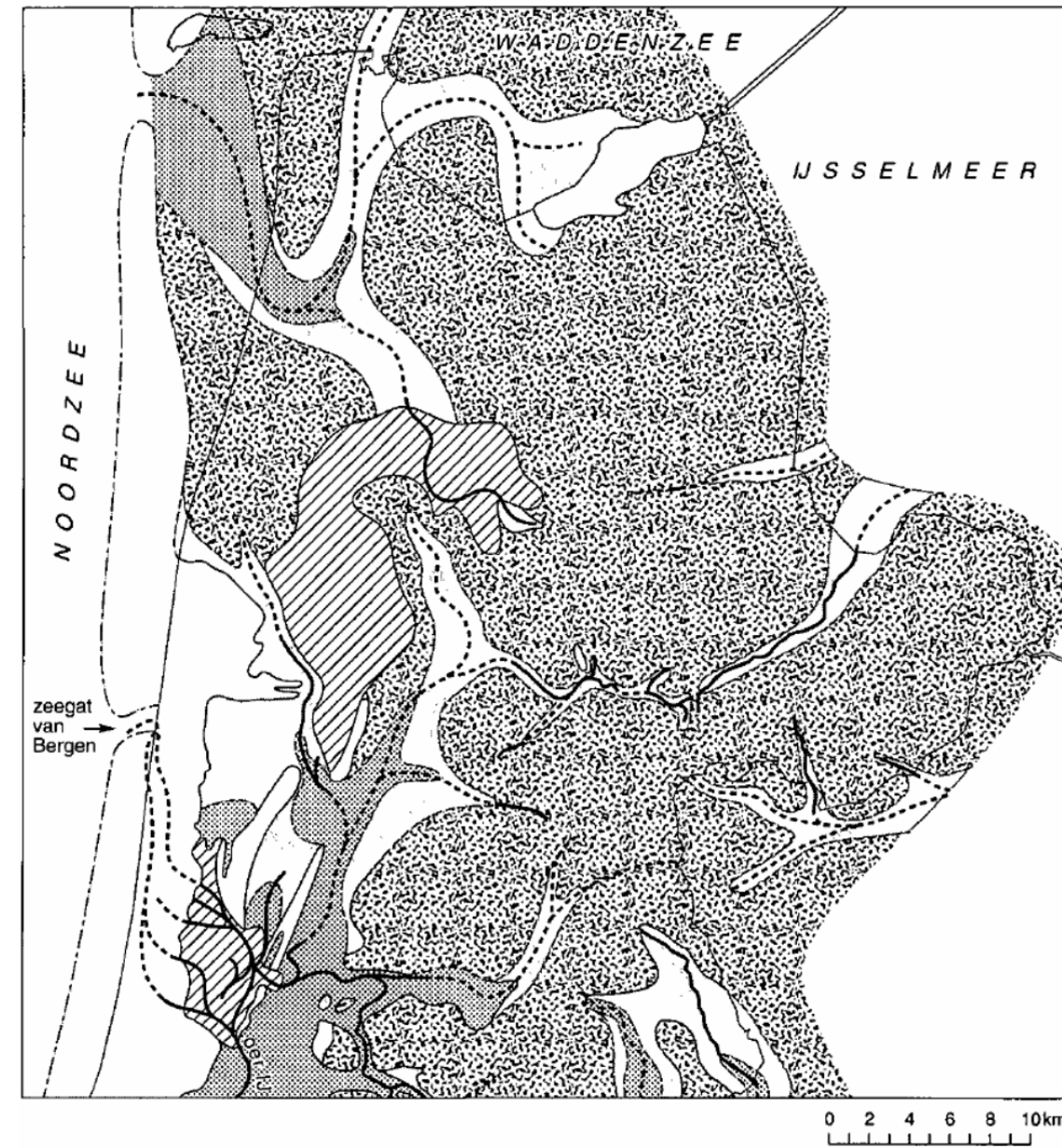




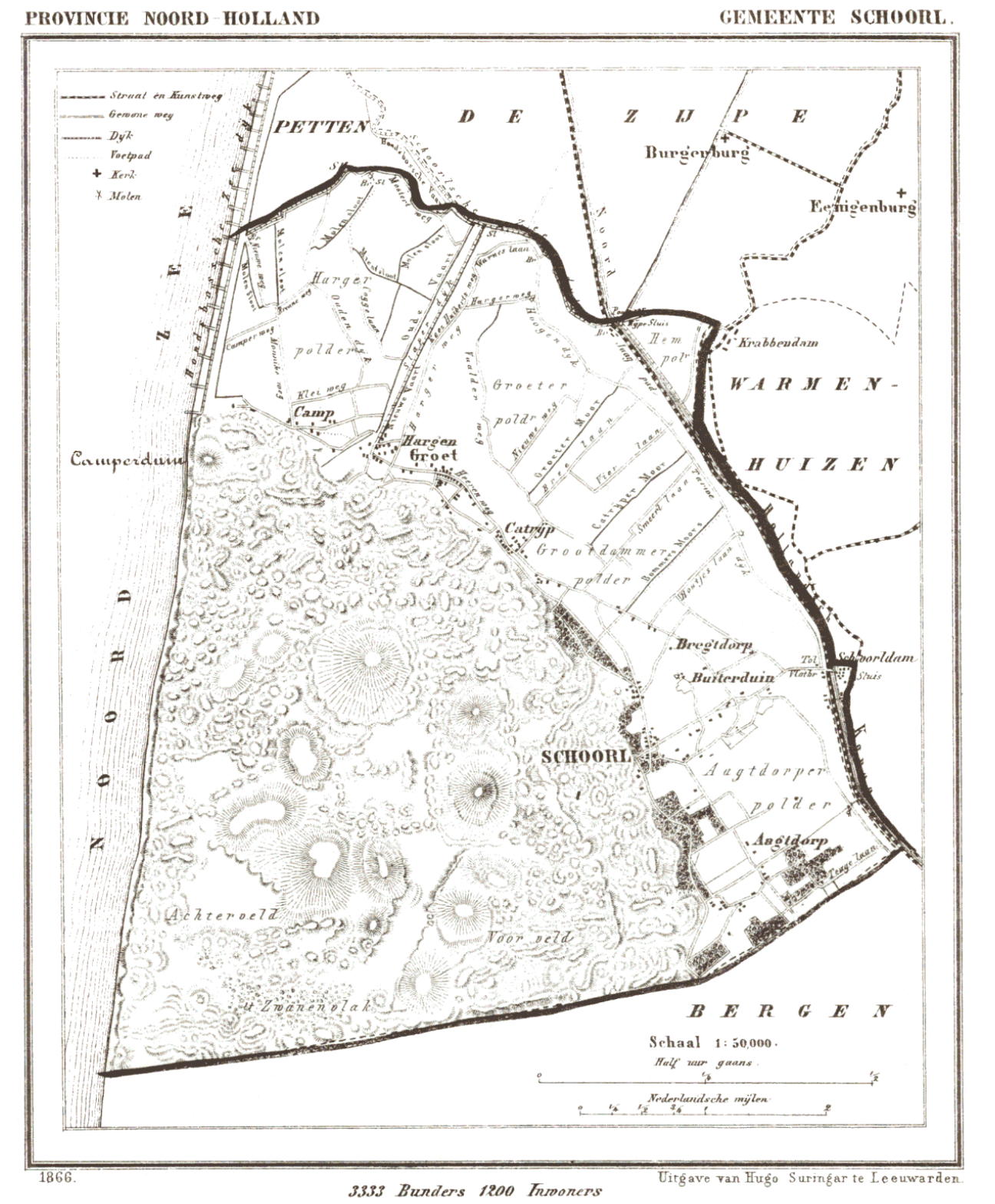




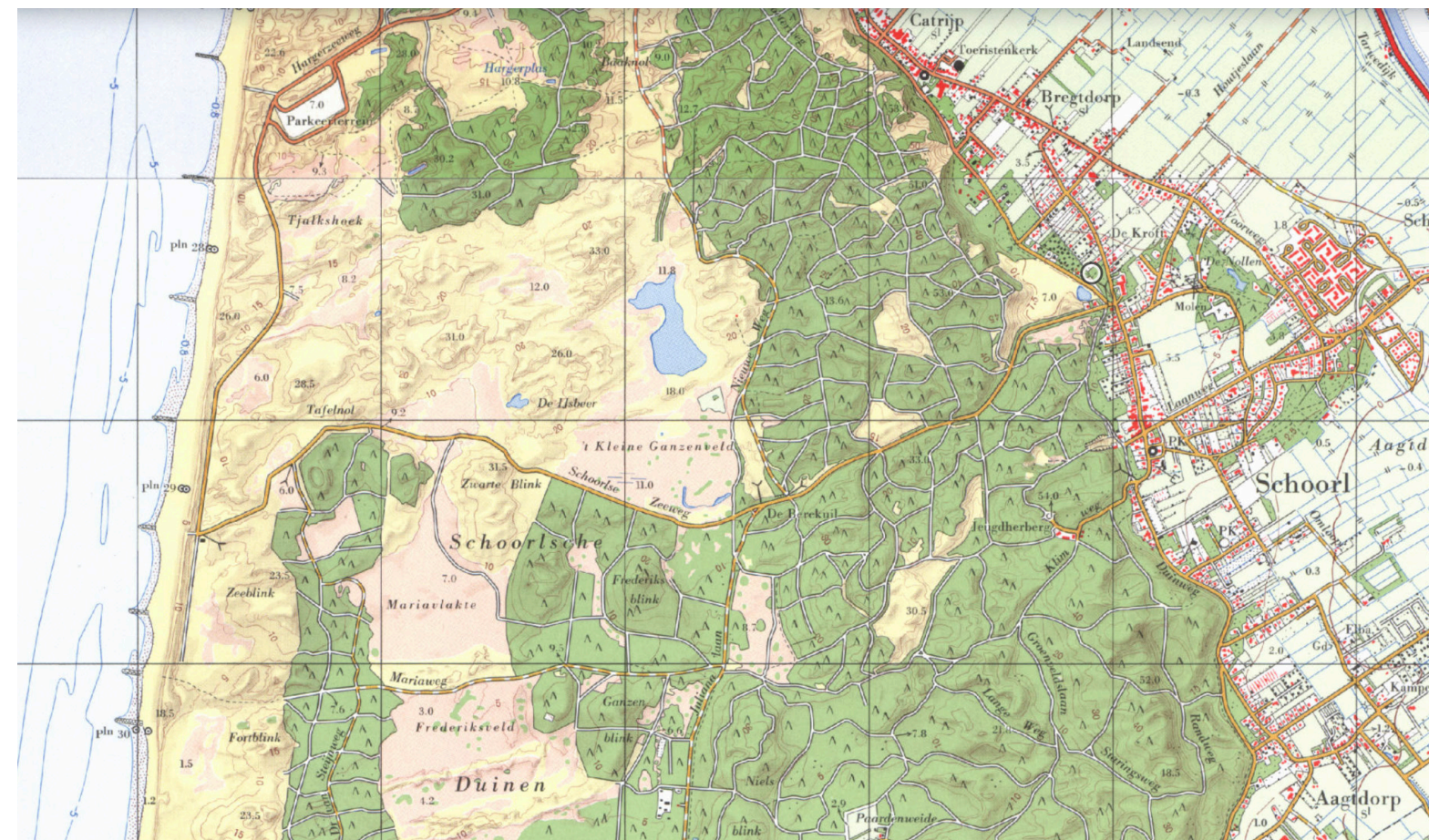
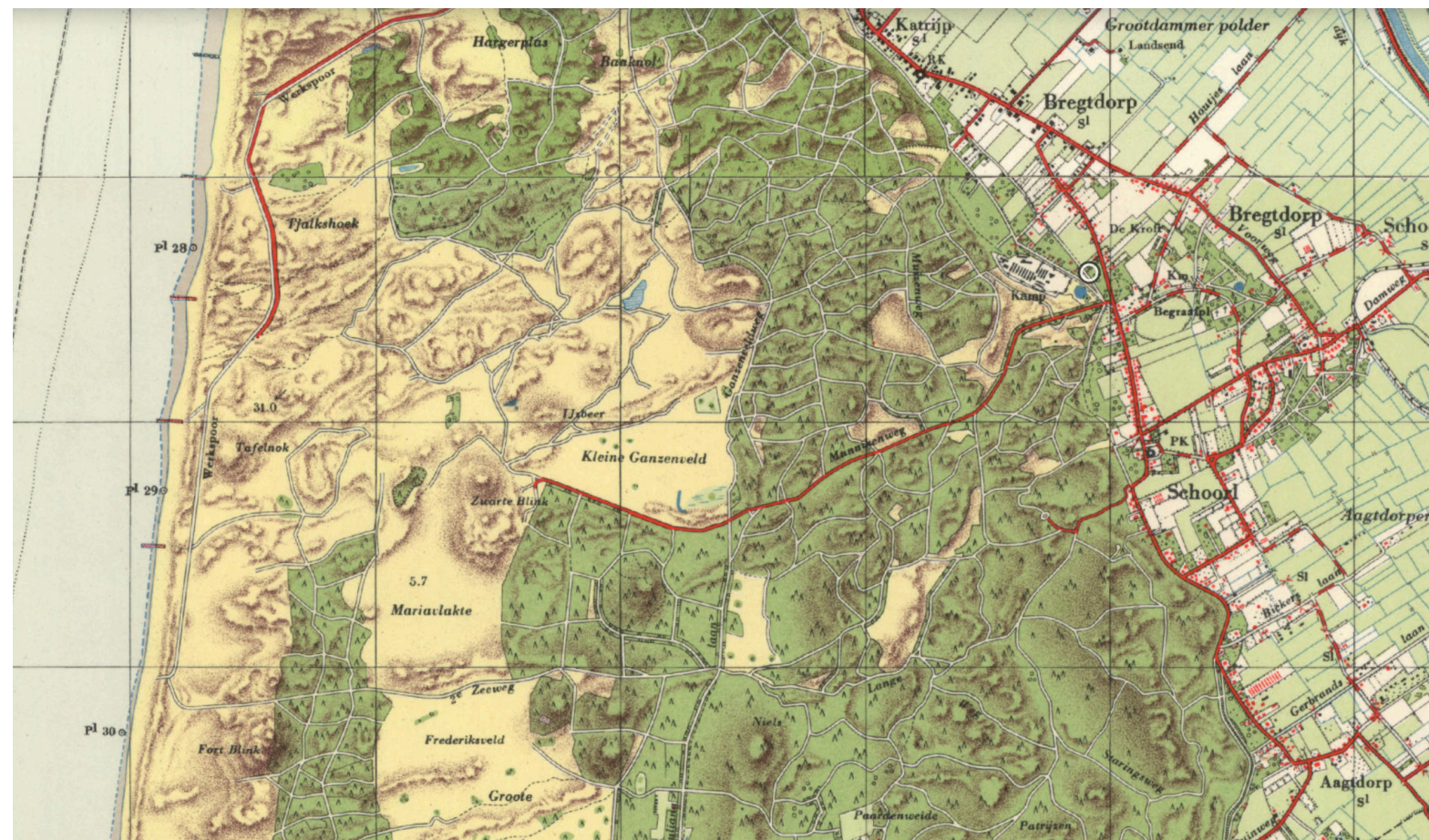




- | | | | |
|--|--|--|---|
| | Pleistoceen, gelegen boven NAP | | begrenzings tussen de veensoorten |
| | strandwallen en oude duinen | | veronderstelde begrenzings tussen de veensoorten |
| | zeeklei met een venige bovengrond en plaatselijk een dunne veentlaag | | kustlijn |
| | veenmosveen (ofigotroof) | | vermoedelijke vroegere kustlijn |
| | zeggeveen (mesotroof) | | veenstroompjes, kreken en rivieren |
| | rietveen en rietzeggeveen (eutroof, brak) | | veronderstelde ligging veenstroompjes, kreken en rivieren |



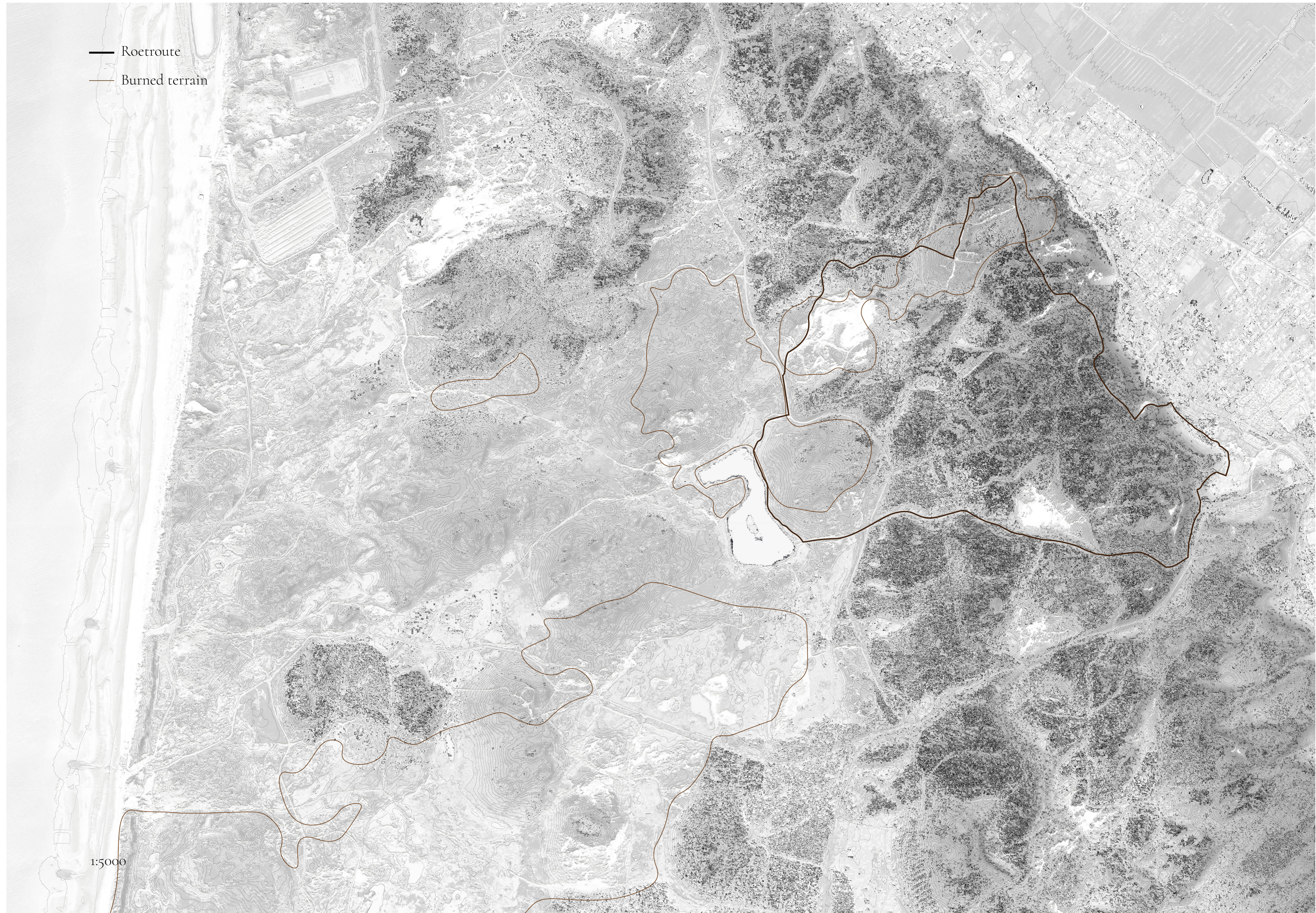






— Roetroute
— Burned terrain

1:5000













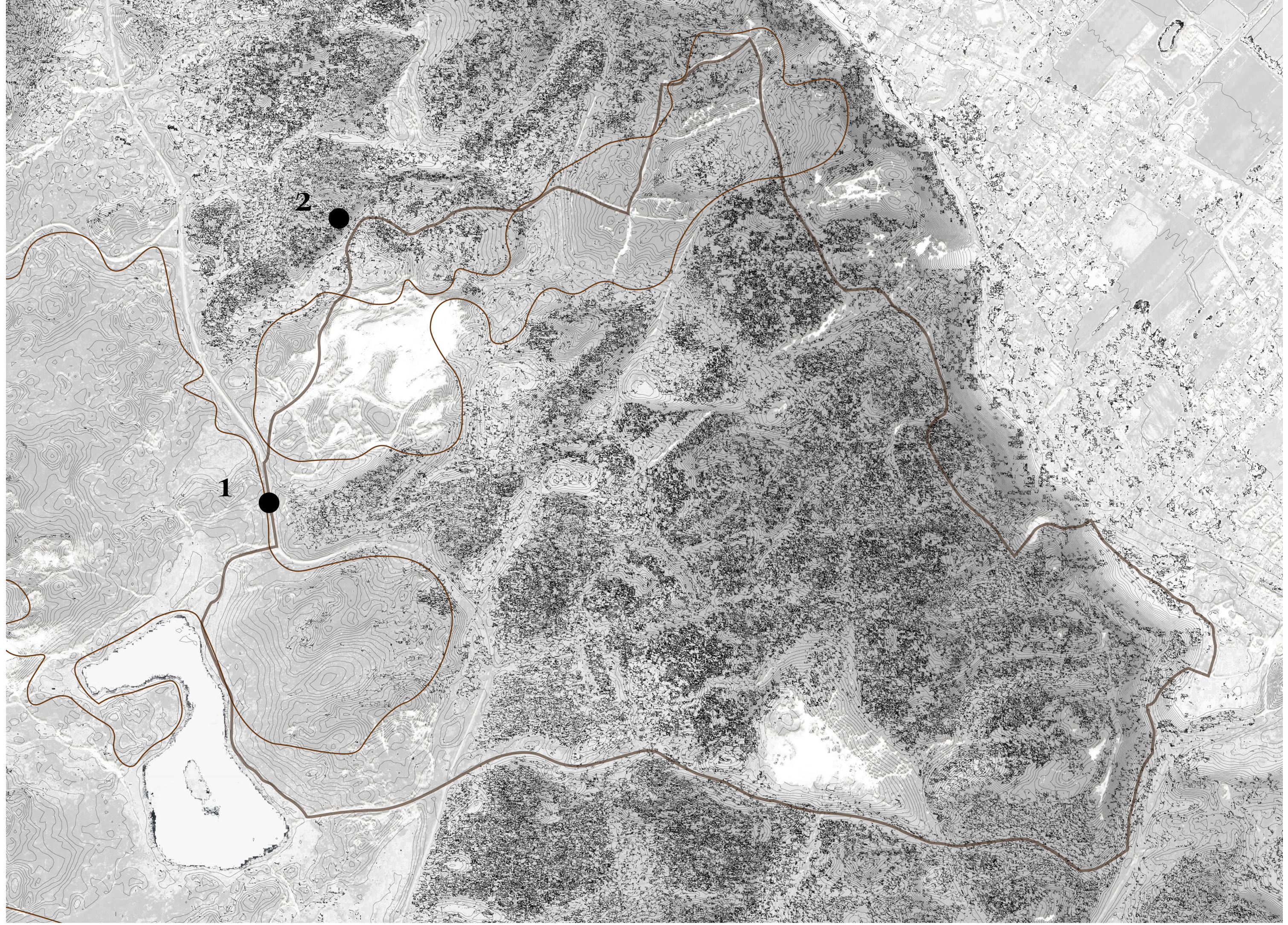






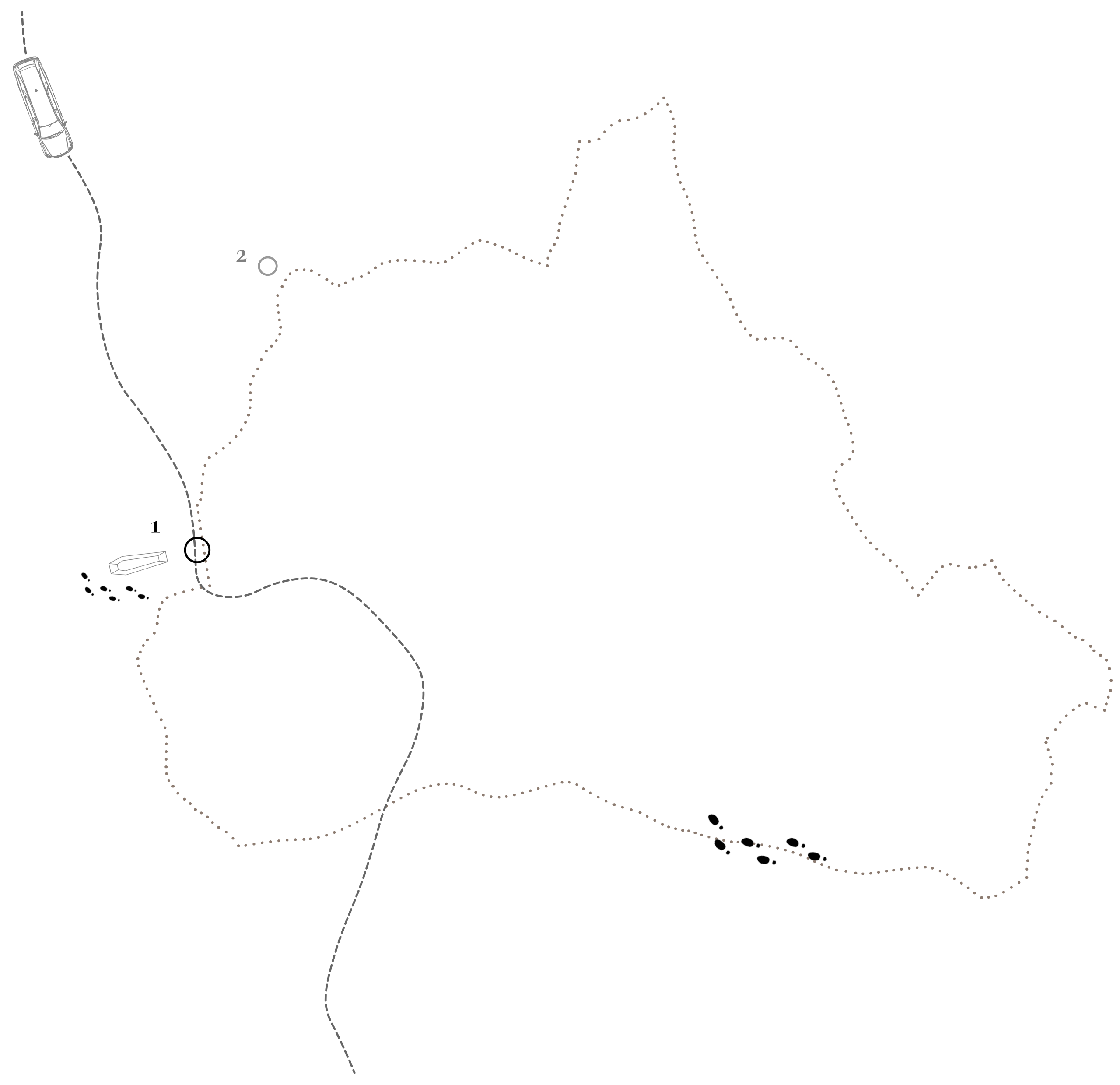








Place one





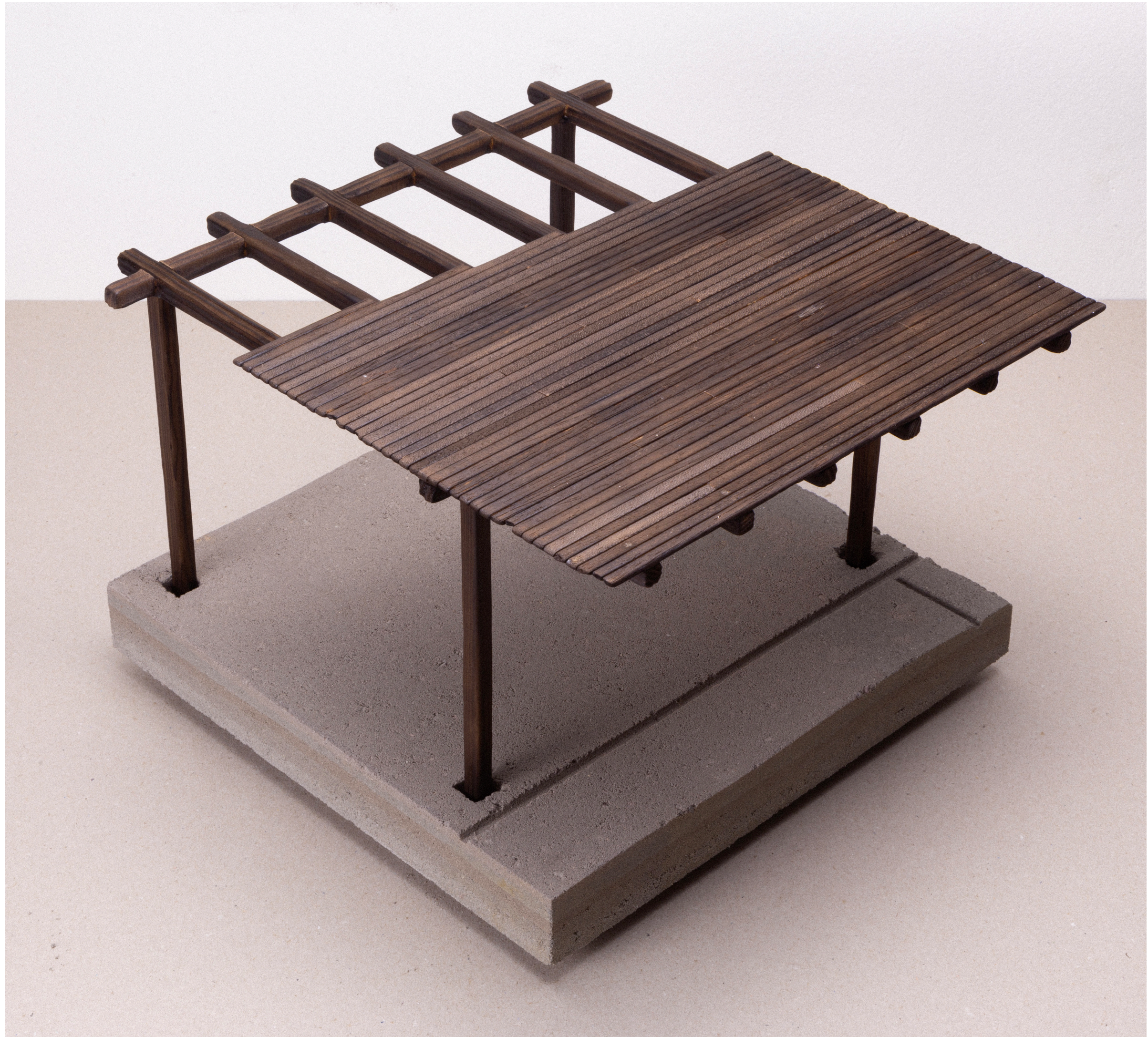


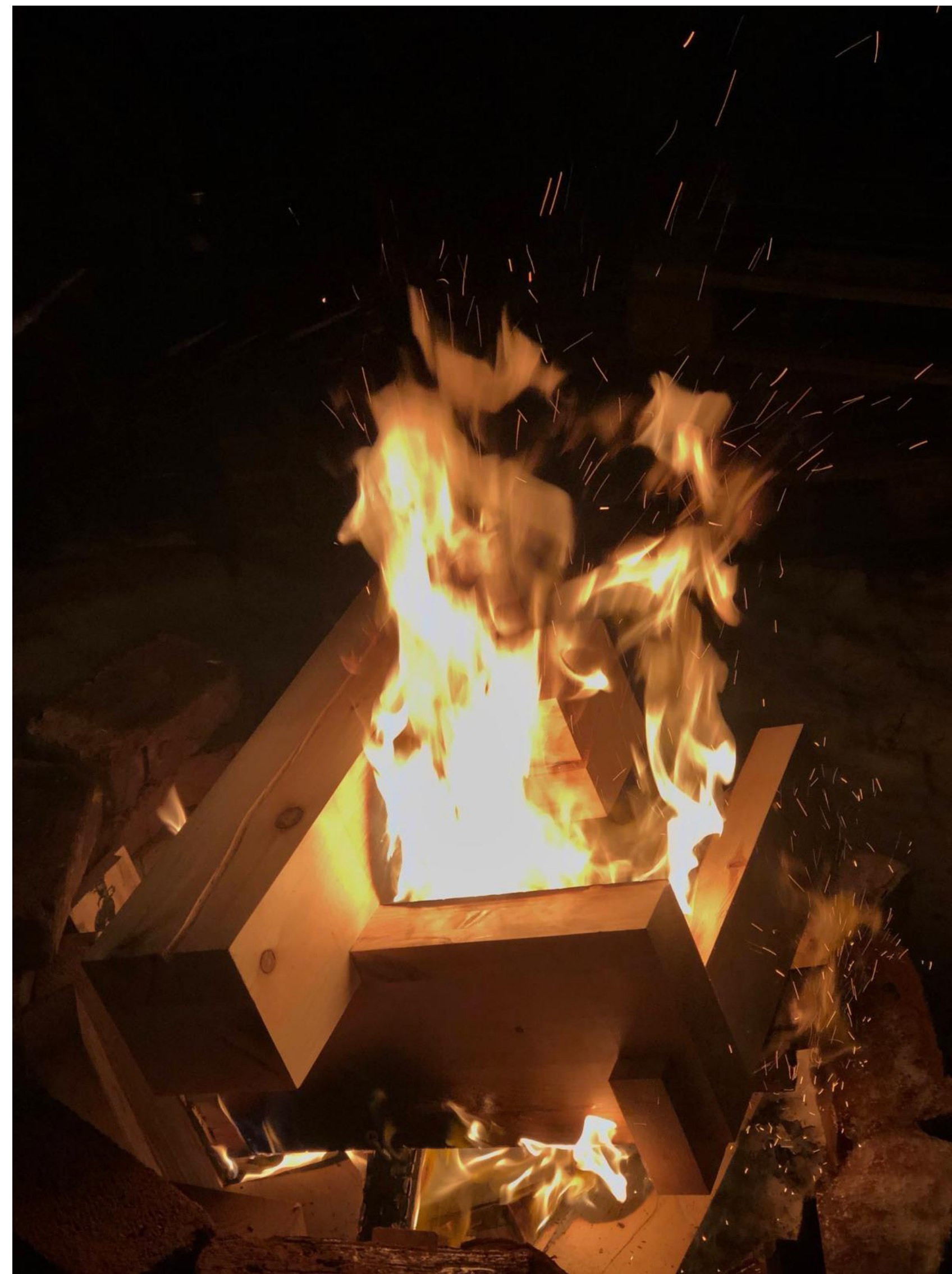




Roger-Viollet, The Arcades Project by Walter Benjamin.



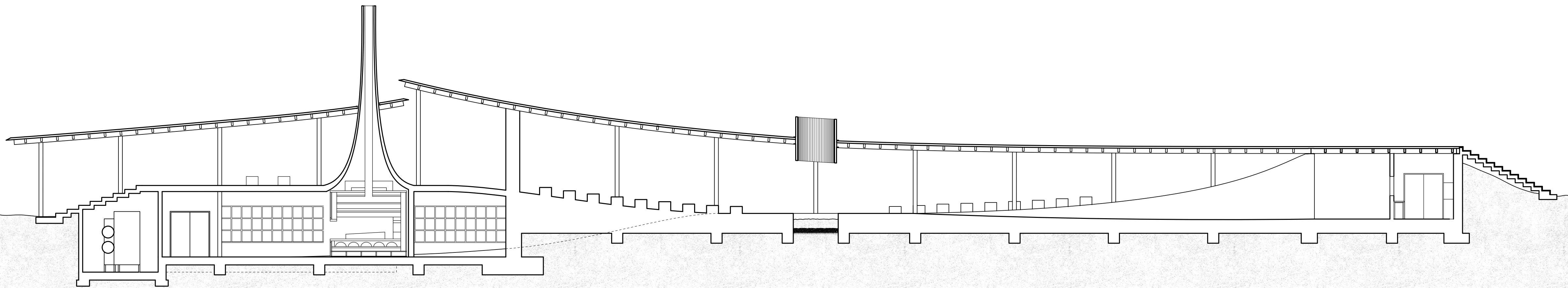


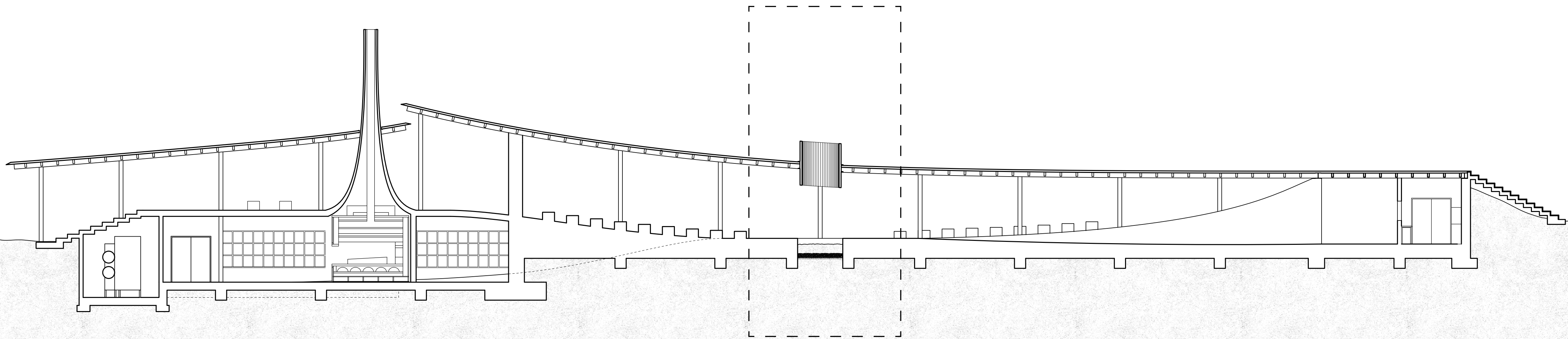


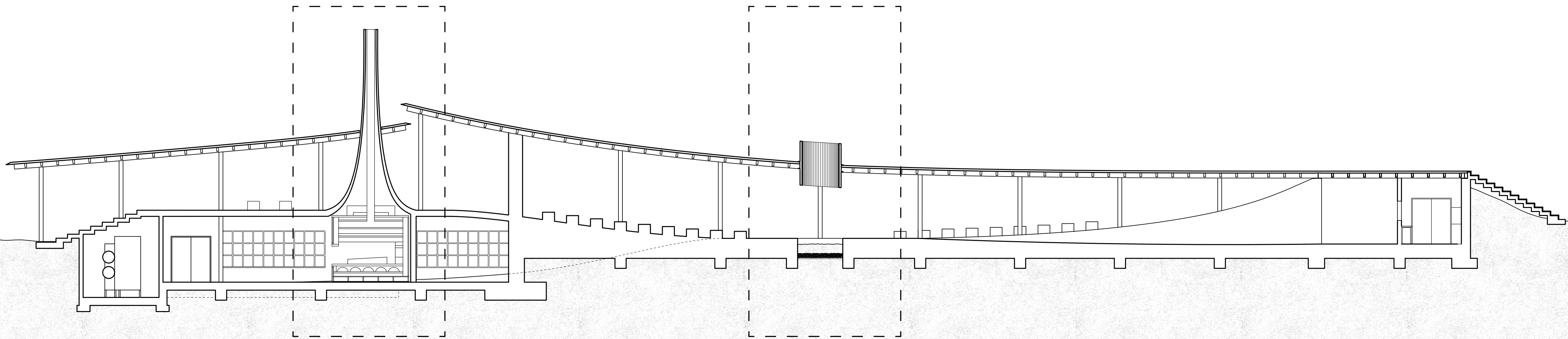


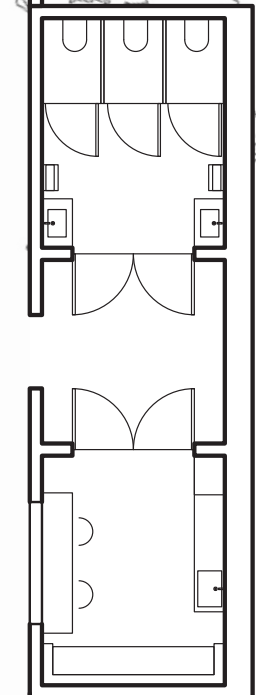
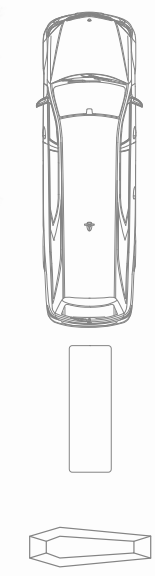
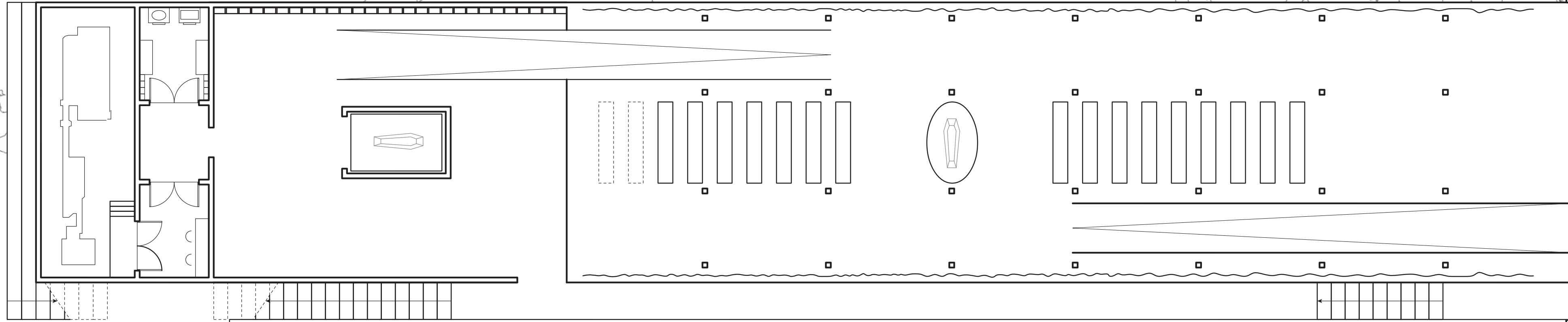


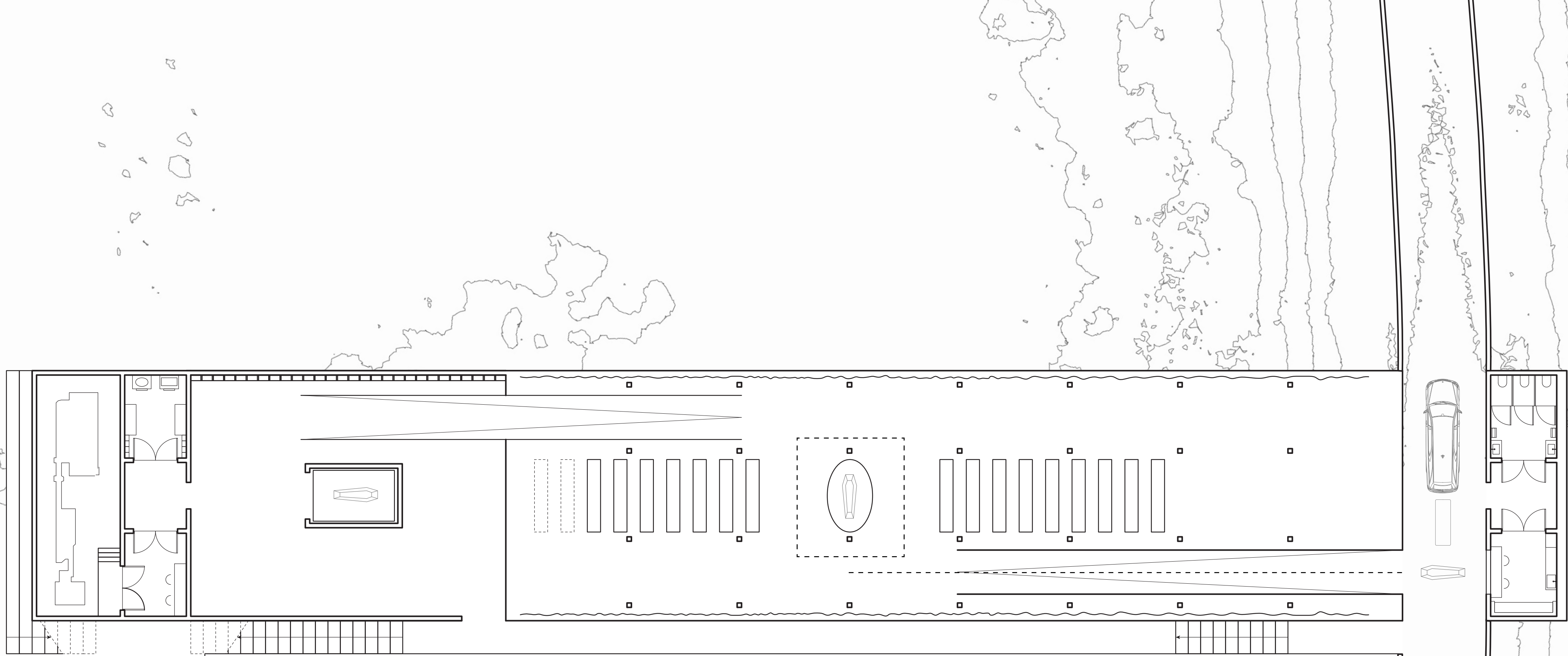












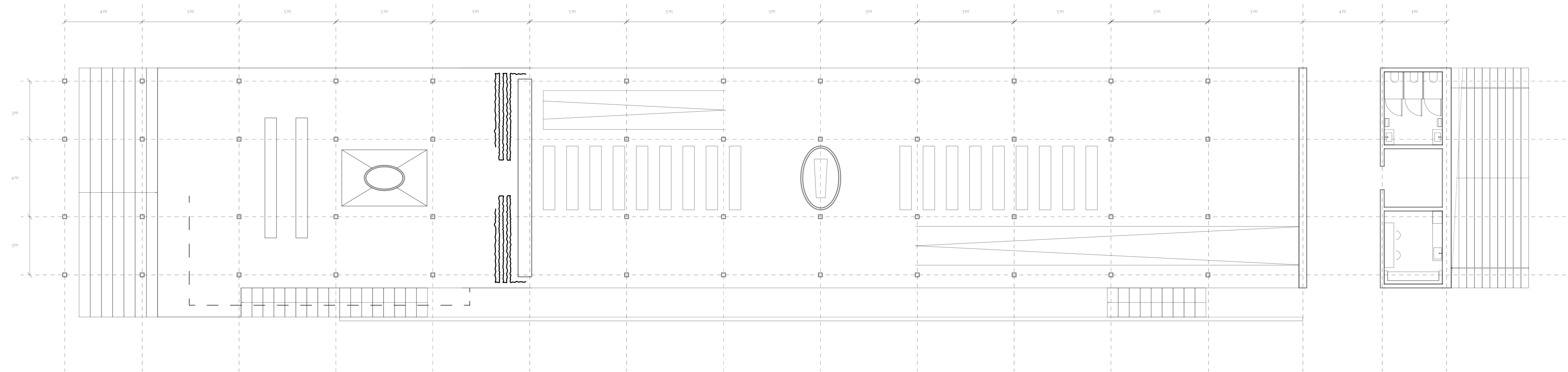






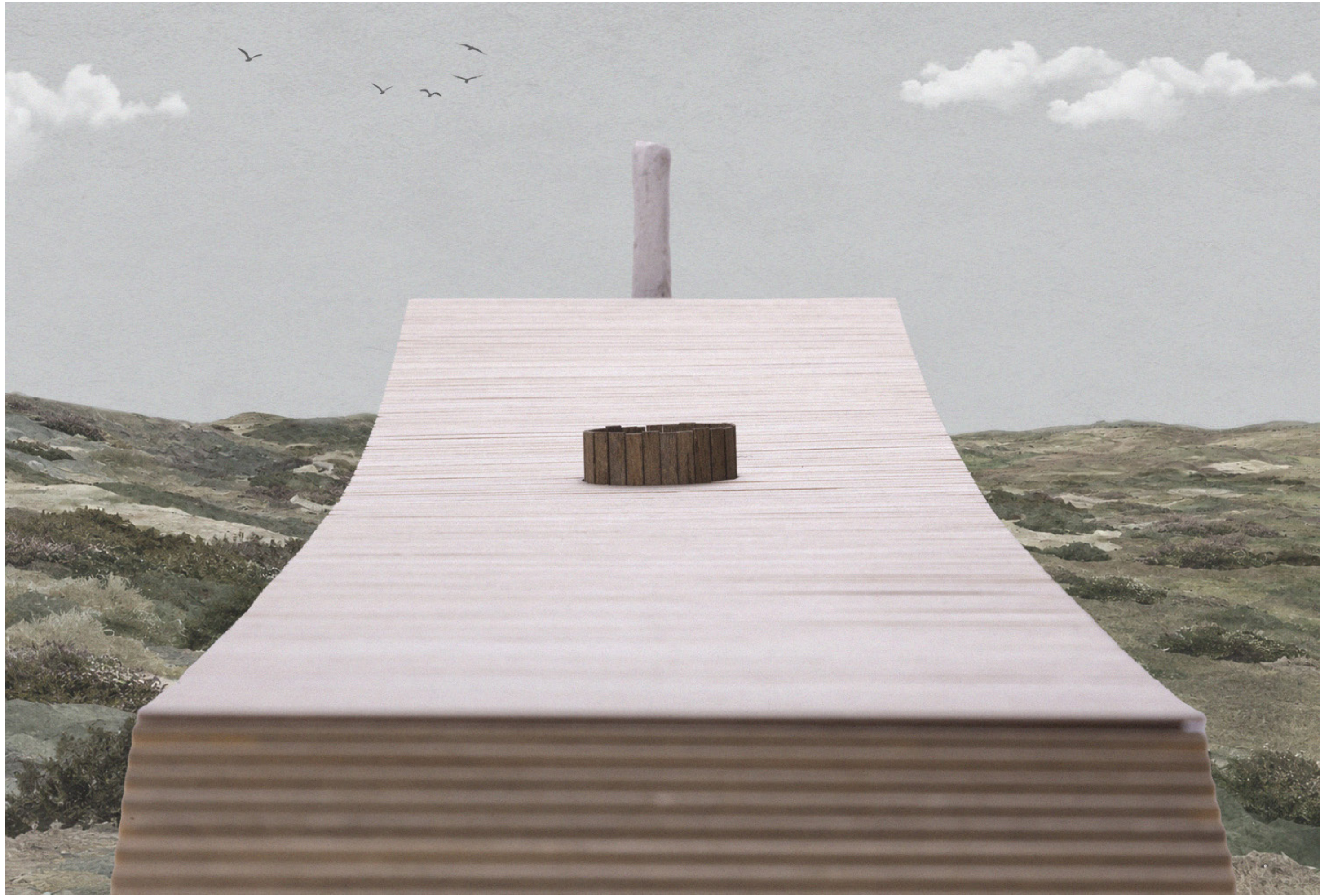








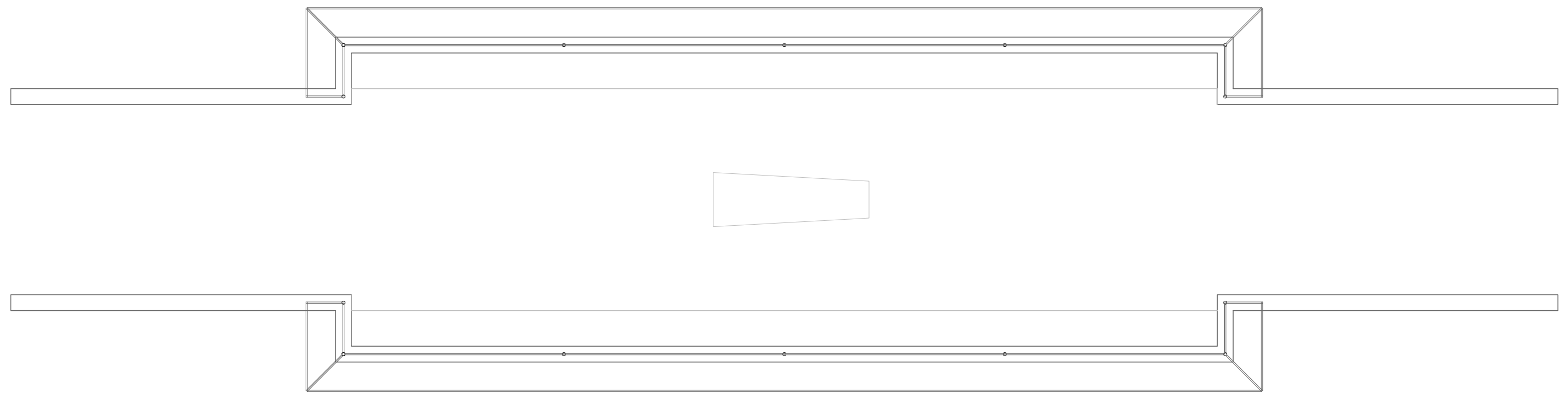


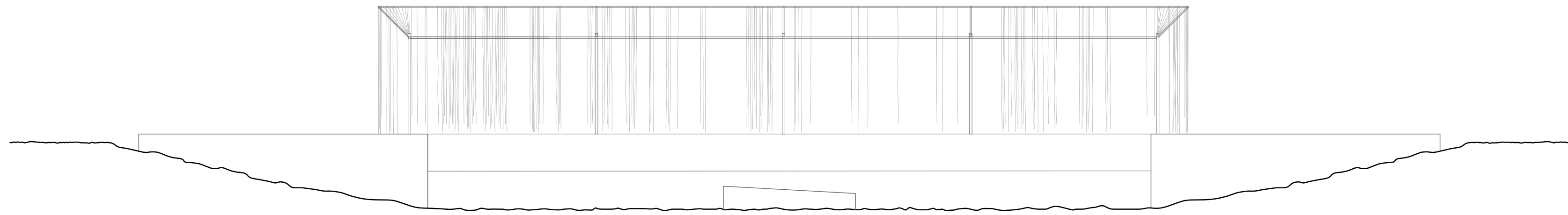




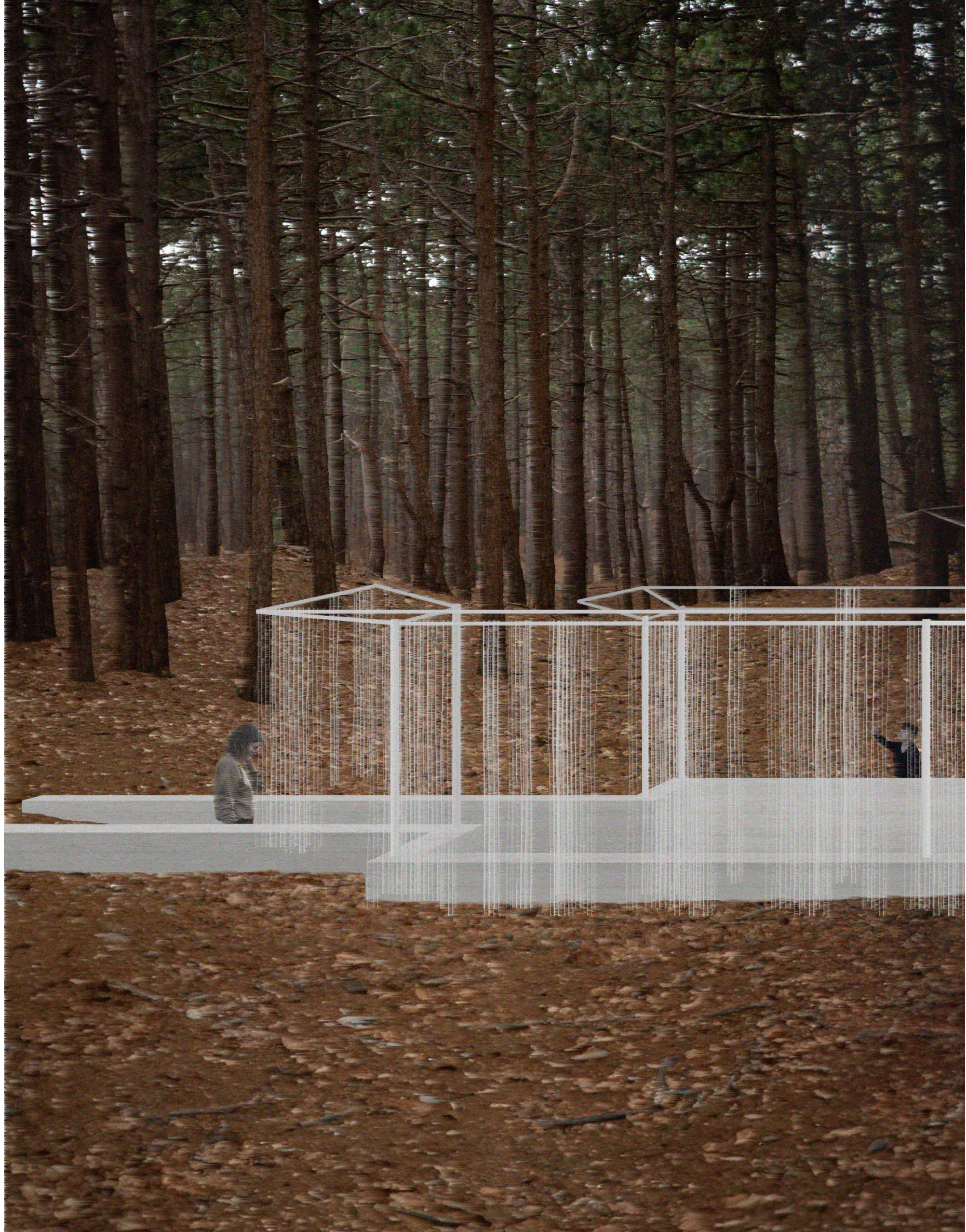


Place 2











Thank you.