

Living in Transition

Transitional housing for safety, autonomy and social inclusion in the Spaanse Polder



TU Delft Faculty of Architecture and the Built Environment
Department of Architecture | Architecture and Dwelling

Graduation Report

ADVANCED HOUSING DESIGN 2025/2026

Master Graduation Studio

ECOLOGIES OF INCLUSION

Student

Sivan Maruf

5193788

s.maruf-1@student.tudelft.nl

Coordinator:

Olv Klijn

Design Mentor:

Robbert Guis

Social inclusion Mentor:

Deepti Adlakha

19.06.2026

ABSTRACT

This graduation report investigates how transitional housing for individuals and families exiting crisis shelters can be architecturally and spatially integrated within the transformation of the Spaanse Polder in Rotterdam. The research addresses the gap between emergency accommodation and permanent housing, focusing on the one- to two-year transitional phase in which residents need safety, stability, autonomy and gradual social reintegration. Rather than approaching transitional housing as an isolated care facility, the project proposes a mixed collective housing model embedded within an emerging urban district. The design combines a balanced resident composition of one-third students, one-third residents aged 55+, and one-third people receiving a transitional housing place. Each residential floor is organised as one large shared apartment with approximately ten furnished private bedrooms. Residents share bathrooms, circulation spaces, outdoor areas, kitchens and collective living rooms. At the

architectural scale, the project creates a gradient from private rooms to collective spaces and public neighbourhood functions. At the urban scale, a public library activates the two-story plinth and connects the building to its surroundings. In this way, the project positions transitional housing as part of ordinary urban life: safe, affordable, socially inclusive and non-institutional.

Contents

Abstract	4
1. Introduction	
1.1 Problem statement	
1.2 Relevance	
1.3 Objective and motivation	
1.4 Research questions	
1.5 Scope	
2. Research and Design Approach	6
2.1 Research approach	
2.2 Theoretical framework	
2.3 Methodological steps	
2.4 Contribution	
3. Research Findings and Design Principles	8
3.1 Transitional housing between shelter and independent living	
3.2 Safety, autonomy and stability	
3.3 Social infrastructure and everyday participation	
3.4 Mixed and dispersed housing strategy	
3.5 Design principles	
4. Final Design Proposal	12
4.1 Project statement and relation to the urban masterplan	
4.2 Target group and resident composition	
4.3 Tenure type and housing typology	
4.4 Programming of collective spaces	
4.5 Architectural and technical organisation	
5. Conclusion and Discussion	18
5.1 Conclusion: answer to the research question	
5.2 Implications for architecture	
5.3 Recommendations	
5.4 Reflection on process and methods	
References	20
Appendix: Project drawings & Renders	
Render Main Entrance	
Render South View	
Render West View	
Render Bedroom - Apartment	
Render Pantry - Apartment	
Render Library - A	
Render Library - B	
Render Sleeping Room	
Render Playground	
Floor Plan - Basement	
First Floor	
Second Floor	

1. Introduction

1.1 Problem statement

Across the Netherlands, individuals and families exiting crisis shelters after experiences of domestic violence face persistent housing insecurity. Crisis accommodation can restore immediate safety, yet it rarely provides a direct pathway towards independent living. Structural shortages in the social housing sector and limited access to urgency schemes can result in prolonged stays in shelters or supported housing, turning temporary protection into long-term instability (Centraal Bureau voor de Statistiek [CBS], 2024, pp. 12-15; Movisie, 2023, pp. 8-11).

Domestic violence affects a substantial part of the population. National prevalence monitoring indicates that approximately 1.3 million adults experience domestic violence annually, including psychological, physical and coercive forms (CBS, 2024, pp. 4-6). In Rotterdam, the issue is addressed through the Centrum Huiselijk Geweld en Kindermishandeling, yet the transition from shelter to stable housing remains structurally constrained (Gemeente Rotterdam, n.d.; Movisie, 2023, pp. 14-17).

For women, men and children leaving crisis centres, fully independent living is often not immediately feasible. Many residents require a transitional phase of one to two years in which safety, stability and autonomy can gradually be rebuilt (Movisie, 2023, pp. 18-21). Current housing systems often treat housing provision as either emergency accommodation or permanent allocation. As a result, transitional housing remains insufficiently developed as a distinct spatial and architectural category.

This project identifies the lack of well-integrated transitional housing as a critical design problem. When transitional housing is implemented as a technical, temporary or residual solution, it can become disconnect-

ted from everyday urban life and reproduce forms of social exclusion. The architectural challenge is therefore to design an intermediate housing environment that supports recovery and reintegration without adopting the spatial language of an institution. Figure 1 illustrates the concept for this project.

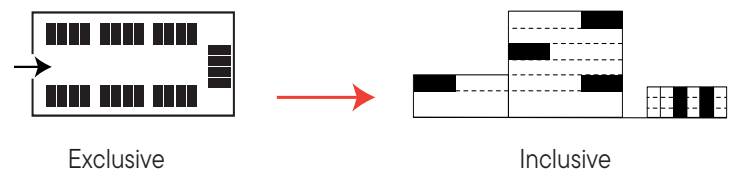


Figure 1
Diagram of the concept for transitional housing.
Own work

1.2 Relevance

The absence of appropriate transitional housing has direct social consequences. Without housing stability during the post-shelter phase, individuals and families face prolonged uncertainty, heightened vulnerability and limited opportunities for social and economic participation. In some cases, this instability may increase the risk of returning to unsafe situations (Movisie, 2023, pp. 22-25).

People exiting crisis shelters constitute a vulnerable group within broader housing shortages and deficits in social infrastructure. Addressing transitional housing therefore contributes to reducing structural inequality and strengthening inclusion at neighbourhood level. From an architectural and urban design perspective, the topic challenges conventional housing models because it requires environments that support flexibility, safety and gradual independence without becoming institutional.

The relevance of this project is also connected to the transformation of the Spaanse Polder. The area is shifting from an industrial and infrastructural landscape towards a mixed-use urban district. This transition creates an opportunity to embed transitional housing within a broader urban fabric rather than placing vulnerable residents at the margins of the city.

1.3 Objective and motivation

This graduation project positions transitional housing not as an isolated care facility, but as an integrated residential typology within an emerging mixed-use district. Through architectural design, the project investigates how spatial organisation can mediate between protection and participation, privacy and collectivity, and temporary residence and long-term urban belonging. The objective is to develop a housing model that allows residents to rebuild routines and autonomy while remaining connected to ordinary neighbourhood life. The motivation for this research stems from the intersection of urgent social need and the spatial potential of large-scale urban transformations. The redevelopment of the Spaanse Polder offers a context in which transitional housing can become a normalised component of the urban fabric rather than an exceptional programme.

1.4 Research questions

The main research question is:

How can transitional housing for individuals and families exiting crisis shelters be architecturally and spatially integrated within the transformation of the Spaanse Polder to support safety, autonomy and social inclusion?

This question is addressed through three sub-questions. First, what spatial and pro-

grammatic conditions are required to ensure safety, autonomy and stability during the one- to two-year transitional phase? Second, how can social infrastructure be integrated with transitional housing to prevent isolation and support everyday participation? Third, in what ways can transitional housing be distributed within a mixed residential environment as part of a dispersed neighbourhood strategy?

1.5 Scope

The research focuses on individuals and families exiting crisis shelters, with an emphasis on transitional housing for a period of one to two years. The spatial scope is limited to the architectural and neighbourhood scale, using the Spaanse Polder in Rotterdam as a case within a broader mixed-use redevelopment context. Care policy, legal frameworks and long-term housing allocation mechanisms are not addressed in depth. The project concentrates on spatial, programmatic and architectural strategies that can support the transition from crisis accommodation to independent living.

2. Research and Design Approach

2.1 Research approach

The project was developed through a research-by-design methodology in which theoretical research, spatial analysis and architectural design informed one another iteratively. Design was used as an investigative tool to test spatial hypotheses related to transitional housing, social inclusion and collective living. The final proposal is therefore not only an outcome of the research, but also a means through which the research questions were explored.

The process combined literature study, precedent research, urban analysis, programme development and design testing. These methods were used to translate social and theoretical concerns into spatial criteria. Each design iteration was evaluated according to three core ambitions: safety, autonomy and social inclusion.

2.2 Theoretical framework

Social inclusion is understood in this report as a spatial condition shaped by the organisation of everyday life. Following Klinenberg, social infrastructure refers to the physical places that enable interaction, mutual support and participation in society (Klinenberg, 2018, pp. 17-19). Housing environments that lack access to such infrastructure risk reinforcing isolation, particularly for vulnerable groups.

Gehl's work on public and collective life supports this position by showing how everyday contact can emerge through spatial proximity, visibility and informal use of shared spaces (Gehl, 2011, pp. 14-17). Within the transformation of the Spaanse Polder, social infrastructure is therefore treated as a critical framework for embedding transitional housing in daily urban routines rather than

treating it as a separate or exceptional programme.

Transitional housing occupies a position between crisis accommodation and permanent housing. Spatially, this requires a balance between protection and autonomy, with clear distinctions between private, semi-private, collective and public domains. Collaborative housing research is relevant here because it demonstrates how private dwelling spaces can be combined with shared facilities, collective routines and forms of mutual support, provided that privacy and voluntary participation are carefully protected (Czischke, 2018, pp. 64-66; Czischke et al., 2023, pp. 14-31).

2.3 Methodological steps

The research and design process consisted of four steps. The first step was a contextual and spatial analysis of the Spaanse Polder, focusing on existing accessibility, functional mix, urban edges and opportunities for social infrastructure. This analysis was used to identify the potential of the area as a mixed-use neighbourhood rather than as a purely industrial zone.

The second step was a user and transition analysis. This examined the spatial needs of individuals and families during the one- to two-year transitional phase, with attention to safety, privacy, autonomy and access to support (Movisie, 2023). This step clarified that transitional housing should provide a secure private base while also enabling gradual reconnection to everyday life.

The third step was typological and precedent research. Relevant examples of mixed housing, collaborative housing and supported living were studied to identify strategies for combining private rooms, shared facilities, resident mix and non-institutional spatial language (Czischke, 2018; Davelaar et al., 2018; Van der Velden et al., 2016).

The fourth step was research by design. Spatial scenarios were developed to test how transitional housing could be integrated into the Spaanse Polder through a mixed collective housing model. The design studies tested the relation between the public plinth, residential floors, circulation, collective rooms and private bedrooms.

2.4 Contribution

The project contributes to the graduation studio by reconceptualising transitional housing as a spatial bridge between crisis accommodation and independent living. Rather than treating the post-shelter phase as a temporary policy gap, the project gives

it an architectural form. The final design demonstrates how a mixed collective housing model can support safety, affordability, social connection and everyday participation within a changing urban district.

3. Research Findings and Design Principles

3.1 Transitional housing between shelter and independent living

Individuals and families leaving crisis shelters often encounter a critical intermediate phase between emergency accommodation and permanent housing. During this transition, residents must re-establish safety, stability and personal autonomy while gradually reintegrating into everyday urban life. This phase typically lasts between one and two years and requires housing conditions that differ from both institutional shelters and fully independent housing (Platform31, 2020, pp. 11-12).

Crisis shelters primarily provide immediate safety and supervision in response to urgent situations. They are not designed as long-term environments for recovery, autonomy or social participation. Immediate placement in fully independent housing, however, may also be difficult when residents lack financial resources, furniture, stable routines or social networks. Transitional housing therefore needs to offer a protected but non-institutional environment in which residents can rebuild everyday life step by step.

For this project, transitional housing is understood as a temporary yet complete living environment. It must provide a secure private base, access to support, opportunities for informal contact and a clear relationship to the wider neighbourhood. The aim is not to create a shelter, but to design a spatial condition that enables the movement from crisis to independence.

3.2 Safety, autonomy and stability

The research identifies safety, autonomy and stability as the three core spatial conditions for the transitional phase. Safety refers not only to protection from danger, but also to

the ability to control one's immediate environment. For residents leaving crisis shelters, the dwelling must offer a reliable private domain where they can withdraw, rest and rebuild personal routines.

Autonomy is supported when residents are addressed as inhabitants rather than clients. This requires domestic spaces that allow choice and self-direction. In the proposed floor plan, the private bedroom functions as the most personal domain, while shared kitchens, living rooms, bathrooms and outdoor spaces provide access to collective life without removing individual control. Stability is produced through spatial clarity, affordability and predictable routines. Furnished rooms lower the financial and practical threshold for moving in quickly. Shared facilities reduce the size and cost of individual units while maintaining access to generous collective spaces. This combination supports a temporary but dignified living environment.

3.3 Social infrastructure and everyday participation

Social inclusion cannot be achieved through housing provision alone. It depends on the spatial conditions that allow residents to participate in everyday life, encounter others and access support. Social infrastructure is therefore central to the project. Shared spaces, public functions and neighbourhood amenities can become the settings through which gradual reintegration takes place (Klinenberg, 2018, pp. 17-19).

For transitional housing, social infrastructure must remain low-threshold. Residents should not be forced into collectivity or exposed to public life before they are ready. Instead, the design should offer repeated opportunities for informal contact: seeing others, sharing routes, cooking together, using a library, sitting in a shared room or accessing outdoor space. Gehl's description of everyday contact as the basis for richer social life is relevant here (Gehl, 2011, pp. 14-17).

In the final design, social infrastructure operates at two scales. At the building scale, shared living rooms, kitchens, circulation spaces and outdoor spaces create domestic forms of contact. This design principle has guided a number of important design choices. At the neighbourhood scale, the public library activates the ground floor and connects residents to the surrounding area.

3.4 Mixed and dispersed housing strategy

Mixed housing research shows that the combination of different resident groups can support social participation when spatial organisation, resident composition and management are carefully designed (Davelaar et al., 2018, pp. 7-10; Van der Velden et al., 2016, pp. 59-67). Concentrating vulnerable residents in one isolated facility risks reproducing the spatial logic of institutional care. A mixed and dispersed strategy can reduce stigma and create a more ordinary residential setting.

In this project, the resident composition is based on one-third students, one-third residents aged 55+, and one-third people receiving a transitional housing place. This mix is used to prevent vulnerability from becoming the defining identity of the building. It also connects the transitional housing agenda to broader questions of loneliness, ageing, affordability and shared domestic life.

The strategy does not assume that social inclusion will occur automatically. Mixed living requires spatial gradients, clear shared spaces, privacy and management. The architectural task is therefore to create conditions in which residents can live together without being forced into constant interaction.

3.5 Design principles

The research leads to five design principles that guide the final proposal. First, transitional units should be distributed within a mixed residential environment rather than concentrated in a separate facility. This reduces stigma and allows residents to participate in ordinary neighbourhood life (Davelaar et al., 2018, pp. 7-10; Van der Velden et al., 2016, pp. 59-67).

Second, the design should create a gradient from private to collective space. Residents need both a secure personal domain and opportunities for gradual contact. Intermediate zones between the bedroom, circulation, shared rooms and public spaces allow residents to choose when to withdraw and when to participate (Gehl, 2011, pp. 58-59; Czischke et al., 2023, pp. 14-31).

Third, support should be embedded within everyday neighbourhood life. Assistance should be accessible without dominating the spatial identity of the project. Support can be formal or informal, but it should be integrated into daily routes and shared amenities rather than isolated in a separate care wing (Davelaar et al., 2018, pp. 23-36).

Fourth, the project should avoid institutional spatial language. Long anonymous corridors, centralised control points and overly visible support facilities can reinforce dependency and stigma. Instead, the design should use the language of ordinary housing: private rooms, domestic thresholds, daylight, shared kitchens, living rooms and a welcoming relation to the street (Czischke, 2018, pp. 64-66).

Fifth, shared spaces should operate as low-threshold social infrastructure. Collective kitchens, living rooms, outdoor spaces, circulation areas and the public library provide everyday opportunities for contact without making participation obligatory. Together, these principles translate the research into a spatial framework for the final design proposal.

4. Final Design Proposal

4.1 Project statement and relation to the urban masterplan

The final design proposes transitional collective housing within the transformation of the Spaanse Polder. The project is positioned in relation to the larger urban agenda described in the ZUS masterplan, National Productive Park Delfland. The plan frames the region between Rotterdam, Delft and The Hague as a pressured delta landscape in which housing demand, climate adaptation, biodiversity, water storage, agriculture, infrastructure and energy transition compete for limited space (ZUS [Zones Urbaines Sensibles], Flux, & Sweco, 2022, p. 14). Rather than extending urban growth into vulnerable open landscapes, the plan argues for densification along city edges and infrastructural nodes while strengthening Midden-Delfland as a green lung, water sponge and productive landscape (ZUS et al., 2022, p. 22).

In relation to this masterplan, the project operates as a local architectural translation of edge densification. The Spaanse Polder is understood as a metropolitan transition zone: currently shaped by logistics, infrastructure and fragmented industrial plots, but capable of becoming a mixed-use urban district (Figure 2). The project contributes to the ZUS agenda by introducing housing where densification can support the larger landscape system instead of threatening it. At the regional scale, the project reinforces the idea that new urban growth should be concentrated at strategic urban edges so that open landscapes can be preserved, adapted and strengthened for water retention, biodiversity and recreation (ZUS et al., 2022, pp. 32-34). The agenda of the project follows the studio themes of sustainability thinking, gender equity, social inclusion and affordability. Sustainability is approached through compact urban densification, reuse of existing urban

land and a relationship with green-blue infrastructures. Gender equity is addressed by designing safe, autonomous and non-institutional housing for people, especially women and families, leaving unsafe domestic situations. Social inclusion is pursued by mixing residents and embedding transitional places within a collective housing model. Affordability is addressed through compact furnished rooms, shared facilities and the reuse of urban land close to existing networks.



Legend

- Existing buildings
- New buildings
- Water
- Green areas
- Possible infrastructure
- Squares
- Infrastructure combined with green



Figure 2
Transformation of the Spaanse Polder.
Group work Social Inclusion
(Jesse Dijk, Sivan Maruf, Mink Miedendorp de Bie, Lieke Pasman, Justin Zethof)

1:10000

4.2 Target group and resident composition

The project is designed for a mixed residential community in which the apartment composition consists of one-third students, one-third residents aged 55+, and one-third people receiving a transitional housing place. Within this mixed setting, the project focuses specifically on individuals and families exiting crisis shelters who are no longer in immediate emergency care, but are not yet ready or able to access fully independent housing. This includes single adults, single parents with children and small families who need a temporary, safe and stable living environment after a period of crisis.

The residents are not approached as patients or clients, but as future independent inhabitants who require privacy, autonomy and gradual reconnection to everyday urban life. The target group may include people who have experienced domestic violence, homelessness, family breakdown or other forms of social vulnerability. For this reason, the design must provide both protection and openness. The mixed resident composition is intended to prevent the concentration of vulnerability and to create a more ordinary neighbourhood setting.

4.3 Tenure type and housing typology

The project proposes temporary affordable rental housing as its main tenure type. The housing is organised as a collective apartment model that combines private furnished rooms with shared domestic facilities. Each residential floor is organised as one large shared apartment with an average of eleven private bedrooms. The bedroom is the most private domain, while bathrooms, circulation spaces, outdoor spaces, the kitchen and communal living rooms are shared.

The furnished character of the rooms is important for the resident groups. For people entering a transitional housing period, furnished accommodation lowers the financial threshold and enables fast rehousing after

crisis, especially when residents lack the means to buy furniture. For older residents, furnished shared apartments offer convenience and may make moving from a single-family home more attractive. The model also supports the ambition to reduce loneliness by creating everyday opportunities for contact, shared routines and informal support. As shown in Figure 3, the floor plan is organized so that the circulation space indicated in light green connects the various living spaces and gives a resident the choice of which space they wish to enter. Circulation is therefore not only functional, but becomes a sequence of informal collective spaces. The typology combines individual privacy with collective domestic life. Shared facilities reduce the size and cost of the individual units while increasing the quality and generosity of the overall living environment. The project therefore does not operate as a shelter or institution, but as a shared domestic environment in which residents can gradually build stability, routine and social connection.

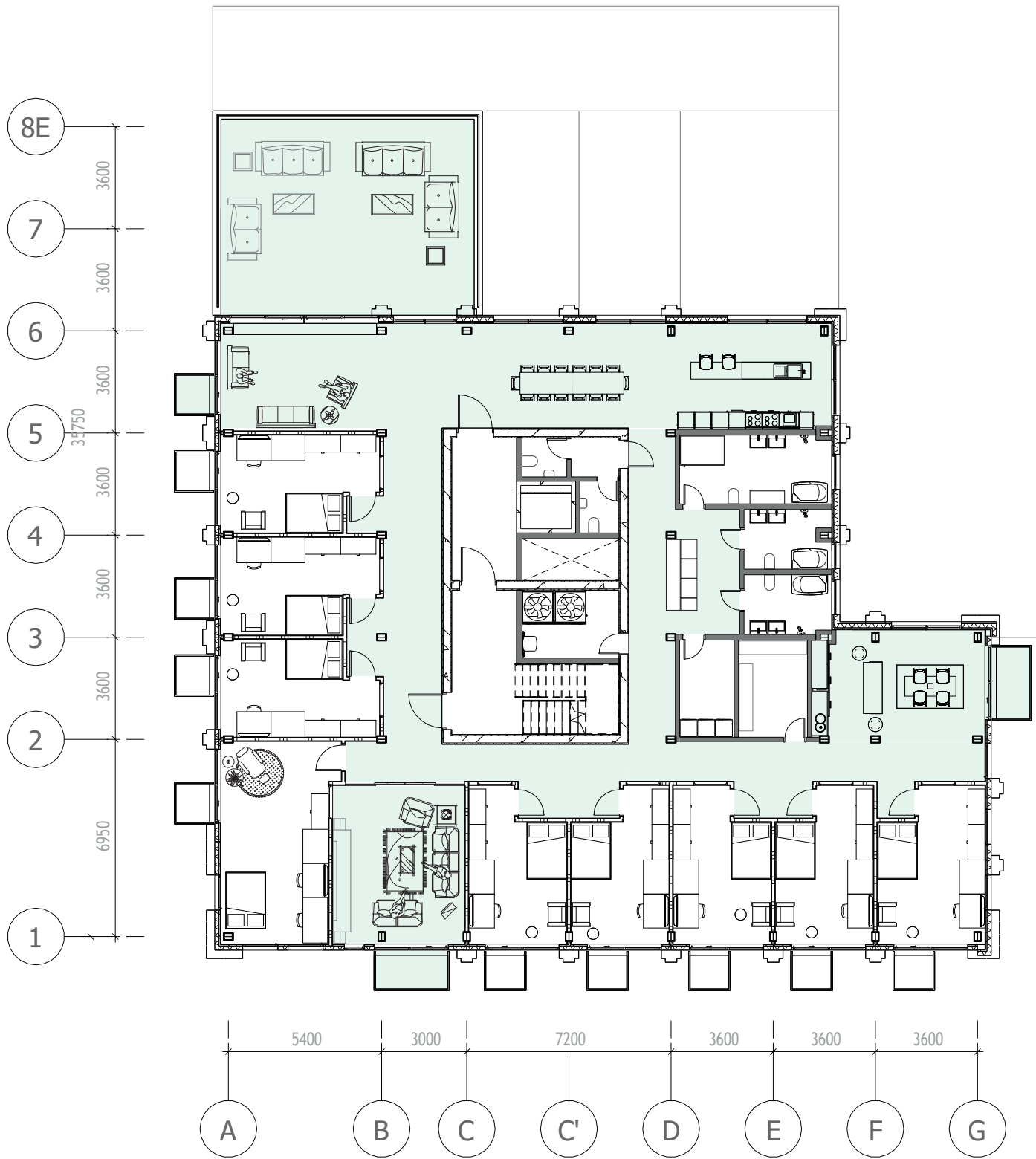


Figure 3
 Floor Floor plan of an apartment with circulation space indicated in light green connecting bedrooms and living spaces
 Own work

1:200 

4.4 Programming of collective spaces

The collective spaces are programmed as low-threshold social infrastructure. They are not designed as compulsory care spaces, but as everyday places where residents can meet, participate, withdraw or receive support at their own pace. The building combines a public ground-floor programme with collective residential floors above. The ground floor contains a public library, which functions as an active plinth and connects the building to the wider neighbourhood, as shown in figure 4.

On each residential floor, the collective programme is organised around a central core. The corridor circulates around this core and expands at several moments into shared living rooms. Along the route, residents pass smaller living areas, shared bathrooms and access to outdoor spaces. For example, Figure 5 shows a cross-section where a bedroom and a pantry are connected. Each bedroom is designed with a window facing the common area to connect the two. On the south side of the floor, the collective programme opens into the shared kitchen and the large communal living room. This southern collective zone forms the social heart of the apartment.

The spatial organisation creates a gradual transition from private to collective space: from the bedroom, to the corridor, to smaller shared living rooms, to the large kitchen and communal living area, and finally to the outdoor space and the public neighbourhood below. Residents can choose between retreating to their private room, joining a smaller shared area or participating in the larger collective living space.

4.5 Architectural and technical organisation

The architectural organisation is based on a compact building volume with a public plinth and residential floors above. This arrangement allows the building to contribute to the

neighbourhood while protecting the privacy of the residents. The public library activates the ground floor and gives the project a civic role. Above it, the residential floors are organised around the central core, with private rooms and collective spaces arranged in relation to daylight, orientation and shared use. The project uses repetition and compactness as part of its affordability strategy. The recurring floor plan creates a clear and legible structure, while the central core bundles vertical circulation and services. The corridor around the core expands into shared living rooms, transforming a functional route into a domestic and social space. The south-facing kitchen and large communal living room provide the main collective focus of each floor. The technical ambition is to align the structure, façade, climate strategy and details with the collective housing concept. The repeated floor organisation can support construction efficiency and flexibility, while the façade can express the rhythm of private rooms and shared spaces. Further elaboration of the load-bearing system, acoustic separation, fire safety, climate concept and façade detail is necessary to fully develop the technical performance of the design.

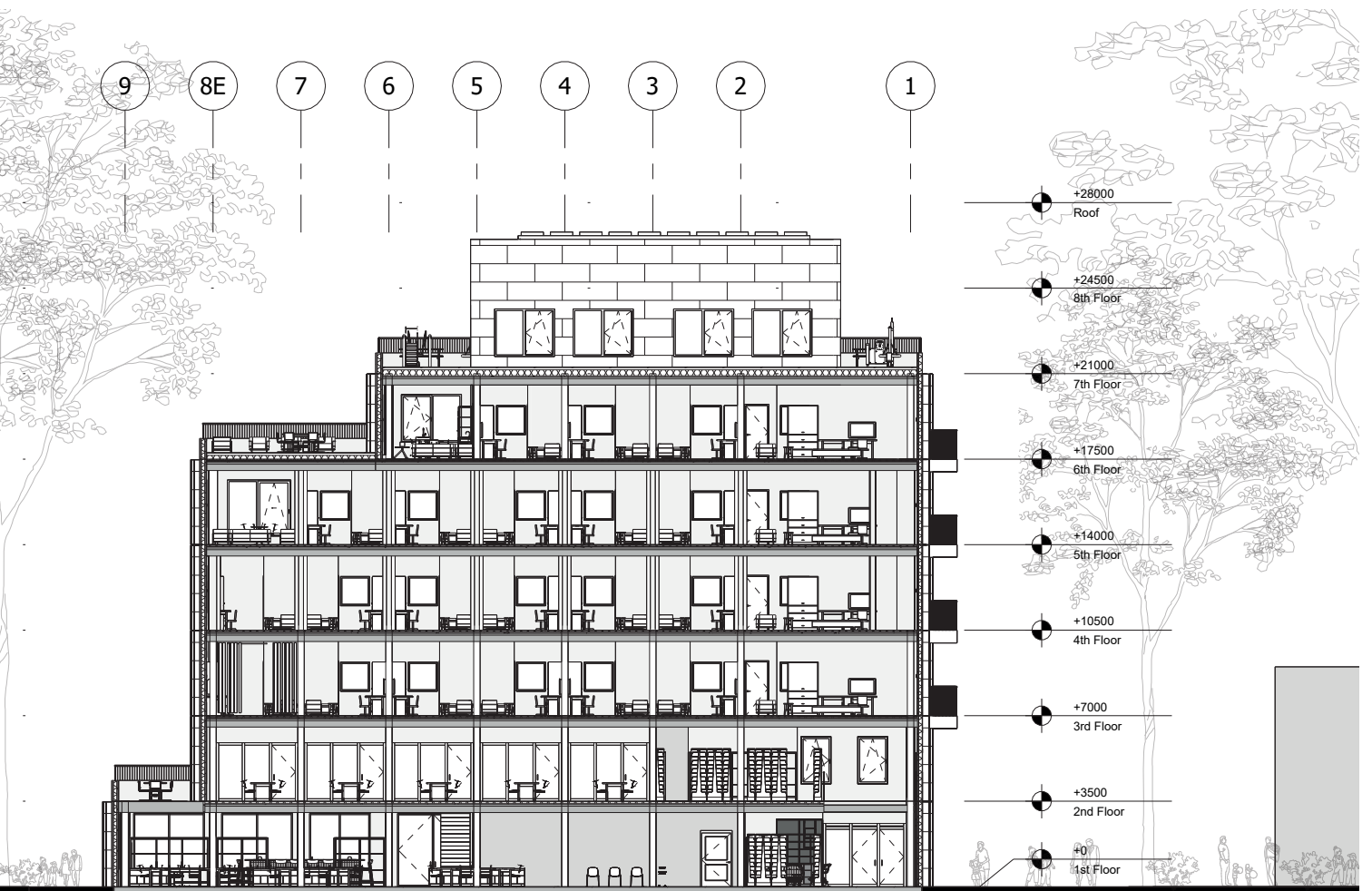


Figure 4
Section of the building illustrating the program.
Own work

1200

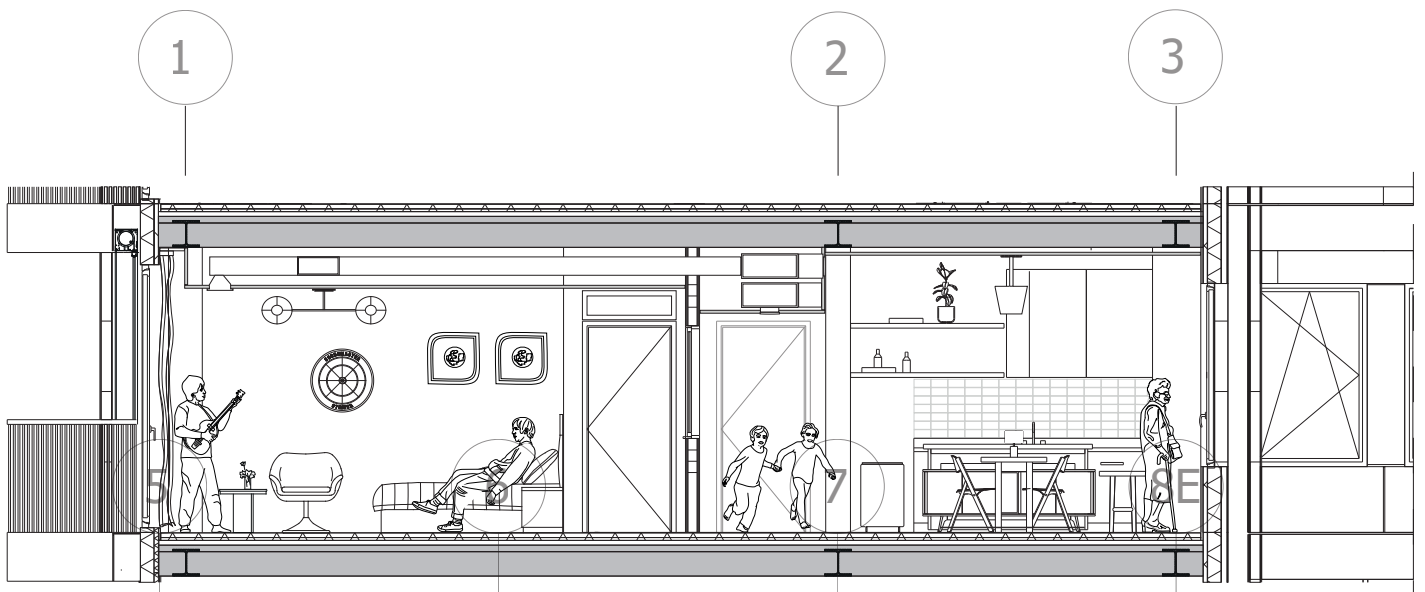


Figure 5
Section illustrating the connection between the private bedroom
and the common area and the common area
Own work

5. Conclusion and Discussion

5.1 Conclusion: answer to the research question

This graduation project asked how transitional housing for individuals and families exiting crisis shelters can be architecturally and spatially integrated within the transformation of the Spaanse Polder to support safety, autonomy and social inclusion. The final design answers this question by positioning transitional housing as part of a mixed collective housing environment rather than as a separate care facility.

Safety is addressed through private furnished bedrooms, a legible floor organisation and a gradual transition from private to collective space. Autonomy is supported by providing each resident with a personal room while sharing domestic facilities that reduce financial and practical barriers. Social inclusion is pursued through the resident mix, the shared living structure and the active public ground floor. Together, these elements allow residents to live as neighbours within an ordinary urban setting rather than being defined by their vulnerability.

The project demonstrates that transitional housing can become a spatial bridge between crisis accommodation and independent living. It does so by combining domestic privacy, collective support and neighbourhood connection. The design does not promise that social inclusion can be produced by architecture alone, but it shows how architecture can create conditions that make inclusion more possible.

5.2 Implications for architecture

The project has implications for the architectural profession. First, it argues that transitional housing should be treated as a distinct architectural category rather than as a resi-

dual or temporary policy solution. The one-to two-year post-shelter phase requires specific spatial conditions: protection without isolation, collectivity without obligation and support without institutionalisation.

Second, the project challenges the assumption that vulnerable groups should be housed separately in specialised facilities. By mixing transitional places with seniors and 55+ residents, the design shifts the architectural language from care and control towards domesticity, neighbourliness and citizenship. Housing is not only a collection of units, but an arrangement of relationships between private rooms, shared spaces, public programmes and the city.

Third, the project shows how collective housing can respond to multiple urban challenges at once. It addresses affordability through shared facilities, loneliness through everyday proximity, gender equity through safe and autonomous housing after crisis, and sustainability through compact urban densification.

5.3 Recommendations

Several recommendations follow from the project. Transitional housing should be integrated into mixed residential environments rather than concentrated in isolated facilities. A mixed and dispersed strategy can reduce stigma and support everyday participation, provided that privacy and management are carefully designed.

Collective housing for mixed resident groups requires clear programming and long-term stewardship. Shared spaces cannot be treated as neutral leftover areas. They need defined purposes, appropriate degrees of privacy and a balance between voluntary encounter and personal retreat. In this project, the shared kitchen, living rooms, bathrooms, outdoor spaces and circulation areas form the basis for everyday interaction, but their success would depend on resident participation and clear agreements about use and responsibility.

The public ground floor should remain an active neighbourhood interface while maintaining a clear distinction between public access and residential access. The library can connect the building to the surrounding area, but the residential floors must remain safe and legible. Further development should also strengthen the technical integration of the concept, especially the structure, façade, acoustic separation, fire safety and climate strategy.

5.4 Reflection on process and methods

The research-by-design methodology was essential to the development of the project. The research began with a social and spatial problem: the lack of appropriate housing for individuals and families leaving crisis shelters. Literature on transitional housing, mixed housing, collaborative living and social infrastructure helped define the key design criteria of safety, autonomy, privacy, collectivity, support and inclusion. These criteria were tested through design exploration at the sca-

le of the urban context, the building and the residential floor.

One of the most important shifts in the process was the movement from thinking about transitional housing as a separate programme towards understanding it as part of a mixed residential ecology. The introduction of 55+ residents and students into the housing mix allowed the design to move away from a care-based model and towards a shared domestic model in which different groups can support one another through everyday proximity. This strengthened the project's relationship to the studio theme of social inclusion.

Another important development was the role of collective space. At the beginning of the research, collective space was understood mainly as a supportive addition to housing. Through the design process, it became the organising principle of the building. The corridor around the core, the smaller shared living rooms, the southern kitchen and the large communal living room demonstrate how collective space can structure daily life. The project also has limitations. The social success of a mixed collective housing model cannot be guaranteed through architecture alone. It depends on management, resident selection, support structures and long-term maintenance. The project should therefore be understood as a spatial framework rather than a complete social solution. Nevertheless, it demonstrates how architecture can contribute to the transition from crisis accommodation to independent living by creating a housing environment that is safe, affordable, socially connected and non-institutional.

References

Centraal Bureau voor de Statistiek. (2024, November 25). Prevalentiemonitor huiselijk geweld en seksueel grensoverschrijdend gedrag 2024. CBS.

Czischke, D. (2018). Collaborative housing and housing providers: Towards an analytical framework of multi-stakeholder collaboration in housing co-production. *International Journal of Housing Policy*, 18(1), 55–81. <https://doi.org/10.1080/19491247.2017.1331593>

Czischke, D., Peute, M., & Brysch, S. (2023). Together: Towards collaborative living. nai010 publishers; TU Delft OPEN Publishing. <https://doi.org/10.59490/mg.80>

Davelaar, M., Gruppen, A., & Knevel, J. (2018). Goede buren: Lessen uit gemengde woonprojecten in Utrecht. Hogeschool Utrecht, Kenniscentrum Sociale Innovatie.

Gehl, J. (2011). *Life between buildings: Using public space* (J. Koch, Trans.). Island Press.

Gemeente Rotterdam. (n.d.). Centrum Huiselijk Geweld. Gemeente Rotterdam. Geraadpleegd op 15 mei 2026.

Klinenberg, E. (2018). *Palaces for the people: How social infrastructure can help fight inequality, polarization, and the decline of civic life*. Crown.

Van der Velden, J., Van der Craats, J., Bouwman, R., & Reedijk, W. (2020). Flexwonen als opstap naar zelfstandig wonen: Casusonderzoek naar tijdelijke woonvormen voor zorgdoelgroepen. Platform31; Expertisecentrum Flexwonen.

Van der Velden, J., & Tiggeloven, P. (2016). *De Magic Mix: Een verkenning van wooncom*

plexen waar verschillende doelgroepen gemengd wonen. Platform31.

ZUS [Zones Urbaines Sensibles], Flux, & Sweco. (2022). National Productive Park Delfland. In *Redesigning Deltas*. Delft University of Technology.

Figures

Figure 1: Diagram of the concept for transitional housing. Source: Own work.

Figure 2: Transformation of the Spaanse Polder.

Source: Group work Social Inclusion (Jesse Dijk, Sivan Maruf, Mink Miedendorp de Bie, Lieke Pasman, Justin Zethof)

Figure 3: Floor Floor plan of an apartment with circulation space indicated in light green connecting bedrooms and living spaces. Source: Own work.

Figure 4: Section of the building illustrating the program. Source: Own work.

Figure 5: Section illustrating the connection between the private bedroom and the common area and the common area. Source: Own work.

Appendix

Project drawings

Render Main Entrance
Render South View
Render West View
Render Bedroom - Apartment
Render Pantry - Apartment
Render Library - A
Render Library - B
Render Sleeping Room
Render Playground
Floor Plan - Basement
First Floor
Second Floor
Third Floor
Fourth Floor
Fifth Floor
Sixt Floor
Section AA



Render Main Entrance





Render South View





Render East View





Render Pantry - Apartment





Render Bedroom - Apartment





Render Library A





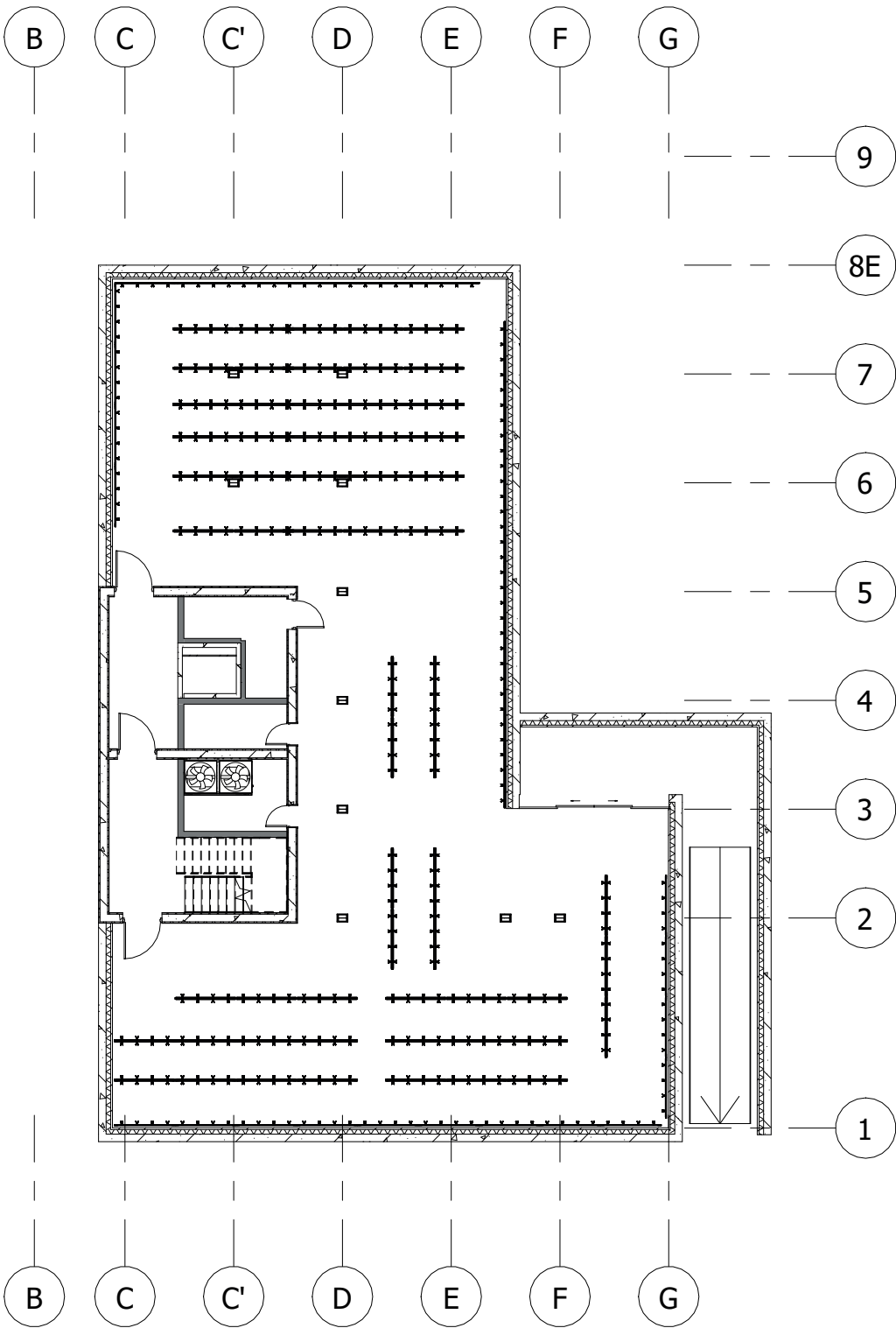
Render Library B





Render Playground

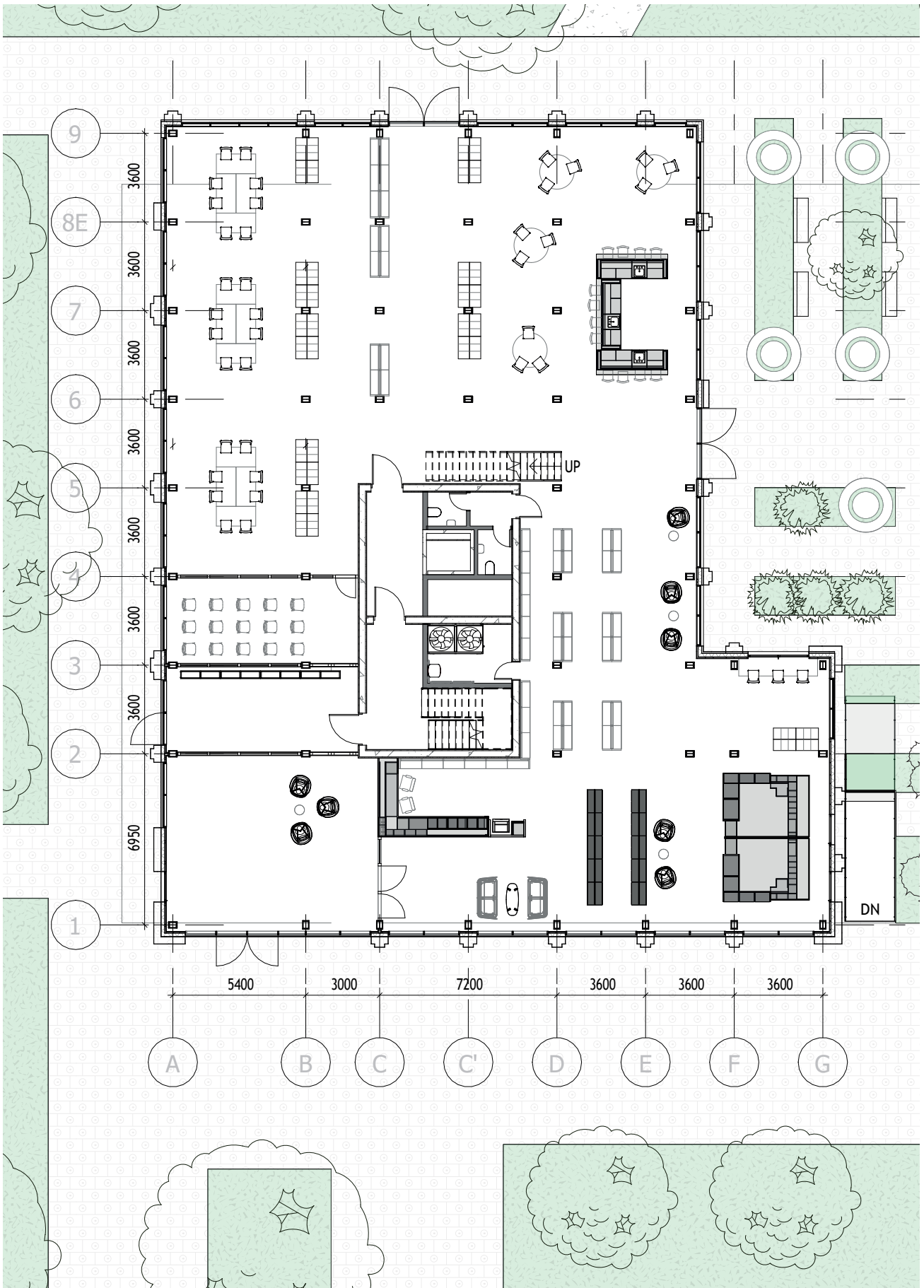




Basement - Bicycle Parking

1:200

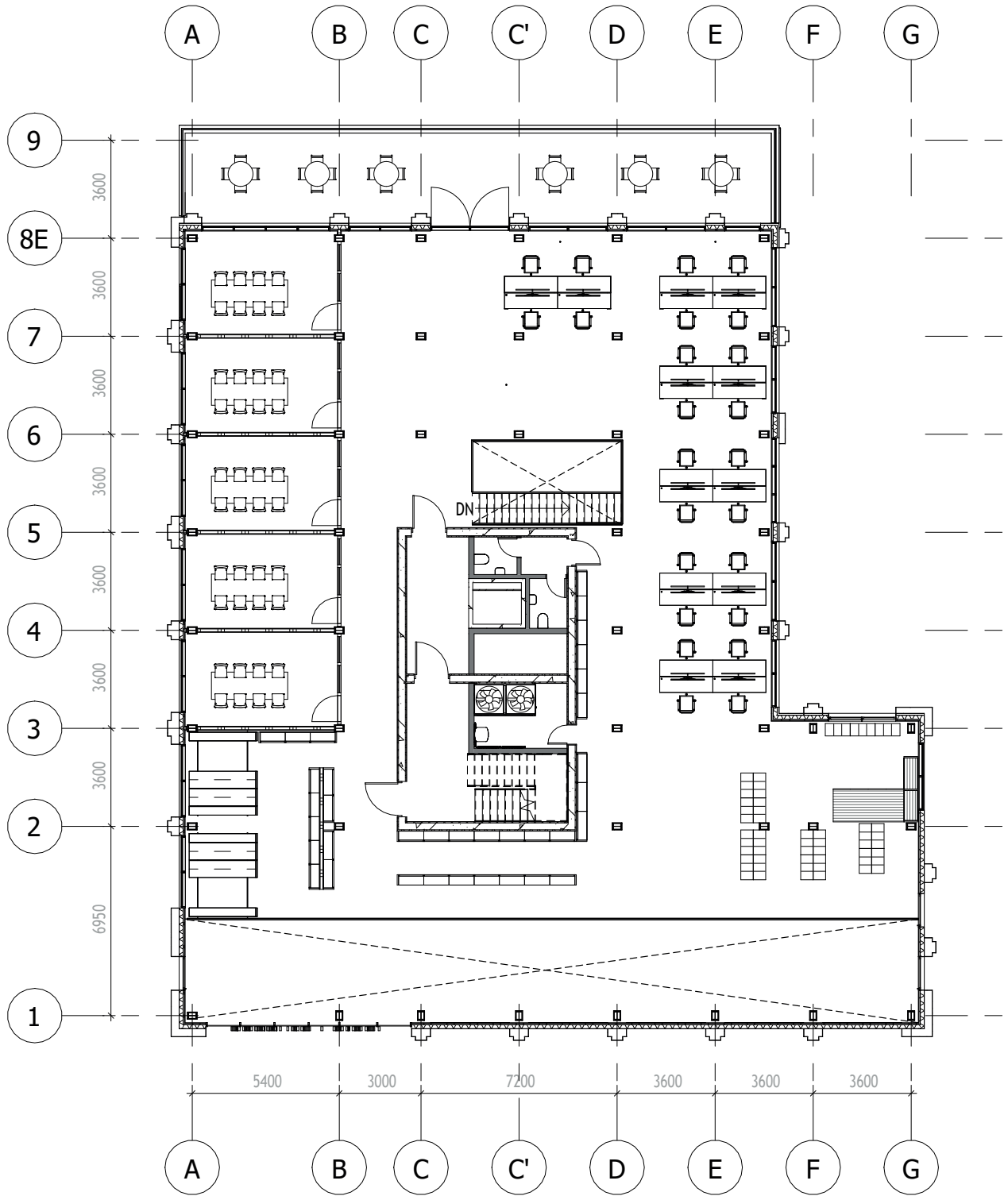




First Floor - Library

1:200

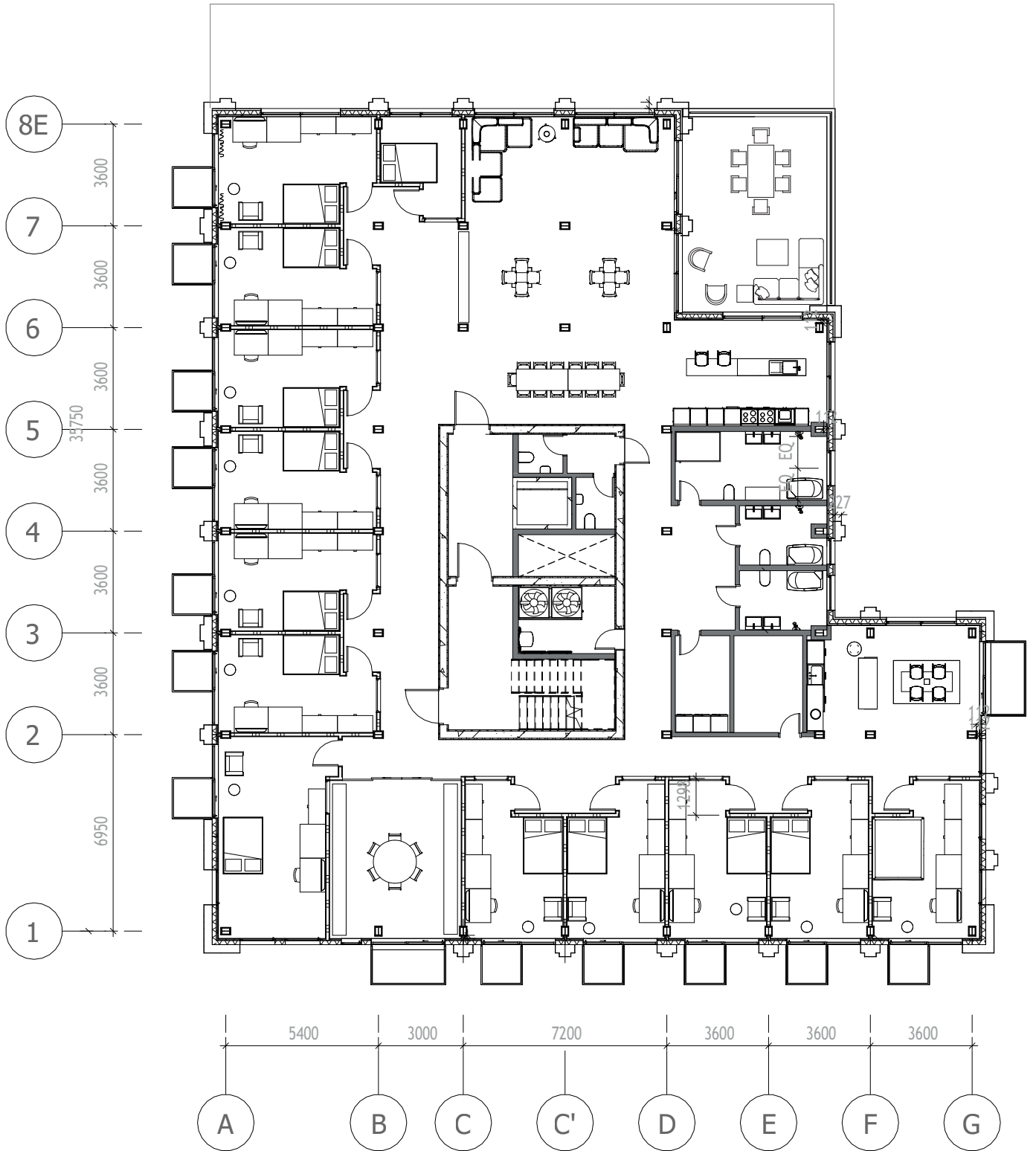




Second Floor - Library

1:200

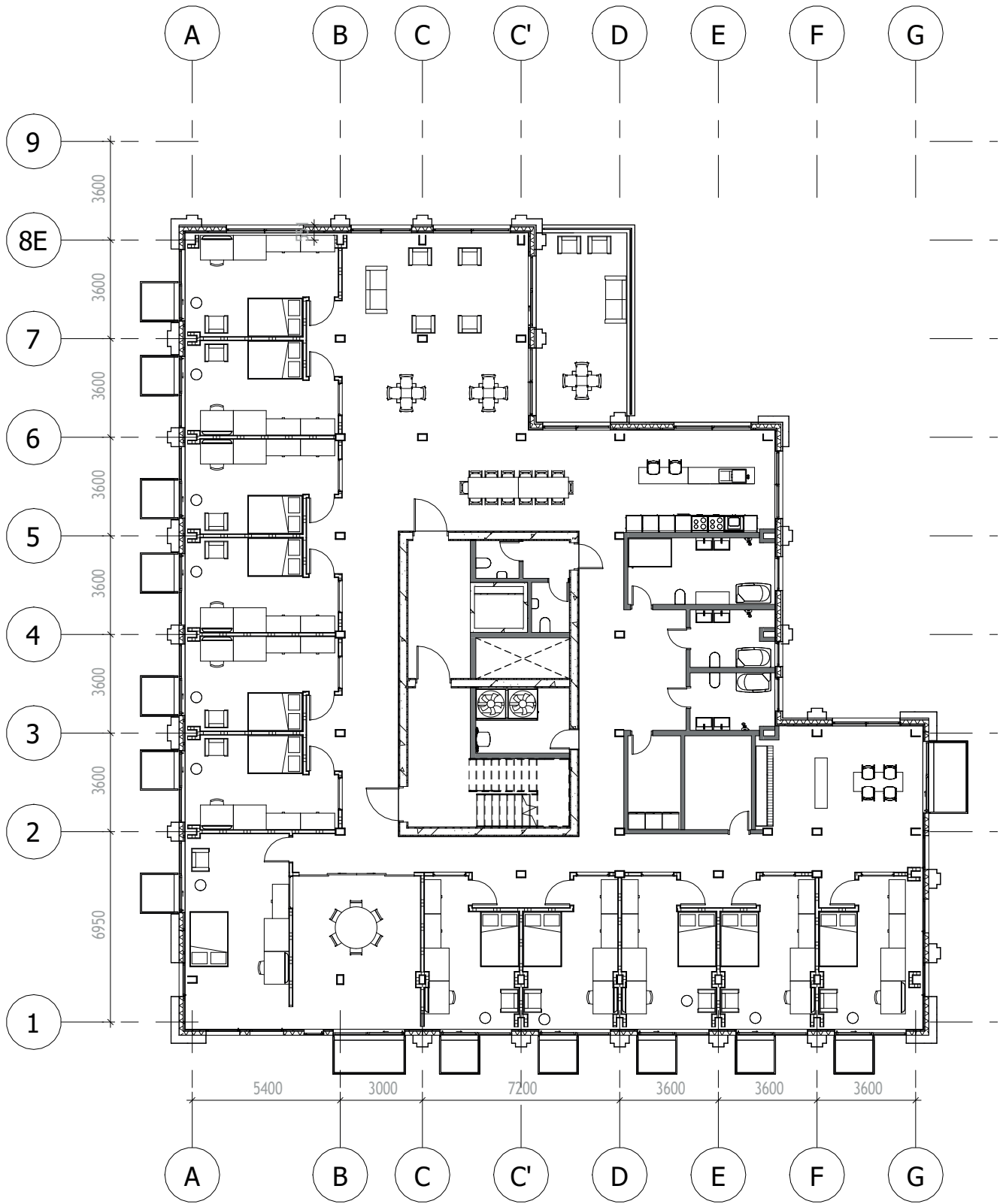




Third Floor - Apartment

1:200

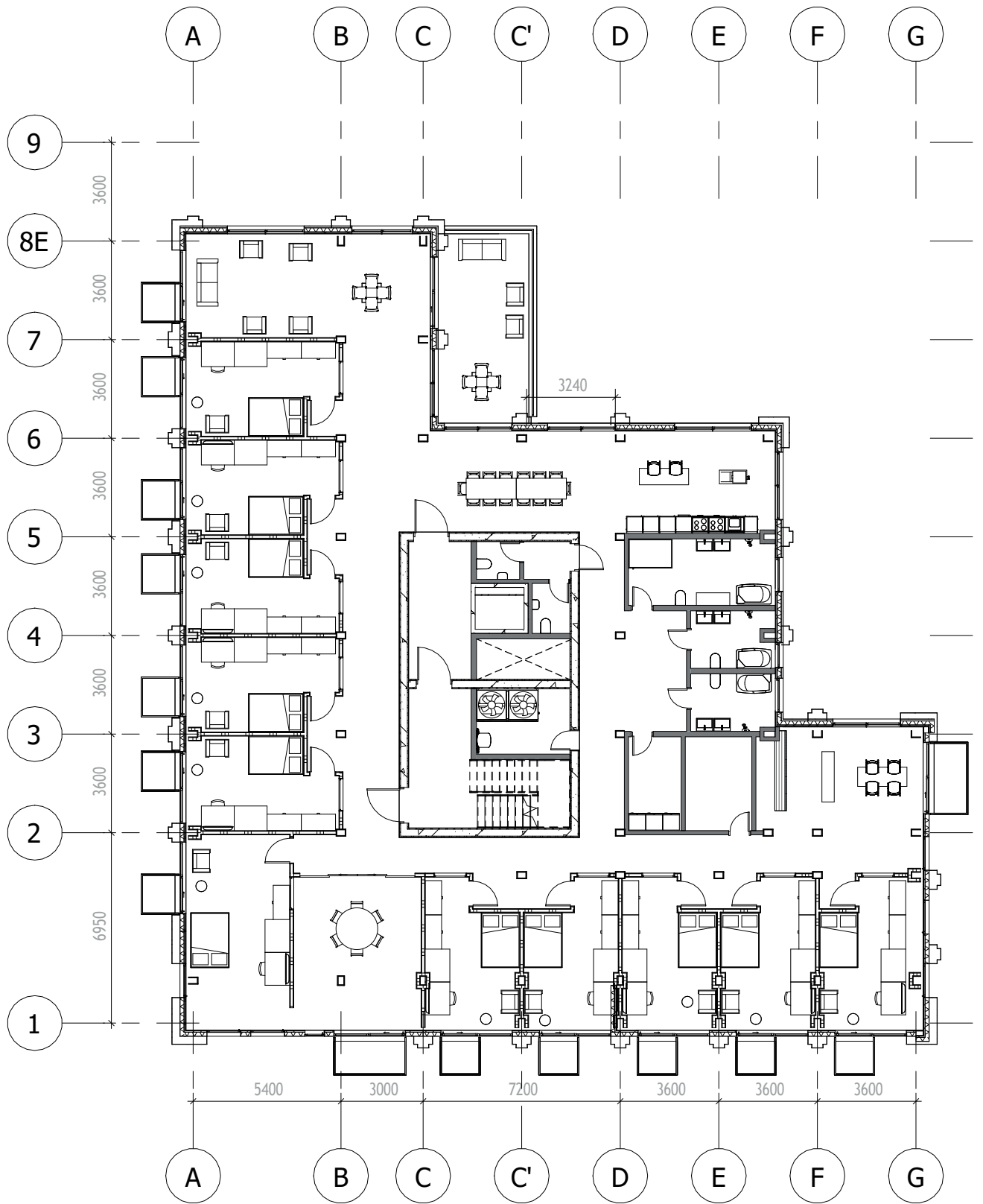




Fourth Floor - Apartment

1:200

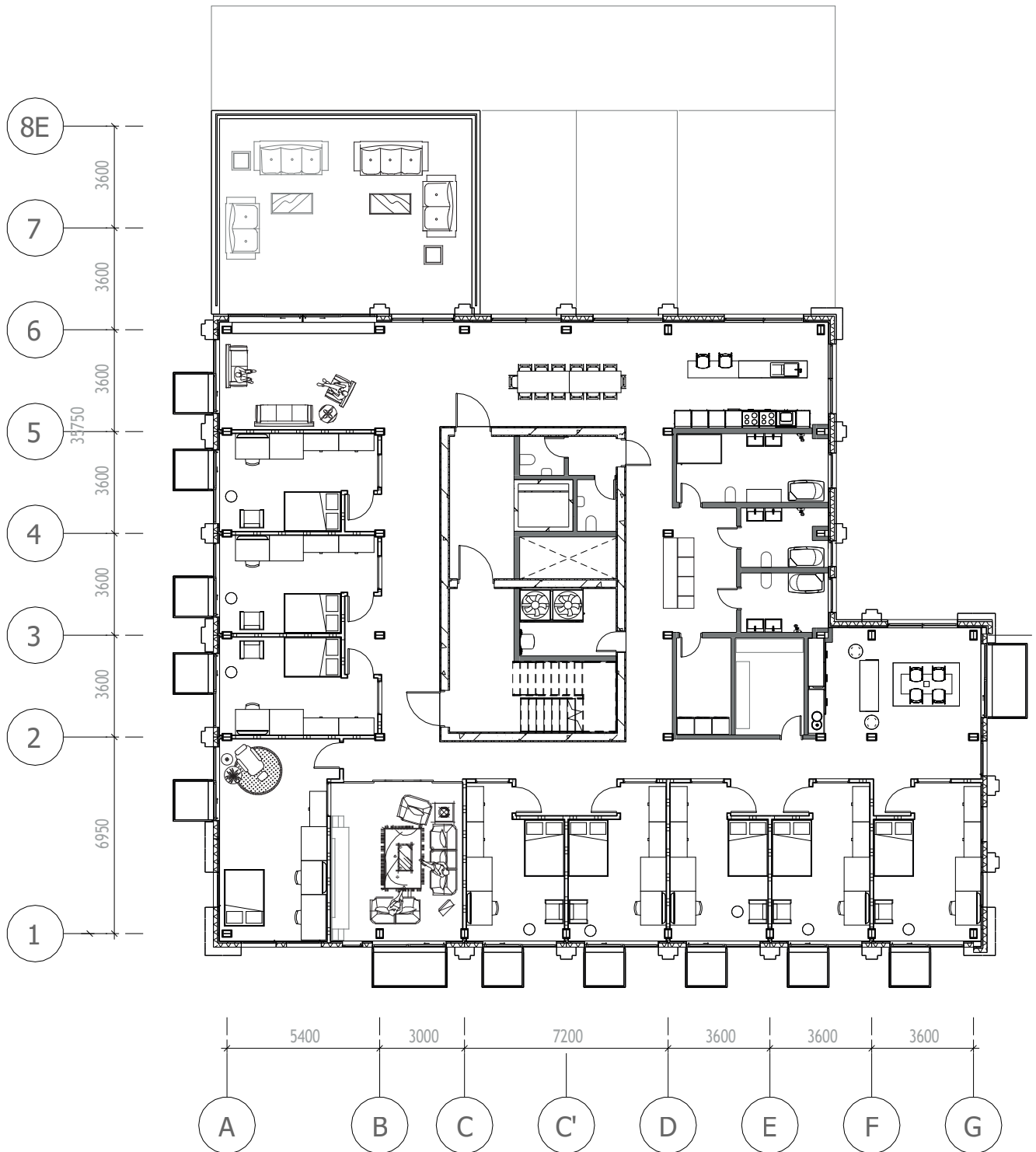




Fifth Floor - Apartment

1:200

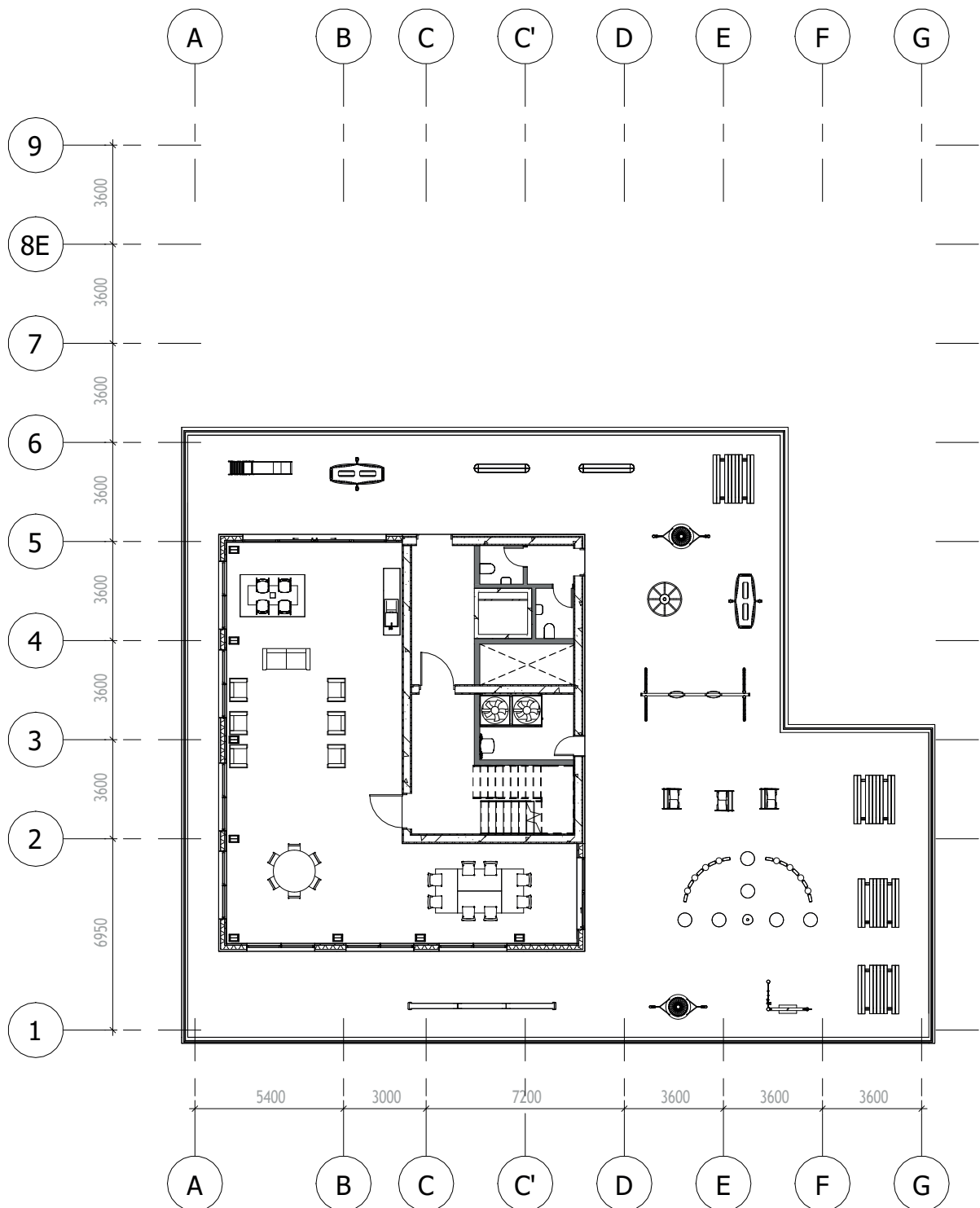




Sixth Floor - Apartment

1:200





Community room - Roof Playground

1:200



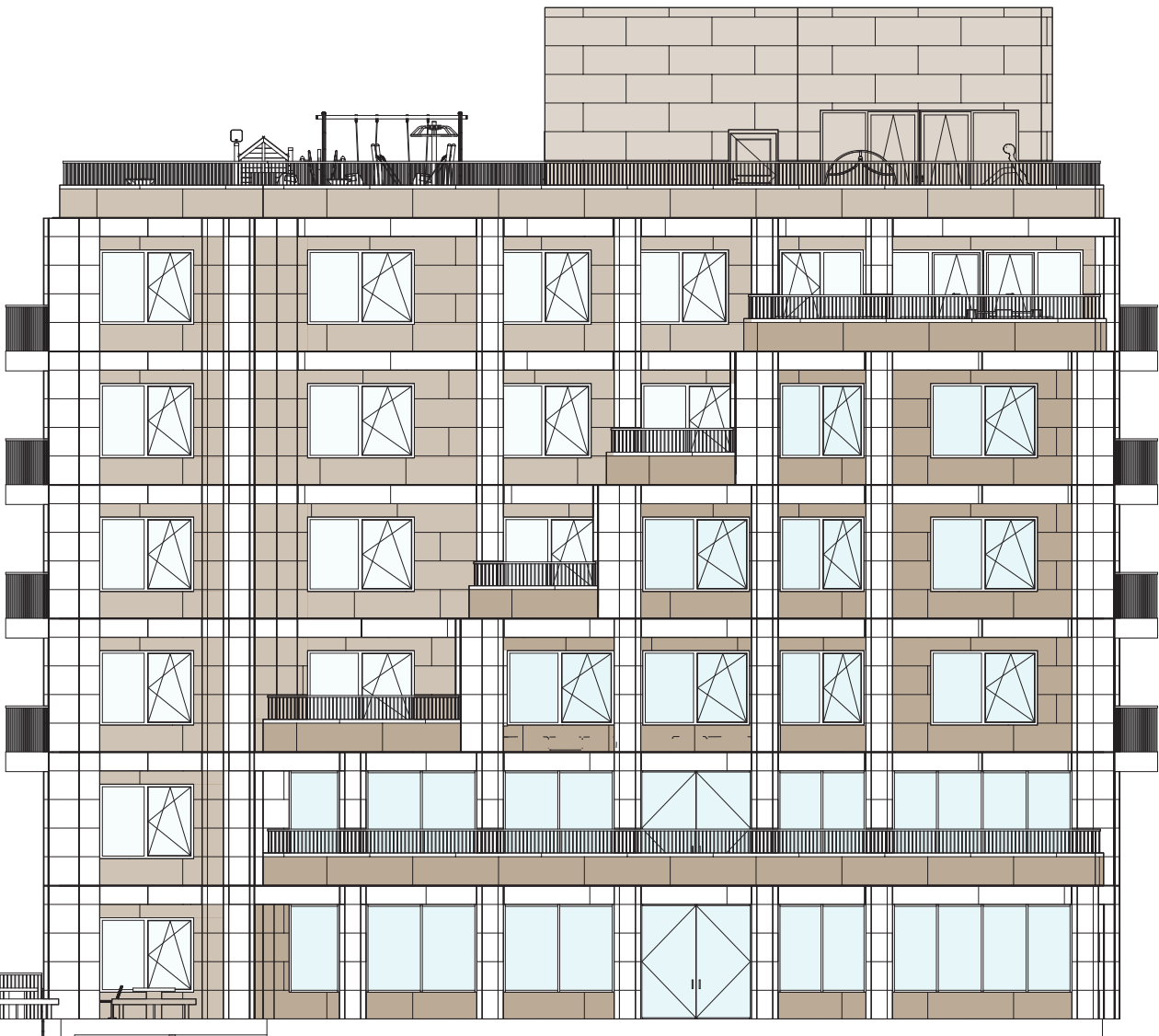


Section AA





North Facade



South Facade