



HEALING ADDICTIONS WITH TRANSCENDENTAL MEDITATION

THE ARCHITECTURE OF DREAMS

ARTHUR WAISBLAT
MSC GRADUATION REPORT / TU Delft / 2013-2014



Governing the Global Drug Wars

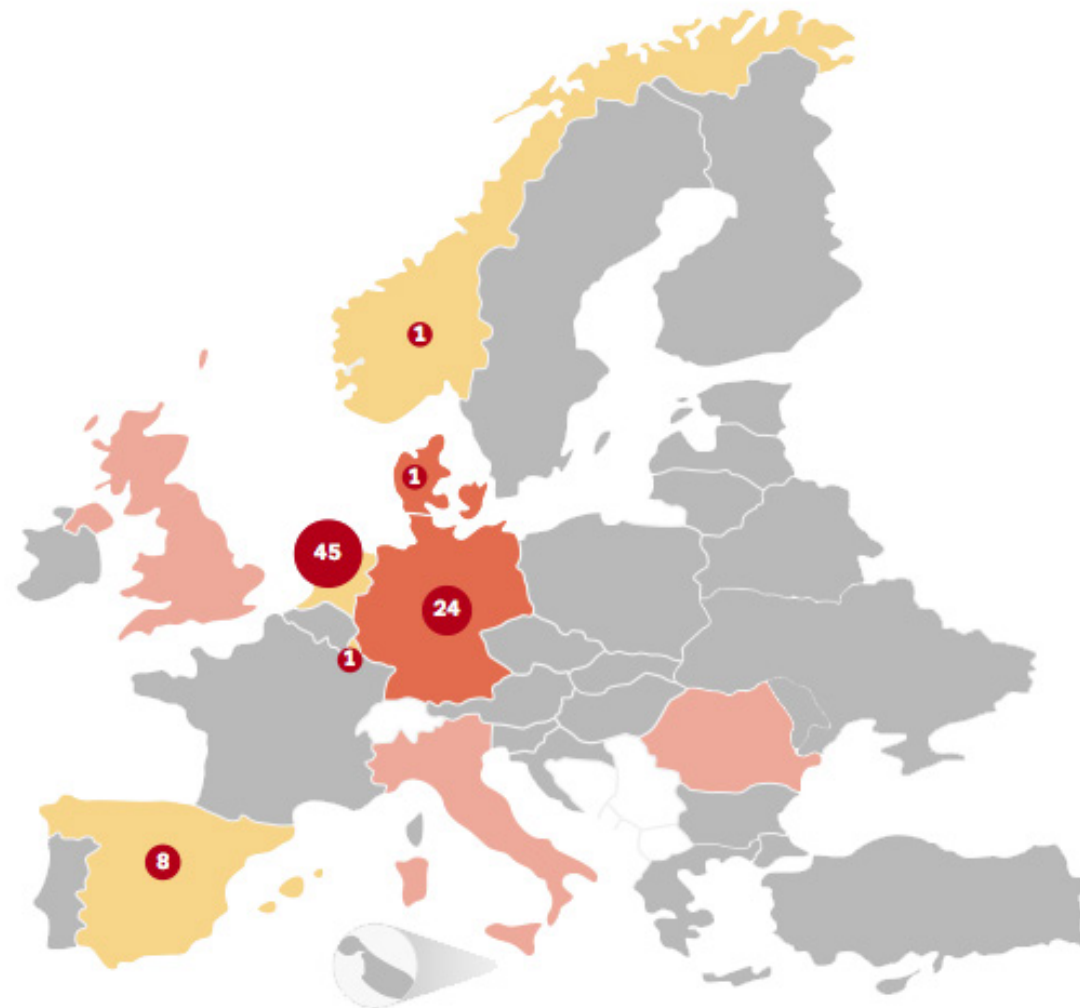
SPECIALREPORT

SR014 October 2012





Pays ayant mis en place des programmes de naloxone à prendre à domicile et des salles de consommation de drogue à moindre risque

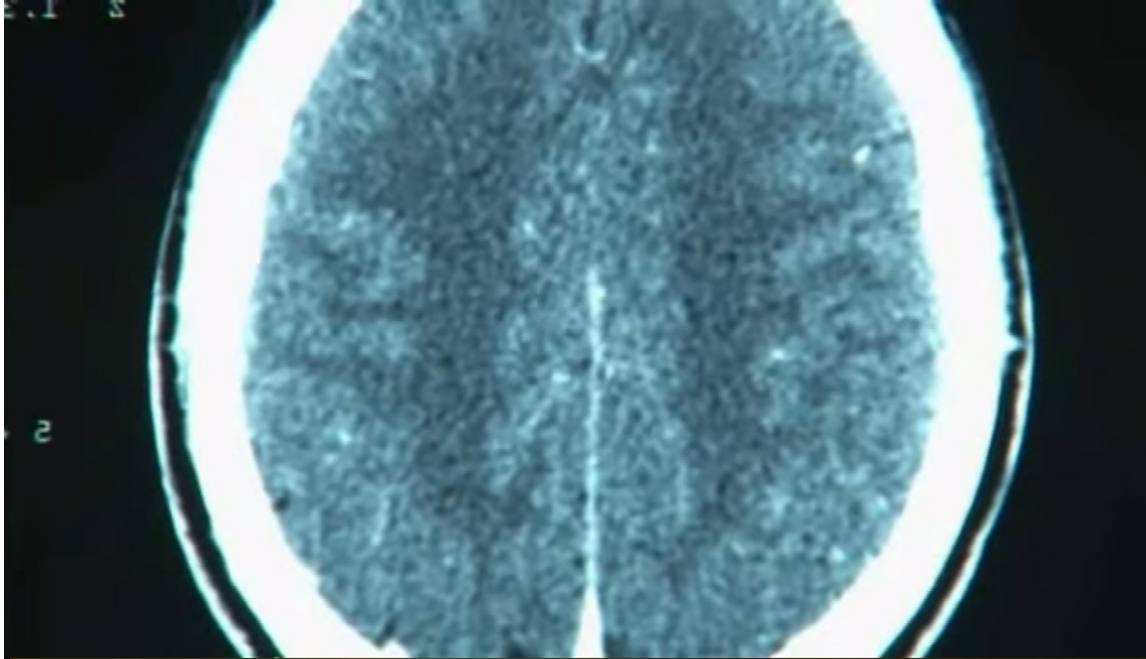


Interventions

- Salles de consommation de drogue à moindre risque
- Programmes de naloxone à prendre à domicile
- Les deux interventions
- Aucune donnée
- 9 Nombre de salles de consommation de drogue









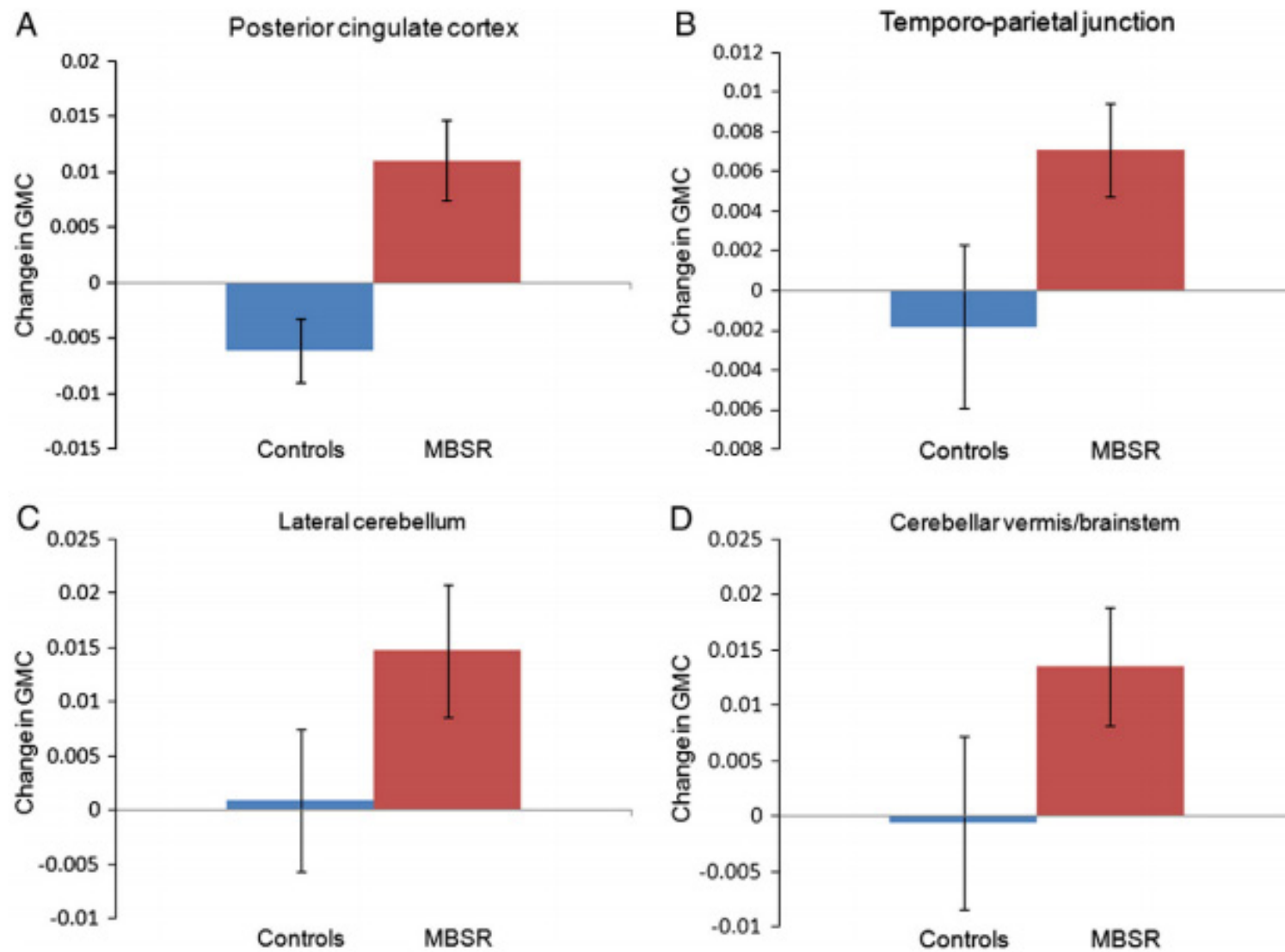
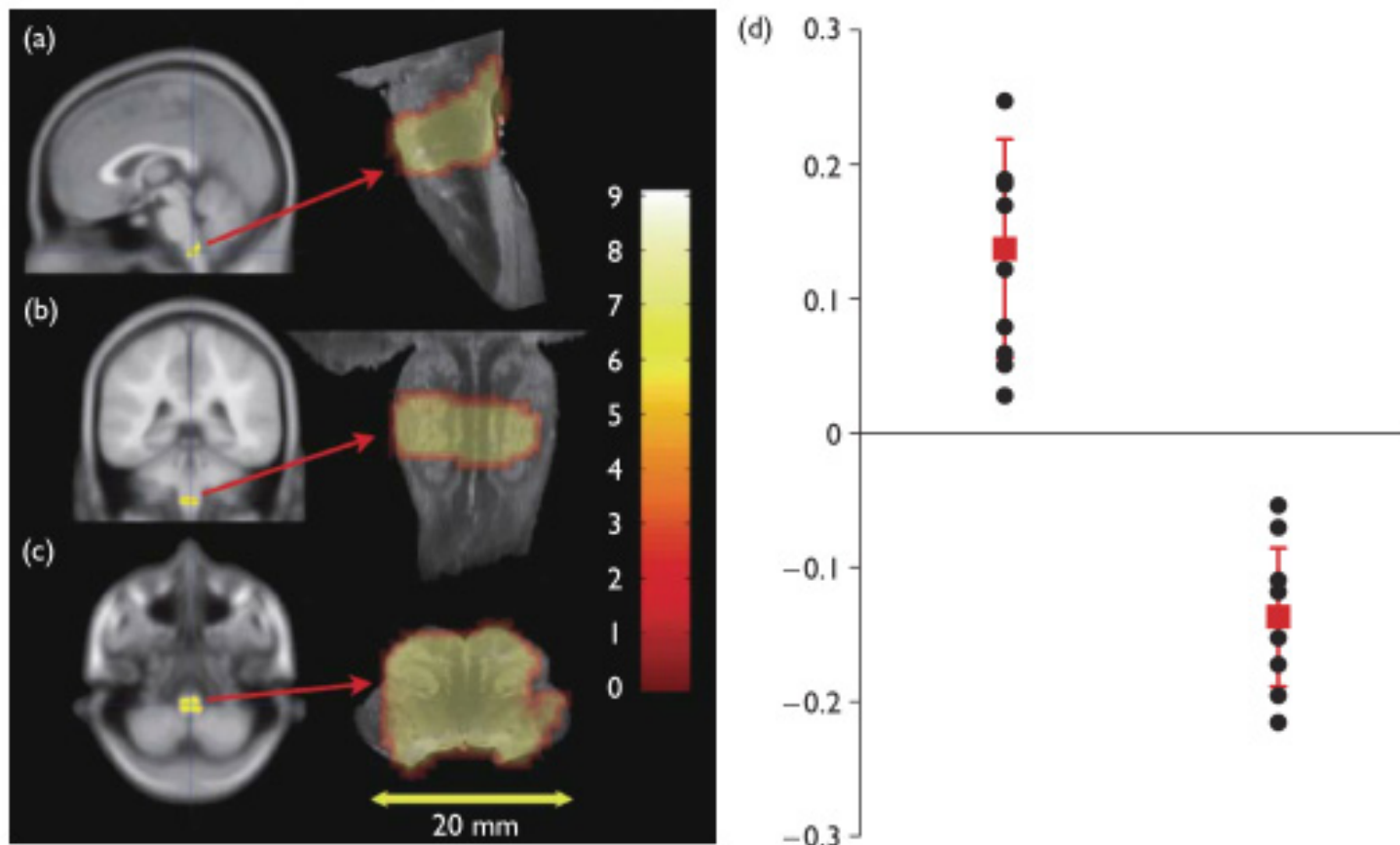
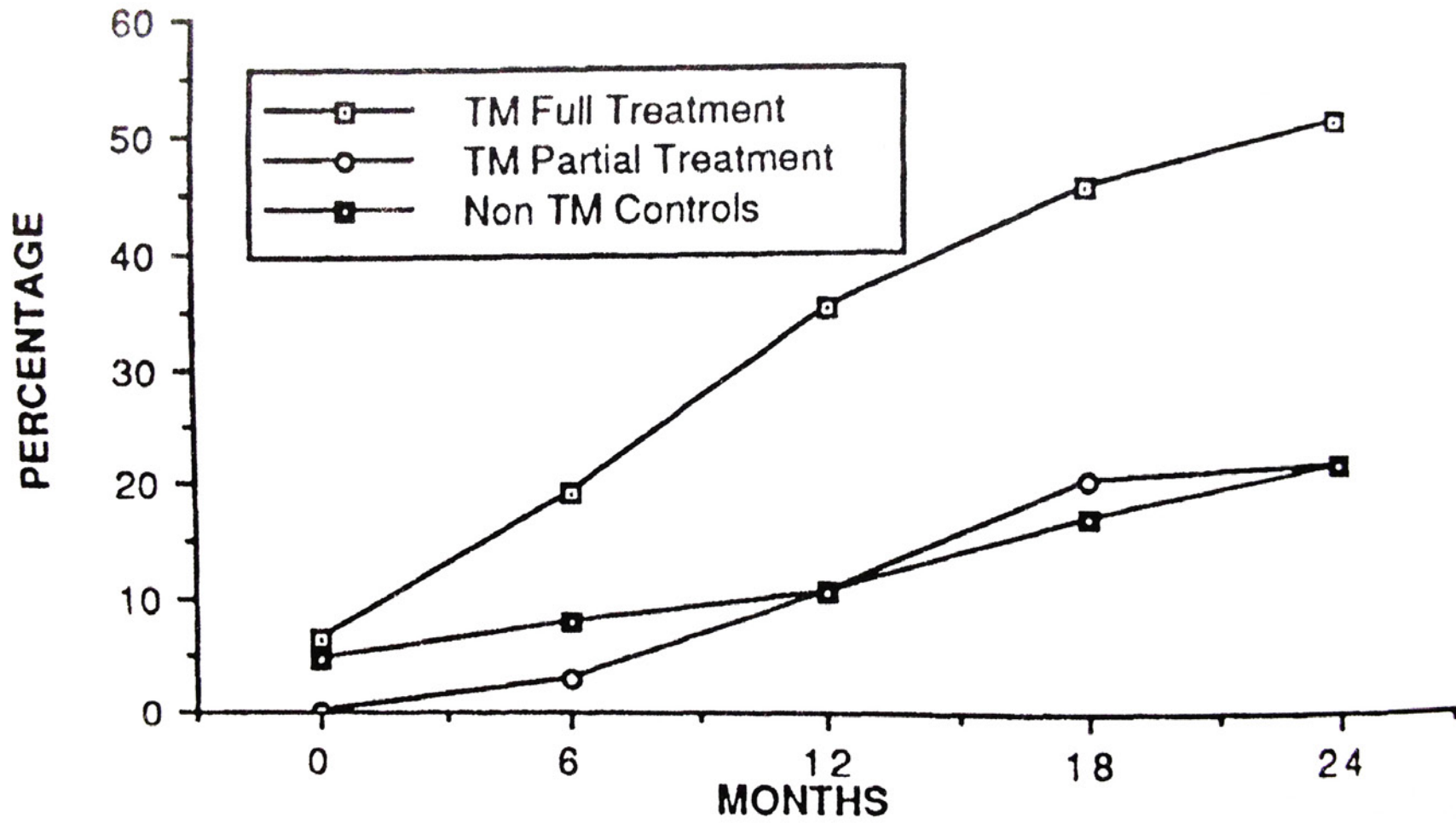
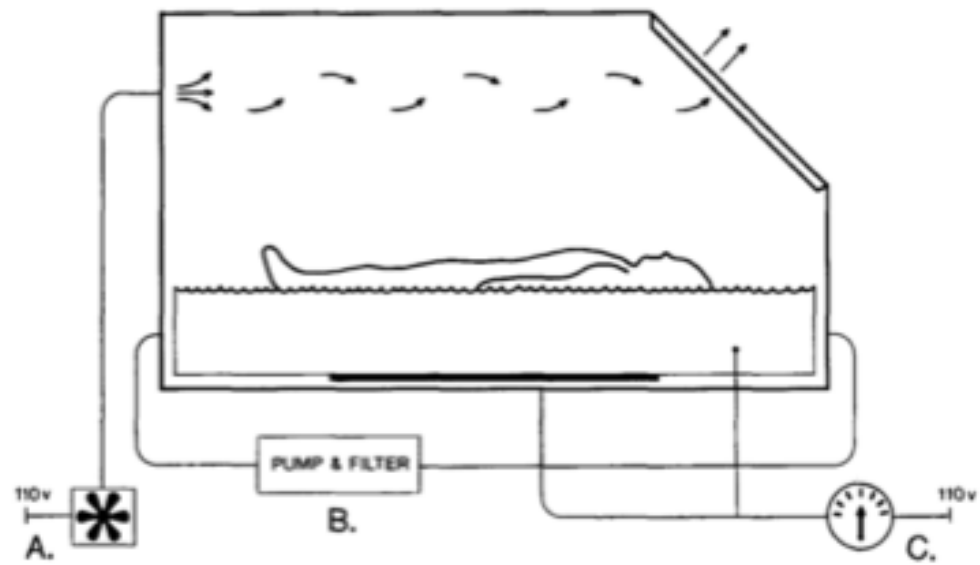
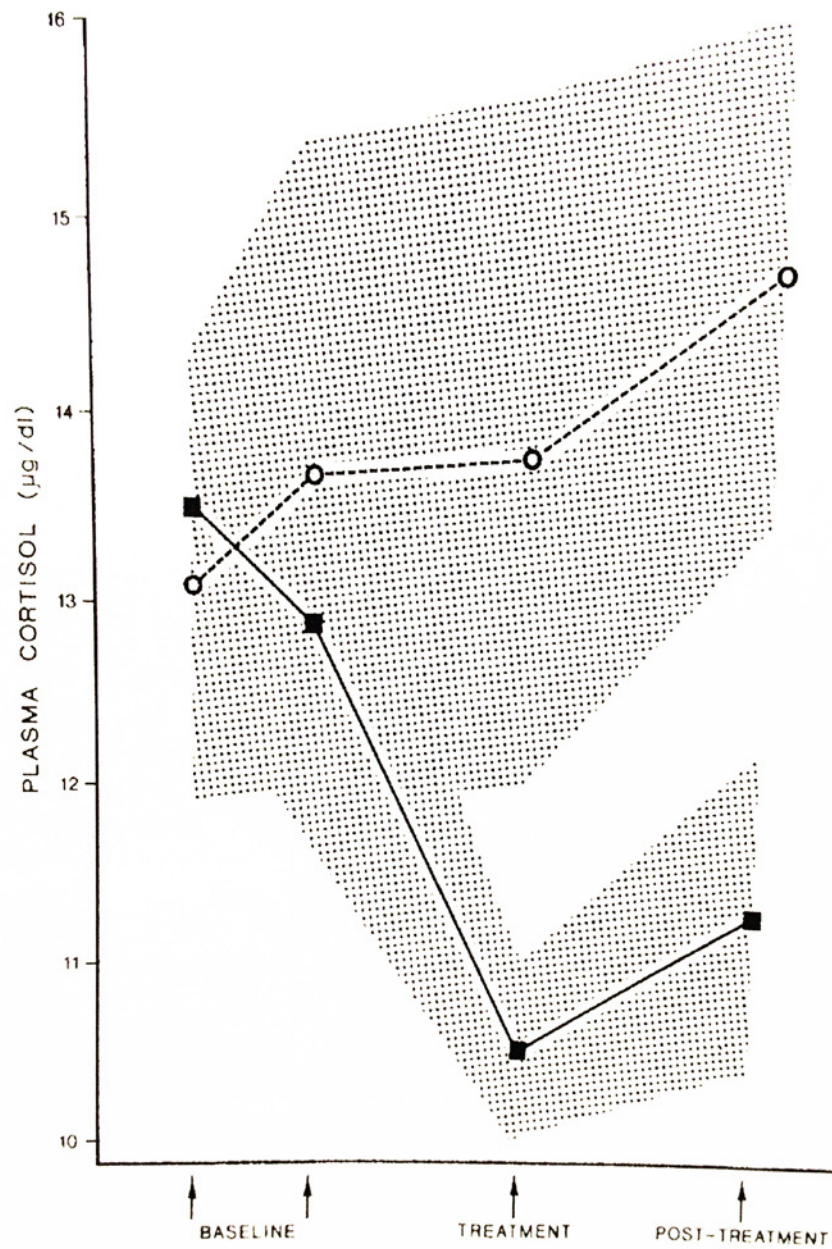


Fig. 3. Change in gray matter concentration (GMC) within the clusters in the posterior cingulate cortex (A), the temporo-parietal junction (B), the lateral cerebellum (C) and the cerebellar vermis/brainstem (D) in the MBSR and control group. Error bars show 95% confidence interval.



Increased gray matter density in the brain stem of the meditators. All data were corrected for multiple comparisons, false-discovery rate ($P < 0.05$). Degrees of freedom = 18. On the left the region is superimposed on a T1 MR image in the same stereotaxic space. (a) Sagittal view, (b) coronal view, (c) axial view. On the right the region is superimposed on a 105- μ m resolution MR image of the human medulla oblongata *in vitro*, which was coregistered to the stereotaxic space of all participants (Montreal Neurological Institute, Canada). Color scale indicates T-score. (d) Relative gray matter density difference in the peak voxel for the groups of meditators (left) and controls (right). Individual data are shown as well as the group mean and standard deviation.





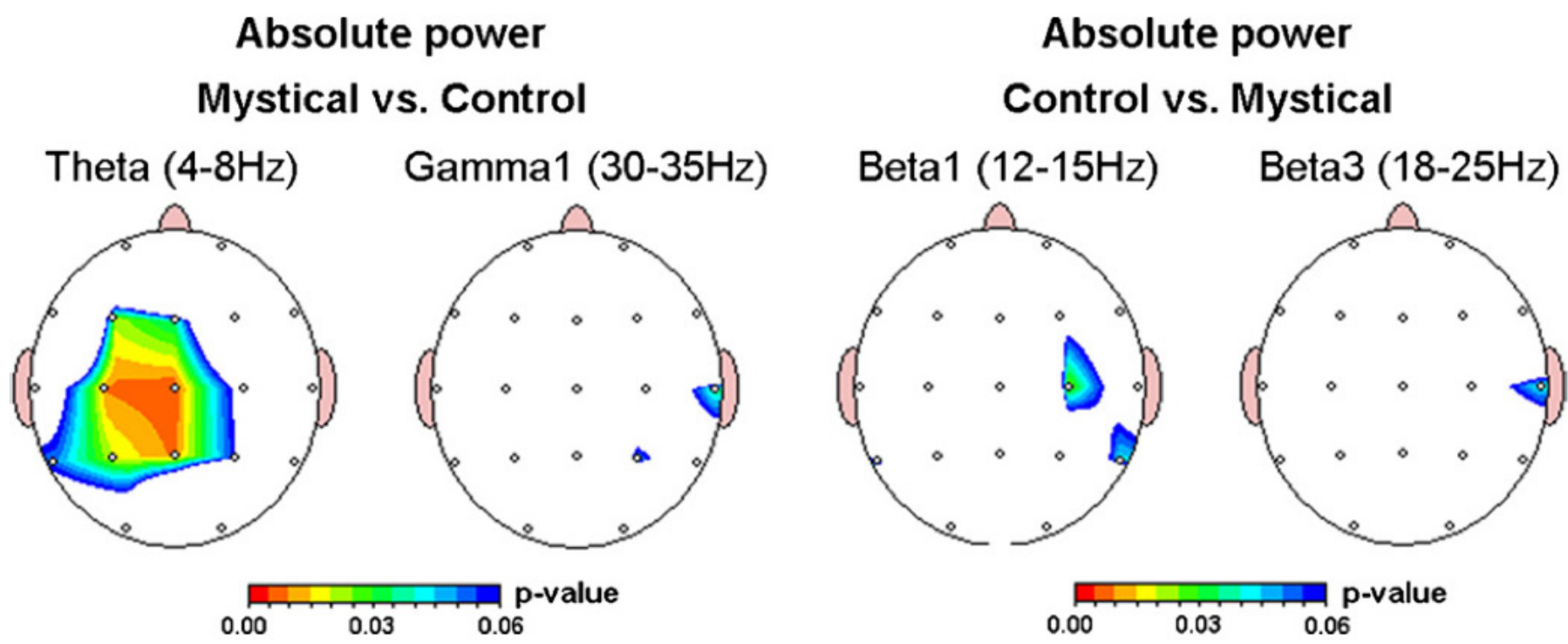
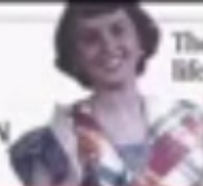


Fig. 1. EEG absolute power for the Mystical vs. Control contrast and the Control vs. Mystical contrast.



AGASSI'S
CRYSTAL
METH
CONFESSION
SPORTS PAGE



The truth about
life in the 1950s
BOOKS PAGE



"Bring him on the floor with
blood everywhere, you just
do what you need to do - put
him up, and the ambulance."
WILL Young on his brother's
depression PAGE

THE WEEK

7 NOVEMBER 2008 £2.50

THE BEST OF THE BRITISH AND FOREIGN MEDIA

Silencing the scientists

Should Nutt have been sacked?

Page 6



Issue 748 (Nov 2008)



ALL RIGHTS RESERVED

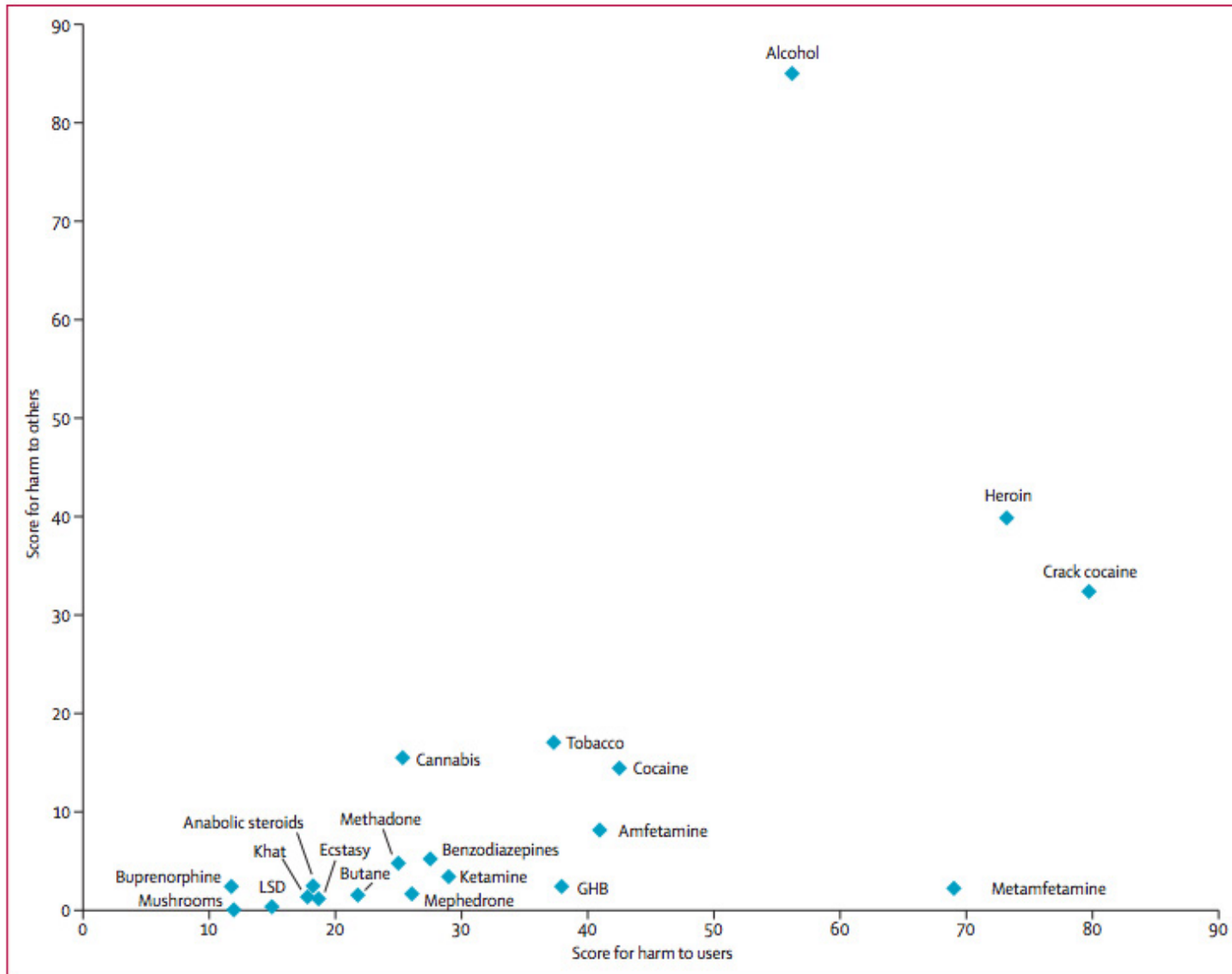
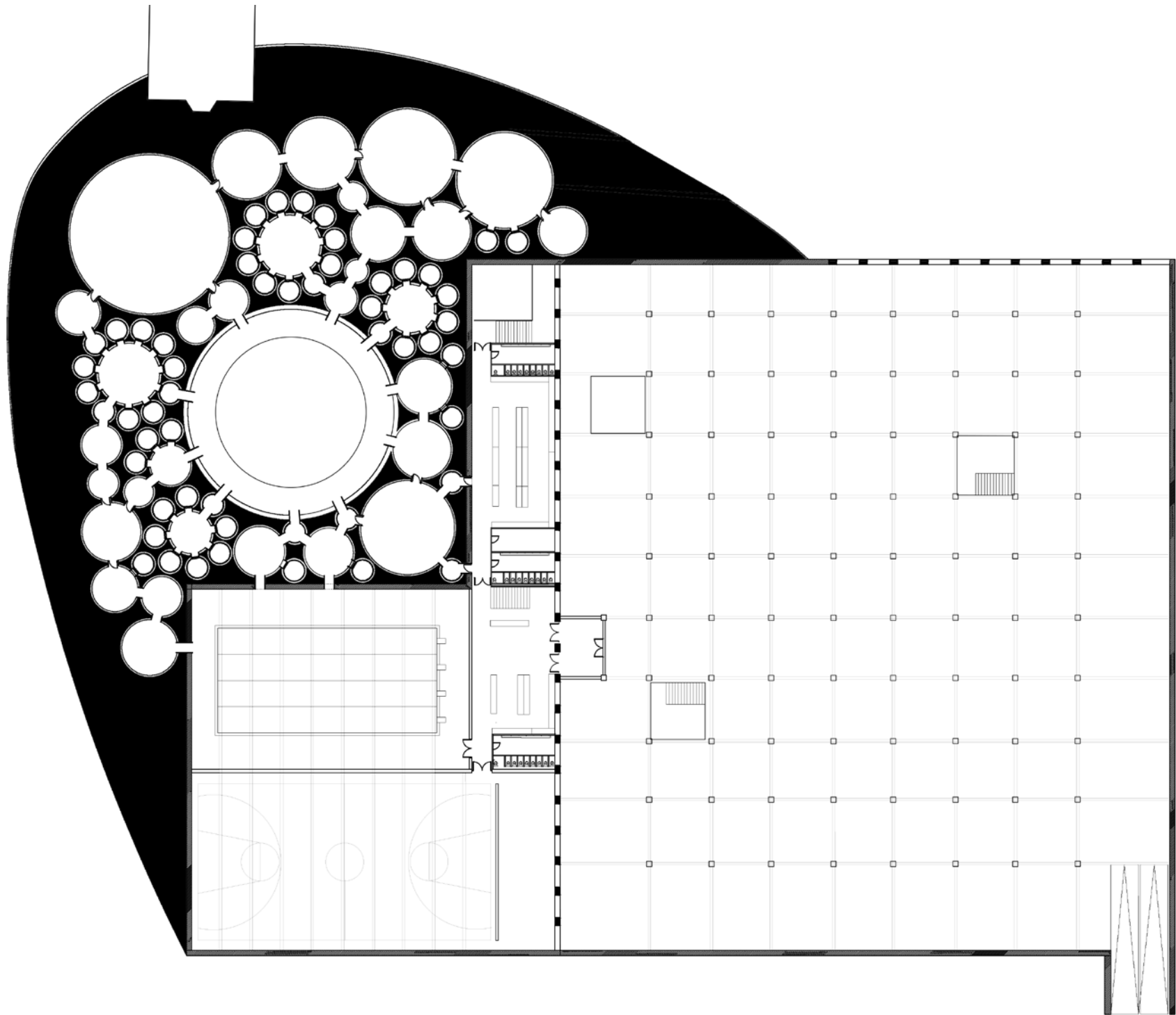


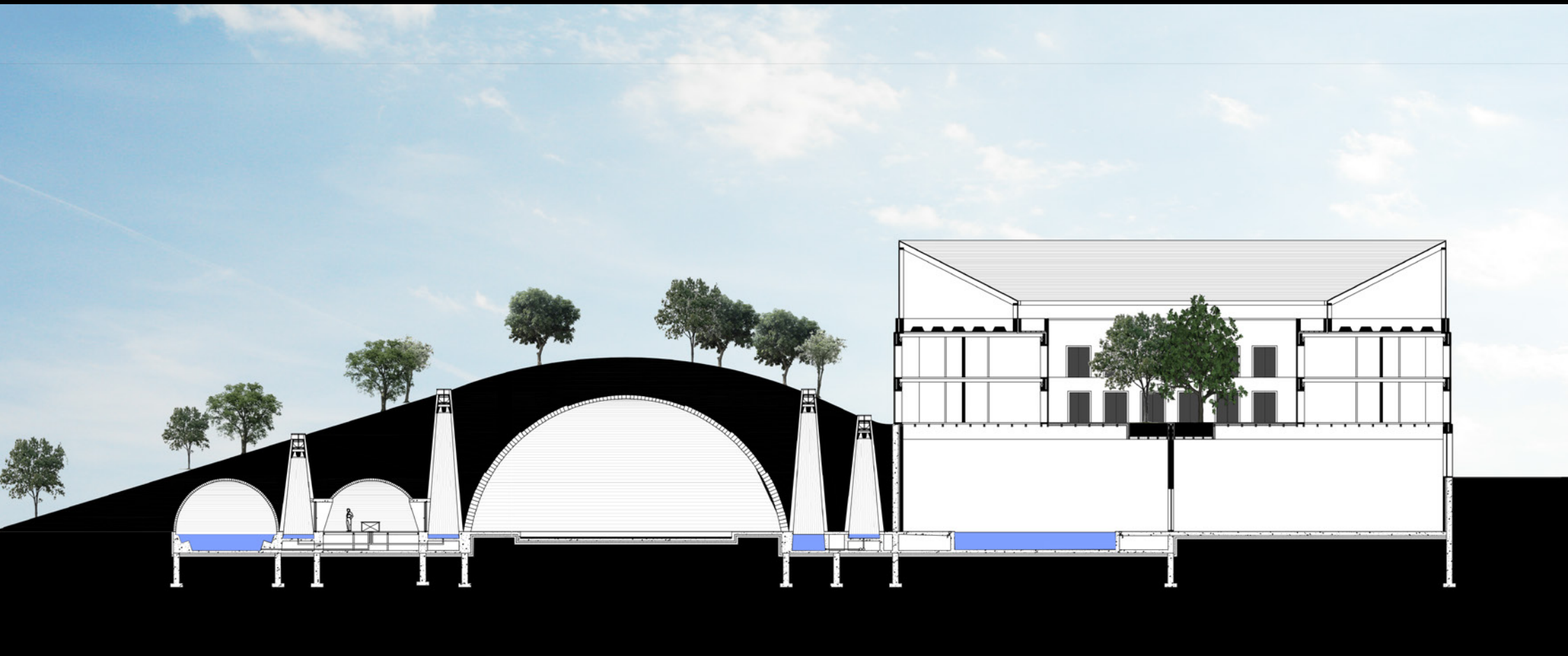
Figure 3: Drugs shown for their harm to users and harm to others
 LSD=lysergic acid diethylamide. GHB=γ hydroxybutyric acid.

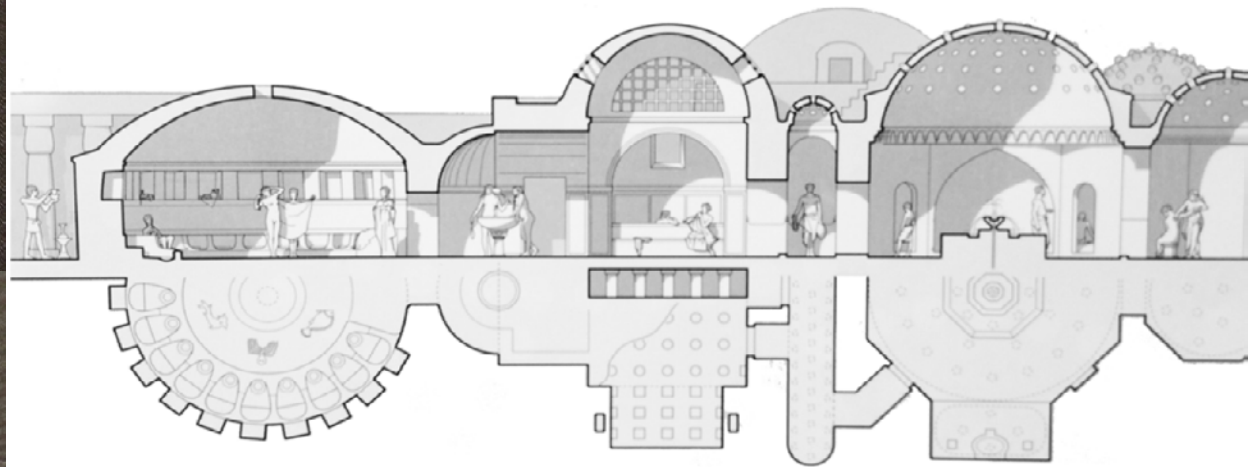
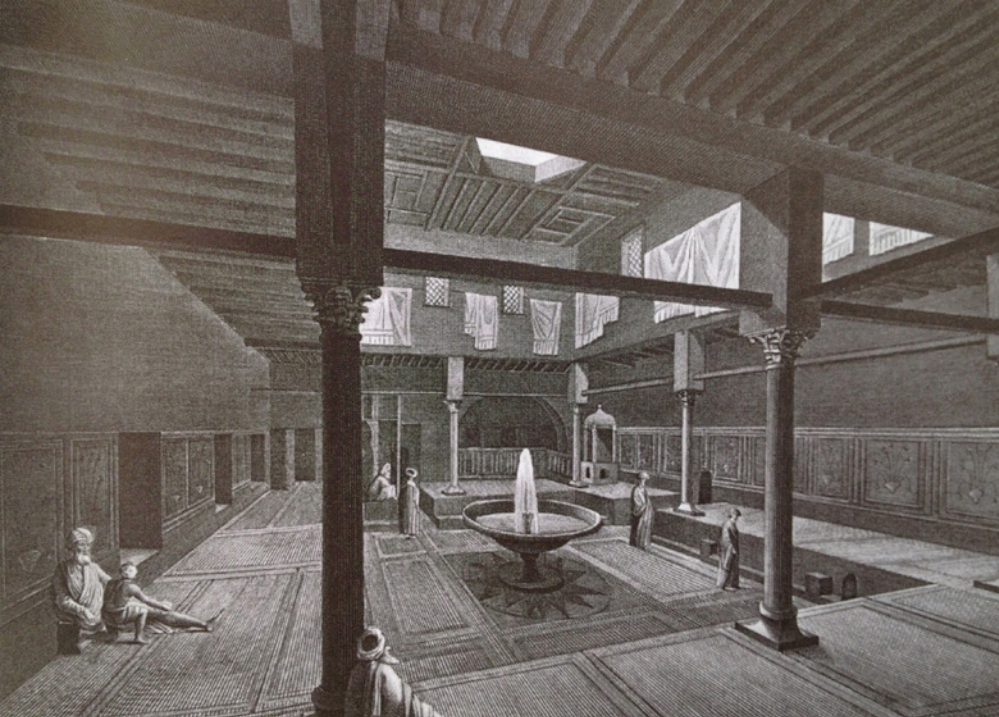
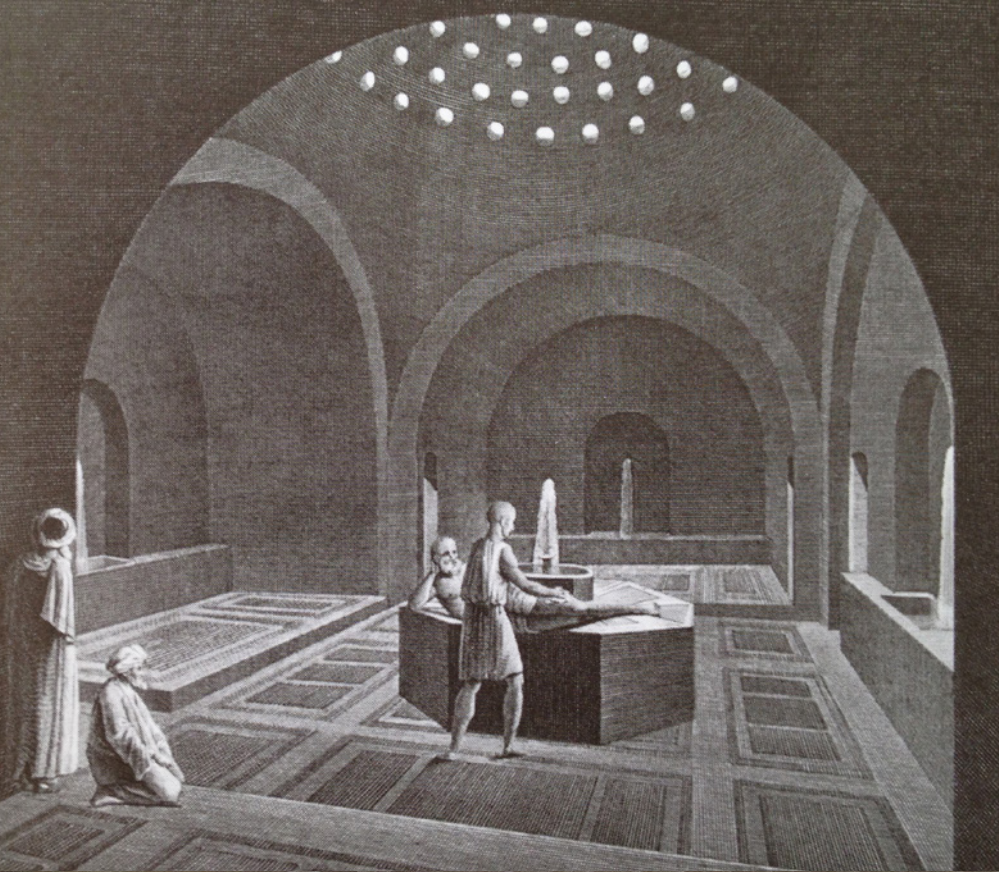


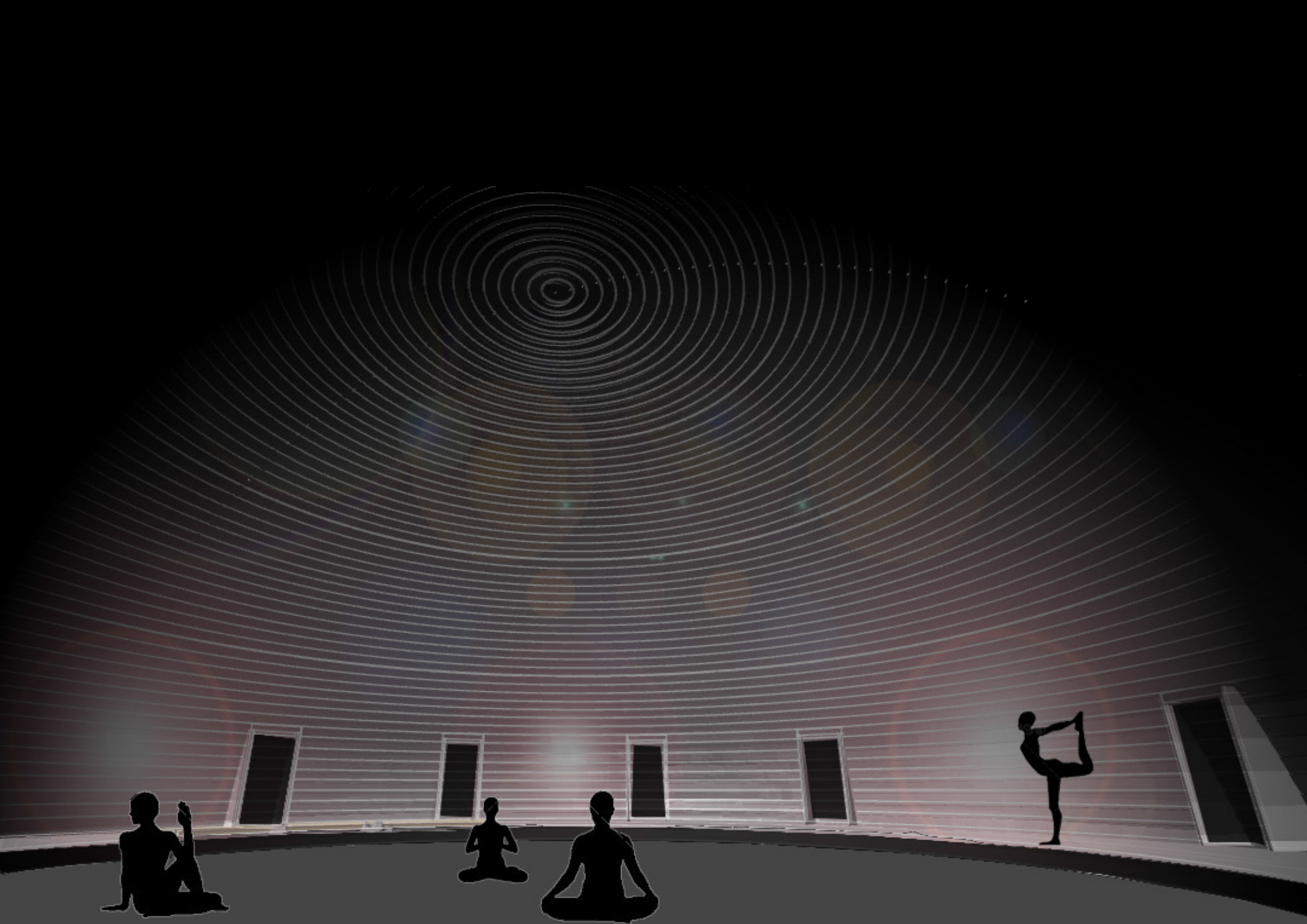


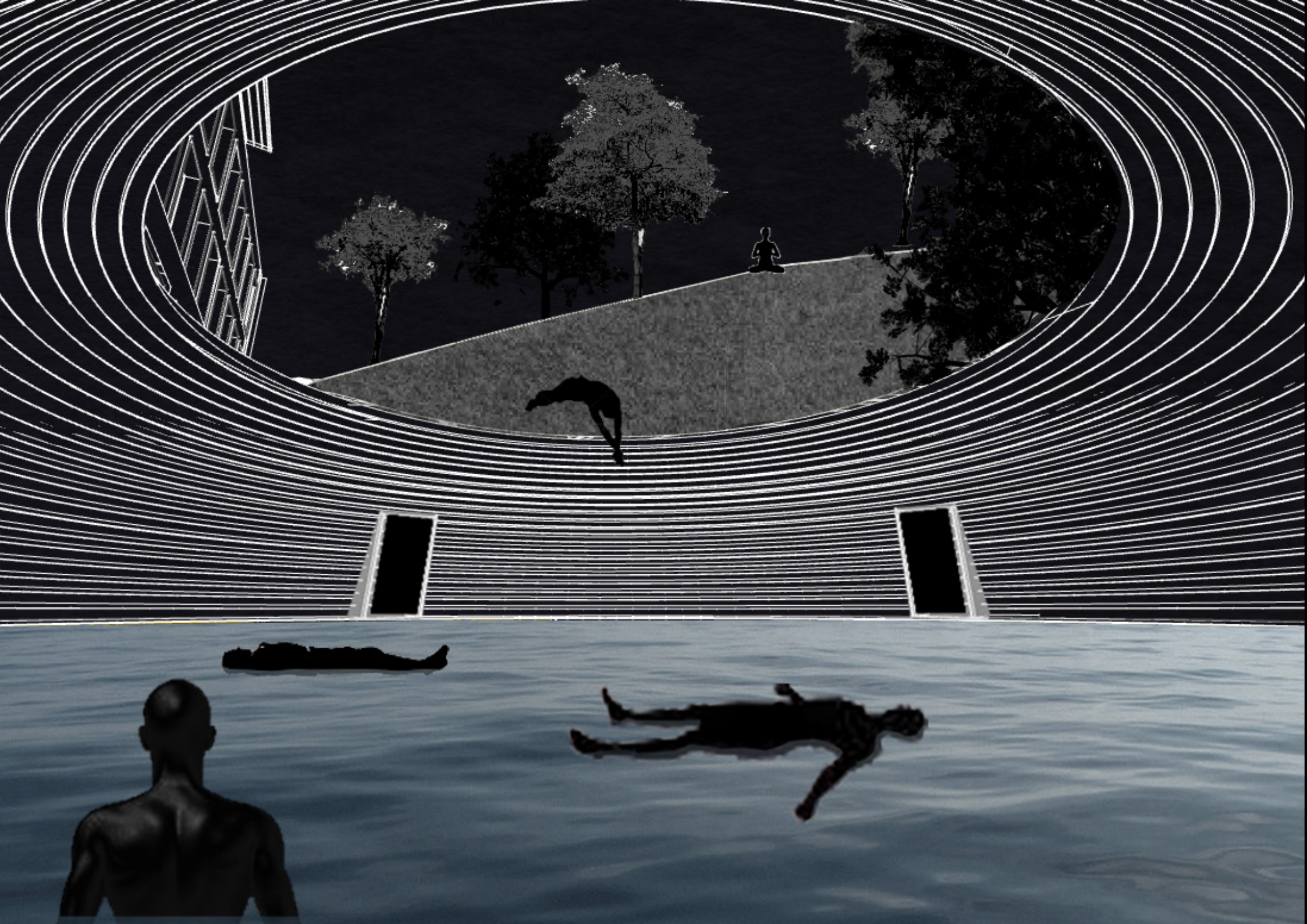


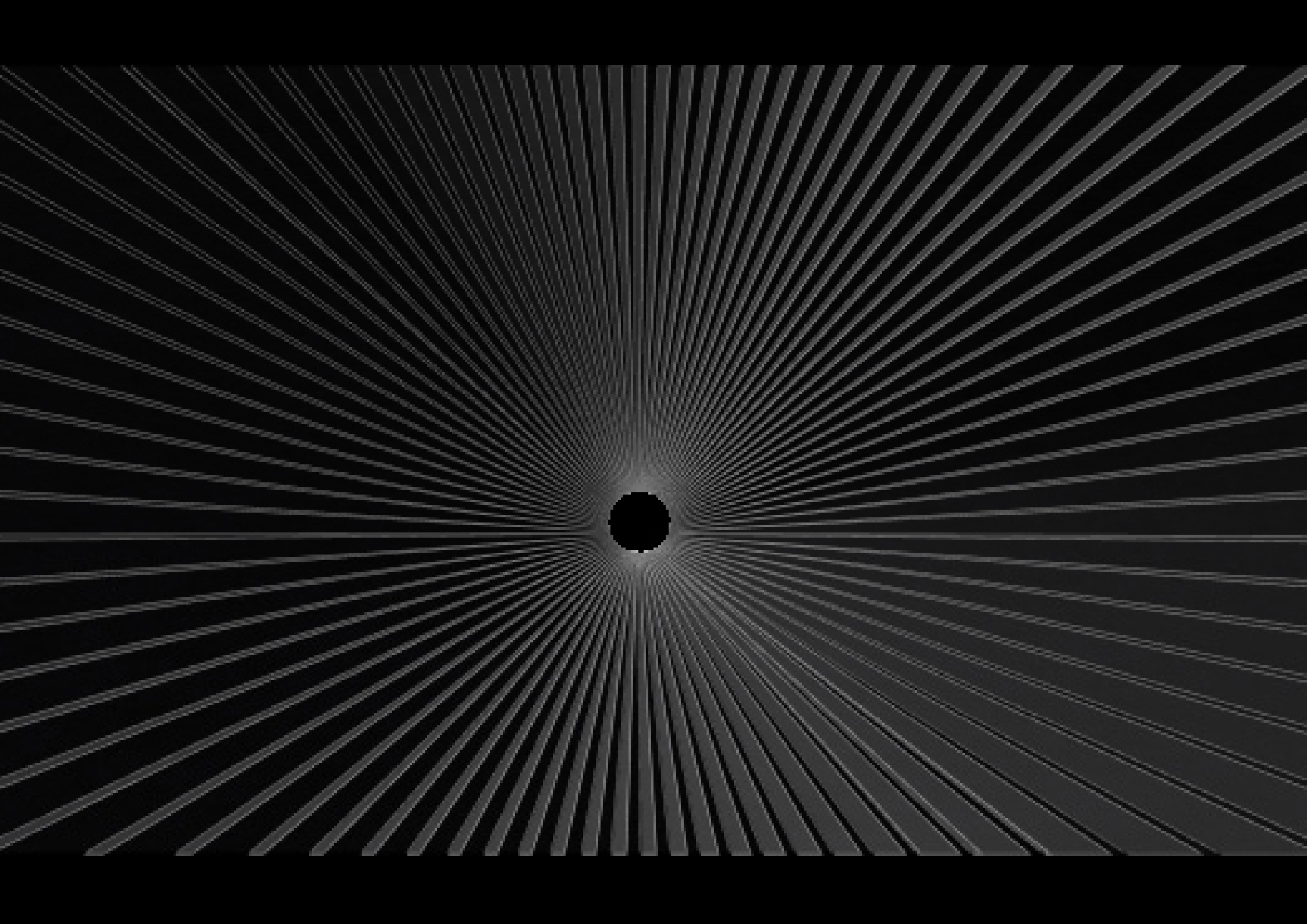




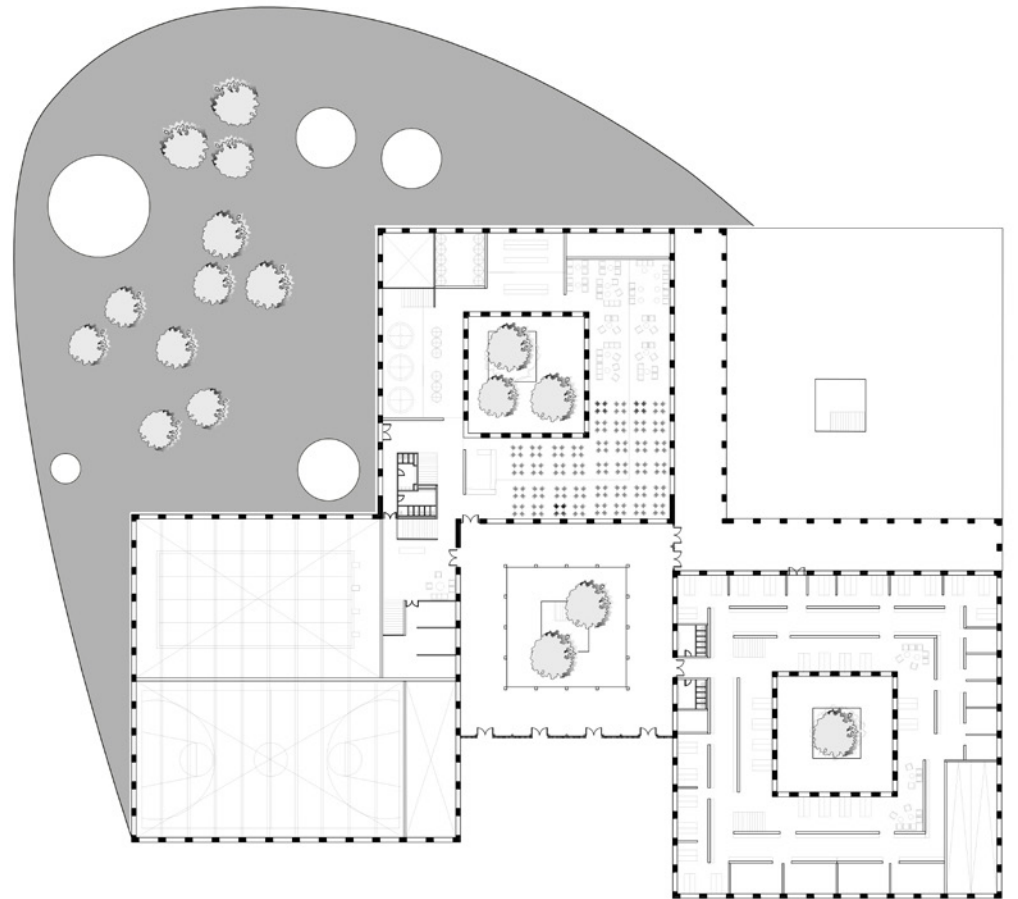
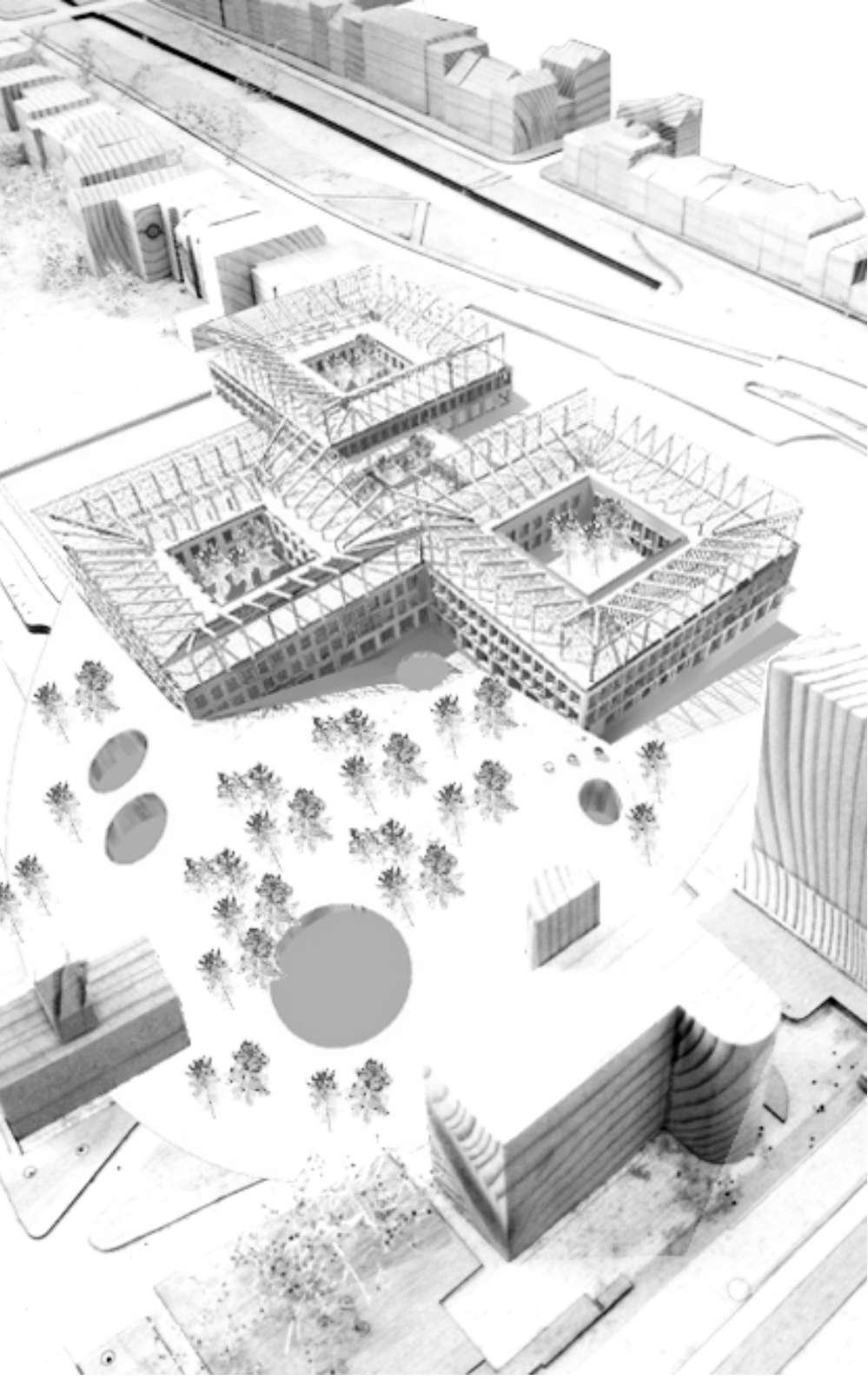


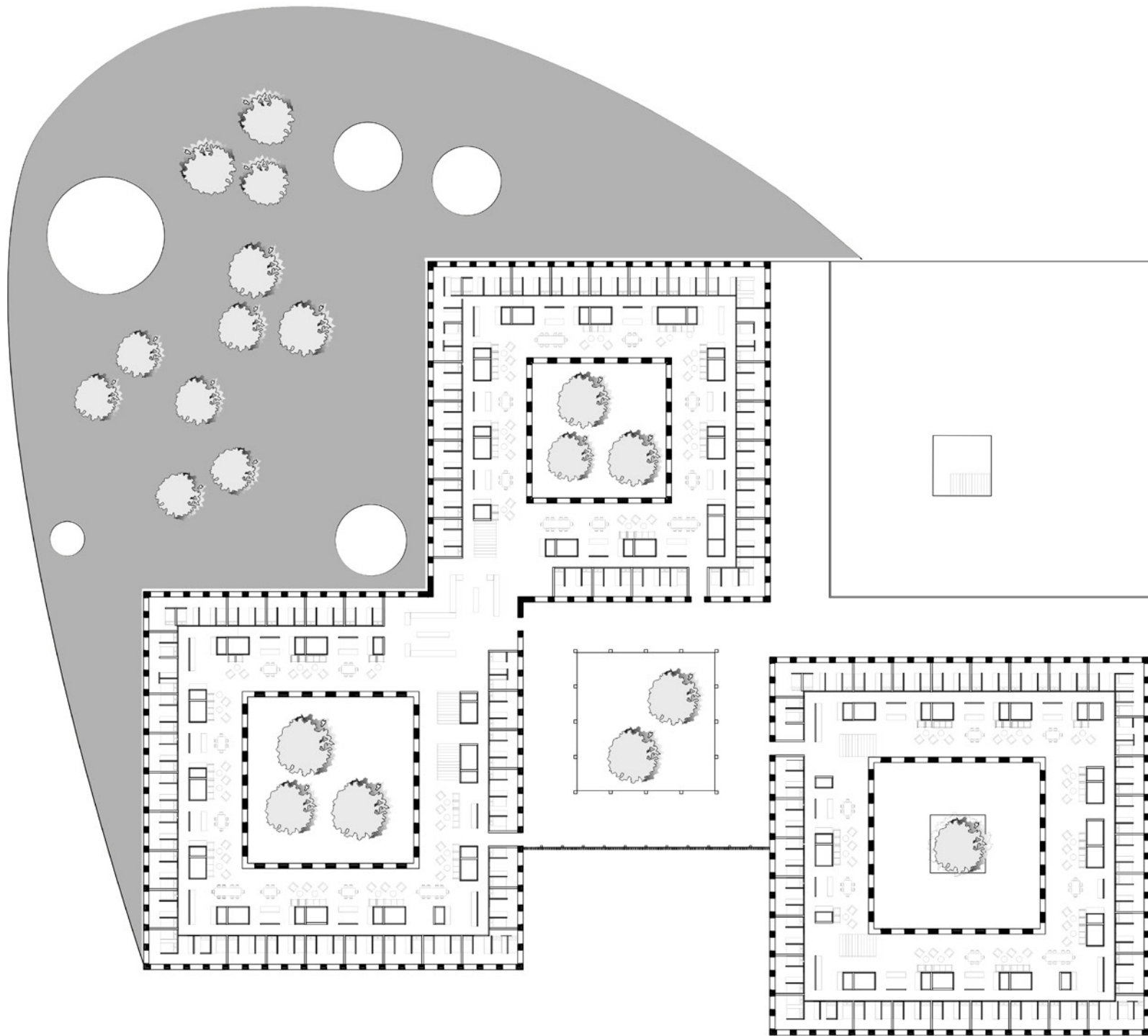




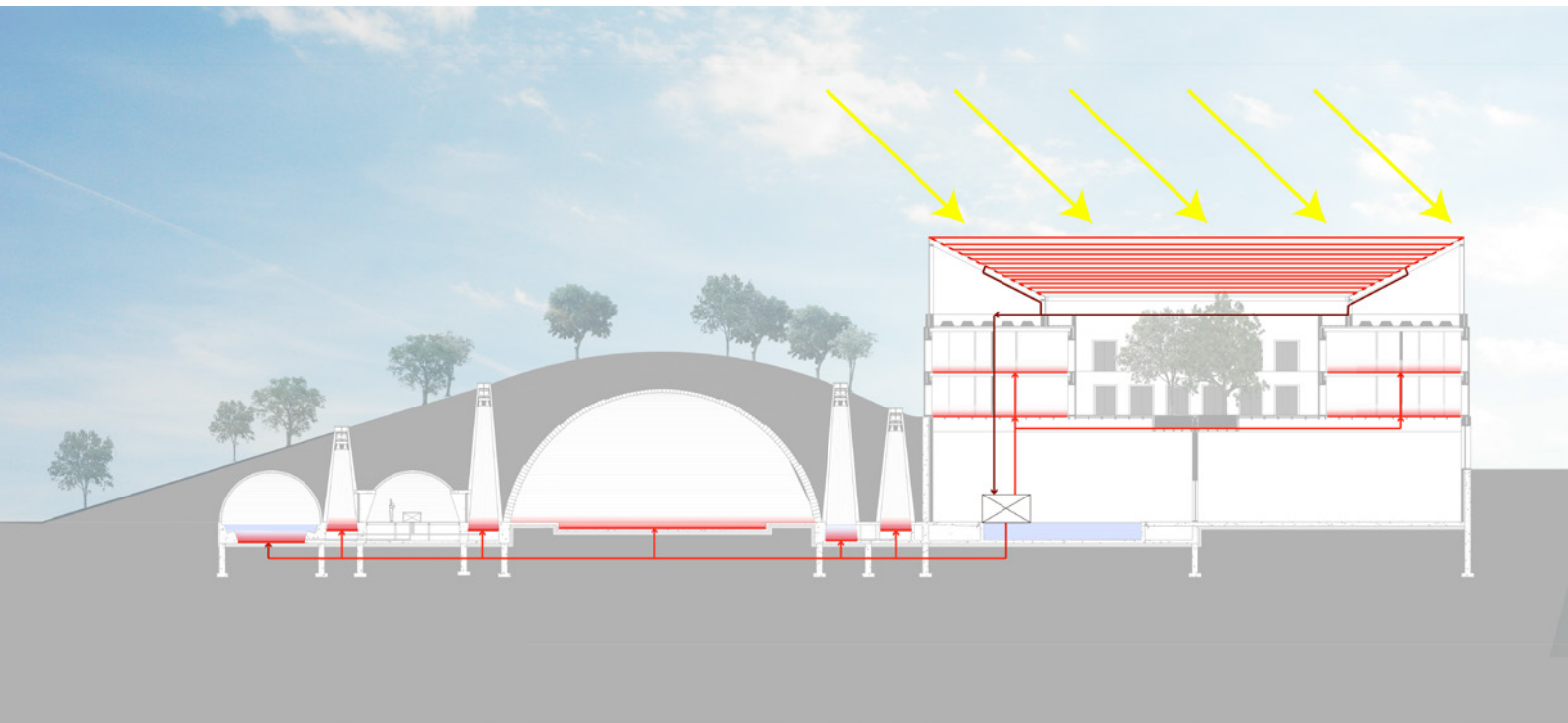












	SURFACE	PRODUCTION
FARMING	3900 m ²	39 meals /day
PV CELLS	1200 m ²	240 mWh /year
	COMPOSITION	U VALUE
WALL	0,5m r.earth 0,1m insul.	0,22 W/m ² K
DOMES	4m earth 0,35m brick	0,10 W/m ² K

