

A sensitivity analysis of an inverted pendulum balance control model

Pasma, Jantsje; Boonstra, Tjitske; van Kordelaar, Joost; Spyropoulou, Vasiliki; Schouten, Alfred

DOI

[10.3389/fncom.2017.00099](https://doi.org/10.3389/fncom.2017.00099)

Publication date

2017

Document Version

Final published version

Published in

Frontiers in Computational Neuroscience

Citation (APA)

Pasma, J., Boonstra, T., van Kordelaar, J., Spyropoulou, V., & Schouten, A. (2017). A sensitivity analysis of an inverted pendulum balance control model. *Frontiers in Computational Neuroscience*, 11, Article 99. <https://doi.org/10.3389/fncom.2017.00099>

Important note

To cite this publication, please use the final published version (if applicable). Please check the document version above.

Copyright

Other than for strictly personal use, it is not permitted to download, forward or distribute the text or part of it, without the consent of the author(s) and/or copyright holder(s), unless the work is under an open content license such as Creative Commons.

Takedown policy

Please contact us and provide details if you believe this document breaches copyrights. We will remove access to the work immediately and investigate your claim.



A Sensitivity Analysis of an Inverted Pendulum Balance Control Model

Jantsje H. Pasma^{1*}, Tjitske A. Boonstra¹, Joost van Kordelaar^{1,2}, Vasiliki V. Spyropoulou¹ and Alfred C. Schouten^{1,2}

¹ Department of Biomechanical Engineering, Delft University of Technology, Delft, Netherlands, ² Department of Biomechanical Engineering, Institute for Biomedical Technology and Technical Medicine (MIRA), University of Twente, Enschede, Netherlands

Balance control models are used to describe balance behavior in health and disease. We identified the unique contribution and relative importance of each parameter of a commonly used balance control model, the Independent Channel (IC) model, to identify which parameters are crucial to describe balance behavior. The balance behavior was expressed by transfer functions (TFs), representing the relationship between sensory perturbations and body sway as a function of frequency, in terms of amplitude (i.e., magnitude) and timing (i.e., phase). The model included an inverted pendulum controlled by a neuromuscular system, described by several parameters. Local sensitivity of each parameter was determined for both the magnitude and phase using partial derivatives. Both the intrinsic stiffness and proportional gain shape the magnitude at low frequencies (0.1–1 Hz). The derivative gain shapes the peak and slope of the magnitude between 0.5 and 0.9 Hz. The sensory weight influences the overall magnitude, and does not have any effect on the phase. The effect of the time delay becomes apparent in the phase above 0.6 Hz. The force feedback parameters and intrinsic stiffness have a small effect compared with the other parameters. All parameters shape the TF magnitude and phase and therefore play a role in the balance behavior. The sensory weight, time delay, derivative gain, and the proportional gain have a unique effect on the TFs, while the force feedback parameters and intrinsic stiffness contribute less. More insight in the unique contribution and relative importance of all parameters shows which parameters are crucial and critical to identify underlying differences in balance behavior between different patient groups.

Keywords: balance control model, human balance control, parameters, sensitivity analysis, frequency domain

OPEN ACCESS

Edited by:

Carlo Laing,
Massey University, New Zealand

Reviewed by:

Tamas Inzperger,
Budapest University of Technology
and Economics, Hungary
Robert Peterka,
Oregon Health & Science University,
United States

*Correspondence:

Jantsje H. Pasma
j.h.pasma@tudelft.nl

Received: 03 July 2017

Accepted: 11 October 2017

Published: 27 October 2017

Citation:

Pasma JH, Boonstra TA, van Kordelaar J, Spyropoulou VV and Schouten AC (2017) A Sensitivity Analysis of an Inverted Pendulum Balance Control Model. *Front. Comput. Neurosci.* 11:99. doi: 10.3389/fncom.2017.00099

INTRODUCTION

During human stance, the central nervous system (CNS) continuously has to compensate for deviations from an upright body orientation and the pull of gravity. The CNS estimates the body orientation based on sensory information from vision, the graviceptive (i.e., vestibular) system, and proprioception. The estimated body orientation is used by the CNS to send motor commands to the muscles to generate corrective muscle activity. This corrective muscle activity, together with intrinsic visco-elastic properties of the muscles and tendons, generate corrective joint torques to keep the body in an upright position (Peterka, 2003). This cycle of continuous sensory feedback of body orientation, corrective muscle activity, and corrective joint torques implies that balance control is effectively a closed-loop system.

In a closed-loop system it is difficult to separate cause and effect, as these are interrelated (Engelhart et al., 2014). For example, in balance control it is difficult to recognize how joint torques

influence joint angles or vice versa. In order to “open” the loop, a unique independent input should be applied in the form of external perturbations (van der Kooij et al., 2005; Boonstra et al., 2013). The joint torque or body sway responses are correlated to the external perturbations to estimate the dynamic balance behavior. The dynamic balance behavior can be expressed in Frequency Response Functions describing the relation between perturbation and response in magnitude and relative timing (phase) for each excited frequency.

To estimate how each subsystem (i.e., sensory systems, CNS, muscles, and body) contributes to dynamic balance behavior, balance control models have been developed. Models are important tools to relate experimental data to physiologically relevant parameters that indicate the contribution of each subsystem to the dynamic behavior (Schouten et al., 2008; Mergner, 2010; Kiemel et al., 2011). Peterka proposed a simple and descriptive linear balance control model, the Independent Channel (IC) model, that consists of a single-link inverted pendulum, a neural controller with proportional, and derivative gains, a time delay and sensory feedback (Peterka, 2002) to adequately describe balance control in the face of sensory perturbations, like support surface rotations or visual surround rotations. Due to its simplicity, the model is frequently used and applied to obtain pathophysiological changes in certain (patient) groups, such as elderly (Pasma et al., 2015; Wiesmeier et al., 2015), vestibular loss patients (Peterka, 2002; Mergner et al., 2009; Peterka et al., 2011), and Parkinson’s disease patients (Boonstra et al., 2014).

However, as balance control models contain multiple parameters and parameters interact, the relative contribution of each parameter to balance control is not directly evident (Engelhart et al., 2014). For example, reduced body sway could be due to both an increased stiffness of the system or to sensory reweighting (Peterka, 2002). To provide insight into the relative contribution of different balance control parameters, we adopted a method to investigate the sensitivity of individual model parameters to the overall dynamic balance behavior. The method is applied to the well-known and frequently used inverted pendulum balance control model of Peterka (2002) to get more insight in the sensitivity of the model parameters. We evaluated the sensitivity of each model parameter to determine how each parameter shapes the dynamic balance behavior (i.e., magnitude and phase as function of frequency). More insight in the unique contribution and relative importance of all parameters helps to understand the applicability and clinical utility of the model for identifying the important parameters that characterize balance control during stance, and to identify which parameters are crucial and critical to detect underlying changes in balance behavior with age and diseases.

MATERIALS AND METHODS

The IC model (Peterka, 2002) comprises of sensory and motor components to describe dynamic balance behavior under external sensory perturbations (see **Figure 1**). The model parameters and the default values are presented in **Table 1**.

The default values of the model parameters were based on the values found in experimental studies (van der Kooij and Peterka, 2011). Compared to Peterka (2002), activation dynamics were added to the model. As the activation dynamics interact with the time delay, a lower value for the time delay (0.097 s) was used compared with other studies, as found in previous studies which included the activation dynamics (van der Kooij and Peterka, 2011; Pasma et al., 2015). It should be noted that the neural controller integral gain (K_I) was deleted from the model, since this gain was shown to be redundant in a model with a torque-related sensory channel, i.e., force feedback (Peterka, 2003), as also will be addressed in the Discussion section.

Model Transfer Functions

The resulting overall dynamic balance behavior was described with transfer functions (TFs) in the Laplace domain. The TFs provide a quantitative measure of how the perturbations affect the response (i.e., body sway) in regards of magnitude and relative timing (phase) as a function of frequency. The body sway responses to two common perturbations (i.e., support surface rotation and visual surround rotation) represented by the TFs from support surface rotation to body sway (H_{SS}) and from visual surround rotation to body sway (H_{VS}):

$$H_{SS}(s) = \frac{BS(s)}{SS(s)} = \frac{P \cdot BS + W_P \cdot NC \cdot BD}{1 - F \cdot NC + P \cdot BD + NC \cdot BD} \quad (1)$$

$$H_{VS}(s) = \frac{BS(s)}{VS(s)} = \frac{W_V \cdot NC \cdot BD}{1 - F \cdot NC + P \cdot BD + NC \cdot BD} \quad (2)$$

The individual model subsystems included in the TFs are described in more detail in **Figure 1** and **Appendix A**. The model TFs were evaluated between 0.1 and 3 Hz, as these are the frequencies that dominate human balance behavior (Soames and Atha, 1982).

Sensitivity Analysis

A sensitivity analysis of the model parameters on the TFs was performed. A sensitivity analysis indicates how uncertainty in the TFs can be apportioned to different sources of uncertainty in the model parameters (Saltelli et al., 2008). We applied a widely used approach of sensitivity analysis, namely “local” sensitivity analysis, which generally is derivative based (numerical or analytical). Local sensitivity analysis depends on the operating point (Saltelli et al., 2008) and only investigates the impact on the TFs based on changes only very close to the nominal values. As patients may be at a different operating point, we investigated the effect of changing the default values, and therefore changing the operating point, on the local sensitivity.

Local Sensitivity

Local sensitivity analysis is a “one-at-a-time” technique, as only the effect of a single parameter of the system is analyzed at a time, while the rest of the parameters remain fixed at the chosen value (i.e., the operating point). The sensitivity of each parameter (p) of the balance control model was determined by taking the partial derivative of both TFs (see Equations 1 and 2) using the Matlab

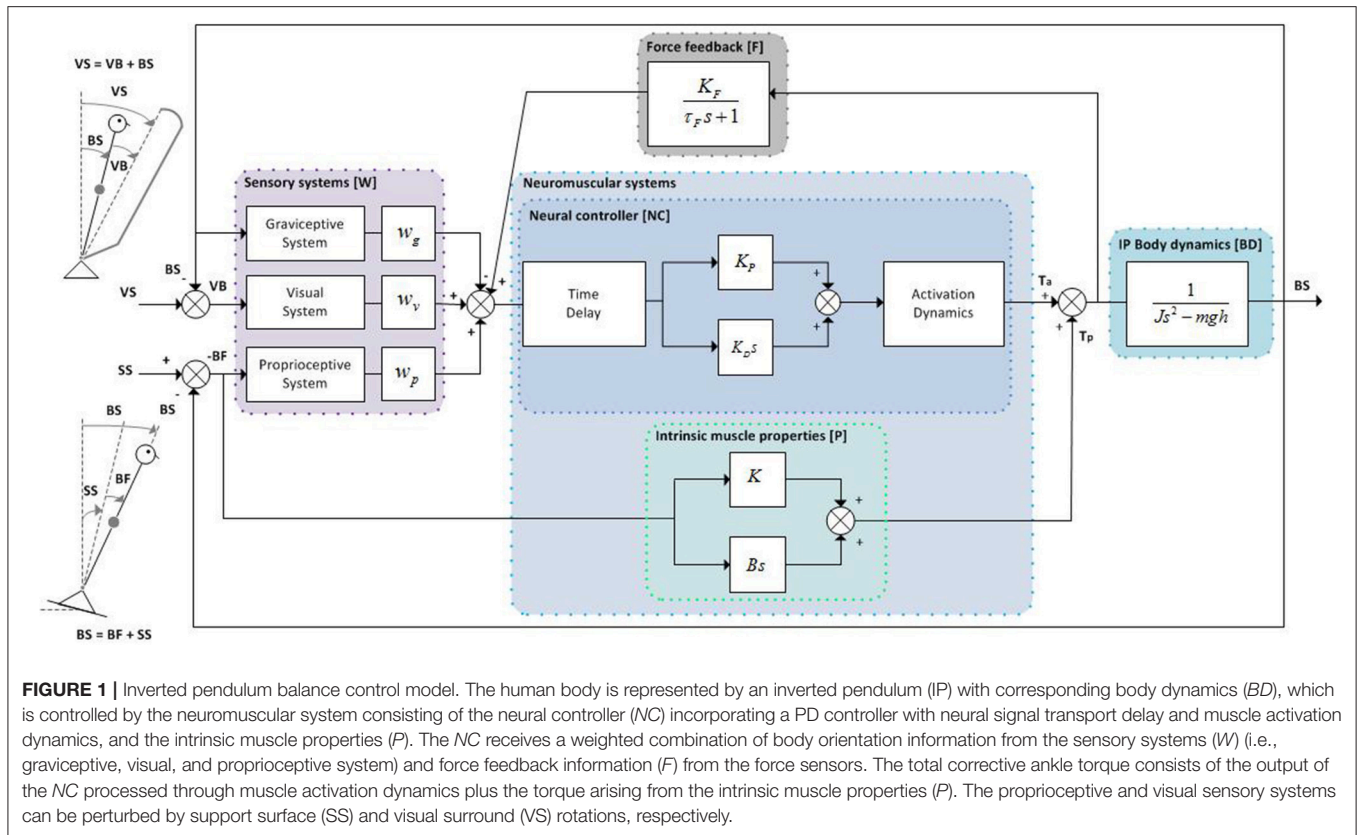


FIGURE 1 | Inverted pendulum balance control model. The human body is represented by an inverted pendulum (IP) with corresponding body dynamics (BD), which is controlled by the neuromuscular system consisting of the neural controller (NC) incorporating a PD controller with neural signal transport delay and muscle activation dynamics, and the intrinsic muscle properties (P). The NC receives a weighted combination of body orientation information from the sensory systems (W) (i.e., graviceptive, visual, and proprioceptive system) and force feedback information (F) from the force sensors. The total corrective ankle torque consists of the output of the NC processed through muscle activation dynamics plus the torque arising from the intrinsic muscle properties (P). The proprioceptive and visual sensory systems can be perturbed by support surface (SS) and visual surround (VS) rotations, respectively.

TABLE 1 | Balance control parameters of the Independent Channel model with the chosen default values, based on experimental data.

Symbol	Parameter	Default value	
J	Moment of inertia [kg m ²] (Fonteyn et al., 2010)	66	Based on anthropometry
m	Body mass [kg] (Fonteyn et al., 2010)	75	
h	Centre-of-mass height [m] (Fonteyn et al., 2010)	0.83	
g	Gravitational constant [m/s ²]	9.81	Known
K	Intrinsic muscle stiffness [Nm/rad]	40.5	
B	Intrinsic muscle damping [Nms/rad]	68.8	
ω_0	Activation dynamics—natural frequency [rad/s] (Mugge et al., 2010)	16.8	
β	Activation dynamics—relative damping [-] (Mugge et al., 2010)	0.99	
τ_D	Time delay [s]	0.097	Model fitting
W_P	Sensory proprioceptive weight [-]	0.8	
W_V	Sensory visual weight [-]	0.8	
K_P	Proportional gain [Nm/rad]	943.9	
K_D	Derivative gain [Nms/rad]	313.5	
K_F	Force feedback—gain [rad/Nm]	0.0018	
τ_F	Force feedback—time constant [s]	17.4	

The last column indicates how this parameter is typically obtained in experimental studies. The sensory weight depends on the perturbation, i.e., support surface or visual surround rotation, and represents the proprioceptive weight (W_P), or visual weight (W_V), respectively.

symbolic toolbox (Version 2014b, Mathworks, Natick, MA):

$$S_i(p, f) = \frac{\partial H(p, f)}{\partial p_i} \tag{3}$$

where S_i is the sensitivity of parameter p_i for a specific parameter set p and frequency range f , and $\frac{\partial H(p, f)}{\partial p_i}$ the partial derivative of the TF H .

The sensitivity is a function of frequency consisting of complex numbers, as the TF is also a function of frequency with complex numbers. Therefore, it was investigated in both the magnitude and phase of the TF which frequency region each model parameter has its largest effect on the dynamic balance behavior, i.e., for which frequencies the partial derivative is the largest.

To show the unique contribution of the parameters per frequency, we multiplied the partial derivatives with a scaling factor (SF) such that for each parameter the relative maximal change of the TF magnitude equals 0.7 (an arbitrary number; Equation 4).

$$SF_i = \frac{0.7}{\max\left(\frac{\text{comp}_H S_i(p, f)}{|H(p, f)|}\right)} \tag{4}$$

where SF_i is the scaling factor of parameter p_i , $\text{comp}_H S_i(p, f)$ represents the component of $S_i(p, f)$ with respect to TF H of

the sensitivity of parameter p_i for a specific parameter set p and frequency range f and $|H(p,f)|$ the magnitude of TF H .

This scaling factor was used in Equation (5) to calculate the resulting transfer function by adding or subtracting the scaled sensitivity.

$$\begin{aligned} H^+(p,f) &= H(p,f) + SF_i \cdot S_i(p,f) \\ H^-(p,f) &= H(p,f) - SF_i \cdot S_i(p,f) \end{aligned} \quad (5)$$

where S_i is the sensitivity of parameter p_i for a specific parameter set p and frequency range f and SF_i the scaling factor of parameter p_i . The component of $H^+(p,f)$ and $H^-(p,f)$ with respect to TF H represents the magnitude of $H^+(p,f)$ and $H^-(p,f)$, while the angle of $H^+(p,f)$ and $H^-(p,f)$ represents the phase angle of $H^+(p,f)$ and $H^-(p,f)$ (see **Figure 2**).

To compare the sensitivity of each parameter, a normalized sensitivity was calculated, as the sensitivity depends on the units of the parameters and the transfer function, for which the changes were expressed as proportions (Norton, 2015; Equation 6). The normalized partial derivatives are comparable across parameters despite the different units of the parameters.

$$S_{n,i}(p,f) = \frac{P_i}{|H(p,f)|} S_i(p,f) \quad (6)$$

where S_i is the sensitivity of parameter p_i for a specific parameter set p and frequency range f and $|H(p,f)|$ the magnitude of TF H . The normalized partial derivatives are expressed by a magnitude, representing the component of $S_{n,i}$ with respect to H , and a phase angle representing the angle difference between H plus $S_{n,i}$ and H (see **Figure 2**).

To indicate the relative importance of each parameter, an importance measure (*IMP*) was calculated (Equation 7).

$$IMP_i = \int_{0.1}^3 \text{comp}_H S_{n,i}(p,f) d(\log(f)) \quad (7)$$

where $\text{comp}_H S_{n,i}$ is the component of the normalized sensitivity of parameter p_i for a specific parameter set p and frequency range f with respect to TF H . A high value indicates a high parameter sensitivity; a small change in the parameter value results in a large change in the TF magnitude.

Operating Points

Local sensitivity analysis estimates the partial derivatives at a particular point in the model parameter space. However, it is likely that the model parameters varied within a range from person to person due to age and disease. The effect of the model parameters on the balance behavior is nonlinear, which results in a change of the sensitivity at different operating points of the model. Therefore, we investigated the effect on the partial derivatives of all parameters by systematically changing parameters.

Previous studies showed that the time delay and the sensory weights are important parameters changing with age and diseases (Peterka, 2002; Cenciari et al., 2010; Pasma et al., 2015; Wiesmeier et al., 2015; Engelhart et al., 2016). To investigate

the effect of these parameter changes on the sensitivity of all parameters on the TF, we changed the time delay and sensory weight systematically from -30% till $+30\%$, resulting in seven partial derivatives per parameter and investigated the effect on the normalized partial derivatives of all parameters.

RESULTS

Sensitivity of Balance Control Parameters: from Support Surface Rotation to Body Sway

Figures 3, 4 illustrate the sensitivity of the model parameters on the TF magnitude and phase, respectively, in the chosen operating point reported in **Table 1**. The anthropometric parameters body mass (m) and Center of Mass height (h) influence the shape of the TF magnitude between 0.1 and 1 Hz in a similar fashion; between 0.1 and 0.6 Hz increasing these parameters leads to a larger magnitude, while decreasing these parameters leads to a smaller magnitude. At frequencies between 0.6 and 1 Hz, this effect is reversed. Both parameters influence the TF magnitude mostly on the low frequencies. The moment of inertia (J) influences the shape of the TF magnitude mostly above 0.6 Hz; increasing its value decreases the magnitude and vice versa. In other words, a decrease in m , h , and J effectually increases the resonance peak of the magnitude.

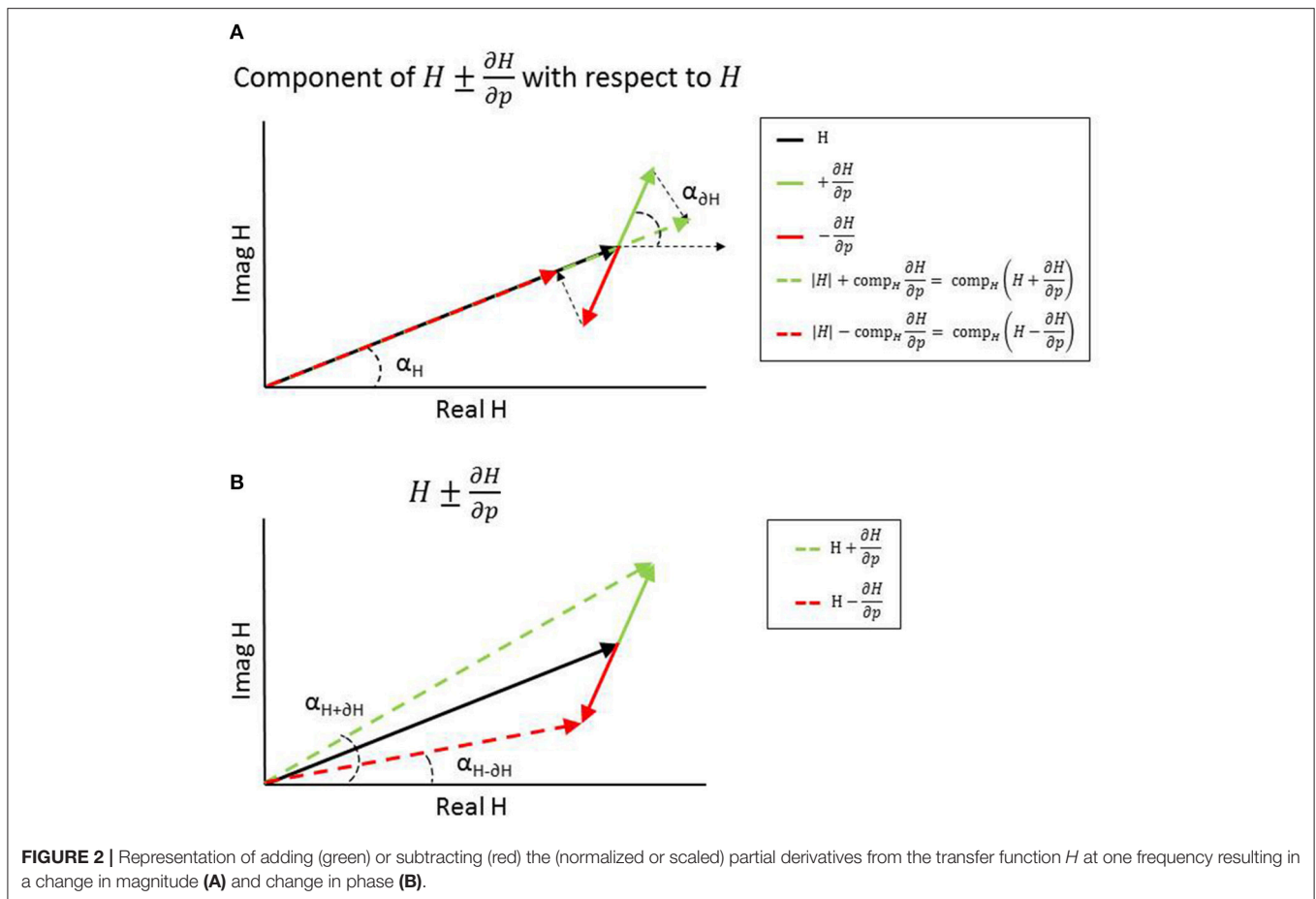
The proportional gain (K_P) shapes the TF magnitude mainly in the lower frequencies (0.1–1 Hz); increasing K_P makes the resonance peak of the magnitude more pronounced. K_P mostly influences the resonance peak. The derivative gain (K_D) shapes the magnitude over the whole frequency range; increasing K_D results in a lower magnitude at the lower frequencies (0.1–0.6 Hz) and a higher magnitude at the higher frequencies (0.6–3 Hz).

The intrinsic stiffness (K) has a similar effect as K_P . However, K shapes the TF magnitude over the whole frequency range, whereas K_P influences the TF magnitude until 1 Hz. Intrinsic damping (B) mainly affects the resonance peak of the magnitude between 0.3 and 0.8 Hz.

Both muscle activation parameters (ω_0 and β), as well as the force feedback parameters (K_F and τ_F) shape the TF magnitude in a similar fashion. ω_0 and τ_F influence the shape of the magnitude in reverse directions compared with β and K_F , leading to an increase of the resonance peak of the magnitude with decreasing ω_0 and τ_F and increasing β and K_F . In contrast with the force feedback parameters, the muscle activation parameters also influence the higher frequencies.

The sensory weight (W_P) has a pronounced effect on the whole frequency range of the TF magnitude; increasing W_P results in an increase of the TF magnitude on all frequencies. The time delay (τ_D) predominantly affects the frequencies around the resonance peak (i.e., 0.6 Hz); increasing τ_D increases the resonance peak at this frequency point, which is in accordance with the destabilizing effect of a time delay in a feedback loop.

As shown in **Figure 4**, the shape of the TF phase is influenced between 0.1 and 1 Hz in a similar fashion by the anthropometric parameters m and h ; increasing these parameters leads to an increased phase lag between 0.1 and 1 Hz and vice versa. J has



effect on the TF phase at the frequencies around the resonance peak (i.e., 0.6 Hz); increasing J leads to an increased phase lag and vice versa.

K_D has also an effect on the TF phase at the frequencies around the resonance peak (i.e., 0.6 Hz); increasing K_D leads to a decreased phase lag between 0.3 and 1 Hz and vice versa. K_P and K have a similar effect on the phase; increasing these parameters leads to a decreased phase lag between 0.1 and 0.6 Hz and vice versa. However, the effect of K_P reverses at between 0.6 and 0.7 Hz, whereas the effect of K is equal till 0.8 Hz.

B , ω_0 and β all influence the TF phase between 0.5 and 3 Hz. Increasing ω_0 and B decreases the phase lag, whereas decreasing ω_0 and B has the opposite effects. For β these effects are reversed compared with ω_0 and B . The force feedback parameters K_F and τ_F have opposite effects on the TF phase; increasing K_F leads to a decreased phase lag and vice versa at lower frequencies. This effect is reversed above 0.6 Hz. In contrast with the muscle activation parameters, the force feedback parameters also influences the TF phase on the low frequencies.

W_P hardly affects the shape of the TF phase. In contrast, τ_D clearly influences the TF phase. The dominant effect can be observed at the frequencies around the resonance peak (i.e., 0.6 Hz); increasing τ_D becomes apparent for the TF phase above these frequencies resulting in an increased phase lag.

Table 2 presents the importance measures of each parameter. The importance measures of K , B , K_F , and τ_F are low (<0.5) compared with the other parameters. This means that these parameters have to change more to get a comparable change as the other parameters. J , W_P , and K_D show the highest important measures; the TF magnitude is most sensitive for changes in these parameters.

Sensitivity of Balance Control Parameters: From Visual Surround Rotation to Body Sway

For almost all parameters, the results of the local sensitivity analysis of the TF from visual surround rotation to body sway are comparable to the sensitivity analysis of the TF from support surface rotation to body sway. However, the parameters K and B did influence the TF in a different way as shown in **Figure 5**. Increasing or decreasing K has a more pronounced effect on H_{VS} in the lower frequency ranges, compared to H_{SS} ; increasing K leads to larger decreases in H_{VS} compared to H_{SS} for frequencies up to 0.6 Hz. Contrary, B has a less pronounced effect on the higher frequencies (>2 Hz) of the H_{VS} compared to the H_{SS} : increases in B do not have an effect on the H_{VS} compared for frequencies larger than 2 Hz, whereas B did influence H_{SS} in this region.

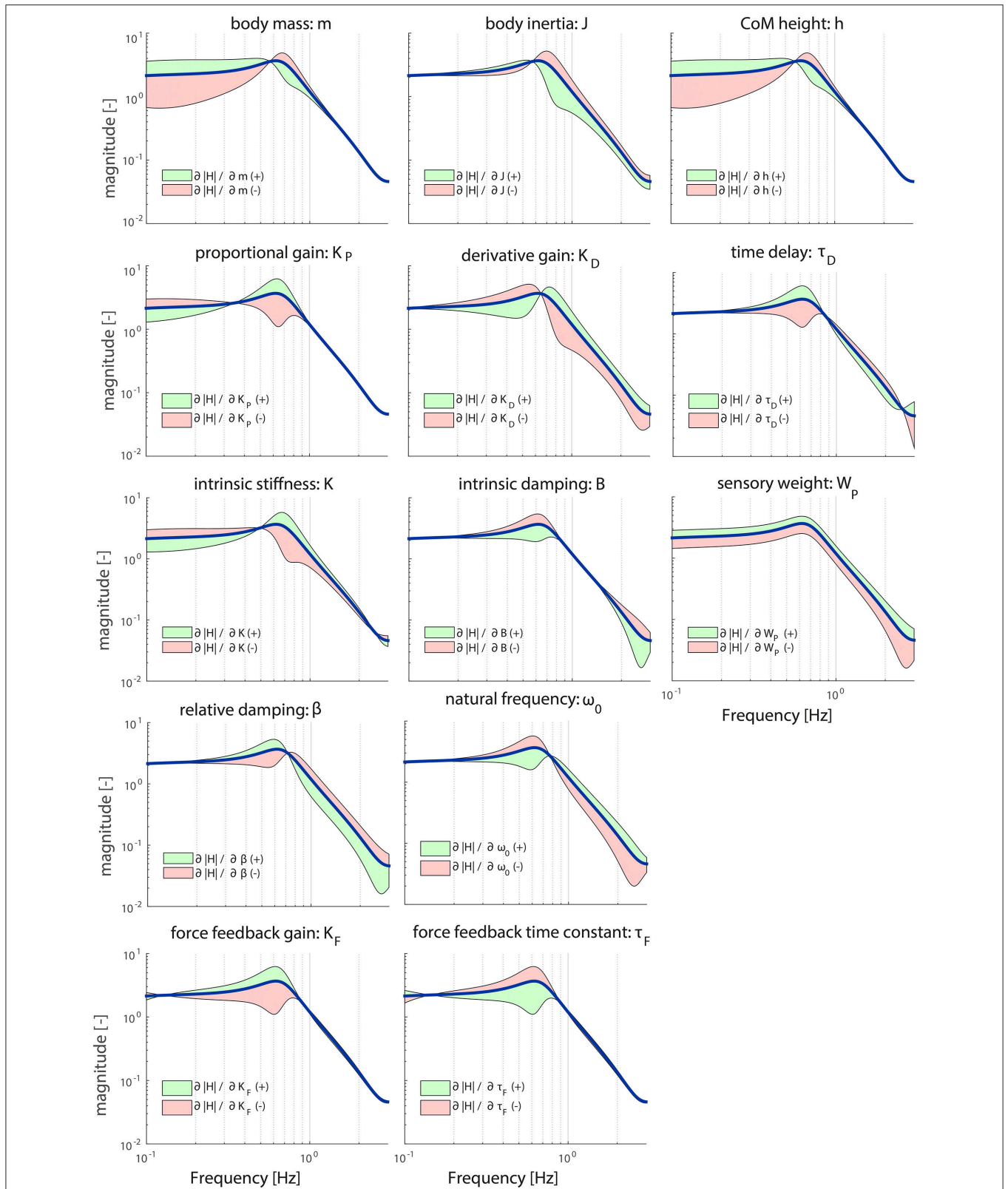


FIGURE 3 | Sensitivity of each parameter of the model's transfer function from support surface rotation to body sway (H_{SS}) on the TF magnitude represented by adding or subtracting the partial derivatives from the TF magnitude; green indicates the effect of a parameter increase and red a parameter decrease. The partial derivatives are multiplied by a scaling factor such that the relative maximum change of the magnitude is 0.7.

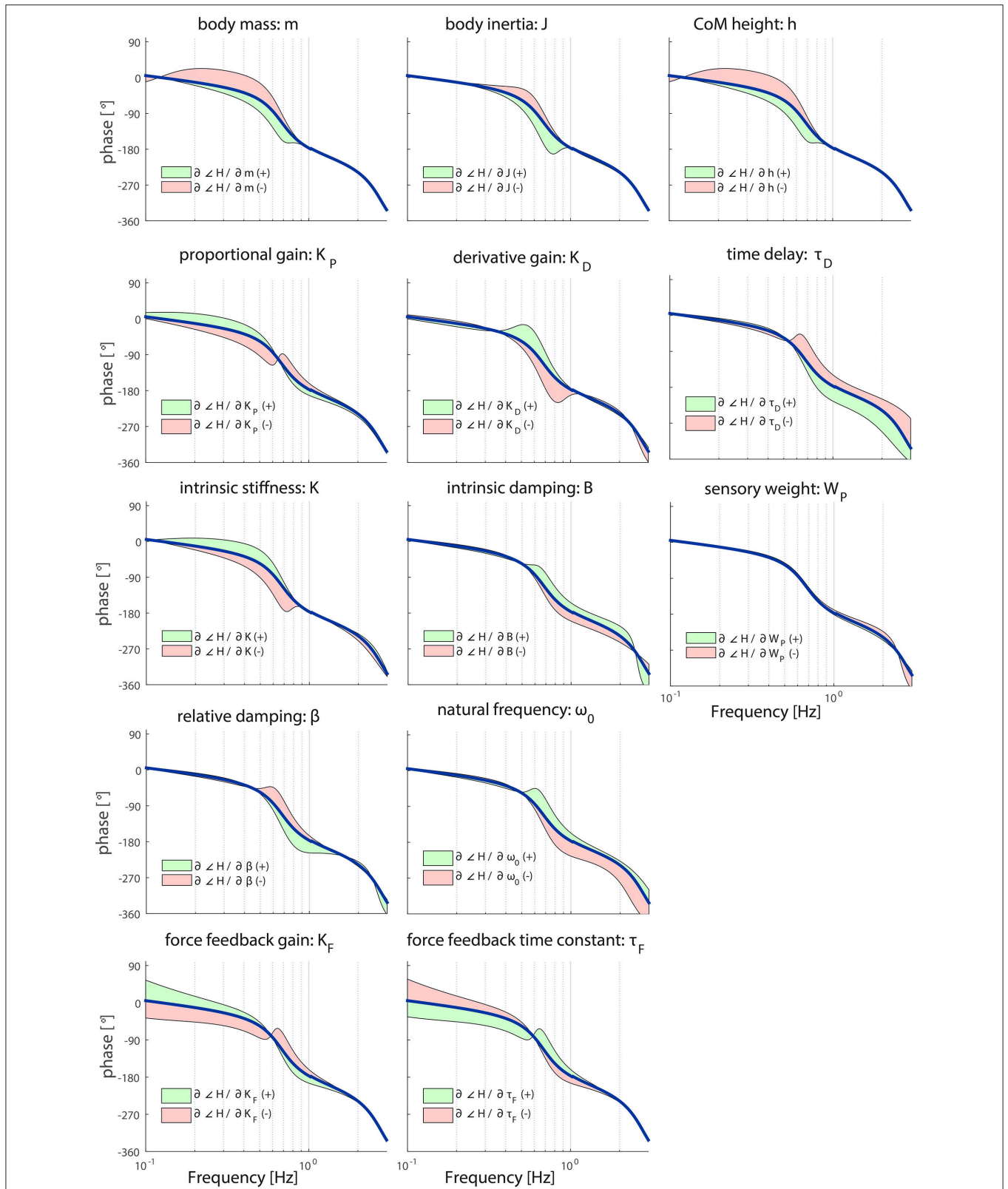


FIGURE 4 | Sensitivity of each parameter of the model's transfer function from support surface rotation to body sway (H_{SS}) on the TF phase represented by adding or subtracting the partial derivatives from the TF phase; green indicates the effect of a parameter increase and red a parameter decrease. The partial derivatives are multiplied by a scaling factor such that the relative maximum change of the magnitude is 0.7.

The sensory weight W_V influences the TF magnitude on all frequencies, which is comparable to W_P . However, the effect is equal over all frequencies. In contrast with W_P , W_V does not influence the TF phase.

The importance measures (Table 2) are comparable with the importance measures as found in the sensitivity analysis of TF

from support surface rotation to body sway. The importance measures of most of the parameters are clearly lower, indicating that H_{VS} is less sensitive to changes of most of the parameters compared with H_{SS} . Furthermore, H_{VS} is sensitive to changes in W_V , but less sensitive compared to H_{SS} to changes in W_P .

Effect of Operating Point

Figures 6–9 show the effect of systematically changing the sensory weight and time delay on the normalized sensitivity of all parameters. Figures 6, 7 clearly show that changing the sensory weight mainly effects the sensitivity of K_P , K_D , B , ω_0 , β , τ_D , and W_P on the TF magnitude on the high frequencies. A higher W_P results in less sensitivity on the high frequencies. Also, the sensitivity on TF phase is mainly influenced on high frequencies.

Figures 8, 9 clearly show the influence of changing the time delay on the normalized sensitivity of all parameters; increasing the time delay results in a higher sensitivity of all parameters around the resonance peak for both the TF magnitude and TF phase. Furthermore, the frequency of the highest sensitivity changes.

TABLE 2 | Relative importance of parameters.

Parameter	H_{SS}	H_{VS}
Moment of inertia (J)	1.30	1.30
Body mass (m)	1.19	1.19
Centre-of-mass height (h)	1.19	1.19
Intrinsic muscle stiffness (K)	0.06	0.08
Intrinsic muscle damping (B)	0.39	0.26
Activation dynamics—natural frequency (ω_0)	1.20	0.99
Activation dynamics—relative damping (β)	1.26	1.04
Time delay (τ_D)	0.75	0.59
Sensory proprioceptive weight (W_P)	1.58	–
Sensory visual weight (W_V)	–	1.48
Proportional gain (K_P)	1.19	1.18
Derivative gain (K_D)	1.88	1.70
Force feedback—gain (K_F)	0.08	0.08
Force feedback—time constant (τ_F)	0.08	0.08

The importance measure represents the relative importance of each parameter. Importance measures are presented for both TFs, namely H_{SS} and H_{VS} .

DISCUSSION

In this study we performed a local sensitivity analysis based on partial derivatives of a commonly used balance control model (i.e., the IC model) to investigate the unique contribution and the relative importance of the parameters incorporated in the model. The results showed that all parameters shape the TF magnitude

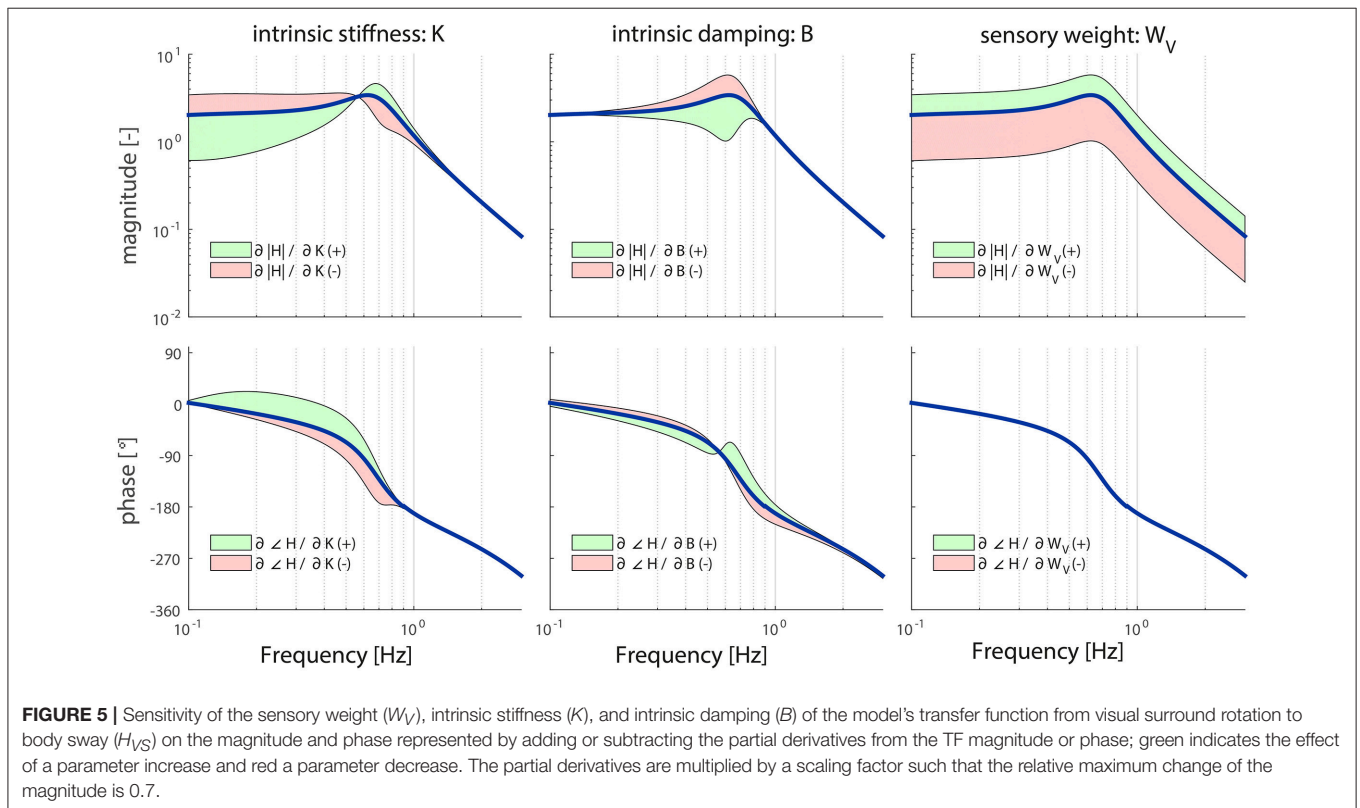


FIGURE 5 | Sensitivity of the sensory weight (W_V), intrinsic stiffness (K), and intrinsic damping (B) of the model's transfer function from visual surround rotation to body sway (H_{VS}) on the magnitude and phase represented by adding or subtracting the partial derivatives from the TF magnitude or phase; green indicates the effect of a parameter increase and red a parameter decrease. The partial derivatives are multiplied by a scaling factor such that the relative maximum change of the magnitude is 0.7.

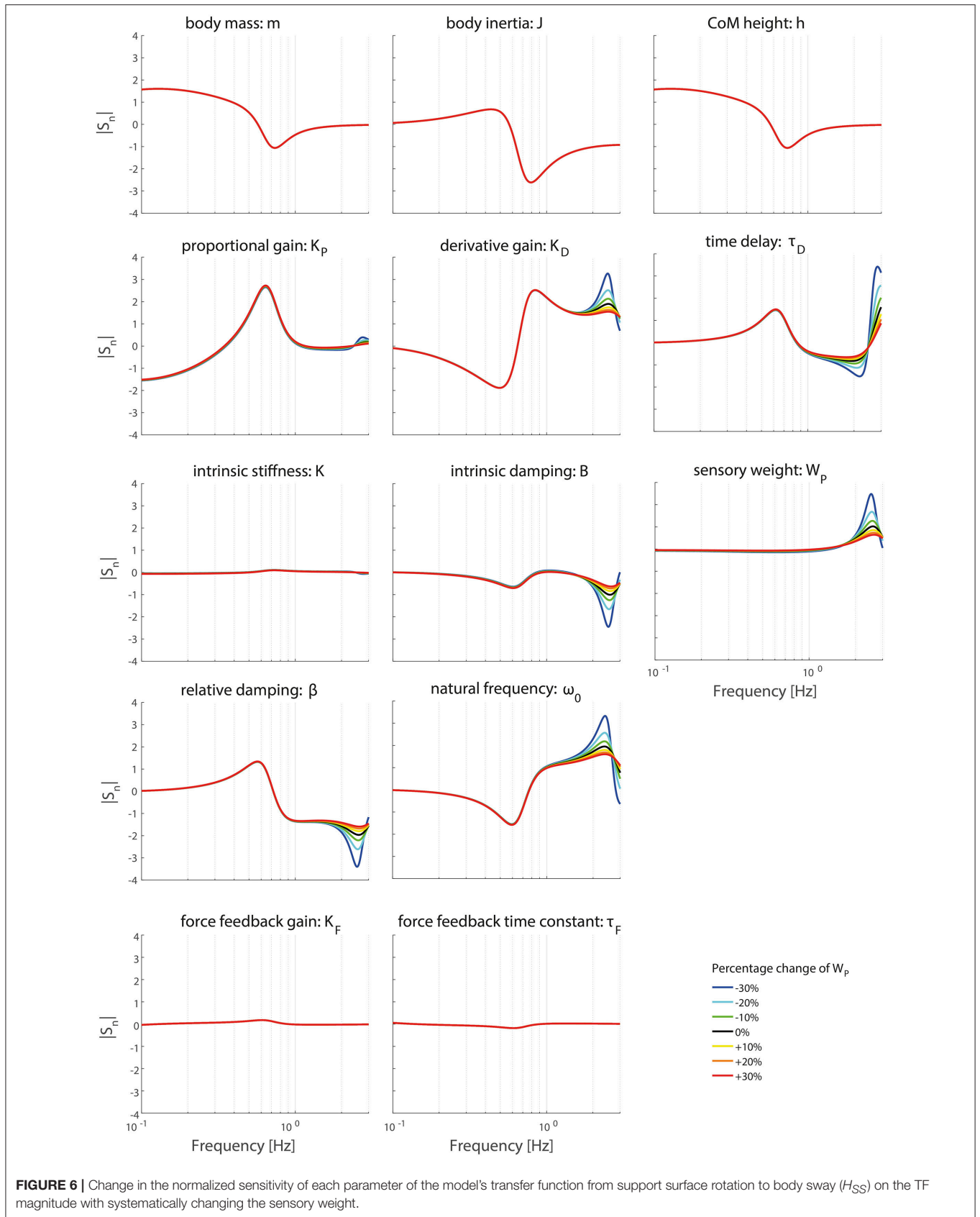


FIGURE 6 | Change in the normalized sensitivity of each parameter of the model's transfer function from support surface rotation to body sway (H_{SS}) on the TF magnitude with systematically changing the sensory weight.

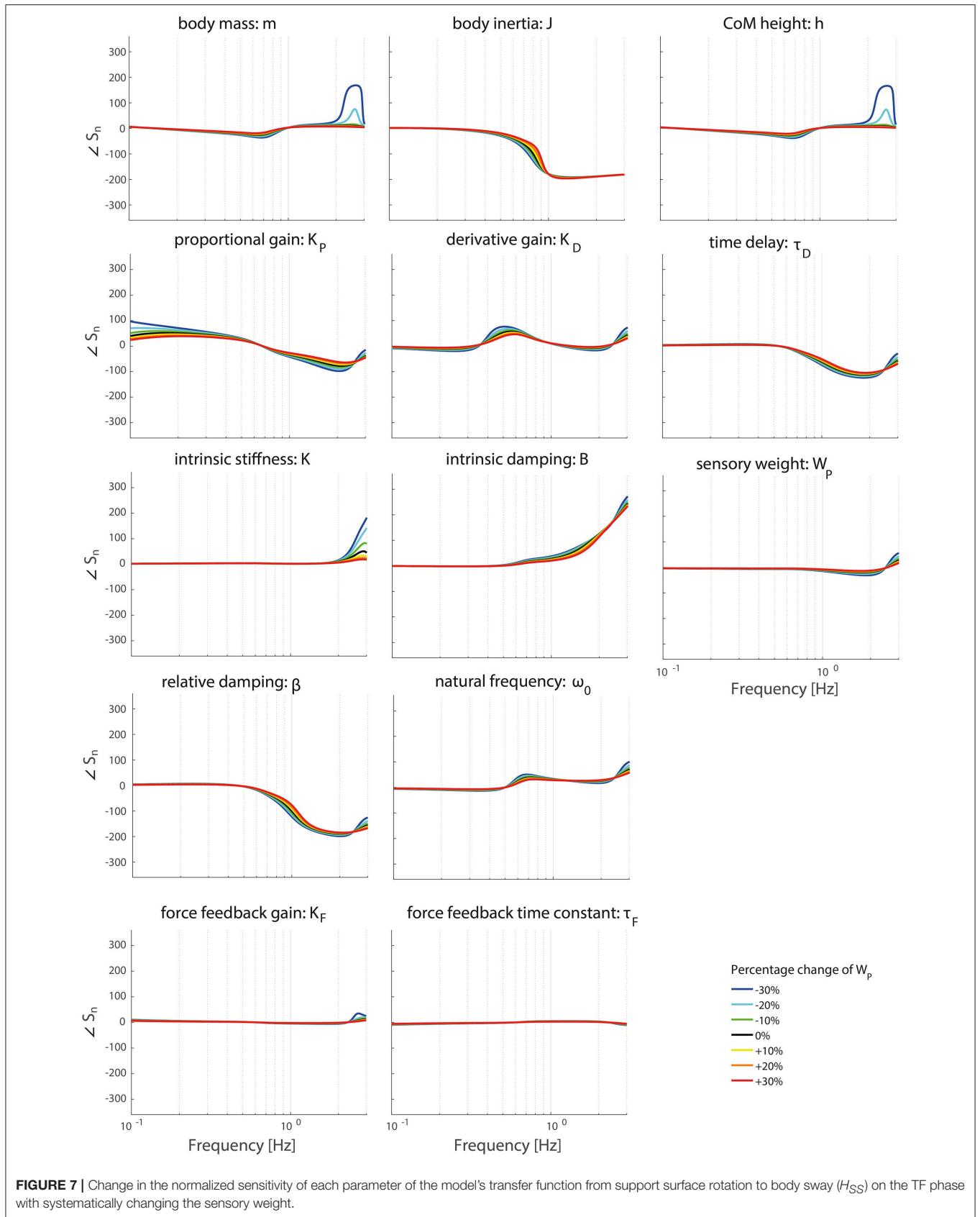
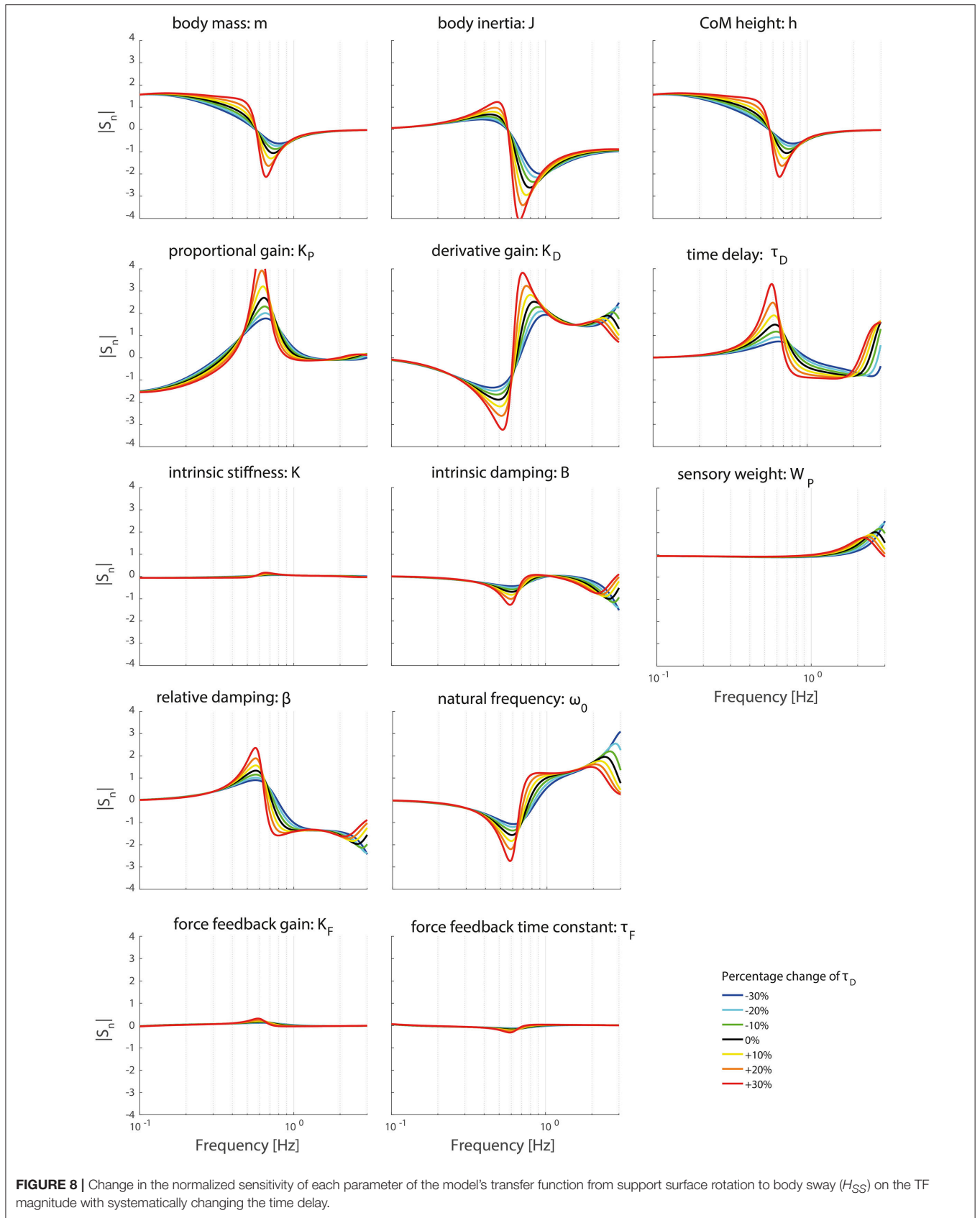
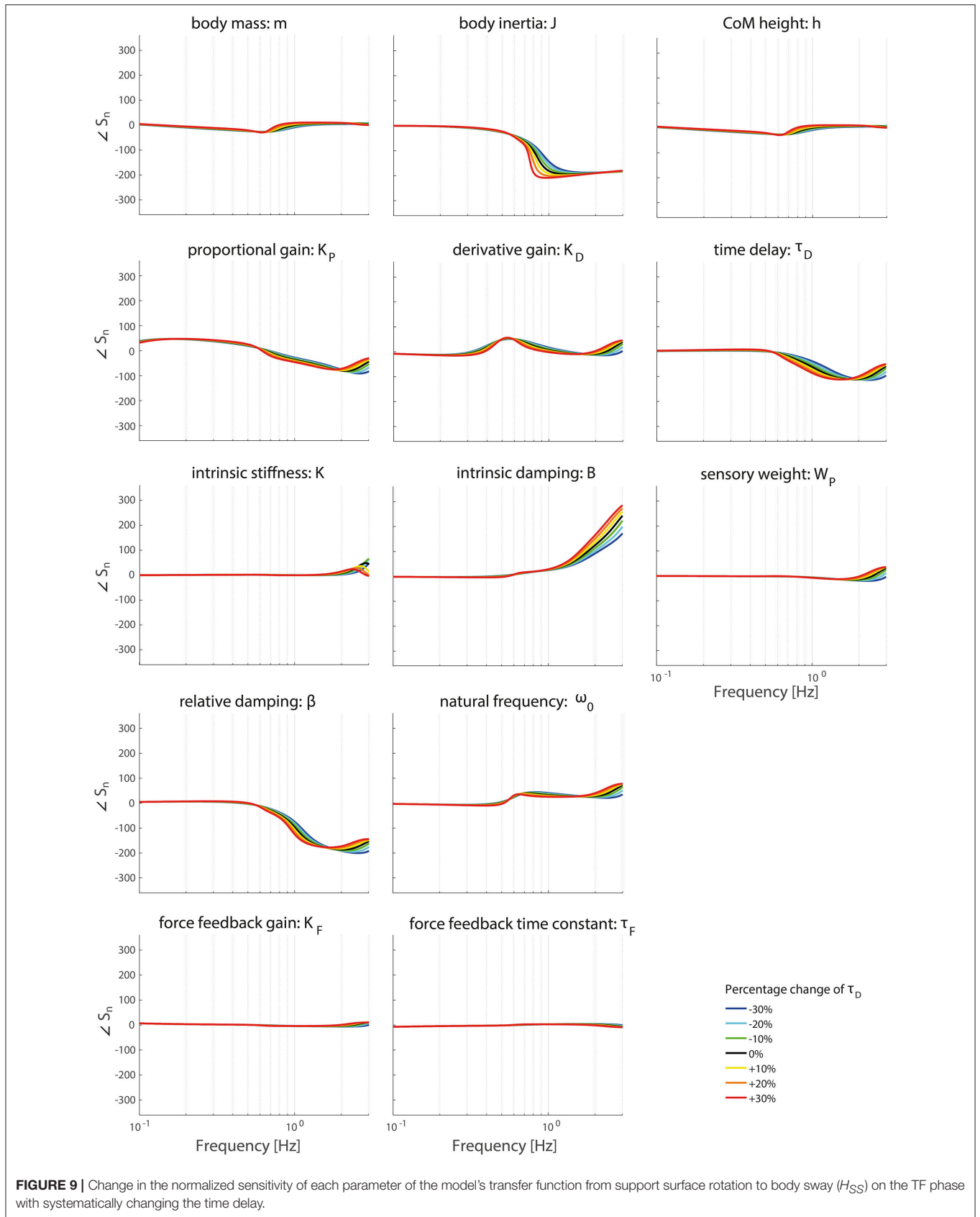


FIGURE 7 | Change in the normalized sensitivity of each parameter of the model's transfer function from support surface rotation to body sway (H_{SS}) on the TF phase with systematically changing the sensory weight.





and phase and therefore play a role in the balance behavior. However, the importance of the parameters varies. The sensory weight, the time delay, the derivative gain, and the proportional gain are of relatively high importance and show a unique contribution to the TF, suggesting that the used balance control model is suitable for the identification of these parameters with experimental data, which is confirmed by other studies showing changes in these parameters with age and disease (Peterka, 2002; Cenciari et al., 2010; Pasma et al., 2015; Wiesmeier et al., 2015).

Sensitivity Analysis of a Balance Control Model

Balance control models consist of several parameters which could interact. Therefore, it is difficult to recognize the unique contribution and relative importance of each parameter to balance control. The results of the sensitivity analysis help with optimizing the balance control models and show the unique contribution of each parameter. In case parameters have similar contributions to the TF, this indicates that these parameters interact and therefore are difficult to distinguish, such as the intrinsic stiffness and proportional gain. The model can be simplified by eliminating some of these parameters or by giving some parameters a constant value obtained from different experiments.

The sensitivity analysis also shows the relative importance of each parameter represented by the importance measures. The TF is less sensitive to changes in parameters with low importance measures, which indicates that these parameters are less important to describe changes in dynamic balance behavior, such as the force feedback parameters and the intrinsic stiffness. Therefore, these parameters can be kept constant or can even be removed from the model. However, this might influence the sensitivity of the other parameters by changing the operating point. On the other hand, parameters with a high importance measure indicate high sensitivity and it is recommended to focus on these parameters.

Many Parameters Influence the Transfer Function in a Similar Fashion

The results showed that many parameters act in the same frequency range and shape the TF in a similar fashion. For example, both the proportional gain (K_P) and intrinsic stiffness (K) similarly shape the magnitude of the TF in the lower frequencies (0.1–1 Hz). This is a very well-known effect, which makes it very difficult to disentangle the effect of the intrinsic and reflexive (i.e., proportional gain) stiffness. However, for upright stance, it has been shown many times that the contribution of the intrinsic stiffness is low (i.e., about 10%), compared to the reflexive stiffness (Peterka, 2002; Vlutters et al., 2015). This is also shown by the low importance measure for the intrinsic stiffness compared with the importance measure of the proportional gain. Therefore, lumping these two parameters would not give rise to large errors in estimations of ankle stiffness and in descriptions of the dynamic balance behavior. However, as consequence no distinction could be made between the intrinsic stiffness and proportional gain. Therefore, possible differences in intrinsic

stiffness and proportional gain between patient groups would not be detectable.

The force feedback (K_F , τ_F) is effective in the low and mid frequencies (0.2–0.8 Hz), with an inverse relationship between the influence of each of the two parameters on the TF. This indicates that there is some interaction between the parameters and overparameterization, which can be solved by combining those parameters into one parameter or removing one of the parameters. As mentioned previously, the integral gain (K_I) and the force feedback gain also have similar influence on the TF at low frequencies as shown by previous studies (Peterka, 2003). This can also be shown with a sensitivity analysis to support the decision to remove K_I from the model, which will nicely illustrate the practical use of sensitivity analysis.

The sensory weight (W_P) influenced the magnitude of the TF across the whole frequency range; an increase in W_P increased the magnitude and vice versa, while the phase of the TF remained unaffected. This confirms previous studies, which showed that when participants increase their sensory weighting, this can be easily extracted from the TF, by searching for increases or decreases in the magnitude of the TF over the whole frequency range (Peterka, 2002; Pasma et al., 2012). However, the effect of the other parameters on the TF still needs to be taken into account.

On the other hand, the visual weight W_V and the proprioceptive weight W_P have a different effect on the TFs. This can be explained by Equations (1, 2). With support surface rotations not only the proprioceptive weight, but also the intrinsic dynamics interact. This is represented by the inclusion of both the intrinsic dynamics and sensory weight factors in the numerator of Equation 1. Therefore, W_P does not act as a constant gain like W_V does.

Influence of Operating Point

It should be noted though that the results of sensitivity analysis vary with the operating point chosen. The operating point (i.e., the set of values for model parameters) chosen in this study (Table 1) is obtained from studies in healthy subjects (Peterka, 2002; van der Kooij and Peterka, 2011). Therefore, it remains to be elucidated whether different values of model parameters in subjects with altered neuromuscular dynamics (e.g., elderly) affect the TF in a similar way as in healthy young subjects, as it is reasonable to assume that they have a different operating point, due to e.g., increased proprioceptive weight (Pasma et al., 2015; Wiesmeier et al., 2015) or time delay (Engelhart et al., 2016) or increased derivative and proportional gain (Cenciari et al., 2010).

Changing the operating point with respect to the sensory weight only lowers the sensitivity in the higher frequency regions of both the TF magnitude and TF phase, i.e., a lower importance measure, with increasing proprioceptive weight. Changing the operating point with respect to the sensory weight does not influence the frequency regions the parameters act on.

Changing the operating point with respect to the time delay does influence the frequency regions the parameters act on. The frequency of the maximal partial derivative changes, i.e., the resonance peak changes. Furthermore, the maximal

change itself increases with increasing time delay, representing a higher sensitivity and therefore a higher importance measure. In other words, the TFs become more sensitive to changes of all parameters in case of a higher time delay.

Future studies that combine sensitivity analysis and experimental research are needed to gain insight into the role of altered neuromuscular dynamics or reweighting strategies on parameter estimates of balance control models.

Practical Applications

Sensitivity analysis can be used to predict how changes in model parameters, induced by pathophysiological conditions, may affect balance control. Based on existing knowledge about pathophysiological changes in patient groups, sensitivity analysis can be used to formulate explicit hypotheses with respect to changes in the TF that these pathophysiological mechanisms induce. For example, as we know that elderly with polyneuropathy have less reliable proprioceptive information, this might result in less use of the proprioceptive information, i.e., a decrease in the sensory weight of proprioceptive information W_p . Therefore, we can expect a decrease of the TF over the whole frequency range. Furthermore, we can hypothesize an increase of sensitivity of the other parameters on the high frequencies. Hence, sensitivity analyses in experimental data may lead to more hypothesis-driven instead of explorative research and ultimately to a better interpretation for observed changes in balance control in people with balance disorders. However, one always has to keep in mind that several parameters could have the same effect on the TF.

Sensitivity analysis also might play an important role in designing new experiments and perturbation signals. From the sensitivity analysis, it is possible to gain more insight in which regions of the TF are influenced by which parameter. Based on the research question and hypothesis, one can identify the parameters of interest and therefore the regions of interest, i.e., the frequencies which are influenced by the parameters of interest. By designing a perturbation signal with more power on the frequencies of interest, the value of the corresponding parameters might be estimated more reliably.

Limitations

In the current study we used the IC model to describe balance control, which is a linearized and simplified balance control model and therefore frequently used in literature to describe balance control in healthy and clinical populations. The used model and methods assume that the behavior of the participants is linear and does not change over time. Furthermore, it assumes

that the body moves as a single inverted pendulum and is stabilized primarily by the ankle torques. These assumptions are justified during small movements.

However, the IC model cannot be used in case of large movements and to investigate (a) adaptive behavior, (b) multi-segmental balance control, and (c) cognitive effects, as the model might miss some essential details. In that case, other models might be more interesting to use to describe balance control, like nonlinear models, intermittent control models, PDA control models, and multi-segmental models (Mergner, 2007; Insperger et al., 2013; Gawthrop et al., 2014; Hwang et al., 2016). The sensitivity analysis used in this study may also be applicable to these kind of models and will provide more insight in the relative importance and contribution of model parameters and the applicability of the models.

CONCLUSION

The local sensitivity analysis performed in this study contributes to the better understanding of the balance control model. It gives more insight in the unique contribution of all parameters on the shape of the TF and shows the relative importance of all parameters. The force feedback parameters and the intrinsic parameters are relatively less important, while the sensory weight, the time delay, the derivative gain, and the proportional gain are more important and uniquely contribute to the TF. This suggests that the used balance control model is suitable for the identification of the sensory weight, time delay and reflexive dynamics with experimental data, which potentially makes it able to identify differences between individuals and among different patient groups. The comparison of reliably identified parameters can give insight into the mechanisms that contribute to changes with age and with disease processes.

AUTHOR CONTRIBUTIONS

All authors contributed substantially to this study; all contributed to the conception and design of the study, and interpretation of the results. TB and JP performed the analysis. JP and TB drafted the manuscript. JvK, VV, and AS revised the manuscript critically. All authors gave final approval of the submission.

FUNDING

This research is supported by the European Union FP7-ICT project 610454 “EMBalance.”

REFERENCES

- Boonstra, T. A., Schouten, A. C., and van der Kooij, H. (2013). Identification of the contribution of the ankle and hip joints to multi-segmental balance control. *J. Neuroeng. Rehabil.* 10:23. doi: 10.1186/1743-0003-10-23
- Boonstra, T. A., Schouten, A. C., van Vugt, J. P., Bloem, B. R., and van der Kooij, H. (2014). Parkinson's disease patients compensate for balance control asymmetry. *J. Neurophysiol.* 112, 3227–3239. doi: 10.1152/jn.00813.2013
- Cenciarini, M., Loughlin, P. J., Sparto, P. J., and Redfern, M. S. (2010). Stiffness and damping in postural control increase with age. *IEEE Trans. Biomed. Eng.* 57, 267–275. doi: 10.1109/TBME.2009.2031874
- Cenciarini, M., and Peterka, R. J. (2006). Stimulus-dependent changes in the vestibular contribution to human postural control. *J. Neurophysiol.* 95, 2733–2750. doi: 10.1152/jn.00856.2004
- Engelhart, D., Pasma, J. H., Schouten, A. C., Aarts, R. G., Meskers, C. G., Maier, A. B., et al. (2016). Adaptation of multijoint coordination during standing balance

- in healthy young and healthy old individuals. *J. Neurophysiol.* 115, 1422–1435. doi: 10.1152/jn.00030.2015
- Engelhart, D., Pasma, J. H., Schouten, A. C., Meskers, C. G., Maier, A. B., Mergner, T., et al. (2014). Impaired standing balance in elderly: a new engineering method helps to unravel causes and effects. *J. Am. Med. Dir. Assoc.* 15, 227.e221–e226. doi: 10.1016/j.jamda.2013.09.009
- Fonteyn, E. M., Schmitz-Hubsch, T., Verstappen, C. C., Baliko, L., Bloem, B. R., Boesch, S., et al. (2010). Falls in spinocerebellar ataxias: results of the EuroSCA fall study. *Cerebellum* 9, 232–239. doi: 10.1007/s12311-010-0155-z
- Gawthrop, P., Loram, I., Gollee, H., and Lakie, M. (2014). Intermittent control models of human standing: similarities and differences. *Biol. Cybern.* 108, 159–168. doi: 10.1007/s00422-014-0587-5
- Hwang, S., Agada, P., Kiemel, T., and Jeka, J. J. (2016). Identification of the unstable human postural control system. *Front. Syst. Neurosci.* 10:22. doi: 10.3389/fnsys.2016.00022
- Inspurger, T., Milton, J., and Stépán, G. (2013). Acceleration feedback improves balancing against reflex delay. *J. R. Soc. Interf.* 10:20120763. doi: 10.1098/rsif.2012.0763
- Kiemel, T., Zhang, Y., and Jeka, J. J. (2011). Identification of neural feedback for upright stance in humans: stabilization rather than sway minimization. *J. Neurosci.* 31, 15144–15153. doi: 10.1523/JNEUROSCI.1013-11.2011
- Mergner, T. (2007). Modeling sensorimotor control of human upright stance. *Prog. Brain Res.* 165, 283–297. doi: 10.1016/S0079-6123(06)65018-8
- Mergner, T. (2010). A neurological view on reactive human stance control. *Ann. Rev. Control* 34, 177–198. doi: 10.1016/j.arcontrol.2010.08.001
- Mergner, T., Schweigart, G., and Fennell, L. (2009). Vestibular humanoid postural control. *J. Physiol. Paris* 103, 178–194. doi: 10.1016/j.jphysparis.2009.08.002
- Mugge, W., Abbink, D. A., Schouten, A. C., Dewald, J. P., and van der Helm, F. C. (2010). A rigorous model of reflex function indicates that position and force feedback are flexibly tuned to position and force tasks. *Exp. Brain Res.* 200, 325–340. doi: 10.1007/s00221-009-1985-0
- Norton, J. (2015). An introduction to sensitivity assessment of simulation models. *Environ. Model. Softw.* 69, 166–174. doi: 10.1016/j.envsoft.2015.03.020
- Pasma, J. H., Boonstra, T. A., Campfens, S. F., Schouten, A. C., and van der Kooij, H. (2012). Sensory reweighting of proprioceptive information of the left and right leg during human balance control. *J. Neurophysiol.* 108, 1138–1148. doi: 10.1152/jn.01008.2011
- Pasma, J. H., Engelhart, D., Maier, A. B., Schouten, A. C., van der Kooij, H., and Meskers, C. G. (2015). Changes in sensory reweighting of proprioceptive information during standing balance with age and disease. *J. Neurophysiol.* 114, 3220–3233. doi: 10.1152/jn.00414.2015
- Peterka, R. J. (2002). Sensorimotor integration in human postural control. *J. Neurophysiol.* 88, 1097–1118. doi: 10.1152/jn.00605.2001
- Peterka, R. J. (2003). Simplifying the complexities of maintaining balance. *IEEE Eng. Med. Biol. Mag.* 22, 63–68. doi: 10.1109/MEMB.2003.1195698
- Peterka, R. J., Statler, K. D., Wrisley, D. M., and Horak, F. B. (2011). Postural compensation for unilateral vestibular loss. *Front. Neurol.* 2:57. doi: 10.3389/fneur.2011.00057
- Saltelli, A., Ratto, M., Andres, T., Campolongo, F., Cariboni, J., Gatelli, D., et al. (2008). *Global Sensitivity Analysis. The Primer*. Chichester, UK: John Wiley and Sons.
- Schouten, A. C., de Vlugt, E., van Hilten, J. J., and van der Helm, F. C. (2008). Quantifying proprioceptive reflexes during position control of the human arm. *IEEE Trans. Biomed. Eng.* 55, 311–321. doi: 10.1109/TBME.2007.899298
- Soames, R. W., and Atha, J. (1982). The spectral characteristics of postural sway behaviour. *Eur. J. Appl. Physiol. Occup. Physiol.* 49, 169–177. doi: 10.1007/BF02334065
- van der Kooij, H., and Peterka, R. J. (2011). Non-linear stimulus-response behavior of the human stance control system is predicted by optimization of a system with sensory and motor noise. *J. Comput. Neurosci.* 30, 759–778. doi: 10.1007/s10827-010-0291-y
- van der Kooij, H., van Asseldonk, E., and van der Helm, F. C. (2005). Comparison of different methods to identify and quantify balance control. *J. Neurosci. Methods* 145, 175–203. doi: 10.1016/j.jneumeth.2005.01.003
- Vlutters, M., Boonstra, T. A., Schouten, A. C., and van der Kooij, H. (2015). Direct measurement of the intrinsic ankle stiffness during standing. *J. Biomech.* 48, 1258–1263. doi: 10.1016/j.jbiomech.2015.03.004
- Wiesmeier, I. K., Dalin, D., and Maurer, C. (2015). Elderly use proprioception rather than visual and vestibular cues for postural motor control. *Front. Aging Neurosci.* 7:97. doi: 10.3389/fnagi.2015.00097

Conflict of Interest Statement: The authors declare that the research was conducted in the absence of any commercial or financial relationships that could be construed as a potential conflict of interest.

Copyright © 2017 Pasma, Boonstra, van Kordelaar, Spyropoulou and Schouten. This is an open-access article distributed under the terms of the Creative Commons Attribution License (CC BY). The use, distribution or reproduction in other forums is permitted, provided the original author(s) or licensor are credited and that the original publication in this journal is cited, in accordance with accepted academic practice. No use, distribution or reproduction is permitted which does not comply with these terms.

APPENDIX A-HUMAN BALANCE CONTROL MODEL

In the model, the human body is represented by an inverted pendulum rotating about the ankle joint. Input of the system is the support surface or visual surround rotations and the output is the body sway (see **Figure 1**). The derivation of the model subsystems is described below.

Human Body Dynamics

The human body dynamics (BD) are described by a single link inverted pendulum, incorporating the ankle joint, as in:

$$BD(s) = \frac{1}{Js^2 - mgh} \quad (A1)$$

where J is the body's moment of inertia about the ankle joint axis and m the body mass; g is the gravitational constant and h is the height of the Center of Mass above the ankle joint, and s is the Laplace variable.

Sensory Systems

The visual, proprioceptive and graviceptive (i.e., vestibular) sensory systems provide information regarding body orientation with respect to their individual internal reference. In this Independent Channel (IC) model (Peterka, 2002) the contribution of the sensory systems can be represented by relative weights, with one weight per sensory channel (i.e., W_V , W_P , W_G). The sensory weights are summed up to 1, providing all the sensory information required to detect body orientation in space and estimate deviations from an upright posture (Cenciarini and Peterka, 2006).

Force Feedback

A torque-related sensory channel is included in the model to better explain low-frequency dynamics (Peterka, 2003). This positive force feedback (F), which is added to the visual, proprioceptive and graviceptive sensory signals, can be described by:

$$F(s) = \frac{K_F}{\tau_F s + 1} \quad (A2)$$

where K_F and τ_F are the force feedback's gain and time constant, respectively.

Neuromuscular System

The neuromuscular system processes the motion- and force-related feedback to generate corrective torques in the ankle joint and stabilize posture. The neuromuscular system consists of two main components; the intrinsic and reflexive dynamics.

Intrinsic Dynamics

The intrinsic dynamics (P) describe the tonic muscle activation, related to the intrinsic properties of muscles and tendons, i.e., visco-elasticity, and act without a time delay, containing a stiffness (K) and a damping component (B) as in:

$$P(s) = K + Bs \quad (A3)$$

Reflexive Dynamics

The reflexive dynamics represent the reflexive muscle activation, i.e., feedback control of the system, and comprise the neural controller along with the (muscle) activation dynamics. The neural controller, by incorporating proportional and derivative components (i.e., PD control), processes the afferent sensory signals, and subsequently generates appropriate motor commands to activate the muscle systems. The reflexive feedback acts with a time delay, due to neural signal processing and transduction. The total transfer function of the reflexive dynamics (NC), combining the neural signal transport delay with the PD controller and the muscle activation dynamics is the following.

$$NC(s) = e^{\tau_D s} \cdot (K_P + K_D s) \cdot \frac{\omega_0^2}{s^2 + s\beta\omega_0^2 + \omega_0^2} \quad (A4)$$

where τ_D is the time delay; K_P and K_D are the controller's proportional and derivative gains resp.; ω_0 and β are the natural frequency and the relative damping of the muscle activation dynamics.