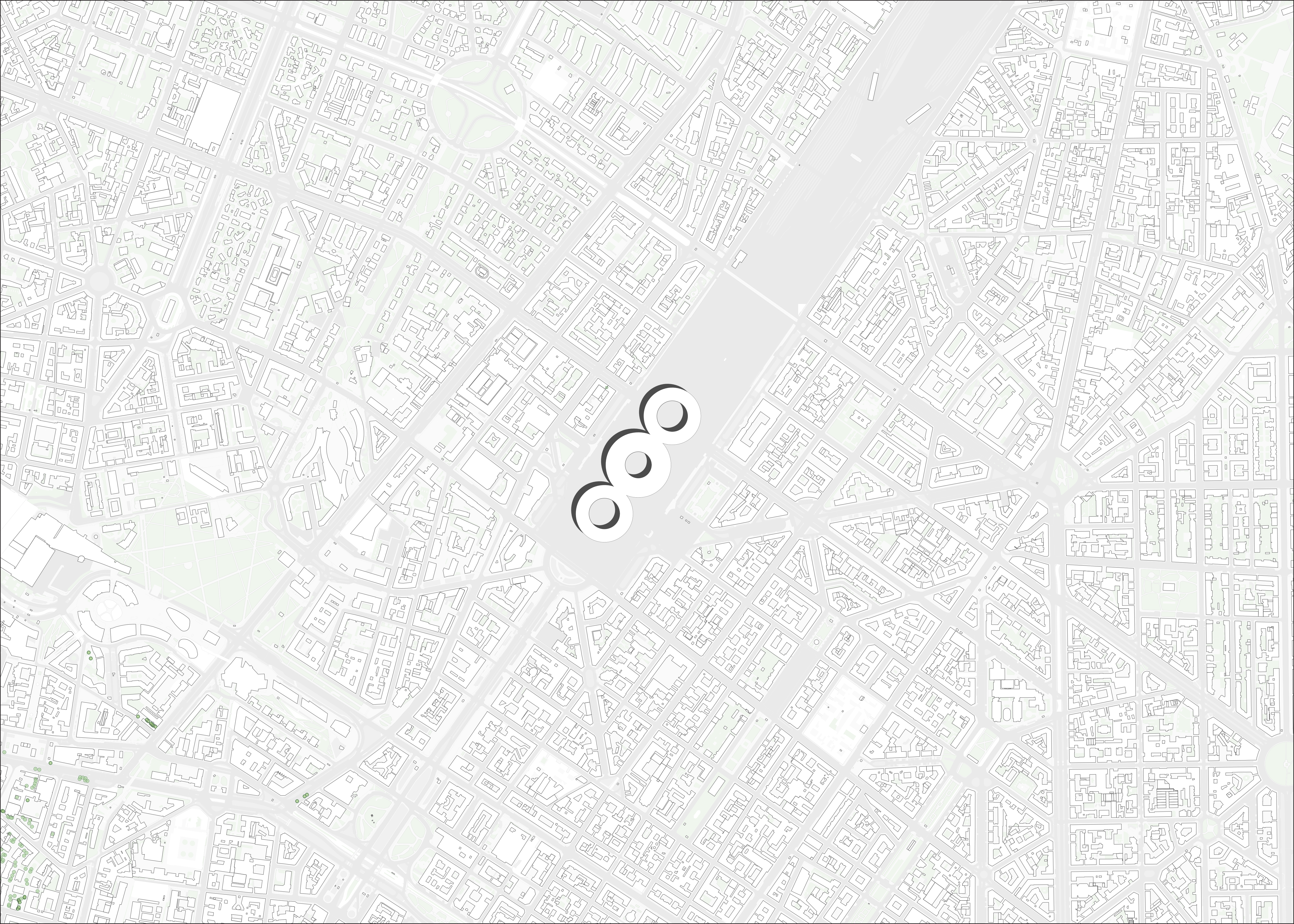
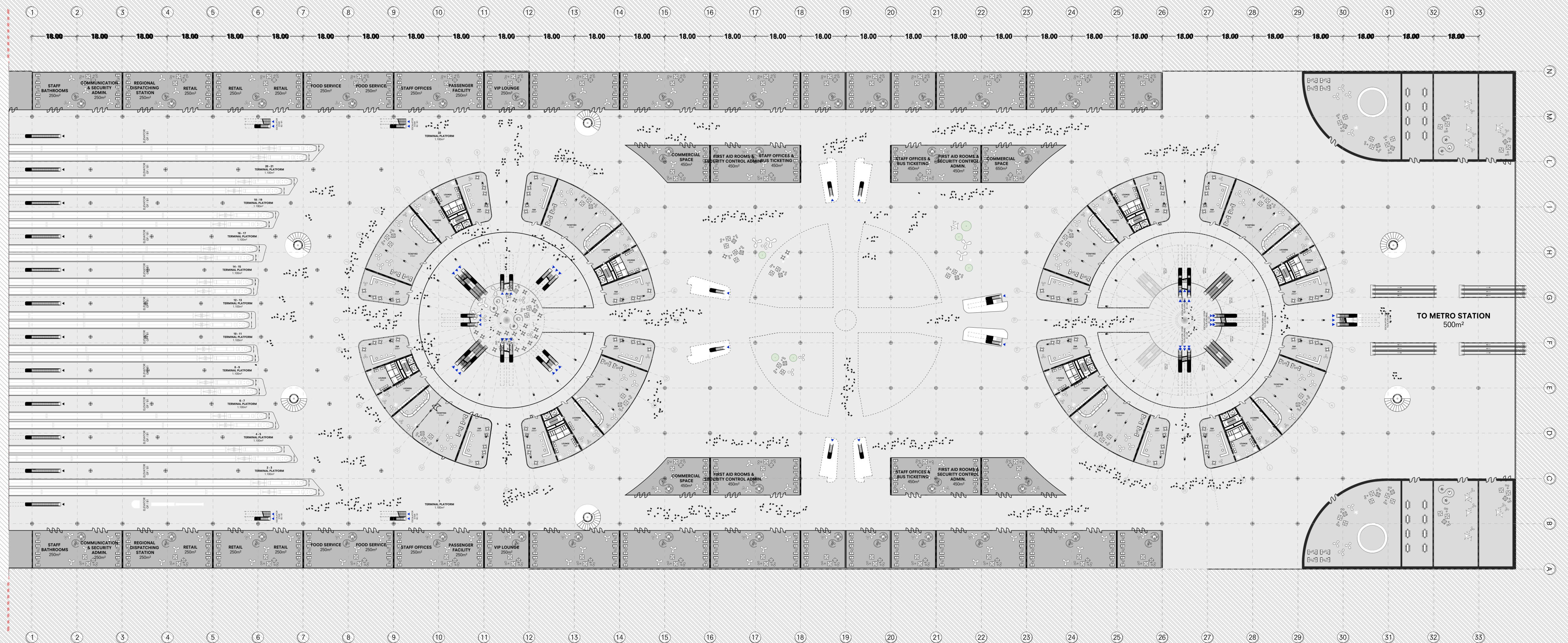


“ON THE MOVE”

drawing set

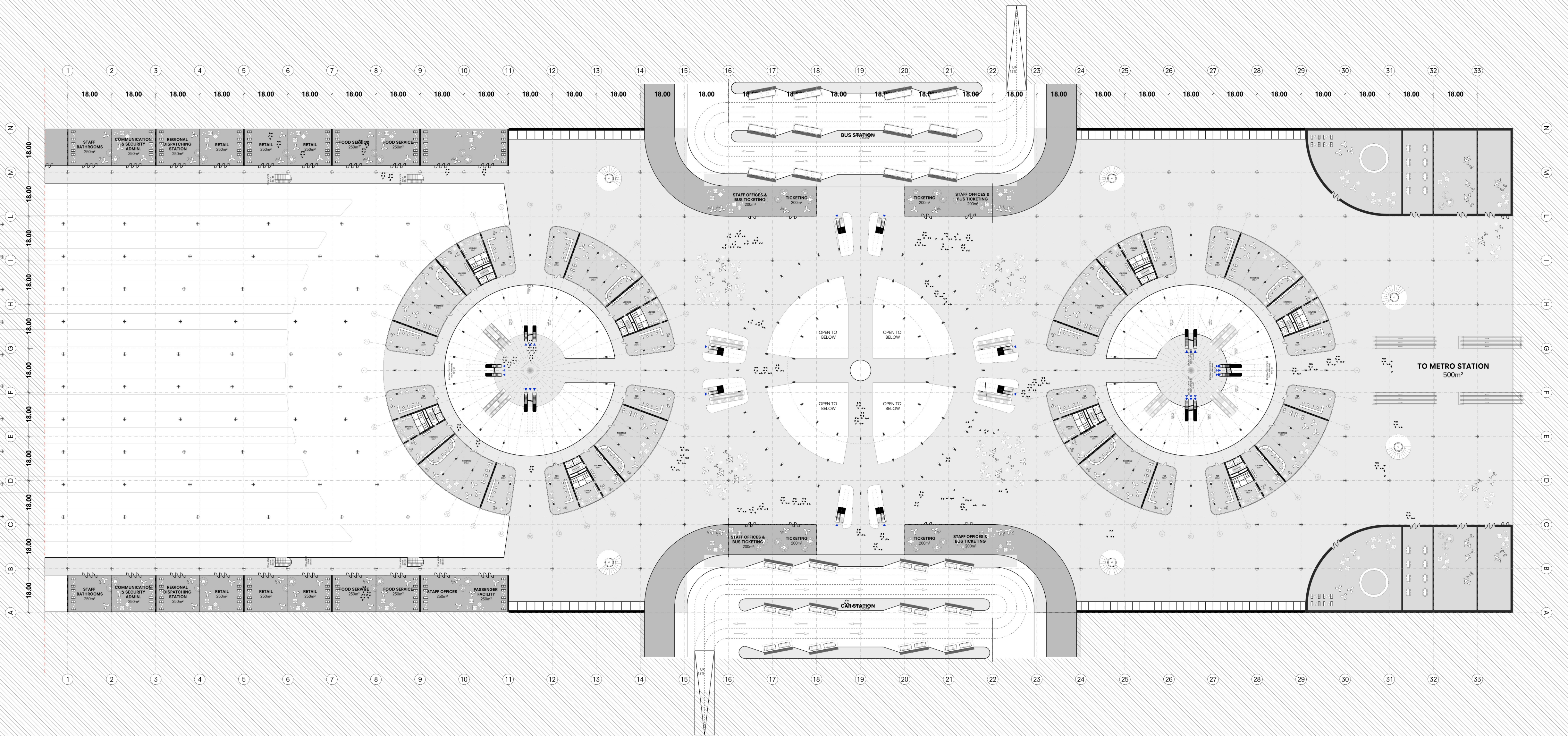




BASEMENT B2 -12.00m

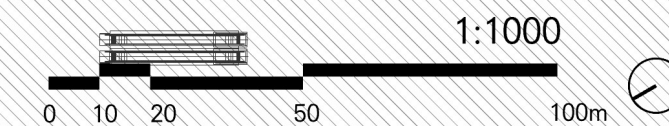
1:1000

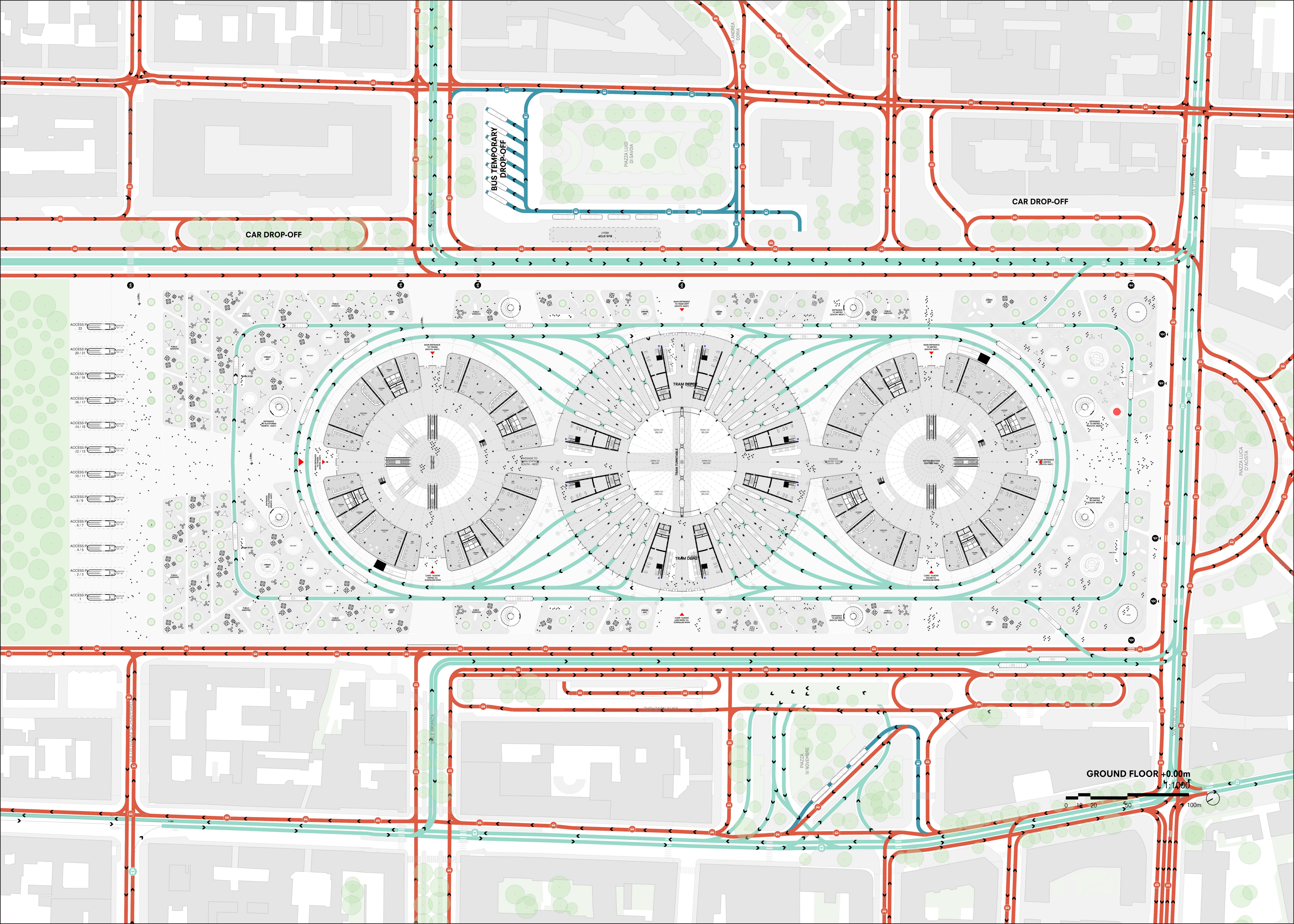




BASEMENT B1 -6.00m

1:1000





CAR DROP-OFF

BUS TEMPORARY
DROP-OFF

PIAZZA LUIGI
DI SAVOIA

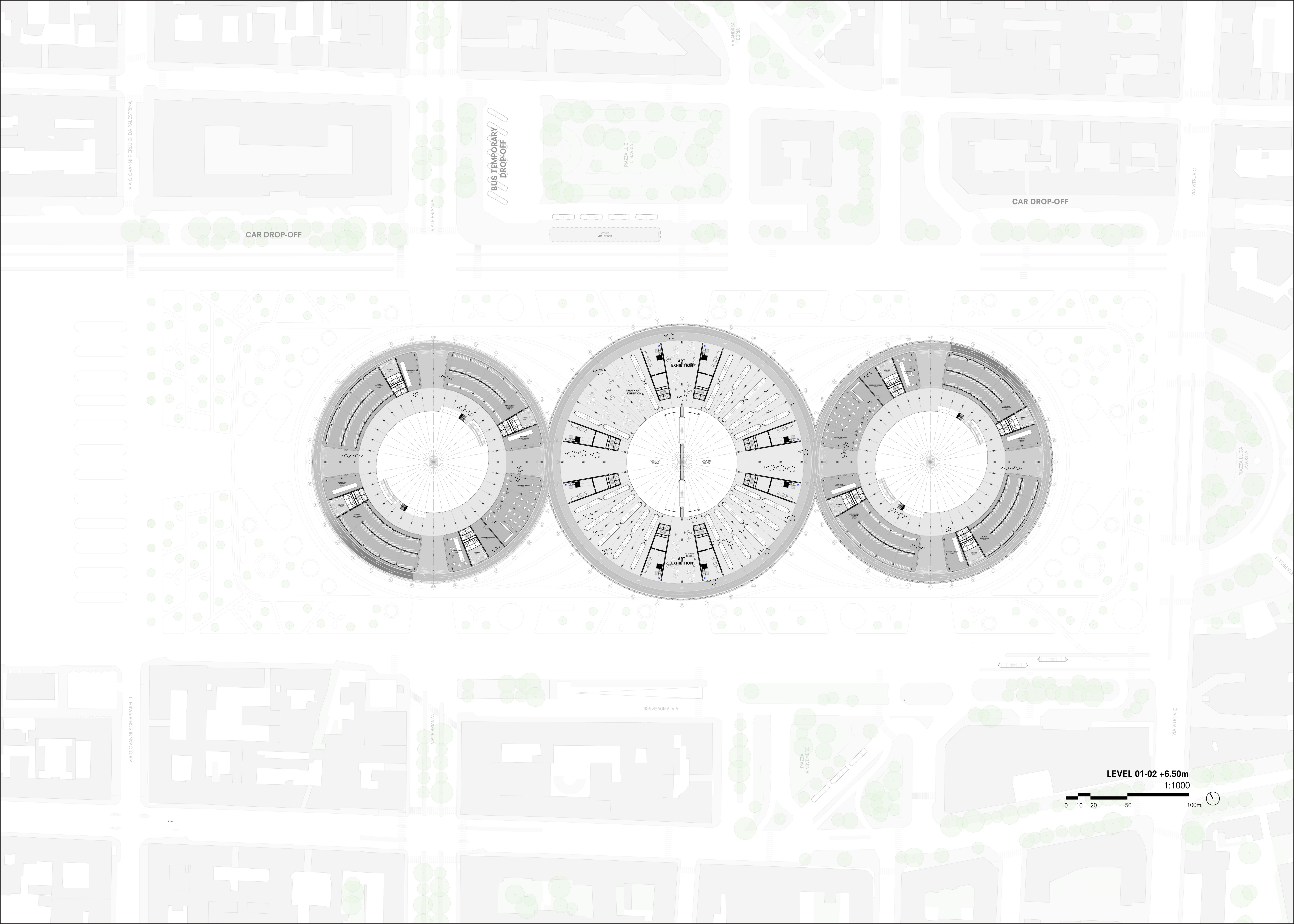
CAR DROP-OFF

PIAZZA LUCA
D'ADRIA

GROUND FLOOR +0.00m

1:1000

0 10 20 50 100m



CAR DROP-OFF

BUS TEMPORARY
DROP-OFF

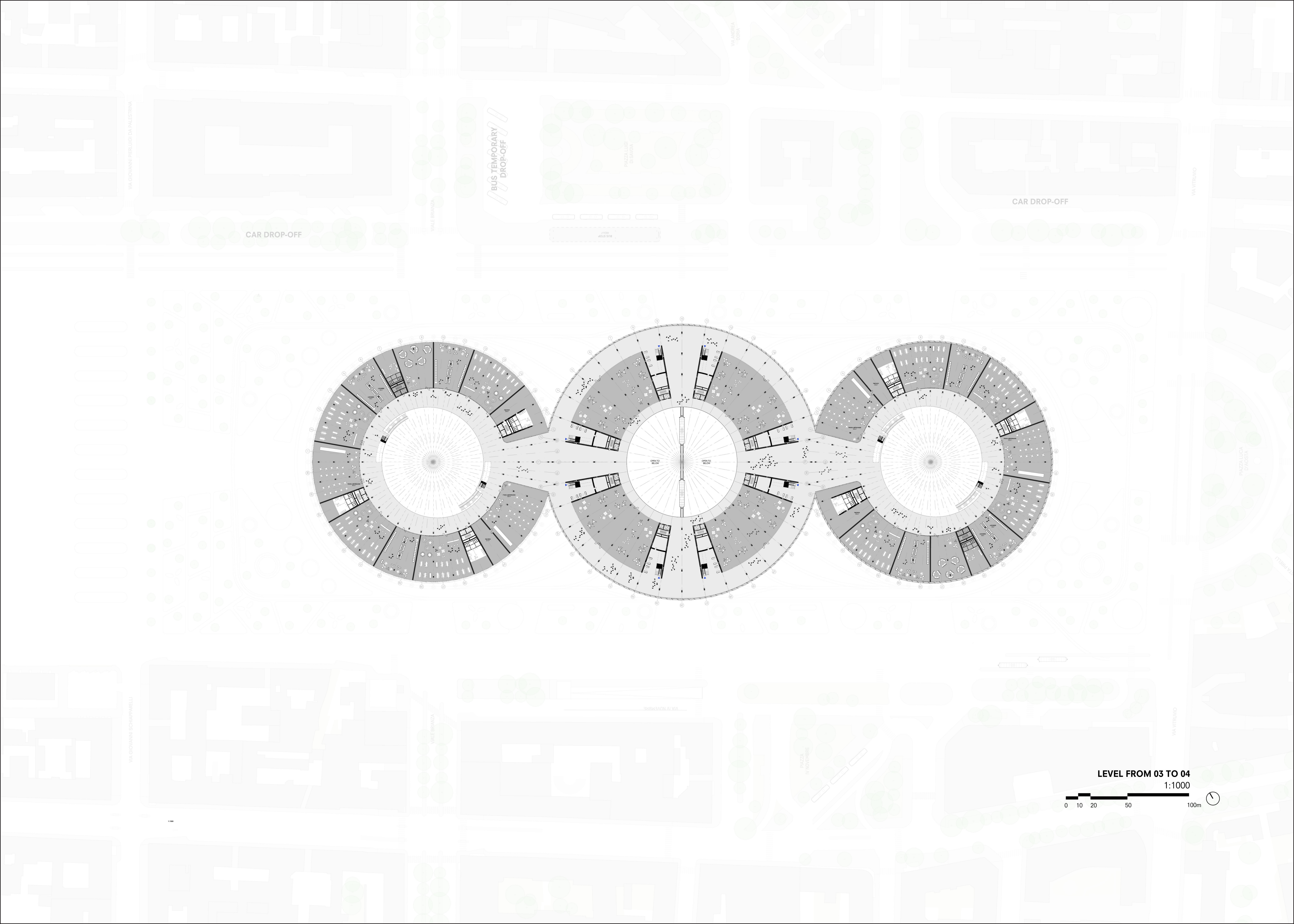
PIAZZA LUIGI
DI SAVOIA

CAR DROP-OFF

PIAZZA LUCA
D'AOSTA

LEVEL 01-02 +6.50m
1:1000

0 10 20 50 100m



CAR DROP-OFF

BUS TEMPORARY
DROP-OFF

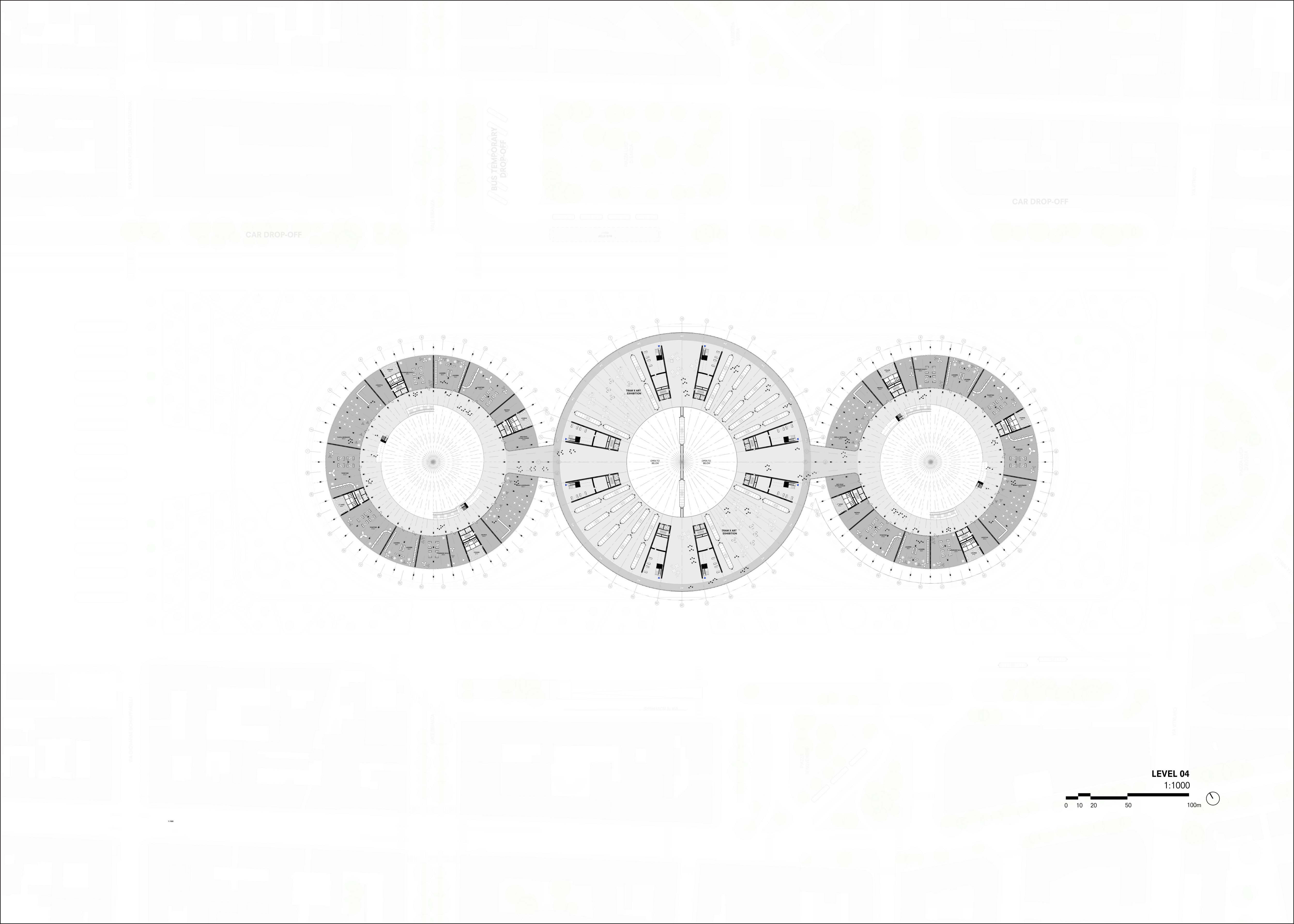
CAR DROP-OFF

LEVEL FROM 03 TO 04

1:1000

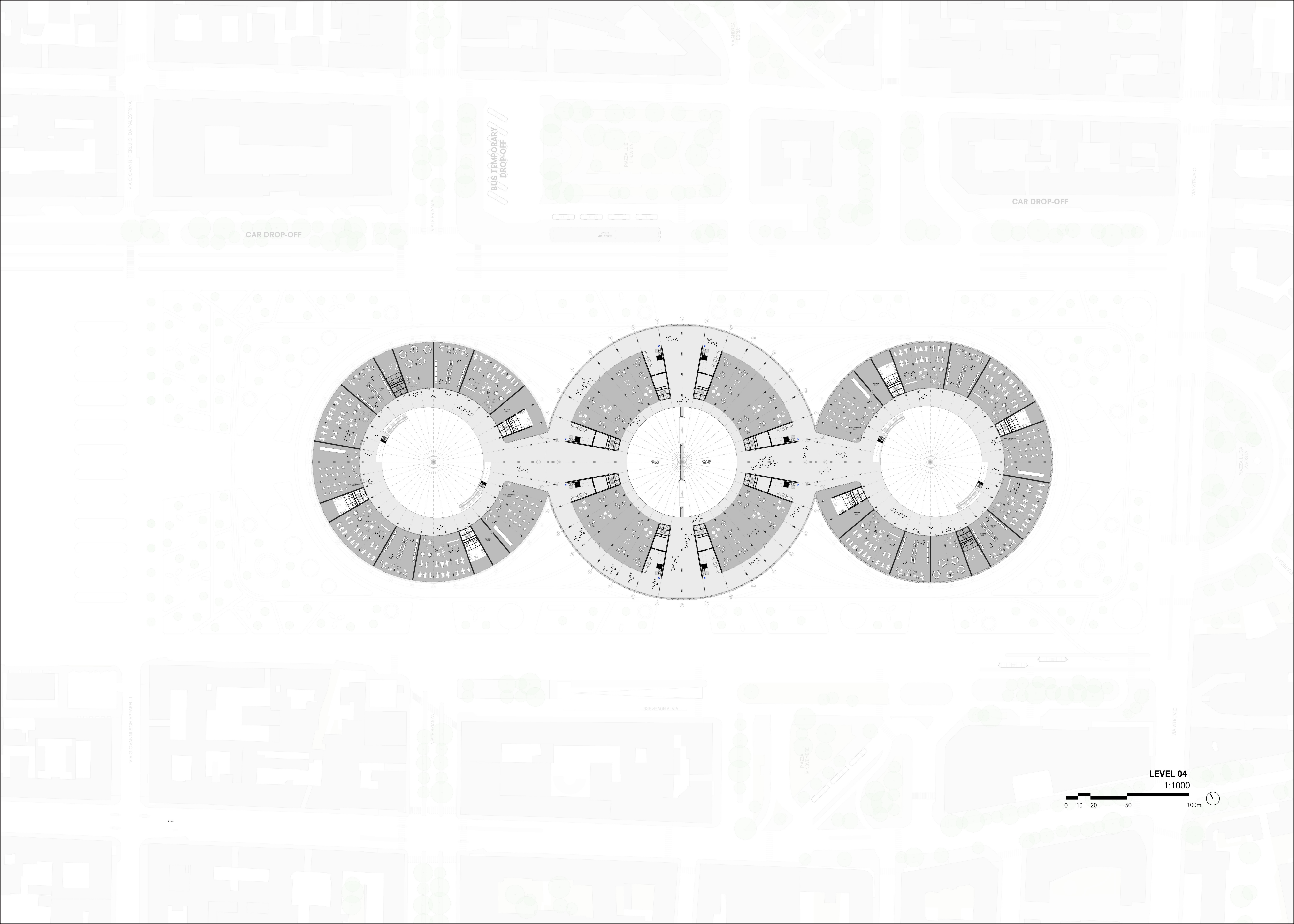
0 10 20 50 100m





LEVEL 04
1:1000





CAR DROP-OFF

BUS TEMPORARY
DROP-OFF

PIAZZA LUIGI
DI SAVOIA

CAR DROP-OFF

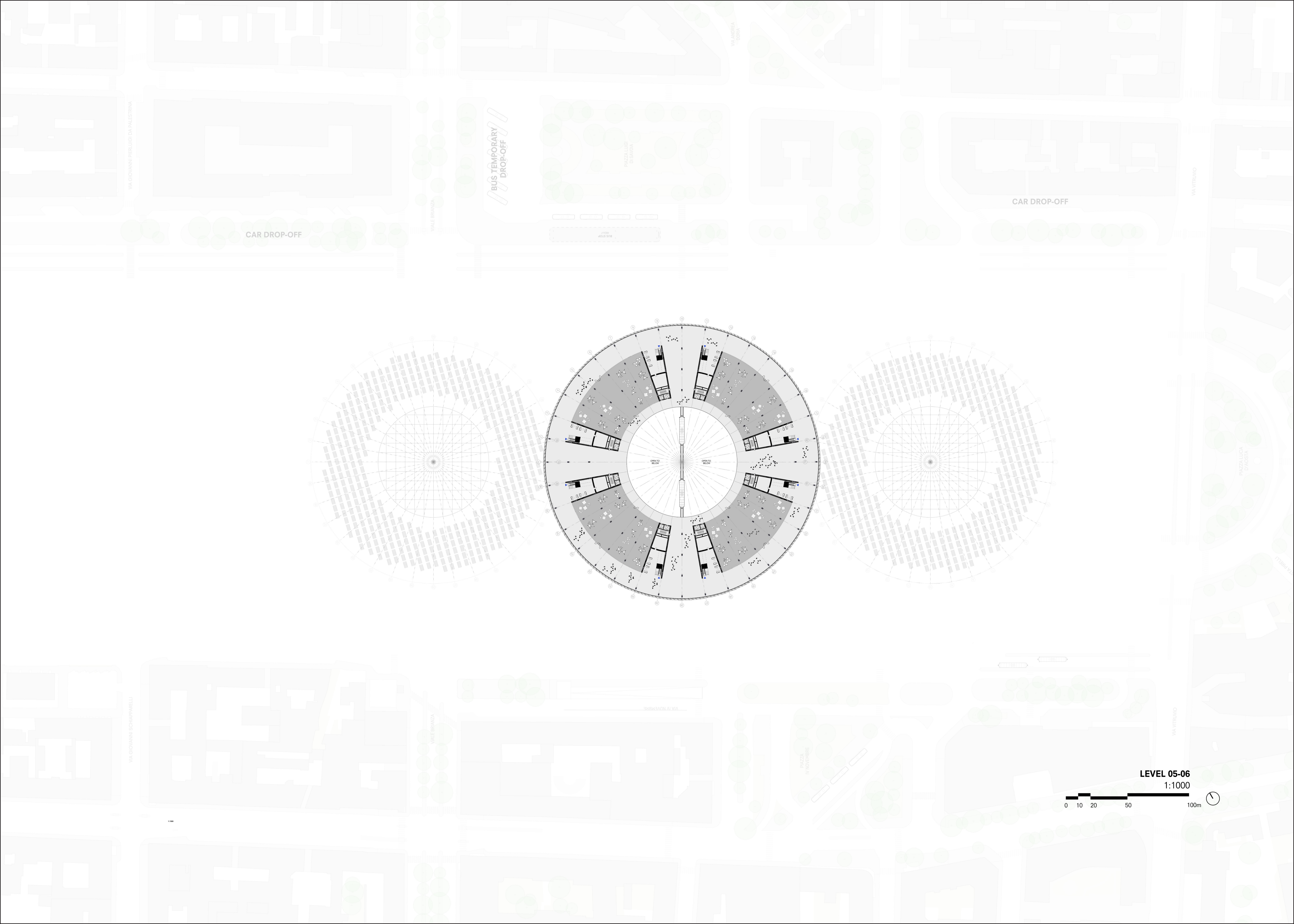
PIAZZA LUIGI
DI SAVOIA

PIAZZA IV
NOVEMBRE

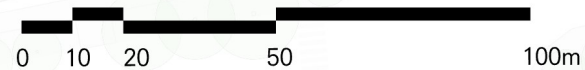
LEVEL 04
1:1000

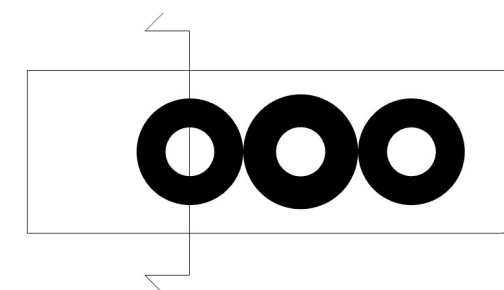
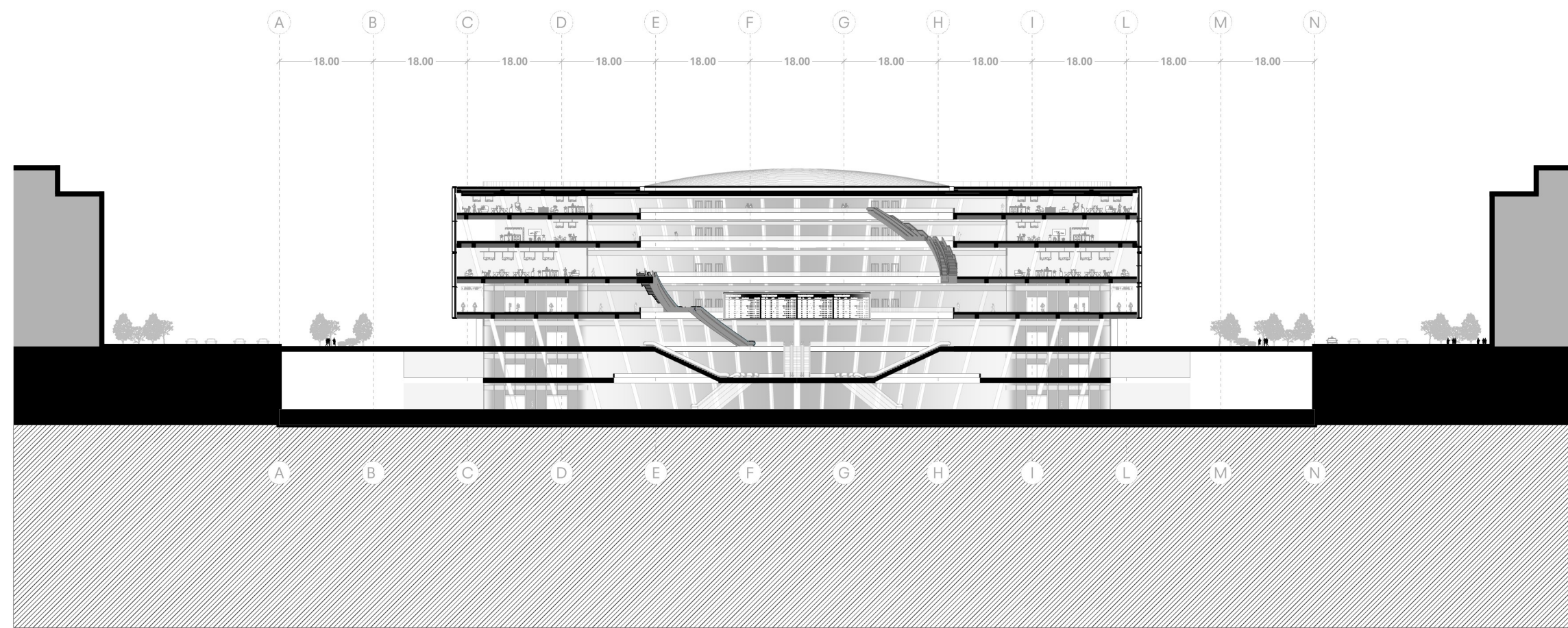
0 10 20 50 100m



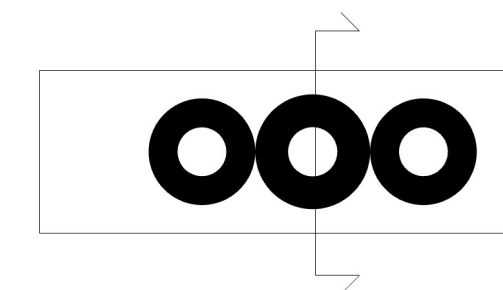
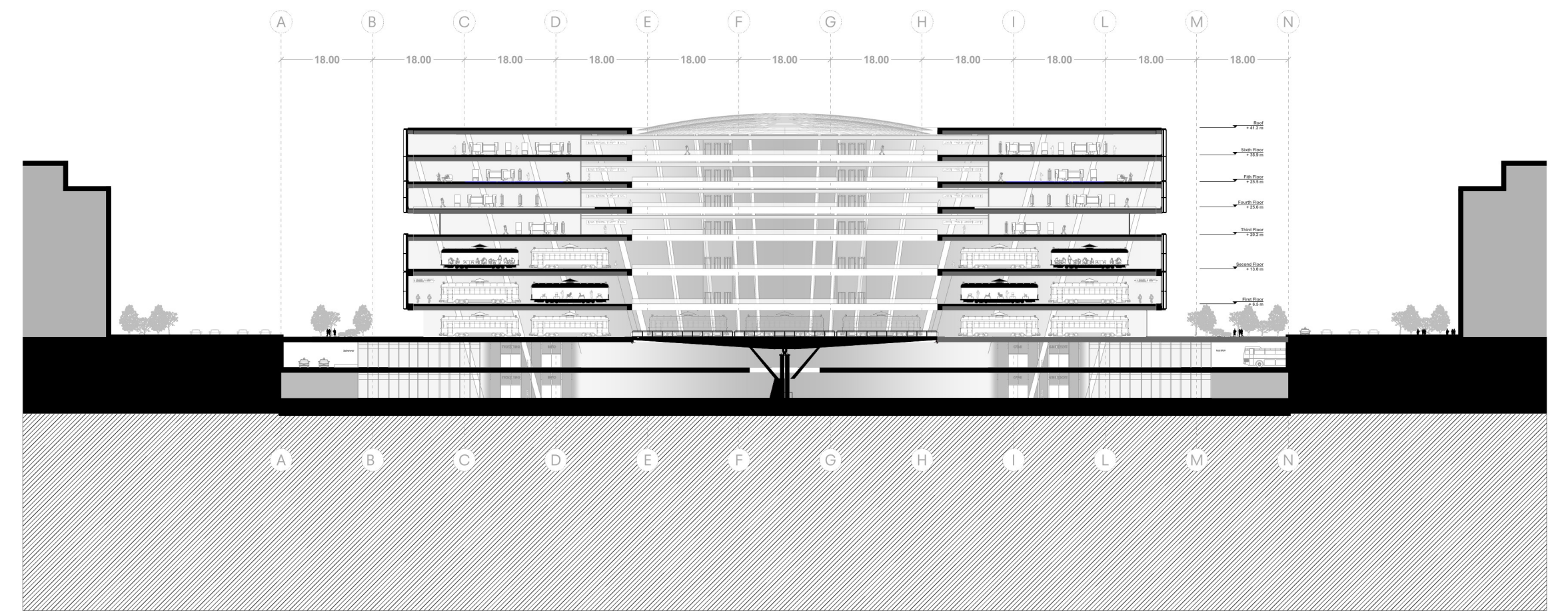
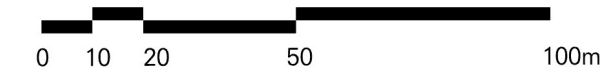


LEVEL 05-06
1:1000

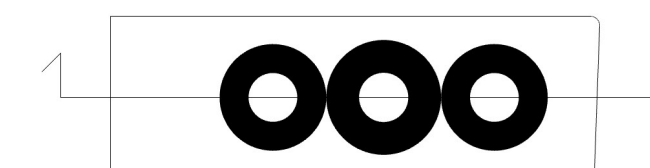
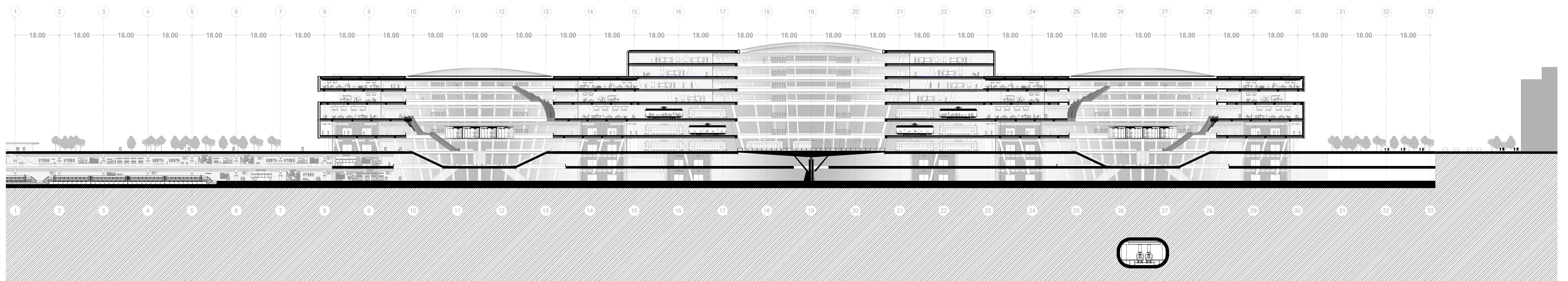
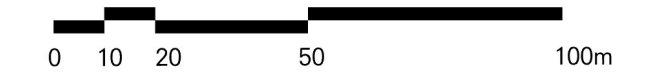




LONGITUDINAL SECTION BB'
1:1000

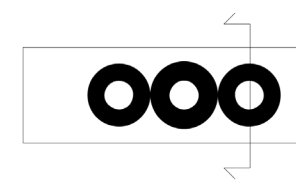
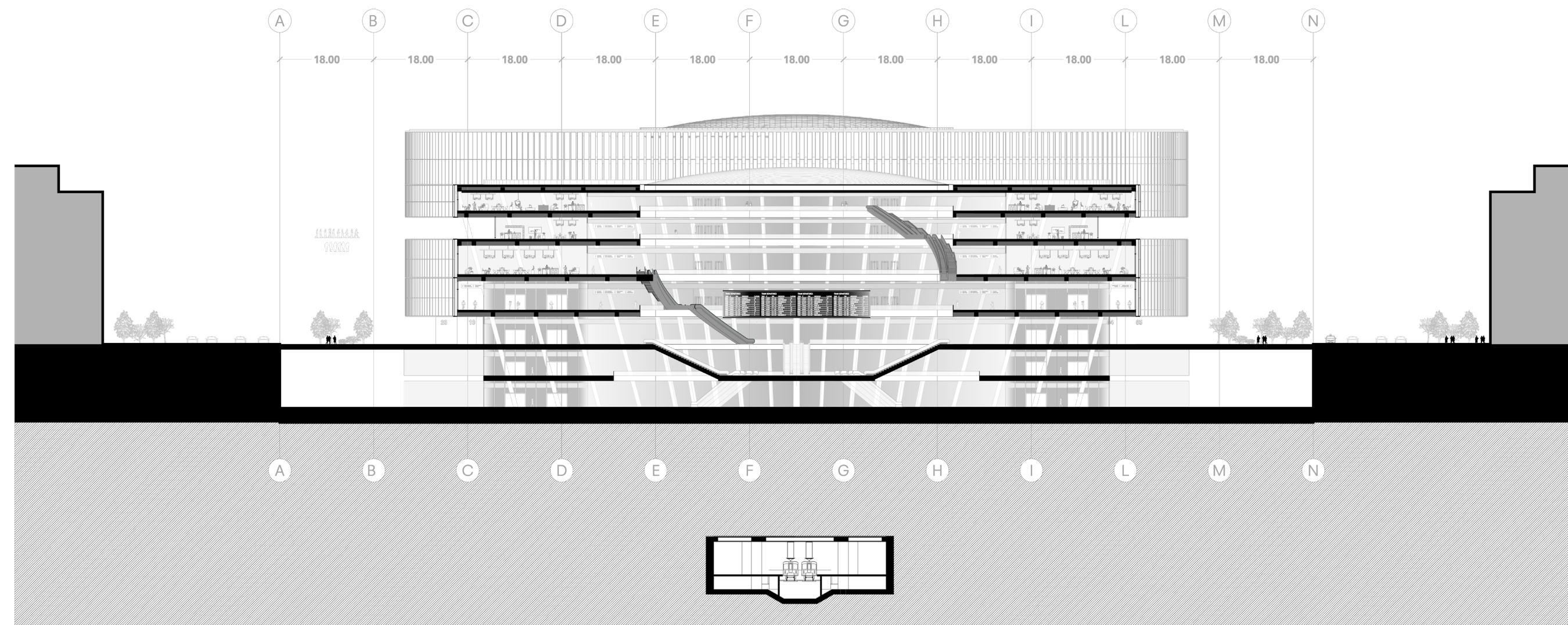


LONGITUDINAL SECTION CC'
1:1000

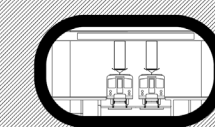
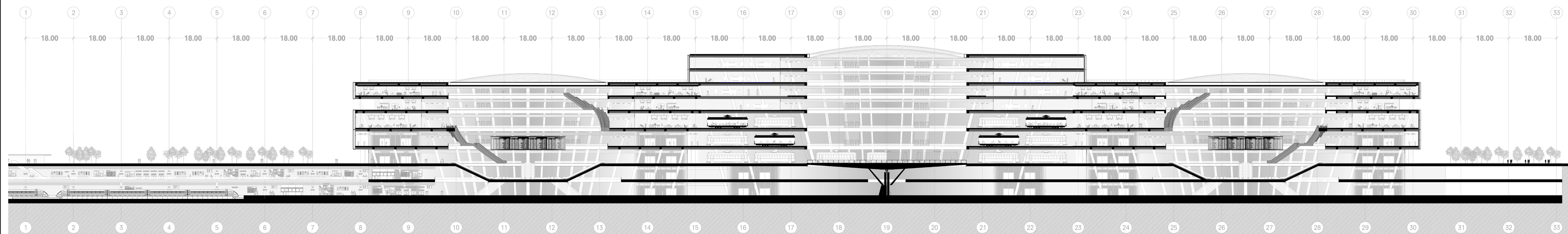
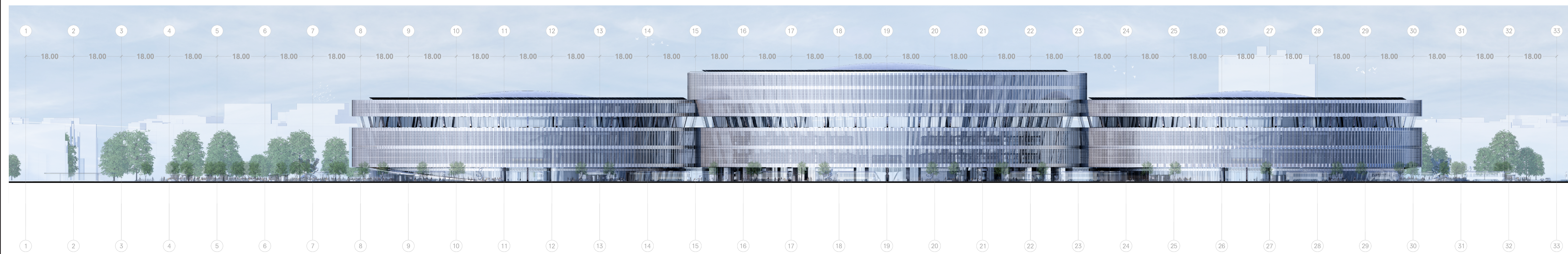
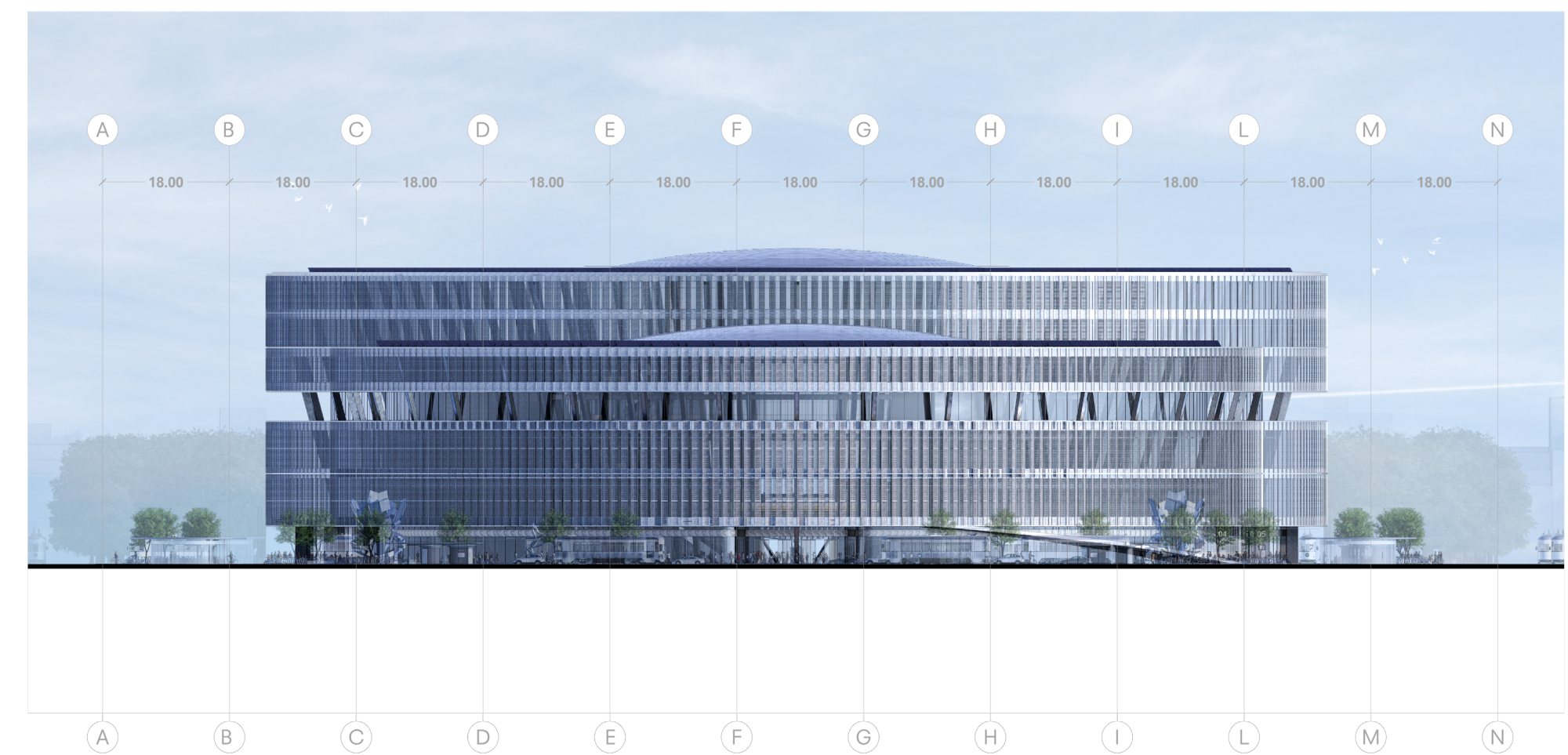


LONGITUDINAL SECTION AA'
1:1000

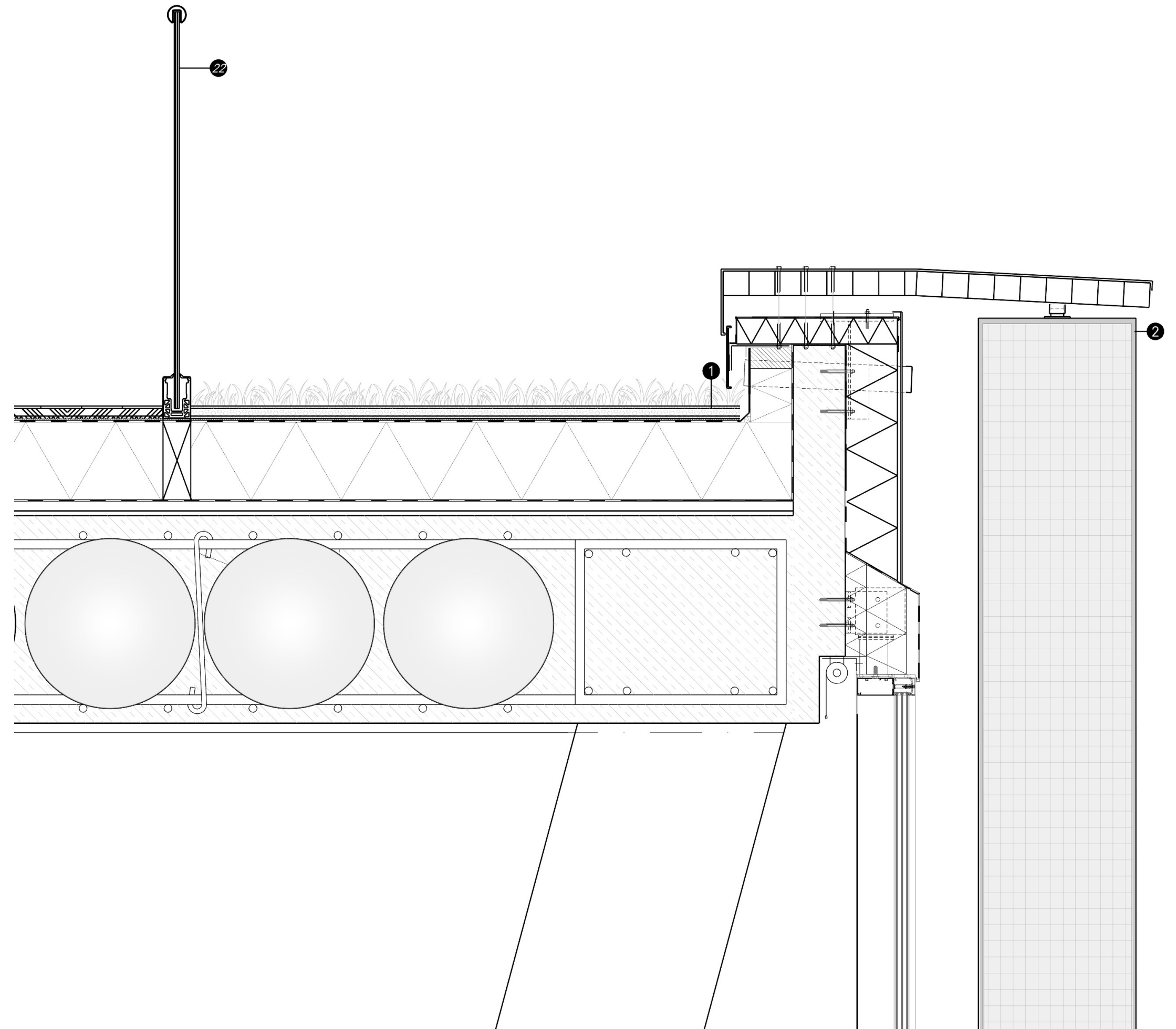
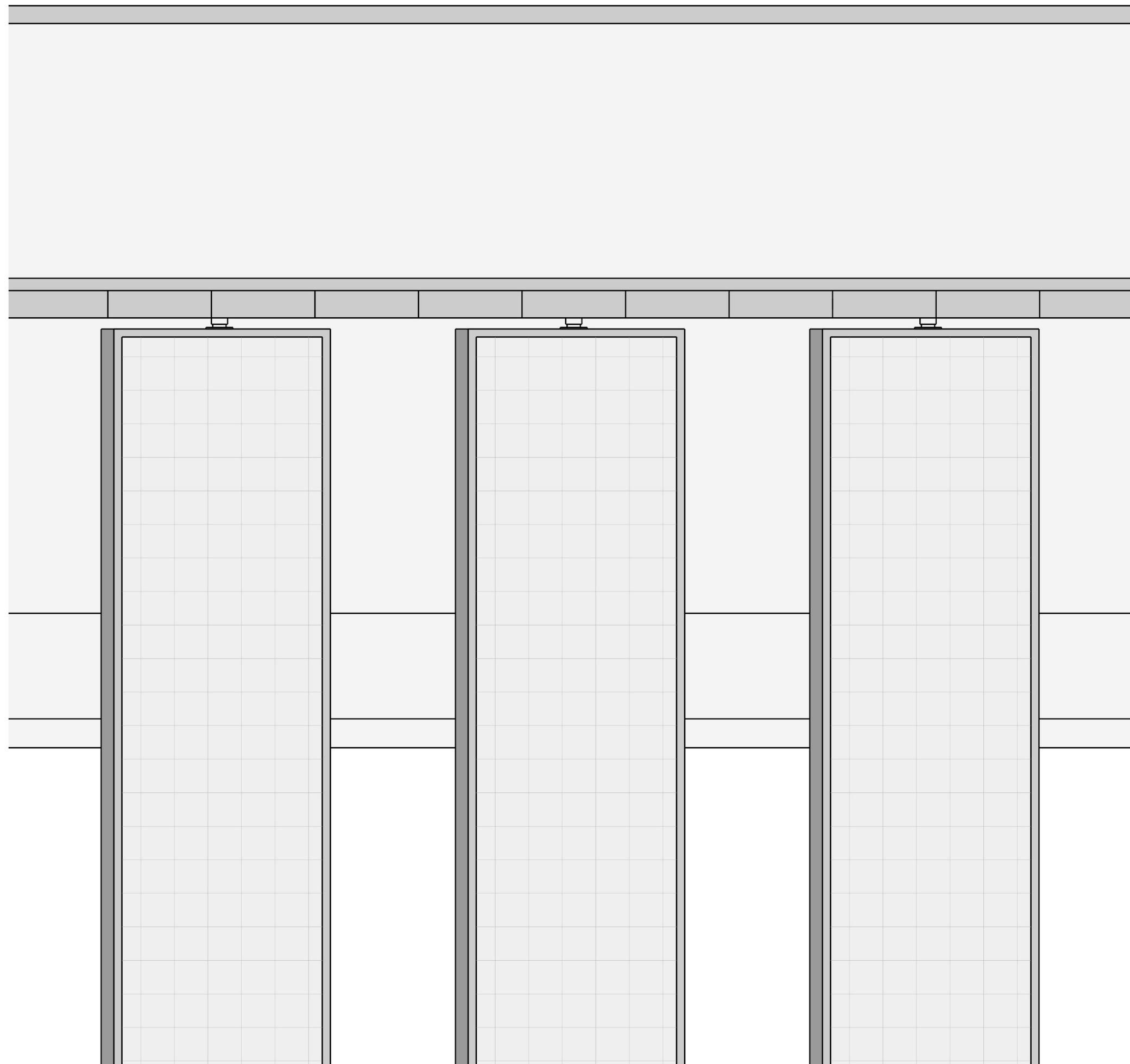




SECTION DD'
1:500
0 10 20 50 100m

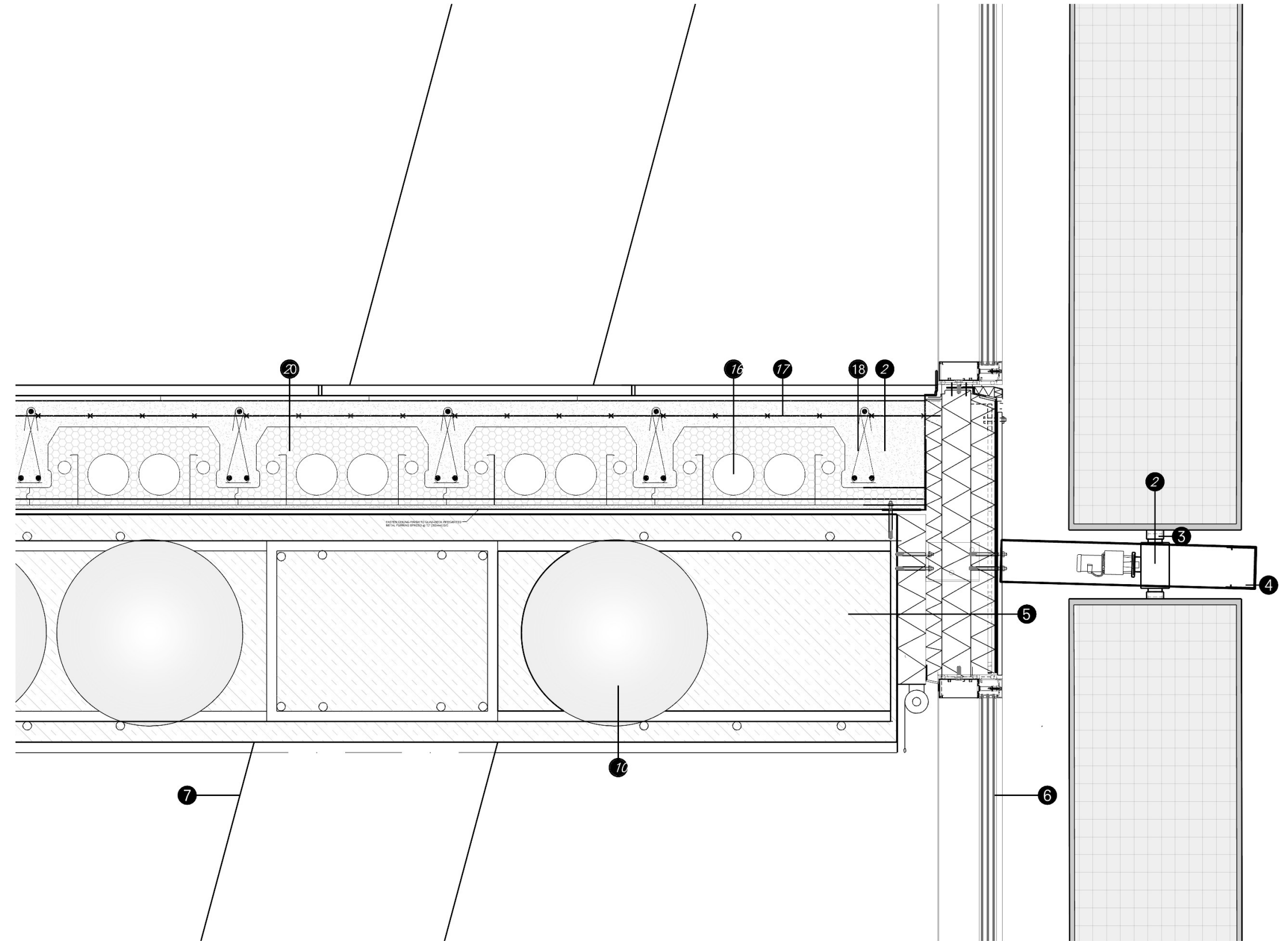
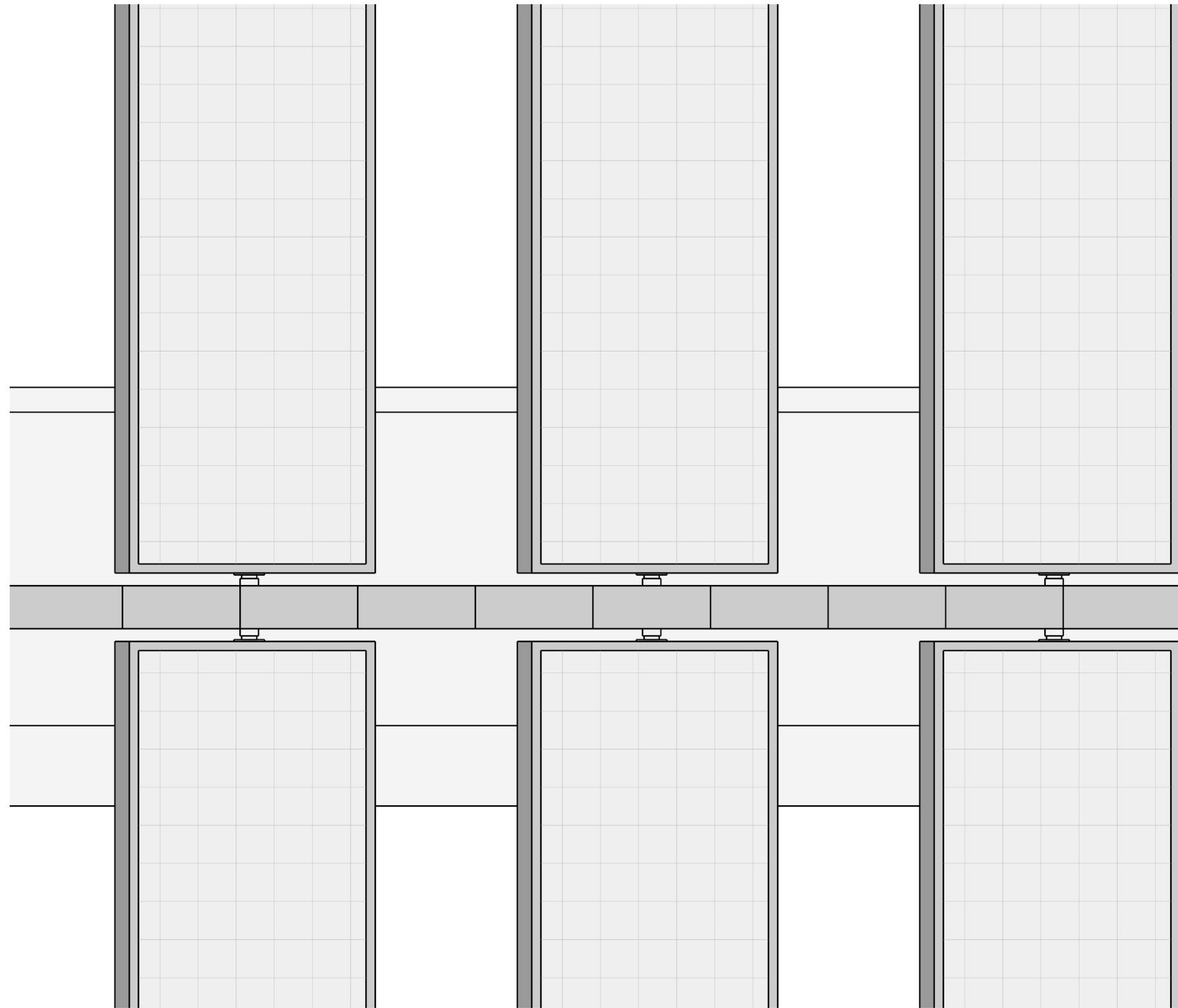


LONGITUDINAL SECTION AA'
1:500
0 10 20 50 200m



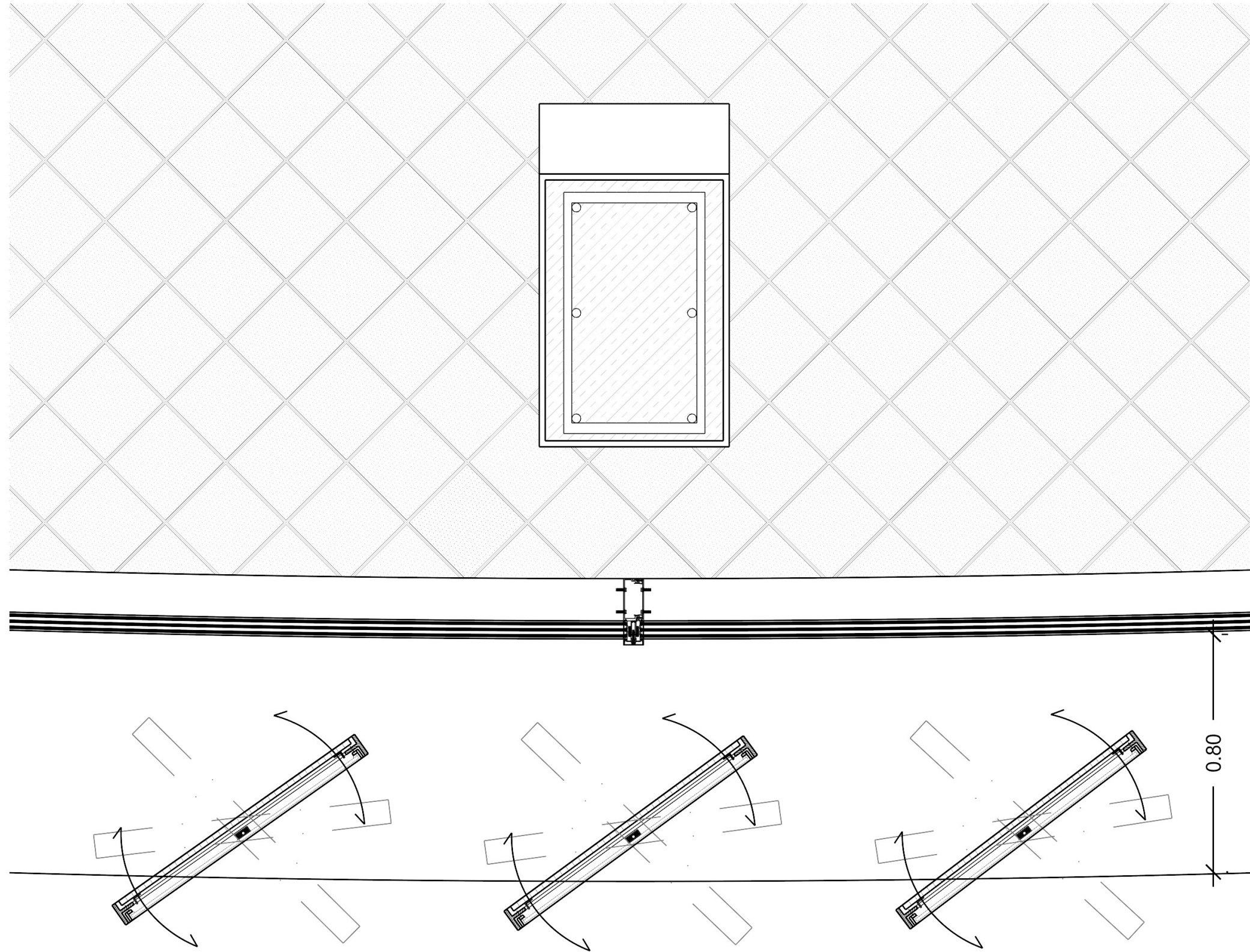
ANNOTATION FACADE FRAGMENT 1:5

- | | | | | | |
|--|--|--|---|--|---|
| <p>❶ 70 mm gravel</p> <p>4mm building protection mat</p> <p>two-ply elastomeric bitumen membrane</p> <p>300 mm PIR thermal insulation</p> <p>vapour barrier</p> <p>320 mm reinforced concrete slab</p> | <p>❷ 80/12 mm aluminium rotating frame</p> <p>❸ 60/4 mm aluminium tube as sleeve</p> <p>❹ extruded section</p> <p>5 mm aluminium sheet, powder-coated + 20 mm air gap</p> <p>❺ 3 mm aluminium sheet cladding</p> | <p>❻ window: triple glazing with</p> <p>2x 4 mm laminated safety glass</p> <p>+ 14 mm cavity + 6 mm float glass</p> <p>+ 14 mm cavity</p> <p>+ 2x 4 mm laminated safety glass</p> <p>130/60 mm aluminium mullion-transom system</p> <p>❼ 800 mm reinforced concrete column</p> | <p>❽ Plaster Ceiling</p> <p>❾ Hook Ø6 c/ 75 x 75 cm</p> <p>❿ Spheres Ø32 cm</p> <p>⓫ Upper Metal Mesh</p> <p>⓬ Acoustic insulation (expanded polystyrene)</p> | <p>⓭ Subfloor</p> <p>⓮ Leveling bed</p> <p>⓯ Concrete Tiling floor 30x30 cm</p> <p>⓰ Void for Utilities Ø121mm</p> <p>⓱ Beam Reinforcement</p> <p>⓲ Stirrups Alternate Left to Right</p> | <p>⓳ Concrete Beam Reinforcement Ø20mm</p> <p>⓴ Expanded Polysyrene (EPS)</p> <p>⓵ Redi-Set Pivotal Motor</p> <p>⓶ GLASS MOUNT HANDRAIL</p> |
|--|--|--|---|--|---|



ANNOTATION FACADE FRAGMENT 1:5

- | | | | | | |
|--|--|--|---|--|---|
| <p>❶ 70 mm gravel</p> <p>4mm building protection mat</p> <p>two-ply elastomeric bitumen membrane</p> <p>300 mm PIR thermal insulation</p> <p>vapour barrier</p> <p>320 mm reinforced concrete slab</p> | <p>❷ 80/12 mm aluminium rotating frame</p> <p>❸ 60/4 mm aluminium tube as sleeve</p> <p>❹ extruded section</p> <p>5 mm aluminium sheet, powder-coated + 20 mm air gap</p> <p>❺ 3 mm aluminium sheet cladding</p> | <p>❻ window: triple glazing with</p> <p>2x 4 mm laminated safety glass</p> <p>+ 14 mm cavity + 6 mm float glass</p> <p>+ 14 mm cavity</p> <p>+ 2x 4 mm laminated safety glass</p> <p>130/60 mm aluminium mullion-transom system</p> <p>❼ 800 mm reinforced concrete column</p> | <p>❽ Plaster Ceiling</p> <p>❾ Hook Ø6 c/ 75 x 75 cm</p> <p>❿ Spheres Ø32 cm</p> <p>⓫ Upper Metal Mesh</p> <p>⓬ Acoustic insulation (expanded polystyrene)</p> | <p>⓭ Subfloor</p> <p>⓮ Leveling bed</p> <p>⓯ Concrete Tiling floor 30x30 cm</p> <p>⓰ Void for Utilities Ø121mm</p> <p>⓱ Beam Reinforcement</p> <p>⓲ Stirrups Alternate Left to Right</p> | <p>⓳ Concrete Beam Reinforcement Ø20mm</p> <p>⓴ Expanded Polysyrene (EPS)</p> <p>⓵ Redi-Set Pivotal Motor</p> <p>⓶ GLASS MOUNT HANDRAIL</p> |
|--|--|--|---|--|---|



ANNOTATION FACADE FRAGMENT 1:5

- | | | | | | |
|--|--|--|---|--|---|
| <p>❶ 70 mm gravel</p> <p>4mm building protection mat</p> <p>two-ply elastomeric bitumen membrane</p> <p>300 mm PIR thermal insulation</p> <p>vapour barrier</p> <p>320 mm reinforced concrete slab</p> | <p>❷ 80/12 mm aluminium rotating frame</p> <p>❸ 60/4 mm aluminium tube as sleeve</p> <p>❹ extruded section</p> <p>5 mm aluminium sheet, powder-coated + 20 mm air gap</p> <p>❺ 3 mm aluminium sheet cladding</p> | <p>❻ window: triple glazing with</p> <p>2x 4 mm laminated safety glass</p> <p>+ 14 mm cavity + 6 mm float glass</p> <p>+ 14 mm cavity</p> <p>+ 2x 4 mm laminated safety glass</p> <p>130/60 mm aluminium mullion-transom system</p> <p>❼ 800 mm reinforced concrete column</p> | <p>❽ Plaster Ceiling</p> <p>❾ Hook Ø6 c/ 75 x 75 cm</p> <p>❿ Spheres Ø32 cm</p> <p>⓫ Upper Metal Mesh</p> <p>⓬ Acoustic insulation (expanded polystyrene)</p> | <p>⓭ Subfloor</p> <p>⓮ Leveling bed</p> <p>⓯ Concrete Tiling floor 30x30 cm</p> <p>⓰ Void for Utilities Ø121mm</p> <p>⓱ Beam Reinforcement</p> <p>⓲ Stirrups Alternate Left to Right</p> | <p>⓳ Concrete Beam Reinforcement Ø20mm</p> <p>⓴ Expanded Polysyrene (EPS)</p> <p>⓵ Redi-Set Pivotal Motor</p> <p>⓶ GLASS MOUNT HANDRAIL</p> |
|--|--|--|---|--|---|