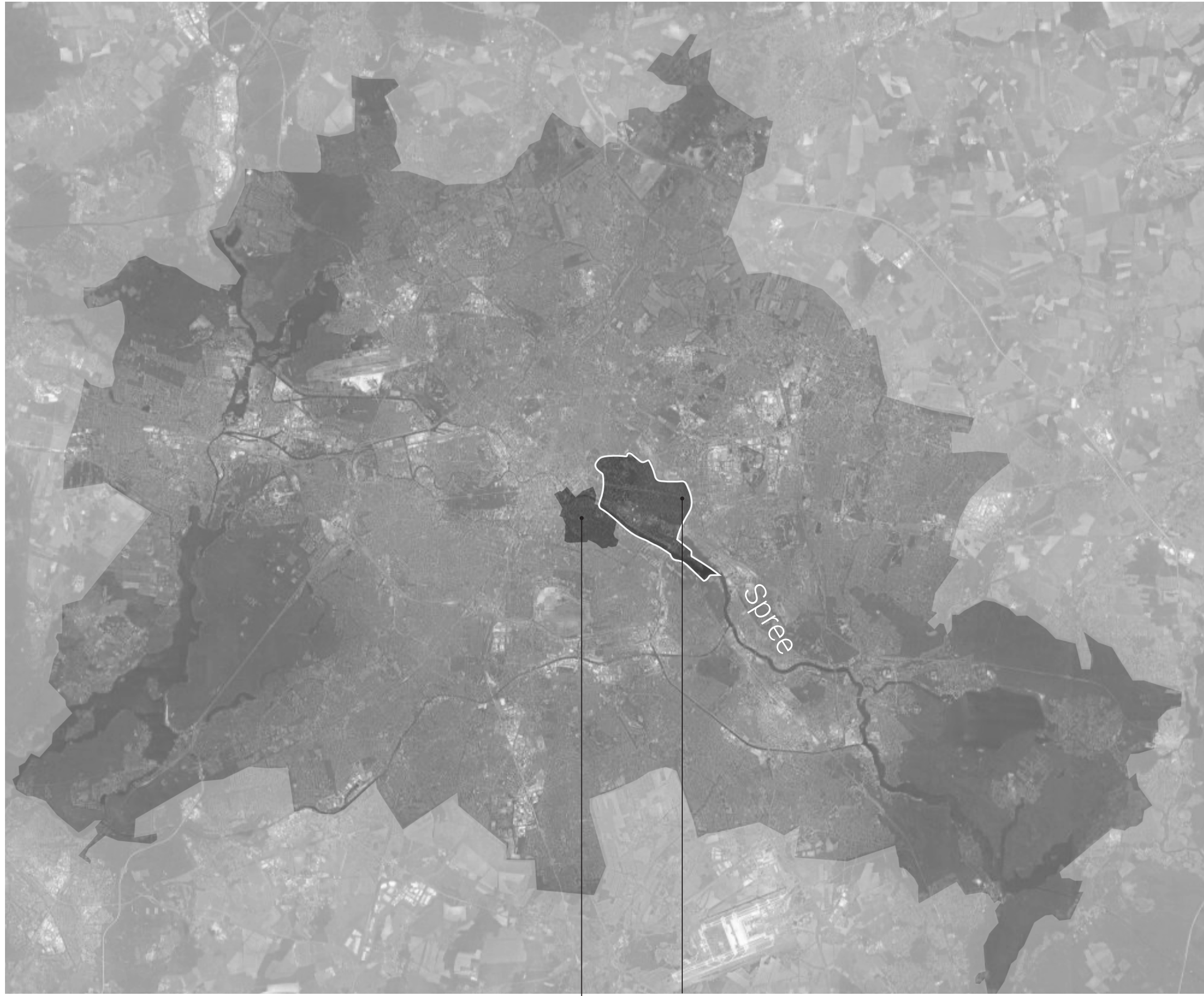


THE INVISIBLE MAGNET:
UNLOCKING DISCOVERY, ENCOUNTER AND INTERACTION.

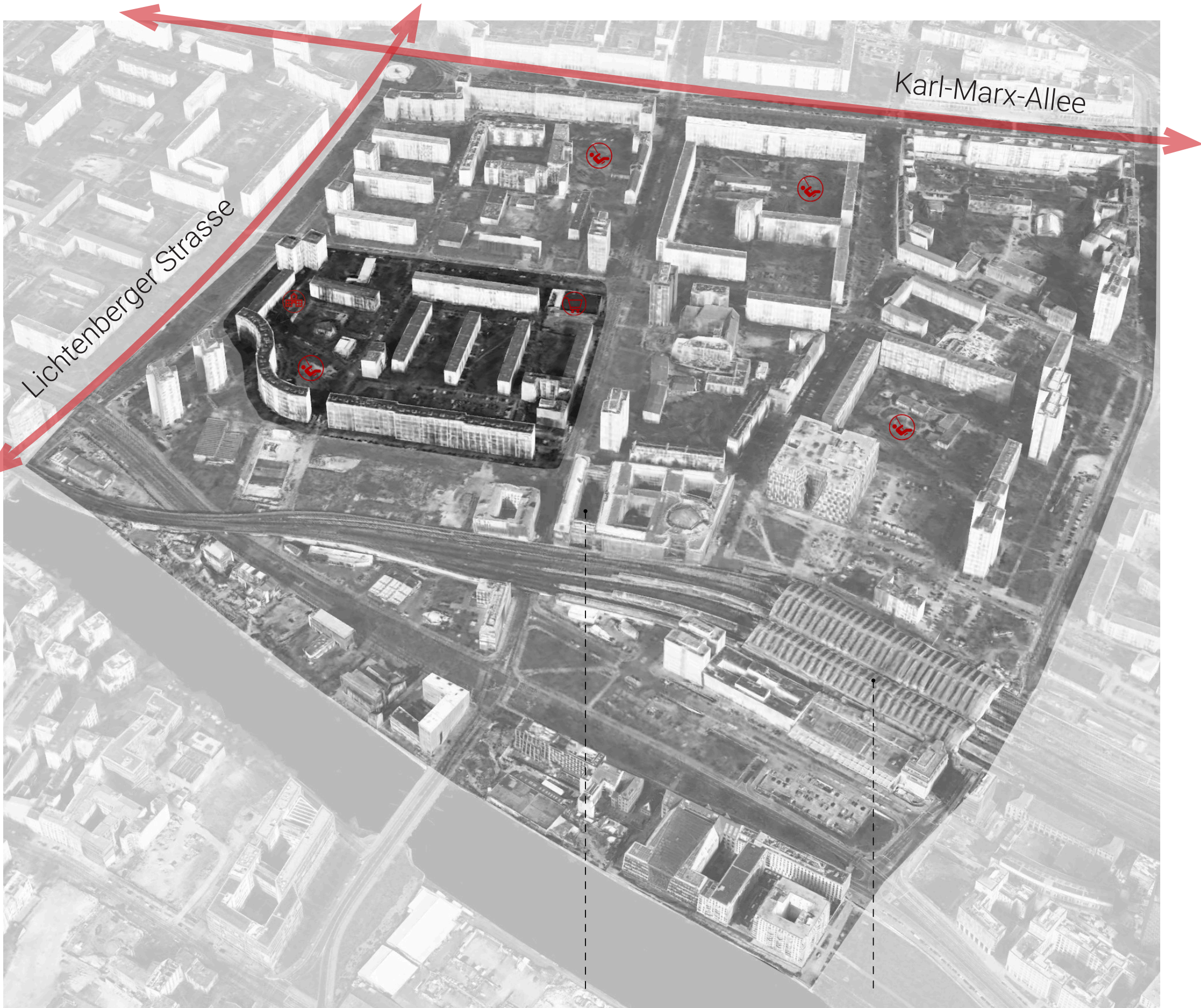
URBAN CONTEXT



Friedrichshain
Berlin - Mitte



Andreasviertel Wriezener Bahnhof Weberwiese
0 400m



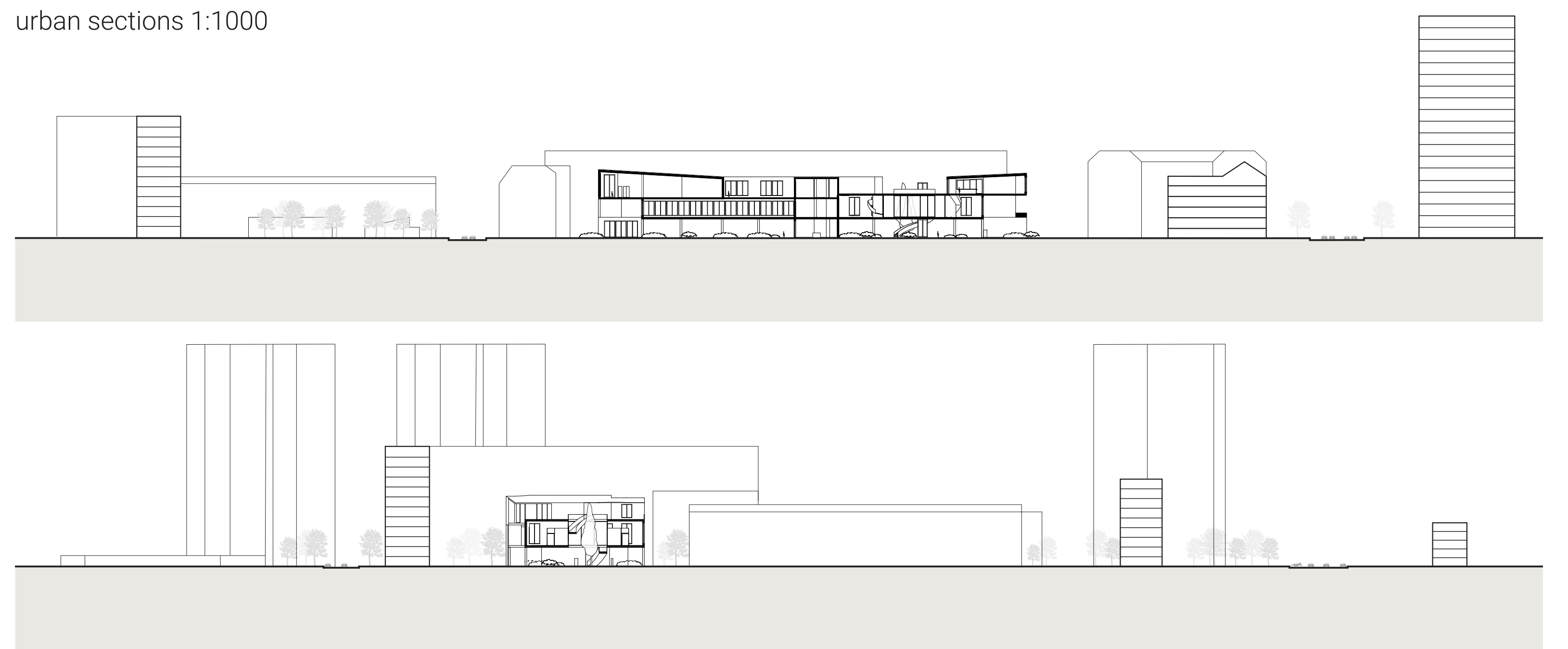
Bundespolizei Berlin Ostbahnhof

SITE CONTEXT

site plan 1:1000



urban sections 1:1000

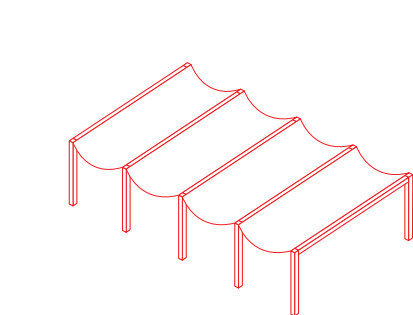


URBAN ACUPUNCTURE

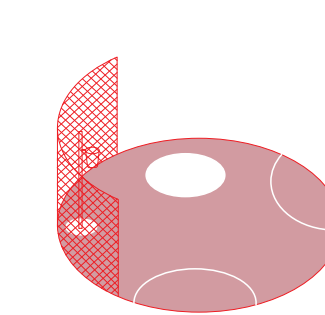
catalogue

framing spaces of activity

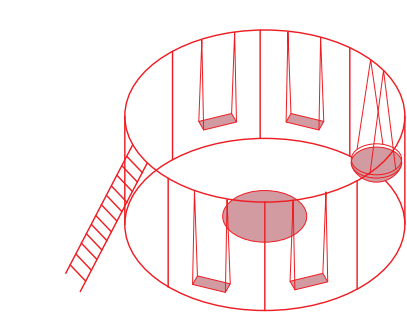
pavilion



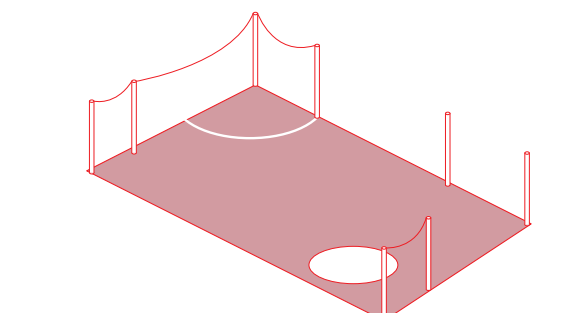
sportsfield



playground

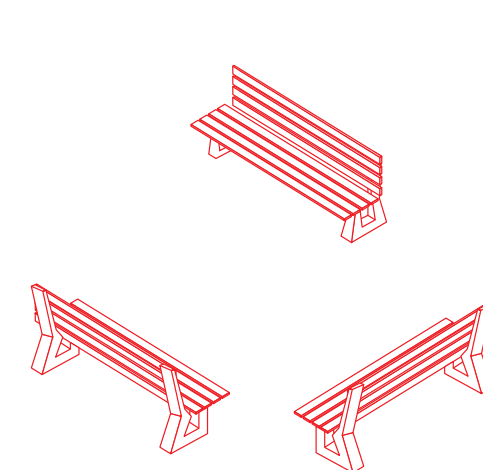


activity/event spot

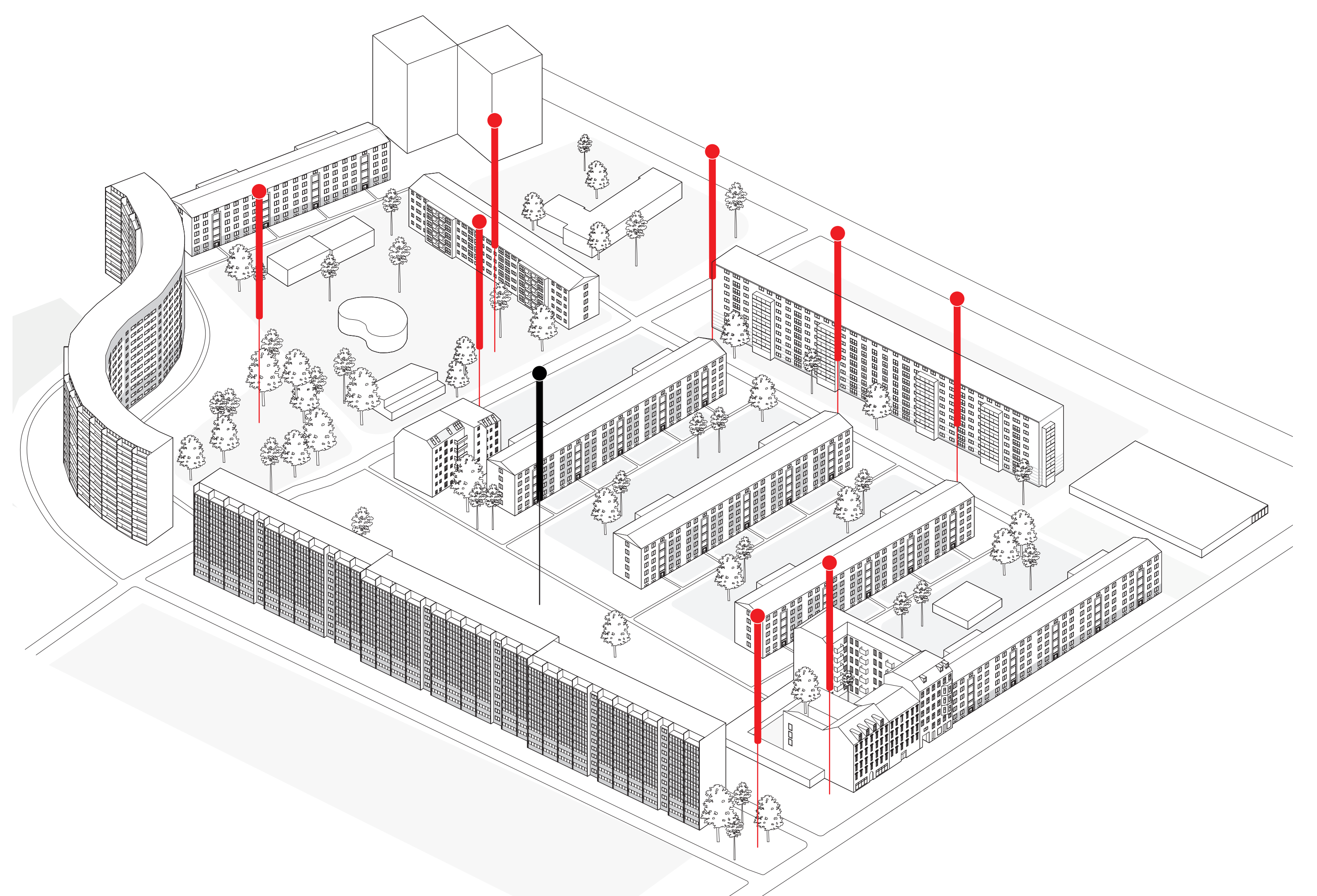
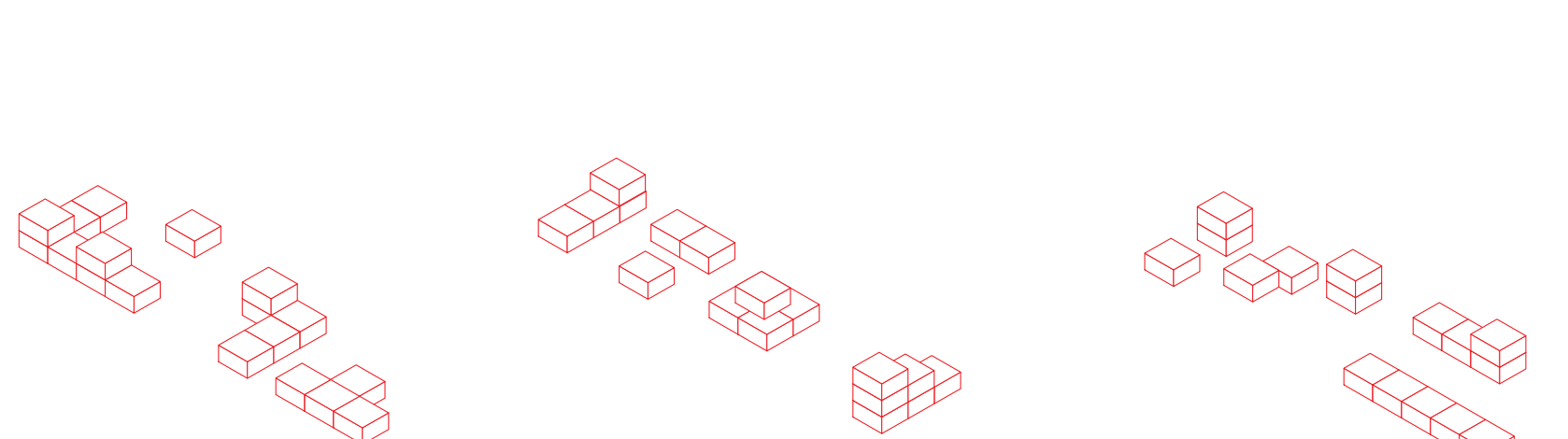


initiating meetings

added benches



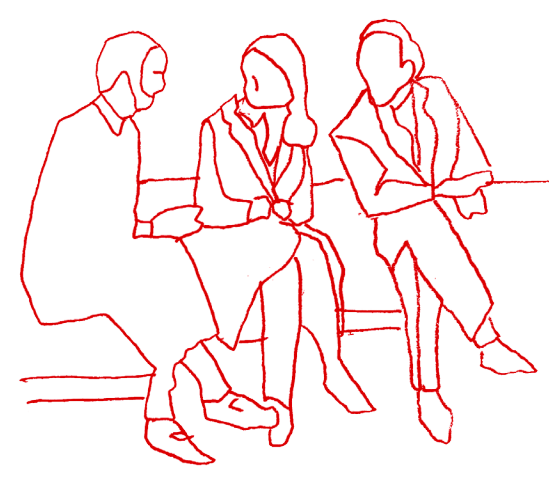
conversation pits 1



TARGET GROUP



families



youth / young adults

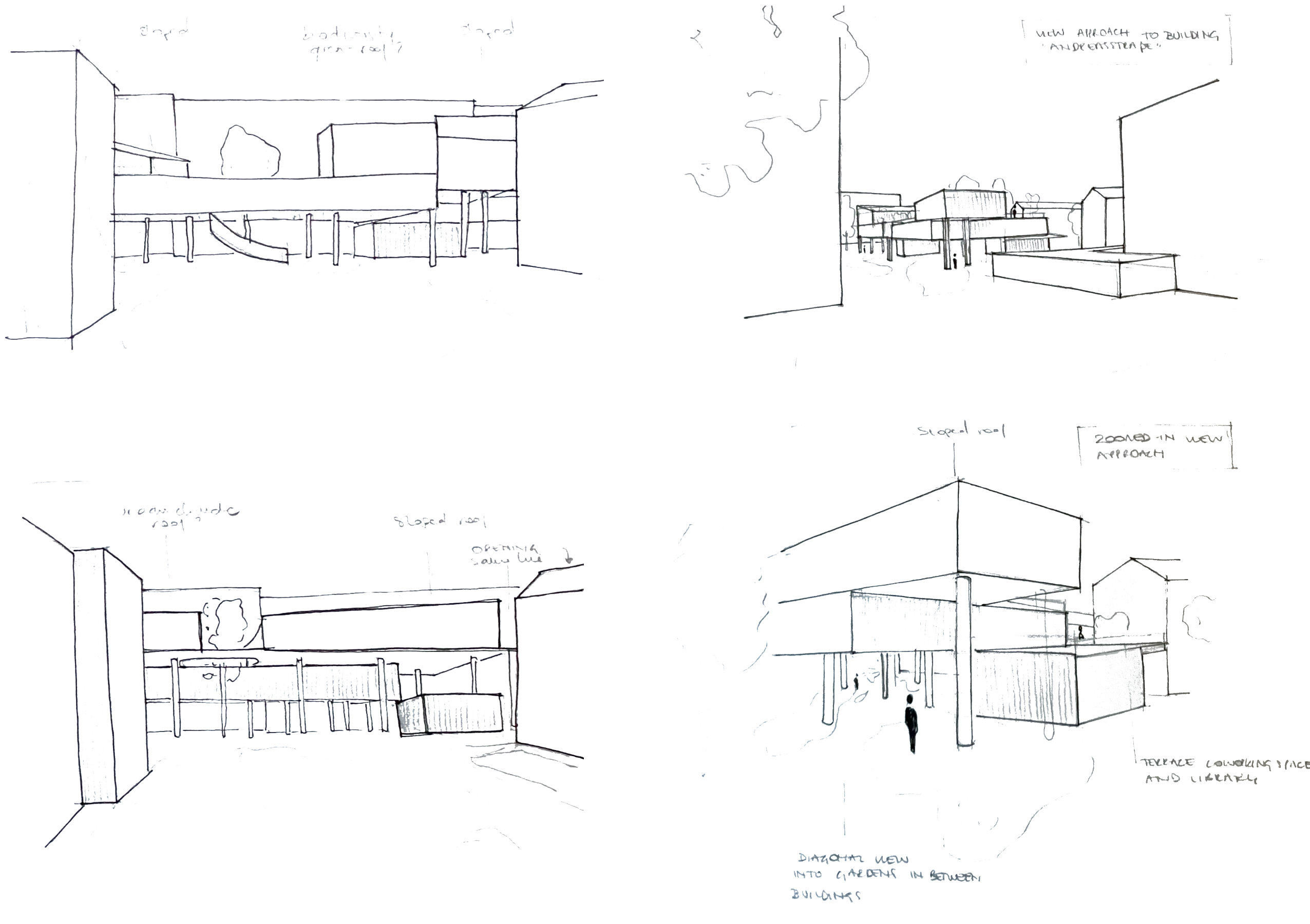


adults / elderly

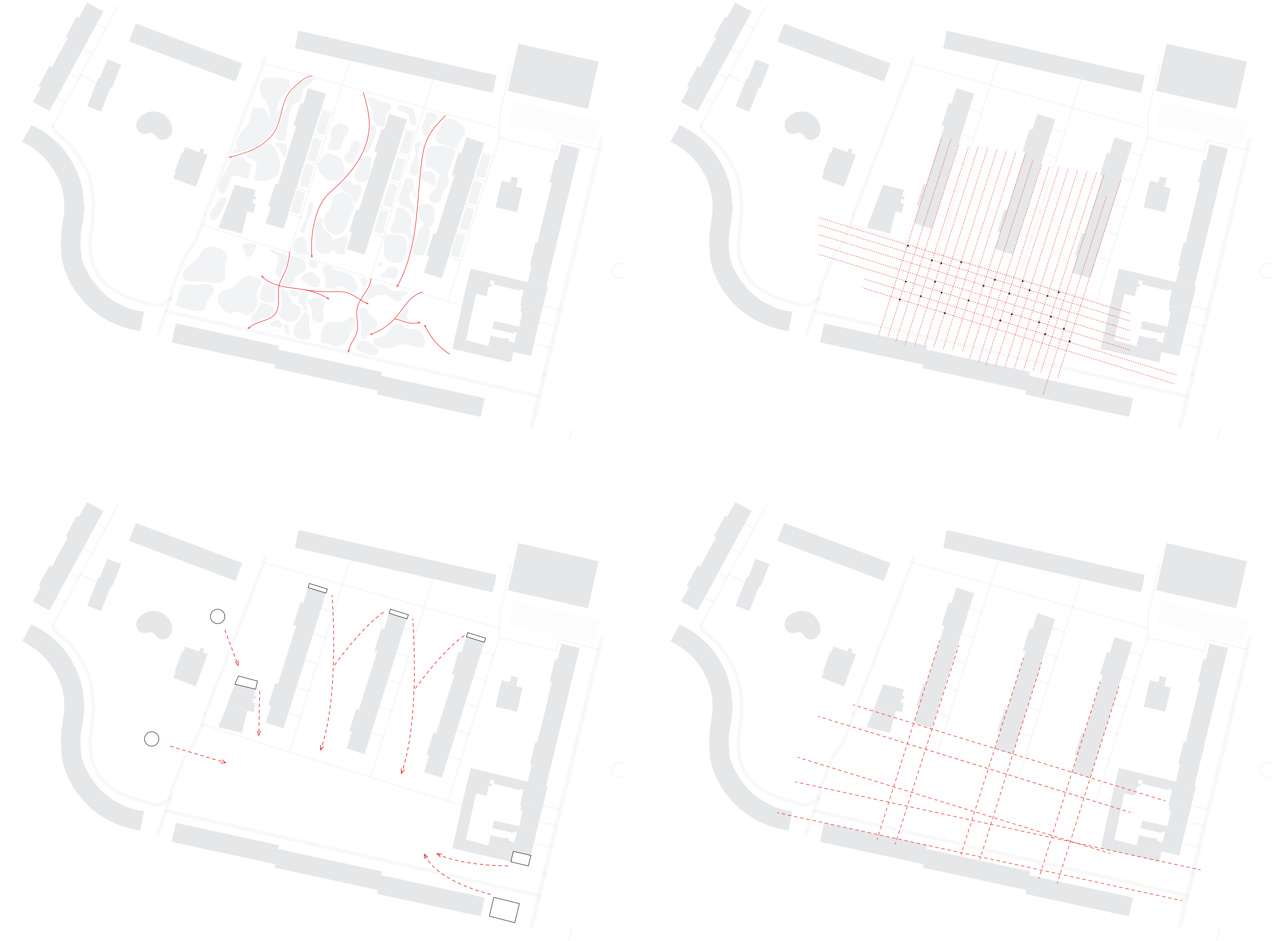
THE INVISIBLE MAGNET: UNLOCKING DISCOVERY, ENCOUNTER AND INTERACTION.

VOLUMETRIC STACKING

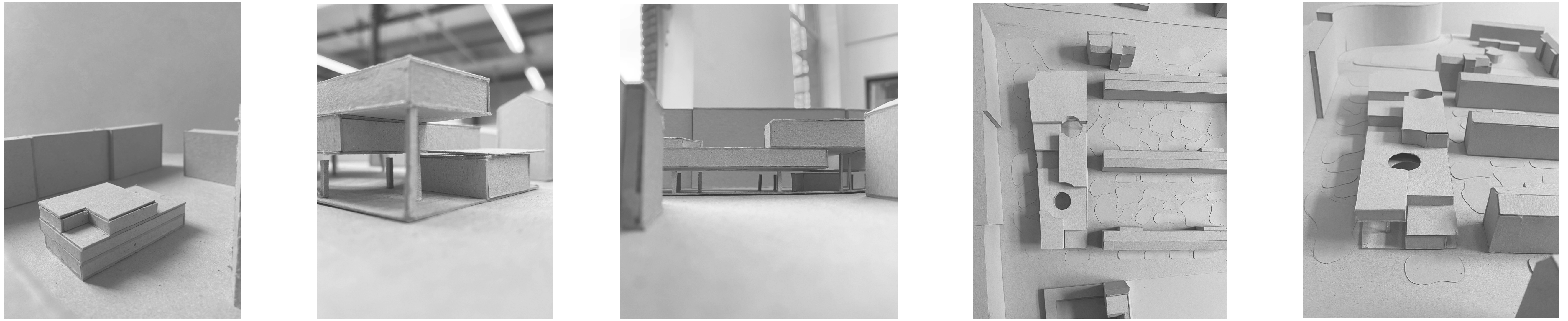
sketches design process



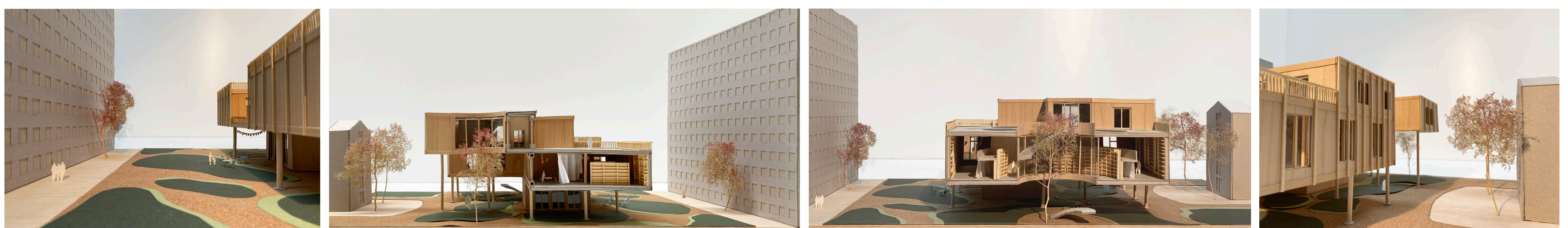
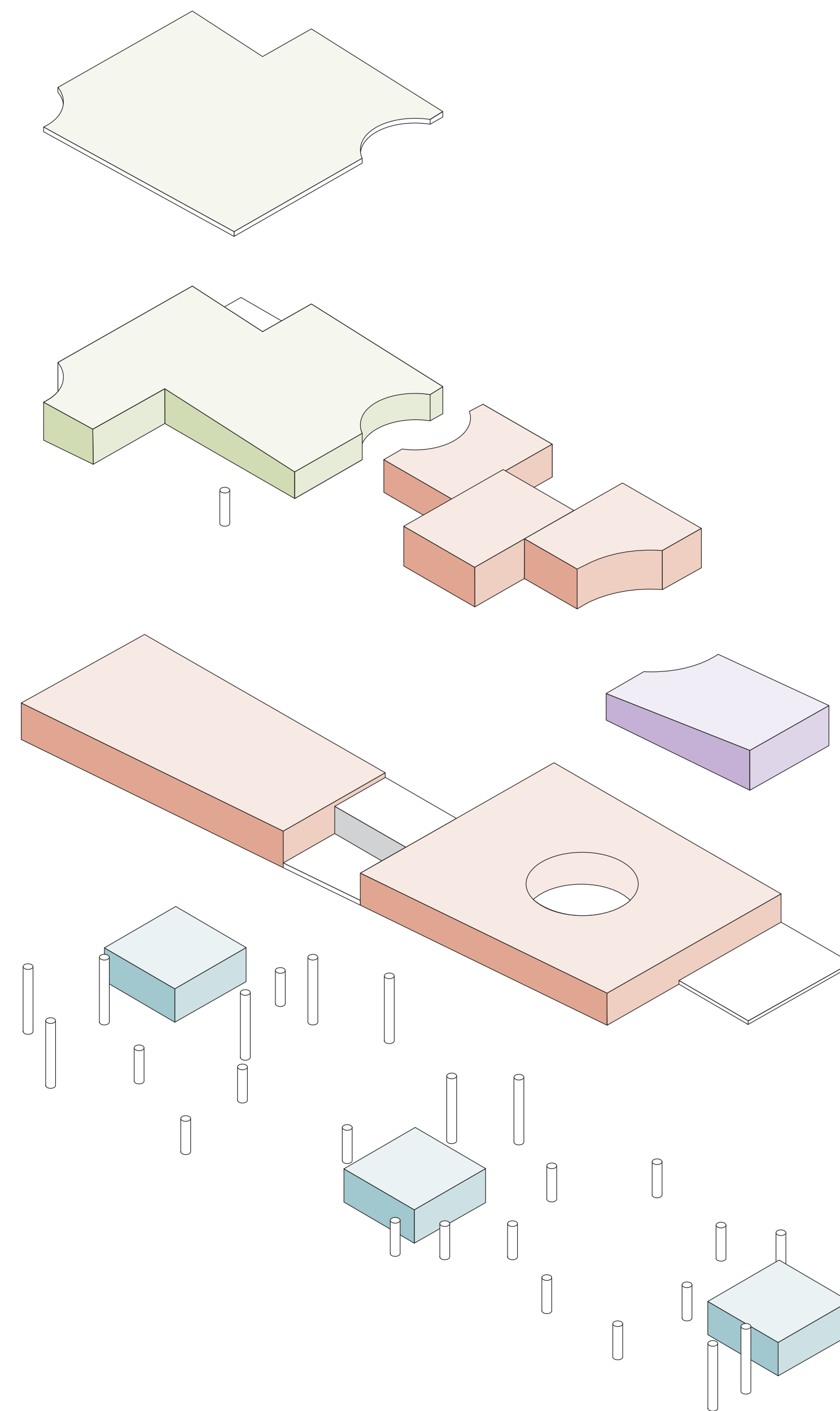
form generating process



process models



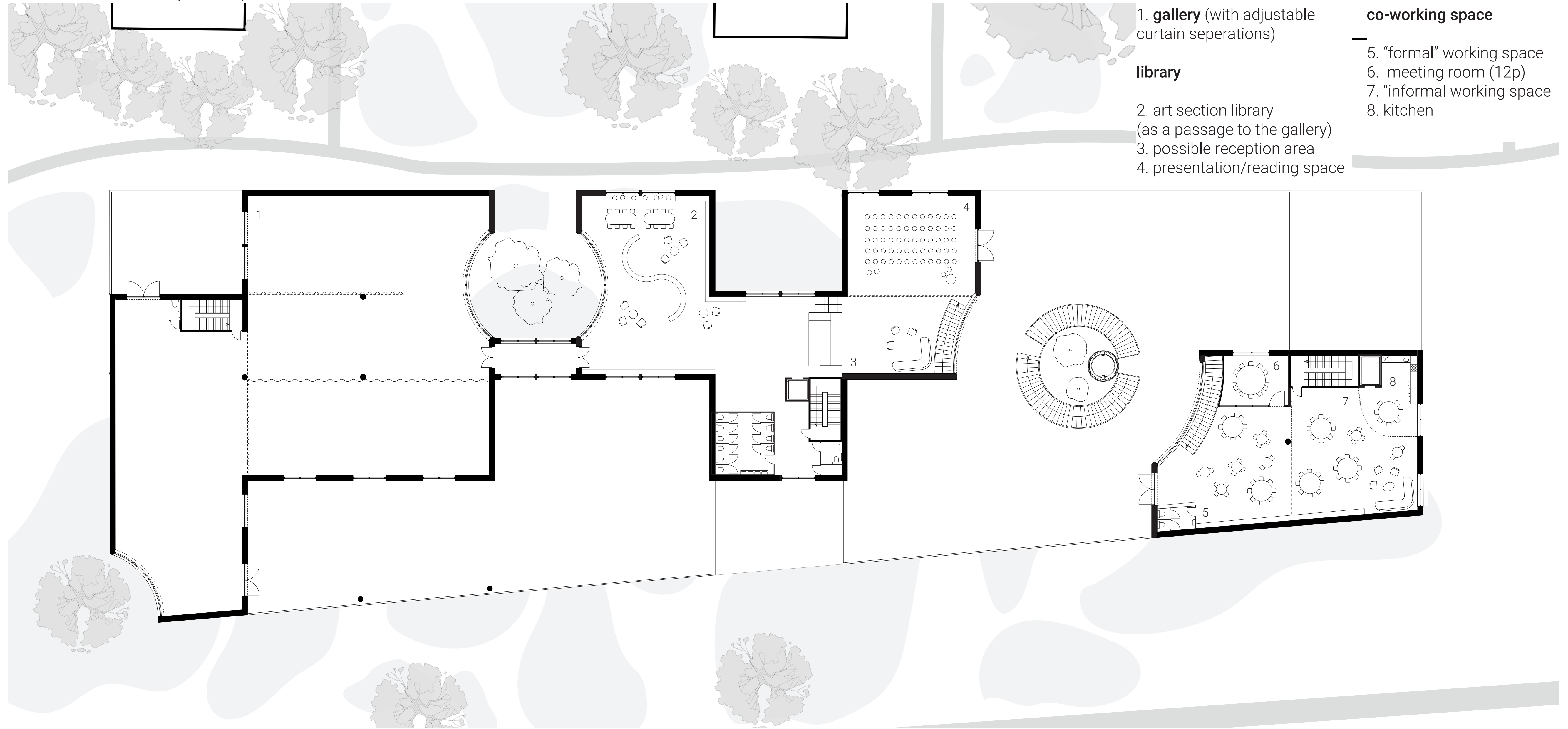
leisure	510 m ²	family restaurant coffeebar	— base (urban landscape)
intellectual		library readings/lectures	— urban garden roof semi private roof terrace (2 levels)
media	2415 m ²	computer spaces reading spaces	
administration	305 m ²	co-working spaces kitchen and break rooms	— urban garden roof
artistic		community gallery space	— urban garden roof
physical health	1280 m ²	sport facilities playgrounds	— urban acupuncture
mental health		urban garden	— base (urban landscape) urban garden roofs
TOTAL ± 4500 m²			



THE INVISIBLE MAGNET:
UNLOCKING DISCOVERY, ENCOUNTER AND INTERACTION.

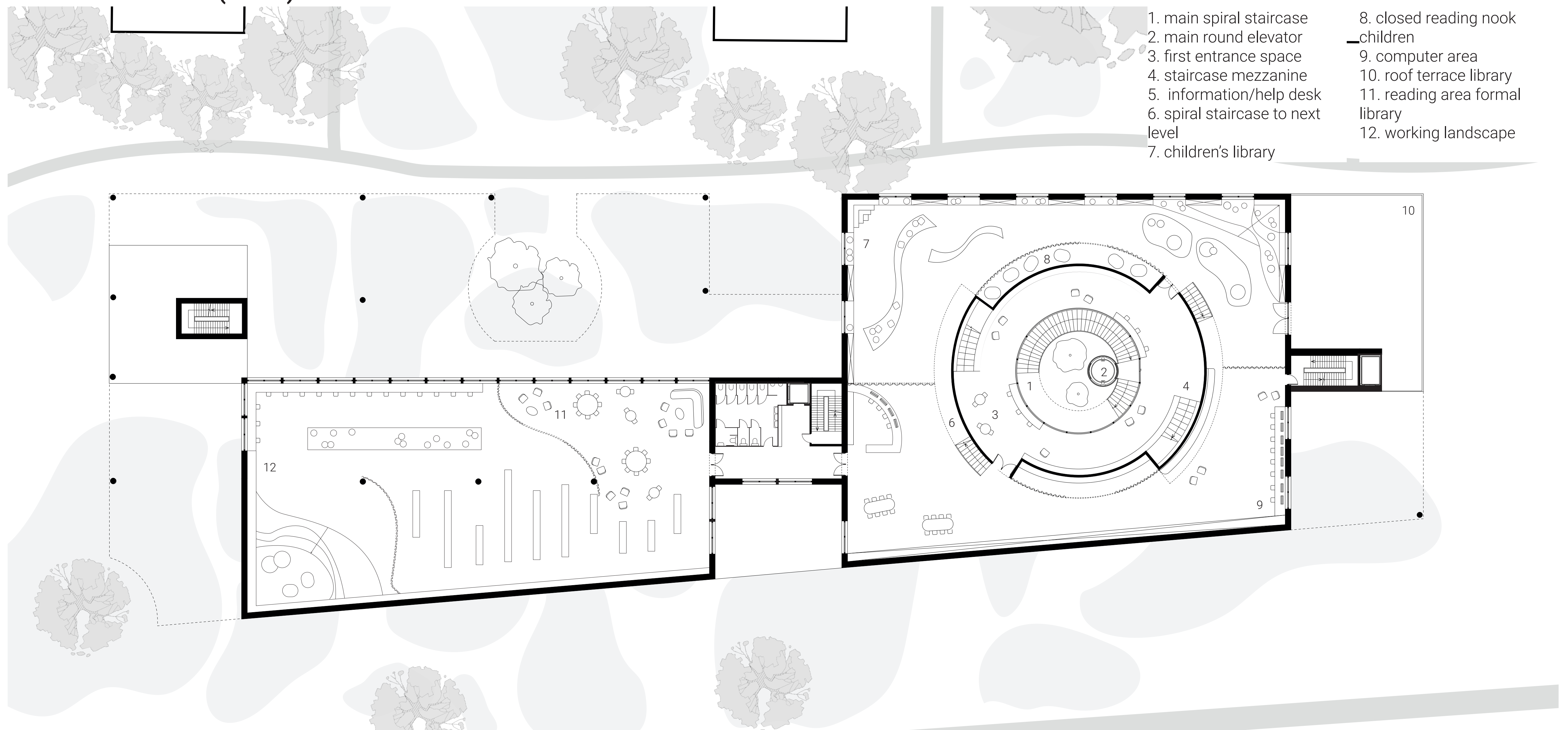
FLOOR PLANS

BASE - LEV +2 (1:200)



- 1. gallery (with adjustable curtain separations)
 - 2. art section library (as a passage to the gallery)
 - 3. possible reception area
 - 4. presentation/reading space
- library**
- 5. "formal" working space
 - 6. meeting room (12p)
 - 7. "informal working space"
 - 8. kitchen
- co-working space**

PLATEAU - LEV +1 (1:200)



- 1. main spiral staircase
- 2. main round elevator
- 3. first entrance space
- 4. staircase mezzanine
- 5. information/help desk
- 6. spiral staircase to next level
- 7. children's library
- 8. closed reading nook children
- 9. computer area
- 10. roof terrace library
- 11. reading area formal library
- 12. working landscape

CORONATION - LEV +0 (1:200)



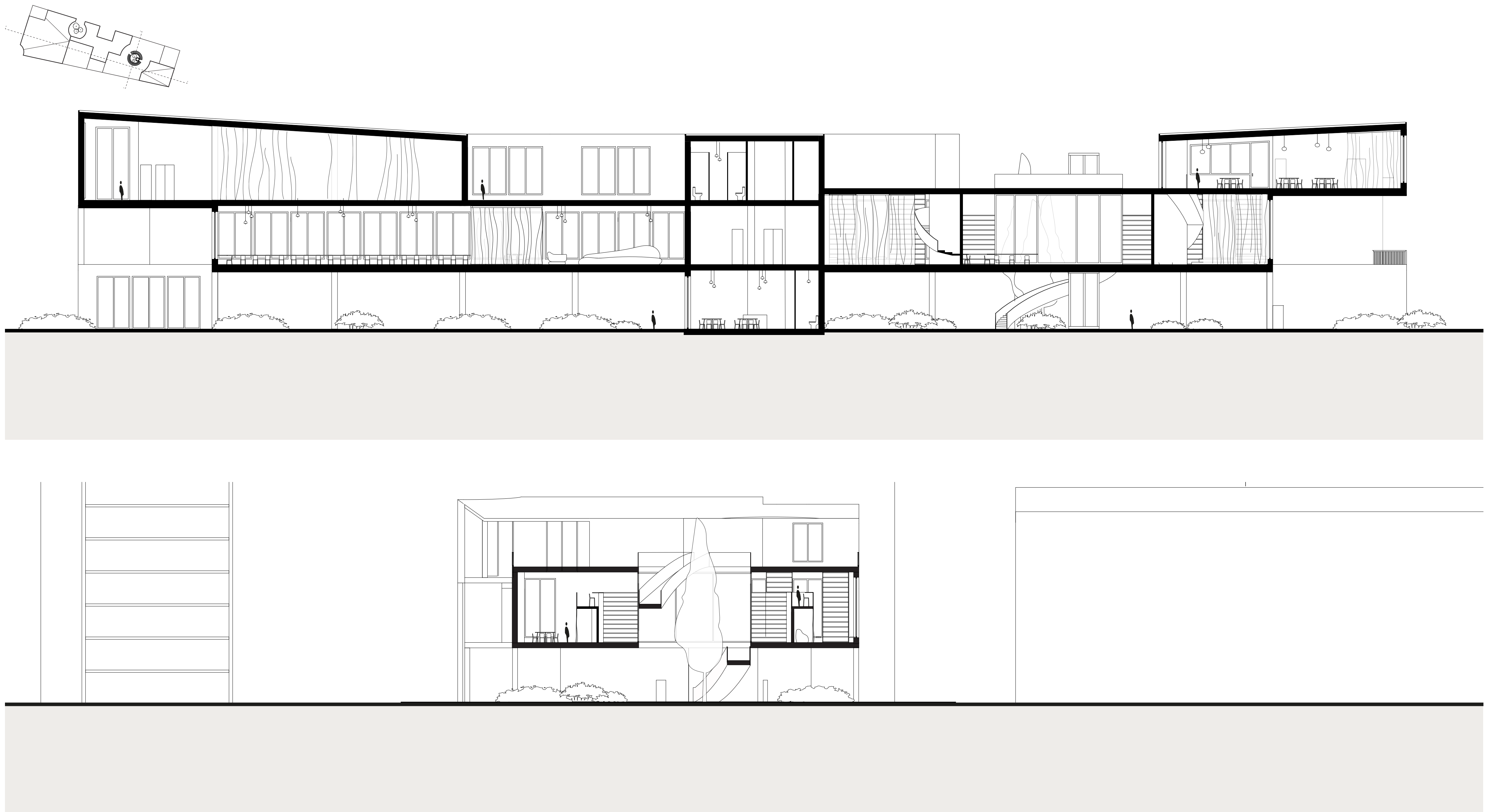
- 1. family restaurant
- 2. coffee bar
- 3. bar
- 4. main spiral staircase
- 5. main round elevator

THE INVISIBLE MAGNET: UNLOCKING DISCOVERY, ENCOUNTER AND INTERACTION.

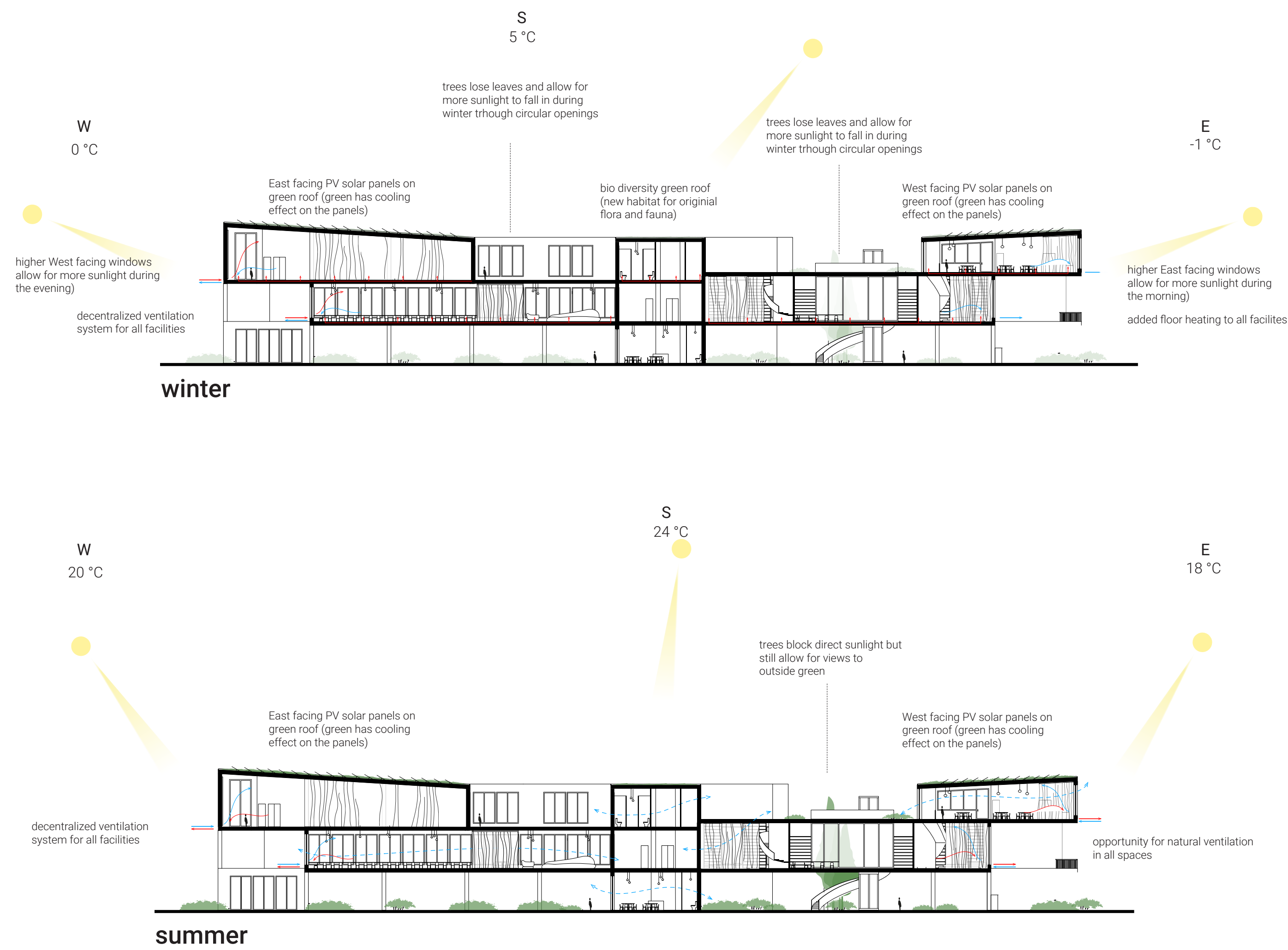
INTERIOR FUNCTIONING



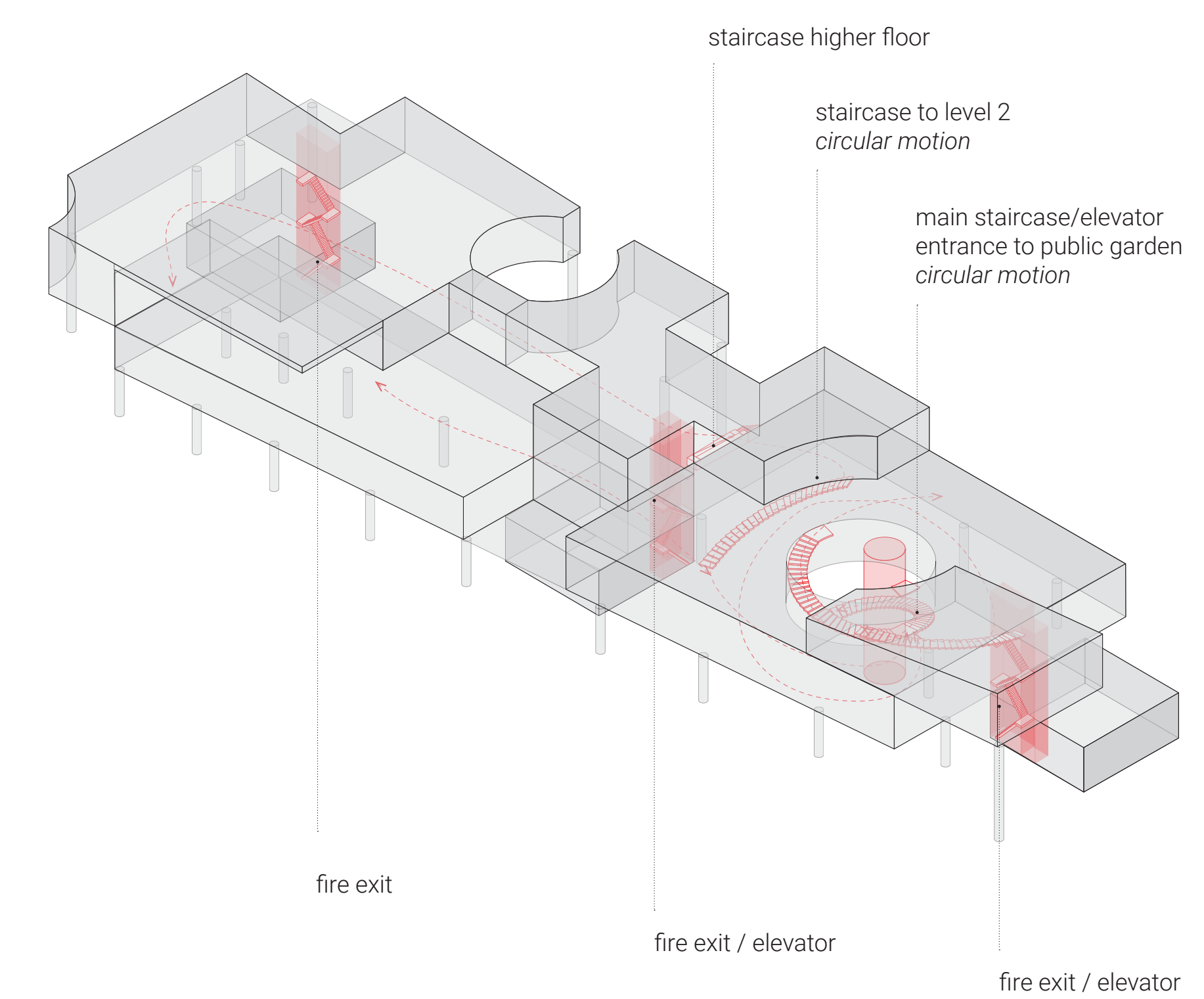
SECTIONS (1:200)



CLIMATE DIAGRAM



CIRCULATION DIAGRAM



THE INVISIBLE MAGNET: UNLOCKING DISCOVERY, ENCOUNTER AND INTERACTION.

FRAGMENTATION

impression discovery lev +0



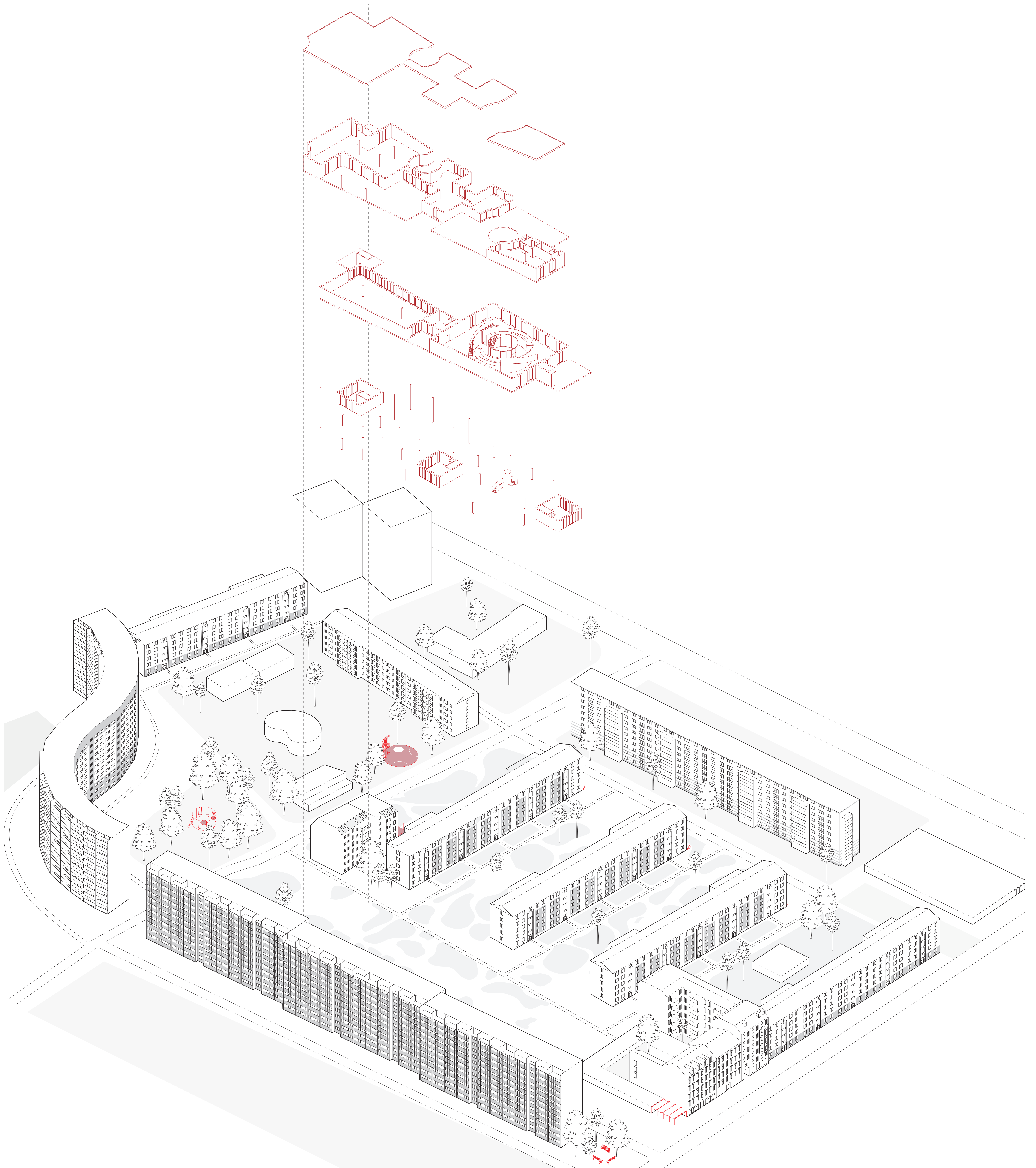
impression 'formal' library lev +1



impression library lev +2



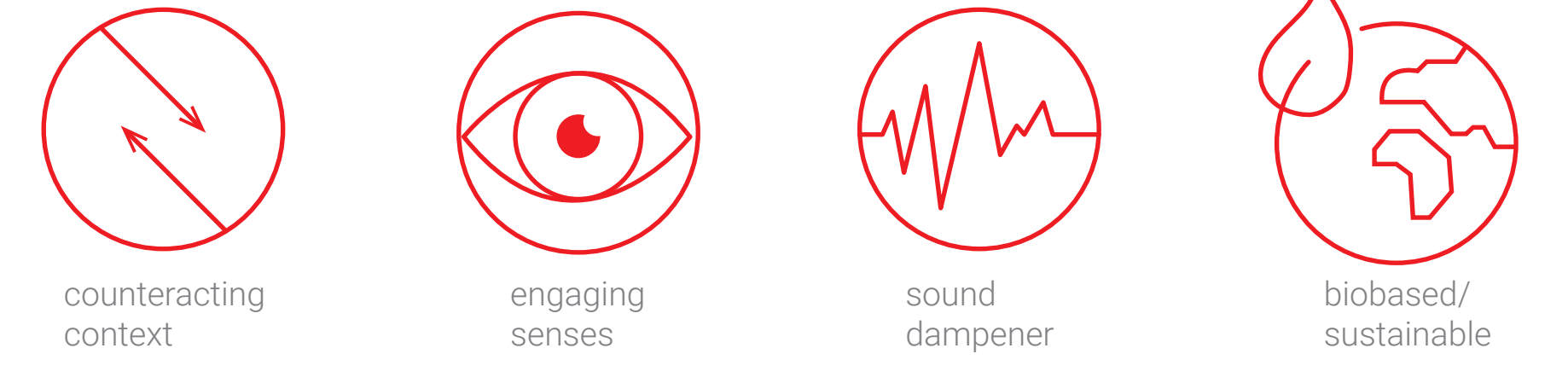
approach from green inbetween buildings 1



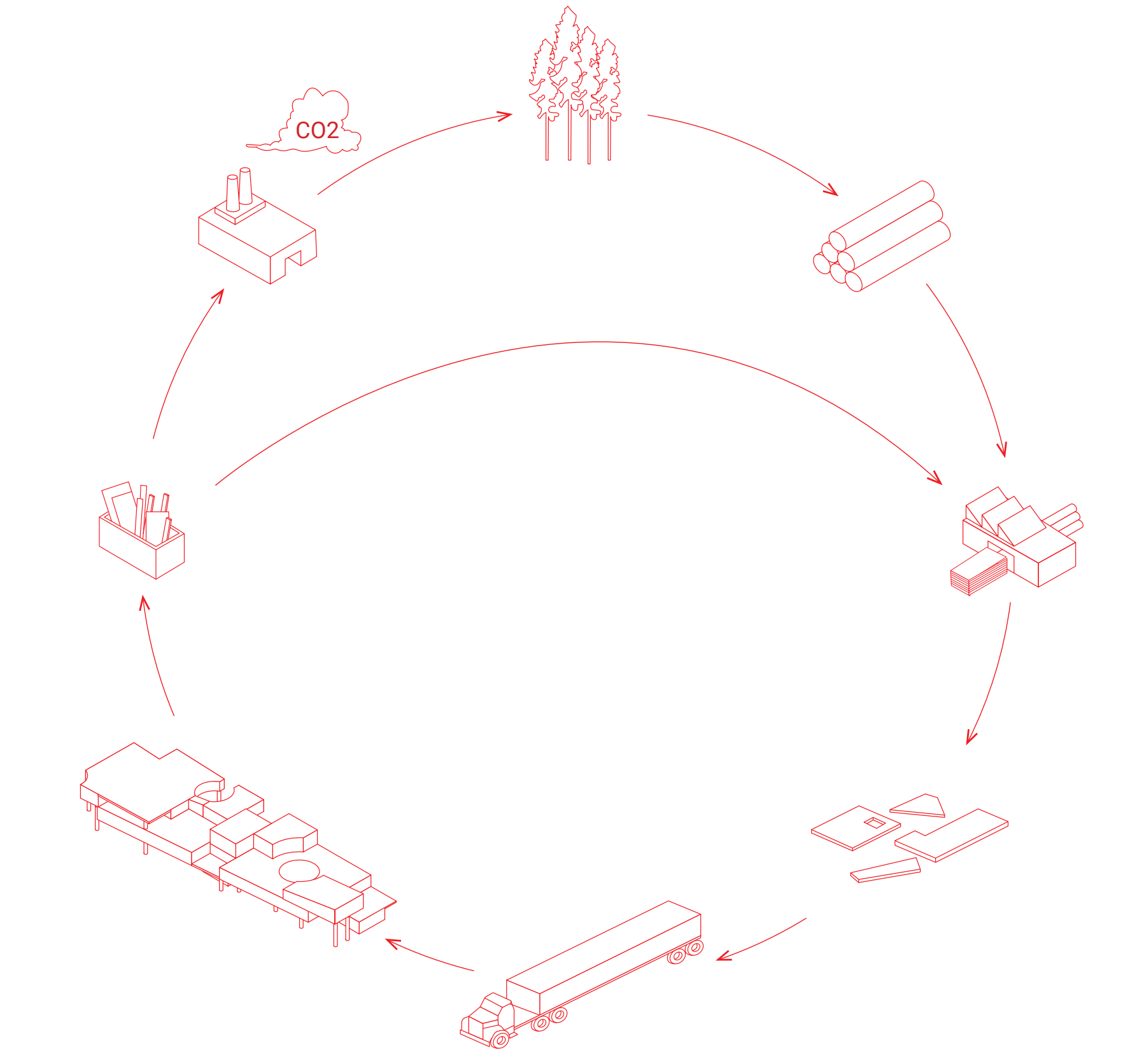
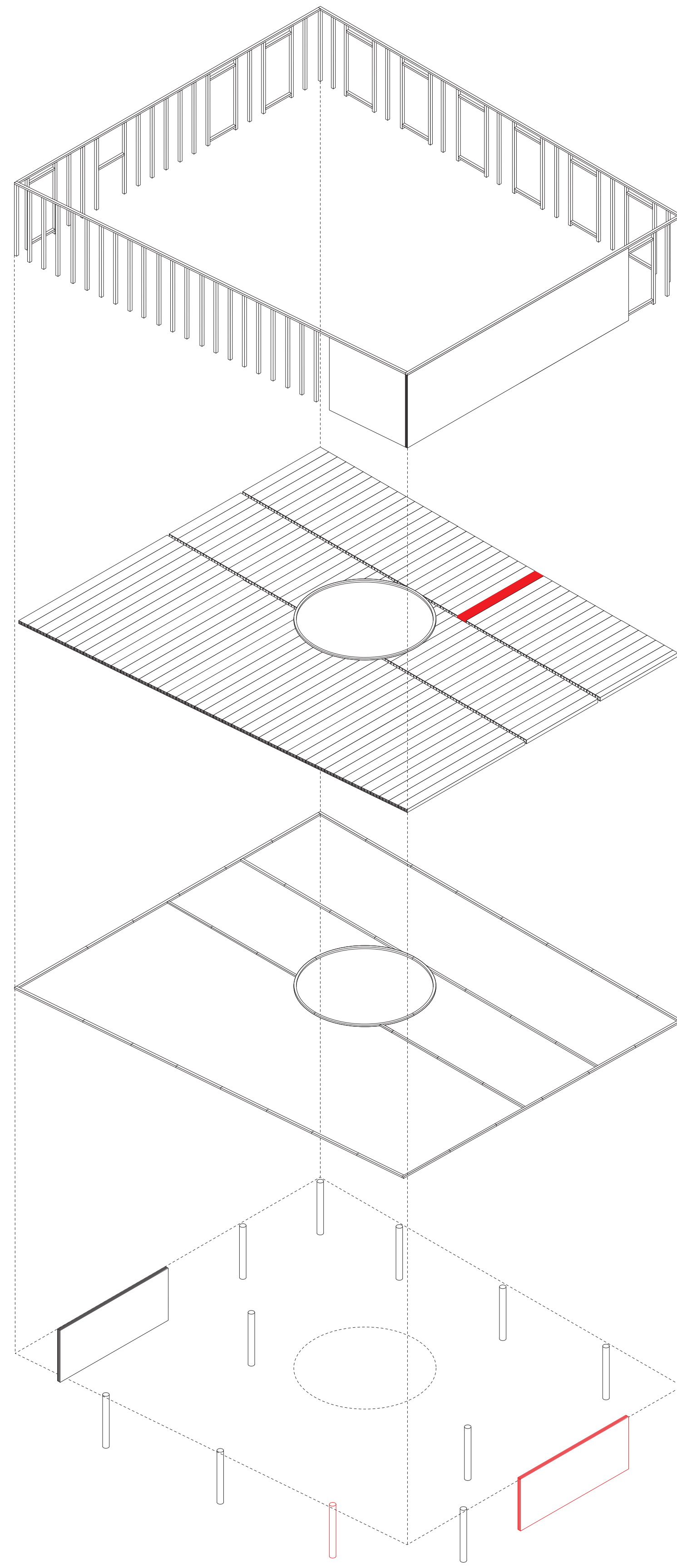
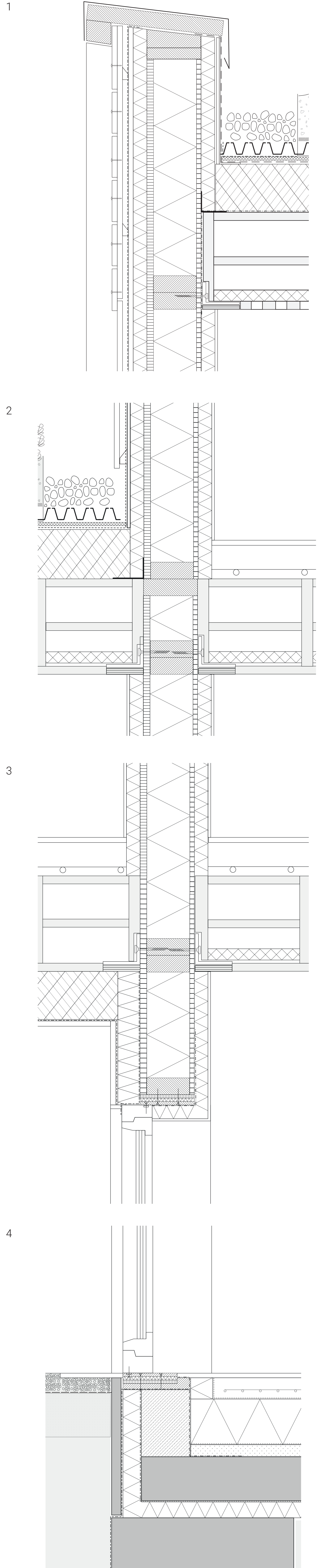
THE INVISIBLE MAGNET:

UNLOCKING DISCOVERY, ENCOUNTER AND INTERACTION.

STRUCTURAL PRINCIPLES

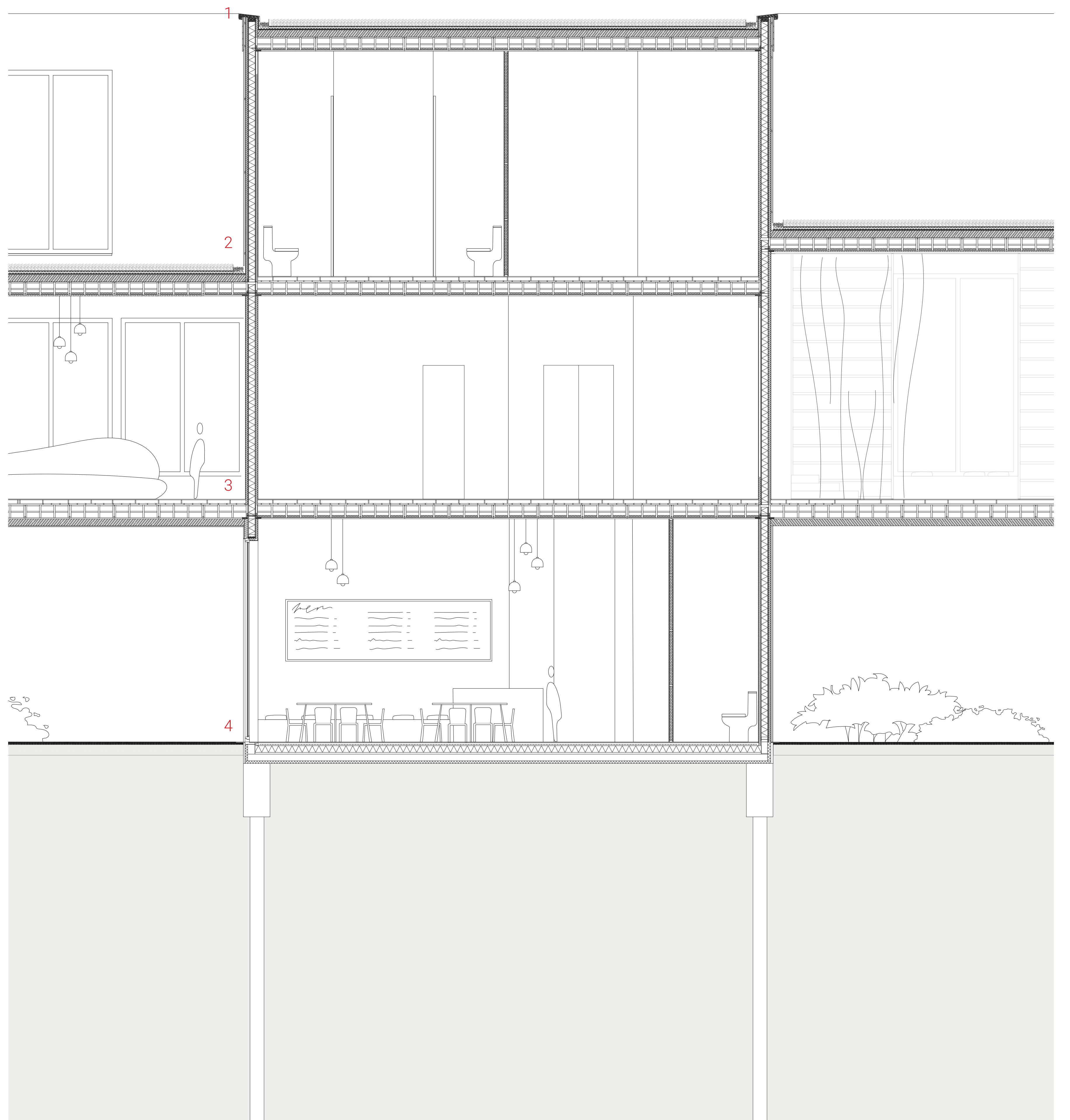


DETAILS (1:5)



- timber post
 - timber beam
 - Lignatur element
 - CLT bracing wall
 - timber column
- Forests absorb CO2 from the atmosphere
- Trees are a renewable resource and store carbon
- Manufacturing processes typically use all parts of the log, producing no waste and little pollution
- Cutting and planing of the panels for more efficient construction
- Transportation
- Timber buildings store carbon in their structures for the period of their maintained life
- Wood products can be reused or recycled to create new products
- Wood can be burned for clean energy

STRUCTURAL SECTION (1:50)



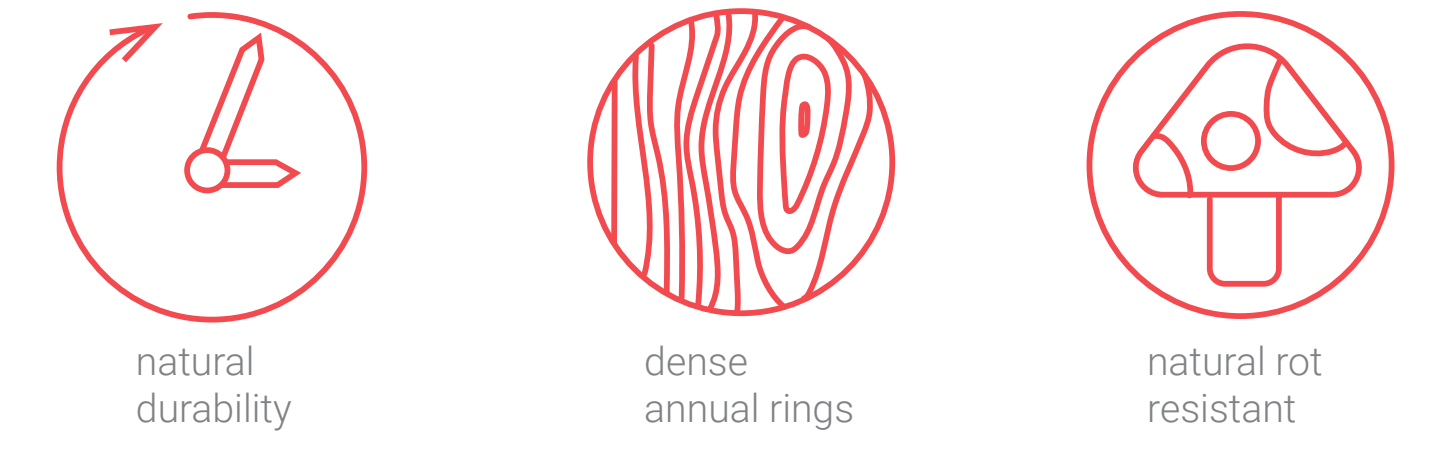
THE INVISIBLE MAGNET:

UNLOCKING DISCOVERY, ENCOUNTER AND INTERACTION.

IMPRESSION FACADE (1:20)



FACADE PRINCIPLES



Larch forest provided by HIT HOLZ

Manufacturing processes typically use all parts of the log, producing no waste and little pollution

Transportation to factory by trucks or rail. Max. distance forest to factory 200km

Sawing of the plates

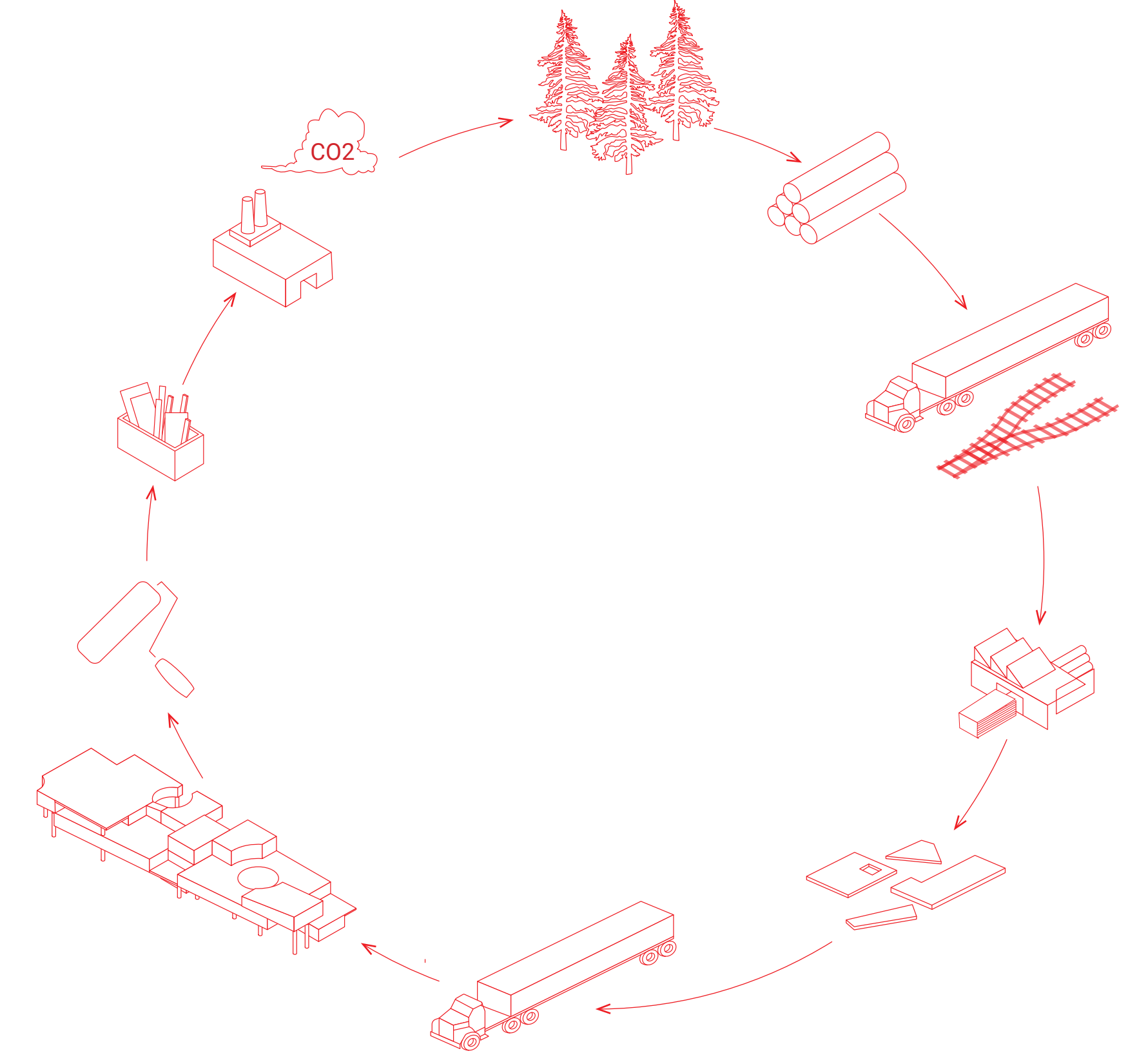
Cutting and planing of the panels for more efficient construction

Transportation from Torgau to Berlin

Oil treatment to ensure UV and water protection. Colour preservation over time

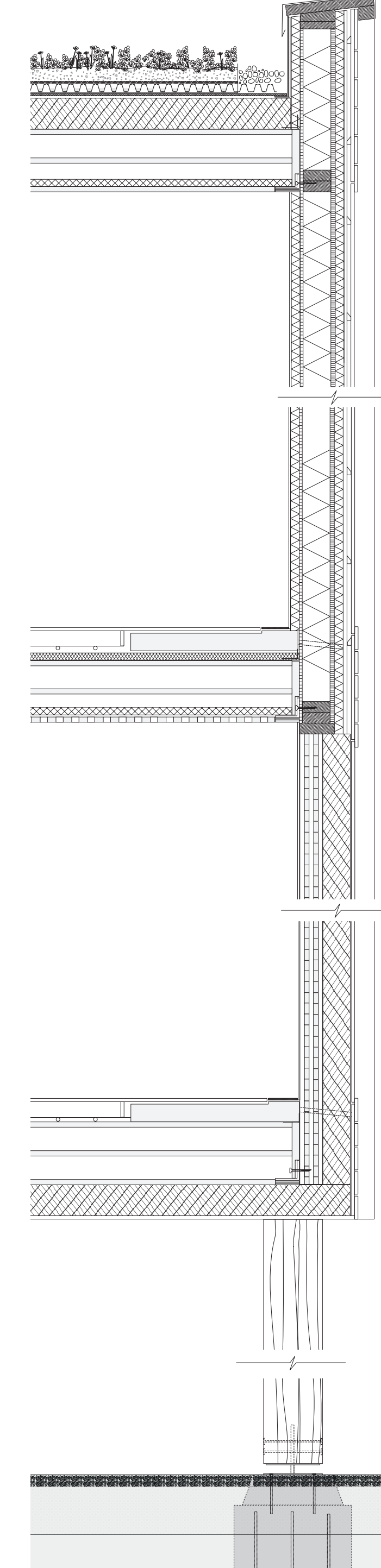
Wood products can be reused or recycled to create new products

Wood can be burned for clean energy

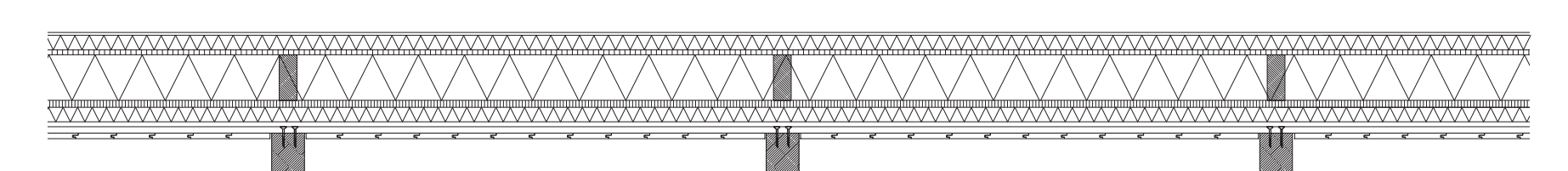
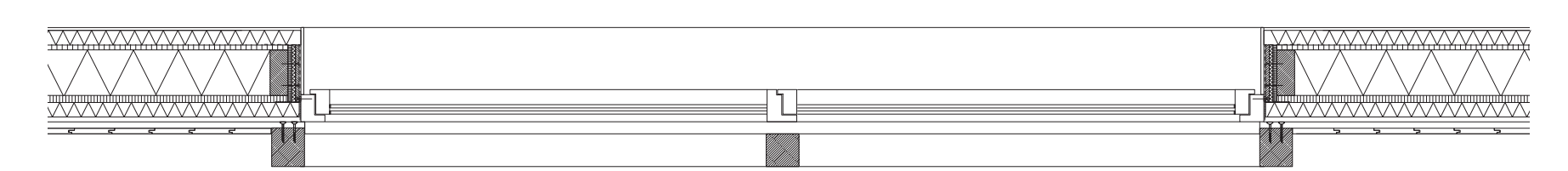
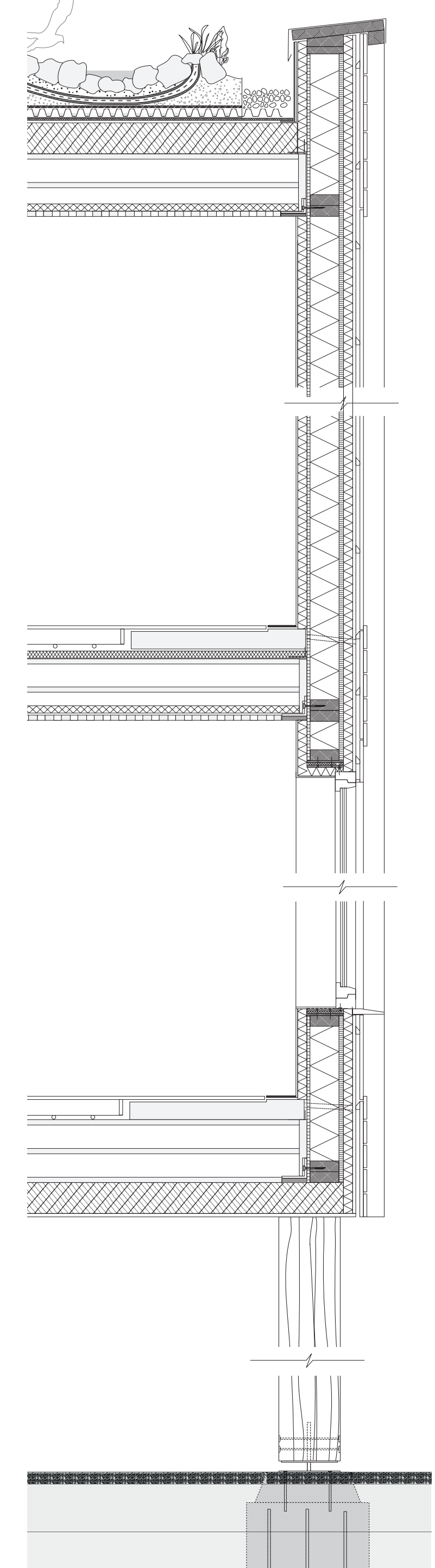


TECHNICAL SECTIONS (1:20)

timber frame + CLT bracing element



timber frame



ELEVATIONS

