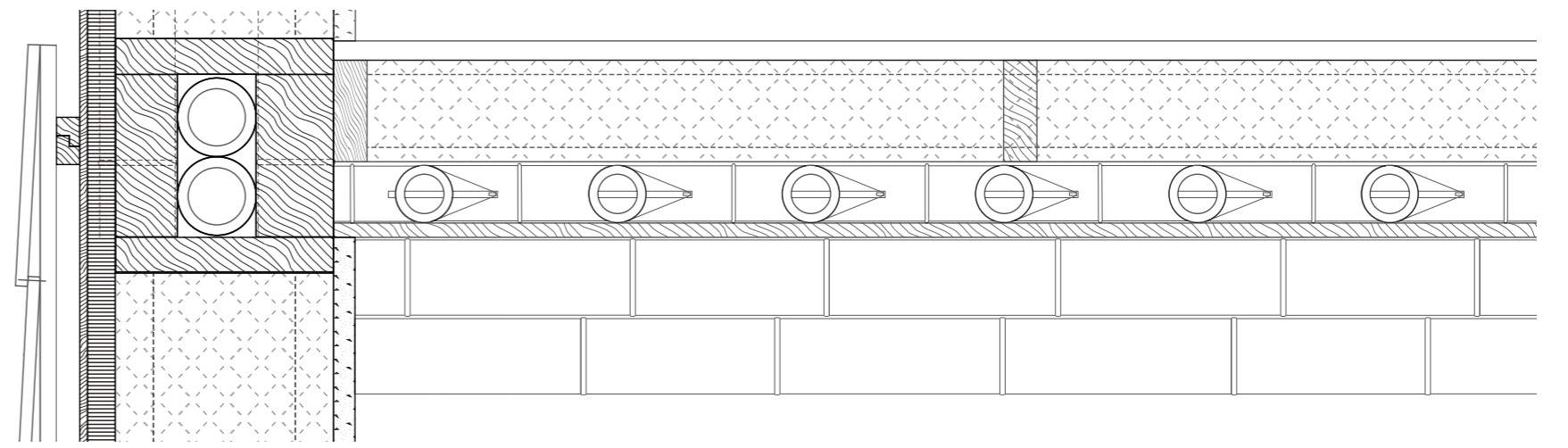
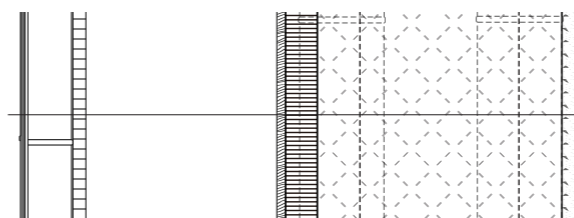
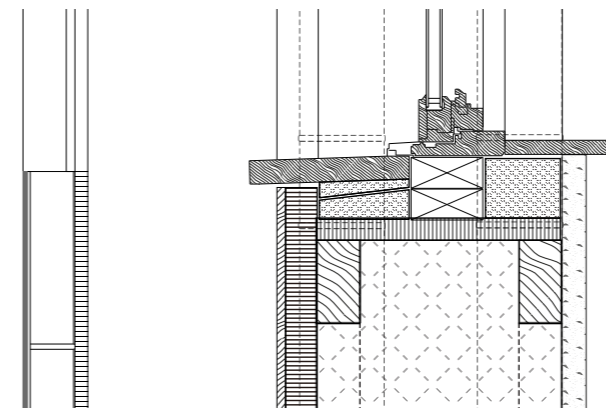
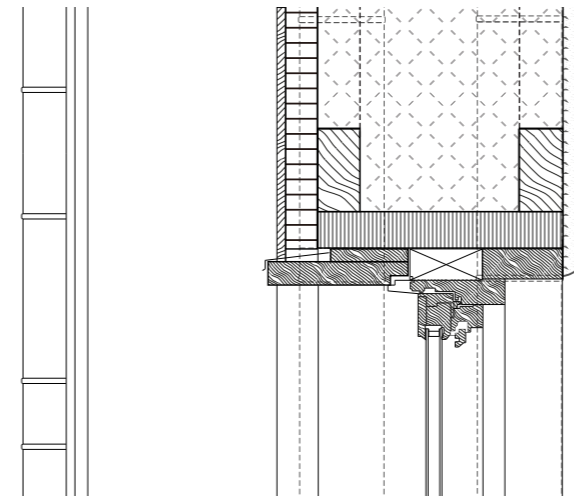
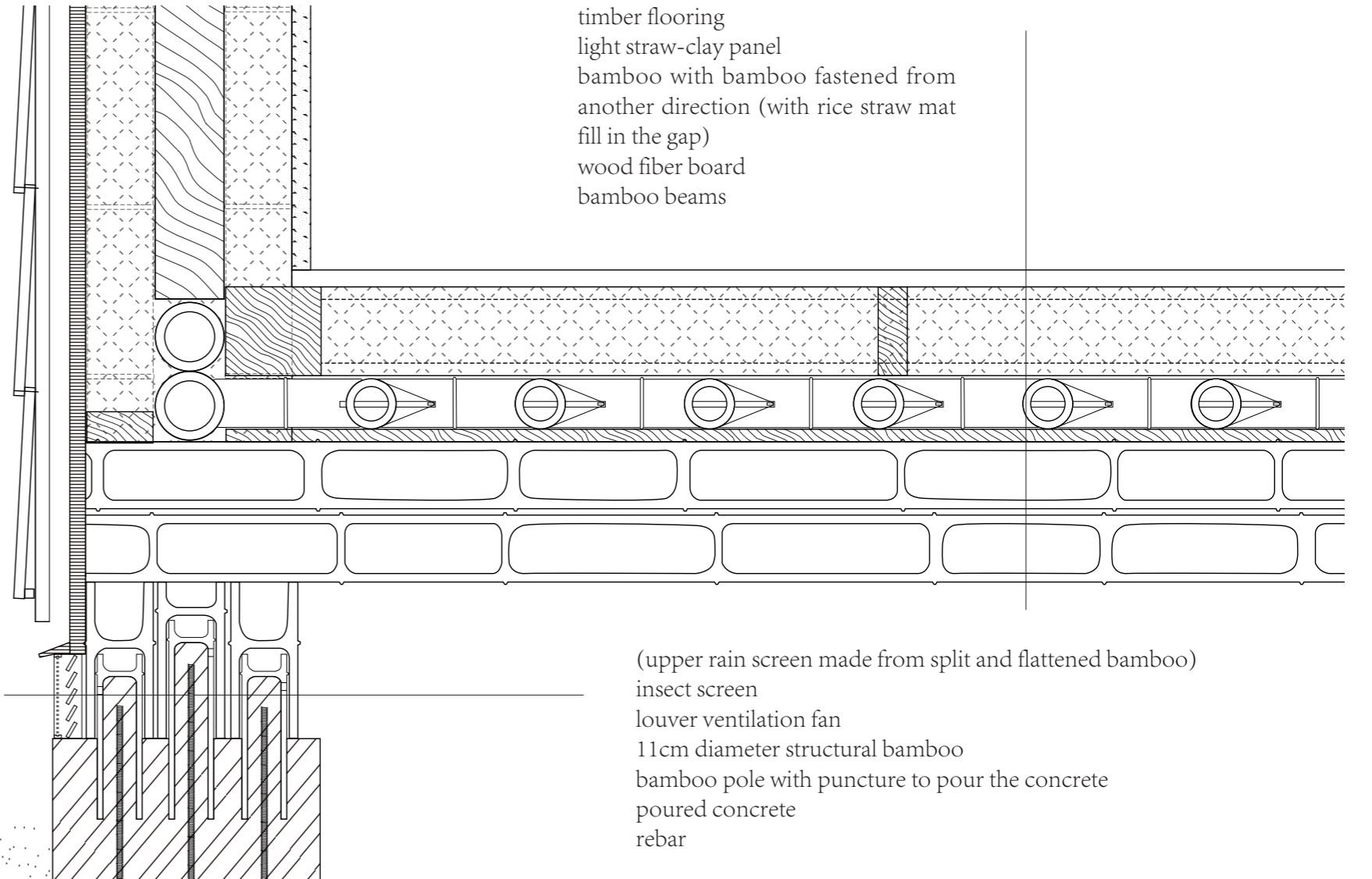
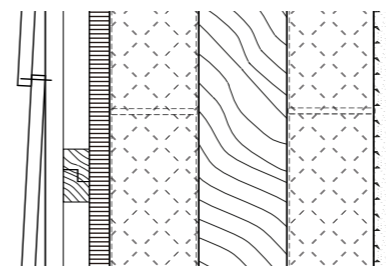


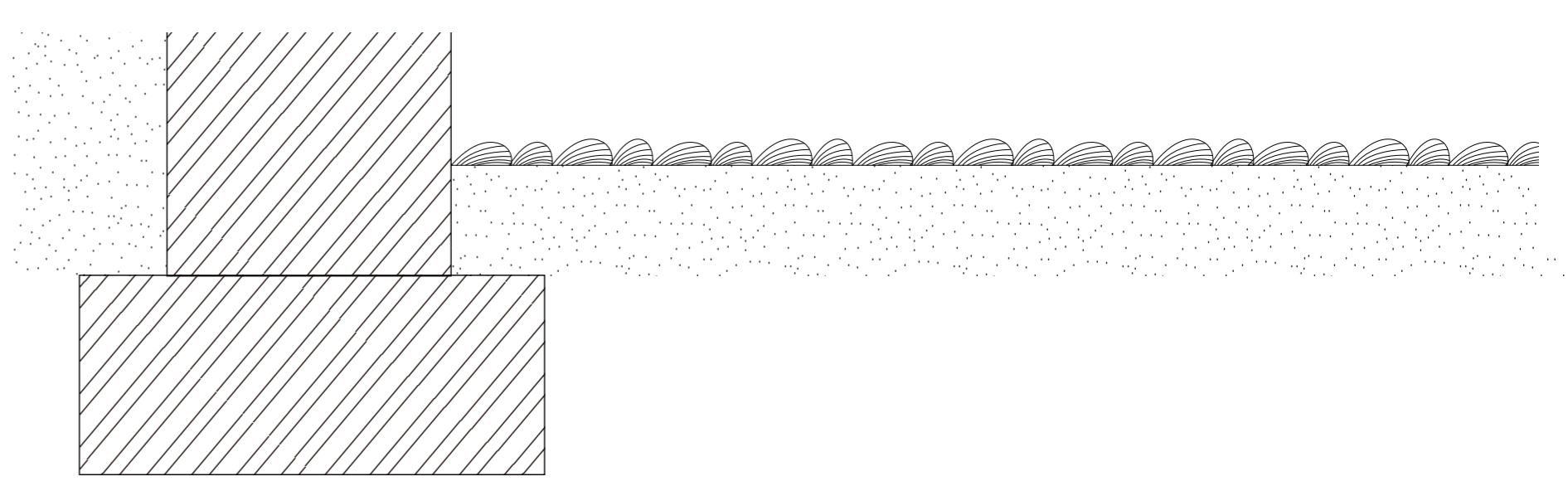
roof tiles
counter battens
roofing battens
wood fiberboard
chopped rice straw blown-in insulation
rafter



rain screen made from half cut bamboo
wood fiber board
timber frame with light straw-clay mixtures
clay plaster



timber flooring
light straw-clay panel
bamboo with bamboo fastened from another direction (with rice straw mat fill in the gap)
wood fiber board
bamboo beams



(upper rain screen made from split and flattened bamboo)
insect screen
louver ventilation fan
11cm diameter structural bamboo
bamboo pole with puncture to pour the concrete
poured concrete
rebar

