

# DE LEERFABRIEK

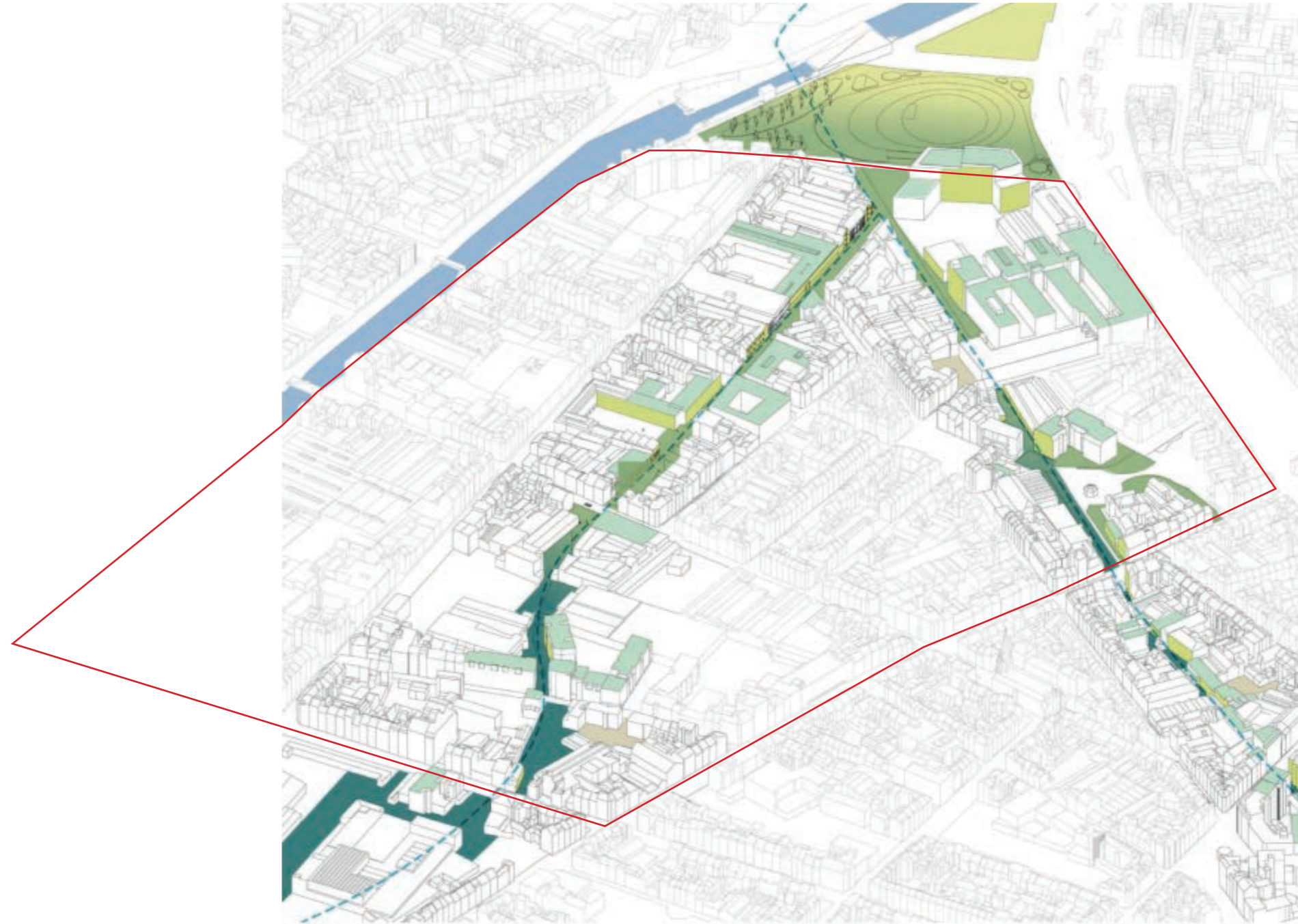
Femque Tangelder





# KLEINE ZENNEPARK

parc de la sennette



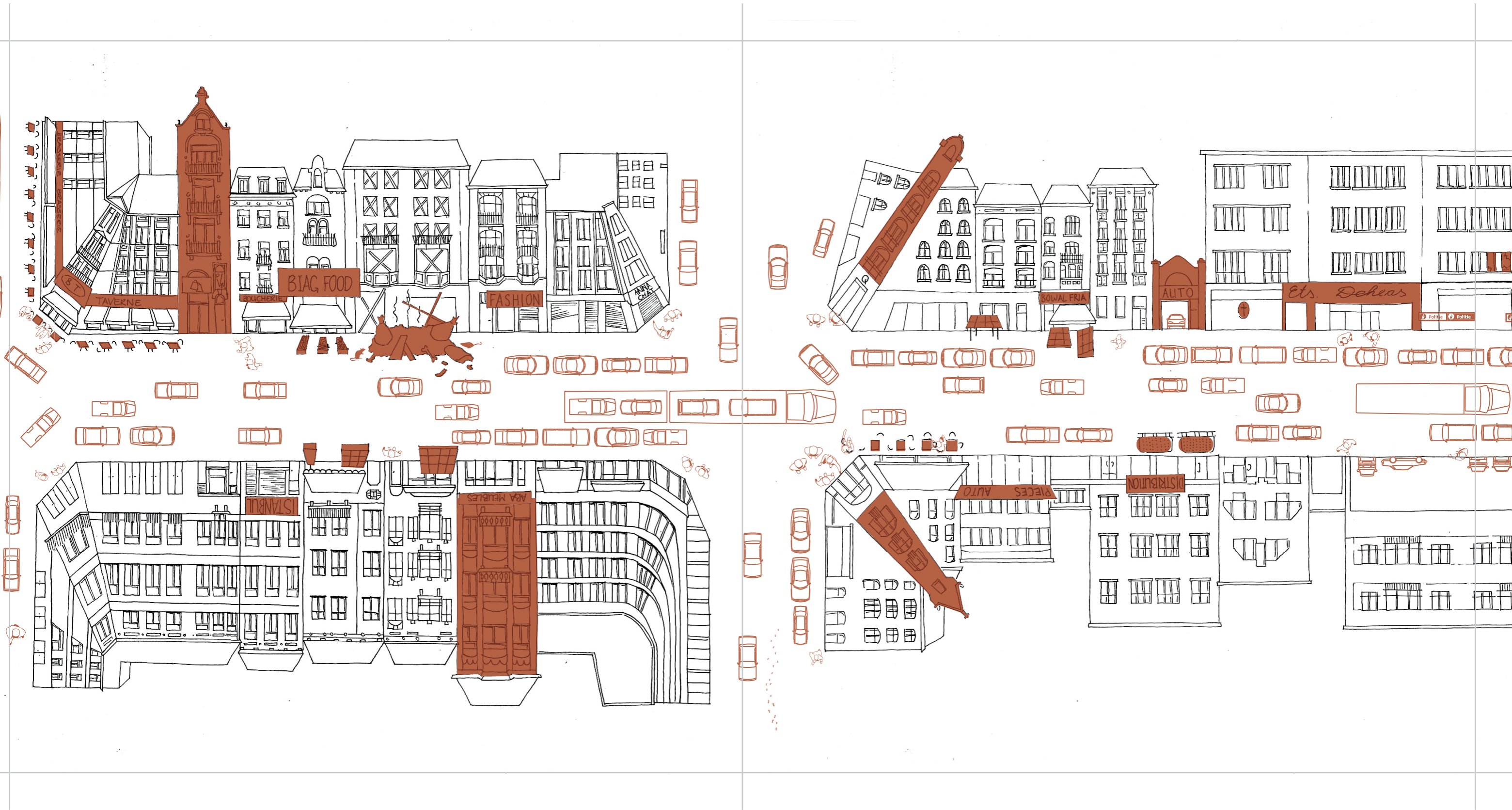
**A LINEAR PARK WITH HIGH ENVIRONMENTAL QUALITY**

EEN LINEAIR PARK VAN HOGE MILIEUKWALITEIT



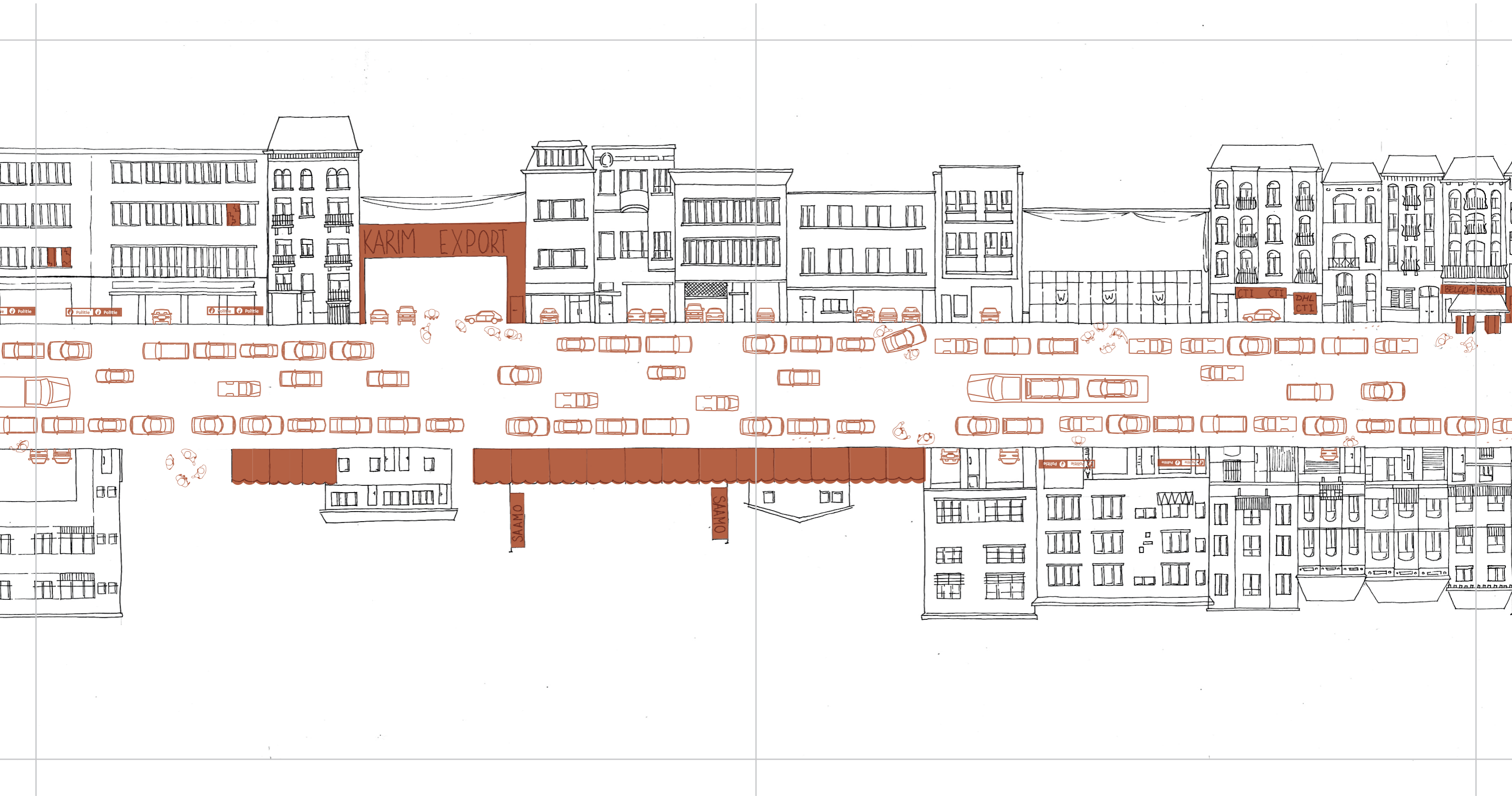
# HEYVAERTSTRAAT

rue heyvaert | jumping scales leporello | groepswerk



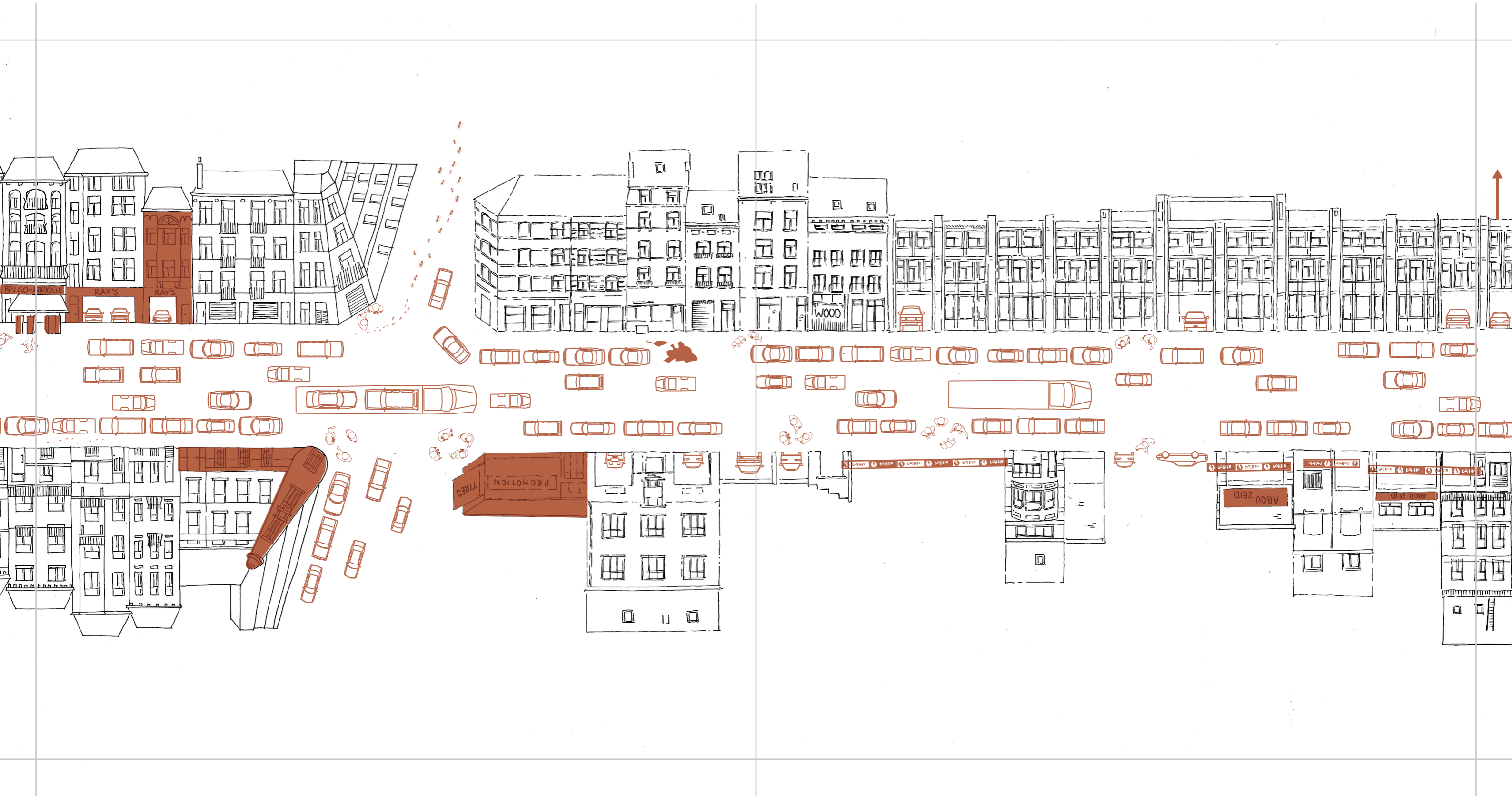
# HEYVAERTSTRAAT

rue heyvaert | jumping scales leporello | groepswerk



# HEYVAERTSTRAAT

rue heyvaert | jumping scales leporello | groepswerk



# HEYVAERTSTRAAT

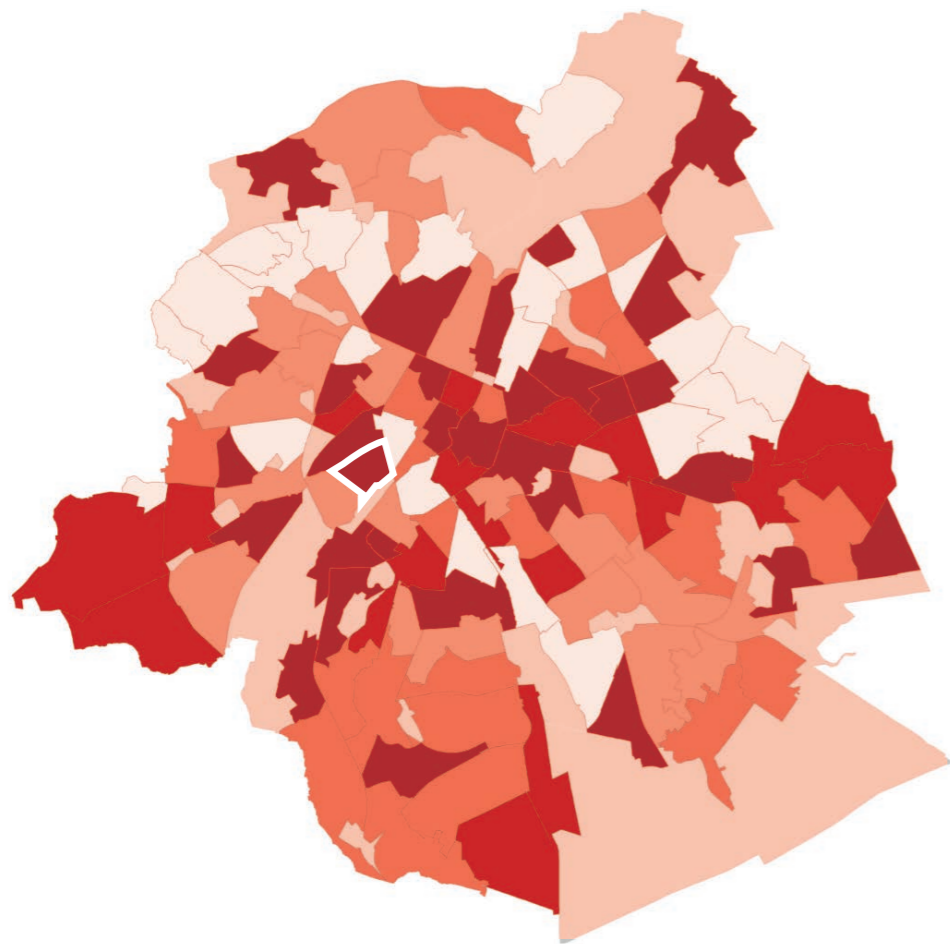
rue heyvaert | jumping scales | leporello | groepswerk



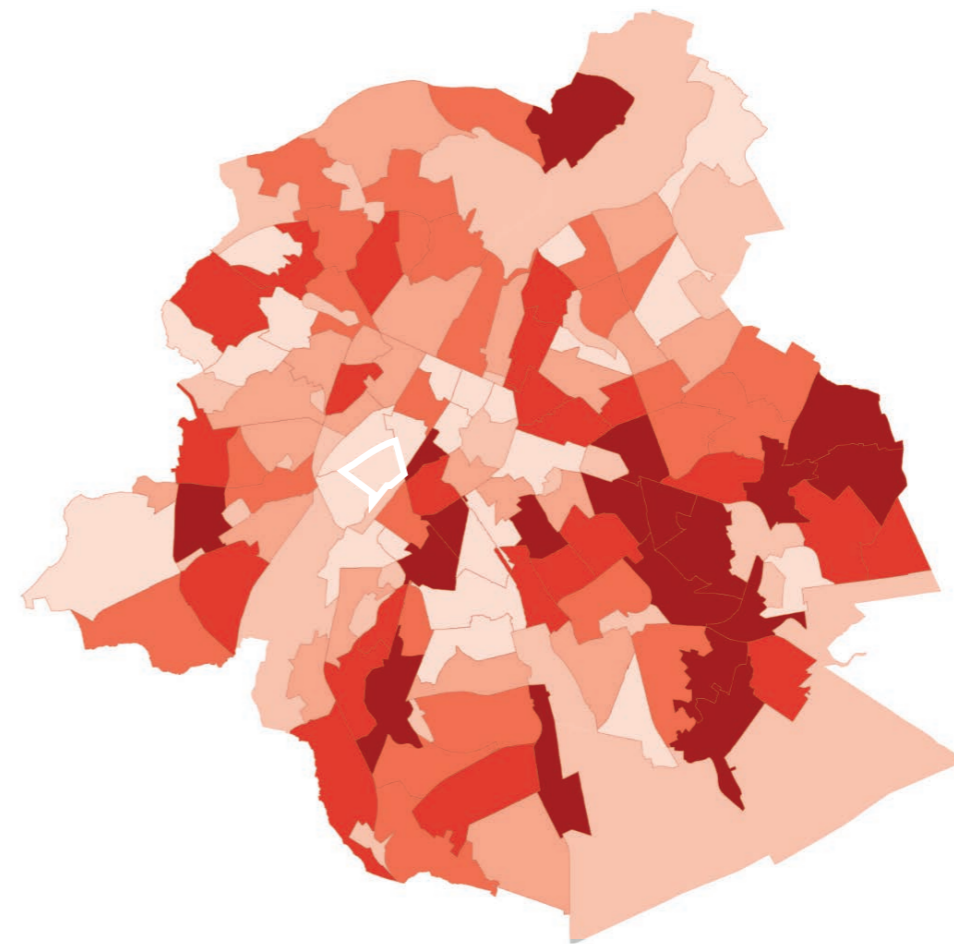
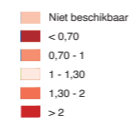
# HEYVAERTSTRAAT

rue heyvaert | jumping scales leporello | groepswerk

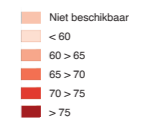


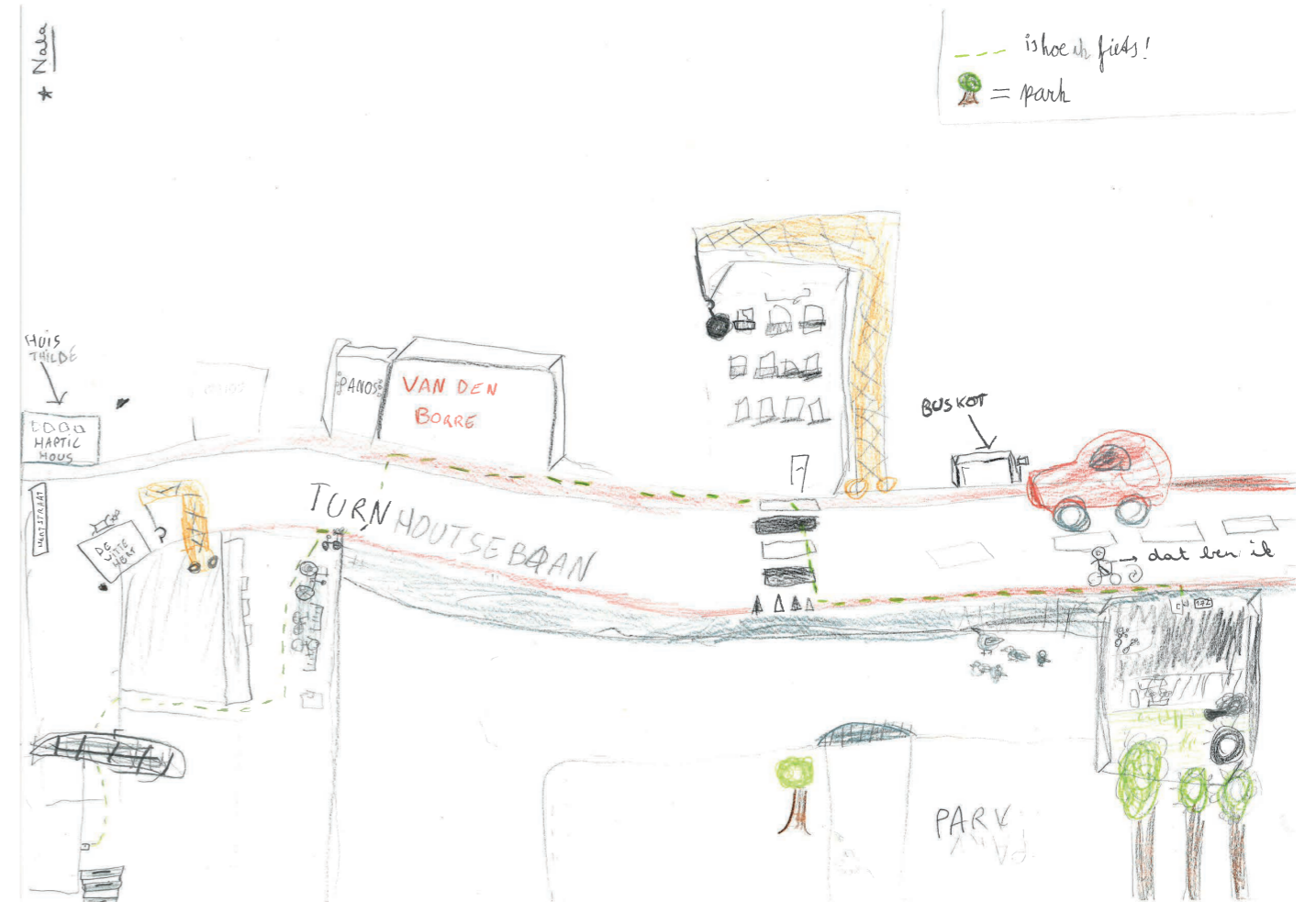


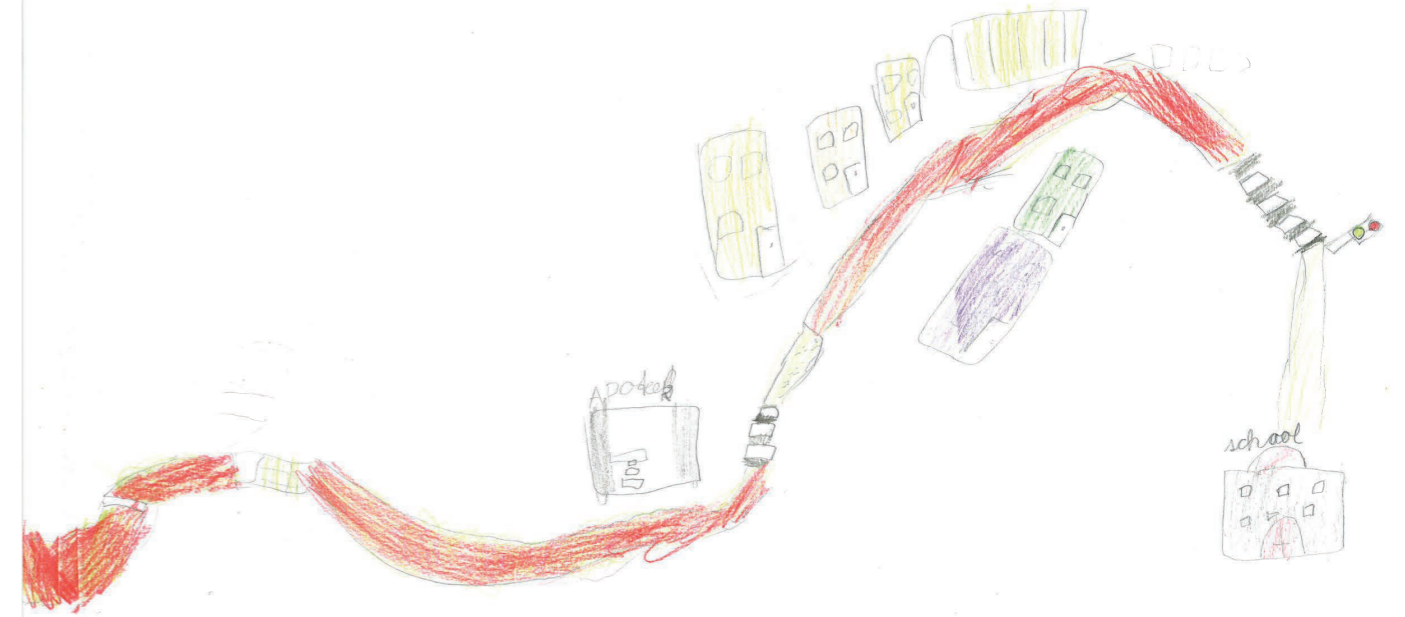
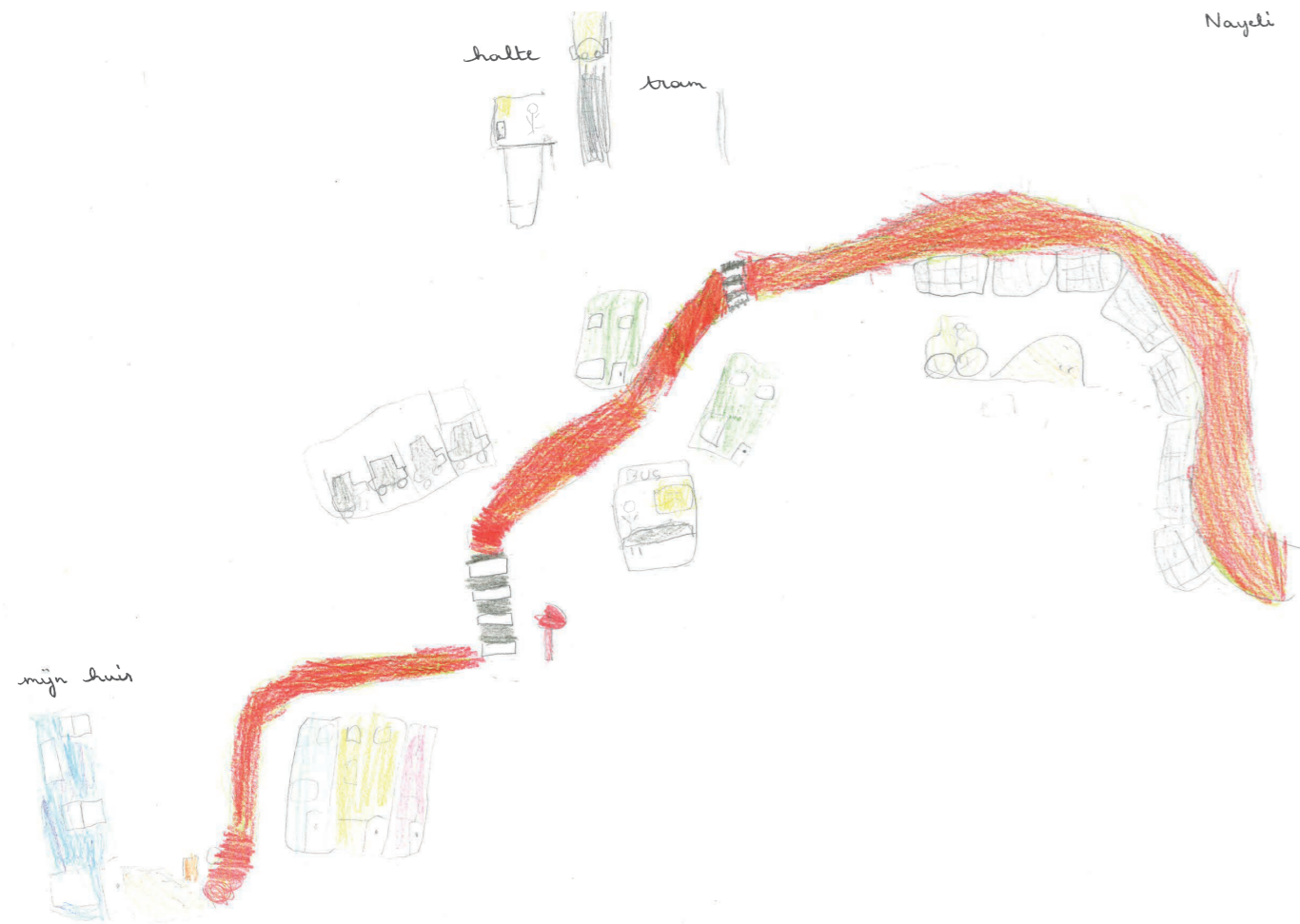
Relatieve opvangcapaciteit van de lagere scholen op het grondgebied (nm leerlingen / nm kinderen) — 2023-2024



Aandeel van de kinderen van de wijk dat schoolloopt in het lagere onderwijs in de buurt van hun woonplaats (%) — 2023-2024

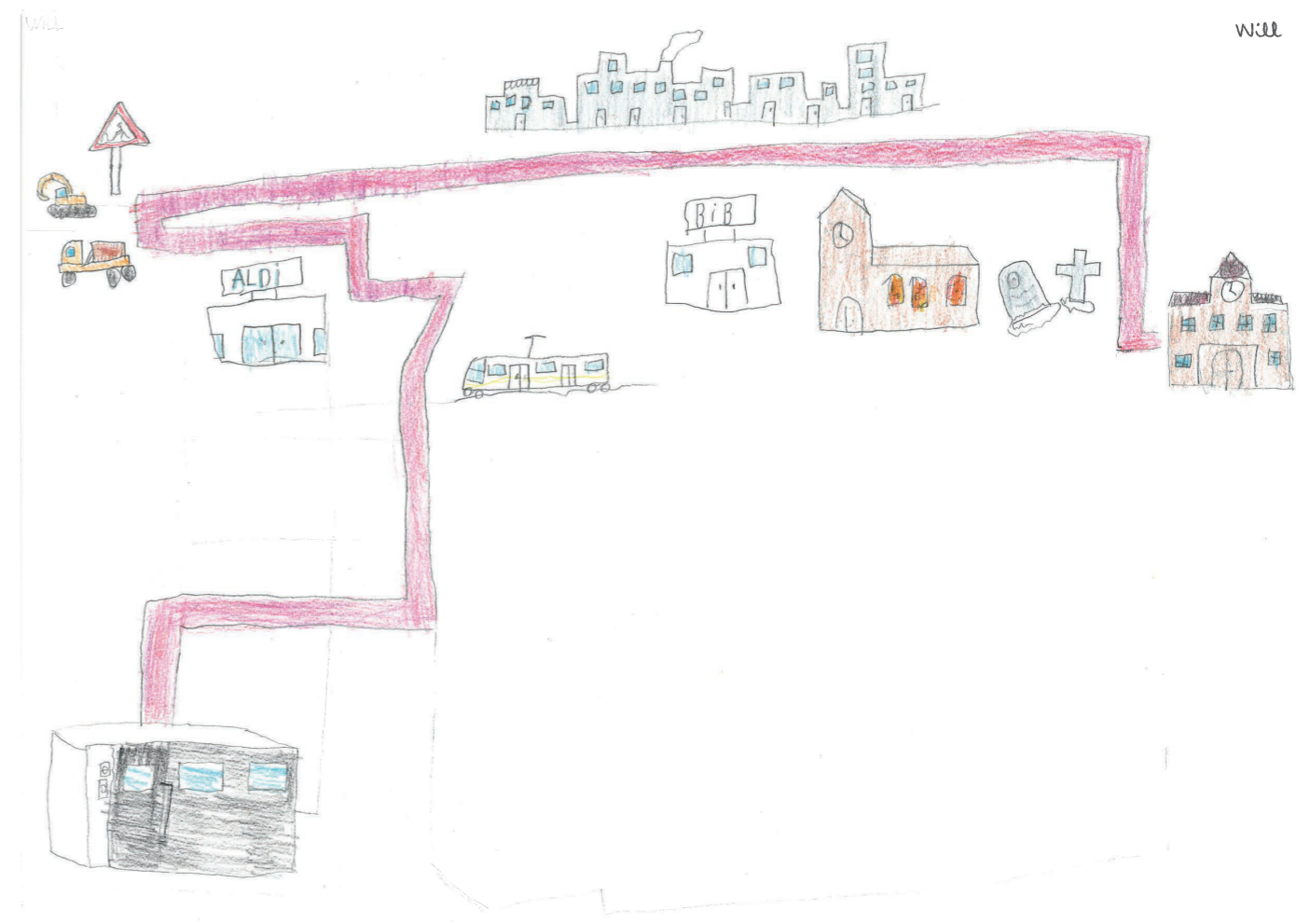






# SCHOOL

school



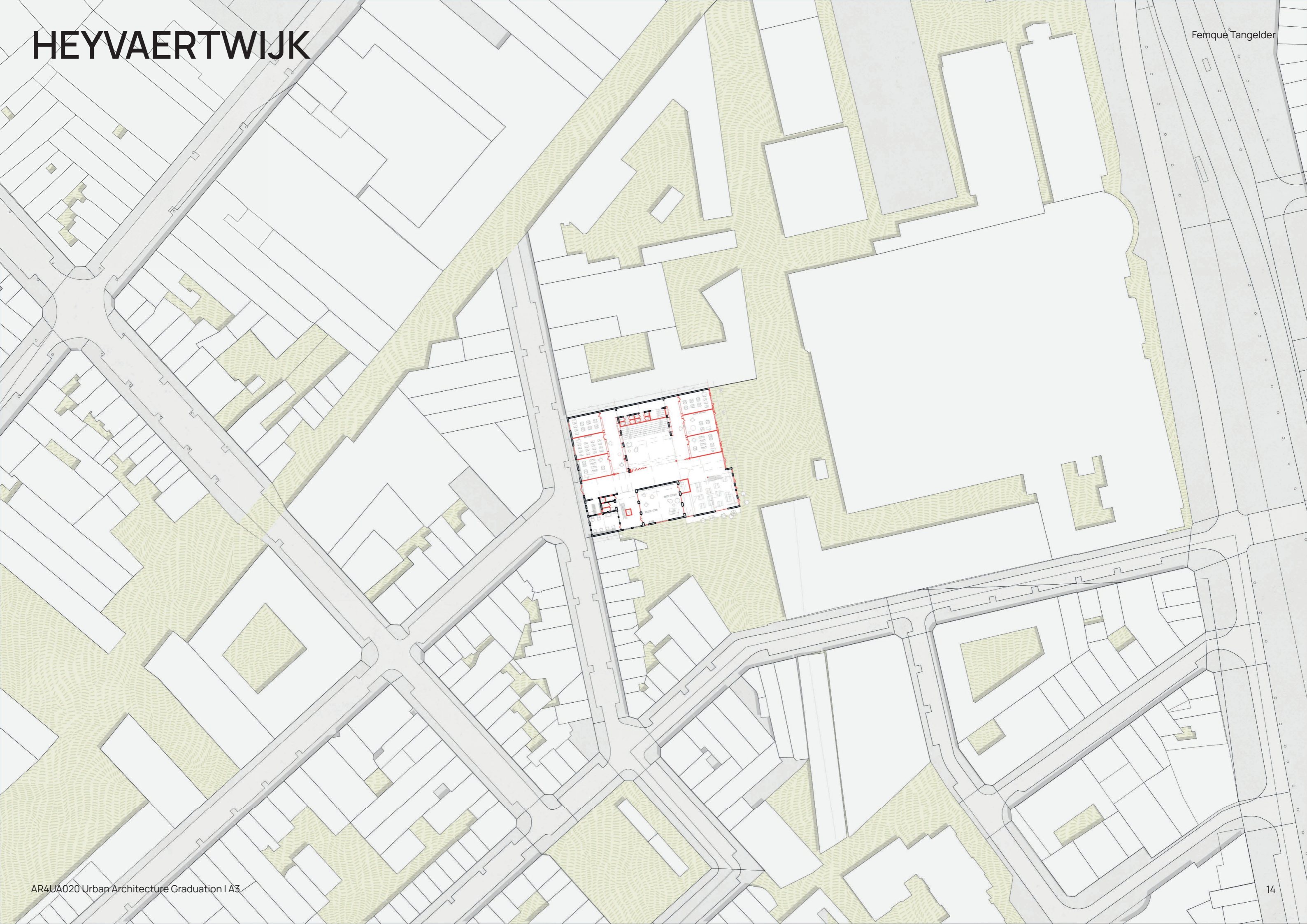
# WASKAARSSTRAAT

rue de la bougie



# HEYVAERTWIJK

Femque Tangelder



# WASKAARSSTRAAT

rue de la bougie



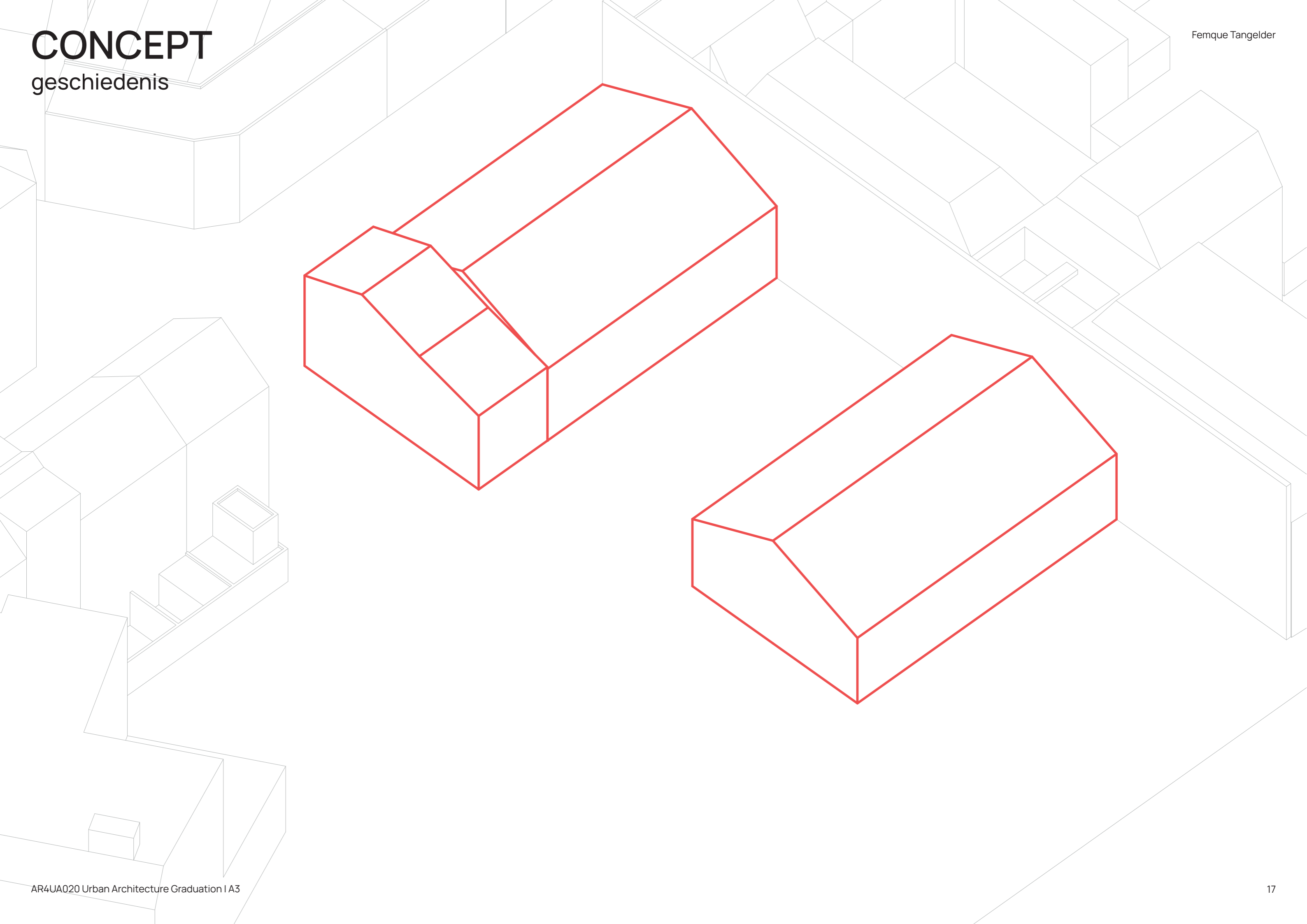
# WASKAARSSTRAAT

rue de la bougie



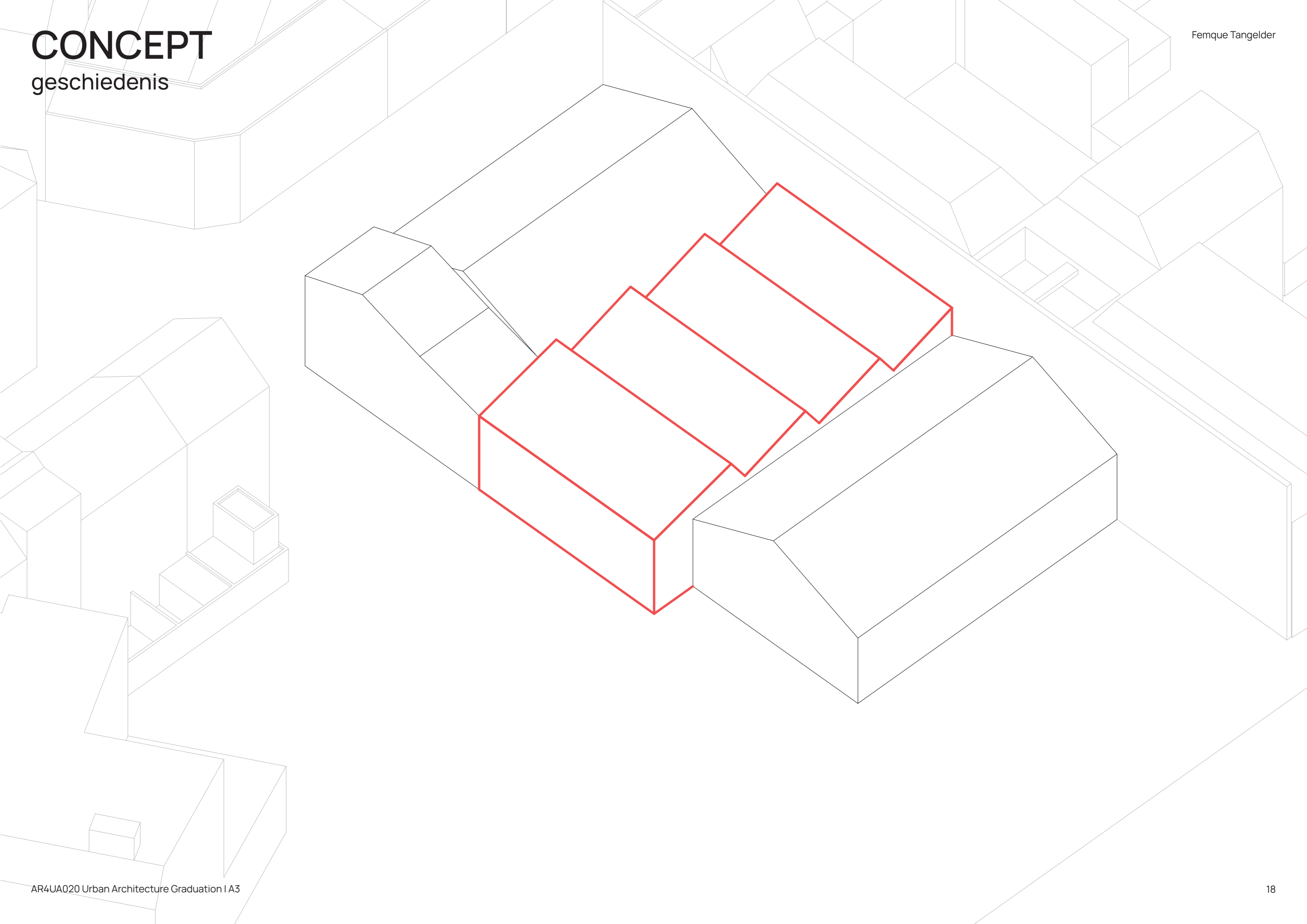
# CONCEPT

geschiedenis



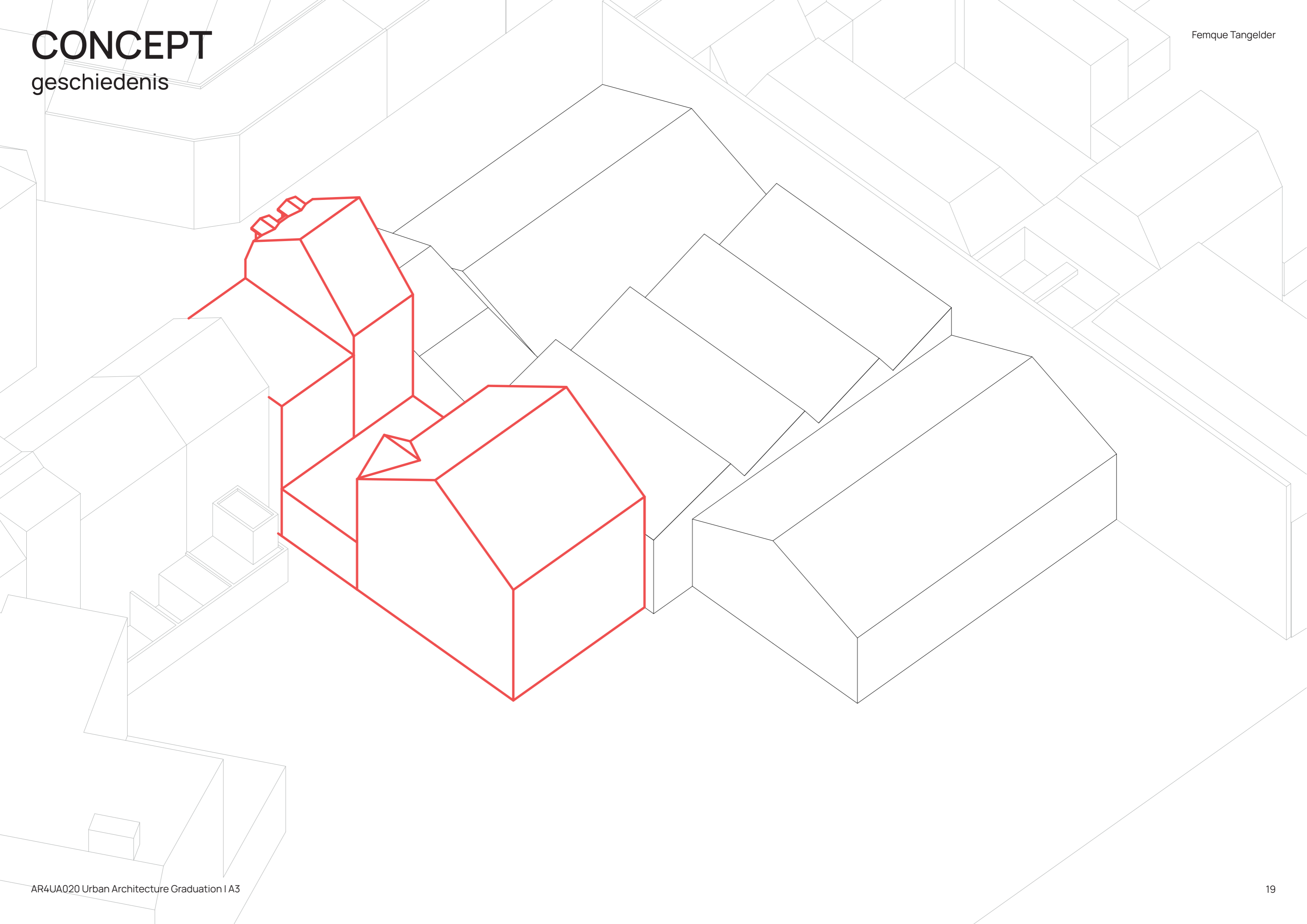
# CONCEPT

geschichte



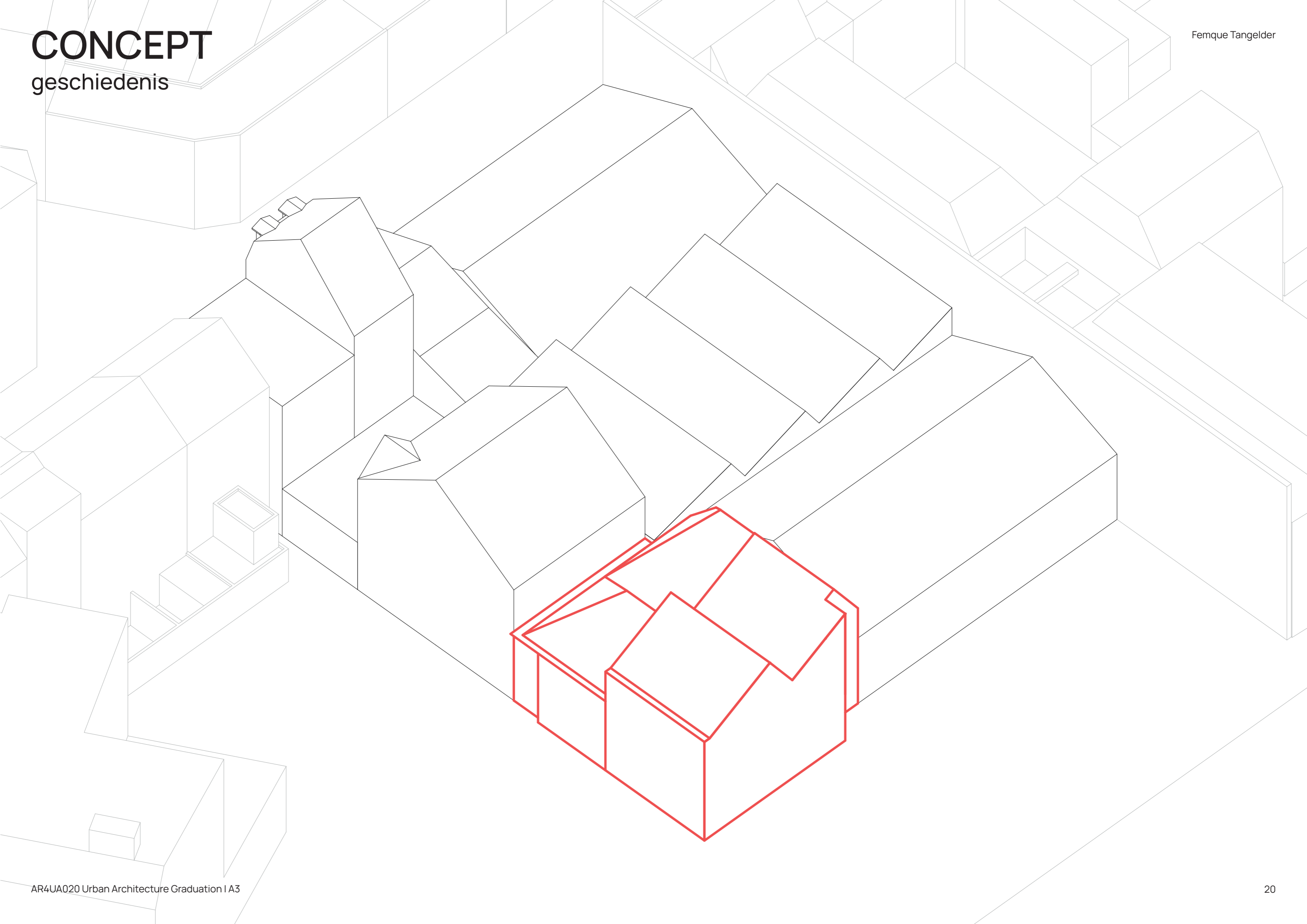
# CONCEPT

geschiedenis



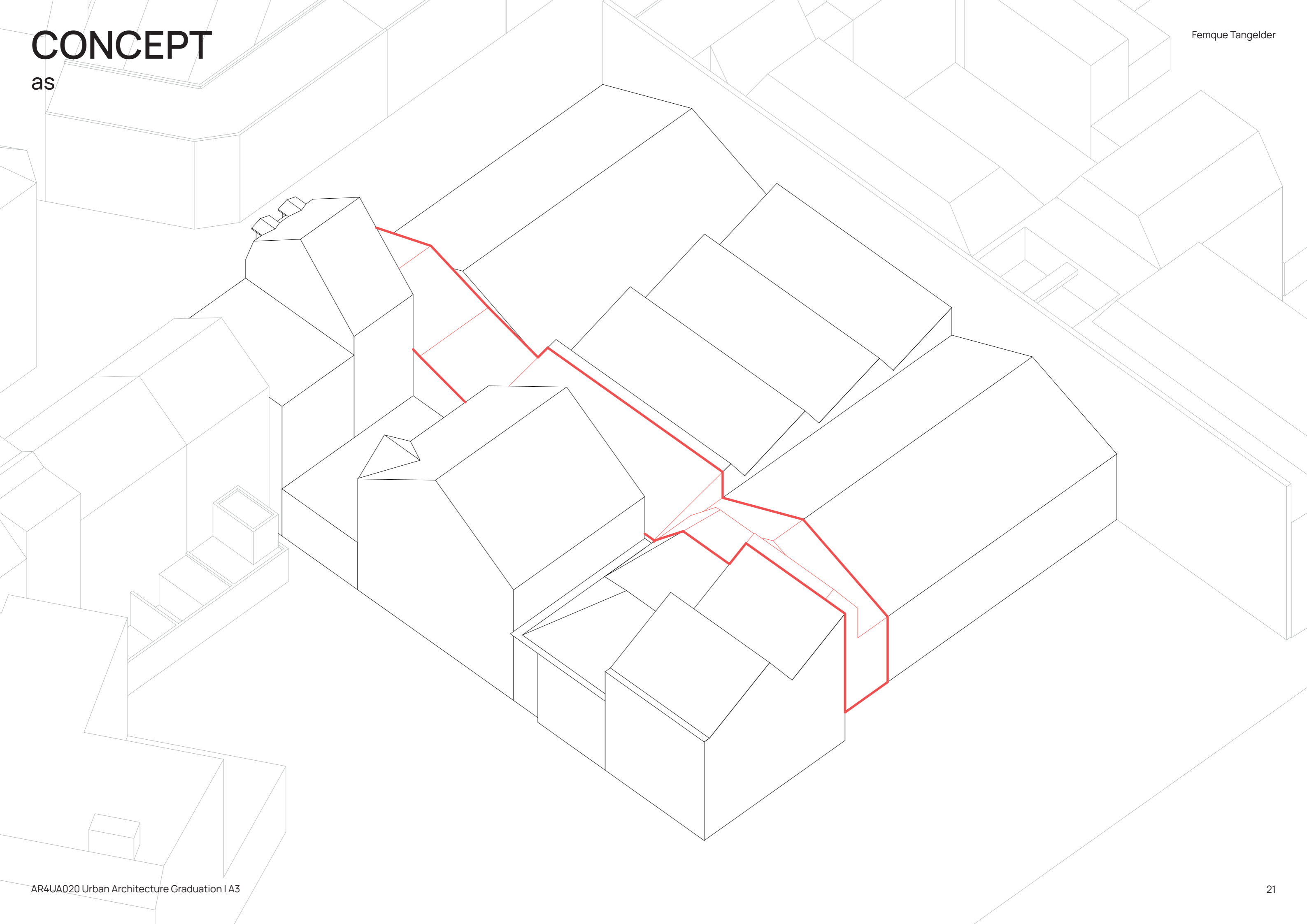
# CONCEPT

geschichte

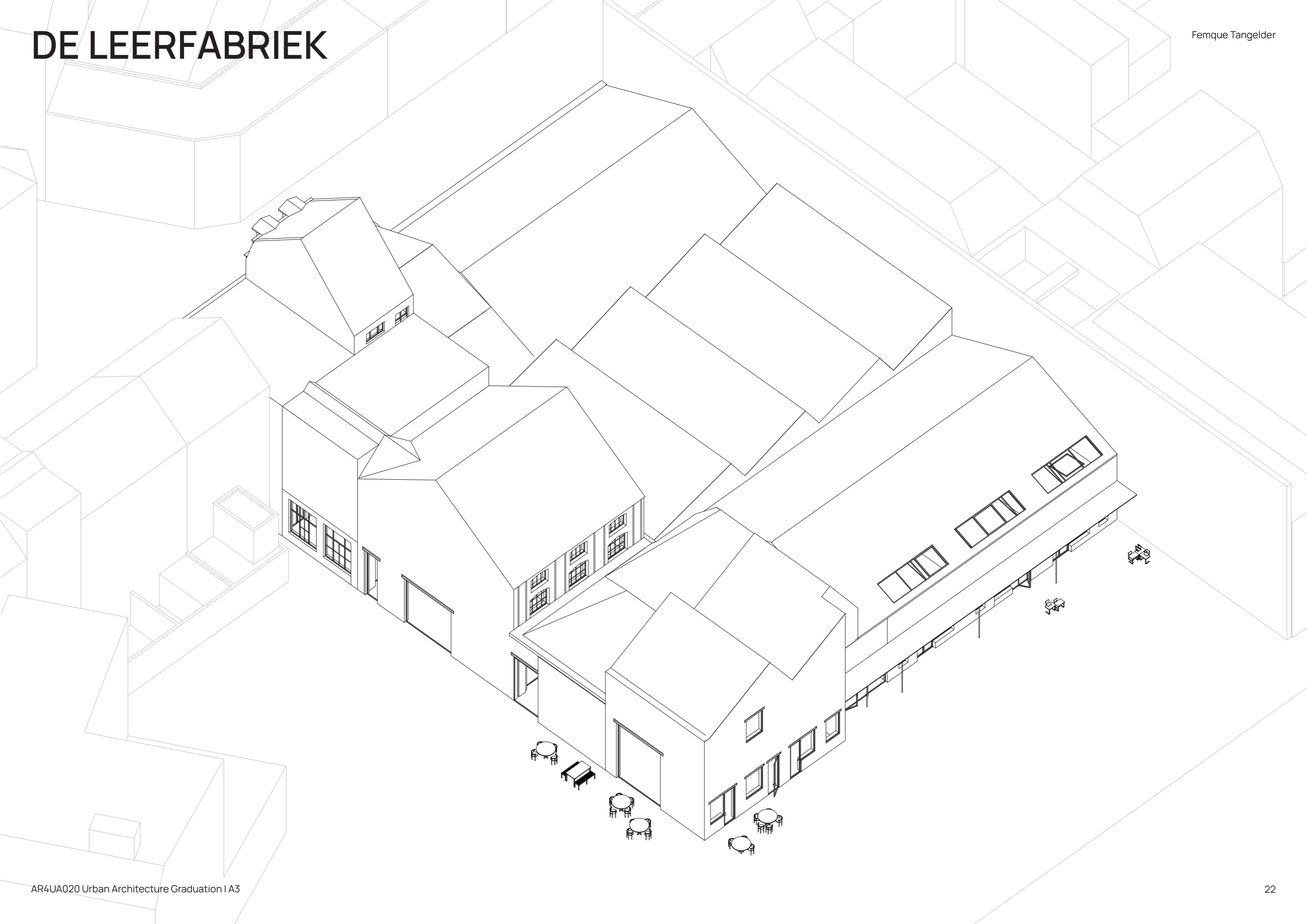


# CONCEPT

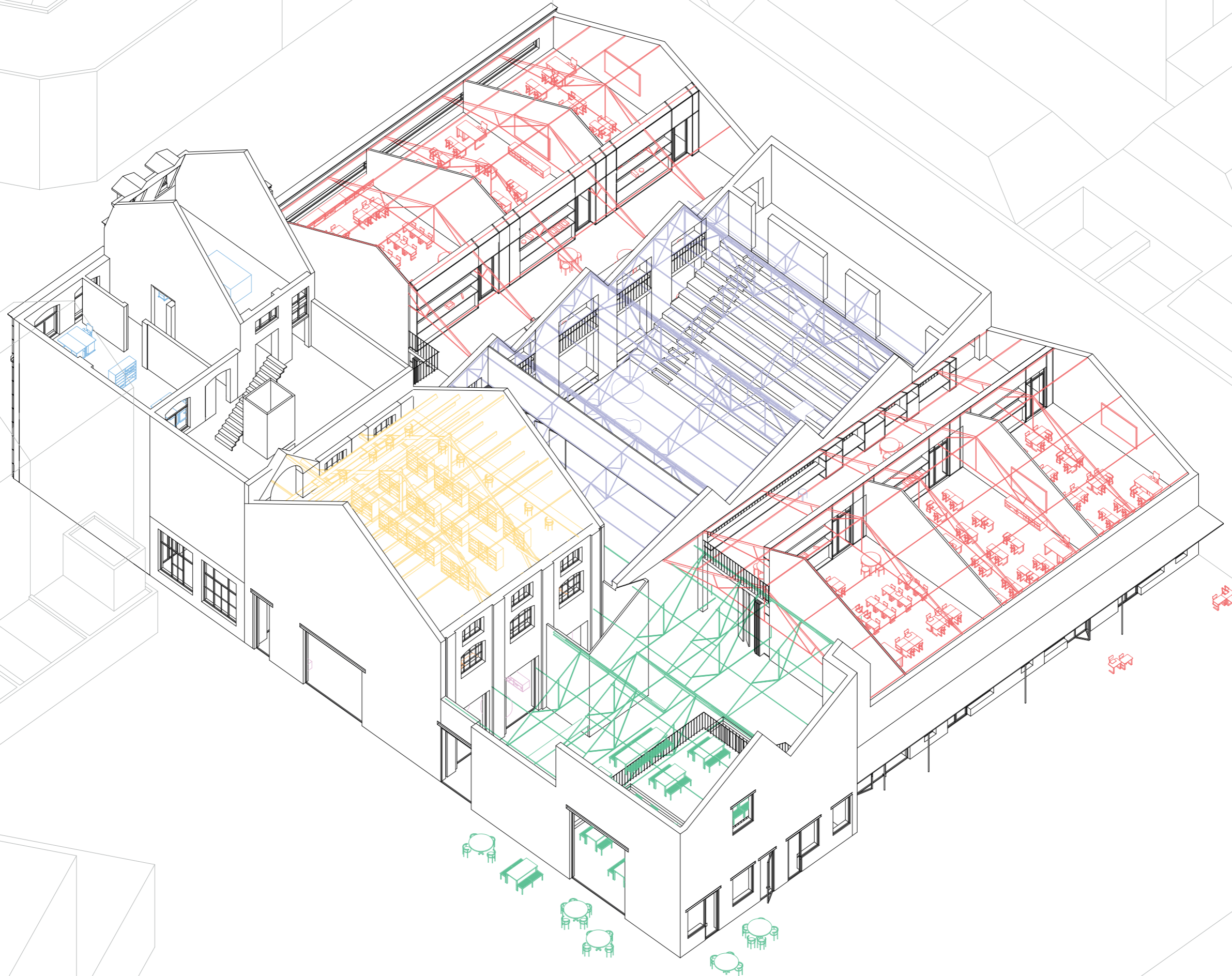
as

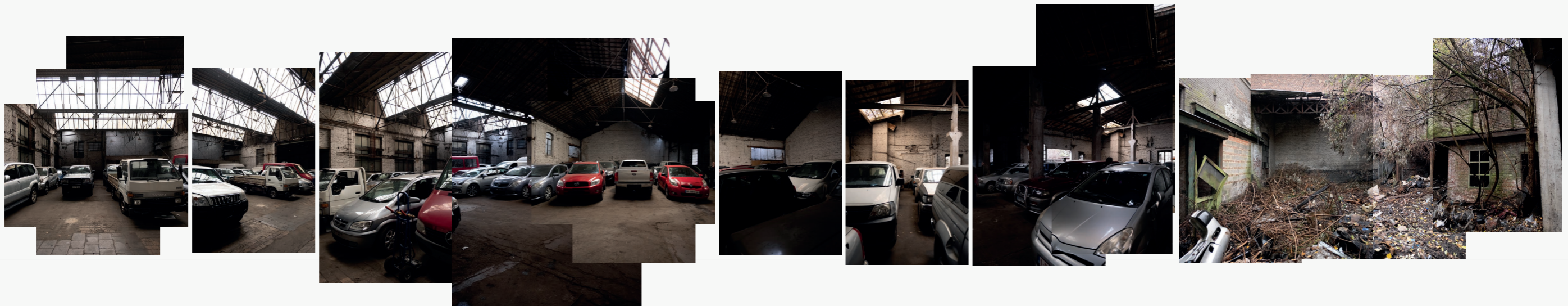
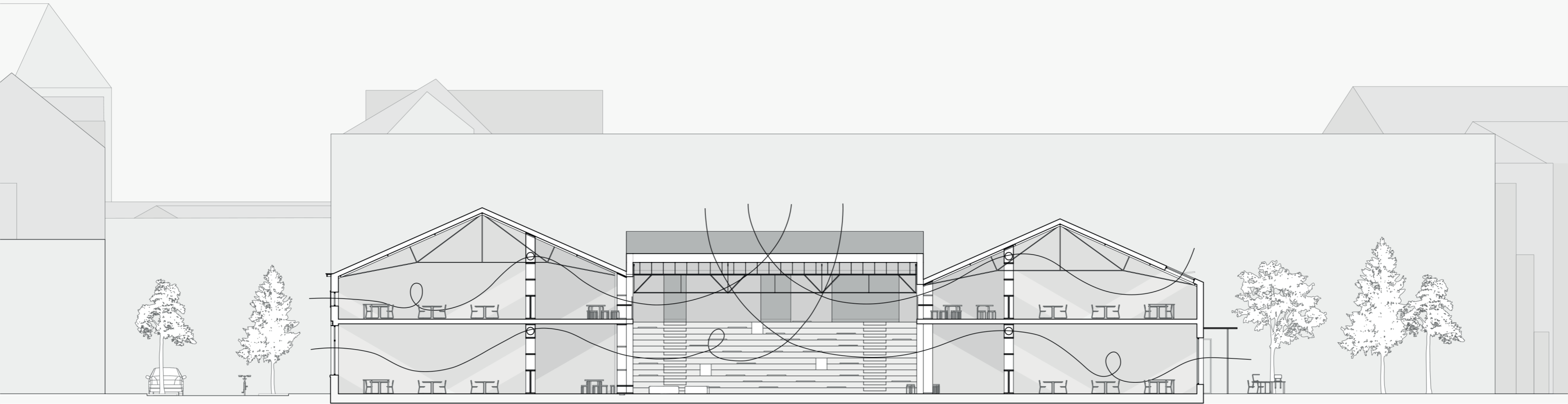


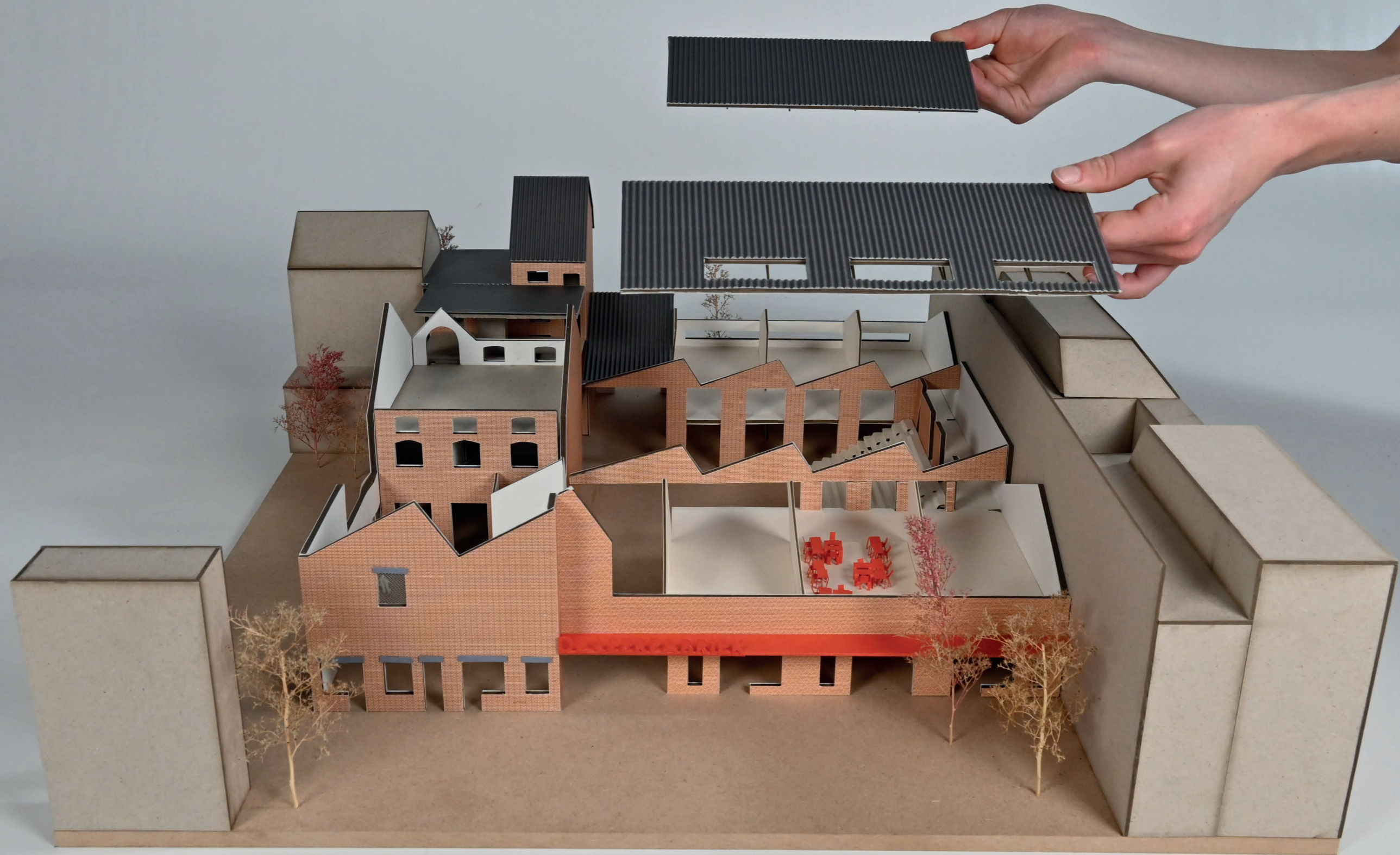
# DE LEERFABRIEK



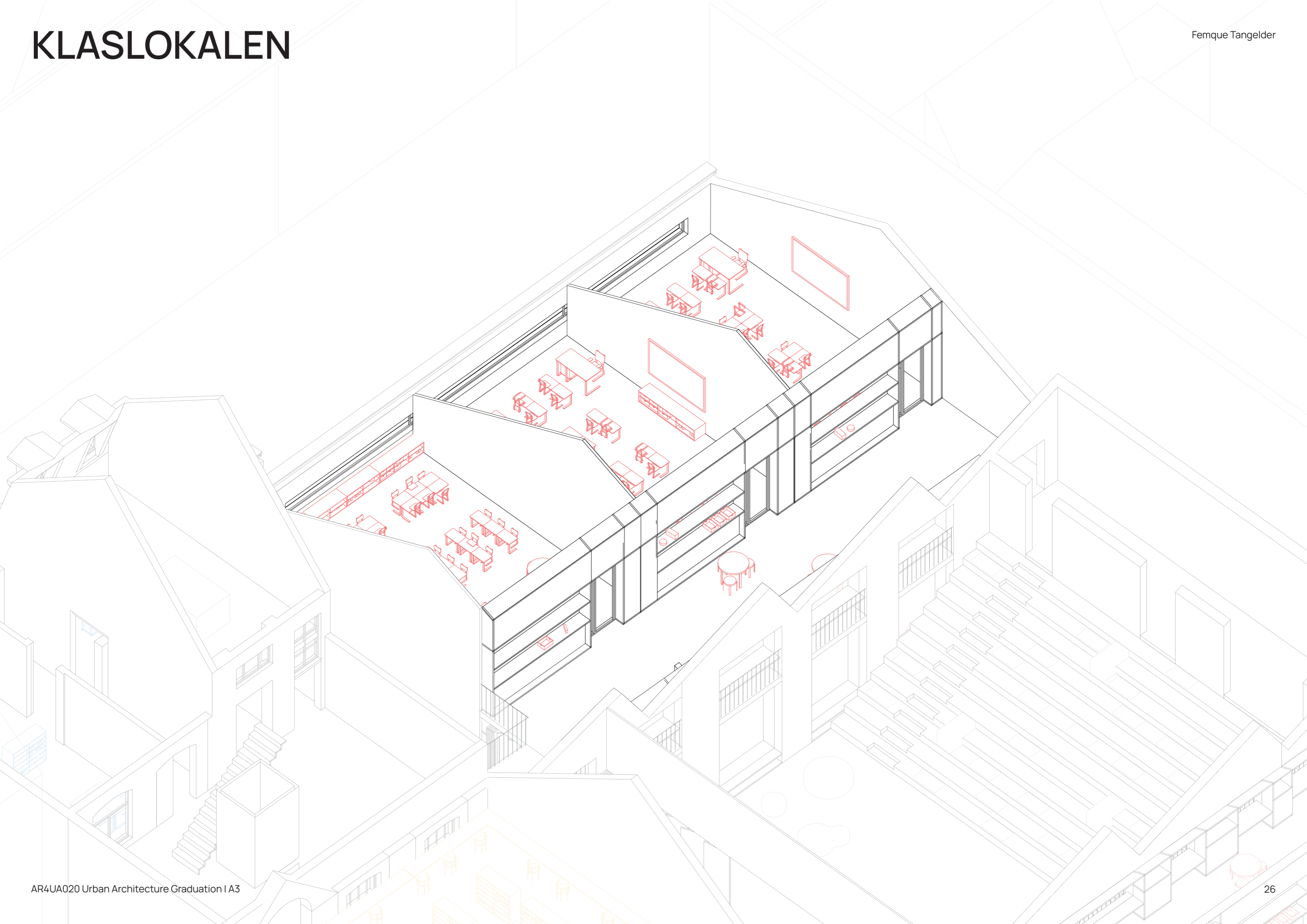
# FUNCTIONIE VOLGT CONSTRUCTIE







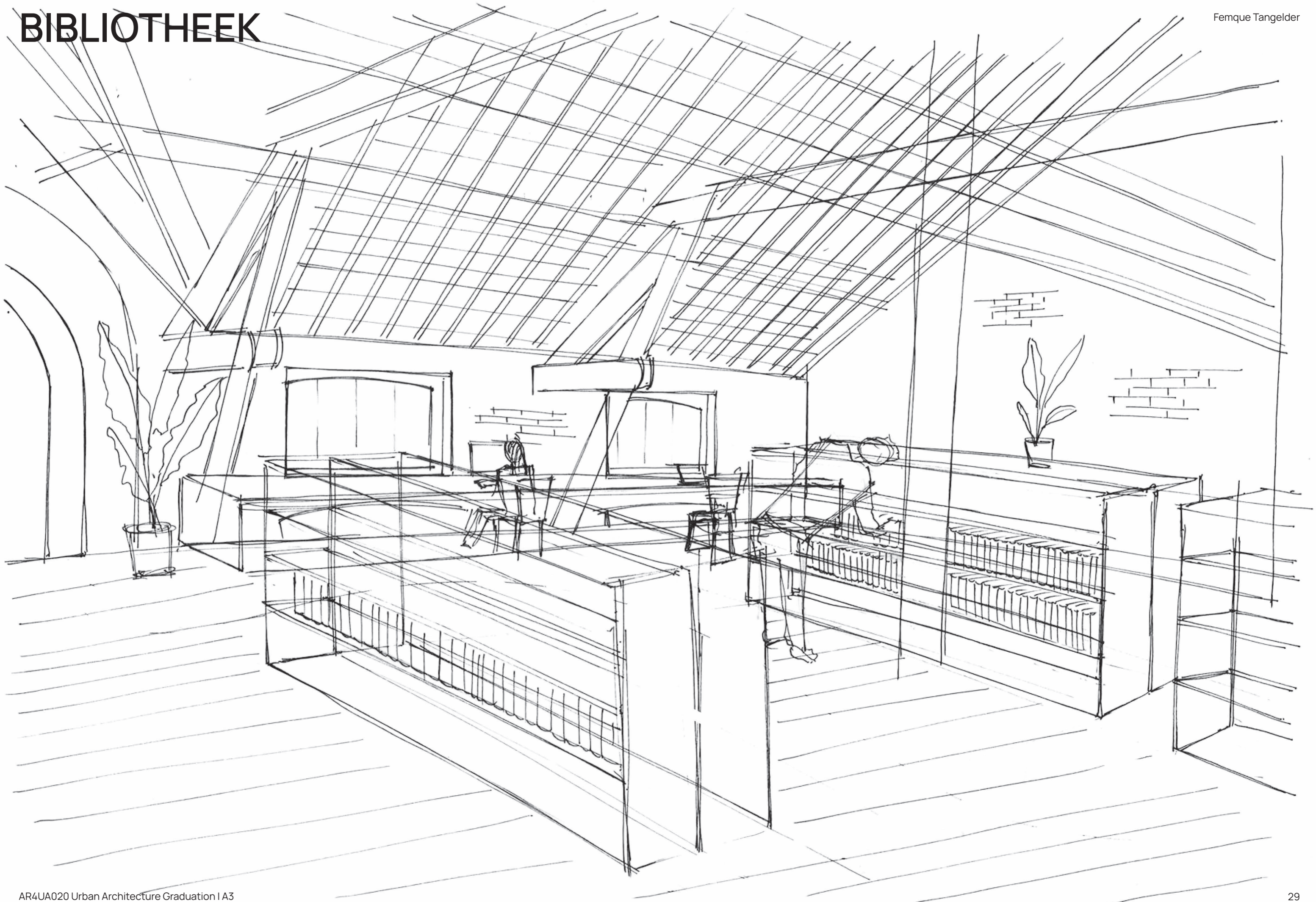
# KLASLOKALEN







# BIBLIOTHEEK



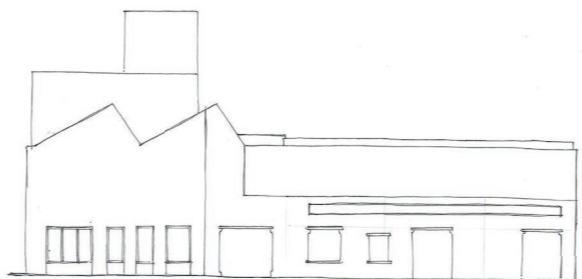
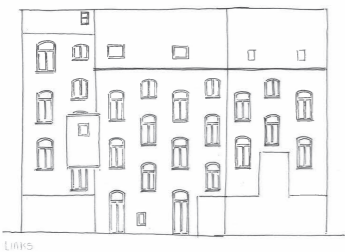
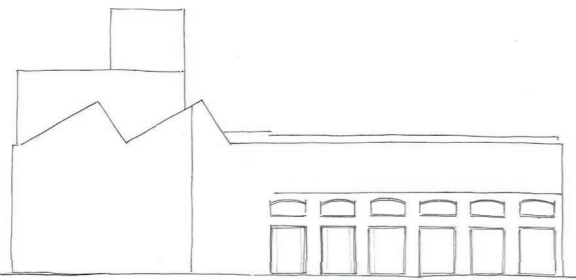
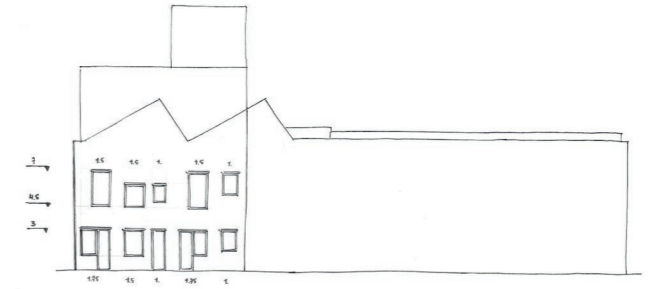
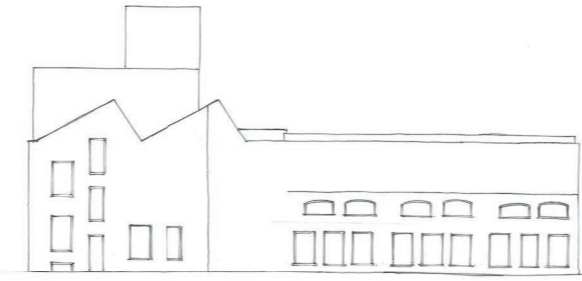
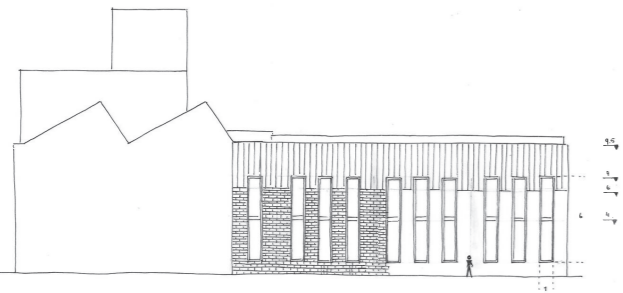
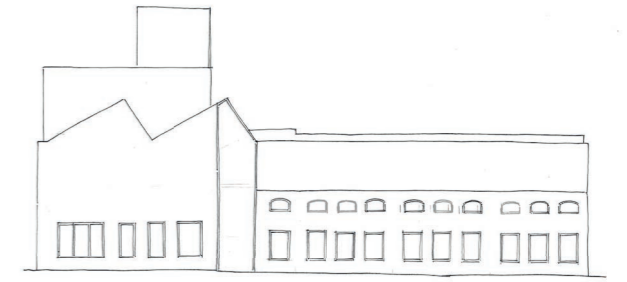
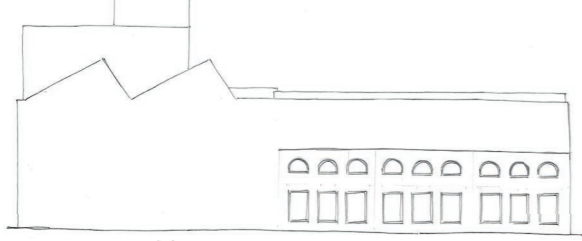
# KLEINE ZENNEPARK

parc de la sennette



# KLEINE ZENNEPARK

## ontwerpproces



# DE LEERFABRIEK



# CAFE | KANTINE





# CAFE | KANTINE

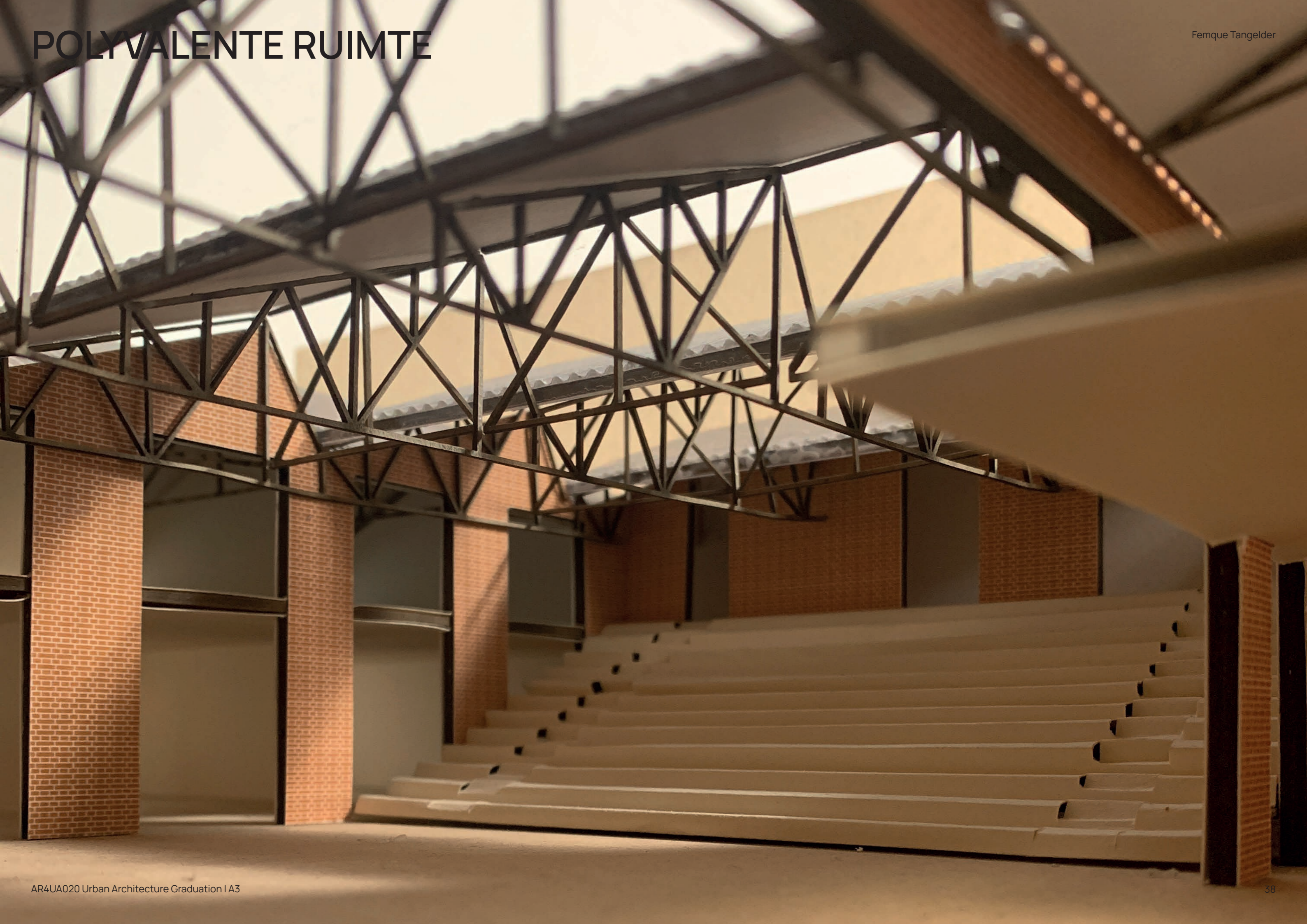




# POLYVALENTE RUIMTE



# POLYVALENTE RUIIMTE



# POLYVALENTE RUIIMTE



# POLYVALENTE RUIJMTE



# POLYVALENTE RUIJITE



