

ARCH

P

CON I PIEDI PER

O

P



ARCH

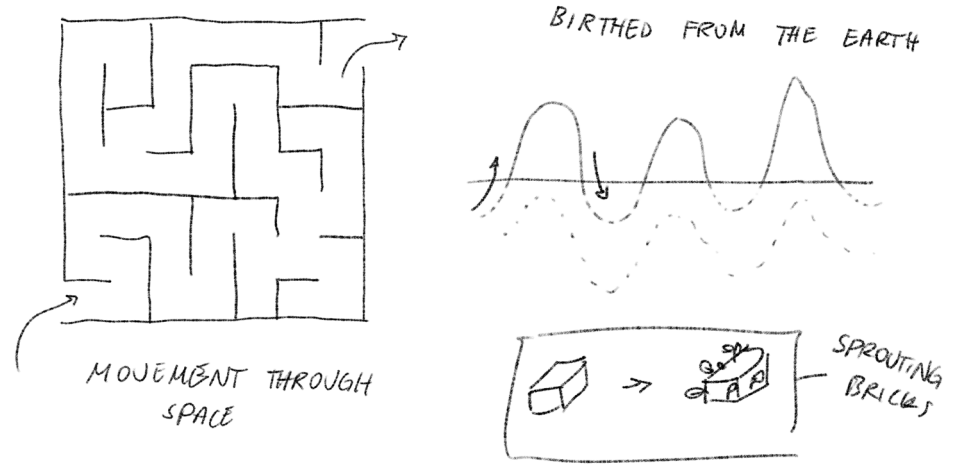
P

TERRA

O

P



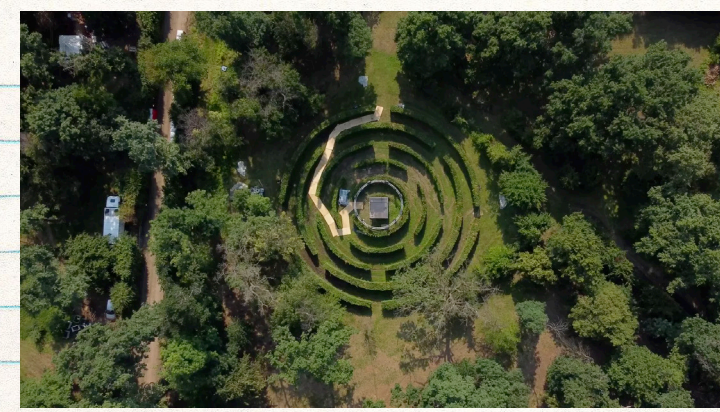


# SPROUTING MAZE

52.366265, 4.908202  
 IMMERSIVE EXHIBITION  
 PALM GREENHOUSE, BOTANICAL GARDEN, AMSTERDAM

Nestled in the palm greenhouse of Amsterdam's Hortus Botanicus, the Sprouting Maze is an enchanting interior installation set to captivate visitors throughout the summer. With the palm trees relocated outdoors to enjoy the warm weather, the greenhouse is transformed into an immersive exhibition space for Murano glass cacti sculptures.

Inspired by movement as a transformative force, the Sprouting Maze features walls made entirely of mud bricks embedded with seeds. These seeds will sprout over time, providing visitors with a continuously evolving experience. Each visit promises a unique encounter, reflecting the dynamic nature of the installation and its harmonious blend with the natural world. visual element to Amsterdam.



**FOSBURY ARCHITECTURE - THE LABYRINTH**  
 Terraforma Festival, Castellazzo – 2022  
 Supported by Bottega Veneta

**BOTTEGA VENETA, PARCO PALLADIANO RELAUNCH**  
 Venice 2018  
 Supported by Bottega Veneta



"There is a need to reconnect to a primal world of animals, minerals, and plants. It's like collecting seashells - beautiful, meaningful and meaningless. It's linked to the beauty of small marvels and natural wonders. It's embracing something freeform: there are clothes without codes"  
 - Matthew Blazy



**VIGNA VEDERE - GAETANO PESCE**  
 Bottega Veneta immersive experience for Milan Design Week, 2023





ARCH

P

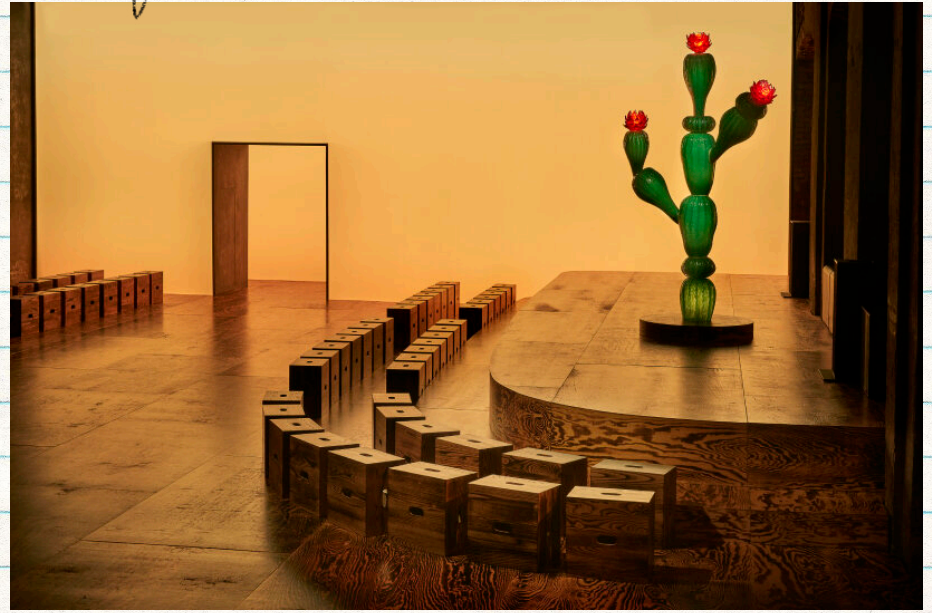


O

P



Visual Reference



**BOTTEGA VENETA'S FW24 SET DESIGN**  
Milan, 2024  
Production design: Bureau Betak  
Stools: Le Corbusier's LC14 Cabanon stool  
Sculptures: large-scale glass flowering cacti handmade on the island of Murano in Venice by Wave Murano Glass.



"The idea of rebirth is beautiful, too. These are the flowers that bloom after the earth is burnt - they give a sense of hope. They come back stronger than ever. Here, elegance is resilience."  
- Matthieu Blazy

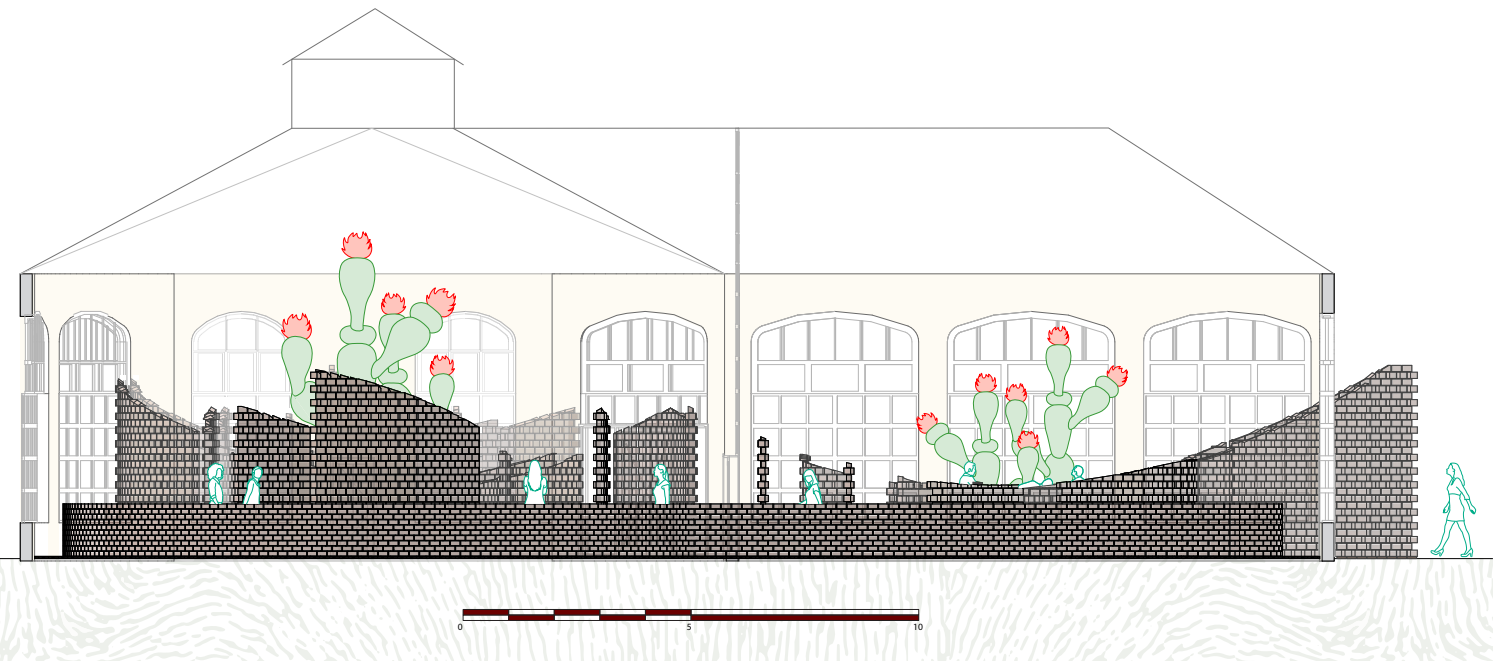


BOTTEGA VENETA PRE FALL 2023



MUD BRICK SPIRAL BY ELÍN HANSDÓTTIR, 2012





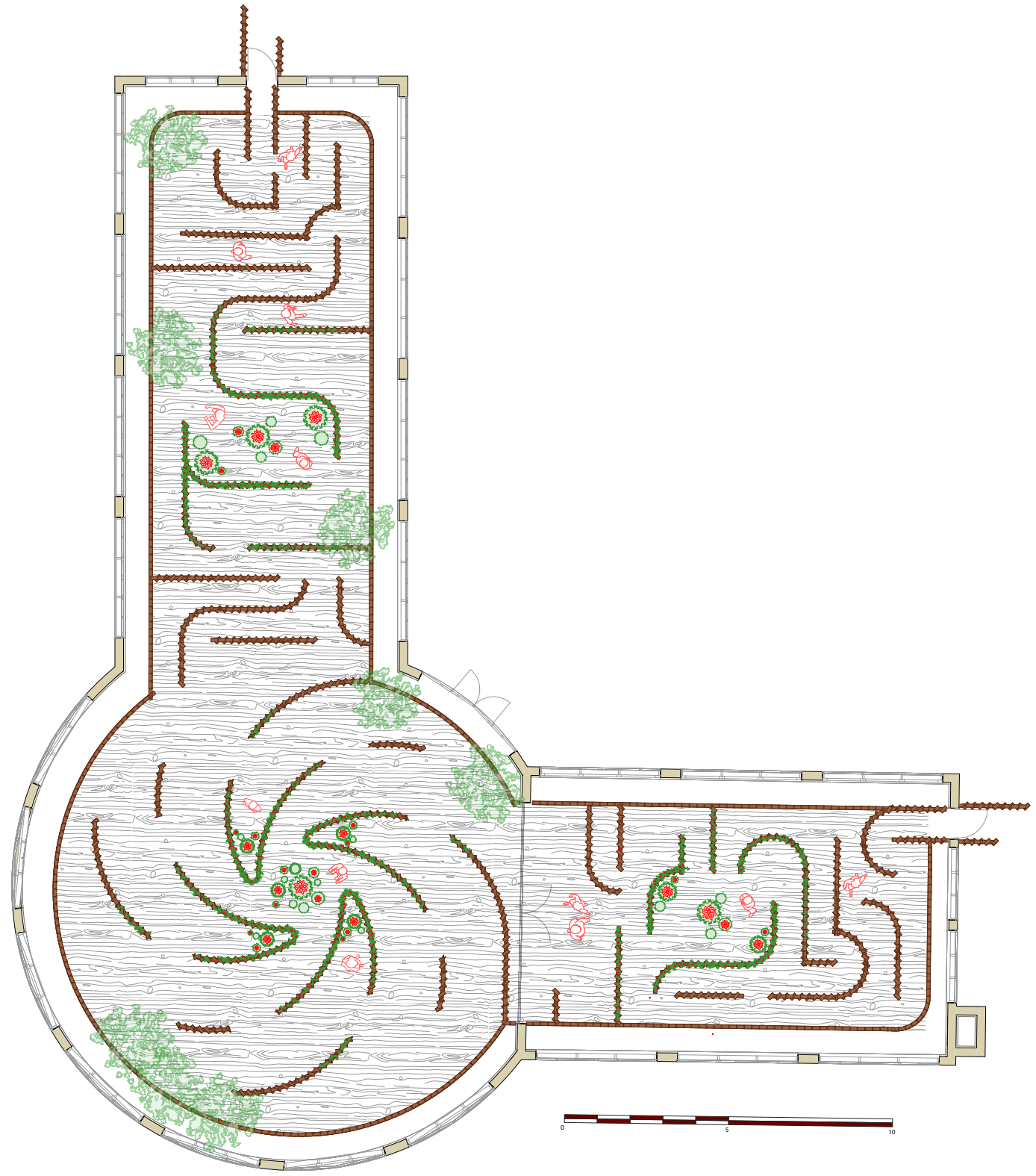
Elevation



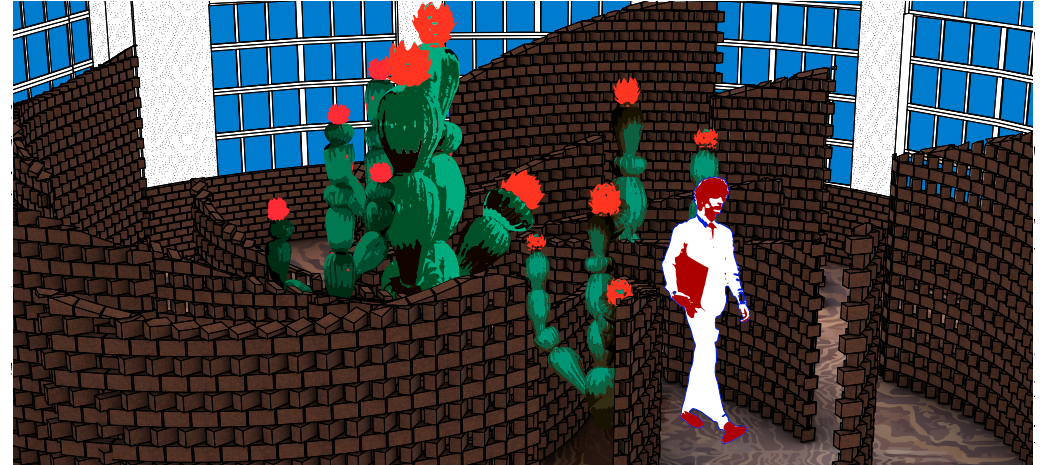
Section







Floor Plan

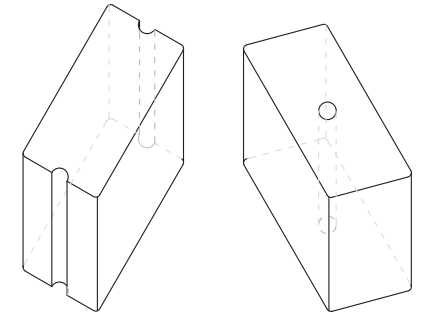


Interior views

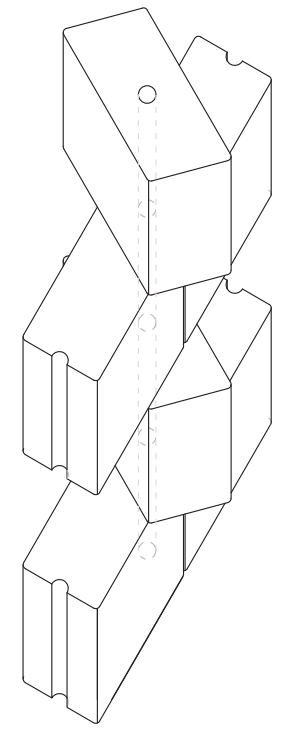








Brick typologies



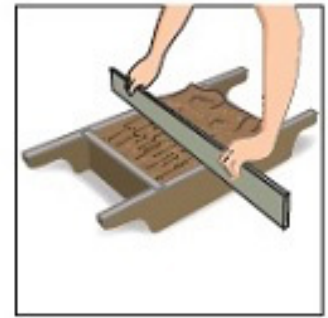
Brick stacking pattern



1. Wet the inside of a brick mould



2. Fill mould to top



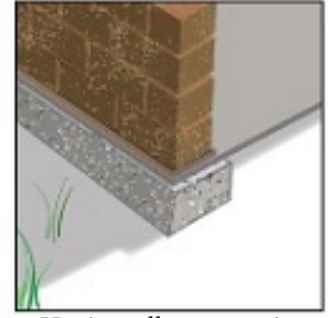
3. Scrape extra mud off top



4. Remove mould and dry



5. When partly dry, turn on the side to finish



6. Use in wall constructions, away from close contact with water

# The Labyrinth







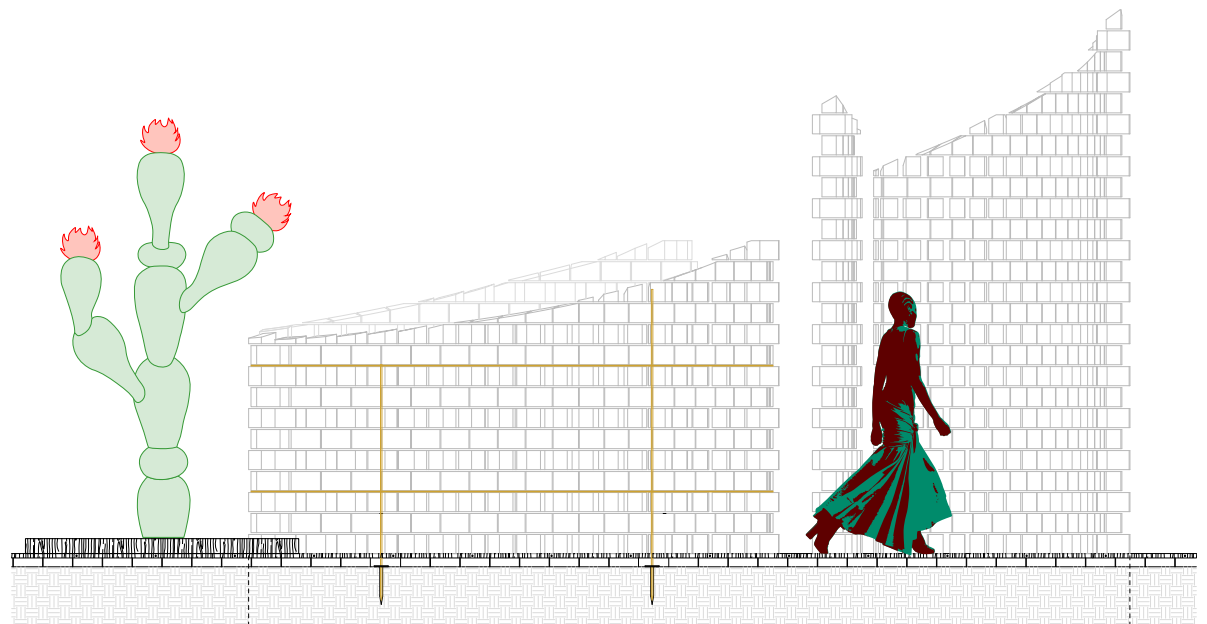
ARCH

P

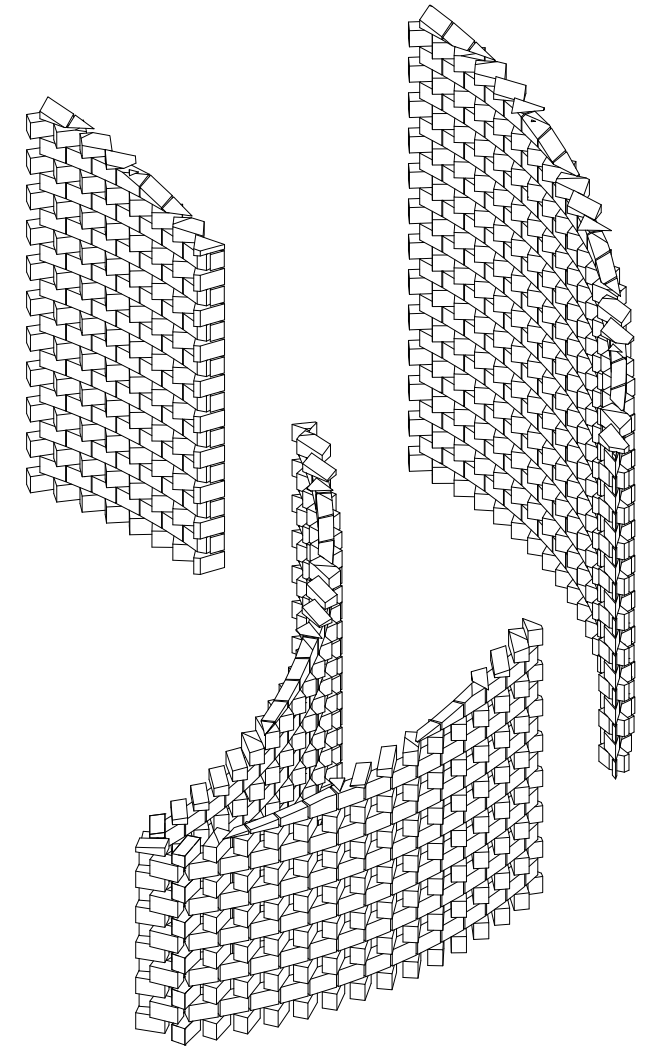


P

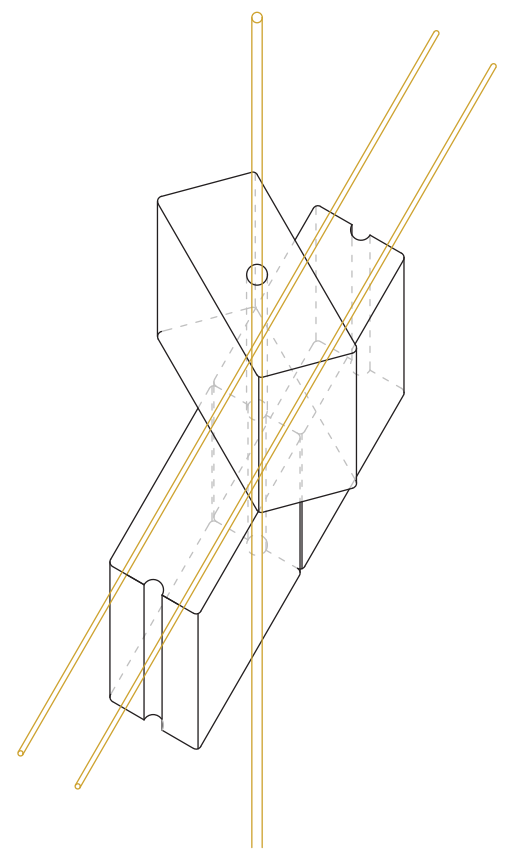




Detail Fragment

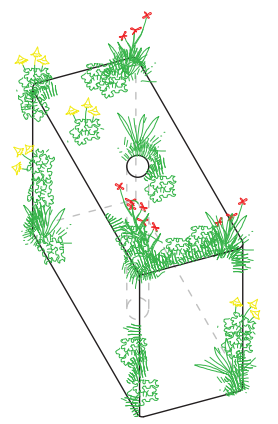
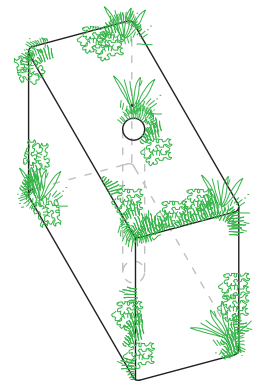
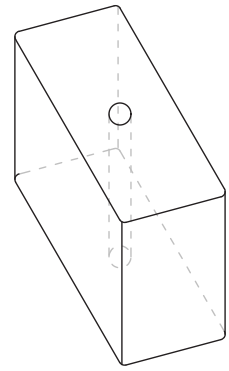


Central display fragment



Wooden reinforcement



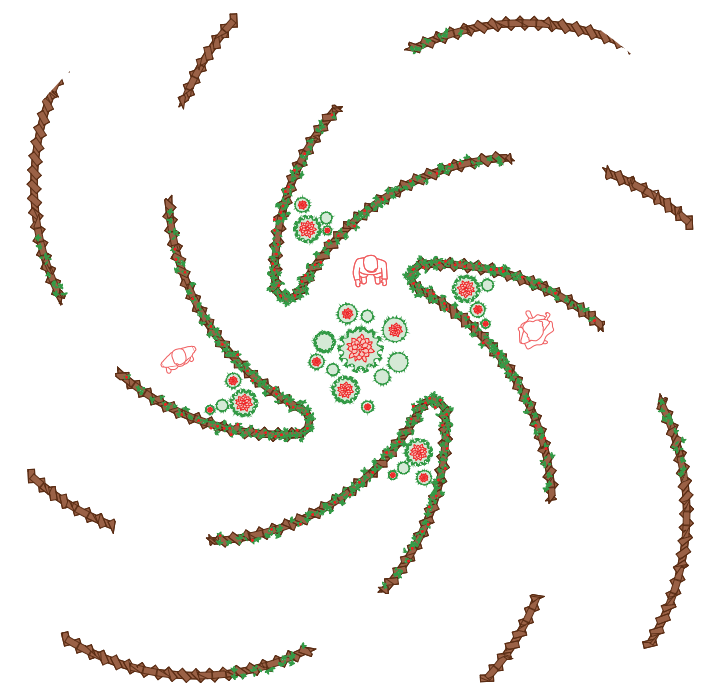


Sprouting brick axonometry





Sprouting brick  
Prototype



Central exhibition space  
spatial layout





ARCH

O



P

Bottega Veneta Summer 22 Campaign, 2022

P





Maria & Louise Thornfeldt - Bottega Veneta Summer23 Campaign, Carovigno, Italy, 2023