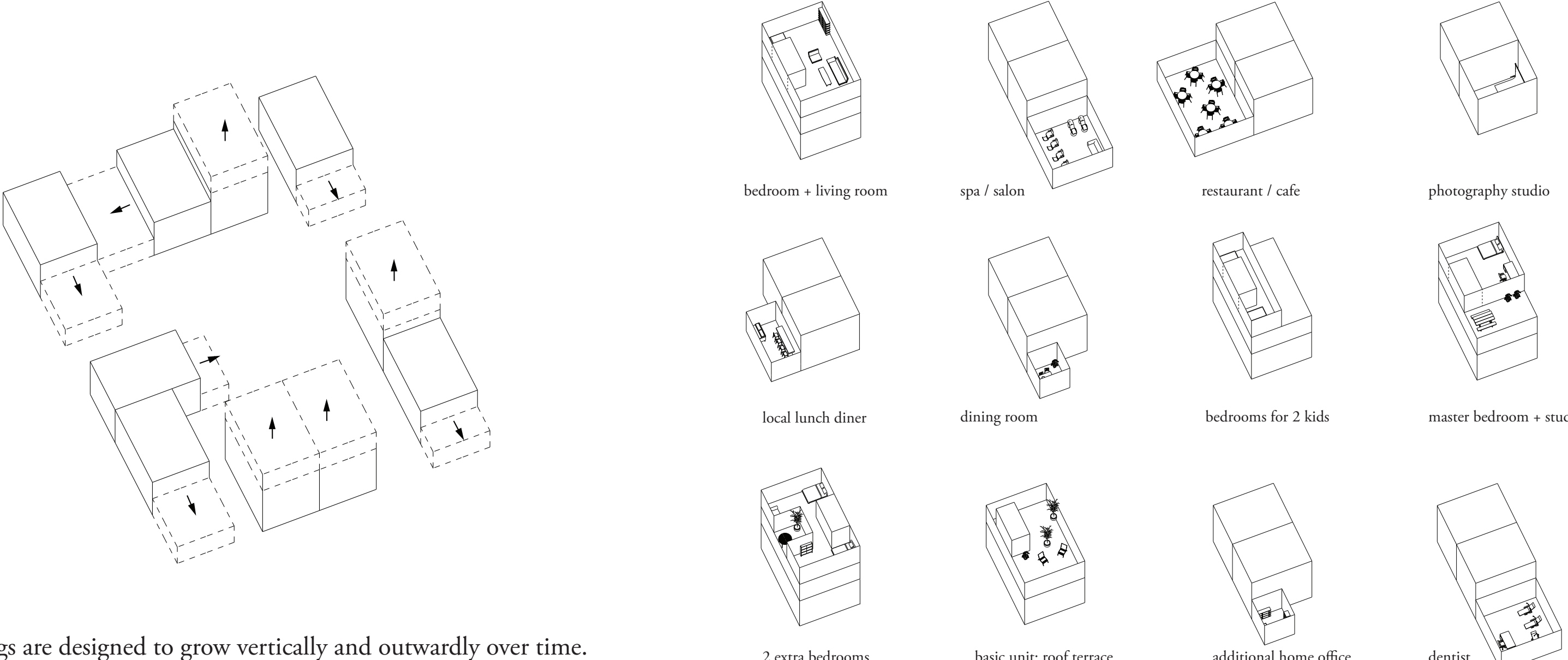
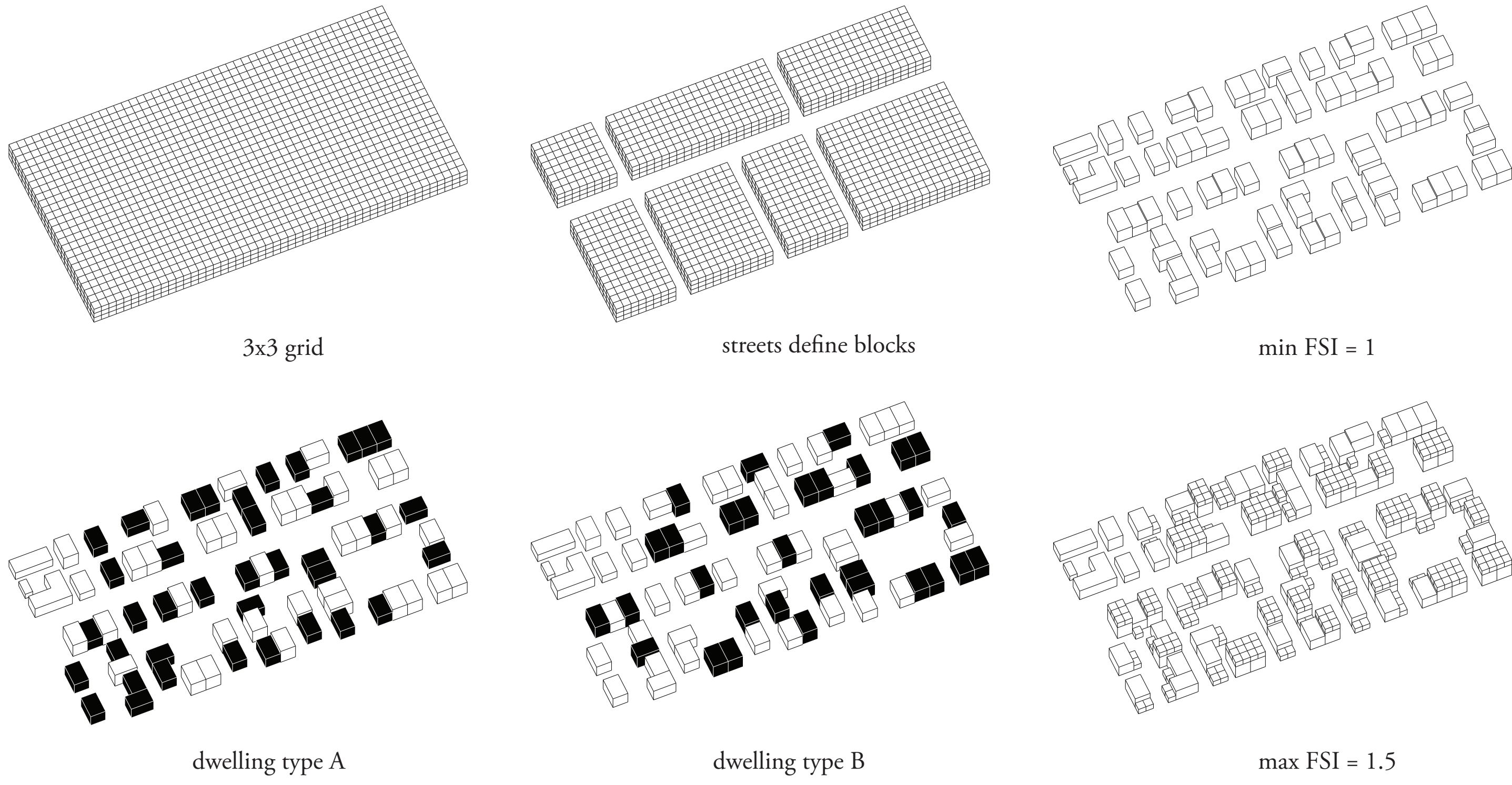


Responsive Suburbia: dwelling and working in IJBurg

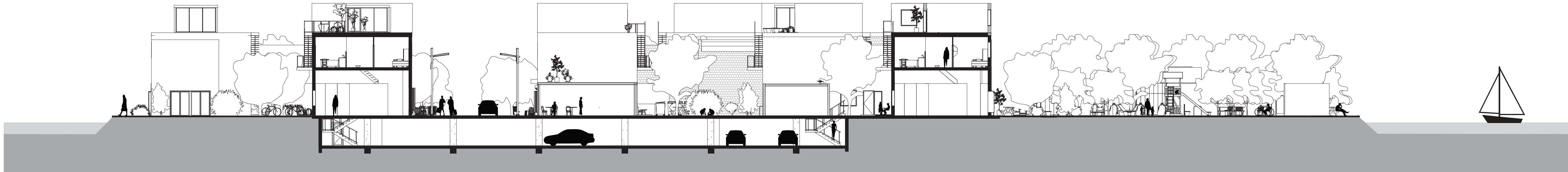
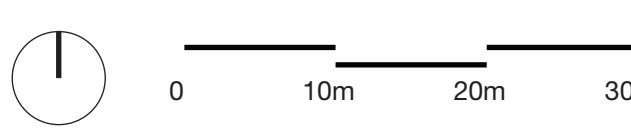
P5. Graduation Studio MSc4 Dwelling, At Home in The City: Amsterdam. Nelson Mota + Ype Cuperus. 4187237 Dominika Linowska. June, 26, 2013



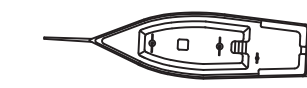
Dwellings are designed to grow vertically and outwardly over time. (left: extension matrix for Houses A and B; array of possibilities)



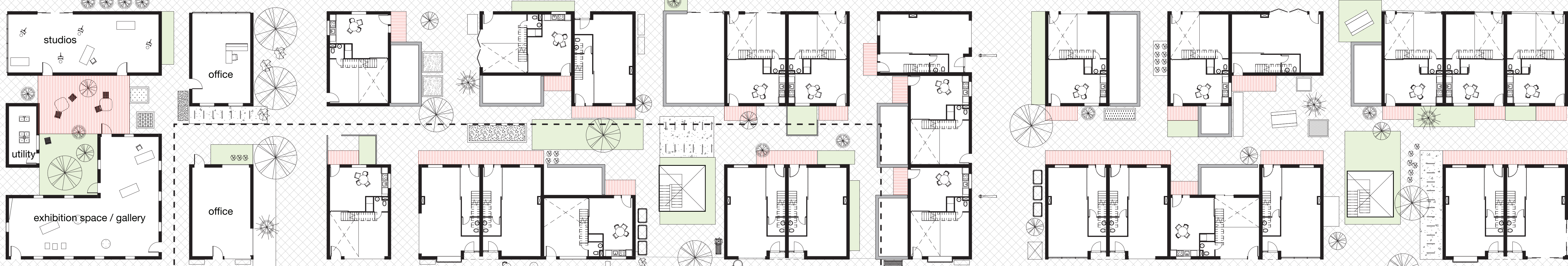
1:500 overall plan in context of neighbourhood, Steigereiland



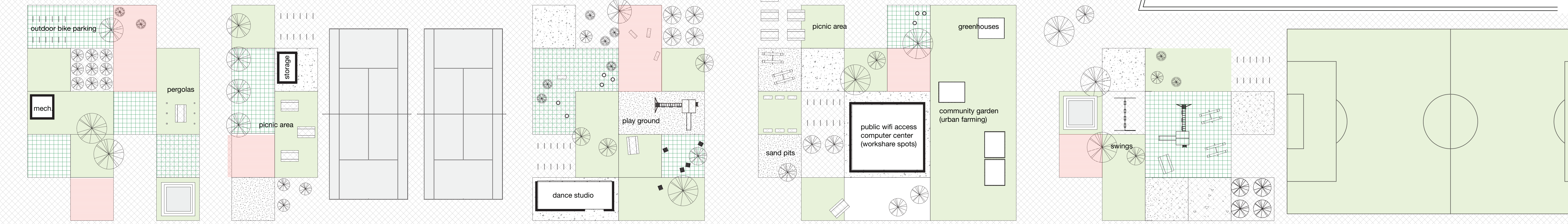
1:200 cross section A-A



north waterfront

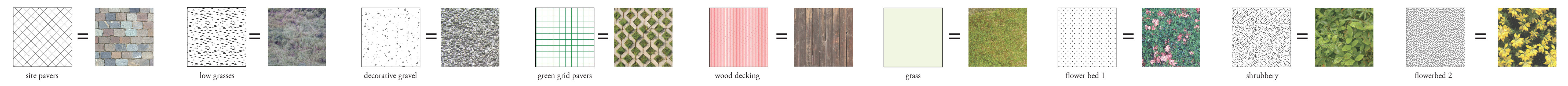
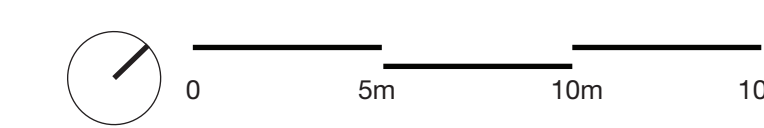
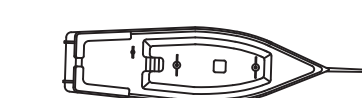
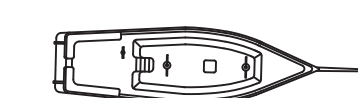


22 ground-floor parking spots



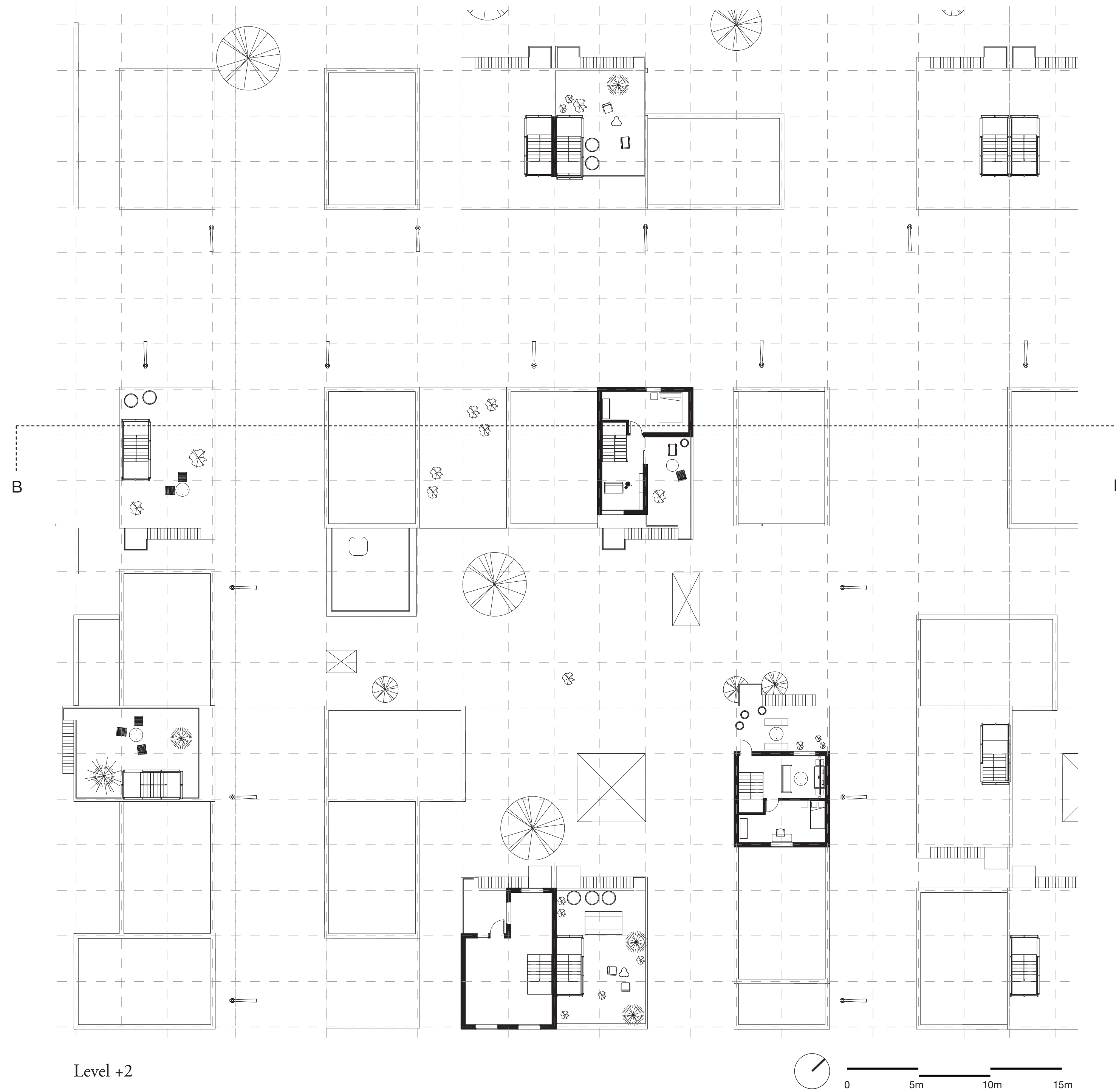
south waterfront

Level 0 1:200

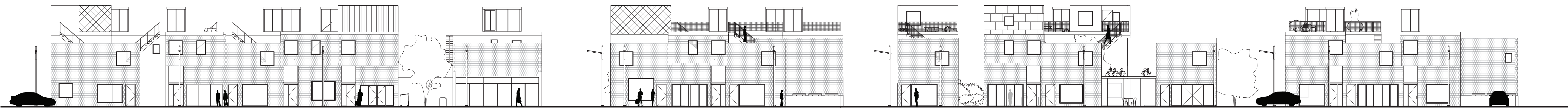




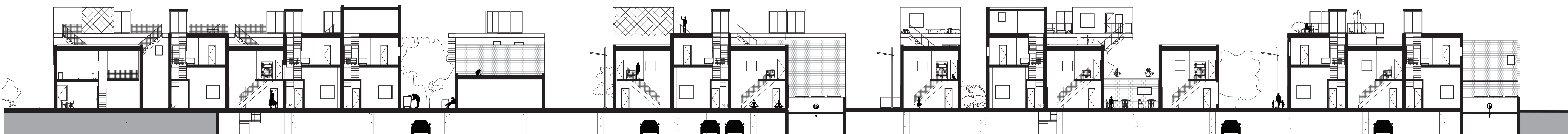
Level +1



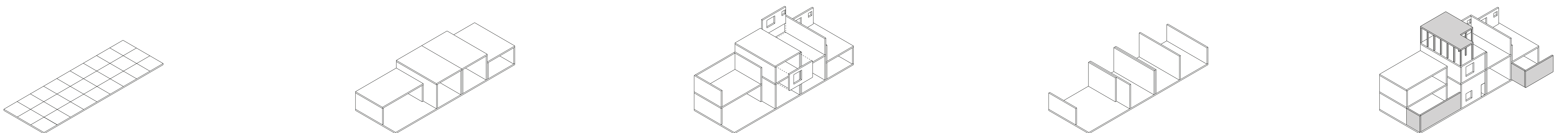
Level +2

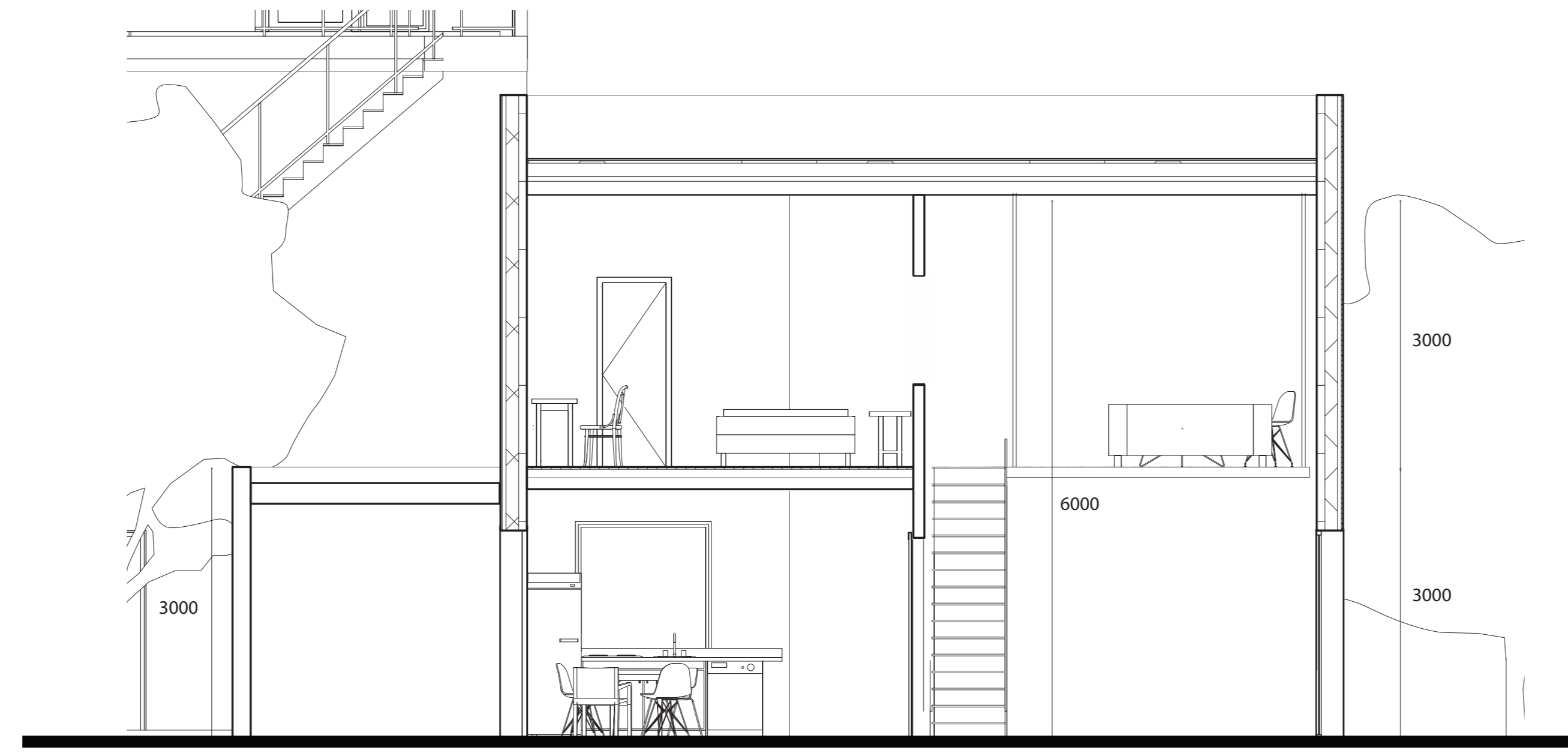
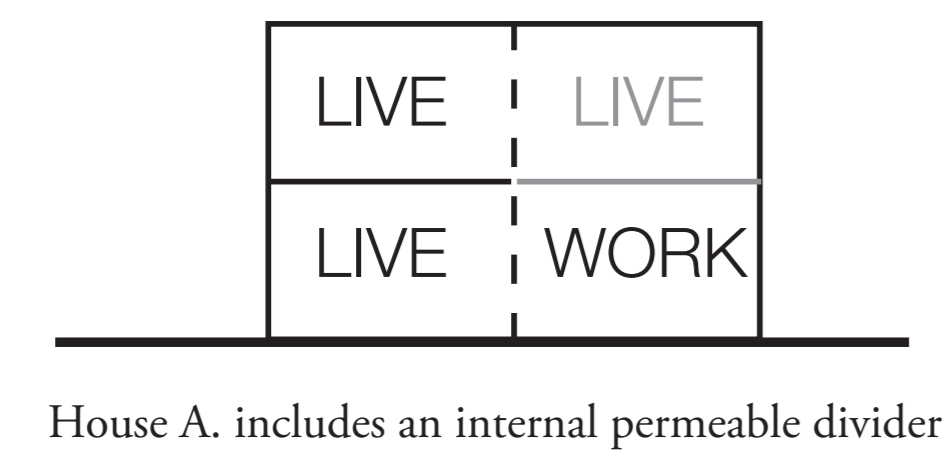


north-facing main street elevation 1:200

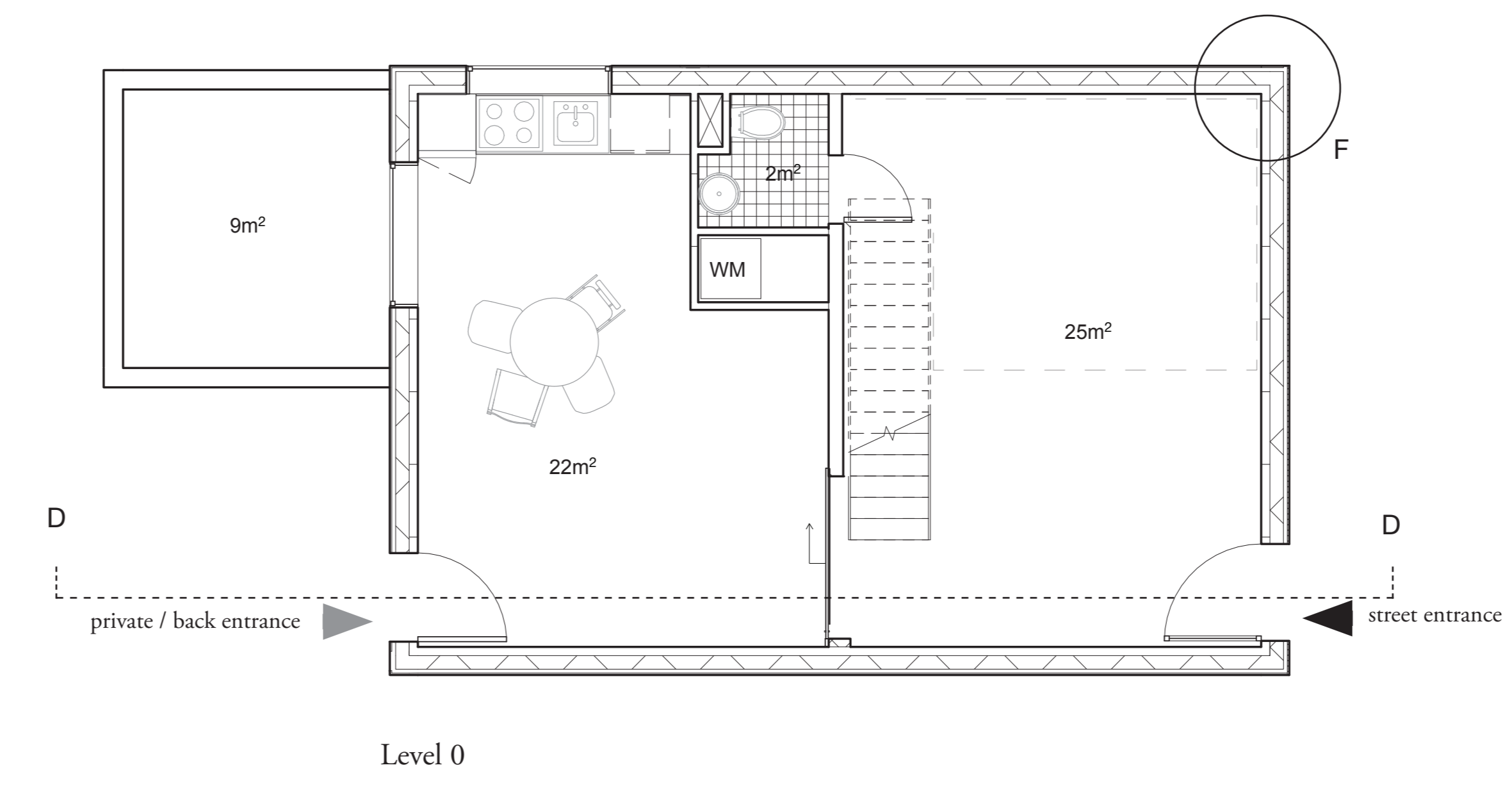


section B-B 1:200

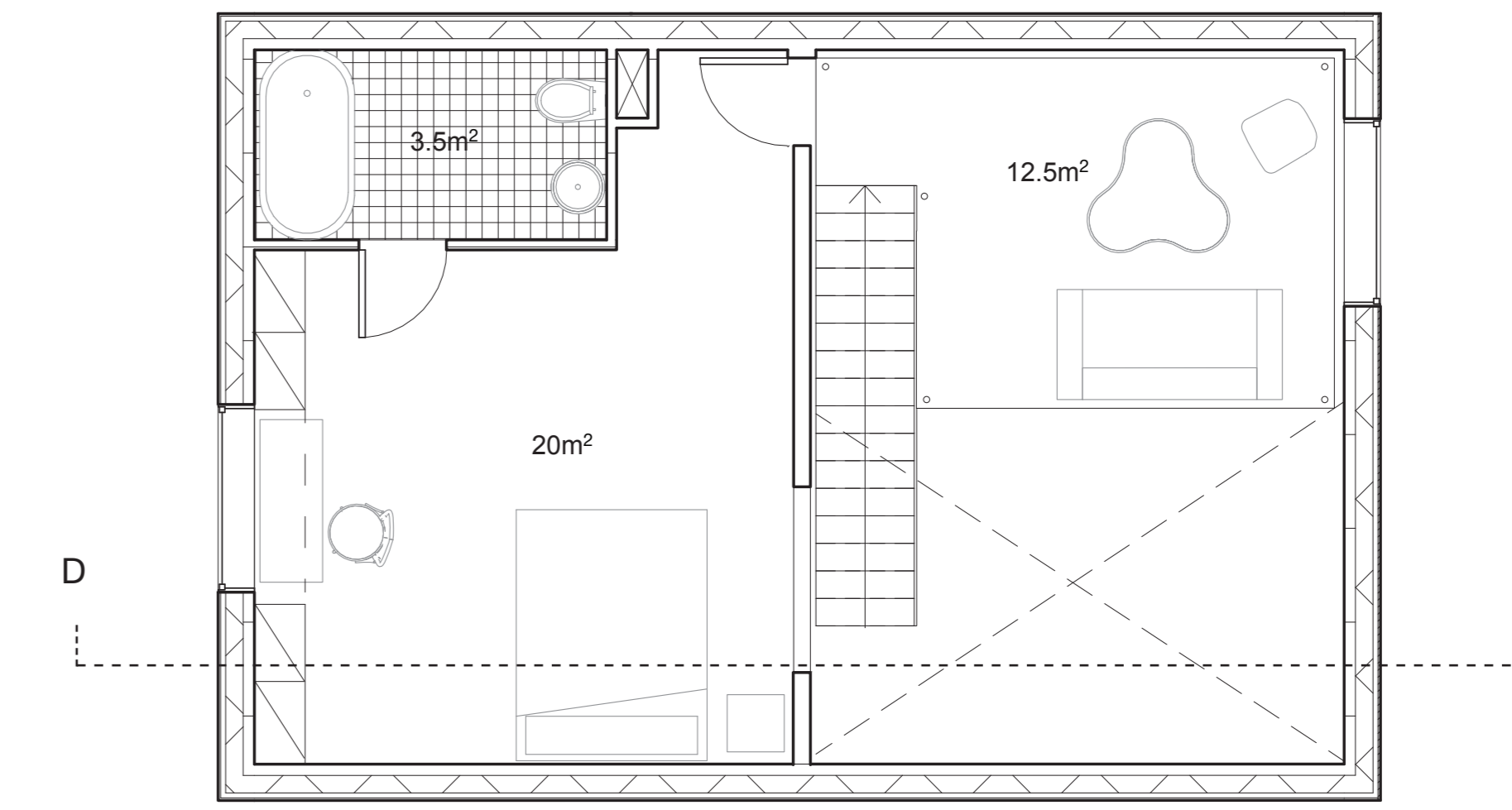




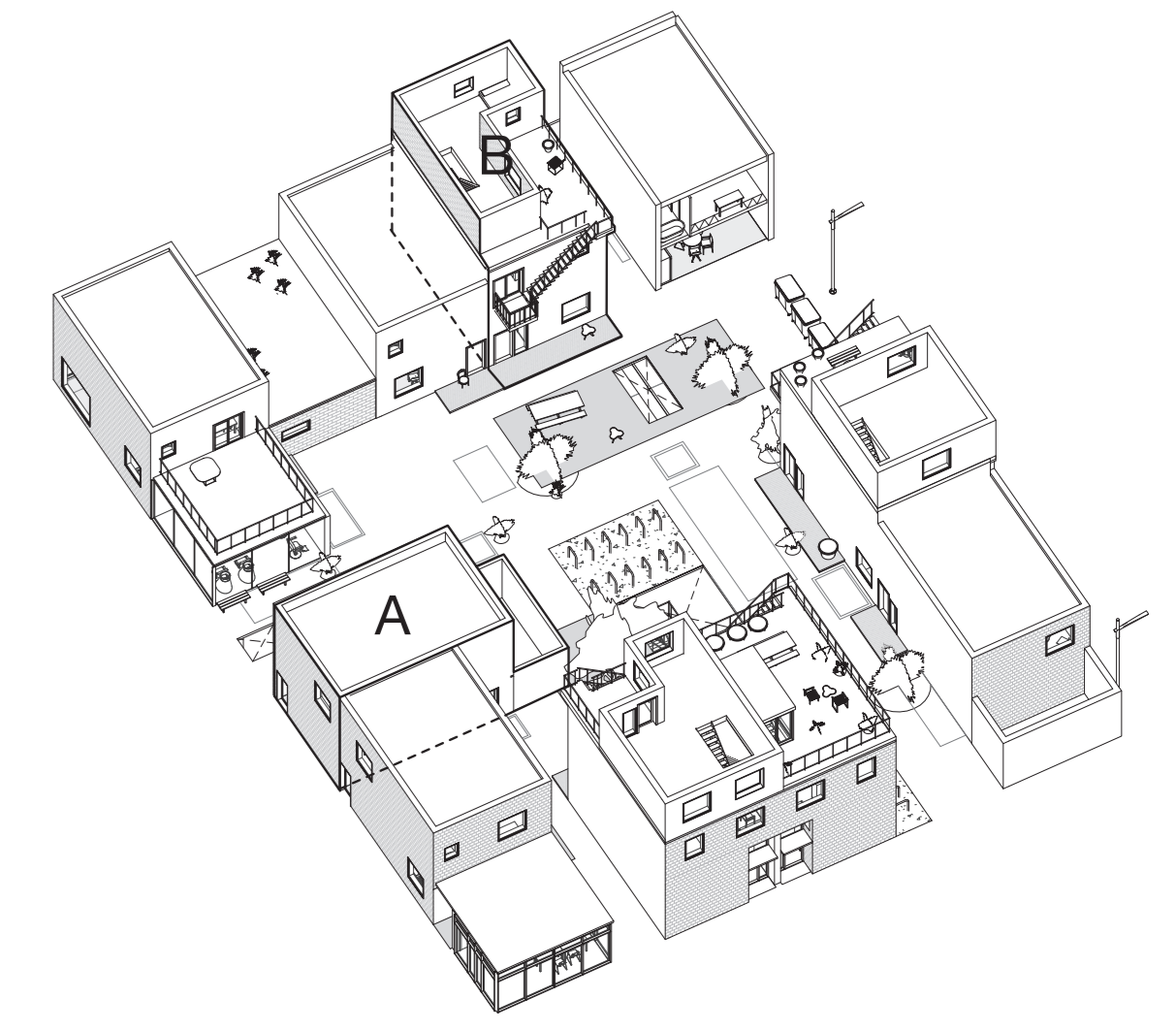
House A. section D-D 1:50



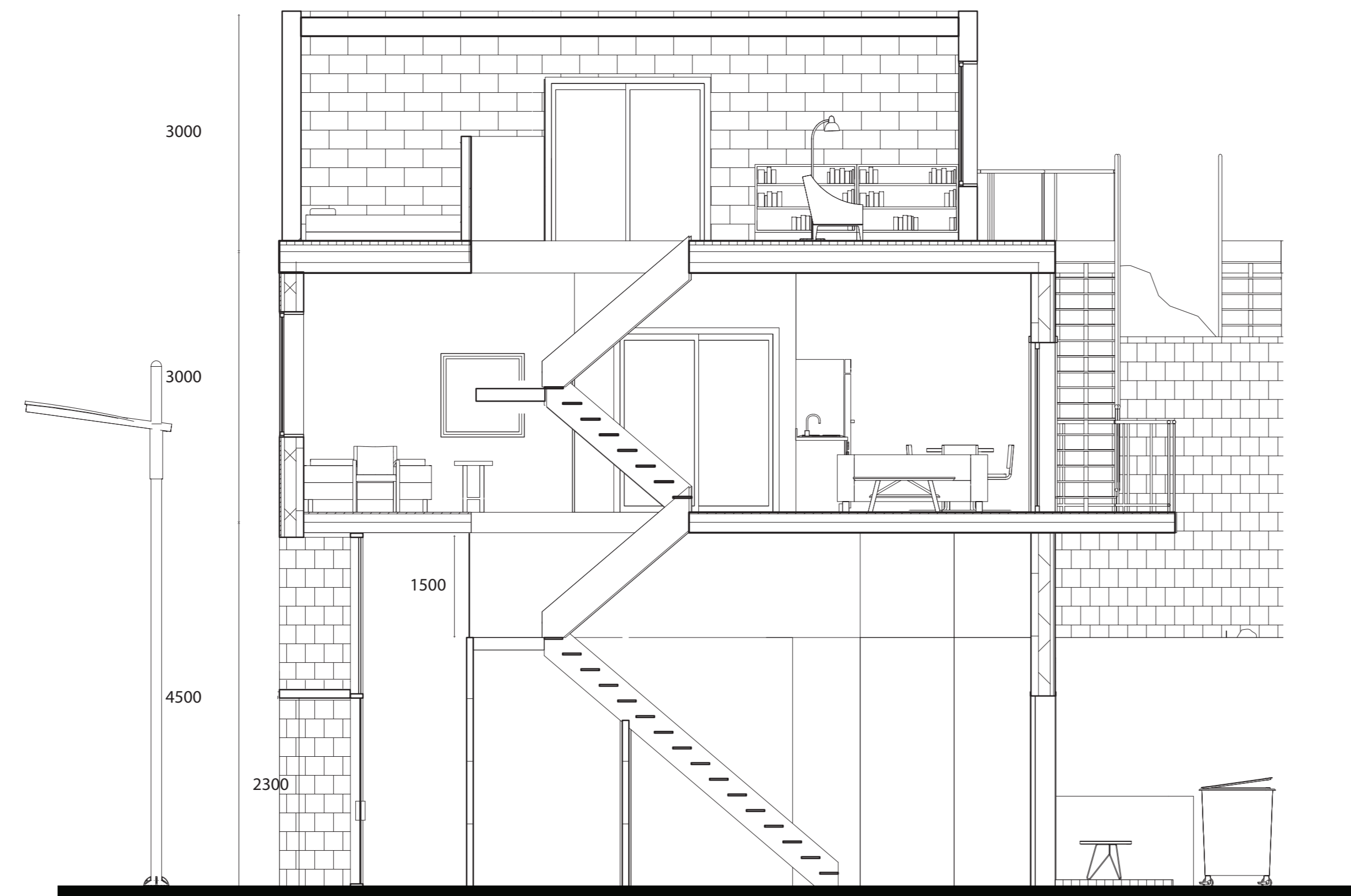
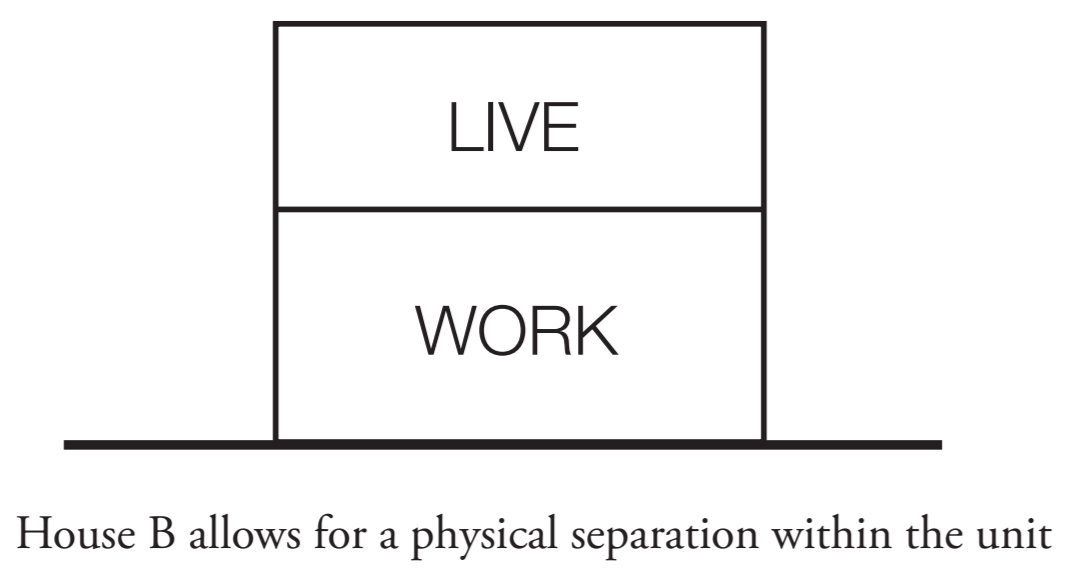
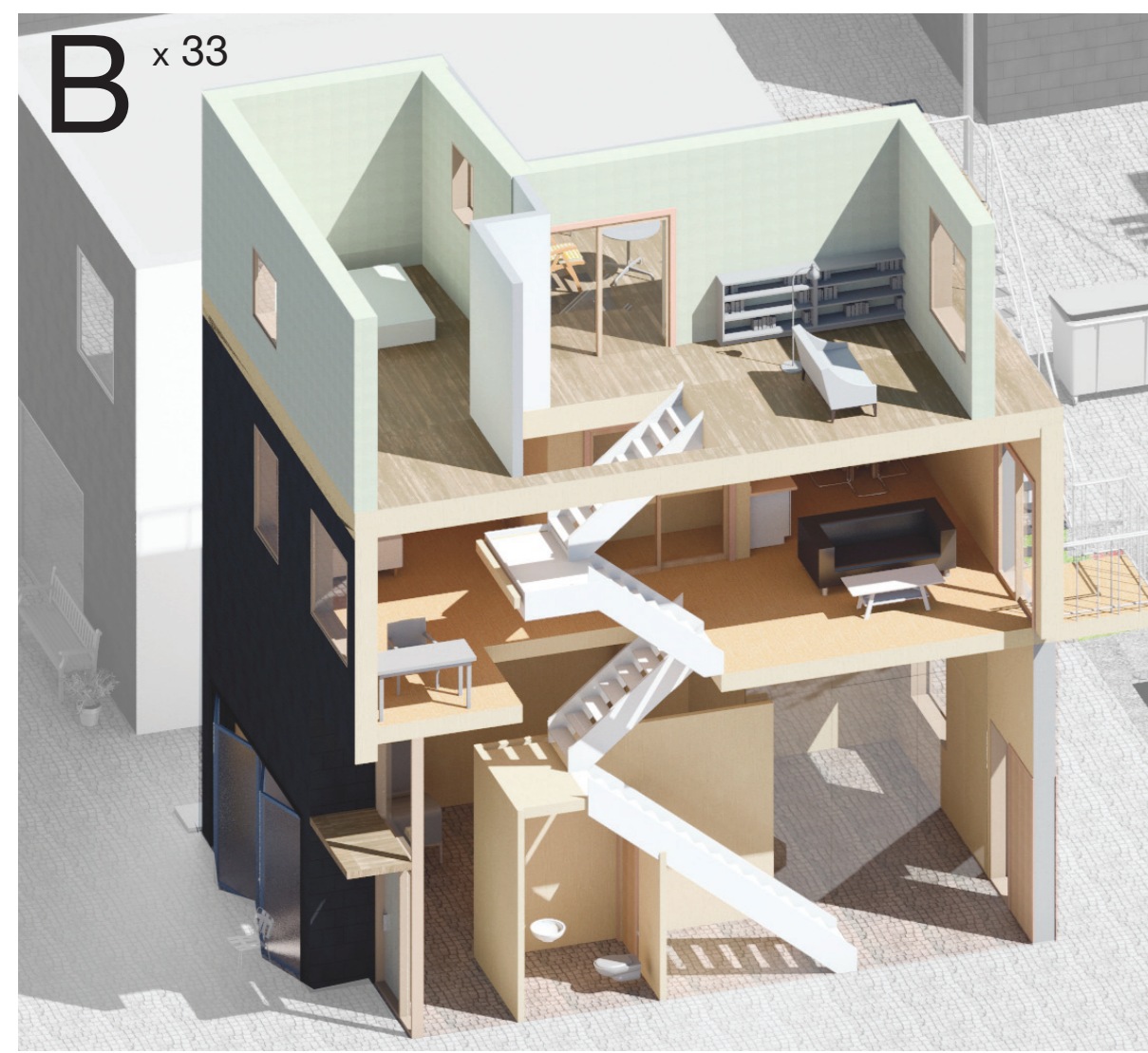
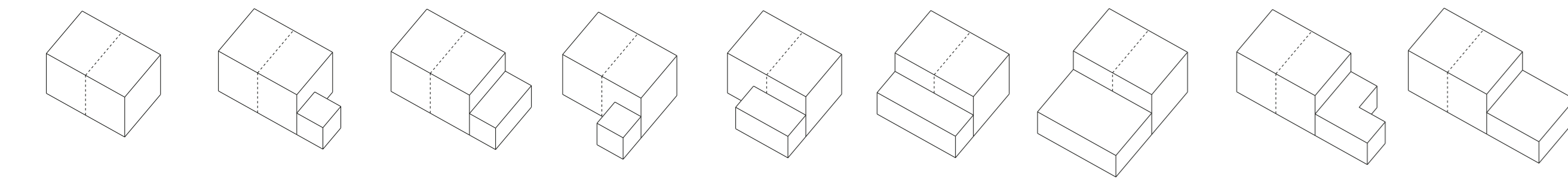
Level 0



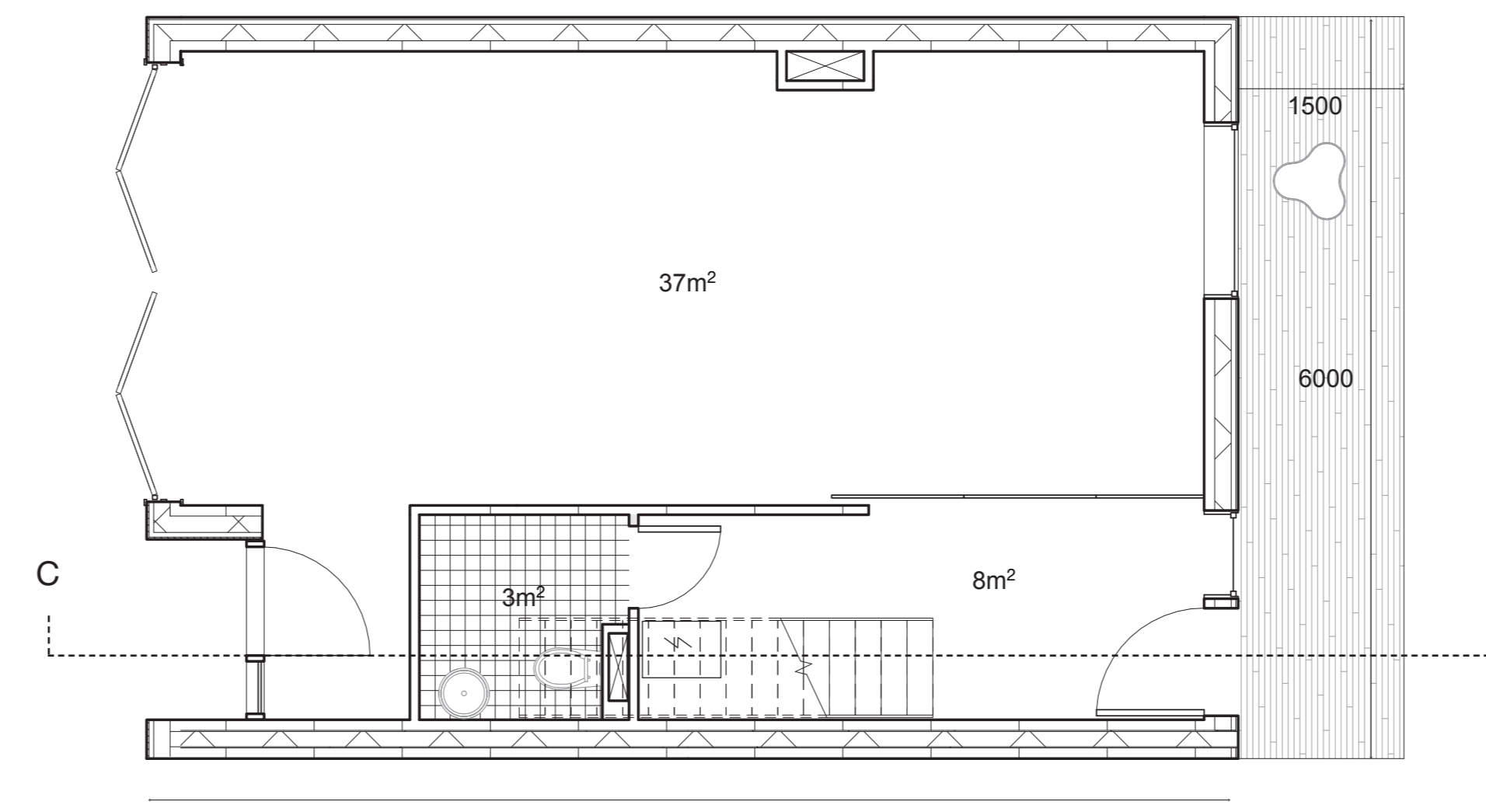
Level +1



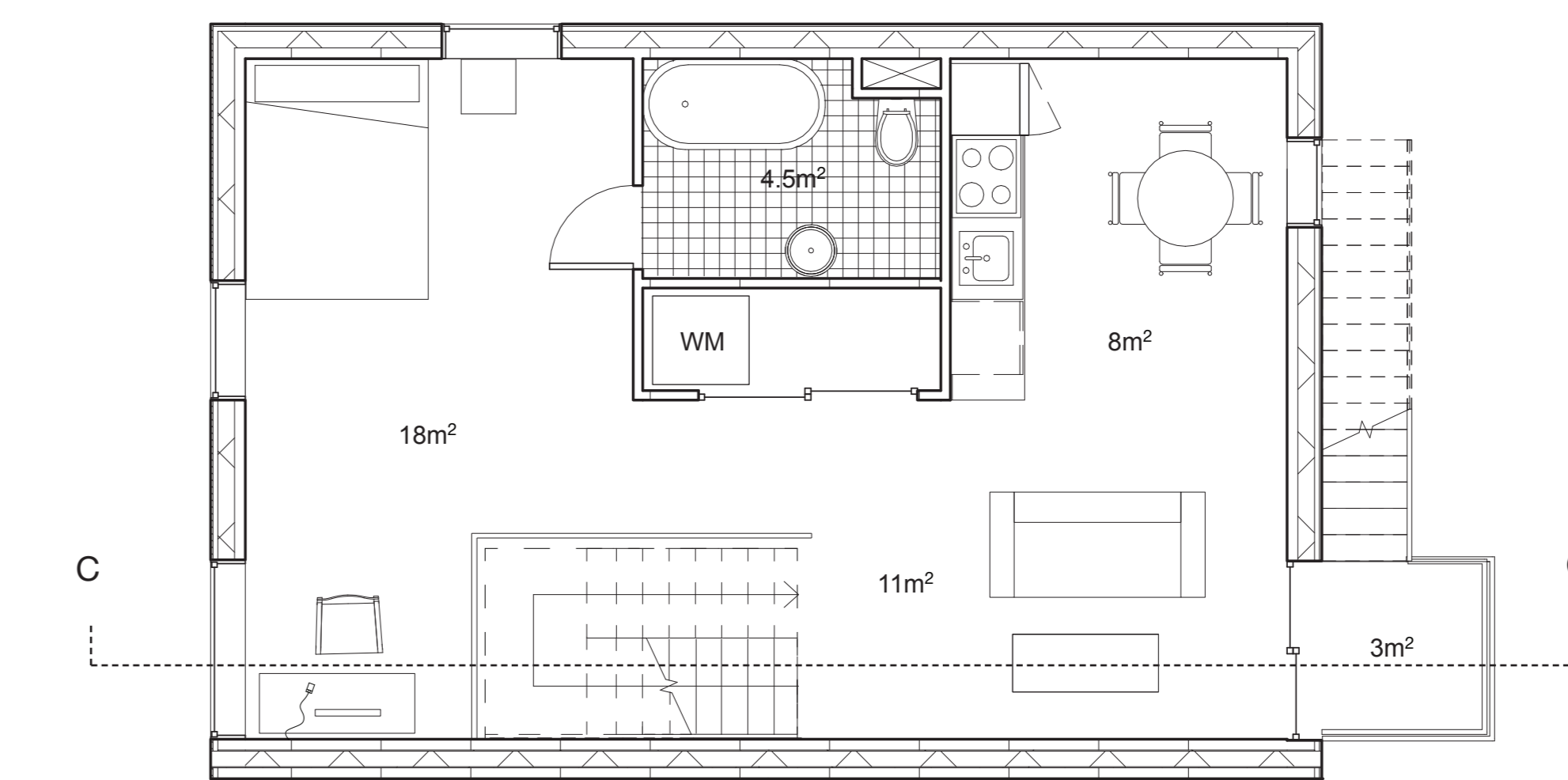
1:400 axonometric of one of the dwelling clusters. Location of (1:50 study) House A and House B.



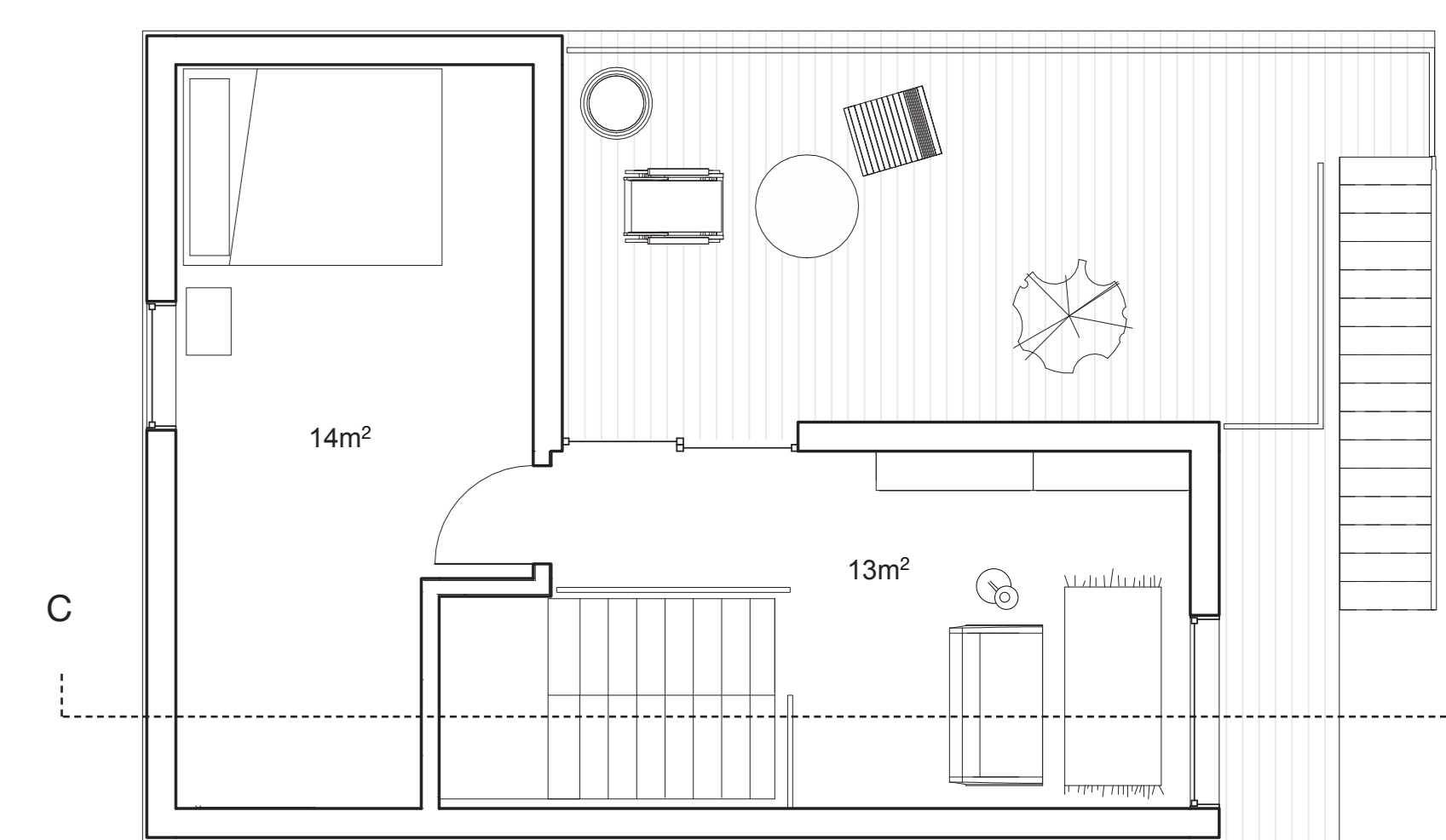
House B. section C-C 1:50



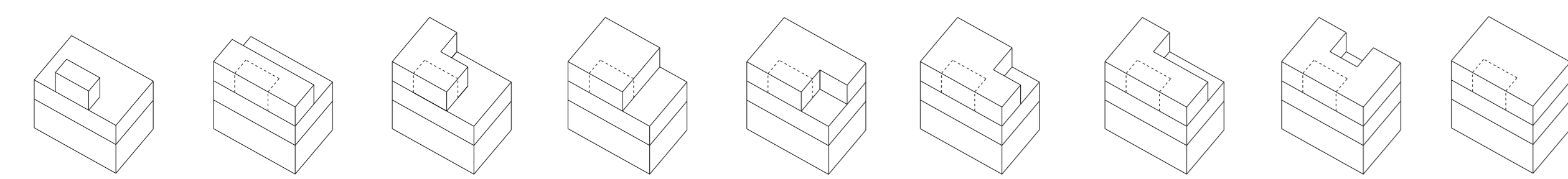
Level 0 1:50



Level +1 1:50



Level +2. addition example 1:50



Existing situation and condition of the IJburg site (zoning: Block 125). A feeling of vastness, and open space lacking human activity.



Design proposal; perspective of main street. Black shingle facades line the public perimeter of the permeable blocks.



View of collective courtyard and the IJ. A white render coat is used for the courtyard-facing facades acting as canvases for additions.



Looking down from roof terrace of House B onto the public activity strip with integrated landscaping and pavilions following the grid.



Entering apartment type B from the courtyard side.



Living room and study / den of dwelling type B.



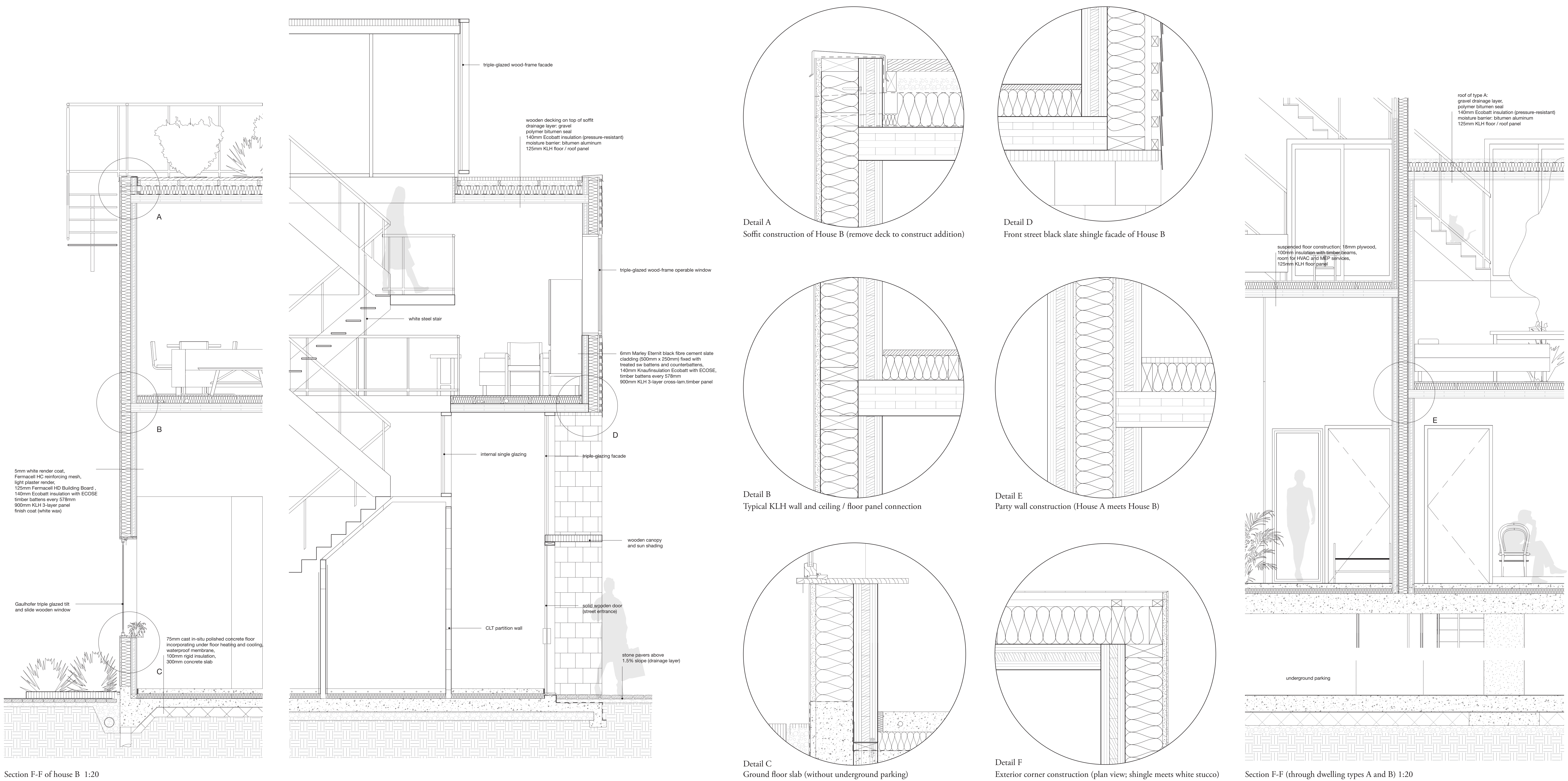
Open-plan bedroom of House B; stairs go up to level 3.



Multi-purpose front room with double-height void of type A.



Floating room of House A; room behind internal brick wall.



Section F-F of house B 1:20

Section F-F (through dwelling types A and B) 1:20