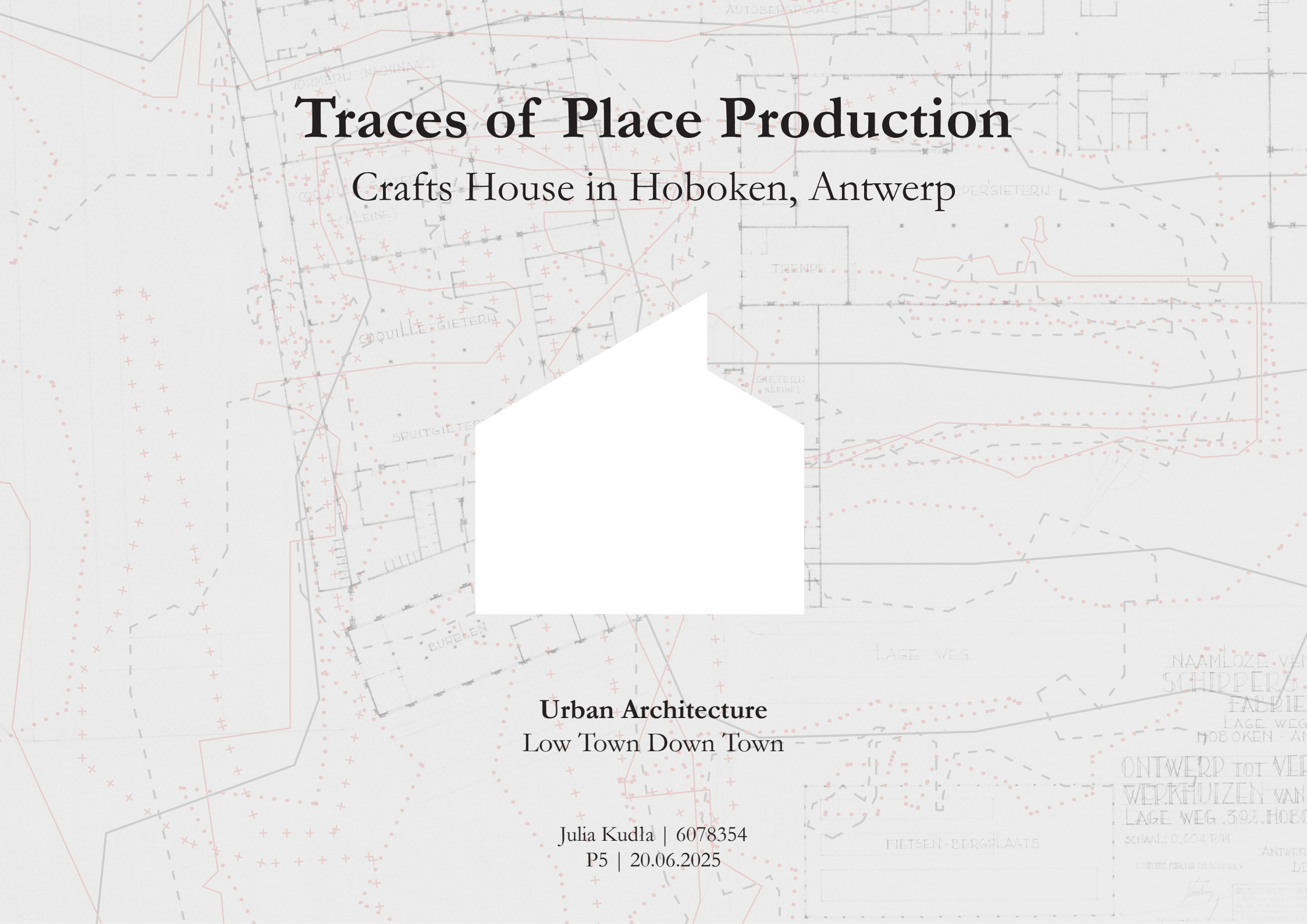


# Traces of Place Production

## Crafts House in Hoboken, Antwerp

Urban Architecture  
Low Town Down Town

Julia Kudla | 6078354  
P5 | 20.06.2025





Site, Blikfabriek and Lemmerz

Hoboken, Antwerp



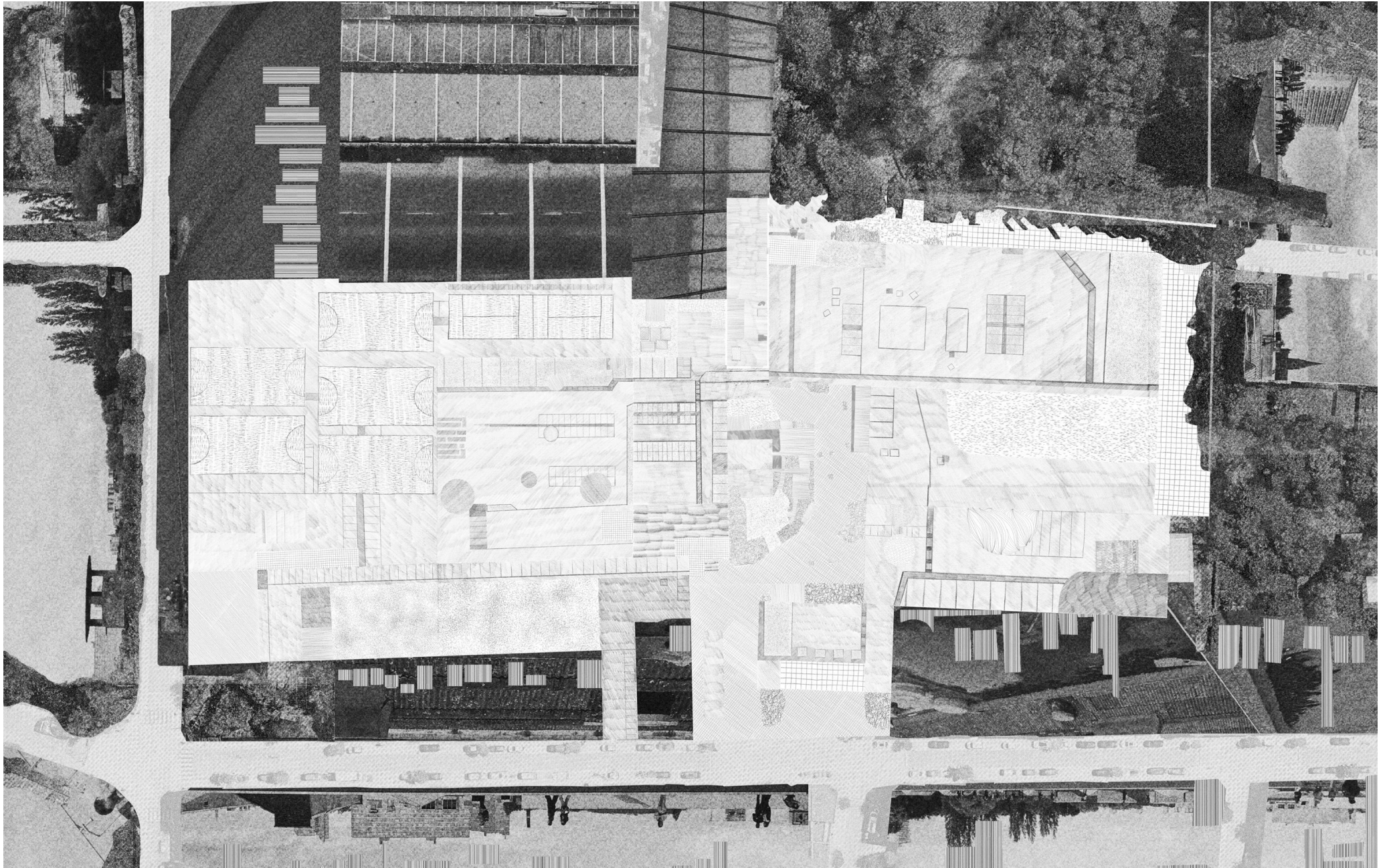
EMMERZ BELGIE W.





Material Garden of Gift and Waste

P1 Fieldwork







Material Garden of Gift and Waste

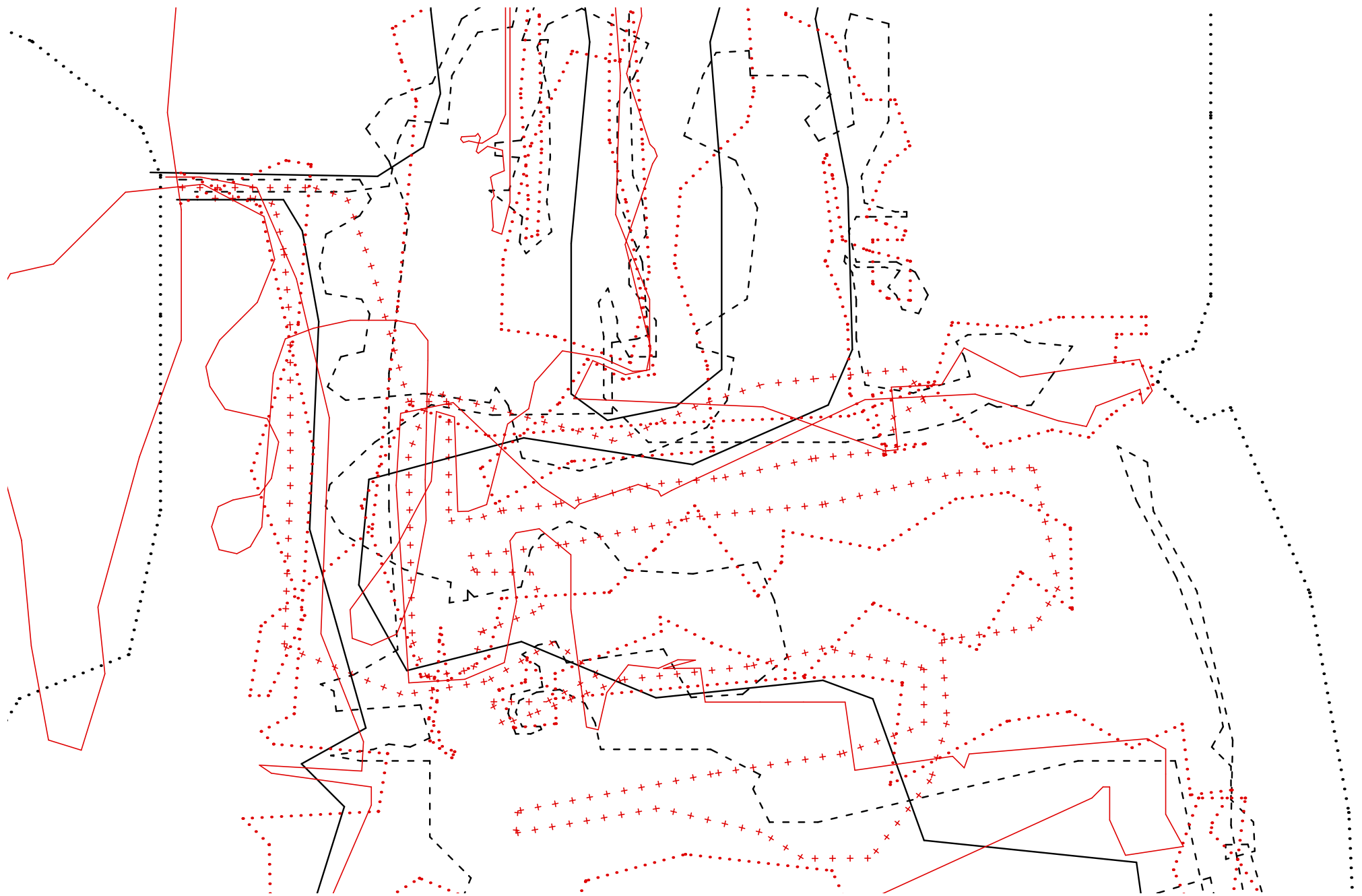


P1 Exhibition, Tiles

How do past experiences, memories, and remnants shape the identity of a place?

When does production change the character of the landscape?

How does industrial history influence contemporary perceptions and uses of post-industrial sites?



Research

Fieldwork, Site Interpretation

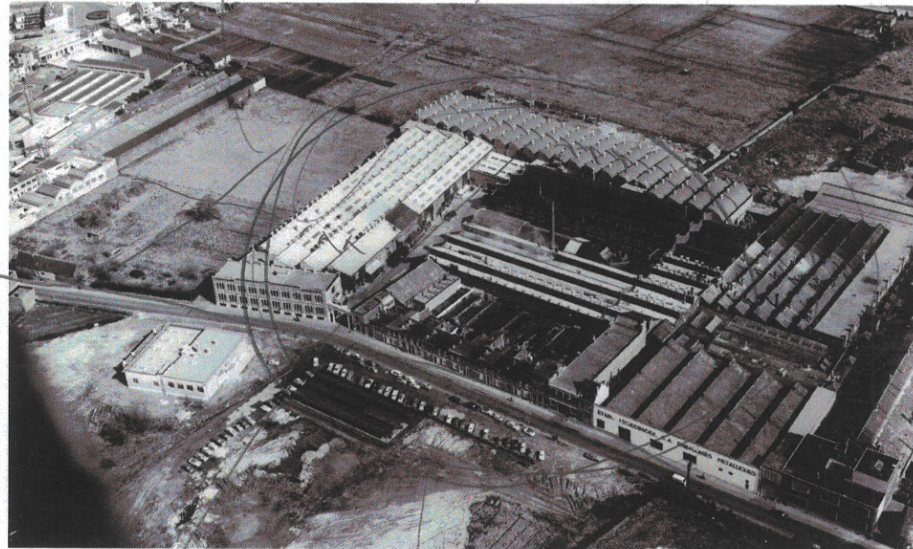


Research

Fieldwork, Photographic Documentation

segmented land,  
probably  
former  
agricultural  
purposes

industrial complex  
in the centre



"Having grown up in Hoboken myself, I liked having work in Hoboken. I also lived with- in walking distance of the factory at the time (...) Most of the workers did come from Hoboken. Also many people from Antwerp's Kiel district. This district borders Hoboken."

"The atmosphere seemed fine to me at the time and there was plenty of work."

various  
gabled roofs  
↓  
heavy manufacturing

road allows  
for access to the  
facility

parked cars on the  
opposite side of  
the street  
→ working hours?  
→ functional period

piled  
construction  
building  
material  
↓  
expansion?

from  
period  
when it  
was  
constructed,

territorial scale

**space transition**

a process of layered transformation, integrating physical change with contextual narrative

neighbourhood scale

**producing and inhabiting**

spatial and social integration of production and dwelling in (post)industrial urban peripheries

building scale

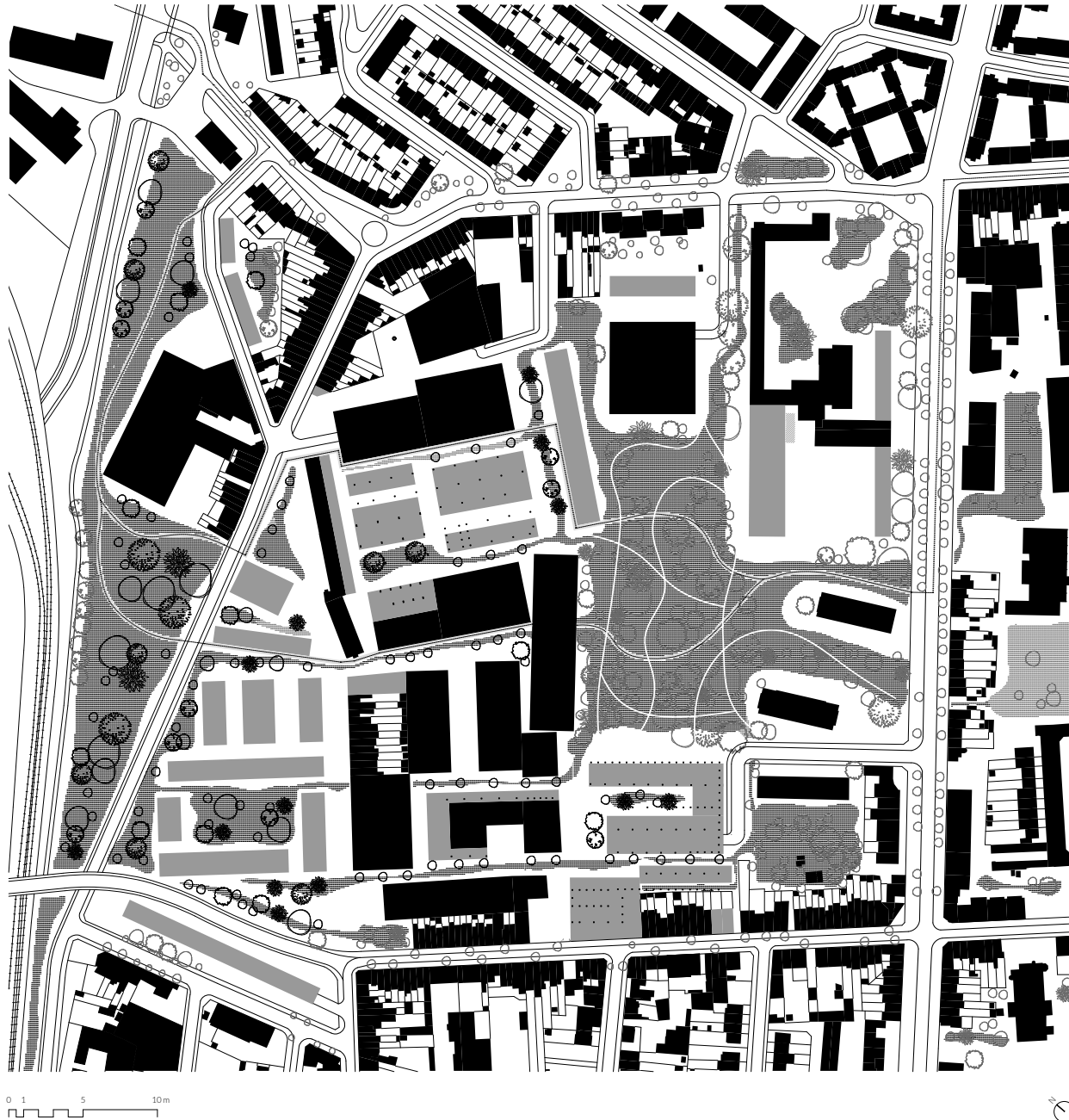
**industrial remnants**

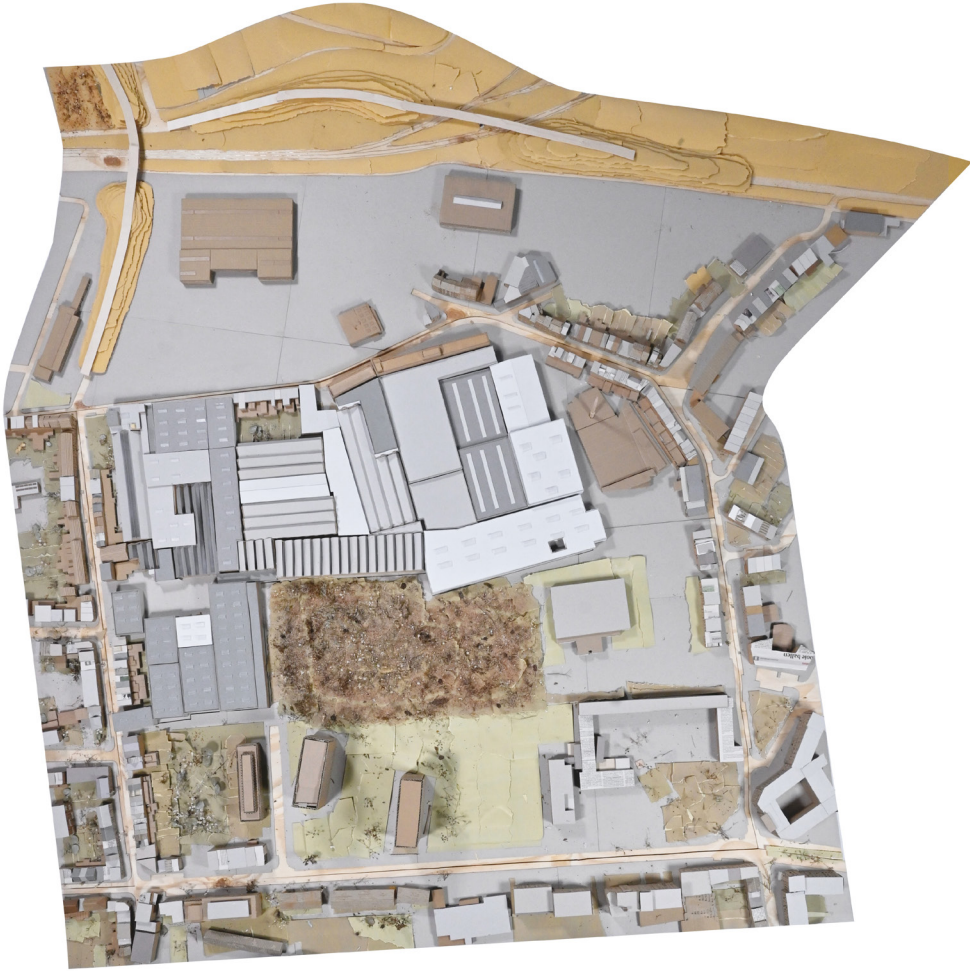
unique characteristics, spatial potential, and contextual meaning of (post)industrial architecture

detail scale

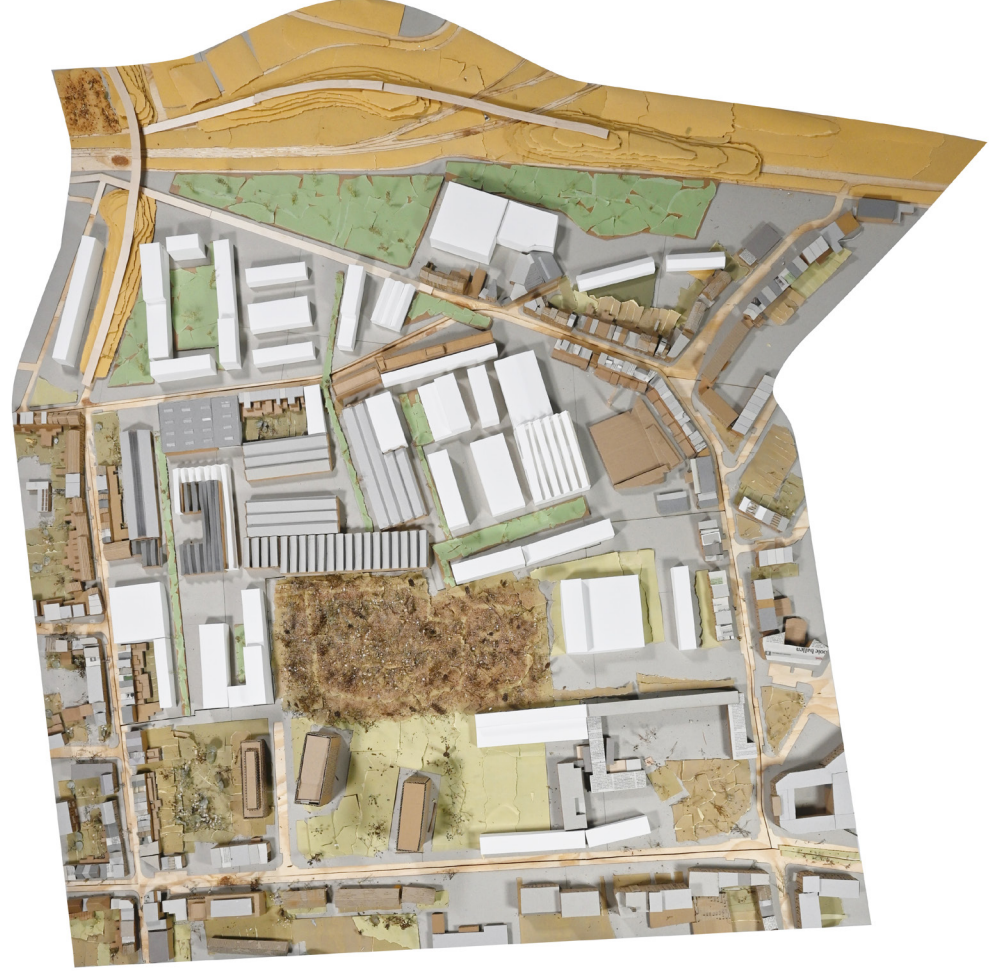
**fragments ensemble**

juxtaposition and interrelation of spatial, material, and conceptual pieces





Masterplan



Site Model 1:333





Masterplan

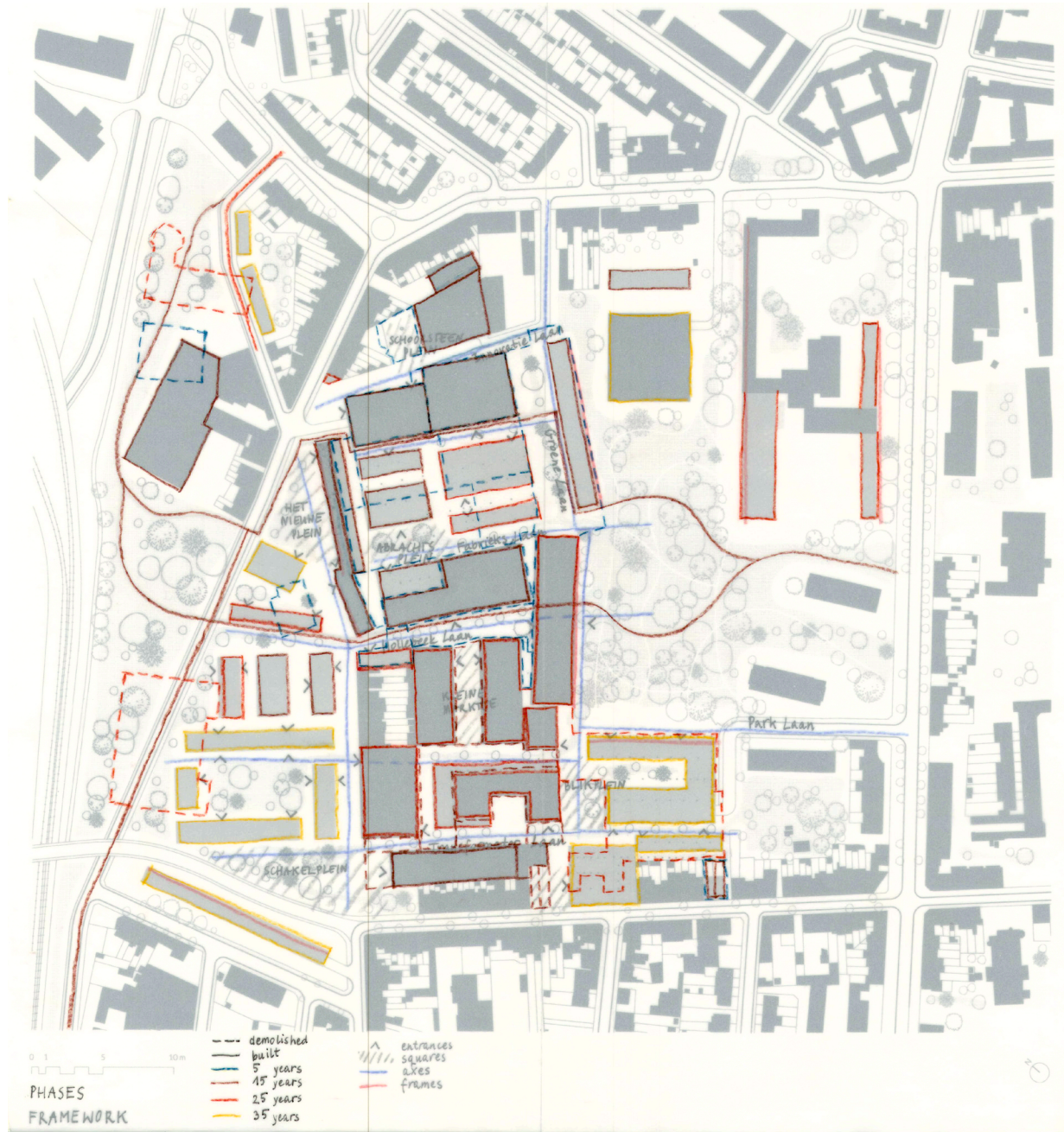
Fragment Model



Masterplan

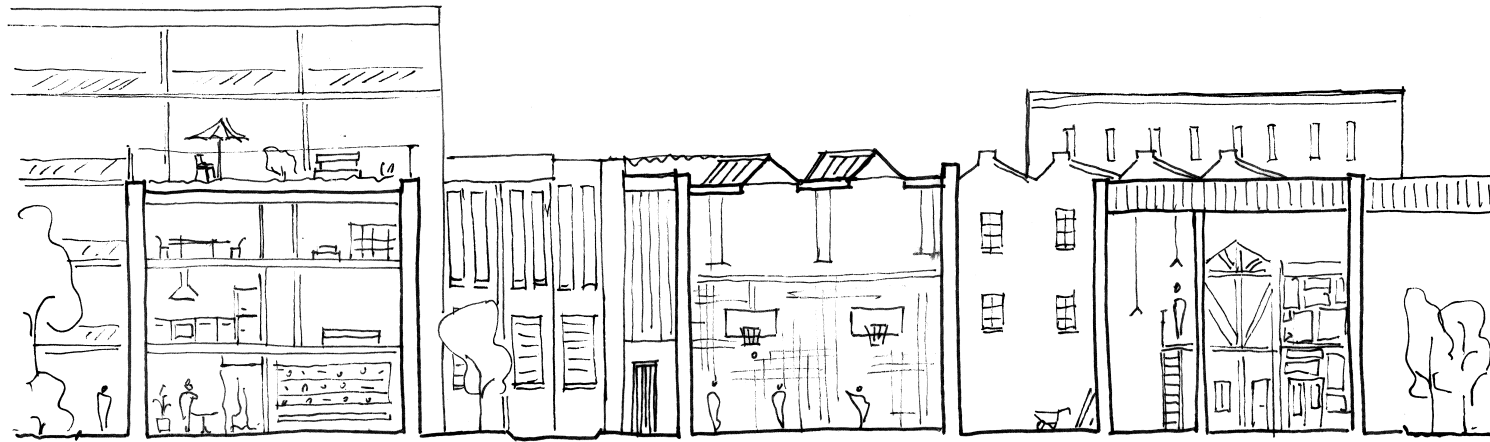
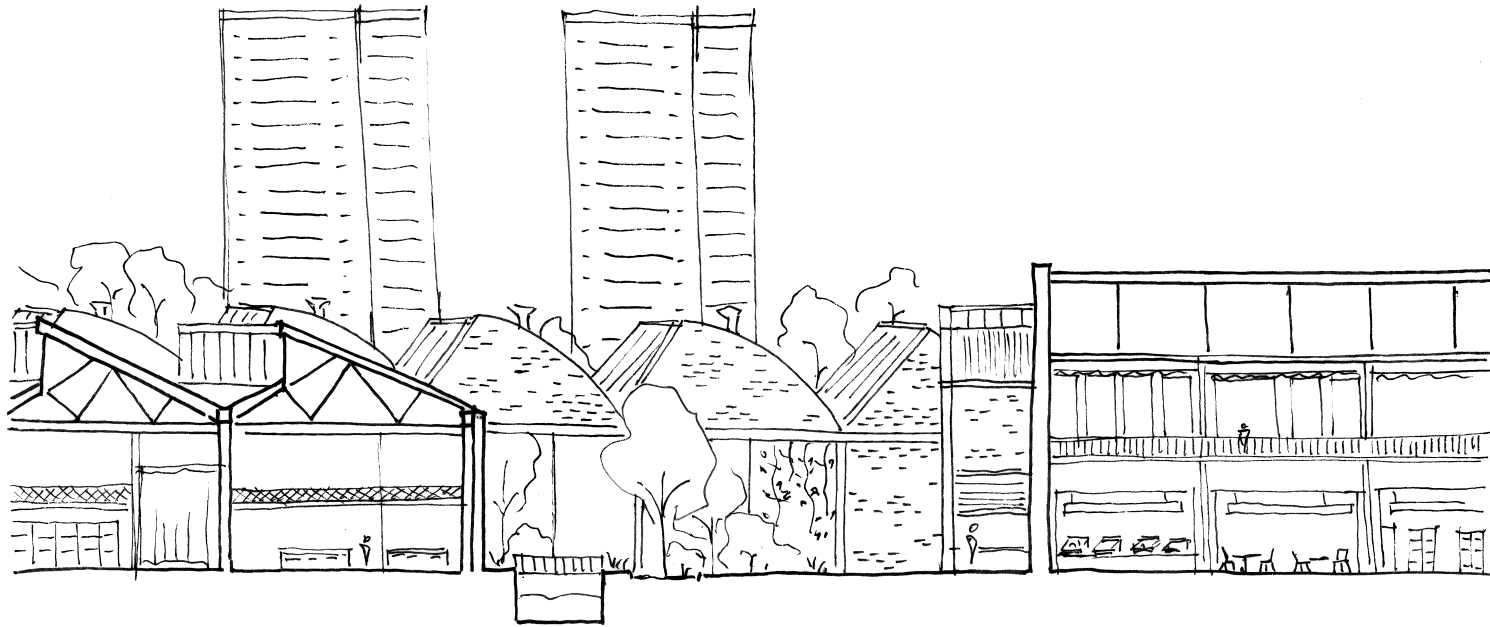
Green Areas





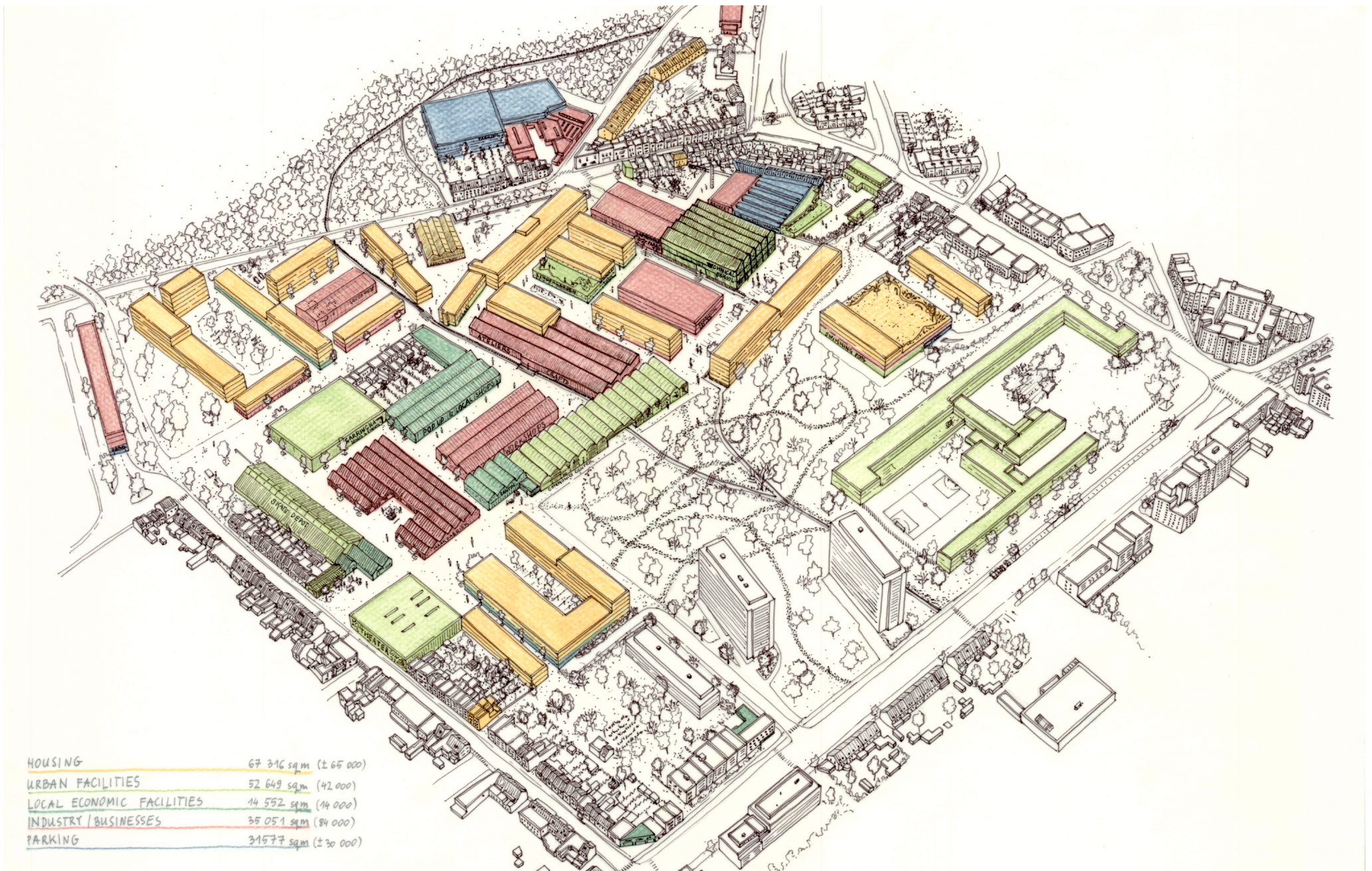
Masterplan

Phases



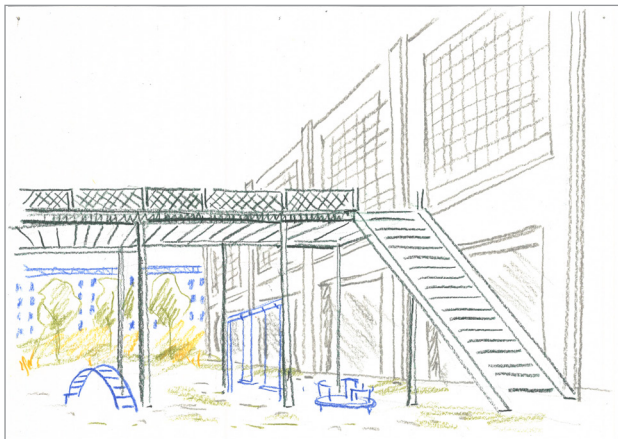
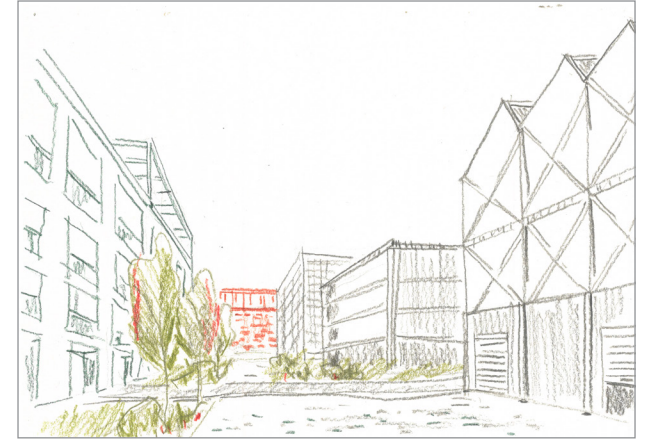
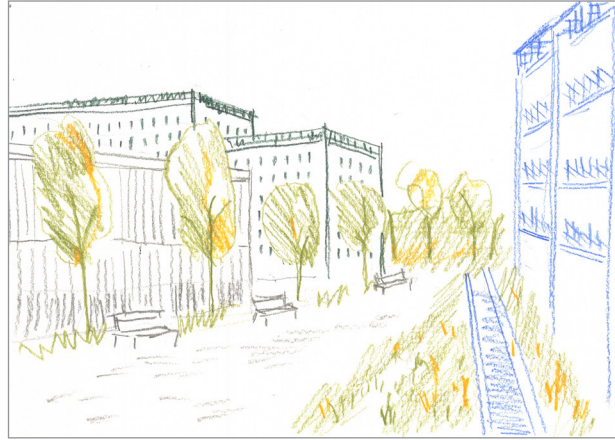
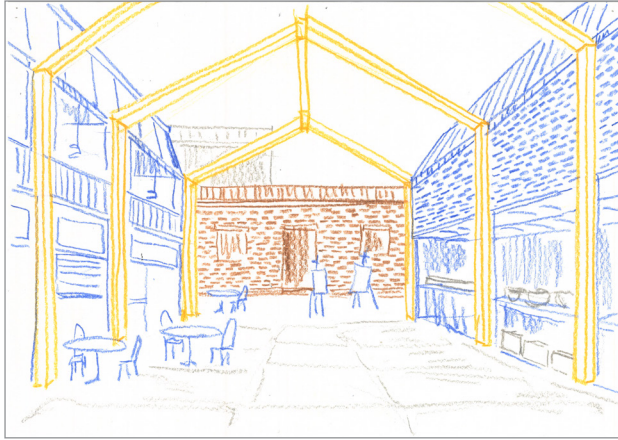
Masterplan

Sections



Masterplan

Function Distribution



Masterplan

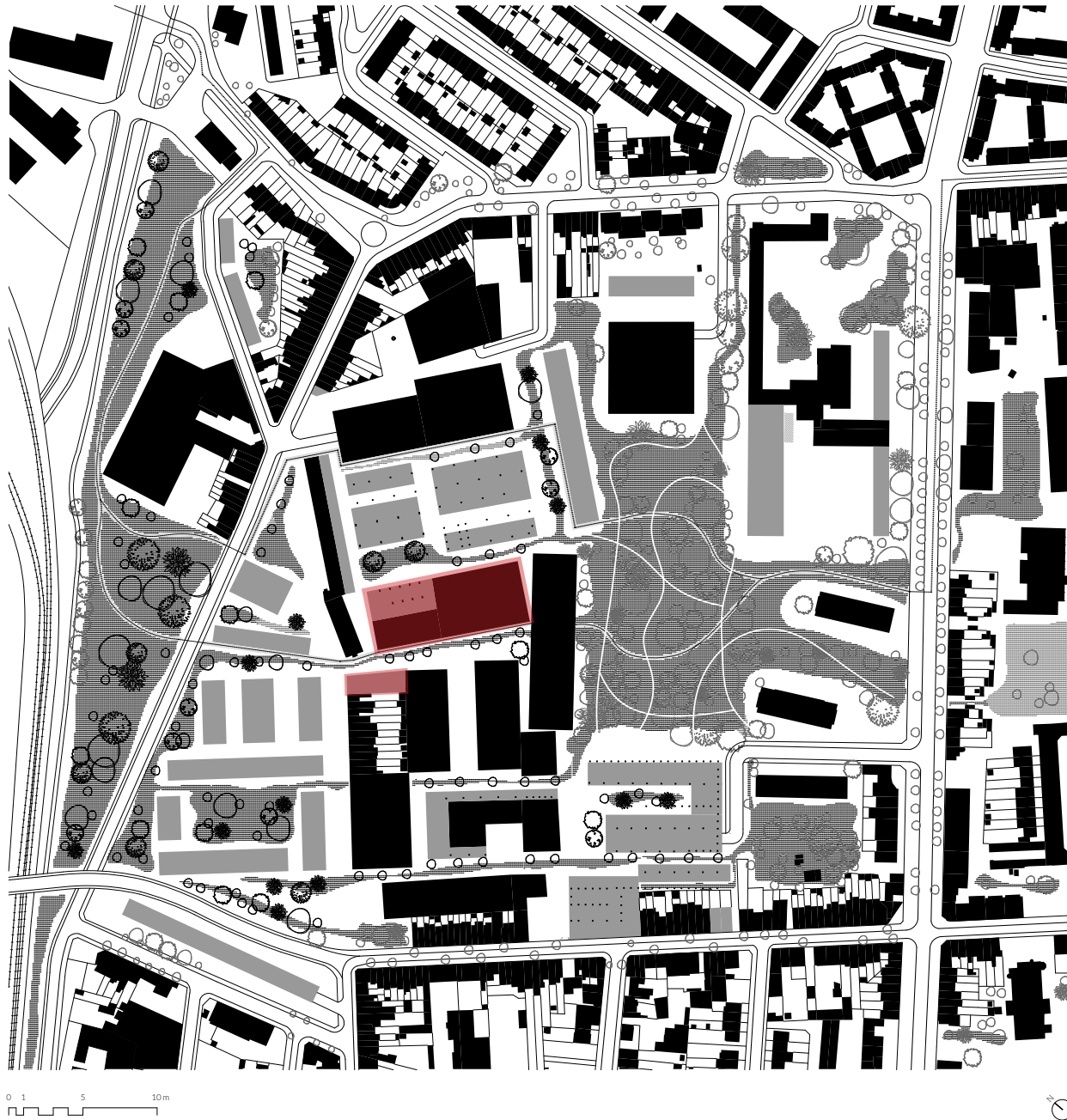
Postcards

How can the integration of small-scale production and housing be designed to foster communities in urban environments?

In what ways can these designs address the socio-economic needs?

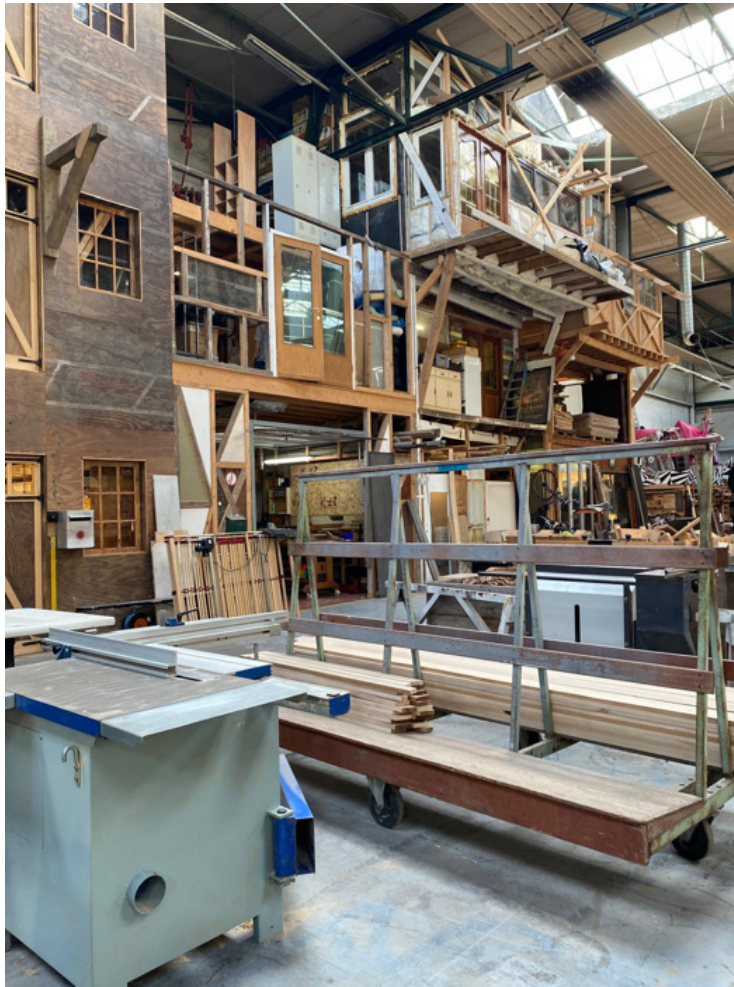
How can designs for combined housing and production respond to the cultural and historical context of Hoboken?





Site

Combination of Residential and Production Functions



Programme

Maakfabriek and De Stelling

“I really hope they’re going to talk to us and then ask who’s going to join and maybe have everything, if everybody like they want and then just rent it to us.”

- Wouter, Maakfabriek

“You have the feedback, you can ask or just have little talks, it gives for me more like an home feeling and I really like that (...) but it’s also nice to have my place on my own so of course I’m happy about it that I can participate if I want but also return back to my studio when I want to focus on my own work. (...) I also really like the way you can use your studio like you want.”

- Siglinde, De Stelling

**“There are 300 people on the list to rent a place in Maakfabriek.”**

**- Joris**

“I’m from Antwerp, from Hoboken here. (...) I had before an atelier, a studio as well in Deurne and for me it was more easier to get here. It was closer for me so it was a good way to change. And after that yeah the community that is already growing here is really nice to get along with other people that has the same background.”

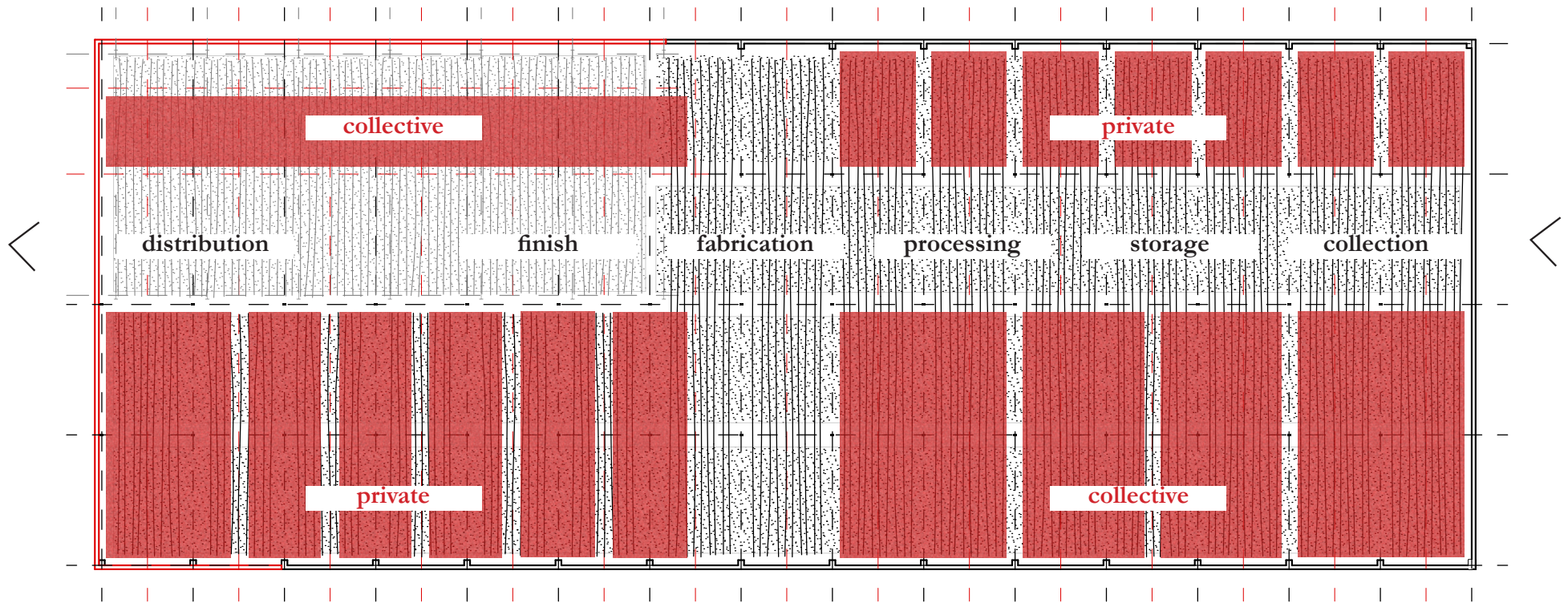
- Siglinde, De Stelling

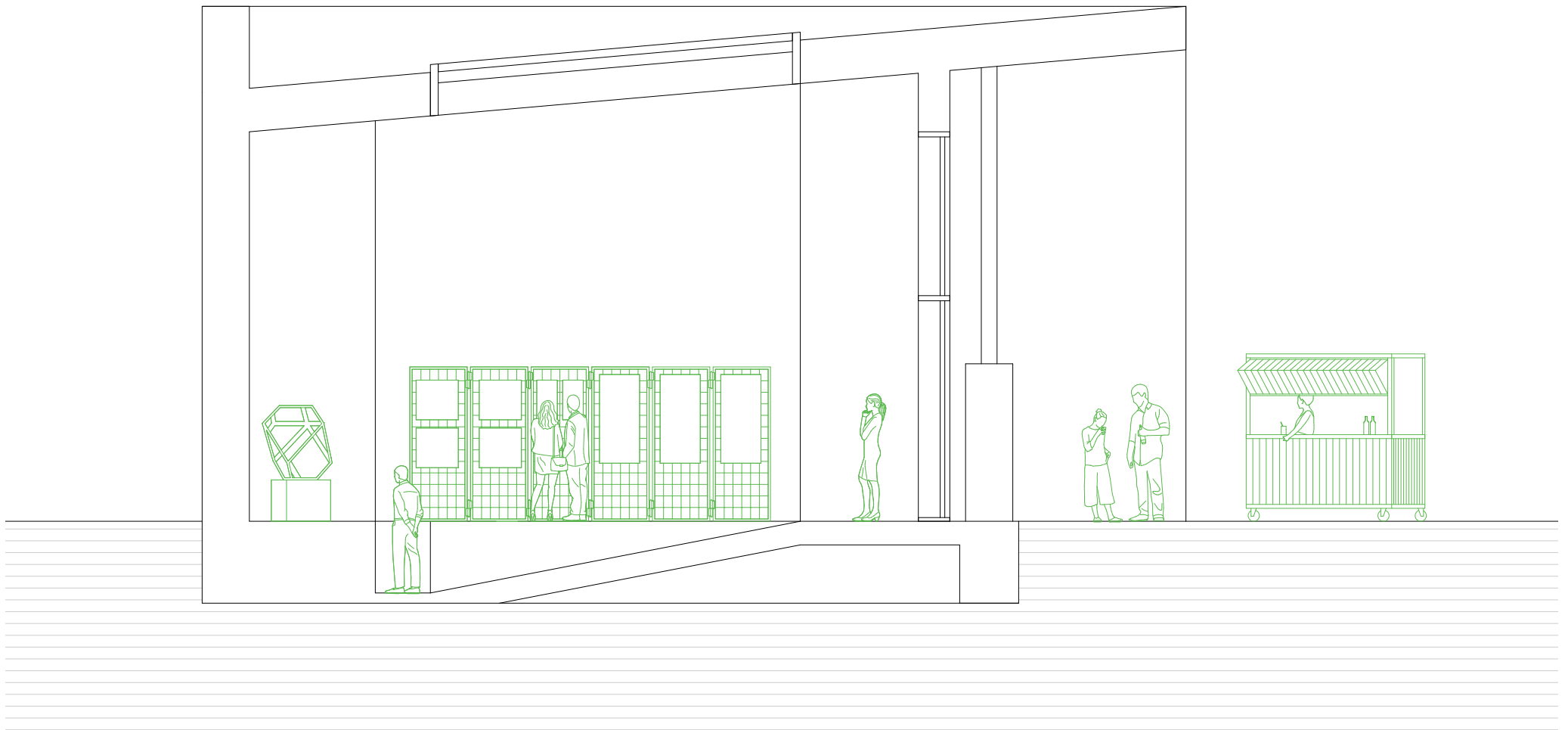
“You can rent a garage or something and start. But you cannot get all the machines that you can use here over there.”

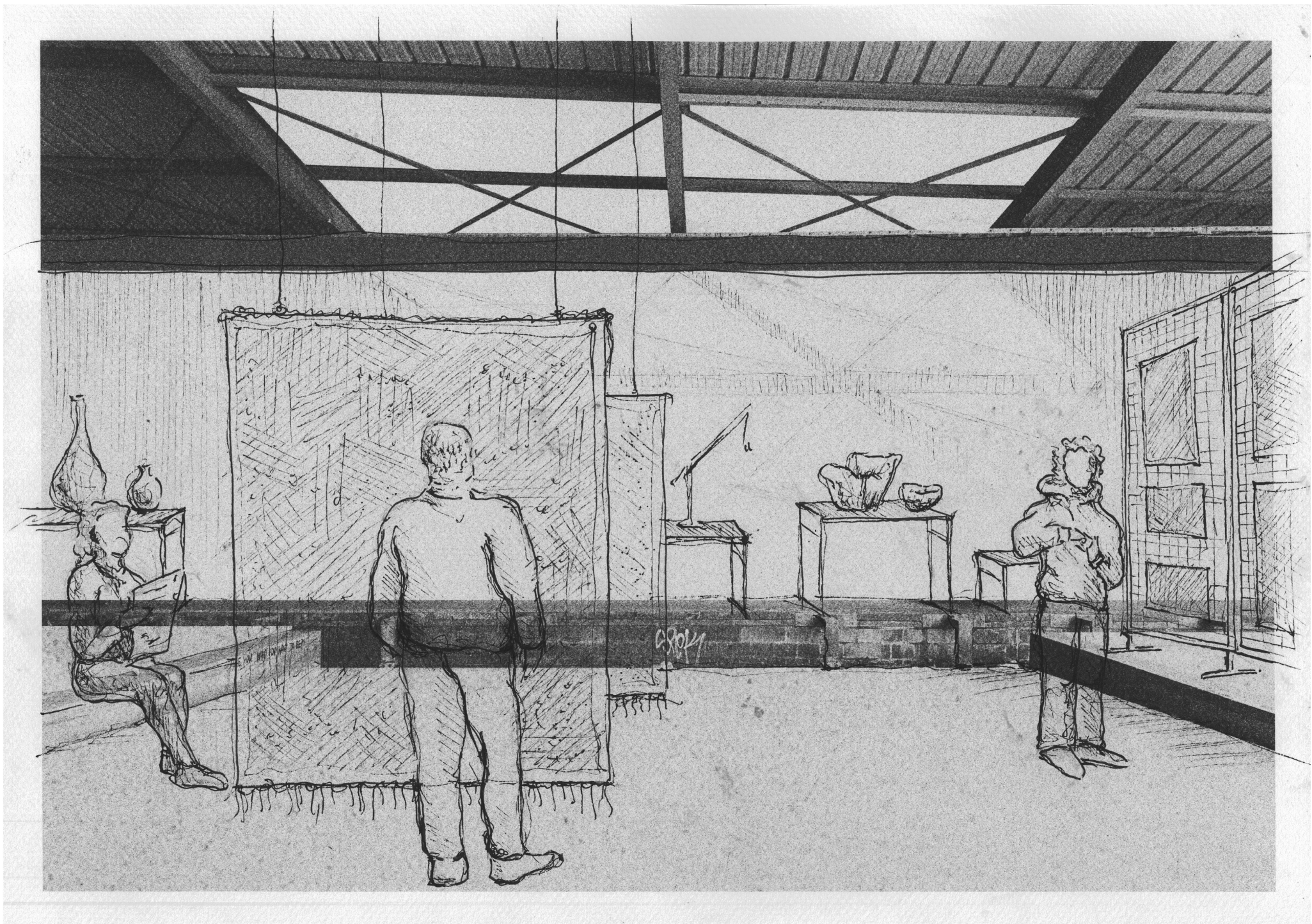
- Joran, Maakfabriek

“We try to make it as much as our own as possible, but we’re always out of space.”

- Sophie, De Stelling









Programme

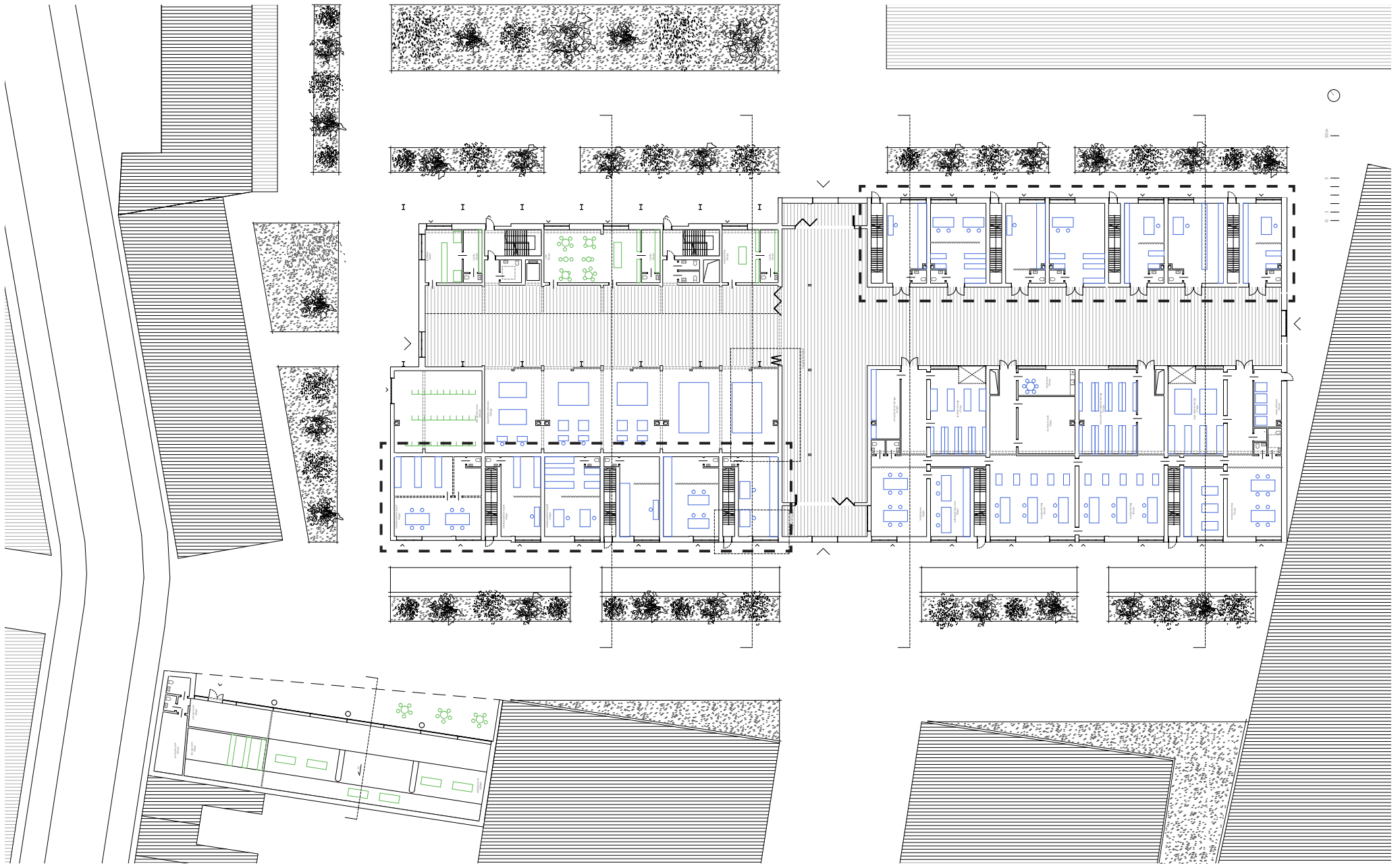
First Floor







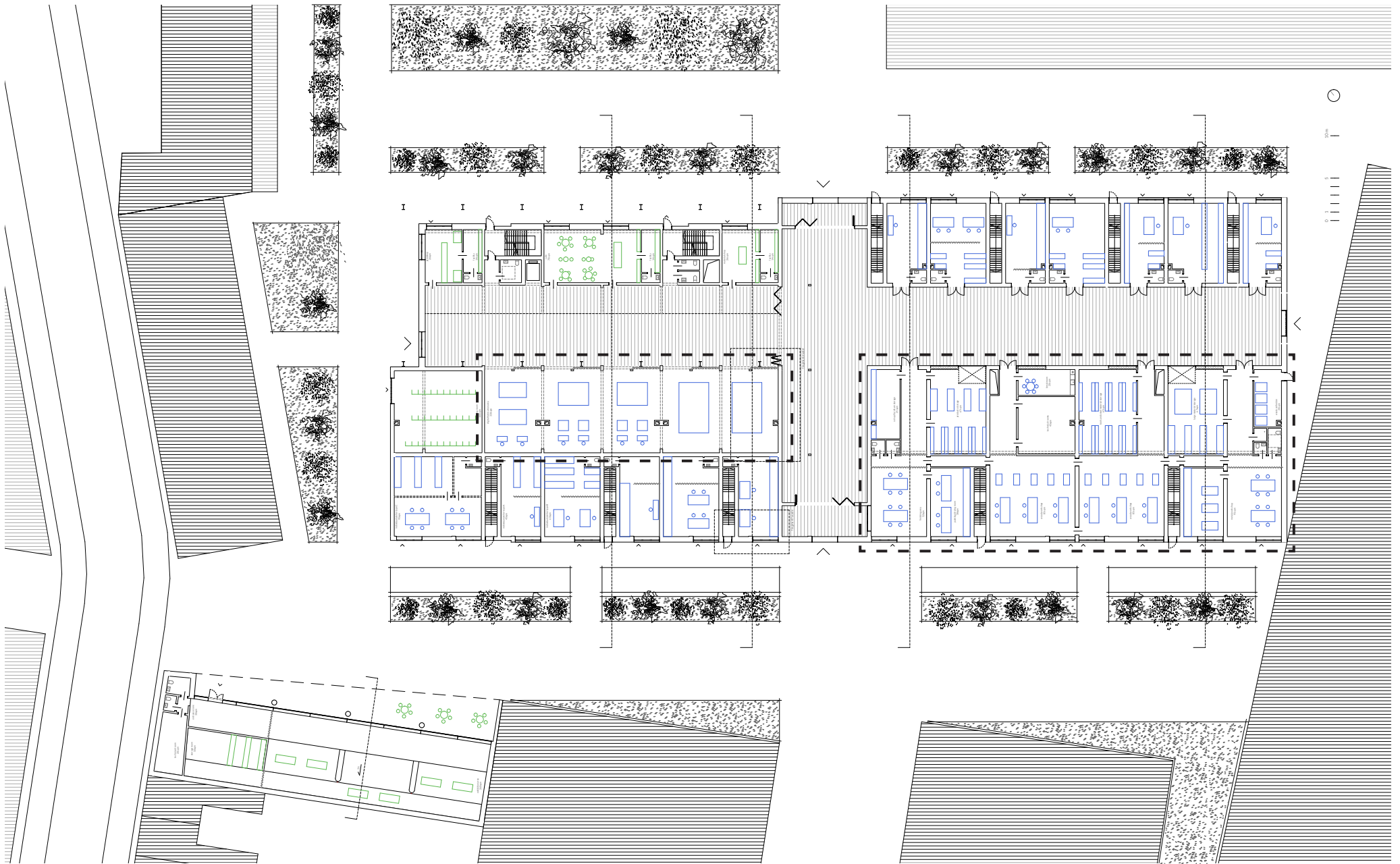


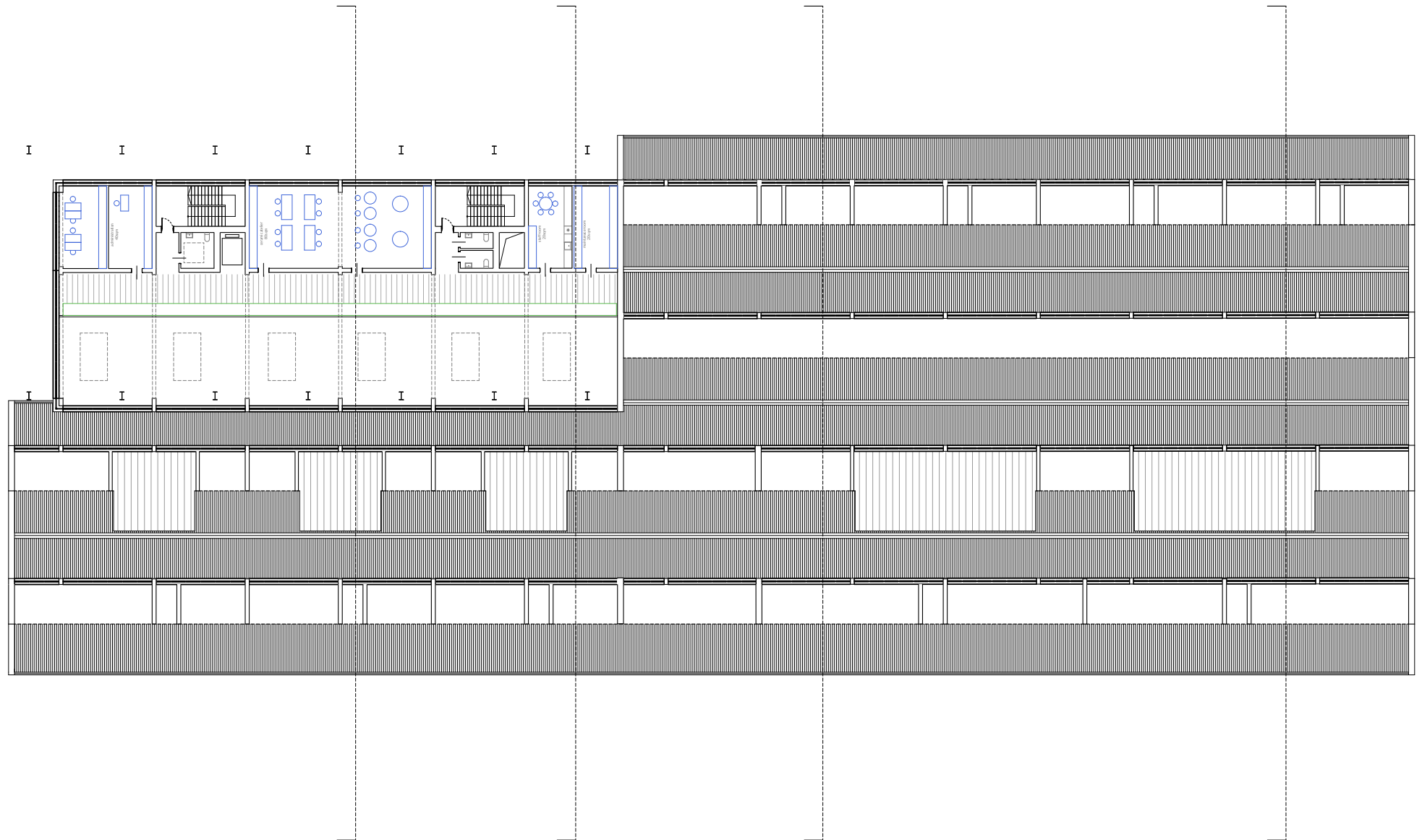


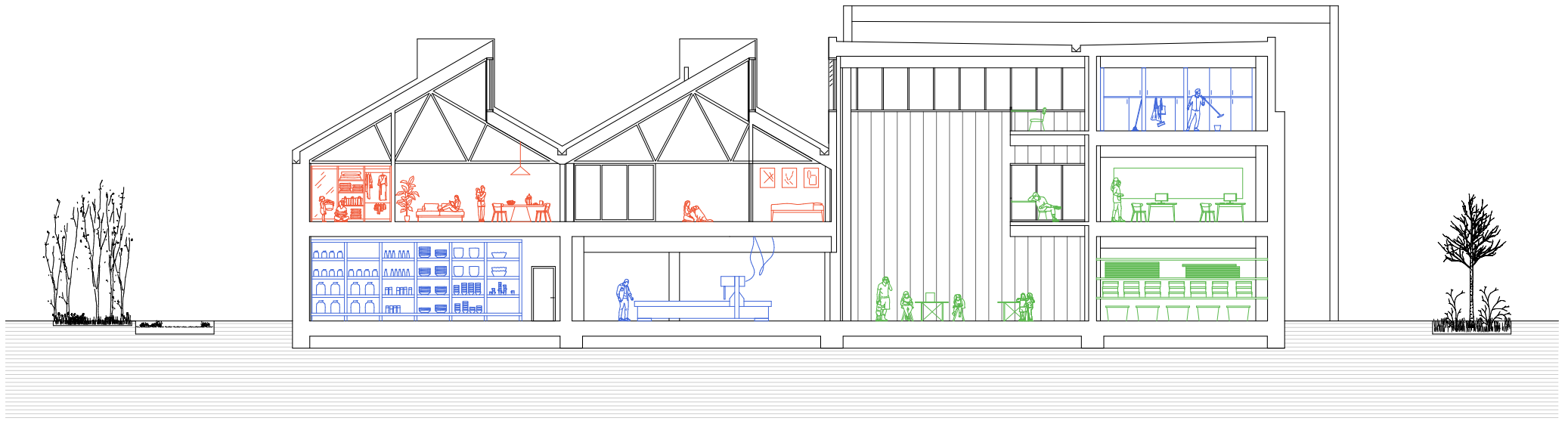
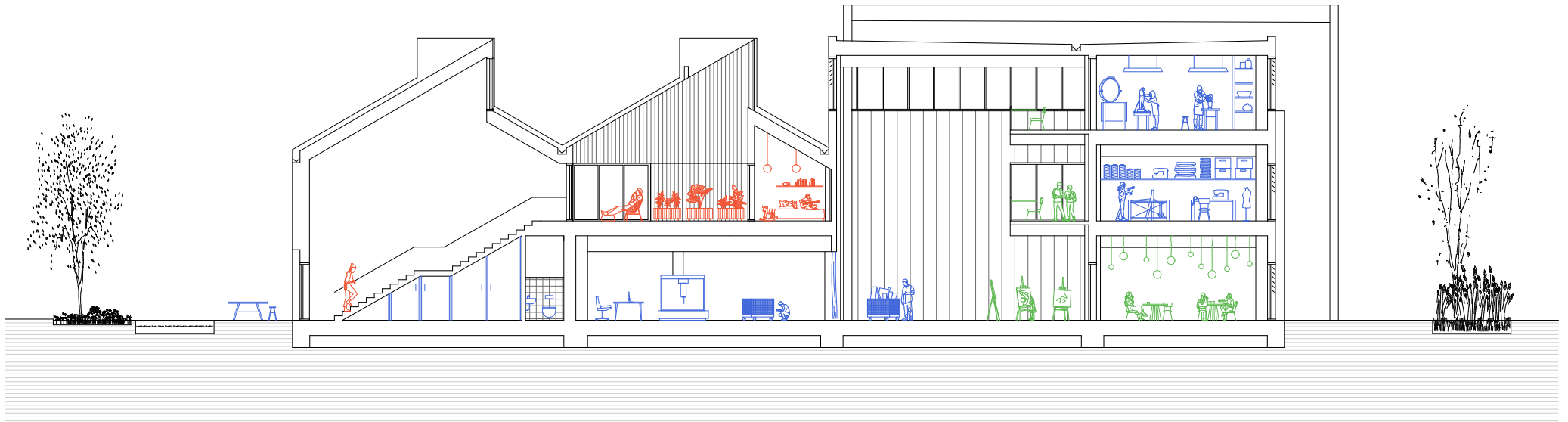


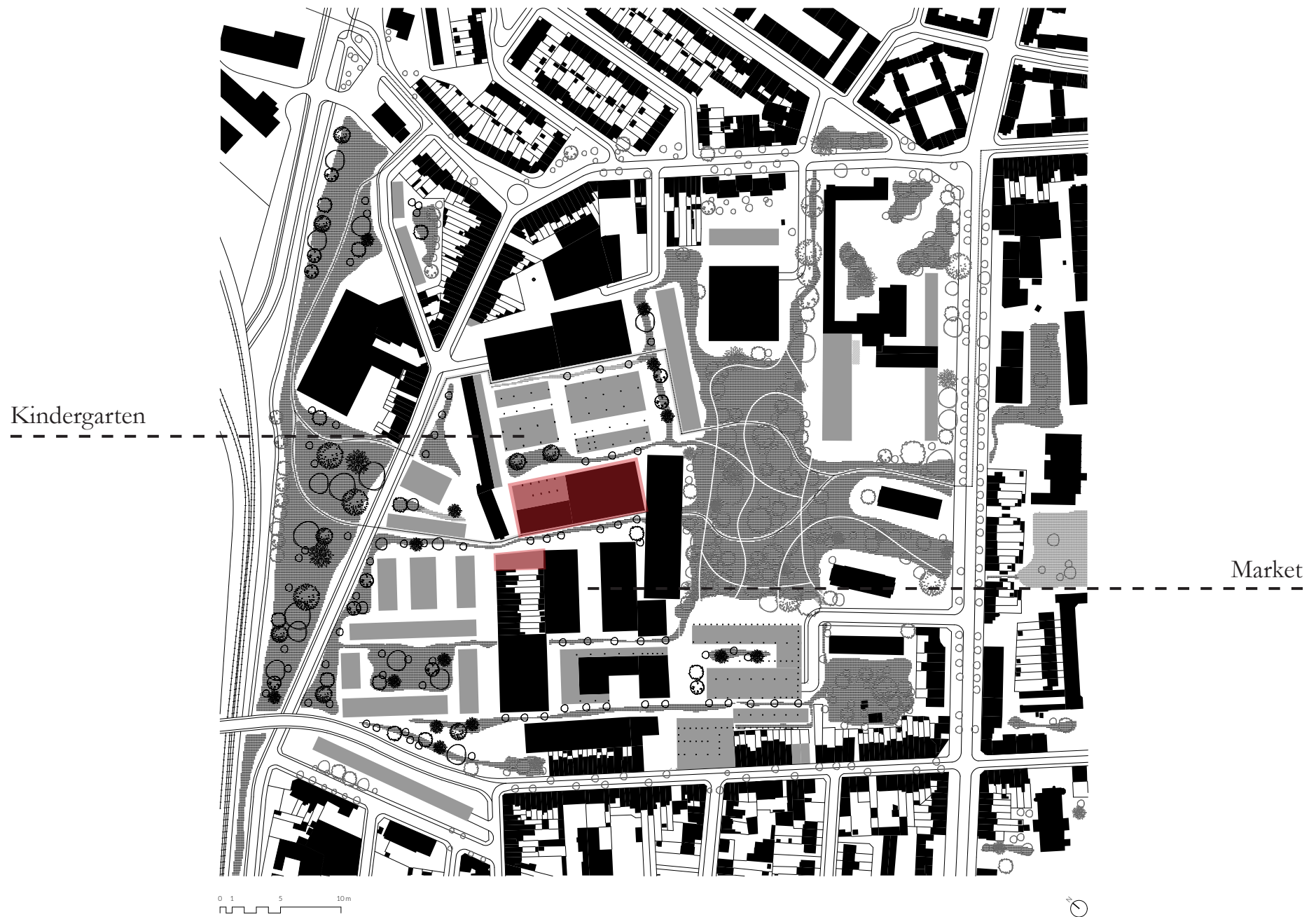
Spatial Qualities

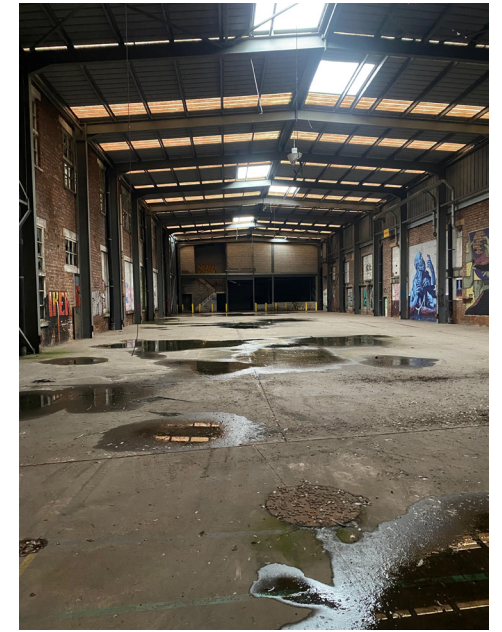
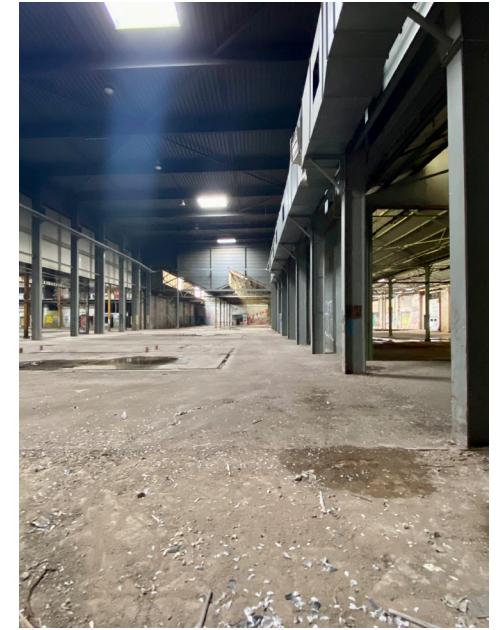
Sections





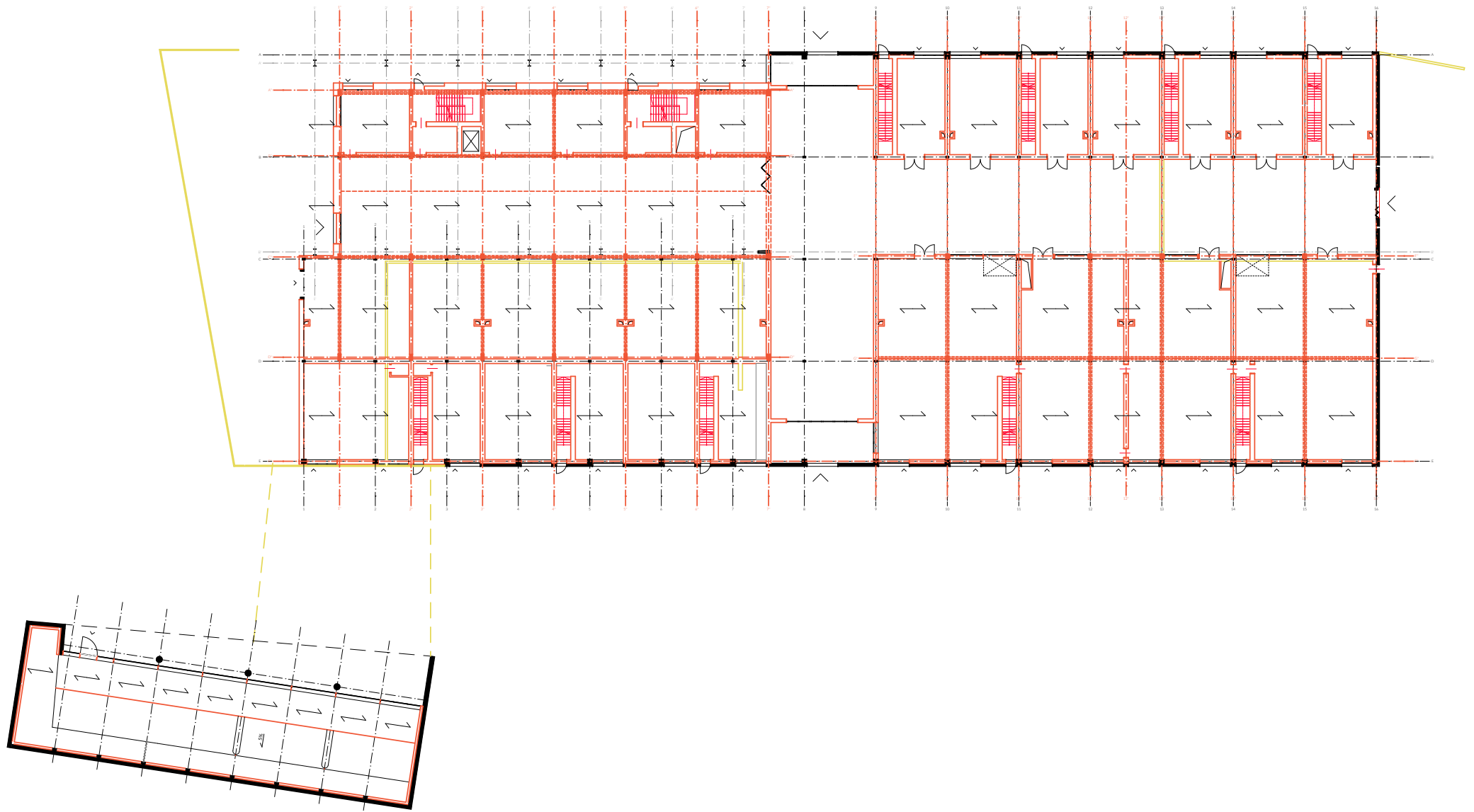






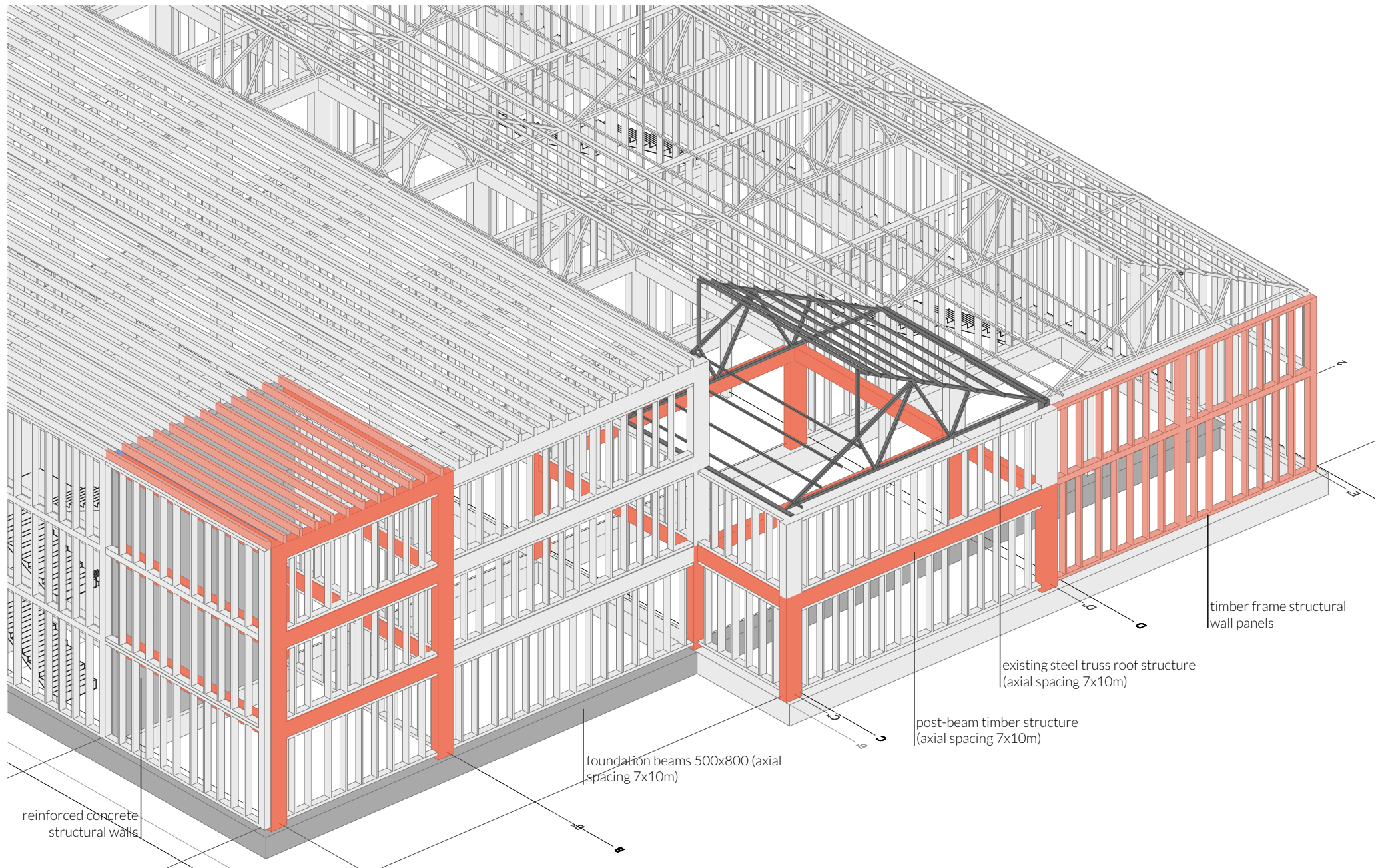
Site

Former Lemmerz Factory Production Hall and Loading Dock



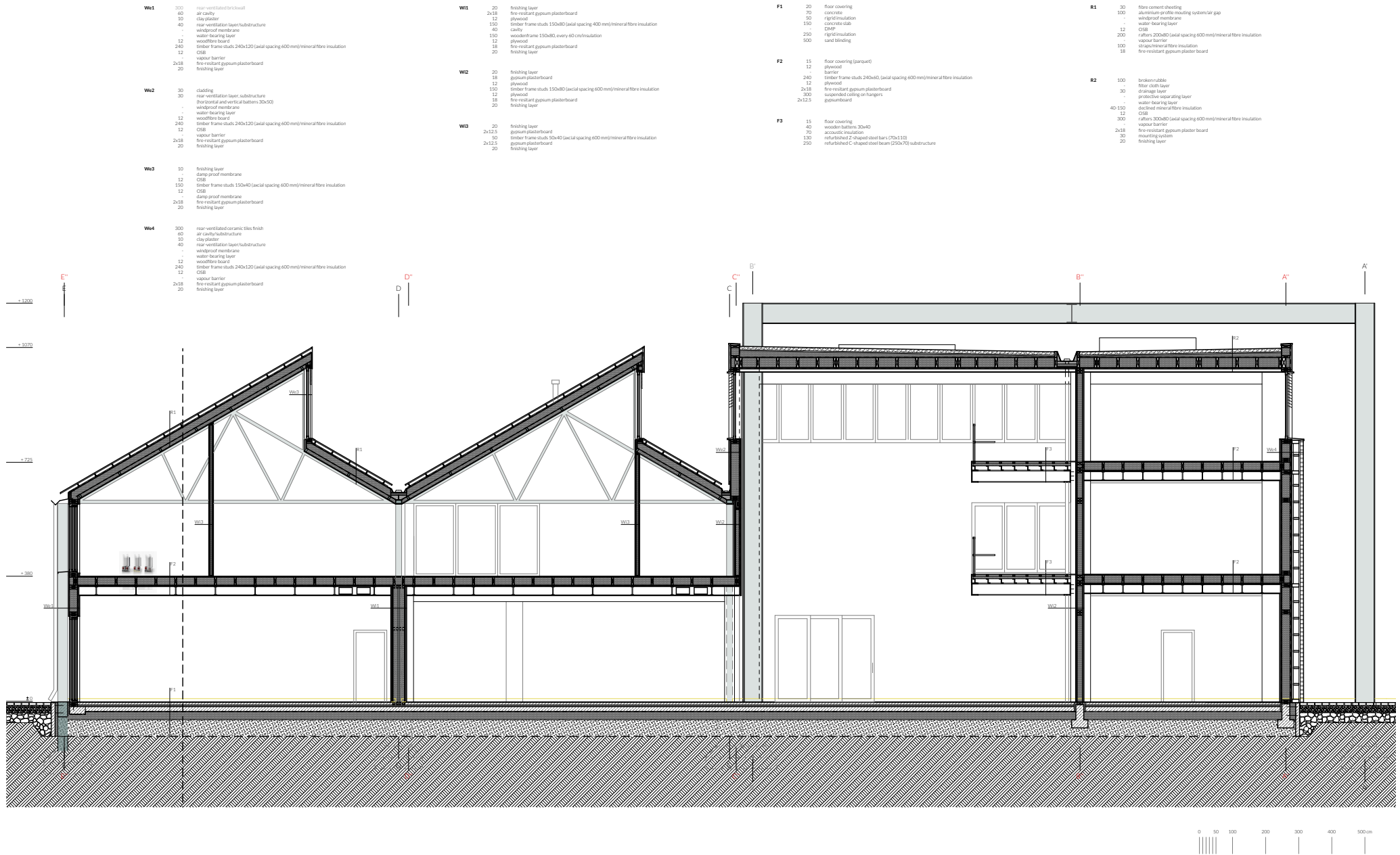
Structure

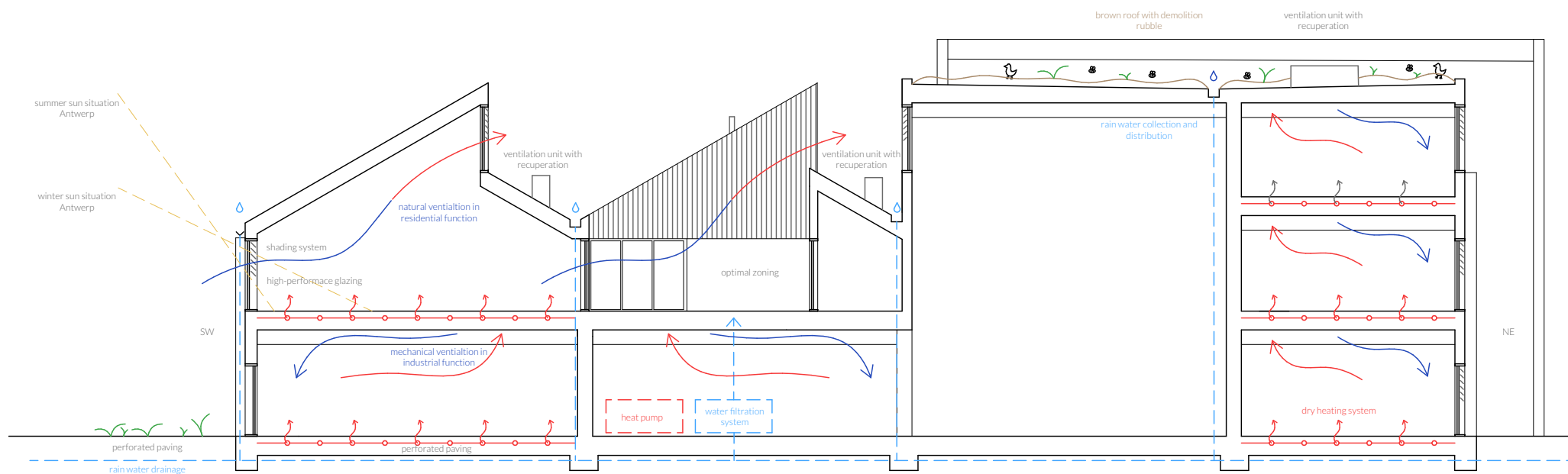
Preserved, Demolished, Added

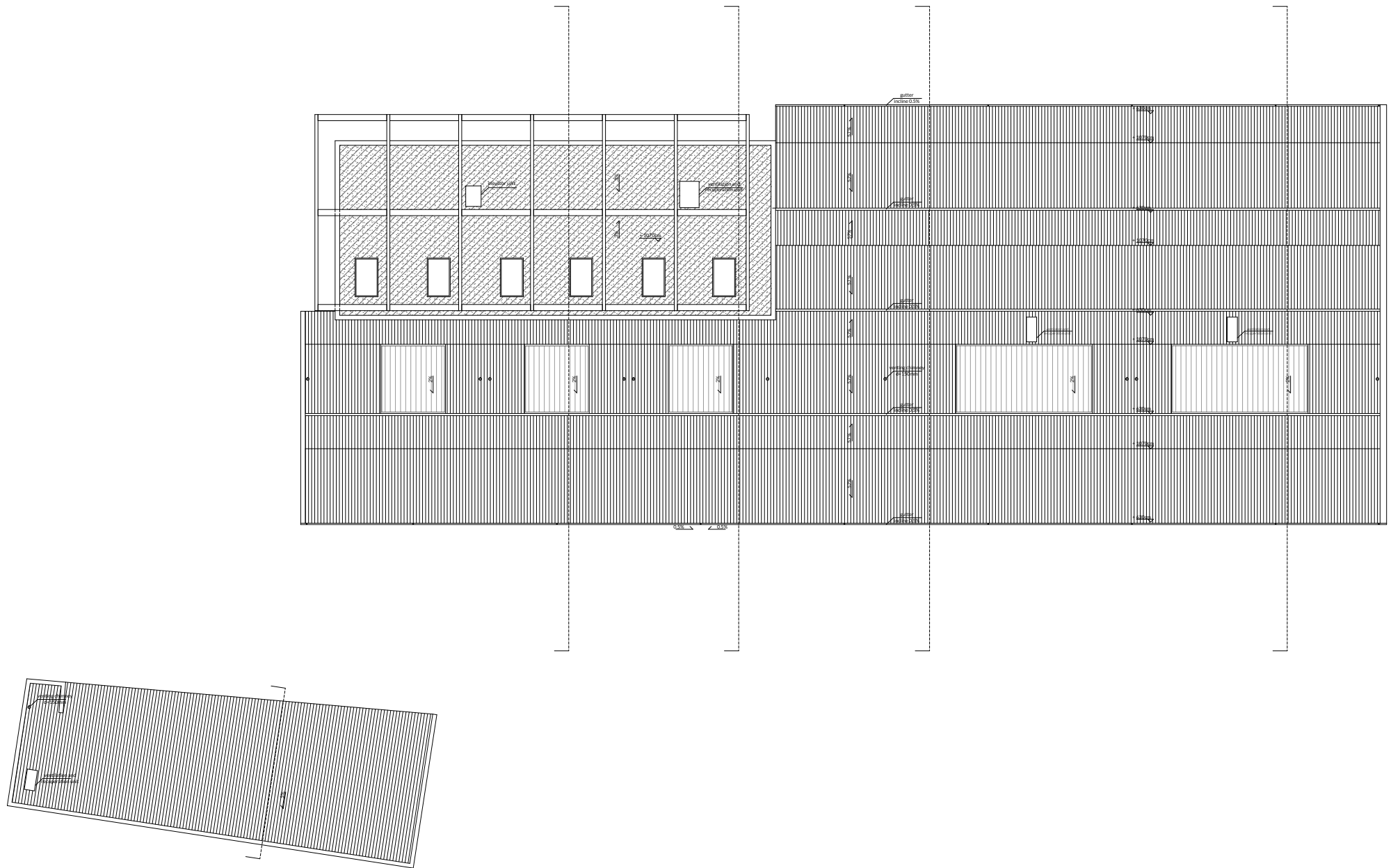


Structure

Combination of Different Bearing Components

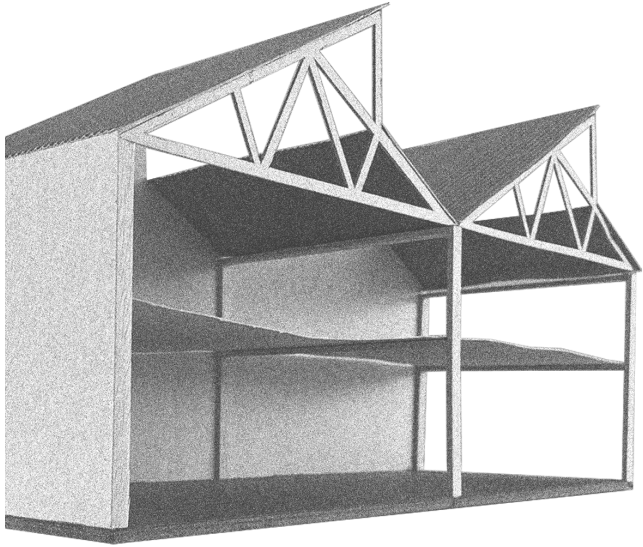




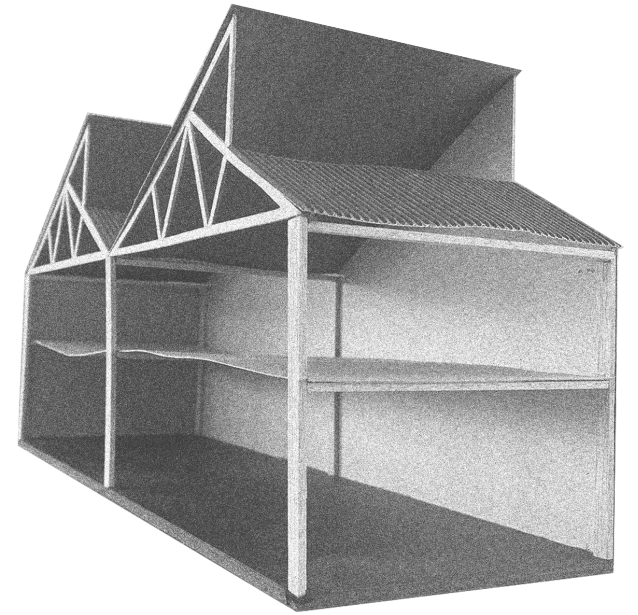


HVAC

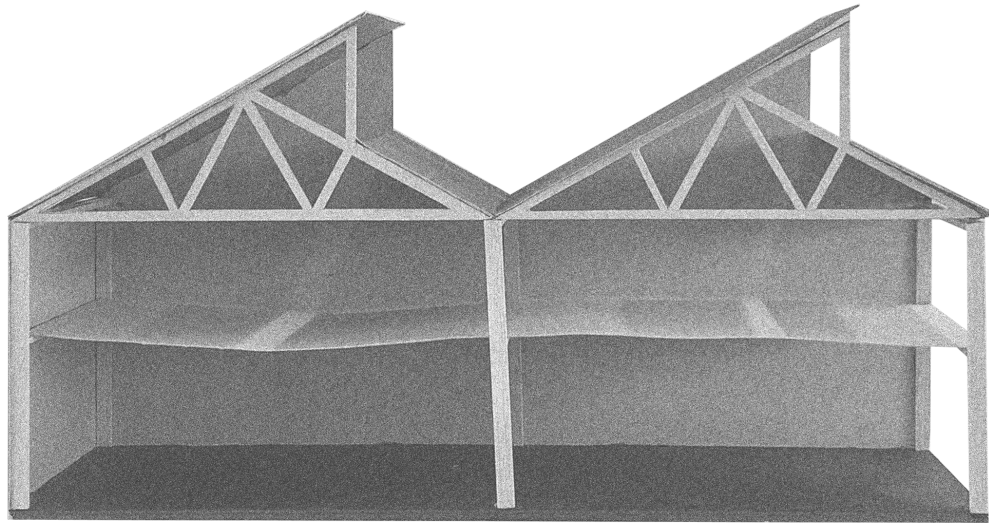
Roof Plan

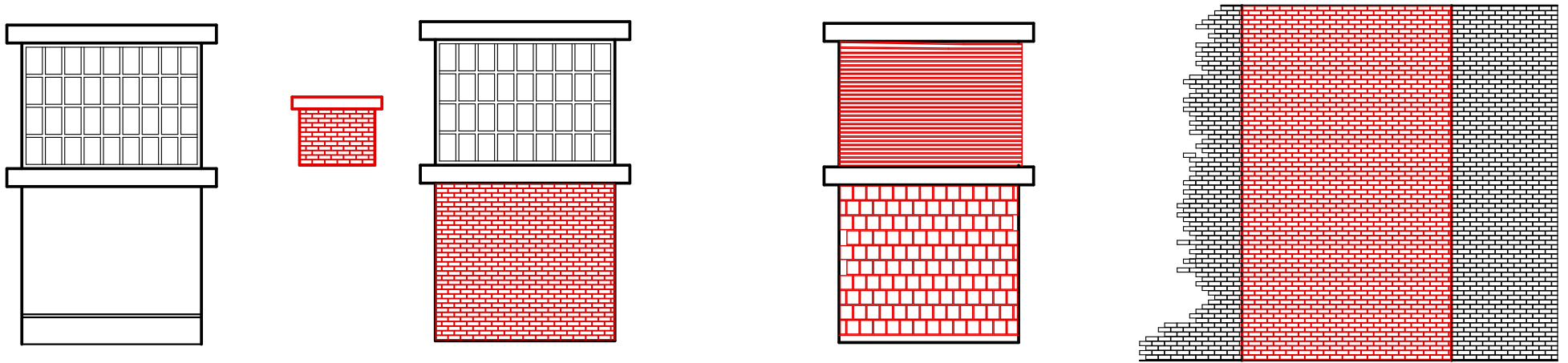


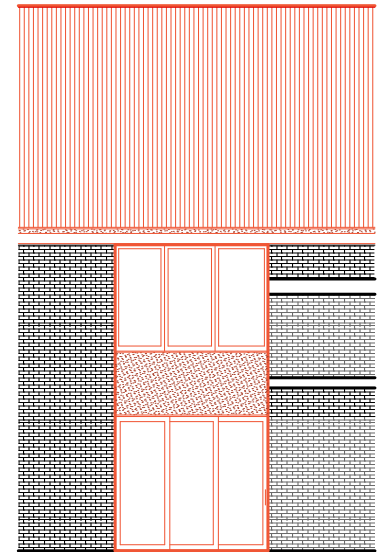
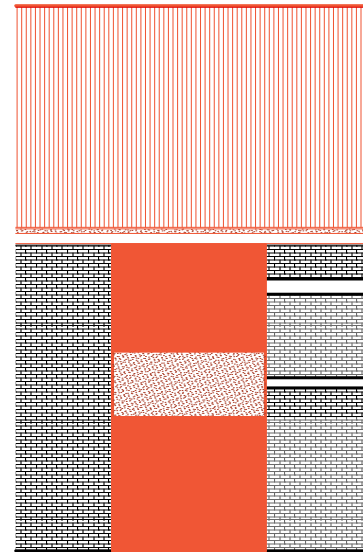
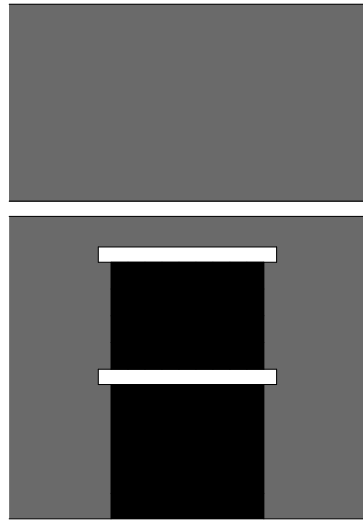
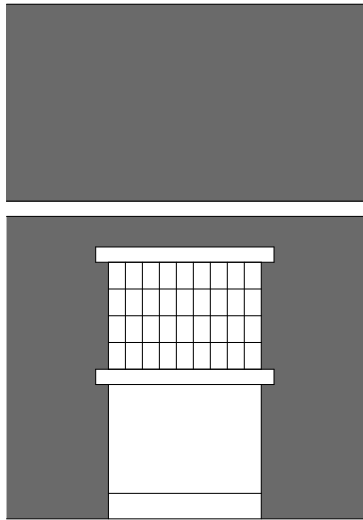
Research



Light Study

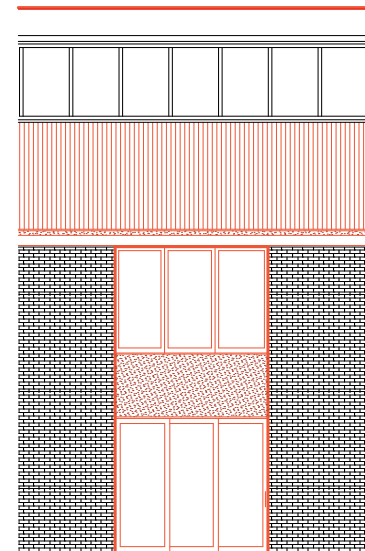
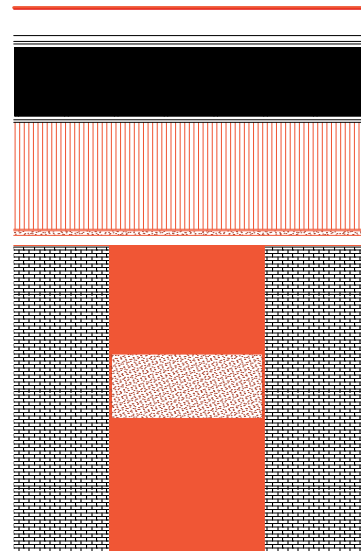
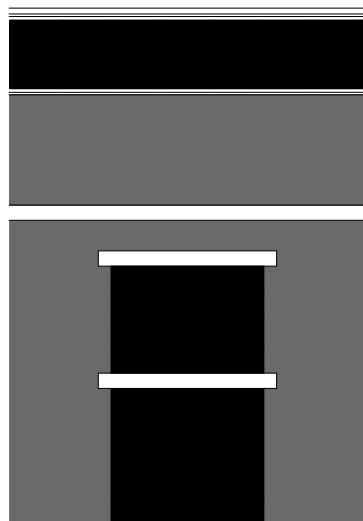
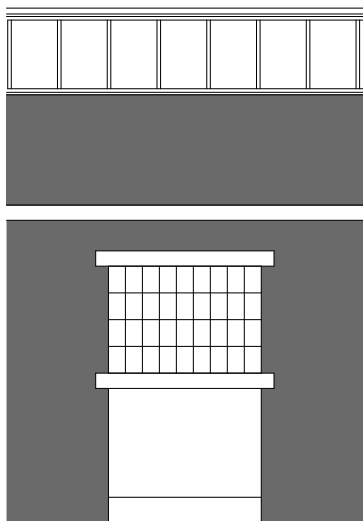






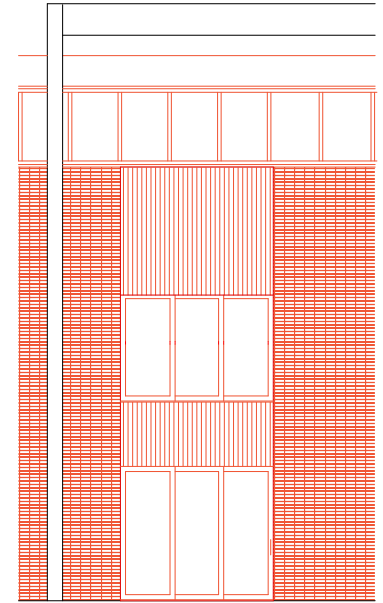
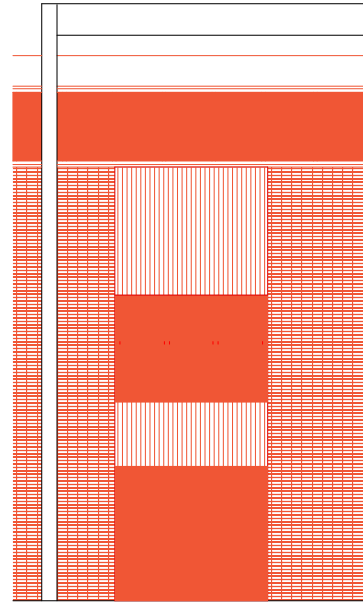
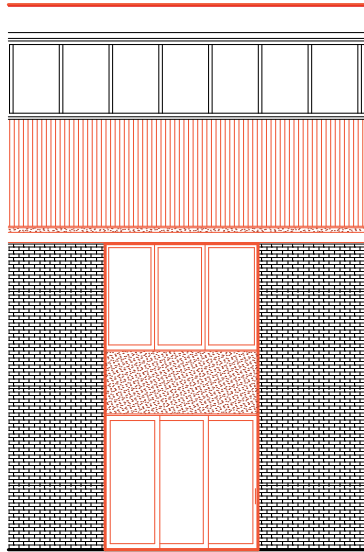
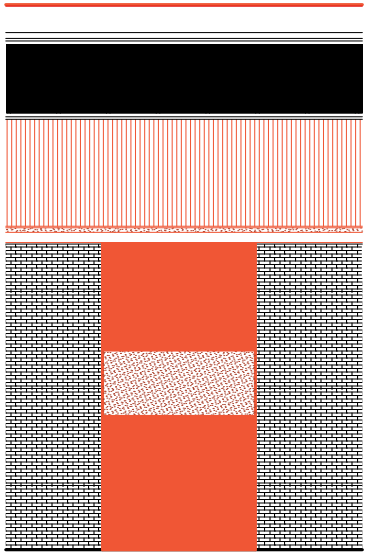
Research

Facade Proposal



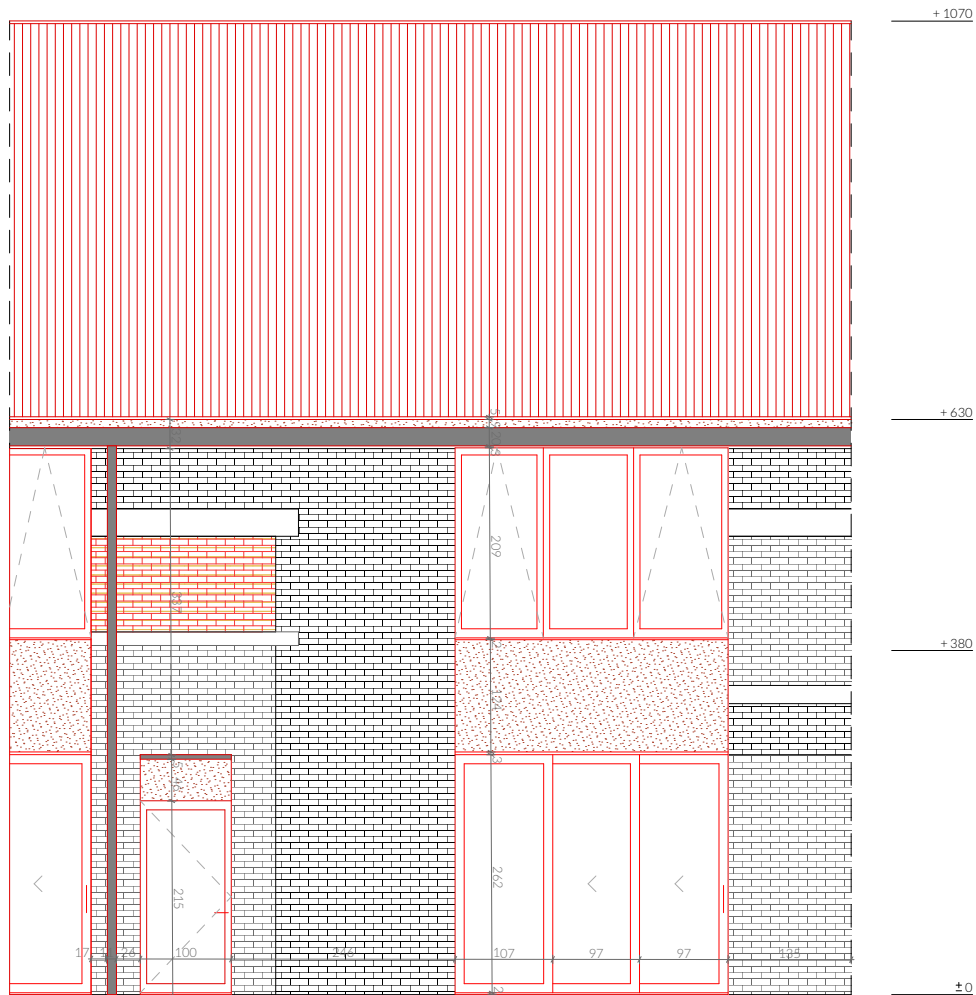
Research

Facade Proposal

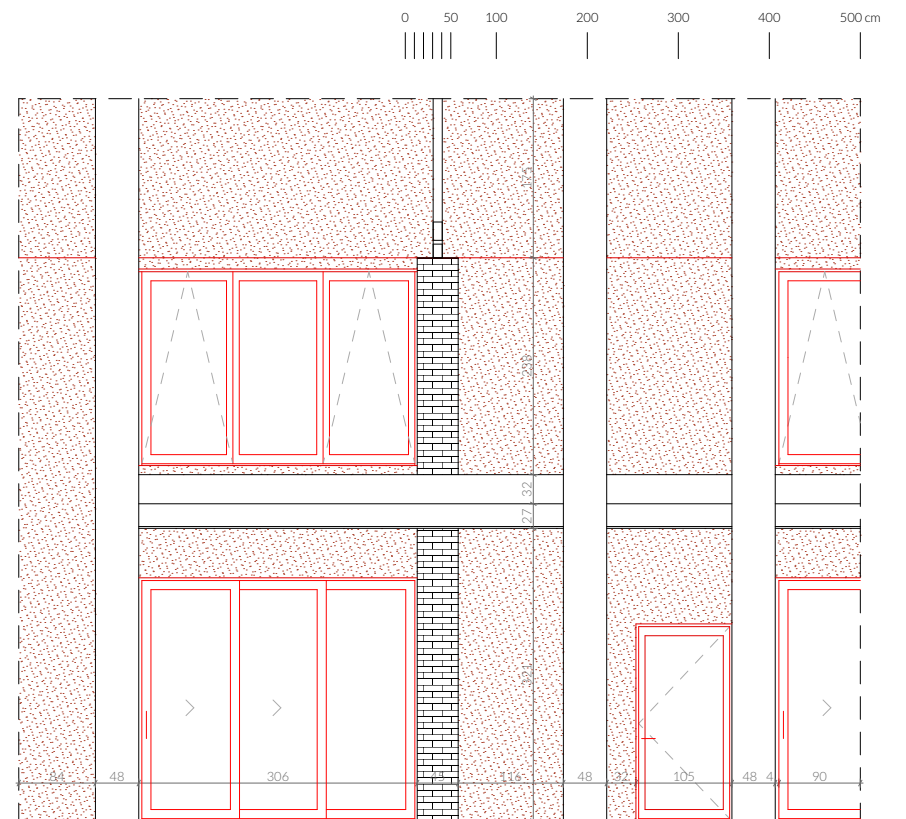


Research

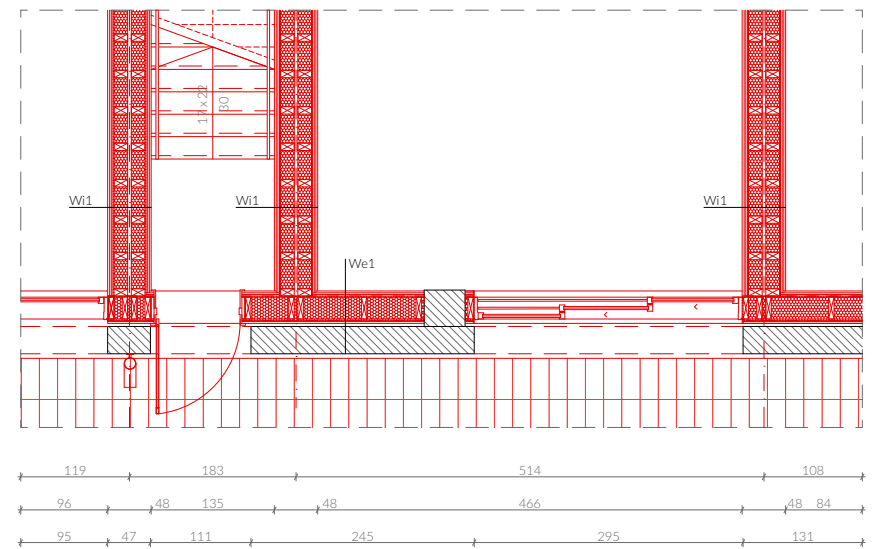
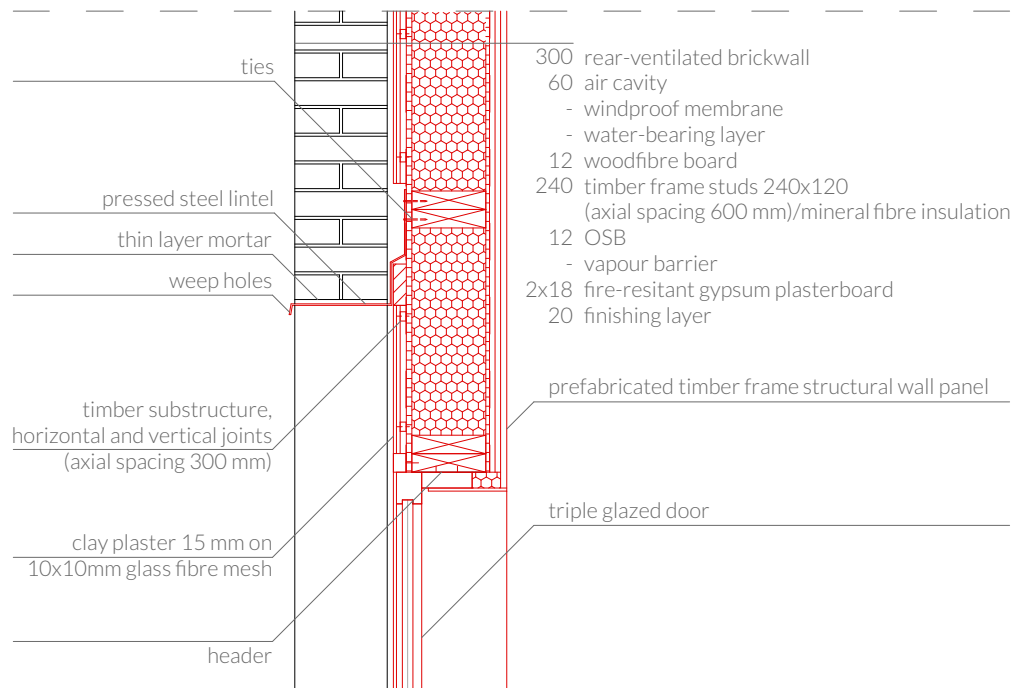
Facade Proposal

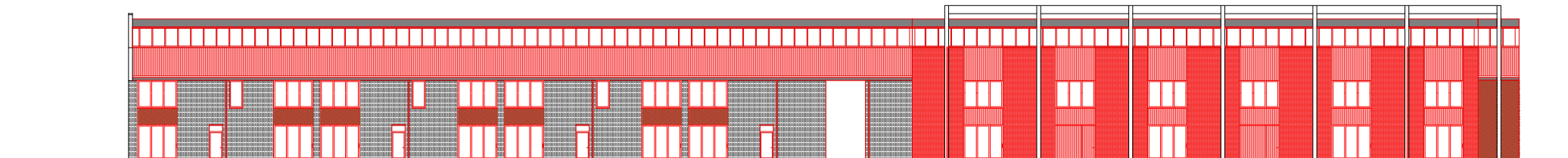
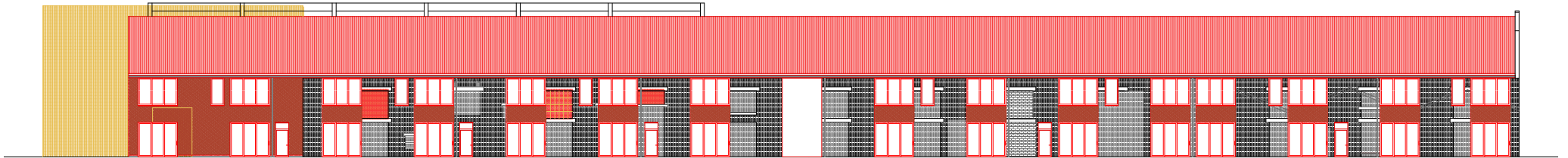


Materialisation



Facade Fragment





0 100 200 300 400 500 cm





A historical map of a shipyard area, likely from the 19th century. The map shows various industrial buildings and streets. Key labels include 'VORMERIJ (MACHINAAL)', 'COQUILLE-GIETERIJ (KLEINE)', 'COQUILLE-GIETERIJ', 'KOPERGIETERIJ', 'TRENDE', 'WEG', 'FIETSEN-BERGPLAATS', and 'AUTOBERG-PLAATS'. The map is overlaid with a grid of red dots and black lines. A large white rectangular area is superimposed on the map, containing the text 'Thank you' and 'Dziękuję'.

Thank you

Dziękuję