



DRAWING SET ROTTERDAM ATHLETIC CLUB

Casper Bovy
4369491

22/1/2021



complex projects

Jelmer van Zalingen
Hrvoje Smihiden



Sjap Holst
Dirk Dubbeling

Group site plan 1:10'000

Site plan 1:1'000

Urban implementation 1:500

Floor plans 1:200

Sections 1:200

Elevations 1:200

Interior fragment 1:50

Envelope fragment 1:20

Details 1:5

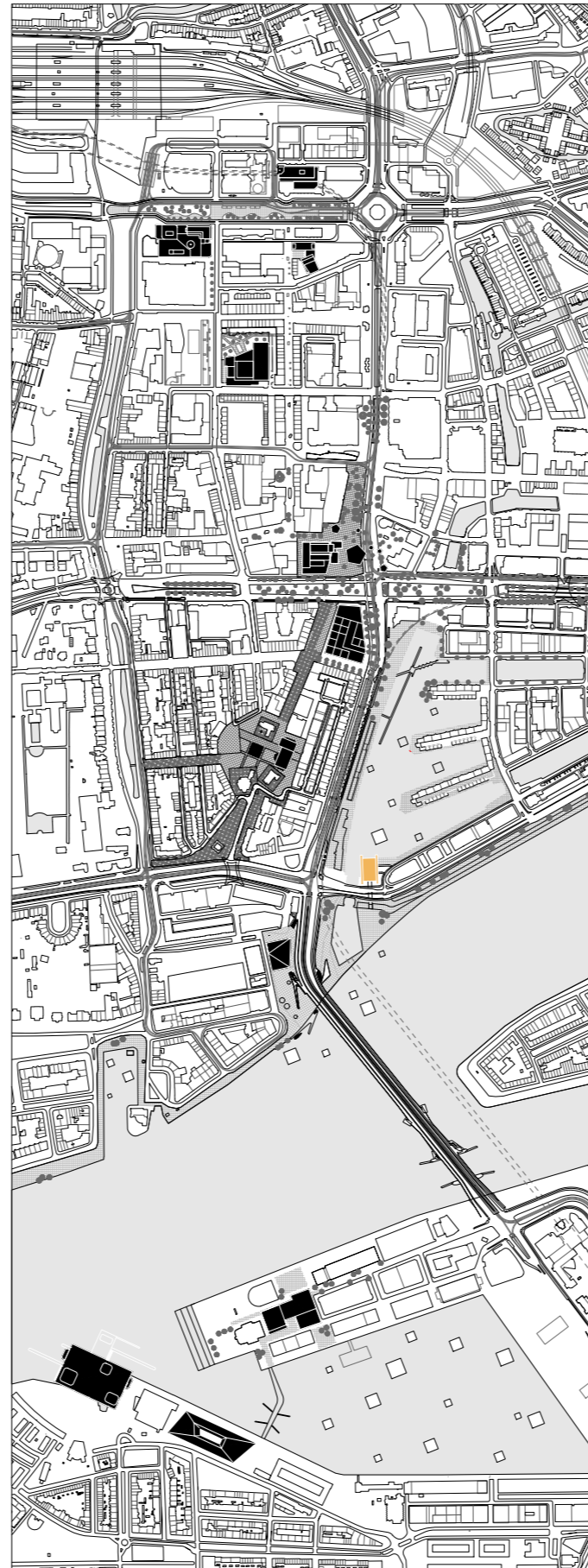
AXO

Renders

INDEX

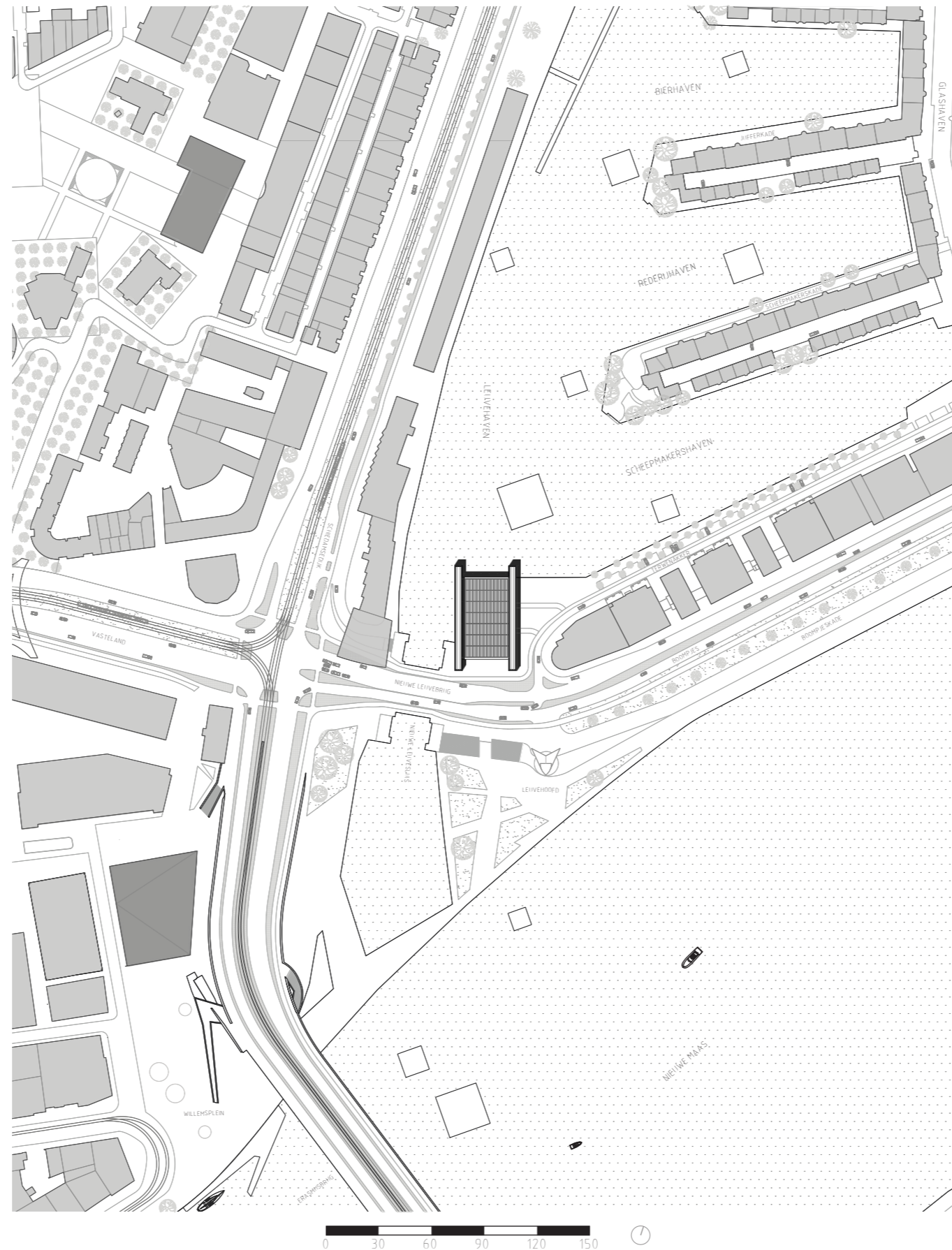
Group site plan 1:10'000

THE UNFINISHED CITY



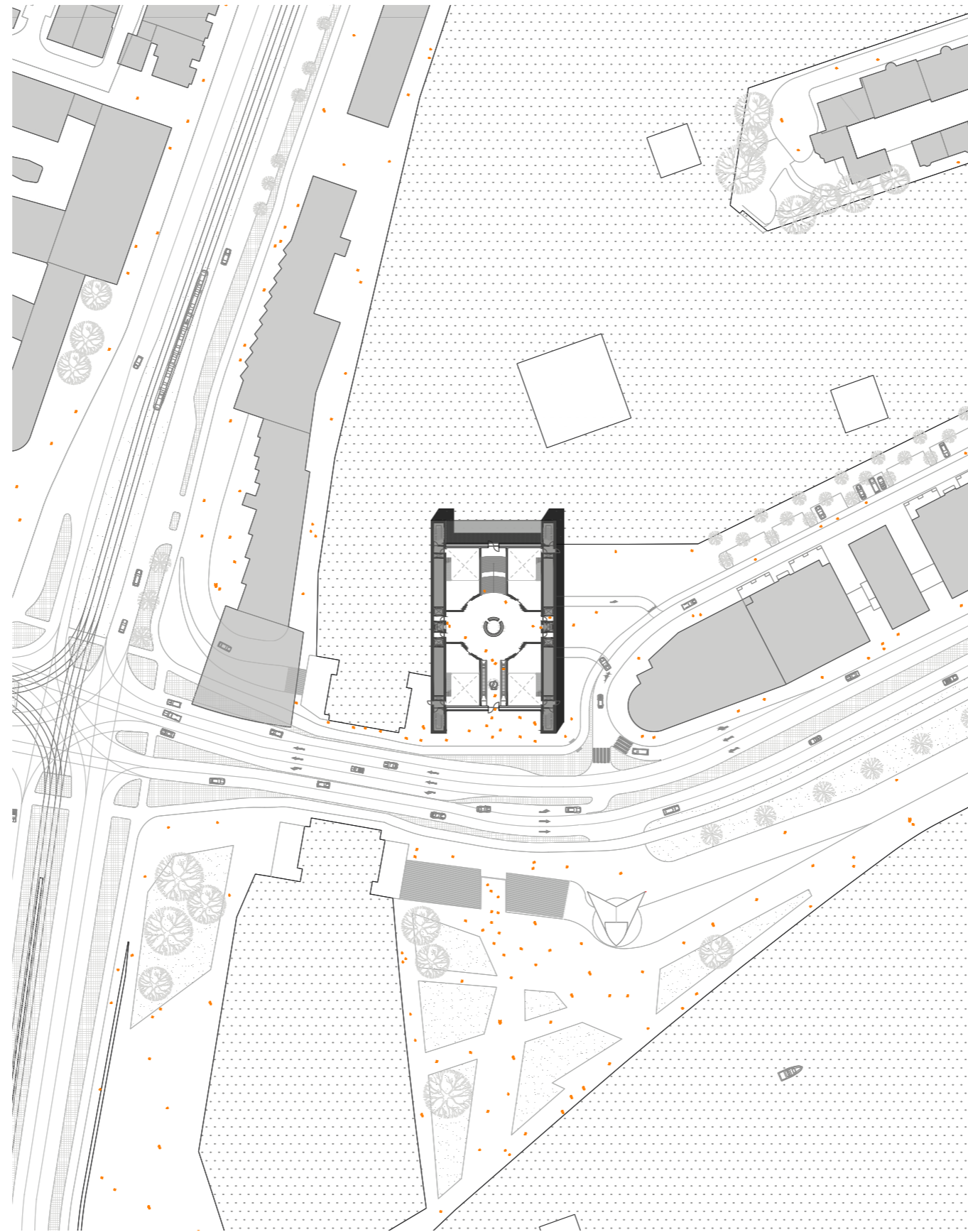
Site plan 1:1'000

ROTTERDAM ATHLETIC CLUB



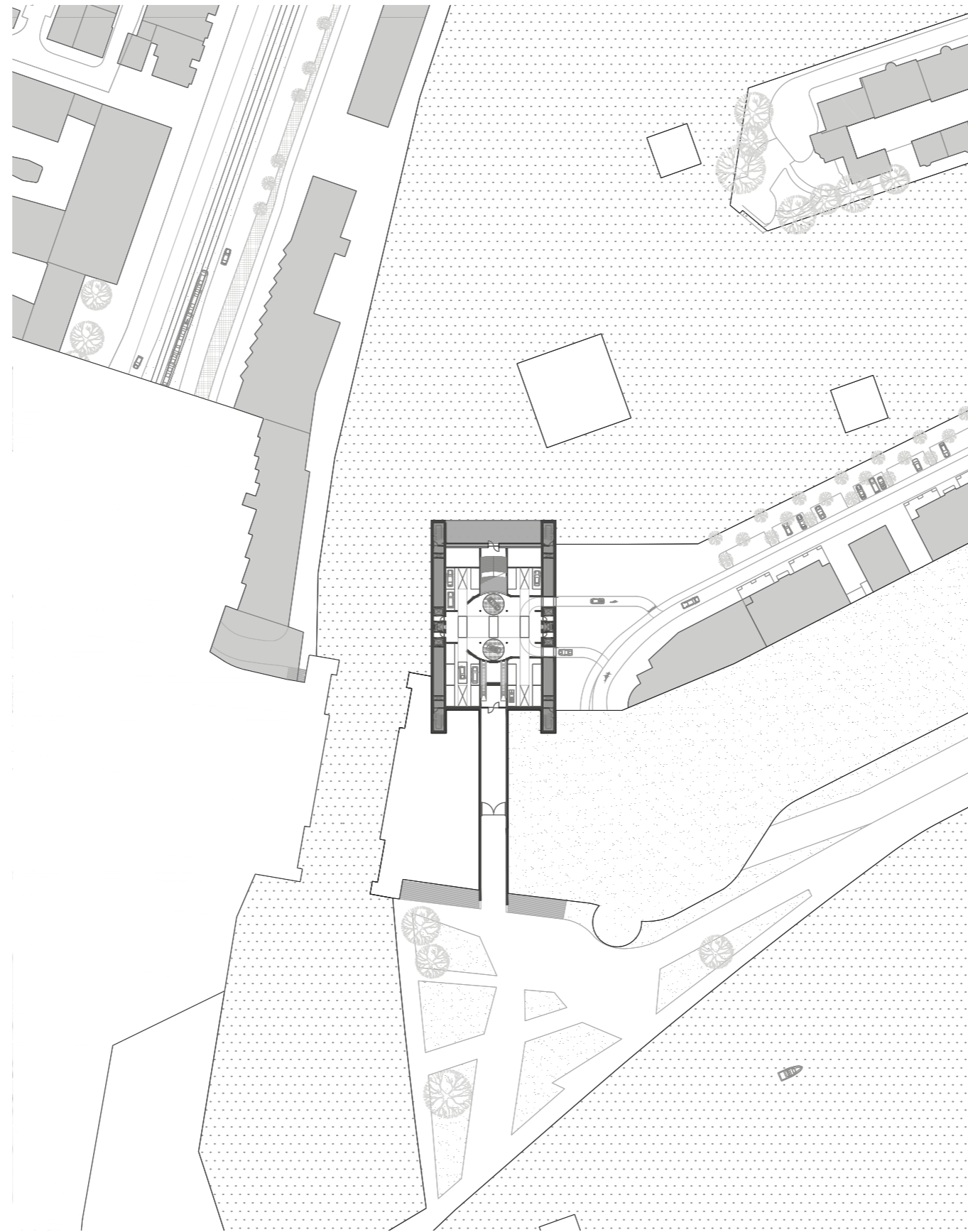
Urban implementation 1:500

BOOMPJES



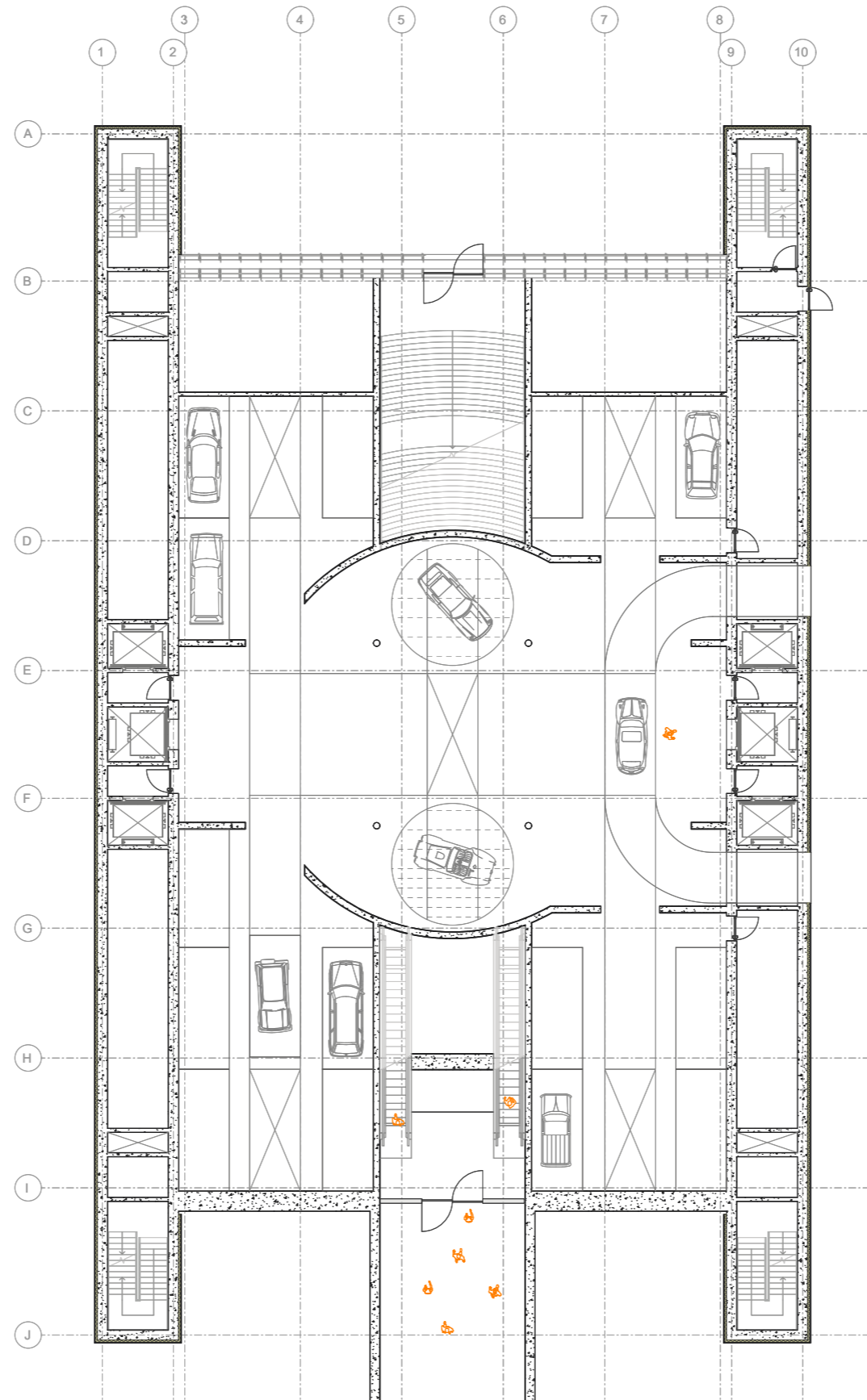
Urban implementation 1:500

TERWENAKKER



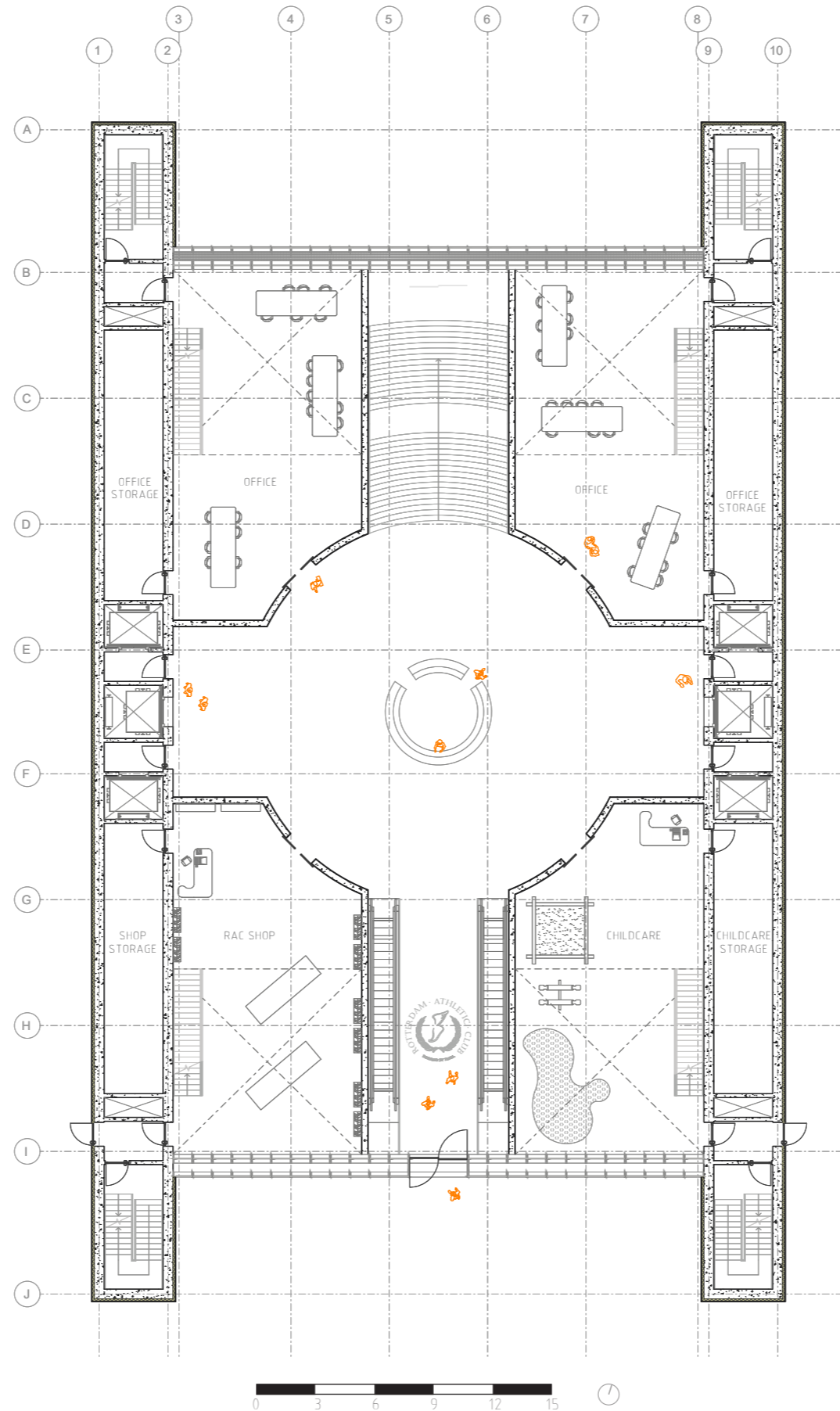
Floor plans 1:200

LEVEL -1 - PARKING



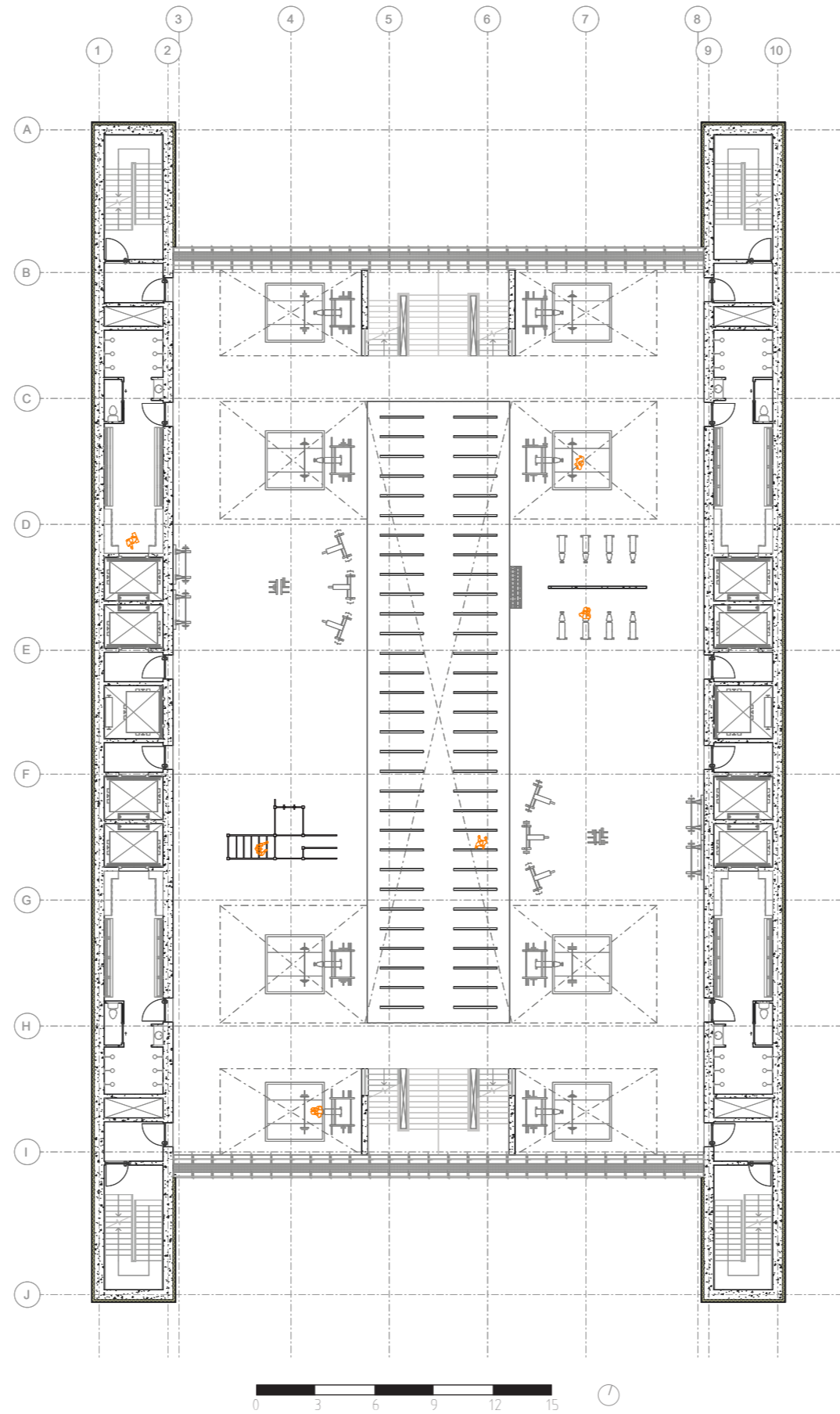
Floor plans 1:200

GROUND FLOOR - ENTRANCE



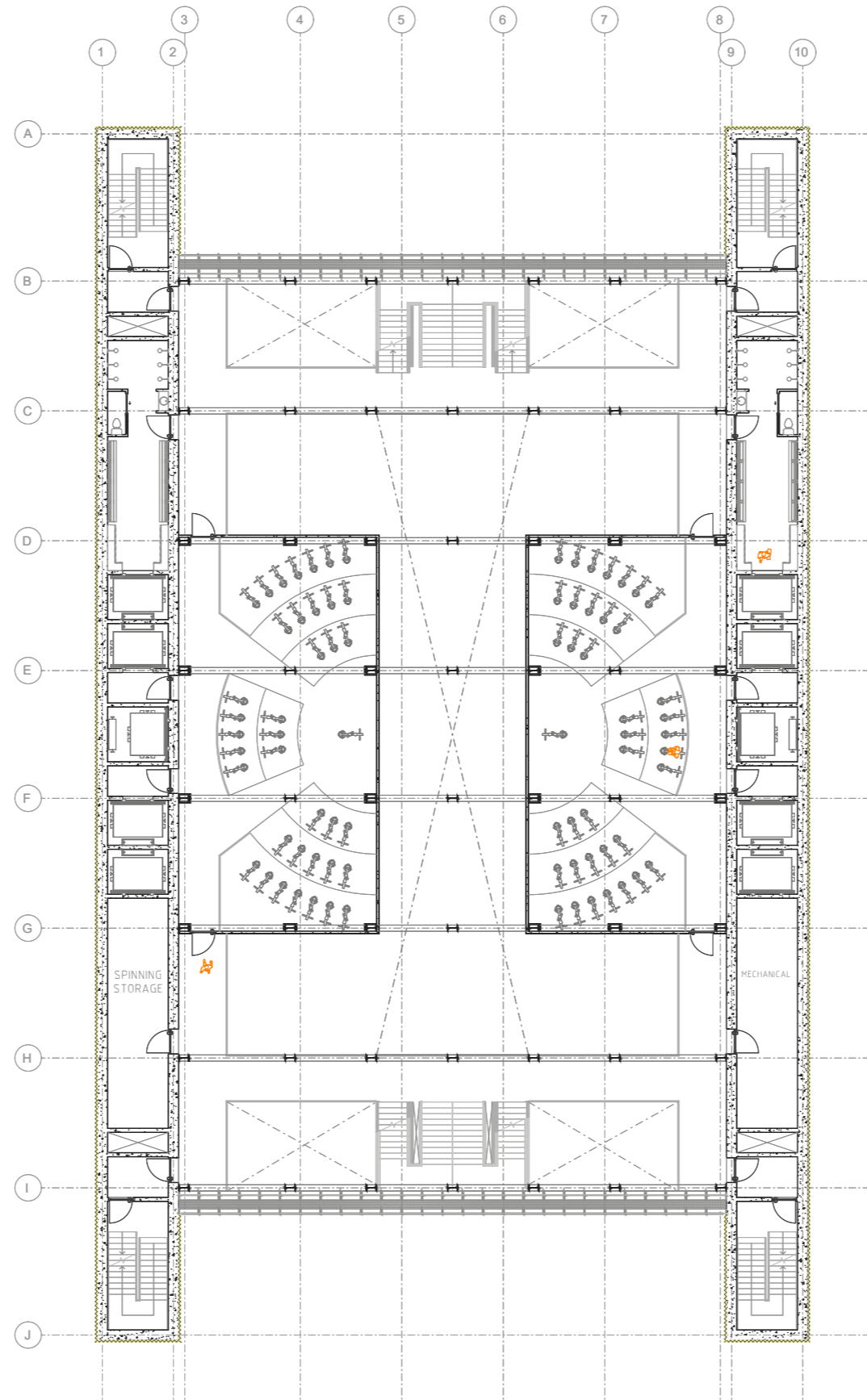
Floor plans 1:200

LEVEL 1 - CROSSFIT



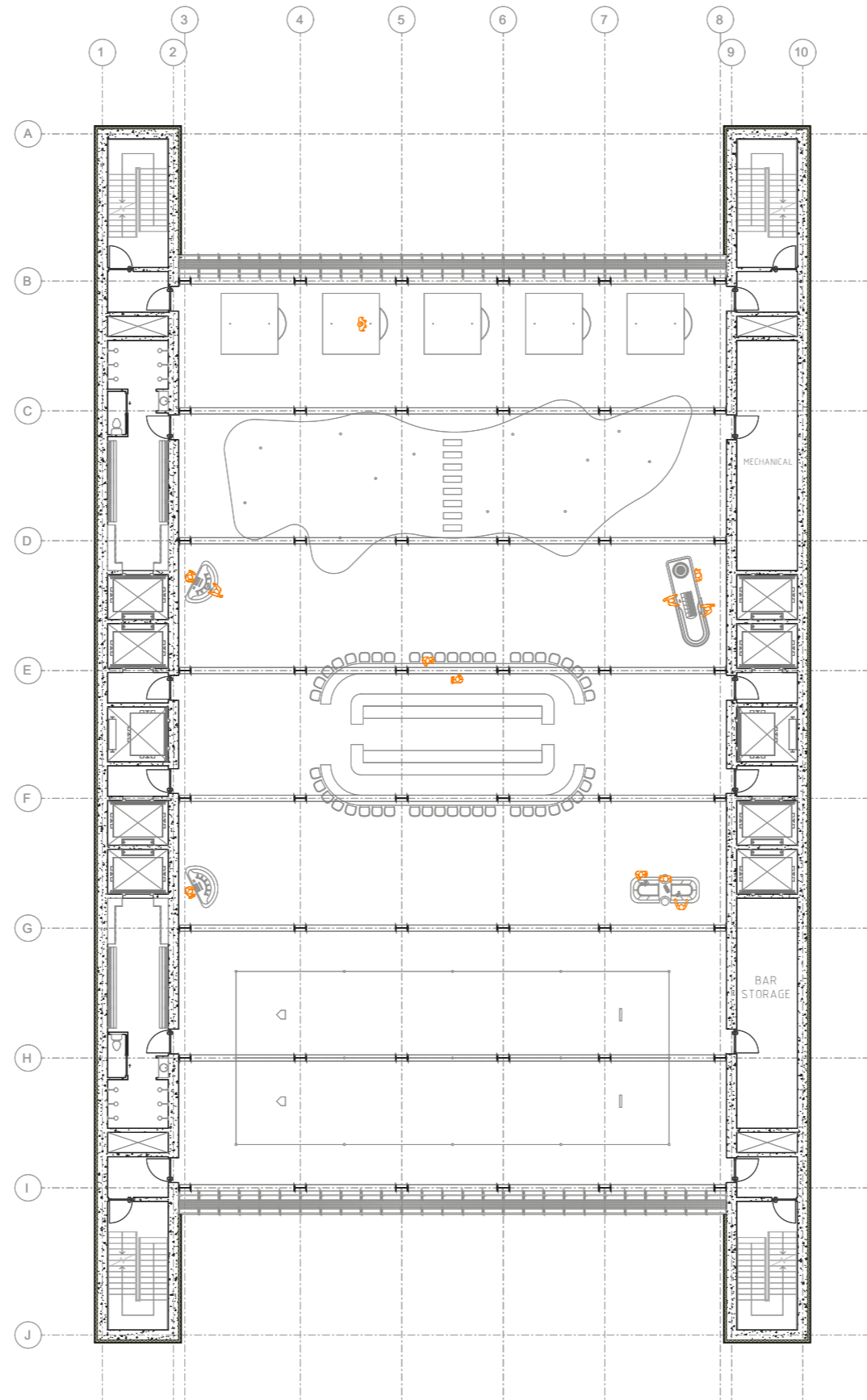
Floor plans 1:200

LEVEL 2 - SPINNING



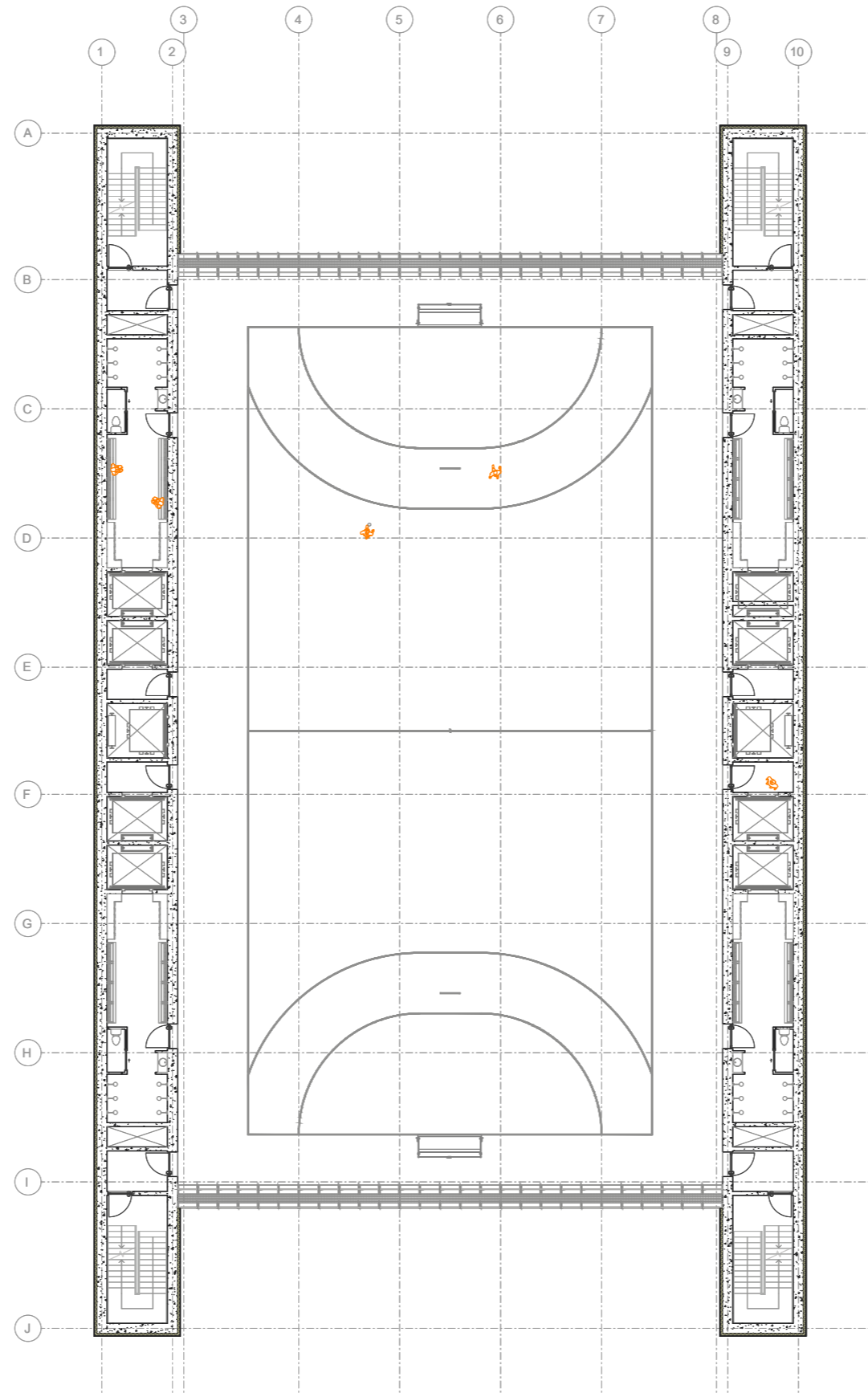
Floor plans 1:200

LEVEL 8 - SPORTS CAFE



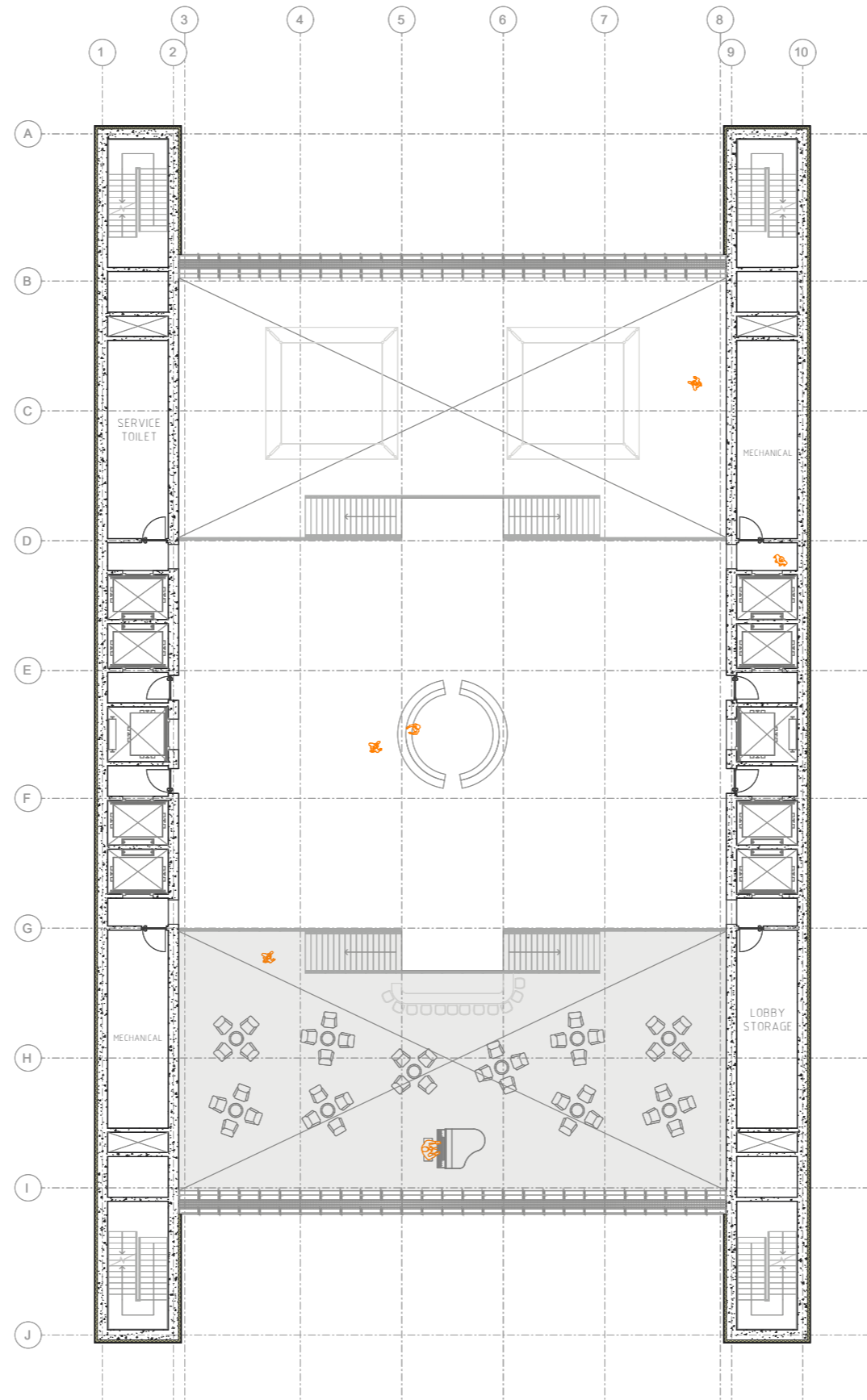
Floor plans 1:200

LEVEL 9 - SPORTS HALL



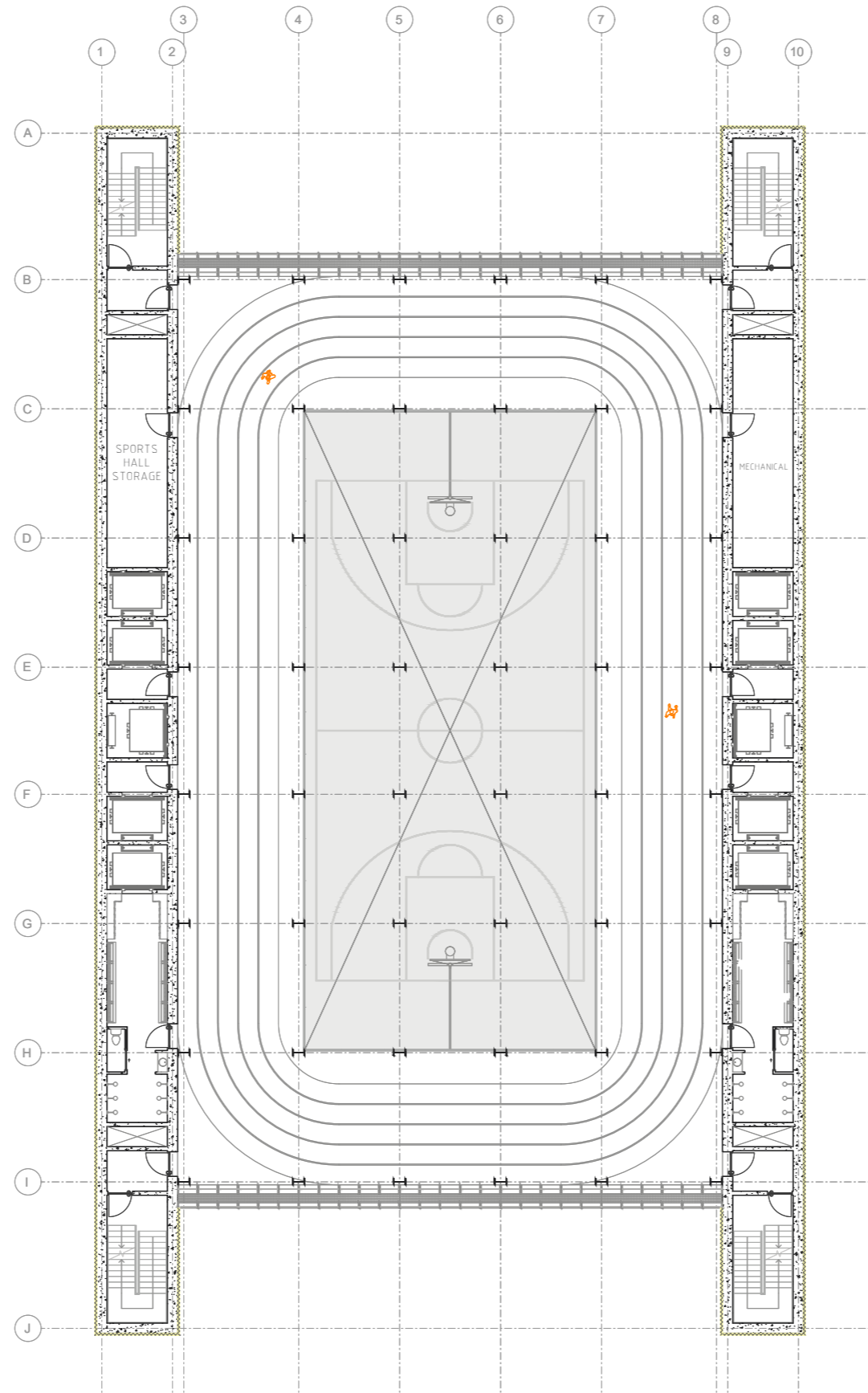
Floor plans 1:200

LEVEL 13 - RAC LOBBY



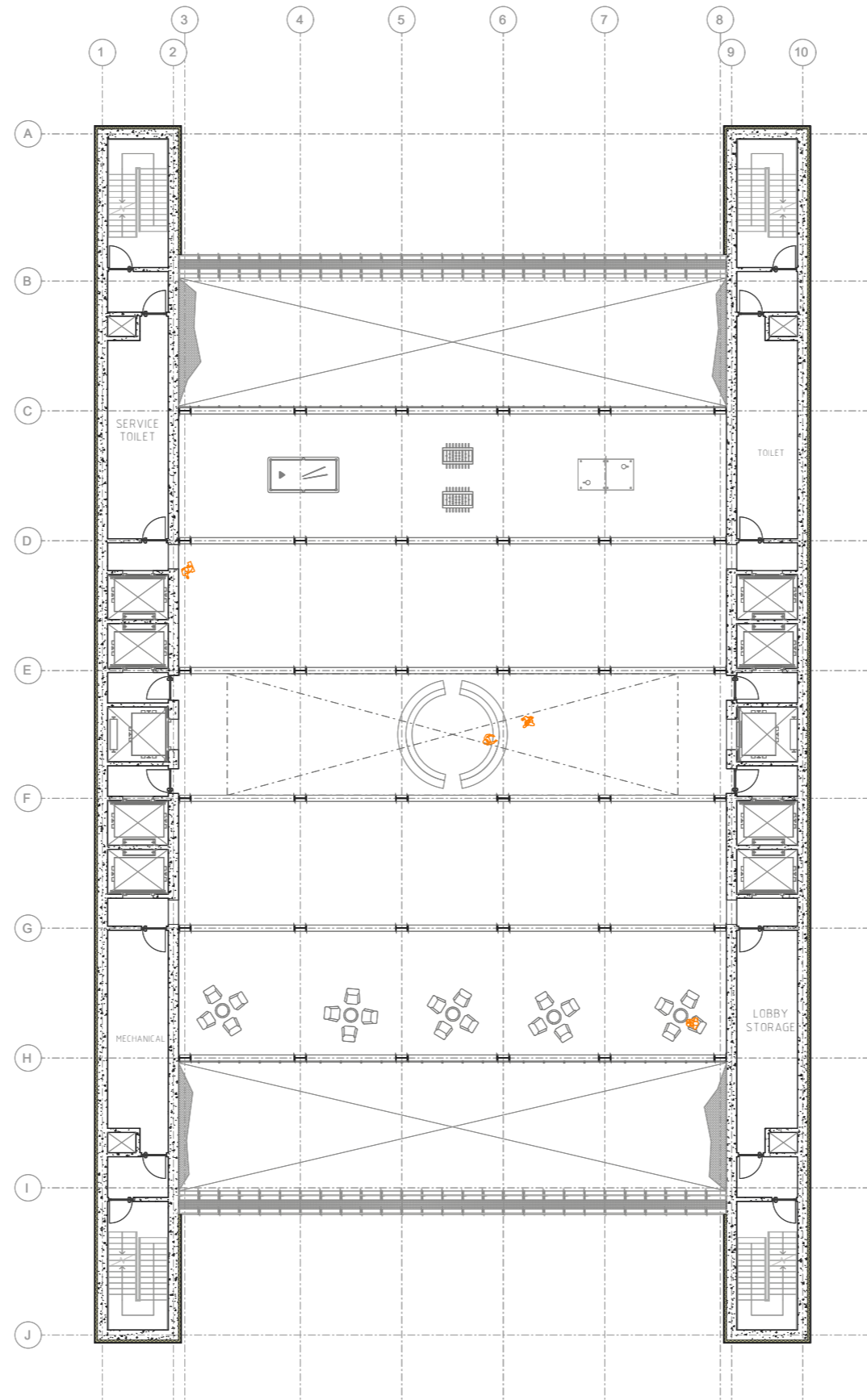
Floor plans 1:200

LEVEL 20 - RUNNING TRACK



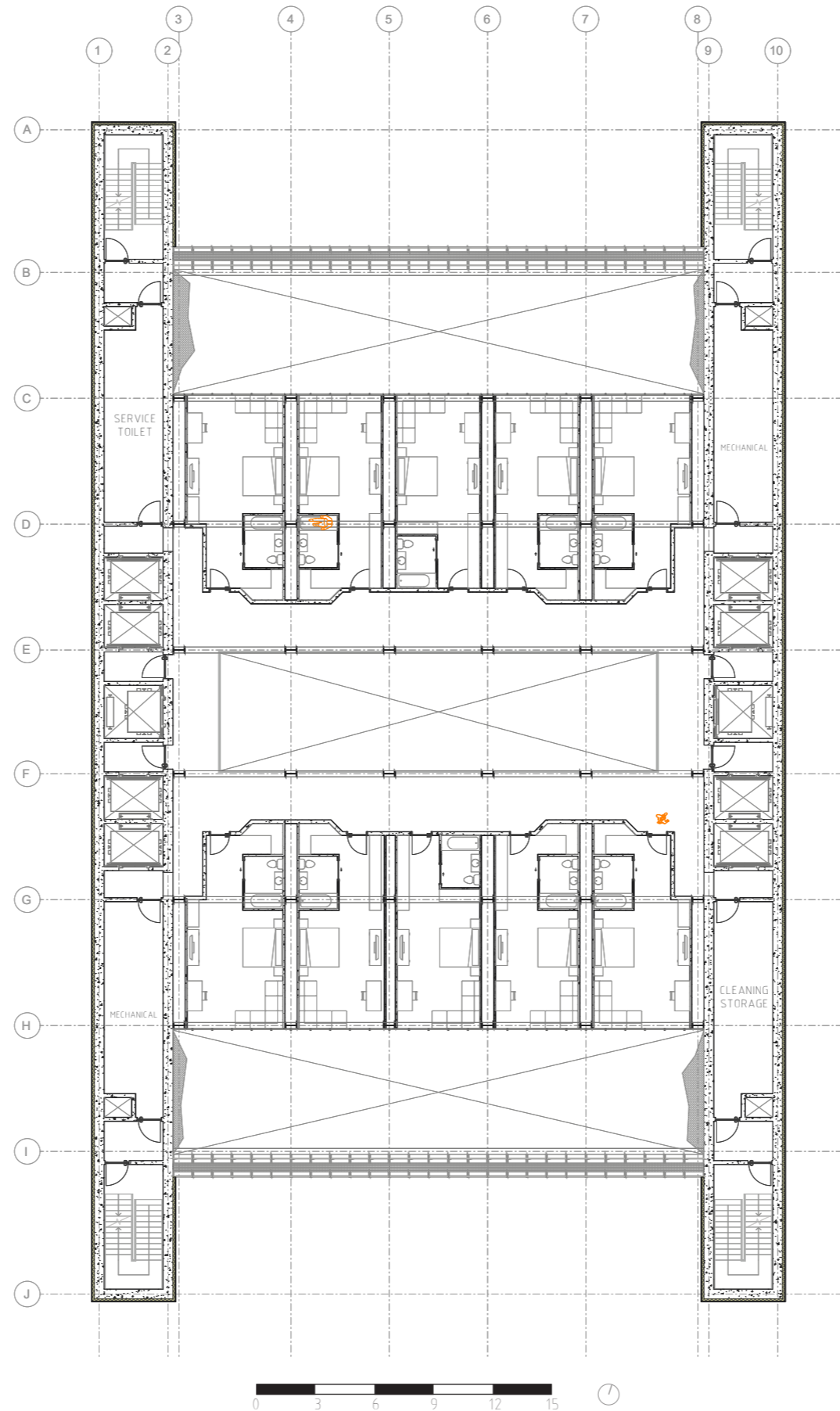
Floor plans 1:200

LEVEL 23 - HOTEL LOBBY



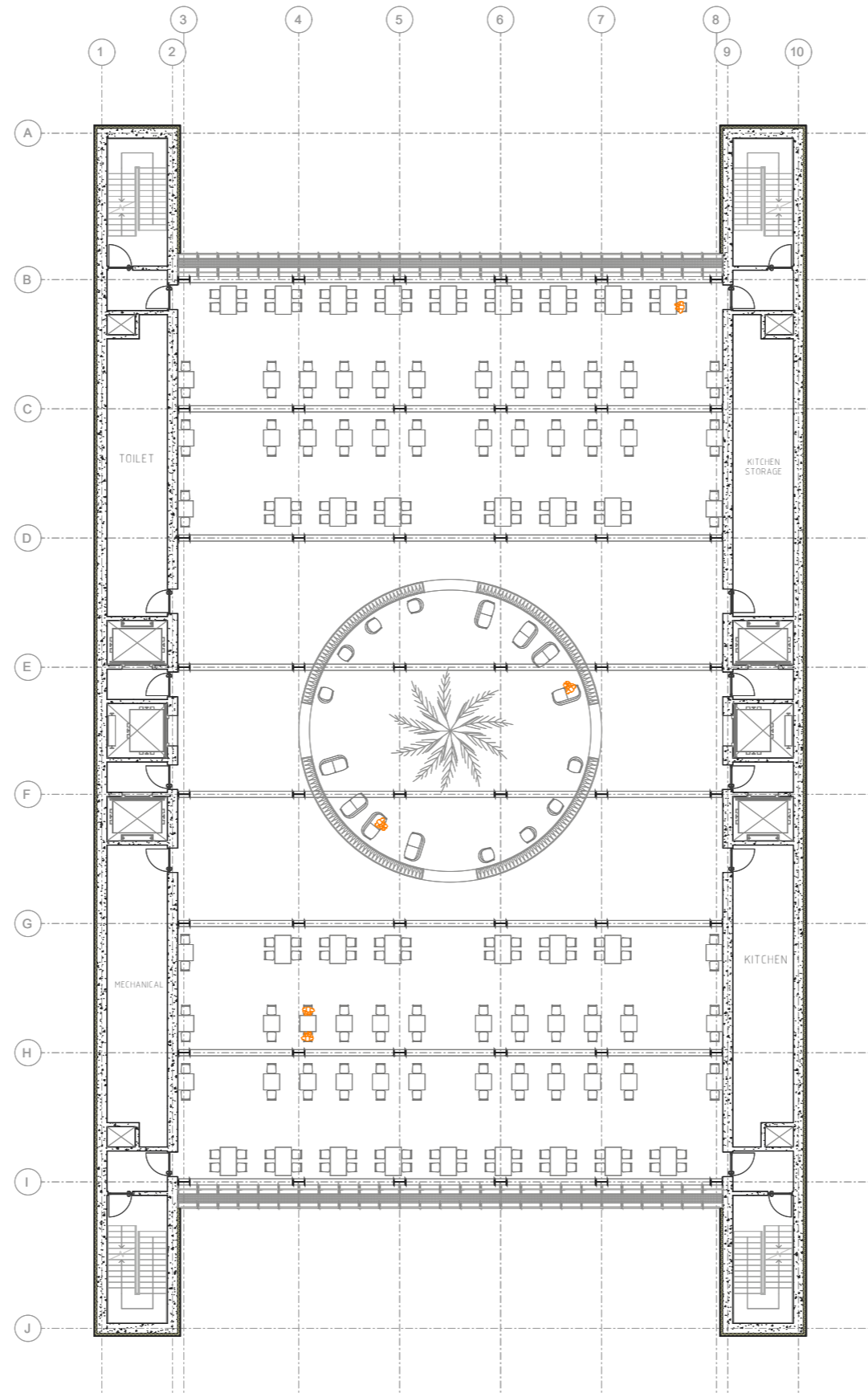
Floor plans 1:200

LEVEL 25 - HOTEL FLOOR



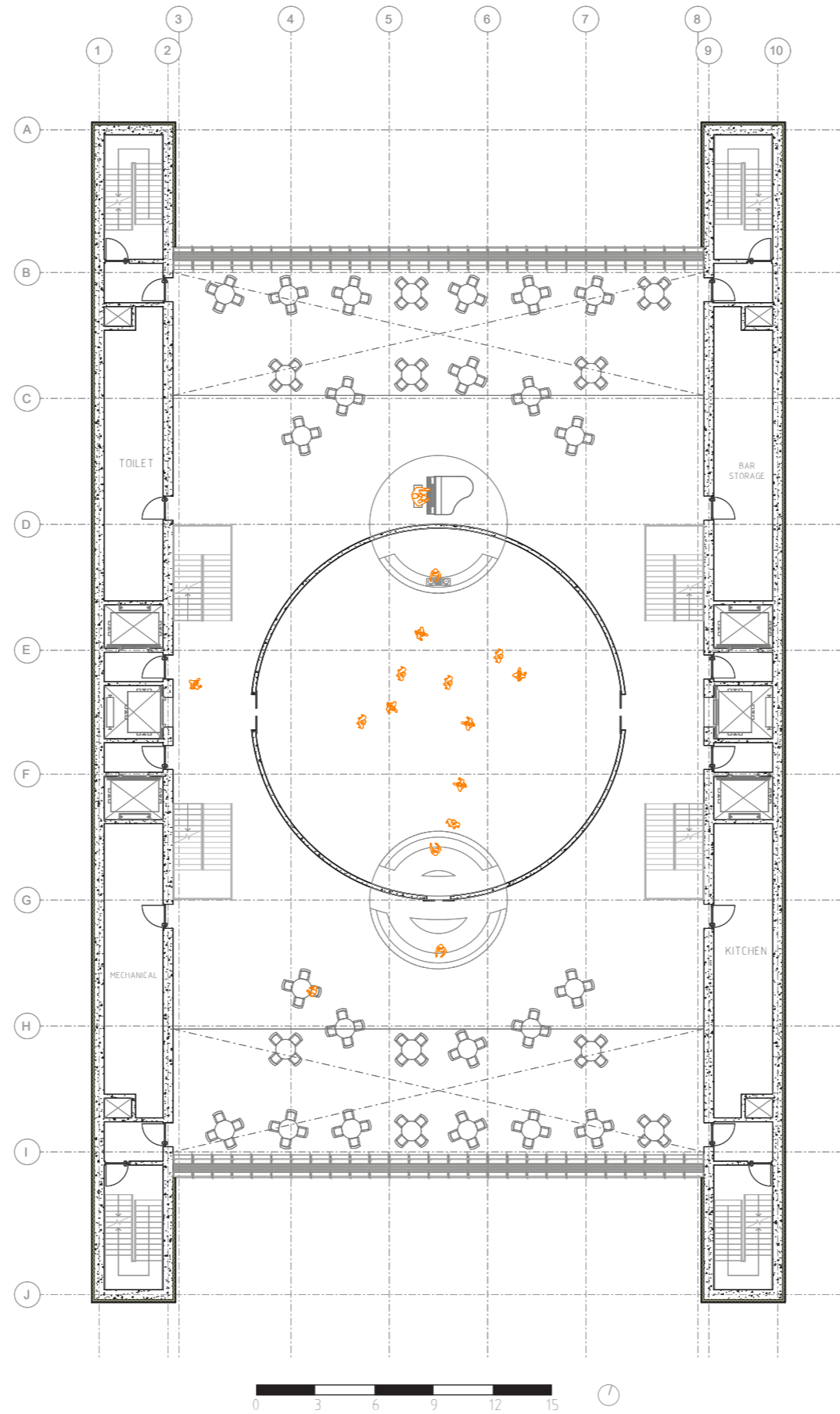
Floor plans 1:200

LEVEL 33 - RESTAURANT



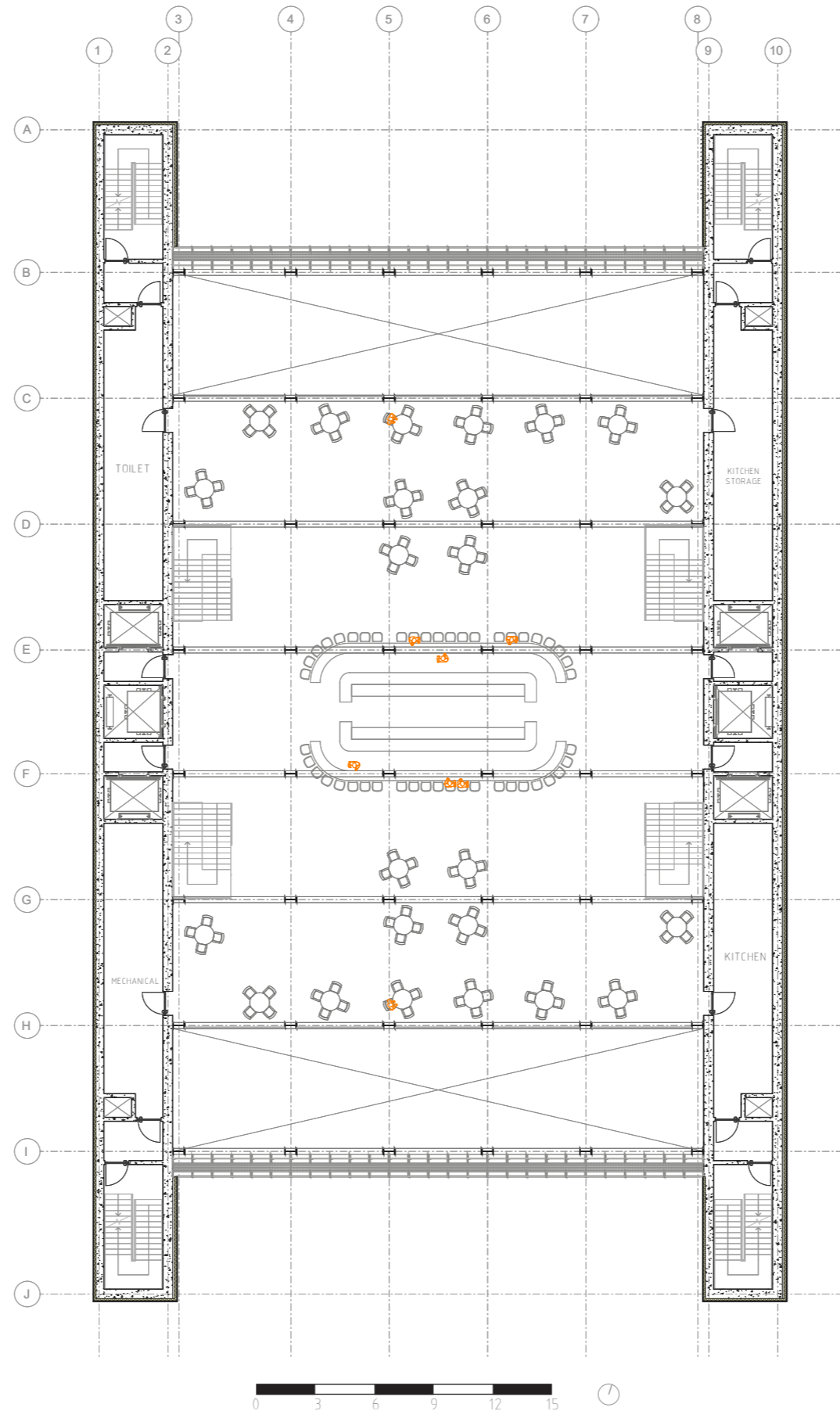
Floor plans 1:200

LEVEL 34 - ROOFTOP BAR



Floor plans 1:200

LEVEL 35 - ROOFTOP BAR



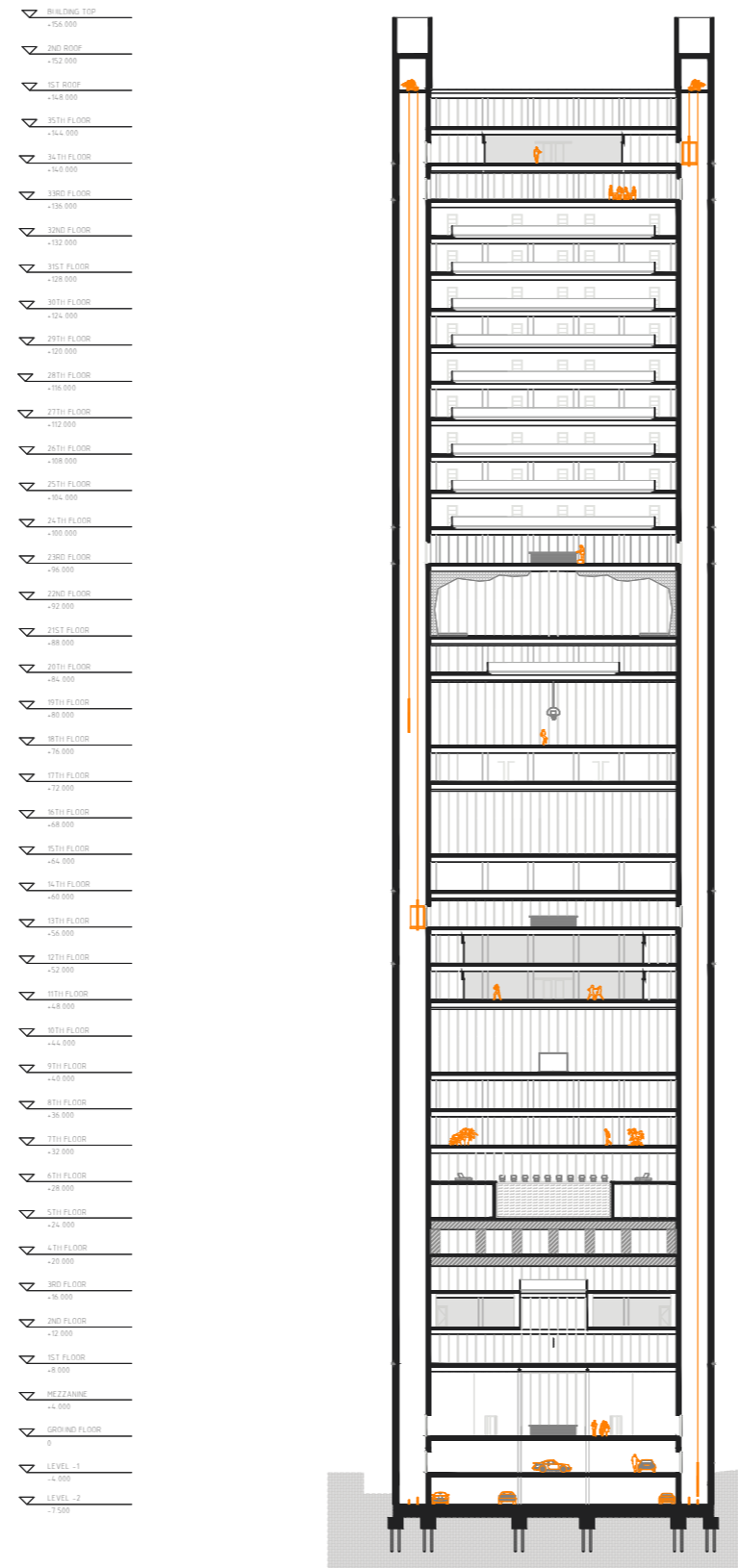
Sections 1:200

LONGITUDINAL SECTION

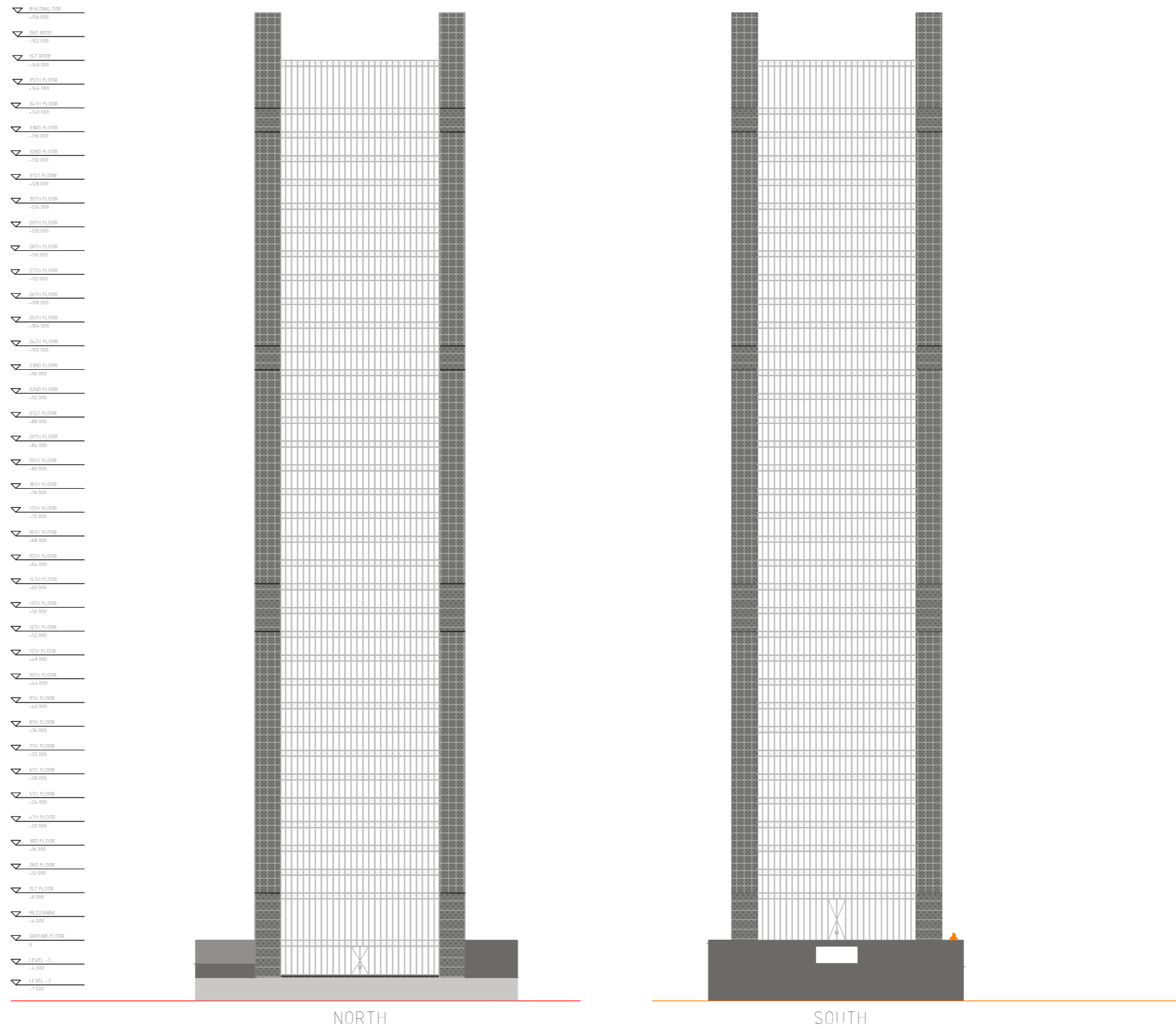


Sections 1:200

CROSS SECTION

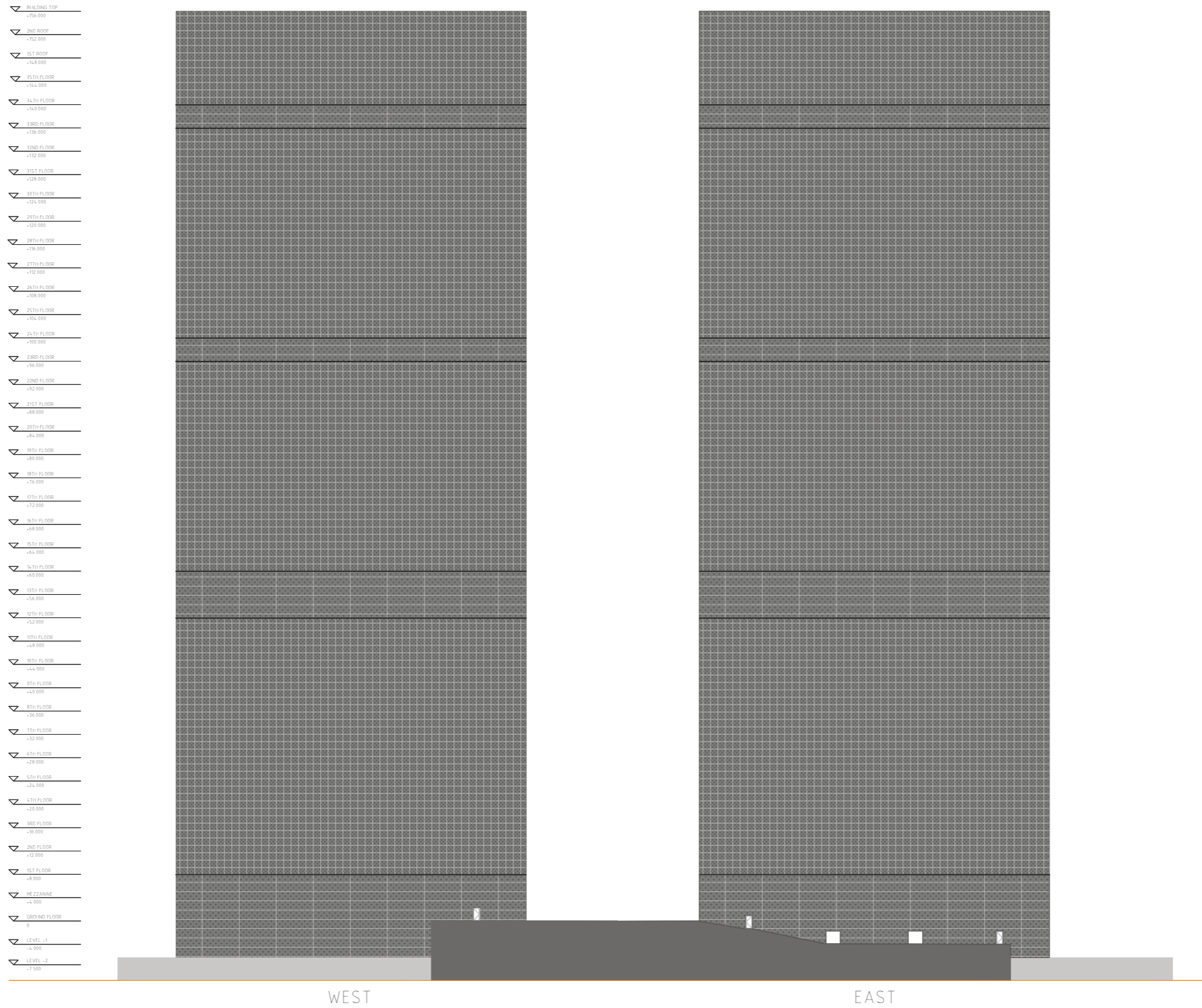


Elevations 1:200
OPEN FACADES



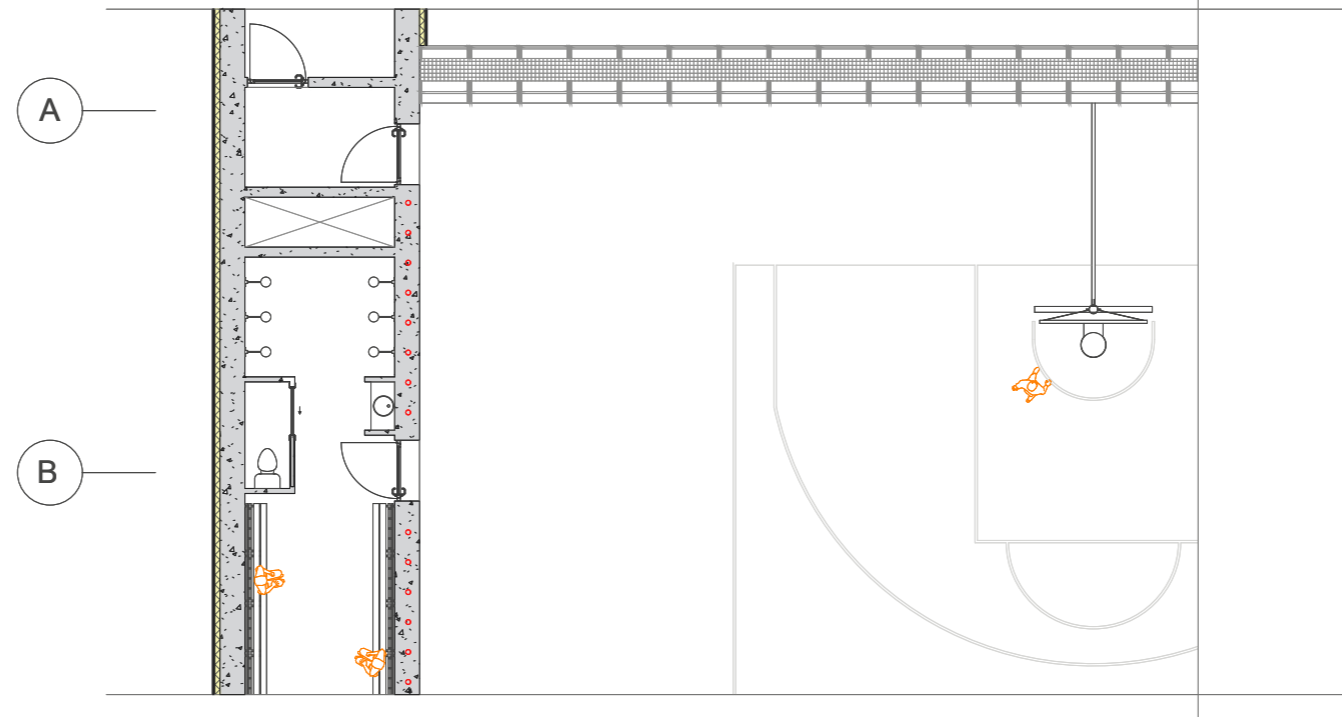
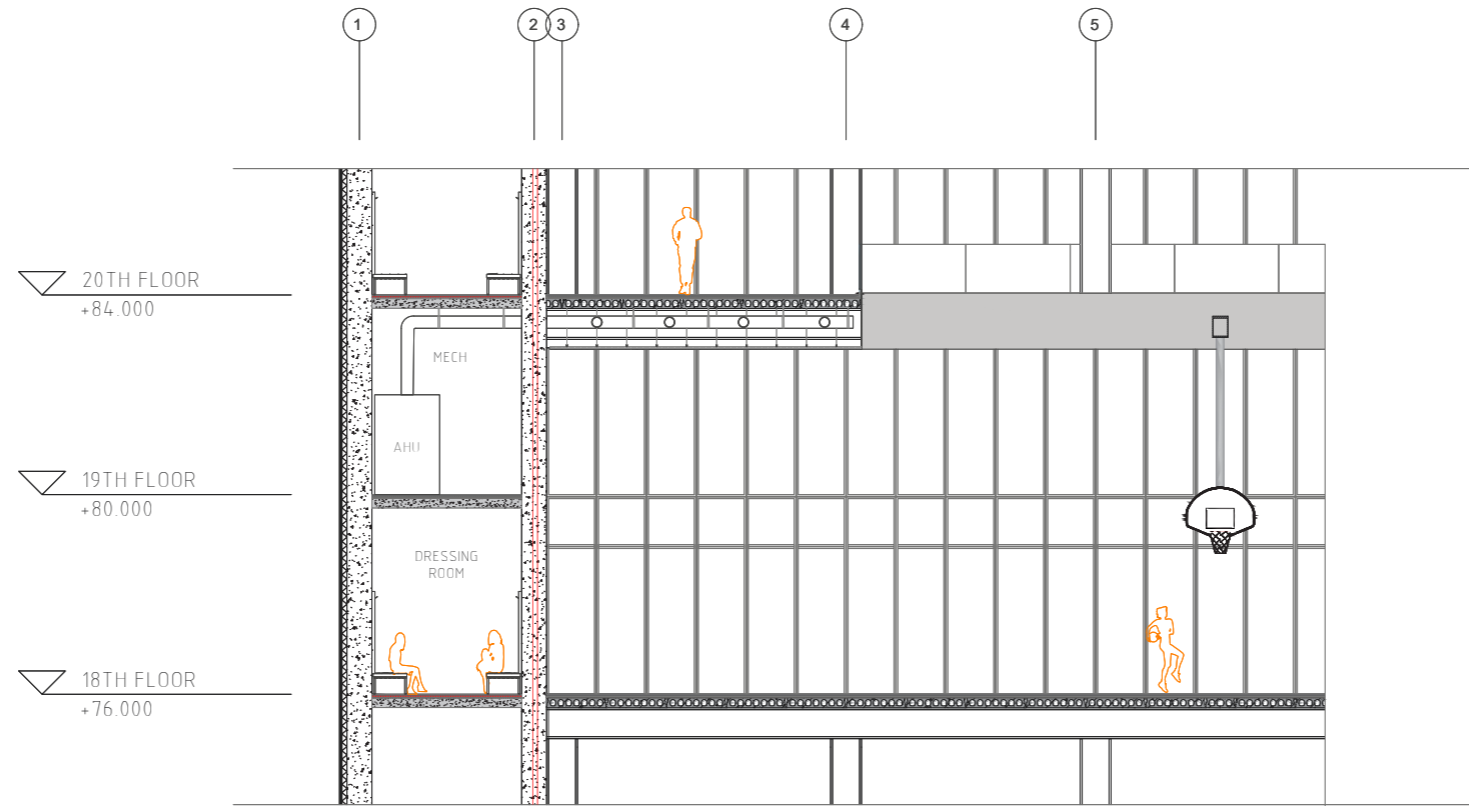
Elevations 1:200

CLOSED FACADES



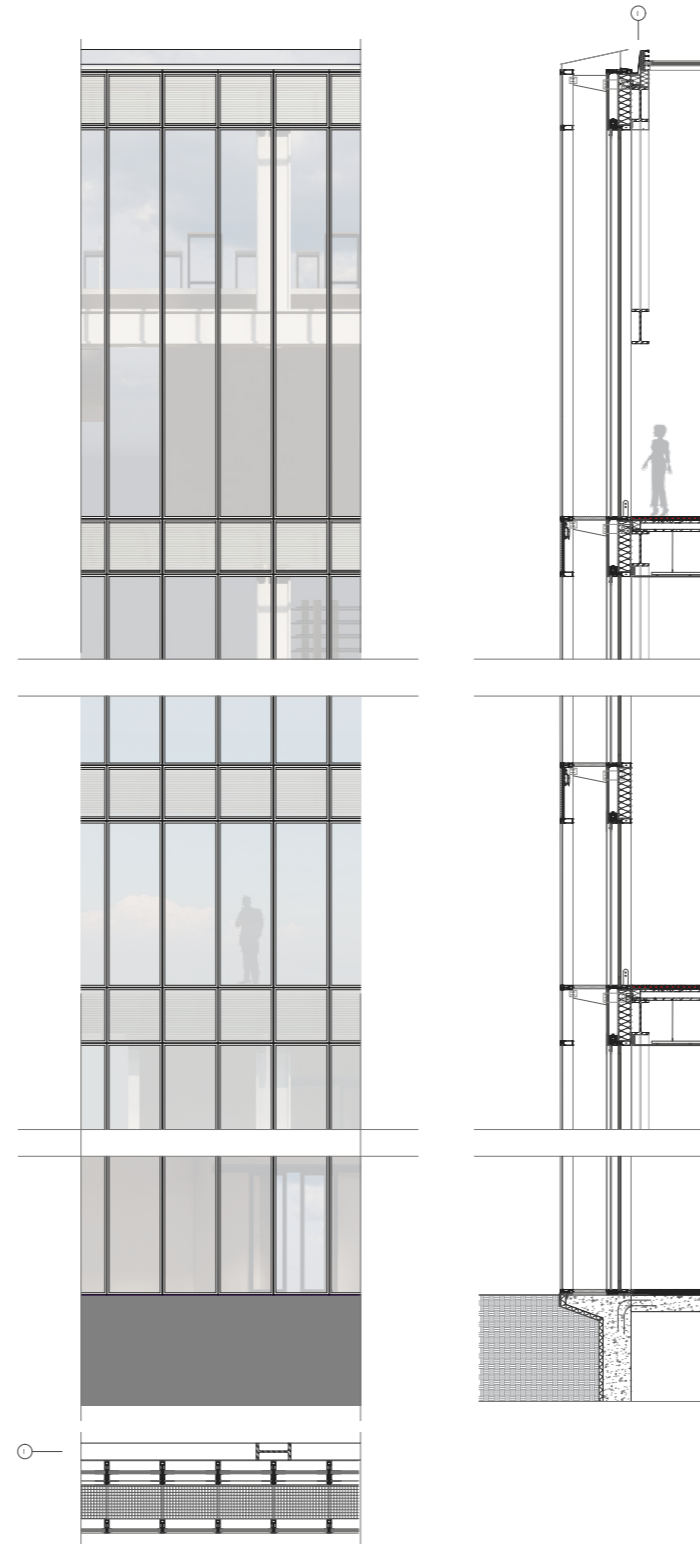
Interior fragment 1:50

BASKETBALL COURT



Envelope fragment 1:20

SOUTH FACADE

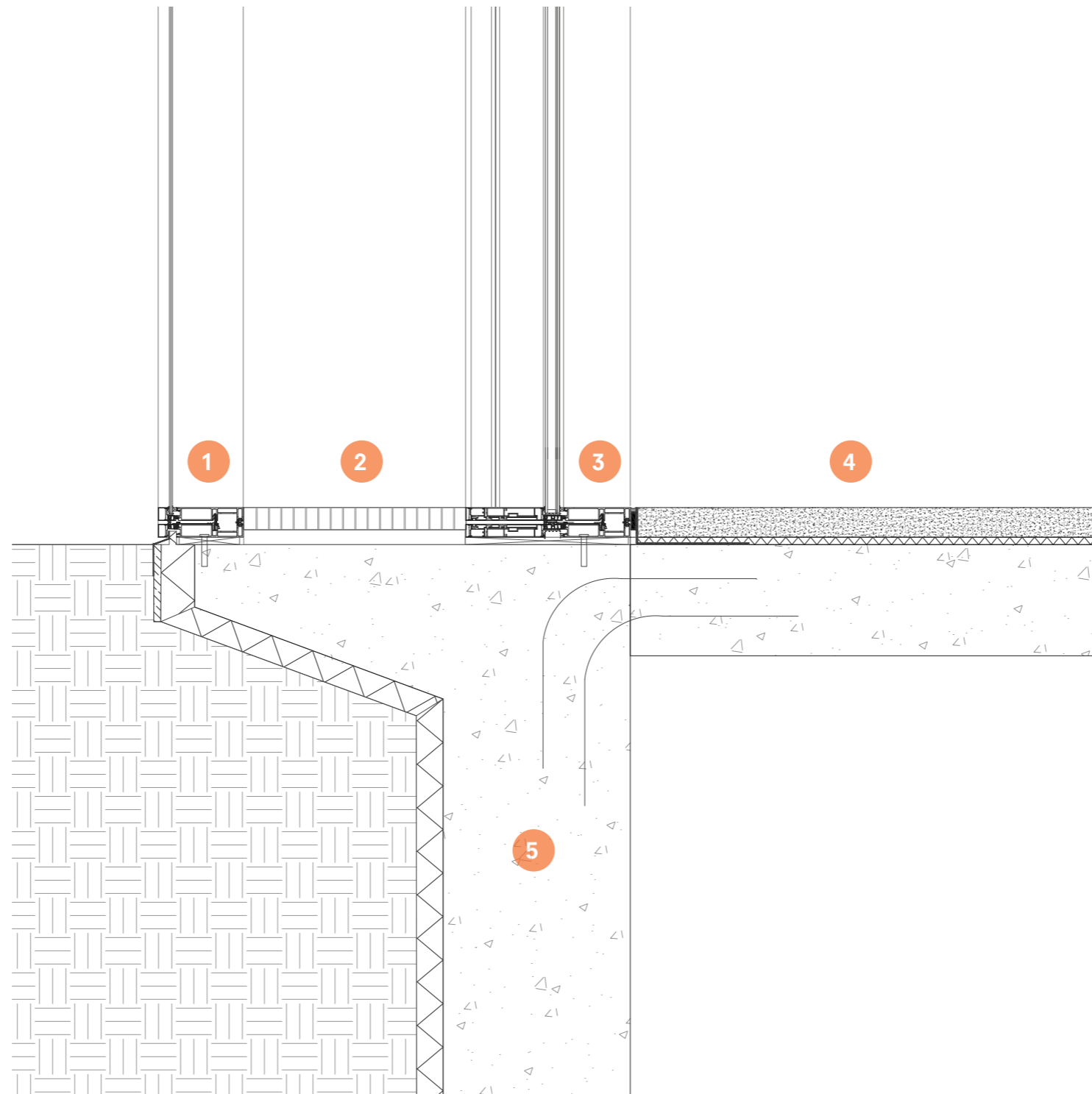


0 1,33 2,66 4 5,33 6,66



Details 1:5

DETAIL A



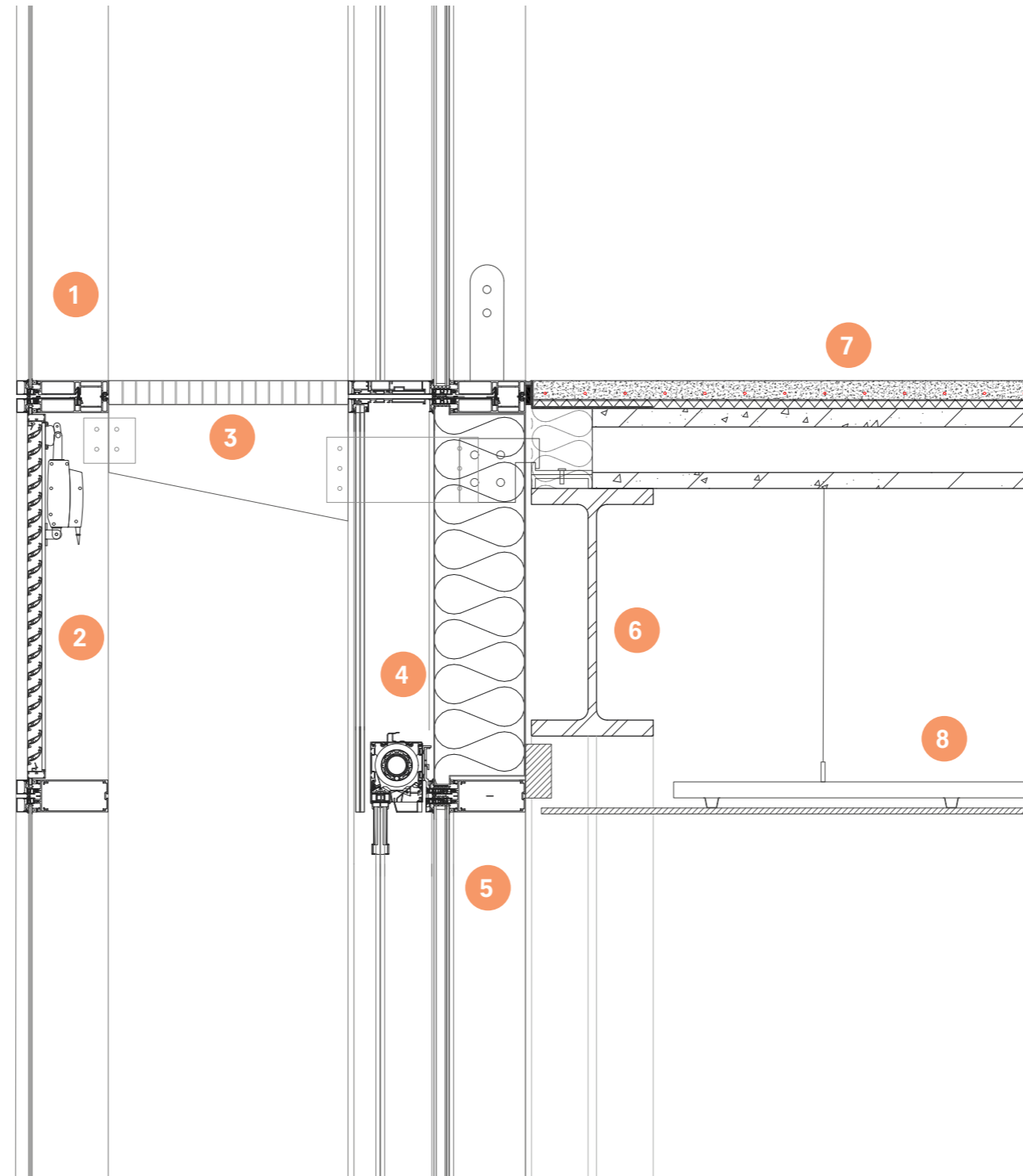
- 1 SCHUCO AF UDC 80
outer element facade panel
with laminated glass (4-6)
- 2 Steel grate for maintenance
- 3 SCHUCO AF UDC 80
inner element facade panel
with double glazing +
laminated glass (4-22-4-6)
- 4 Cast in situ slab 300 mm
with 20 mm rigid floor
insulation and 50 mm screed
with integrated floor heating
- 5 Cast in situ basement, 500
mm thick and covered by
rigid basement insulation

0 0,15 0,3 0,45 0,6 0,75



Details 1:5

DETAIL B

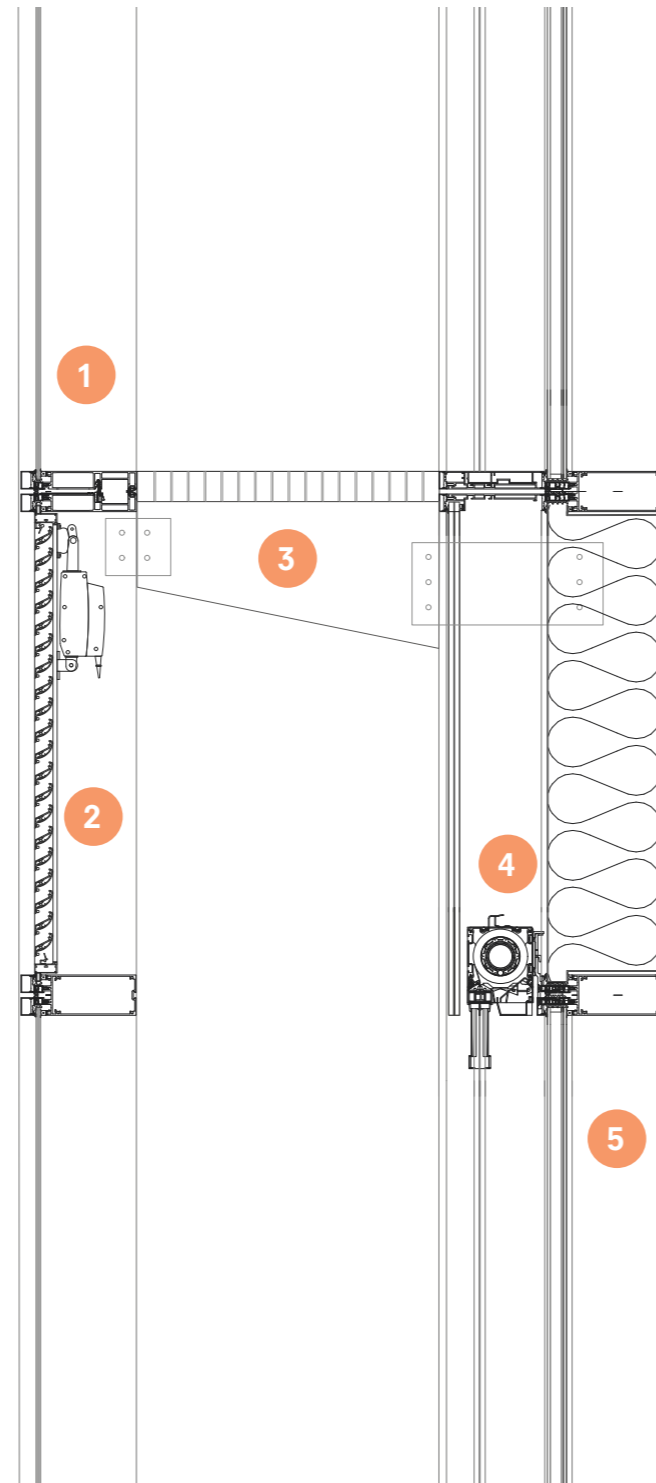


- 1 SCHUCO AF UDC 80
outer element facade panel
with laminated glass (4-6)
- 2 DUCOGRILLE CLOSE F 35Z
ventilation grille with motor
- 3 Steel connection between
inner and outer skin + steel
grate for maintenance
- 4 SCHUCO AB ZDS
automated shading in black,
perforated to make it see-
through
- 5 SCHUCO AF UDC 80
inner element facade panel
with double glazing +
laminated glass (4-22-4-6).
connected to vierendeel
truss through a facade
bracket
- 6 HEM 600 steel beam as
part of the vierendeel truss,
coated with intumescent
paint (fire proofing)
- 7 VBI hollow core slab 200mm
with a 20 mm floor rigid
insulation and a 50 mm
screed with integrated floor
heating
- 8 DERA KO closed linear
ceiling system; wooden
slats of 125 mm wide with a
gap of 15 mm, hanging on a
carrier system of galvanized
steel rails with clips

0 0,15 0,3 0,45 0,6 0,75

Details 1:5

DETAIL C

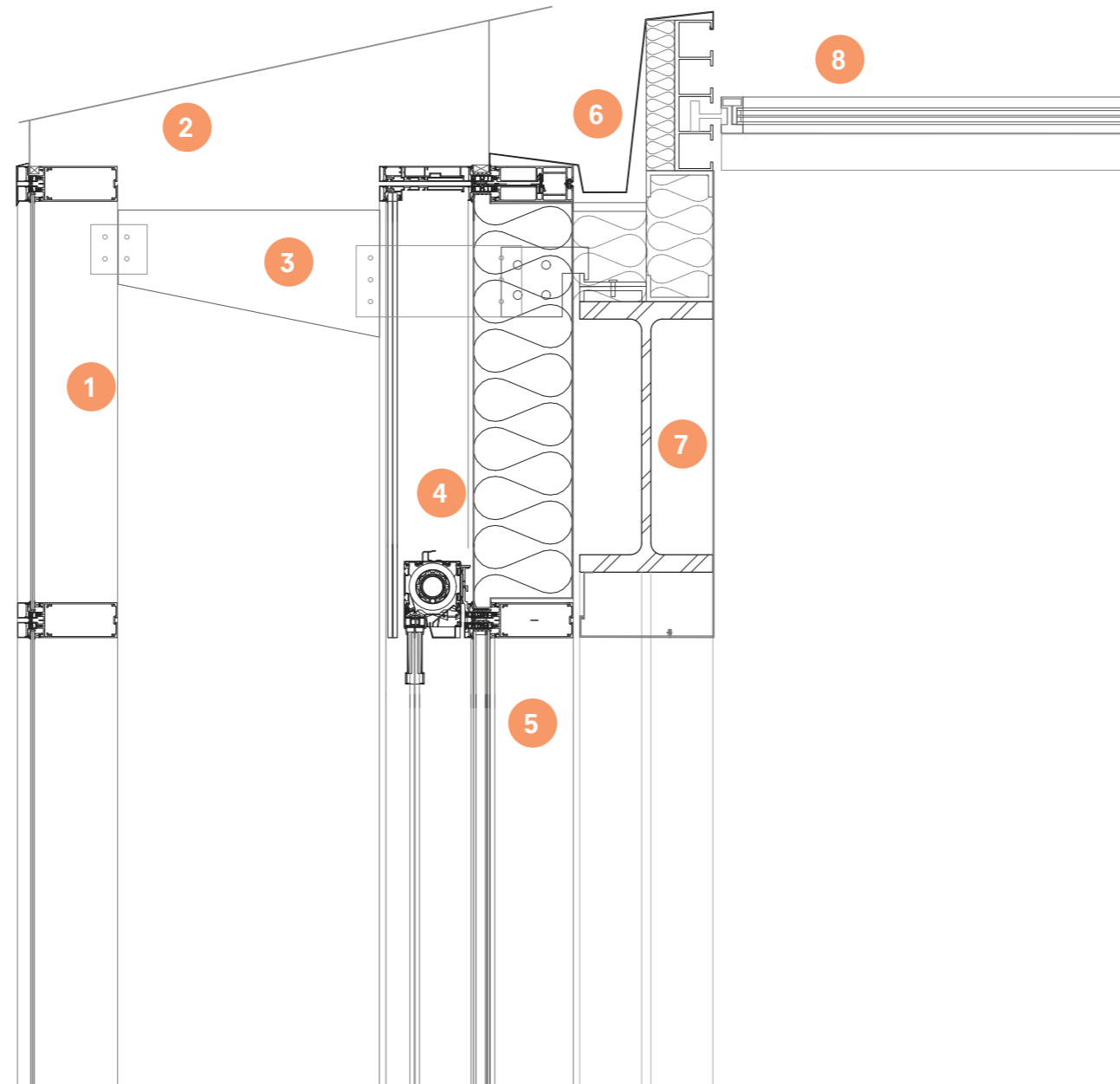


- 1 SCHUCO AF UDC 80
outer element facade panel
with laminated glass (4-6)
- 2 DUCOGRILLE CLOSE F 35Z
ventilation grille with motor
- 3 Steel connection between
inner and outer skin + steel
grate for maintenance
- 4 SCHUCO AB ZDS
automated shading in black,
perforated to make it see-
through
- 5 SCHUCO AF UDC 80
inner element facade panel
with double glazing +
laminated glass (4-22-4-6).
connected to vierendeel
truss through a facade
bracket

0 0,15 0,3 0,45 0,6 0,75

Details 1:5

DETAIL D



- 1 SCHUCO AF UDC 80
outer element facade panel
with laminated glass (4-6)
- 2 Double skin facade top
cover with opening as an air
outlet
- 3 Steel connection between
inner and outer skin
- 4 SCHUCO AB ZDS
automated shading in black,
perforated to make it see-
through
- 5 SCHUCO AF UDC 80
inner element facade panel
with double glazing +
laminated glass (4-22-4-6).
connected to vierendeel
truss through a facade
bracket
- 6 Custom rainwater drainage
- 7 HEM 600 steel beam as
part of the vierendeel truss,
coated with intumescent
paint (fire proofing) and
covered by a steel trim
- 8 SolarGlide V2 openable
glass roofing system, sliding
into the concrete slabs



Axo
OVERALL AXO

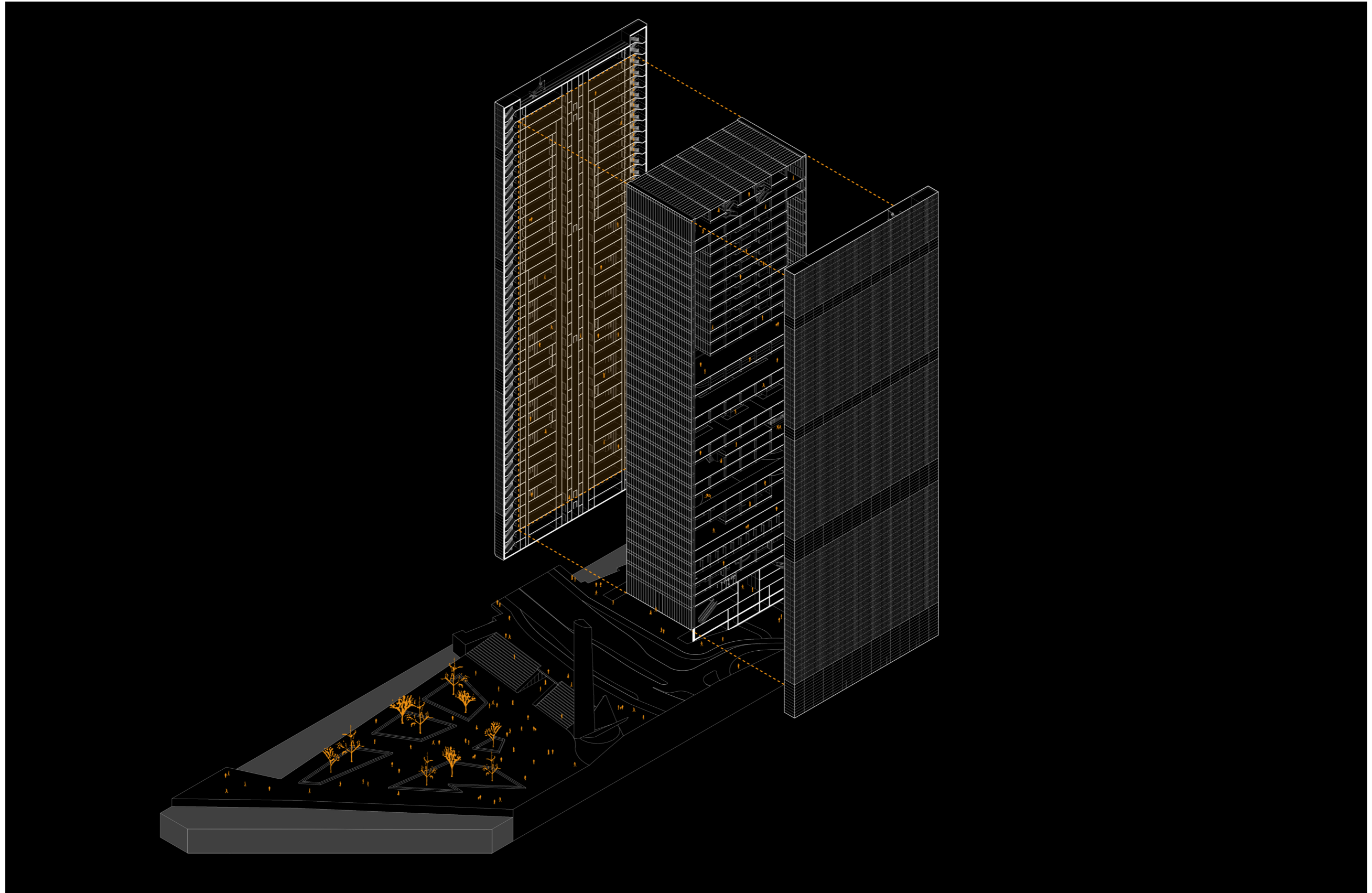


Axo
EXPLODED AXO



Axo

EXPLODED LINE DRAWING



Renders

MAIN ENTRANCE



Renders

FRONT FACADE



Renders

FRONT FACADE



Renders

MAIN LOBBY



Renders
RAC LOBBY



Renders

GYM



Renders
SOCCER



Renders

RUNNING / BASKETBALL



Renders
HOTEL LOBBY



Renders
HOTEL ROOM



Renders

RUNNING / BASKETBALL



Renders

LOGO

