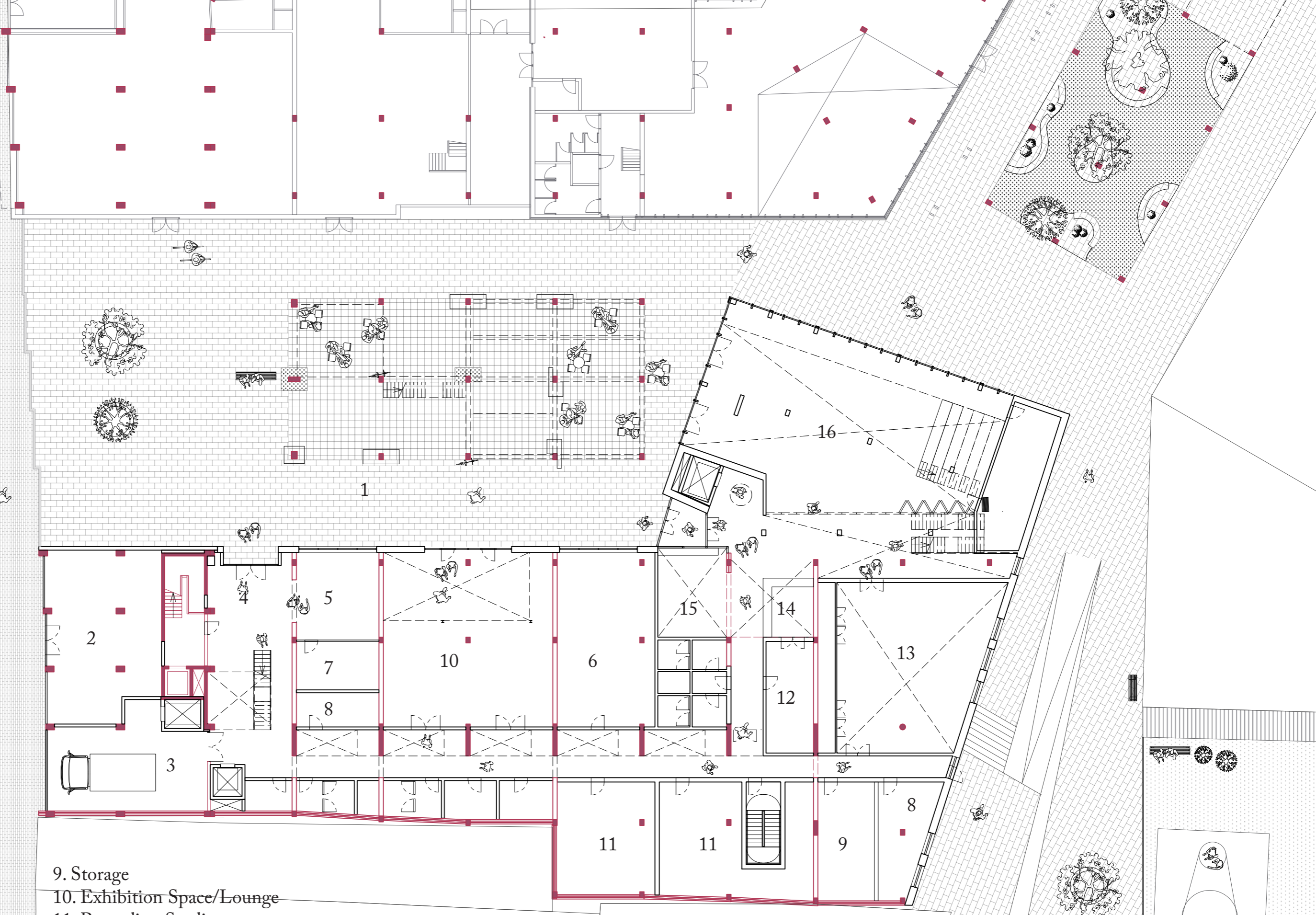


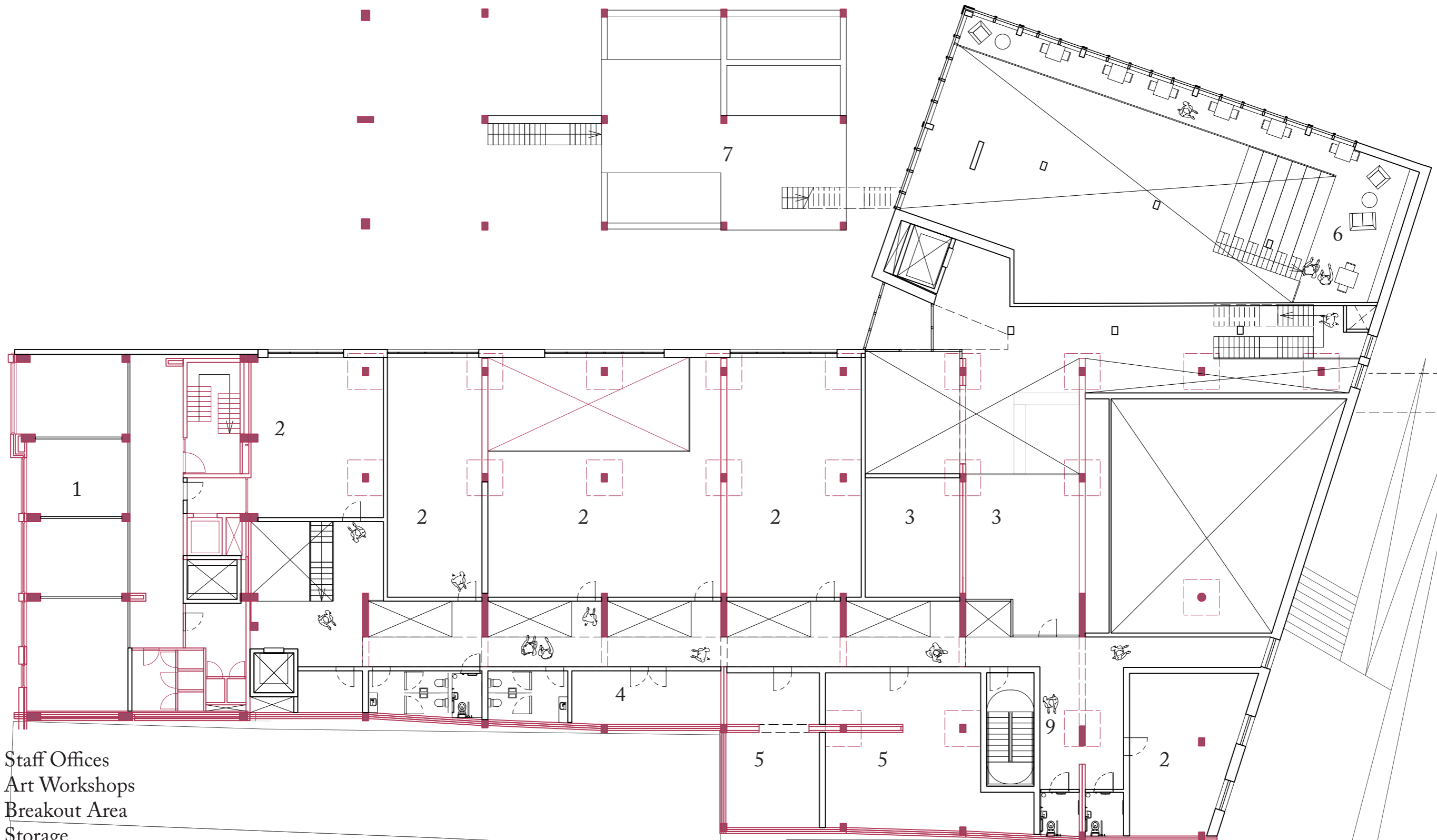
Ground Floor Plan

- 1. Ruins Yard
- 2. Music Shop
- 3. Deliveries
- 4. Staff Entrance
- 5. Breakout Area
- 6. Art Workshops
- 7. Meeting Room
- 8. Plant Room
- 9. Storage
- 10. Exhibition Space/Lounge
- 11. Recording Studio
- 12. Kitchen
- 13. Performance Hall
- 14. Café
- 15. Reception Office
- 16. Community Hall

Existing
 New
 Scale 1:250

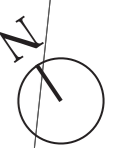


First Floor Plan

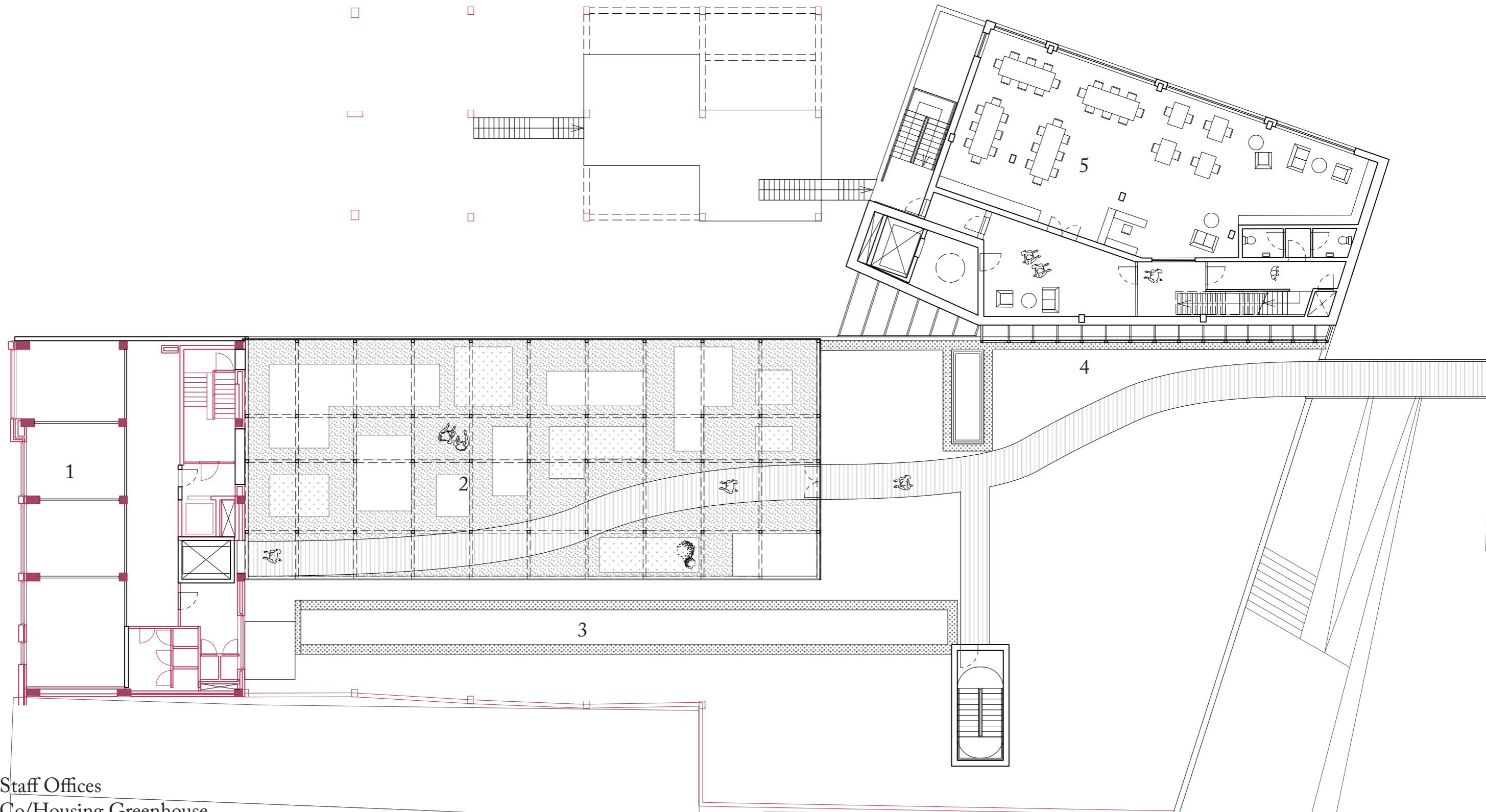


- 1. Staff Offices
- 2. Art Workshops
- 3. Breakout Area
- 4. Storage
- 5. Photography Studio
- 6. Mezzanine
- 7. Stair to Watchtower

Existing
 New
 Scale 1:200

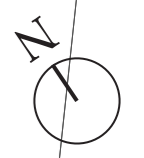


Second Floor Plan

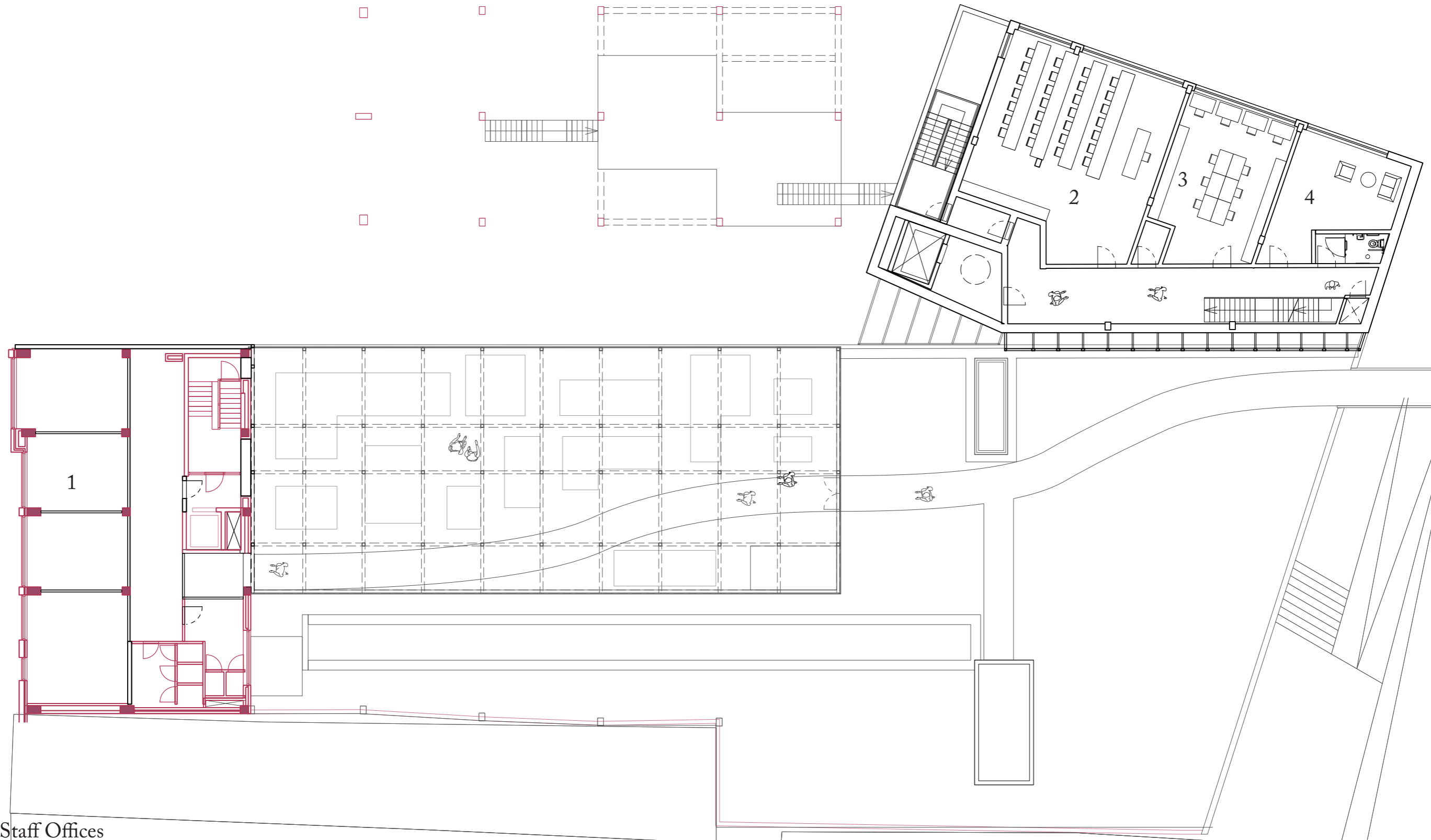


- 1. Staff Offices
- 2. Co/Housing Greenhouse
- 3. Skylights
- 4. Solar Chimney
- 5. Collective Study

■ Existing
□ New
Scale 1:200



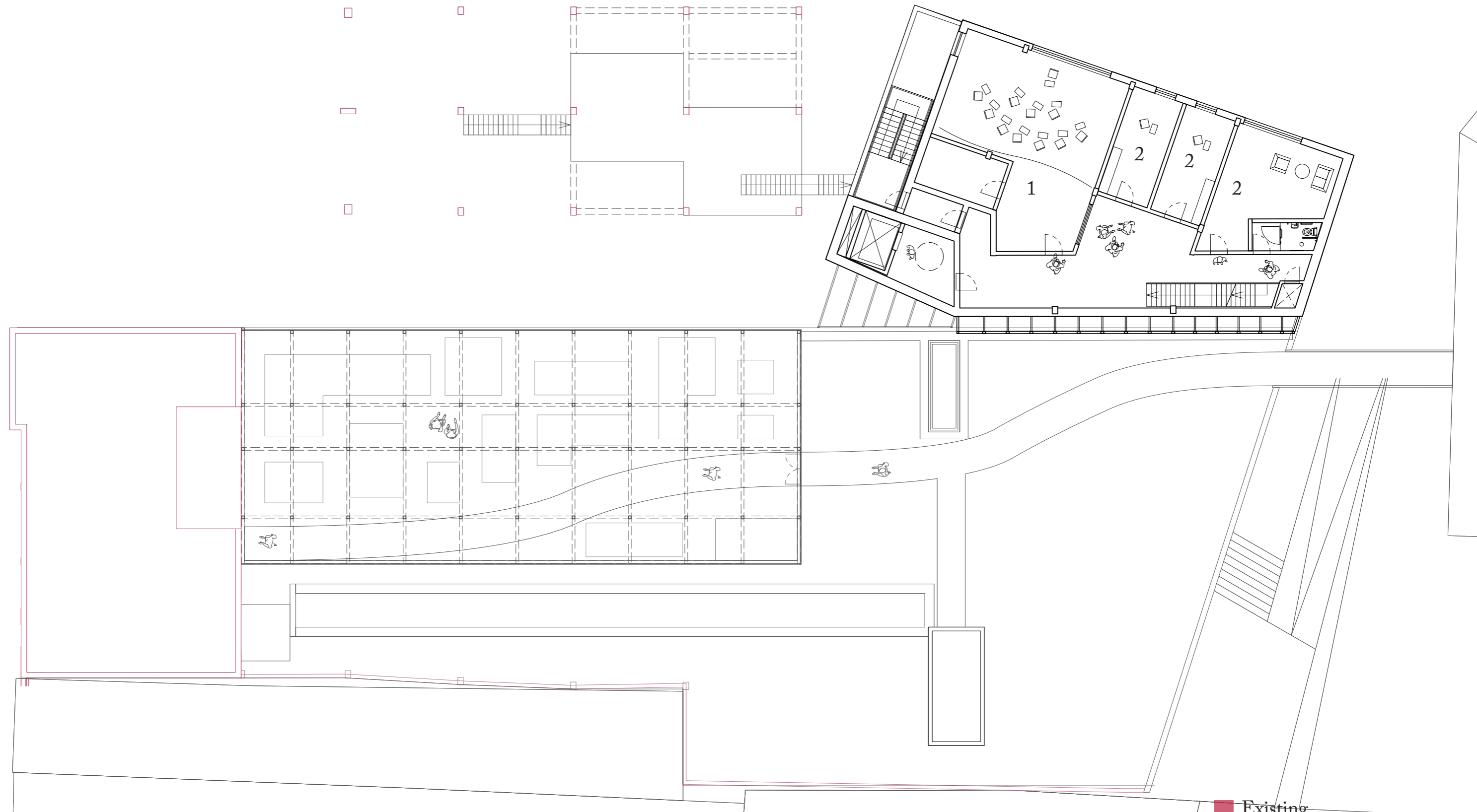
Third Floor Plan



- 1. Staff Offices
- 2. Lecture Room
- 3. Individual Study
- 4. Office

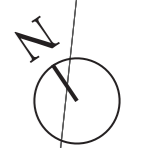
■ Existing
□ New
Scale 1:200

Fourth & Fifth Floor Plan

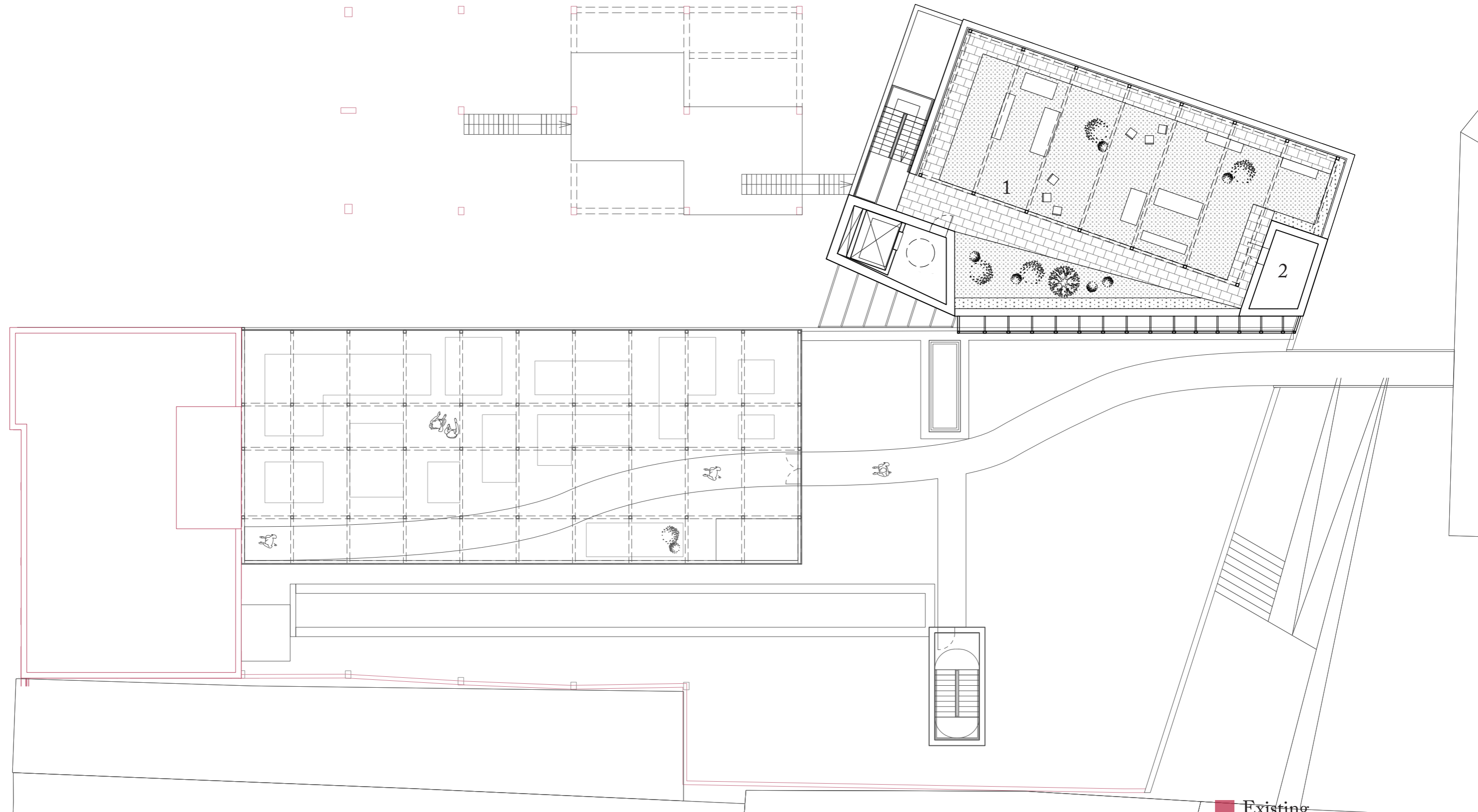


- 1. Group Music Room
- 2. Music Room

■ Existing
□ New
Scale 1:200



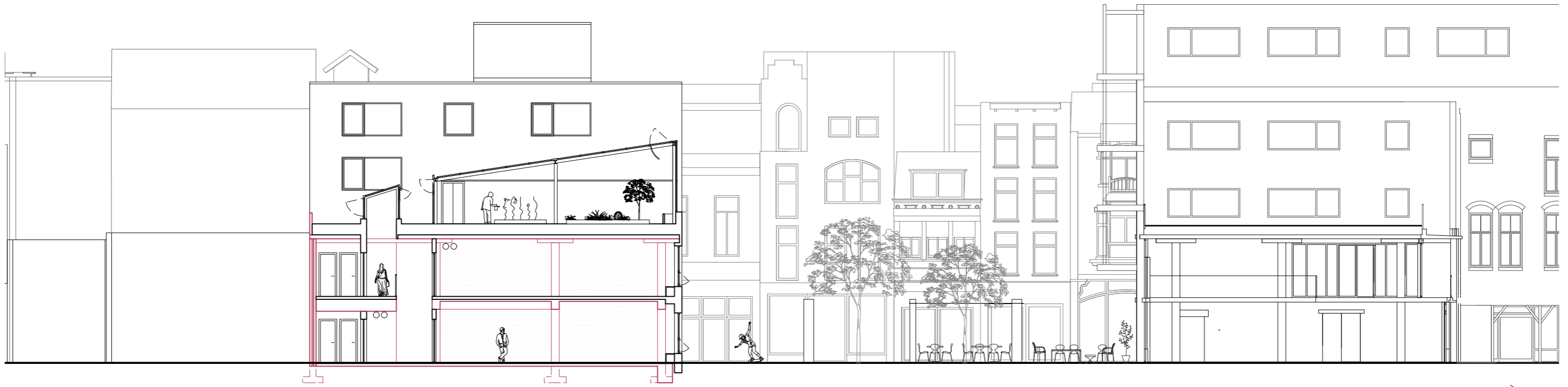
Roof Plan



- 1. Watchtower
- 2. Mechanical Room

■ Existing
□ New
Scale 1:200



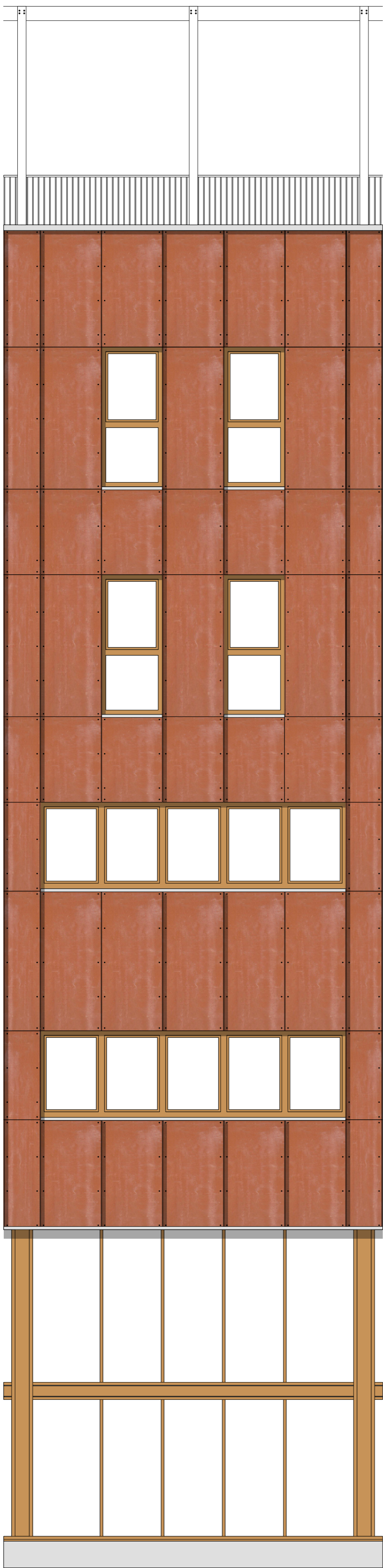


Short Section

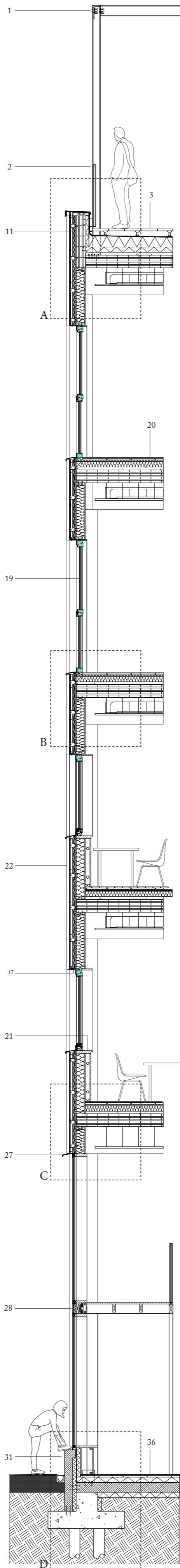


Long Section

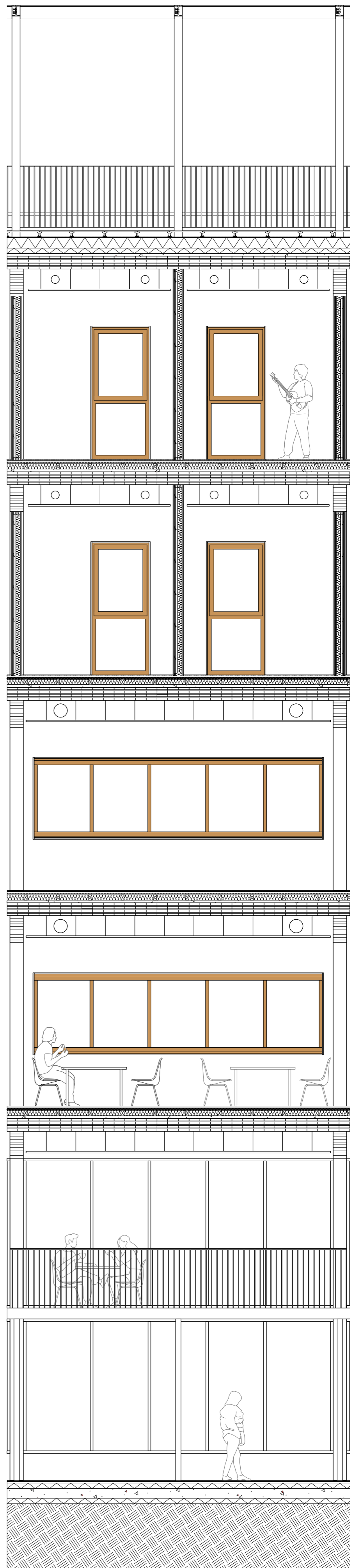
Existing
New



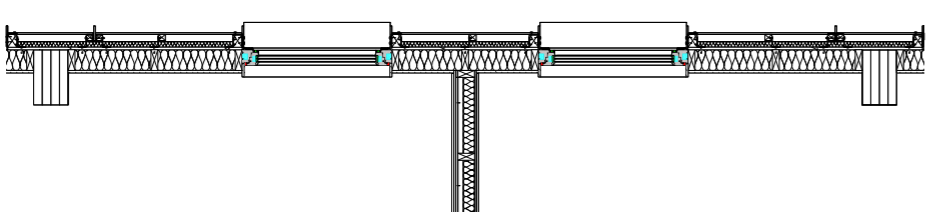
1:20 Exterior elevation



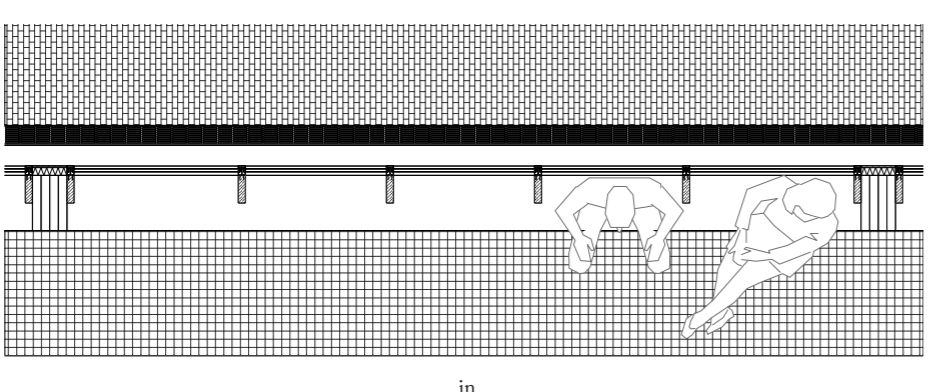
1:20 Section



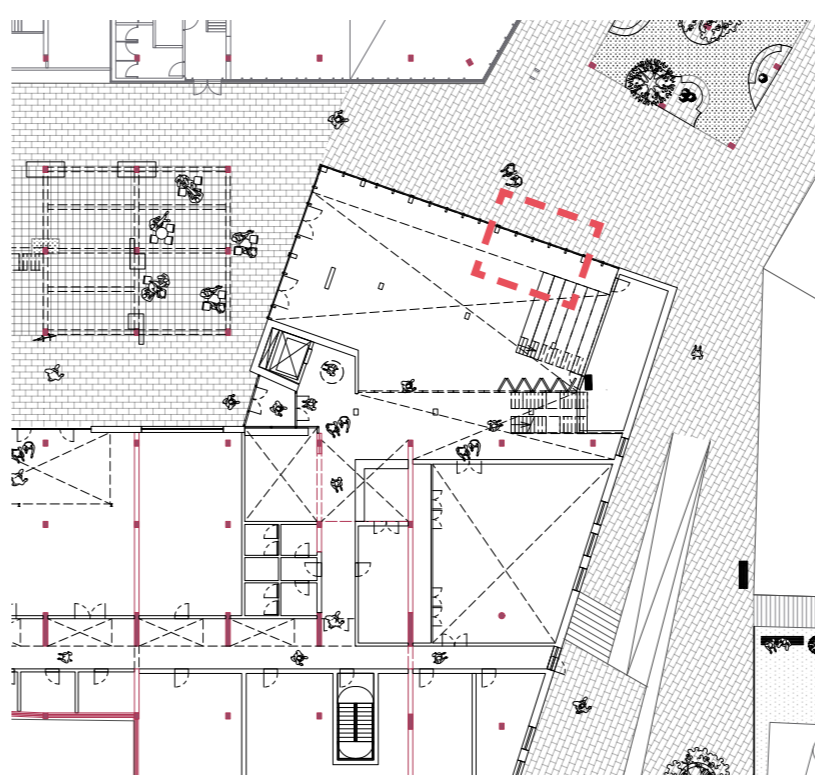
1:20 Interior section



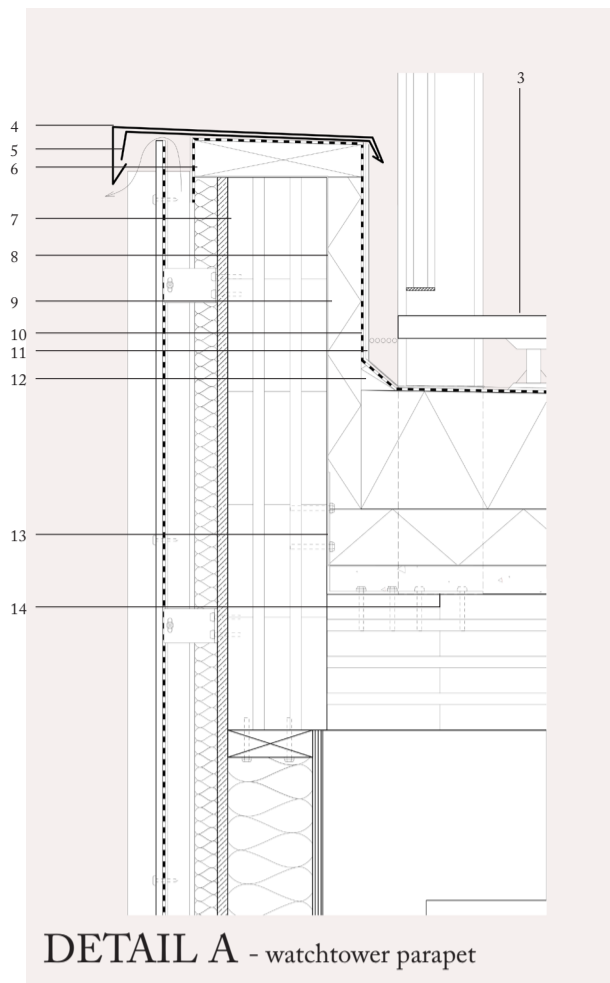
Fourth&Fifth Floor Plan



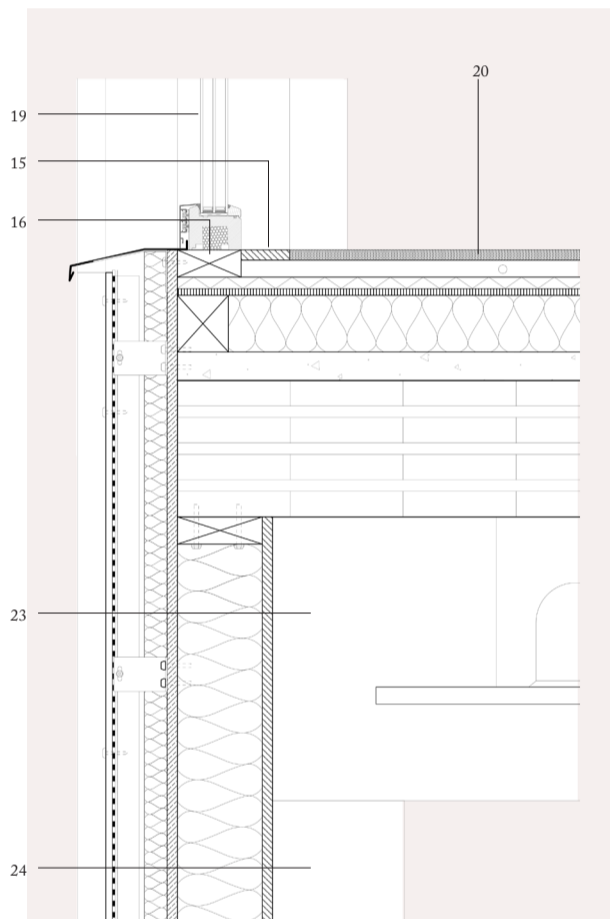
Ground Floor Plan



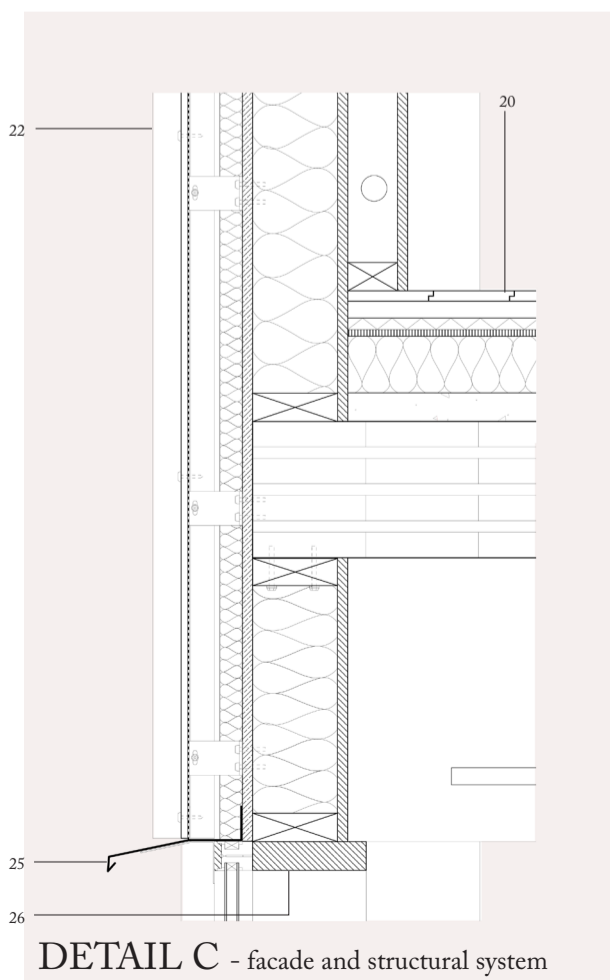
1:20 Facade Details



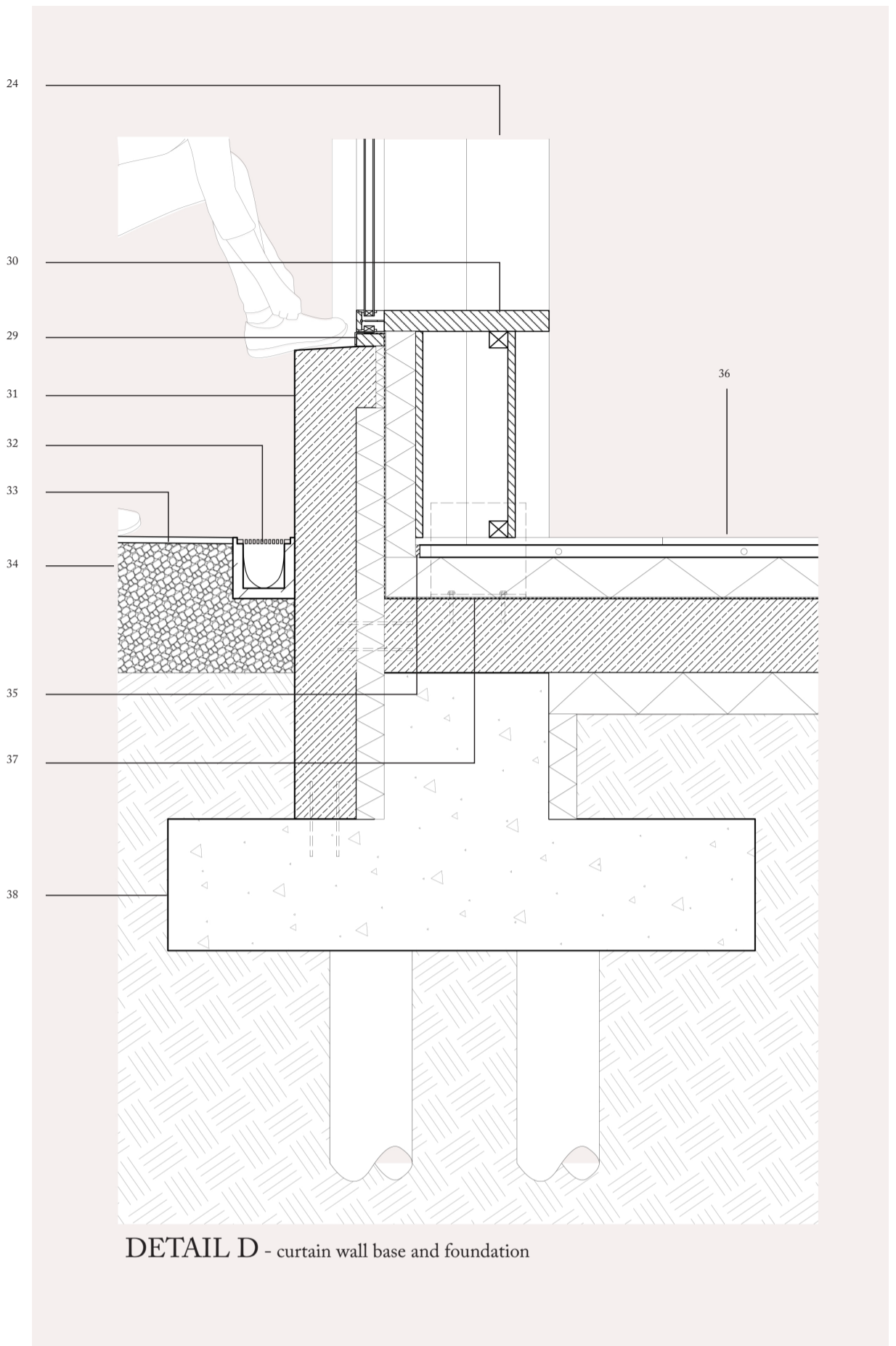
DETAIL A - watchtower parapet



DETAIL B - music room window base and ceiling



DETAIL C - facade and structural system



DETAIL D - curtain wall base and foundation

KEY

- | | | |
|--|--|--|
| 1. reclaimed Molenpoort I and L profile steel frame, anodised and painted, connected with metal L profile connectors and bolts | 17. 12mm Viroc rainscreen cladding | 27. aluminium drip |
| 2. anodised aluminium railing fixed in between reclaimed steel frame | 18. metal U-shaped perforated profile | 28. 12mm timber boards
waterproof membrane
50mm rigid insulation
50x200mm timber joist
80mm wood fibre insulation
30x40mm timber battens to fix 18mm plywood |
| 3. 40mm stone tiles onto floating floor system drainage layer
protective membrane
waterproof membrane
1.5° sloped rigid foam insulation
100mm rigid foam insulation
vapour barrier
50mm concrete screed
7-layer, 240mm clt slab | 19. triple glazing window with timber frame clad in anodised aluminium | 29. 30mm timber profile |
| 4. aluminium capping | 20. carpet (4th & 5th floor) or 22mm timber flooring (2nd and 3rd floor)
30mm concrete layer poured over underfloor heating
20mm acoustic insulation quilt
12mm plywood
100mm wood fibre insulation
50mm fireproof concrete screed
7-layer, 240mm clt slab
service void
heat recovery ventilation system
suspended perforated timber acoustic ceiling | 30. 50mm LVT transom bench |
| 5. sheet metal clip | 21. 50mm timber window sill | 31. 150mm pre-cast concrete plinth fixed to concrete slab and foundation
70mm rigid insulation
waterproof membrane
75mm rigid insulation
18mm OSB panel
cavity
18mm timber panel fixed onto 40x45mm wood battens |
| 6. 60mm sloped timber board | 22. 12mm Viroc rainscreen cladding, with 50mm fins
EPDM membrane
aluminium rainscreen cladding fixing system, screwed to timber profiles at 600mm centres
10mm air cavity
breather membrane
80mm wood fiber thermal insulation
18mm cement particle board sheating layer
150x50 timber batten facade structure filled with
150mm wood fibre thermal insulation
18mm ply
90mm electrical service gap
18mm vertical timber boards | 32. drainage with metal grills |
| 7. 5-layer, 175mm clt upstand | 23. 300x500mm glulam beam | 33. paving tiles with drainage holes to gravel below |
| 8. vapour barrier | 24. 250x400mm glulam column | 34. gravel layer |
| 9. 60mm rigid insulation | 25. aluminium drip fixed to metal clip | 35. insulation seal |
| 10. waterproof membrane | 26. 200x50mm timber curtain wall system double glazing | 36. 22mm composite tile from Molenpoort tiles, crushed and reclaimed
30mm concrete screed sub floor with underfloor heating
100mm rigid insulation
waterproof membrane
180mm concrete slab
100mm rigid insulation |
| 11. aluminium sheet cladding for upstand | | 37. glulam column metal connector bolted to concrete slab |
| 12. 45x45mm timber angle fillet | | 38. concrete pile foundation |
| 13. L-shaped metal connector bolted to clt upstand and slab | | |
| 14. reclaimed steel column metal connector bolted to clt slab | | |
| 15. 18mm plywood | | |
| 16. 48mm timber profile | | |

1:5 Details