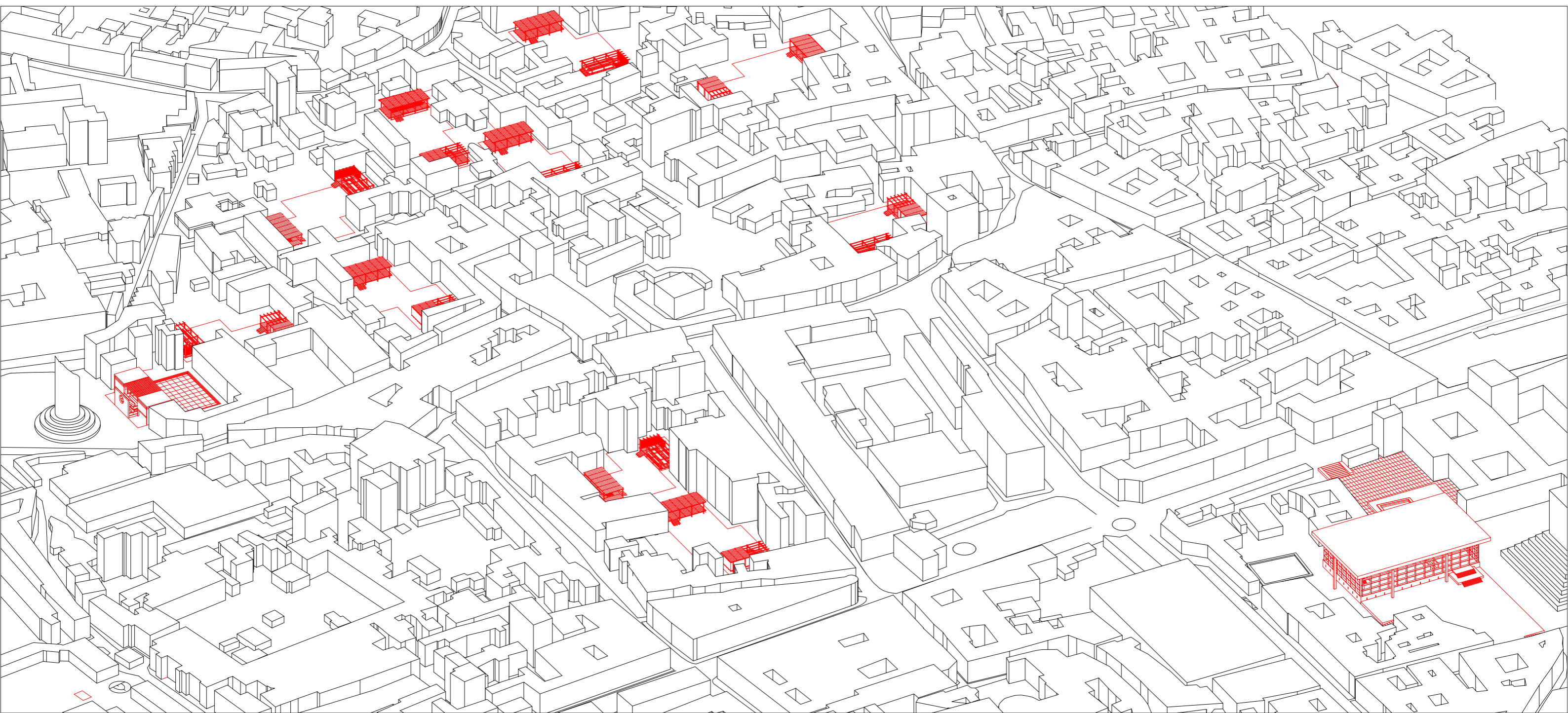


Dasbain

New civic places for a society in transformation

P4 Presentation

M. M. F. Cerra



Da•shein

/daʒzaɪn/

noun

1. A fifteen-day-long national festival, which celebrates the victory of good over evil, **renewing community ties**. The Dashain is the most important festival for the city of Kathmandu.

Index

Introduction

Research

Methodology

Project

Introduction















HOTEL VENUS
Phara-4, Lakanda, Khahara Chowk

Anuska Cold Stores
Khahara

सहरे चौक
KHAHARA

LAKE SEKUWA CORNER
KHAHARA

LAKE B. B. Q. CORNER
लेक सेकुवा कर्नर

LAKE SEKUWA CORNER

Pasa Local Restaurant
Khahara

Car

**The last day of Dashain, on September 16th 2015,
the new constitution of Nepal is signed**

Secularism

Freedom of expression

Federalism



VEHICLE SERVICE
SIGHT SEEING
PHONE/PHOTO/PHOTO COPY
E-MAIL

TIMS
Registration Counter

SA

Two Hours Laundry Service

GREEN SPA
Beauty Care
Pokhara-6
Anchokw, Lakeside, Pokhara-6
1st Floor of Red Swiss Trekking

आजको दिन
सबैको लागि



जय श्रीनवदुर्गा ईंद्रा विक्री डिपो
नितकुन, कोटेश्वर
ज. ४४४४०५३ त. ४४५४०५४ मो. ४४९०-५३४८९
सामान्यतः राष्ट्रीय लोकल ईंद्रा, चाहेतिज ईंद्रा रोड बान्वा सादो
चाहेतिज सम्पर्क शान्दोला, आबिस बकिदुको व्यवस्था ध

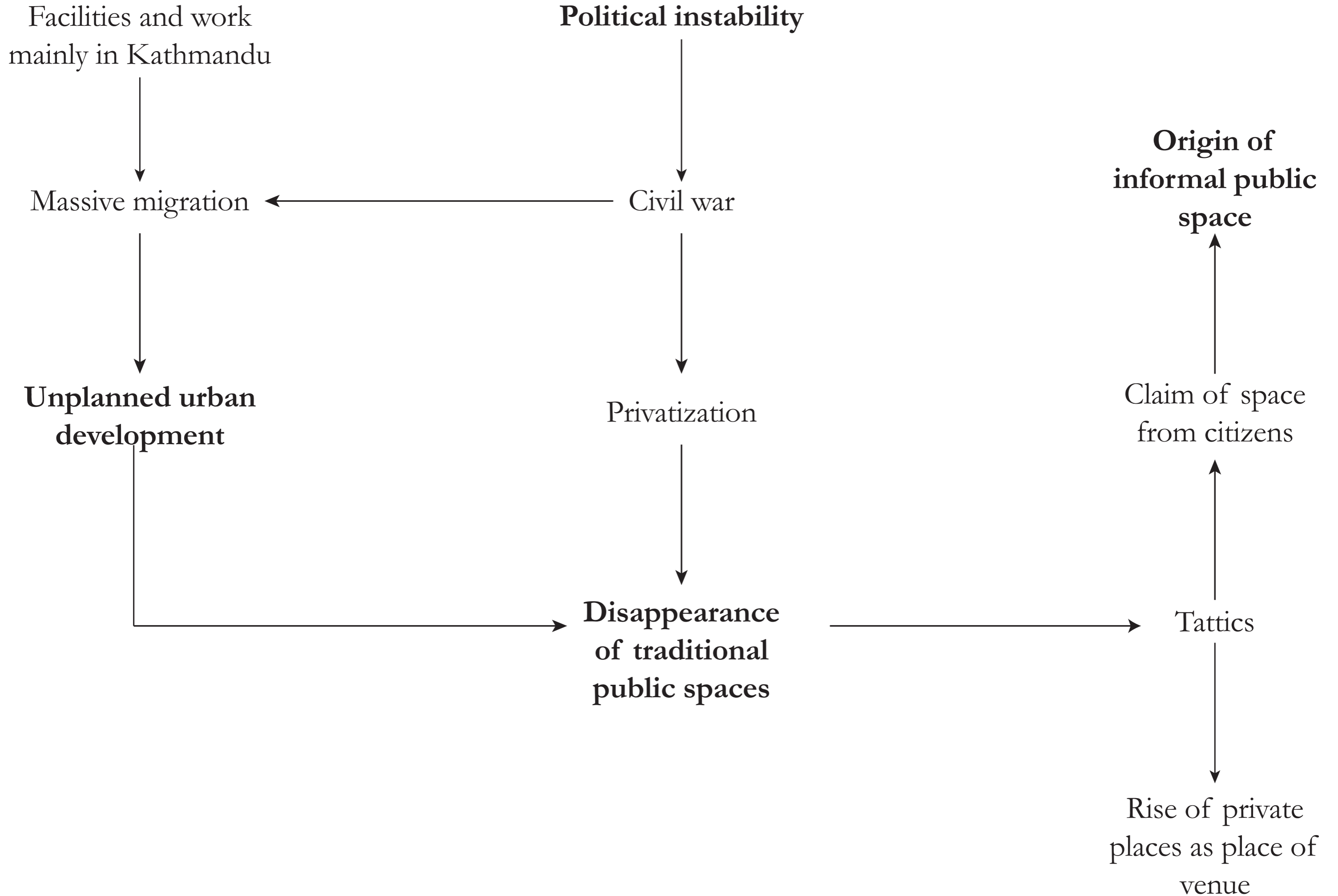
जय श्री दाचा कालिका फर्निचर



Research



How could this new chapter in Nepal history
affect the architecture and the built environment
of Kathmandu?





Architecture

464 V Century VI Century 1482 1660 1850 1951 1996 2015

Licchavi

Malla

Shah-Rana

Shah

Republic



Public Realm and Urban Planning



Architecture

464 V Century VI Century 1482 1660 1850 1951 1996 2015

Long lasting kingdoms

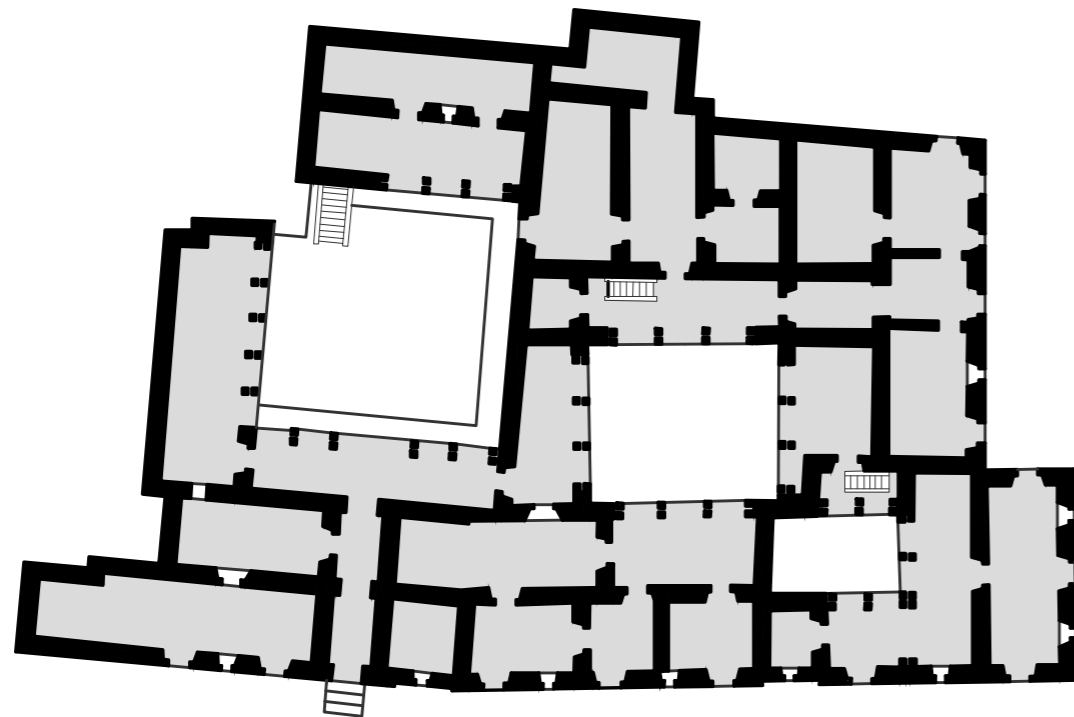
Dictatorship

Unstable governments

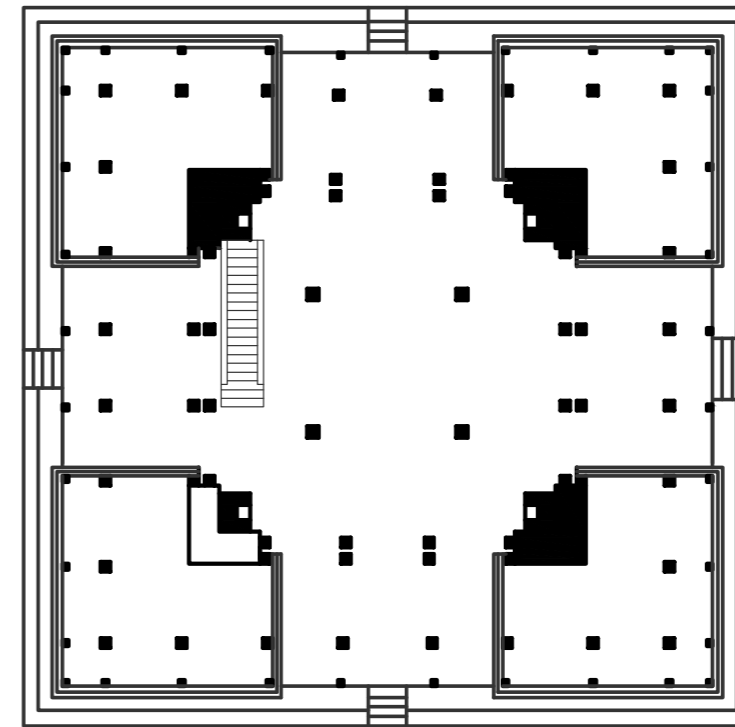


Public Realm and Urban Planning

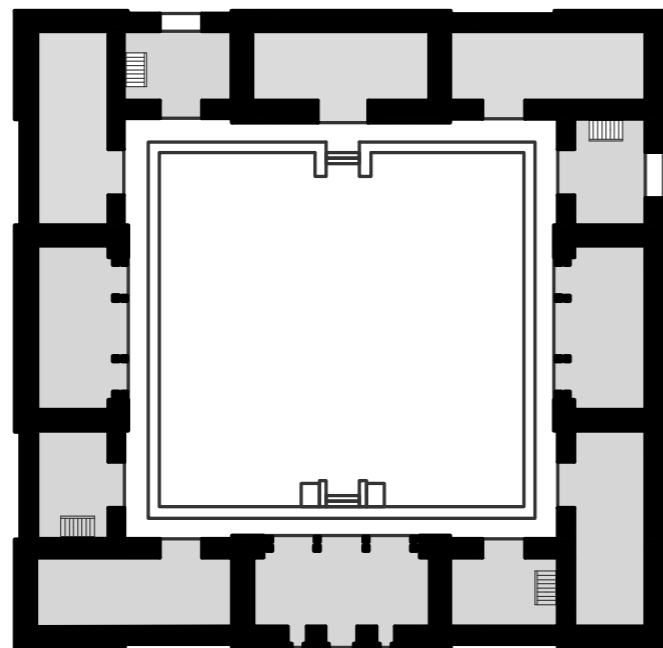
The expansion of the city was based on a medieval Hindu text, underlining the importance of the **architectural element** as a means of creating **harmony between the inhabitants and the city.**



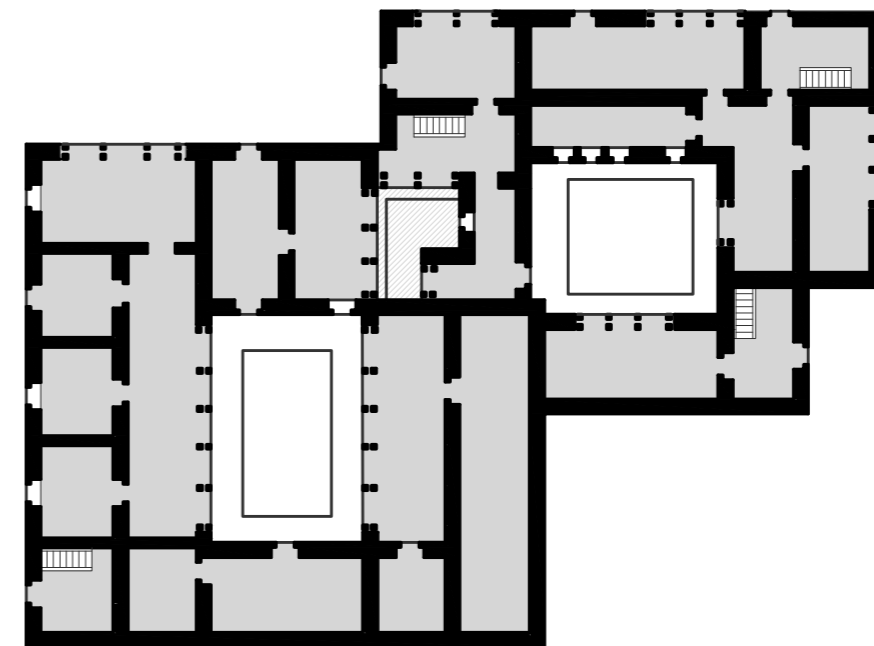
Type of courtyard in a Hindi school



Type of courtyard in a civic building

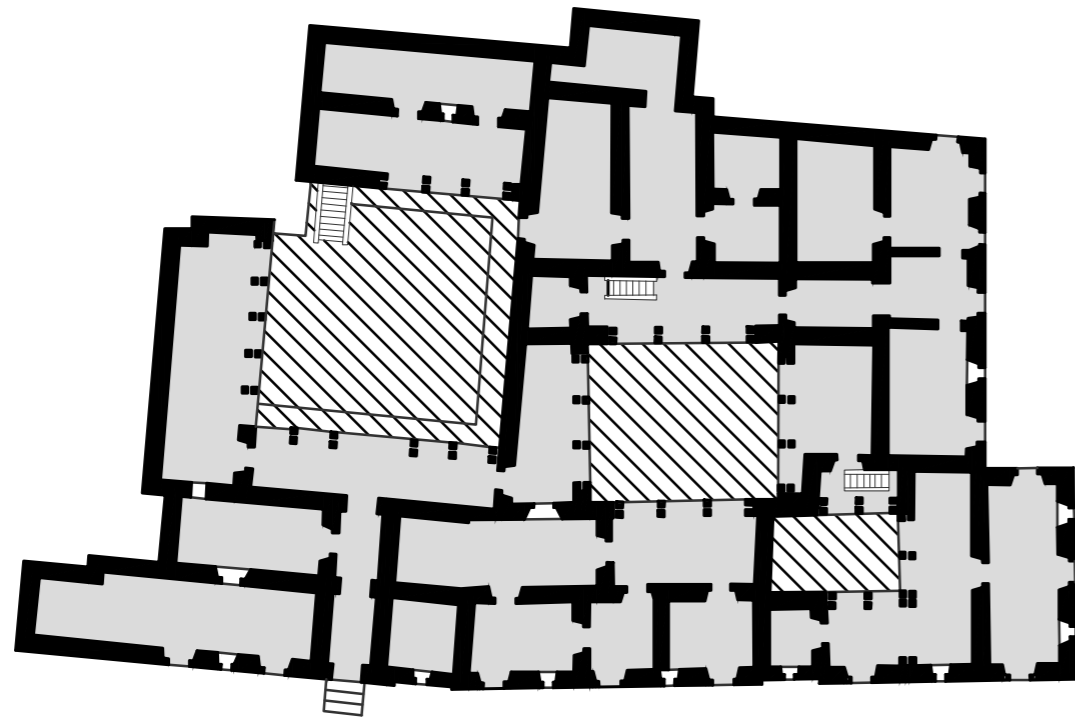


Type of courtyard in a Buddhist school

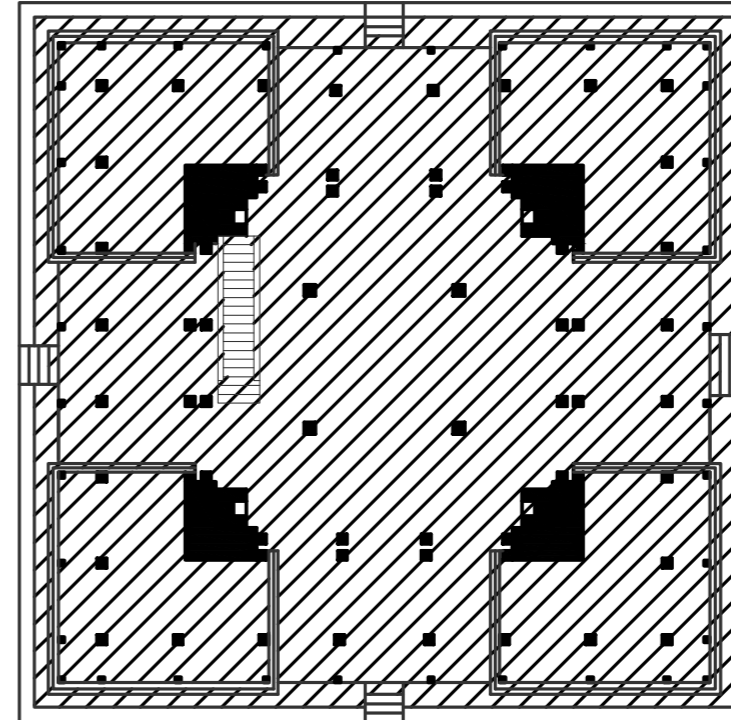


Type of courtyard in a dwelling house

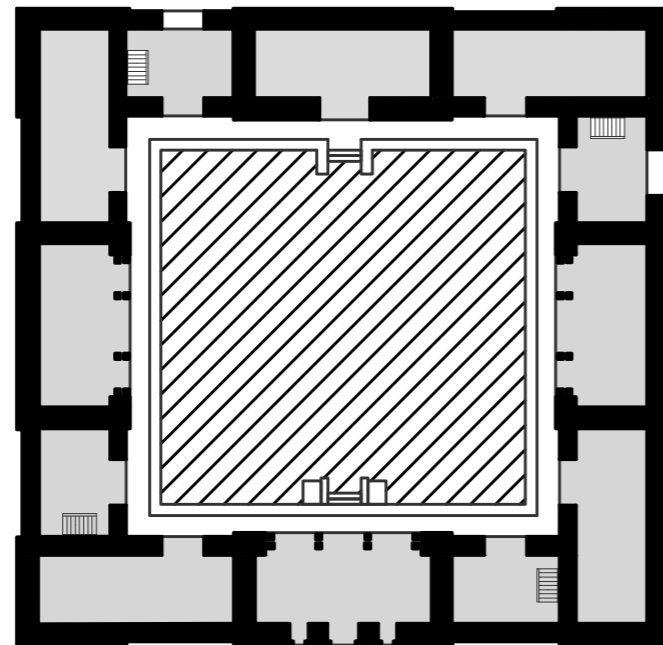
Courtyard



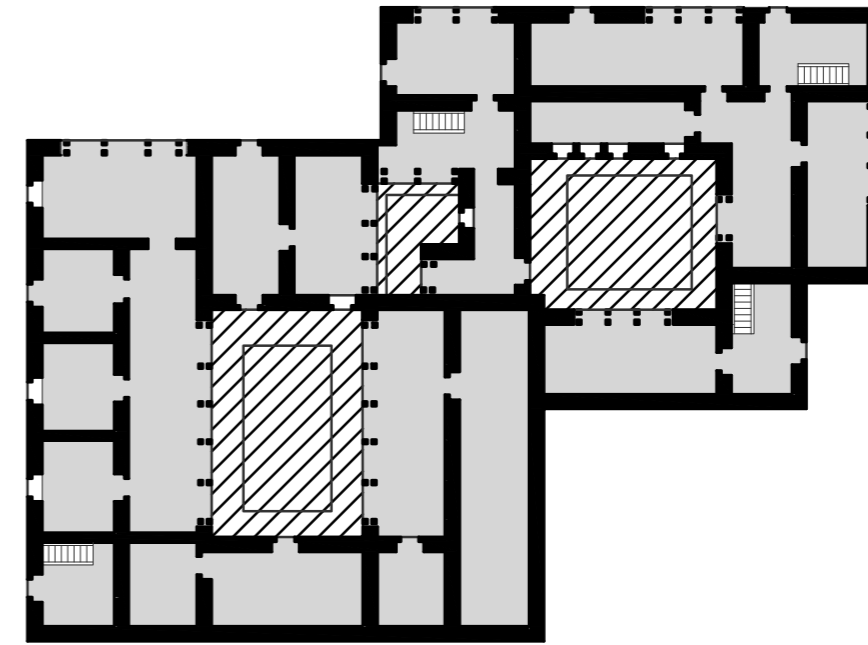
Type of courtyard in a Hindi school



Type of courtyard in a civic building

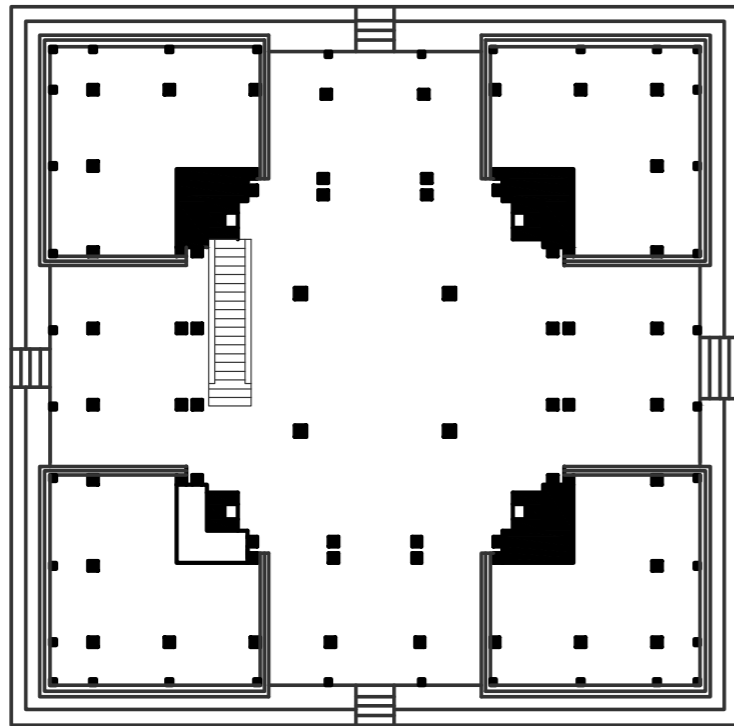


Type of courtyard in a Buddhist school

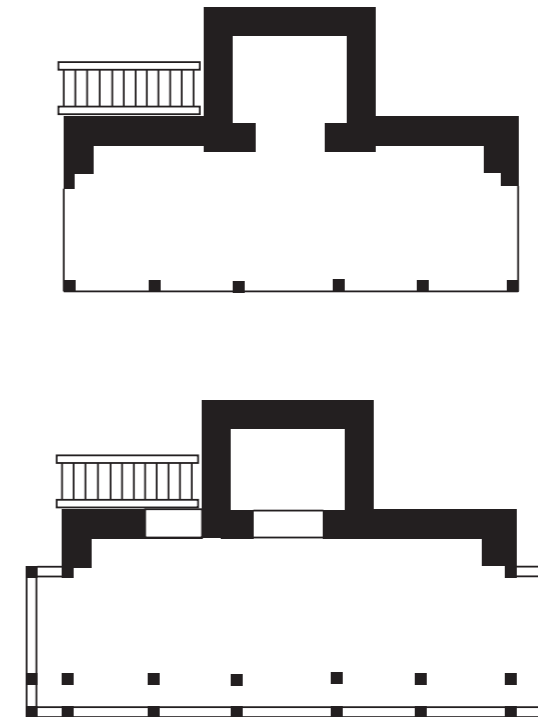


Type of courtyard in a dwelling house

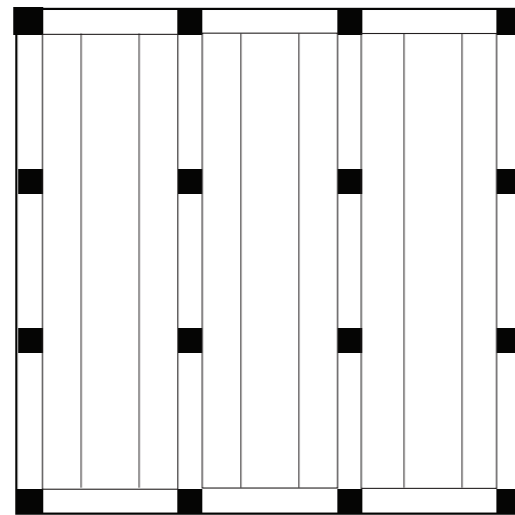
Courtyard



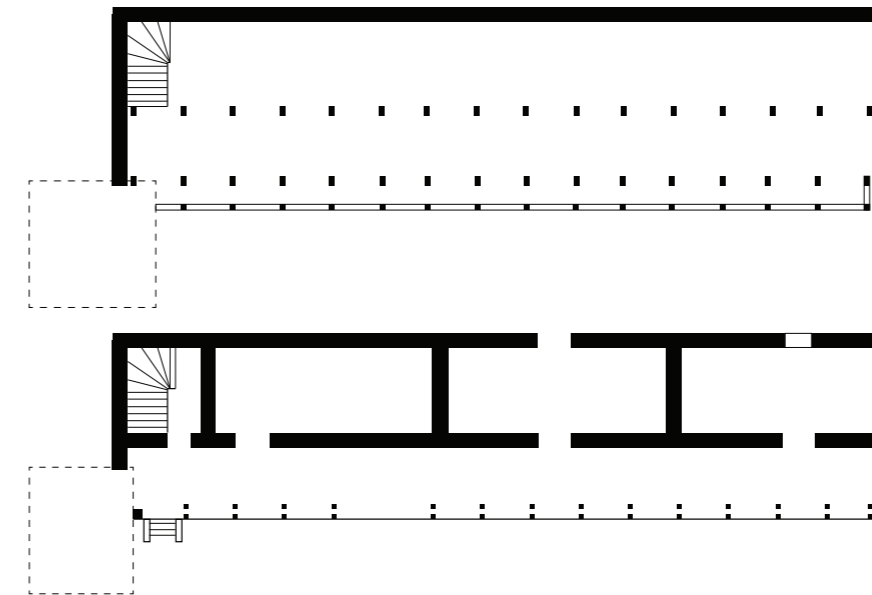
Type A



Type C



Type B



Type D

Mandapas

Family exchange



Social exchange



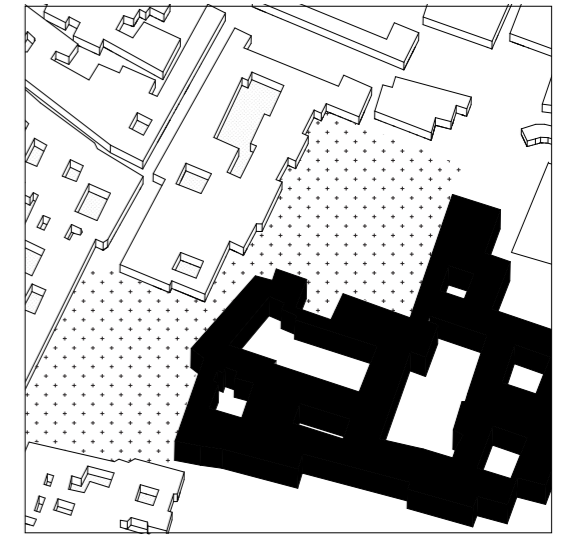
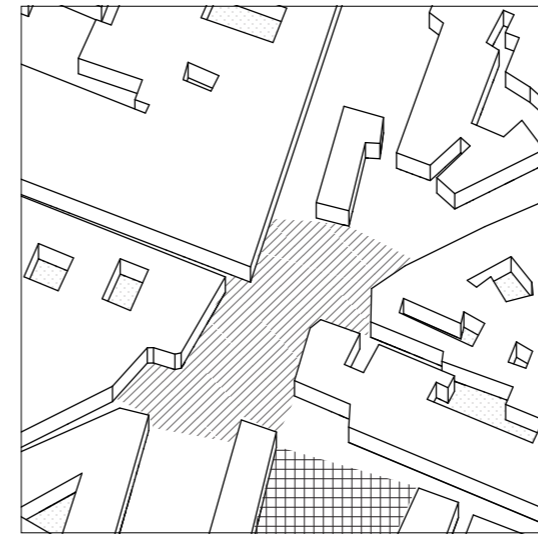
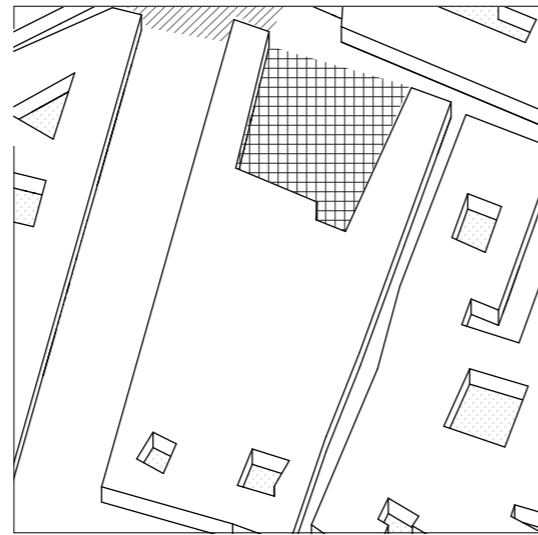
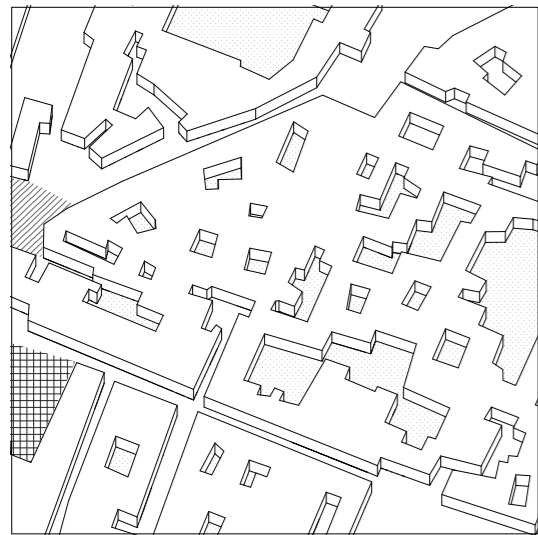
Economic exchange



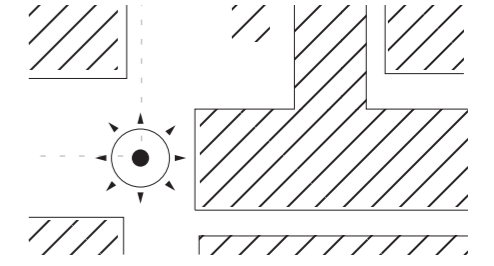
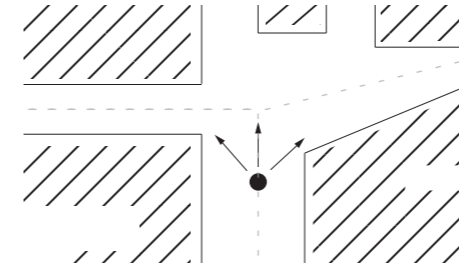
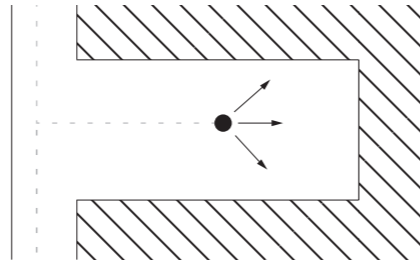
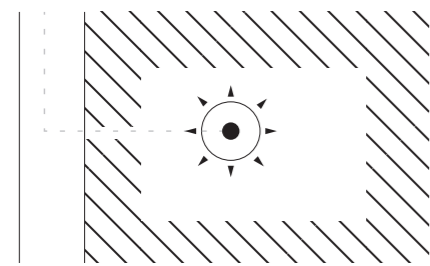
Political exchange



Image



Fabric



Perception

Family members and acquaintances

Neighborhood residents

People from different districts of the city

All the citizens

Users

Long lasting kingdoms

Dictatorship

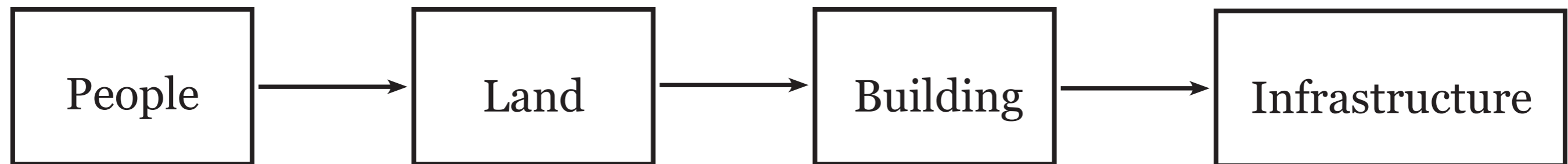
Unstable governments



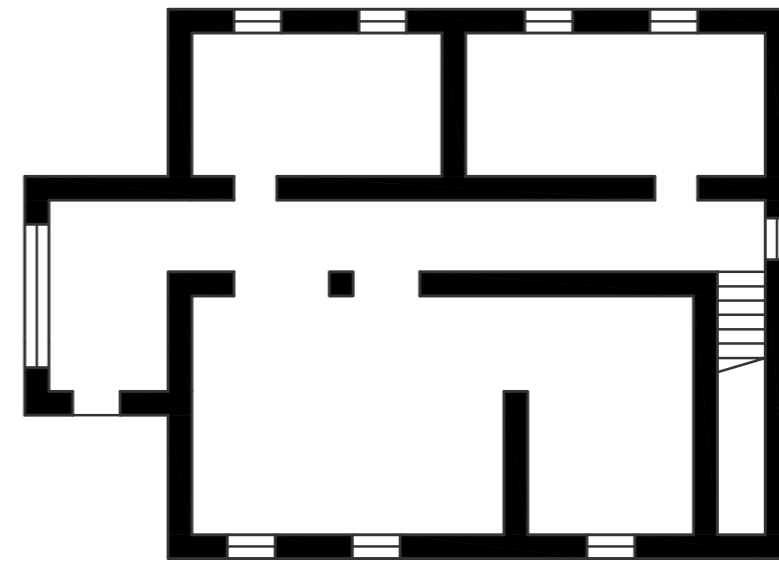
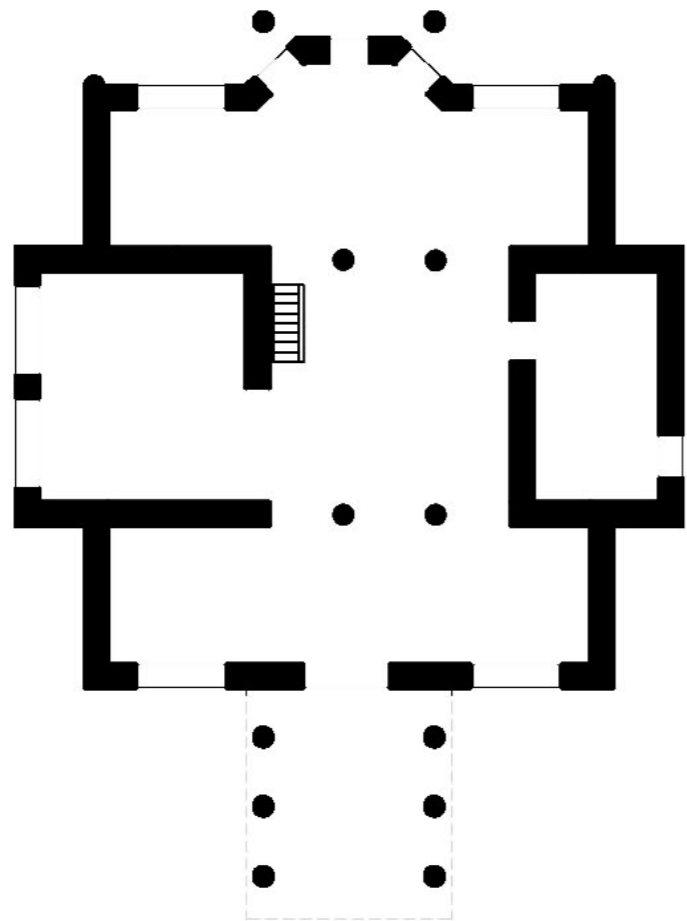
Urban planning during long last kingdoms



Urban planning during dictatorship

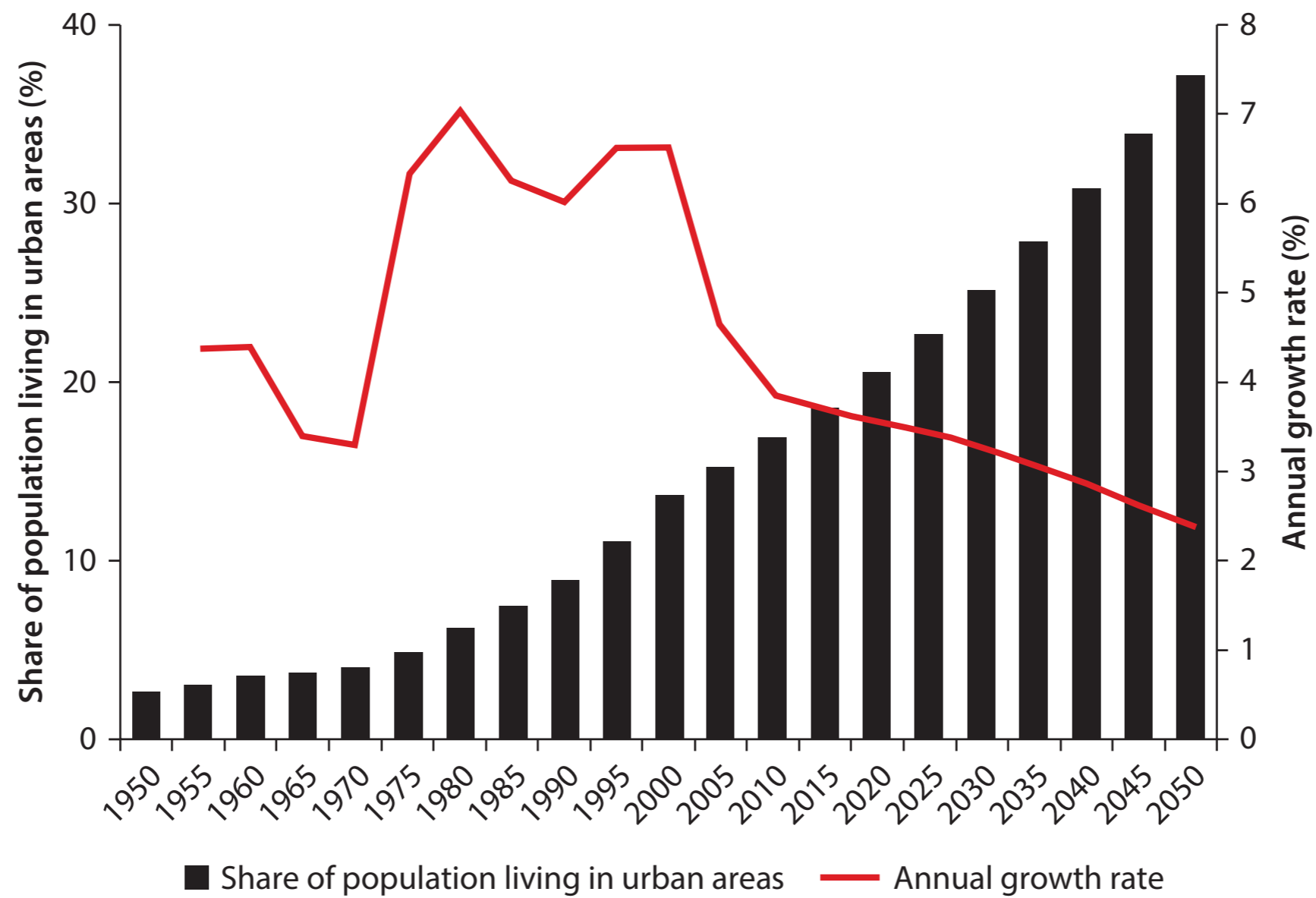


Type



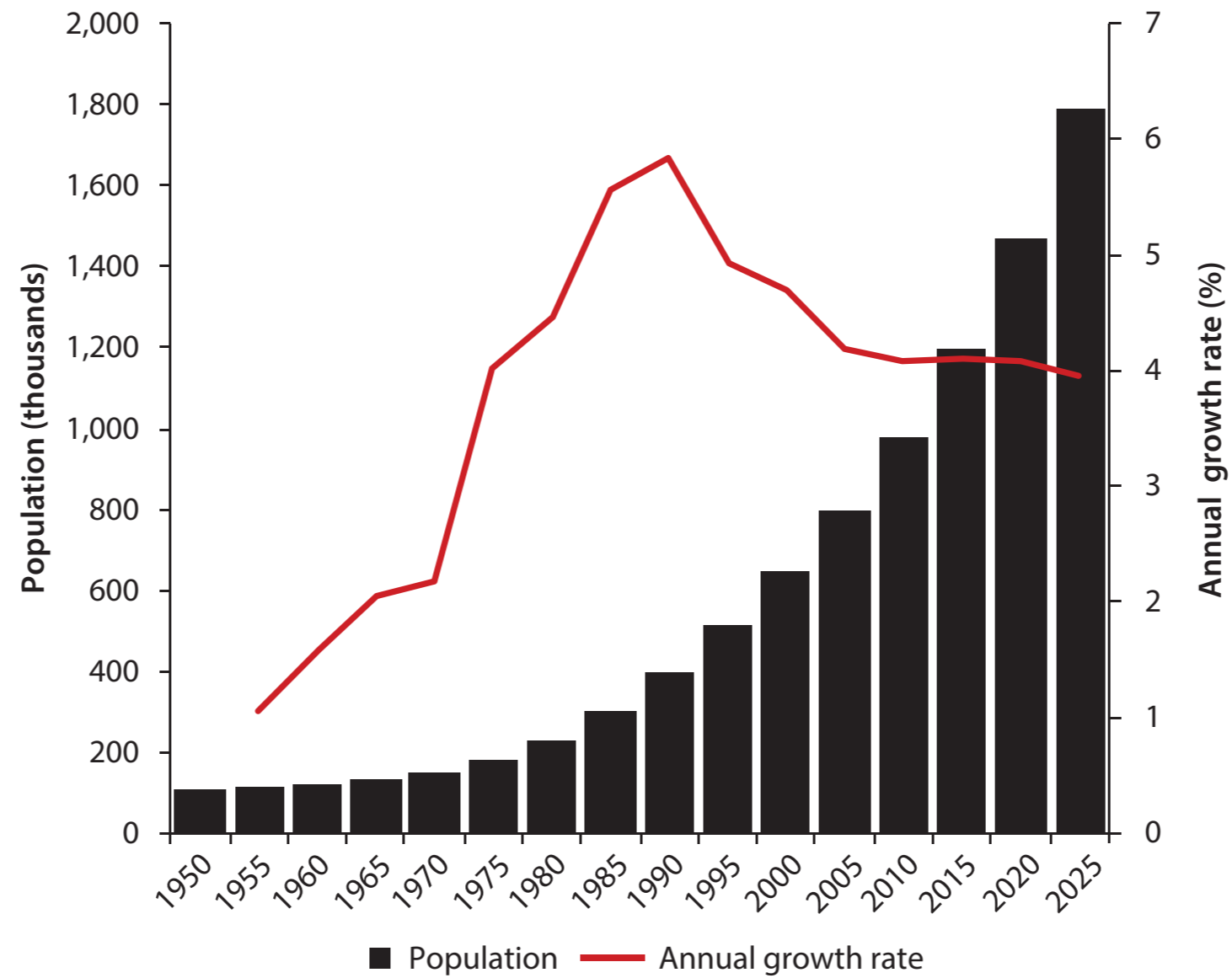
Urban expansion

Urbanization and urban growth in urban areas in Nepal



Urban expansion

Population growth of Kathmandu in the next 10 years



Urban expansion

Kathmandu, 1967



Urban expansion

Kathmandu, 1991



Urban expansion

Kathmandu, 2000



Urban expansion

Dharara, Kathmandu, 1983



Urban expansion

Dharara, Kathmandu, 2016



Urban expansion



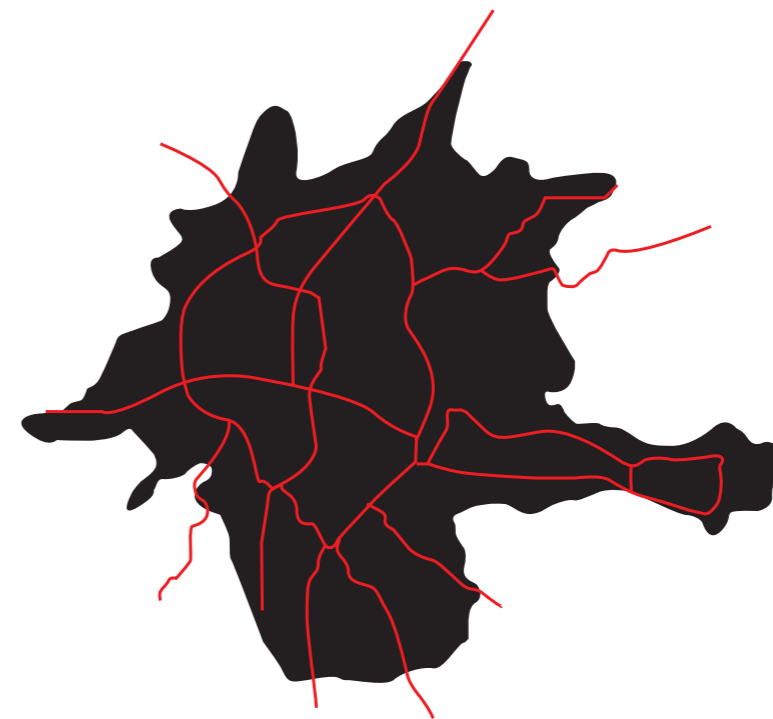
1984



1991



2000



2015

Urban expansion



Urban expansion



How Urban Planning Failed Kathmandu

Haphazard urbanization and rampant building code violations in Nepal pushed up the earthquake death toll.

TANVI MISRA | [@Tanvim](#) | Apr 26, 2015 | [20 Comments](#)



Indian-led relief efforts in Kathmandu, Nepal. (AP images)

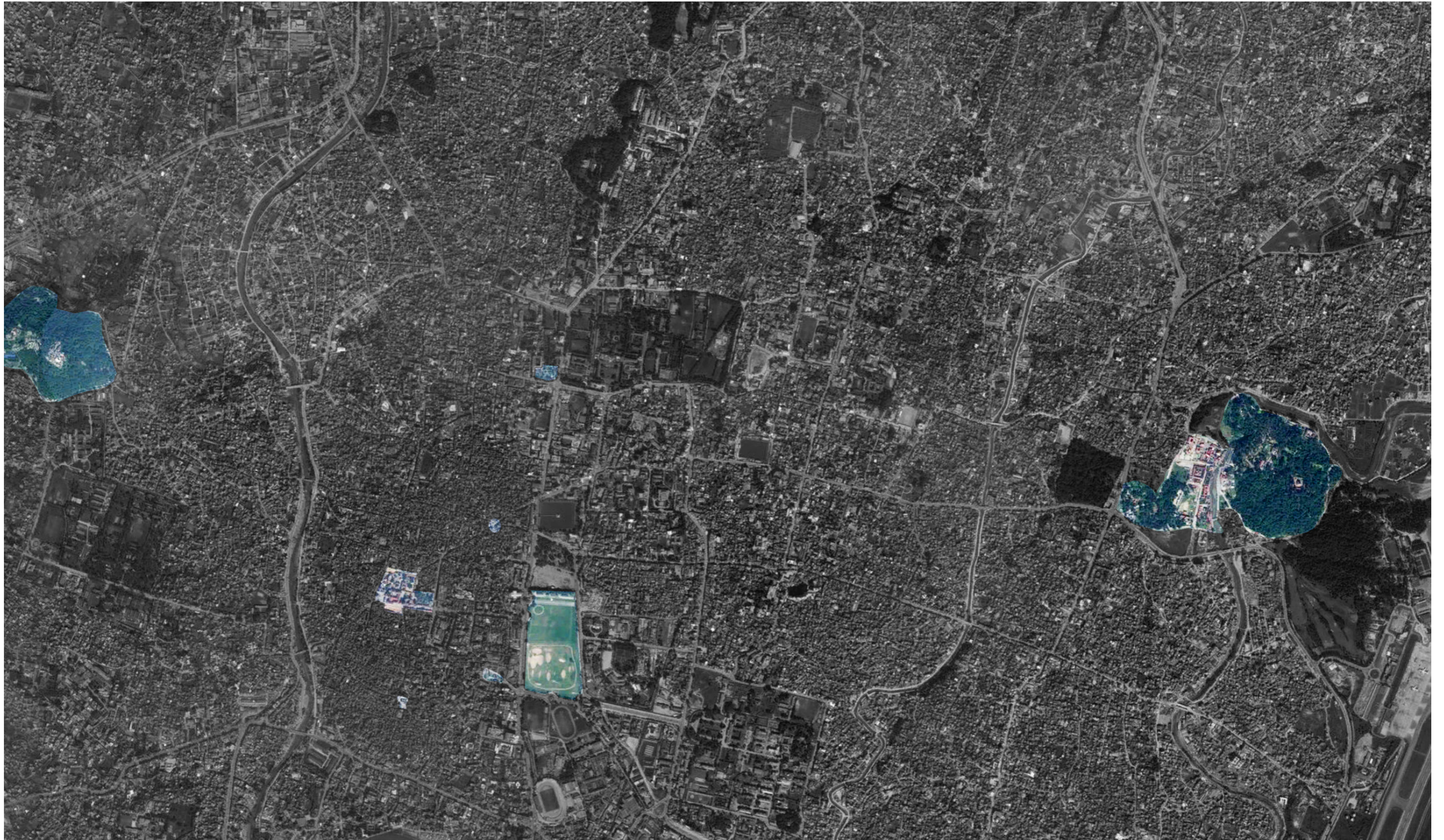
Public spaces



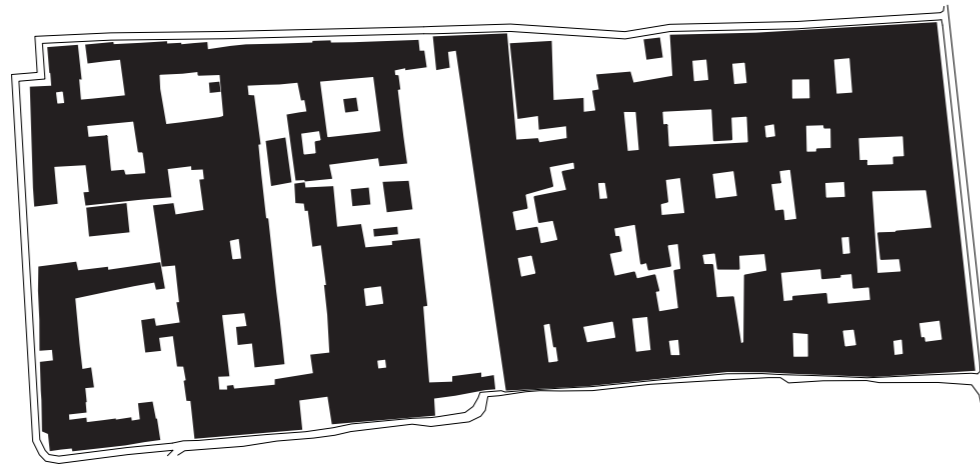
Public spaces



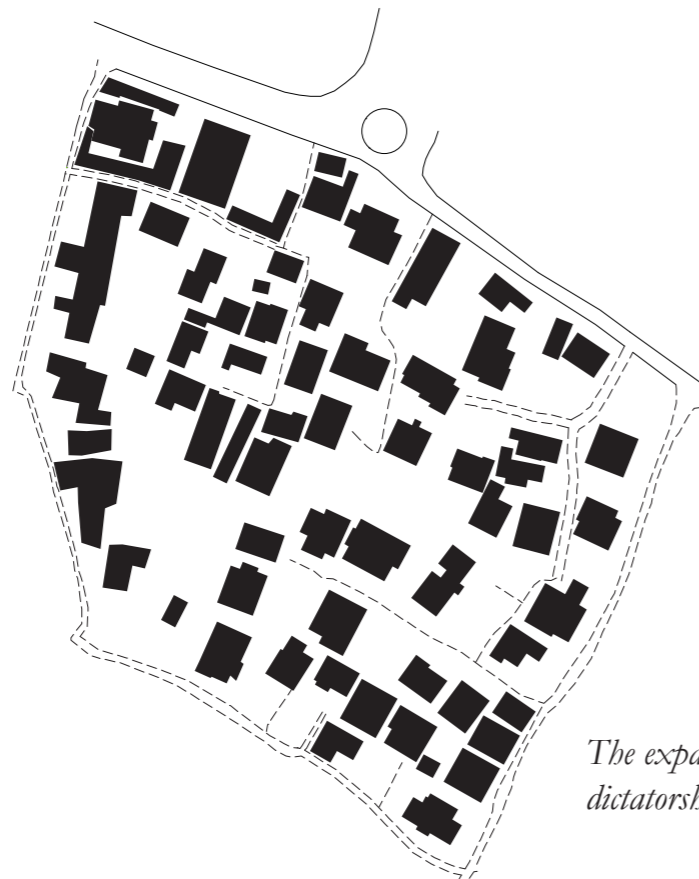
Public spaces



Urban morphology over the time



The medieval urban morphology with its full and voids



The expansion over the dictatorship, much more liquid

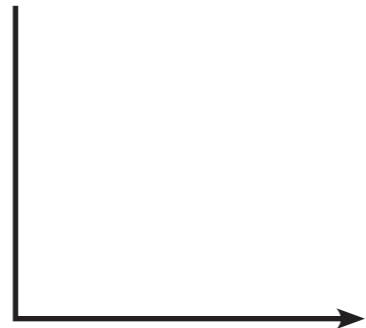


The modern expansion, the adjoining sector of the city center, where there is no a design of the block and the blocks are much bigger in comparison on the other two.

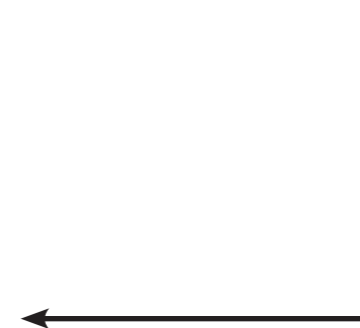
Methodology

Political value

Communal value



Civic value



Public spaces

Family exchange



Social exchange



Economic exchange

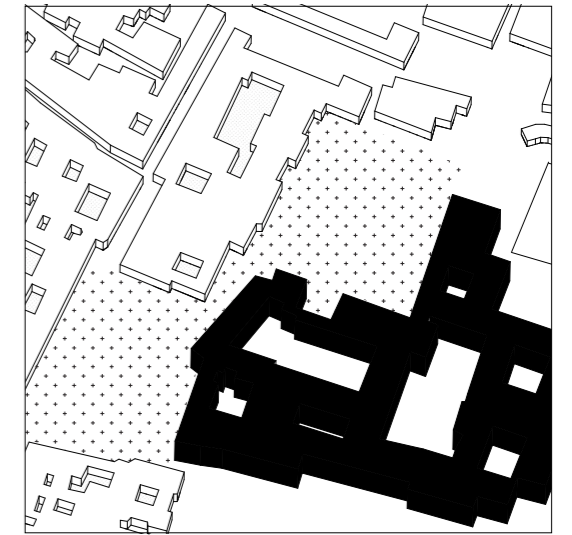
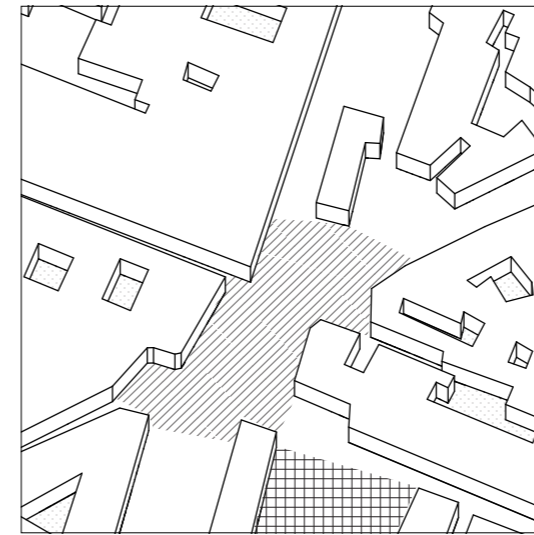
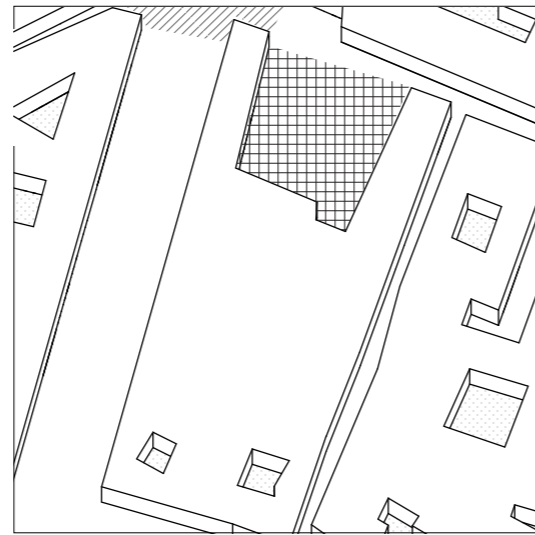
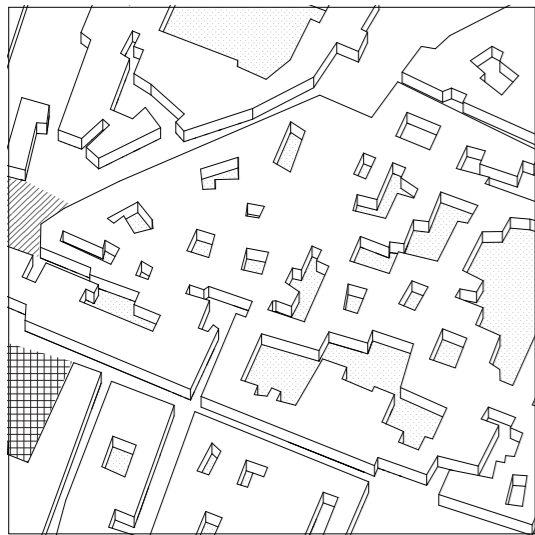


Political exchange

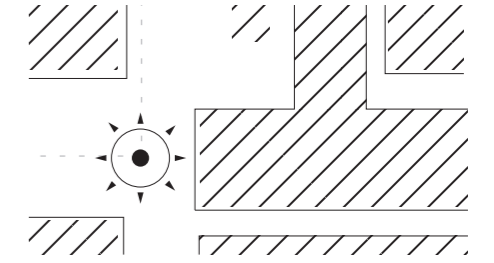
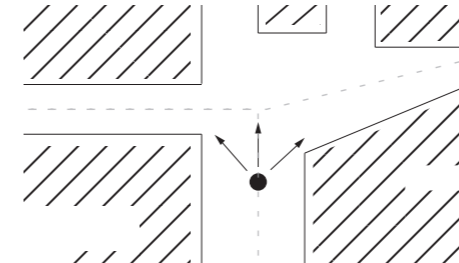
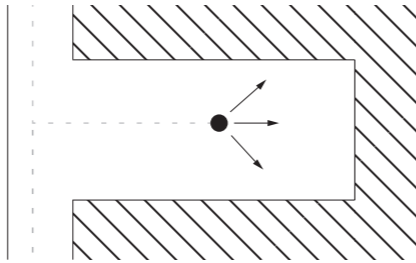
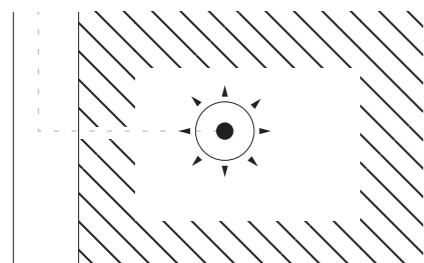


Image

Fabric



Perception



Users

Family members and acquaintances

Neighborhood residents

People from different districts of the city

All the citizens

The urban block

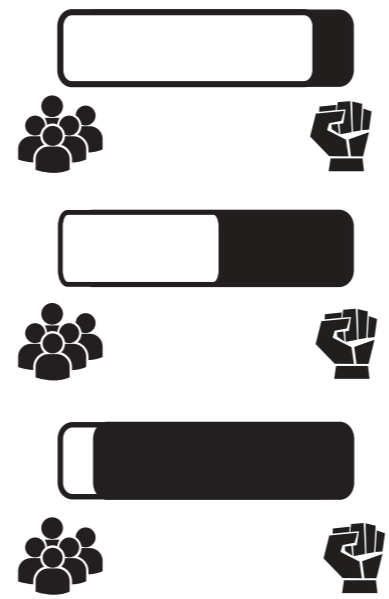
The district

The nation

Social exchange

Economic exchange

Political exchange

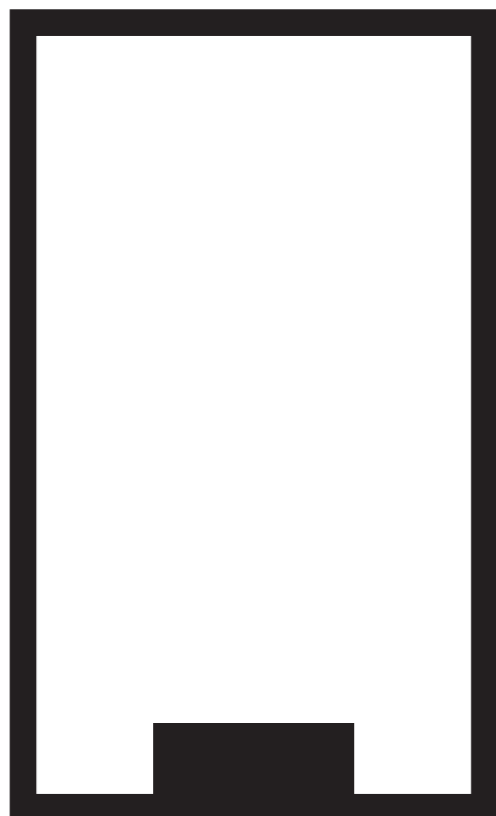


Pavilions

Forum

Assembly

Urban block



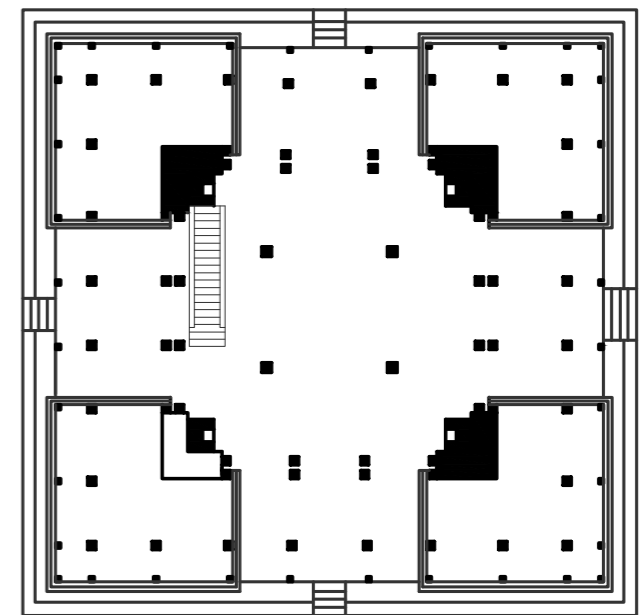
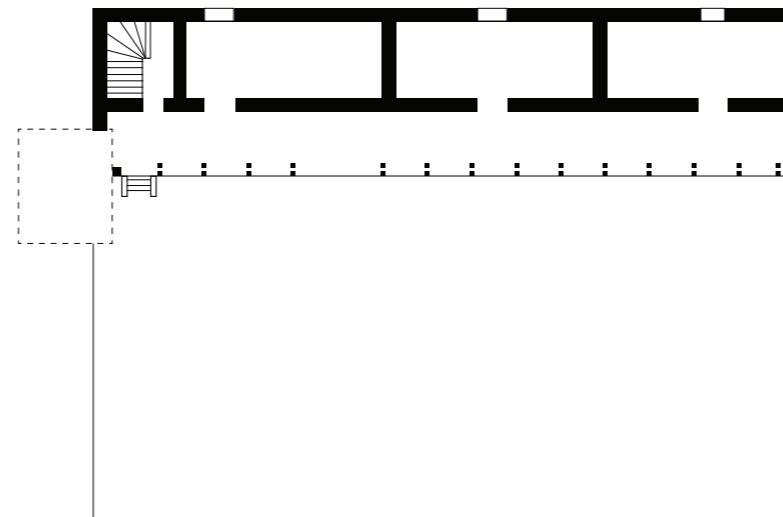
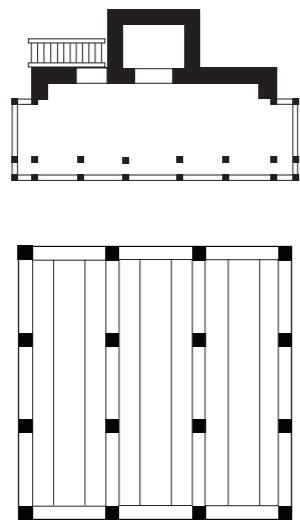
District



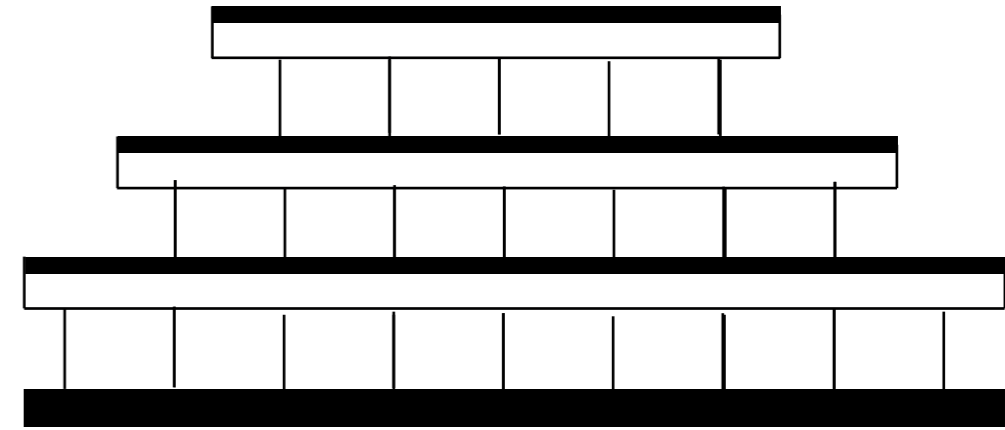
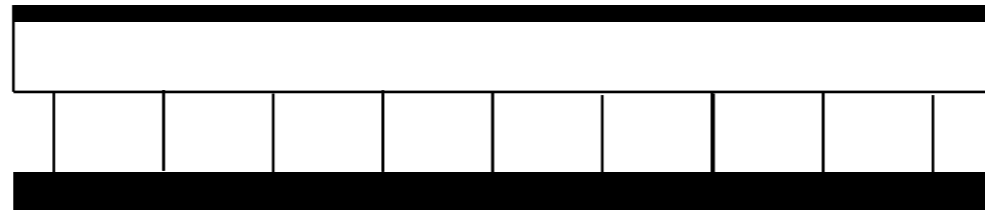
Nation



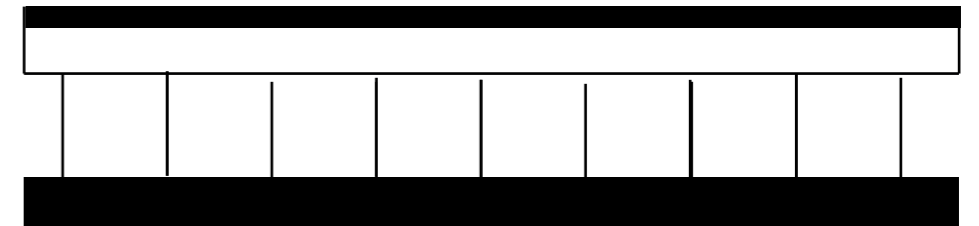
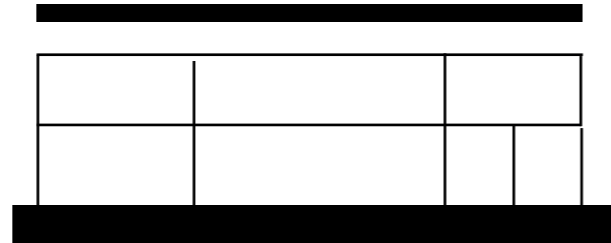
Three types of Mandapas



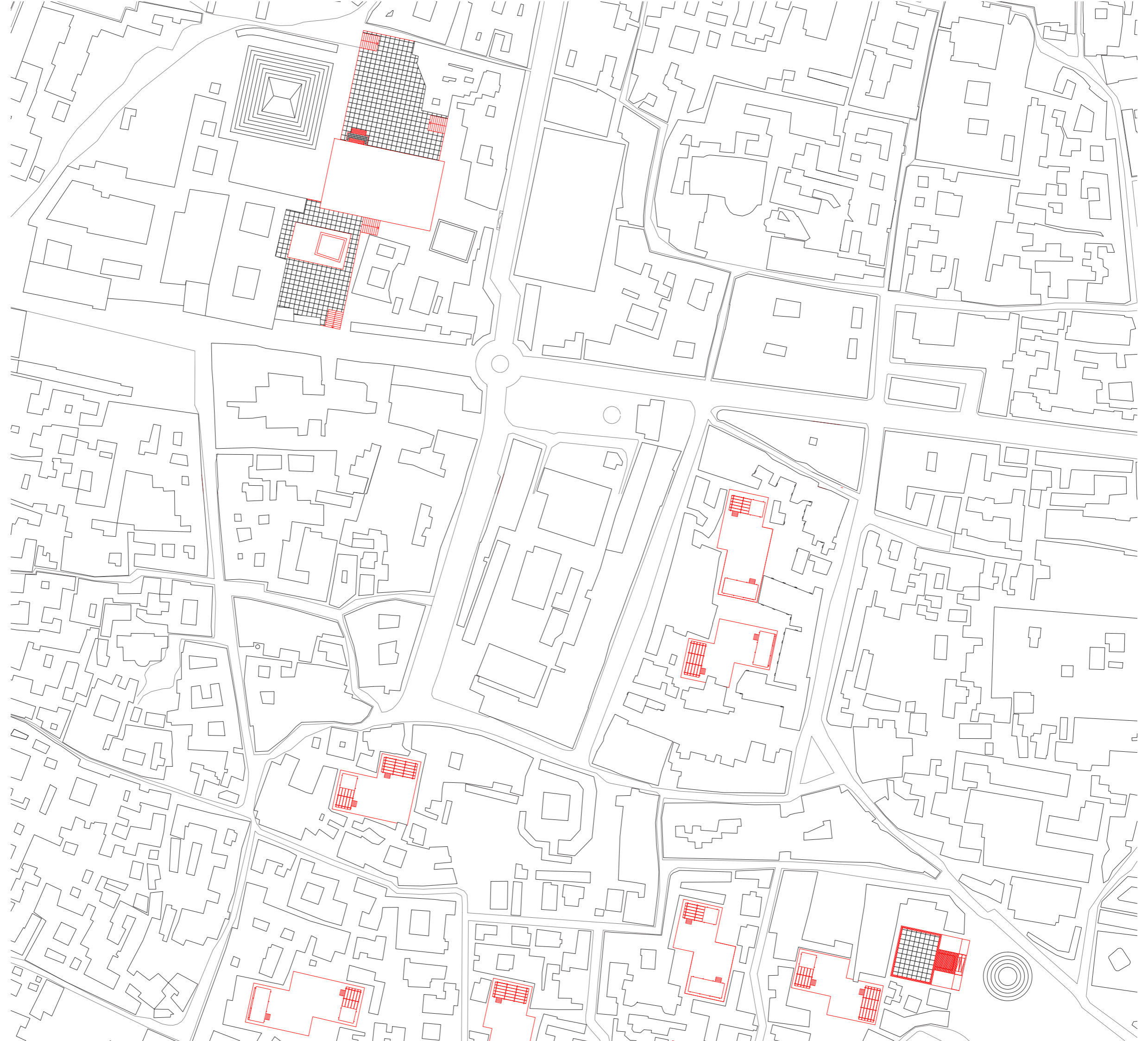
Three types of Mandapas



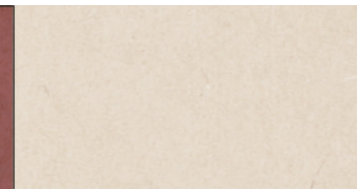
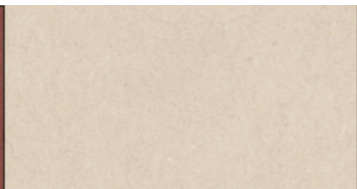
Three scales of project



The project



First scale: the urban block



The “courtyards” now



dump

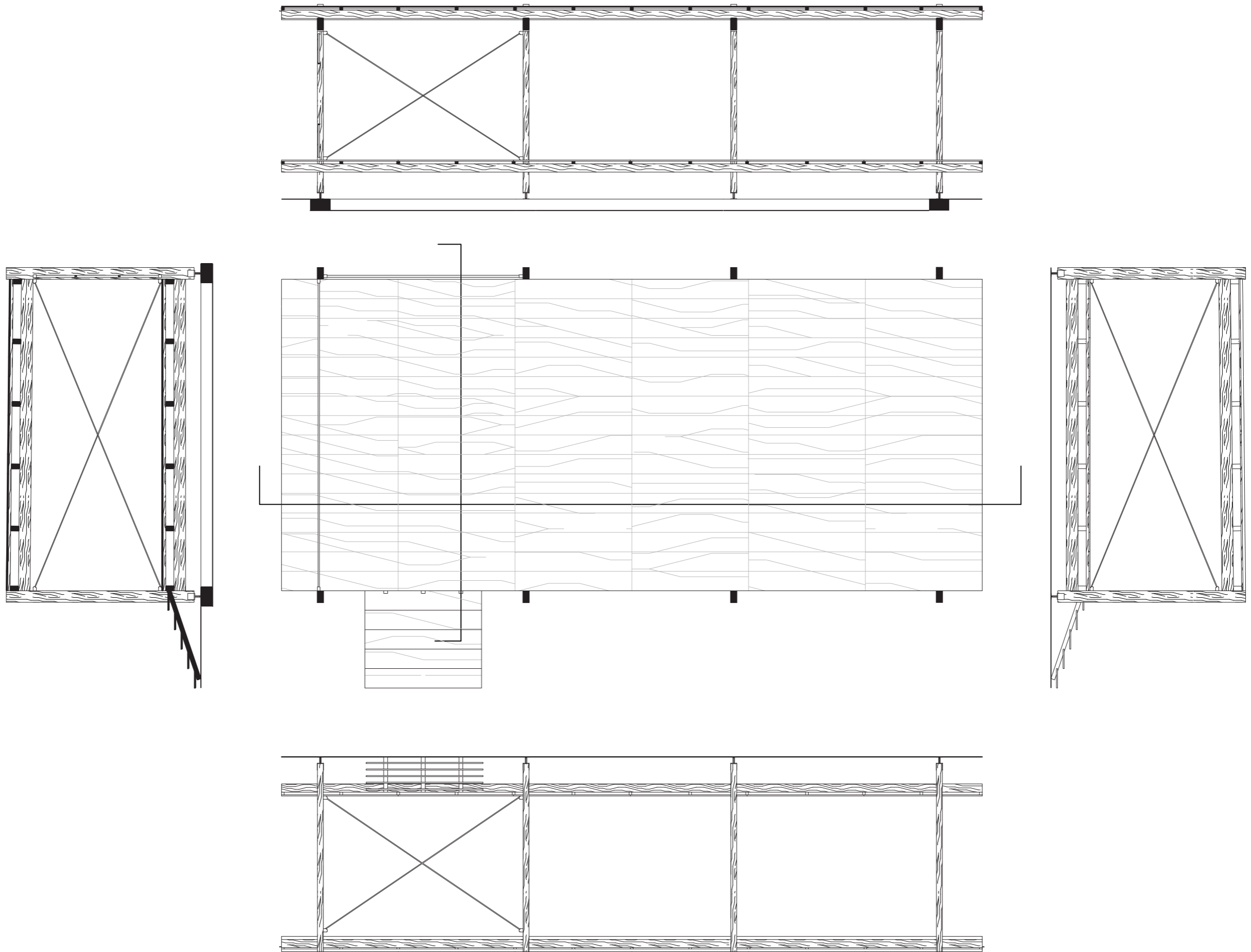


parking lot



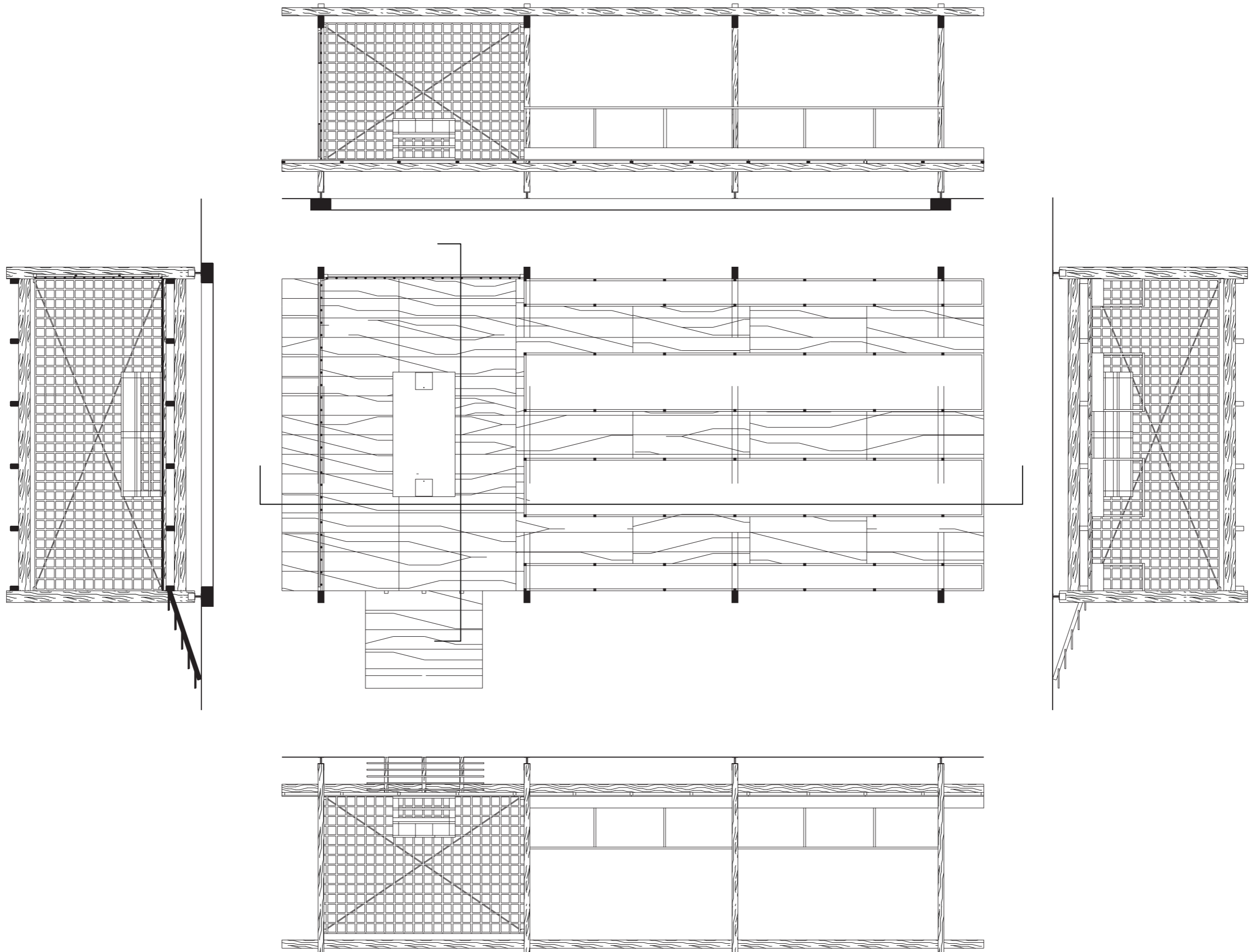
dump

Comunitarian Pavilion



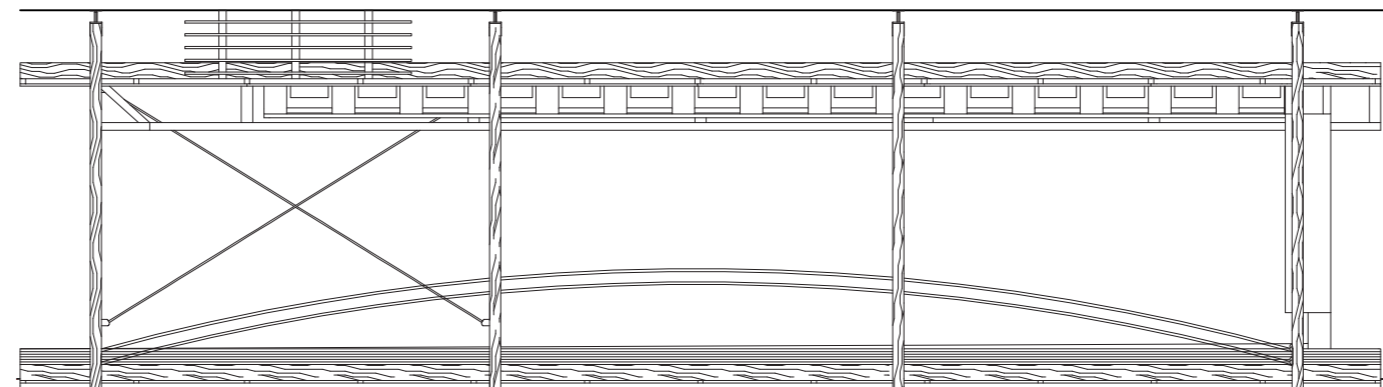
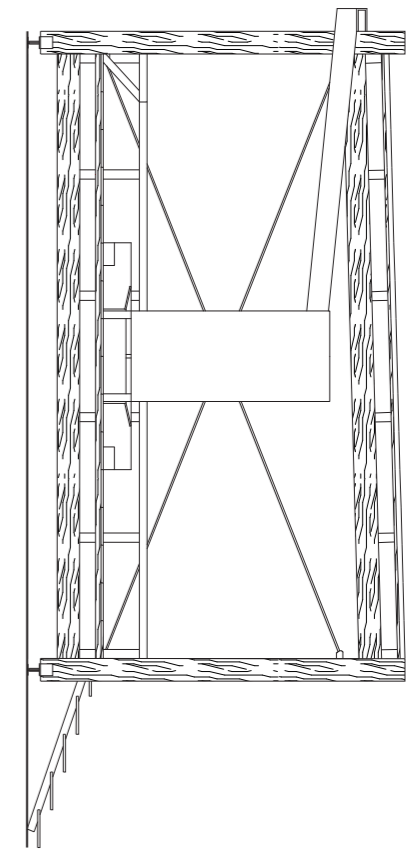
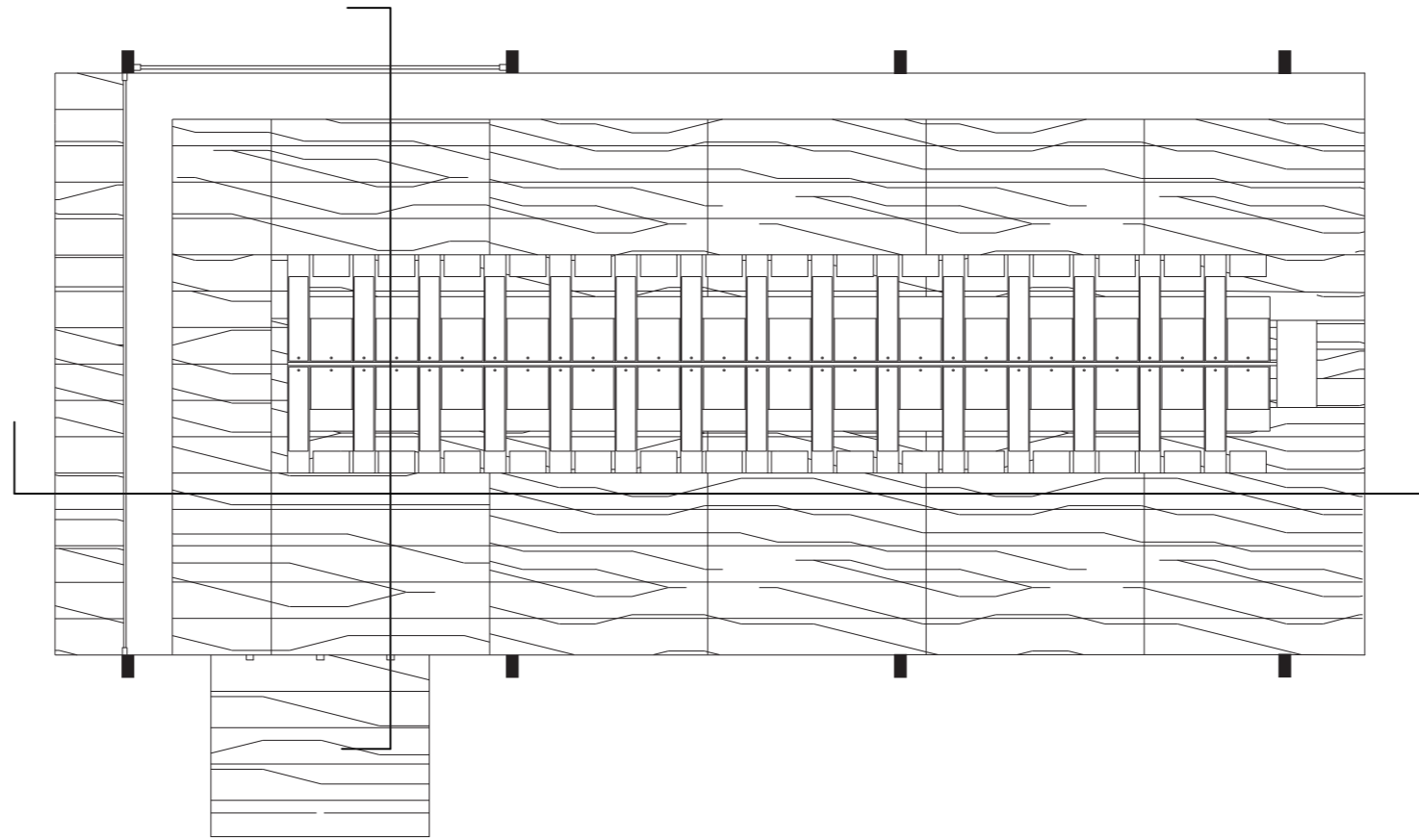
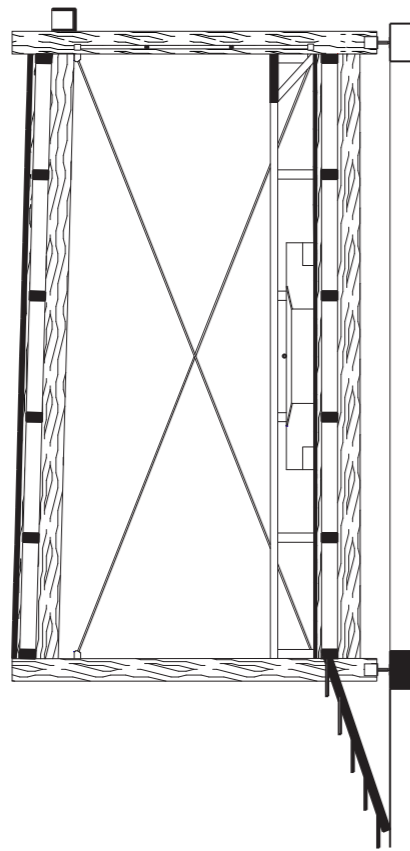
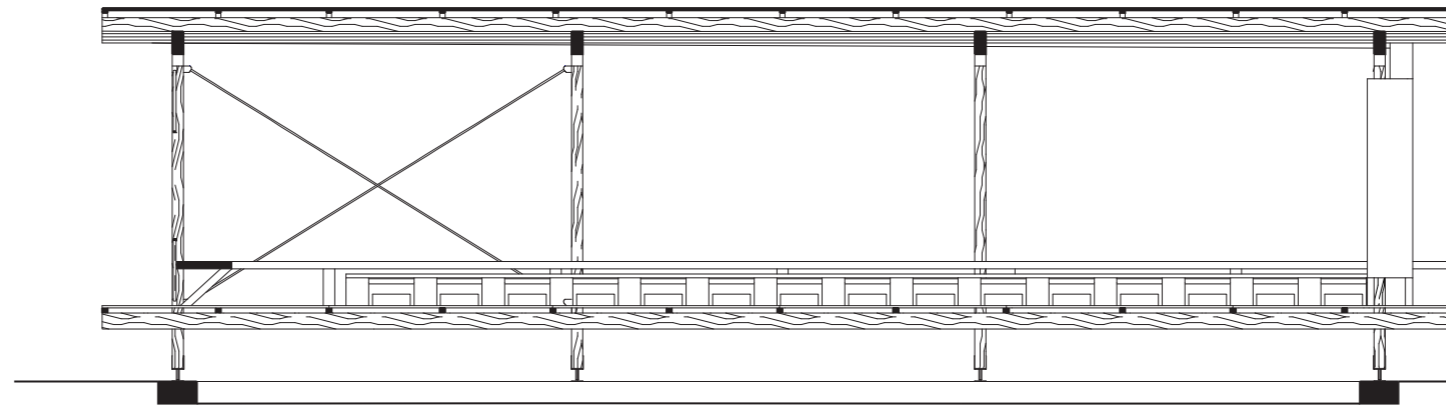


Gardening Pavilion



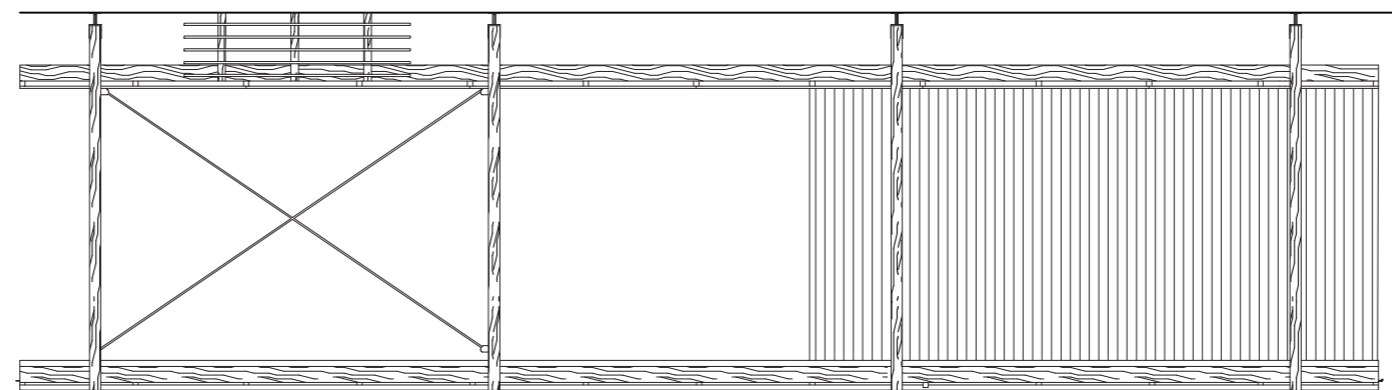
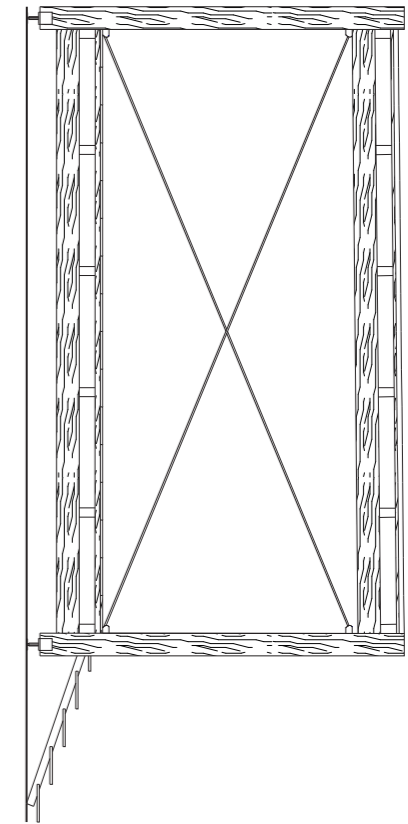
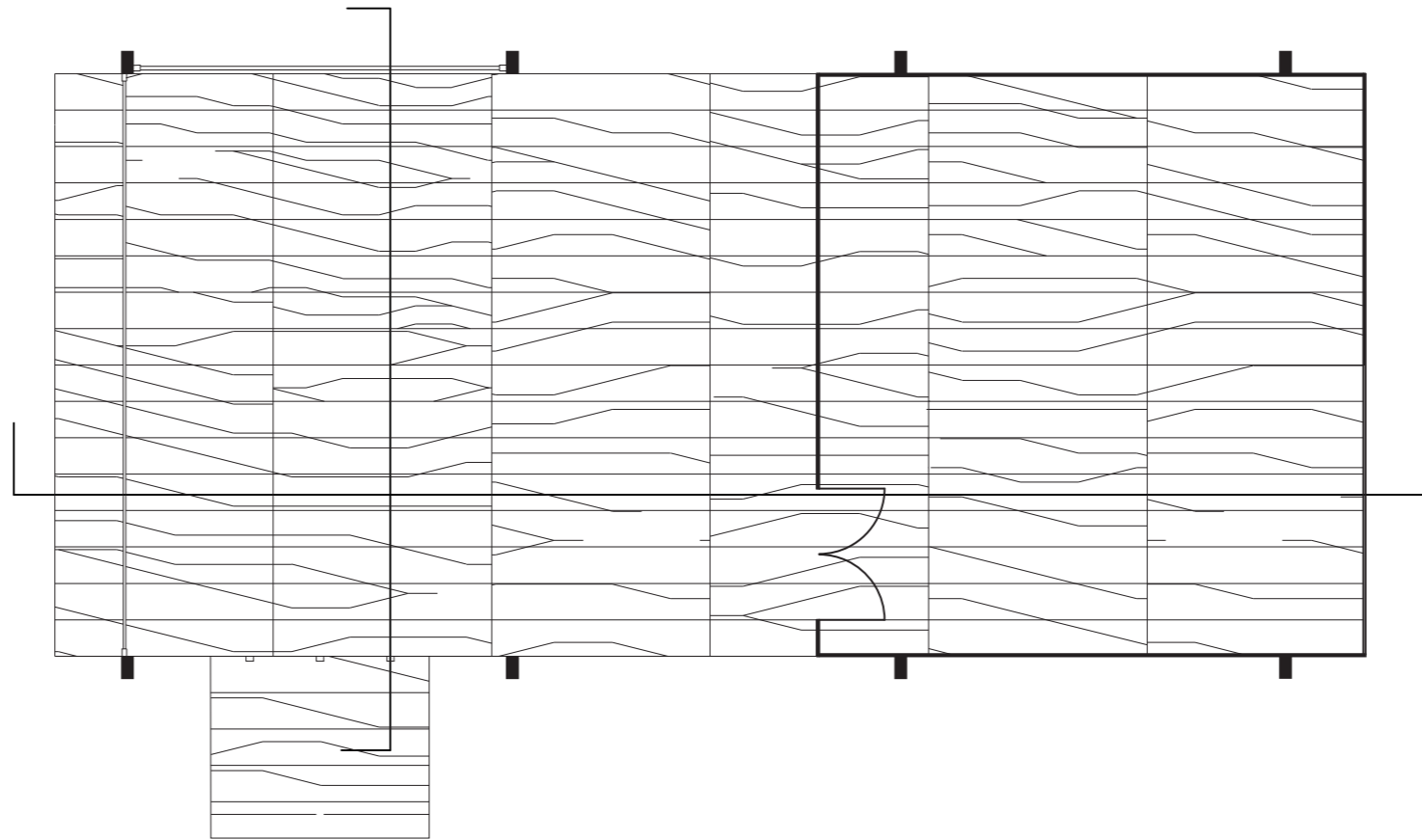
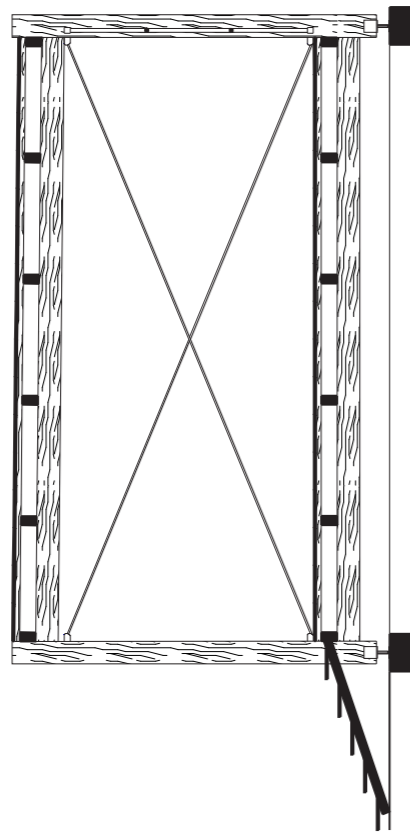
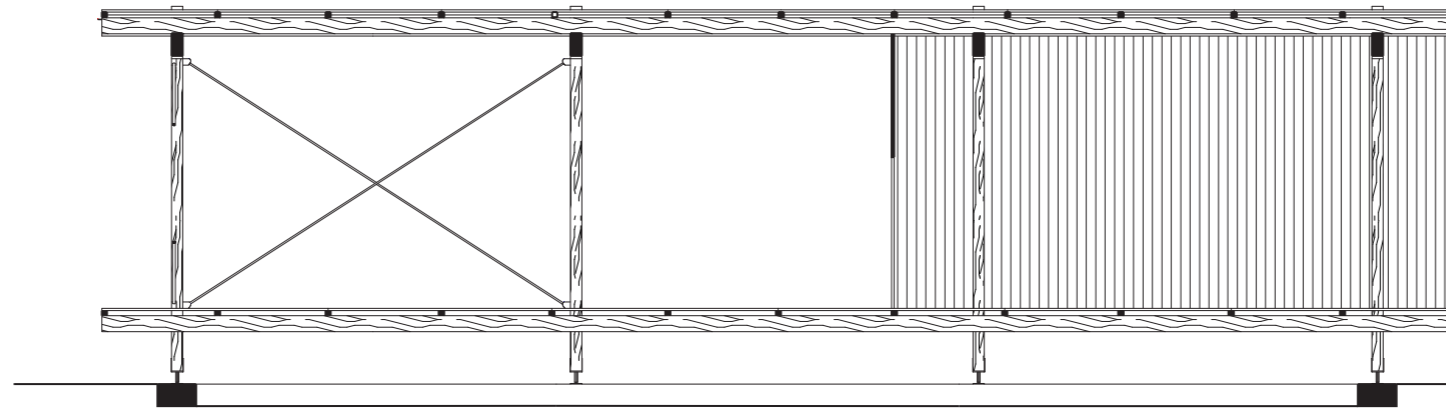


Laundry Pavilion

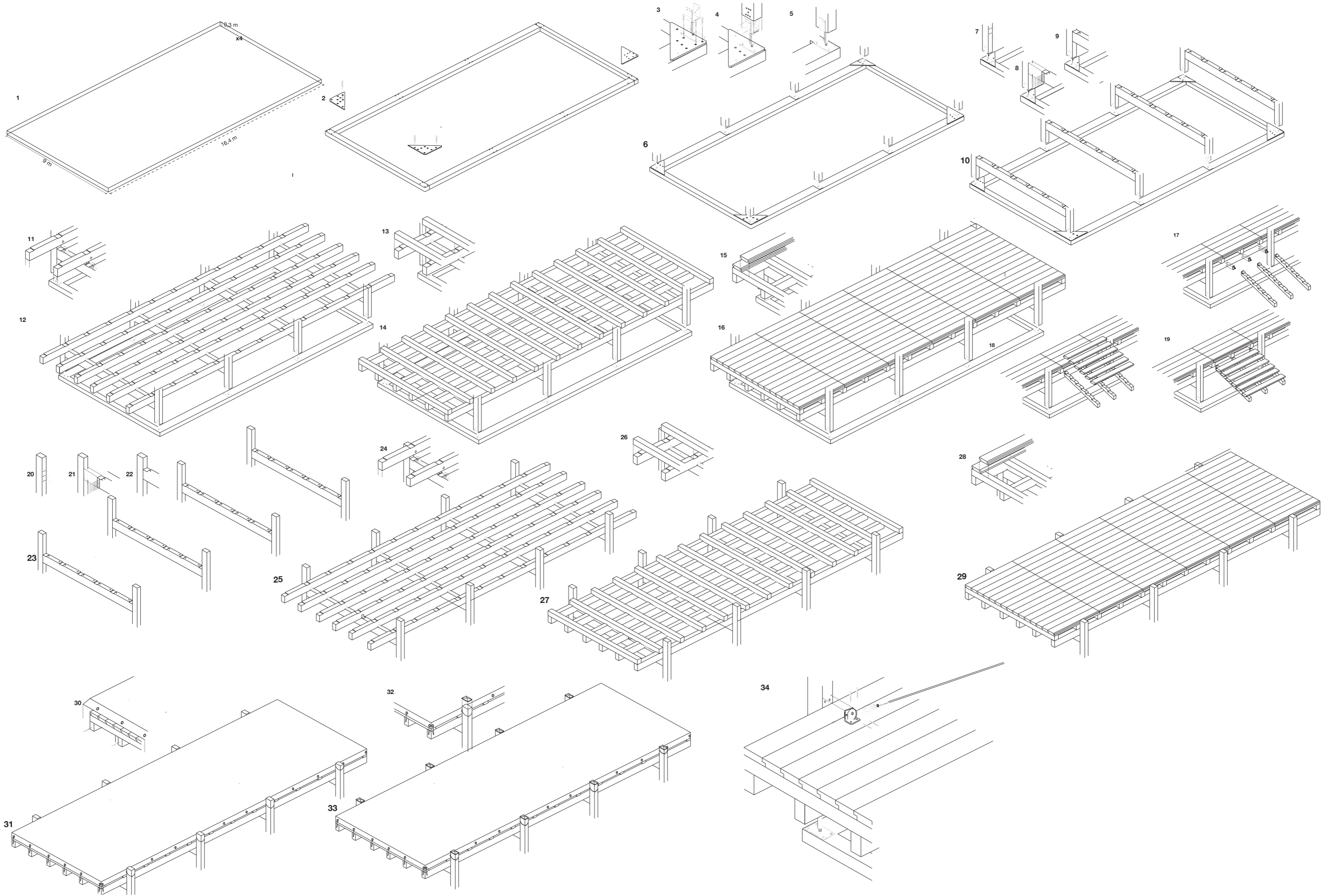


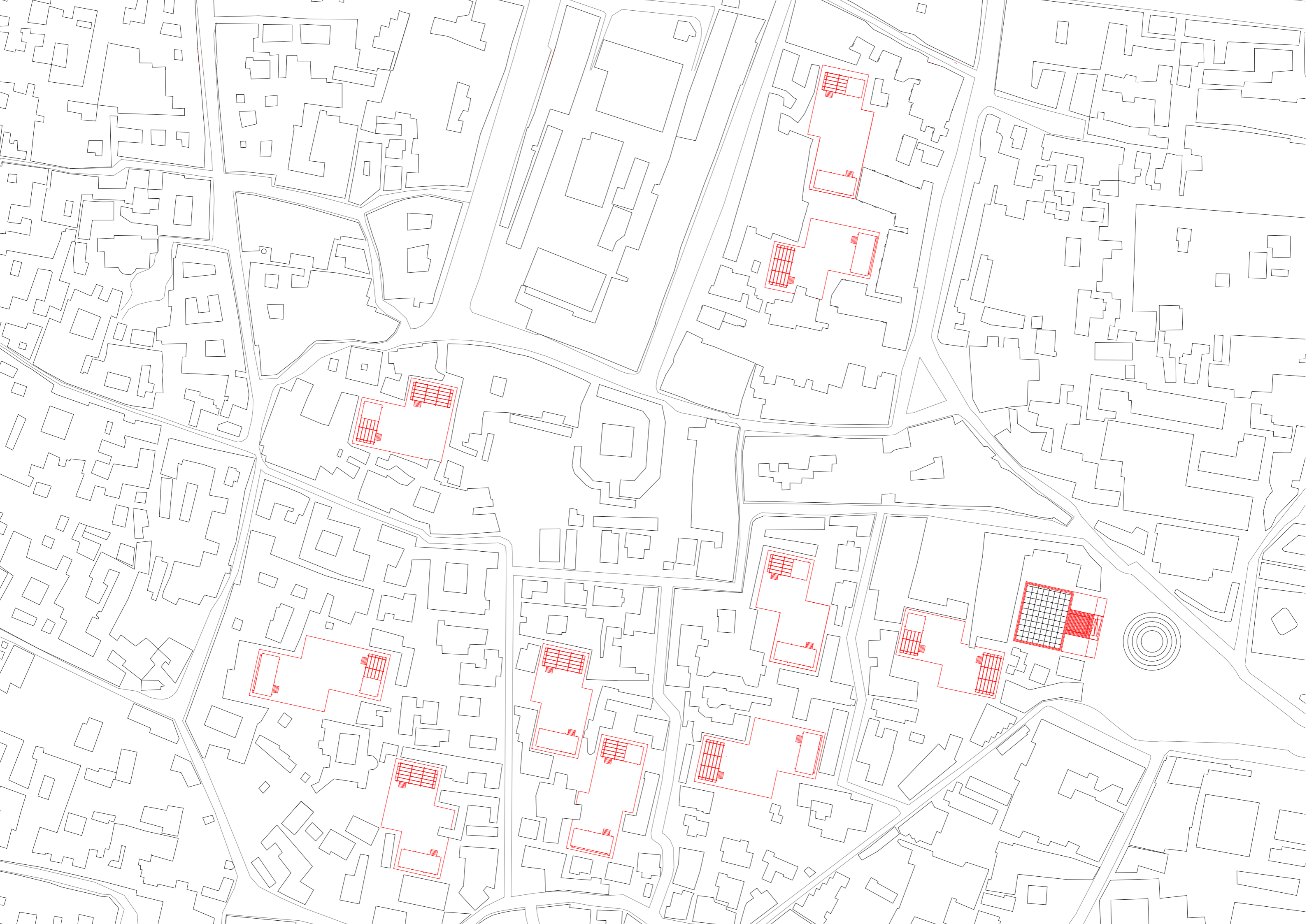


Crafting pavilion:





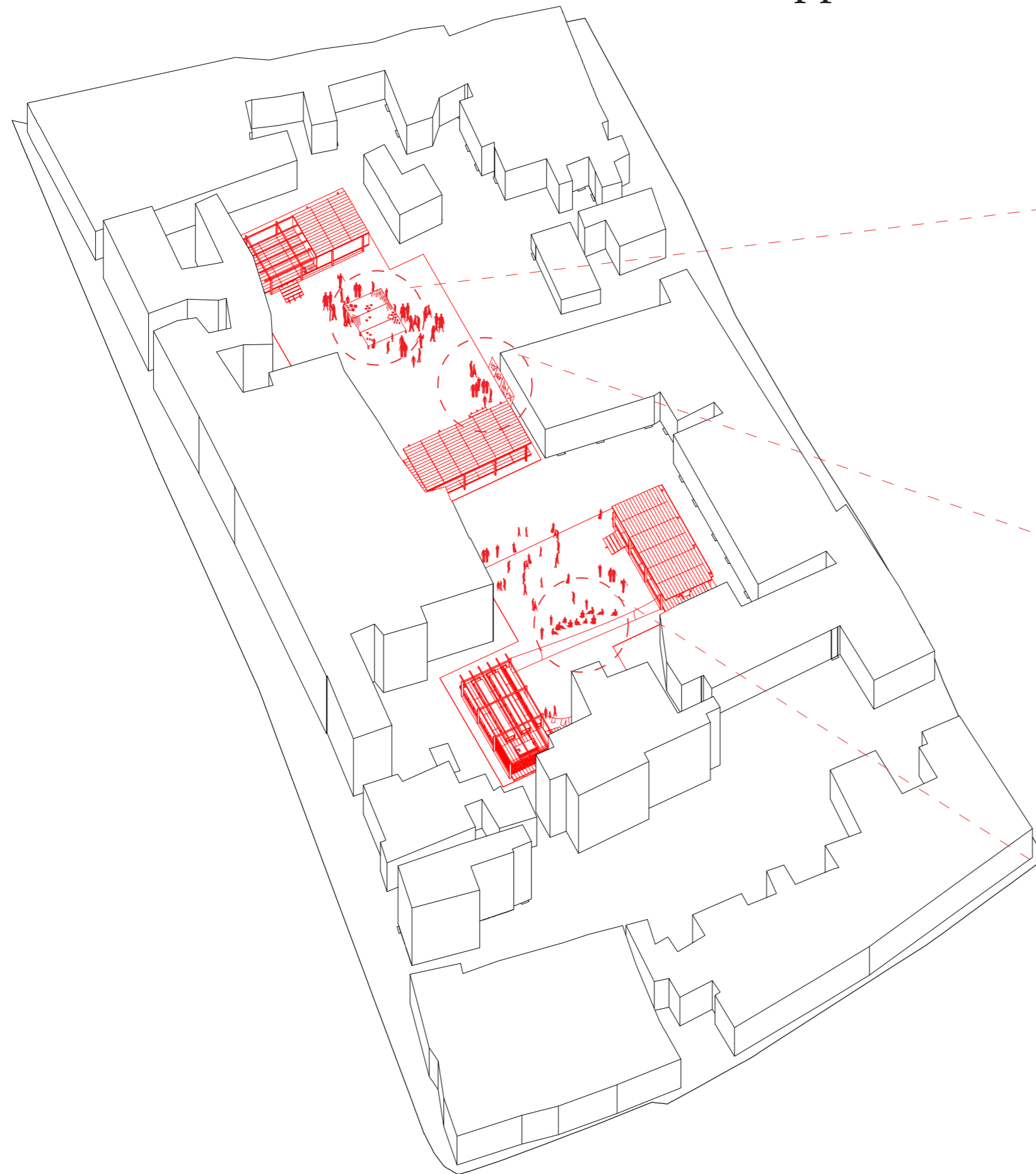




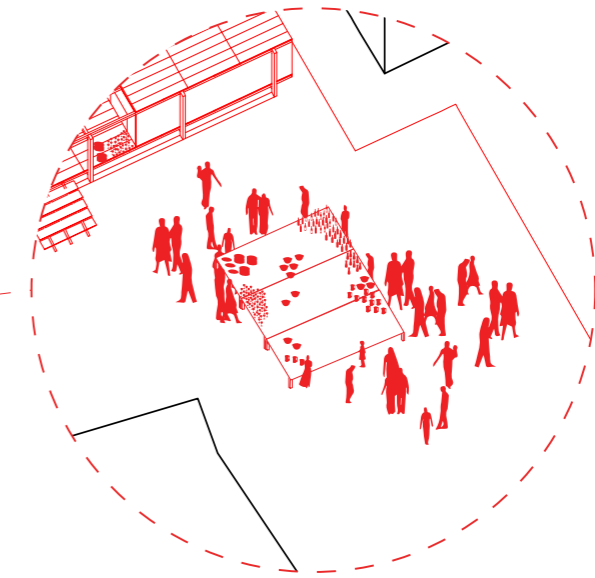
Intervention area



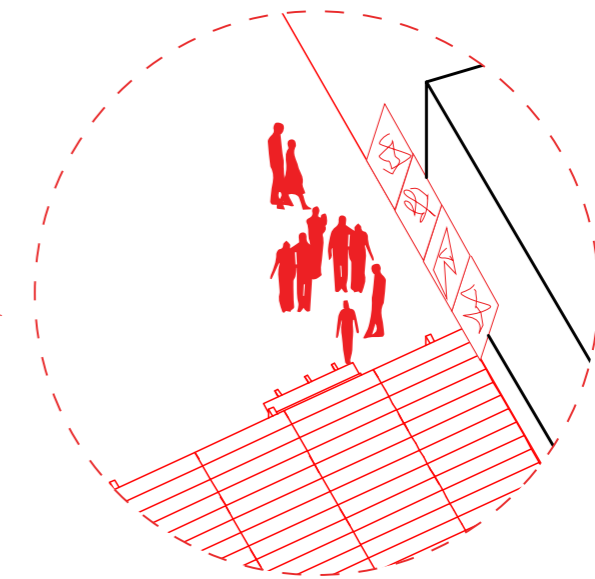
Application



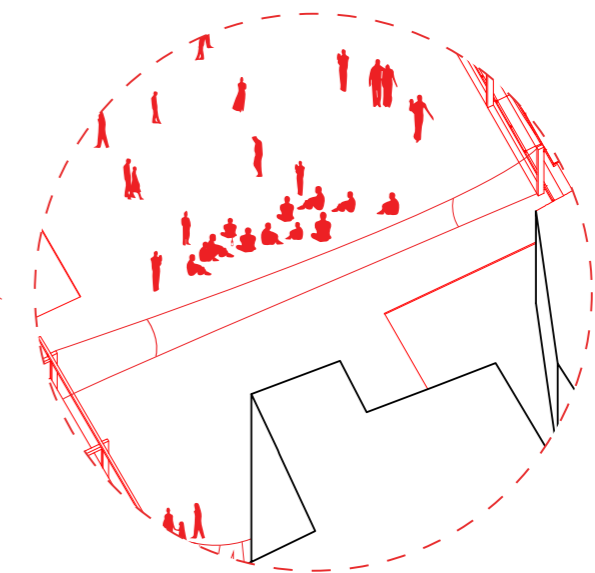
Community dining



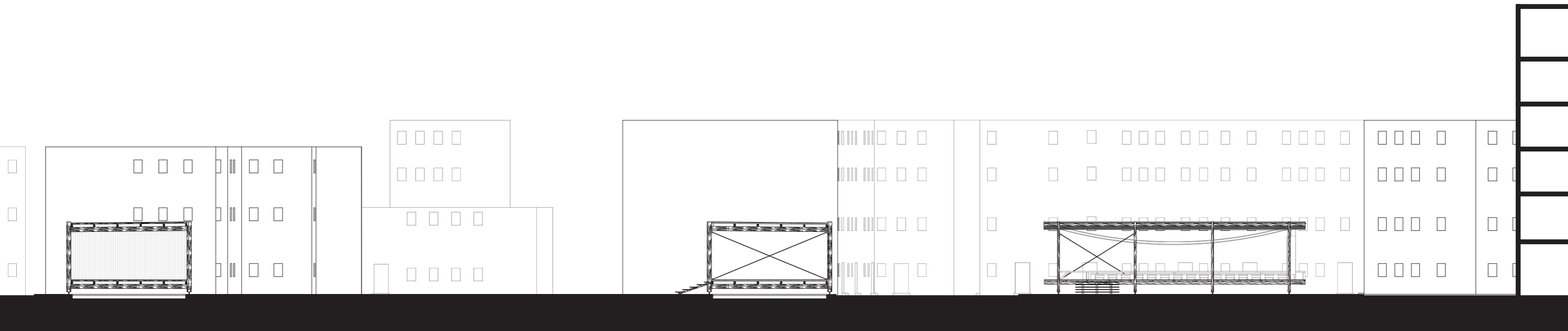
Exhibitions



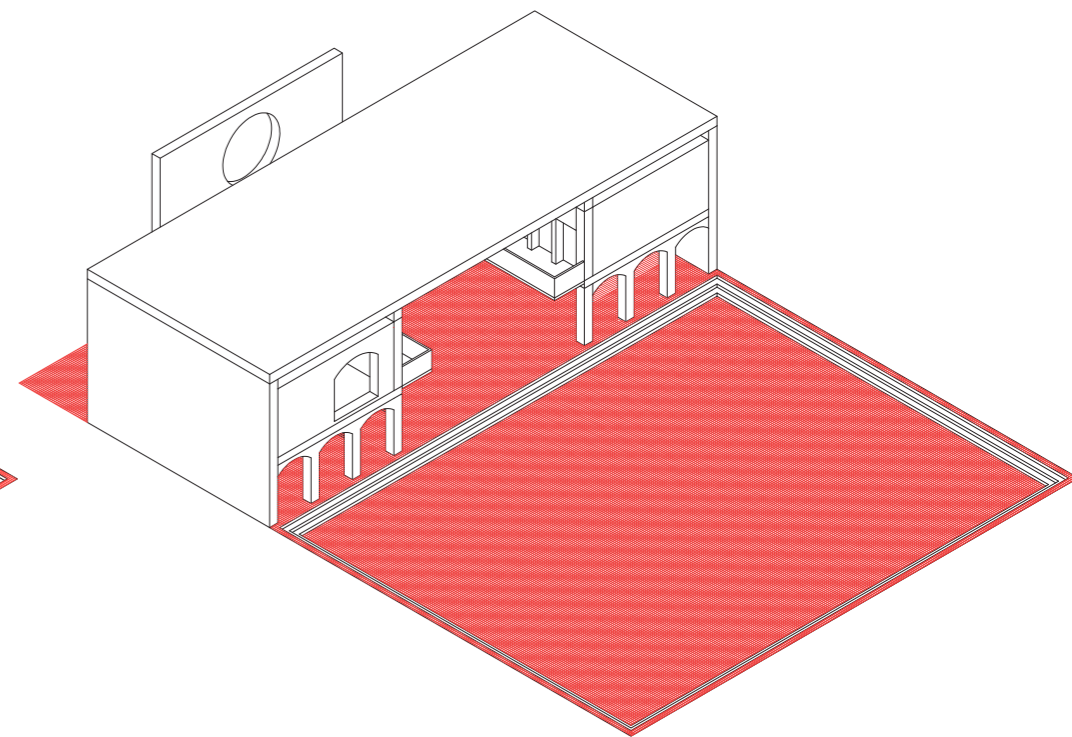
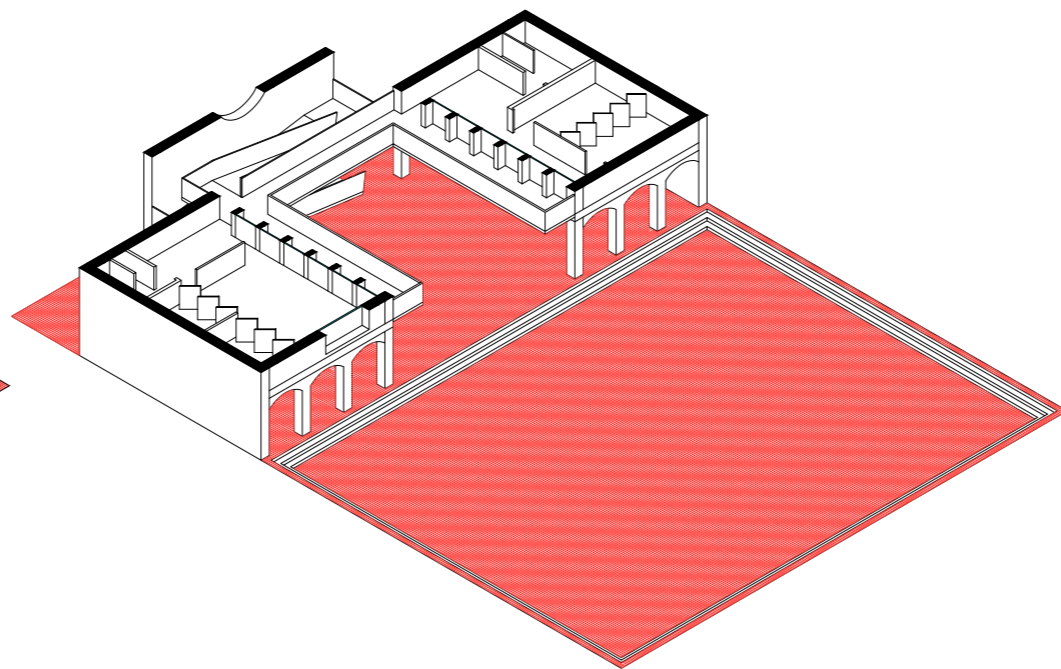
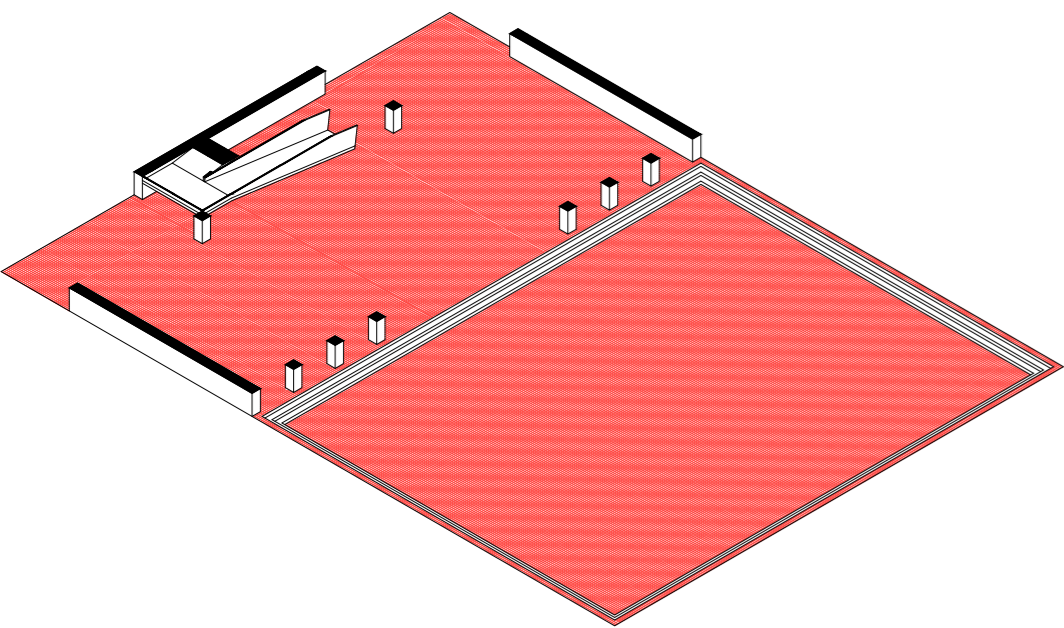
Open air theatre



Application



Second scale: the district

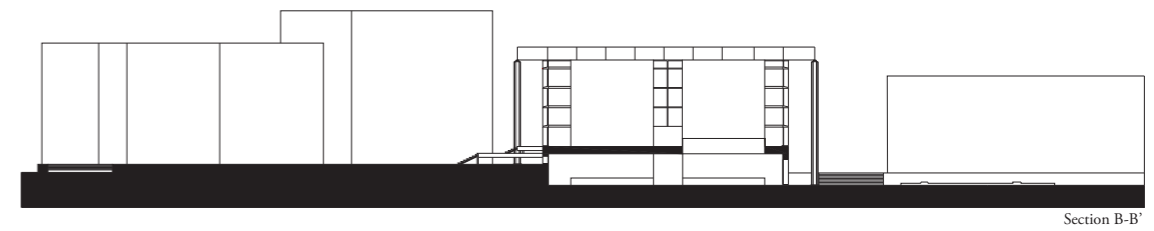
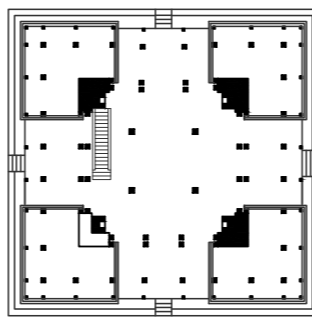


Third scale: the nation

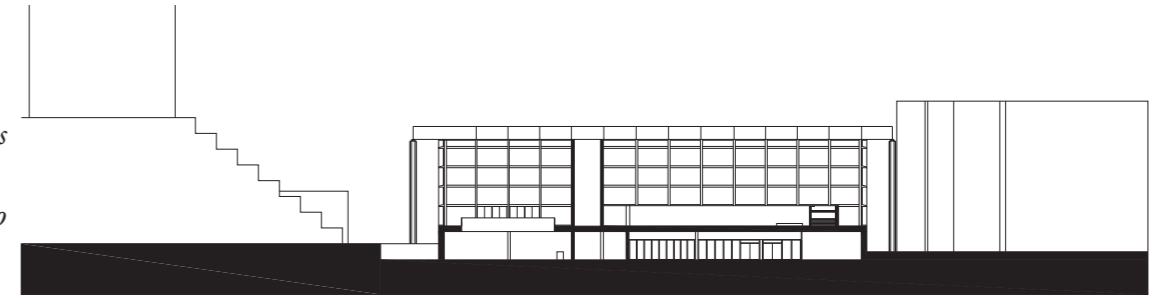


National Assembly

Parliament is the space where politics literally takes shape. Here, collective decisions take form in a specific setting where relationships between political actors are organized through architecture.



Section B-B'



Section A-A'

The architecture of spaces of political congregation is not only an expression of a political culture, it also shapes this culture



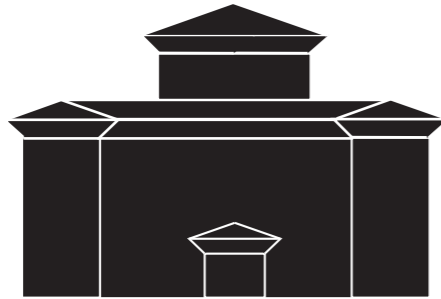
Parliament during the dictatorship



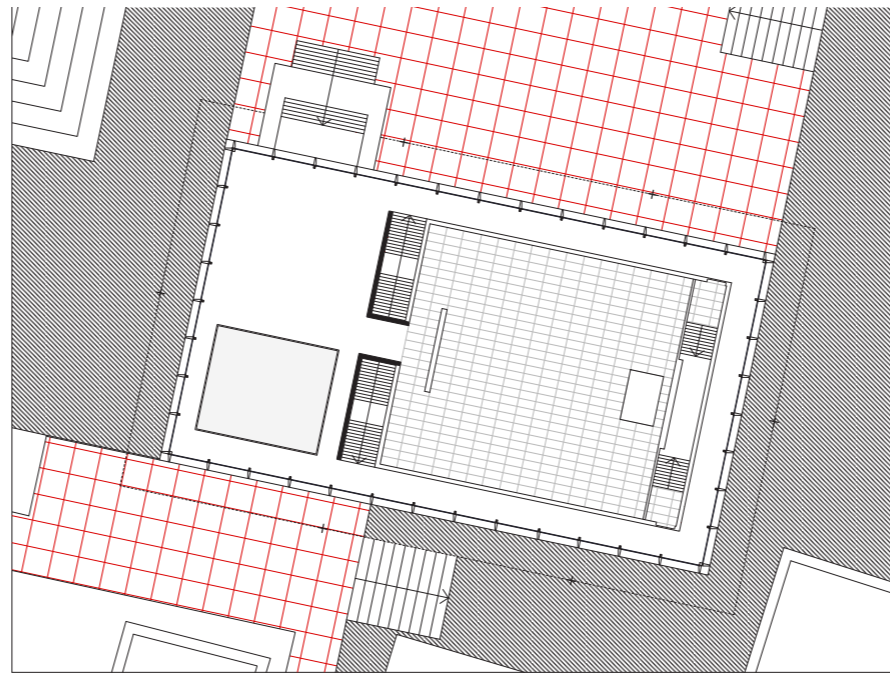
Parliament after the end of the dictatorship



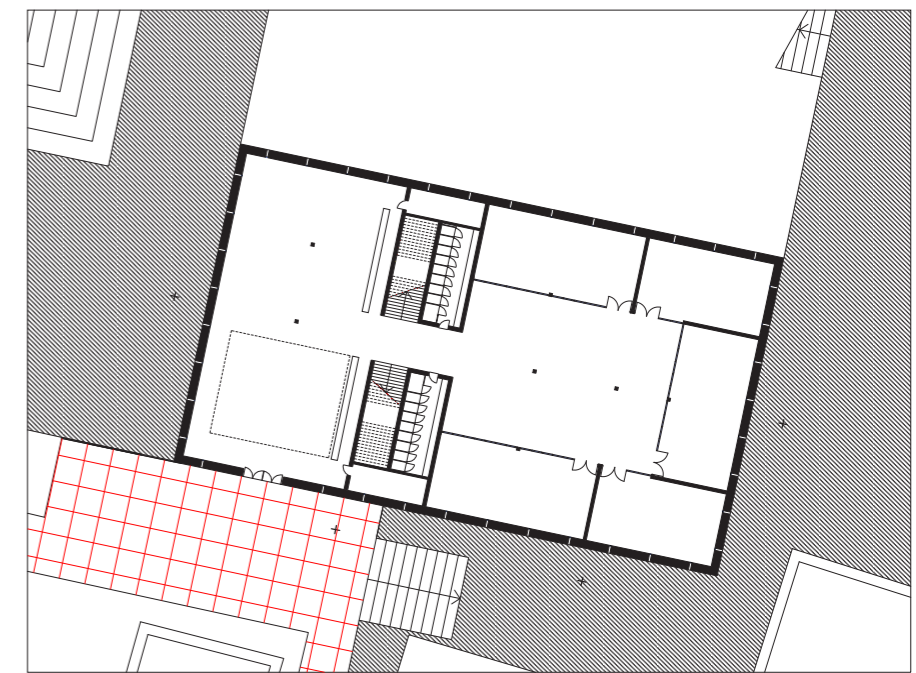
Parliament after the end of the constitutional monarchy



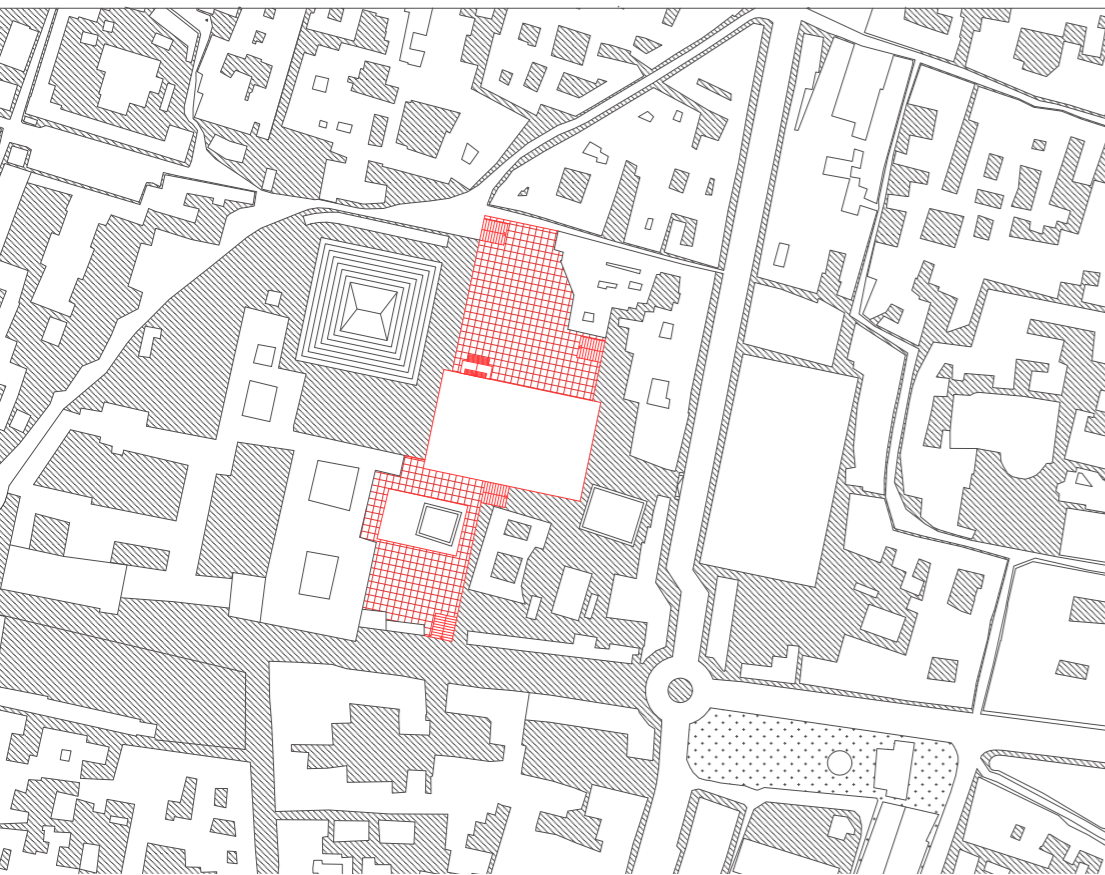
Current parliament built in 2006 after signing the first constitution



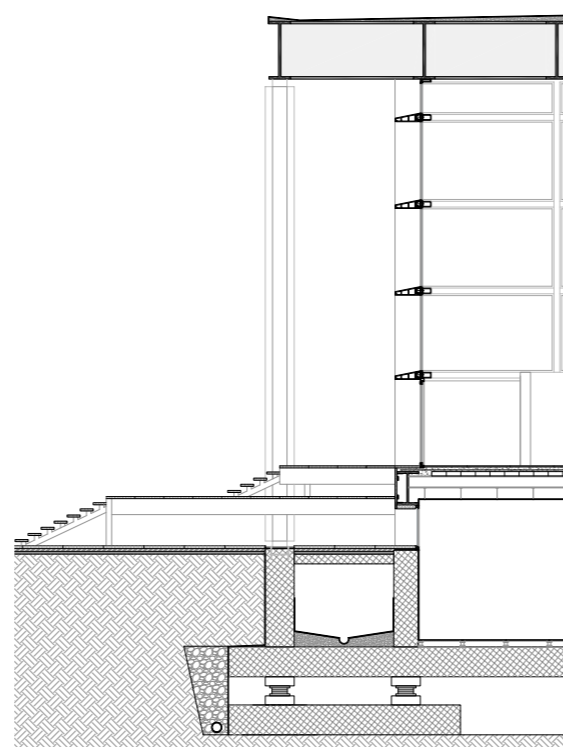
Plan of the ground floor, with the national assembly



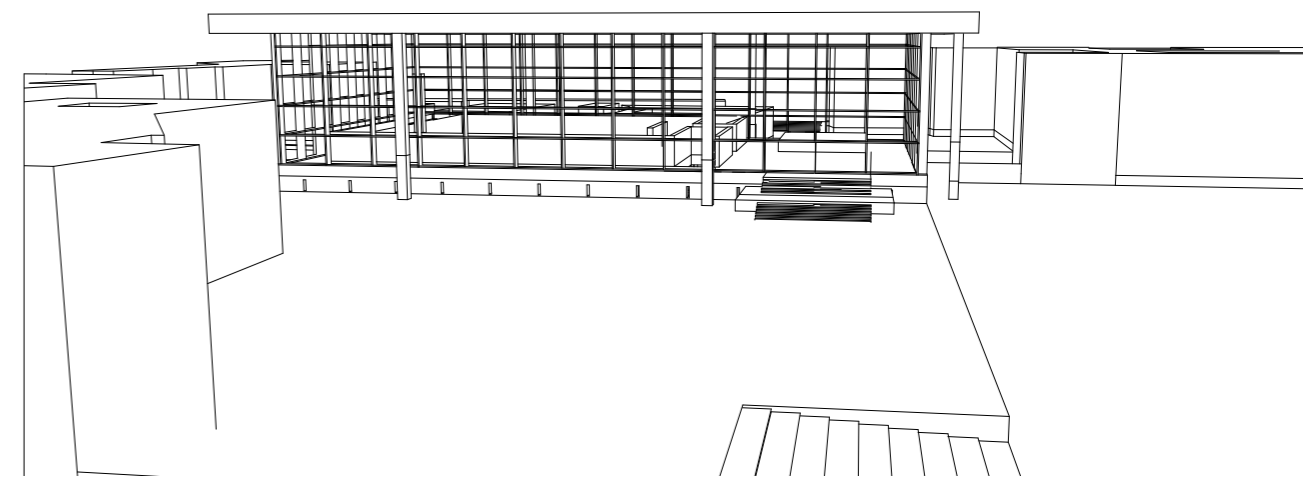
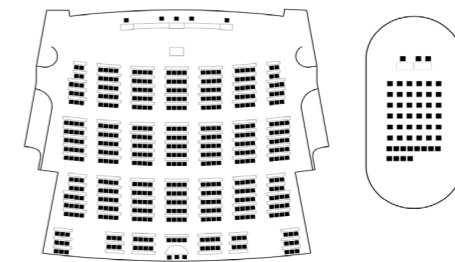
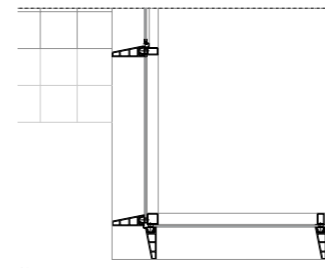
Plan of the basement, where the politicians offices are.



Implantation in the main square of the city in order to recreate a new political square.



Entrance technological section.



Conclusion

