



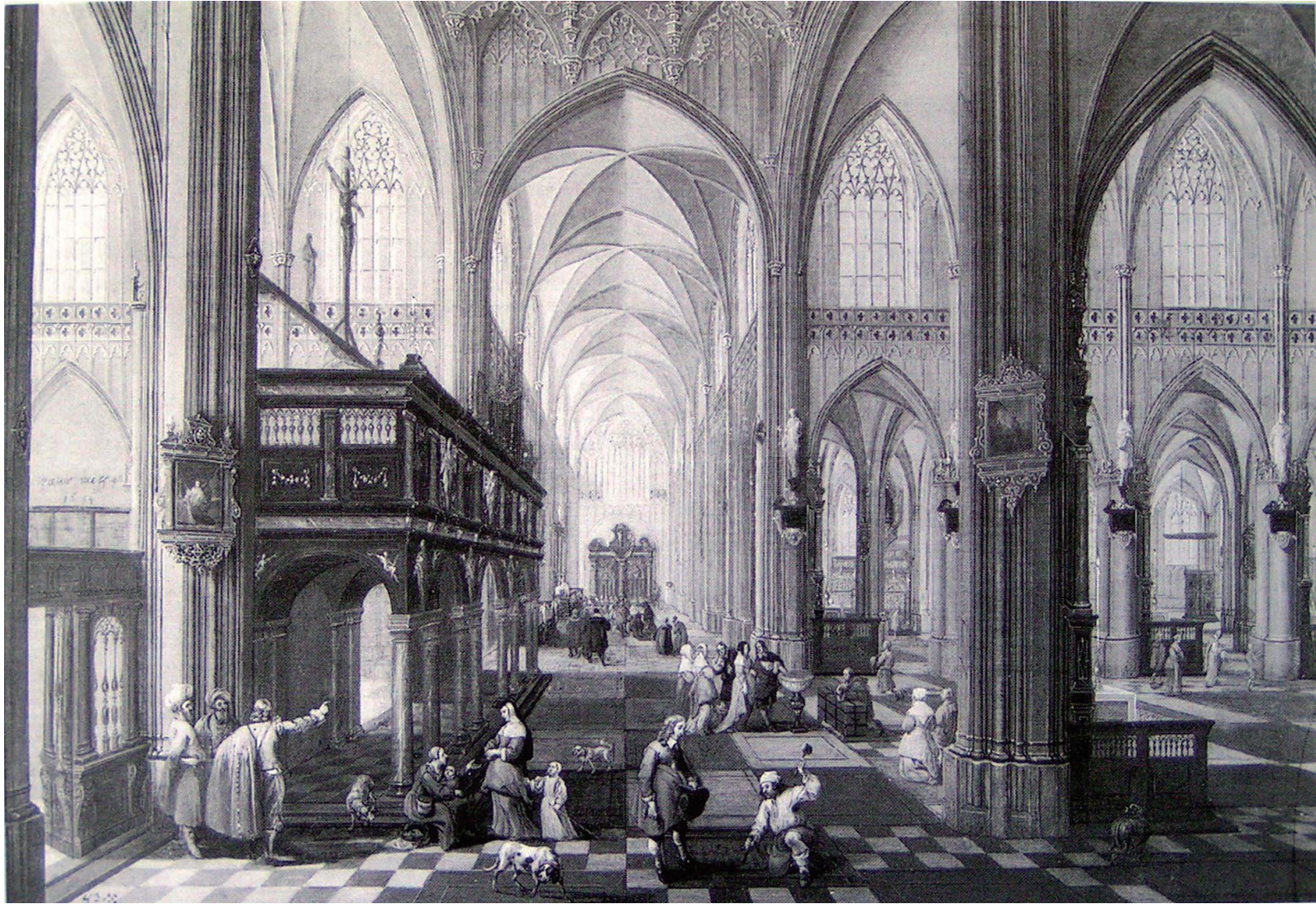
***New Berchem Library at Antwerp
Interiors Buildings Cities***

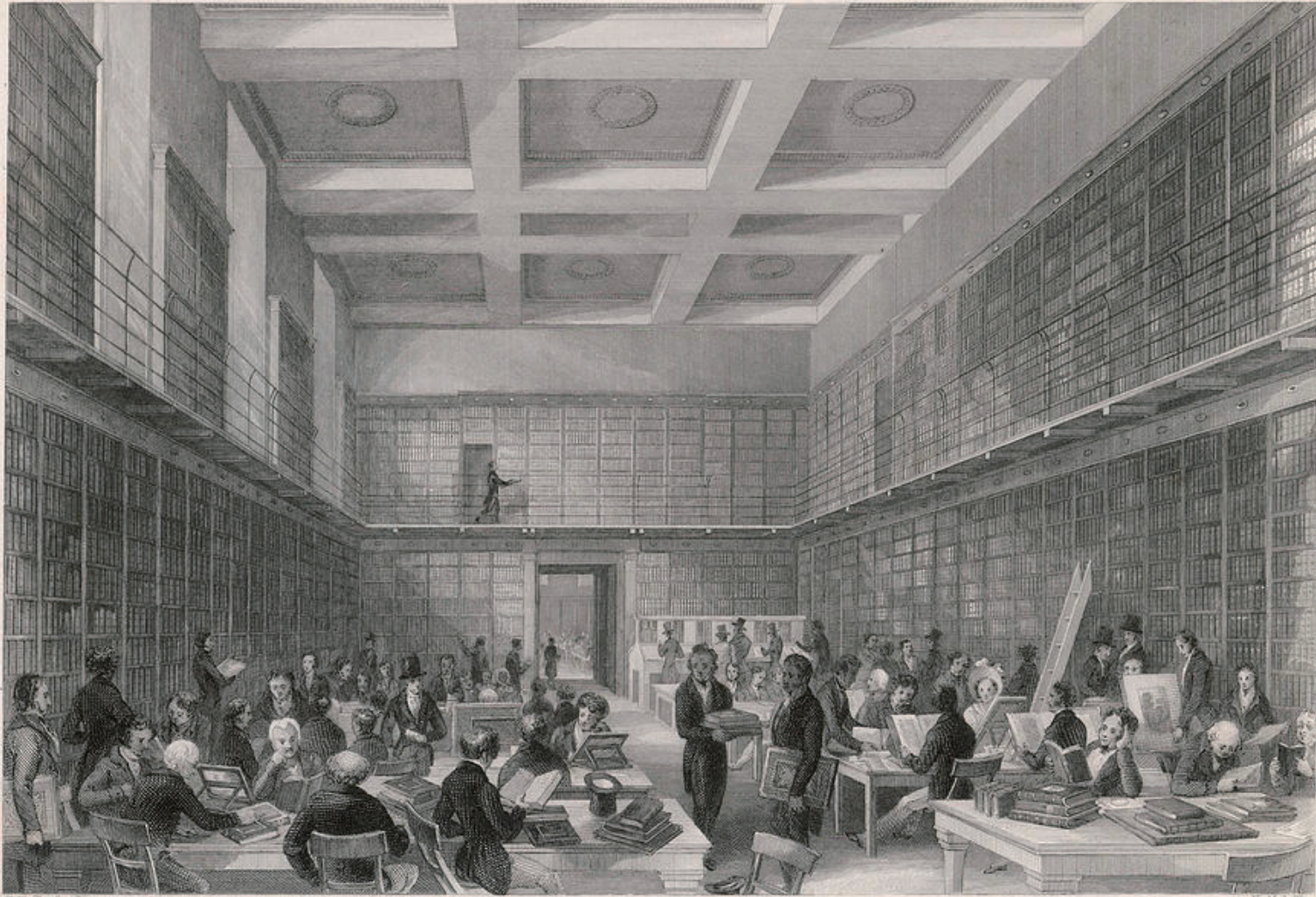
*P5 presentation
Ziyao Chen*

1. Impression of Intimacy

.....Feeling the interiority in an impersonal condition which brings the domestic world to the exterior

Richard Sennett

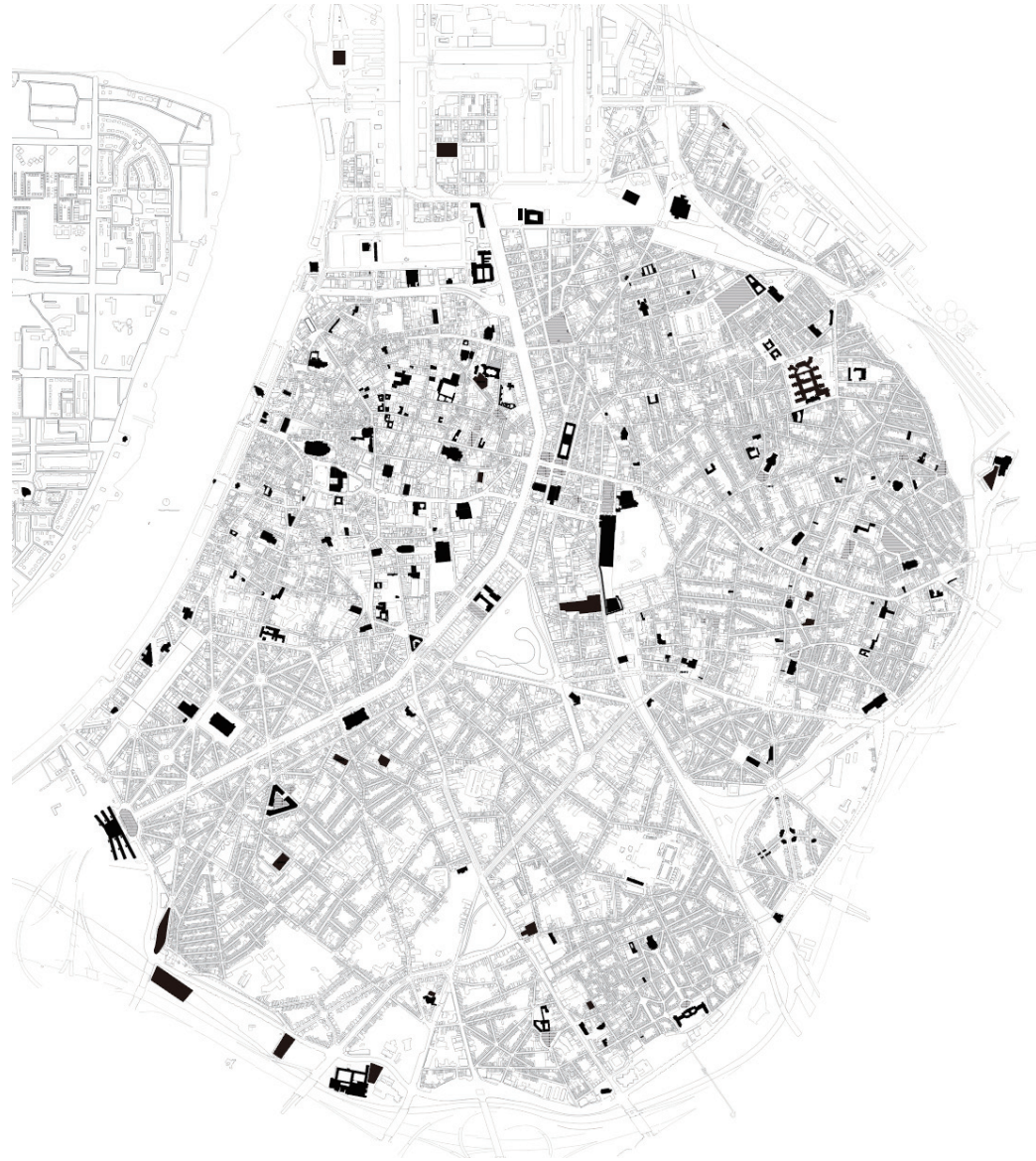




T. B. Shepherd

H. Melville

2. Antwerp



City Room in Antwerp

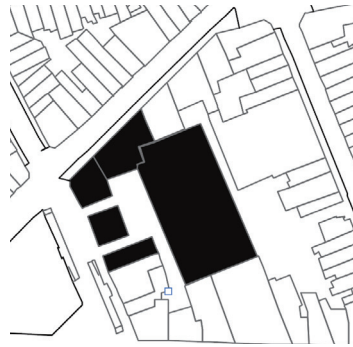


Service area of Berchem Library

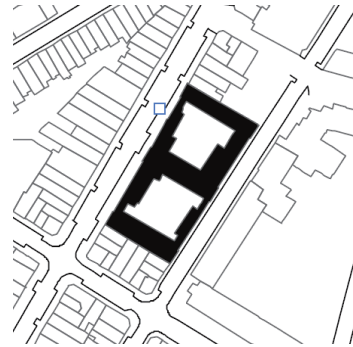
Source: Demographics online tool of city of Antwerp



Heritage Library Hendrik
Conscience
Centrum
4200sqm



Bibliotheek Permeke
'T Noord
5600sqm



Library Brederode
Zuid
4300sqm



Peace Library
Borgerhout
3800sqm



Berchem Library
Berchem
2000sqm



68000



64000



43000



44000



42000



Ground Floor

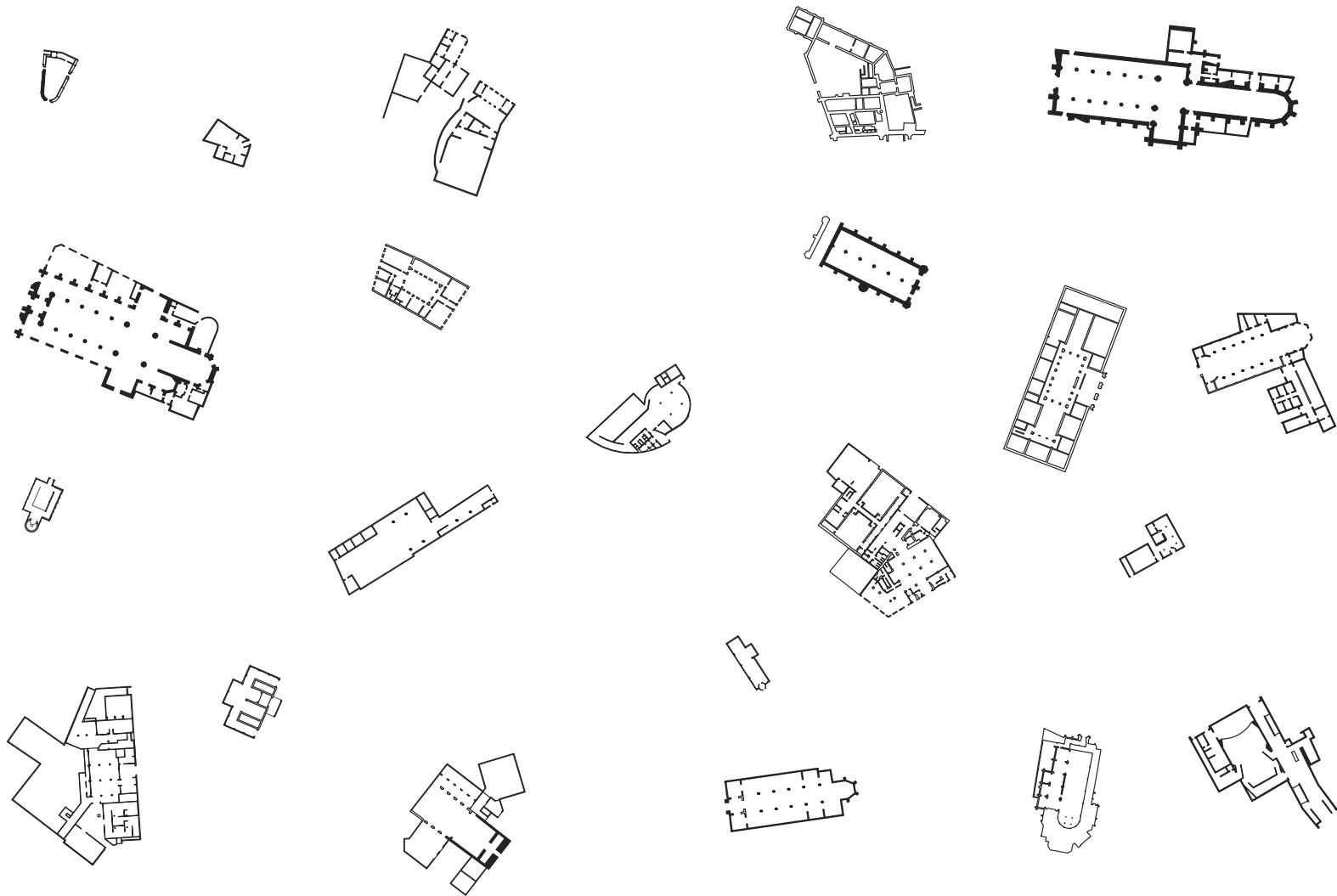


Cyber Room

Existing situation of Berchem Library



Existing public building in Berchem District



Existing public building in Berchem District



Extra City Kunsthal
Art center
120 sqm
Regional



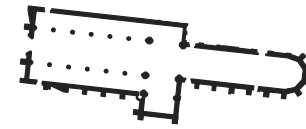
Zuiderterras / RAS
Restaurant
190 sqm
Regional



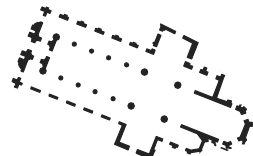
Costa concertzaal
Live Music Venue
920 sqm
Regional



De Koninck - Antwerp City Brewery
Brewery
1500sqm
Regional



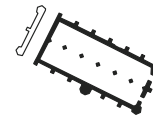
Sint-Hubertuskerk
Catholic church
3000sqm
Regional



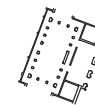
Sint-Andrieskerk
Catholic Church
2200 sqm
Regional



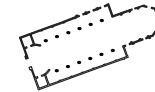
Mercator-Orteliushuis
Museum
650 sqm
Regional



Salons Magnus
Event venue
1500sqm
Regional



Masjid El-Mouhsinine
Moskee El Mohsinien
900sqm
Regional



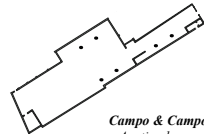
Mar Marcos coptic orthodox church
Church
1200sqm
Regional



Zuiderterras / RAS
Restaurant
190 sqm
Regional



Berchem Library
Library
2000 sqm
Regional



Campo & Campo
Auction house
2000 sqm
Metropolitan



Koninklijk Atheneum Berchem
School
3000sqm
Regional



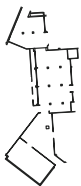
De Nieuwe Vrede
cafe
400 sqm
Regional



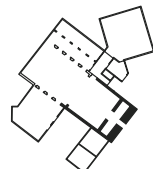
Buurtwerk Posthof
Community center
500 sqm
Regional



Districtshuis Berchem
City government office
500sqm
Regional



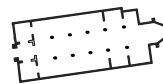
Huis van de Sport
Government office
1200 sqm
Regional



Academie Berchem
School
2000 sqm
Regional



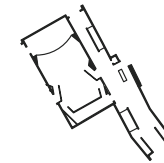
Districtshuis Berchem
City government office
500sqm
Regional



Sint-Willibrorduskerk
Catholic church
1200sqm
Regional



Basiliek van het Heilig Hart
Catholic church
1800sqm
Regional



Berchem Theater
theater
2000 sqm
Regional

Existing public interior in Berchem District



Pocket square surrounded by district house and social housing



Pocket area along Grottesteenweg

Context
Typical cityscape

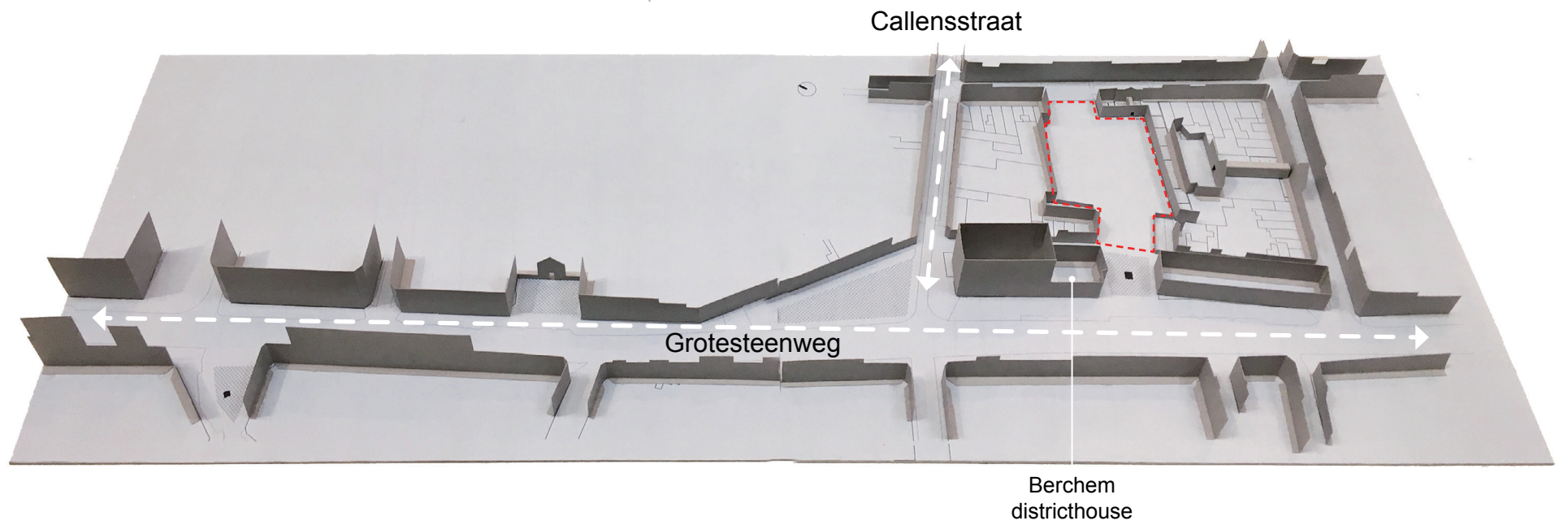


Callensstraat - Main commercial street

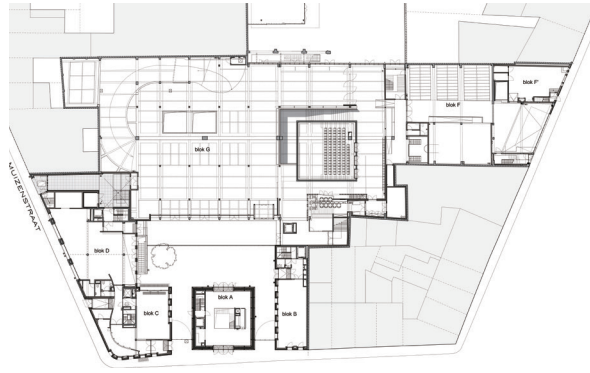


Neighborhood - Library and Art Academy

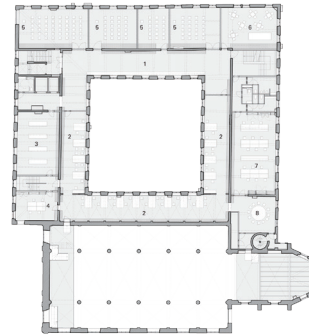
Context
Typical cityscape



Context
Nolli map model

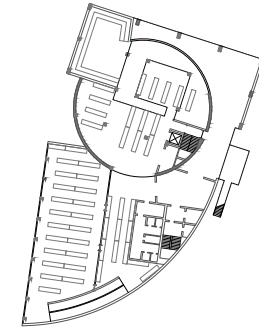


Permeke Library
Antwerp, 2005
5000 sqm

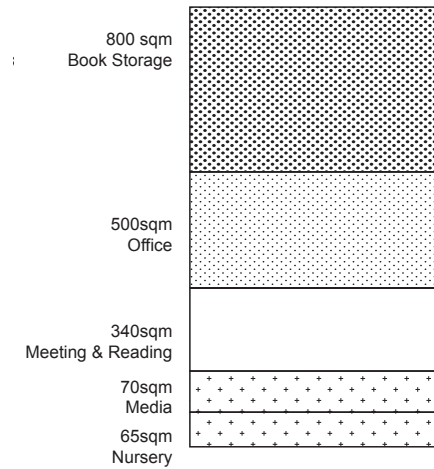
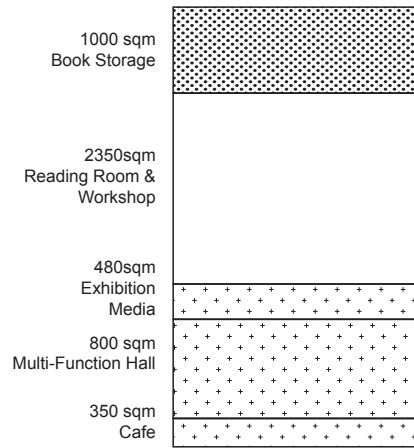
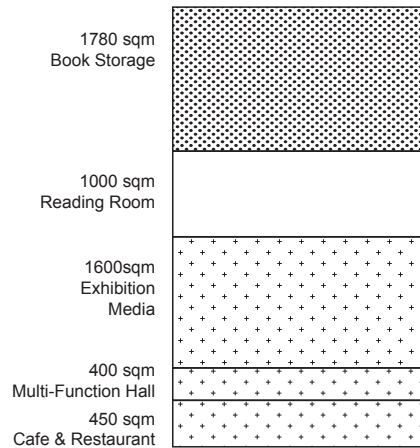


- eerste verdieping
- 1 zone 'Midden' circulair /
 - 2 zone 'Boven' open en flexibele
 - 3 bibliotheek
 - 4 atelier mediatheek
 - 5 workshop / atelier
 - 6 referentie
 - 7 afvalruimte / bergingsruimte
 - 8 speelkamer / afvalruimte

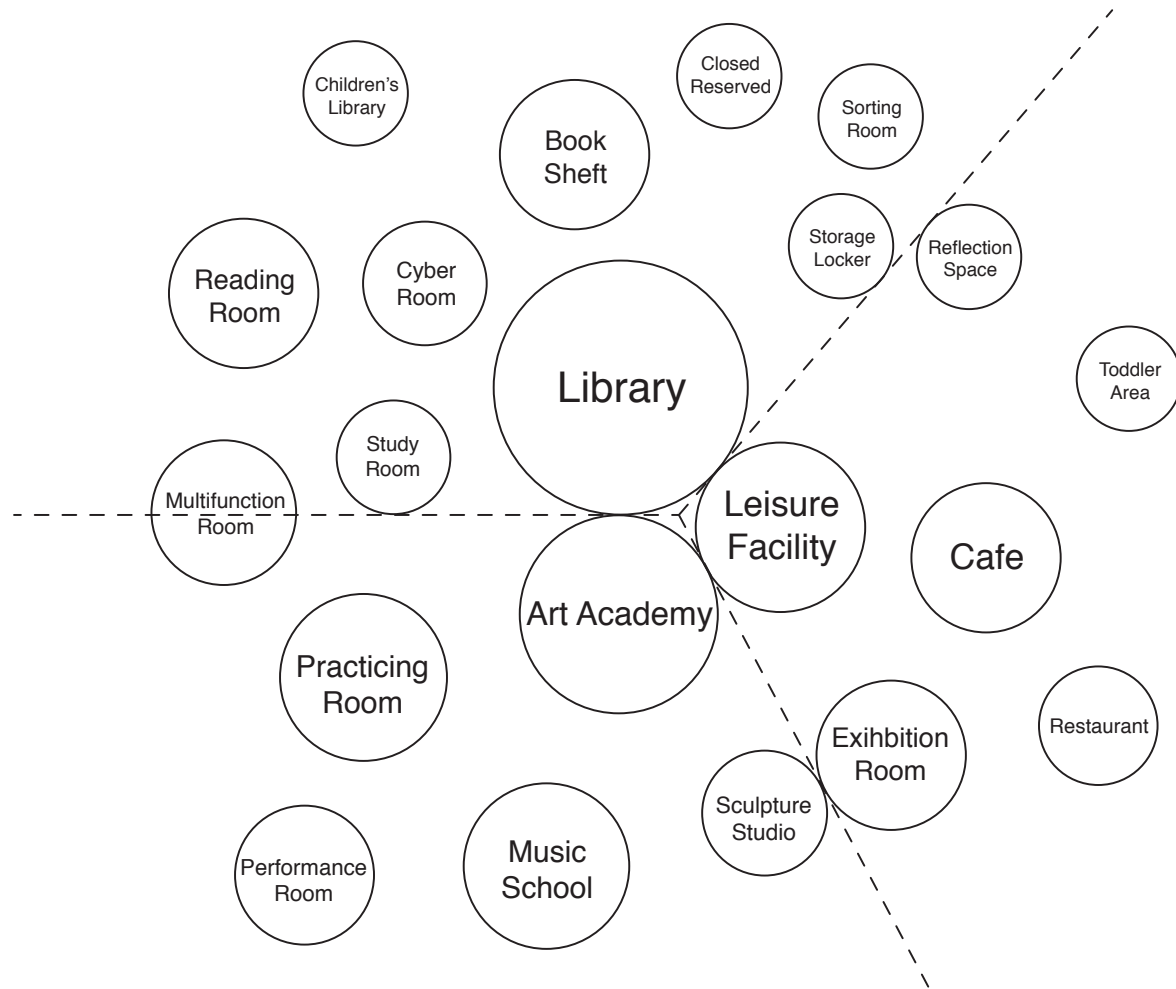
Mechelen Public Library
Mechelen, 2012
5400 sqm



Bibliotheek De Poort
Antwerp, 1995
2080 sqm

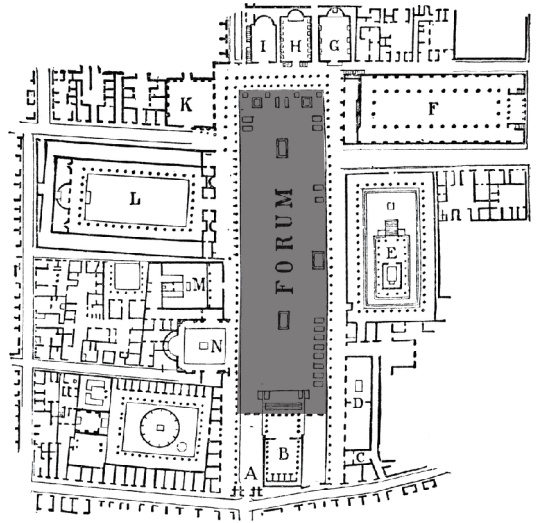


Analysis of Contemporary Library

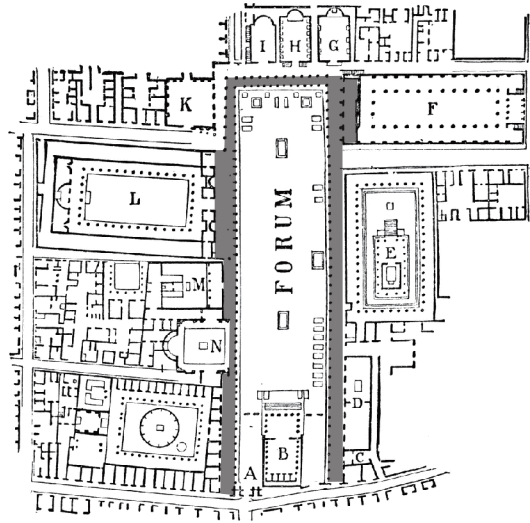


Conceptual Programme

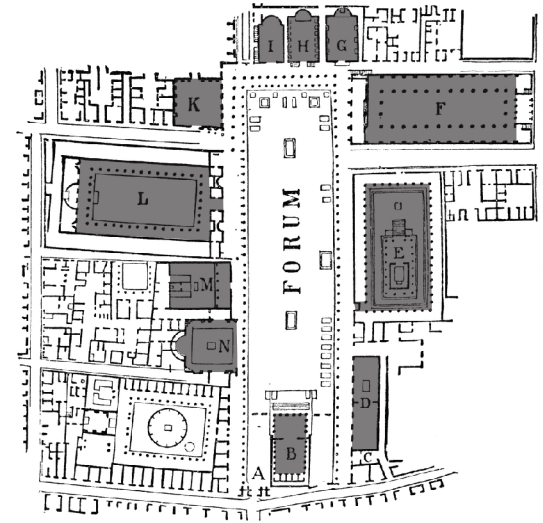
3. Typology and Urban Morphology



Forum



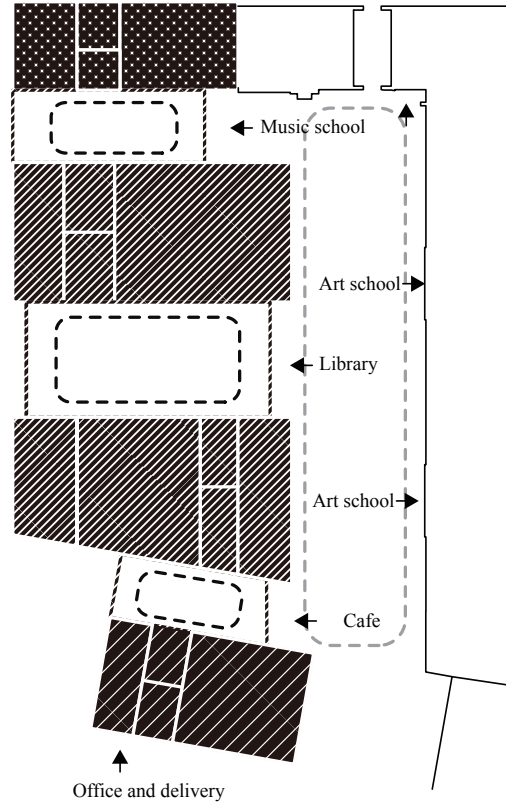
Colonnade



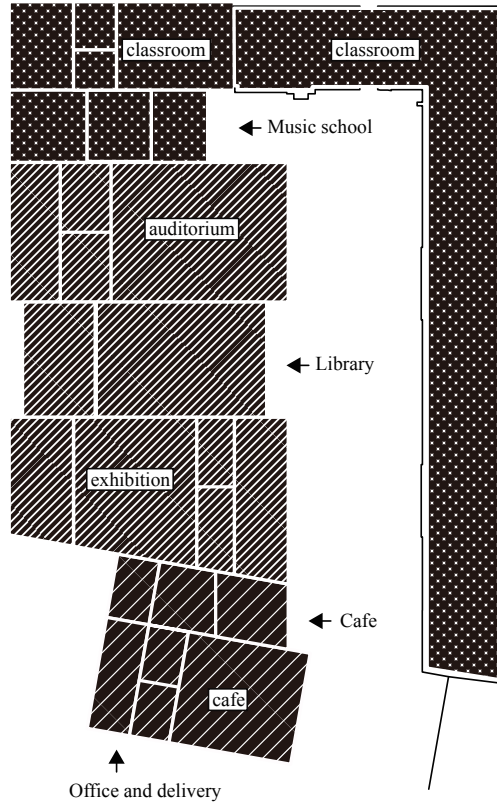
City Room

Pompeii Forum

*The 'forum' a positive reference point for the internal street,
a space in which variegated programmes overlap and converge.*

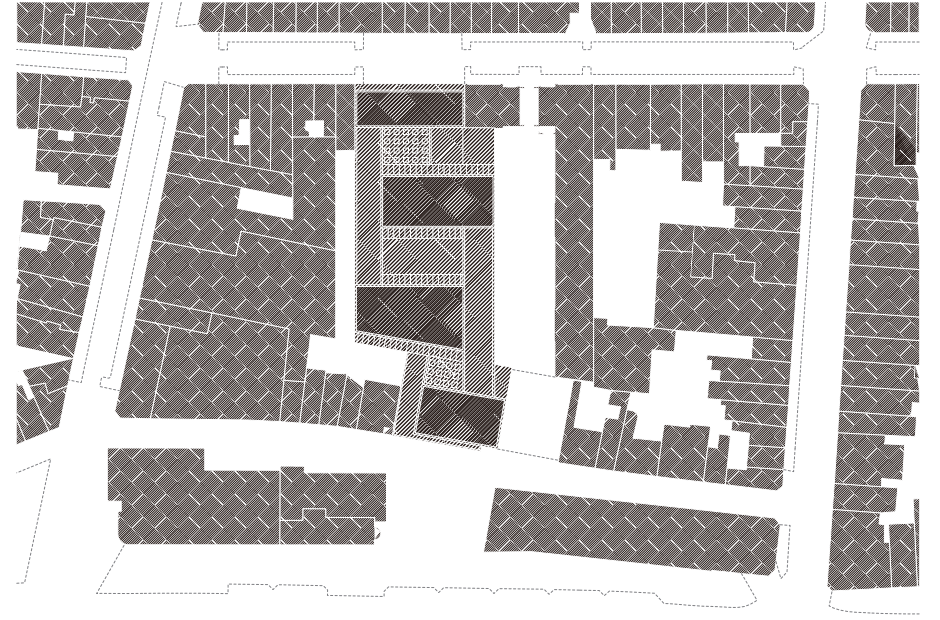
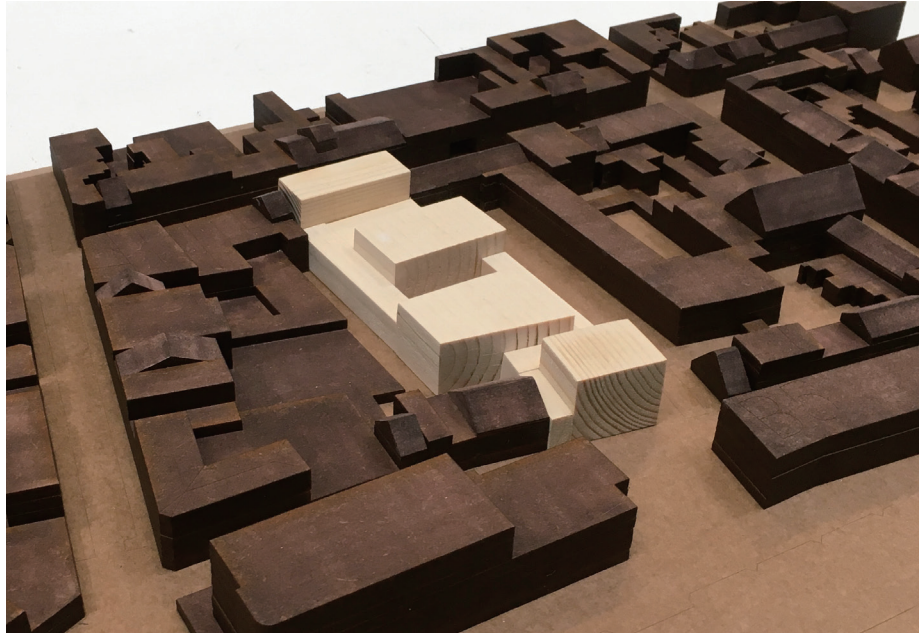


Program
forum as the outdoor cityroom
to organize the entrance of different program



Program

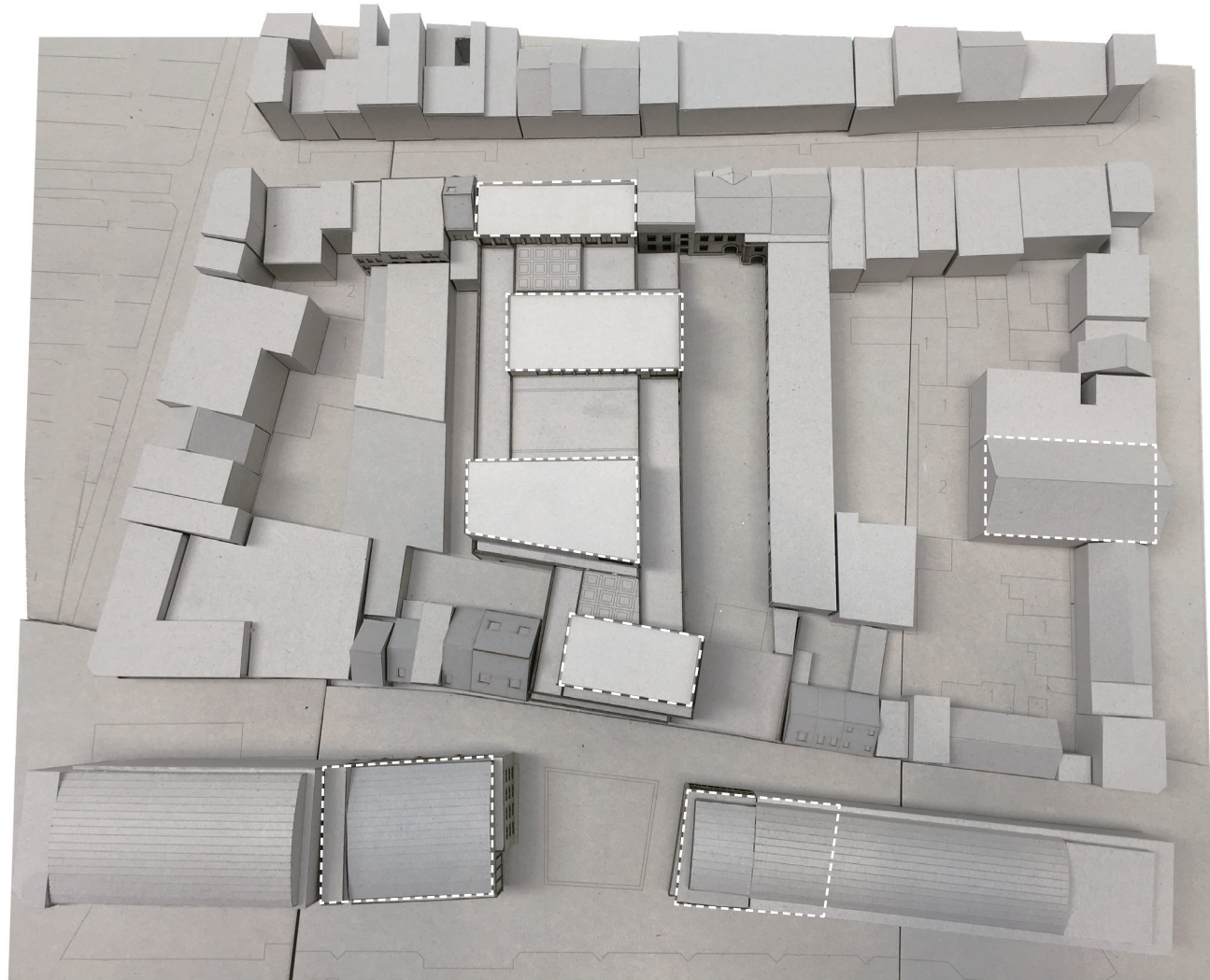
three main program: art school, library, cafe & restaurant



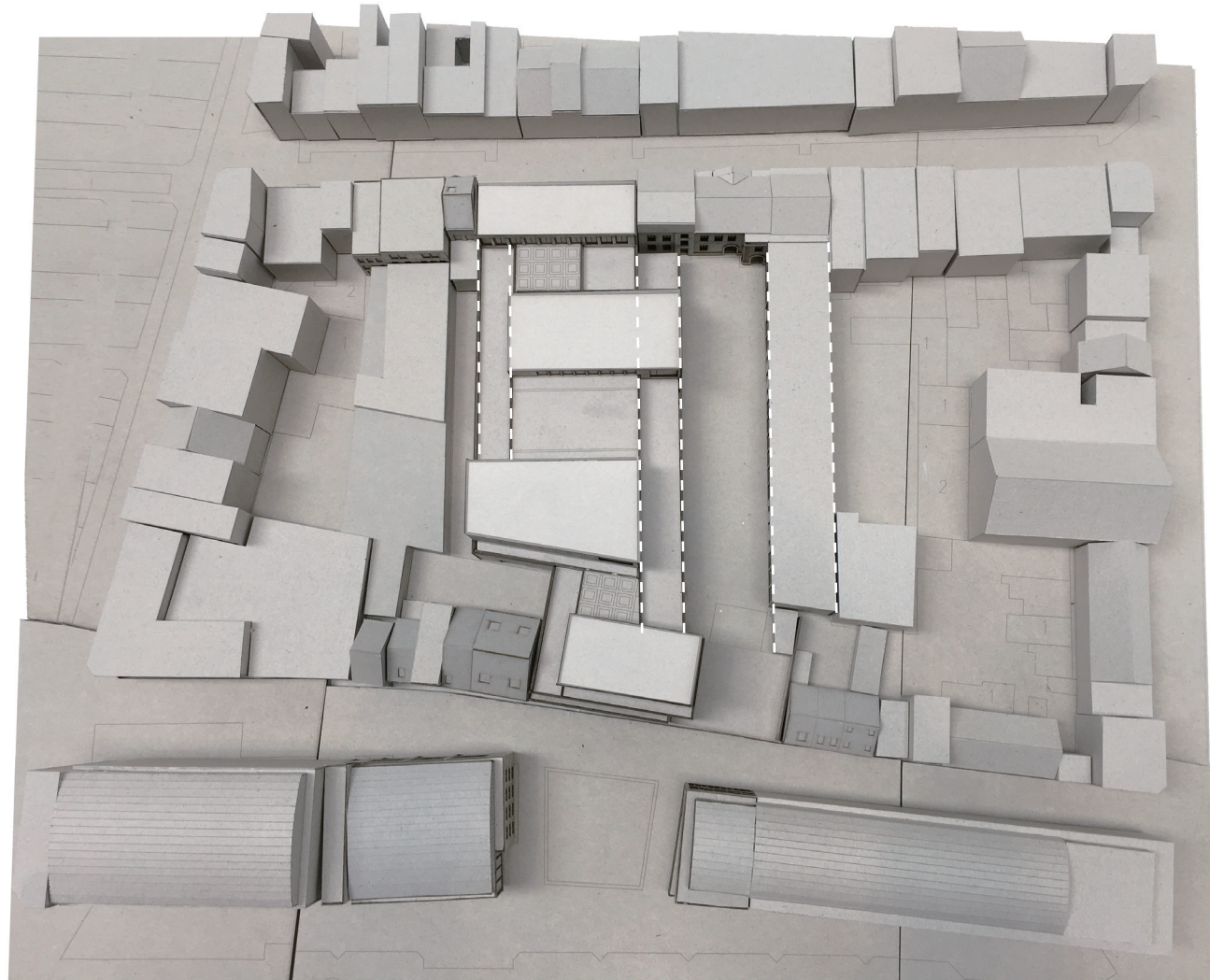
Massing Model



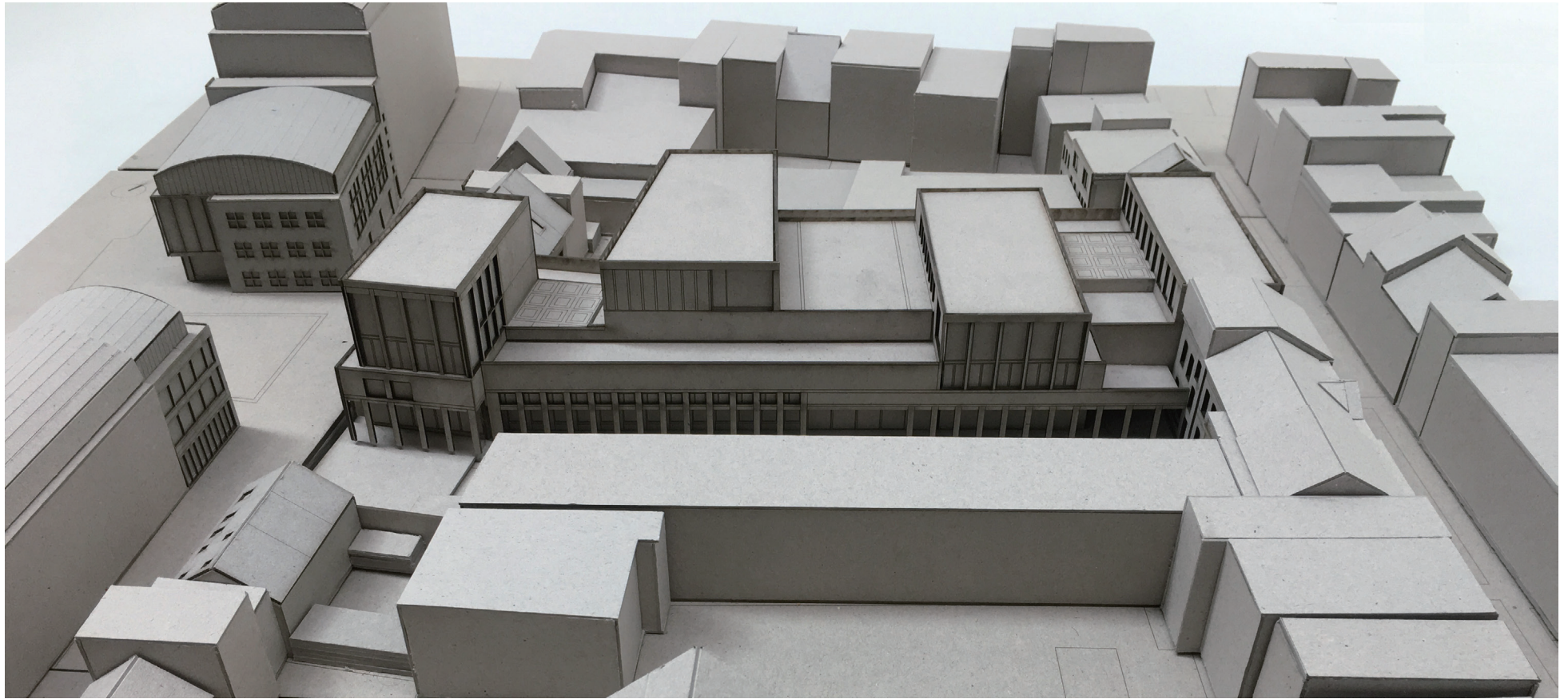
Massing Model within the Context



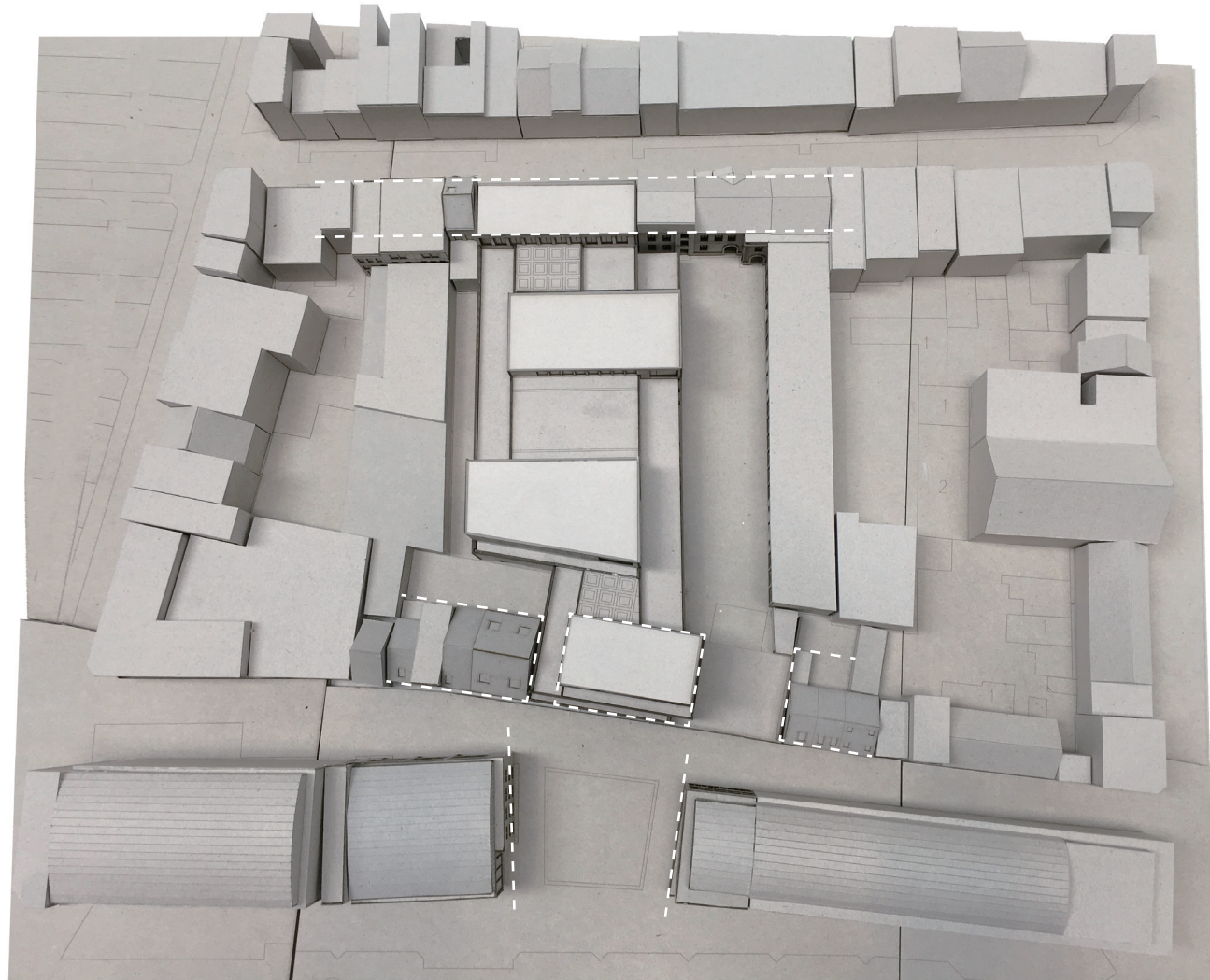
Massing Model within the Context
large volume respond to the public buildings in the block



Massing Model within the Context
podiums respond to the wing of school



Massing Model within the Context
podiums respond to the wing of school



Massing Model within the Context
different gesture of front and back volume
each respond to its city environment



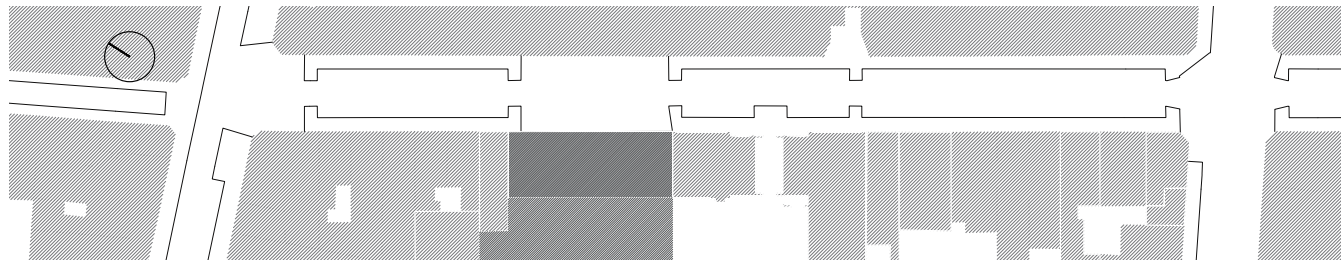
Urban Context



Building as part of Urban Fabric



Massing Model



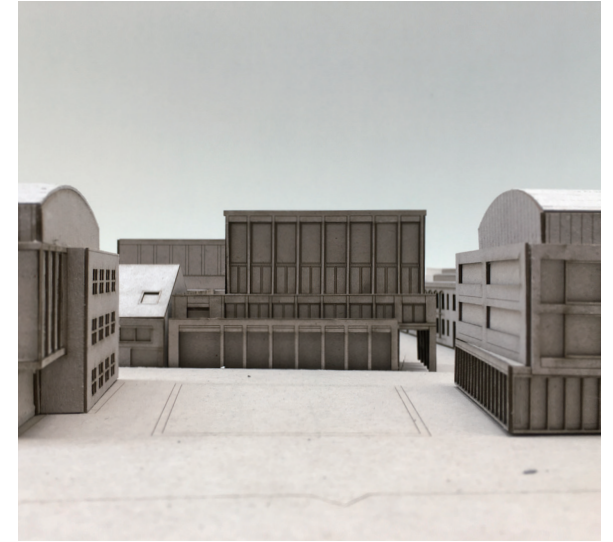
Massing - Context - Fabric



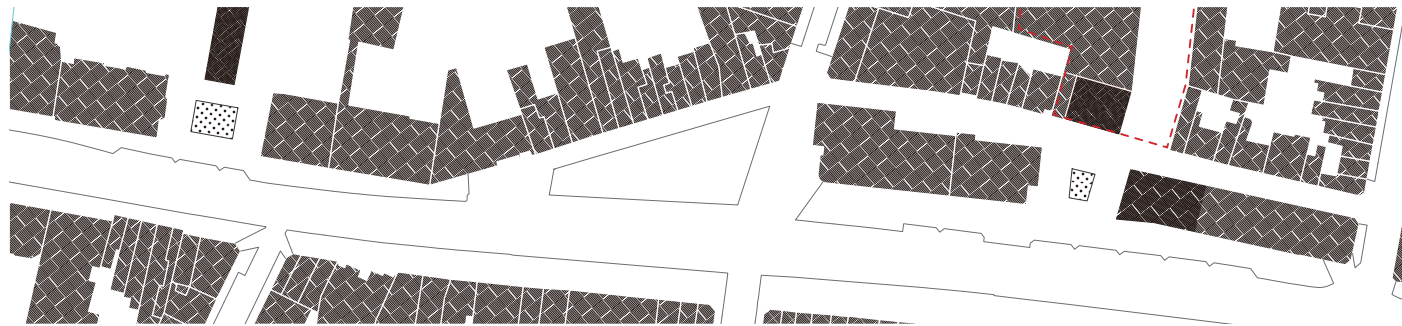
Urban Context



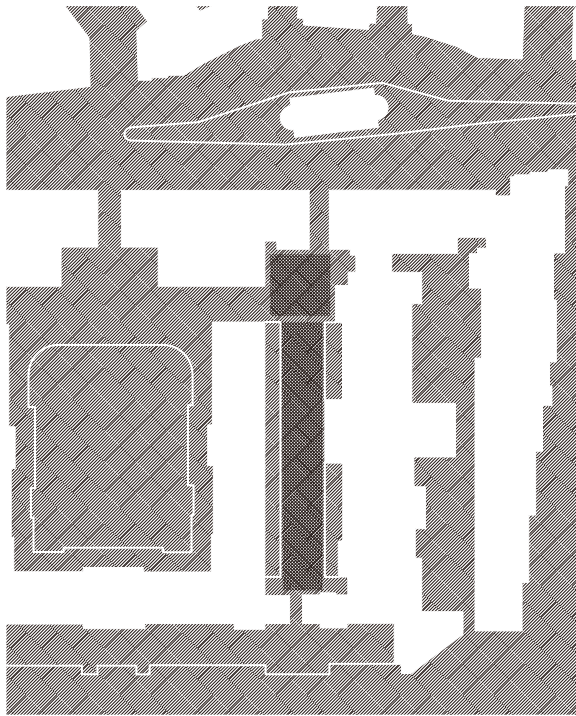
Building as Object



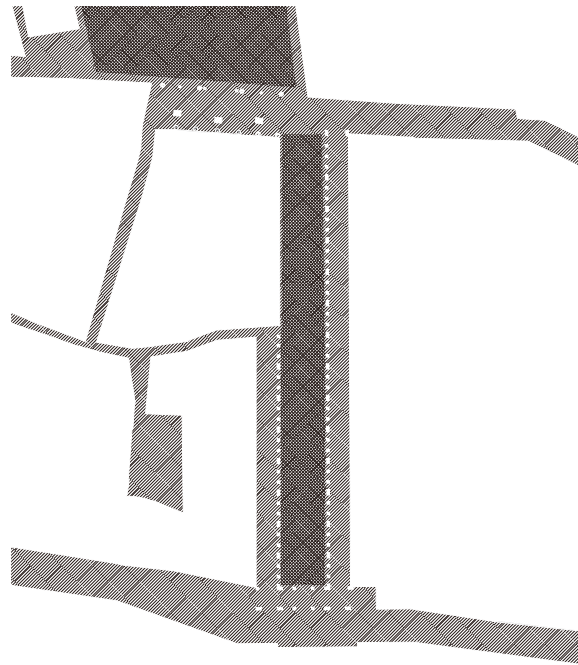
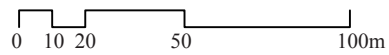
Massing Model



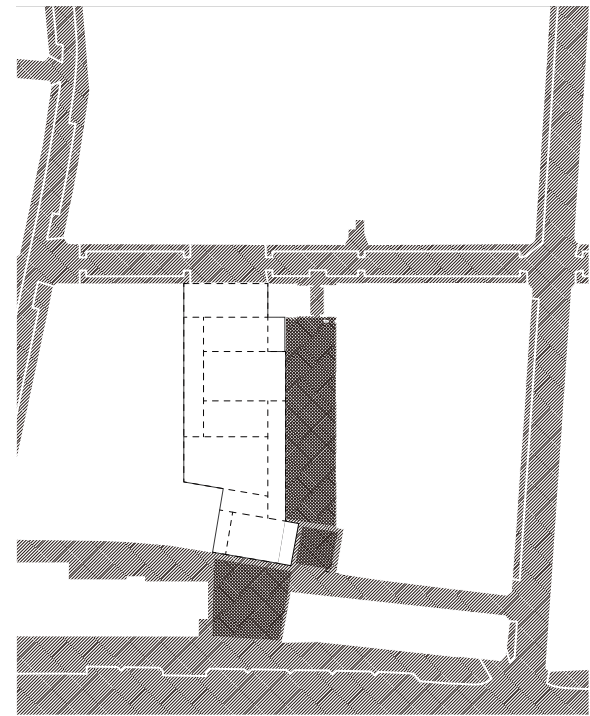
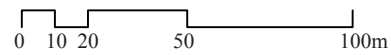
Massing - Context - Object



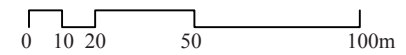
King's Collage



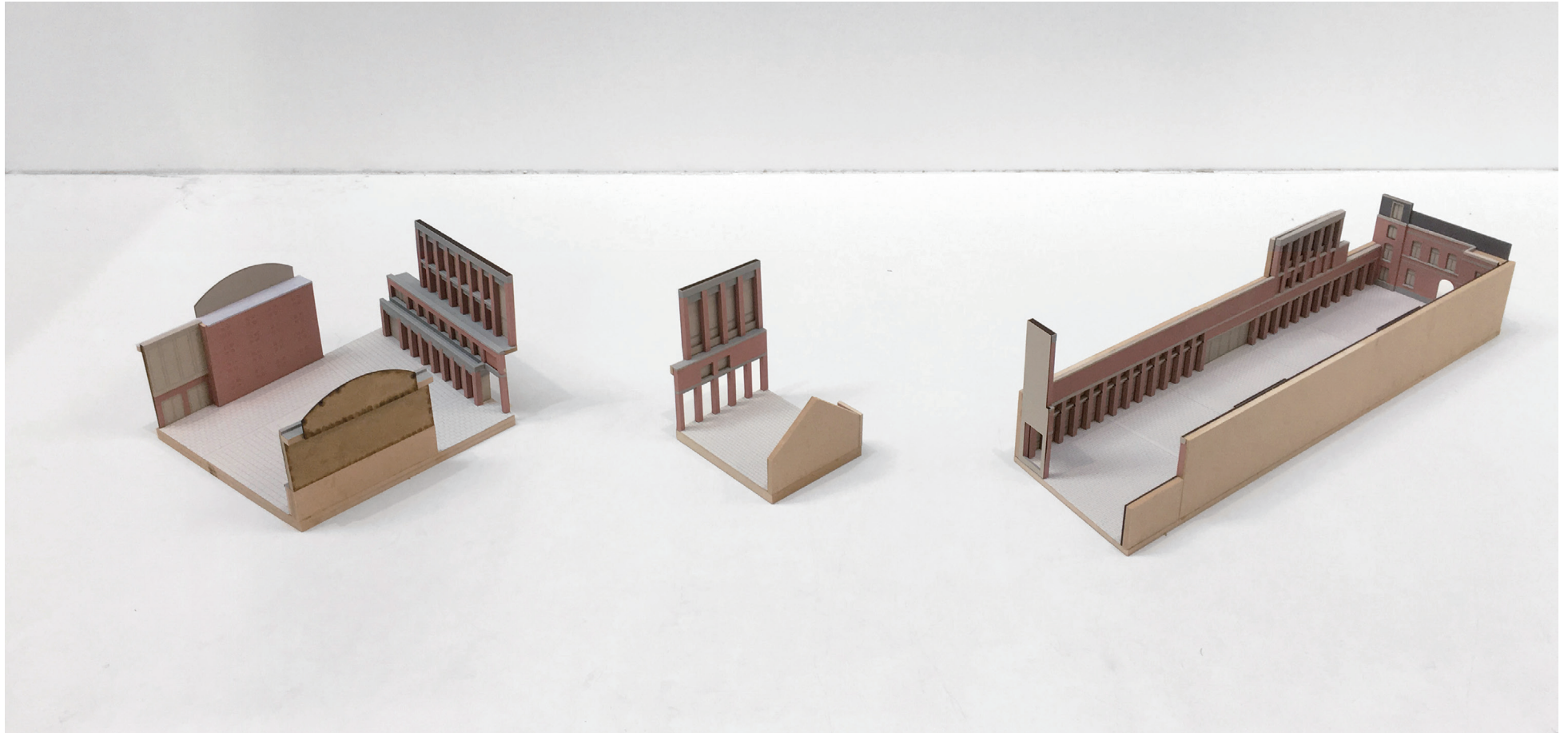
Uffizi Gallery



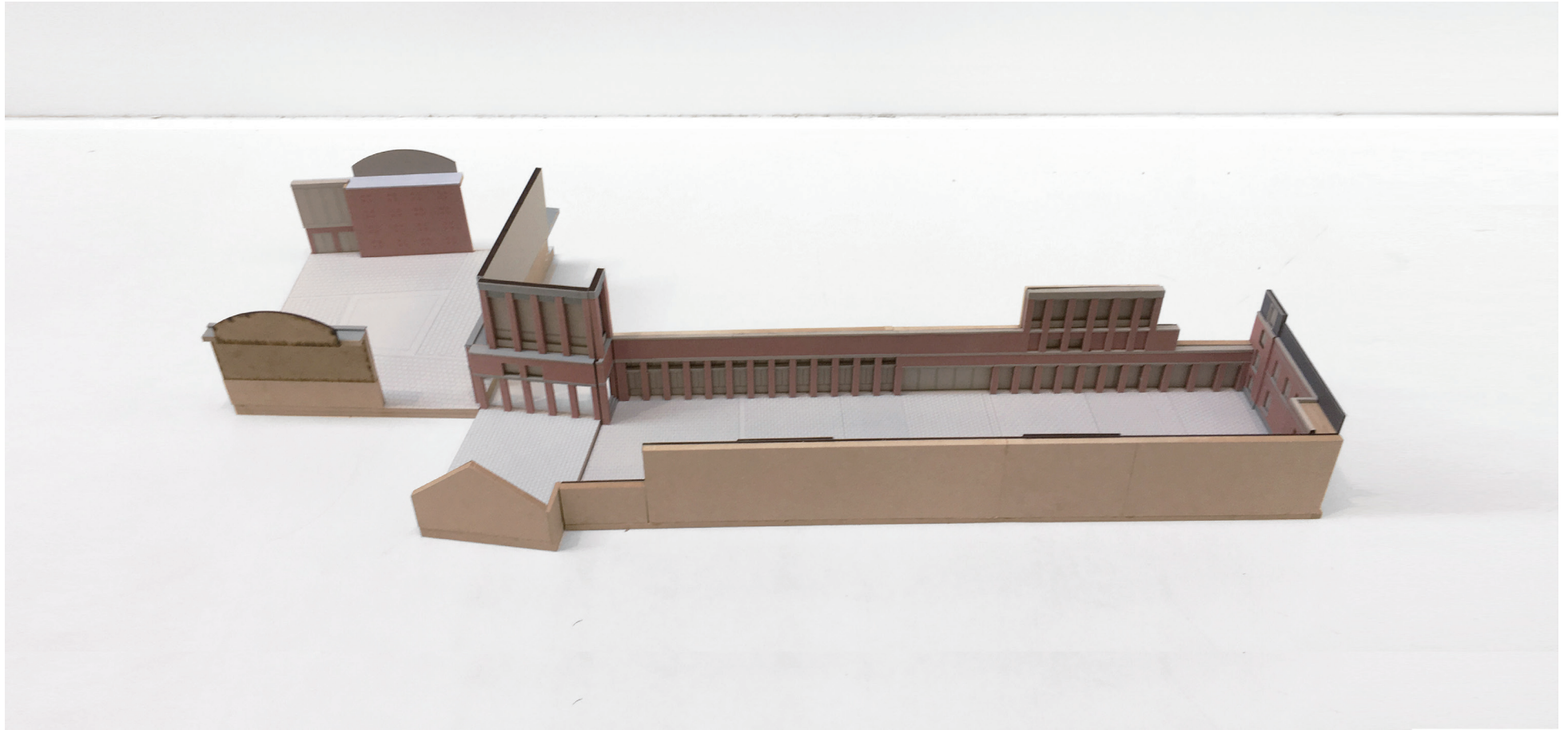
Library Site



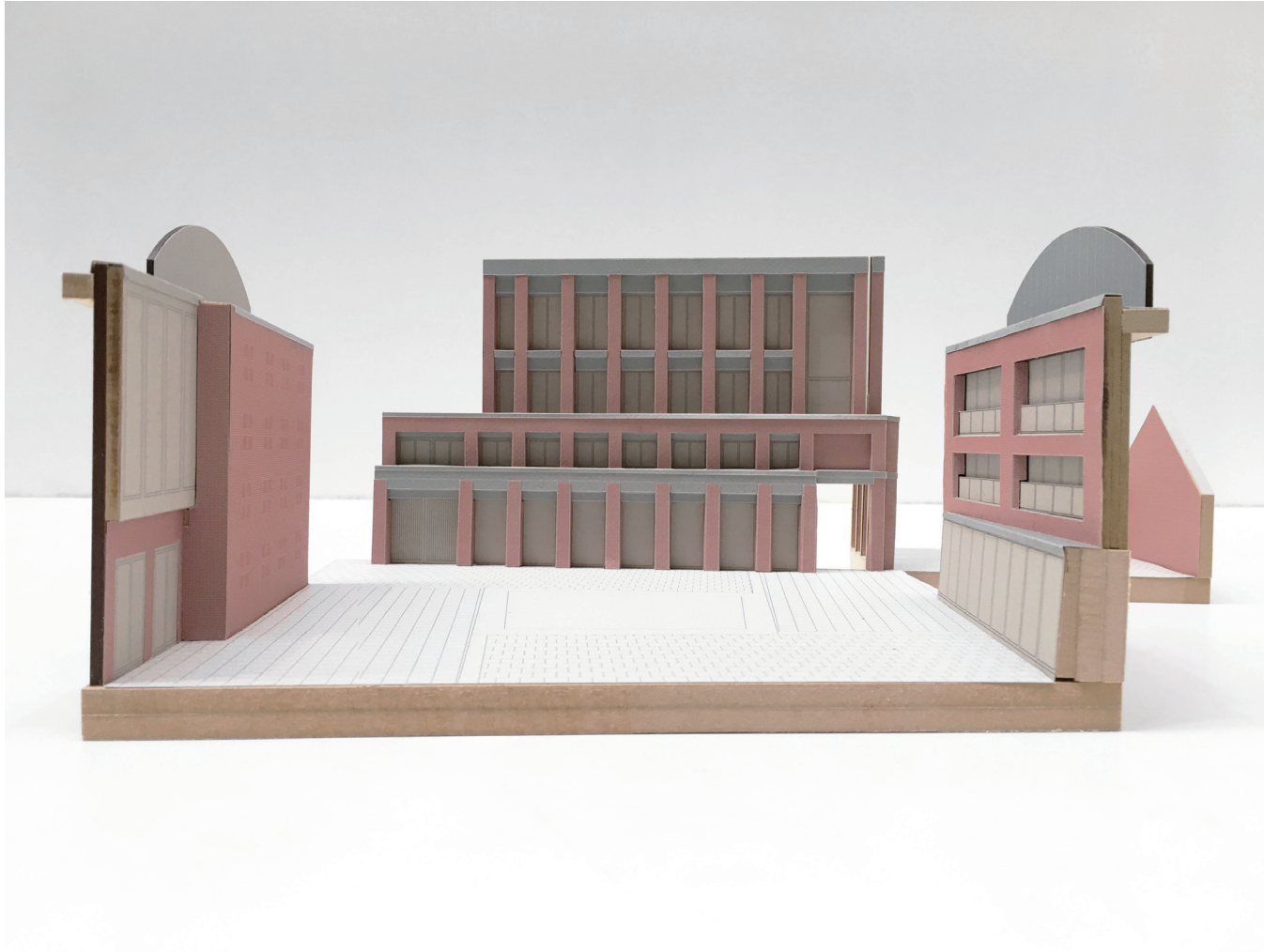
Urban Mophology
*the square always associate with a series of transitional space
to form a sequence*



Urban Mophology
three squares



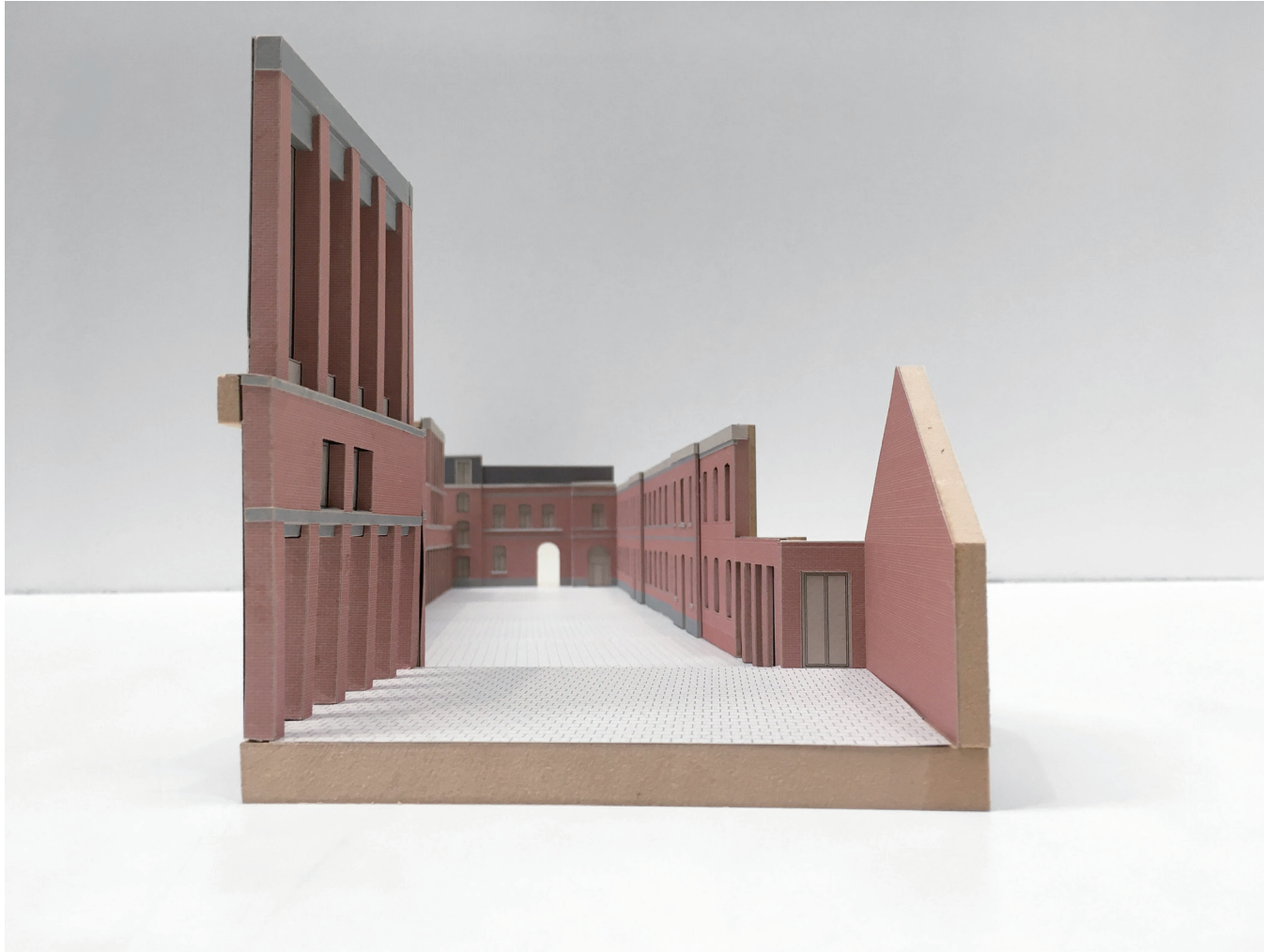
Urban Mophology
three squares



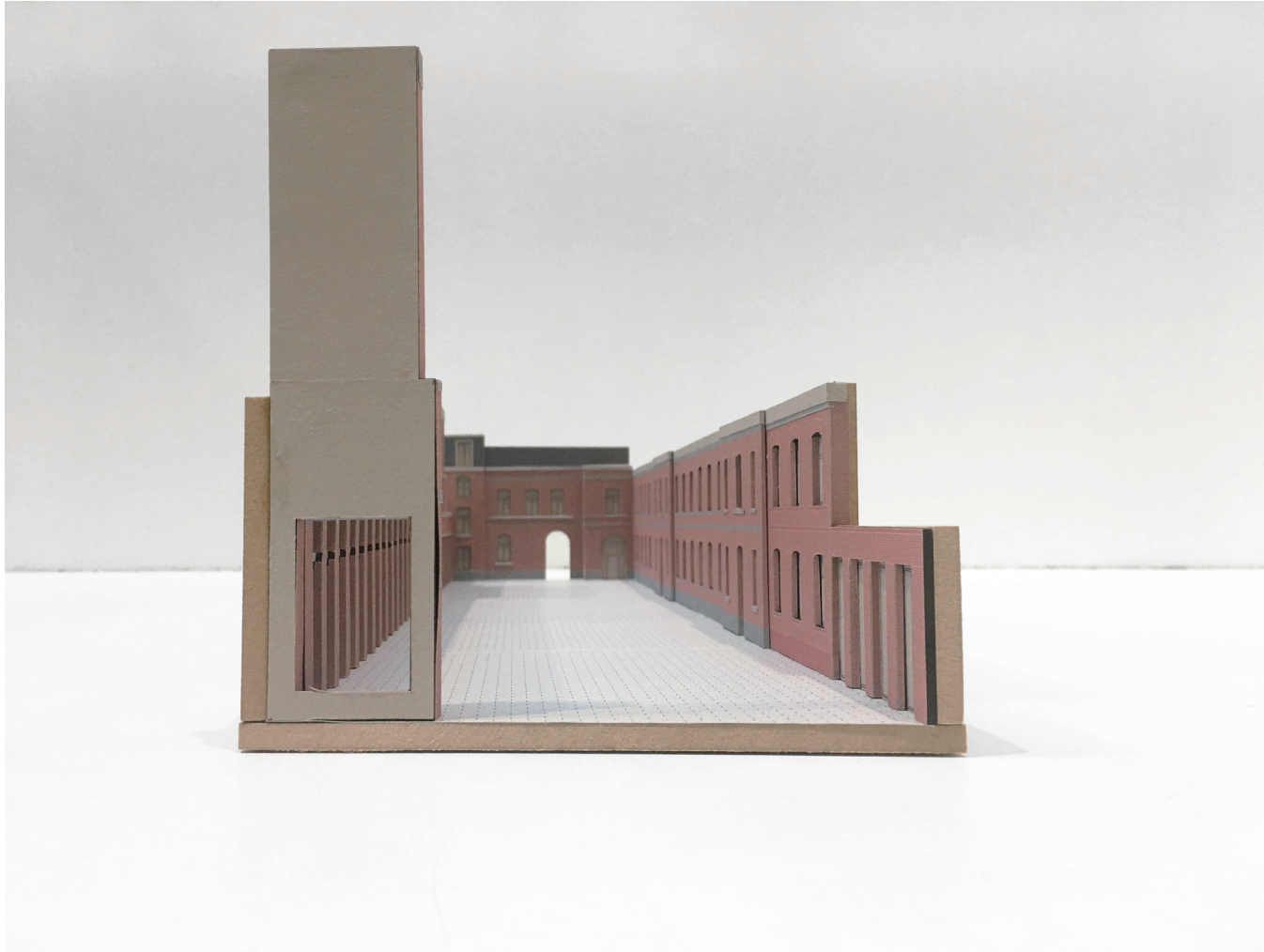
First Square

The Trinity

*three echoing façade form the formal public space an serve as the gate to
introduce the people to go further.*

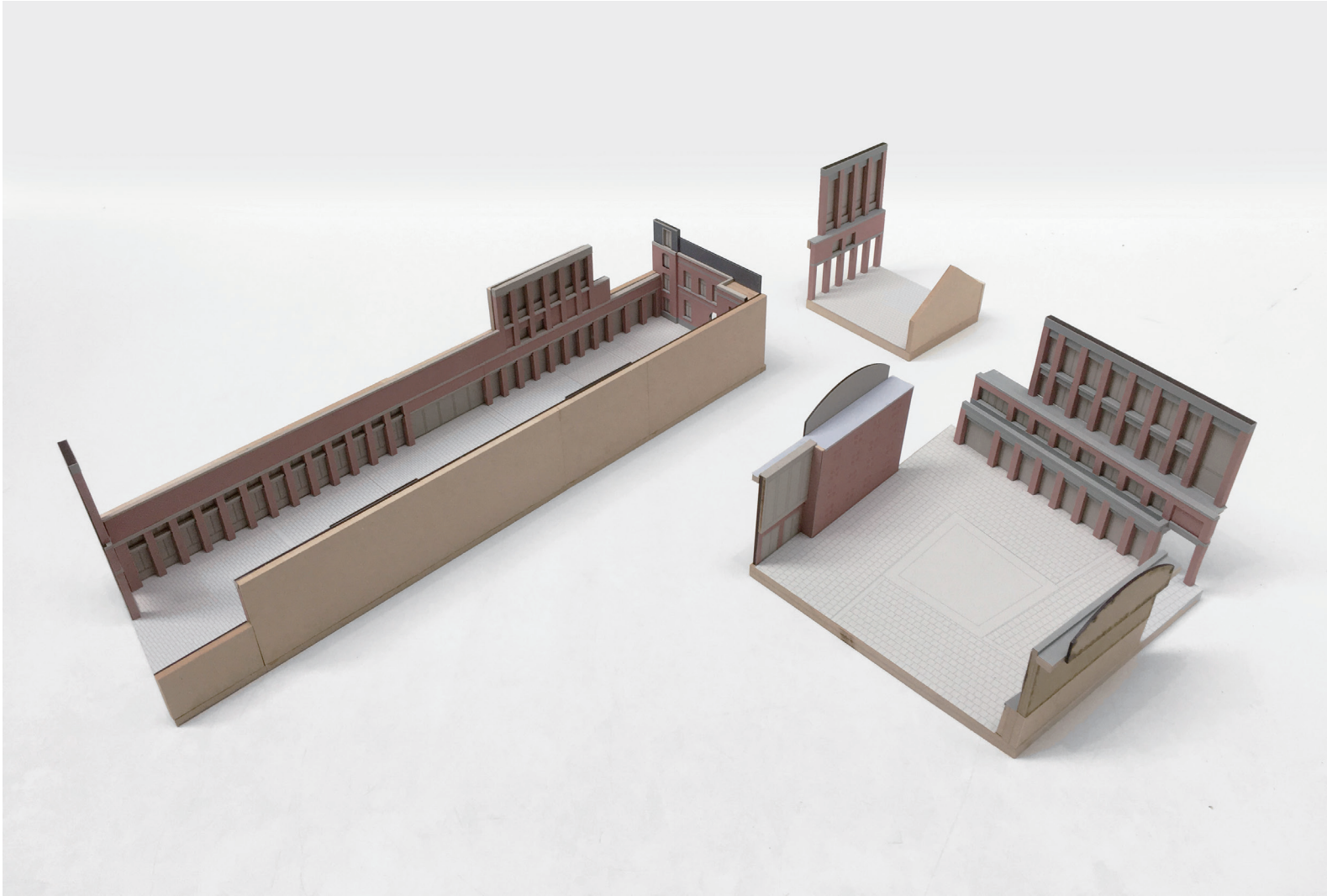


Second Square
the threshold
transitional space



Third Square
forum

*the extending volume marks the end of the forum while ground floor loggia
serves as the other gate of the square*



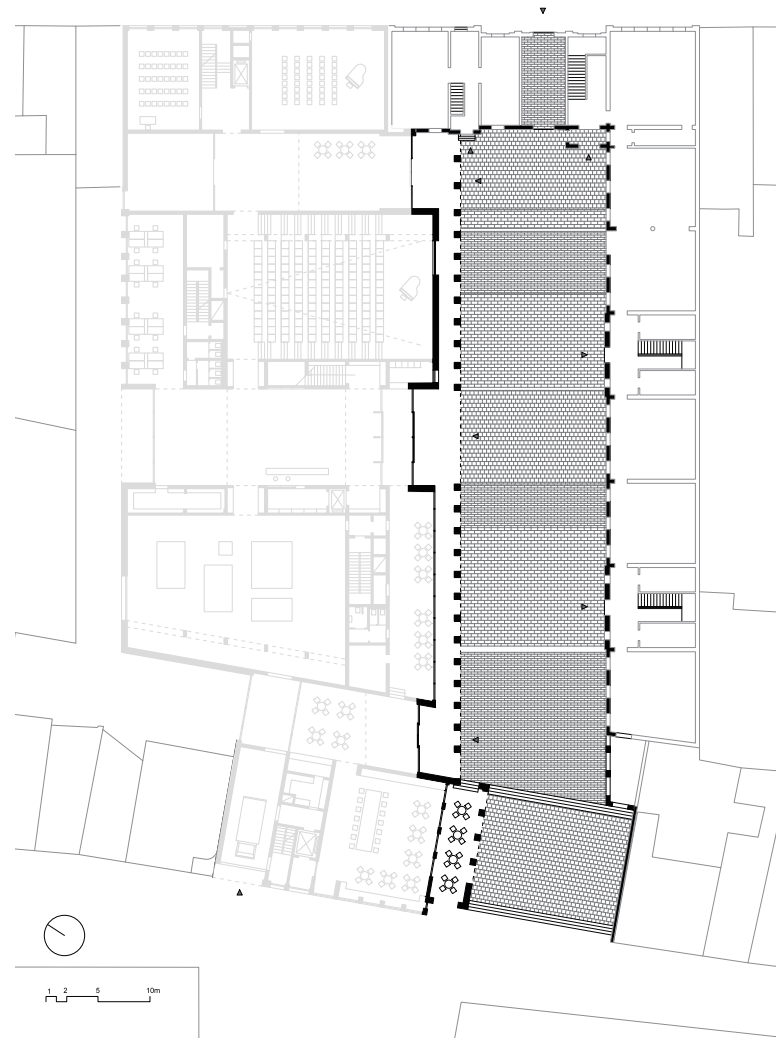
There Square
entering from public to intimate realm





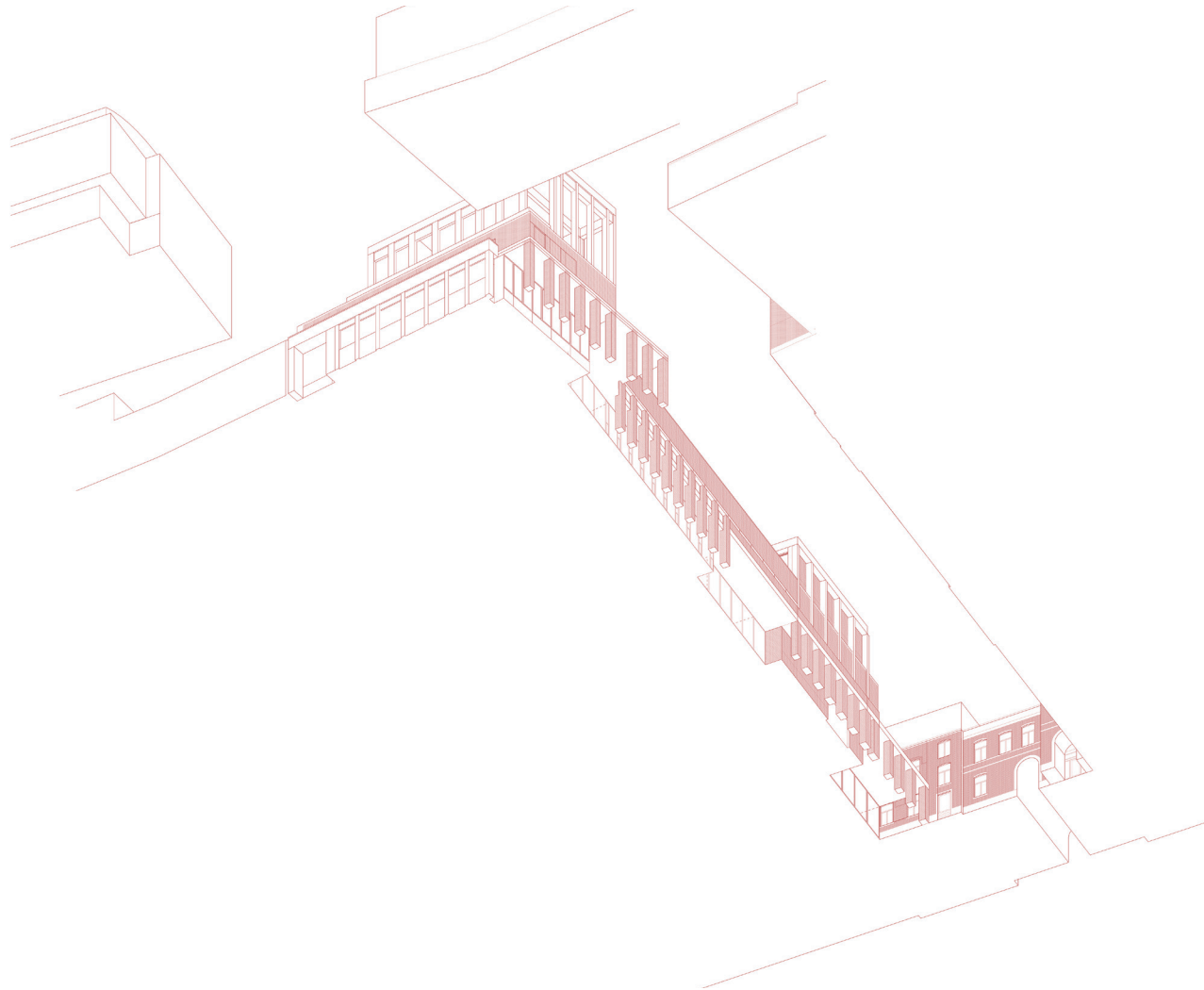






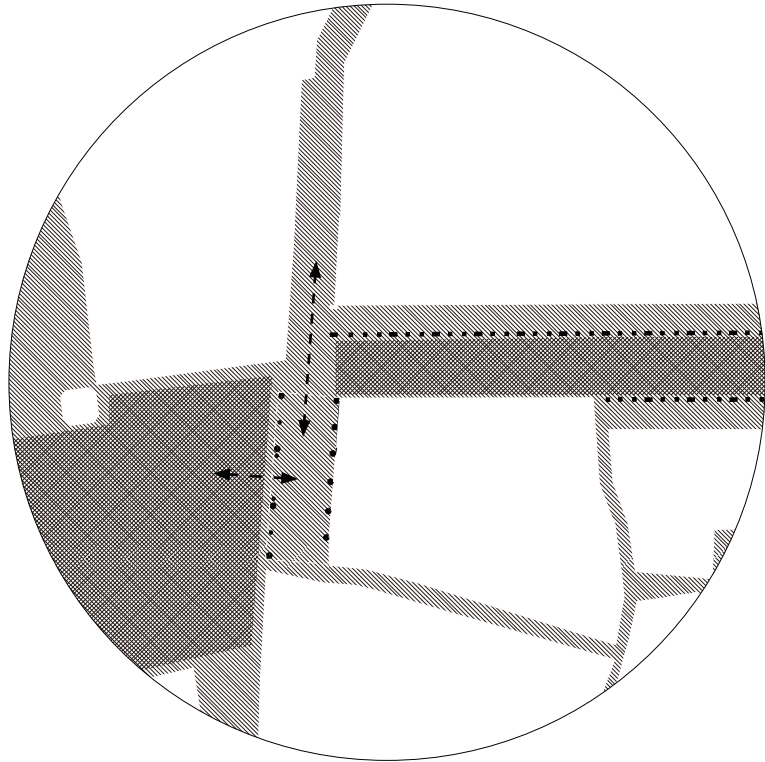
Loggia

*loggia mediate between exterior and interior
accommodate the activities of the square.*

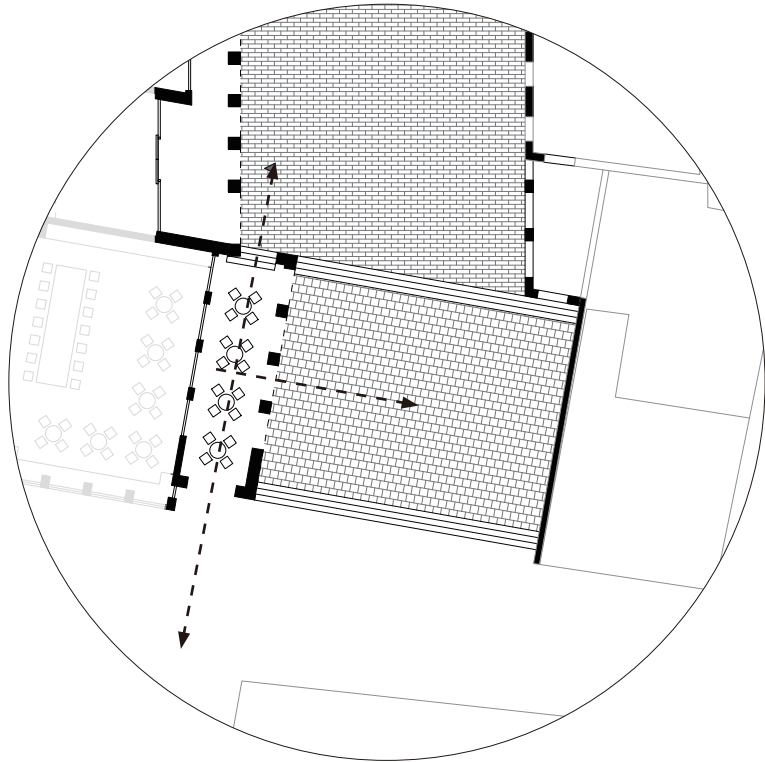


Loggia

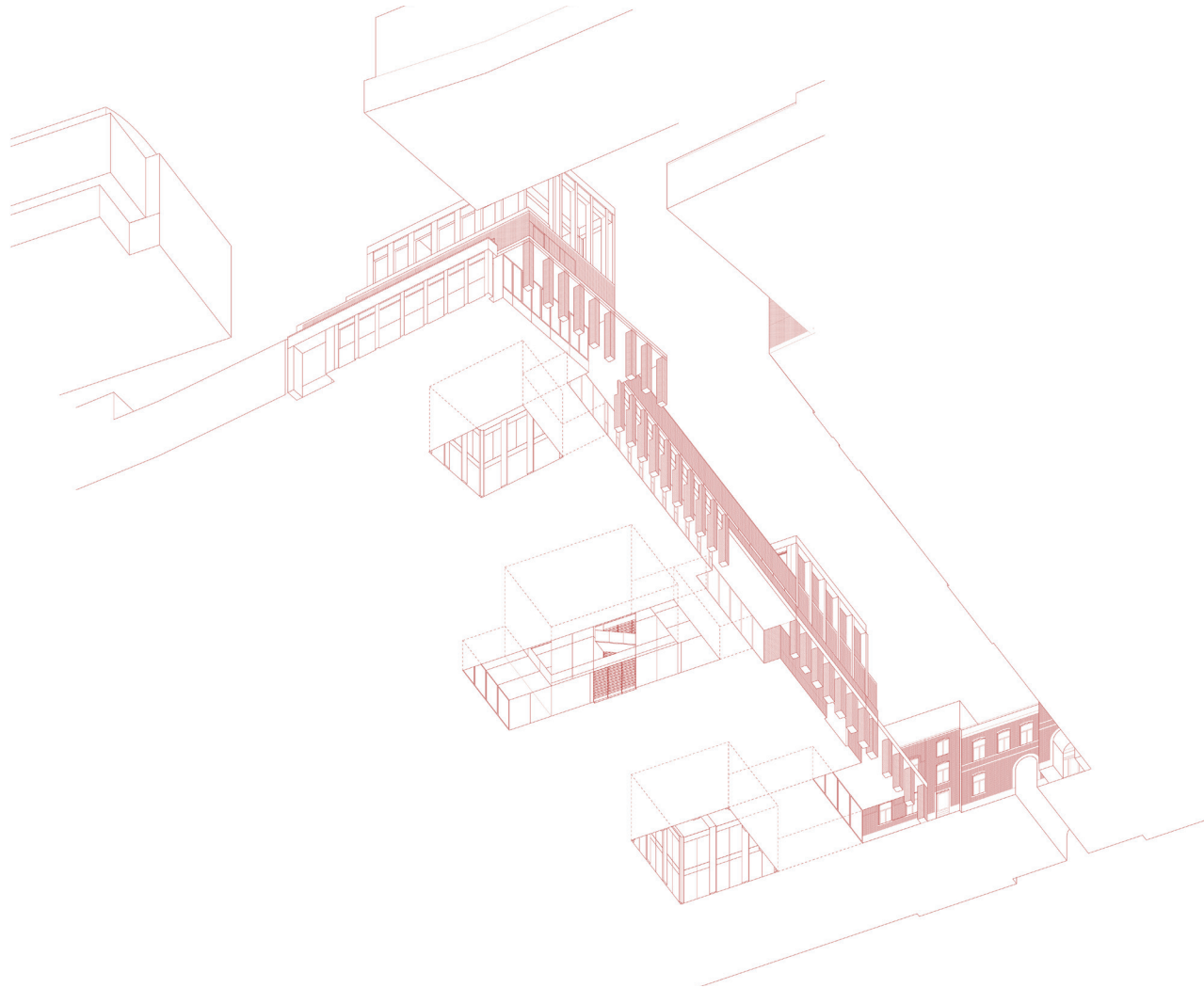
three pockets area respond to three entrances



Loggia dei Lanzi
*Loggia as the threshold between
Piazza della Signoria & Piazzale degli Uffizi*

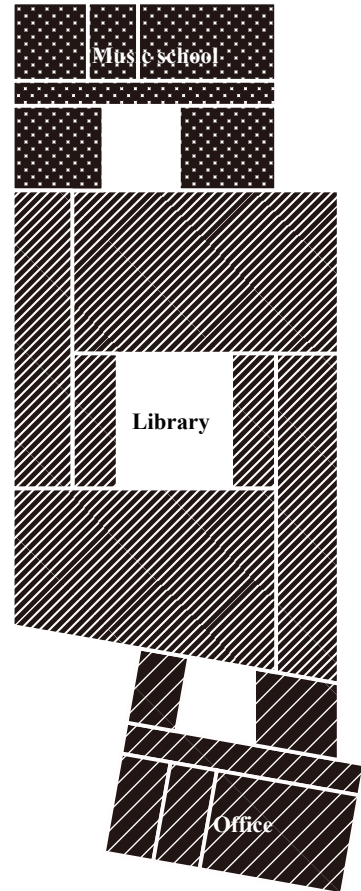


Loggia connecting three squares
framing the entrance and open to the square

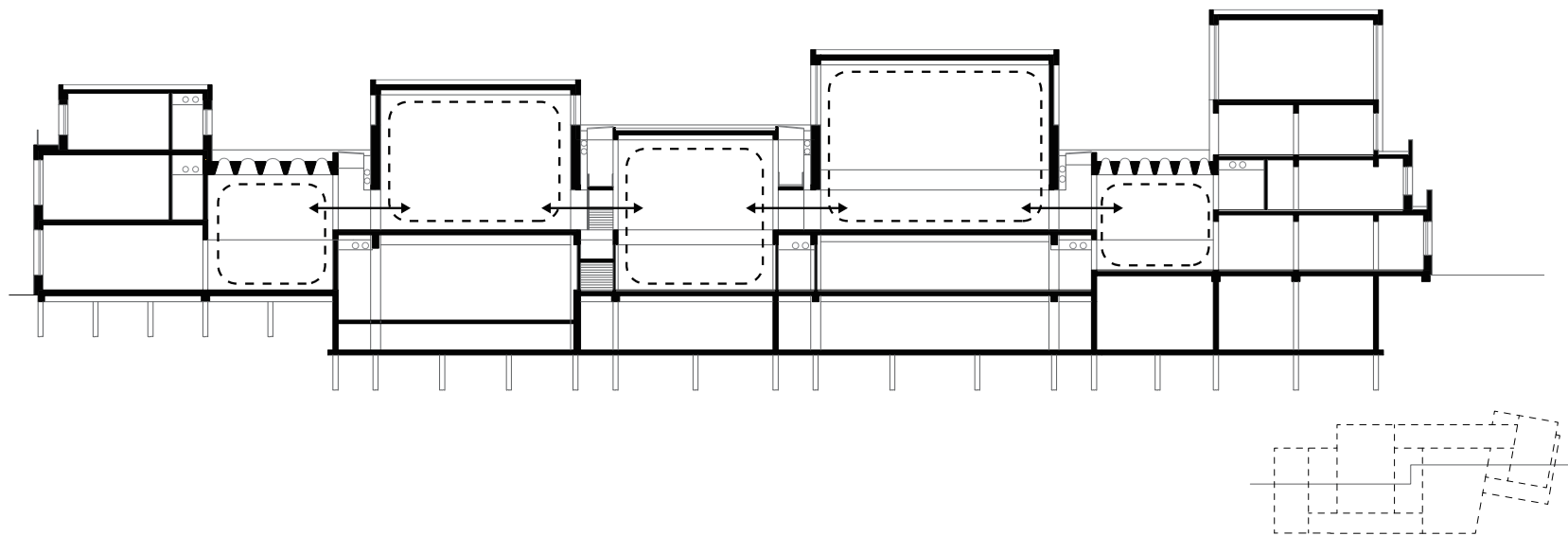


Loggia
connecting the three separated foyer

4. Architecture Design and City Room



Program and Spatial Organization
three program revolve around their individual atriums/public room

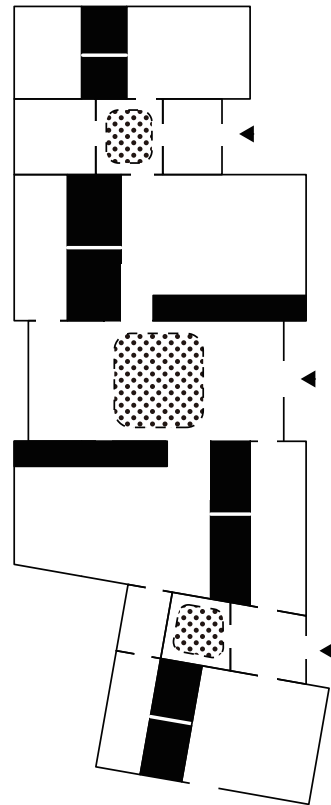




Longitudinal Section
visual connection



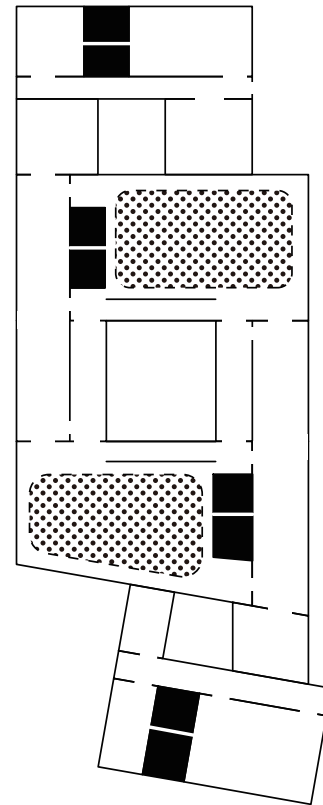
Enflade



look through from the main reading room to foyer



 Public room
 Service and Circulation

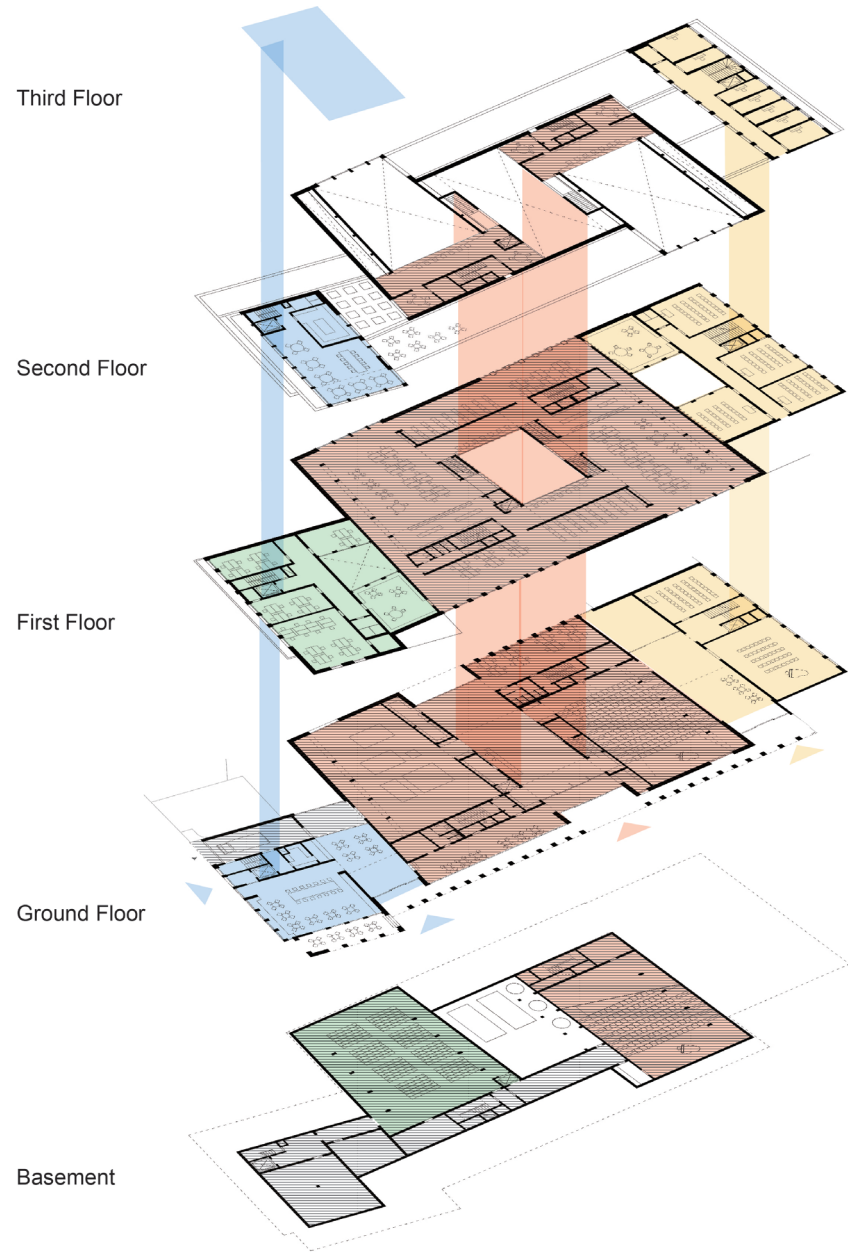
*Spatial Arrangement
Ground floor*



 Public room
 Service and Circulation

*Spatial Arrangement
First floor*

Program and Spacial Organization
service versus public room



- Library
- Music school
- Cafe & restaurant
- Office & Staff

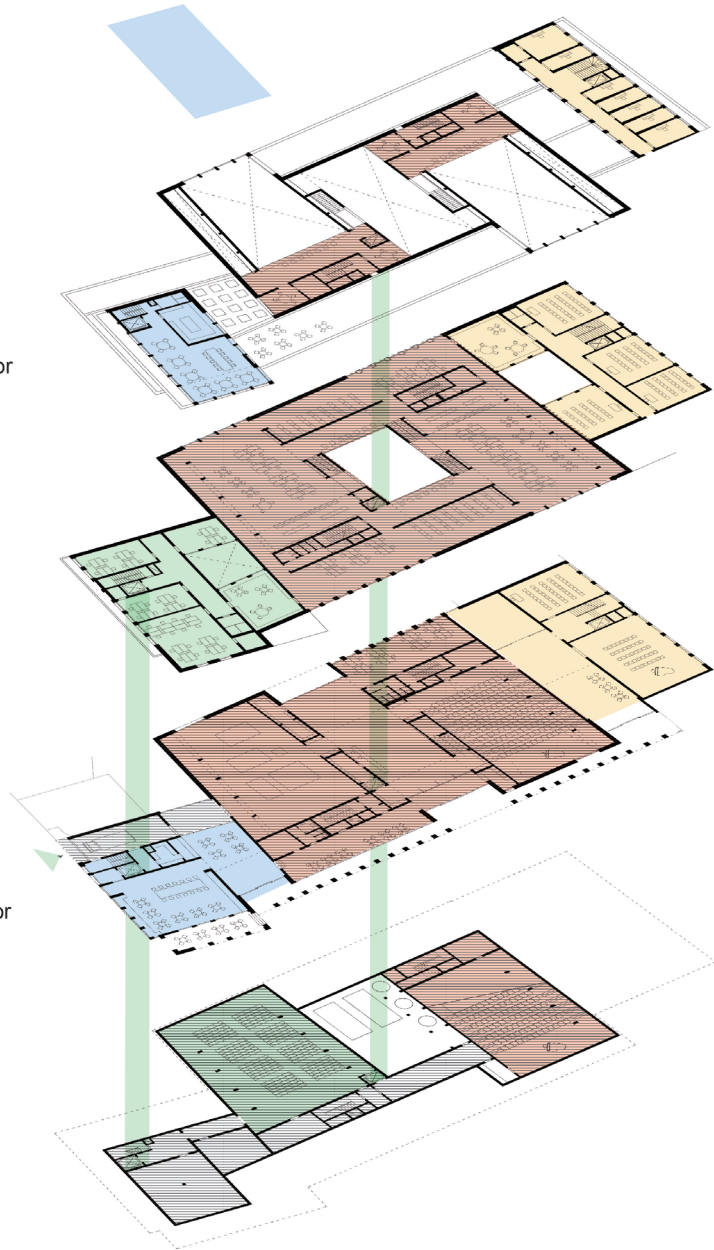
Third Floor

Second Floor

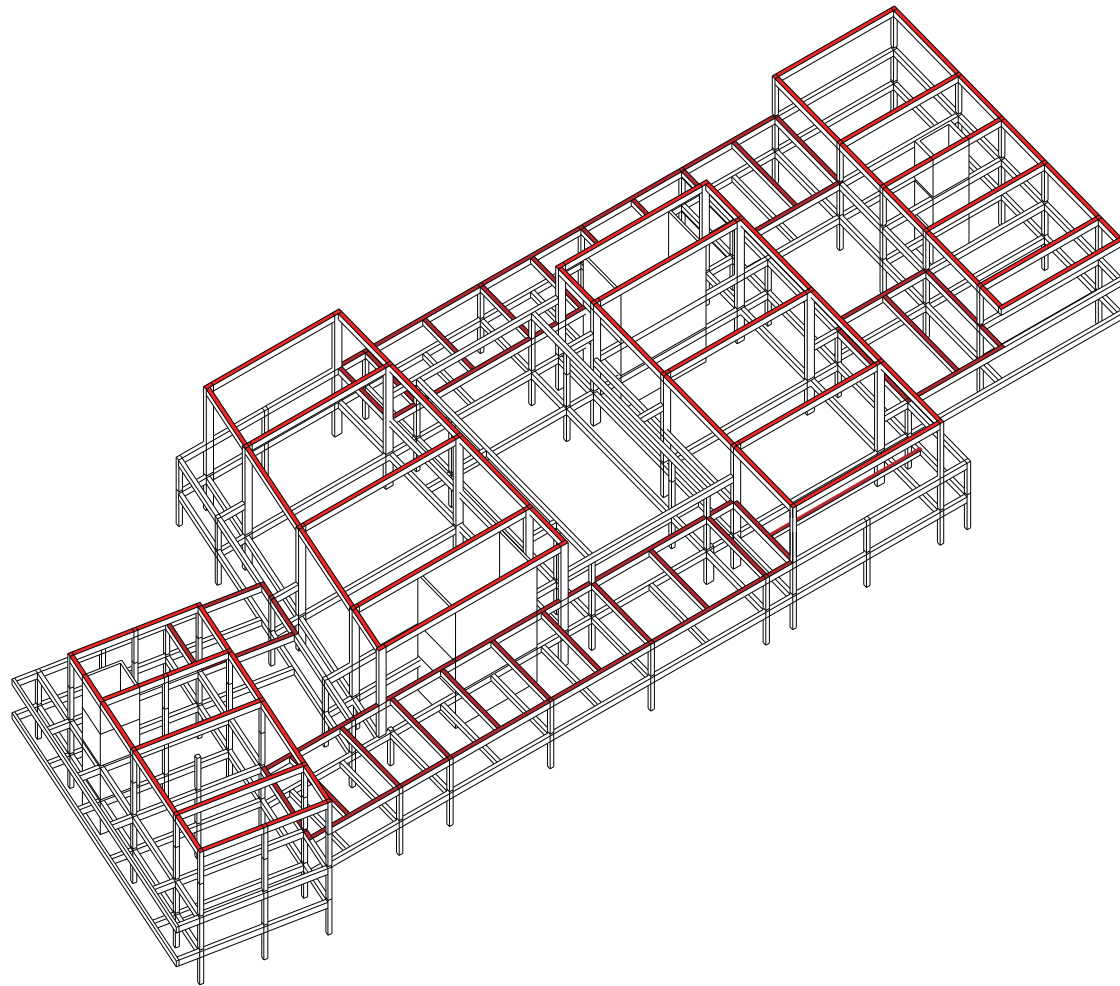
First Floor

Ground Floor

Basement

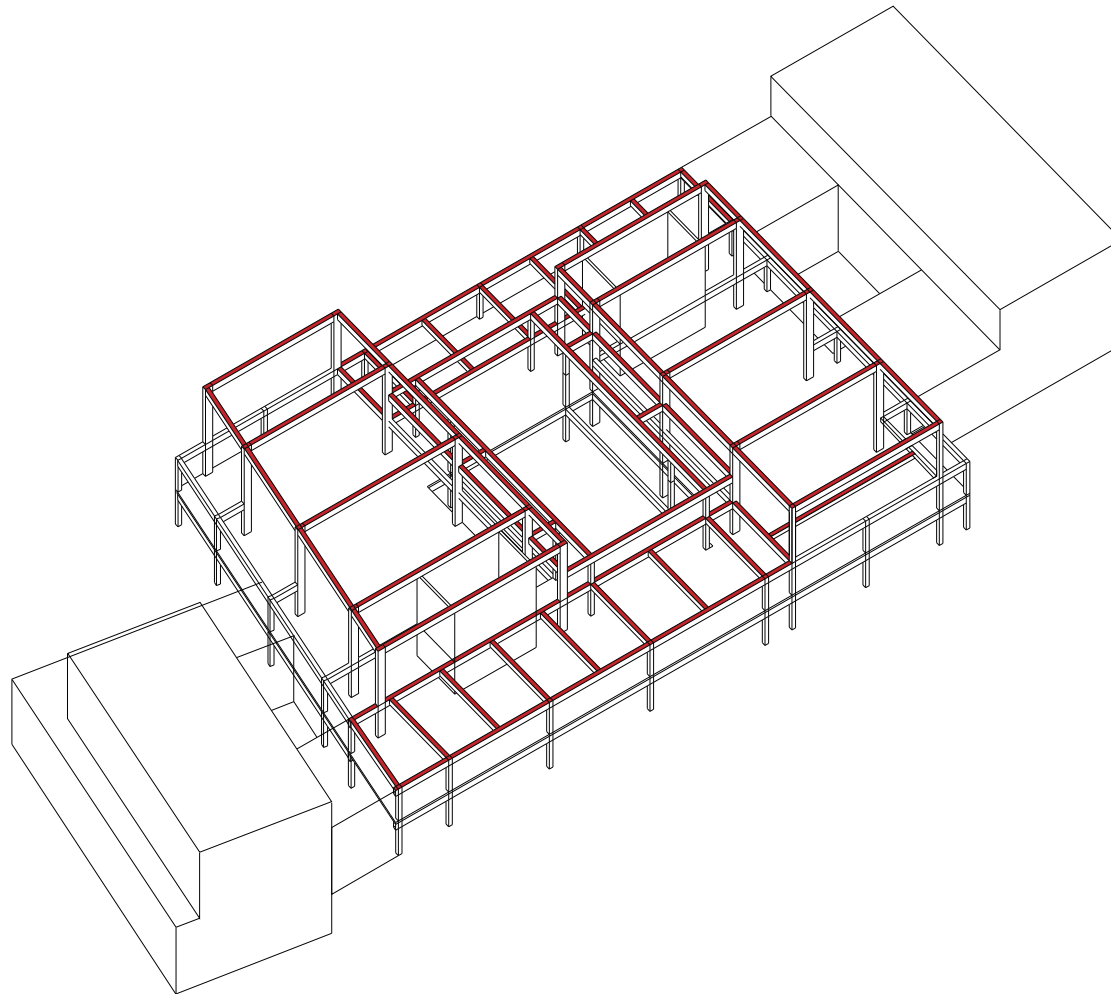


- Library
- Music school
- Cafe & restaurant
- Office & Staff



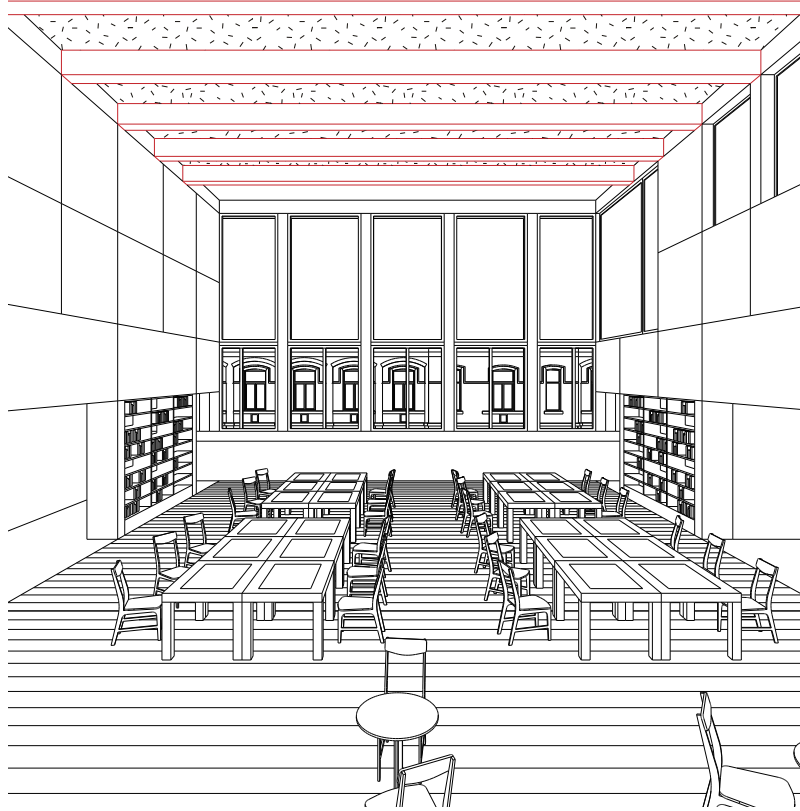
Structure

the logic of structure follows the directions of the volumes which enhance the hierarchy of the space

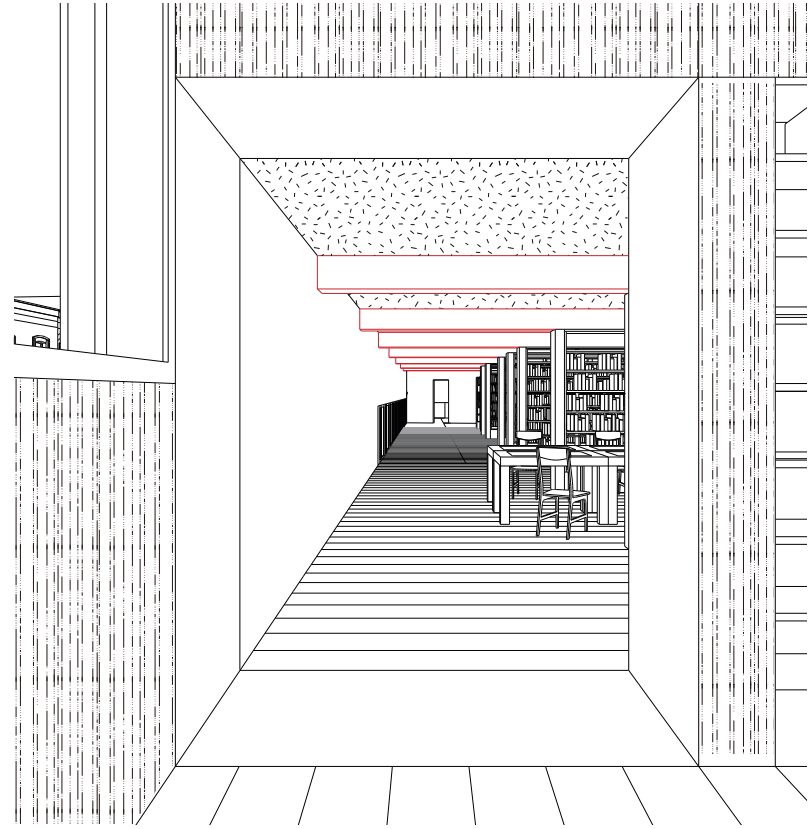


Structure of Library Part

*the configuration of four volumes together with the rhythm created by the beams
generates a revolving circulation around the central foyer*



main reading room



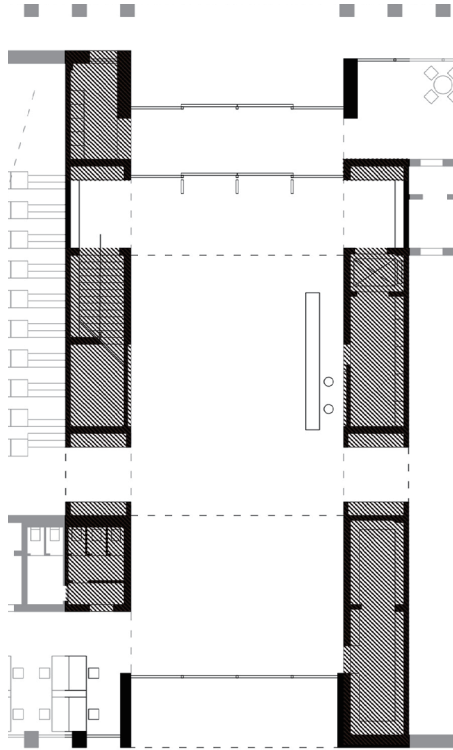
study room

Directions created by the Structure
two directions of beams create the circular circulation









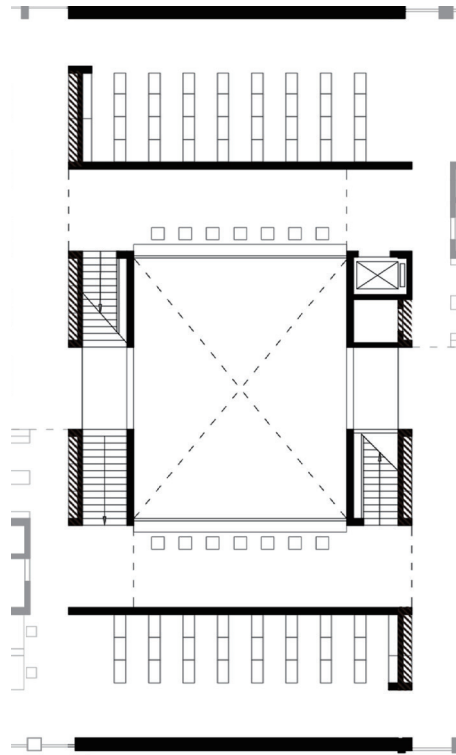
ground floor



material

Materiality

*the solid aspect of the service space are intensified by the mololithic materia
the groud floor service space serve as a large piece of furniture*



first floor



material

Materiality

*the upper part of the room is dedicated for the light
white-painted wall and ceiling work as the canopy providing diffused light*

4. Facade



The Portraits of the Duke and Duchess of Urbino
Piero della Francesca



Material

*red brick as the main facade material echo with the opposite building.
form the uniform background*



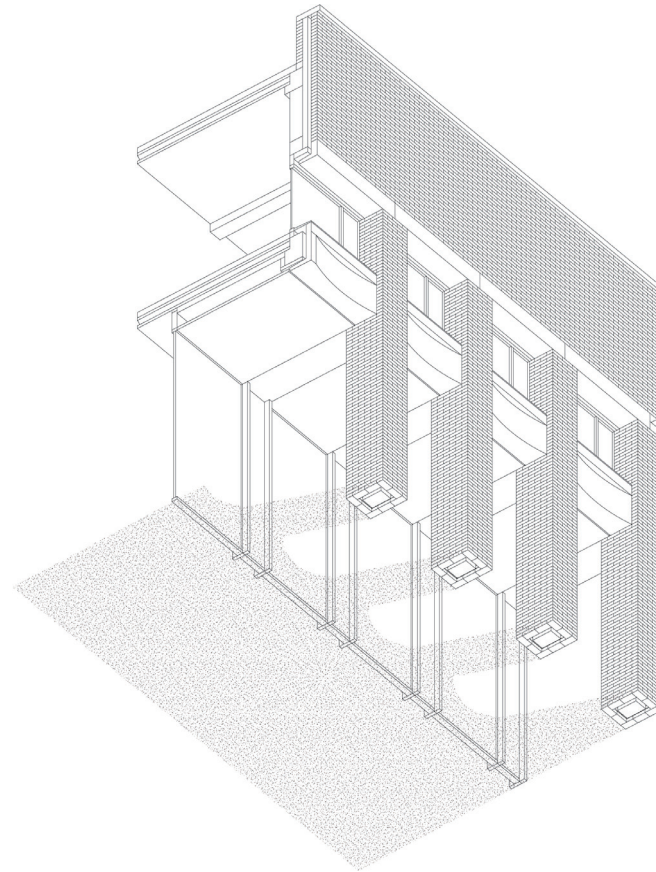


Library facade

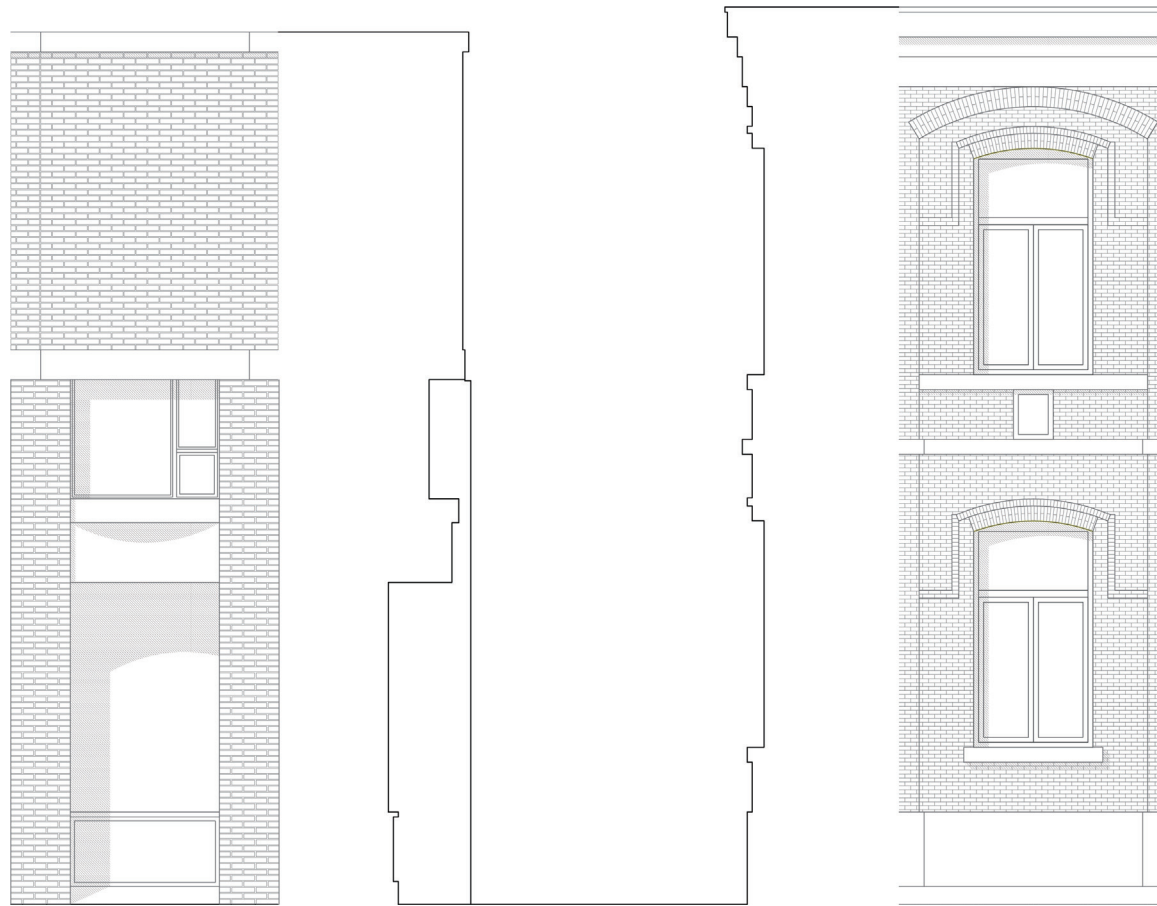


Opposite existing facade

Typical Facade Components
inherits the characteristic / develops own subjectivity
rhythm, height, motif



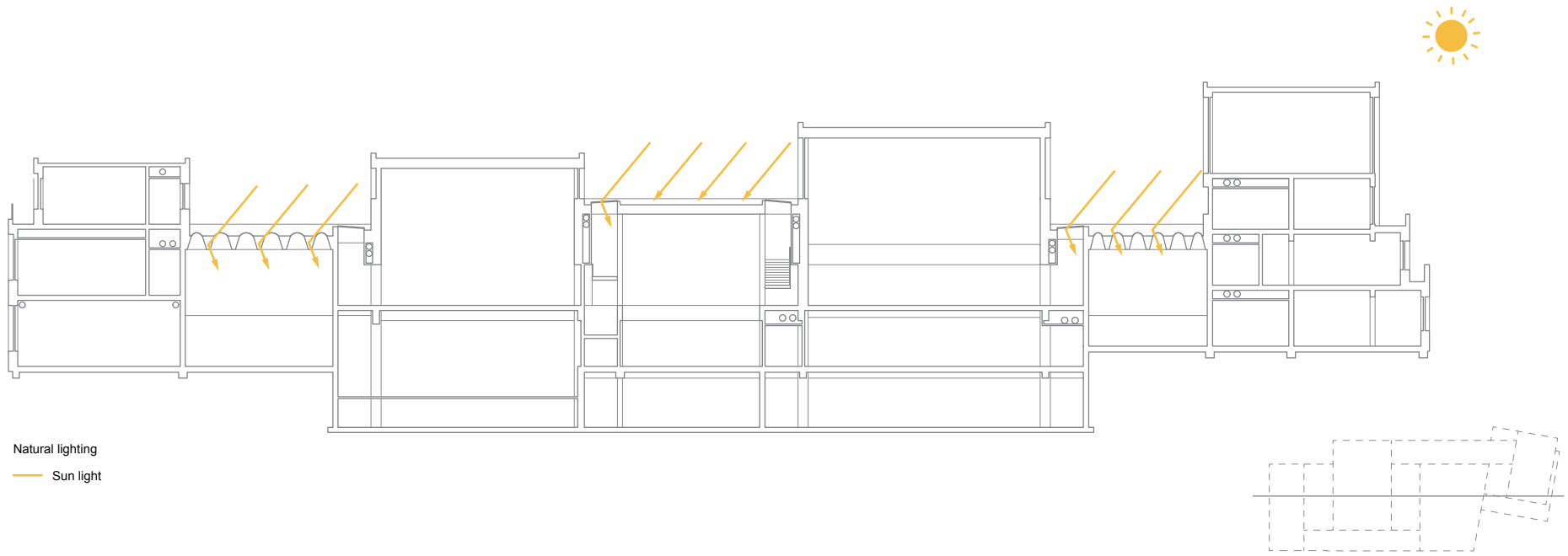
Typical facade fragment
shadow as the ephemeral image of architecture



Facade Profile
different / common
complementary / own identity



The Portraits of the Duke and Duchess of Urbino
Piero della Francesca

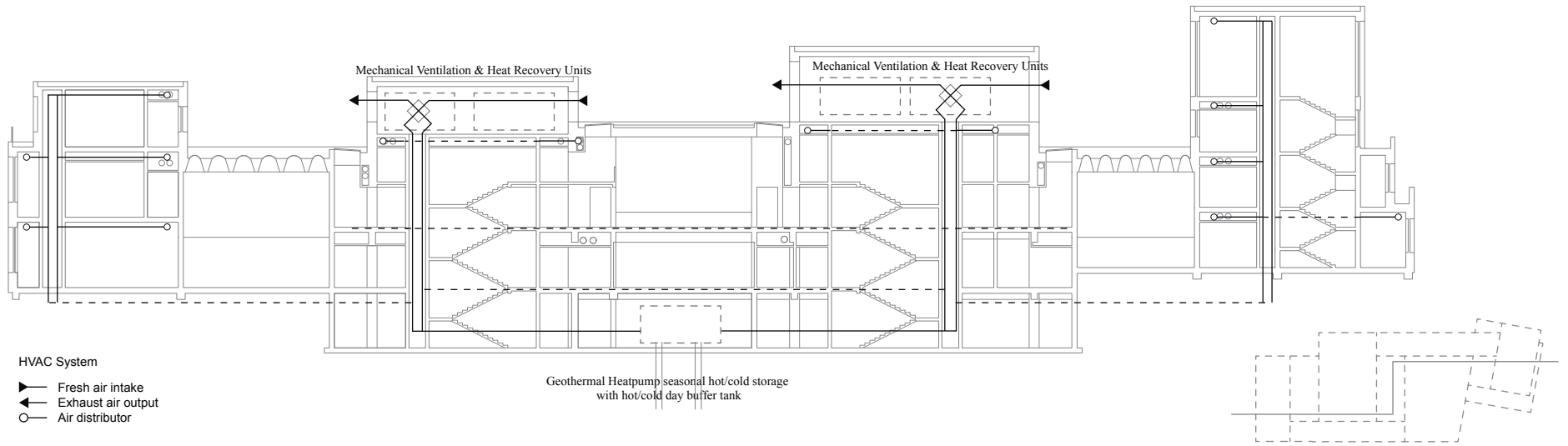


Natural lighting
— Sun light

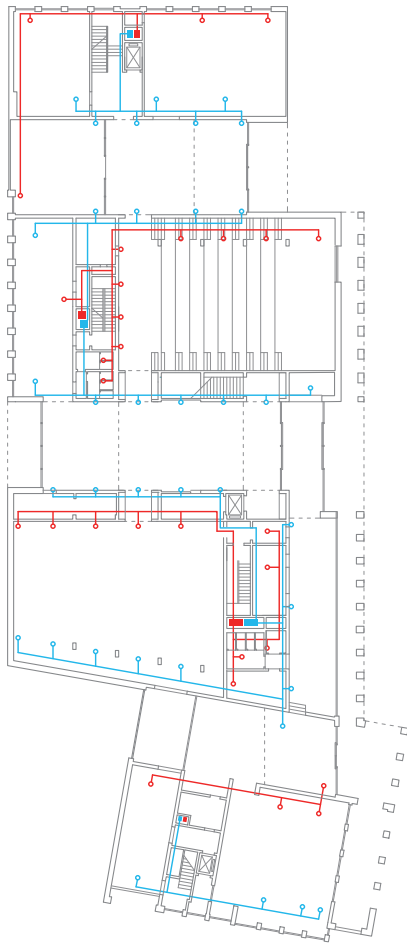
Building Service Overall Diagram
Natural lighting



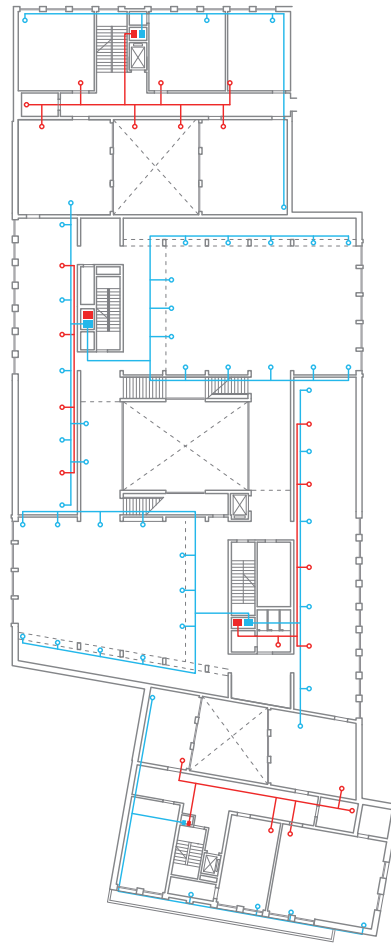
Reading room Faces to the South



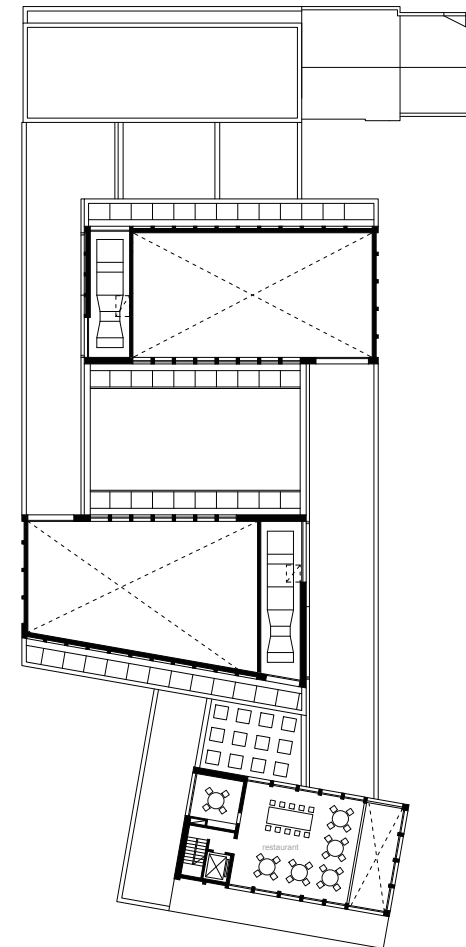
Building Service Overall Diagram
mechanical ventilation section



ground floor

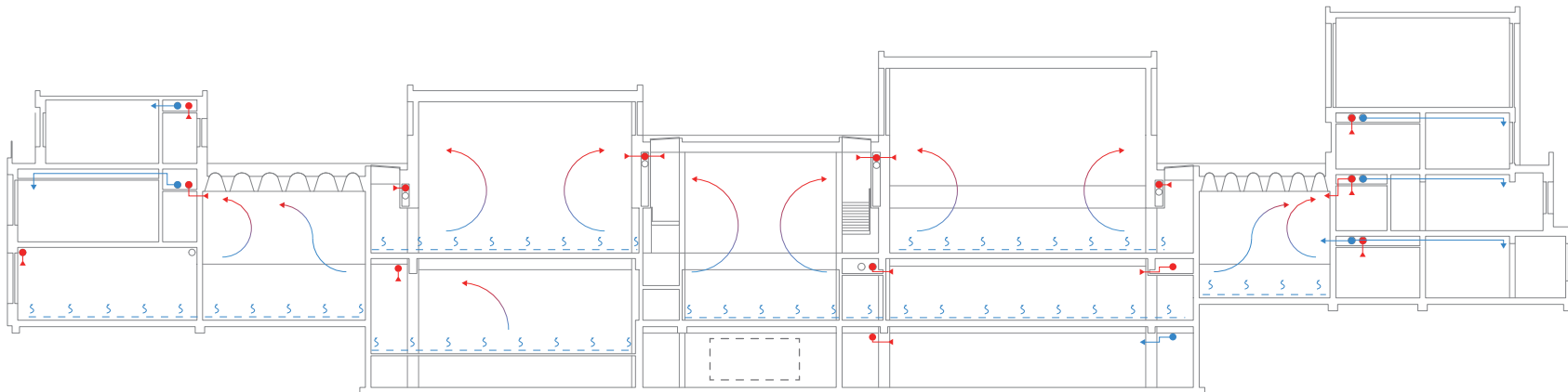


first floor



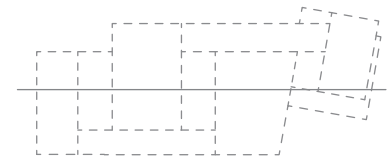
top floor

Building Service Overall Diagram
mechanical ventilation plan

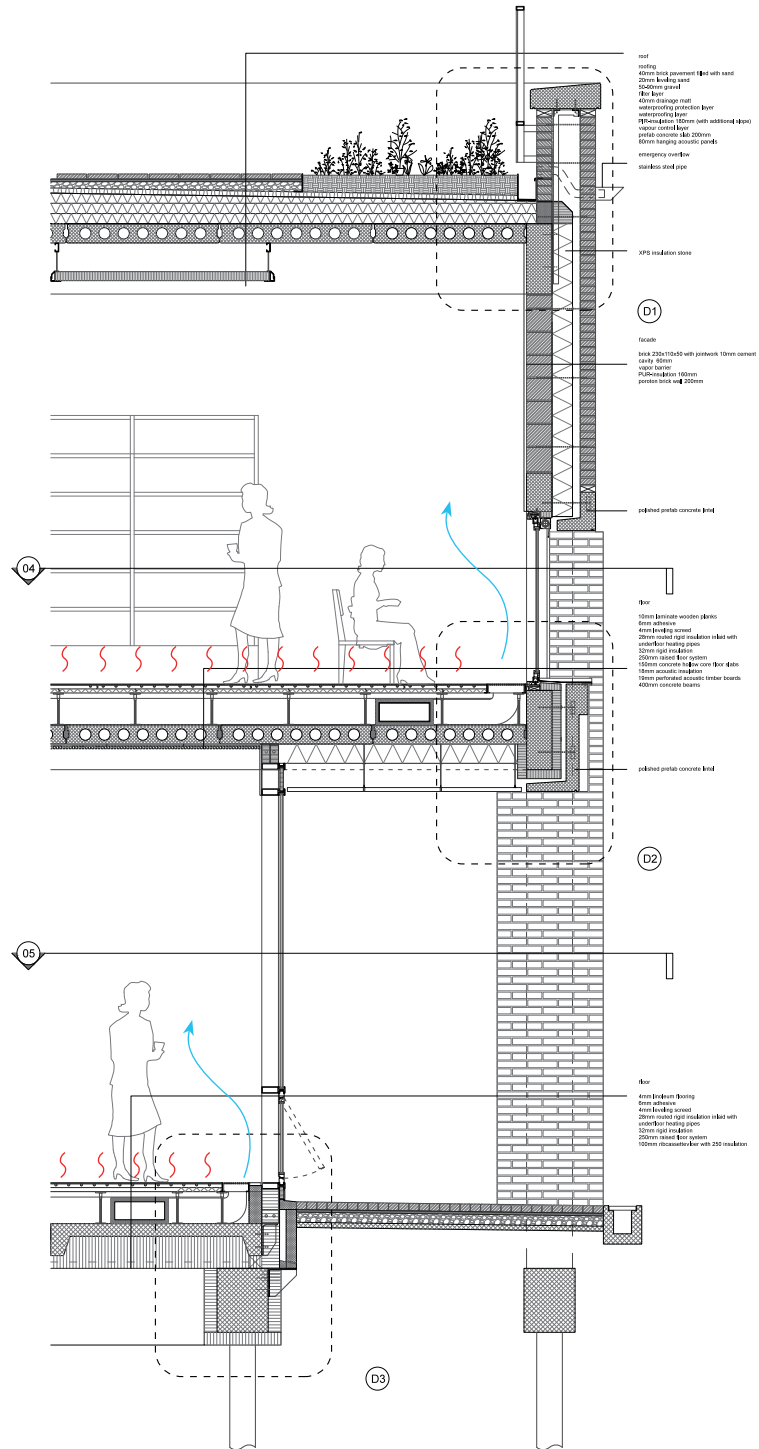


Mechanical Ventilation

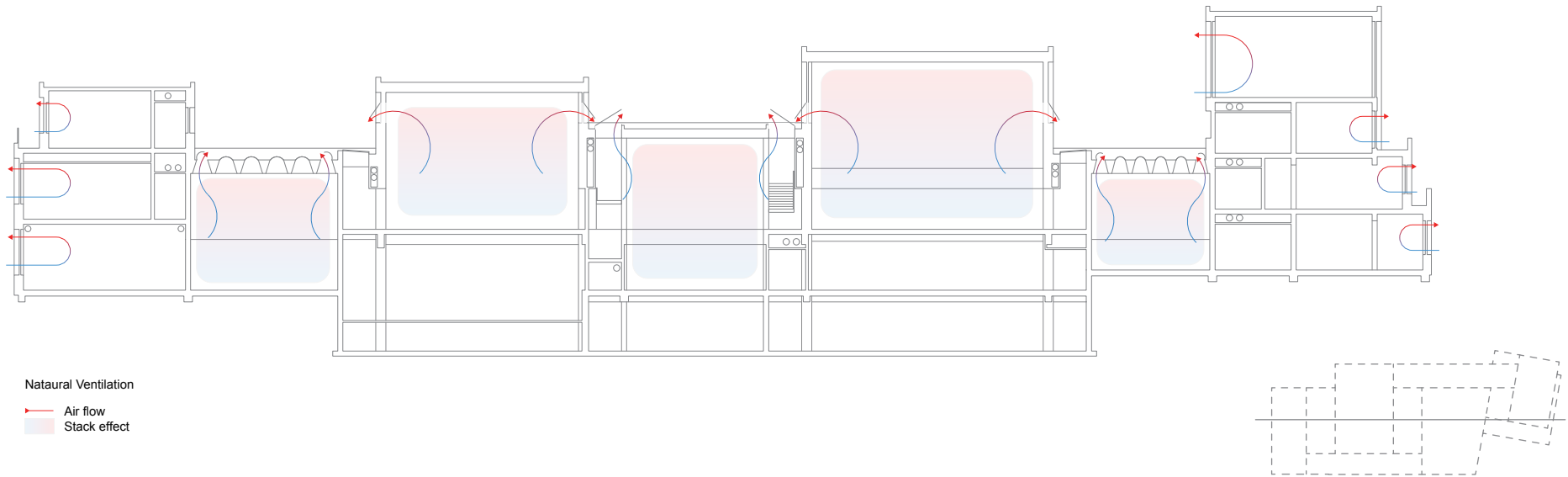
- ← Fresh air
- Exhaust air
- • Ventilation ducts



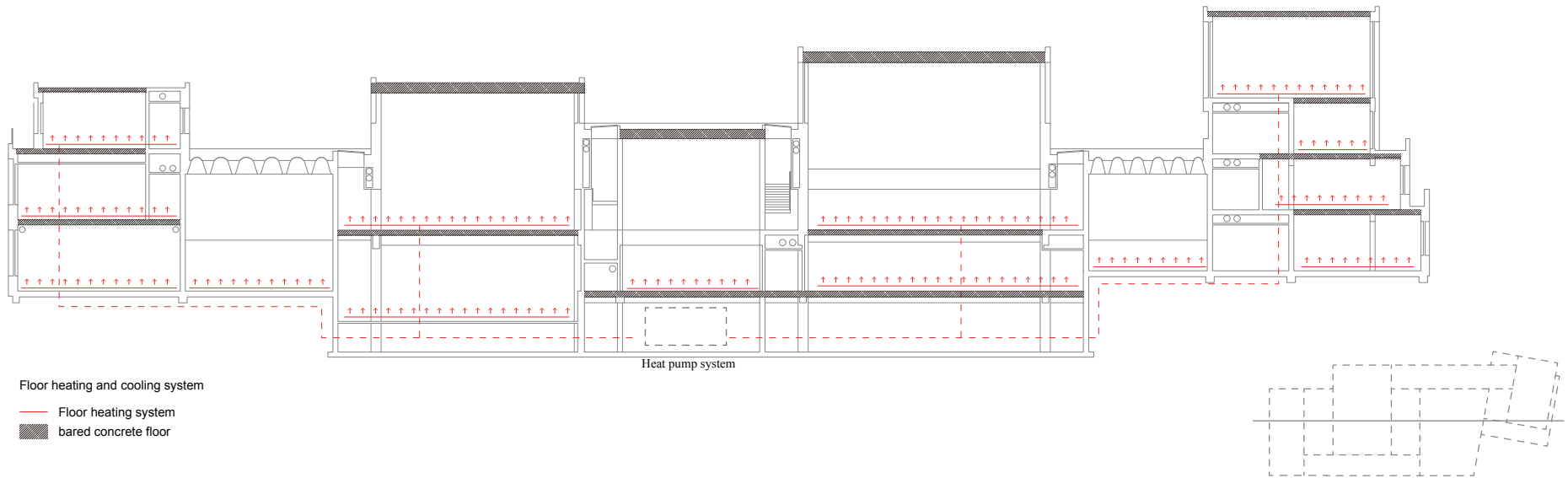
Building Service Overall Diagram
mechanical ventilation section



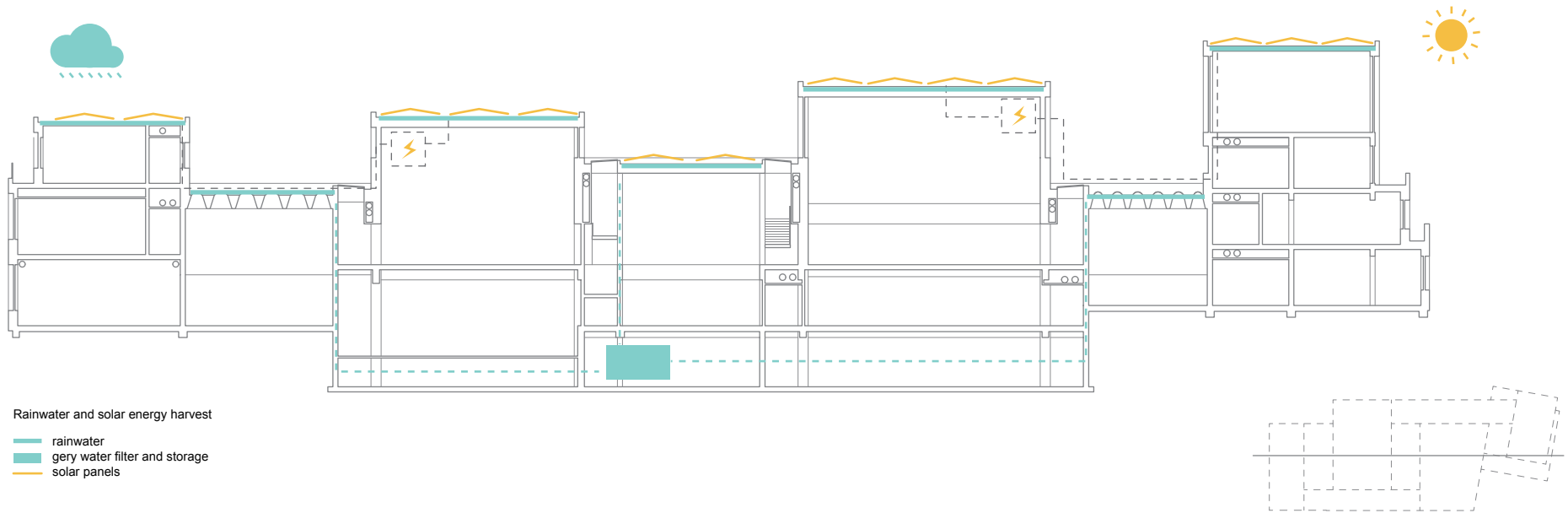
02 Front Facade Detail Section



Building Service Overall Diagram
natural ventilation section



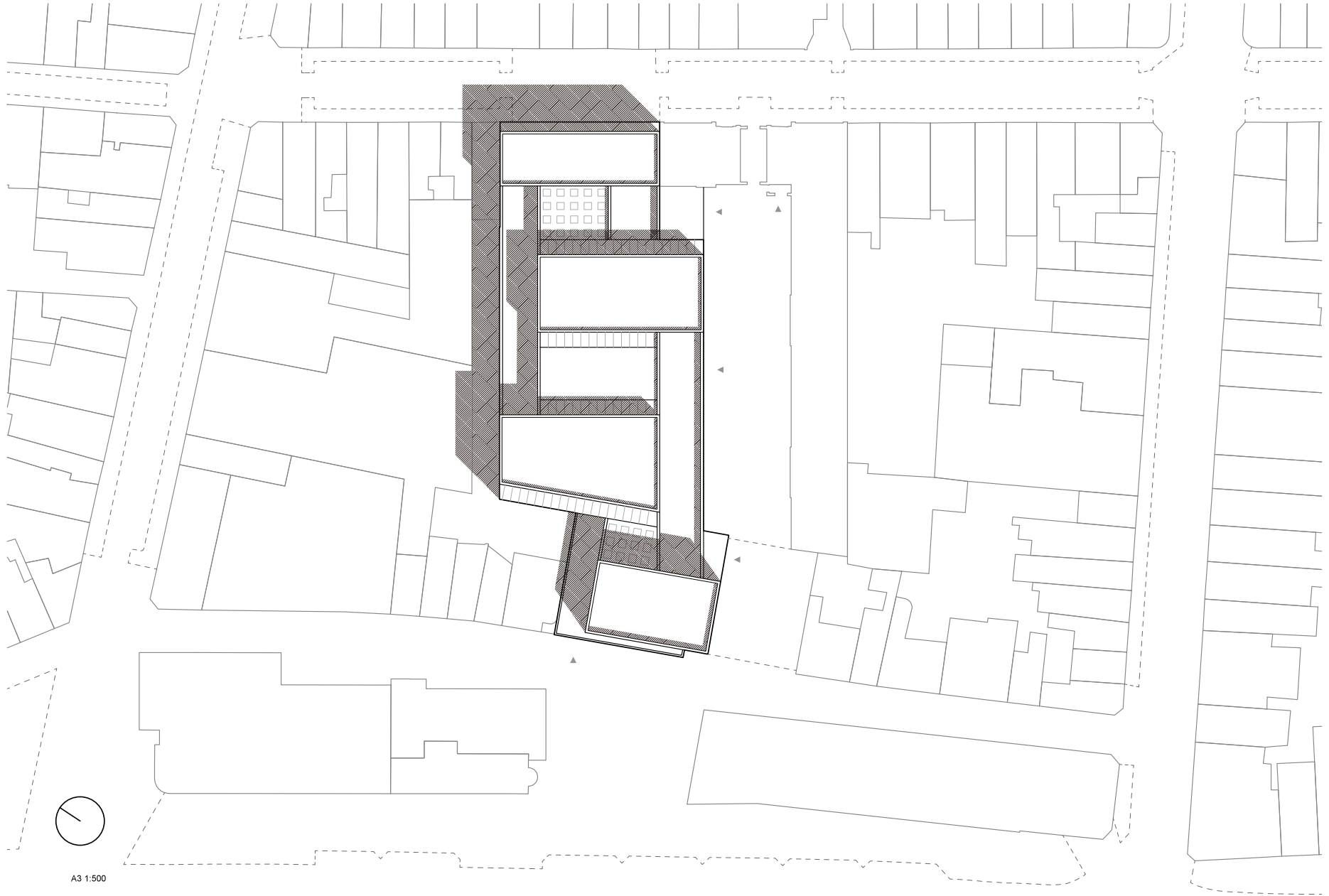
Building Service Overall Diagram
underfloor heating and cooling section
thermal mass of concrete



Building Service Overall Diagram
rain water and solar energy harvest

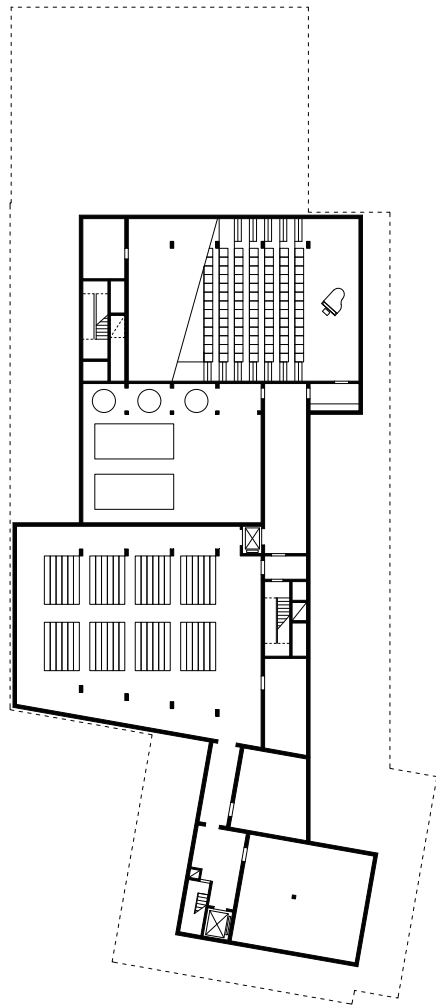


thank you.



A3 1:500

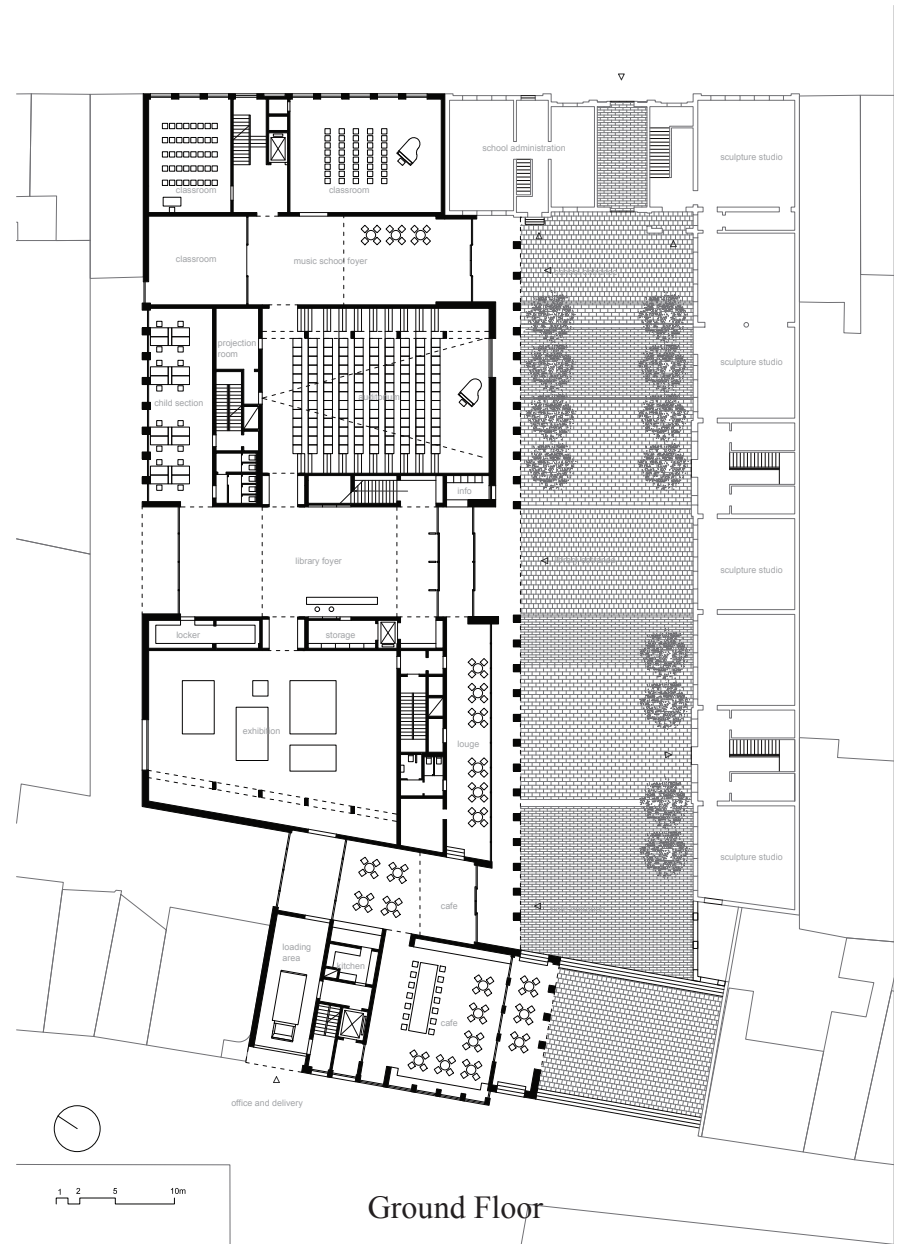




Basement



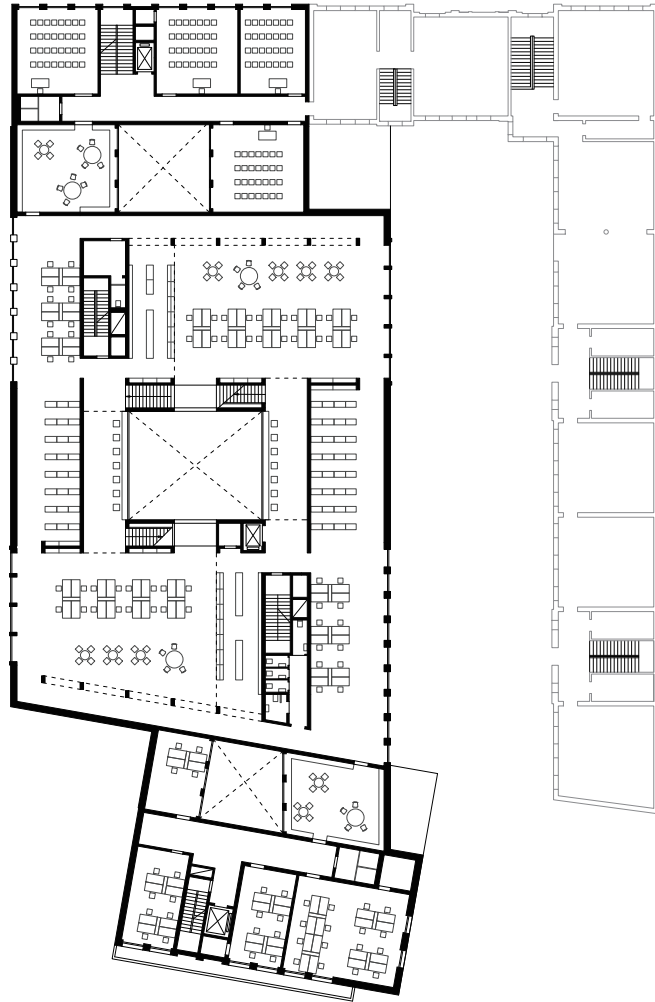
1 2 5 10m



Ground Floor

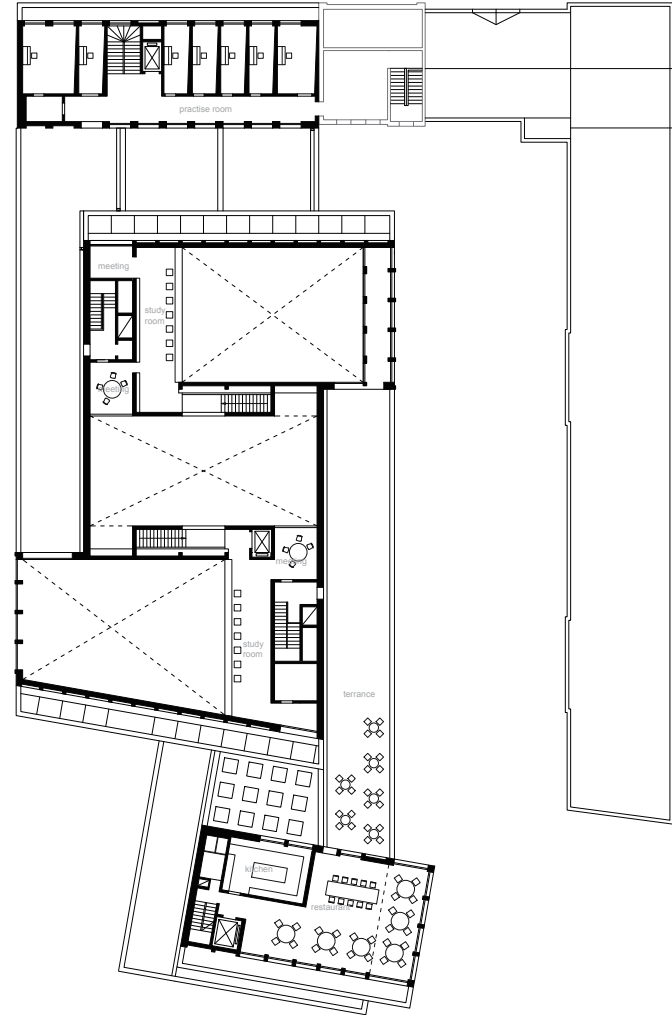


1 2 5 10m



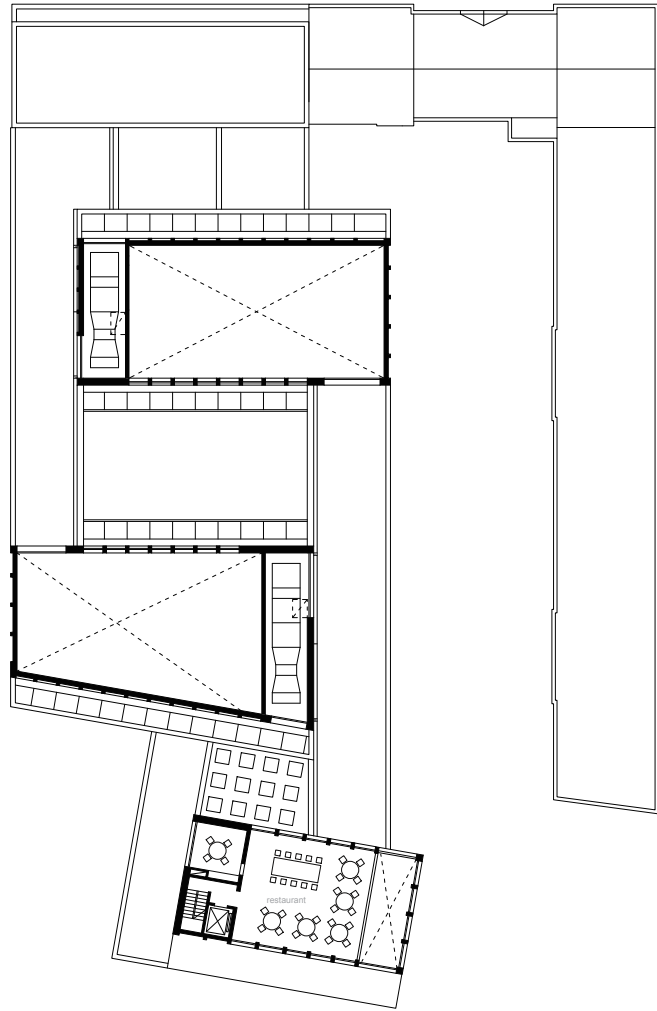
1 2 5 10m

First Floor



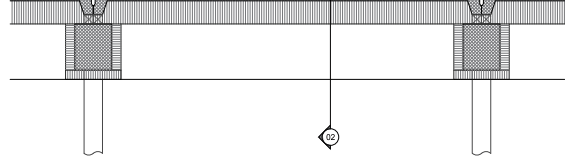
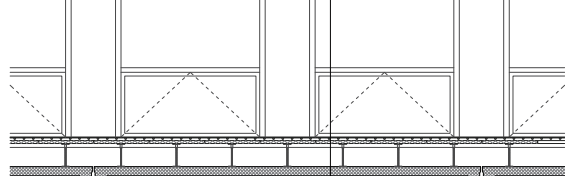
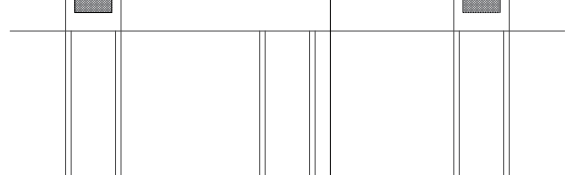
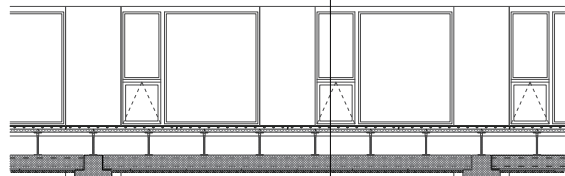
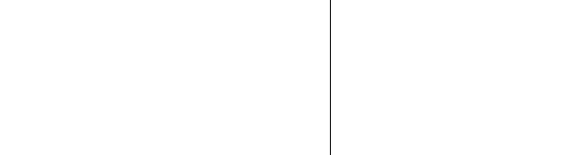
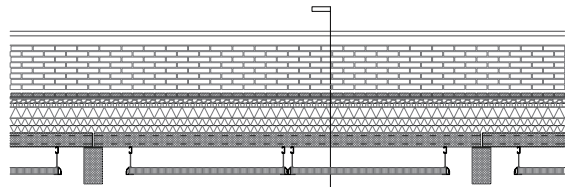
1 2 5 10m

Second Floor

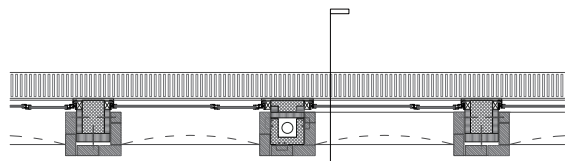


1 2 5 10m

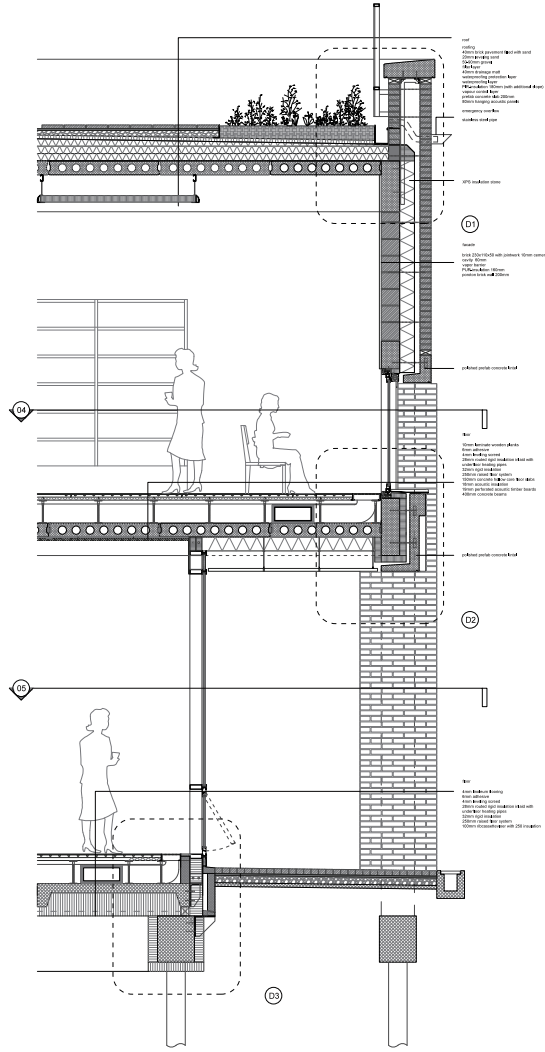
Third Floor



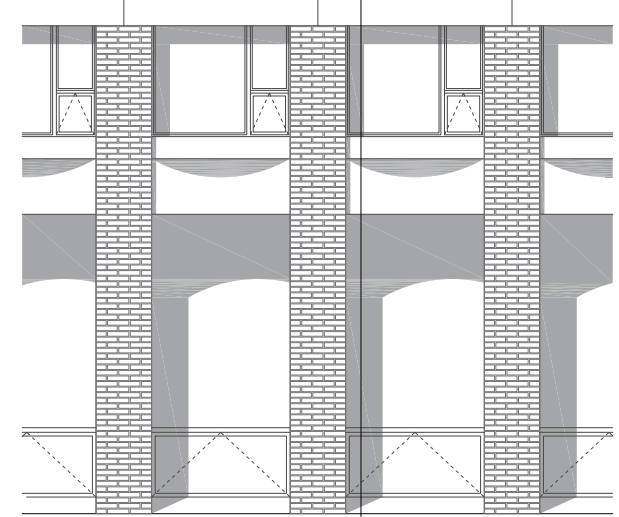
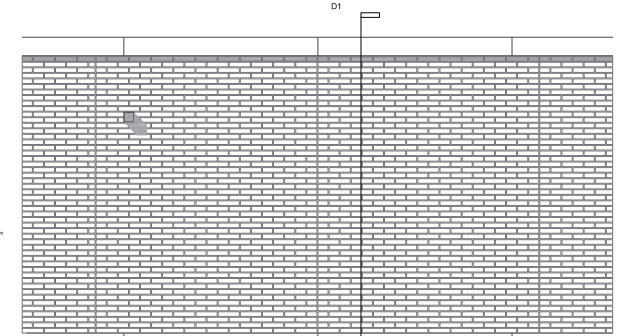
01 Front Facade Detail Internal Elevation



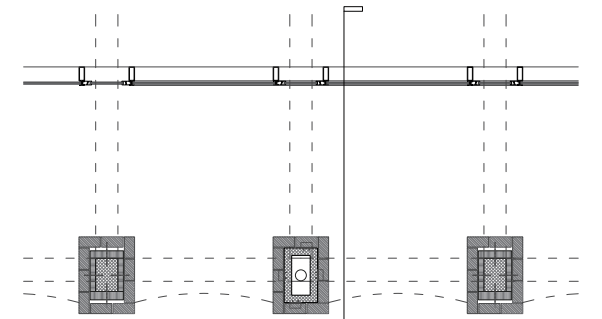
04 First Floor Plan Detail



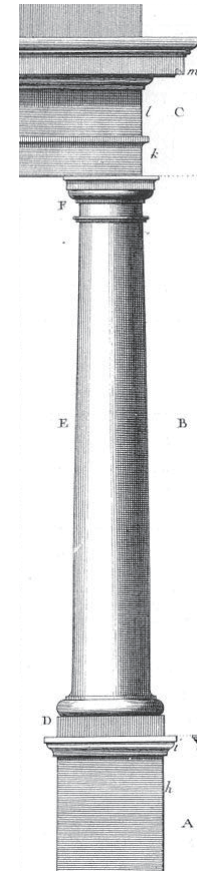
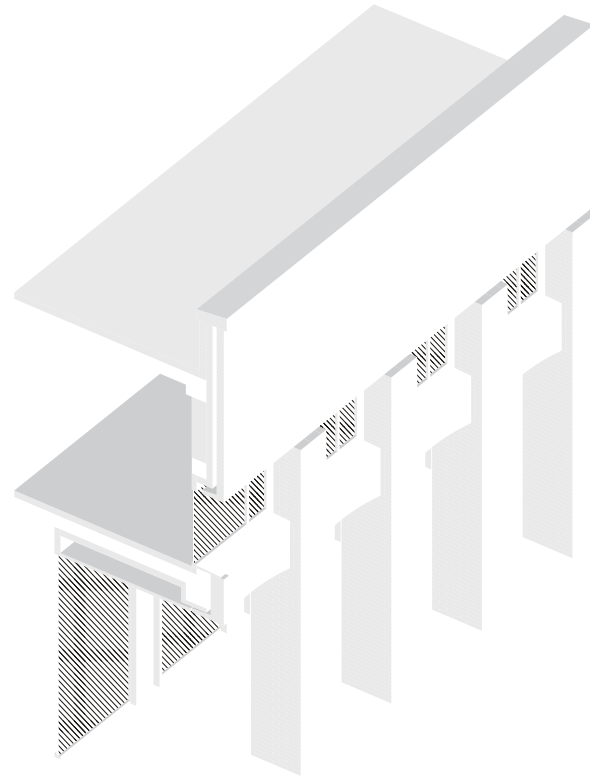
02 Front Facade Detail Section



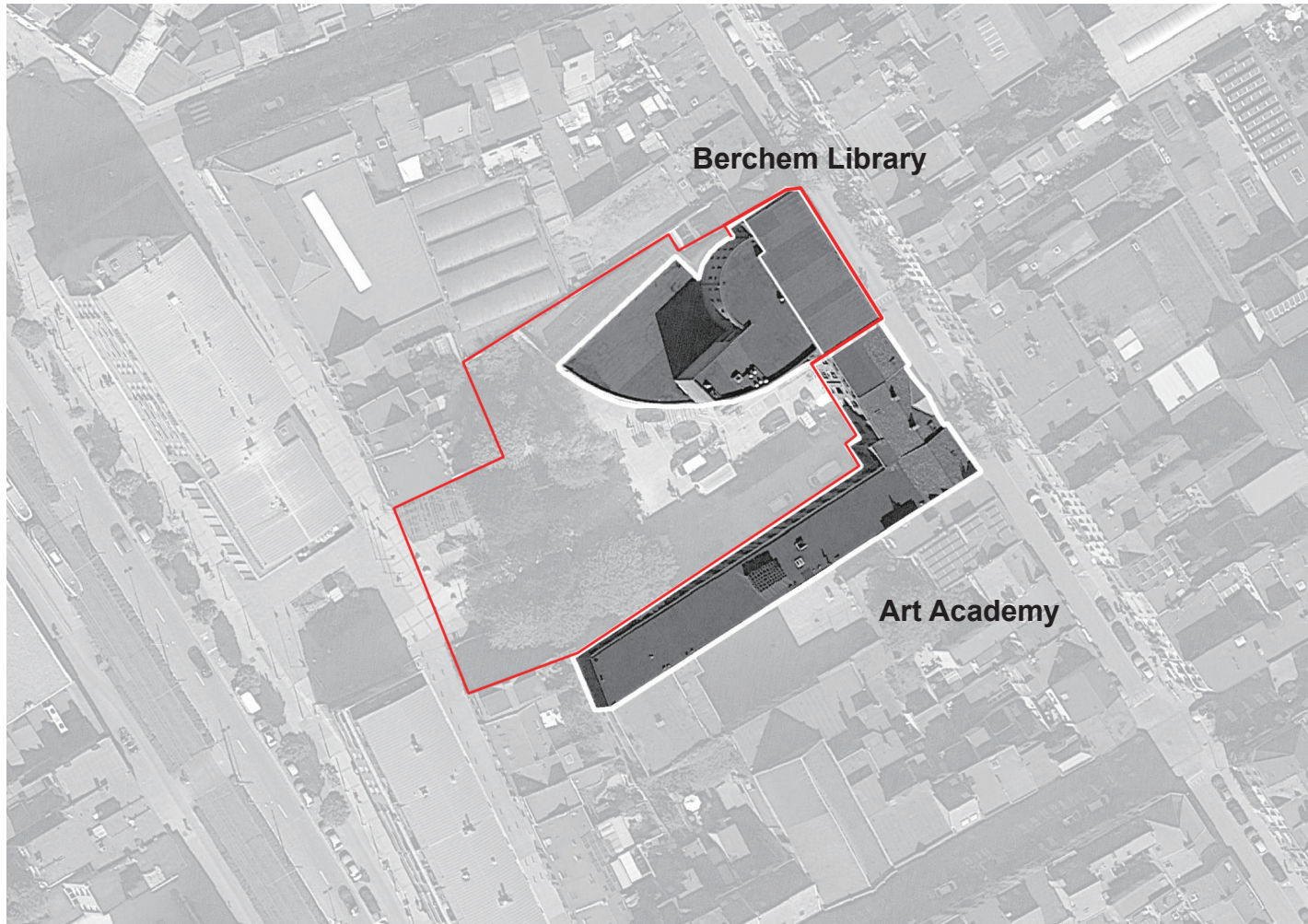
03 Front Elevation Detail



05 Ground Floor Plan Detail



Typical facade fragment
stacking



Berchem Library, 1987
2100 sqm



Internal facade of Academie Berchem



Sculpture studio

Academie Berchem
1880

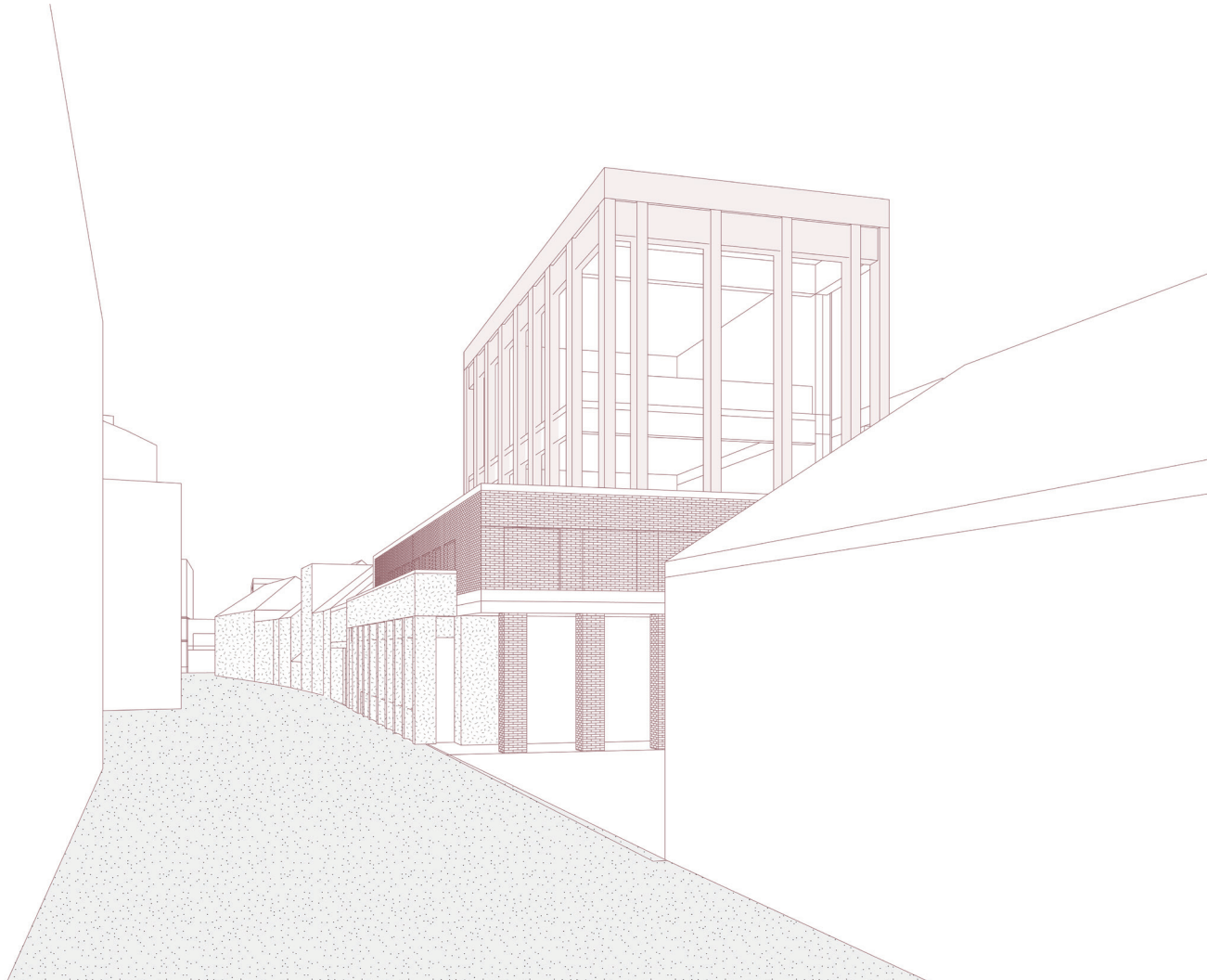
In the Music-Word Academy:

the instrument lessons start at a different time in September than the group courses. As soon as concrete information is known, we place it on the website. Consult here the [timetables](#).

MUSIC

- **First grade**
 - Already FULL !: Kunstenbad 1D (Sterrenkijker) & Kunstenbad 2A (Willem Van Laarstraat)
 - START instrument initiation (for 7-year olds who follow the arts course) depending on the day: on Monday start October 1, on Tuesday start October 9, on Wednesday start October 3, on Thursday start October 4, on Friday start October 12, on Saturday start on October 13
- **Second degree**
 - Already VOLZET: Music workshop 2A and 3A (Willem Van Laarstraat)
 - START music studio lessons (formerly AMV): from Saturday 8 September
- **Third degree**
 - START lessons music lab (formerly AMC): from Monday 10 September
- **General**
 - music history from Tuesday 25 September
 - team groups from Monday 17 September





Column transformation
transform from street scale to square scale

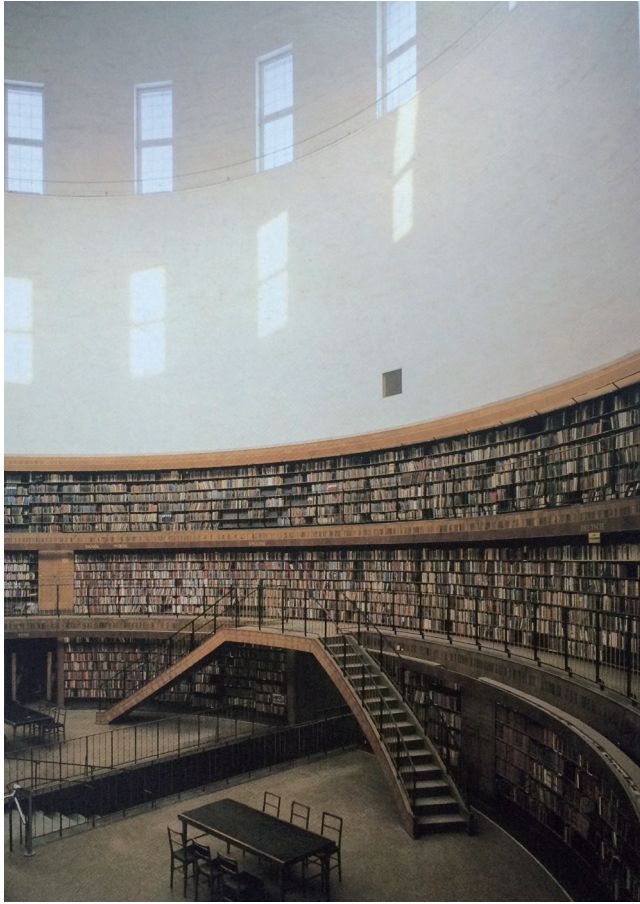




Material Comparison
red versus yellow brick



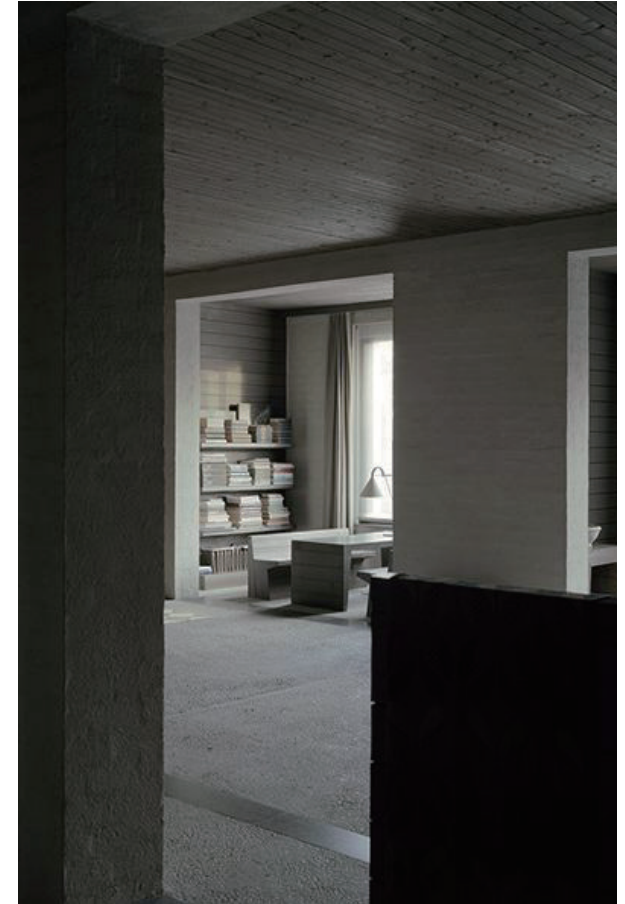
*Excursion to Naples
The Ruin of Pompeii forum*



*Stockholm Public Library
Gunnar Asplund*



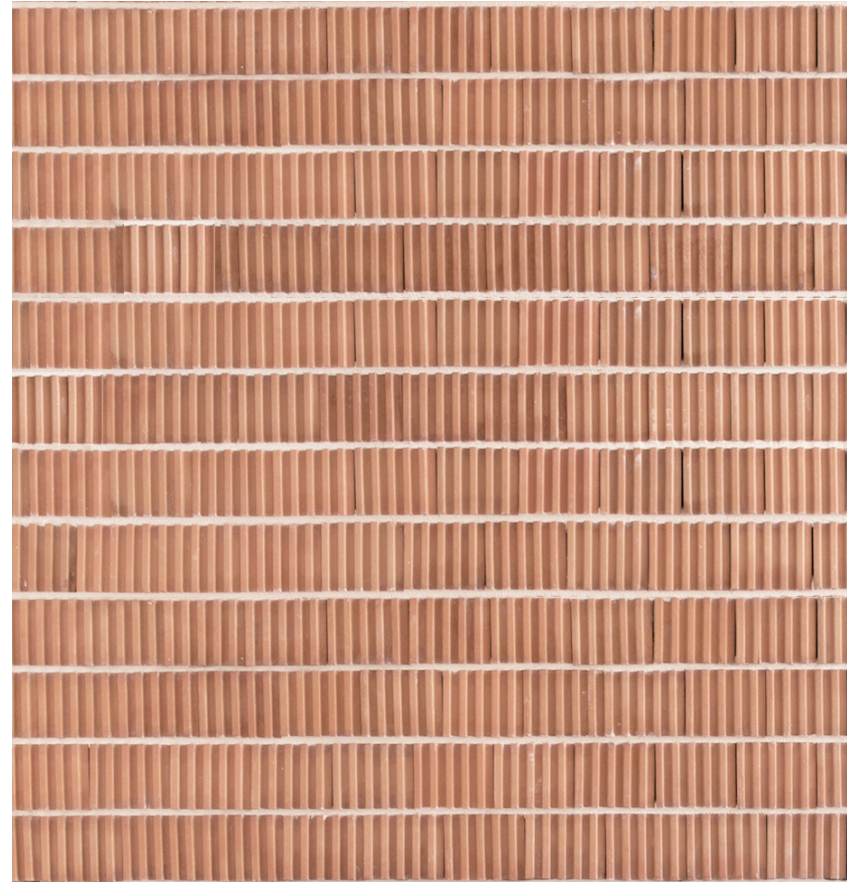
*Bibliothèque Sainte Geneviève
Alvaro Siza*



*St Benedictusberg
Dom Hans van der Laan*



*New Crematorium
Johan Celsing*



Poroton Brick



Museum of Ocean and Surf
Steven Holl



Primate Chair
Achille Castiglioni

Primate Chair
behavior / gesture / movement of body influence how people perceive the space

blasé

(blɑːzeɪ ⓘ, US blɑːzeɪ ⓘ) also blase

Collins COBUILD

adjective

If you describe someone as **blasé**, you mean that they are not easily impressed, excited, or worried by things, usually because they have seen or experienced them before.

[disapproval]

*Far too many people are blasé about their driving skills. [+ about]
...his seemingly blasé attitude.*

Synonyms: nonchalant, cool, bored, distant [More Synonyms of blase](#)

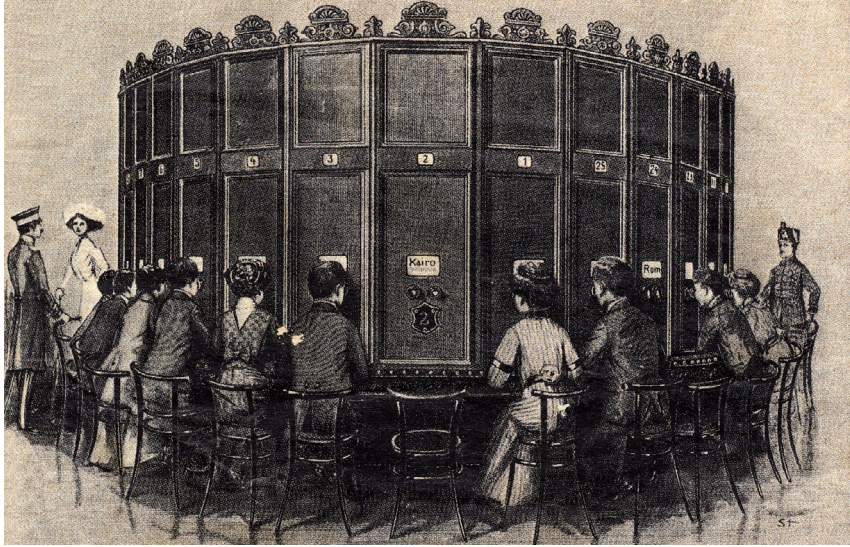


Blase behavior

Splügen brau
Achille Castiglioni

Primate Chair

behavior / gesture / movement of body influence the perception of space



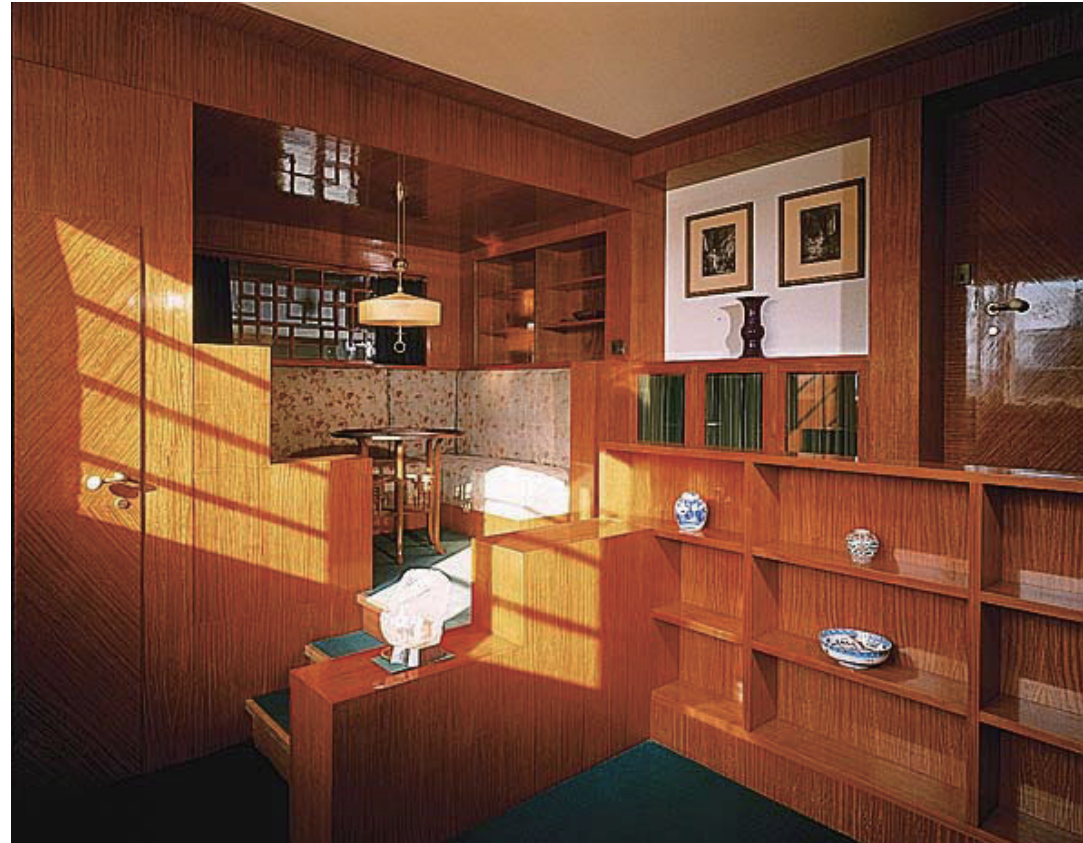
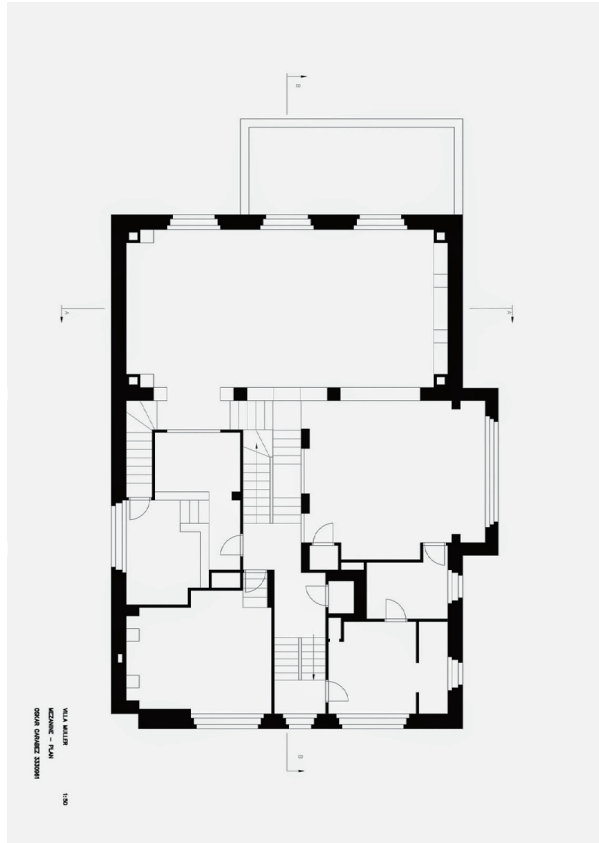
Peep
body stay in the public while the mind enter the private realm



Rear window
the intimate moment created by peeping



Rear window
day and night sence
ordinary / silhouette



Muller house
reception room for hostess
Adolf Loos



Grammar of the brick
heavyness of the brick



Monadnock building
classical versus expression



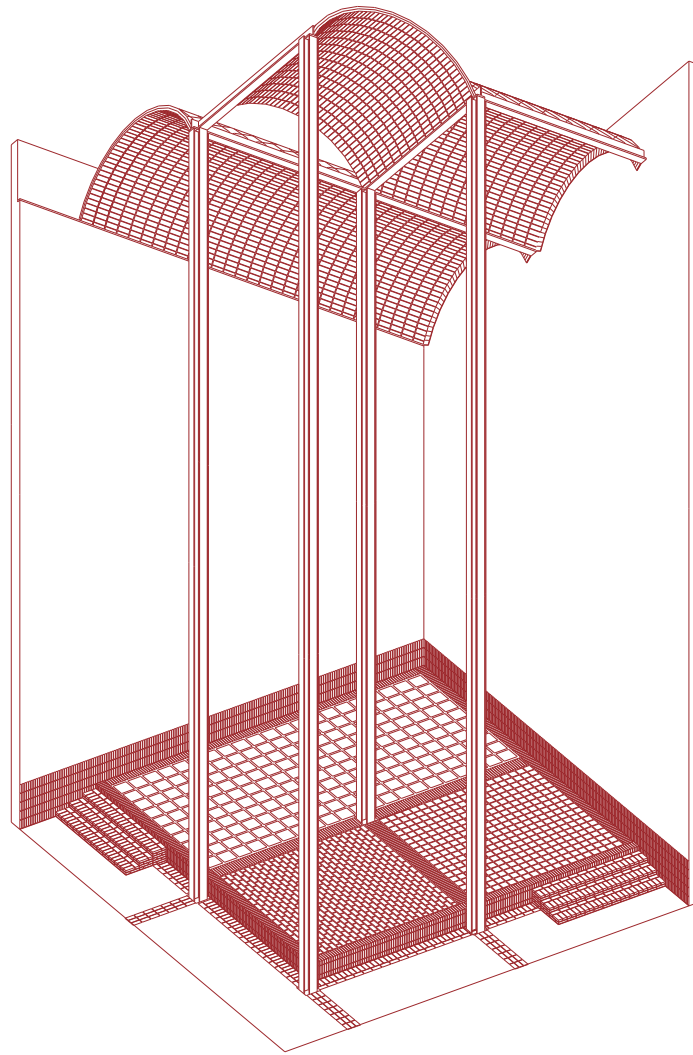
*Excursion to Naples
Living on the street*



*Excursion to Naples
The inside-out city*

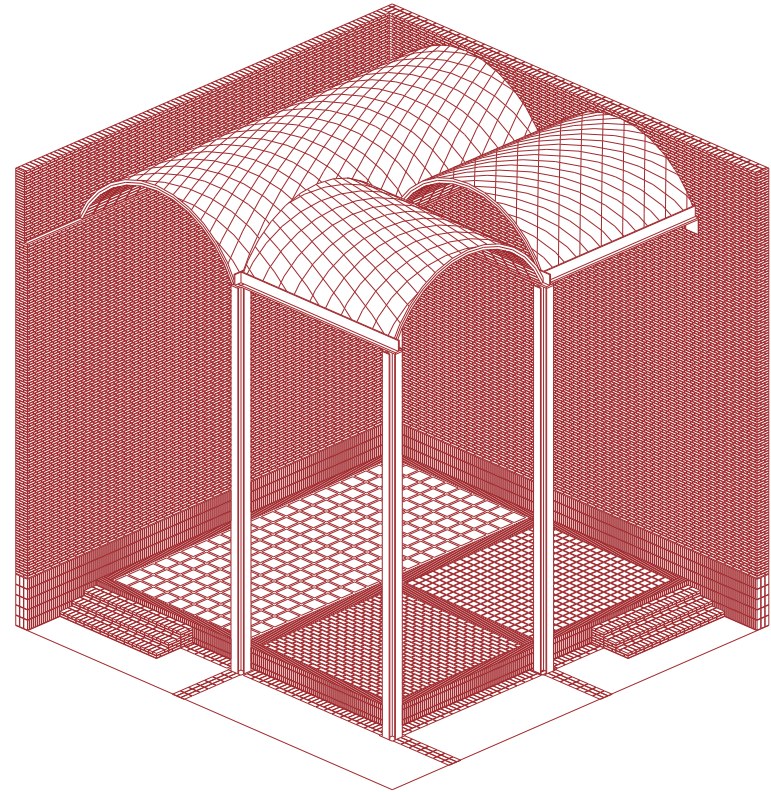


Spatial test models
Scale 1:50



Conceptual Axonometric

Exterior masonry bond implement in Interior



PI Model
Structure and Lighting