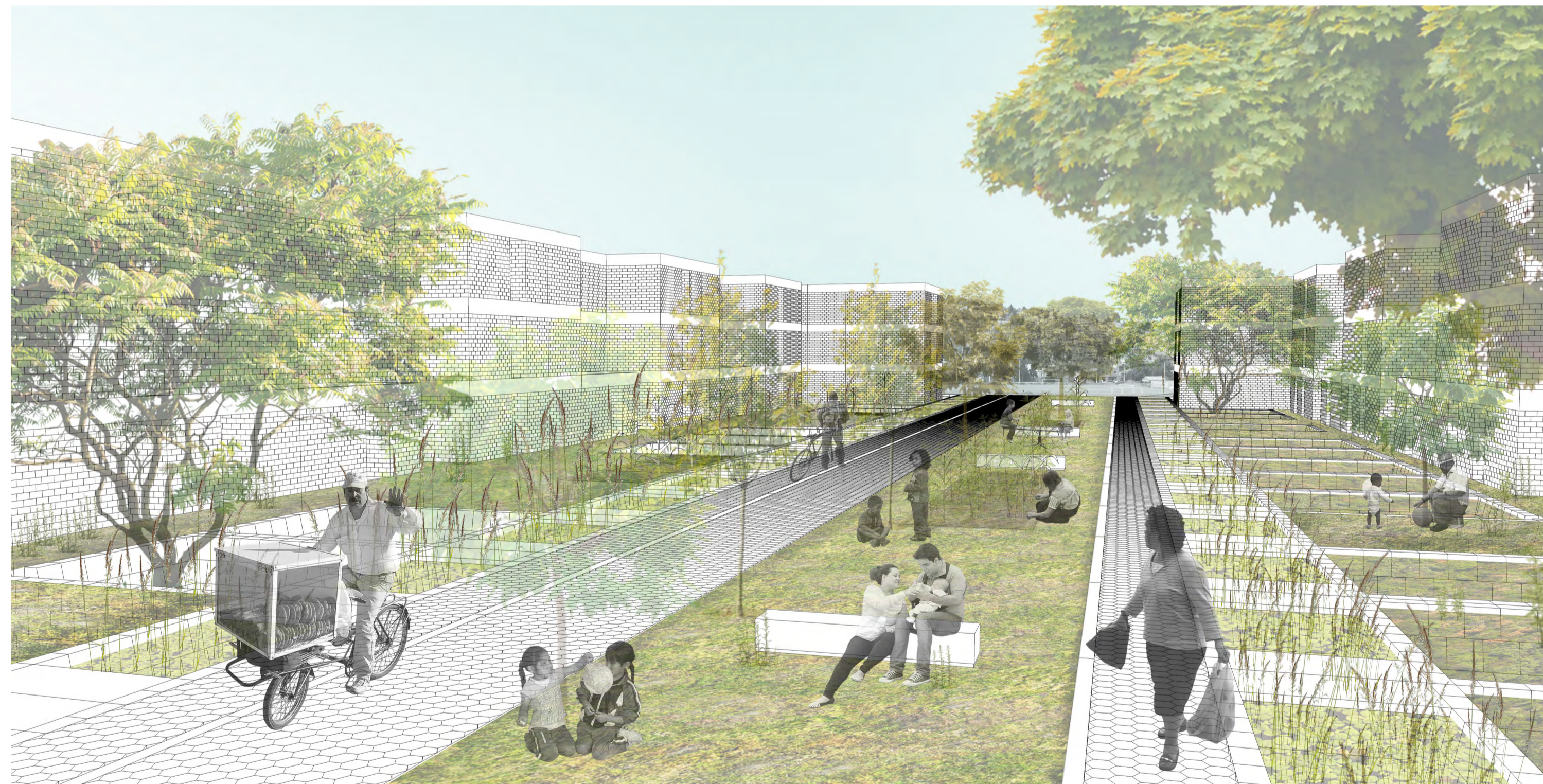
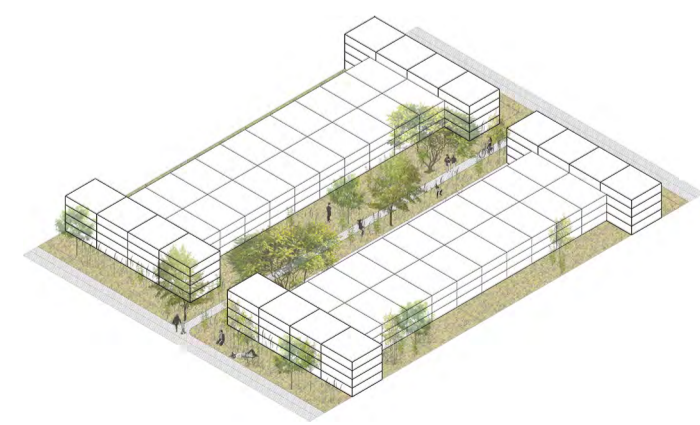


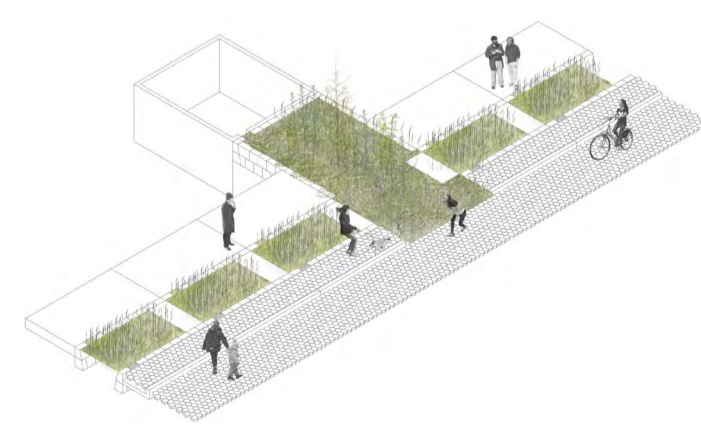
Street profile of typical block



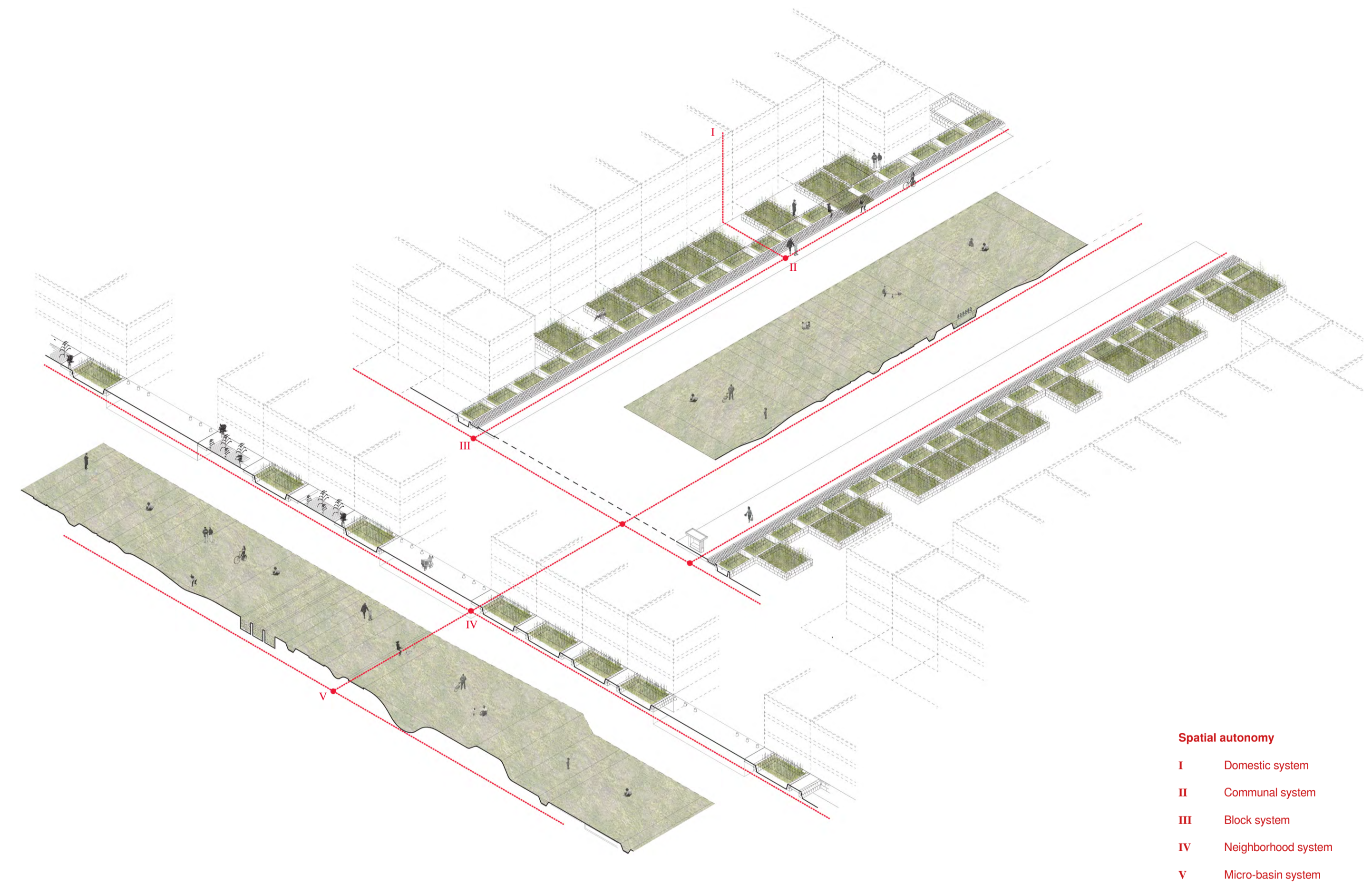
Potential scenario



Potential block transformation



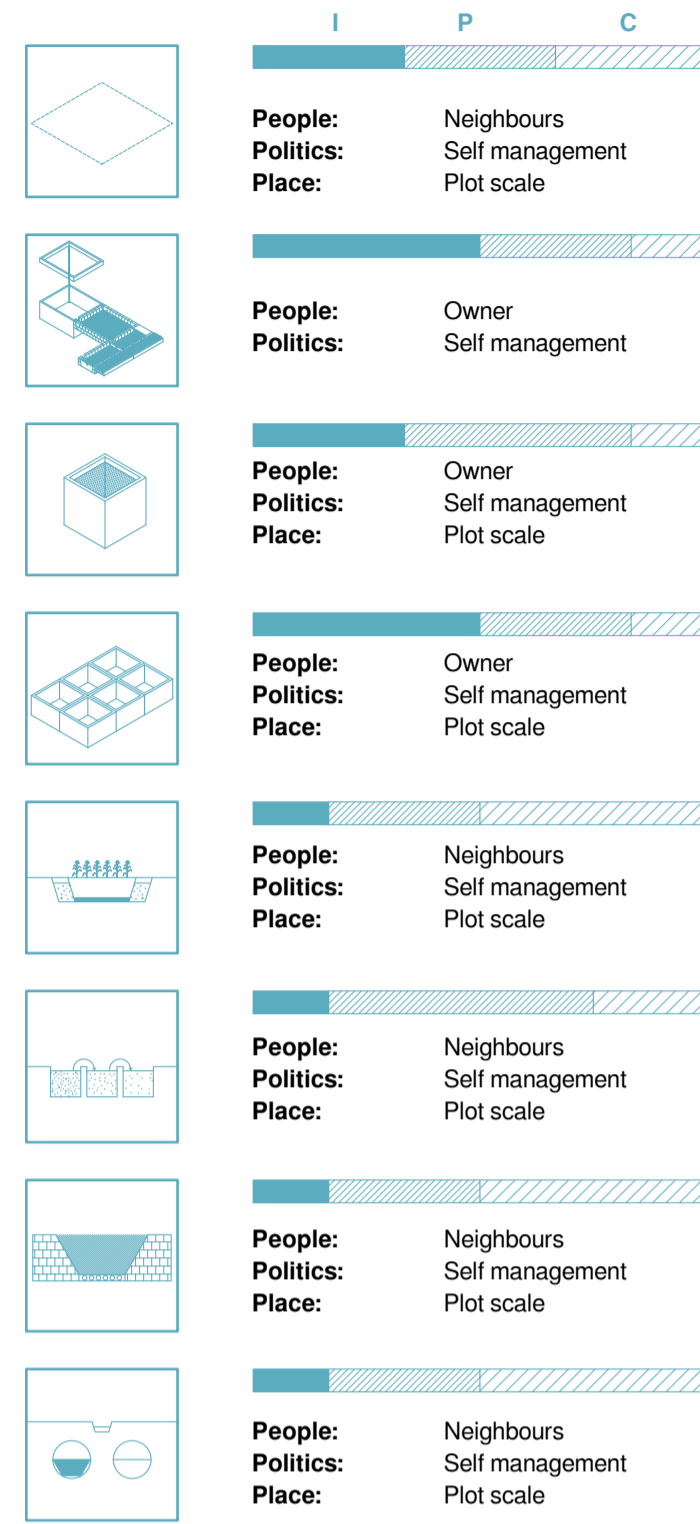
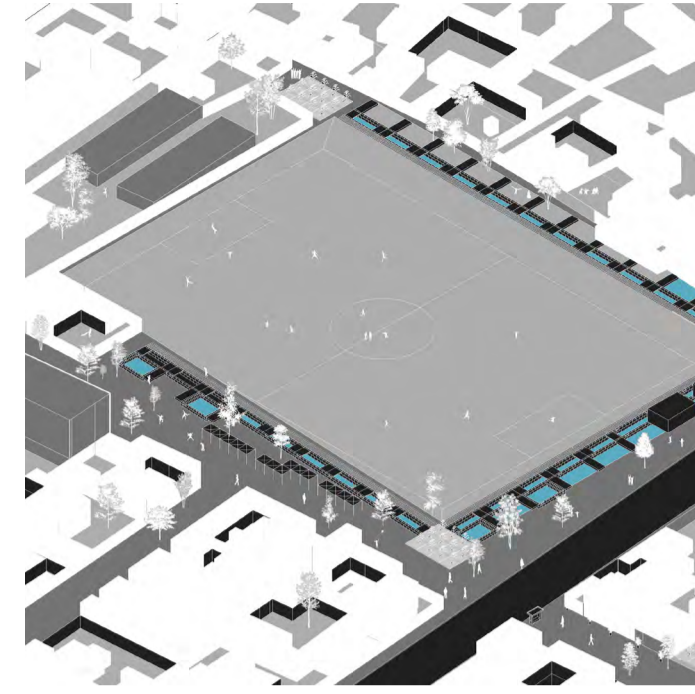
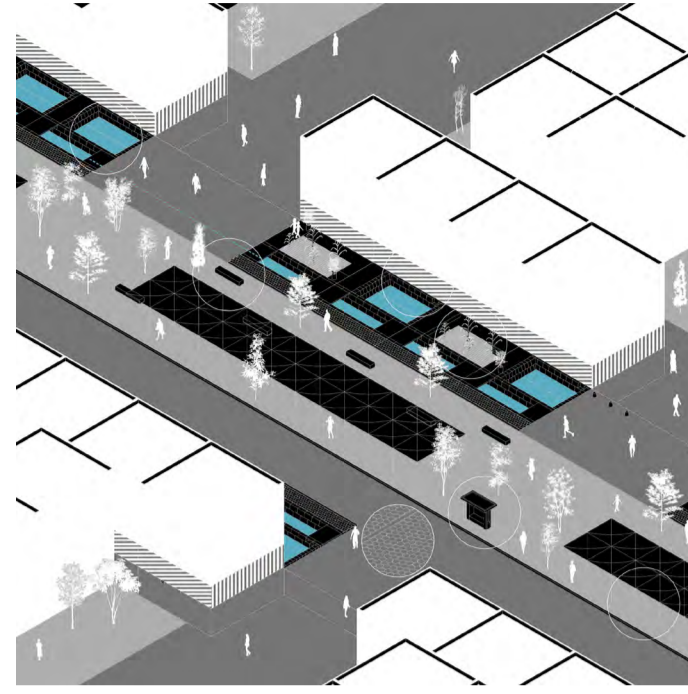
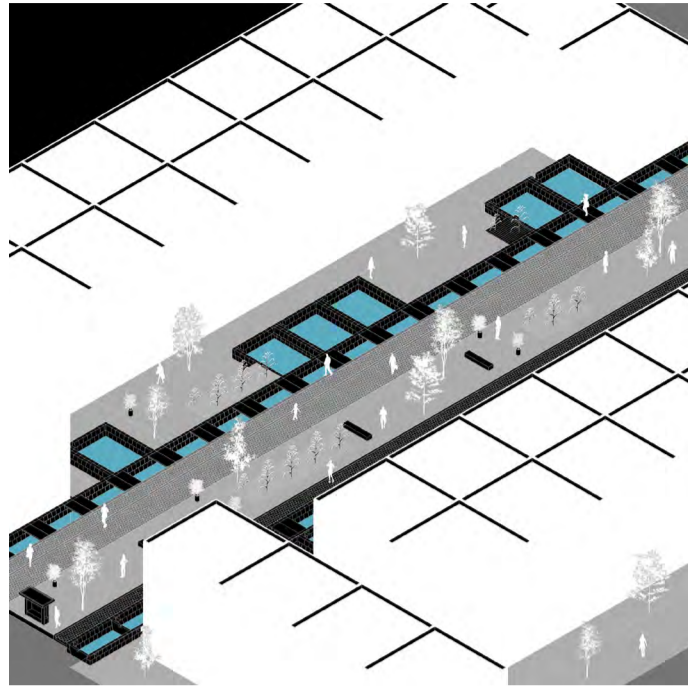
Potential public space transformation



- Spatial autonomy**
- I Domestic system
  - II Communal system
  - III Block system
  - IV Neighborhood system
  - V Micro-basin system



## Water treatment strategy



**WATER TREATMENT INFRASTRUCTURE**

**Constraints**

- Poor solid waste management

**Enablers**

- High rainfall

**WATER RETENTION**

**Constraints**

- Highly densified

**Enablers**

- Good soil mechanics

**GROUNDWATER RECHARGE**

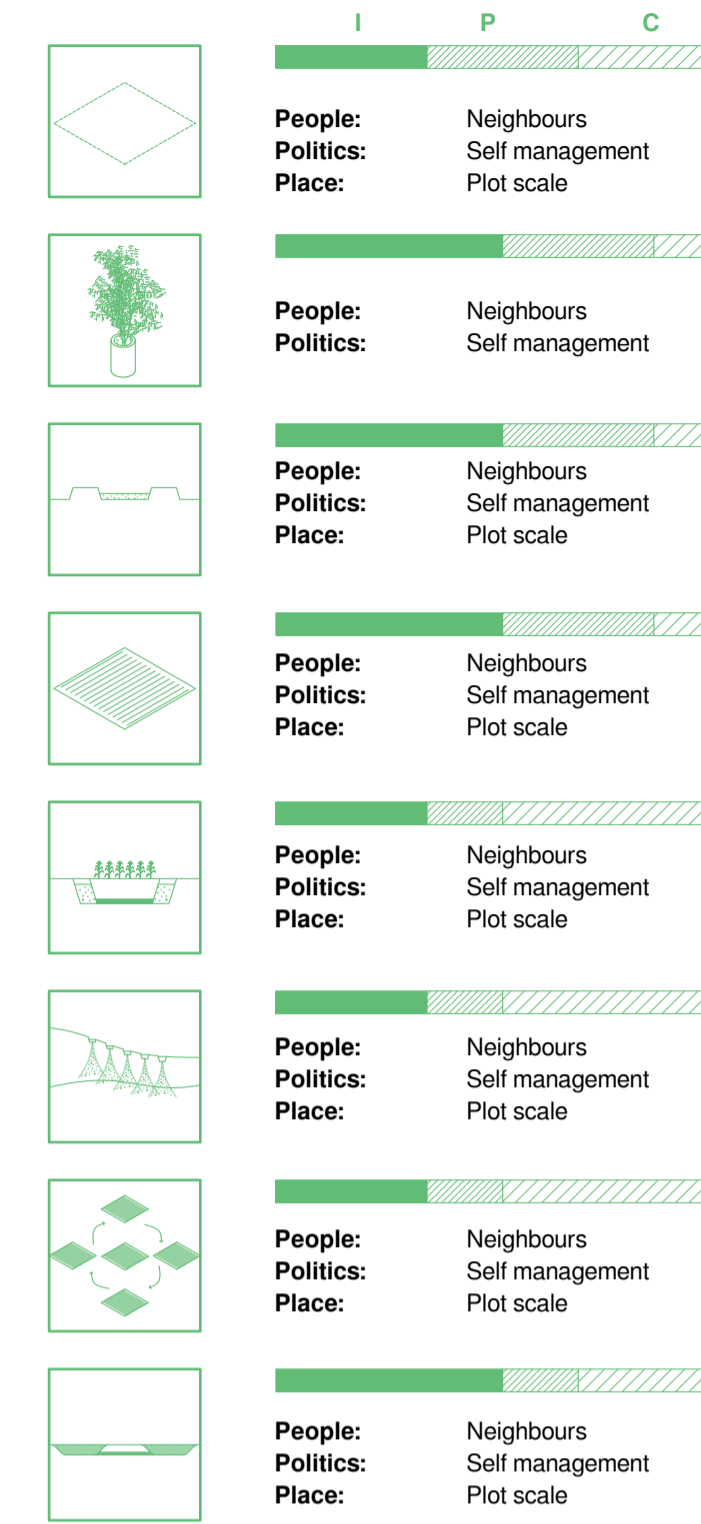
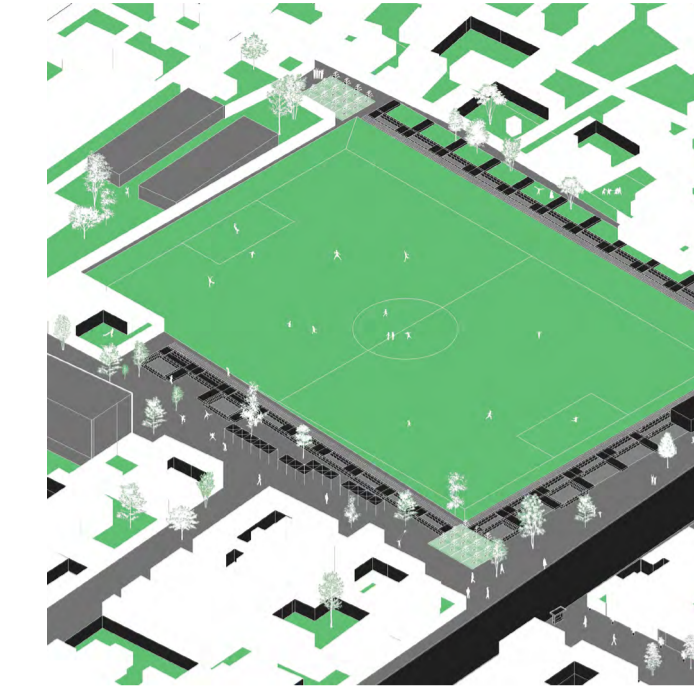
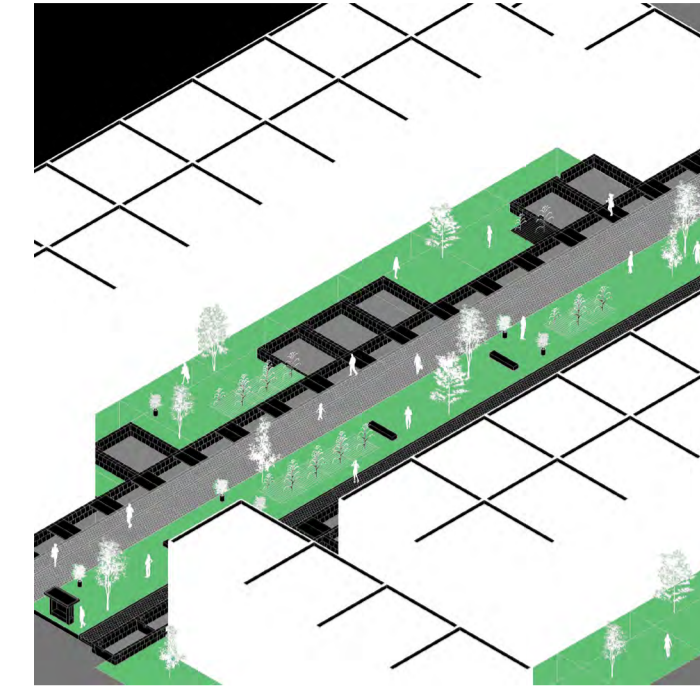
**Constraints**

- Degraded soil quality

**Enablers**

- Highly infiltrable soil

## Health and Food production strategy



**LOCAL FOOD PRODUCTION**

**Constraints**

- Short rainy seasons

**Enablers**

- Highly productive landscapes

**RENATURALIZE URBAN PERIPHERY**

**Constraints**

- Increasing housing market

**Enablers**

- Strong existing green network

**DECREASE URBAN SPRAWL**

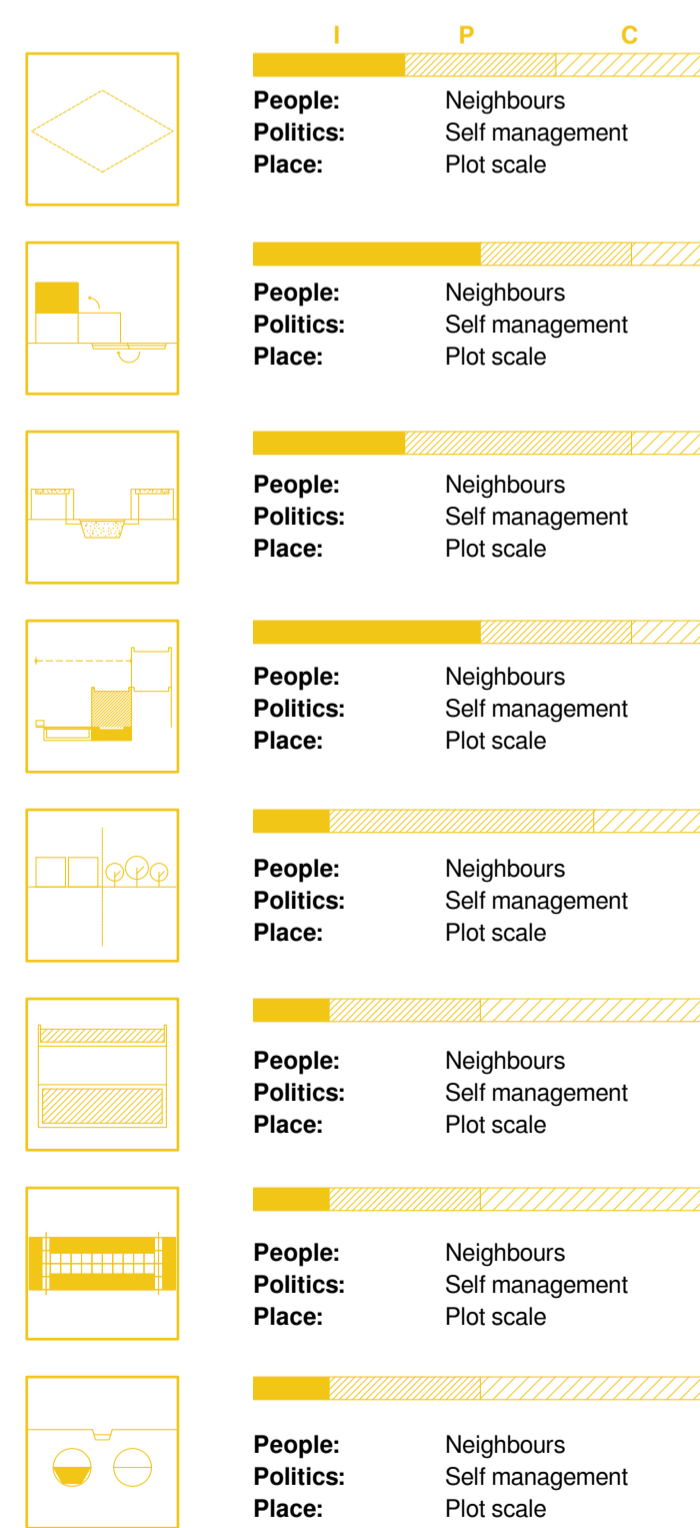
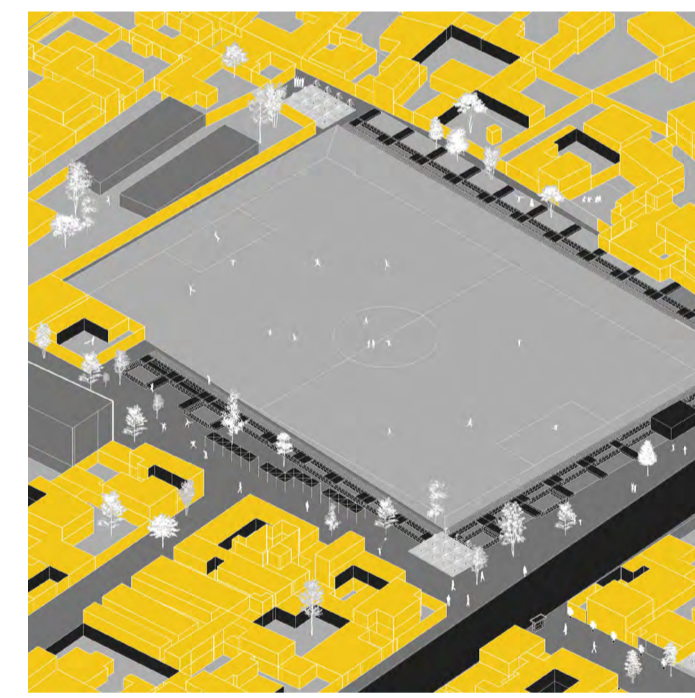
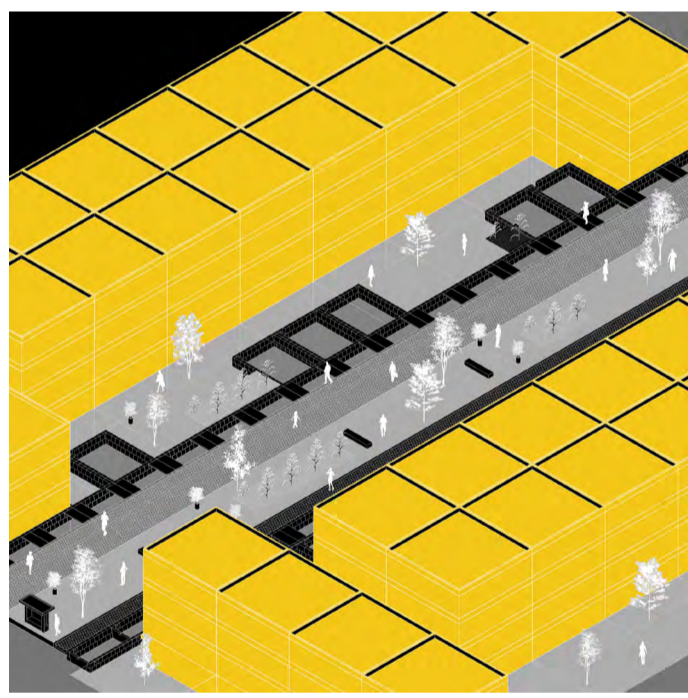
**Constraints**

- Increasing population due to immigration from rural areas

**Enablers**

- Good preservation of forests and natural areas

## Housing regen. strategy



**HOUSING REDENSIFICATION**

**Constraints**

- Competition for housing market is highly monopolized

**Enablers**

- Financial incentives from SEDUVI

**COOPERATIVE HOUSING SCHEME**

**Constraints**

- Lack of community organization

**Enablers**

- Well knit community

**REDISTRIBUTION OF URBAN DENSITY**

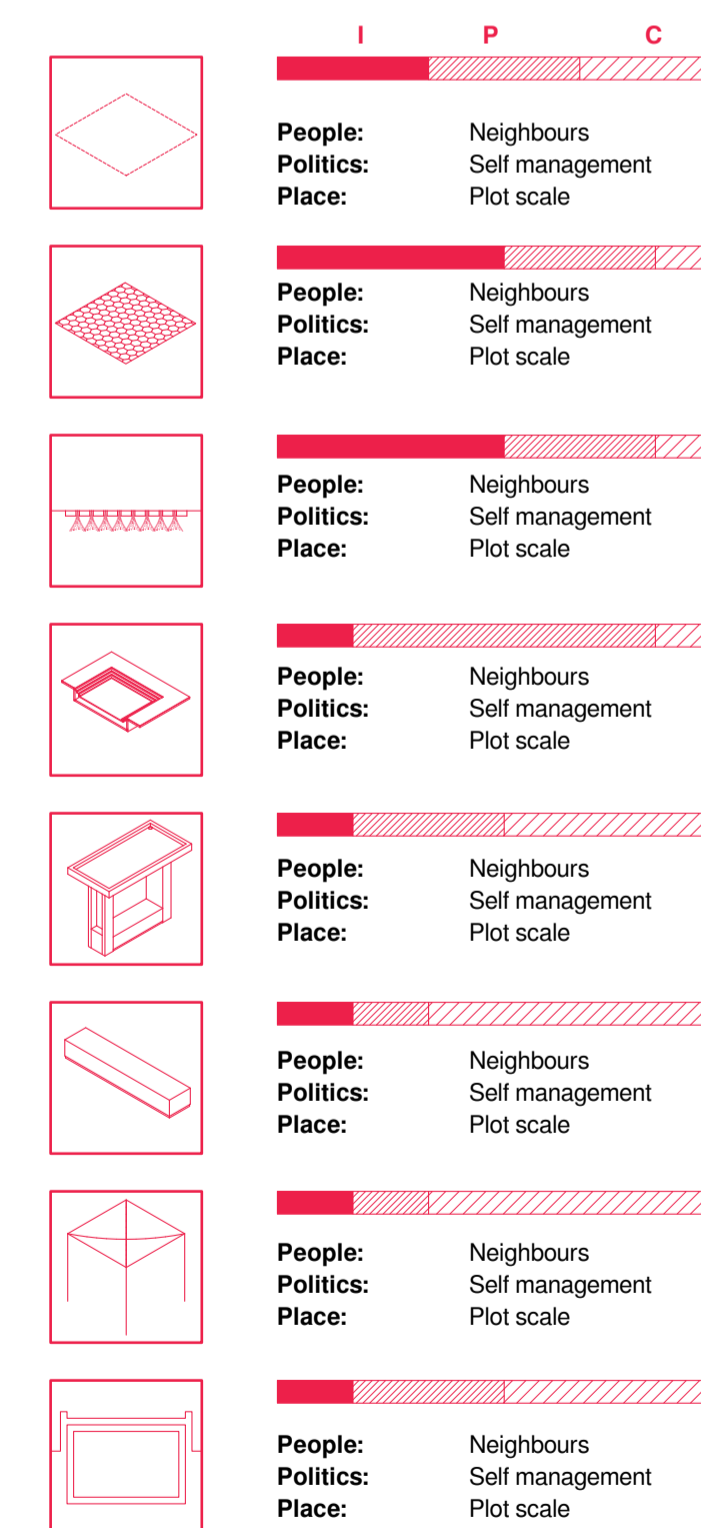
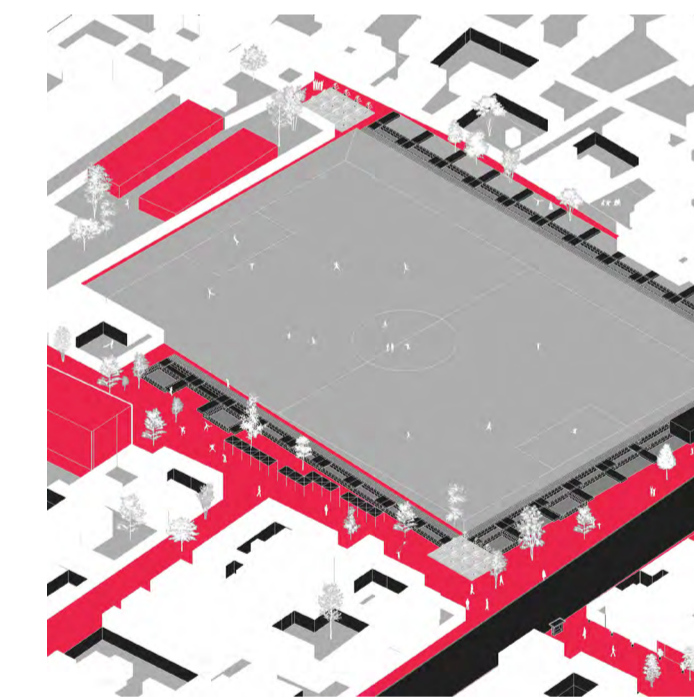
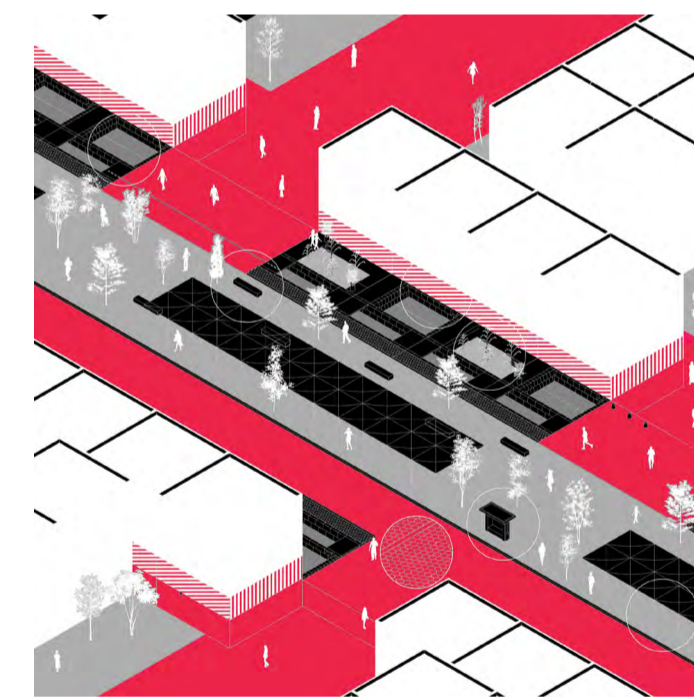
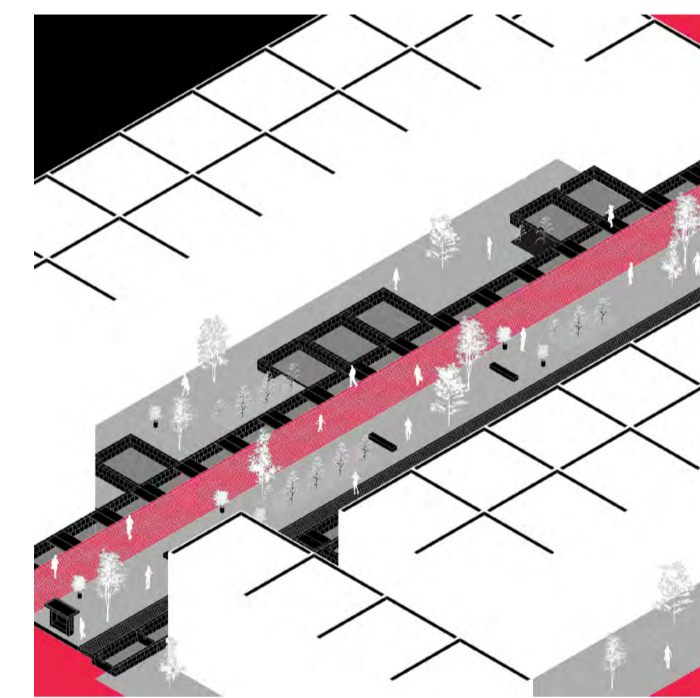
**Constraints**

- Strict zoning laws

**Enablers**

- Pressure from federal funding programs

## Public space and services strategy



**PUBLIC SPACE REGENERATION**

**Constraints**

- Low maintenance budget

**Enablers**

- High demand

**DECENTRALIZATION OF PUBLIC SERVICES**

**Constraints**

- High demand of services

**Enablers**

- Abundant informal services

**CREATION OF STRONG LOCAL ECONOMY**

**Constraints**

- Large scale monopolies

**Enablers**

- Distance is favorable