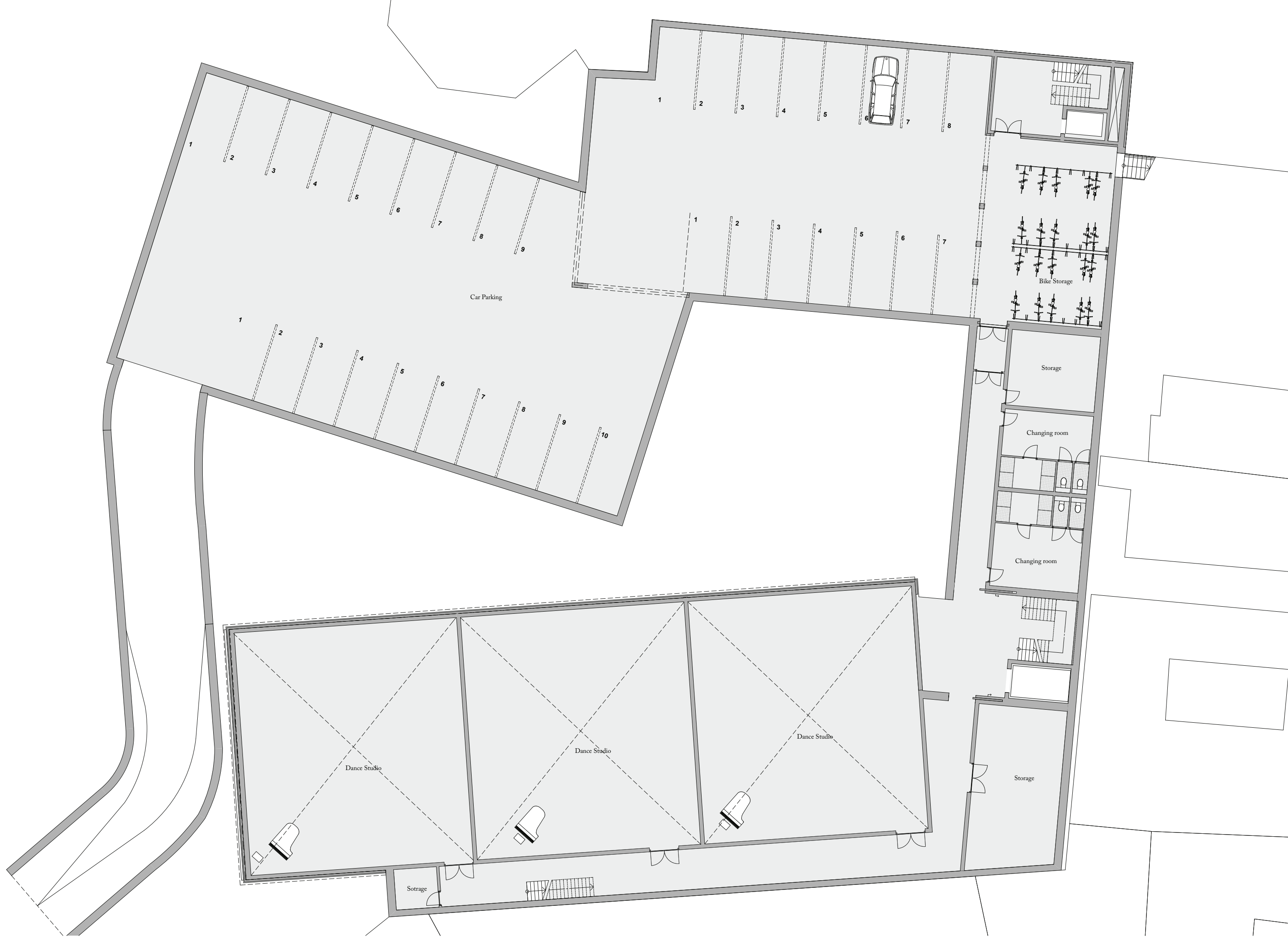


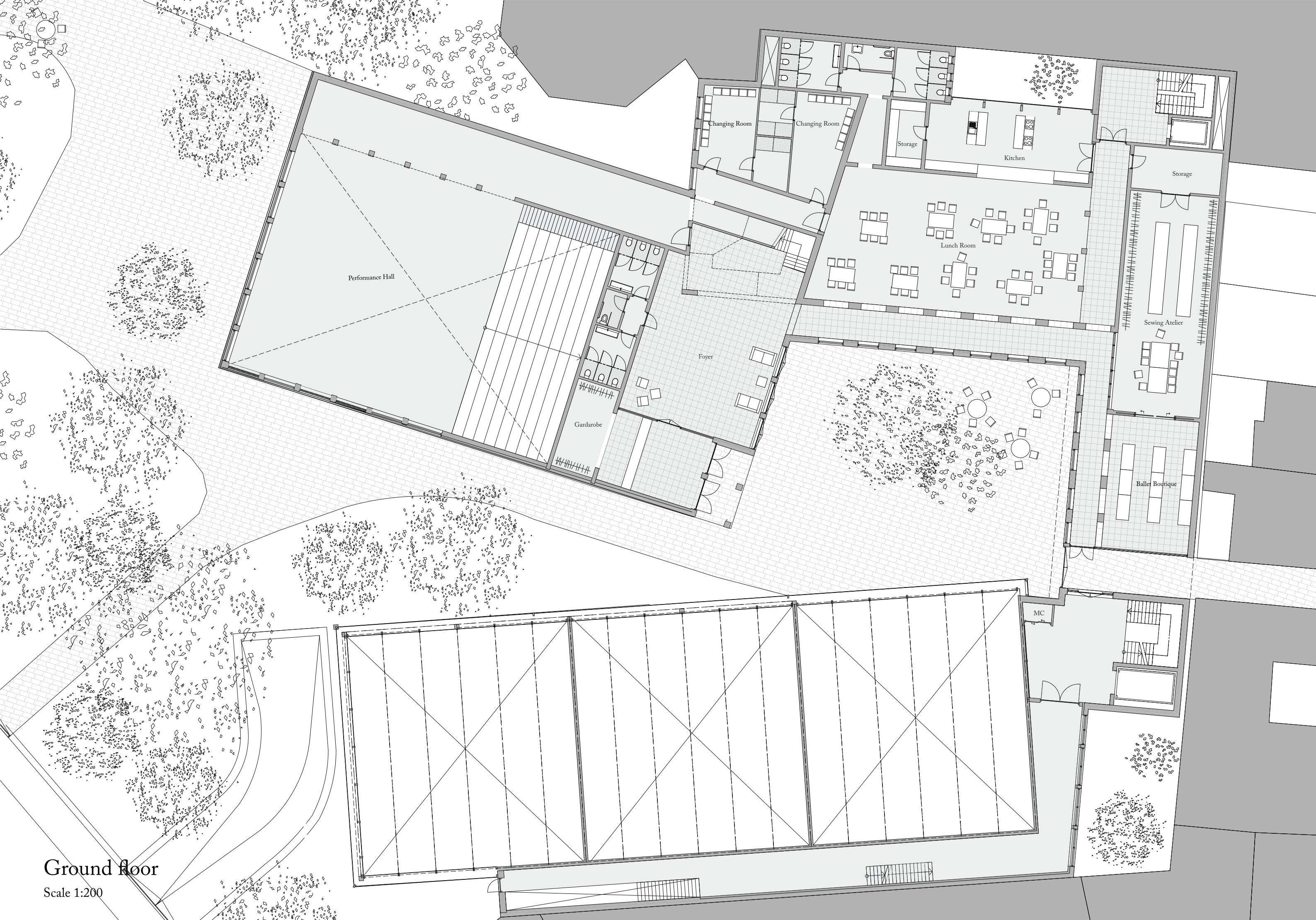


Site

Scale 1:1000







Ground floor

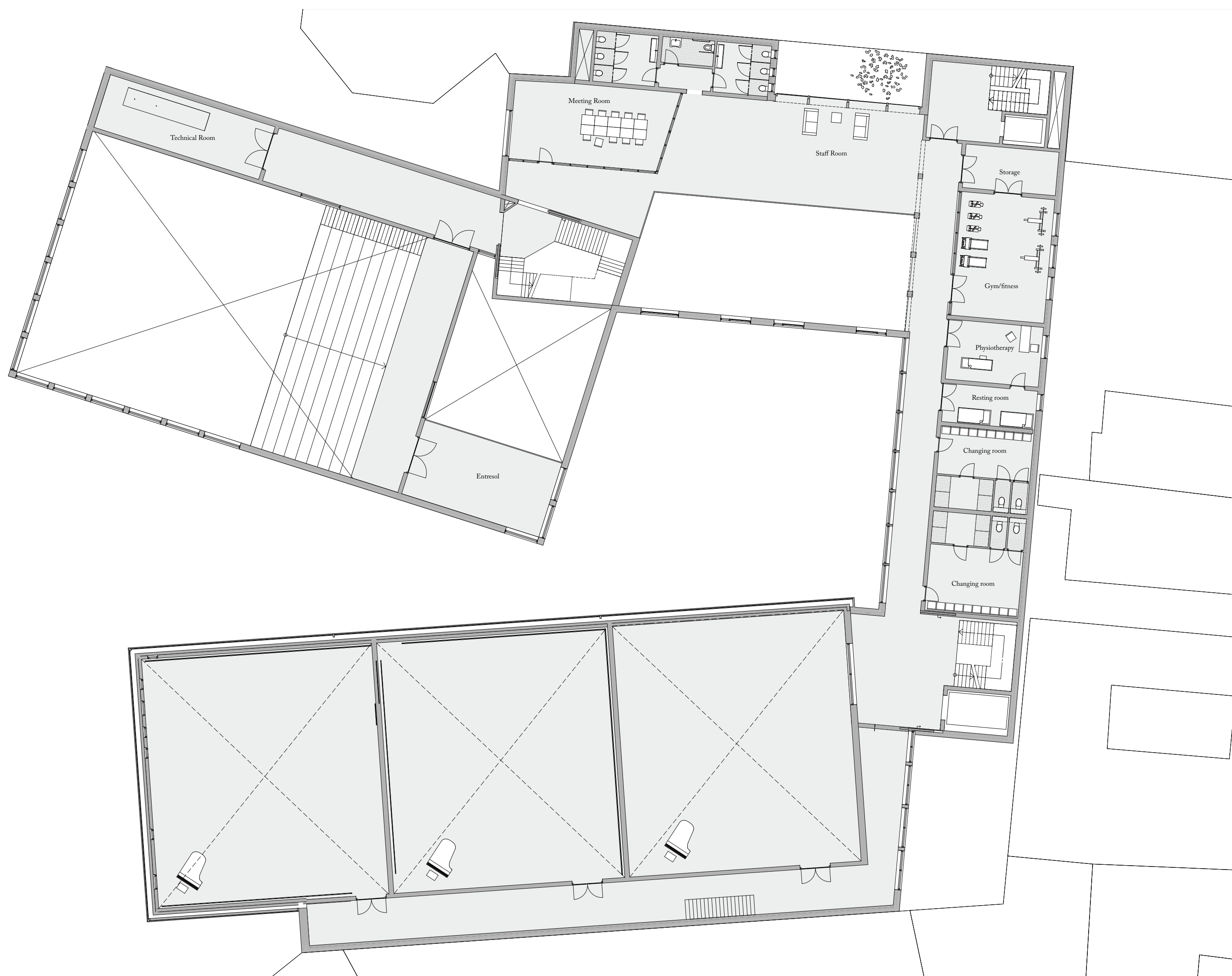
Scale 1:200



Second floor

Scale 1:200





First floor

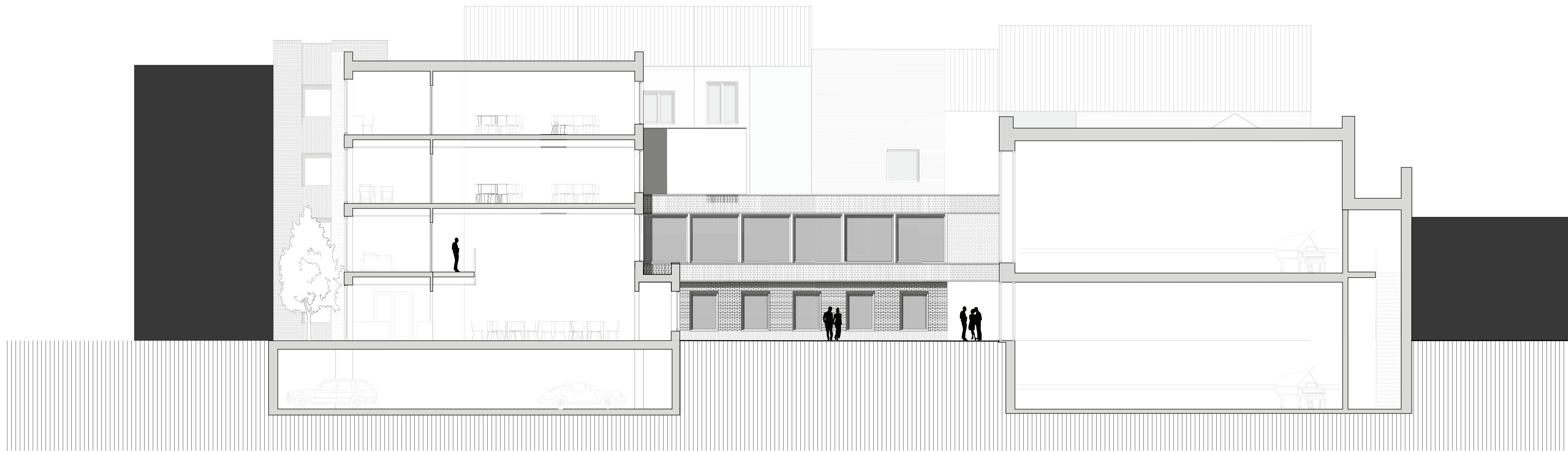
Scale 1:200



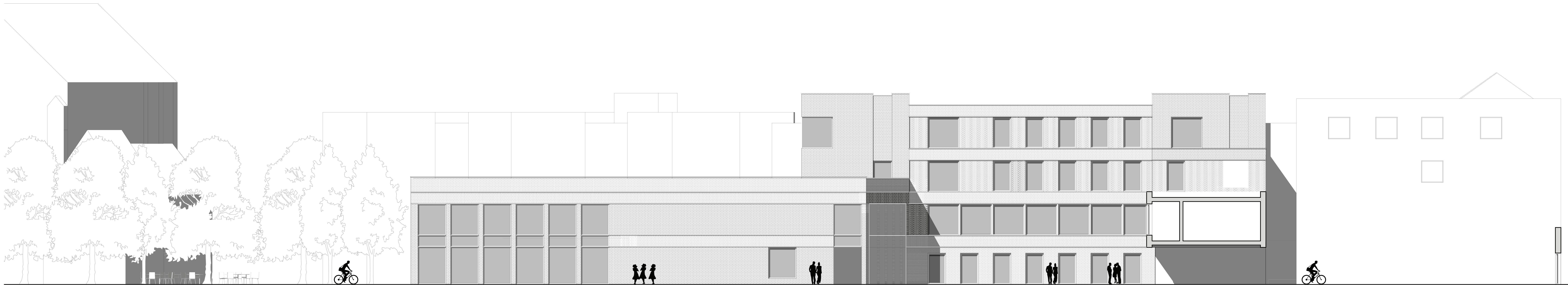
Third floor

Scale 1:200

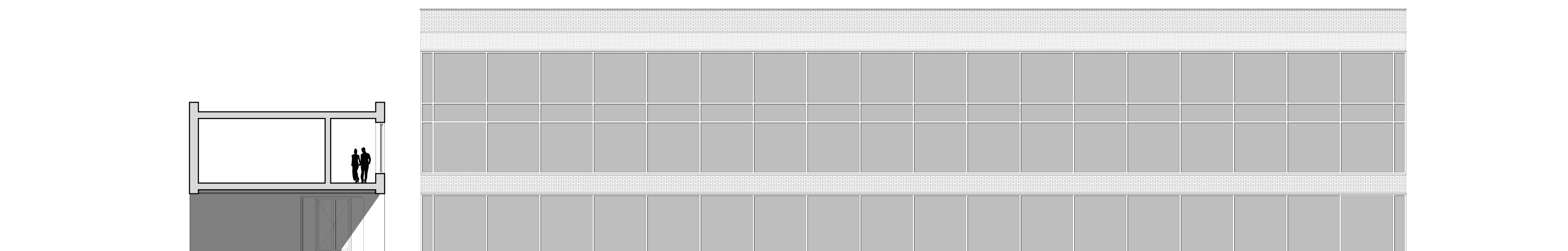




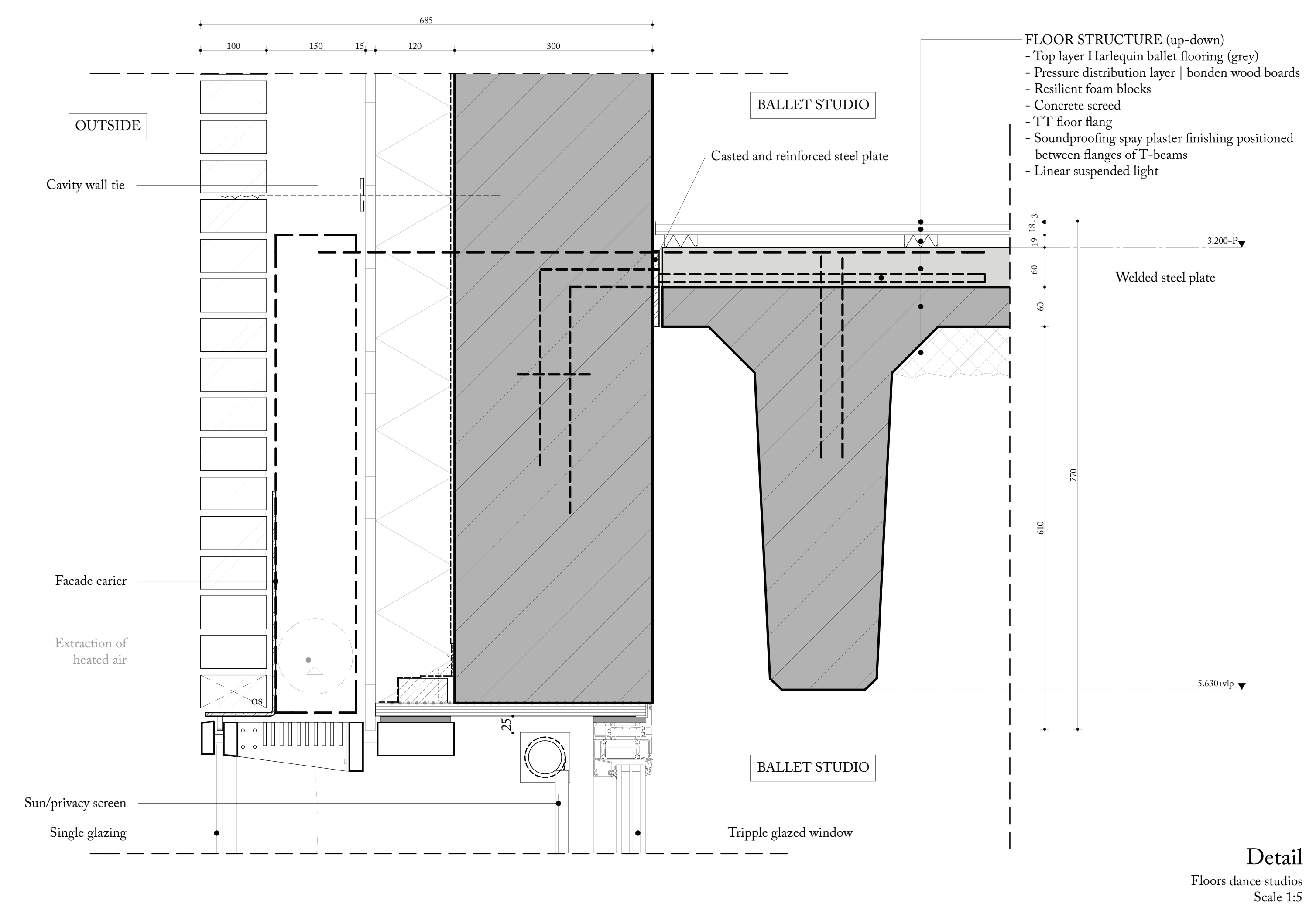
Facade/Section  
Scale 1:100



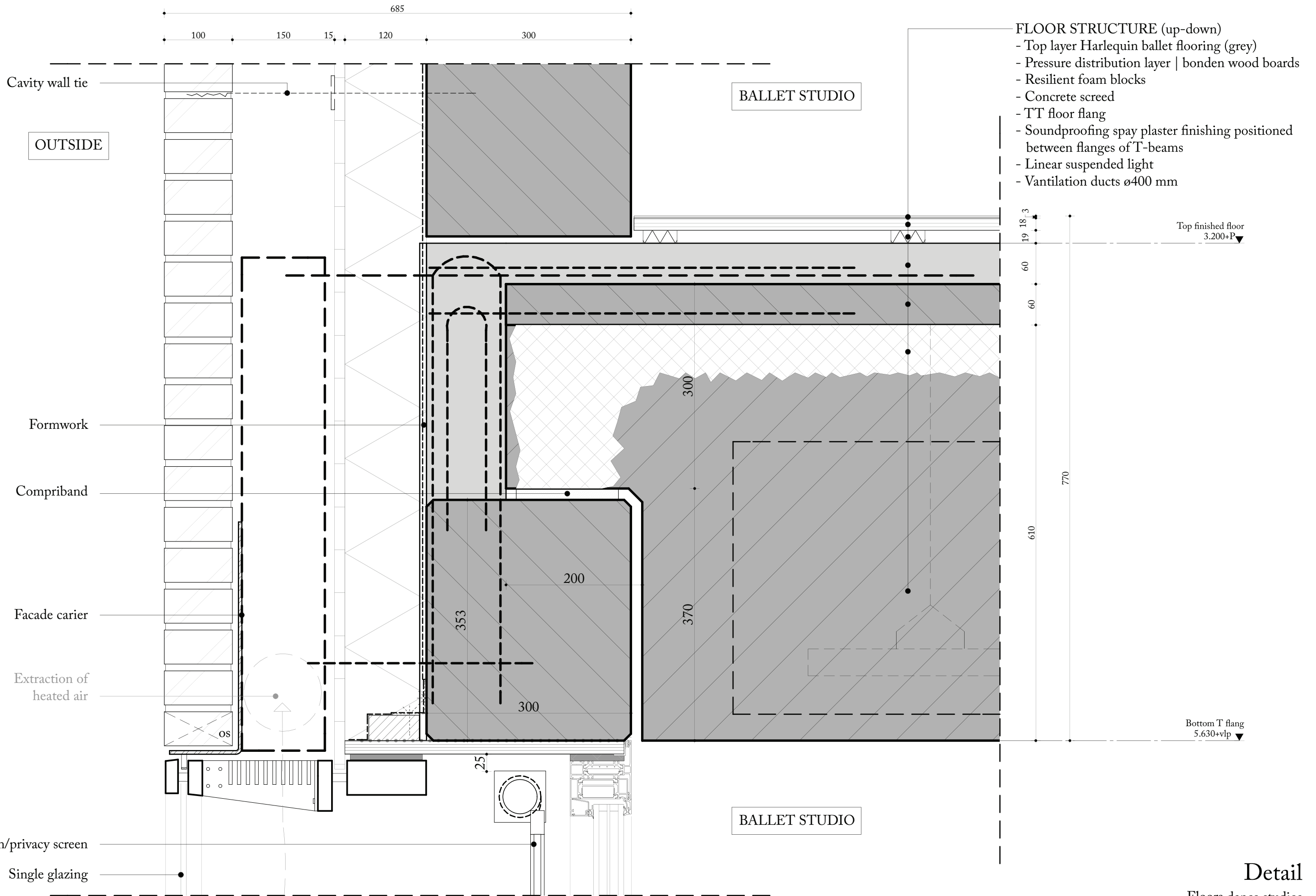
Facade Educaion and Performance Hall  
Scale 1:100



Front Facade Ballet Building  
Scale 1:100







**Detail**  
Floors dance studios  
Scale 1:5



OUTSIDE

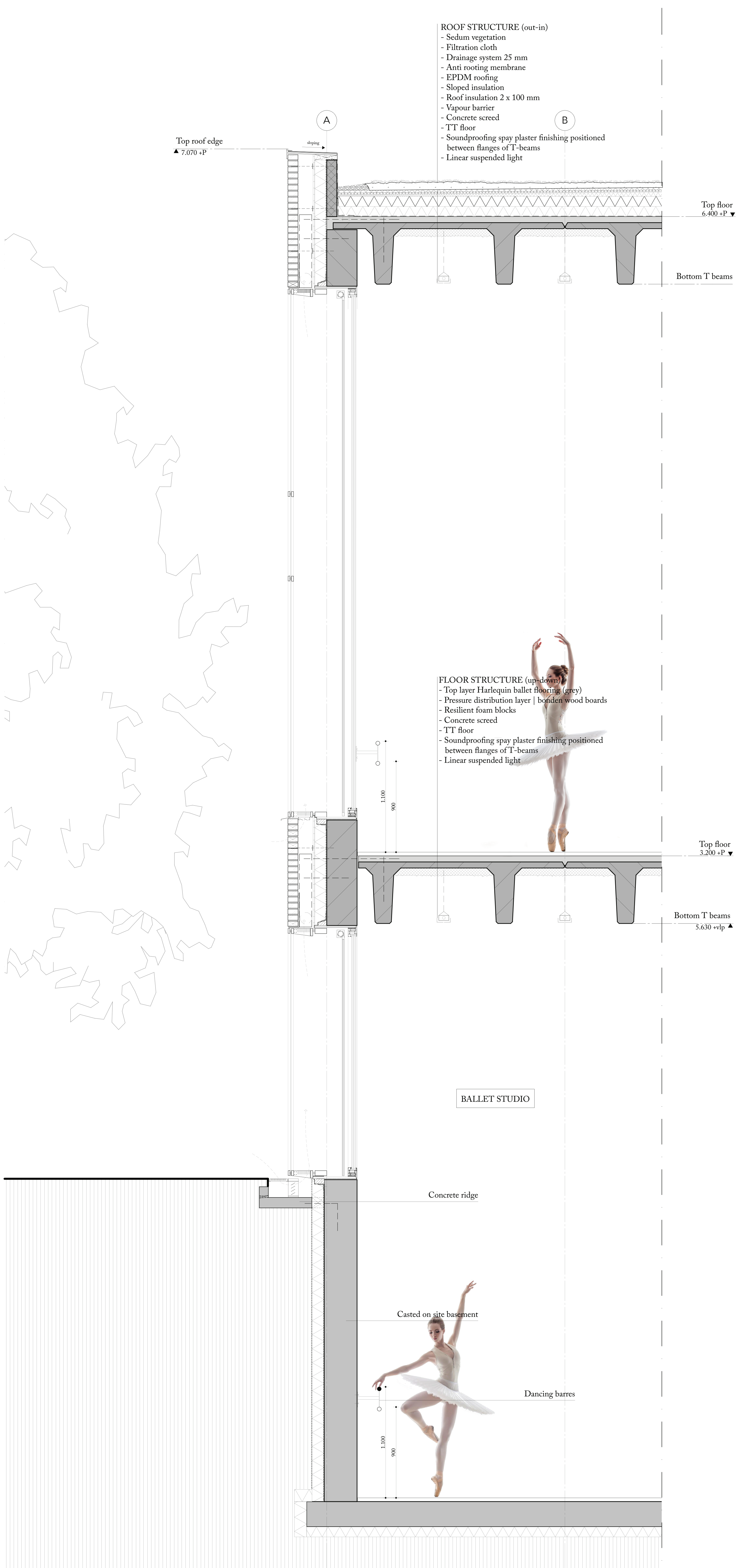
BALLET STUDIO

OUTSIDE

BALLET STUDIO

A

A



ROOF STRUCTURE (out-in)

- Sedum vegetation
- Filtration cloth
- Drainage system 25 mm
- Anti rooting membrane
- EPDM roofing
- Sloped insulation
- Roof insulation 2 x 100 mm
- Vapour barrier
- Concrete screed
- TT floor
- Soundproofing spay plaster finishing positioned between flanges of T-beams
- Linear suspended light

Top floor  
6.400 +P ▼

Bottom T beams

FLOOR STRUCTURE (up-down)

- Top layer Harlequin ballet flooring (grey)
- Pressure distribution layer | borden wood boards
- Resilient foam blocks
- Concrete screed
- TT floor
- Soundproofing spay plaster finishing positioned between flanges of T-beams
- Linear suspended light

Top floor  
3.200 +P ▼

Bottom T beams  
5.630 +P ▲

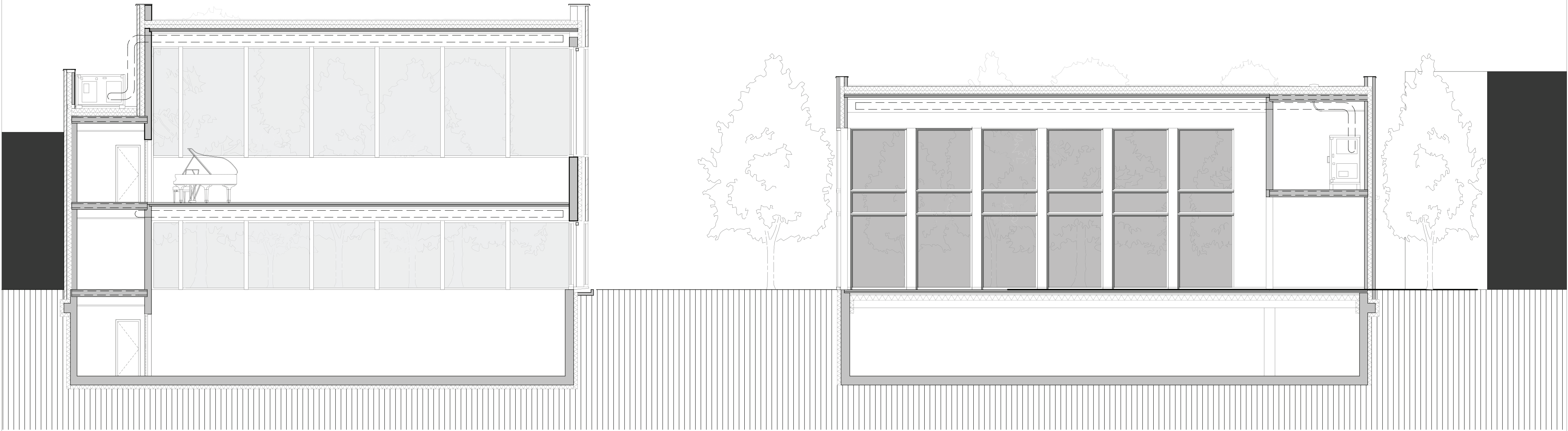
BALLET STUDIO

Concrete ridge

Casted on site basement

Dancing bars





Section  
Scale 1:100