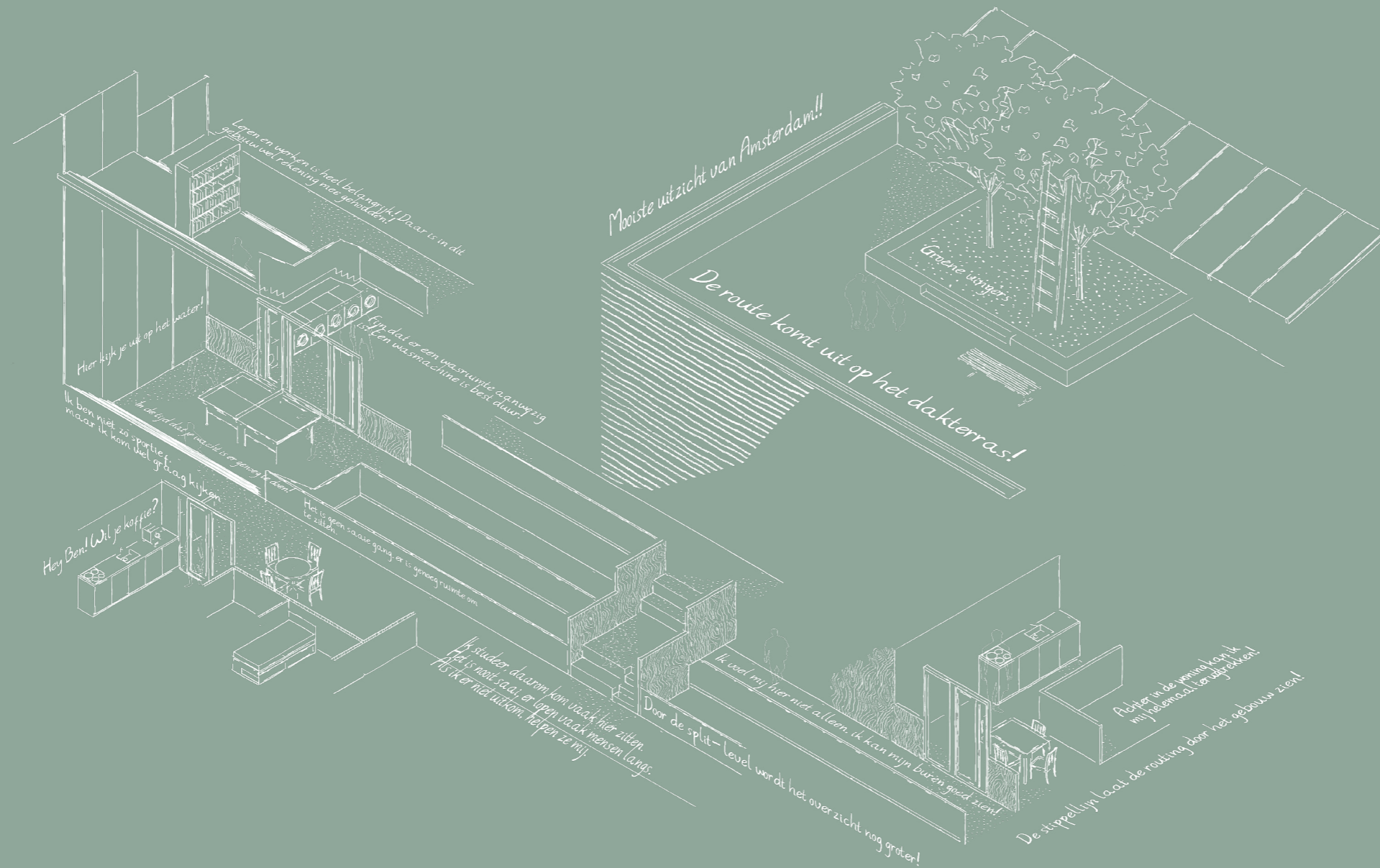


Inclusion by design.

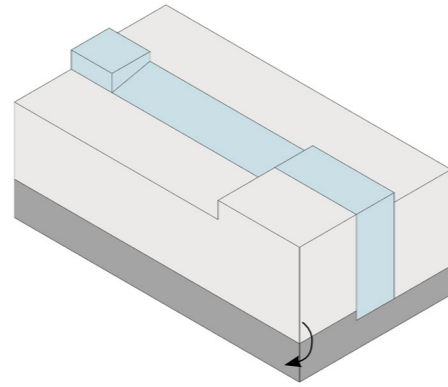
"There is no place like home"

Set of drawings

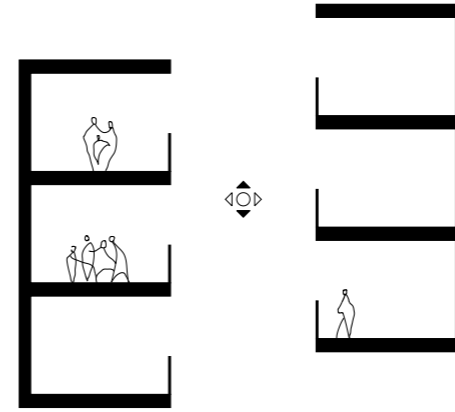


Karolis Dragunas

1 Combine living and working



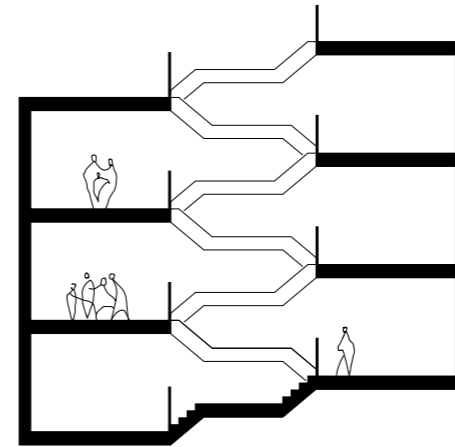
4 Increase transparency



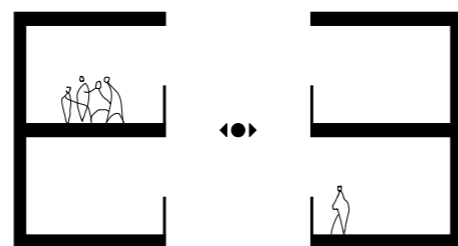
2 Implement social dimensions



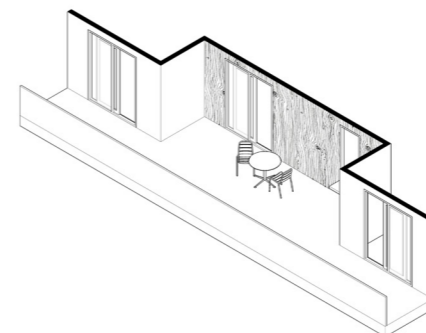
5 Activate the space by adding a route



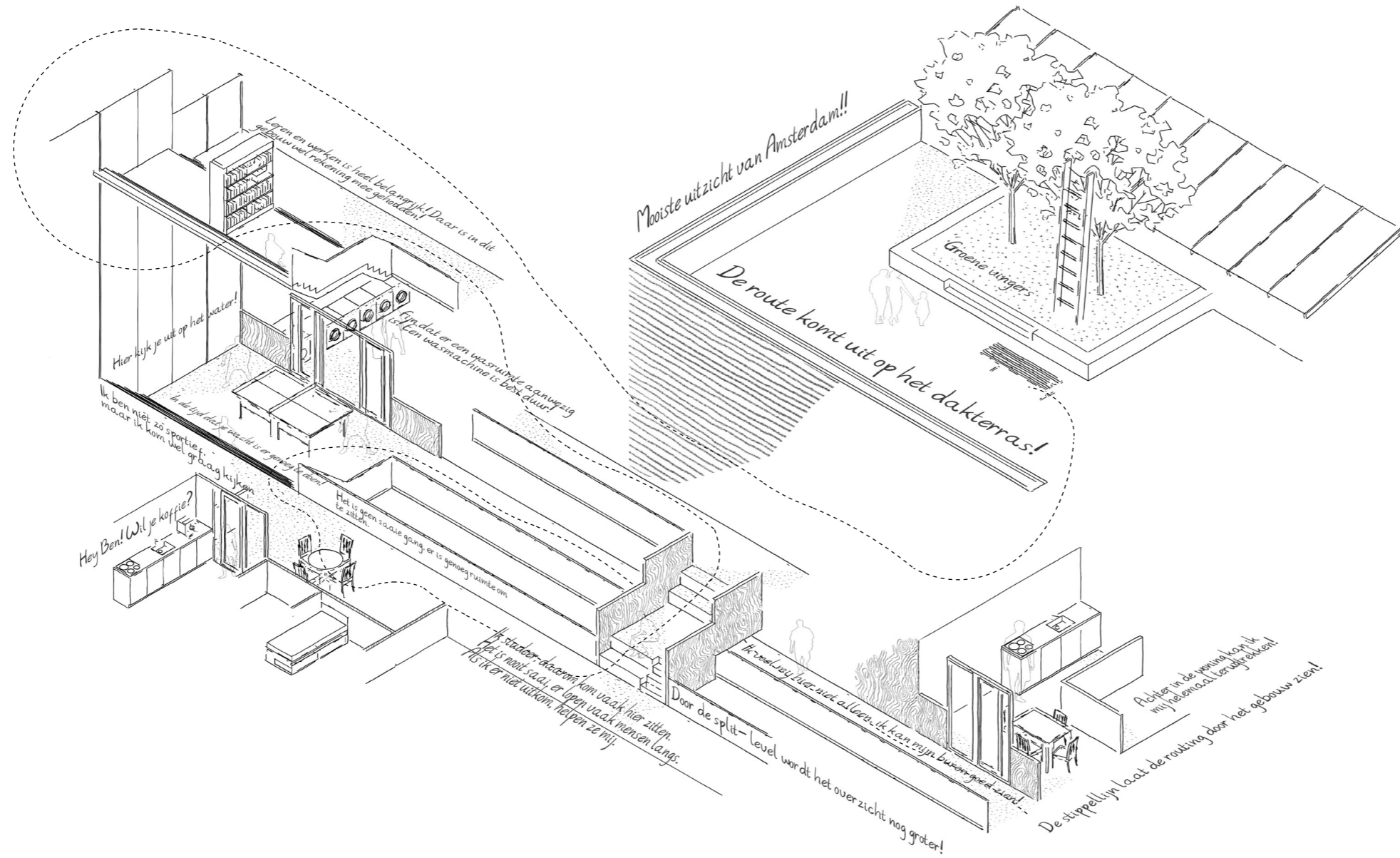
3 Add a third dimension



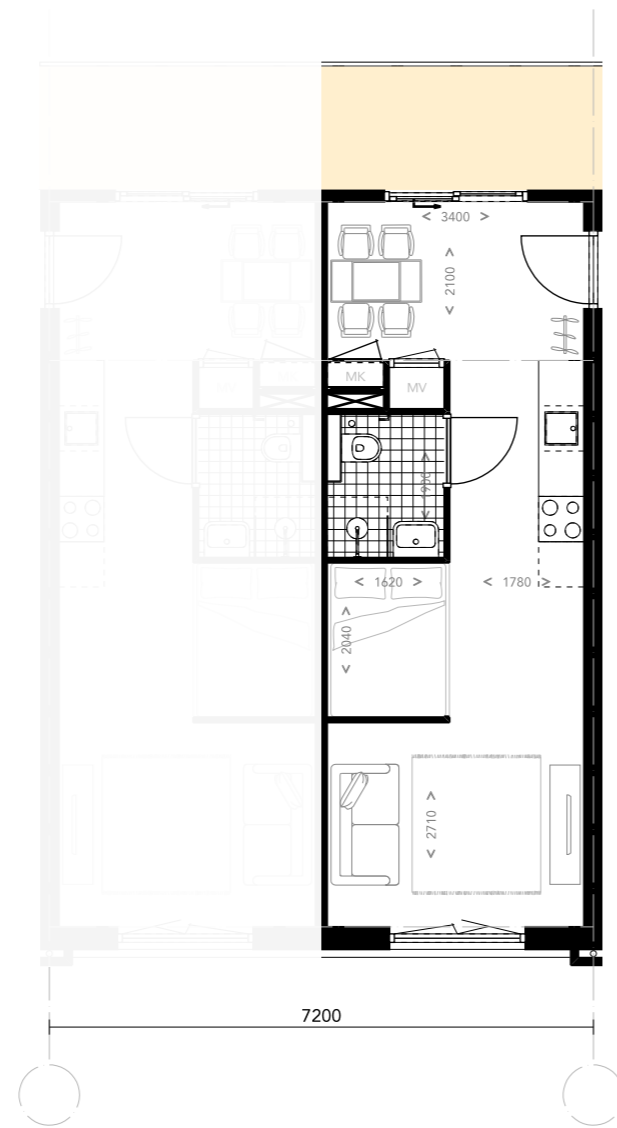
6 Create space to rest and meet



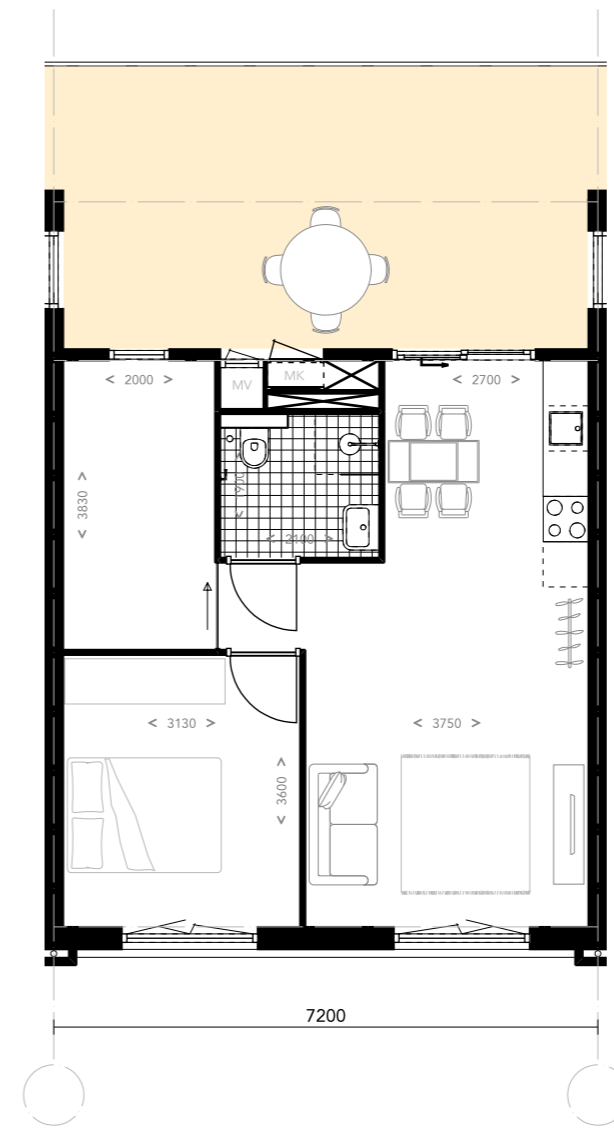
Spatial configuration







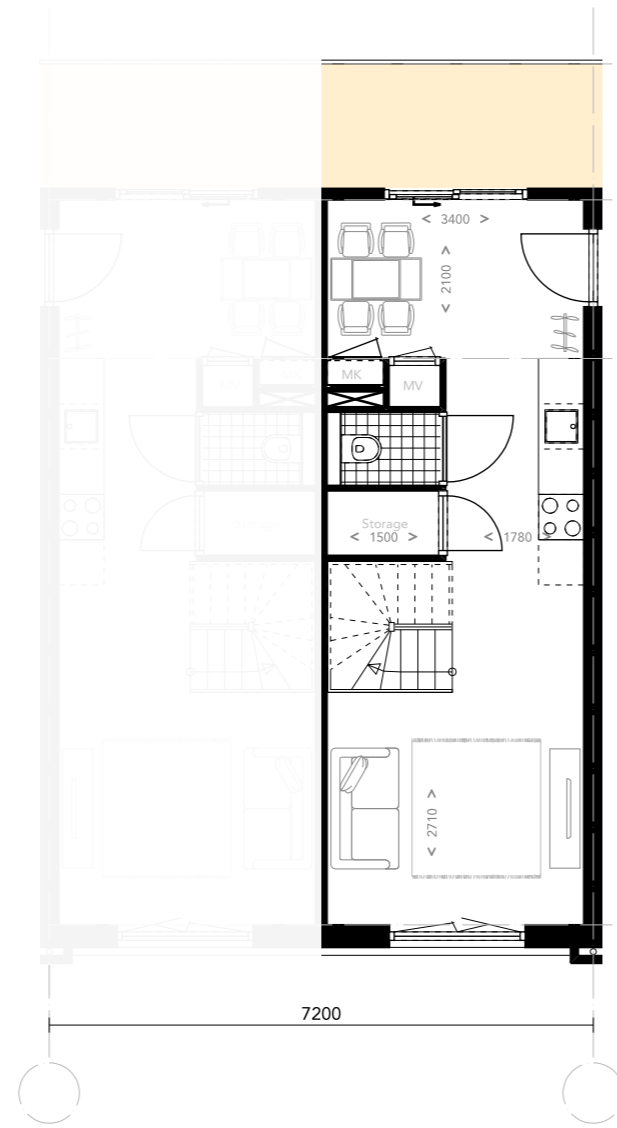
30 m² studio



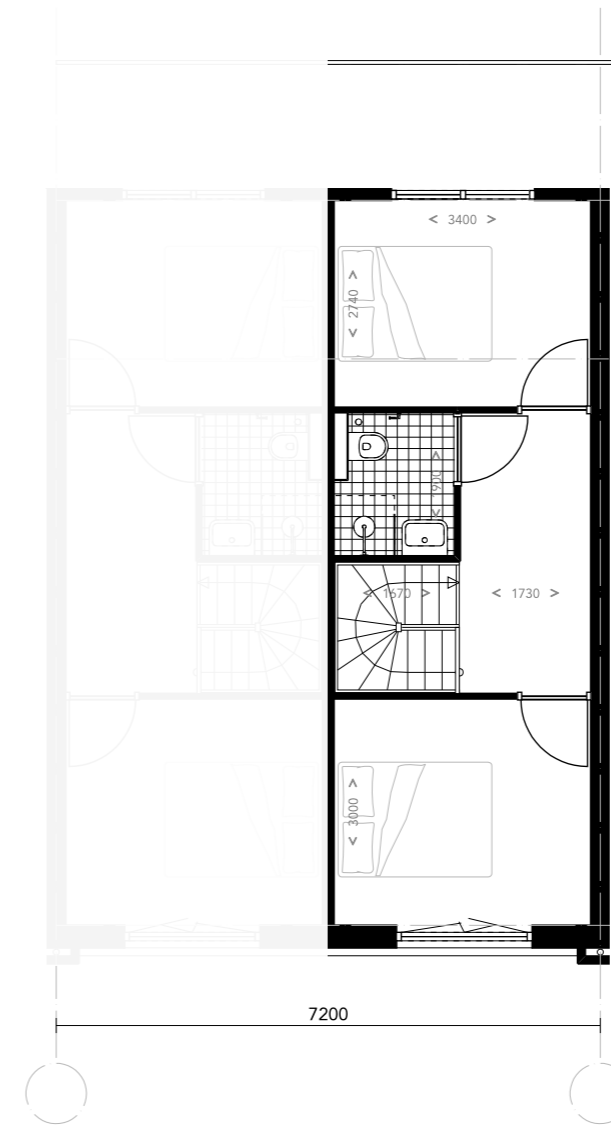
50 m² studio

1:100 Apartments

Maisonette 60 m²



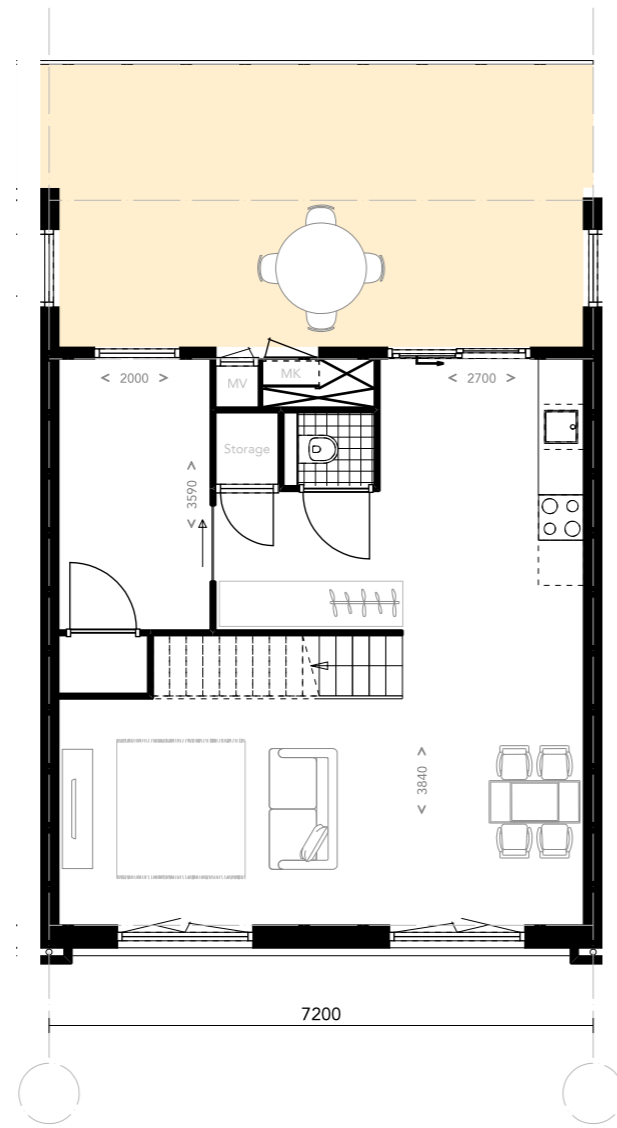
Ground floor



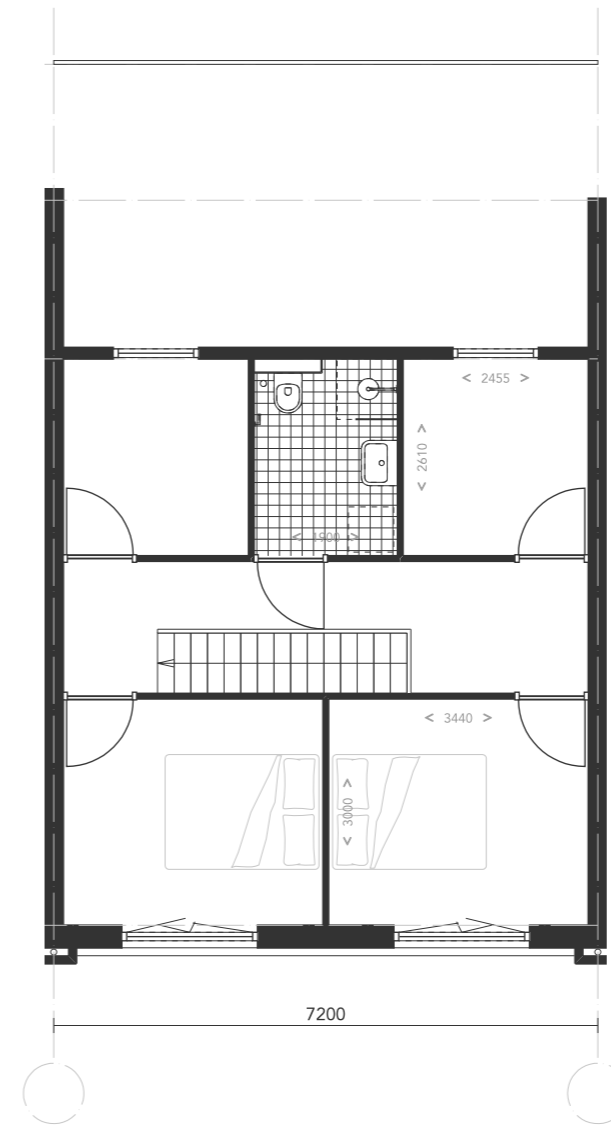
First floor

1:100 Apartments

Maisonette 100 m²



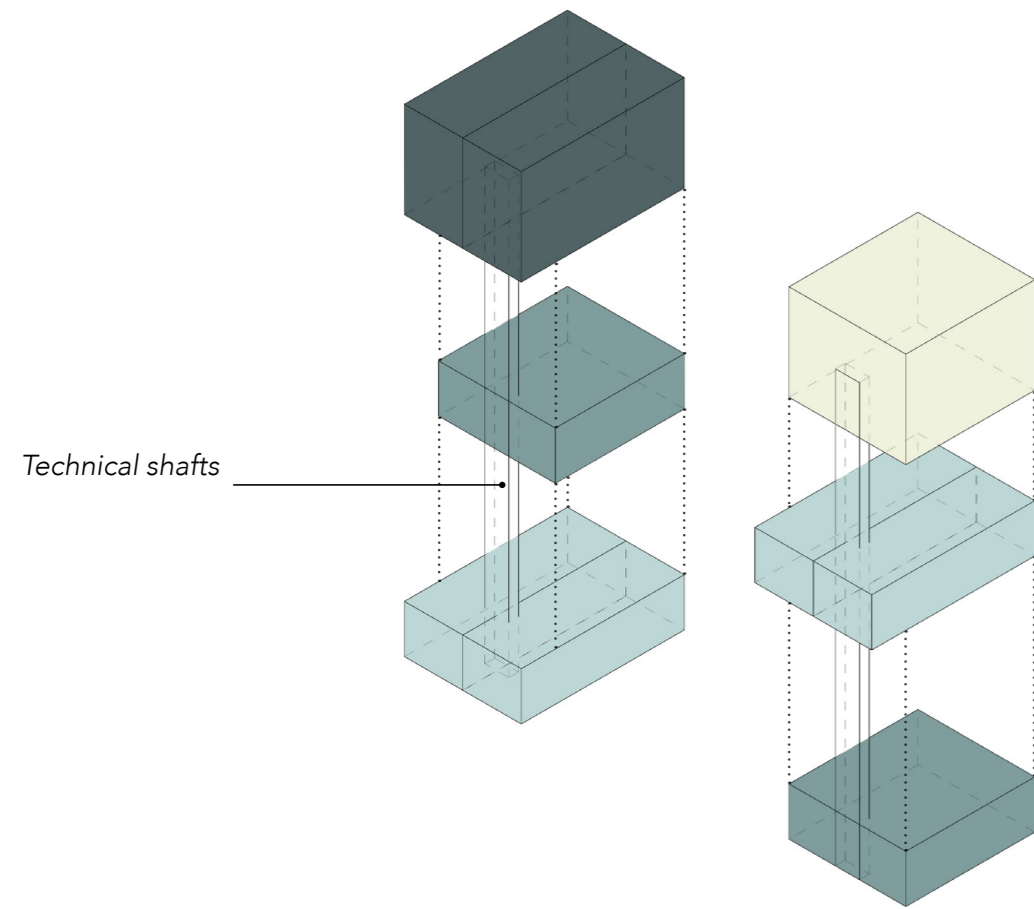
Ground floor



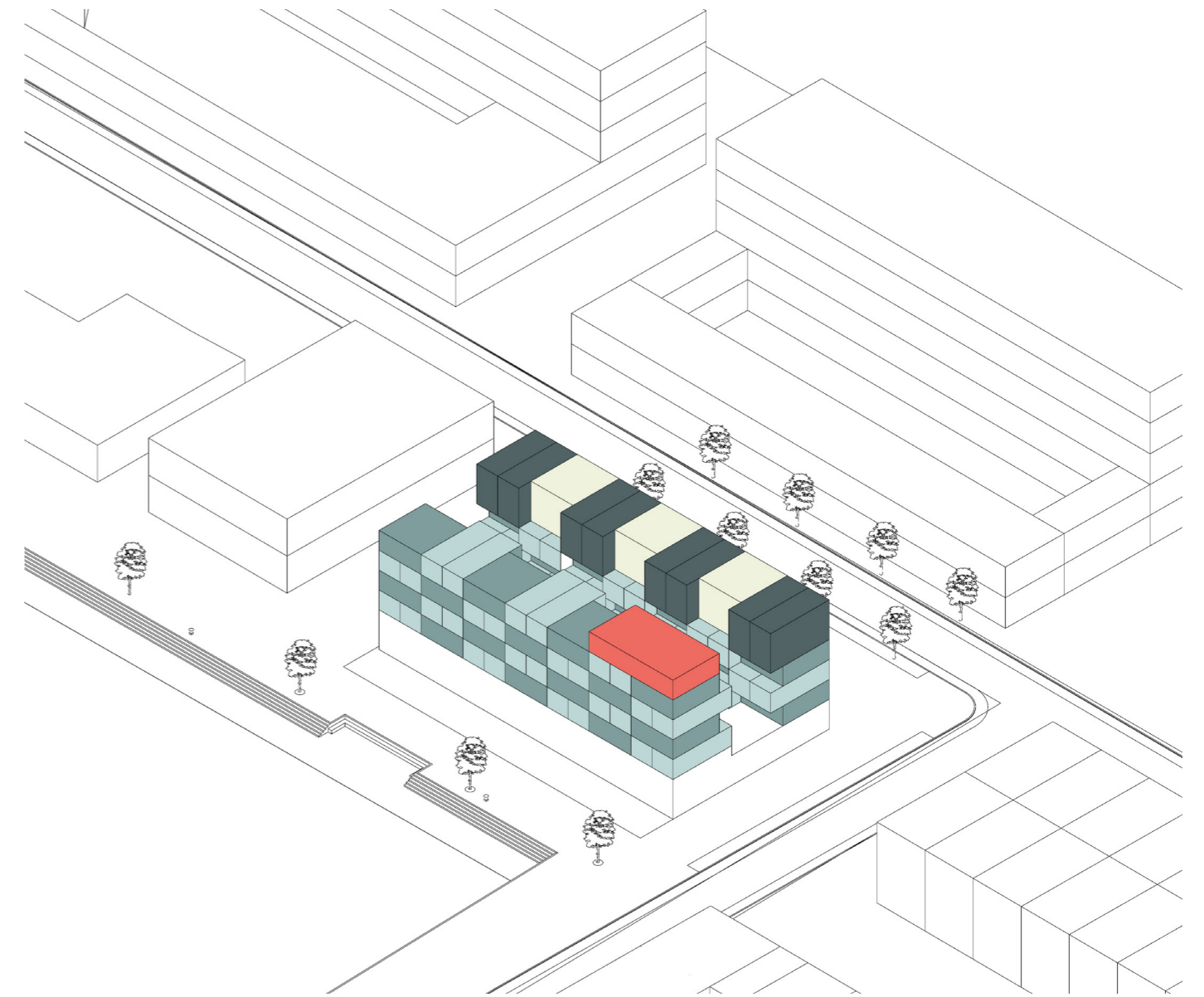
First floor

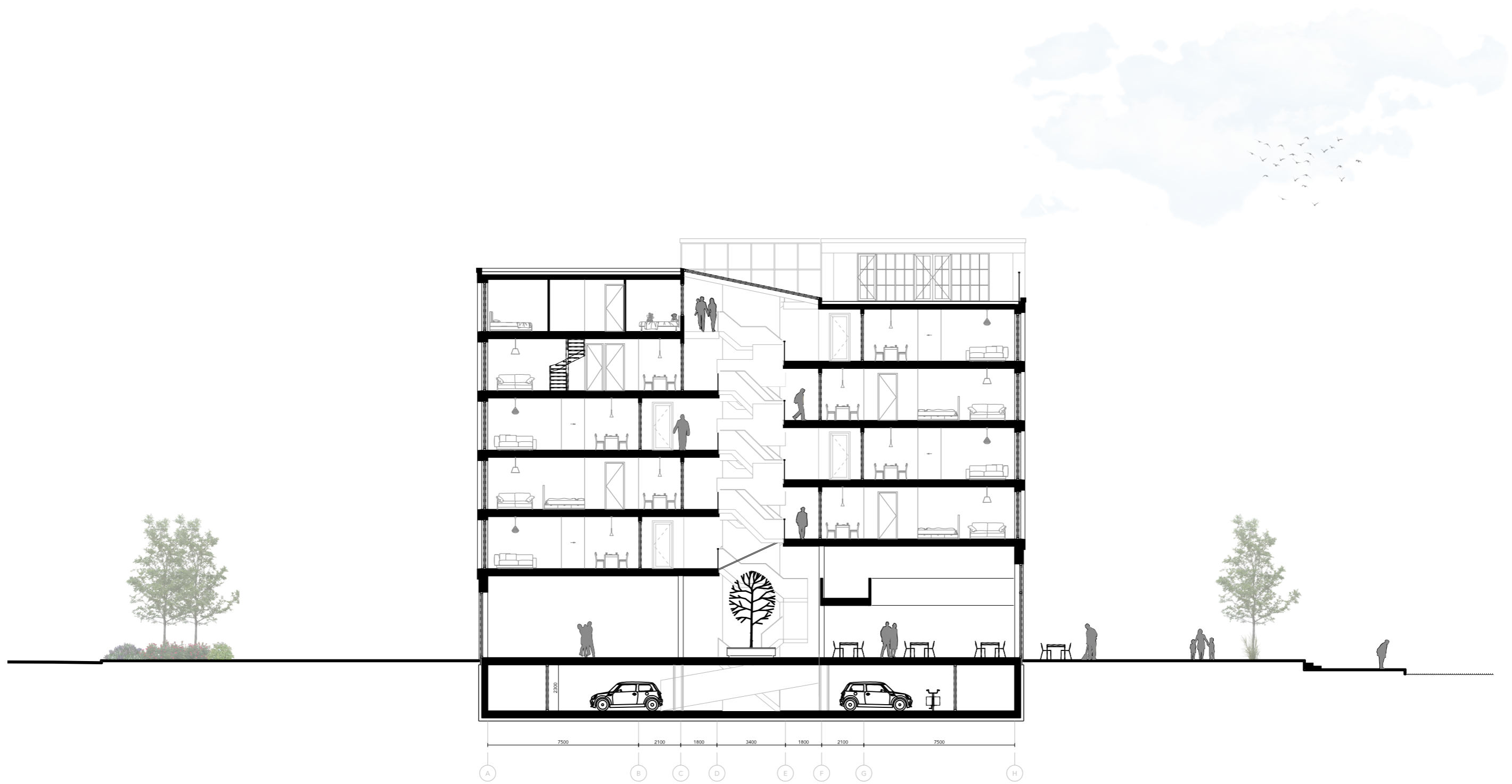
Dwelling configuration

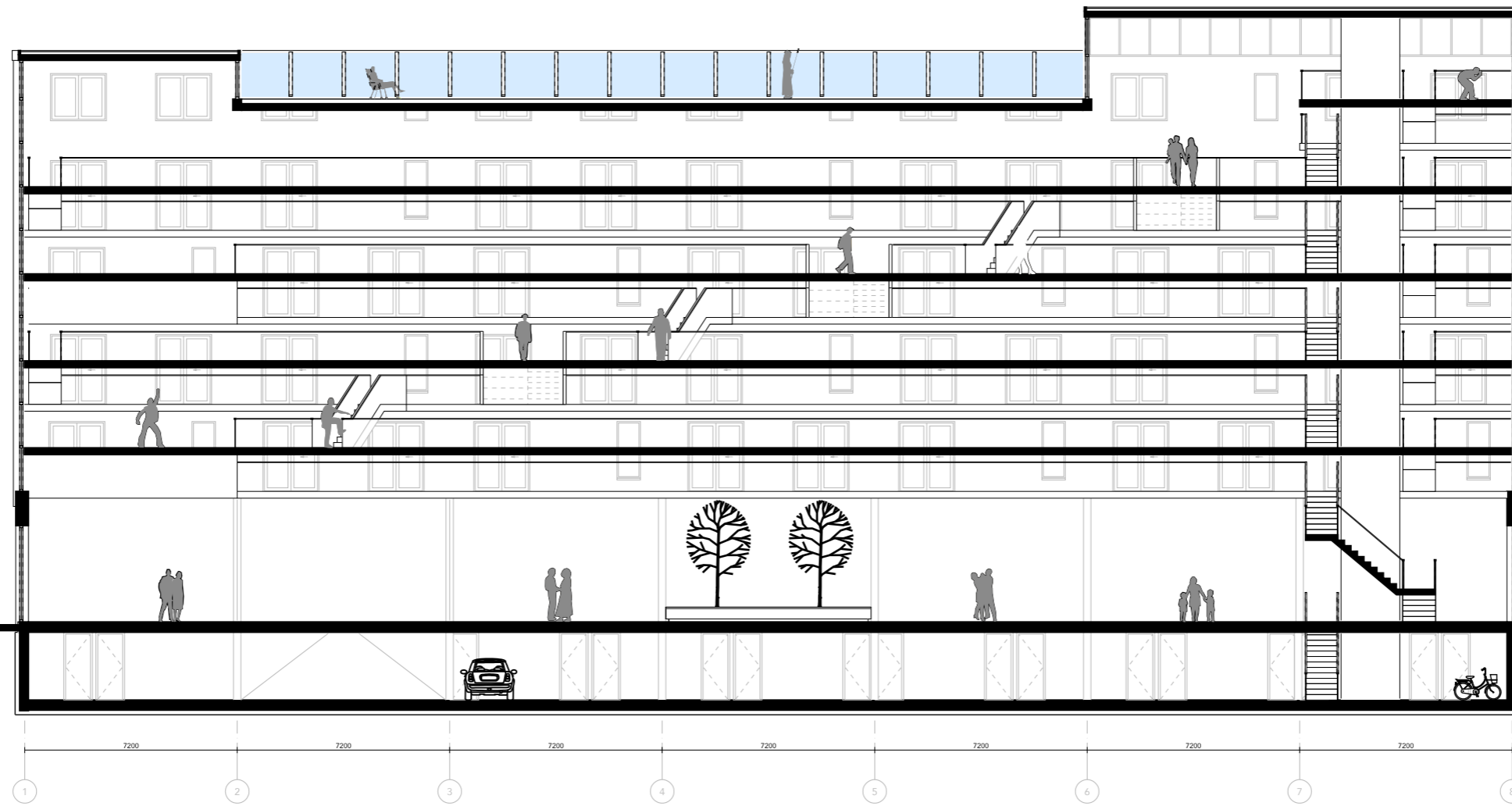
Spatial configuration

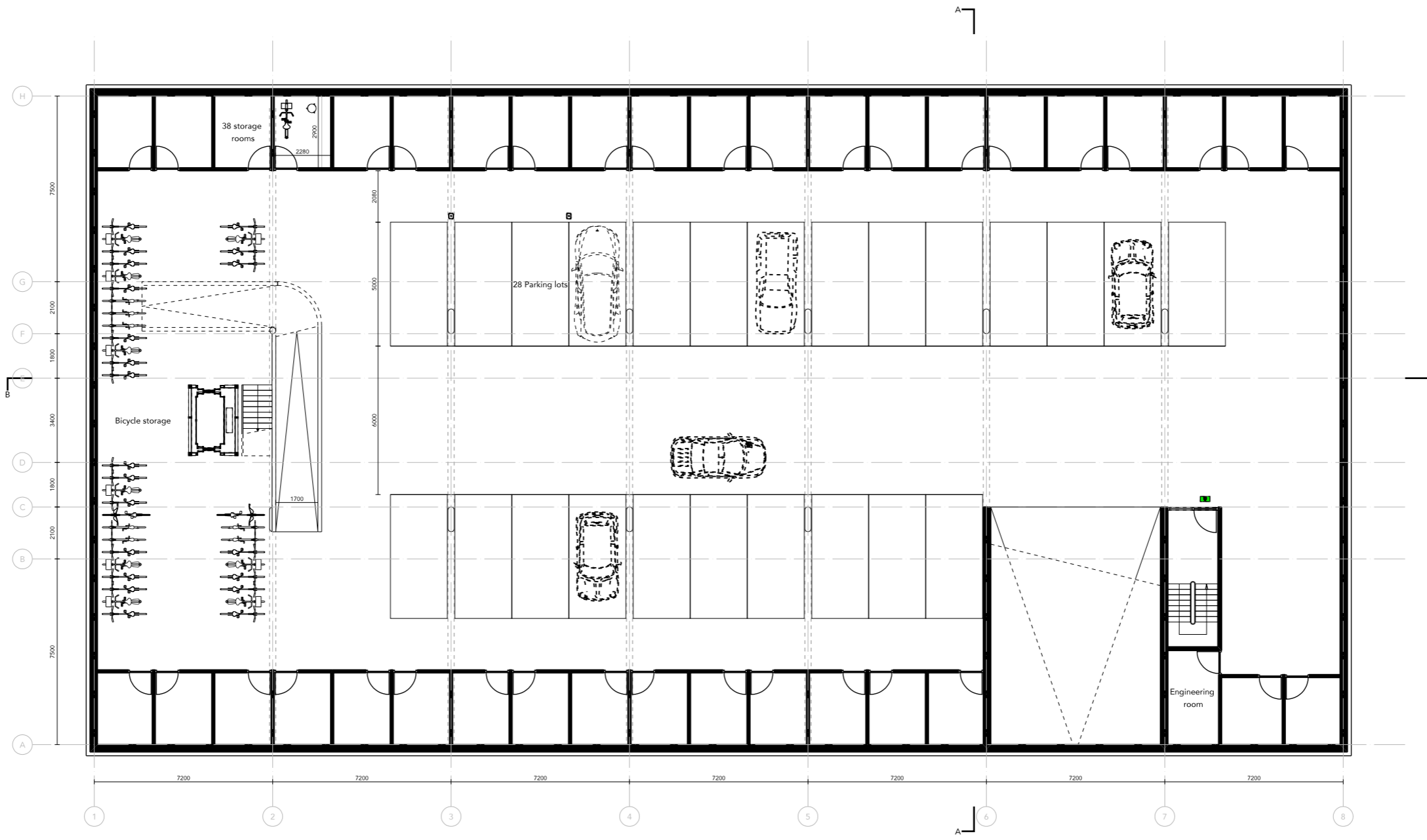


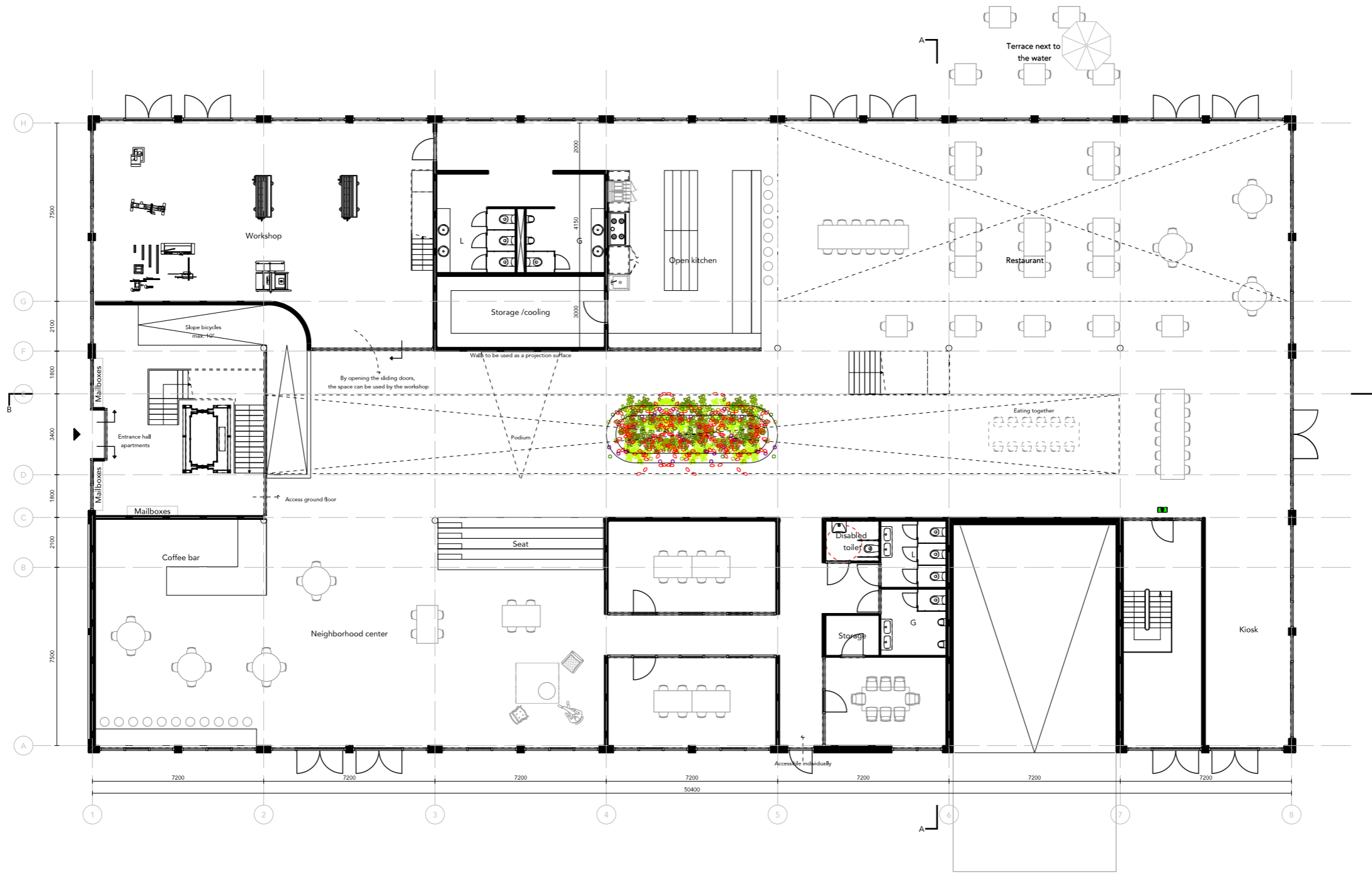
Clustering

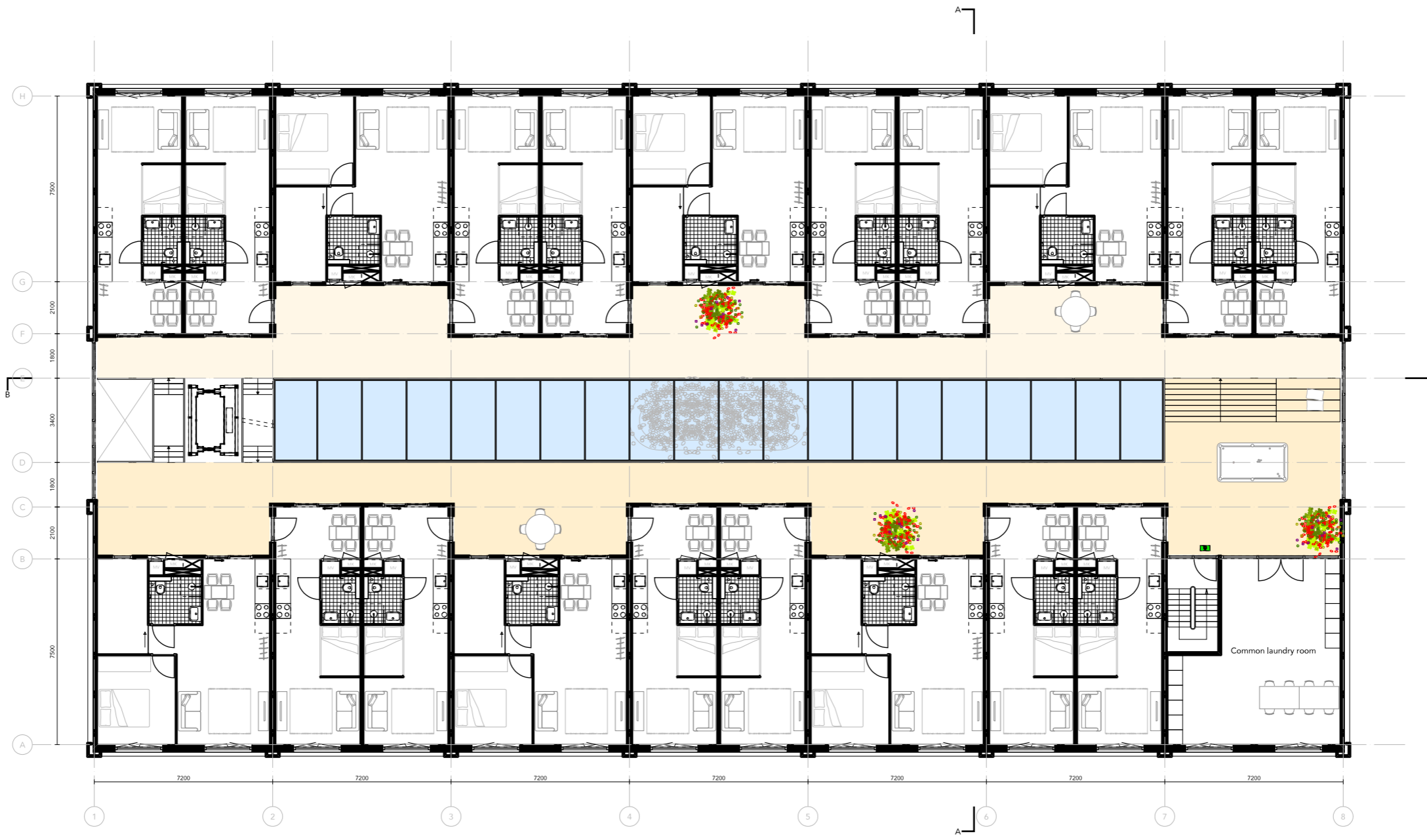


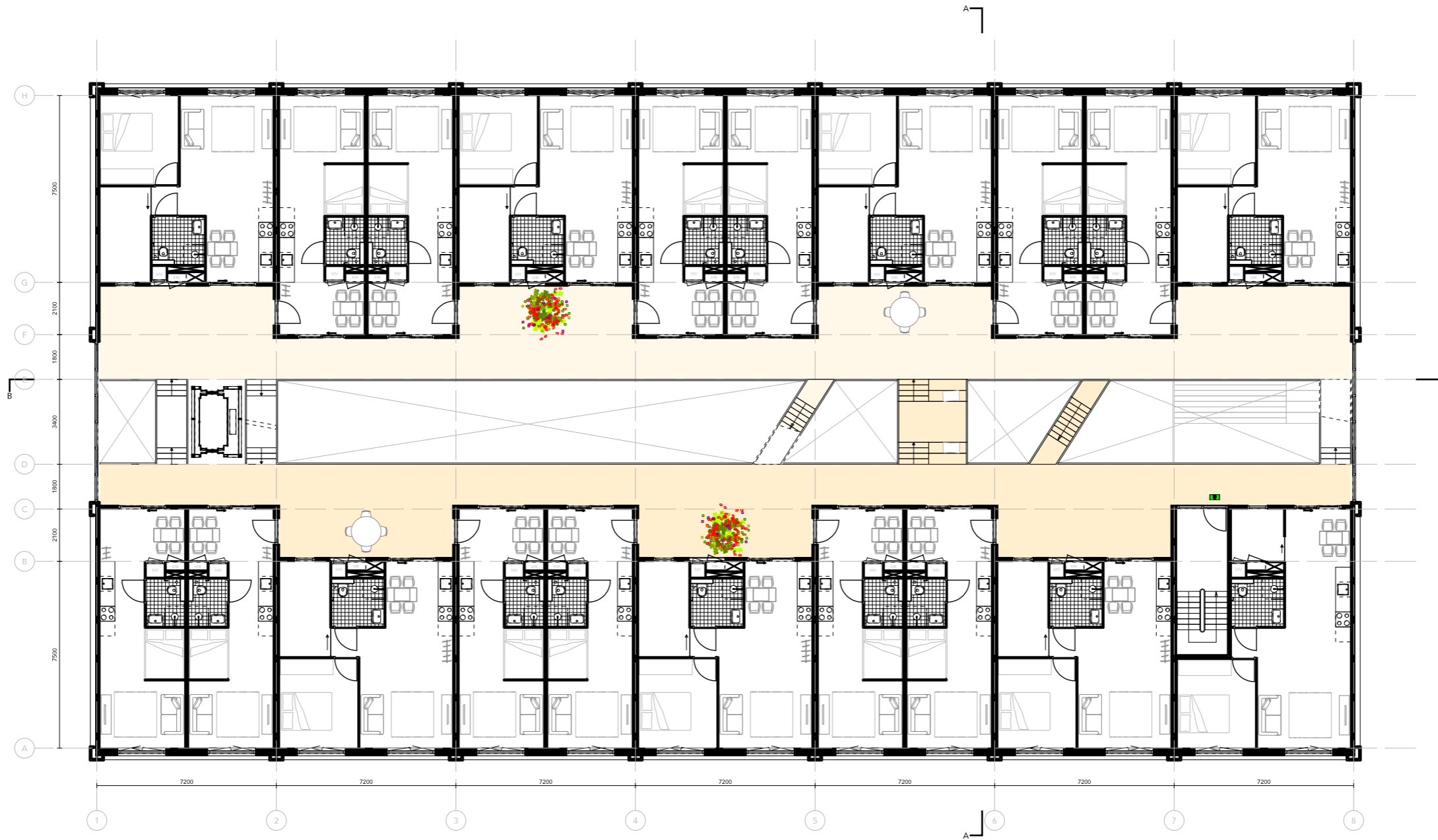


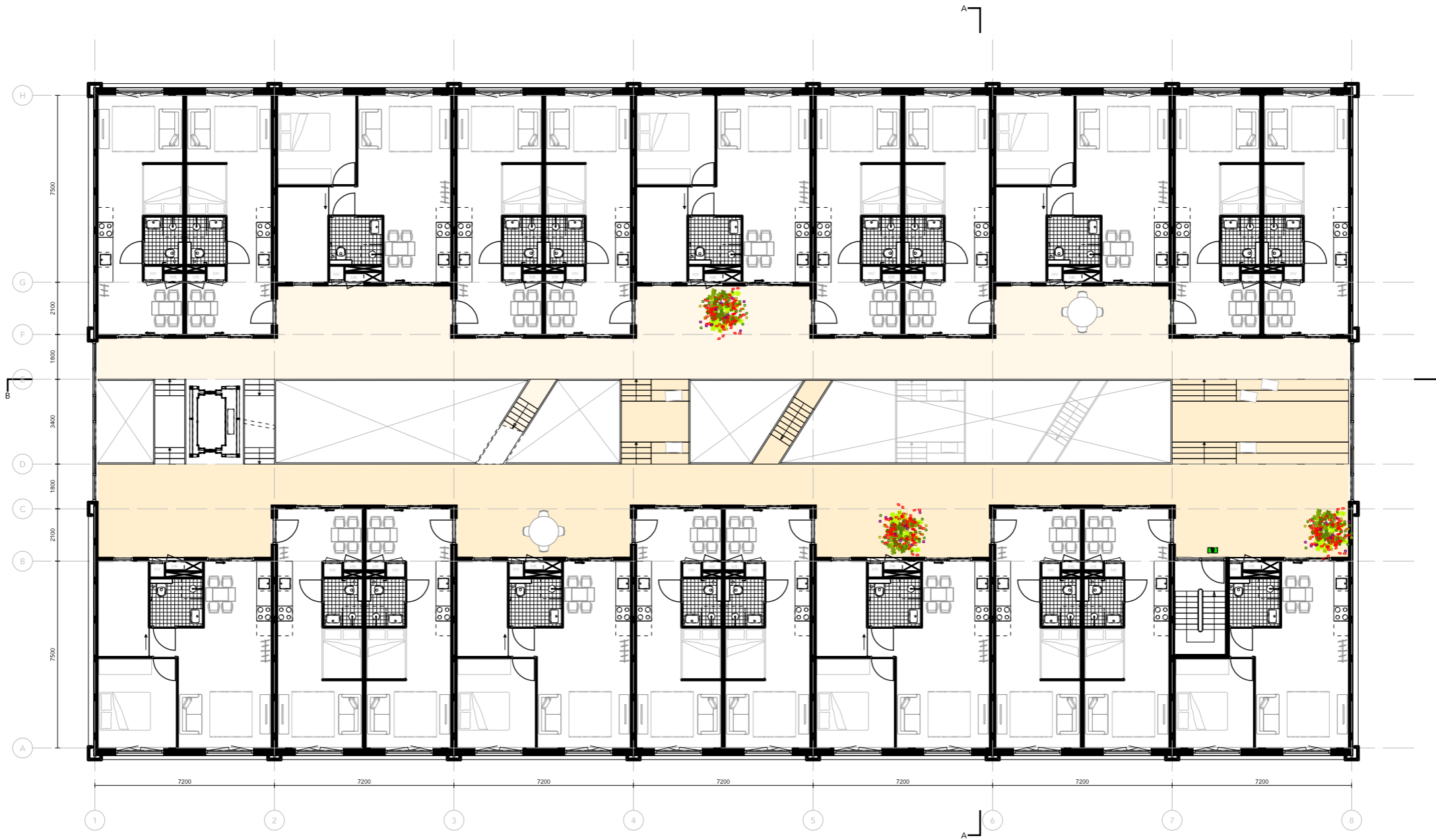


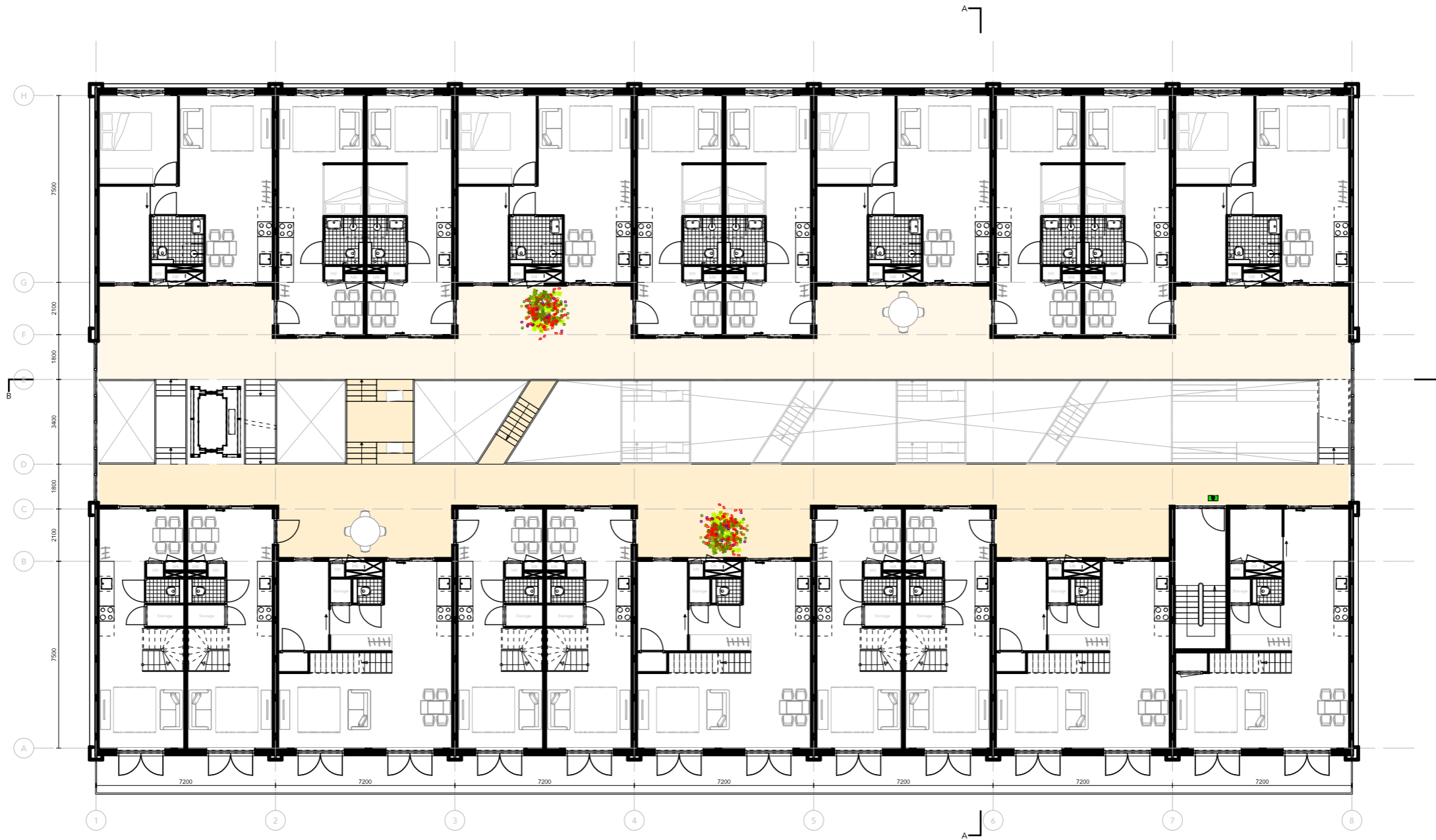


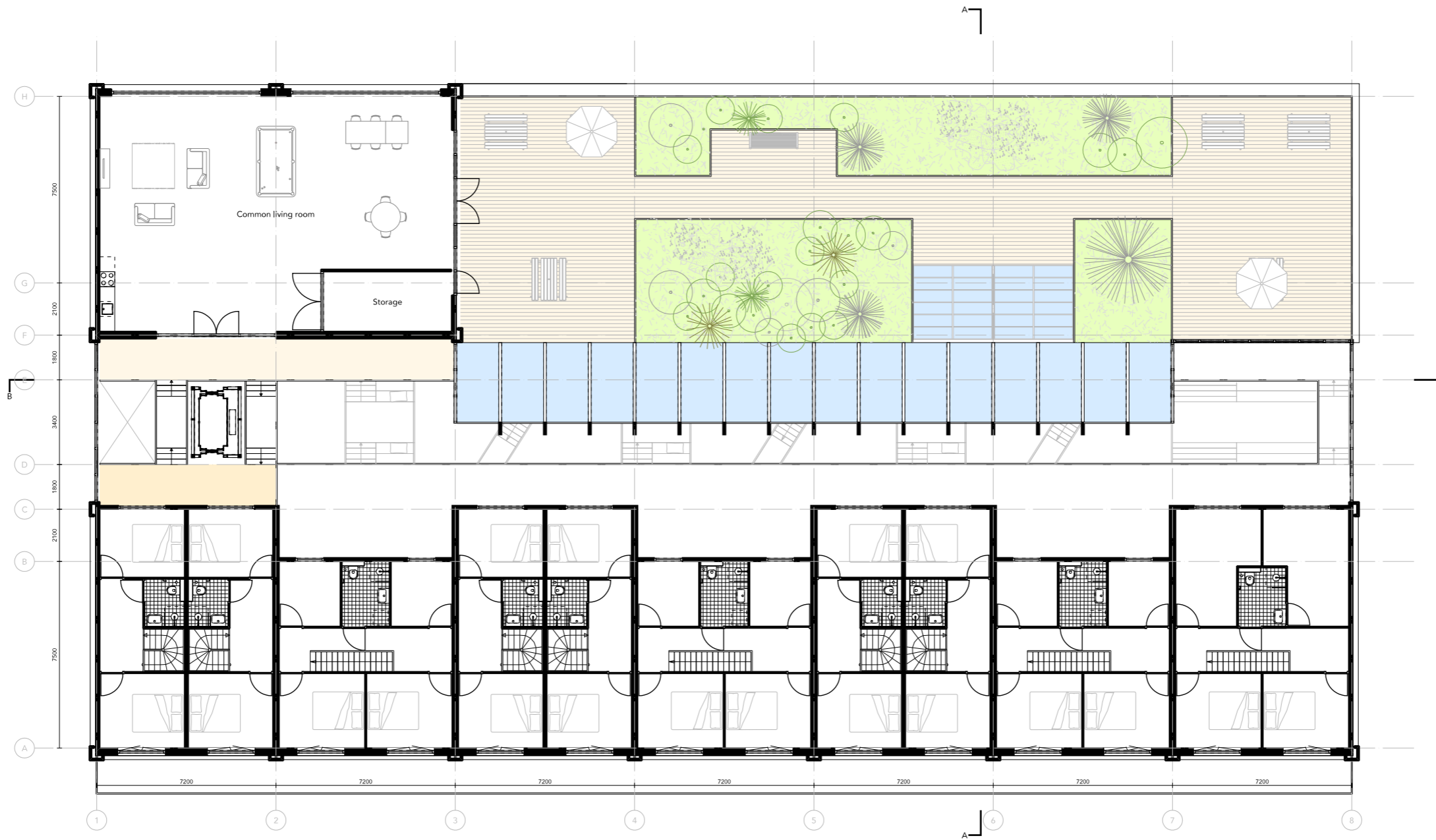












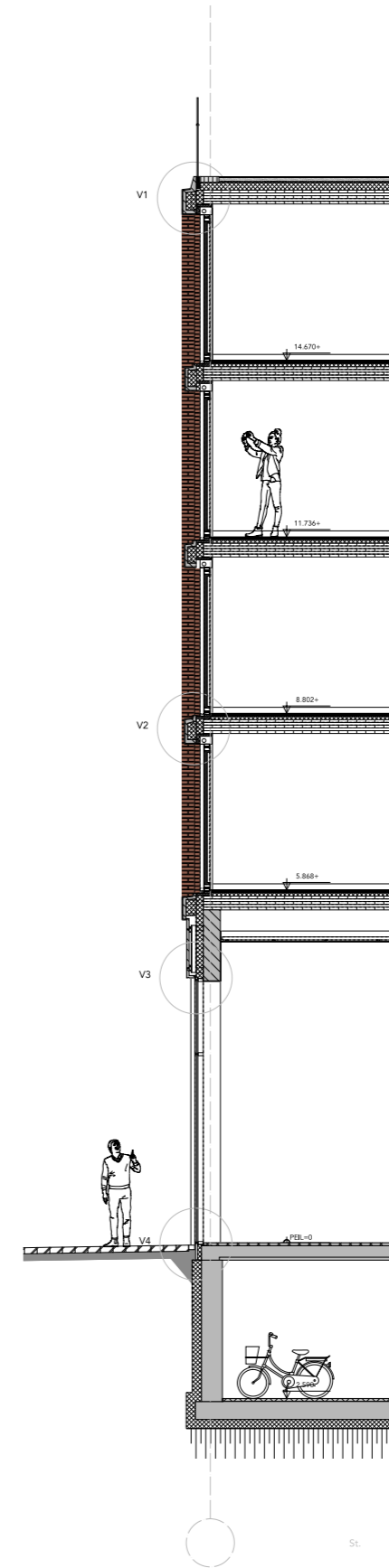




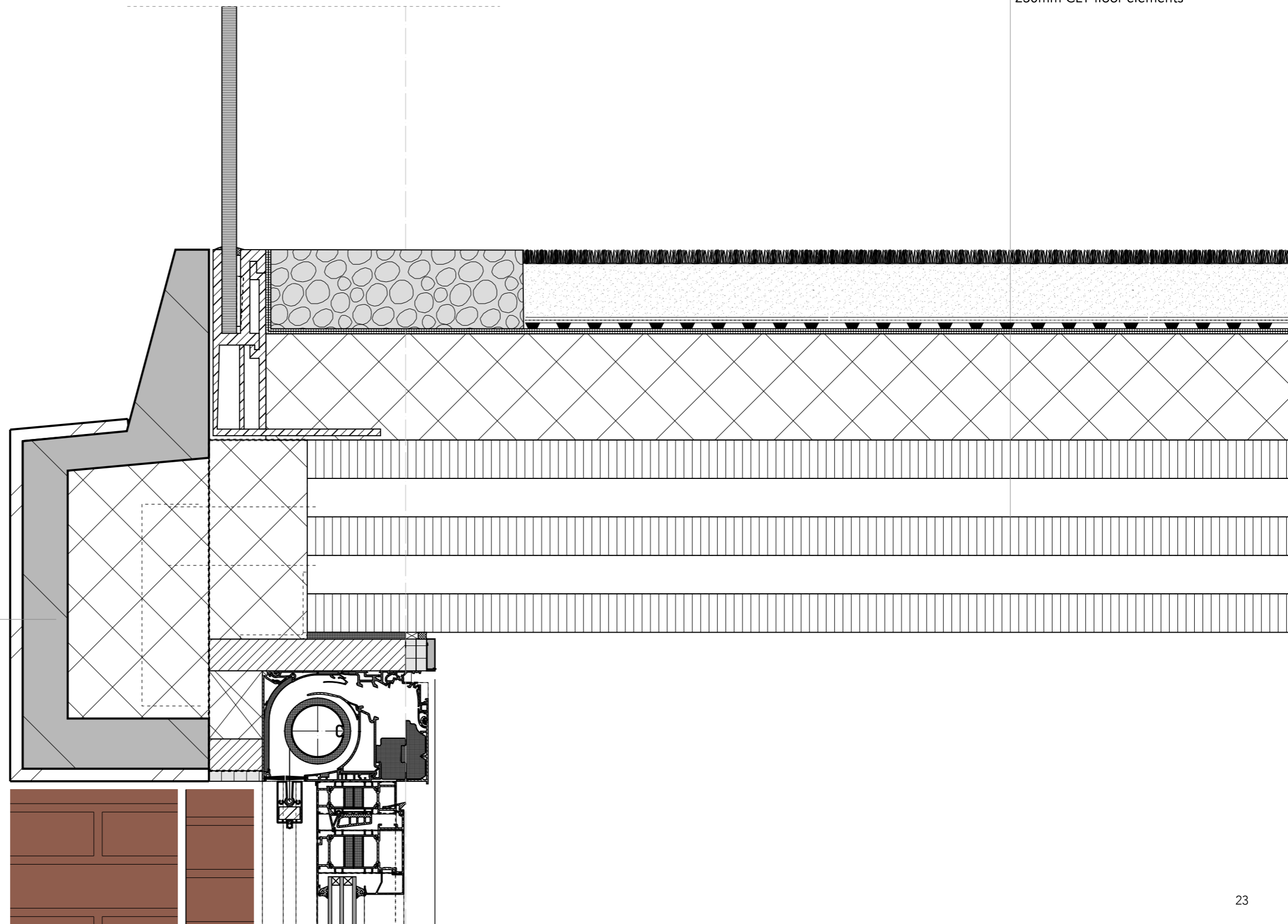




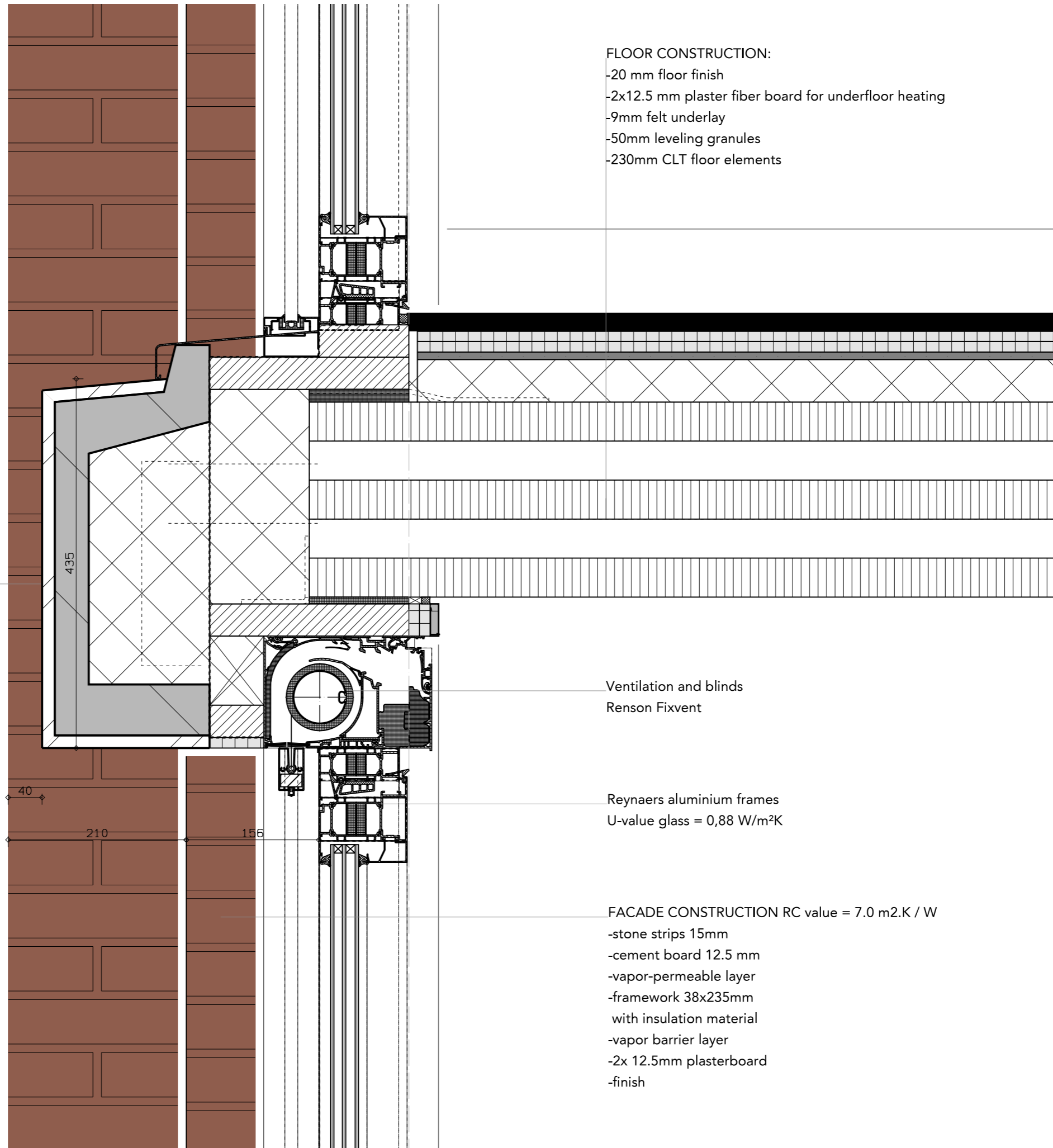
1:50 Facade fragment * fitting a3



ROOF CONSTRUCTION RC value = 6.09 m2.
-green roof system
-142mm slope insulation
-230mm CLT floor elements



Light Concrete element with brick strips



FLOOR CONSTRUCTION:
-20 mm floor finish
-2x12.5 mm plaster fiber board for underfloor heating
-9mm felt underlay
-50mm leveling granules
-230mm CLT floor elements

Light Concrete element with brick strips

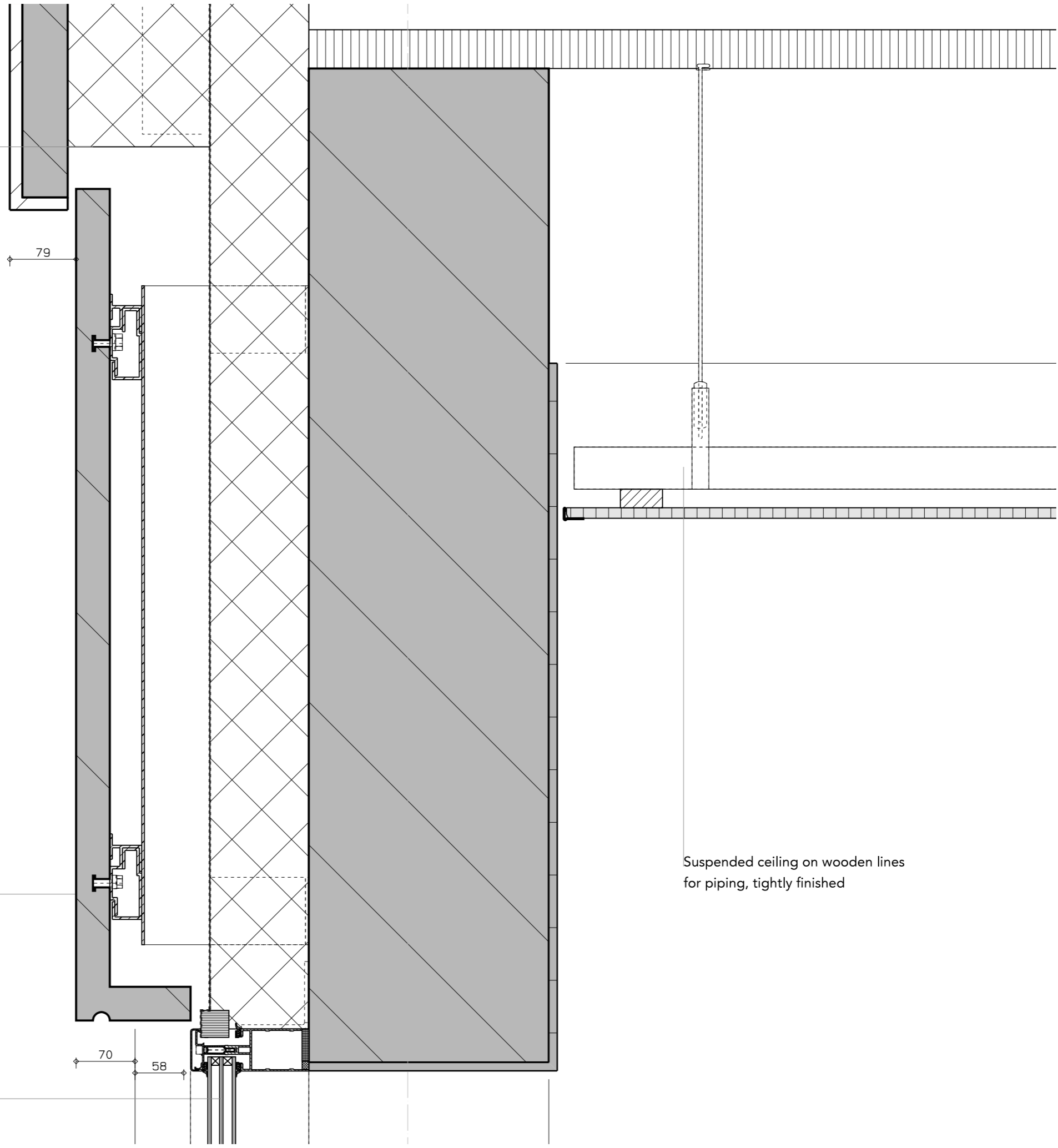
Ventilation and blinds
Renson Fixvent

Reynaers aluminium frames
U-value glass = 0,88 W/m²K

FACADE CONSTRUCTION RC value = 7.0 m².K / W
-stone strips 15mm
-cement board 12.5 mm
-vapor-permeable layer
-framework 38x235mm
with insulation material
-vapor barrier layer
-2x 12.5mm plasterboard
-finish

1:5 Detail V3

Light Concrete element with brick strips

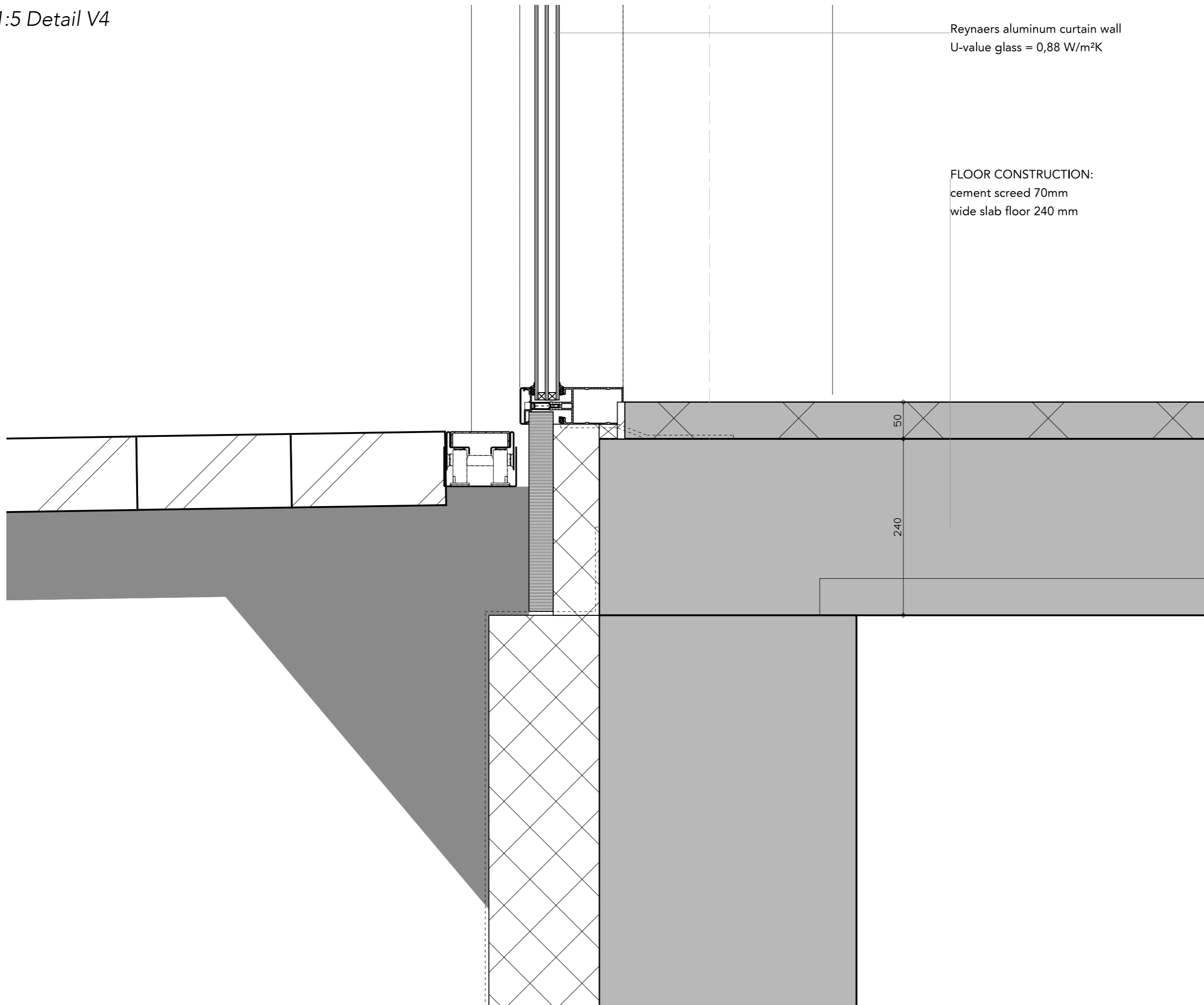


Light Concrete element
(invisibly attached to the rear structure)

Reynaers aluminum curtain wall
U-value glass = 0,88 W/m²K

Suspended ceiling on wooden lines
for piping, tightly finished

1:5 Detail V4



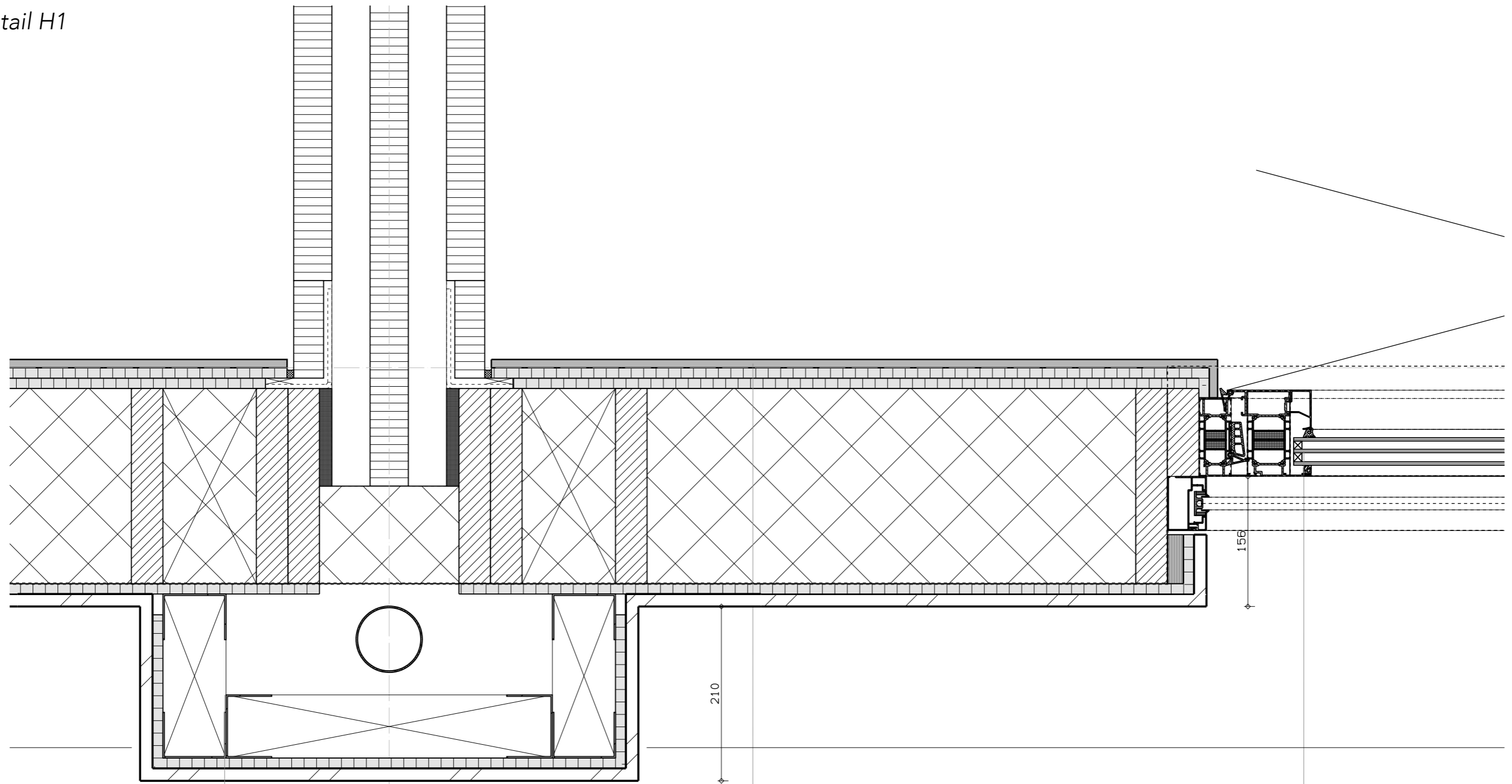
Reynaers aluminum curtain wall
U-value glass = 0,88 W/m²K

FLOOR CONSTRUCTION:
cement screed 70mm
wide slab floor 240 mm

50

240

1:5 Detail H1



600

Prefabricated element with brick strips

210

FACADE CONSTRUCTION RC value = 7.0 m².K / W

- stone strips 15mm
- cement board 12.5 mm
- vapor-permeable layer
- framework 38x235mm with insulation material
- vapor barrier layer
- 2x 12.5mm plasterboard
- finish

156

Reynaers aluminium frames
U-value glass = 0,88 W/m²K

Construction scheme

