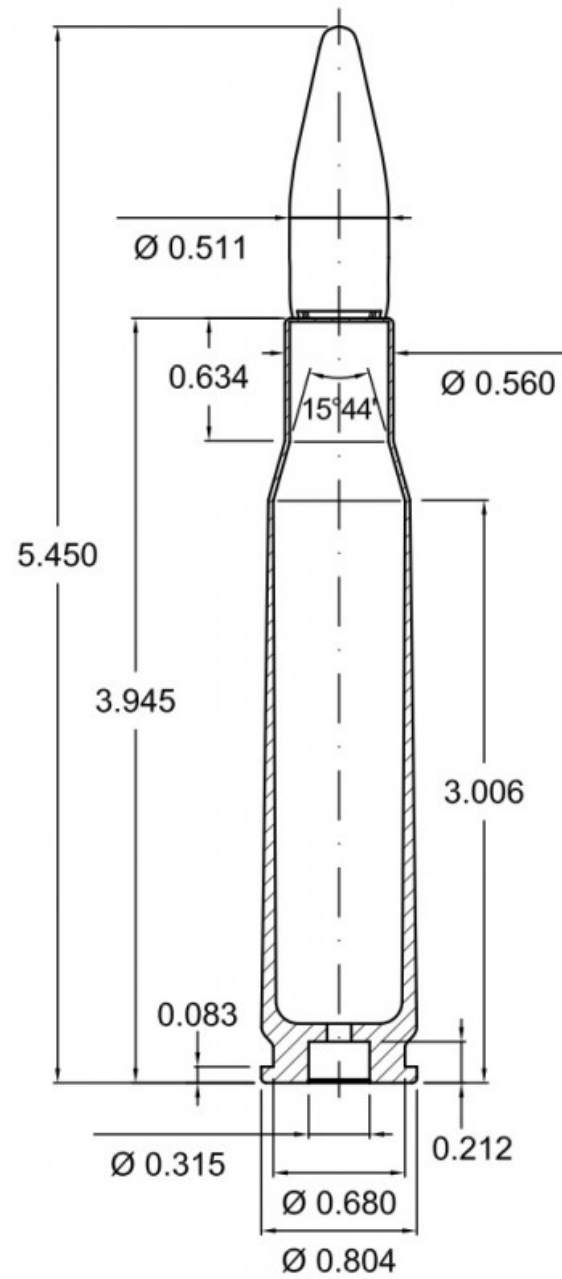


COLD WAR MUSEUM – HEMBRUG

Proposal by Vasileios Iliopoulos, 4749669

AR3AH110
June 24th, 2019











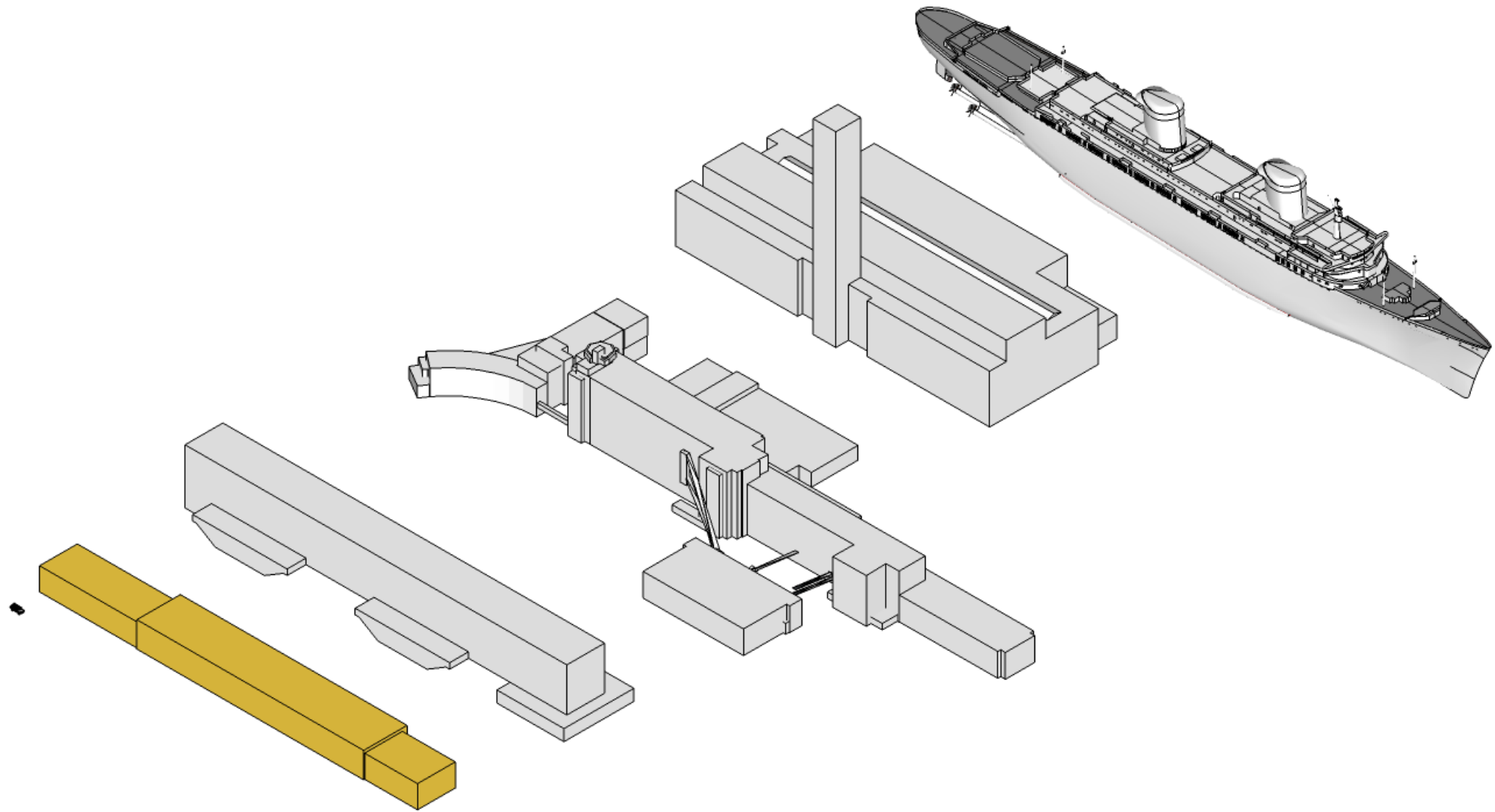


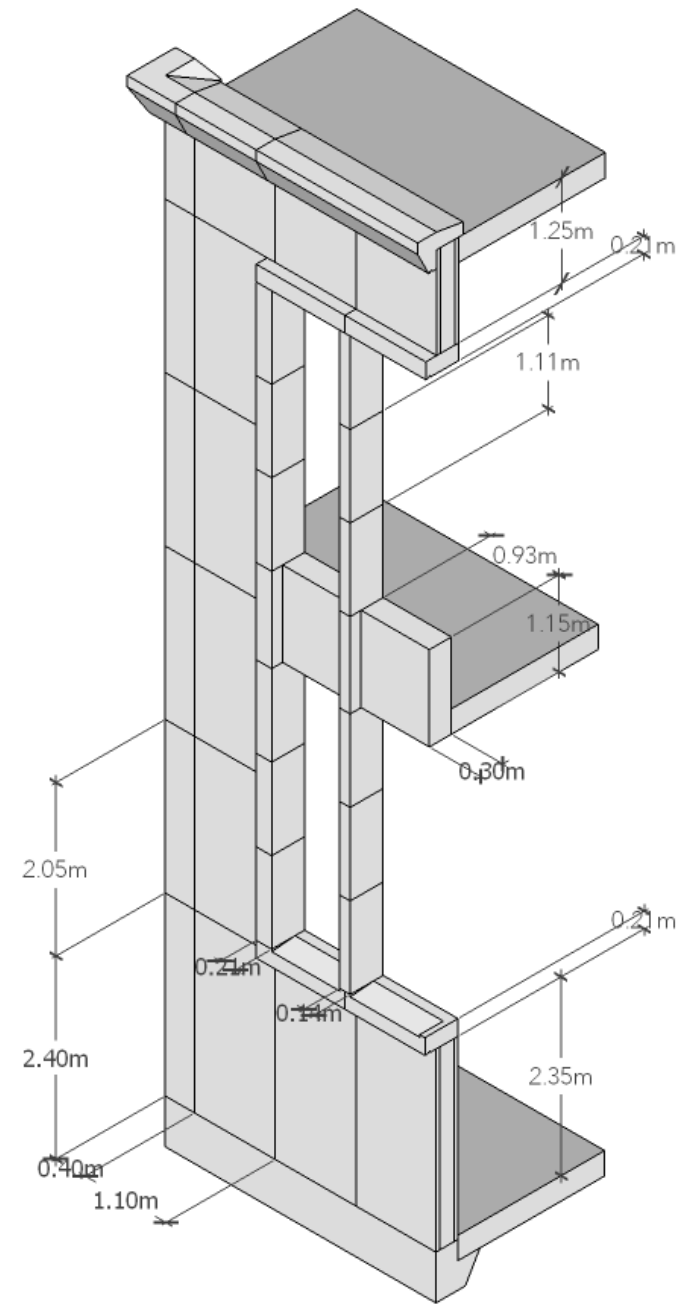
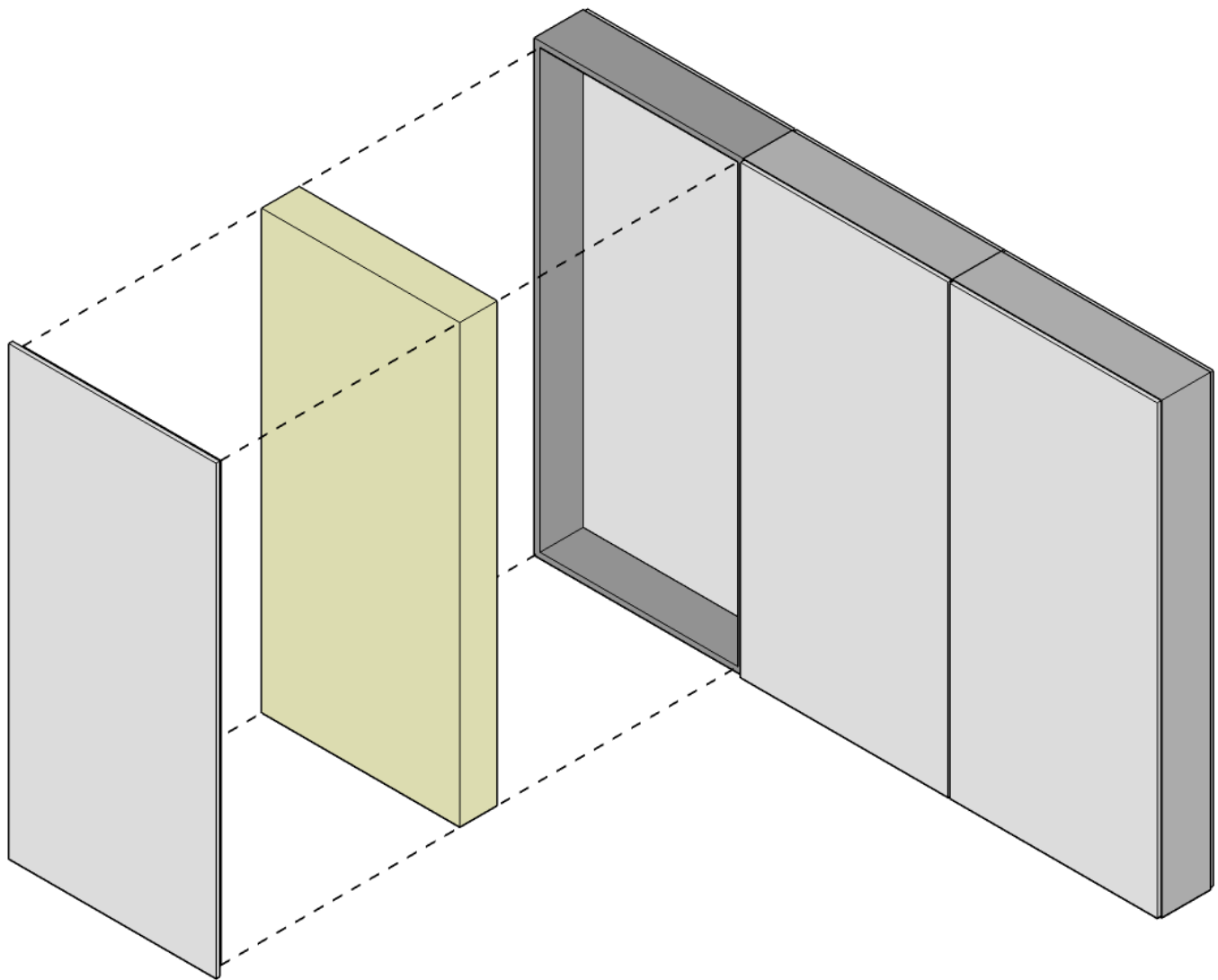




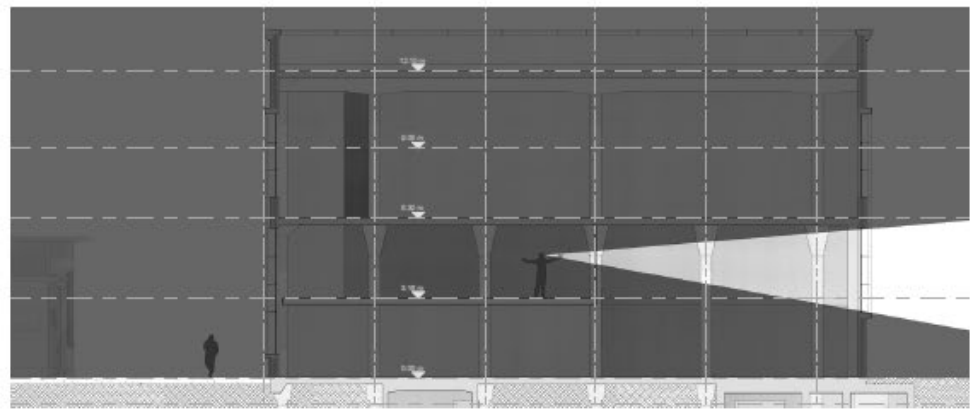
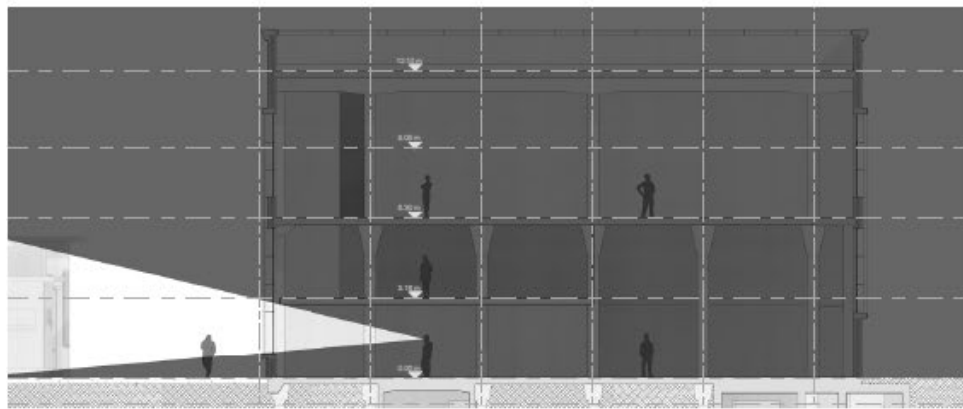
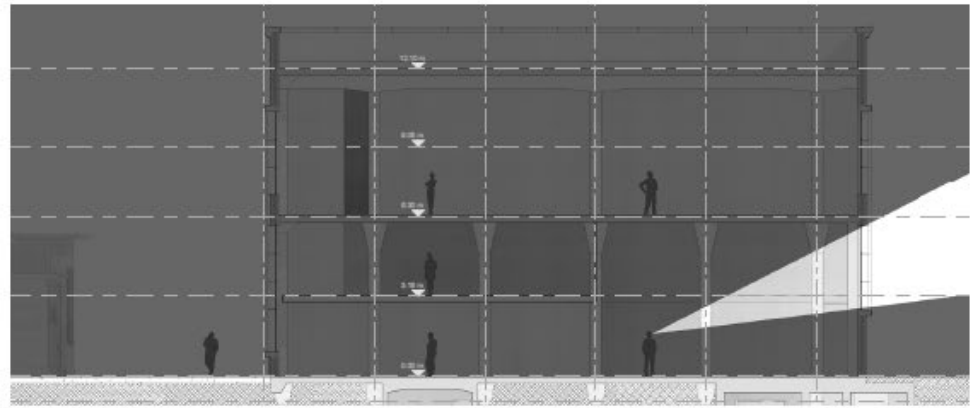
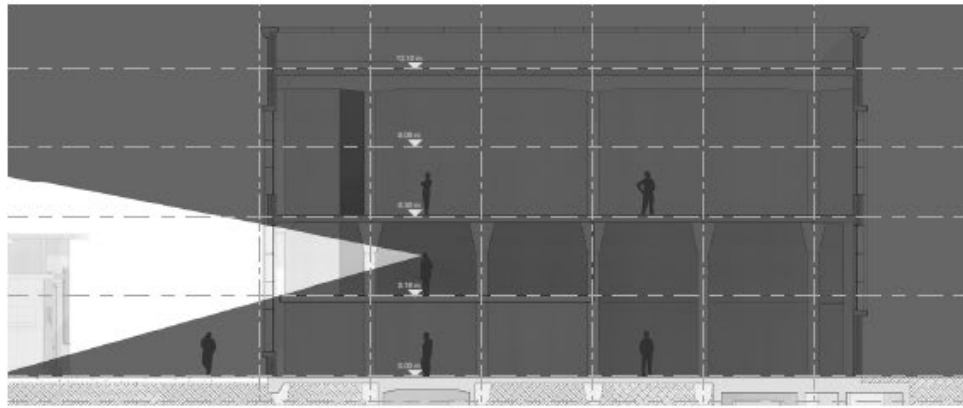
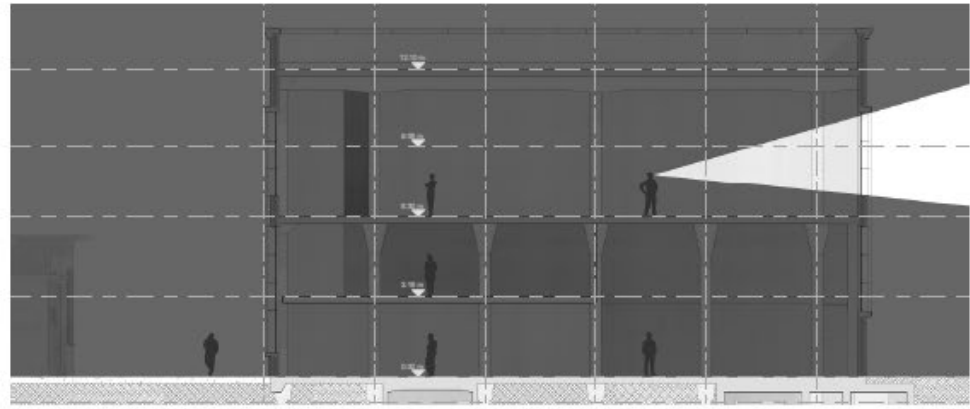
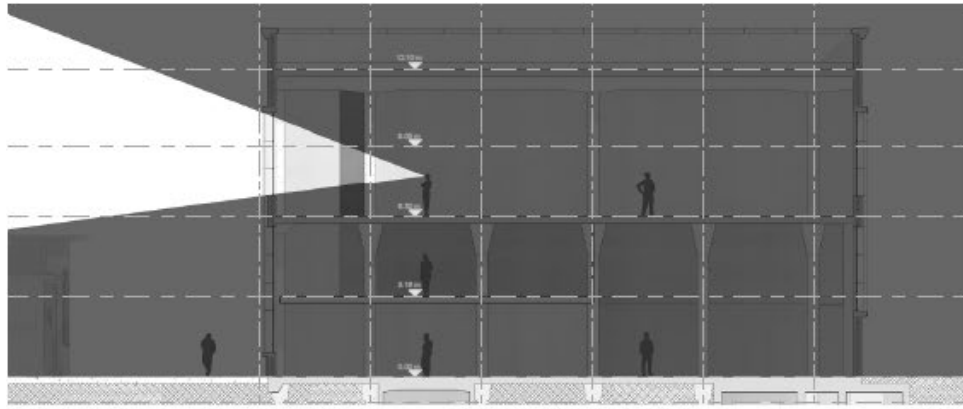


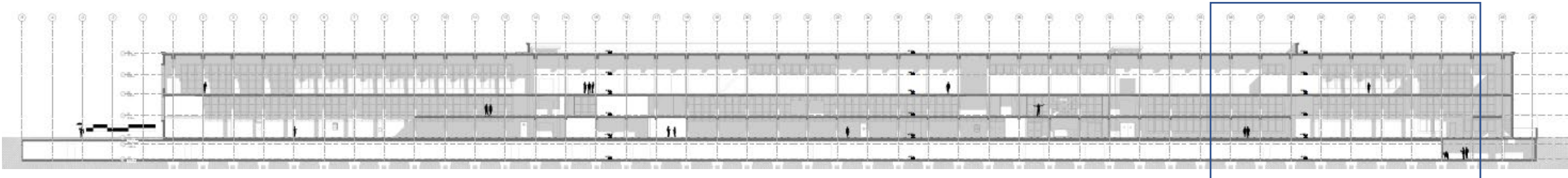
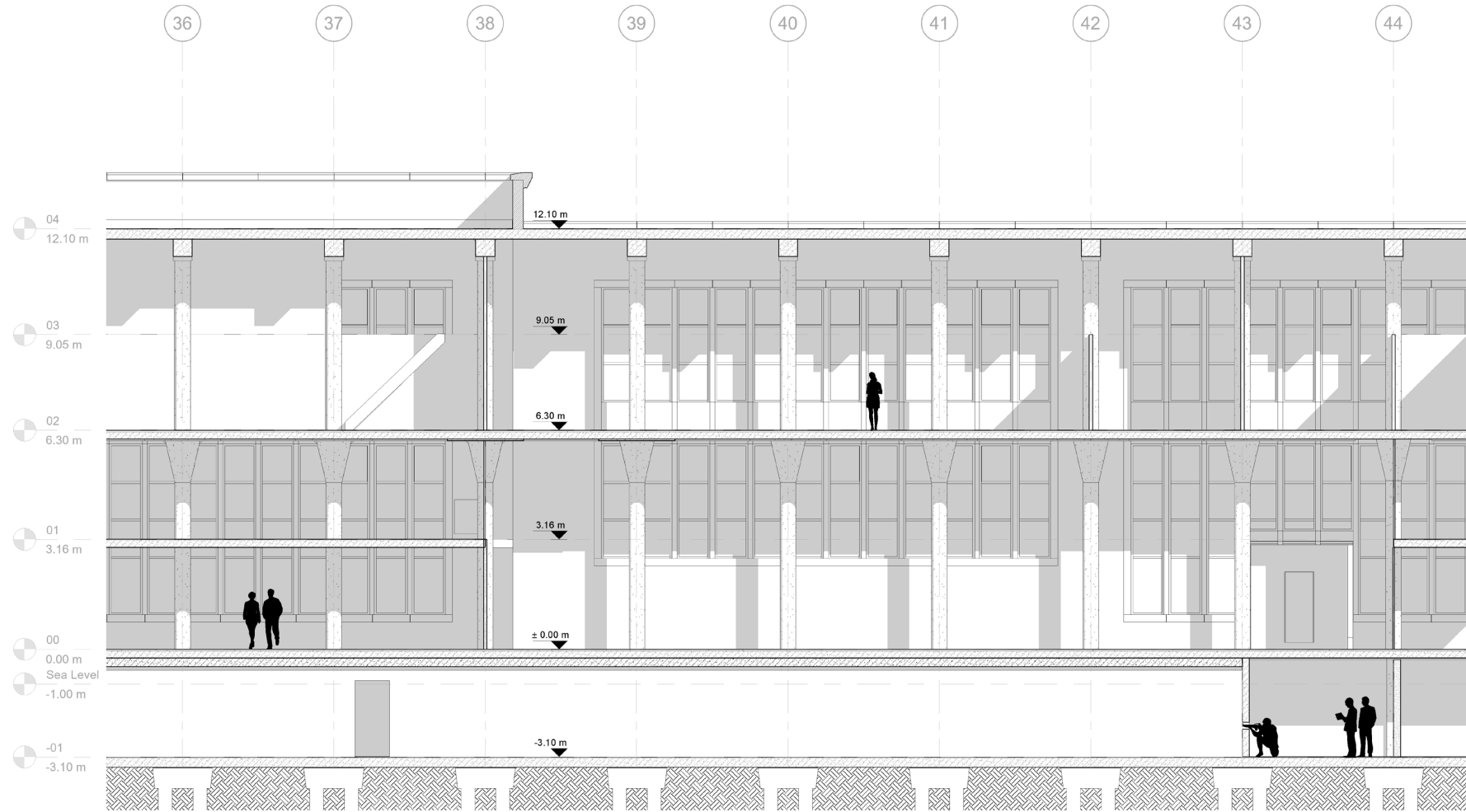
© Vasileios Iliopoulos, 2019



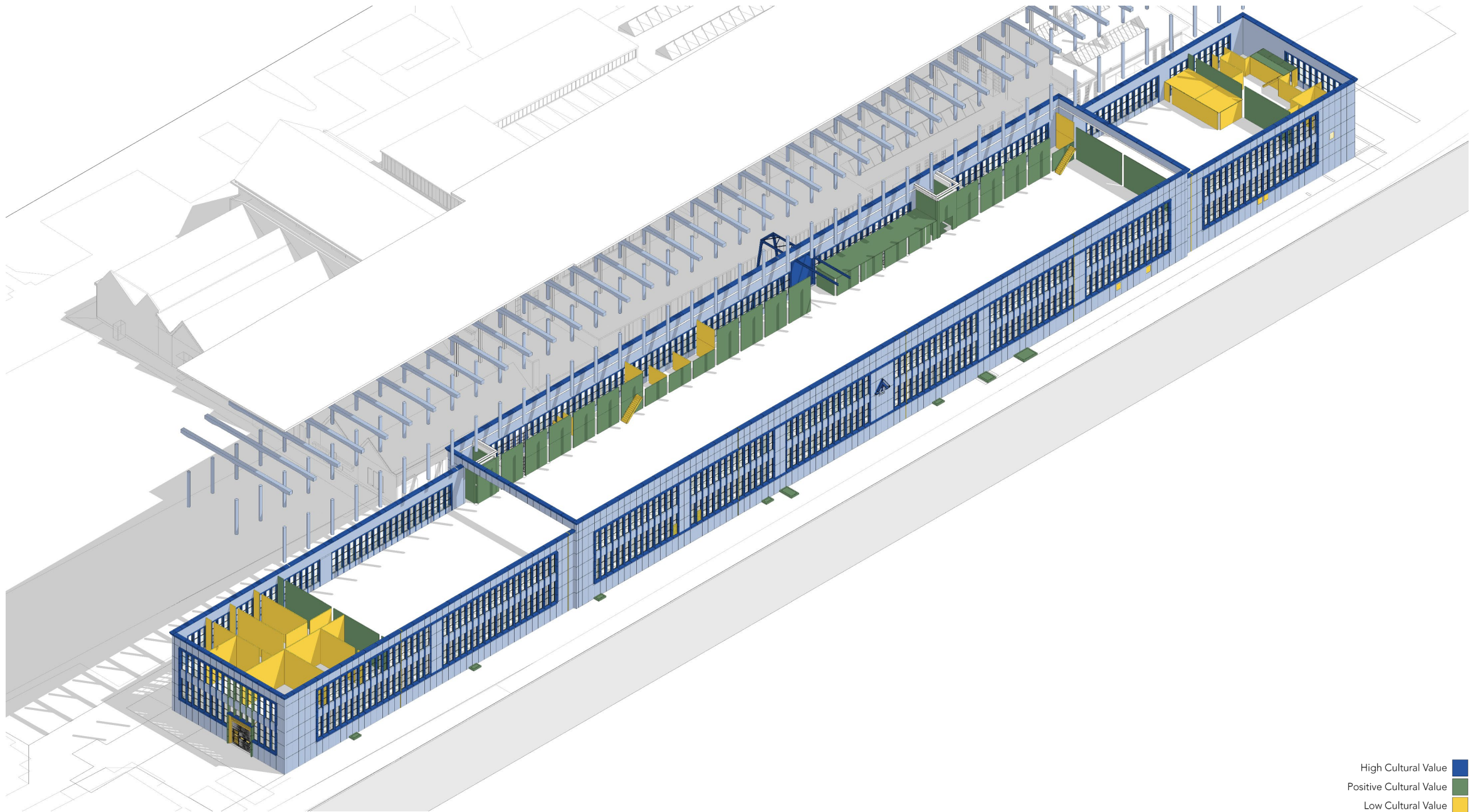














- High Cultural Value ■
- Positive Cultural Value ■
- Low Cultural Value ■



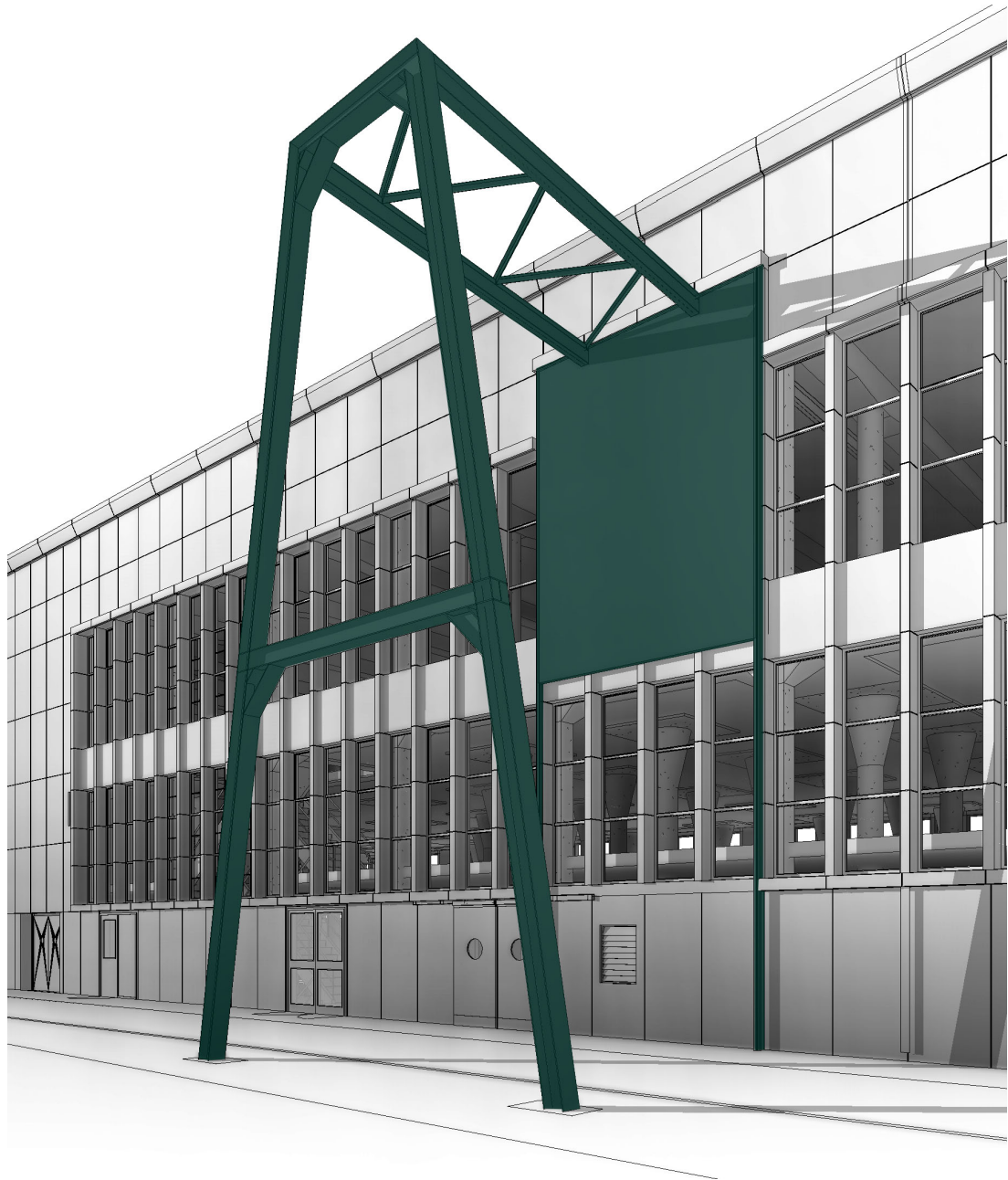


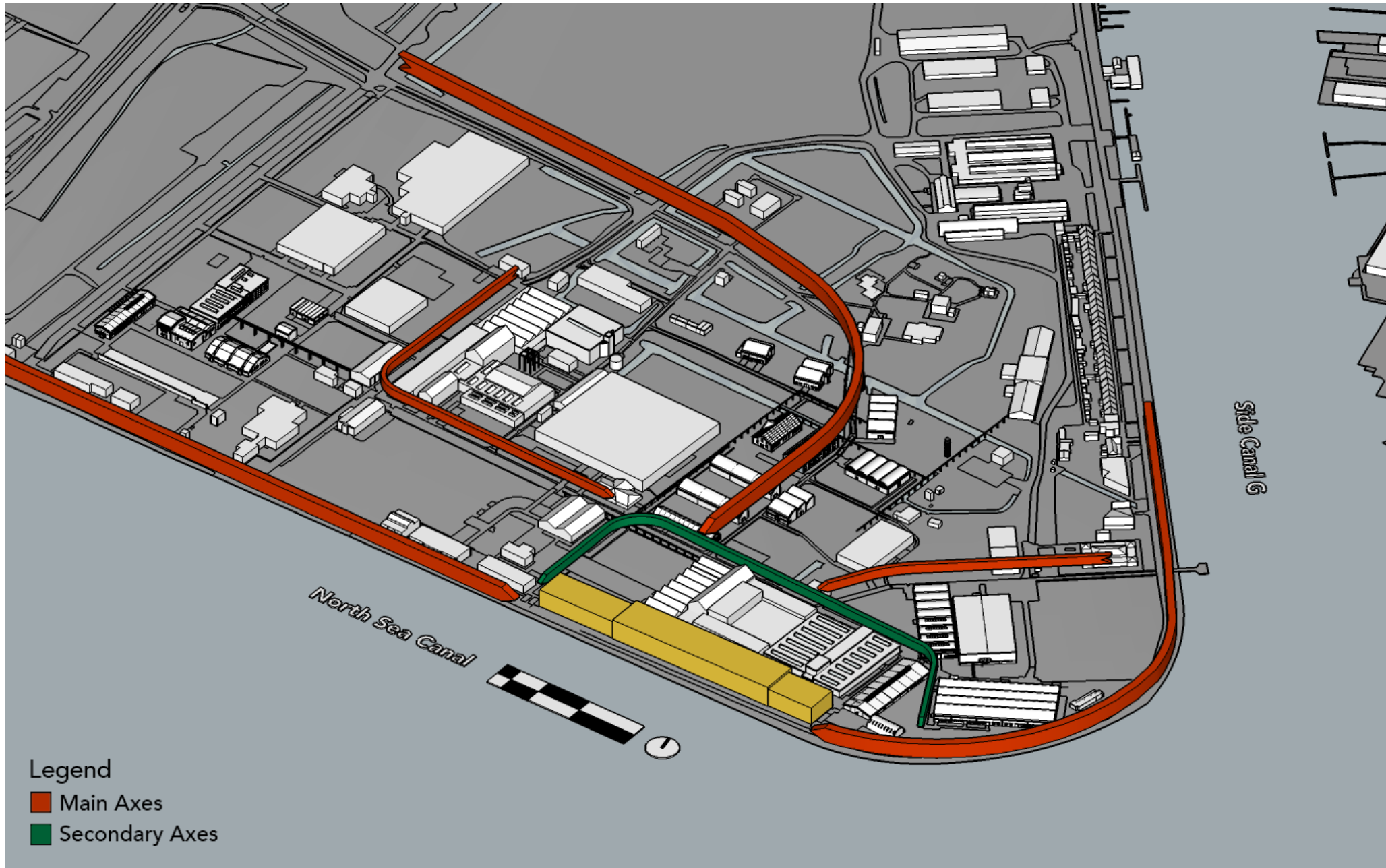
© Vasileios Iliopoulos, 2019



© Vasileios Iliopoulos, 2019











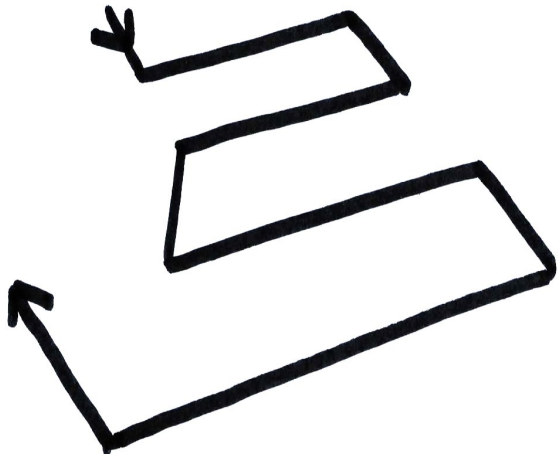


© Vasileios Iliopoulos, 2019



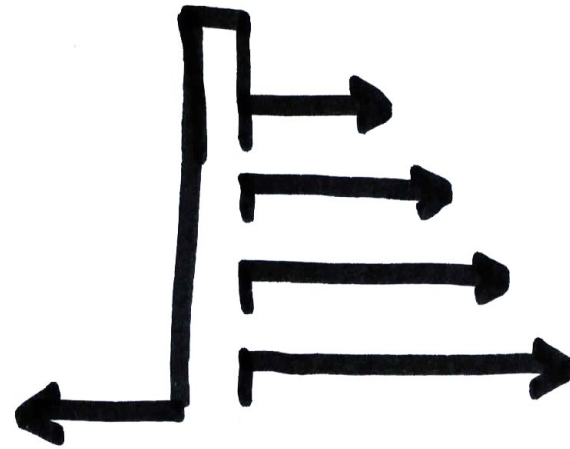


© Vasileios Iliopoulos, 2019



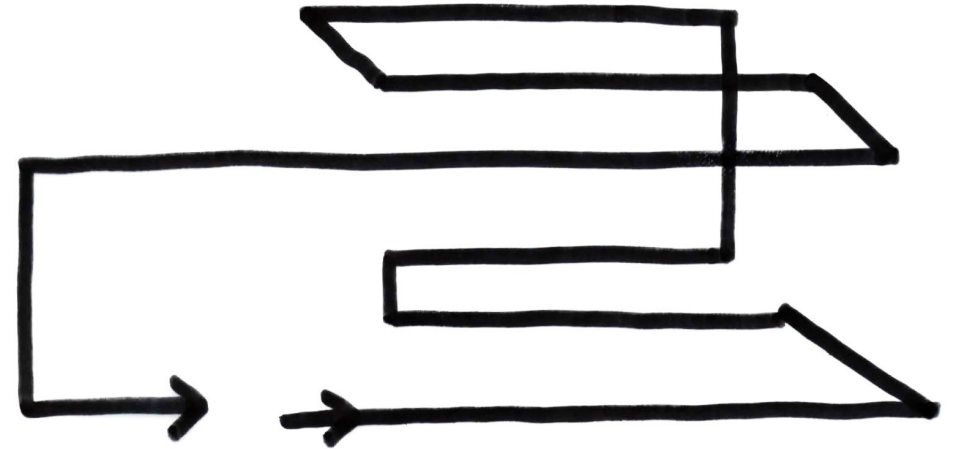
Nationaal Militair Museum

Linear route



Tate Modern

Flexible, autonomous

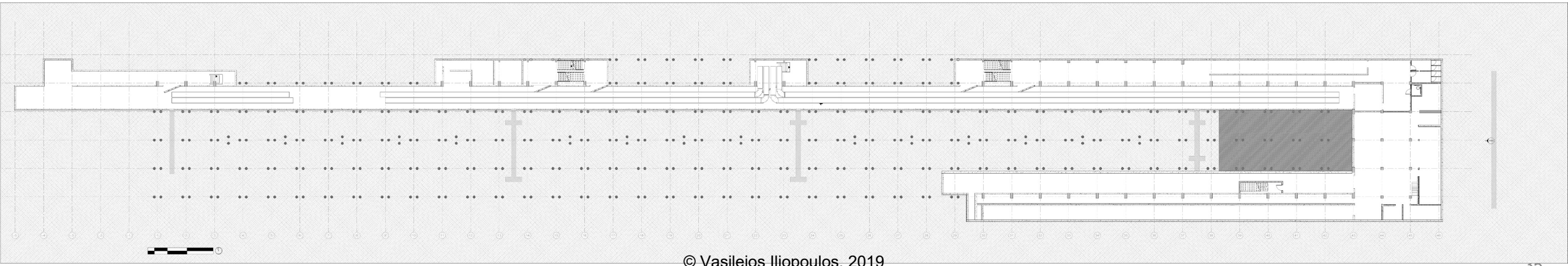
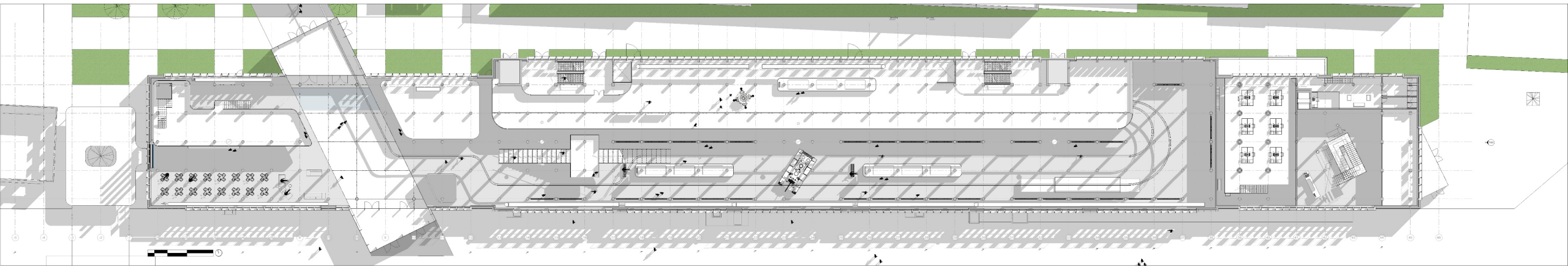
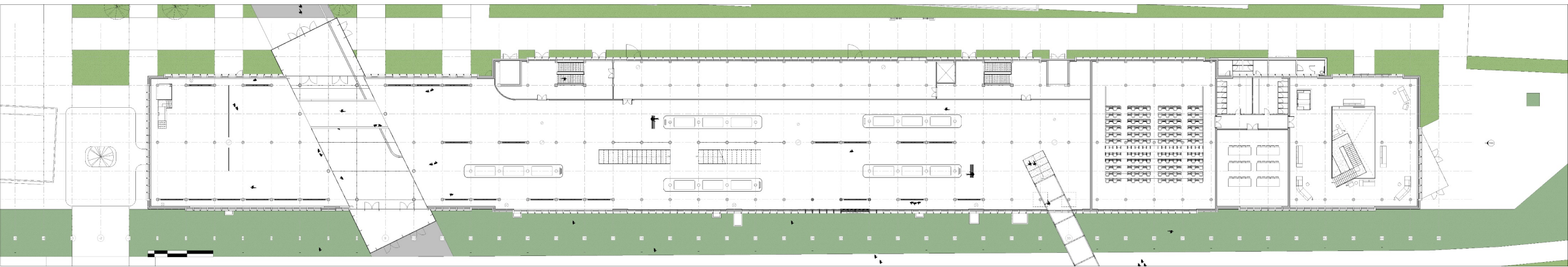


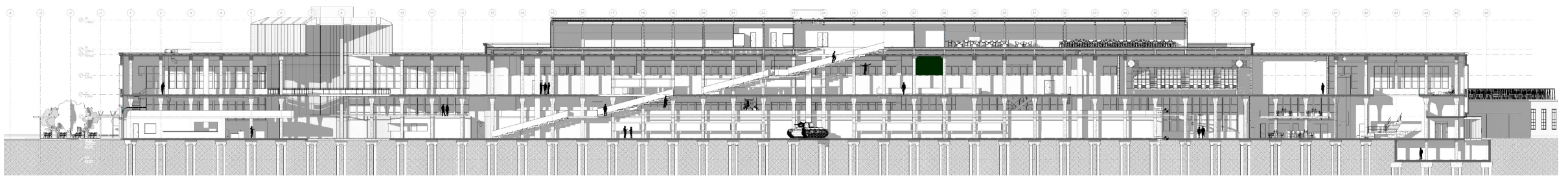
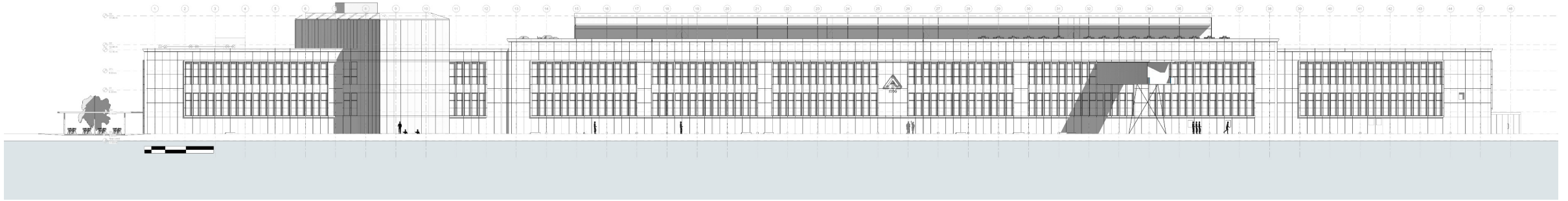
Cold War Museum

Linear experience(s)





















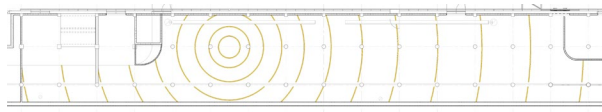
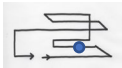


1945-1949 TENSIONS

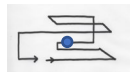
- OCCUPATION OF BERLIN
- POTSDAM CONFERENCE
- ATOM BOMB ATTACKS ON JAPAN
- GREEK CIVIL WAR
- MARSHALL AID PLAN
- ESTABLISHMENT OF NORTH KOREA
- ESTABLISHMENT OF NATO

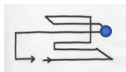


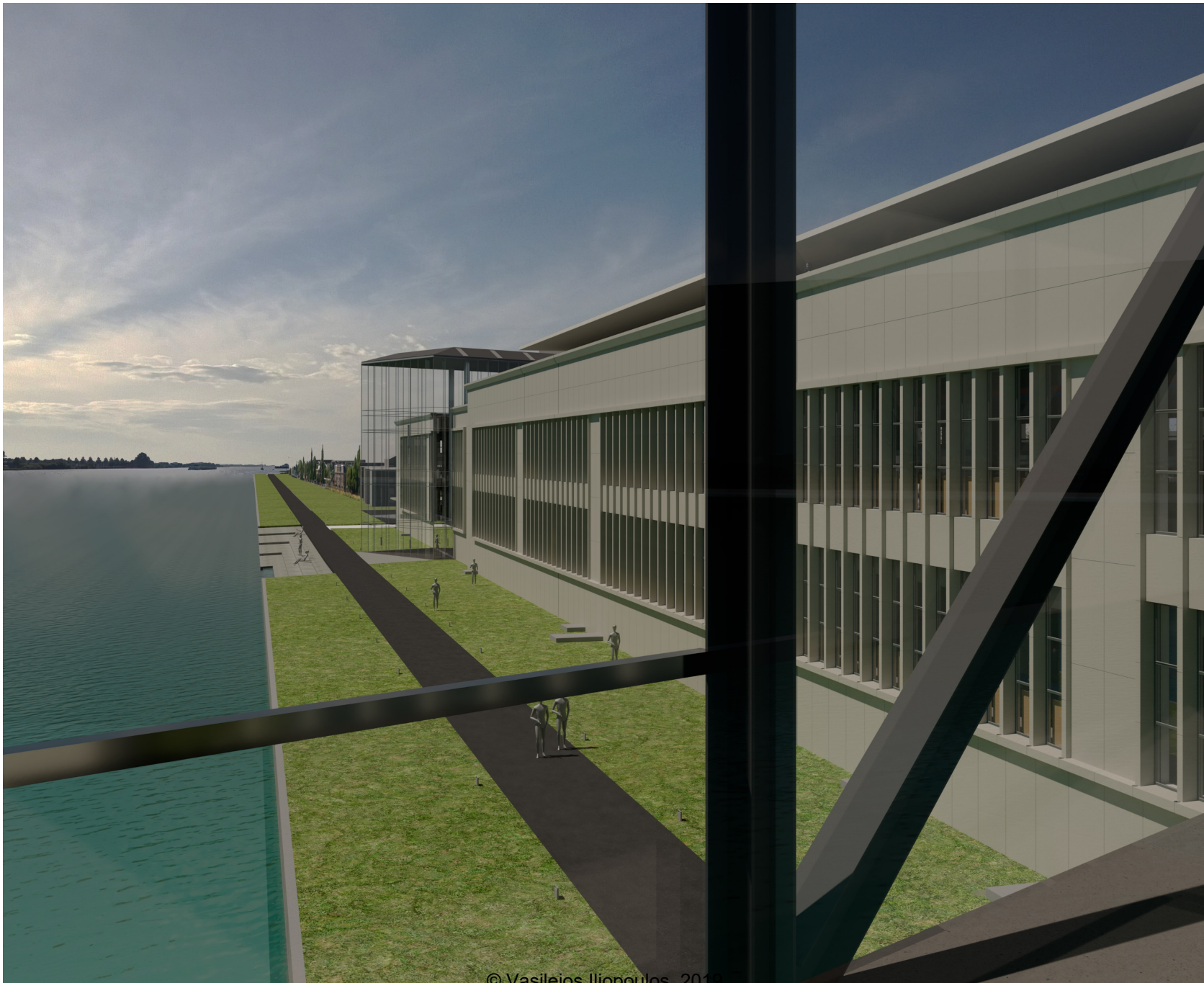


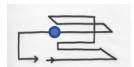


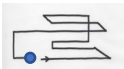
© Vasileios Iliopoulos, 2019

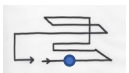












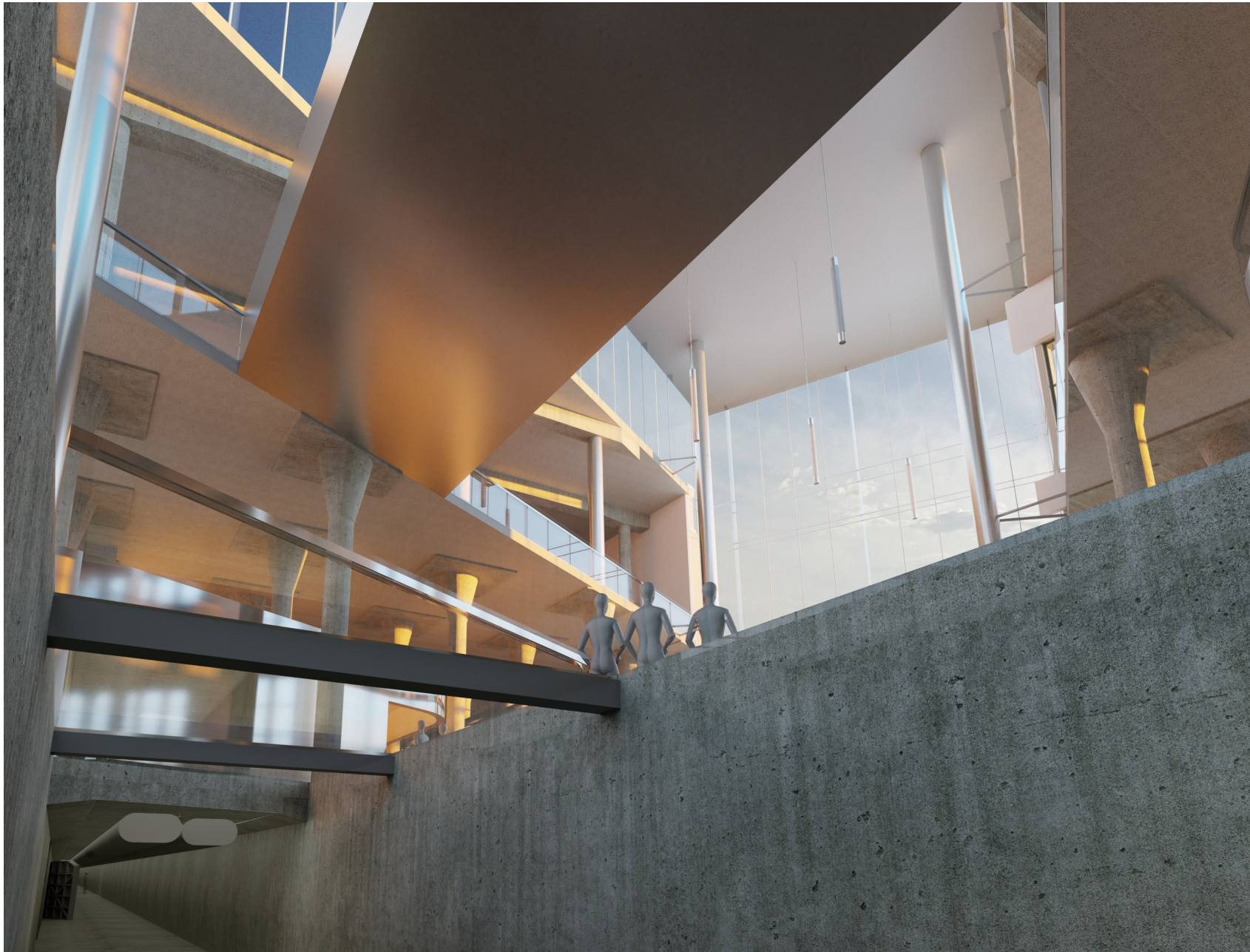














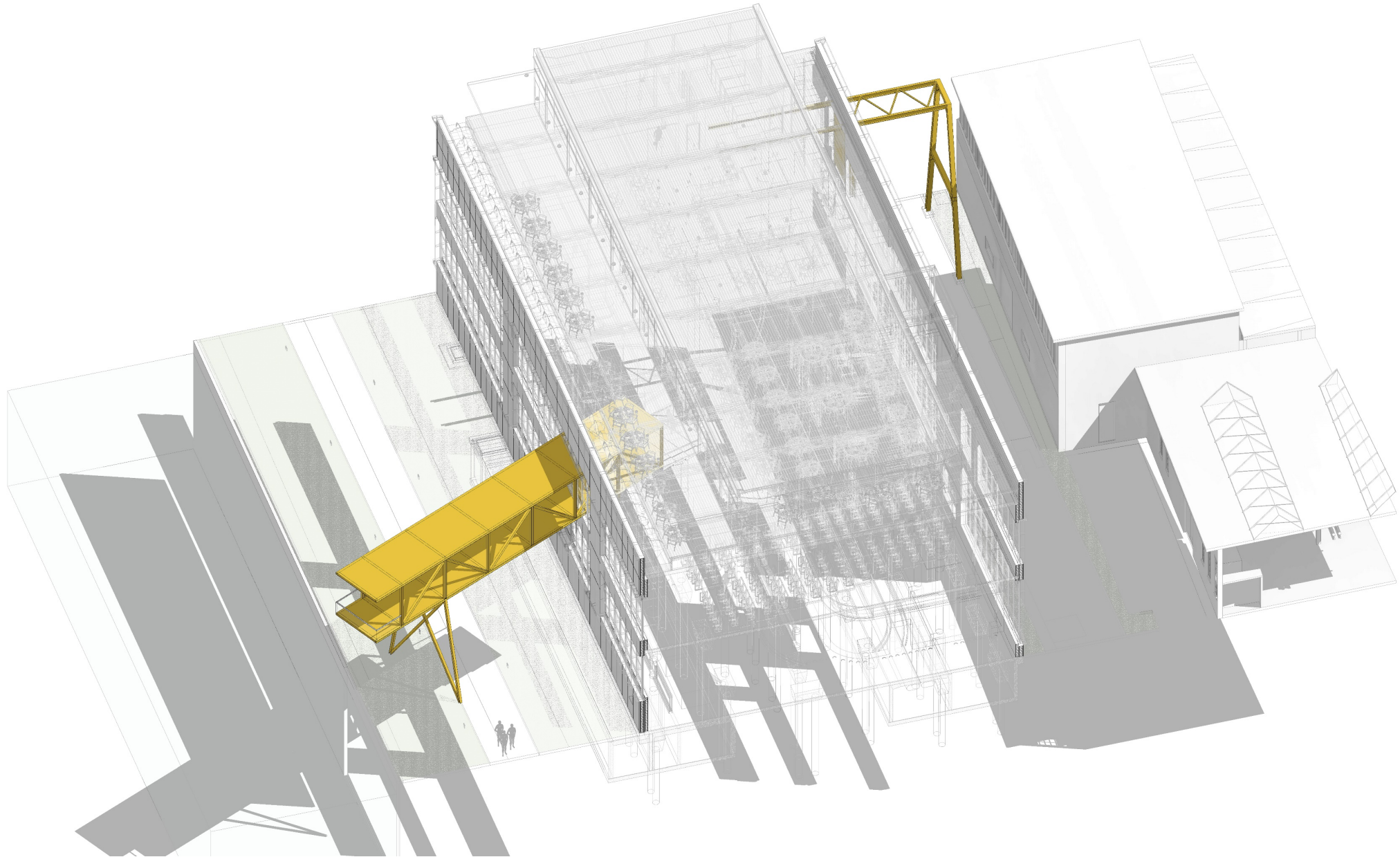


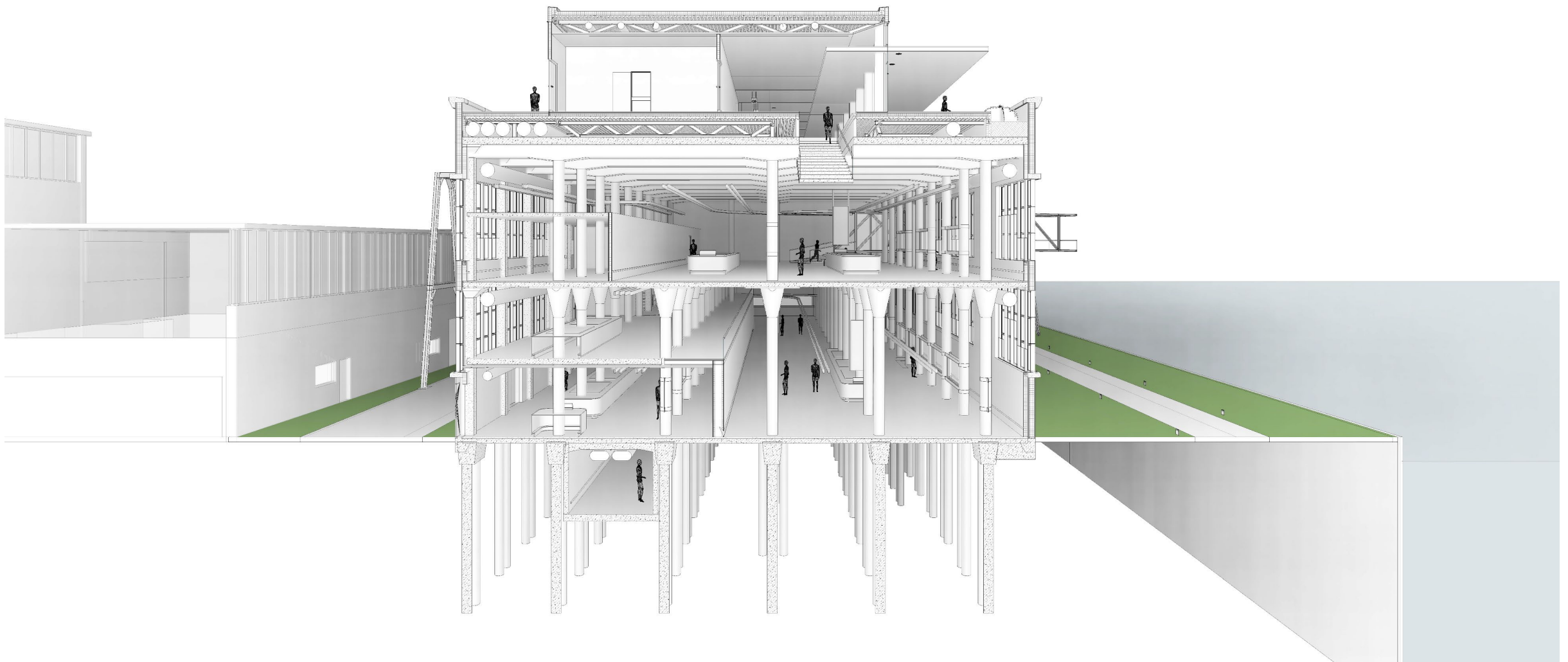


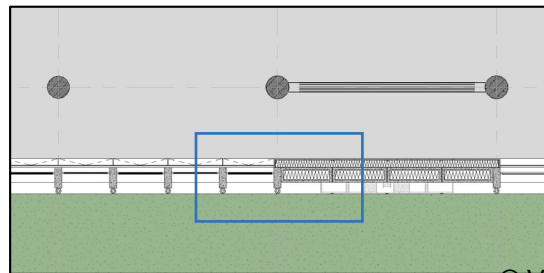
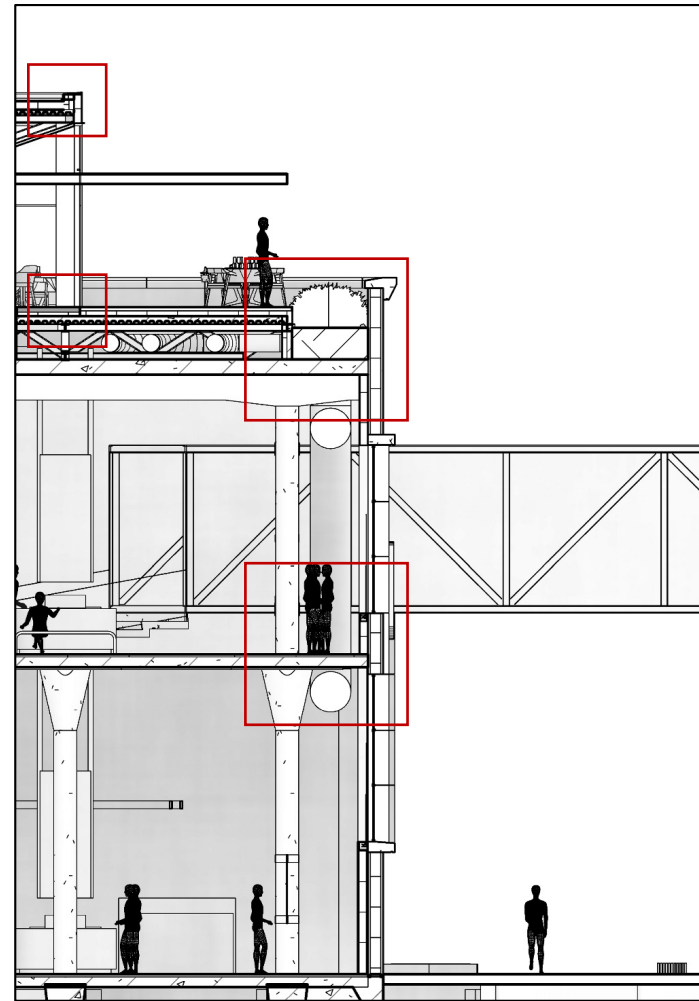
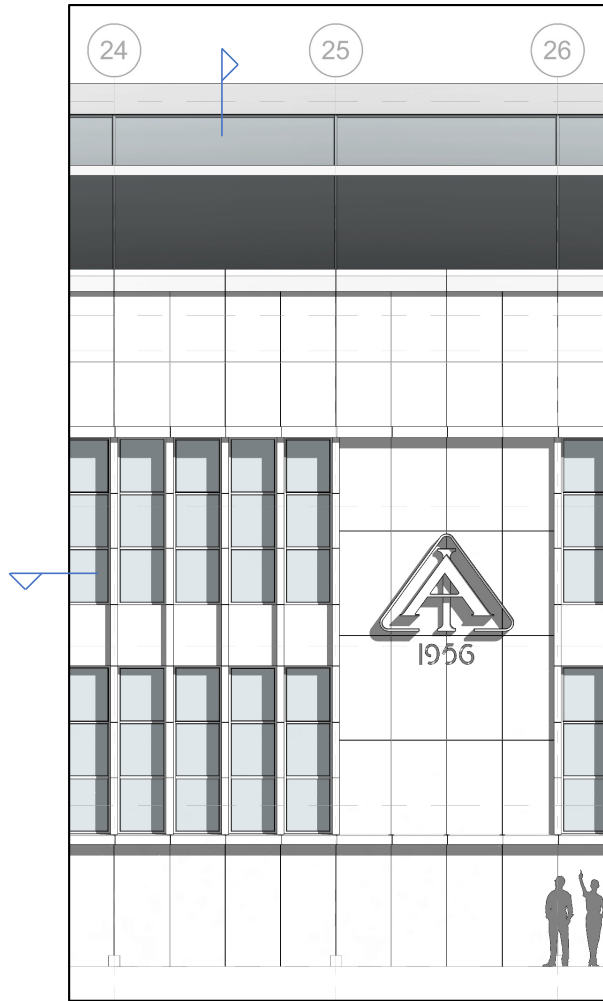


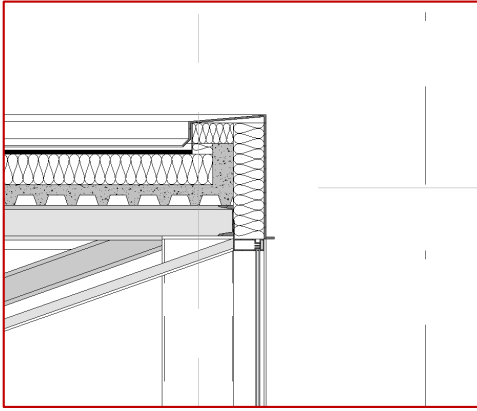




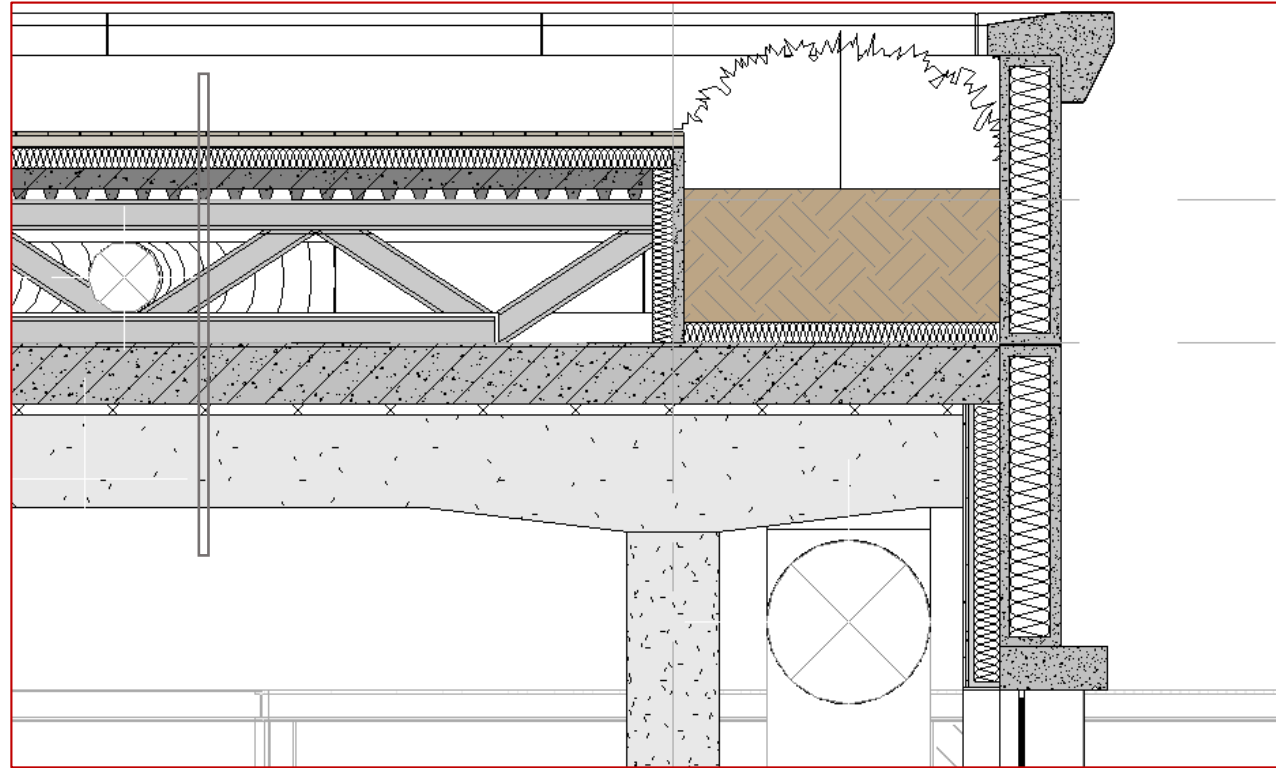
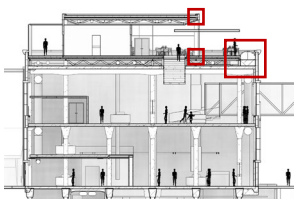
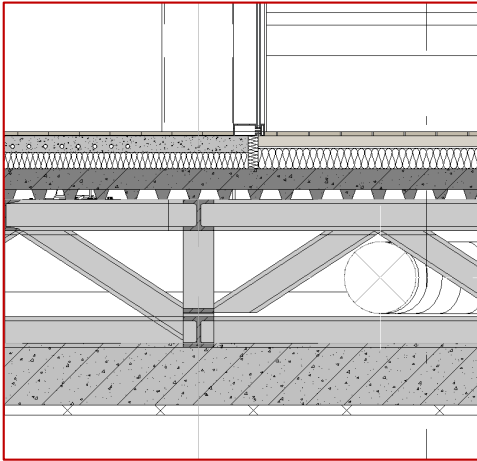


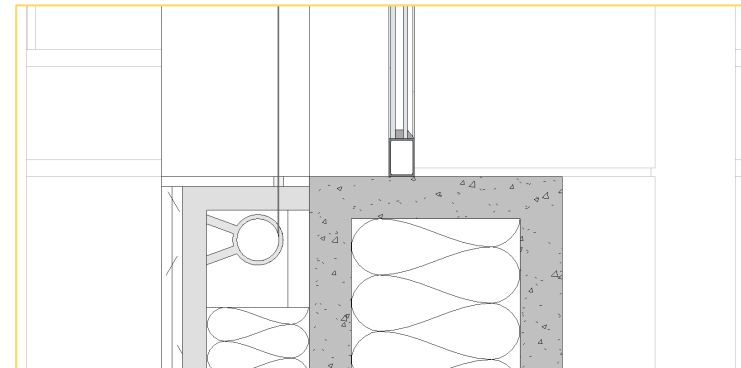
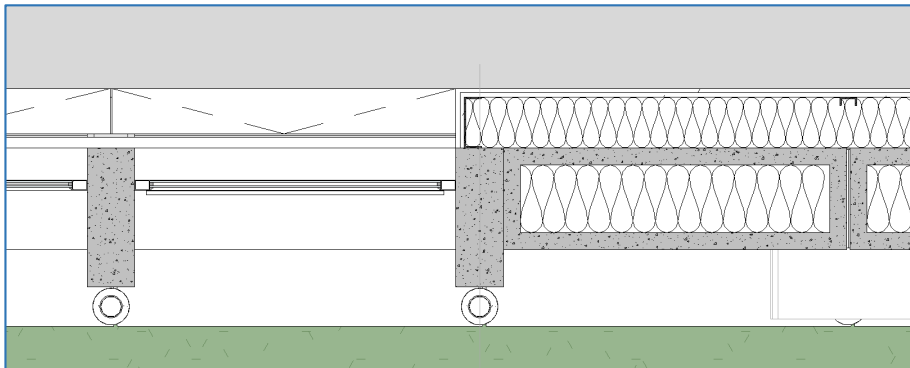
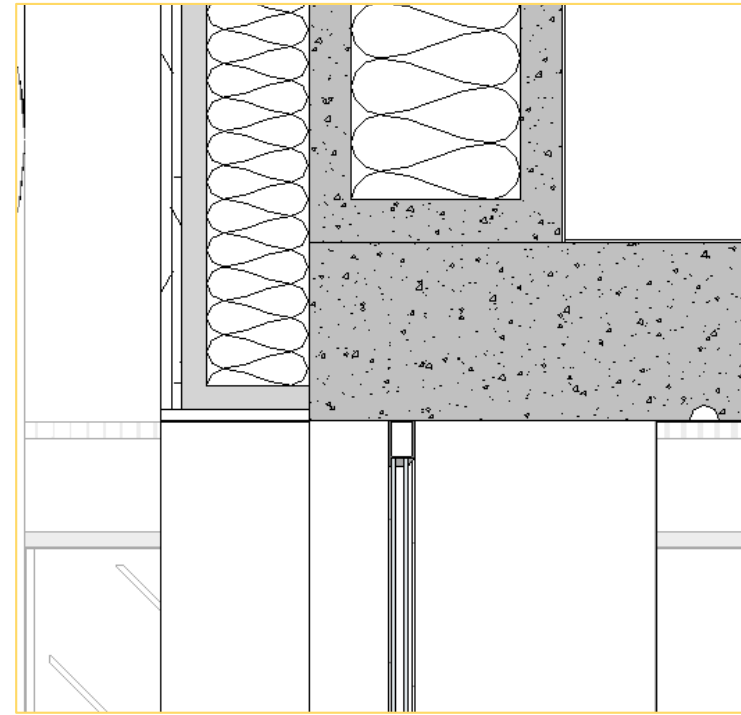
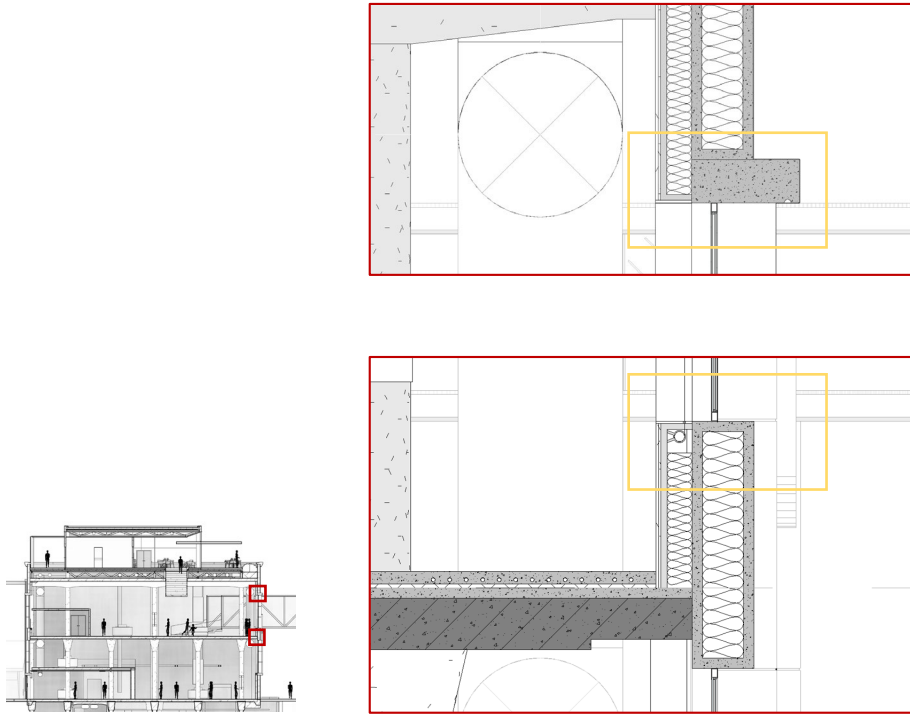


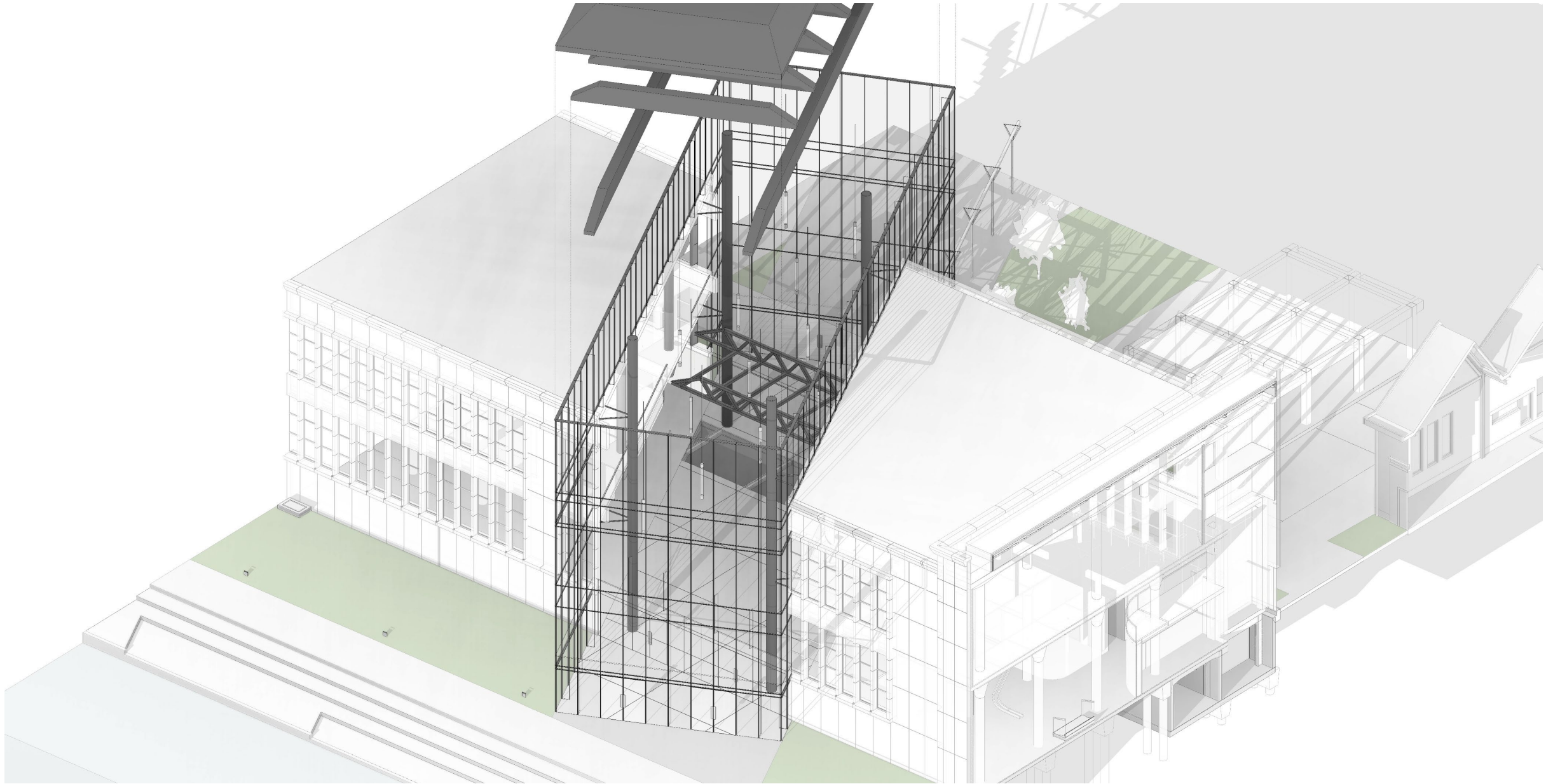


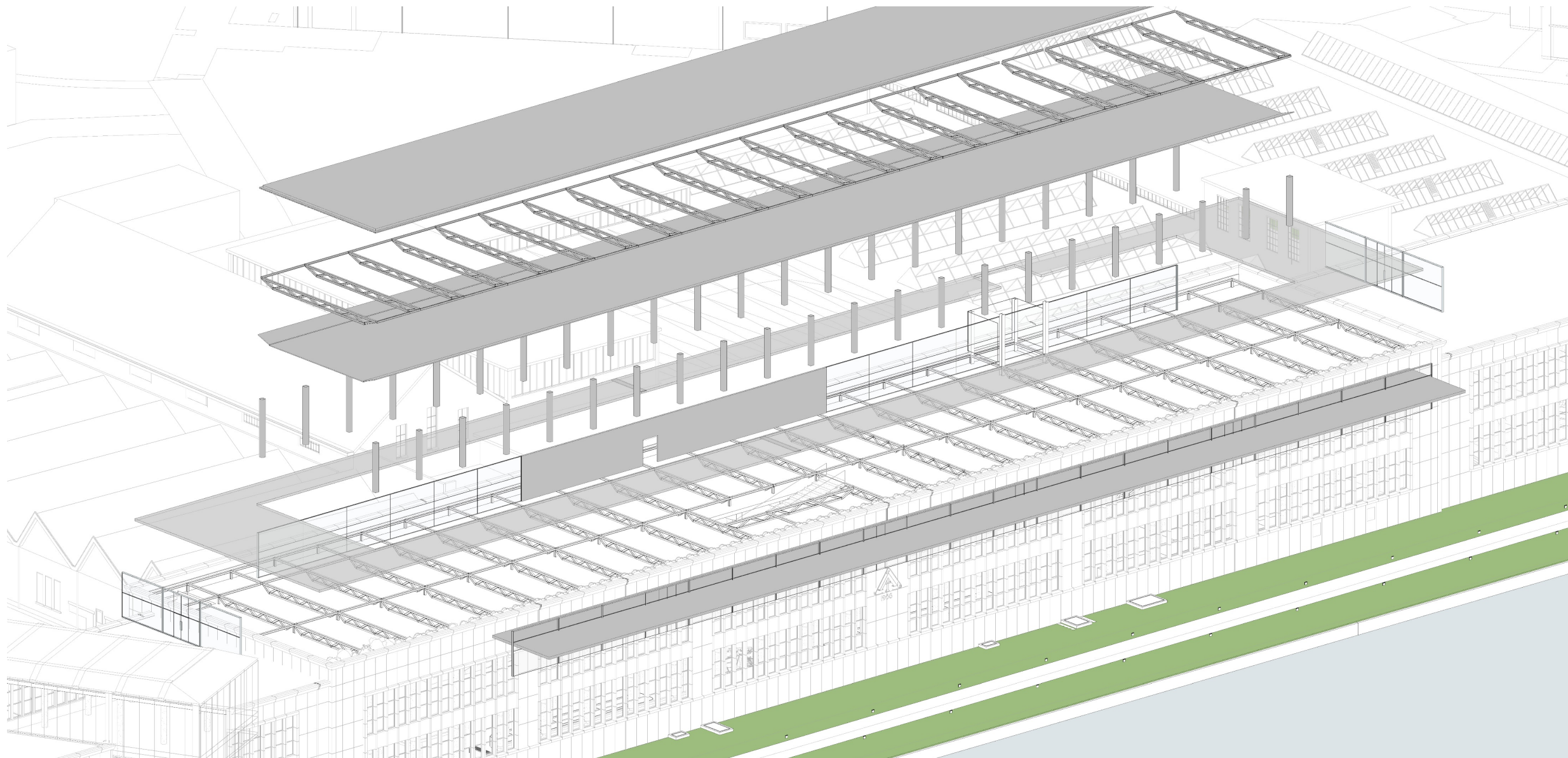


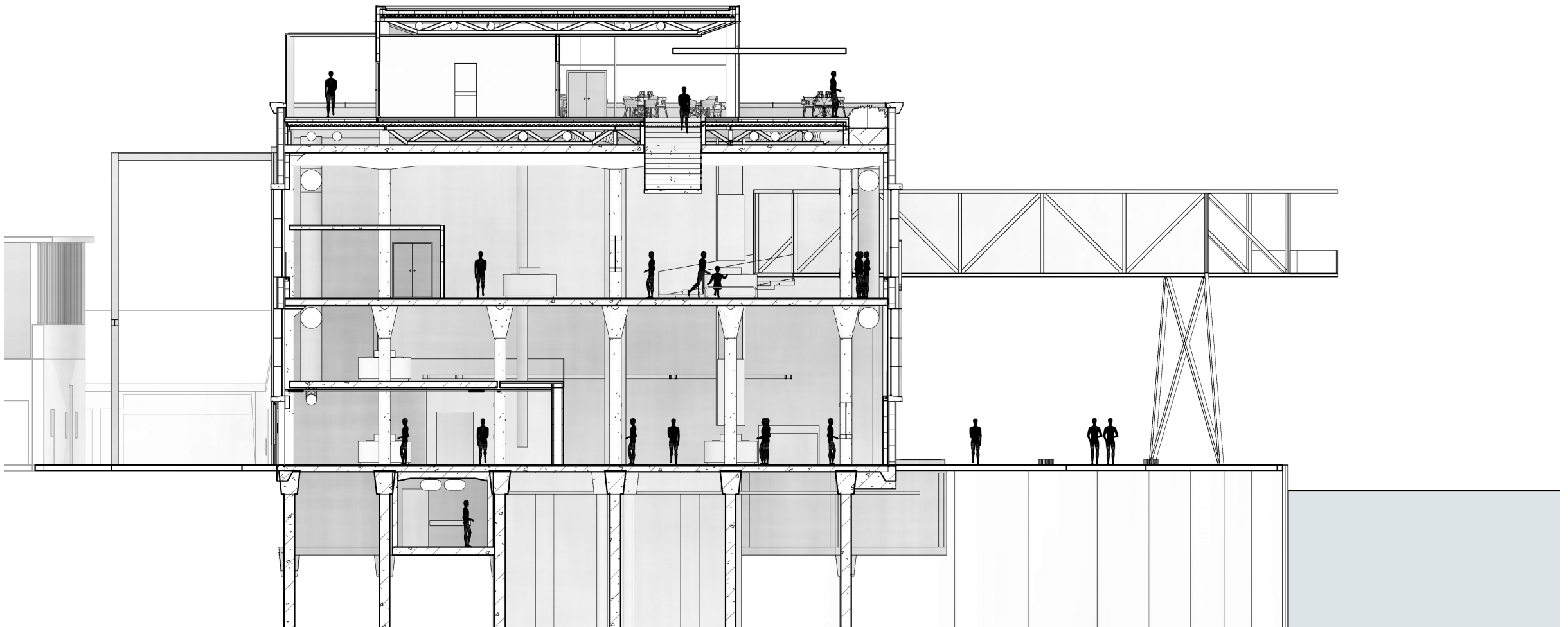
Description:
Timber floor finish
Timber frame, rectangular section
Rubber mat
Waterproofing
Rigid insulation
Composite concrete slab
Steel truss
Reinforced concrete slab, existing
Reinforced concrete beam, existing

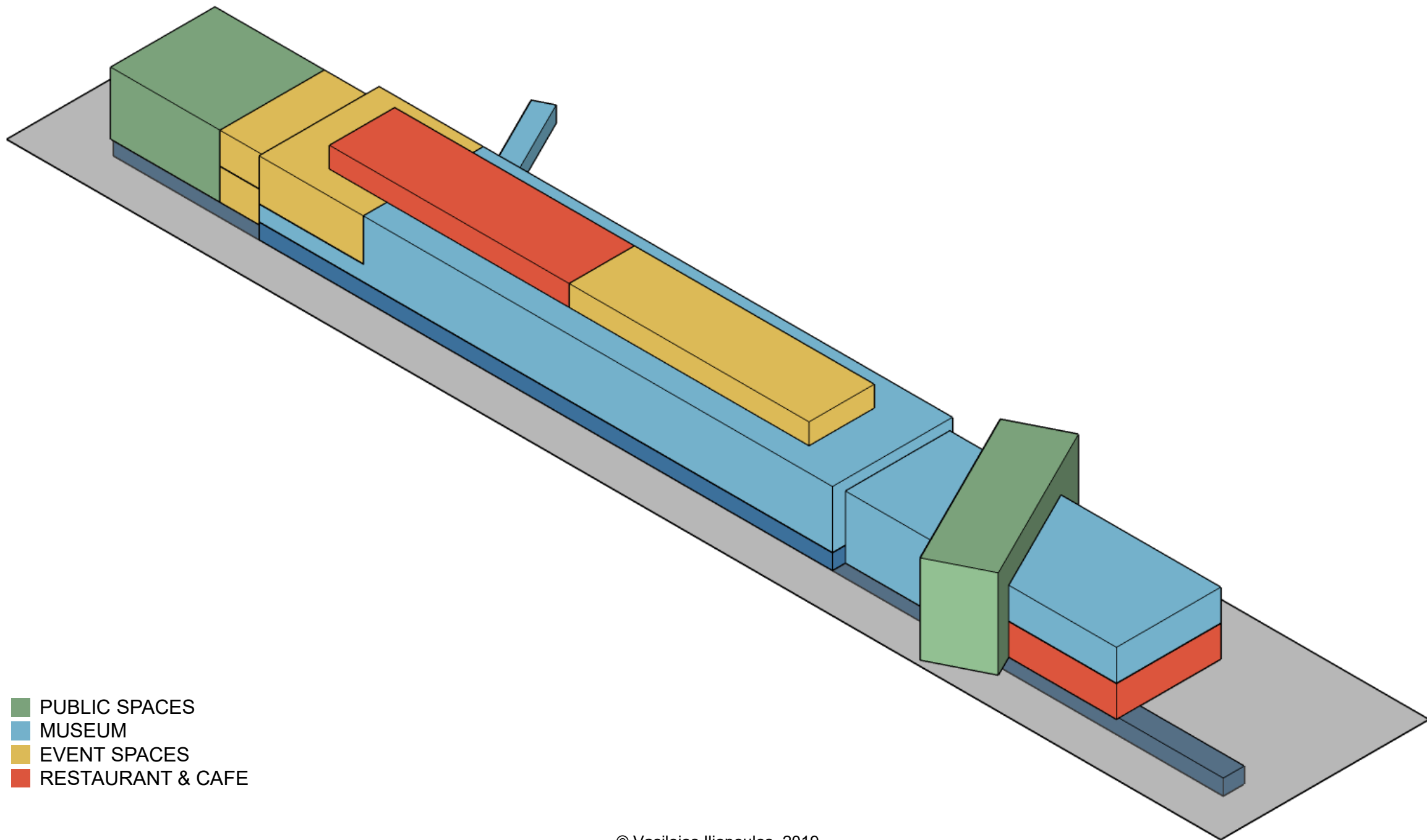












- PUBLIC SPACES
- MUSEUM
- EVENT SPACES
- RESTAURANT & CAFE

