

---

# TIMBER TOWN

---

AN INCLUSIVE MIXED-USE AREA IN WINTERSWIJK,  
BUILT FOR AND OUT OF WOOD



---

## CONTENTS

---

1. INTRODUCTION	
1.1 THE PROJECT	4
1.2 SURROUNDINGS	6
1.3 SITE	8
2. ANALYSIS	
2.1 METHODOLOGY	10
2.2 THE IDEA	12
2.3 STARTING POINTS DESIGN	13
3. DESIGN	
3.1. SITE	14
3.2 TIMBER WORKSHOP AND CREATIVE CUBICLES	22
3.3 SHED ROOF BUILDING	36
3.4 ADDITIONAL BUILDINGS	44
3.5 SIGNING AND BRANDING	46

1. INTRODUCTION  
**1.1 THE PROJECT**



Textile manufacturing, which began with the craftsmanship of the farmers around Winterswijk, has been an important driver for the development of the village and its inhabitants. In the late 19th century the craft was taken to the industry and soon grew out to the pride of the village. The project is a building ensemble within an industrial area, close to the village centre. It is divided into four parts: Gaudium, Morsepoort, Hazewind and Janfleur. A creek –the 'Whemerbeek'- used to be one of the elements which were very important within the area regarding the production process. It is now partly covered because it has lost its function. Furthermore, regardless of the textile industry fulfilling the core function of Winterswijk's prosperity in the past, part of the area currently lays unused and deteriorated: only Gaudium is still functioning as a textile factory. Despite the presence of this factory, the industrial area has lost its status as a showpiece for the village and the inhabitants do not feel connected to the area anymore. For that reason, the focus of this project will be to revive the Morsepoort.

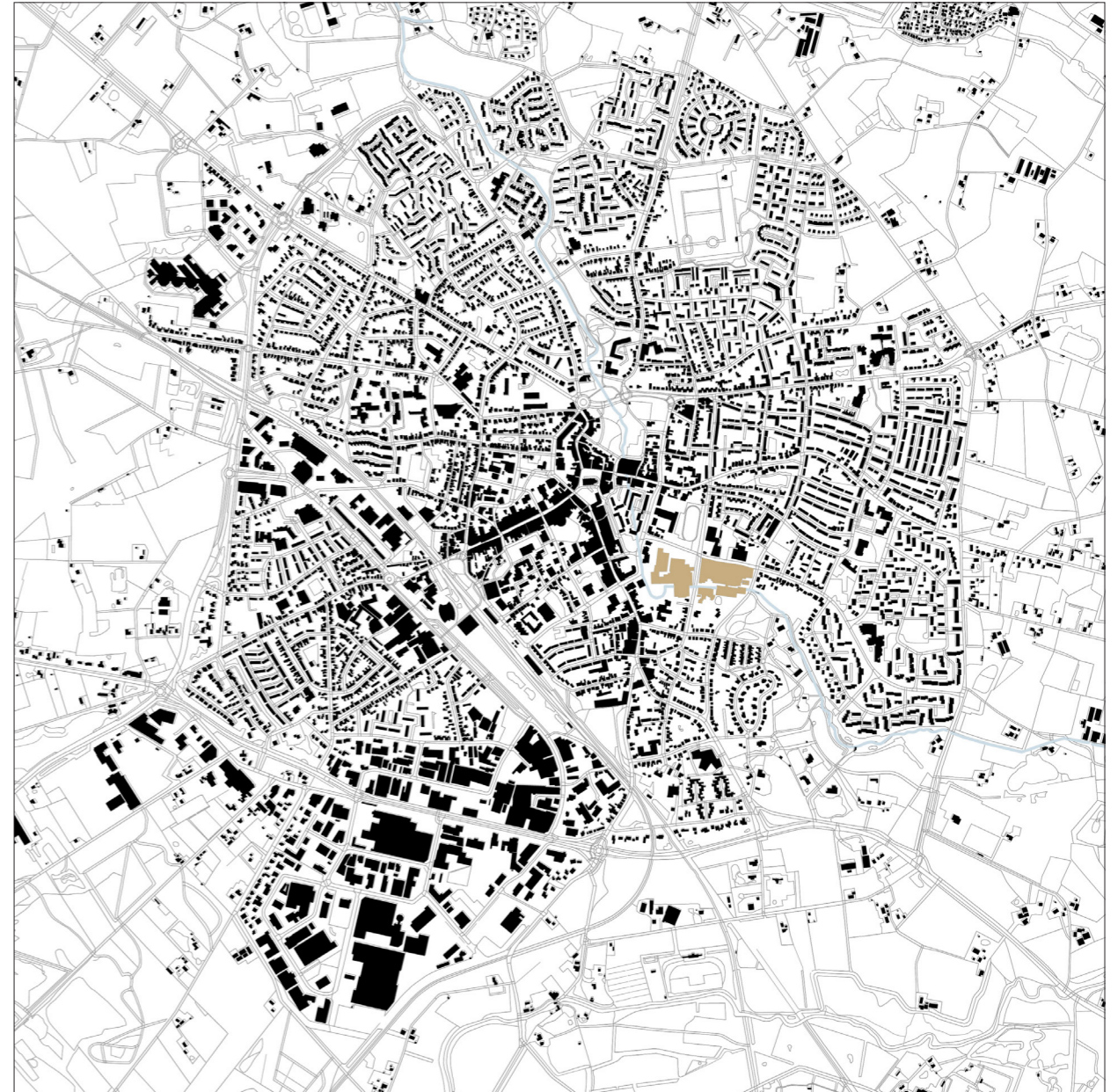
The graduation is part of the KaDEr project. The province of Gelderland founded the KaDEr project in order to redefine their strategy in the field of heritage, since restoration and transformation of heritage is becoming a common future interest. The project is a collaboration between the Province of Gelderland and the Faculty of Architecture of the Technical University of Delft, section of Heritage & Architecture. The industrial area in Winterswijk is appointed as one of the (partly) abandoned heritage sites within the KaDEr project.

1. INTRODUCTION  
1.2 SURROUNDINGS



200 m

WINTERSWIJK



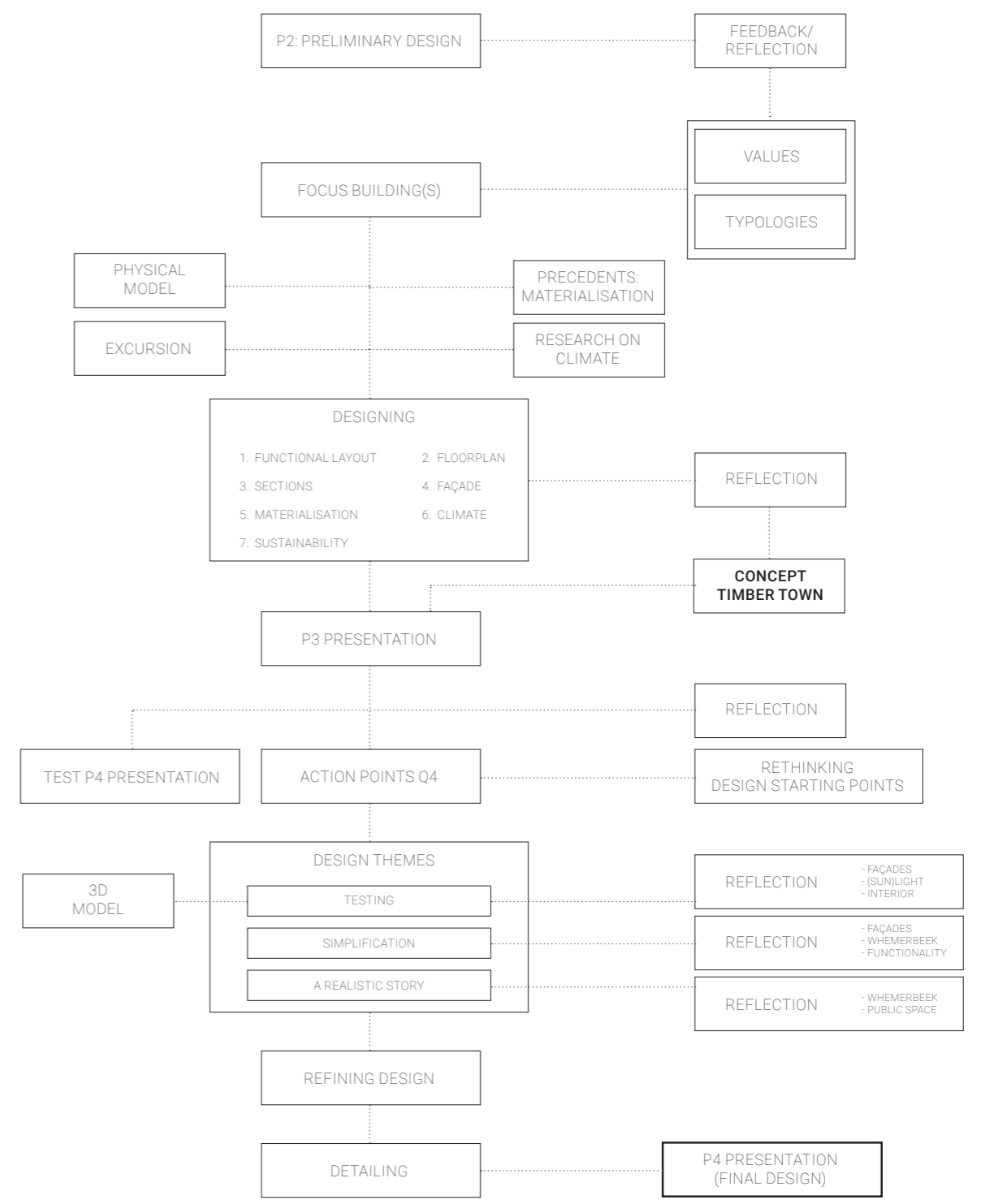
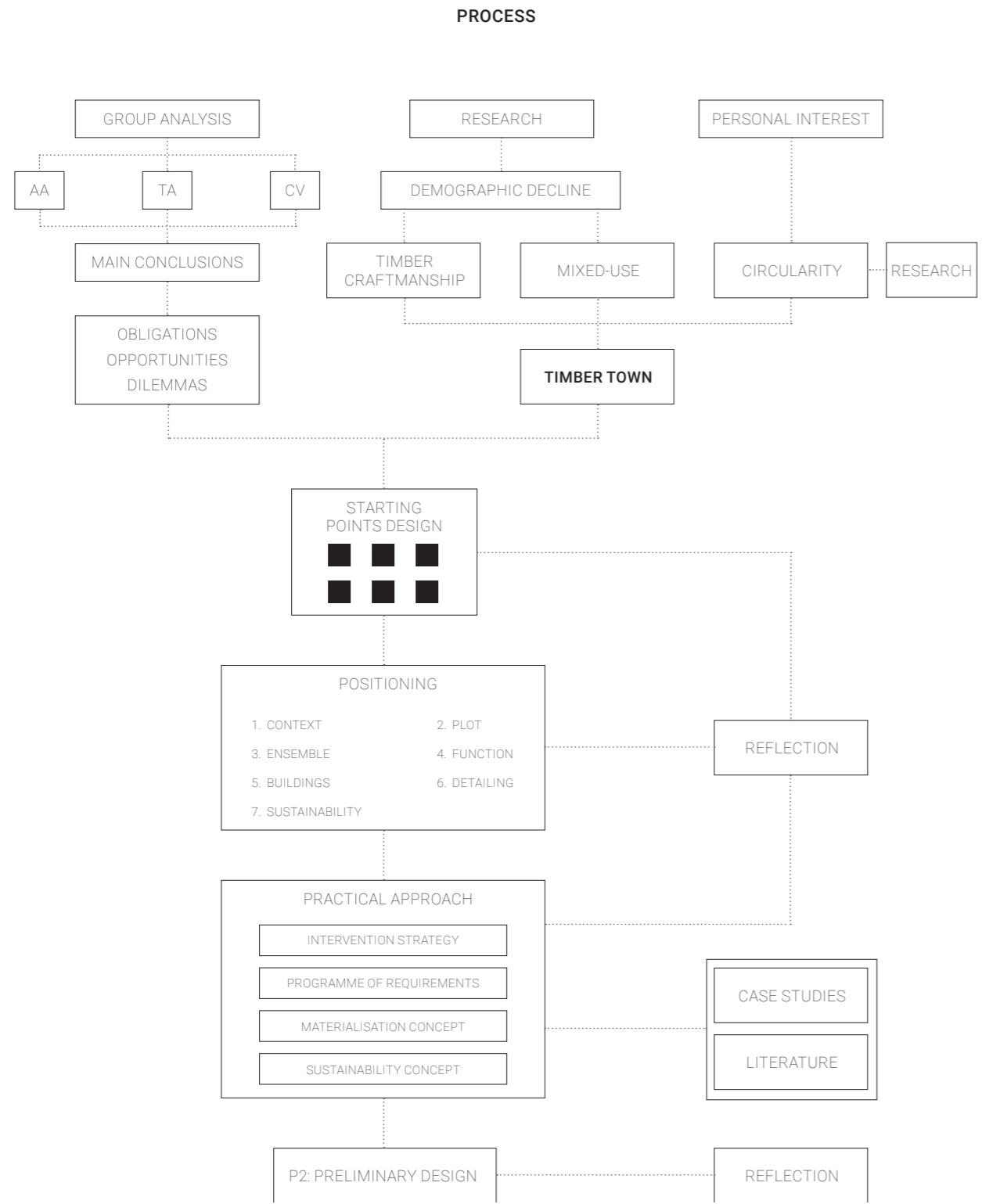
200 m

INDUSTRIAL AREA

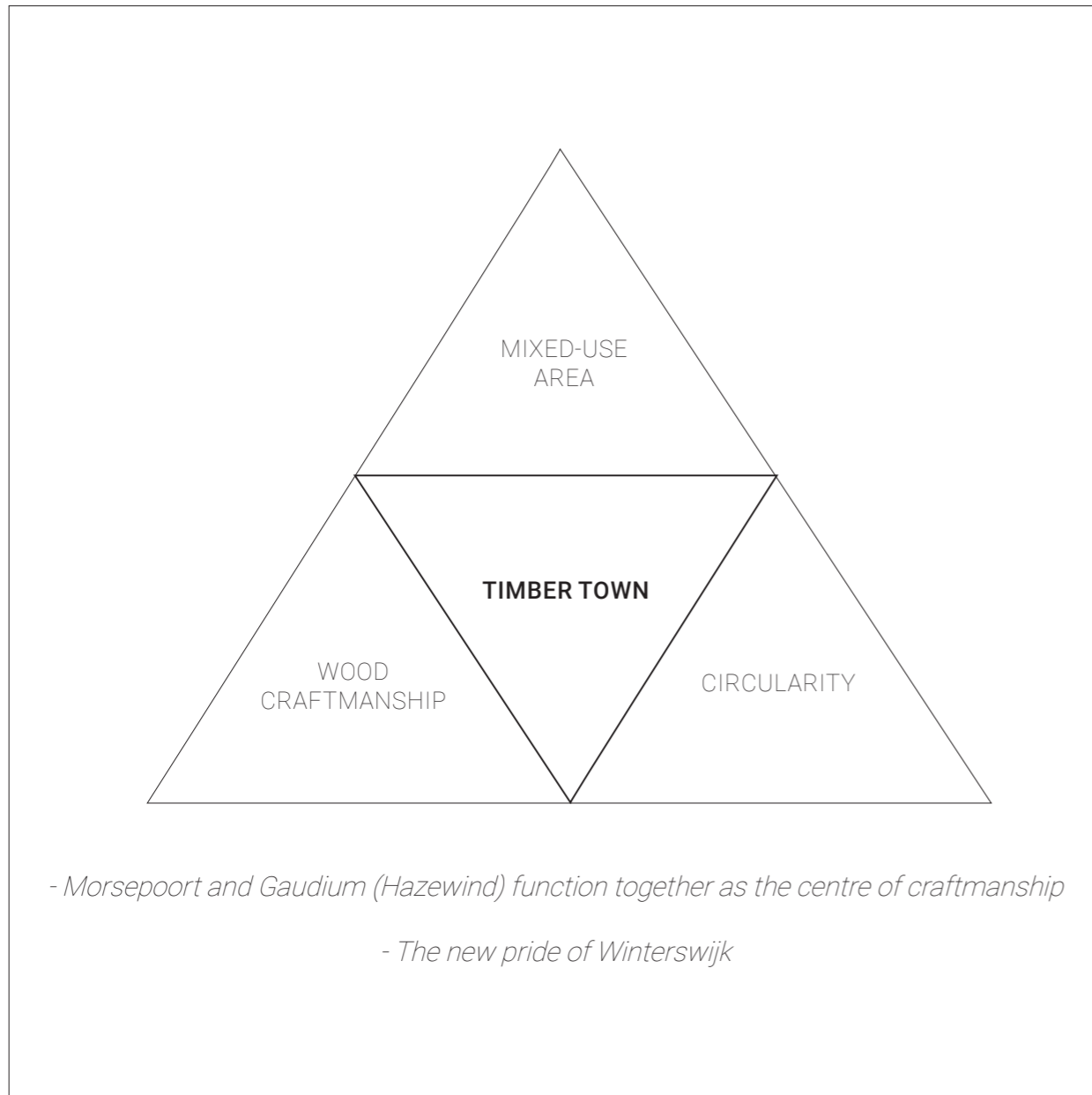
1. INTRODUCTION  
1.3 SITE



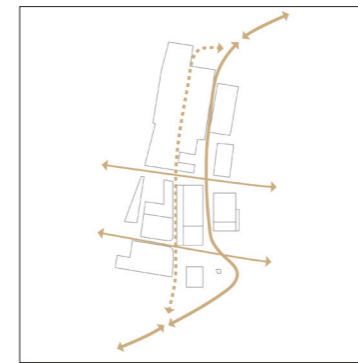
2. ANALYSIS  
2.1 METHODOLOGY



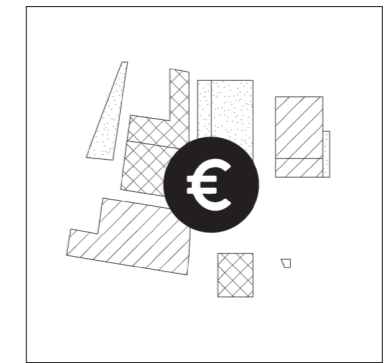
2. ANALYSIS  
2.2 THE IDEA



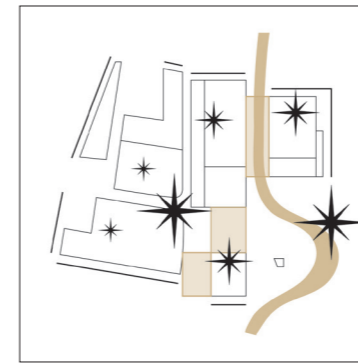
2. ANALYSIS  
2.3 DESIGN STARTING POINTS



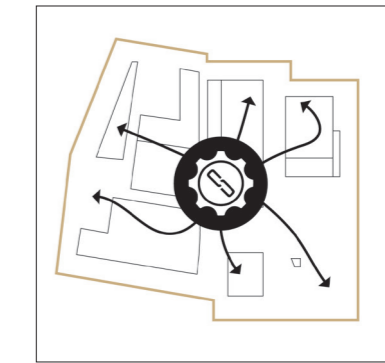
STRENGTHEN THE URBAN SITUATION AND INVOLVE THE HINTERLAND



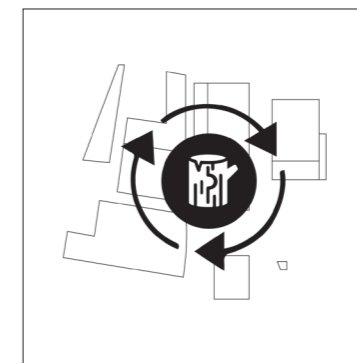
INSTALL MIXED-USE FUNCTIONS AND CREATE ECONOMIC FEASIBILITY



CULTURAL VALUE INTERVENTION STRATEGY



FOCUS ON CIRCULAR AND DURABLE INTERVENTIONS



CREATING SYNERGY WITHIN THE ENSEMBLE

3. DESIGN  
3.1 SITE



50 m

CURRENT

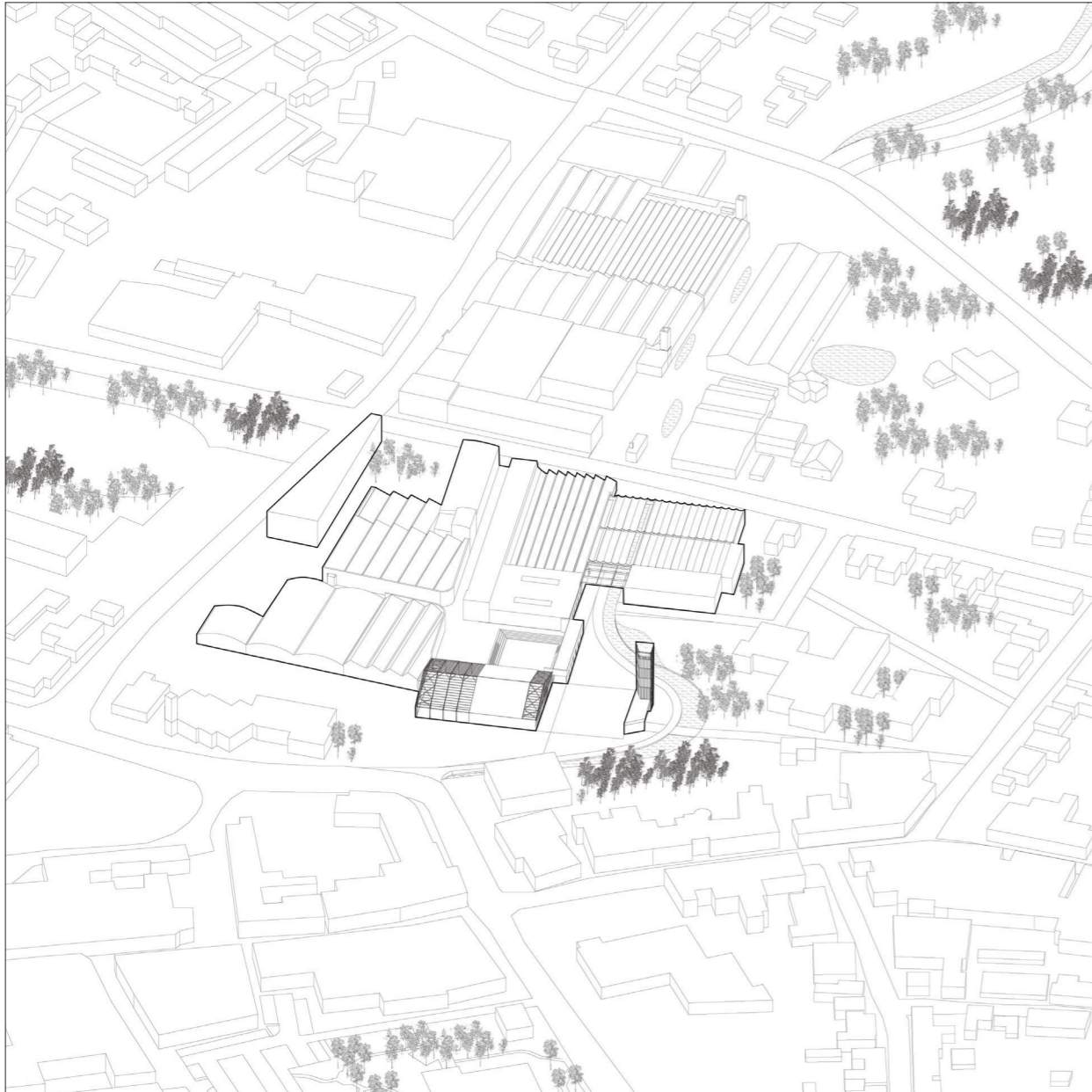


50 m

URBAN PROPOSAL



3. DESIGN  
3.1 SITE

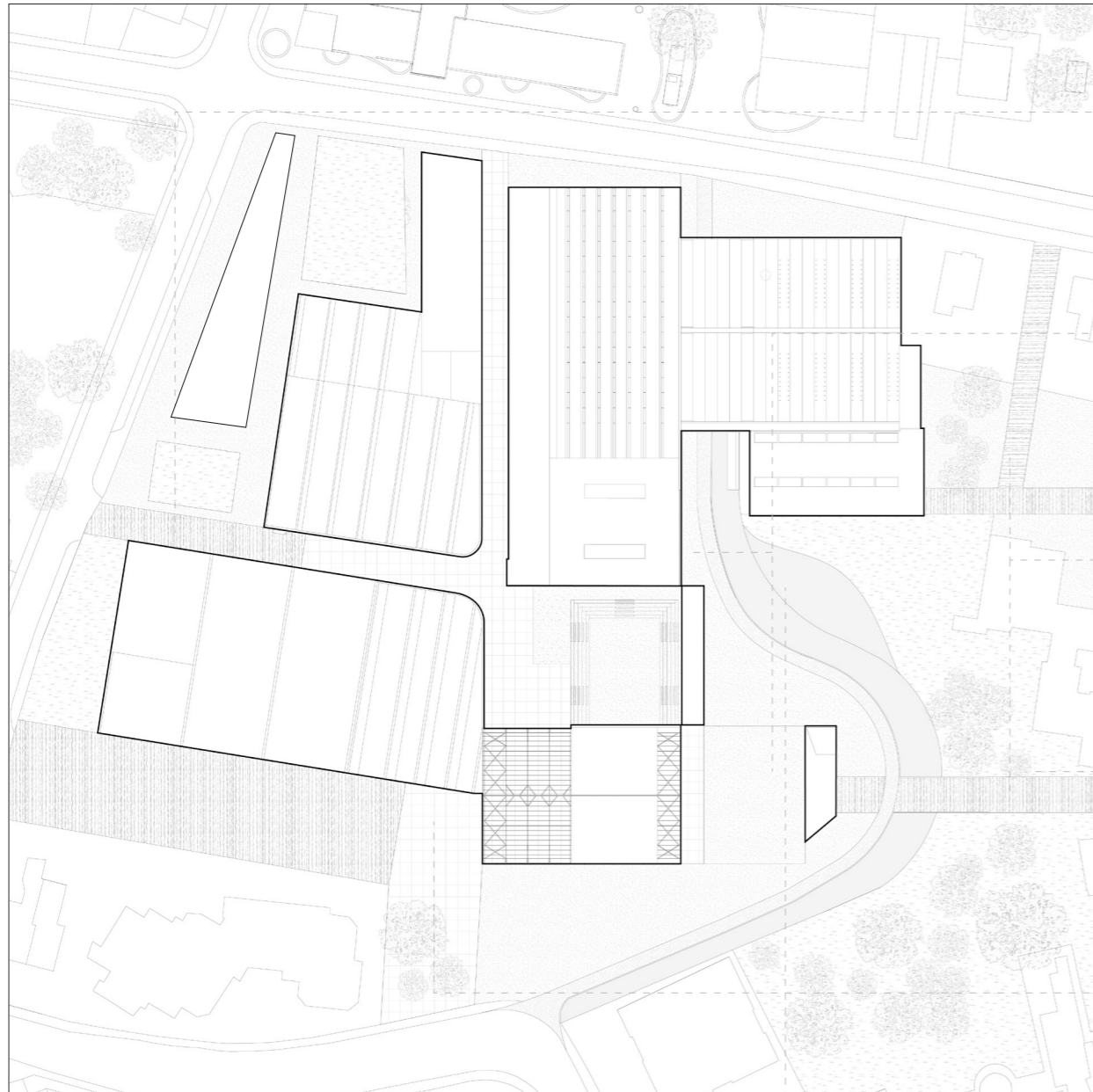


SITE PROPOSAL



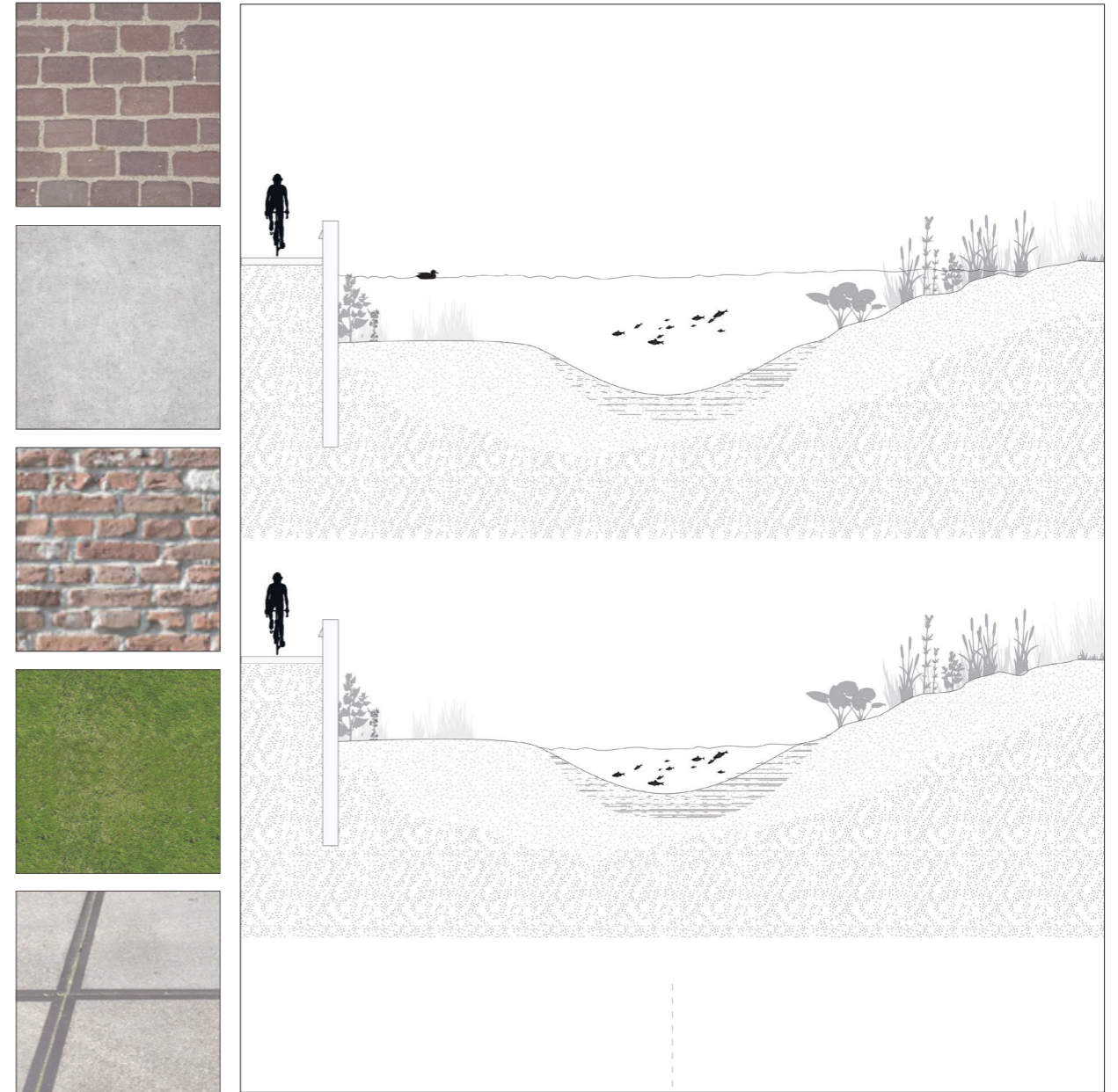
SITE PROPOSAL

3. DESIGN  
3.1 SITE



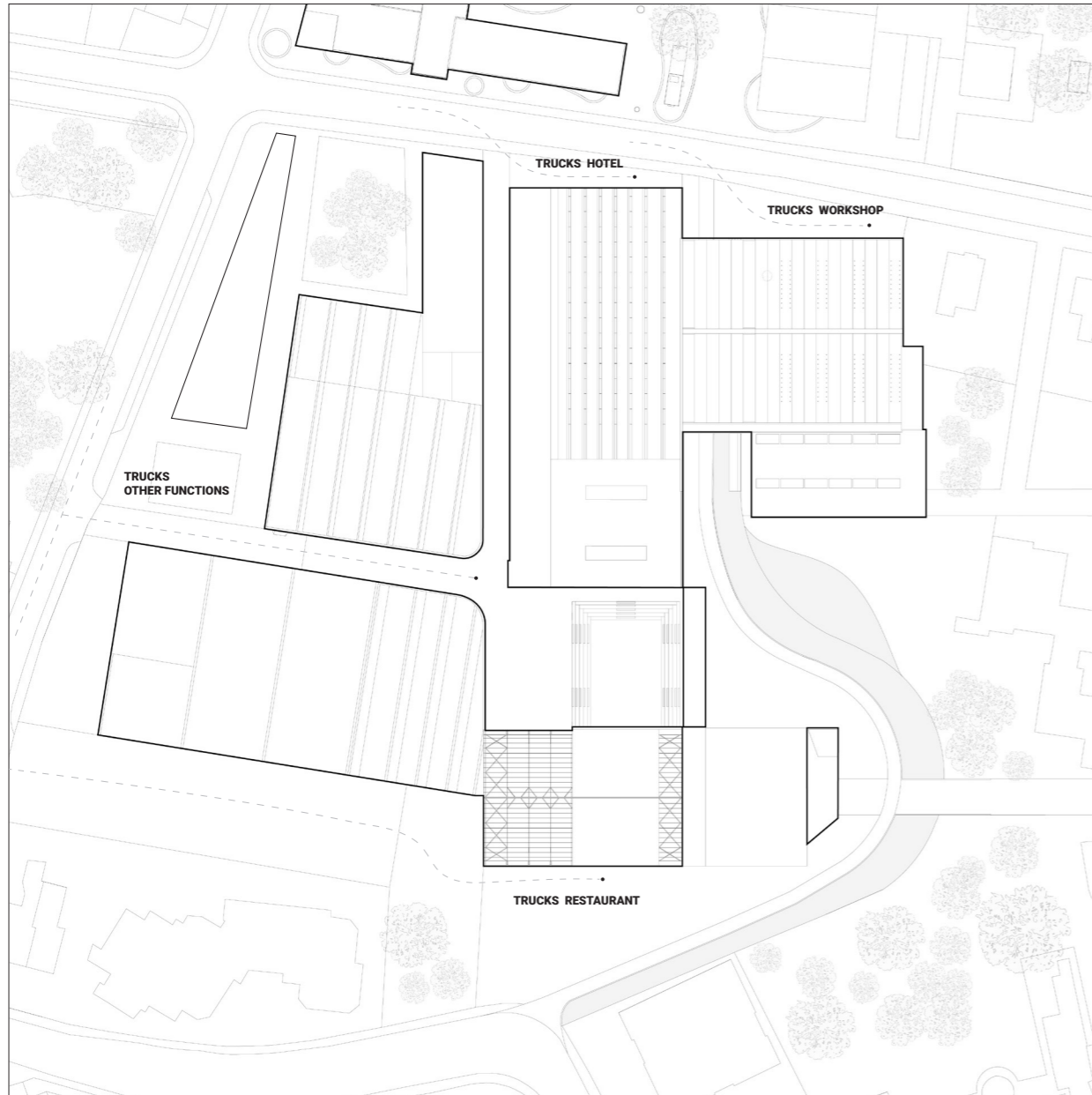
20 m

MATERIALISATION PUBLIC SPACE



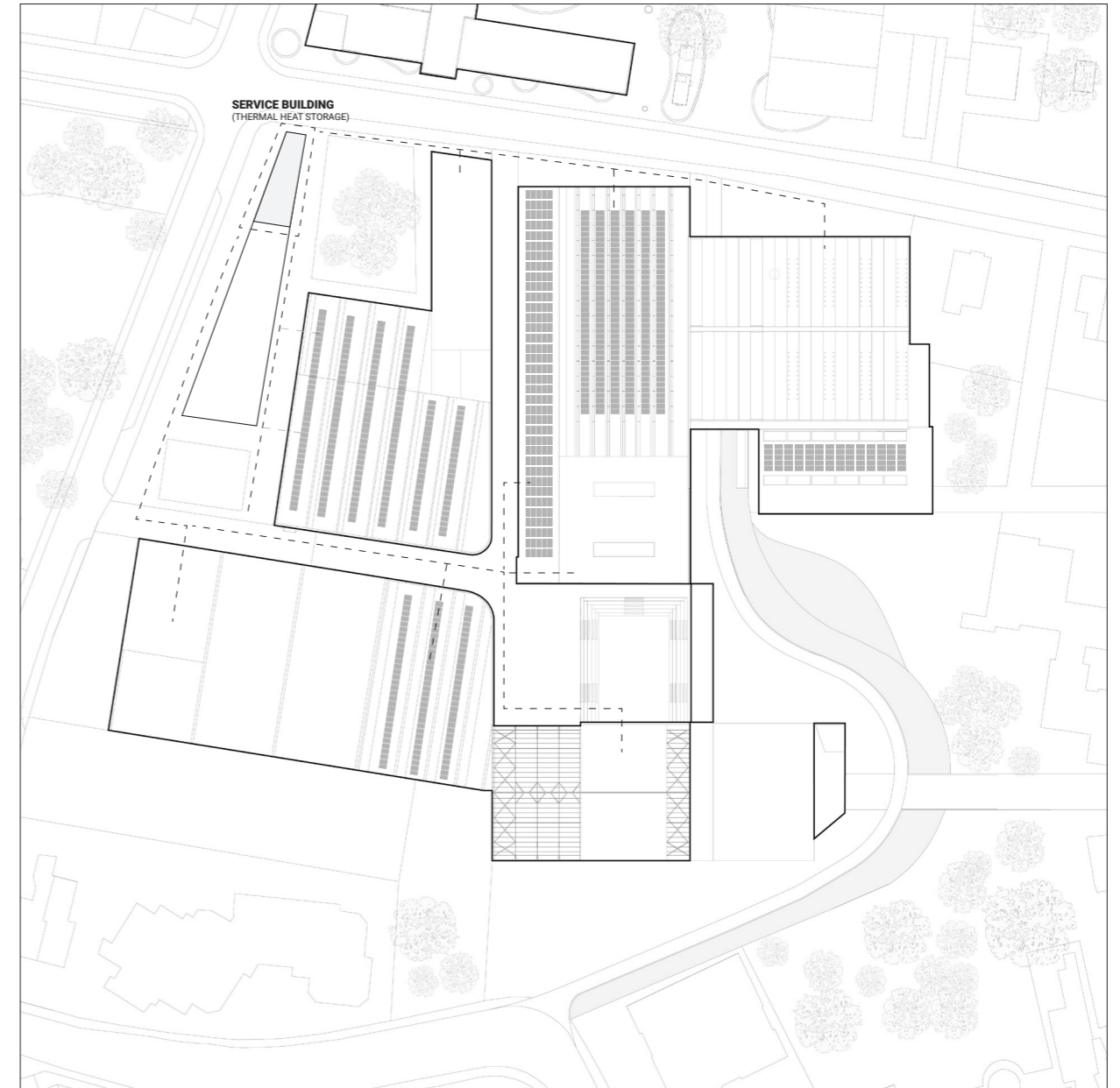
DESIGN OF THE CREEK IN DRY AND WET SITUATION

3. DESIGN  
3.1 SITE



20 m

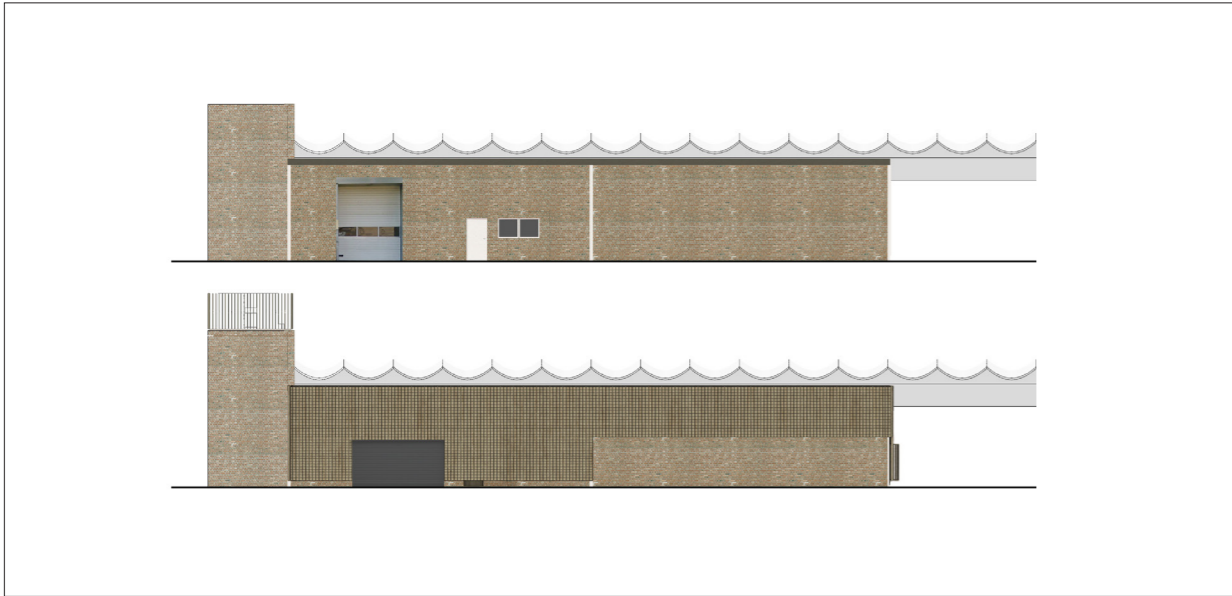
LOGISTICS AND TRAFFIC



20 m

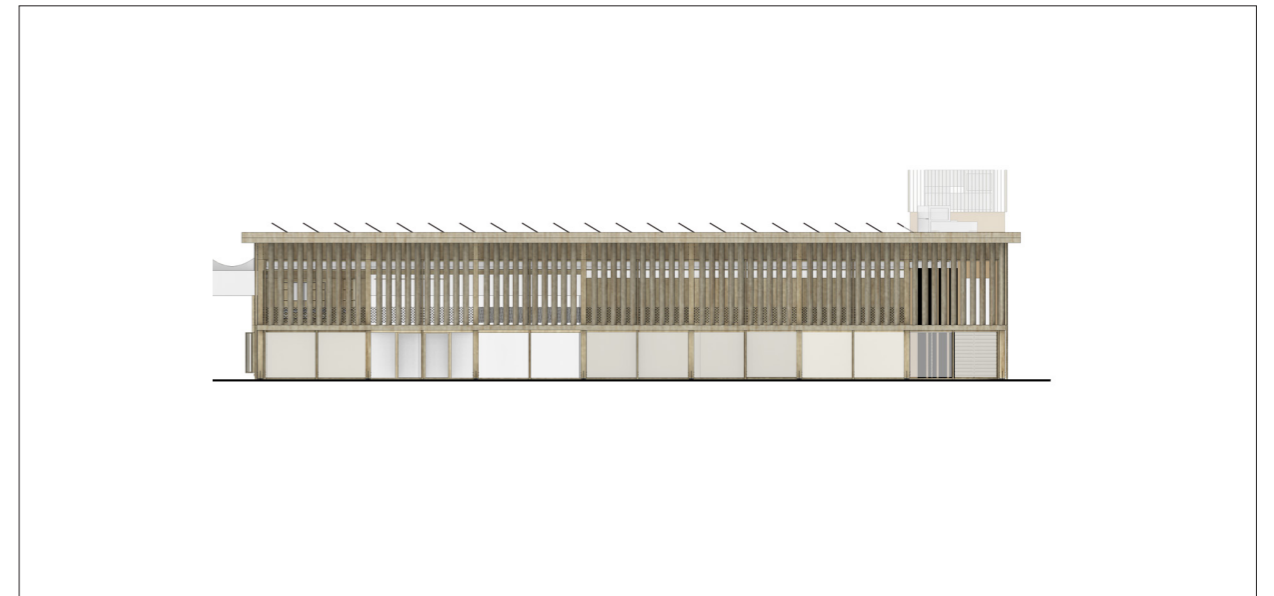
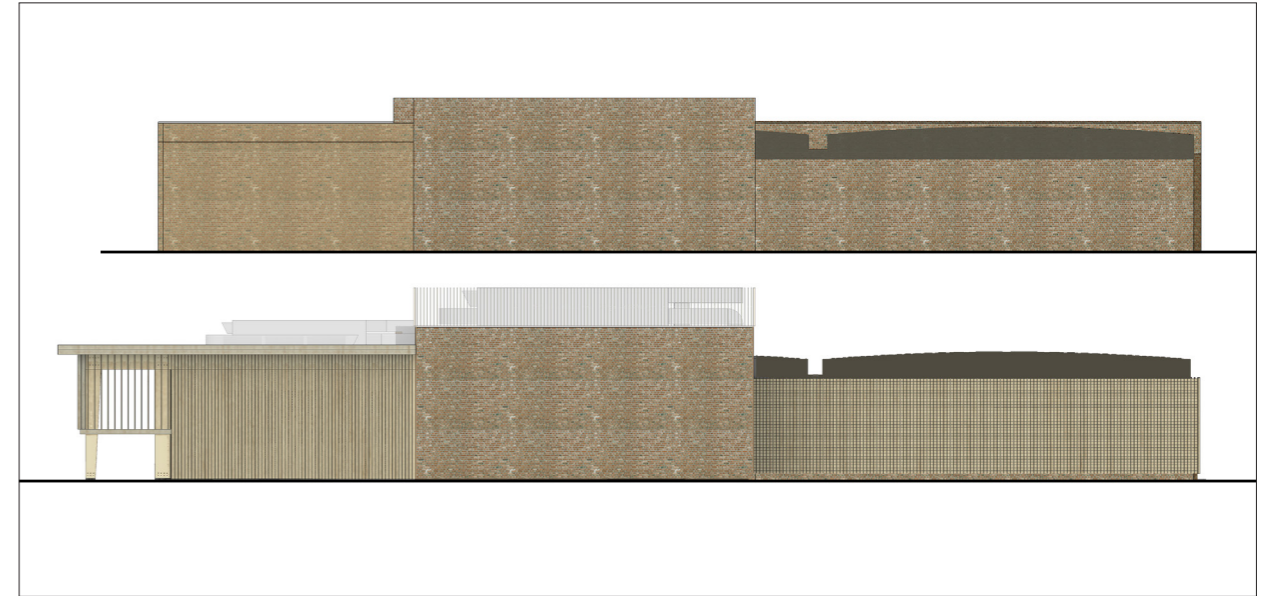
INSTALLATIONS AND SOLAR PANELS

3. DESIGN  
3.2 TIMBER WORKSHOP AND CREATIVE CUBICLES



10 m

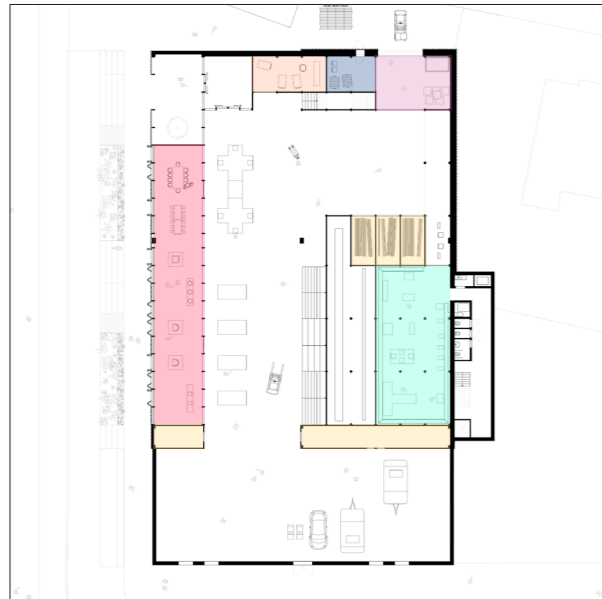
EAST AND NORTH FAÇADES



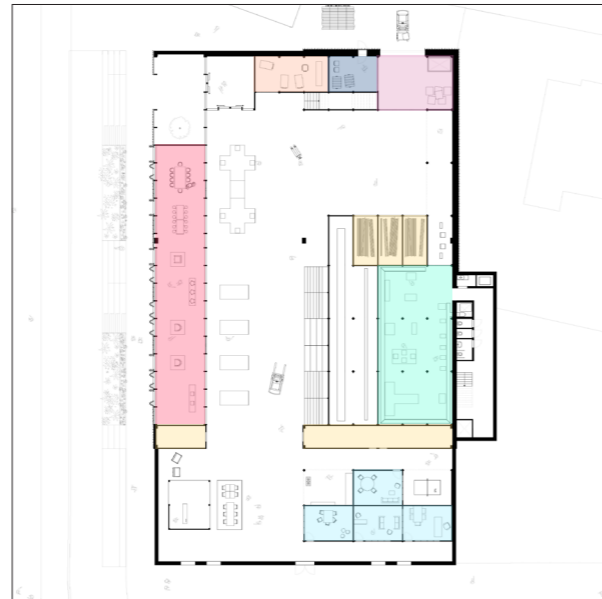
SOUTH AND WEST FAÇADES

3. DESIGN  
 3.2 TIMBER WORKSHOP AND CREATIVE CUBICLES

- tool storage
- creative cubicles
- garbage space
- education/workshops
- buffer zone
- shop
- storage
- circular shop
- exhibition
- café
- machine space
- local exhibition



0 - STAGE 1



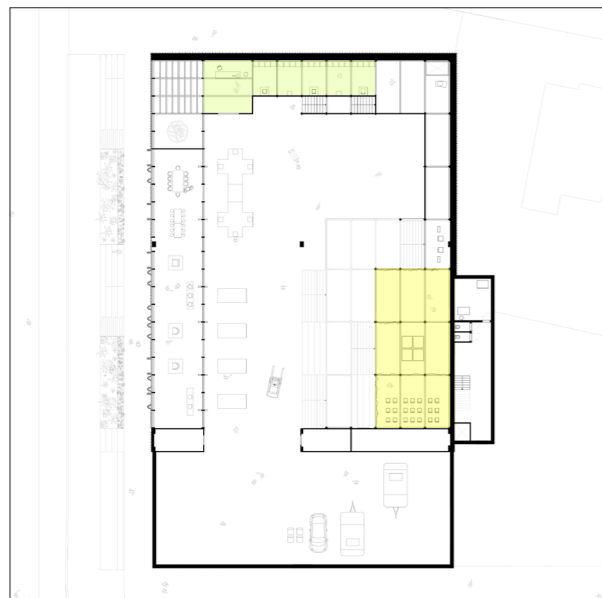
0 - STAGE 2



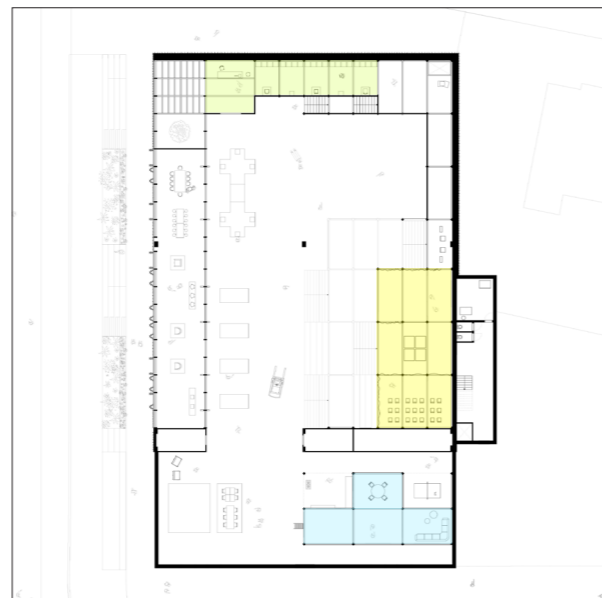
0 - STAGE 3



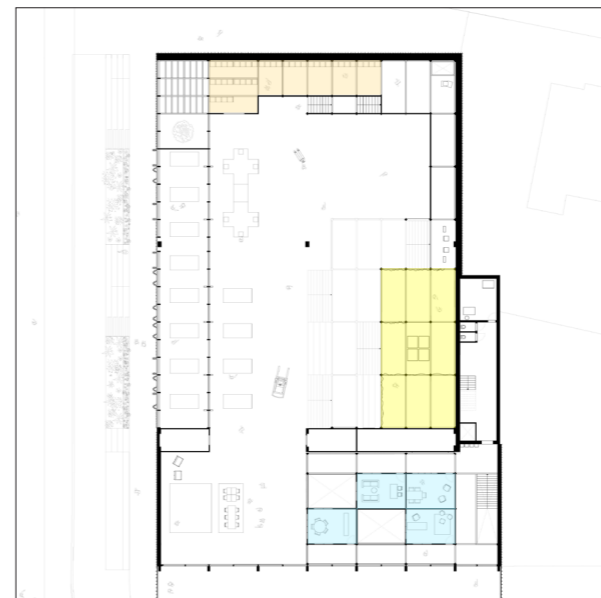
0 - STAGE 4



1 - STAGE 1



1 - STAGE 2

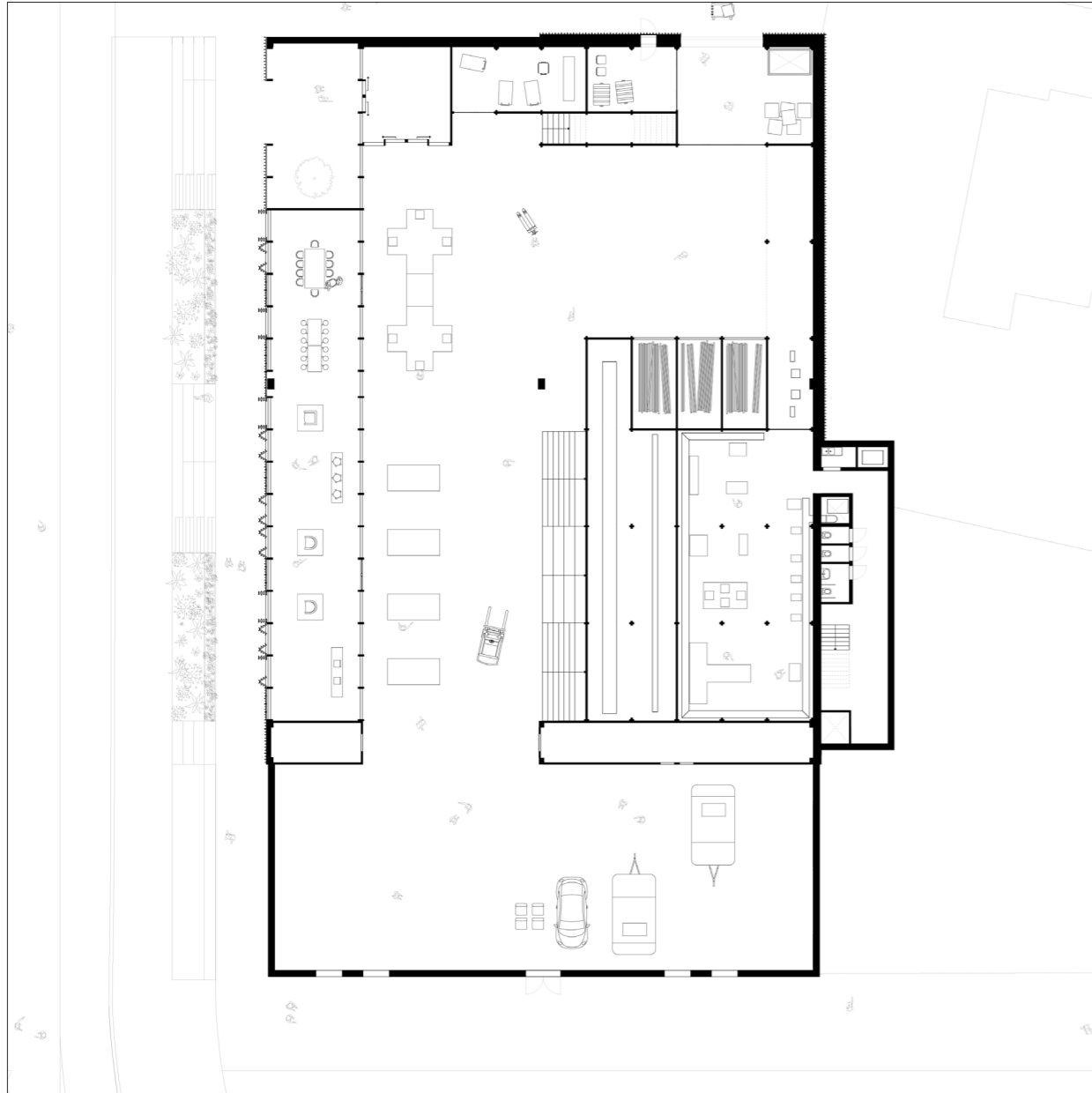


1 - STAGE 3

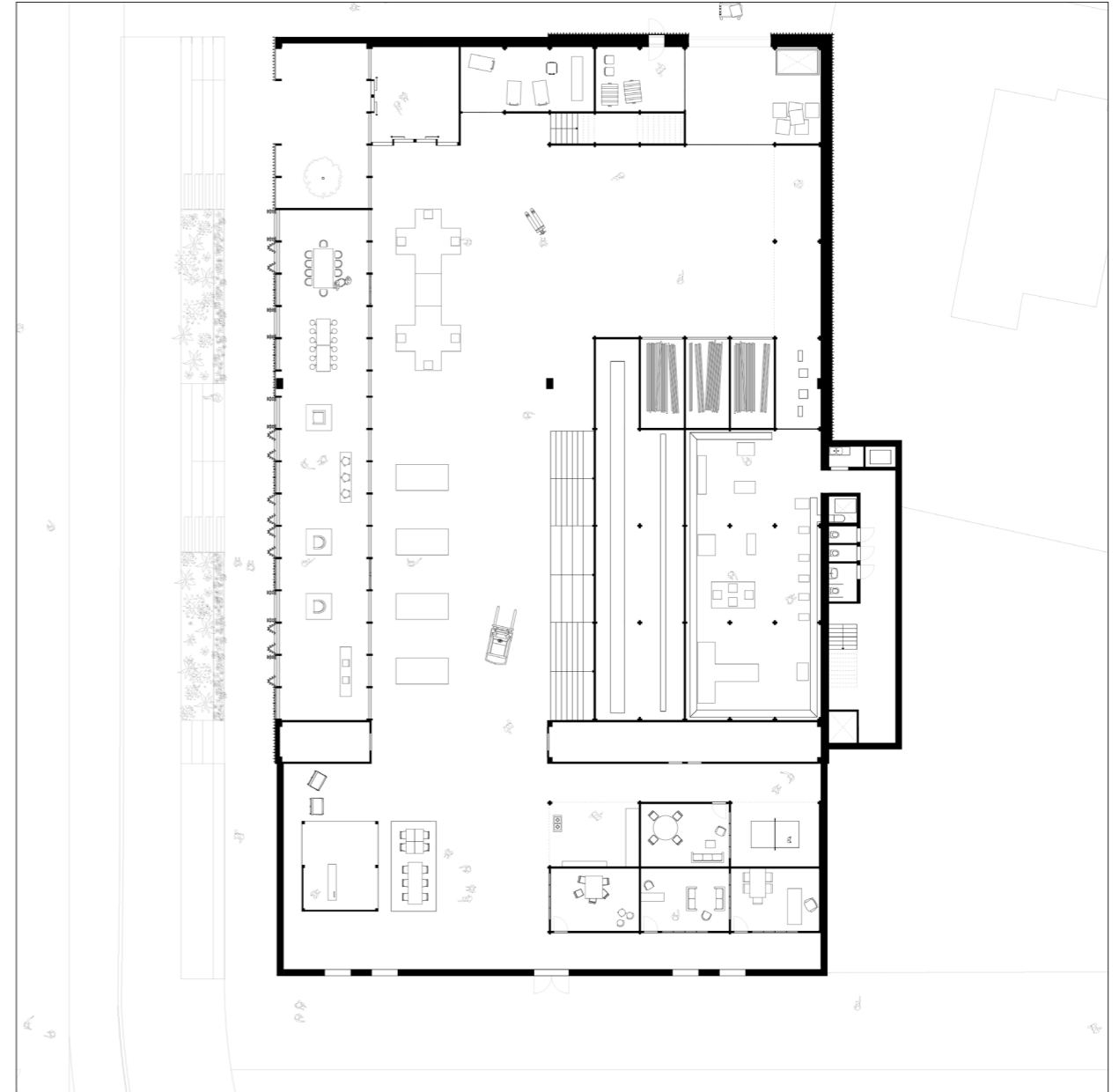


1 - STAGE 4

3. DESIGN  
3.2 TIMBER WORKSHOP AND CREATIVE CUBICLES

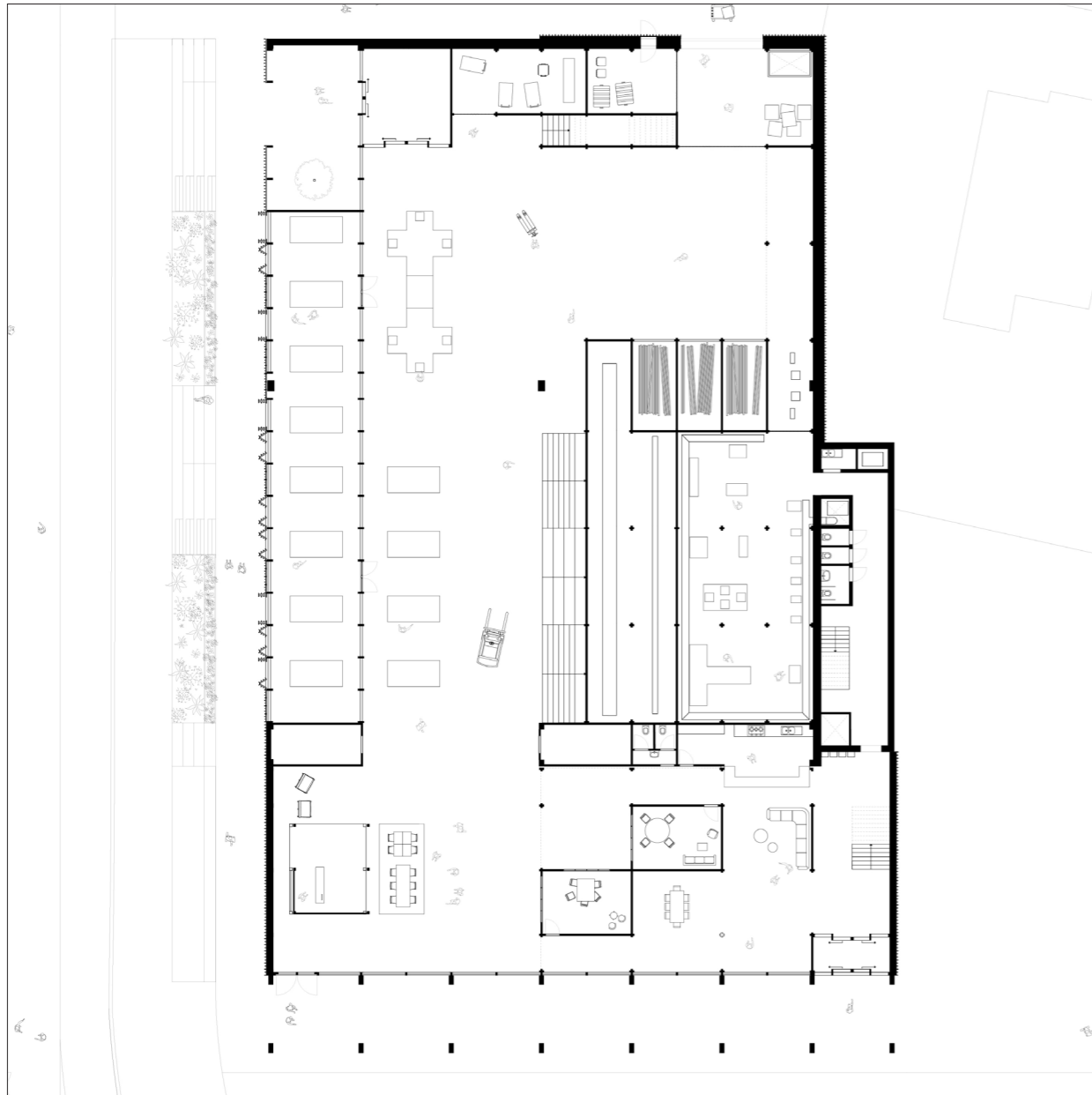


0 - STAGE 1

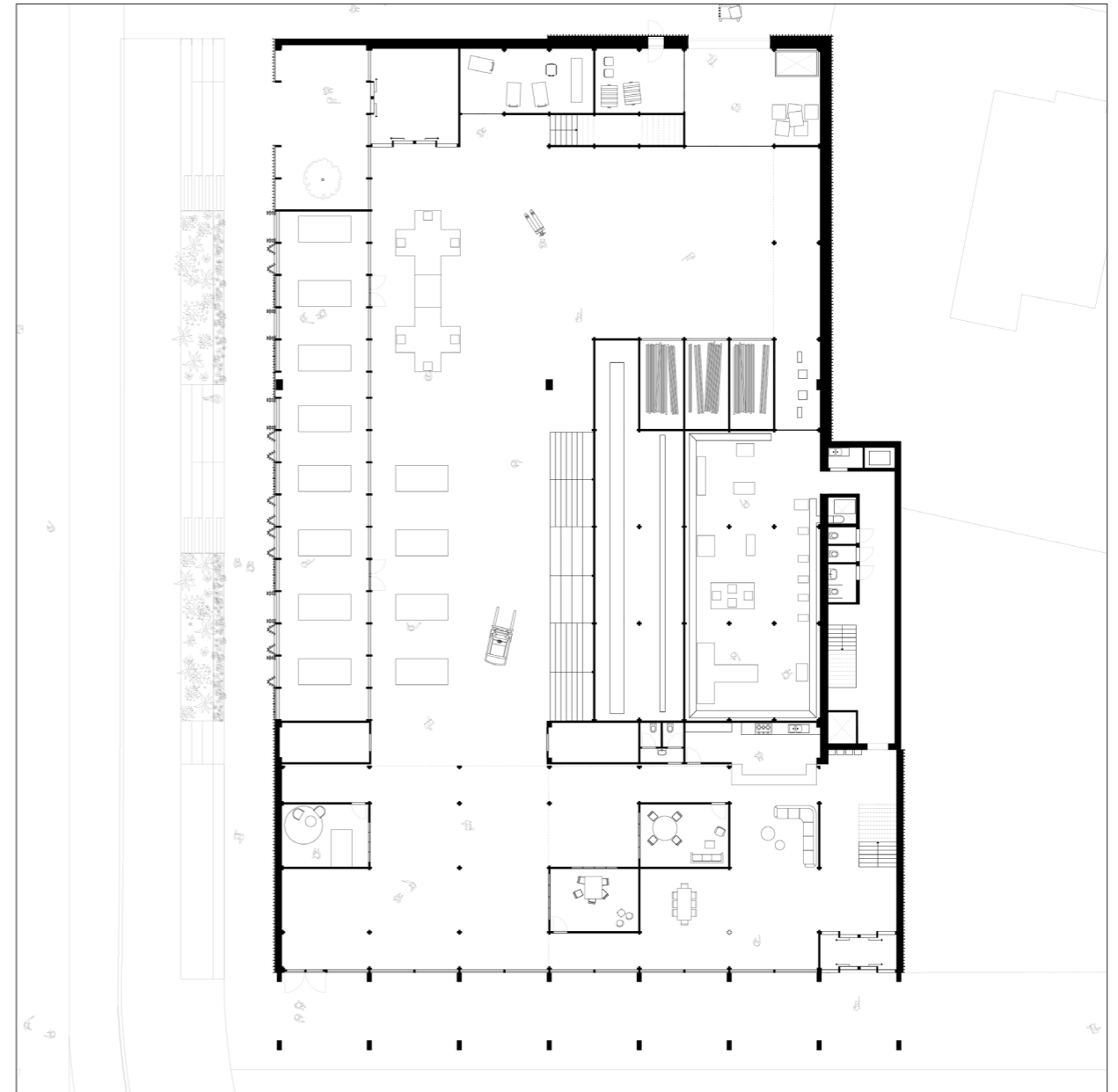


0 - STAGE 2

3. DESIGN  
3.2 TIMBER WORKSHOP AND CREATIVE CUBICLES

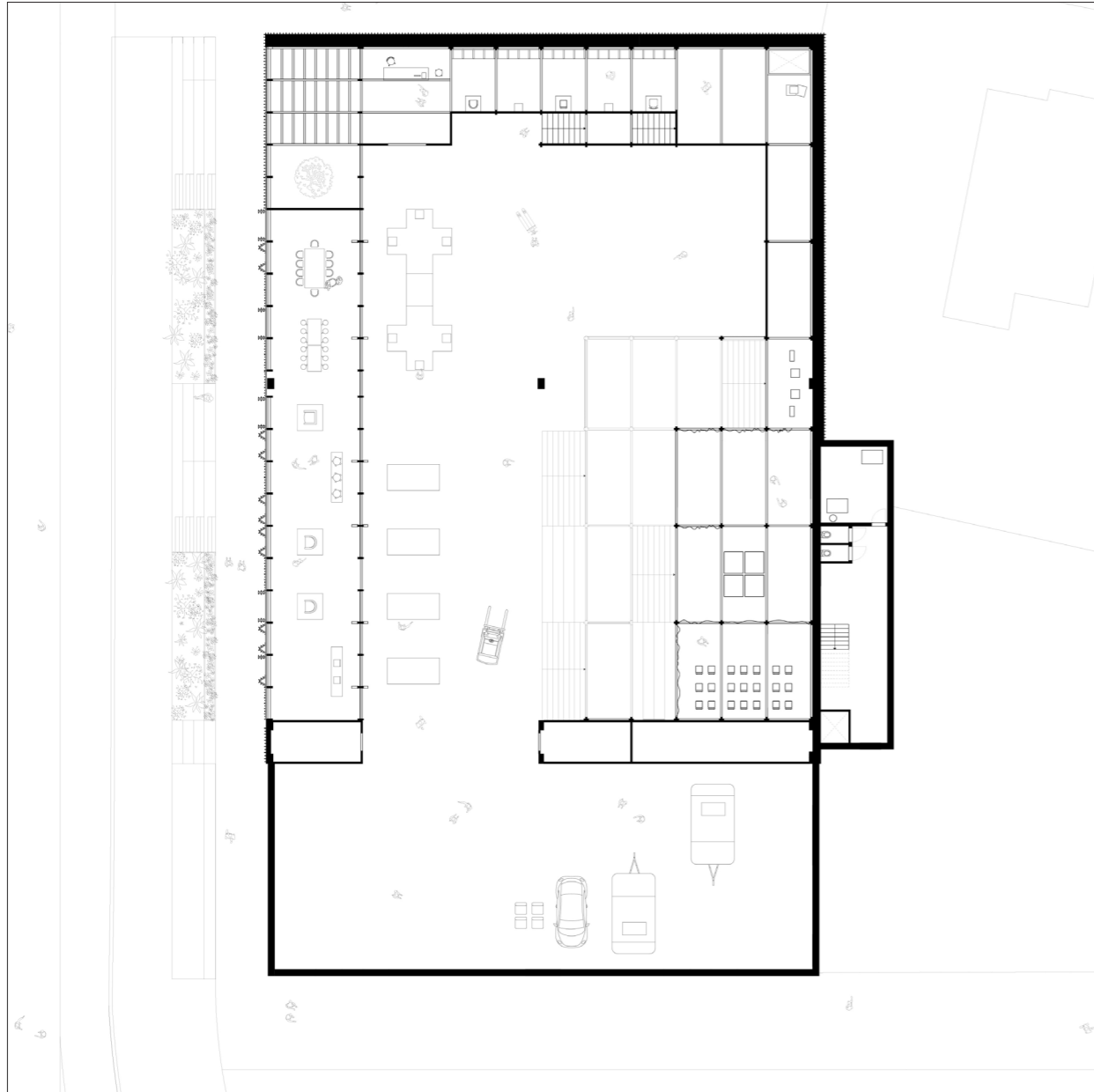


0 - STAGE 3

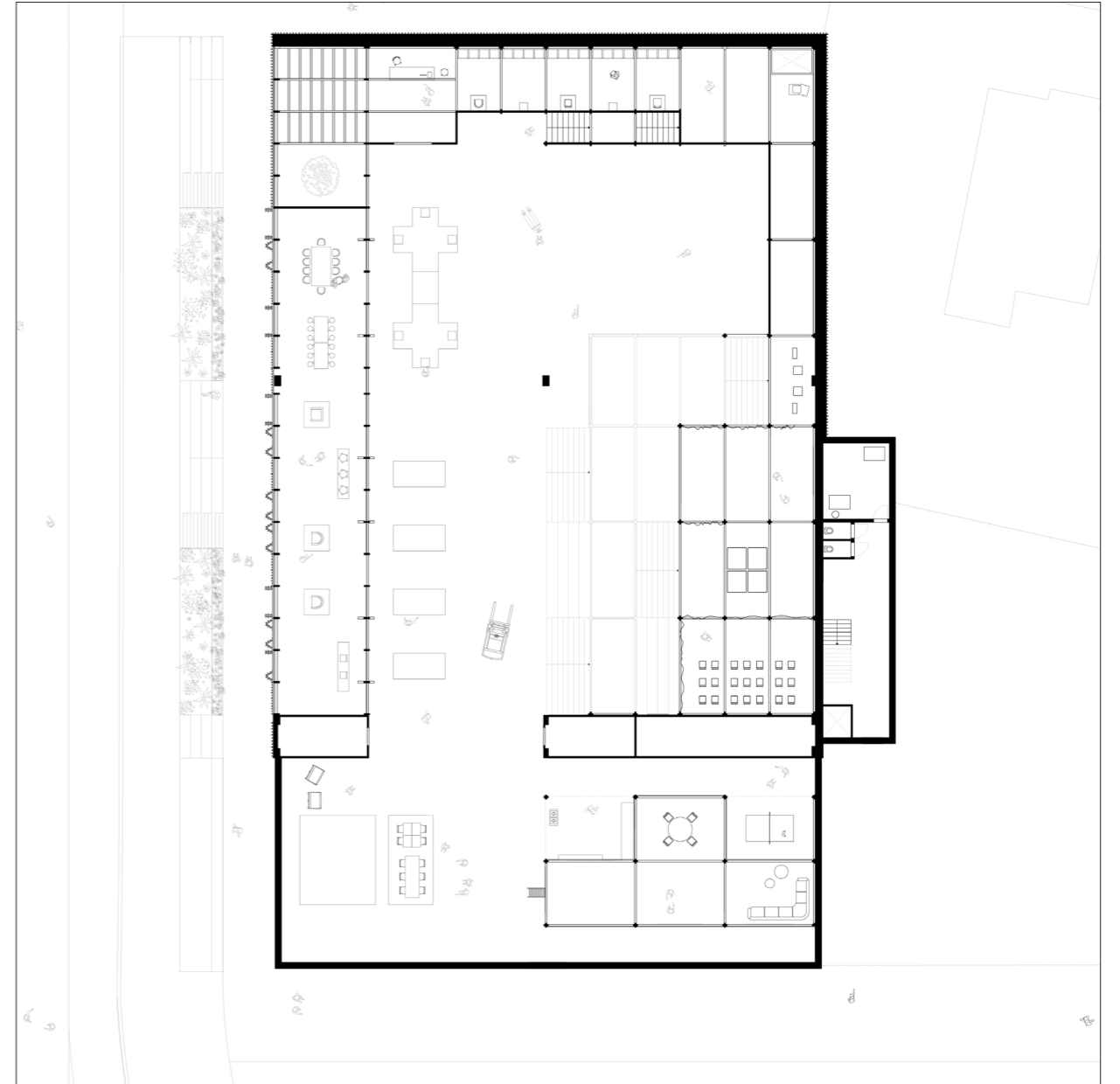


0 - STAGE 4

3. DESIGN  
3.2 TIMBER WORKSHOP AND CREATIVE CUBICLES



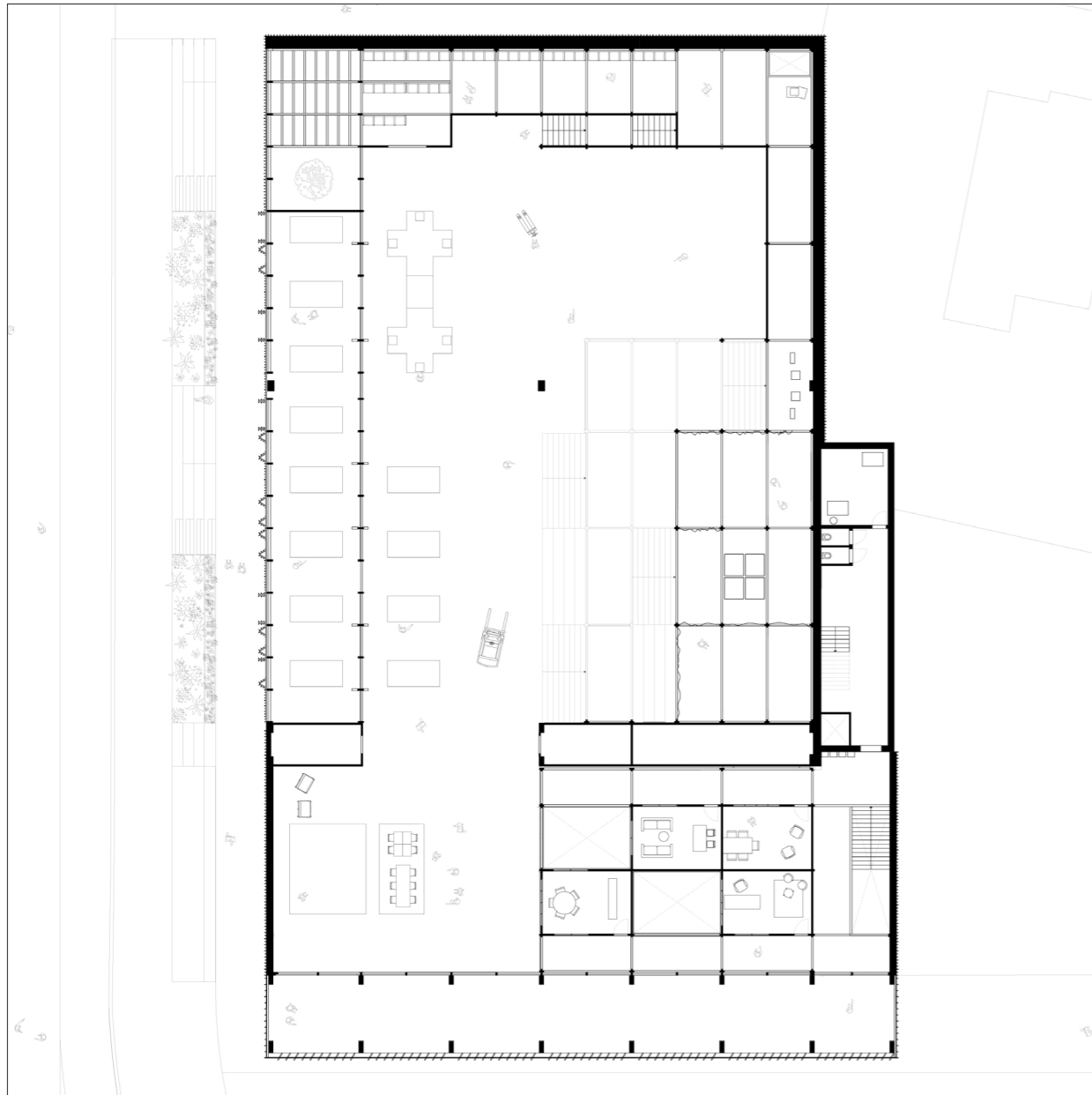
1 - STAGE 1



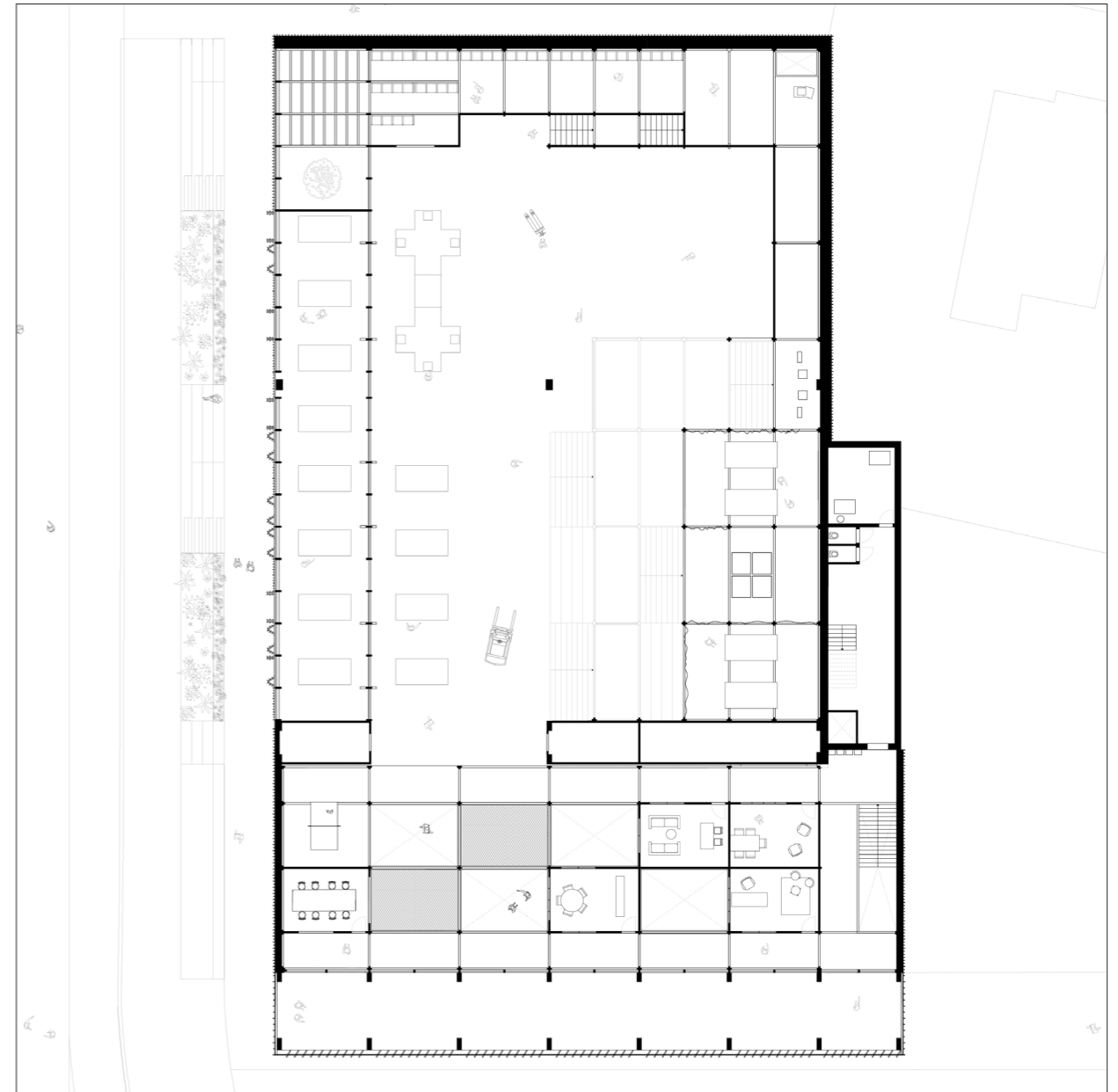
1 - STAGE 2



3. DESIGN  
3.2 TIMBER WORKSHOP AND CREATIVE CUBICLES

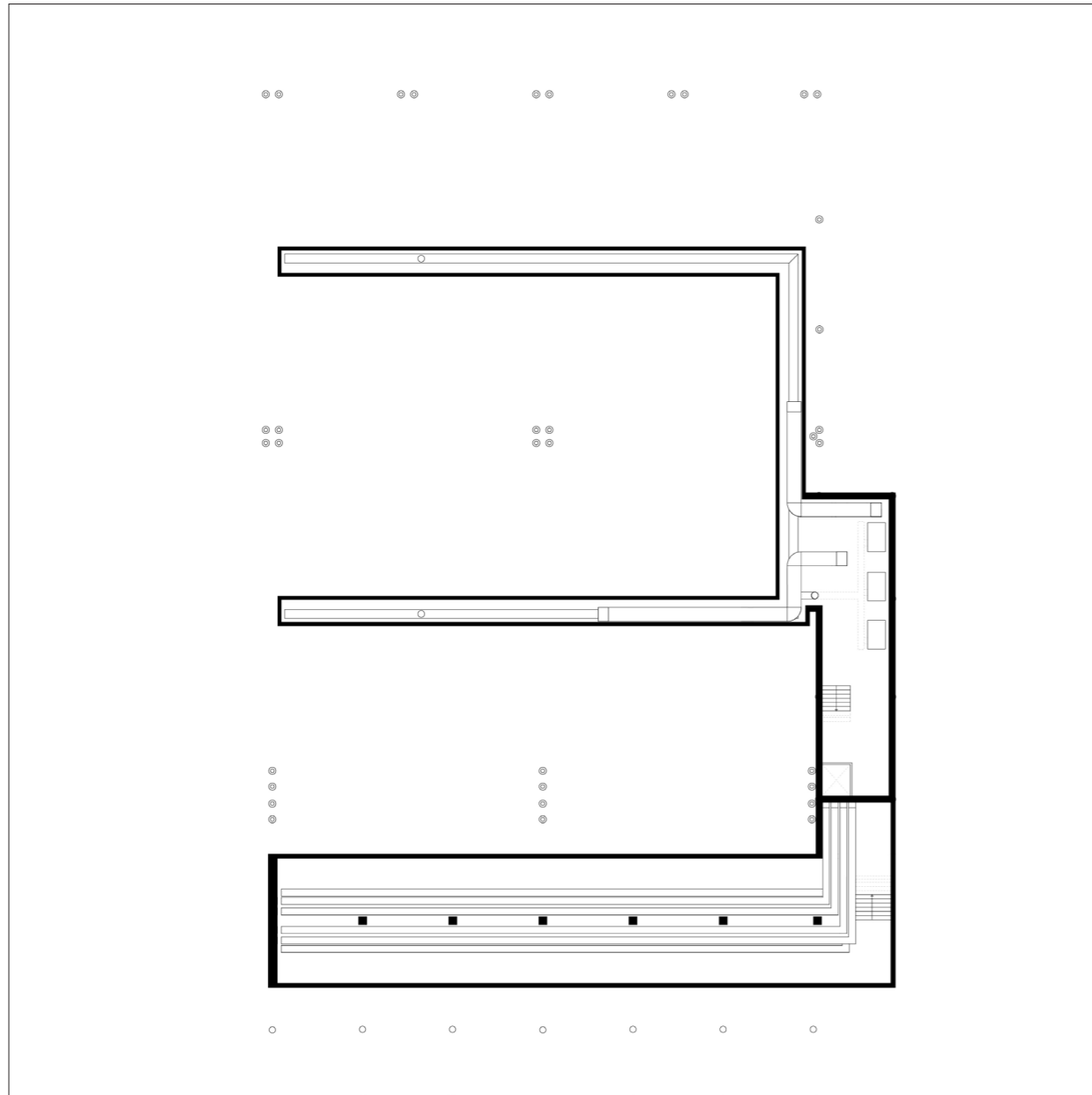


1 - STAGE 3



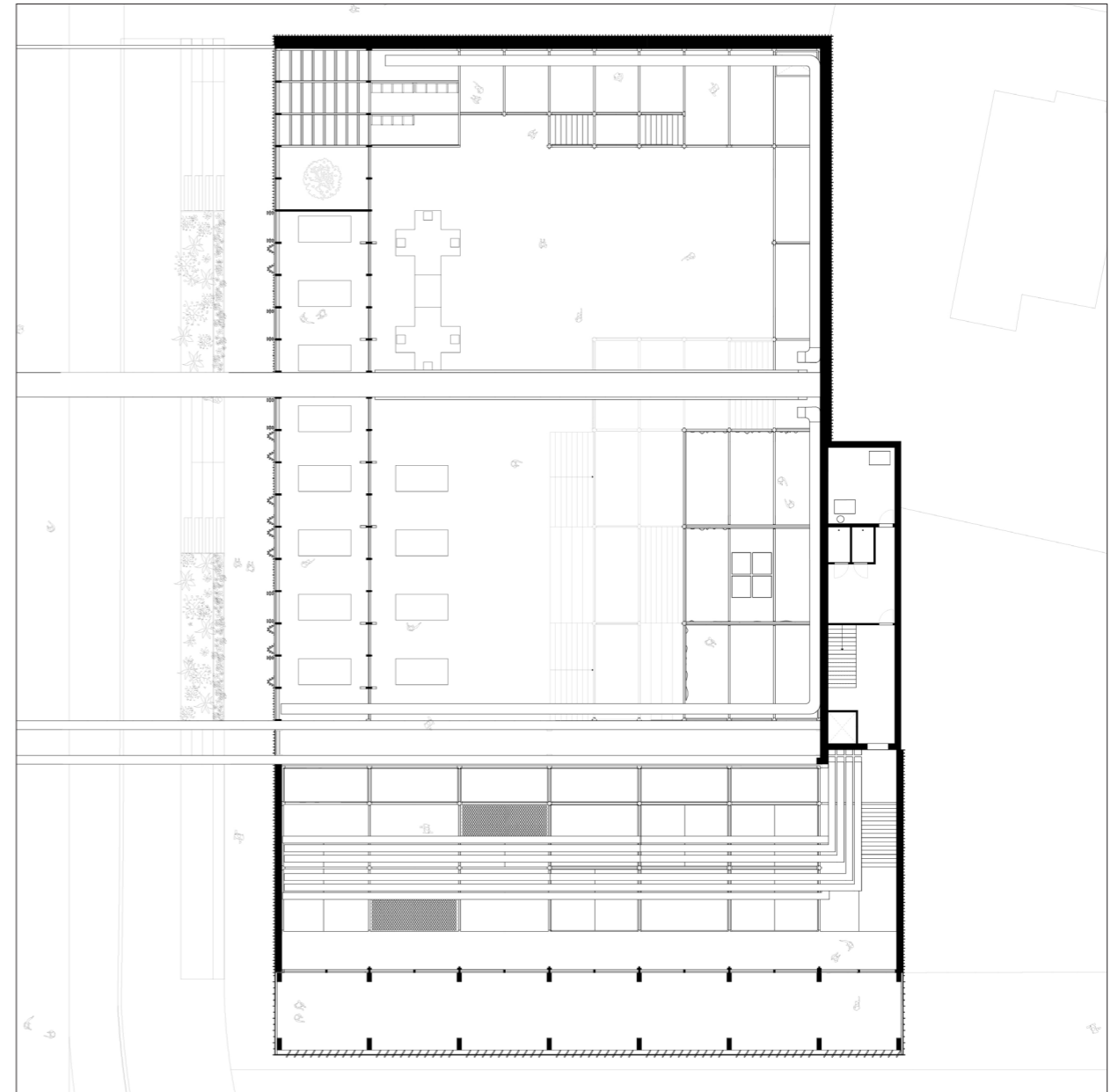
1 - STAGE 4

3. DESIGN  
3.2 TIMBER WORKSHOP AND CREATIVE CUBICLES



10m

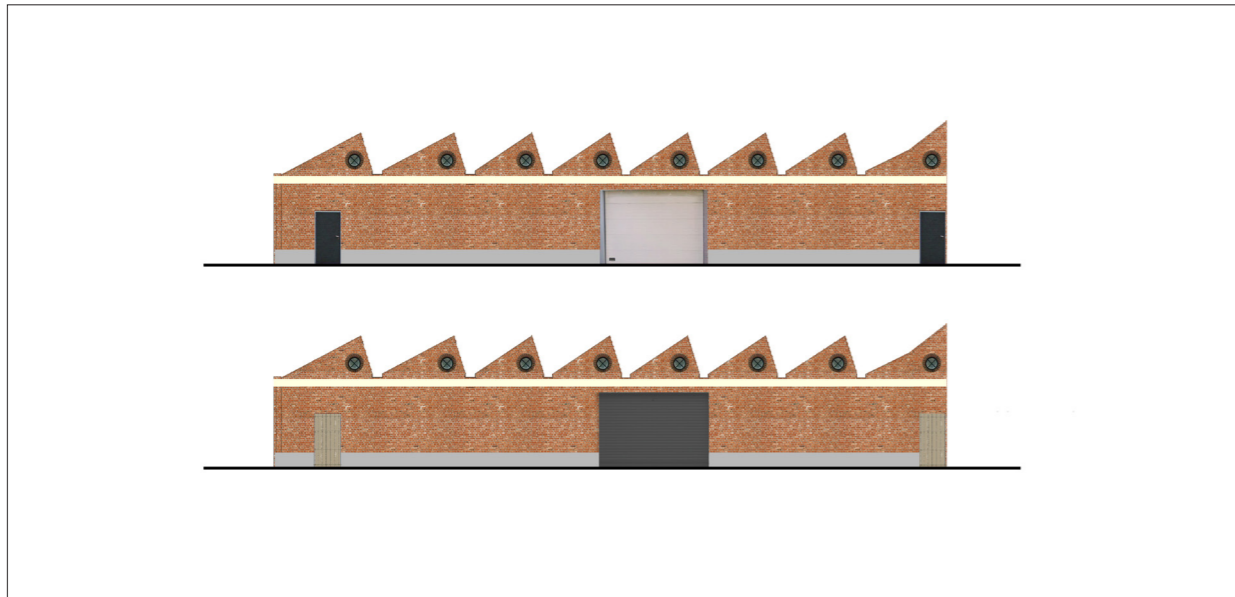
-1 - STAGE 4



10m

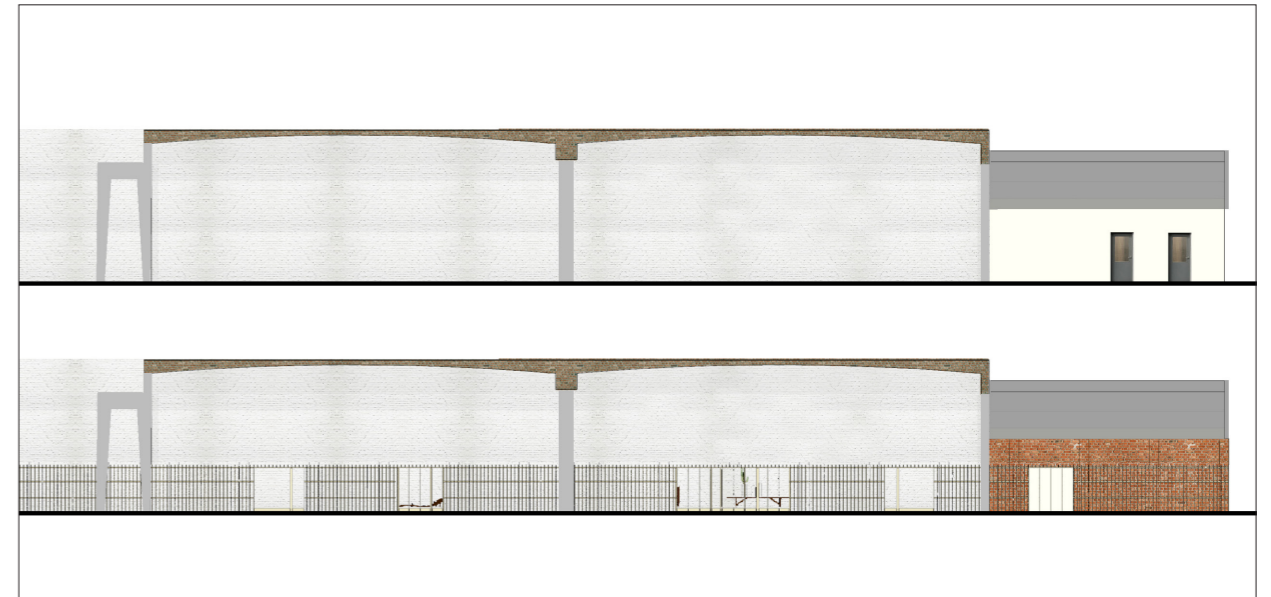
2 - STAGE 4

3. DESIGN  
3.3 SHED ROOF BUILDING



5m

EAST FAÇADE



SOUTH FAÇADE

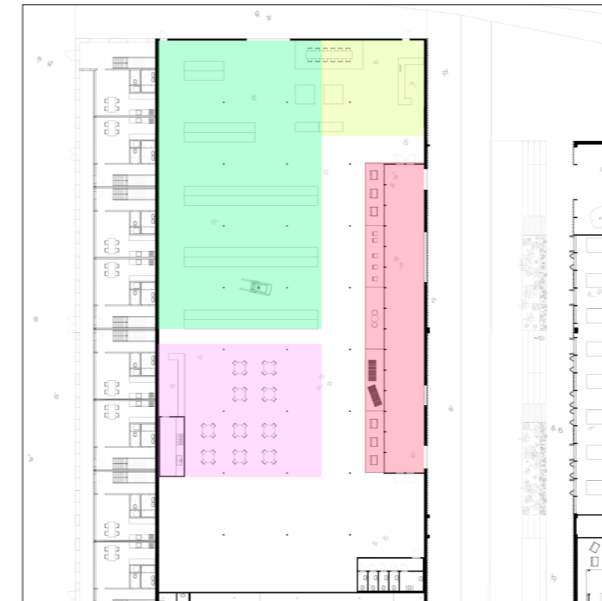
3. DESIGN  
3.3 SHED ROOF BUILDING



0 - STAGE 1



0 - STAGE 2



0 - STAGE 3



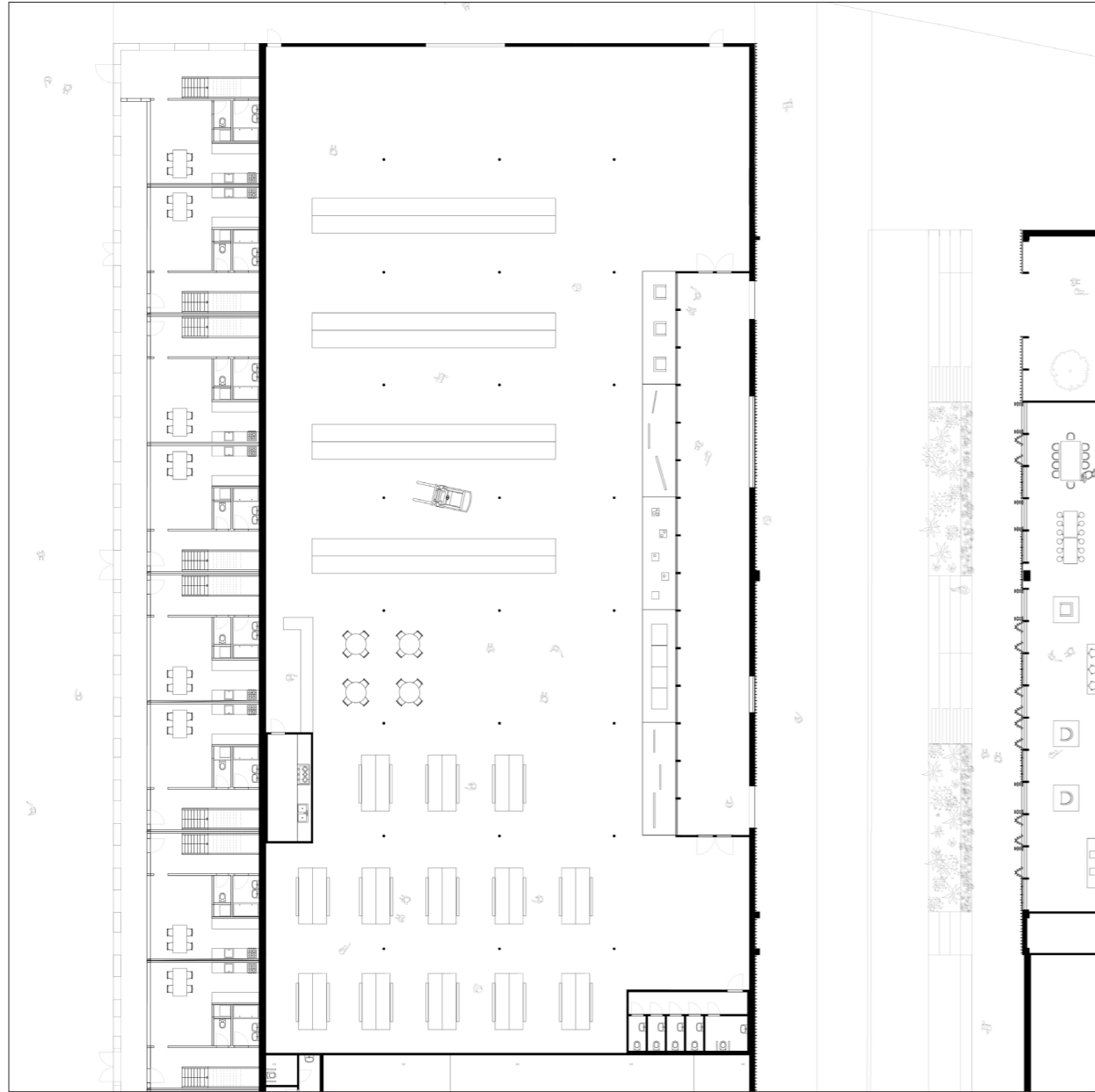
0 - STAGE 4

- tool storage
- garbage space
- buffer zone
- storage
- exhibition
- machine space
- creative cubicles
- education/workshops
- shop
- circular shop
- café
- local exhibition

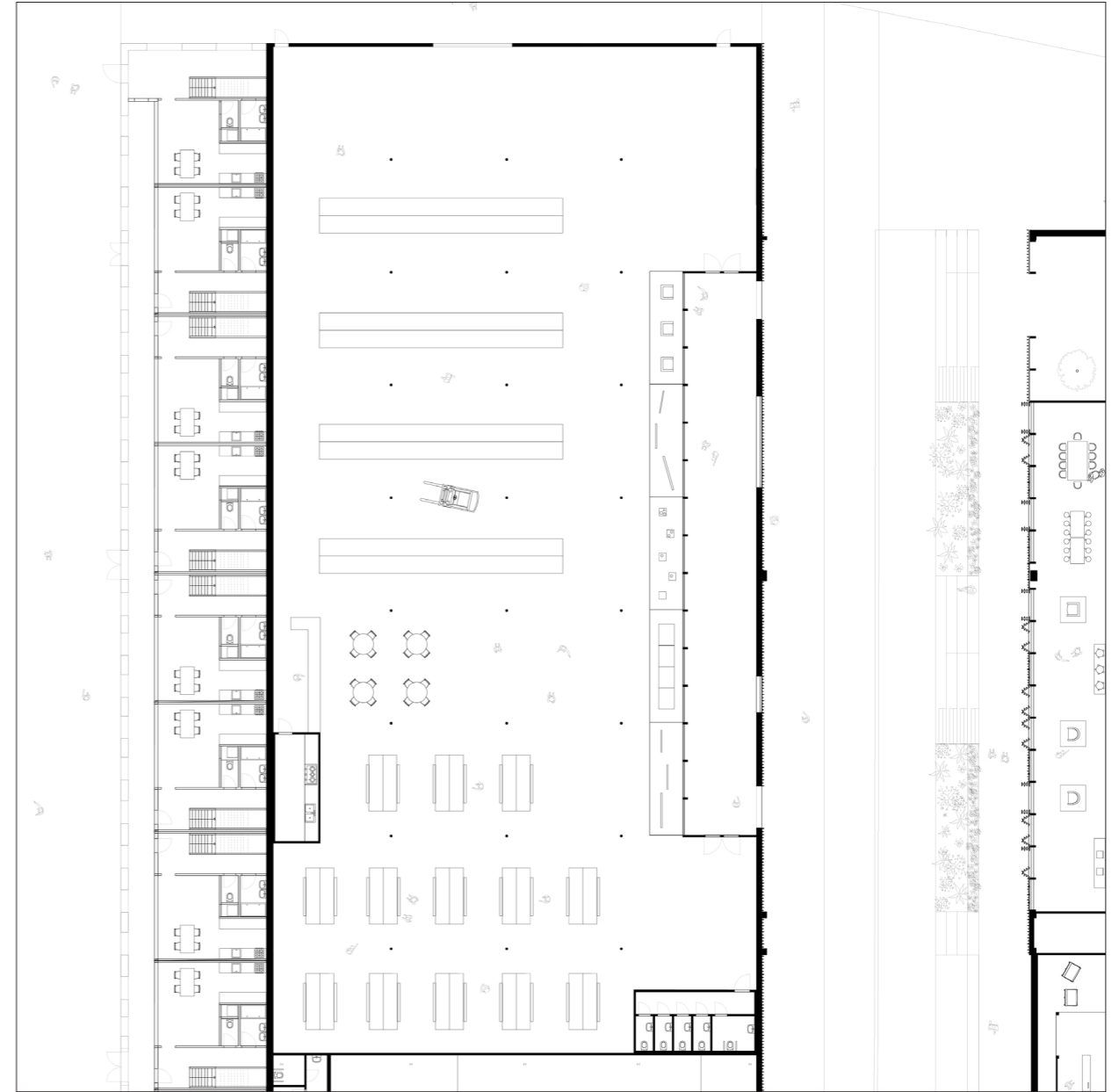
FUNCTIONS

FUNCTIONS

3. DESIGN  
3.3 SHED ROOF BUILDING

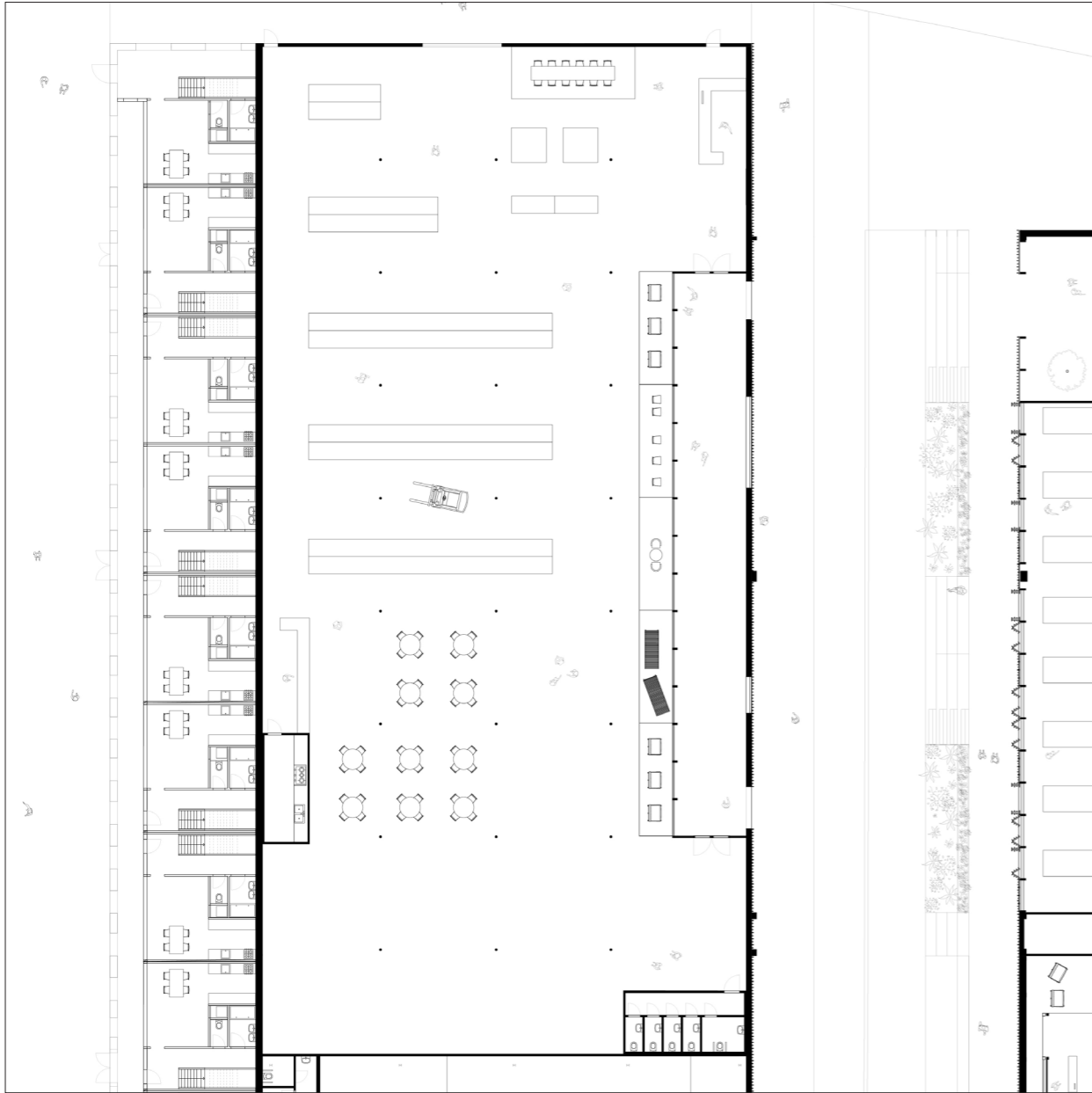


0 - STAGE 1

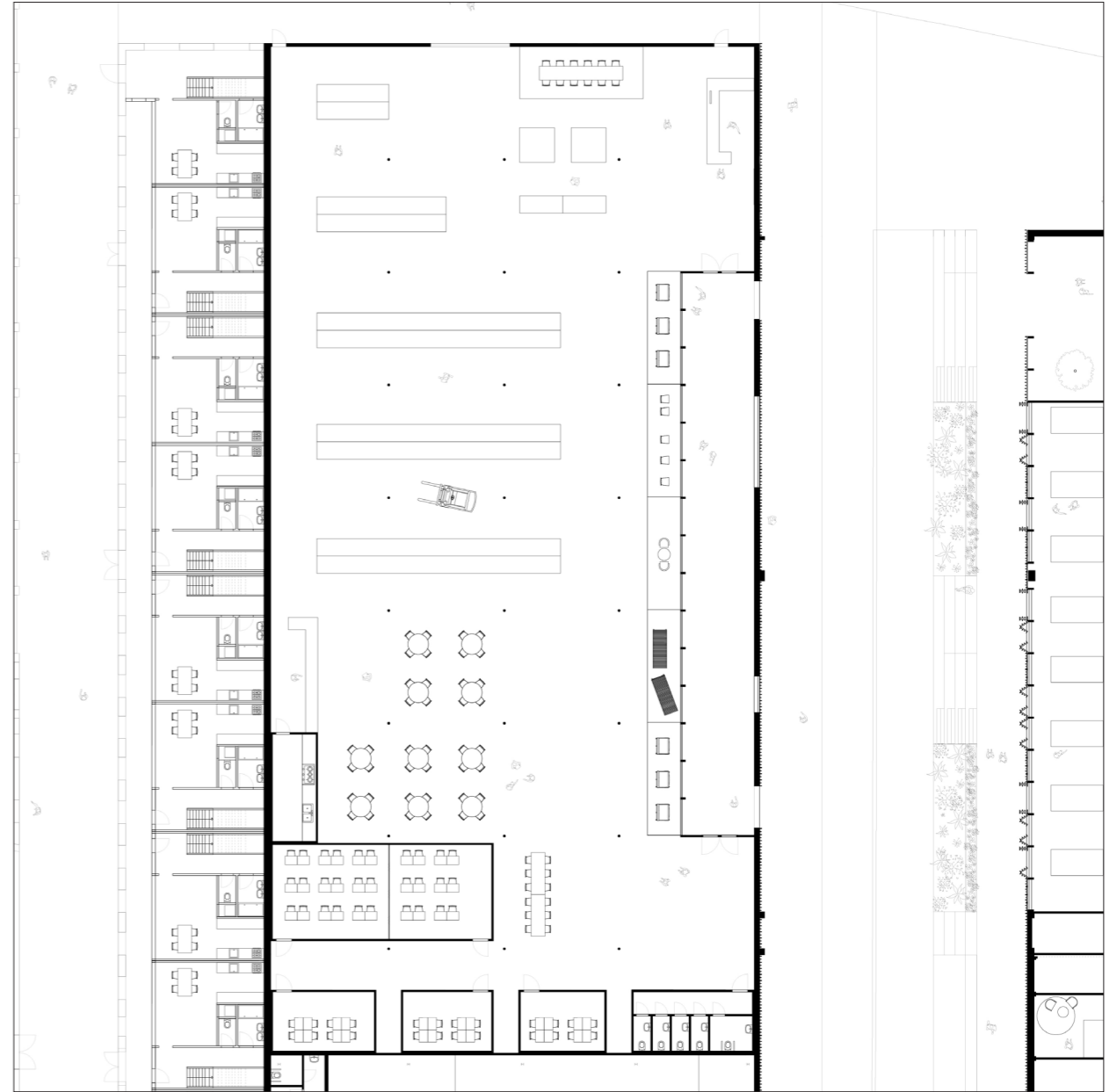


0 - STAGE 2

3. DESIGN  
3.3 SHED ROOF BUILDING

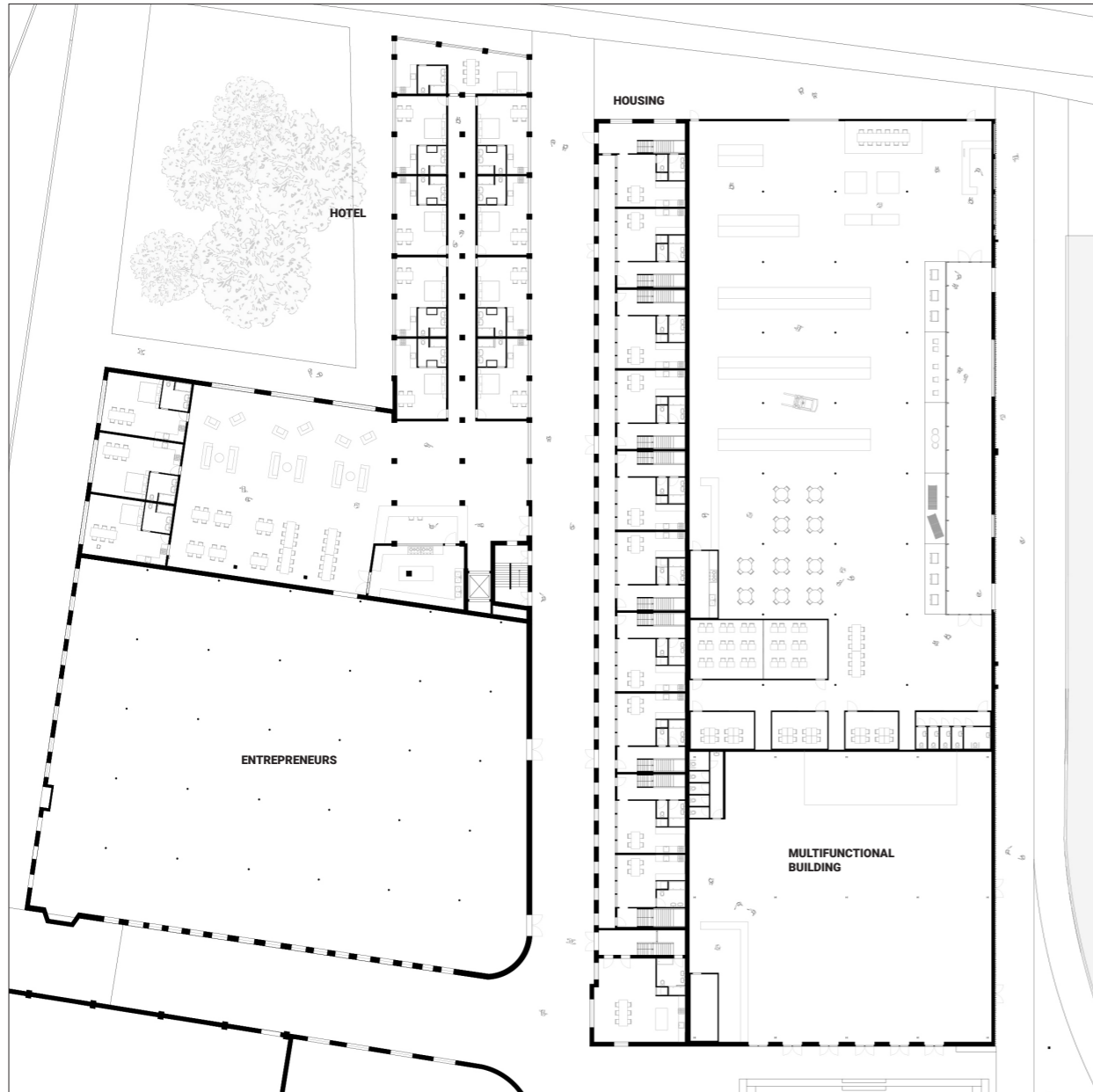


0 - STAGE 3

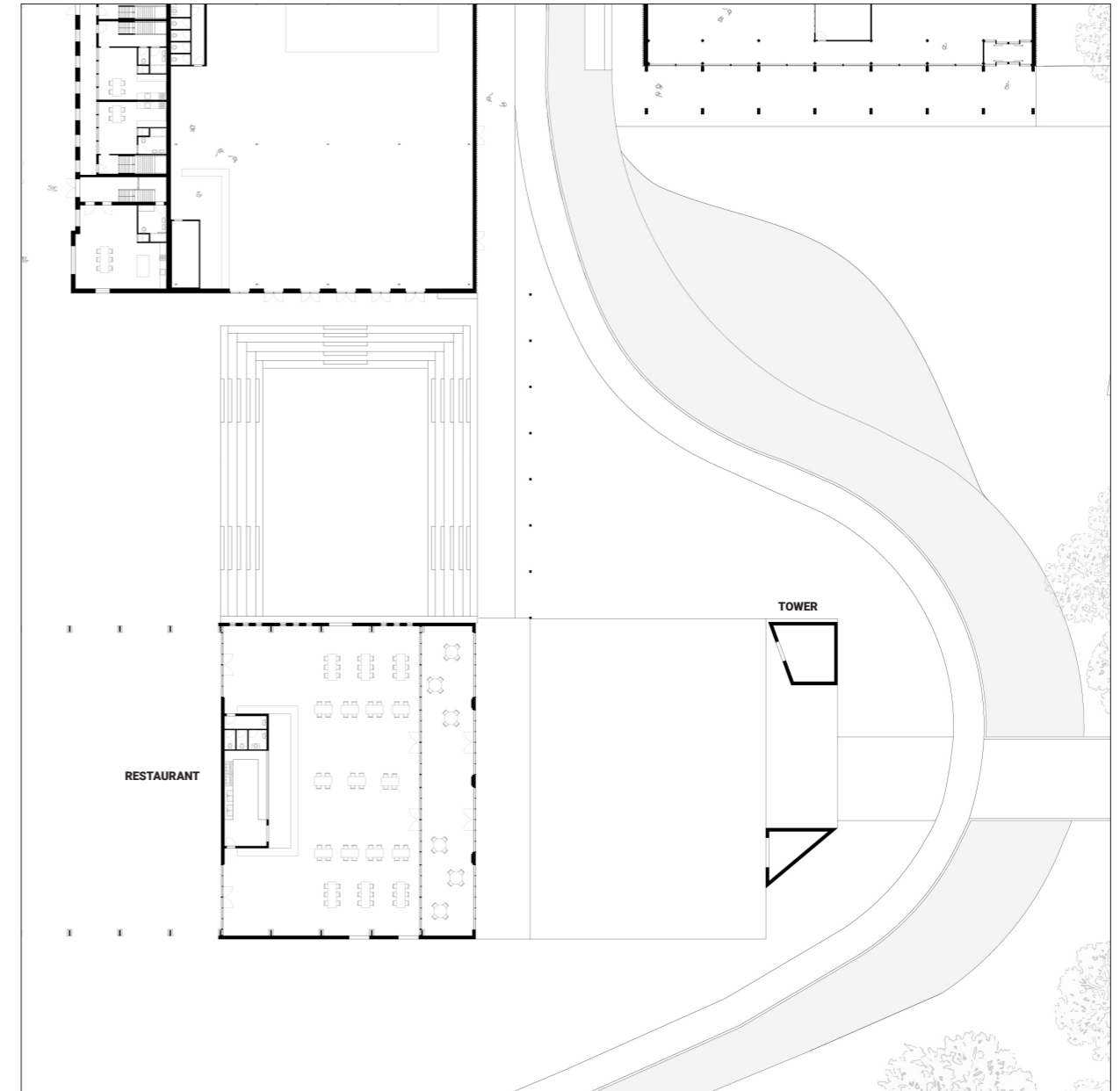


0 - STAGE 4

3. DESIGN  
3.4 ADDITIONAL BUILDINGS



0 - STAGE 4



0 - STAGE 4

3. DESIGN  
3.5 SIGNING AND BRANDING

