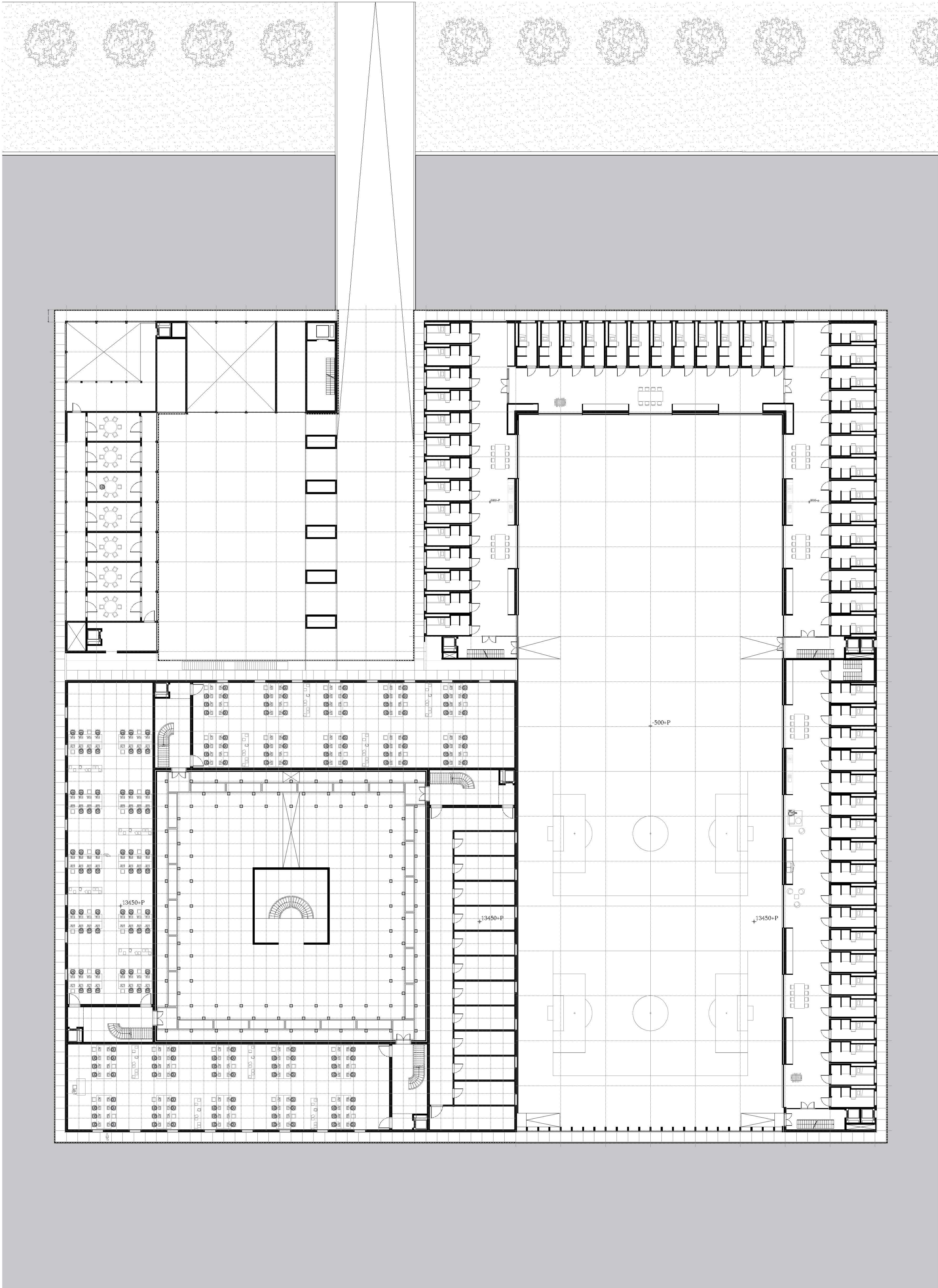


Location

1:1000

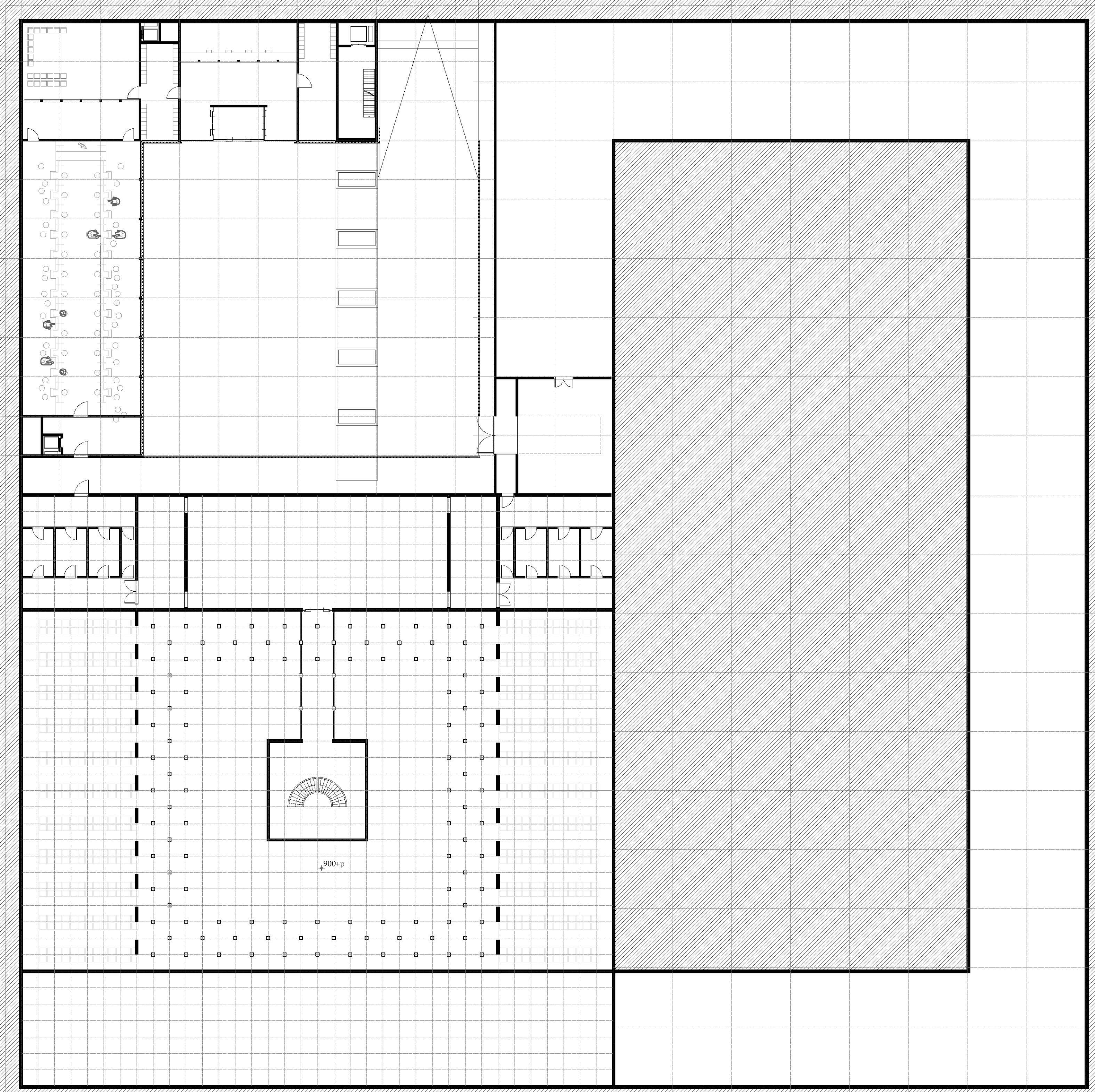


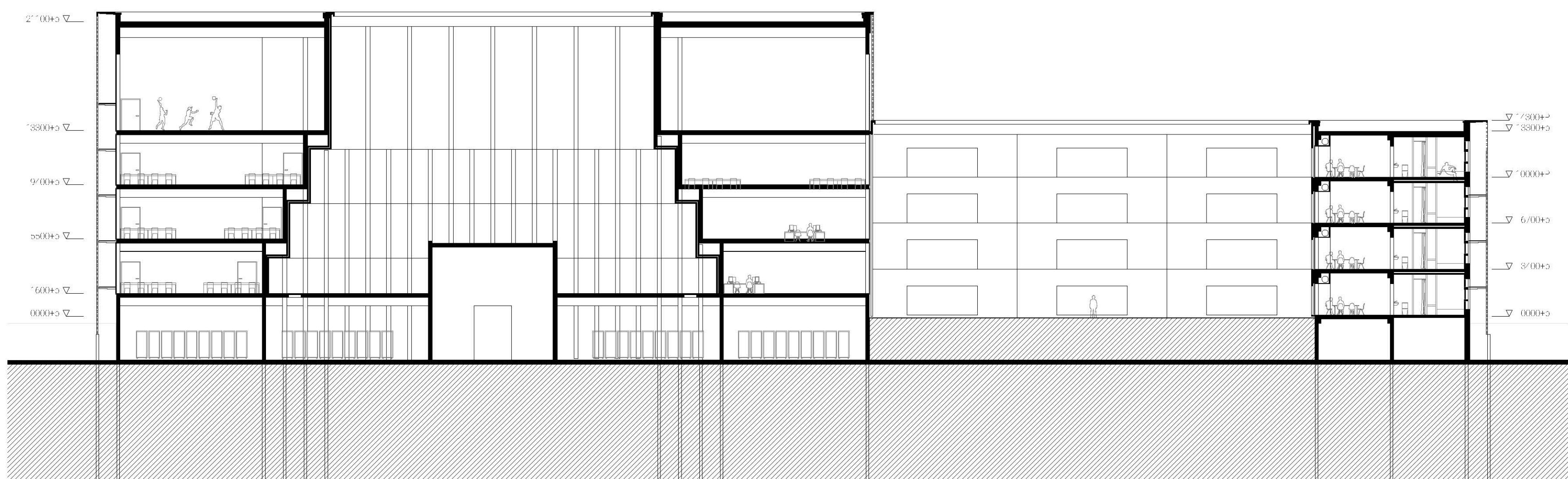
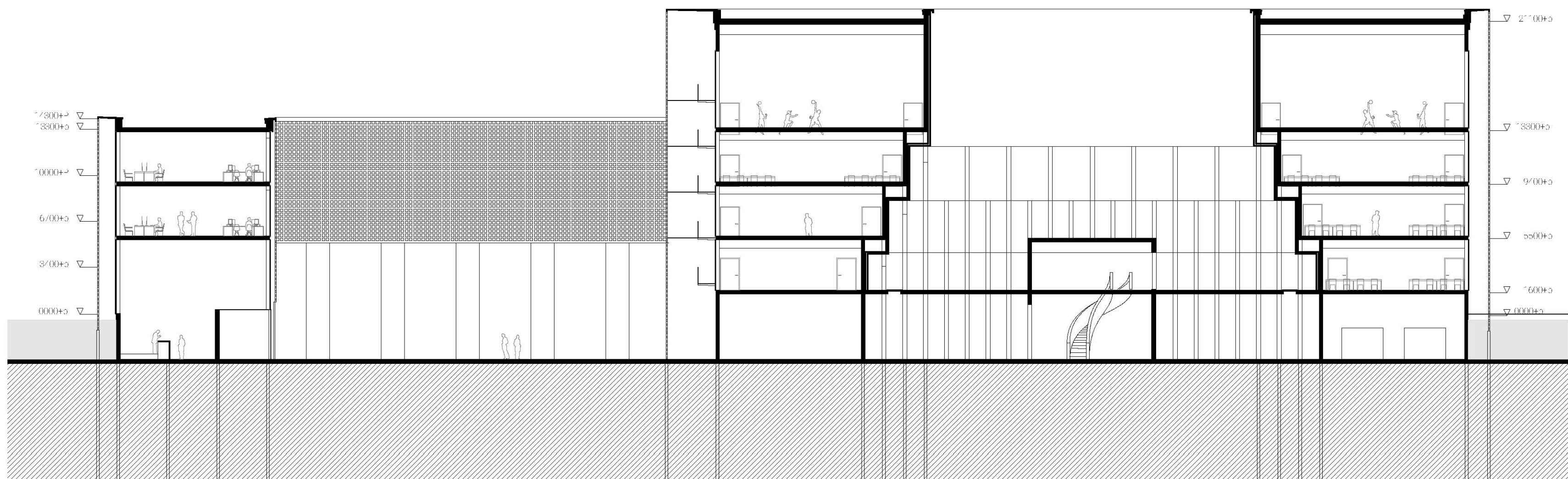


Ground floor Plan

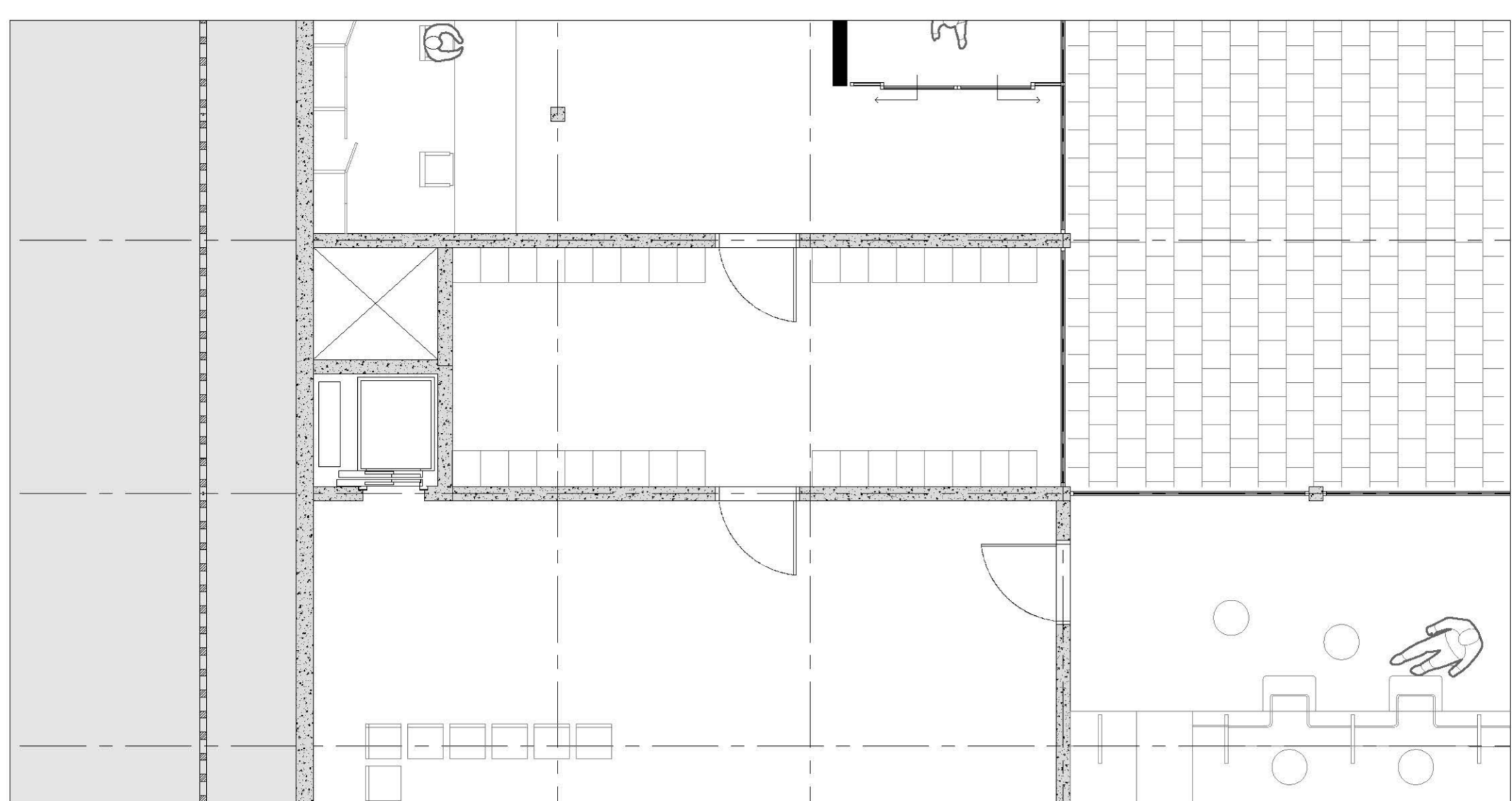
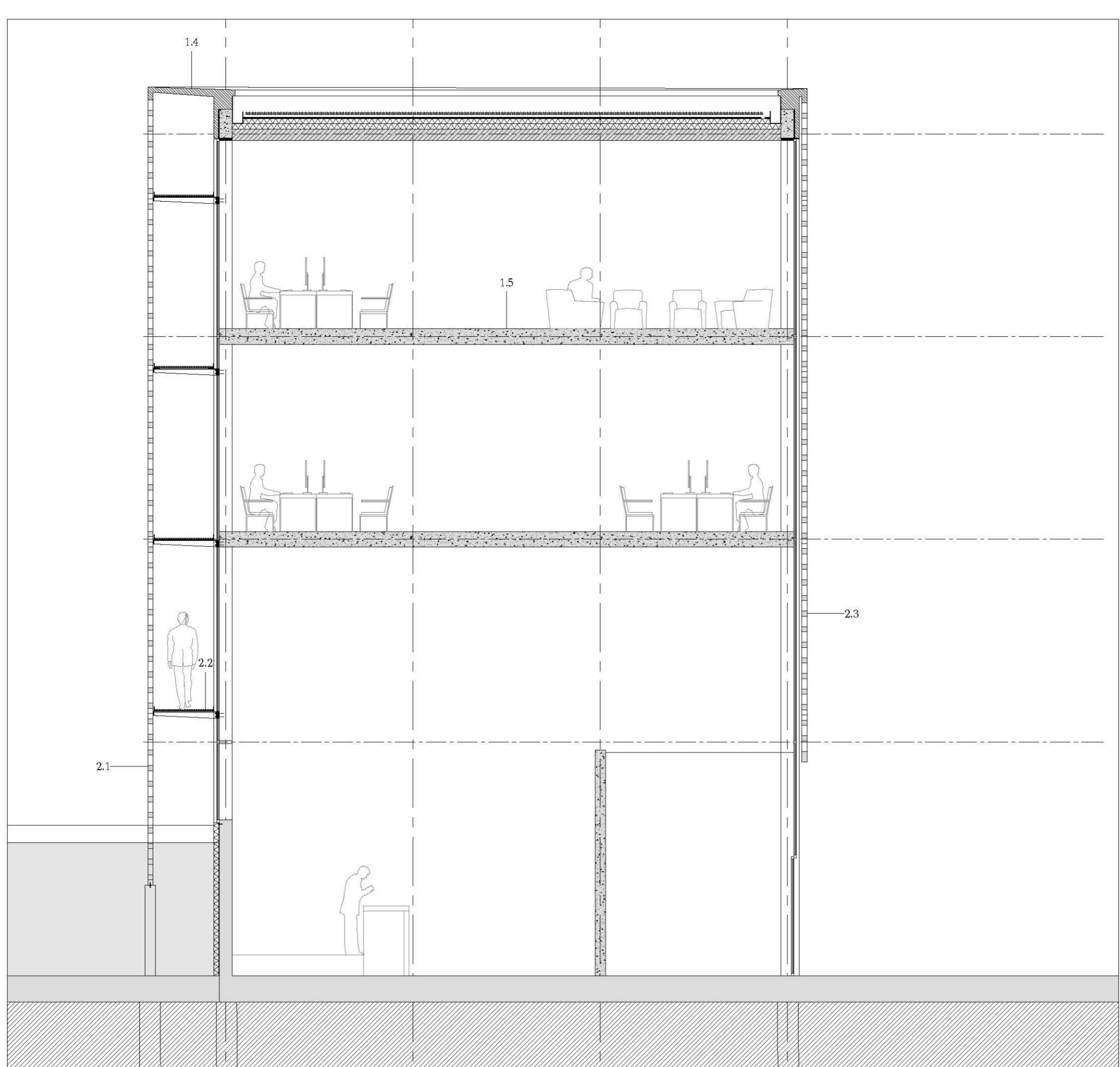
1:250



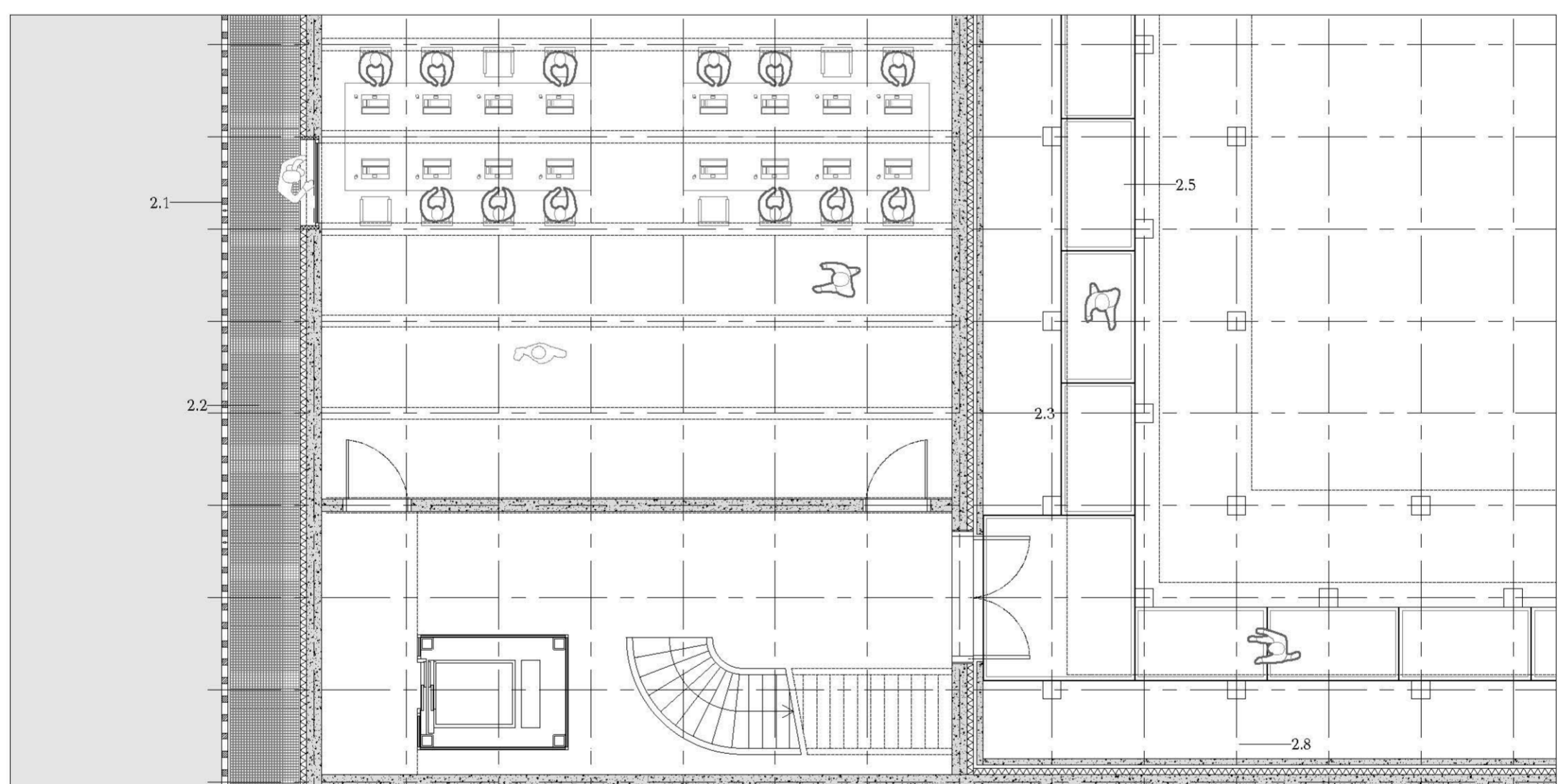
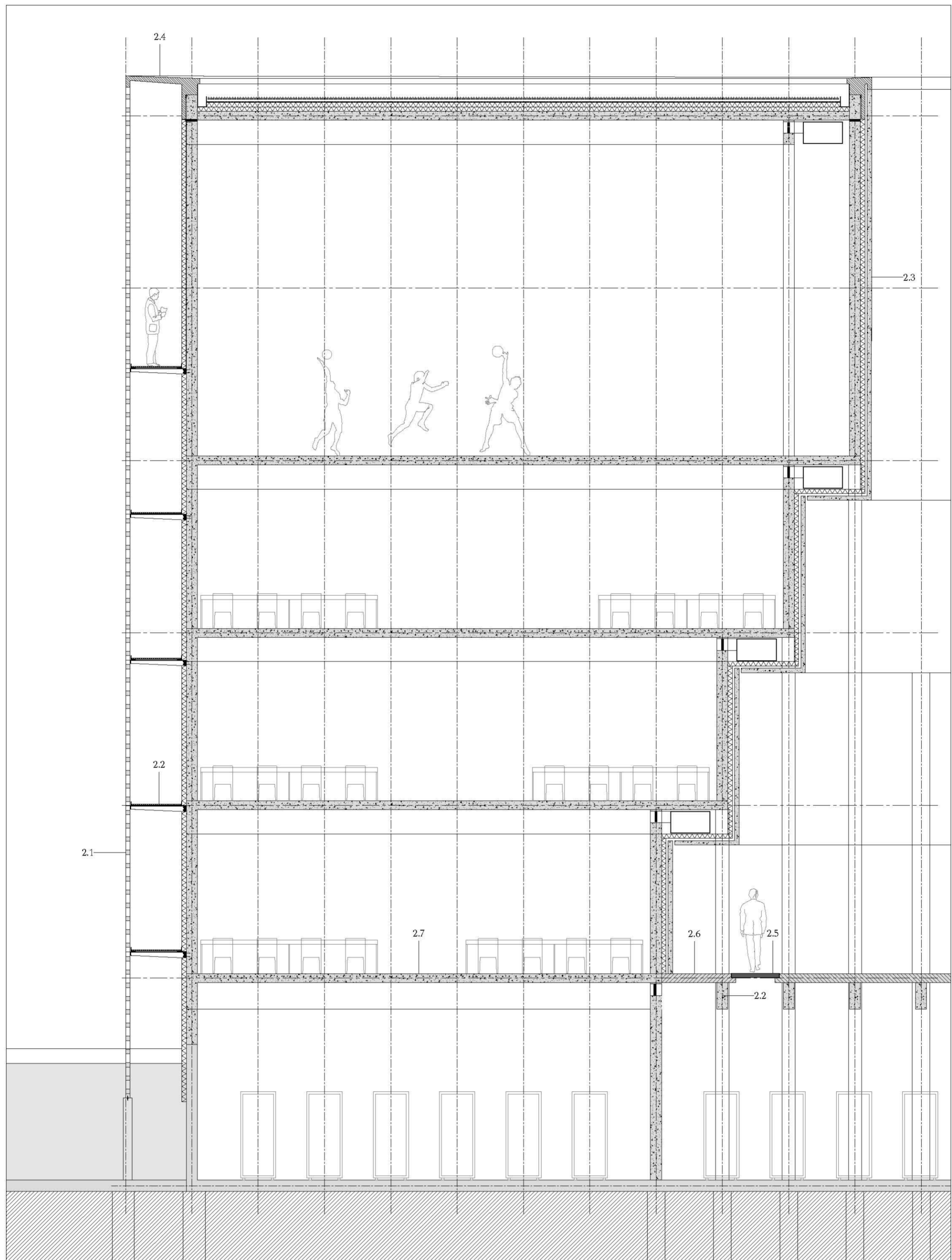




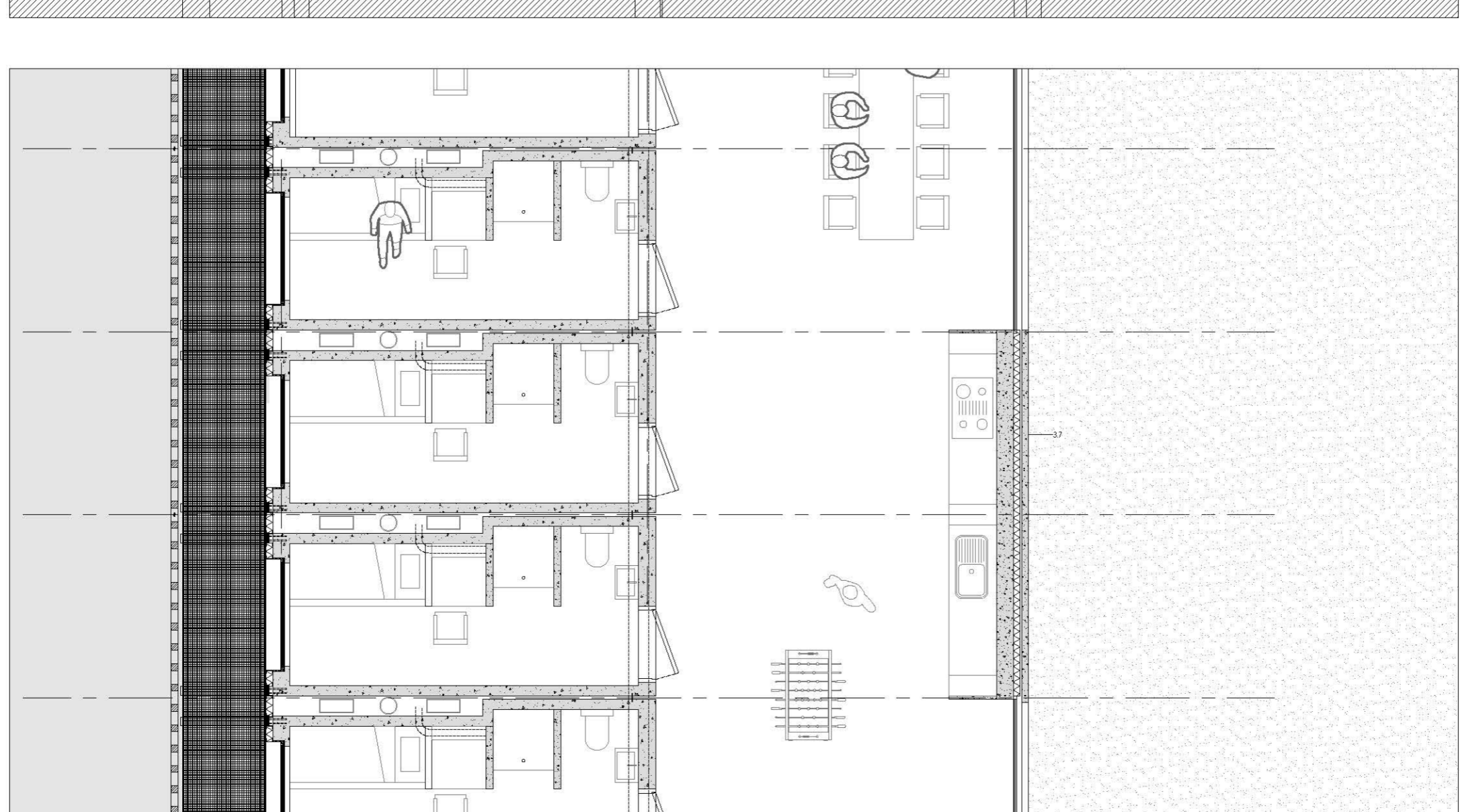
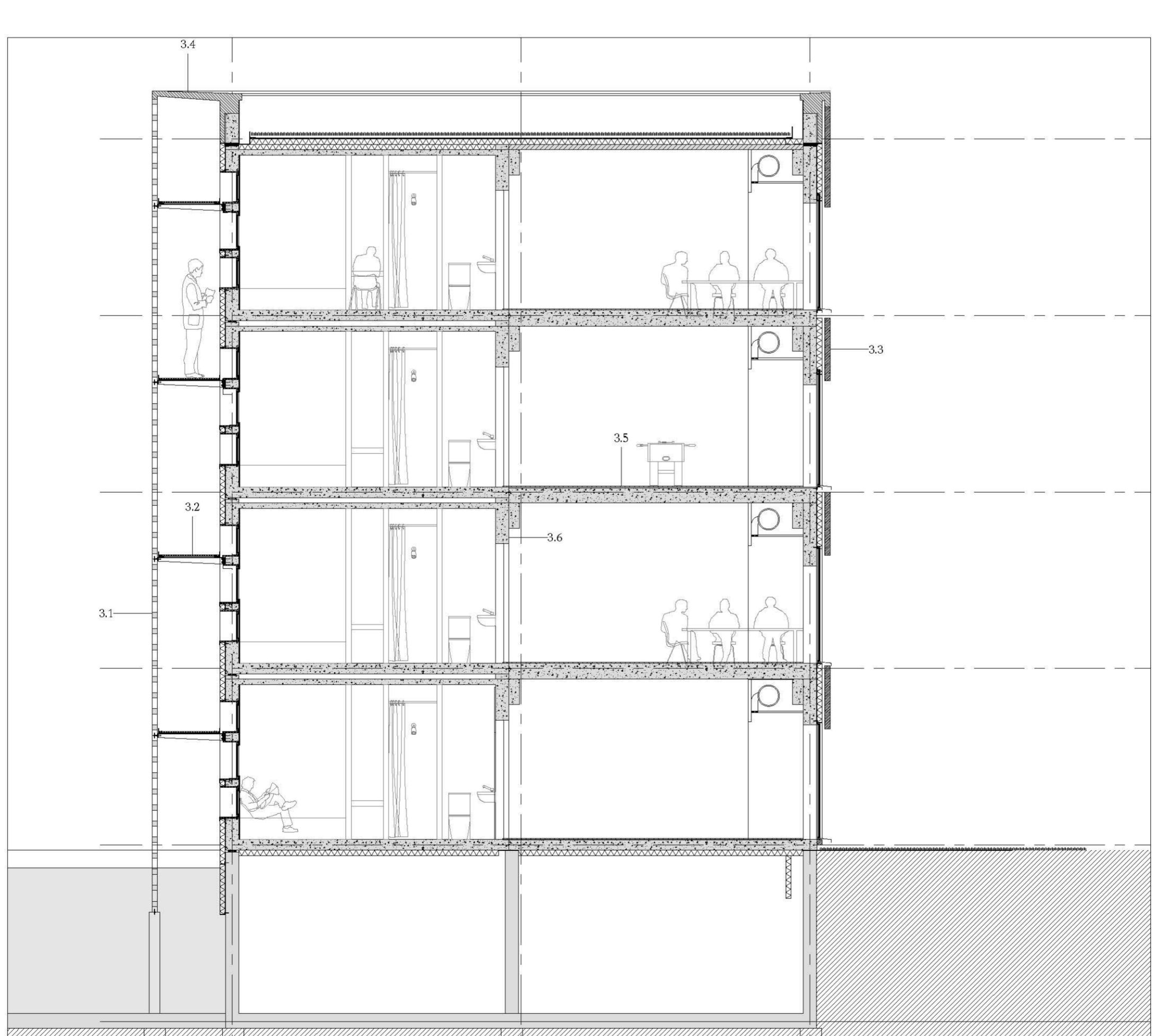
Section
1:250



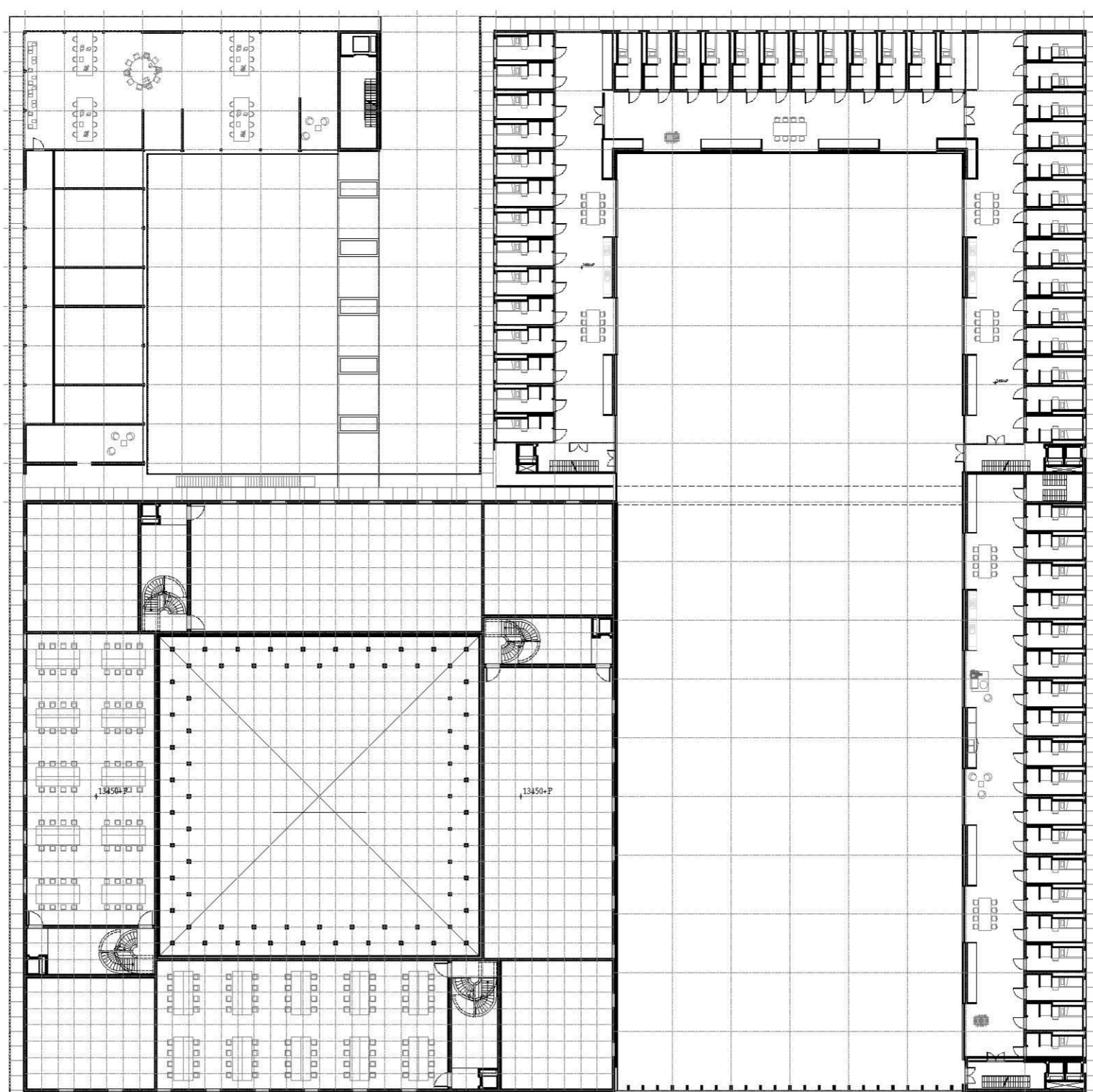
- 1.1 Vertical UHPC lattice panel: 5400 x 3300 mm, air cavity 1350mm, pvc waterproofing, Henpercrete insulation panels 100mm, precast concrete unit 250mm, polished finishing
- 1.2 Steelpressed grating walk way 1000 x 1150
- 1.3 Double glazing (9-13-9 mm) in steel frame, Vertical UHPC lattice panel: 5400 x 3300 mm
- 1.4 Prefab concrete unit 100 - 250 mm, pouring strip, correcting spacing
- 1.5 prefab concrete floor 300 mm,
- 1.6 Prefab concrete columns 250 x 250 mm



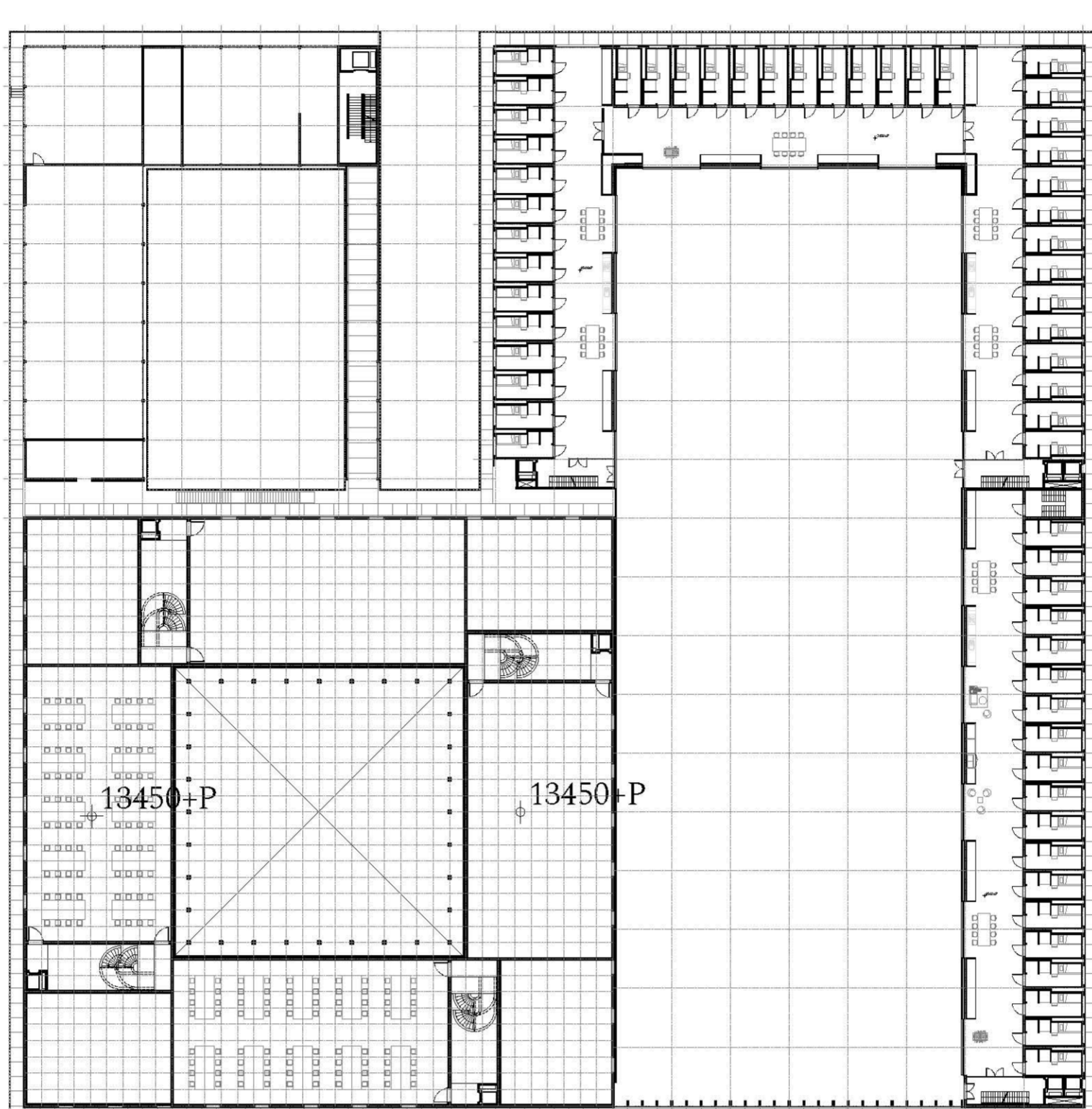
- 2.1 Vertical UHPC lattice panel: 5400 x 3300 mm, air cavity 1350mm, pvc waterproofing, Henpercrete insulation panels 100mm, precast concrete unit 250mm, polished finishing
- 2.2 Steelpressed grating walk way 1000 x 1150
- 2.3 Concrete facade panel 100 mm, pvc waterproofing, Henpercrete insulation panels 100mm, precast concrete unit 250mm, polished finishing
- 2.4 Prefab concrete unit 100 - 250 mm, pouring strip, correcting spacing
- 2.5 Glass floor panel, wearing layer, 8 mm toughened safety glass printed with dots to provide non-slip finish
- 2.6 Precast concrete floor, 250mm, polished finishing
- 2.7 Rib/floor 550/650mm, insitu cast cantilevering element, terrazzo finishing
- 2.8 Concrete column 300 x 300 mm



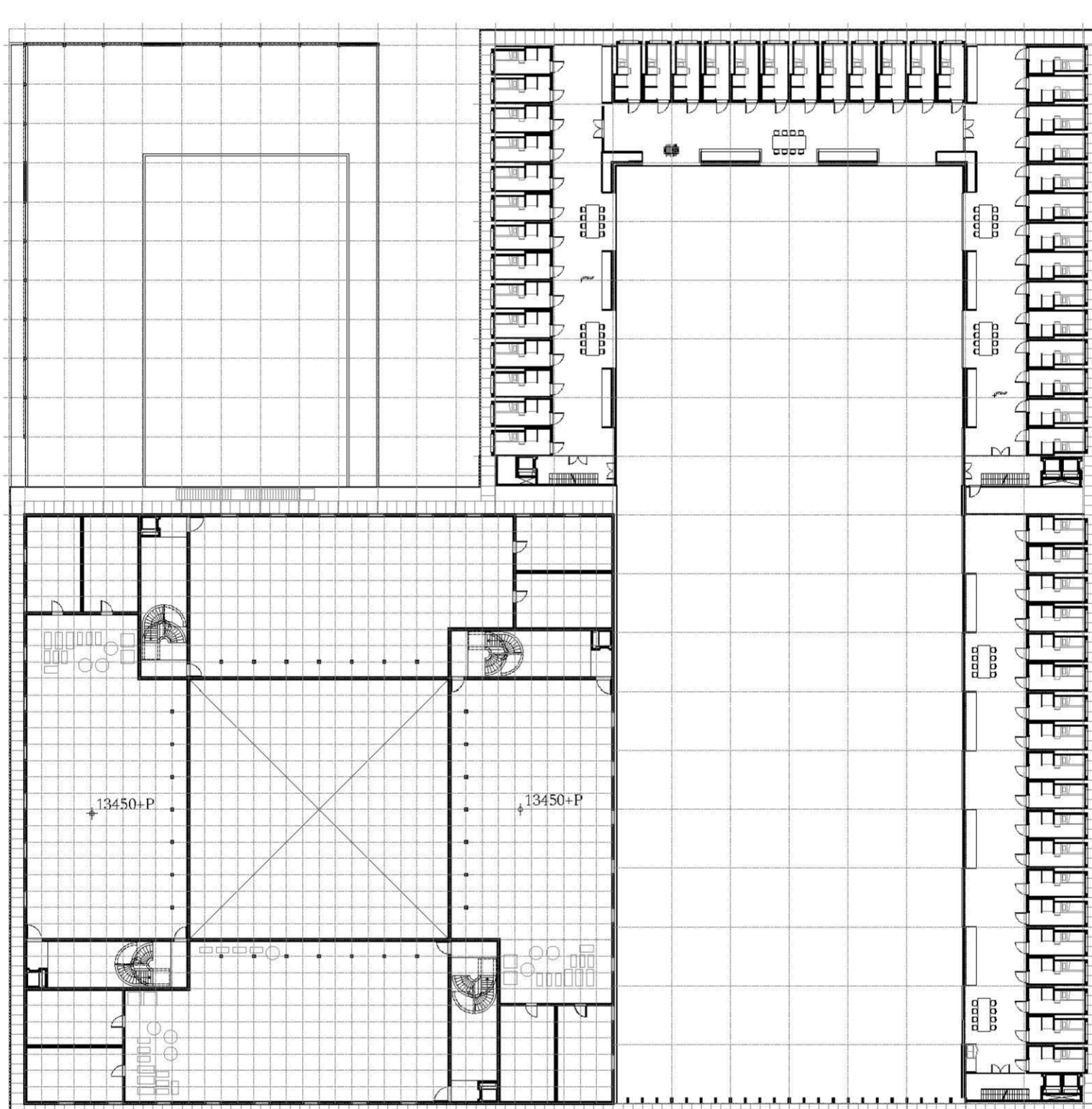
- 3.1 Vertical UHPC lattice panel: 5400 x 3300 mm, air cavity 1350mm, pvc waterproofing, Henpercrete insulation panels 100mm, precast concrete unit 250mm, polished finishing
- 3.2 Steelpressed grating walk way 1000 x 1150
- 3.3 Concrete facade panel 100 mm, pvc waterproofing, Henpercrete insulation panels 100mm, precast concrete unit 250mm, polished finishing
- 3.4 Prefab concrete unit 100 - 250 mm, pouring strip, correcting spacing
- 3.5 Prefab Concrete floor, 300 mm, core heating tubes, polished terrazzo finishing
- 3.6 Prefab concrete unit, floor 200 mm, walls 100-250 mm, ceiling 100 mm, integrated core heating tube
- 3.7 Integrated kitchen unit



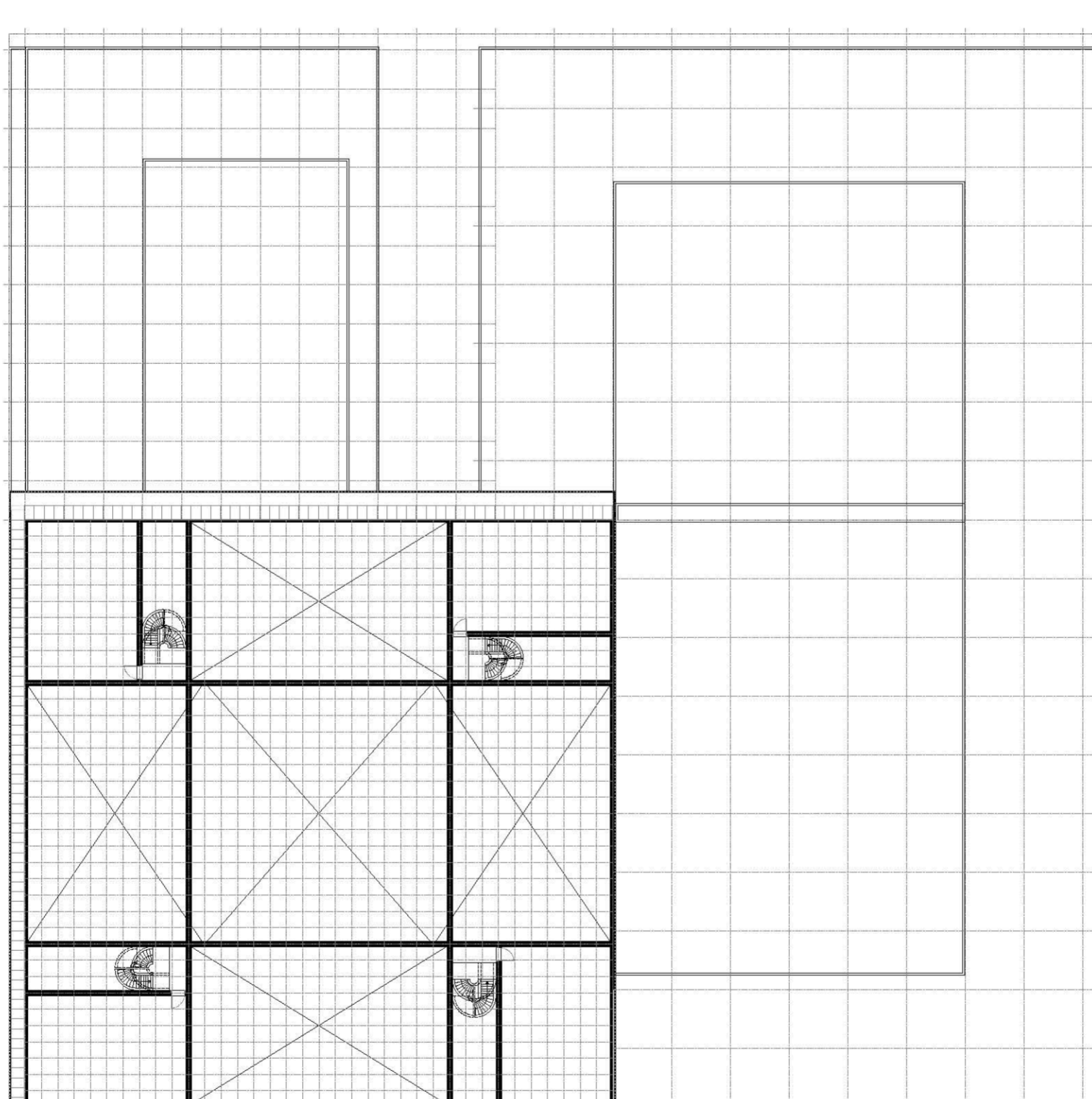
Floor 1



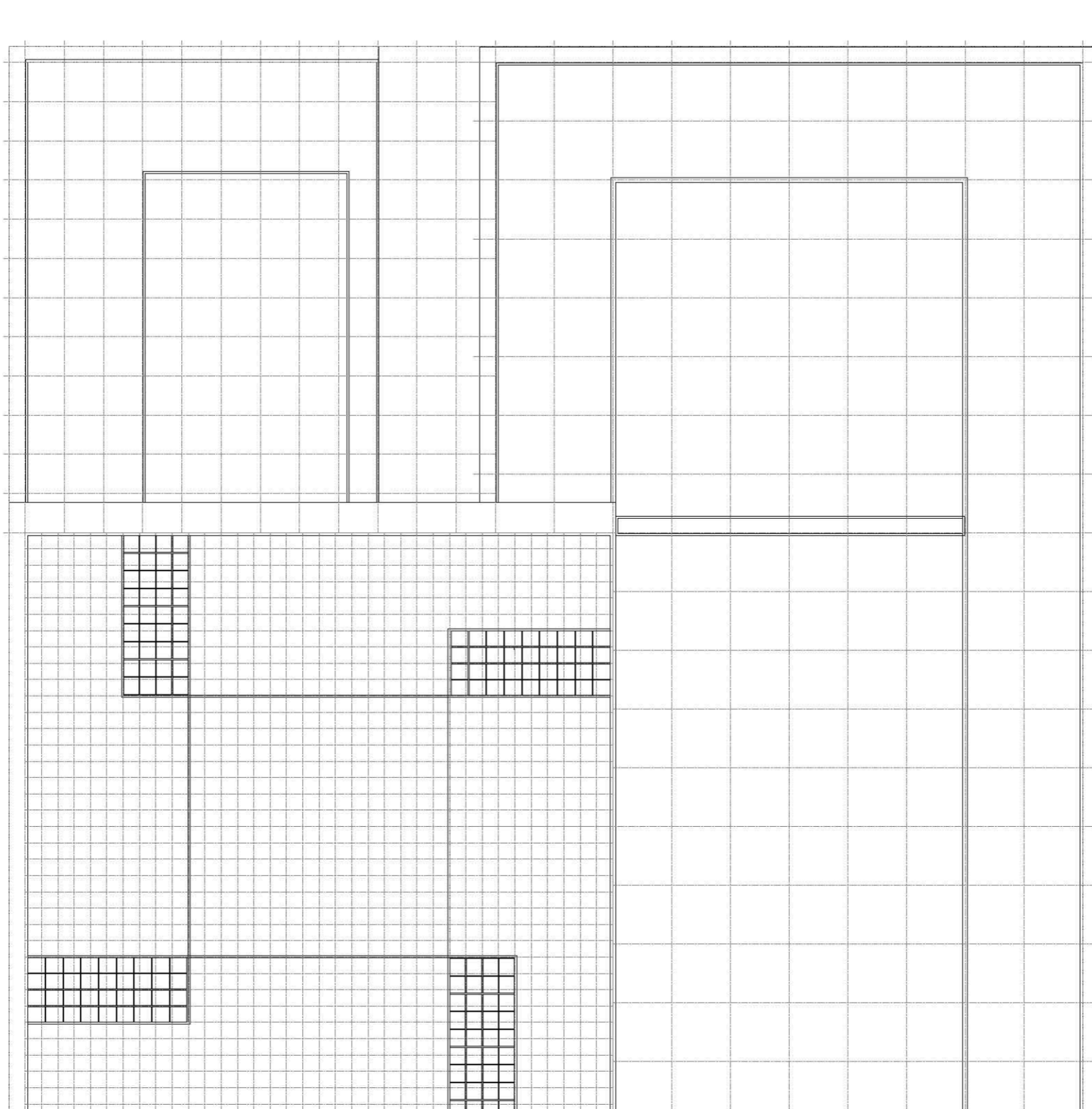
Floor 2



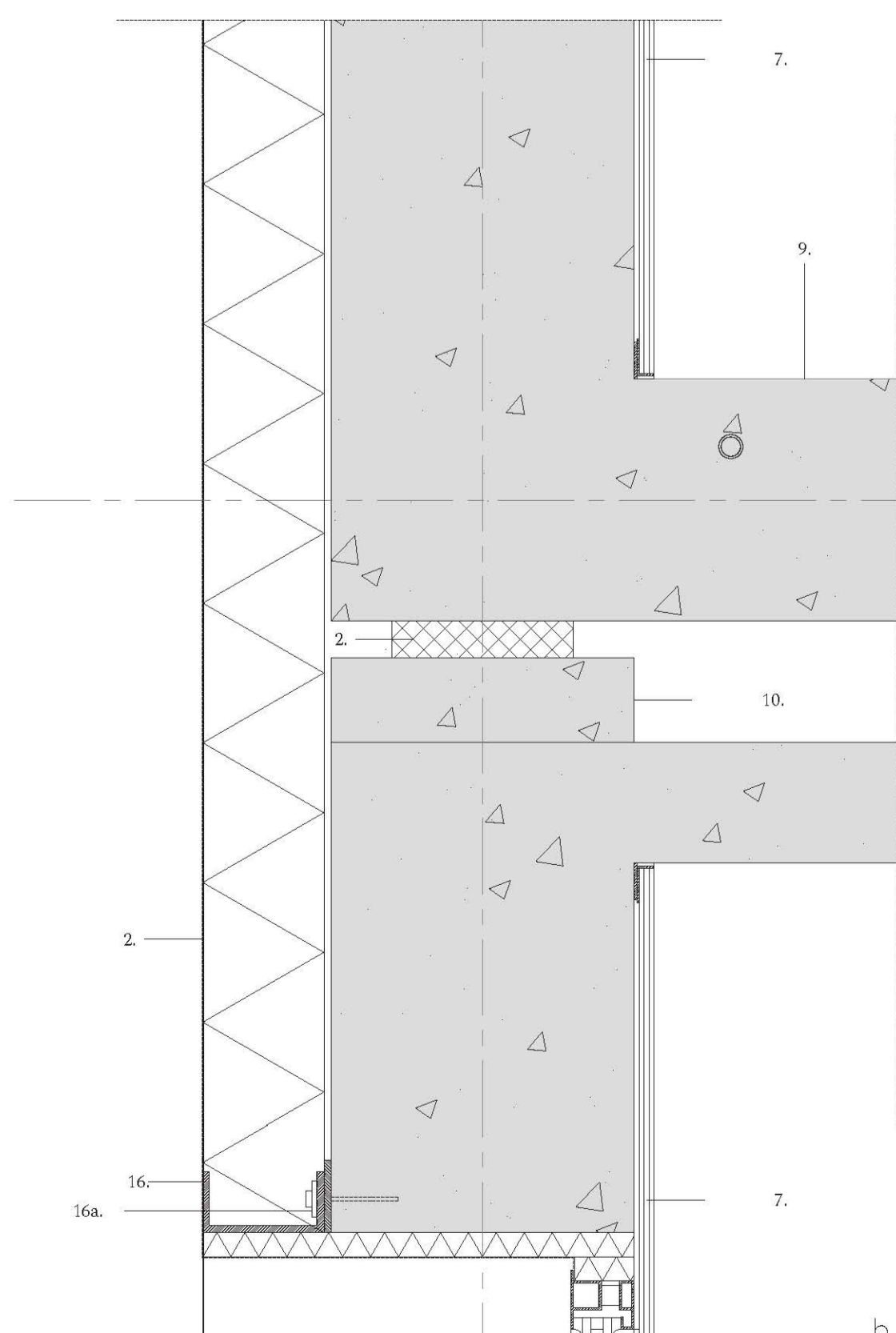
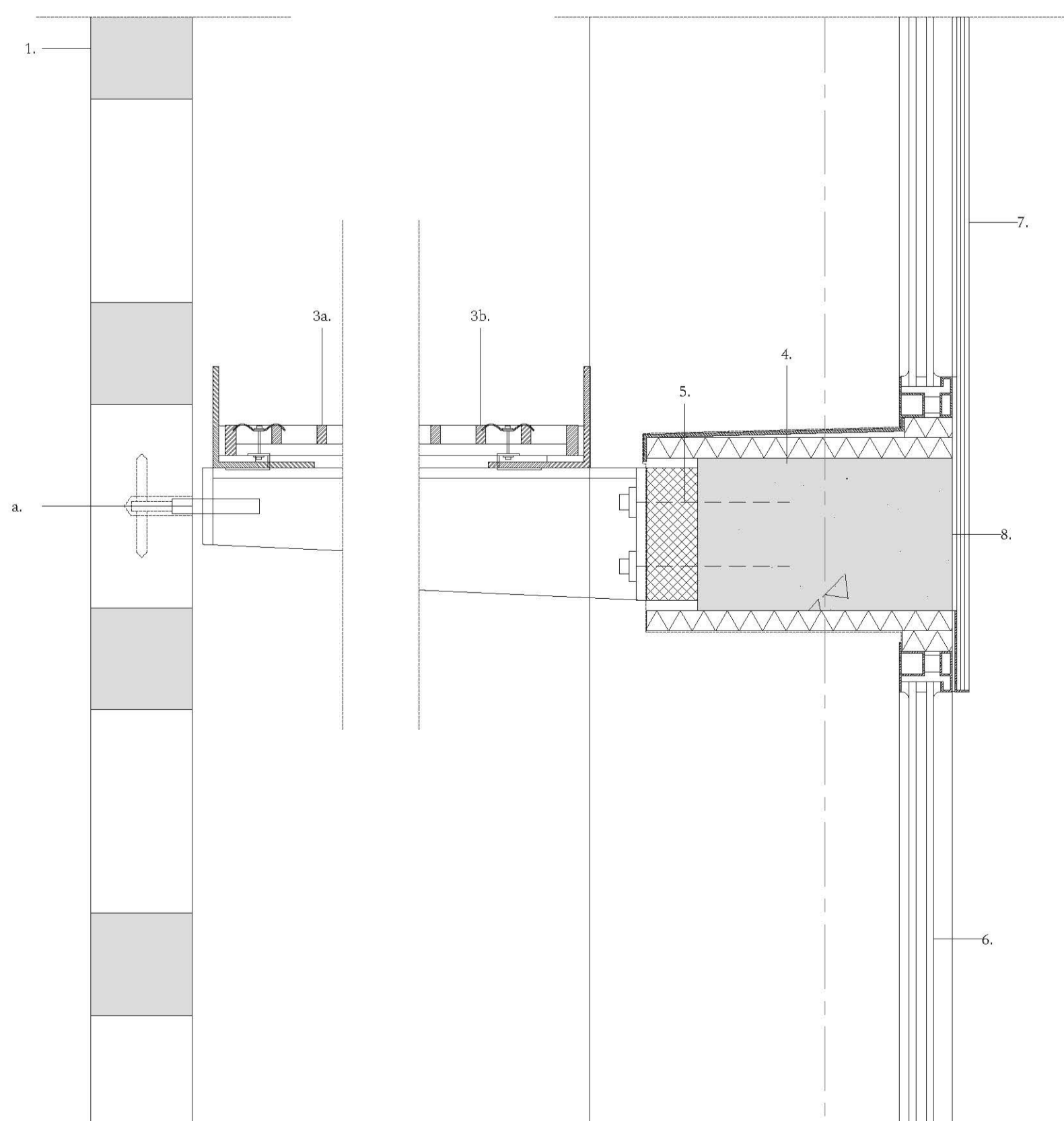
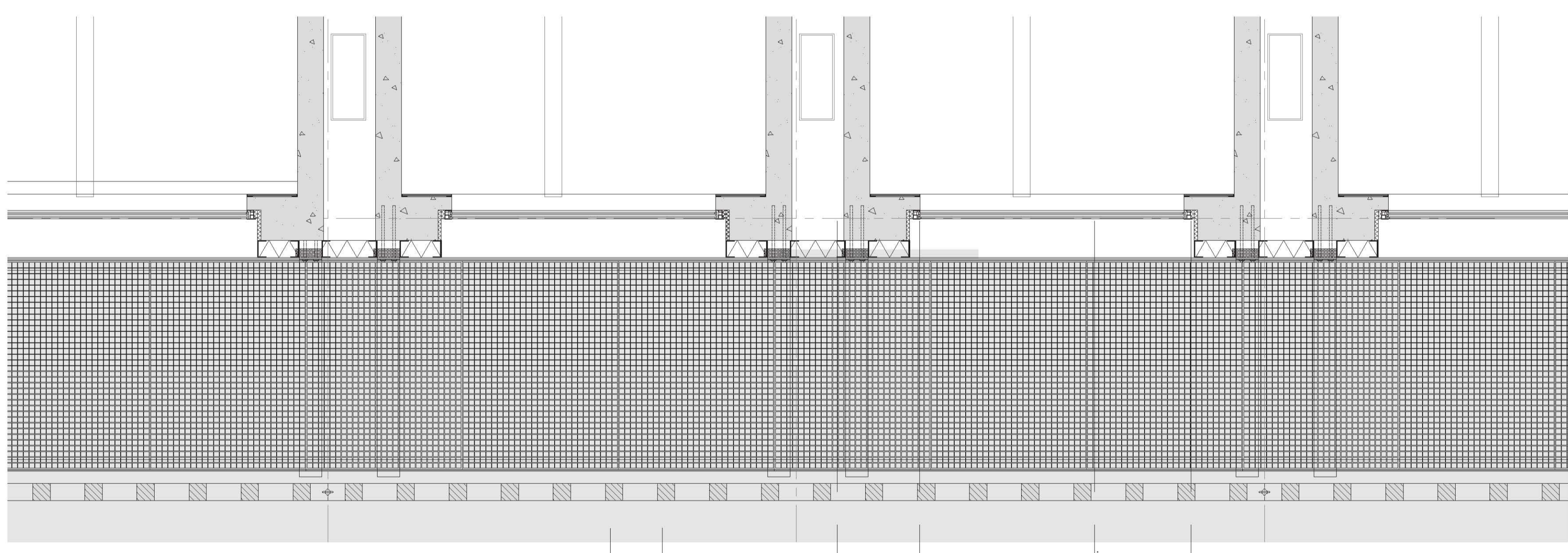
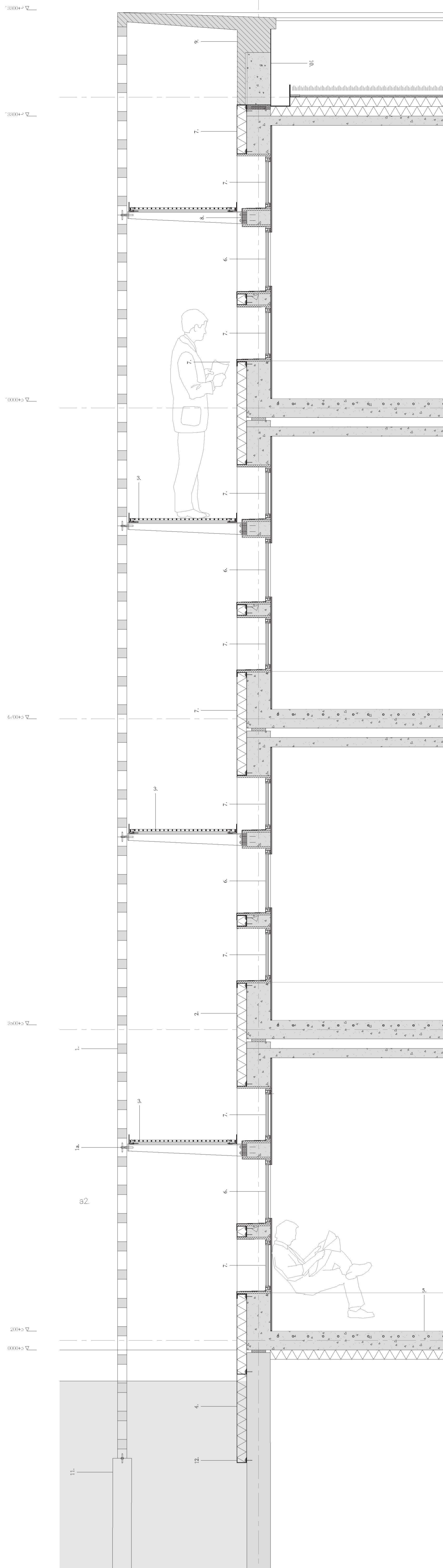
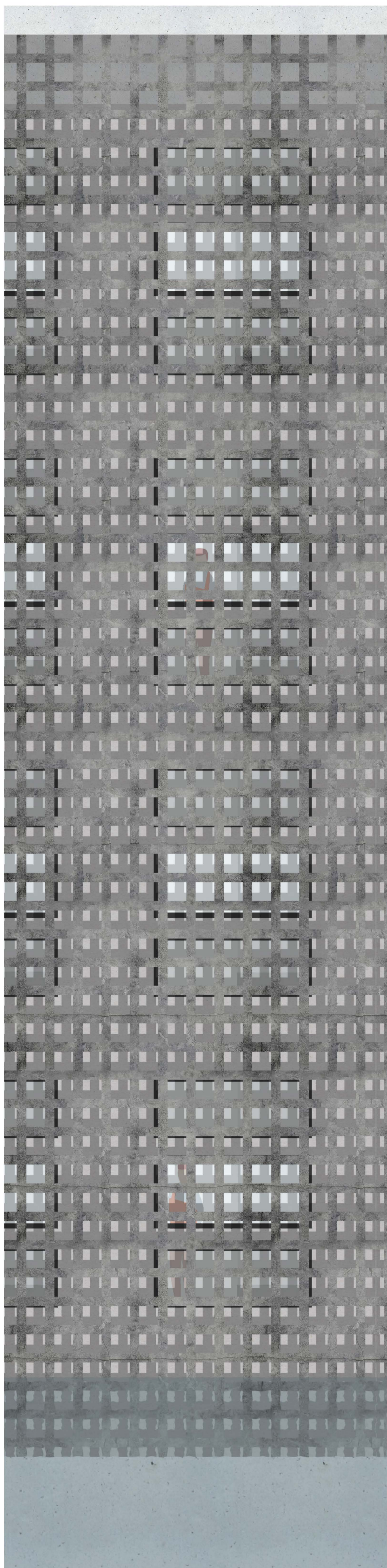
Floor 3



Floor 4



Roof



1. Vertical UHPC lattice panel: 80 x 80 mm cross-section, 5400 x 3250 mm format
- 1.1. Dowel Pin, sealed threaded sockets with casting, polyurethane washers
2. External wall: PVC waterproofing, 100mm Hempcrete insulation panel in U-steel frame, 250mm precast concrete, Pressed grating, carried by a steel beam
3. Bitumen layer, window sill 1 mm sheet stainless-steel, rigid foam insulation 50mm
4. Reinforcement connection, insulated
5. Double glazing (13 + 18 + 13 mm) in steel frame
6. Toughened glass panel (20 mm) with reflecting metal oxide coating
7. Precast reinforced concrete unit 250 mm

8. Precast reinforced concrete unit 250 mm
9. Precast reinforced concrete unit 250 mm, water tubes for heating
10. Precast concrete element, rubber support block
11. Lattice facade support: reinforced-concrete edge beam
12. In situ reinforced concrete concrete 300
13. Precast reinforced concrete roof units 250 - 100 mm
14. Extensive Planting, infill gravel, 40 mm substrate, 40 mm drainage layer, bitumen water proofing, rigid foam insulation EPS 200 mm, Precast reinforced concrete unit 150 mm, polished finishing
15. Precast concrete furniture 50 - 100 mm
16. U-steel, adjustable connection to cell, to correct spacing

Facade Detail

1:20 & 1:5