

# I amsterdam. city card

24 hours



Enjoy free entrance\* to the following museums and attractions with the I amsterdam City Card

2018

\* Van Gogh Museum requires a free time slot ticket

## 6. Outsider Art Museum – Hermitage



The only museum in the Netherlands that shows leading artworks by national and international 'Outsider Artists'. Experience the extraordinary art made by individuals who, for the most part, are not formally trained as artists. Their work is authentic, unconventional and goes against the grain. Open daily 10:00-17:00, 1 Jan from 11:00. Closed 27 Apr & 25 Dec. Amstel 51; [www.outsiderartmuseum.nl](http://www.outsiderartmuseum.nl)

## 7. Street Art Museum



In the summer of 2018, the largest street art museum in the world will open its doors in the Lasloods. In terms of surface area, art form and collection, an international cultural location is created at the NDSM werf. The art will hang side by side on the old cranes in a room that is 24 meters high and has a monumental industrial appearance. To be announced. Ms. van Riemsdijkweg 9; ferry NDSM

## 8. Tram Museum



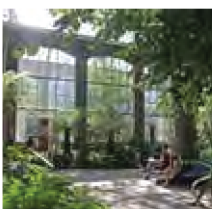
This museum on rails has been established in 1975. They restored old electric trams and made them run on a separate tram line from Amsterdam to Amstelveen. The historic tram line has on its way three stops in Amsterdamse Bos, where you may step out, walk in the park, have a meal in one of the restaurants, to return later also by tram to Amsterdam. Sun 11:00-17:30. Noordzijde 31; [vaneesterenmuseum.nl](http://vaneesterenmuseum.nl); tram 16

## 9. National Holocaust Museum – Jewish Cultural Quarter



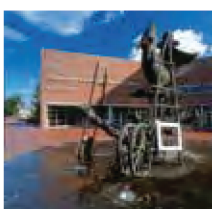
The National Holocaust Museum is currently in the process of development. This historic site relates the story of the Holocaust in an artistic form based on personal accounts in changing exhibitions and events. Open daily 11:00-17:00. Closed 27 Apr, 11 & 19 Sep. Plantage Middenlaan 27; [www.jck.nl](http://www.jck.nl)

## 10. Hortus Botanicus - Botanical Garden



One of the oldest botanical gardens in the world, the Hortus Botanicus is a beautiful and intimate place that has a unique collection of plants, and offers an oasis of tranquillity in the busy city. Open daily 10:00-17:00, July-Aug on Sun until 19:00. Closed 1 Jan & 25 Dec. Plantage Middenlaan 2a; [www.dehortus.nl](http://www.dehortus.nl)

## 11. Cobra Museum Amstelveen



The programme at the Cobra Museum of Modern Art includes trendsetting contemporary art exhibitions with works by both Dutch and international artists. Connection bus 142, 170, 172 to Amstelveen bus station (2 min. walk), or tram 5 to stop Binnenhof (10 min. walk). Open Tue-Sun 11:00-17:00, Mon during public holidays. Closed 1 Jan & 27 Apr. Sandbergplein 1, Amstelveen; [www.cobra-museum.nl](http://www.cobra-museum.nl)

## 12. ARTIS Amsterdam Royal Zoo



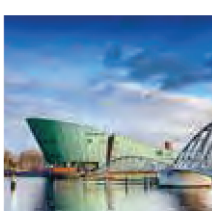
At ARTIS Amsterdam Royal Zoo, nature, culture and heritage come together. Stroll among the shady trees and admire the diversity of plants and animals. Open Mar-Oct daily 9:00-18:00, Nov-Feb 9:00-17:00, Jun, Jul & Aug every Sat until sunset, 1 Jan 10:00-17:00, 31 Dec 9:00-16:00. Plantage Kerklaan 38-40; [www.artis.nl](http://www.artis.nl)

## 13. Oude Kerk



The oldest monument in Amsterdam is located in the middle of the Red Light District. Rembrandt married his wife Saskia here, you can still see her tombstone amongst 2500 others. Today, large-scaled and site-specific exhibitions of contemporary artists take place within the ancient walls. Open Mon-Sat 10:00-18:00, Sun 13:00-17:30. Oudekerksplein 23; [www.oudekerk.nl](http://www.oudekerk.nl)

## 14. NEMO Science Museum



Explore five floors full of fascinating science at NEMO Science Museum. Don't forget to admire the stunning view over Amsterdam from the roof terrace. Open Tue-Sun 10:00-17:30, daily 12 Feb-9 Sep, Mon during Dutch school & public holidays. Closed 27 Apr. Oosterdok 2; [www.nemosciencemuseum.nl](http://www.nemosciencemuseum.nl)

## 15. Amsterdam Museum



Experience the story of Amsterdam and take a fascinating journey of discovery through seven centuries of the city's history. Open daily 10:00-17:00, 1 Jan 12:00-17:00, 5, 24 & 31 Dec 10:00-16:00. Closed 27 Apr & 25 Dec. Kalverstraat 92; [www.amsterdammuseum.nl](http://www.amsterdammuseum.nl)

## 1. Van Eesteren Museum



'Light, air & space'. That is the philosophy behind the Nieuw-West (New-West) district built by Cornelis van Eesteren for the reconstruction of Amsterdam. The museum is consisting of an inside and outside exhibition and a model house. Also, the museum organizes tours, talks and other activities in the neighborhood. Thu-Sun 12:00-17:00. Noordzijde 31; [vaneesterenmuseum.nl](http://vaneesterenmuseum.nl); tram 7, 13, 14

## 2. Allard Pierson Museum



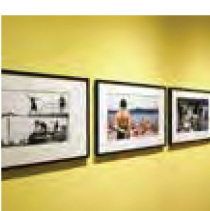
The archaeology museum of the University of Amsterdam shows original artefacts from ancient Mediterranean cultures dating from 10,000 BC to 1000 AD. Open Tue-Fri 10:00-17:00, Sat, Sun & public holidays 13:00-17:00. Closed 1 Jan, 27 Apr & 25 Dec. Oude Turfmarkt 127; [www.allardpiersonmuseum.nl](http://www.allardpiersonmuseum.nl)

## 3. EYE Filmmuseum



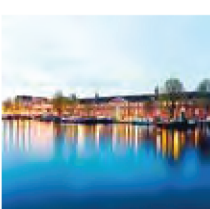
EYE screens all manner and size of films, and its permanent exhibition and several changing exhibitions at the intersection of art and film bring the world of cinema comfortably within reach. The City Card is only valid for the permanent exhibitions (a surcharge may apply). Exhibition open daily 10:00-19:00. Closed 27 Apr. Check website for additional closing dates. IJpromenade 1; [www.eyefilm.nl](http://www.eyefilm.nl)

## 4. Foam Fotografiemuseum Amsterdam

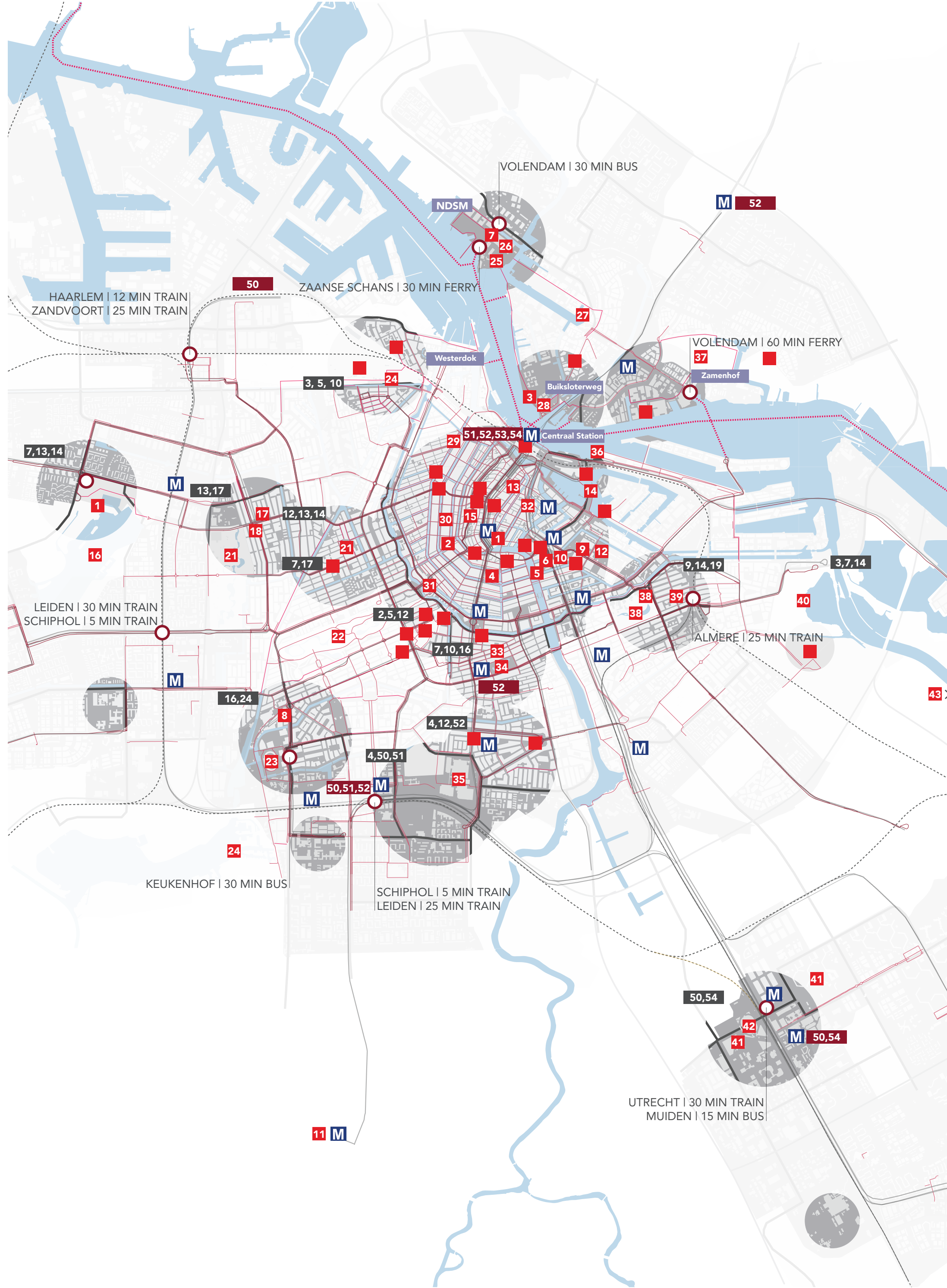


Photography museum Foam exhibits all facets of the photographic medium: from contemporary to historical work, and from fine art to applied photography. World-famous photographers are displayed alongside young, emerging artists in a lively exhibition programme. Open daily 10:00-18:00, Thu-Fri until 21:00, 1 Jan 12:00-18:00. Closed 27 Apr. Keizersgracht 609; [www.foam.org](http://www.foam.org)

## 5. Hermitage Amsterdam



A spectacular museum with changing exhibitions from the Hermitage Museum in St Petersburg. 2018's exhibitions: Dutch Masters of the Hermitage and Classic Beauties. Time slots and a €10 surcharge apply for the blockbuster Dutch Masters. Open daily 10:00-17:00, 1 Jan & 25 Dec from 11:00. Closed 27 Apr & between exhibitions. Amstel 51; [www.hermitage.nl](http://www.hermitage.nl)



Next to museums the city offers various other activities, like parks, swimming areas, shopping, dining facilities, a panorama view, iconic structures and nightlife.

## Transport modes

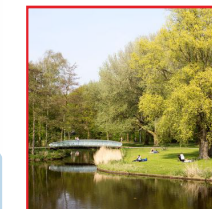
The activities are accessible by one or more modes of transport, information how to reach each of them is given below. Point of departure to destination in the region.

## 16. Sloterpark



The natural environment of the Sloterpark combines green, water, sports and recreation. In summer you can swim in the lake to cool off: the Sloterstrand. Some cafes and restaurants are spread out through the park. Always open. Sloterpark/Sloterpark; metro 50, tram 7, 13, 14

## 17. Rembrandtpark



The Rembrandtpark is situated close to the Mercatorplein and is mostly used as a neighborhood park. It provides a quiet recreational area, with a city farm and allotment gardens. Park always open. Rembrandtpark; metro 51, 52, 53, 54

## 18. Mercatorplein



A dynamic square in the west part of Amsterdam, with the very typical Amsterdam School architecture style. Many bars, restaurants and shops popular by locals are situated here. Always open. Mercatorplein; 7, 13, 17

## 19. Jeruzalemkerk



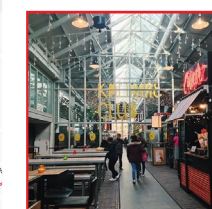
This identical element of Amsterdam School architecture is hidden from the regular routes. Sometimes the church facilitated concerts, movies or other events, for the program see the website. Open during events. Jan Majenplein 14; [www.jeruzalem-kerk.nl](http://www.jeruzalem-kerk.nl); tram 7, 13, 17

## 20. Westergas terrein



People come to Amsterdam's Westergasfabriek to meet, work and relax. This beautiful city park, with its historic factory buildings surrounded by expanses of green, also has workplaces, venues for large and small events, and a range of catering, film, theatre and exhibition facilities. Open daily, various opening hours. Pazzanistraat 33; [www.westergasfabriek.nl](http://www.westergasfabriek.nl); tram 3, 5, 10

## 21. Foodhallen



The 'Foodhallen' opened in 'De Hallen Amsterdam' – a newly renovated tram depot – in October 2014. An unique addition to culinary Amsterdam: the international indoor food market the 'Foodhallen' Open Sun-Thu 11:00-23:30, Fri-Sat 11:00-01:00 Bellamyplein 51; [foodhallen.nl](http://foodhallen.nl); tram 3, 7, 12, 13, 14, 17, 19

## 22. Vondelpark



The Vondelpark is the most popular park of Amsterdam with the Vondel theatre in the center of the park: May is festival month and from June onwards there is a diverse program every Friday, Saturday and Sunday with both young talents and established names. With the sun, the beautiful park and the good atmosphere there is something for everyone! Park always open, theatre with events. [www.openluchttheater.nl](http://www.openluchttheater.nl); tram, 1, 2, 3, 5, 11, 12

## 23. Olympisch stadion



The Olympic Stadium has been the center of sport since 1928 with many events and festivities. You can come here to get a tour, do sports yourself, experience an escape room or have dinner at the restaurant. Open daily, on request. Olympisch Stadion 2; [olympischstadion.nl](http://olympischstadion.nl); metro Amstelveenseweg, tram 16, 24

## 24. Amsterdamse bos



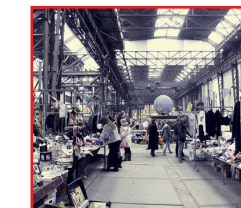
The large forest on the south side of the city, with sport facilities, walking routes, swimming areas, festivals, restaurants, a spa, cruises, a theatre, a camping, a farm and rowing tracks. Open daily, for the program see the website. [www.amsterdamsebos.nl](http://www.amsterdamsebos.nl)

## 25. NDSM werf



The NDSM-werf has been a creative hothouse since the 1990s, when it was transformed after having served as a shipbuilding wharf for decades. In recent years, the area has been hosting many festivals. Also the site facilitates working places for artists, which art is exhibited in the incubator or in the public space. Always open, incubator daily 08:00-18:00. NDSM-Plein; [www.ndsm.nl](http://www.ndsm.nl); ferry NDSM

## 26. IJhallen



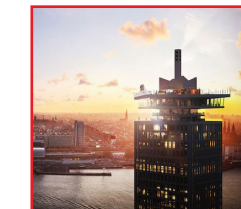
The IJ-Hallen is the biggest and most unique flea market in Europe and is located in the most densely populated area of The Netherlands. The IJ-Hallen is recommended to anyone who loves flea markets and great bargains. Located on the NDSM werf. One weekend a month, see website. T.T. Neveritaweg 15; [ijhallen.nl](http://ijhallen.nl); ferry NDSM

## 27. Cafe de Ceuveel



On the veranda, in the hammock and on the beautiful ship-wharf terrace at the waterside you can enjoy yummy food, delicious drinks and beautiful music. But there's more! It is a cafe with a sustainable mission and the owners would like to invite you on their adventure. Tue-Thu and Sun 11:00-00:00, Fri-Sat 11:00-02:00. Korte Papaverweg 2 - 6; [deceuveel.nl](http://deceuveel.nl); metro 52

## 28. Adam toren



The brand name 'ADAM' also stands for 'Amsterdam Dance and Music'. It is home to a mix of offices, cafes, restaurants, a hotel, an observation point with a swing and panorama view and a revolving restaurant. Open daily, various opening hours, see the website. Overhoeksplein 1; [adamtoren.nl](http://adamtoren.nl); ferry Buiskloterweg

## 29. Noordermarkt



The colourful and lively character of this market offers something to visitors of all ages from all over the world and it is a very interesting meeting place surrounded by cosy pubs, lovely terraces and delicious restaurants. On Saturday it offers a farmers market and antiques, while on Monday you can find second hand products. Mon 9:00-13:00, Sat 09:00-16:00. Noordermarkt; [www.noordermarkt-amsterdam.nl](http://www.noordermarkt-amsterdam.nl)

## 30. Negen straatjes



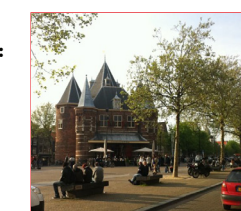
9 picturesque shopping alleyways in the Amsterdam canal belt. The area offers a great overview of the architectural style of Amsterdam heritage. It is very lively with artisanal businesses, hidden cafes, hot spot restaurants and galleries, and a unique offer of specialized and authentic shops. Open daily, various opening hours. De 9 Straatjes; [de9straatjes.nl](http://de9straatjes.nl); tram 13, 14, 17

## 31. Leidseplein



The Leidseplein: the most popular entertainment and nightlife district in the Netherlands, located in the bustling centre of Amsterdam. Many theaters, clubs, concert halls, restaurants and bars is this area the heart of the Leidsebuurt nightlife district. Open daily, various opening hours. Leidseplein; [www.leidseplein.amsterdam.nl](http://www.leidseplein.amsterdam.nl); tram 1, 2, 5, 7, 10, 11, 12, 19

## 32. Nieuwmarkt



The Nieuwmarkt is a square in Amsterdam's Chinatown, which is located next to the Red Light District. In 1614, part of the canals were filled in and the Nieuwmarkt was created. De Waag, the outstanding building on the square, was originally part of the city walls. The square is surrounded by a large number of cafes, bars and restaurants. Various opening hours, farmers market Sat 09:00-17:00. Nieuwmarkt; metro 51, 53, 54

## 33. Albert Cuypmarkt



The largest day market of Europe, where you can find fresh vegetables, fruit, fish, flowers, plants, fabrics, trendy clothing, textile, nice leather goods, and jewelry. Surrounding the area of the market many shops, cafe's and restaurants are always busy with locals. Mon-Sat 09:00-17:00. Albert Cuypstraat; [albertcuyp-markt.amsterdam](http://albertcuyp-markt.amsterdam); metro 52, tram 7, 10, 16, 24

## 34. Sarphatipark



The recreational park in the middle of the Pijp district is designed as an English landscape. A large play area for the little ones has been set up on the northwest side. Recreational facilities for the older children have been set up in the south-eastern part. Here, young people can play volleyball, basketball and table tennis. Always open. Sarphatipark; metro 52, tram 7, 10, 16

## 35. RAI Amsterdam



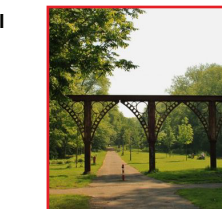
A place that brings people together in the physical and virtual worlds, crossing borders and providing inspiration. Many large scaled events and exhibitions are held here, like the householders, motorbikes and fashion events. Open during events, see the website. Europaplein 24; [www.raai.nl](http://www.raai.nl); metro 52, tram 4, 12

## 36. Muziekgebouw aan 't IJ



Muziekgebouw aan 't IJ is an internationally renowned, open and welcoming stage in Amsterdam that excels in contemporary music concerts and the related genres of classical, jazz, electronic pop music and world music. The building also facilitates a restaurant with a large terrace at the waterfront. Mon-Sat 12:00-18:00 and during concerts, restaurant Tue-Sun 11:30-23:30. Piet Heinkade 1; [www.muziekgebouw.nl](http://www.muziekgebouw.nl); tram 26

## 37. Vliegenbos



The Vliegenbos is the oldest city forest of Amsterdam, situated in district north with a camping, tennis courts, playgrounds, a restaurant, allotment gardens and a sculpture garden. Always open. Vliegenbos; [www.vliegenbos.amsterdam](http://www.vliegenbos.amsterdam), metro 52, ferry Zamenhof

## 38. Oosterpark



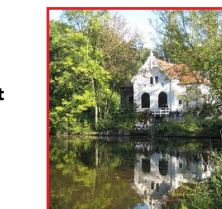
The most visited park of Amsterdam, with a paddling pool, picnic areas and meditation and sports areas. On the edge of the park the Tropenmuseum is located and surrounding the park you can find many bars, restaurants and cafes. Just a short walk away is the Dappermarkt. Always open, Tropenmuseum Tue-Sun 10:00-17:00. Linnaeusstraat 2/Oosterpark; [www.tropenmuseum.nl](http://www.tropenmuseum.nl); tram 9, 14, 19

## 39. Dappermarkt



More than 100 years ago, the Dappermarkt became officially a marketplace and the market is known as the most affordable and multicultural market in Amsterdam. The range of products on the Dappermarkt has a broad character. The neighborhood market has developed into a market with a global offer. Mon-Sat 09:00-17:00. Dapperstraat; [www.dappermarkt.nl](http://www.dappermarkt.nl); tram 9, 14, 19

## 40. Nieuwe Diep



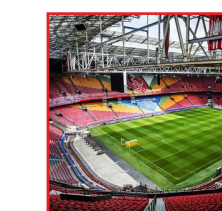
Cafe situated in the Flevopark in the east side of Amsterdam. It facilitates a tasting room and shop with all the produced products. The Flevopark also contains an open air pool, barbecue spots, a swimming area, a terrace and playgrounds. Tue-Sun 15:00-20:00. Flevopark 13; [www.nwediep.nl](http://www.nwediep.nl); tram 3, 7, 14

## 41. Bijlmer



The Bijlmermeer district is built according to the 'light, green and air' perspective, with a lot of public space surrounding the apartment buildings. Some of this area is preserved. Also the stadium for the soccer team Ajax of Amsterdam and a large concert hall Ziggo Dome were built in the area. Always open, Ziggo Dome during events and concerts. Bijlmermeer; [www.ziggodome.nl](http://www.ziggodome.nl); metro 50, 54

## 42. Johan Crujff Arena



The Johan Crujff Arena is the soccer stadium of the Netherlands, home of AFC Ajax and the Dutch national team. It is also the multifunctional space for large-scale, national and international music and dance events as well as meetings on a scale in the business segment. Tours can be planned to various art and culture projects. Arena Boulevard 1; [www.johancrujffarena.nl](http://www.johancrujffarena.nl); metro 50, 54

## 43. Blijburg



Blijburg is a cozy place to enjoy and meet in both summer and winter. A place where Amsterdamers from the neighborhood and from the city come together. Where you can swim, eat and drink or sit in front of the lovely fireplace. But also where you can enjoy live music, the spoken word and be surprised by various art and culture projects. Sun-Thu 08:30-23:00, Fri-Sat 08:30-01:00. Pampuslaan 501; [blijburg.nl](http://blijburg.nl); tram 26