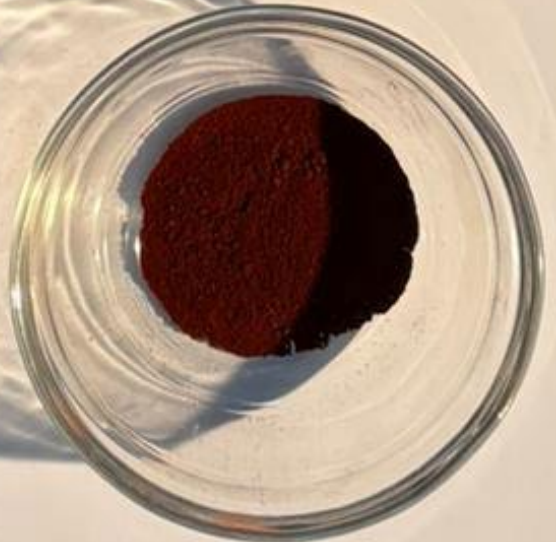




Matter, Making and the Six Bells Paradox
Mark Vas | Explore Lab 41





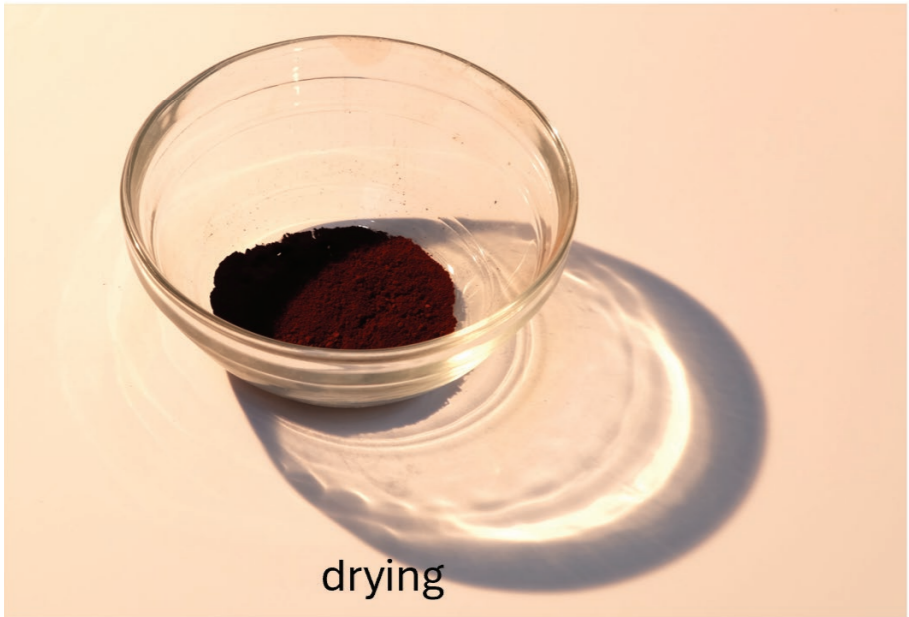
raw sludge



washing



decanting



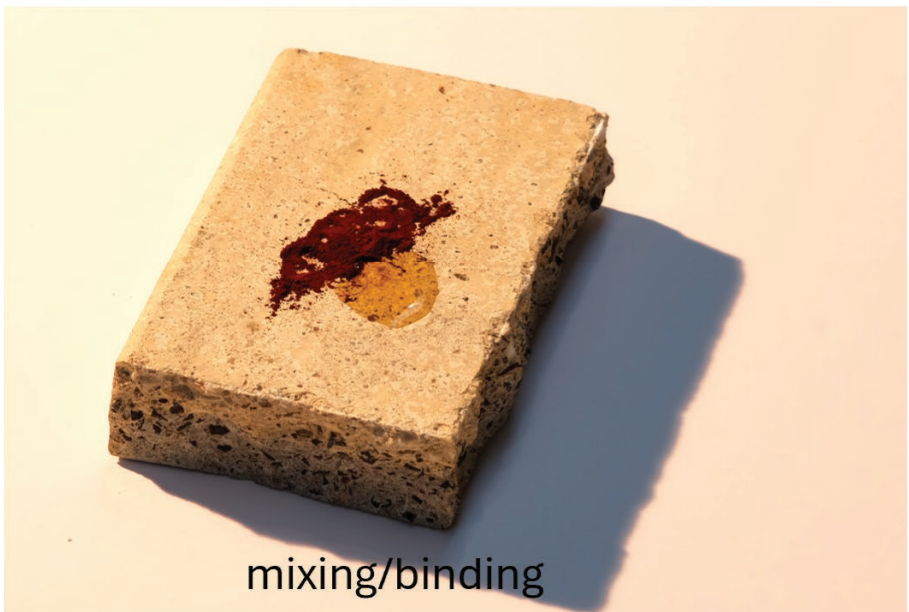
drying



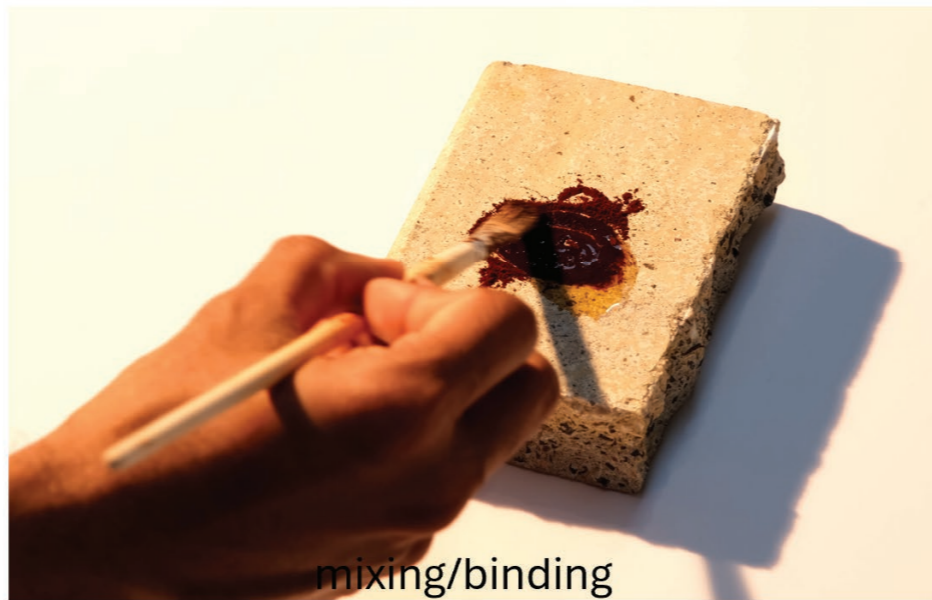
grinding



grinding



mixing/binding



mixing/binding













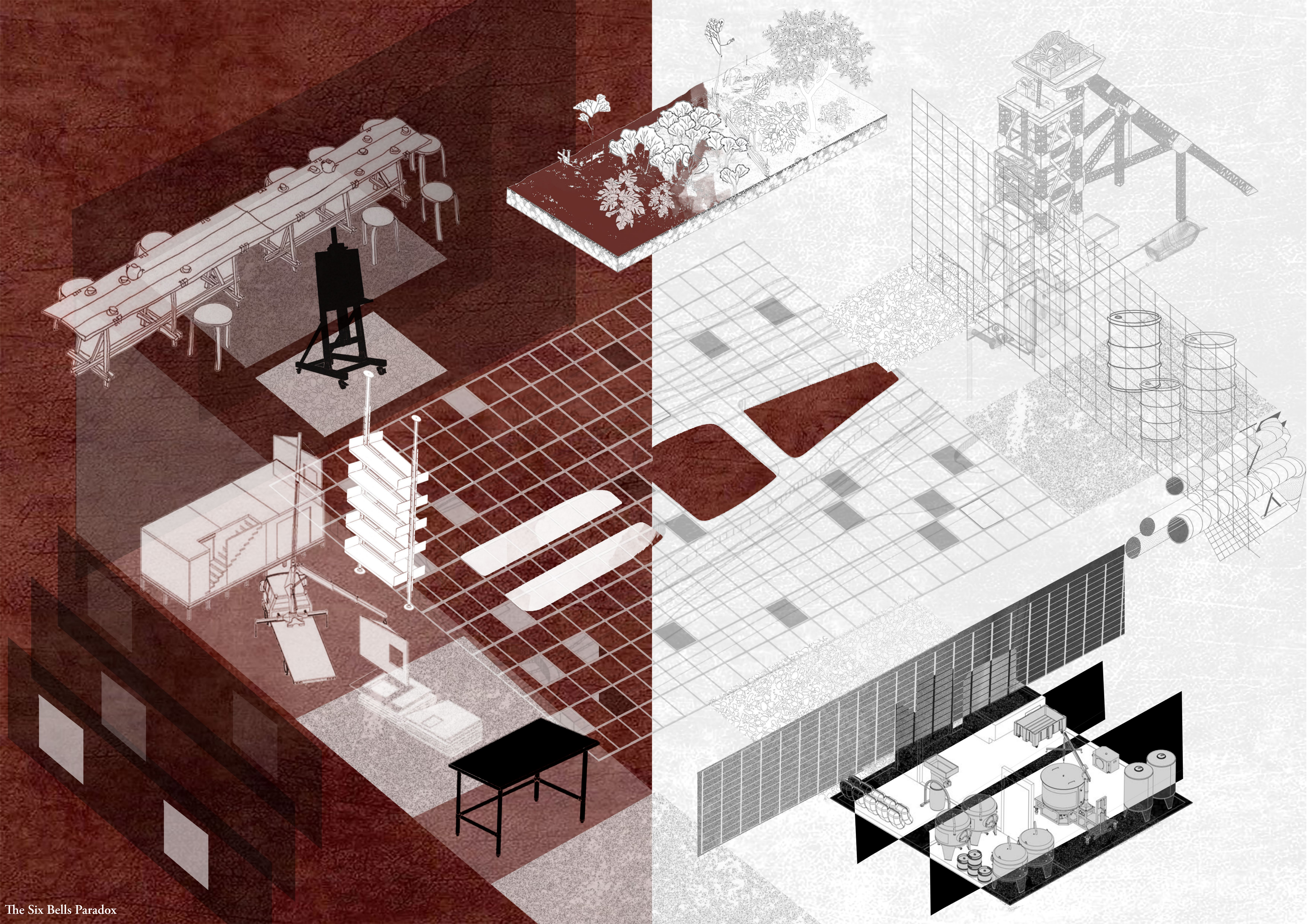


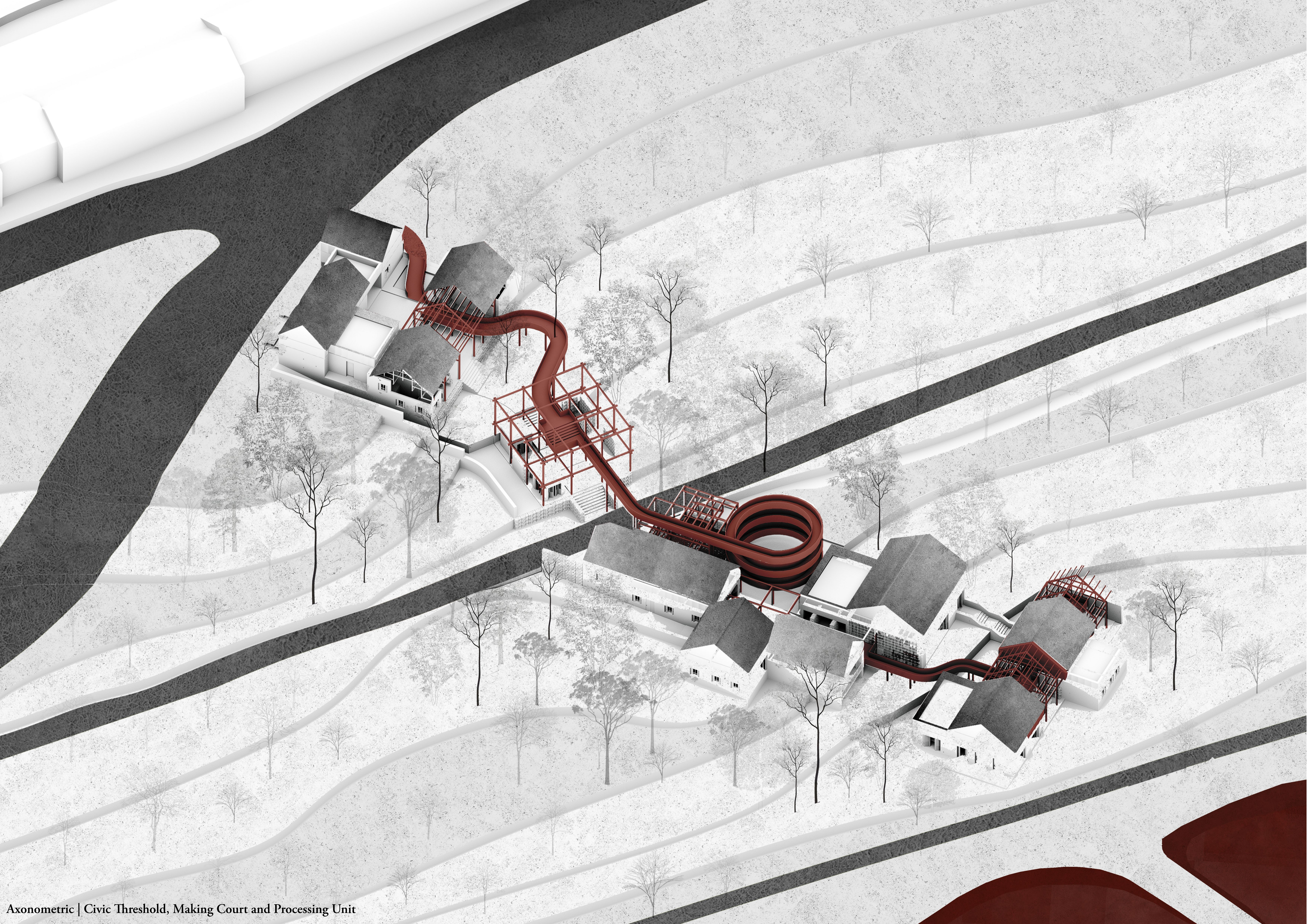


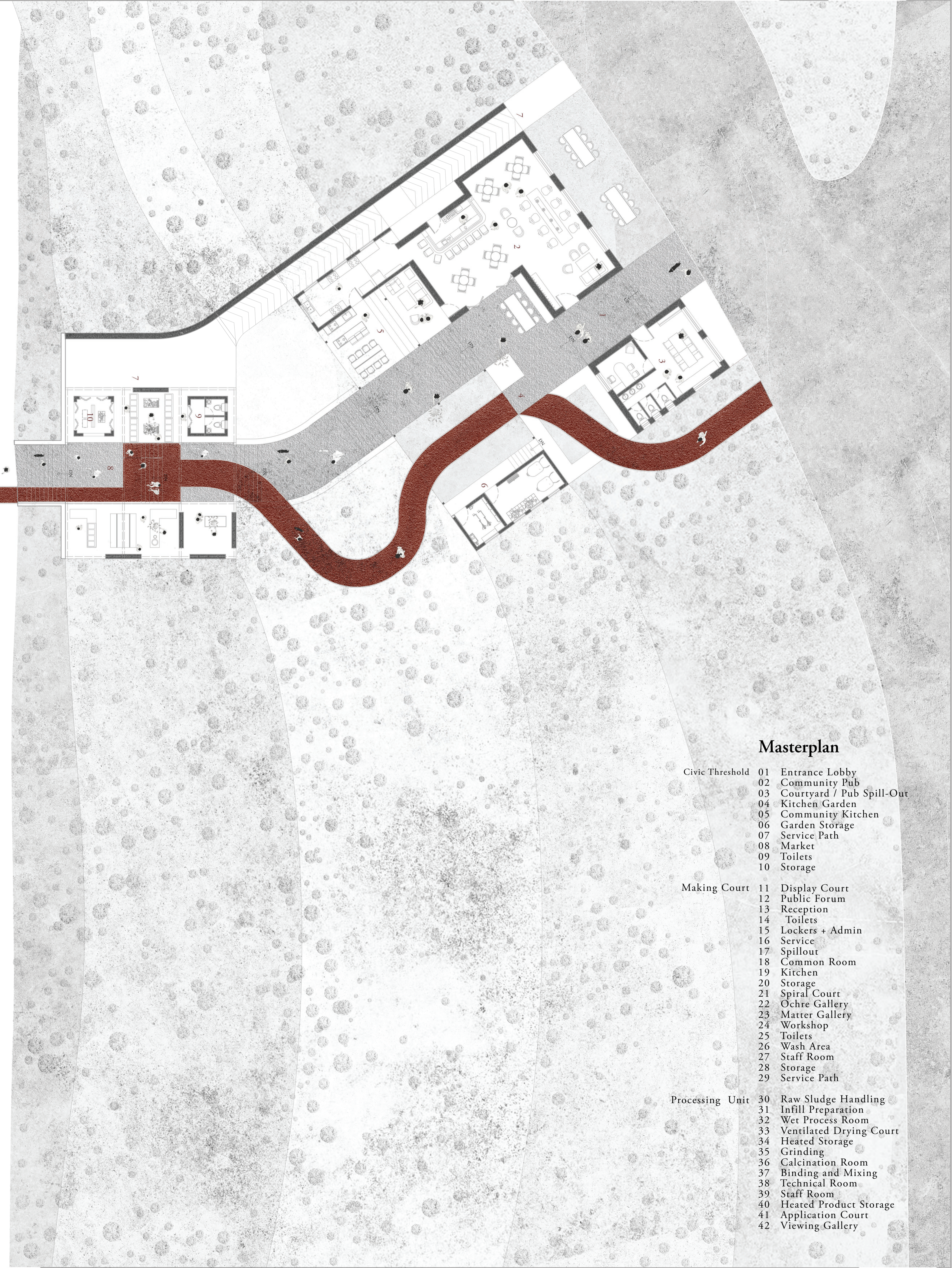
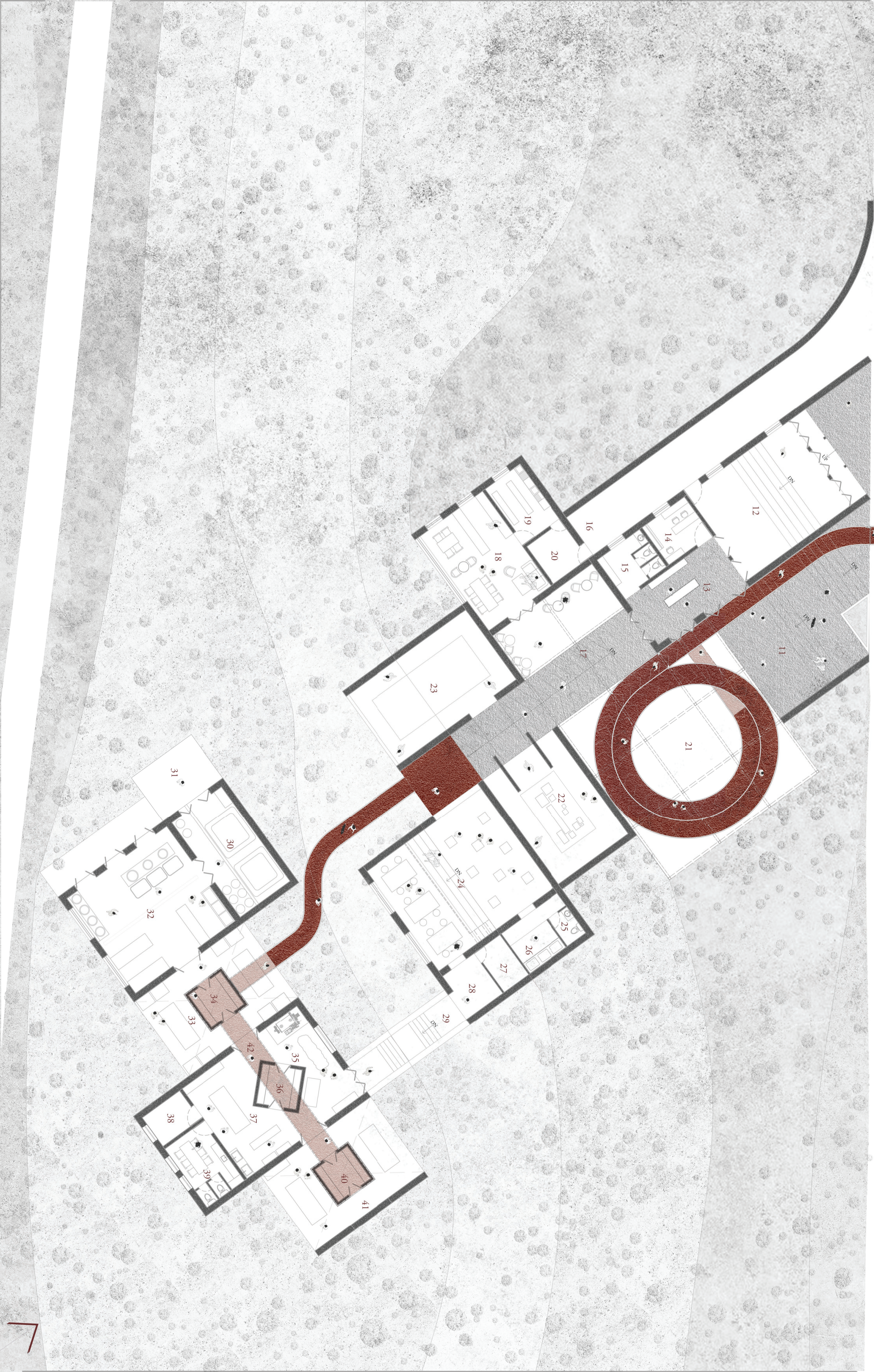










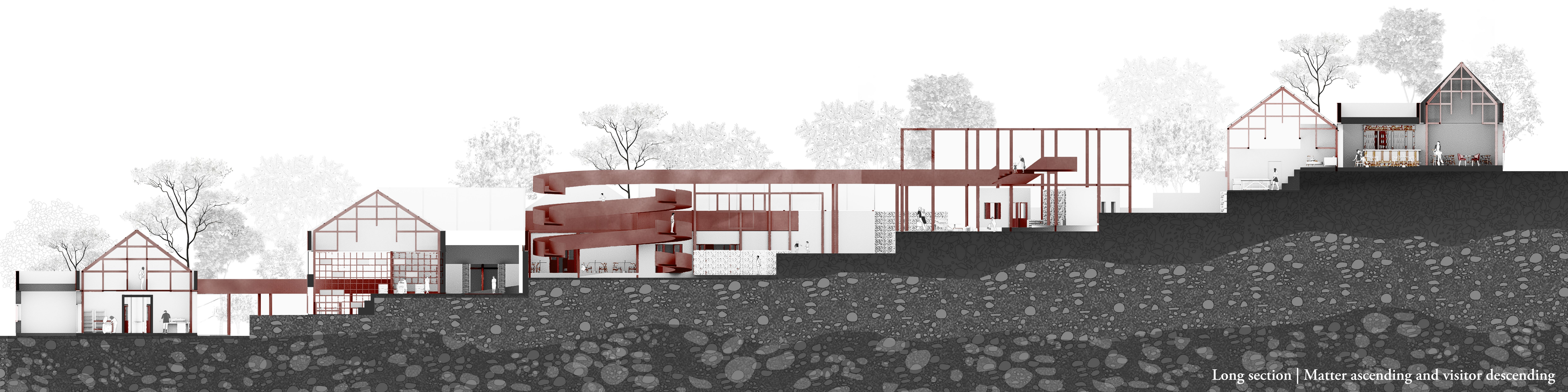


Masterplan

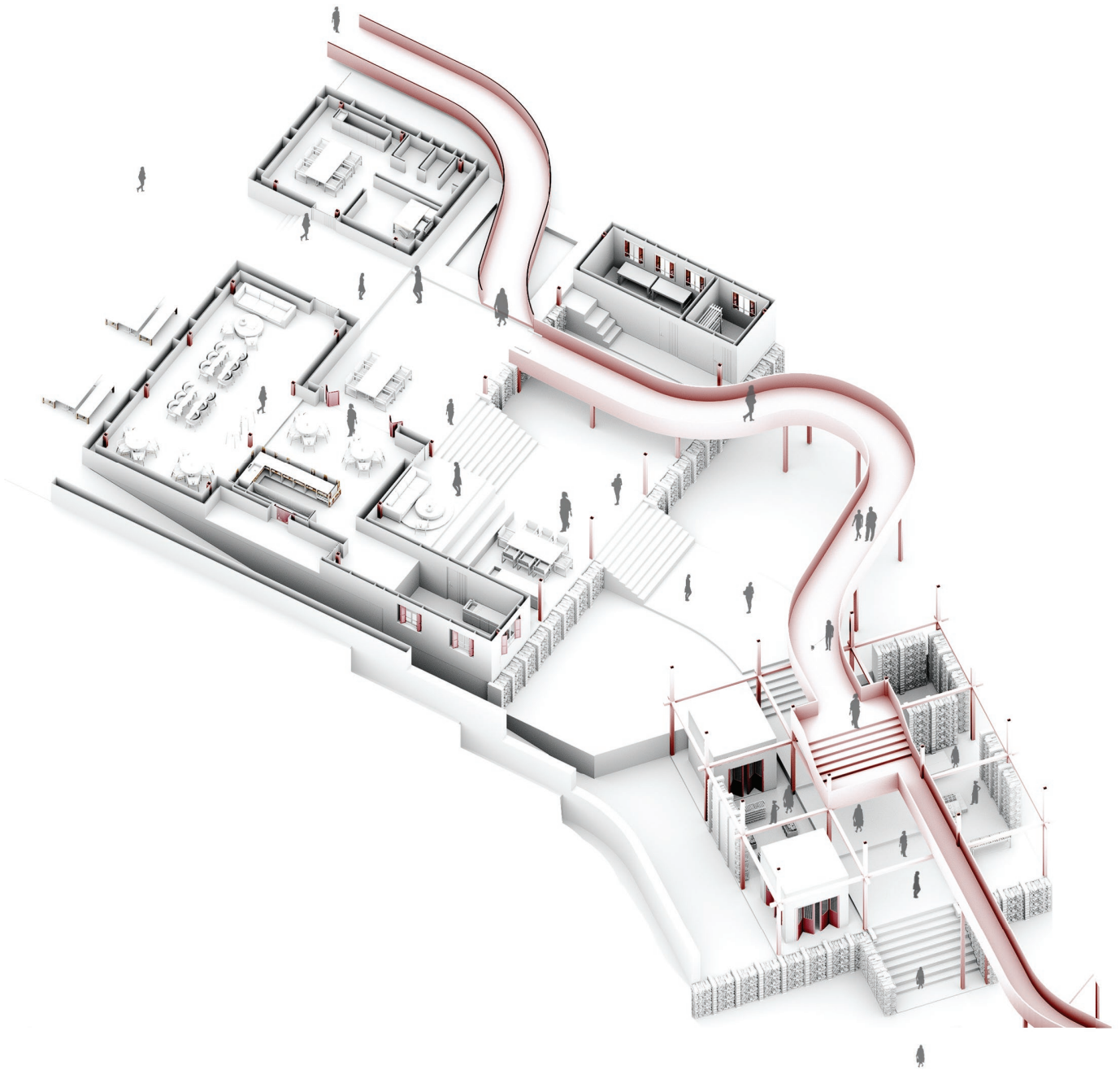
- Civic Threshold
 - 01 Entrance Lobby
 - 02 Courtyard / Pub Spill-Out
 - 03 Kitchen Garden
 - 04 Community Kitchen
 - 05 Garden Storage
 - 06 Service Path
 - 07 Market
 - 08 Toilets
 - 09 Storage

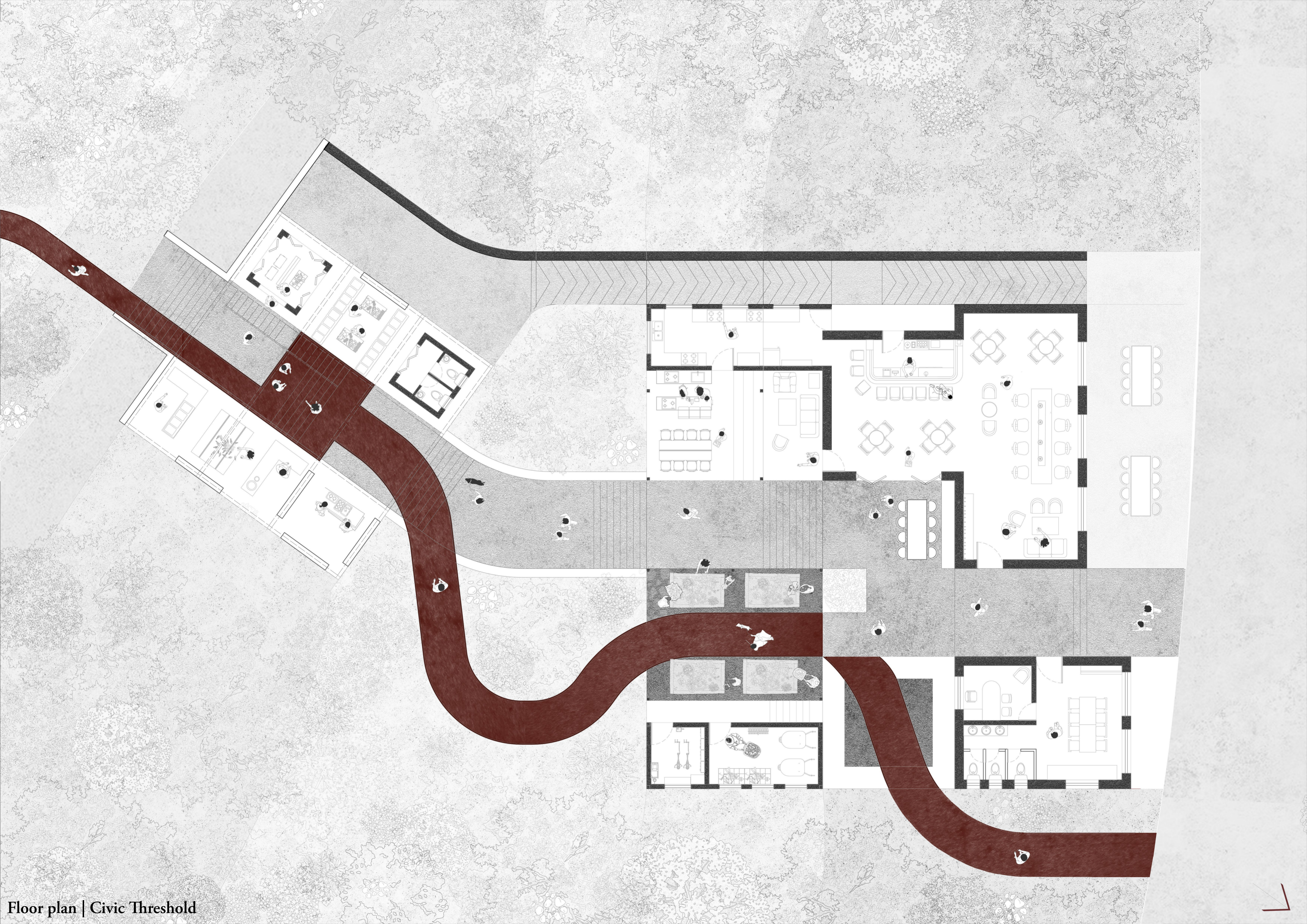
- Making Court
 - 11 Display Court
 - 12 Public Forum
 - 13 Reception
 - 14 Toilets
 - 15 Lockers + Admin
 - 16 Service
 - 17 Spillout
 - 18 Common Room
 - 19 Kitchen
 - 20 Storage
 - 21 Spiral Court
 - 22 Ochre Gallery
 - 23 Matter Gallery
 - 24 Workshop
 - 25 Toilets
 - 26 Wash Area
 - 27 Staff Room
 - 28 Storage
 - 29 Service Path

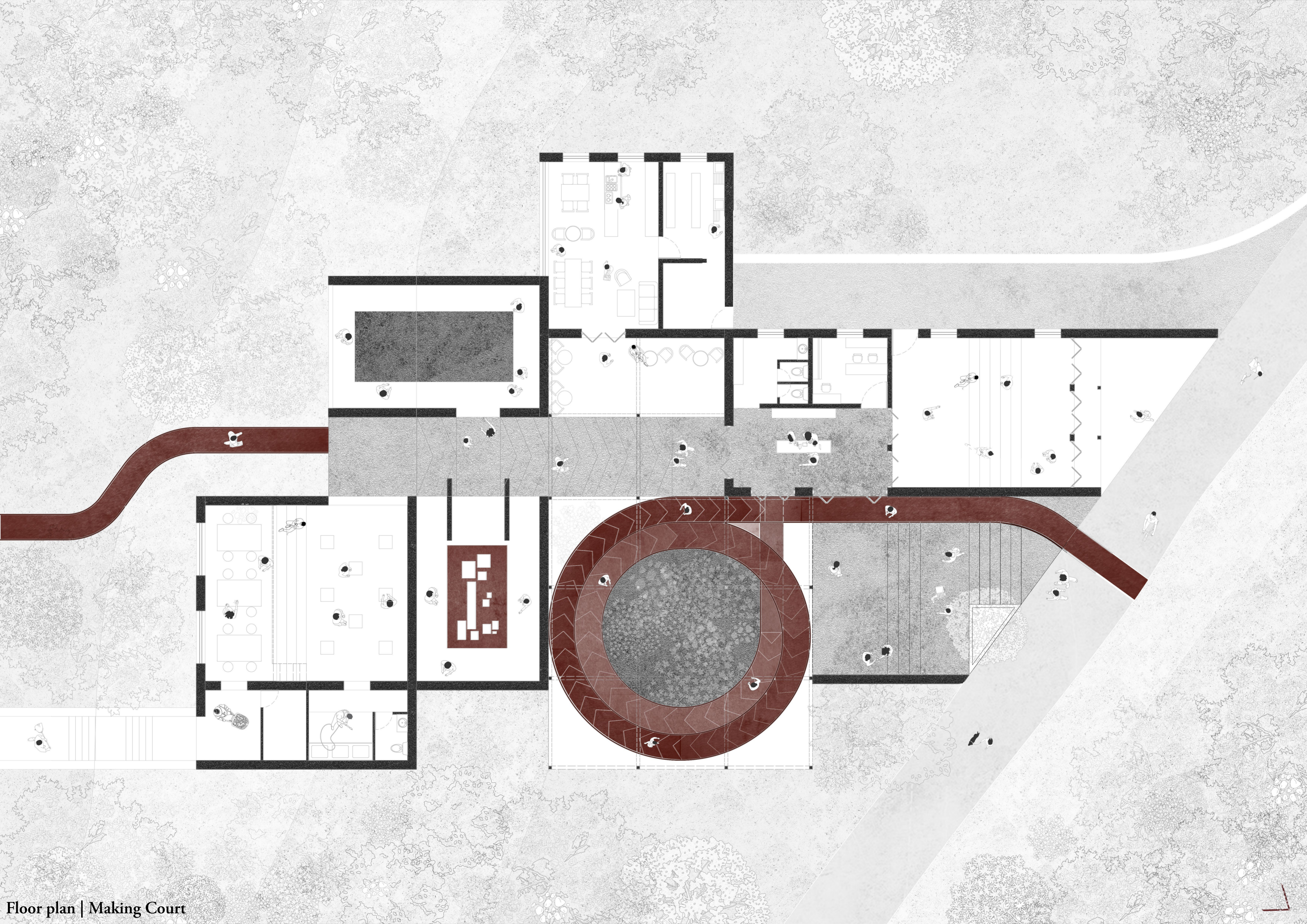
- Processing Unit
 - 30 Raw Sludge Handling
 - 31 Infill Preparation
 - 32 Wet Process Room
 - 33 Ventilated Drying Court
 - 34 Heated Storage
 - 35 Grinding
 - 36 Calcination Room
 - 37 Binding and Mixing
 - 38 Technical Room
 - 39 Staff Room
 - 40 Heated Product Storage
 - 41 Application Court
 - 42 Viewing Gallery

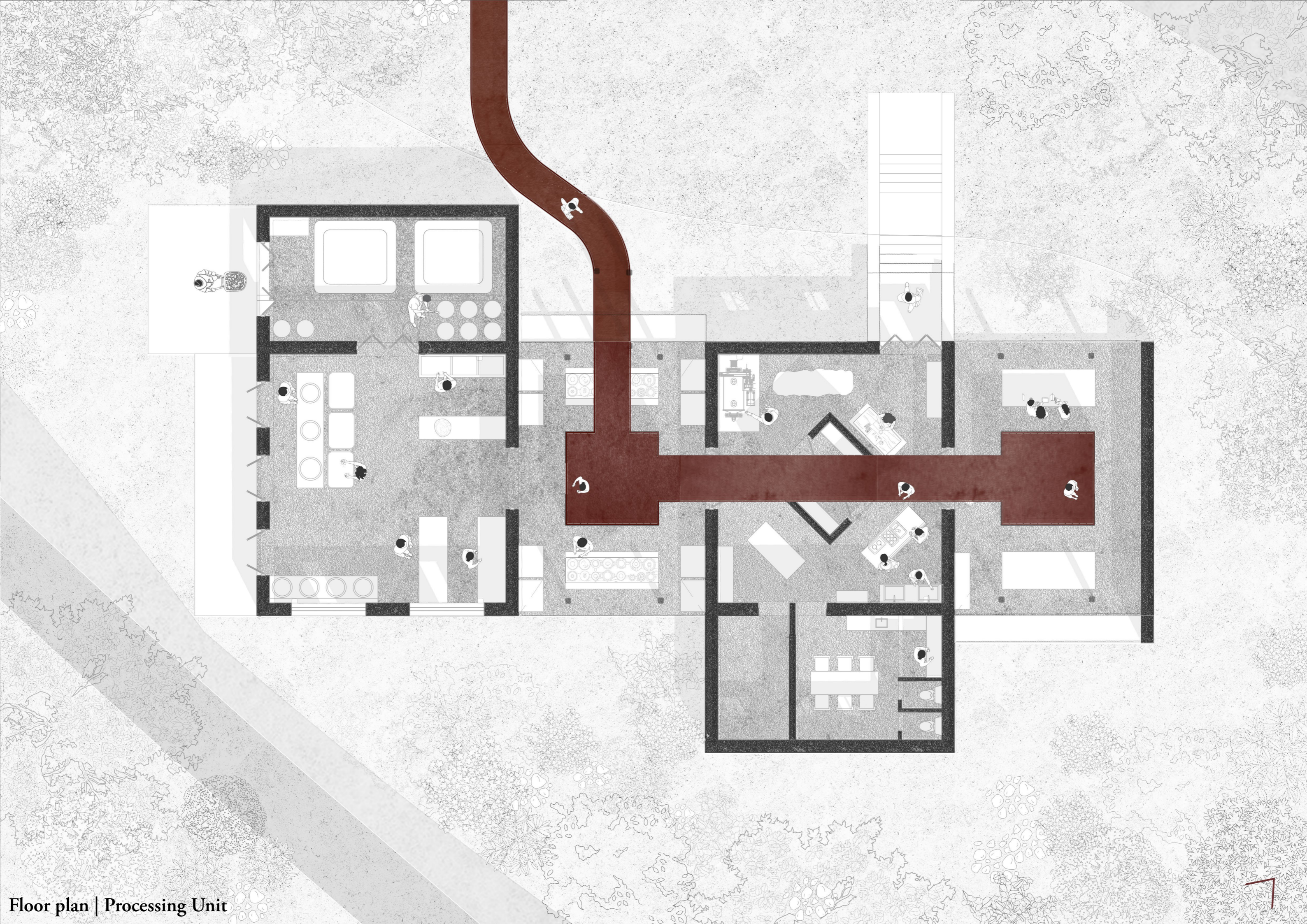


Long section | Matter ascending and visitor descending



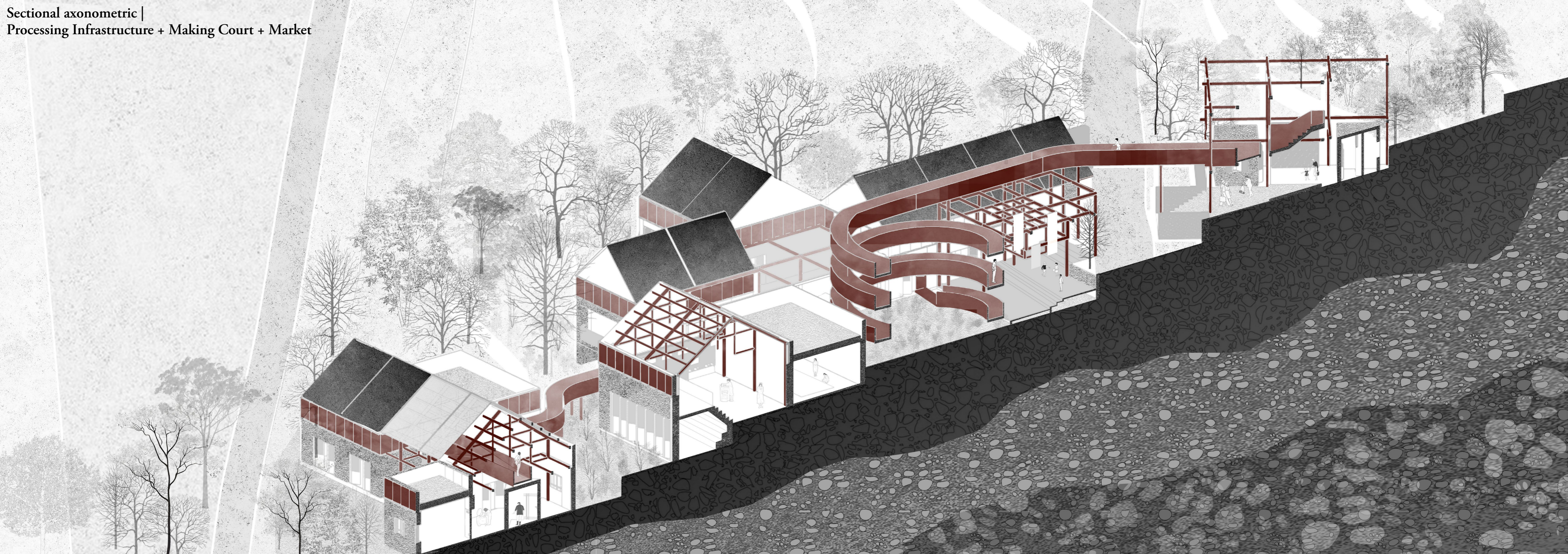




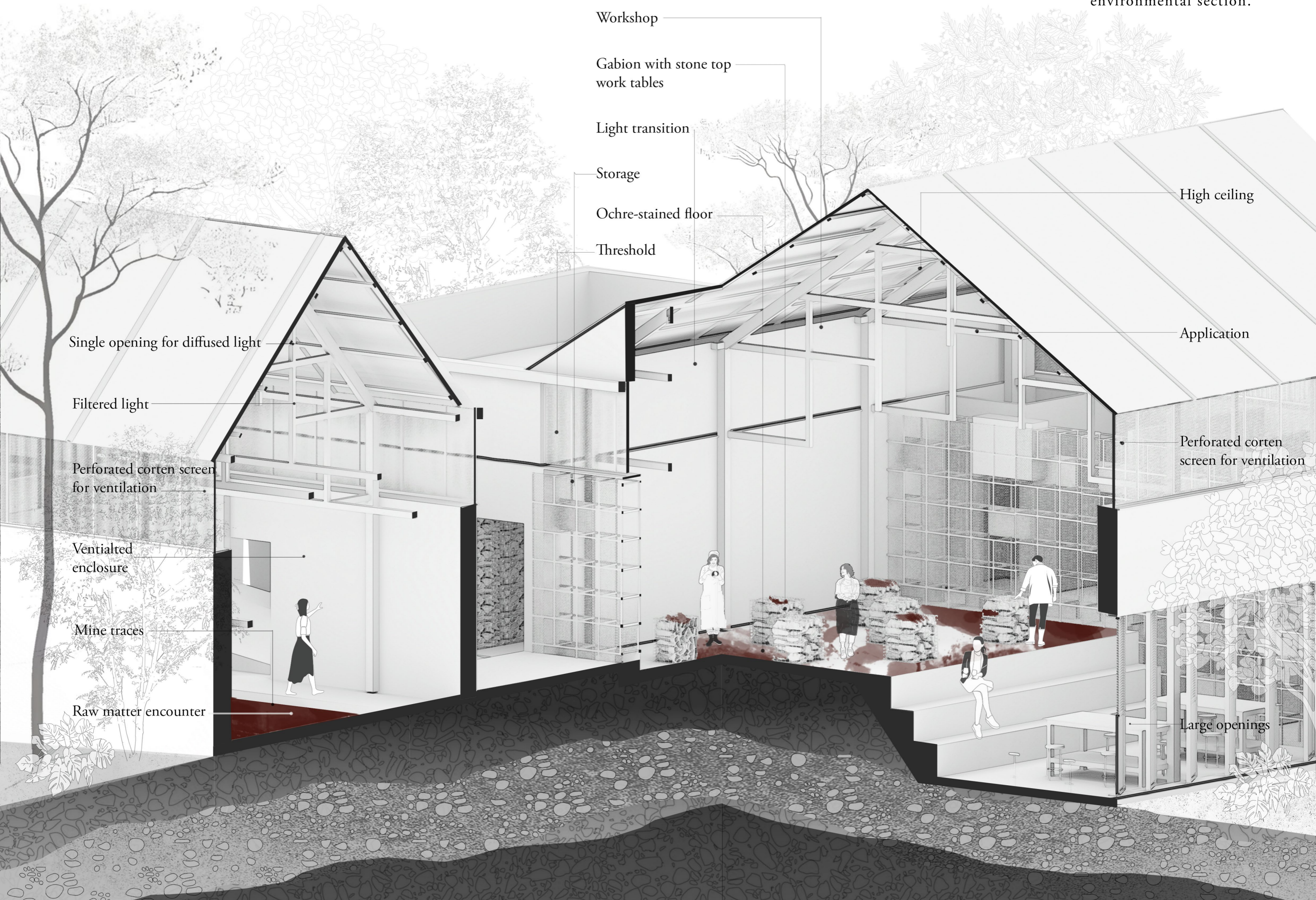


Floor plan | Processing Unit

Sectional axonometric |
Processing Infrastructure + Making Court + Market



Matter Gallery and Workshop environmental section.



Workshop

Gabion with stone top
work tables

Light transition

Storage

Ochre-stained floor

Threshold

High ceiling

Application

Perforated corten
screen for ventilation

Single opening for diffused light

Filtered light

Perforated corten screen
for ventilation

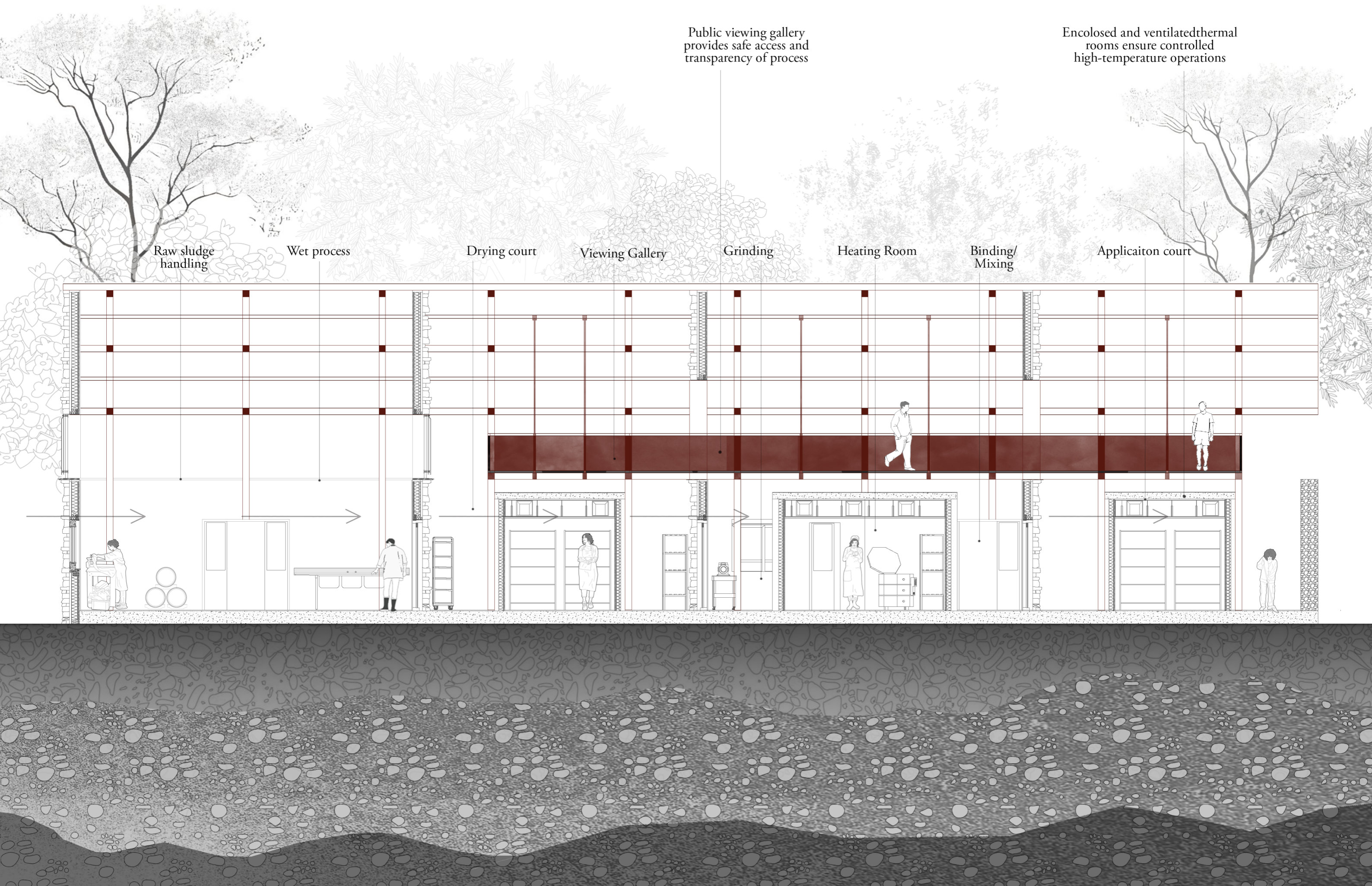
Ventilated
enclosure

Mine traces

Raw matter encounter

Large openings

Processing Unit Section



Public viewing gallery provides safe access and transparency of process

Enclosed and ventilated thermal rooms ensure controlled high-temperature operations

Raw sludge handling

Wet process

Drying court

Viewing Gallery

Grinding

Heating Room

Binding/Mixing

Application court

standing seam metal roof sheet 7mm

insulation

roof deck

purlins

folded metal box gutter

corten rainscreen panel 8mm

sloped metal capping 3mm

160mm mineral wool insulation

local stone outer leaf

structural stone lintel

breather membrane

silicone seal with polyethelene

15mm stone flooring

residual cavity

damp proof course

min. 150mm above ground

perimeter insulation

below DPC

foundation block

concrete footing/retaining

perimeter trench

fill foundation



ROOF LEVEL
LEVEL : +7.5 M



EAVES LEVEL
LEVEL : +4.5 M



PLINTH LEVEL
LEVEL : +0.15 M

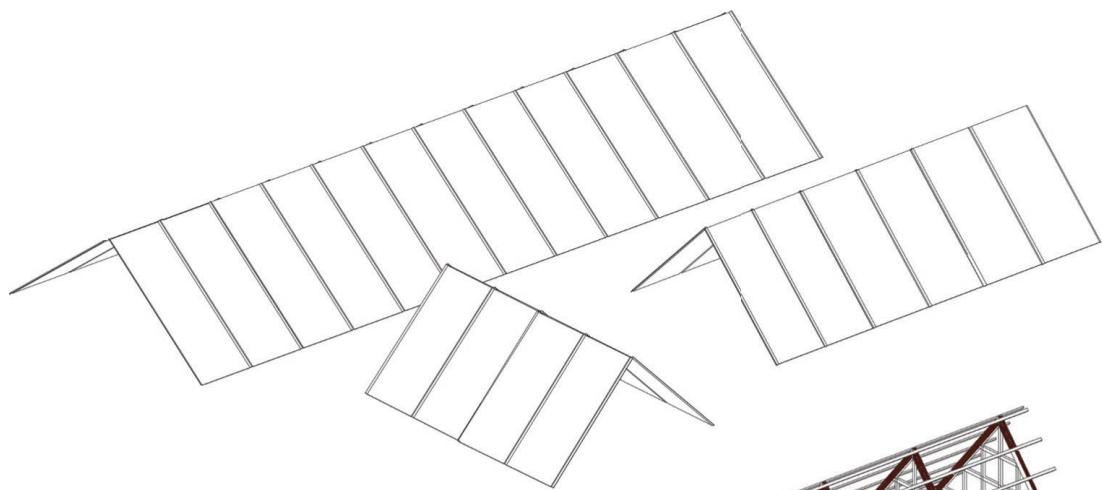


GROUND LEVEL
LEVEL : +/- 0.00 M

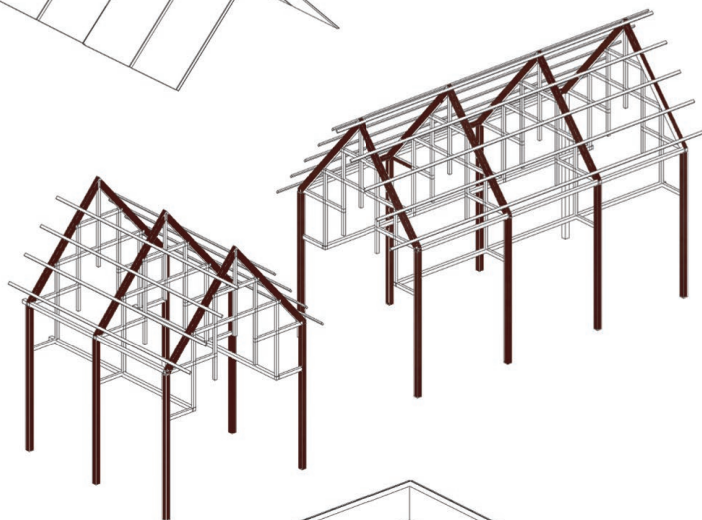
1:20 construction detail



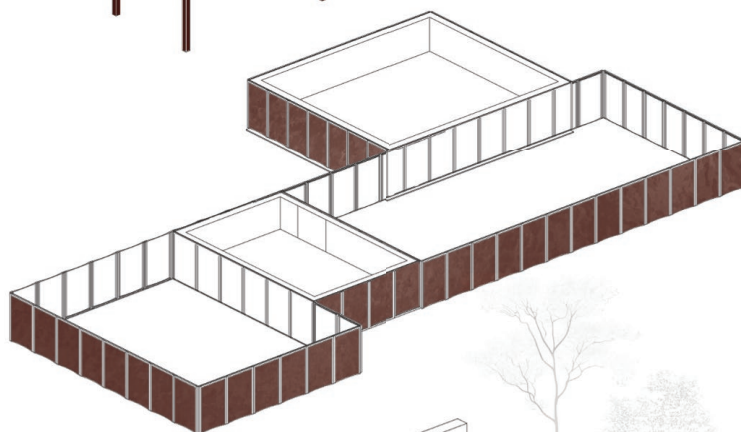
Elevation



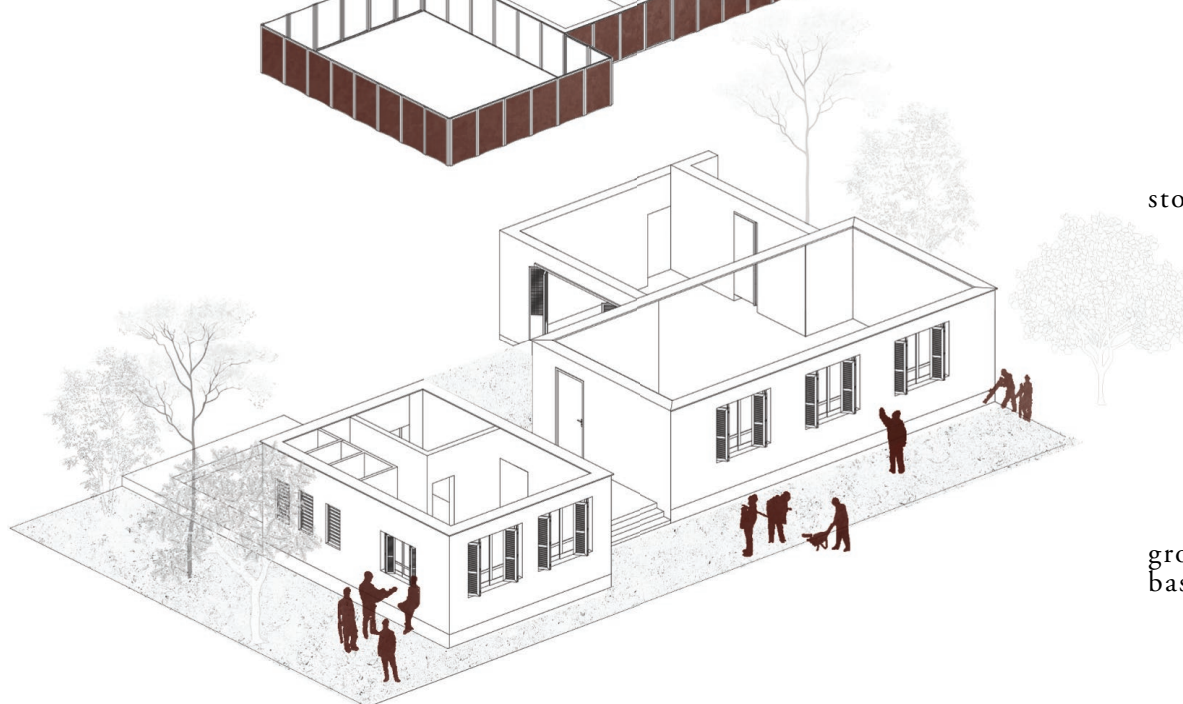
lightweight roof



reversible steel frame



corten rainscreen



stone enclosure

grounded stone base

Assembly of the Tectonic System



