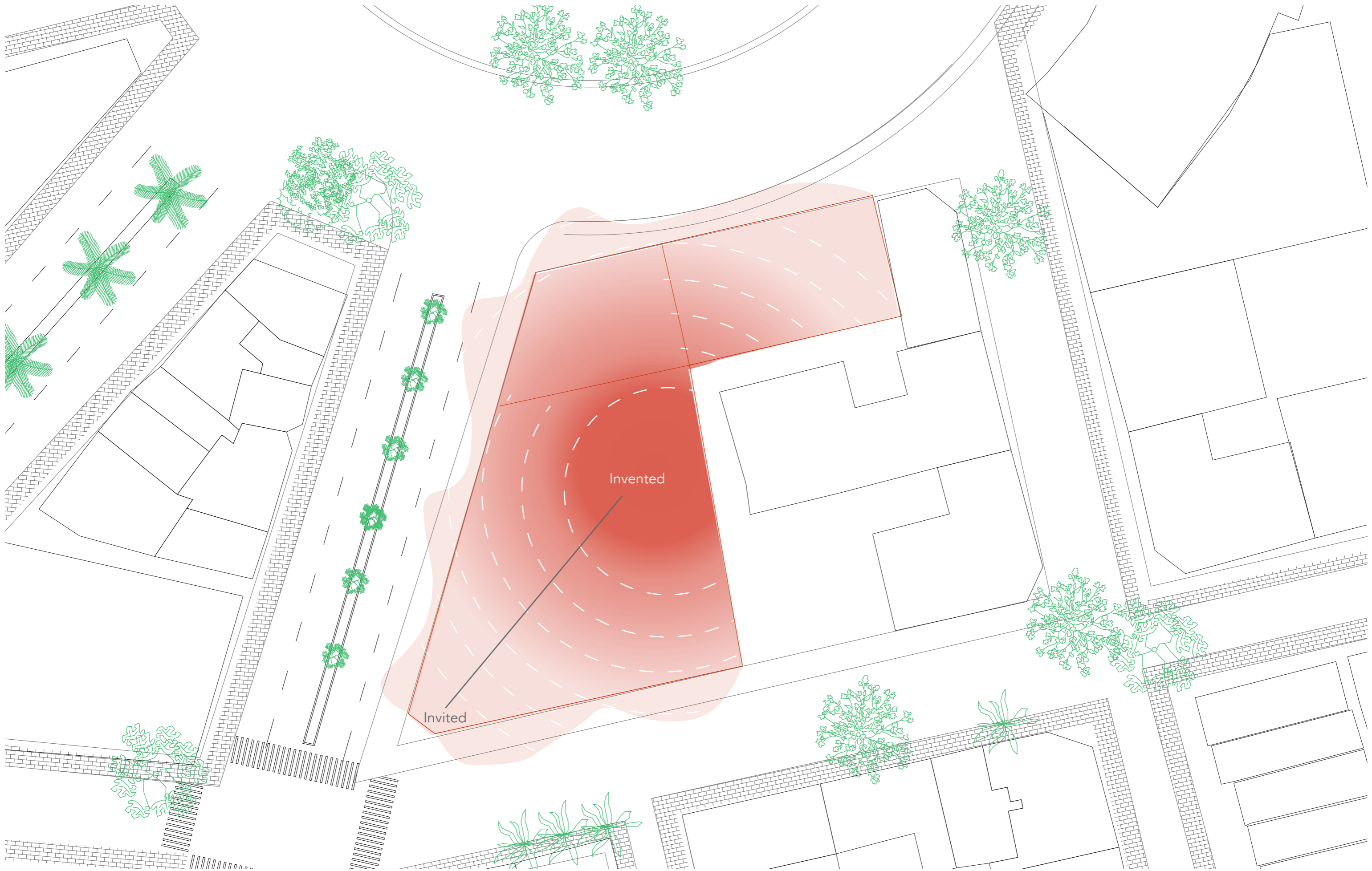
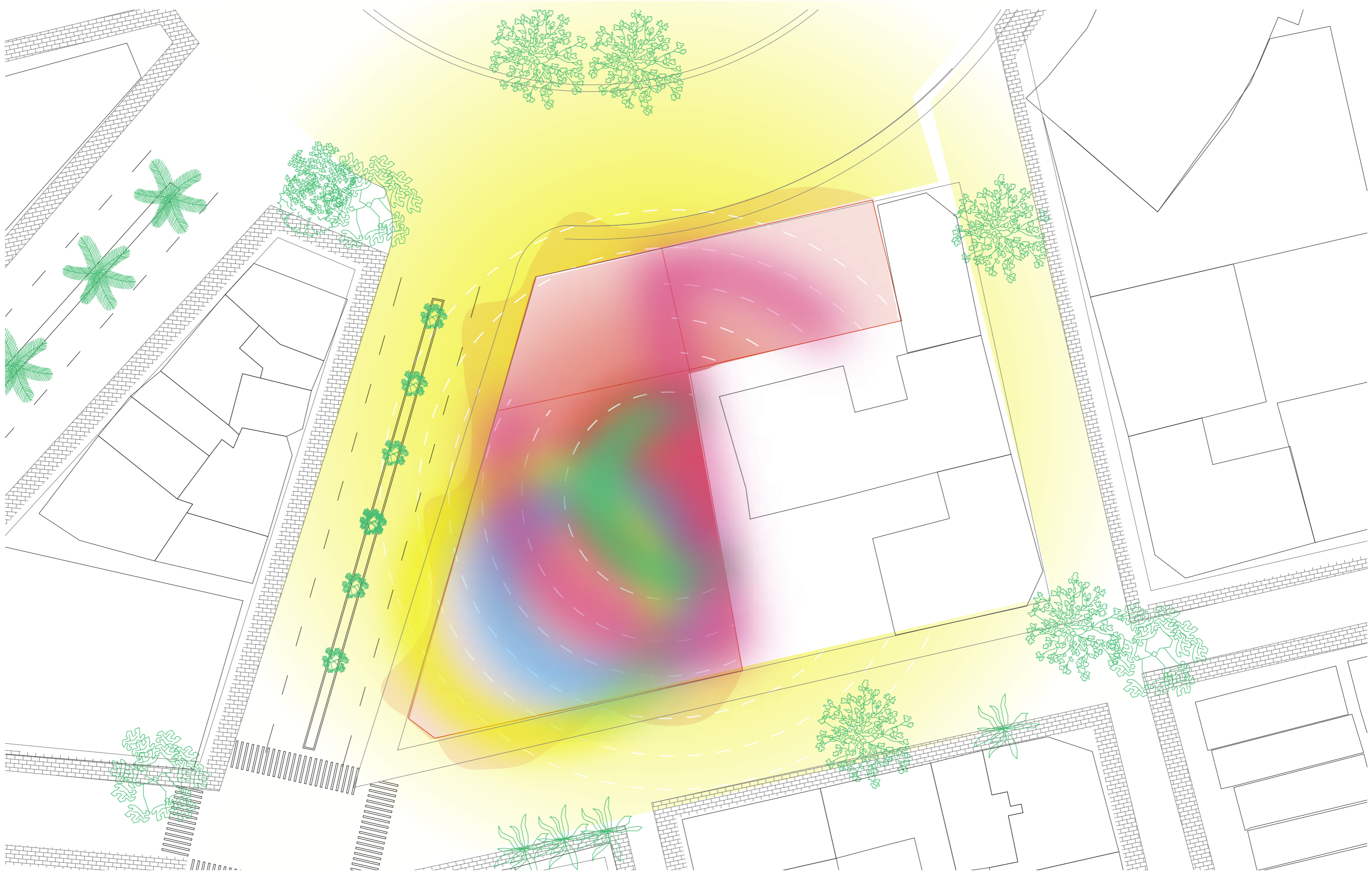


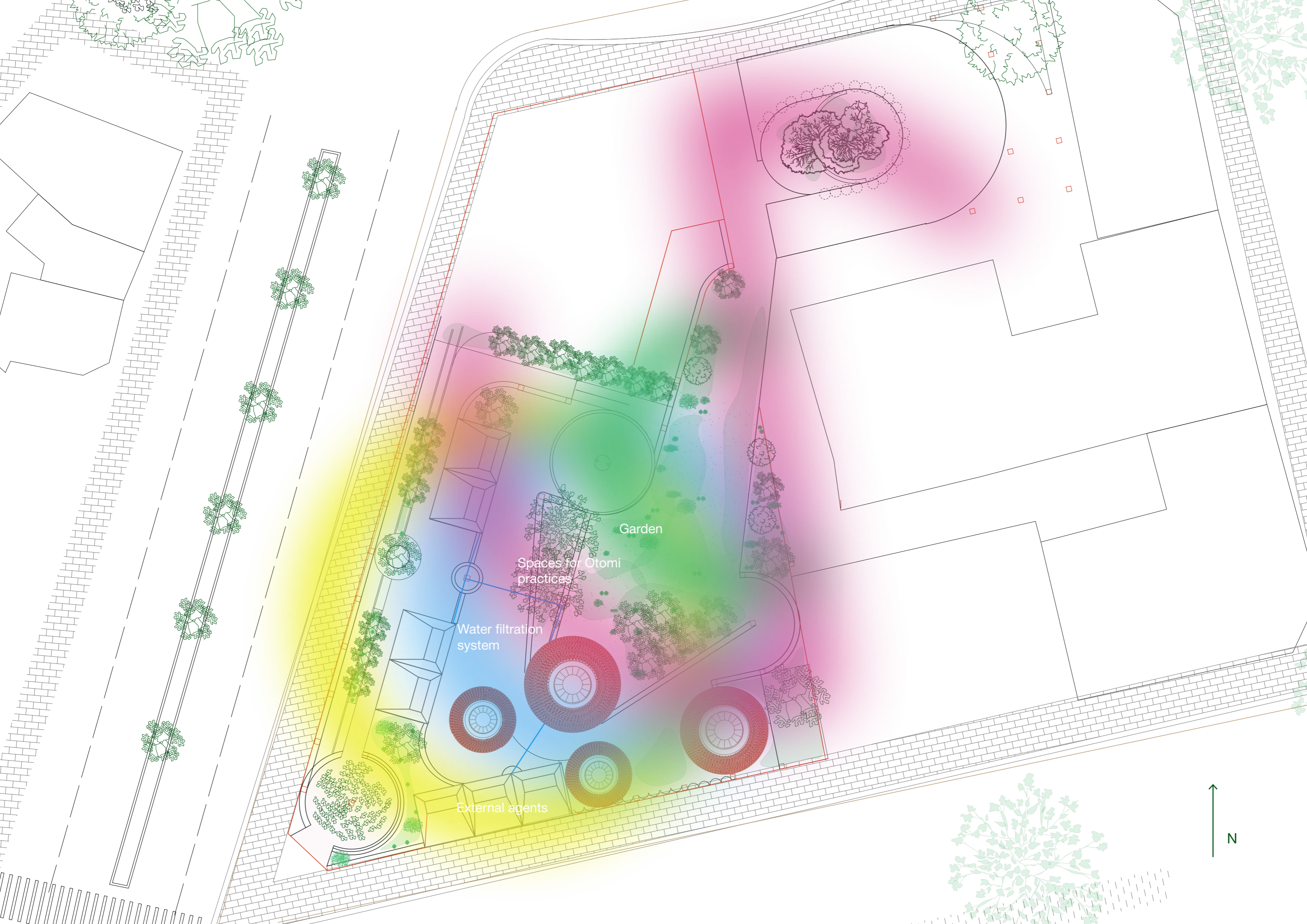
1:500



Intensity is a spectrum towards isolation

1:500





Garden

Spaces for Otomi
practices

Water filtration
system

External agents



1:200 Roof Plan



N



1:200 Plan at +1

Exit

Otomi
Pavillion

Rain pond

Toilets

Garden

Communal
sink

Rest
areas

Rest areas

Communal
Kitchen

Entrance





1:200 Plan at +1

Exit

Otomi
Pavillion

Rain pond

Toilets

Garden

Communal
sink

Rest
areas

Rest areas

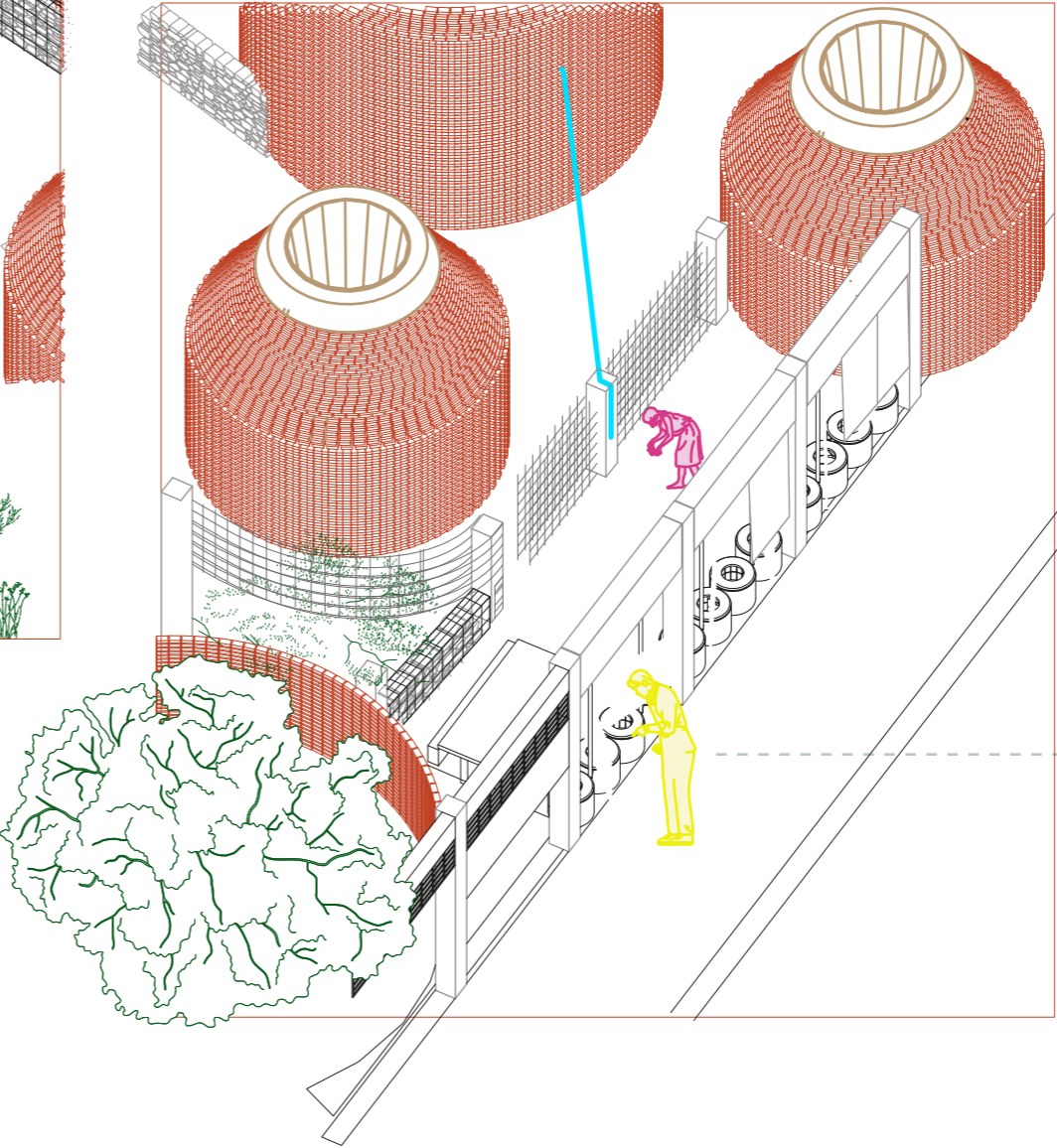
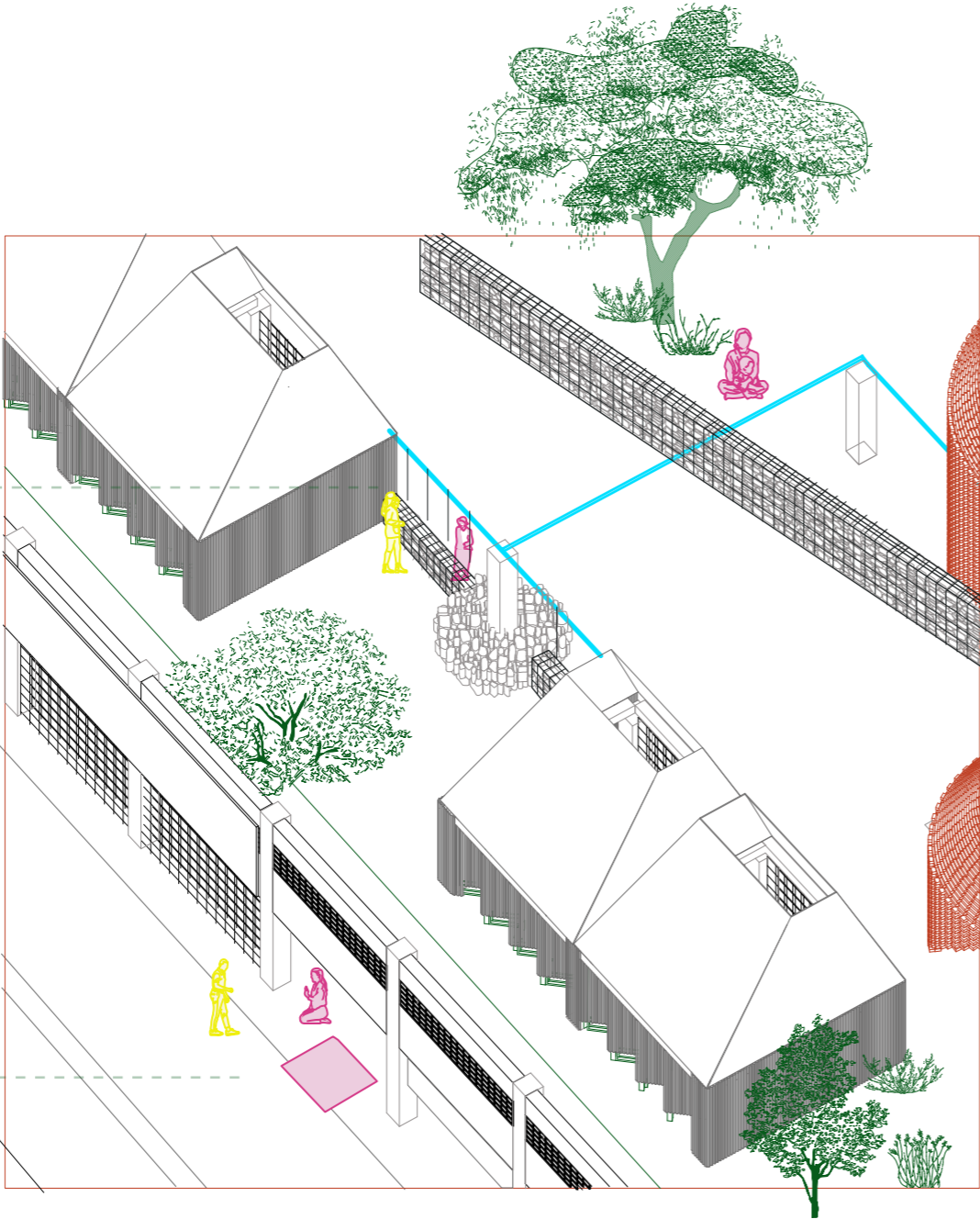
Communal
Kitchen

Entrance

Points of Interaction

Communal sink accessible from both sides

Selling and buying on the facade



Peeking in to the communal kitchen

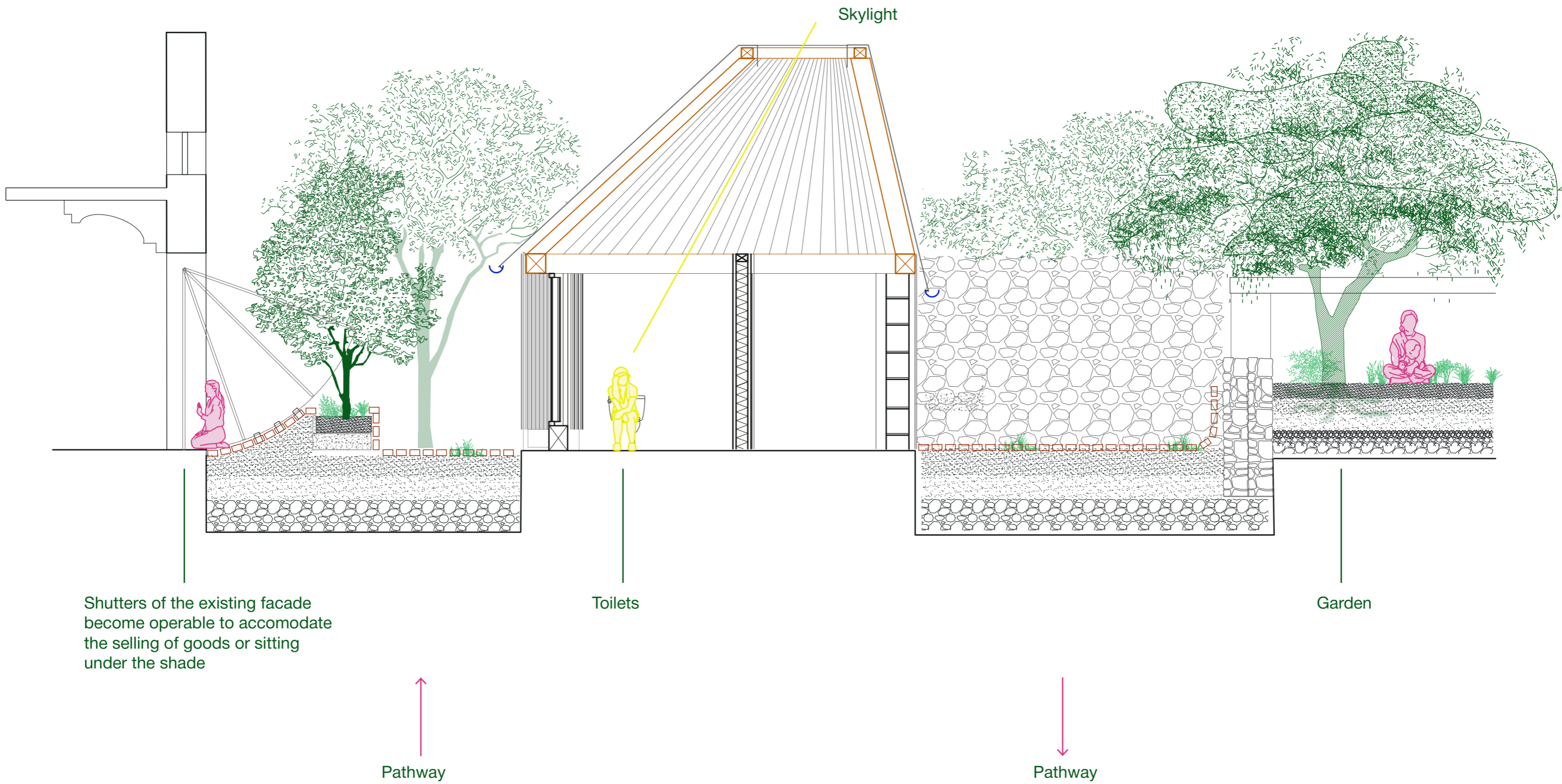
Facade



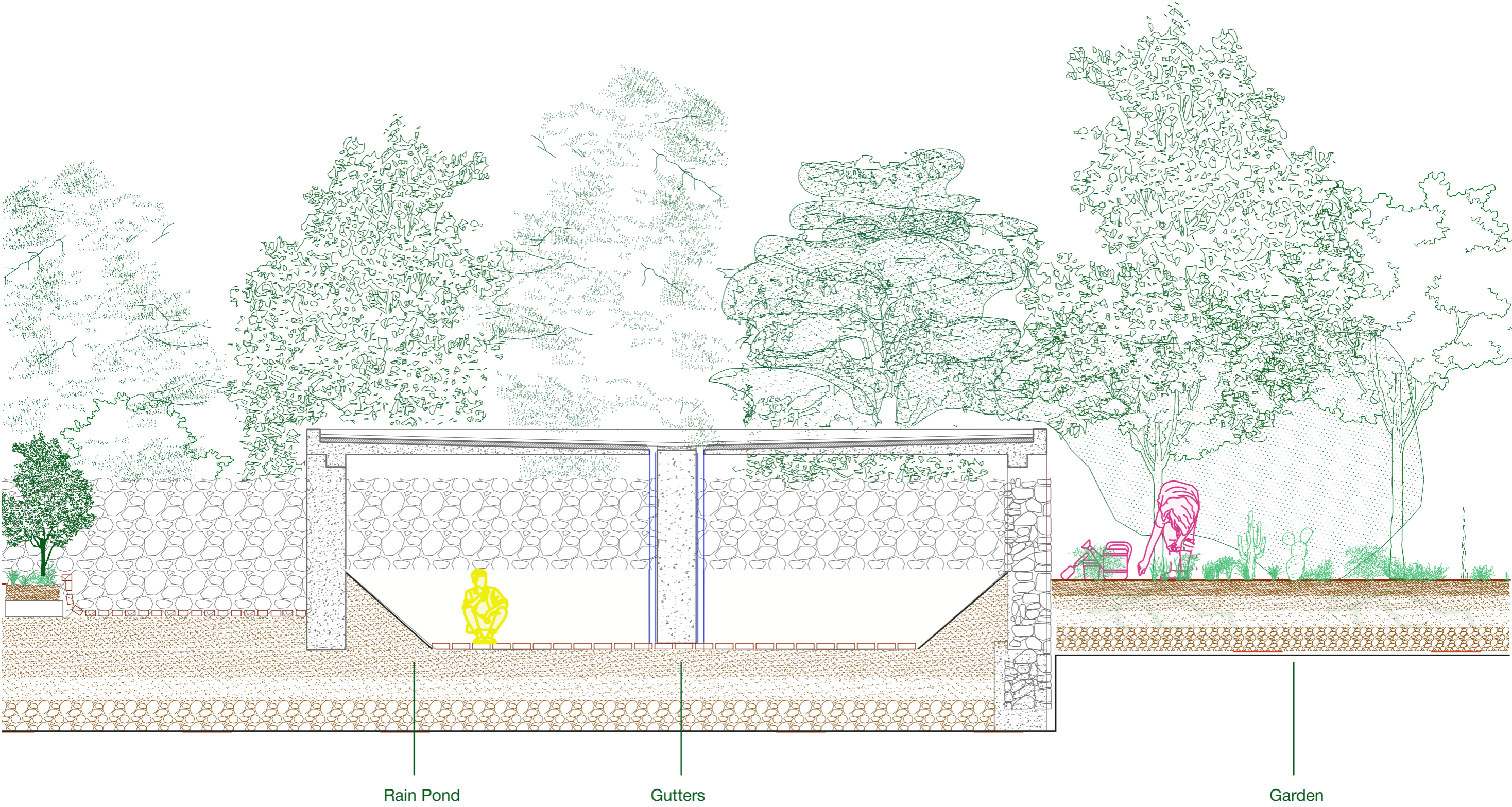
Facade



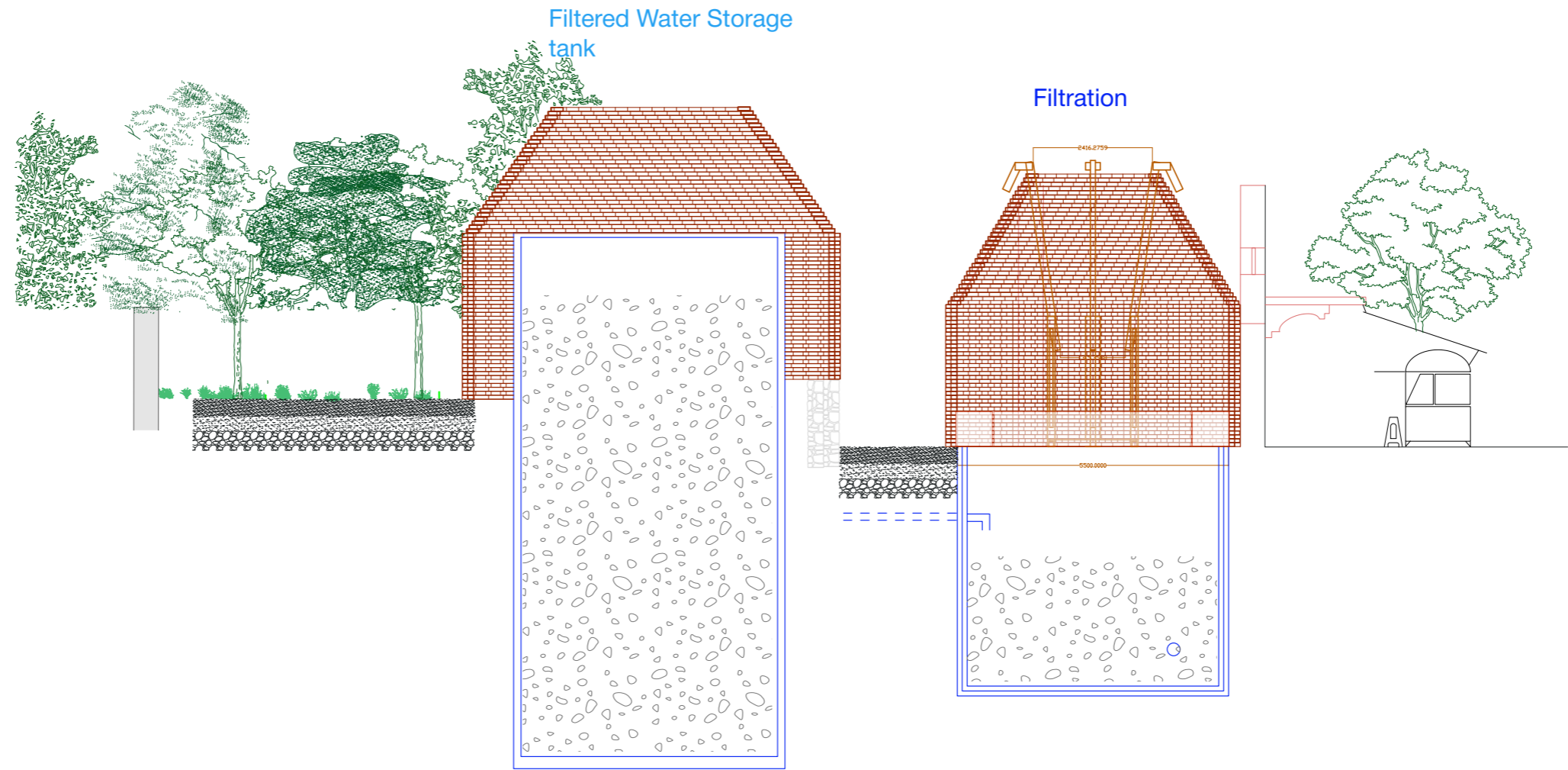
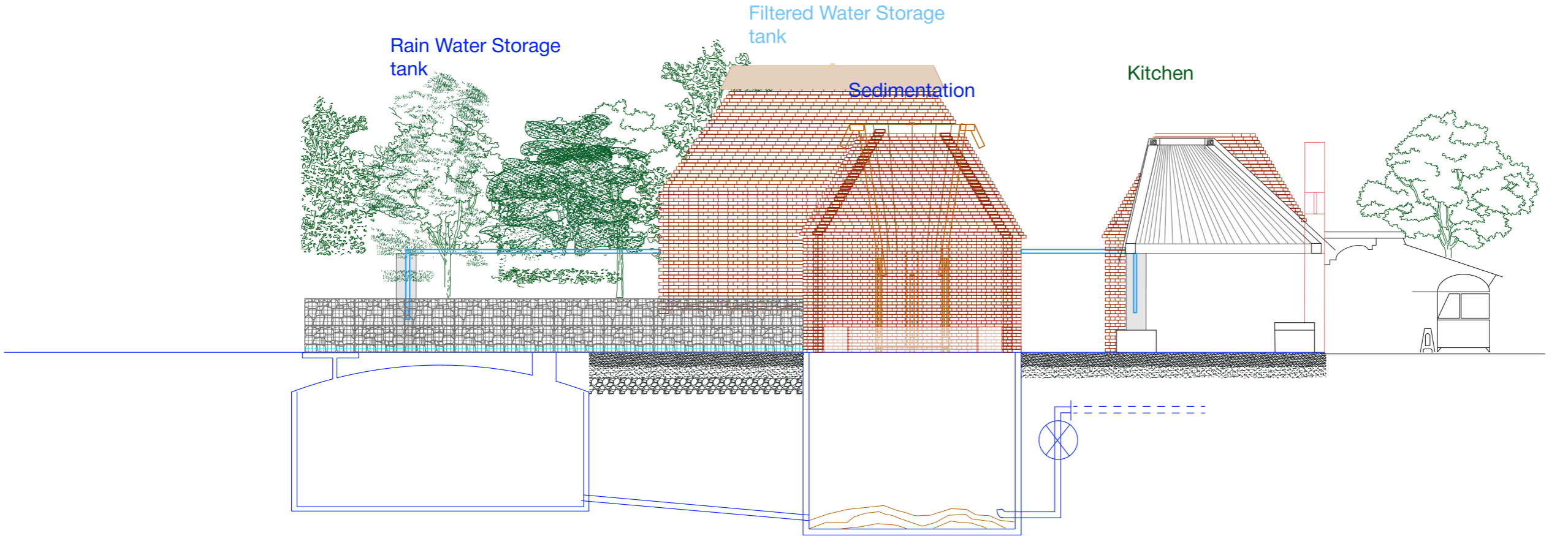
1:50 Section A-A



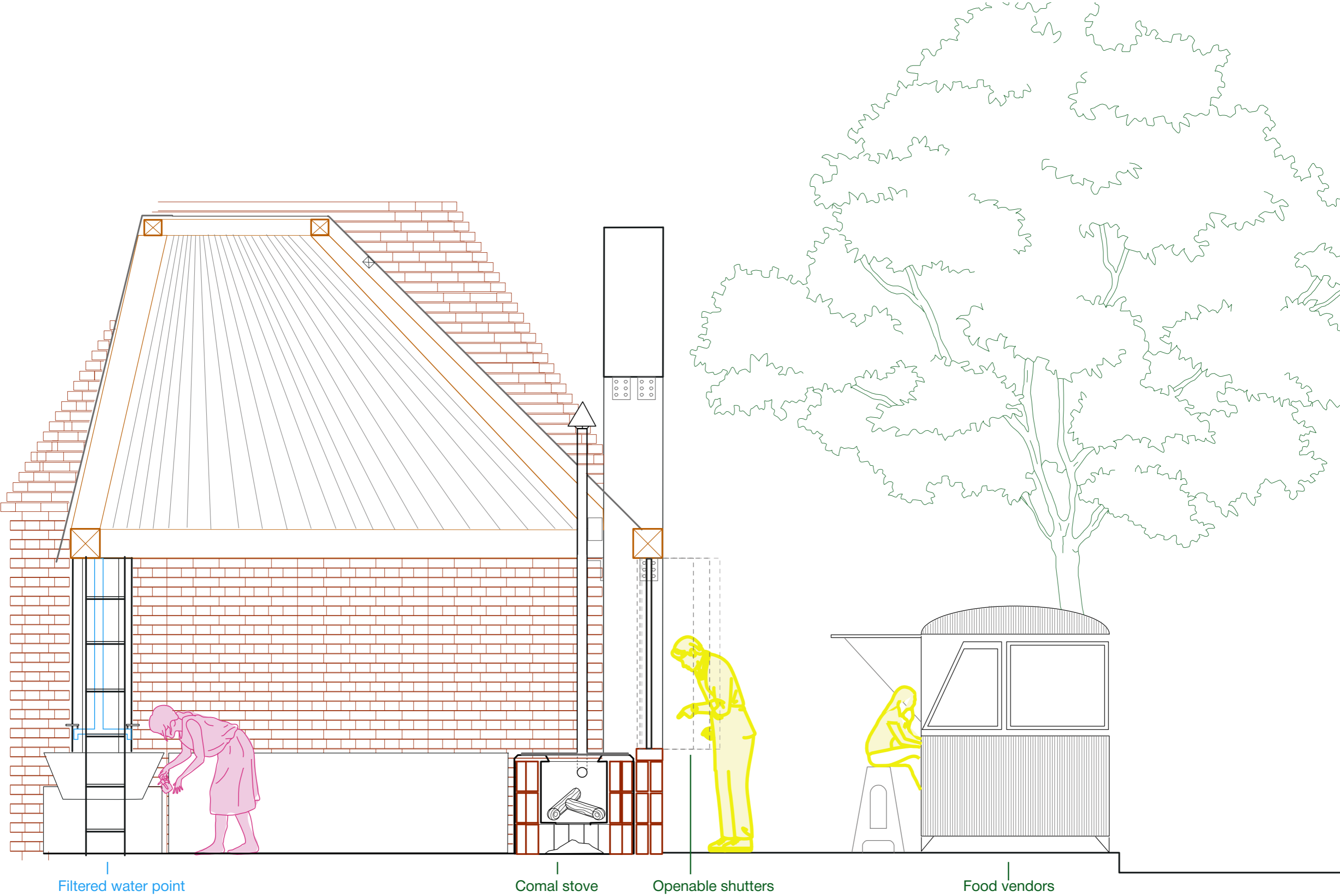
1:50 Section B-B



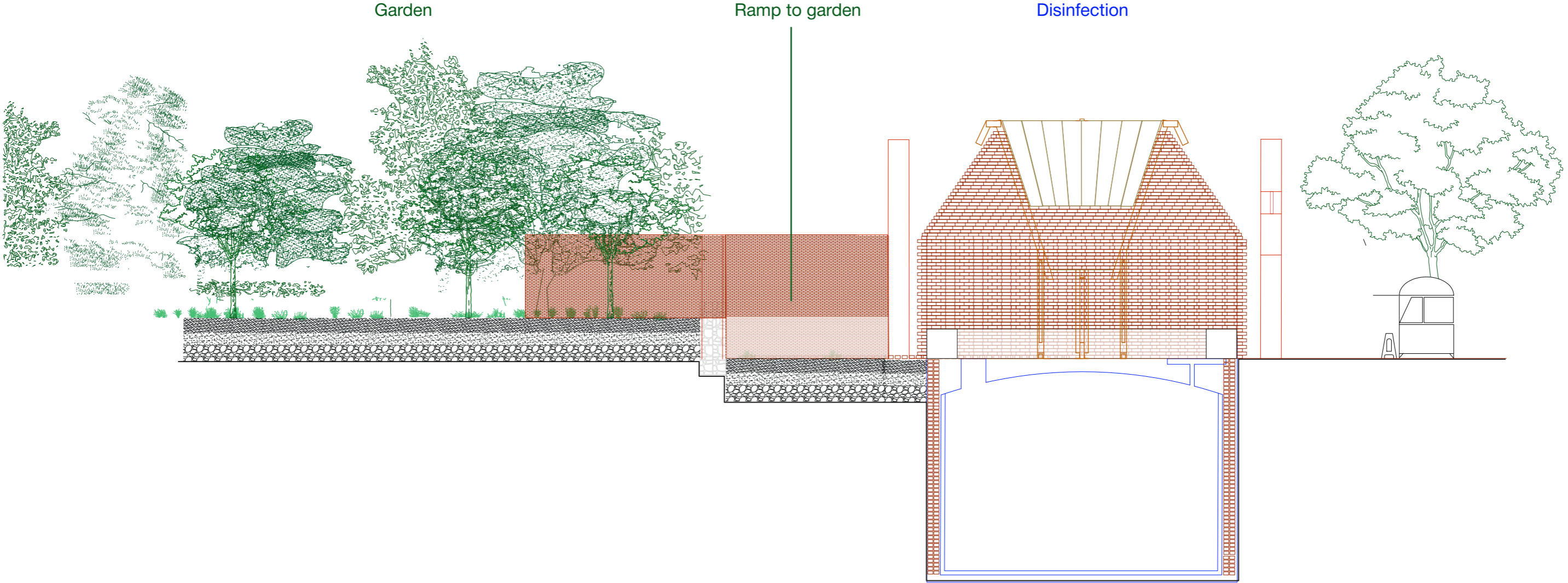
1:200 Sections C-C and C-C'



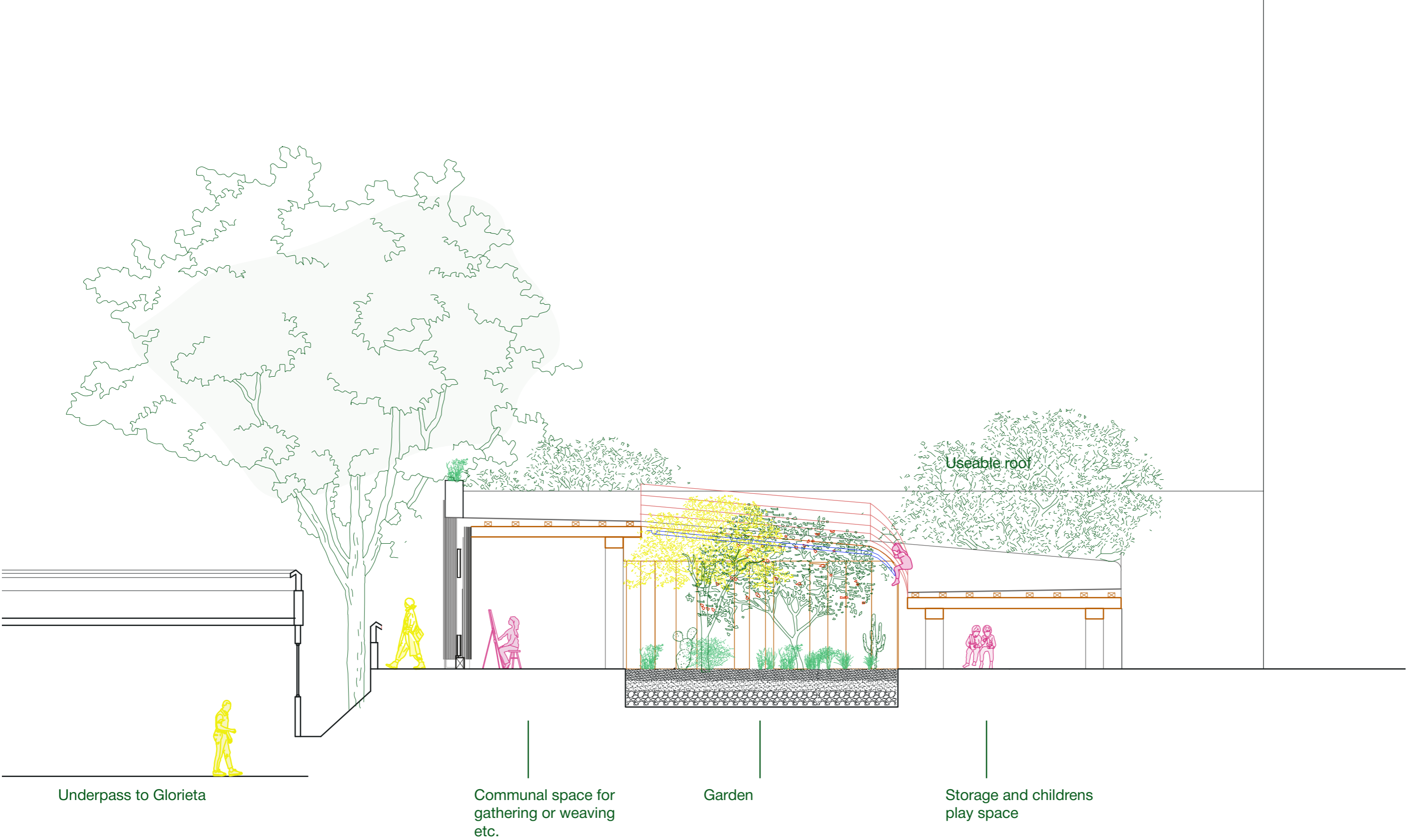
1:20 Facade Section



1:100 Section C-C”



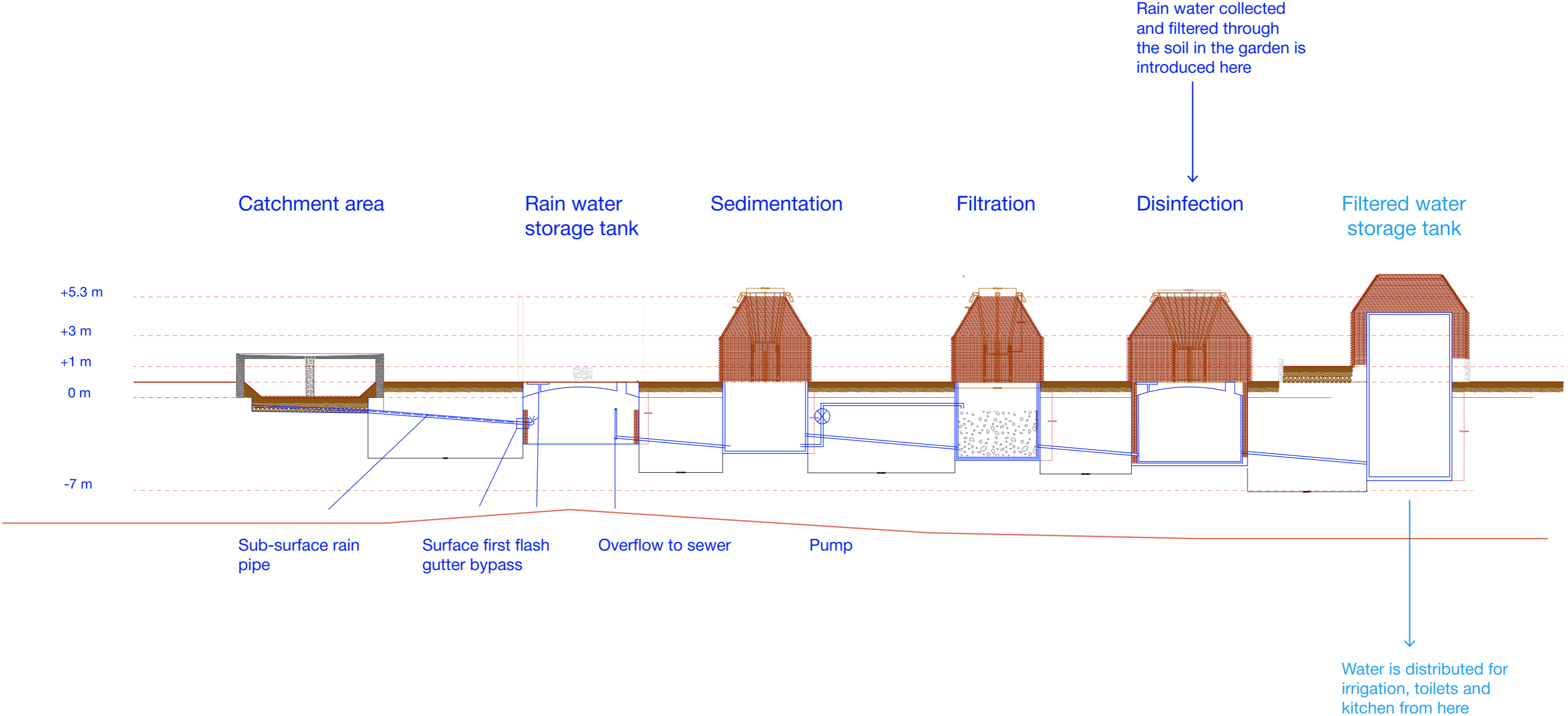
1:50 Section D-D



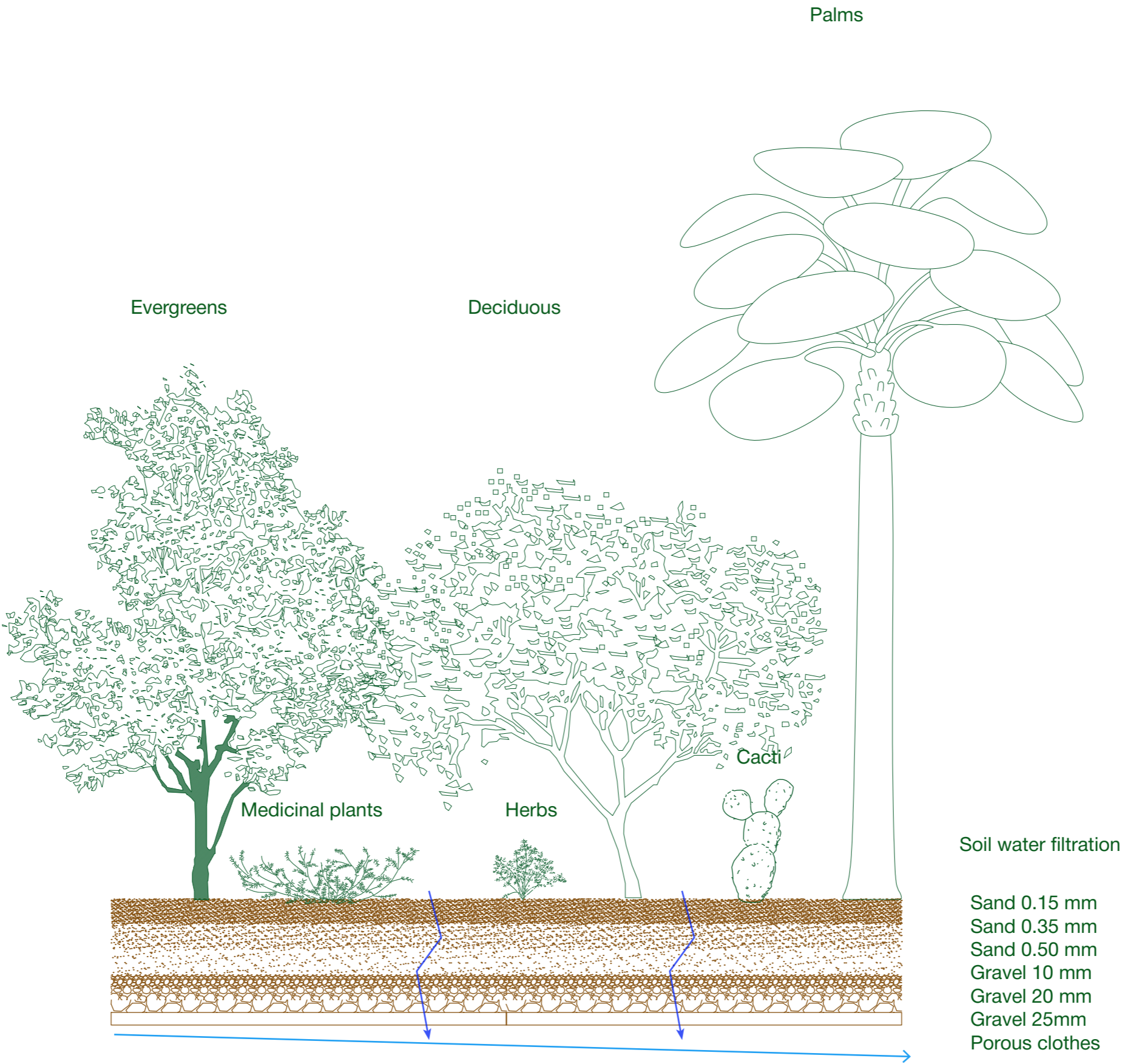
1:100 Otomi Pavilion Plan



1:250 Diagrammatic section of water system



Garden water treatment and vegetation plan



Goal:
Plant native species of trees that have air purifying qualities and attract pollinators to further diversify the environment

1:200 Garden Plan

Fruit trees
Tejocote

Fruit trees

Plants that
purify the air
and attract
pollinator

Air purifying trees
Mexican Yucca
Mexican Elderberry
Mexican Honeysuckle
Mexican Sage
Mexican Mint Marigold
Mexican Firebush

Mexican Yellow elder
Mexican Palo Verde

Palms
- Separate
area

Native Palm trees
Mexican Palma

Medicinal
Mexican Elderberry
Mexican Mint Marigold

Medicinal plants

Evergreens
Encino
Pine
Tepozan

Evergreens
- for shading

Herb garden

Evergreens
- for shading

Flowering trees
Casahuete
Colorin
Jacaranda



Materiality

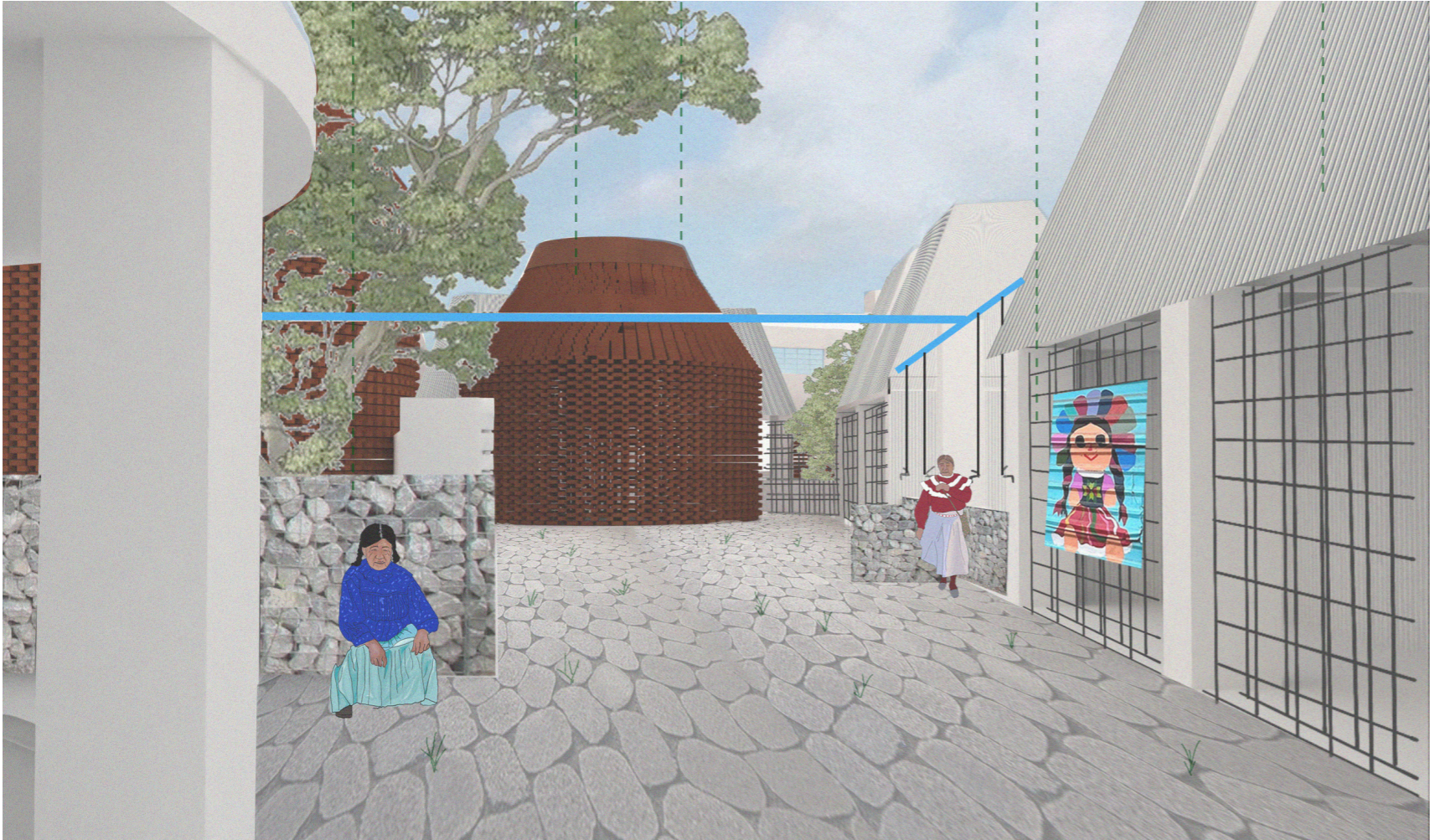
Gabion wall

Brick

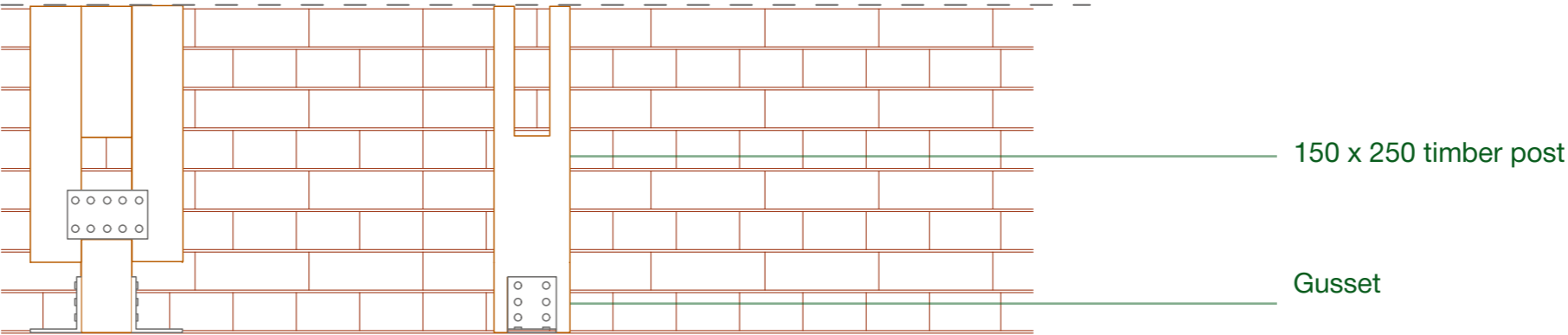
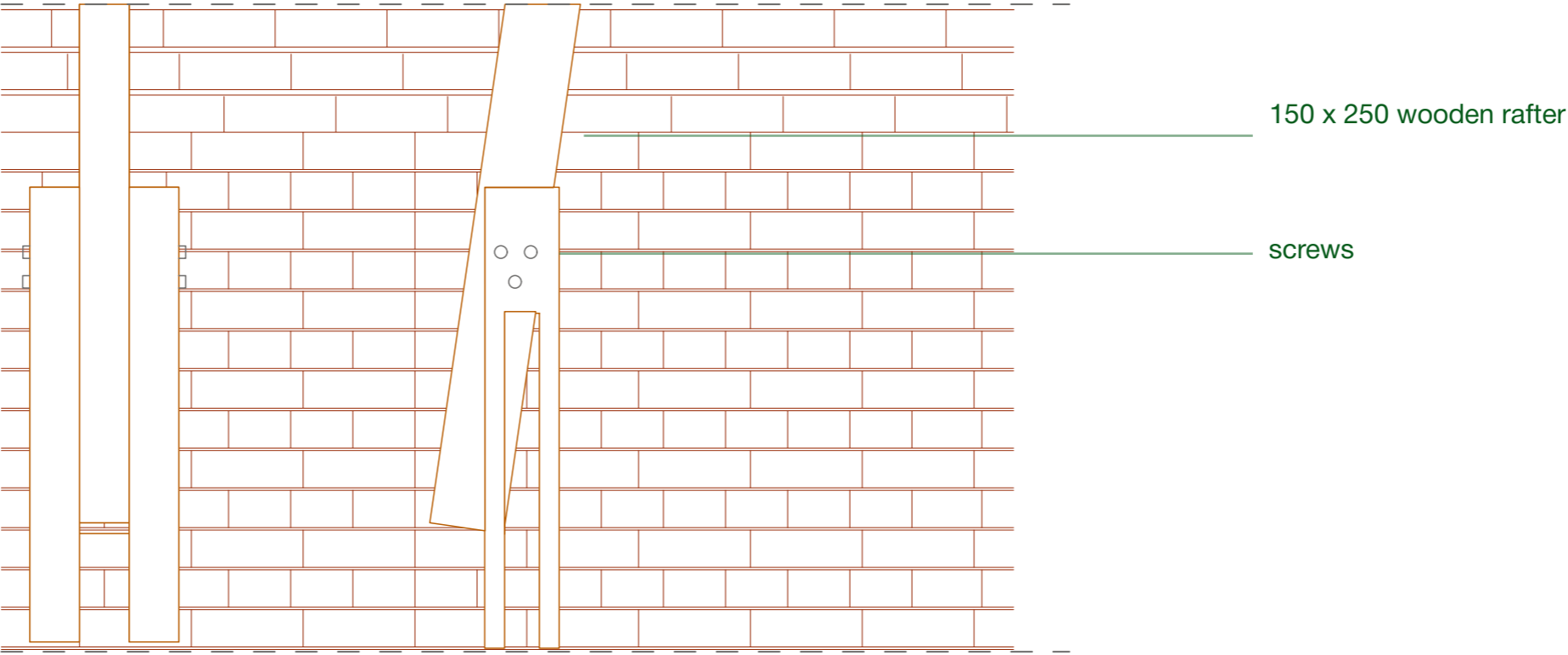
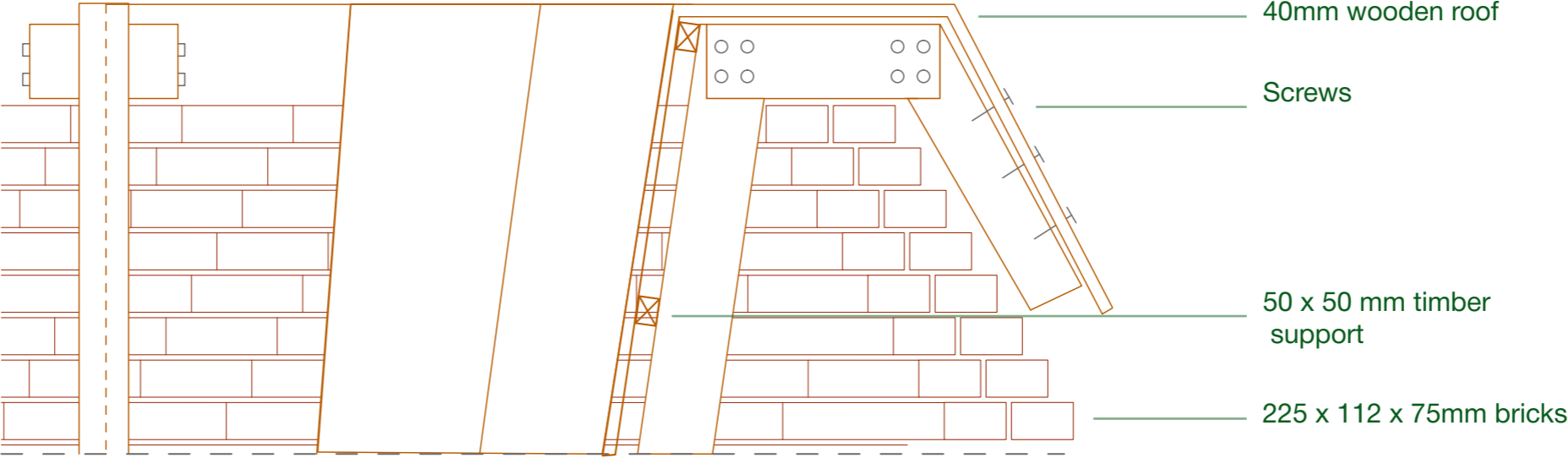
Wood

Metal mesh

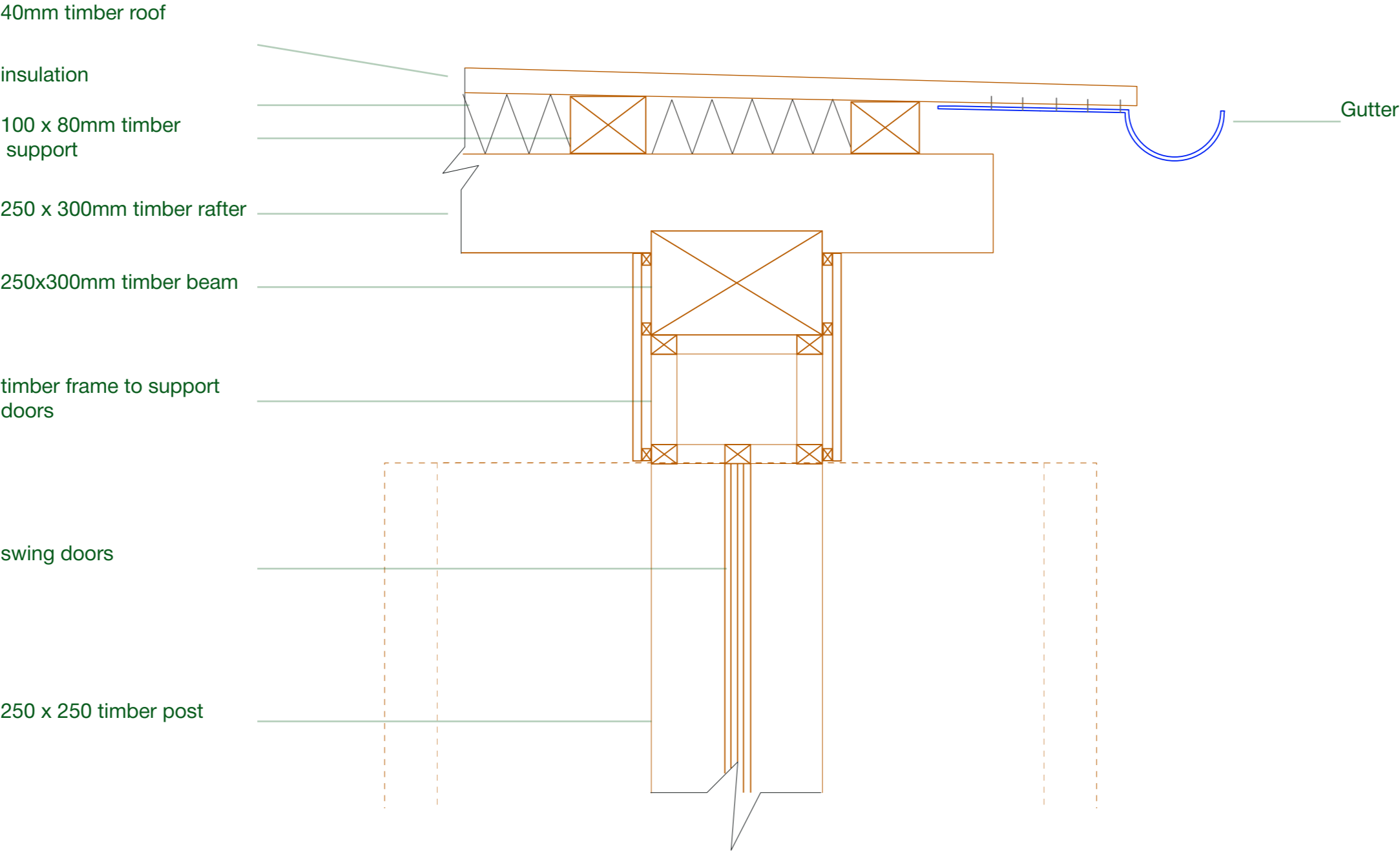
Corrugated steel



1:10 detail of wood supports in brick structures



1:10 wood construction of Otomi pavillion



PROFOUNDLY URBAN

