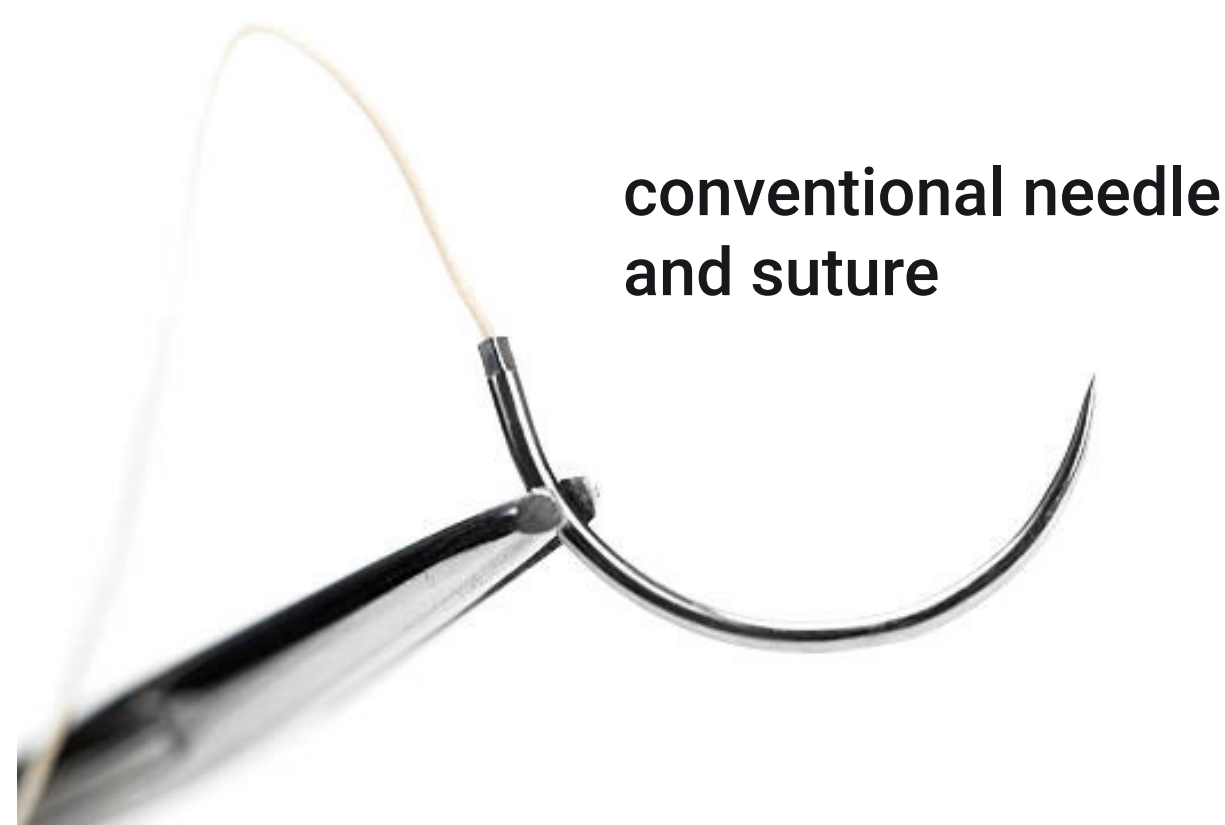


Alternative closure method for laparoscopic mesentery repair

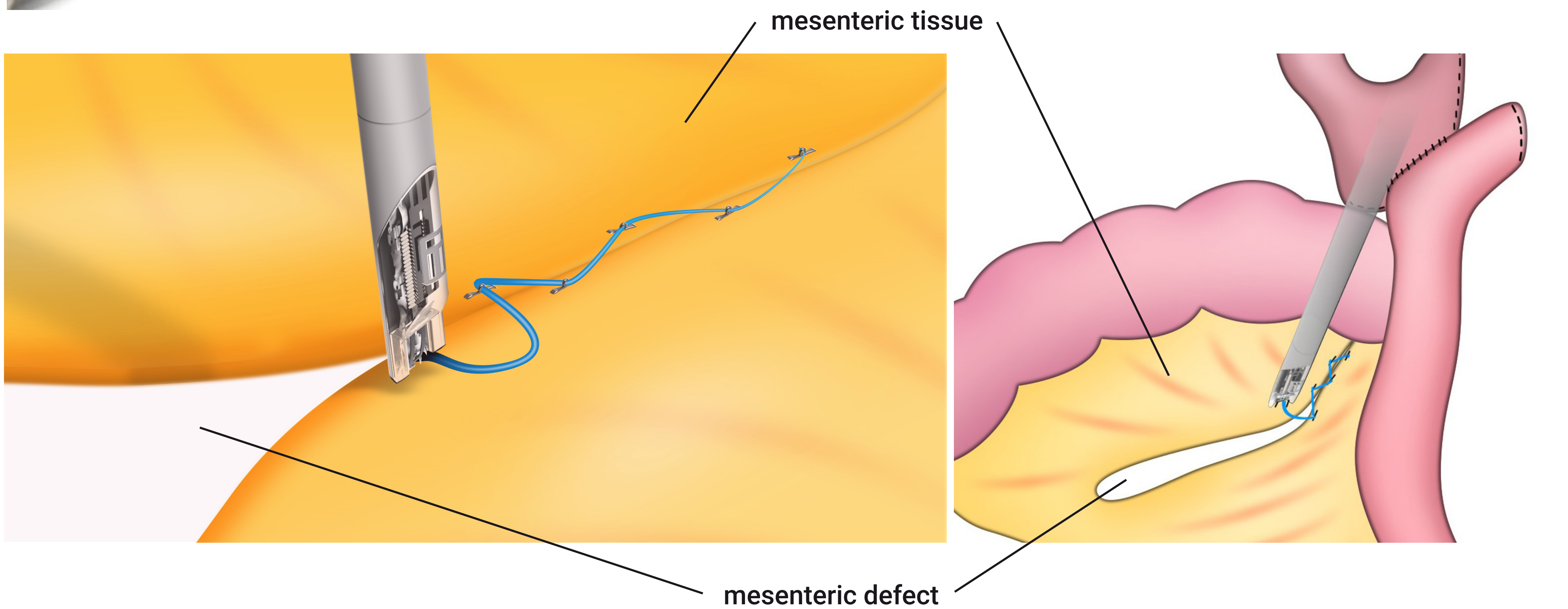
Development of a surgical tool to facilitate hand suturing in minimally invasive surgery



conventional needle and suture

Hand suturing is one of the most challenging tasks in laparoscopic surgery and requires high cognitive effort from the performing surgeon.

This project suggests a newly developed closure method which combines the advantages of hand suturing and stapling. It was developed together with bariatric surgeons to ensure viability and desirability.



loaded stapler



attaching staple to tissue

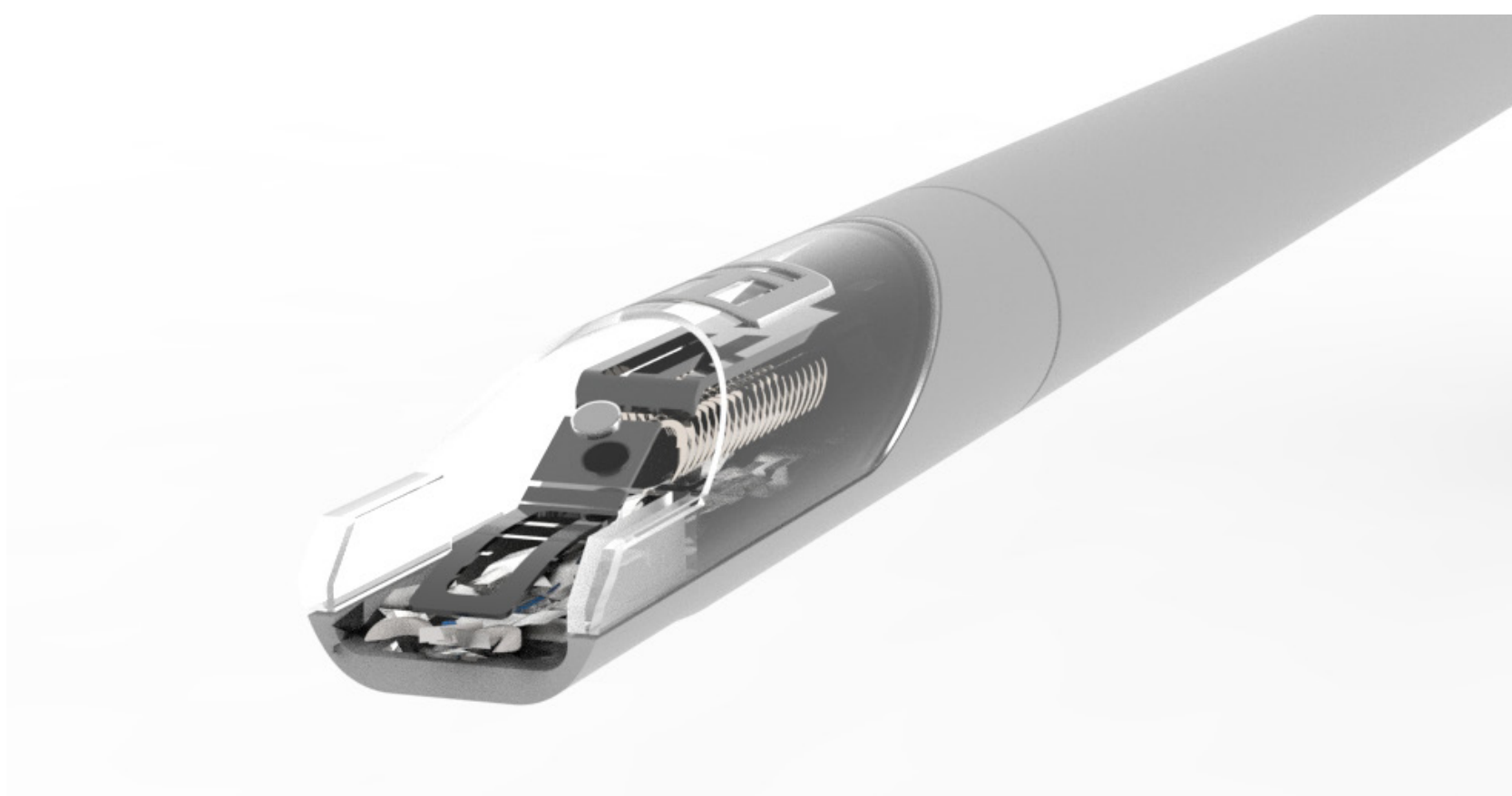


staple attached to tissue



positioning device and tissue

The device has a cartridge of about 30 staples which can be attached to the tissue from the top. A pre-sutured thread connects the staples which makes it possible to close the tissue opening like a laces. Barbs lock the suture and make it stay in place after tightening.



Natalie Wochner
Alternative closure method for laparoscopic
gastrointestinal anastomosis
22. August 2022
Integrated Product Design, Medisign

Committee
Armagan Albayrak
Wim Schermer
Maurits de Brauw
Company
Maurits de Brauw (Spaarne Hospital, Hoofddorp)
Remi Veenman (Spark Design, Rotterdam)

