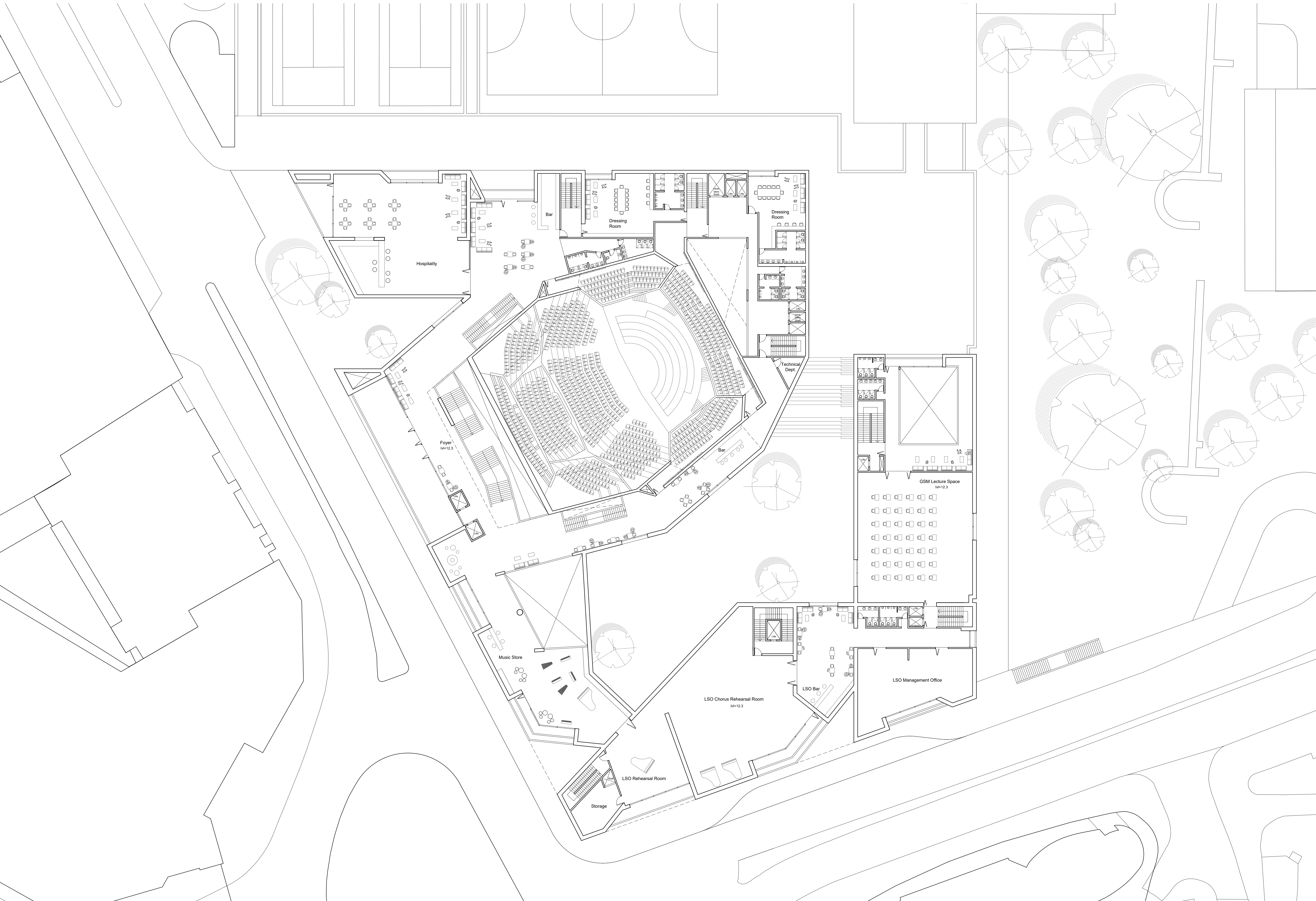
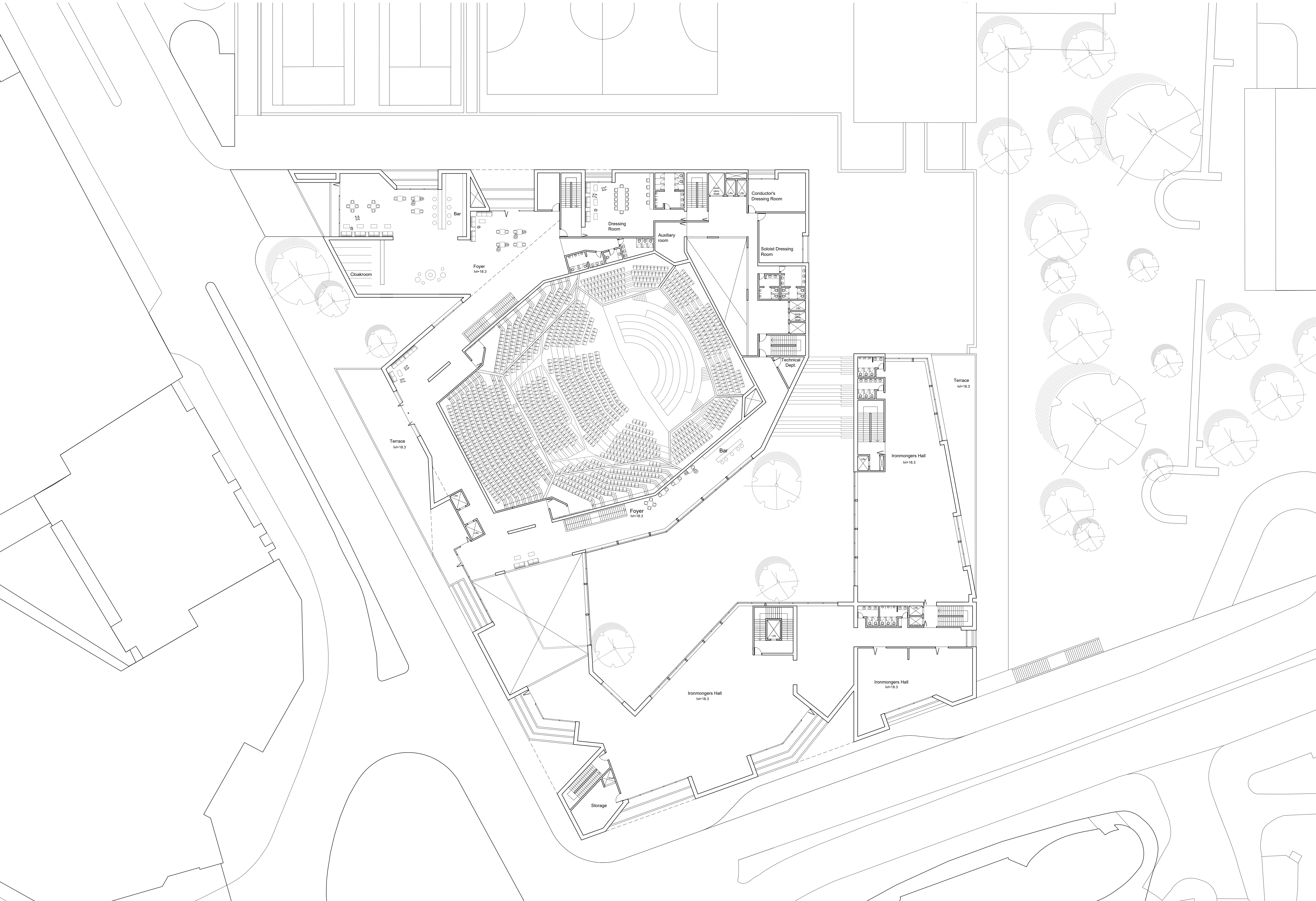
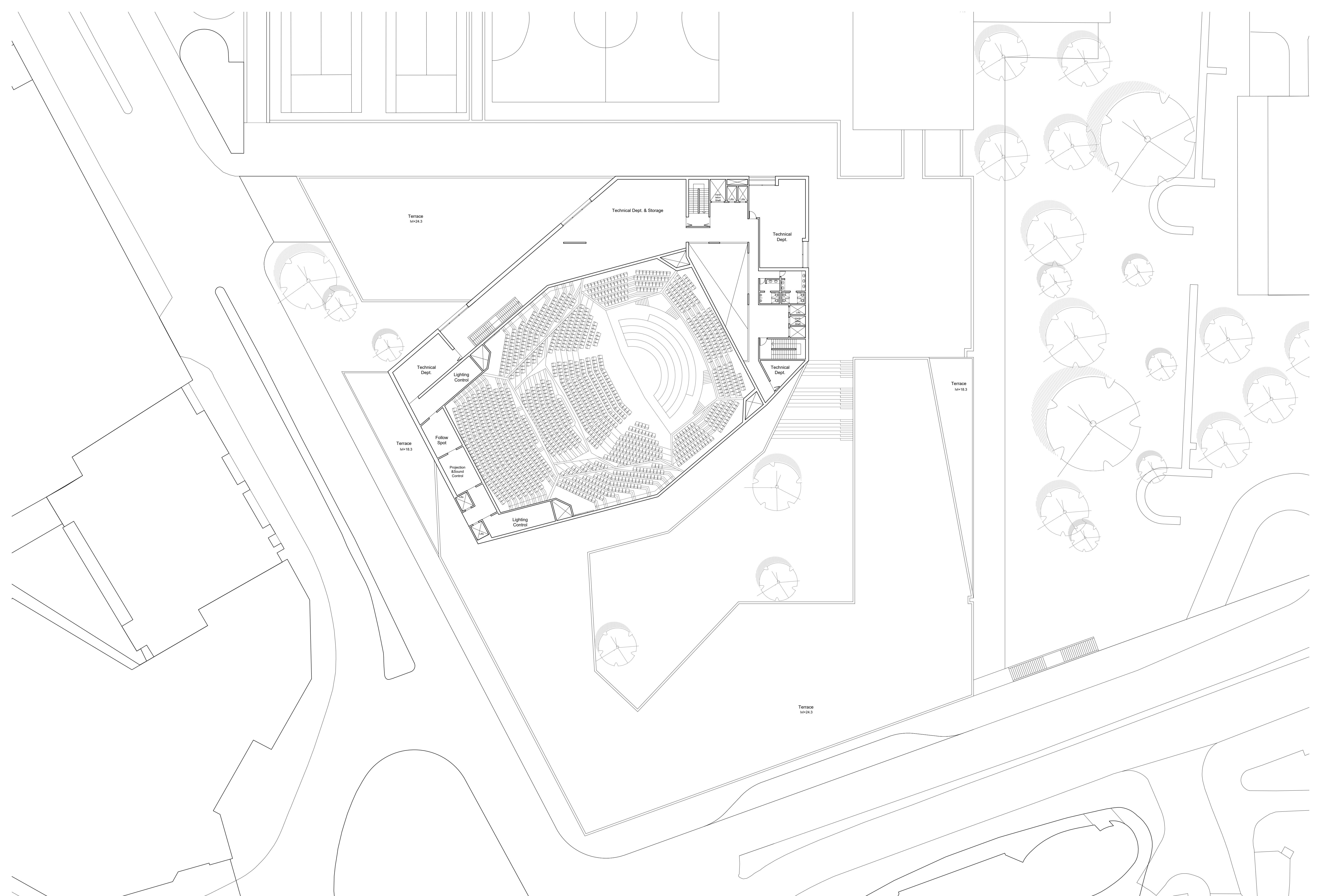


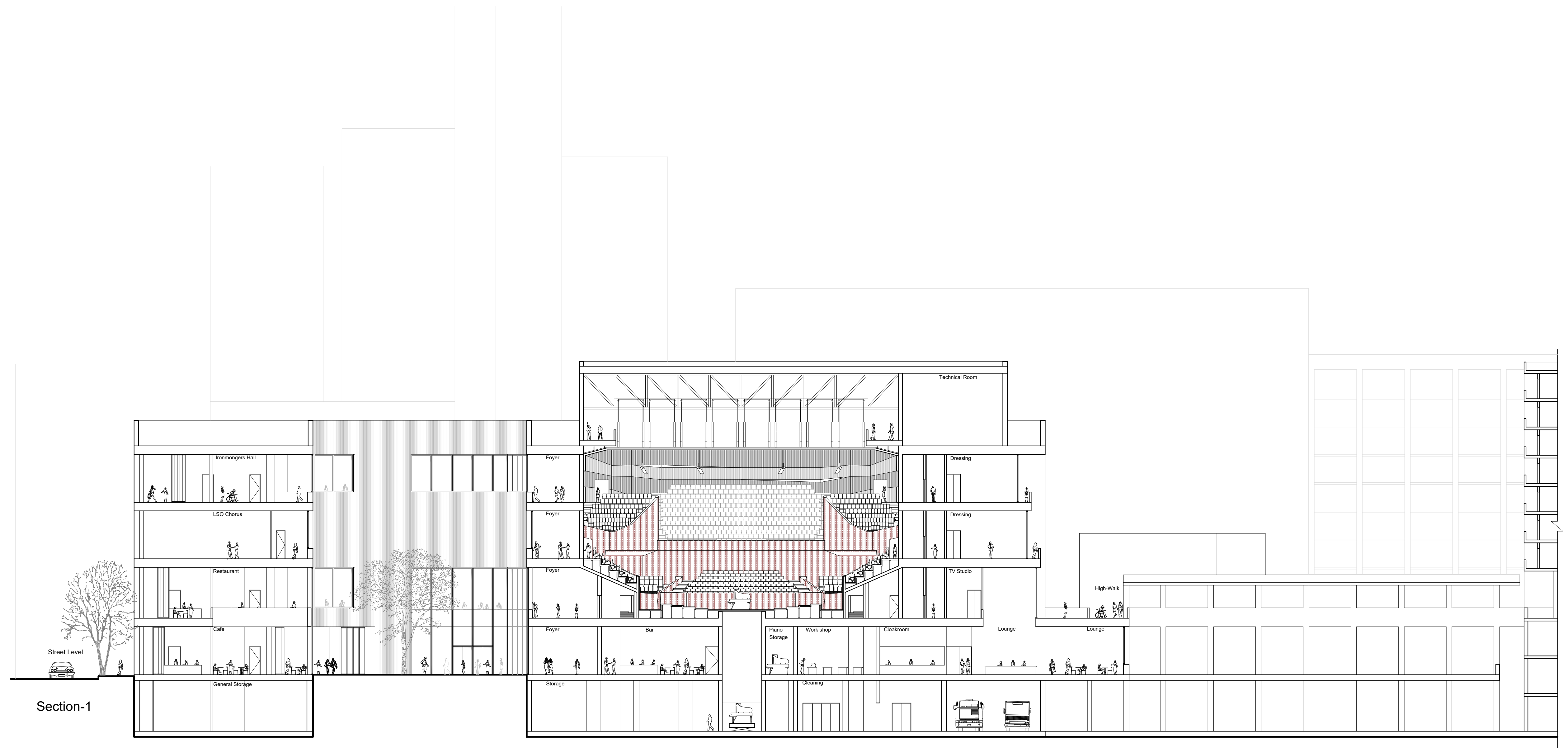
First Floor Plan



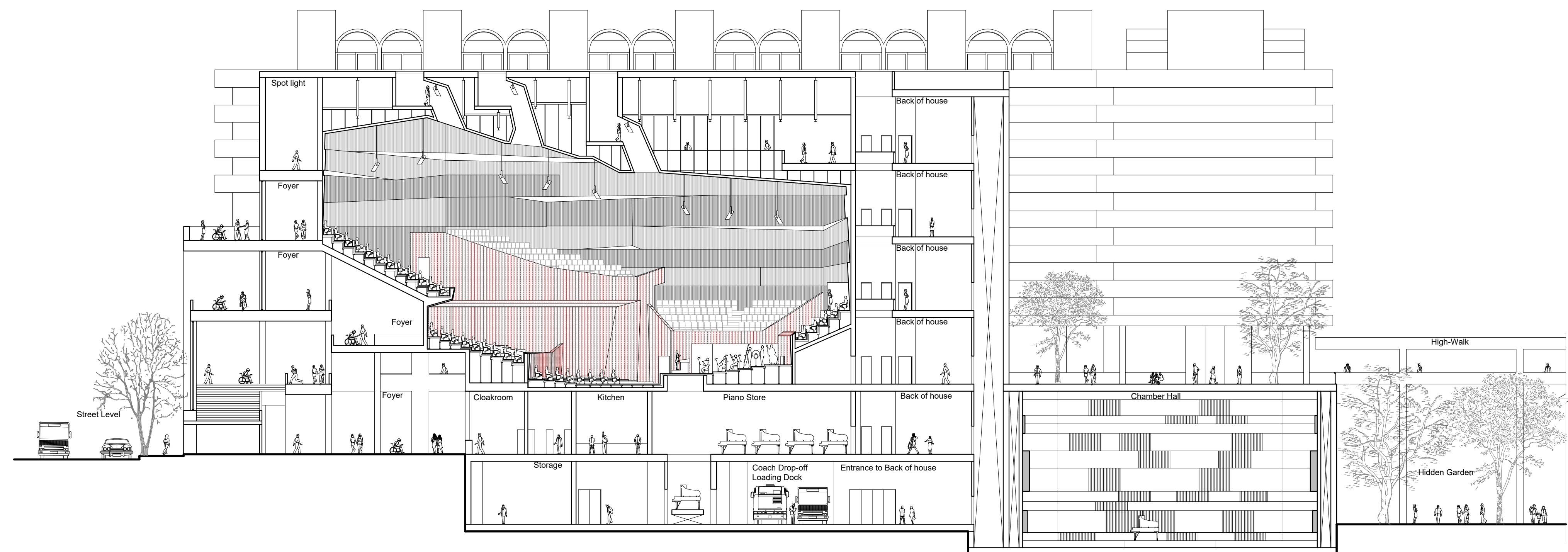








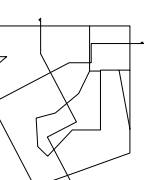
Section-1



Section-2

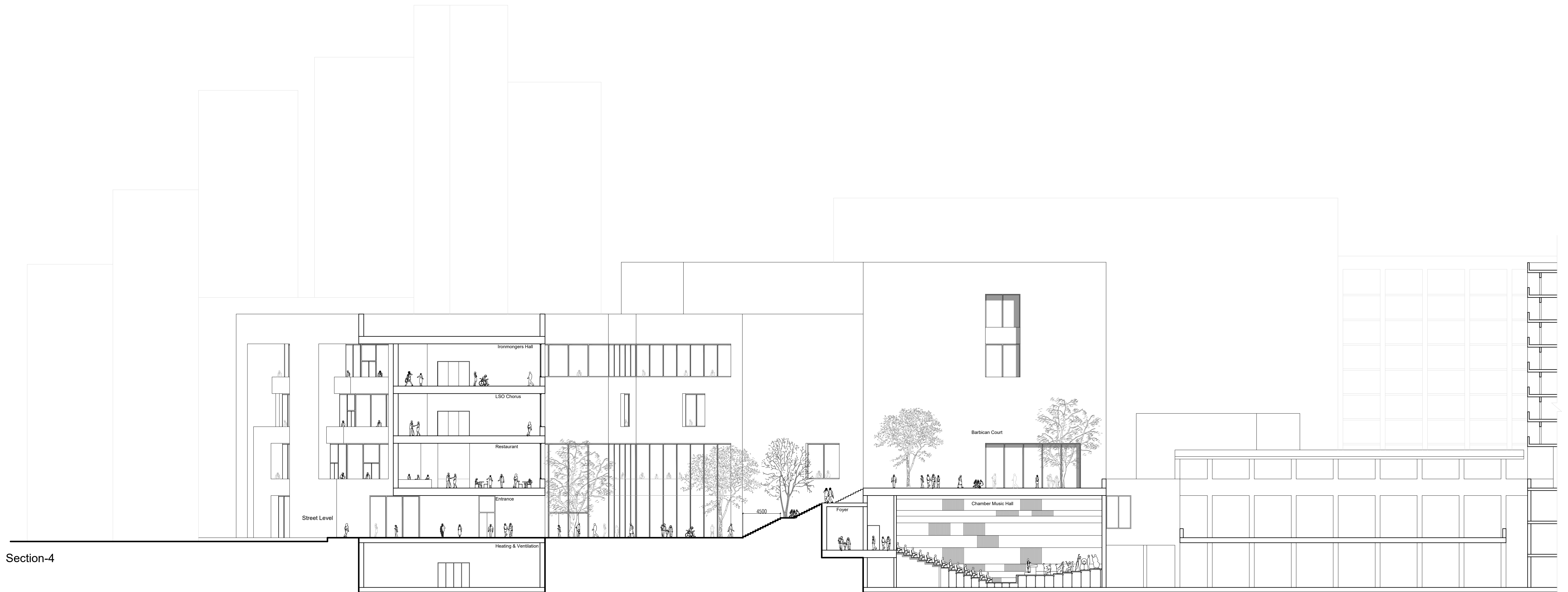
Sections

0 5 10 20

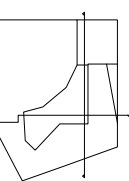




Section-3

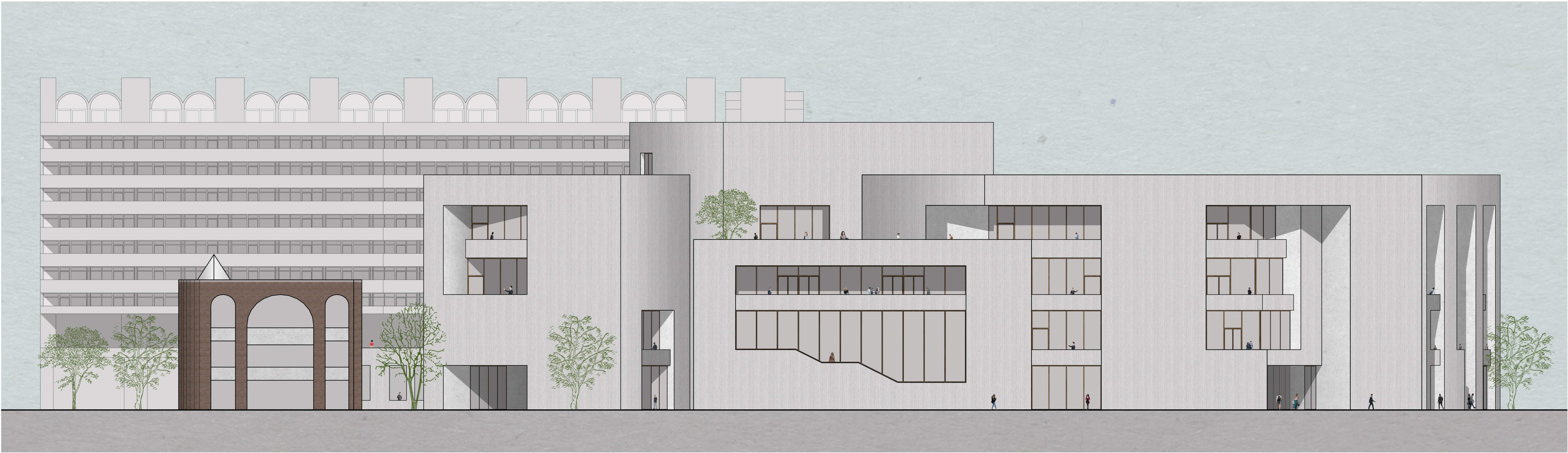


Section-4





East Elevation



West Elevation



South Elevation



Elevation from St. Paul's

Architectural section drawing of a building facade, showing four floors (ground floor, 1st floor, 2nd floor, 3rd floor, 4th floor) and a vertical section detail V-4. The drawing includes floor levels, room layouts, and a vertical scale on the right.

Floor Levels and Dimensions:

- 4th floor: Ht. = 24.30m
- 3rd floor: Ht. = 20.30m
- 2nd floor: Ht. = 16.30m
- 1st floor: Ht. = 12.30m
- ground floor: Ht. = 0.00m

Vertical Section Detail V-4:

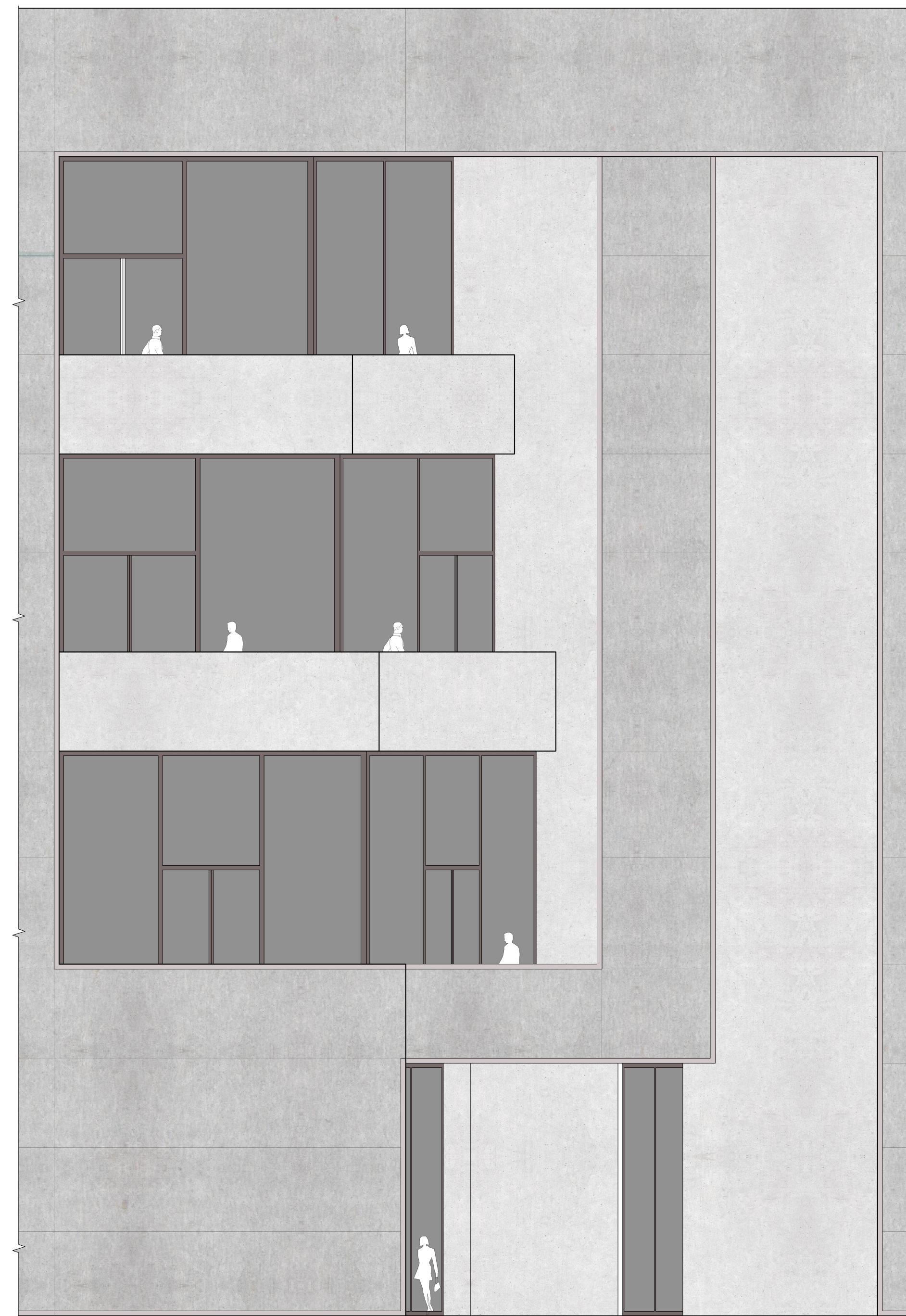
- Detail V-4 is shown on the right side of the drawing, indicating a vertical section through the building.
- The vertical scale on the right indicates heights in meters (m): 0.00, 12.30, 16.30, 20.30, 24.30.

Room Layouts and Features:

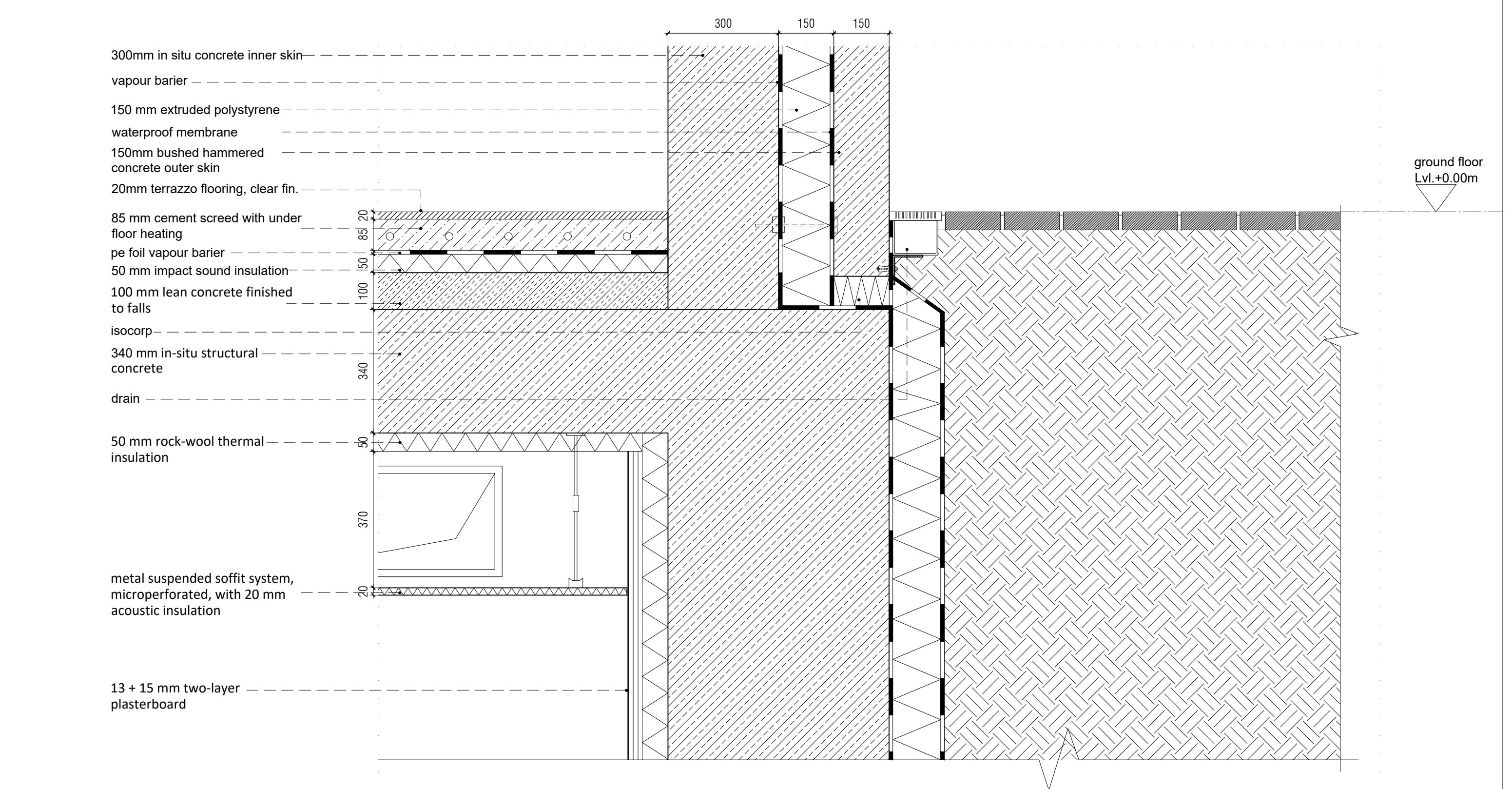
- The ground floor shows a large open space with a person walking.
- The 1st floor shows a room with a person walking.
- The 2nd floor shows a room with a person walking.
- The 3rd floor shows a room with a person walking.
- The 4th floor shows a room with a person walking.

Technical drawing of a roof detail H-1. The drawing shows a cross-section of a roof structure. A sloped section on the right is labeled "Detail H-1". The structure consists of a concrete slab (hatched pattern) and a metal deck (cross-hatched pattern). The sloped section is supported by a vertical wall. The horizontal section at the bottom shows a concrete slab (hatched pattern) and a metal deck (cross-hatched pattern). The drawing includes dimension lines and a scale bar.

Scale 1:50



Technical drawing of a roof section showing a gabled roof with a dormer, a chimney, and a staircase. The drawing includes a detailed view of the roof edge labeled "Detail H-2".



10 mm toughened glass + 16 mm cavity + 2x 8 mm laminated safety glass

20mm terrazzo flooring, clear fin.

85 mm cement screed with under floor heating

pe foil vapour barrier

15 mm impact sound insulation

40 mm calcium sulphate panels

columns system floor

120 mm rock-wool thermal insulation

vapour barrier

waterproof membrane

isocorp

340 mm in-situ structural concrete

300mm in situ concrete inner skin

vapour barrier

150 mm extruded polystyrene

waterproof membrane

150mm bushed hammered concrete outer skin

600/600 mm composite tile elements to bear foot traffic

40 mm polystyrene thermal insulation

geo-textile separating layer; roof sealing layer

25 mm bed of mortar

40-150 mm lean concrete finished to falls

vapour-retarding layer

drip mould

1st floor Lvl. +6.00m

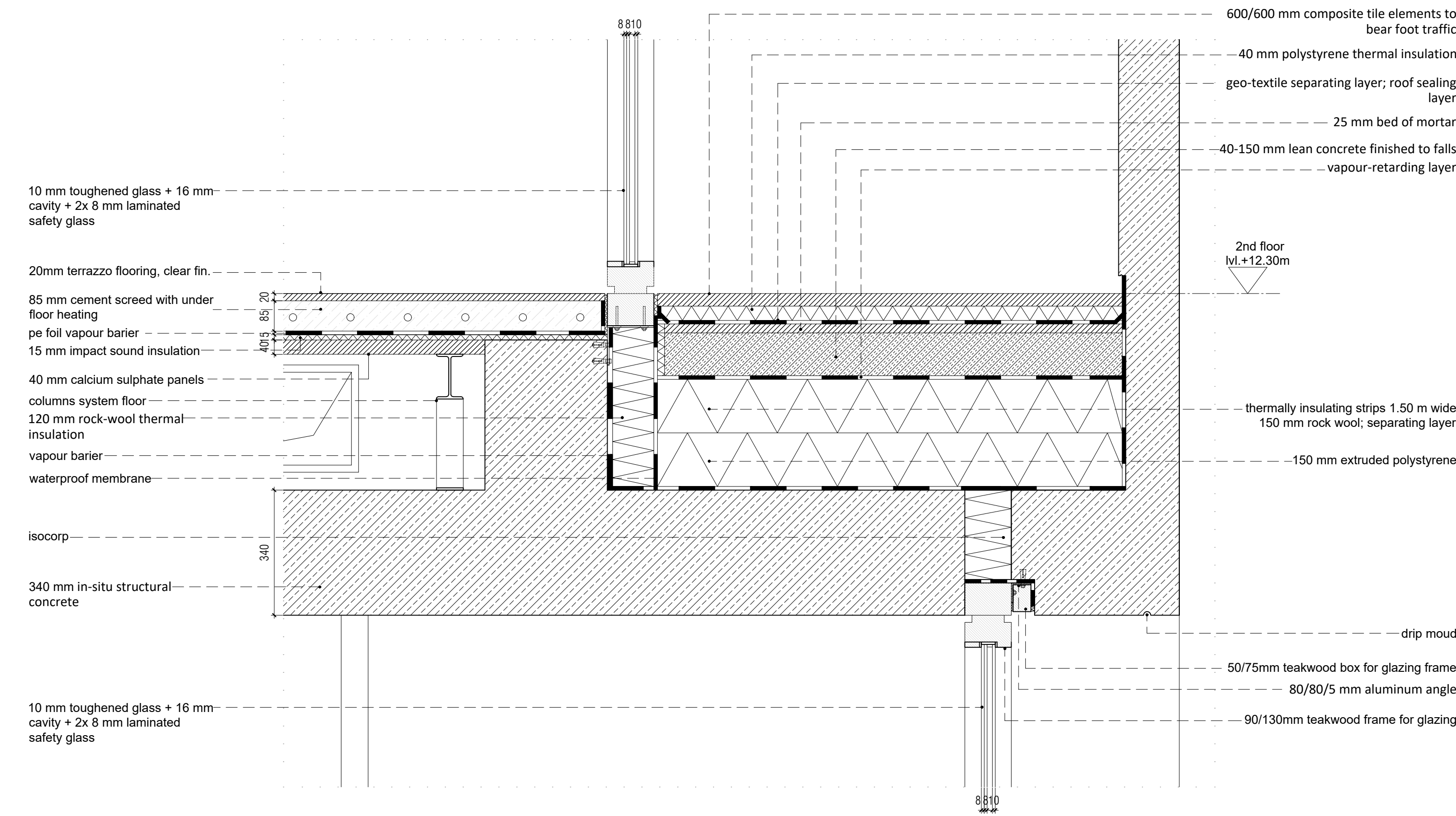
thermally insulating strips 1.50 m wide

150 mm rock wool; separating layer

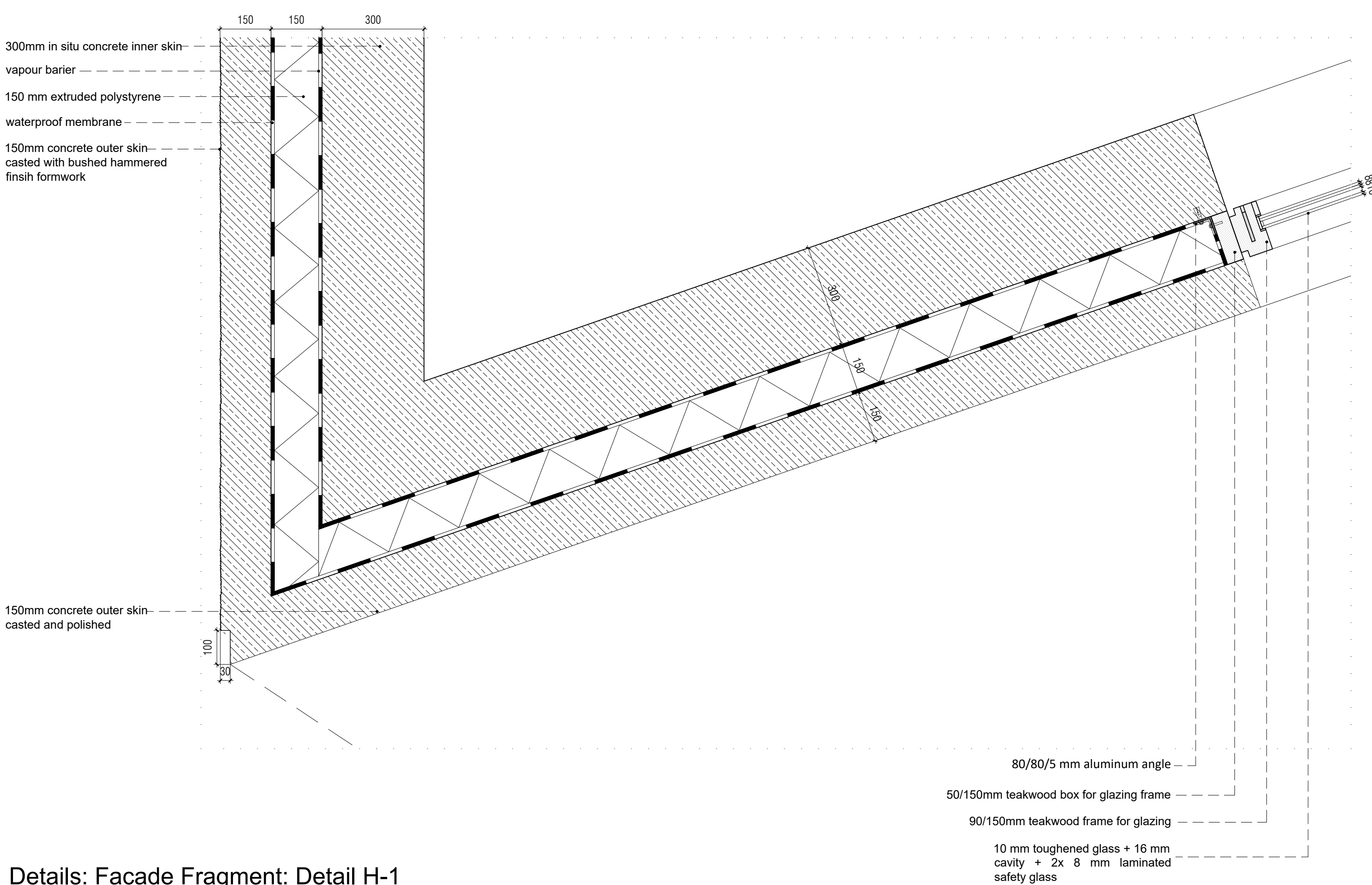
150 mm extruded polystyrene

300 150 150

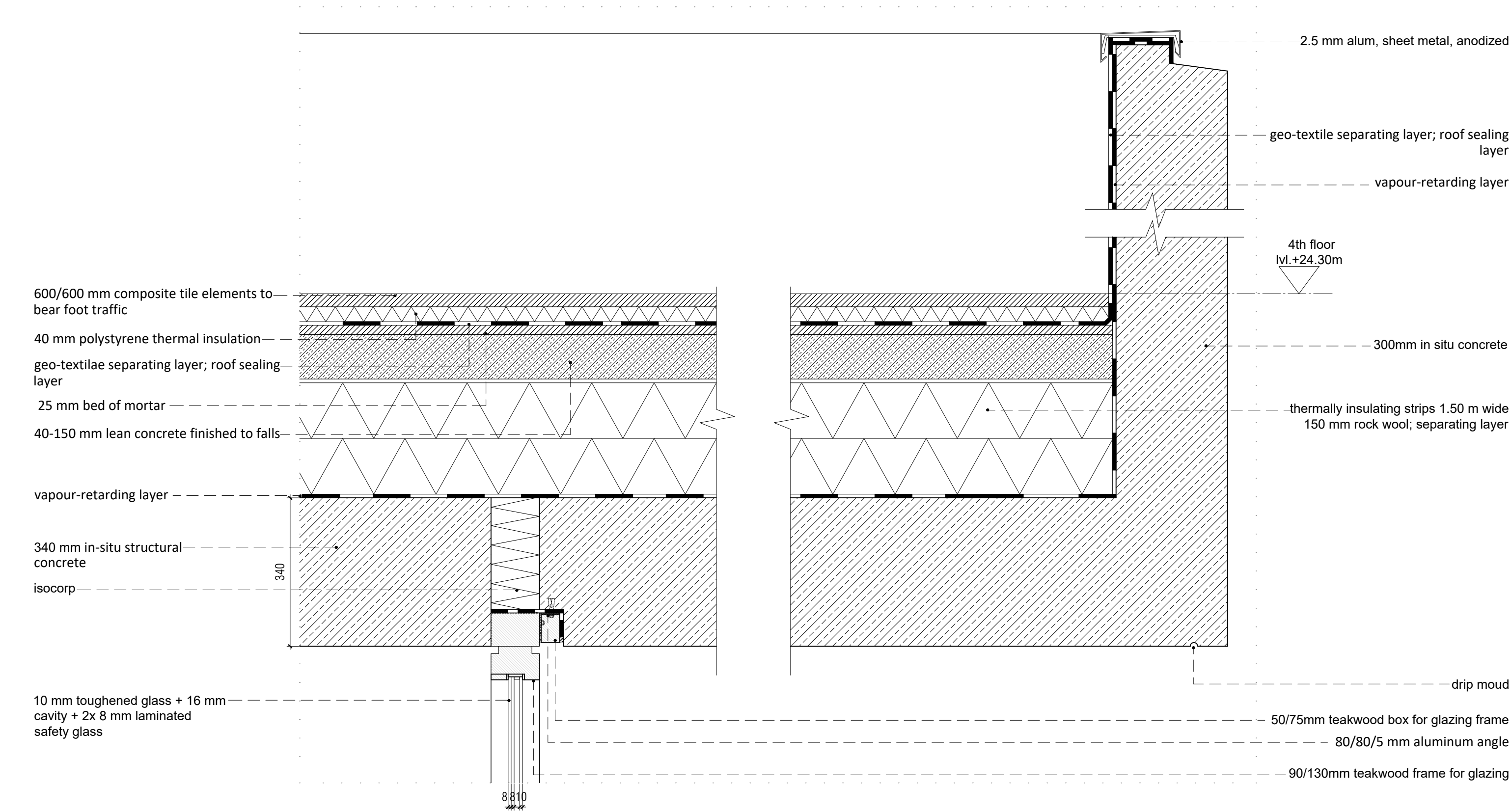
Details: Facade Fragment: Detail V-2



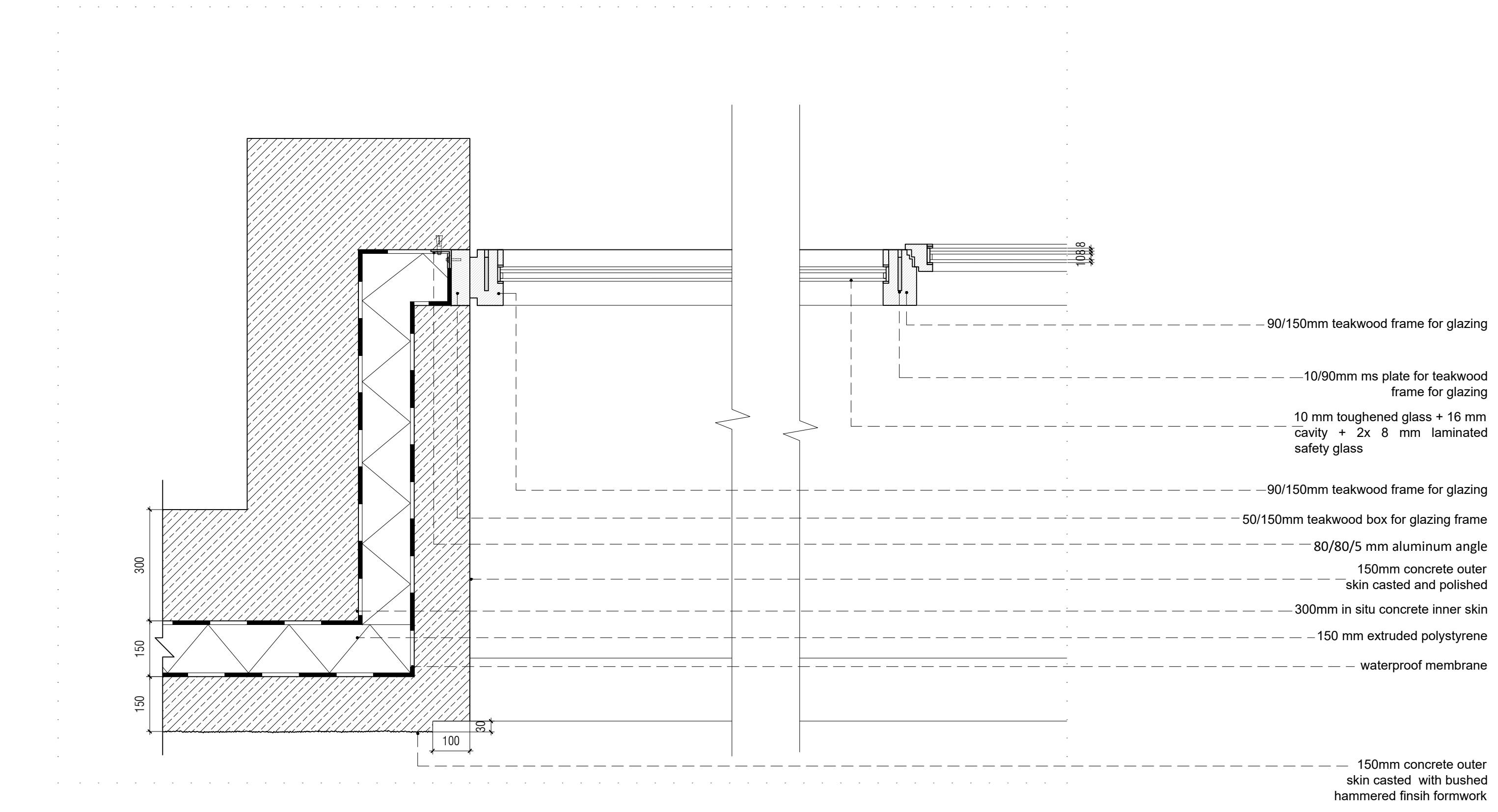
Details: Facade Fragment: Detail V-3



Details: Facade Fragment: Detail H-1



Details: Facade Fragment: Detail V-4



Details: Facade Fragment: Detail H-2