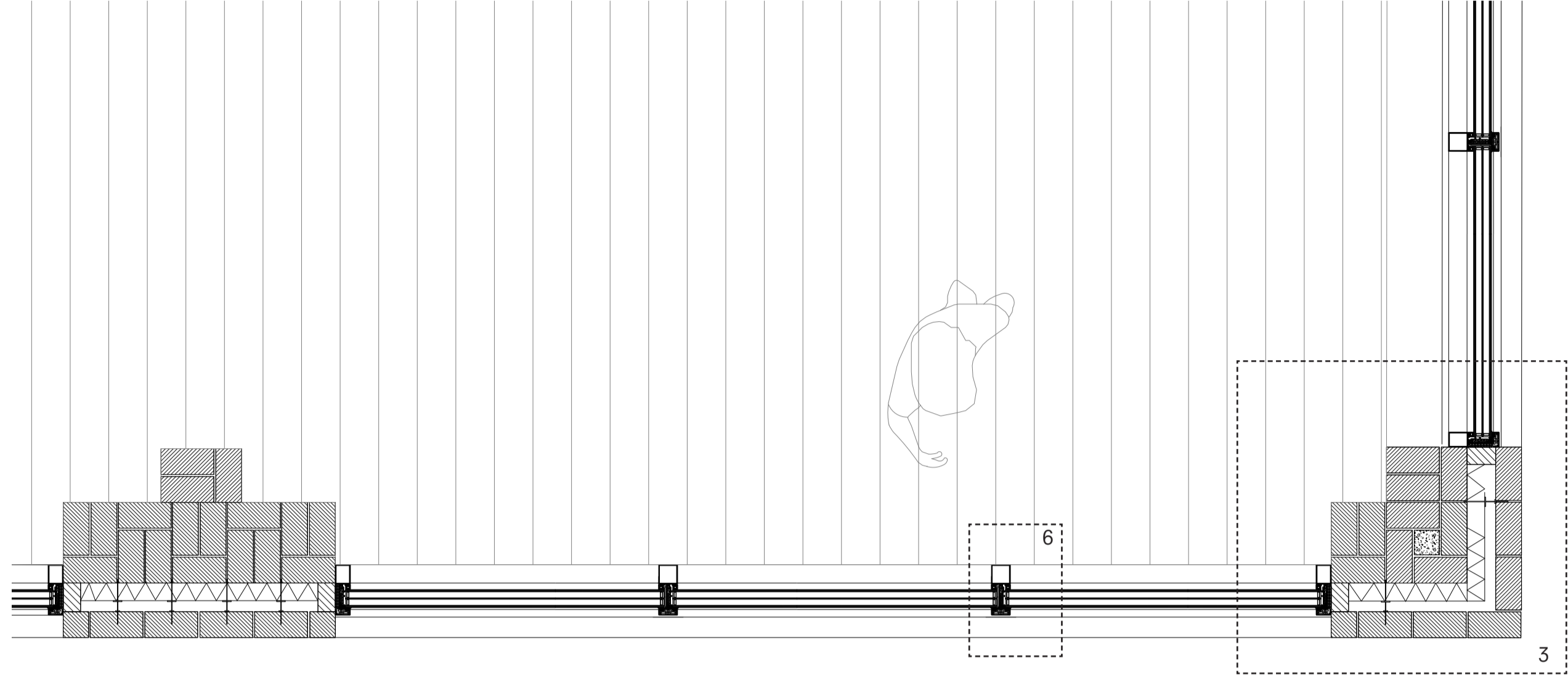
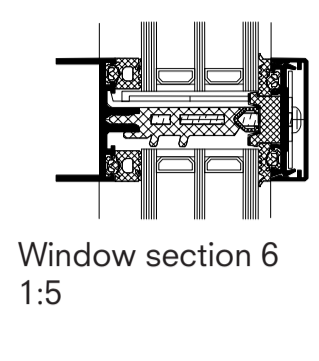
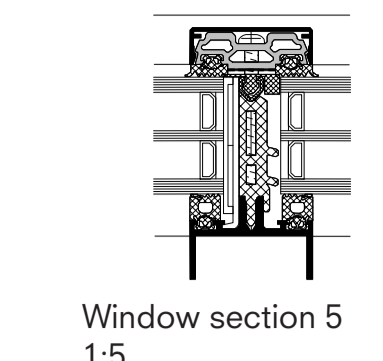
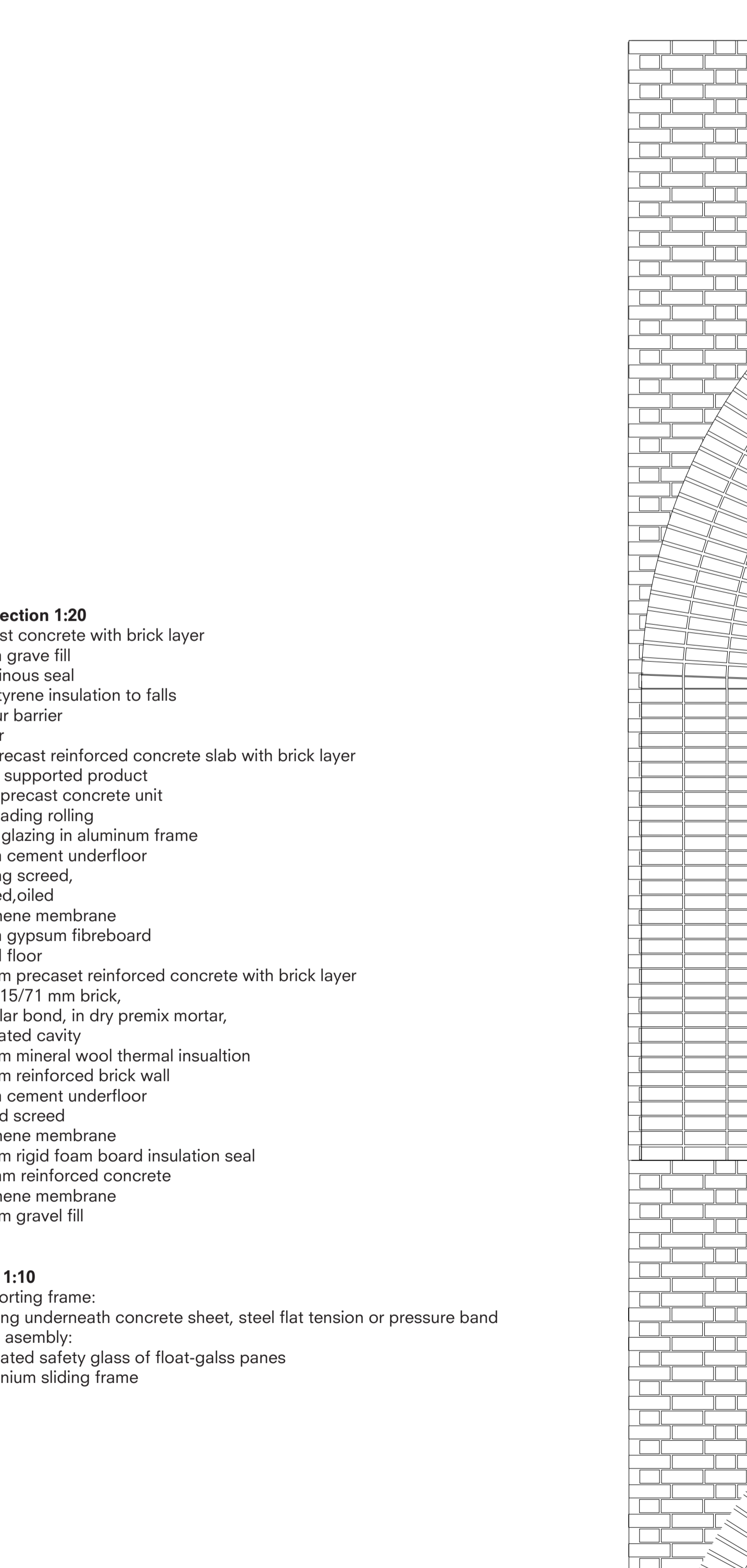
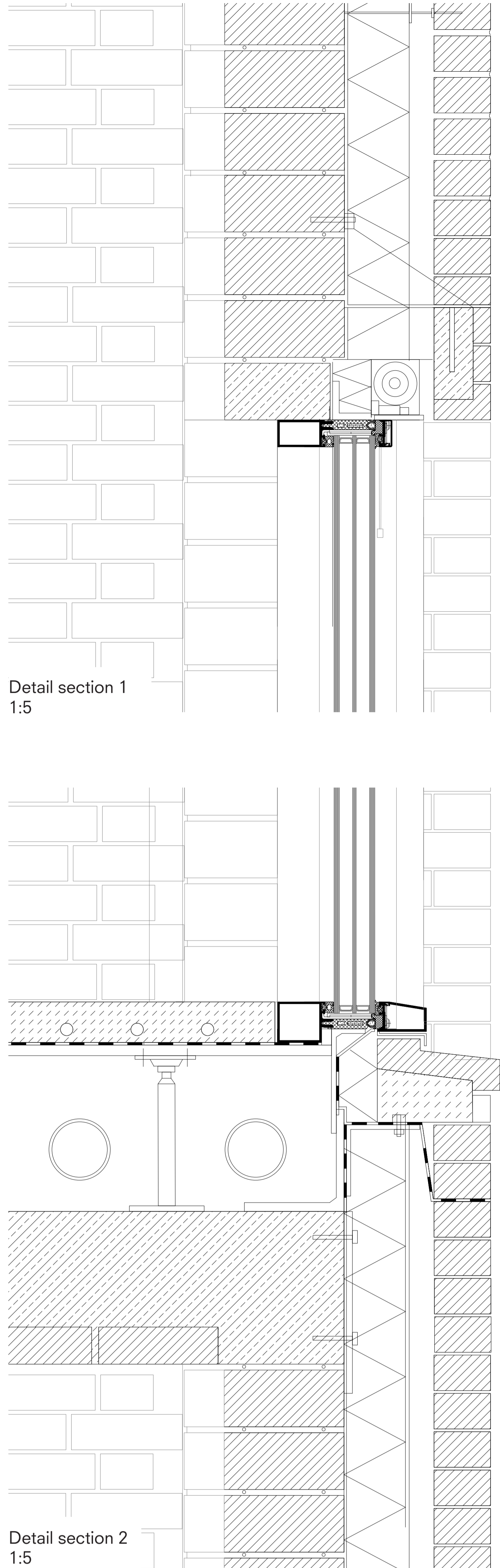
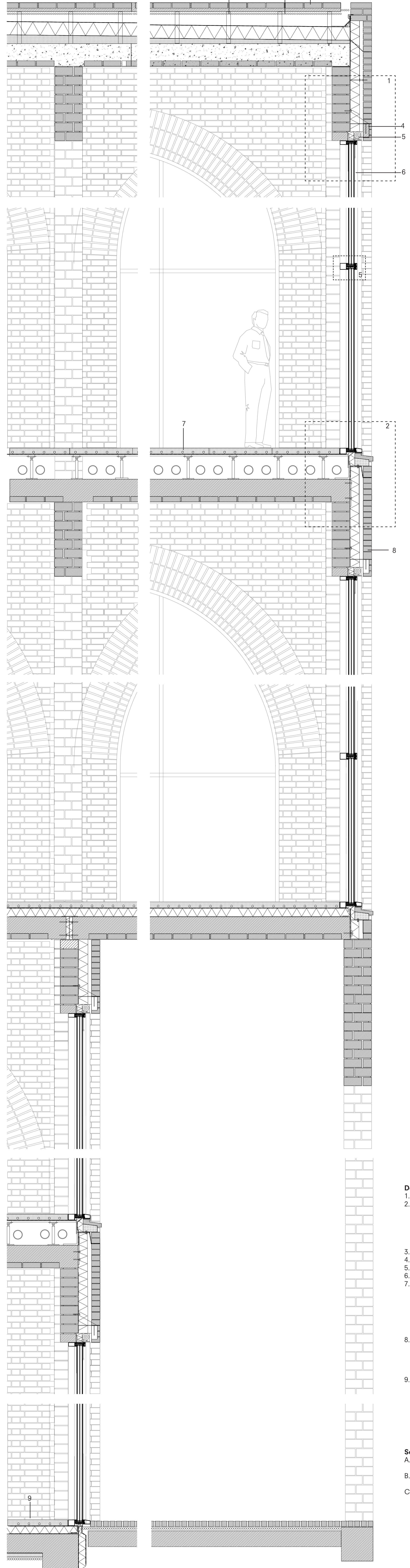
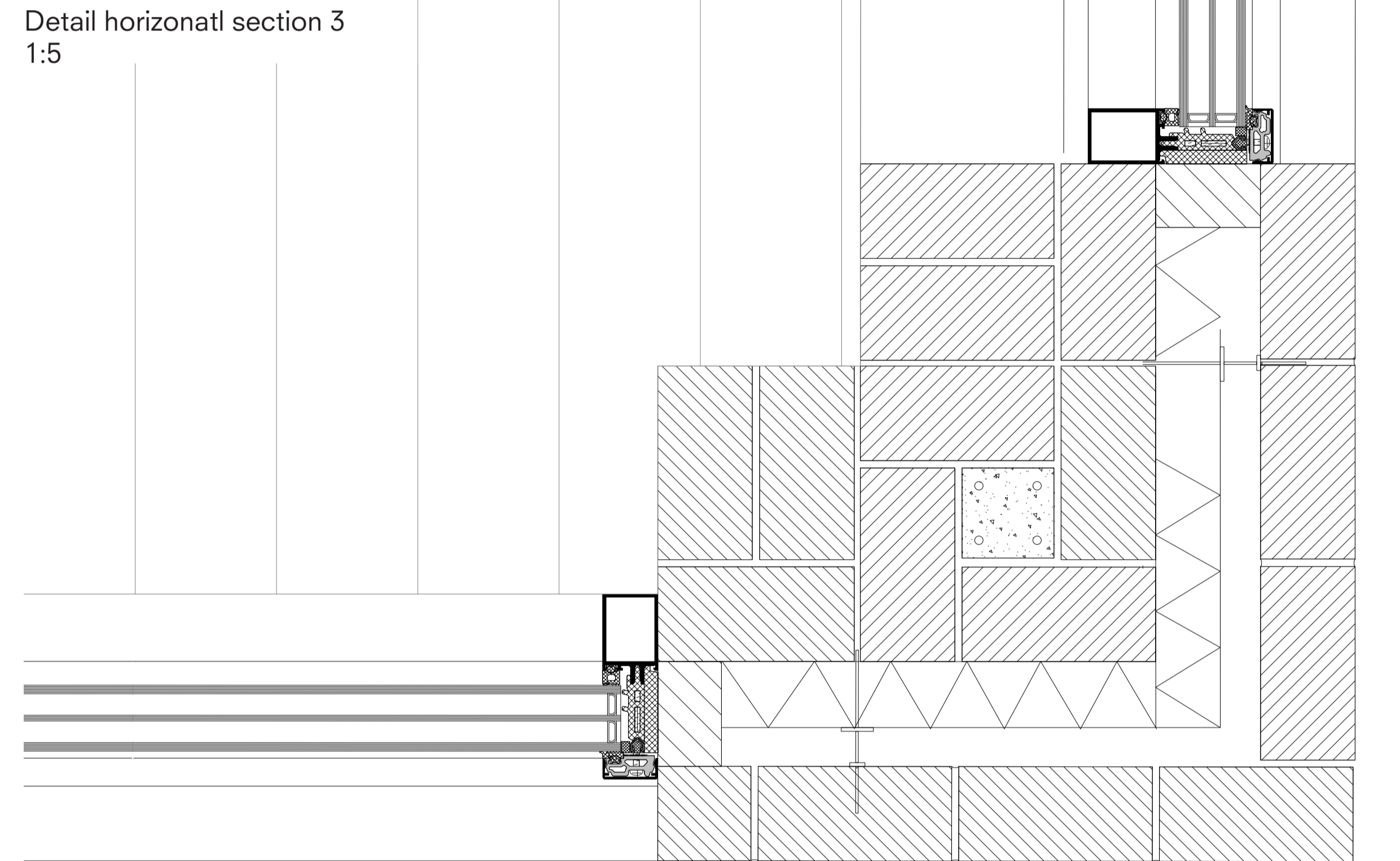


# Construction detail

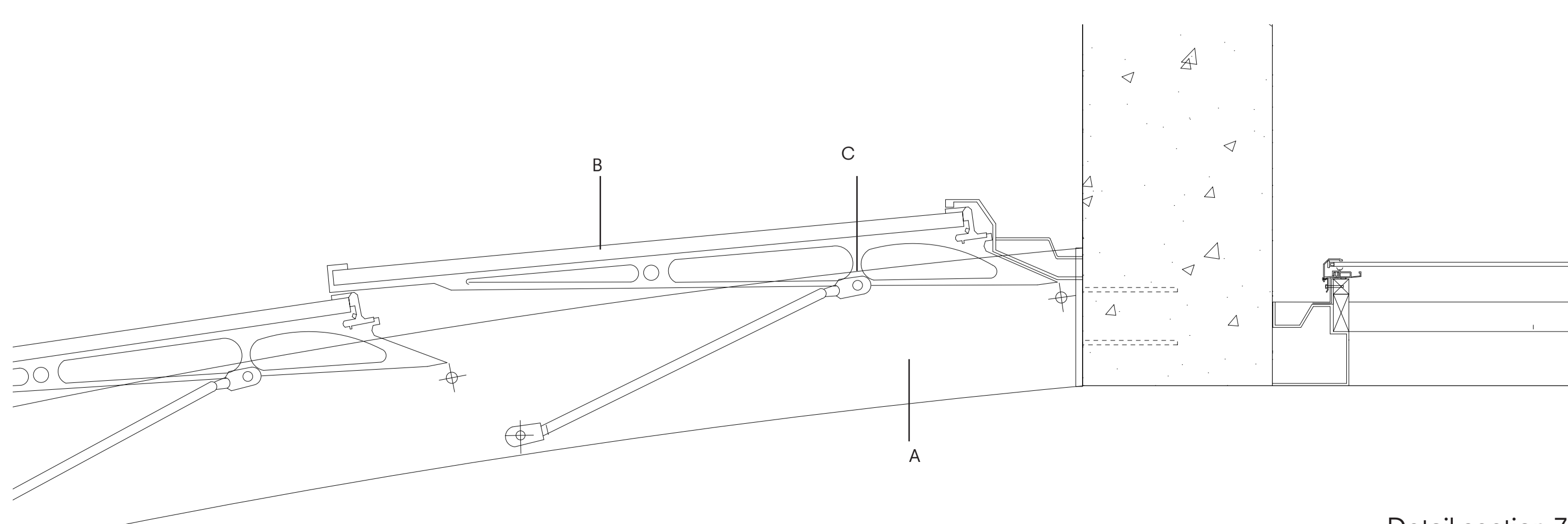
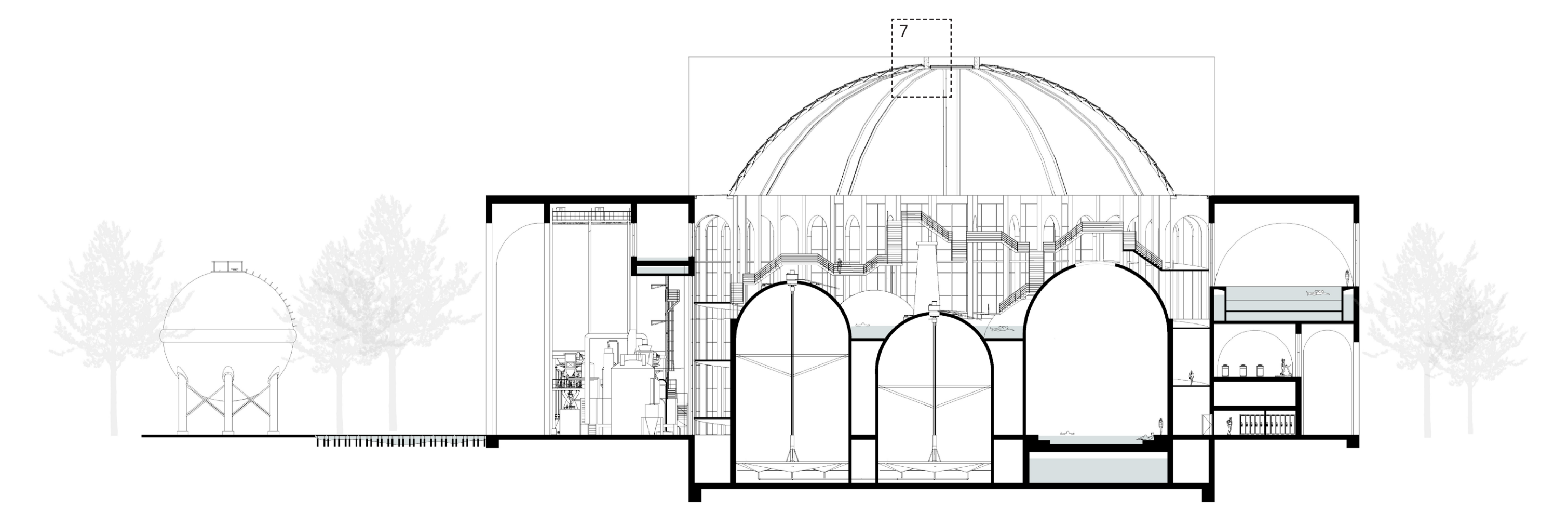
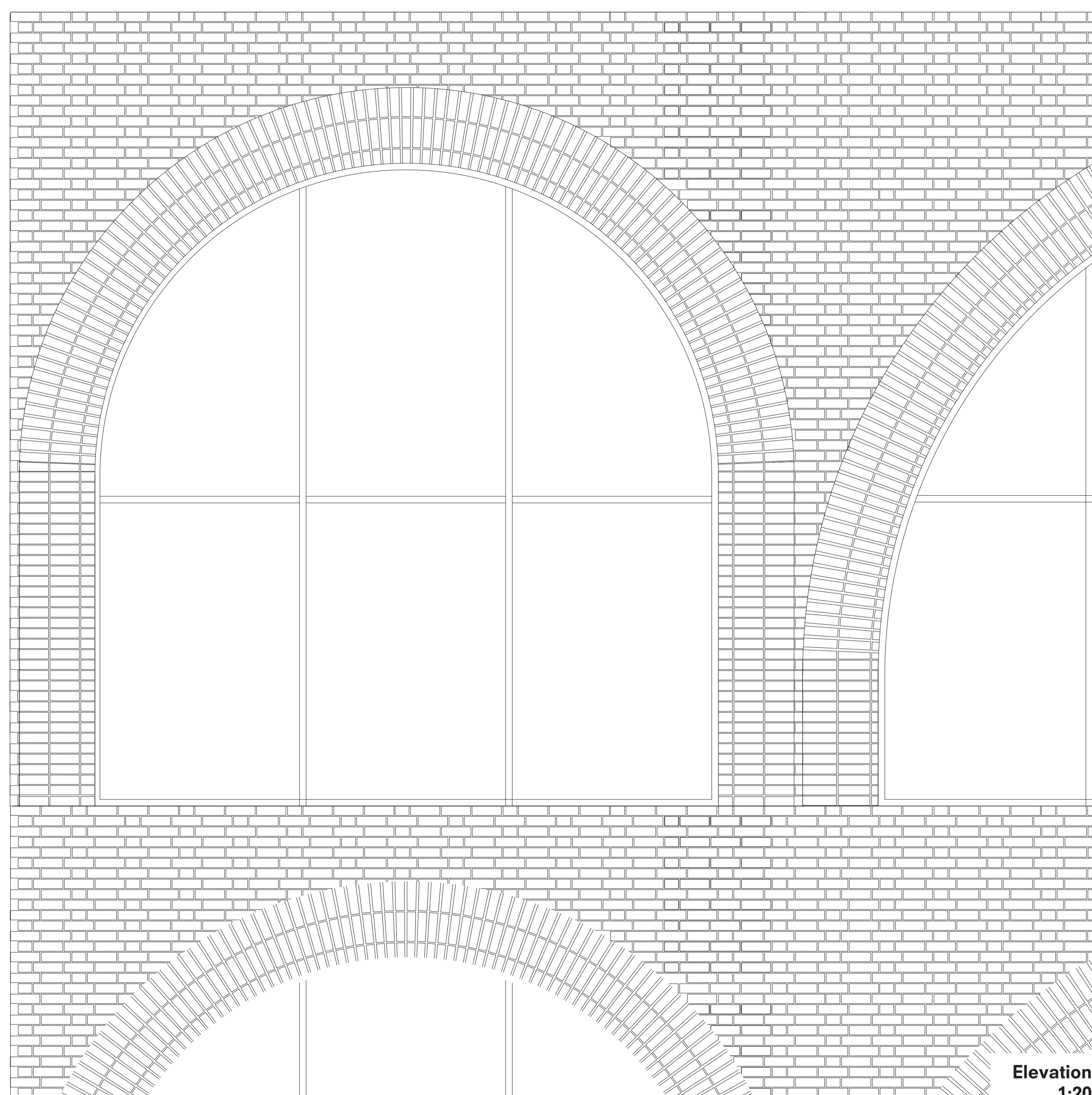
Yixin Lyu  
4617487



Detail horizontal section 3  
1:5



- Detail section 1:20**
1. Precast concrete with brick layer
  2. 50mm grave fill  
bituminous seal  
polystyrene insulation to falls  
vapour barrier  
primer
  3. Metal supported product
  4. lintel: precast concrete unit
  5. sunshading rolling
  6. Triple glazing in aluminum frame
  7. 80mm cement underfloor  
heating screed,  
sanded,oiled  
polythene membrane  
18mm gypsum fibreboard  
raised floor
  8. 240/115/71 mm brick,  
irregular bond, in dry premix mortar,  
ventilated cavity  
140mm mineral wool thermal insulation  
360mm reinforced brick wall
  9. 80mm cement underfloor  
heated screed  
polythene membrane  
110mm rigid foam board insulation seal  
250mm reinforced concrete  
polythene membrane  
150mm gravel fill
- Section 1:10**
- A. Supporting frame:  
Hanging underneath concrete sheet, steel flat tension or pressure band
  - B. Glass assembly:  
laminated safety glass of float-glass panes
  - C. aluminium sliding frame



Detail section 7  
1:10