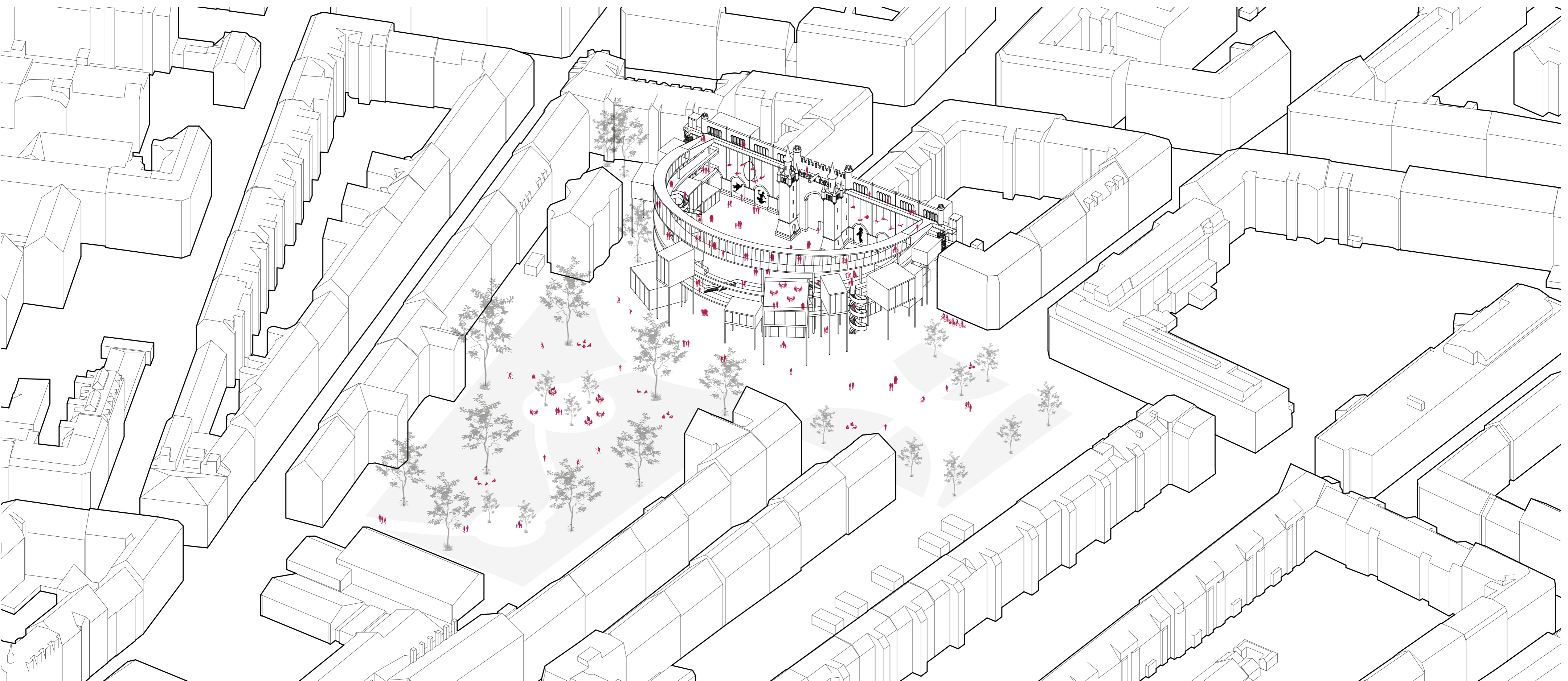


Place of Unpretentiousness // Visualizations



Place of Unpretentiousness // Contextual isometry

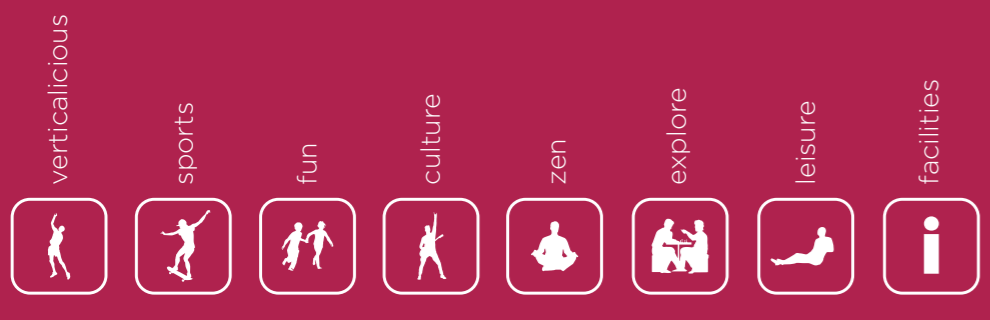




# Concept

## immaterial profit

the program of the public condenser tends to stimulate the production of intangibles such as the production of ideas, innovations and experiences



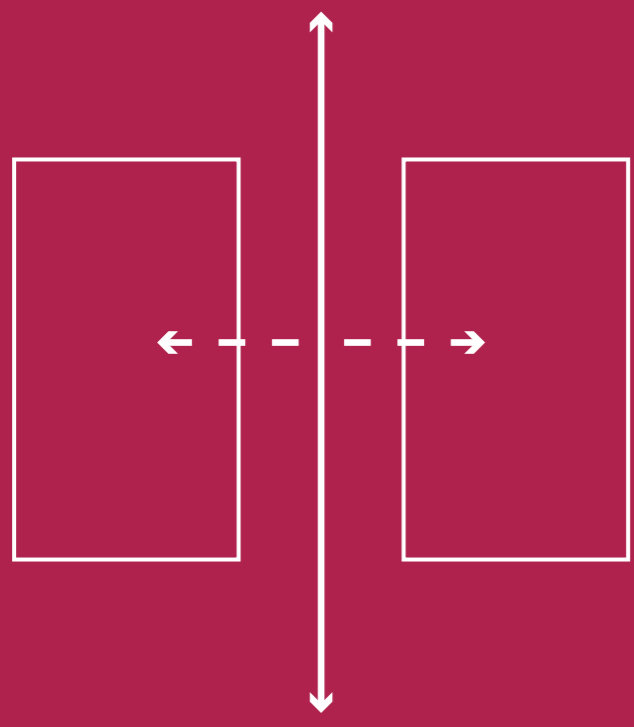
## inclusive

whereas consumerism enhances class polarization, the public condenser seeks for inclusivity by offering places for multiple target audiences



## inviting

instead of forcing people to enter, the public condenser tends to kindly invite people without any means of confrontation



## unique

whereas consumerism claims to stimulate status and uniqueness, the public condenser provides absolute uniqueness by using the wall, being it one of its kind



## honest & trustworthy

honesty refers to preserving the original character of the place, while trustworthiness refers to the openness and transparency of the public condenser

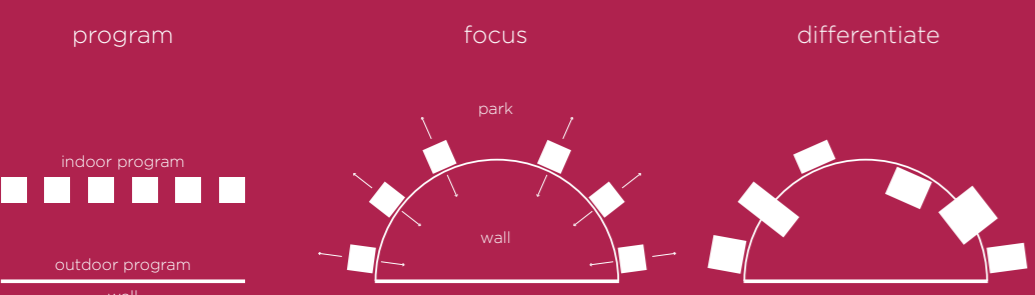


focus on existing honest

trustworthy focus on new

## minimum for maximum

whereas commercialization tends to reach the maximum through maximum effort, the public condenser tends to provide the maximum through minimum interventions

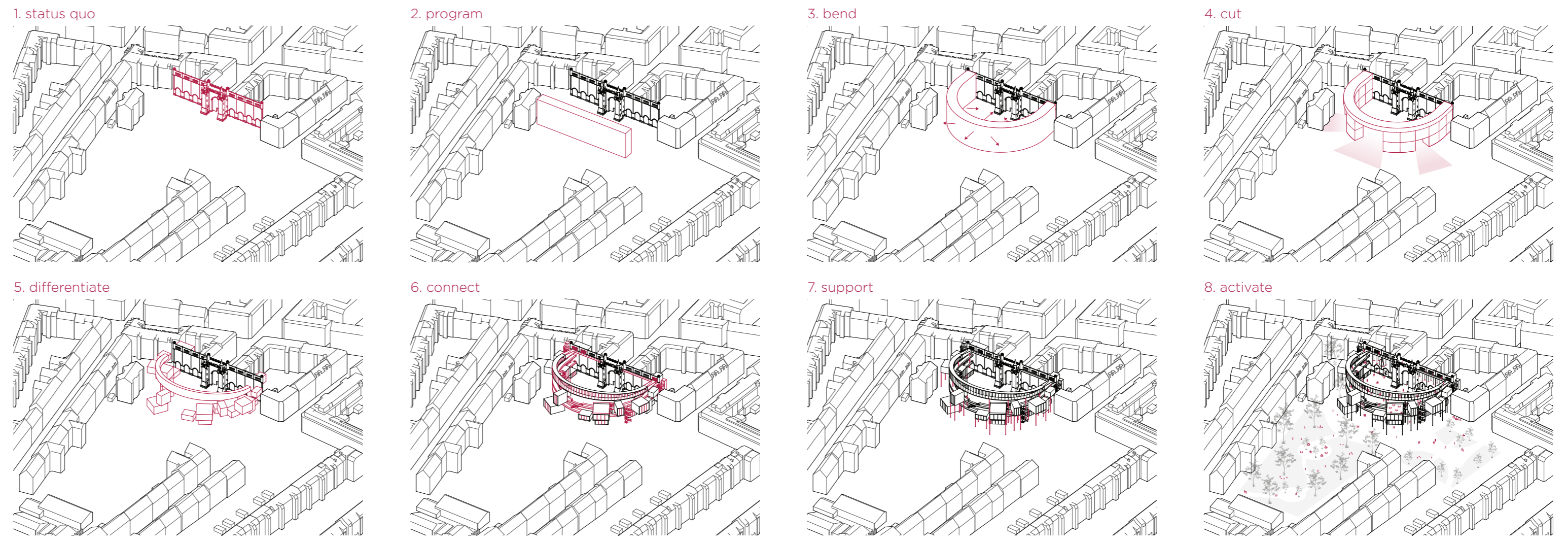


## multiplicity

the combination of these strategies results in a place that allows multiple activities to take place for different target audience in complete honesty and trustworthiness

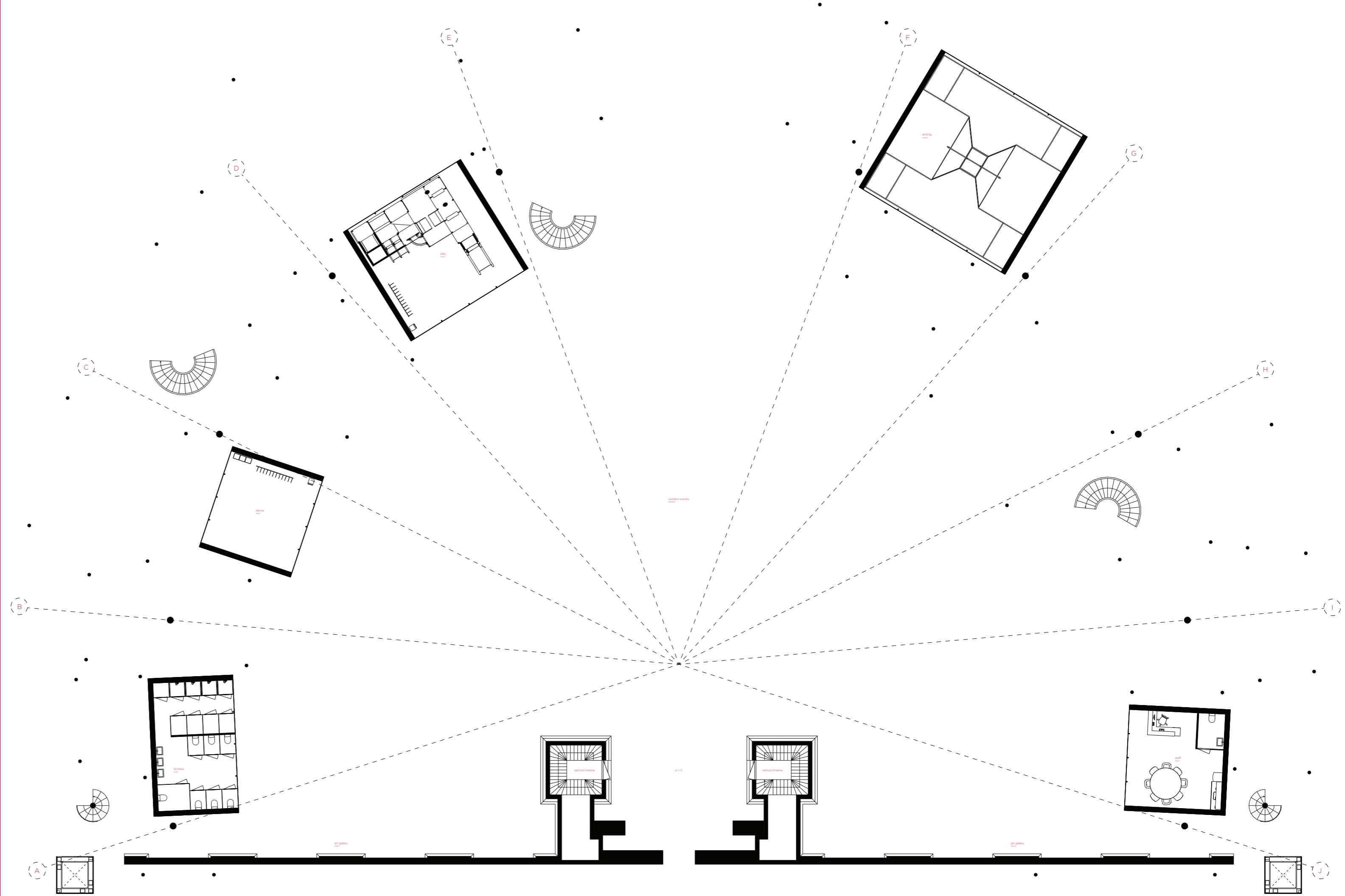


# Design strategy // Mass strategy

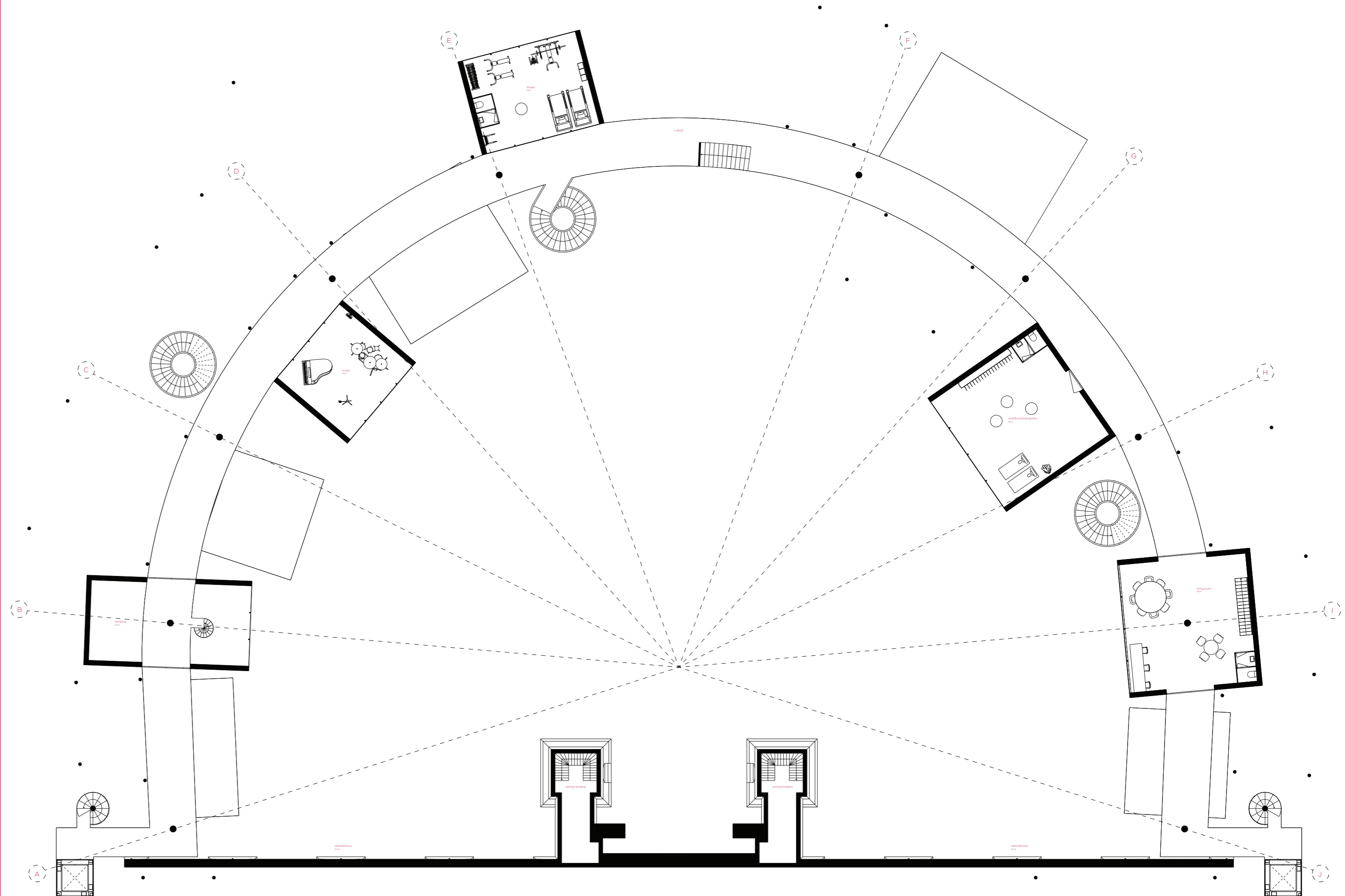


# Drawings // Plan

plan level 00 - 1:200



plan level 01 - 1:200





# Valuation of Existing

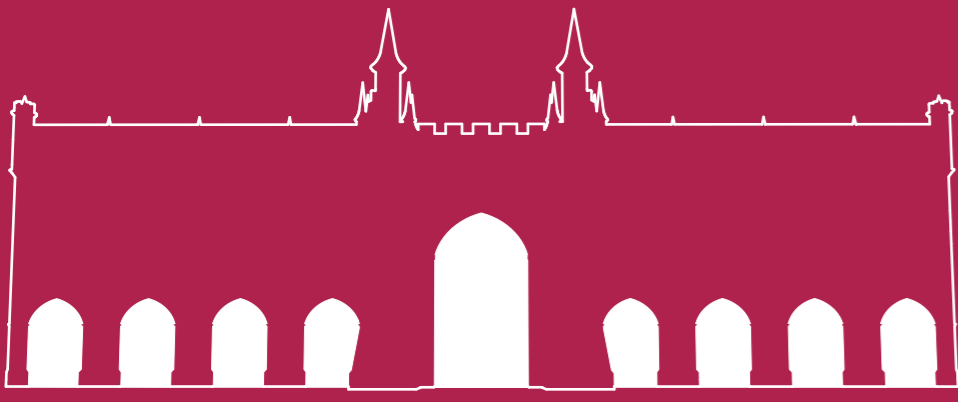
## visible entity

the intervention should respect the wall being perceivable as one entity



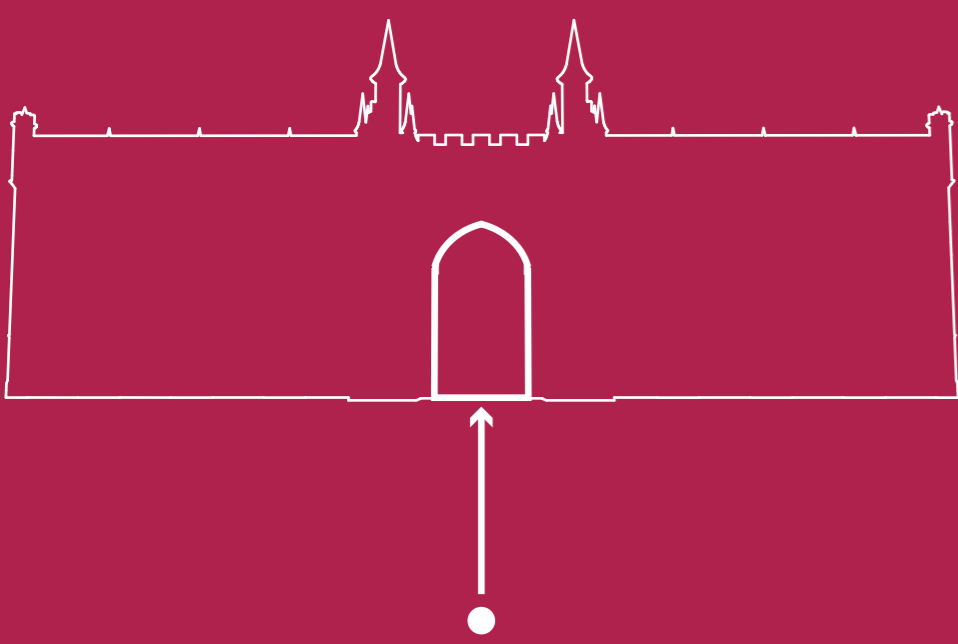
## centered hierarchy

the intervention should respect the central hierarchical order of the wall



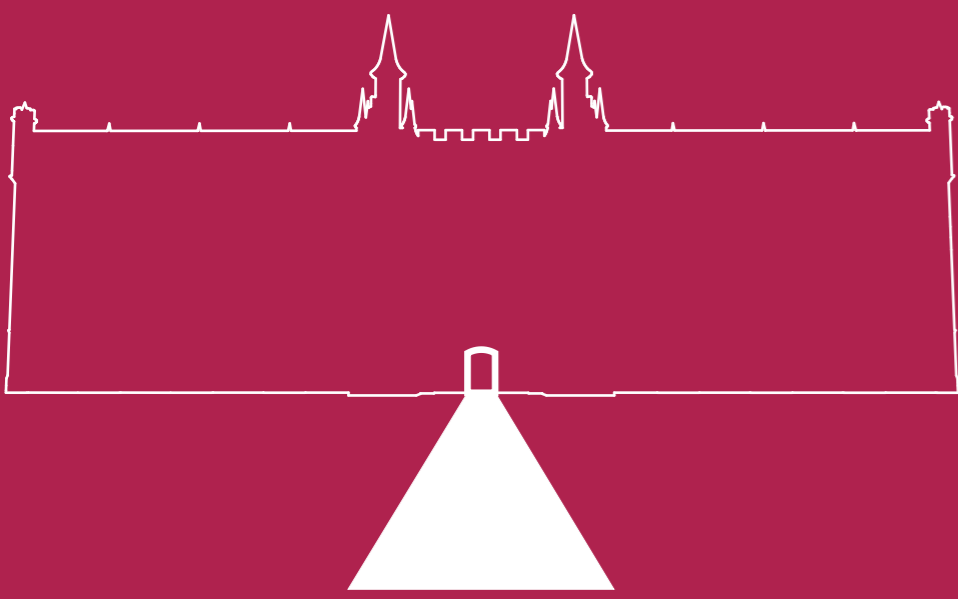
## historical shooting direction

the intervention should respect the historical direction in which the wall used to be perceived



## centered axis

the intervention should emphasize the central axis that goes through the wall



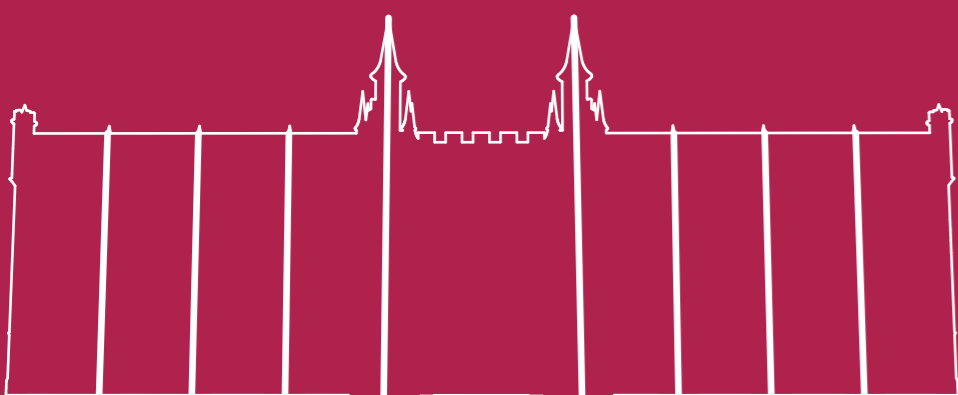
## narrow entrance

the closed character of the wall should be seen as a possibility to create a new world behind the wall



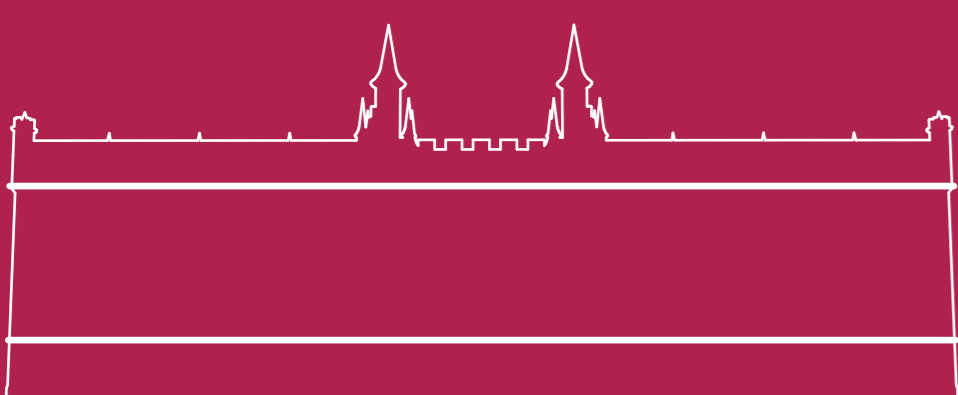
## vertical fragmentation

the intervention should respect the vertical fragmentation of the wall



## horizontal fragmentation

the intervention should respect the horizontal fragmentation of the wall



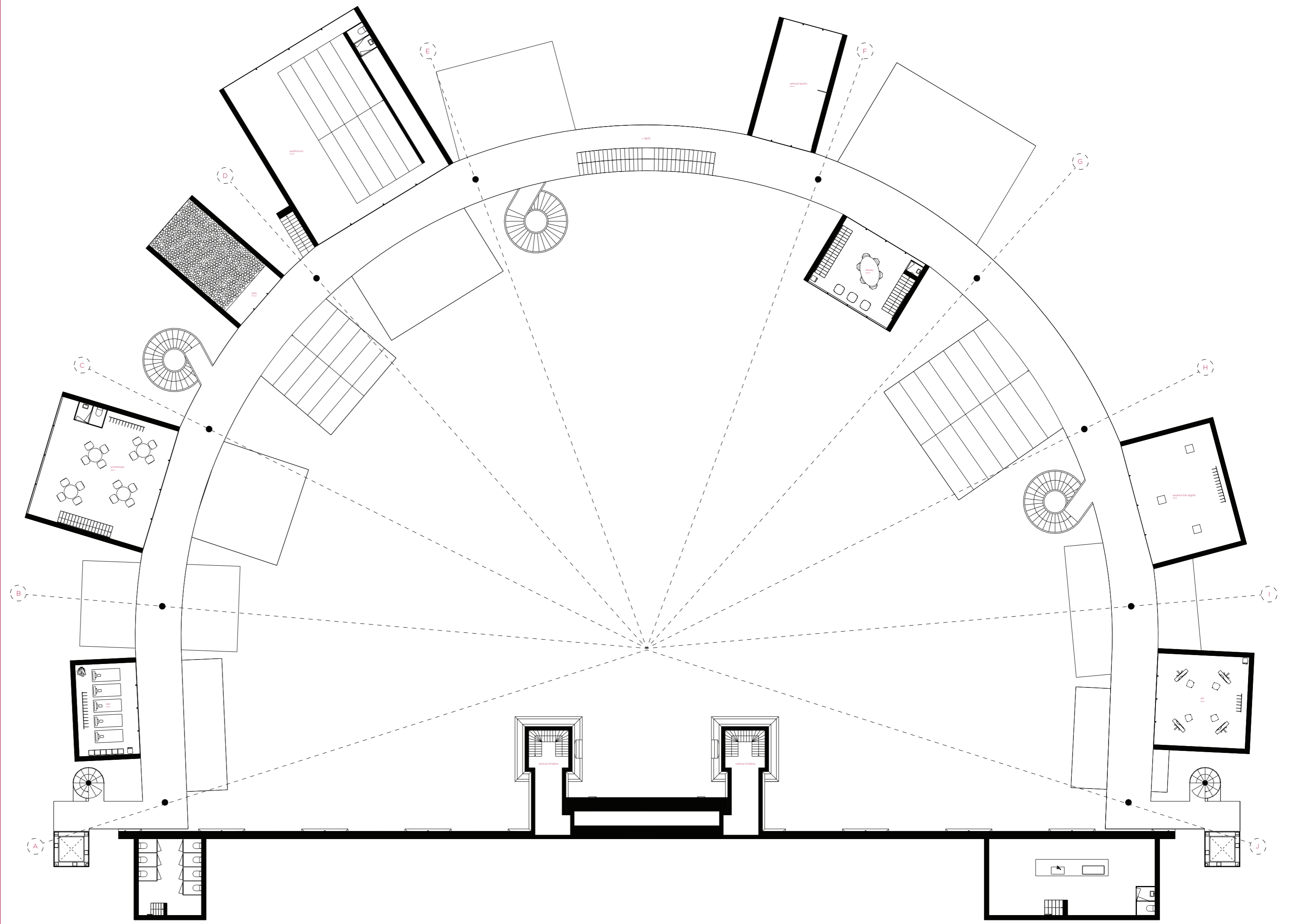
# Drawings // Elevation

front elevation - 1:200

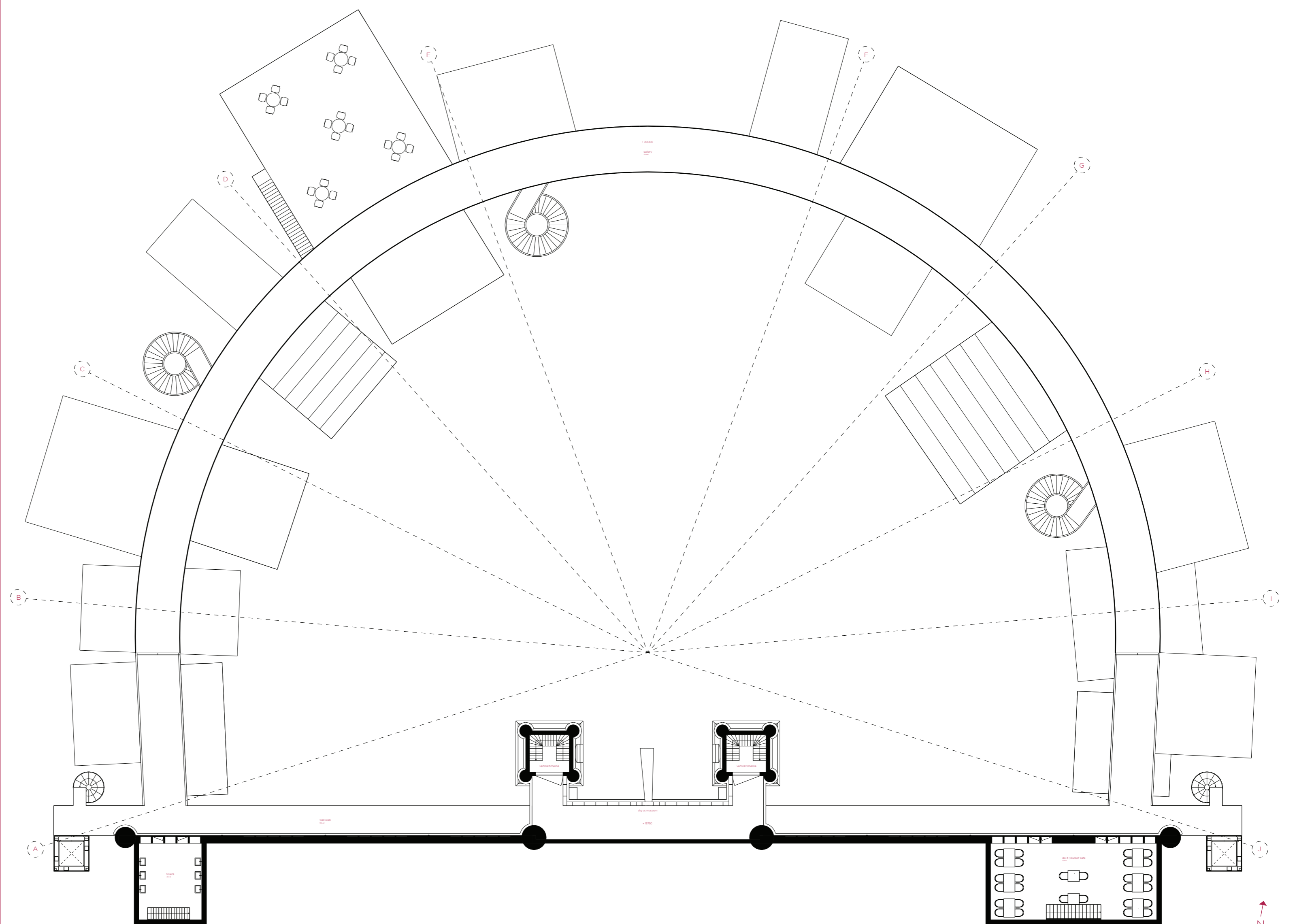


# Drawings // Plan

plan level 02 - 1:200



plan level 03 - 1:200

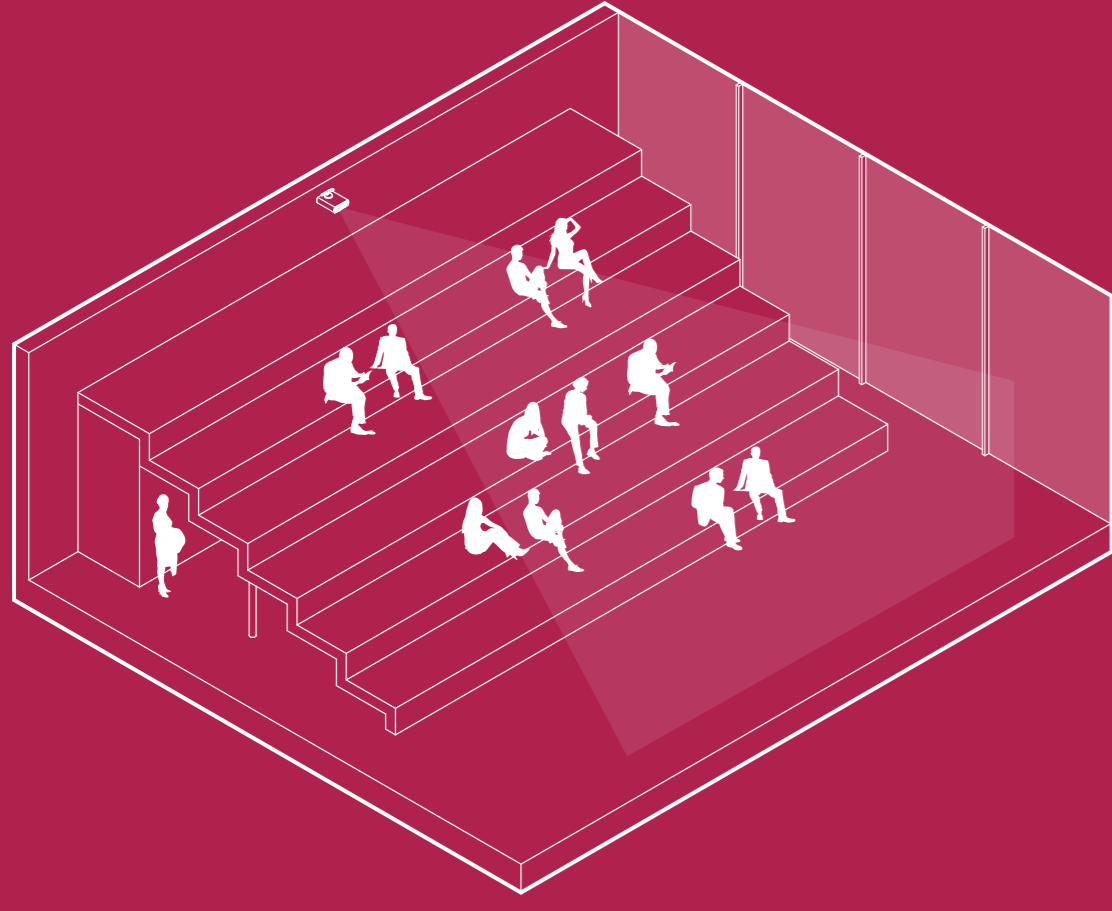




Activity // Indoor

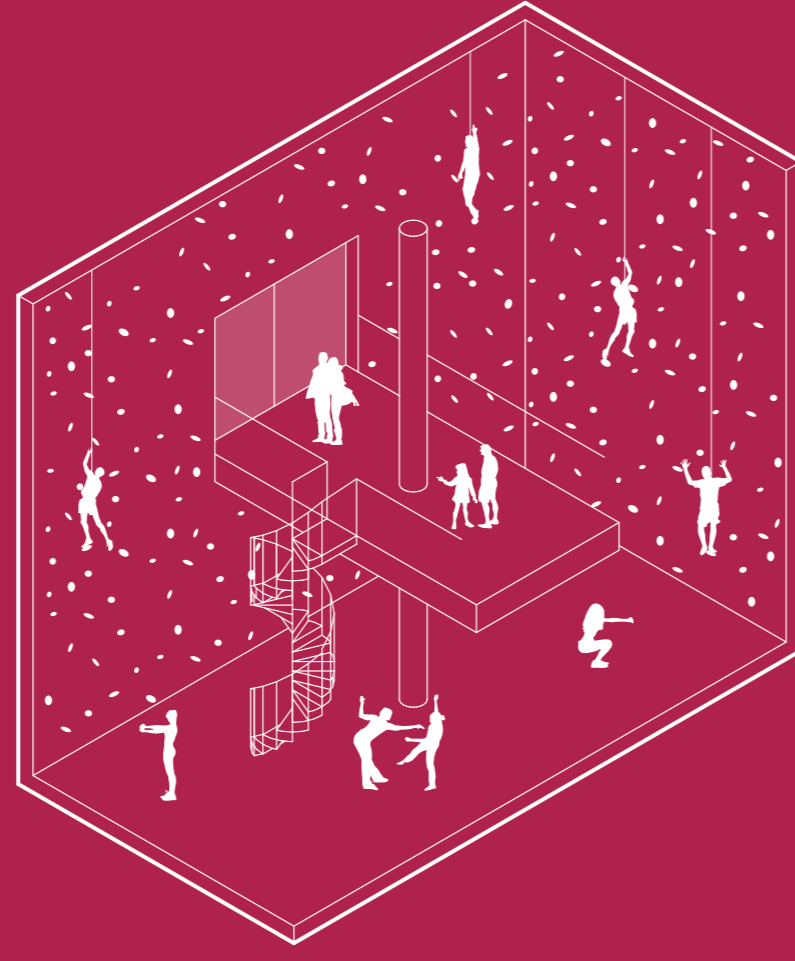
auditorium

lectures, gatherings and cinema



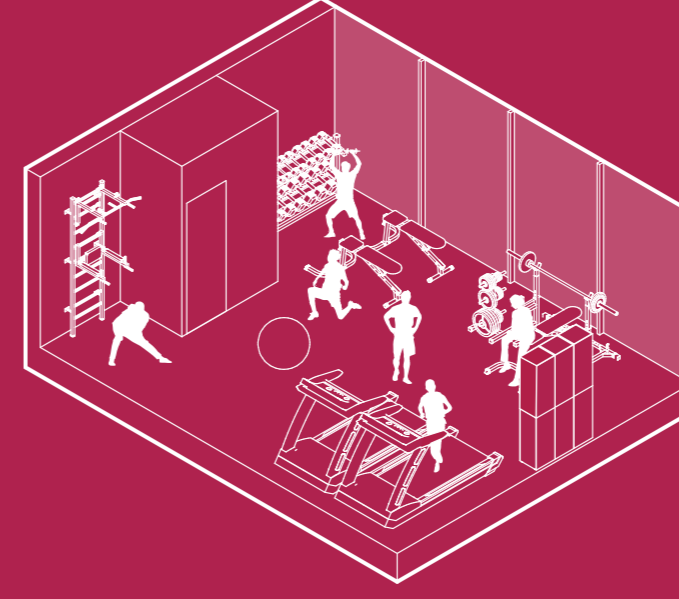
climbing

gravity defying sports



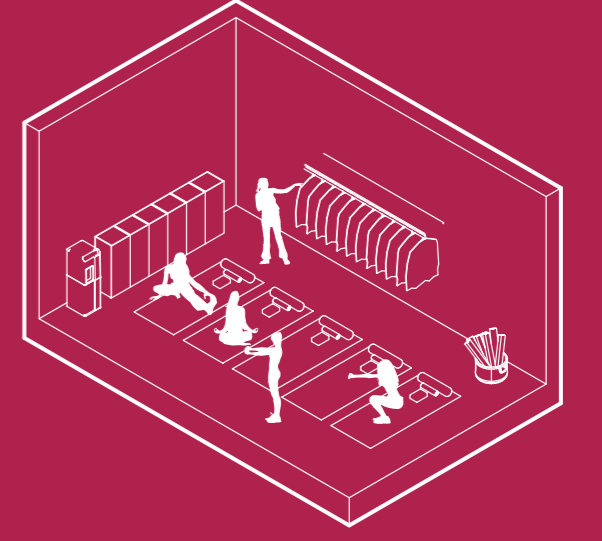
fitness

full-body workouts



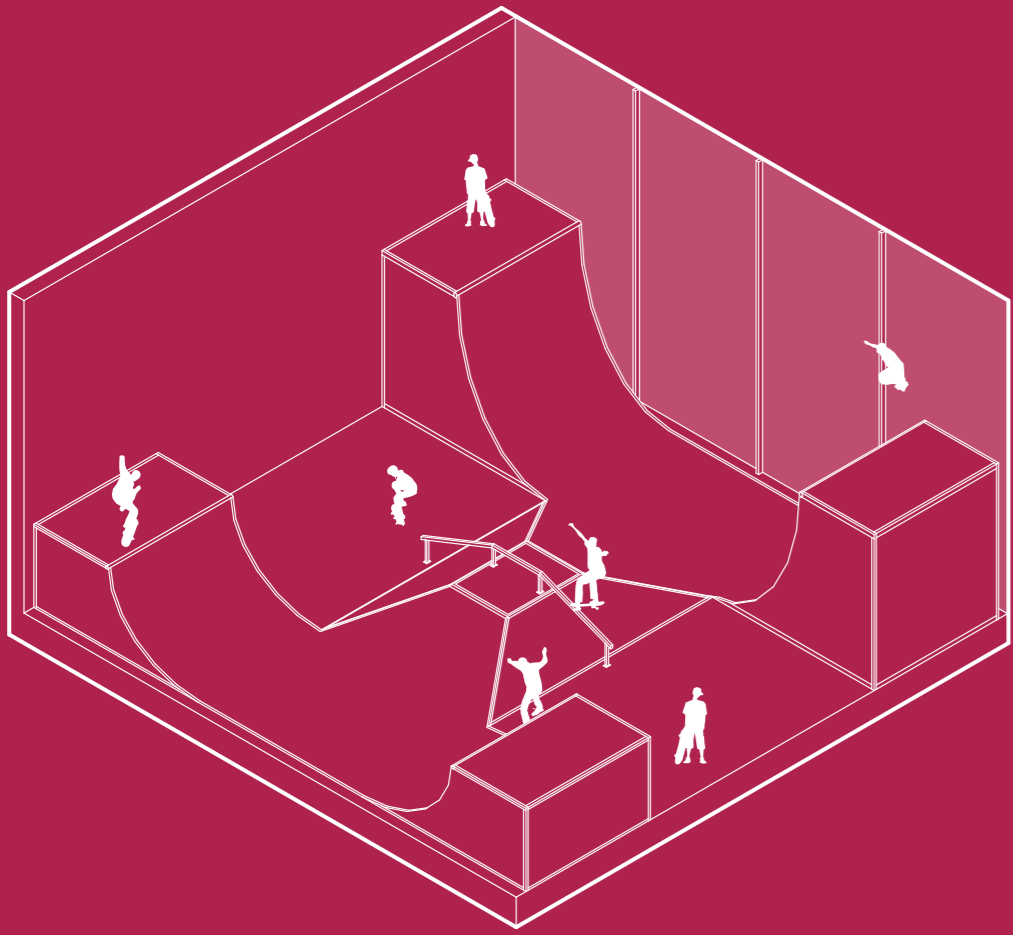
zen

a moment of contemplation and mental calmness



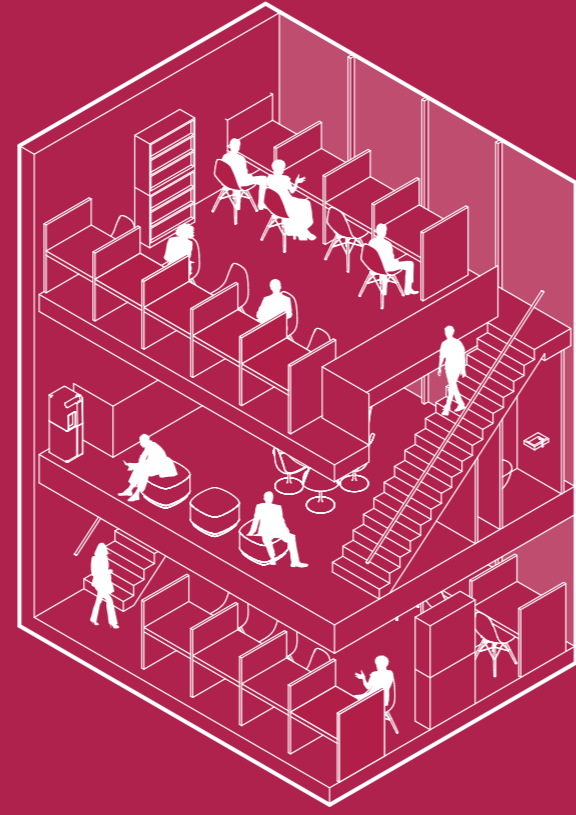
skating

ramps for professionals as for beginners



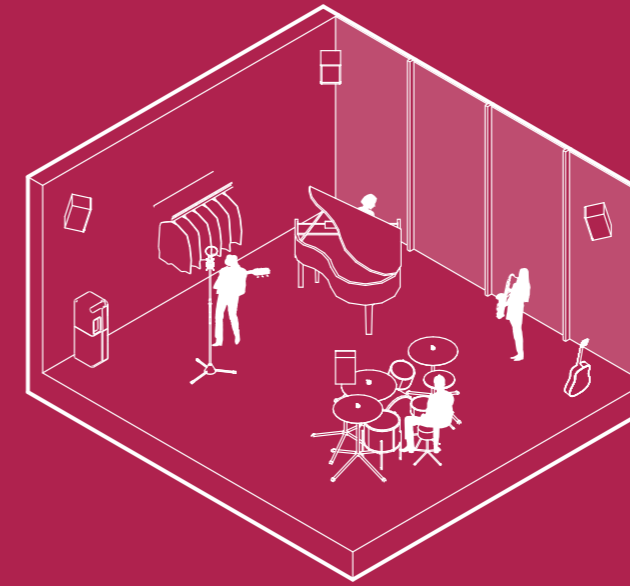
library

study spots with an extraordinary view



music

connects different musical talents



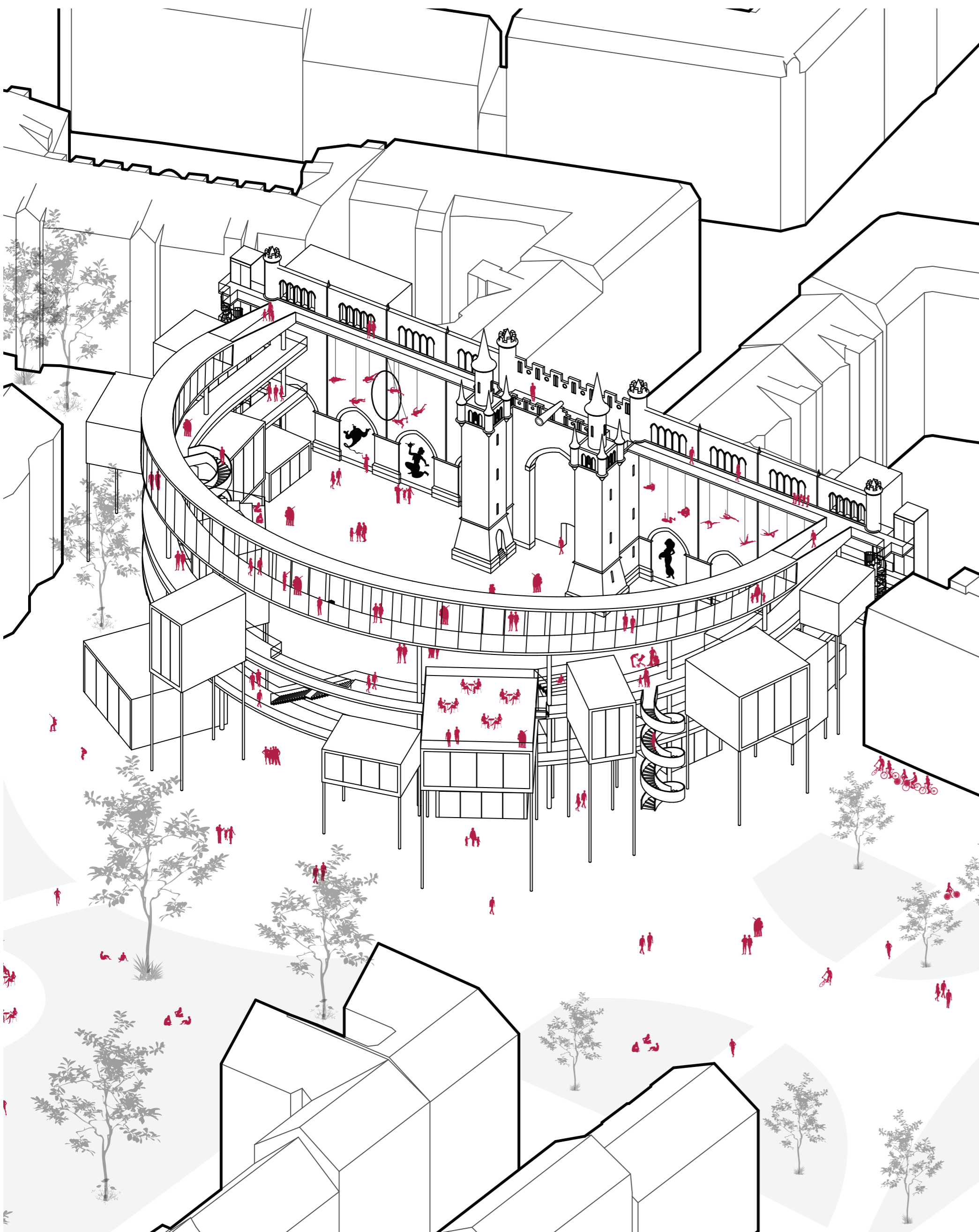
art

canvas painting and exhibitions

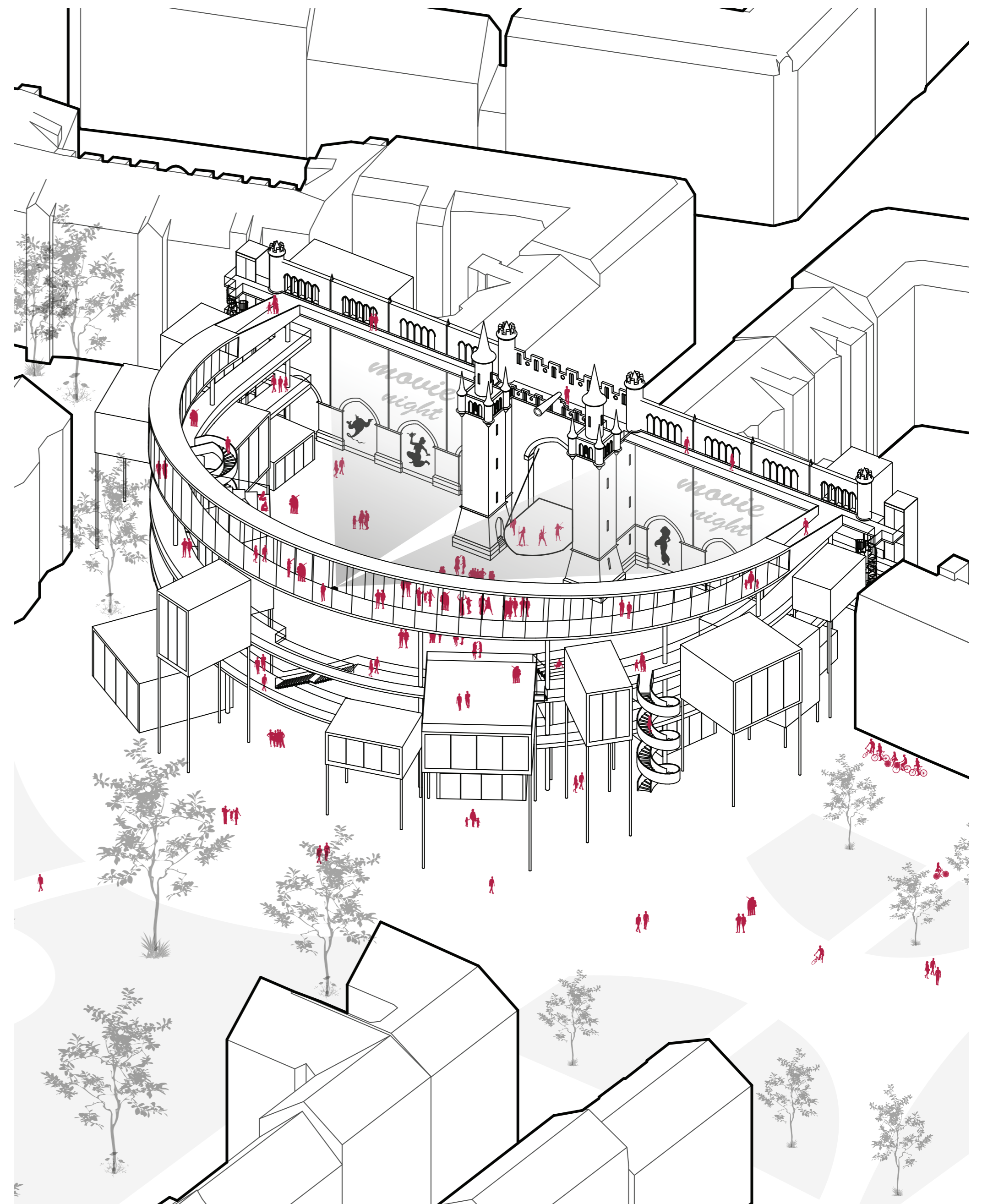


Activity // Outdoor

activity by day - wall as vertical playground

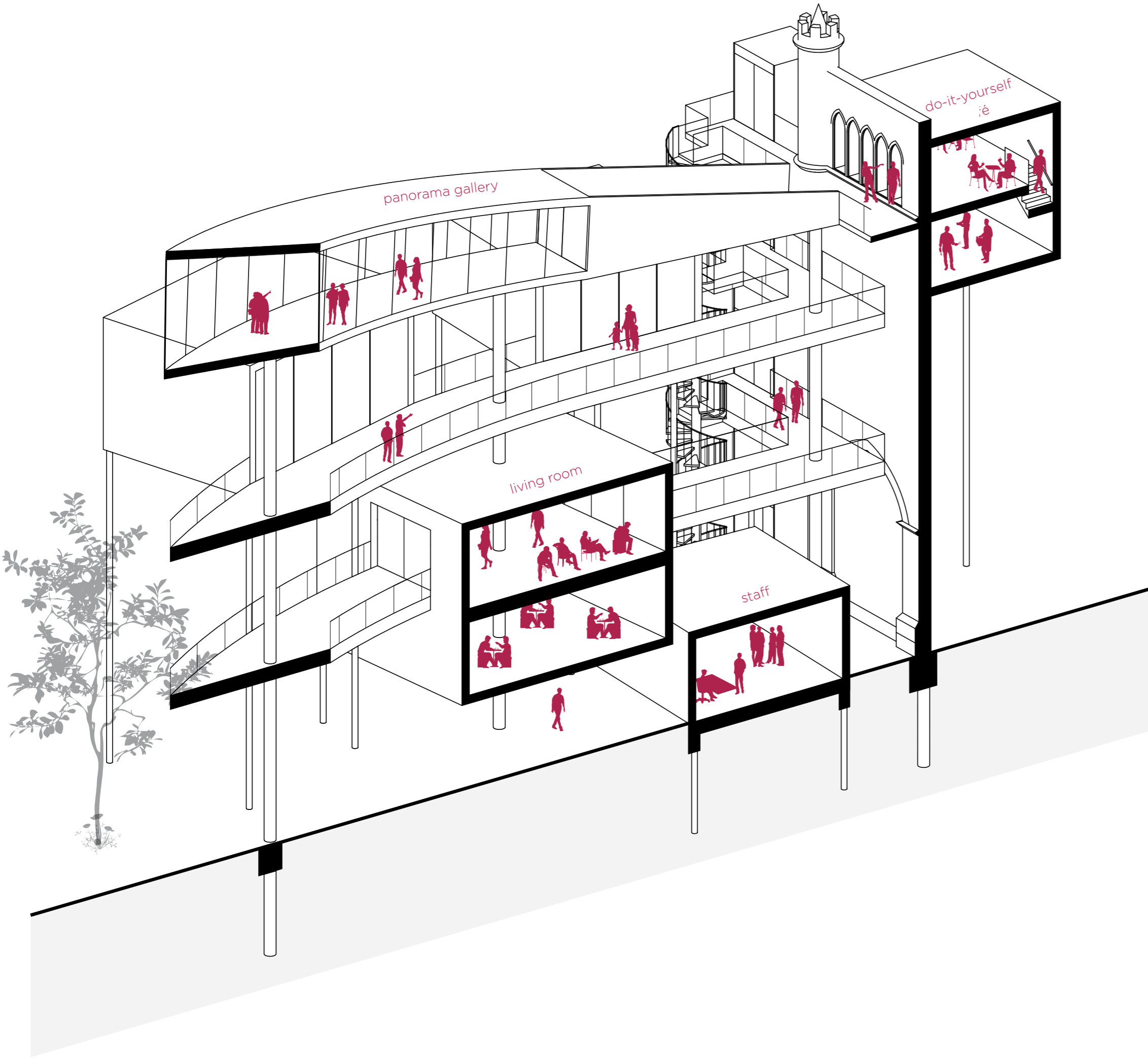


activity by night - wall as projection screen and stage for events

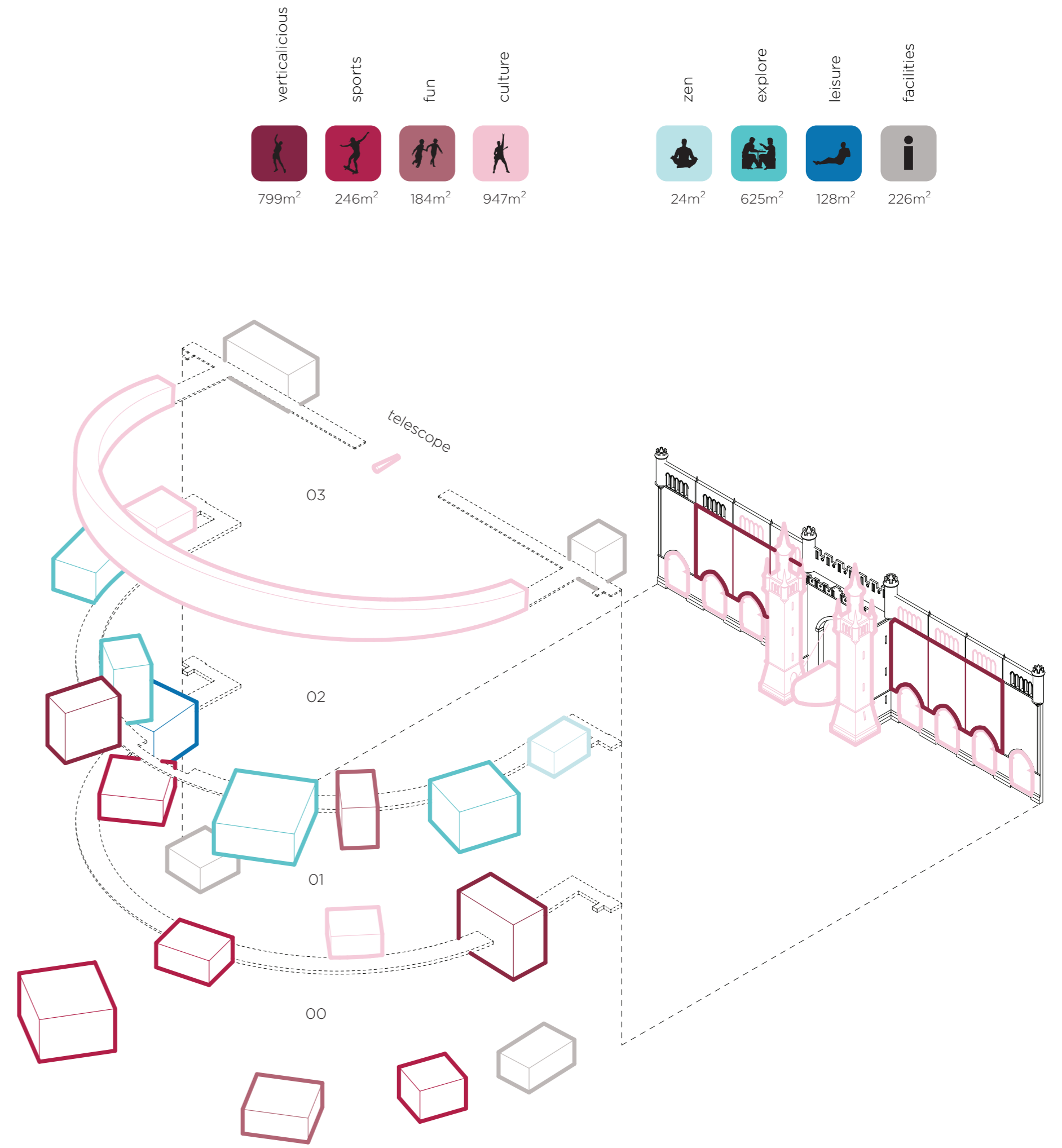




Design // 3D-sectional cut - how it works



Design // Programmatic composition

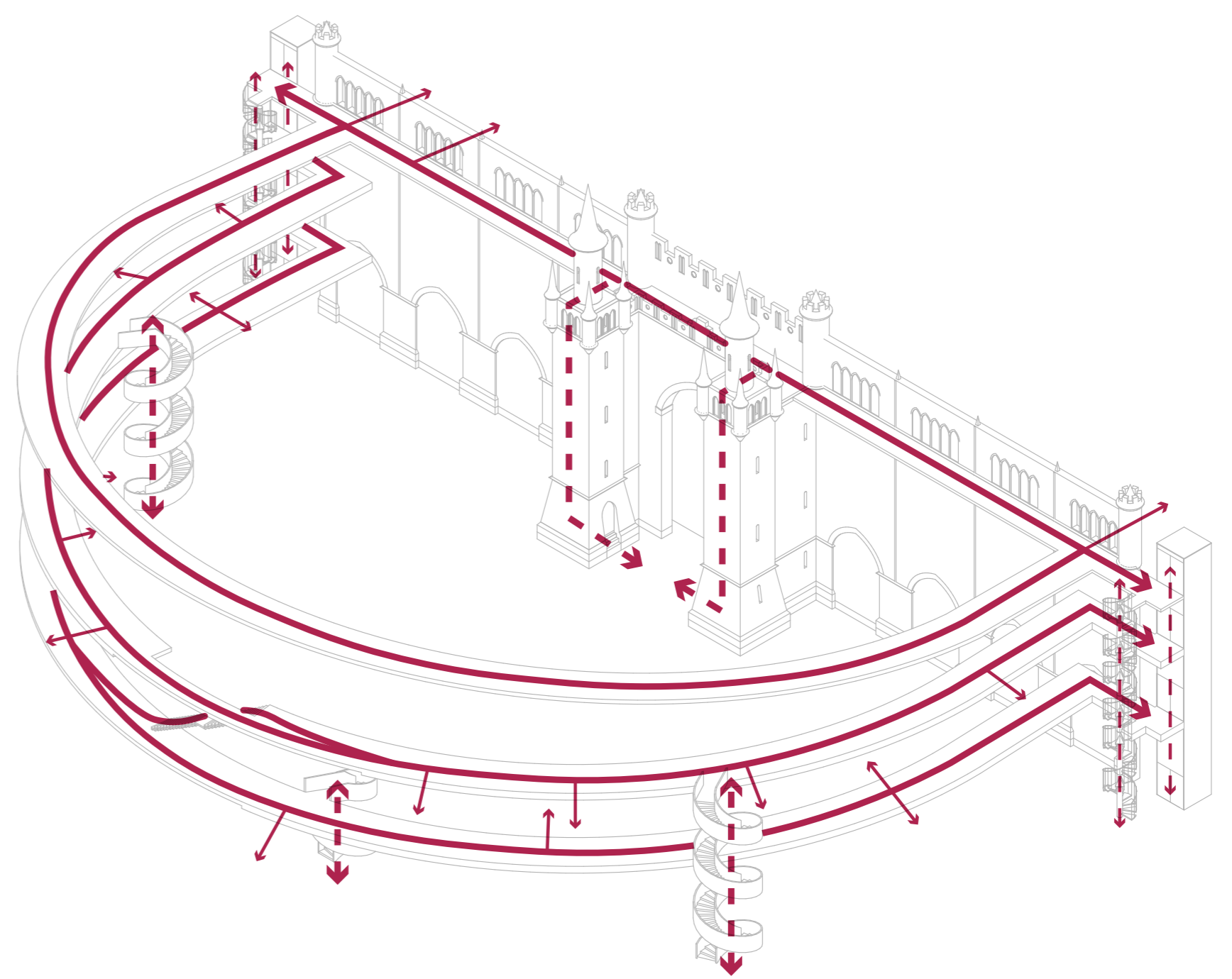
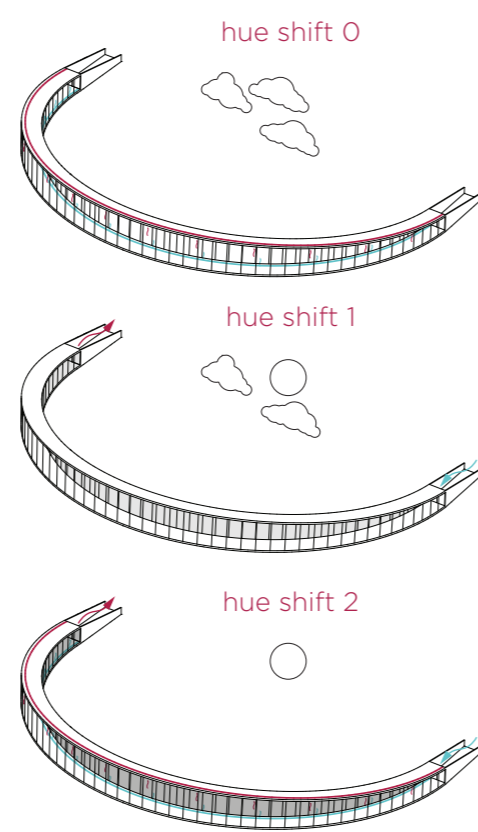
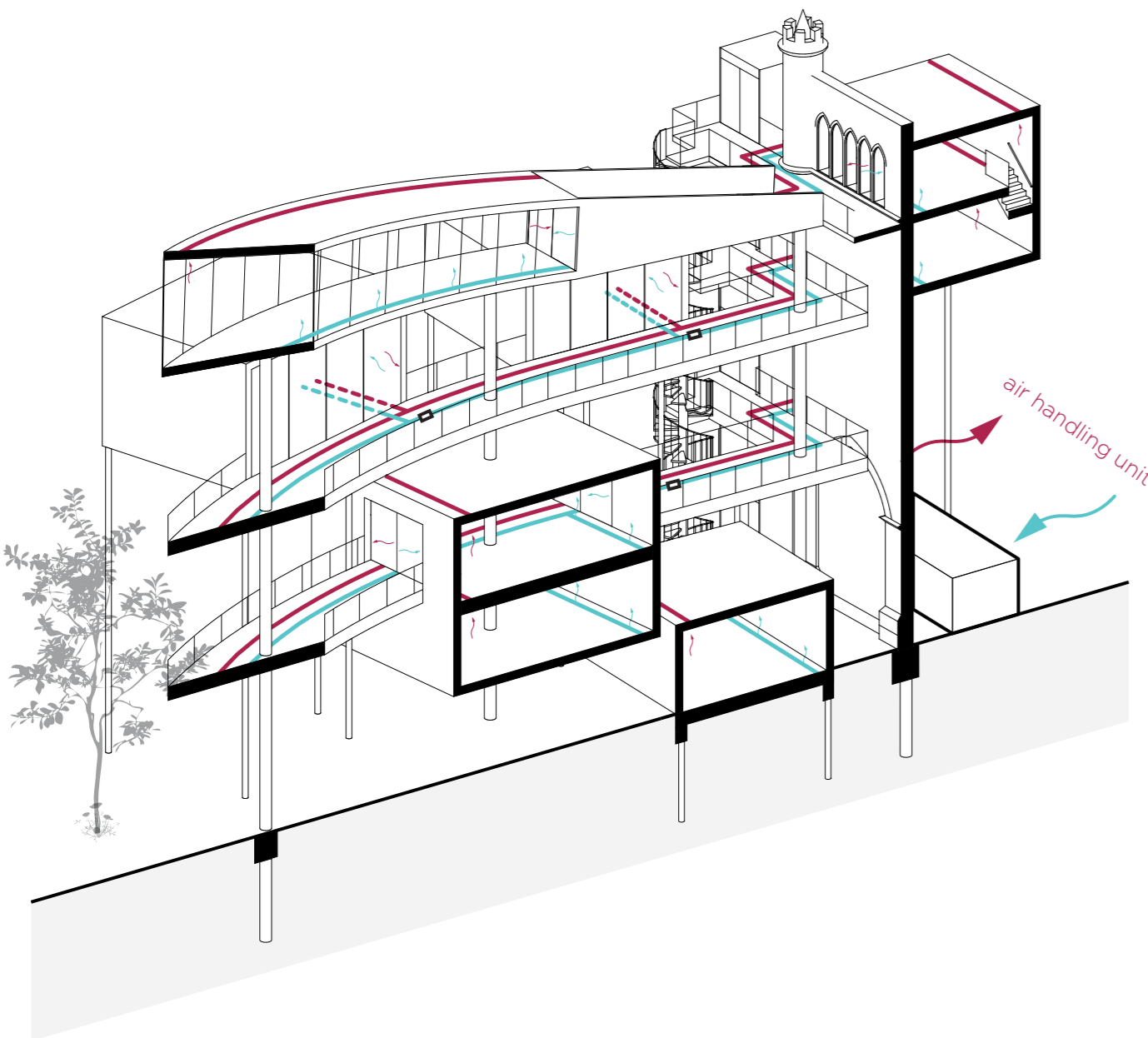


Design // Technology

climate - ducts integrated in the gallery floor

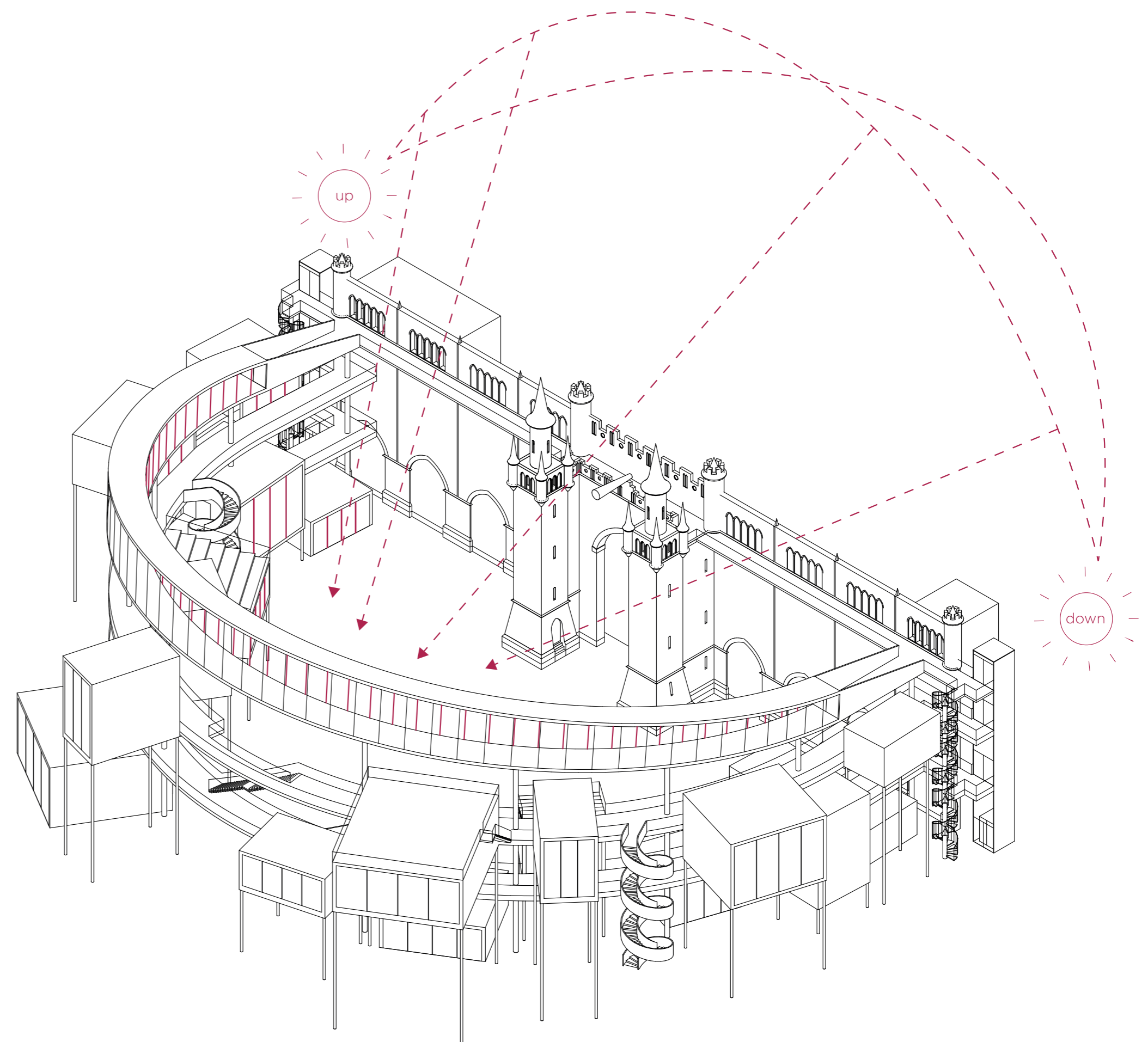
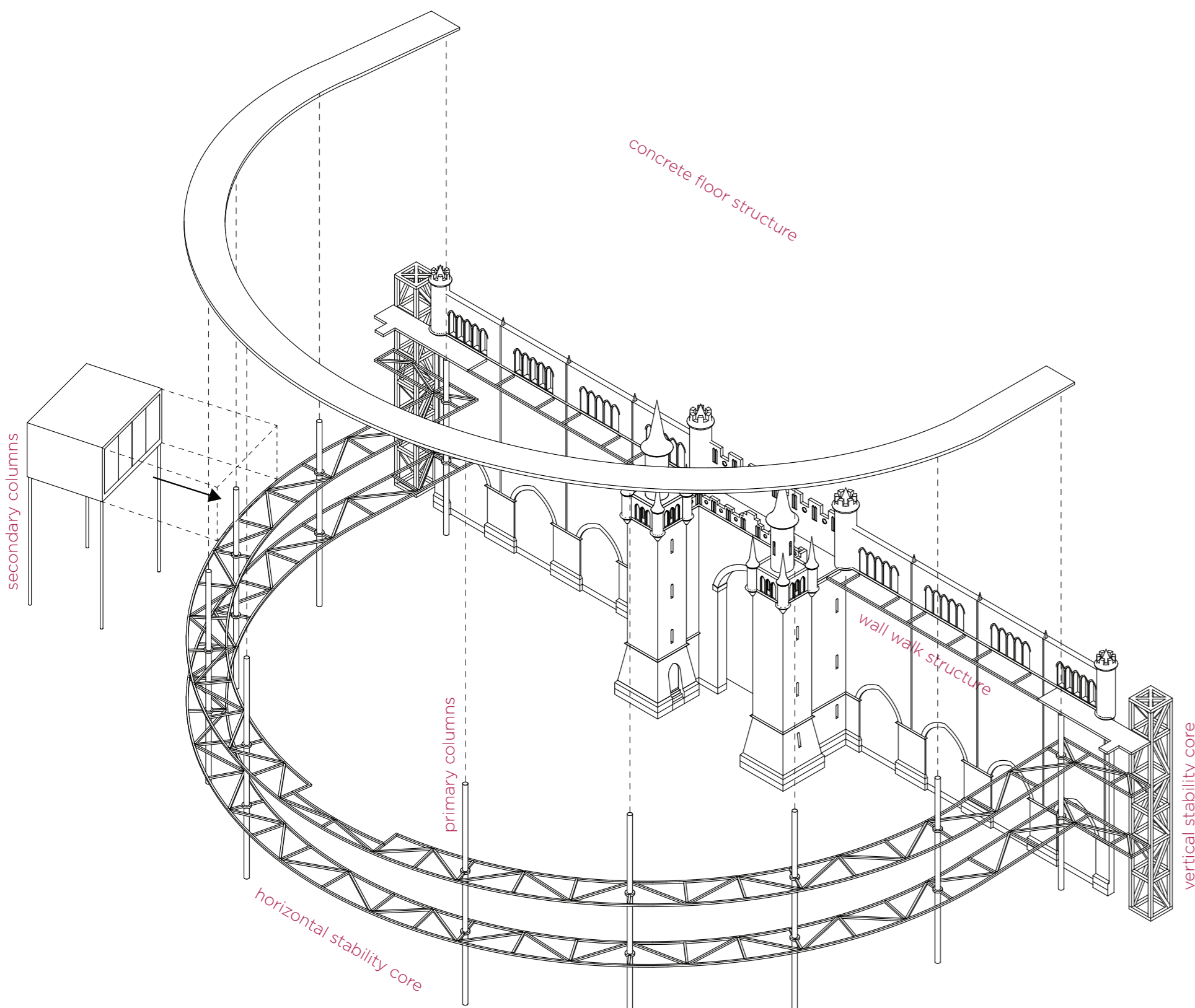
panorama gallery - shifting glass

circulation - the galleries serve as main route towards the interiors



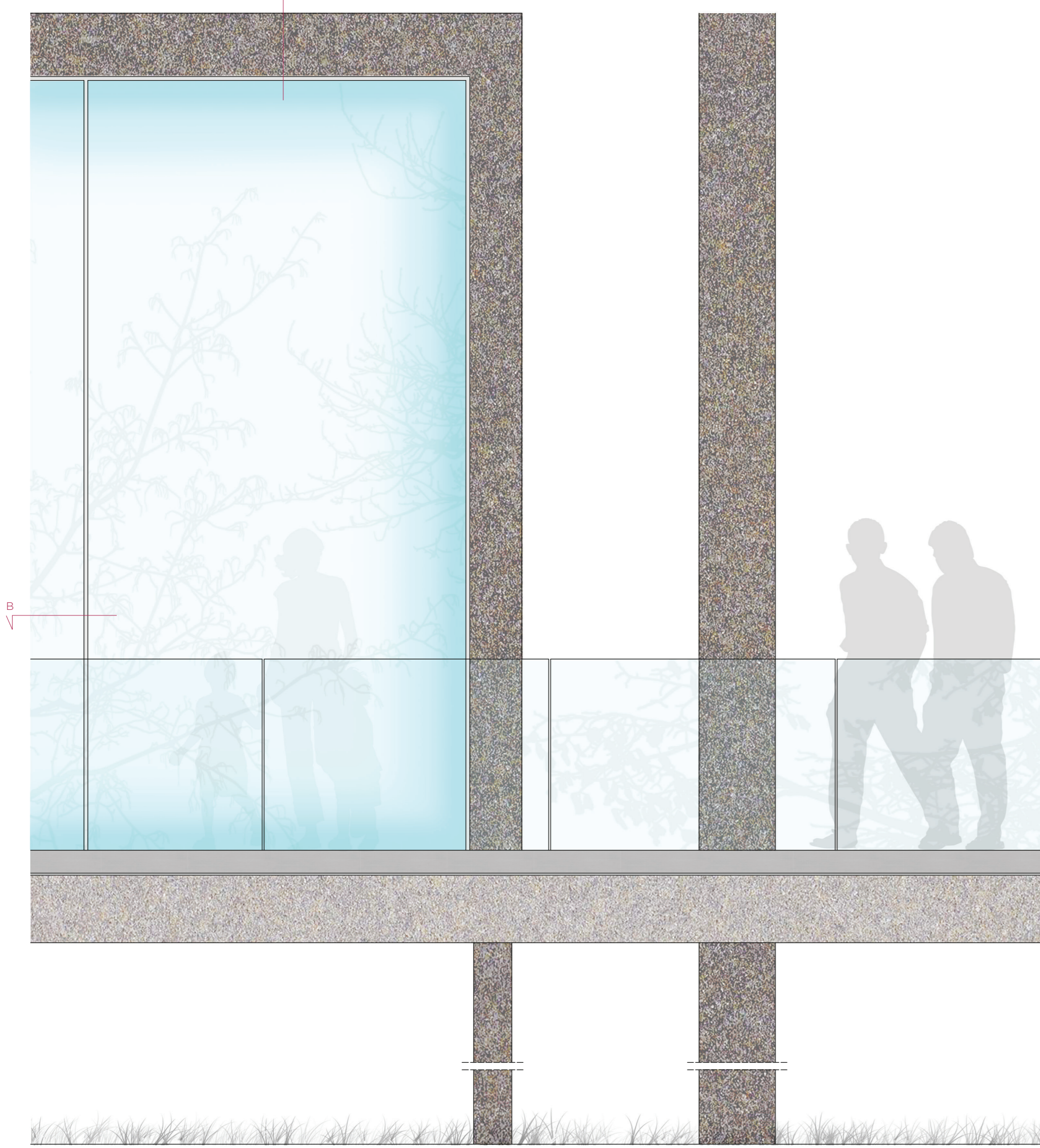
structure - horizontal truss serves as backbone where everything is attached to

sun orientation - catch sunlight through the use of transparent solar panels on curtain walls

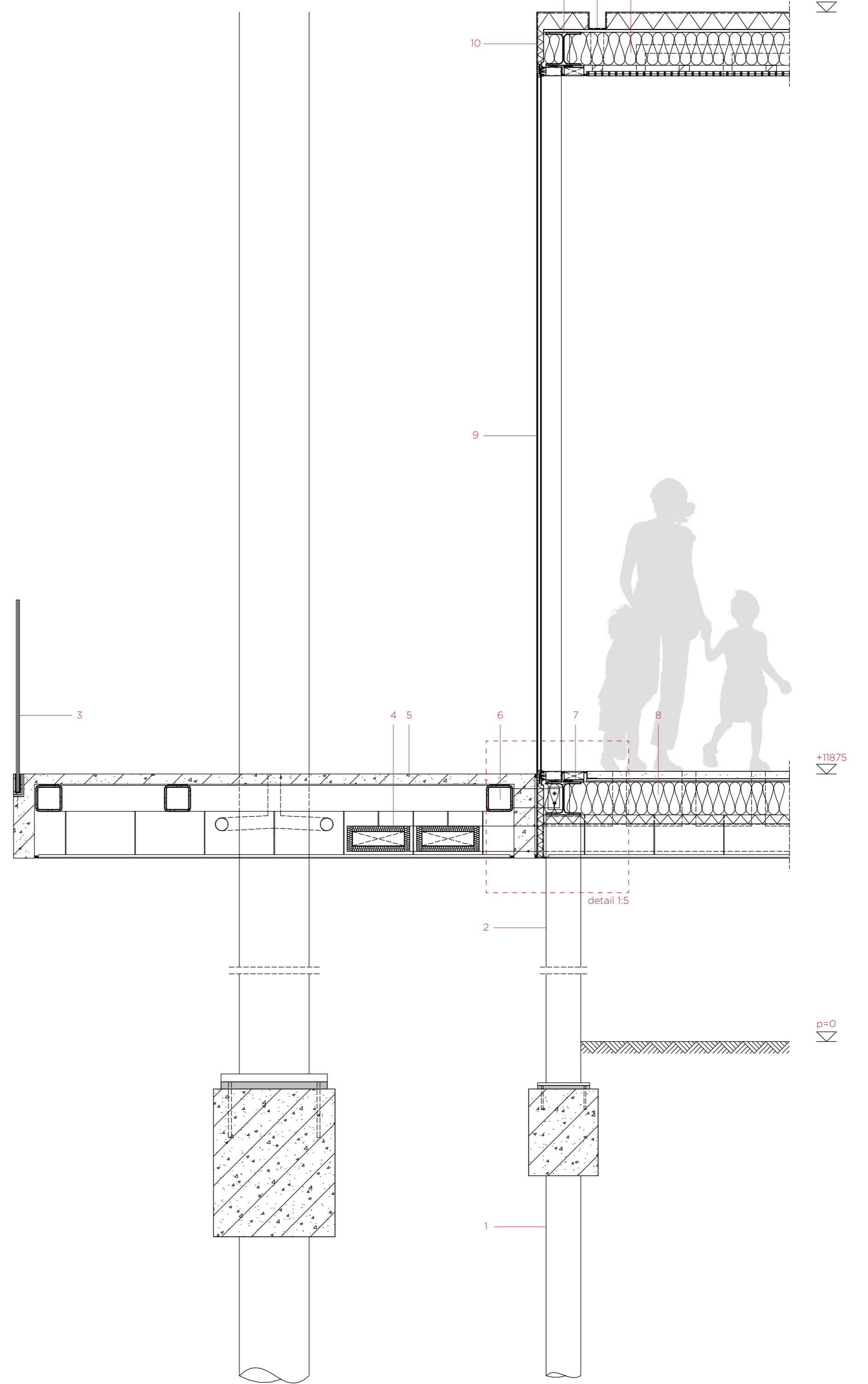




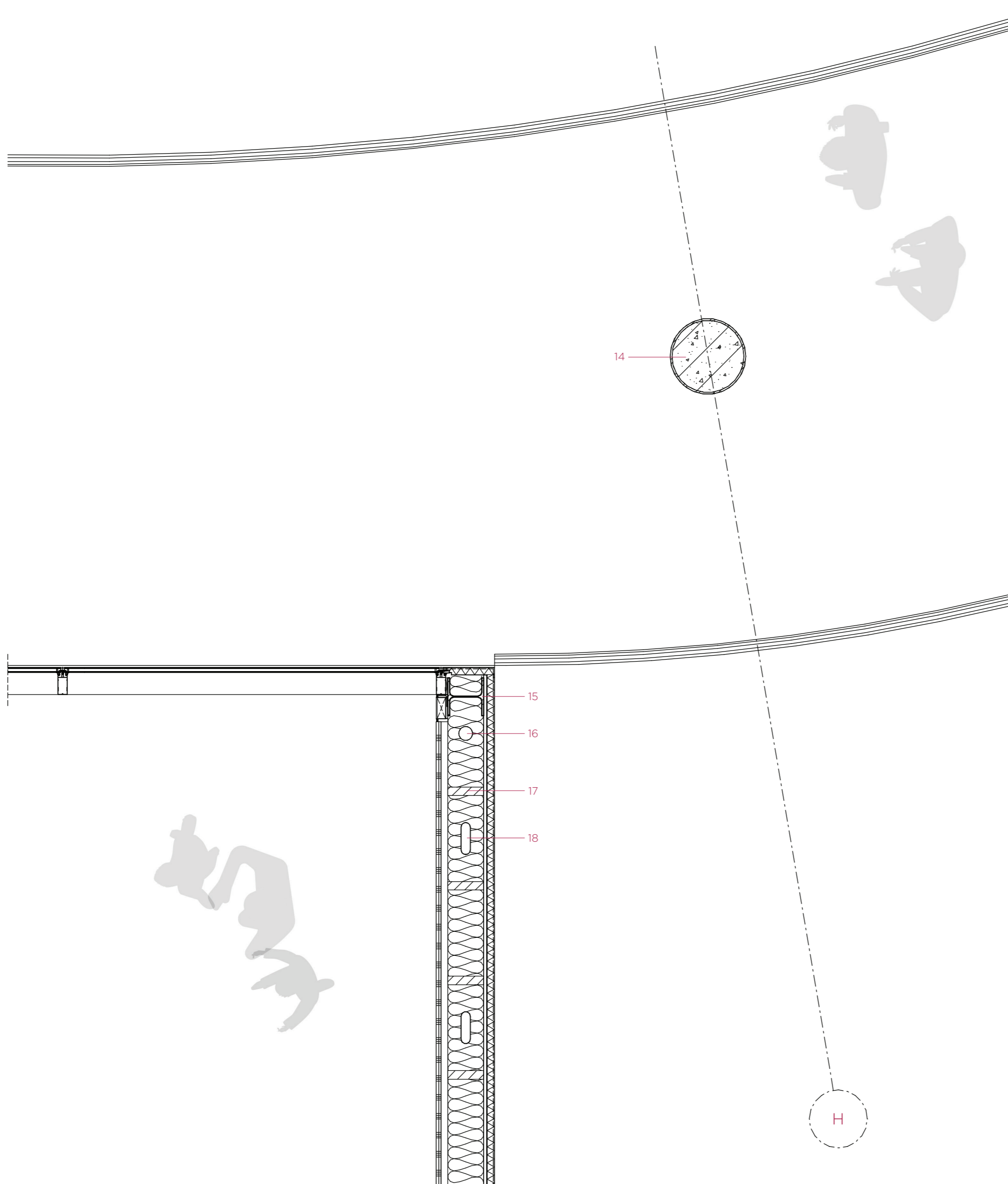
elevation 1:20



vertical section AA - 1:20



horizontal section BB - 1:20



- 1 - steel pipe pile with poured concrete
- 2 - roughly coated steel column with poured UHP concrete
- 3 - glass railing
- 4 - installation duct
- 5 - prefab concrete element
- 6 - steel horizontal truss 150x150mm
- 7 - HE200A beam
- 8 - timber joisting
- 9 - double glazing with transparent solar panels
- 10 - roughly coated aluminium sandwich panel
- 11 - HE200A beam
- 12 - roof gutter
- 13 - timber joisting
- 14 - roughly coated steel column with poured UHP concrete
- 15 - HE200A column
- 16 - rainwater pipe
- 17 - timber joisting
- 18 - ventilation duct

Technology // Detailing 1:5

detail 1:5

