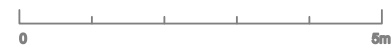
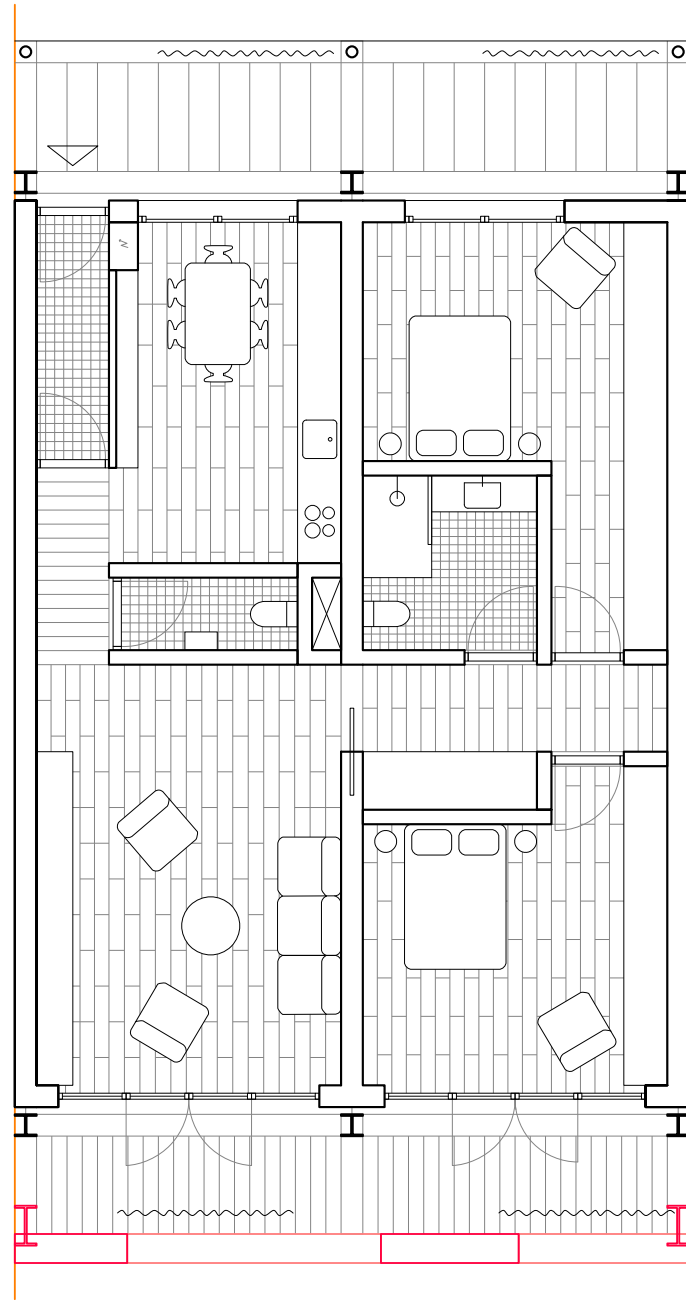


**(Out of the) Ordinary**  
Sophie Latour

*Roof plan*



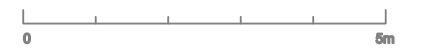
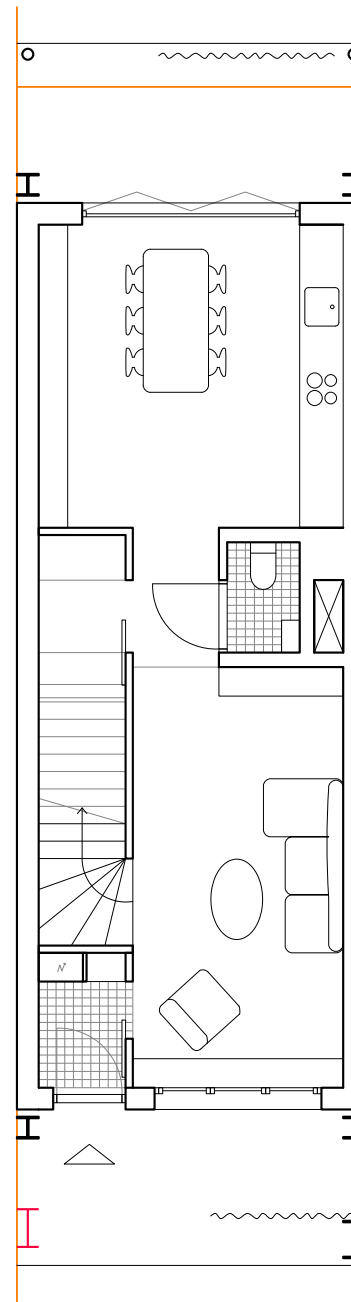


*(Out of the) Ordinary*  
Sophie Latour

Type 3 - 2f base  
105 m<sup>2</sup>

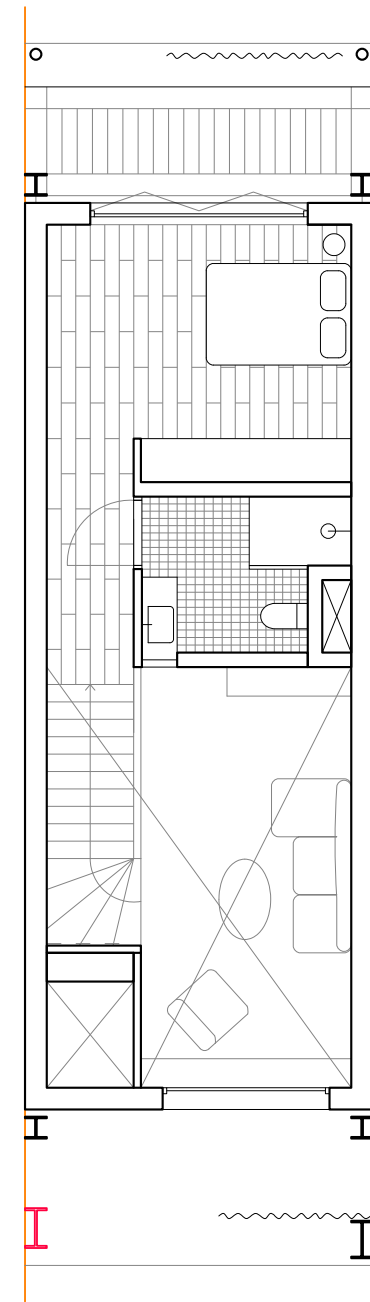


gf



*(Out of the) Ordinary*  
Sophie Latour

1f

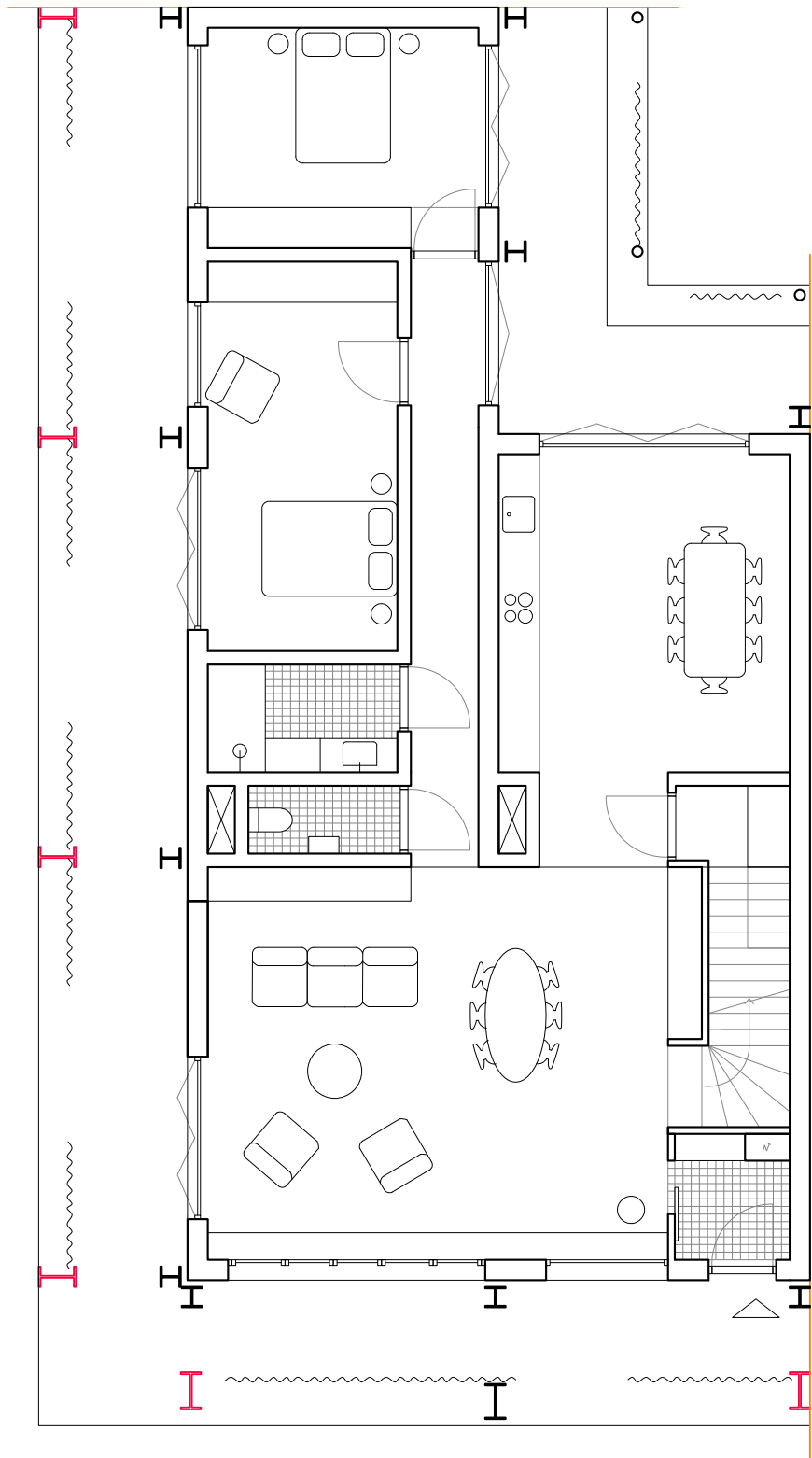


12500

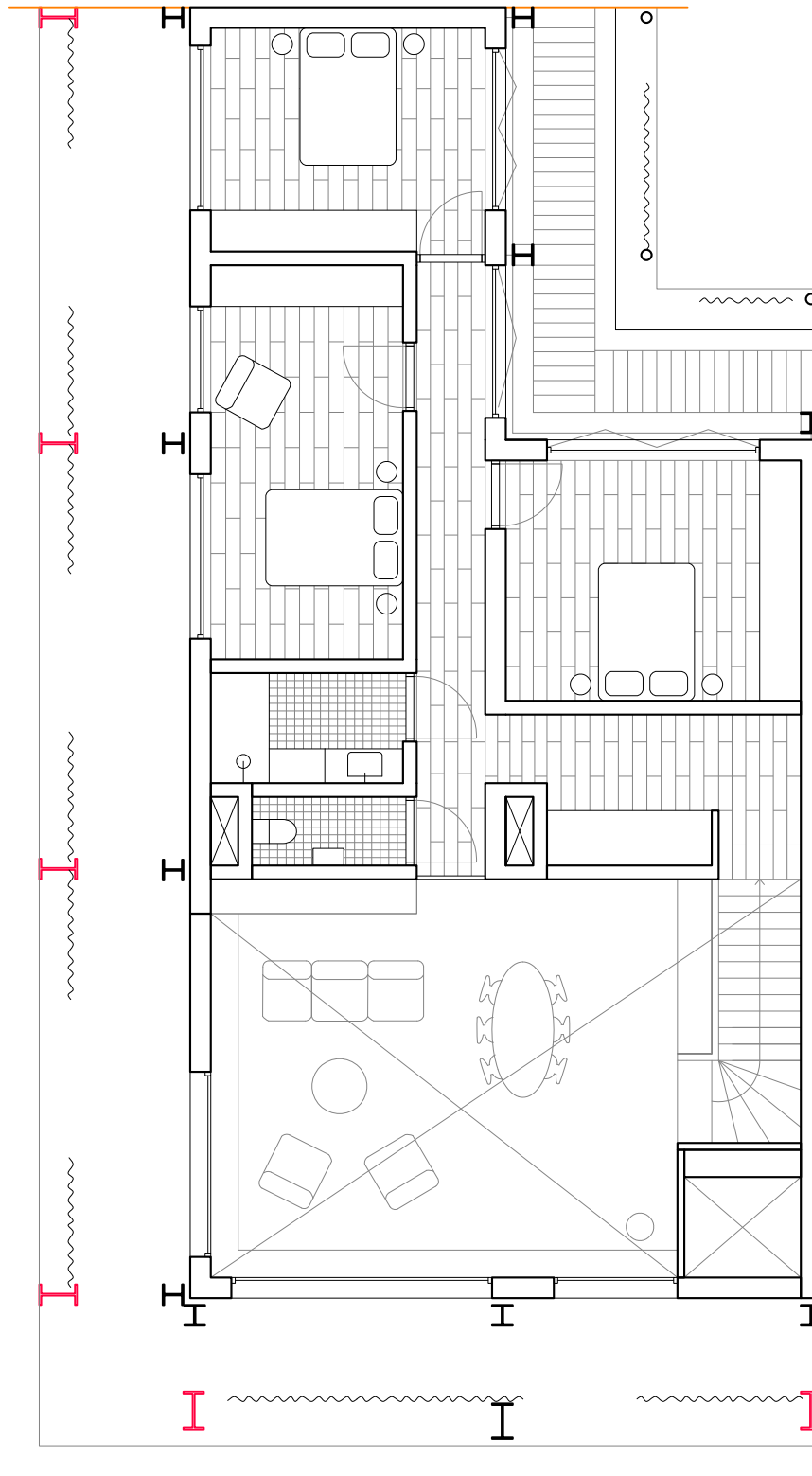
Type 1 - mezzanine  
78 m<sup>2</sup>



gf

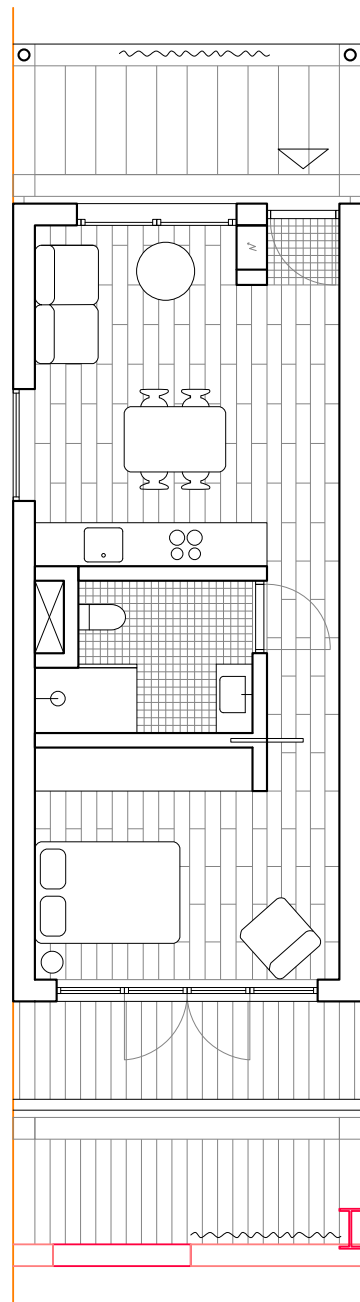


1f

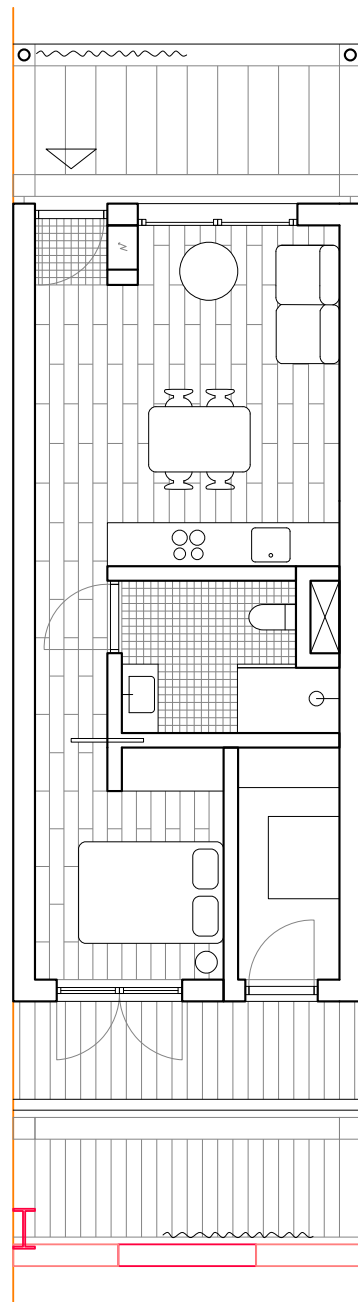




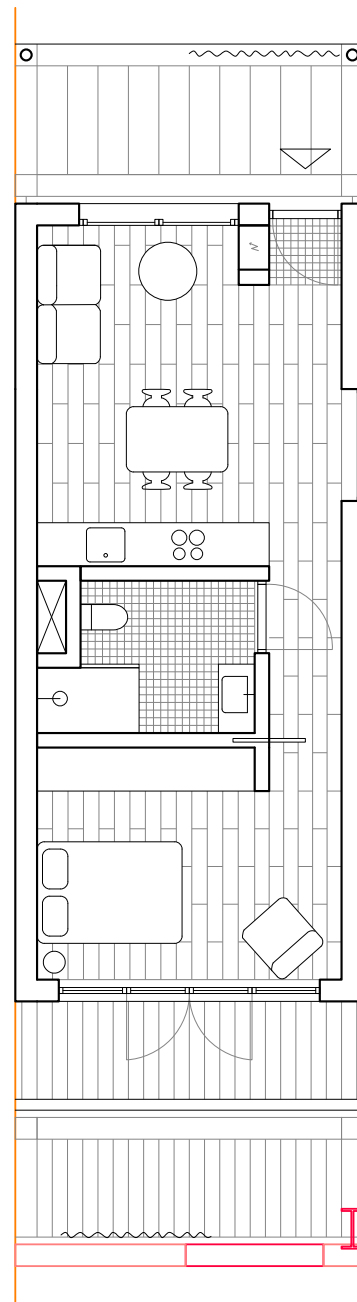
a



b

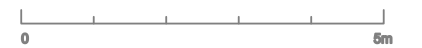
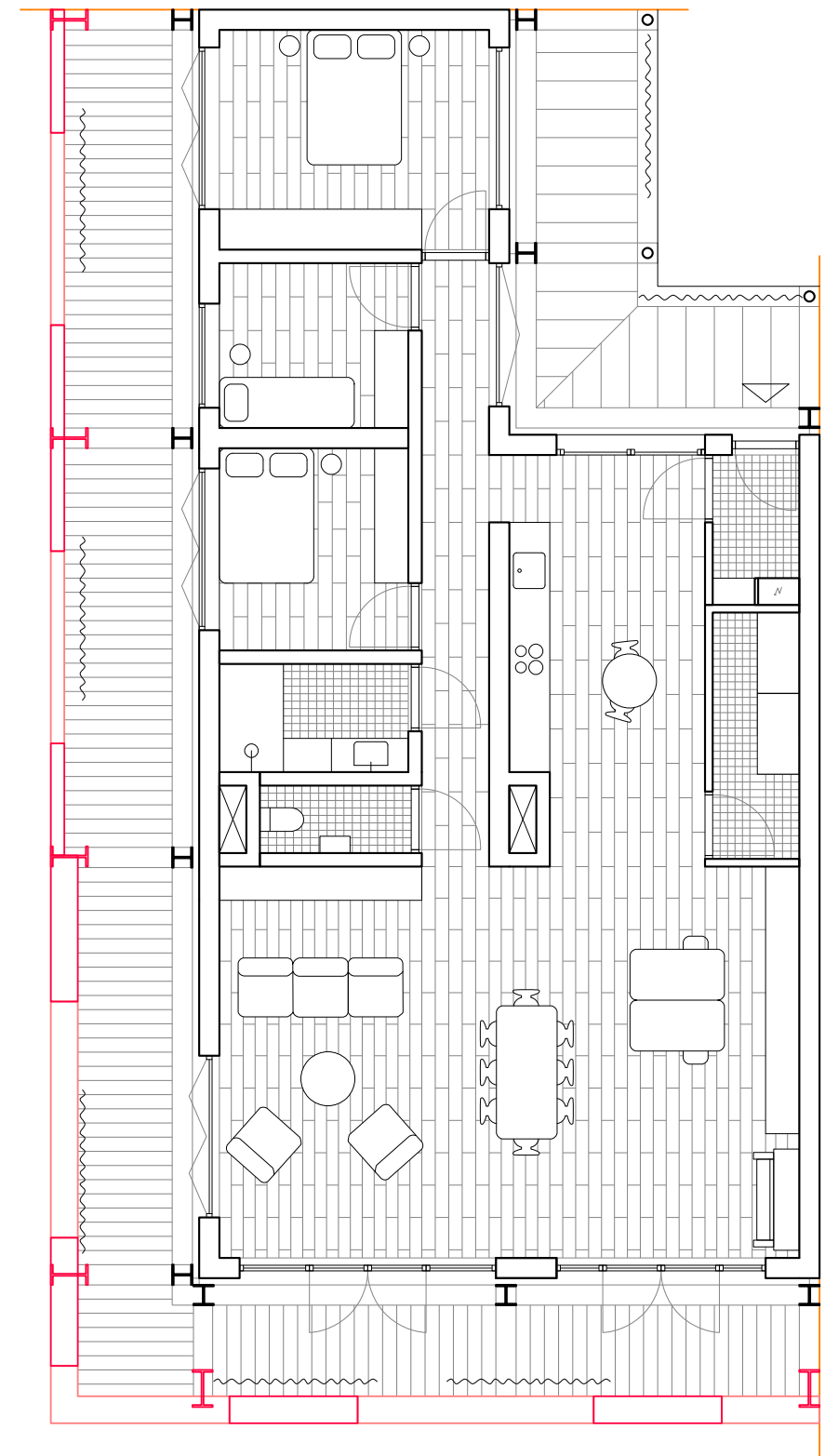


c



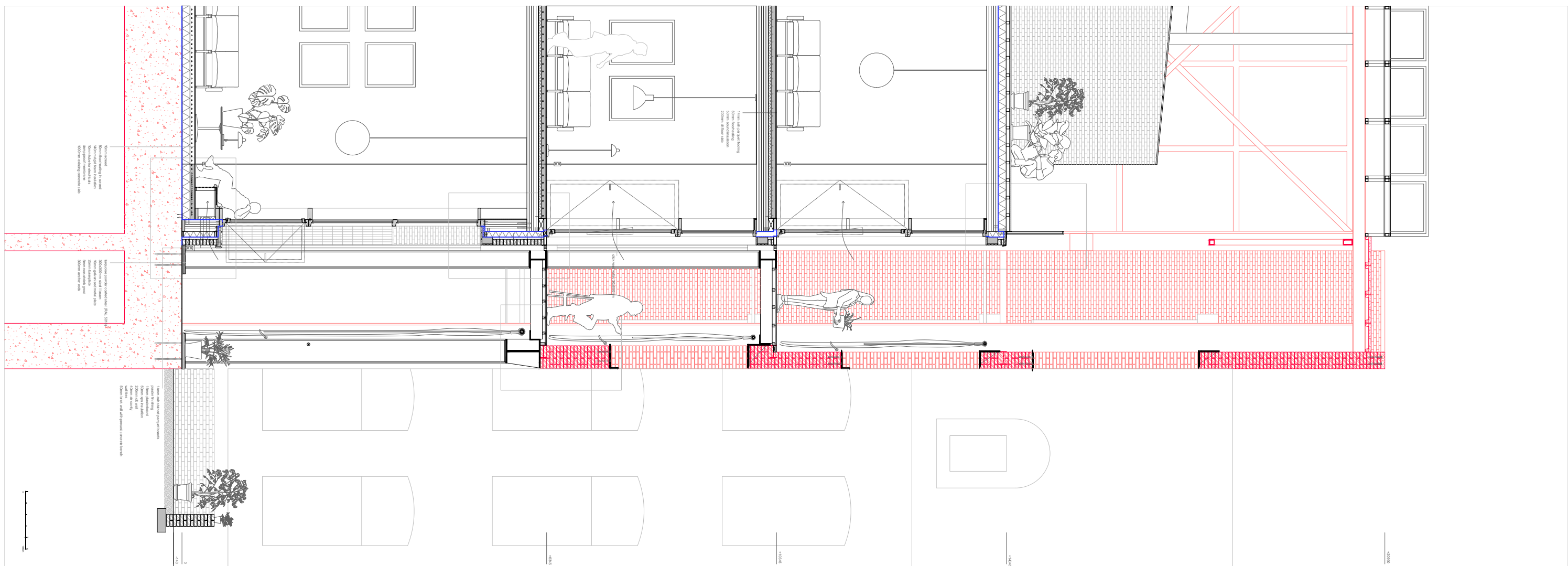
Type 5 studios  
44 m<sup>2</sup>

(Out of the) Ordinary  
Sophie Latour



Type 4 - 2f base corner  
131 m<sup>2</sup>

(Out of the) Ordinary  
Sophie Latour

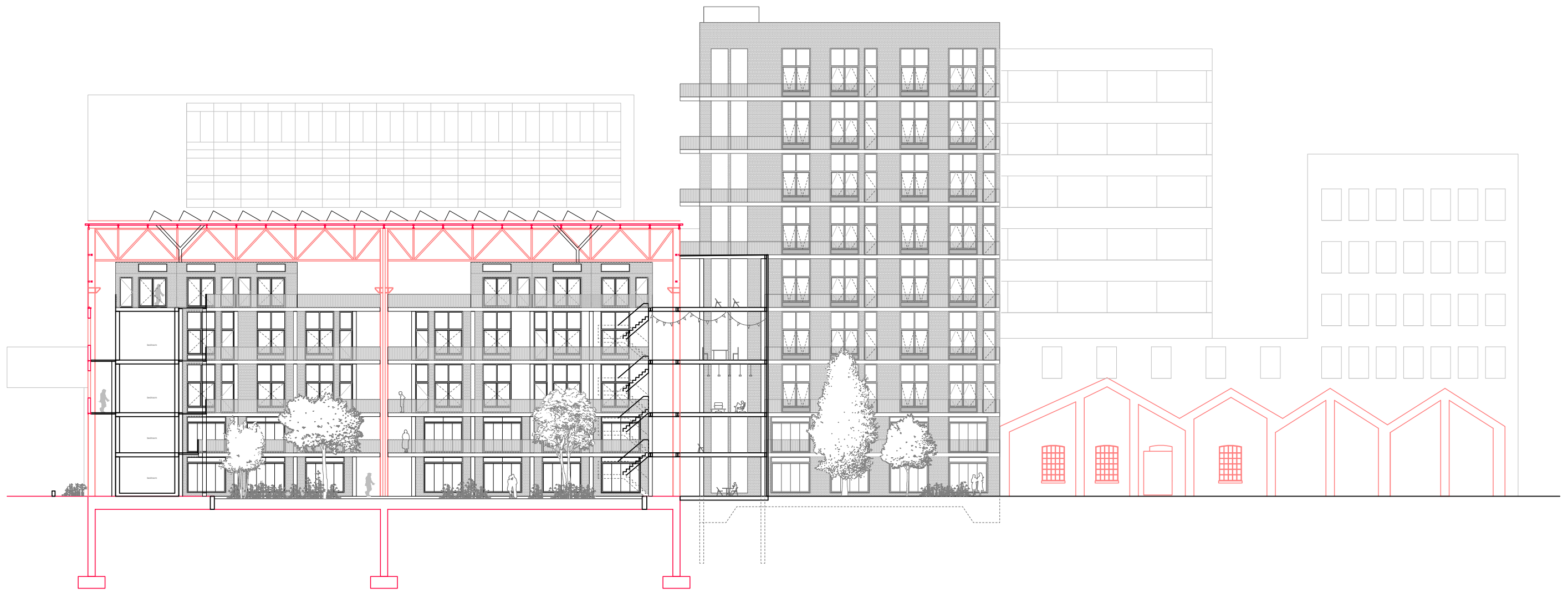




***(Out of the) Ordinary***  
*Sophie Latour*

*North-South elevation*





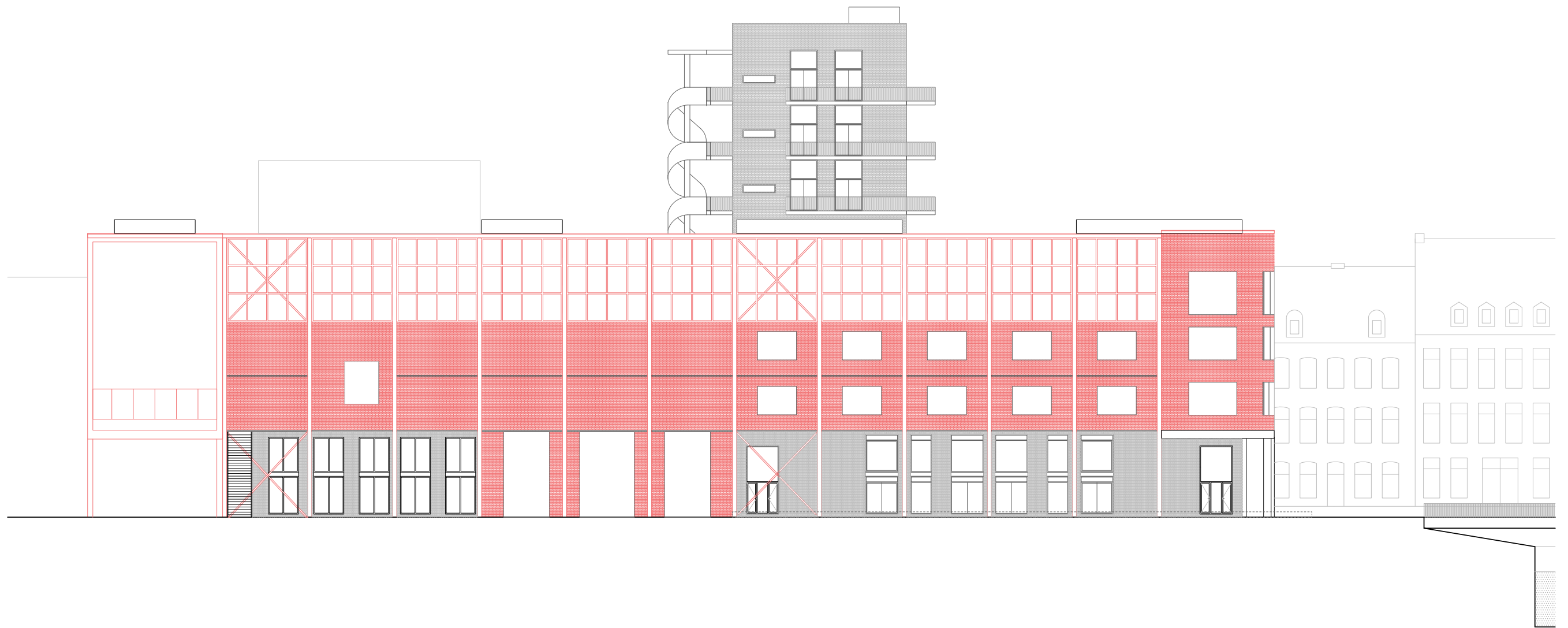
*(Out of the) Ordinary*  
Sophie Latour

*North-South section*



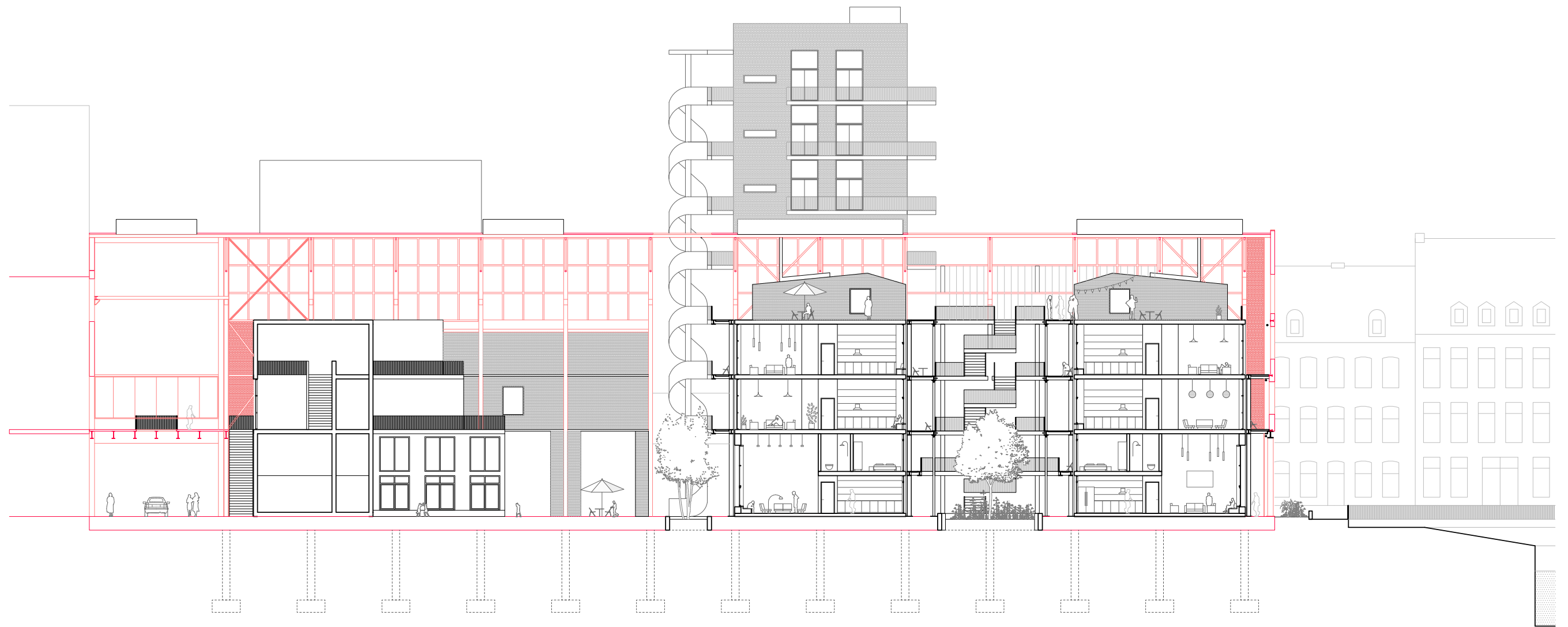
*(Out of the) Ordinary*  
 Sophie Latour

*North-South section*  
*Climate diagram*



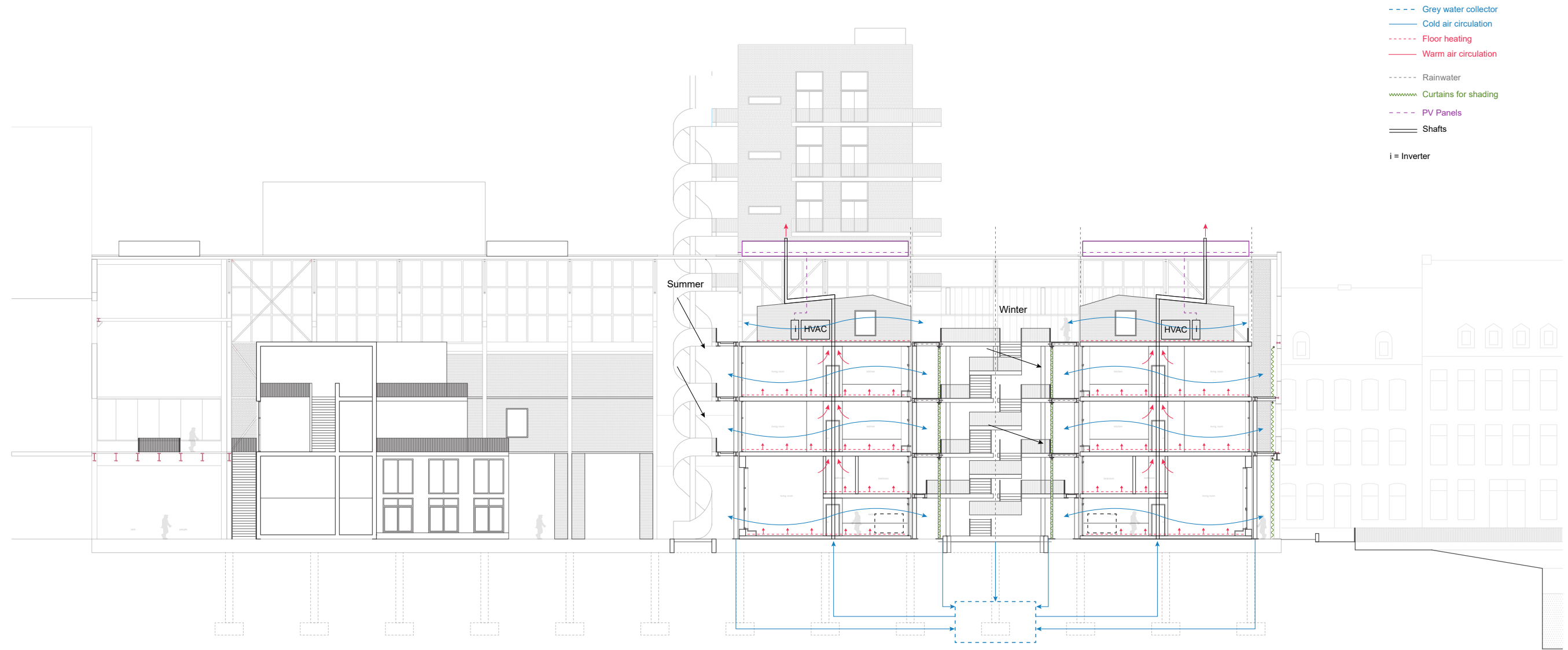
***(Out of the) Ordinary***  
*Sophie Latour*

*North elevation*



*(Out of the) Ordinary*  
Sophie Latour

*East - West section*



***(Out of the) Ordinary***  
 Sophie Latour

*East - West section  
 Climate diagram*



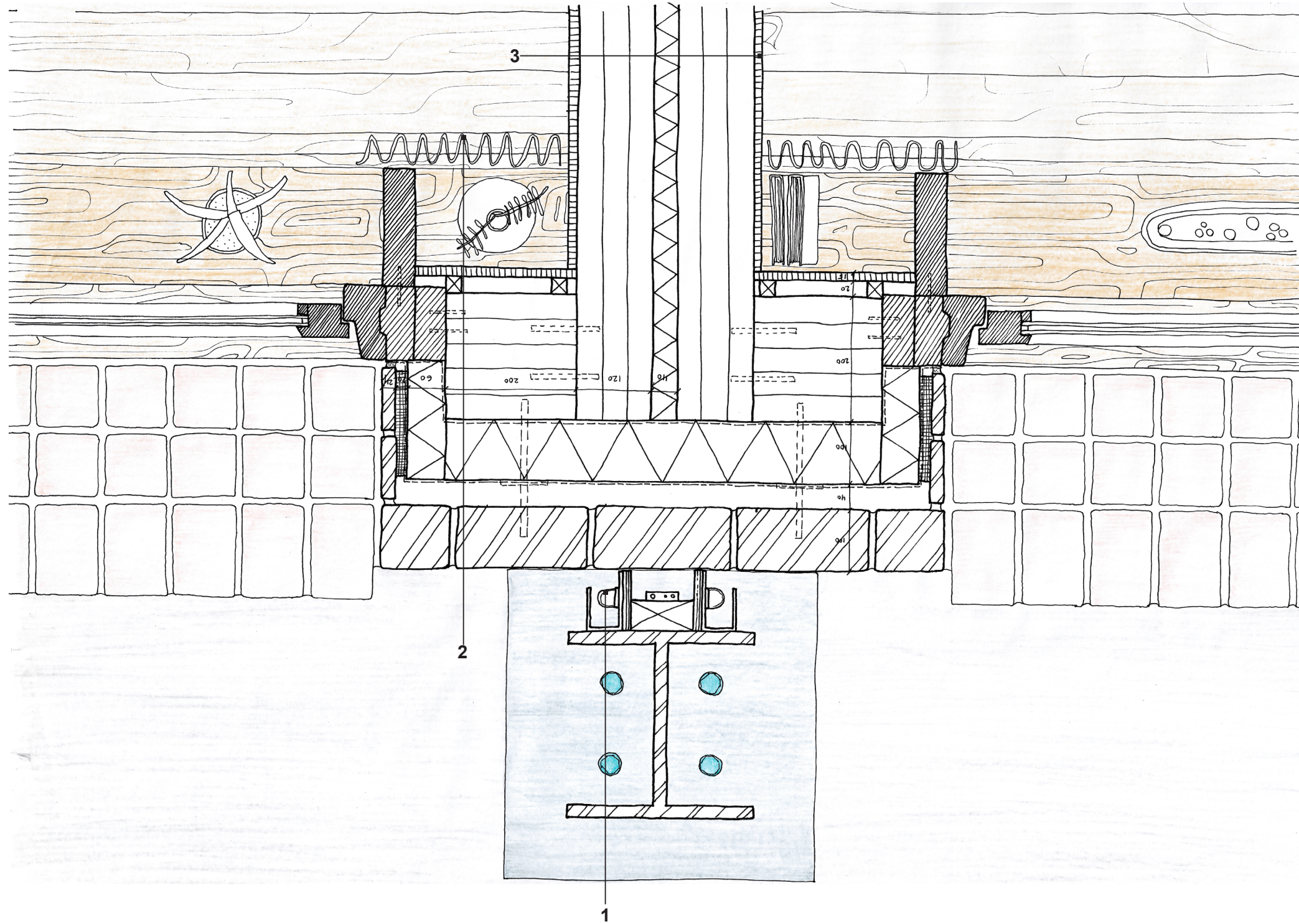


0 10m

*(Out of the) Ordinary*  
Sophie Latour

*South elevation*

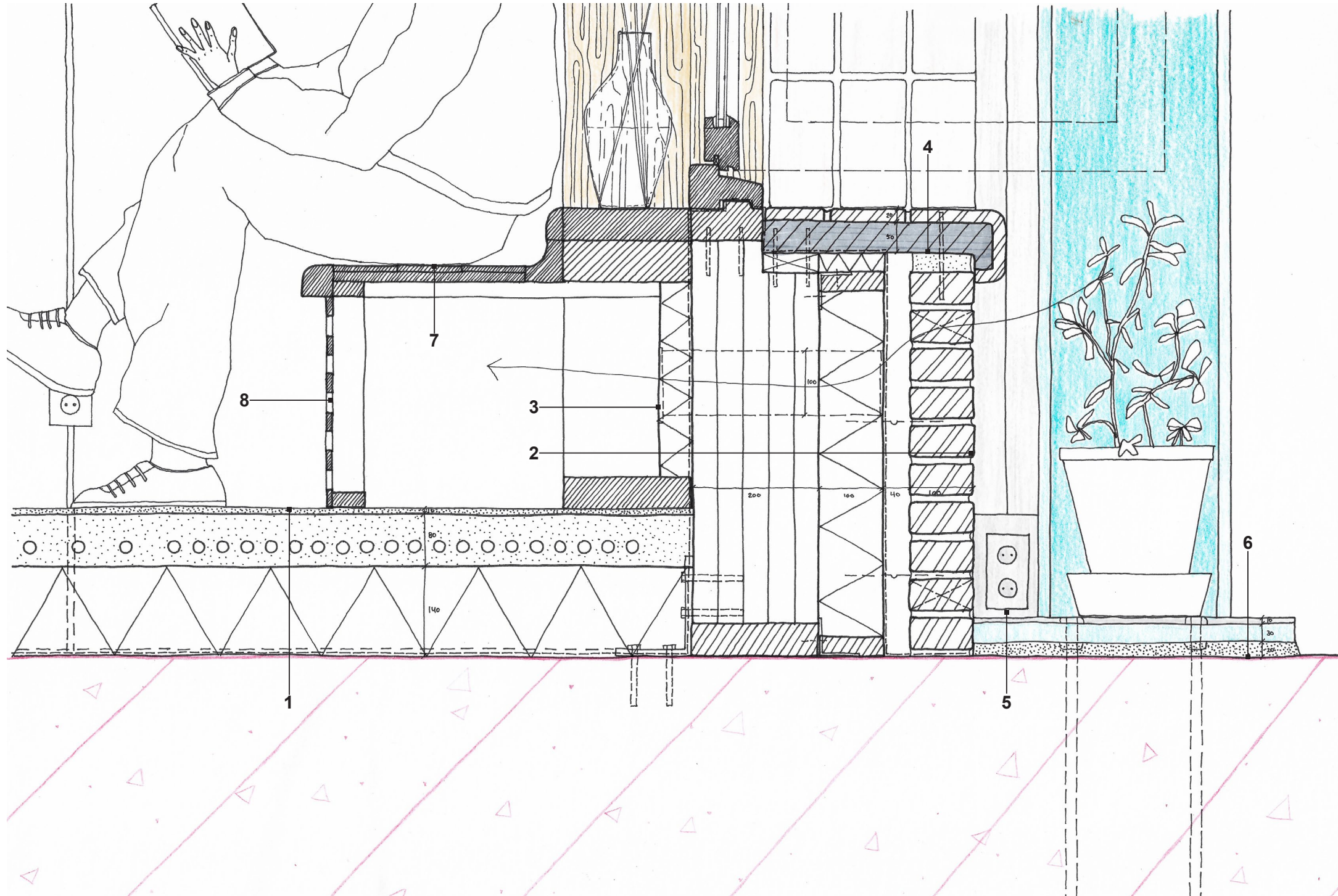
windows of display



- |  |   |   |
|--|---|---|
| <p>1 -300x300mm steel I beam<br/>in turquoise powder coat<br/>(RAL 5018)<br/>-100x80mm steel cove lighting profile<br/>-LED light tube</p> | <p>2 wall construction:<br/>-50x210x100mm brick 'Nougat Punched'(stonecycling)<br/>-40mm air cavity<br/>-wall ties<br/>-waterproof layer<br/>-100mm XPS insulation<br/>-vapour barrier<br/>-200x200mm cross laminated timber<br/>-20x20mm timber joists<br/>-15mm gypsum fibre board<br/>-plaster finishing<br/>-200mm ash shelf<br/>-100mm curtain</p> | <p>3 wall construction<br/>-15mm gypsum fibre board<br/>-120mm cross laminated timber<br/>-40mm XPS insulation<br/>-120mm corss laminated timber<br/>-15mm gypsum fibre board</p> |
|--|---|---|

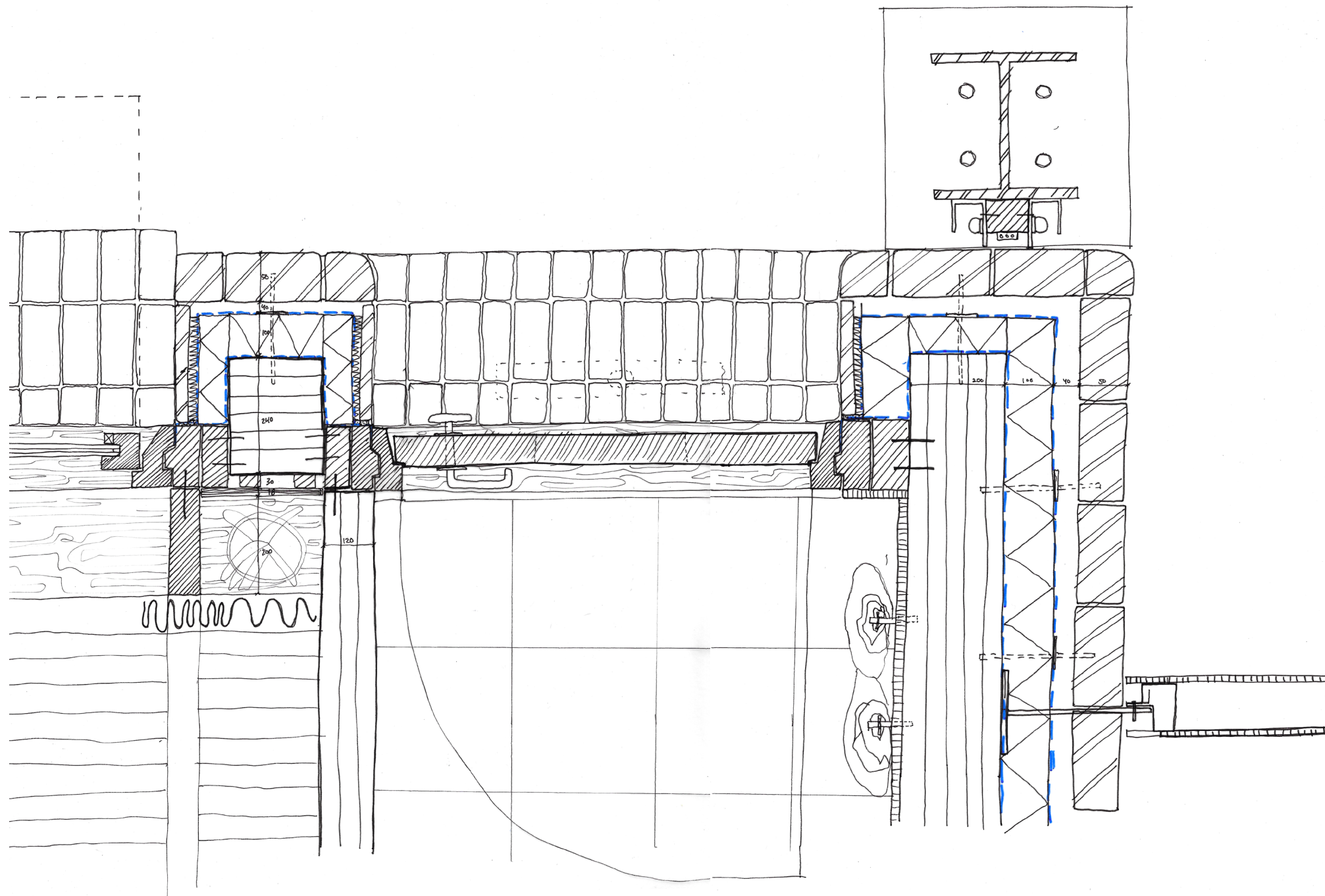


a bench for introversion and extroversion



- |   |  |   |   |
|---|--|---|---|
| <p>1 Floor construction<br/>                     -10mm screed<br/>                     -80mm integrated floorheating system in screed<br/>                     -140mm rigid foam insulation<br/>                     -tube for electrical wiring<br/>                     -vaour barrier<br/>                     -100mm existing concrete slab with column on pile/ pad foundation</p> | <p>2 Wall construction<br/>                     -10mm ash stained parquet boards<br/>                     -15mm plaster board<br/>                     -50mm XPS insulation<br/>                     -vapour barrier<br/>                     -200mm cross laminated timber<br/>                     -waterproof layer<br/>                     -100mm XPS insulation<br/>                     -40mm air cavity<br/>                     -wall ties<br/>                     -50x210x100mm brick 'Nougat Punched' (stonecycling)</p> | <p>3 100 Ø x375mm air ventilation duct w/ aluminium vent grille</p> <p>4 -24mm brick slips 'Nougat punched' (stonecycling)<br/>                     -50mm precast concrete bench attached with anchor rod</p> <p>5 aluminium cove lighting profile with integrated socket</p> | <p>6 -turquoise powder coated steel ( RAL 5018)<br/>                     -300x300mm steel I beam<br/>                     -10mm galvanized metal plate<br/>                     -25mm base plate<br/>                     -5mm nonshrink grout<br/>                     -300mm anchor rods</p> <p>7 45mm ash bench</p> <p>8 20mm ash ventilation flip</p> |
|---|--|---|---|

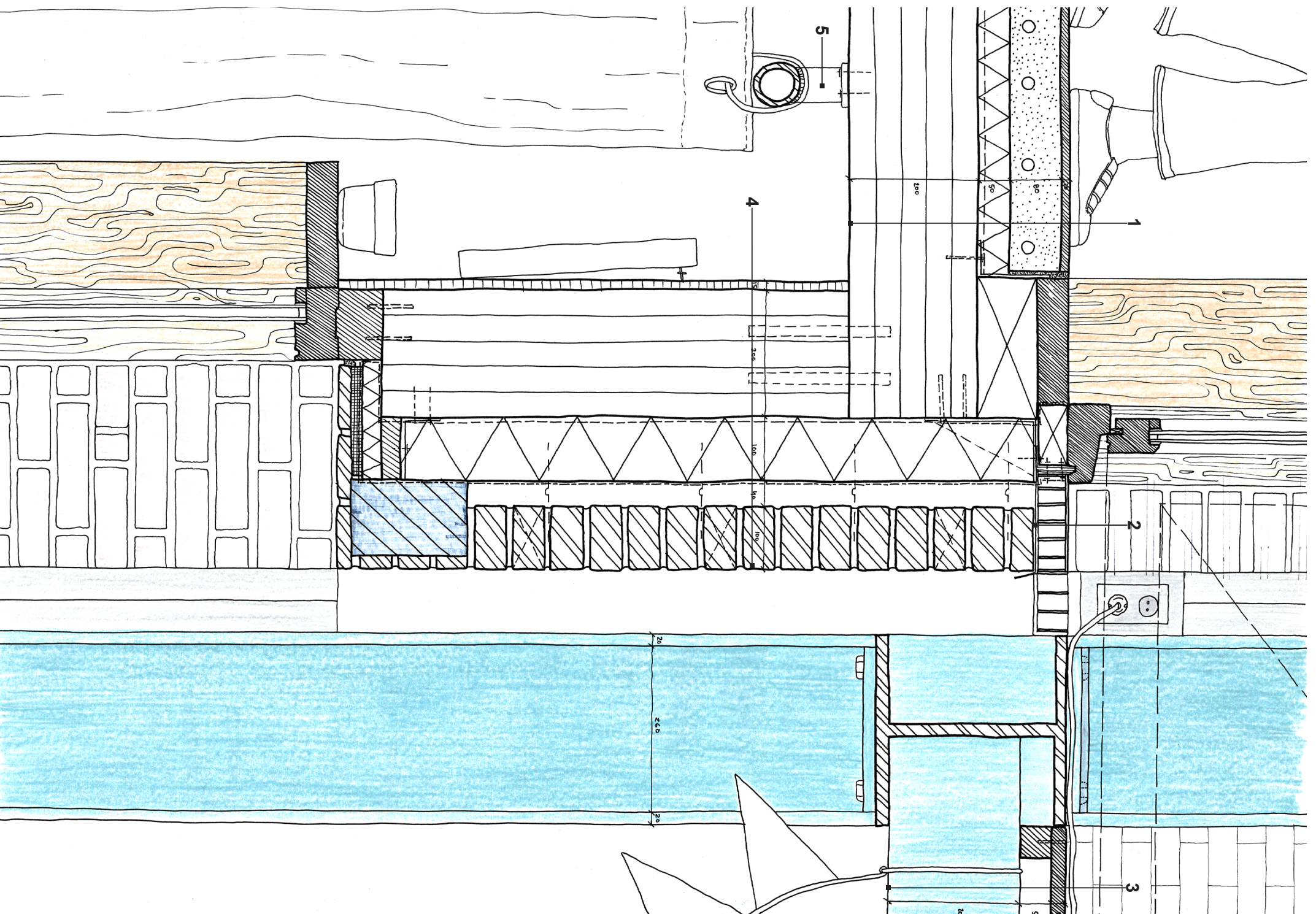
entering the home



- |  |  |   |   |
|--|--|---|---|
| <p>1 -300x300mm steel I beam in turquoise powder coat (RAL 5018)<br/>-100x80mm steel cove lighting profile<br/>-LED light tube</p> <p>2 Viabizzuno rectangle steel light</p> | <p>3 -24mm brick slip 'Nougat Punched'(stonecycling)<br/>-glue layer for 15mm brick slips<br/>-gypsum board<br/>-waterproof layer<br/>-60mm XPS insulation<br/>-200x200 mm cross laminated timber column</p> | <p>4 -280mm steel T profile<br/>-100x100mm square steel hollow structural section (HSS)<br/>-10mm perforated galvanized steel panels screwed to HSS</p> | <p>5 wall construction:<br/>-30x210x100mm brick 'Nougat Punched'(stonecycling)<br/>-40mm air cavity<br/>-waterproof layer<br/>-100mm XPS insulation<br/>-200mm cross laminated timber<br/>-15mm gypsum fibre board<br/>-plaster finishing<br/>-100mm chrome U coathooks</p> |
|--|--|---|---|



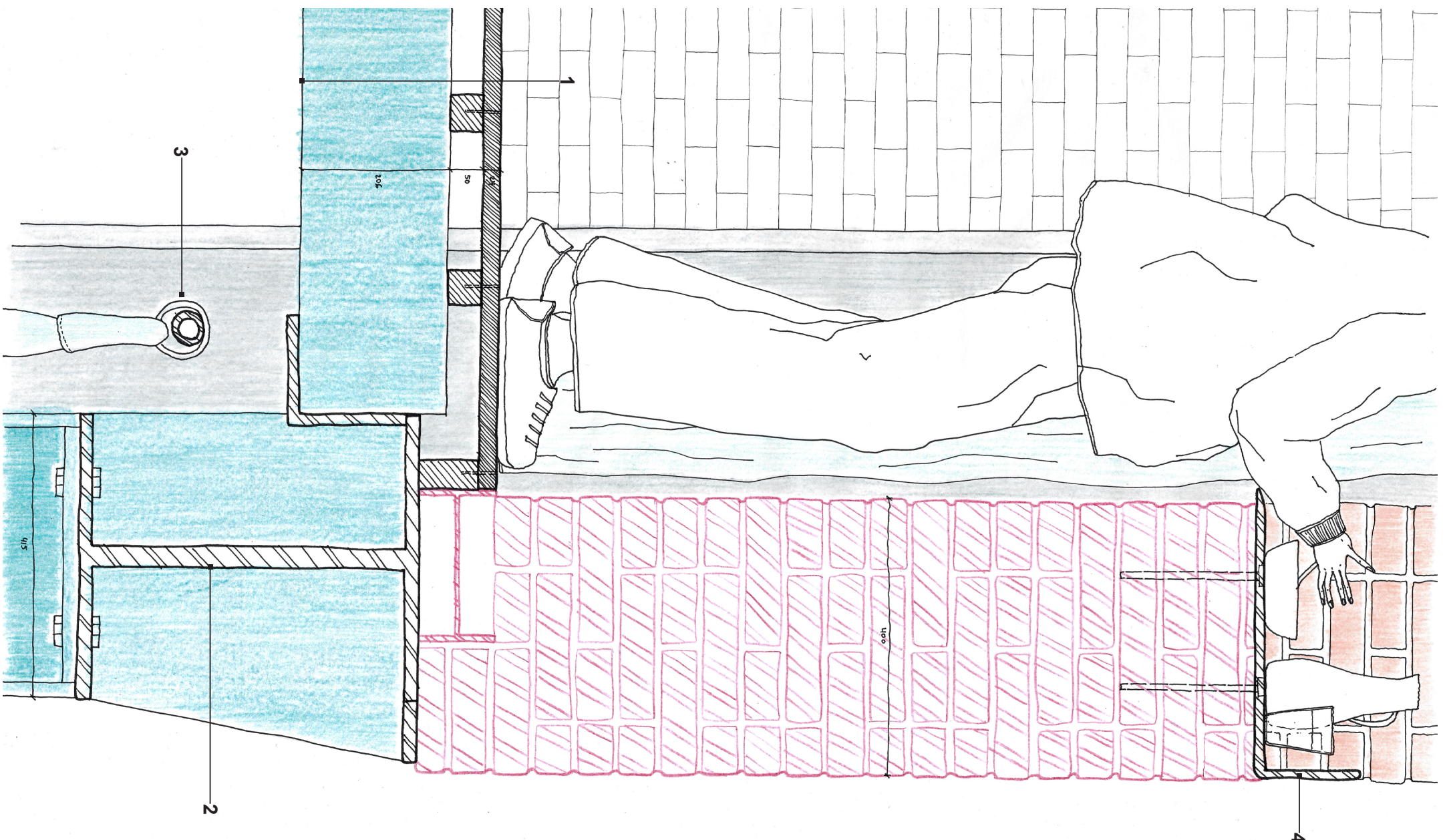
stepping into the gallery



- |   |  |  |   |  |
|---|--|--|---|--|
| <p>1 Floor construction:<br/>         -20mm ash parquet flooring<br/>         -80mm integrated floor heating in screed<br/>         -50mm wood-fibre sound insulation<br/>         -20mm tubing for electrical cables integrated into insulation<br/>         -200mm cross laminated timber</p> | <p>2 50x150mm custom steel grate with aluminium plate in turquoise powder coat (RAL 5018)(stacoroosters)</p> | <p>3 Gallery construction:<br/>         -24x200mm ash floorboards with waterproof coating<br/>         -50x50mm timber joists<br/>         -206x100mm steel rectangle hollow structural section(HSS)</p> | <p>4 Wall construction<br/>         -plaster finishing<br/>         -15mm gypsum fibre board<br/>         -200mm cross laminated timber<br/>         -vapour barrier<br/>         -100mm XPS insulation<br/>         -waterproof layer<br/>         -40mm air cavity<br/>         -50x210x100mm brick 'Nougat Punched' (stonecycling)</p> | <p>5 80mm Ø galvanized steel curtain railing</p> |
|---|--|--|---|--|



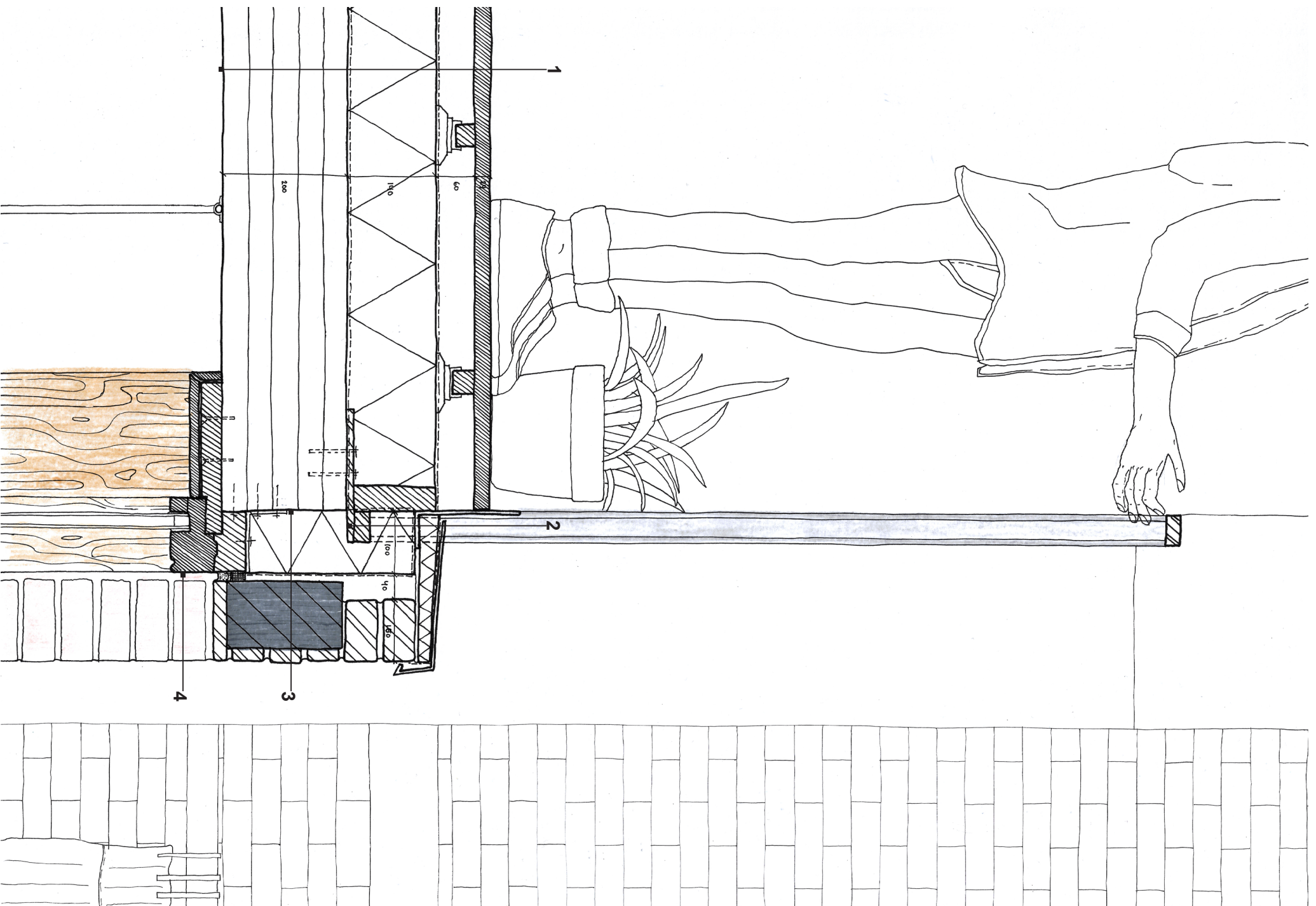
an intimate passage



- 1 gallery construction:
  - 24x200mm ash floorboards with waterproof coating
  - 50x50mm timber floor joists
  - 206x100mm steel rectangular hollow structural section (HSS)
- 2 600x415mm steel I beam with a welded 85mm strip and 165x165mm angle profile in turquoise powder coat (RAL 5018)
- 3 Ø 100mm turquoise powder coated steel (RAL 5018) round hollow structural section (HSS)
- 4 420x140mm steel angle window sill with anchor rods in turquoise powder coat (RAL 5018)



balustrade



- 1 Floor construction
  - 24x200mm ash floorboards with waterproof coating
  - 60mm adjustable terrace pedestals
  - waterproofing ayer
  - 140mm XPS insulation
  - vapour barrier
  - 200mm cross laminated timber
  - electrical wiring for lighting held by aluminium clasps
- 2 zinc panel roof finishing
  - waterproof layer
  - 60mm XPS insulation
  - 100x60mm galvanized steel angle
  - galvanised steel railing anchored to 200mm cross laminated timber
- 3 wall construction
  - 200mm cross laminated timber
  - vapour barrier
  - 100mm XPS insulation
  - waterproof layer
  - 120x180mm concrete lintel
  - 24mm brick slips (Nougat Punched (stonecycling))
- 4 double glazing in ash frame