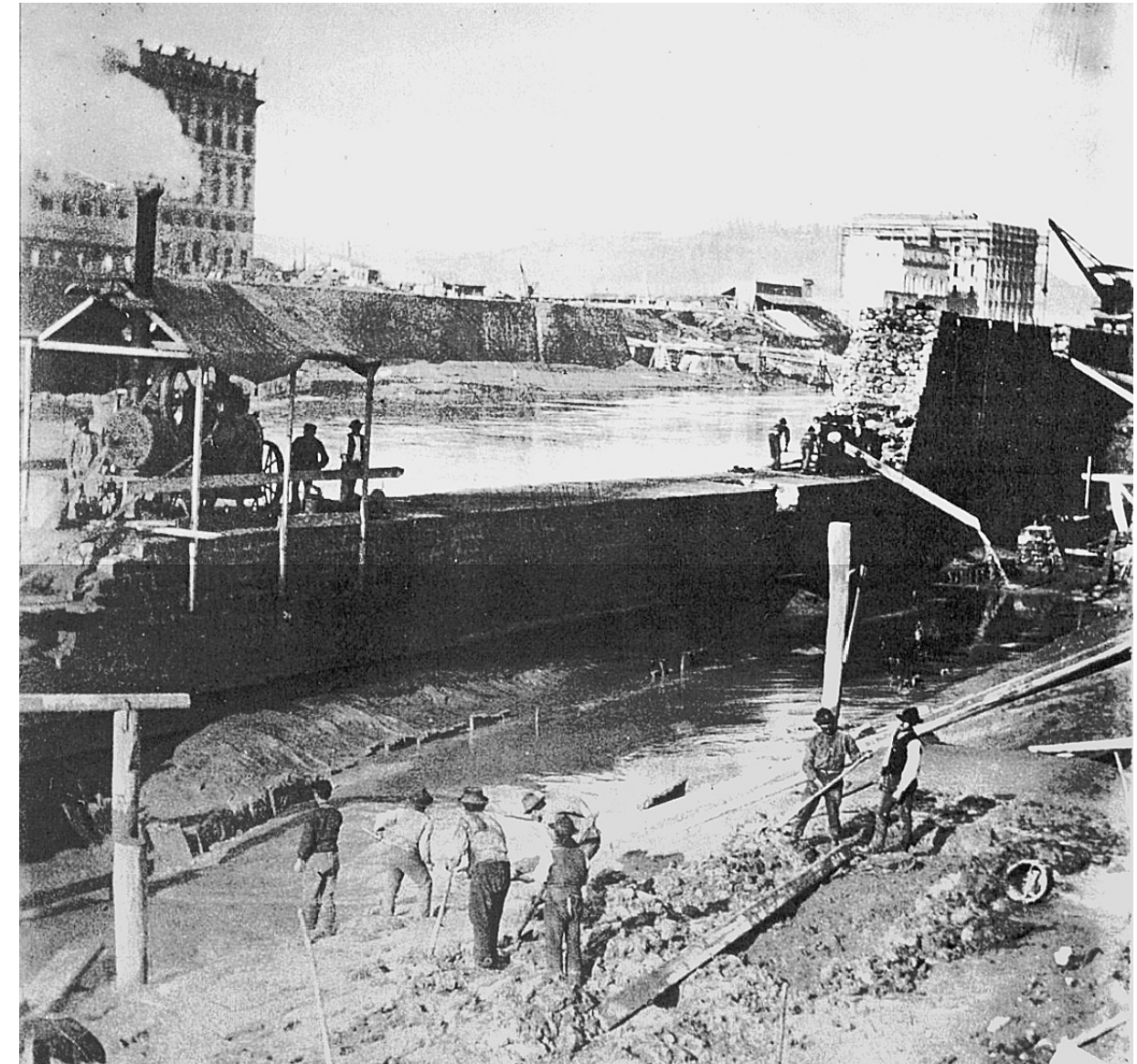
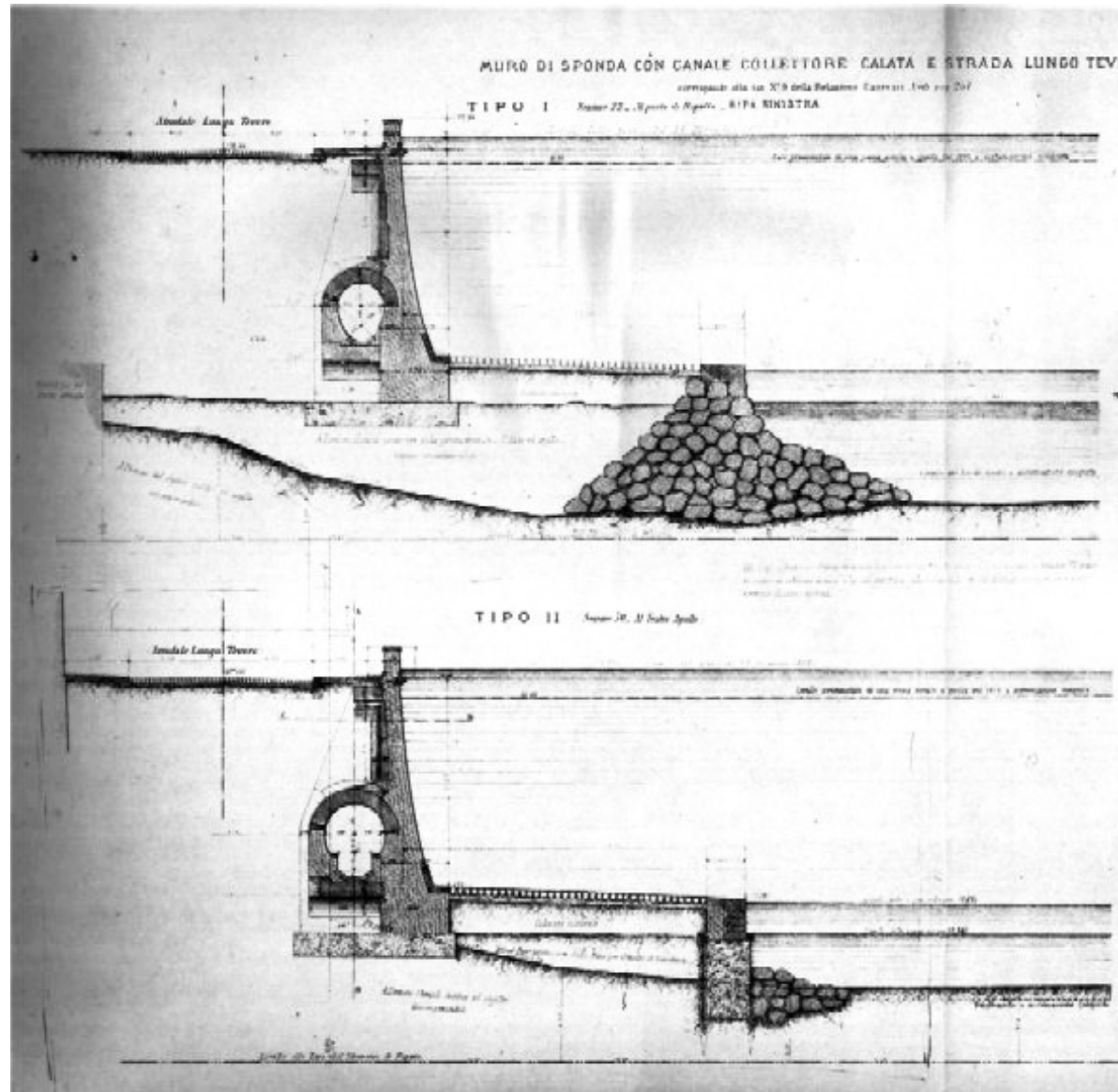




VERSO TEVERE
TOWARDS THE TIBER



Tiber river <1875



Building Lungotevere (1875-1926)



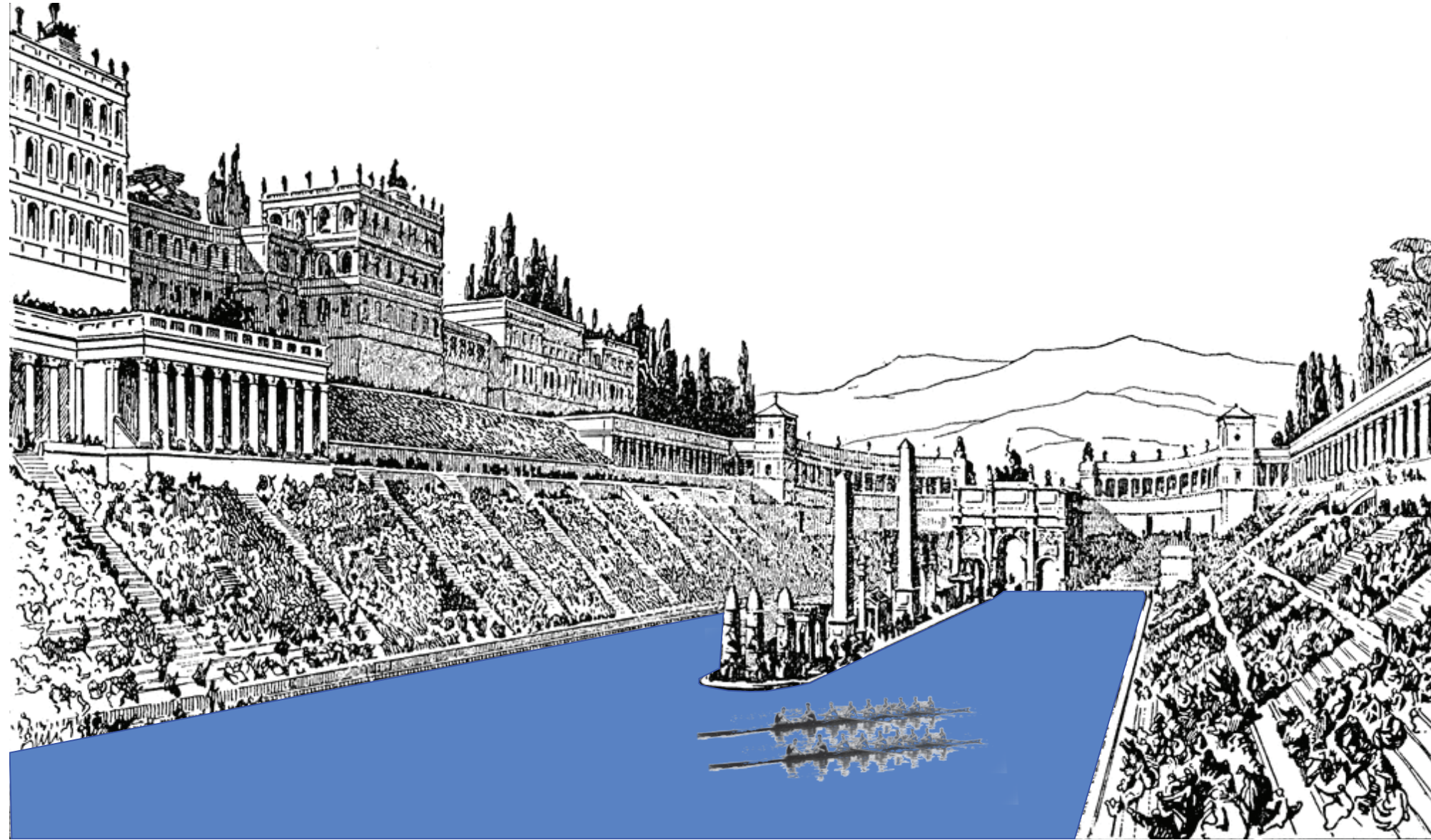
Tiber as vacancy



+10 +15 +20 masl flood in Rome's original landscape



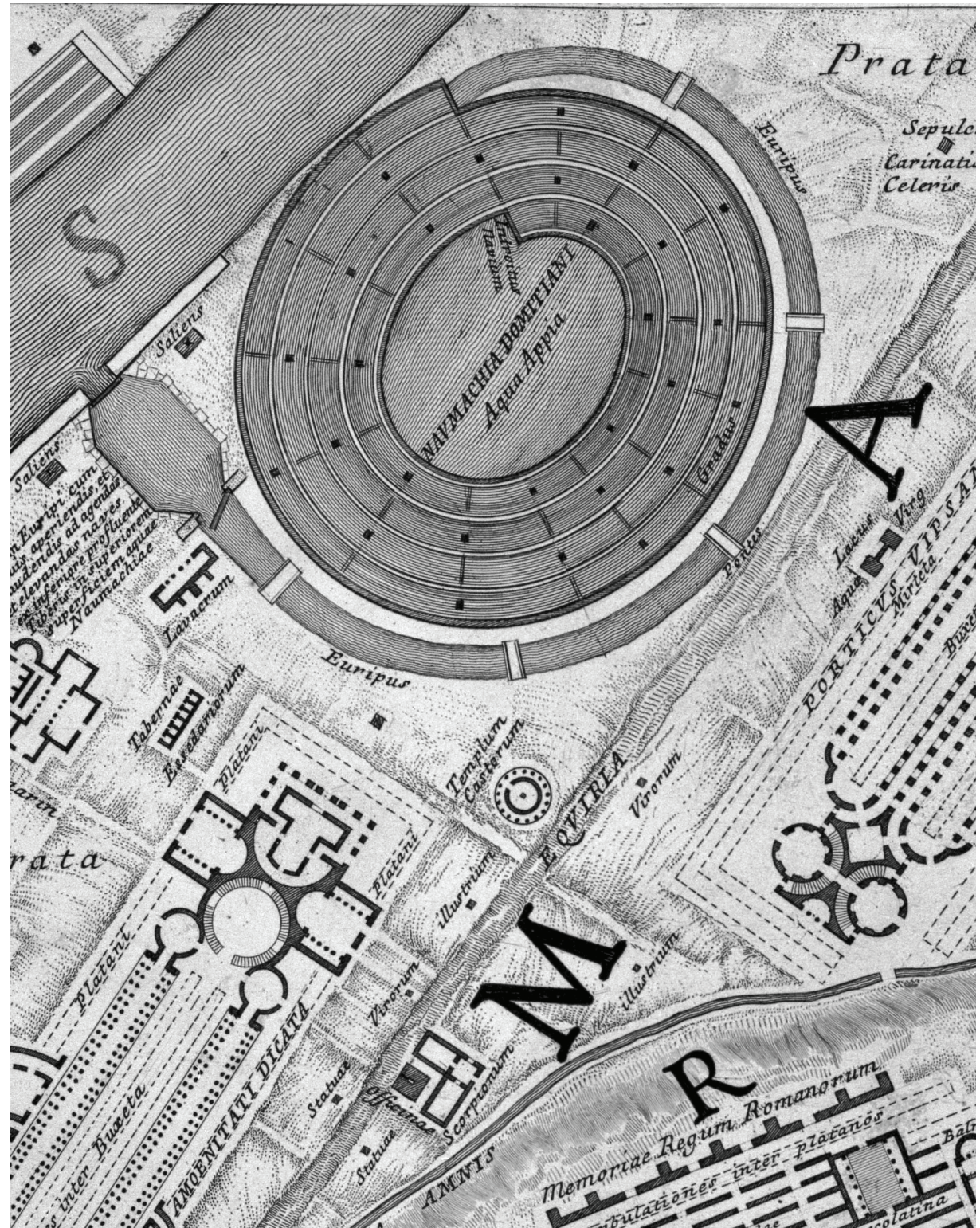
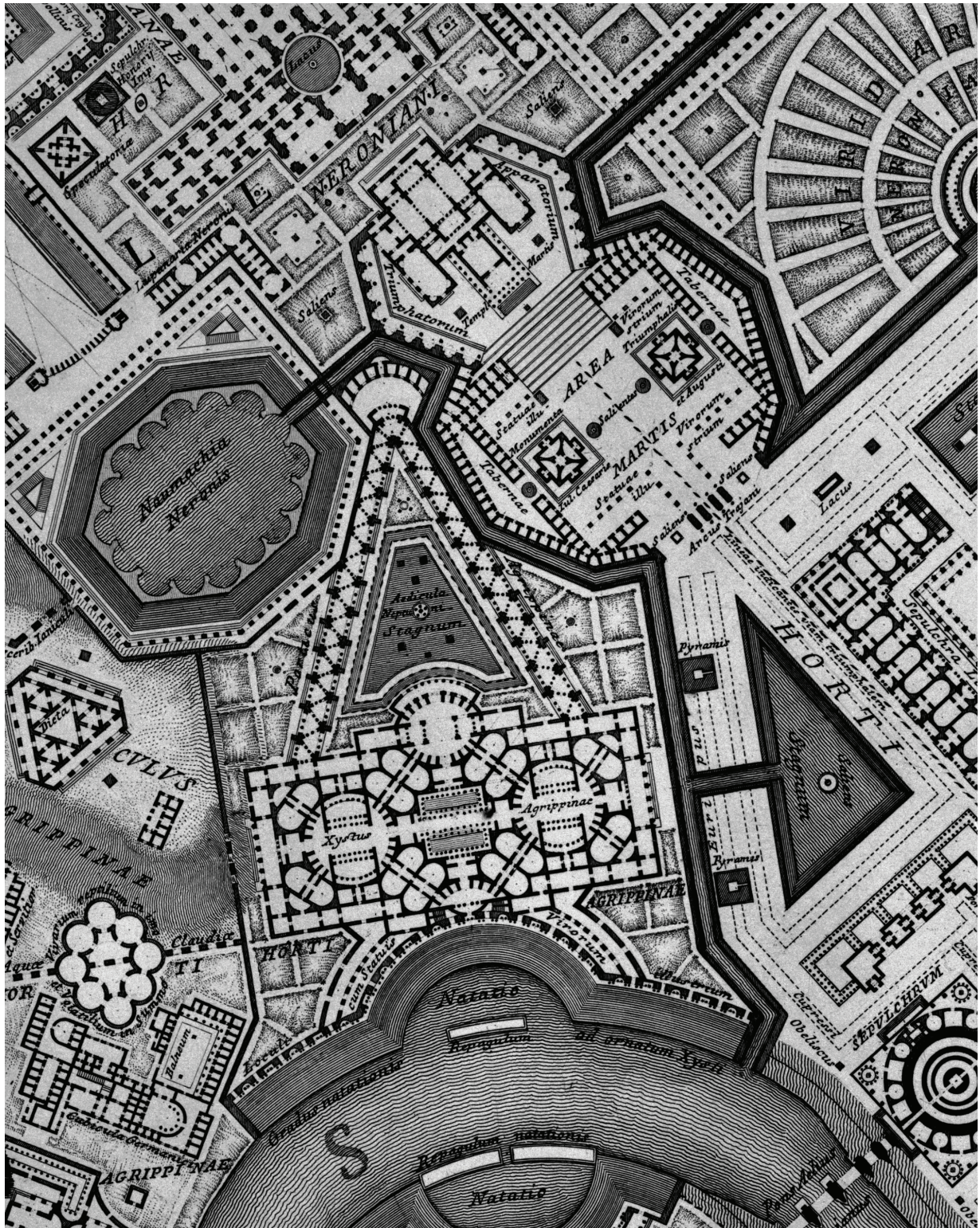
Pantheon flooded



Circus Maximus flooded



Piazza Navona flooded



Connection between architecture and Tiber



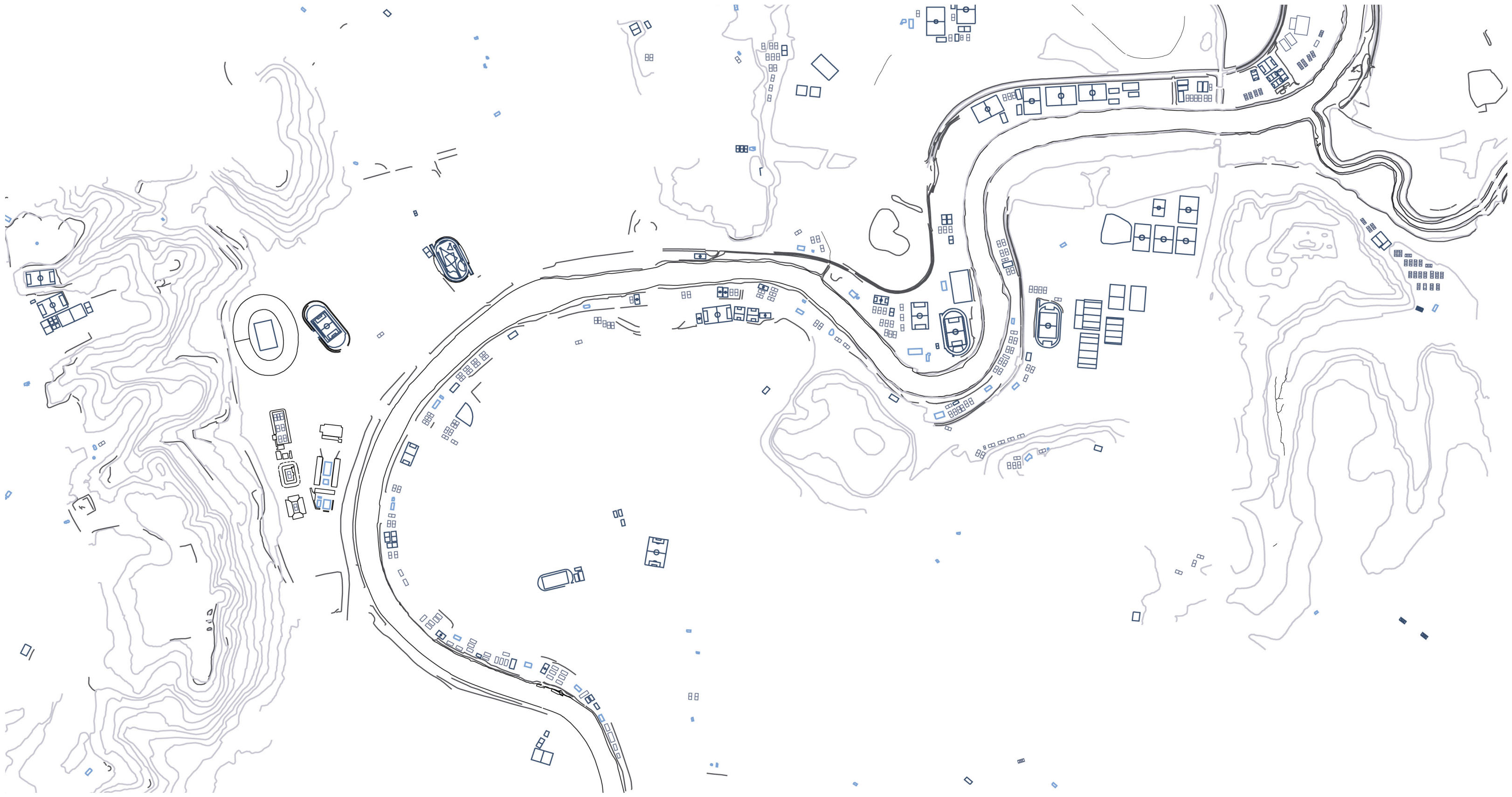
Naumachia Nero



Naval battle in flooded Colosseum



Modern gladiator

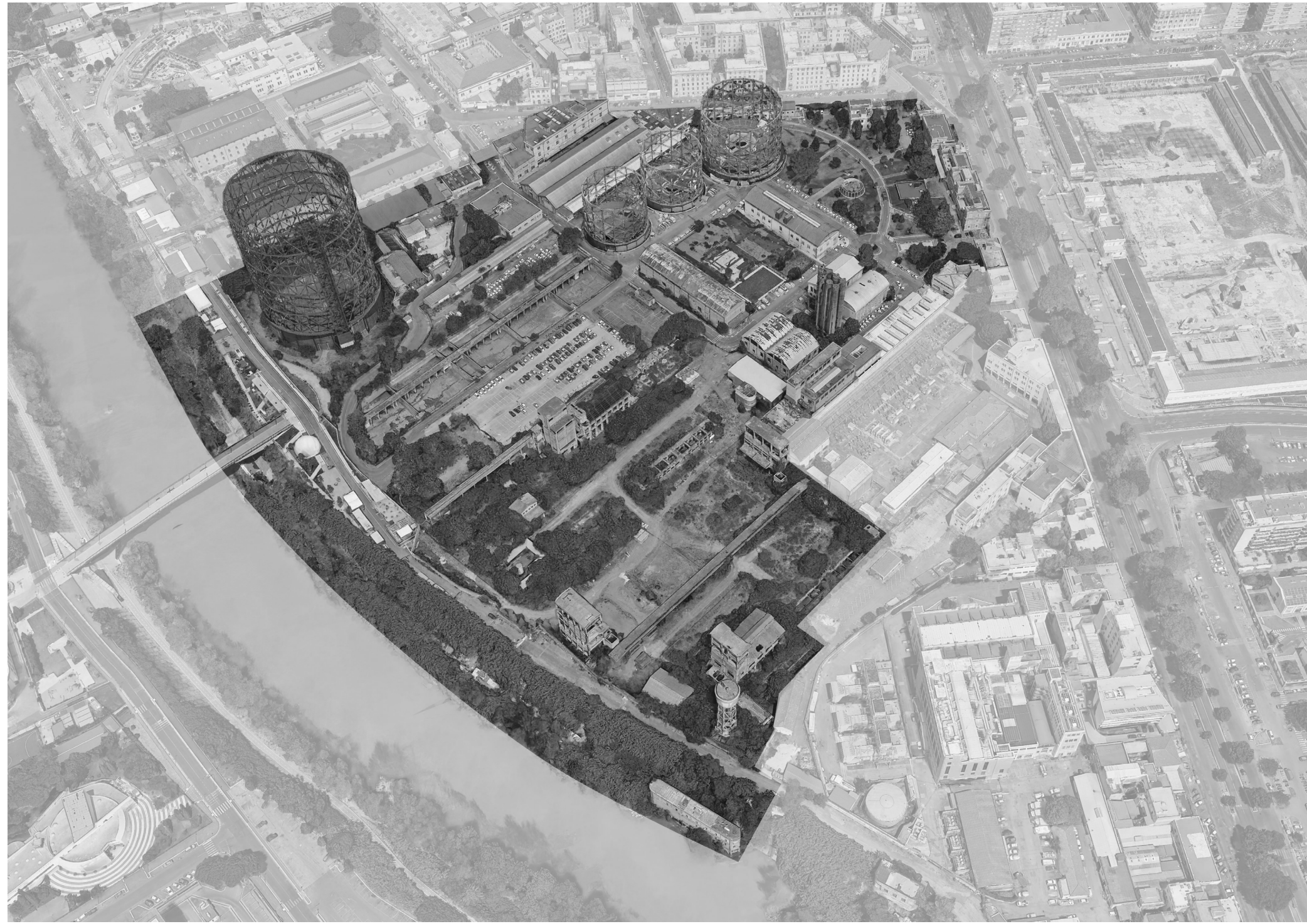


Sports along the Tiber

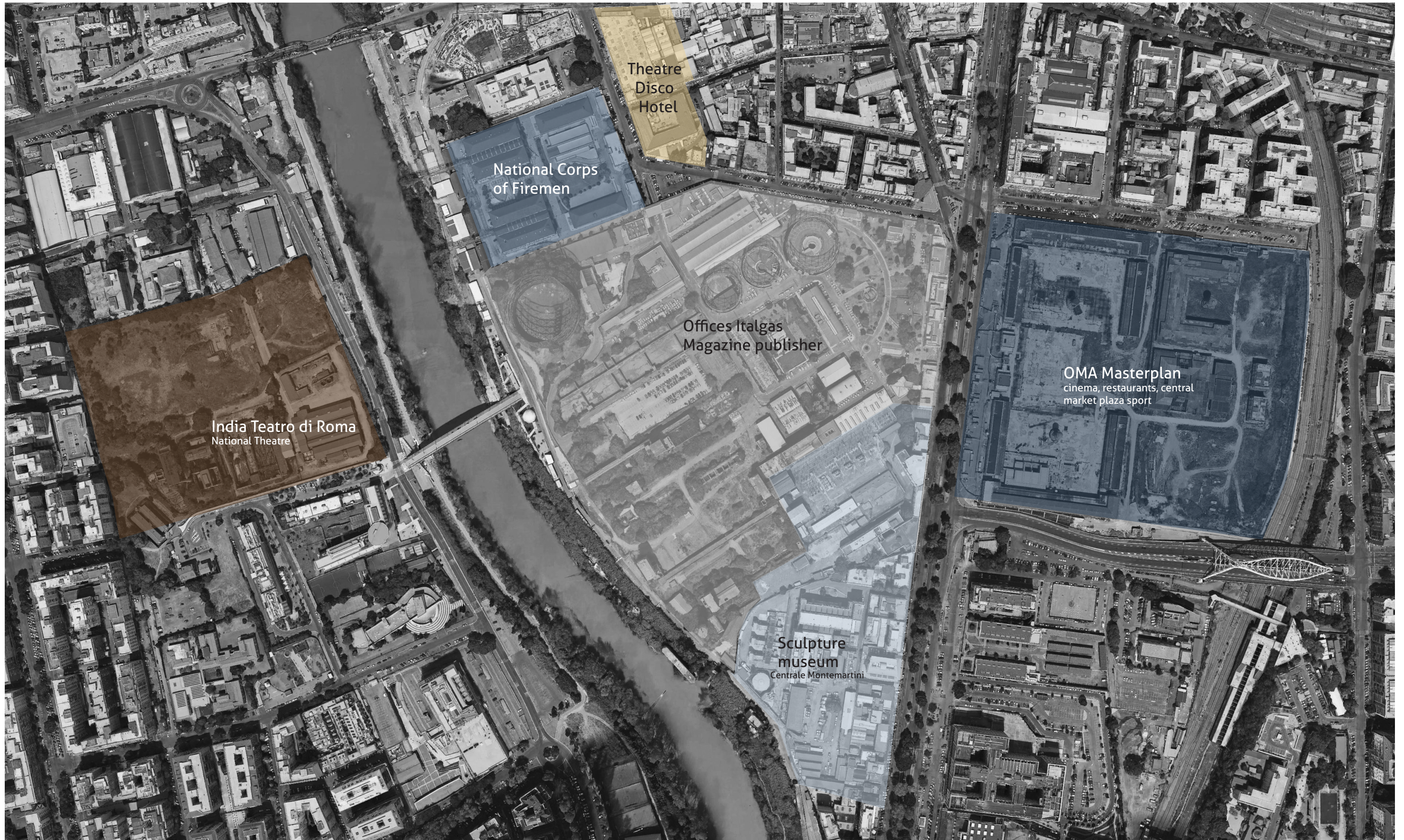




Recent interaction with Tiber



Vacant gas factory



Theatre
Disco
Hotel

National Corps
of Firemen

India Teatro di Roma
National Theatre

Offices Italgas
Magazine publisher

OMA Masterplan
cinema, restaurants, central
market plaza sport

Sculpture
museum
Centrale Montemartini

Recent developments in the area



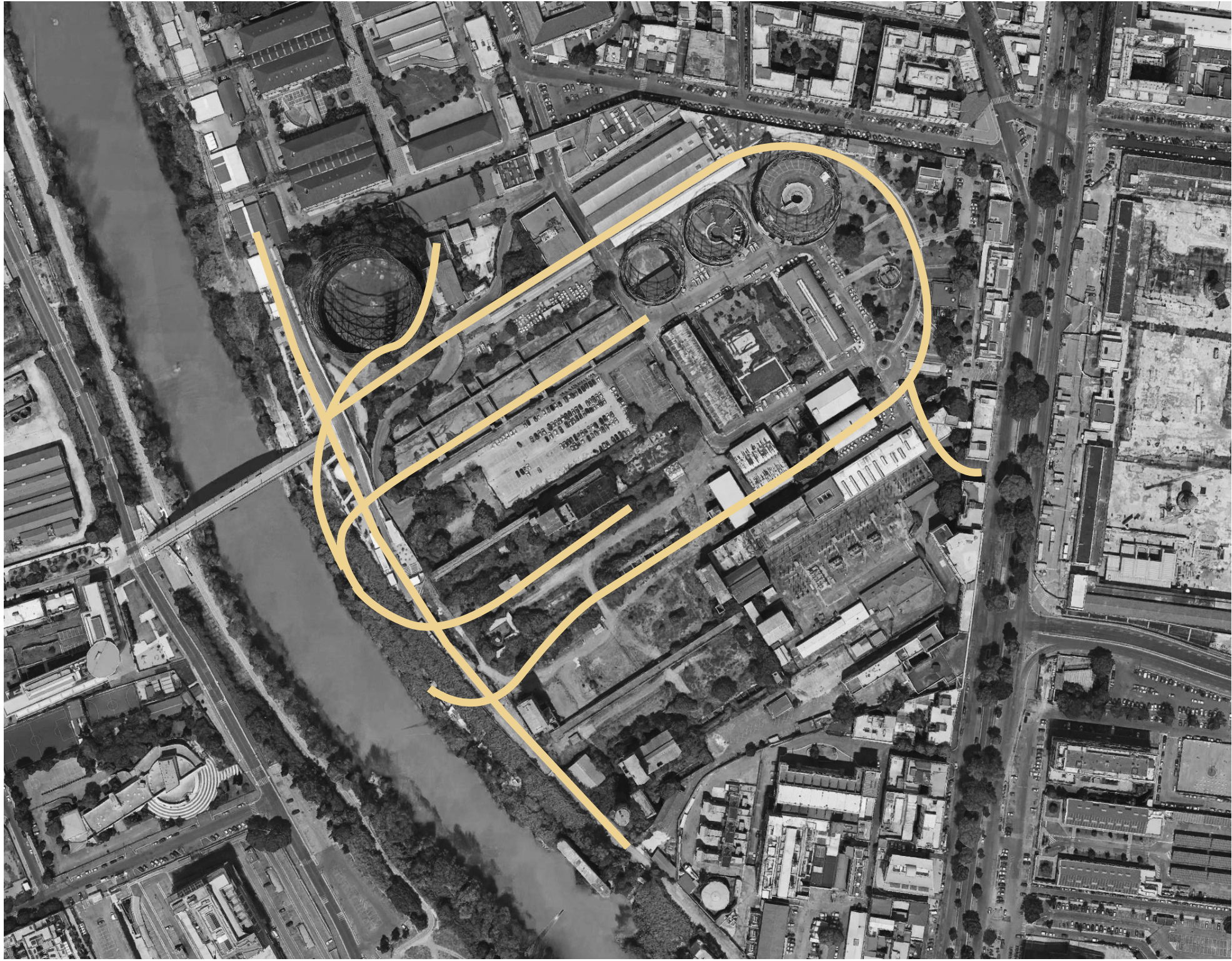
Gazometro during high water



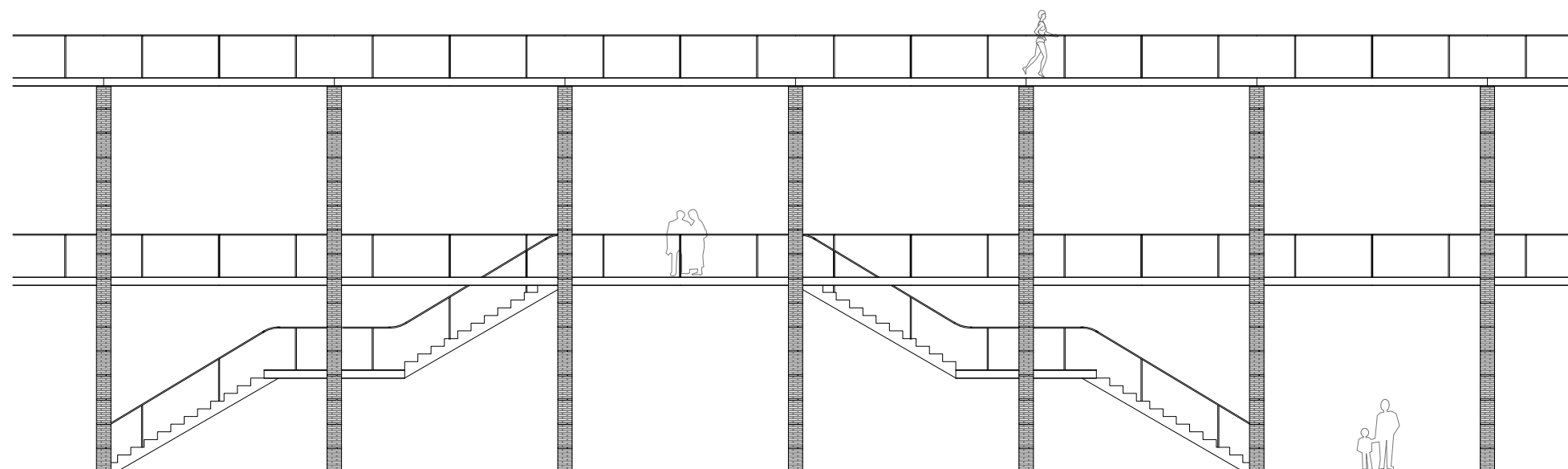
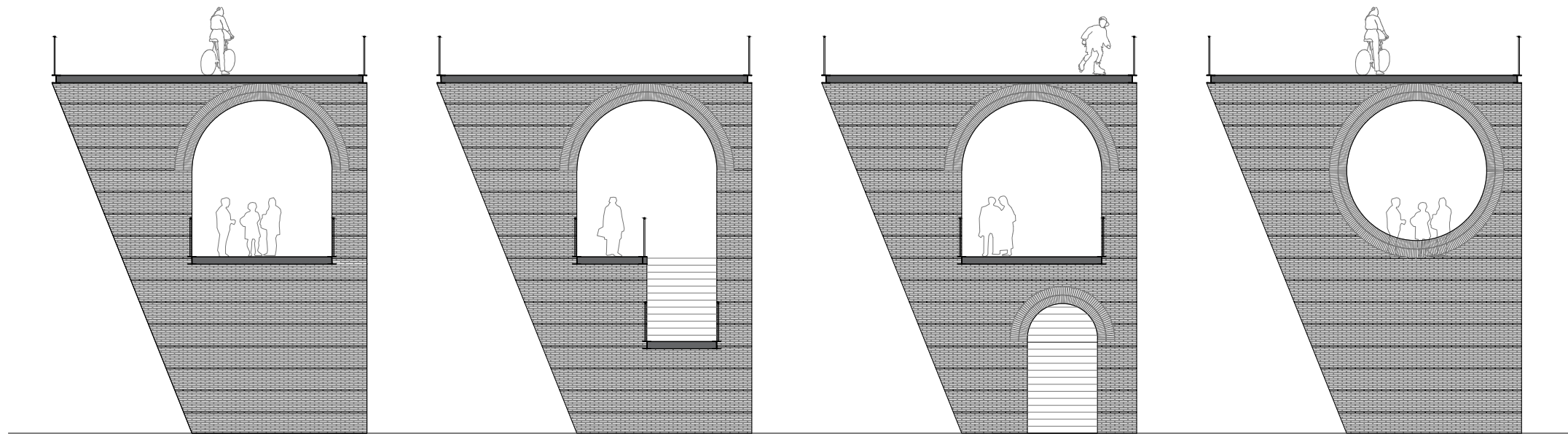
Big variety of architectural elements



Trian as important infrastructure



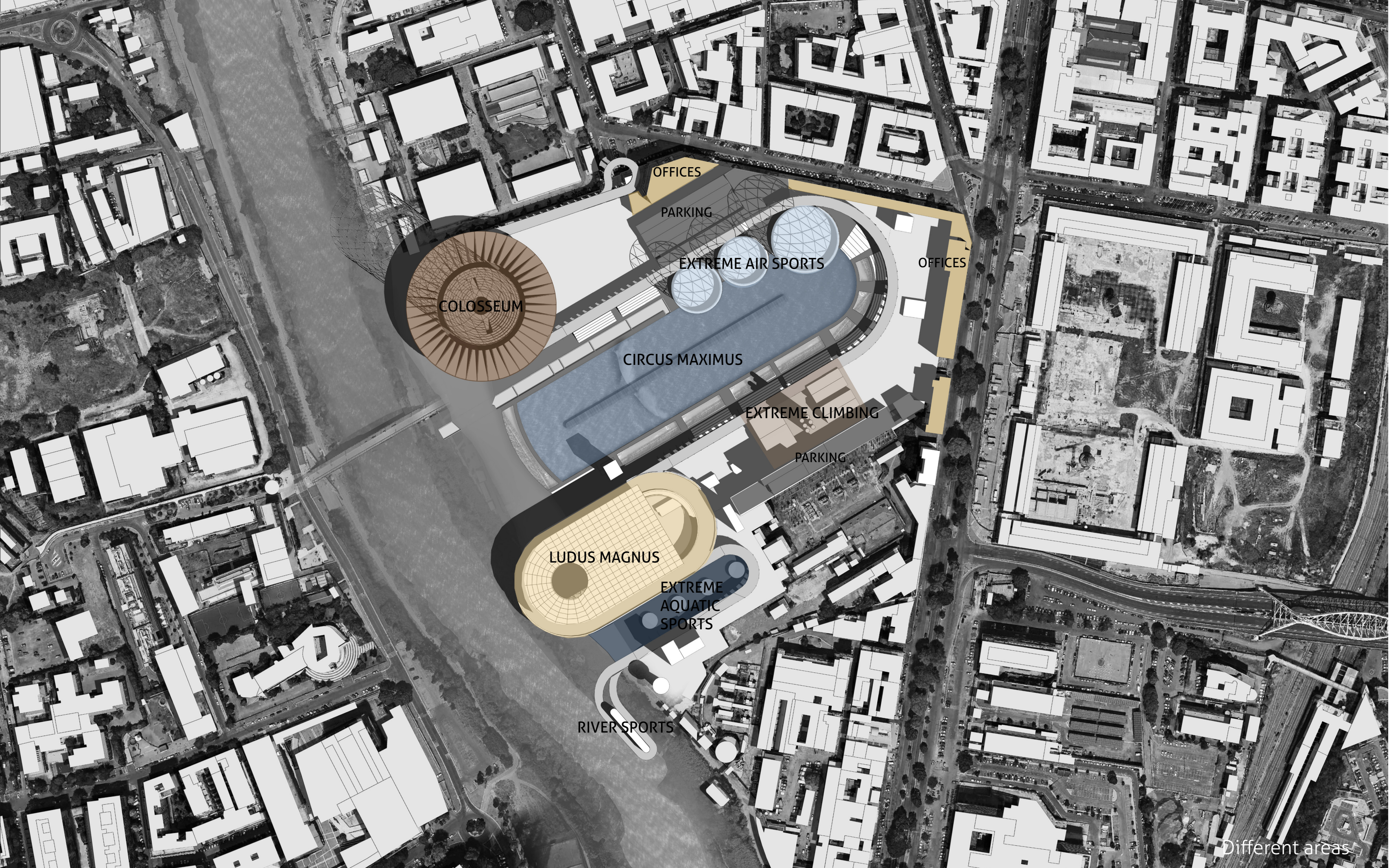
Old train tracks



Treshhold + Arcade + Skywalk = RIBBON



Intertwining fingers



OFFICES

PARKING

EXTREME AIR SPORTS

OFFICES

COLOSSEUM

CIRCUS MAXIMUS

EXTREME CLIMBING

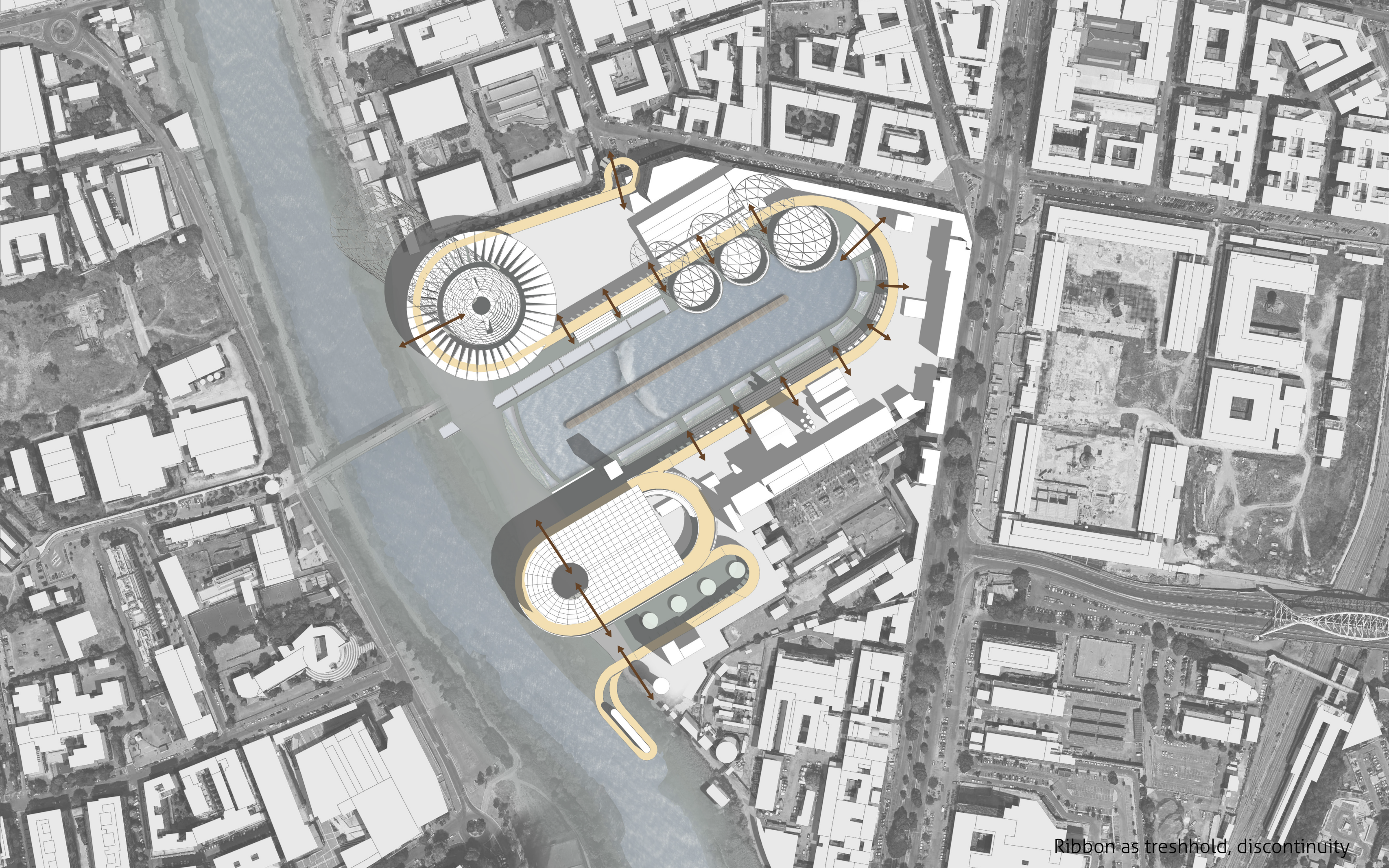
PARKING

LUDUS MAGNUS

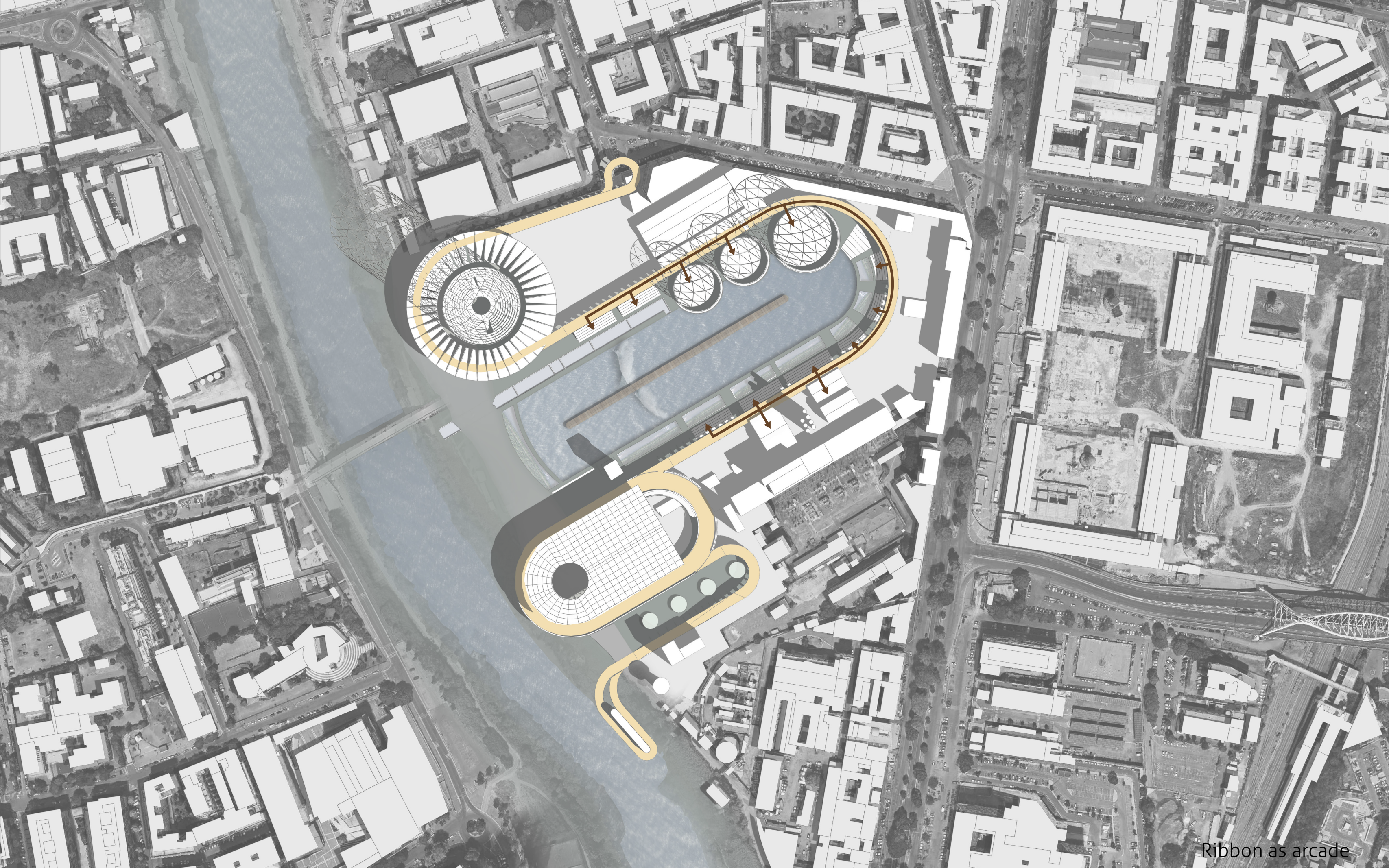
EXTREME
AQUATIC
SPORTS

RIVER SPORTS

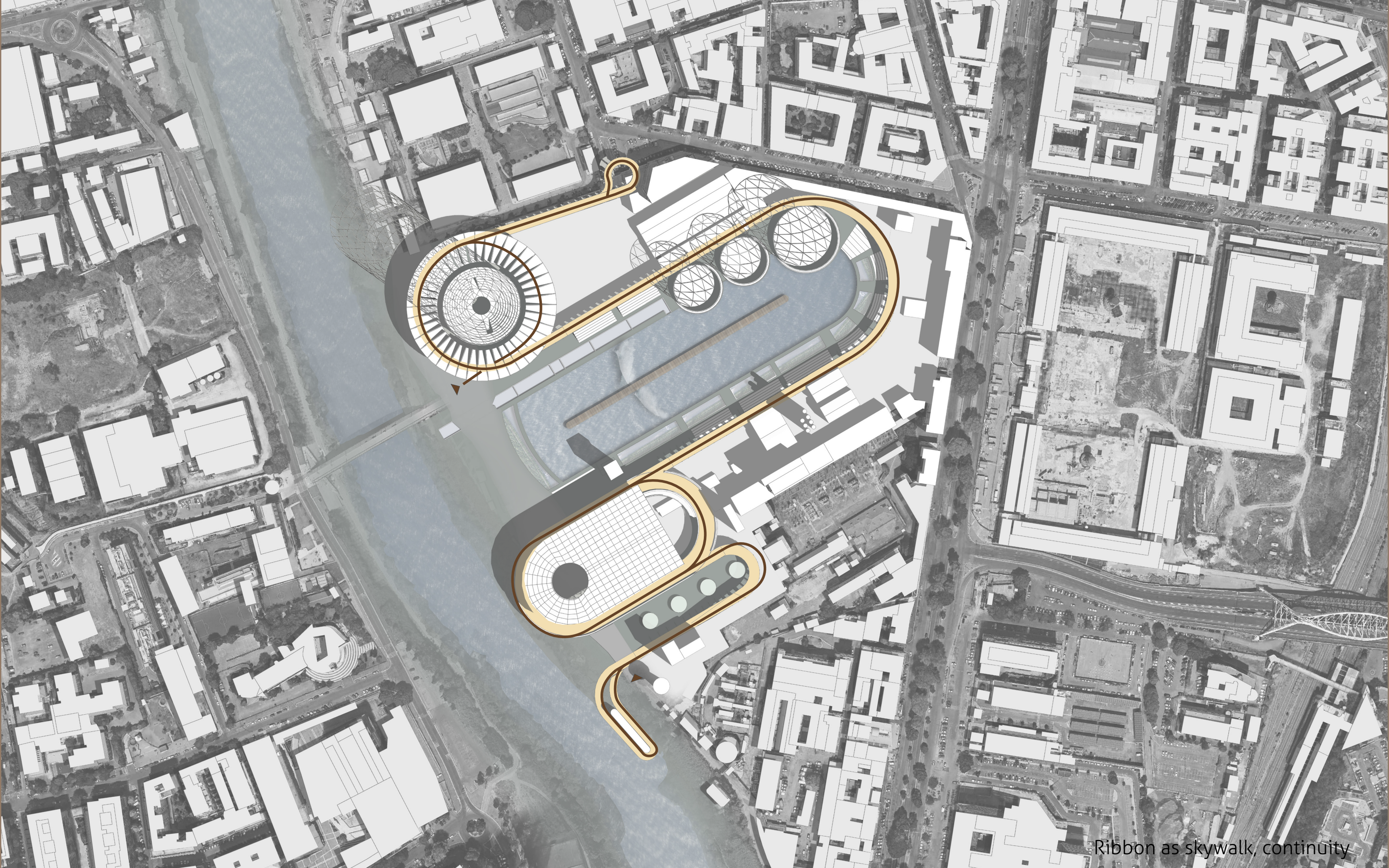
Different areas



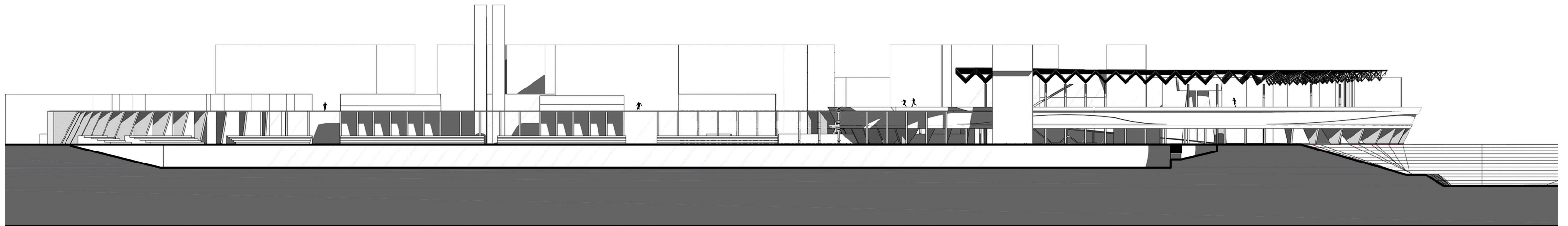
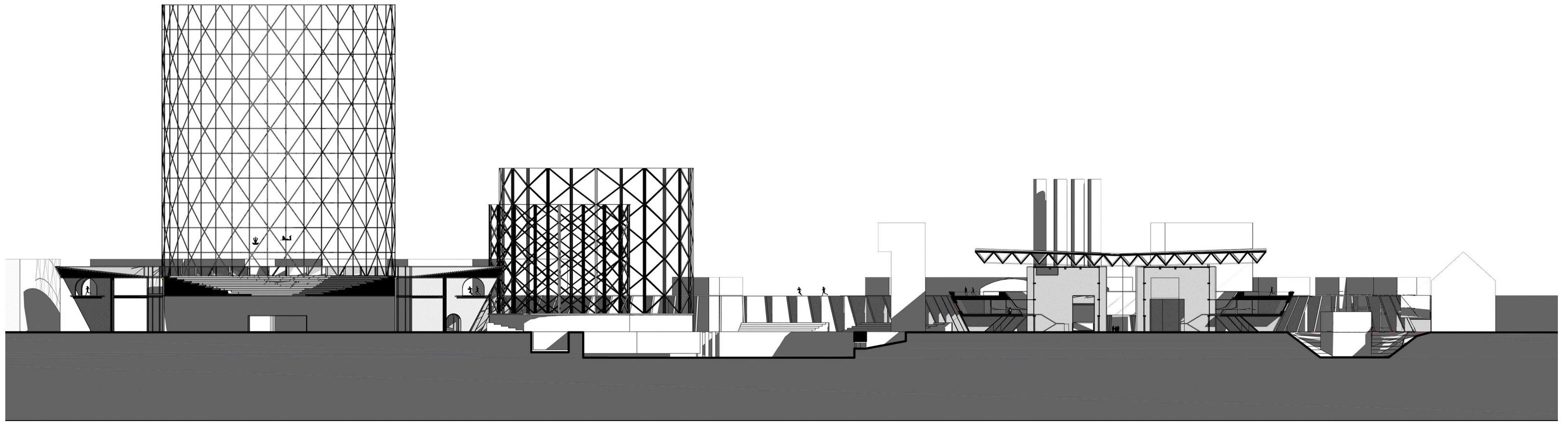
Ribbon as treshhold, discontinuity



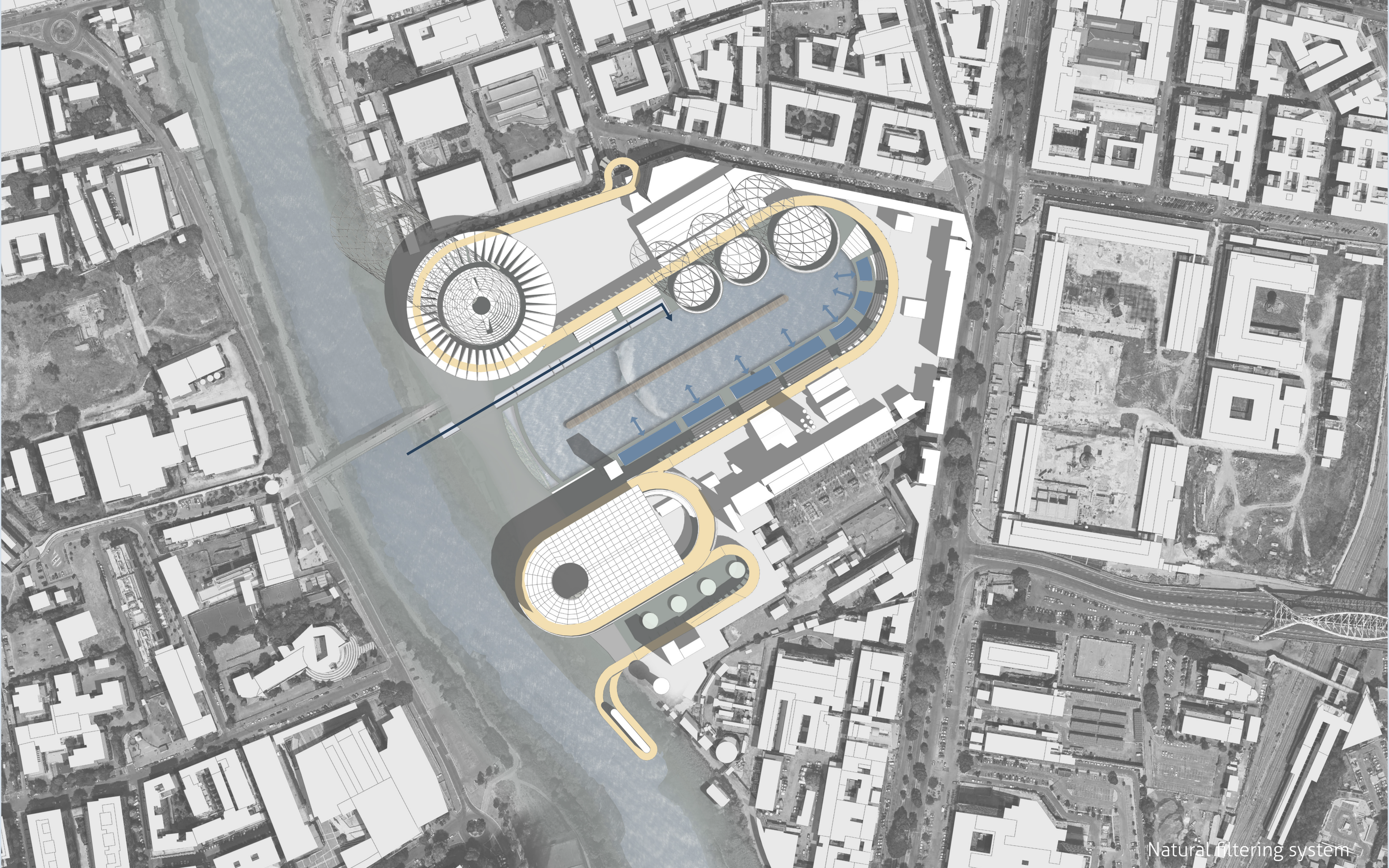
Ribbon as arcade



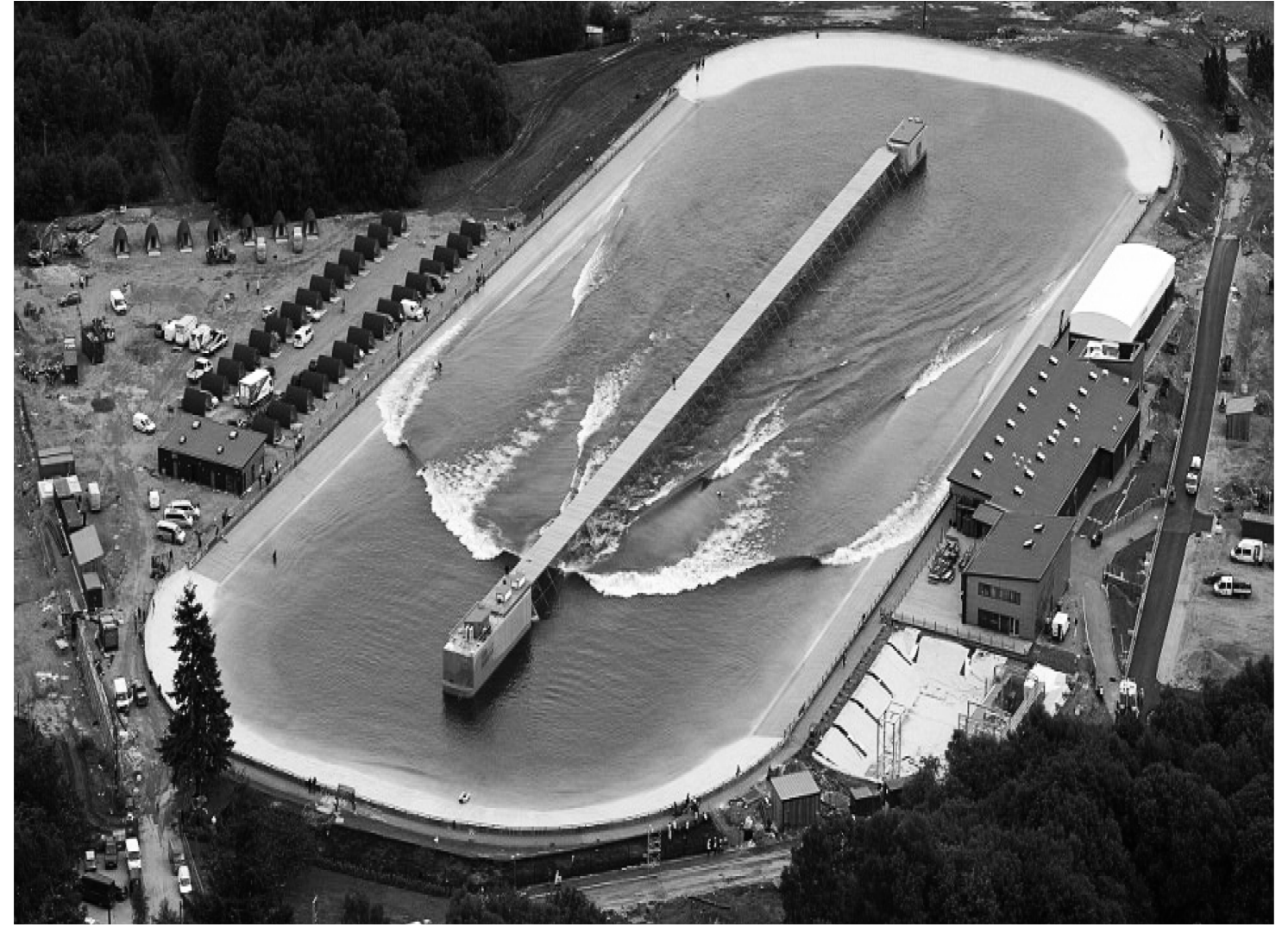
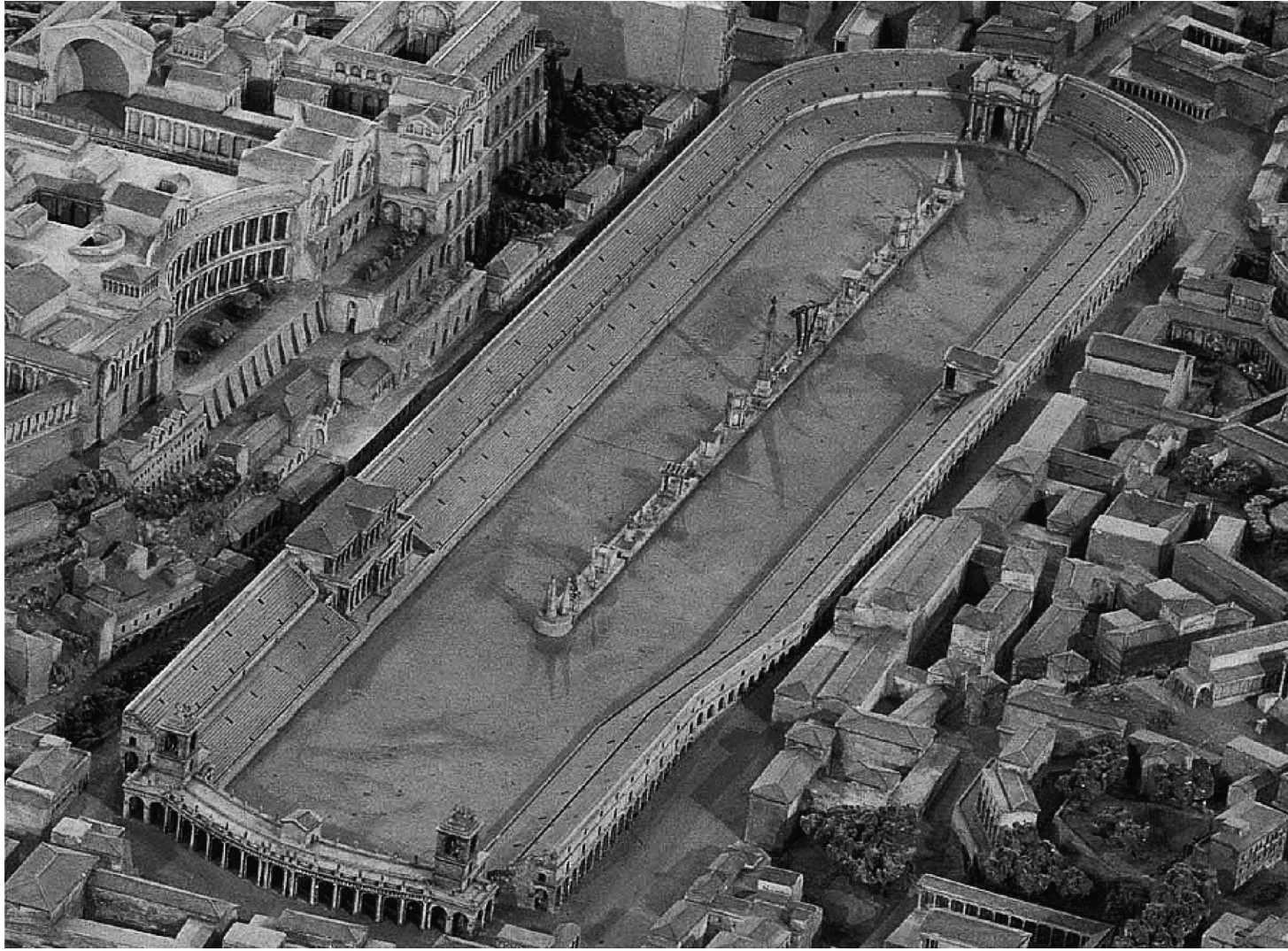
Ribbon as skywalk, continuity



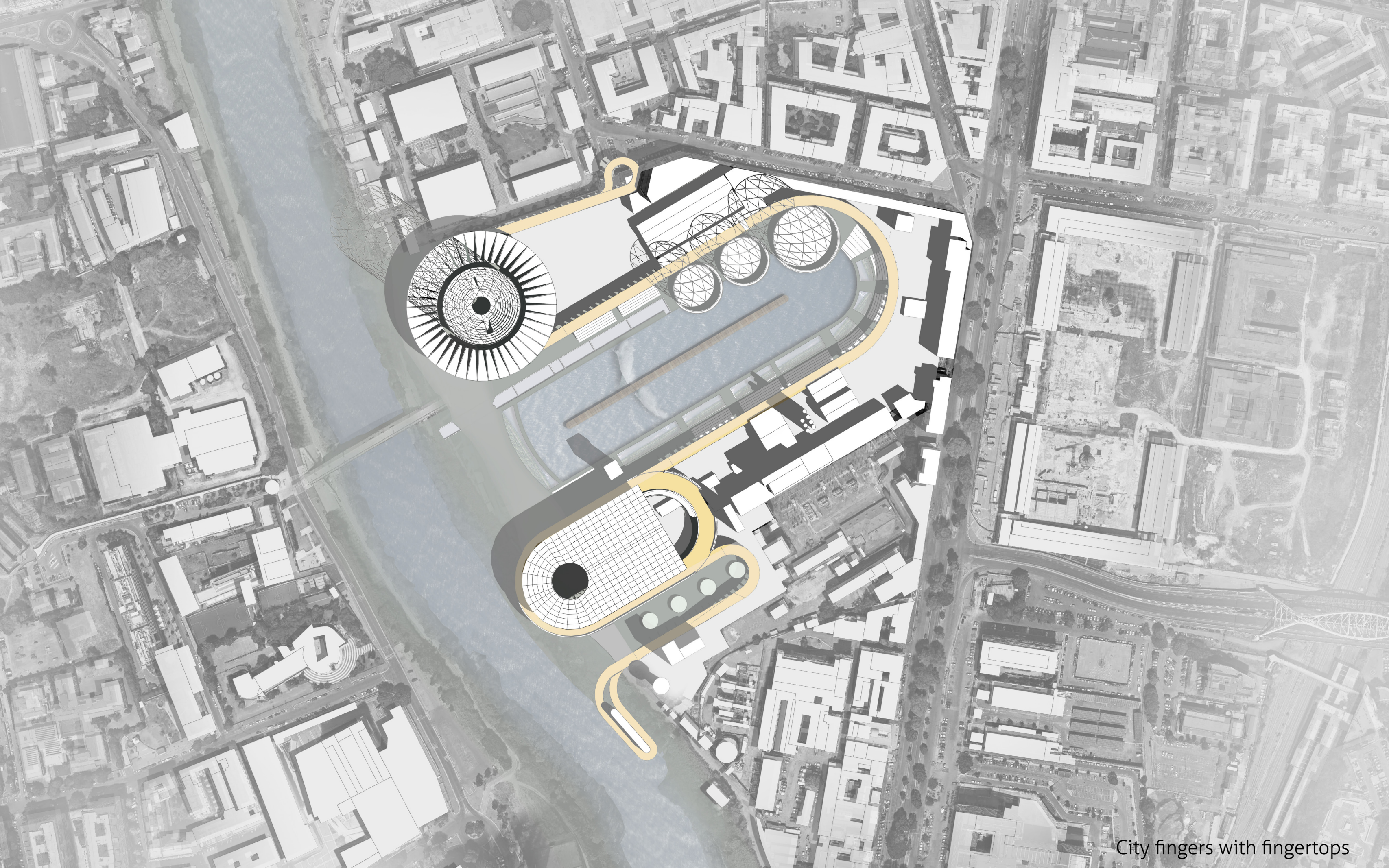
Mountain ridge - bottom valley



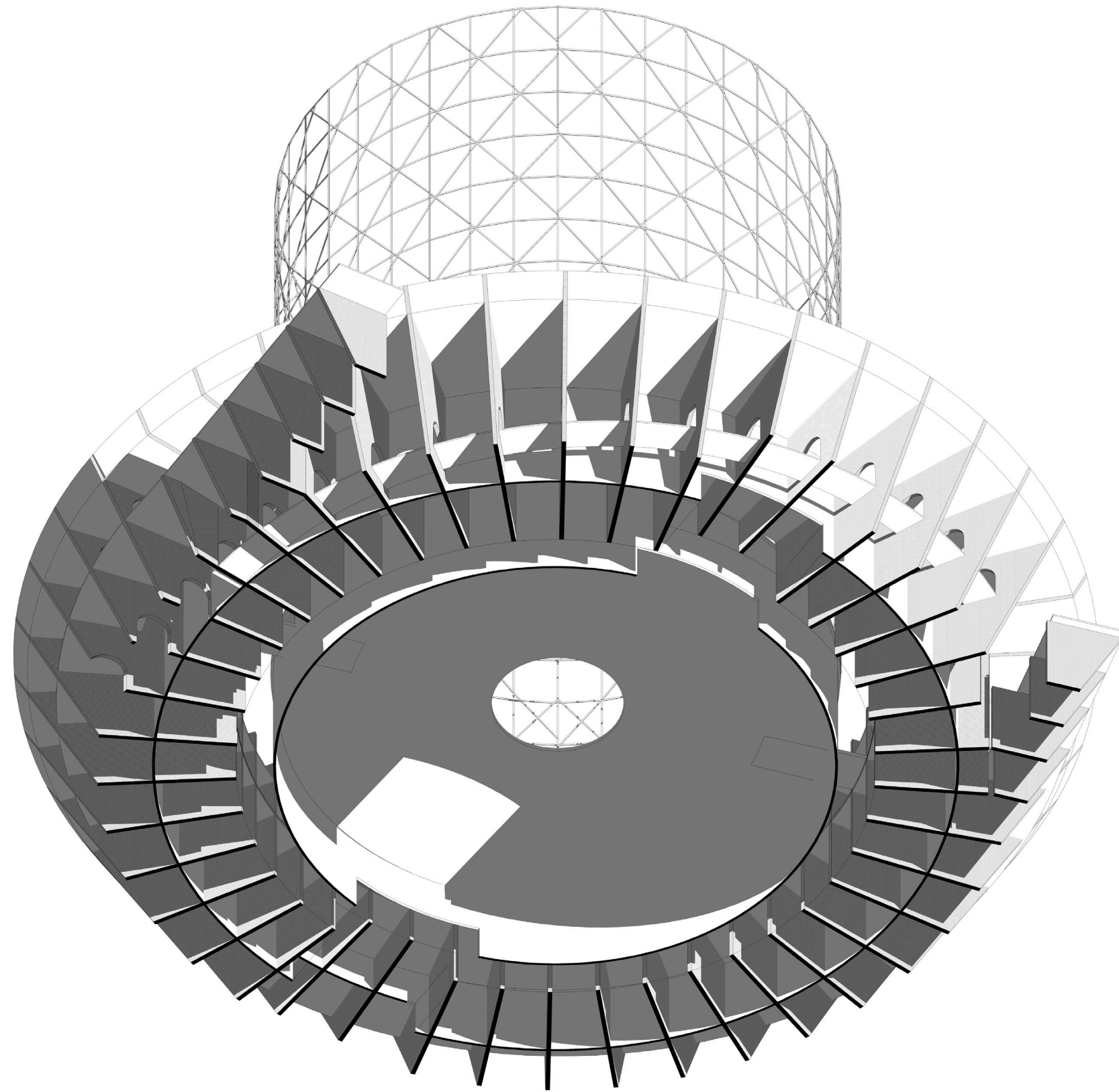
Natural filtering system



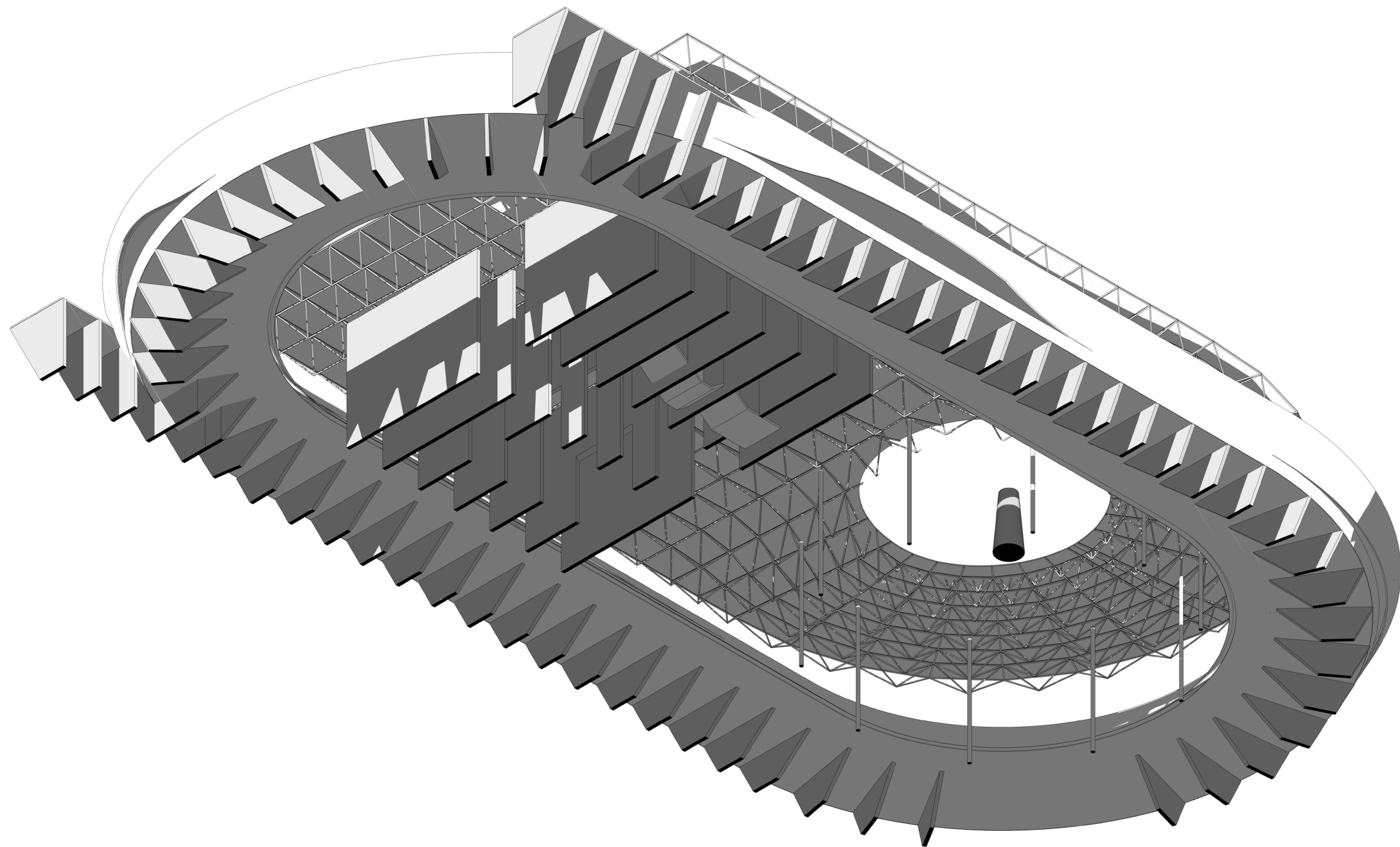
Ancient and modern Circus Maximus



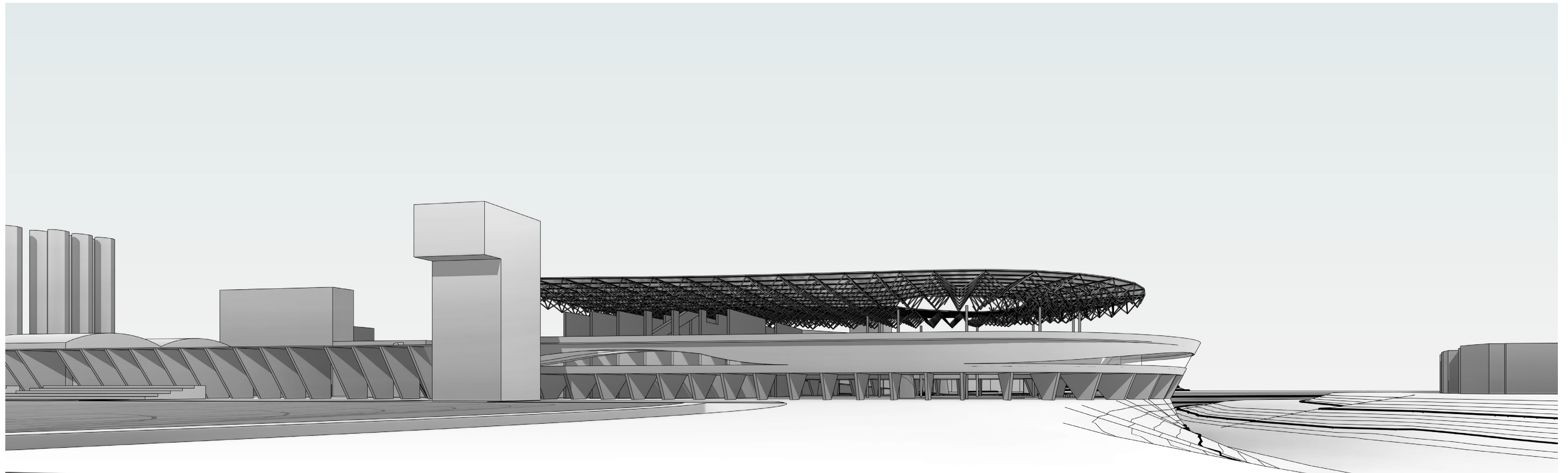
City fingers with fingertips



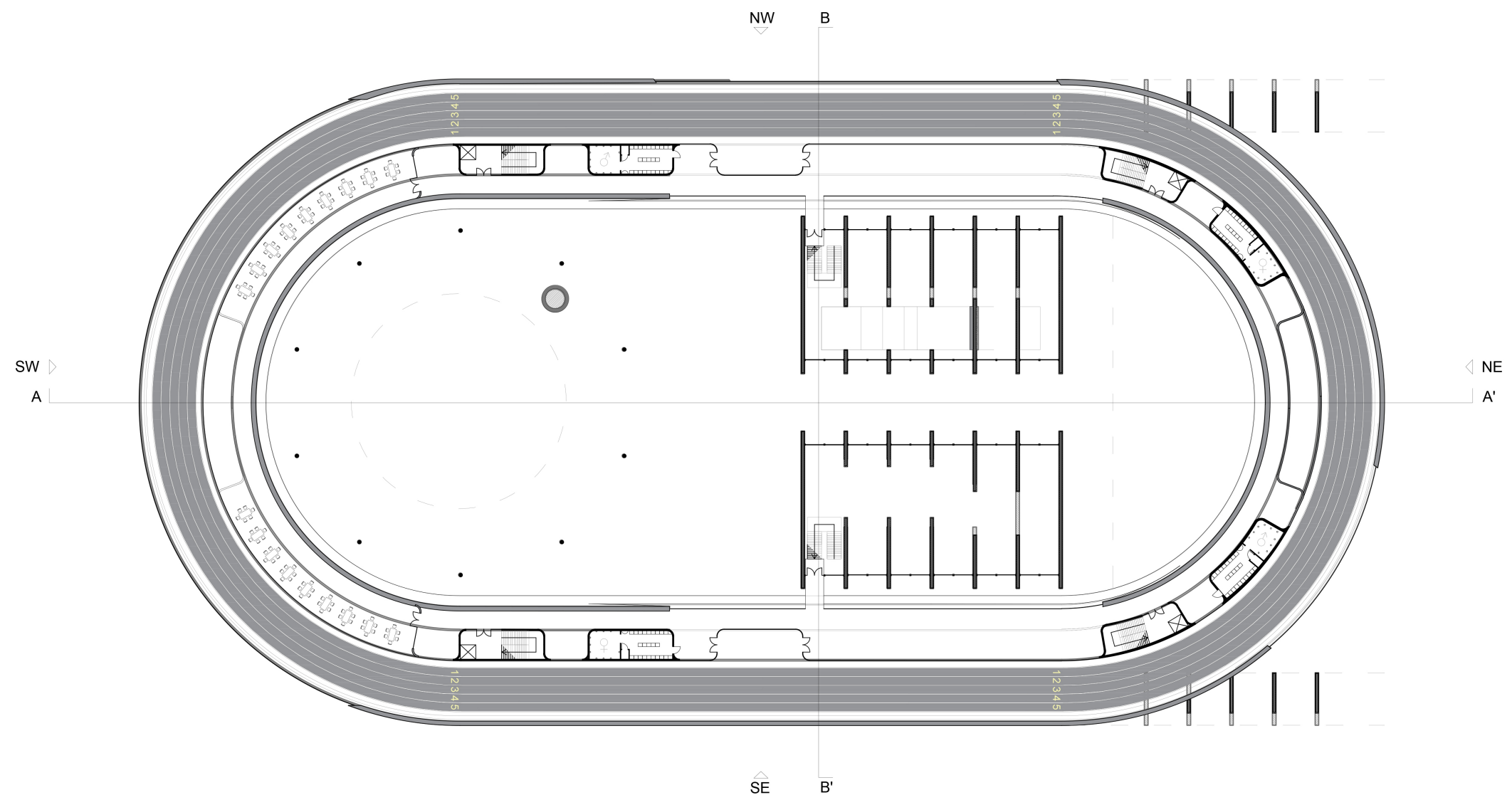
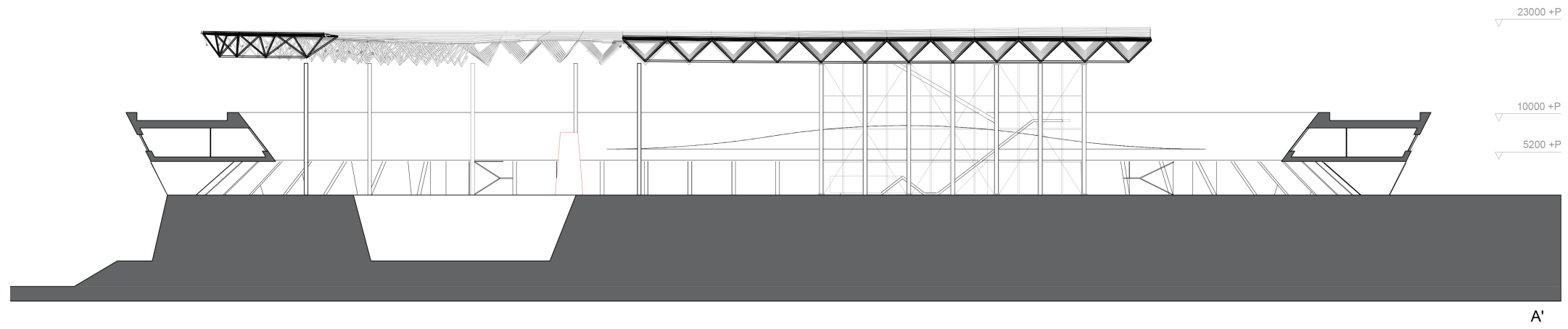
Connection between Ribbon and Colosseum



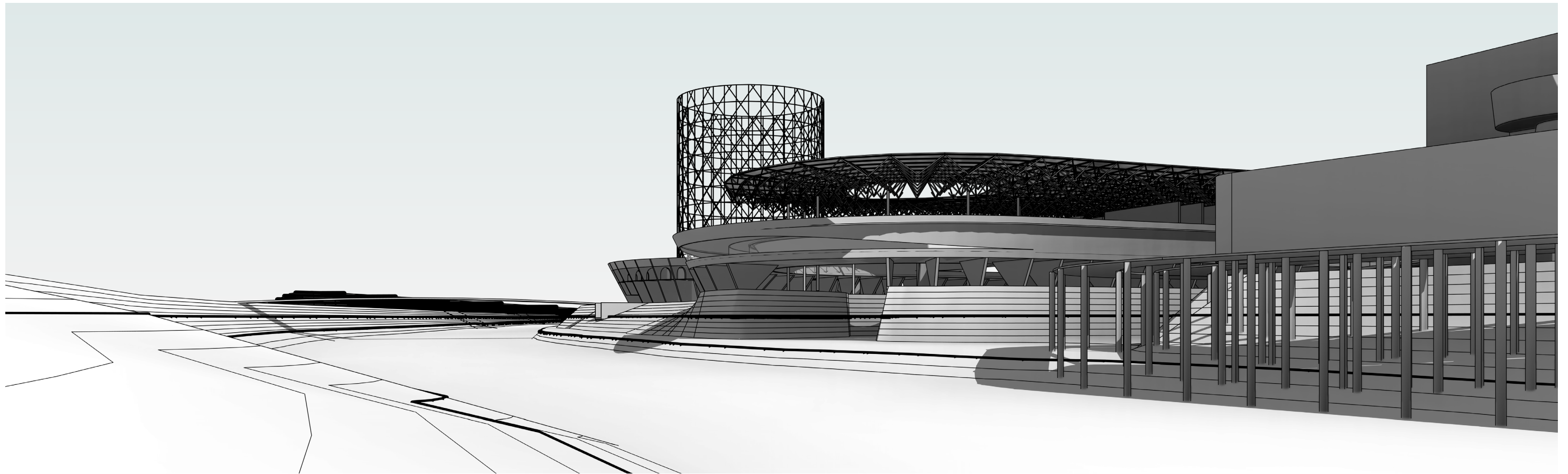
Connection between Ribbon and Ludus Magnus



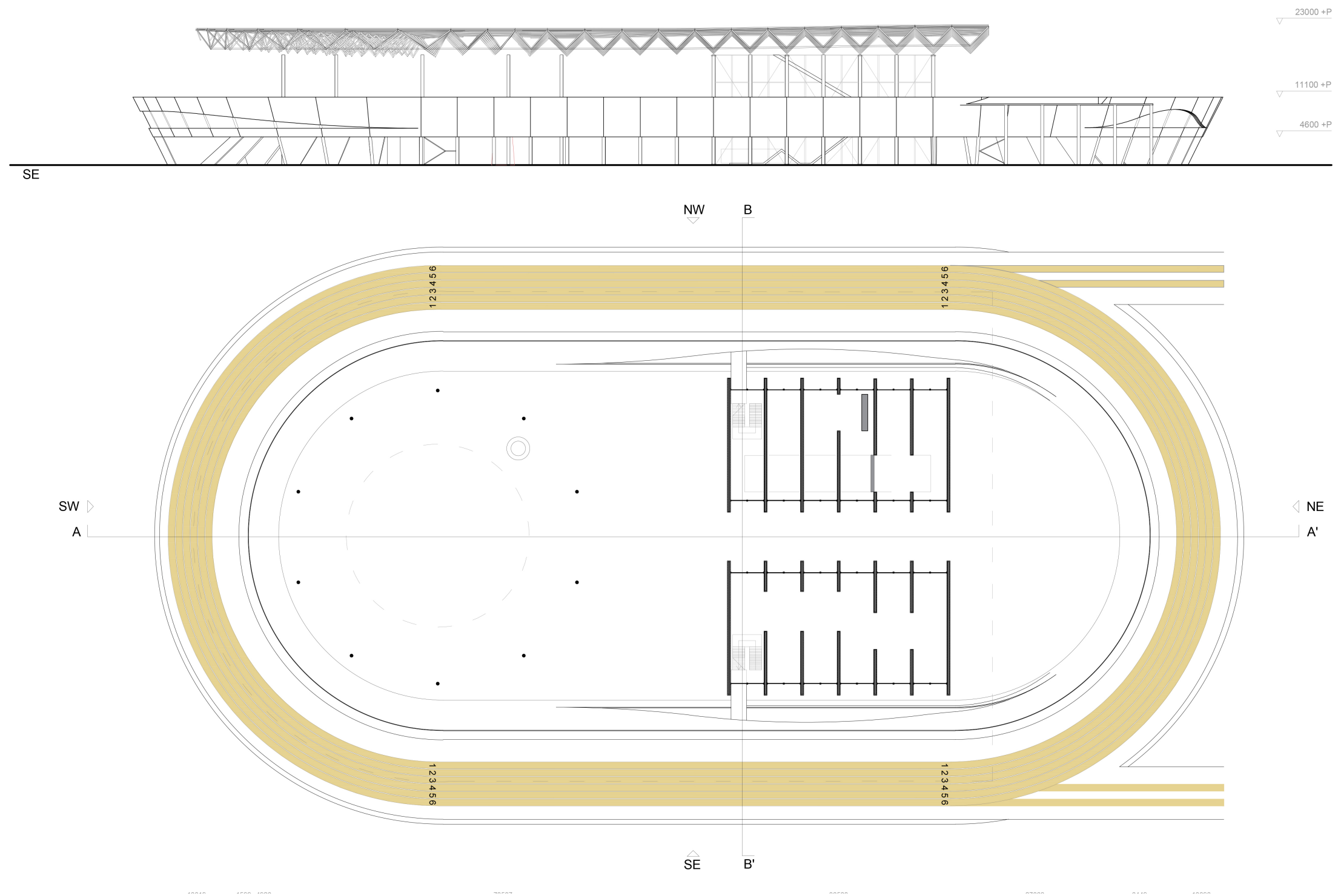
Ludus Magnus from riverside



1st floor and section Ludus Magnus



Connection between riverbank and Ludus Magnus



2nd floor and elevation SE Ludus Magnus

