

# Tijdloos

A Kit-Of-Parts System for Self-Assembled Temporary Housing

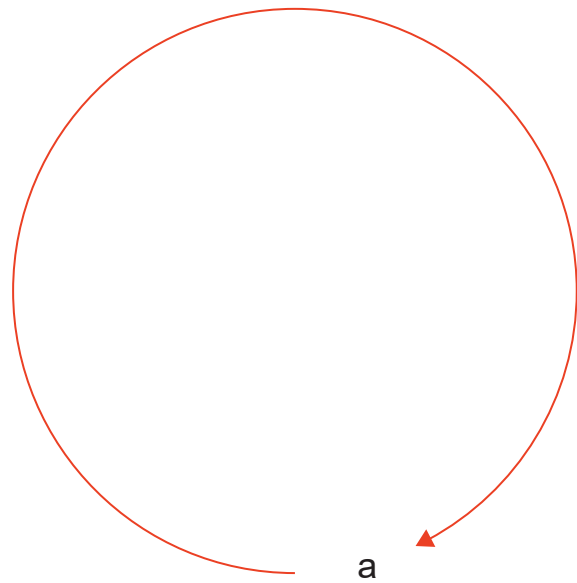


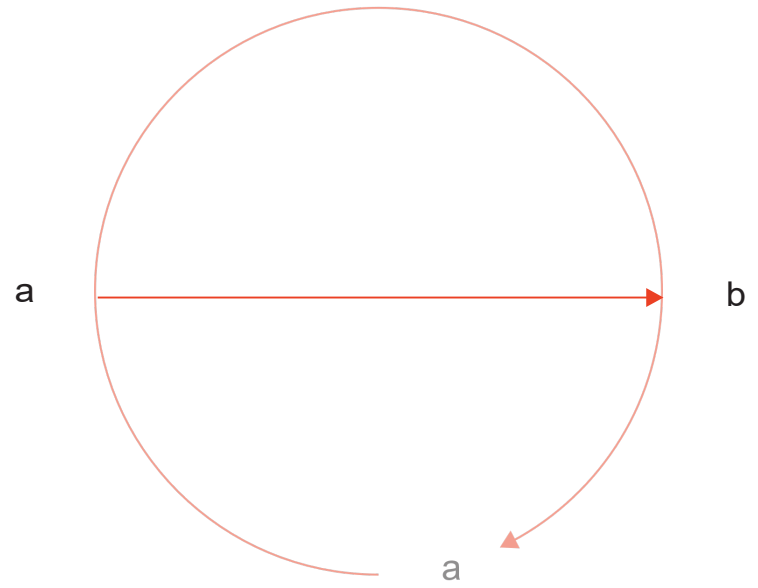
*An investigation into the potential of self-assembled, temporary housing as circular response to the housing shortage in the Netherlands.*

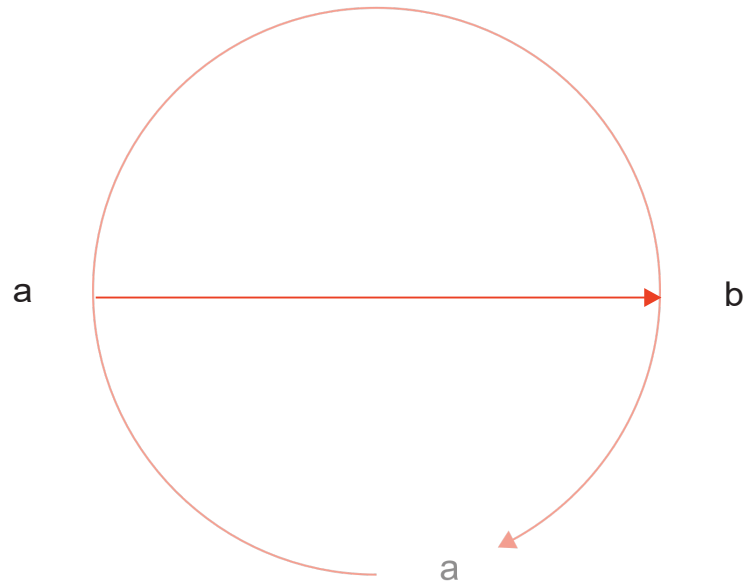
*Een onderzoek naar de mogelijkheden van tijdelijke zelfbouwwoningen als circulaire strategie voor het woningtekort in Nederland.*

*An investigation into the potential of **self-assembled, temporary** housing as **circular** response to the housing shortage in the Netherlands.*

*Een onderzoek naar de mogelijkheden van **tijdelijke zelfbouwwoningen** als **circulaire** strategie voor het woningtekort in Nederland.*







*Take-make-waste model*



Replacement crank (own image, 2026)



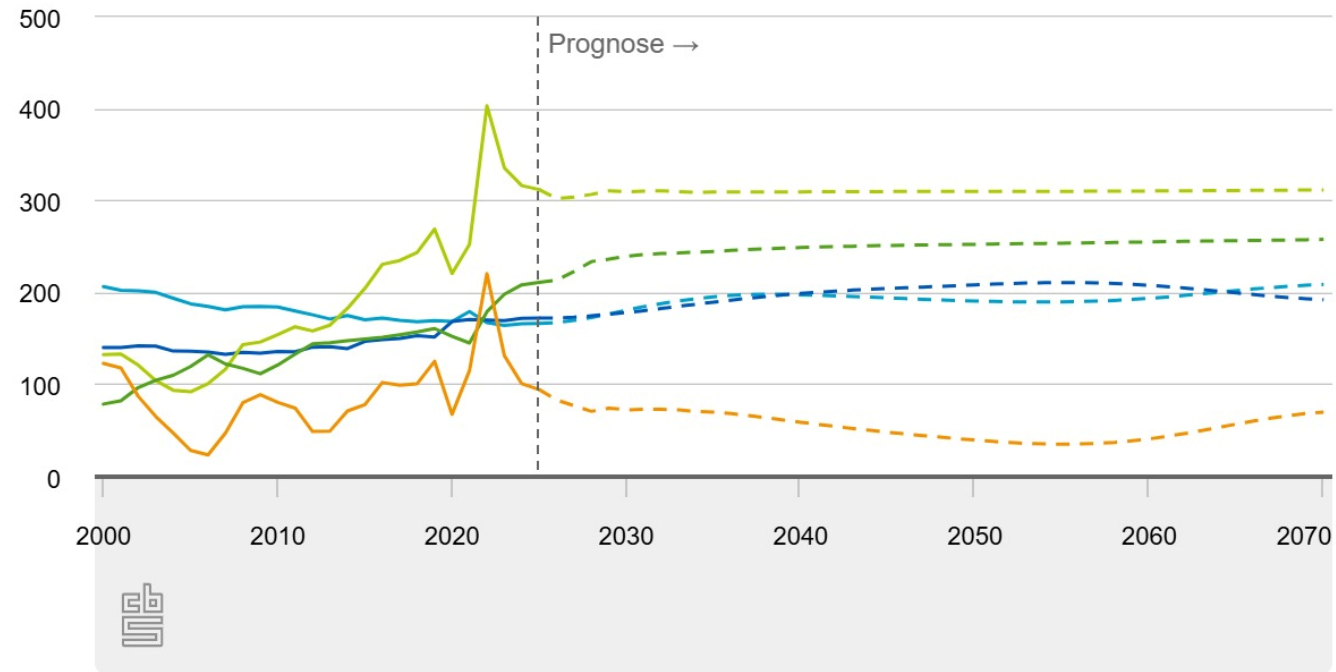
(Rural Studio, *the making of Rosie's Home 2024*)

*What if greater initiative were taken by stakeholders themselves, in the road towards circularity?*

*Wat als stakeholders zelf een grotere rol en meer initiatief zouden nemen, in de weg naar circulariteit?*

## Bevolkingsontwikkeling

x 1 000



- Levend geboren kinderen
- Immigranten
- Bevolkingsgroei
- Overledenen
- Emigranten

"A classic and probably a work of genius" —JANE JACOBS, author of *The Death and Life of Great American Cities*

# HOW BUILDINGS LEARN

What happens after they're built



New Orleans, 1857



The same two buildings, 1993

STEWART BRAND  
creator of *THE WHOLE EARTH CATALOG*



*In a land where land is scarce and populations dynamics fluctuate, continuously constructing permanent housing may not be the most sustainable long-term strategy.*

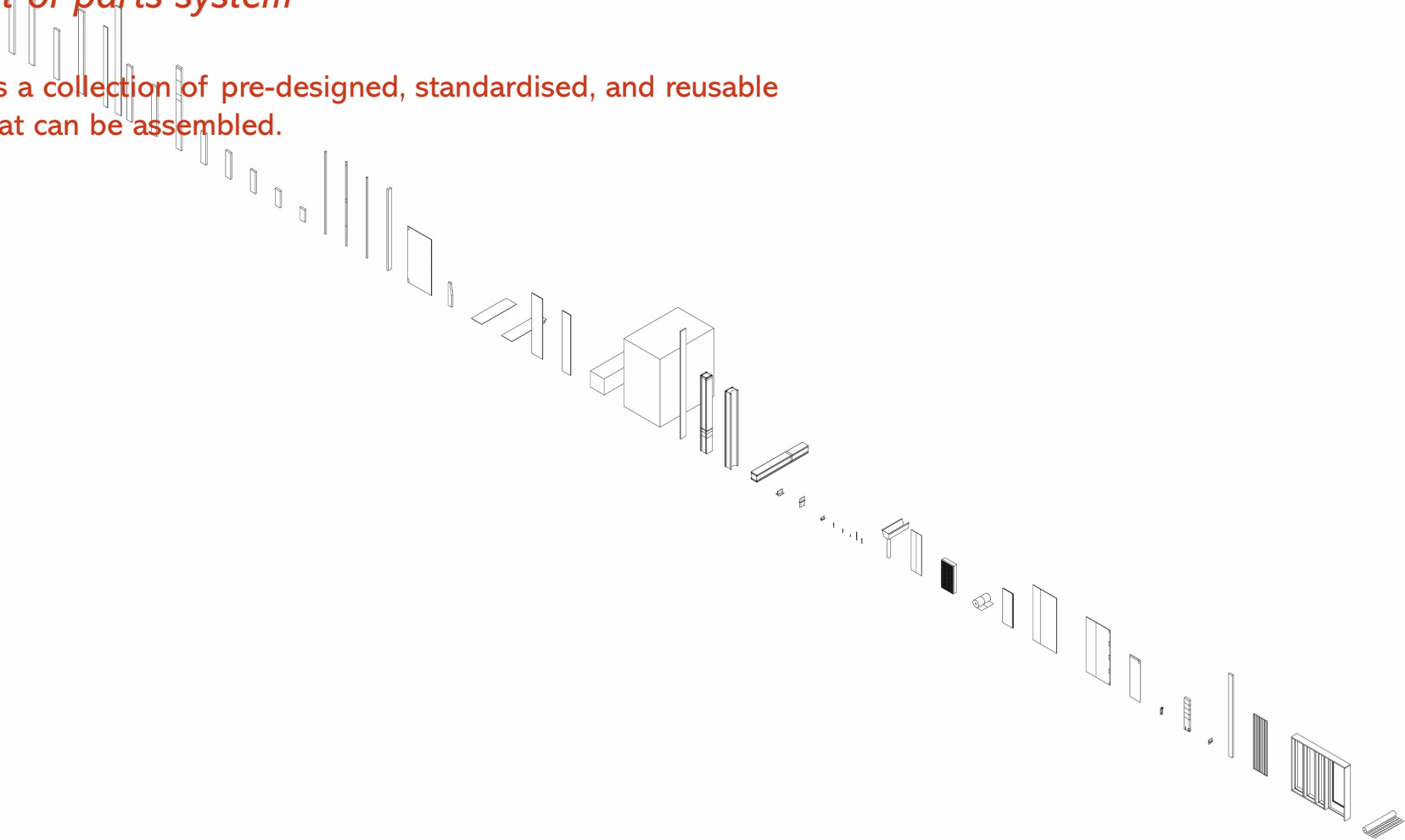
*In een land waar ruimte schaars is en de bevolkingsdynamiek fluctueert, is het voortdurend bouwen van permanente huisvesting wellicht niet de meest duurzame lange termijn strategie.*

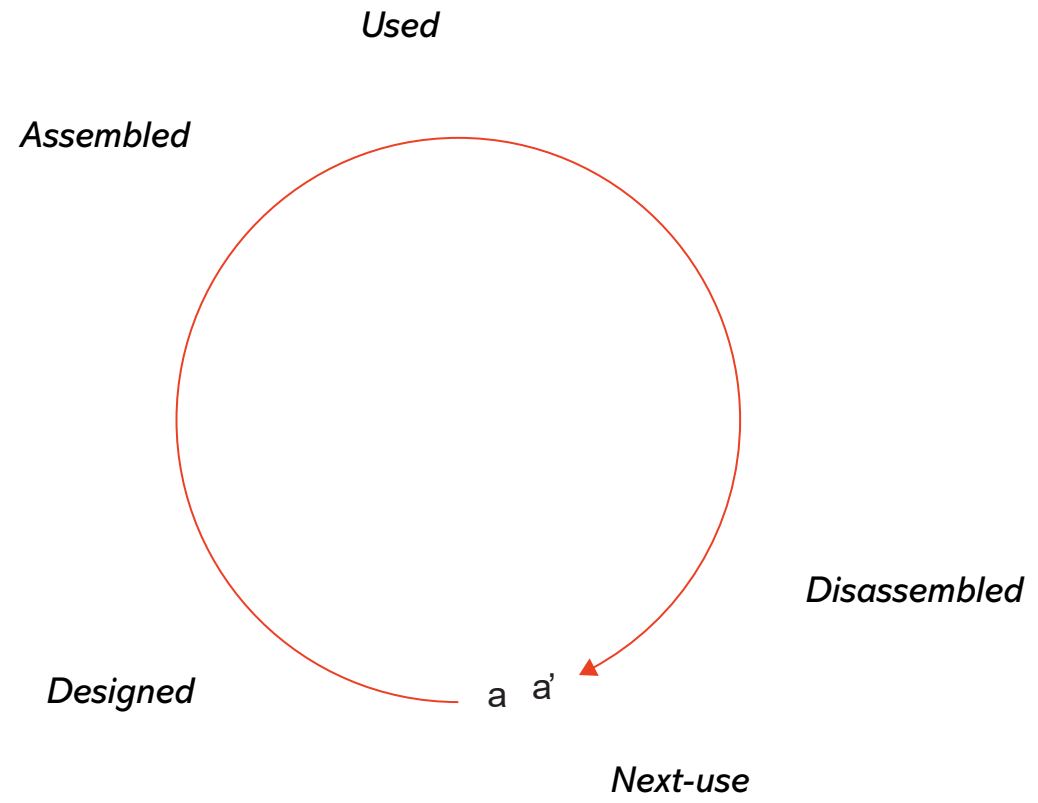
*An investigation into the potential of self-assembled, temporary housing as circular response to the housing shortage in the Netherlands.*

*Een onderzoek naar de mogelijkheden van tijdelijke zelfbouwwoningen als circulaire strategie voor het woningtekort in Nederland.*

## *Structural kit-of-parts system*

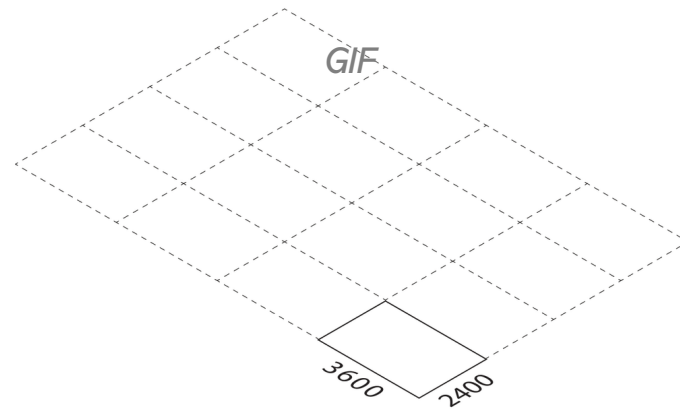
A kit-of-parts is a collection of pre-designed, standardised, and reusable components that can be assembled.





## Tijdloos

### A Kit-Of-Parts System for Self-Assembled Temporary Housing



*Design principles*

1. *Weight.*
2. *Standard measurements.*

*Ontwerp principes*

1. *Gewicht;*
2. *Standaard afmetingen.*

*Design principles*

1. *Weight : 20 kg maximum, 40 kg for two persons.*

*Ontwerp principes*

1. *Gewicht : 20 kg maximum, 40 kg voor twee personen.*

### *Design principles*

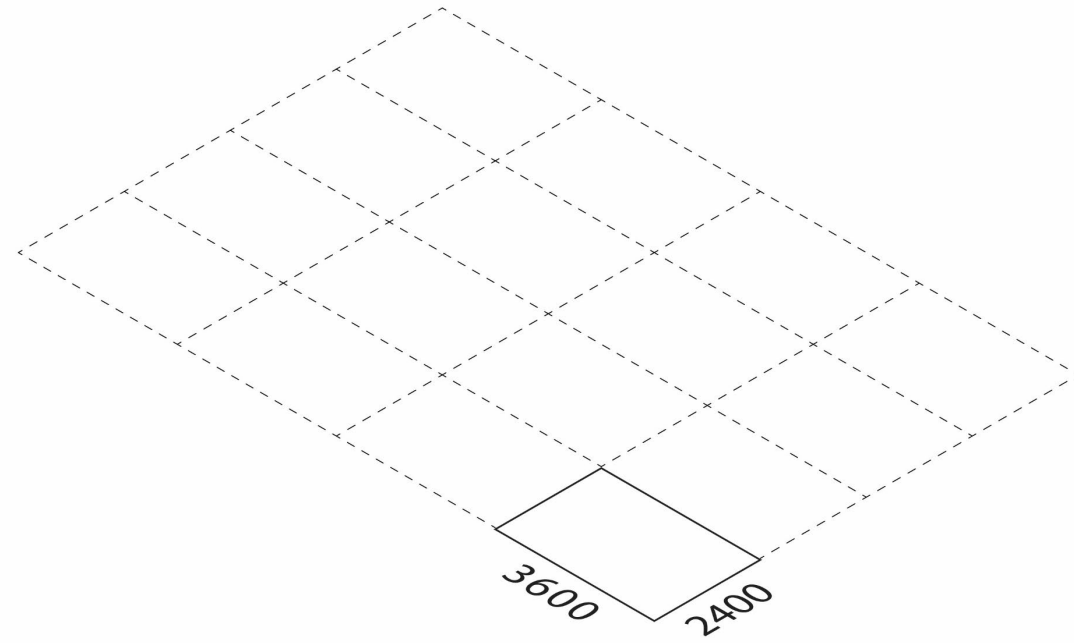
2. *Standard measurements* : The circulation of standard dimensions makes building faster, cheaper and more reliable.

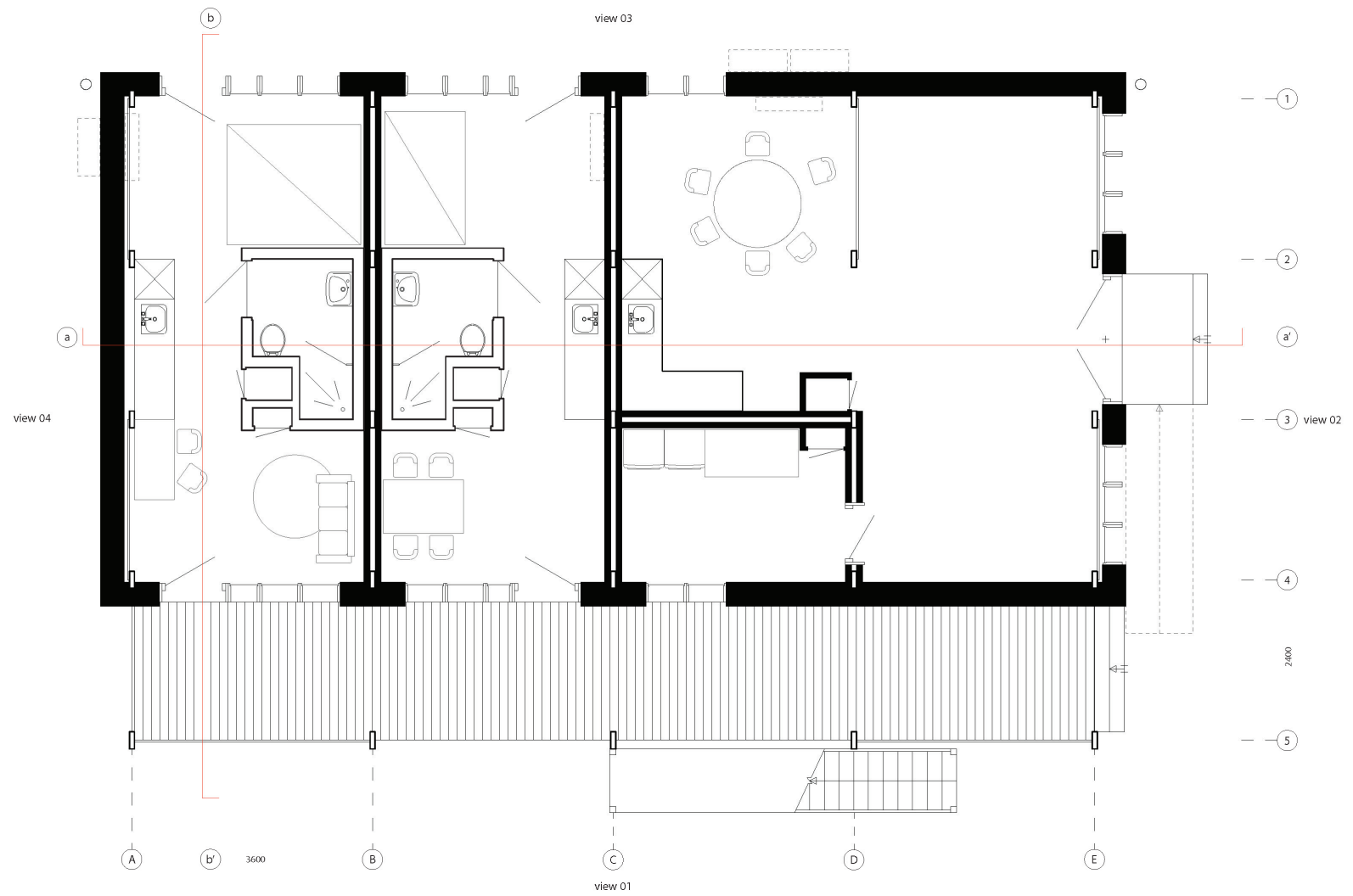
### *Ontwerp principes*

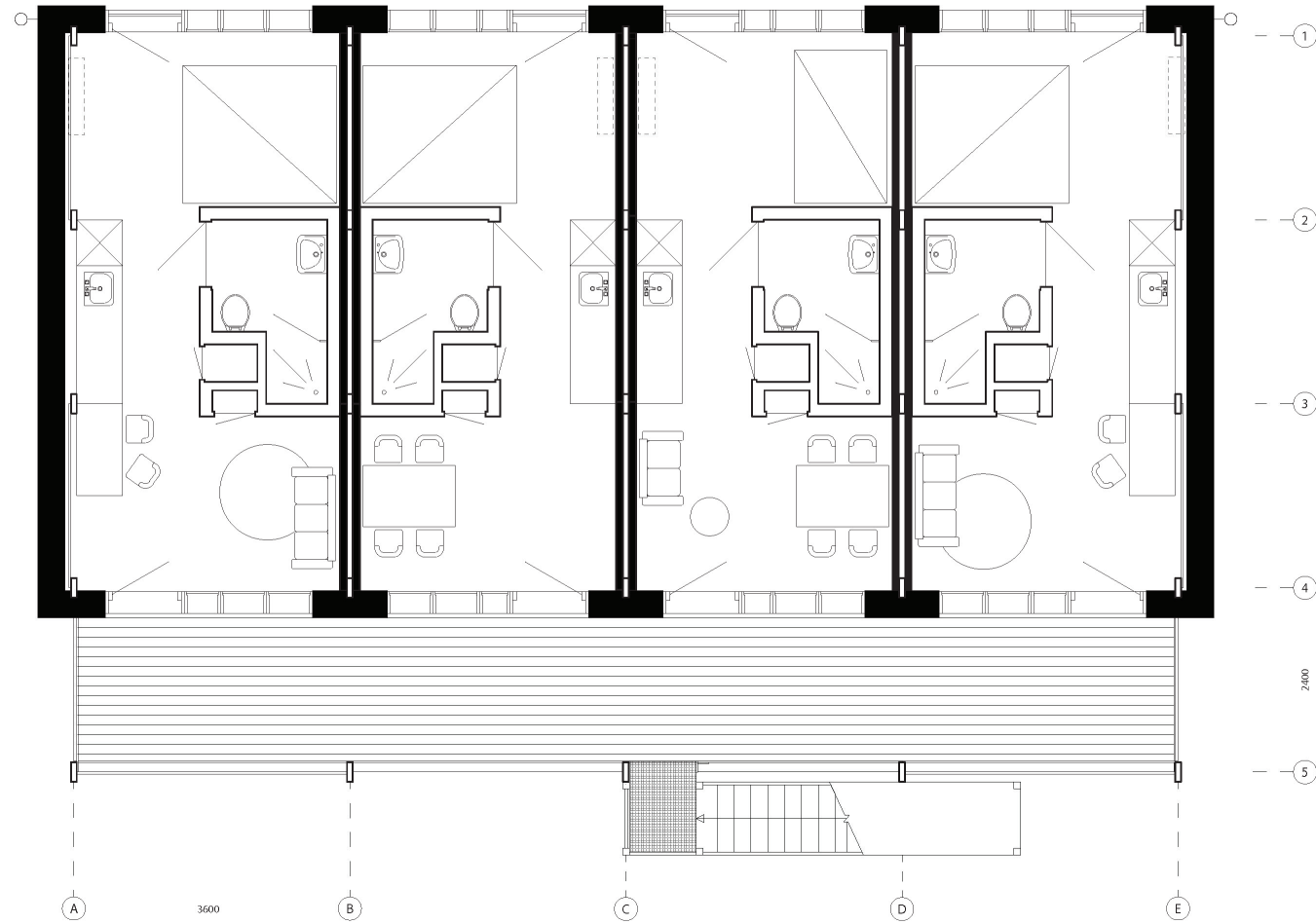
2. *Standaard afmetingen* : de rondgang van standaard afmetingen maakt bouwen sneller, goedkoper en betrouwbaarder.

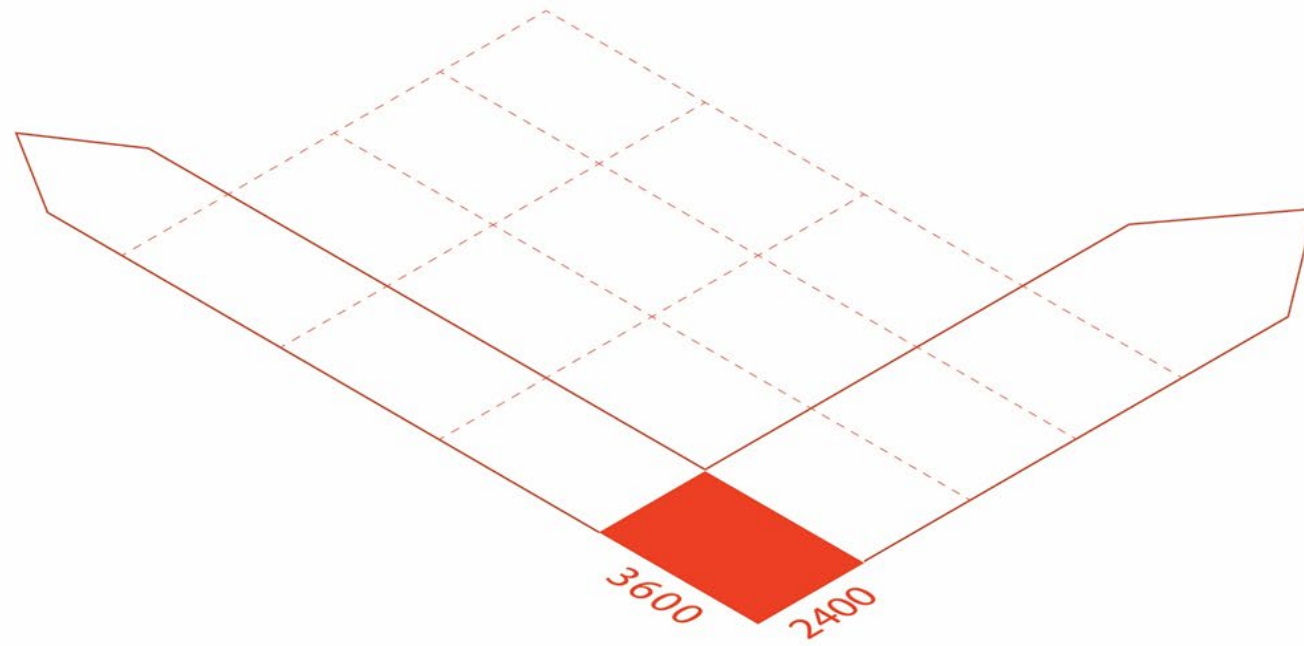
### The sanding belt-effect

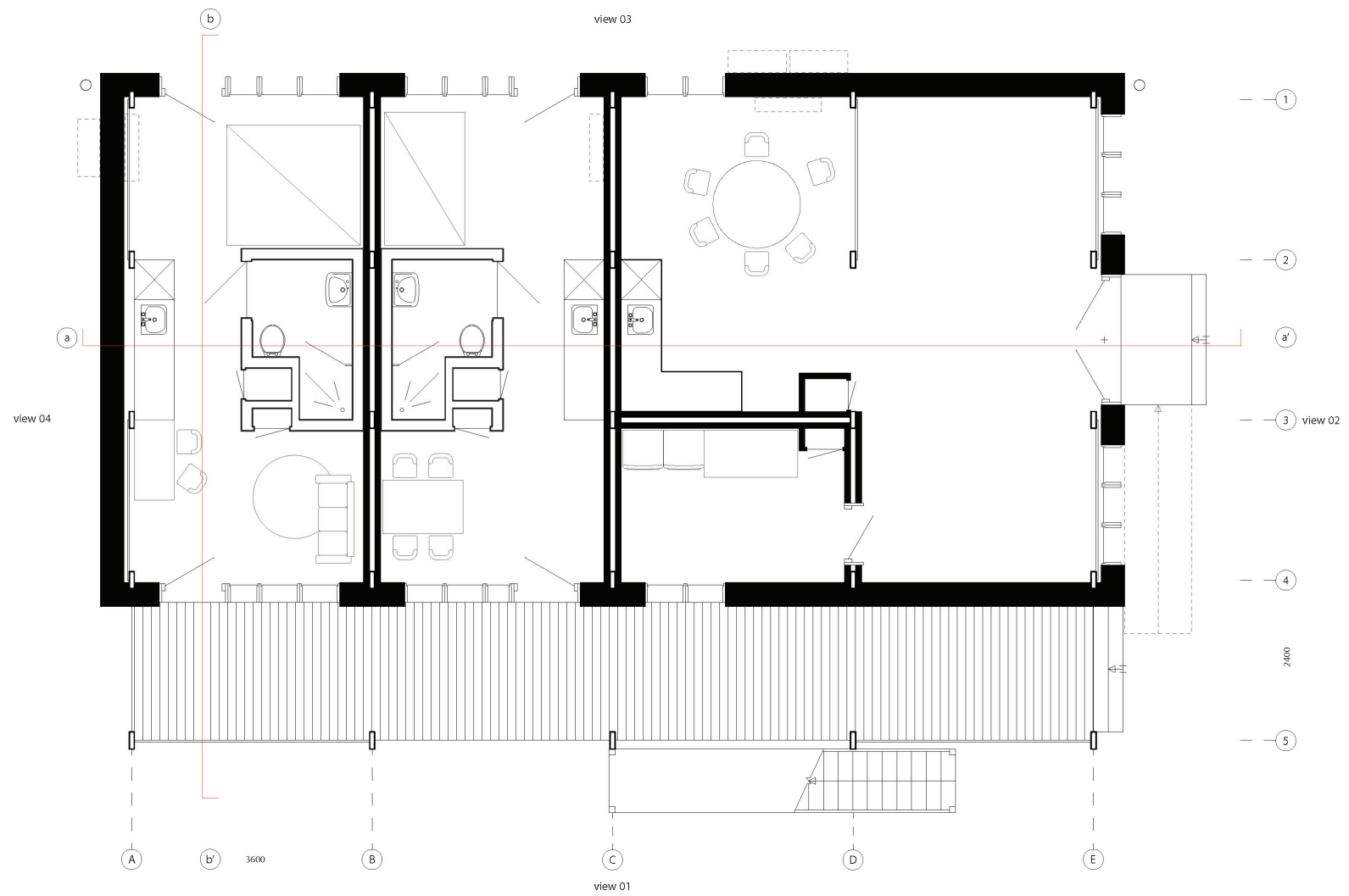
*When working at my father's workshop in my hometown, I always loved using the sanding belt. It could smooth even the roughest or most heavily glued pieces of wood. Whenever my father was around, he would say - in an eastern Dutch dialect: "Weet je dat zeker? Hij gaat hartstikke snel en weg is weg." ("Are you sure about that? It goes very fast, and once it's gone, it's gone.").*

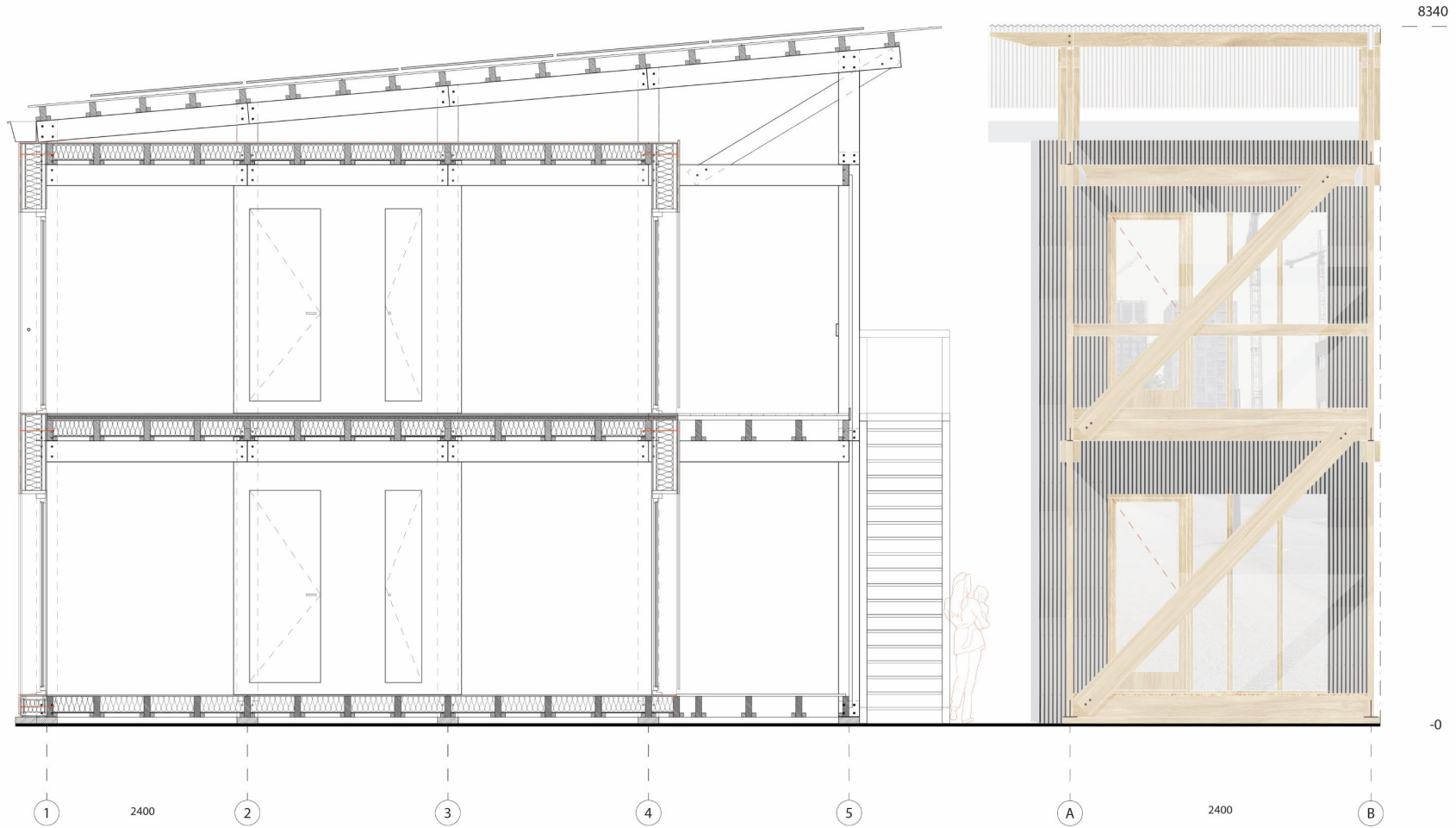










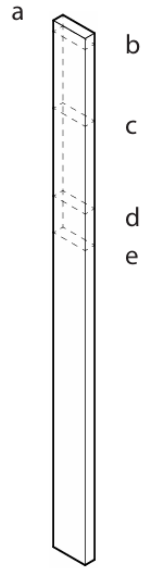


Section bb' + fragment (own work, 2026)



Interior (own work, 2026)





8. Spruce wood (C24) - beam  
75x250 mm

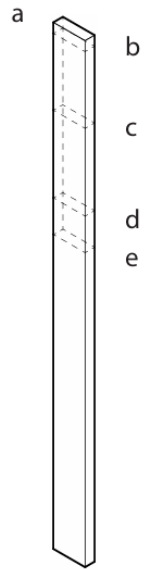
RI -a: 3600 mm  
31,1 - 39,2 kg  
Amount: 42  
€ 53,83

RI -b: 3525 mm  
30,4 - 38,3 kg  
Amount: 163  
from € 53,83

RI -c: 3000 mm  
25 kg  
Amount: 10  
€ 48,38

RI -d: 2400 mm  
20,7 - 26,1 kg  
Amount: 100  
€ 35,88

RI -e: 2150 mm  
18 - 22 kg  
Amount: 20  
from € 53,83



8. Spruce wood (C24) - beam  
75x250 mm

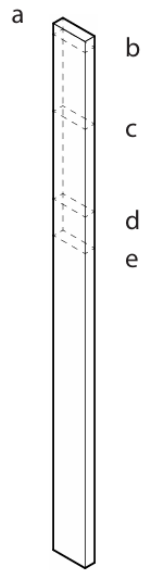
RI -a: 3600 mm  
31,1 - 39,2 kg  
Amount: 42  
€ 53,83

RI -b: 3525 mm  
30,4 - 38,3 kg  
Amount: 163  
from € 53,83

RI -c: 3000 mm  
25 kg  
Amount: 10  
€ 48,38

RI -d: 2400 mm  
20,7 - 26,1 kg  
Amount: 100  
€ 35,88

RI -e: 2150 mm  
18 - 22 kg  
Amount: 20  
from € 53,83



8. Spruce wood (C24) - beam  
75x250 mm

RI -a: 3600 mm  
31,1 - 39,2 kg  
Amount: 42  
€ 53,83

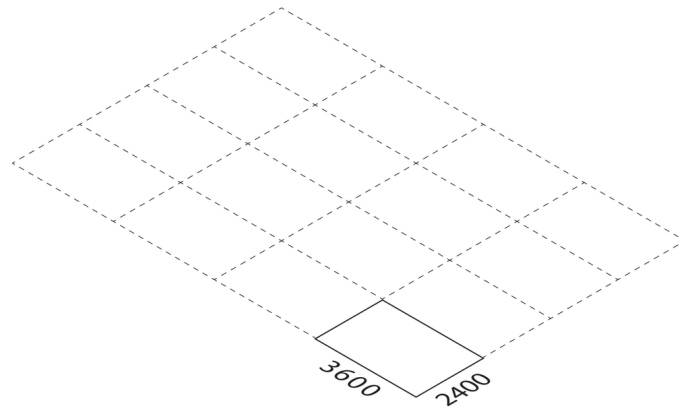
RI -b: 3525 mm  
30,4 - 38,3 kg  
Amount: 163  
from € 53,83

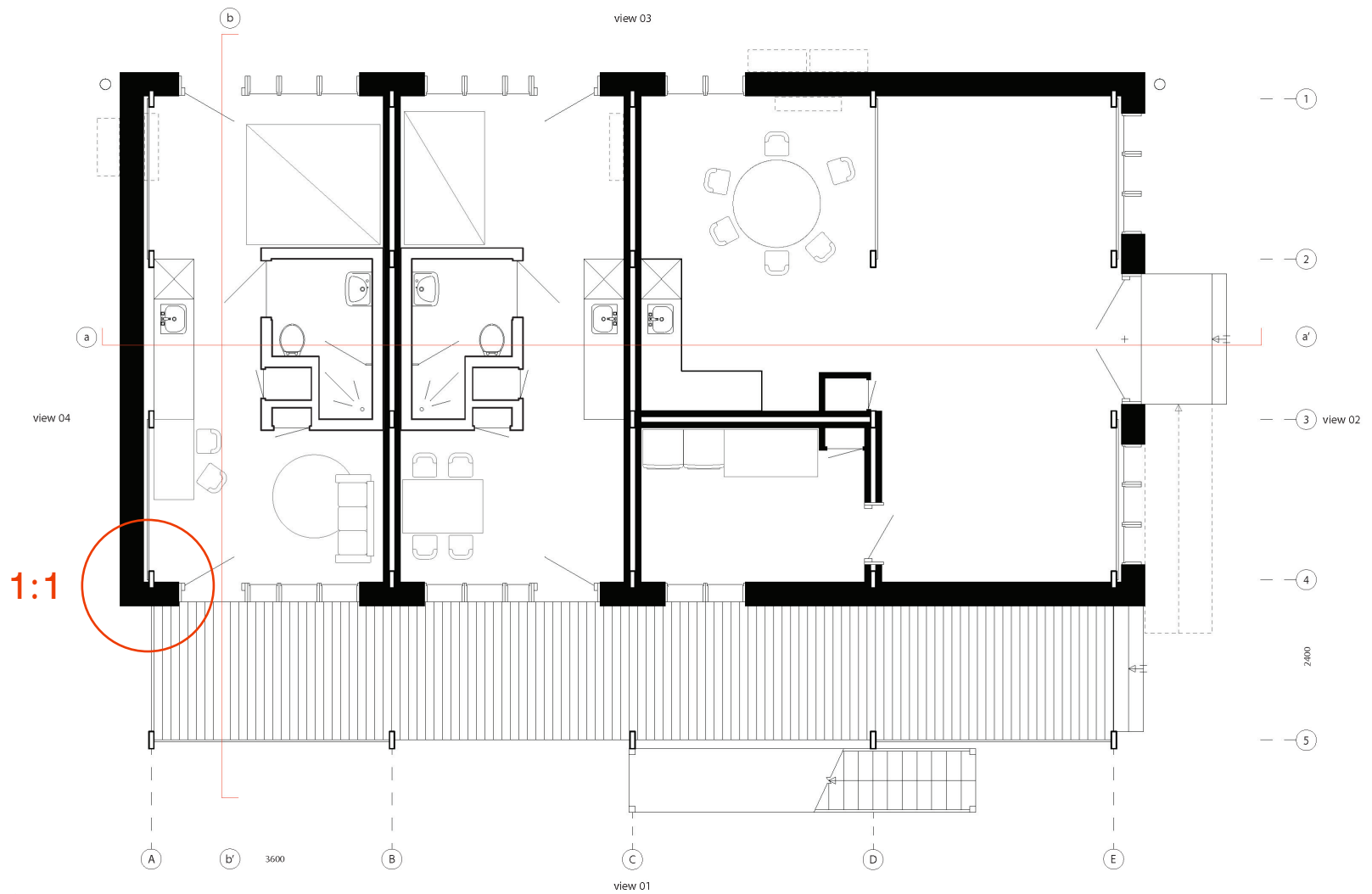
RI -c: 3000 mm  
25 kg  
Amount: 10  
€ 48,38

RI -d: 2400 mm  
20,7 - 26,1 kg  
Amount: 100  
€ 35,88

RI -e: 2150 mm  
18 - 22 kg  
Amount: 20  
from € 53,83

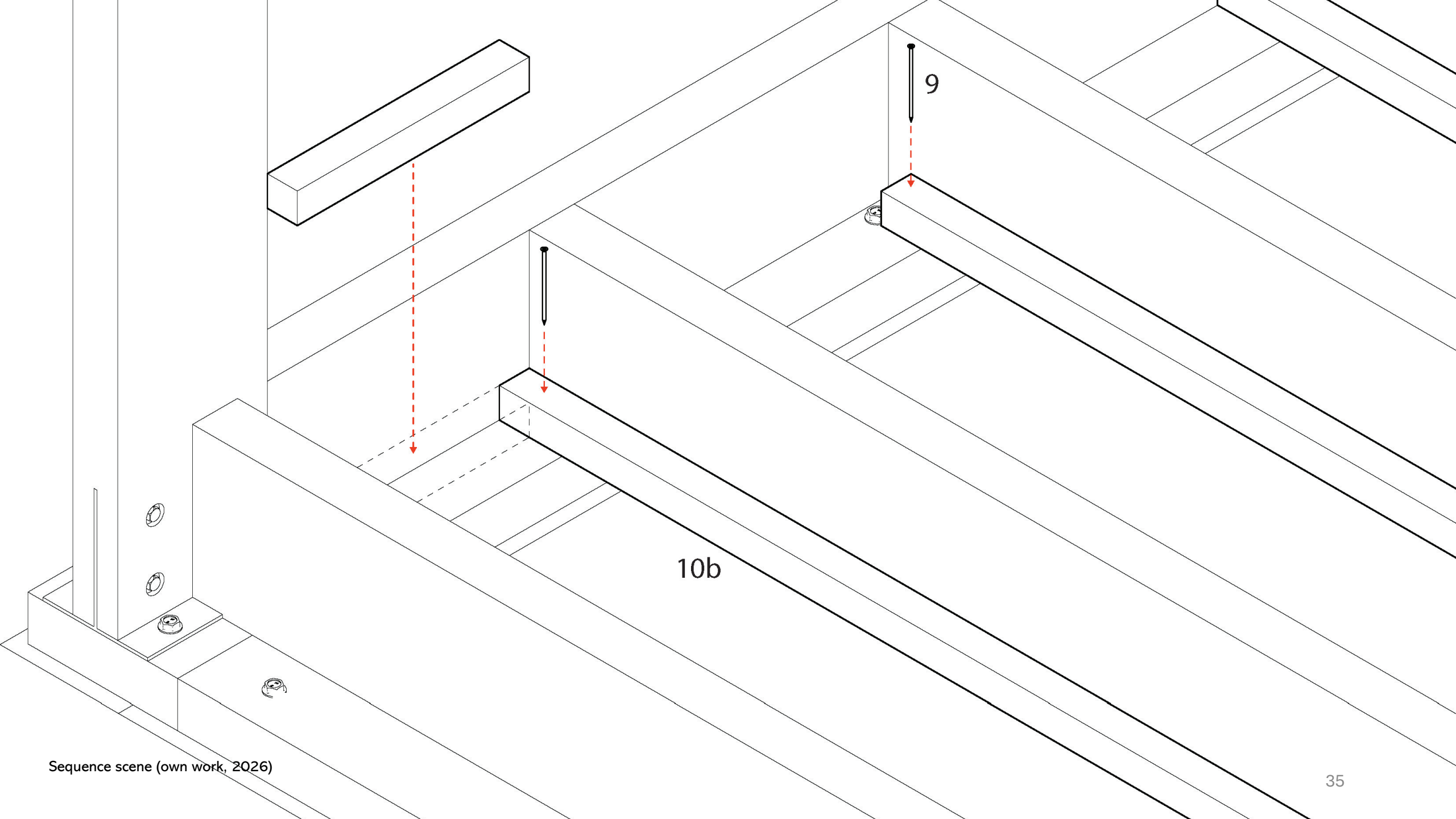
## *Building sequence*

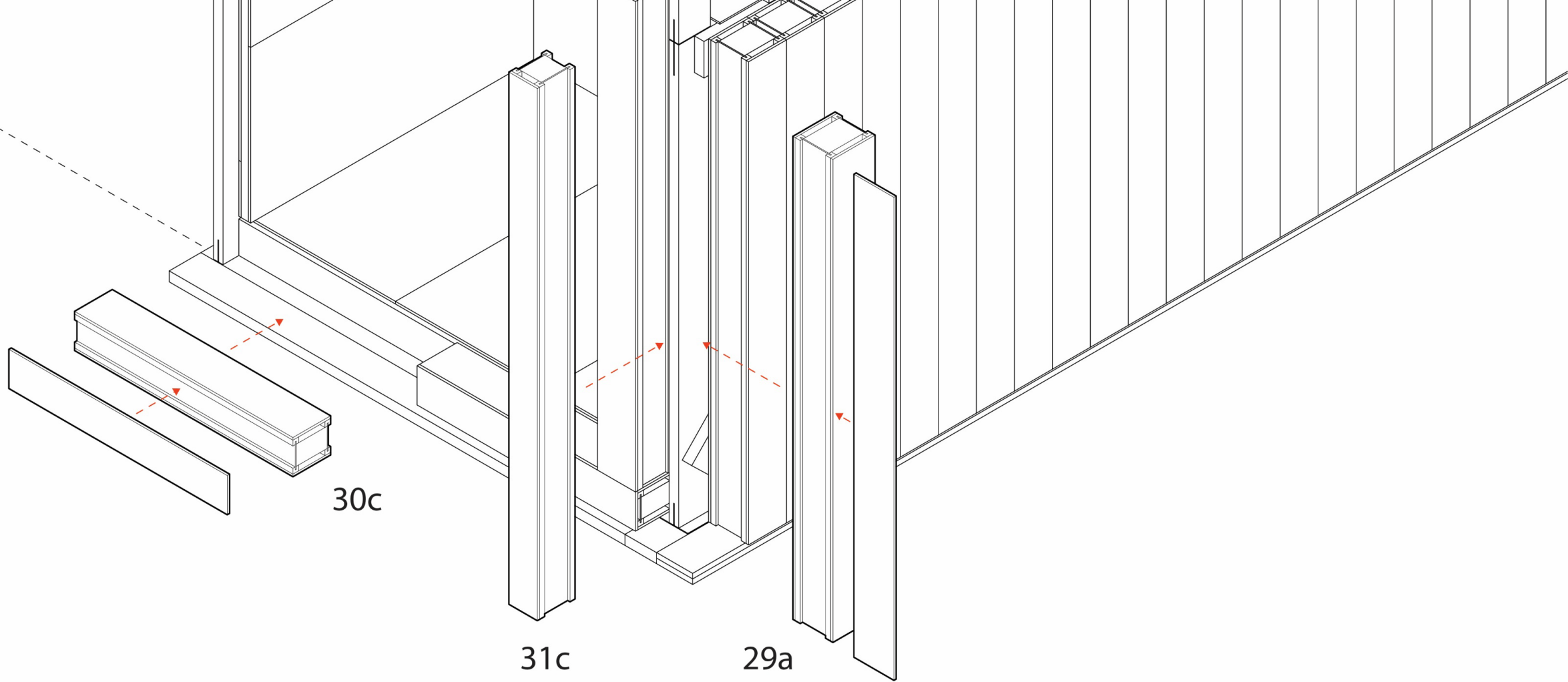


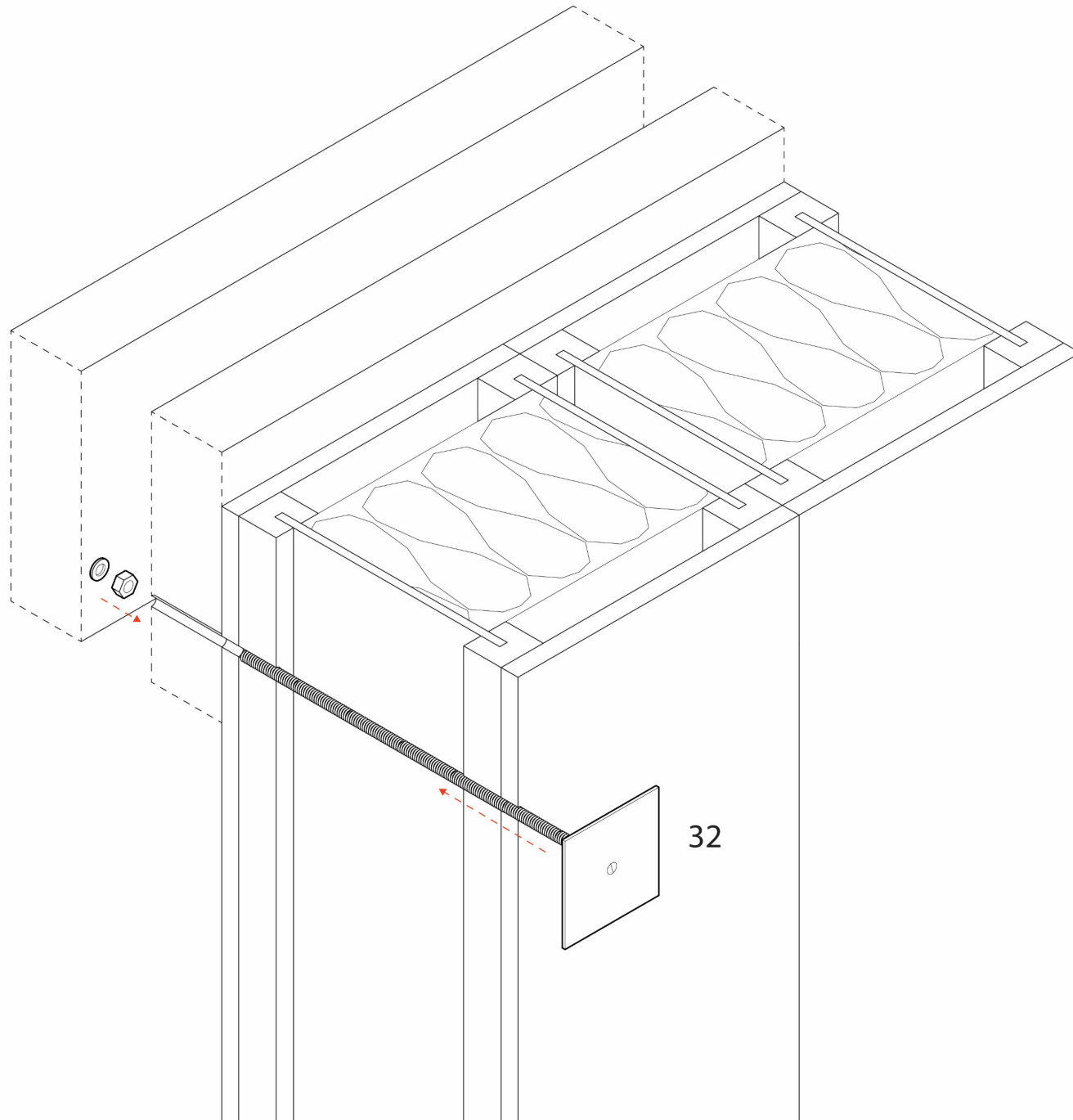




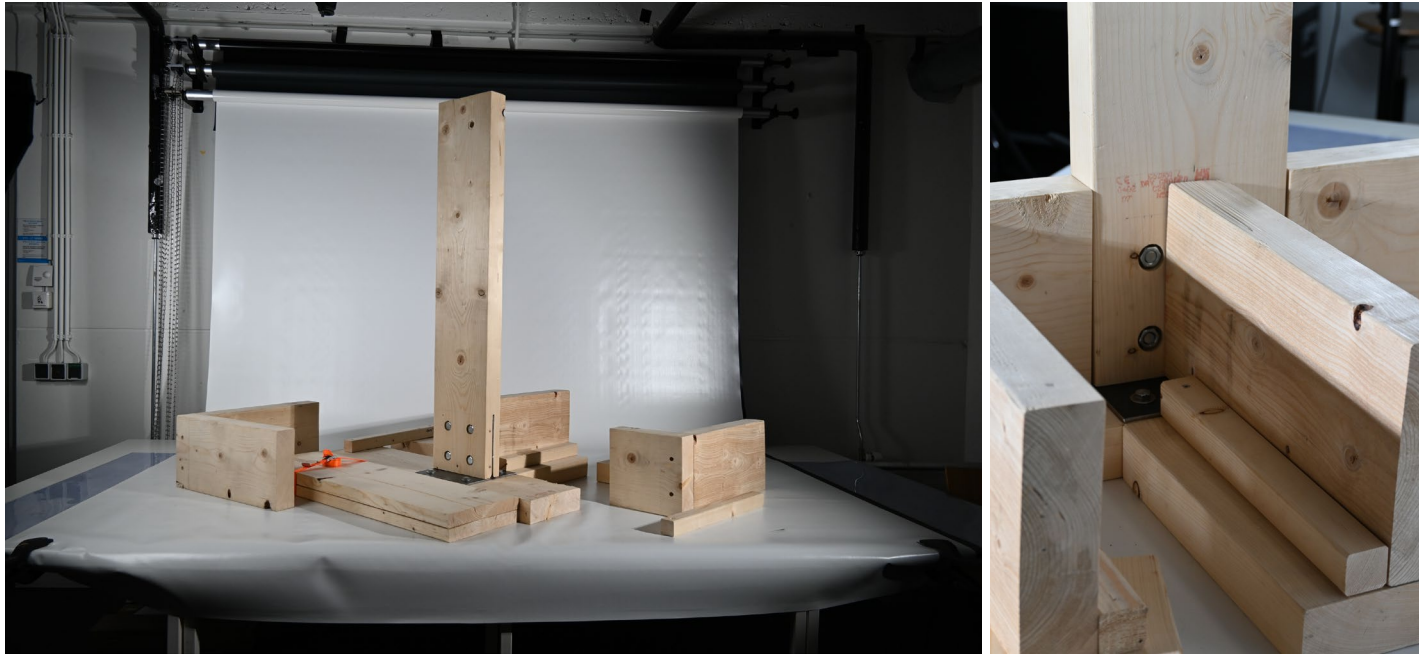
Walter Segal house (John McKean, 1979)



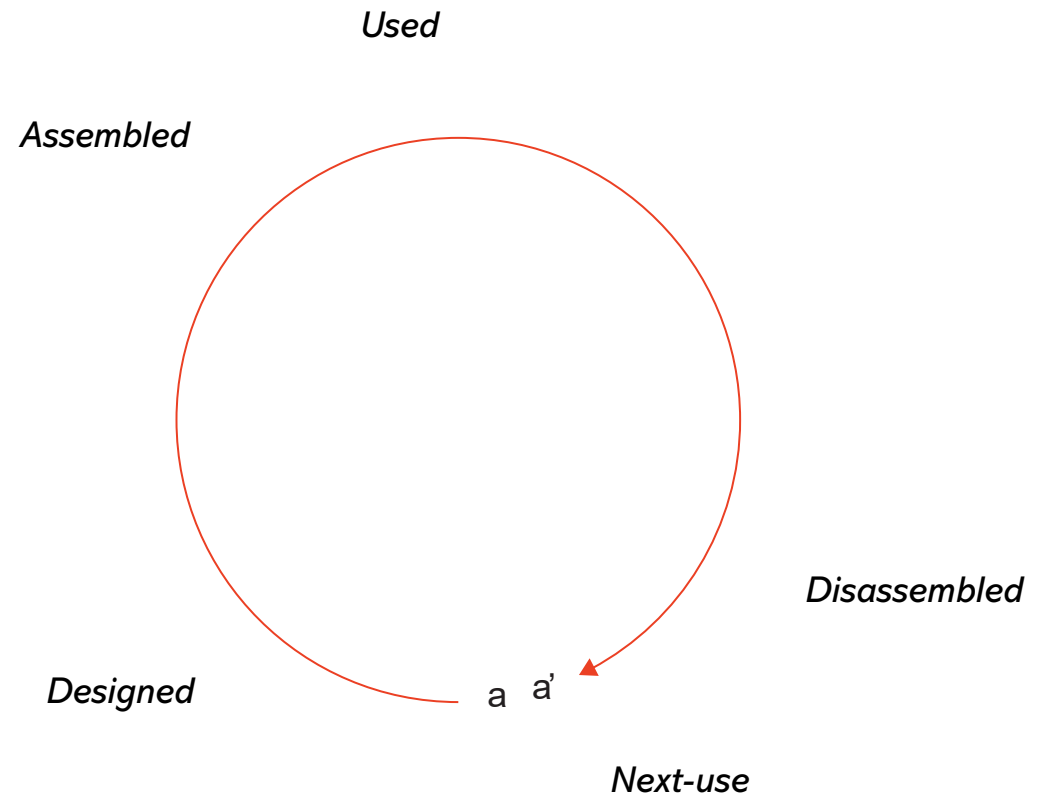








1:1 model (own image, 2026)









## Tijdloos

### A Kit-Of-Parts System for Self-Assembled Temporary Housing

