

Valuing the Cerrado

Designing a Botanical Garden in the Brazilian Savanna



*P5 Presentation
Camila Rosado
Circular Water Stories Lab
25.06.2025*



January 2025

















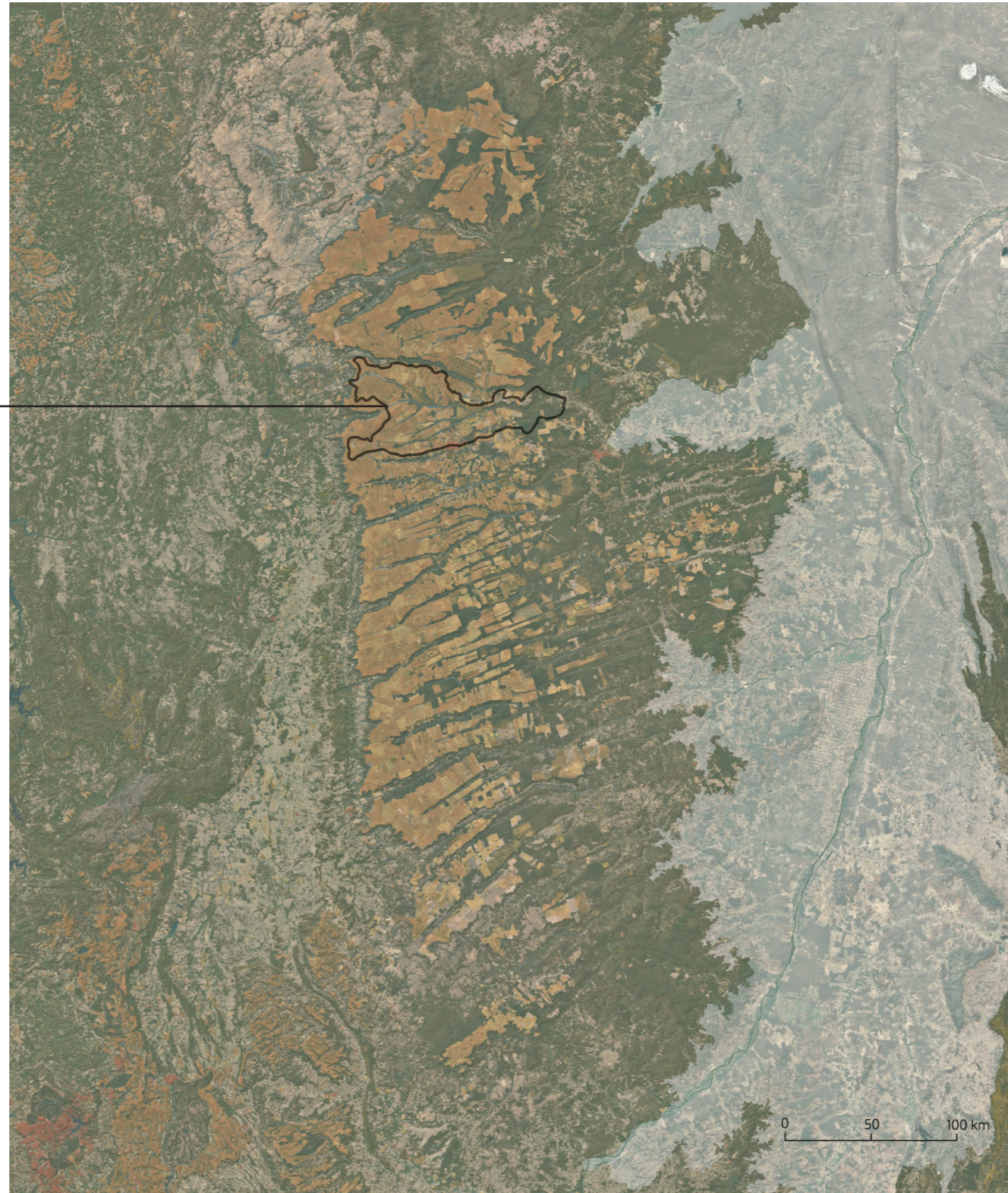






Western Bahia

Janeiro River Basin







Western Bahia





Urucuia Aquifer







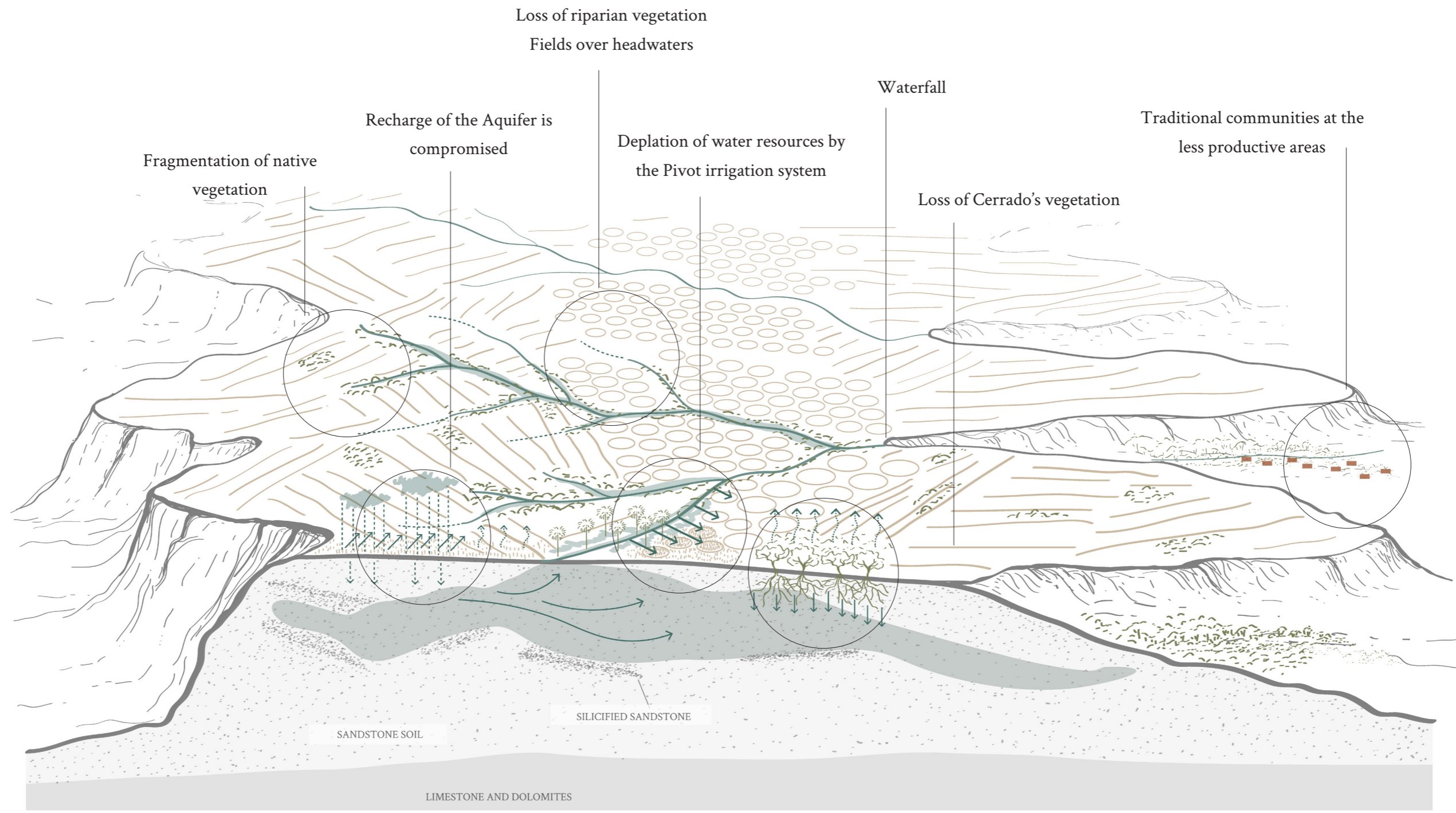




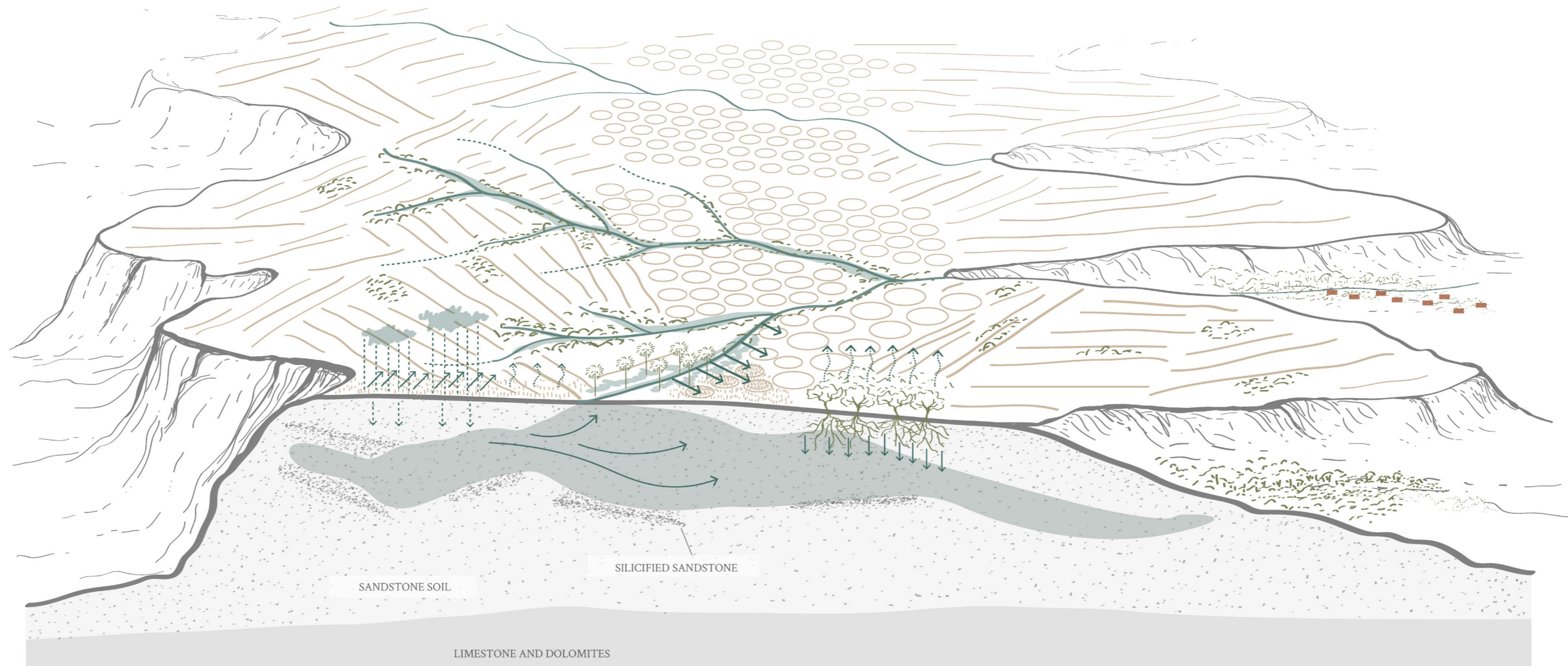






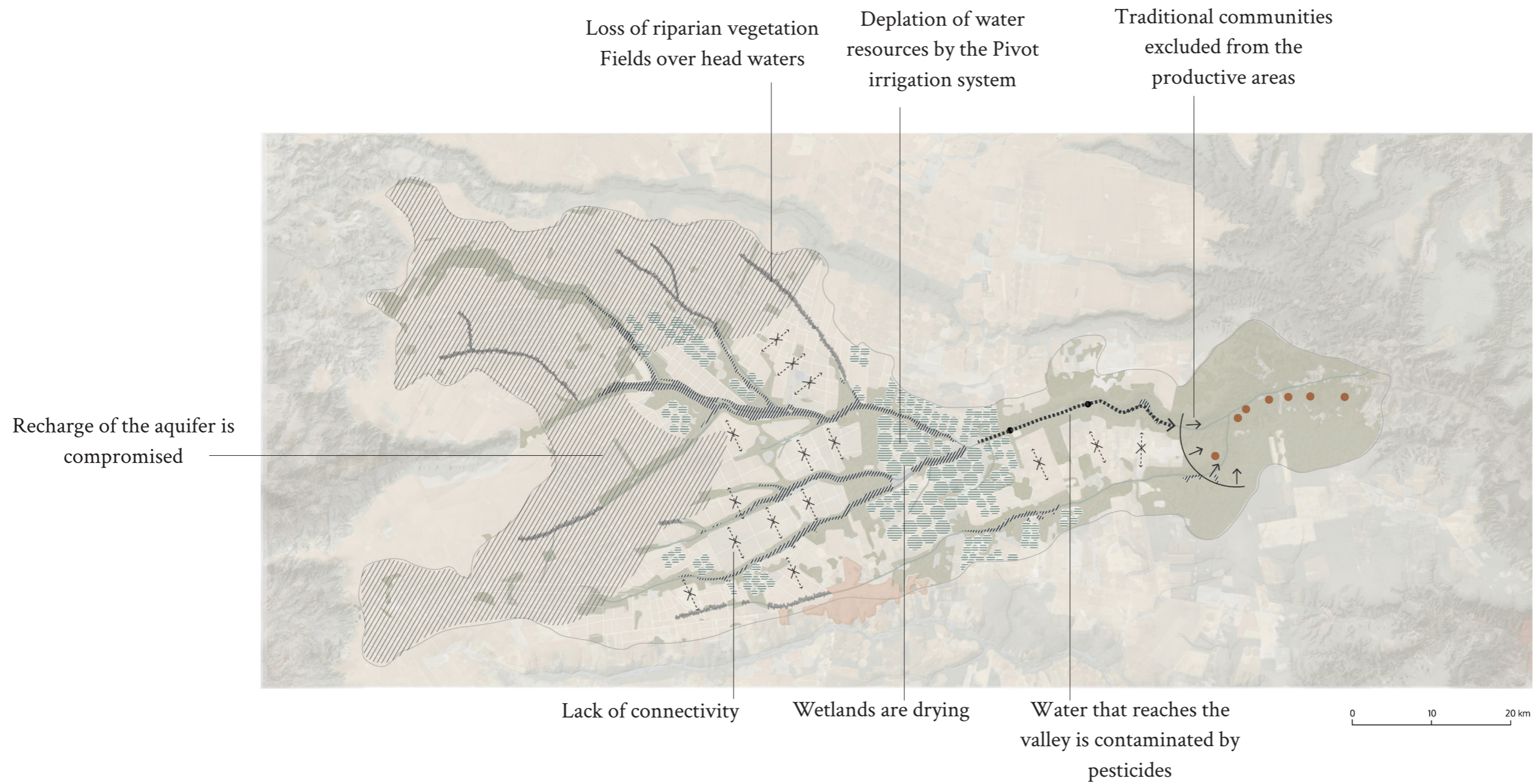


How can landscape design enhance the relationship between aesthetic and ecological perception of Cerrado Biome landscape while mitigating the impacts of the large-scale production landscape in this ecosystem?



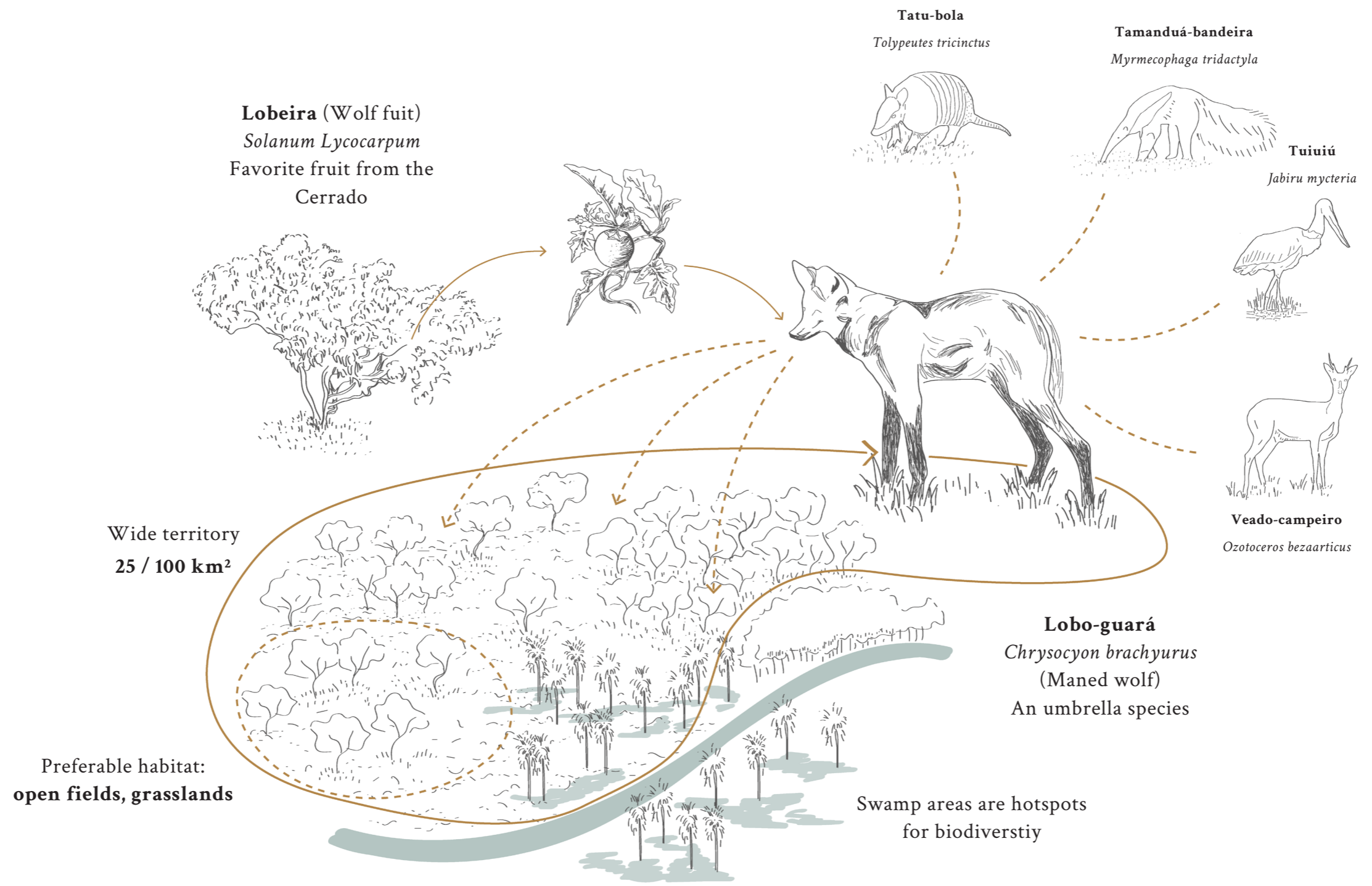
Current Situation of Janeiro River Basin

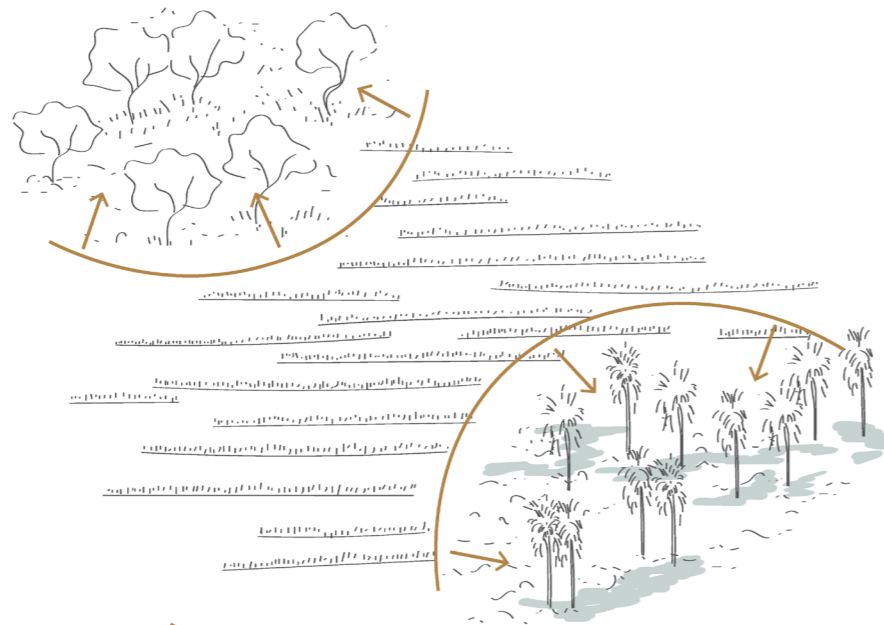




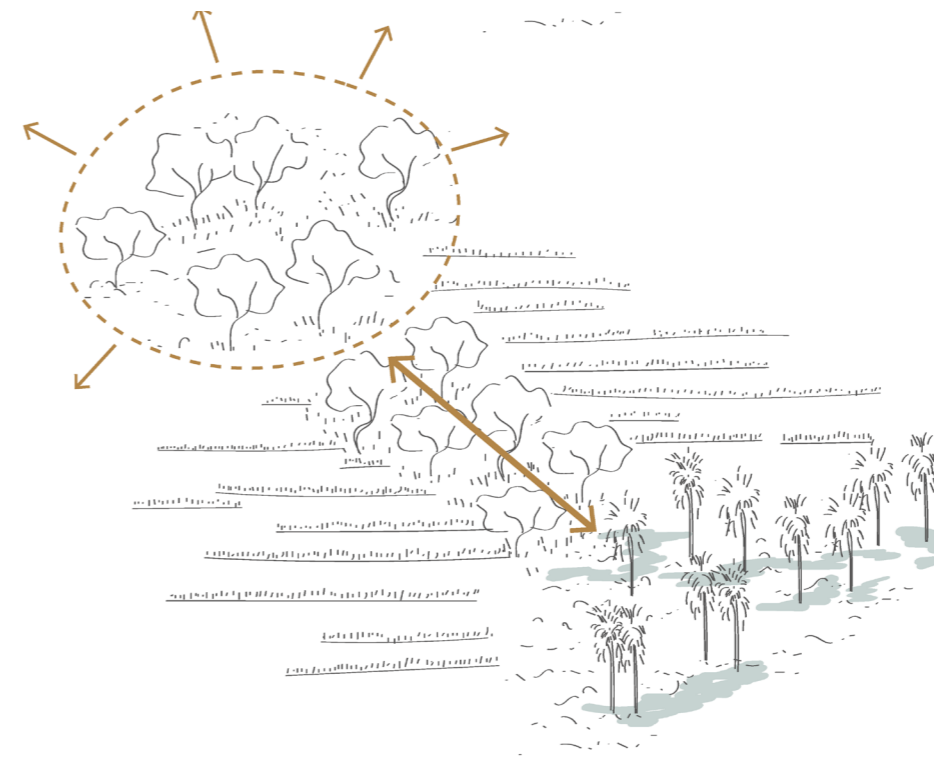








- Threats for the maned wolf:**
- Fragmentation of habitat
 - Scarcity in food (fruits and small animals)
 - Expansion of agriculture
 - Less habitat
 - Urbanisation



- Strategies:**
- Expand habitat
 - Creation of Corridors for movement and to connect habitats
 - The wolf is a great agent for reforestation as they act as seed dispersal agent

Integrate and enhance
blue-green structure

Native vegetation in
between Pivot fields

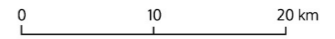
Include and give space to local
communities in productive and
restoration projects

Bigger Nature reserves at
the head waters



Connect the blue-green structure
with green corridors

Strict regulation over the use of
water by the irrigation system



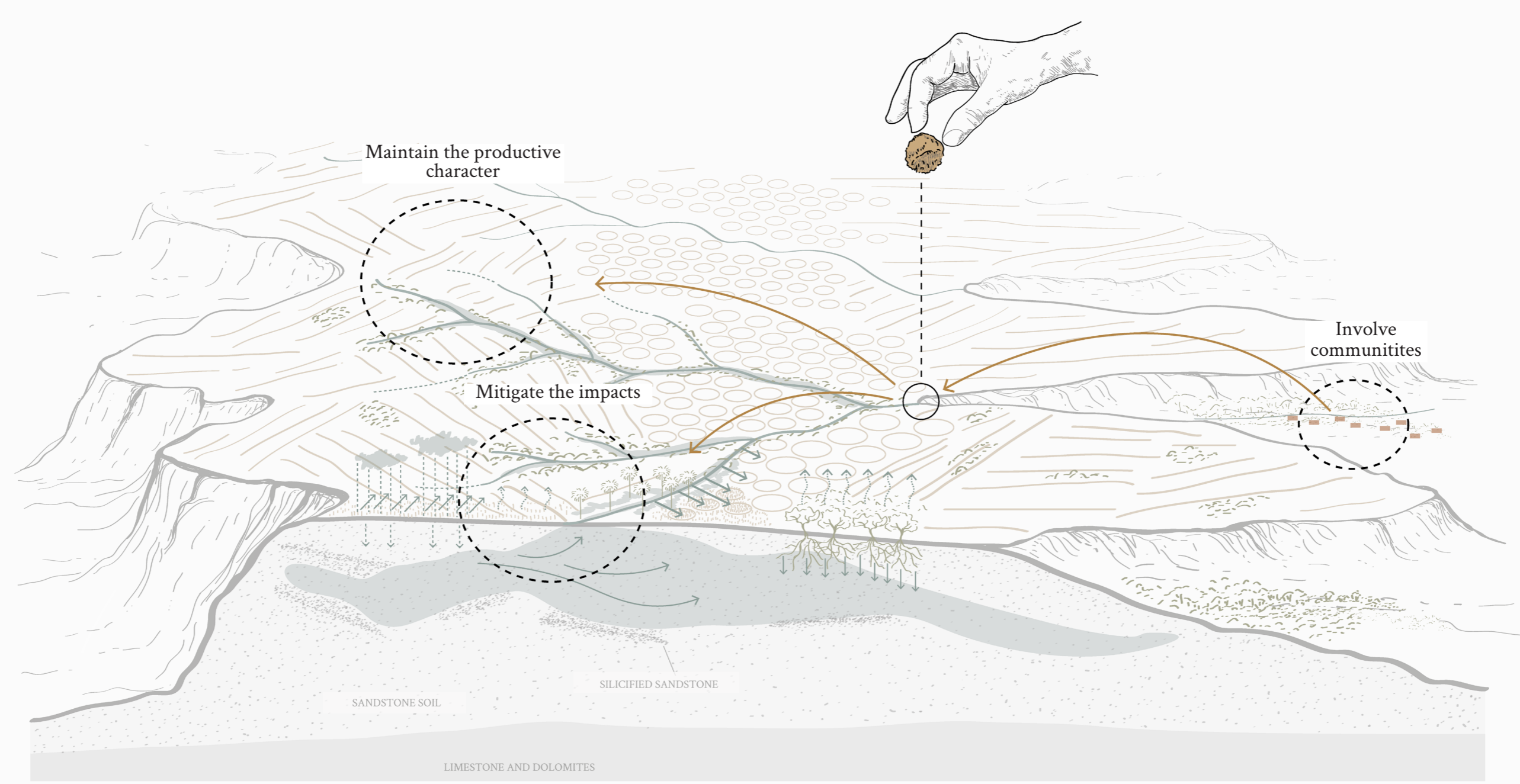


Current Situation



Vision

Sowing a seed



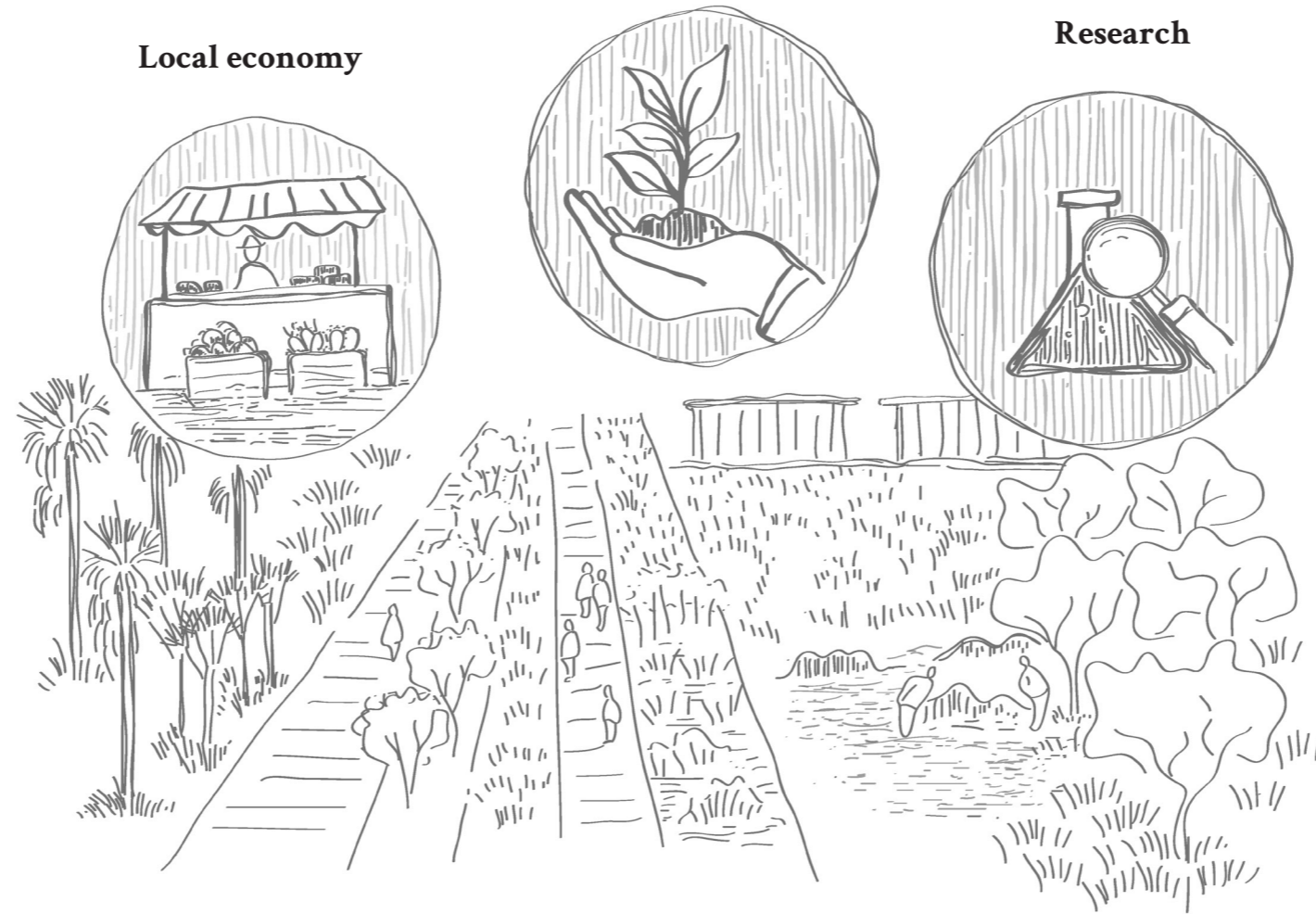
The Urucua Botanical Garden

Aesthetic value

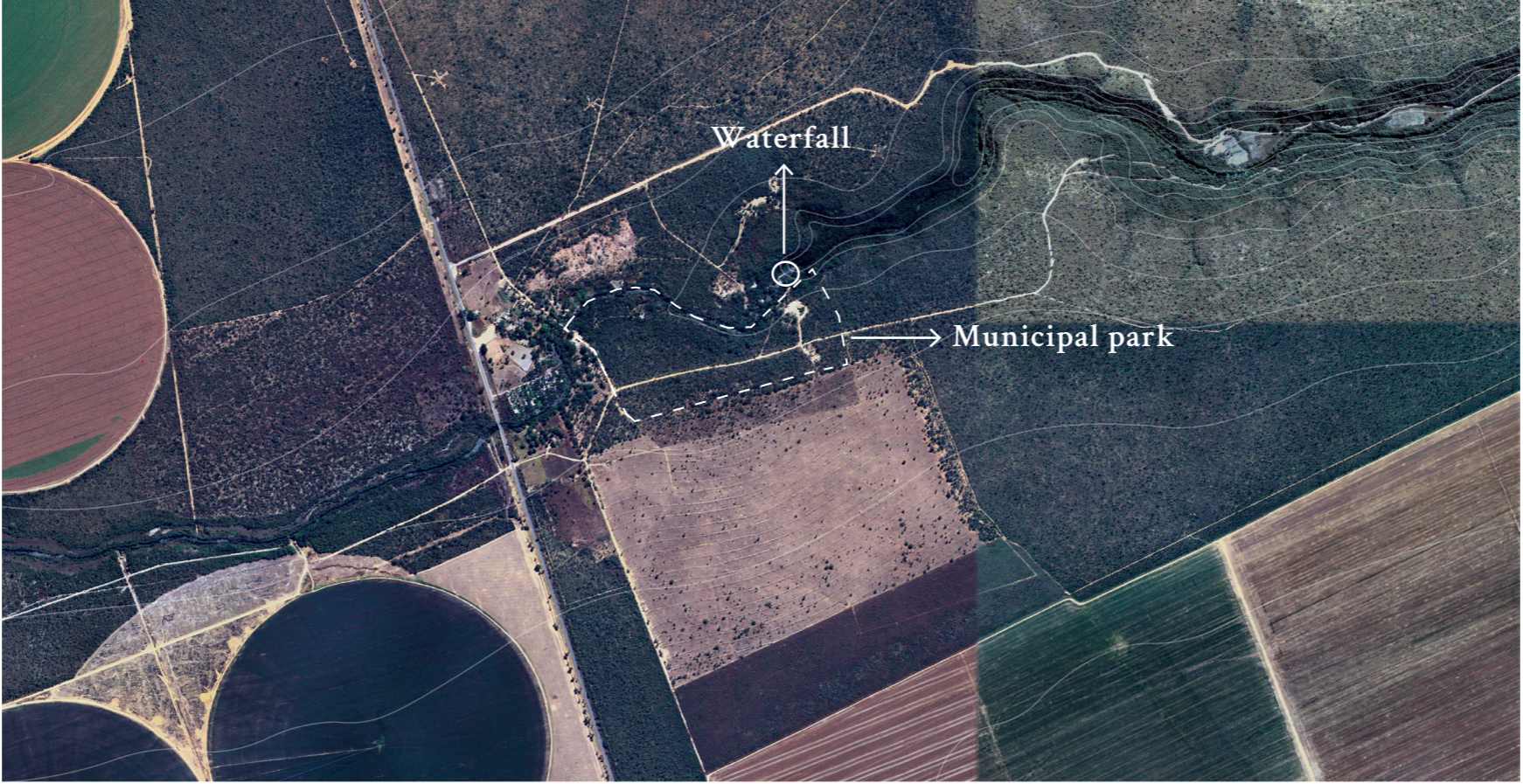
Ecological awareness

Local economy

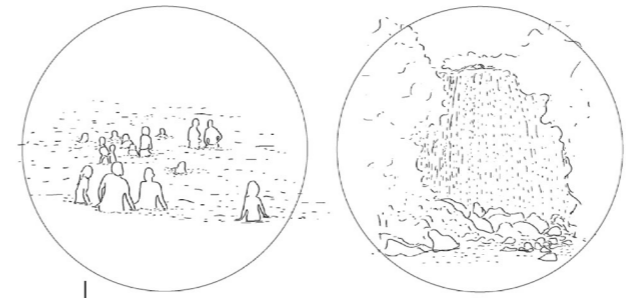
Research



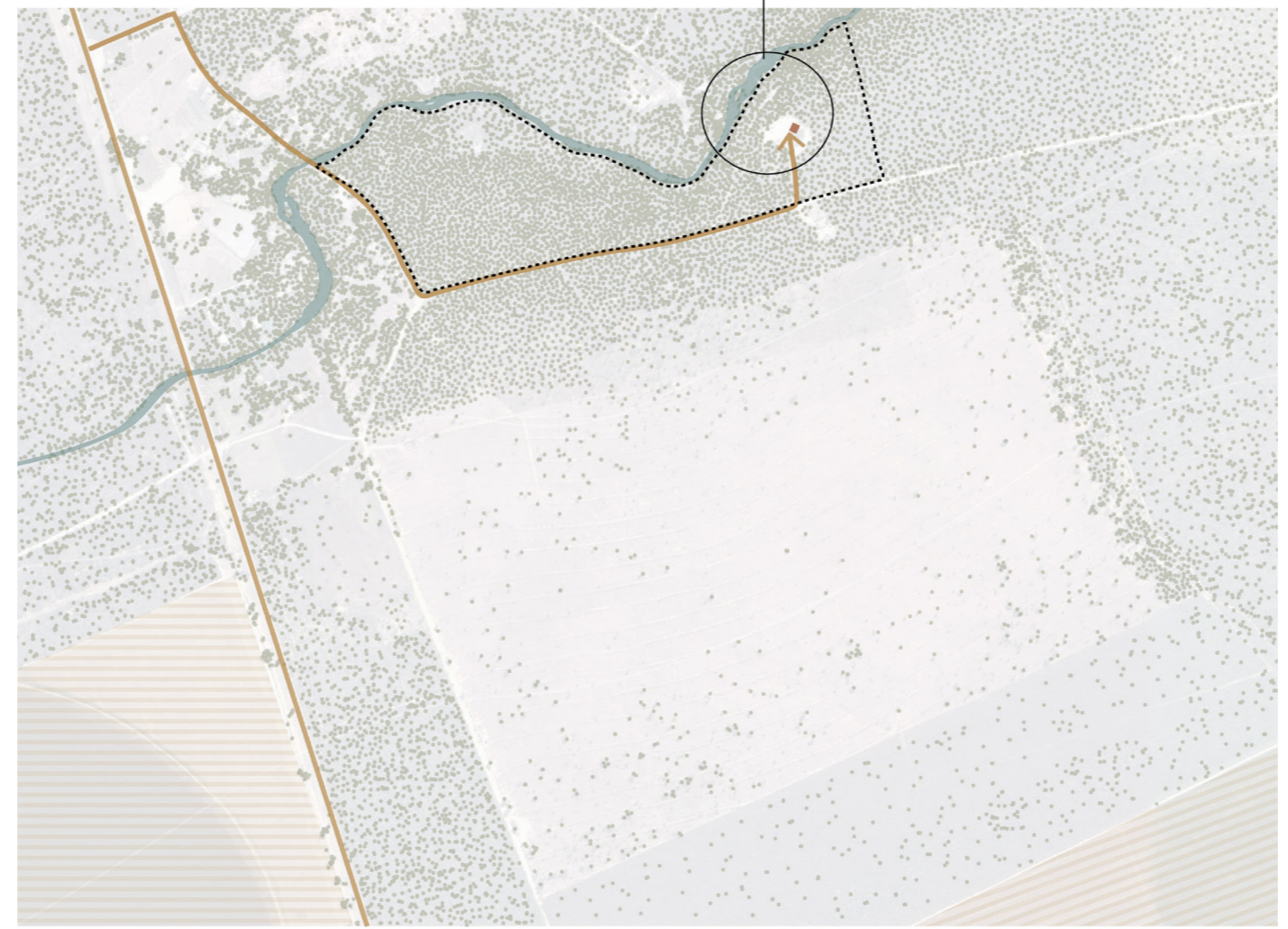




0 0.5 1km



Local tourism



2025



Local Economy



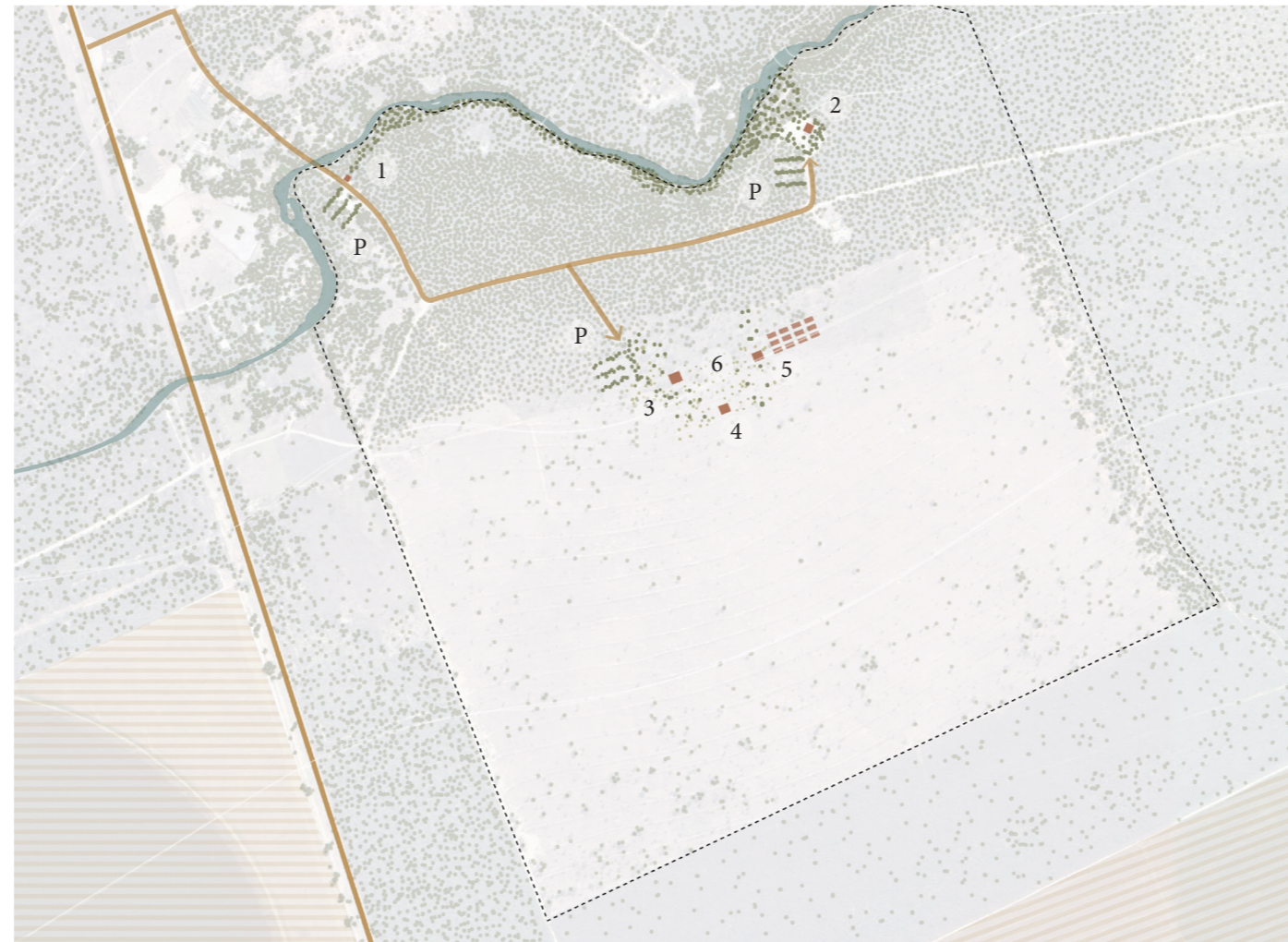
Nursery



Culture



Research



- P- Car Park
- 1- Welcoming hut
- 2- Local Products Shop
- 3- Cerrado's Memorial
- 4- Restaurant
- 5- Research Center
- 6- Event area

Phase 1
0-5 years



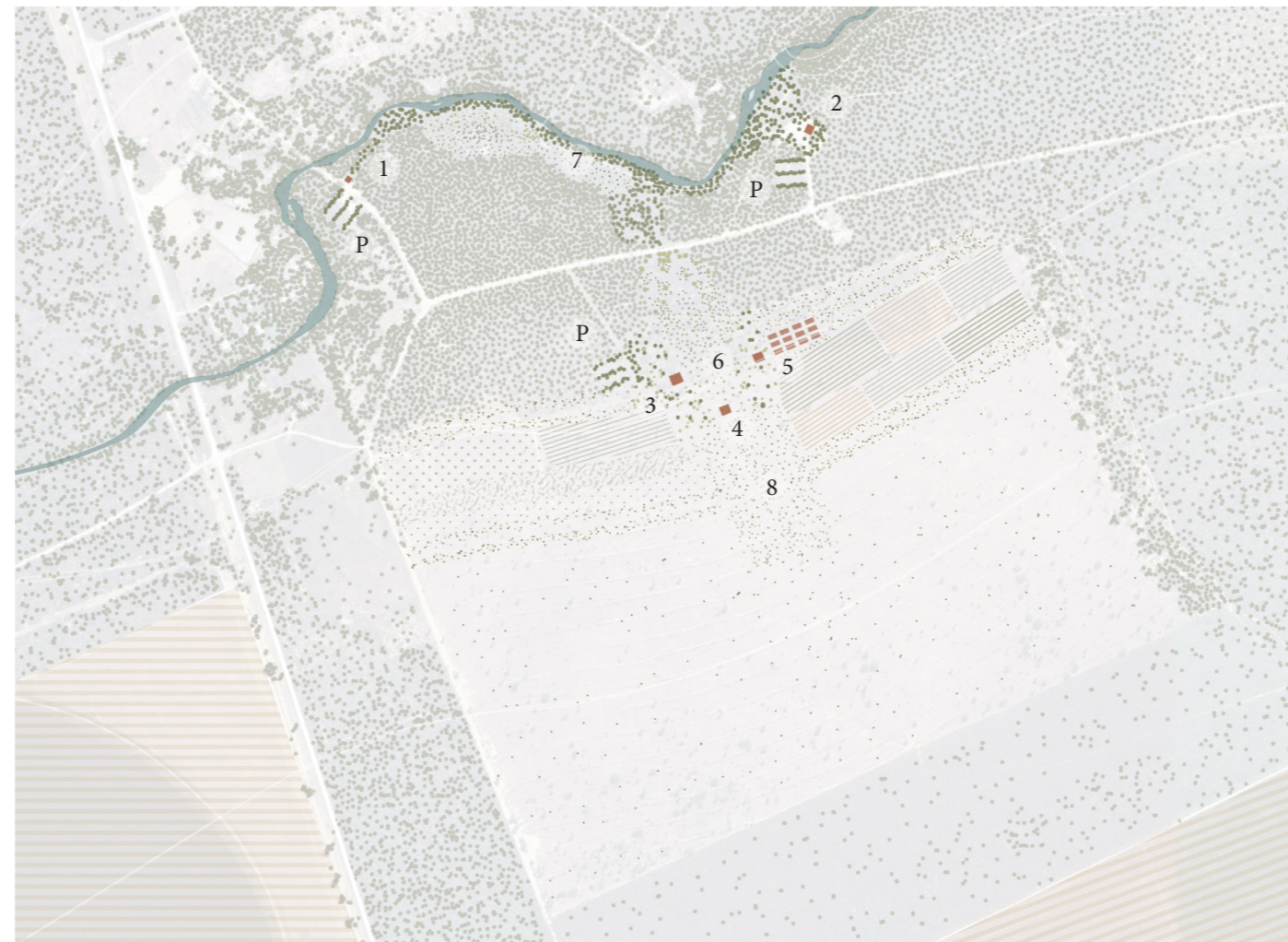
Start of the Gardens



Expansion of the Nursery



Expansion of Research



- P- Car Park
- 1- Welcoming hut
- 2- Local Products Shop
- 3- Cerrado's Memorial
- 4- Restaurant
- 5- Research Center
- 6- Event area
- 7- Cerrado's Route
- 8- Ecological and Productive Corridor

Phase 2
5-10 years



Opening of the Gardens to the public

Involvement of the public in the gardens

- P- Car Park
- 1- Welcoming hut
- 2- Local Products Shop
- 3- Cerrado's Memorial
- 4- Restaurant
- 5- Research Center
- 6- Event area
- 7- Cerrado's Route
- 8- Ecological and Productive Corridor
- 9- Ice Cream Shop and Cafe
- 10- Seed Bank and Nursery
- 11- Testing Fields



Phase 3
10-20 years



Mature phase of ecological and productive corridor

- P- Car Park
- 1- Welcoming hut
- 2- Local Products Shop
- 3- Cerrado's Memorial
- 4- Restaurant
- 5- Research Center
- 6- Event area
- 7- Cerrado's Route
- 8- Ecological and Productive Corridor
- 9- Ice Cream Shop and Cafe
- 10- Seed Bank and Nursery
- 11- Testing Fields



Phase 4
20-30 years

The Urucuia Botanical Garden



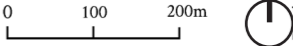
Total Area: **150 ha**

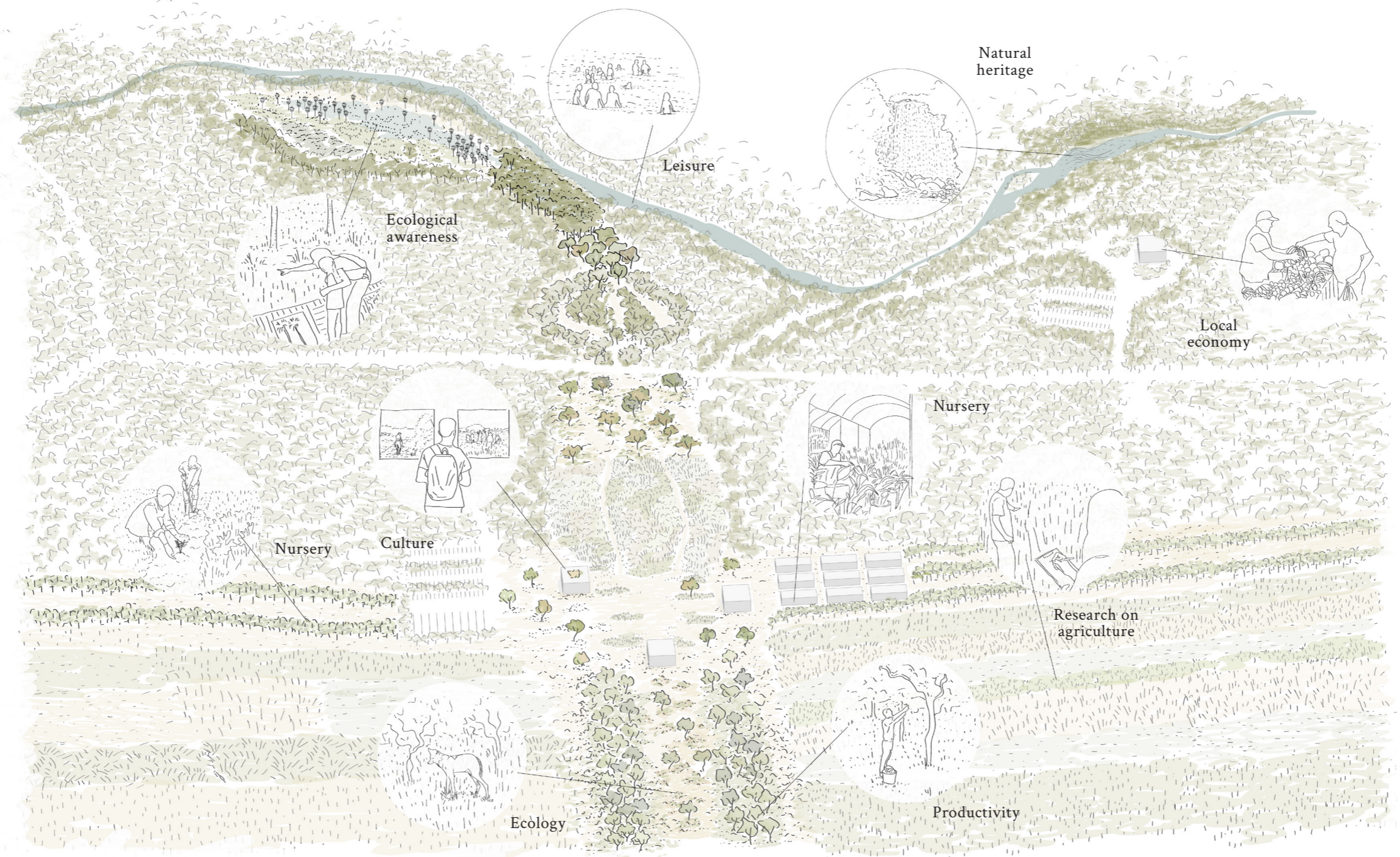
Area open for visitors: **30 ha**

Property: **Municipality**

Capacity: **500 visitors daily**

Finance sources: Municipality, Governmental programs for culture, University, Entree fee for the memorial, Events, Restaurant, Local Shop, Donations.





Leisure



Natural heritage



Local economy



Ecological awareness



Culture



Nursery



Nursery



Research on agriculture

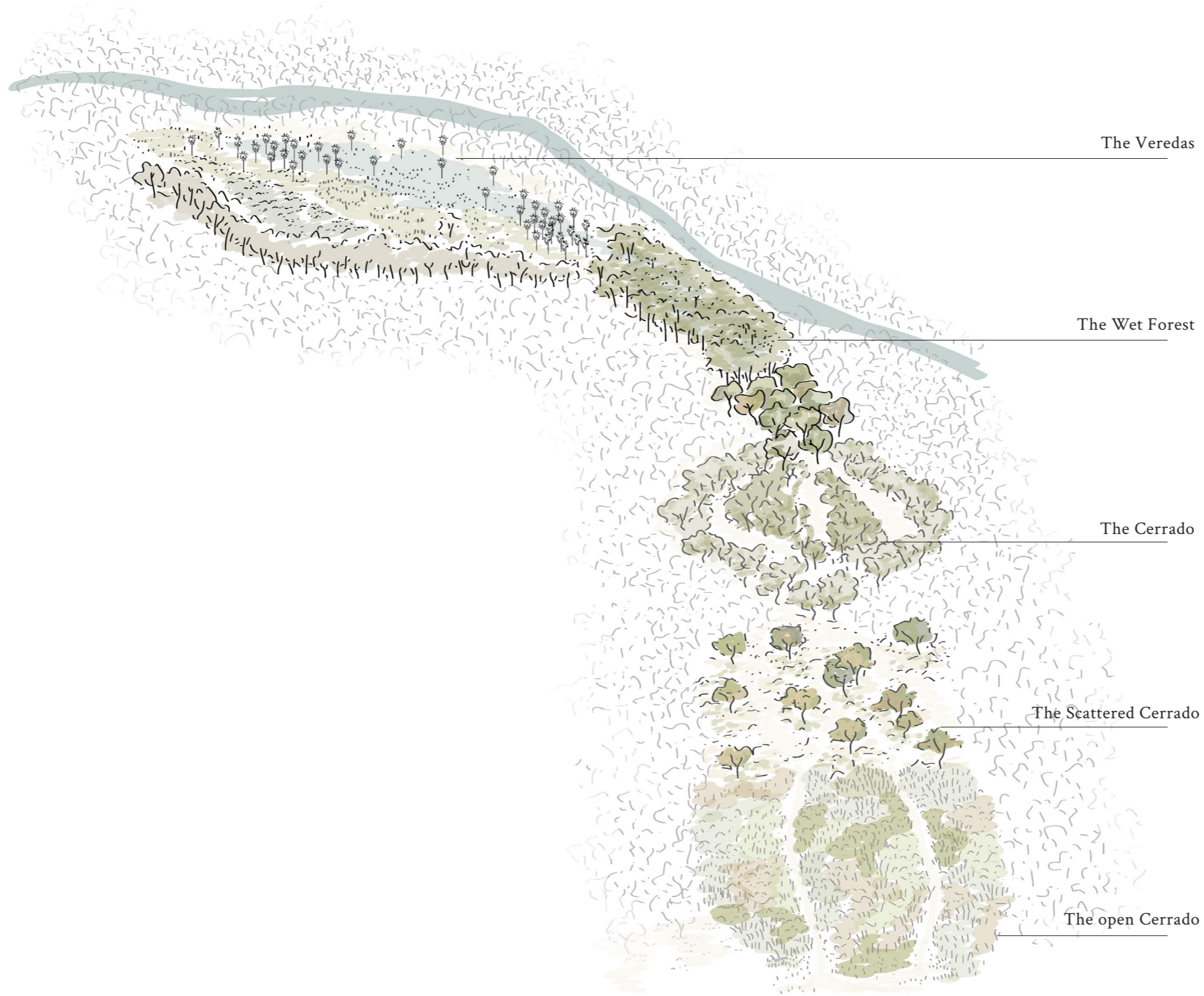


Ecology



Productivity

The Cerrado's Route



The Veredas



The Wet Forest



The Cerrado

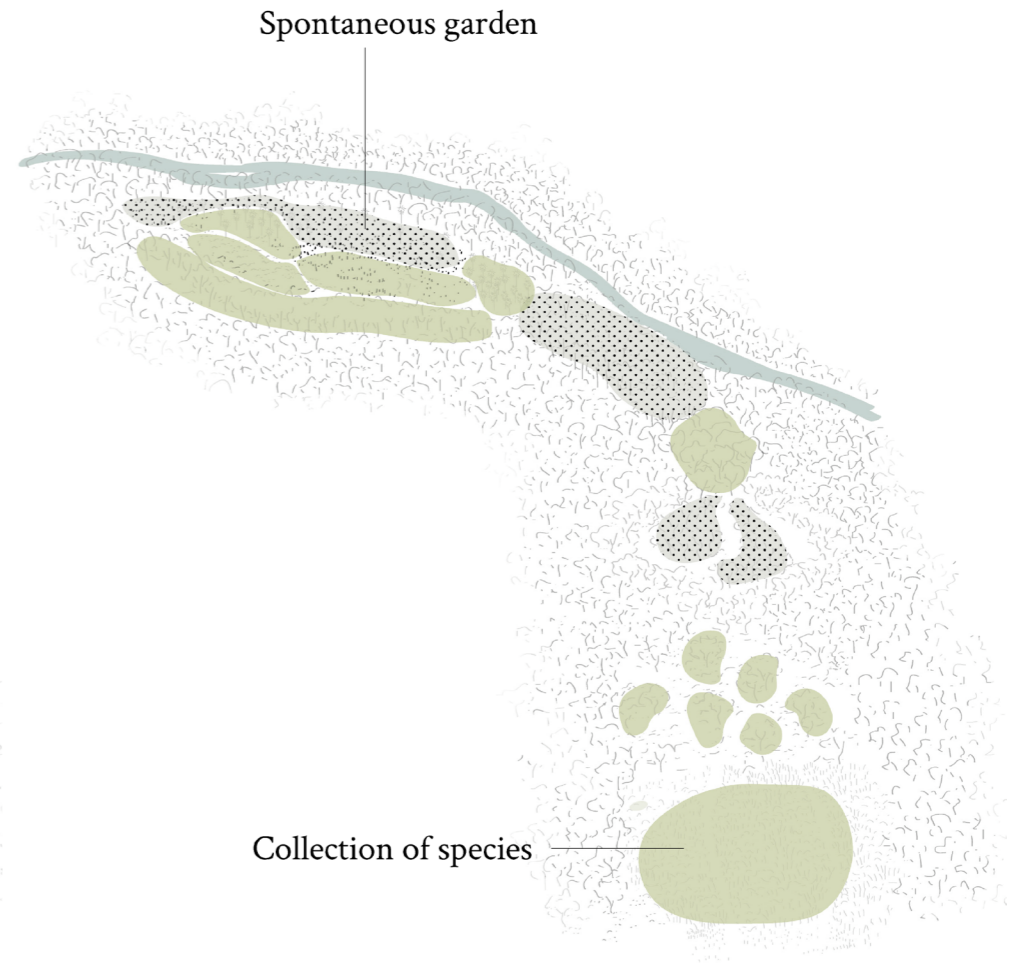
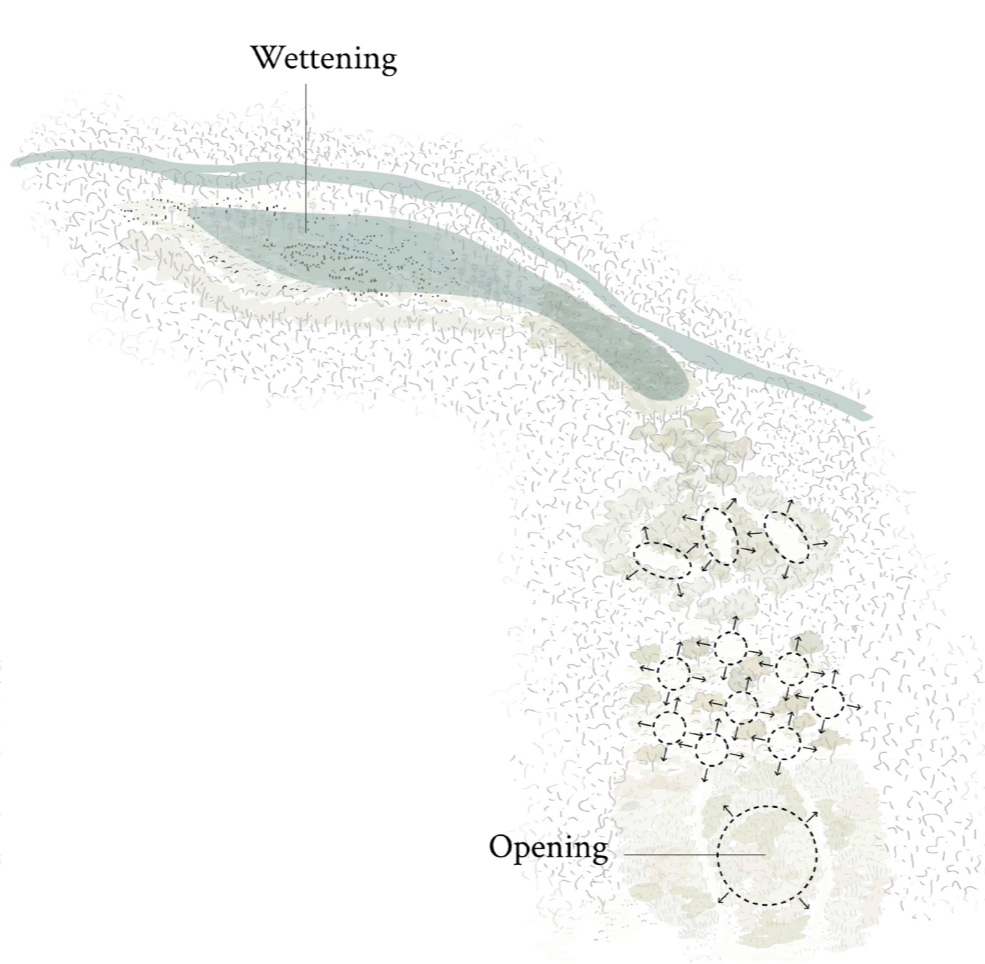
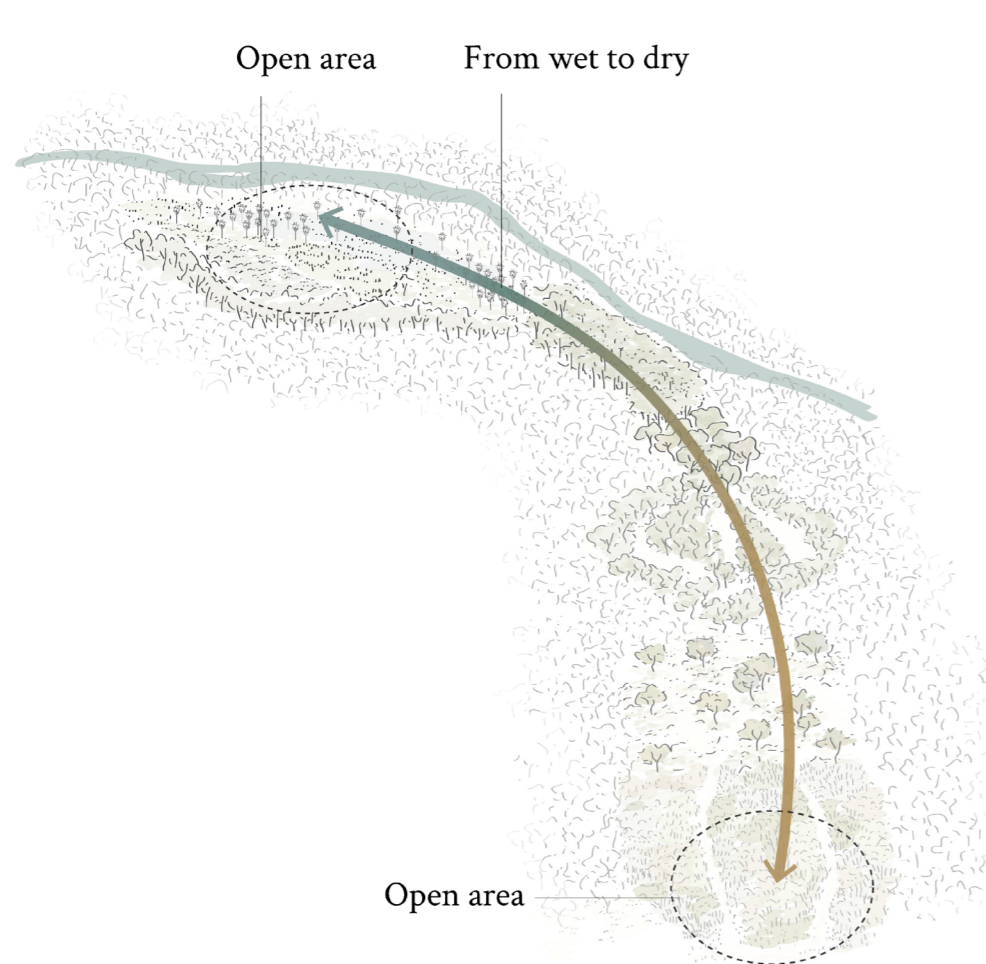


The Scattered Cerrado



The open Cerrado





The Vereda (Swamp) garden

Buriti
Mauritia flexuosa

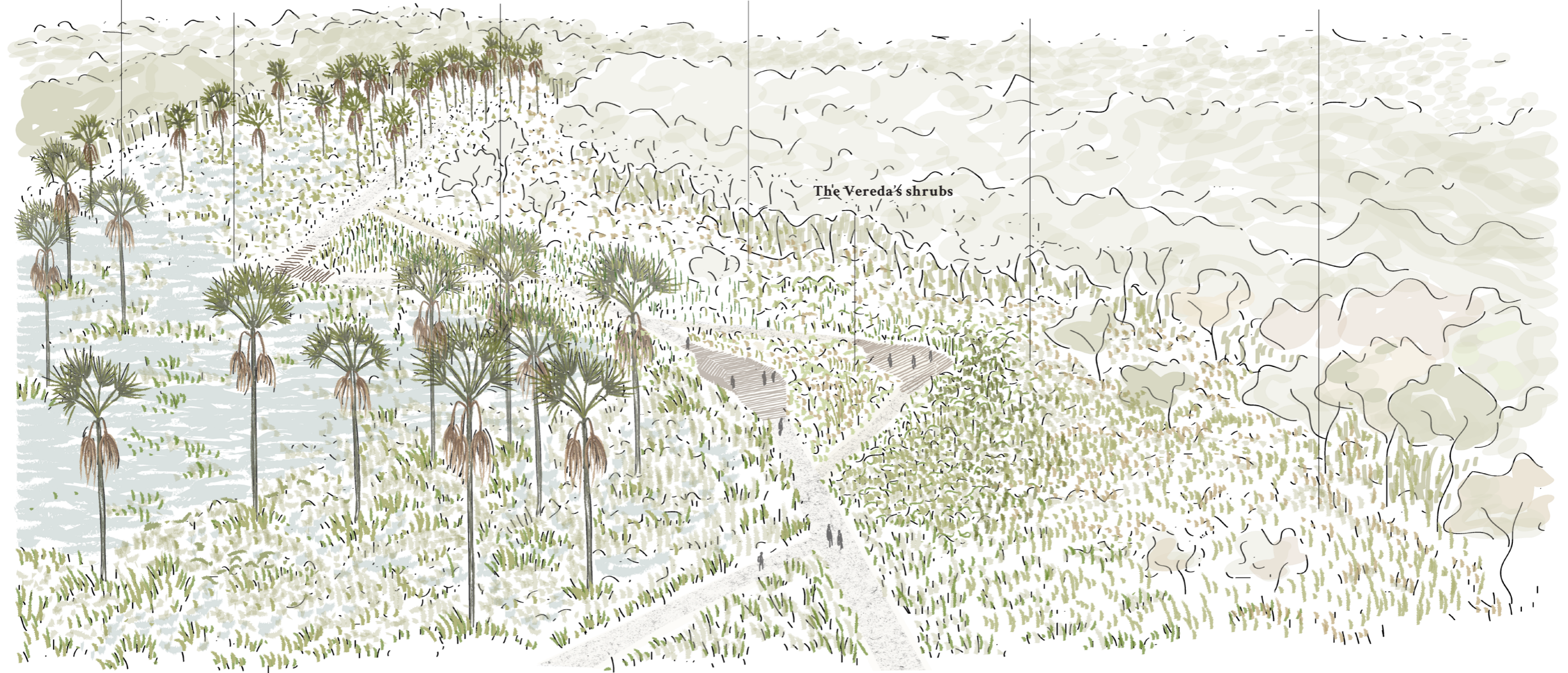
Tuiuiú
Jabiru mycteria

Aracua-do-Cerrado
Ortalis canicollis

Tatu-bola
Tolypeutes tricinctus

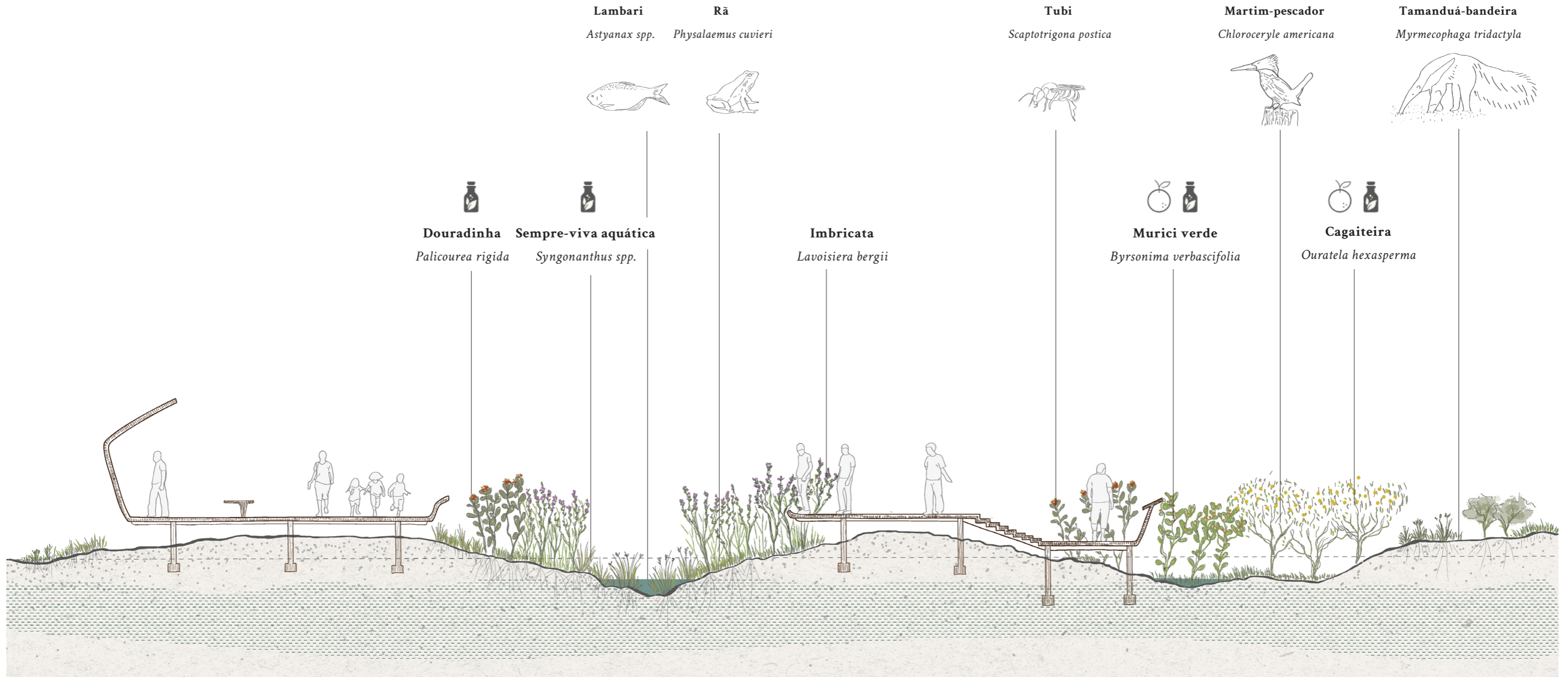
Veado-campeiro
Ozotoceros bezaarticus

Lobo-guará
Chrysocyon brachyurus



The Vereda's shrubs

The Vereda's shrubs



Lambari
Astyanax spp.

Rã
Physalaemus cuvieri

Tubi
Scaptotrigona postica

Martim-pescador
Chloroceryle americana

Tamanduá-bandeira
Myrmecophaga tridactyla

Douradinha
Palicourea rigida

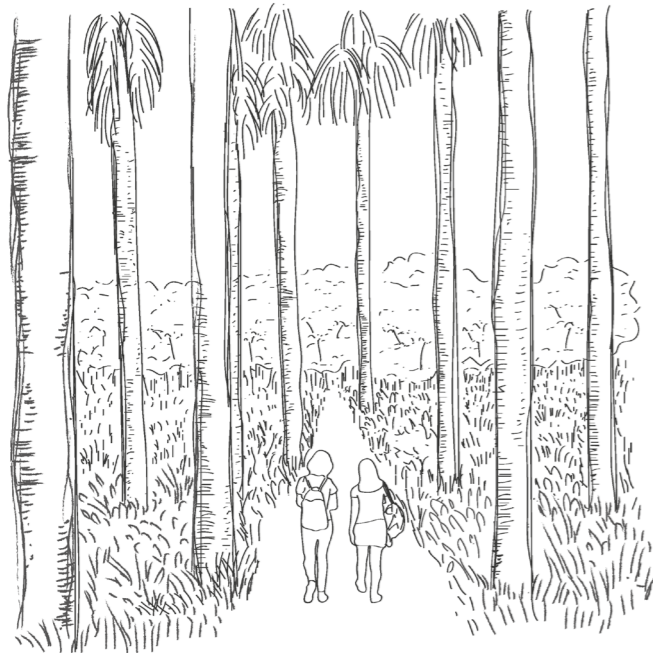
Sempre-viva aquática
Syngonanthus spp.

Imbricata
Lavoisiera bergii

Murici verde
Byrsonima verbascifolia

Cagaiteira
Ouratela hexasperma

A serial vision through Cerrado's route



Walking through the Buriti



The wet forest



Approaching the Cerrado



Entering the Cerrado

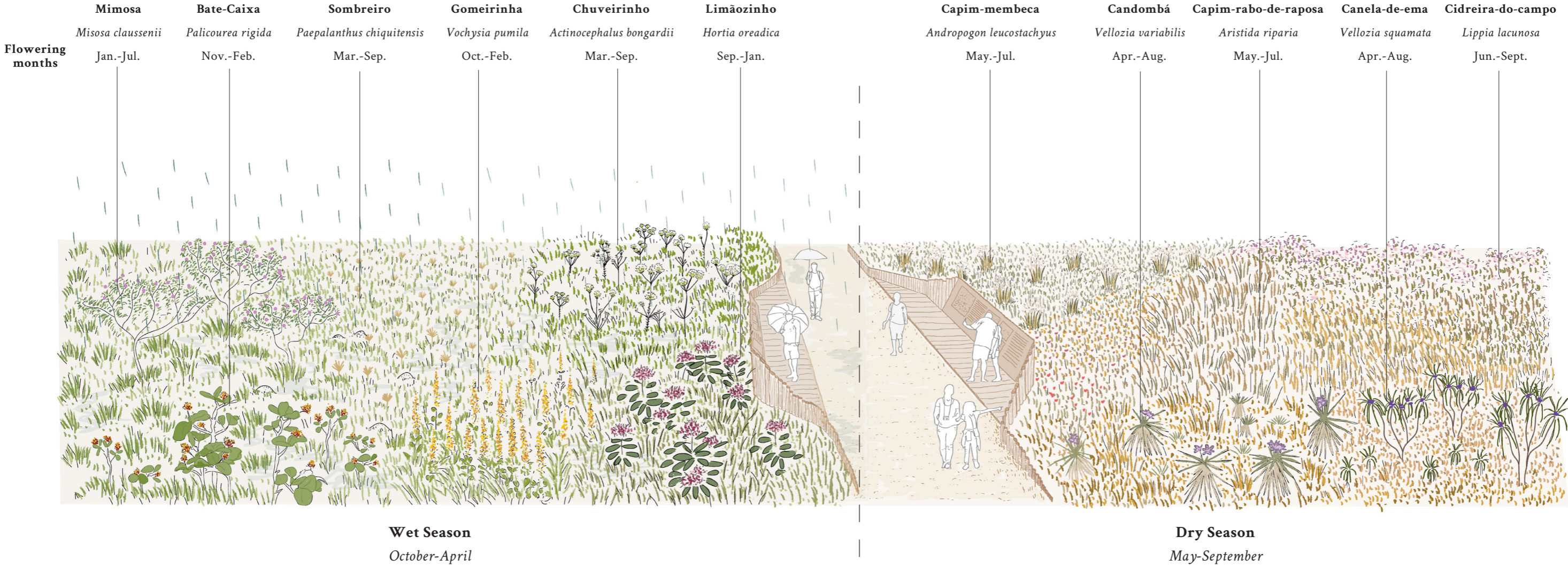


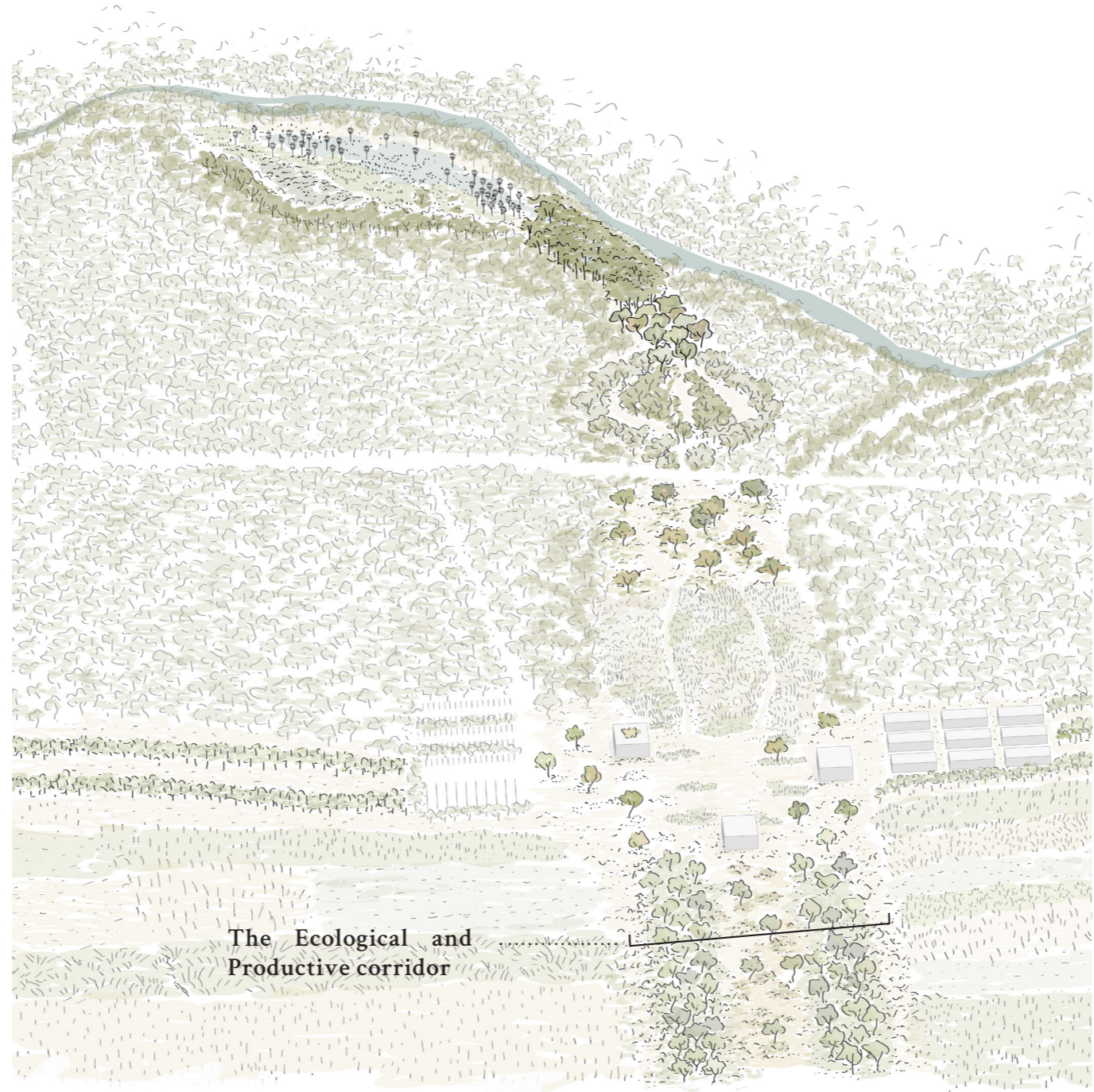
Opening the Cerrado



The scattered Cerrado

The Open Cerrado





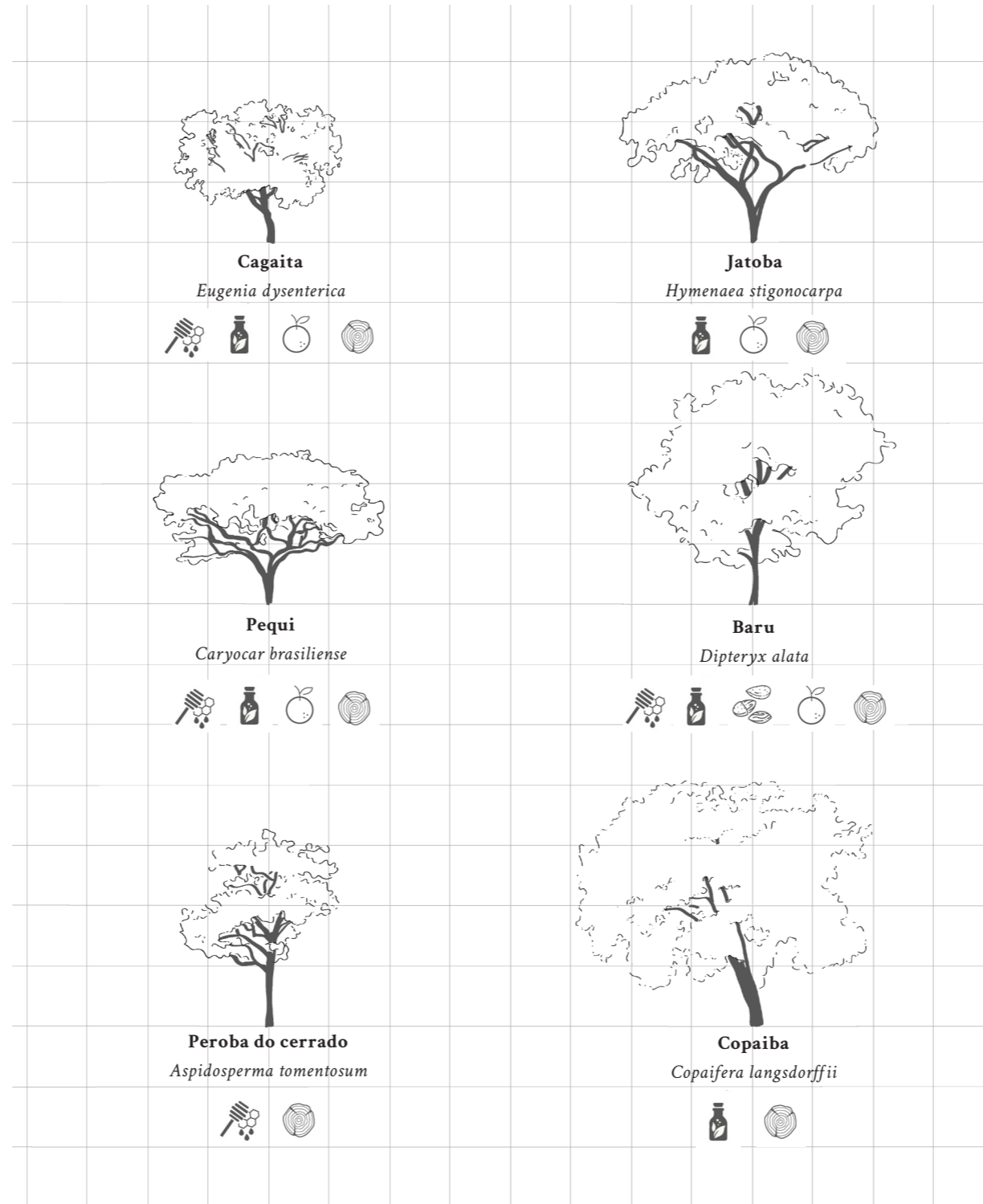
The Ecological and Productive corridor



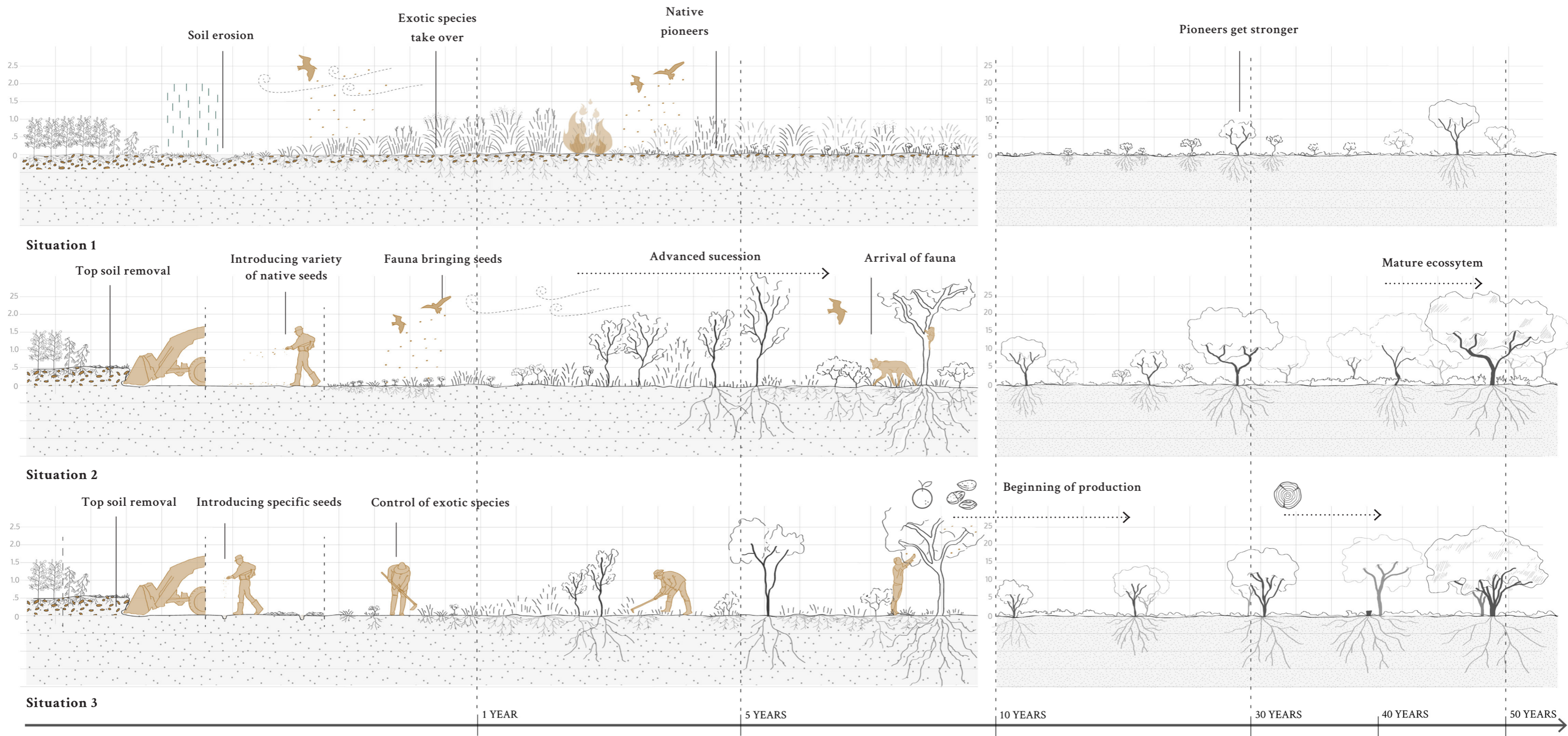
The green corridor in the basin scale

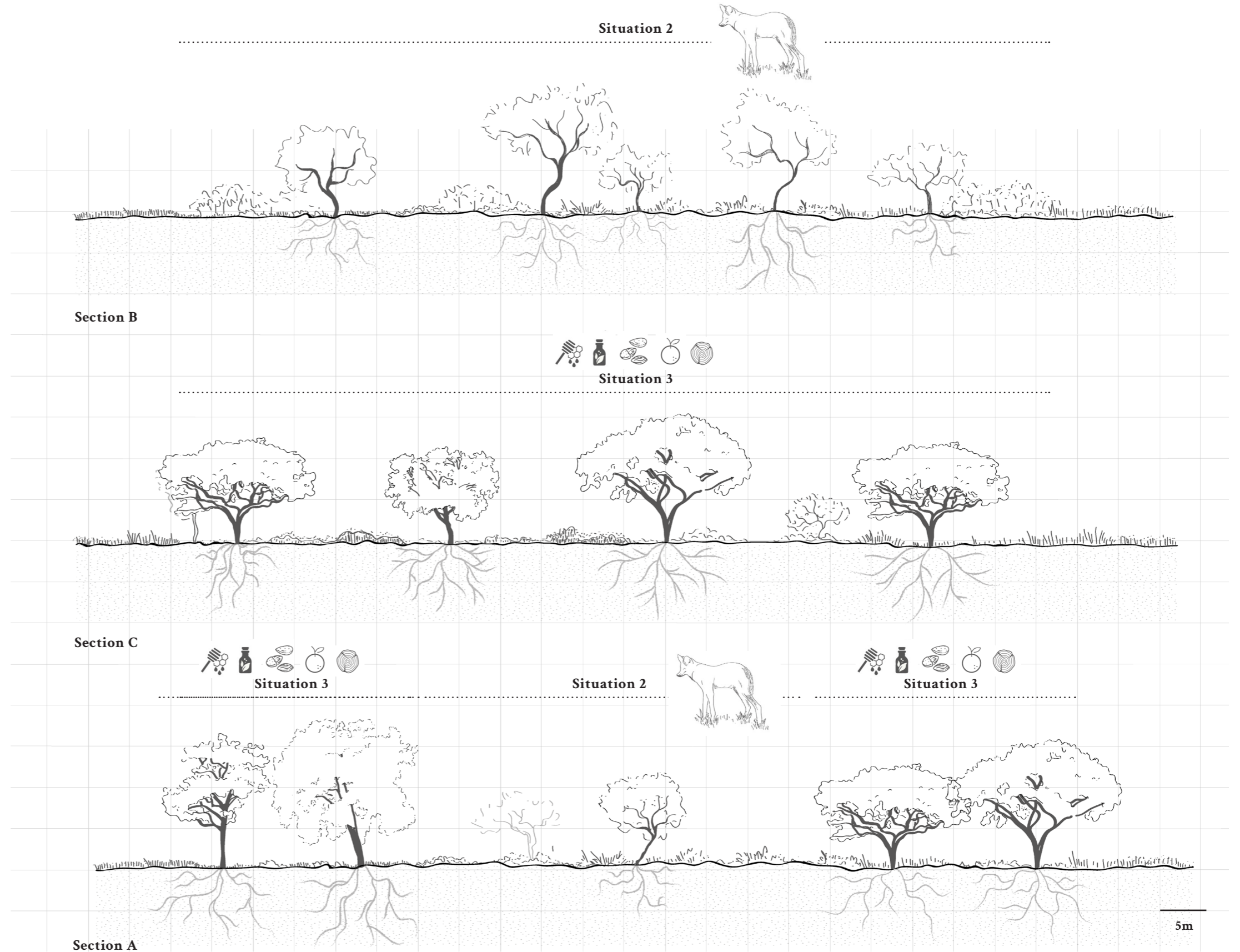


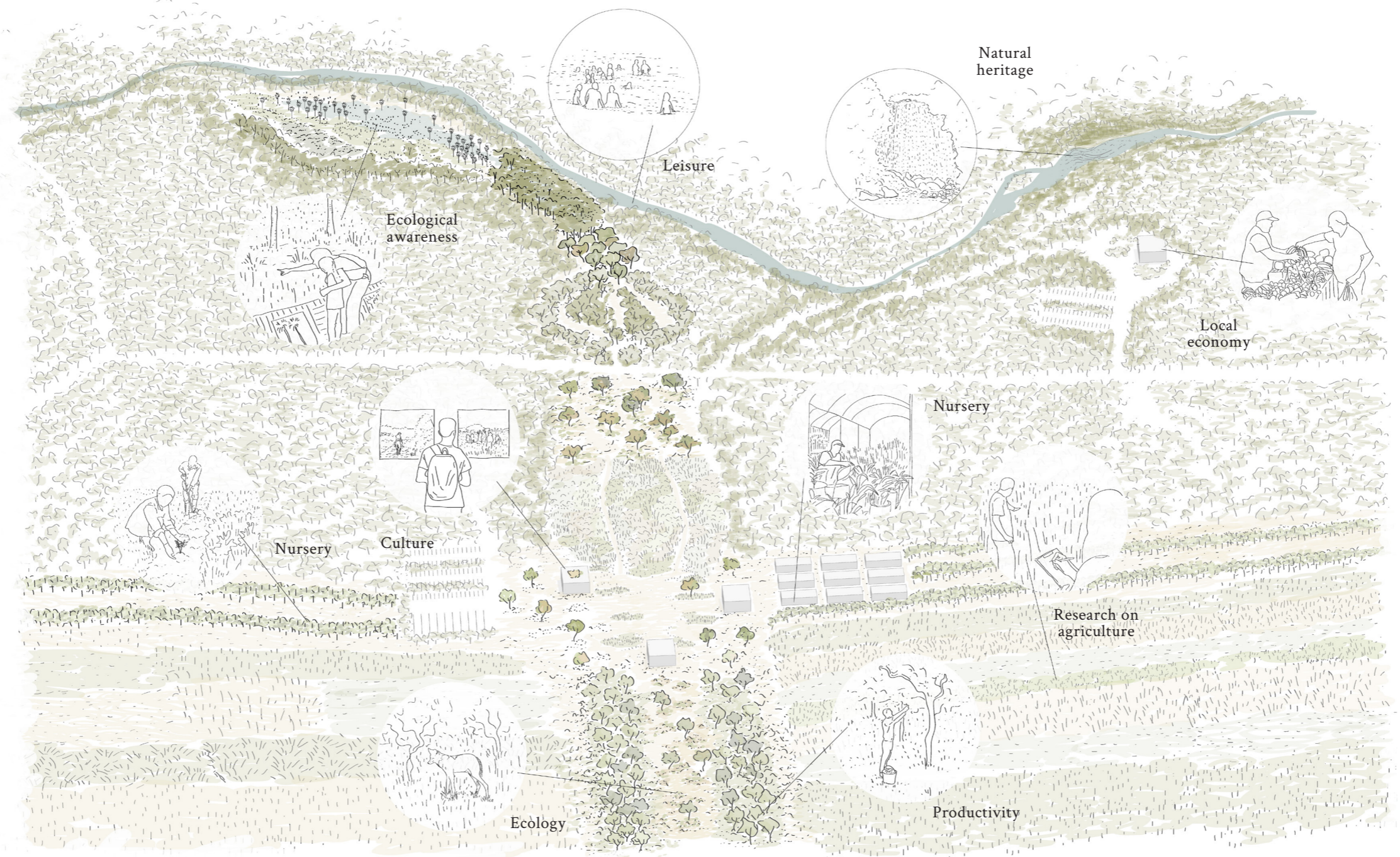
Fragment of the green corridor



 Honey
  Medicinal use
  Nut
  Fruit
  Wood







Leisure



Natural heritage



Local economy



Ecological awareness



Culture



Nursery



Nursery



Research on agriculture



Ecology



Productivity



