







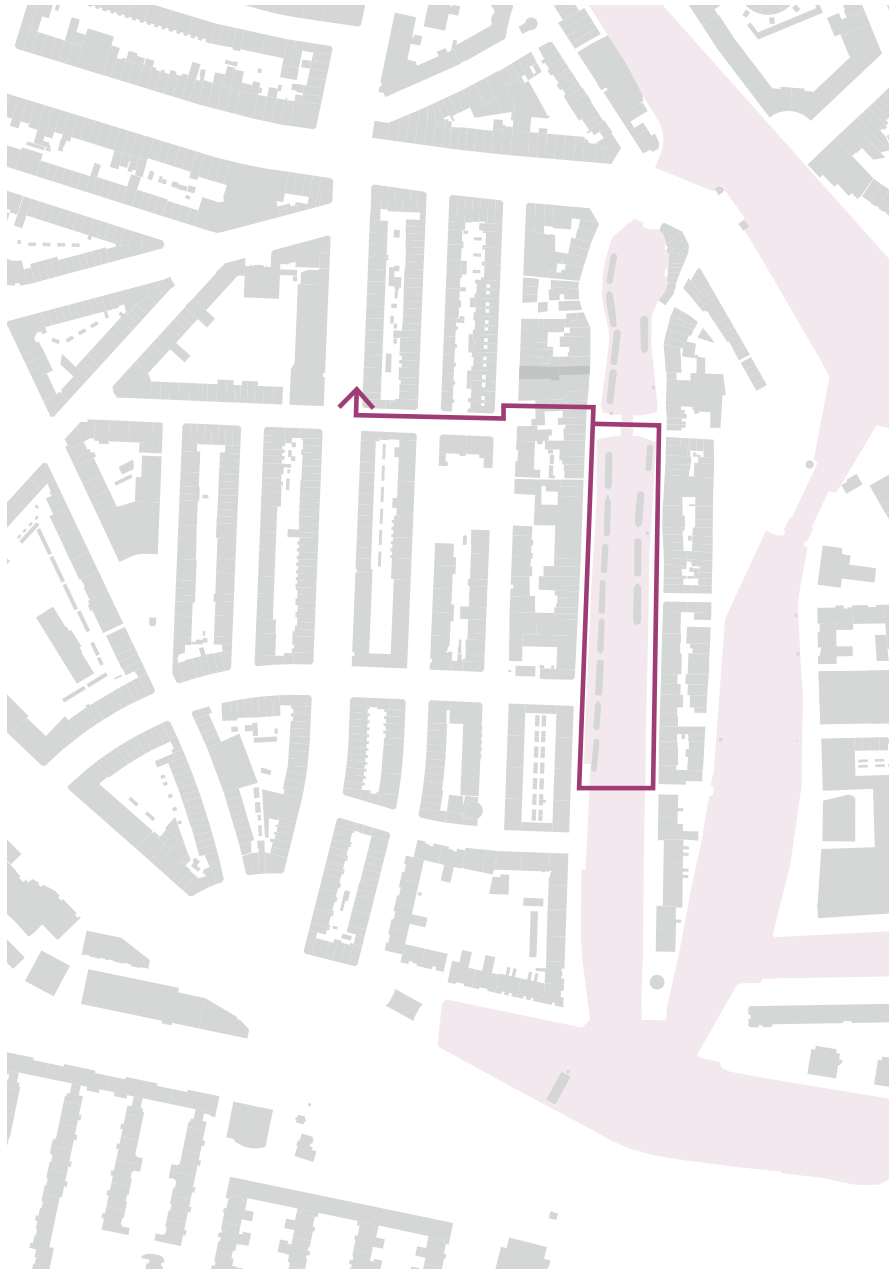




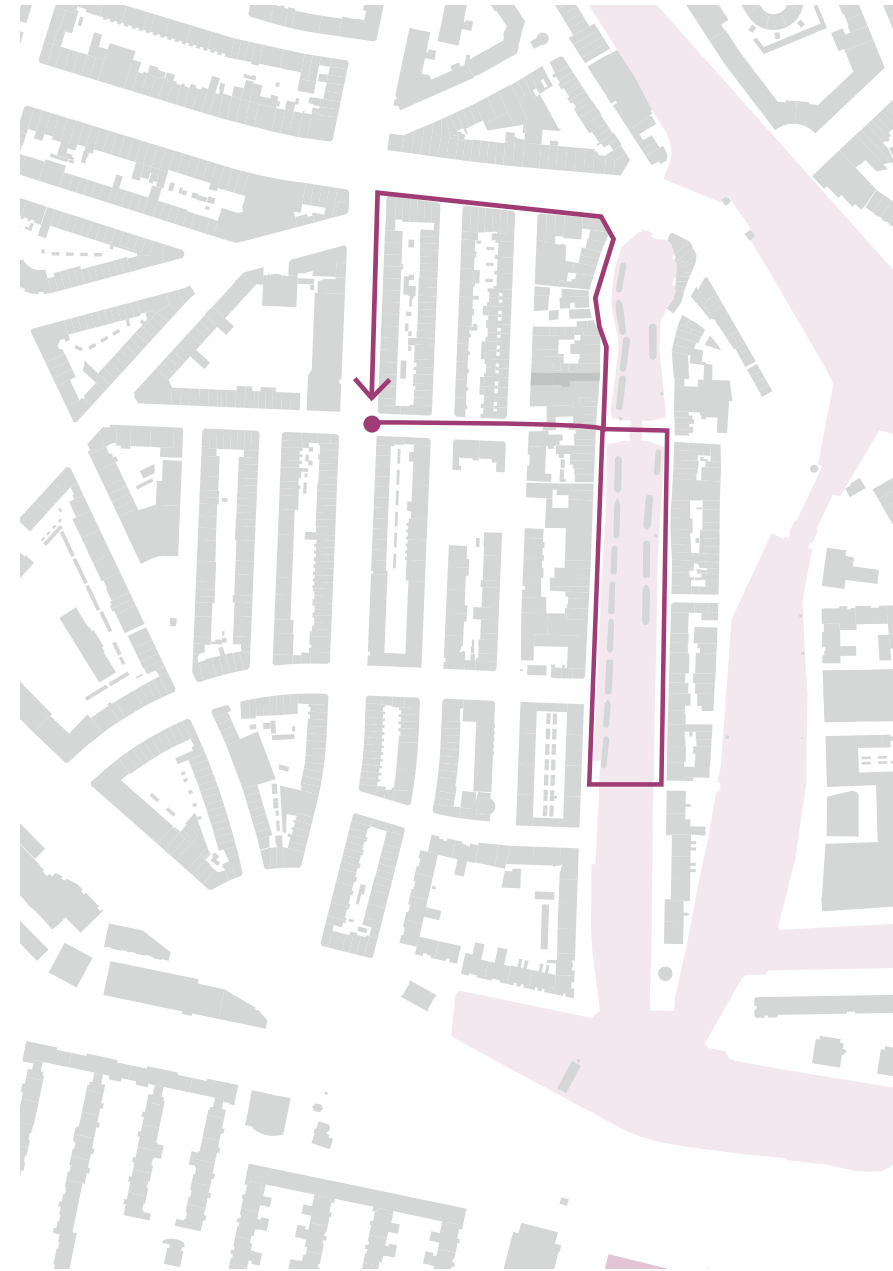




**What is the difference here?**



**Route Sem**



**Route Jikke**



# Beyond the Blueprint

Harnessing Lived Experience in Participatory processes to advance Gender Mainstreaming and address spatial inequalities of the Gendered City

**P5 presentation | June 27th 2025**

Jikke Keizer  
4668553

MSc. Graduation Management in the Built Environment  
Civic Transformation, Innovation, Vision for Inclusive Communities

First Mentor: Ir. Ellen Geurts  
Second Mentor: Dr. Yawei Chen







# Content

**01**

Introduction

**02**

Problem statement &  
Research questions

**03**

Methodology

**04**

Findings

**05**

The Manual

**06**

Conclusion & Discussion

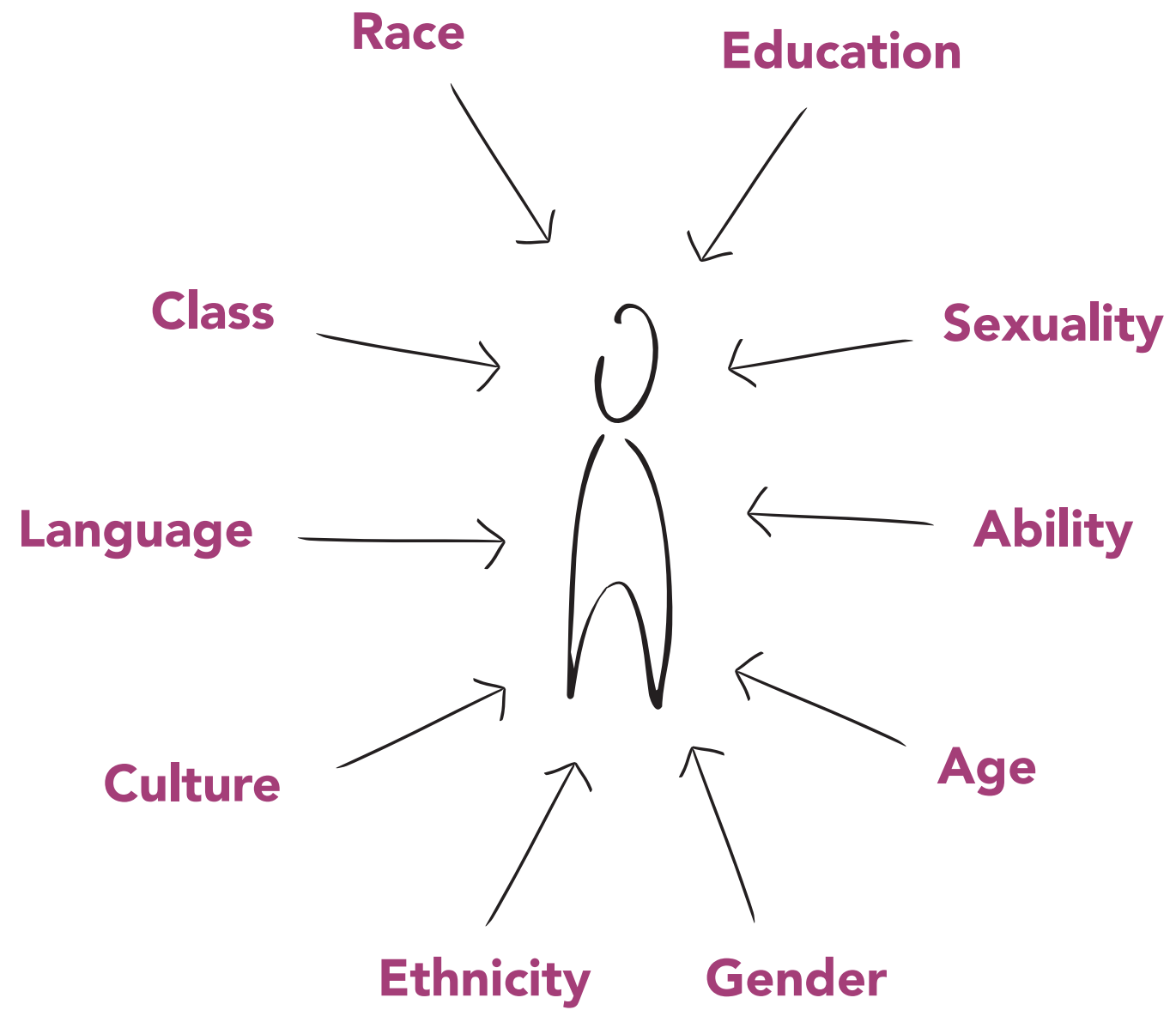


## ***'Lived experience'***

How individuals and communities perceive, feel, and interpret the city's physical, social, and cultural environments based on their unique backgrounds, identities, and daily routines.







*Intersectional framework, own work*

## A city for women (not just the 'default male')

We owe it to each other to make the urban experience more inclusive. It is only by pinpointing the critical issues and unmet needs of women that we can enable sustainable behaviour change and make transport gender neutral.



May 02, 2016


## THE COMMUNITY AND PUBLIC ARE GENDERED

**Cities were not designed with women in mind. How can the situation be improved?**



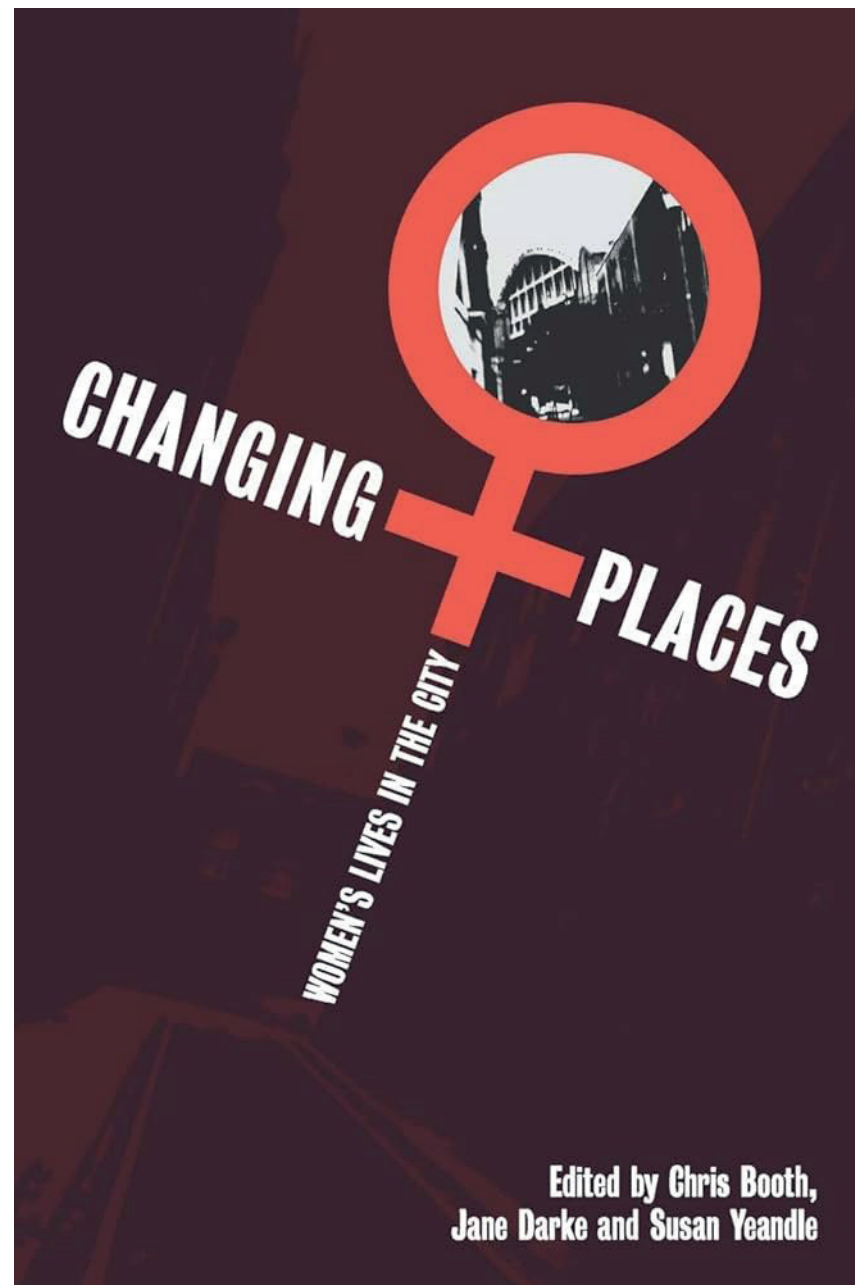
**"The safe city I imagine will be one where a woman would not only be able to go to work safely, but also lie in a park reading a book without fear or worry."**

Gendered mobility strategies and challenges to sustainable travel—patriarchal norms controlling women's everyday transportation

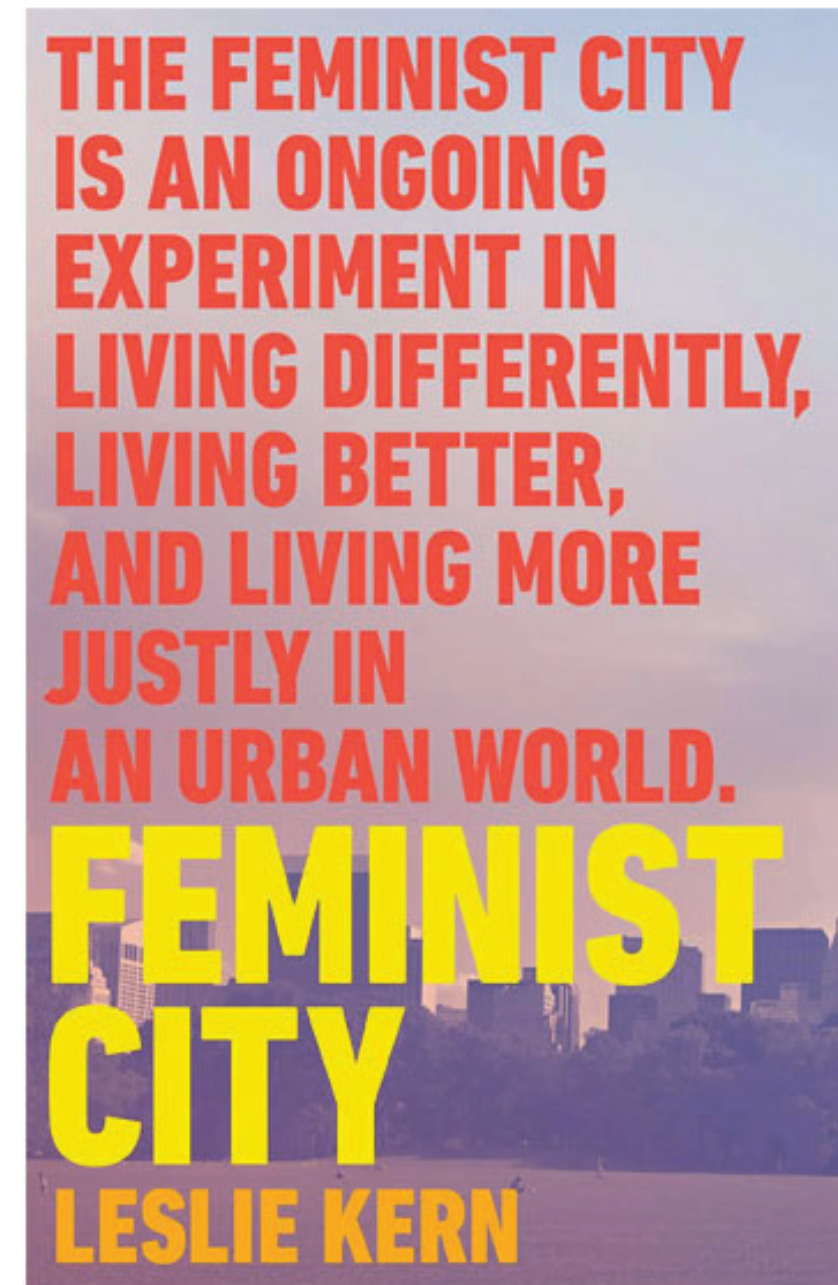
 Christina Lindkvist<sup>1,2,3\*</sup>

<sup>1</sup> Department of Urban Studies, Malmö University, Malmö, Sweden  
<sup>2</sup> The Swedish Knowledge Center for Public Transport, Lund, Sweden  
<sup>3</sup> Institute of Urban Research, Malmö University, Malmö, Sweden





*Changing Places, Women's life in the City*  
Booth, Darke & Yeandle, 1996

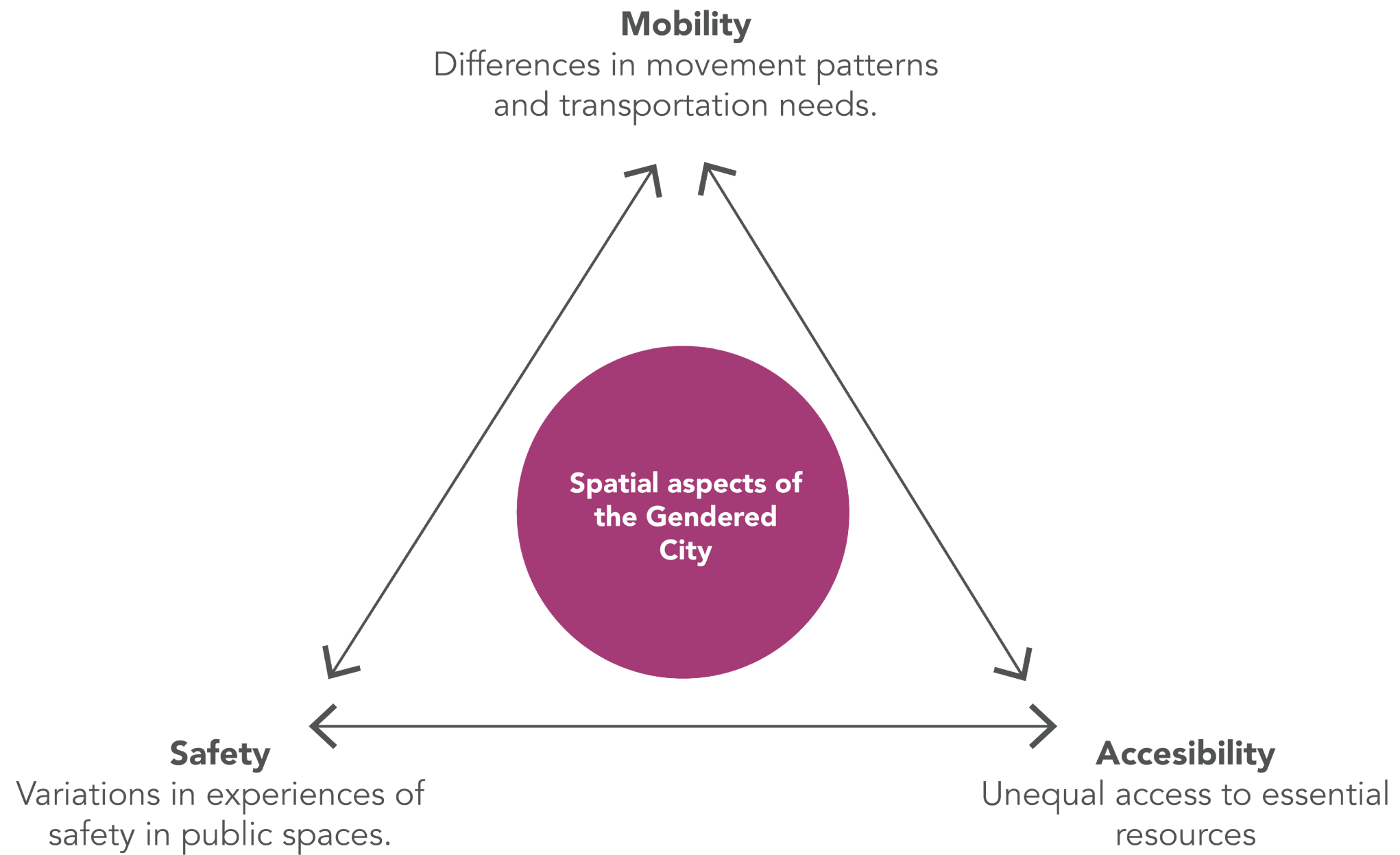


*Leslie Kern, Feminist City 2020*

## Feminist Geography

***The Gendered City explores how urban spaces are shaped by, and reinforce, gendered experiences, highlighting the inequalities that emerge in cities based on gender.***

(Fenster, 2005; Butcher & Maclean, 2018)

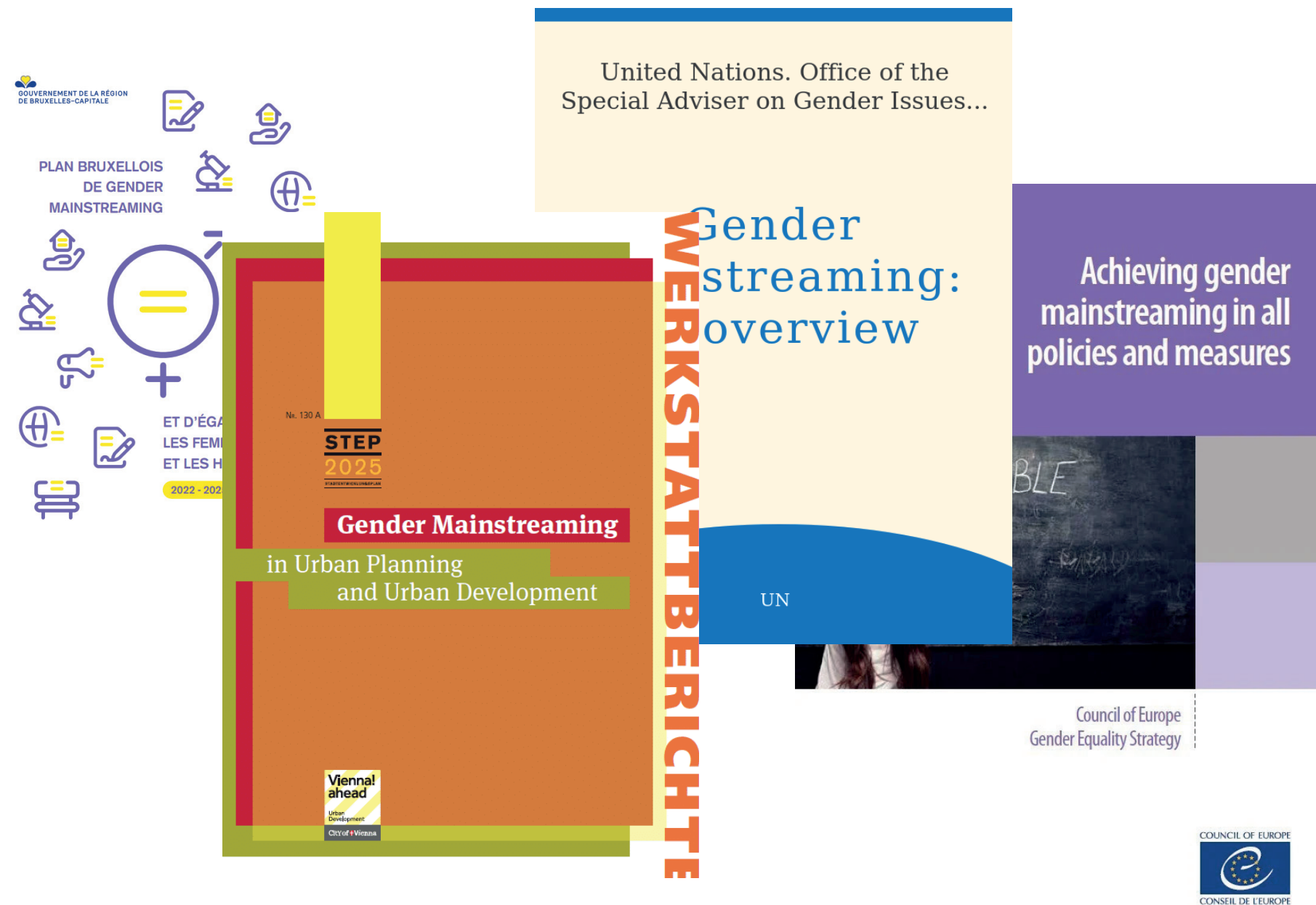




**This inequality calls for a effective strategies..**

***Gender mainstreaming is a strategy aimed at integrating gender considerations into all levels of policy-making, planning, and implementation.***

(e.g. Horelli, 2017; Polk, 2016; de Madariaga & Abril, 2019).



*"Gender considerations are frequently included in general policy documents but are not systematically incorporated into all stages and scales of planning."*

**(Perrone, 2020)**



**How does citizen participation play into this?**

# Participatie: hoe eerder, des te beter



EXPERTISES

PROJECTEN

INSIGHTS

OVER ONS

VACATURES

CONTACT

INSIGHT

Burgerparticipatie en de nieuwe omgevingswet



## Nadere regels voor participatie bij ruimtelijke ontwikkelingen gemeente Schiedam 2022

Geldig van 22-02-2024 t/m heden

### Intitulé

Nadere regels voor participatie bij ruimtelijke ontwikkelingen gemeente Schiedam 2022

Het college van burgemeester en wethouders van de gemeente Schiedam;

gelet op artikel 7, eerste lid van de Participatieverordening 2022 gemeente Schiedam;

overwegende dat de gemeenteraad van Schiedam op 6 juli 2023 een motie heeft aangenomen waarin wordt gevraagd lessen te trekken uit eerdere participatieprocessen om de transparantie van en verwachtingen bij inspraakprocessen bij ruimtelijke ontwikkeling te verbeteren;

## Participatie bij ruimtelijke projecten

Wanneer is participatie gewenst en wanneer verplicht? Wat voor eisen kun je als gemeente stellen aan ontwikkelaars?



Smidt, Marinda de



Marinda de Smidt

5 december 2022

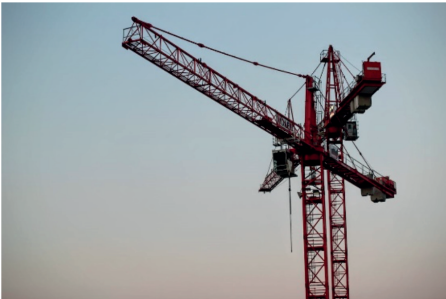
Blog

participatie

ruimtelijke-kwaliteit

ruimtelijke-ordening

ruimtelijke-plannen



Vanaf dat moment dat de Omgevingswet in werking treedt is het voor gemeenten verplicht om participatiebeleid te hebben en speelt participatie een grote rol bij ruimtelijke projecten. Elke gemeente kent wel zijn eigen voorbeelden van goede en minder succesvolle participatietrajecten. Wij zien veel gemeenten die enthousiast aan de slag zijn met verschillende vormen van participatie. En tegelijkertijd worstelen ze met vragen over hun eigen rol, hun ambitie en hoe ze participatie kunnen organiseren.

Soms hebben deze vragen een juridische achtergrond, soms draaien ze om hoe participatie concreet vorm te geven. Soms is



### Meest gelezen



De ba  
netco  
gebie

1



De pe  
vakan  
hangt

2



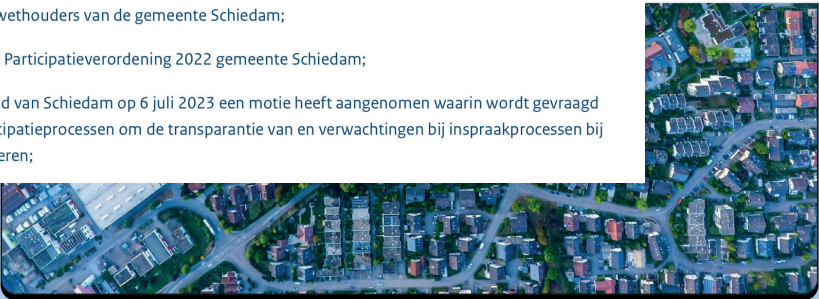
Schra  
meer

3



Van k  
groen

4



## Omgevingswet 2024: Burgerparticipatie in de openbare ruimte

Wijken en buurten zijn de levensaders van een gemeente. Het is vaak het eerste waar mensen naar kijken als ze een woning huren of kopen. Om ervoor te zorgen dat burgers zich prettig voelen in een wijk, is **burgerparticipatie** een instrument bij uitstek om meningen te plegen. Door de komst van de omgevingswet 2024 wordt burgerparticipatie steeds belangrijker.

Hoewel we slapen en wonen in huizen en appartementen, vindt een groot deel van ons leven plaats buiten de deur. Daar waar **jongeren** op pleintjes voetballen of op straat samenkomen. Waar mensen de hand schakelen of hun kinderen laten spelen. Waar ouders een speeltuin maken en waar veelvuldig

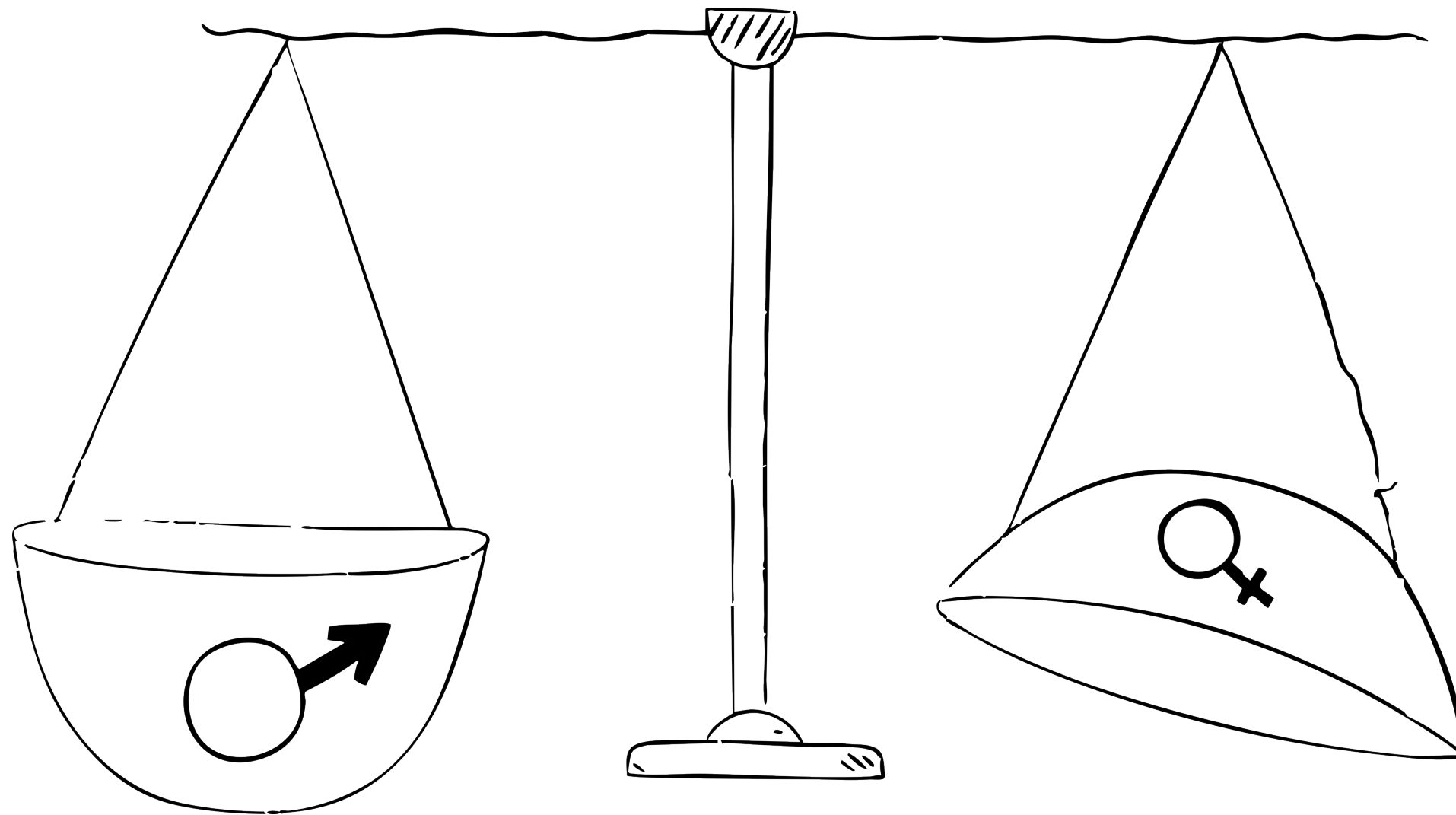
## Emerging field





Citizen participation processes offer opportunities to **better integrate the needs of specific groups** based on their lived experience.





**Equal framework in an unequal environment?**

(Udoewa, 2022)

**So what exactly is the problem then?**



## Gender

**the Gendered City** profoundly impact women's daily lives, limiting their access, mobility, and safety within urban environments.

demands

Gender-based spatial inequalities **need targeted strategies** to ensure that urban areas serve all citizens more equitably.

emerges

**Gender mainstreaming** presents a promising approach

fails

Top-down implementation in urban planning is not working, gender mainstreaming has **struggled to translate into effective spatial interventions.**

informed by

informed by

**'The lived experience'**

## Citizen participation

Emerging **citizen participation processes** offer a bottom-up approach

lacks

Current participation models **lack a targeted, equity-focused framework,** making it difficult to address the specific needs.

In which way can **citizen participation processes**, by harnessing '**the lived experience**', be structured to function as a bottom-up approach to address the spatial inequalities of **the Gendered City**?



To answer this question several sub-questions have been formulated

- 1 In which way can **the lived experiences**, particularly those of women, reveal and highlight the spatial inequalities of the Gendered City?
- 2 Are there opportunities within current **citizen participation practices** to engage with '**the lived experience**' to strengthen their role in addressing spatial inequalities?
- 3 What are effective structural elements, that can be implemented in **citizen participation processes**, that use the lived experience to address **the Gendered City**?

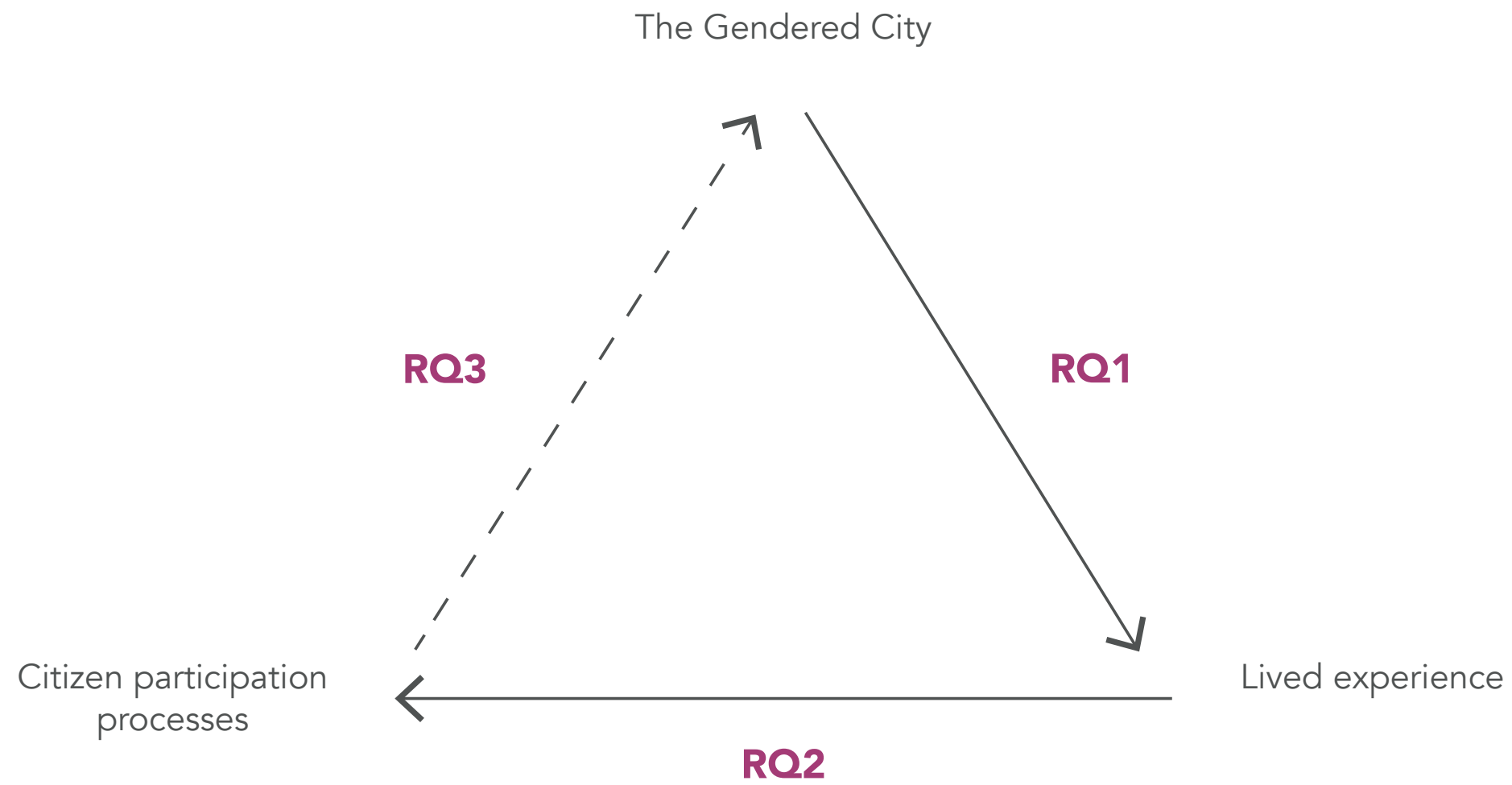
To answer this question several sub-questions have been formulated

- 1 In which way can **the lived experiences**, particularly those of women, reveal and highlight the spatial inequalities of the Gendered City?
- 2 Are there opportunities within current **citizen participation practices** to engage with **'the lived experience'** to strengthen their role in addressing spatial inequalities?
- 3 What are effective structural elements, that can be implemented in **citizen participation processes**, that use the lived experience to address **the Gendered City**?

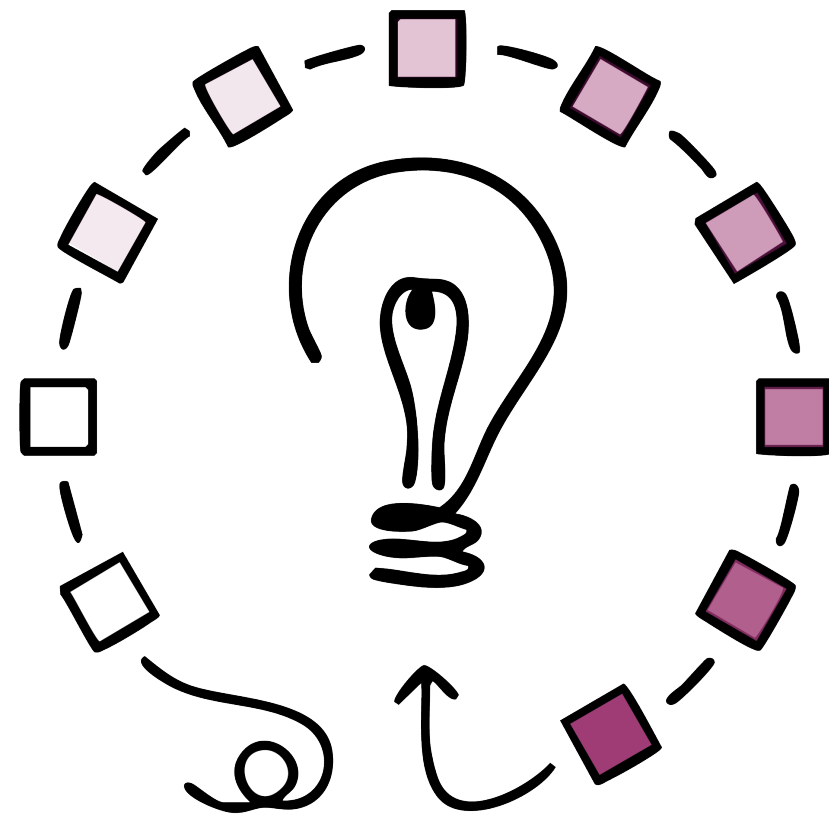
To answer this question several sub-questions have been formulated

- 1 In which way can **the lived experiences**, particularly those of women, reveal and highlight the spatial inequalities of the Gendered City?
- 2 Are there opportunities within current **citizen participation practices** to engage with '**the lived experience**' to strengthen their role in addressing spatial inequalities?
- 3 What are effective structural elements, that can be implemented in **citizen participation processes**, that use the lived experience to address **the Gendered City**?





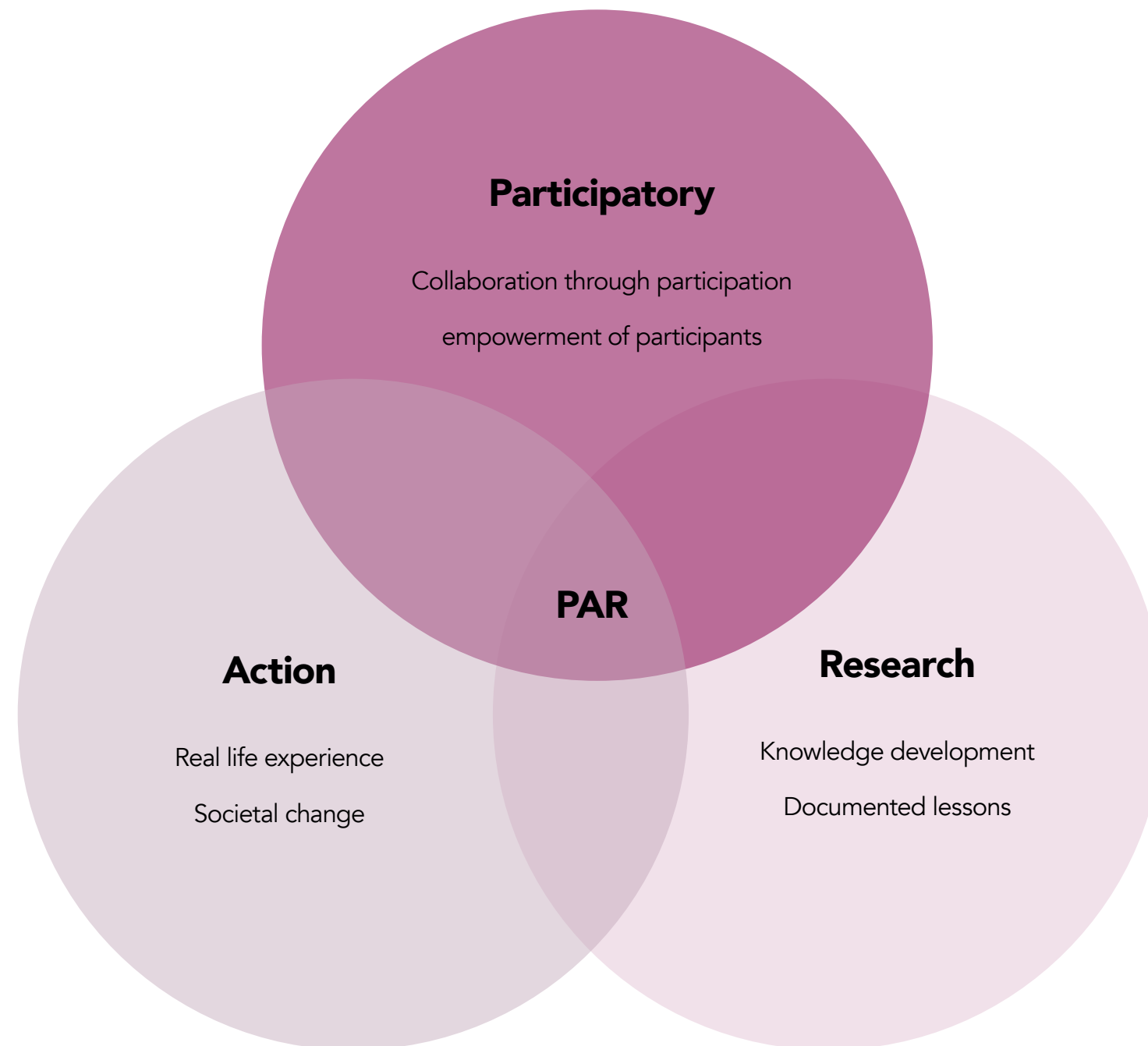
*Relationship between research questions, own work*



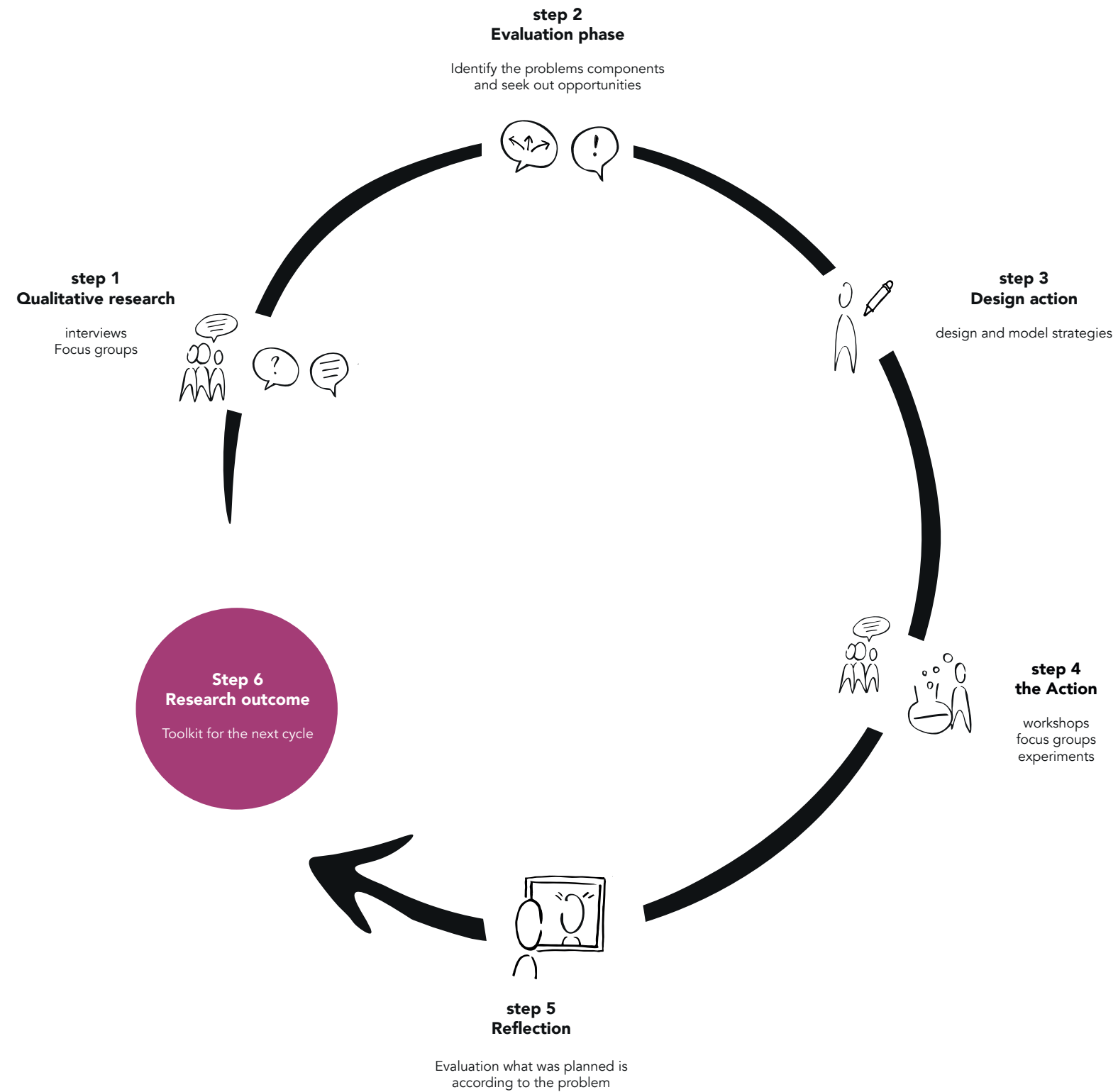
**Explorative approach**

# Participatory Action Research (PAR)





*Interconnected facets of PAR based on Schubotz (2019), own work*



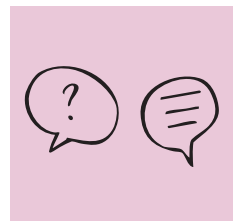
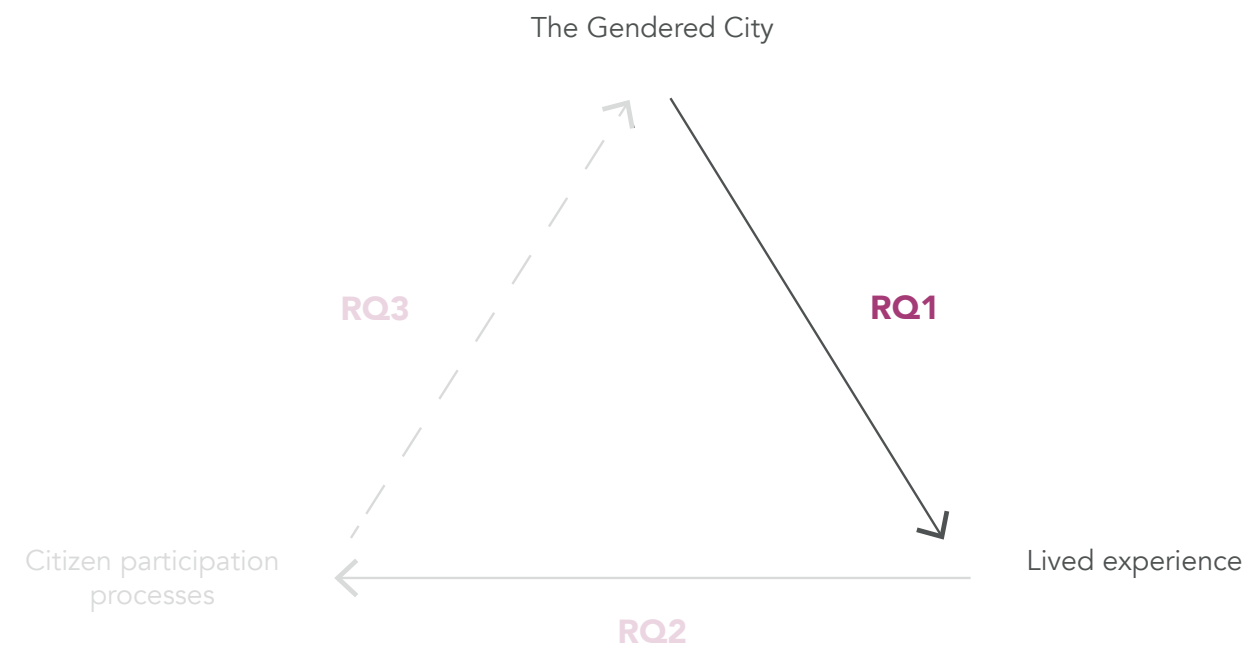
The cyclic steps of PAR with addition of step 6 based on Apolo (2021), own work

**So, what were the findings of all this?**



## *the Gendered City and lived experience*

In which way can **the lived experiences**, particularly those of women, reveal and highlight the spatial inequalities of the Gendered City?



## Expert interviews



**Lived experience reveals interconnectedness of spatial aspects**



**Experience and feelings should become an integral part of the built environment**



**Lived experience exposes the contextuality of the Gendered City**



**Sense of belonging through representation**

*“While aspects such as lightning, accessibility, and layout can be mapped, it is through lived experience that we understand how they function — or fail — within specific contexts.”*

Overview of tactics for better collection and use of lived experience in participation based on expert interviews, own work

**Conclusion**

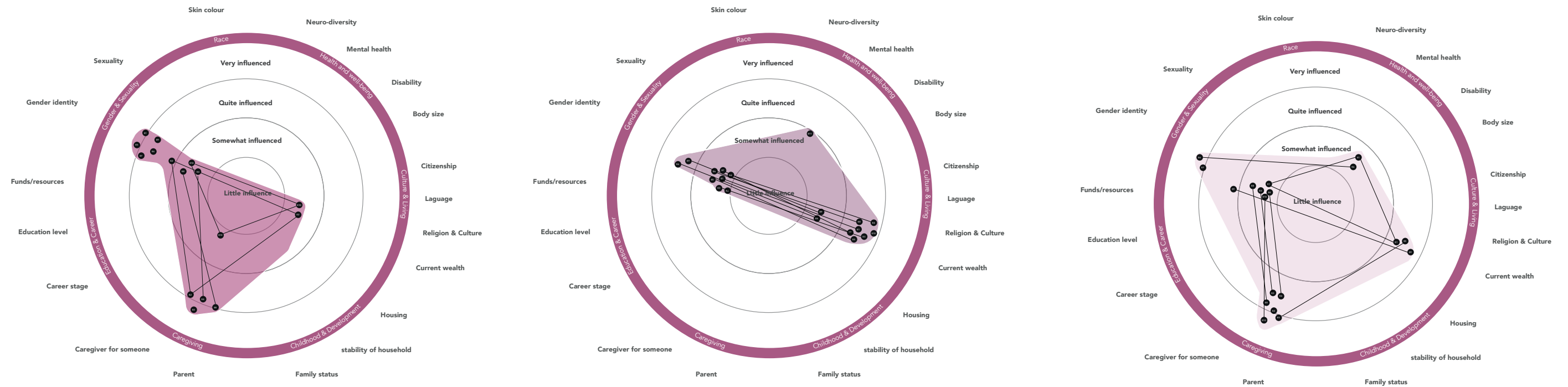
# Exploratory walks



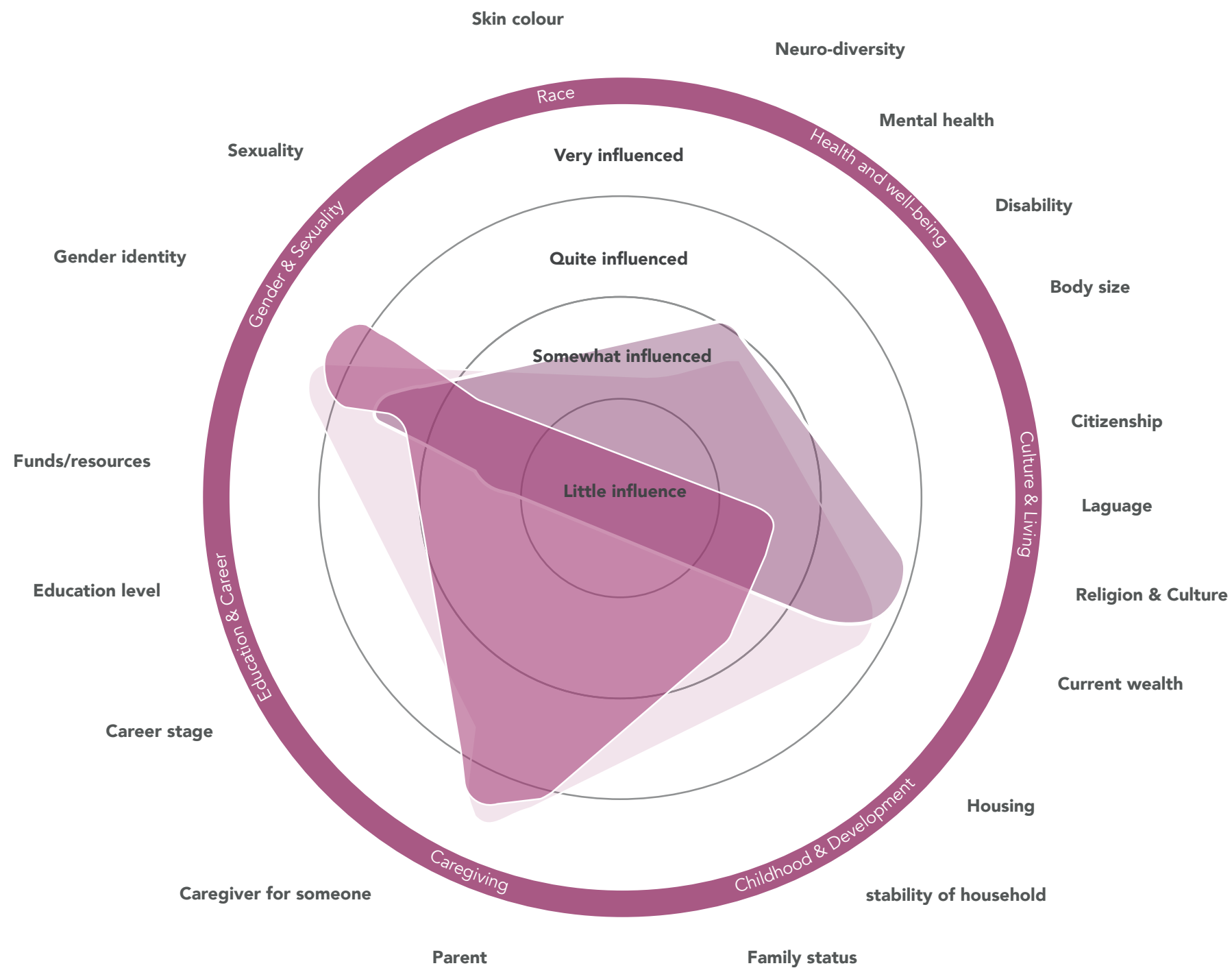
Ava is a 28 year old woman who lives in the eastern part of Amsterdam with her partner. She is born and raised in the city and considers this her home. She is a mother of a two year old and combines her motherhood with work and studies. Her days are a balancing act between all these different duties.







Intersectional analysis experiences participant 1,2 and 3, own work



## Analysis of exploratory walks



Lived experiences were considerably influenced by their gender, the extent to which heavily relates to age and life stage



Gendered experiences are heavily related to mobility of care

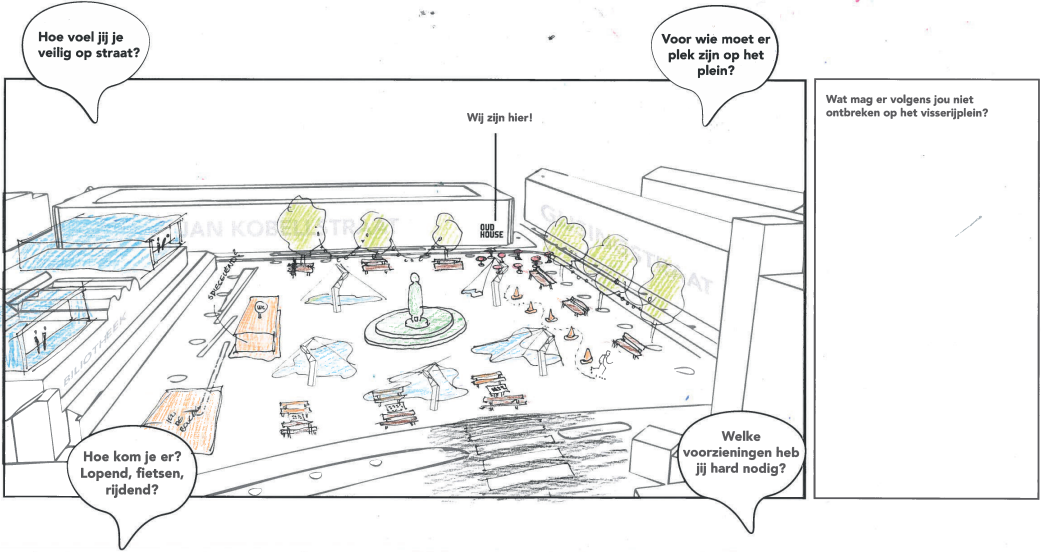


Experiences were also influenced by cultural differences → Representation

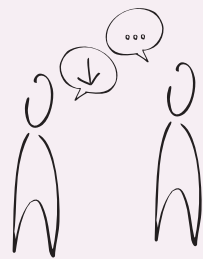
# The workshop



## EEN GENDERVRIENDELIJK VISSERIJPLEIN?



## Thematic analysis of the workshop



**Women tend to downplay their own experiences and speak up less  
→ Mental barriers**



**Lived experience, once again, reveals interconnectedness between spatial aspects**

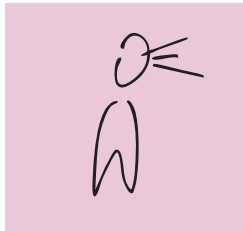
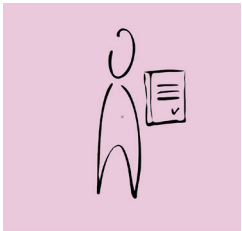
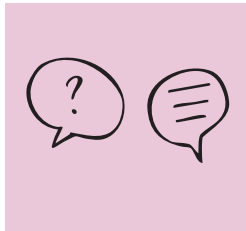
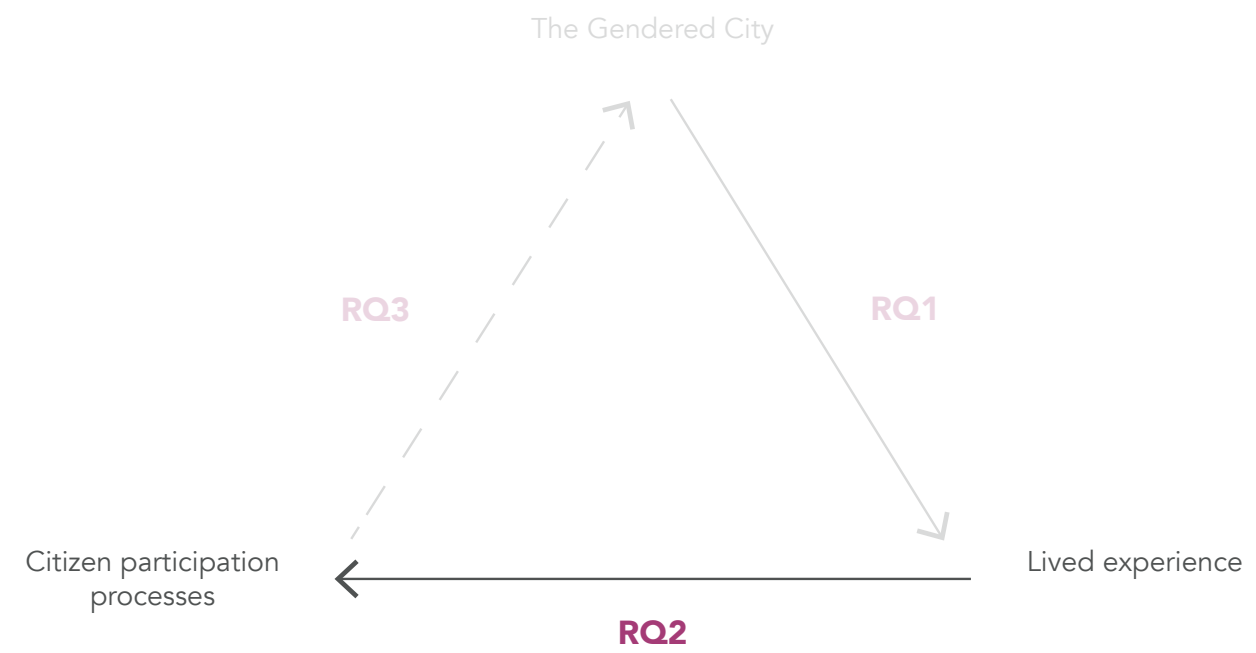


**Spatial aspects of the Gendered City are experienced across genders, but women are disproportionately affected by them**



*Lived experience in citizen participation processes*

Are there opportunities within current **citizen participation practices** to engage with **'the lived experience'** to strengthen their role in addressing spatial inequalities?



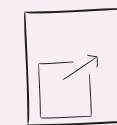
## Expert interviews



**Taking away barriers**



**Build trust and transparency**



**Offer multiple scales**



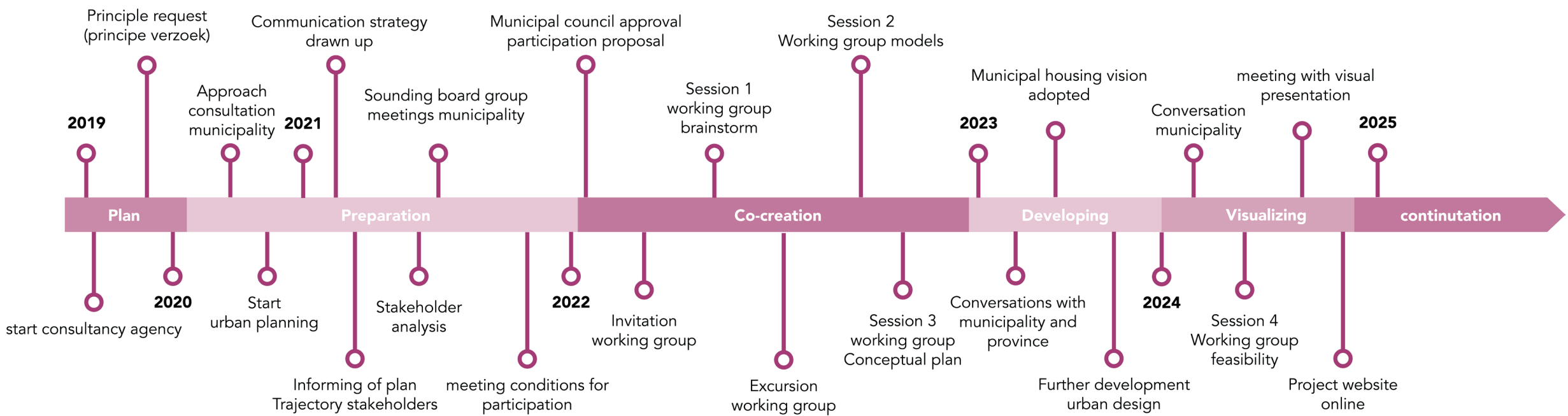
**Adress womens issues**



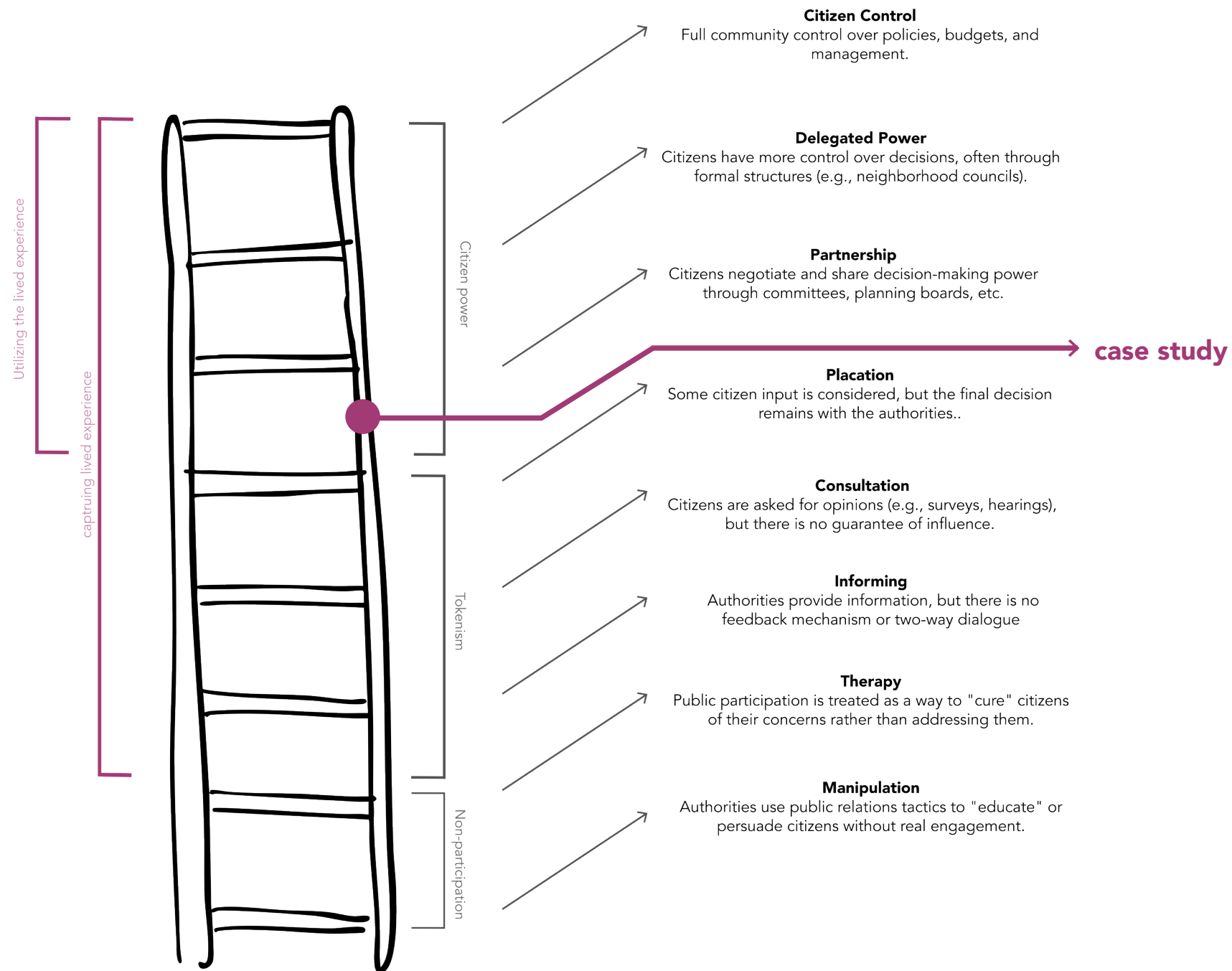
**Check your bias**

*Overview of tactics for better collection and use of lived experience in participation based on expert interviews, own work*

# case study



Overview of participation trajectory based on Kubiek, own work

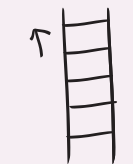


Case study analysis with Arnstein's ladder, own work

## Analysis of case study



**Lived experience was captured, but not actively sought out to address systemic issues**



**Need for low-intensity methods that are high up the ladder**



**Time and budget constraints** → Added value of inclusivity and lived experience needs broader support



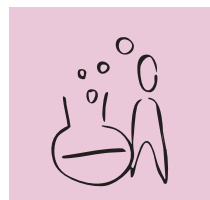
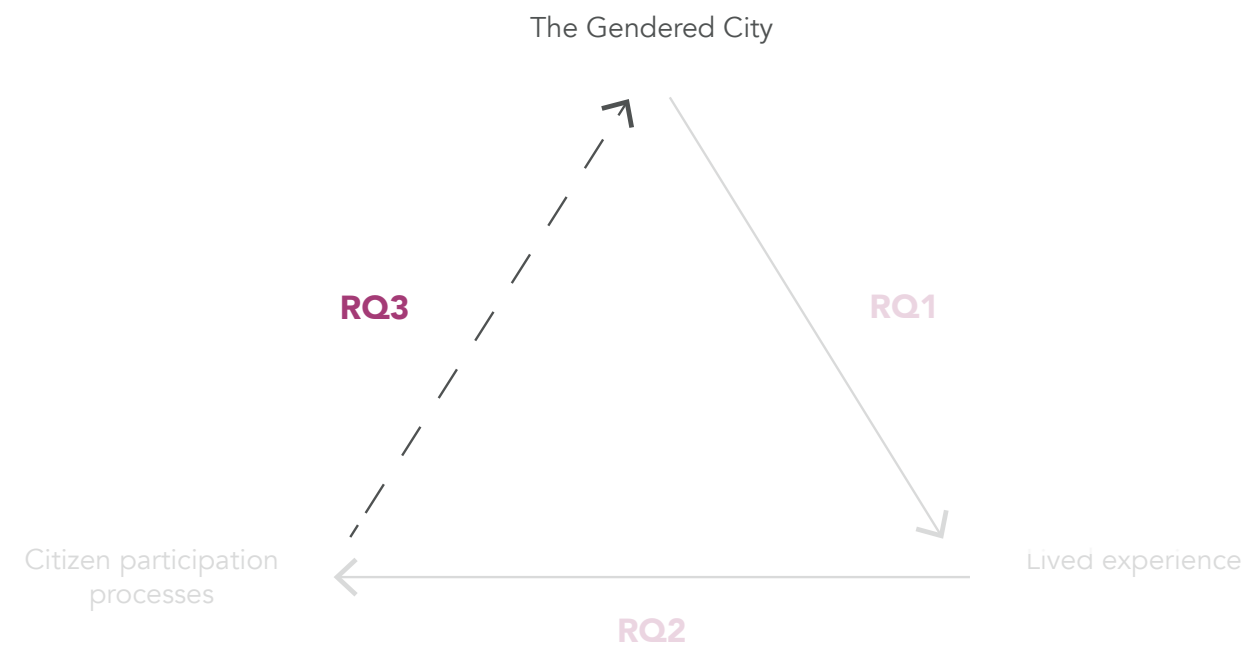
**Misconception on time and budget** → Practice needs accessible framework that enables incorporation of gender considerations and inclusive practices



# Adressing the Gendered City in citizen participation processes

(the action)

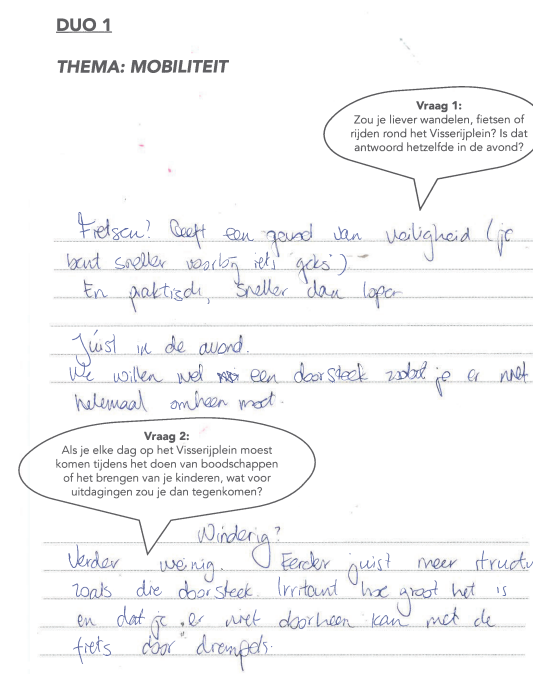
What are effective structural elements, that can be implemented in **citizen participation processes**, that use the lived experience to address **the Gendered City**?



# What was the action about?



**Part 1**  
Thematic mapping with stickers



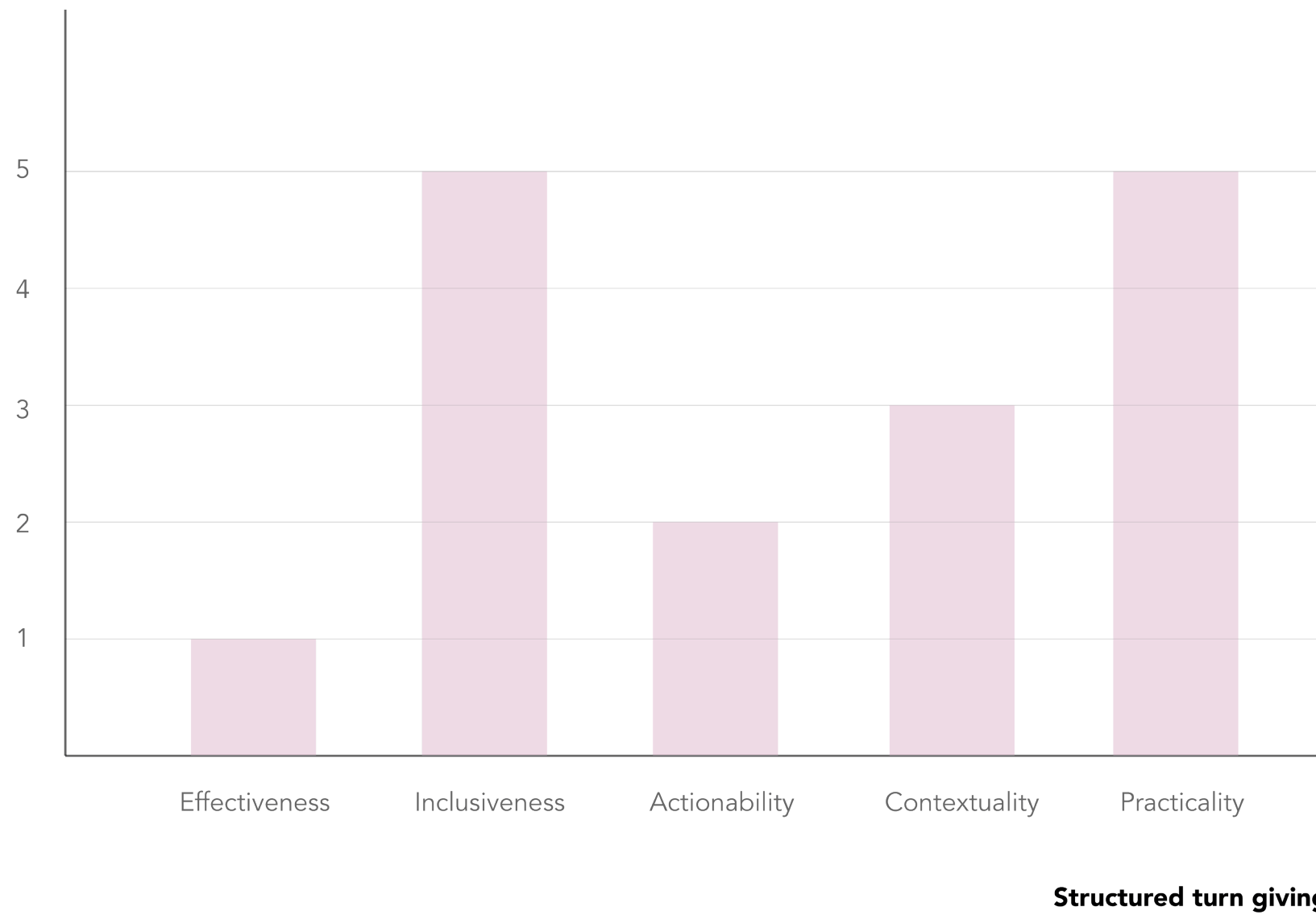
**Part 2**  
Thematic excursion

## Wat mag er niet ontbreken op het visserijplein?

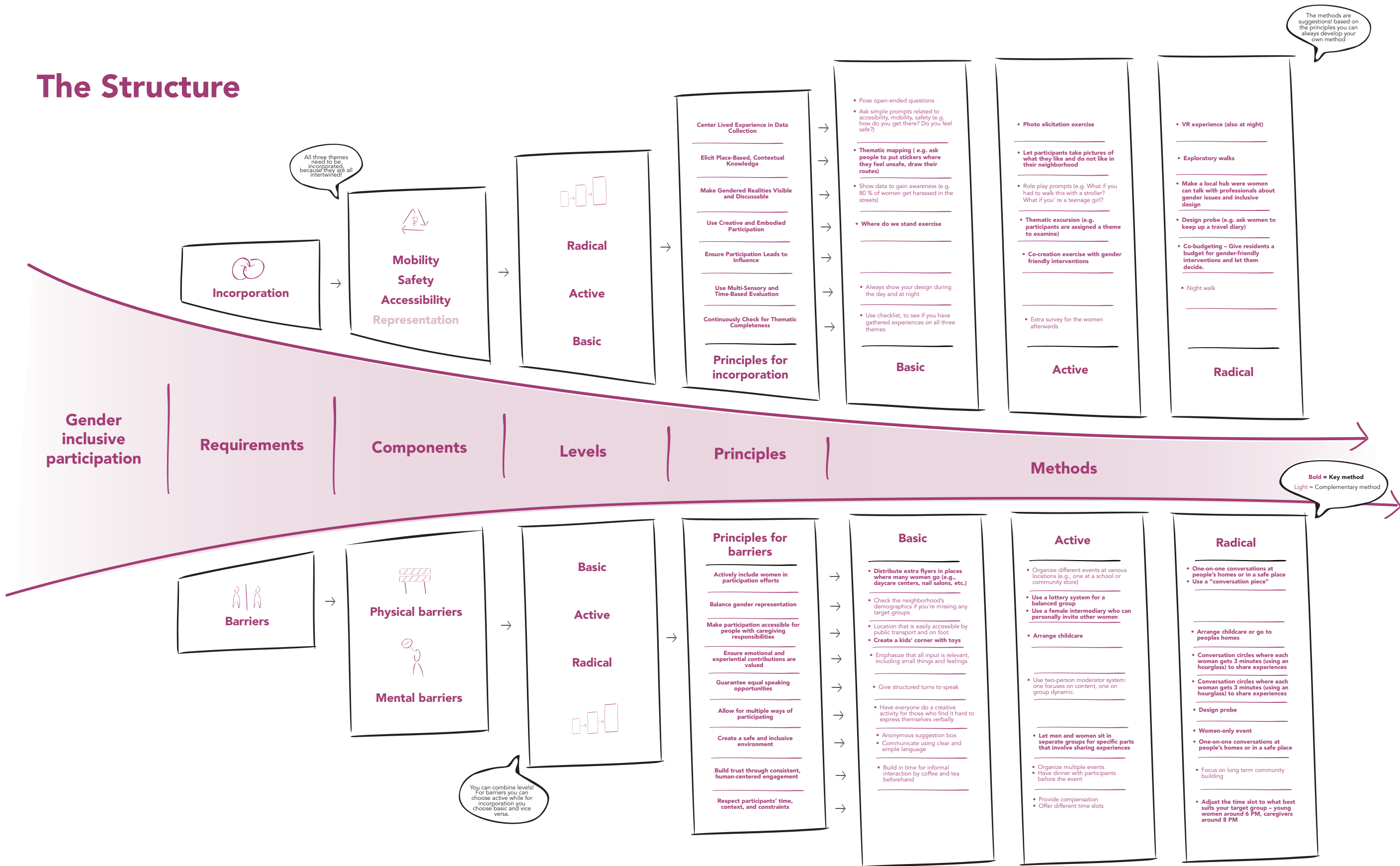


Kies 5 van de 10 opties en plaats/teken ze ergens op het plein  
iets erbij schrijven mag!

**Part 3**  
Co-creation exercise with gender-friendly interventions

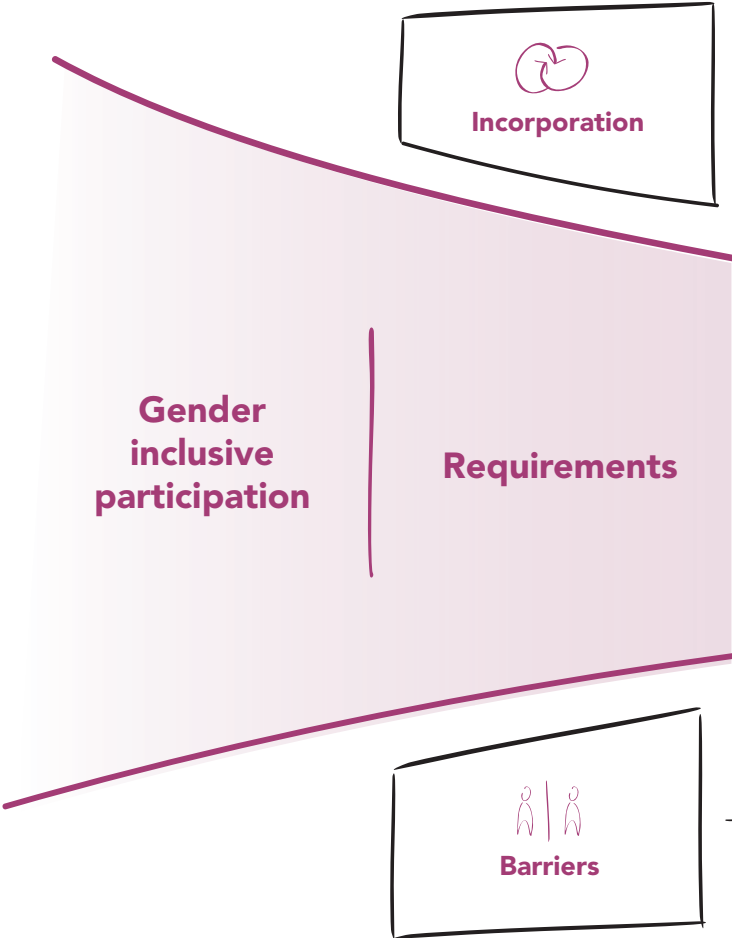


# The Structure





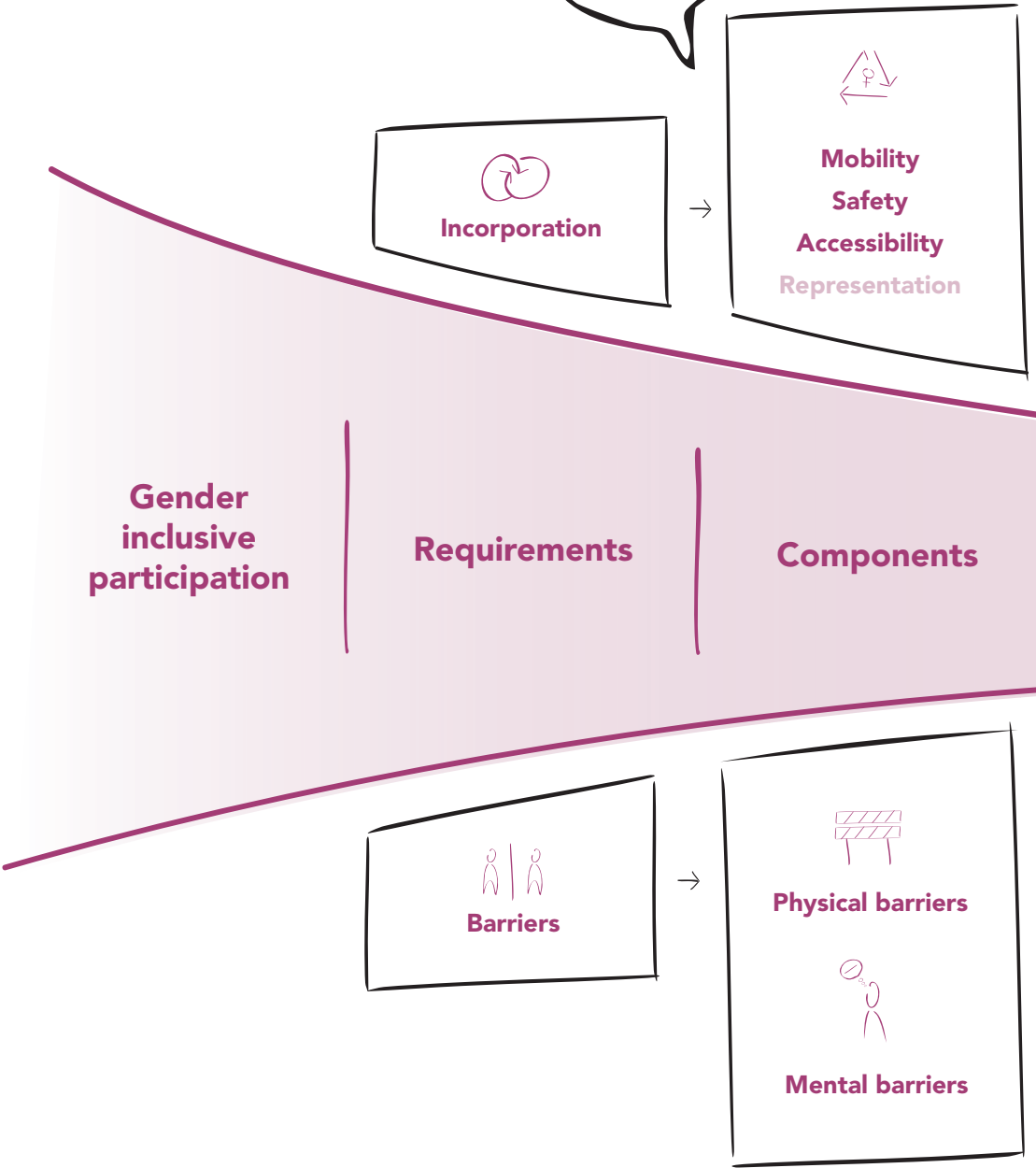
# The Structure



Both requirements of the structure need to be adressed for optimal results

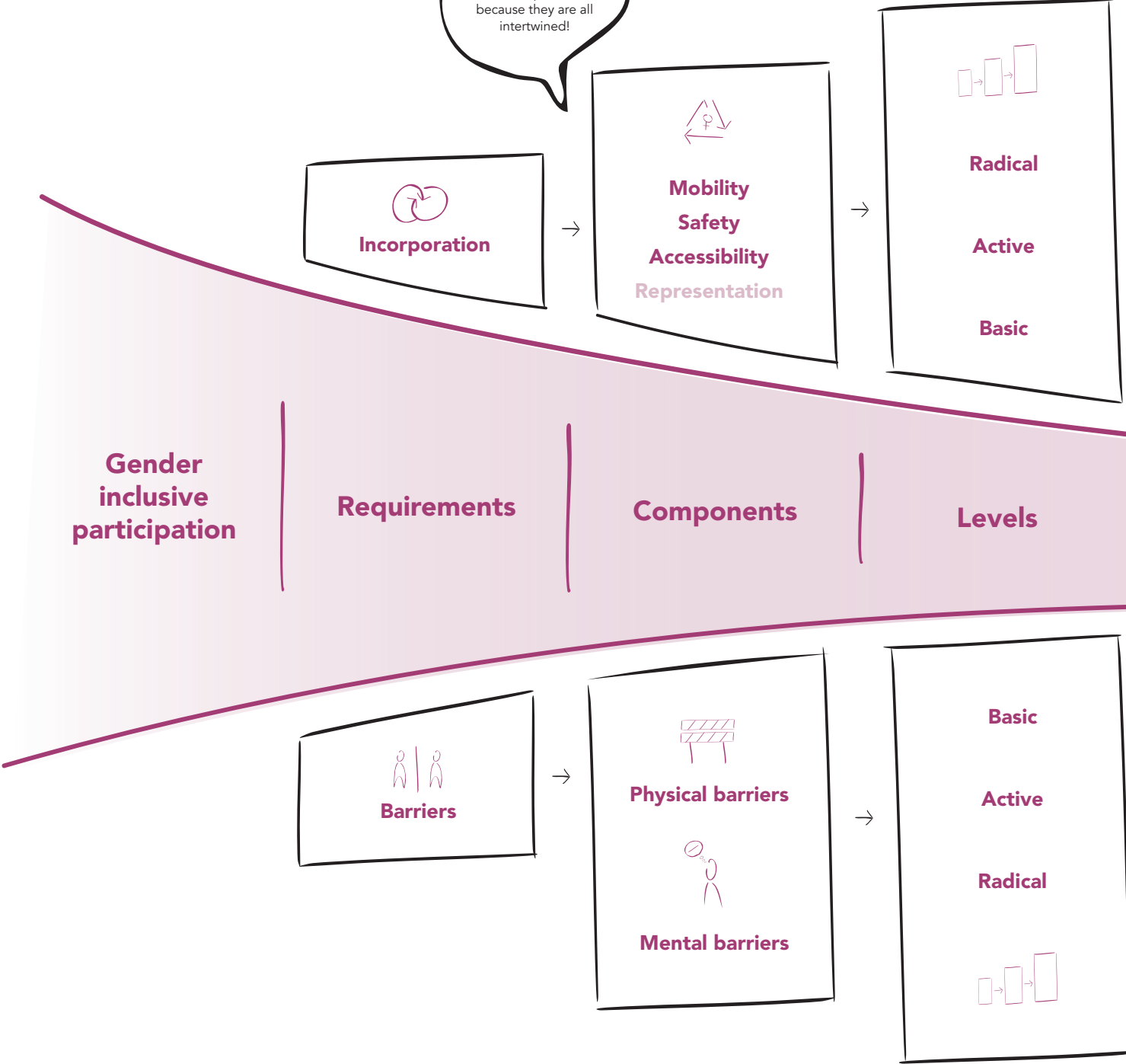
# The Structure

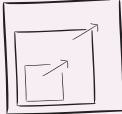
All three themes need to be incorporated, because they are all intertwined!

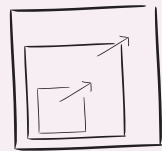


# The Structure

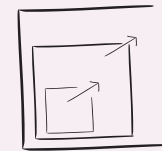
All three themes need to be incorporated, because they are all intertwined!



 Levels also serve participants needs a combination is most optimal



**Option 1: Choose a level that suits you**

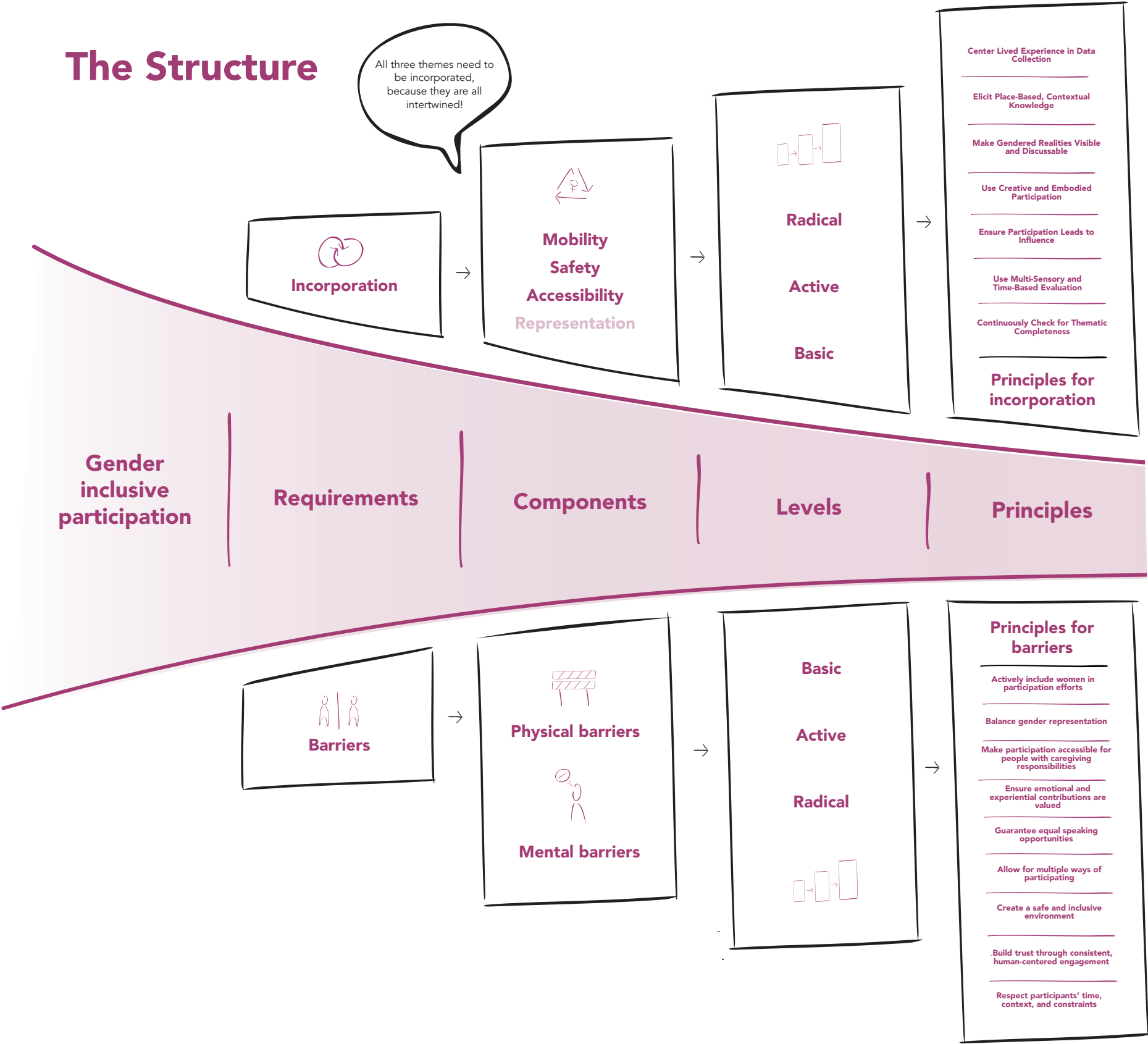


**Option 2: Combine levels for optimal results**

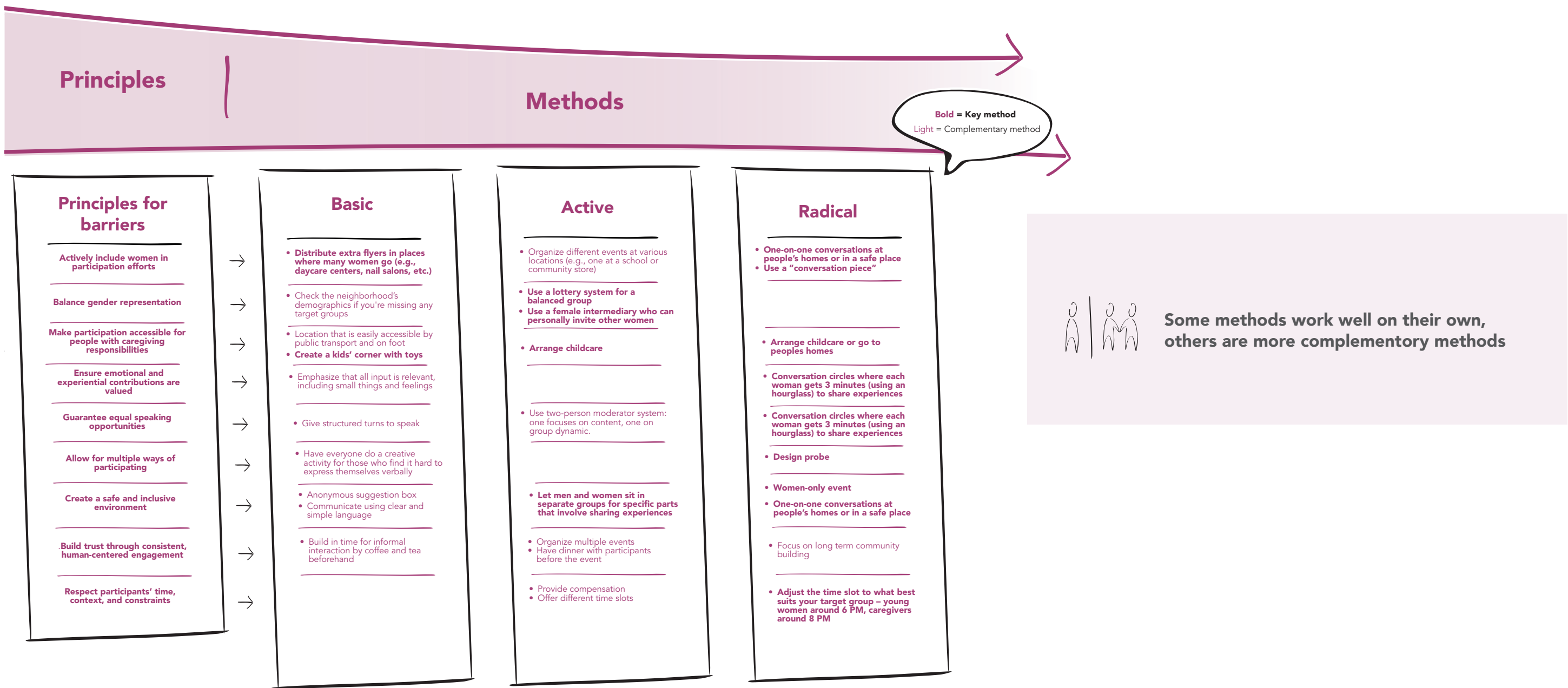


# The Structure

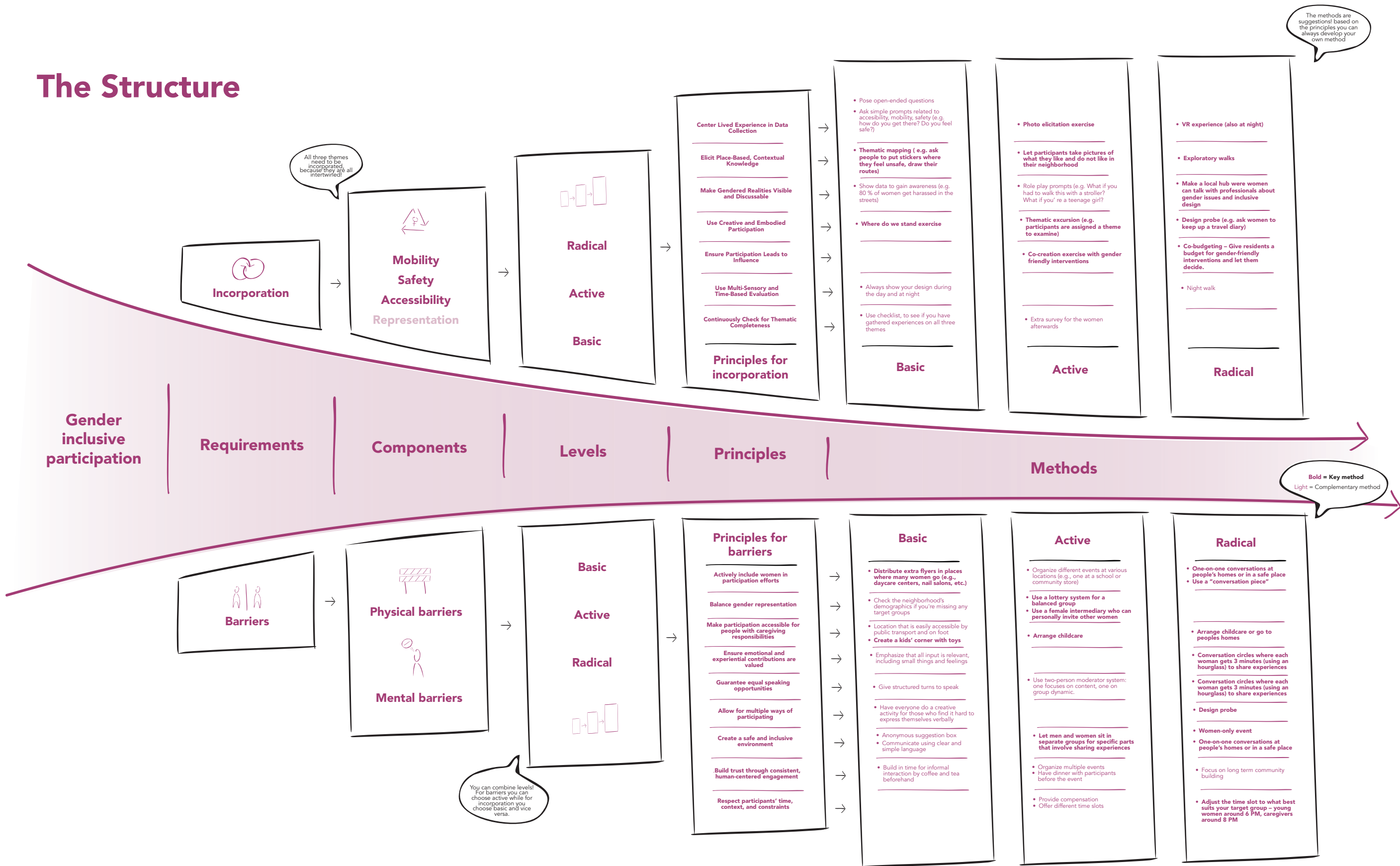
All three themes need to be incorporated, because they are all intertwined!



# The Structure



# The Structure





# **GENDER INCLUSIVE PARTICIPATION**

## *A PRACTICAL MANUAL*



### CONTEXT CARD

You are hired to lead a participation trajectory for a new large-scale busstation in a large city. The municipality wants to innovate with terms like 'mobility hub'. Multiple incidents have happened in the past.

### BUDGET

17 X €

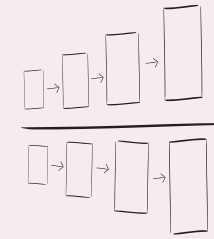
## Conclusion



Lived experiences need to be actively sought out and systematically integrated into participation processes.



Spatial aspects of the Gendered City must be directly addressed within participation.



The manual is necessary—not just as a tool—but as a support system to help practitioners move from intention to action.

In which way can **citizen participation processes**, by harnessing **‘the lived experience’**, be structured to function as a bottom-up approach to address the spatial inequalities of **the Gendered City**?

# Discussion

## Theoretical discussion

Loss of participatory ambitions within the built environment

Translation to other marginalized groups

One side of the problem

## The problem

Broader support for  
inclusivity/gender  
considerations in policy and  
mandate

Where  
gendermainstreaming is  
important

Better practical tools and  
frameworks to incorporate  
gender considerations in  
participation

**The thesis**

## Theoretical discussion

Loss of participatory ambitions within the built environment

Translation to other marginalized groups

One side of the problem

## Methodological discussion

Broad multimethod approach

PAR

Ethics of PAR



**Thank you for listening!**

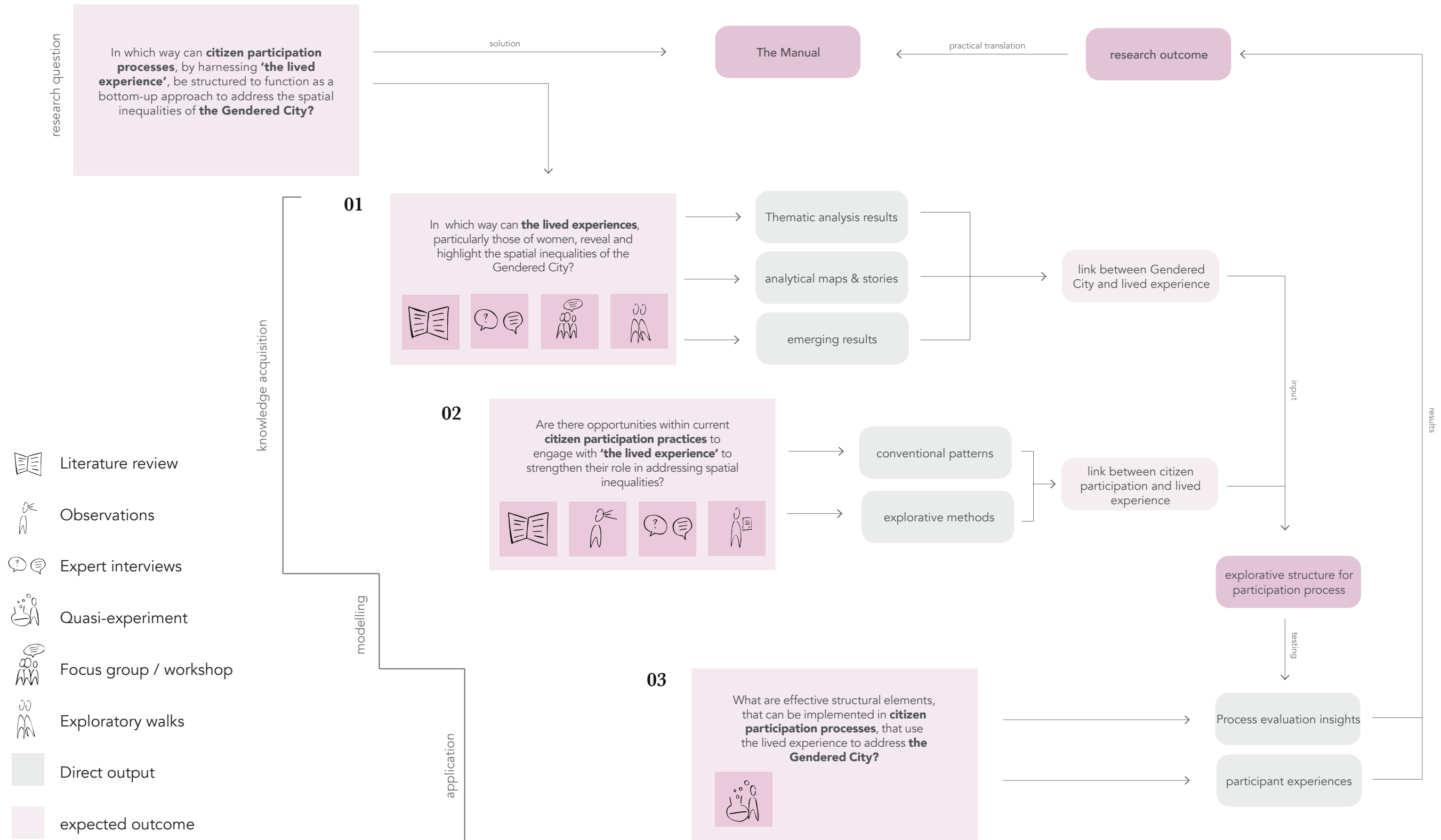


Figure 11. Methodological framework, own work

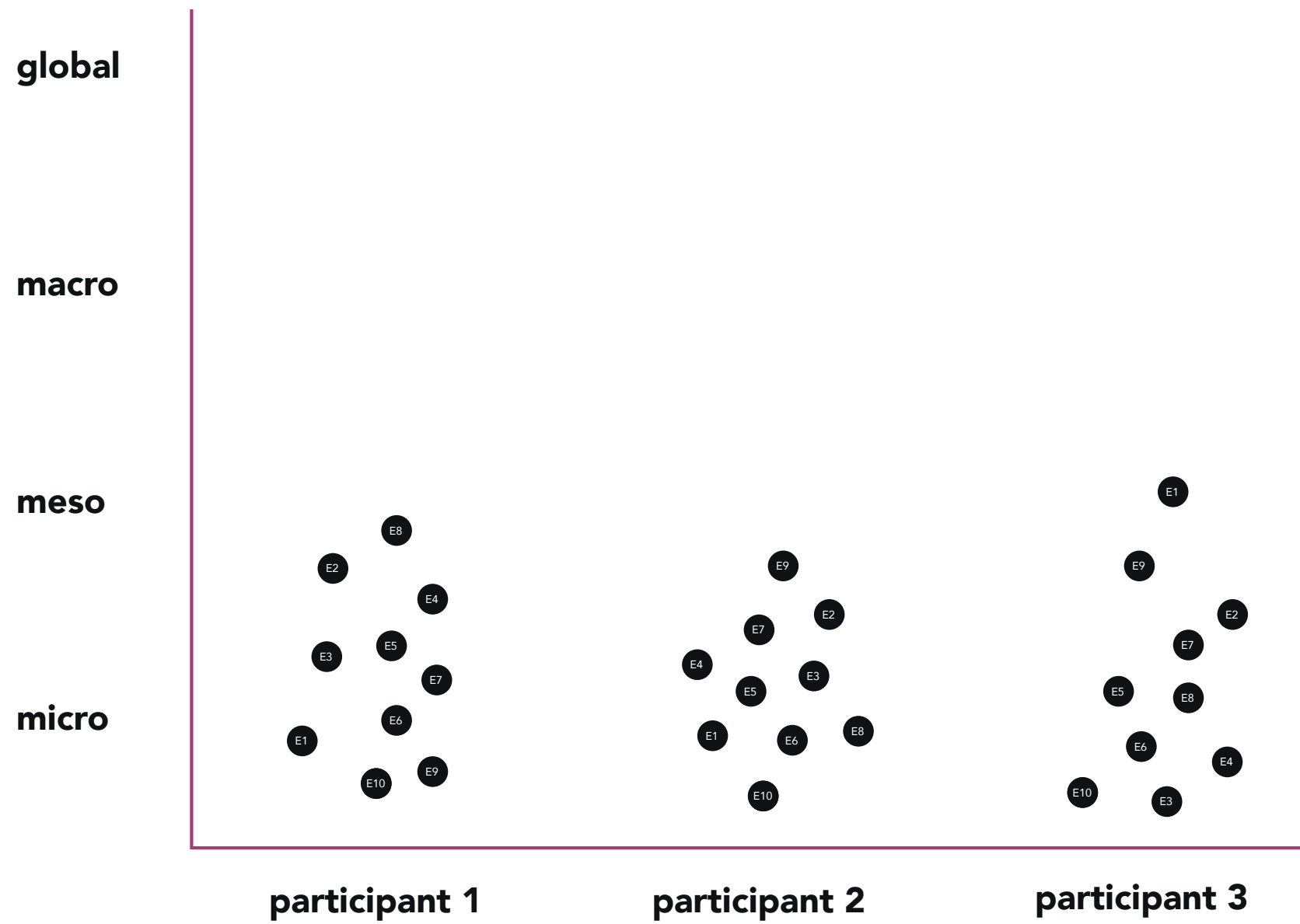


Figure 21. Analysis experiences in the different shperes from Kang et al. (2017), own work

	Project category 1	Project category 2	Project category 3
Degree of impact	Limited impact	Medium impact	Large-scale impact
Participation level	Informing or consulting	Consulting or asking advice	Asking advice or co-creation
Examples	Dormer, gardenhouse or small-scale change of function	Demolition/construction of main buildings or large-scale change of function	Large-scale spatial development, new residential area, government policy

Figure 24. Overview participation level linked to project category based on documents from Kubiek, own work





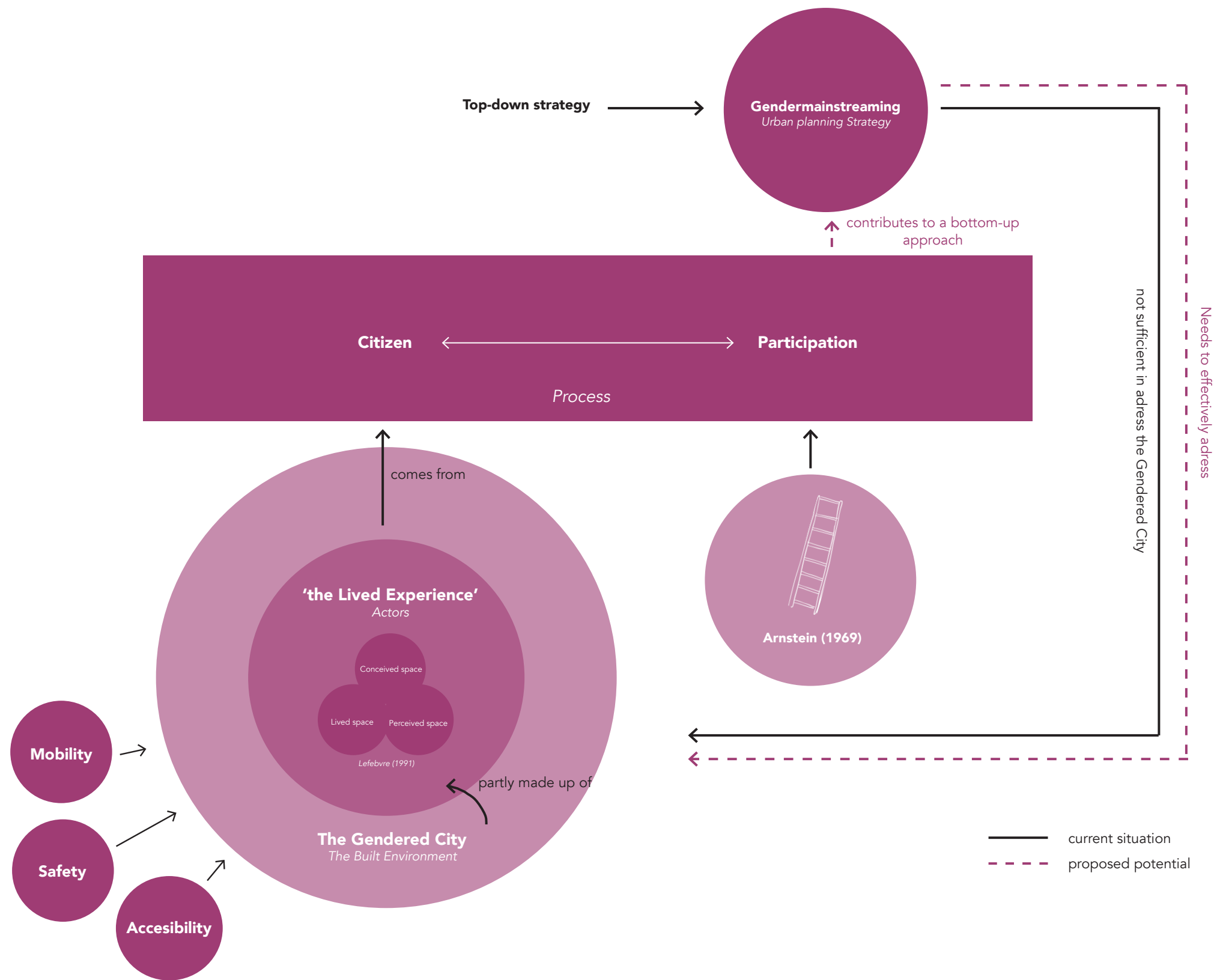
	Project category 1	Project category 2	Project category 3
 <b>Preparatory instrument</b>		Stakeholder analysis Environmental analysis	Stakeholder analysis Environmental analysis Expert meeting
 <b>Shaping instrument</b>	Letter Survey Street conversations	Letter Survey Street conversations Participation meeting Kitchen table conversations Walk-in consultation Working group excursion	Letter Survey Street conversations Participation meeting Kitchen table conversations Walk-in consultation Working group excursion Project website
 <b>Imagining instrument</b>		Maps Visualisation Photo insertions Animation	Maps Visualisation Photo insertions Animation VR-application
 <b>Informing instrument</b>		Communication medium Promo medium	Communication medium Promo medium

Figure 25. overview of instruments per project category based documents from Kubiek, own work



Conceptual framework, own work