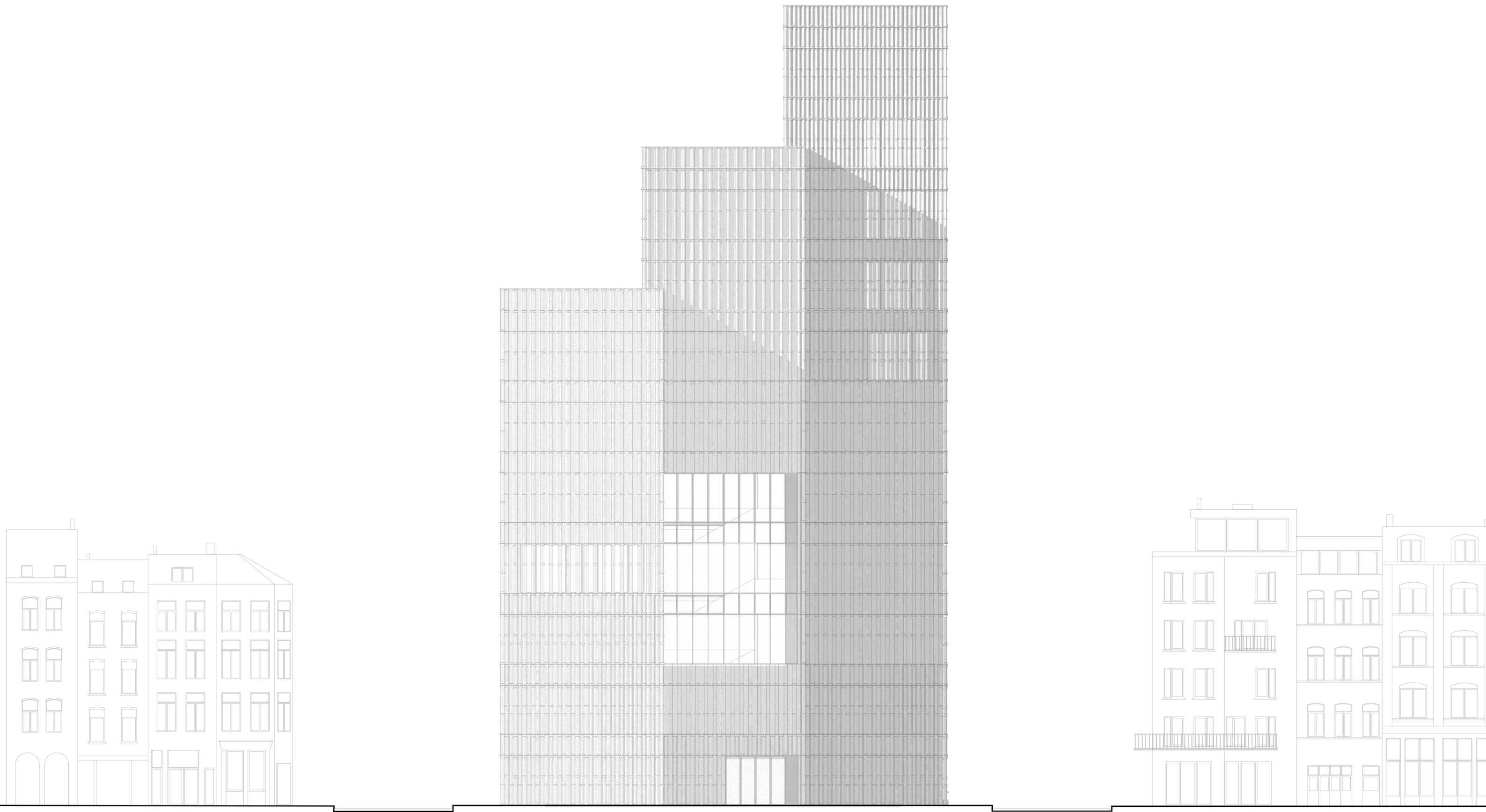
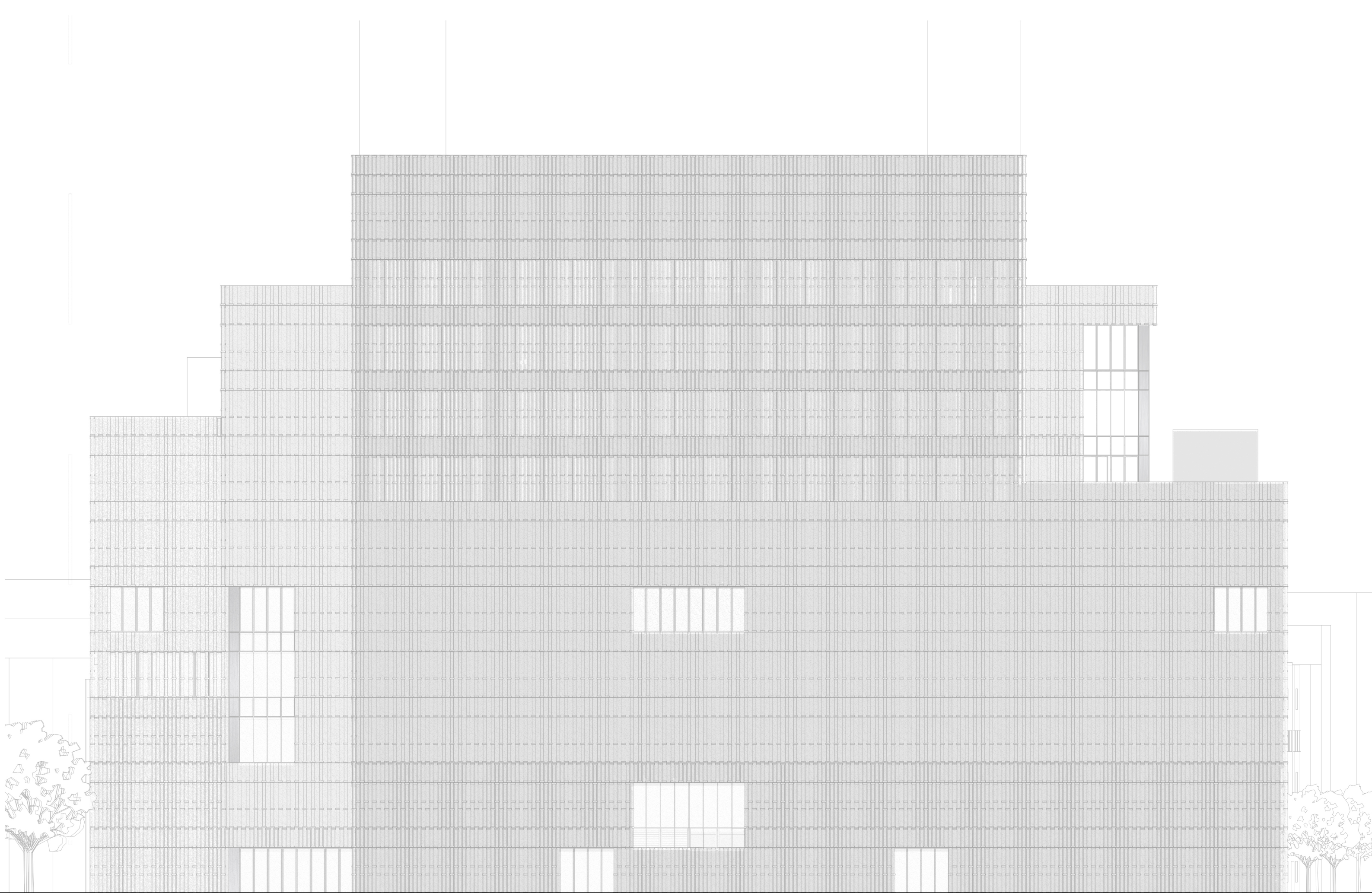




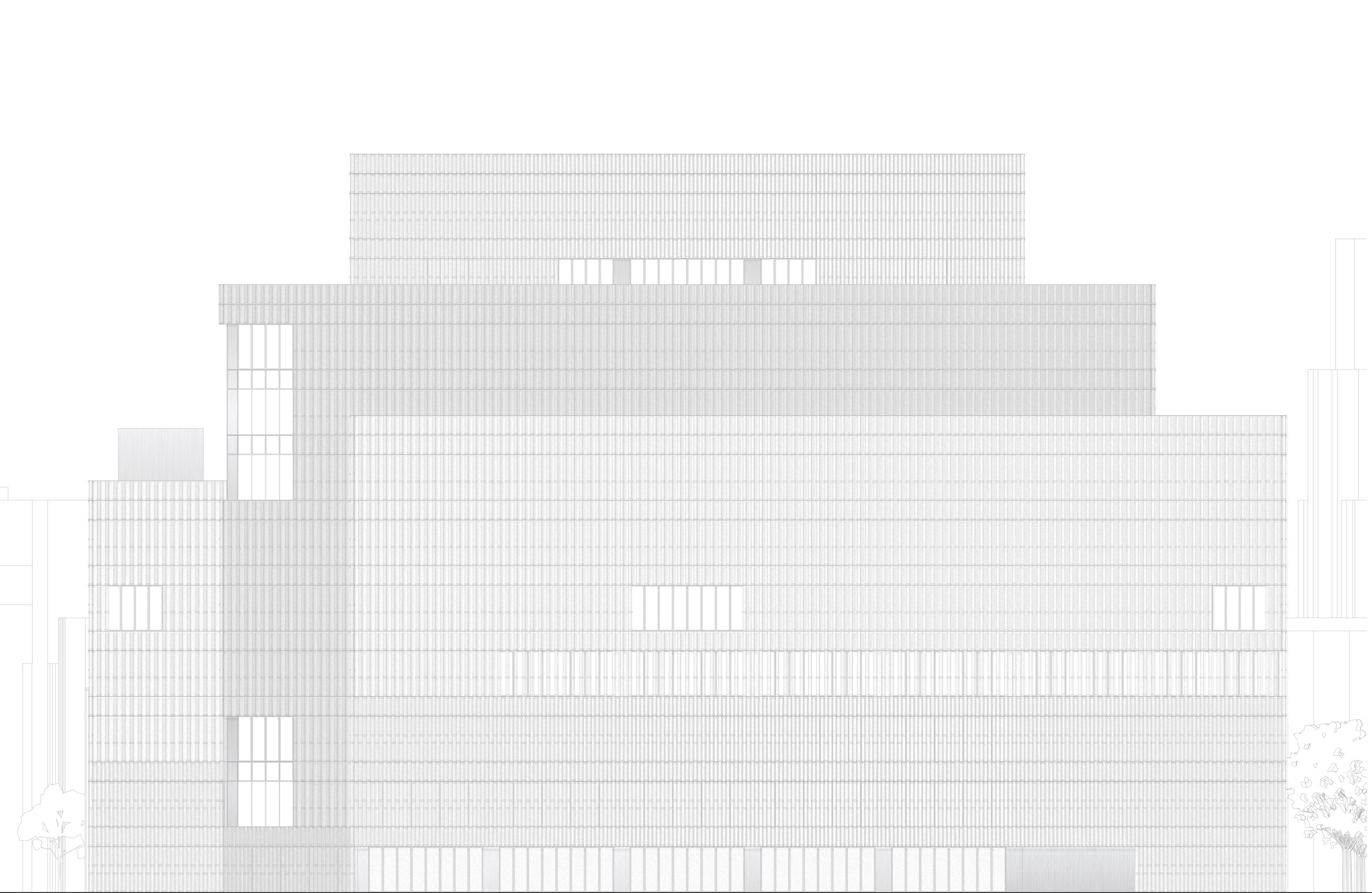
North elevation



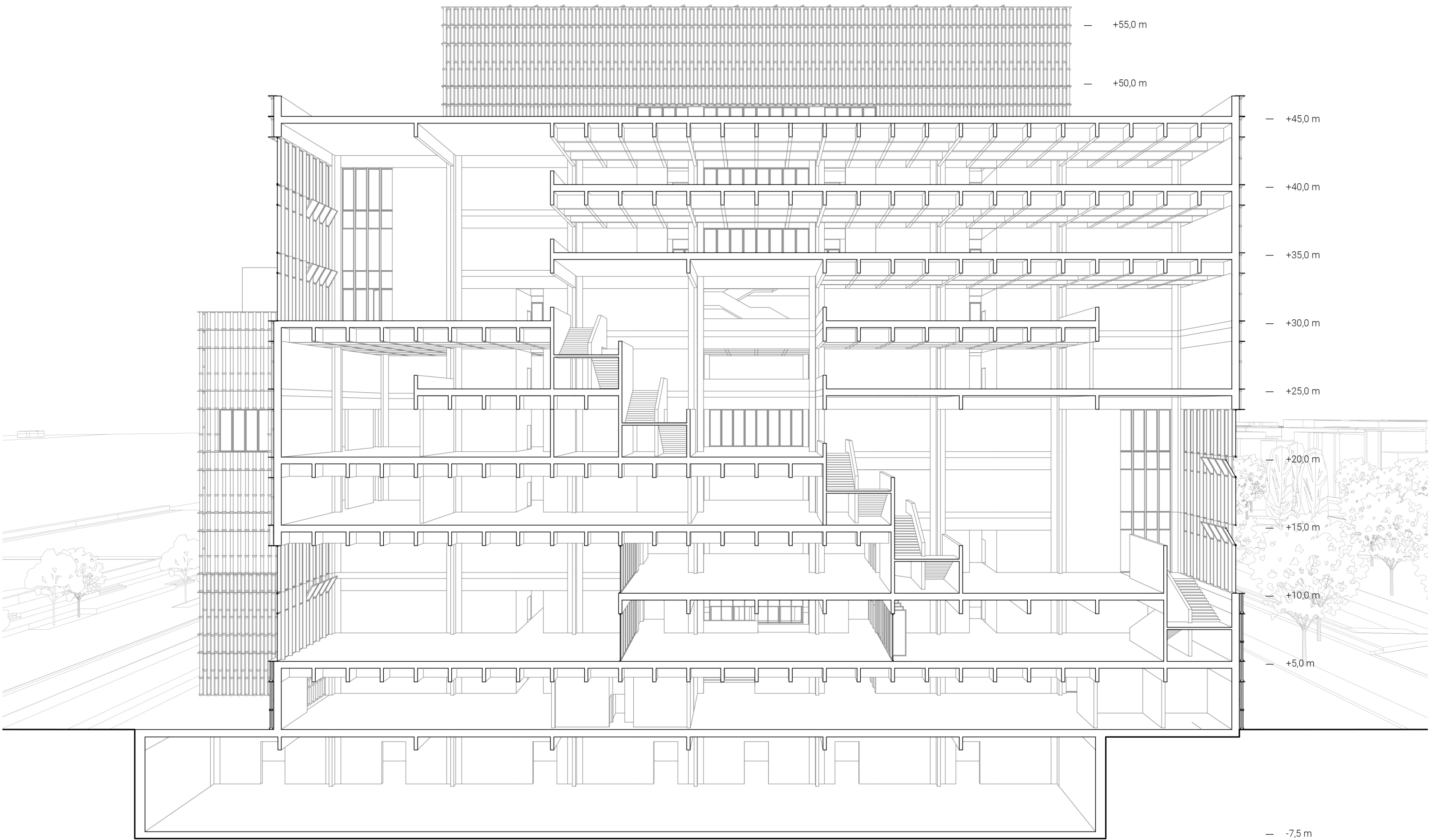
South elevation

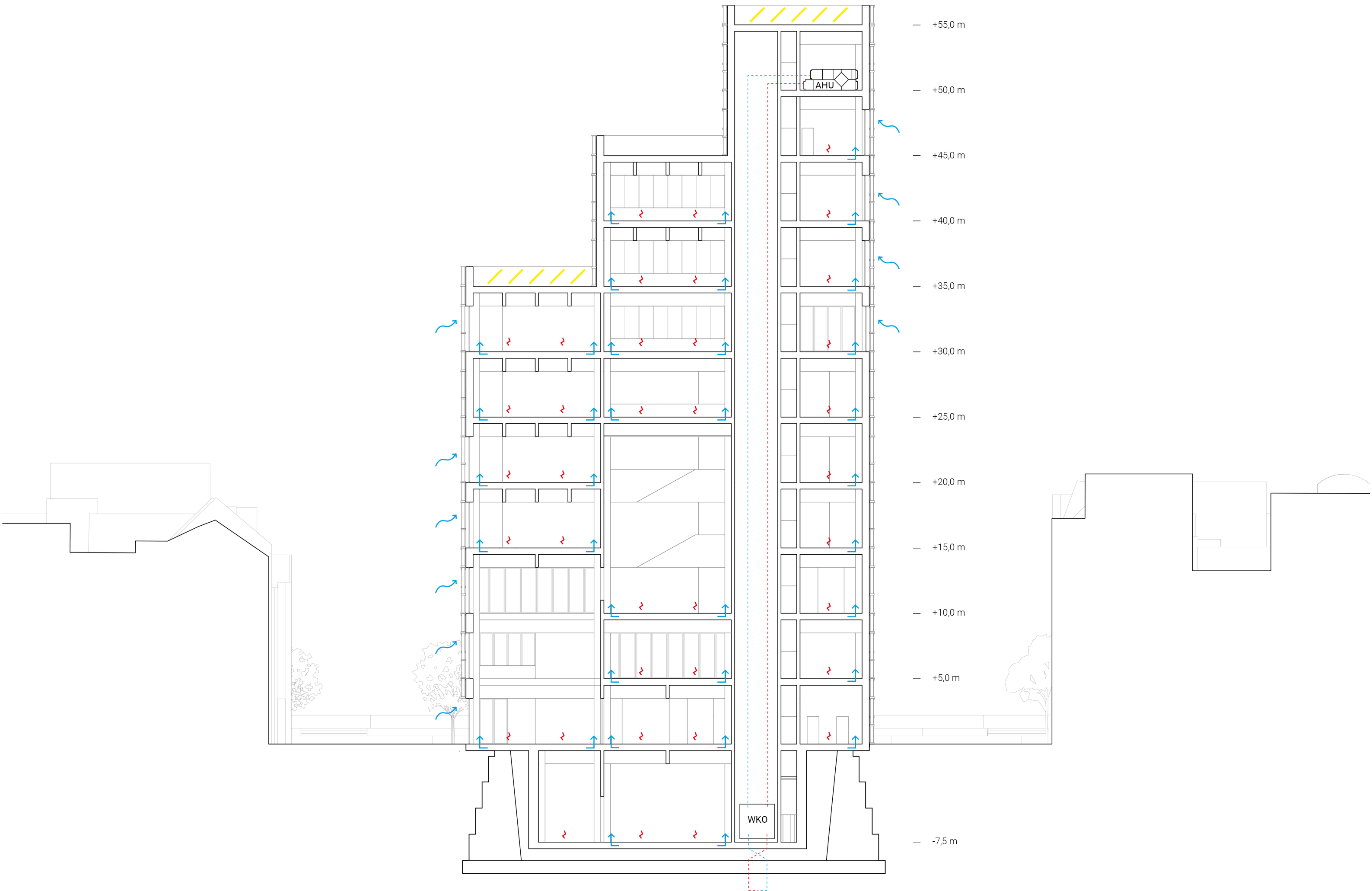


East elevation



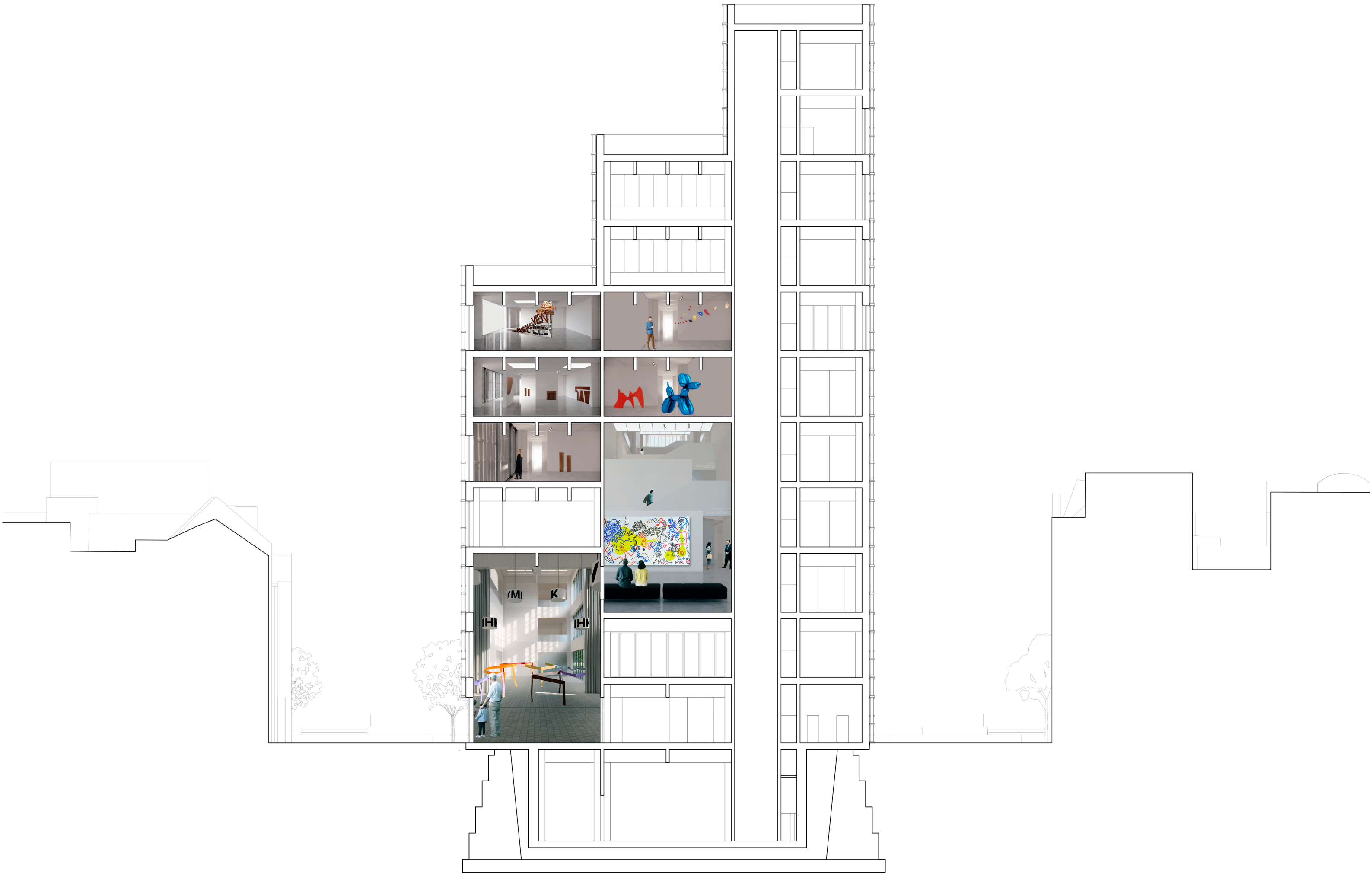
West elevation

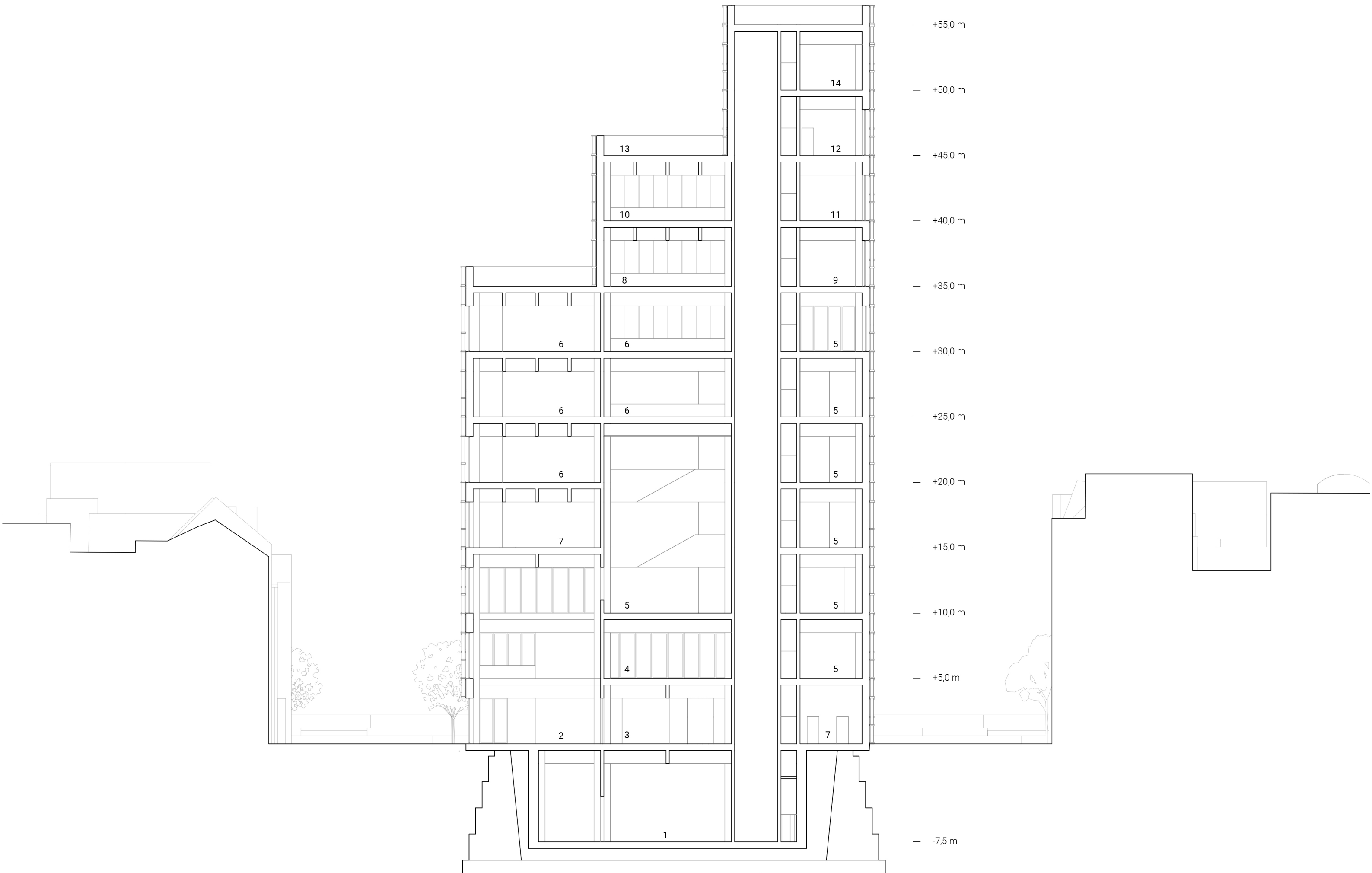


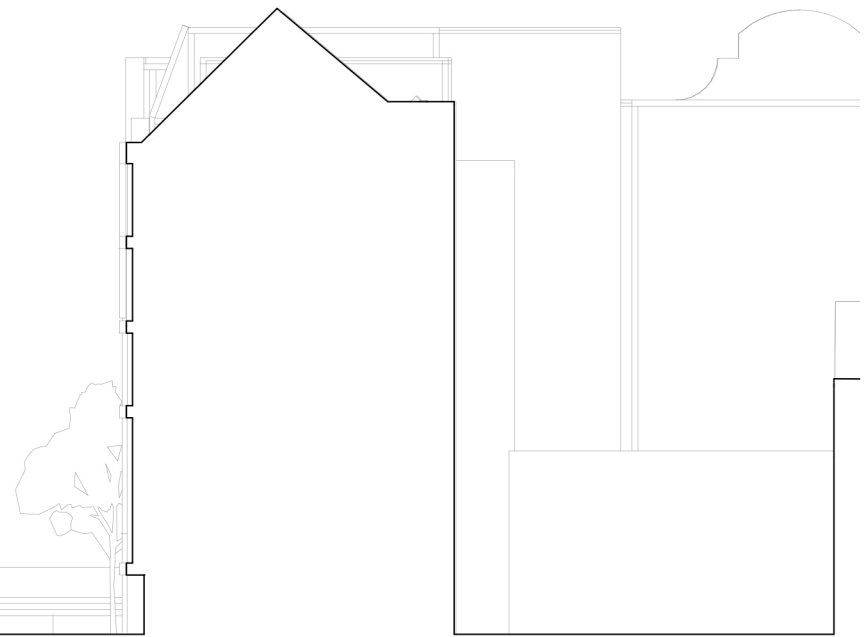


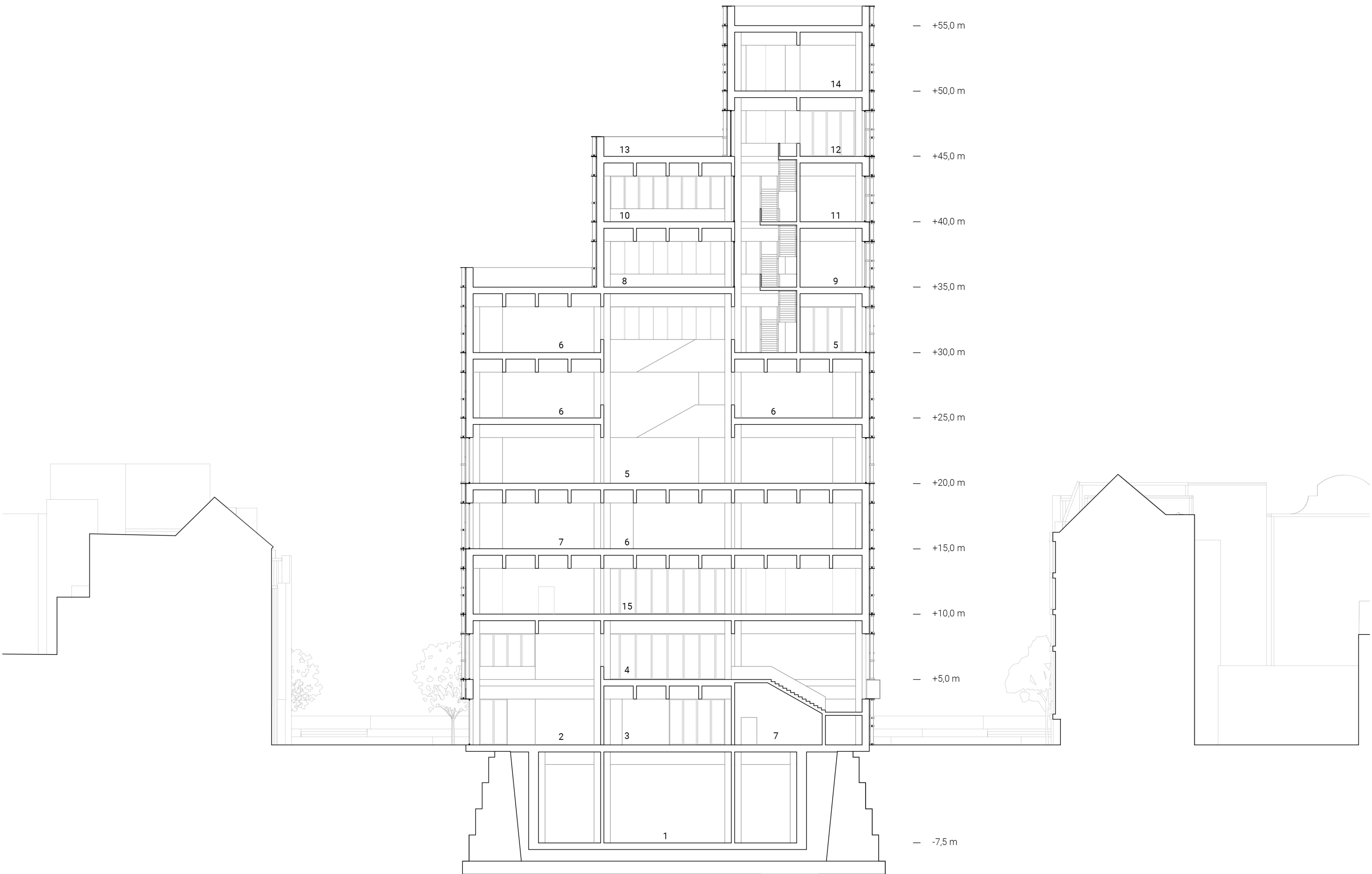
Section B | 1:250

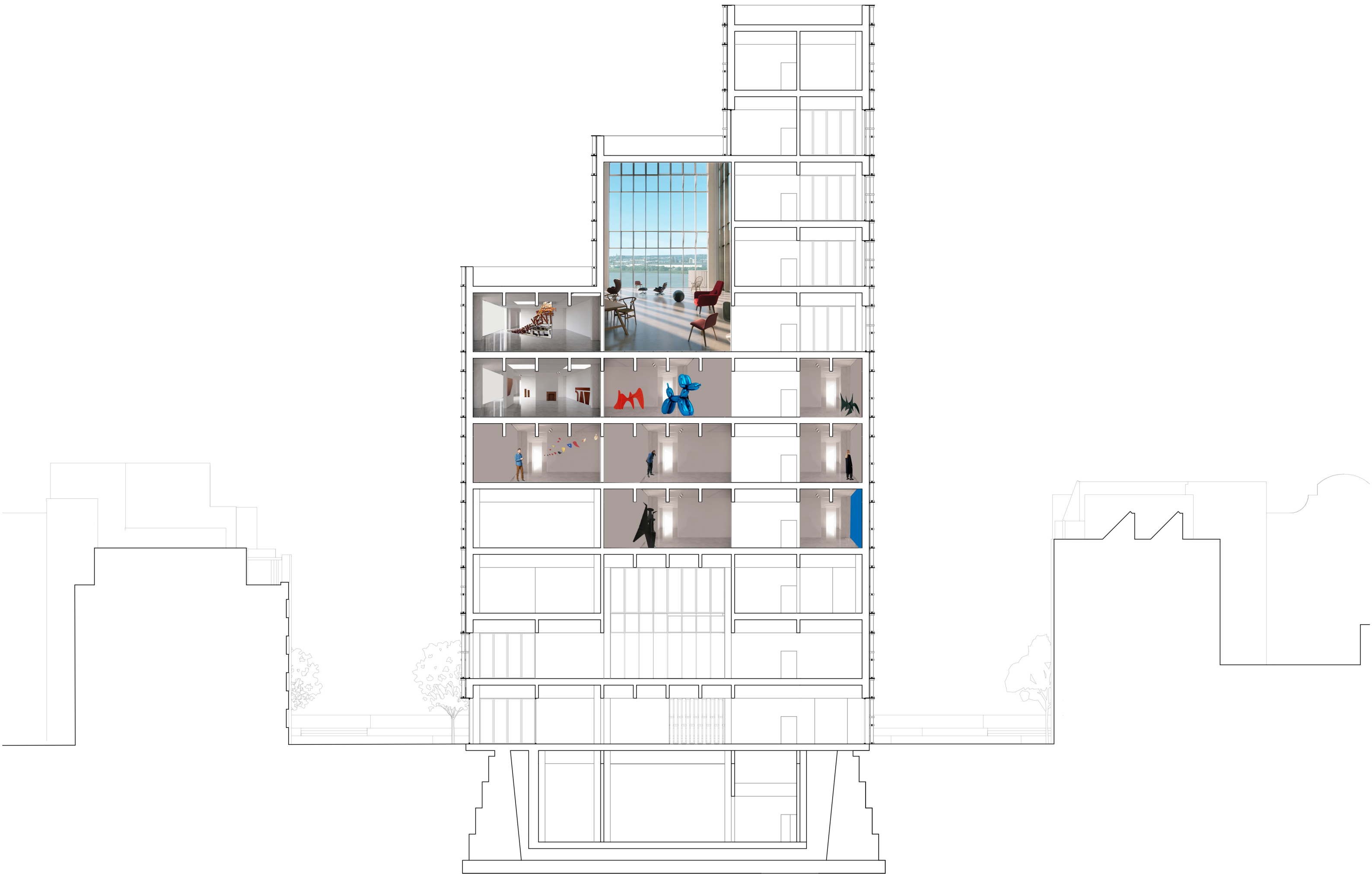
— solar panels — low temperature floor heating — air outlet through joint between wall and floor — AHU (air handling unit) — WKO (heat and cold storage) — geothermal energy



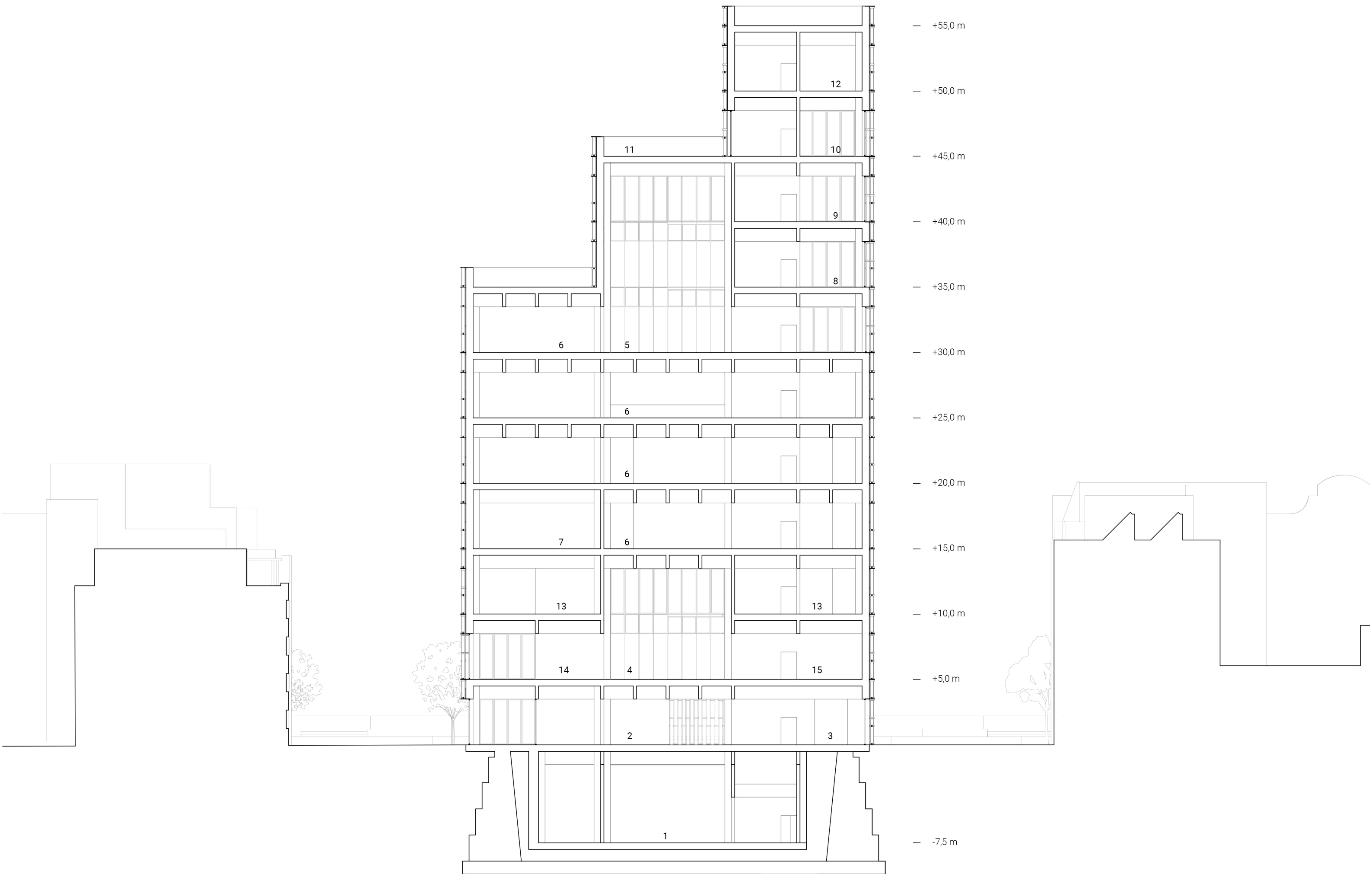


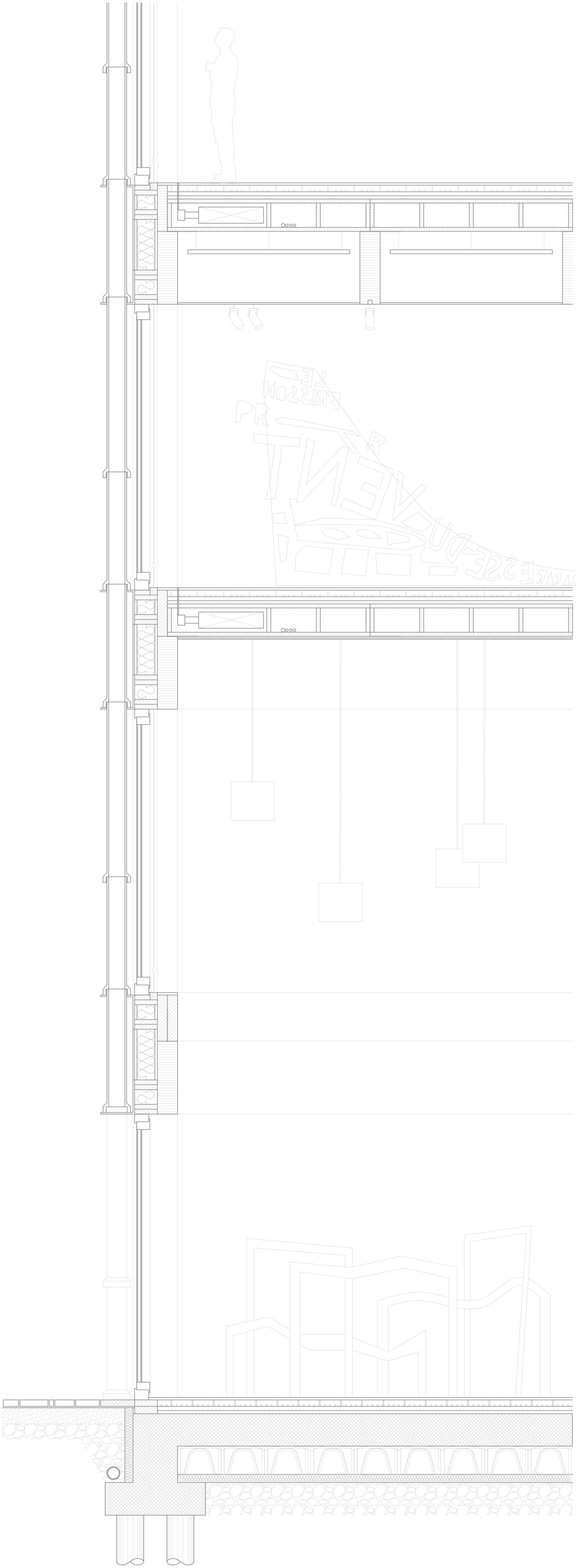
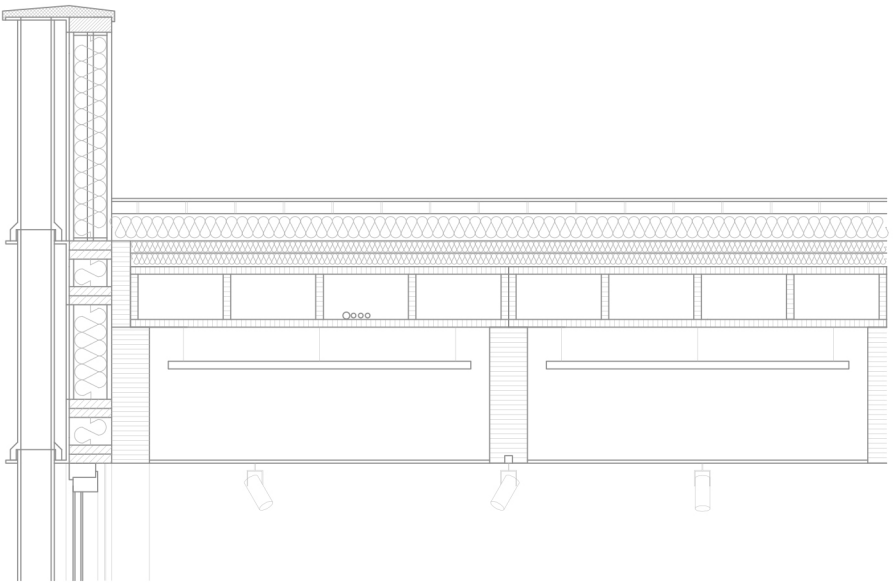
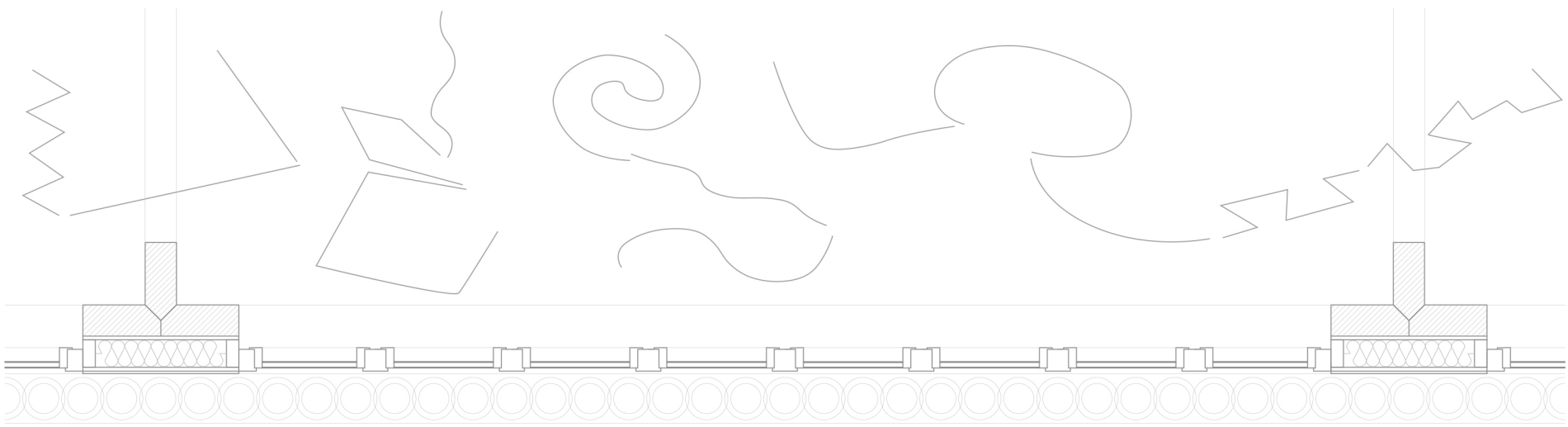
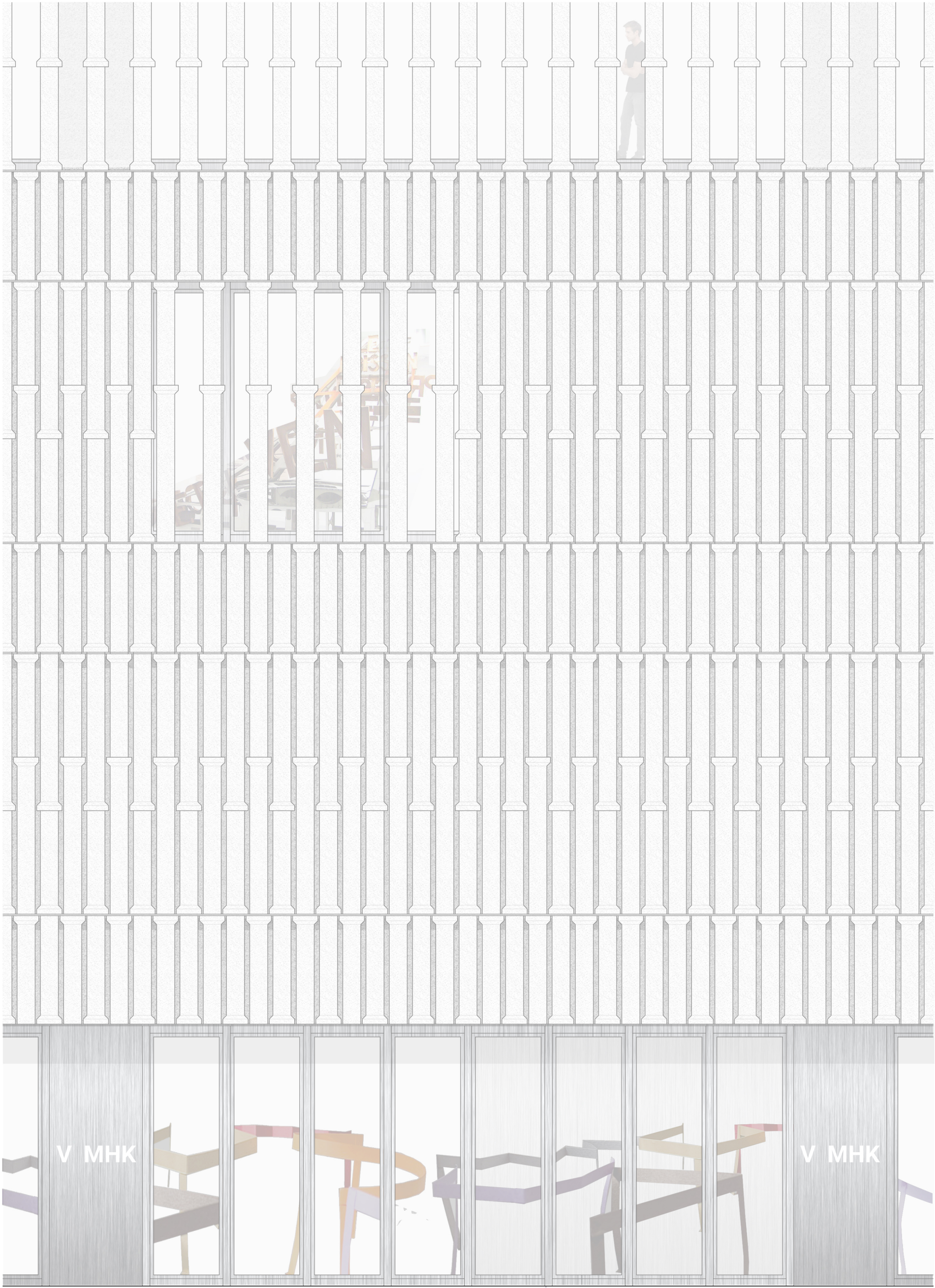
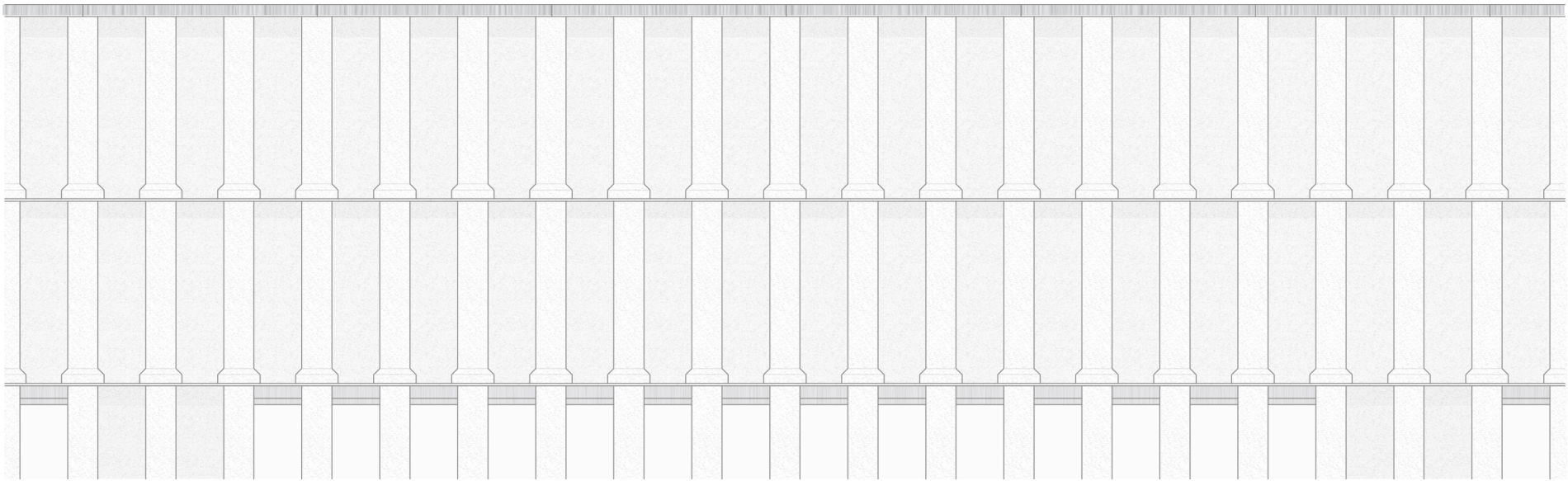


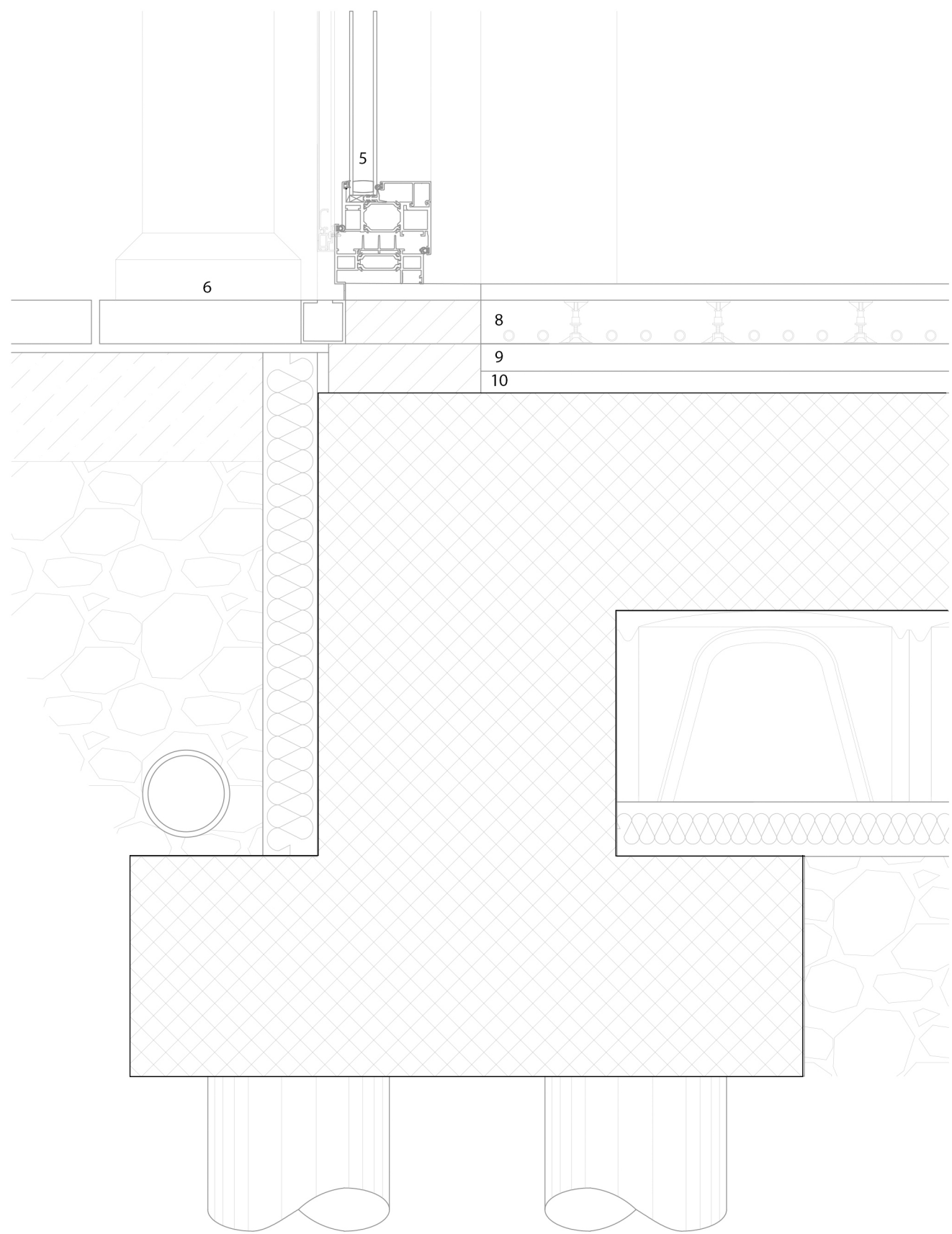




Section D | 1:250







STRUCTURE (1) Kerto-riipa box elements, 40 cm (2) CLT beam, 90x25 cm
FACADE (3) OSB board, 3 cm (4) Wood fiber insulation, 22 cm (5) Tilt turn window (6) Ceramic sewer pipe Steinzeug Keramo dn240
FLOOR (7) Grey polyurethane floor, 3 cm (8) Hollow floor, 8 cm (9) Cement screed, 5 cm (10) Impact sound insulation, 4 cm
(11) Metal support element for sewer pipes (12) Folding blinds (13) Supply air duct (14) artificial lighting

