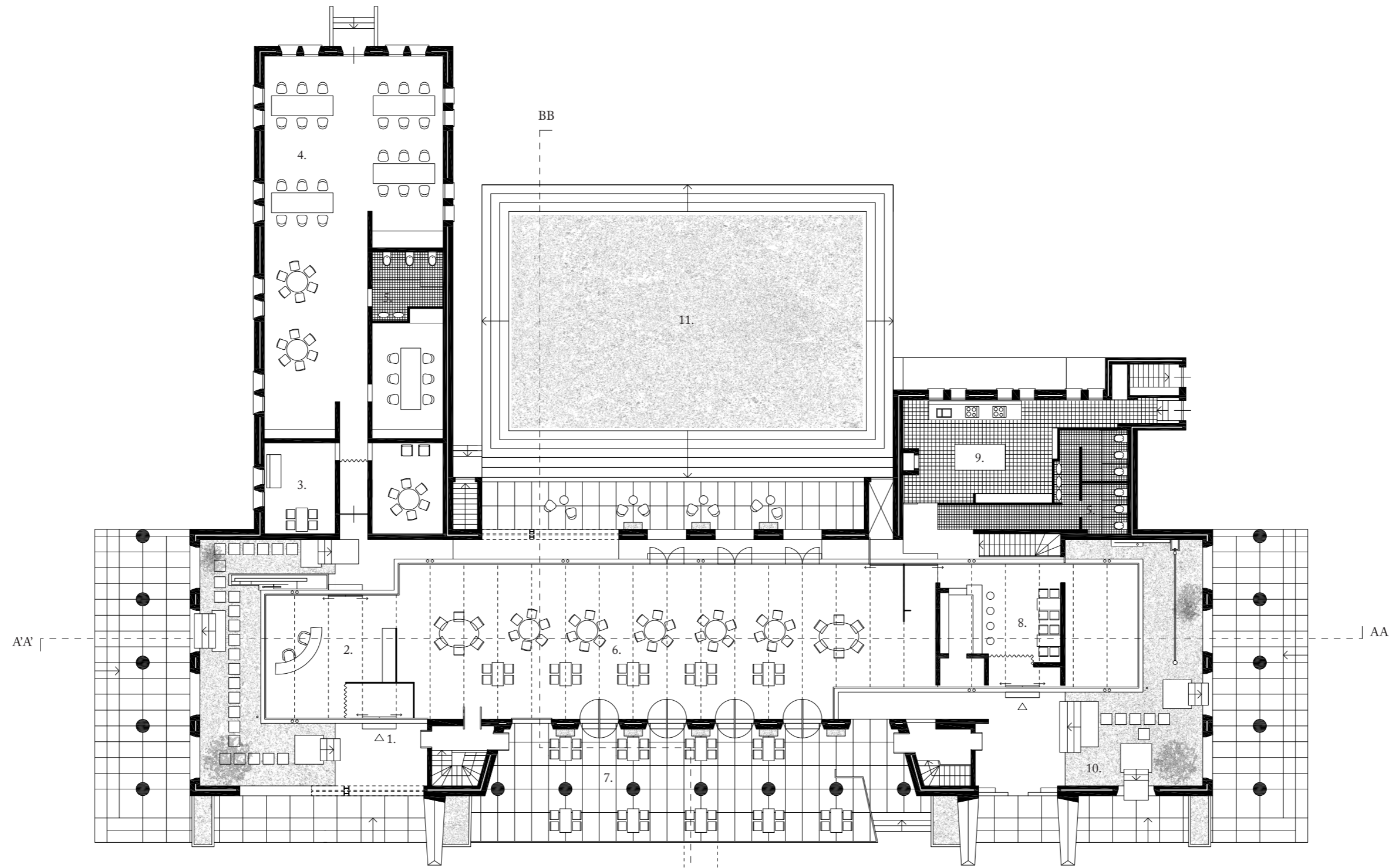
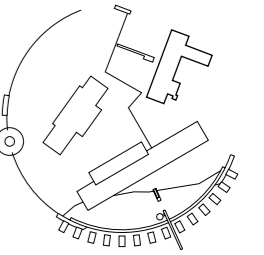




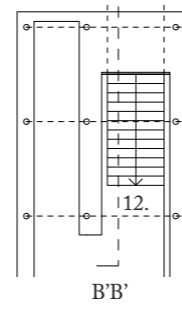
Villa Huisduinen 30.03.2020 07.00 14°C 3.8 m/s



The square 30.03.2020 08.30 14°C 4.2 m/s



- 1. entrance
- 2. reception
- 3. waiting room
- 4. offices
- 5. toilets
- 6. restaurant
- 7. terrace
- 8. bar
- 9. kitchen
- 10. garden
- 11. lawn
- 12. underground passage



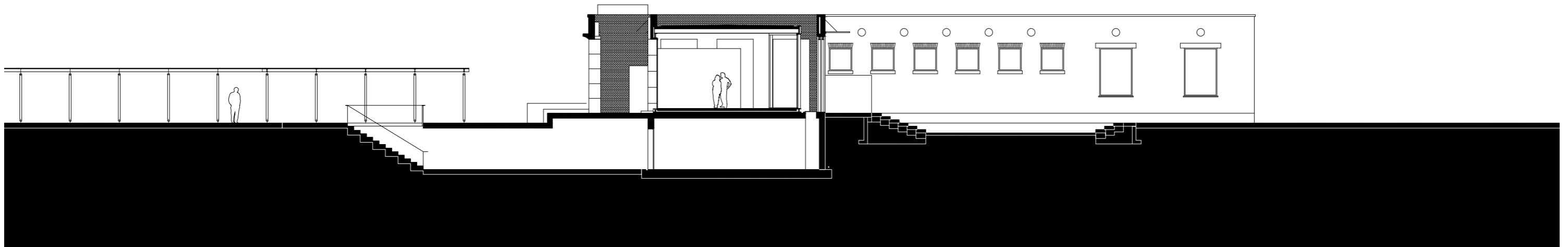
The ruin 1:200



The terrace 30.03.2020 09.00 16°C 4.5 m/s

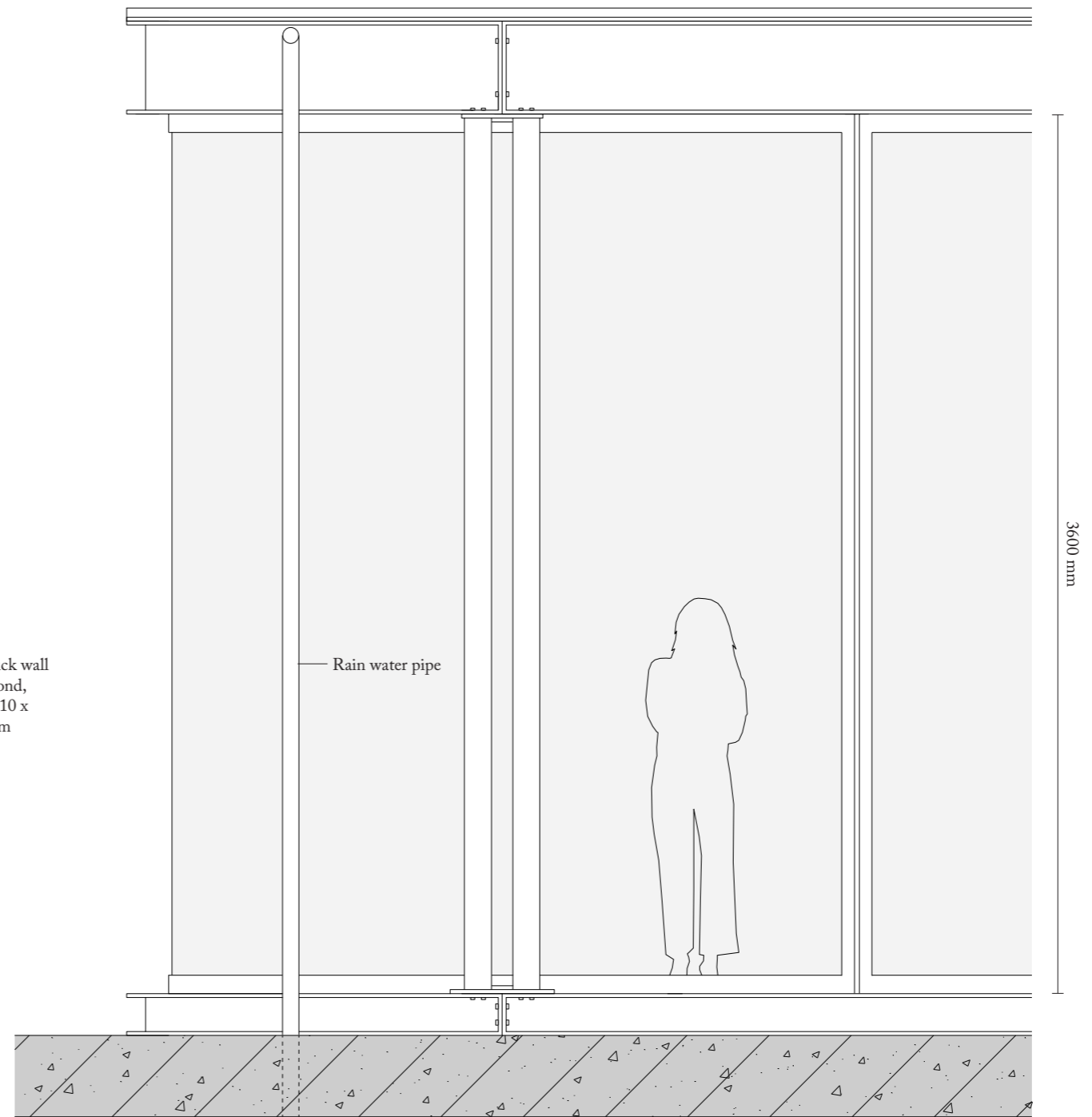
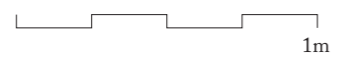
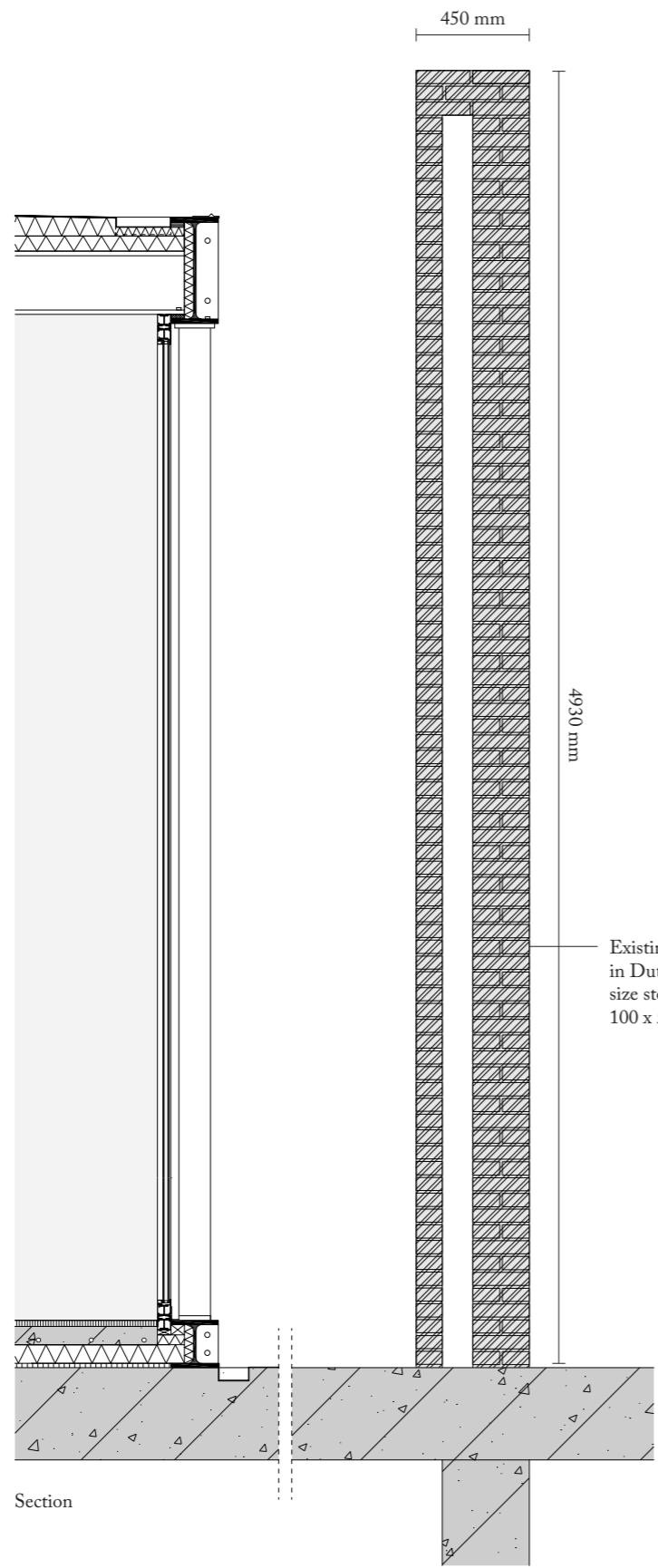


Longitudinal section AA



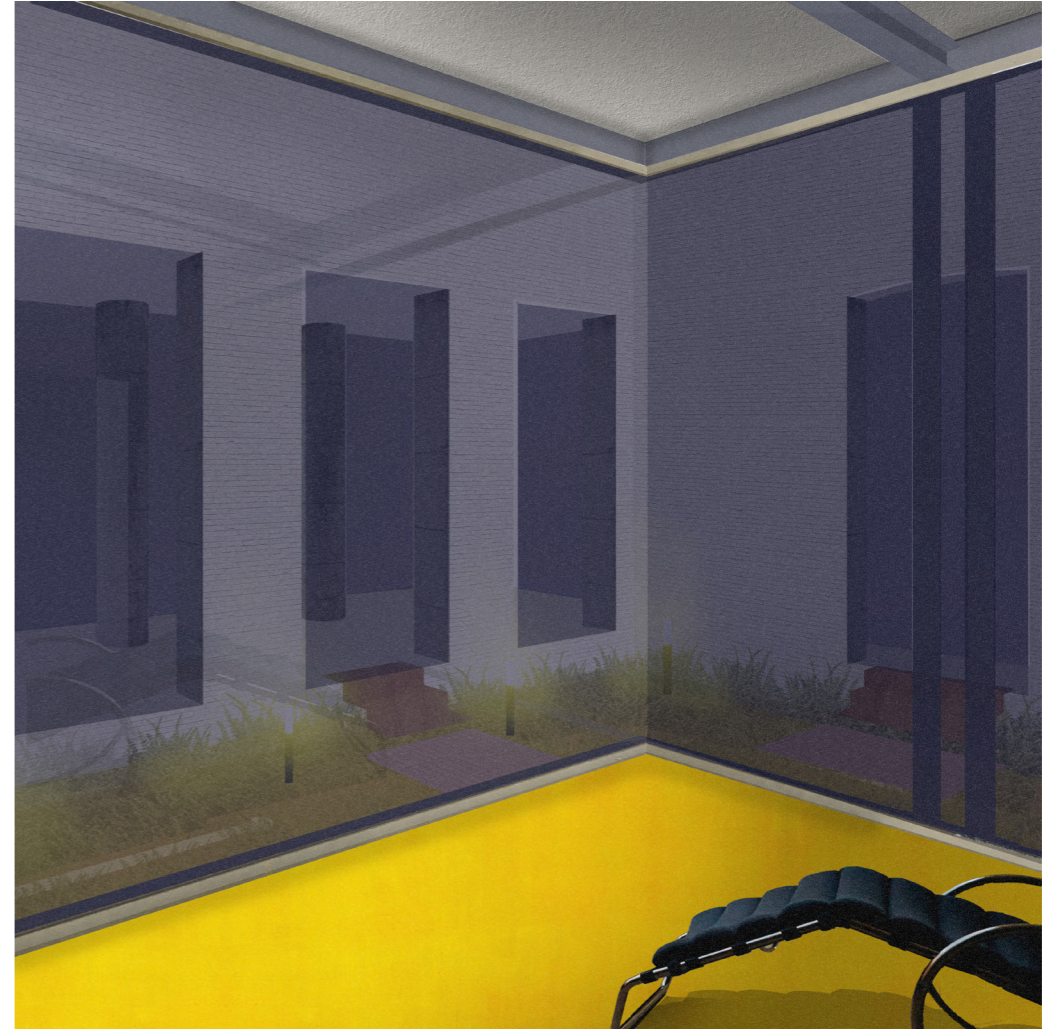
Cross section BB



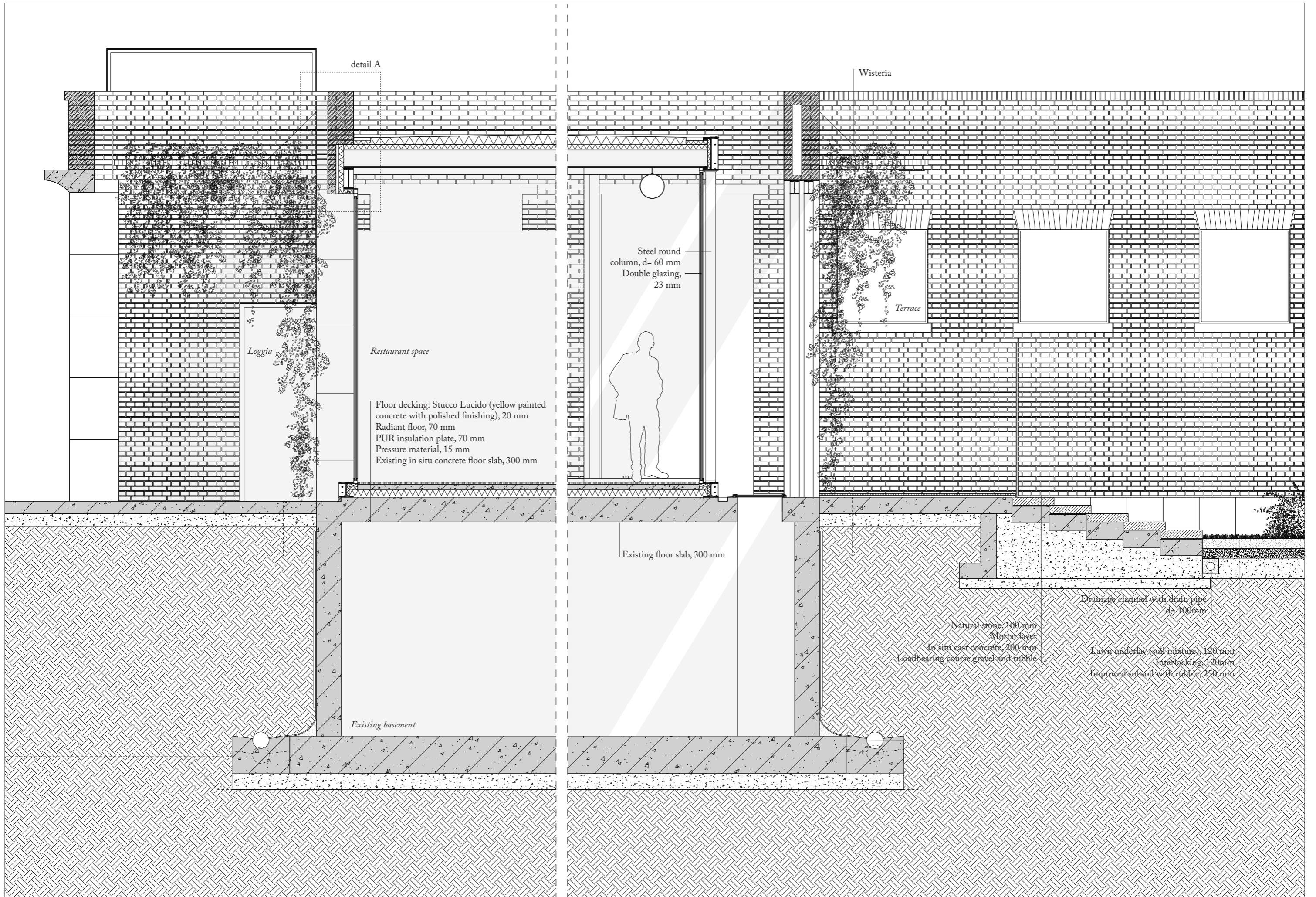


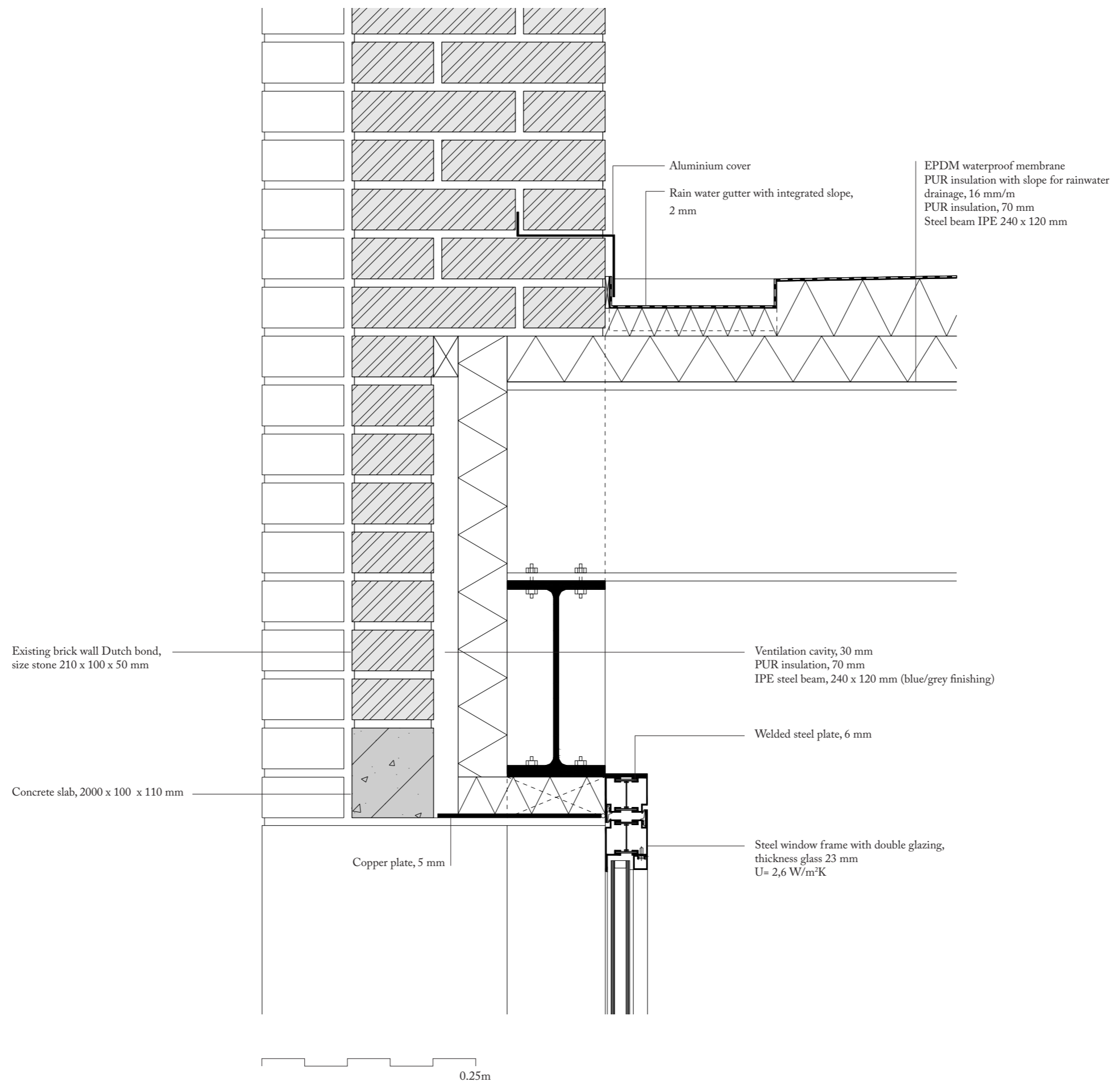


Before

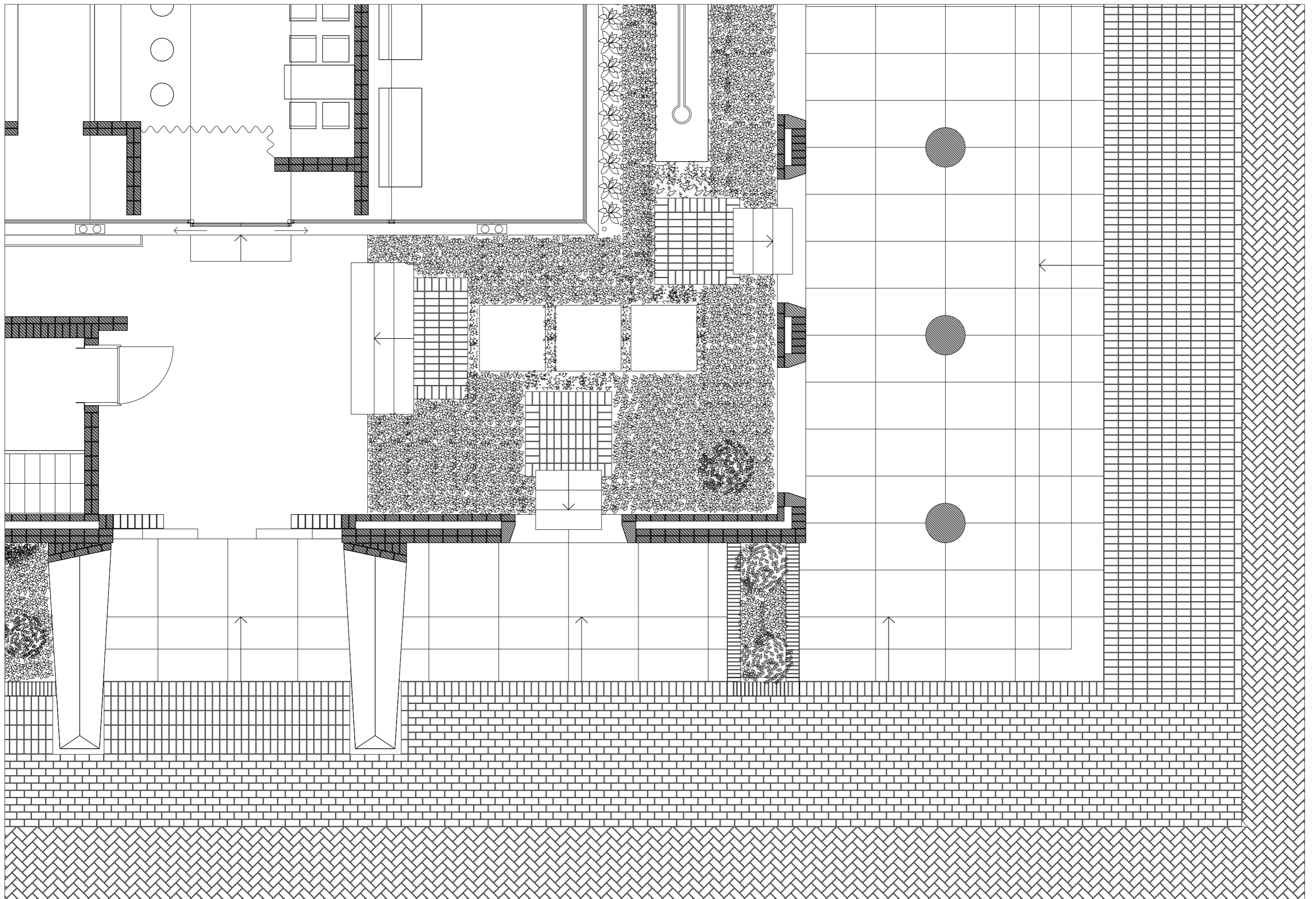


After





Detail A 1:5



2m

Plan ruin 1:50



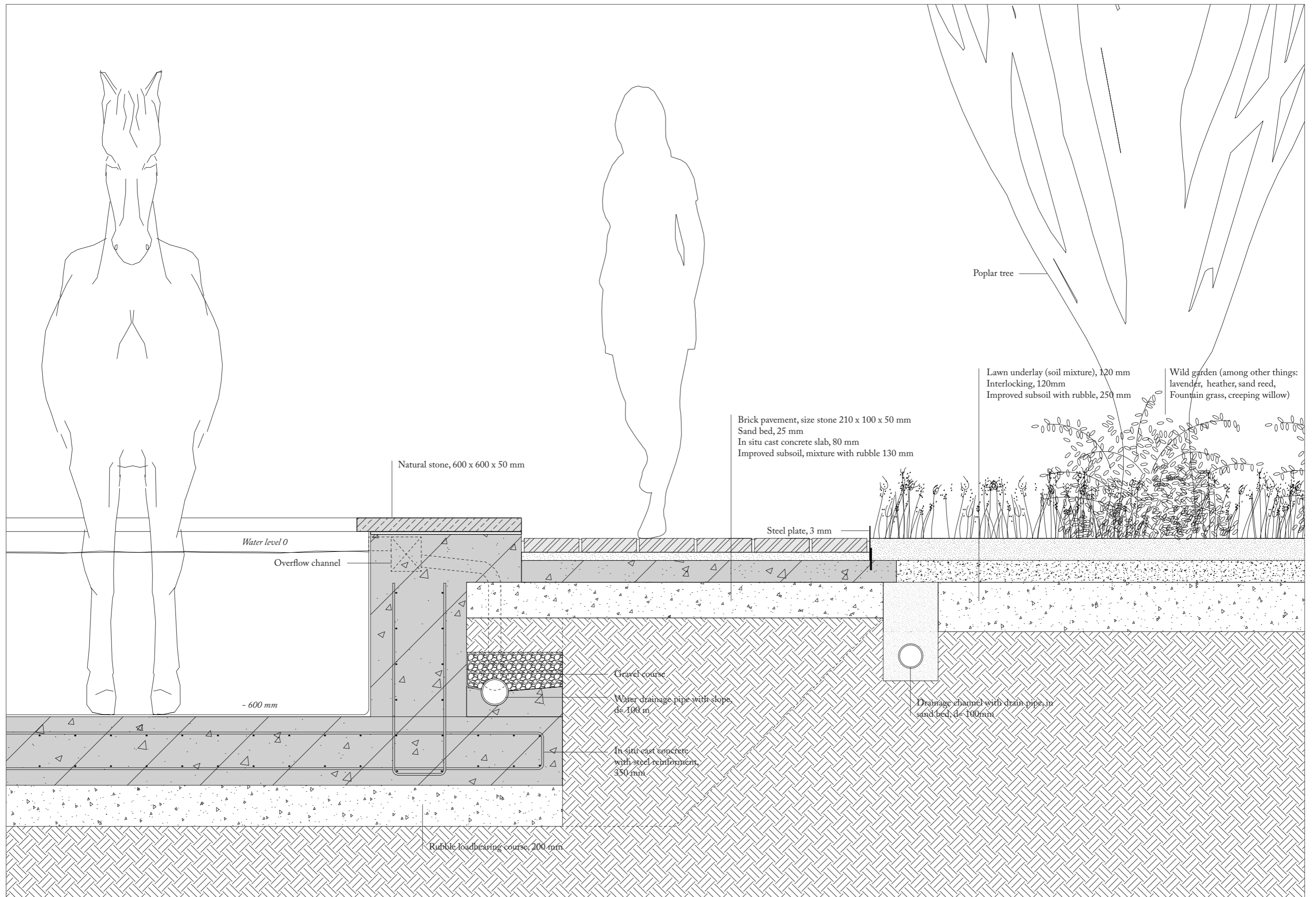
Before



After



The pond 30.03.2020 12.00 17°C 4.2 m/s



0.6m

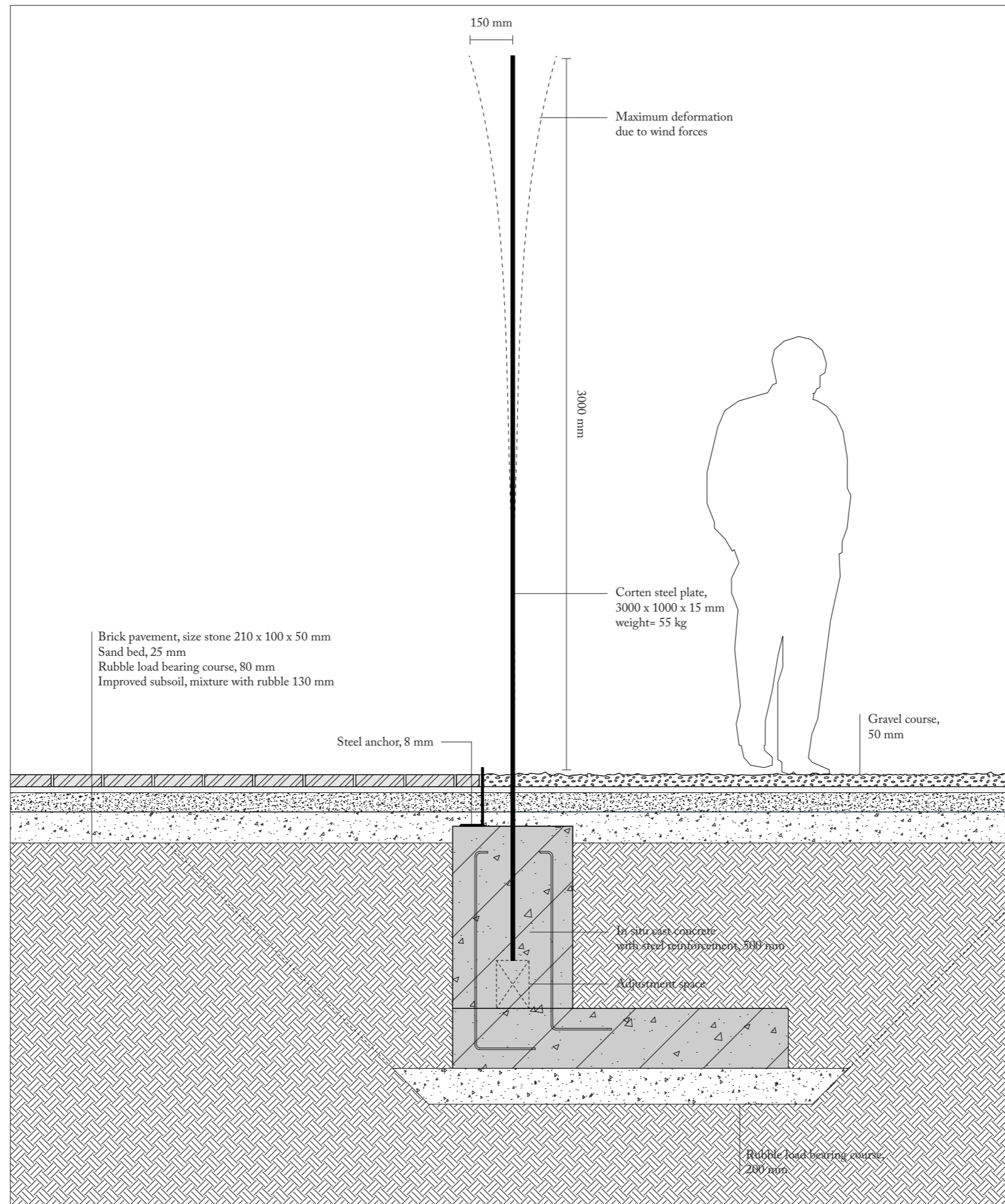
Pond detail 1:10



The pond 19.11.2020 13.00 9°C 6.2 m/s



The wall 19.11.2020 14.00 9°C 6.5 m/s

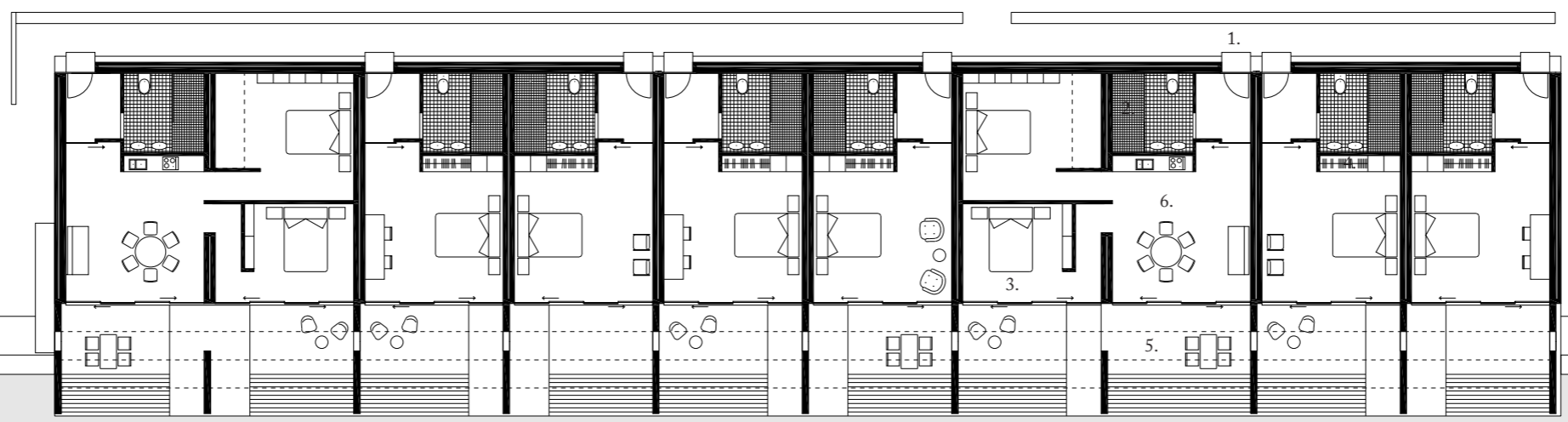
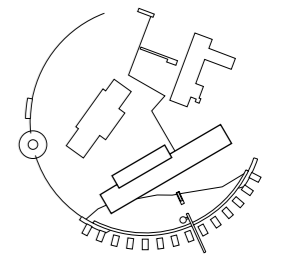


Wall detail 1:15



Hotel room 19.11.2020 15.00 9°C 9.2 m/s

- 1. Entrance
- 2. Bathroom with skylight
- 3. Main room
- 4. Storage
- 5. Terrace with pergola
- 6. Living room with kitchen

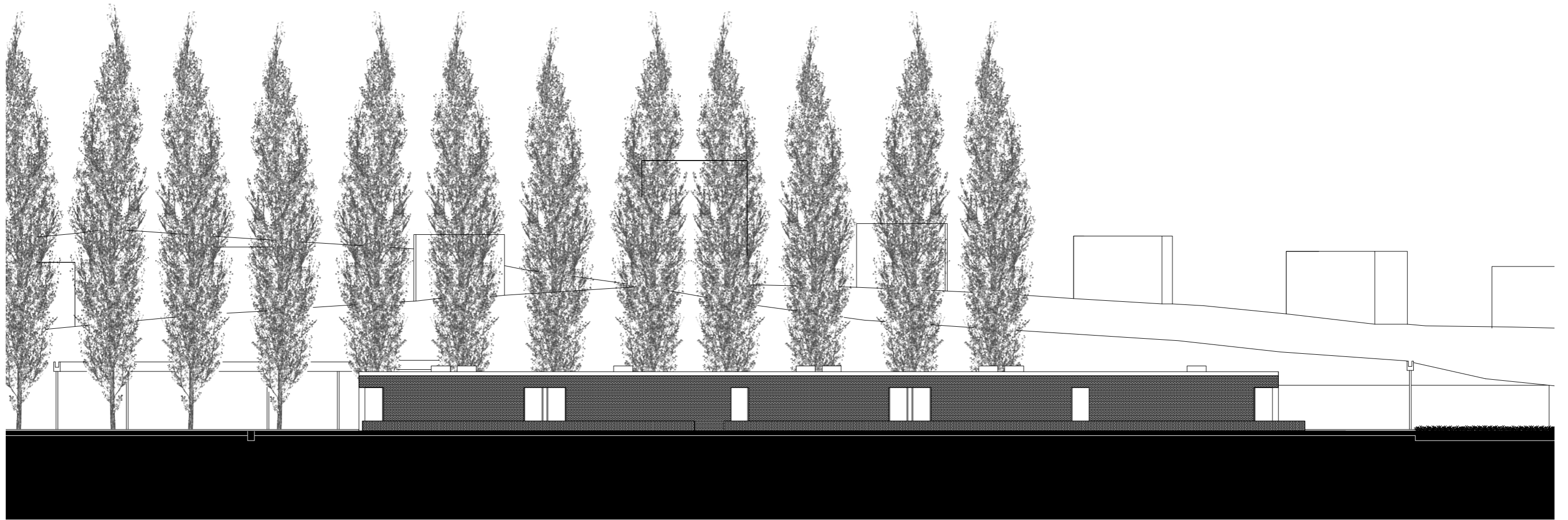


Line for surface drainage

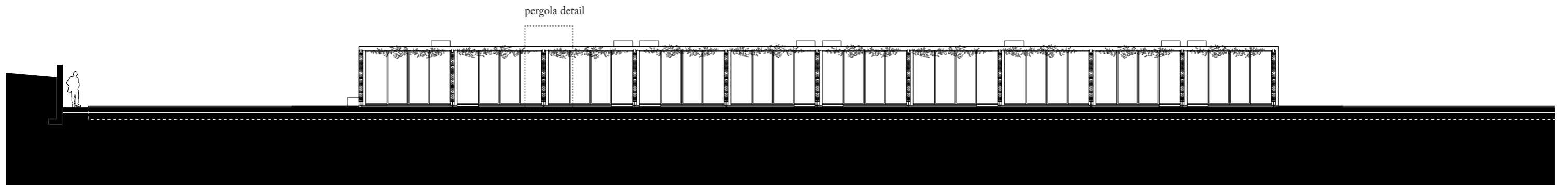
Pond

10m

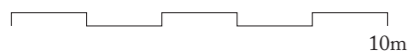
Plan hotel 1:200

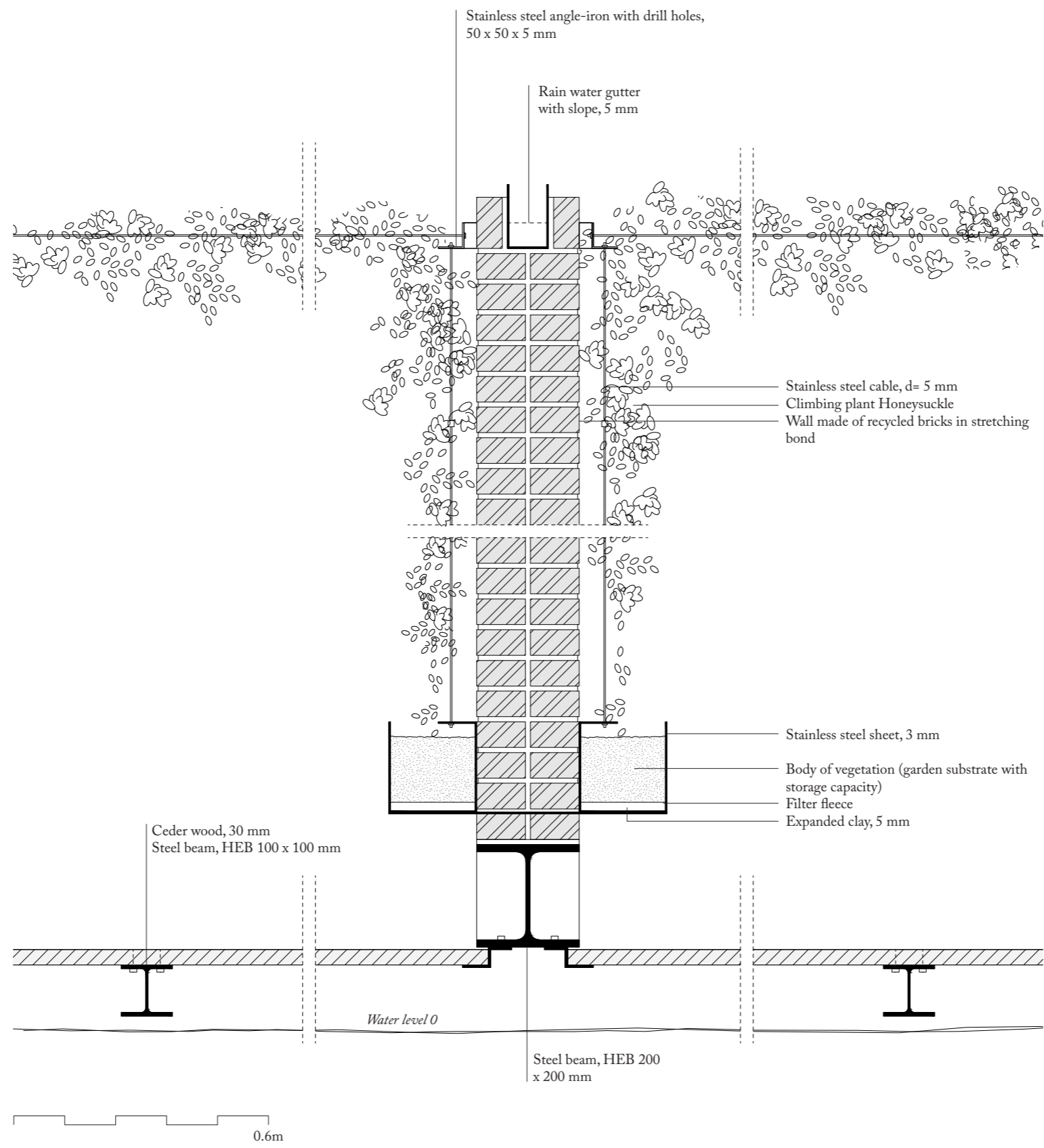


North elevation

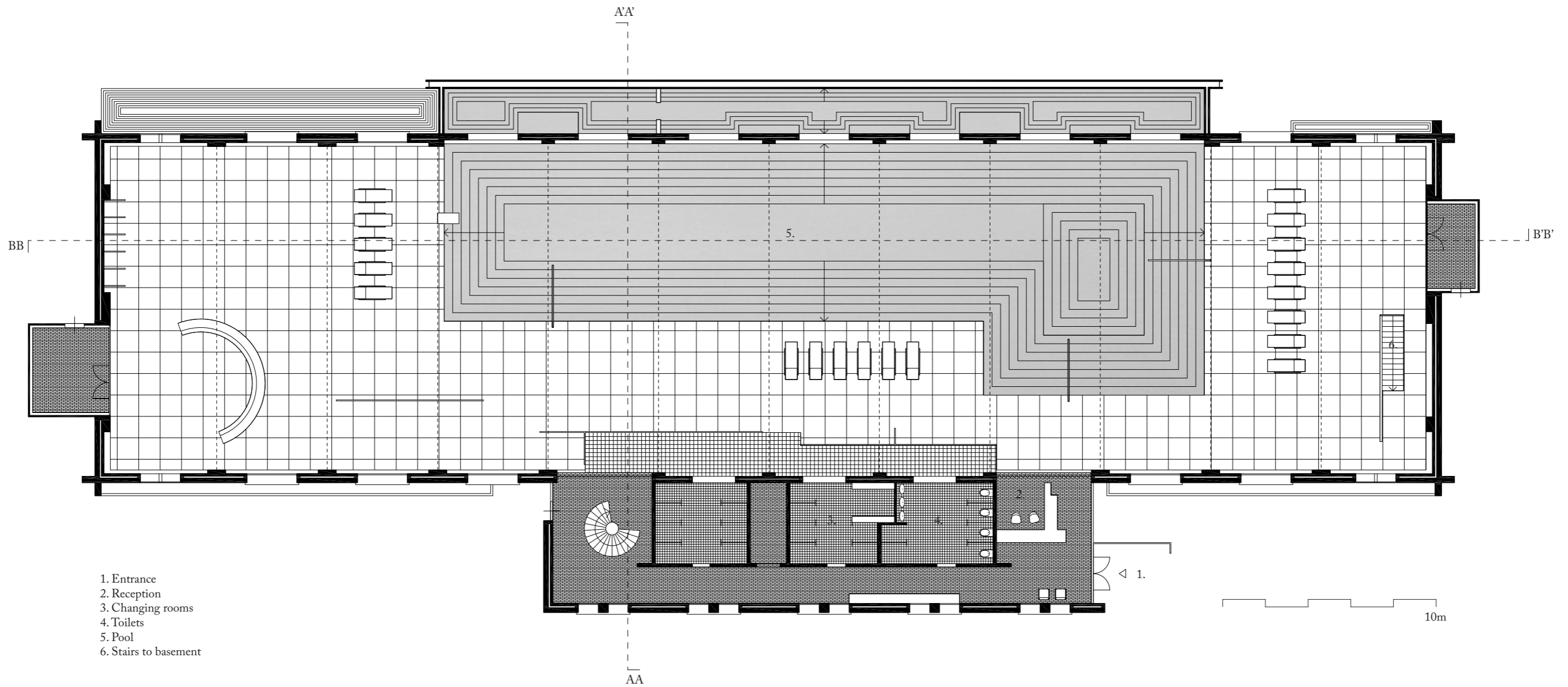


South elevation

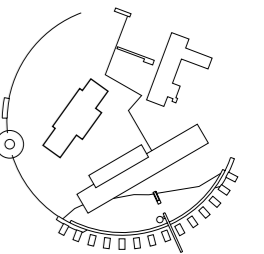


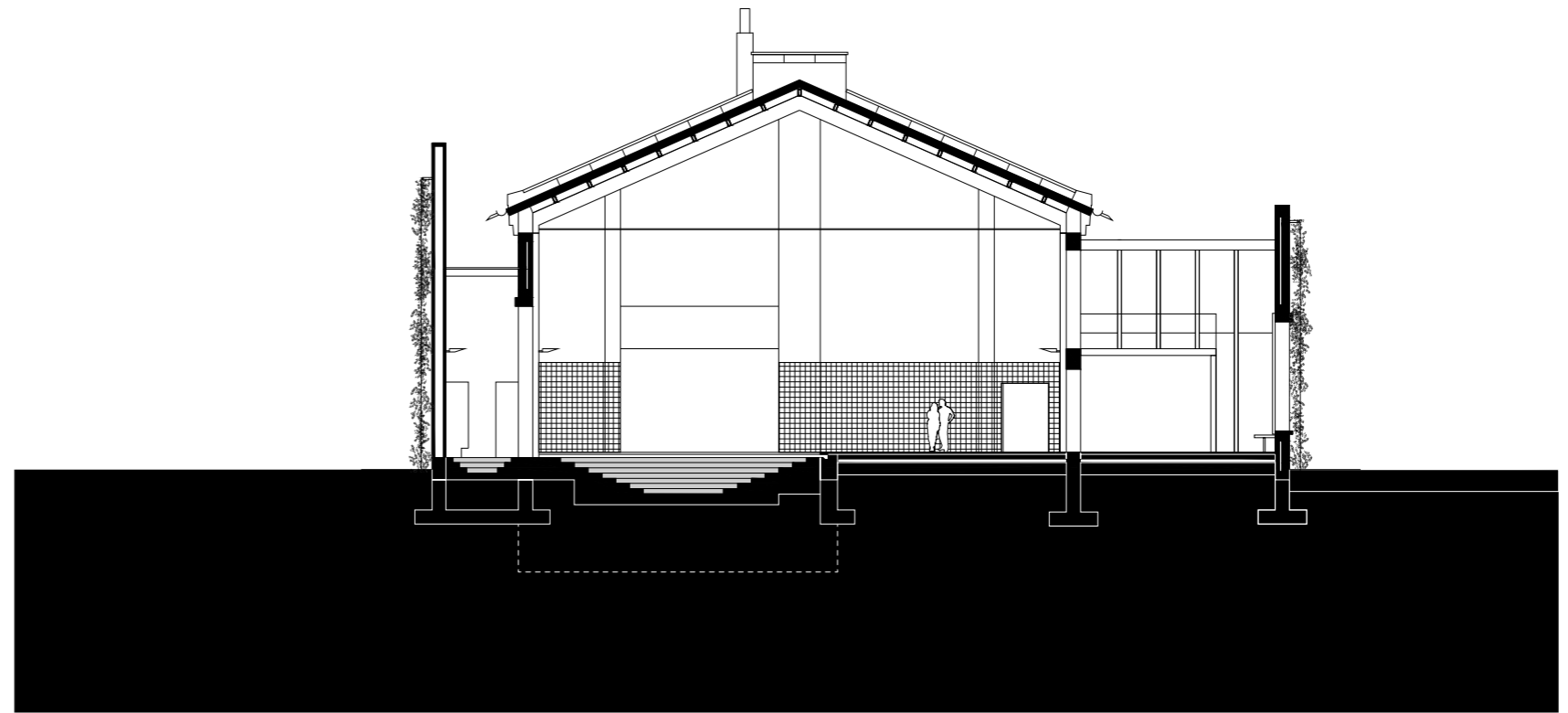


Pergola detail 1:10

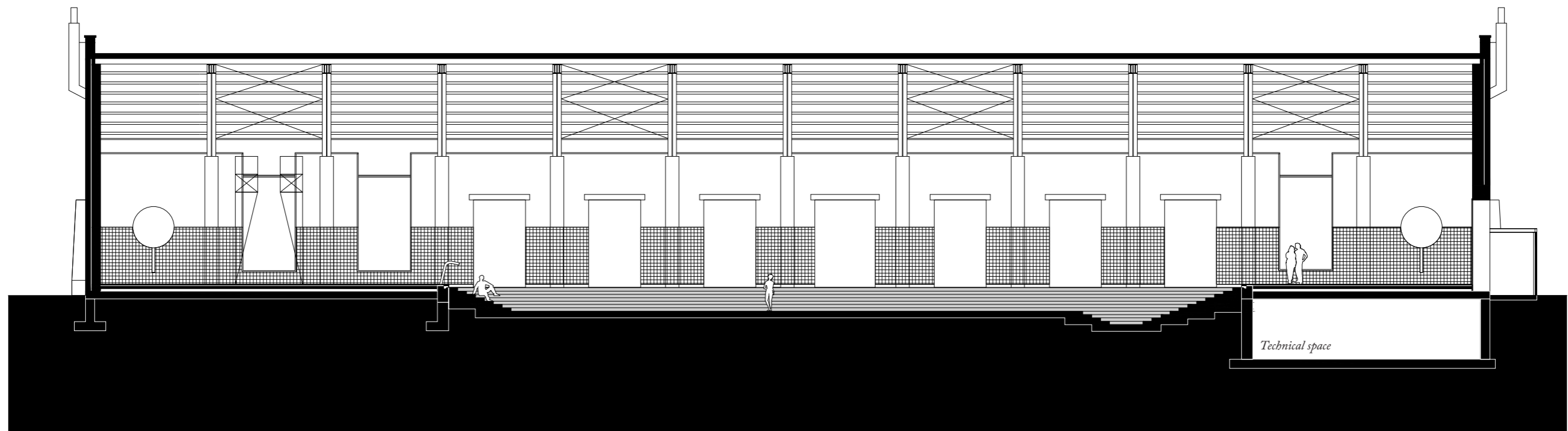


Plan pool 1:200

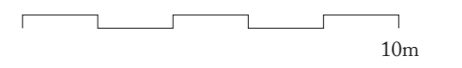




Cross section AA

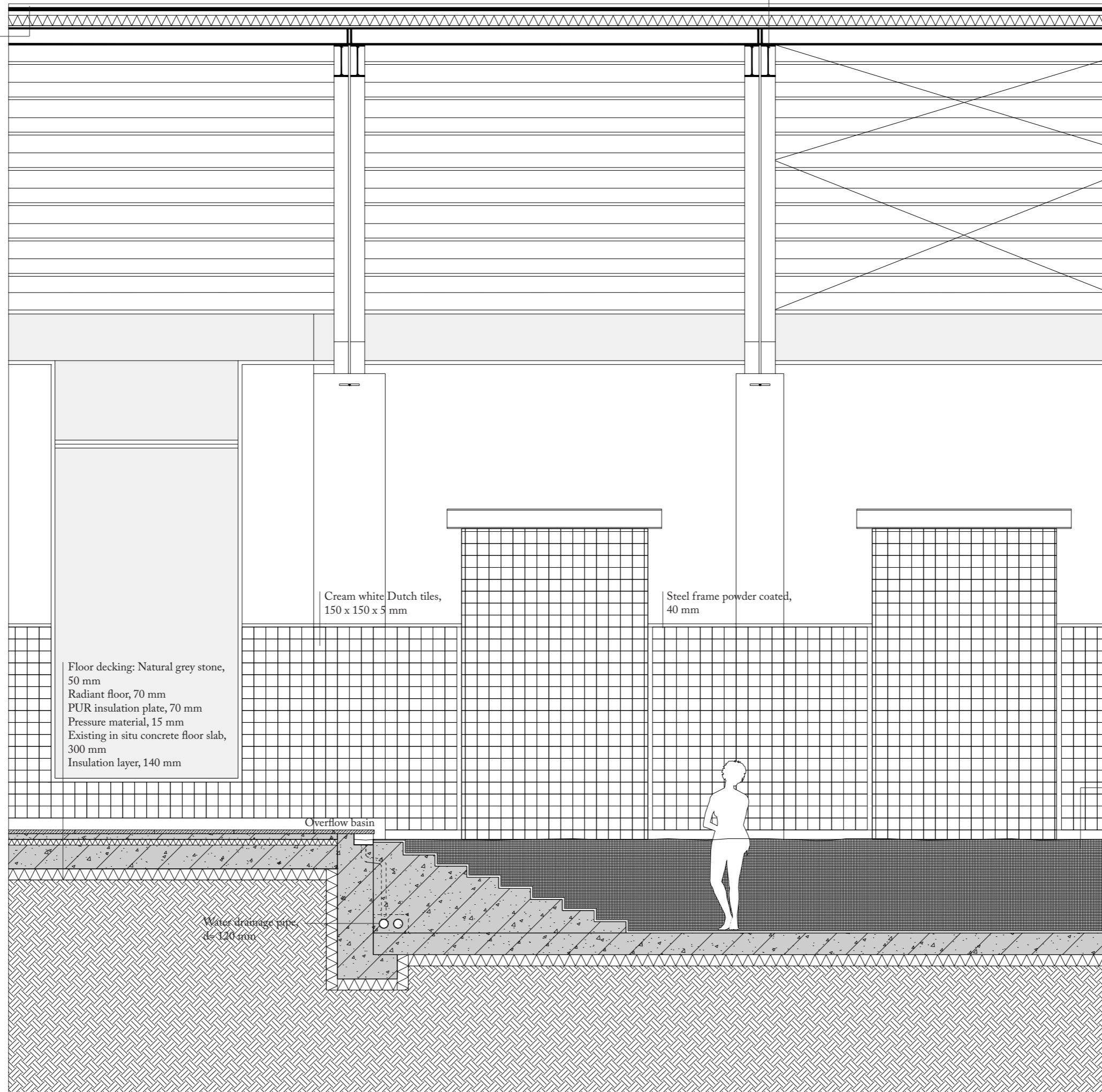


Longitudinal section BB



Double steel roof beam IPE,
400 x 180 mm

Zinc roof, 40 mm
Ventilation cavity, 55 mm
Insulation layer with substructure
for roof, 140 mm
Damp control layer
Ceiling, 30 mm
Steel case, 200 x 100 mm



Floor decking: Natural grey stone,
50 mm
Radiant floor, 70 mm
PUR insulation plate, 70 mm
Pressure material, 15 mm
Existing in situ concrete floor slab,
300 mm
Insulation layer, 140 mm

Cream white Dutch tiles,
150 x 150 x 5 mm

Steel frame powder coated,
40 mm

Purple Italian glass tiles with gold
and blue accents, 20 x 20 mm

Water level 0

-1100 mm

Overflow basin

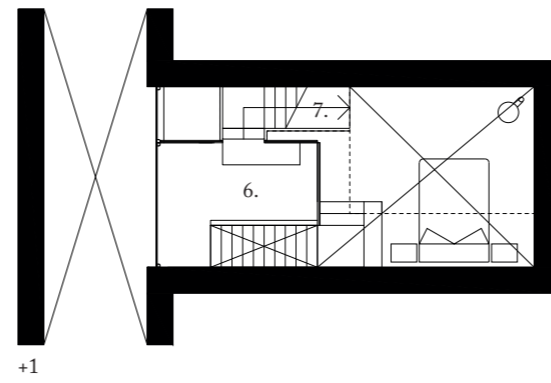
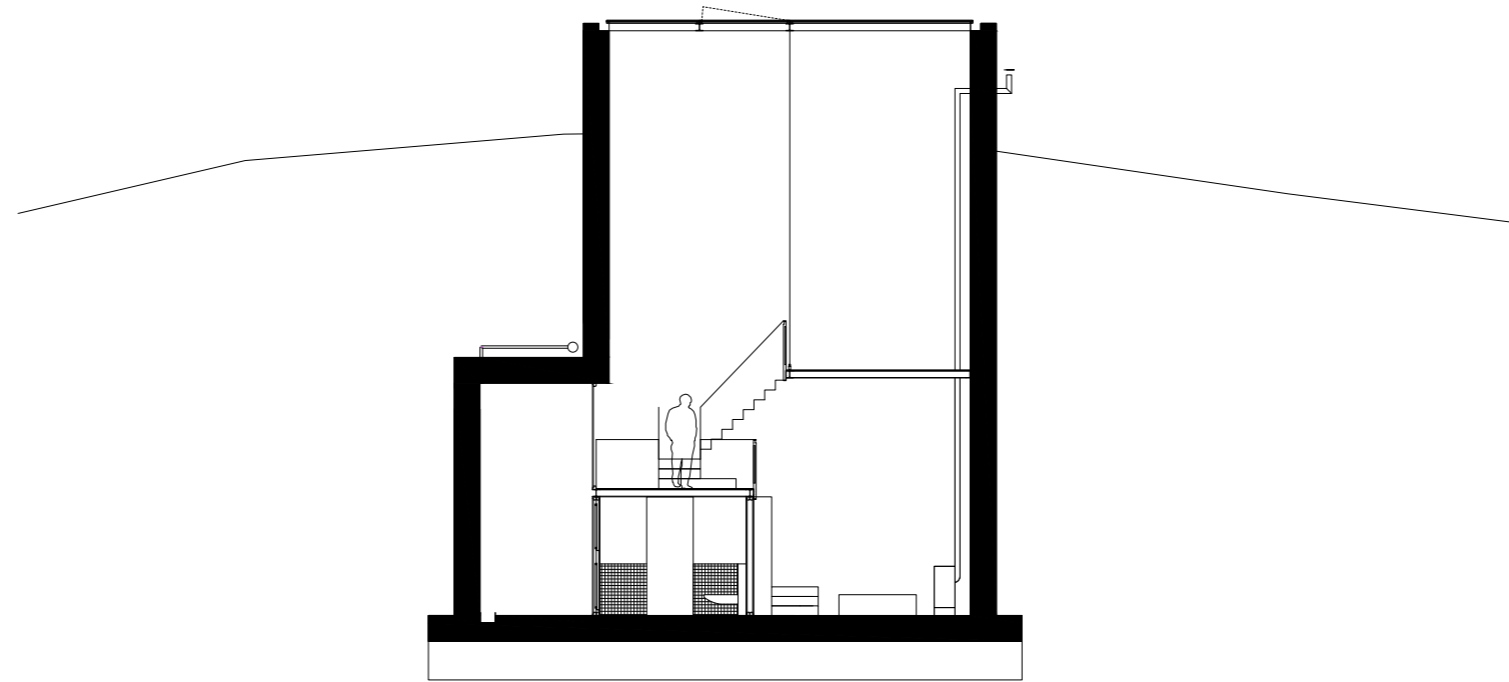
Water drainage pipe
d=120 mm

2m

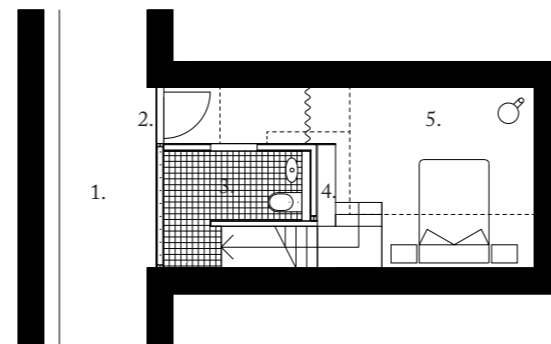
Fragment pool 1:50



The pool 19.11.2020 16.30 9°C 10.5 m/s

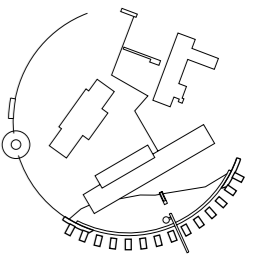


+1



0

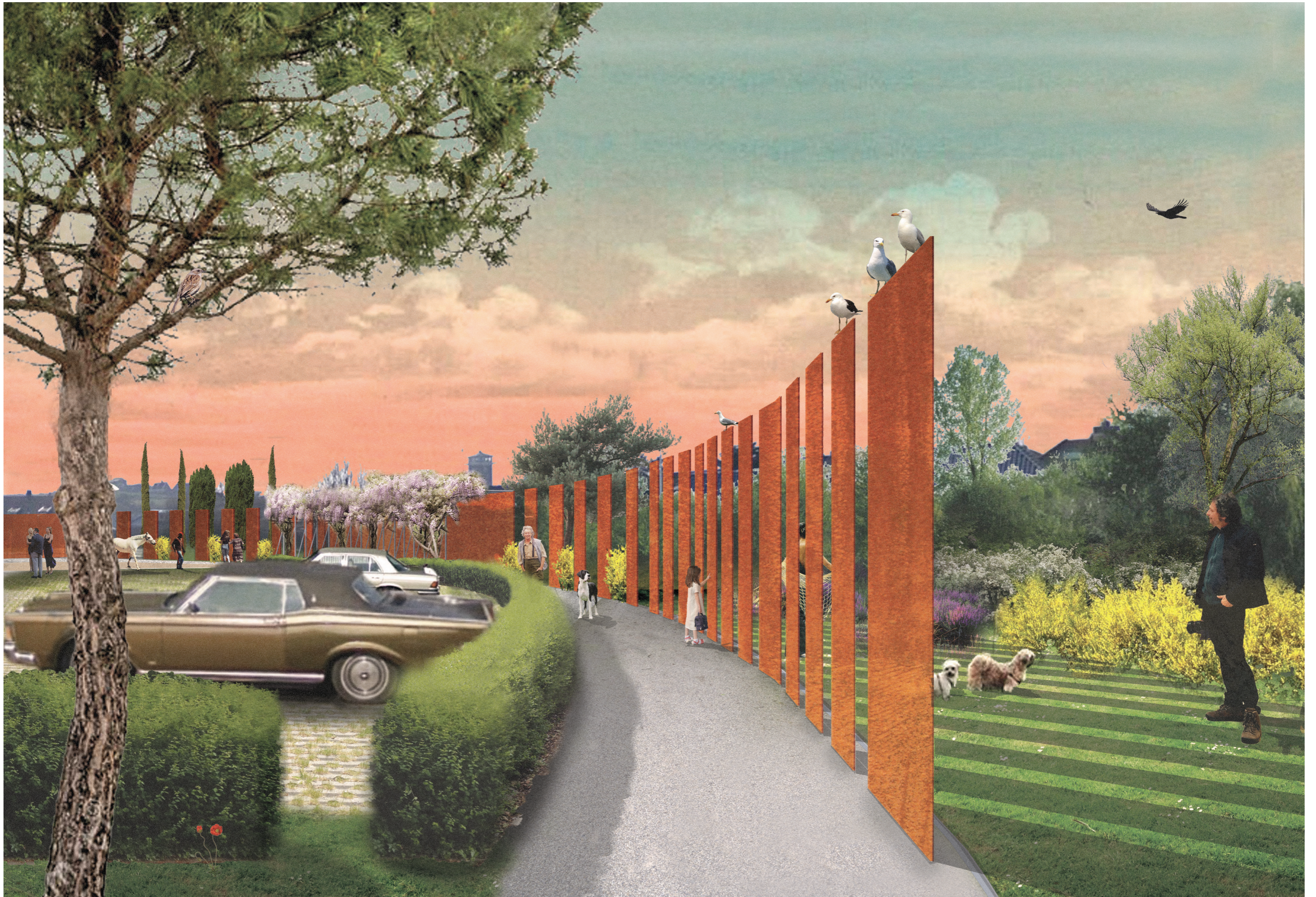
- 1. Tunnel
- 2. Entrance
- 3. Bathroom
- 4. Storage
- 5. Main room
- 6. Sitting area
- 7. Stairs to platform



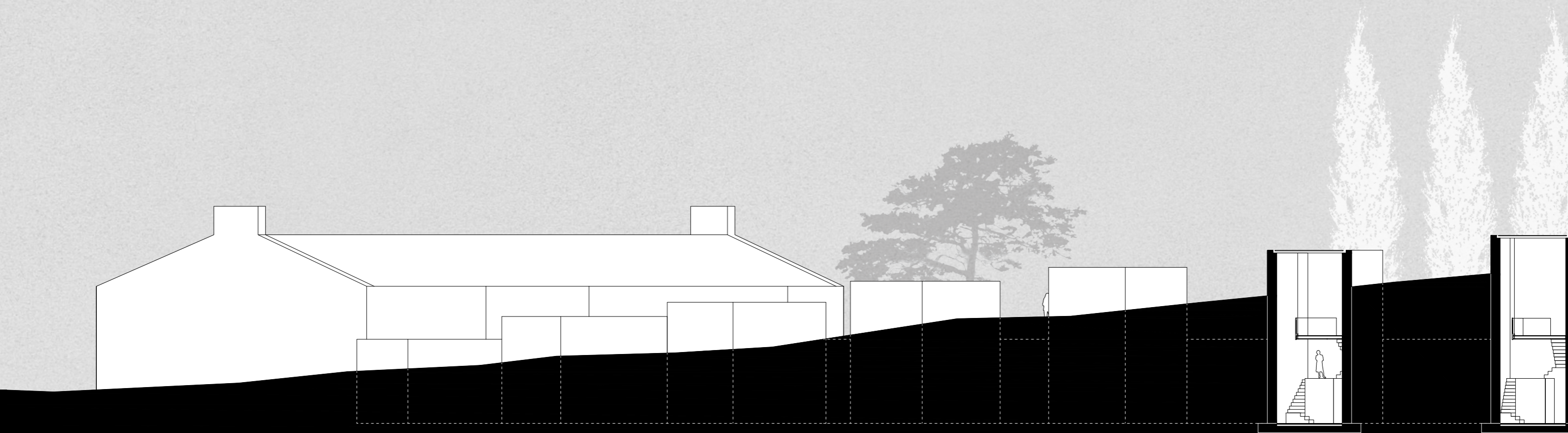
Plan dune room 1:200



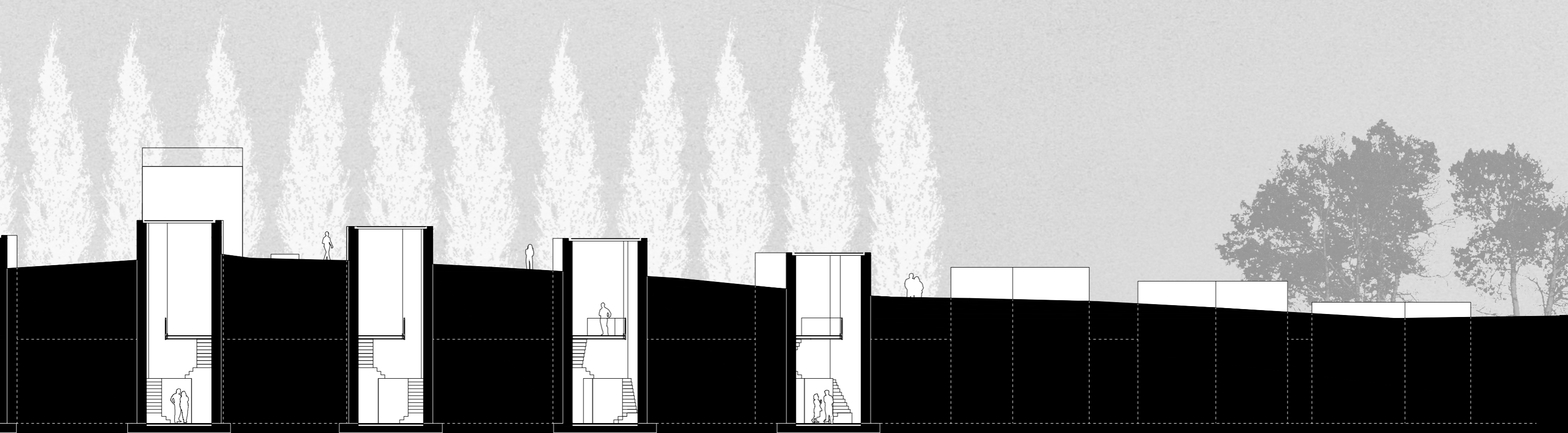
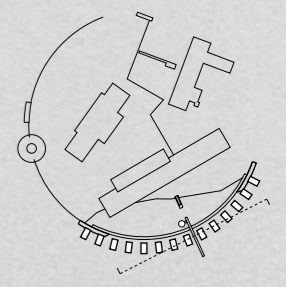
The garden 12.07.2020 17.00 22°C 3.5 m/s



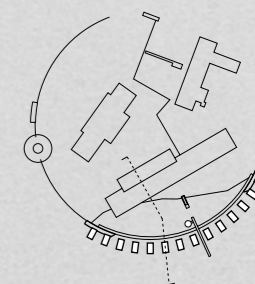
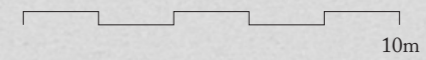
The wall 12.07.2020 21.00 20°C 3.3 m/s



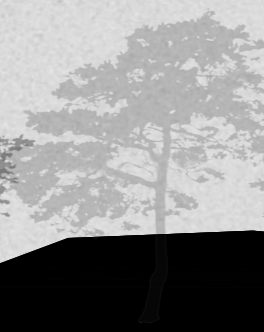
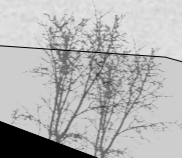
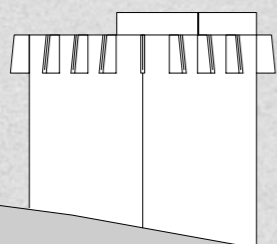
10m







Flakgruppenkommandostand
+ 13 m

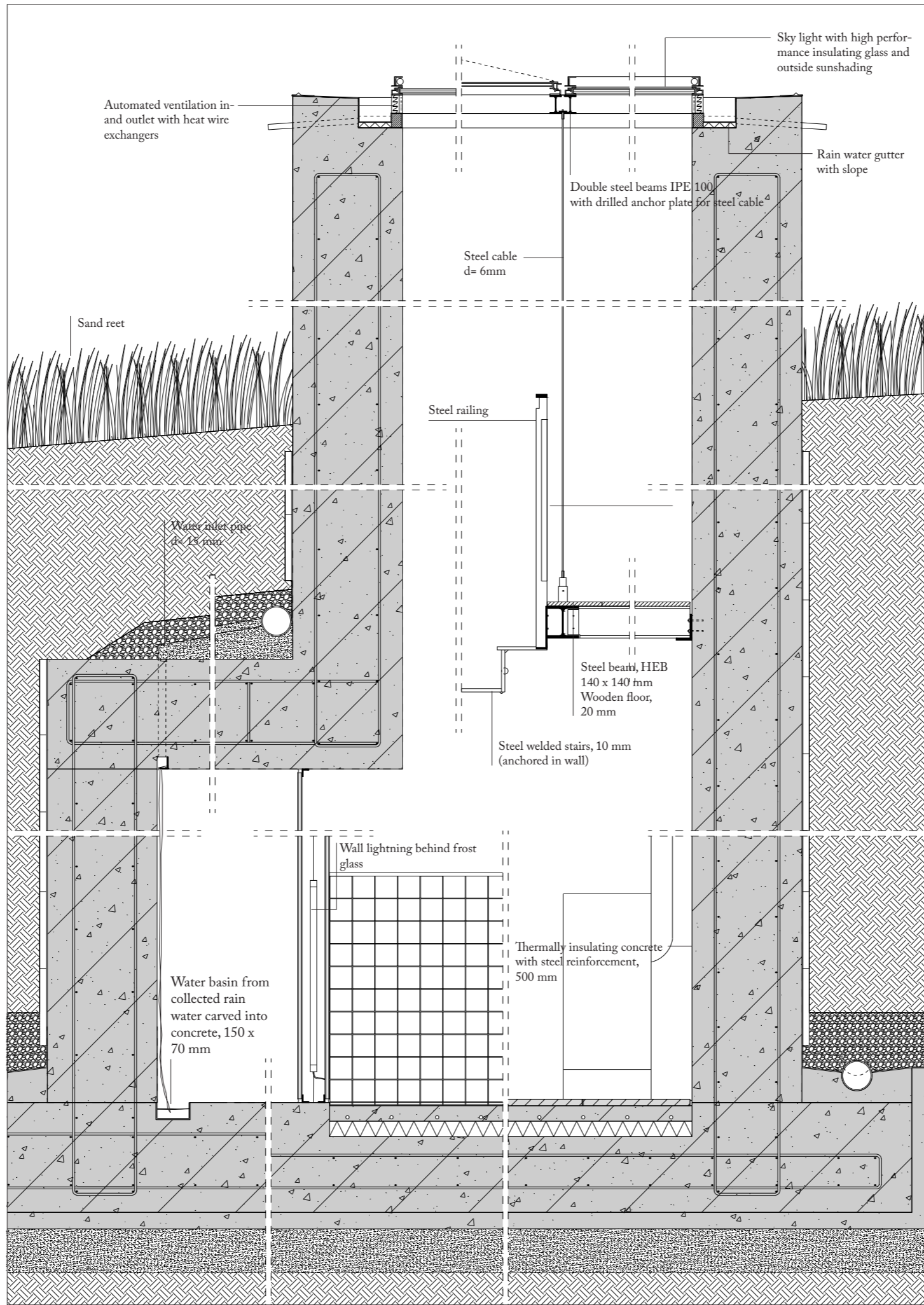




Dune room 22.12.2020 22.00 4°C 6.5 m/s



Sky 22.12.2020 23.00 -1°C 6.5 m/s



Fragment dune room 1:20



Lighthouse 22.12.2020 24.00 -2°C 4.5 m/s