

**Document Version**

Final published version

**Licence**

CC BY

**Citation (APA)**

Egberts, G., Vermolen, F., & van Zuijlen, P. (2021). Stability of a one-dimensional morphoelastic model for post-burn contraction. *Journal of Mathematical Biology*, 83(3), 1-24. Article 24. <https://doi.org/10.1007/s00285-021-01648-5>

**Important note**

To cite this publication, please use the final published version (if applicable). Please check the document version above.

**Copyright**

In case the licence states "Dutch Copyright Act (Article 25fa)", this publication was made available Green Open Access via the TU Delft Institutional Repository pursuant to Dutch Copyright Act (Article 25fa, the Taverne amendment). This provision does not affect copyright ownership.

Unless copyright is transferred by contract or statute, it remains with the copyright holder.

**Sharing and reuse**

Other than for strictly personal use, it is not permitted to download, forward or distribute the text or part of it, without the consent of the author(s) and/or copyright holder(s), unless the work is under an open content license such as Creative Commons.

**Takedown policy**

Please contact us and provide details if you believe this document breaches copyrights. We will remove access to the work immediately and investigate your claim.



# Stability of a one-dimensional morphoelastic model for post-burn contraction

Ginger Egberts<sup>1,2</sup> · Fred Vermolen<sup>2</sup> · Paul van Zuijlen<sup>3,4,5</sup>

Received: 25 September 2020 / Revised: 29 June 2021 / Accepted: 19 July 2021

© The Author(s) 2021

## Abstract

To deal with permanent deformations and residual stresses, we consider a morphoelastic model for the scar formation as the result of wound healing after a skin trauma. Next to the mechanical components such as strain and displacements, the model accounts for biological constituents such as the concentration of signaling molecules, the cellular densities of fibroblasts and myofibroblasts, and the density of collagen. Here we present stability constraints for the one-dimensional counterpart of this morphoelastic model, for both the continuous and (semi-) discrete problem. We show that the truncation error between these eigenvalues associated with the continuous and semi-discrete problem is of order  $\mathcal{O}(h^2)$ . Next we perform numerical validation to these constraints and provide a biological interpretation of the (in)stability. For the mechanical part of the model, the results show the components reach equilibria in a (non) monotonic way, depending on the value of the viscosity. The results show that the parameters of the chemical part of the model need to meet the stability constraint, depending on the decay rate of the signaling molecules, to avoid unrealistic results.

---

✉ Ginger Egberts  
G.Egberts@tudelft.nl

Fred Vermolen  
fred.vermolen@uhasselt.be

<sup>1</sup> Delft Institute of Applied Mathematics, Delft University of Technology, Delft, The Netherlands

<sup>2</sup> Research Group Computational Mathematics (CMAT), Department of Mathematics and Statistics, University of Hasselt, Hasselt, Belgium

<sup>3</sup> Burn Centre, Department of Plastic, Reconstructive and Hand Surgery, Red Cross Hospital, Beverwijk, The Netherlands

<sup>4</sup> Department of Plastic, Reconstructive and Hand Surgery, Amsterdam UMC, Location VUmc, Amsterdam Movement Sciences, Amsterdam, The Netherlands

<sup>5</sup> Pediatric Surgical Centre, Emma Children's Hospital, Amsterdam UMC, Location AMC and VUmc, Amsterdam, The Netherlands

**Keywords** Burns · Wound contraction · Stability · Morphoelasticity · Moving-grid finite-element

**Mathematics Subject Classification** 35B20 · 35B35 · 35G20 · 35L65 · 35M10 · 35Q74 · 35Q80 · 35Q92 · 35R37 · 65C20 · 65M12 · 65M60 · 65N12 · 65N30 · 74-10 · 74L15 · 92-10 · 92C10 · 92C17 · 92C45 · 93B18

## 1 Introduction

Burn wounds are a global problem and are the fifth most common cause of non-fatal childhood injuries. Figures show that the number of burn injuries was nearly 11 million worldwide in 2004, and about 180,000 people die from burns each year (WHO 2018). Given that burns mainly occur at home and workplace and that particularly adult women and children are vulnerable to burns (WHO 2018), targeting burn prevention specifically at these target groups results in lower numbers of incidents. Besides pain, itching, and loss of energy, mental factors and additional factors of wound healing play a role. Slow wound healing, infection, extreme pain, hypertrophic scars, and contractures remain as major challenges in burn management (Ye 2018).

The wound healing process comprises four partially overlapping phases that normally act upon each other quickly. The first phase, haemostasis, begins almost immediately after injury and aims primarily at stopping bleeding and starting the second phase. Burn wound healing passes over haemostasis, by cause of burning and cauterization of blood vessels. Hence burn wound healing starts with the second phase of normal wound healing, called the inflammatory response, which starts in just a few hours after injury to clean the wound and to protect it against infections. The growth factors that play a major role stimulate angiogenesis and collagen metabolism (Enoch and Leaper 2008) and activate cells, such as granulocytes (white blood cells) that play a major role in the wound healing's continuation.

During inflammation, the wound is cleaned and protected from bacterial infections, and the proliferative phase begins. These phases in wound healing are overlapping. The sub processes that take place during the proliferative phase are re-epithelialization, angiogenesis, fibroplasia and wound contraction. Sometimes, re-epithelialization never completes and skin grafting is necessary (Young and McNaught 2011). The ultimate phase, remodeling and scar maturation, can take several years. This phase brings various processes and structures into balance. This results in a scar that, on average, has 50% strength of unwounded skin (within three months), and 80% on the long-term (Enoch and Leaper 2008; Young and McNaught 2011).

Wound contraction is yet visible in small wounds: the edges of the wound pull in, the wound size reduces and the wounded area deforms. In adult patients, wounds can become 20–30% smaller over several weeks (Olsen et al. 1995). Wound contraction involves a biomechanical interaction of fibroblasts, myofibroblasts, chemokines, and collagen. Depending on the wound dimensions (location on the body, size), and the extent of contraction, the result can cause reduced mobility. If the contraction result causes reduced mobility, then we commonly refer to a contracture. Contraction can

lead to limited range-of-motion of joints, which can lead to immobility and is an important sign for scar revision.

Various studies report on mathematical models to predict the behavior of experimental and clinical wounds and to gain insight into which elements of the wound healing response might have a substantial influence on the contraction (Tranquillo and Murray 1992; Olsen et al. 1995; Barocas and Tranquillo 1997; Dallon et al. 1999; McDougall et al. 2006; Koppenol 2017; Menon et al. 2017) to name a few. This study uses the morphoelastic model for burn wound contraction that has been developed by Koppenol and Vermolen (2017). Morphoelasticity bases on the following principle (Hall 2008): the total deformation is decomposed into a deformation because of growth or shrinkage and a deformation because of mechanical forces. In a mathematical context, one considers the following three coordinate systems:  $\mathbf{X}$ ,  $\mathbf{X}_e(t)$ , and  $\mathbf{x}(t)$ , which, respectively, represent the initial coordinate system, the equilibrium at time  $t$  that results because of growth or shrinkage, and the current coordinate system that results because of growth or shrinkage and mechanical deformation. Assuming sufficient regularity, the deformation gradient tensor is written by

$$\mathbf{F} = \frac{\partial \mathbf{x}}{\partial \mathbf{X}} = \frac{\partial \mathbf{x}}{\partial \mathbf{X}_e} \frac{\partial \mathbf{X}_e}{\partial \mathbf{X}} = \mathbf{AZ}, \quad (1)$$

in which the tensor  $Z$  represents the deformation gradient tensor because of growth or shrinkage, and  $A$  represents the deformation gradient because of mechanical forces (Hall 2008; Goriely and Amar 2006; Rodriguez et al. 1994).

Given Koppenol's morphoelastic model for skin contraction (Koppenol and Vermolen 2017), we analyse stability around equilibria in a one-dimensional environment to study the parametric dependence of stable and unstable solutions. We use a linear stability analysis with Fourier series, where the transformations represent perturbations around equilibria. Such a stability analysis on morphoelastic models is new in the literature. We analyse the nonlinear equations as a system of equations, and we provide stability conditions. Here we distinguish between the entire continuous problem, which represents the actual solution, and the semi-discrete problem, which is the solution of a semi-discrete solution method. We show that stability of the continuous system implies stability of the semi-discrete stable system. Next to stability conditions, we call attention to the effects of system instability regarding the real-life wound contraction. We further discuss particular components of the model that we can adapt to bring the model closer to reality. The results in this article together form an entirely recent addition to the existing morphoelastic model for skin contraction.

The organization of this paper is as follows. Section 2 presents the mathematical model and Sect. 3 presents the stability analysis. Subsequently, Sect. 4 presents the numerical method that is used to approximate the solution and Sect. 5 presents the numerical validation of the stability constraints and a biological interpretation of (in)stability. Finally, Sect. 6 presents the conclusion and discussion.

## 2 The mathematical model

We borrow the morphoelastic continuum hypothesis-based modeling framework from Koppenol, and present it in a one-dimensional form. It is not our aim to derive the model completely and will therefore go into this less in depth than the original articles by Koppenol and Vermolen (2017); Koppenol et al. (2017b). More details about this framework can be found in the cited articles. This model considers the displacement of the dermal layer ( $u$ ), the displacement velocity of the dermal layer ( $v$ ) and the effective strain present in the dermal layer ( $\varepsilon$ ). The effective strain is a local measure for the difference between the current configuration of the dermal layer and a hypothetical configuration of the dermal layer where the tissue is mechanically relaxed. Furthermore, four constituents are incorporated: signaling molecules ( $c$ ), fibroblasts ( $N$ ), myofibroblasts ( $M$ ) and collagen ( $\rho$ ). Here we use collagen as a collective name for the molecules, fibrils and bundles of collagen, and we use signaling molecules as a collective name for growth factors, such as transforming growth factor beta (TGF- $\beta$ ), platelet derived growth factor (PDGF) and connected tissue growth factor (CTGF), and cytokines.

We show the conservation laws for mass and linear momentum, together with the evolution equation that describes how the infinitesimal effective strain changes. We bear in mind that because of the forces that are exerted by the cells; the domain deforms and hence the points within the domain of computation are subject to displacement. The local displacement rate is incorporated by *passive convection*, which is reflected by the second term in the left-hand side in Eqs. (2)–(9). Next, we briefly discuss what (the right-hand side of) the equations represent.

The equation for the signaling molecules (2) represents diffusion according to normal Fickian diffusion and random spread, enhanced secretion by fibroblasts and a portion of myofibroblasts (Barrientos et al. 2008), proteolytic breakdown by Matrix Metallo Proteins (MMPs) (Mast and Schultz 1996; Sternlicht and Werb 2001), the handle of release of MMPs by (myo)fibroblasts and collagen (Lindner et al. 2012), and the inhibition of the secretion of MMPs by signaling molecules (Overall et al. 1991):

$$\frac{\partial c}{\partial t} + \frac{\partial(cv)}{\partial x} = D_c \frac{\partial^2 c}{\partial x^2} + k_c \left[ \frac{c}{a_c^I + c} \right] [N + \eta^I M] - \delta_c \frac{[N + \eta^{II} M] \rho}{1 + a_c^{II} c} c. \quad (2)$$

Here,  $D_c$  is the Fickian diffusion coefficient of the signaling molecules,  $k_c$  is the maximum net secretion rate of the signaling molecules,  $\eta^I$  is the ratio of myofibroblasts to fibroblasts in the maximum secretion rate of the signaling molecules,  $a_c^I$  is the concentration of the signaling molecules that causes the half-maximum net secretion rate of the signaling molecules,  $\delta_c$  is the proteolytic breakdown rate parameter of the signaling molecules,  $\eta^{II}$  is the ratio of myofibroblasts to fibroblasts in the secretion rate of the MMPs and  $1/[1 + a_c^{II} c]$  represents the inhibition of the secretion of the MMPs. Next to the derivation of this equation in Koppenol and Vermolen (2017), one finds the derivation of the second part on the right-hand side in Olsen et al. (1995).

The equations for the (myo)fibroblasts (3)&(4) represent migration towards the gradient of the signaling molecules (Postlethwaite et al. 1987; Boon et al. 2016; Dal-

lon et al. 2001) by a minimal model for chemotaxis (Hillen and Painter 2008), and cell density-dependent Fickian diffusion. The proliferation of the cells depends on the signaling molecules (as an activator-inhibitor), and inhibition because of crowding (Vande Berg et al. 1989). This is modeled by two similar logistic growth models. Further, the equations represent differentiation of fibroblasts to myofibroblasts (Tomasek et al. 2002), and apoptosis of the cells:

$$\frac{\partial N}{\partial t} + \frac{\partial(Nv)}{\partial x} = -\frac{\partial}{\partial x} \left( -D_F(N + M) \frac{\partial N}{\partial x} + \chi_F N \frac{\partial c}{\partial x} \right) + r_F \left[ 1 + \frac{r_F^{\max} c}{a_c^{III} + c} \right] [1 - \kappa_F(N + M)]N^{1+q} - k_{FC}N - \delta_N N, \tag{3}$$

$$\frac{\partial M}{\partial t} + \frac{\partial(Mv)}{\partial x} = -\frac{\partial}{\partial x} \left( -D_F(N + M) \frac{\partial M}{\partial x} + \chi_F M \frac{\partial c}{\partial x} \right) + r_F \left[ \frac{[1 + r_F^{\max}]c}{a_c^{III} + c} \right] [1 - \kappa_F(N + M)]M^{1+q} + k_{FC}N - \delta_M M. \tag{4}$$

Here,  $D_F$  represents (myo)fibroblast random diffusion and  $\chi_F$  is the chemotactic parameter that depends on both the binding and unbinding rate of the signaling molecules with its receptor, and the concentration of this receptor on the cell surface of the (myo)fibroblasts,  $r_F$  is the cell division rate,  $r_F^{\max}$  is the maximum factor of cell division rate enhancement because of the presence of the signaling molecules,  $a_c^{III}$  is the concentration of the signaling molecules that cause half-maximum enhancement of the cell division rate,  $\kappa_F(N + M)$  represents the reduction in the cell division rate because of crowding,  $q$  is a fixed constant,  $k_F$  is the signaling molecule-dependent cell differentiation rate of fibroblasts into myofibroblasts,  $\delta_N$  is the apoptosis rate of fibroblasts and  $\delta_M$  is the apoptosis rate of myofibroblasts.

An important difference between the two equations is that myofibroblasts only proliferate in the presence of the signaling molecules. The form of the logistic growths needs more justification. We do not always know the exact mechanism behind many of the biological processes, let alone a quantitative description of such a biological mechanism, and if others have developed a quantitative description, reliable estimates of the values for parameters are often lacking. So Koppenol has avoided the use of quadratic terms in the biological parts of the models as much as possible, unless there is really a good biological reason for this. The growth of the (myo)fibroblasts is therefore taken to the power  $(1 + q)$  to make the model consistent. The value of  $q$  is a necessary consequence of the other values of the parameters of the model. Let therefore  $\bar{c}$ ,  $\bar{N}$ ,  $\bar{M}$  define the equilibria of the signaling molecules, the fibroblasts and the myofibroblasts, respectively. If we take  $\bar{M} = 0$  and  $\bar{c} = 0$  as the kinetic equilibrium, then solving the reactive term in Eq. (3) for  $\delta_N$  yields:

$$\delta_N = r_F [1 - \kappa_F \bar{N}] \bar{N}^q. \tag{5}$$

The equation for collagen (6) represents the production of collagen by (myo) fibroblasts (Baum and Arpey 2006), enhancement of the secretion by signaling molecules (Ivanoff et al. 2005), and proteolytic breakdown of collagen by MMPs

(similar as for the signaling molecules):

$$\frac{\partial \rho}{\partial t} + \frac{\partial(\rho v)}{\partial x} = k_\rho \left[ 1 + \left[ \frac{k_\rho^{\max} c}{a_c^{IV} + c} \right] \right] [N + \eta^I M] - \delta_\rho \frac{[N + \eta^{II} M] \rho}{1 + a_c^{II} c} \rho. \quad (6)$$

Here,  $k_\rho$  is the collagen secretion rate,  $k_\rho^{\max}$  is the maximum factor of secretion rate enhancement because of the presence of the signaling molecules,  $a_c^{IV}$  is the concentration of the signaling molecules that cause the half-maximum enhancement of the secretion rate of collagen and  $\delta_\rho$  is the degradation rate of collagen. A generic MMP affects the reaction kinetics of the signaling molecules and collagen, and is assumed always to be at a local equilibrium concentration. Reasoning for this modeling choice has been to avoid even more complexity and additional unknown parameter values.

Let  $\bar{\rho}$  define the equilibrium of collagen. Then, solving the reactive term in Eq. (6) for  $\bar{\rho}$  yields:

$$\bar{\rho} = \sqrt{k_\rho / \delta_\rho}. \quad (7)$$

The equation for the displacement velocity (8) represents Cauchy stress by a visco-elastic constitutive relation, and a body force that is proportional to the product of the cell density of the myofibroblasts and a function of the concentration of collagen. This visco-elastic constitutive relation follows the assumption from Ramtani (2004, 2002), which incorporates the dependence of the Young’s modulus of skin on the density of collagen:

$$\rho_t \left( \frac{\partial v}{\partial t} + 2v \frac{\partial v}{\partial x} \right) = \frac{\partial}{\partial x} \left( \mu \frac{\partial v}{\partial x} + E \sqrt{\rho} \varepsilon \right) + \frac{\partial}{\partial x} \left( \frac{\xi M \rho}{R^2 + \rho^2} \right). \quad (8)$$

Here,  $\rho_t$  represents the total mass density of the dermal tissues,  $\mu$  is the viscosity,  $E \sqrt{\rho}$  represents the Young’s modulus (stiffness),  $\xi$  is the generated stress per unit cell density and the inverse of the unit collagen concentration,  $R$  is a constant. The above equation represents the balance of momentum, and despite many studies neglect inertial effects (the first two terms), we have kept the inertia terms in order to stay closer to the underlying physics.

To incorporate a plastic deformation in the equation for the effective strain (9), we use a tensor-based approach that is also commonly used in growth of tissues (such as tumors). The ‘growth’ contribution, which with a negative sign models contraction of the tissue, is assumed to be proportional to the product of the amount of effective strain (see Hall 2008), the cell density of (myo)fibroblasts, and to be a function of the collagen density. In particular, we assumed that the tensor for contraction depends on the product of the concentration of the MMPs, the concentration of the chemokines and the reciprocal of the collagen density. Taken together, the following equation finalizes the presentation of the one-dimensional morphoelastic framework for skin contraction:

$$\frac{\partial \varepsilon}{\partial t} + v \frac{\partial \varepsilon}{\partial x} + (\varepsilon - 1) \frac{\partial v}{\partial x} = -\zeta \frac{[N + \eta^{II} M] c}{1 + a_c^{II} c} \varepsilon. \quad (9)$$

Here,  $\zeta$  is the rate of morphoelastic change (i.e., the rate at which the effective strain changes actively over time).

### 2.1 Initial and boundary conditions

We define the domain of computation by  $\Omega_{x,t}$  and the boundary by  $\partial\Omega_{x,t}$ . The dimension  $x$  is in centimeters and  $t$  in days. Since we are interested in the model’s stability around equilibria, we define the initial conditions by perturbations around equilibria, where the values on the boundaries are the equilibrium values. Further, we impose the following boundary conditions. For all  $x \in \partial\Omega_{x,t}$  and  $t \geq 0$ :

$$c(x, t) = 0, \quad N(x, t) = \bar{N}, \quad M(x, t) = 0, \quad v(x, t) = 0. \tag{10}$$

Regarding the equations for  $\varepsilon$  and  $\rho$ , an ordinary differential equation with derivatives regarding time in terms of the material derivative is obtained. We see this if we write the left-hand side of Eq. (6) as  $\frac{D\rho}{Dt} + \rho \frac{\partial v}{\partial x}$  and Eq. (9) as  $\frac{D\varepsilon}{Dt} + \varepsilon \frac{\partial v}{\partial x} = \frac{\partial v}{\partial x} - \alpha\varepsilon$ . The partial derivatives regarding space only involve the displacement velocity  $v$ . On the boundaries, for  $v$  we use the boundary condition  $v = 0$ . Therefore, to specify the solution of  $\varepsilon$  and  $\rho$  in the (open) domain  $\Omega$ , it is unnecessary to specify any boundary conditions (the characteristics in the  $x, t$ -plane are vertical). We note that in cases (not currently) where characteristics would be directed out of the domain of computation, imposing these boundary conditions would lead to failure of existence and continuity. To summarize, we do not need any boundary conditions for  $\rho$  and  $\varepsilon$ .

### 3 Linear stability of the model

In this section, we analyse the stability of the one-dimensional morphoelastic model for skin contraction. First, we analyse linear stability of the continuous problem. The stability conditions are formulated in terms of the input parameters. We do this analysis in order to understand the a priori behavior of the solution. Since we cannot derive the exact solution to the problem, we also analyse stability of the numerical approximation. We consider the following linearised equations around equilibria  $(c, N, M, \rho, v, \varepsilon) = (0, \bar{N}, 0, \bar{\rho}, 0, \bar{\varepsilon})$ , where  $\bar{N}, \bar{\rho}, \bar{\varepsilon} \in \mathbb{R}_{\geq 0}$ :

$$\begin{aligned} \frac{\partial \hat{c}}{\partial t} - D_c \frac{\partial^2 \hat{c}}{\partial x^2} + \bar{N} \left[ \delta_c \bar{\rho} - \frac{k_c}{a_c^I} \right] \hat{c} &= 0, \\ \frac{\partial \hat{N}}{\partial t} - D_F \bar{N} \frac{\partial^2 \hat{N}}{\partial x^2} + \chi_F \bar{N} \frac{\partial^2 \hat{c}}{\partial x^2} - r_F \bar{N}^q ((1+q)(1-\kappa_F \bar{N}) - \kappa_F \bar{N}) \hat{N} \\ &+ \delta_N \hat{N} + r_F \kappa_F \bar{N}^{1+q} \hat{M} - \bar{N} \left[ \frac{r_F r_F^{\max}}{a_c^{III}} [1 - \kappa_F \bar{N}] \bar{N}^q - k_F \right] \hat{c} = 0, \\ \frac{\partial \hat{M}}{\partial t} - D_F \bar{N} \frac{\partial^2 \hat{M}}{\partial x^2} + \delta_M \hat{M} - k_F \bar{N} \hat{c} &= 0, \end{aligned}$$

$$\begin{aligned}
 \frac{\partial \hat{\rho}}{\partial t} + \delta_\rho \bar{\rho}^2 (\eta^{II} - \eta^I) \hat{M} - \delta_\rho \bar{\rho}^2 \bar{N} \left( \frac{k_\rho^{max}}{a_c^{IV}} + a_c^{II} \right) \hat{c} + 2\delta_\rho \bar{N} \bar{\rho} \hat{\rho} &= 0, \\
 \frac{\partial \hat{v}}{\partial t} - \frac{\mu}{\rho_t} \frac{\partial^2 \hat{v}}{\partial x^2} - \frac{E\sqrt{\bar{\rho}}}{\rho_t} \frac{\partial \hat{\varepsilon}}{\partial x} - \frac{E\bar{\varepsilon}}{2\rho_t\sqrt{\bar{\rho}}} \frac{\partial \hat{\rho}}{\partial x} - \frac{\xi\bar{\rho}}{\rho_t(R^2 + \bar{\rho}^2)} \frac{\partial \hat{M}}{\partial x} &= 0, \\
 \frac{\partial \hat{\varepsilon}}{\partial t} + (\bar{\varepsilon} - 1) \frac{\partial \hat{v}}{\partial x} + \zeta\bar{\varepsilon}\bar{N}\hat{c} &= 0,
 \end{aligned} \tag{11}$$

where  $\hat{c}$ ,  $\hat{N}$ ,  $\hat{M}$ ,  $\hat{\rho}$ ,  $\hat{v}$ , and  $\hat{\varepsilon}$  are variations around the equilibria. Here we used that  $k_\rho = \delta_\rho \bar{\rho}^2$  must hold in equilibrium.

### 3.1 Stability of the continuous problem

We write the variations around the equilibria in terms of a complex Fourier series,

$$\begin{aligned}
 \hat{c}(x, t) &= \frac{1}{|\Omega|} \sum_{j=-\infty}^{\infty} c_j^c(t) e^{2i\pi jx}, & \hat{N}(x, t) &= \frac{1}{|\Omega|} \sum_{j=-\infty}^{\infty} c_j^N(t) e^{2i\pi jx}, \\
 \hat{M}(x, t) &= \frac{1}{|\Omega|} \sum_{j=-\infty}^{\infty} c_j^M(t) e^{2i\pi jx}, & \hat{\rho}(x, t) &= \frac{1}{|\Omega|} \sum_{j=-\infty}^{\infty} c_j^\rho(t) e^{2i\pi jx}, \\
 \hat{v}(x, t) &= \frac{1}{|\Omega|} \sum_{j=-\infty}^{\infty} c_j^v(t) e^{2i\pi jx}, & \hat{\varepsilon}(x, t) &= \frac{1}{|\Omega|} \sum_{j=-\infty}^{\infty} c_j^\varepsilon(t) e^{2i\pi jx},
 \end{aligned} \tag{12}$$

where  $|\Omega|$  denotes the length of  $\Omega$  and  $i$  represents the imaginary unit number.

Substitution of the variations (12) into the linearised equations (11), multiplication by  $e^{-2i\pi kx}$ , and integration over  $\Omega$  gives

$$\begin{aligned}
 \dot{c}_k^c(t) + D_c(2\pi k)^2 c_k^c(t) + \bar{N} \left[ \delta_c \bar{\rho} - \frac{k_c}{a_c^I} \right] c_k^c(t) &= 0, \\
 \dot{c}_k^N(t) + D_F \bar{N} (2\pi k)^2 c_k^N(t) - \chi_F \bar{N} (2\pi k)^2 c_k^c(t) + r_{F\kappa_F} \bar{N}^{1+q} c_k^M(t) \\
 - r_F \bar{N}^q ((1+q)(1 - \kappa_F \bar{N}) - \kappa_F \bar{N}) c_k^N(t) + \delta_{NC} c_k^N(t) \\
 - \bar{N} \left[ \frac{r_{FF}^{max}}{a_c^{III}} [1 - \kappa_F \bar{N}] \bar{N}^q - k_F \right] c_k^c(t) &= 0, \\
 \dot{c}_k^M(t) + D_F \bar{N} (2\pi k)^2 c_k^M(t) + \delta_M c_k^M(t) - k_F \bar{N} c_k^c(t) &= 0, \\
 \dot{c}_k^\rho(t) + \delta_\rho \bar{\rho}^2 (\eta^{II} - \eta^I) c_k^M(t) - \delta_\rho \bar{\rho}^2 \bar{N} \left[ \frac{k_\rho^{max}}{a_c^{IV}} + a_c^{II} \right] c_k^c(t) \\
 + 2\delta_\rho \bar{N} \bar{\rho} c_k^\rho(t) &= 0,
 \end{aligned} \tag{13}$$

for the chemical part of the model, and

$$\begin{aligned}
 \dot{c}_k^v(t) + \frac{\mu}{\rho_t} (2\pi k)^2 c_k^v(t) - i \frac{E\sqrt{\bar{\rho}}}{\rho_t} (2\pi k) c_k^\varepsilon(t) - i \frac{E\bar{\varepsilon}}{2\rho_t\sqrt{\bar{\rho}}} (2\pi k) c_k^\rho(t) \\
 - i \frac{\xi\bar{\rho}}{\rho_t(R^2 + \bar{\rho}^2)} (2\pi k) c_k^M(t) = 0, \\
 \dot{c}_k^\varepsilon(t) + i(\bar{\varepsilon} - 1)(2\pi k) c_k^v(t) + \zeta\bar{\varepsilon}\bar{N} c_k^c(t) = 0,
 \end{aligned}
 \tag{14}$$

for the mechanical part of the model. The derivation of Eqs. (13) and (14) is given in Appendix 1. Interchanging the second and third equation of (13), these equations together with Eq. (14) are in the form  $y' + Ay = 0$  with

$$A = \begin{bmatrix} A_{11} & 0 & 0 & 0 & 0 & 0 \\ A_{21} & A_{22} & 0 & 0 & 0 & 0 \\ A_{31} & A_{32} & A_{33} & 0 & 0 & 0 \\ A_{41} & A_{42} & 0 & A_{44} & 0 & 0 \\ 0 & A_{52} & 0 & A_{54} & A_{55} & A_{56} \\ A_{61} & 0 & 0 & 0 & A_{65} & 0 \end{bmatrix}.
 \tag{15}$$

We determine the eigenvalues of  $A$  by solving  $|A - \lambda I| = 0$  for  $\lambda$ , where  $I$  represents the identity matrix. For this, we use the first four diagonal values as pivots and end up with a 2-by-2 matrix containing the mechanical part of the model with determinant  $\lambda^2 - A_{55}\lambda - A_{56}A_{65}$ . Hence the eigenvalues are the first four diagonal entries and  $\lambda = \frac{1}{2}A_{55} \pm \frac{1}{2}\sqrt{A_{55}^2 + 4A_{56}A_{65}}$ . Note that the system is linearly stable if and only if the real part of the eigenvalues is non-negative, hence we need:

$$\begin{aligned}
 D_c(2\pi k)^2 + \bar{N} \left[ \delta_c \bar{\rho} - \frac{k_c}{a_c^I} \right] &\geq 0, \\
 D_F \bar{N} (2\pi k)^2 - r_F \bar{N}^q ((1 + q)(1 - \kappa_F \bar{N}) - \kappa_F \bar{N}) + \delta_N &\geq 0, \\
 D_F \bar{N} (2\pi k)^2 + \delta_M &\geq 0, \\
 2\delta_\rho \bar{N} \bar{\rho} &\geq 0, \\
 \frac{(2\pi k)^2 \mu}{2\rho_t} \pm \frac{1}{2} \sqrt{\left( \frac{(2\pi k)^2 \mu}{\rho_t} \right)^2 + 4 \frac{(2\pi k)^2 E\sqrt{\bar{\rho}}}{\rho_t} (\bar{\varepsilon} - 1)} &\geq 0.
 \end{aligned}
 \tag{16}$$

The first two requirements imply that the model obtains stability for  $\delta_c \geq \frac{k_c}{a_c^I \bar{\rho}}$  and combining the second requirement with Eq. (5), gives  $q\delta_N \leq \kappa_F r_F \bar{N}^{1+q}$  ( $k = 0$ ). In addition, given the relation in (5), it must hold that  $\delta_N > 0$  and hence  $\kappa_F \bar{N} < 1$ . Further, the third and fourth eigenvalues meet the stability condition  $\text{Re}(\lambda(A)) \geq 0$  independent of the chosen values for the parameters given that the parameters are positive. Finally, linear stability is obtained for  $\bar{\varepsilon} \leq 1$ , else a saddle point problem is obtained if  $\lambda_{5,6} \in \mathbb{R}$ . Note that this is also a physical requirement given that Eq. (9) only holds for small strains. These last two eigenvalues are real-valued as long as

$\mu \geq \frac{\sqrt{\rho_t E \sqrt{\bar{\rho}} (1 - \bar{\varepsilon})}}{\pi}$  ( $k = 1$ ). If the last-mentioned condition is satisfied for  $k = 1$ , then the eigenvalues are real-valued for other values of  $k$ . For all the other conditions, they

hold for all  $k \in \mathbb{Z}$  as well. The constant case  $k = 0$  implies that these eigenvalues are zero, which reflects the trivial case in which there are no dynamics. This also implies that  $\bar{\varepsilon} = 0$  is a stable equilibrium state with real-valued eigenvalues. We summarize these results in Theorem 1.

**Theorem 1** *Let  $\{c, N, M, \rho, v, \varepsilon\}$  satisfy equations (2)–(9). Let  $\delta_N = r_F(1 - \kappa_F \bar{N})\bar{N}^q > 0$  and  $\bar{\rho} = \sqrt{k_\rho/\delta_\rho}$ , then:*

1. *The equilibria  $(c, N, M, \rho, v, \varepsilon) = (0, \bar{N}, 0, \bar{\rho}, 0, \bar{\varepsilon})$ ,  $(\bar{N}, \bar{\rho}, \bar{\varepsilon}) \in \mathbb{R}_{>0}$ , are linearly stable if and only if  $\delta_c \bar{\rho} \geq \frac{k_c}{a_c^I}$ , and  $q\delta_N \leq \kappa_F r_F \bar{N}^{1+q}$  and  $\bar{\varepsilon} \leq 1$ ;*
2. *Given  $\bar{\varepsilon} < 1$ , then the eigenvalues are real-valued if and only if*  

$$\mu \geq \frac{\sqrt{\rho_t E \sqrt{\bar{\rho}(1-\bar{\varepsilon})}}}{\pi} \quad (k = 1);$$

**Remark 1** Note that  $\delta_c \geq \frac{k_c}{a_c^I \bar{\rho}}$ , for  $k = 0$  (constant states). Hence, if constant perturbations are stable, then wavelike perturbations are stable. In case  $\delta_c$  is not large enough, fast oscillating perturbations will vanish, while slow oscillating perturbations will not vanish and can amplify. Further, if  $\bar{\varepsilon} < 1$  and if  $\mu < \frac{\sqrt{\rho_t E \sqrt{\bar{\rho}(1-\bar{\varepsilon})}}}{\pi}$ , then convergence from variations around  $\bar{\varepsilon}$  will occur in a non-monotonic way over time because the eigenvalues of the linearised dynamical system are not real-valued.

Next, we provide some quantitative examples that illustrate the stability claims. Stability is warranted if there is a sufficient decay of the growth factor. Monotonicity (of convergence) is obtained if there is sufficient damping in terms of viscous forces.

**Example** If we let  $\delta_c = 5 \times 10^{-4}$  cm<sup>6</sup>/(cells g day),  $k_c = 4 \times 10^{-13}$  g/(cells day),  $a_c^I = 10^{-8}$  g/cm<sup>3</sup>, and  $\bar{\rho} = 0.1125$  g/cm<sup>3</sup>, then we have  $\delta_c = 5 \times 10^{-4} \geq 3.55 \times 10^{-4} = k_c/(a_c^I \bar{\rho})$ . Hence, with these parameter values, we meet the stability condition for the signaling molecules. Further, if we let  $\bar{N} = 10^4 < 10^6 = \kappa_F^{-1}$  cells/cm<sup>3</sup>,  $\delta_N = 0.002/\text{day}$ ,  $r_F = 0.924$  cm<sup>3q</sup>/(cells<sup>q</sup> day) and  $q = \frac{\log(\delta_N) - \log(r_F(1 - \kappa_F \bar{N}))}{\log(\bar{N})} \approx -0.42$ , then we have  $q\delta_N = -8.4 \times 10^{-4} \leq 1.9 \times 10^{-4} = \kappa_F r_F \bar{N}^{1+q}$ . Hence, with these parameter values we meet the stability condition for the fibroblasts. Note that there is only a distance of  $1.45 \times 10^{-4}$  cm<sup>6</sup>/(cells g day) between the left- and right-hand side in the first condition, and a much larger distance of  $1.03 \times 10^{-3}$  between the left- and right-hand side in the second condition. In addition, substitution of  $\delta_N = r_F(1 - \kappa_F \bar{N})\bar{N}^q$  into the second equation of (16), and solving for  $q$  with  $k = 0$  yields  $q \leq \kappa_F \bar{N}/(1 - \kappa_F \bar{N}) \approx 0.01$ , yielding the upper bound  $\delta_N < 1.004$  (with the chosen parameter values). Given that the doubling time (DT) of fibroblasts ranges from 18 to 20 h (Alberts et al. 1989; Ghosh et al. 2007), and that the average lifespan of fibroblasts varies between 40 and 70 population doublings (PD) (Ghosh et al. 2007; Moulin et al. 2011), using the formula  $\delta_N = (\ln 2)/(PD \times DT/24)$ , yields the save range  $0.0119 \leq \delta_N \leq 0.0231$  for the fibroblast apoptosis rate.

### 3.2 Stability of the discrete problem

Stability of the continuous problem does not always automatically imply stability of the (semi-) discrete counterpart of the problem. Therefore, we assess stability of the

semi-discrete problem, which can assess stability of the full discrete system. Lax' Equivalence Theorem states that a consistent, stable method converges. The global truncation error tends to zero as the step size tends to zero (as  $h \rightarrow 0$ ), if the local truncation error (i.e., the difference between the derivatives and difference ratios) tends to zero as the step size is sent to zero.

A well-known way to assess numerical stability is by including Gershgorin's Circle Theorem. This theorem is widely used and very general in the sense that it is straightforward to generalize stability to general, non-equidistant meshes and to cases where the input variables are non constant. However, in many examples, the eigenvalue bounds obtained through Gershgorin's Circle Theorem are less accurate than by the use of the Von Neumann analysis, which is based on discrete Fourier analysis. Because of the accuracy and also the ease of application of the Von Neumann analysis, we apply this analysis on a uniform grid on the system of linearised equations with constant coefficients (11). The Von Neumann stability analysis provides sufficient conditions for numerical stability (Fletcher 1998). The *finite difference method* (FDM) gives:

$$\begin{aligned}
 \lambda c_k &= -D_c \frac{c_{k-1} - 2c_k + c_{k+1}}{h^2} + \bar{N} \left[ \delta_c \bar{\rho} - \frac{k_c}{a_c^I} \right] c_k, \\
 \lambda N_k &= -D_F \bar{N} \frac{N_{k-1} - 2N_k + N_{k+1}}{h^2} + \chi_F \bar{N} \frac{c_{k-1} - 2c_k + c_{k+1}}{h^2} \\
 &\quad + \left[ \delta_N - r_F \bar{N}^q ((1+q)(1 - \kappa_F \bar{N}) - \kappa_F \bar{N}) \right] N_k + r_F \kappa_F \bar{N}^{1+q} M_k \\
 &\quad - \bar{N} \left[ \frac{r_F r_F^{\max}}{a_c^{III}} [1 - \kappa_F \bar{N}] \bar{N}^q - k_F \right] c_k, \\
 \lambda M_k &= -D_F \bar{N} \frac{M_{k-1} - 2M_k + M_{k+1}}{h^2} + \delta_M M_k - k_F \bar{N} c_k, \\
 \lambda \rho_k &= \delta_\rho \bar{\rho}^2 (\eta^{II} - \eta^I) M_k - \delta_\rho \bar{\rho}^2 \bar{N} \left( \frac{k_\rho^{\max}}{a_c^{IV}} + a_c^{II} \right) c_k + 2\delta_\rho \bar{N} \bar{\rho} \rho_k, \tag{17}
 \end{aligned}$$

for the chemical part of the model, and

$$\begin{aligned}
 \lambda v_k &= -\frac{\mu}{\rho_t} \frac{v_{k-1} - 2v_k + v_{k+1}}{h^2} - \frac{E \sqrt{\bar{\rho}}}{\rho_t} \frac{\varepsilon_{k+1} - \varepsilon_{k-1}}{2h} \\
 &\quad - \frac{E \bar{\varepsilon}}{2\rho_t \sqrt{\bar{\rho}}} \frac{\rho_{k+1} - \rho_{k-1}}{2h} - \frac{\xi \bar{\rho}}{\rho_t (R^2 + \bar{\rho}^2)} \frac{M_{k+1} - M_{k-1}}{2h}, \\
 \lambda \varepsilon_k &= (\bar{\varepsilon} - 1) \frac{v_{k+1} - v_{k-1}}{2h} + \zeta \bar{\varepsilon} \bar{N} \hat{c}_k, \tag{18}
 \end{aligned}$$

for the mechanical part of the model. Let

$$c_k = \sum_{\beta=1}^{n-1} \hat{c}_\beta e^{-2\pi\beta k h i}, \quad N_k = \sum_{\beta=1}^{n-1} \hat{N}_\beta e^{-2\pi\beta k h i}, \quad M_k = \sum_{\beta=1}^{n-1} \hat{M}_\beta e^{-2\pi\beta k h i},$$

$$\rho_k = \sum_{\beta=1}^{n-1} \hat{\rho}_\beta e^{-2\pi\beta k h i}, \quad v_k = \sum_{\beta=1}^{n-1} \hat{v}_\beta e^{-2\pi\beta k h i}, \quad \varepsilon_k = \sum_{\beta=1}^{n-1} \hat{\varepsilon}_\beta e^{-2\pi\beta k h i}. \quad (19)$$

Substitution of (19) in equations (17) and (18), subdivision by  $e^{-2\pi\beta k h i}$ , and using Euler’s formula and  $2 - 2 \cos(2\pi\beta h) = 4 \sin^2(\pi\beta h)$  results in

$$\begin{aligned} \lambda \hat{c}_\beta &= \frac{D_c}{h^2} 4 \sin^2(\pi\beta h) \hat{c}_\beta + \bar{N} \left[ \delta_c \bar{\rho} - \frac{k_c}{a_c^I} \right] \hat{c}_\beta, \\ \lambda \hat{N}_\beta &= \frac{D_F \bar{N}}{h^2} 4 \sin^2(\pi\beta h) \hat{N}_\beta - \frac{\chi_F \bar{N}}{h^2} 4 \sin^2(\pi\beta h) \hat{c}_\beta \\ &\quad + \left[ \delta_N - r_F \bar{N}^q ((1+q)(1 - \kappa_F \bar{N}) - \kappa_F \bar{N}) \right] \hat{N}_\beta \\ &\quad + r_F \kappa_F \bar{N}^{1+q} \hat{M}_\beta - \bar{N} \left[ \frac{r_F r_F^{\max}}{a_c^{III}} [1 - \kappa_F \bar{N}] \bar{N}^q - k_F \right] \hat{c}_\beta, \\ \lambda \hat{M}_\beta &= \left[ \frac{D_F \bar{N}}{h^2} 4 \sin^2(\pi\beta h) + \delta_M \right] \hat{M}_\beta - k_F \bar{N} \hat{c}_\beta, \\ \lambda \hat{\rho}_\beta &= \delta_\rho \bar{\rho}^2 (\eta^{II} - \eta^I) \hat{M}_\beta - \delta_\rho \bar{\rho}^2 \bar{N} \left[ \frac{k_\rho^{\max}}{a_c^{IV}} + a_c^{II} \right] \hat{c}_\beta + 2\delta_\rho \bar{N} \bar{\rho} \hat{\rho}_\beta, \end{aligned} \quad (20)$$

for the chemical part of the model, and

$$\begin{aligned} \lambda \hat{v}_\beta &= \frac{\mu}{\rho_t h^2} 4 \sin^2(\pi\beta h) \hat{v}_\beta + i \frac{E \sqrt{\bar{\rho}}}{\rho_t h} \sin(2\pi\beta h) \hat{\varepsilon}_\beta \\ &\quad + i \frac{E \bar{\varepsilon}}{2\rho_t \sqrt{\bar{\rho}} h} \sin(2\pi\beta h) \hat{\rho}_\beta + i \frac{\xi \bar{\rho}}{2\rho_t (R^2 + \bar{\rho}^2) h} \sin(2\pi\beta h) \hat{M}_\beta, \\ \lambda \hat{\varepsilon}_\beta &= -i \frac{(\bar{\varepsilon} - 1)}{h} \sin(2\pi\beta h) \hat{v}_\beta + \zeta \bar{\varepsilon} \bar{N} \hat{c}_\beta, \end{aligned} \quad (21)$$

for the mechanical part of the model. The derivation of equations (20) and (21) is given in Appendix 2. These equations are in the form  $\lambda z = C z$  with the matrix  $C$  as in (15). Hence, we found the eigenvalues in the same way as before. Note that the discrete system is linearly stable if and only if the real part of the eigenvalues is non-negative, hence we need:

$$\begin{aligned} \frac{D_c}{h^2} 4 \sin^2(\pi\beta h) + \bar{N} \left[ \delta_c \bar{\rho} - \frac{k_c}{a_c^I} \right] &\geq 0, \\ \frac{D_F \bar{N}}{h^2} 4 \sin^2(\pi\beta h) - r_F \bar{N}^q ((1+q)(1 - \kappa_F \bar{N}) - \kappa_F \bar{N}) + \delta_N &\geq 0, \\ \frac{D_F \bar{N}}{h^2} 4 \sin^2(\pi\beta h) + \delta_M &\geq 0, \\ 2\delta_\rho \bar{N} \bar{\rho} &\geq 0, \end{aligned}$$

$$\frac{2\mu}{\rho_t h^2} \sin^2(\pi\beta h) \pm \frac{1}{2} \sqrt{\left(\frac{\mu}{\rho_t h^2} 4 \sin^2(\pi\beta h)\right)^2 + 4 \frac{E\sqrt{\bar{\rho}}}{\rho_t h^2} (\bar{\varepsilon} - 1) \sin^2(2\pi\beta h)} \geq 0. \tag{22}$$

To guarantee linear stability, the first requirement states  $\delta_c \bar{\rho} \geq \frac{k_c}{a_c^I}$ . Given  $\delta_N = r_F(1 - \kappa_F \bar{N}) \bar{N}^q$ , the second requirement states  $q \delta_N \leq \kappa_F r_F \bar{N}^{1+q}$ . The third and fourth eigenvalues meet the stability condition independent of the chosen values for the parameters given that the parameters are positive. Finally, for the discrete problem, linear stability is also obtained for  $\bar{\varepsilon} \leq 1$ , and since

$$4 \frac{E\sqrt{\bar{\rho}}}{\rho_t h^2} (1 - \varepsilon) \sin^2(2\pi\beta h) \geq 0, \tag{23}$$

stability is guaranteed for all  $h \in \mathbb{R}_{>0}$ . To conclude, we have demonstrated that if the equilibrium is stable in the continuous problem, then it is also stable in the semi-discrete problem.

There exists a consistency between the stability criteria of the continuous problem and the stability criteria of the discrete problem. We show this consistency by writing  $\sin^2(x)$  as a Taylor series. Substitution into the first and last equation in (22) yields:

$$D_c(2\pi\beta)^2 + \mathcal{O}(h^2) + \bar{N} \left[ \delta_c \bar{\rho} - \frac{k_c}{a_c^I} \right] \geq 0, \\ \frac{(2\pi\beta)^2 \mu}{2\rho_t} + \mathcal{O}(h^2) \pm \frac{1}{2} \sqrt{\left(\frac{(2\pi\beta)^2 \mu}{\rho_t} + \mathcal{O}(h^2)\right)^2 + 4 \frac{(2\pi\beta)^2 E\sqrt{\bar{\rho}}}{\rho_t} (\bar{\varepsilon} - 1) + \mathcal{O}(h^2)} \geq 0. \tag{24}$$

Comparison to the first and last second equation of (16)

$$D_c(2\pi k)^2 + \bar{N} \left[ \delta_c \bar{\rho} - \frac{k_c}{a_c^I} \right] \geq 0, \\ \frac{(2\pi k)^2 \mu}{2\rho_t} \pm \frac{1}{2} \sqrt{\left(\frac{(2\pi k)^2 \mu}{\rho_t}\right)^2 + 4 \frac{(2\pi k)^2 E\sqrt{\bar{\rho}}}{\rho_t} (\bar{\varepsilon} - 1)} \geq 0. \tag{25}$$

yields a difference in eigenvalues of order  $\mathcal{O}(h^2)$ . Note that in the same way, a difference of order  $\mathcal{O}(h^2)$  follows for the second equations of (16) and (22).

Furthermore, the last equation in (22) implies that for real-valued eigenvalues, we need

$$\frac{\mu^2}{\rho_t^2 h^4} 4^2 \sin^4(\pi\beta h) \geq 4 \frac{E\sqrt{\bar{\rho}}}{\rho_t h^2} (1 - \bar{\varepsilon}) \sin^2(2\pi\beta h).$$

Writing  $\sin^2(2\pi\beta h) = 4 \sin^2(\pi\beta h) \cos^2(\pi\beta h)$ , multiplication by  $\frac{\rho_t^2 h^2}{4^2 \sin^4(\pi\beta h)}$  gives

$$\mu^2 \geq \rho_t h^2 E \sqrt{\bar{\rho}} (1 - \varepsilon) \frac{\cos^2(\pi\beta h)}{\sin^2(\pi\beta h)}.$$

Hence the numerical criterium

$$\mu \geq \frac{h}{\tan(\pi\beta h)} \sqrt{\rho_t E \sqrt{\bar{\rho}} (1 - \varepsilon)}. \tag{26}$$

For consistency, we have

$$\lim_{h \rightarrow 0} \frac{h}{\tan(\pi\beta h)} = \lim_{h \rightarrow 0} \frac{\pi\beta h}{\tan(\pi\beta h)} \cdot \frac{1}{\pi\beta} = \frac{1}{\pi\beta}$$

and  $\frac{h}{\tan(\pi\beta h)} \leq \frac{1}{\pi\beta}$ , for  $\beta = 1, \dots, n - 1$  ( $hn = |\Omega|$ ). Hence, for monotonic convergence for  $\beta = 1$ , we see that the convergence is consistent with convergence of the fully continuous model for  $h \rightarrow 0$ . We summarise the results in Theorem 2.

**Theorem 2** *Let  $\{c, N, M, \rho, v, \varepsilon\}$  satisfy the semi-discrete spatial finite differences version of Eqs. (2)–(9). Then stability in the fully continuous problem implies stability in the semi-discrete formulation, regardless of the step-size. Furthermore, monotonic convergence in the fully continuous problem implies monotonic convergence in the semi-discrete problem formulation, regardless of the step-size.*

**Corollary 1** *Let  $\{c, N, M, \rho, v, \varepsilon\}$  satisfy the semi-discrete spatial finite differences version of Eqs. (2)–(9). Let  $\delta_N = r_F(1 - \kappa_F \bar{N})\bar{N}^q$  and  $\bar{\rho} = \sqrt{k_\rho/\delta_\rho}$ , then the equilibria are unconditionally stable for the trapezoid rule and the Euler backward method as long as  $\delta_c \bar{\rho} \geq k_c/a_c^I$  and  $q\delta_N \leq \kappa_F r_F \bar{N}^{1+q}$ . Furthermore, the Euler backward method is A-stable.*

**Remark 2** It is possible that the semi-discrete yields monotonic convergence, whereas the continuous problem does not. The reason for this is that  $\frac{h}{\tan(\pi\beta h)} \leq \frac{1}{\pi\beta}$ . Hence the inequality for the continuous problem is sharper than for the semi-discrete problem.

### 4 Numerical method for validation

We approximate the solution to the model equations by the finite-element method using linear basis functions. For more information about this method, we refer to Van Kan et al. (2014). We multiply the Eqs. (2)–(9) by a test function  $\varphi(x, t) \in H_0^1$ , integrate over the domain of computation  $\Omega$  (integration by parts), apply the application of the Gauss’ theorem, and apply the Leibniz–Reynold’s transport theorem.

To construct the basis functions, we subdivide the domain of computation into  $n \in \mathbb{N}$  sub-domains  $e_p = [x_p, x_{p+1}]$  (i.e., the elements). Let  $X_h(t) = \bigcup e_p$  the finite element subspace and  $x_j, j \in \{1, \dots, n + 1\}$  the vertices of the elements. We choose

$\varphi_i(x_j, t) = \delta_{ij}, i, j \in \{1, \dots, n + 1\}$  as the linear basis functions, where  $\delta_{ij}$  denotes the Kronecker delta function.

Note that the following holds for the chosen subspace  $X_h(t) \subset \Omega_{x,t}: \frac{D\varphi_i}{Dt} = 0$  for all  $\varphi_i$  (Dziuk and Elliot 2007). The Galerkin equations are simplified using this property. We solve the Galerkin equations using backward Euler time integration and we use a monolithic approach with inner Picard iterations to account for the non-linearity of the equations. To avoid loss of monotonicity (i.e. oscillations), we use the process called mass lumping.

We approximate the local displacements by

$$u_i^{t+\Delta t} \simeq u_i^t + \Delta t v_i^{t+\Delta t}, \tag{27}$$

with

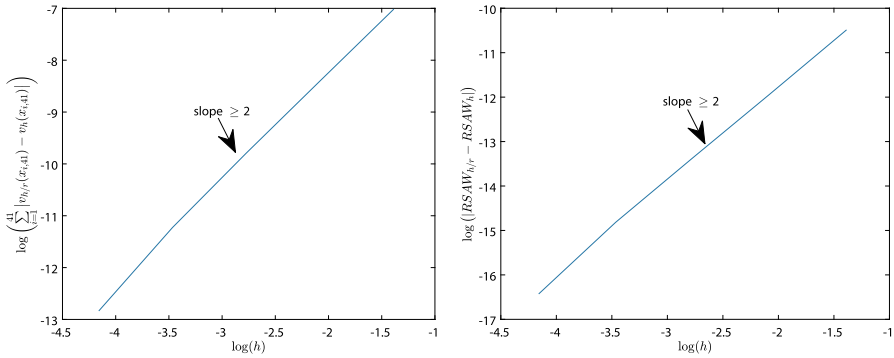
$$u(x, 0) = 0, \quad \forall x \in \Omega_{x,0}, \tag{28}$$

the initial condition.

### 5 Results

To experimentally assess the convergence of the numerical method, we use a domain of computation of 10 cm in which we model a 4 cm large wound. To account for the steepness of the gradients of the initial fibroblast distribution, and signaling molecule and collagen densities, we use an interval with a length of 1 cm over which the initial solution varies between its equilibrium and the initial wound density. Within the wound, we assume that there are 2000 fibroblast cells/cm<sup>3</sup>, 10<sup>-8</sup> g/cm<sup>3</sup> signaling molecules and 0.01125 g/cm<sup>3</sup> collagen present. We model the gradient of the steepness area by sine functions. We divide the domain of computation in  $n$  elements, where  $n \in \{41, 81, 161, 321, 641, 1281\}$ . For each simulation, we define  $\Delta t = h^2$ , where  $h$  is the size of the elements, and simulate skin contraction for 1 day. In each simulation, we report the densities of the variables (the solutions) and the relative surface area of the wound (RSAW). The convergence order results are computed as follows. Let  $\lim_{h \rightarrow 0} z_h(x, 1) = z(x, 1)$  denote the true density of variable  $z$  on day 1 and  $z_{0.0078}(x, 1) =: z_{h/r}$  the solution in the last simulation (i.e., the reference, which has been computed using the highest numerical resolution). We approximate the errors  $\epsilon := \int |z - z_h| dx$  of the solutions on the full domain of computation, and since we are interested in the wound boundary's displacement, we approximate the errors of the solutions on the boundary of the wound in particular. For this, we use the following error definition:

$$\epsilon_{|41|}(h) = \sum_{i=1}^{41} |z_{h/r}(x_{i,41}) - z_h(x_{i,41})|, \tag{29}$$



**Fig. 1** Numerical validation of convergence. Here, the contraction of a wound of 4 cm, with 1 cm steepness, on a domain of 10 cm is simulated. Initially, in the wound there are 2000 fibroblast cells/cm<sup>3</sup>, 10<sup>-8</sup> g/cm<sup>3</sup> signaling molecules and 0.01125 g/cm<sup>3</sup> collagen present. The values of the other parameters are shown in Table 1. The left plot shows the logarithm of the step size versus the logarithm of the absolute displacement velocity error on the domain of computation on a fixed number of grid-points. The right plot shows the logarithm of the step size  $h$  versus the logarithm of the absolute relative surface area error

where the grid-points  $x_{i,n}$  correspond to the grid-points in the simulation with  $n = 41$  nodes. This error is a variant of the  $L^1$ -norm in which we evaluate the solution to the equations on the same grid-points.

Figure 1 shows some results for error  $\epsilon_{|41|}$ , where we show the relations of the errors with the element size  $h$  for the displacement velocity, and the error of the relative surface area of the wound.

From the left plot, we see that the absolute error of the displacement velocity decreases consistently as  $h$  becomes smaller. The average slope of this graph is 2.1882, hence the order of convergence is about  $\mathcal{O}(h^2)$ . From the right plot, we see that the absolute error of the relative surface area of the wound decreases consistently as  $h$  becomes smaller. The average slope of this graph is 2.2092, showing an order of convergence about  $\mathcal{O}(h^2)$  as well. We note that all averaged slopes of the logarithms of the absolute errors of the variables and the relative surface area of the wound show an overall consistent convergence of order  $\mathcal{O}(h^2)$ . One finds these slopes in Table 2.

To validate the model’s stability, we perturb the initial conditions around equilibria using sine functions, and we vary the parameters  $\delta_c$  and  $\mu$ . We use  $n = 500$  elements to divide the domain of computation between 0 and 1, which represents half a domain of the modeled skin on which we perform computations. This is possible because of the symmetry of the model. We fix all parameters except for  $\delta_c$  and  $\mu$ . Table 1 shows the values of the fixed parameters. When not stated otherwise, for time integration, we use a step of  $\Delta t = 5 \times 10^{-1}$  days.

For the initial conditions, we vary the number of waves  $k$  using three levels (1, 5 and 10). We perturb the initial condition for the fibroblasts and collagen by using a sine function with amplitude 10 cells/cm<sup>3</sup> and 10<sup>-2</sup> g/cm<sup>3</sup>, respectively. This is possible because the equilibrium distribution of the fibroblasts and the equilibrium density of collagen are non-zero. For the initial condition of the myofibroblasts and the signaling molecules, we use uniform splines with  $2k + 1$  knots. On the boundaries, the knots have zero value, and in between the values are 3 and 6 cells/cm<sup>3</sup> for the myofibroblasts, and

**Table 1** Overview of the parameters used for the simulations. Shown are the symbols, values, dimensions and references. Here TW denotes that the value of the parameter is estimated in the study, and NC denotes that the value of the parameter is a consequence because of the chosen values for other parameters

Symbol	Value	Dimension	Reference
$D_c$	$2.88 \times 10^{-3}$	cm <sup>2</sup> /day	Haugh (2006)
$D_F$	$10^{-7}$	cm <sup>5</sup> /(cells day)	Sillman et al. (2003)
$\chi_F$	$2 \times 10^{-3}$	cm <sup>5</sup> /(g day)	Murphy et al. (2012)
$k_c$	$4 \times 10^{-13}$	g/(cells day)	Olsen et al. (1995)
$r_F$	$9.24 \times 10^{-1}$	cm <sup>3q</sup> /(cells <sup>q</sup> day)	Alberts et al. (1989) & Gosh et al. (2007)
$r_F^{\max}$	2	–	Strutz (2001)
$k_\rho$	$7.6 \times 10^{-8}$	g/(cells day)	[NC, Eq. (7)]
$k_\rho^{\max}$	10	–	Olsen et al. (1995)
$a_c^I$	$10^{-8}$	g/cm <sup>3</sup>	Olsen et al. (1995)
$a_c^{II}$	$2 \times 10^8$	cm <sup>3</sup> /g	Overall et al. (1991)
$a_c^{III}$	$10^{-8}$	g/cm <sup>3</sup>	Grotendorst (1992) & Olsen et al. (1995)
$a_c^{IV}$	$10^{-9}$	g/cm <sup>3</sup>	Roberts et al. (1986)
$\eta^I$	2	–	Rudolph and Vande Berg (1991)
$\eta^{II}$	$5 \times 10^{-1}$	–	[TW]
$k_F$	$1.08 \times 10^7$	cm <sup>3</sup> /(g day)	Desmoulière et al. (1993)
$\kappa_F$	$10^{-6}$	cm <sup>3</sup> /cells	Vande Berg et al. (1989)
$q$	$-4.151 \times 10^{-1}$	–	[NC, Eq. (5)]
$\delta_c$	$5 \times 10^{-4}$	cm <sup>6</sup> /(cells g day)	Olsen et al. (1995)
$\delta_N$	$2 \times 10^{-2}$	/day	Olsen et al. (1995)
$\delta_M$	$6 \times 10^{-2}$	/day	Koppenol et al. (2017b)
$\delta_\rho$	$6 \times 10^{-6}$	cm <sup>6</sup> /(cells g day)	Koppenol et al. (2017b)
$\bar{N}$	$10^4$	cells/cm <sup>3</sup>	Olsen et al. (1995)
$\bar{M}$	0	cells/cm <sup>3</sup>	Olsen et al. (1995)
$\bar{c}$	0	g/cm <sup>3</sup>	Koppenol et al. (2017b)
$\bar{\rho}$	$1.125 \times 10^{-1}$	g/cm <sup>3</sup>	Olsen et al. (1995)
$\rho_r$	1.09	g/cm <sup>3</sup>	Wrobel et al. (2009)
$\mu$	$10^2$	(N day)/cm <sup>2</sup>	[TW]
$E$	$2.1 \times 10^2$	N/((g cm) <sup>0.5</sup> )	[TW]
$\xi$	$4.4 \times 10^{-2}$	(N g)/(cells cm <sup>2</sup> )	Maskarinec et al. (2009) & Wrobel et al. (2002)
$R$	$9.95 \times 10^{-1}$	g/cm <sup>3</sup>	[TW]
$\zeta$	$4 \times 10^2$	cm <sup>6</sup> /(cells g day)	[TW]

$0.5 \times 10^{-15}$  and  $2 \times 10^{-15}$  g/cm<sup>3</sup> for the signaling molecules. This way we ensure that the myofibroblast distribution and signaling molecule density values are positive. The initial amplitudes of the displacement velocity and effective strain are 0.05 and 0.5, respectively.

For stability, Theorem 1 requires that  $\delta_c \geq \frac{k_c}{a_c^I \bar{\rho}}$  in case  $k = 0$ . Further, given that the equilibrium density of the effective strain is less than 1, eigenvalues are real-

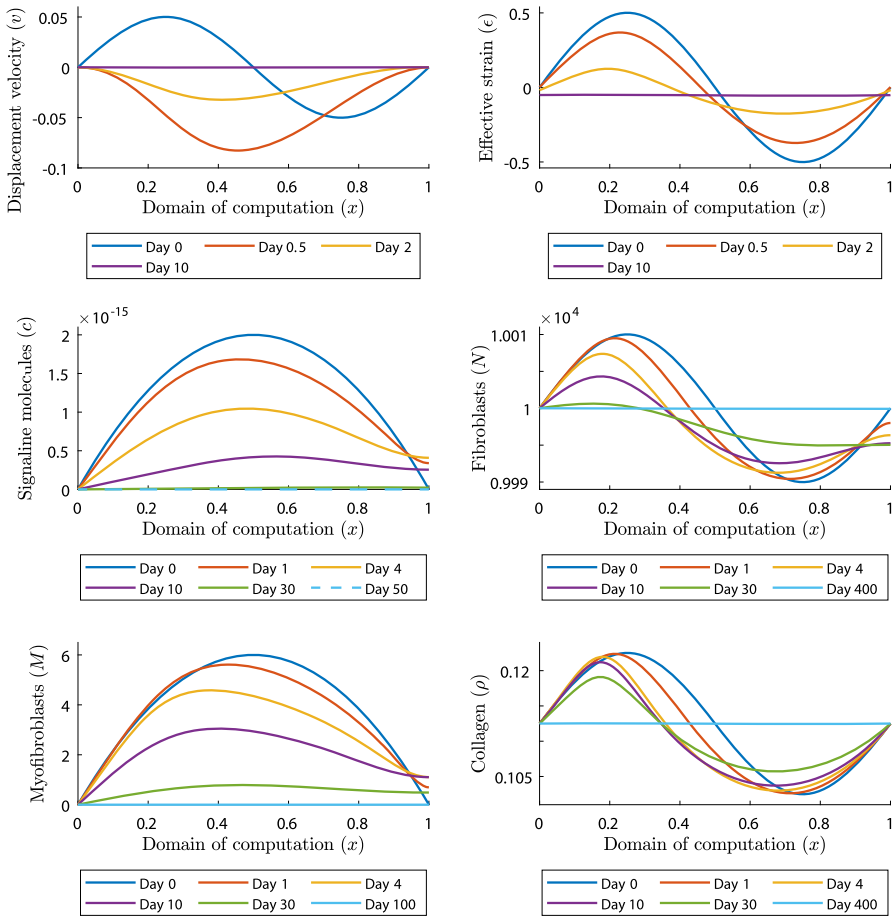
**Table 2** Overview of the averaged slopes of the errors of the variables for different element sizes  $h$  on the full domain of computation and on the boundary of the wound. The columns show slopes for the different errors, and the rows show the averaged slopes for the variables. The last column shows the averaged slopes of the rows. The reference is the solution in which  $h = 0.0078$ . For completeness, Appendix 3 shows other error definitions

Variable	$\epsilon_{ 41 }$	$\epsilon_{L1}$	$\epsilon_{L2}$	$\epsilon_{boundary}$	Averaged
$N$	2.1843	2.0160	1.9701	2.1850	2.0889
$M$	2.1735	2.1203	2.0961	2.1892	2.1448
$c$	2.1900	2.0964	2.0675	2.0929	2.1117
$\rho$	2.1911	2.0626	1.9211	2.1708	2.0864
$v$	2.1882	2.1891	2.1911	2.1189	2.1718
$\varepsilon$	2.2283	2.2301	2.2521	2.2403	2.2377

valued if and only if  $\mu \geq \sqrt{\rho_t E \sqrt{\rho}(1 - \varepsilon_0)}/\pi$  in case  $k = 1$ . We choose to vary the signaling molecule decay rate  $\delta_c$  using three levels ( $2 \times 10^{-4}$ ,  $3 \times 10^{-4}$  and  $5 \times 10^{-4}$ )  $\text{cm}^6/(\text{cells g day})$ , where the first two values are chosen such that the stability condition is not met. We vary the viscosity parameter  $\mu$  using two levels (1 and 100)  $(\text{N day})/\text{cm}^2$ . The first value is chosen such that the corresponding eigenvalue is not real-valued. Videos corresponding to the shown figures can be found in the online resources. The values of the fixed parameters can be found in Appendix 3.

In the first simulation, we take  $\delta_c = 5 \times 10^{-4} \text{ cm}^6/(\text{cells g day})$  and  $\mu = 100$   $(\text{N day})/\text{cm}^2$  and simulate for 400 days. We note that for these values, the stability criteria are met. Figure 2 shows the results.

We see that the displacement velocity density rearranges to negative values. As the density moves below zero, the amplitude of the wave initially increases, after which the density moves gradually toward the equilibrium  $v = 0$ . The effective strain density does not change signs. The values on the boundaries of the domain of computation initially move away from the equilibrium, where all other values gradually move toward the equilibrium  $\varepsilon \approx -0.05$ . Because of the boundary condition, the signaling molecule density is fixed at equilibrium on the left boundary of the domain of computation. We see that on the right boundary, the density increases in the first days, after which it decreases to the equilibrium  $c = 0 \text{ g/cm}^3$ . Because of the negative values of the displacement velocity density after 12 h, the mesh moves to the left. This is most clear in the fibroblast plot. During the simulation, the fibroblast distribution displacements to the left, and values above the equilibrium gradually move toward the equilibrium  $N = 10^4 \text{ cells/cm}^3$ . The fibroblast distribution on the right boundary starts by moving away from the equilibrium as the fibroblasts differentiate to myofibroblasts because of the increased density of signaling molecules. After the signaling molecule density is almost zero around the right boundary on day 30, the fibroblast distribution moves toward the equilibrium, reaching it fully around day 400. We see the same effect in the myofibroblast plot, where the distribution moves to the left, and moves gradually toward the equilibrium  $M = 0 \text{ cells/cm}^3$ . Only the values on the right boundary move away from the equilibrium in the first 10 days, because of the differentiated fibroblasts. The plot of collagen is like the plot of the effective strain, although the effect of the



**Fig. 2** Evolution of distributions and densities of the modeled variables for  $\delta_c = 5 \times 10^{-4} \text{ cm}^6/(\text{cells g day})$  and  $\mu = 100 \text{ (N day)/cm}^2$ . Table 1 shows the values of the other parameters. The plots on the upper left and right, the middle left and right, and the lower left and right show the displacement velocity, the effective strain, the signaling molecules, the fibroblasts, the myofibroblasts, and collagen, respectively

local displacements seems larger for collagen, and for collagen it takes much longer before the density reaches the equilibrium  $\rho = 0.1125 \text{ g/cm}^3$ . Overall, the model behaves absolutely stable given these stable parameter values.

From a biological perspective, minor variations in the number of (myo) fibroblast cells, and in the density of signaling molecules and collagen, already initialises wound healing in which contraction appears for 100 days. If there is a disruption in the distribution of collagen, the skin recovers this almost immediately. However, this process takes longer than for signaling molecules, for example. Further, local displacements in the skin are in the direction toward the center of the wound or in the direction of the boundary of the wound.

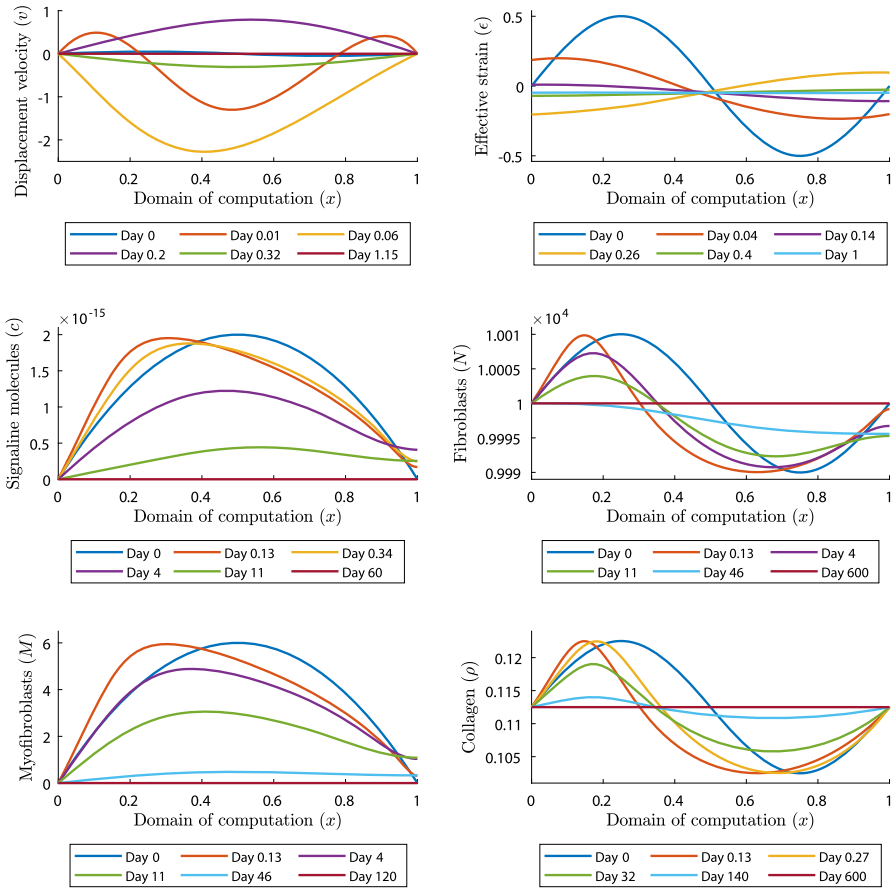
Next, in the second, third and fourth ( $k = 1, 5, 10$ ) simulations we take  $\delta_c = 2 \times 10^{-4} \text{ cm}^6/(\text{cells g day})$  and  $\mu = 100 \text{ (N day)/cm}^2$  and simulate for 1200 days

(not shown). While running these simulations, at first the constituents (almost) reach their equilibria. For  $k = 1$ , the signaling molecule density reaches the equilibrium around day 250, the fibroblast distribution changes towards equilibrium until day 650, the myofibroblast distribution reaches equilibrium around day 390, and the collagen density around day 650 as well. Further, both the displacement velocity and effective strain density reach equilibria within 15 days. However, from day 660, the signaling molecule density increases and starts decreasing around day 753. The fibroblast distribution decreases after day 650 and starts increasing around day 745 again. The myofibroblast distribution also increases, which happens around day 638, and starts decreasing again around day 704. Shortly after the collagen density seems to reach equilibrium around day 650, the density explodes and does not start decreasing. Because of singular matrices, we ended this simulation. The Picard iterations did not converge and because of NaN's in all the solutions, there were no plots available anymore. We see the same where  $k = 5, 10$ .

Theoretically, if the human body or an external factor reduces the decay rate of signaling molecules too much, then initially, this does not cause the skin to rupture. However, after a few years, the secretion of signaling molecules can increase significantly, causing such problems. Present fibroblasts fully differentiate into myofibroblasts. The scar will undergo a severe contraction, and collagen will cause tissue to rupture because of excessive production. We believe that the human body protects against the lowering of the decay rate of signaling molecules to this extent, in order to prevent such a non-realistic occurrence.

Next, in the fifth, sixth and seventh ( $k = 1, 5, 10$ ) simulations we take  $\delta_c = 5 \times 10^{-4} \text{ cm}^6/(\text{cells g day})$  and  $\mu = 1 \text{ (N day)/cm}^2$  and simulate for 600 days. Note that the signaling molecule decay rate stability condition is met and that we focus on the effect of complex eigenvalues in the mechanical part of the model. Initially, we use a time step of  $\Delta t = 0.01$ , and we change that to  $\Delta t = 1$  after 2 days, and to  $\Delta t = 2$  after 50 days. Figure 3 shows the results for  $k = 1$ .

We see that all the constituents reach equilibria within 600 days, after which the distributions and densities do not change anymore. Initially, the displacement velocity density oscillates around zero, moving the mesh to the left and right, and the effective strain density oscillates around the (new) equilibrium. Shortly after the start of the simulation, the wave in the displacement velocity density fades out. Further, within approximately 15 min, the amplitude increases by a factor 10 above the equilibrium value, and by a factor 25 below the equilibrium value. Shortly after that, around approximately 1.5 h, the amplitude of the displacement velocity density has increased by a factor 45, after which the amplitude decreases until zero. Both the displacement velocity density and effective strain density reach the equilibria within a few days, the displacement velocity density reaching the equilibrium  $v = 0$  first. Note that these results both confirm the non-monotonic convergence from the variations around  $\bar{\varepsilon}$  (see Theorem 1 and Theorem 2). We see the mesh also moving in the plots of the constituents. While the displacement velocity density oscillates, the distributions and densities of the constituents move from the right to the left and back, until the distributions and densities move gradually towards the equilibria. First, the signaling molecules density reaches equilibrium around day 60. About twice that time, around 120 days, the myofibroblast distribution reaches equilibrium. The fibroblast distri-



**Fig. 3** Evolution of distributions and densities of the modeled variables for  $\delta_c = 5 \times 10^{-4} \text{ cm}^6 / (\text{cells g day})$  and  $\mu = 1 \text{ (N day)}/\text{cm}^2$ . Table 1 shows the values of the other parameters. The plots on the upper left and right, the middle left and right, and the lower left and right show the displacement velocity, the effective strain, the signaling molecules, the fibroblasts, the myofibroblasts, and collagen, respectively

bution grows as follows. After a few days, when the displacement velocity density reaches equilibrium, the fibroblast distribution above the equilibrium decreases, and the fibroblast distribution below the equilibrium increases, except for the fibroblast distribution around the right boundary of the domain of computation, representing the center of the portion of skin that we model. The number of fibroblasts around this right boundary decreases until about 23 days, after which it increases towards equilibrium. The collagen density changes calmly: the density above the equilibrium moves downward to the equilibrium, and the density below the equilibrium moves upward to the equilibrium.

Where  $k = 5$  (figures not shown), the results show that increasing the number of waves makes the initial increase in amplitudes in the displacement velocity density smaller. Again, initially this amplitude increases around 15 min, after which it

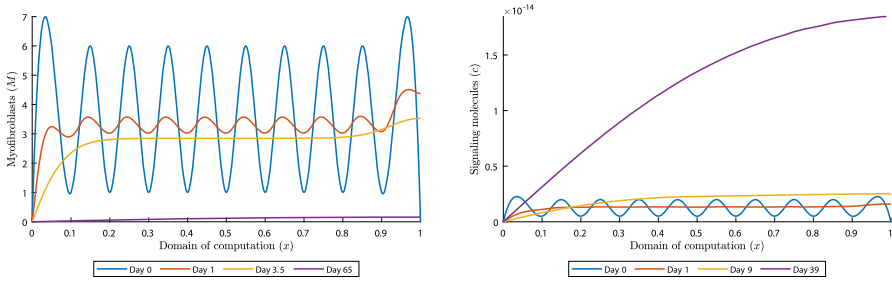
decreases while the density oscillates around the equilibrium. Fading out the waves takes more time, here about 4.8 h, compared to 1.5 h where  $k = 1$ , and the local displacements are much smaller. The other densities and distributions change similarly to where  $k = 1$ , except for some features. Equilibria are reached around day 112, 210, and 600 for the signaling molecule density, the myofibroblast distribution, the fibroblast distribution and collagen density, respectively, the first two later than where  $k = 1$ . The waves in the fibroblast distribution disappear faster and the distribution moves faster toward the equilibrium. The smaller local displacements are clearly visible in the plots of the constituents. We have seen that the signaling molecule density shifts to the left between 0 and 3 h, and to the right between 3 and 8 h. Further, the density decreases gradually toward the equilibrium, and the waves have already started fading out on day 4.

Comparing the results from the simulation where  $k = 10$  (figures not shown) with the simulations where  $k = 1, 5$ , we conclude the waves fade out faster for faster oscillating perturbations and that initially, the distributions and densities of the constituents and the effective strain move faster toward the equilibria. In addition, the initial increase in amplitude in the displacement velocity density is larger for smaller  $k$ . Taken these numerical results together, we can confirm that the one-dimensional morphoelastic framework for skin contraction is stable given that  $\delta_c \geq k_c / (a_c^I \bar{\rho})$ .

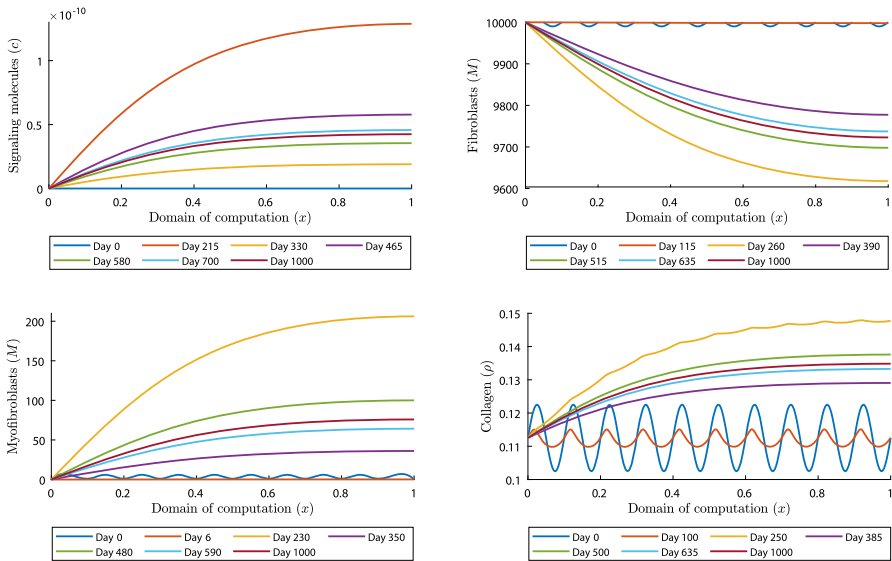
From a biological perspective, a large value of the viscosity mimics an extensive amount of damping, and this damping term makes the equation for the displacement velocity more ‘diffusive’. A diffusion equation satisfies a maximum principle, we can only assume the extremes on the boundary of the domain or initially, unless the solution is constant. This implies that the solution must behave more monotonically for large viscosities, shown by the upper left plot in Fig. 2. A small value in the viscosity makes the equation for the displacement velocity less diffusive, so that the boundary of the domain does not bound the extremes or initially, shown by the upper left plot in Fig. 3. Here, the modeled medium is less resistant to the rate of deformation, and given the initial fluctuation in the displacement velocity density, this results not only in a back-and-forth movement in the displacement, also a direct effect in the stress (effective strain) that is proportional to the shear deformation.

As stated before, the model can numerically be unstable when  $\delta_c < k_c / (a_c^I \bar{\rho})$ . However, we have seen that sometimes for small signaling molecule decay rates not too far below the stated lower boundary, the model still converges. In the last simulation we set the number of waves with  $k = 10$ , and we take  $\delta_c = 3 \times 10^{-4} \text{ cm}^6 / (\text{cells g day})$  and  $\mu = 100 \text{ (N day)}/\text{cm}^2$ . Figures 4 and 5 show some results of the simulation of 1000 days. These show that the model converges, and highlight what happens in this case.

First, everything seems calm until day 60 (for example, see the left plot in Fig. 4). The displacement velocity density (figure not shown) reaches equilibrium within 10 days, and the effective strain density around day 20. However, the initial perturbed waves are still visible. Initially, the signaling molecule density decreases, but on approximately day 9 the upper bound of the density surpasses the initial upper bound (see the right plot in Fig. 4). The signaling molecule density keeps increasing until day 215, affecting the (myo)fibroblast distributions and the collagen density, shown in Fig. 5.



**Fig. 4** (early) Evolution of myofibroblast distribution and signaling molecule density for  $\delta_c = 3 \times 10^{-4} \text{ cm}^6/(\text{cells g day})$  and  $\mu = 100 \text{ (N day)/cm}^2$  and  $k = 10$ . Table 1 shows the values of the other parameters. The left and right plots show the myofibroblasts and the signaling molecules, respectively



**Fig. 5** Evolution of distributions and densities of the constituents for  $\delta_c = 3 \times 10^{-4} \text{ cm}^6/(\text{cells g day})$  and  $\mu = 100 \text{ (N day)/cm}^2$  and  $k = 10$ . Table 1 shows the values of the other parameters. The plots on the upper left and right, and lower left and right, show the signaling molecules, the fibroblasts, the myofibroblasts and collagen, respectively

The initial perturbed waves in the (myo)fibroblast distribution fade out within 4.5 days. Both distributions move toward the corresponding equilibria  $10^4 \text{ cells/cm}^3$  and approximately  $0.16 \text{ cells/cm}^3$  (hence no cells), respectively. However, on days 63.5 and 65, for the fibroblasts and myofibroblasts respectively, the distributions move away from the equilibria. Only the collagen density is not affected by this setup until day 120, after which this density increases.

After the signaling molecule density decreases from day 215 on, the myofibroblast distribution, the collagen density and the fibroblast distribution keep moving away from their equilibria until days 230, 250 and 260, respectively. From the plot for collagen, it takes more time to fade out the initial perturbed waves. From these moments

(i.e., the days where maxima and minima are reached), the distributions and densities of the constituents oscillate around a new equilibrium. At the end of the simulation of 1000 days the new equilibria in the center of the modeled skin are  $4.245 \times 10^{-11}$  g/cm<sup>3</sup>, 9723 cells/cm<sup>3</sup>, 76 cells/cm<sup>3</sup>, and 0.1348 g/cm<sup>3</sup> for the signaling molecules, the fibroblasts, the myofibroblasts, and collagen, respectively.

From a biological perspective, if there is an enhanced expression of signaling molecules because of their reduced decay, a wound may heal properly at first. However, over time, persistent signaling will lead to over-expression of signaling molecules, resulting in excessive scarring and contraction. The excessive deposition of collagen is reminiscent of keloids and hypertrophic scars, characterised by thicker collagen bundles (Tuan and Nichten 1998). In addition, myofibroblasts are abundant in hypertrophic scars. Since aberrant TGF- $\beta$  signaling in myofibroblasts is associated with the formation of hypertrophic scars (Zhang et al. 2020), it is likely that such a situation exists precisely because of a lower decay rate of signaling molecules. Further, hypertrophic scars are not immediately visible after injury. These scars develop in 1 to 2 months after injury, whereas keloids develop months to years after the initial injury, supporting our results. Experimental evidence suggests that fibroblasts from hypertrophic scars might represent a hyper-proliferative phenotype that can be reverted once the stimulation, such as the overabundance of growth factors, is lifted (Tuan and Nichten 1998). We verified this by setting the signaling molecule density to equilibrium on day 1000 and saw that this directly initiates the change of the (myo)fibroblast distributions and collagen density toward the healthy equilibria. First, the myofibroblasts disappear after 100 days, then 350 days later, the collagen density reaches equilibrium, and finally 100 days after that, the fibroblast distribution reaches equilibrium. Hence, according to our simulation, it takes about 1.5 year to reverse the process. To conclude this Section, the model is stable under the condition that the decay rate of the signaling molecules is not too far decreased to values below the stated bound  $\delta_c \geq k_c / (a_c^l \bar{\rho})$ .

## 6 Conclusion and discussion

In this study, we investigate the stability of the one-dimensional model for intensity of contraction and the formation of contractures in burn scars. The model presented in this paper is the one-dimensional version of the morphoelastic model developed by Koppenol. This model is based on the theory and derivations developed by Hall (2008). In this model, four constituents are incorporated: fibroblasts, myofibroblasts, signaling molecules, and collagen. Furthermore, we use equations for the displacement of the dermal layer, the displacement velocity of the dermal layer, and the effective Eulerian strain present in the dermal layer.

We presented a stability analysis for the model, for both the fully continuous and the semi-discrete (where the spatial derivatives have been replaced with differences) version of the problem. A surprising result was that we could derive the eigenvalues of the matrix involved in the stability analytically. This is possible because the linearised equations (11) leave out other variables after accounting for the equilibria values. As a result, we could say that three of the six eigenvalues meet the stability constraints independent of the chosen value for the parameters, given that the parameters involved

are positive and realistic. We have shown that the equilibrium distribution of the effective strain should meet  $\bar{\varepsilon} \leq 1$ , and that the parameter that represents the viscosity of skin should be greater or equal to a factor containing the total mass density of dermal tissues, the Young's Modulus and the equilibrium distribution of the effective strain, to have monotonically behavior of the solution. Note that the stability criterium of the effective strain is also a physical requirement, from Eq. (9). Further, another important stability constraint states the model is stable on the condition that the decay rate of the signaling molecules is greater than a factor concerning the maximum net secretion rate of the signaling molecules, the concentration of the signaling molecules that causes half-maximum net secretion rate of the signaling molecules, and the collagen equilibrium density.

We have shown that there is a consistency between the eigenvalues of the discrete model which we used for the uniform grid based finite element approximation, and the eigenvalues of the continuous model which is the 'true' model. We see that if the equilibrium solution to the continuous problem is stable, then the equilibrium to the semi-discrete problem is also stable under the current discretization (that is, if we use the right discretization method). The convergence rate towards the equilibrium is determined by the obtained eigenvalues of the system. In case  $\mu \geq \frac{h}{\tan(\pi\beta h)} \sqrt{\rho_t E \sqrt{\bar{\rho}} (1 - \bar{\varepsilon})}$ , convergence in the semi-discrete system is monotonic for  $\beta = 1$  and consistent for  $h \rightarrow 0$ . For monotonic convergence in the continuous system it must hold that  $\mu \geq \frac{1}{\pi} \sqrt{\rho_t E \sqrt{\bar{\rho}} (1 - \bar{\varepsilon})} \geq \frac{h}{\tan(\pi\beta h)} \sqrt{\rho_t E \sqrt{\bar{\rho}} (1 - \bar{\varepsilon})}$ ,  $\beta = 1, \dots, n - 1$ . Hence, monotonic convergence in the continuous system implies monotonic convergence in the semi-discrete system. Conversely, convergence could be monotonic in the semi-discrete system and not in the continuous system. We have assessed the convergence of the numerical method experimentally, in which the order of convergence is of order  $\mathcal{O}(h^2)$ . Since the difference between the eigenvalues from the continuous and semi-discrete problem is of the order  $\mathcal{O}(h^2)$ , the convergence rates towards the equilibrium differ by an order  $\mathcal{O}(h^2)$ . This is in accordance with the expectations since the discretization method should have local truncation errors of order  $\mathcal{O}(h^2)$ .

Using numerical simulations, we validated the stability constraints that we derived from the analysis. In case we meet stability criteria, the model behaves absolutely stable given these stable parameter values. Because of the initial perturbation, it takes some time to rearrange the distribution of (myo)fibroblasts and the densities of signaling molecules and collagen. First, the signaling molecule density increases in the center of the modeled skin, after which local fibroblasts differentiate to myofibroblasts, decreasing the local fibroblast distribution and increasing the local myofibroblast distribution. Because of the initial perturbation in the displacement velocity density, there are local displacements. Because the displacement velocity density rearranges such that all values have the same sign, the mesh moves in one particular direction. Both the collagen density and effective strain density gradually move toward the equilibrium. We conclude that a small perturbation of order  $\mathcal{O}(10^{-15}) \text{ g/cm}^3$  in the signaling molecule density and a few cells in the (myo)fibroblast distributions is already responsible for initializing wound healing that takes more than a year time.

In case we do not meet the signaling molecule stability condition  $\delta_c \geq k_c/(a_c^l \bar{\rho})$ , the model can numerically be unstable. Initially, the model seems stable. The signaling molecule density and myofibroblast distribution seem to reach equilibria first, after which the fibroblast distribution and the collagen density seem to reach equilibria as well. Shortly after this has happened, the signaling molecule density or the myofibroblast distribution increase first, after which the fibroblast distribution drops and the collagen density explodes. Although the signaling molecule density and (myo)fibroblast distributions move back towards the equilibria, the collagen density does not, and therefore the numerical method does not converge. Because of the lack of convergence in the inner Picard iterations, the numerical method cannot attain a solution.

We confirmed the model is stable if the eigenvalues are not real-valued. If the viscosity is low, the figures show that the distributions and densities of the variables reach their equilibrium densities. Though, in this case convergence is not monotonic, but oscillates as seen in Fig. 3. Besides this conclusion, we point out that the larger the number of initial perturbed waves, the faster the equilibria are reached and the faster the initial oscillations fade out. Because of an initial increase in amplitude in, and the oscillating behavior of, the displacement velocity density, the mesh moves shortly after the start of the simulation back and forth to the left and right. After the displacement velocity density stabilises, the distributions and densities of the constituents move gradually toward the equilibria. In conclusion, we need real-valued eigenvalues to prevent the model to increase the amplitudes of the initial perturbations in the displacement velocity density. However, this does not induce instability in terms of equilibria.

If we have  $\delta_c < k_c/(a_c^l \bar{\rho})$  not too far below the bound, then the signaling molecules move away from equilibrium and affect the distributions of the fibroblasts and the myofibroblasts. All the constituents move away from the expected equilibria and oscillate around new equilibria. The collagen density still shows the initial waves of the perturbations around day 260, while these waves already vanished in the other densities. We have linked this situation to real-life scar occurrences, namely hypertrophic scars and keloids. By reverting the stimulation of matrix production and differentiation to myofibroblasts by setting the signaling molecule density to (healthy) equilibrium, we have provided experimental evidence, from a mathematical point of view, that a disturbance in (myo)fibroblast cell and collagen densities can indeed be reverted. Taken together, the numerical model fully reproduces the stability constraints.

It would interest to incorporate hypertrophy to this one-dimensional morphoelastic model (Koppenol et al. 2017b), since hypertrophic scars can also develop contractures and elevate above healthy skin levels. The beauty of the one-dimensional model is the speed, hence incorporation of hypertrophy will quickly yield new results and therefore insight. However, validating results from such a model is a challenge since hypertrophy depends highly on angiogenesis, which nowadays seems impossible to test in vitro.

An interesting direction is to model the boundaries of the wounded area as elastic springs, since with the current setting the boundary of the domain of computation needs to be sufficiently far away. We are planning on incorporating pulling and stretching forces because of the growth of children and motility. A first attempt to incorporate the

growth of children is to add terms to the right-hand side of Eq. (8) representing body forces. Another attempt is to incorporate forces by adding new boundary conditions.

Considering the modeling choices, we could keep a linear growth rate and introducing a tune-able quadratic cell death term for fitting equilibrium, instead of with the constant  $q$  in equation (3). We can also easily consider that myofibroblasts in response to TGF- $\beta$  move slower than fibroblasts (Thampatty and Wang 2006), and that in vitro myofibroblasts can differentiate back to fibroblasts under the influence of Prostaglandin E2 (PGE2) (Garrison et al. 2013).

If we study the stability of the multi-dimensional framework, we have to deal with the skewed displacement velocity gradient tensor. We do not expect any limiting problems in the model's chemistry, to which we can easily apply the usual Fourier transforms. Though we can prove that the strain tensor remains symmetric if the initial strain is symmetric, the analysis of stability of the mechanical equations for higher dimensionality can be a challenge because of the skewed parts in the evolution equation. The symmetry result simplifies the stability analysis. From a computational point of view, the challenge is to optimize calculations in 2D and 3D because of the growing number of elements, arbitrary geometries, and artificial negative concentrations. Parallel computation, the use of isogeometric analysis (IGA) and flux correction techniques can provide a solution for this.

**Supplementary Information** The online version contains supplementary material available at <https://doi.org/10.1007/s00285-021-01648-5>.

**Acknowledgements** The authors are grateful for the financial support by the Dutch Burns Foundation under Project 17.105.

**Funding** This project is funded by the Dutch Burns Foundation under Project 17.105.

**Availability of data and material** All relevant data will be available in the 4TU.Centre for Research Data.

**Code availability** All relevant code will be available in the 4TU.Centre for Research Data.

## Declarations

**Conflicts of interest** The authors declare that they have no conflict of interest.

**Open Access** This article is licensed under a Creative Commons Attribution 4.0 International License, which permits use, sharing, adaptation, distribution and reproduction in any medium or format, as long as you give appropriate credit to the original author(s) and the source, provide a link to the Creative Commons licence, and indicate if changes were made. The images or other third party material in this article are included in the article's Creative Commons licence, unless indicated otherwise in a credit line to the material. If material is not included in the article's Creative Commons licence and your intended use is not permitted by statutory regulation or exceeds the permitted use, you will need to obtain permission directly from the copyright holder. To view a copy of this licence, visit <http://creativecommons.org/licenses/by/4.0/>.

## Appendices

### Appendix 1: The derivation of the stability constraints for the continuous problem

First we substitute the variations (12) into the linearised equations (11). This yields

$$\begin{aligned}
 & \frac{1}{|\Omega|} \sum_{j=-\infty}^{\infty} \dot{c}_j^c(t) e^{2i\pi jx} + \frac{D_c}{|\Omega|} \sum_{j=-\infty}^{\infty} (2\pi j)^2 c_j^c(t) e^{2i\pi jx} \\
 & + \frac{\bar{N}}{|\Omega|} \left[ \delta_c \bar{\rho} - \frac{k_c}{a_c^I} \right] \sum_{j=-\infty}^{\infty} c_j^c(t) e^{2i\pi jx} = 0, \\
 & \frac{1}{|\Omega|} \sum_{j=-\infty}^{\infty} \dot{c}_j^N(t) e^{2i\pi jx} + \frac{D_F \bar{N}}{|\Omega|} \sum_{j=-\infty}^{\infty} (2\pi j)^2 c_j^N(t) e^{2i\pi jx} \\
 & - \frac{\chi_F \bar{N}}{|\Omega|} \sum_{j=-\infty}^{\infty} (2\pi j)^2 c_j^c(t) e^{2i\pi jx} + \frac{\delta_N}{|\Omega|} \sum_{j=-\infty}^{\infty} c_j^N(t) e^{2i\pi jx} \\
 & - \frac{r_F}{|\Omega|} \bar{N}^q ((1+q)(1-\kappa_F \bar{N}) - \kappa_F \bar{N}) \sum_{j=-\infty}^{\infty} c_j^N(t) e^{2i\pi jx} \\
 & + \frac{r_F \kappa_F \bar{N}^{1+q}}{|\Omega|} \sum_{j=-\infty}^{\infty} c_j^M(t) e^{2i\pi jx} \\
 & - \frac{\bar{N}}{|\Omega|} \left[ \frac{r_F r_F^{\max}}{a_c^{III}} [1 - \kappa_F \bar{N}] \bar{N}^q - k_F \right] \sum_{j=-\infty}^{\infty} c_j^c(t) e^{2i\pi jx} = 0, \\
 & \frac{1}{|\Omega|} \sum_{j=-\infty}^{\infty} \dot{c}_j^M(t) e^{2i\pi jx} + \frac{D_F \bar{N}}{|\Omega|} \sum_{j=-\infty}^{\infty} (2\pi j)^2 c_j^M(t) e^{2i\pi jx} \\
 & + \frac{\delta_M}{|\Omega|} \sum_{j=-\infty}^{\infty} c_j^M(t) e^{2i\pi jx} - \frac{k_F \bar{N}}{|\Omega|} \sum_{j=-\infty}^{\infty} c_j^c(t) e^{2i\pi jx} = 0, \\
 & \frac{1}{|\Omega|} \sum_{j=-\infty}^{\infty} \dot{c}_j^\rho(t) e^{2i\pi jx} + \frac{\delta_\rho \bar{\rho}^2}{|\Omega|} (\eta^{II} - \eta^I) \sum_{j=-\infty}^{\infty} c_j^M(t) e^{2i\pi jx} \\
 & - \frac{\delta_\rho \bar{\rho}^2 \bar{N}}{|\Omega|} \left( \frac{k_\rho^{\max}}{a_c^{IV}} + a_c^{II} \right) \sum_{j=-\infty}^{\infty} c_j^c(t) e^{2i\pi jx} \\
 & + \frac{2\delta_\rho \bar{N}}{|\Omega|} \bar{\rho} \sum_{j=-\infty}^{\infty} c_j^\rho(t) e^{2i\pi jx} = 0,
 \end{aligned}$$

for the chemical part of the model, and

$$\begin{aligned} & \frac{1}{|\Omega|} \sum_{j=-\infty}^{\infty} \dot{c}_j^v(t) e^{2i\pi jx} + \frac{\mu}{|\Omega|\rho_t} \sum_{j=-\infty}^{\infty} (2\pi j)^2 c_j^v(t) e^{2i\pi jx} \\ & - i \frac{E\sqrt{\bar{\rho}}}{|\Omega|\rho_t} \sum_{j=-\infty}^{\infty} (2\pi j) c_j^\varepsilon(t) e^{2i\pi jx} - i \frac{E\bar{\varepsilon}}{|\Omega|2\rho_t\sqrt{\bar{\rho}}} \sum_{j=-\infty}^{\infty} (2\pi j) c_j^\rho(t) e^{2i\pi jx} \\ & - i \frac{\xi\bar{\rho}}{|\Omega|\rho_t(R^2 + \bar{\rho}^2)} \sum_{j=-\infty}^{\infty} (2\pi j) c_j^M(t) e^{2i\pi jx} = 0, \\ & \frac{1}{|\Omega|} \sum_{j=-\infty}^{\infty} \dot{c}_j^\varepsilon(t) e^{2i\pi jx} + i \frac{(\bar{\varepsilon} - 1)}{|\Omega|} \sum_{j=-\infty}^{\infty} (2\pi j) c_j^v(t) e^{2i\pi jx} \\ & + \frac{\zeta\bar{\varepsilon}\bar{N}}{|\Omega|} \sum_{j=-\infty}^{\infty} c_j^c(t) e^{2i\pi jx} = 0, \end{aligned}$$

for the mechanical part of the model. Multiplication by  $e^{-2i\pi kx}$  gives

$$\begin{aligned} & \frac{1}{|\Omega|} \sum_{j=-\infty}^{\infty} \dot{c}_j^c(t) e^{2i\pi(j-k)x} + \frac{D_c}{|\Omega|} \sum_{j=-\infty}^{\infty} (2\pi j)^2 c_j^c(t) e^{2i\pi(j-k)x} \\ & + \frac{\bar{N}}{|\Omega|} \left[ \delta_c \bar{\rho} - \frac{k_c}{a_c^I} \right] \sum_{j=-\infty}^{\infty} c_j^c(t) e^{2i\pi(j-k)x} = 0, \\ & \frac{1}{|\Omega|} \sum_{j=-\infty}^{\infty} \dot{c}_j^N(t) e^{2i\pi(j-k)x} + \frac{D_F \bar{N}}{|\Omega|} \sum_{j=-\infty}^{\infty} (2\pi j)^2 c_j^N(t) e^{2i\pi(j-k)x} \\ & - \frac{\chi_F \bar{N}}{|\Omega|} \sum_{j=-\infty}^{\infty} (2\pi j)^2 c_j^c(t) e^{2i\pi(j-k)x} \\ & - \frac{r_F}{|\Omega|} \bar{N}^q ((1+q)(1 - \kappa_F \bar{N}) - \kappa_F \bar{N}) \sum_{j=-\infty}^{\infty} c_j^N(t) e^{2i\pi(j-k)x} \\ & + \frac{\delta_N}{|\Omega|} \sum_{j=-\infty}^{\infty} c_j^N(t) e^{2i\pi(j-k)x} + \frac{r_F \kappa_F \bar{N}^{1+q}}{|\Omega|} \sum_{j=-\infty}^{\infty} c_j^M(t) e^{2i\pi(j-k)x} \\ & - \frac{\bar{N}}{|\Omega|} \left[ \frac{r_F r_F^{\max}}{a_c^{III}} [1 - \kappa_F \bar{N}] \bar{N}^q - k_F \right] \sum_{j=-\infty}^{\infty} c_j^c(t) e^{2i\pi(j-k)x} = 0, \\ & \frac{1}{|\Omega|} \sum_{j=-\infty}^{\infty} \dot{c}_j^M(t) e^{2i\pi(j-k)x} + \frac{D_F \bar{N}}{|\Omega|} \sum_{j=-\infty}^{\infty} (2\pi j)^2 c_j^M(t) e^{2i\pi(j-k)x} \end{aligned}$$

$$\begin{aligned}
 & + \frac{\delta M}{|\Omega|} \sum_{j=-\infty}^{\infty} c_j^M(t) e^{2i\pi(j-k)x} - \frac{k_F \bar{N}}{|\Omega|} \sum_{j=-\infty}^{\infty} c_j^c(t) e^{2i\pi(j-k)x} = 0, \\
 & \frac{1}{|\Omega|} \sum_{j=-\infty}^{\infty} \dot{c}_j^\rho(t) e^{2i\pi(j-k)x} + \frac{\delta_\rho \bar{\rho}^2}{|\Omega|} (\eta^{II} - \eta^I) \sum_{j=-\infty}^{\infty} c_j^M(t) e^{2i\pi(j-k)x} \\
 & - \frac{\delta_\rho \bar{\rho}^2 \bar{N}}{|\Omega|} \left( \frac{k_\rho^{max}}{a_c^{IV}} + a_c^{II} \right) \sum_{j=-\infty}^{\infty} c_j^c(t) e^{2i\pi(j-k)x} \\
 & + \frac{2\delta_\rho \bar{N}}{|\Omega|} \bar{\rho} \sum_{j=-\infty}^{\infty} c_j^\rho(t) e^{2i\pi(j-k)x} = 0,
 \end{aligned}$$

for the chemical part of the model, and

$$\begin{aligned}
 & \frac{1}{|\Omega|} \sum_{j=-\infty}^{\infty} \dot{c}_j^v(t) e^{2i\pi(j-k)x} + \frac{\mu}{|\Omega| \rho_t} \sum_{j=-\infty}^{\infty} (2\pi j)^2 c_j^v(t) e^{2i\pi(j-k)x} \\
 & - i \frac{E \sqrt{\bar{\rho}}}{|\Omega| \rho_t} \sum_{j=-\infty}^{\infty} (2\pi j) c_j^\xi(t) e^{2i\pi(j-k)x} - i \frac{E \bar{\epsilon}}{|\Omega| 2 \rho_t \sqrt{\bar{\rho}}} \sum_{j=-\infty}^{\infty} (2\pi j) c_j^\rho(t) e^{2i\pi(j-k)x} \\
 & - i \frac{\xi \bar{\rho}}{|\Omega| \rho_t (R^2 + \bar{\rho}^2)} \sum_{j=-\infty}^{\infty} (2\pi j) c_j^M(t) e^{2i\pi(j-k)x} = 0, \\
 & \frac{1}{|\Omega|} \sum_{j=-\infty}^{\infty} \dot{c}_j^\xi(t) e^{2i\pi(j-k)x} + i \frac{(\bar{\epsilon} - 1)}{|\Omega|} \sum_{j=-\infty}^{\infty} (2\pi j) c_j^v(t) e^{2i\pi(j-k)x} \\
 & + \frac{\xi \bar{\epsilon} \bar{N}}{|\Omega|} \sum_{j=-\infty}^{\infty} c_j^c(t) e^{2i\pi(j-k)x} = 0,
 \end{aligned}$$

for the mechanical part of the model. Integration over  $\Omega$  gives the result, hence Eqs. (13) and (14).

### Appendix 2: The derivation of the stability constraints for the discrete problem

Substitution of the variations (19) in finite differences Eqs. (17) and (18) gives

$$\begin{aligned}
 \lambda c_k & = -\frac{D_c}{h^2} \sum_{\beta=1}^{n-1} \hat{c}_\beta \left\{ e^{-2\pi\beta(k-1)hi} - 2e^{-2\pi\beta k hi} + e^{-2\pi\beta(k+1)hi} \right\} \\
 & + \bar{N} \left[ \delta_c \bar{\rho} - \frac{k_c}{a_c^I} \right] \sum_{\beta=1}^{n-1} \hat{c}_\beta e^{-2\pi\beta k hi},
 \end{aligned}$$

$$\begin{aligned}
 \lambda N_k &= -\frac{D_F \bar{N}}{h^2} \sum_{\beta=1}^{n-1} \hat{N}_\beta \left\{ e^{-2\pi\beta(k-1)hi} - 2e^{-2\pi\beta k hi} + e^{-2\pi\beta(k+1)hi} \right\} \\
 &+ \frac{\chi_F \bar{N}}{h^2} \sum_{\beta=1}^{n-1} \hat{c}_\beta \left\{ e^{-2\pi\beta(k-1)hi} - 2e^{-2\pi\beta k hi} + e^{-2\pi\beta(k+1)hi} \right\} \\
 &+ \left[ \delta_N - r_F \bar{N}^q ((1+q)(1-\kappa_F \bar{N}) - \kappa_F \bar{N}) \right] \sum_{\beta=1}^{n-1} \hat{N}_\beta e^{-2\pi\beta k hi} \\
 &+ r_F \kappa_F \bar{N}^{1+q} \sum_{\beta=1}^{n-1} \hat{M}_\beta e^{-2\pi\beta k hi} \\
 &- \bar{N} \left[ \frac{r_F r_F^{\max}}{a_c^{III}} [1 - \kappa_F \bar{N}] \bar{N}^q - k_F \right] \sum_{\beta=1}^{n-1} \hat{c}_\beta e^{-2\pi\beta k hi}, \\
 \lambda M_k &= -\frac{D_F \bar{N}}{h^2} \sum_{\beta=1}^{n-1} \hat{M}_\beta \left\{ e^{-2\pi\beta(k-1)hi} - 2e^{-2\pi\beta k hi} + e^{-2\pi\beta(k+1)hi} \right\} \\
 &+ \delta_M \sum_{\beta=1}^{n-1} \hat{M}_\beta e^{-2\pi\beta k hi} - k_F \bar{N} \sum_{\beta=1}^{n-1} \hat{c}_\beta e^{-2\pi\beta k hi}, \\
 \lambda \rho_k &= \delta_\rho \bar{\rho}^2 (\eta^{II} - \eta^I) \sum_{\beta=1}^{n-1} \hat{M}_\beta e^{-2\pi\beta k hi} \\
 &- \delta_\rho \bar{\rho}^2 \bar{N} \left( \frac{k_\rho^{\max}}{a_c^{IV}} + a_c^{II} \right) \sum_{\beta=1}^{n-1} \hat{c}_\beta e^{-2\pi\beta k hi} + 2\delta_\rho \bar{N} \bar{\rho} \sum_{\beta=1}^{n-1} \hat{\rho}_\beta e^{-2\pi\beta k hi},
 \end{aligned}$$

for the chemical part of the model, and

$$\begin{aligned}
 \lambda v_k &= -\frac{\mu}{\rho_t h^2} \sum_{\beta=1}^{n-1} \hat{v}_\beta \left\{ e^{-2\pi\beta(k-1)hi} - 2e^{-2\pi\beta k hi} + e^{-2\pi\beta(k+1)hi} \right\} \\
 &- \frac{E \sqrt{\bar{\rho}}}{\rho_t 2h} \sum_{\beta=1}^{n-1} \hat{\varepsilon}_\beta \left\{ e^{-2\pi\beta(k+1)hi} - e^{-2\pi\beta(k-1)hi} \right\} \\
 &- \frac{E \bar{\varepsilon}}{2\rho_t \sqrt{\bar{\rho}} 2h} \sum_{\beta=1}^{n-1} \hat{\rho}_\beta \left\{ e^{-2\pi\beta(k+1)hi} - e^{-2\pi\beta(k-1)hi} \right\} \\
 &- \frac{\xi \bar{\rho}}{\rho_t (R^2 + \bar{\rho}^2) 2h} \sum_{\beta=1}^{n-1} \hat{M}_\beta \left\{ e^{-2\pi\beta(k+1)hi} - e^{-2\pi\beta(k-1)hi} \right\}, \\
 \lambda \varepsilon_k &= \frac{(\bar{\varepsilon} - 1)}{2h} \sum_{\beta=1}^{n-1} \hat{v}_\beta \left\{ e^{-2\pi\beta(k+1)hi} - e^{-2\pi\beta(k-1)hi} \right\} + \zeta \bar{\varepsilon} \bar{N} \sum_{\beta=1}^{n-1} \hat{c}_\beta e^{-2\pi\beta k hi},
 \end{aligned}$$

for the mechanical part of the model.

This must be true for arbitrary  $\{c_\beta, N_\beta, M_\beta, \rho_\beta, v_\beta, \varepsilon_\beta\}$ , hence each factor following  $\{c_\beta, N_\beta, M_\beta, \rho_\beta, v_\beta, \varepsilon_\beta\}$  in the sum should be zero. Subdivision by  $e^{-2\pi\beta k h i}$  gives

$$\begin{aligned} \lambda c_k &= -\frac{D_c}{h^2} \hat{c}_\beta \left\{ e^{2\pi\beta h i} - 2 + e^{-2\pi\beta h i} \right\} + \bar{N} \left[ \delta_c \bar{\rho} - \frac{k_c}{a_c^I} \right] \hat{c}_\beta, \\ \lambda N_k &= -\frac{D_F \bar{N}}{h^2} \hat{N}_\beta \left\{ e^{2\pi\beta h i} - 2 + e^{-2\pi\beta h i} \right\} \\ &\quad + \frac{\chi_F \bar{N}}{h^2} \hat{c}_\beta \left\{ e^{2\pi\beta h i} - 2 + e^{-2\pi\beta h i} \right\} \\ &\quad + \left[ \delta_N - r_F \bar{N}^q ((1+q)(1-\kappa_F \bar{N}) - \kappa_F \bar{N}) \right] \hat{N}_\beta \\ &\quad + r_F \kappa_F \bar{N}^{1+q} \hat{M}_\beta - \bar{N} \left[ \frac{r_F r_F^{\max}}{a_c^{III}} [1 - \kappa_F \bar{N}] \bar{N}^q - k_F \right] \hat{c}_\beta, \\ \lambda M_k &= -\frac{D_F \bar{N}}{h^2} \hat{M}_\beta \left\{ e^{2\pi\beta h i} - 2 + e^{-2\pi\beta h i} \right\} + \delta_M \sum_{\beta=1}^{n-1} \hat{M}_\beta - k_F \bar{N} \hat{c}_\beta, \\ \lambda \rho_k &= \delta_\rho \bar{\rho}^2 (\eta^{II} - \eta^I) \hat{M}_\beta - \delta_\rho \bar{\rho}^2 \bar{N} \left( \frac{k_\rho^{\max}}{a_c^{IV}} + a_c^{II} \right) \hat{c}_\beta + 2\delta_\rho \bar{N} \bar{\rho} \hat{\rho}_\beta, \end{aligned}$$

for the chemical part of the model, and

$$\begin{aligned} \lambda v_k &= -\frac{\mu}{\rho_t h^2} \hat{v}_\beta \left\{ e^{2\pi\beta h i} - 2 + e^{-2\pi\beta h i} \right\} - \frac{E \sqrt{\bar{\rho}}}{\rho_t 2h} \hat{\varepsilon}_\beta \left\{ e^{-2\pi\beta h i} - e^{2\pi\beta h i} \right\} \\ &\quad - \frac{E \bar{\varepsilon}}{2\rho_t \sqrt{\bar{\rho}} 2h} \hat{\rho}_\beta \left\{ e^{-2\pi\beta h i} - e^{2\pi\beta h i} \right\} \\ &\quad - \frac{\xi \bar{\rho}}{\rho_t (R^2 + \bar{\rho}^2) 2h} \hat{M}_\beta \left\{ e^{-2\pi\beta h i} - e^{2\pi\beta h i} \right\}, \\ \lambda \varepsilon_k &= \frac{(\bar{\varepsilon} - 1)}{2h} \hat{v}_\beta \left\{ e^{-2\pi\beta h i} - e^{2\pi\beta h i} \right\} + \zeta \bar{\varepsilon} \bar{N} \hat{c}_\beta, \end{aligned}$$

for the mechanical part of the model. Using Euler’s formula and  $2 - 2 \cos(2\pi\beta h) = 4 \sin^2(\pi\beta h)$  gives the result, hence Eqs. (20) and (21).

### Appendix 3: Absolute errors in convergence

The averaged errors in Table 2 show that the order of convergence in the numerical method is  $\mathcal{O}(h^2)$ . Shown are the averaged slopes of the errors that are defined in (29) and by:

$$\epsilon_{L^1}(h) = h \sum_{i=1}^n |z_{h/r}(x_{i,n}) - z_h(x_{i,n})|,$$

$$\epsilon_{L^2}(h) = \sqrt{h \sum_{i=1}^n (z_{h/r}(x_{i,n}) - z_h(x_{i,n}))^2},$$

where the grid-points  $x_{i,n}$  correspond to the grid-points in the simulation with  $n$  nodes.

## References

- Alberts B, Bray D, Lewis J, Raff M, Roberts K, Watson J (1989) *The Molecular Biology of The Cell*, 2nd edn. Garland Publishing, Oxford
- Barocas VH, Tranquillo R (1997) An anisotropic biphasic theory of tissue-equivalent mechanics: the interplay among cell traction, fibrillar network deformation, fibril alignment, and cell contact guidance. *J Biomech Eng* 119(2):137–145. <https://doi.org/10.1115/1.2796072>
- Barrientos S, Stojadinovic O, Golinko MS, Brem H, Tomic-Canic M (2008) PERSPECTIVE ARTICLE: Growth factors and cytokines in wound healing. *Wound Repair Regener* 16(5):585–601. <https://doi.org/10.1111/j.1524-475x.2008.00410.x>
- Baum CL, Arpey CJ (2006) Normal cutaneous wound healing: clinical correlation with cellular and molecular events. *Dermatol Surg* 31(6):674–686. <https://doi.org/10.1111/j.1524-4725.2005.31612>
- Boon W, Koppenol D, Vermolen F (2016) A multi-agent cell-based model for wound contraction. *J Biomech* 49(8):1388–1401. <https://doi.org/10.1016/j.jbiomech.2015.11.058>
- Dallon J, Sherrat J, Maini P (1999) Mathematical modelling of extracellular matrix dynamics using discrete cells: fiber orientation and tissue regeneration. *J Theor Biol* 199(4):449–471. <https://doi.org/10.1006/jtbi.1999.0971>
- Dallon J, Sherrat J, Maini P (2001) Modeling the effects of transforming growth factor- $\beta$  on extracellular matrix alignment in dermal wound repair. *Wound Repair Regener* 9(4):278–286. <https://doi.org/10.1046/j.1524-475X.2001.00278.x>
- Desmoulière A, Geinoz A, Gabbiani F, Gabbiani G (1993) Transforming growth factor-beta 1 induces alpha-smooth muscle actin expression in granulation tissue myofibroblasts and in quiescent and growing cultured fibroblasts. *J Cell Biol* 122(1):103–111. <https://doi.org/10.1083/jcb.122.1.103>
- Dziuk G, Elliot C (2007) Finite elements on evolving surfaces. *IMA J Numer Anal* 27(2):262–292. <https://doi.org/10.1093/imanum/drl023>
- Enoch S, Leaper D (2008) Basic science of wound healing. *Surgery (Oxford)* 26(2):31–37. <https://doi.org/10.1016/j.mpsur.2007.11.005>
- Fletcher CAJ (1998) *Computational techniques for fluid dynamics 1*. Springer, Berlin. <https://doi.org/10.1007/978-3-642-58229-5>
- Garrison G, Huang SK, Okunishi K, Scott JP, Penke LRK, Scruggs AM, Peters-Golden M (2013) Reversal of myofibroblast differentiation by prostaglandin E2. *Am J Respir Cell Mol Biol* 48(5):550–558. <https://doi.org/10.1165/rcmb.2012-0262oc>
- Ghosh K, Pan Z, Guan E, Ge S, Liu Y, Nakamura T, Ren XD, Rafailovich M, Clark RA (2007) Cell adaptation to a physiologically relevant ECM mimic with different viscoelastic properties. *Biomaterials* 28(4):671–679. <https://doi.org/10.1016/j.biomaterials.2006.09.038>
- Goriely A, Amar MB (2006) On the definition and modeling of incremental, cumulative, and continuous growth laws in morphoelasticity. *Biomech Model Mechanobiol* 6(5):289–296. <https://doi.org/10.1007/s10237-006-0065-7>
- Gosh K, Pan Z, Guan E, Ge S, Nakamura Lio Y, T., Ren, Z.D., Rafailovich, M., Clark, R. (2007) Cell adaptation to a physiologically relevant ECM mimic with different viscoelastic properties. *Biomaterials* 28(4):671–679. <https://doi.org/10.1016/j.biomaterials.2006.09.038>
- Grotendorst G (1992) Chemoattractants and growth factors. In: Cohen I, Diegelmann R, Lindblad W (eds) *Wound healing: biochemical and clinical aspects*, Chap. 15, 1st edn. W.B. Saunders, Philadelphia, pp 237–246
- Hall CL (2008) *Modelling of some biological materials using continuum mechanics*. Ph.D. thesis, Queensland University of Technology
- Haugh JM (2006) Deterministic model of dermal wound invasion incorporating receptor-mediated signal transduction and spatial gradient sensing. *Biophys J* 90(7):2297–2308. <https://doi.org/10.1529/biophysj.105.077610>

- Hillen T, Painter KJ (2008) A user's guide to PDE models for chemotaxis. *J Math Biol* 58(1–2):183–217. <https://doi.org/10.1007/s00285-008-0201-3>
- Ivanoff J, Talme T, Sundqvist KG (2005) The role of chemokines and extracellular matrix components in the migration of T lymphocytes into three-dimensional substrata. *Immunology* 114(1):53–62. <https://doi.org/10.1111/j.1365-2567.2004.02005.x>
- Koppenol D (2017) Biomedical implications from mathematical models for the simulation of dermal wound healing. Ph.D. thesis, Delft University of Technology
- Koppenol DC, Vermolen FJ (2017) Biomedical implications from a morphoelastic continuum model for the simulation of contracture formation in skin grafts that cover excised burns. *Biomech Model Mechanobiol* 16(4):1187–1206. <https://doi.org/10.1007/s10237-017-0881-y>
- Koppenol D, Vermolen F, Koppenol-Gonzalez G, Niessen F, van Zuijlen P, Vukic K (2017a) A mathematical model for the simulation of the contraction of burns. *J Math Biol* 75(1):1–31. <https://doi.org/10.1007/s00285-016-1075-4>
- Koppenol D, Vermolen F, Niessen F (2017b) A mathematical model for the simulation of the formation and the subsequent regression of hypertrophic scar tissue after dermal wounding. *Biomech Model Mechanobiol* 16(1):15–32. <https://doi.org/10.1007/s10237-016-0799-9>
- Lindner D, Zietsch C, Becher PM, Schulze K, Schultheiss HP, Tschöpe C, Westermann D (2012) Differential expression of matrix metalloproteases in human fibroblasts with different origins. *Biochem Res Int* 2012:1–10. <https://doi.org/10.1155/2012/875742>
- Maskarinec S, Franck C, Tirell D, Ravichandran G (2009) Quantifying cellular traction forces in three dimensions. *Proc Natl Acad Sci* 106(52):22108–22113. <https://doi.org/10.1073/pnas.0904565106>
- Mast BA, Schultz GS (1996) Interactions of cytokines, growth factors, and proteases in acute and chronic wounds. *Wound Repair Regen* 4(4):411–420. <https://doi.org/10.1046/j.1524-475x.1996.40404.x>
- McDougall S, Dallon J, Sherratt J, Maini P (2006) Fibroblast migration and collagen deposition during dermal wound healing: mathematical modelling and clinical implications. *Philos Trans R Soc A Math Phys Eng Sci* 364(1843):1385–1405. <https://doi.org/10.1098/rsta.2006.1773>
- Menon SN, Hall CL, McCue SW, McElwain DLS (2017) A model for one-dimensional morphoelasticity and its application to fibroblast-populated collagen lattices. *Biomech Model Mechanobiol* 16(5):1743–1763. <https://doi.org/10.1007/s10237-017-0917-3>
- Moulin V, Mayrand D, Laforce-Lavoie A, Laroche S, Genest H (2011) Regenerative medicine and tissue engineering—cells and biomaterials, Chapter 8. IntechOpen, Rijeka, pp 195–208
- Murphy K, Hall C, Maini P, McCue S, MacElwain D (2012) A fibrocontractive mechanochemical model of dermal wound closure incorporating realistic growth factor kinetics. *Bull Math Biol* 74(5):1143–1170. <https://doi.org/10.1007/s11538-011-9712-y>
- Olsen L, Sherratt J, Maini P (1995) A mechanochemical model for adult dermal wound contraction and the permanence of the contracted tissue displacement profile. *J Theor Biol* 177(2):113–128. <https://doi.org/10.1006/jtbi.1995.0230>
- Overall C, Wrana J, Sodek J (1991) Transcriptional and post-transcriptional regulation of 72-kda Gelatinase/Type IV collagenase by transforming growth factor-beta in human fibroblasts. *J Biol Chem* 266(21):14061–14071
- Postlethwaite AE, Keski-Oja J, Moses HL, Kang AH (1987) Stimulation of the chemotactic migration of human fibroblasts by transforming growth factor beta. *J Exp Med* 165(1):251–256. <https://doi.org/10.1084/jem.165.1.251>
- Ramtani S (2004) Mechanical modelling of cell/ECM and cell/cell interactions during the contraction of a fibroblast-populated collagen microsphere: theory and model simulation. *J Biomech* 37(11):1709–1718. <https://doi.org/10.1016/j.jbiomech.2004.01.028>
- Ramtani S et al (2002) Remodeled-matrix contraction by fibroblasts: numerical investigations. *Comput Biol Med* 32(4):283–296. [https://doi.org/10.1016/S0010-4825\(02\)00018-5](https://doi.org/10.1016/S0010-4825(02)00018-5)
- Roberts A, Sporn M, Assoian R, Smith J, Roche N, Wakefield L, Heine U, Liotta L, Falanga V, Kehrl J, Fauci A (1986) Transforming growth factor type beta: rapid induction of fibrosis and angiogenesis in vivo and stimulation of collagen formation in vitro. *Proc Natl Acad Sci* 83(12):4167–4171. <https://doi.org/10.1073/pnas.83.12.4167>
- Rodriguez EK, Hoger A, McCulloch AD (1994) Stress-dependent finite growth in soft elastic tissues. *J Biomech* 27(4):455–467. [https://doi.org/10.1016/0021-9290\(94\)90021-3](https://doi.org/10.1016/0021-9290(94)90021-3)
- Rudolph R, Vande Berg J (1991) The myofibroblast in Dupuytren's contracture. *J Hand Clinics* 7(4):683–692 (**Discussion 693-4**)

- Sillman A, Quang D, Farboud B, Fang K, Nuccitelli R, Isseroff R (2003) Human dermal fibroblasts do not exhibit directional migration on collagen I in direct-current electric fields of physiological strength. *Exp Dermatol* 12(4):396–402. <https://doi.org/10.1034/j.1600-0625.2002.120406.x>
- Sternlicht MD, Werb Z (2001) How matrix metalloproteinases regulate cell behavior. *Annu Rev Cell Dev Biol* 17(1):463–516. <https://doi.org/10.1146/annurev.cellbio.17.1.463>
- Strutz F (2001) Tgf- $\beta$ 1 induces proliferation in human renal fibroblasts via induction of basic fibroblast growth factor (fgf-2). *Kidney Int* 59(2):579–592. <https://doi.org/10.1046/j.1523-1755.2001.059002579.x>
- Thampatty BP, Wang JHC (2006) A new approach to study fibroblast migration. *Cell Motil Cytoskelet* 64(1):1–5. <https://doi.org/10.1002/cm.20166>
- Tomasek JJ, Gabbiani G, Hinz B, Chaponnier C, Brown RA (2002) Myofibroblasts and mechano-regulation of connective tissue remodelling. *Nat Rev Mol Cell Biol* 3(5):349–363. <https://doi.org/10.1038/nrm809>
- Tranquillo R, Murray JD (1992) Continuum model of fibroblast-driven wound contraction: inflammation-mediation. *J Theor Biol* 158(2):135–172. <https://doi.org/10.1115/1.2796072>
- Tuan TL, Nichten LS (1998) The molecular basis of keloid and hypertrophic scar formation. *Mol Med Today* 4(1):19–24. [https://doi.org/10.1016/s1357-4310\(97\)80541-2](https://doi.org/10.1016/s1357-4310(97)80541-2)
- Van Kan J, Segal A, Vermolen F (2014) Numerical methods in scientific computing, 2nd edn. Academic Press, Delft
- Vande Berg J, Rudolph R, Poolman W, Disharoon D (1989) Comparative growth dynamics and actin concentration between cultured human myofibroblasts from granulating wounds and dermal fibroblasts from normal skin. *Lab Invest* 61(5):532–538
- Wang Y (2018) Burn injury: challenges and advances in burn wound healing, infection, pain and scarring. *Adv Drug Deliv Rev* 123:3–17. <https://doi.org/10.1016/j.addr.2017.09.018>
- WHO (2018) World health organisation, fact sheet, burns, 06-03-2018. <https://www.who.int/en/news-room/fact-sheets/detail/burns>. Accessed on 04 Dec 2019
- Wrobel L, Fray T, Molloy J, Adams J, Armitage M, Sparrow J (2002) Contractility of single human dermal myofibroblasts and fibroblasts. *Cell Motil Cytoskelet* 52(2):82–90. <https://doi.org/10.1002/cm.10034>
- Wrobel L, Fray T, Molloy J, Adams J, Armitage M, Sparrow J (2009) Annex a: Table a.1. *Annals of the ICRP Publication 110* 39(2), 48–51
- Young A, McNaught C (2011) Contractility of single human dermal myofibroblasts and fibroblasts. *Surgery (Oxford)* 29(10):475–479. <https://doi.org/10.1016/j.mpsur.2011.06.011>
- Zhang T, Wang XF, Wang ZC, Lou D, Fang QQ, Hu YY, Zhao WY, Zhang LY, Wu LH, Tan WQ (2020) Current potential therapeutic strategies targeting the TGF- $\beta$ /Smad signaling pathway to attenuate keloid and hypertrophic scar formation. *Biomed Pharmacother* 129: <https://doi.org/10.1016/j.biopha.2020.110287>