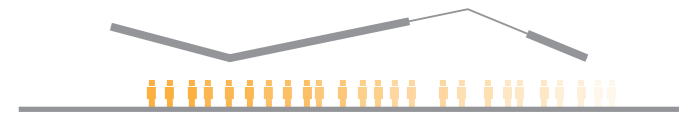


museosystem: artist, curator and audience in symbiotic relationship

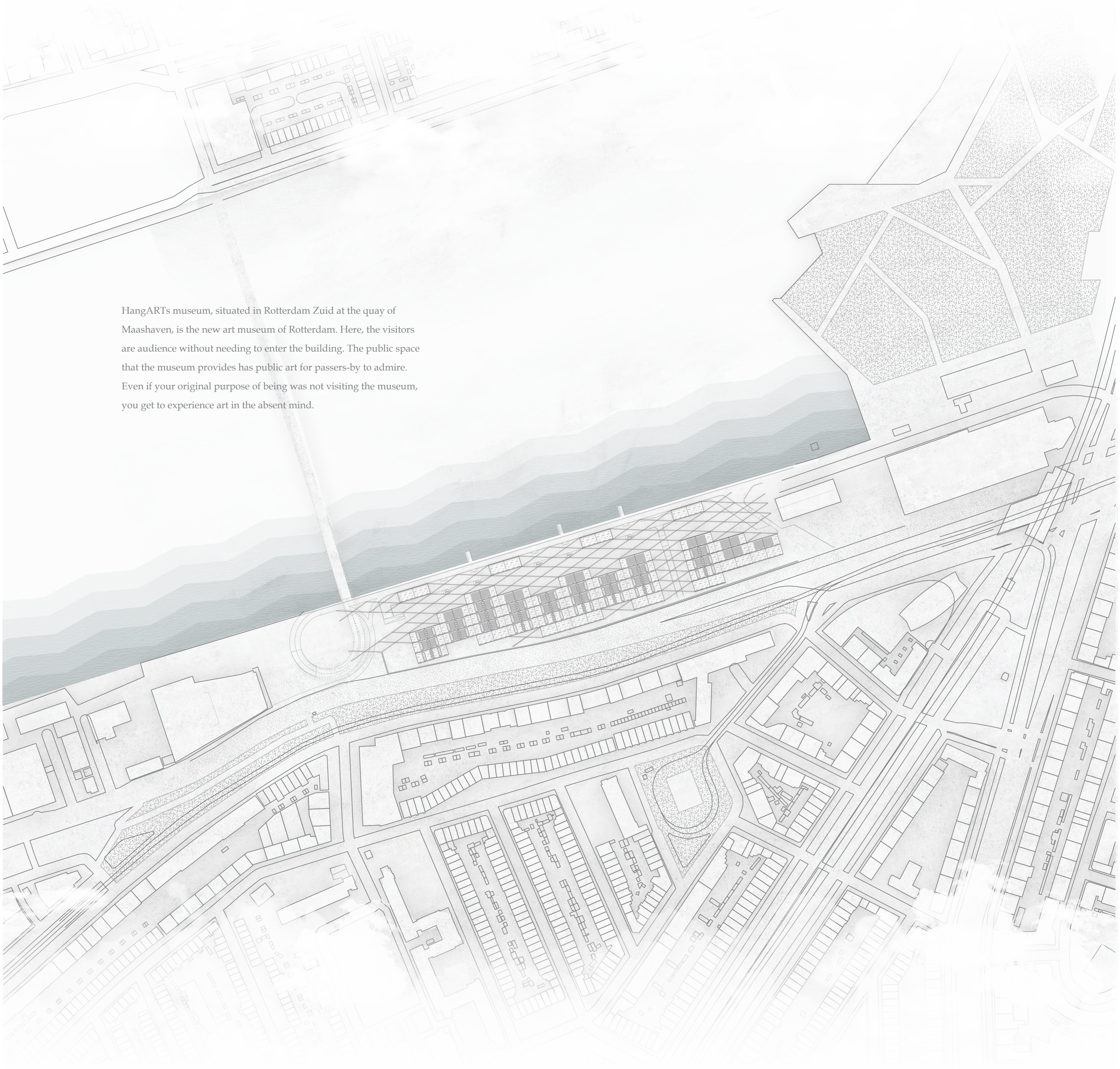


bringing parties closer together

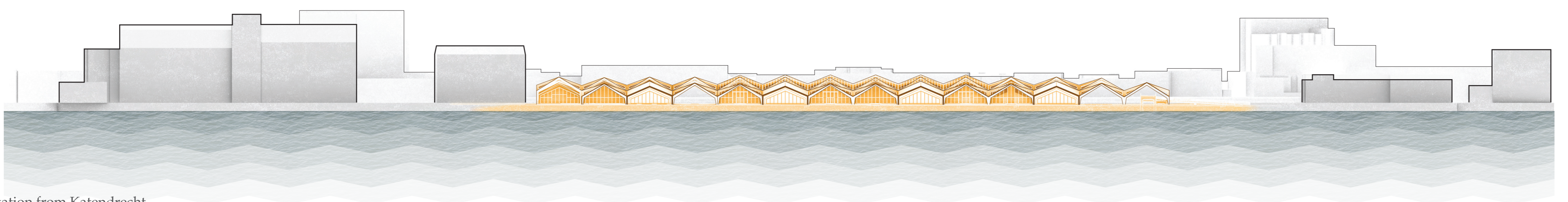


gradient of time and concentration investment

HangARTs museum, situated in Rotterdam Zuid at the quay of Maashaven, is the new art museum of Rotterdam. Here, the visitors are audience without needing to enter the building. The public space that the museum provides has public art for passers-by to admire. Even if your original purpose of being was not visiting the museum, you get to experience art in the absent mind.



site plan

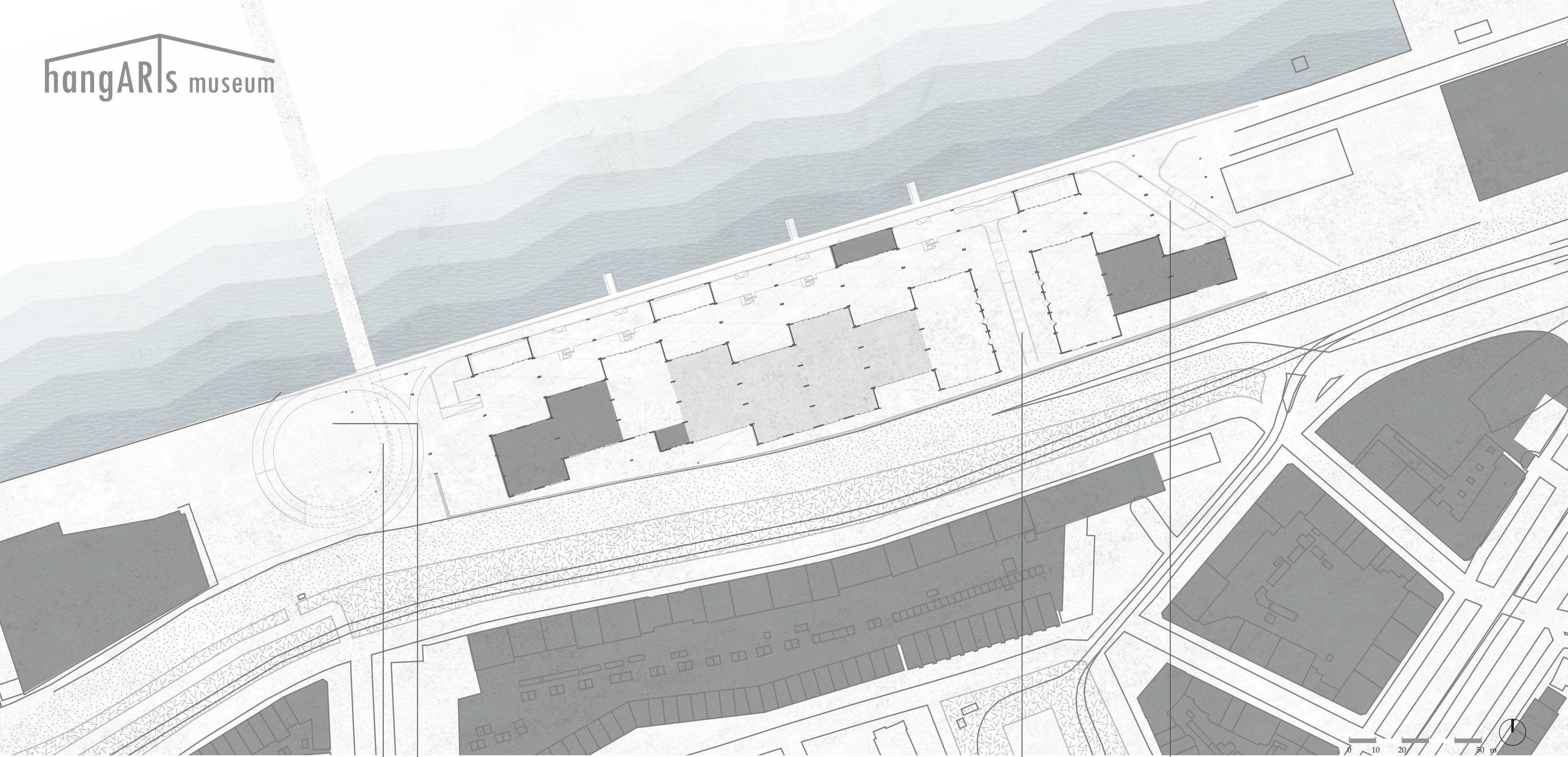


elevation from Katendrecht

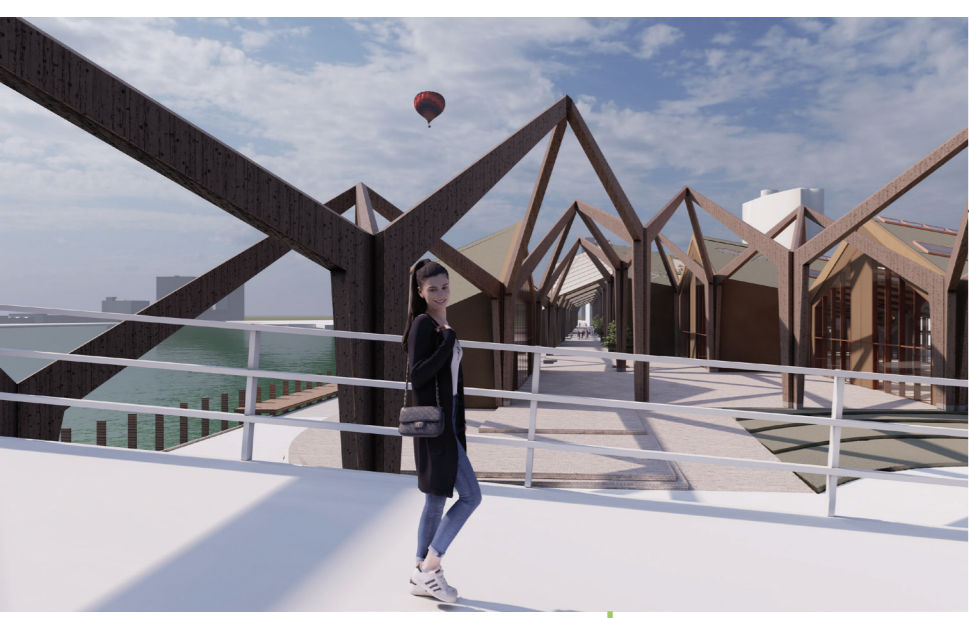


elevation from Brielselaan





site plan: nollu



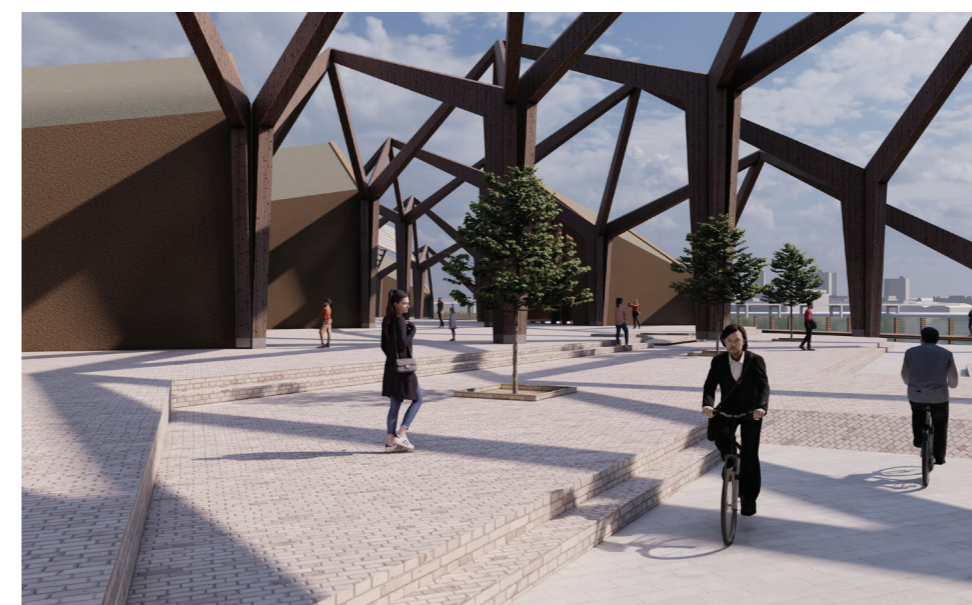
from bridge



from west side (Maastunnel)

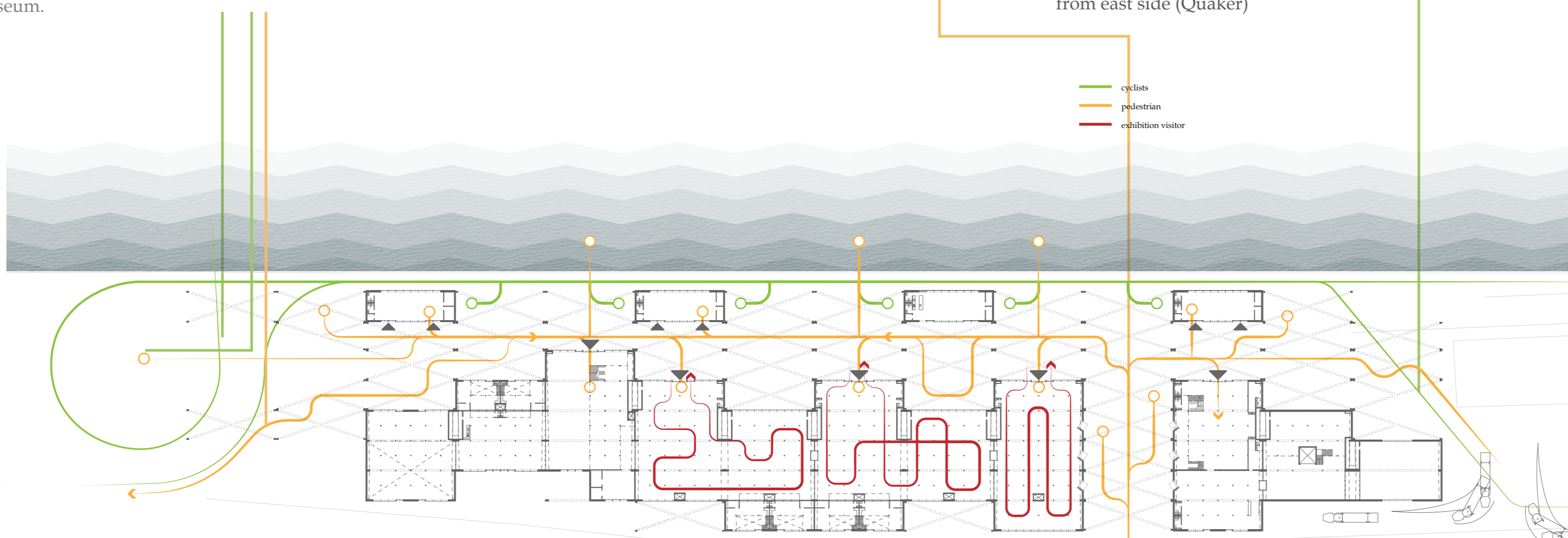


from south side (bus stop)



from east side (Quaker)

On the site of hangARTs museum are artists in residence, selected by the curator selected for the museum. Bringing the artists to the museum allows the audience to get closer to the process of art, making art a more touchable subject. The audience get the chance to talk to the artists about their pieces of work to truly understand the artwork. Furthermore, the curator has a more personal relationship with the artists as well, which improves the quality of the art and exhibitions. The audience also gets to see the role of a curator more up close, which provides more knowledge about the workings of an art museum.



possible routes

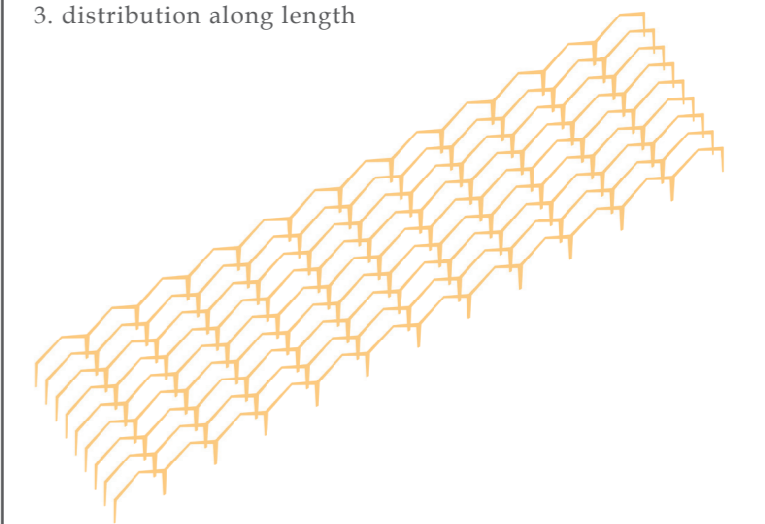
1. single module



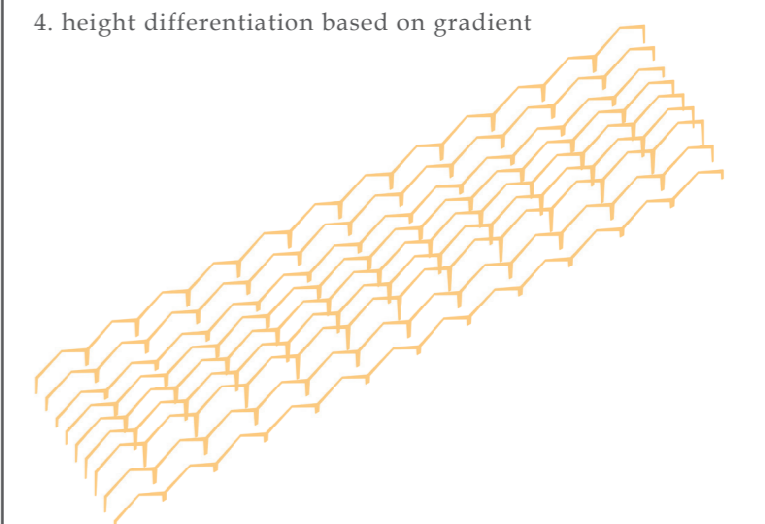
2. distribution along width



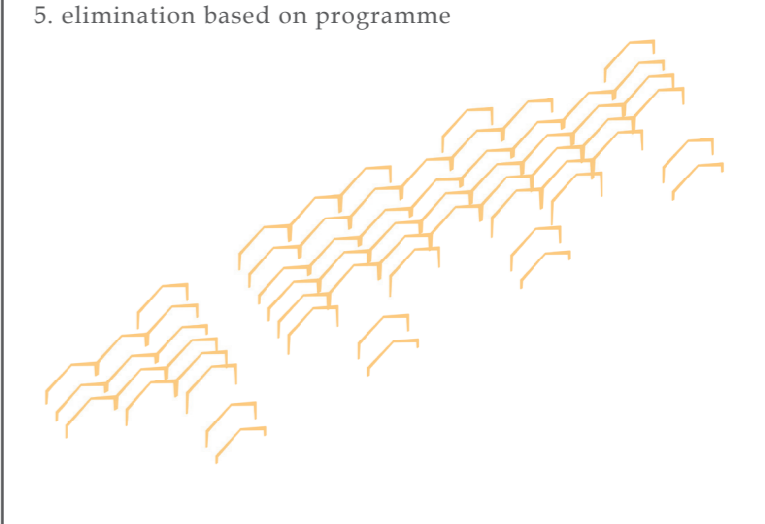
3. distribution along length



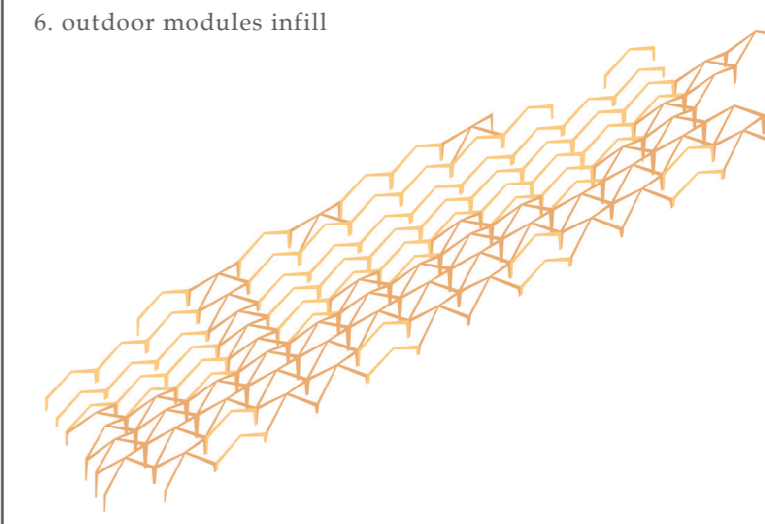
4. height differentiation based on gradient



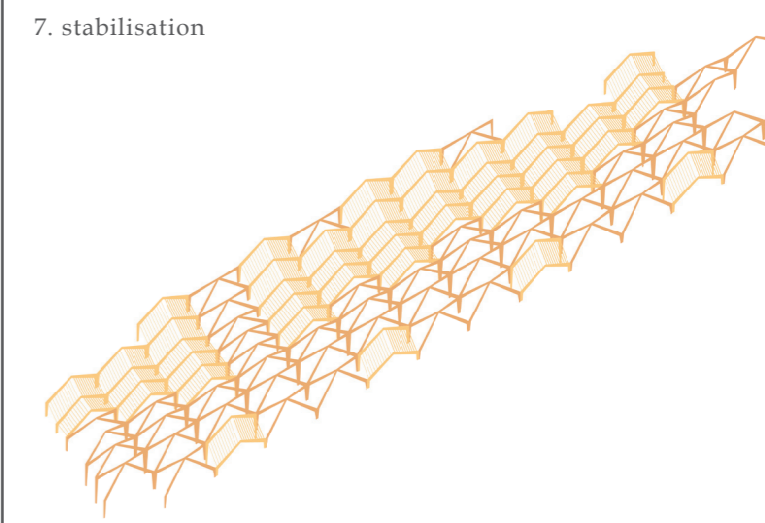
5. elimination based on programme

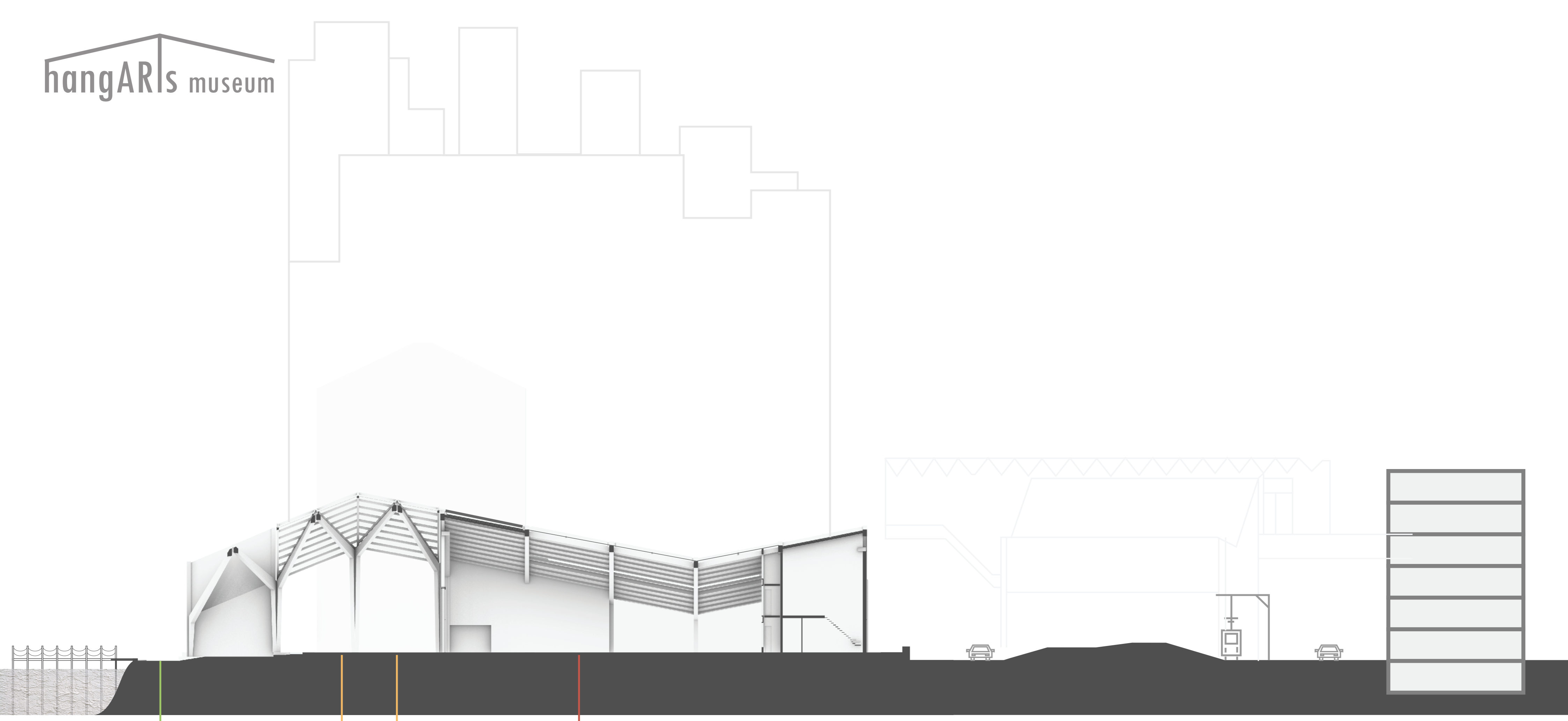


6. outdoor modules infill



7. stabilisation

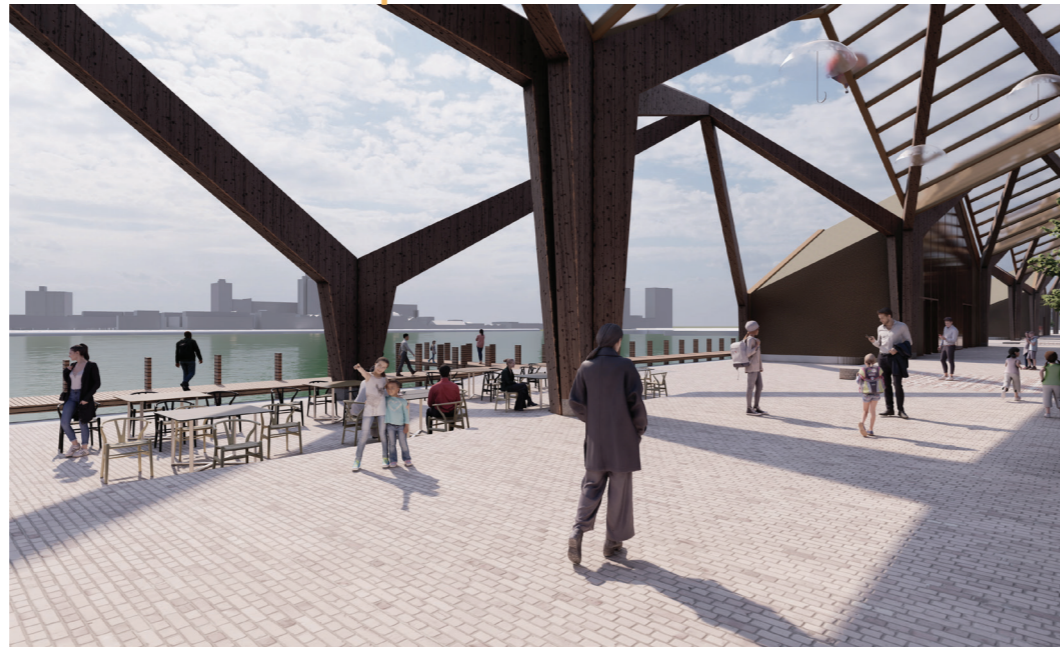




0 2.5 5 12.5 m



from bike path



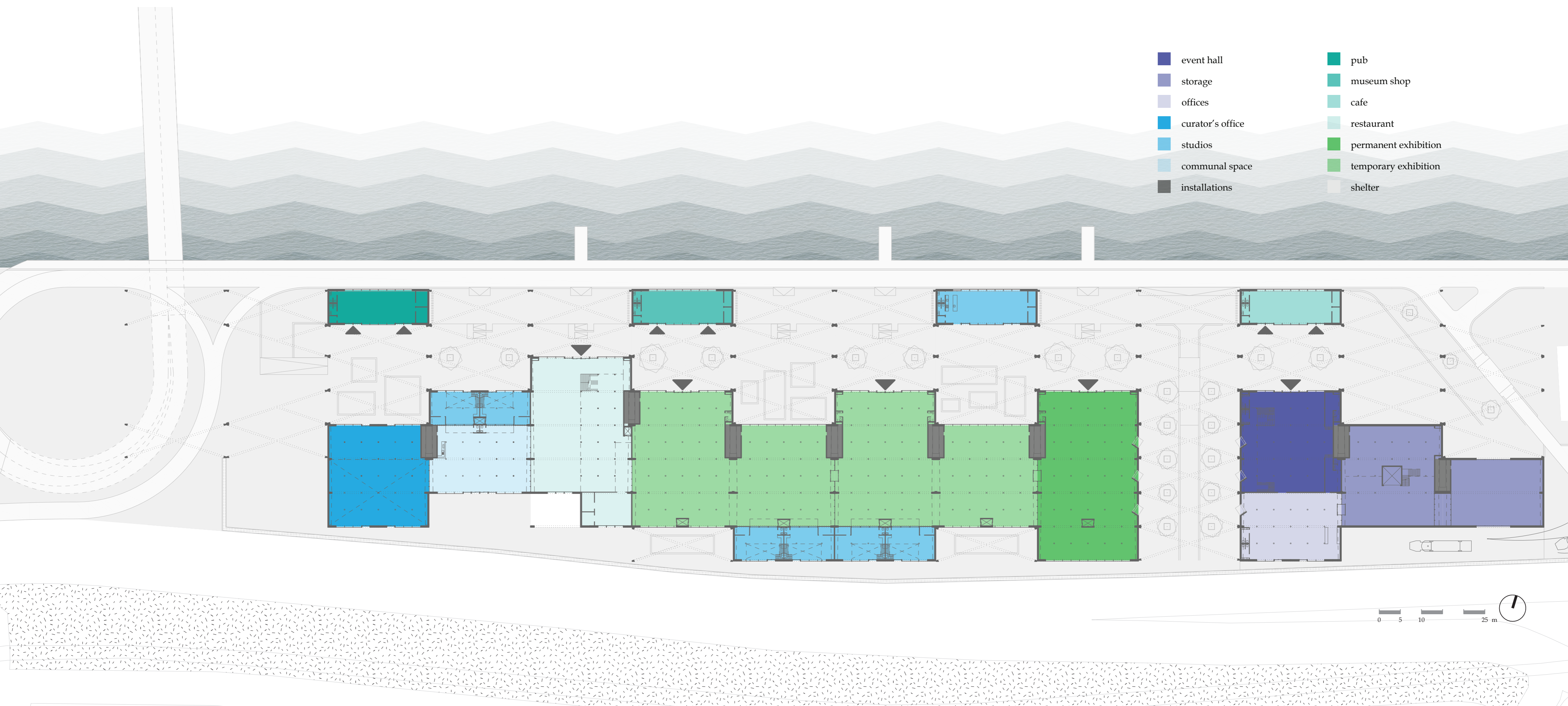
from promenade, waterside



from promenade

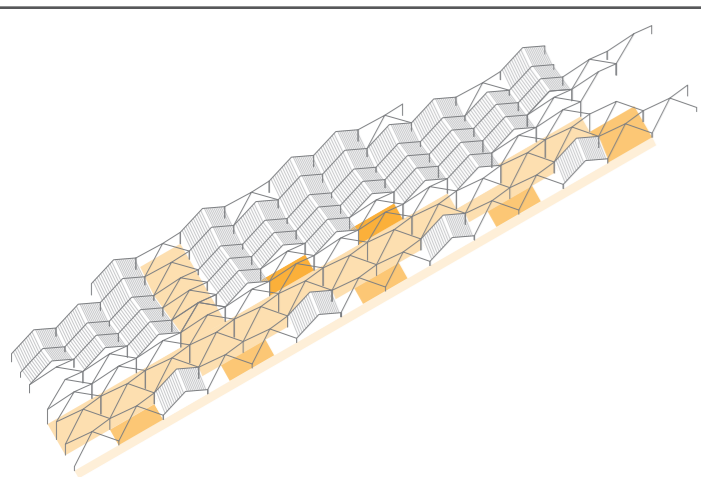


in exhibition hall

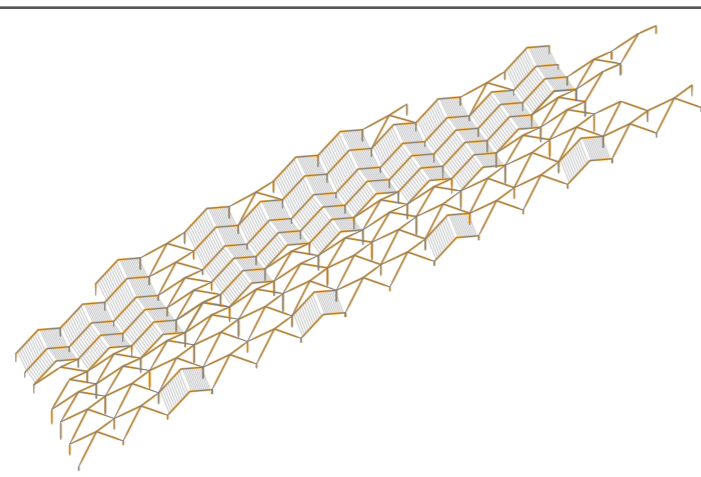


- event hall
- storage
- offices
- curator's office
- studios
- communal space
- installations
- pub
- museum shop
- cafe
- restaurant
- permanent exhibition
- temporary exhibition
- shelter

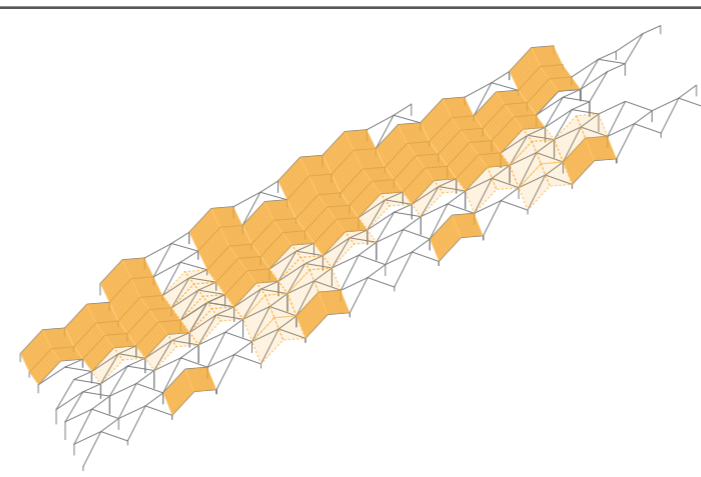
0 5 10 25 m



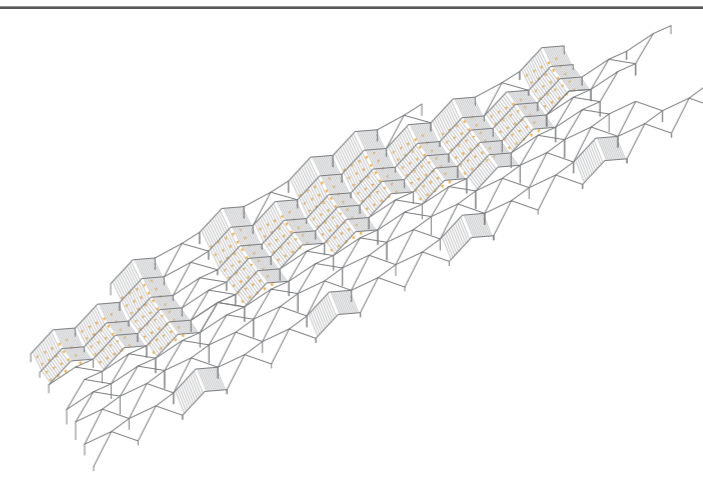
connecting traffic and public space
art + public space
museum + public space



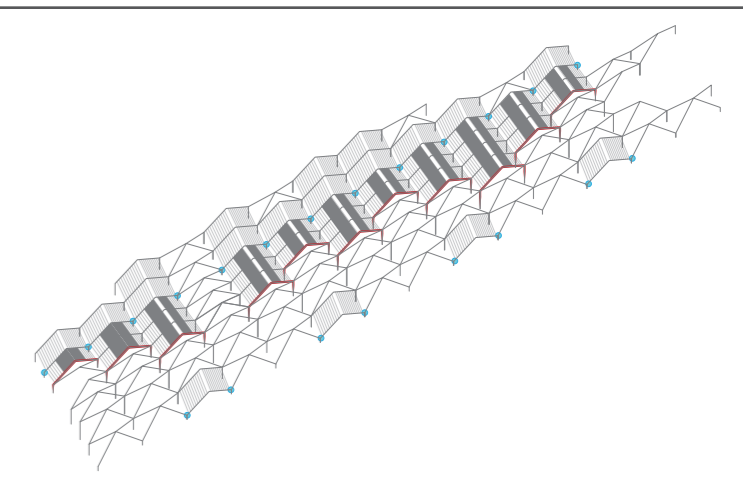
expressive big-span structure
frame for art
space demarcation



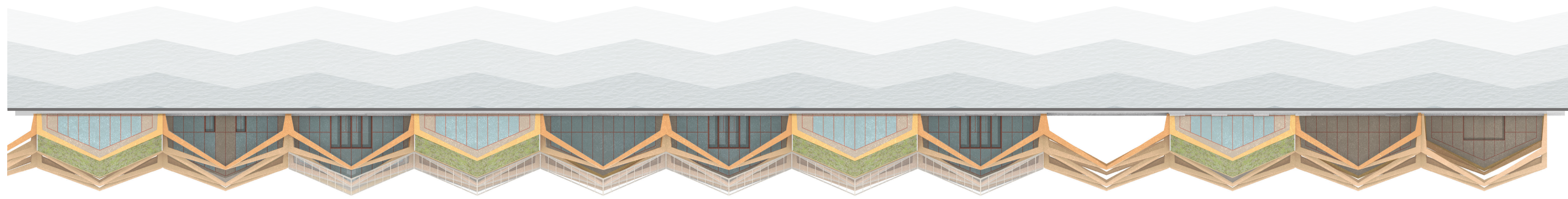
roof expansion
roof reduction
flexible floor space



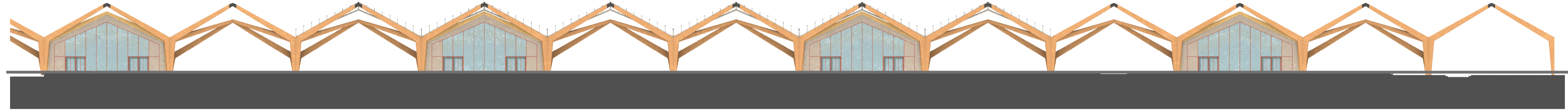
cast-in build-up system
temporary structure possibilities
allowing creative spaces



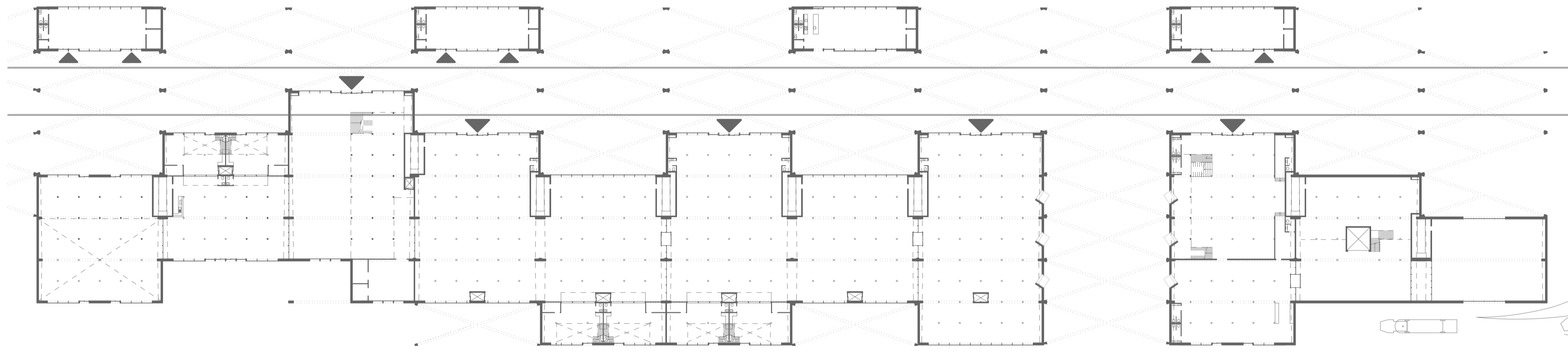
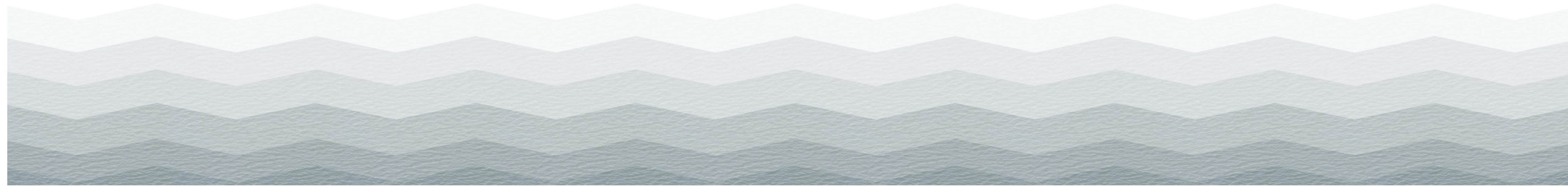
integrated ducts
integrated energy production
big surface for water collection



elevation 1



elevation 2

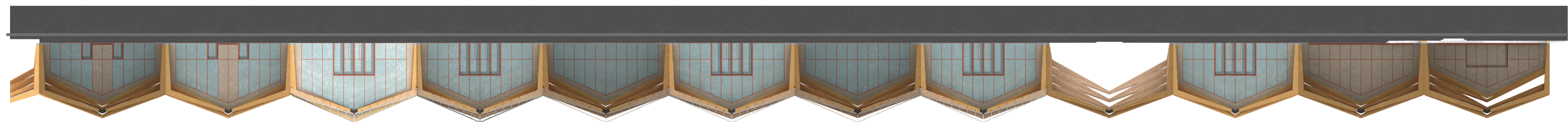


1. facade N

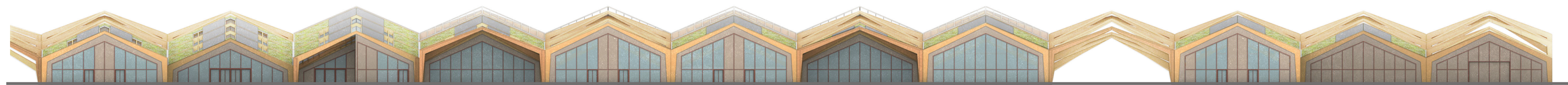
2. facade pavillions

3. facade main building

4. facade S



elevation 3



elevation 4

FACADE FRAGMENT 1:20

- A. roof**
- sedum substrate | 40 mm
- filter layer | 25 mm
- drainage layer | 4 mm
- bitumen | 160 mm
- thermal insulation ($R_c = 7 \text{ m}^2\text{K/W}$) | 20 mm
- vapour barrier | 20 mm
- multiplex | 20 mm

- B. structure**
- laminated timber portal frame: span = 24 m

- C. exterior wall**
- cork panels | 40 mm
- timber slats | 20 mm
- HSB construction | 160 mm
- thermal insulation ($R_c = 4.7 \text{ m}^2\text{K/W}$) | 110 mm
- ventilation shaft | 10 mm
- felt layer | 25 mm
- perforated timber panel | 25 mm

- D. glass facade**
- MHB corten steel profile | w = 100 mm
- triple glazed glass | 4-6-4-2-4 mm

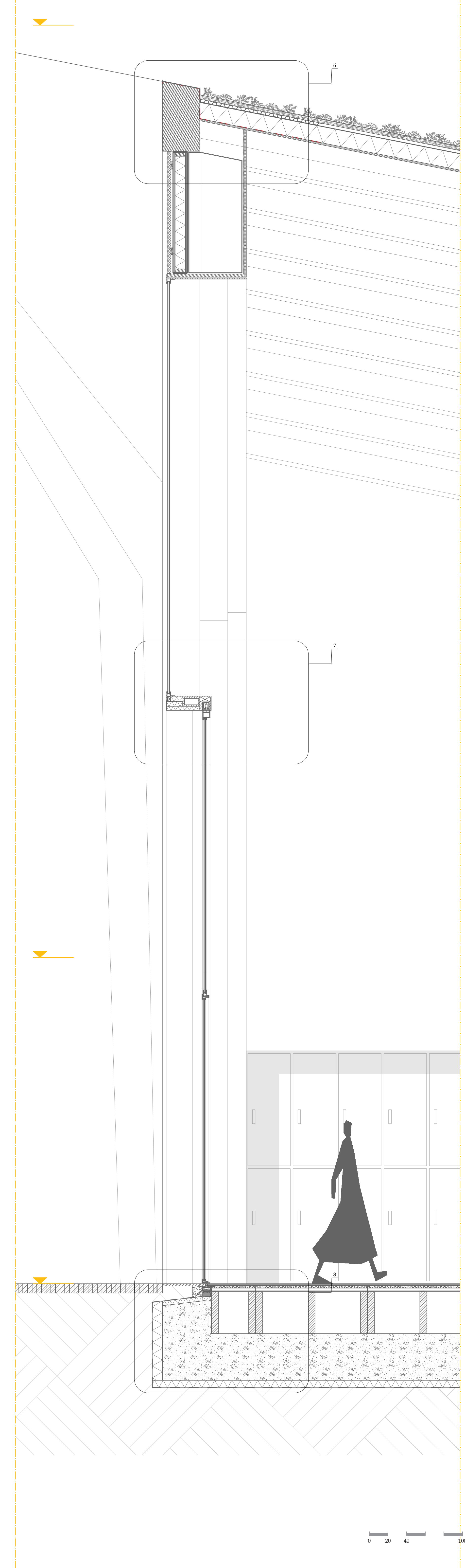
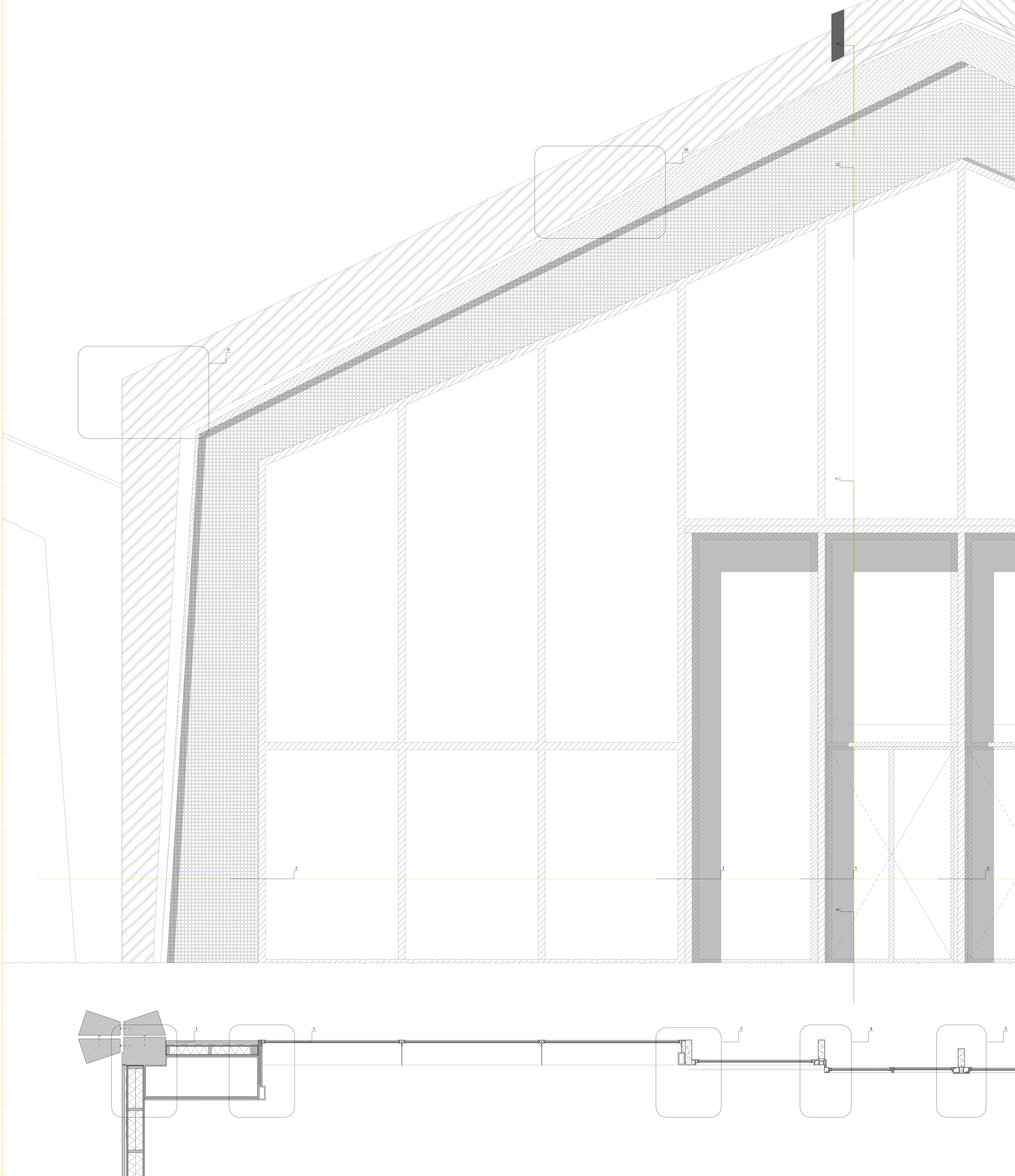
- E. opening**
- hinge double doors in sliding doors

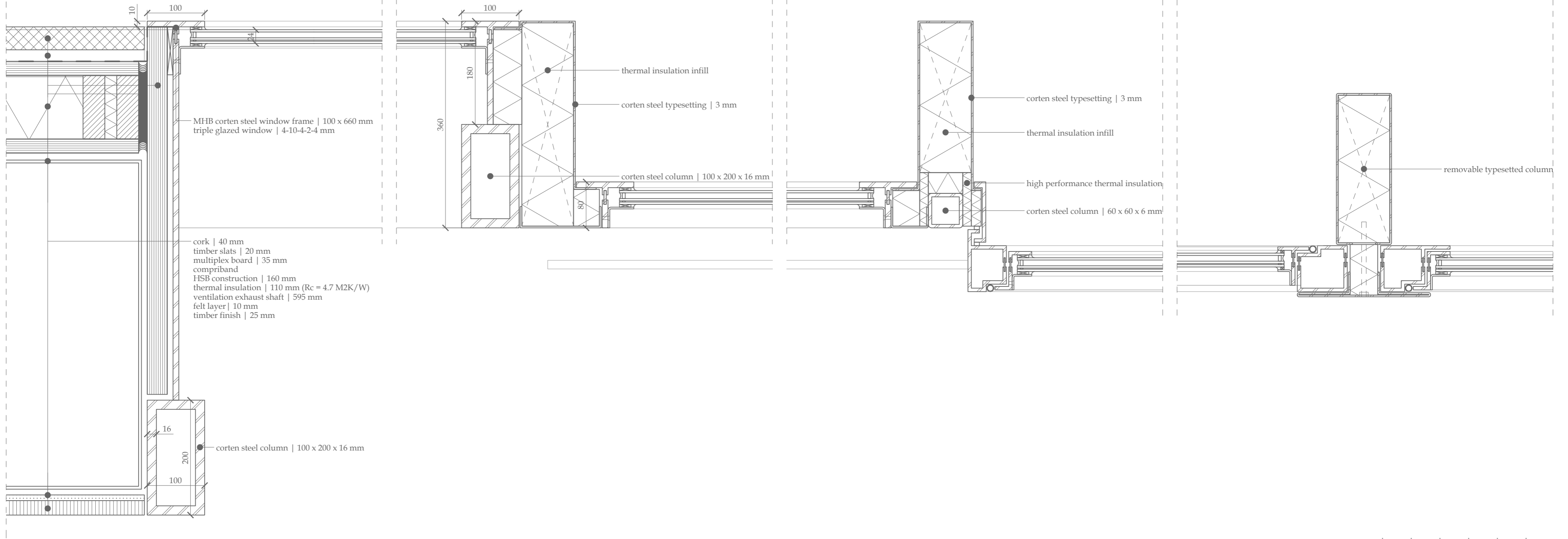
- F. floor**
- floor finish: timber | 25 mm
- milled gypsum boards with floor heating | 20 mm
- Kerto Ripa open timber floro slabs | 450 mm
- slab foundation cast-in-situ concrete | 500 mm
- thermal insulation ($R_c = 4 \text{ m}^2\text{K/W}$) | 80 mm

- G. foundation**
- thermal insulation ($R_c = 4.7 \text{ m}^2\text{K/W}$) | 110 mm
- concrete beam cast-in-situ on slab | 525 mm

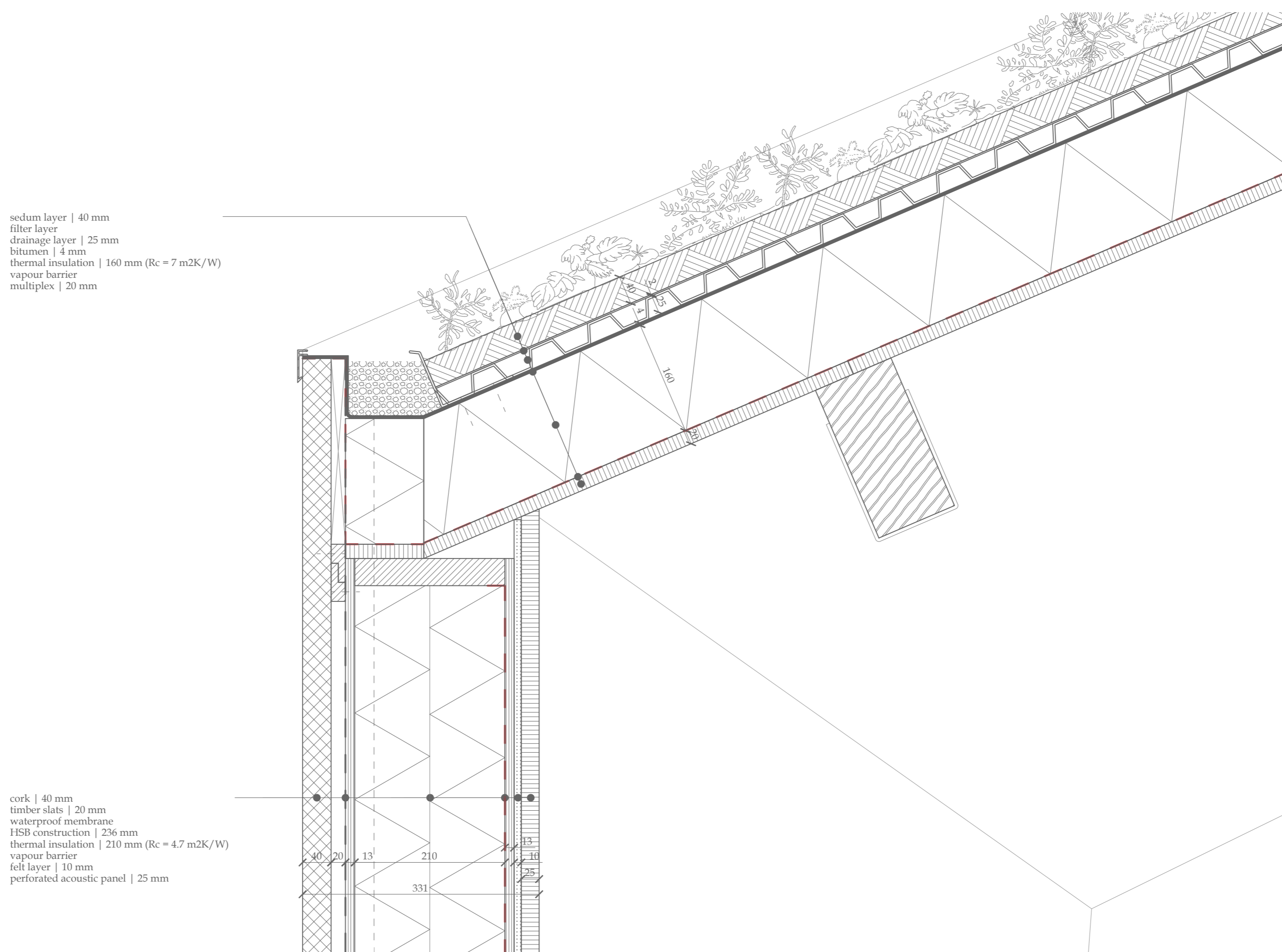
- H. structure**
- outdoor portals
- laminated timber portal frame

- I. sliding door connection**
- typesetted corten steel with insulation infill (removable when sliding doors open)

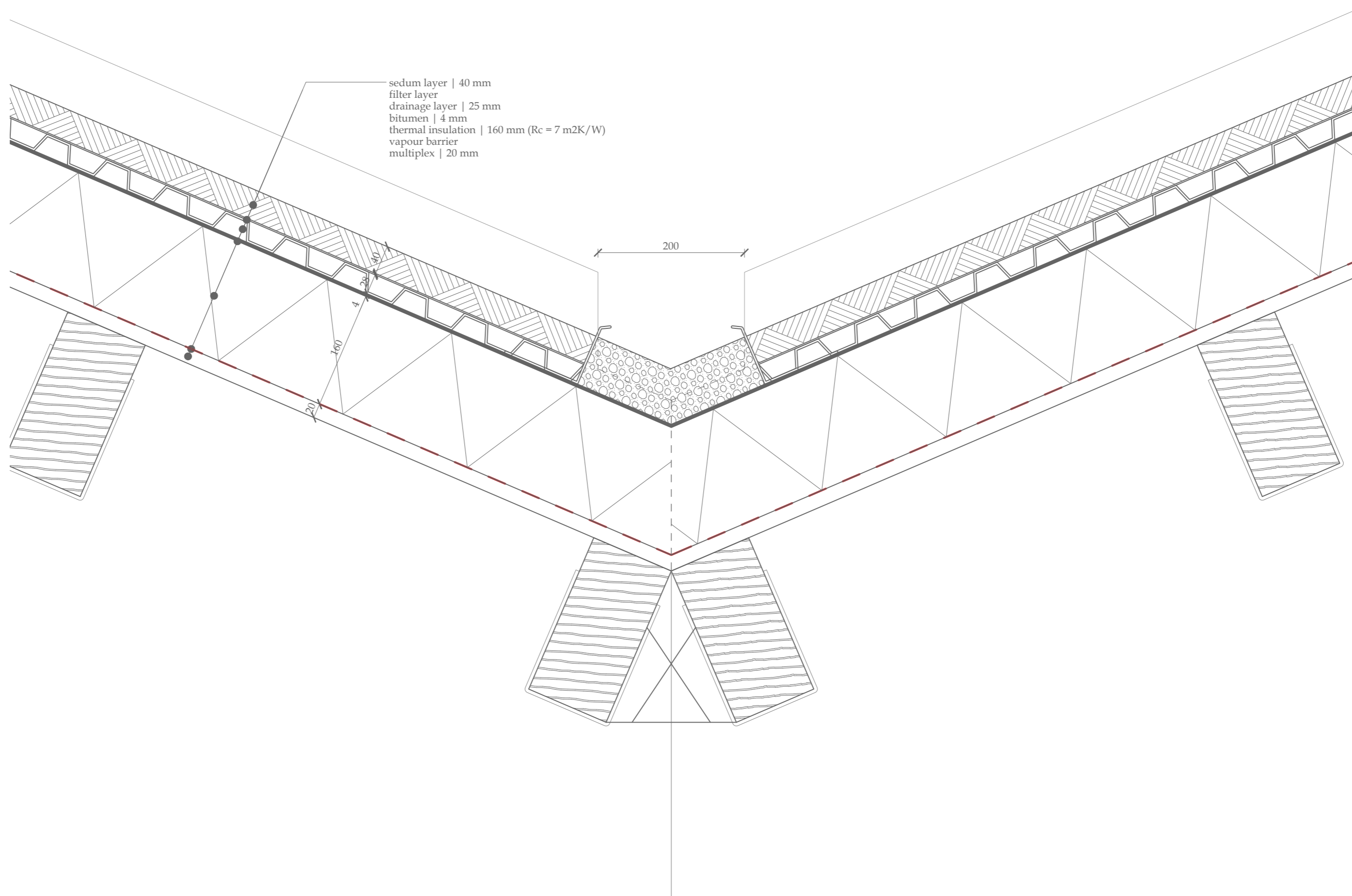




detail 2 - 5



detail 9



detail 11

