

Memories of Tlaloc: Water as the Cultural Legacy in Xochimilco

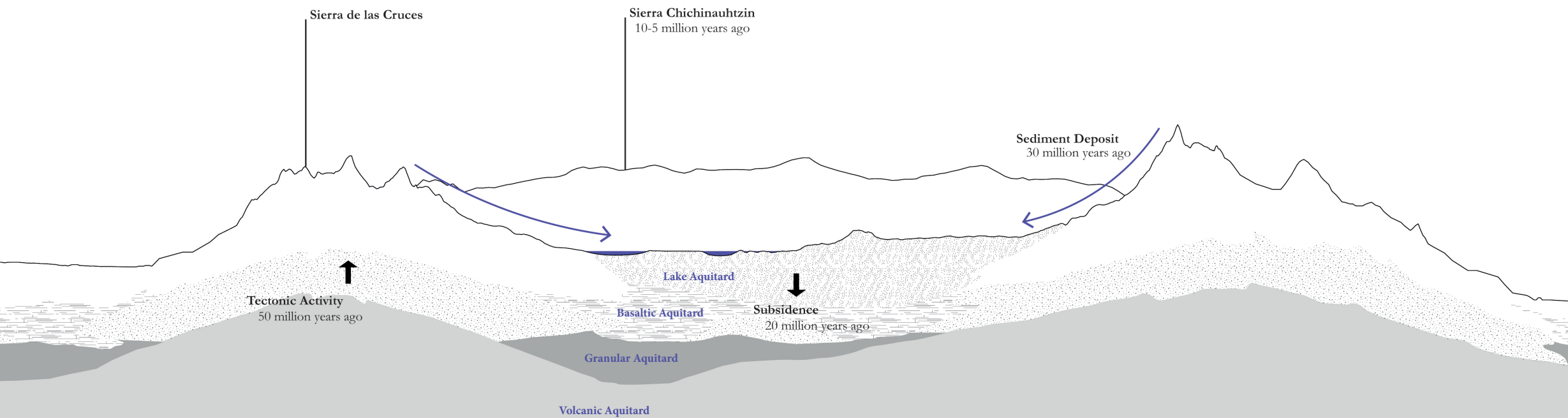


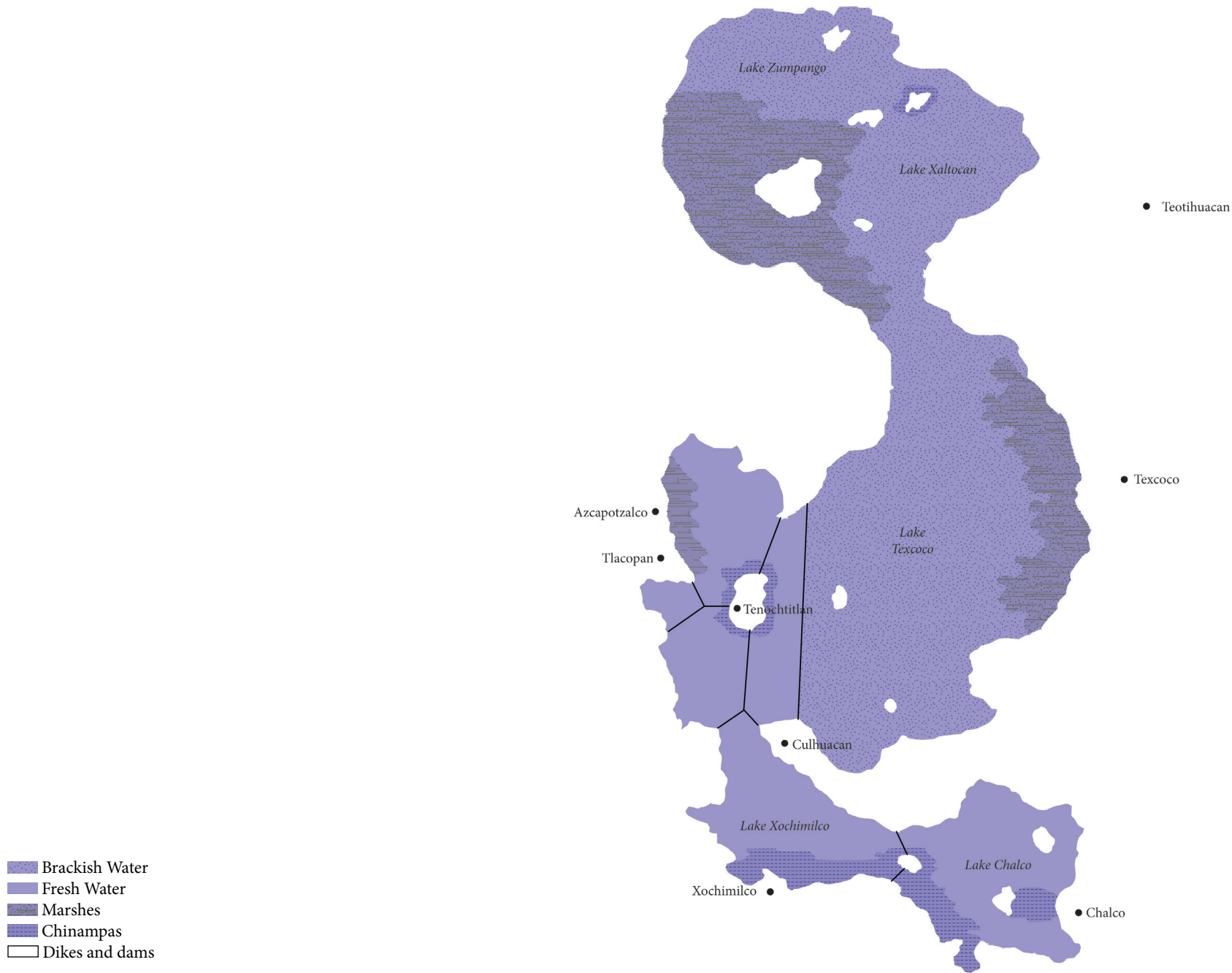
Carolina Marquez Luna



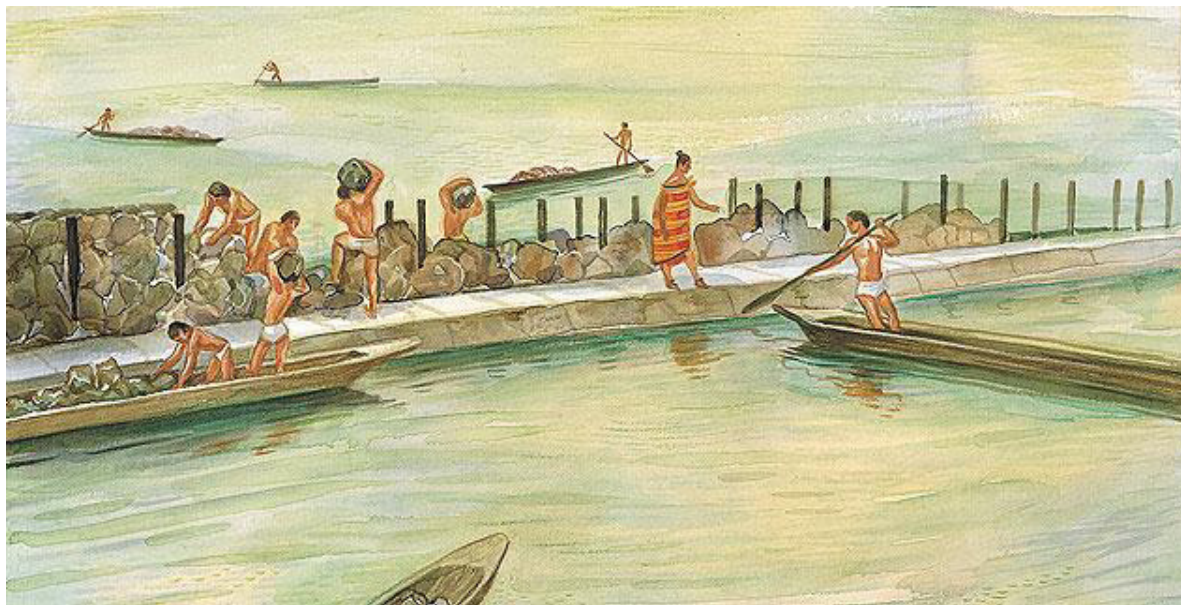
An aerial view of the Fountain of Tlaloc, mural by Diego Rivera honouring the god of water in Mexico City.
(Photo: Carlos Jasso, Alamy Stock Photo/Reuters)

Formation of the Endhoreic Basin





0 10 km

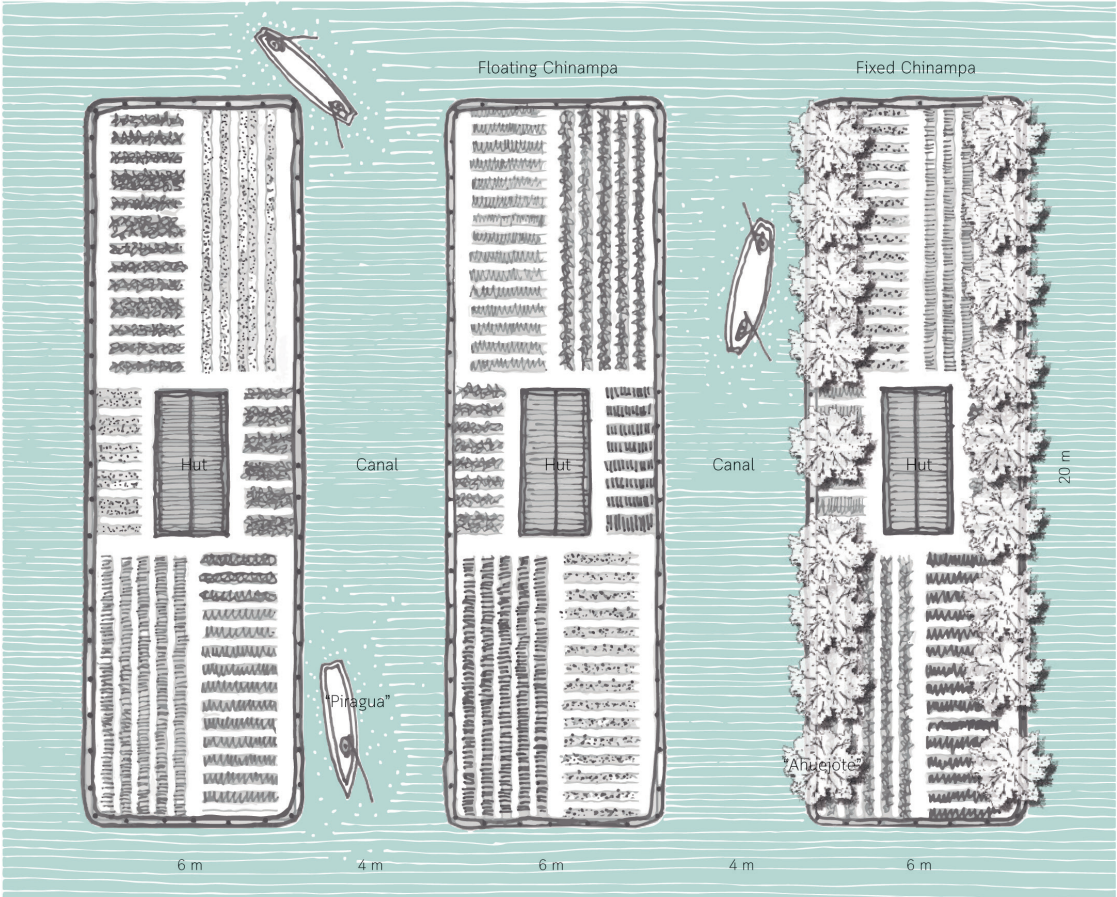
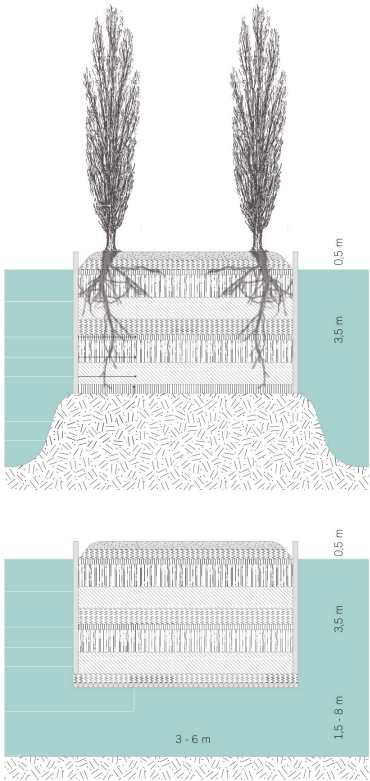


Mexicas building the Nezahualcoyotl Dam
(Source: Mexico Desconocido, n.d.)



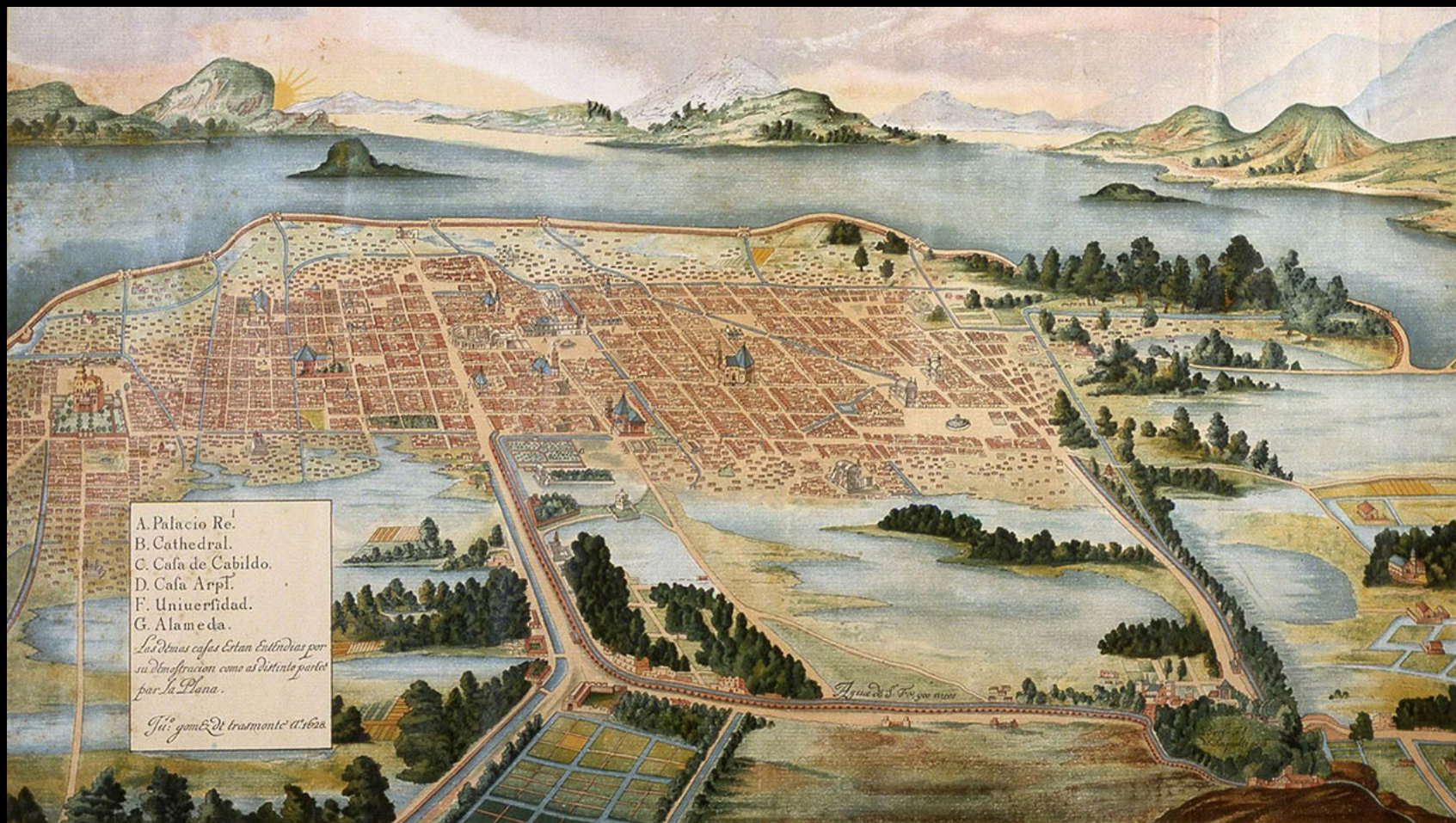
Mexicas building a Chinampa
(Source: mxc.com.mx, n.d.)

'Chinampas' - Woven Fence of Canes



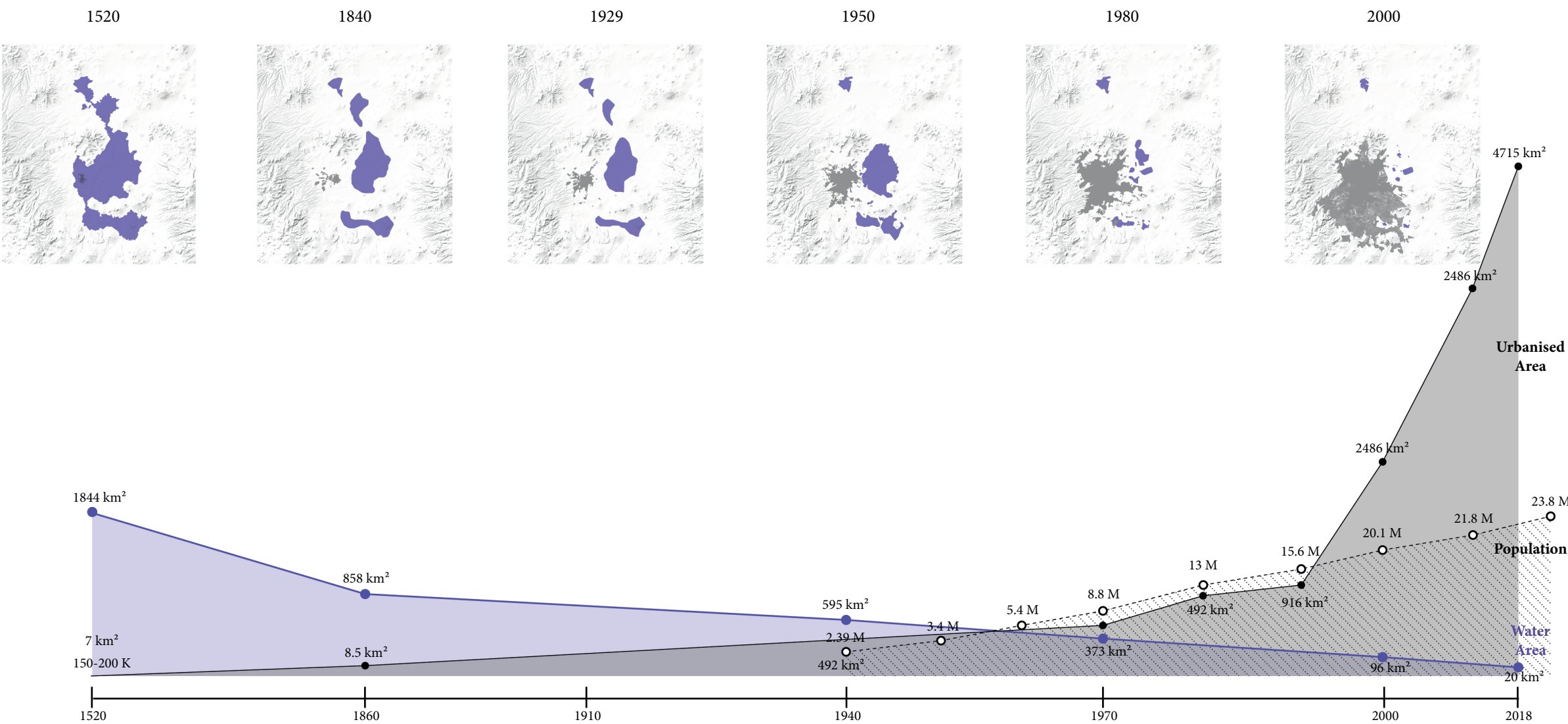


El tianguis de Tlatelolco by Diego Rivera
(Photo: Jen Wilton via Flickr, 2012)



Mexico City in the colonial era
(Source: www.nhmdemexico.colmex.mx, n.d.)

Urban Expansion Timeline

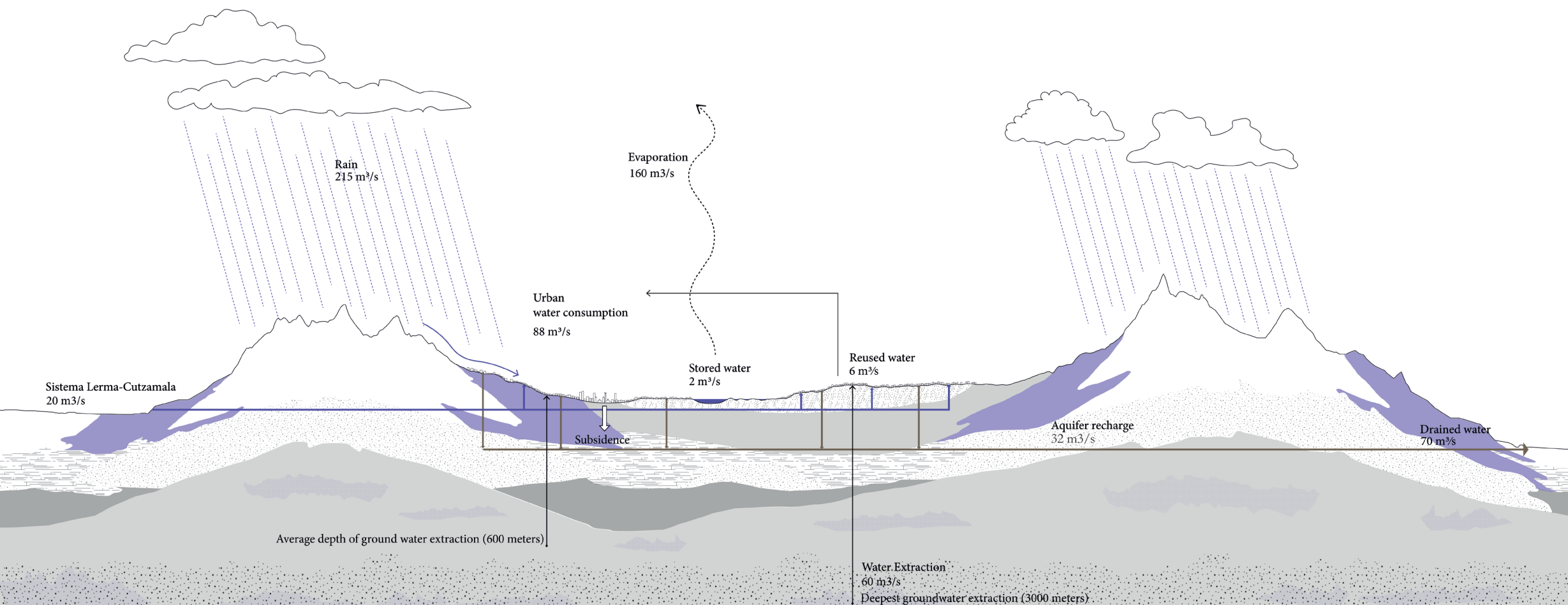




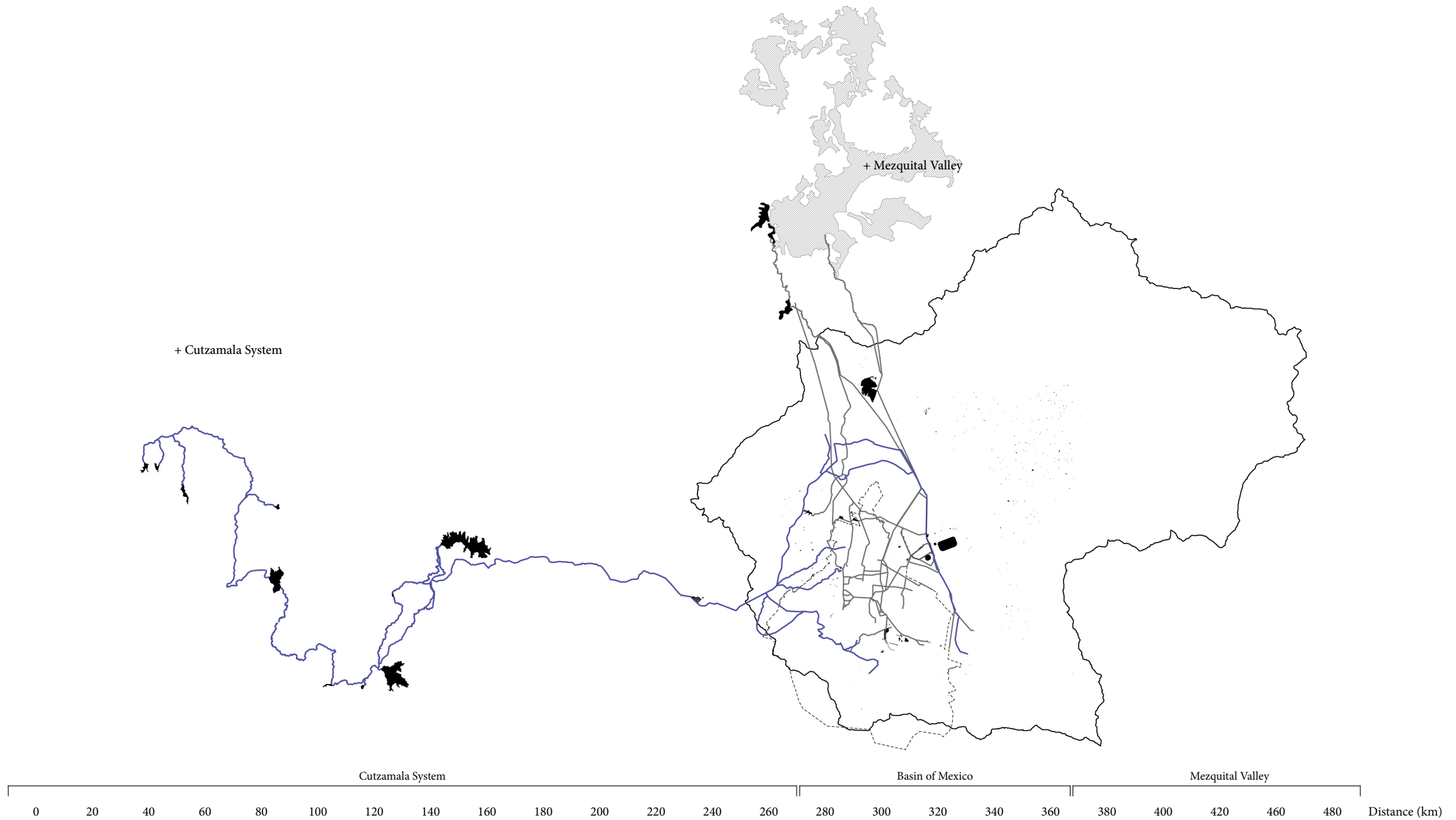
La Ciudad de México in 1949 by Juan O'Gorman
(Photo: Fundación ICA, n.d.)



Horizontal sprawl of Mexico City
(Photo: Santiago Arau, 2018)



Lerma-Cutzamala Hydroelectric System Section, groundwater Extraction and its disposal outside the Basin





Pipelining of the La Piedad River
(Photo: El Universal, n.d.)



Pipelining of the La Piedad River
(Photo: El Universal, n.d.)



People filling containers during a public water distribution as more than half of Mexico faces moderate to severe drought conditions
(Photo: Daniel Becerril, 2022)

The average consumption of the Mexico City population more than doubles the consumption rate advised by the World Health Organisation (WHO) for large cities.



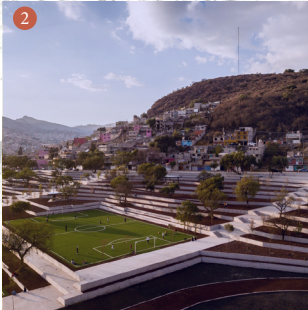
Street Art depicting Tlaloc.
(Photo: Santiago Arau, 2021)

How can historical water values in the Basin of Mexico be reintroduced to mitigate flooding, water scarcity, and pollution, enhance community awareness and engagement to conserve the unique endemic ecosystem in Mexico City, particularly in Xochimilco?

Shared Concern



Texcoco Ecological Park



Bicentenario Park



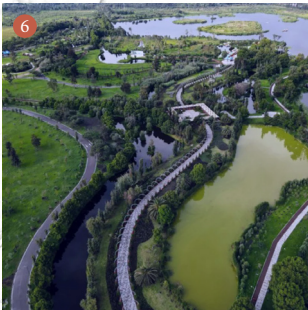
Gran Canal Linear Park



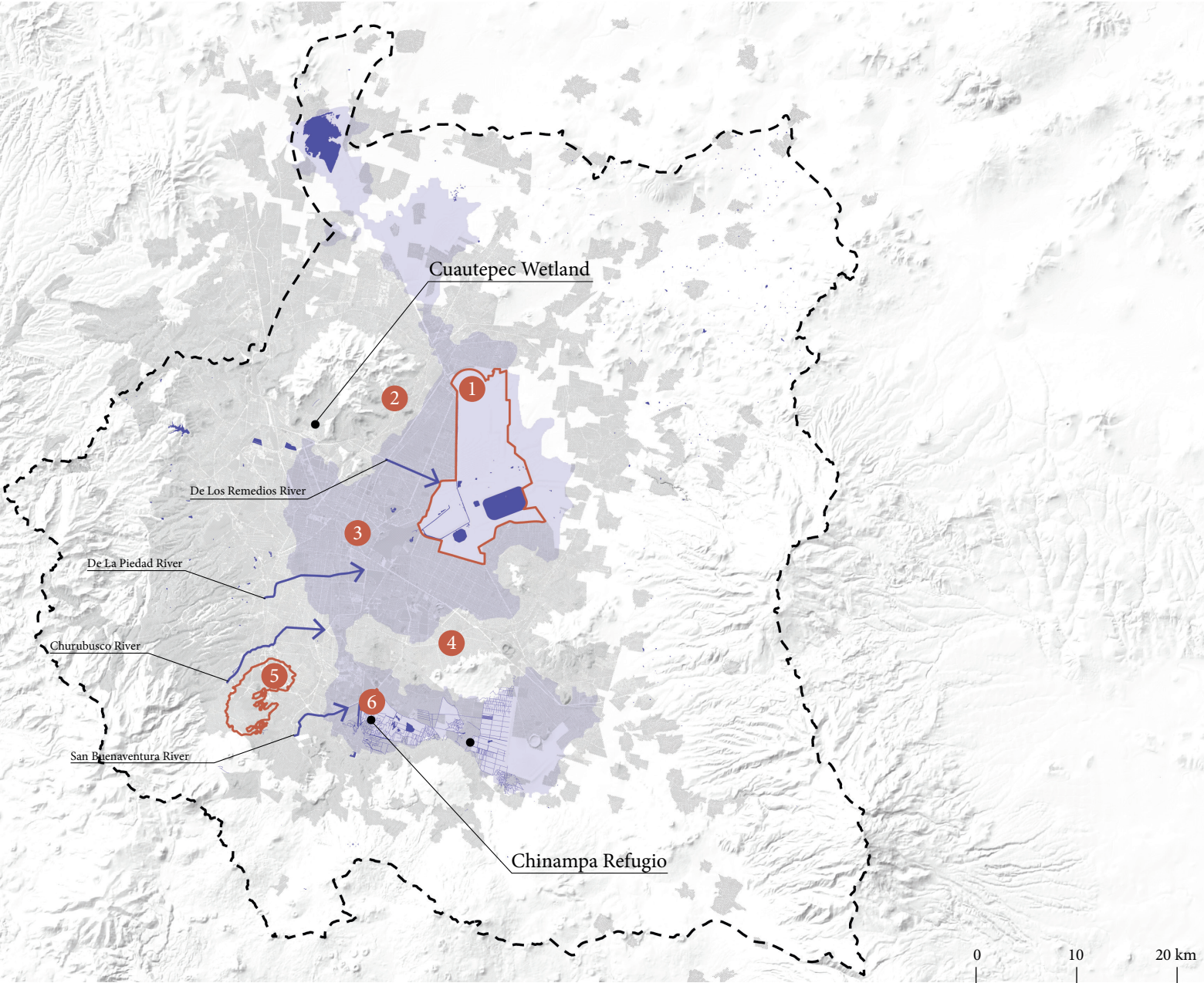
La Quebradora Hydric Park



El Pedregal Protected Area

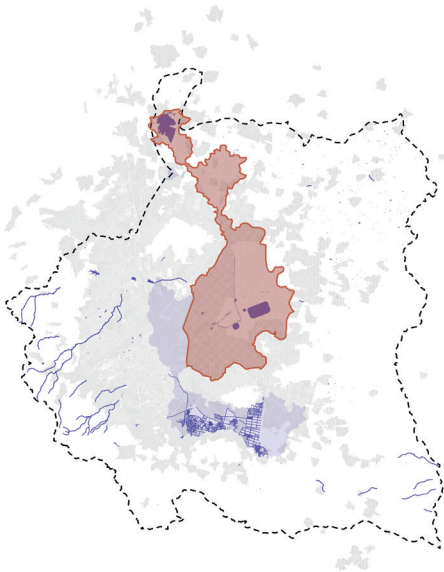


Xochimilco Ecological Park



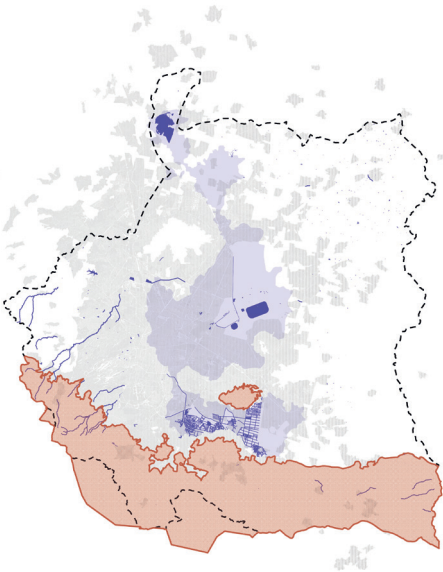
1

Retain and Store



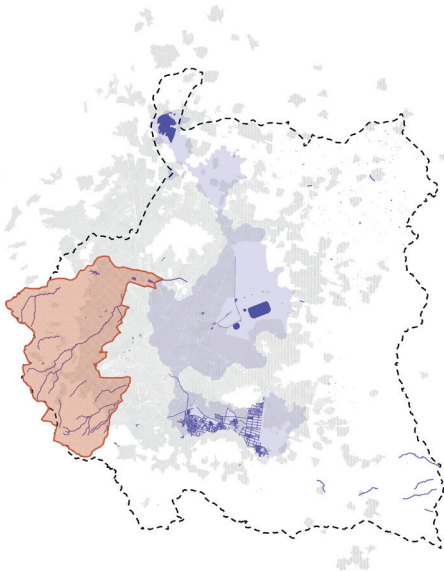
2

Infiltrate



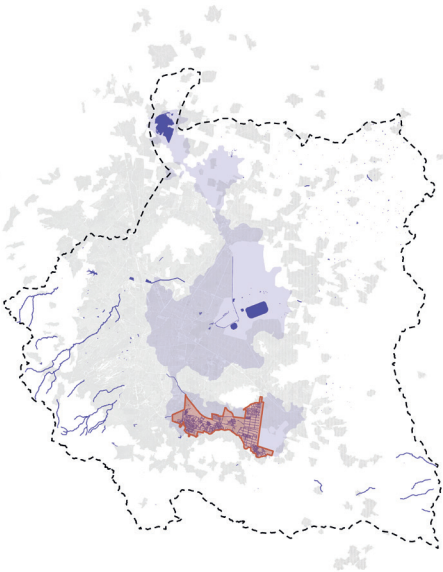
3

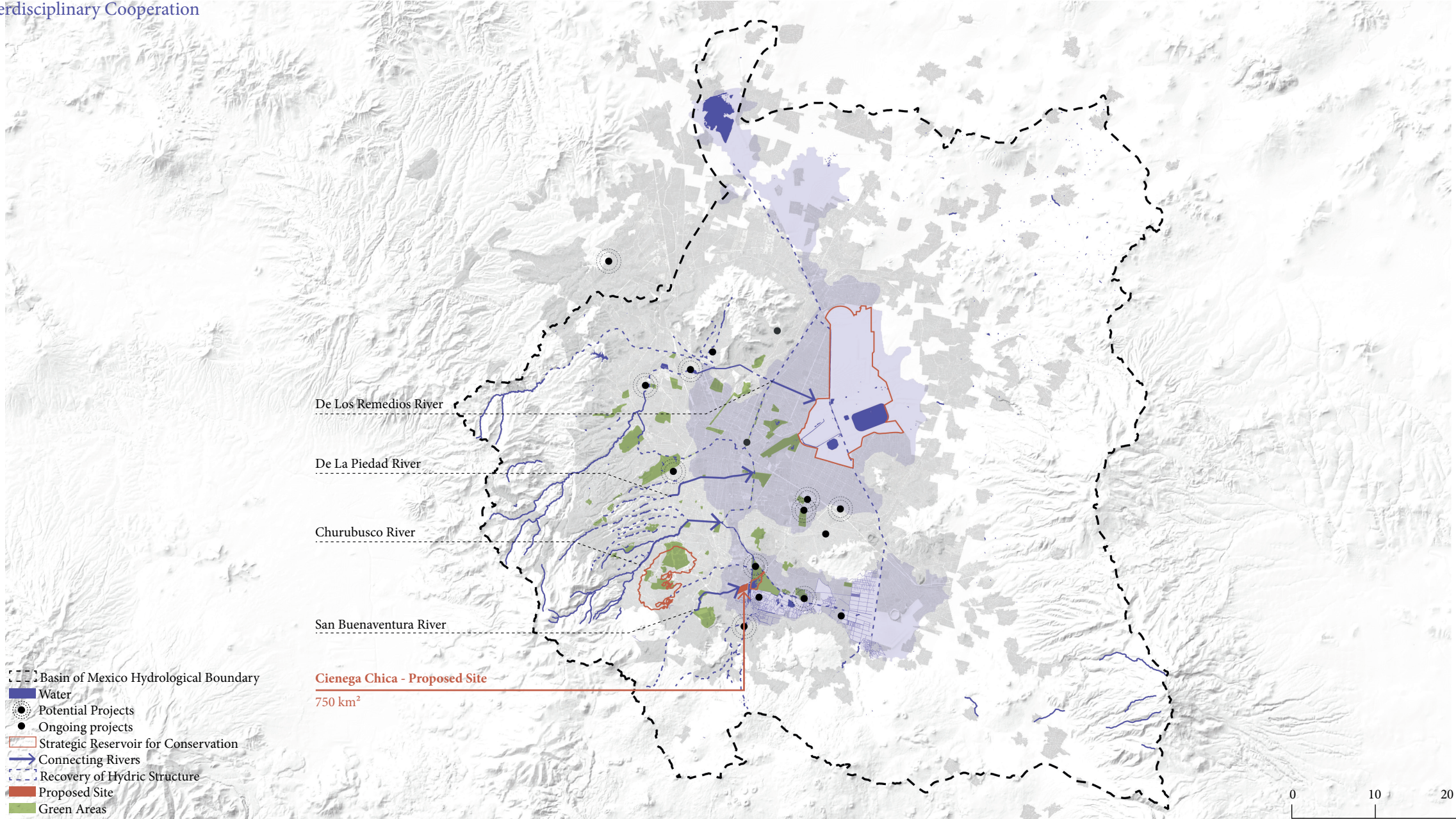
Delay and Infiltrate

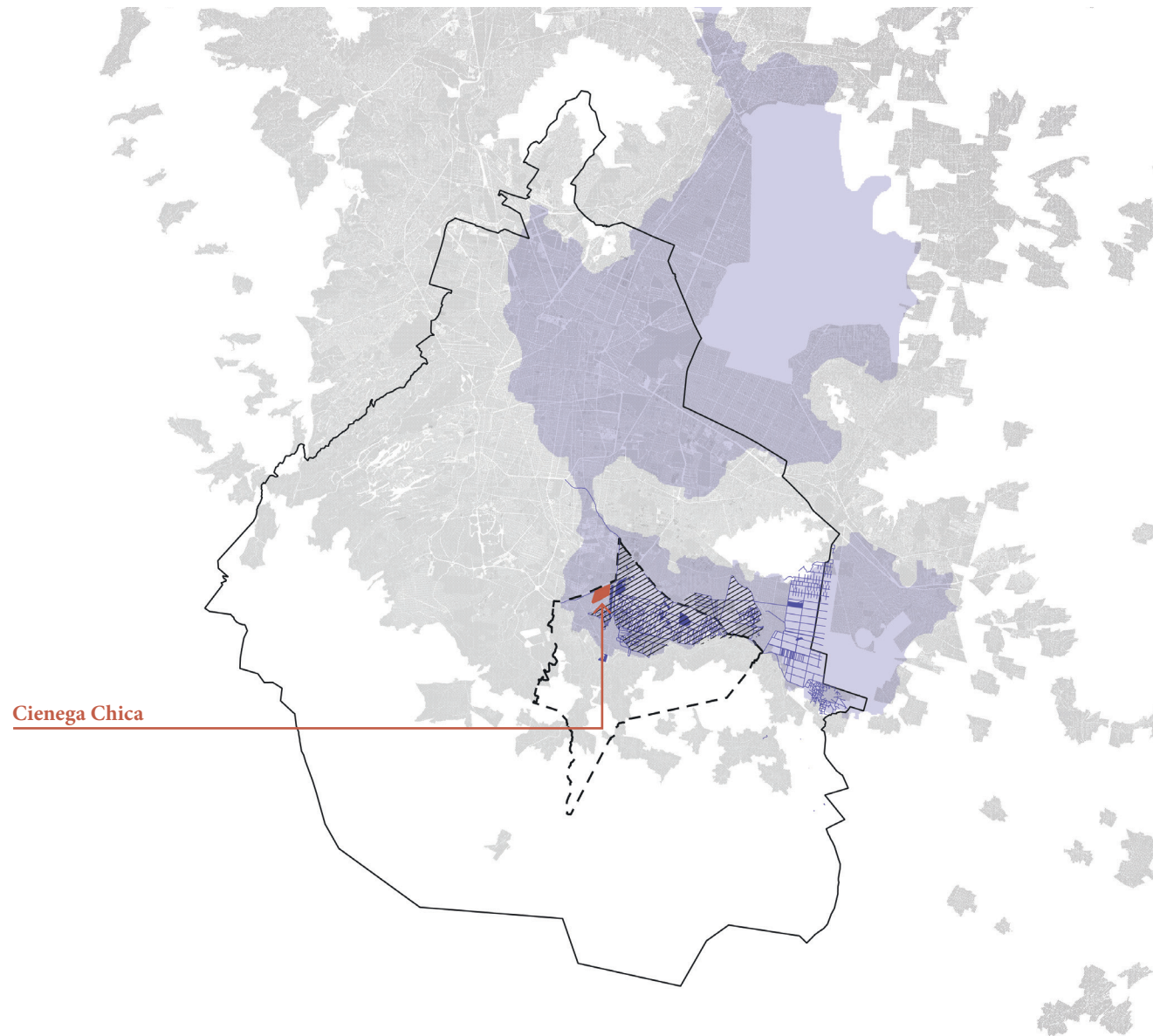


4

Clean







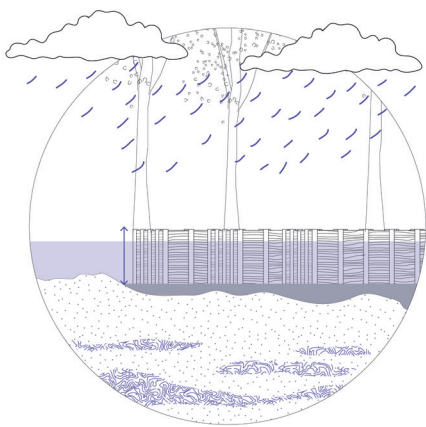
- Mexico City
- Xochimilco
- Xochimilco's Conservation Land
- Former lake bed
- Urban Areas
- Water
- Cienega Chica

0 10 20 km



Aerial photo in Xochimilco
(Photo: Santiago Arau, 2017)

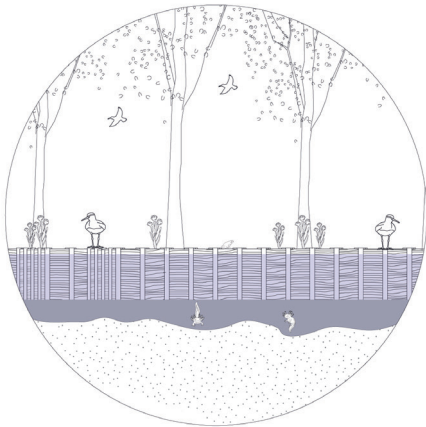
Regulation Services of the Hydrological Cycle



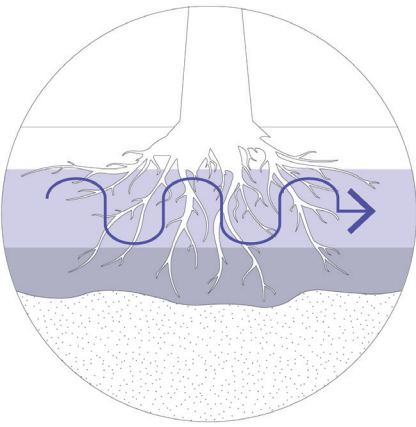
Cultural and Recreation Services



Preservation of Aquatic and Terrestrial Biodiversity



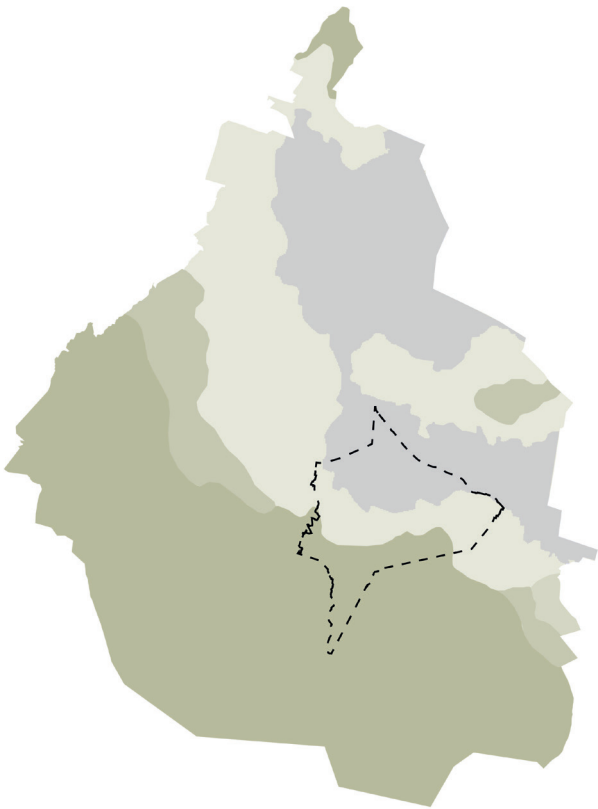
Water Quality Control



Productivity



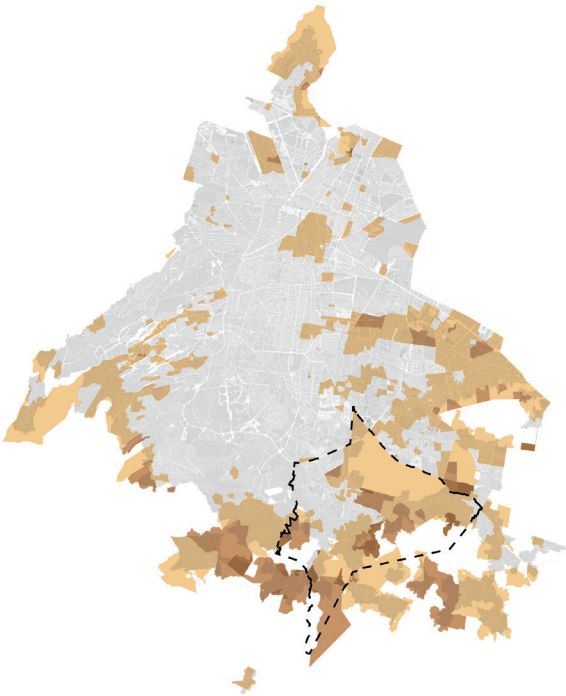
Geological Periphery



Geological Type

- Extinct lake bed
- Plain
- Hill top
- Mountain

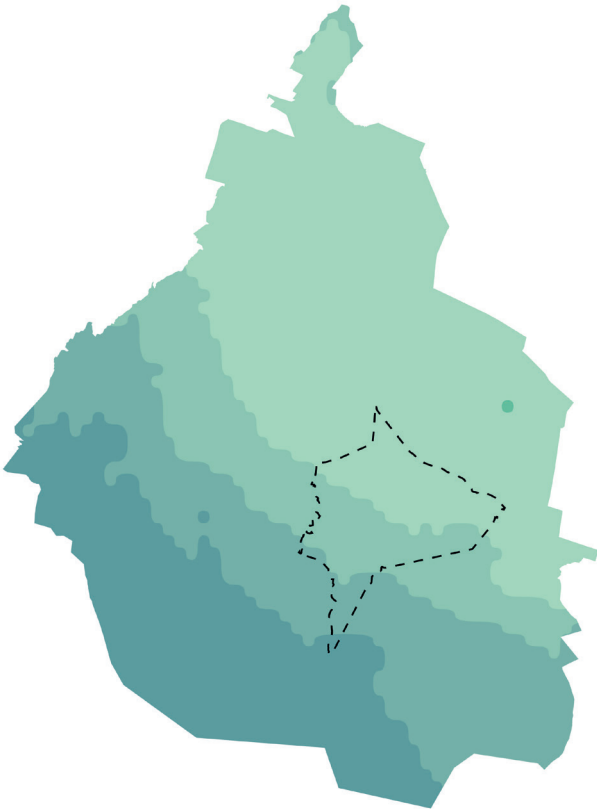
Social Periphery



Urban Marginalisation Index

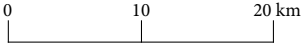
- Medium
- High
- Very High

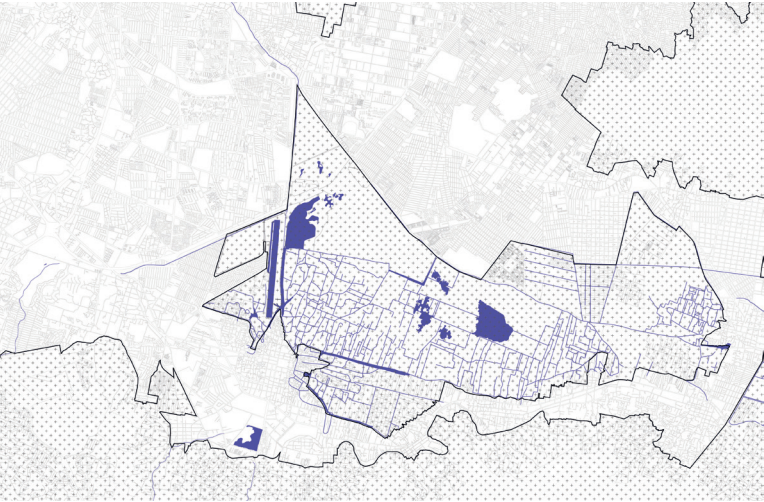
Precipitation Periphery



Annual precipitation (mm)

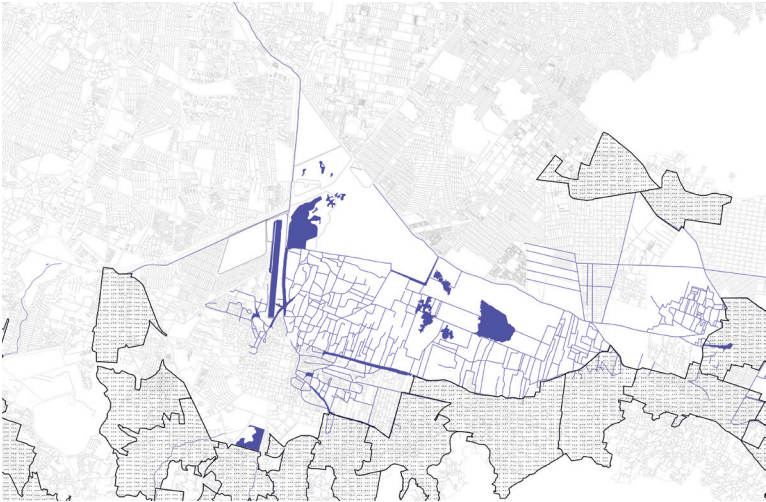
- 600-800 mm
- 800-1000 mm
- 1000-1200 mm
- 1200-1500 mm





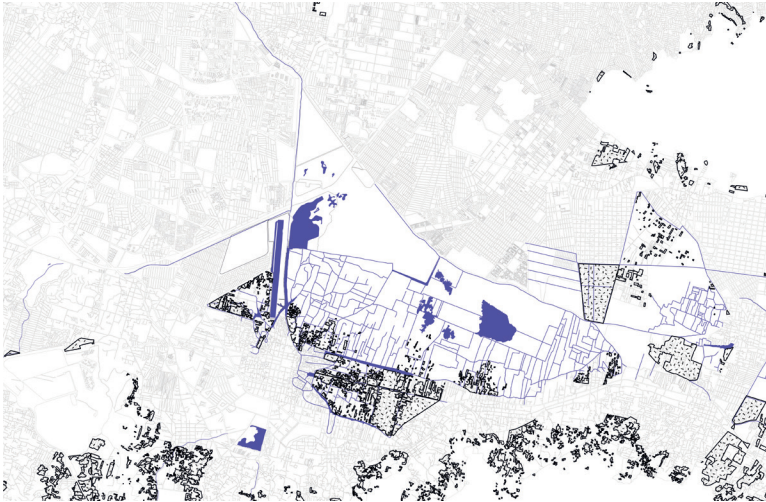
Xochimilco's Conservation Land

- Water
- Conservation Land



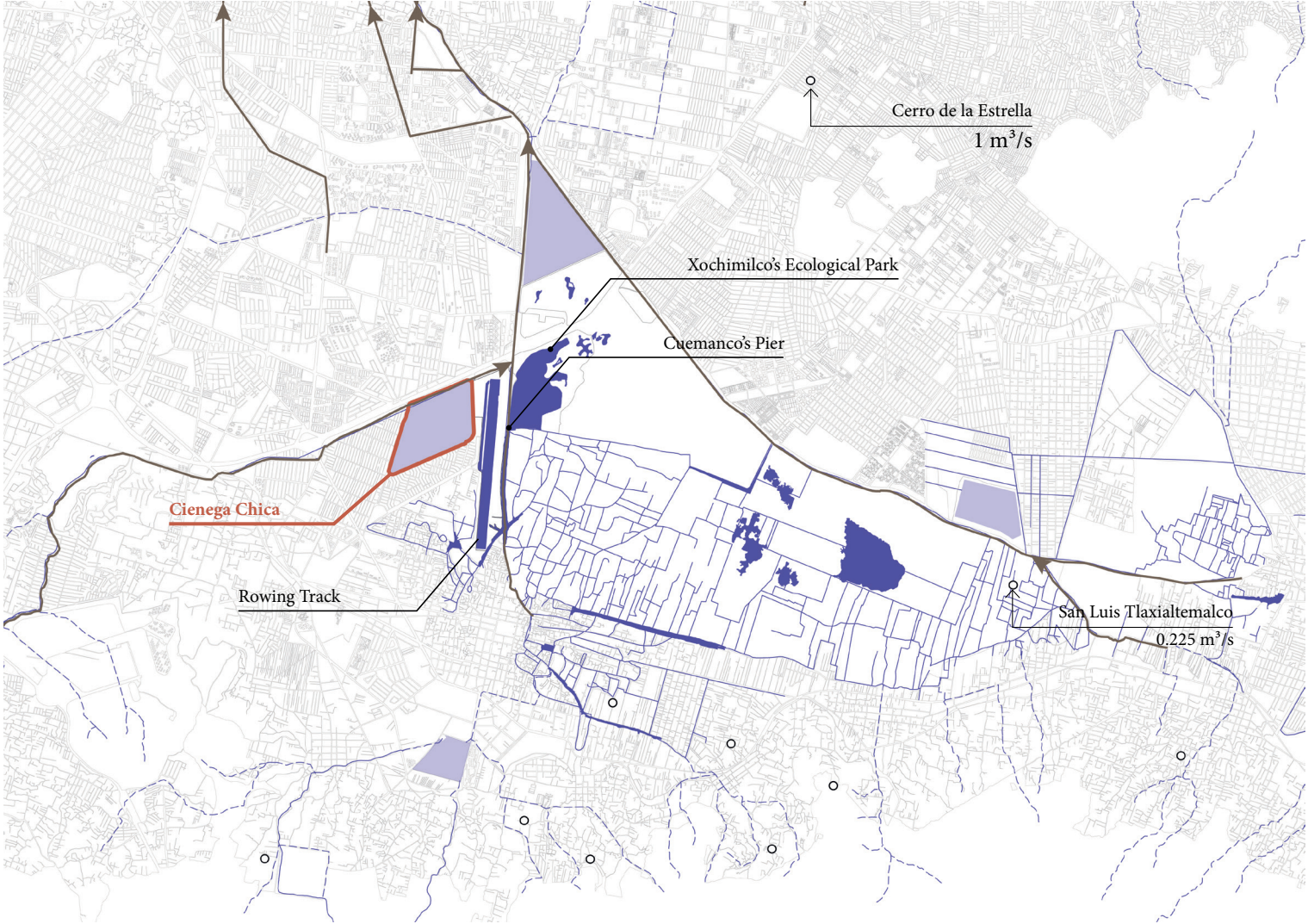
Location of indigenous communities

- Water
- Indigenous Communitites

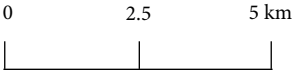


Irregular settlements in Xochimilco

- Water
- Irregular Settlements



- Water
- Sewage System
- Wastewater Treatment Plants
- Flooding Plain
- Intermittent Run-Off
- Proposed Site





Aerial view of Cienega Chica, the Xochimilco Ecological Park, and the chinampas cultural landscape
(Source: Google Earth, 2025)

Wastewater is the only water source that increases
with water demands

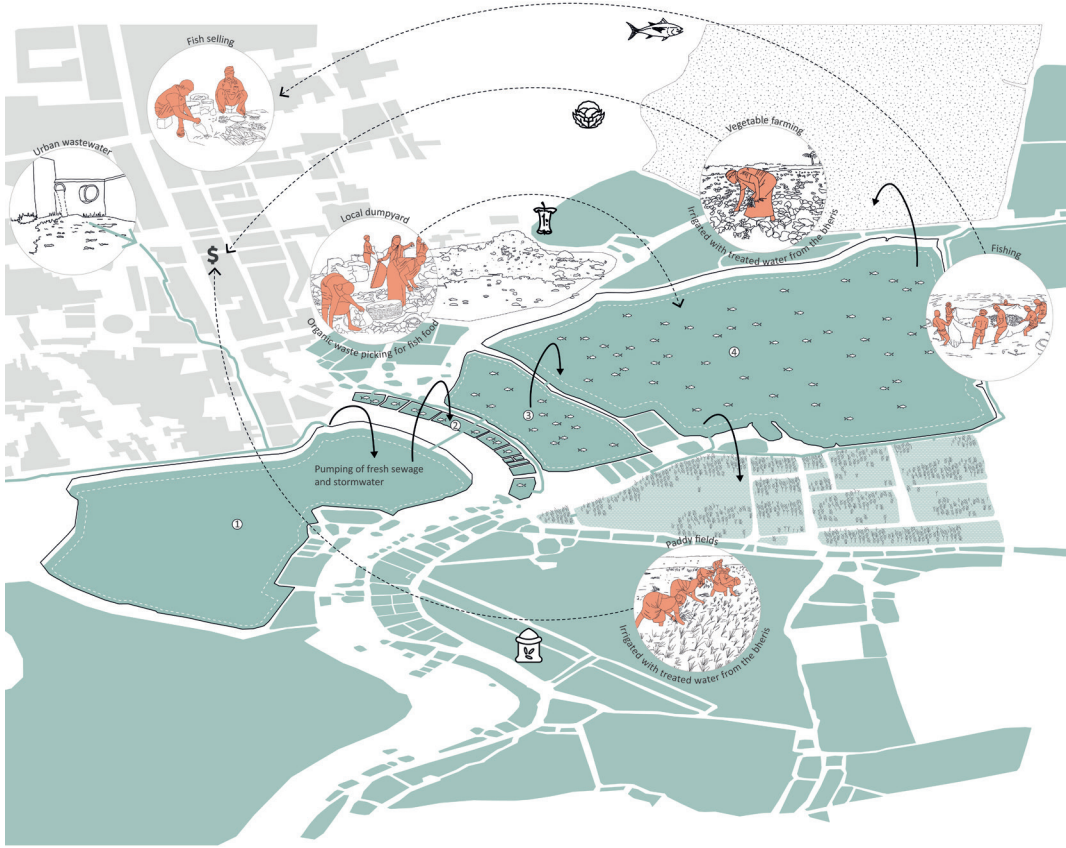


Lankheet Park
Location: Landgoed Het Lankheet, Haaksbergen NL
Designer: Strootman Landschaparchitecten



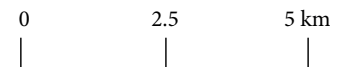
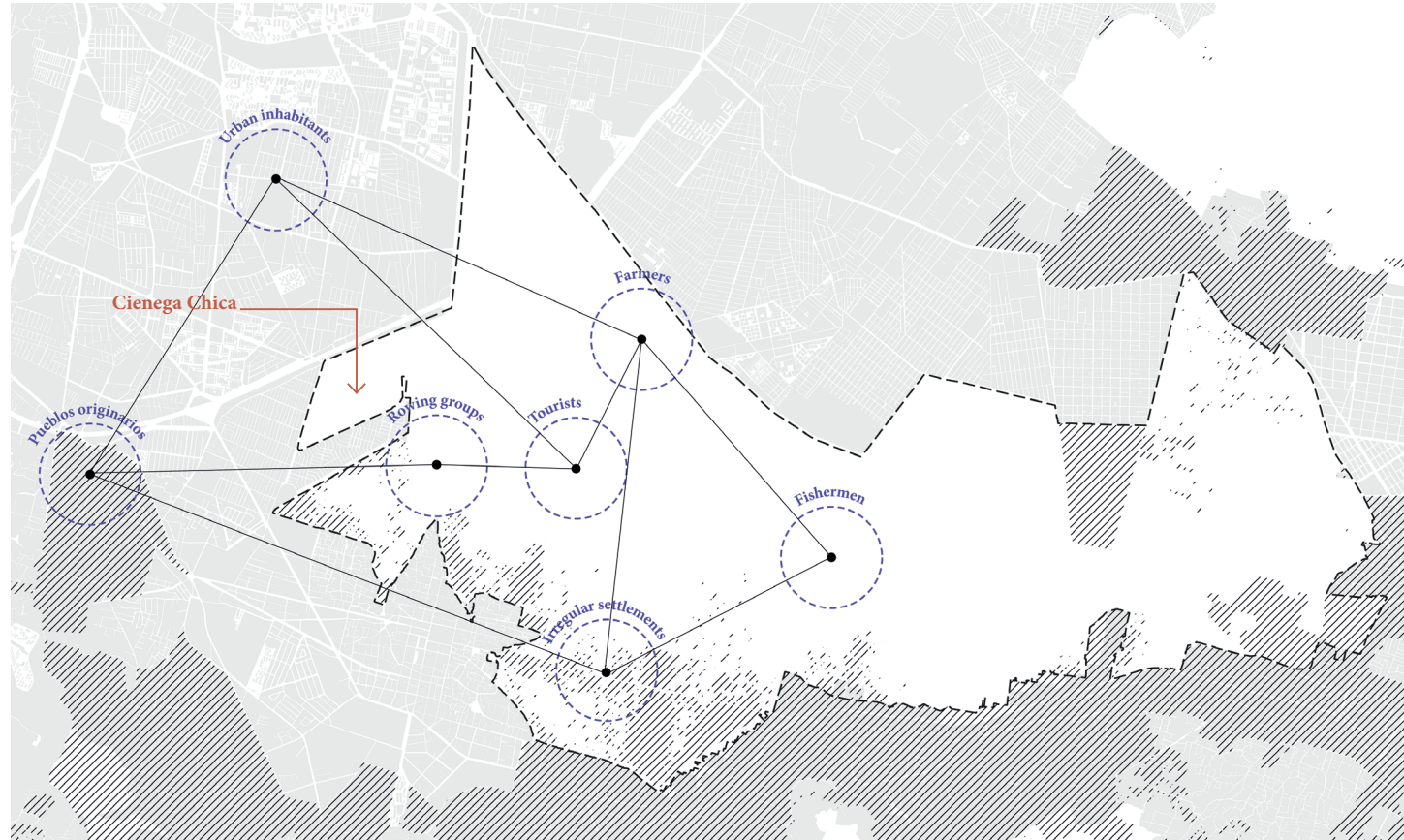
Lankheet's Reed Filtering System
(Source: Strootman Landschaparchitecten, n.d.)

Bheri Wastewater Aquaculture Treatment
Location: Kolkata, West Bengal IN
Urban Context

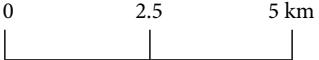
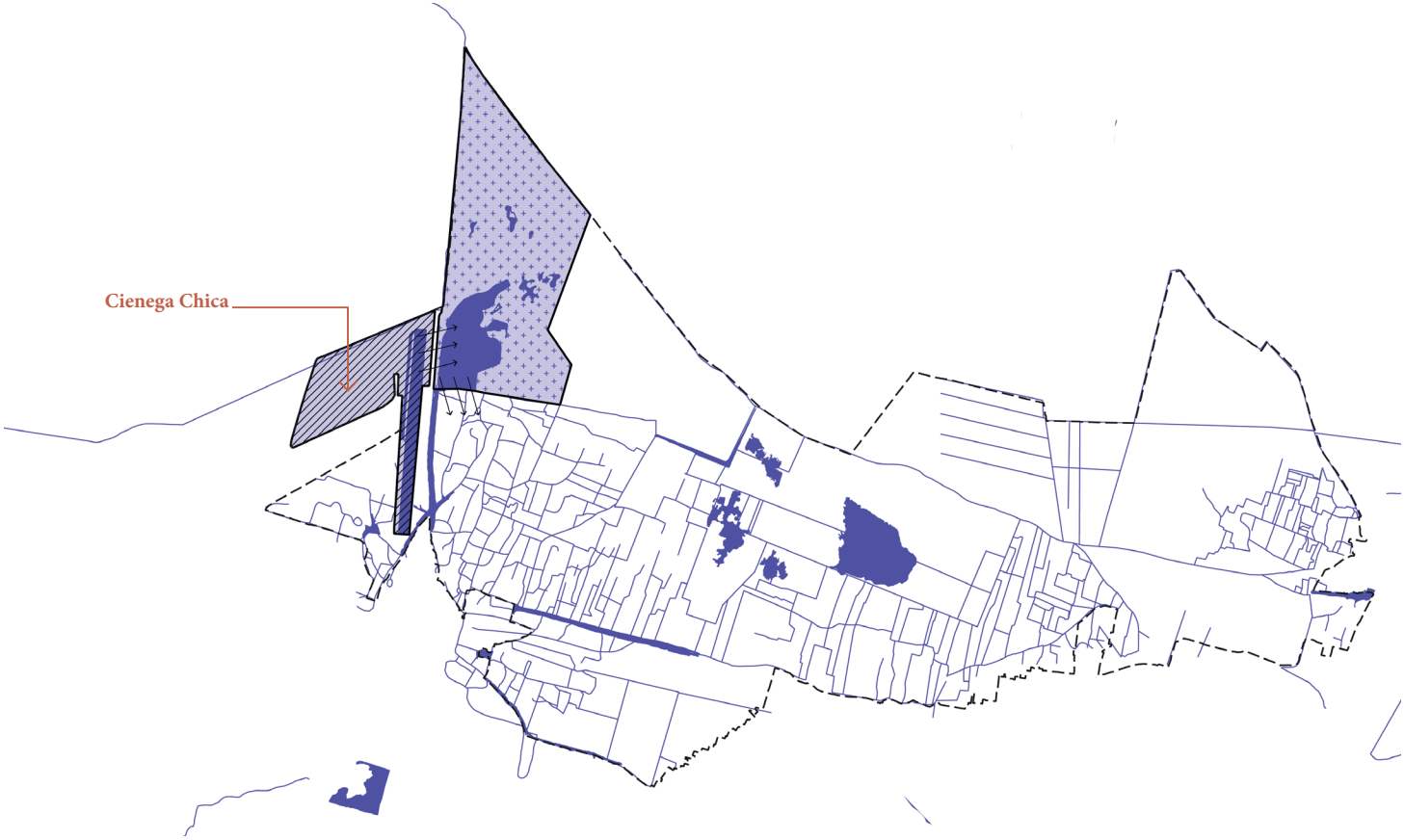


Circularity System of the East Kolkata Wetlands m
(Source: Carolina Marquez, 2025)

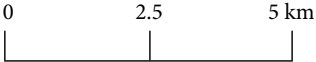
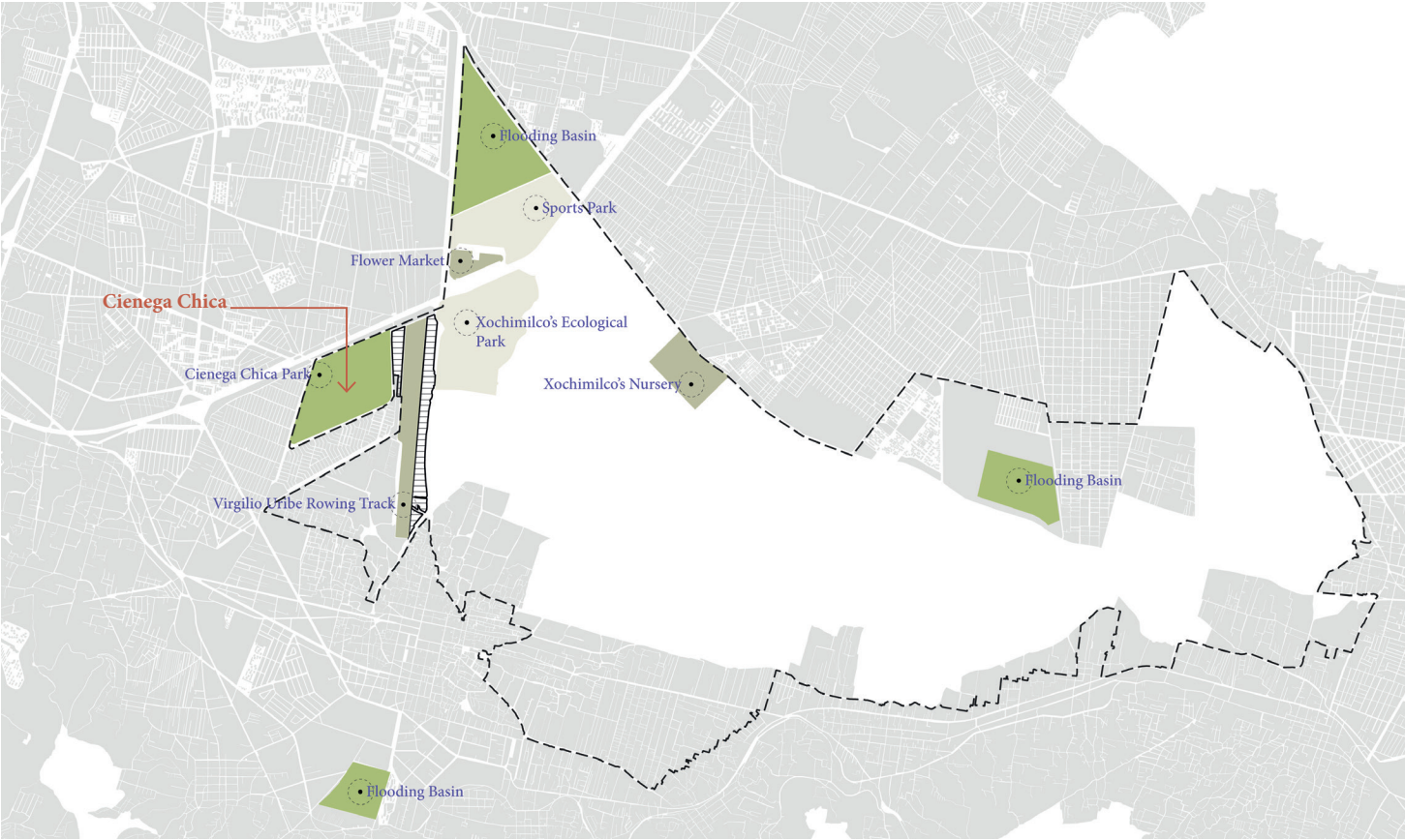
1. Interconnected spaces for new ways of interaction



2. Reconnected water purification system



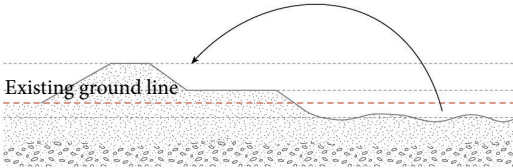
3. Repurposed urban infrastructure



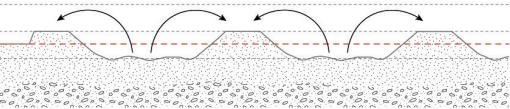
4. Prioritising an ecological balance



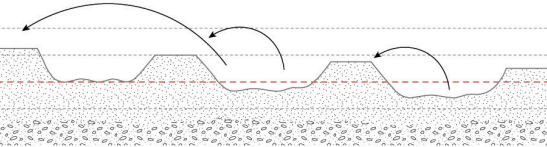
Sedimentation



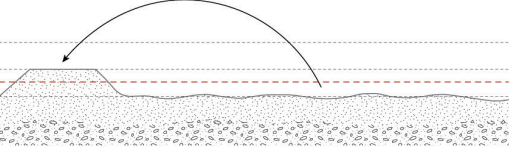
Reed filtering



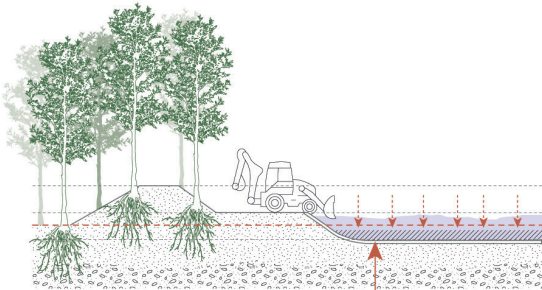
Anaerobic



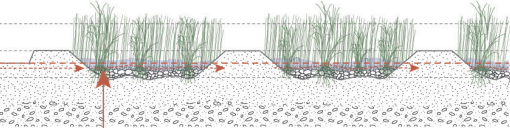
Facultative



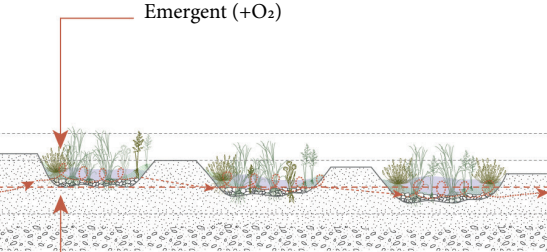
|Vegetation barrier |Space for |
|maintenance



Wetland lining

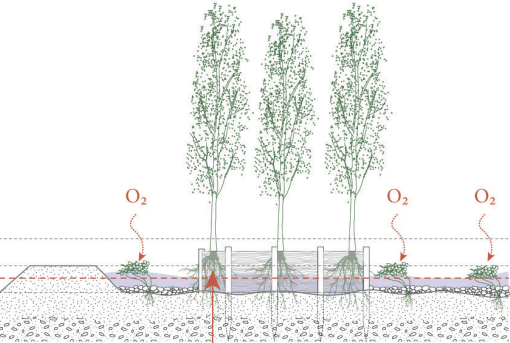


Rhizosphere space



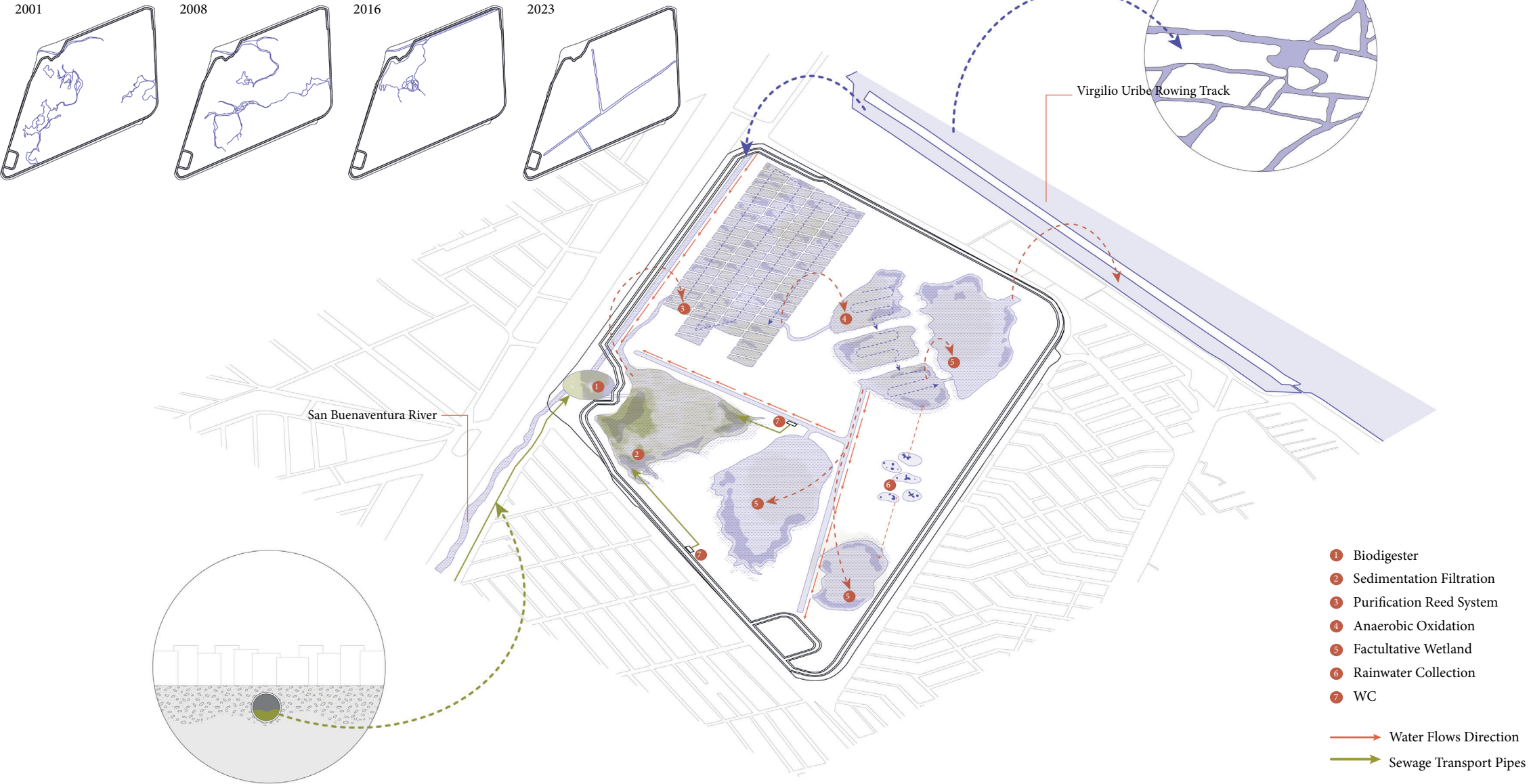
Emergent (+O₂)

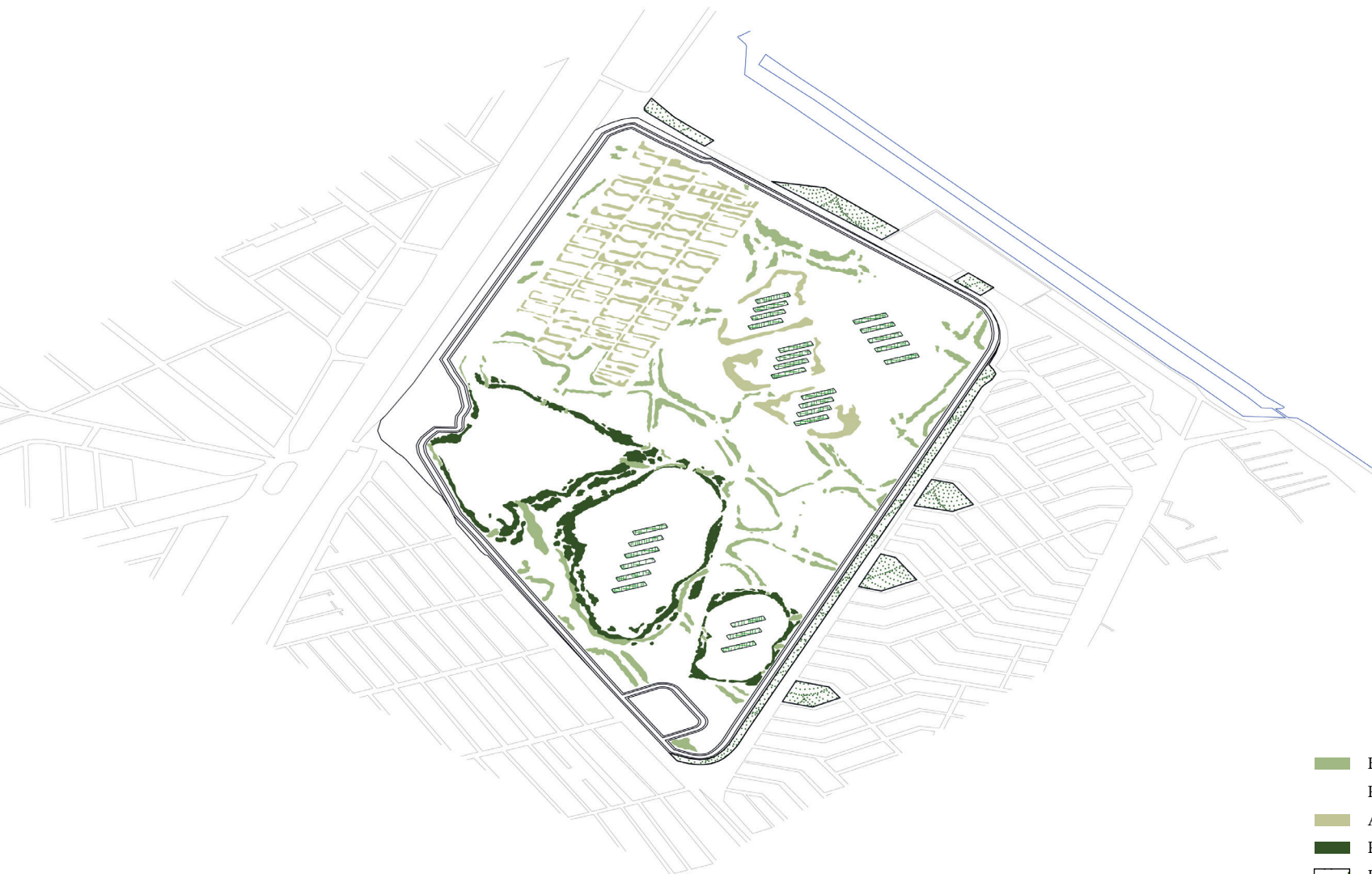
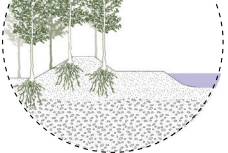
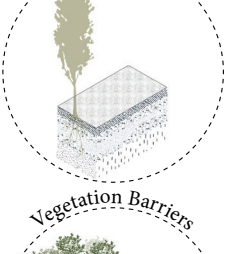
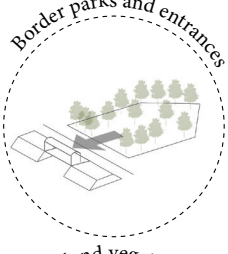
Submergent (-O₂)



Roots

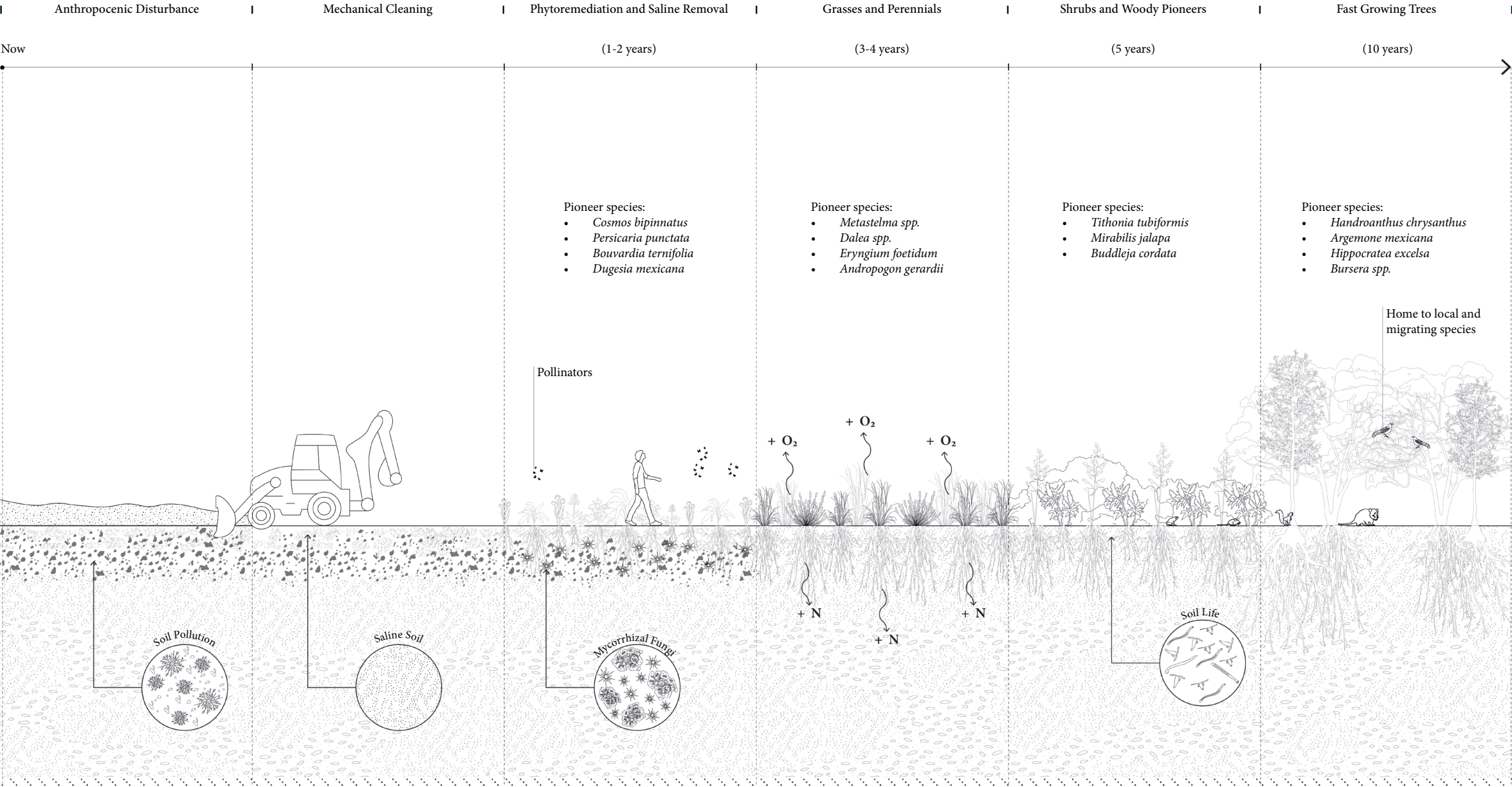
A New Cleaning System



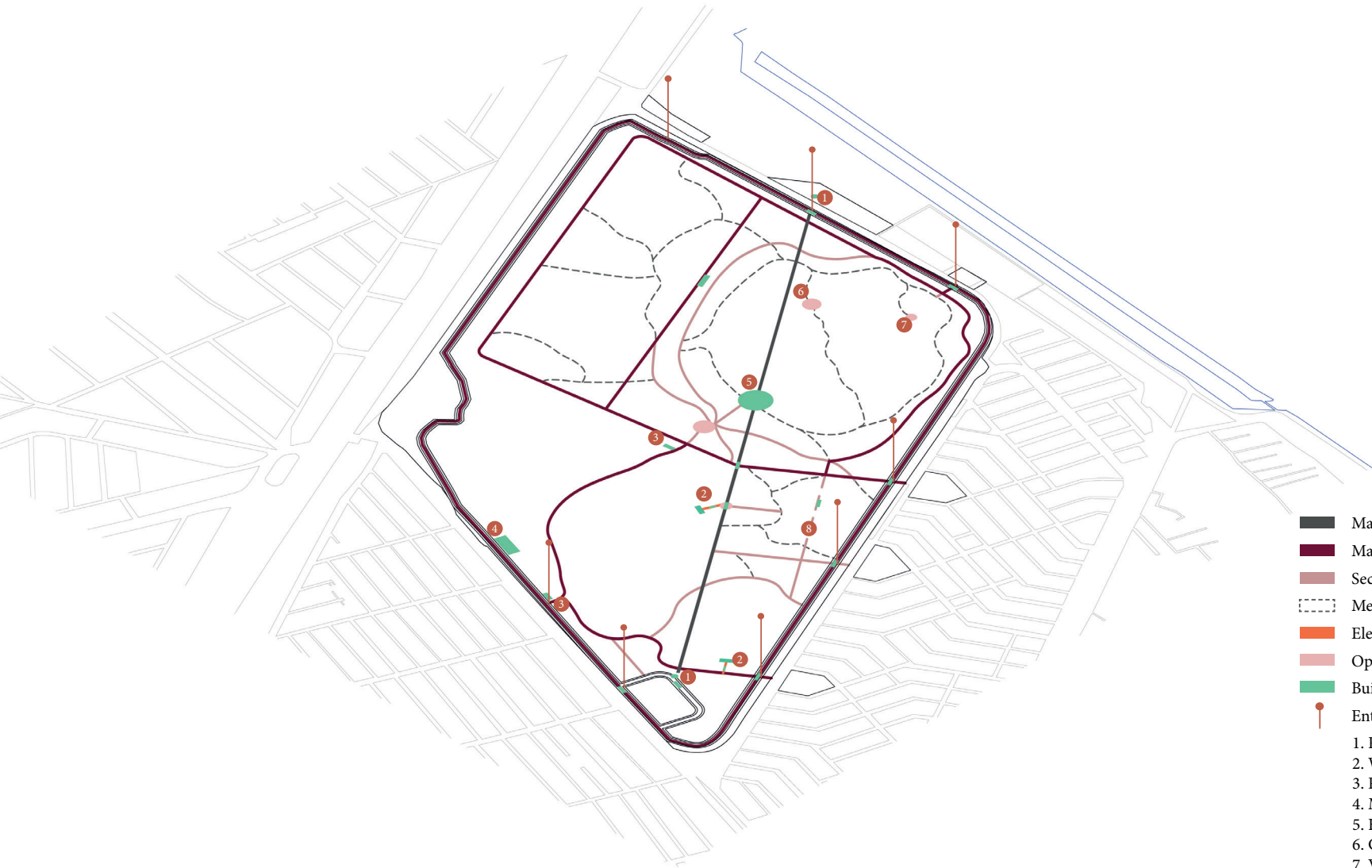
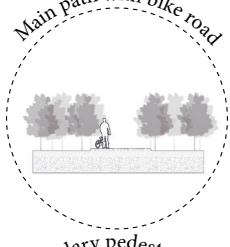
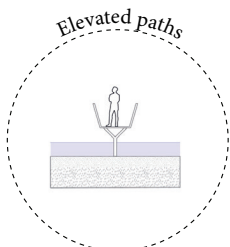
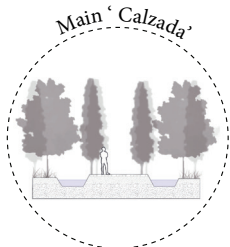


- Borders for Flora and Fauna Recovery
- Aquatic Filtering Vegetation
- Plant Barriers
- Border Parks
- Chinampas

Ecological Succession

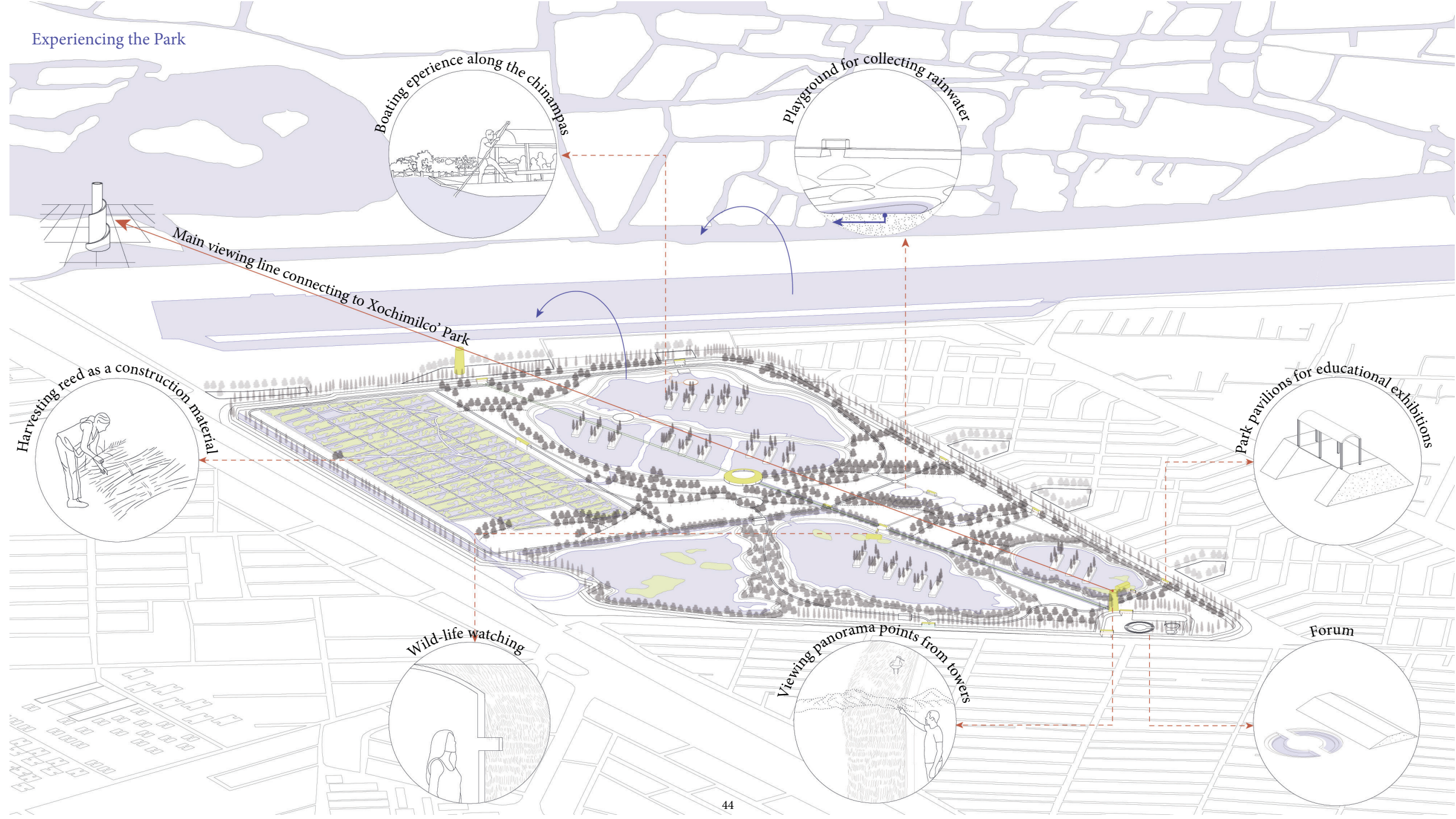


Park Program Integration

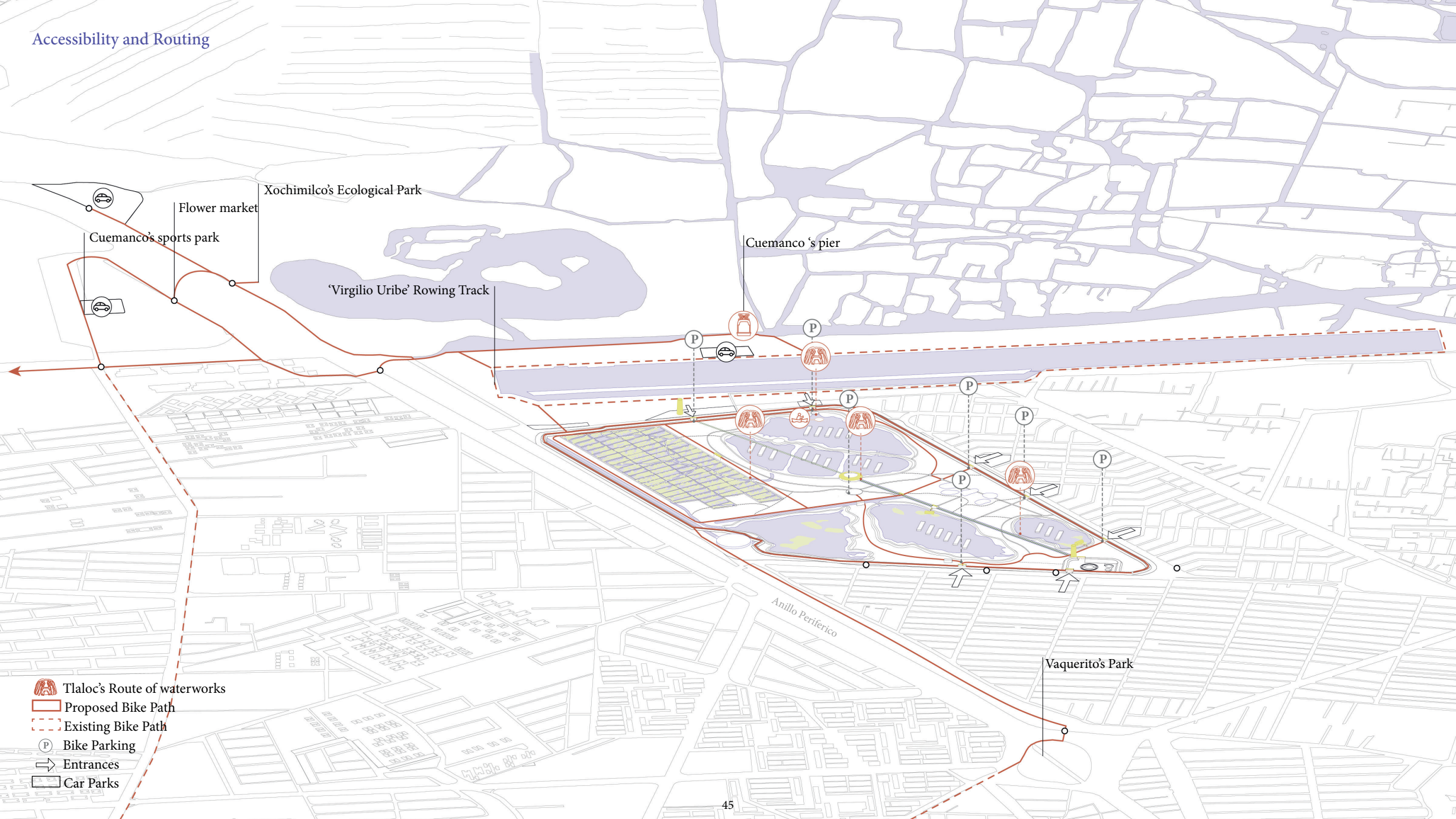


- Main 'Calzada'
- Main Road with Bike Path
- Secondary Pedestrian Path
- Meandering Path
- Elevated Walkway
- Open Spaces
- Buildings and Pavilions
- Entrances
- 1. Panoramic Viewing Towers
- 2. Wildlife Watching Pavilions
- 3. Restrooms
- 4. Maintenance Warehouse
- 5. Kiosk
- 6. Gathering Space
- 7. Viewing Platform
- 8. Playground for Kids

Experiencing the Park



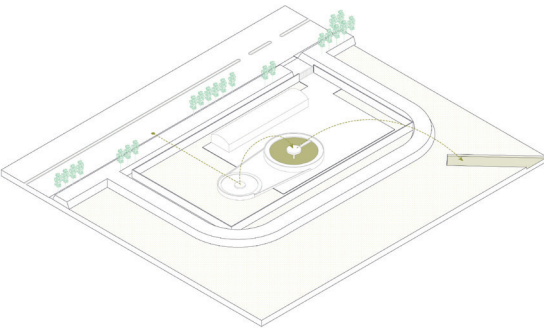
Accessibility and Routing



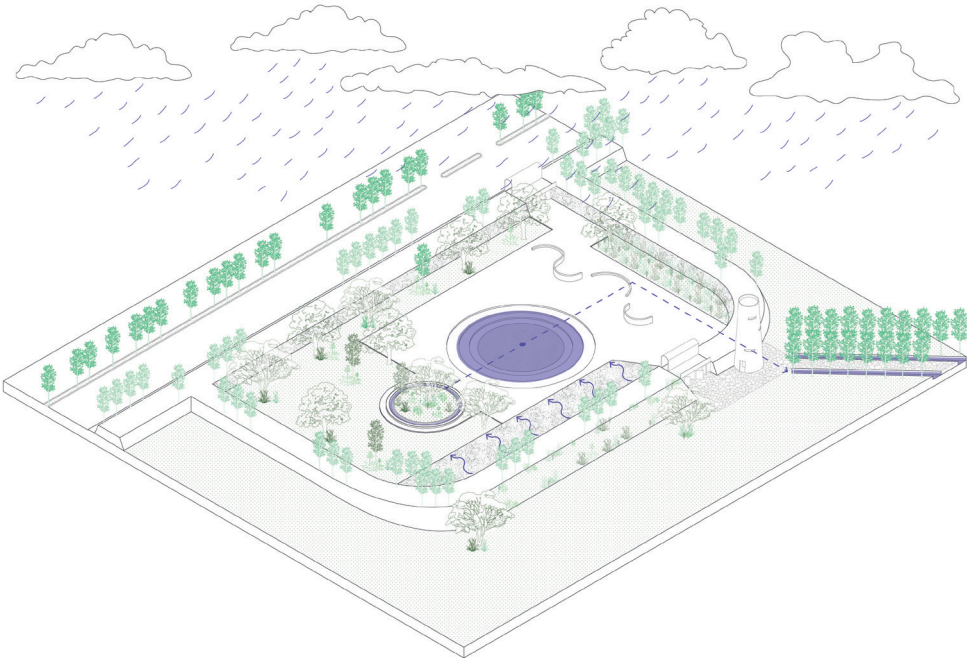
- Tlaloc's Route of waterworks
- Proposed Bike Path
- Existing Bike Path
- Bike Parking
- Entrances
- Car Parks

Transforming a once dysfunctional infrastructure into an entrance point

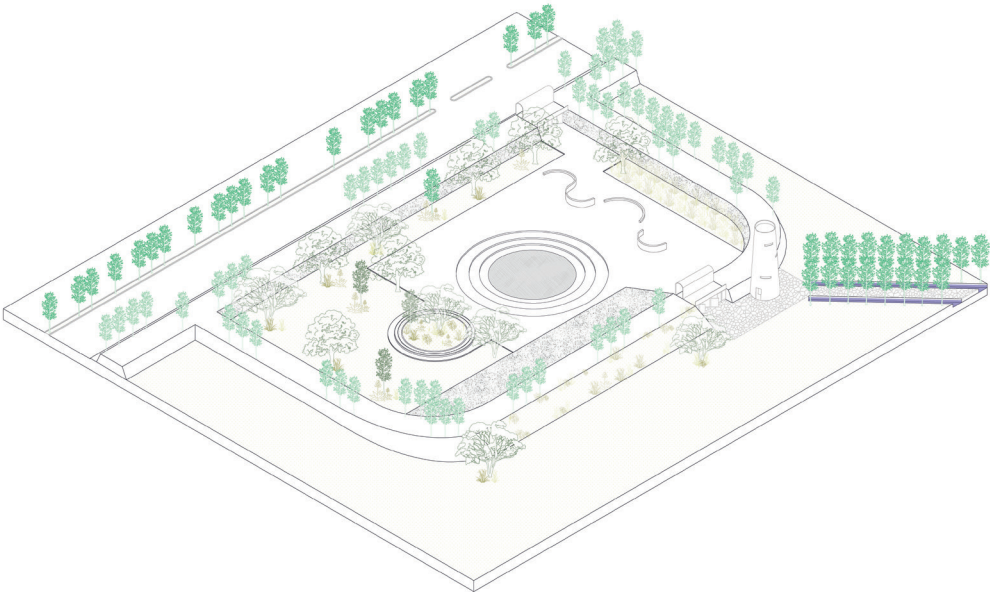
Before



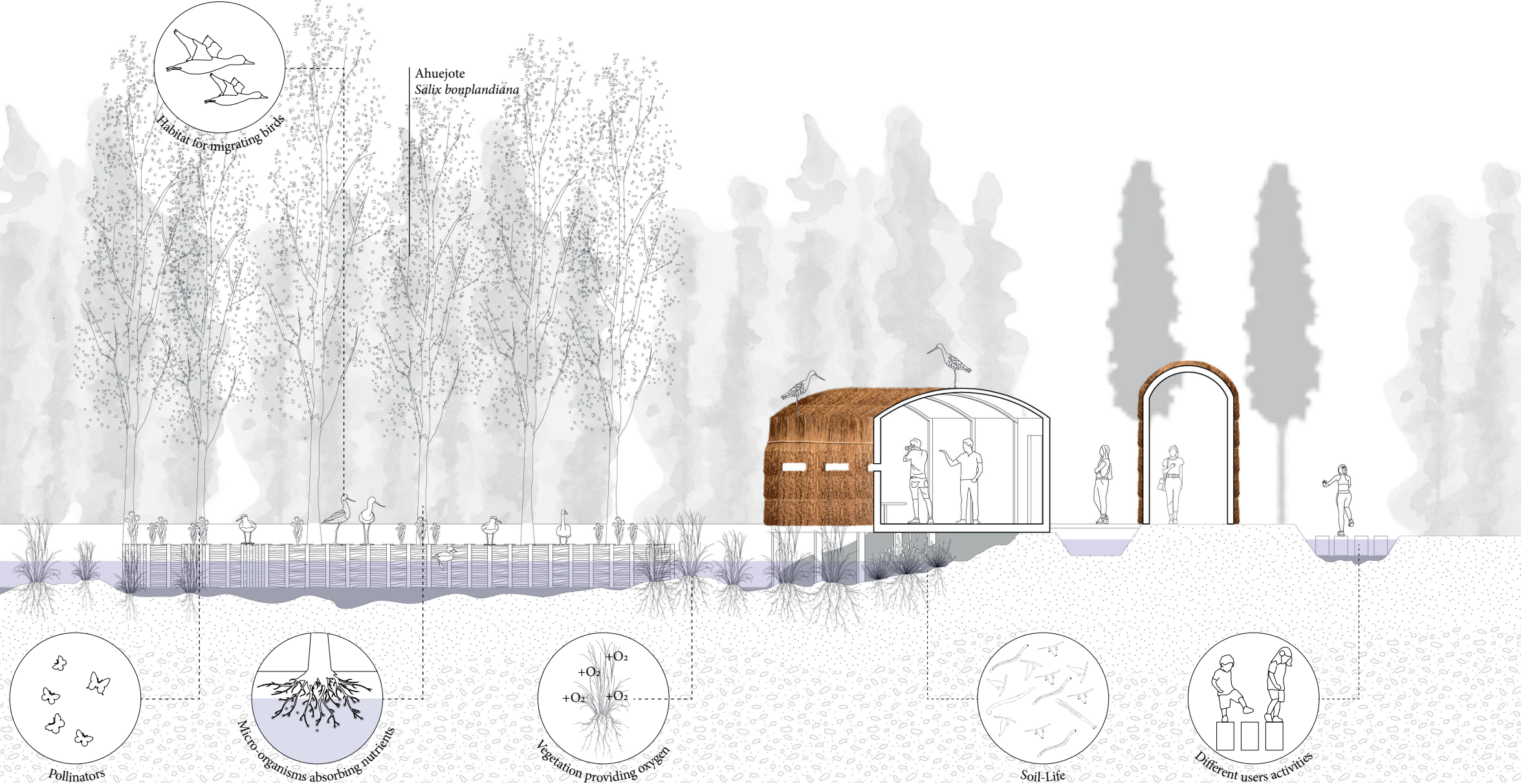
Wet Season



Dry Season







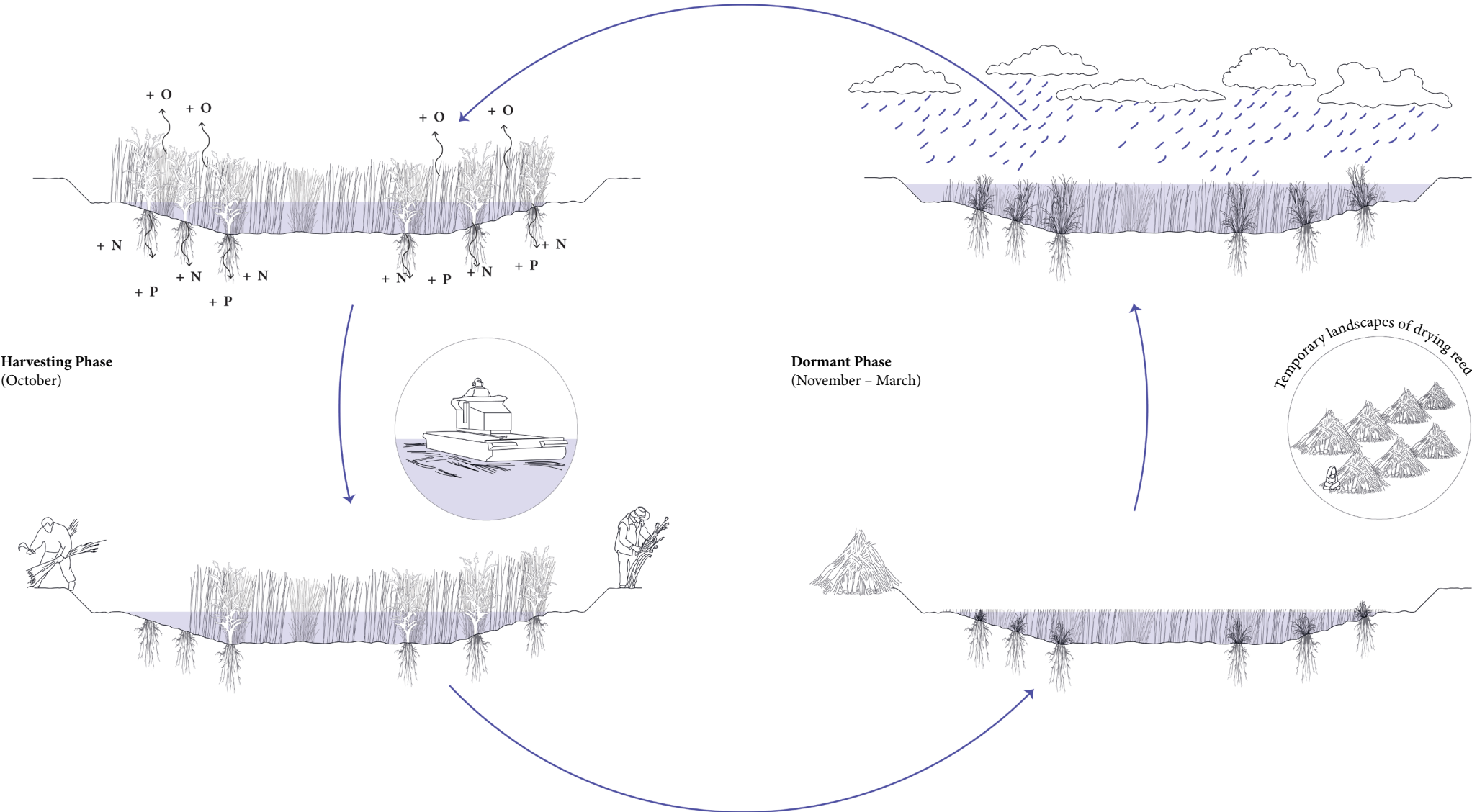
A Living System to Explore and Learn

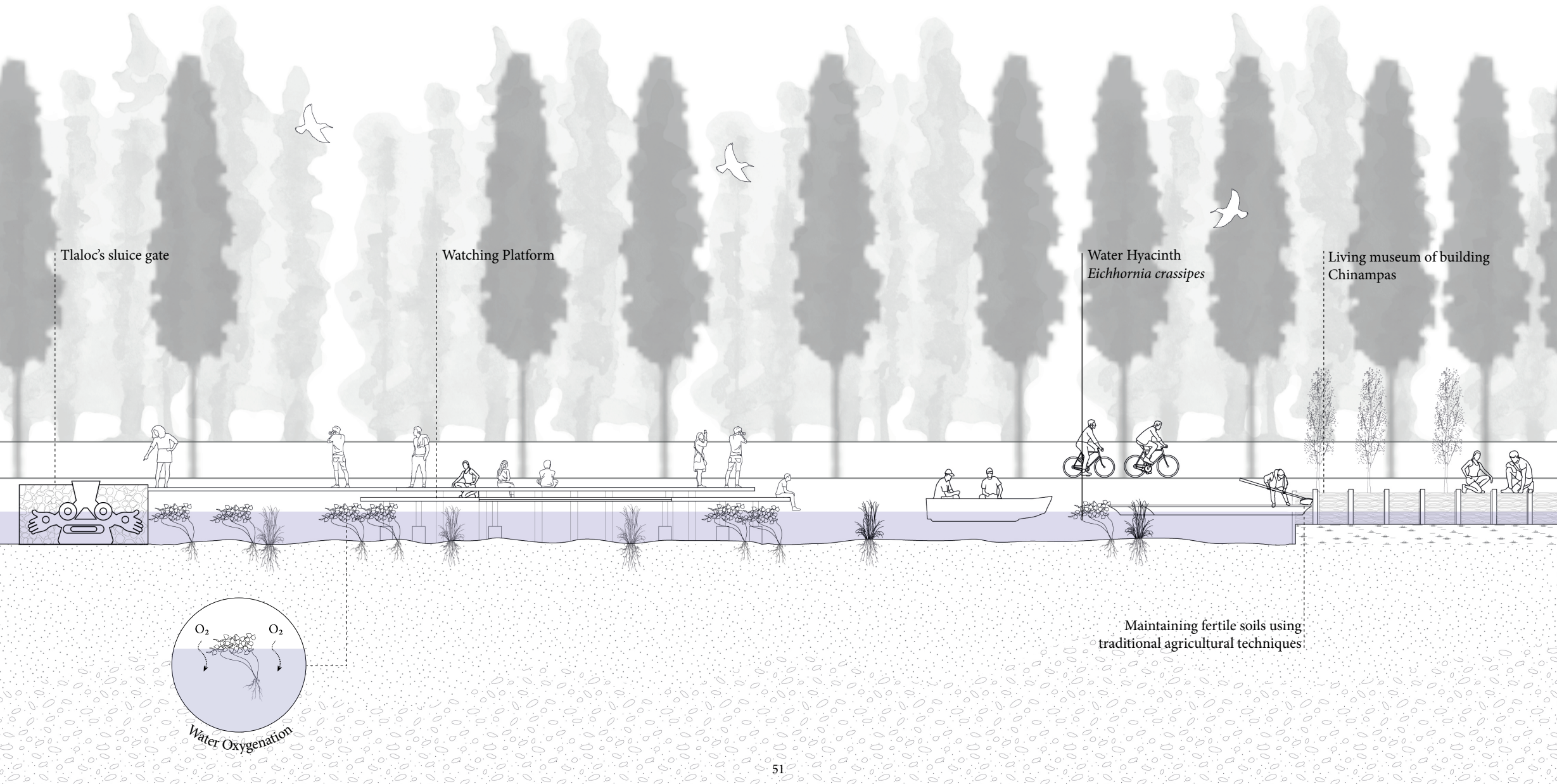


Reed Life-Cycle

Translocating Phase
(August – October)

Growing Phase
(April – June)



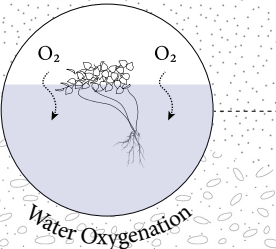


Tlaloc's sluice gate

Watching Platform

Water Hyacinth
Eichhornia crassipes

Living museum of building
Chinampas



Maintaining fertile soils using
traditional agricultural techniques

Socio-Ecological Relationships

