

Incrementalizing Lattice-Based Program Analyses in Datalog

Szabo, Tamas; Bergmann, Gábor; Erdweg, Sebastian; Voelter, Markus

DOI

[10.1145/3276509](https://doi.org/10.1145/3276509)

Publication date

2018

Document Version

Final published version

Published in

Proceedings of the ACM on Programming Languages

Citation (APA)

Szabo, T., Bergmann, G., Erdweg, S., & Voelter, M. (2018). Incrementalizing Lattice-Based Program Analyses in Datalog. *Proceedings of the ACM on Programming Languages*, 2(OOPSLA), 1-29. Article 139. <https://doi.org/10.1145/3276509>

Important note

To cite this publication, please use the final published version (if applicable).
Please check the document version above.

Copyright

Other than for strictly personal use, it is not permitted to download, forward or distribute the text or part of it, without the consent of the author(s) and/or copyright holder(s), unless the work is under an open content license such as Creative Commons.

Takedown policy

Please contact us and provide details if you believe this document breaches copyrights.
We will remove access to the work immediately and investigate your claim.



Incrementalizing Lattice-Based Program Analyses in Datalog

TAMÁS SZABÓ, itemis, Germany and Delft University of Technology, Netherlands

GÁBOR BERGMANN, Budapest University of Technology and Economics and MTA-BME Lendület Research Group on Cyber-Physical Systems, Hungary

SEBASTIAN ERDWEG, Delft University of Technology, Netherlands

MARKUS VOELTER, independent and itemis, Germany

Program analyses detect errors in code, but when code changes frequently as in an IDE, repeated re-analysis from-scratch is unnecessary: It leads to poor performance unless we give up on precision and recall. Incremental program analysis promises to deliver fast feedback without giving up on precision or recall by deriving a new analysis result from the previous one. However, Datalog and other existing frameworks for incremental program analysis are limited in expressive power: They only support the powerset lattice as representation of analysis results, whereas many practically relevant analyses require custom lattices and aggregation over lattice values. To this end, we present a novel algorithm called $DRed_L$ that supports incremental maintenance of recursive lattice-value aggregation in Datalog. The key insight of $DRed_L$ is to dynamically recognize increasing replacements of old lattice values by new ones, which allows us to avoid the expensive deletion of the old value. We integrate $DRed_L$ into the analysis framework IncA and use IncA to realize incremental implementations of strong-update points-to analysis and string analysis for Java. As our performance evaluation demonstrates, both analyses react to code changes within milliseconds.

CCS Concepts: • **Software and its engineering** → **Automated static analysis**;

Additional Key Words and Phrases: Static Analysis, Incremental Computing, Domain-Specific Language, Language Workbench, Datalog, Lattice

ACM Reference Format:

Tamás Szabó, Gábor Bergmann, Sebastian Erdweg, and Markus Voelter. 2018. Incrementalizing Lattice-Based Program Analyses in Datalog. *Proc. ACM Program. Lang.* 2, OOPSLA, Article 139 (November 2018), 29 pages. <https://doi.org/10.1145/3276509>

1 INTRODUCTION

Static program analyses are fundamental for the software development pipeline: They form the basis of compiler optimizations, enable refactorings in IDEs, and detect a wide range of errors. For program analyses to be useful in practice, they must balance multiple requirements, most importantly precision, recall, and performance. In this work, we study how to improve the performance of program analyses through *incrementality*, without affecting precision or recall. After a change of the subject program (program under analysis), an incremental analysis updates a previous analysis result instead of re-analyzing the code from scratch. This way, incrementality can provide order-of-magnitude speedups [Bhatotia et al. 2011; Sumer et al. 2008] because small input changes only trigger small output changes, with correspondingly small computational cost. Prior research has

Authors' addresses: Tamás Szabó, itemis, Germany, Delft University of Technology, Netherlands; Gábor Bergmann, Budapest University of Technology and Economics, MTA-BME Lendület Research Group on Cyber-Physical Systems, Hungary; Sebastian Erdweg, Delft University of Technology, Netherlands; Markus Voelter, independent, itemis, Germany.



This work is licensed under a Creative Commons Attribution-NonCommercial-ShareAlike 4.0 International License.

© 2018 Copyright held by the owner/author(s).

2475-1421/2018/11-ART139

<https://doi.org/10.1145/3276509>

shown that incrementality is particularly useful for program analysis. For example, incrementality was reported to speed up FindBugs checks 65x [Mitschke et al. 2014] and C points-to analysis 243x [Szabó et al. 2016]. Unfortunately, existing approaches for efficiently incrementalizing static analyses are limited in expressiveness due to limitations of the Datalog solvers they rely on.

Datalog is a logic programming language that is frequently used for program analyses [Av-gustinov et al. 2016; Green et al. 2013; Smaragdakis and Bravenboer 2011; Whaley and Lam 2004]. Incremental Datalog solvers efficiently update query results based on code changes [Gupta and Mumick 1995]. However, existing incremental solvers do not support recursive user-defined aggregation, which means that an analysis can only compute fixpoints over powersets but not over any other data structure such as intervals. This severely limits the applicability of incremental Datalog solvers to practically relevant program analyses, which often aggregate over custom *lattices* using the least upper or greatest lower bound. Indeed, in general, recursive user-defined aggregations may require complete unrolling of previous computations when aggregation inputs change.

In this paper, we present a new algorithm DRed_L that incrementally solves recursive Datalog queries containing user-defined aggregations subject to the following two requirements: (i) aggregations operate on lattices and that (ii) recursive aggregations are monotonic. Both requirements are readily satisfied by program analyses. The key insight of DRed_L is that the monotonicity of recursive aggregations allows for efficient handling of monotonic input changes. This is necessary for correctness and essential for efficiency. We have formally verified that DRed_L is correct and yields the exact same result as computing the query from scratch.

We integrate DRed_L into the existing incremental program analysis framework IncA [Szabó et al. 2016]. IncA is based on Datalog and supported the incremental maintenance of relations only, but *not* user-defined aggregations. We extended the front-end, compiler, and runtime system of IncA to support lattice operations. Specifically, we added lattice declarations and operations to the front-end of IncA and preserve them through compilation. We changed the runtime system of IncA to detect aggregations over lattice operations and use DRed_L to incrementally maintain their results. IncA is integrated into the MPS language workbench¹ and our implementation is available open source.²

To evaluate the applicability and performance of IncA, we have implemented two Java analyses in IncA adapted from the literature: Strong update points-to analysis [Lhoták and Chung 2011] as well as character-inclusion and prefix-suffix string analysis [Costantini et al. 2011]. Our analyses are intra-procedural, the points-to analysis is flow-sensitive, while the string analyses are flow-insensitive. We ran performance measurements for both analyses on four real-world Java projects with up to 70 KLoC in size. We measured the initial non-incremental run time and the incremental update time after random as well as idiomatic code changes. Our measurements reveal that the initialization takes a few tens of seconds, while an incremental update takes a few milliseconds on average. Additionally, we also benchmarked the memory requirement of the system because incrementalization relies on extensive caching. Our evaluation shows that the memory requirement can grow large but not prohibitive.

In summary, we make the following contributions:

- We identify and describe the key challenge for incremental lattice-based program analysis: cyclic reinforcement of lattice values (Section 2).
- We present the IncA approach for incremental lattice-based program analysis by embedding in Datalog, requiring recursive aggregation (Section 3).

¹<https://www.jetbrains.com/mps>

²<https://github.com/szabta89/IncA>

- We develop and verify DRed_L , the first algorithm to incrementally solve recursive Datalog rules containing user-defined aggregations (Section 4).
- We implemented DRed_L and IncA as open-source software (Section 5).
- We demonstrate the applicability and evaluate the performance of DRed_L and IncA on two existing Java analyses (Section 6).

2 CHALLENGES OF INCREMENTAL PROGRAM ANALYSIS

In this section we introduce a running example to illustrate the challenge of incremental lattice-based static program analysis. The example is a flow-sensitive interval analysis for Java, which reports the possible value ranges of program variables. As a starting point, we choose logic programming in Datalog because the use of Datalog for program analysis is well-documented [Green et al. 2013; Smaragdakis and Bravenboer 2011], and there exist incremental Datalog solvers [Gupta et al. 1993; Mitschke et al. 2014; Szabó et al. 2016]. It will become clear in this section that incremental program analysis requires incremental recursive aggregation, which existing solvers fail to support.

Interval Analysis with Datalog. A flow-sensitive interval analysis keeps track of the value ranges of variables at each control flow location. We first analyze a program's control flow by constructing a relation $\text{CFlow}(\text{src}, \text{trg})$, where each (src, trg) tuple represents an edge of the control flow graph (CFG). We define $\text{CFlow}(\text{src}, \text{trg})$ through Datalog rules.

A Datalog rule r has form $h :- a_1, \dots, a_n$ where h is the *head* of the rule and a_1, \dots, a_n are the (possibly negated) *subgoals*. In standard Datalog (as opposed to some extensions of it [Green et al. 2013]), the rule head and subgoals are of the form $R(t_1, \dots, t_k)$ where R is the name of a relation and t_i is a term that is either a variable or a constant value. Each rule is interpreted as a universally quantified implication: For each substitution of variables that satisfies all subgoals a_i , the head h must also hold. Given a rule head $R(t_1, \dots, t_k)$, the satisfying substitutions of the terms t_1, \dots, t_k yield the tuples of relation R . We refer the reader to [Green et al. 2013] for further literature on Datalog. The following rules compute CFlow :

```

CFlow(from, to)      :- Next(from, to), ¬IfElseStmt(from).
CFlow(while, start) :- WhileStmt(while), FirstChild(while, start).
CFlow(last, while)  :- WhileStmt(while), LastChild(while, last).

```

First, control flows from a statement to its successor statement if the former is not an `IfElseStmt` (or any other construct that redirects control flow). Second, control flows from a `while` head to the first child in its body. And third, control flows from the last statement of a loop body to the loop head. Figure 1B shows an example subject program with statements N1 to N5; its CFG as computed by CFlow is shown in Figure 1A.

We now construct a flow-sensitive interval analysis on top of this CFG. We define a relation $\text{IntervalAfter}(\text{stmt}, \text{var}, \text{iv})$, where a tuple $(s, v, i) \in \text{IntervalAfter}$ describes that after execution of statement s , variable v must take a value in interval i . Terms s and v are existing program elements, and i is a computed value from the *interval lattice*. To compute the interval i of variable v after statement s , the analysis must consider two cases. If s (re)assigns v , we compute v 's interval based on the assignment expression. Otherwise v 's interval does not change, and we propagate the interval associated with v from before the statement:

```

IntervalAfter(stmt, var, iv) :- AssignsNewValue(stmt, var), AssignedInterval(stmt, var, iv).
IntervalAfter(stmt, var, iv) :- ¬AssignsNewValue(stmt, var), IntervalBefore(stmt, var, iv).

```

In order to figure out this previous interval, we query the CFG to find all control-flow predecessors of the current statement and collect the variable's IntervalAfter for each of the predecessors in a relation $\text{PredecessorIntervals}$. As the interval containment *partial order* forms a *lattice*, we

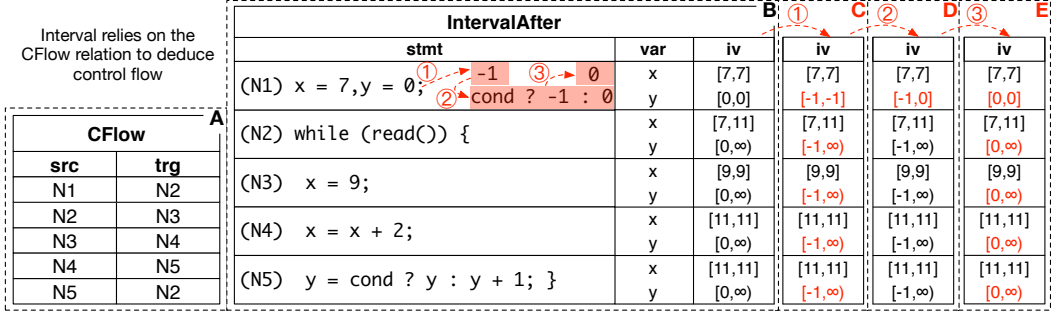


Fig. 1. Relations of the running example. (A) CFlow relation encoding the CFG of the subject program. (B) Interval relation showing the value ranges of variables per CFG node. (C) - (E) Updates in the Interval relation after changing the initializer of y through the series $0 \rightarrow -1 \rightarrow \text{cond} ? -1 : 0 \rightarrow 0$. Red color shows the changes compared to previous values.

can obtain the smallest interval containing all predecessor intervals of the current statement. It is computed by aggregating such predecessors using the *least upper bound* (lub) lattice operation:

```
PredecessorIntervals(stmt, var, pred, iv) :- CFlow(pred, stmt), IntervalAfter(pred, var, iv).
IntervalBefore(stmt, var, lub(iv)) :- PredecessorIntervals(stmt, var, _pred, iv).
```

Note that *IntervalAfter* and *IntervalBefore* are *mutually recursive* and also induce *cyclic tuple dependencies* whenever CFlow is cyclic. This is typical for flow-sensitive program analyses. We obtain the final analysis result by computing the (least) fixpoint of the Datalog rules. The computation always terminates because the rules in our analysis are monotonic wrt. the partial order of the interval lattice, and because we use widening to ensure that the partial order does not have infinite ascending chains [Cousot and Cousot 2004]. For example, as shown in Figure 1B, the interval analysis computes tuples $(N2, x, [7, 11])$ and $(N2, y, [0, \infty])$ for the loop head. Tuple $(N2, x, [7, 11])$ is the result of joining $(N1, x, [7, 7])$ and $(N5, x, [11, 11])$. Tuple $(N2, y, [0, \infty])$ is the result of the fixpoint computation, joining all intermediate intervals $\text{lub}([0, 0], [0, 1], [0, 2], \dots)$ of y before $N2$.

Incremental Interval Analysis. The analysis presented up to here is standard; we now look at incrementalization. Existing incremental Datalog solvers cannot handle this analysis because they do not support recursive aggregation. The root cause of the limitation is that realistic subject programs typically have loops or recursive data structures. Analyzing them requires fixpoint iteration over cyclic control flow or data-flow graphs, which, in turn, requires recursive aggregation. Indeed, there is no known algorithm for incrementally updating aggregation results over recursive relations with cyclic tuple dependencies.

The goal of an *incremental* analysis is to update its results in response to the subject program's evolution over time with *minimal computational effort*. For illustrative purposes, we consider three changes ①, ②, and ③ of the initializer of y in Figure 1B, and then we review what is expected from an incremental analysis in response to them. First, we change it from 0 to -1 . Figure 1C shows the updated *iv* column of relation *IntervalAfter*. While this change does not affect previous results of x , the intervals assigned to y require an update at all CFG nodes. After a subsequent change from -1 to $(\text{cond} ? -1 : 0)$ we expect that only the interval at $N1$ gets updated (see Figure 1D) because the analysis of the loop already considered $y=0$ before. Third, consider a final change from $(\text{cond} ? -1 : 0)$ to 0 . Now the analysis does not have to consider $y=-1$ anymore, and we expect an update to all lower bounds of the intervals assigned to y as shown in Figure 1E.

How can we update a previous result with minimal computational effort in response to changes ①, ②, and ③? Fundamentally, we propagate program changes bottom-up through the analysis' Datalog rules, starting at the changed program element. For example, a change to a variable's initializer directly affects the result of `AssignedInterval`, which is then used in the first rule of `IntervalAfter`. If the new initializer has a different interval than the old initializer, `AssignedInterval` propagates a derived change to `IntervalAfter`. A derived change leads to the deletion of the old interval and the insertion of the new interval into the relevant relation. In turn, `IntervalAfter` propagates such a change to `PredecessorIntervals`, which propagates it to the aggregation in `IntervalBefore`, which propagates it to the second rule of `IntervalAfter`, and so on. This way we can handle change ①, where we delete $(N1, y, [\emptyset, \emptyset])$, insert $(N1, y, [-1, -1])$, and propagate these changes.

Handling change ② efficiently is more challenging: We must augment our strategy to avoid deleting $(N1, y, [-1, -1])$ before inserting $(N1, y, [-1, \emptyset])$, so that we can reuse previous results. Failing to do that would result in re-computing the exact same result, which is unnecessary excess work degrading efficiency.

The toughest problem is change ③, where we delete $(N1, y, [-1, \emptyset])$ and insert $(N1, y, [\emptyset, \emptyset])$. The problem manifests at CFG node N2 and is due to the loop in the CFG and the `lub` aggregation over it. Before change ③, N2's CFG predecessors N1 and N5 report intervals $[-1, \emptyset]$ and $[-1, \infty)$ for y , as shown in Figure 1D. When propagating deletion $(N1, y, [-1, \emptyset])$ and insertion $(N1, y, [\emptyset, \emptyset])$ to N2, we expect to replace $(N2, y, [-1, \infty))$ by $(N2, y, [\emptyset, \infty))$. However, the aggregation in `IntervalBefore` for N2 also has to consider interval $[-1, \infty)$ from N5 and $\text{lub}([\emptyset, \emptyset], [-1, \infty)) = [-1, \infty)$. However, note how this yields the *wrong* result for N2 because the very reason for $[-1, \infty)$ at N5 is the old initializer at N1, which just got deleted. We call this situation *cyclic reinforcement* of lattice values. An incremental analysis must carefully handle cyclic reinforcements to avoid computing incorrect analysis results. The design of an algorithm for executing program analyses incrementally and correctly is the central contribution of this paper.

Problem Statement. Our goal is to incrementalize program analyses with recursive, user-defined aggregations. Our solution must satisfy the following requirements:

Correctness (R1): An incremental analysis must produce the exact same result as re-running the analysis from scratch. For example, it must rule out cyclic reinforcements.

Efficiency (R2): An incremental analysis must update its results with minimal computational effort. We expect from an incremental analysis to be significantly faster than the corresponding non-incremental analysis, so that we can use analyses in interactive editing scenarios.

Expressiveness (R3): Our solutions should apply systematically to any program analyses that use (one or more) user-defined lattices and user-defined aggregation operators.

Note that we do not mention *precision* or *recall* because these are the responsibility of the analysis developer when designing the lattices and their operations. There is no limitation on the design of those by our solution. However, a more precise analysis might take more time to compute (e.g. because we reach a fixpoint in more iterations), so it has an impact on performance, just like in a non-incremental analysis.

3 INCREMENTAL LATTICE-BASED PROGRAM ANALYSIS WITH IncA

IncA is a framework for specifying and incrementally executing program analyses that perform recursive lattice-based aggregations. IncA provides a DSL for the specification of lattices and program analyses. As we describe in Section 5, the DSL compiles to Datalog-style rules similar to the ones we have shown in Section 2. In the present section, we focus on the runtime system of IncA and how it executes analyses incrementally.

As pointed out in [Section 1](#), this work extends our prior work on incremental program analysis. The prior version of IncA could only incrementally analyze relations over program elements; for example, we used it for an incremental points-to analysis for C. However, because of fundamental limitations in the runtime system, there was no support for lattices nor aggregation over them. In this paper, we solve these limitations by adding support for lattice-based aggregations, which, as we have argued above and validate in [Section 6](#), enables a much wider range of program analyses.

3.1 Incremental Execution of Non-Recursive Analyses

The runtime system of IncA incrementally computes relations described by Datalog-style rules. We briefly review program representation, handling of program changes, and non-recursive aggregations first. Then we discuss recursive analyses in [Section 3.2](#).

Program representation and change. We represent the abstract syntax tree (AST) of a program in *base relations* (extensional predicates in Datalog). We use a separate base relation for each AST node type, for example, `IfElseStmt` and `AssignStmt`. We use additional base relations to connect AST nodes, for example, `Next(prev, next)` for subsequent nodes in a list and `Parent(child, parent)` to represent the containment hierarchy. We rely on the IDE to incrementally maintain the base relations for the subject program, either by incremental parsing [[Ramalingam and Reps 1993](#)], non-incremental parsing with tree diffing [[Dotzler and Philippsen 2016](#)], or projectional editing [[Voelter et al. 2014](#)]; we use the latter.

Program analyses and analysis results. Traditionally, a program analysis traverses the AST of a program to extract analysis results. Correspondingly, in IncA, program analyses query the base relations. That is, program analyses are Datalog-style rules that define *derived relations*. For example, in [Section 2](#) we showed rules that define the derived relation `CFlow` based on `IfElseStmt`, `Next`, and others. Derived relations can also make use of the contents of other derived relations, which is useful for decomposing an analysis into multiple smaller parts. For example, we defined `PredecessorIntervals` based on `CFlow`.

IncA allows updates to derived relations to be observed. For example, we can extend our interval analysis to define a derived relation `BoundedArrayAccess` that contains a tuple for each array access where the interval of the index is guaranteed to be within bounds of the array. By observing this relation, an IDE can incrementally highlight safe and (possibly) unsafe array accesses.

Change propagation. IncA ensures that derived relations are up-to-date; as tuples are inserted and deleted from base relations, IncA propagates these changes to dependent derived relations. Effectively, IncA maintains a dependency graph between relations and caches their tuples. The base relations are sources of changes, and the IDE-observed derived relations are sinks of changes.

IncA propagates tuples from sources to sinks, and it skips the propagation where a relation is not affected by an incoming change. This can happen in two cases: (i) The cache of the derived relation already accounts for the tuple, or (ii) a Datalog rule ignores the tuple entirely. The first case occurs when the tuple was already derived before through an alternative derivation, which can happen because there can be alternative bodies for the same Datalog rule head. For example, change ② in [Figure 1B](#) was skipped at statement N2 because the previous analysis result remained valid. The second case for skipping occurs when an incoming tuple simply could not affect the contents of a relation. For example, boolean variables are irrelevant for our interval analysis. This manifests in those Datalog rules that inspect the right-hand sides of assignments, but never query relations such as `AndExpr` that represent boolean expressions. The IncA compiler optimizes the subject analyses to avoid the propagation of irrelevant changes, see more details in [[Szabó et al. 2016](#)].

Finally, the occurrence of negated subgoals in a rule's body leads to a stratification of change propagation. That is, the relation that occurs negated must be fully up-to-date before we can draw conclusions about the absence of a tuple. For example, in our control-flow analysis, we must fully update relation `IfElseStmt` before we can derive changes to `CFlow` based on it. Moreover, when `CFlow` uses \neg `IfElseStmt`, an insertion into `IfElseStmt` triggers deletion(s) from `CFlow`, and a deletion from `IfElseStmt` triggers insertion(s) into `CFlow`. IncA's change propagation respects negation. Stratification requires that there is no recursion through negation because then we could not fully compute the negated relations before computing the non-negated ones.

Non-recursive aggregation. In contrast to other incremental systems [Gupta and Mumick 1995], IncA supports aggregations over *recursive* relations. Here, however, we first review how IncA handles *non-recursive* aggregations, which, while much simpler, is an important stepping stone.

Formally, an aggregating Datalog rule has the following form:

$$\text{Agg}(t_1, \dots, t_k, \alpha(v)) :- \text{Coll}(t_1, \dots, t_k, _x_1, \dots, _x_l, v).$$

Here the *aggregand* column v and *aggregate result* column $\alpha(v)$ are both lattice-valued, and α is an *aggregation operator*, i.e. a mapping from a *multiset* of lattice values to a single lattice value. Without loss of generality (as shown below) we assume this is the only rule with `Agg` in the head. We call `Agg` the aggregating relation and `Coll` the *collecting* relation; t_1, \dots, t_k are the *grouping* variables, while $_x_1, \dots, _x_l$ are *auxiliary* variables.

For example, in the interval analysis from Section 2, `PredecessorIntervals` served the role of `Coll` whereas `IntervalBefore` served the role of `Agg`, while α was `lub`. We used `stmt` and `var` as grouping variables (the value of `var` after statement `stmt`), and we used `pred` as an auxiliary variable to enumerate the interval values of all CFG predecessors.

For each substitution of the grouping columns, the aggregand values v in `Coll`, if any, are mapped by α into the aggregate result column of the single corresponding tuple in `Agg`. Given a set of grouping values t_1, \dots, t_k , different sets of values $_x_1, \dots, _x_l$ can have the same aggregand v associated with them, so α aggregates over a *multiset* of values (instead of just a simple set).

Note that the above form of the aggregating rule does not restrict expressiveness (R3): the IncA language actually allows multiple alternative rules for `Agg`, each with several subgoals. The compiler then introduces a helper relation `Coll` that is derived using these multiple rule bodies, and then aggregates `Agg` from `Coll`.

We can incrementalize non-recursive aggregations by (i) incrementally maintaining `Coll` as usual and (ii) incrementally maintaining the aggregate result $\alpha(v)$ of each group whenever an aggregand v is inserted or deleted from the collecting relation. IncA specifically supports (see Section 4.4) the latter kind of incrementality for aggregation operators that are induced by associative and commutative binary operations, e.g. `lub` (least upper bound) or `glb` (greatest lower bound).

The above form of aggregating rules is independent of whether the aggregation is recursive or not. An aggregation is recursive if `Coll` also depends on `Agg` (e.g. see dependencies between `PredecessorIntervals`, `IntervalAfter`, and `IntervalBefore` in Section 2). This leads us to the next part where we discuss recursive analyses.

3.2 Incremental Execution of Recursive Analyses

Our strategy for incrementalizing *non-recursive* analyses is relatively simple once the analysis is formulated as a relational computation (e.g., through our DSL, Section 5): We propagate changes through the dependency graph, we are careful about negations, and we incrementally maintain aggregate results. Adding recursion, the process is severely complicated because of cyclic reinforcement, as shown in Section 2.

To deal with recursion, we modify our approach in two steps. First, we add *recursive relations* but the aggregations must remain non-recursive. This enables the incrementalization of control flow analysis as well as set-based data-flow analyses and represents the current state of the art of incremental Datalog solvers (including the prior version of IncA as documented in [Szabó et al. 2016]). Second, we add *recursive aggregations* on values of lattices with monotonic lattice operators. This enables the incrementalization of lattice-based data-flow analyses and goes beyond the state of the art. We carefully engineer our solution to handle cyclic reinforcement of lattice values correctly, thus satisfying **Correctness (R1)**.

Recursive relations. In contrast to non-recursive relations, recursive relations require a fixpoint computation. That is, an insertion into a recursive relation can trigger subsequent insertions, which can trigger subsequent insertions, and so on. Consider the following recursive relation that computes the transitive closure of CFlow:

```
CFlowReach(from, to) :- CFlow(from, to).
CFlowReach(from, to) :- CFlow(from, step), CFlowReach(step, to).
```

When adding a statement `stmt` to the program, we trigger an insertion of $(\text{pred}, \text{stmt})$ into CFlow for `stmt`'s predecessor. This triggers subsequent insertions such as $(\text{predpred}, \text{stmt})$ into CFlowReach for `pred`'s predecessor, but eventually CFlowReach stabilizes when no new tuples can be derived.

Incrementally deleting tuples from a recursive relation is more difficult because of cyclic reinforcement of tuples. If a tuple was derived multiple times within a cycle, deleting one derivation does not necessarily invalidate the other derivations, but invalidating all derivations is sometimes necessary to obtain correct results. This is similar to the cyclic reinforcement of lattice values we discussed in Section 2, with an important difference: The cyclic reinforcement of tuples does not involve aggregations.

There is a generic solution called Delete and Re-derive (DRed) [Gupta et al. 1993] for supporting deletions in spite of cyclic reinforcement of tuples. The basic strategy of DRed is to first delete the tuple and everything that was derived from it, ignoring alternative derivations of that tuple for now. This is an over-approximation and, in general, will delete too much. After the deletion reaches a fixpoint, DRed starts a re-derive phase to insert back all those tuples that can be derived from the remaining ones that were left intact during the delete phase.

Recursive aggregation. The key technical contribution of our paper is to develop a novel algorithm for incremental recursive aggregation in Datalog. As we explained in Section 2, the main challenge is the cyclic reinforcement of lattice values (in contrast to cyclic reinforcement of *tuples*, as discussed above). Specifically, change ③ in Figure 1B induced the deletion of tuple $(N1, y, [-1, 0])$, which should have triggered the deletion of $(N2, y, [-1, \infty))$. However, because $N2$ occurred in a loop, there was cyclic reinforcement between the lattice values: $N5$ still reported the interval $[-1, \infty)$, even though the very reason for that value is that the initial interval was $[-1, 0]$ previously. At this point, we did not know how to proceed.

Why can we not just apply DRed here? How is cyclic reinforcement of lattice values different from cyclic reinforcement of tuples? The main difference is that updating an aggregate value induces both a deletion of the old value and an insertion of the new value. However, DRed first processes all deletions and postpones insertions until the re-derive phase. Hence, one issue is that lattice values require an interleaving of the delete and re-derive phases, which violates the contract of DRed. A second issue is more subtle. Let's say we allow interleaving. When deleting the old aggregate value, DRed's delete phase will delete all tuples derived from it. In particular, it will delete the new aggregate value, which we were just about to insert.

To resolve these issues, we developed a novel algorithm called DRed_L . It generalizes DRed to support incremental computation of recursive *monotonic* aggregations over lattices. Given a partially ordered set $(\mathcal{M}, \sqsubseteq)$, an aggregation operator α is \sqsubseteq -monotonic if $\alpha(M) \sqsubseteq \alpha(M \cup \{m\}) \sqsubseteq \alpha(M \cup \{m'\})$ for all multisets of values $M \subseteq \mathcal{M}$ and all values $m, m' \in \mathcal{M}$ with $m \sqsubseteq m'$. That is, the aggregate result of a monotonic aggregation increases with the insertion of any new tuple or with the increasing replacement of any existing tuple in the collecting relation.

Crucially, our algorithm recognizes monotonicity at runtime when handling the update of an aggregate result. Given a \sqsubseteq -monotonic aggregator α , whenever DRed_L sees a deletion $(t_1, \dots, t_k, \text{old})$ from a relation and an insertion $(t_1, \dots, t_k, \text{new})$ to the same relation with $\text{old} \sqsubseteq \text{new}$, it recognizes that together they represent an increasing replacement of a lattice value. We call such a change pair a \sqsubseteq -*increasing replacement*, and deletions that are part of a \sqsubseteq -increasing replacement do not need to go through a full delete phase. This way, deletions of old aggregate results will not invalidate cyclically dependent lattice values and, in particular, the new aggregate values. This allows DRed_L to perform correct incremental maintenance even in presence of recursive aggregation. We describe the details of DRed_L in [Section 4](#), with a focus on correctness and efficiency; its novelty over the state-of-the-art (esp. DRed) will be discussed in [Section 7](#).

While in [Section 4](#) we explain DRed_L in its full generality, its main application is the incrementalization of program analyses that use custom lattices. Program analyses routinely use lattices to approximate program behavior [[Nielson et al. 2010](#)]. Without recursive aggregation, only the power set lattice can be represented because recursive tuple insertion and deletion can model set union and intersection. DRed_L 's support for recursive aggregation lifts this limitation and enables the incrementalization of program analyses over any user-defined lattice. In [Section 6](#), we show how DRed_L performs on strong-update points-to [[Lhoták and Chung 2011](#)] and string analyses [[Costantini et al. 2011](#)].

4 INCREMENTAL RECURSIVE AGGREGATION WITH DRED_L

We design DRed_L , an incremental algorithm for solving Datalog rules that use recursive aggregation over lattices. Given a set of Datalog rules, DRed_L efficiently and transitively updates derived relations upon changes to base relations.

DRed_L propagates changes to derived relations in the four steps described below, which are similar to earlier algorithms (notably DRed). However, there are key differences at each step, necessitated by the support for lattice aggregation, that will be discussed in [Section 7](#).

- (1) *Change splitting*: Split incoming changes into monotonic changes (increasing replacements and insertions) and anti-monotonic changes (deletions that are not part of increasing replacements). The crucial novelty over the older DRed algorithm is the lattice-aware recognition of increasing replacements at runtime, which heavily impacts the other three steps as well.
- (2) *Anti-monotonic phase*: Interleaved with the previous step, we process anti-monotonic changes by transitively deleting the relevant tuples and everything derived from them. This is an over-approximation and, in general, will delete too much, but, importantly, over-deletions guarantee that we compute correct results in the face of cyclic reinforcements.
- (3) *Re-derivation*: Fix the over-approximation of the previous step by re-deriving deleted tuples from the remaining tuples.
- (4) *Monotonic phase*: Process monotonic changes. For insertions, we insert the new tuple and transitively propagate the effects. For increasing replacements, we simultaneously delete the old tuple and insert the new tuple and transitively propagate their effects. By propagating deletions and insertions of increasing replacements together, we ensure that dependent relations will in turn recognize them as increasing replacements and handle them accordingly.

In the remainder of this section, we summarize the assumptions of DRed_L on Datalog rules, introduce necessary data structures for DRed_L , present DRed_L as pseudocode, explain how DRed_L incrementalizes aggregations, and present a proof sketch of our algorithm.

4.1 Assumptions of DRed_L on the Input Datalog Rules

In order to guarantee that DRed_L computes a correct (R1) analysis result efficiently (R2), the input Datalog rules must meet the following assumptions:

Monotonic recursion (A1): We call a set of mutually recursive Datalog rules a *dependency component*. DRed_L assumes that each dependency component respects a partial order \sqsubseteq of each used lattice (either the natural order of the lattice, or its inverse). Given this order, the relations represented by the rules must only recur \sqsubseteq -monotonically: If they are updated by insertions or \sqsubseteq -increasing replacements, then *recursively* derived results may only change by insertions or \sqsubseteq -increasing replacements. This assumption has important implications: Abstract interpretation operators and aggregations must be monotonic within a dependency component wrt. the chosen partial order. The analysis developer needs to ensure operators are monotonic. Additionally, recursion through negation is not allowed: IncA automatically rejects analyses that do not conform to this requirement (Section 5).

Aggregation exclusivity (A2) Alternative rules deriving the same (collecting) relation must produce mutually disjoint results, if the relation is in a dependency component that uses aggregation at all. This is important for ruling out cyclic reinforcements.

Cost consistency (A3) Given a non-aggregating relation $R(t_1, \dots, t_k, v)$ with lattice-typed column v , we require that columns (t_1, \dots, t_k) uniquely determine column v .

No infinite ascending chains (A4) DRed_L computes the least fixpoint of the Datalog rules. To ensure termination and as is standard in program analysis frameworks, DRed_L requires that the used lattices do not contain infinite \sqsubseteq -ascending chains [Atiyah and Macdonald 1994, Section 6] for any \sqsubseteq that is chosen as part of A1. Fulfilling this requirement may require widening [Cousot and Cousot 2004], as shown in our interval analysis in Section 2.

Assumption A1 allows a dependency component to use and aggregate over several lattices. For each of those, the component must be monotonic; this is the responsibility of the analysis developer. In many typical lattice analyses (e.g. where aggregators are idempotent like lub , glb), the IncA compiler can automatically guarantee A3 by transforming the IncA analysis code (using the idea in [Ross and Sagiv 1992] as detailed in Section 5.3). In other cases, it is the responsibility of the analysis developer. For non-aggregating standard Datalog programs A2 trivially holds.

We validated that these assumptions suffice for correctness (R1) by constructing a proof sketch (Section 4.5). We also validated that these assumptions do not inhibit expressiveness (R3) for incremental program analyses by construction of IncA (Section 5) and case studies (Section 6).

4.2 Support Data Structures

The anti-monotonic step of DRed_L performs an over-deletion, after which some tuples may need to be re-derived; while the monotonic phase performs monotonic deletions that do not always have to be propagated. To make these decisions, we adapt support counts [Gupta et al. 1993] for tuples, and we design a new data structure called support multisets for aggregate results:

- *Support count:* The support count of a tuple is equal to the number of alternative derivations a tuple has within a relation (across all alternative rules and local variables). Given a tuple t in relation R , $\text{Support}_R^\#(t)$ represents the support count of t .
- *Support multiset:* The support multiset of an aggregate result contains the individual aggregands that contribute to it. Formally, given an aggregating rule as in Section 3.1, the support

procedure maintainIncrementally(<i>all</i>) {	1	procedure directRederive(<i>deleted</i>) {	36
for <i>C</i> in top. order of dep. components {	2	<i>red</i> := \emptyset	37
<i>effect</i> := immediateConsequences(<i>C</i> , <i>all</i>)	3	foreach <i>change</i> in <i>deleted</i> {	38
(<i>anti</i> , <i>mon</i>) := changeSplitting(<i>effect</i>)	4	<i>R</i> := rel(<i>change</i>)	39
<i>deleted</i> := \emptyset	5	if (<i>R</i> is non-aggregating) {	40
while (<i>anti</i> != \emptyset) { // ANTI-MONO - fixpoint	6	if ($\text{Support}_R^\#(\text{change}) > 0$)	41
<i>new</i> := updateAnti(<i>anti</i>); <i>deleted</i> \cup = <i>new</i>	7	<i>red</i> \cup = { + <i>change</i> }	42
<i>newEffect</i> := immediateConsequences(<i>C</i> , <i>new</i>)	8	} else { // aggregating: $R(\bar{t}, \alpha(v)) :- \dots$	43
(<i>anti</i> , <i>mon</i>) := changeSplitting(<i>newEffect</i> \cup <i>mon</i>)	9	let $R(\bar{t}, v) = \text{change} $	44
}	10	if ($\text{Support}_R^{MS}(\bar{t}) \neq \emptyset$) {	45
<i>red</i> := directRederive(<i>deleted</i>) // RE-DERIVE	11	<i>red</i> \cup = { + $R(\bar{t}, \alpha(\text{Support}_R^{MS}(\bar{t})))$ }	46
<i>mon</i> \cup = immediateConsequences(<i>C</i> , <i>red</i>)	12	}	47
<i>all</i> \cup = <i>deleted</i> \cup <i>red</i>	13	}	48
while (<i>mon</i> != \emptyset) { // MONO - fixpoint	14	}	49
<i>new</i> := updateMon(<i>mon</i>); <i>all</i> \cup = <i>new</i>	15	update stored relation contents by <i>red</i>	50
<i>mon</i> := immediateConsequences(<i>C</i> , <i>new</i>)	16	return <i>red</i>	51
}}	17	}	52
procedure updateAnti(<i>body</i>) {	18	procedure updateMon(<i>body</i>) {	53
<i>head</i> := \emptyset	19	<i>head</i> := \emptyset	54
foreach <i>change</i> in <i>body</i> {	20	foreach <i>change</i> in <i>body</i> {	55
<i>R</i> := rel(<i>change</i>); <i>h</i> := $\pi_R(\text{change})$	21	<i>R</i> := rel(<i>change</i>); <i>h</i> := $\pi_R(\text{change})$	56
if (<i>R</i> is non-aggregating) {	22	if (<i>R</i> is non-aggregating) {	57
$\text{Support}_R^\#(h) \mathrel{-}= 1$	23	$\text{Support}_R^\#(h) \mathrel{+}= \text{sign}(h)$	58
if ($ h \in R$)	24	if (support changed to or from 0)	59
<i>head</i> \cup = { <i>h</i> }	25	<i>head</i> \cup = { <i>h</i> }	60
} else { // aggregating: $R(\bar{t}, \alpha(v))$	26	} else { // aggregating: $R(\bar{t}, \alpha(v))$	61
let $R(\bar{t}, v) = h $	27	let $R(\bar{t}, v) = h $	62
$\text{Support}_R^{MS}(\bar{t}) \mathrel{-}= \{v\}$	28	<i>head</i> \cup = { - $R(\bar{t}, \alpha(\text{Support}_R^{MS}(\bar{t})))$ }	63
if ($\exists w. (\bar{t}, w) \in R$)	29	if ($\text{sign}(h) == -1$) { $\text{Support}_R^{MS}(\bar{t}) \mathrel{-}= \{v\}$ }	64
<i>head</i> \cup = { - $R(\bar{t}, w)$ }	30	else { $\text{Support}_R^{MS}(\bar{t}) \mathrel{+}= \{v\}$ }	65
}	31	<i>head</i> \cup = { + $R(\bar{t}, \alpha(\text{Support}_R^{MS}(\bar{t})))$ }	66
}	32	}	67
update stored relation contents by <i>head</i>	33	update stored relation contents by <i>head</i>	68
return <i>head</i>	34	return <i>head</i>	69
}	35	}	70

Fig. 2. The DRed_L algorithm in pseudocode. The entry point is procedure maintainIncrementally.

multiset $\text{Support}_{\text{Agg}}^{MS}$ associates, to each substitution of grouping variables of aggregating relation *Agg*, the aggregands in the group from *Coll*. In other words, $\text{Support}_{\text{Agg}}^{MS}(t_1, \dots, t_k)$ is the multiset of values *v* that satisfy $\text{Coll}(t_1, \dots, t_k, _x_1, \dots, _x_l, v)$ for some $_x_1, \dots, _x_l$.

These support data structures are used and incrementally maintained throughout DRed_L. As $\text{Support}_R^\#$ is no larger than *R* and $\text{Support}_{\text{Agg}}^{MS}$ is no larger than *Coll*, there is no asymptotic overhead.

4.3 DRed_L Algorithm

We present the DRed_L algorithm as pseudocode in Figure 2. The entry point is procedure maintainIncrementally, which takes a changeset *all* as input and updates affected relations. In the code, we use italic font exclusively for variables that store changesets.

As usual for incremental Datalog solvers, DRed_L iterates over the dependency components of the analysis in a topological order (Line 2). We exploit that recursive changes within each component

are required to be monotonic (Assumption **A1**). We start in Line 3 by computing the *immediate consequences* of changes in *all* on the bodies of the Datalog rules in the current component *C*. That is, for a Datalog rule $h :- a_1, \dots, a_n$ in *C*, we compute the consequences of the changes on a_1, \dots, a_n first. We omit the details of *immediateConsequences*, but the implementation relies on straightforward *algebraic differencing* from the Datalog literature [Gupta and Mumick 1995]. Technically, the interim result *effect* is expressed on rule bodies and not yet projected to rule heads like *h* (the actual relations to be maintained). This allows us to maintain support counts and support multisets for alternative body derivations.

If component *C* uses aggregation, in Line 4 we perform **change splitting** of changeset *effect*, according to the \sqsubseteq of Assumption **A1**. We compute the set of *monotonic changes* *mon* from *effect* by collecting all insertions and those deletions that are part of an increasing replacement:

$$\begin{aligned} \text{mon} = & \{+r(t_1, \dots, t_k) \mid +r(t_1, \dots, t_k) \in \text{effect}\} \\ & \cup \{-r(t_1, \dots, t_k, c_{\text{old}}) \mid -r(t_1, \dots, t_k, c_{\text{old}}) \in \text{effect}, +r(t_1, \dots, t_k, c_{\text{new}}) \in \text{effect}, c_{\text{old}} \sqsubseteq c_{\text{new}}\} \end{aligned}$$

Here and below we write $+r(t_1, \dots, t_k)$ for a tuple insertion and $-r(t_1, \dots, t_k)$ for a deletion. The set of *anti-monotonic changes* consists of all deletions not in *mon*. Note that for a component *C* that does not use aggregation, *mon* simply consists of all insertions and *anti* consists of all deletions.

Next, we perform the **anti-monotonic phase** on changeset *anti* iteratively until reaching a fixpoint (Line 6-10). In each iteration, we first use procedure *updateAnti* (discussed below) to update the affected support data structures and relations (Line 7). This yields changes *new* to rule heads defined in *C*. We propagate the *new* changes to *deleted* because they are candidates for a later re-derivation. But we also propagate the *new* changes to *C* to handle recursive effects (Line 8), yielding recursive feedback in *newEffect*. By design, the anti-monotonic phase within a dependency component only produces further deletions and never insertions. We merge the *newEffect* changes with the monotonic changes *mon* and split them again because a new change may cancel out an insertion or form an increasing replacement. Note that this can be done efficiently by indexing the changesets for aggregating relations over the grouping variables. This way we can efficiently query relevant lattice values when deciding if a pair needs to be split up or formed.

Procedure *updateAnti* processes anti-monotonic changes of rule bodies and projects them to changes of the rule heads while keeping support counts and support multisets up-to-date. We iterate over the anti-monotonic body changes, all of which are deletions by definition. For each change, we obtain the changed relation symbol *R*, and we project with π_R the body change to the corresponding change of the relation's head *h* (Line 21). While *h* is a change, we write $|h|$ to obtain the change's absolute value, that is, the tuple being deleted or inserted. If *R* does not aggregate, we decrease the support count of *h* and we propagate a deletion of *h* if it is currently derivable in *R*. If instead *R* aggregates, we decompose *h* to obtain the grouping terms \bar{t} and the aggregand *v*. We delete *v* from the support multiset of \bar{t} . Furthermore, if *R* currently associates an aggregation result *w* to \bar{t} , we propagate the deletion of said association from *R*. Note that the associated aggregation result *w* is unique by Assumption **A3**, and we delete it as soon as any of the aggregands is deleted. It is important to point out that a positive support count or non-empty support multiset after deletions is no evidence for the tuple being present in the relation, due to the possibility of a to-be-deleted tuple falsely reinforcing itself through cyclic dependencies. We will put back tuples that still have valid alternative derivations, and we will put back aggregate results computable from remaining aggregands in the re-derivation step of *DRed_L*. Finally, we update the stored relations and return head for recursive propagation in the main procedure *maintainIncrementally*.

Back in *maintainIncrementally*, we proceed with **re-derivation** to fix the over-deletion from the anti-monotonic phase (Line 11-12). To this end, we use procedure *directReDerive* to re-derive tuples that were deleted during the anti-monotonic phase but still have support. The input to the

procedure is deleted, and we iterate over the deletions in the changeset. If R does not aggregate, we use the support count: A positive support count indicates the tuple is still derivable, and we propagate a re-insertion (Line 41-42). If instead R aggregates, we use the support multiset: A non-empty support multiset indicates that some aggregand values are left (Line 45). In this case, we recompute the aggregation result by applying the aggregation operator α and propagating a re-insertion (Line 46). Due to the support multiset, we do not need to re-collect aggregand values, saving precious time. In [Section 4.4](#), we explain how we further incrementalize the aggregation computation (blue highlighting in the code). We return to procedure `maintainIncrementally` by storing the re-derived tuples in red. Because these tuples, together with the previously deleted ones, can trigger transitive changes in downstream dependency components, we add deleted and mon to all (Line 13). We perform a signed union, so ultimately if a tuple was deleted but then we could re-derive it, then that tuple will not change all. Note that re-derivation triggers insertions only and hence only entails monotonic changes that we handle in the final step of DRed_L .

Finally, DRed_L runs the **monotonic phase** until a fixpoint is reached (Line 14-16). In each iteration, we use procedure `updateMon` to compute the effect of the monotonic changes. Procedure `updateMon` is similar to `updateAnti`, but `updateMon` handles deletions as well as insertions due to increasing replacements. If R does not aggregate (Line 57-60), we update the support count of h according to the tuple being an insertion ($\text{sign}(h)=1$) or a deletion ($\text{sign}(h)=-1$). If instead R aggregates (Line 61-66), we delete the old aggregate result and insert the new one. To this end, we compute the aggregate result over the support multiset before and after the change to the support multiset. We collect all tuple deltas and return them to `maintainIncrementally`, which continues with the next fixpoint iteration. The implementation also checks if the produced tuple deltas may cancel each other out, which is quite common with idempotent aggregation functions such as `lub`.

Procedure `maintainIncrementally` executes the four steps of DRed_L for each dependency component C until all of them are up-to-date. While it may seem that a change requires excessive work, in practice many changes have a sparse effect and only trigger relatively little subsequent changes. We evaluate the performance of DRed_L in detail in [Section 6](#). One potential source of inefficiency in DRed_L is computing the aggregation result over the support multiset (highlighted in blue in [Figure 2](#)). We eliminate this inefficiency through further incrementalization.

4.4 Incremental Aggregator Function

Procedures `updateAnti` and `updateMon` recompute the aggregate results based on support multisets. A straightforward implementation, that reapplies aggregation operator α on the multiset contents, will require $O(N)$ steps to recompute the aggregate result from a multiset of N values. For example, a flow-insensitive interval analysis on a large subject program may write to the same variable N times. For large N , this can degrade incremental performance as computational effort will linearly depend on input size N (instead of the change size), which contradicts **Efficiency (R2)**.

Given associative and commutative aggregation operators (like `glb` or `lub`), our idea is to incrementalize the aggregator functions themselves using the following approach. Independently from the partial order of the lattice we aggregate over, we take an arbitrary *total* order of the lattice values (e.g., the order of memory addresses). Using this order, we build a balanced search tree (e.g. AVL [[Sedgewick and Wayne 2011](#), Chapter 3.3]) from the aggregands. At each node, we store additionally the aggregate result of all aggregands at or below that node. The final aggregate result is available at the root node. Upon insertion or deletion, we proceed with the usual search tree manipulation. Then we locally recompute the aggregate results of affected nodes and their ancestors in the tree. At each node along the path of length $O(\log N)$, the re-computation consist of aggregating in $O(1)$ time the locally stored aggregand with intermediate results. In sum, this way we can incrementally update aggregate results in $O(\log N)$ steps, while using $O(N)$ memory.

4.5 DRed_L Semantics and Correctness Proof

Our approach relies on the formal semantics of recursive monotonic aggregation given by Ross and Sagiv [Ross and Sagiv 1992]. We recap here the most important semantical aspects (taken from [Ross and Sagiv 1992]), and then present a novel proof sketch for the correctness of DRed_L.

4.5.1 Semantics of Recursive Aggregation. A *database* or *interpretation* assigns actual instance relations to the relation names (*predicates*) appearing in the Datalog rules. A database is *cost consistent* if it satisfies the condition in Assumption A3, i.e. lattice columns are functionally determined by non-lattice columns in all relations. Let the set of variables that appear in the body (in any of the subgoals) of a Datalog rule r be $Vars$. Then, given a concrete database, one can evaluate the body of a rule r to find all substitutions to $Vars$ that satisfy all subgoals in the body.

A *model* is a cost-consistent database that satisfies all Datalog rules, i.e. any given derived relation is perfectly reproduced by collecting or aggregating the derivations of all those rules that have this relation in the head. A *Datalog semantics* assigns a unique model to a set of Datalog rules (where, technically, base relations are also encoded as rules that only use constants, so called *extensional rules*). In the following, we present the semantics of Ross and Sagiv by induction on dependency components, i.e. when considering the relations defined by a given component, we assume that we already know the semantics of all other components it depends on, so they can be equivalently substituted by constants and considered as base relations.

For such a single dependency component, by Assumption A1 we have a partial order \sqsubseteq for each lattice used. We can thus lift this notation to define a partial order (shown to be a lattice as well) on databases; we say that $D_1 \sqsubseteq D_2$ iff for each tuple $t_1 \in D_1$, there is a tuple $t_2 \in D_2$ in the corresponding relation such that $t_1 \sqsubseteq t_2$. For cost-consistent databases, this is equivalent to saying D_2 can be reached from D_1 by tuple insertions and \sqsubseteq -increasing replacements.

It has been shown [Ross and Sagiv 1992] that if a set of Datalog rules satisfy Assumption A1 and A3, then there is a unique *minimal model* M_{min} , i.e. all models M have $M_{min} \sqsubseteq M$. Thus the minimal model is considered as the semantics of the Datalog rules with recursive aggregation.

4.5.2 Correctness of the Algorithm - Proof Sketch. Following [Green et al. 2013; Motik et al. 2015; Ross and Sagiv 1992], we give an informal sketch to prove the proposed DRed_L algorithm correct (R1), given the assumptions³ from Section 4.1. We do not include proofs for the correctness of well-known techniques used, such as algebraic differencing [Gupta and Mumick 1995] or semi-naïve evaluation [Green et al. 2013].

Specifically, we will show that DRed_L terminates and produces the minimal model, while keeping its support data structures consistent, as well. As usual, we will conduct the proof using (i) induction by update history, i.e. we assume that DRed_L correctly computed the results before given input changes were applied, and now it merely has to maintain its output and support data structures in face of the change; as well as (ii) componentwise induction, i.e. we assume that the result for all lower dependency components have already been correctly computed (incrementally maintained), and we consider them base relations.

Preliminaries. Let B^{old} be the base relations (input) before a changeset Δ , inducing minimal model M_{min}^{old} , which DRed_L correctly computed by the induction hypothesis; let $B = B^{old} \cup \Delta$ be the new input and M_{min} the new minimal model, which DRed_L shall compute. Let D^\cap be the \sqsubseteq -greatest lower bound of the two minimal models (exists since databases themselves form a lattice [Ross and Sagiv 1992]); essentially it is the effect of applying the anti-monotonic changes only.

³ To prove general fixpoint convergence, Ross and Sagiv required each lattice to be a *complete lattice*. We have dropped this assumption in favor of Assumption A4, which will also suffice for our goals. Note that we require the finite height of *ascending* chains only, thus strictly speaking our assumption is neither stronger nor weaker than the original one.

Let us denote by $D_{init} = D_{anti}^0$ the current database (state of base and derived relations) when DRed_L starts to process the dependency component (with changes in base relations already applied), by D_{anti}^i after iteration i of the anti-monotonic phase, by D_{anti}^{final} at the end of the anti-monotonic phase, by $D_{red} = D_{mon}^0$ after the immediate re-derivations, by D_{mon}^i after iteration i of the monotonic phase, and finally by D_{mon}^{final} after the monotonic phase.

Monotonicity. Iterations of the anti-monotonic phase only delete tuples, so $D_{init} \sqsupseteq D_{anti}^i \sqsupseteq D_{anti}^{final}$. Re-derivations are always insertions, and each re-derived tuple t_{red} compensates for a tuple $t_{anti} \sqsupseteq t_{red}$ ($t_{anti} = t_{red}$ for non-aggregating relations) that was deleted during the anti-monotonic phase; therefore we also have $D_{anti}^{final} \sqsubseteq D_{red} \sqsubseteq D_{init}$. Finally, by induction on i and by Assumption A1, each iteration i of the monotonic phase performs monotonic changes, thus $D_{red} \sqsubseteq D_{mon}^i \sqsubseteq D_{mon}^{final}$.

Termination. The anti-monotonic phase must terminate in finite time as there are finite number of tuples to delete. The immediate re-derivation affects at most as many tuples as the anti-monotonic phase, thus it terminates. The monotonic phase must reach its convergence limit in a finite number of steps as well, for the following reasons. Given a finite database of base relations, a finite amount of non-lattice values are available. Due to Assumption A3 it follows that the output of the component is also finite. As the monotonic phase never deletes tuples, it can only perform a finite number of insertions to reach this finite output size. Finally, it may only perform a finite number of \sqsubseteq -increasing replacements due to Assumption A4.

Upper bound and support consistency. We now show that after the anti-monotonic phase, intermediate database states are upper bounded by the desired output, and that support data structures are consistent: A tuple t is (i) contained in the database or (ii) has a positive support count or nonempty support multiset only if $\exists t' \in M_{min}$ with $t \sqsubseteq t'$.

The anti-monotonic phase deleted all tuples that, in any way, depended transitively on the anti-monotonic part of input deletions, therefore those that remained must have had support not impacted by the deletions, thus $D_{anti}^{final} \sqsubseteq D \sqsubseteq M_{min}$. As rules are monotonic by Assumption A1, and the support data structures are correctly maintained (using algebraic differencing [Gupta and Mumick 1995] by `immediateConsequences`), any tuple t that has support in state D_{anti}^{final} must have a t' that has support in (and thus contained in) M_{min} . This means that re-derivation only inserts tuples upper bounded by the minimal model, so $D_{red} \sqsubseteq M_{min}$.

A similar argument applies during the monotonic phase. Assume by induction that $D_{mon}^{i-1} \sqsubseteq M_{min}$. All tuples t that are to be inserted in iteration i due to having support (as computed by `immediateConsequences` and reflected in the support data structures by `updateMon`), must have (by Assumption A1 and the induction hypothesis) a corresponding $t' \in M_{min}$ with $t \sqsubseteq t'$, thus $D_{mon}^i \sqsubseteq M_{min}$ still holds. Eventually, $D_{mon}^{final} \sqsubseteq M_{min}$.

Cost consistency. We will show that the output D_{mon}^{final} is cost consistent. Base relations are considered cost consistent due to Assumption A3 and the assumed correctness of DRed_L for lower dependency components. Therefore it is sufficient to check the cost consistency of derived relations, which we do by indirect proof. By the induction hypothesis, the state of the algorithm before the change was the cost-consistent model M_{min}^{old} . The change in base relations did not directly affect derived relations and the anti-monotonic phase only deleted tuples, so D_{anti}^{final} is cost-consistent as well. During the re-derive and monotonic phase, tuples are only inserted if they have support, so cost-consistency is only violated if tuples $t \neq t'$, agreeing on all non-lattice columns, both had support. Let us assume such a situation arises, and we prove that it can actually never happen.

(module)	m	$::= \text{module } n \text{ import } \bar{n} \{ \overline{m\bar{c}} \}$
(module content)	mc	$::= f \mid l$
(lattice)	l	$::= \text{lattice } L \{ \text{constructors } \{ \bar{c} \} \text{ lop} \}$
(lattice name)	L	$::= \text{name}$
(type in lat. def)	T_L	$::= \text{AST node type} \mid \text{Java base type} \mid \text{String} \mid L$
(constructor)	c	$::= n(\overline{T_L})$
(lattice op)	lop	$::= \text{def } n(n : T_L) : \overline{T_L} = lopb$
(lattice op body)	$lopb$	$::= \text{Java code} + \text{lattice constructors and operations}$
(visibility)	vis	$::= \text{private} \mid \text{public}$
(function)	f	$::= vis \text{ def } n(n : T_R) : \overline{T_R} = \overline{alt}$
(type in rel. code)	T_R	$::= \text{AST node type} \mid L \mid L/lop$
(alternative)	alt	$::= \bar{s}$
(statement)	s	$::= \bar{n} := e \mid \text{assert } cond \mid \text{return } e$
(condition)	$cond$	$::= e == e \mid e != e \mid e \text{ instanceof } T_R \mid e \text{ not instanceof } T_R \mid \text{undef } e$
(expression)	e	$::= n \mid lit \mid e.n \mid n(\bar{e}) \mid n^+(e) \mid L.n(\bar{e})$
(literal)	lit	$::= \text{number} \mid \text{string} \mid \text{enum} \mid \text{boolean}$
(name)	n	$::= \text{name}$

Fig. 3. Syntax of IncA. The highlighted parts show the additions in comparison to the prior version of the IncA DSL [Szabó et al. 2016].

Due to Assumption A3, the Datalog rules themselves are specified to obey cost consistency, so t and t' both can't be transitively derivable from base relations at the same time. Thus one of them, say t , must be an error in the support data structure, cyclically reinforcing itself. Such cyclic reinforcement can form for t if it was previously present, then one of its derivations is deleted (which is possible in the monotonic phase via an increasing replacement), but a positive support count still remained, so it was left in the database.

Because of the way how change splitting is performed, increasing replacements in the monotonic phase are only permitted for dependency components that use aggregation. By Assumption A2, alternative rules for the same relation must produce disjoint results, so all derivations of t must stem from the same rule, and may only differ in local variables of the rule. Therefore an increasing replacement that has removed one such derivation must have removed all of them, decreasing the support count of t to zero. This contradiction concludes the indirect proof.

Model. The monotonic phase acts as a standard bottom-up Datalog evaluation using semi-naïve (differential) iterations [Green et al. 2013]. Each iteration i takes the Datalog rules that can be applied to D_{mon}^{i-1} in order to derive new facts or increase aggregate results to obtain D_{mon}^i . If a rule can be applied to a database, its result will contribute to the computed immediate consequence due to the correctness of differential evaluation. At the final fixpoint, the immediate consequence is empty; this means that no more rules can be applied to D_{mon}^{final} , therefore the state thus reached (shown above to be cost-consistent) is a model.

Minimality. By definition, $M_{min} \sqsubseteq M$ for any model M over the same base relations. However, we have shown above that $D_{mon}^{final} \sqsubseteq M_{min}$ which implies that $D_{mon}^{final} = M_{min}$, i.e. the algorithm is correct.

5 THE IncA FRAMEWORK

We build a complete analysis framework as an extension of our prior IncA incremental analysis framework [Szabó et al. 2016]. Our extensions span four layers: DSL, compiler, runtime system, and IDE integration. We briefly review each of these extensions. IncA is open source software, and every component of this architecture is available online, along with the complete implementation of the interval analysis and the other case studies used in Section 6.⁴ The exception is the runtime solver, which is stand-alone and hosted elsewhere, as discussed below.

⁴<https://github.com/szabta89/IncA>

5.1 DSL

IncA provides a DSL for the specification of lattices and analyses using these lattices. The DSL is subject language independent, that is, one can use it to define program analyses for any language. We developed this language as an extension of our prior IncA DSL, and we highlight our extensions in Figure 3.

A lattice definition l declares the name of the lattice, algebraic data-type constructors for lattice values, and lattice operations. Each lattice operation has a name and is implemented in Java extended with calls to lattice constructors and operations. Each lattice must implement at least `leq`, `lub`, and `glb` operations; other user-defined operations for abstract interpretation of expressions or statements are optional.

Functions f define IncA analyses. Internally, IncA treats functions as relations, but the distinction between input parameters and output values seems useful for analysis developers [Szabó et al. 2016]. We extended type annotations T_R such that functions can take and produce lattice values. The type L simply means that a function uses lattice values, but does not aggregate them. In contrast, L/lop means lattice-based aggregation using lattice operation lop . In this case, IncA only allows to use operations with the right signature: An aggregation operation must take two lattice values and produce one lattice value. IncA does not verify that the aggregator operator is indeed monotonic, ensuring this is the responsibility of the analysis developer. Finally, expressions within a function body can invoke lattice constructors and operations $L.n$ using the lattice name as a qualifier.

To illustrate the IncA DSL, let us re-implement the Datalog rules `IntervalAfter` and `IntervalBefore` from the interval analysis in Section 2 using IncA.

```
def getIntervalAfter(stmt : Stmt, var : Var) : Interval = {
  assert assignsNewValue(stmt, var)
  initializer := getInitializerFor(stmt, var)
  return assignedInterval(stmt, initializer)
} alt {
  assert undef assignsNewValue(stmt, var)
  return getIntervalBefore(stmt, var)
}

def getIntervalBefore(stmt : Stmt, var : Var) : Interval/lub = {
  pred := getCFlowPred(stmt)
  return getIntervalAfter(pred, var)
}
```

The analysis is governed by two recursively dependent functions `getIntervalBefore` and `getIntervalAfter`. They both take a statement and a variable as input and return the associated interval as output. Note that the functions use `lub` for aggregation as specified by the annotation on the return type. In contrast to Section 3.1, there is no need to define separate functions that compute the `Coll` and `Agg` relations; as we discuss later, those are automatically generated by the compiler based on the type annotations. Section 6 shows more IncA examples through the implementation of our case studies.

5.2 Runtime System

The low-level incremental solver of IncA is the open source VIATRA QUERY⁵ system (formerly INCQUERY [Ujhelyi et al. 2015]), which is an incremental engine for graph pattern matching [Rozenberg 1997] (essentially a variant of Datalog) that did not support incremental recursive aggregation

⁵<https://www.eclipse.org/viatra>

prior to this work. We extended VIATRA QUERY with our new aggregation constraint `Agg` and our `DRedL` algorithm (see [Section 4](#)) that incrementally maintains such patterns.

5.3 Compiler

Translation. To bridge the gap between the high-level analysis language and the underlying solver VIATRA QUERY, IncA translates the DSL code into graph patterns encoded in Java. Compared to prior work [Szabó et al. 2016] on pure relational analyses, our first extension is to allow relations to carry lattice values. We translate a lattice definition into a Java class, where lattice constructors become class constructors and lattice operations become static methods. We allow relations to use instances of these classes as values. For each aggregation operation $L.n$ used in the IncA program under compilation, we generate an AVL tree implementation $\tau_{L.n}$ specialized for $L.n$, as described in [Section 4.4](#).

Our second extension is to generate new aggregating graph patterns $\text{Agg}(p, c, \tau_{L.n})$, where p is a graph pattern, c is a lattice-typed column of p , and $\tau_{L.n}$ is the AVL tree for the aggregation of c . We use such an aggregating graph pattern as the translation of any IncA function f that takes or yields an aggregated lattice value. Specifically, we generate two graph patterns: An auxiliary pattern f'_p that is the result of compiling f without any aggregation annotation (analogous to `Coll` of [Section 3.1](#)), as well as the main pattern f_p that aggregates the tuples of f'_p using our new `Agg` graph pattern (analogous to the relation `Agg`). This translation naturally extends to more than one aggregating columns.

Checks on IncA analyses. The IncA compiler also performs static analyses on IncA subject analyses to ensure that the assumptions from [Section 4.1](#) are met. These analyses include (i) checking the consistent usage of aggregations, (ii) enforcing stratifiable negation, and (iii) aggregation exclusivity. These analyses are all implemented in IncA itself, and they all rely on analyzing the strongly connected components in the call graph of analysis functions. The results of the analyses are used by the compiler, which reports errors to the analysis developer.

Although not implemented yet, we propose an additional static check of the cost consistency assumption. Note that cost consistency is a form of *functional dependency*. Thus if a graph pattern obeys cost consistency, in most cases it should be possible for the existing functional dependency reasoner of VIATRA QUERY to prove it, using information such as (i) the single-valued nature of expression evaluation and aggregation, (ii) knowledge on the structure of the AST (e.g. each try block has at most one finally block), and by induction on (iii) functional dependencies exhibited by other user-defined patterns used as subgoals.

Transformation for ensuring cost consistency. If such a functional dependency cannot be established for an *aggregating rule*, the IncA compiler can, in typical cases, perform a transformation (written in Java) on the analysis code that will ensure cost consistency anyway. More precisely, it can remove a few very common violations of cost consistency. The rest of [Section 5.3](#) is devoted to this transformation, based on an idea from [Ross and Sagiv 1992].

The transformation assumes that within a single rule body, the lattice-typed variables are already uniquely determined by the non-lattice typed variables (local or not); this can typically be verified by the functional dependency solver. If the assumption is satisfied for all bodies of the aggregating pattern, the transformation runs in two steps. First, in order to prevent multiple derivations of the same aggregation group within the same rule body, we lift up all local variables from the rule body to the head. This way, we can ensure that the lattice-typed head variables are uniquely determined by the non-lattice typed head variables (since we have just made all variables head variables). Second, for patterns with multiple rule bodies, we introduce a new intermediate pattern per body,

and we discriminate them with a unique constant value in the rule head. Each such intermediate pattern performs an intermediate aggregation over the “lifted” local variables, so its head will match that of the original aggregating pattern, plus the unique discriminator. The final transformed rule will then aggregate the union of these intermediate aggregates (incl. body discriminator).

It is important to point out that this transformation preserves the semantics of the original Datalog rules only because IncA analyses exclusively use lattice aggregators derived from idempotent, associative, and commutative binary operations (glb , lub). In contrast, for a generic aggregating Datalog rule set (e.g. with summation), lifting would indeed change the semantics (as some parts would be included in the sum multiple times). We emphasise that the transformation is specific to IncA, not the underlying DRed_L algorithm (which assumes cost-consistent Datalog rules on its input). Although the current implementation is limited, we have verified that it works well for many typical analyses, including our case studies. In future work, we will extend the transformation, so that it can also (i) help with the non-aggregating Datalog rules; consult the functional dependency reasoner to (ii) verify that rule bodies are cost consistent and (ii) leave the rule intact if it is already found to be cost consistent.

5.4 IDE Integration

Our primary goal with IncA is to enable the application of program analyses in interactive use cases in an IDE. To this end, we integrated IncA into the MPS language workbench: Our integration comes with typical IDE features, such as syntax highlighting, type system, generators, and validations for analyses expressed with IncA’s DSL. MPS relies on a projectional editor [Voelter et al. 2016], where user edits directly lead to AST modifications, without parsing. This aligns perfectly with incremental program analysis because edits directly correspond to fine-grained incremental AST changes.

6 EVALUATION

To validate that our solution satisfies **Efficiency (R2)** and **Expressiveness (R3)**, we used IncA to implement two program analyses with aggregation over lattices that were designed by program analysis researchers, and we ran these analyses on four open source code bases. Our goal is to use these analyses (and IncA, in general) for interactive applications in IDEs, so we need sub-second update times, otherwise clients would observe a noticeable pause in the development flow. Therefore, IncA caches the previous analysis results, which, however, induces extra memory consumption. This leads to two evaluation criteria:

Run-time (RQ1) Is the update time of IncA fast enough for interactive applications in IDEs, and does this come with an acceptable initialization time?

Memory (RQ2) Is the extra memory requirement induced by incrementalization acceptable?

Note that we cannot compare to another incremental framework because to the best of our knowledge none exists that supports recursive aggregation over lattices.

6.1 Evaluation Setup

The subject language for our evaluation is Jimple, an intermediate Java representation adopted from the Soot framework [Lam et al. 2011]. It only uses `ifs` and `gotos` to express control, which relieves us from reasoning about more complex control flow. It helps with the construction of the CFG, but it does not simplify the data-flow analyses themselves. Implementing control flow analyses with relations is itself an interesting research problem; IncA has been successfully used for C control flow analysis [Szabó et al. 2016], but addressing Java is beyond the scope of this paper.

Our first analysis adapts the strong update points-to analysis for C introduced in [Lhoták and Chung 2011] to Jimple. We chose this analysis because of its practical relevance; points-to analyses are the basis of many other analyses. Our points-to analysis implementation is flow-sensitive, field-sensitive, and intra-procedural. Our second analysis addresses character inclusion and prefix/suffix analyses for string values [Costantini et al. 2011]; we chose these because they rely on non-trivial lattices and lattice computations. Our string analyses are intra-procedural. Compared to the points-to analysis, the string analyses are flow-insensitive because we wanted to verify that, even though, the string analyses use more complex lattices, the ballpark of the run time is still lower, meaning that flow-sensitivity is the dominating factor. All of our analyses rely on recursive aggregation over lattices. Our implementations in IncA are available open source.⁶

We analyze the following Java code bases: (1) Google Truth, an assertion framework (9 KLOC Java code), (2) Google Gson, a JSON serialization library (14 KLOC), PGSQL JDBC, a PostgreSQL-Java binding (45 KLOC), and (4) BerkeleyDB, an embedded database (70 KLOC). We selected these because they represent widely used real world applications. We are not aware of a standard benchmark for incremental analyses that comes with a particular code base and sequences of code changes. We imported the code into MPS and transformed it to Jimple, which is functionally equivalent to the original Java programs.

The actual evaluation is as follows. For each code base, we start the analysis with an initial, non-incremental run. We then introduce 1000 incremental program changes on the Jimple code, simulating the edits of a developer. We use two kinds of changes. First, we randomly perform generic changes such as copying and deleting expressions, statements, and methods, or renaming variables. Second, we perform random changes tailored to each analysis: We change assignments for the points-to analysis and modify string values for the string analysis. In all cases, we measure the wall clock time of the initial run and the run-time of the incremental updates to answer **Run-time (RQ1)**. To measure memory consumption (**Memory (RQ2)**), we subtract MPS' total memory use before the initialization of the analyses from the value after the analyses are initialized. For the points-to analysis, we vary the subject code base when running the measurements. For the string analyses, we also vary the number of tracked string properties to find out how much more expensive it is to track not only one string property (e.g. only prefix) but two or three at the same time. We do this in order to see if a developer can simply turn on and off tracked properties to control the amount of information the analysis provides without incurring excessive performance penalty.

To validate **Correctness (R1)**, we compared the results of the incremental analysis with the results of a full re-analysis after every code manipulation, and we verified that they are the same.

We ran the benchmarks on an Intel Core i7 at 2.7 GHz with 16 GB of RAM, running 64-bit OSX 10.12.6, Java 1.8.0_121 and MPS version 2017.3.5. The raw data and the sequence of code changes are available online.⁷ We now show interesting implementation details of the analyses, and then present our measurement results to answer our research questions.

6.2 Strong Update Points-to Analysis

The strong update points-to analysis is at the sweet spot between the cheap flow-insensitive and the precise flow-sensitive analysis: It is flow-sensitive for a variable or field (given that we analyze Java/Jimple) as long as the target points-to set consists of a singleton object, and then gives up on flow-sensitivity immediately when the target set has more than one object. This makes sense because dereferencing a non-singleton points-to set does not allow strong updates (that would overwrite the previous results) anyway, and so in most of the cases the precision gained through

⁶<https://github.com/szabta89/IncA>

⁷<https://github.com/szabta89/IncA>

<pre> def varPT(v:Var) : Obj def fieldPT(o:Obj, f:Field) : Obj </pre>	A	<pre> def varPTBefore(s:Stmt, v:Var) : SObj/lub def varPTAfter(s:Stmt, v:Var) : SObj/lub def fieldPTBefore(s:Stmt, o:Obj, f:Field): SObj/lub def fieldPTAfter(s:Stmt, o:Obj, f:Field): SObj/lub </pre>	B
<pre> lattice SObj { constructors { Bot S(Obj) Top } def leq(l : SObj, r : SObj) : bool = return match (l, r) with { case (S(o1), S(o2)) => o1 == o2 case ... } def lub(l : SObj, r : SObj) : SObj = return match (l, r) with { case (S(o1), S(o2)) => o1 == o2 ? l : Top case ... } } </pre>	C	<pre> def varPT_SU(s:Stmt,v:Var): PSObj/lub = { trg := varPTAfter(s, v) assert trg != Top return PSObj.fromSObj(trg) } alt { assert varPTAfter(s, v) == Top trg := varPT(v) return PSObj.fromObj(trg) } def fieldPT_SU(s:Stmt,o:Obj,f:Field): PSObj/lub = { ... } </pre>	D

Fig. 4. Building blocks of the IncA strong update points-to analysis.

flow-sensitivity is limited. The original paper [Lhoták and Chung 2011] provides details on the corner cases and precision characteristics. Here, we focus on the implementation in IncA.

Implementation. Figure 4 shows the main building blocks of the analysis. The first one is the flow-insensitive points-to analysis. Figure 4A shows the signatures of the IncA analysis functions. `varPT` returns the points-to set of variable `v`, while `fieldPT` returns the points-to set of object `o` through field `f`. Similar to the interval analysis, these functions collect assignments and interpret the left and right hand sides to collect the pointer variables and the pointed objects. The functions recursively call each other, but they do not use a custom lattice or aggregation.

Next, we define the flow-sensitive analysis that uses the singleton-set lattice to decide when to give up on tracking the points-to set of a variable. Figure 4C shows the lattice definition in IncA, and Figure 4B shows the signatures of the flow-sensitive analysis functions. The implementation of these functions follows the same approach as the interval analysis in Section 2 in that they recursively depend on each other to propagate the points-to information along the subject program's CFG, using a forward style analysis. The current implementation builds on a control flow analysis for Jimple. The functions in Figure 4B all annotate the `SObj` lattice type with `lub`, making sure that the analysis gives up on tracking non-singleton sets (see first case in the body of `lub` in Figure 4C).

The final ingredient of the strong update analysis is responsible for combining the results of the previous two (Figure 4D). The analysis returns the result of the flow-sensitive analysis in the first alternative, given that it yields an exact result in the form of a singleton set. The second alternative turns to the flow-insensitive analysis. Additionally, these two functions use a power set lattice for the output parameter (`PSObj`) to aggregate the target objects into one set. The reason for this is that the flow-sensitive analysis gives up on tracking non-singleton targets to save memory, so we must not store separate tuples per target objects here either, otherwise we would lose the memory saving. To query the points-to information, clients would interact with the `varPT_SU` and `fieldPT_SU` functions, whose results are maintained incrementally.

Run-time (RQ1) The *initialization times* of the points-to analysis are as follows: Google Truth - 6.5s, Google Gson - 9.4s, PostgreSQL JDBC - 57.8s, and BerkeleyDB - 64.3s. In contrast to these numbers, loading a larger project in MPS easily takes a few tens of seconds, so even the initialization on BerkeleyDB is not prohibitively long. We compare the numbers to the MPS project loading time

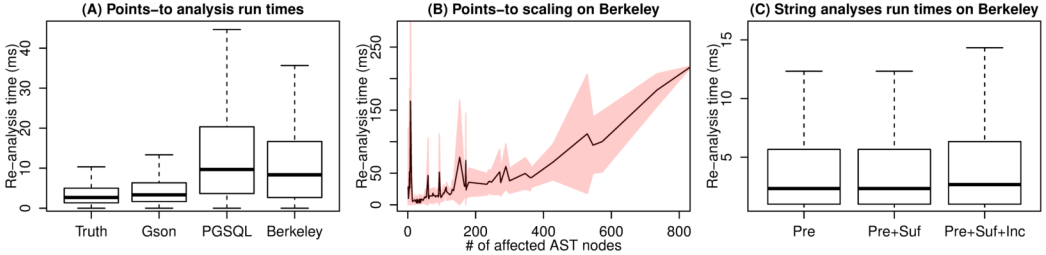


Fig. 5. Runtime measurement results. Box plot whiskers cut off outliers beyond 1.5 IQR.

because it is better to initialize the analyses during start-up, otherwise developers would observe a longer pause when an analysis is queried first. Figure 5A captures the *incremental update times* of IncA for the four code bases in a box plot (outliers removed). These times are very fast, exactly the kind of numbers we want in interactive applications. Figure 5B reinforces this observation because it shows the scaling of the system on BerkeleyDB in terms of update time wrt. the size of the program change. We had multiple data points per change sizes: The line connects the mean values, and we obtained the red area by subtracting and adding the standard deviation to the mean. We can see also on this graph that the update times are fast, even for larger changes. For example, changes affecting ~800 AST nodes were typically the duplication or removal of complete methods.

Memory (RQ2) The memory consumption of IncA is as follows: Google Truth - 670MB, Google Gson - 1GB, PostgreSQL JDBC - 4.5GB, and BerkeleyDB - 5GB (these numbers essentially remain constant as the program changes). To put these numbers into perspective: (1) At the time of measurements MPS used around 2GB of memory, so the analysis on BerkeleyDB uses 2.5X of that, and (2) the points-to analysis is a flow-sensitive analysis, and the Jimple representation of BerkeleyDB has a few hundred thousand CFG nodes. To provide a ballpark for the number of tuples we note that the relations of the points-to analysis on the BerkeleyDB together contain roughly 57 million tuples. These are high numbers, and they are because of extensive caching, but, in return, we have fast incremental updates.

6.3 String Analyses

Our second case study concerns string values. Costantini et al. proposed several abstract domains to keep track of the properties of string values [Costantini et al. 2011]. We implemented with IncA three distinct string analyses. First, the character inclusion analysis that keeps track of the definitely-contained and maybe-contained set of characters for a string variable. This, in turn, can be used to decide whether the return value of operations like `indexOf(s)` can be negative or not, which is interesting because a negative value causes operations like `split` or `substring` to throw an exception. We also implemented analyses that compute the longest common prefix and suffix of the strings a variable take; this is useful to check well-formedness, for example, to ensure that an SQL statement always starts with a keyword and terminates with a semicolon.

Implementation. Due to space reasons, we only show a few operations of the prefix lattice:

```
lattice Prefix {
  constructors { Bot | Pre(string) }
  def top() : Prefix = Pre("")
  def leq(l : Prefix, r : Prefix) : boolean =
    return match (l,r) with case (Pre(p1),Pre(p2)) => p1.startsWith(p2)
  def lub(l : Prefix, r : Prefix) : Prefix =
    return match (l, r) with case (Pre(p1), Pre(p2)) => Pre(lcp(p1, p2))
  def interpretSubstring(v:Prefix, s:int, e:int) : Prefix =
```

```

return match v with case Pre(p) => {
  final int l = p.length();
  if (s <= e && e <= l) return Pre(p.substring(s, e));
  else if (s <= e && s < l && l < e) return Pre(p.substring(s, l));
  else return top();
} ... }

```

The Prefix lattice⁸ has two kinds of elements: Bot, the bottom of the lattice, is never used by the analysis, it marks a “failure”. The Pre element wraps a prefix string. The leq operator performs a prefix-check using Java’s `String.startsWith` method, while lub uses a helper function, `lcp`, that computes the longest common prefix of two strings. The pattern matching syntax allows us to encode the lattice structure in just a few lines of code.

For example, function `interpretSubstring` interprets the result of substring calls on strings, in the Prefix abstract domain. It performs various checks using the start and end indices and returns a slice of the prefix accordingly, or resorts to the lattice top in case of an empty result.

Run-time (RQ1) We use the notation `Pre` to refer to the string analysis that keeps track of the longest common prefix, `Pre+Suf` tracks the suffix in addition, while `Pre+Suf+Inc` also tracks character inclusion. The initialization times for BerkeleyDB are as follows: `Pre` - 13.5s, `Pre+Suf` - 13.8s, and `Pre+Suf+Inc` - 20.4s. Figure 5 (C) shows the incremental update times. We observe: (1) as expected, a flow-insensitive analysis is cheaper to compute, even incrementally, (2) these run times meet the requirements of interactive applications, (3) activating one (Suf) or two more string properties (Suf+Inc) has only very minor impact on incremental performance.

Memory (RQ2) The memory requirement of the analyses are as follows: `Pre` - 1.6GB, `Pre+Suf` - 1.7GB, `Pre+Suf+Inc` - 2.2GB. The overall lower memory use compared to the points-to analysis is because of flow-insensitivity. An interesting observation is that maintaining the longest common suffix in addition to the prefix requires only a 100MB extra memory, but activating the character inclusion induces an extra 500 MB compared to `Pre-Suf`. This is because the character inclusion lattice wraps two sets of characters, which is expensive in terms of memory for the large code base.

6.4 Discussion

We summarize the results of our performance benchmarking, and we briefly discuss how inter-procedurality fits into our IncA roadmap.

Run time IncA achieves our goals for run-time performance. It requires an acceptable amount of initialization time even on our largest benchmark code base, and its update times are a few milliseconds on average.

Memory We pay the price for the fast update times with memory. The memory requirement of IncA can grow large, but it is not prohibitive. In practice, developers would typically work with smaller parts of projects, reducing the absolute amount of memory needed.

In addition, we have concrete plans for reducing the memory use in the future. Likely, a major source of memory overhead is the strategy of our incremental backend VIATRA QUERY to break down a large analysis function into subqueries, each performing an elementary relational algebra operation. For instance, a rule $h :- a_1, a_2, a_3, a_4$ may be automatically substituted with $h :- b_1, b_2$ and $b_1 :- a_1, a_2$ and $b_2 :- a_3, a_4$, so that the rule body is decomposed into a tree of three simple relational joins. The results of these subqueries are each stored, maintained, and indexed separately (the Rete [Forgy 1982] approach). This reduces runtime of change propagation (when a_3 changes, b_1

⁸This lattice is an interesting example, as it has infinite descending chains (any prefix can be continued to an even longer prefix), but no ascending ones (any given prefix has a finite number of truncations), hence Assumption A4 is still satisfied.

can be looked up from the index instead of recomputed) at the expense of additional memory (both b_1 and b_2 are stored and indexed). The TREAT system [Miranker 1987] is on the other side of this spectrum, it consumes less memory by using more coarse-grained operations, but it loses efficiency in maintenance run time. Gator networks [Hanson and Hasan 1993] form a continuum between Rete and TREAT by selecting subqueries of various granularities for caching. We will experiment with finding the right trade-off between these approaches and either make it configurable or employ a dynamic solution that tunes the cache granularity.

Inter-procedural analyses We have benchmarked IncA on intra-procedural analyses, because these are relatively easy to express while also requiring significant computation time as the size of procedures grow. The goal of incrementalization is to make the computational effort for (re-)analysis proportional to the size of the change, not to the size of the code base. In future work, we will investigate how to express inter-procedural analyses in IncA and how they perform incrementally.

7 RELATED WORK

We discuss the relation of this work to incremental Datalog solvers, to individual incremental algorithms, and to analysis frameworks.

Incremental Datalog evaluation. Datalog [Ceri et al. 1989] forms the theoretical underpinning for our declarative analyses in mathematical logic. Non-recursive Datalog is straightforward to maintain incrementally (see *Counting* [Gupta et al. 1993]). For stratified recursive Datalog programs, incremental maintenance algorithms (see survey [Gupta and Mumick 1995]) include DRed [Gupta et al. 1993]; improvements over DRed that reduce work in some cases (e.g. *Backward/Forward* [Motik et al. 2015]); and various *provenance*-based approaches [Liu et al. 2009] that maintain, for each tuple, logical expressions as conditions of validity. In contrast to our solution, none of these algorithms can handle recursive aggregation over custom lattices, and this is because of the different notion of monotonicity: while these approaches use monotonicity in the conventional set-theoretic sense, in our case, the partial order of the respective lattice also governs monotonicity.

Our proposed solution DRed_L generalizes DRed for recursive lattice aggregation, so the two algorithms share many features. In particular, the four steps introduced in Section 4 correspond to the analogous steps of DRed. However, some notable differences stem from aggregation support:

- For aggregations, tuple insertions may result in increasing replacements, which DRed cannot correctly handle as they are not conventionally monotonic.
- As its key novelty, DRed_L solves this problem by splitting tuples at runtime according to \sqsubseteq -monotonicity as opposed to simply separating deletions and insertions. This has far-reaching consequences on all aspects of the algorithm:
- The monotonic phase of DRed_L must thus incrementally process monotonic deletions (in addition to insertions). This requires a mechanism to determine how to propagate such deletions that were not present in DRed. For this purpose we have adapted support counts (from *Counting*) and introduced support multisets, neither of which were part of DRed where only insertions were considered monotonic.
- The maintenance of these support data structures required DRed_L to enumerate each derivation exactly once; this is achieved (following [Motik et al. 2015]) through semi-naïve evaluation (algebraic differencing).
- As a side effect, such support data structures also enabled the rederive phase of DRed_L to avoid recomputation in contrast to DRed.

An alternative to maintaining recursive aggregations would be to rewrite them [Mazuran et al. 2013; Shkapsky et al. 2015] into a form supported by DRed: replicate tuple t with lattice value c to

tuples t' with c' for each $c' \sqsubseteq c$, thus mapping \sqsubseteq -monotonic changes, aggregations, and recursions into their classical monotonic counterparts. Depending on the lattice, this transformation may be prohibitively expensive or even impossible. For example, the (integer) interval analysis would require a quadratic amount of additional interval values (one for each sub-interval); while an *infinite* amount of new tuples would have to be produced for an occurrence of Top in the points-to analysis. First-class support of lattice values avoids this blowup in DRed_L .

Single-analysis algorithms. While IncA is a program analysis *framework*, other researchers have studied how to incrementalize individual analyses. Lu et al. encode points-to analysis as a reachability problem over an auxiliary data structure that encodes the points-to information and selectively re-computes affected paths after a program change [Lu et al. 2013]. Yur et al. incrementalizes a flow- and context-sensitive points-to analysis using worklists [Nielson et al. 2010, Chapter 6.1.1][Yur et al. 1999]. Saha and Ramakrishnan define points-to analysis as a logic program using Datalog [Ceri et al. 1989], and they build on top of the DRed algorithm [Gupta et al. 1993] to incrementalize its execution [Saha and Ramakrishnan 2005]. Their algorithm is lazy, meaning that it only computes points-to information when demanded by clients. Cooper and Kennedy develop an algorithm for the incremental maintenance of inter-procedural and flow-insensitive MOD analysis. A MOD analysis reports about which variables are affected by which statements in the program. Souter and Pollock [Souter and Pollock 2001] and Ismail [Ismail 2009] incrementalize call graph construction with specialized algorithms targeted towards in-IDE use. Instead of incrementalizing individual analyses, we have aimed for a framework that supports the incrementalization of a wide range of analysis.

Analysis frameworks. Pollock and Soffa present two algorithms for the incremental maintenance of data-flow analyses [Pollock and Soffa 1989]. First, the IMMEDIATE analysis is used to maintain the results of *may analysis* problems (i.e. any path). This is analogous to the Counting algorithm from the Datalog literature [Gupta et al. 1993]. Second, the TWO_PHASE algorithm is used to compute the results of *must analyses* (i.e. all paths). This algorithm is more complex than IMMEDIATE, and it is analogous to DRed because it considers cyclic reinforcements that can appear among the nodes of a strongly connected component in the CFG. In the low level, TWO_PHASE also uses four phases just like DRed and our DRed_L . The key difference compared to our DRed_L is that TWO_PHASE (and DRed) relies on set-theoretical monotonicity, which means that it is bound to analyses that use the powerset lattice (e.g. liveness, very busy expressions, uninitialized variables analysis). In contrast, DRed_L relies on an extended notion of monotonicity, which also uses the partial order of the custom lattices, leading to very different steps in the four phases.

Khedker provides a formal treatment of monotone data flow frameworks and defines requirements against incremental analyses performed on them [Khedker 1995]. The thesis provides concrete algorithms for the incremental maintenance of analyses using *bitvector-represented* (boolean) lattices. It is not possible to efficiently represent arbitrary lattices as bitvectors, as is the case for the string prefix lattice in Section 6.3. The potential for generalization is mentioned in Section 13.2.1 of the thesis, but it is largely left as future work.

Zadeck develops algorithms to incrementally maintain the results of partitionable data flow analyses [Zadeck 1984]. A data-flow analysis is partitionable if the nodes in the strongly connected components of the CFG all have the same associated data-flow value. The presented algorithms operate over bitvectors, which is a limitation because infinite lattices cannot be expressed this way. Also, as discussed in Section 5.3 of the thesis, flow-sensitive analyses do not fall into the category of partitionable problems, so we could not use this technique for the analyses in this paper.

The Magellan system encodes program analyses in Prolog, and it uses incremental tabled evaluation to update the analysis result in response to changes in the subject program [Eichberg et al.

2007]. The framework is integrated into Eclipse, and it can automatically infer input facts based on the single static assignment form of Java programs. Clients of Magellan analyses can also mark analyses that are not used anymore, and the framework automatically throws away the caches for the affected relations, thereby freeing up memory. In contrast to IncA, Magellan only supports analyses that operate on the powerset lattice.

Hermenegildo et al. design algorithms for the incremental maintenance of top-down (goal directed) constraint logic programs [Hermenegildo et al. 2000; Puebla and Hermenegildo 1996]. However, the algorithms do not support negation nor aggregation, thus the expressivity is the same as that of DRed, which is not enough for analyses with custom lattices.

Facebook’s Flow⁹ is an incremental type checker for JavaScript. Assuming that JavaScript modules have explicitly typed signatures, Flow analyzes the code per module, and stores a summary for each module. When code gets changed, Flow only re-analyzes the transitively affected modules bottom up, also parallelizing as much of the computation as possible. Unfortunately, there is no documented performance numbers on Flow, but the authors argue that it delivers the performance needed for interactive type checking in IDEs. In contrast to Flow, IncA is a generic framework that is not bound to a particular language or analysis.

Arzt and Bodden’s Reviser framework incrementalizes IFDS data-flow analyses [Arzt and Bodden 2014; Reps et al. 1995], which associates semantic information (data flow facts) with nodes in the inter-procedural CFG of the subject program and uses flow functions to propagate the information along the CFG. Upon a change at a CFG node, Reviser computes the transitively reachable affected nodes and re-executes the flow functions on them to compute the updated analysis result. In contrast, IncA provides a more fine-grained incrementalization, and it also exploits monotonic lattice value updates; this would not be possible with Reviser’s selective re-computation. Additionally, IFDS is bound to distributive data-flow analysis problems, and, for example, points-to analysis is known to be non-distributive. Späth et al. has shown that certain parts of points-to analysis can be re-formulated as a distributive problem [Späth et al. 2016], but it is unclear if and how such a re-formulation is possible for other kinds of analyses.

In terms of expressivity, the most closely related framework to IncA is Flix [Madsen et al. 2016]. Flix combines Datalog and lattices and thus, from the frontend’s perspective, is similar to IncA. However, Flix is not incremental. In contrast to IncA, Flix uses a verifier to automatically prove the monotonicity and other properties of lattice operations at compile time; in IncA, we only check that a program analysis is free of inconsistent lattice orderings and recursion through negation (Section 5). It should be possible to integrate Flix’s verifier in IncA since the expressivity is similar.

Like Flix, Conway et al. also combine lattices and logic programming in Bloom^L [2012]. Bloom^L offers many built-in lattices (e.g. bool, max, map) in its standard library, and developers can also define their own. In contrast to IncA, Bloom^L does not support full incrementality: only insertions are allowed. However, deletions are not only much more difficult to handle (requiring anti-monotonic propagation and re-derivation), deletions are also crucial in an IDE setting where developers freely edit code. Bloom^L targets distributed application development, and Conway et al. argue that supporting insertions is sufficient for this use case.

8 CONCLUSIONS

We presented IncA, a framework that efficiently incrementalizes the evaluation of program analyses with user-defined lattices. To this end, we developed the DRed_L algorithm that incrementalizes recursive aggregations over lattice values. We then integrated DRed_L into the runtime system of IncA and developed an analysis DSL to hide the technical details of incrementalization, allowing

⁹<https://perma.cc/5JWN-K8HR>

developers to focus on the essentials of the analysis definition. Our evaluation with practically relevant program analyses on real-world code shows that IncA can efficiently support interactive applications in IDEs through fast incremental update time. Our future work is centered around two main directions. First, we will experiment with inter-procedural analyses in IncA to examine the effects of incrementalization. Second, we will work on reducing the memory overhead of IncA by tuning the granularity of caching and indexing, potentially dynamically as the analysis runs.

ACKNOWLEDGMENTS

We thank the anonymous reviewers for their useful feedback on this paper. The second author was supported by the Hungarian Academy of Sciences, under grant LP2015-12 (<http://mta.hu/lendulet>) Lendület 2015 Research Group on Cyber-Physical Systems, and under the János Bolyai Research Scholarship (<http://mta.hu/bolyai-osztondij>).

REFERENCES

- Steven Arzt and Eric Bodden. 2014. Reviser: Efficiently Updating IDE-/IFDS-based Data-flow Analyses in Response to Incremental Program Changes. In *Proceedings of the 36th International Conference on Software Engineering (ICSE 2014)*. ACM, New York, NY, USA, 288–298. <https://doi.org/10.1145/2568225.2568243>
- Michael Francis Atiyah and Ian Grant Macdonald. 1994. *Introduction to commutative algebra*. Westview press.
- Pavel Avgustinov, Oege de Moor, Michael Peyton Jones, and Max Schäfer. 2016. QL: Object-oriented Queries on Relational Data. In *LIPICs-Leibniz International Proceedings in Informatics*, Vol. 56. Schloss Dagstuhl-Leibniz-Zentrum fuer Informatik.
- Pramod Bhatotia, Alexander Wieder, Rodrigo Rodrigues, Umut A. Acar, and Rafael Pasquin. 2011. Incoop: MapReduce for Incremental Computations. In *Proceedings of the 2Nd ACM Symposium on Cloud Computing (SOCC '11)*. ACM, New York, NY, USA, Article 7, 14 pages. <https://doi.org/10.1145/2038916.2038923>
- S. Ceri, G. Gottlob, and L. Tanca. 1989. What You Always Wanted to Know About Datalog (And Never Dared to Ask). *IEEE Trans. on Knowl. and Data Eng.* 1, 1 (March 1989), 146–166. <https://doi.org/10.1109/69.43410>
- Neil Conway, William R. Marczak, Peter Alvaro, Joseph M. Hellerstein, and David Maier. 2012. Logic and Lattices for Distributed Programming. In *Proceedings of the Third ACM Symposium on Cloud Computing (SOCC '12)*. ACM, New York, NY, USA, Article 1, 14 pages. <https://doi.org/10.1145/2391229.2391230>
- Keith D. Cooper and Ken Kennedy. 1984. Efficient Computation of Flow Insensitive Interprocedural Summary Information. In *Proceedings of the 1984 SIGPLAN Symposium on Compiler Construction (SIGPLAN '84)*. ACM, New York, NY, USA, 247–258. <https://doi.org/10.1145/502874.502898>
- Giulia Costantini, Pietro Ferrara, and Agostino Cortesi. 2011. Static Analysis of String Values. In *Proceedings of the 13th International Conference on Formal Methods and Software Engineering (ICFEM '11)*. Springer-Verlag, Berlin, Heidelberg, 505–521. <http://dl.acm.org/citation.cfm?id=2075089.2075132>
- Patrick Cousot and Radhia Cousot. 2004. *Basic Concepts of Abstract Interpretation*. Springer US, Boston, MA, 359–366. https://doi.org/10.1007/978-1-4020-8157-6_27
- Georg Dotzler and Michael Philippsen. 2016. Move-optimized Source Code Tree Differencing. In *Proceedings of the 31st IEEE/ACM International Conference on Automated Software Engineering (ASE 2016)*. ACM, New York, NY, USA, 660–671. <https://doi.org/10.1145/2970276.2970315>
- Michael Eichberg, Matthias Kahl, Diptikalyan Saha, Mira Mezini, and Klaus Ostermann. 2007. Automatic Incrementalization of Prolog Based Static Analyses. In *Proceedings of the 9th International Conference on Practical Aspects of Declarative Languages (PADL '07)*. Springer-Verlag, Berlin, Heidelberg, 109–123. https://doi.org/10.1007/978-3-540-69611-7_7
- Charles L. Forgy. 1982. Rete: A Fast Algorithm for the Many Pattern/Many Object Pattern Match Problem. *Artif. Intell.* 19, 1 (Sept. 1982), 17–37. [https://doi.org/10.1016/0004-3702\(82\)90020-0](https://doi.org/10.1016/0004-3702(82)90020-0)
- Todd J. Green, Shan Shan Huang, Boon Thau Loo, and Wenchao Zhou. 2013. Datalog and Recursive Query Processing. *Found. Trends databases* 5, 2 (Nov. 2013), 105–195. <https://doi.org/10.1561/19000000017>
- Ashish Gupta and Inderpal Singh Mumick. 1995. Maintenance of Materialized Views: Problems, Techniques, and Applications. *IEEE Data Eng. Bull.* 18, 2 (1995), 3–18. <http://sites.computer.org/debull/95JUN-CD.pdf>
- Ashish Gupta, Inderpal Singh Mumick, and V. S. Subrahmanian. 1993. Maintaining Views Incrementally. In *Proceedings of the 1993 ACM SIGMOD International Conference on Management of Data (SIGMOD '93)*. ACM, New York, NY, USA, 157–166. <https://doi.org/10.1145/170035.170066>
- Eric N. Hanson and Mohammed S. Hasan. 1993. *Gator: An Optimized Discrimination Network for Active Database Rule Condition Testing*. Technical Report TR93-036. Univ. of Florida.

- Manuel Hermenegildo, German Puebla, Kim Marriott, and Peter J. Stuckey. 2000. Incremental Analysis of Constraint Logic Programs. *ACM Trans. Program. Lang. Syst.* 22, 2 (March 2000), 187–223. <https://doi.org/10.1145/349214.349216>
- Usman Ismail. 2009. *Incremental call graph construction for the Eclipse IDE*. Technical Report CS-2009-07. University of Waterloo.
- Uday Khedker. 1995. *A Generalised Theory of Bit Vector Data Flow Analysis*. Ph.D. Dissertation. Department of Computer Science and Engineering, IIT Bombay.
- Patrick Lam, Eric Bodden, Ondrej Lhoták, and Laurie Hendren. 2011. The Soot framework for Java program analysis: a retrospective. In *Cetus Users and Compiler Infrastructure Workshop (CETUS 2011)*, Vol. 15. 35.
- Ondrej Lhoták and Kwok-Chiang Andrew Chung. 2011. Points-to Analysis with Efficient Strong Updates. In *Proceedings of the 38th Annual ACM SIGPLAN-SIGACT Symposium on Principles of Programming Languages (POPL '11)*. ACM, New York, NY, USA, 3–16. <https://doi.org/10.1145/1926385.1926389>
- M. Liu, N. E. Taylor, W. Zhou, Z. G. Ives, and B. T. Loo. 2009. Recursive Computation of Regions and Connectivity in Networks. In *2009 IEEE 25th International Conference on Data Engineering*. 1108–1119. <https://doi.org/10.1109/ICDE.2009.36>
- Yi Lu, Lei Shang, Xinwei Xie, and Jingling Xue. 2013. An Incremental Points-to Analysis with CFL-Reachability. In *Proceedings of the 22Nd International Conference on Compiler Construction (CC'13)*. Springer-Verlag, Berlin, Heidelberg, 61–81. https://doi.org/10.1007/978-3-642-37051-9_4
- Magnus Madsen, Ming-Ho Yee, and Ondřej Lhoták. 2016. From Datalog to Flix: A Declarative Language for Fixed Points on Lattices. In *Proceedings of the 37th ACM SIGPLAN Conference on Programming Language Design and Implementation (PLDI '16)*. ACM, New York, NY, USA, 194–208. <https://doi.org/10.1145/2908080.2908096>
- Mirjana Mazuran, Edoardo Serra, and Carlo Zaniolo. 2013. Extending the power of datalog recursion. 22 (08 2013).
- Daniel P. Miranker. 1987. TREAT: A Better Match Algorithm for AI Production Systems; Long Version. (1987).
- Ralf Mitschke, Sebastian Erdweg, Mirko Köhler, Mira Mezini, and Guido Salvaneschi. 2014. i3QL: language-integrated live data views. In *Proceedings of the 2014 ACM International Conference on Object Oriented Programming Systems Languages & Applications, OOPSLA 2014, part of SPLASH 2014, Portland, OR, USA, October 20-24, 2014*, Andrew P. Black and Todd D. Millstein (Eds.). ACM, 417–432. <https://doi.org/10.1145/2660193.2660242>
- Boris Motik, Yavor Nenov, Robert Piro, and Ian Horrocks. 2015. Incremental Update of Datalog Materialisation: The Backward/Forward Algorithm. In *Proceedings of the Twenty-Ninth AAAI Conference on Artificial Intelligence (AAAI'15)*. AAAI Press, 1560–1568. <http://dl.acm.org/citation.cfm?id=2886521.2886537>
- Flemming Nielson, Hanne R. Nielson, and Chris Hankin. 2010. *Principles of Program Analysis*. Springer Publishing Company, Incorporated.
- L. L. Pollock and M. L. Soffa. 1989. An Incremental Version of Iterative Data Flow Analysis. *IEEE Trans. Softw. Eng.* 15, 12 (Dec. 1989), 1537–1549. <https://doi.org/10.1109/32.58766>
- Germán Puebla and Manuel Hermenegildo. 1996. Optimized algorithms for incremental analysis of logic programs. In *Static Analysis: Third International Symposium, SAS '96 Aachen, Germany, September 24–26, 1996 Proceedings*, Radhia Cousot and David A. Schmidt (Eds.). Springer Berlin Heidelberg, 270–284. https://doi.org/10.1007/3-540-61739-6_47
- G. Ramalingam and Thomas Reps. 1993. A Categorized Bibliography on Incremental Computation. In *Proceedings of the 20th ACM SIGPLAN-SIGACT Symposium on Principles of Programming Languages (POPL '93)*. ACM, New York, NY, USA, 502–510. <https://doi.org/10.1145/158511.158710>
- Thomas Reps, Susan Horwitz, and Mooly Sagiv. 1995. Precise Interprocedural Dataflow Analysis via Graph Reachability. In *Proceedings of the 22Nd ACM SIGPLAN-SIGACT Symposium on Principles of Programming Languages (POPL '95)*. ACM, New York, NY, USA, 49–61. <https://doi.org/10.1145/199448.199462>
- Kenneth A. Ross and Yehoshua Sagiv. 1992. Monotonic Aggregation in Deductive Databases. In *Proceedings of the Eleventh ACM SIGACT-SIGMOD-SIGART Symposium on Principles of Database Systems (PODS '92)*. ACM, New York, NY, USA, 114–126. <https://doi.org/10.1145/137097.137852>
- Grzegorz Rozenberg (Ed.). 1997. *Handbook of Graph Grammars and Computing by Graph Transformation: Volume I. Foundations*. World Scientific Publishing Co., Inc., River Edge, NJ, USA.
- Diptikalyan Saha and C. R. Ramakrishnan. 2005. Incremental and Demand-driven Points-to Analysis Using Logic Programming. In *Proceedings of the 7th ACM SIGPLAN International Conference on Principles and Practice of Declarative Programming (PPDP '05)*. ACM, New York, NY, USA, 117–128. <https://doi.org/10.1145/1069774.1069785>
- Robert Sedgewick and Kevin Wayne. 2011. *Algorithms* (4th ed.). Addison-Wesley Professional.
- A. Shkapsky, M. Yang, and C. Zaniolo. 2015. Optimizing recursive queries with monotonic aggregates in DeALS. In *2015 IEEE 31st International Conference on Data Engineering*. 867–878. <https://doi.org/10.1109/ICDE.2015.7113340>
- Yannis Smaragdakis and Martin Bravenboer. 2011. Using Datalog for Fast and Easy Program Analysis. In *Proceedings of the First International Conference on Datalog Reloaded (Datalog'10)*. Springer-Verlag, Berlin, Heidelberg, 245–251. https://doi.org/10.1007/978-3-642-24206-9_14
- Amie L. Souter and Lori L. Pollock. 2001. Incremental Call Graph Reanalysis for Object-Oriented Software Maintenance. In *Proceedings of the IEEE International Conference on Software Maintenance (ICSM'01) (ICSM '01)*. IEEE Computer Society,

- Washington, DC, USA, 682–. <https://doi.org/10.1109/ICSM.2001.972787>
- Johannes Späth, Lisa Nguyen Quang Do, Karim Ali, and Eric Bodden. 2016. Boomerang: Demand-Driven Flow- and Context-Sensitive Pointer Analysis for Java. In *30th European Conference on Object-Oriented Programming (ECOOP 2016) (Leibniz International Proceedings in Informatics (LIPIcs))*, Shriram Krishnamurthi and Benjamin S. Lerner (Eds.), Vol. 56. Schloss Dagstuhl–Leibniz-Zentrum fuer Informatik, Dagstuhl, Germany, 22:1–22:26. <https://doi.org/10.4230/LIPIcs.ECOOP.2016.22>
- Ozgur Sumer, Umut Acar, Alexander T Ihler, and Ramgopal R Mettu. 2008. Efficient bayesian inference for dynamically changing graphs. In *Advances in Neural Information Processing Systems*. 1441–1448.
- Tamás Szabó, Sebastian Erdweg, and Markus Voelter. 2016. IncA: A DSL for the Definition of Incremental Program Analyses. In *Proceedings of the 31st IEEE/ACM International Conference on Automated Software Engineering (ASE 2016)*. ACM, New York, NY, USA, 320–331. <https://doi.org/10.1145/2970276.2970298>
- Zoltán Ujhelyi, Gábor Bergmann, Ábel Hegedüs, Ákos Horváth, Benedek Izsó, István Ráth, Zoltán Szatmári, and Dániel Varró. 2015. EMF-IncQuery: An integrated development environment for live model queries. *Science of Computer Programming* 98, Part 1, 0 (2015), 80 – 99. <https://doi.org/10.1016/j.scico.2014.01.004> Fifth issue of Experimental Software and Toolkits (EST): A special issue on Academics Modelling with Eclipse (ACME2012).
- Markus Voelter, Janet Siegmund, Thorsten Berger, and Bernd Kolb. 2014. Towards User-Friendly Projectional Editors. In *Software Language Engineering*, Benoît Combemale, DavidJ. Pearce, Olivier Barais, and JurgenJ. Vinju (Eds.). Lecture Notes in Computer Science, Vol. 8706. Springer International Publishing, 41–61. https://doi.org/10.1007/978-3-319-11245-9_3
- Markus Voelter, Tamás Szabó, Sascha Lisson, Bernd Kolb, Sebastian Erdweg, and Thorsten Berger. 2016. Efficient Development of Consistent Projectional Editors Using Grammar Cells. In *Proceedings of the 2016 ACM SIGPLAN International Conference on Software Language Engineering (SLE 2016)*. ACM, New York, NY, USA, 28–40. <https://doi.org/10.1145/2997364.2997365>
- John Whaley and Monica S. Lam. 2004. Cloning-based Context-sensitive Pointer Alias Analysis Using Binary Decision Diagrams. In *Proceedings of the ACM SIGPLAN 2004 Conference on Programming Language Design and Implementation (PLDI '04)*. ACM, New York, NY, USA, 131–144. <https://doi.org/10.1145/996841.996859>
- Jyh-shiarn Yur, Barbara G. Ryder, and William A. Landi. 1999. An Incremental Flow- and Context-sensitive Pointer Aliasing Analysis. In *Proceedings of the 21st International Conference on Software Engineering (ICSE '99)*. ACM, New York, NY, USA, 442–451. <https://doi.org/10.1145/302405.302676>
- Frank Kenneth Zadeck. 1984. *Incremental data flow analysis in a structured program editor*. Vol. 19. ACM.