

THE RIPPLE

An Architectural Design Vision for Sustainable and Energy Efficient Tourism in The Mediterranean Climate

Zeynep Naz Yelken - 5724716
P5 Presentation 02.07.2024



EXPLORATION

NEW ROLE FOR A HOTEL
URBAN SCALE

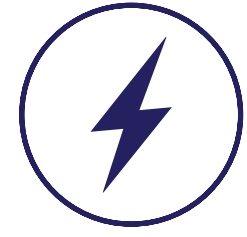
Improving the urban context and connecting the Ripple to the rest of the town. By making sure public facilities of the hotel are accessible by public, a new role is created for a hotel - hotel as a luxury provider.



INTERACTION

BUILDING SCALE
PASSIVE DESIGN

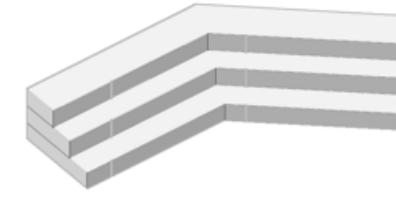
By combining three different types of touristic residents it is aimed to create life all year around. This increases the day-to-day exposure of tourists coming in. The spatial design also promotes the idea of interaction through public spaces and blurred public/private zones



ADAPTATION

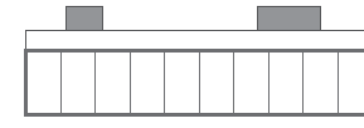
BLURRING BORDERS
ENERGY

Adapting the building to the conclusions of the research has been a constant goal for the project. Majority of the existing building is kept. This ensures that the time period the hotel relies on HVAC is decreased. Moreover, through spatial design, users are encouraged to leave their openings open and enjoy the facilities of the hotel.



Terraced

The Ripple recognizes the most efficient morphologies and typologies for implementing passive design implements this vision during the transformation of the existing building. This is realized through all around terraces and single-loaded slab typology. These decisions also add quality to the spaces and encourage the users to rely on openings.

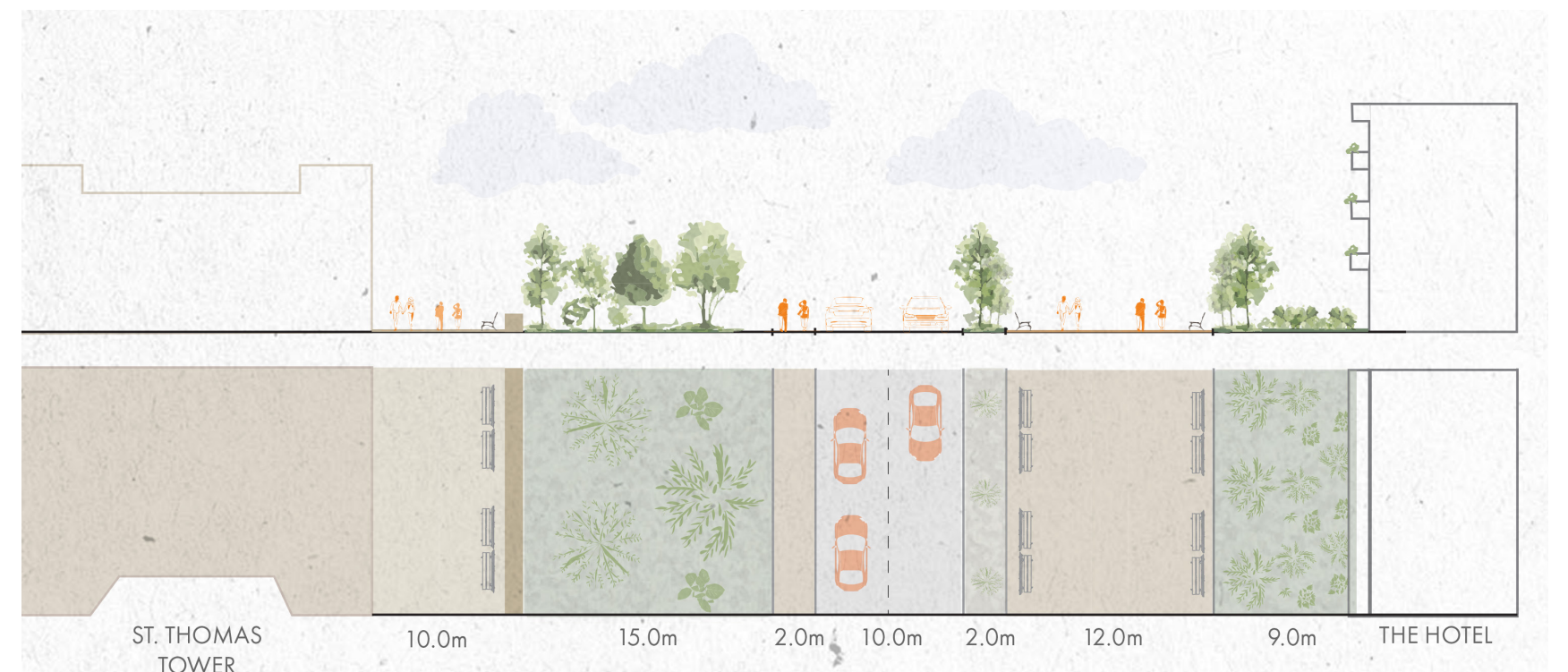


Single-loaded slab

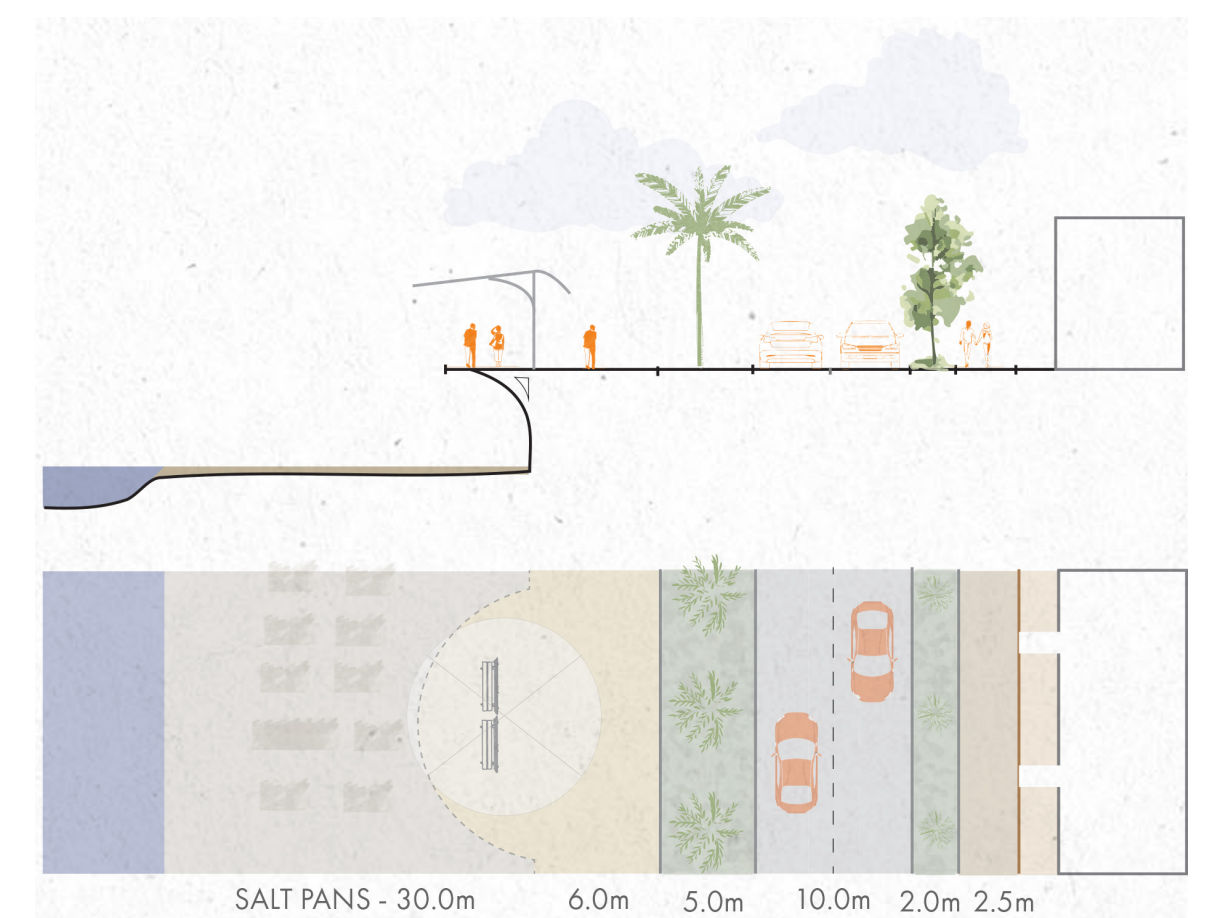
Considering the existing structure was strictly made for double-loaded slab typology, the adaptation of a different typology to an existing structure shows significant potential. As a result, The Ripple shows the possibility of energy-efficient transformation/adaptation projects for creating tourism products.



Urban Strategy & Hierarchy

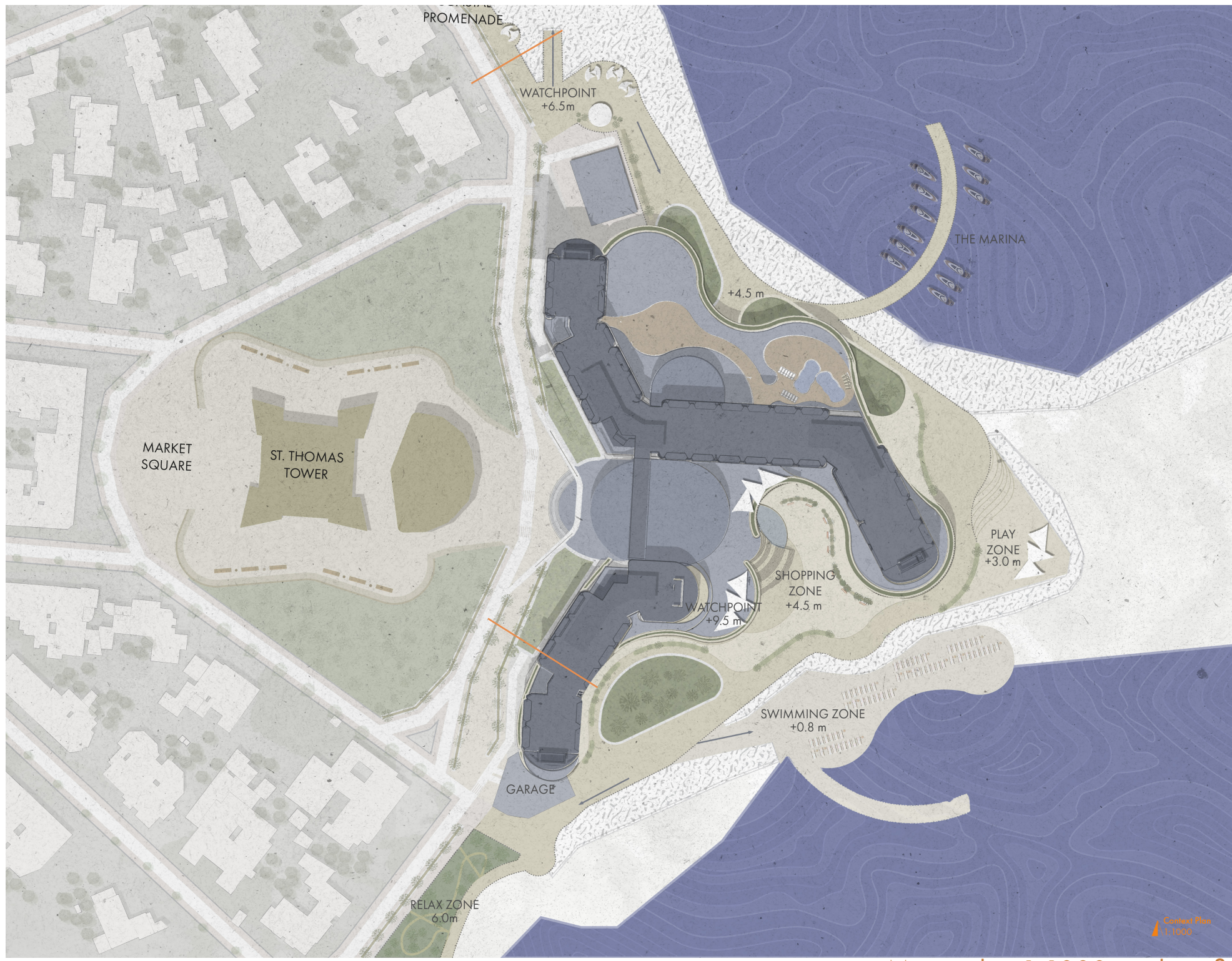


Street section - St. Thomas tower and The Ripple

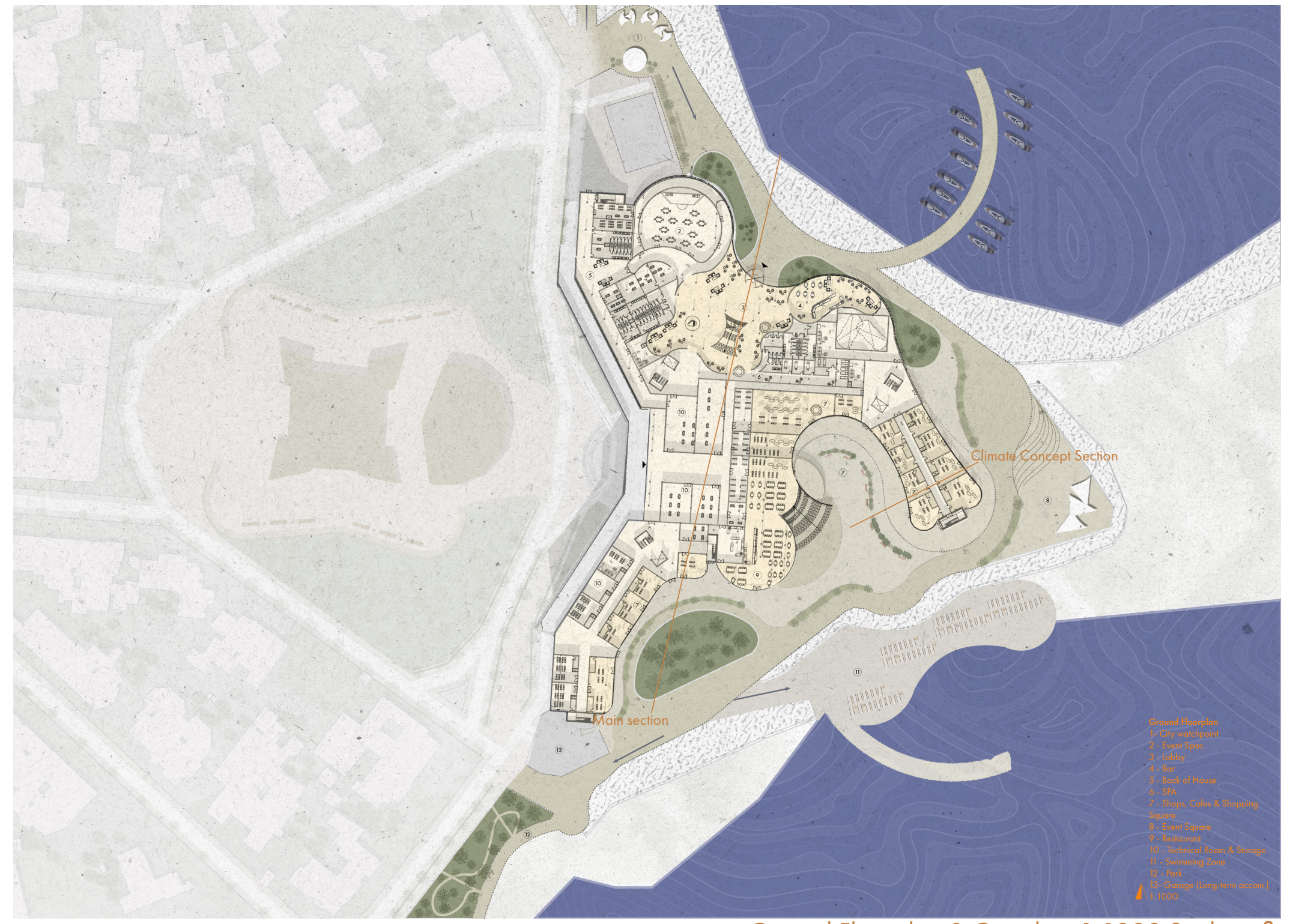


Street section - Coastal Promenade

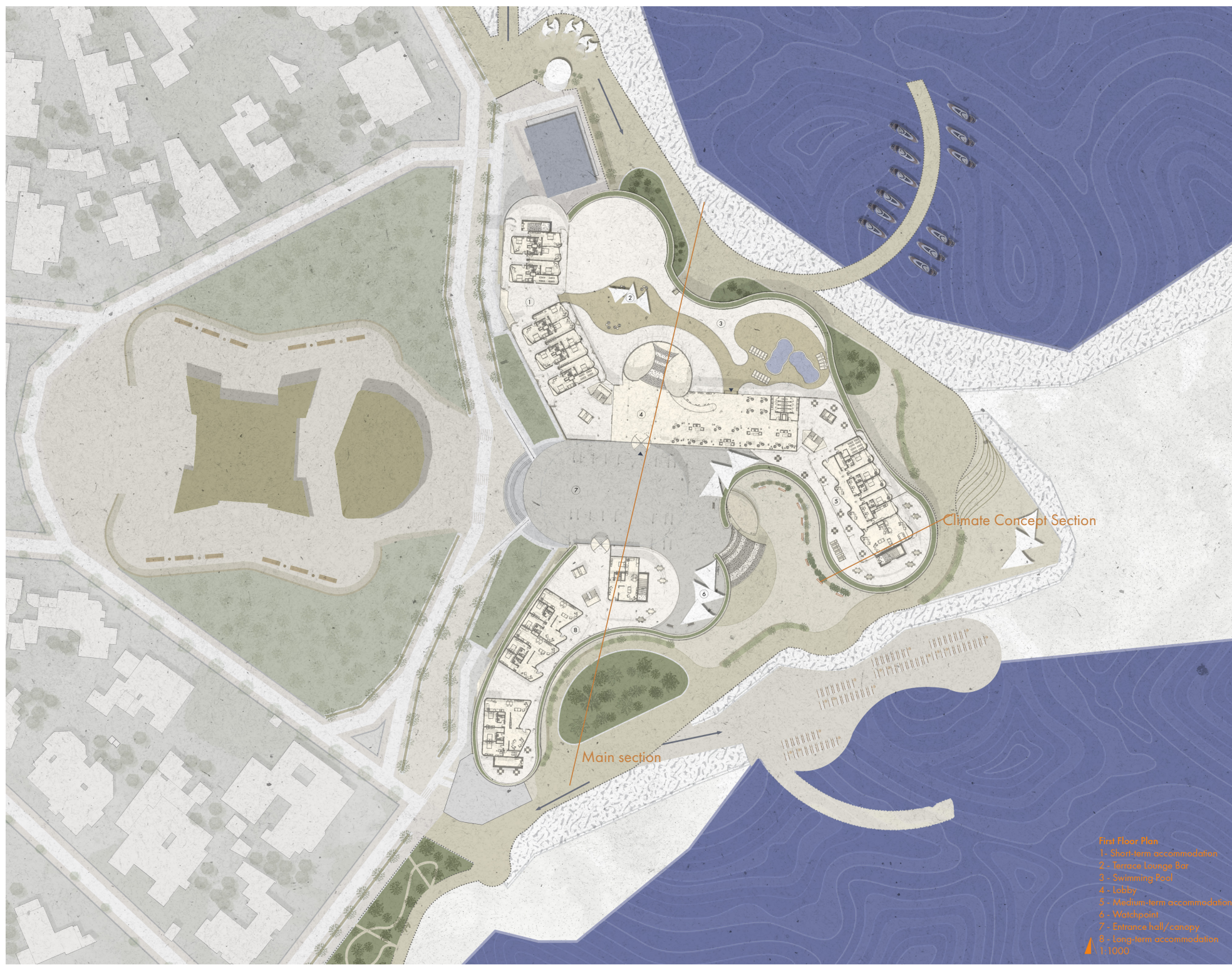




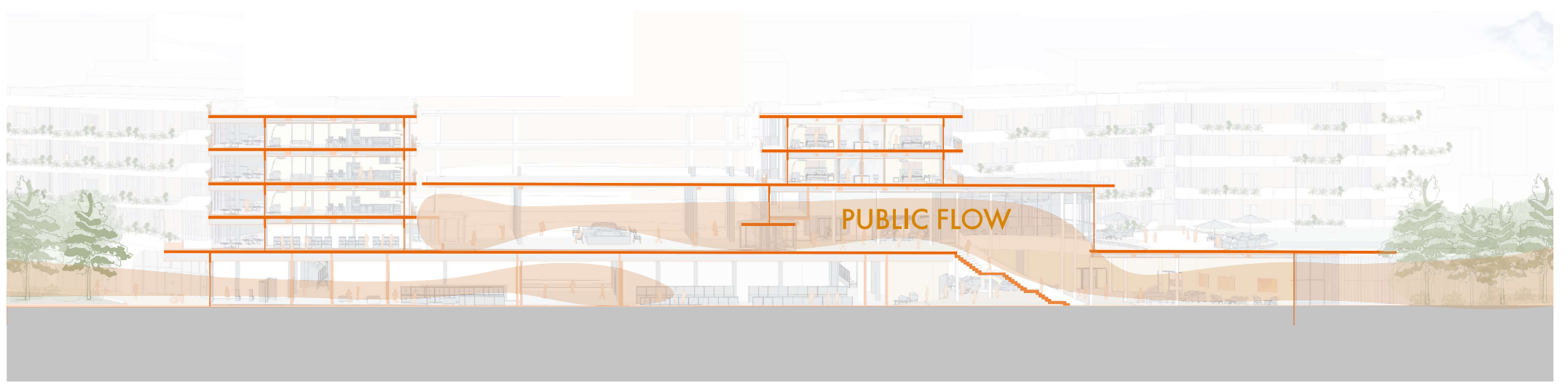
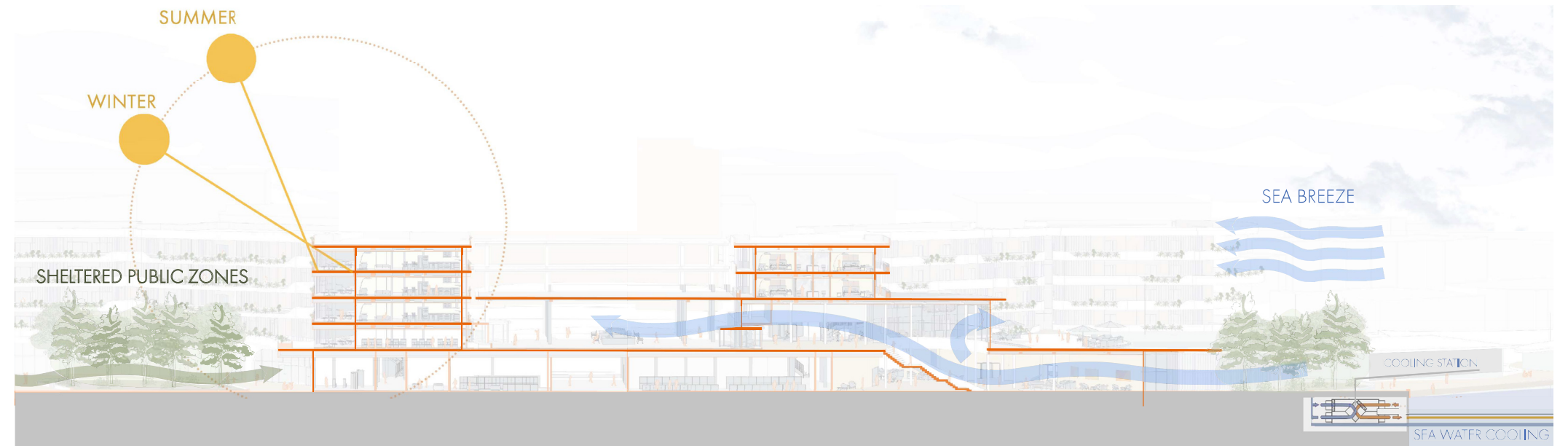
Masterplan 1:1000, scale to fit



Ground Floorplan & Coastline 1:1000 Scale to fit



First Floorplan & Entrance from road 1:1000 Scale to fit



Main section - Climate & Accessibility Concept





MARKET SQUARE

RELAX ZONE

WATCHPOINT

RELAX ZONE

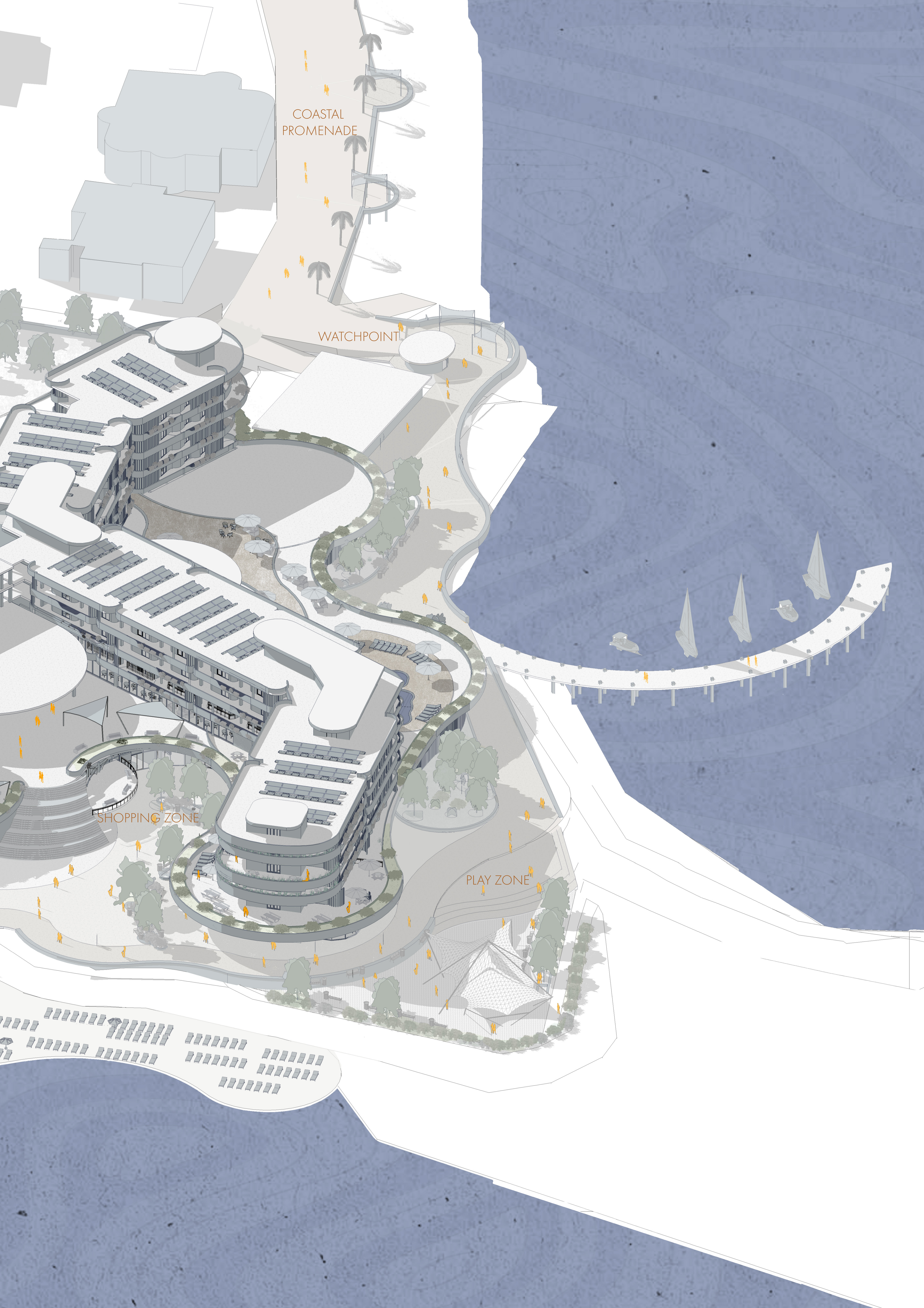
RELAX ZONE

COASTAL
PROMENADE

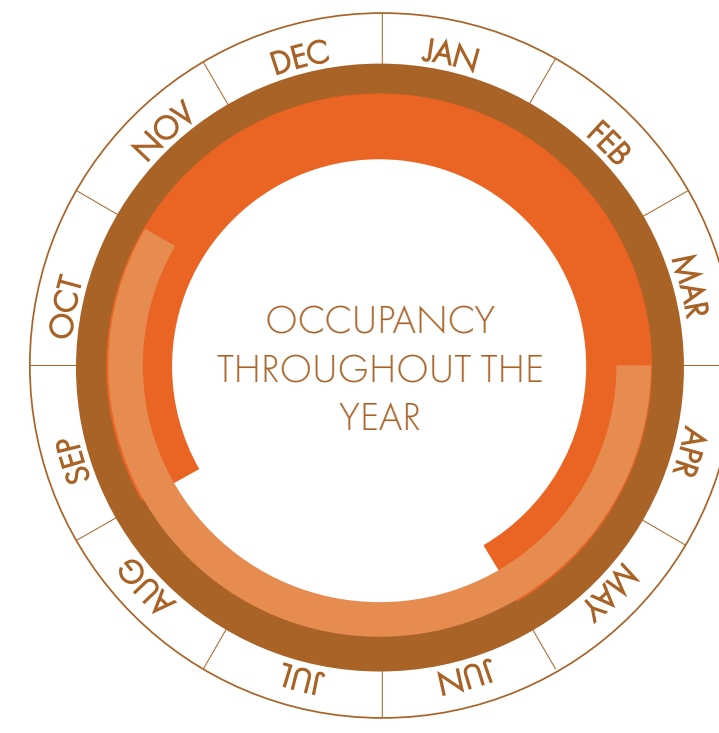
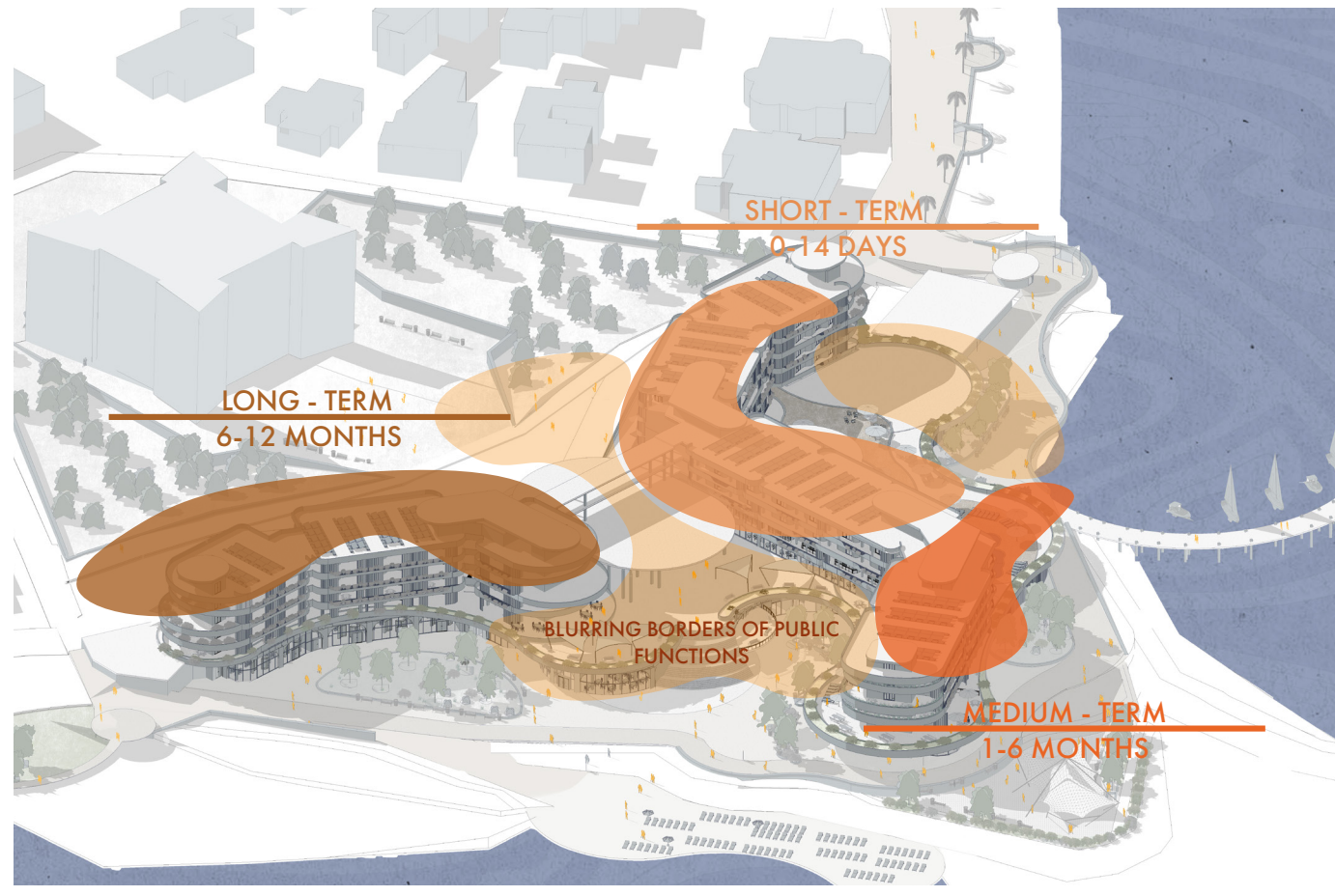
WATCHPOINT

SHOPPING ZONE

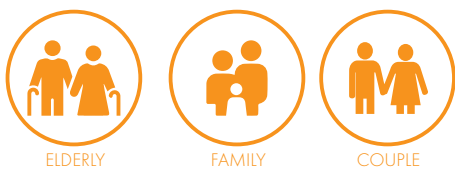
PLAY ZONE



ACCOMMODATION TYPES

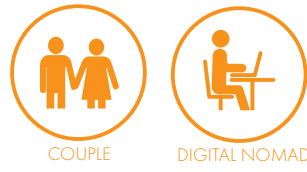
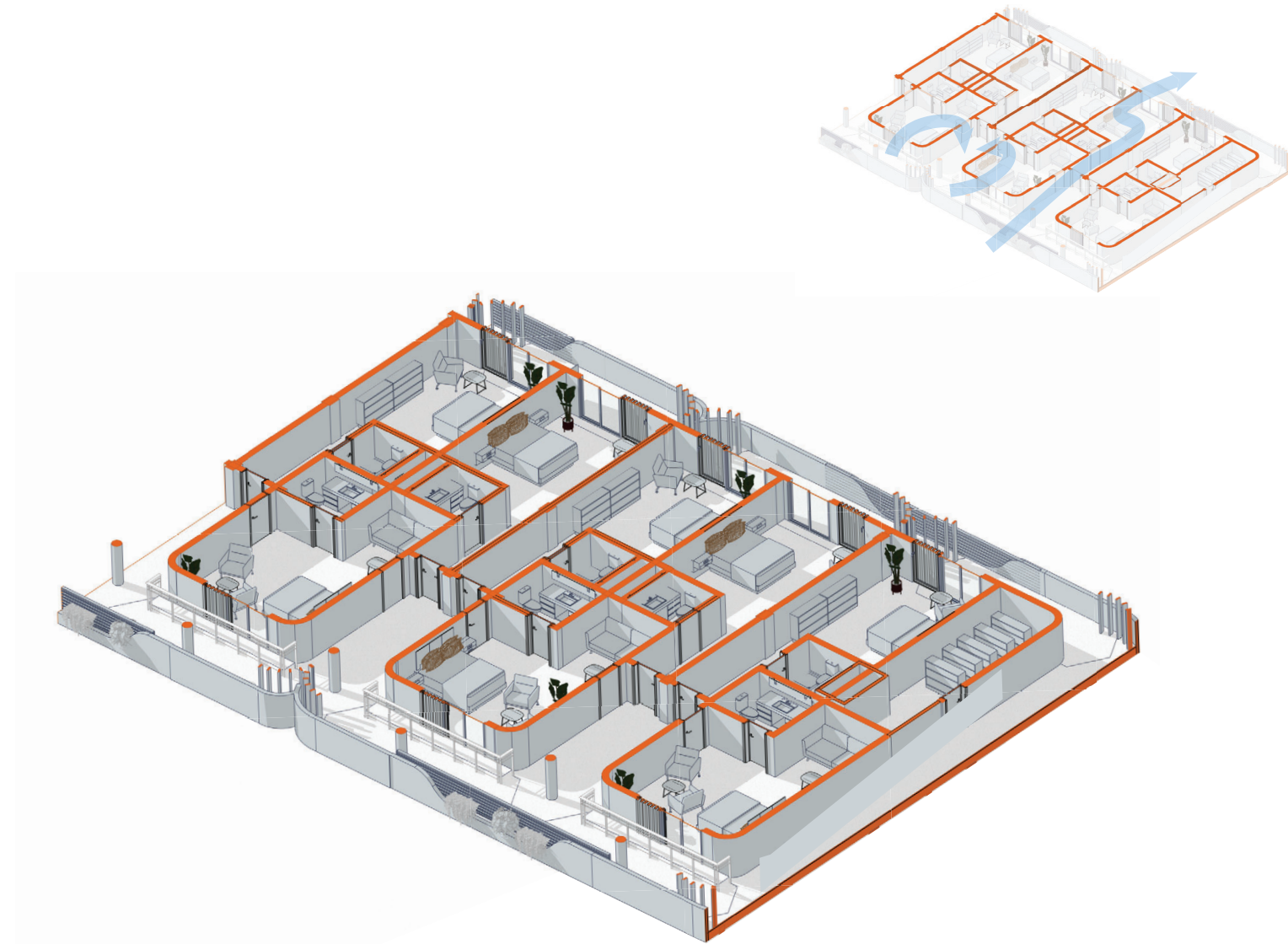
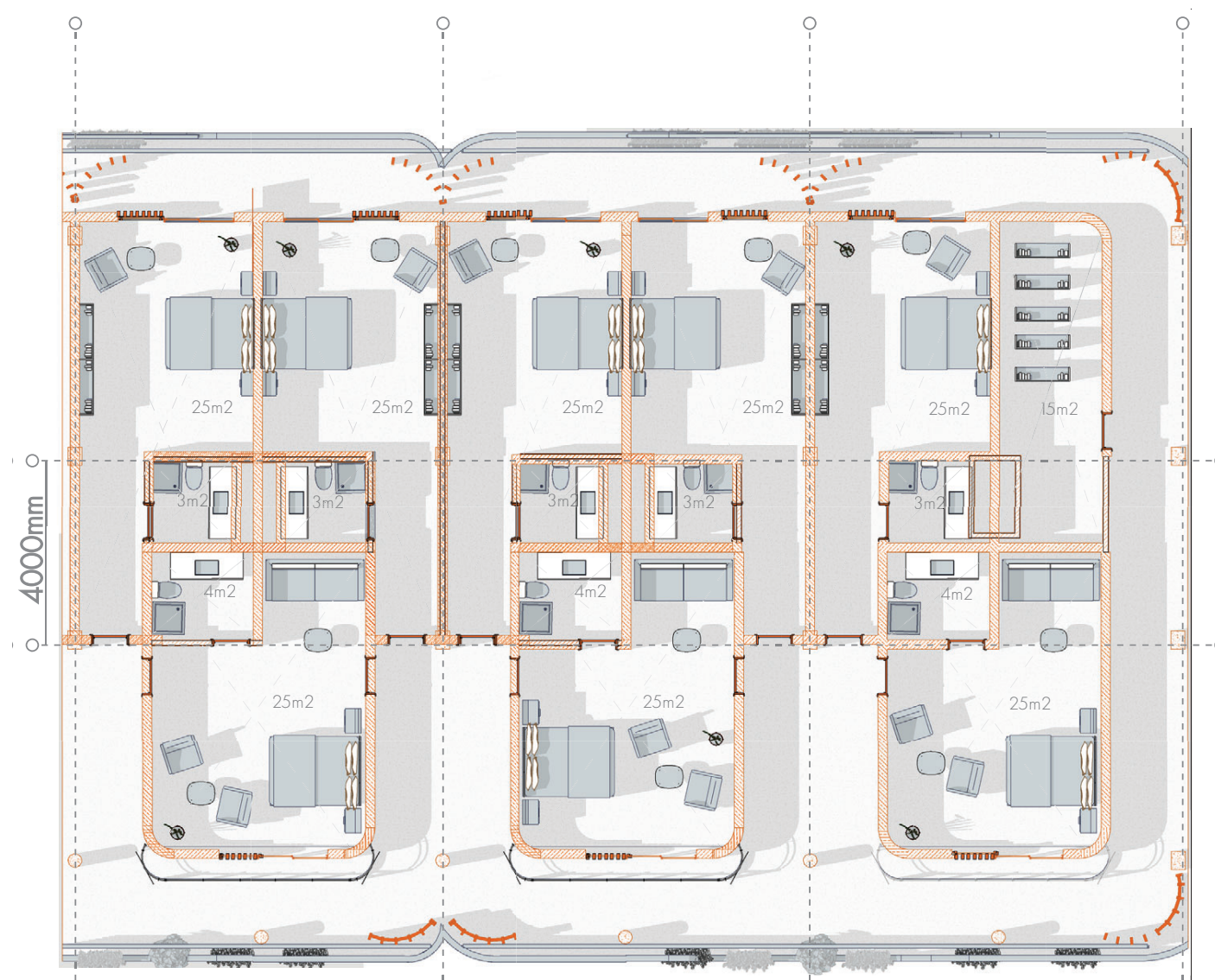


- SHORT - TERM
0-14 DAYS
- MEDIUM - TERM
1-6 MONTHS
- LONG - TERM
6-12 MONTHS



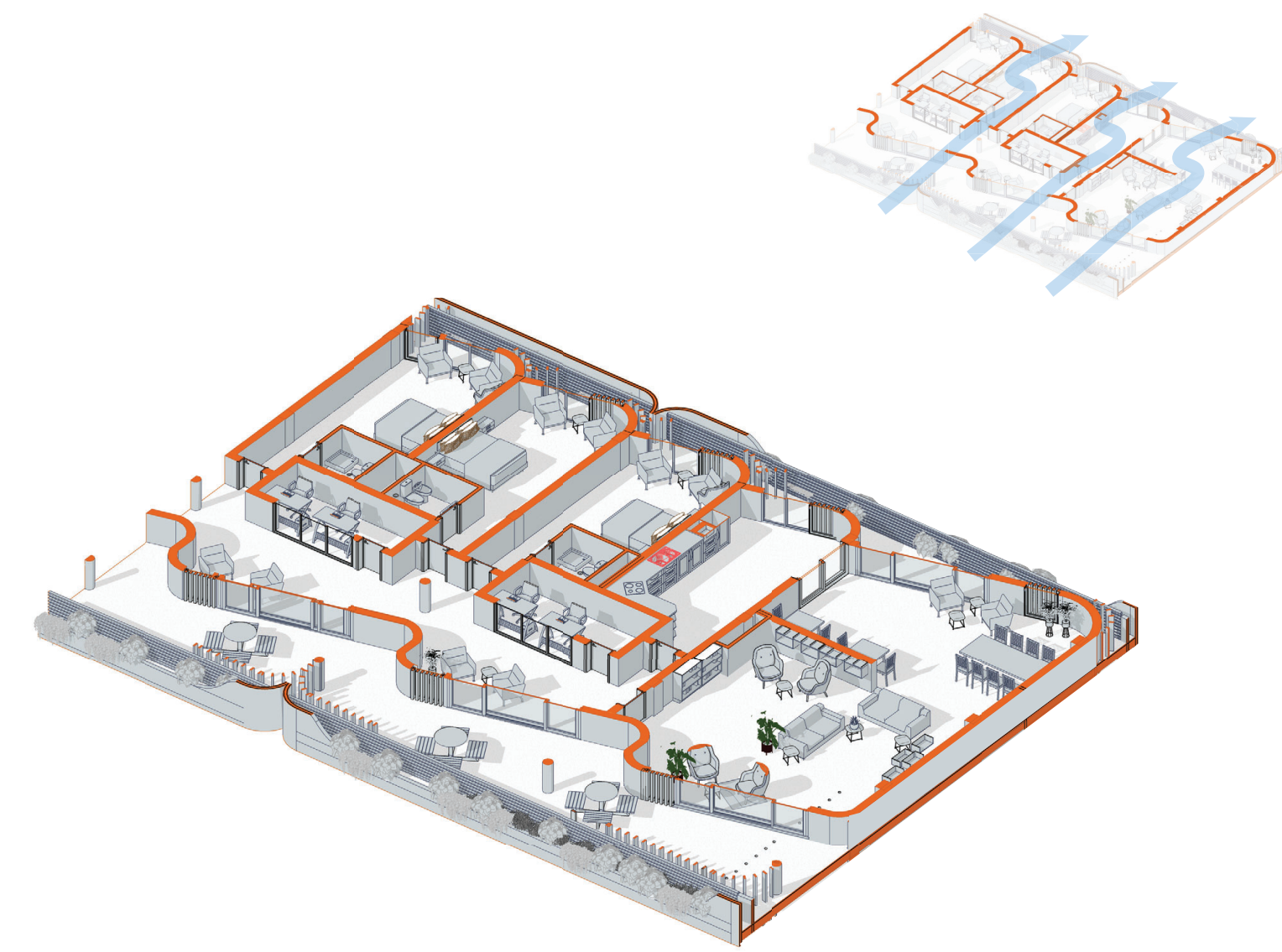
SHORT TERM ACCOMMODATION

private en-suite bedroom net A: 27m²



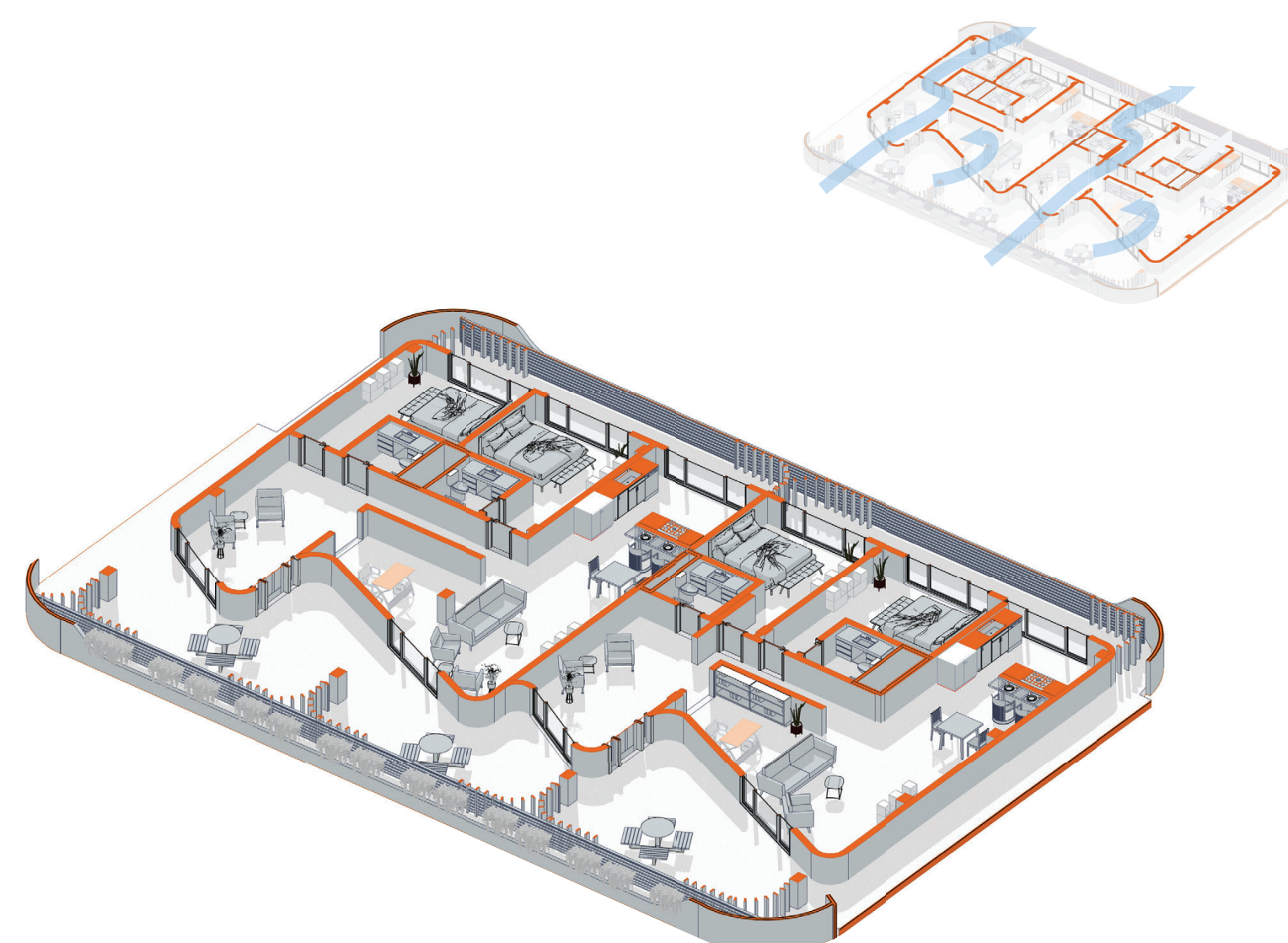
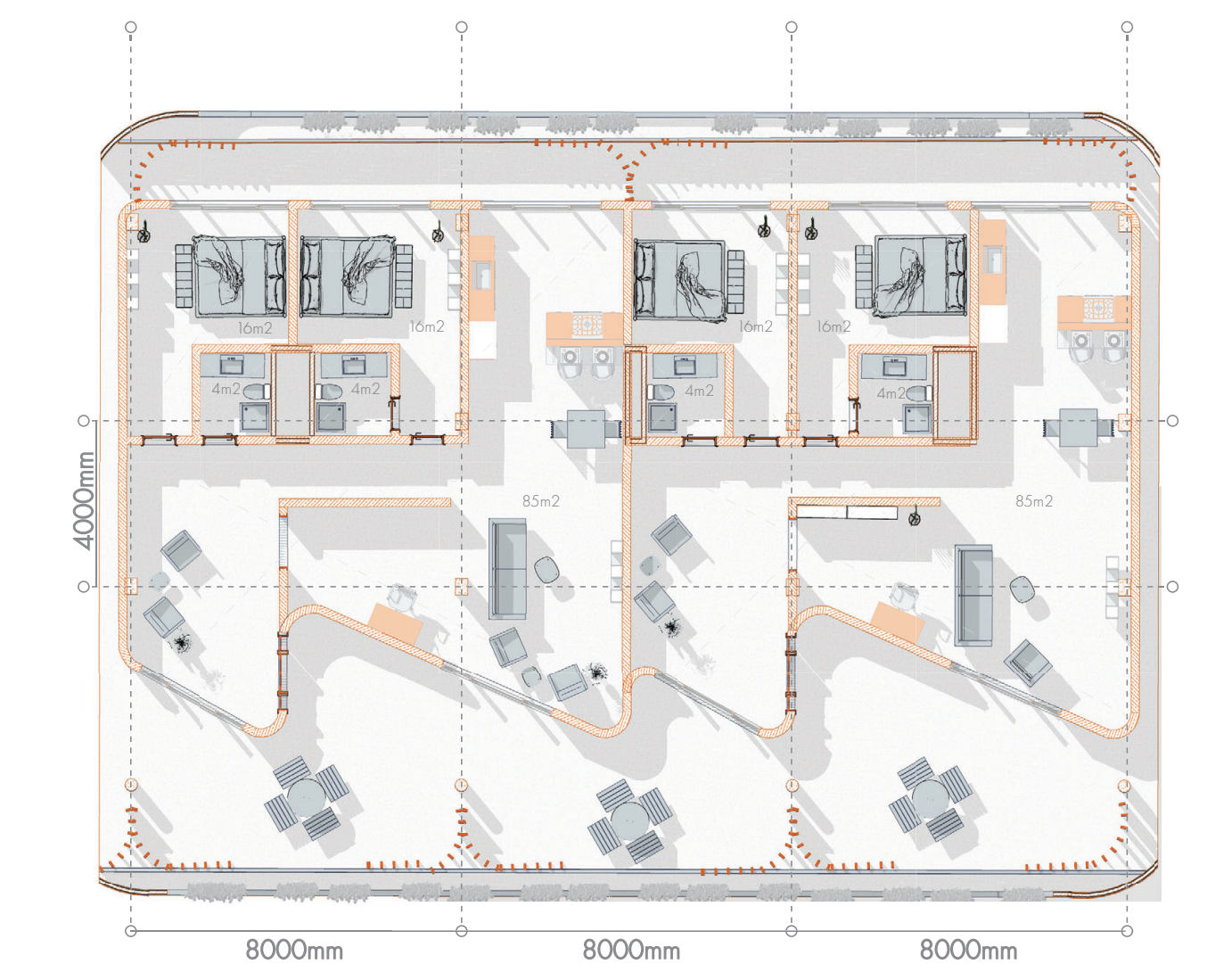
MEDIUM TERM ACCOMMODATION

private en-suite bedroom net A: 25m²
shared spaces net A: 170m²



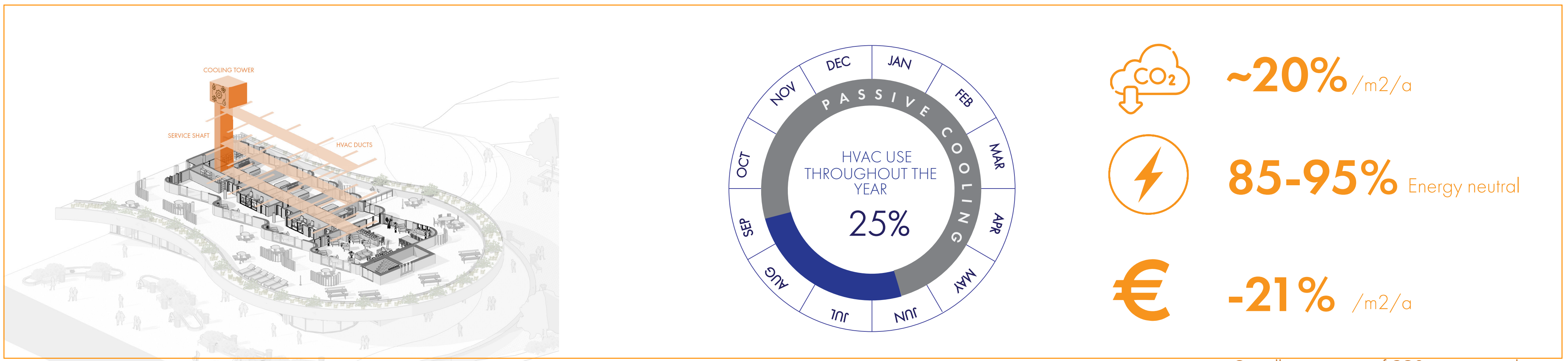
LONG TERM ACCOMMODATION

4x **1+1** net A: 76m² 8x **2+1** net A: 110m² 4x **3+1** net A: 130m²





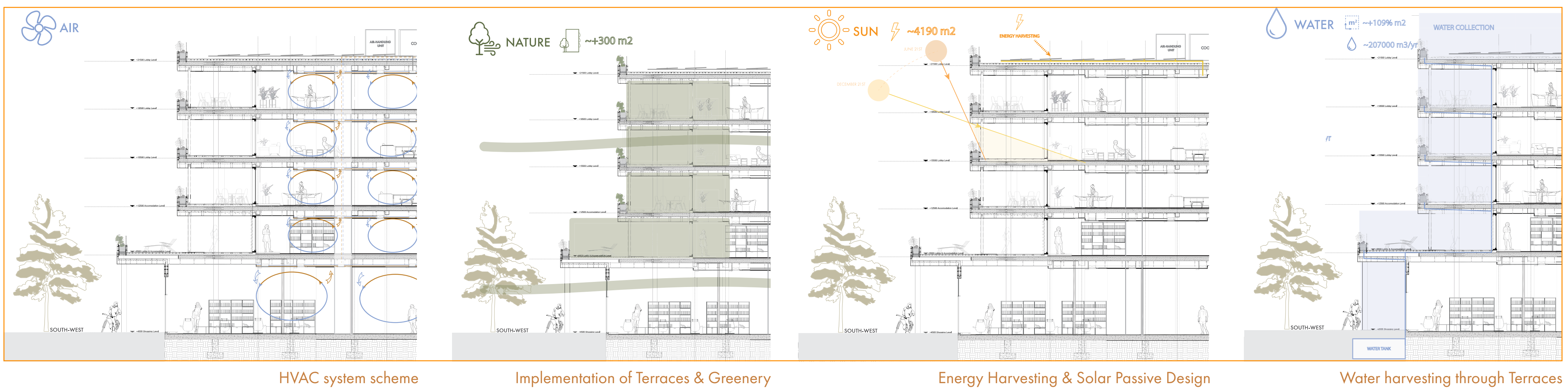
Axonometric View of Medium-term accommodation & Public Plinth



Service Zones & HVAC outlets

Improved HVAC use after passive design implementations

Overall improvement of CO2 emissions and energy harvesting and saving costs.

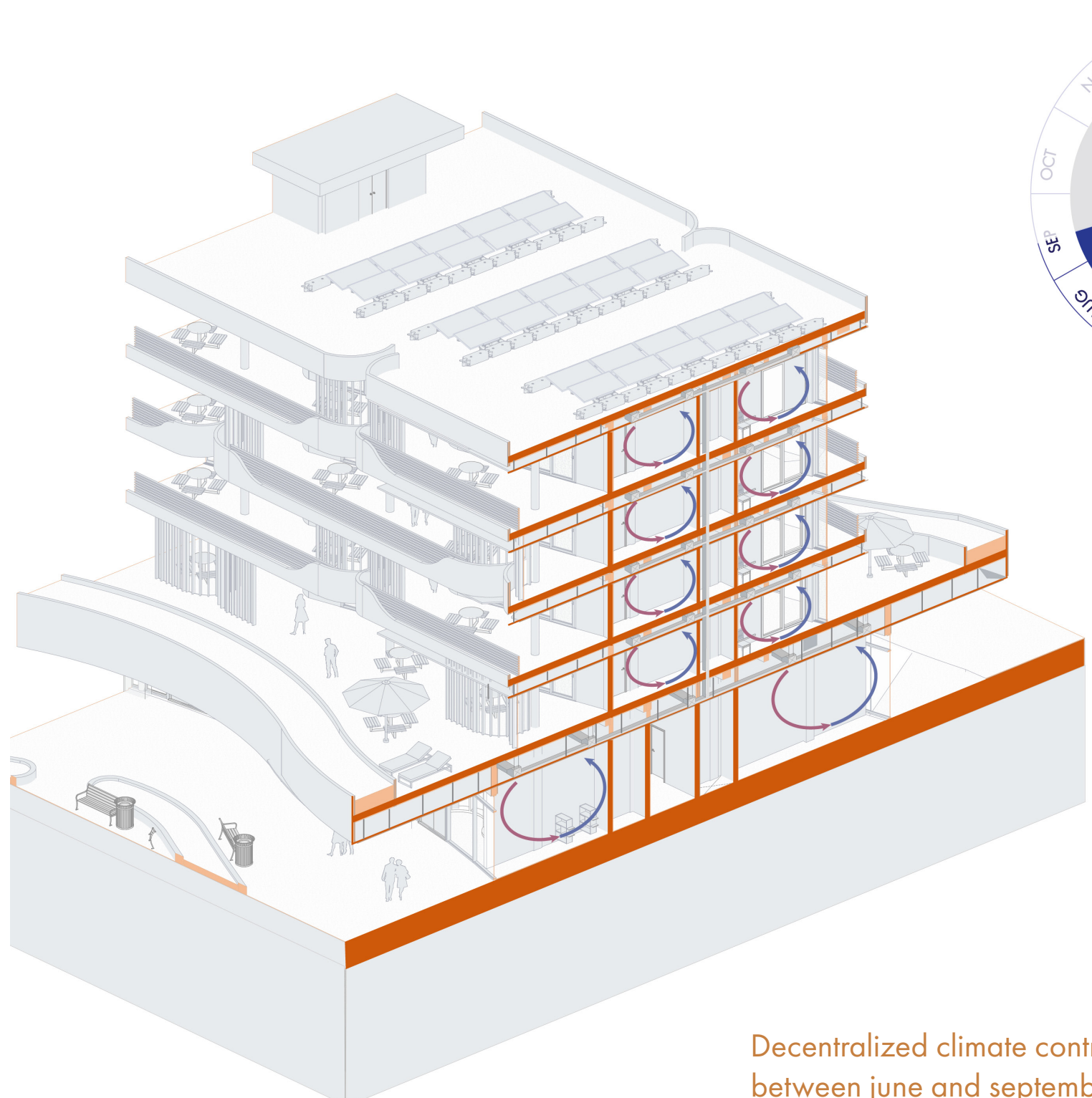


HVAC system scheme

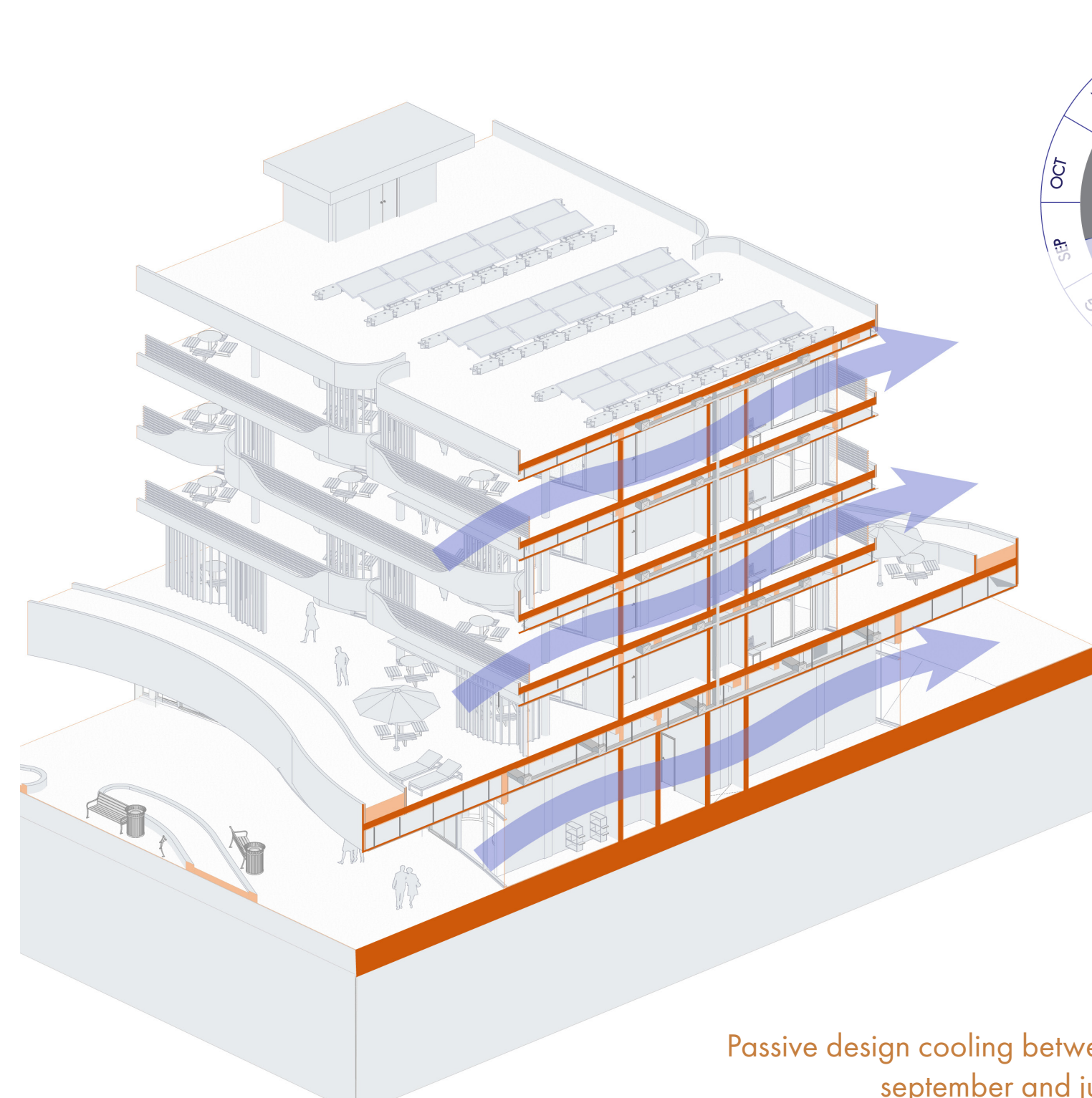
Implementation of Terraces & Greenery

Energy Harvesting & Solar Passive Design

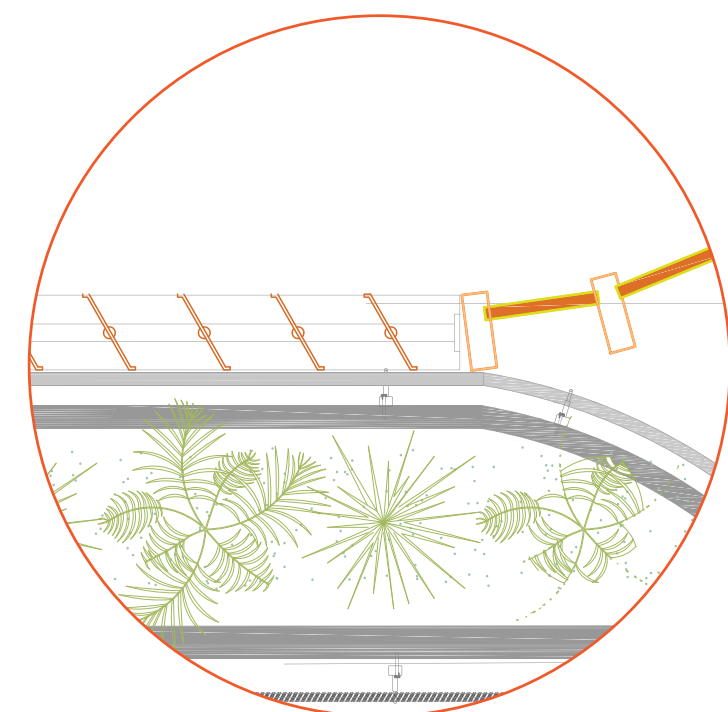
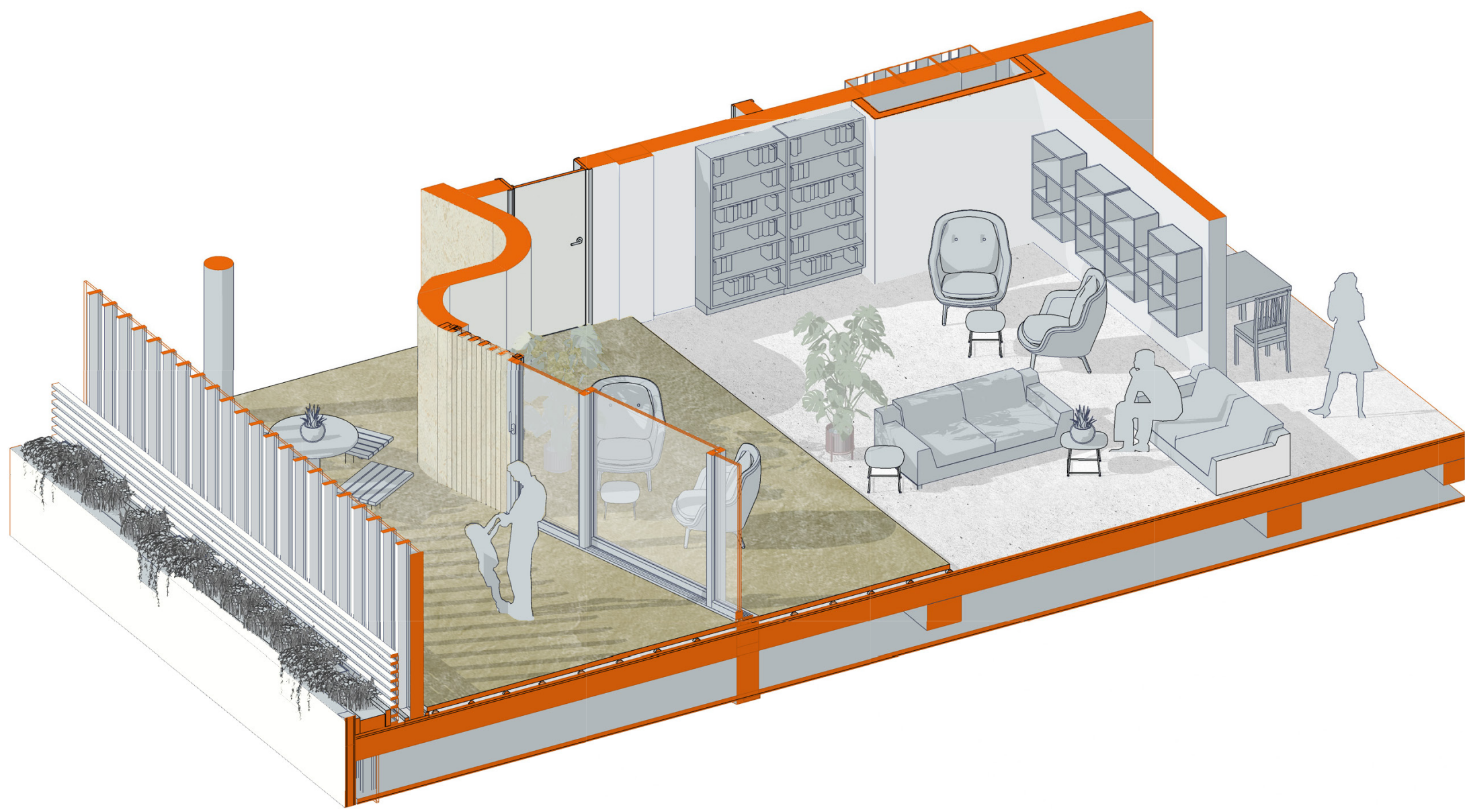
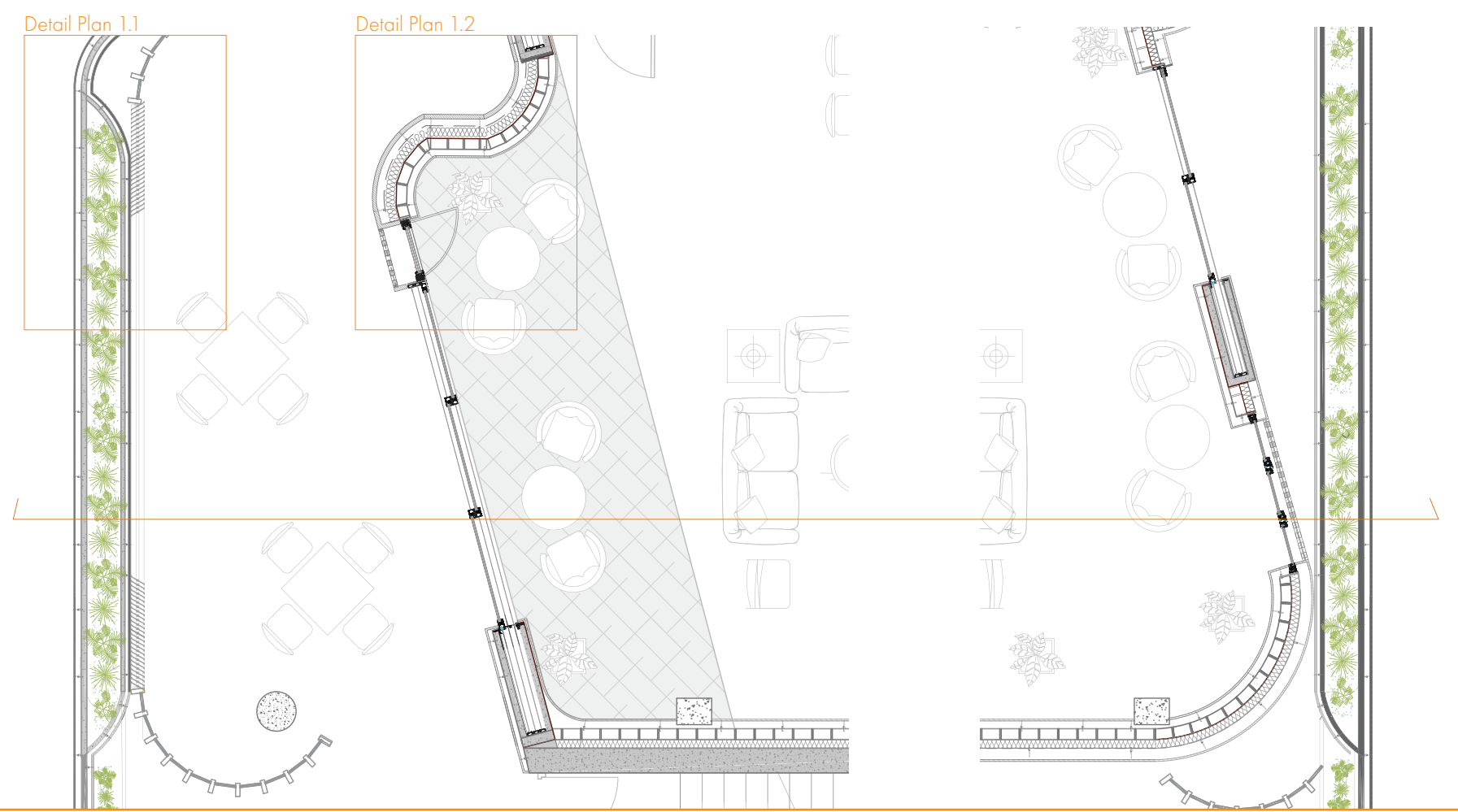
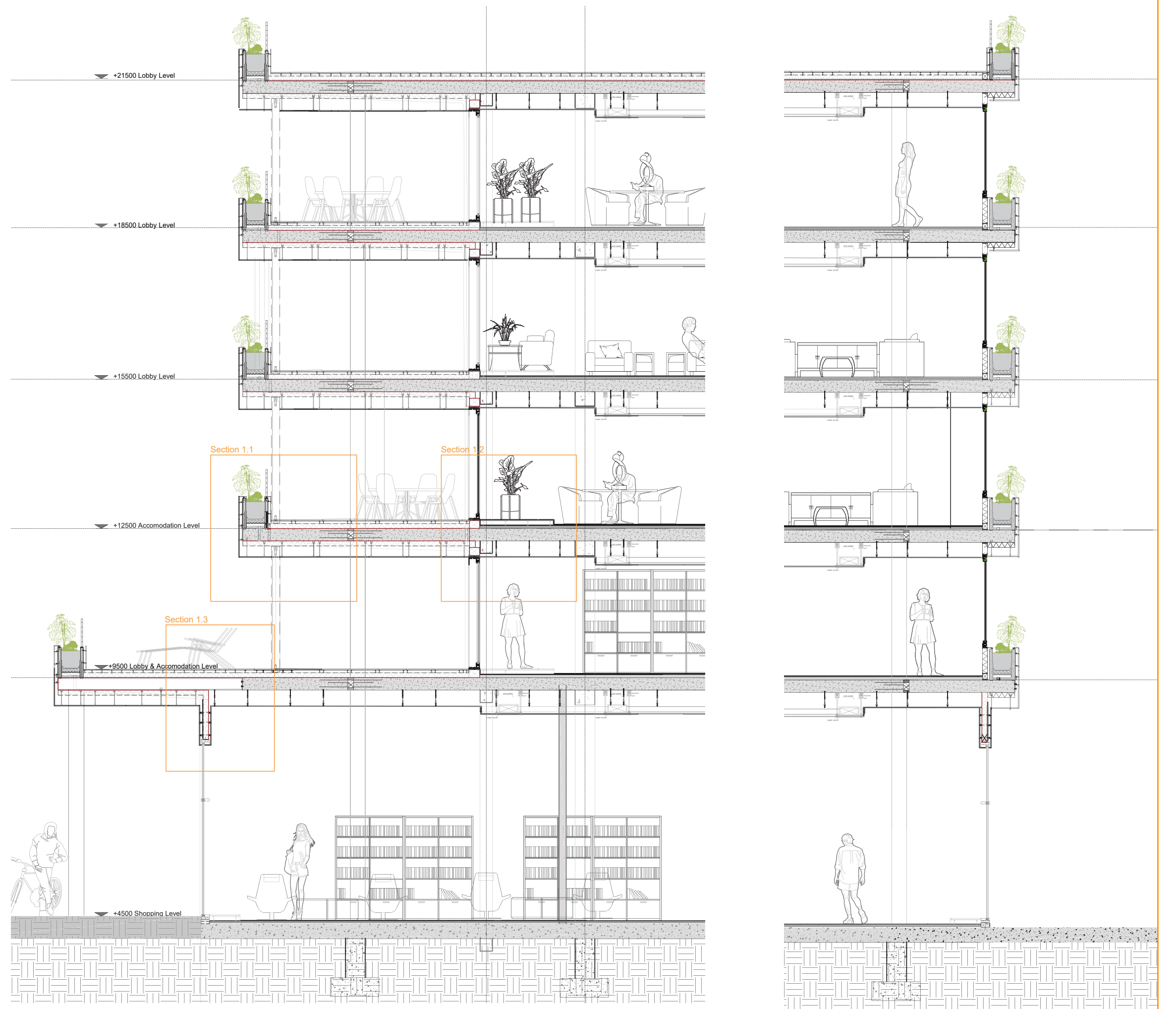
Water harvesting through Terraces



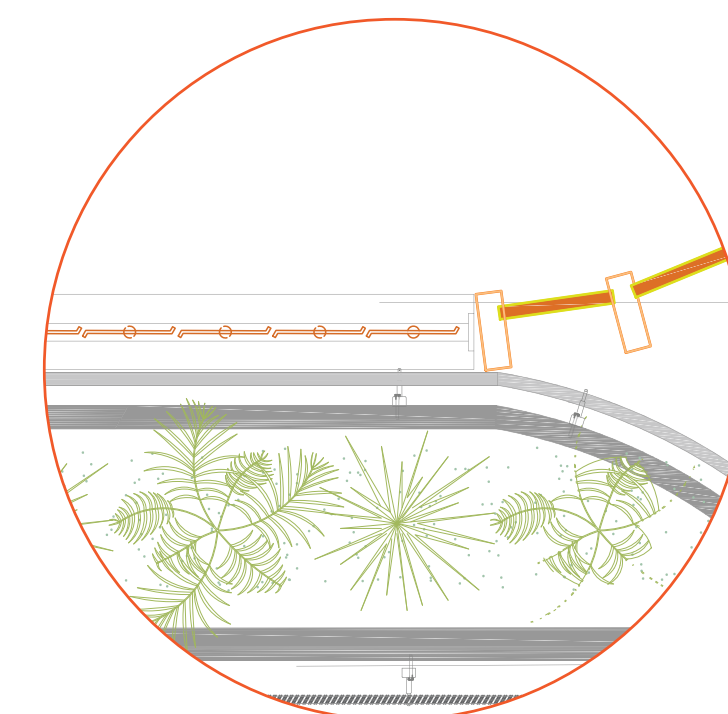
Decentralized climate control between June and September



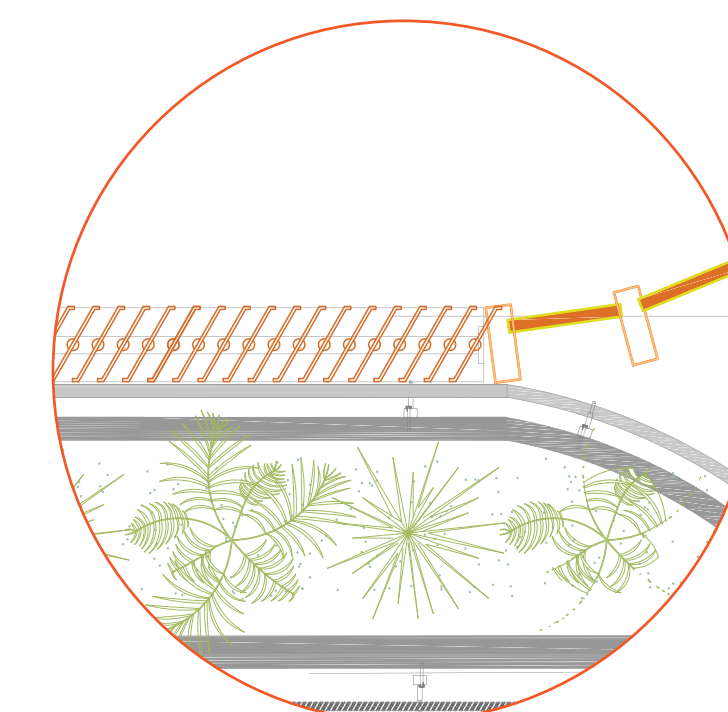
Passive design cooling between September and June



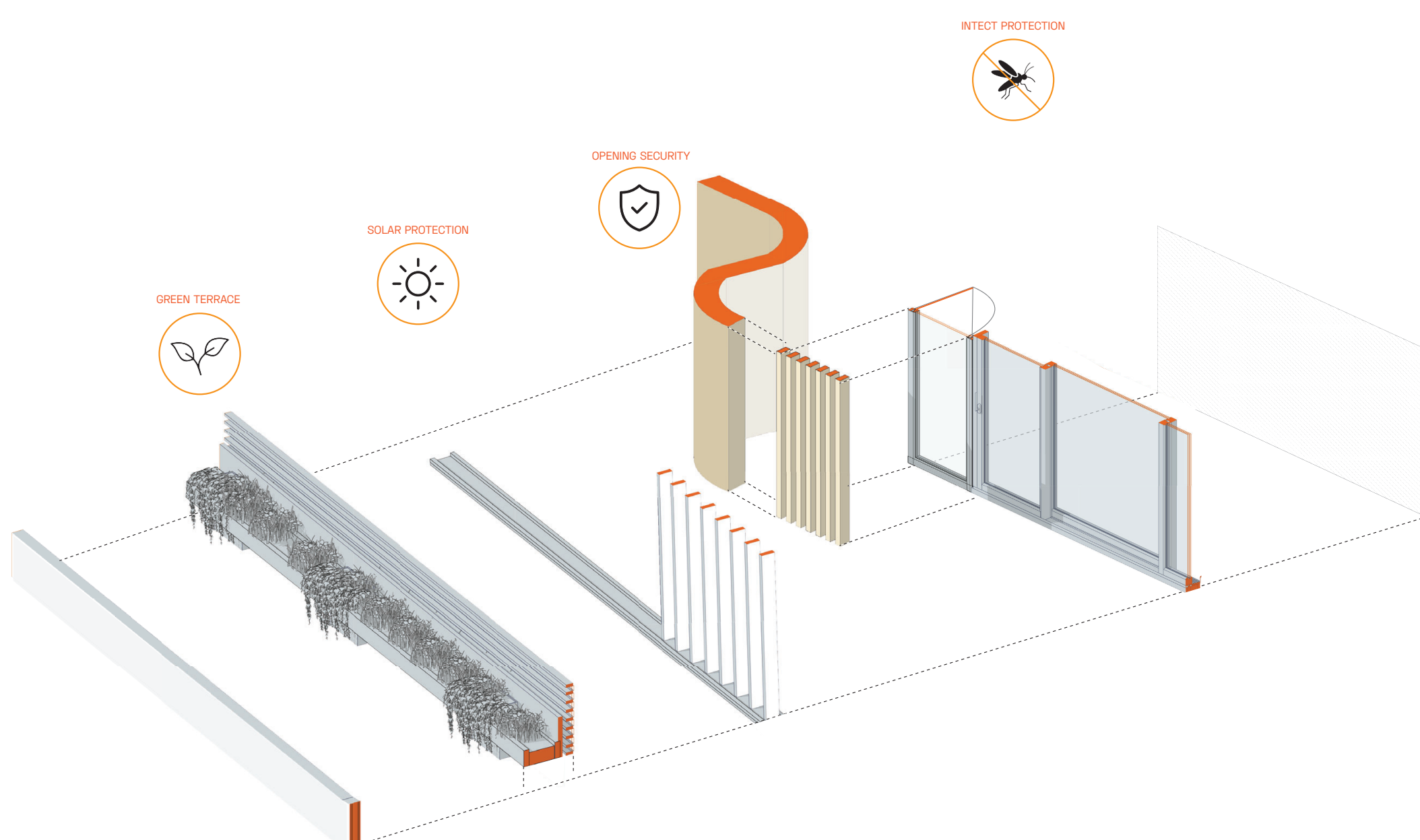
SUMMER DAY / WINTER DAY

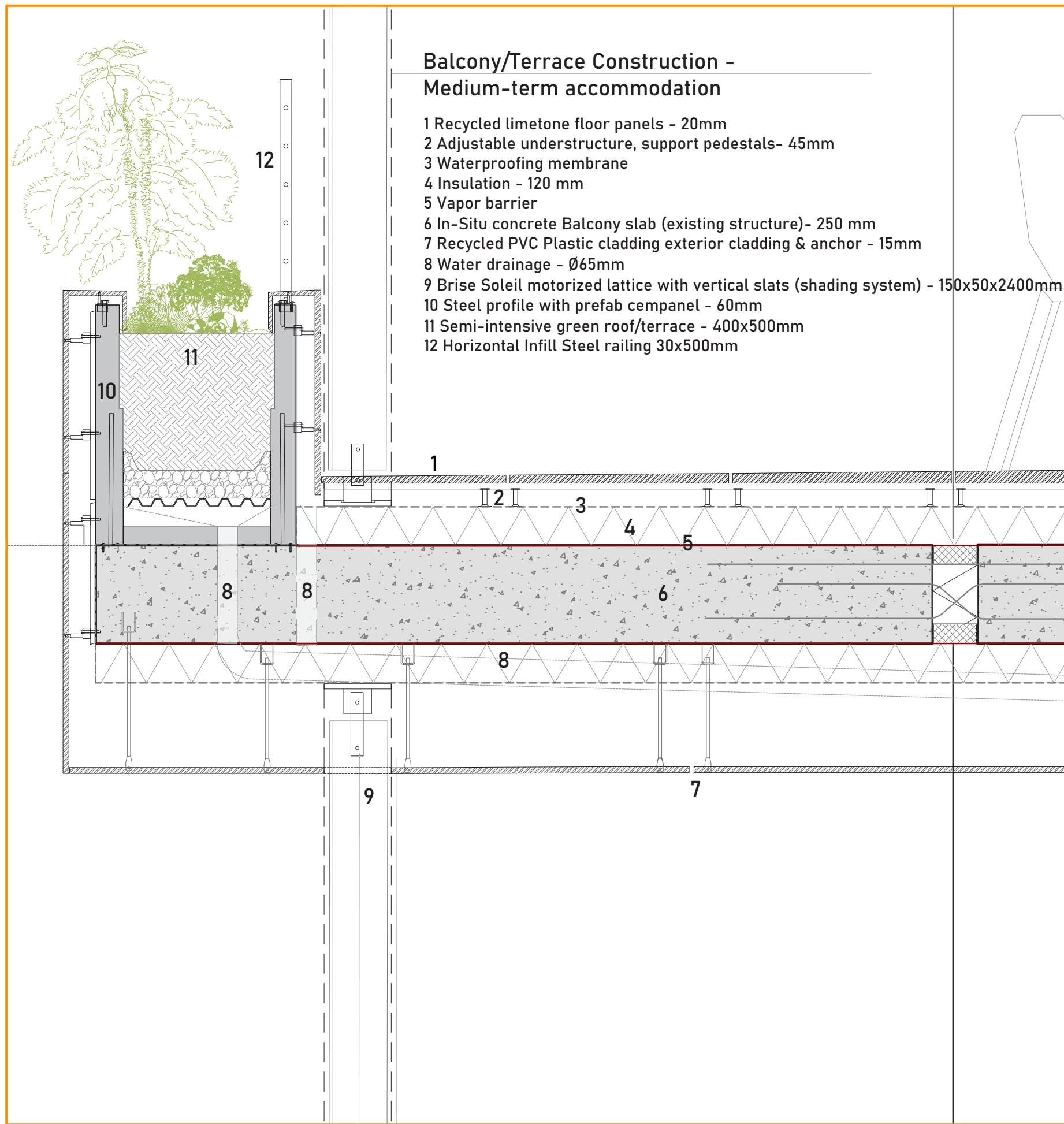


SUMMER DAY / WINTER NIGHT

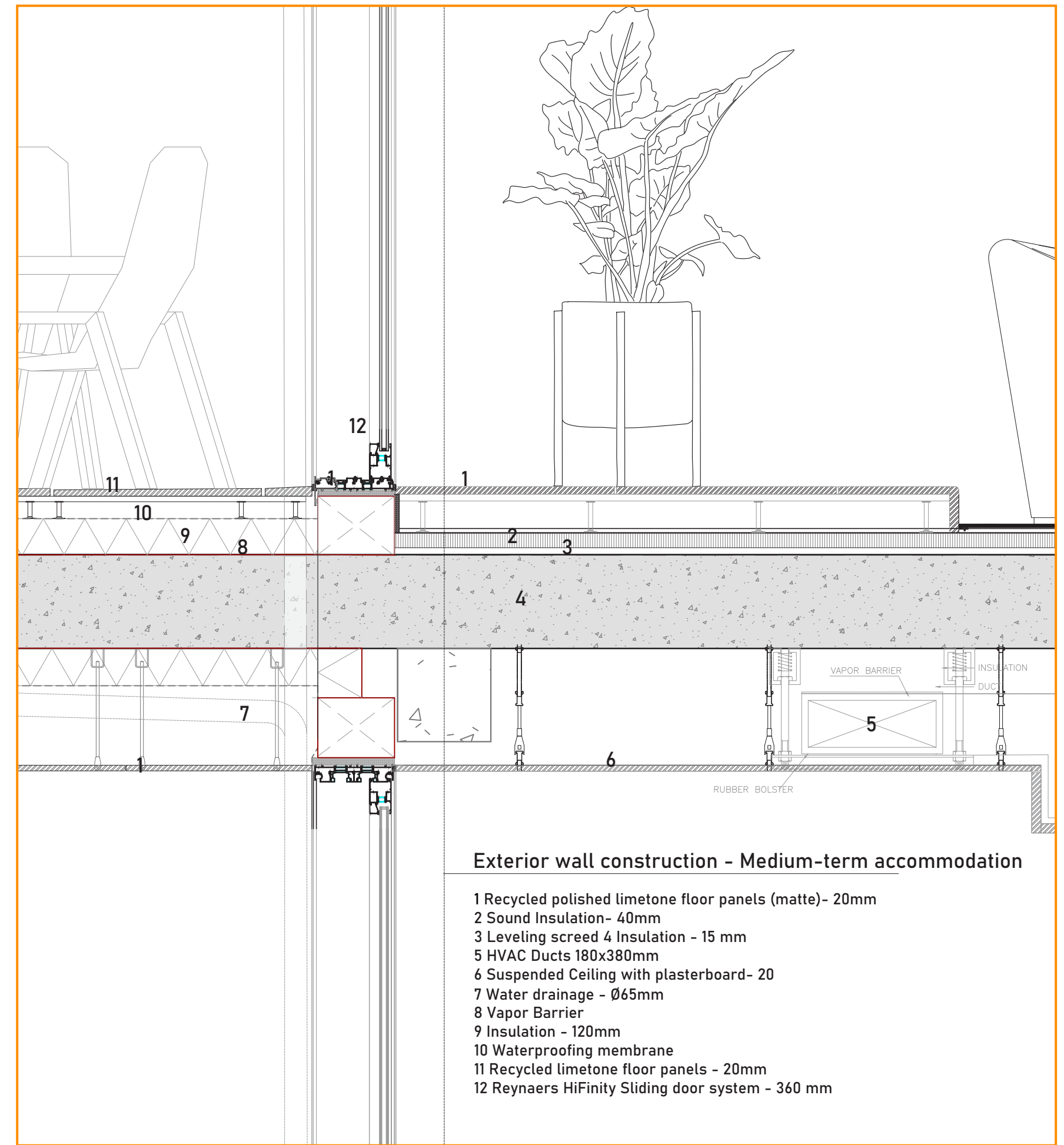


SUMMER NIGHT / WINTER DAY

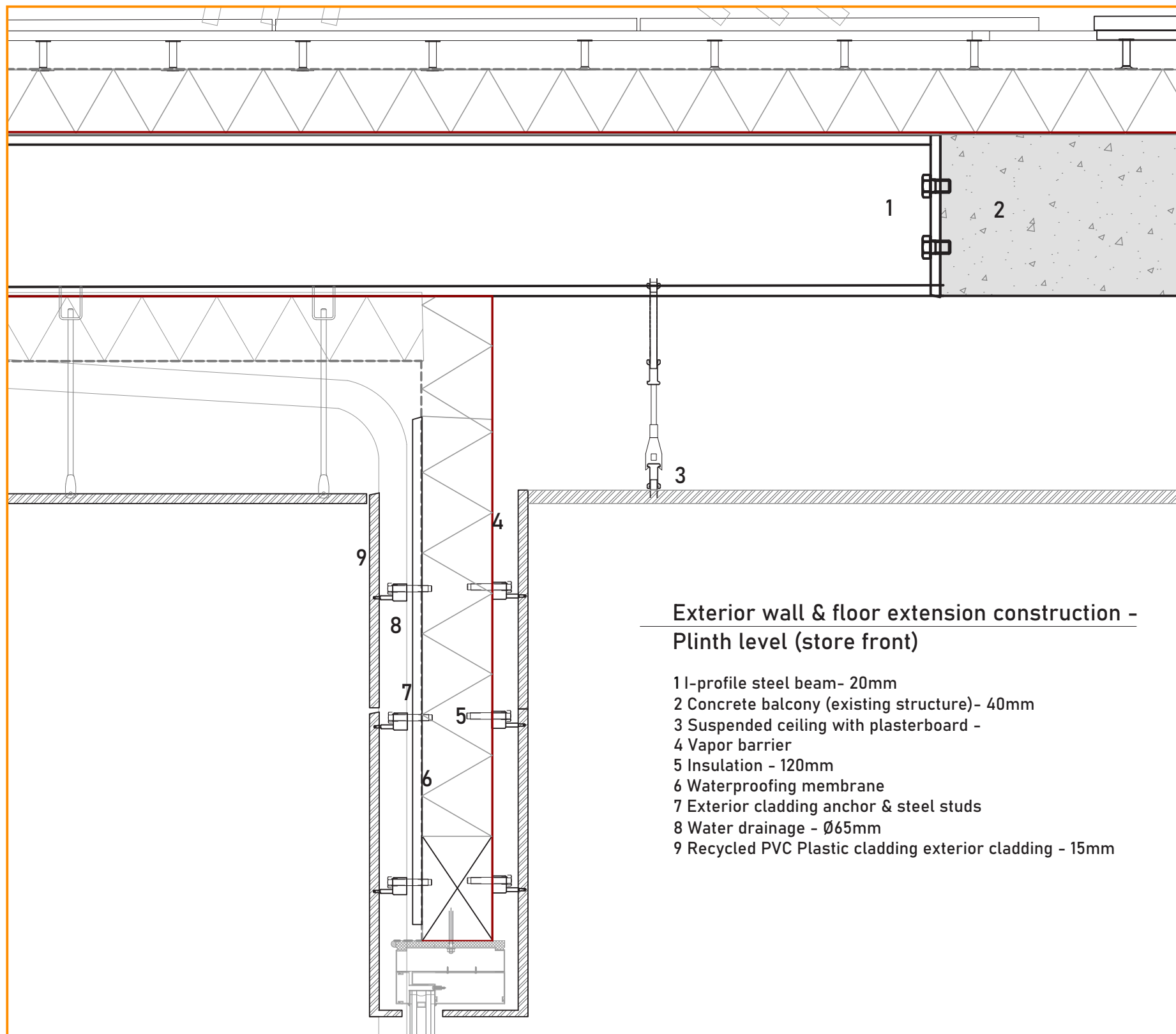




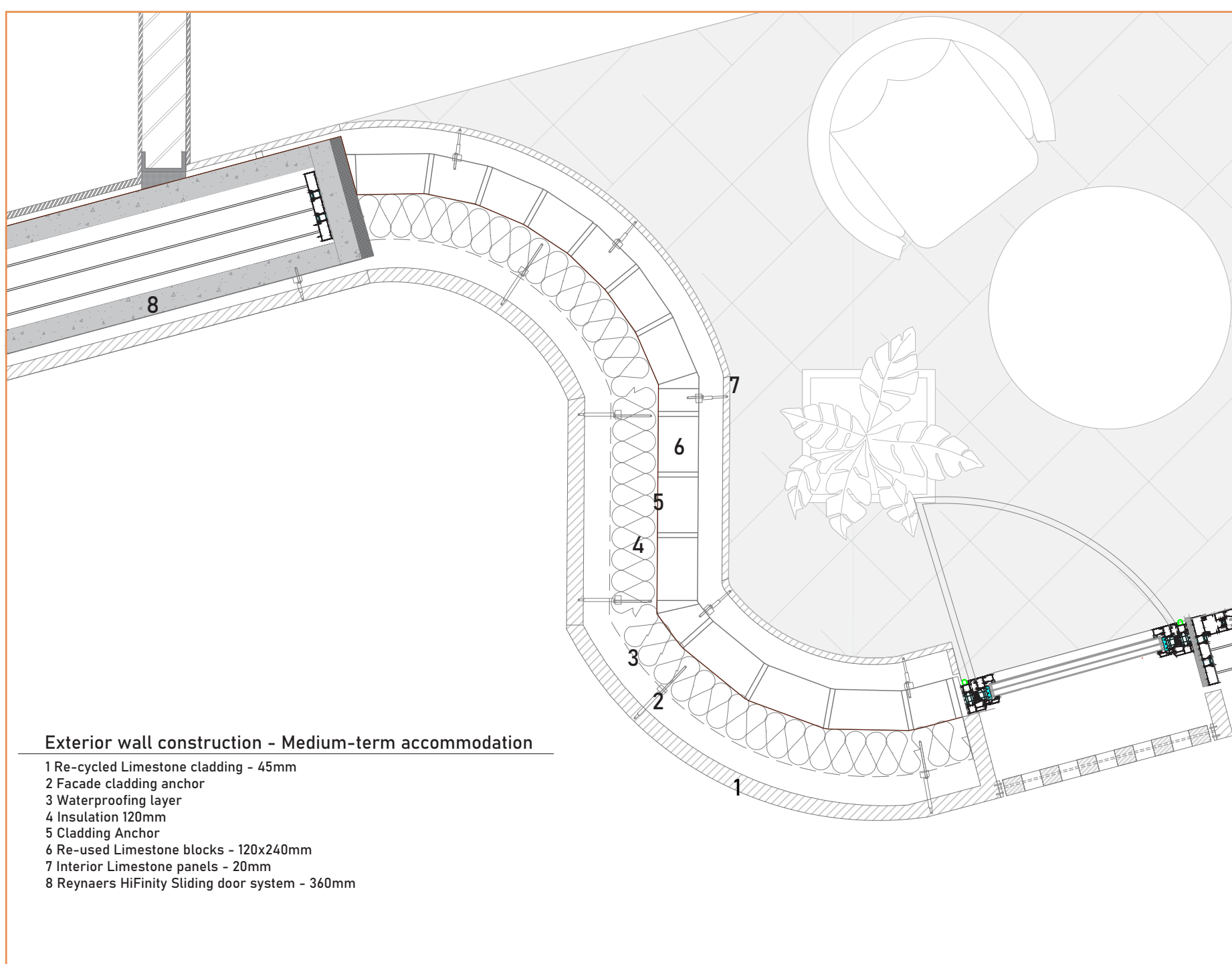
1:10 Section Detail 1



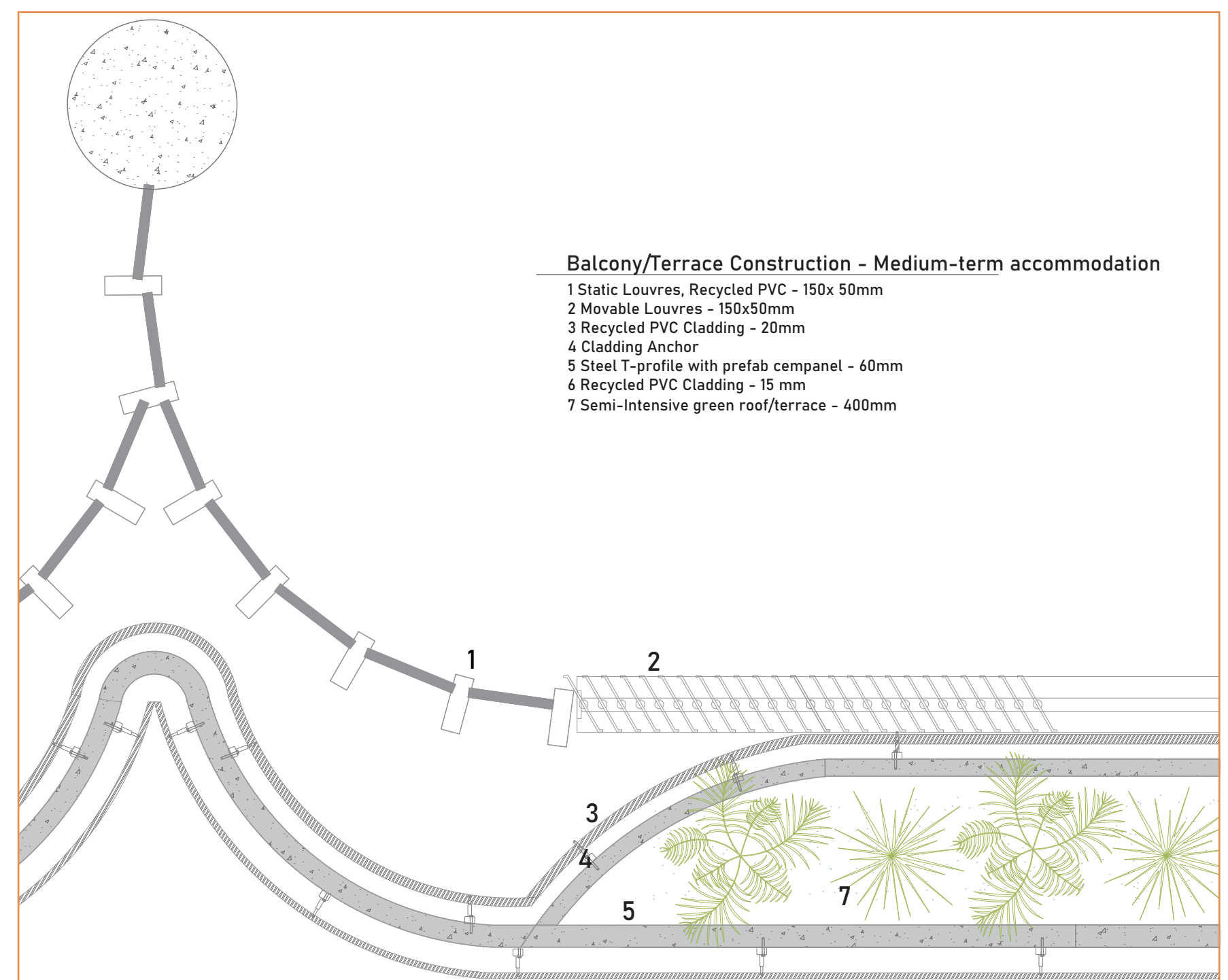
1:10 Section Detail 2



1:10 Section Detail 3



1:10 Plan Detail 1



1:10 Plan Detail 2

