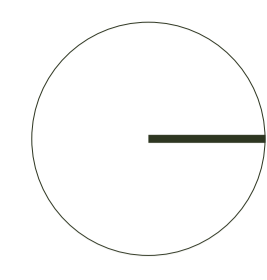
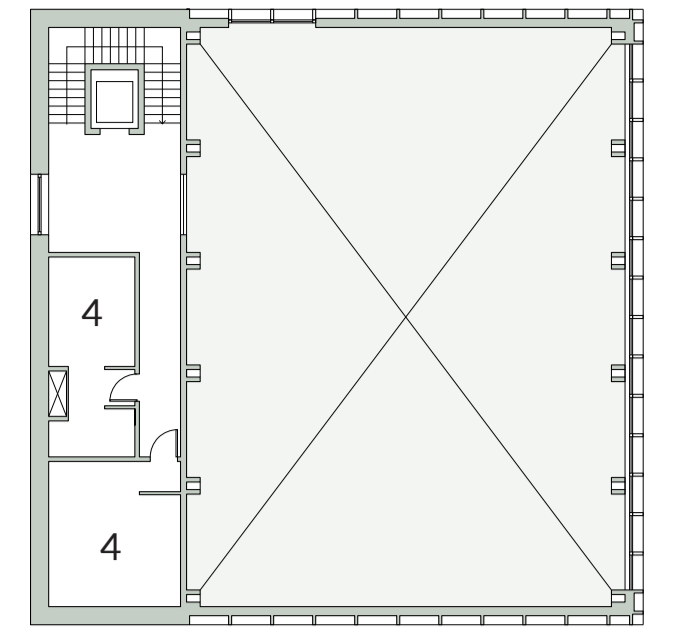
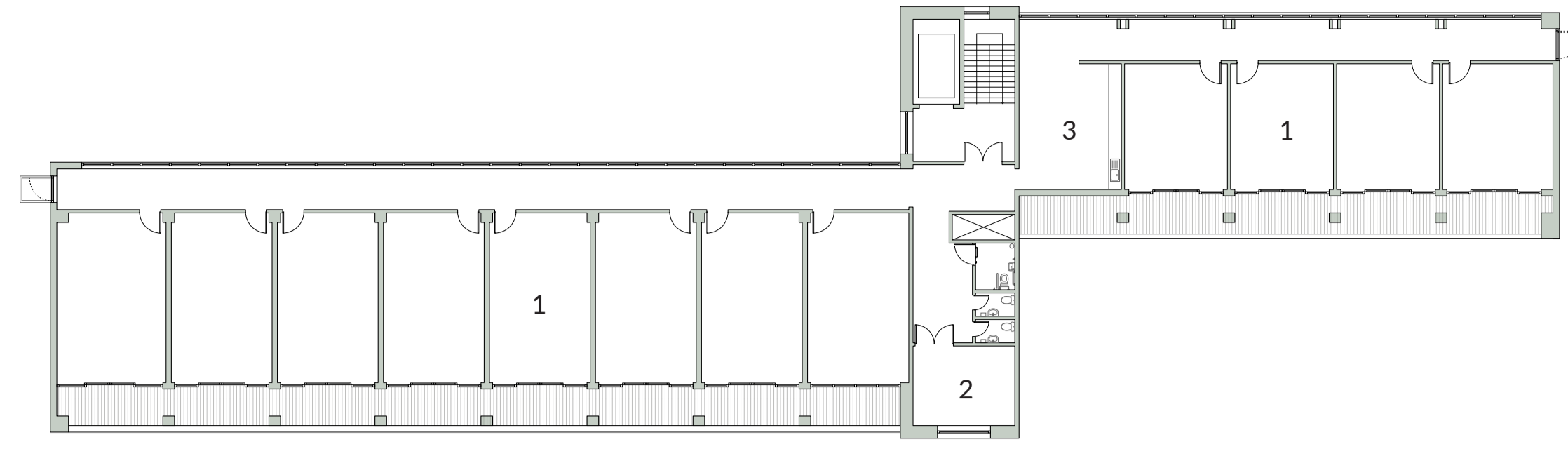


# Floor Plans @ 1:250



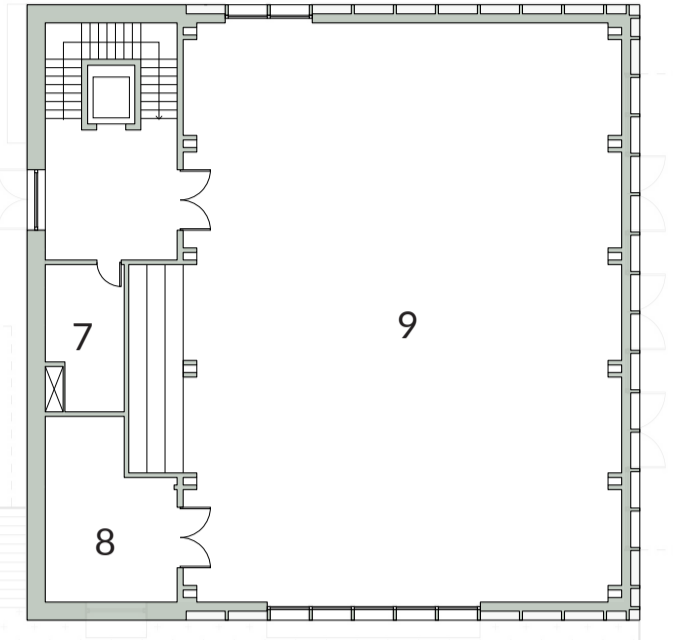
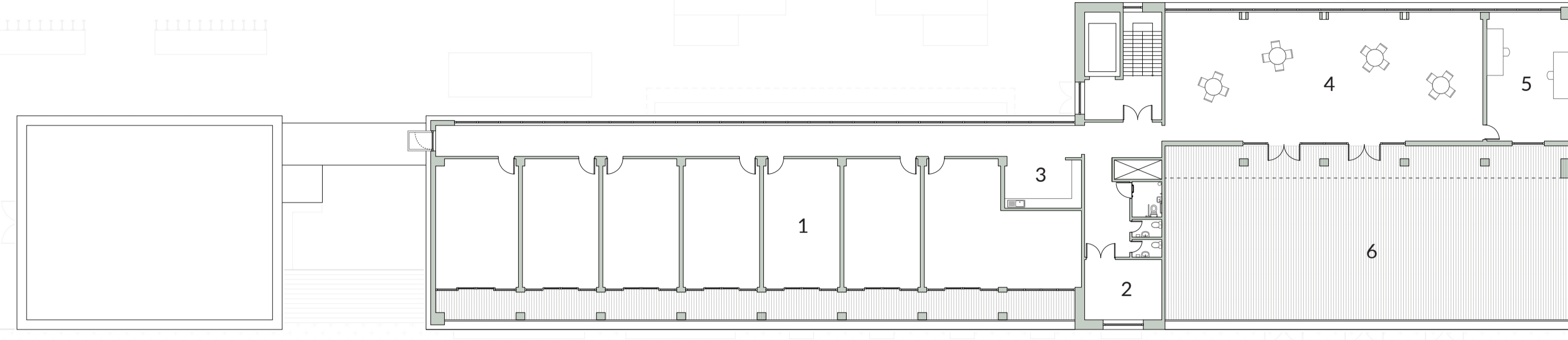
3F

- 1. Artist Atelier
- 2. Wet Room
- 3. Kitchenette
- 4. Changing Rooms



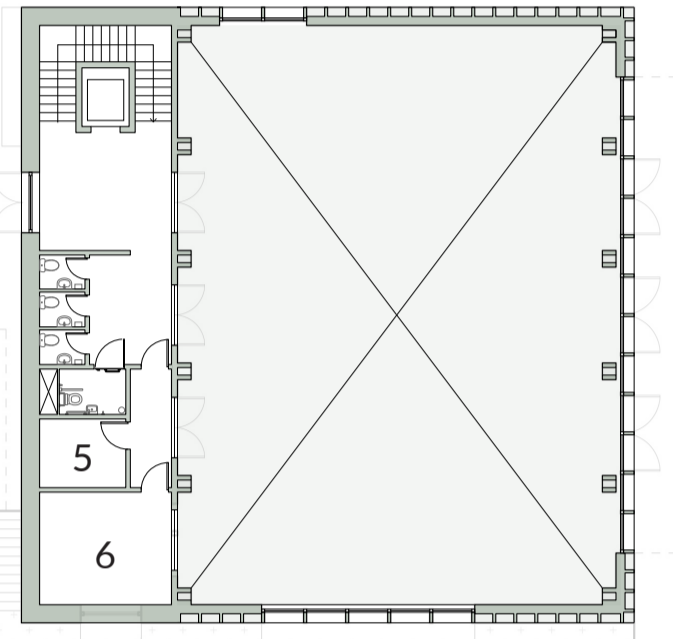
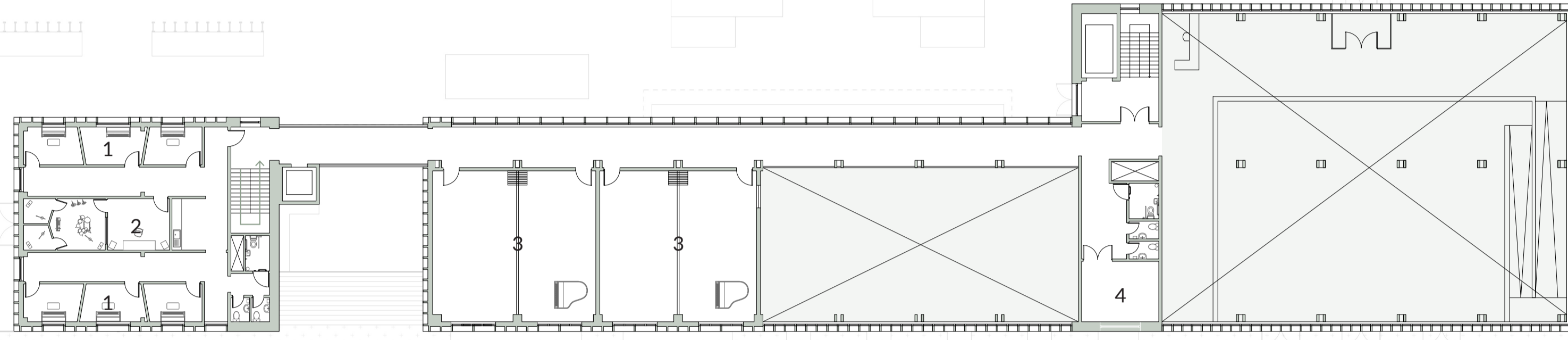
2F

- 1. Artist Atelier
- 2. Wet Room
- 3. Kitchenette
- 4. Common Room
- 5. Administration Office
- 6. Social Terrace



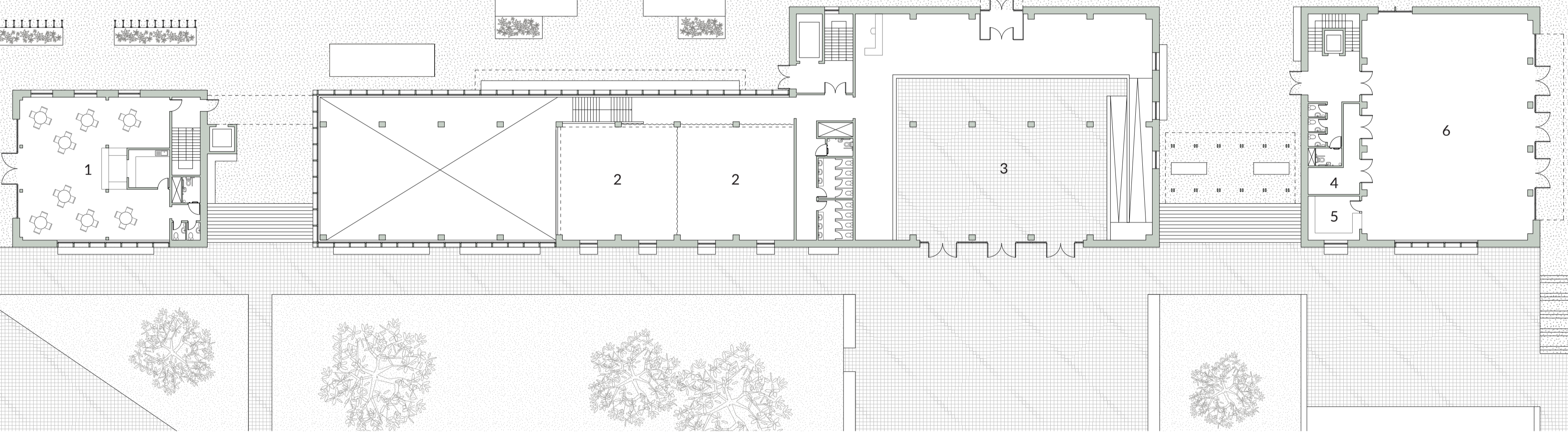
1F

- 1. Individual Practice Room
- 2. Recording Studio
- 3. Large Rehearsal Studio
- 4. Storage
- 5. Technical Space
- 6. Control Mezzanine



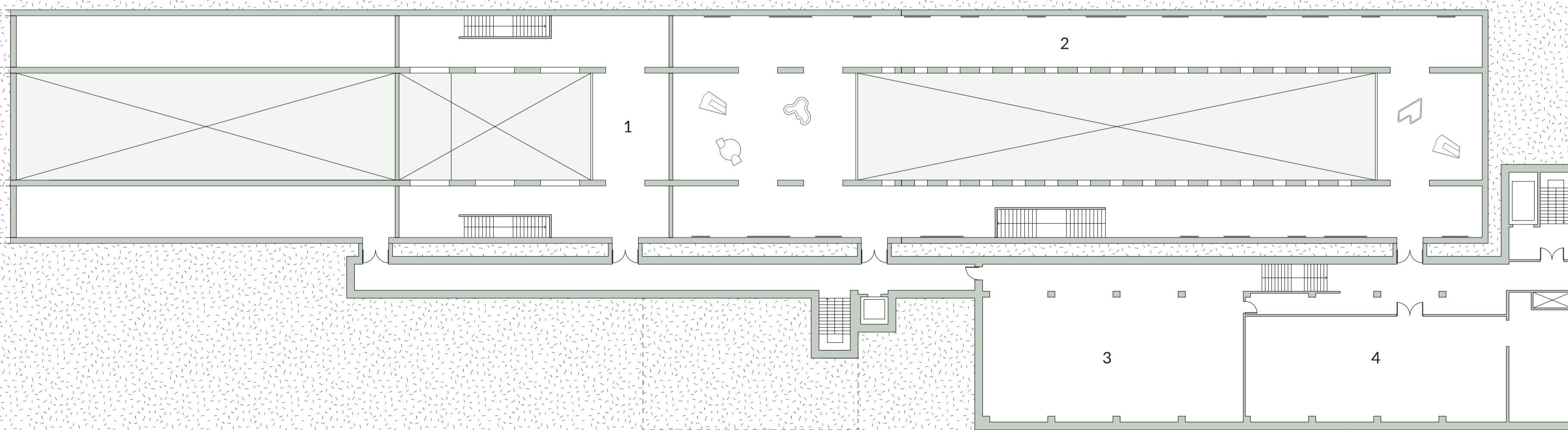
GF

- 1. Cafe
- 2. Public Activity Rooms
- 3. Exhibition Hall
- 4. Storage
- 5. Kitchenette
- 3. Community Hall



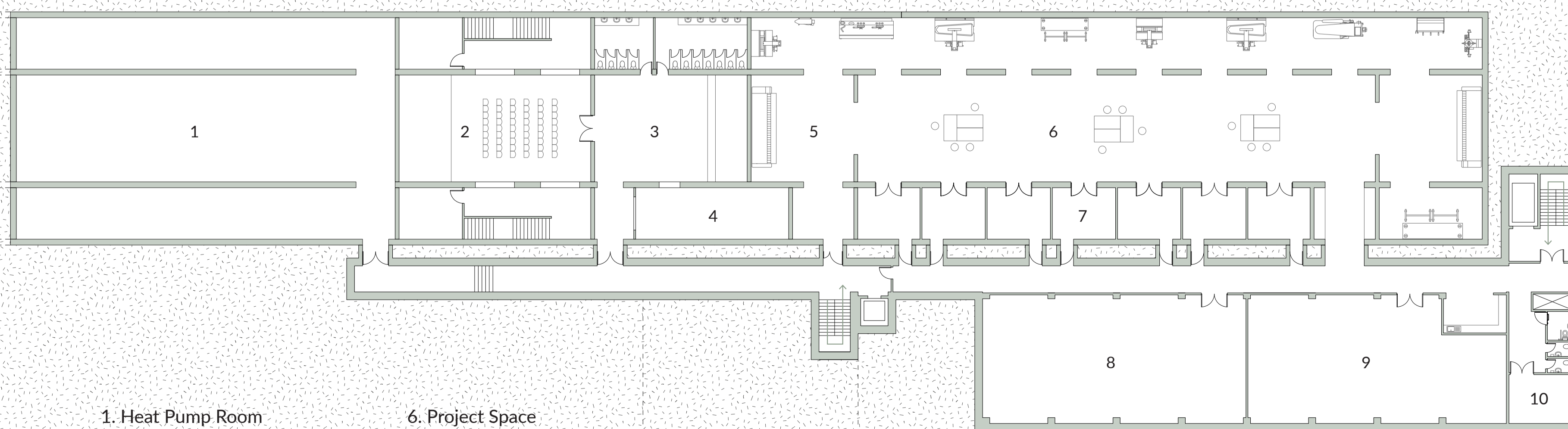
-1F

- 1. Theatre / Nightclub Mezzanine
- 2. Exhibition / Gallery
- 3. Ceramics Workshop
- 4. Storage



-2F

- 1. Heat Pump Room
- 2. Theatre / Nightclub
- 3. Bar
- 4. Cloakroom
- 5. Workshop
- 6. Project Space
- 7. Artist Atelier
- 8. Photography Studio
- 9. Technical Space
- 10. Wet Room



# Long Section @ 1:250



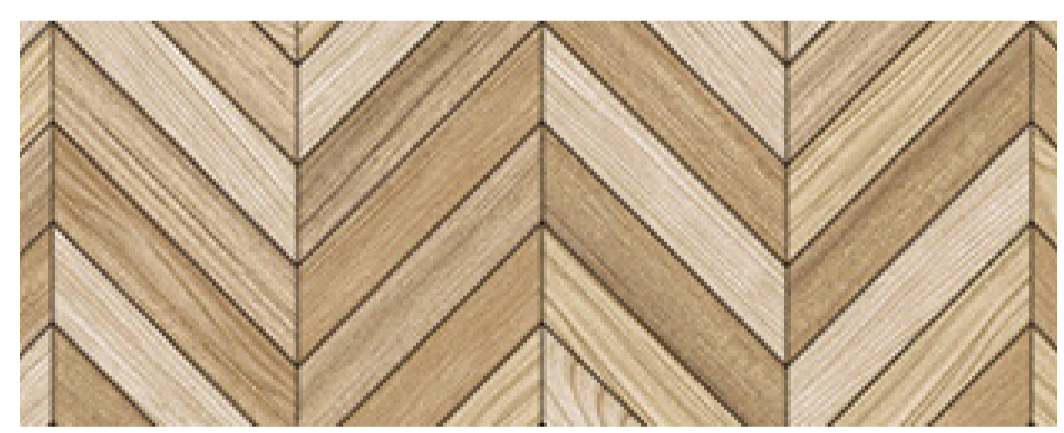
# Material Palette



bronze anodised aluminium



vertical timber cladding



herringbone timber cladding



timber fins



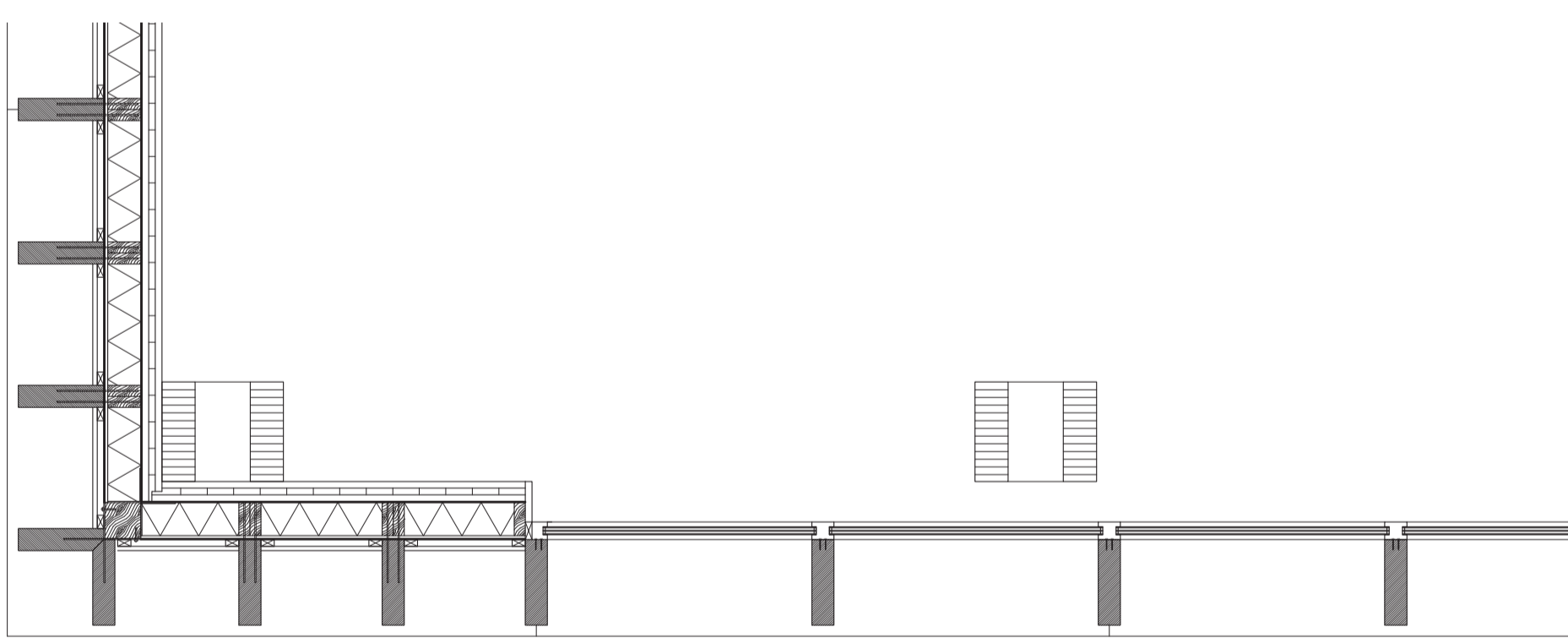
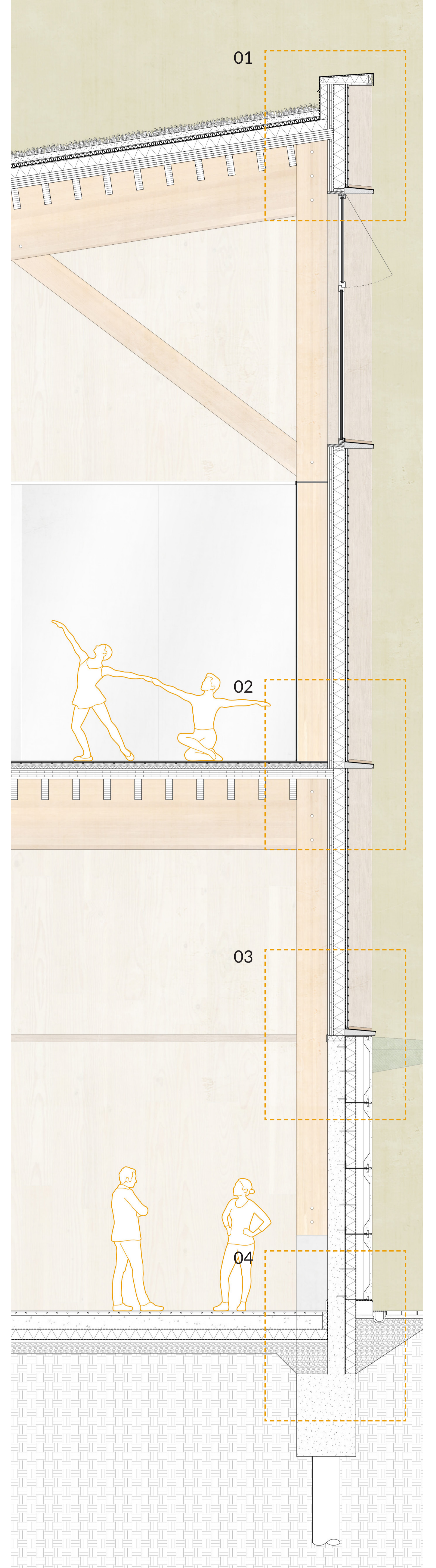
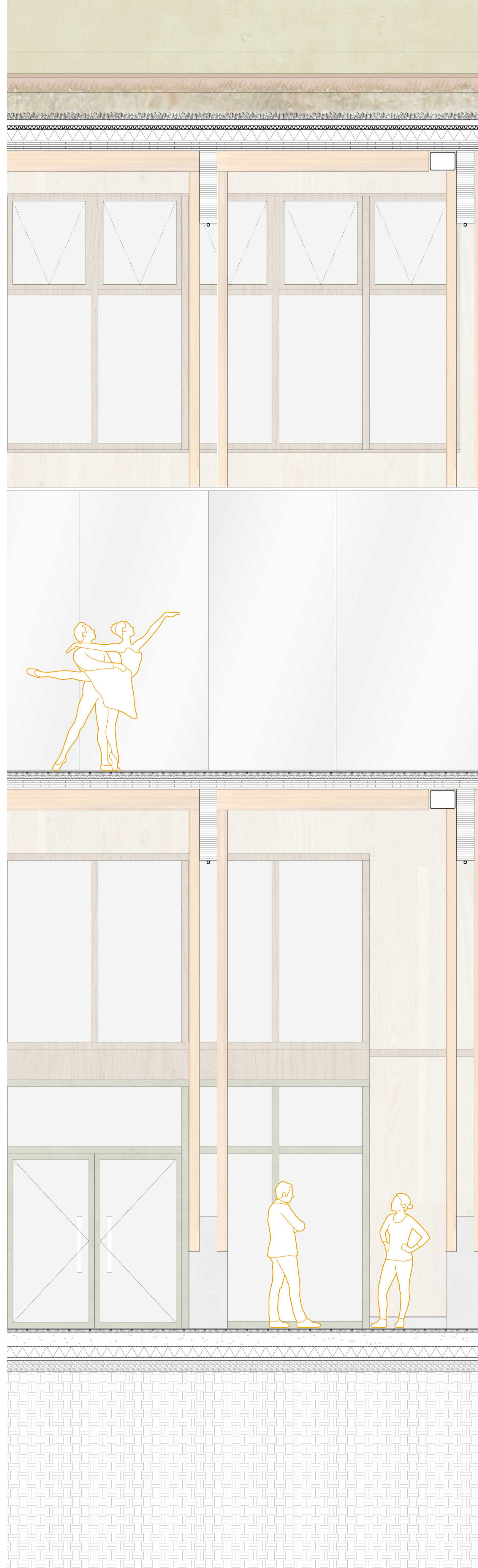
precast concrete panels



green anodised aluminium  
(entrance detailing)



# BT Drawings



- 01** Roof build up:
- Planting
  - 60mm substrate filter fabric
  - drainage system
  - root barrier
  - waterproof membrane
  - 150mm rigid insulation
  - 150 mm ribbed CLT panel with 300mm glulam ribs

- 03** Intermediate floor build up:
- Timber parquet flooring
  - 60mm EPS insulation with underfloor heating
  - 40mm impact sound insulation
  - 150 mm ribbed CLT panel with 300mm glulam ribs

- 02** Concrete wall build up:
- 250mm reinforced concrete wall
  - breather membrane
  - 150mm insulation
  - vapour barrier
  - air gap
  - precast concrete facade panel
- Timber wall build up:**
- 90mm CLT panel
  - breather membrane
  - 150mm insulation between timber studs
  - 38mm plywood sheathing
  - waterproof membrane
  - 30mm vertical timber battens
  - 20mm timber cladding

- 04** Ground floor build up:
- 15mm timber parquet flooring
  - 50mm EPS insulation with underfloor heating
  - 200mm reinforced concrete slab
  - 150mm insulation
  - 50mm blinding
  - 150mm compacted hardcore

