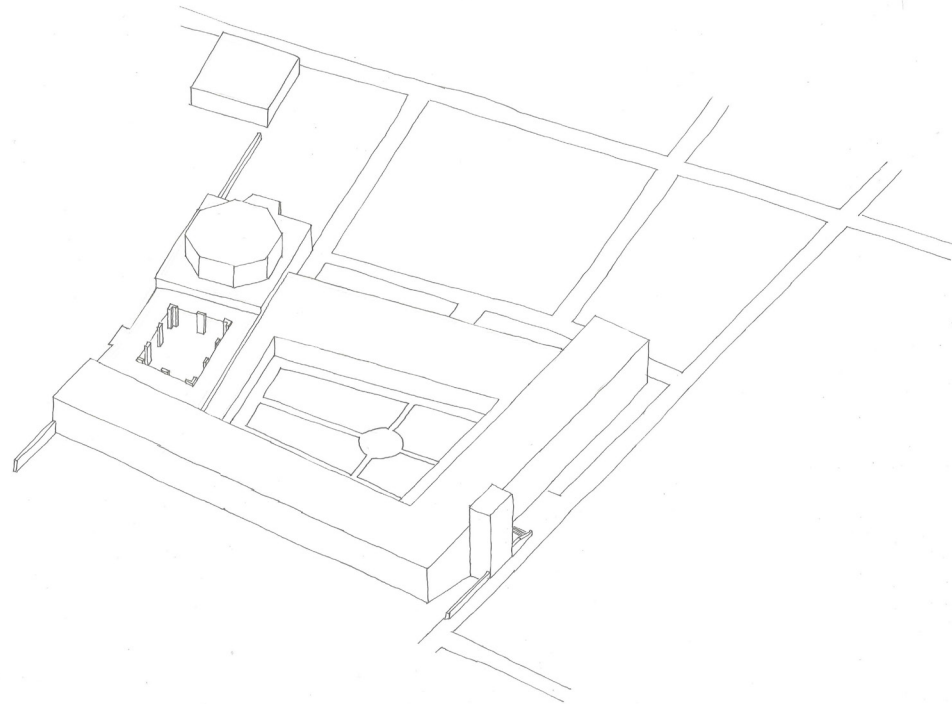


abbey roosenberg + care



*It is necessary to be in tune with the age and with the surroundings, to see inspiration in the task itself, if the requirements of that task are to be translated into an architectonic language creating a unity of all the different factors.*

*At the same time the architect must have an ability to imagine and to create, an ability that is sometimes called fantasy, sometimes dreams.*

Jørn Utzon  
1948



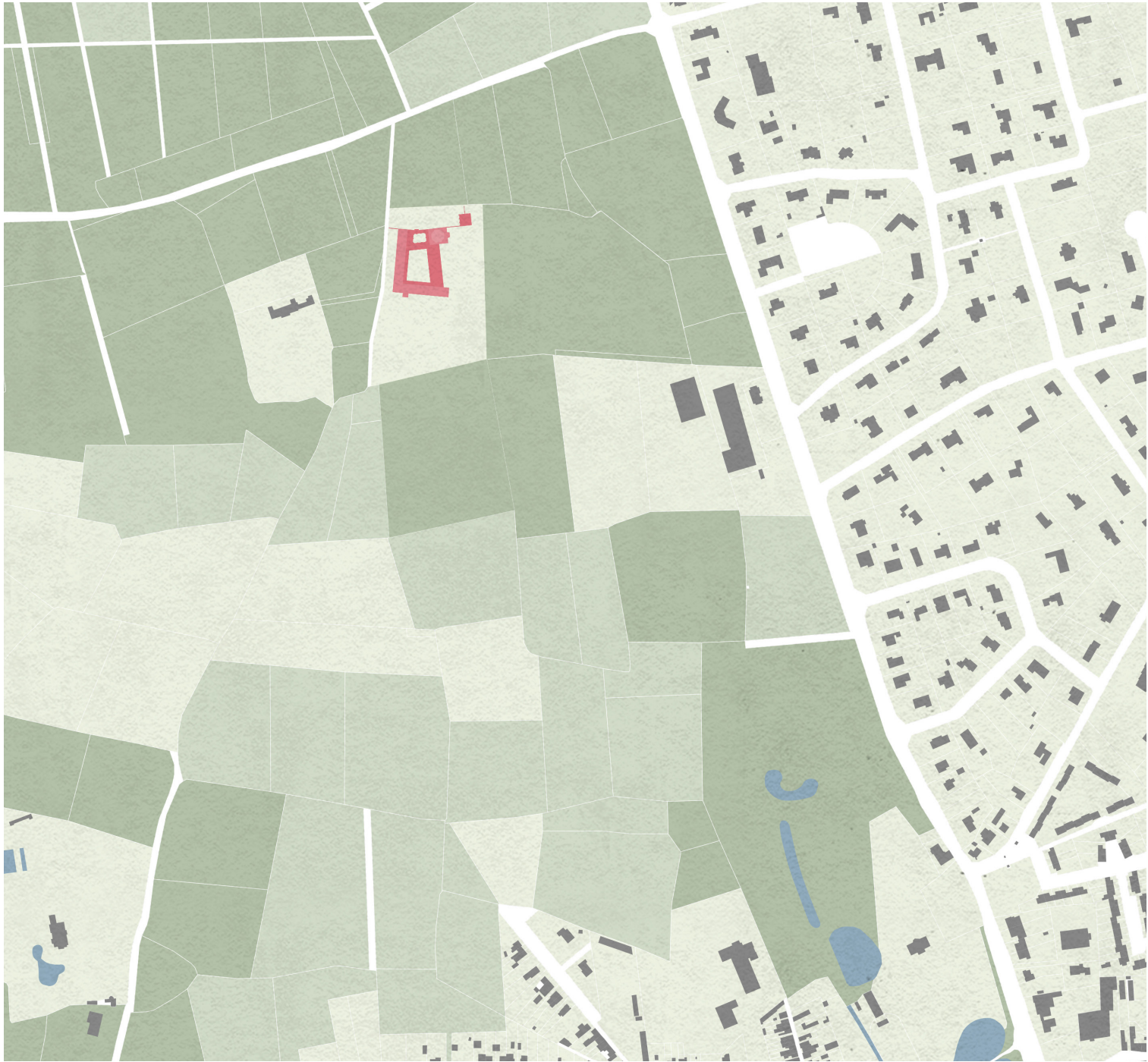
settlement roosenberg

- place & memory
- settlement
- enclosure
- building landscape
- living & caring
- lessons learned from van der laan
- material culture
- identity





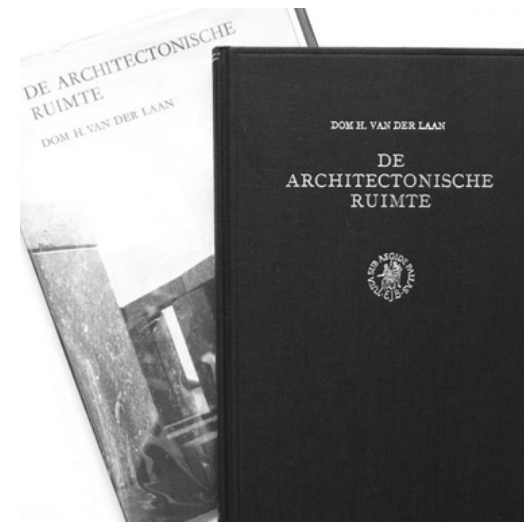
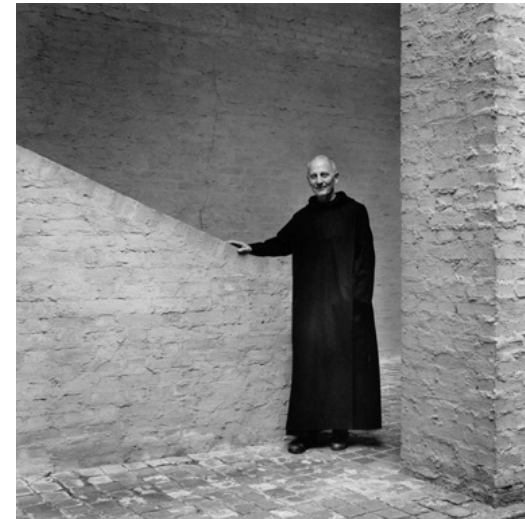
place & memory



*It is a lesson in architectural thinking, in its rigour and sensitivity to materiality and the tectonic. A lesson that reminds us of the essential in our quest to make meaningful spaces, to make a meaningful architecture, to bring a stillness.*

*It is simply a building which is larger than itself.*

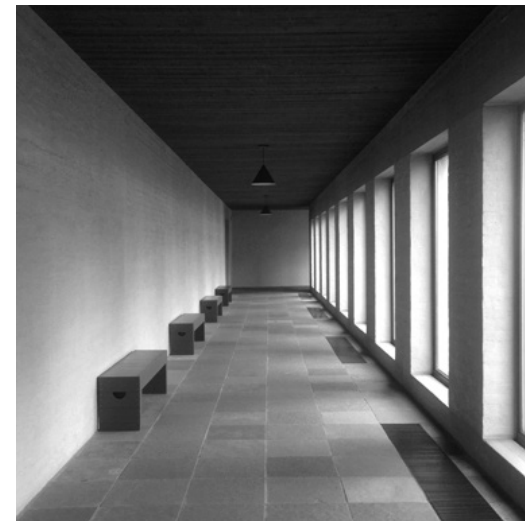
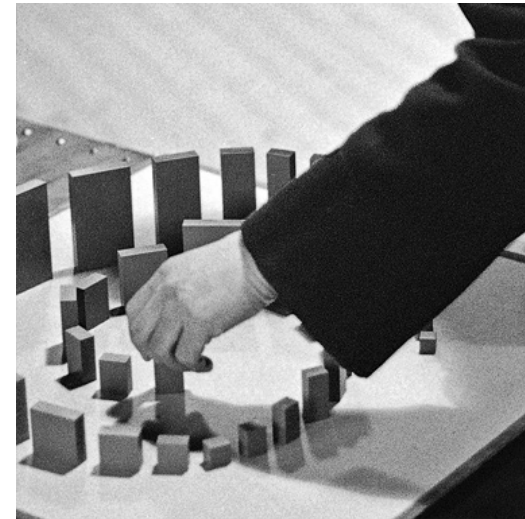
Stephen Bates



*It is a lesson in architectural thinking, in its rigour and sensitivity to materiality and the tectonic. A lesson that reminds us of the essential in our quest to make meaningful spaces, to make a meaningful architecture, to bring a stillness.*

*It is simply a building which is larger than itself.*

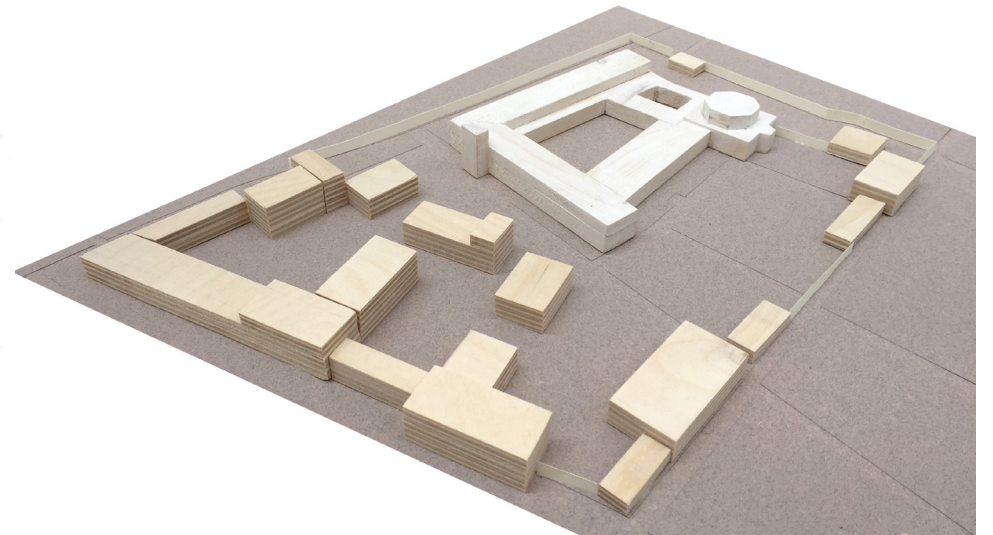
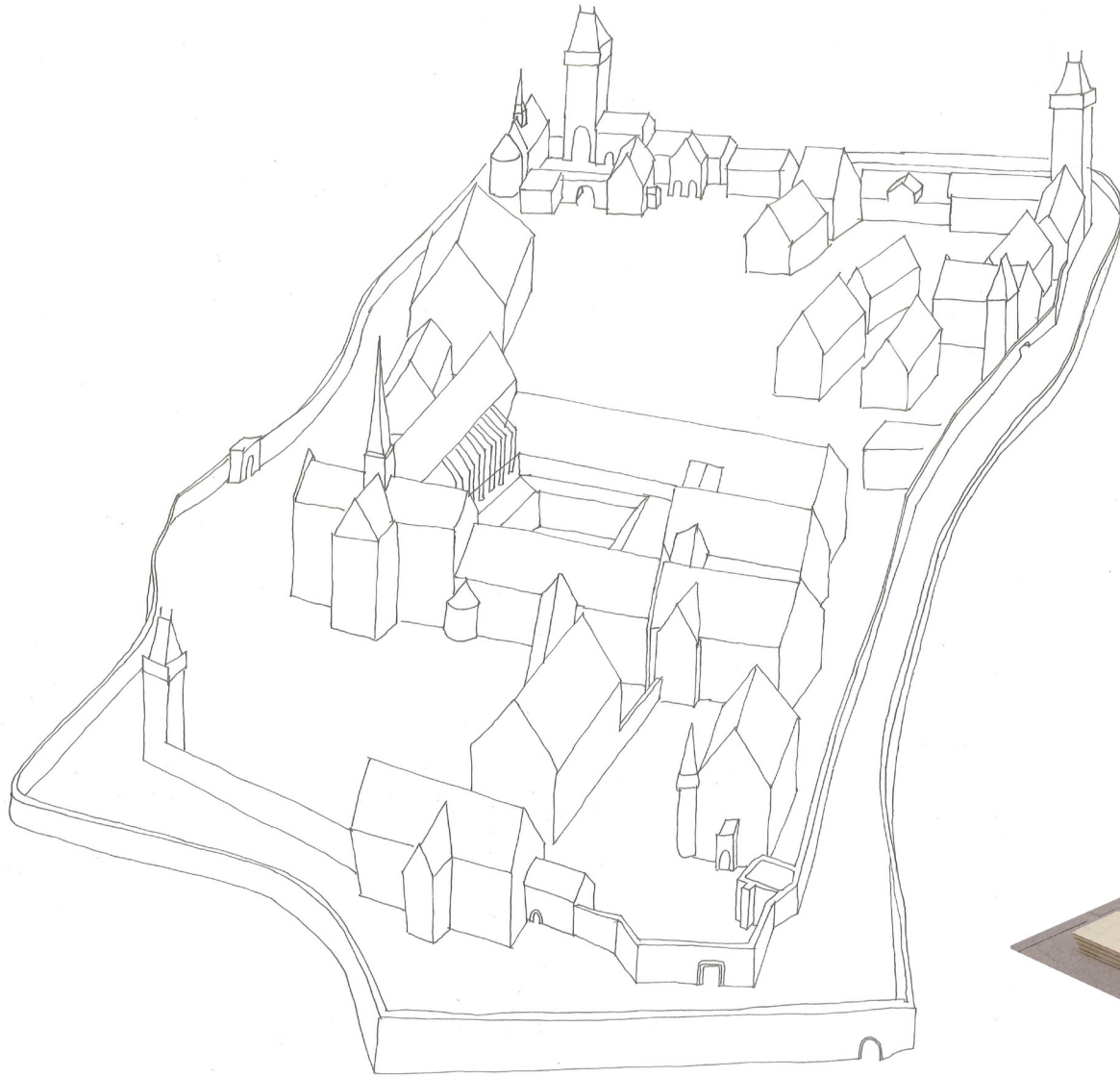
Stephen Bates



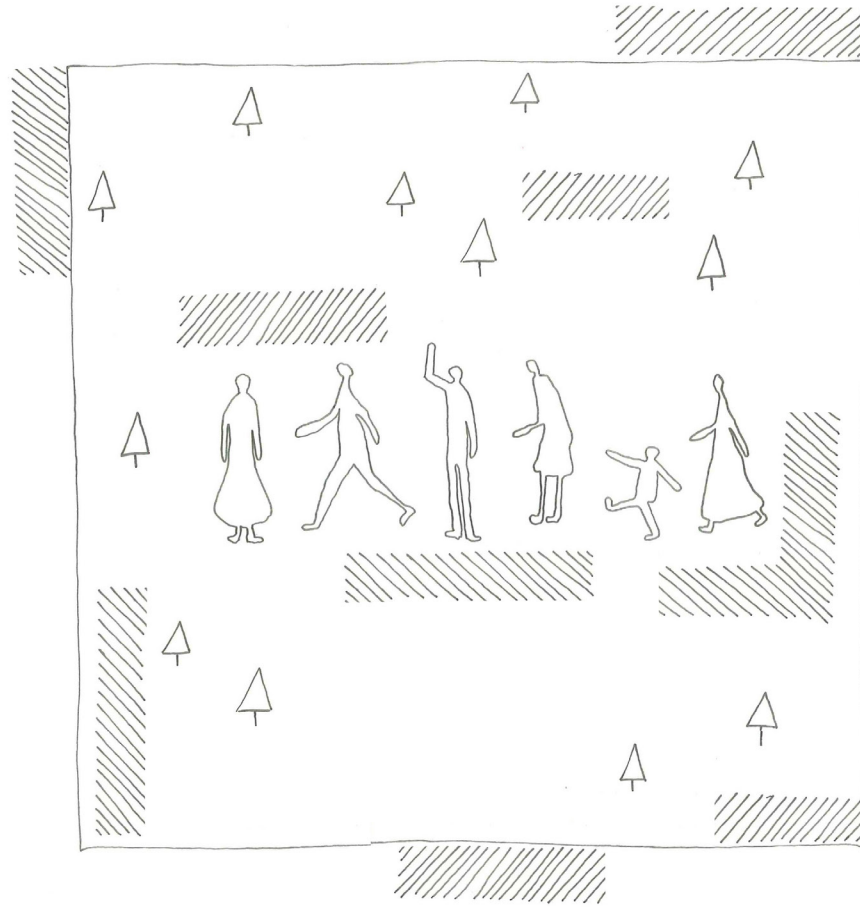




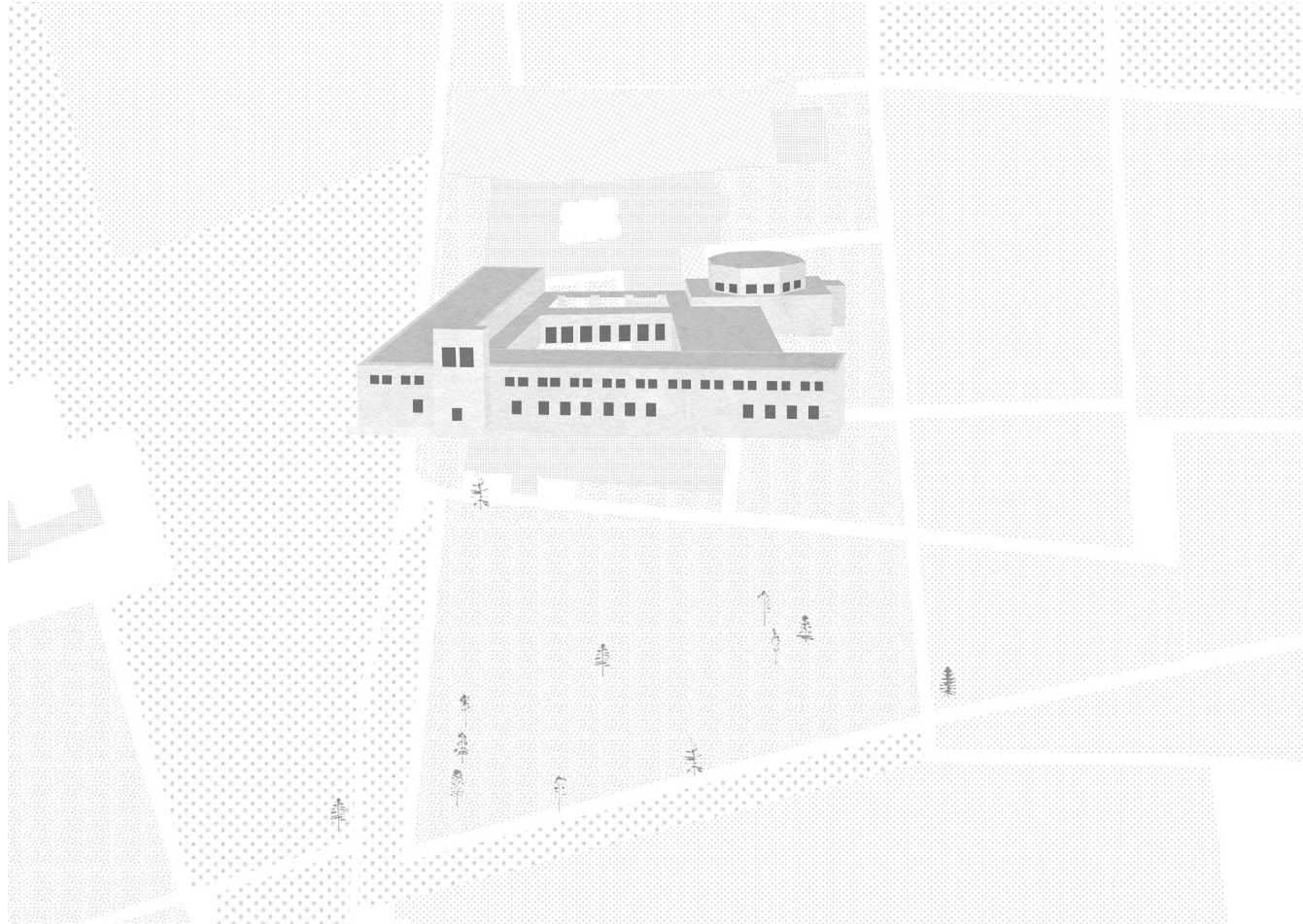




in collaboration with Leonie Boelens



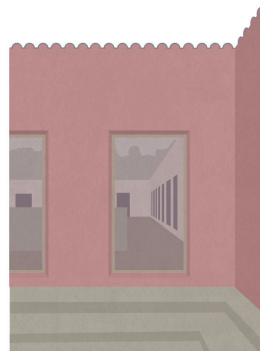
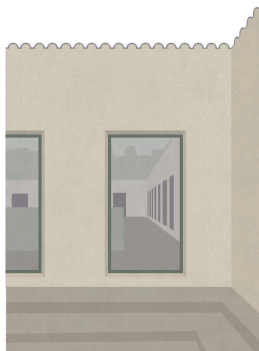
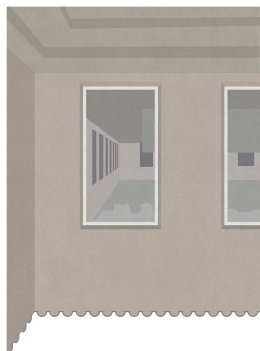
settlement

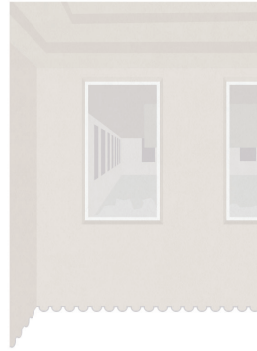


## <sup>1</sup>settle

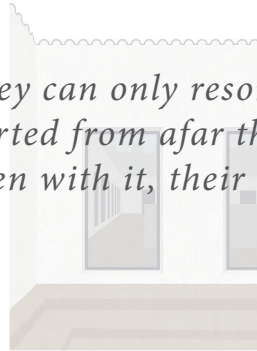
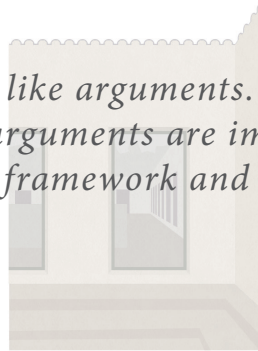
verb | set·tle

- : to end (something) by reaching an agreement
- : sit or come to rest in a comfortable position
- : to make a final decision about (something)
- : to move to a place and make it your home



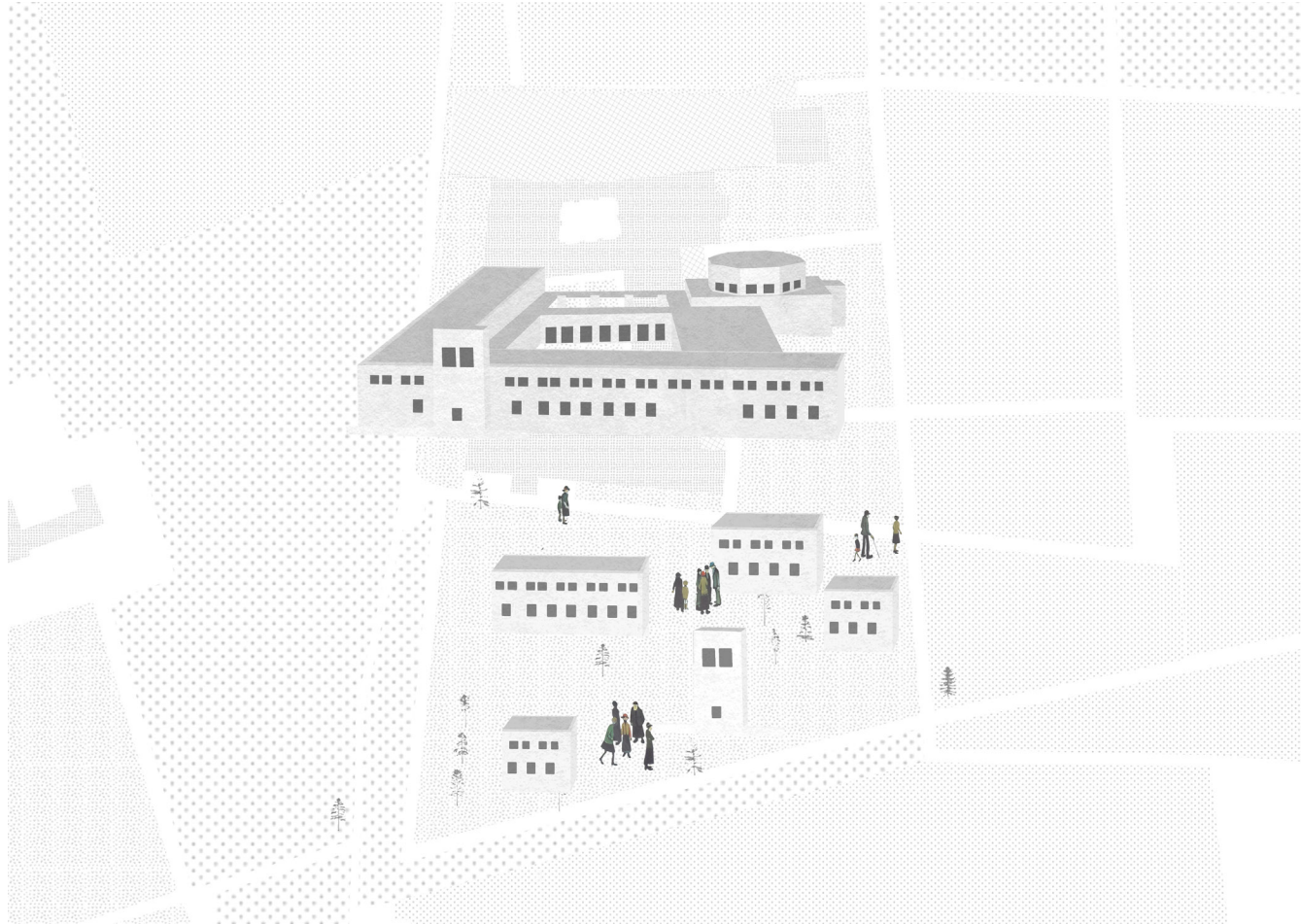


*Buildings are like arguments. They can only resonate within a precise framework.  
When these arguments are imported from afar they frequently fall outside such a  
framework and often with it, their arguments are lost.*



Jantje Engels & Marius Grootveld  
from the introduction to *Building upon Building*

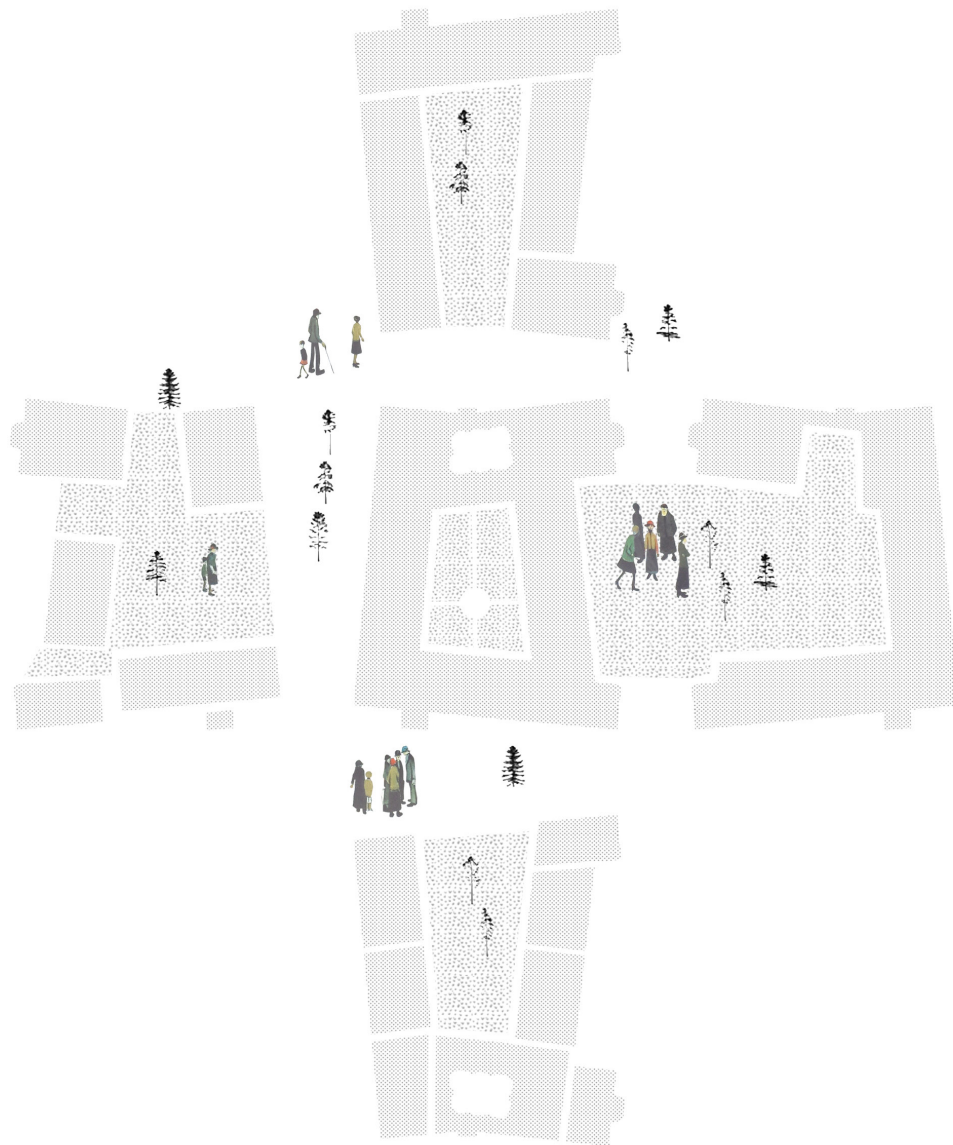




## <sup>1</sup>settlement

noun | set·tle·ment

- : the act or process of settling an argument or disagreement
- : the act of making stable or putting on a permanent basis.
- : a small community
- : the settling or establishment of a person or a group of people

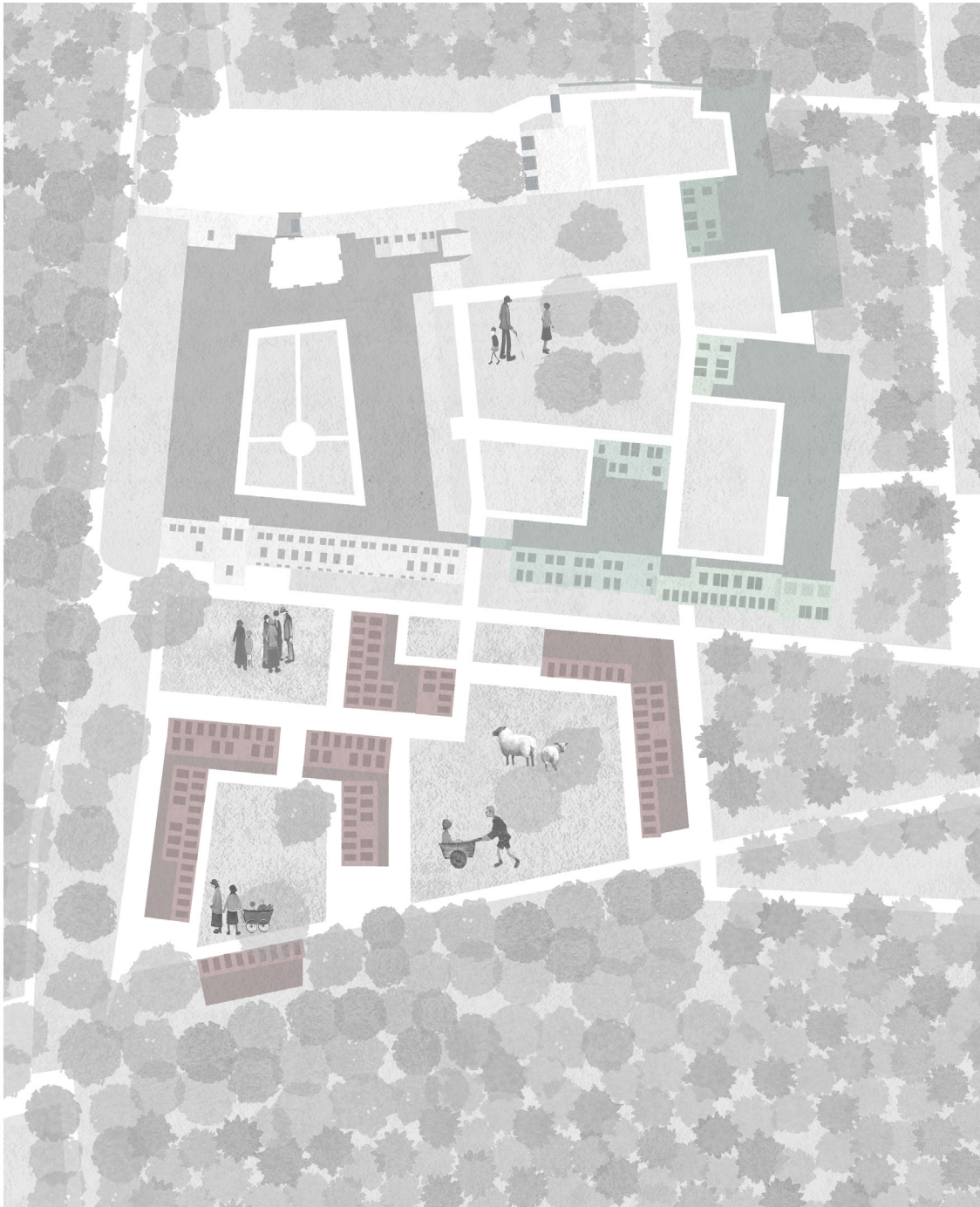












*It comes from Latin communis “in common, public, shared by all or many; general, not specific; familiar, not pretentious,”*

*But, it comes originally from the Proto Indo-European word \*ko-moin-i- “held in common,”... hence it means literally “shared by all”.*

*Acts of ‘commoning’, of re-appropriation of the commons are needed, use not property is what counts.*

Lieven De Caeter

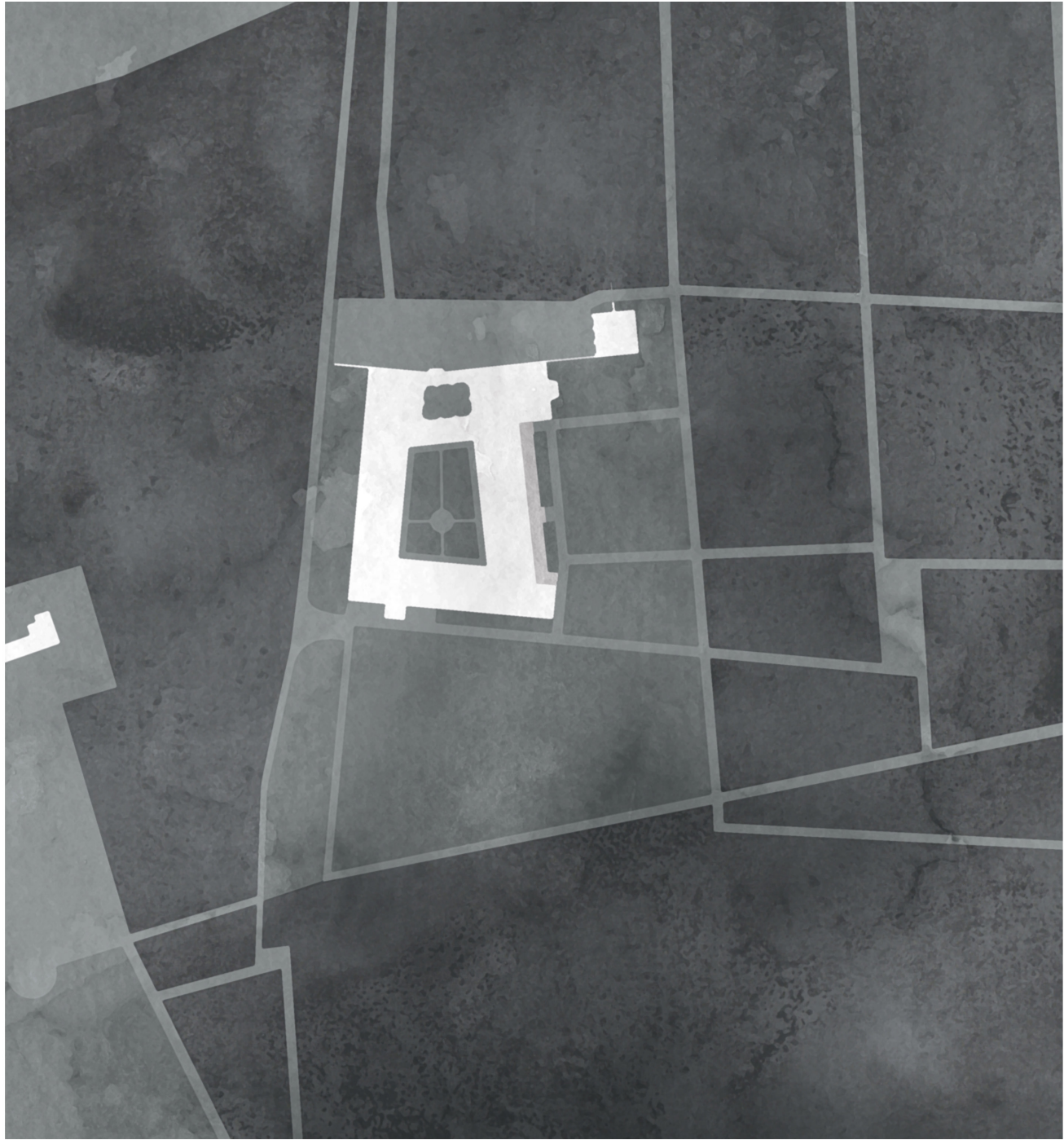
*Common Places: Preliminary Notes on the (Spatial) Commons*







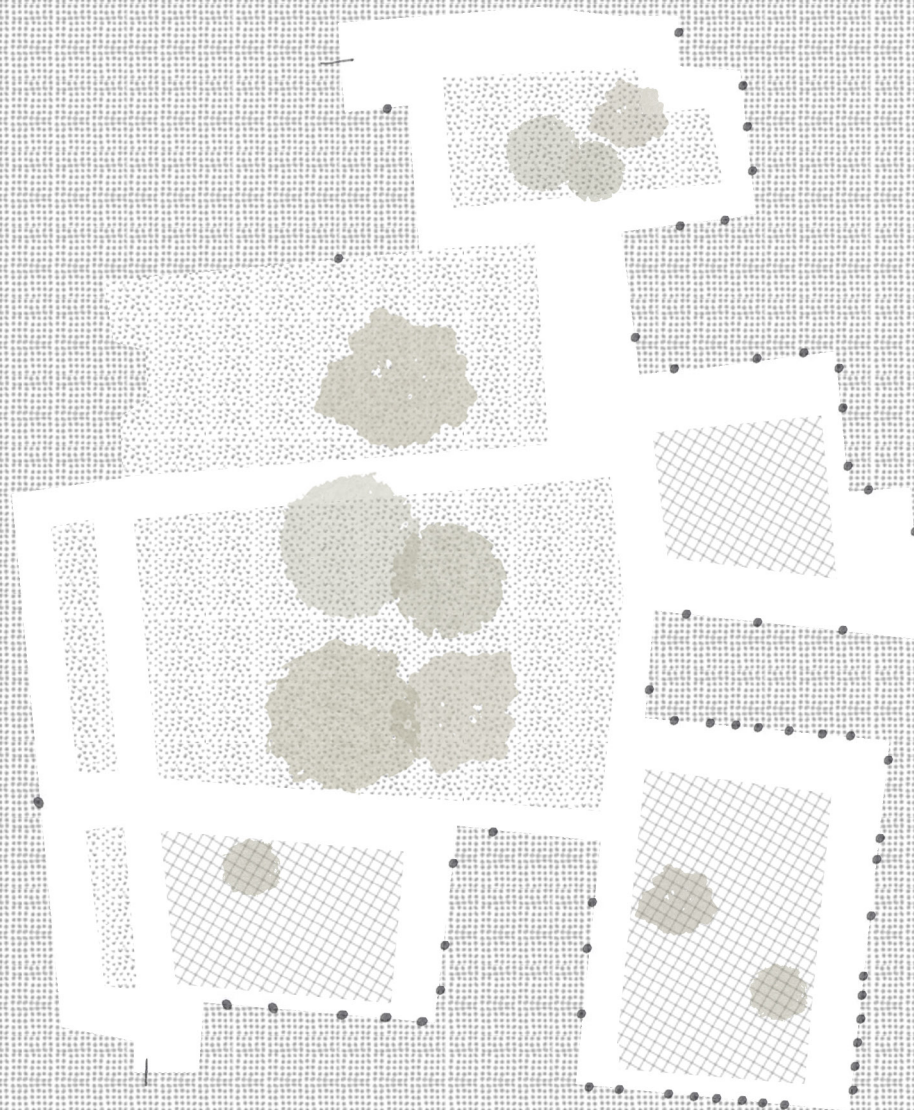
enclosure

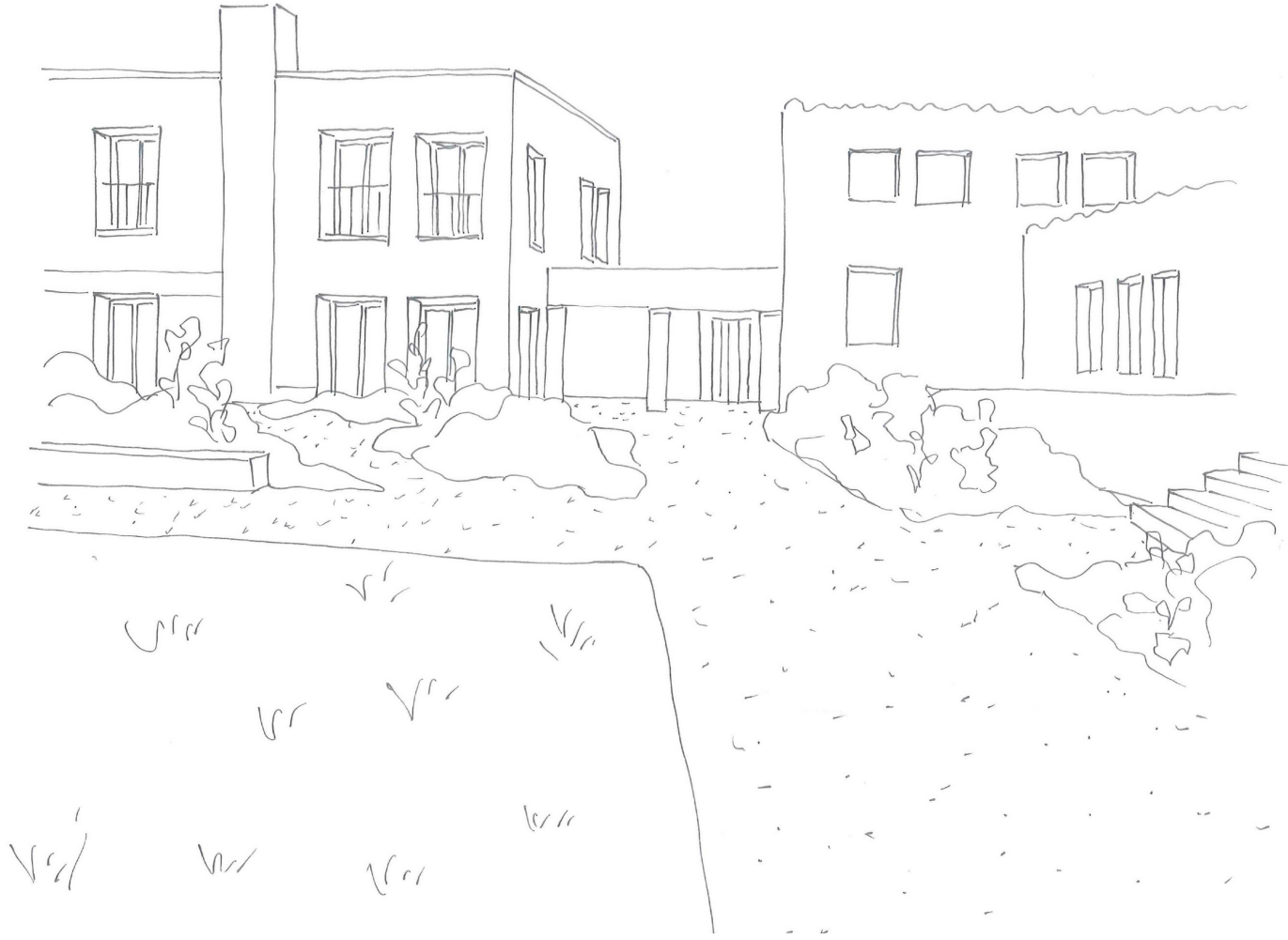








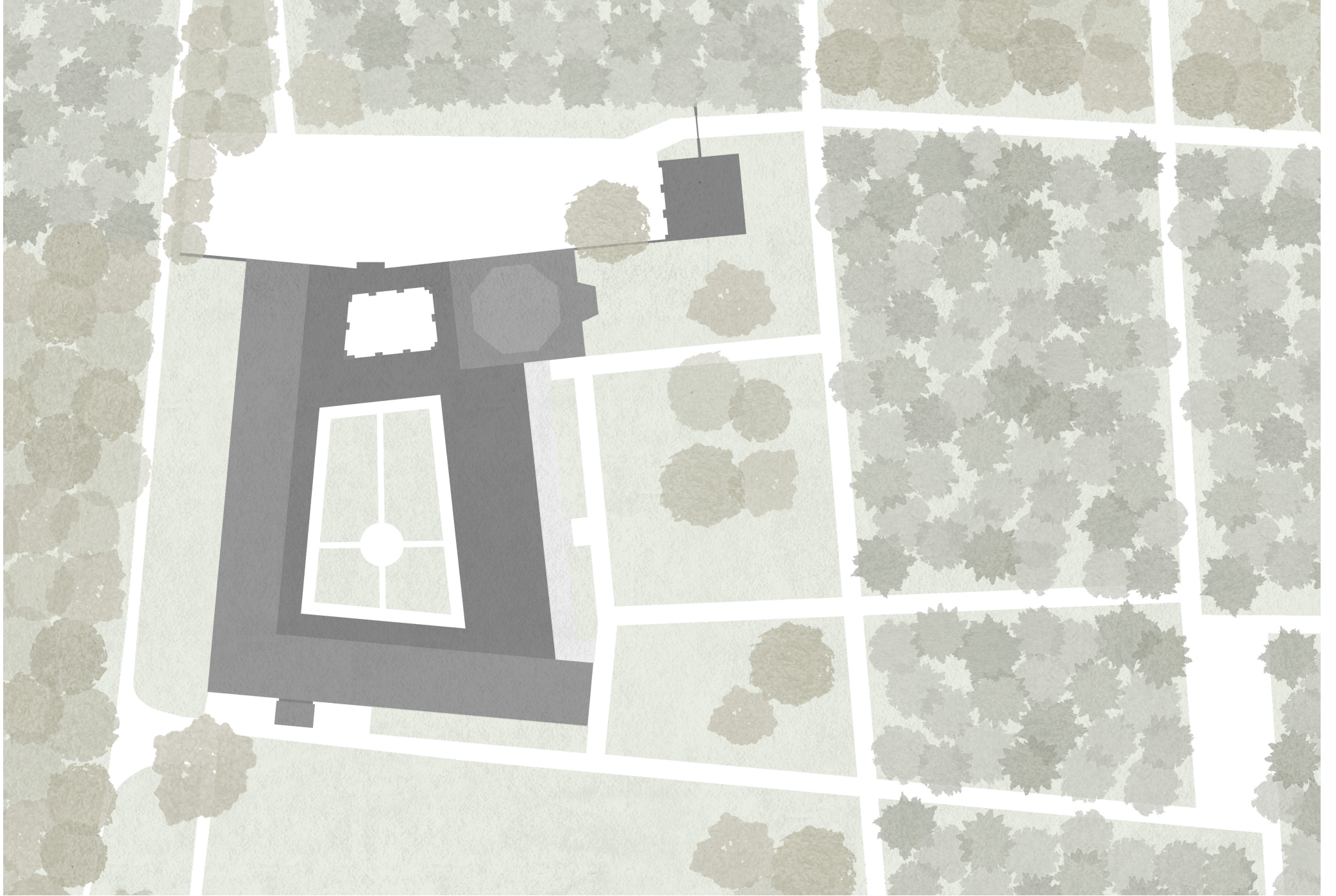






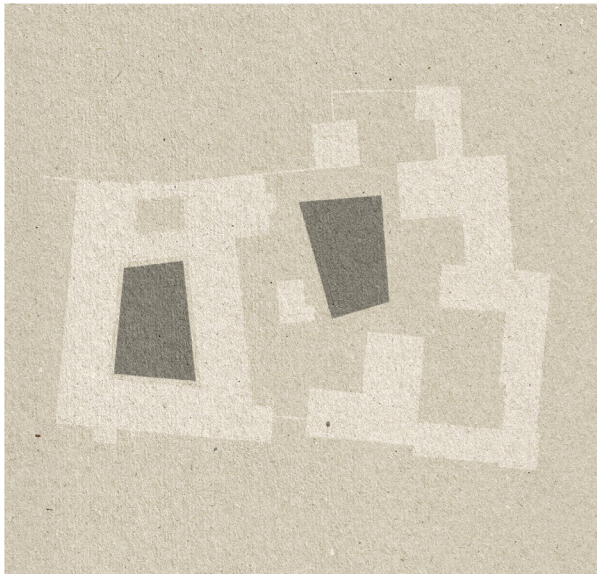
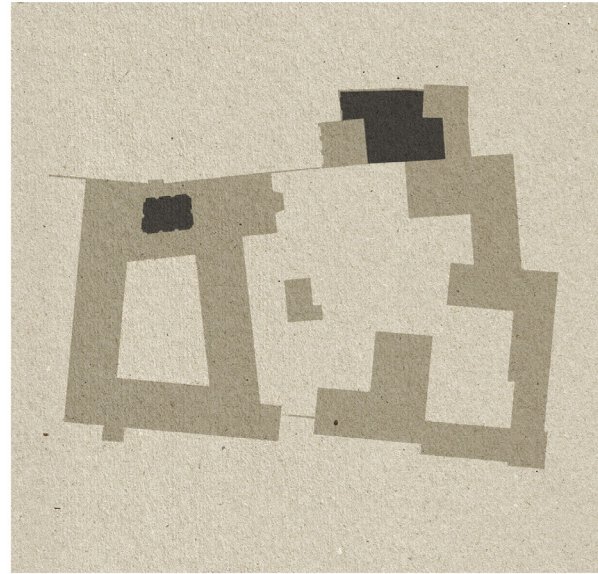
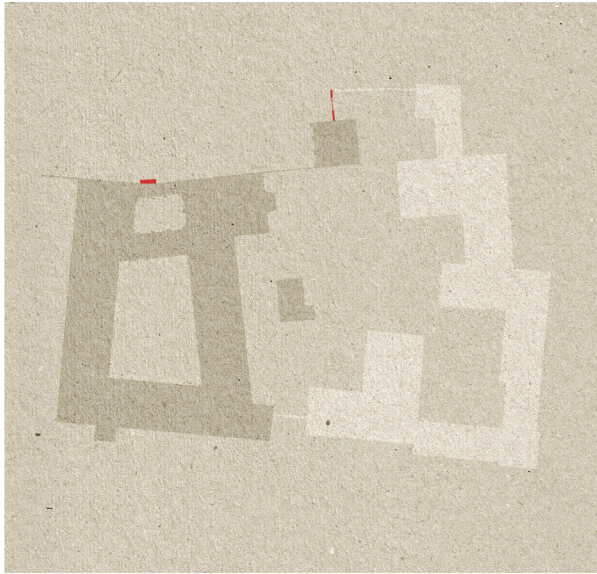


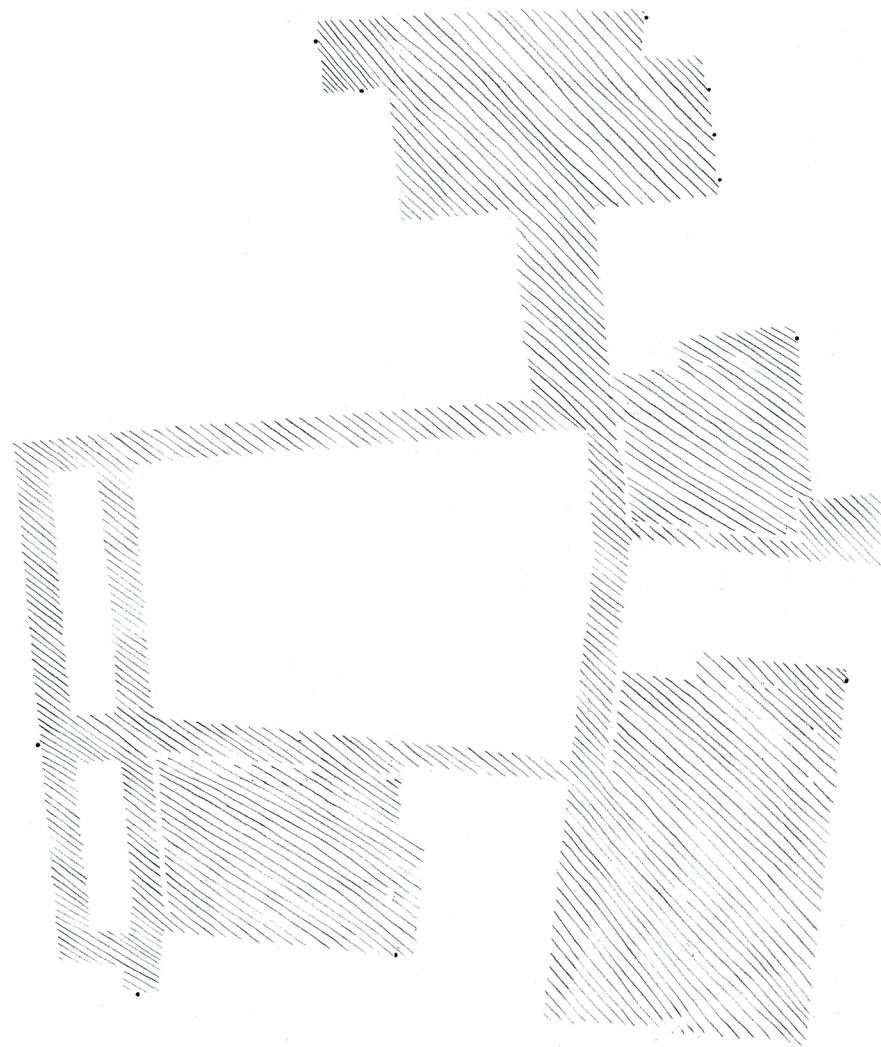
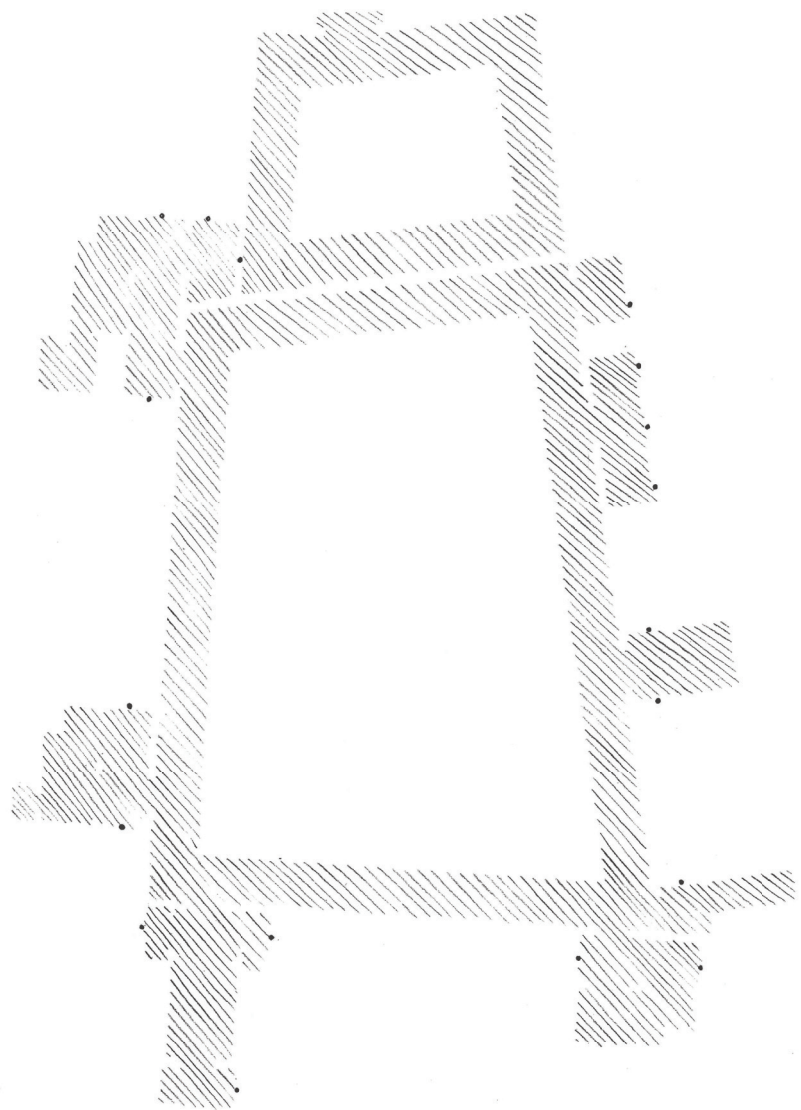
building landscape

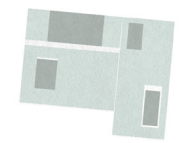
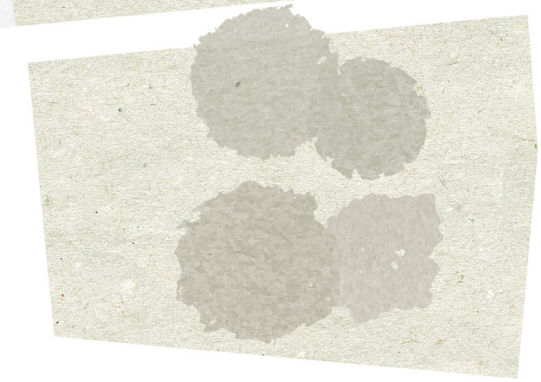
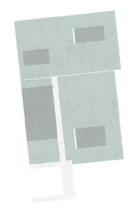
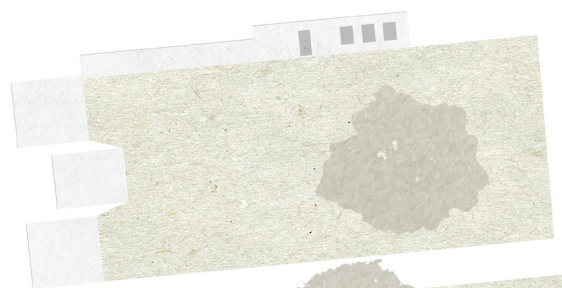






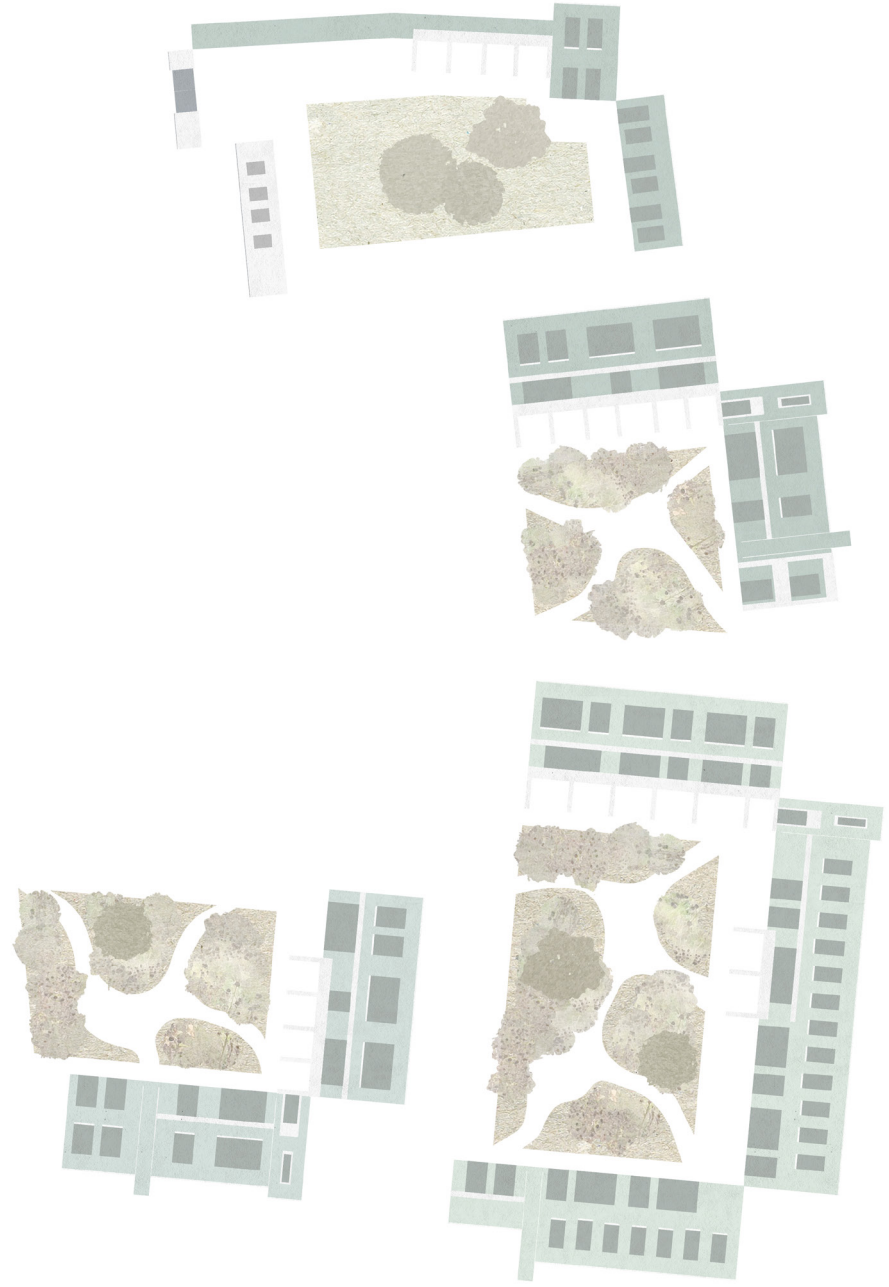




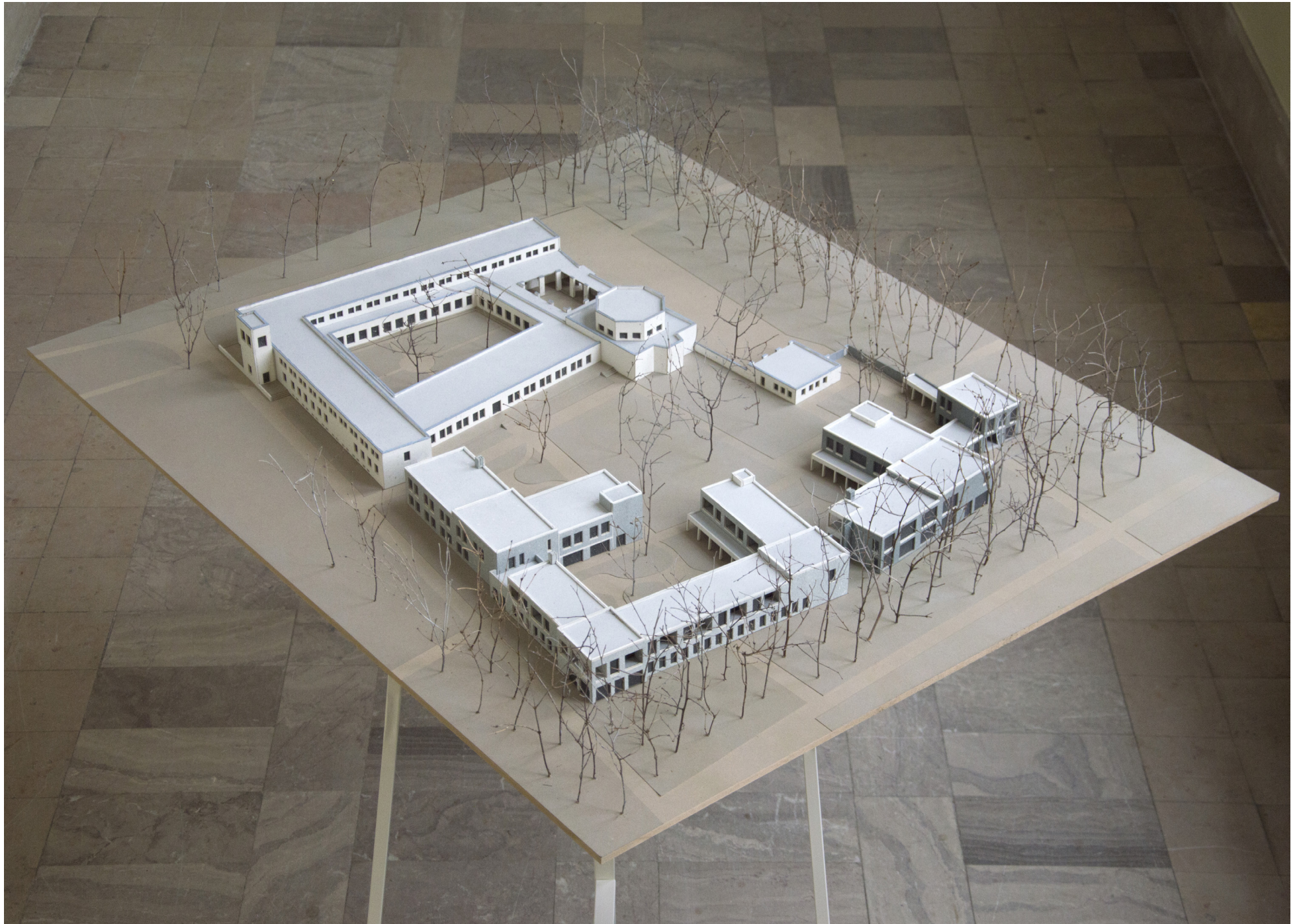




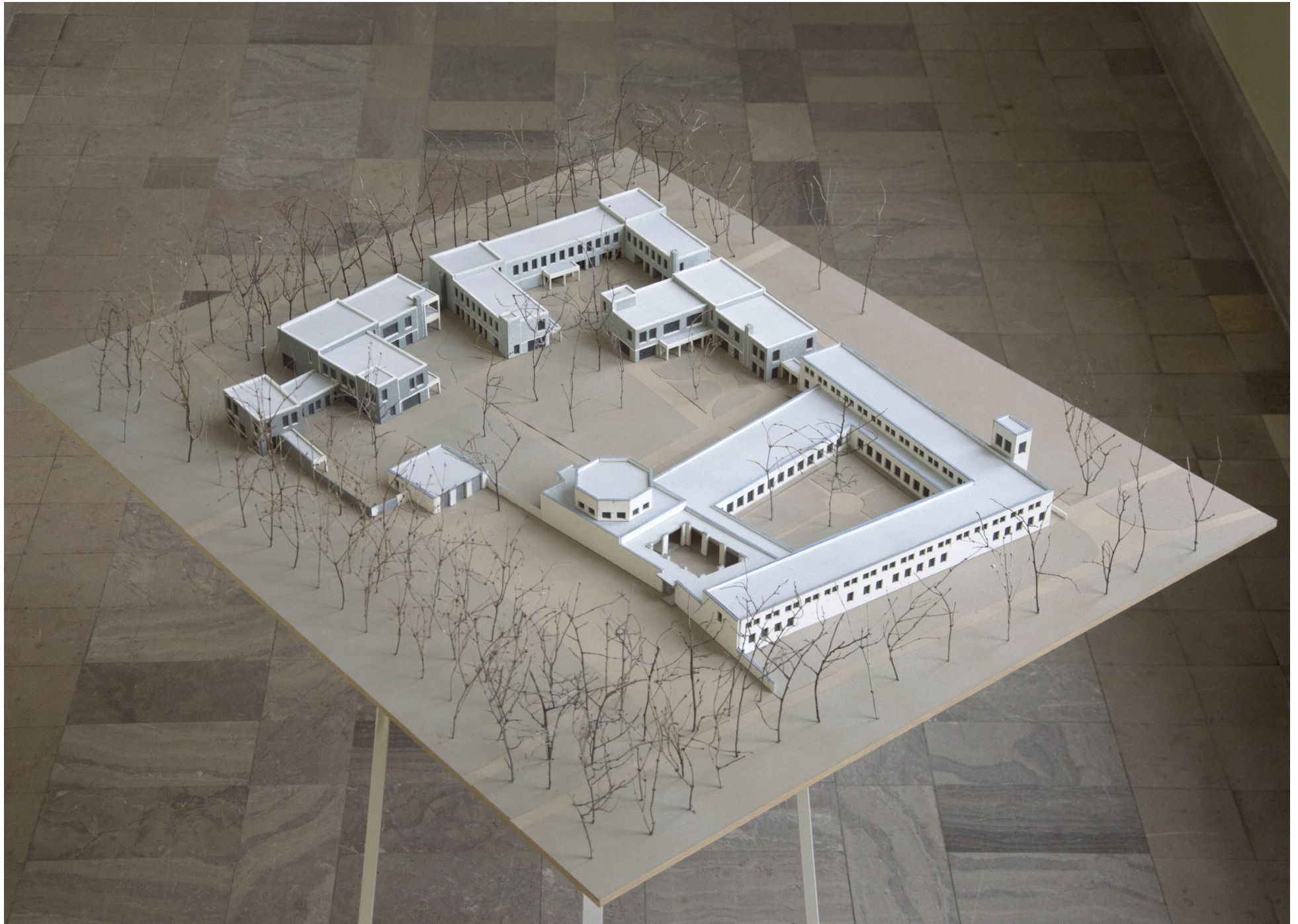




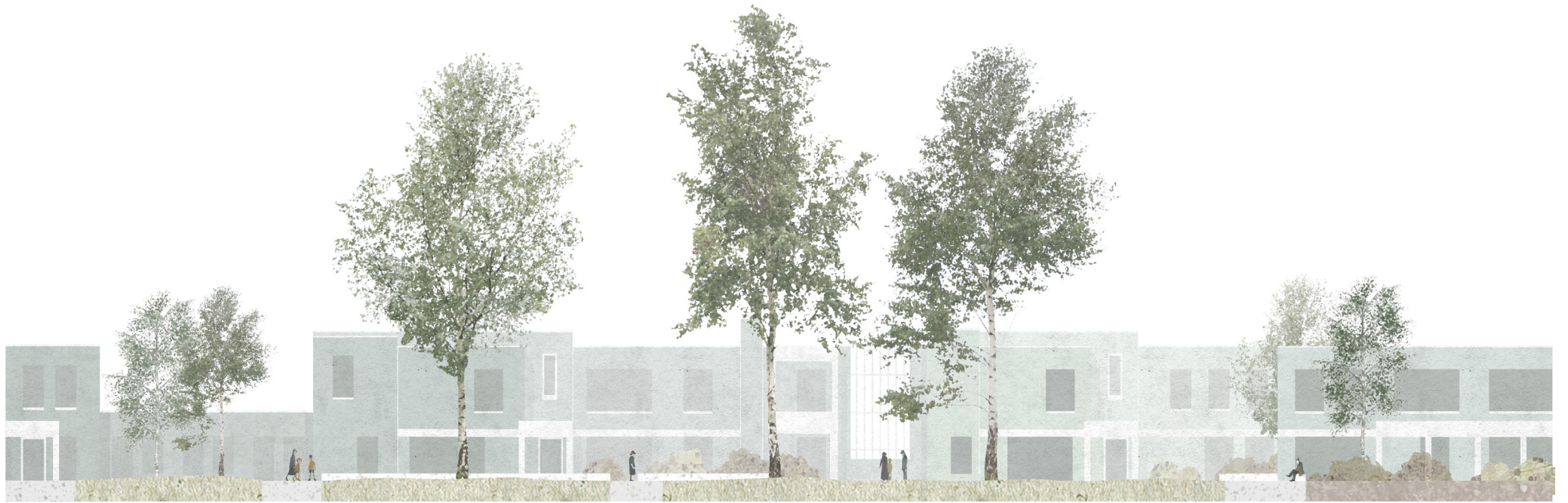








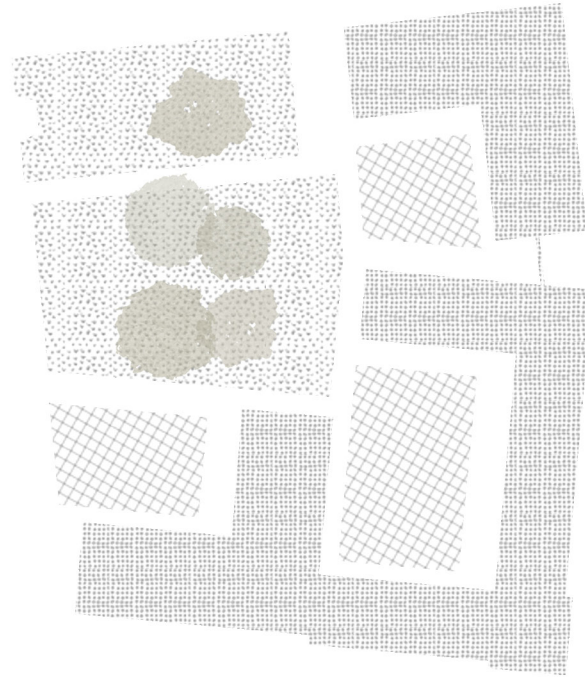
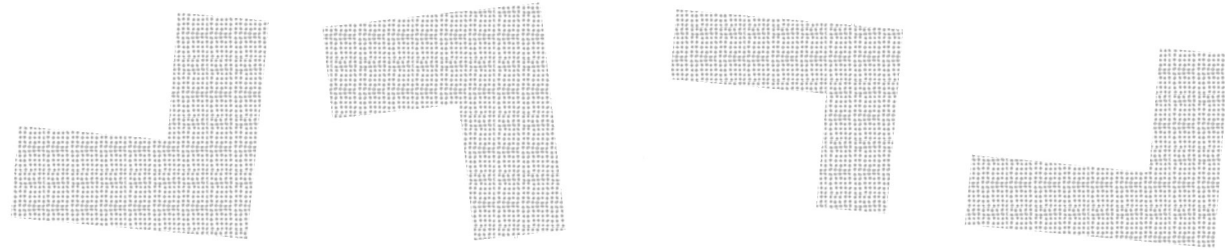






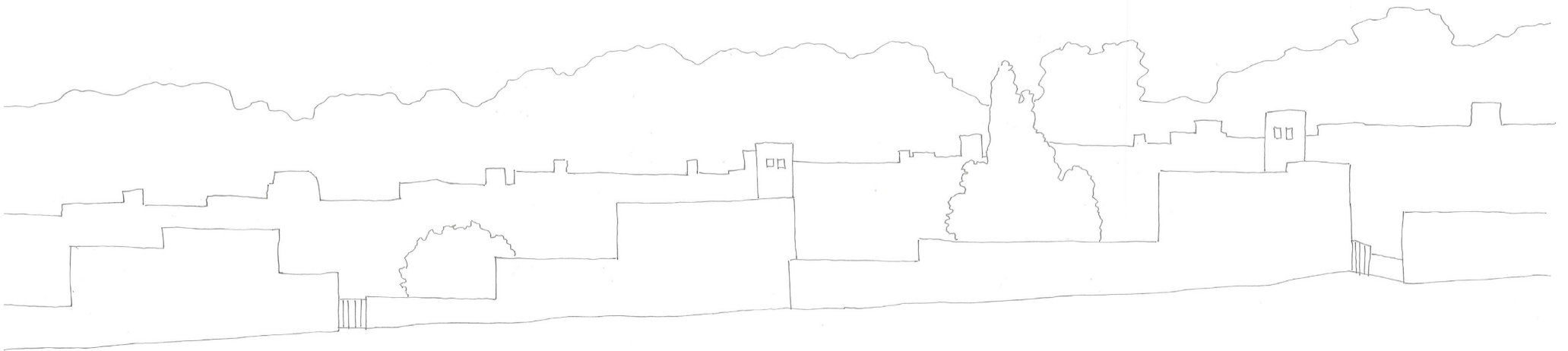


living & caring



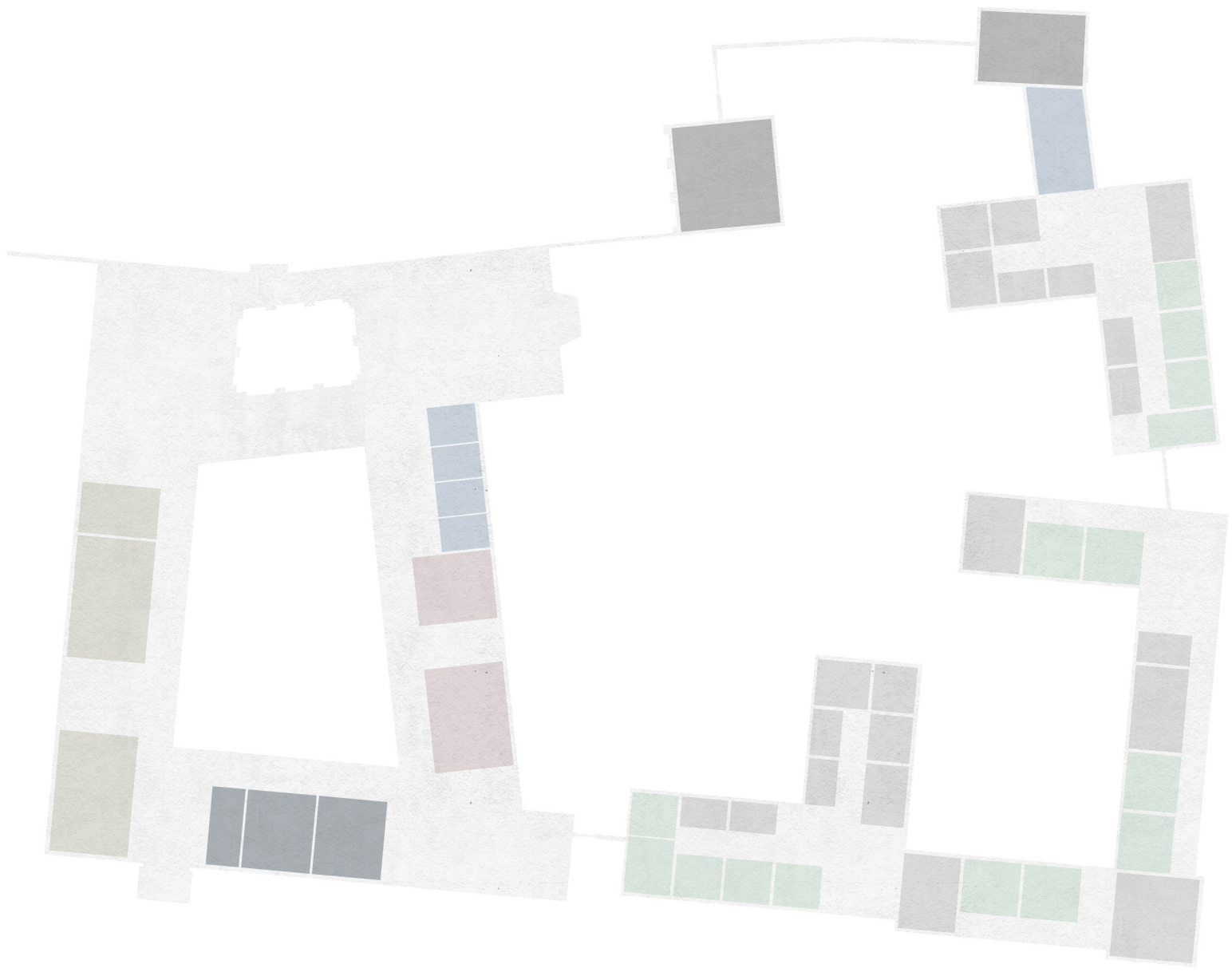
*By looking at how people lived, I quickly discovered that all the small gardens were filled with tool sheds and hobby sheds, and old cars stood there and pleasure craft etc. And so I designed a town plan and a house type that accepted that within their own area people could do as they pleased in their leisure time without upsetting their neighbours and without having any special easements; such a house and such a town plan that respected this or assumed the individual right to enjoy private life; but at the same time the resulting part of the town was then to have a common character as seen from outside so that it became a small community.*

Jørn Utzon  
about his first courtyard house project Houses for Skåne



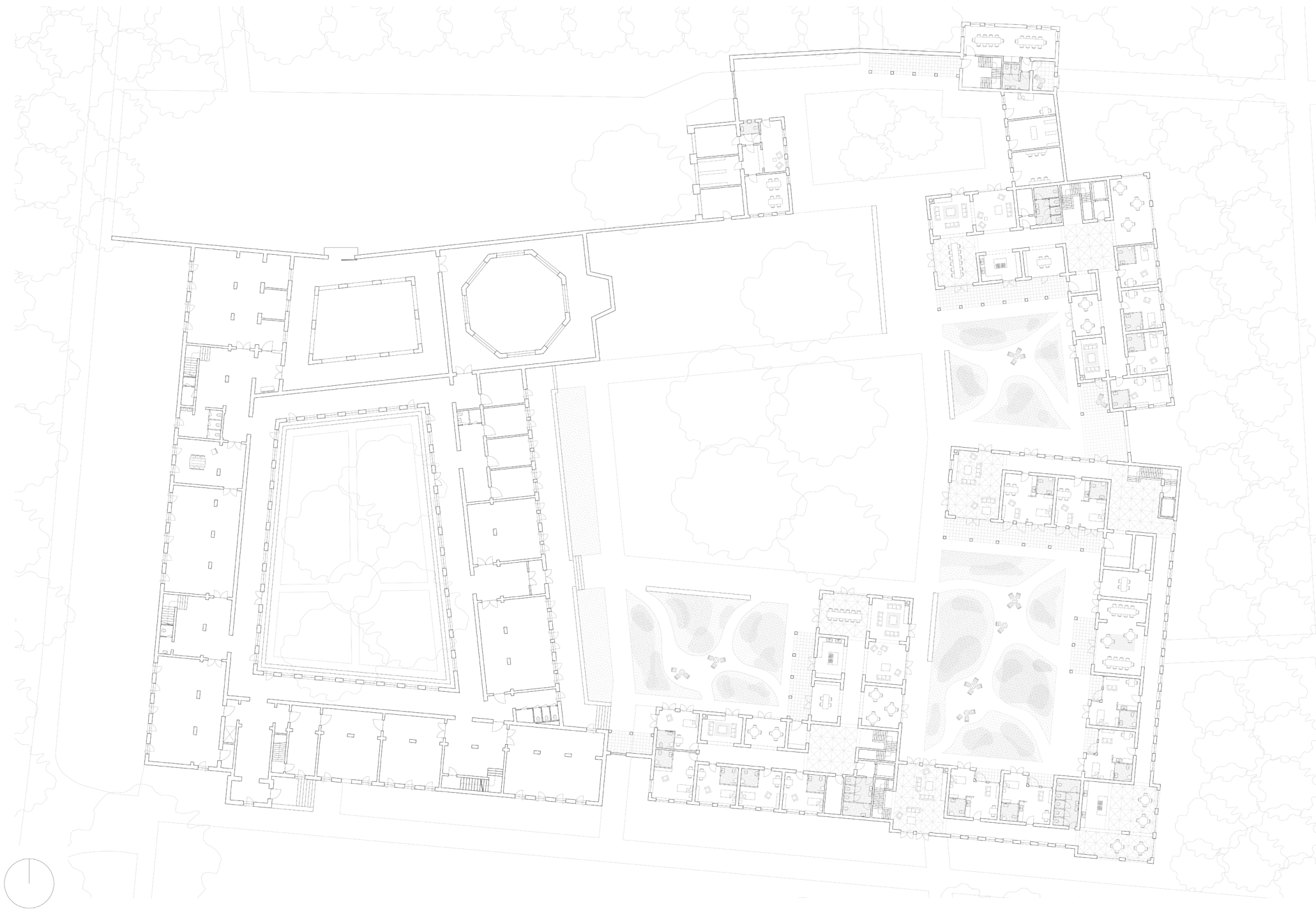






- living spaces
- rooms
- daycare
- restaurant
- kitchen
- care supporting functions
- service spaces















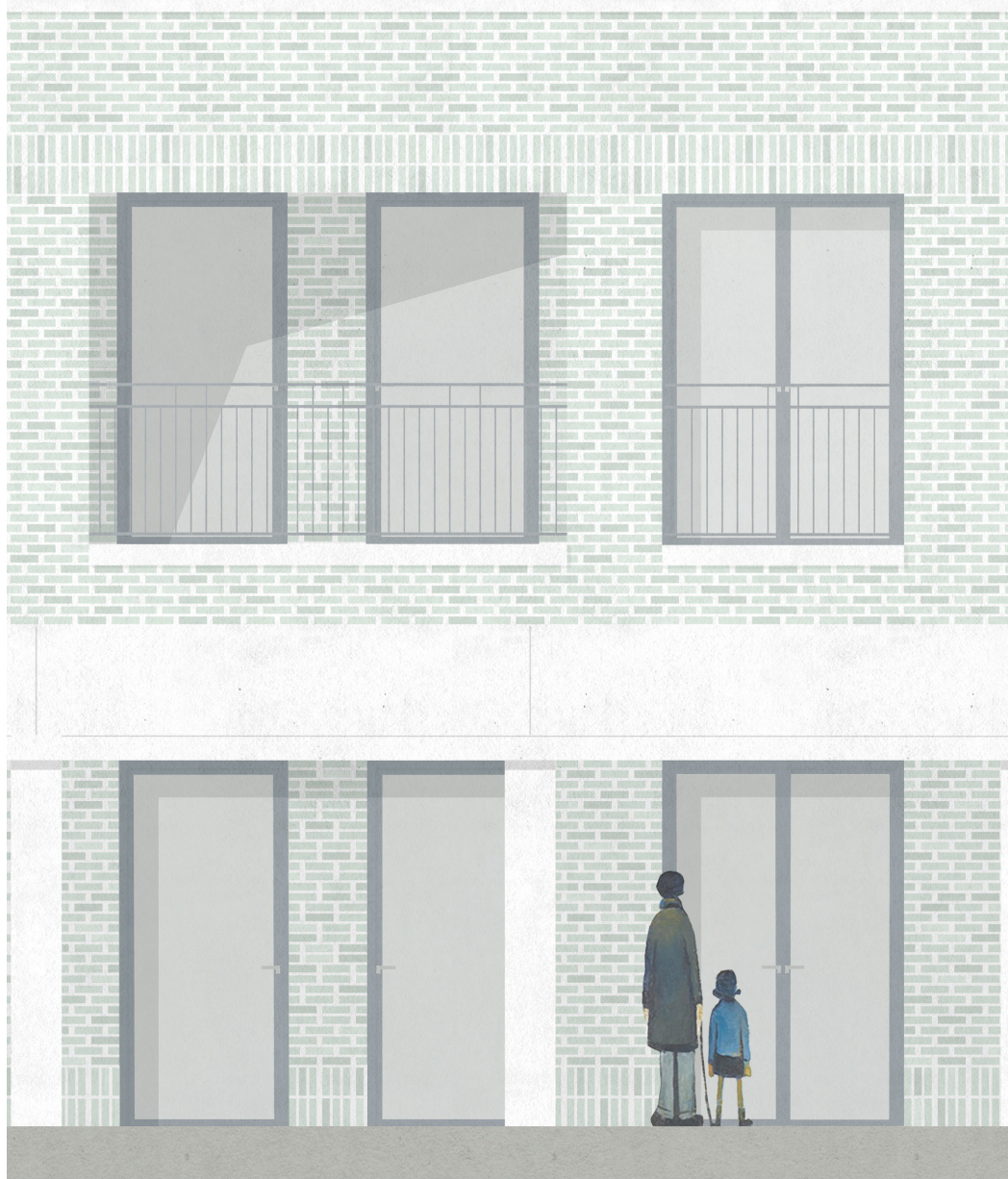














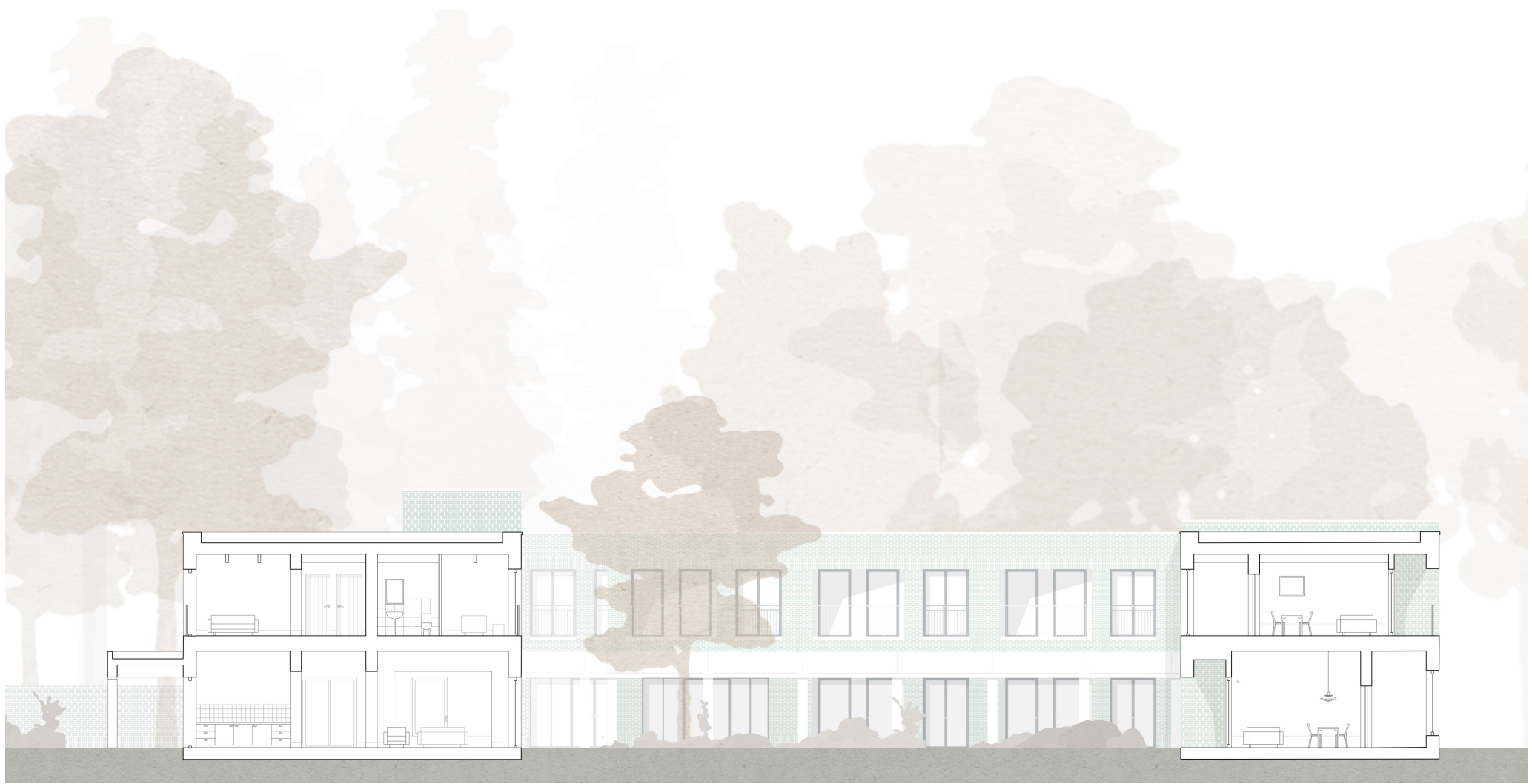


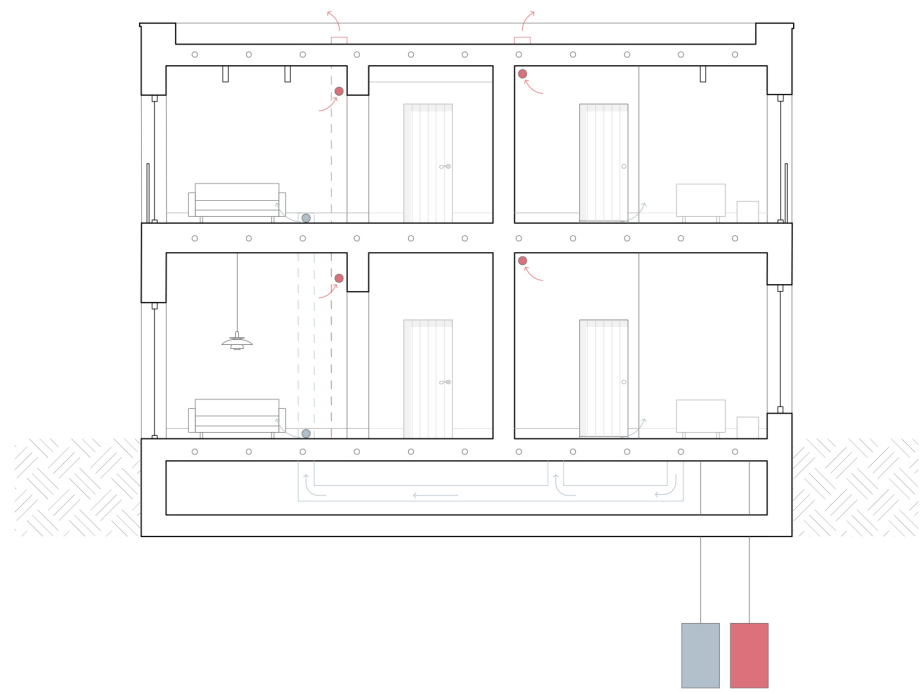
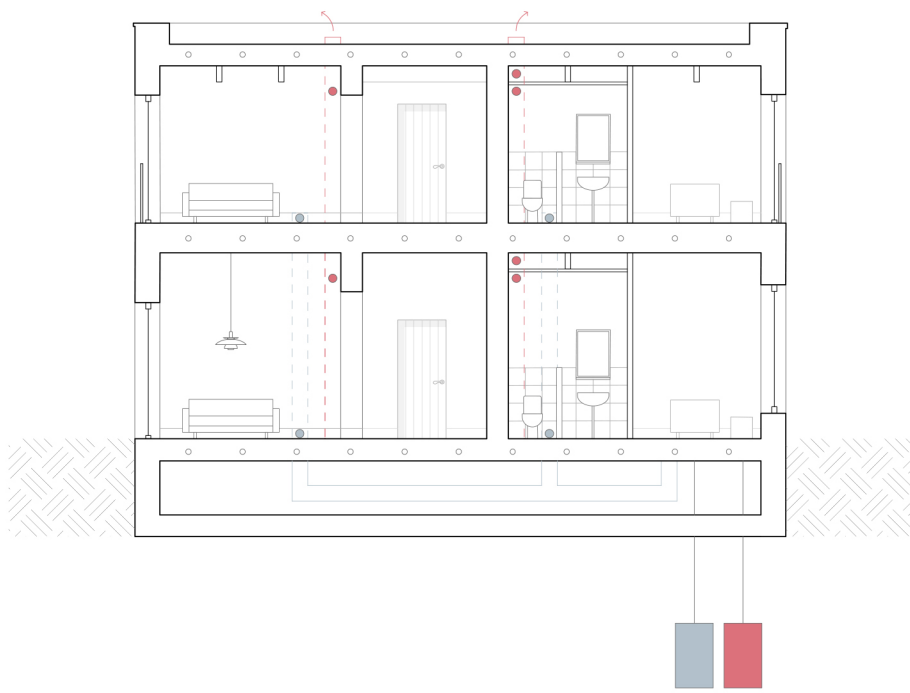


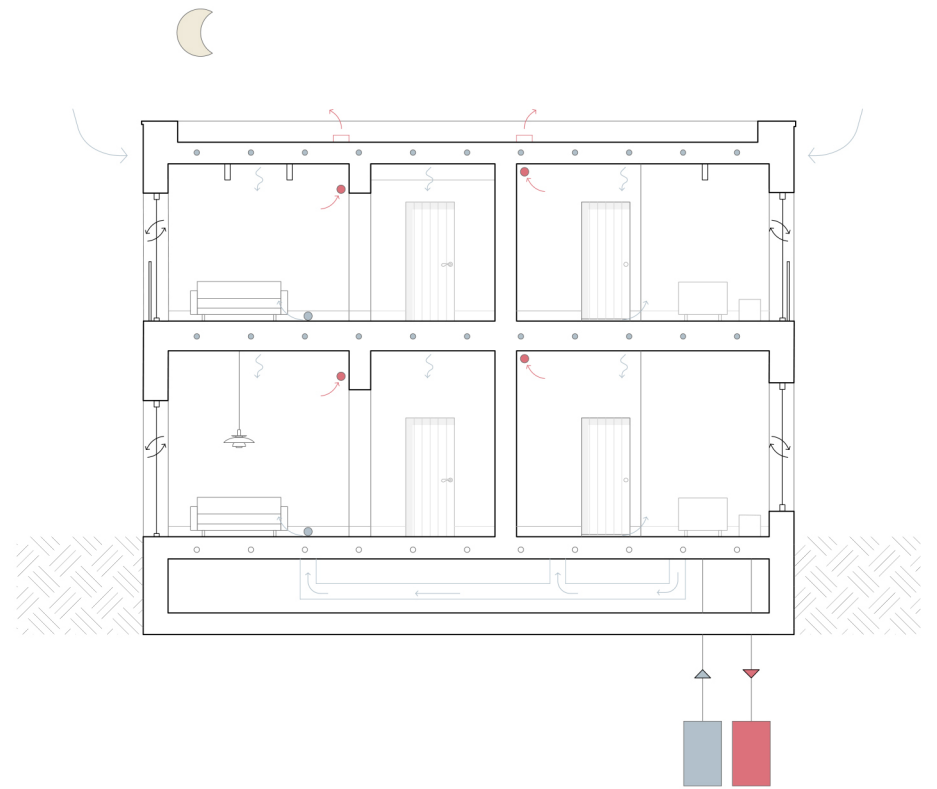
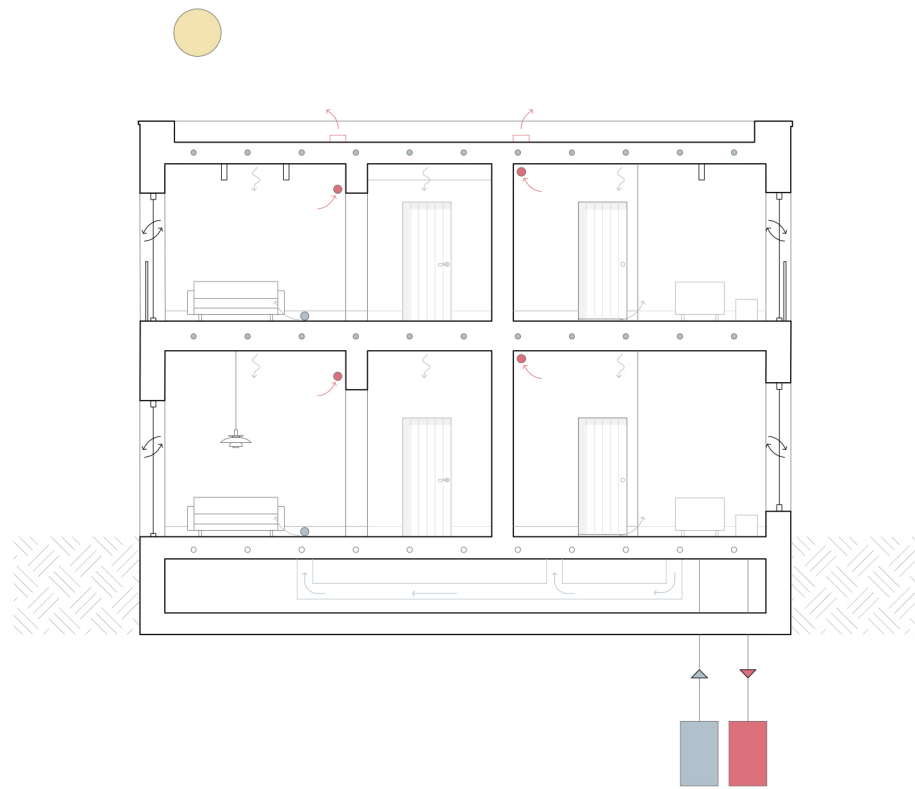




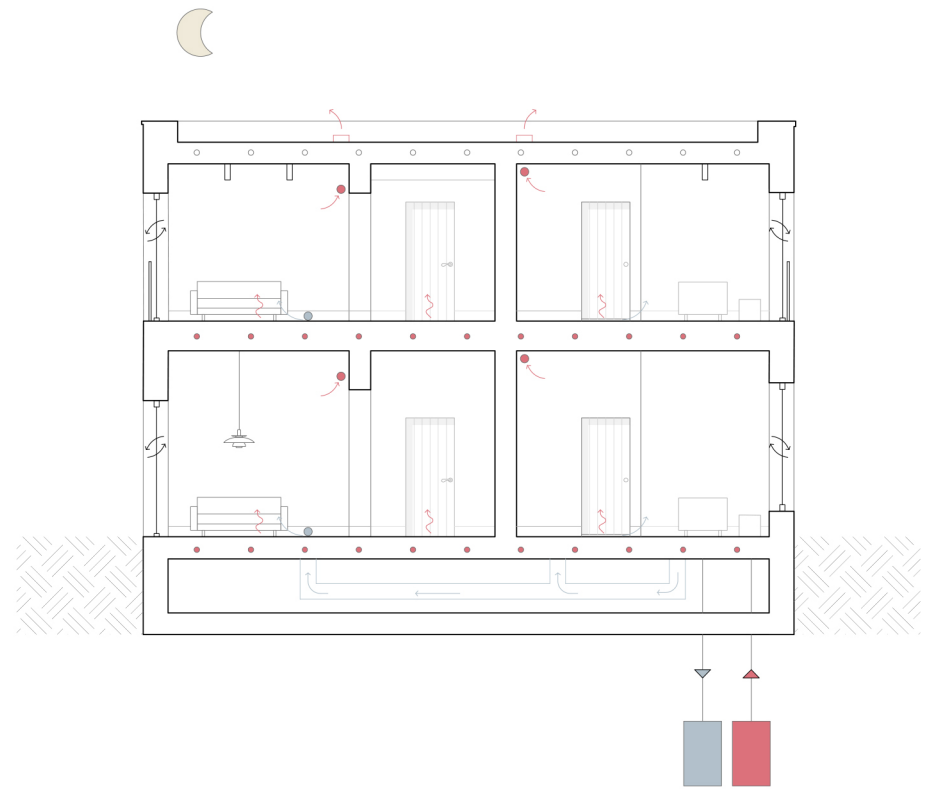
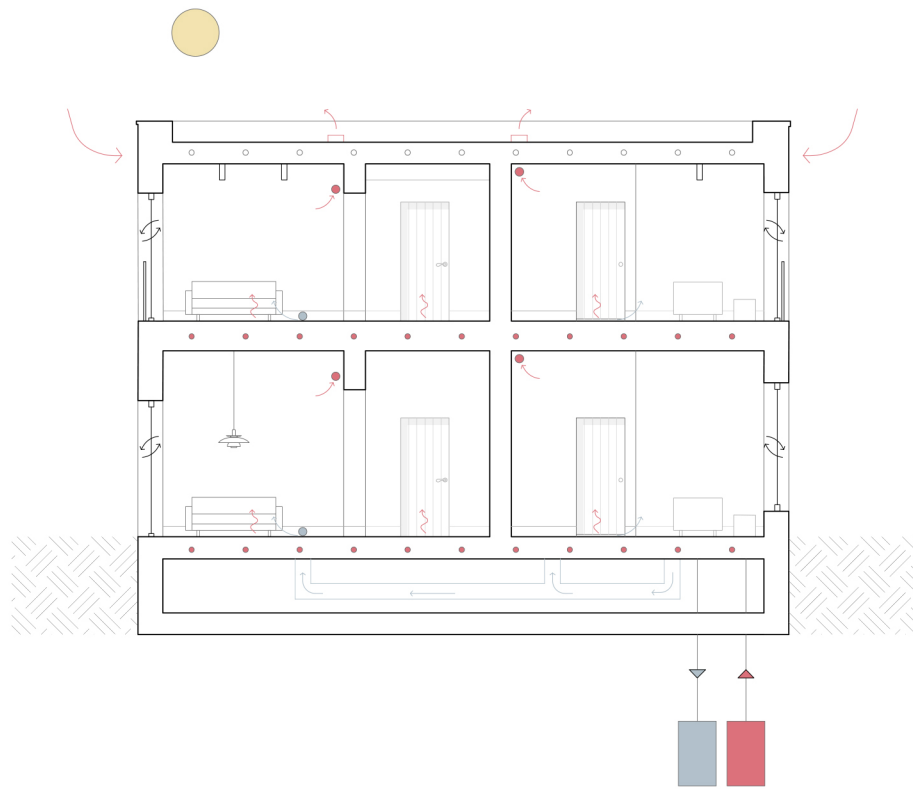




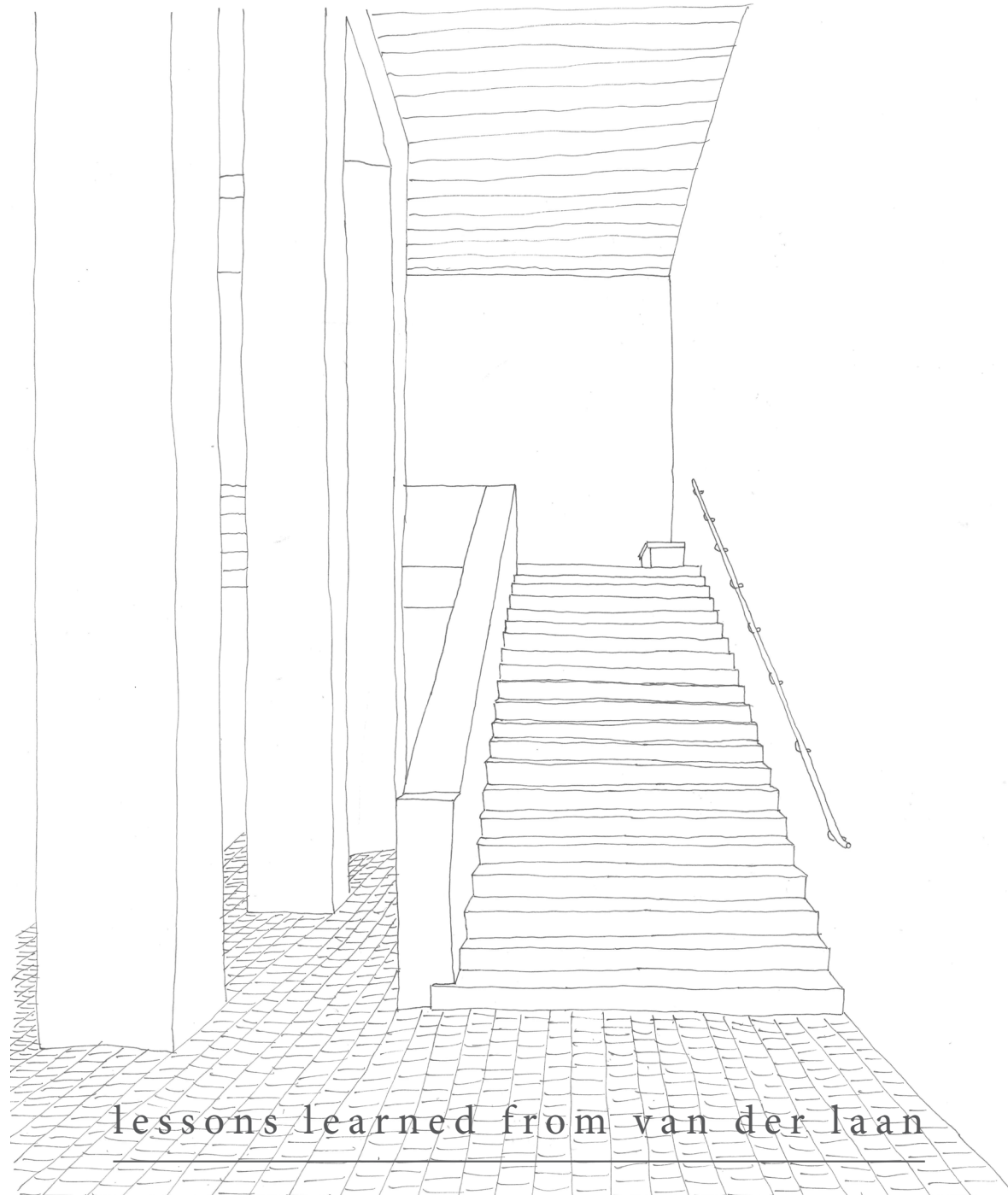




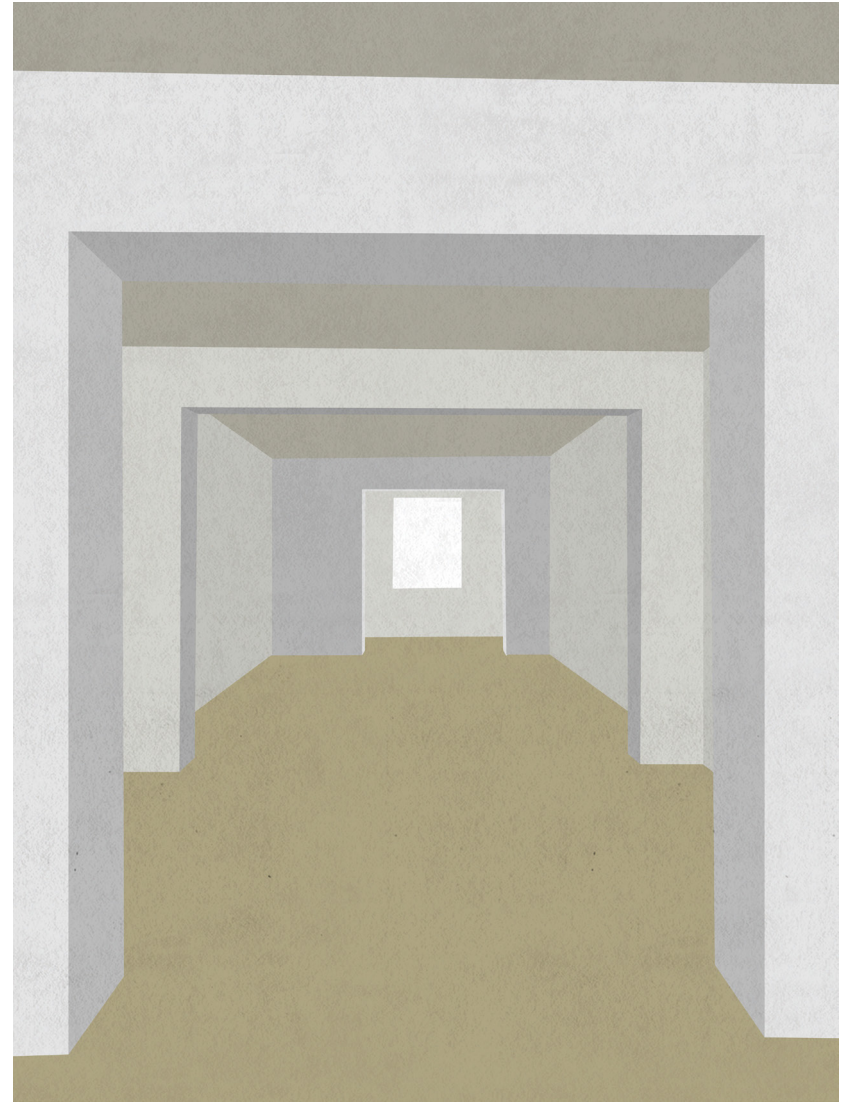
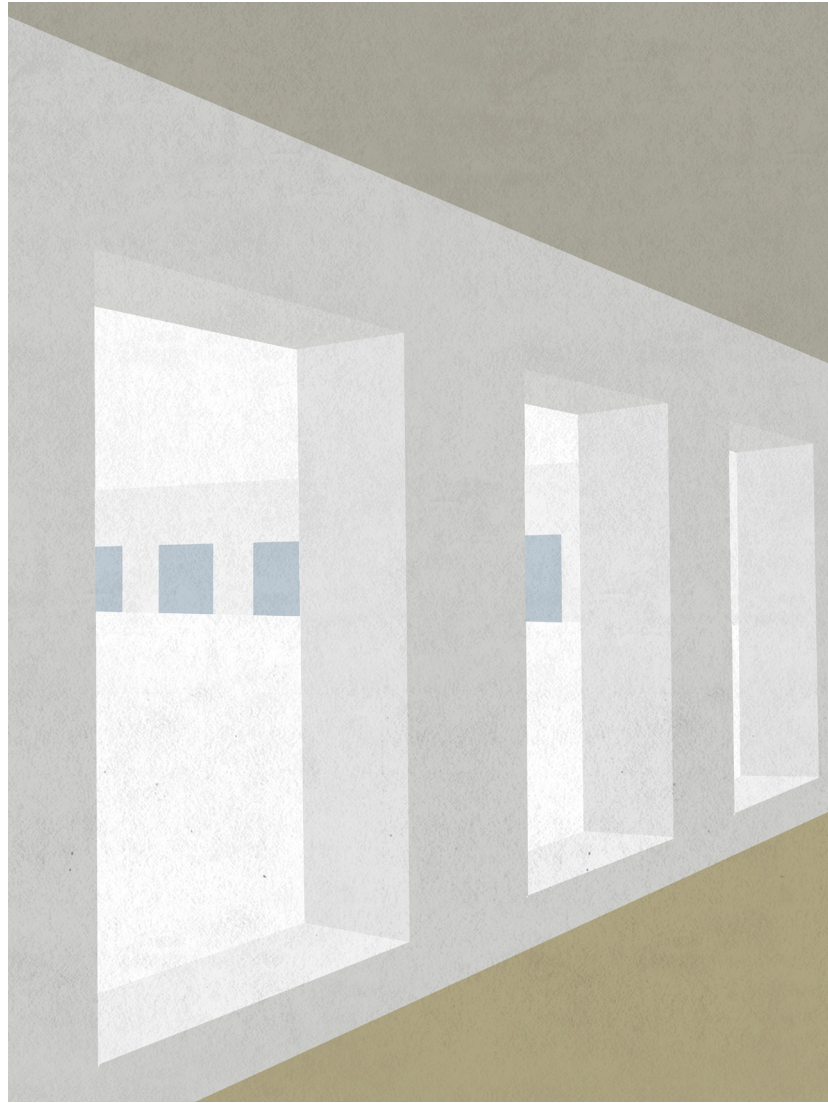
summer



winter

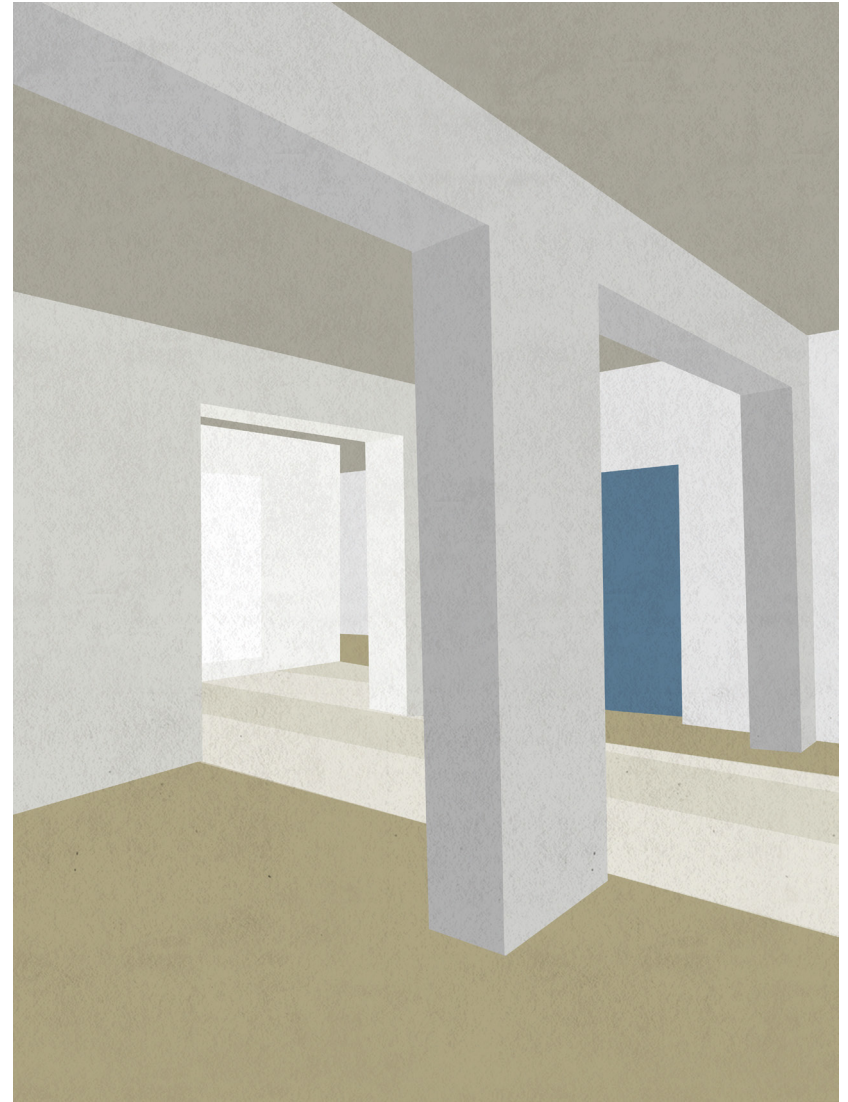
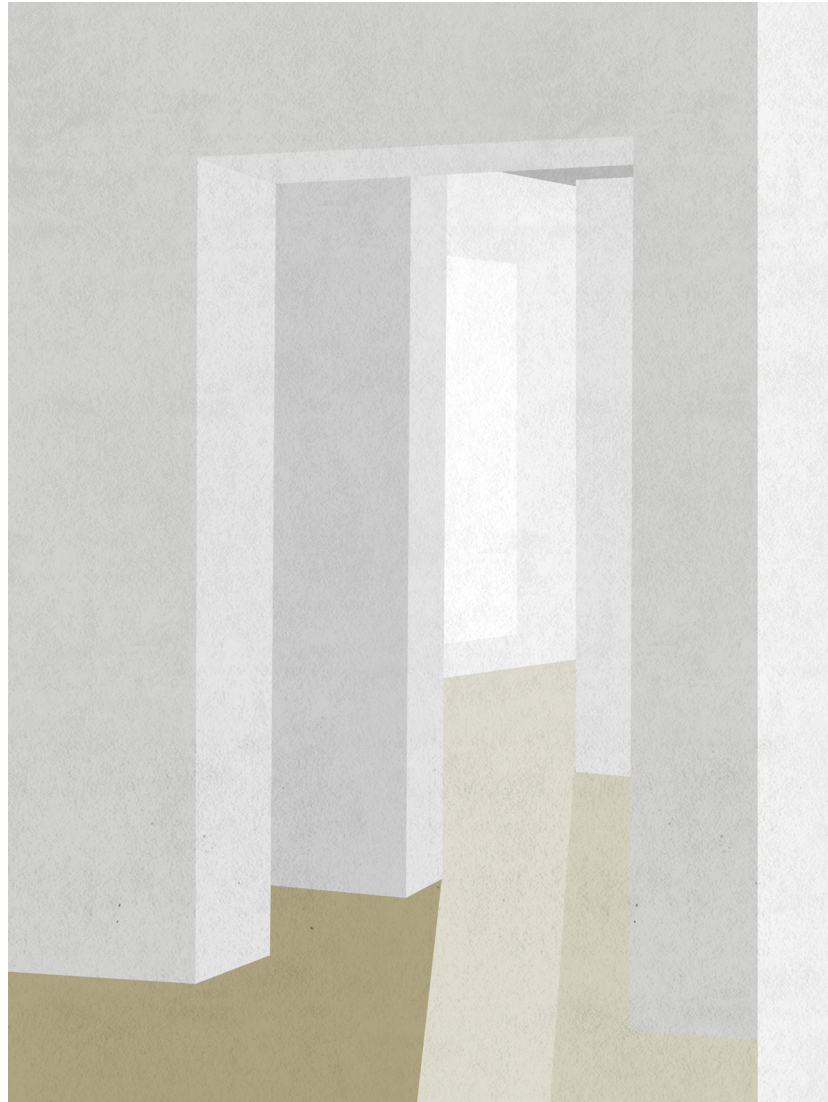


lessons learned from van der laan





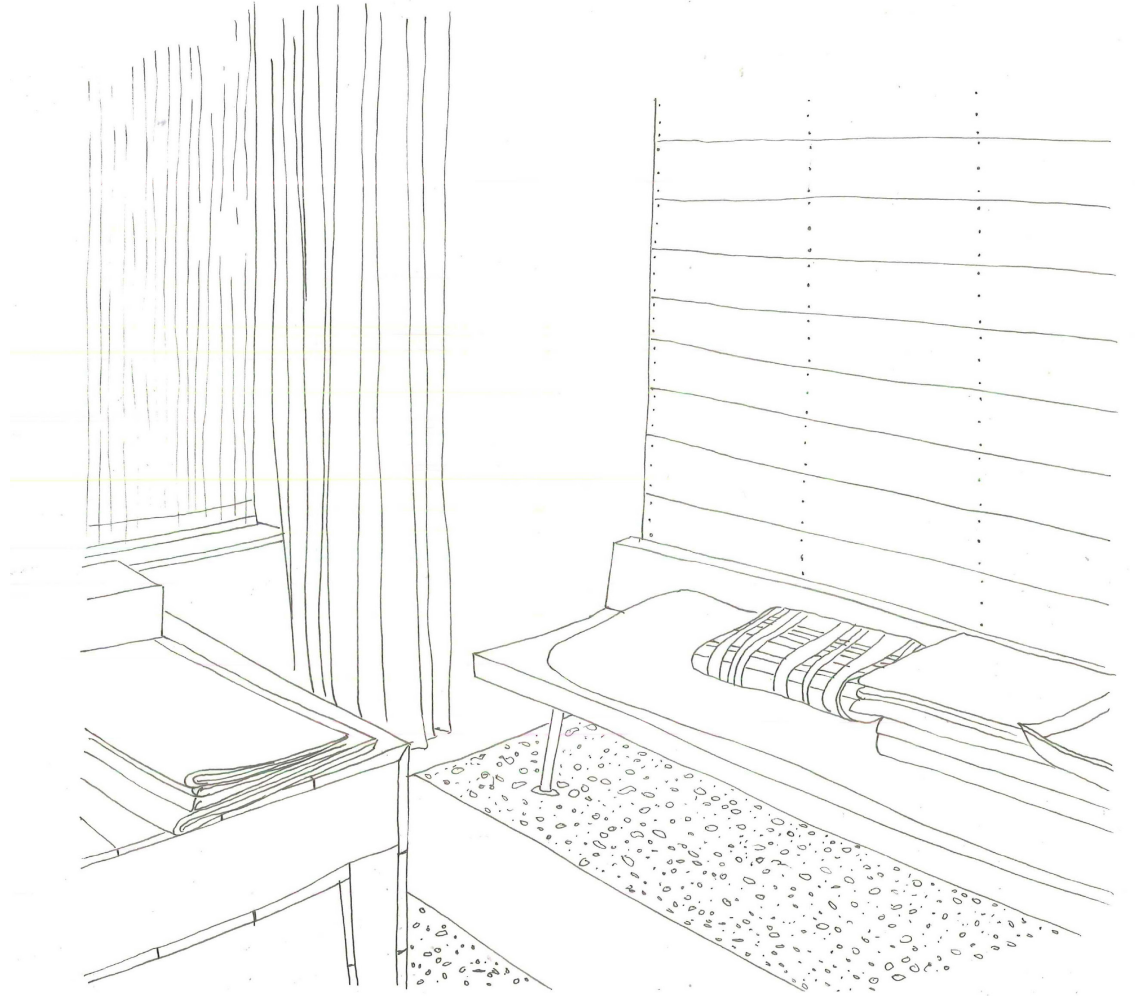




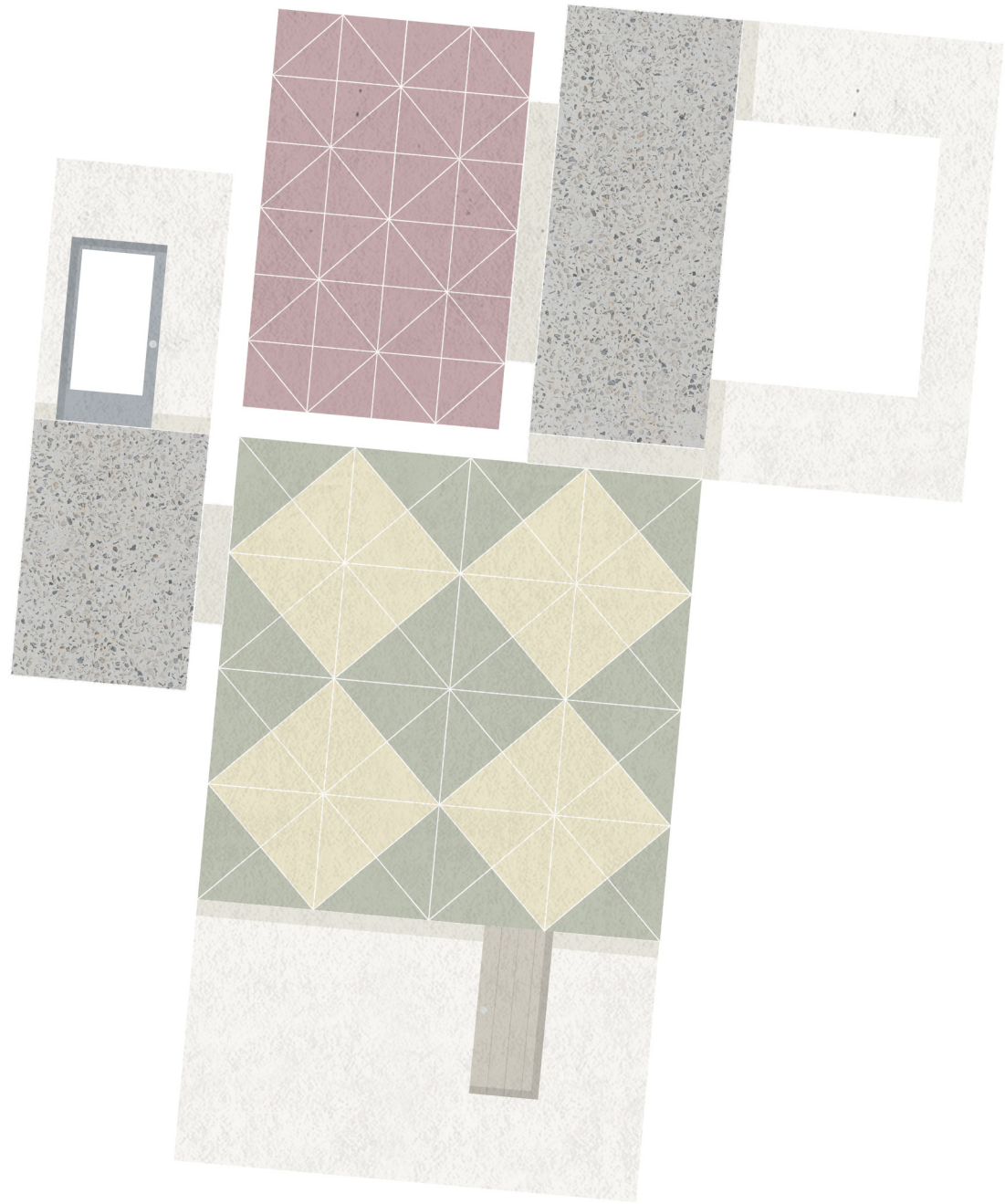






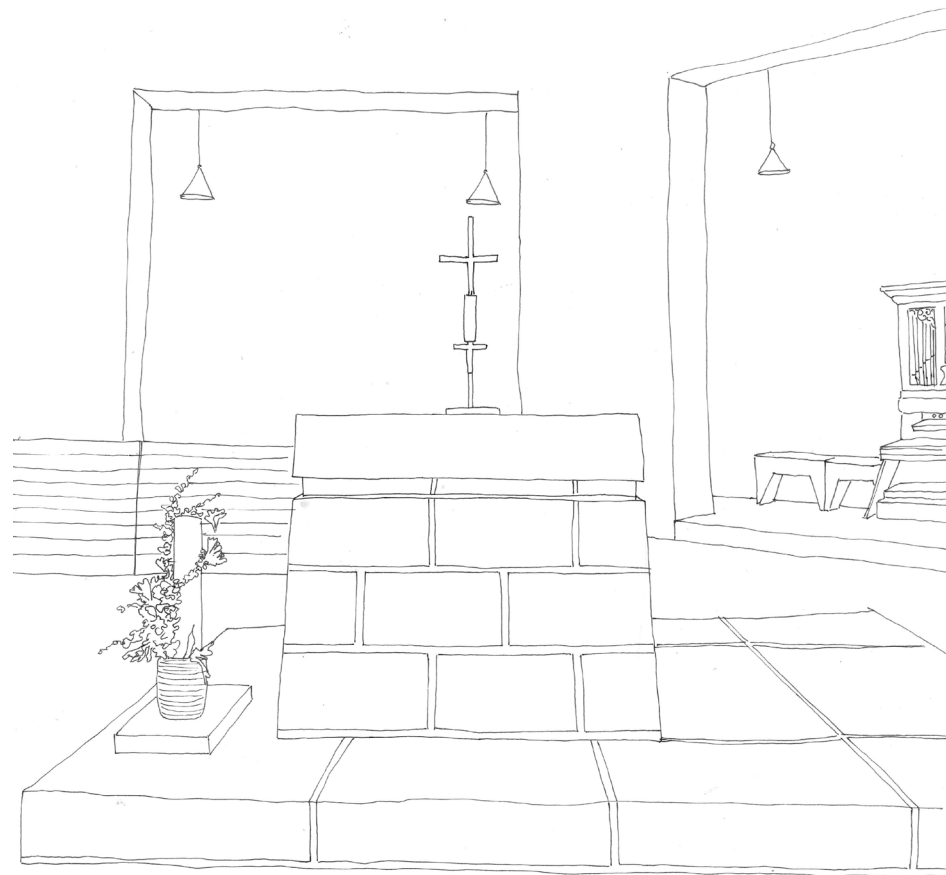


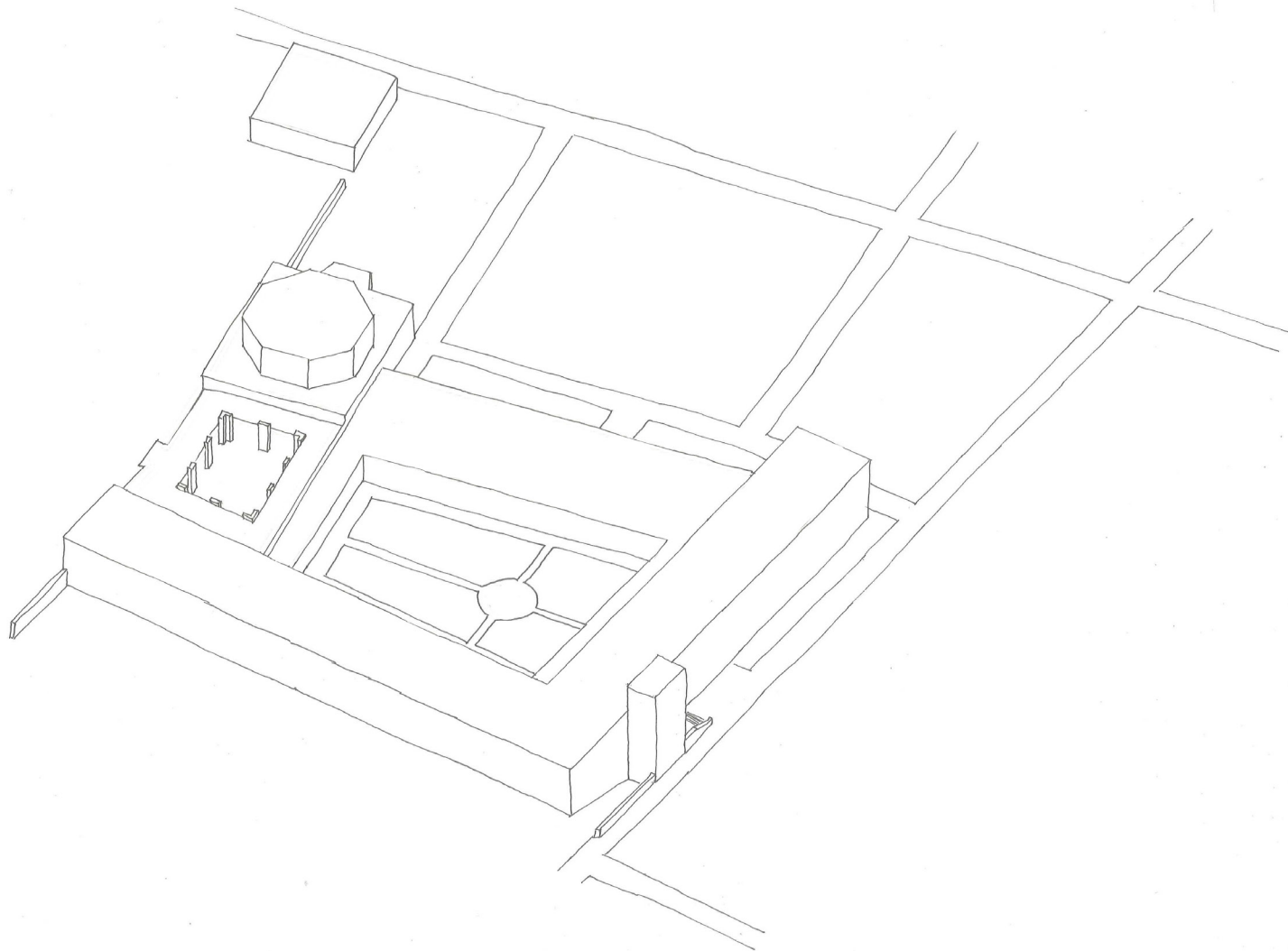






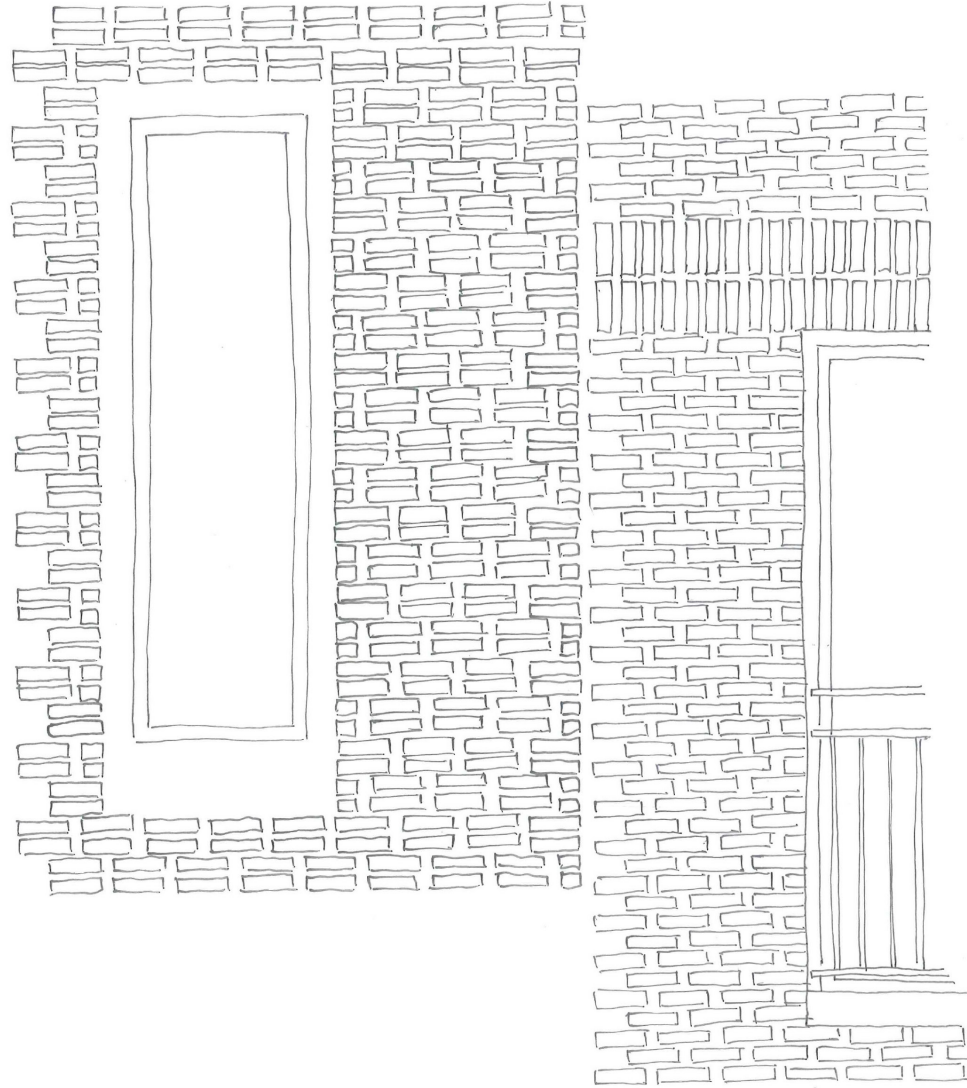












material culture



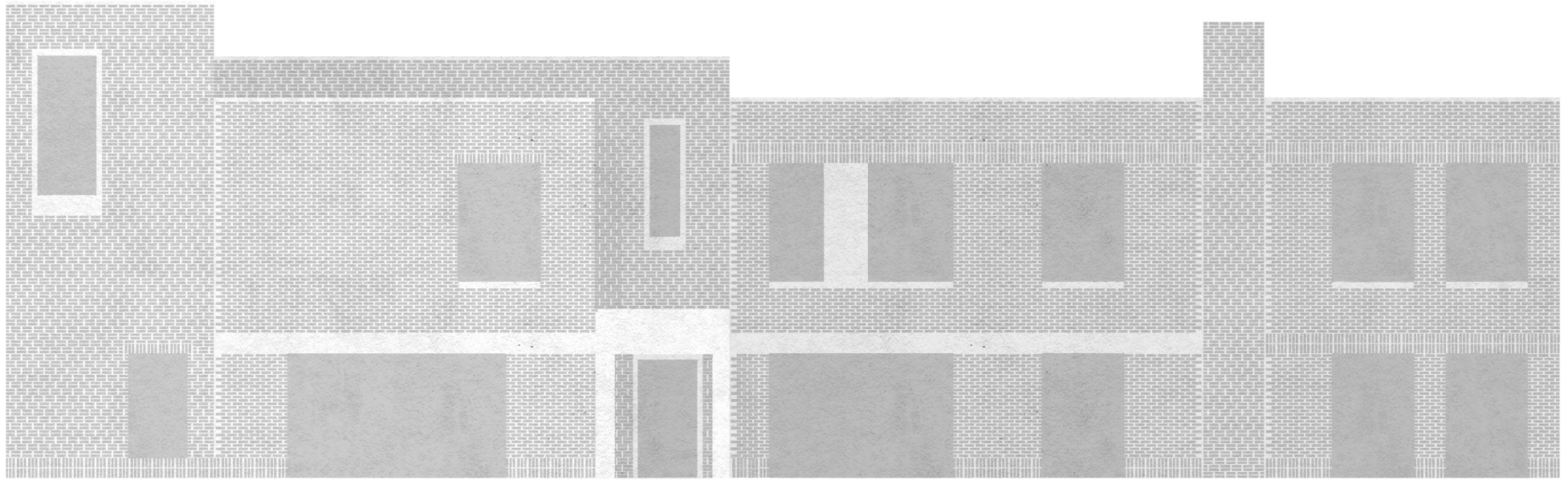
*The words 'nobilis simplicitas', principal simplicity, are repeated like a chorus. These are words close to my heart; I searched for the art in the right proportions and the simplicity in the materials and shapes. The same simplistic rectangular shapes keep reappearing and everything is made of brick, concrete and rough wood.*

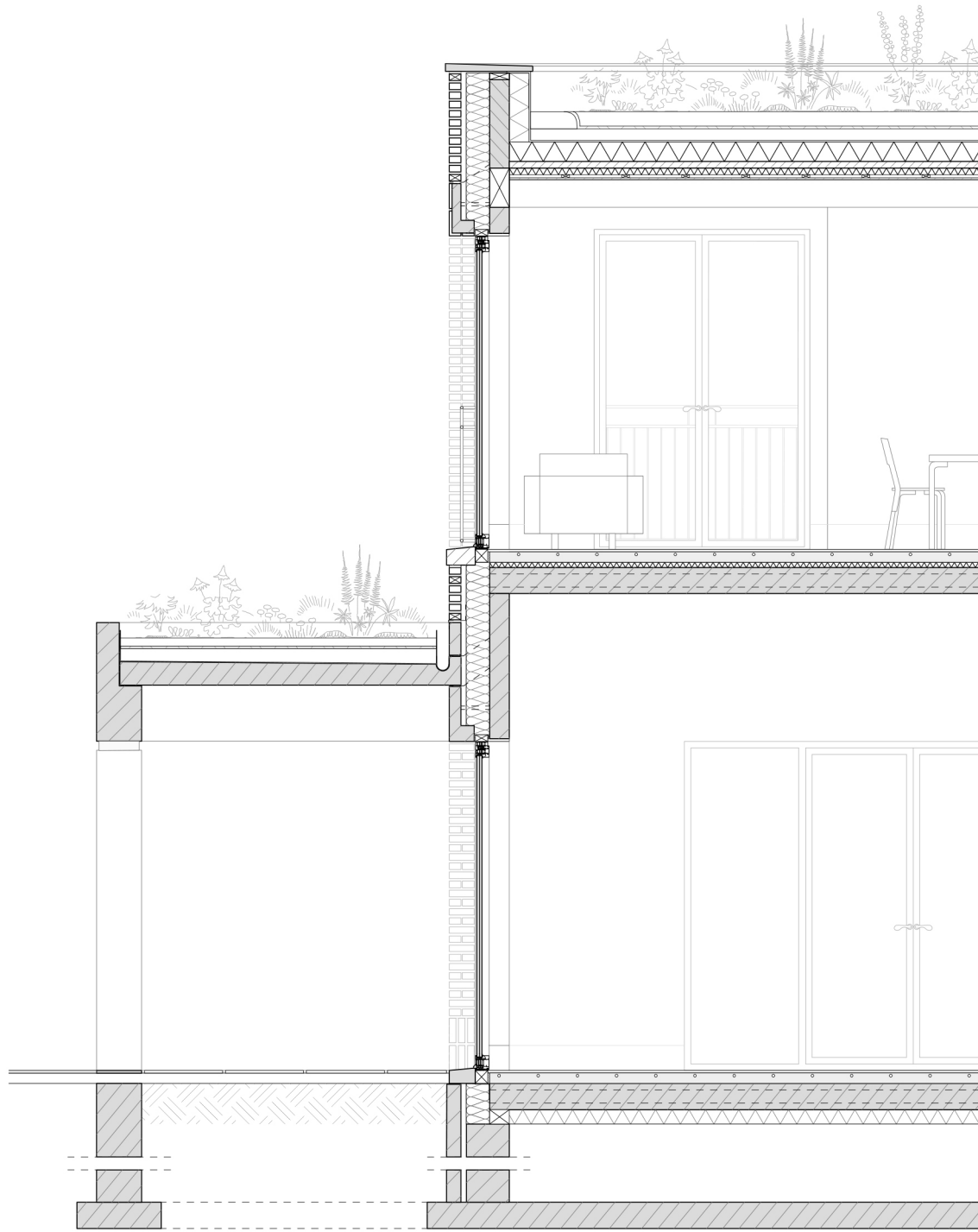
Dom Hans van der Laan  
about Roosenberg abbey in his fourth letter to nun Germaine Vael



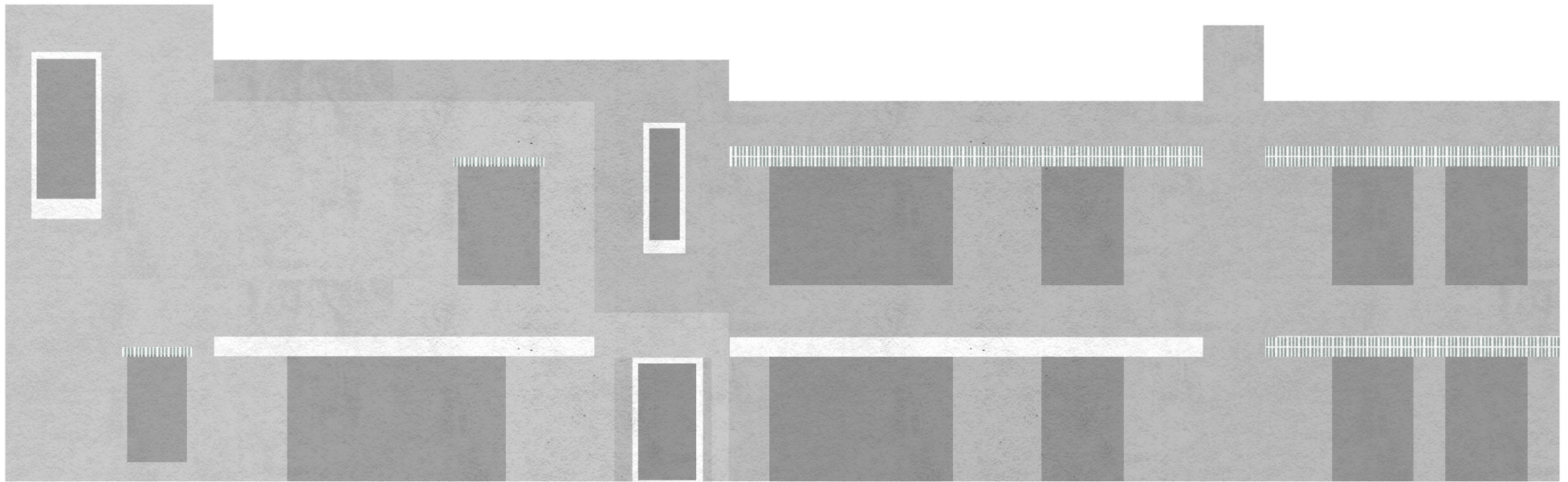


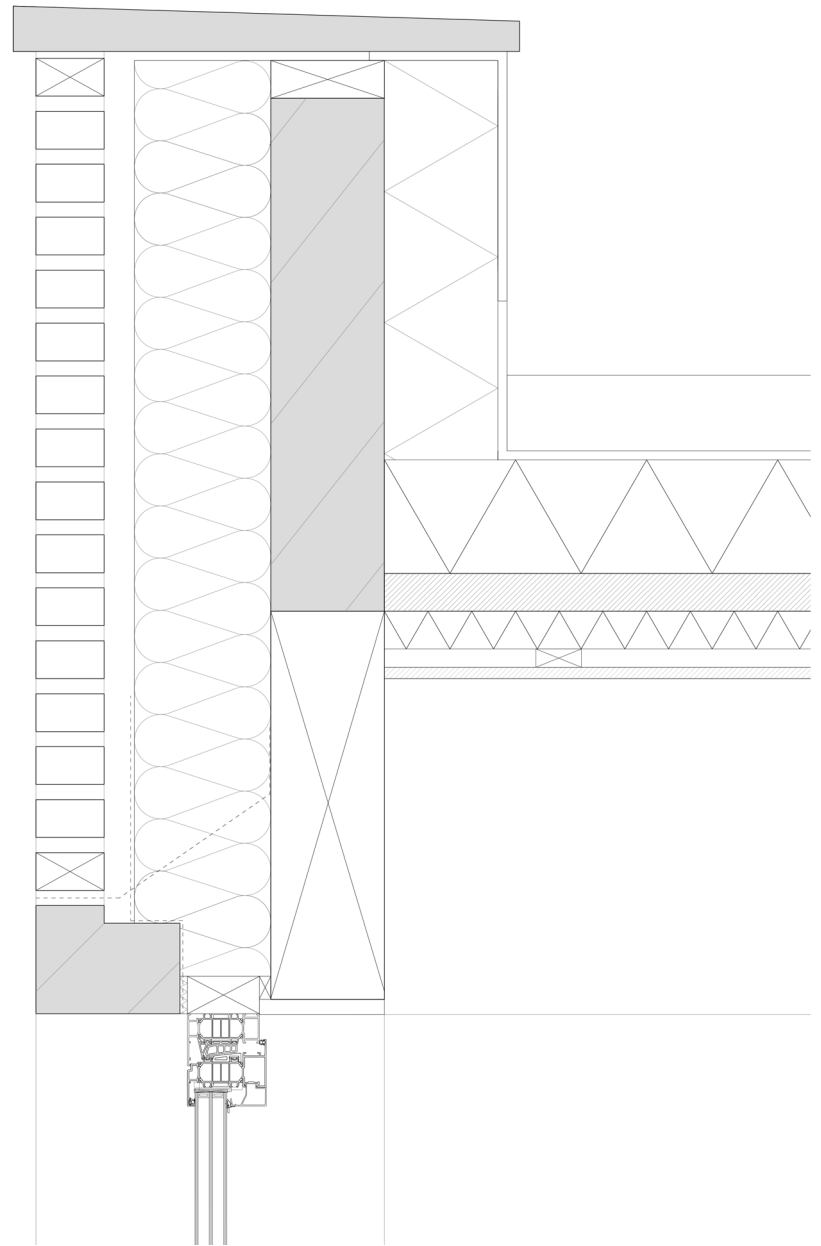
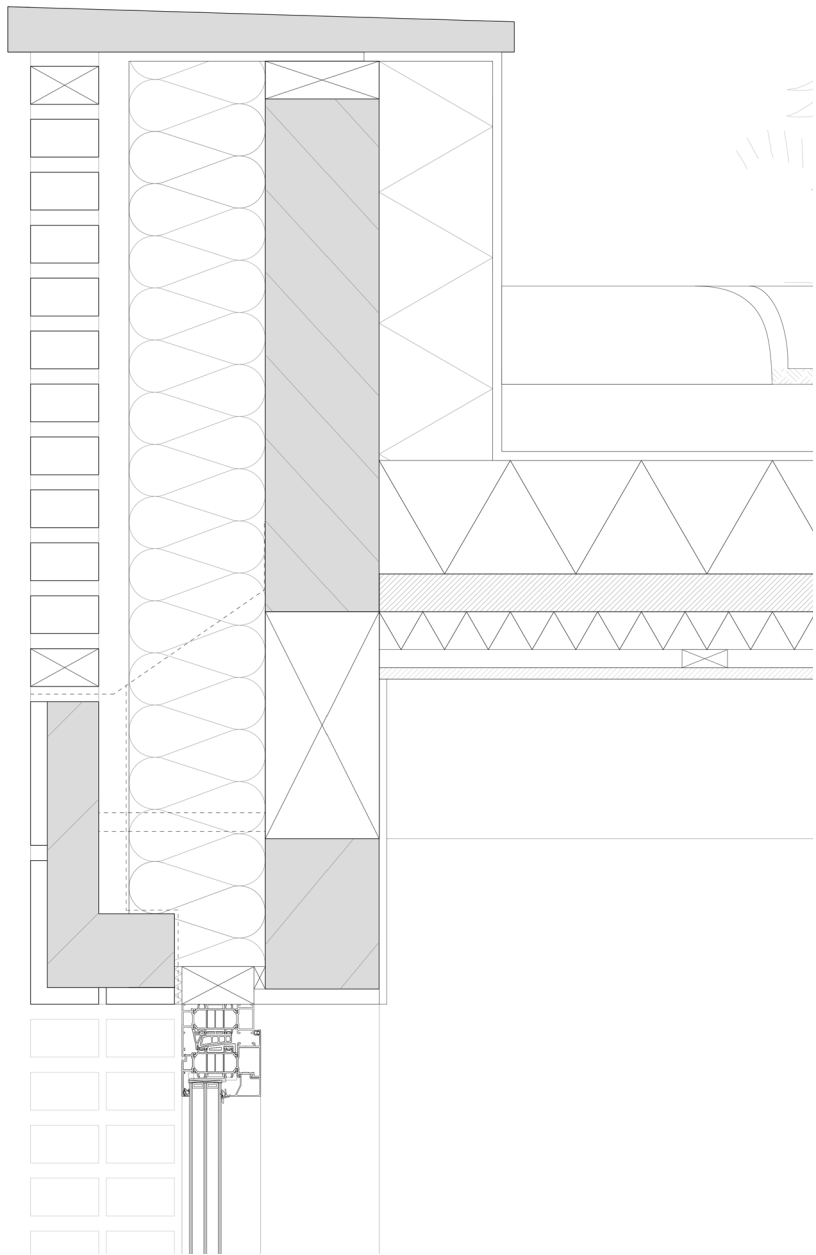


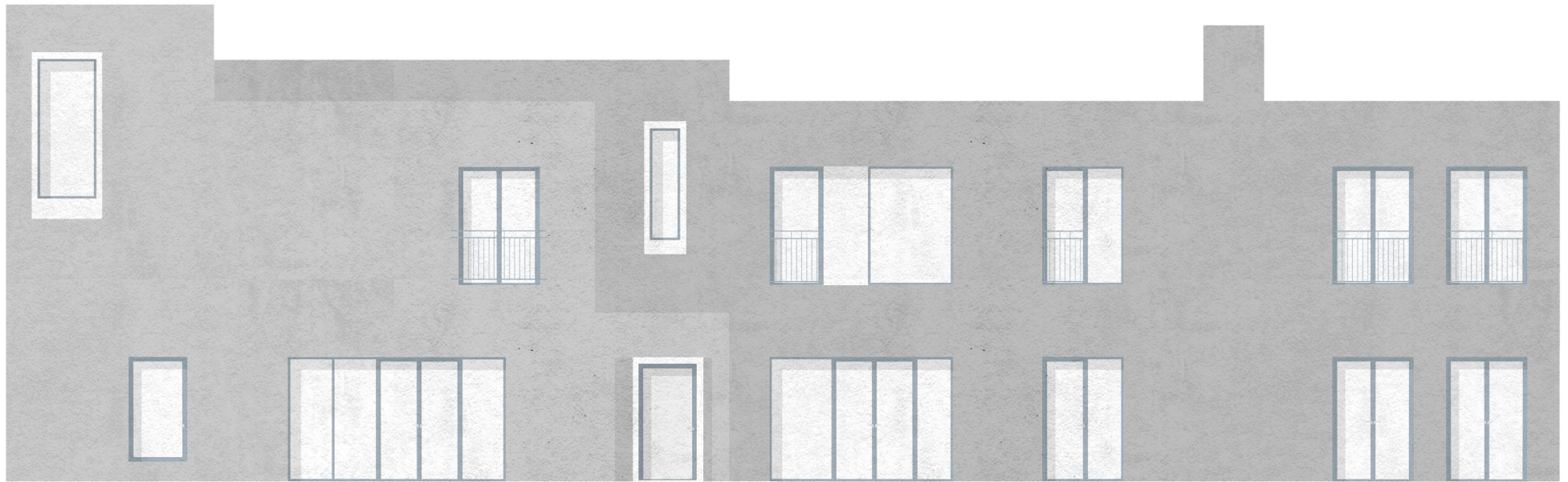


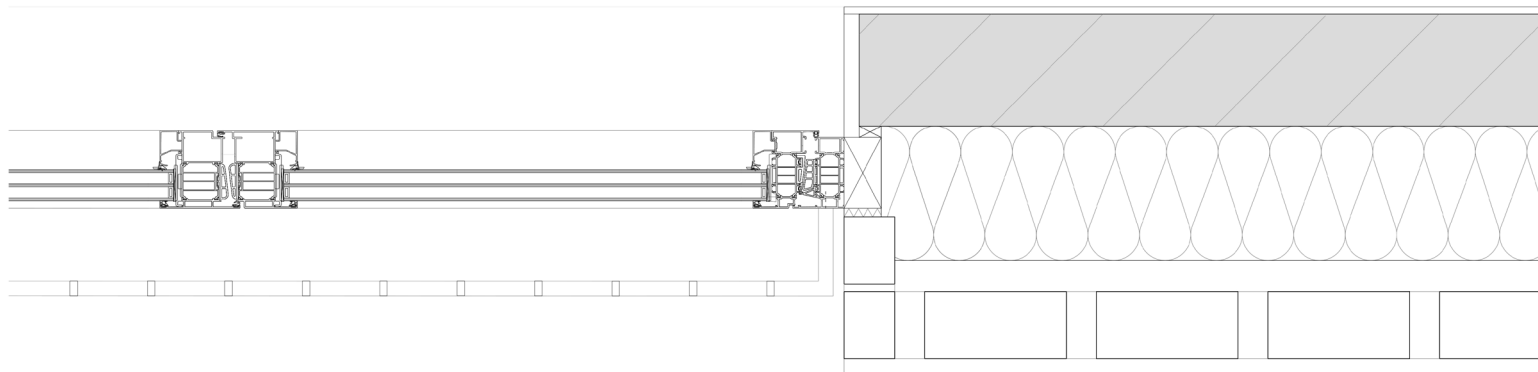








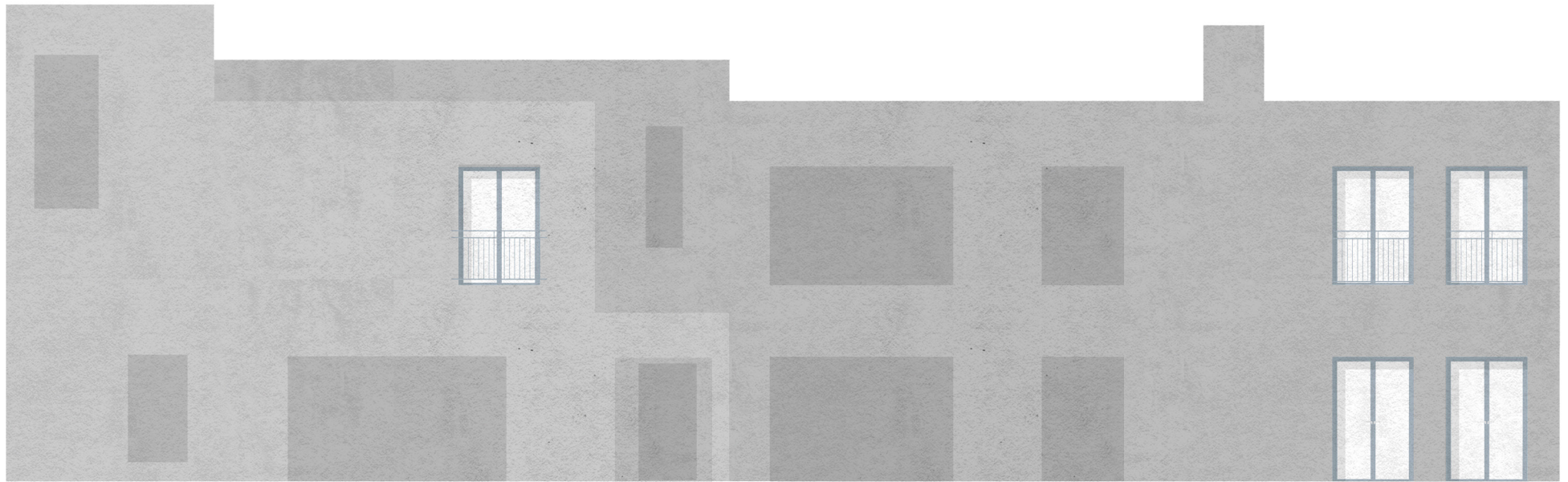


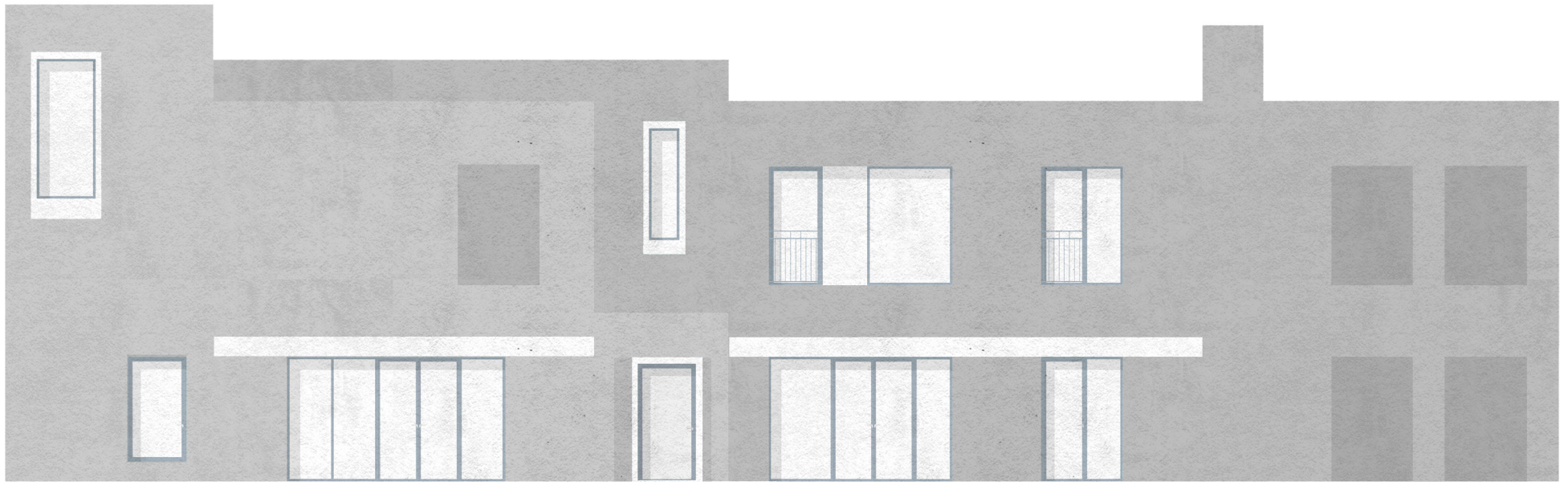


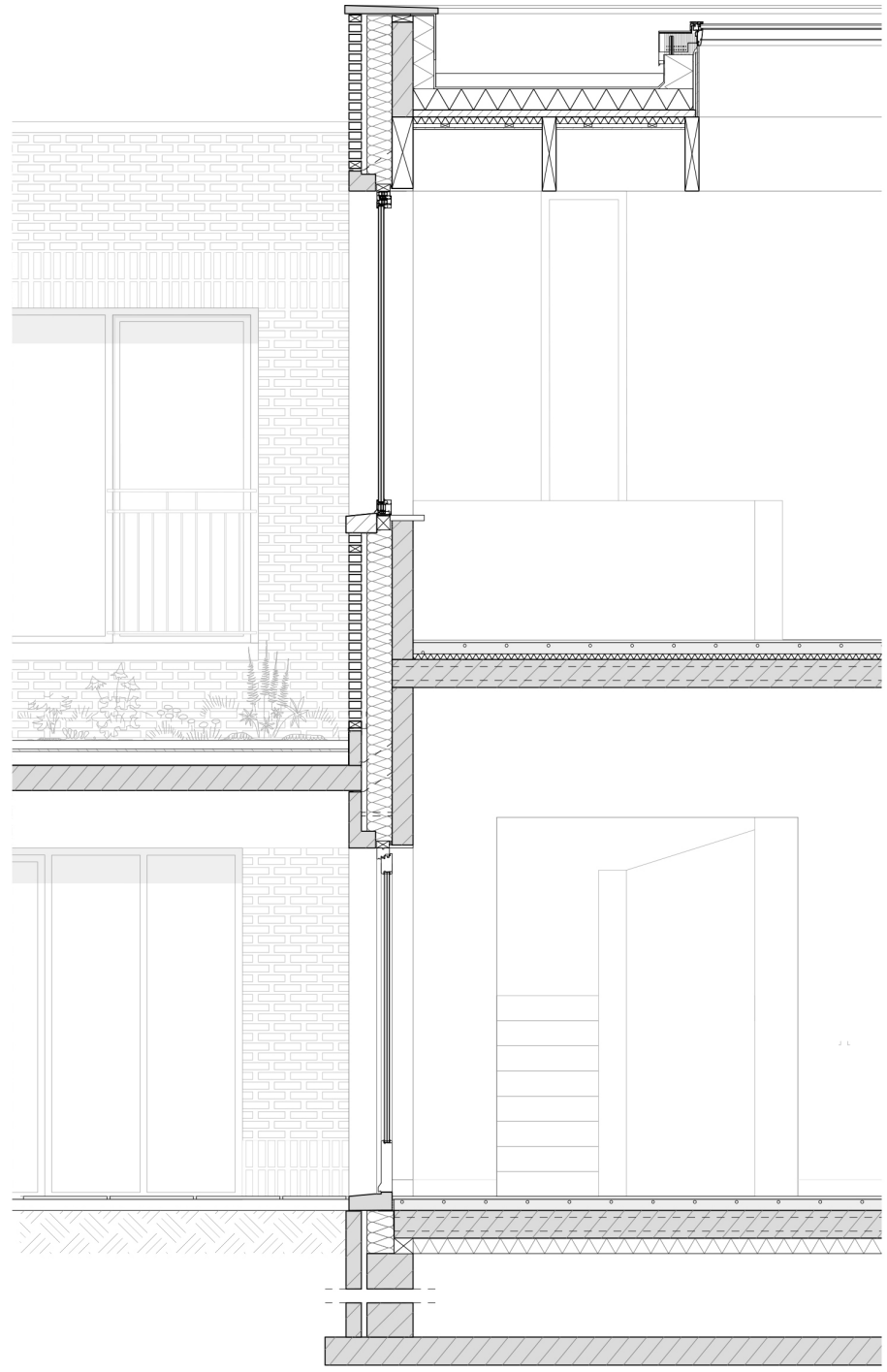
















identity

