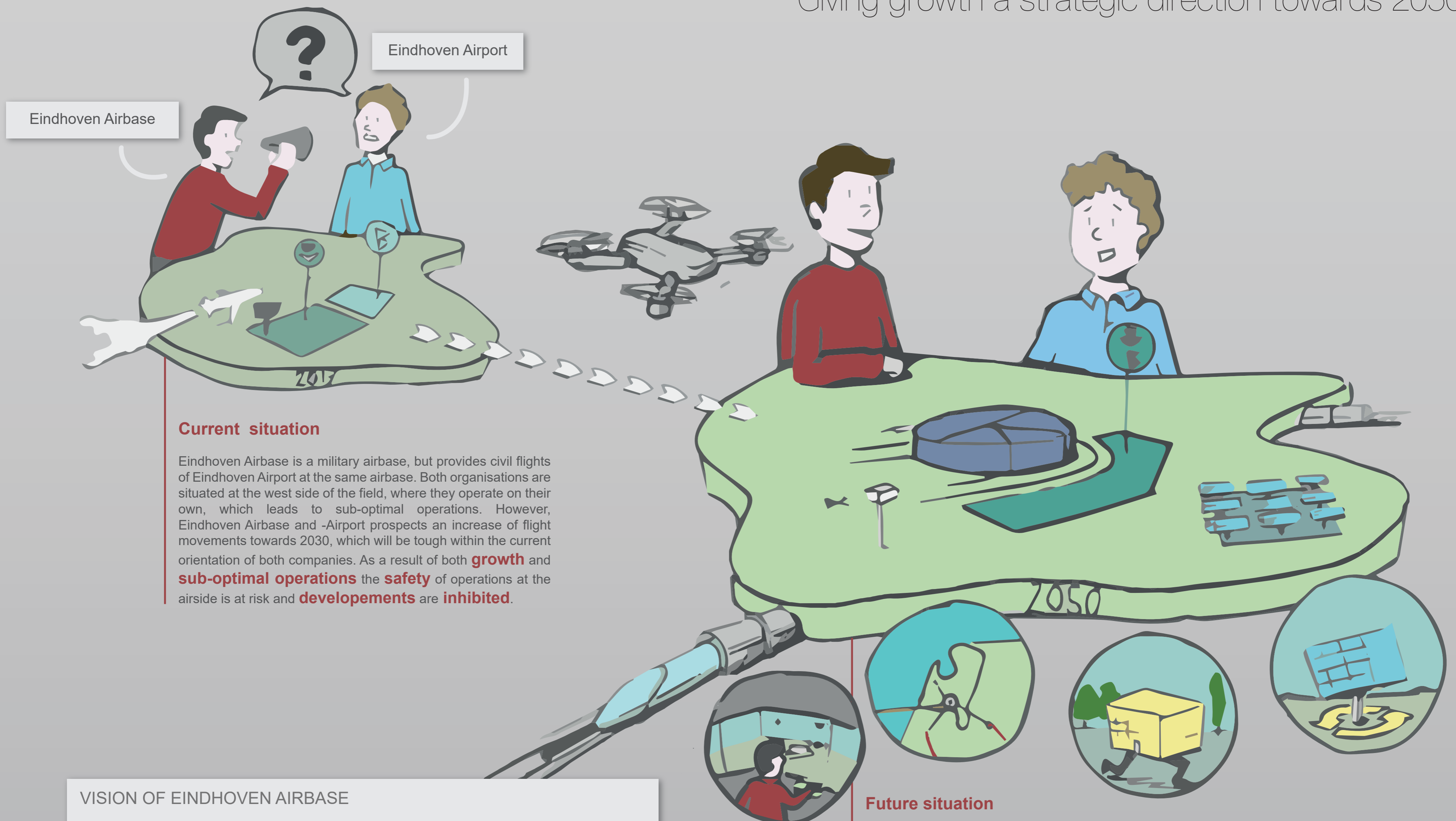


A future vision of Eindhoven Airbase

Giving growth a strategic direction towards 2050



Current situation

Eindhoven Airbase is a military airbase, but provides civil flights of Eindhoven Airport at the same airbase. Both organisations are situated at the west side of the field, where they operate on their own, which leads to sub-optimal operations. However, Eindhoven Airbase and -Airport prospects an increase of flight movements towards 2030, which will be tough within the current orientation of both companies. As a result of both **growth** and **sub-optimal operations** the **safety** of operations at the airside is at risk and **developments** are **inhibited**.

VISION OF EINDHOVEN AIRBASE

“Eindhoven Airbase needs to mutually operate as the first self-sustaining transport city in the world in 2050”

Future situation

The airbase needs to be an **adaptive hub**, internationally connected and adaptive within the organisation, where the airbase could be used by all units of Ministry of Defence. And where Eindhoven Airport and Eindhoven Airbase will be **mutually operating** at the airbase, so they can give growth a direction together, reduce human error and

replace human interacted operations by automation. The airbase needs to have **circular operations**, to achieve environmental challenges. Next to that **seamless and resilient transport** around the airbase is necessary to become an (inter)national junction.

Strategic directions

Creating a position within a co-creation industry

Align strategic goals and aspirations with sustainable business practice and support local community by engaging them in processes.

- A Eindhoven Airbase has to connect with Eindhoven Airport.
- B Eindhoven Airbase needs to attract co-developers to the airbase, which can provide the transition of electrification, automation and connectivity.
- C These actions also need to focus on the internal employees to facilitate adaptivity in internal processes.

Establishing a sustainable system

Build long-term strategic relationships with external environment which will result in environmental, social and economic outcomes.

- A Eindhoven Airbase will achieve this by improving the electric infrastructure in current operations at the airbase.
- B Improving this infrastructure it has to connect with Eindhoven city, so a shared electric network can be created.
- C Collaterally improving the electric infrastructure, the development of energy generation at the airbase needs to expand and implement usage in current operations.
- D The airbase has to keep upgrading the system with renewables, this includes creating an automated and connected electrical system.
- E As a result the system at the airbase will be self-sustaining, this can be connected to the loop of materials connected with the co-developers. Considering the mutual operations, this creates a self-sustaining circular economy connected to the external environment, which can fulfil the vision of 2050.

Strengthening the transport infrastructure within system

Align strategic infrastructure developments with future needs, to be innovative, adaptable and ready for future changes.

- A Eindhoven Airbase needs to improve and connect their infrastructure around the airbase with Eindhoven city. As a result the connection with a European network can be created.
- B Eindhoven Airbase will establish a connected and combined air- and land transport.
- C This connected transport system will facilitate the attraction of relevant stakeholders, which can be connected to the network of co-developers around the airbase, resulting in a loop of aircraft and materials with suppliers and experts around the airbase.

Ingeborg Ilse Dijkstra
A future vision of Eindhoven Airbase
Giving growth a strategic direction towards 2050
Strategic Product Design
4th of April, 2018

Committee Sylvia Mooij
Bart Bluemink
Marcel de Pee
Company Royal Netherlands Air Force

 TU Delft