

Redefining Centraal Beheer

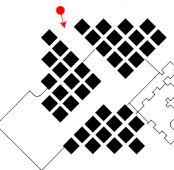
Impressions

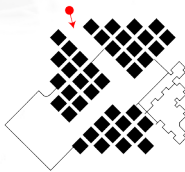


Heritage & Architecture
The Future of Structuralism

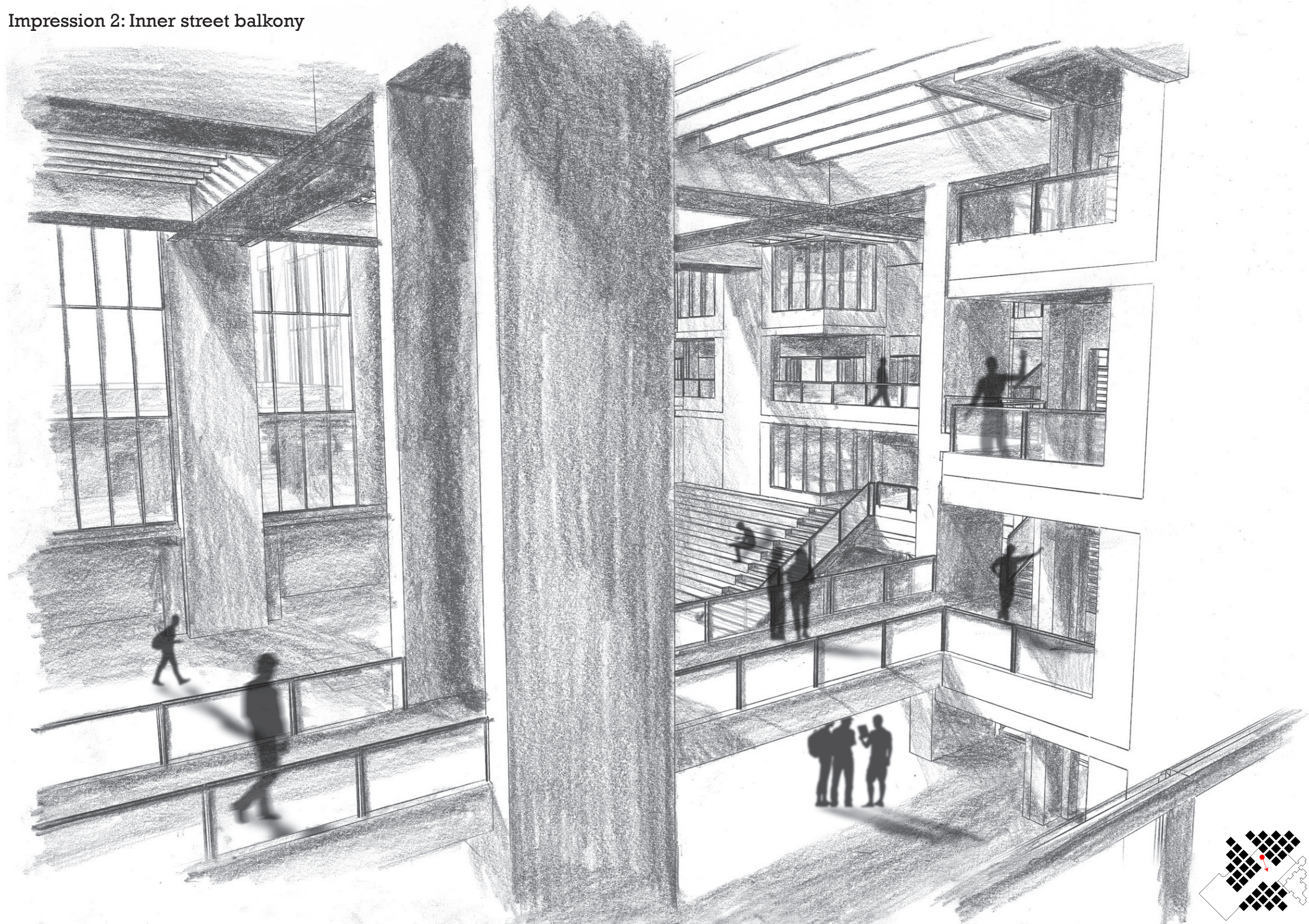
Jeroen Boogaard
31-01-2019

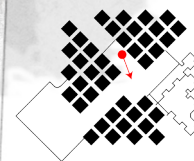
Impression 1: Main Entrance



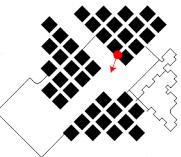
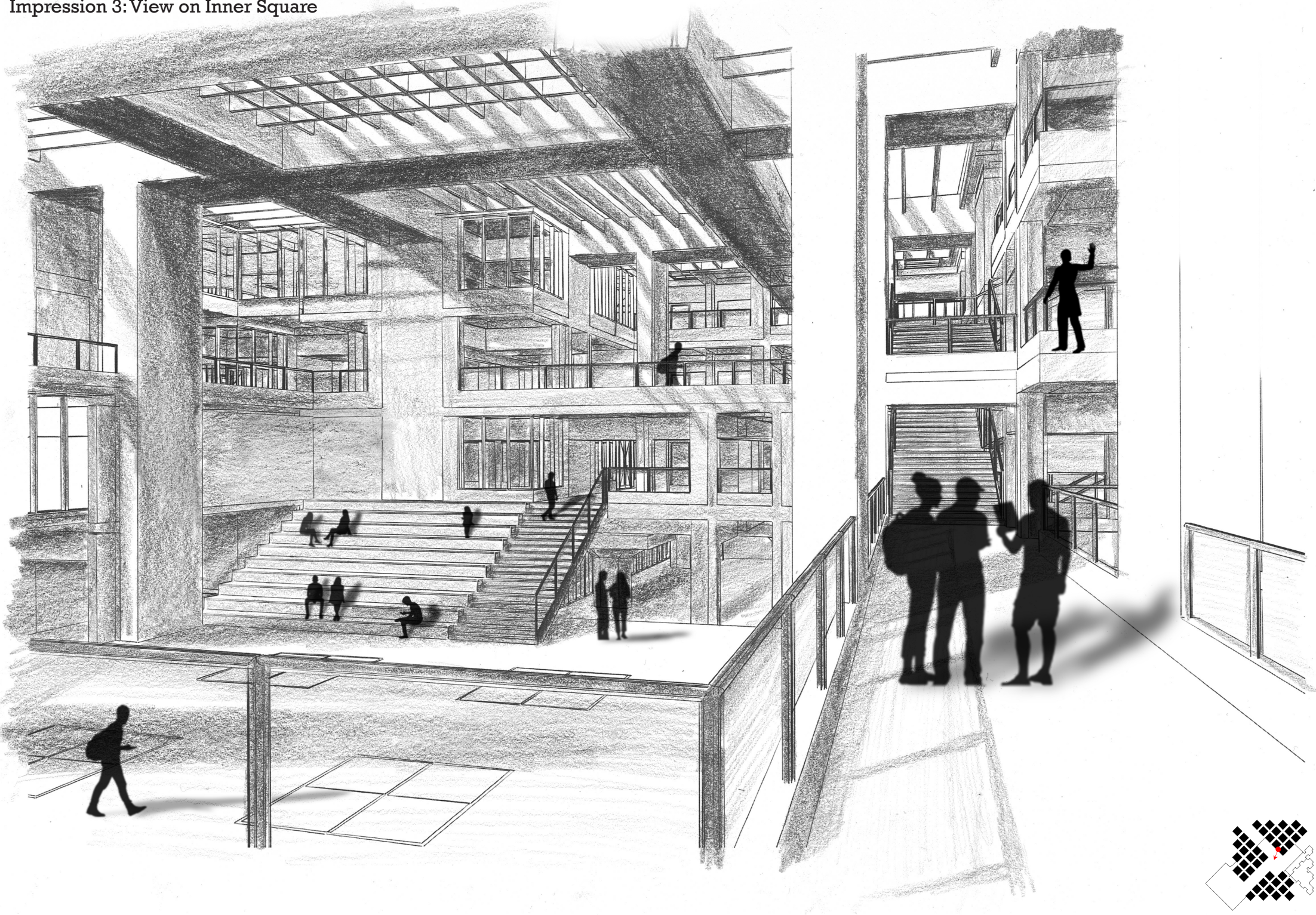


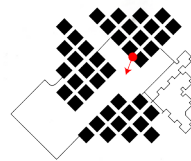
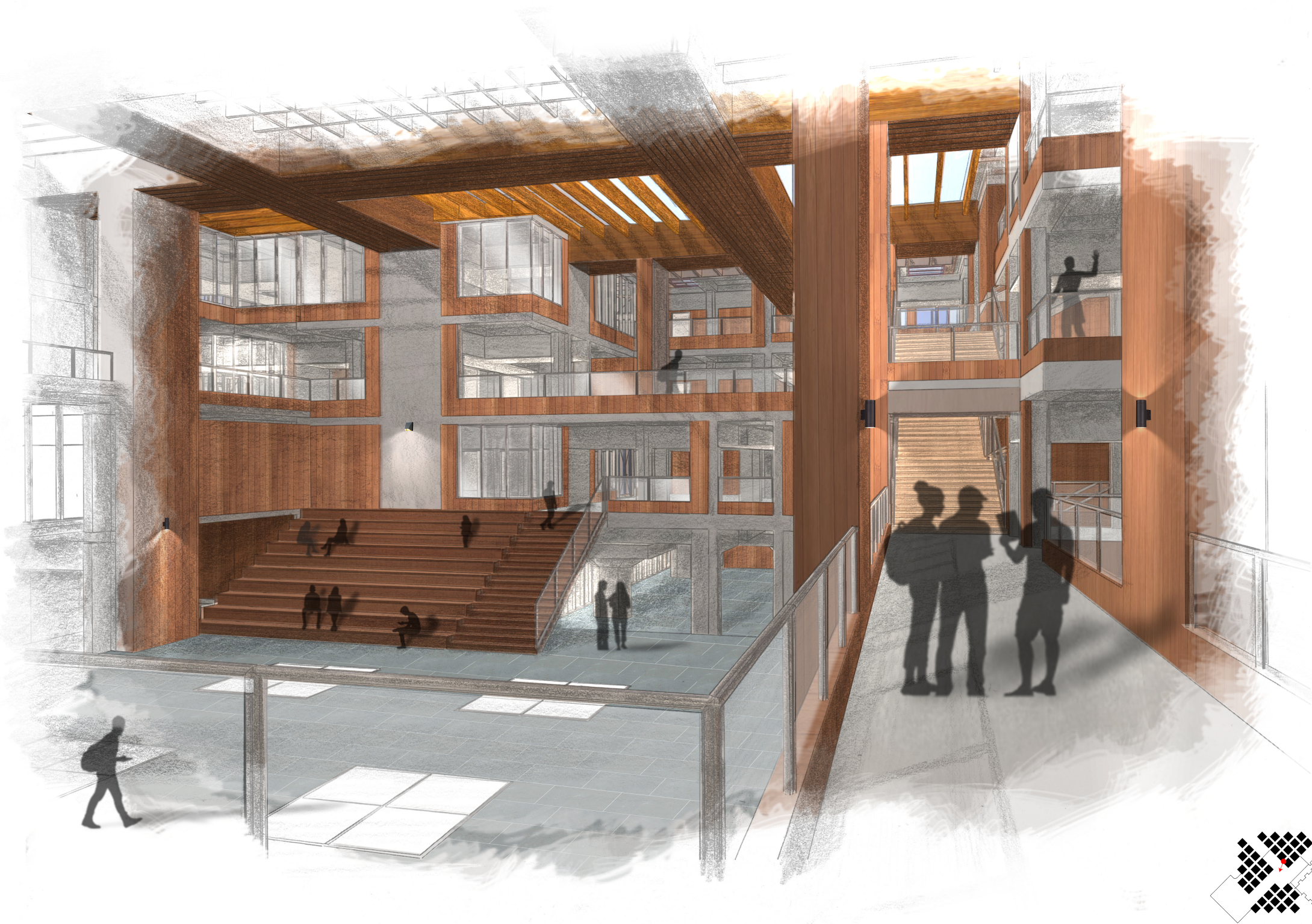
Impression 2: Inner street balcony



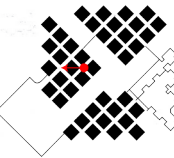
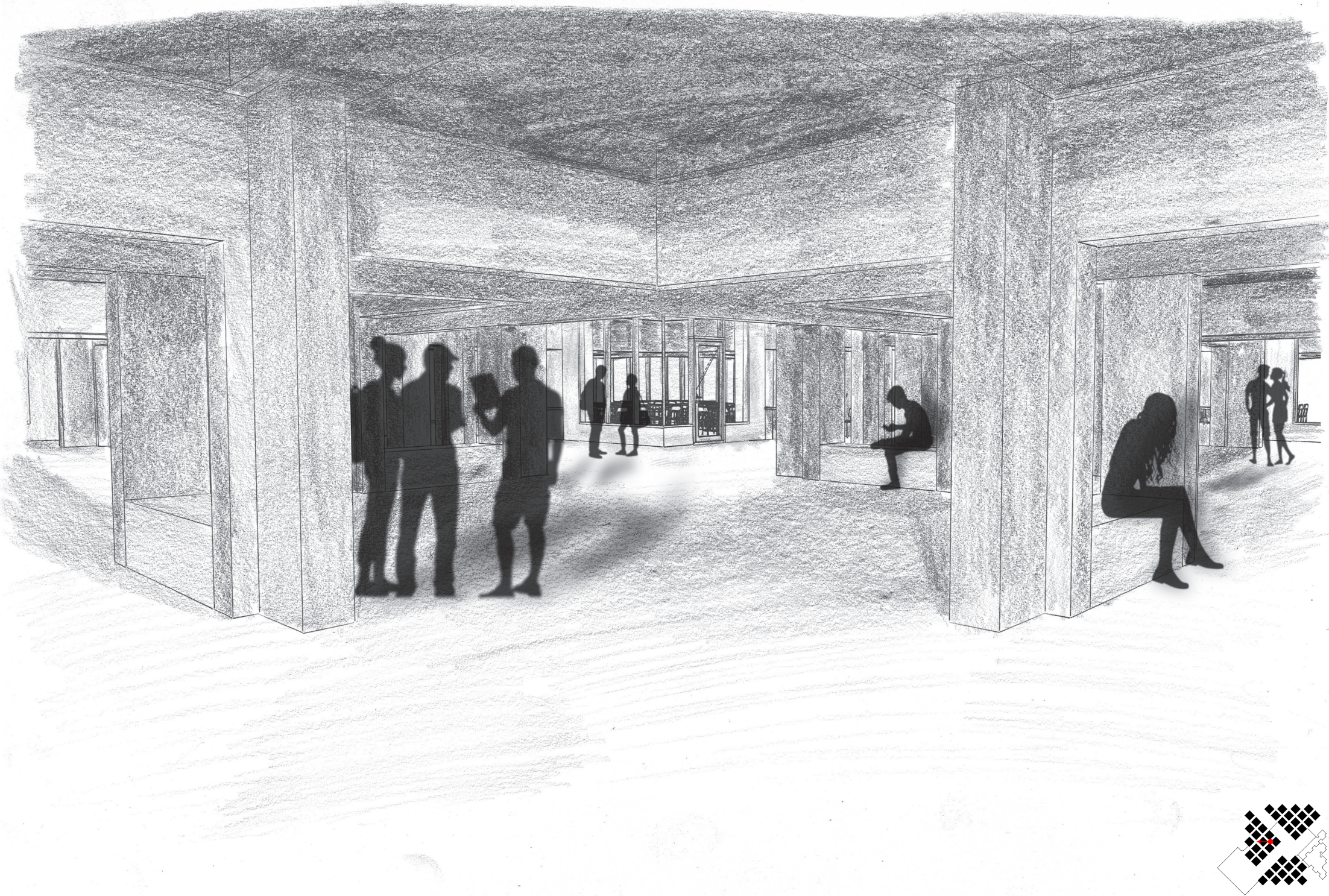


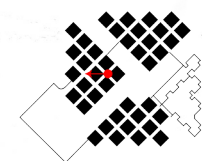
Impression 3: View on Inner Square



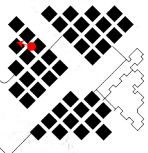
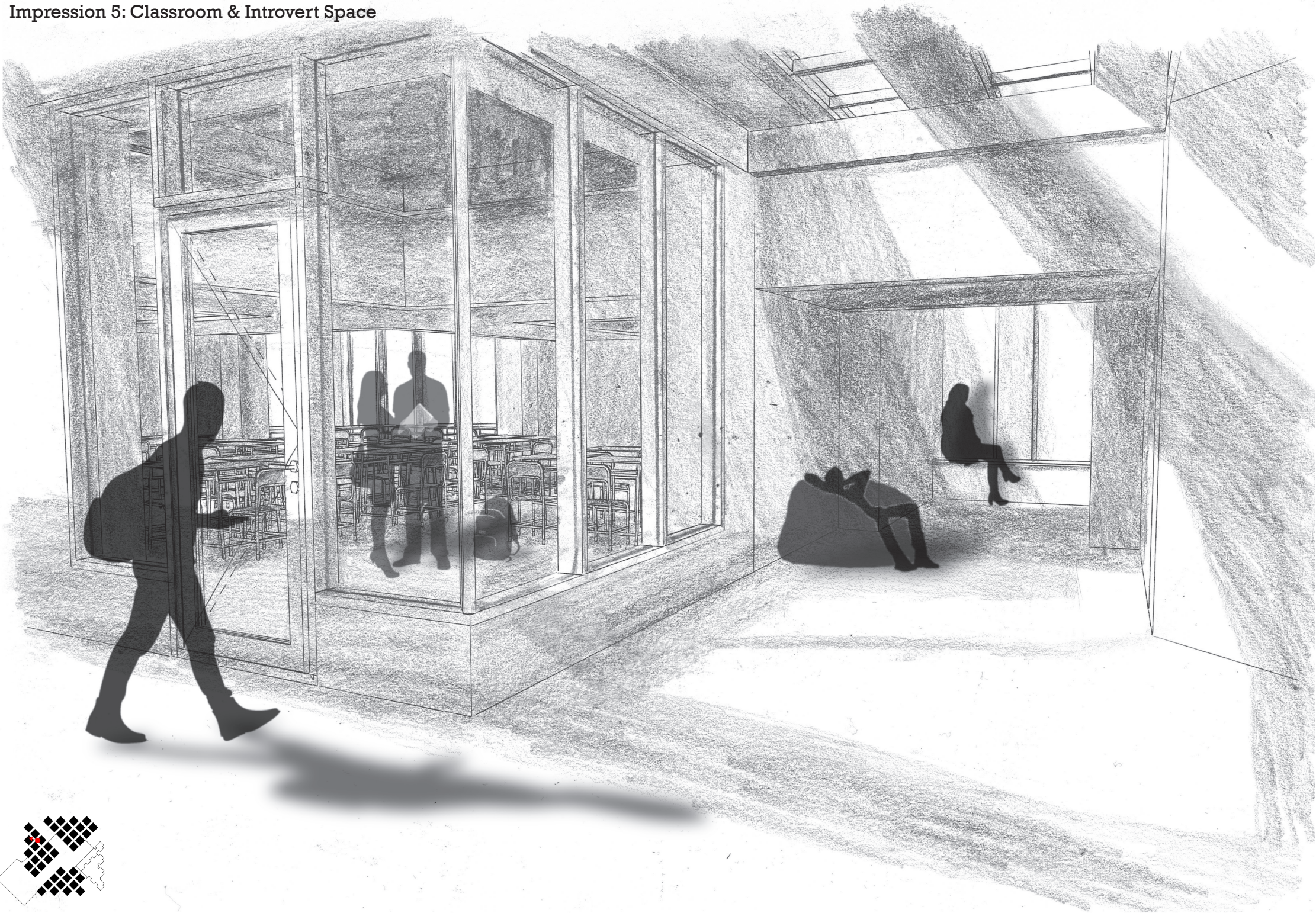


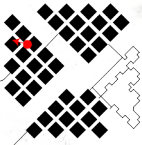
Impression 4: Entrance to Quadrant



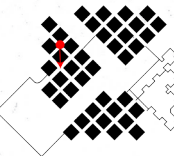
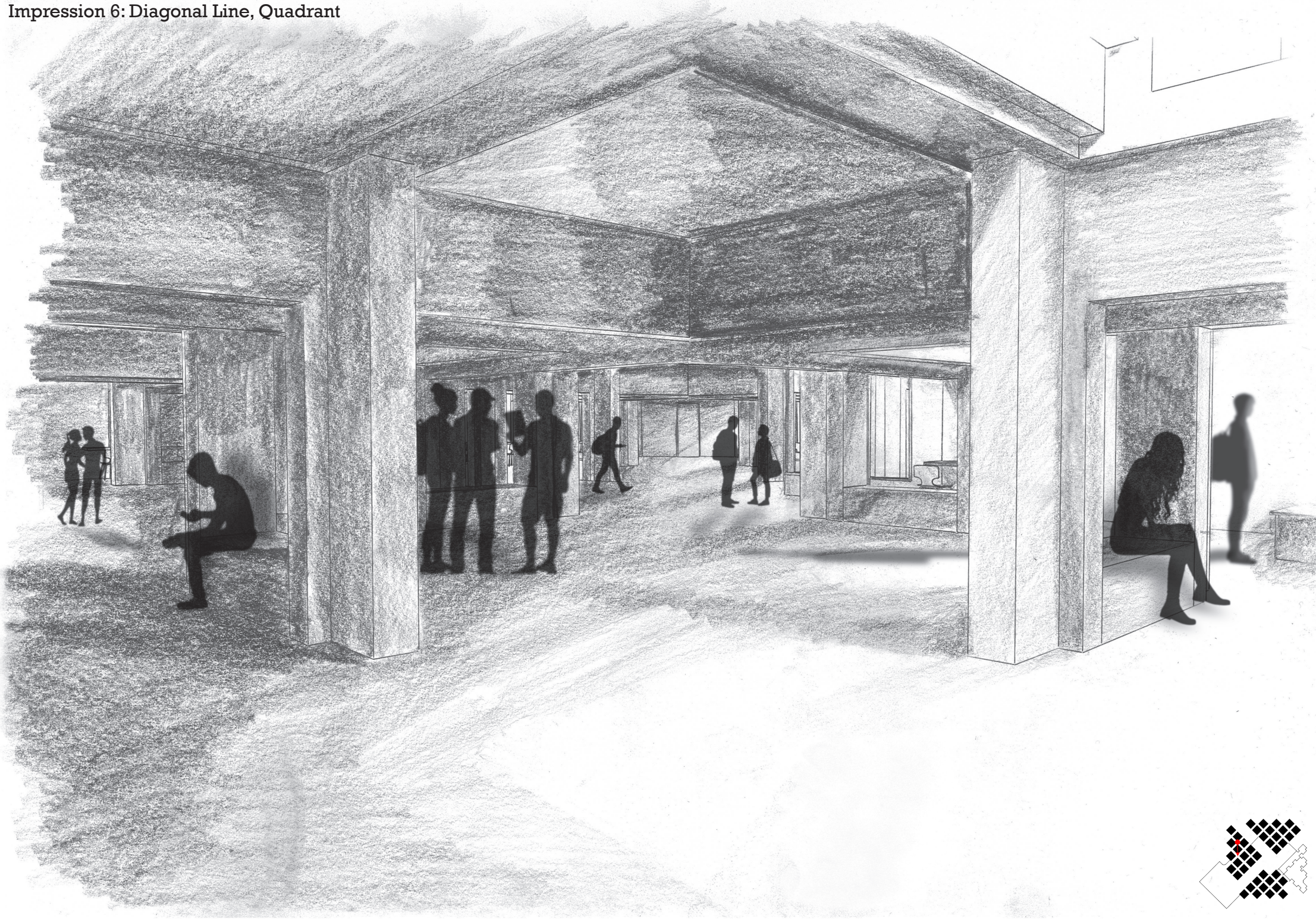


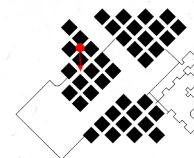
Impression 5: Classroom & Introvert Space



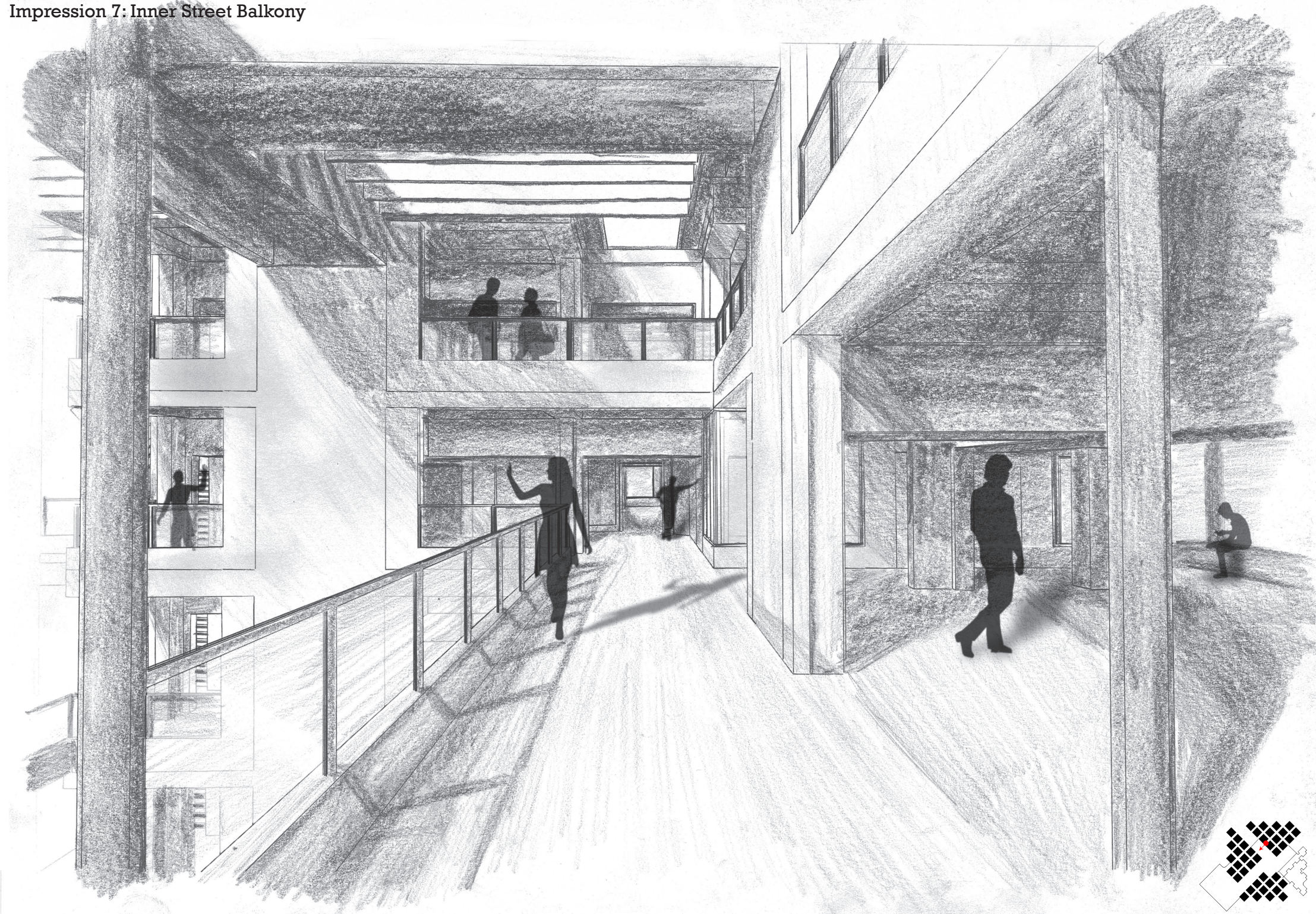


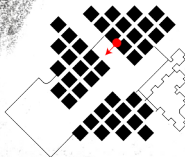
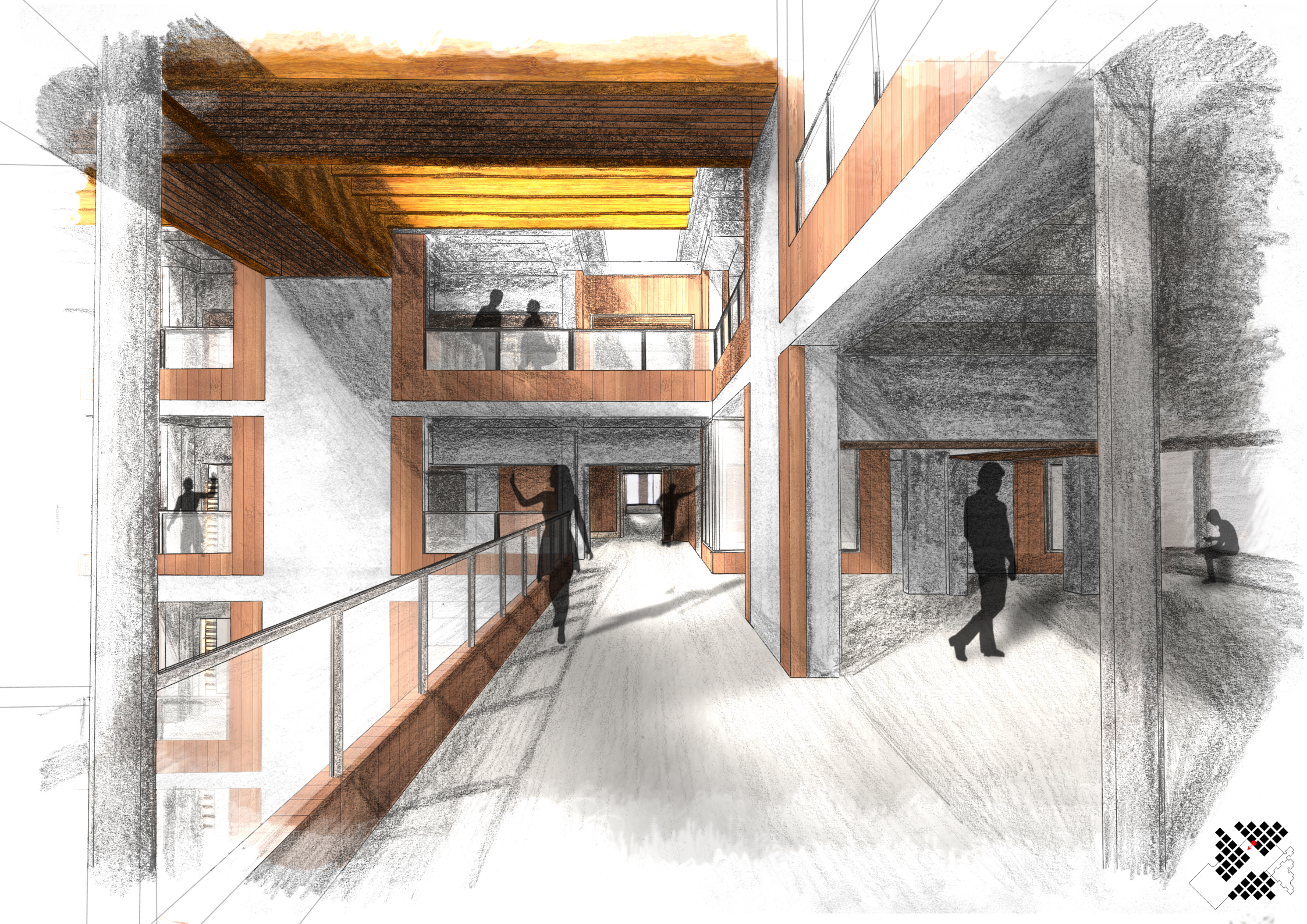
Impression 6: Diagonal Line, Quadrant



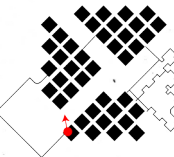


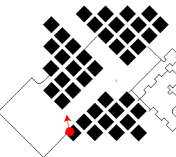
Impression 7: Inner Street Balcony





Impression 8: Roof Garden view





An architectural rendering of a modern building's interior. The space is a large, open atrium with a high ceiling. The walls and upper levels are clad in warm-toned wood, while the ground floor features large, light-colored stone tiles. A prominent feature is a glass-enclosed staircase on the right side, which allows natural light to penetrate deep into the space. The ceiling is composed of a grid of wooden beams, creating a warm, textured atmosphere. Several silhouetted figures are placed throughout the space to provide a sense of scale and human presence. The rendering is framed by a rough, torn-paper-like border, suggesting a conceptual or artistic design phase.

