

Liminality of space:
reconnecting materiality and embodiment
in the design of the swimming pool.

*"The image is not a certain meaning, expressed by director, but an entire world reflected in a drop of water".
Andrei Tarkovsky*



tectonics, topos, typos
materiality, practise, time
experience

MJS | Research | 03



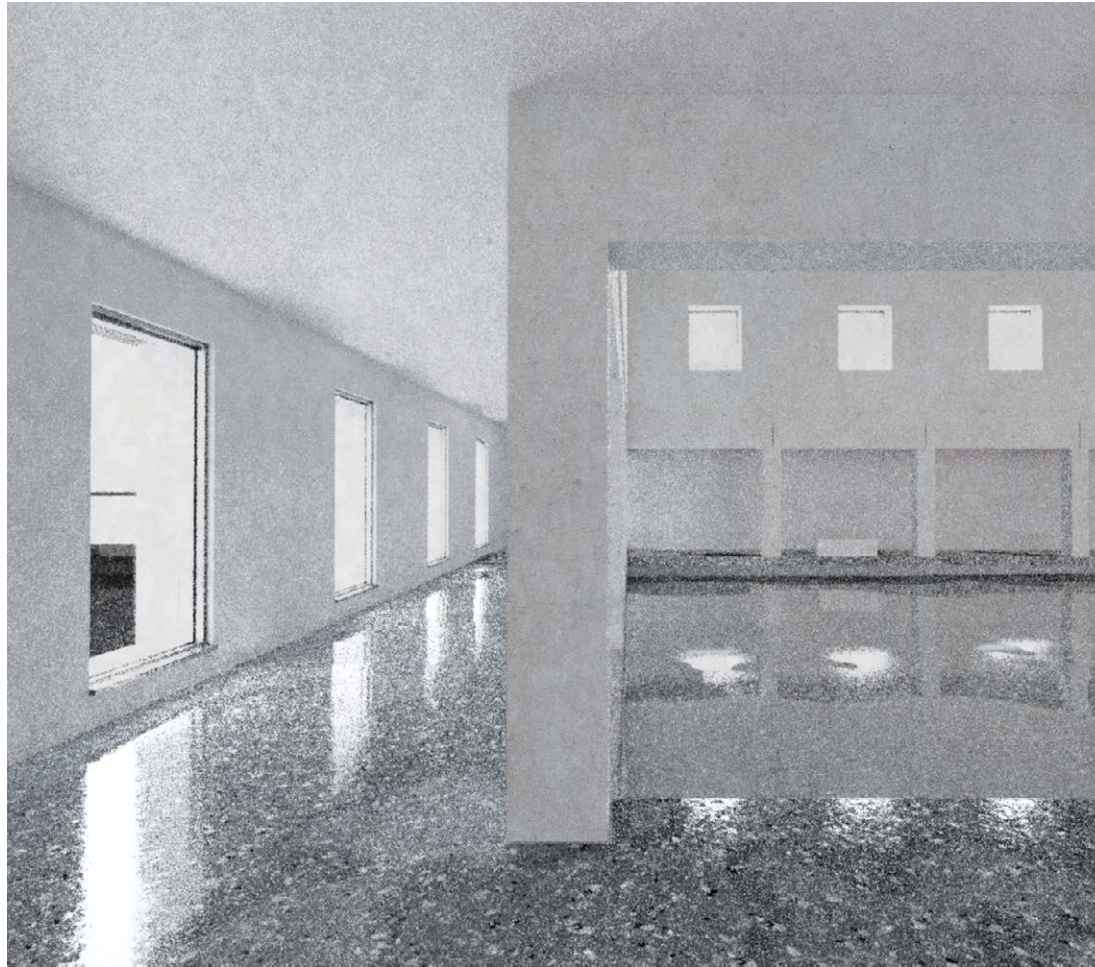
tectonics, topos, typos
materiality, practise, time
experience

MJS | Research | 04



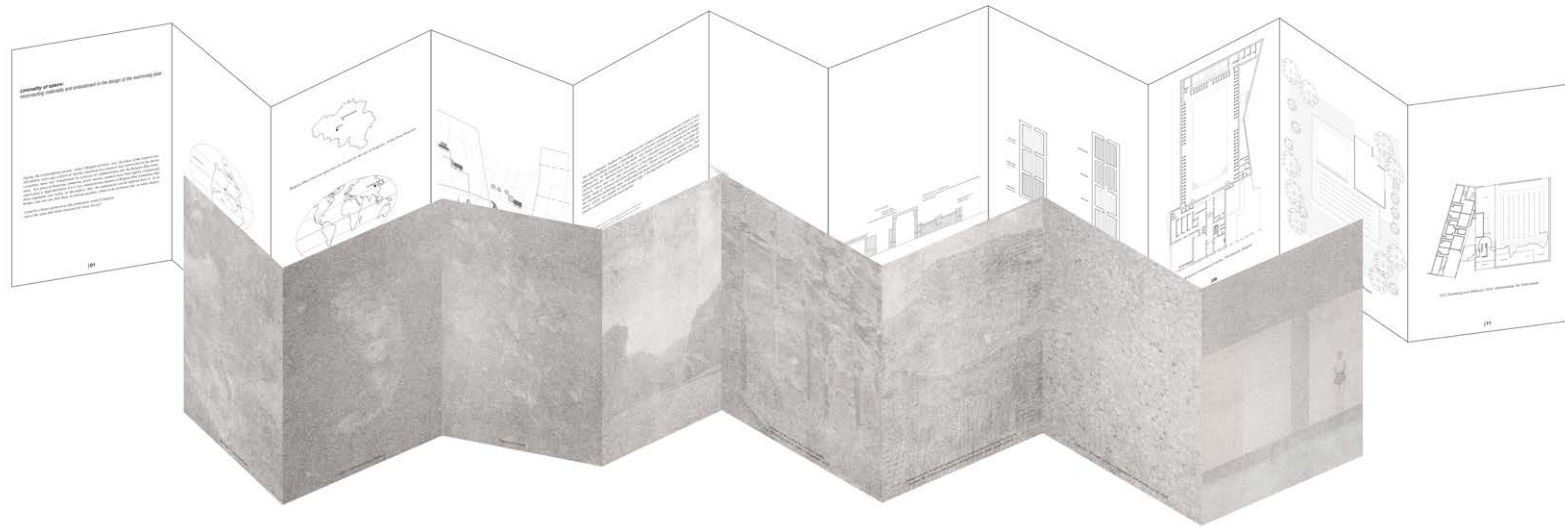
tectonics, topos, typos
materiality, practise, time
experience

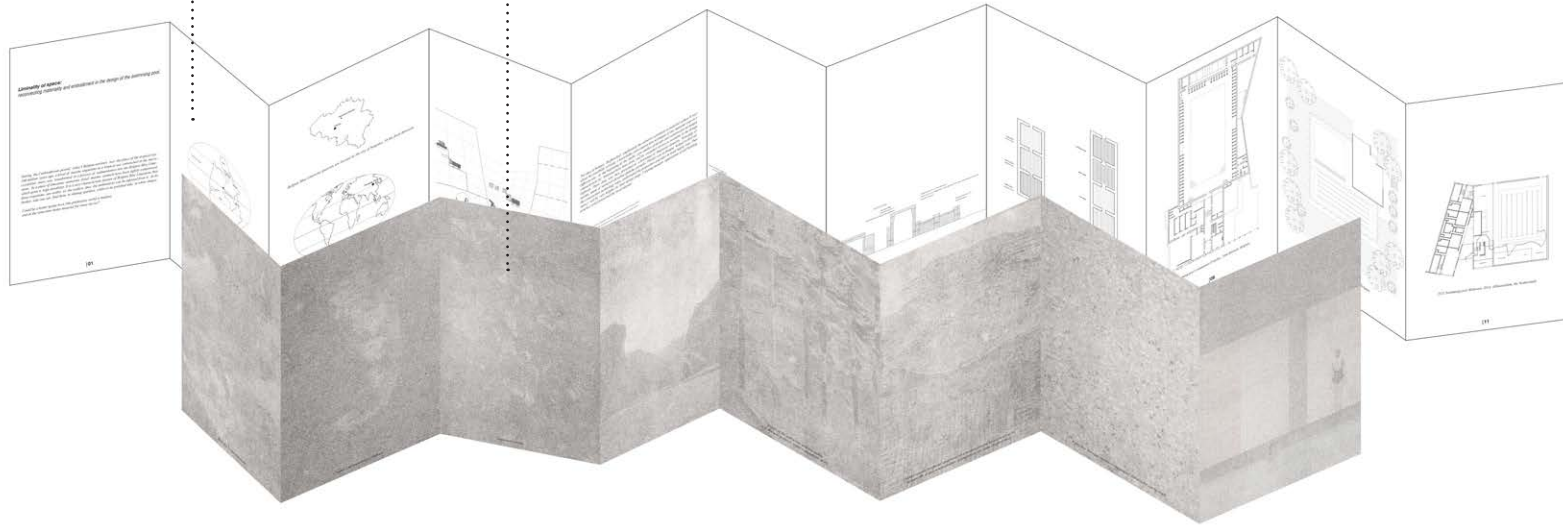
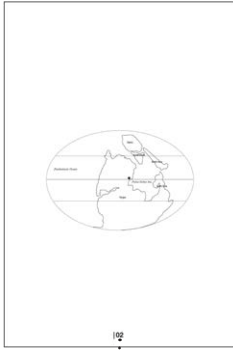
MJS | Research | 05



tectonics, topos, typos
materiality, practise, time
experience

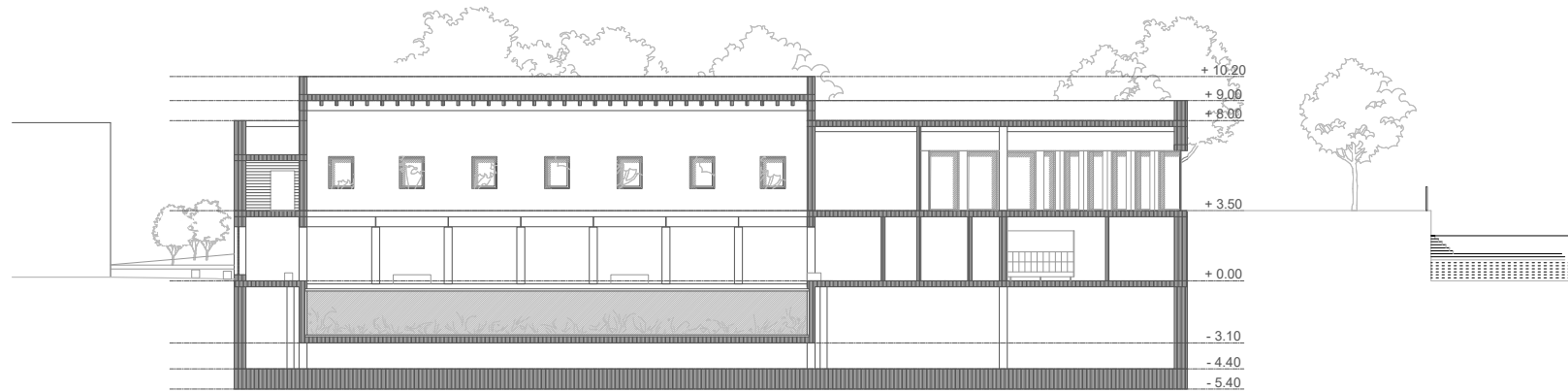
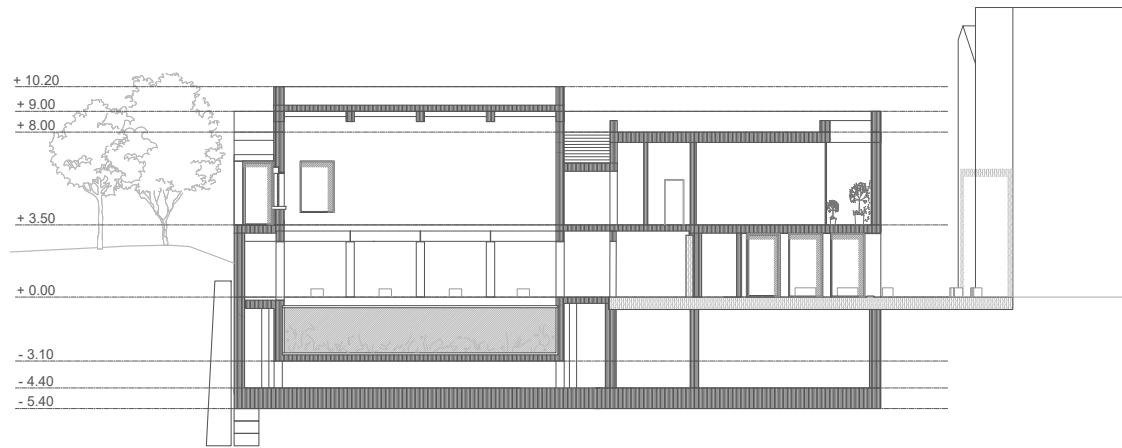
MJS | Research | 06



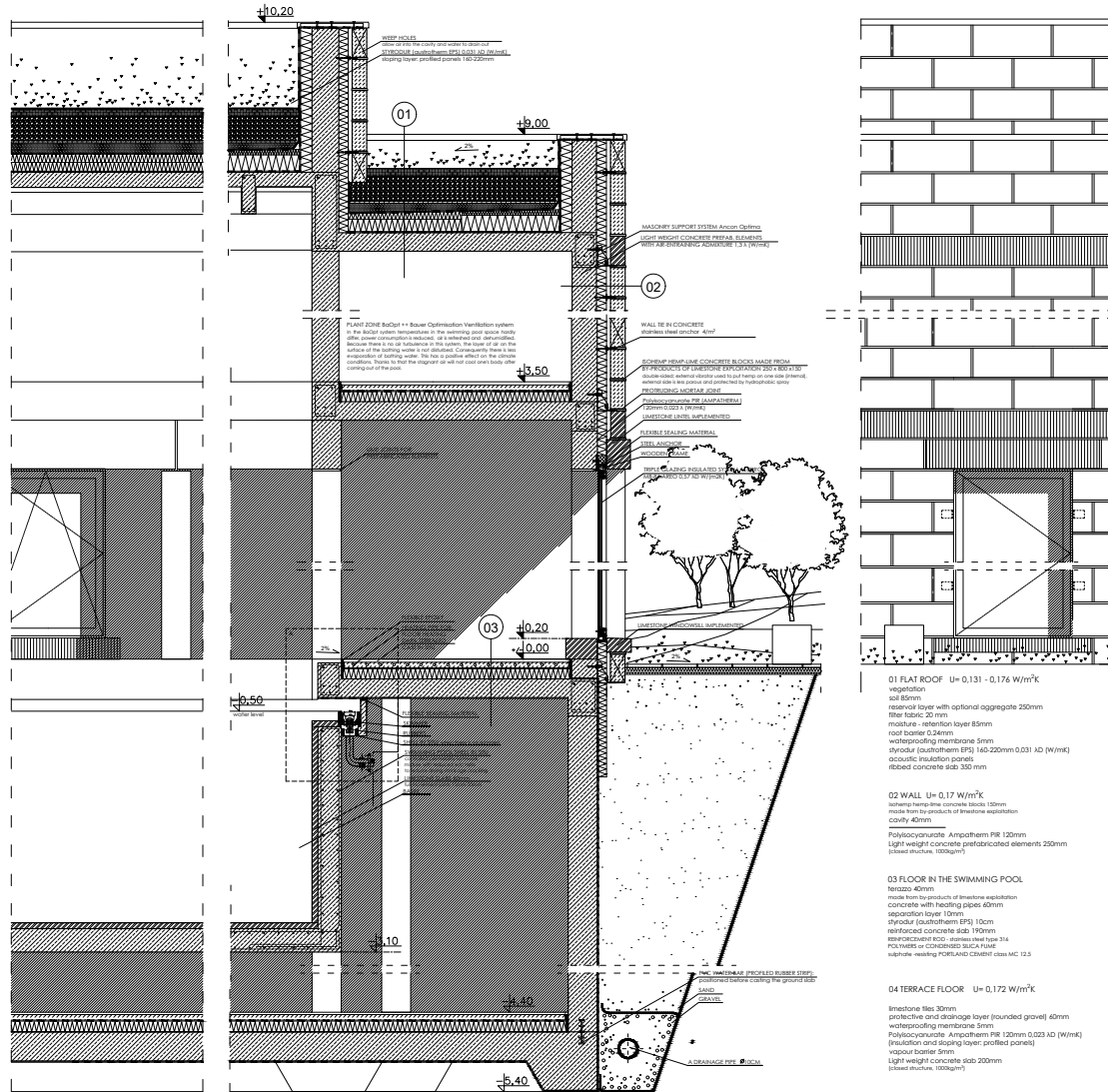




MJS I Design Concept I 09



MJS I Design Concept I 10



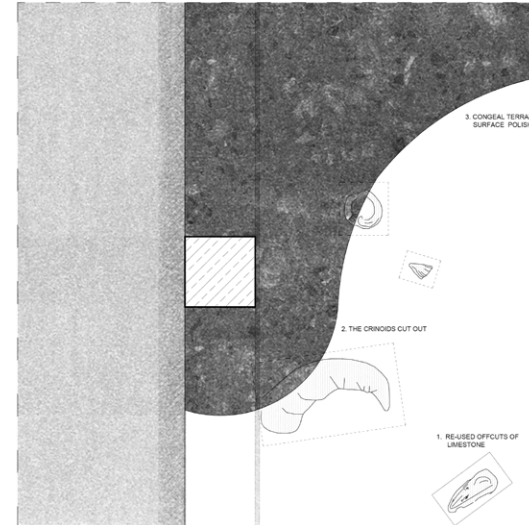
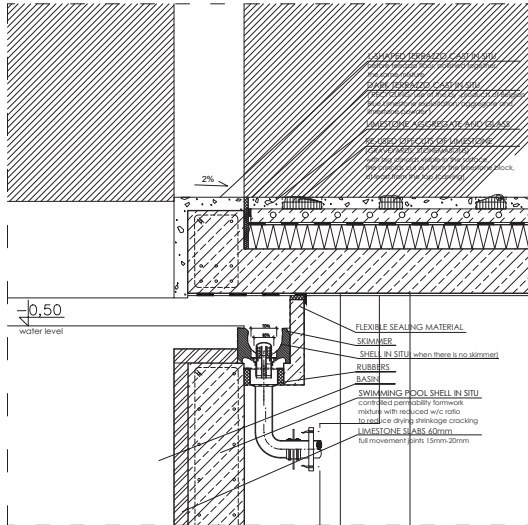
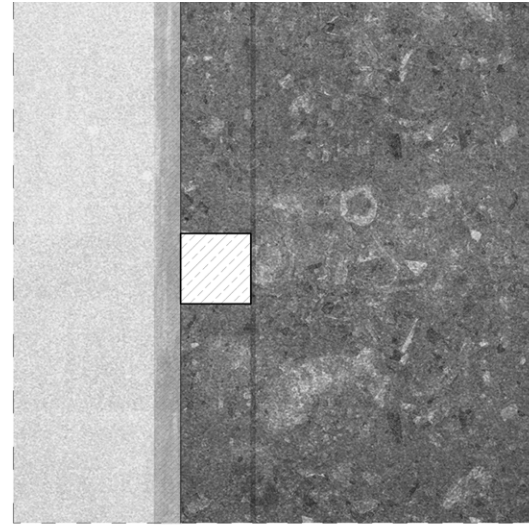
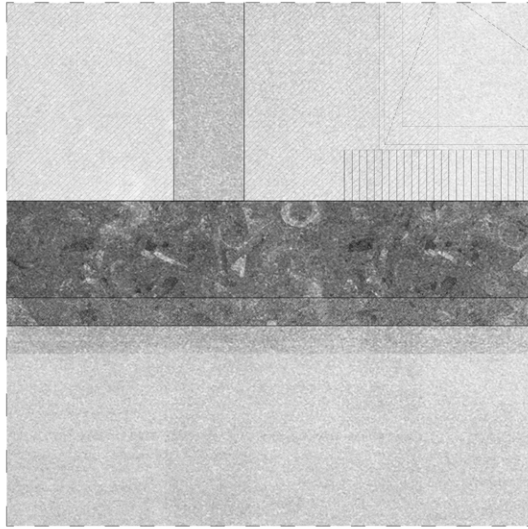
+0.20
 01
 +0.00

+3.50
 02
 +0.20
 +0.00

+0.20
 +0.00
 03
 +1.0
 +4.0
 +5.40

- 01 FLAT ROOF** $U = 0.131 - 0.176 \text{ W/m}^2\text{K}$
 vegetation
 soil 40mm
 reservoir layer with optional aggregate 250mm
 filter fabric 20 mm
 moisture - retention layer 85mm
 roof barrier 0.24mm
 waterproofing membrane 5mm
 Insulok (souththerm EPS) 140-220mm 0.031 AD (W/mk)
 acoustic insulation panels
 ribbed concrete slab 300 mm
- 02 WALL** $U = 0.17 \text{ W/m}^2\text{K}$
 double thermal breaks, depth 150mm
 made from by products of brickwork separation
 cavity 40mm
 Polystyrene AmphiTherm PIR 120mm
 Light weight concrete prefabricated elements 200mm
 stone finish, 100kg/m³
- 03 FLOOR IN THE SWIMMING POOL**
 bricks 40mm
 made from by products of brickwork separation
 concrete with heating cable 40mm
 separation layer 10mm
 Insulok (souththerm EPS) 10mm
 reinforced concrete slab 190mm
 prefabricated floor elements made from
 POLYSTYRENE OR CONCRETE SLAB FINISH
 100kg/m³ heating PIR/PIR/AD/CLAY/ST/SLAB/AC 12.5
- 04 TERRACE FLOOR** $U = 0.172 \text{ W/m}^2\text{K}$
 membrane 30mm
 protective and drainage layer (rounded gravel) 40mm
 waterproofing membrane 5mm
 Polystyrene AmphiTherm PIR 120mm 0.032 AD (W/mk)
 (insulation and sloping layer; profiled pores)
 roof barrier 5mm
 Light weight concrete slab 200mm
 stone finish, 100kg/m³

MJS | Design Concept | 11



MJS I Design Concept I 12



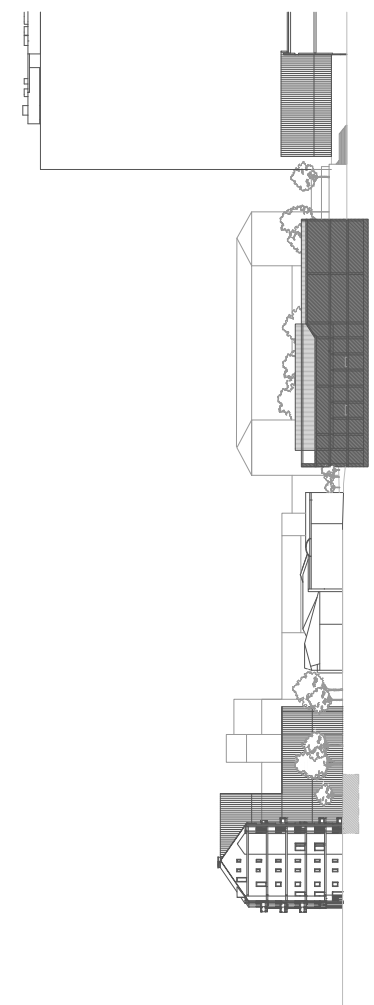
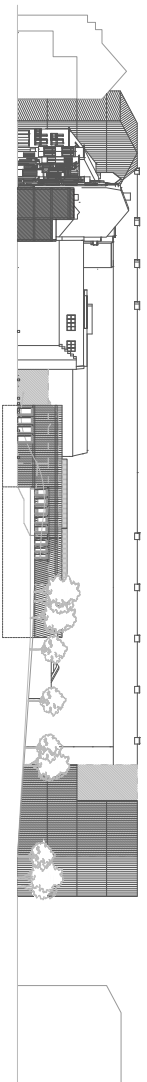
MJS | Urban Concept | 13



MJS | Urban Concept | 14



MJS | Urban Concept | 15

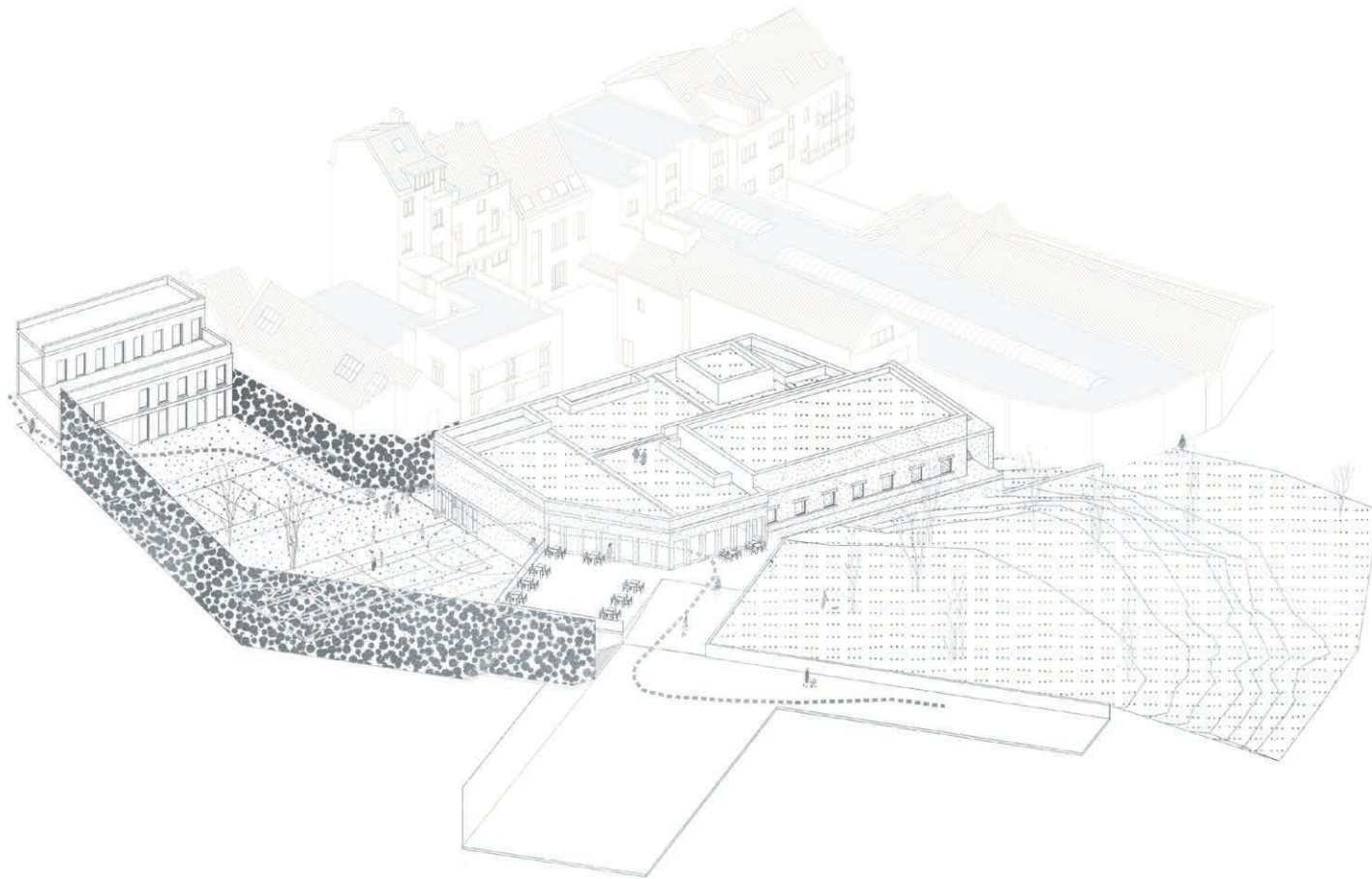


MJS I Urban Concept I 16



MJS I Urban Concept I 17

LACK OF IDENTITY
/
SPOLIA
as the cultural continuum phenomena

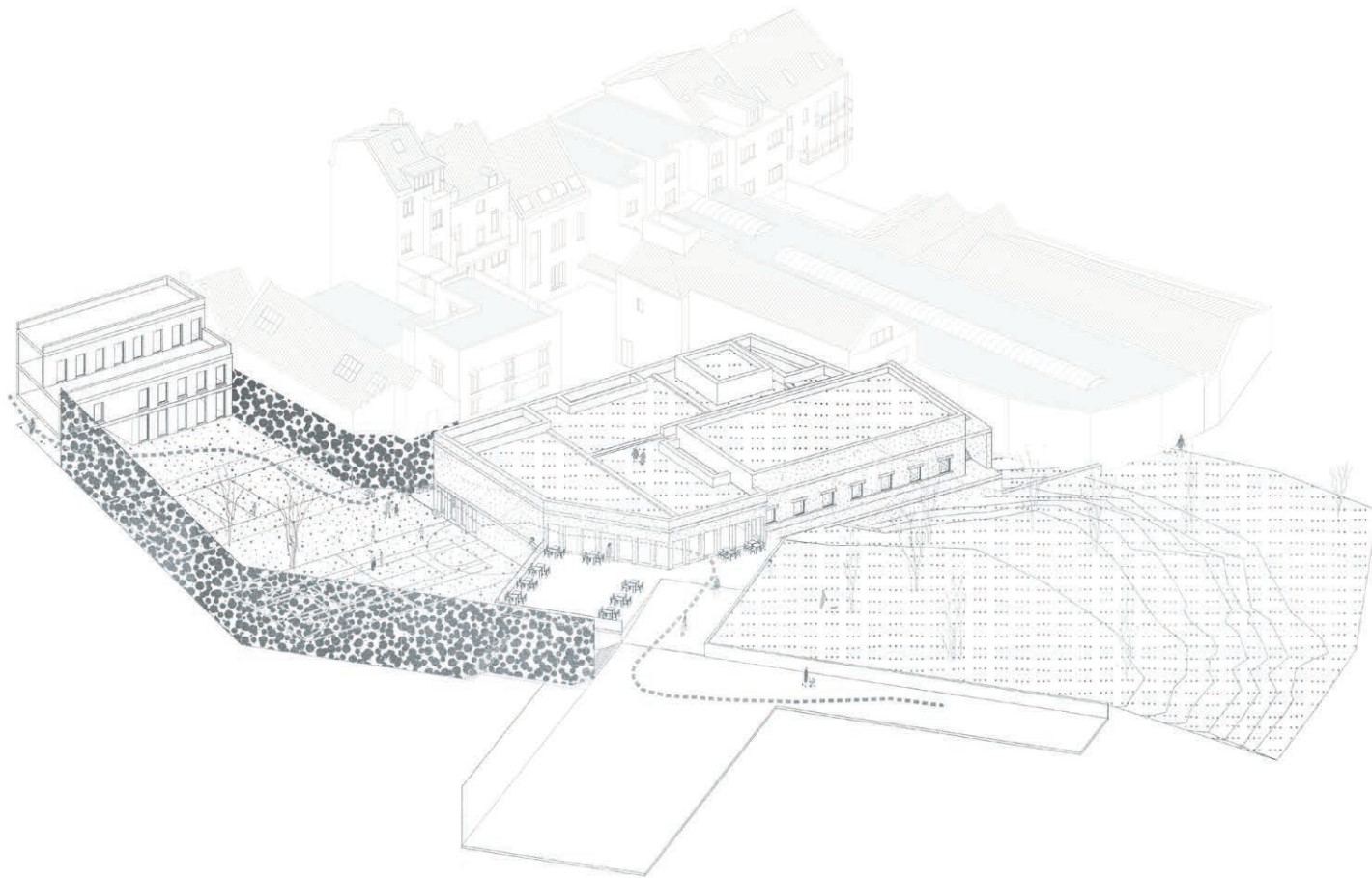


Popular culture as opposed to noble body cultures

MJS | Urban Concept | 19

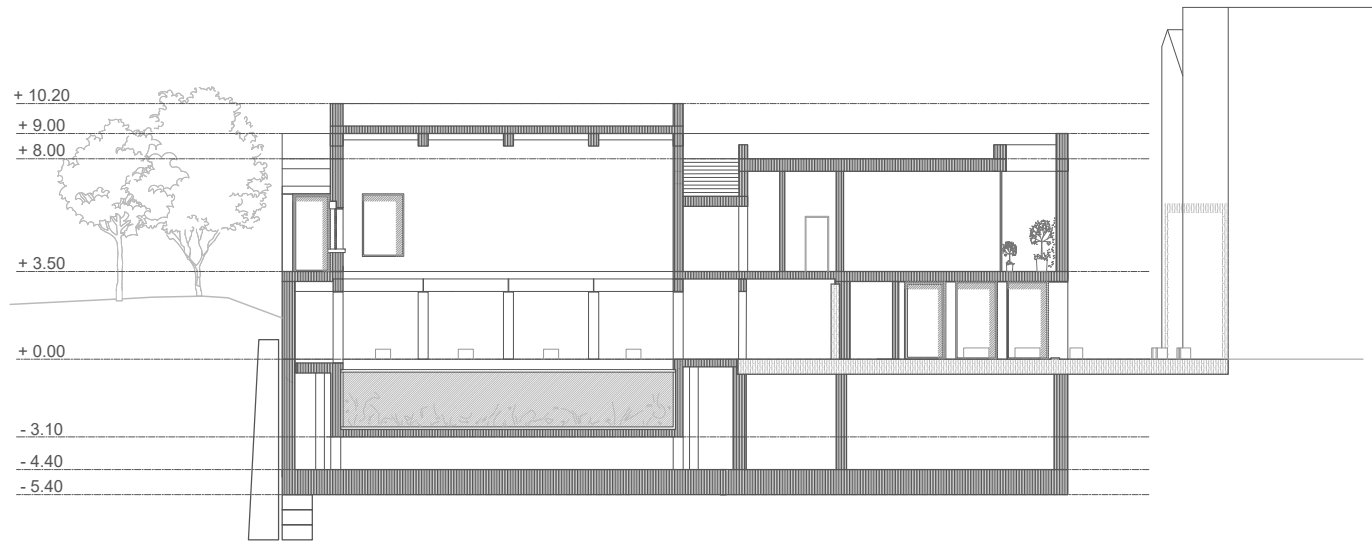


MJS | Urban Concept | 20

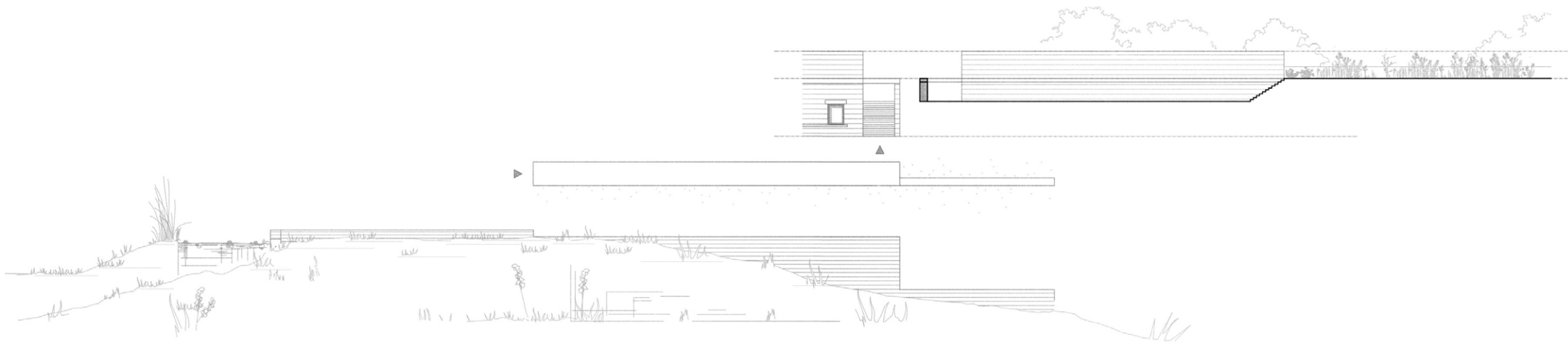


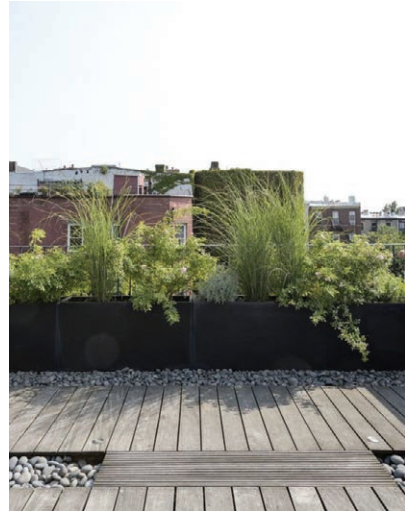


MJS | Urban Concept | 22





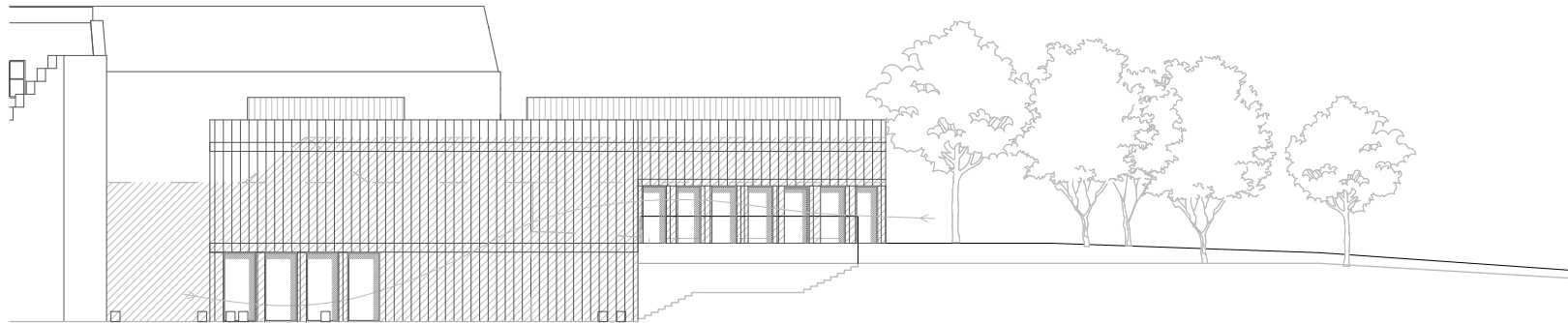
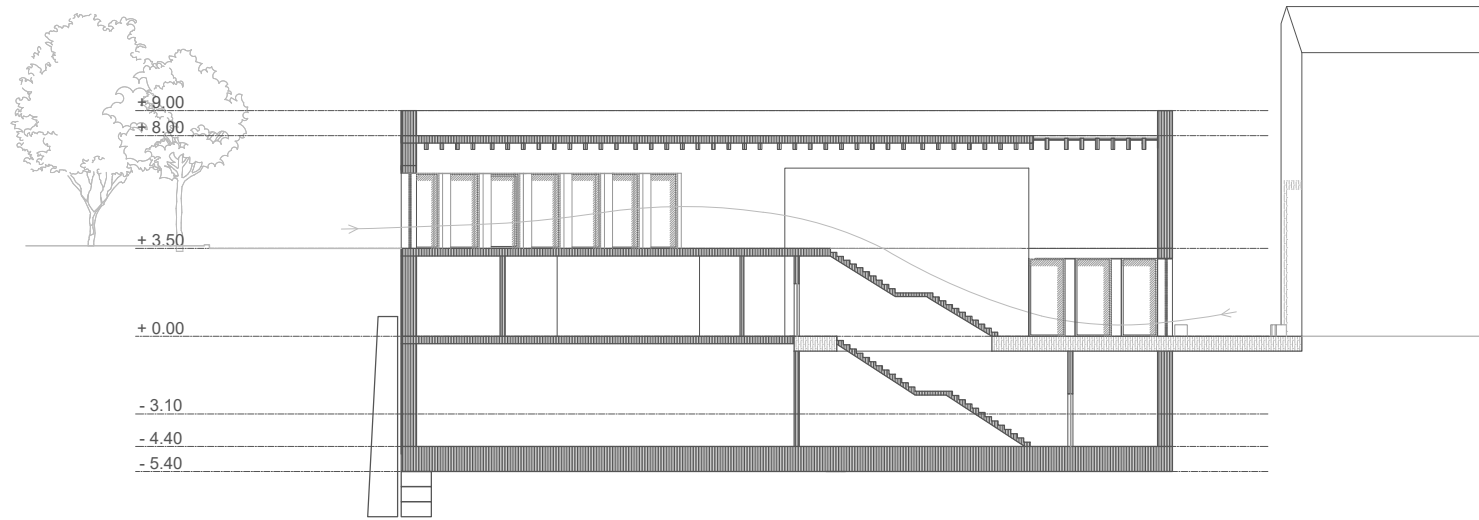


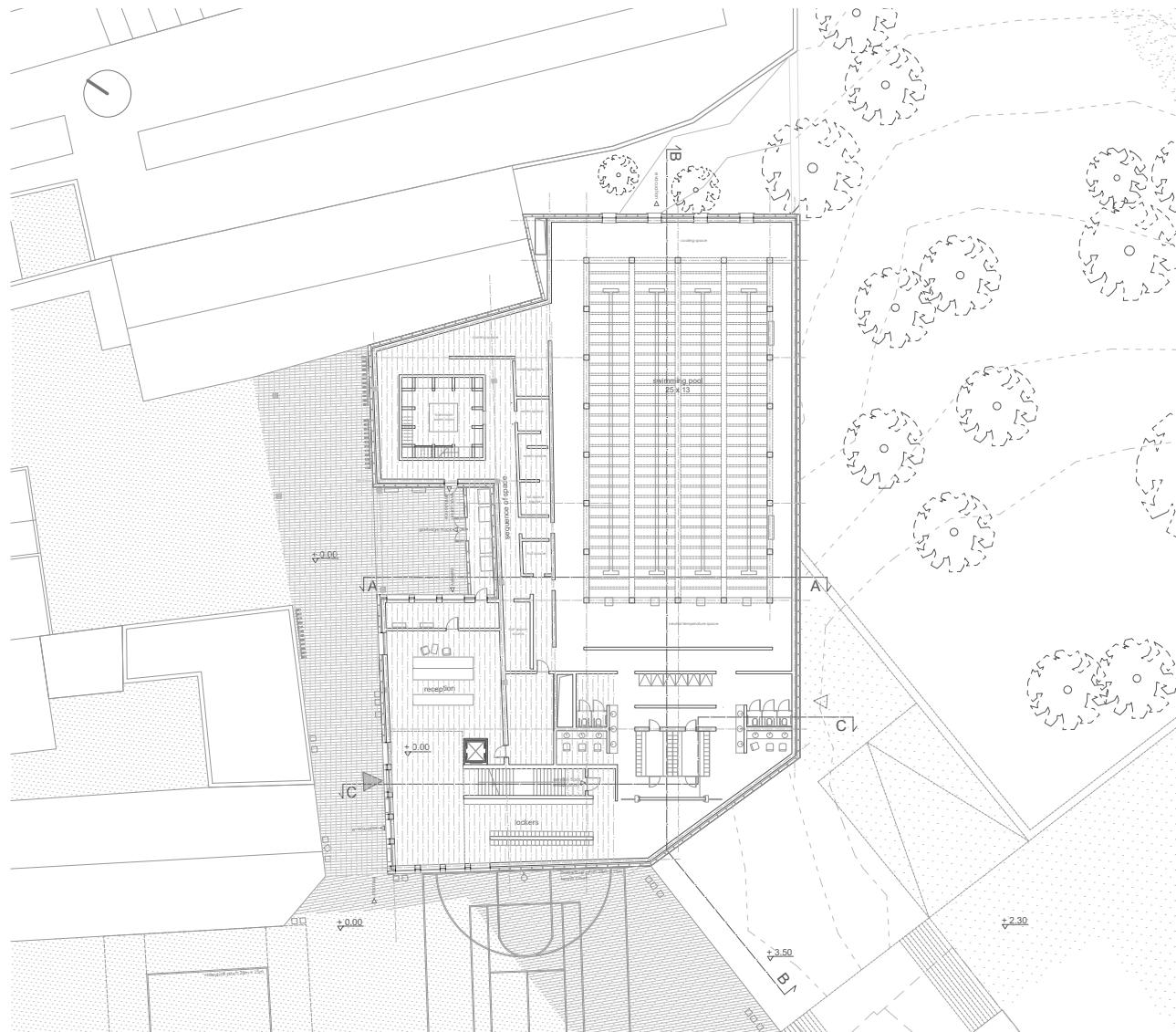


Roofscape; the secret garden, an extension of the park, meadow covered with local wild flowers that people can pick.
MJS | Urban Concept | 26

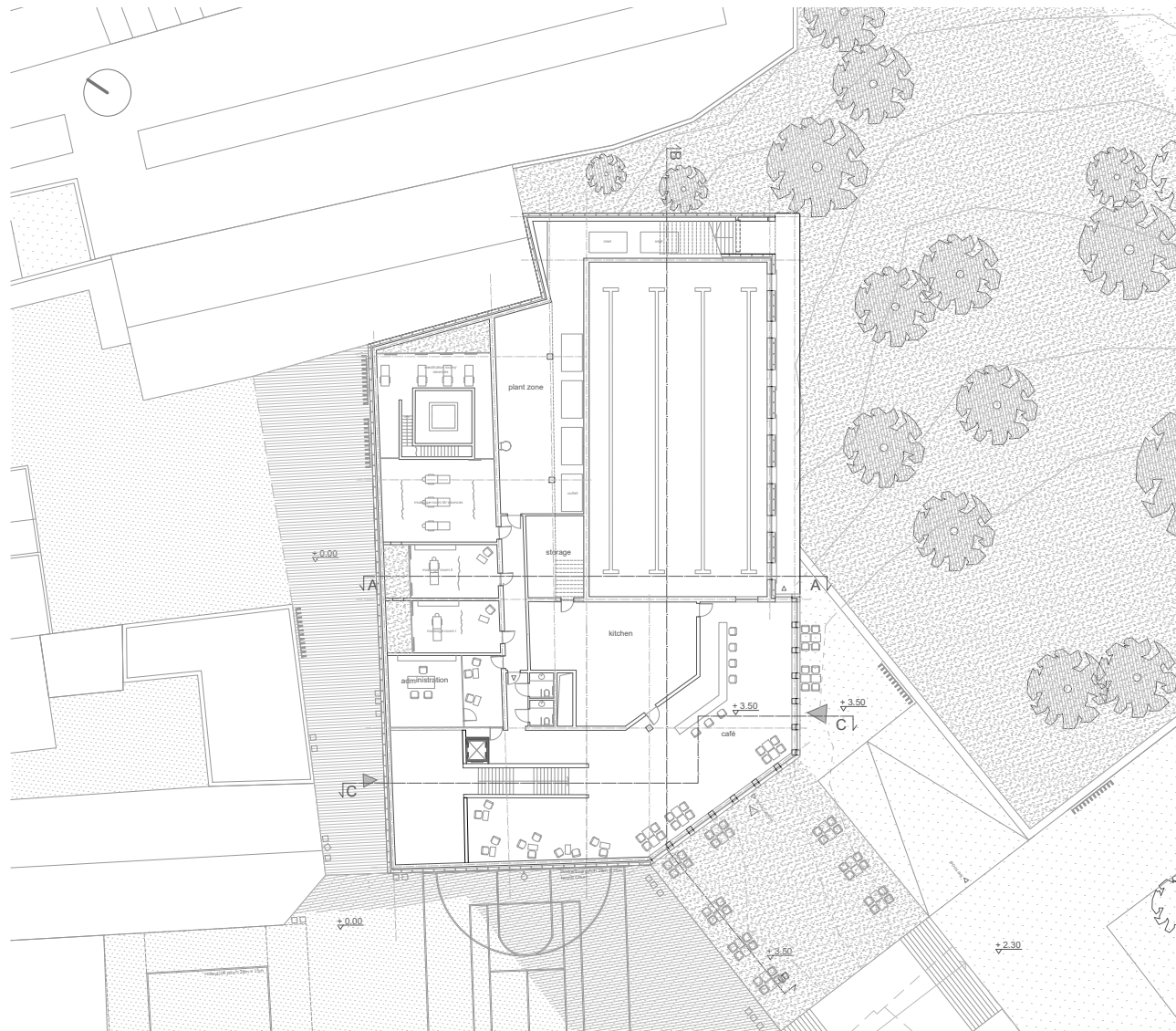


MJS | Urban Concept | 27

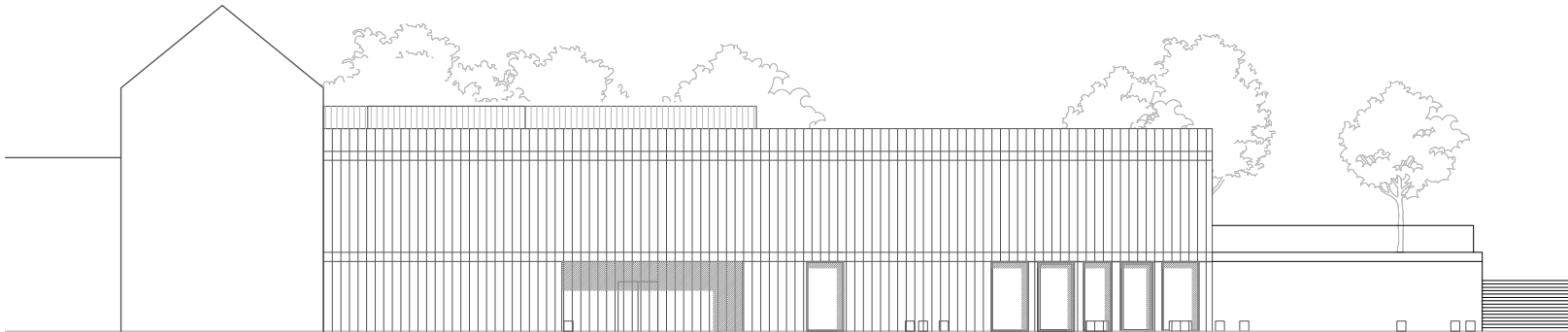
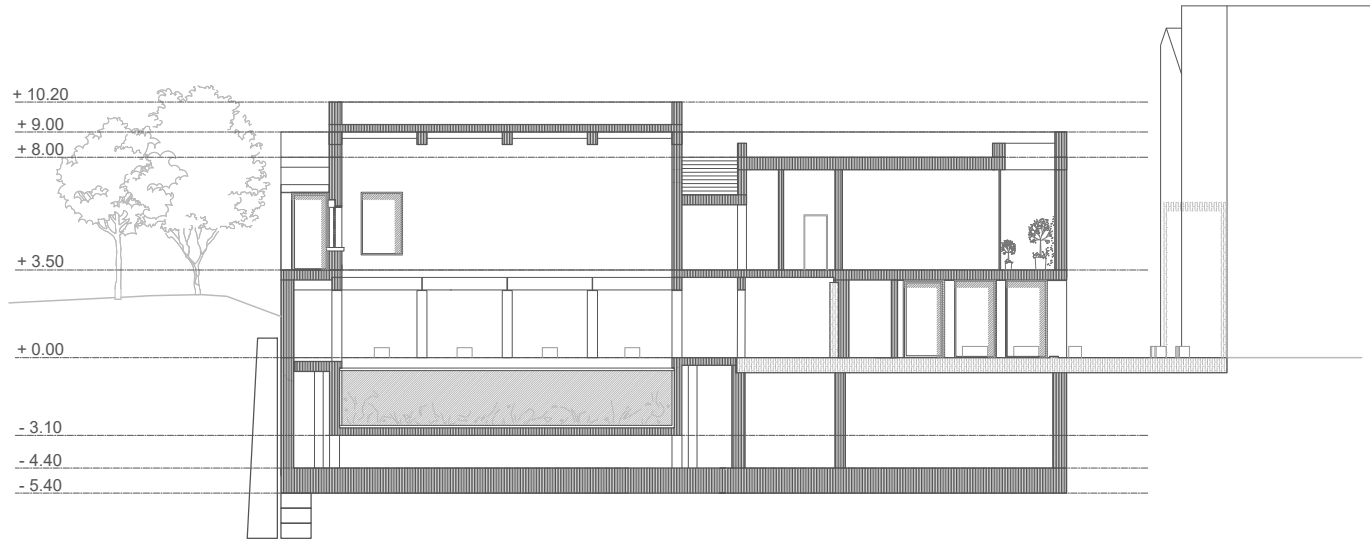


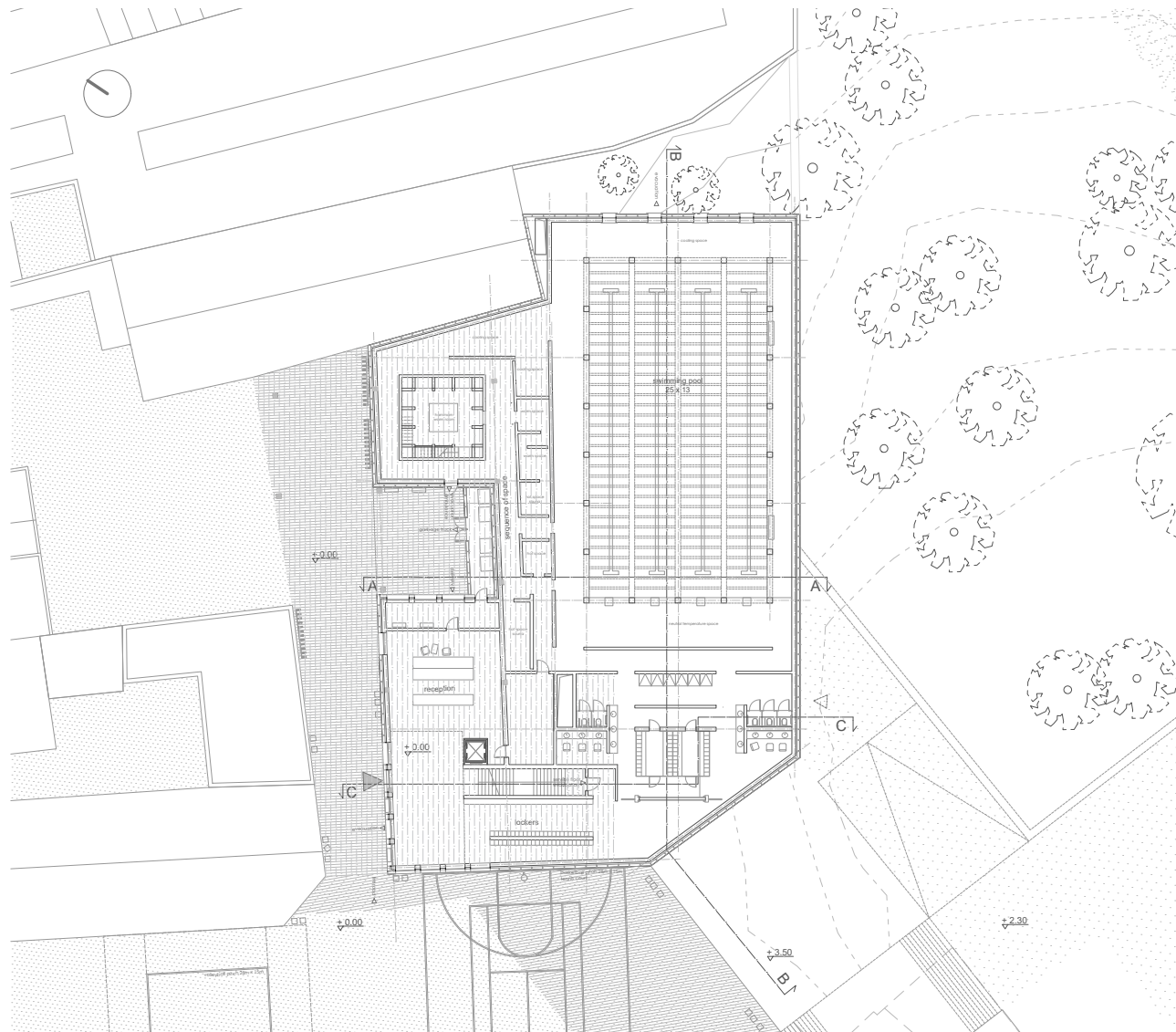


MJS | Design Concept | 29

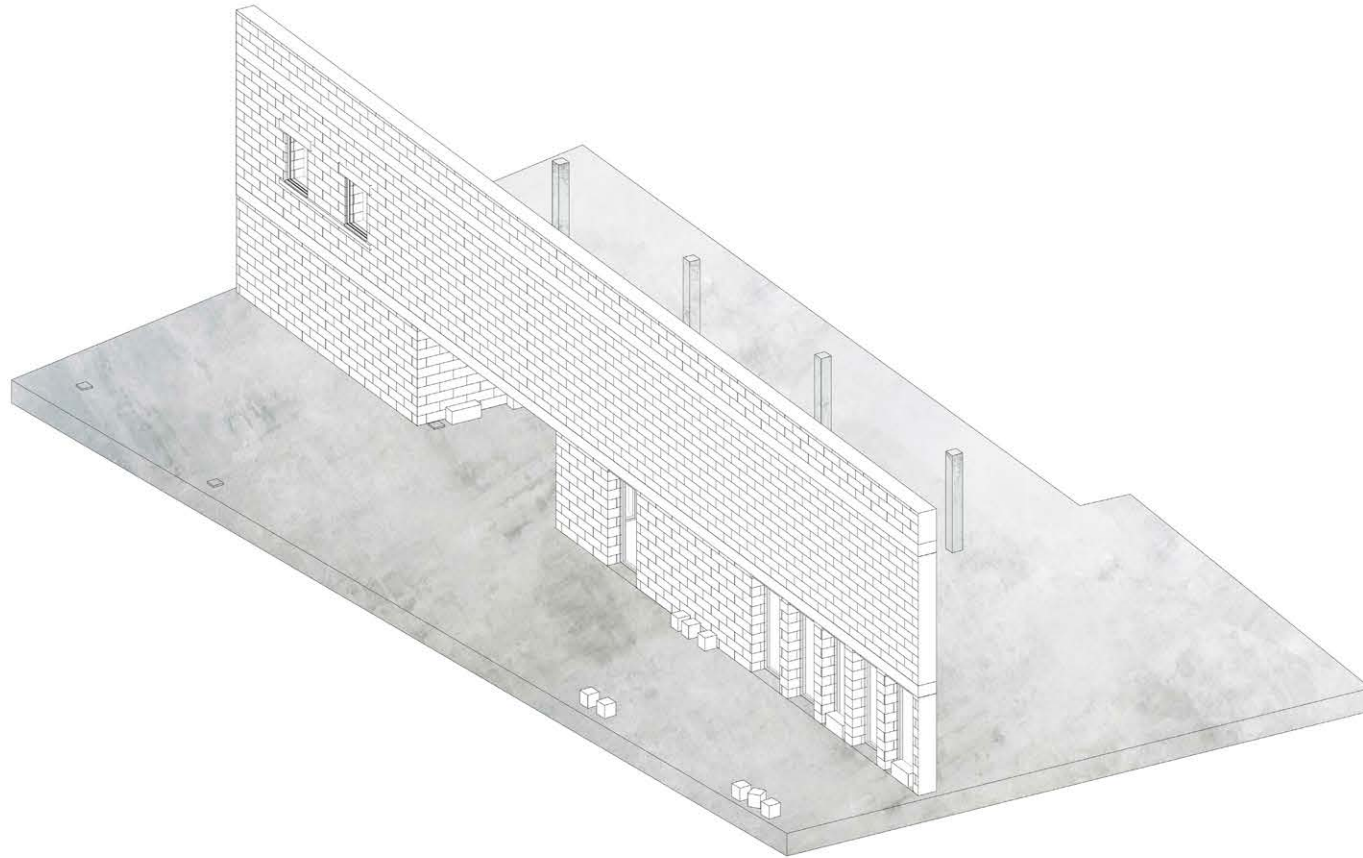


MJS I Design Concept I 30

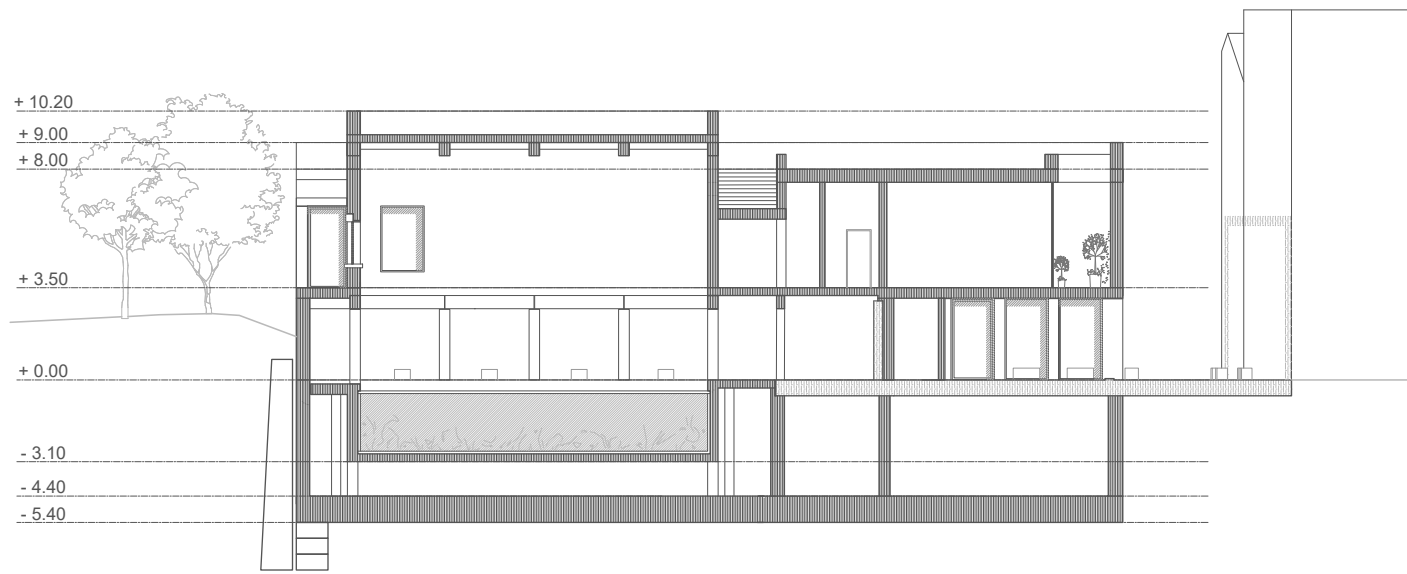




MJS I Design Concept I 33



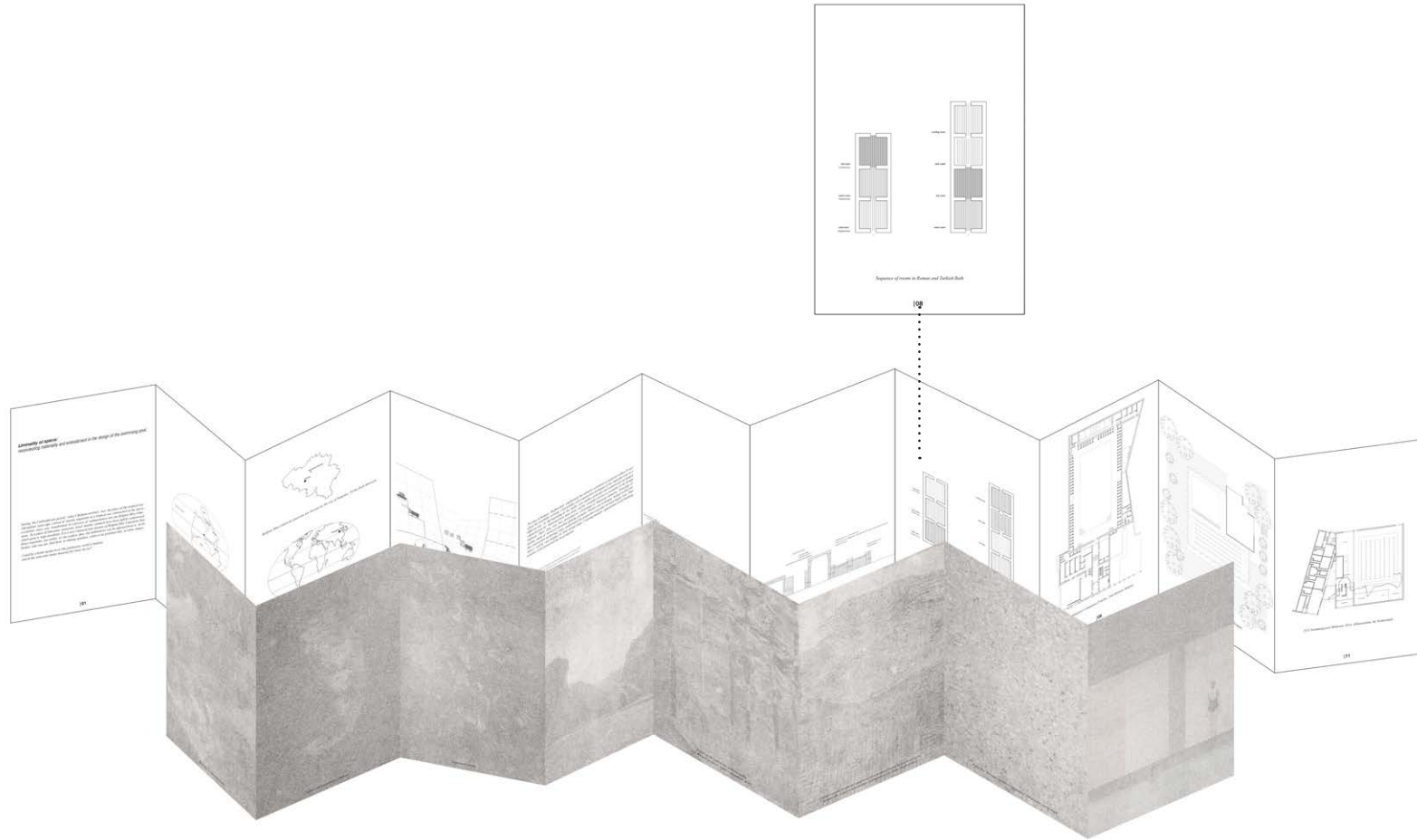
Existing concrete structure of the building implemented to the design

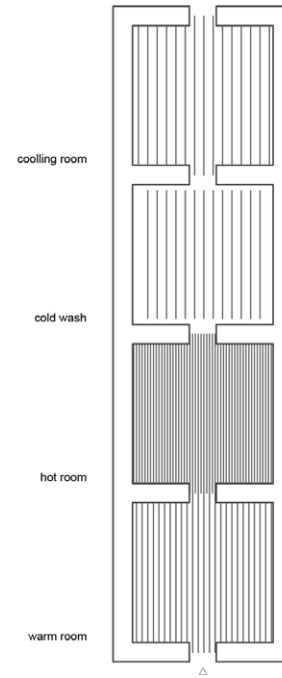
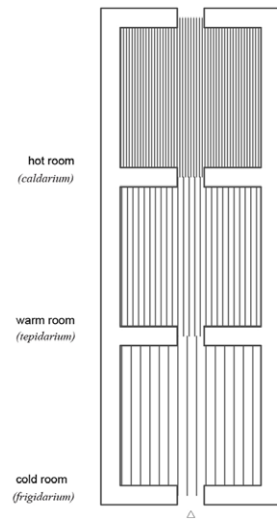


MJS I Design Concept I 35

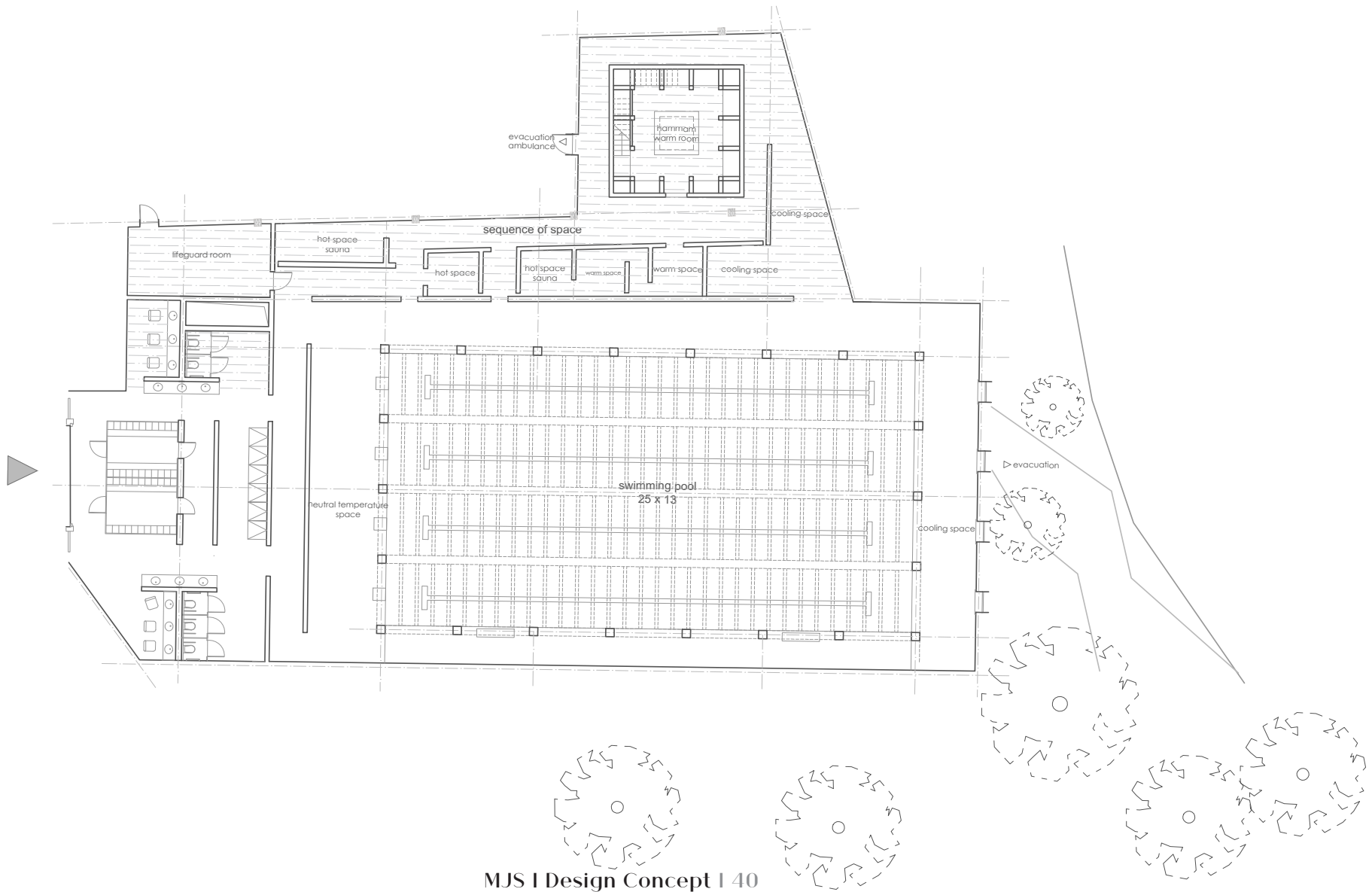


MJS I Design Concept I 37

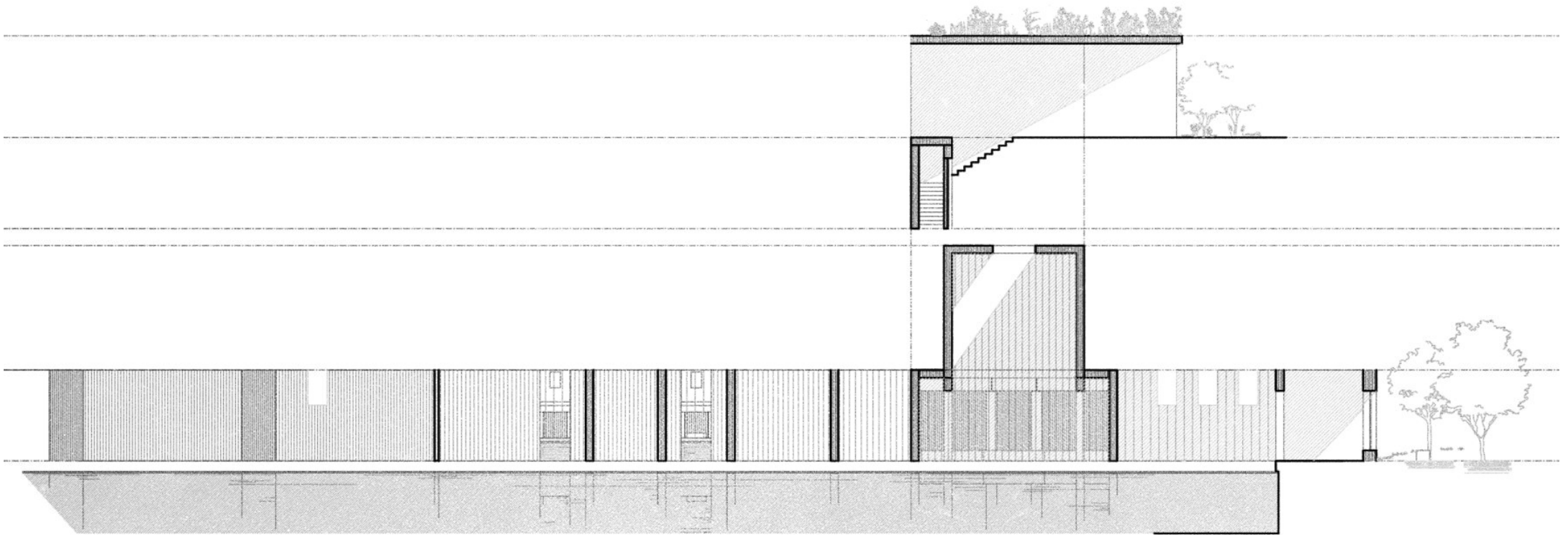




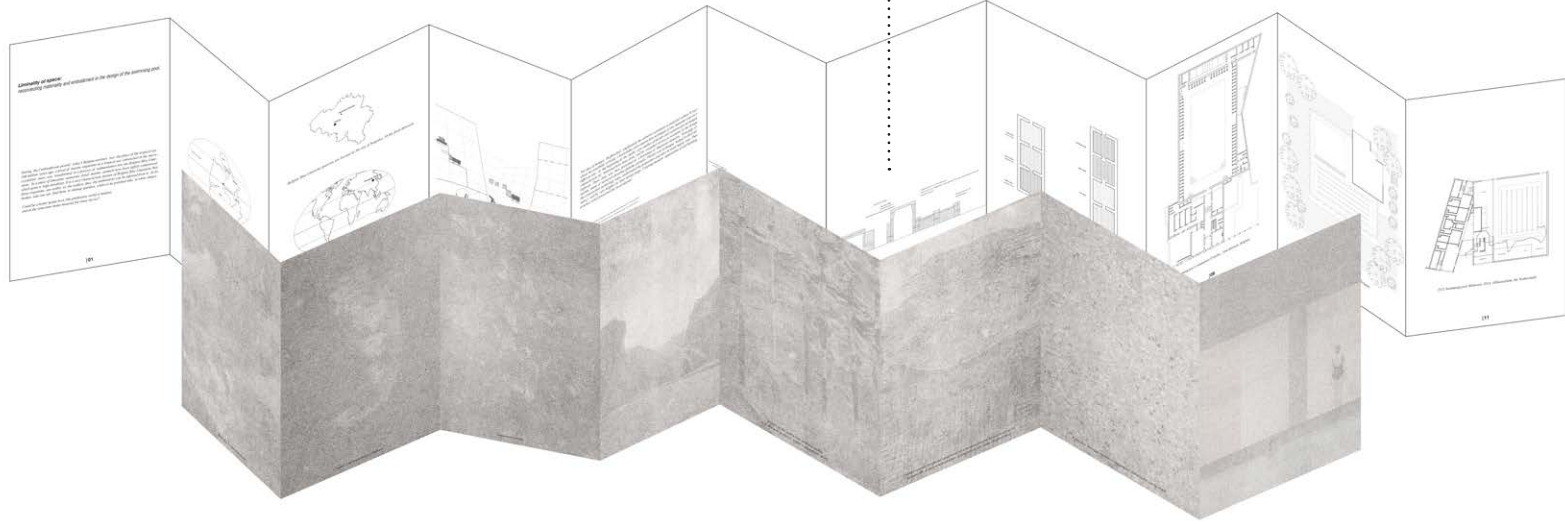
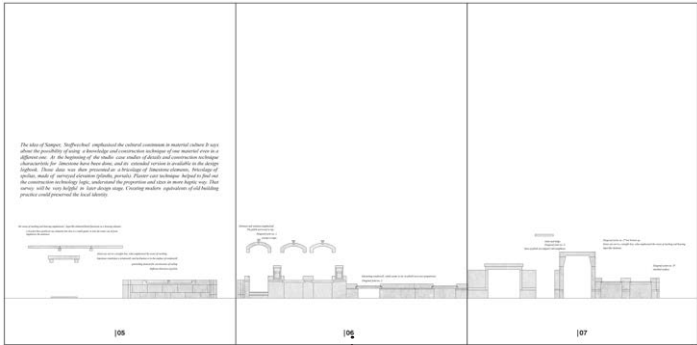
Sequence of rooms in Roman and Turkish Bath

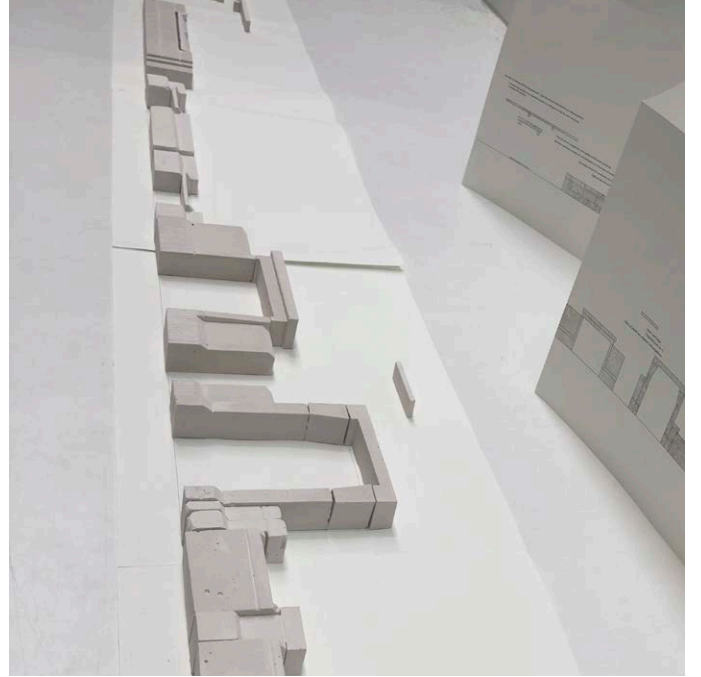
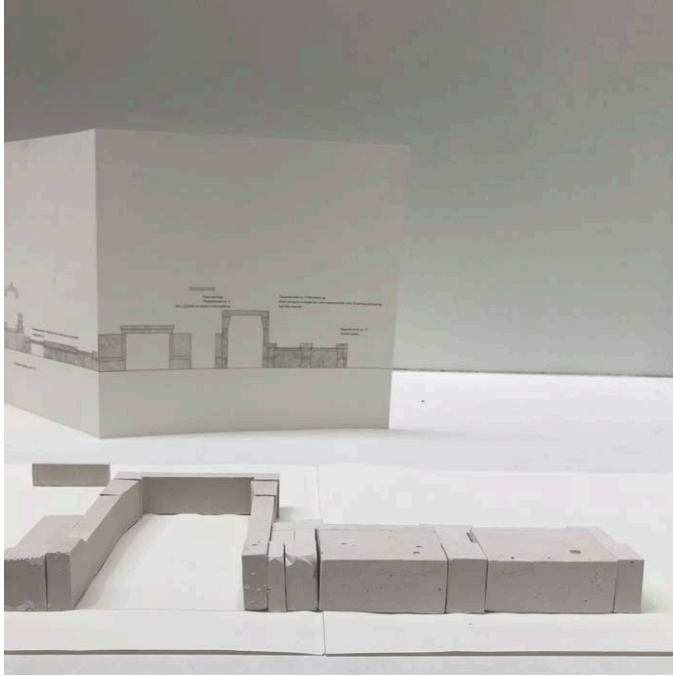
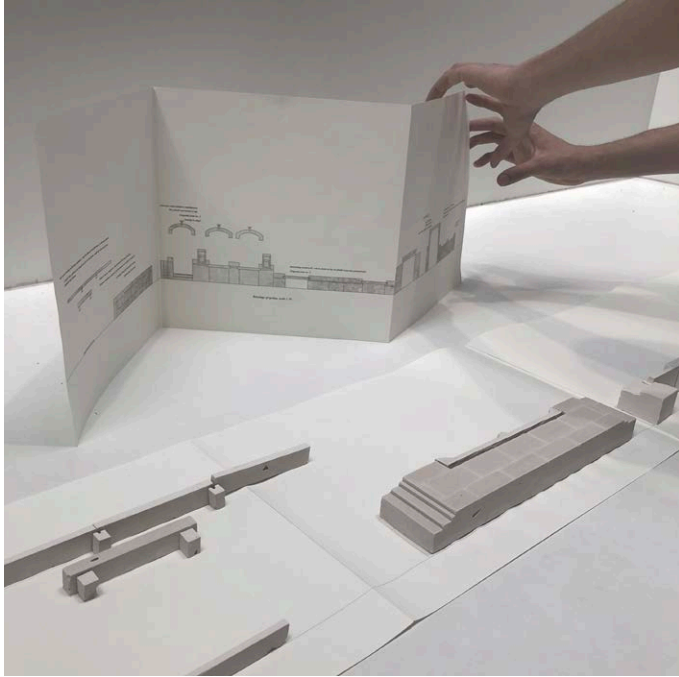


MJS | Design Concept | 40

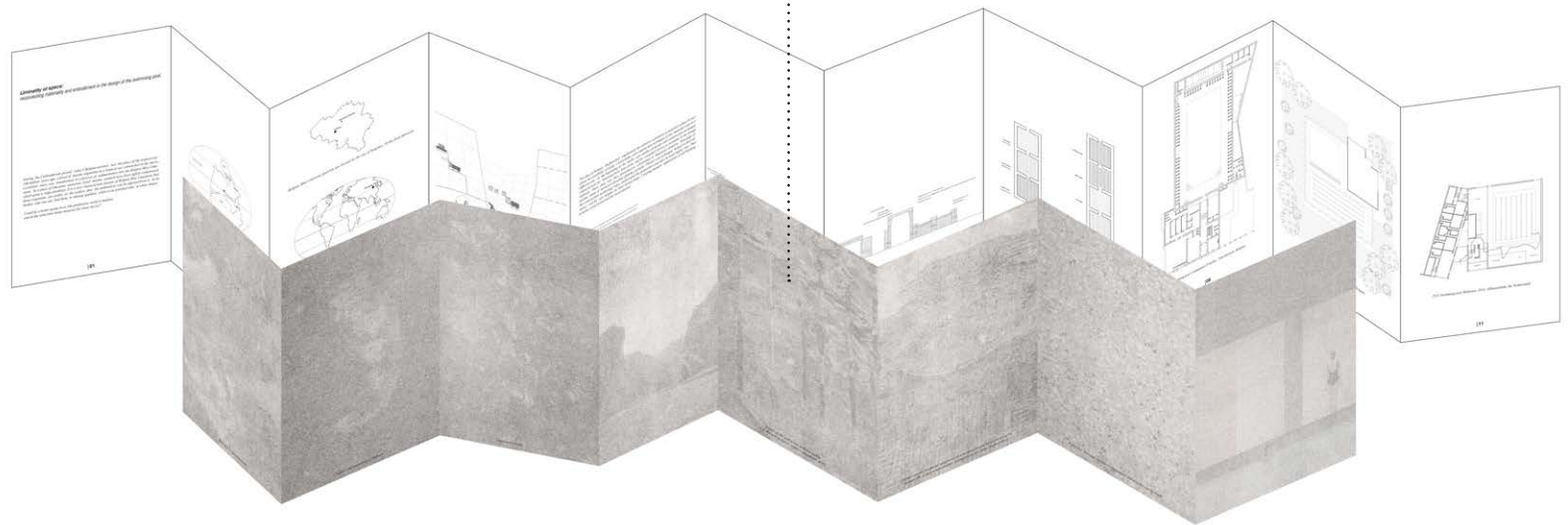
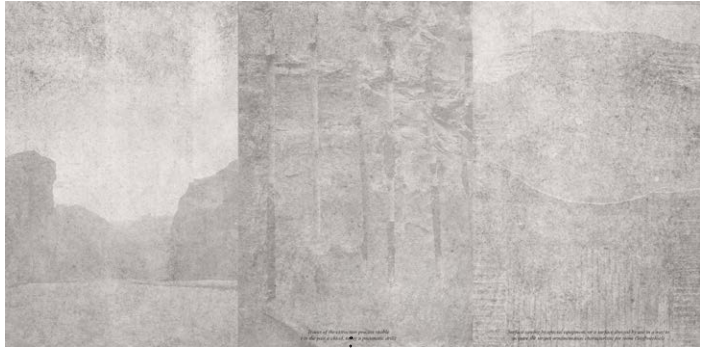


MJS I Design Concept I 41





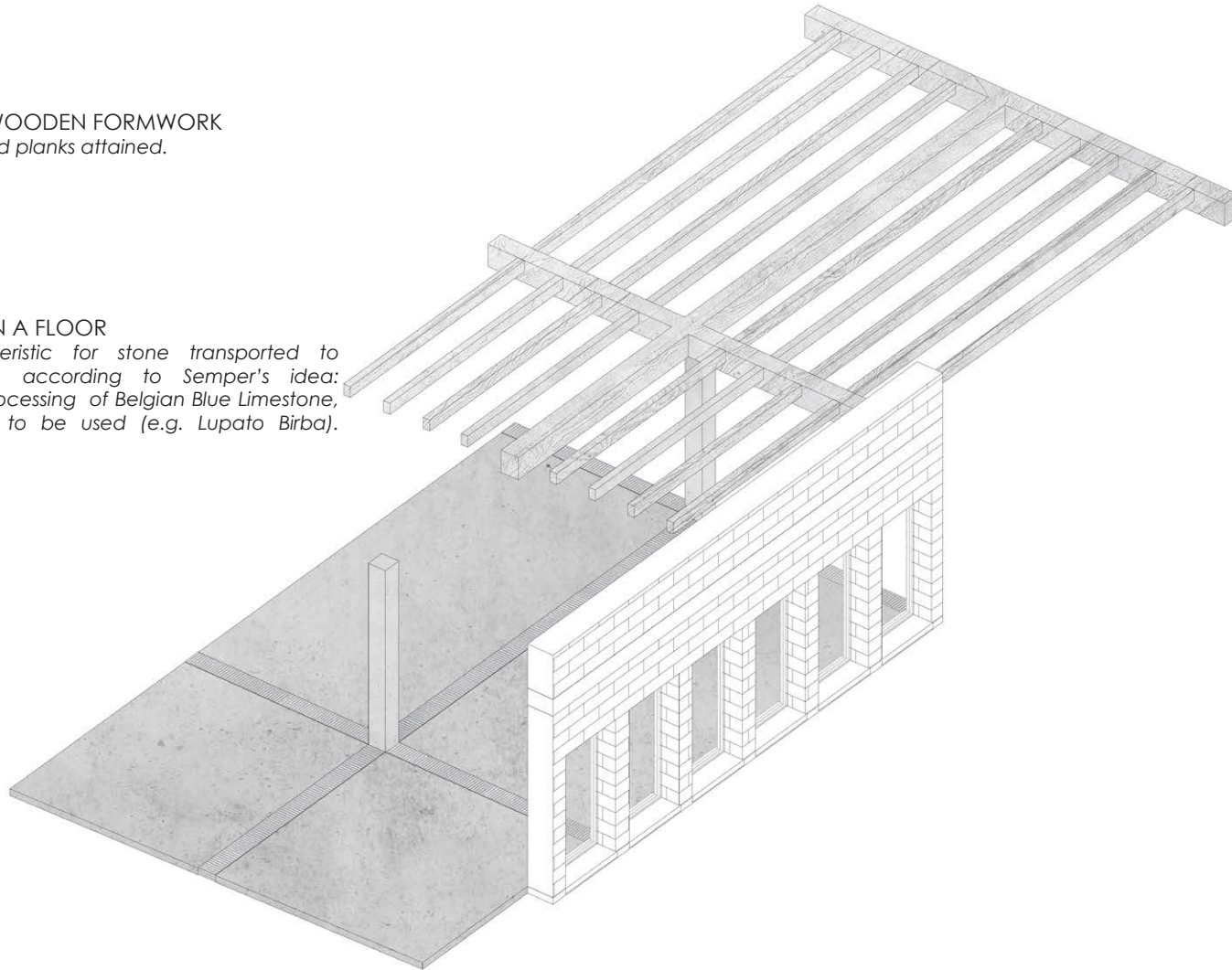






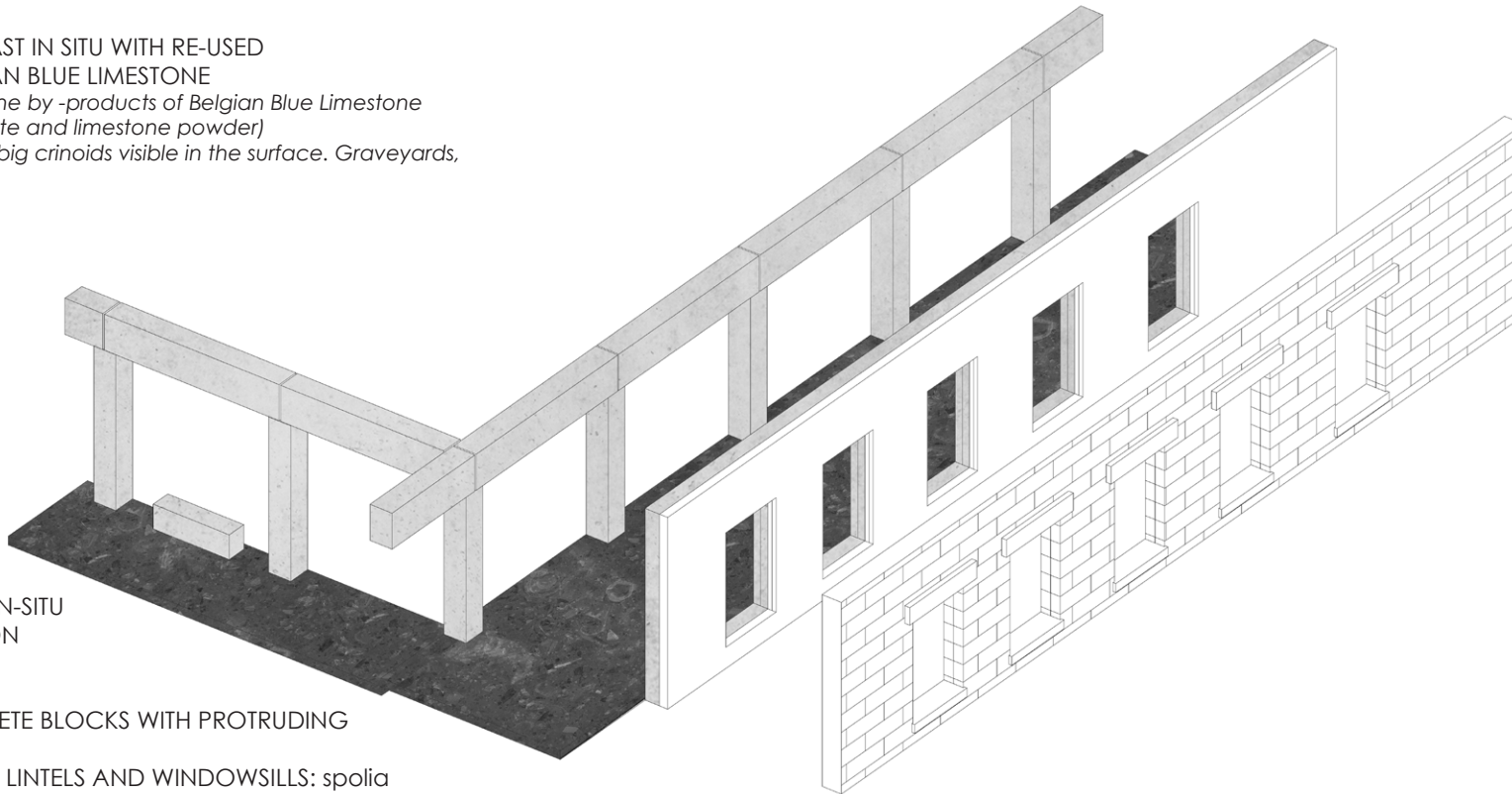
CONCRETE BEAMS IN SITU IN WOODEN FORMWORK
coarse and grainy texture of wood planks attained.

CONCRETE BEAMS EXPOSED IN A FLOOR
Stripes ornamentation characteristic for stone transported to a different material, concrete, according to Semper's idea: Stoffwechsel. Similar to the processing of Belgian Blue Limestone, bush hammering with rollers is to be used (e.g. Lupato Birba).



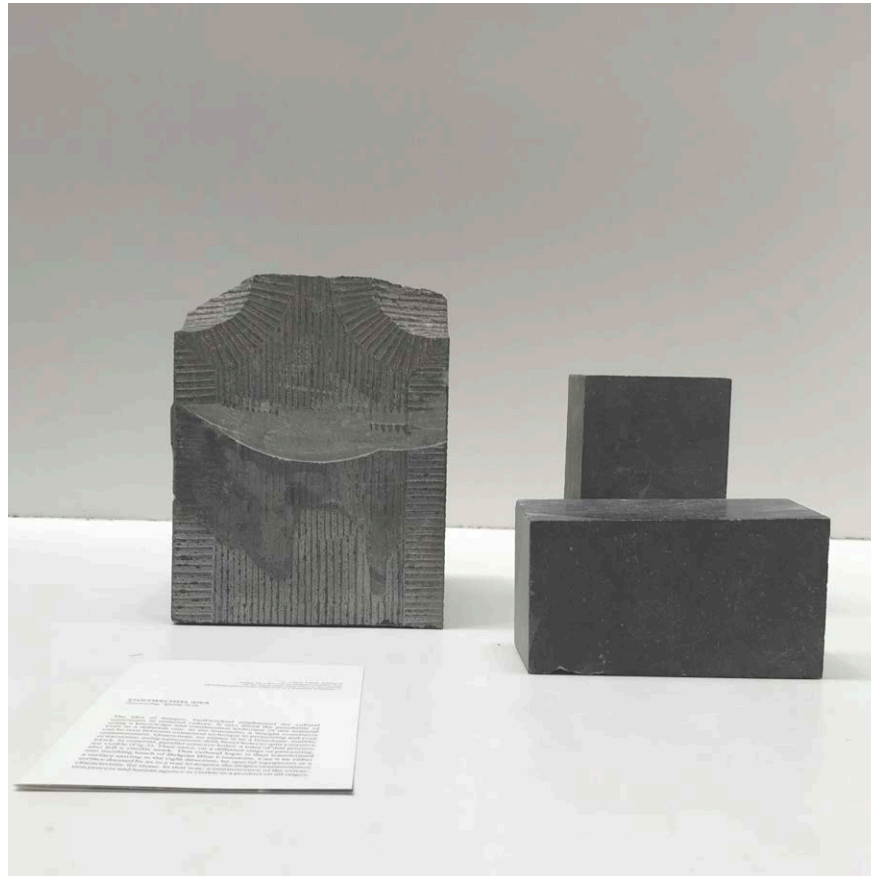
PREFAB CONCRETE POSTS AND BEAMS FOR LATER RE-USE
lime joints

DARK TERRAZZO CAST IN SITU WITH RE-USED
OFFCUTS OF BELGIAN BLUE LIMESTONE
(*RECYCLING: use of the by-products of Belgian Blue Limestone
exploitation; aggregate and limestone powder*)
(*NATURE: offcuts with big crinoids visible in the surface. Graveyards,
Stonemasons*)



CONCRETE WALLS IN-SITU
THERMAL INSULATION
CAVITY

LIME-HEMP CONCRETE BLOCKS WITH PROTRUDING
JOINTS
RE-USED LIMESTONE LINTELS AND WINDOWSILLS: *spolia*



MJS I Research I 50

SPOLIA

/ re-use elements

neighbouring buildings structure, lintels, windowsills, sinks made of limestone pots, old metal taps, limestone steps, and small pink tiles

/ recycled materials

concrete production from limestone waste and by-products of exploitation

/ materials that are taking material from nature

crinoids





MJS I Design Concept I 53

SPOLIA

/ re-use elements

neighbouring buildings structure, lintels, windowsills, sinks made of limestone pots, old metal taps, limestone steps, and small pink tiles

/ recycled materials

concrete production from limestone waste and by-products of exploitation

/ materials that are taking material from nature

crinoids



SPOLIA

/ re-use elements

neighbouring buildings structure, lintels, windowsills, sinks made of limestone pots, old metal taps, limestone steps, and small pink tiles

/ recycled materials

concrete production from limestone waste and by-products of exploitation

/ materials that are taking material from nature

crinoids



MJS | Design Concept | 57



thank you.

MJS | Urban Architecture Studio | 58