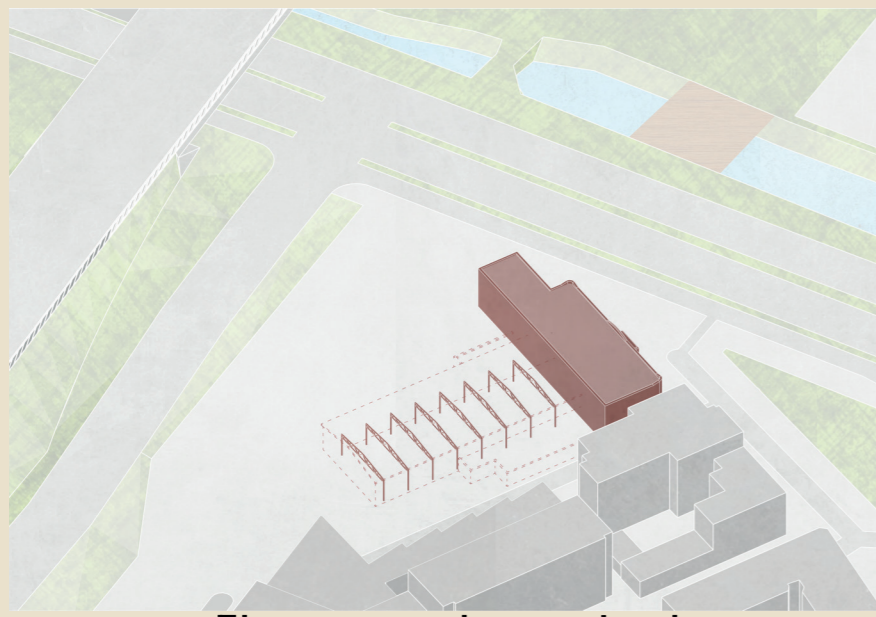


# Symphony

“The building is to form an example for future architecture on how to work, design and live with bio-based materials.”

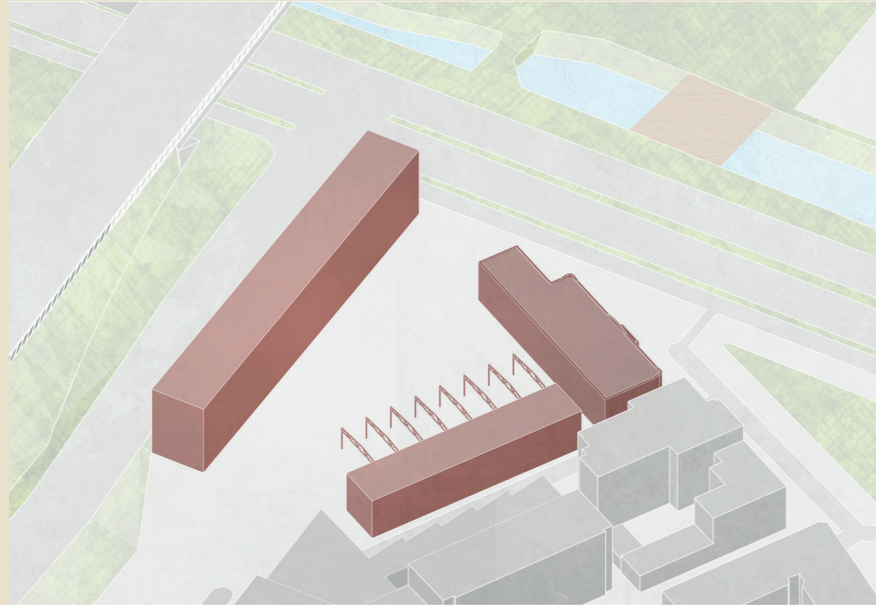
- Bram Turkstra -



Elements to be retained

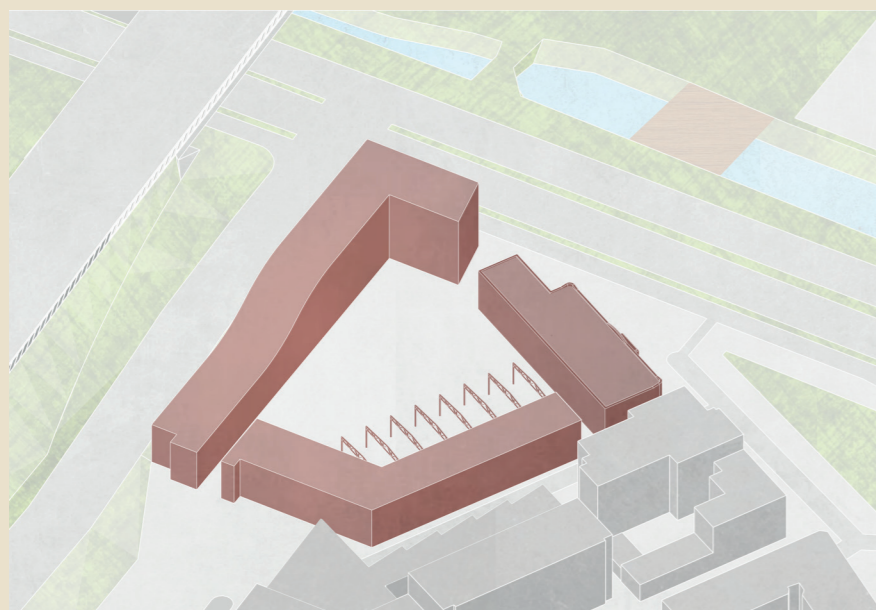
The old factory hall and side buildings are demolished.

The trusses of the factory hall remain and form the basis and central heart of the courtyard



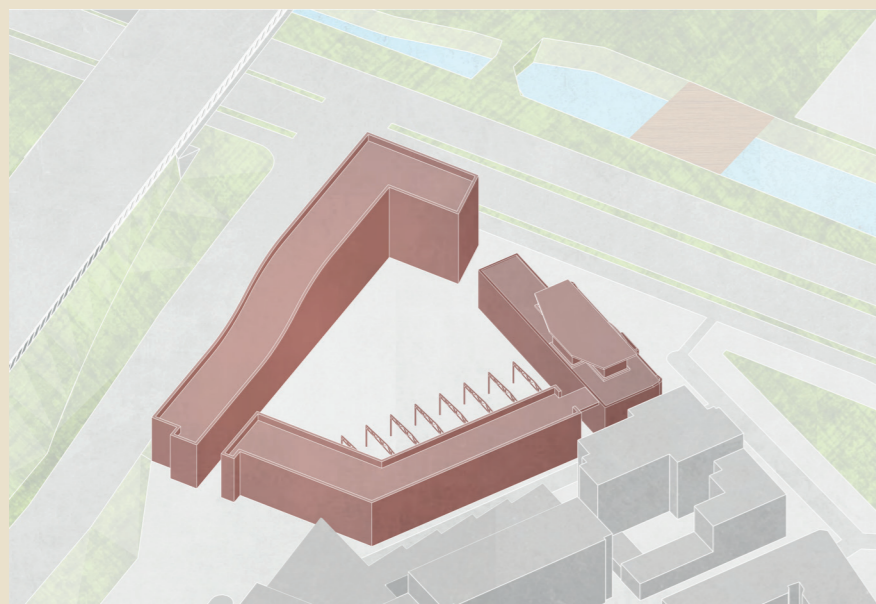
Walls to block off

Introducing the Functional- and Esthetical wall in order to block off sound and noise pollution



L-shape & curve

Making a curve to strengthen the effect of blocking noise and sound as well as letting sunlight in

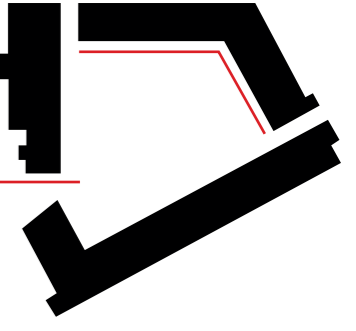


Roof edge & pavillion

Adding the pavillion and roof edge for green roofs and facades to reduce urban heat island effect



Front facade - Courtyard



Ground floor



First floor

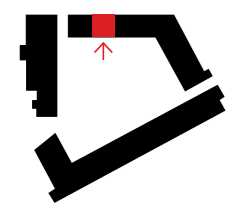
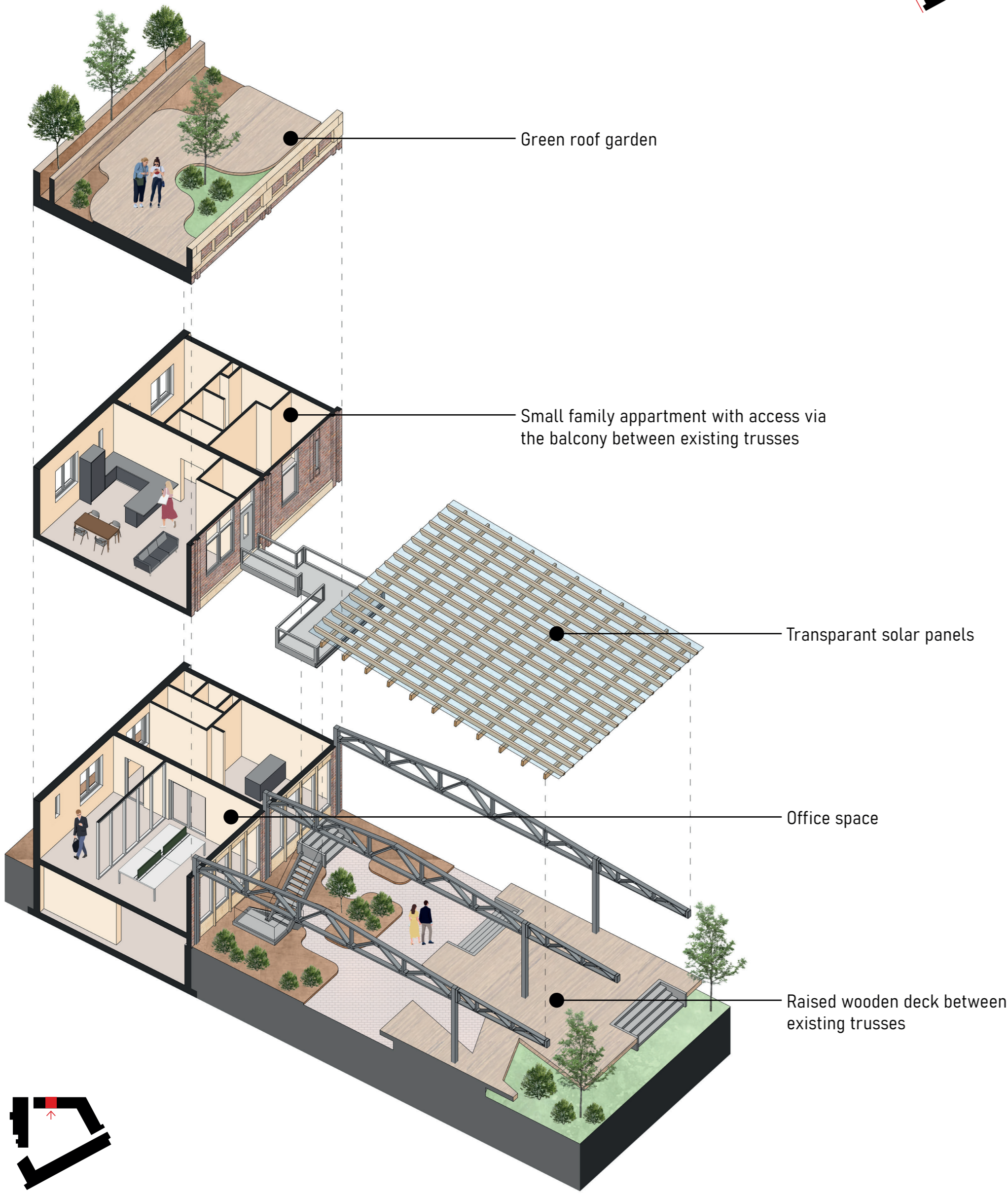
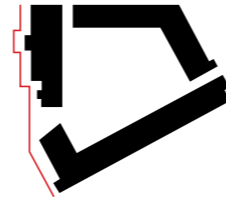


Second floor Historical wall





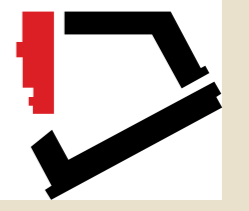
Front facade - Haarlemmerweg



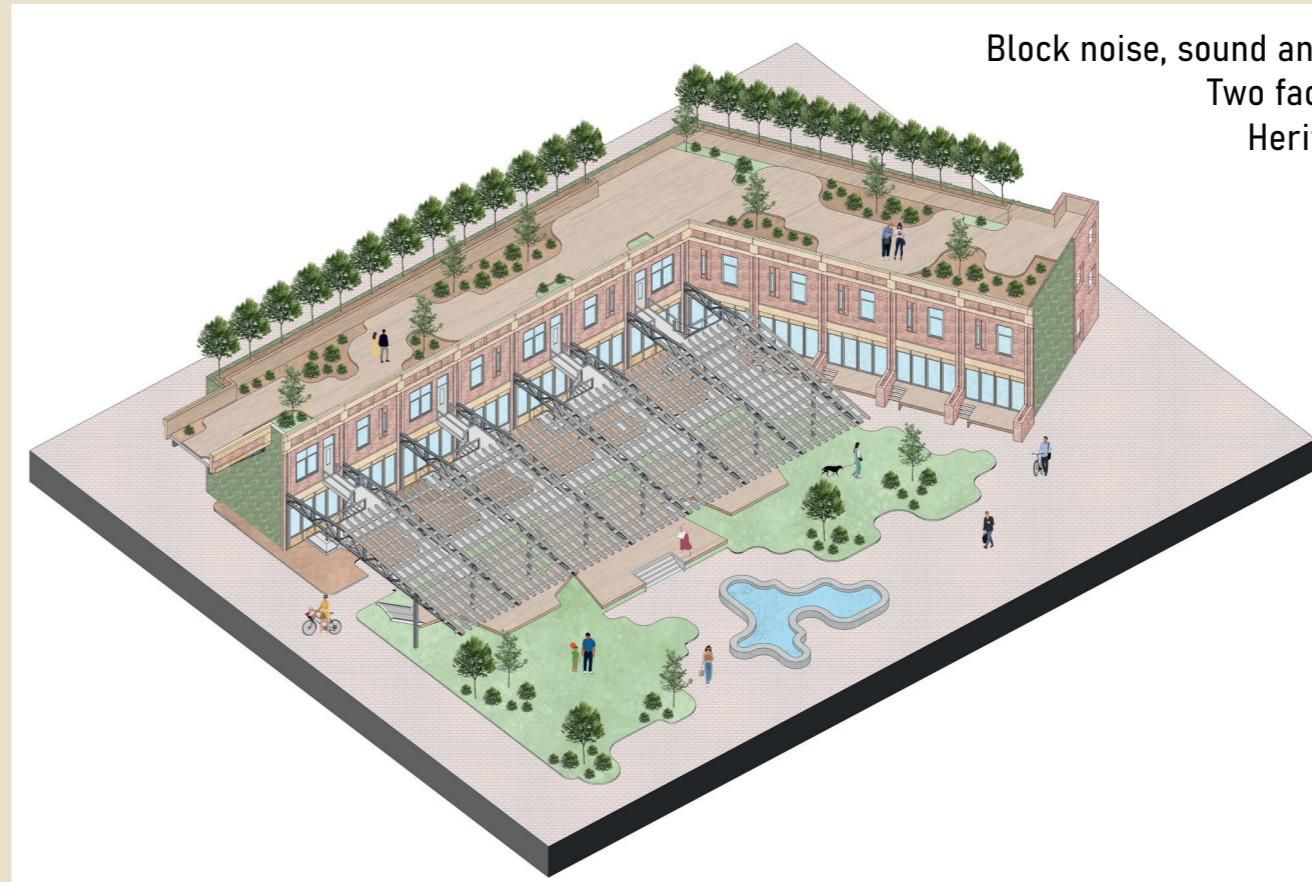
# Symphony



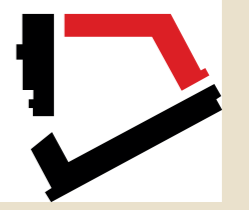
Save the original building style  
Add a pavillion  
Future proof



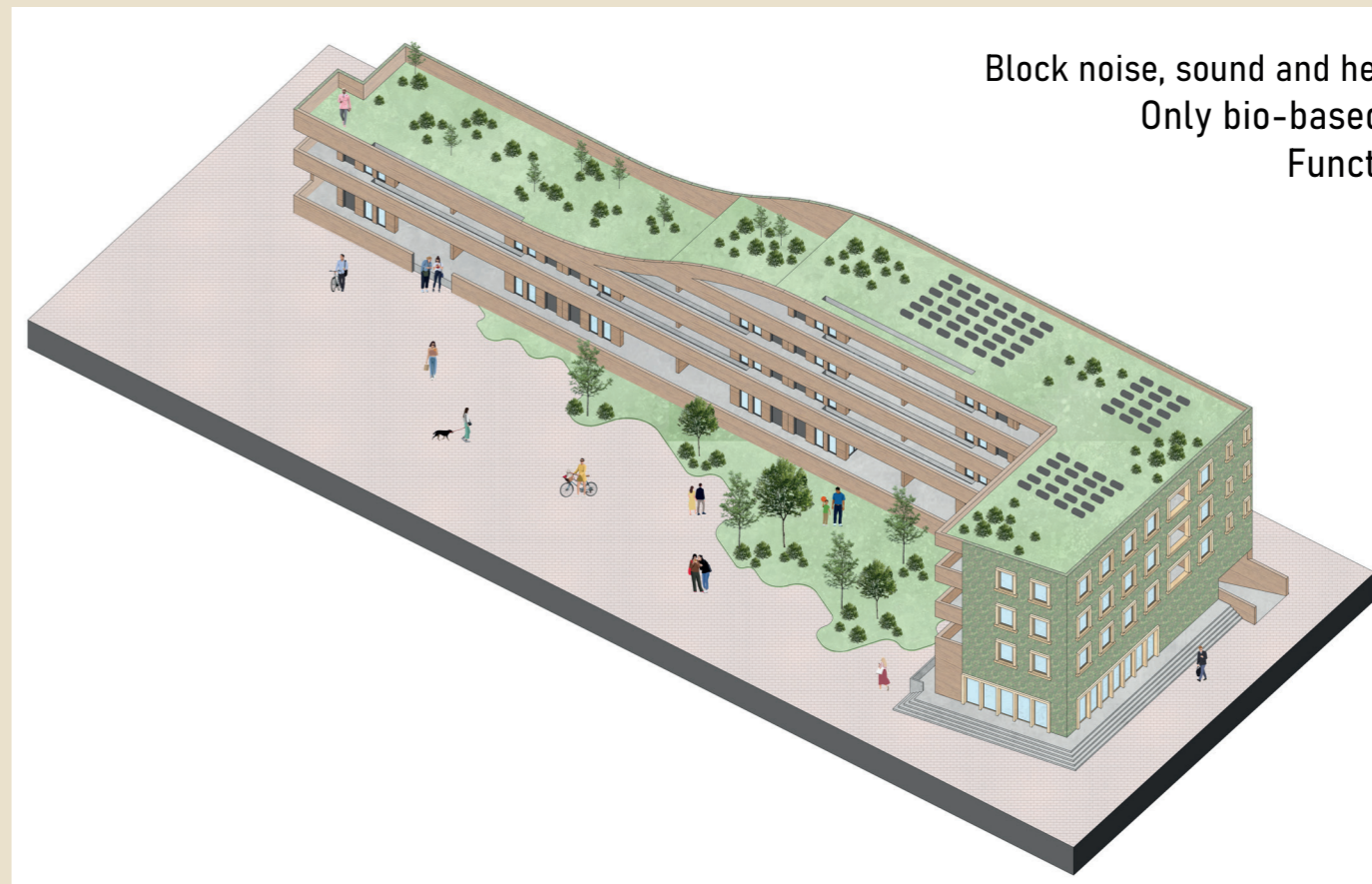
The Historical wall



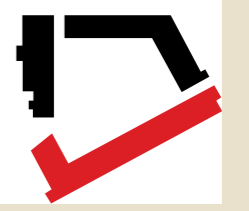
Block noise, sound and heat pollution  
Two faces architecture  
Heritage connection



The Esthetical wall



Block noise, sound and heat pollution  
Only bio-based materials  
Functional roofs



The Functional wall

