

Interiors
Buildings
Cities
MSc3/4, 2022/2023

Julie Ligtvoet

Project Book



Building in which M HKA currently resides.



Proposed site (Bartosz Teodorczyk, 2022).



“Boys and Girls” by Job Koelewijn is an artwork of the current collection of MHKA.

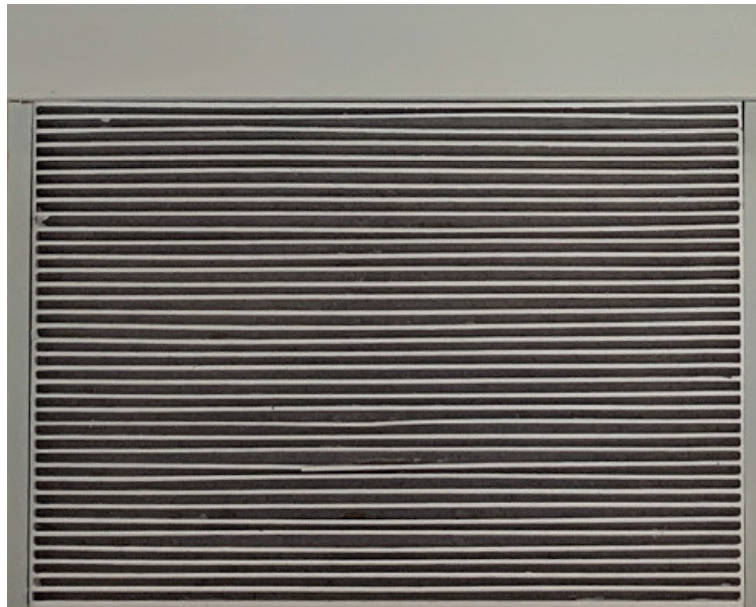
Transforming a vacant shop into a temporary gallery space, the installation invited people to step inside the doll packages and be part of the artwork's narrative. Like living dolls, individuals became part of the artwork, blurring the lines between art and reality.



Vacant shop on the Meir, Antwerp (Eric de Mildt, 2019).



Exhibition proposal for “Boys and Girls”.



Model pictures of the vacant shop that has turned into an immersive exhibition space. When the “dolls” find their place within the artwork, the shutter doors rise, unveiling the people on display.



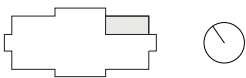
The concept of the shopfront undergoes a reimagination in the design of the new M HKA. Drawing inspiration from the innovative Apple store in Stanford, the ground floorplan of the museum embraces the essence of a contemporary retail space.



Apple store in Stanford (Hufton+Crow , Roy Zipstein, n.d.)

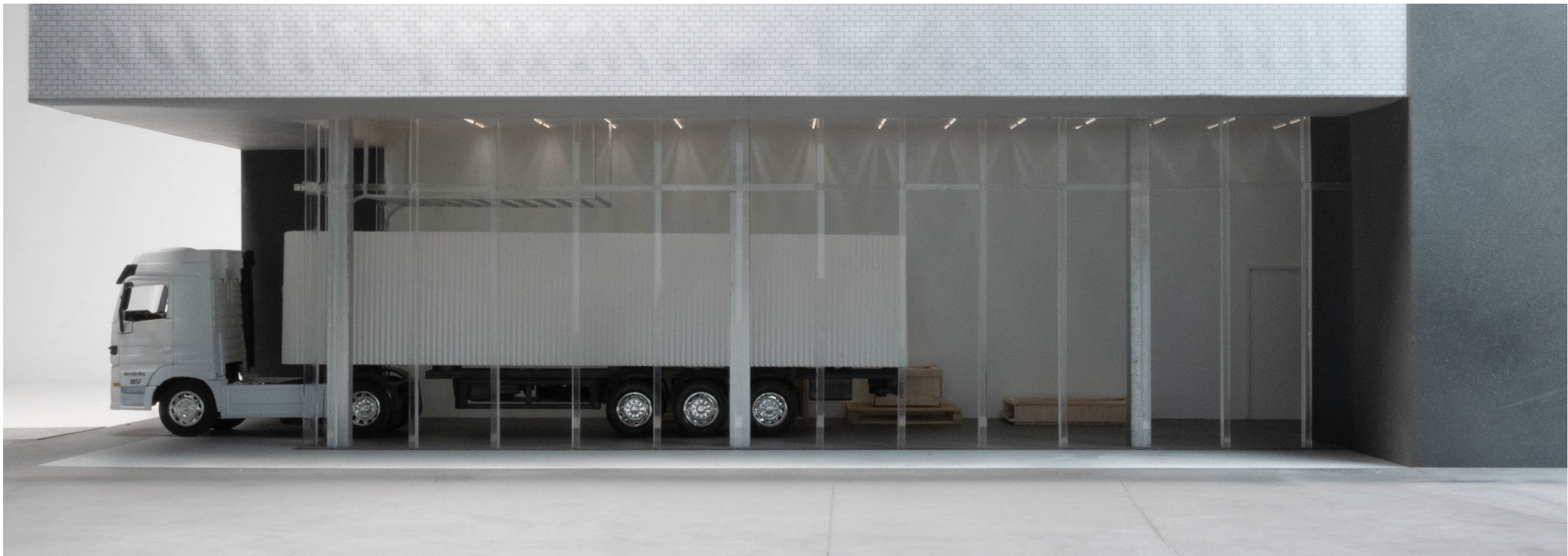


Main entrance

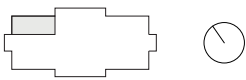




Open ground floor level of the Fabrikstrasse 10 in Basel by Yoshio Taniguchi (Johannes Marburg, n.d.)



Art entrance

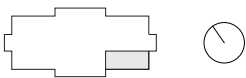




Close-up image of the art entrance.



Cafe

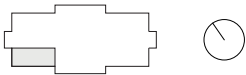




Close-up image of the art entrance.



Workshop





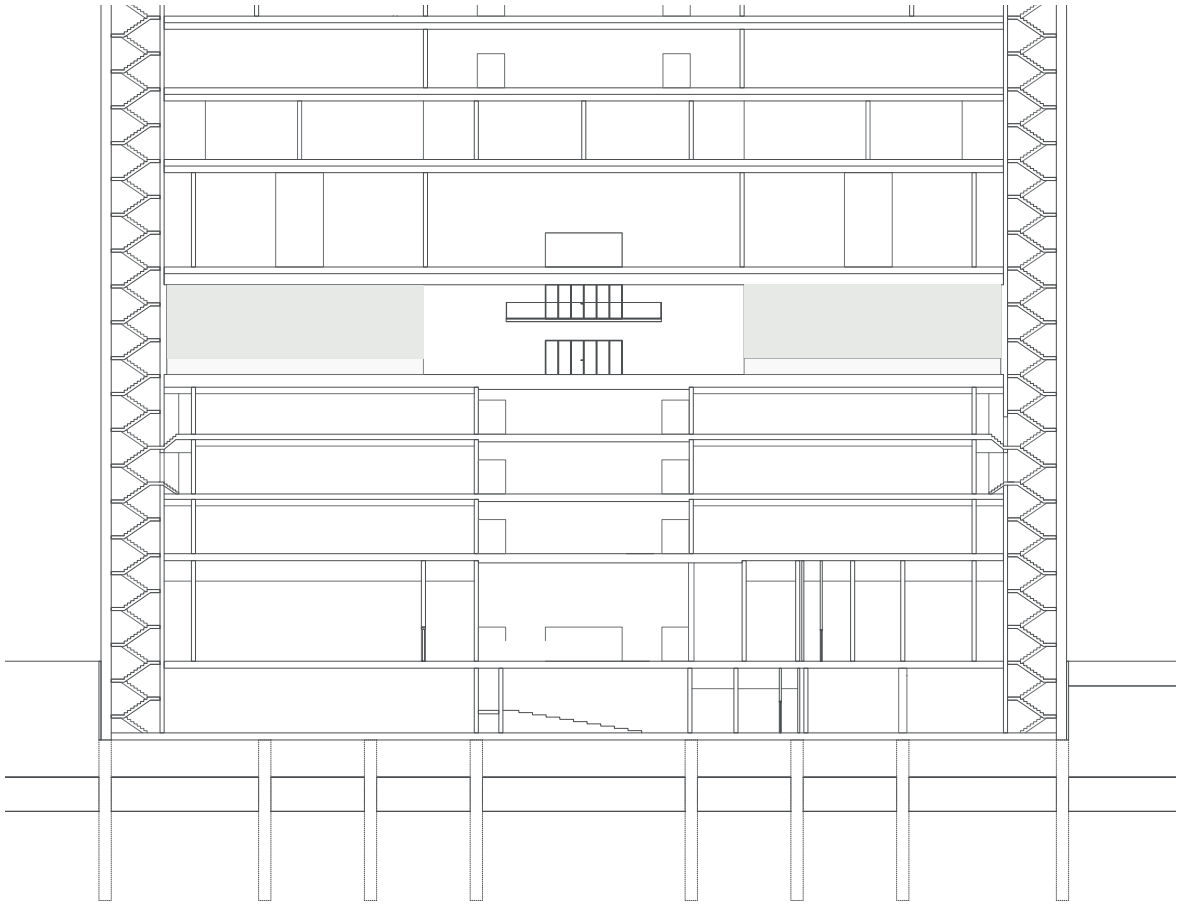
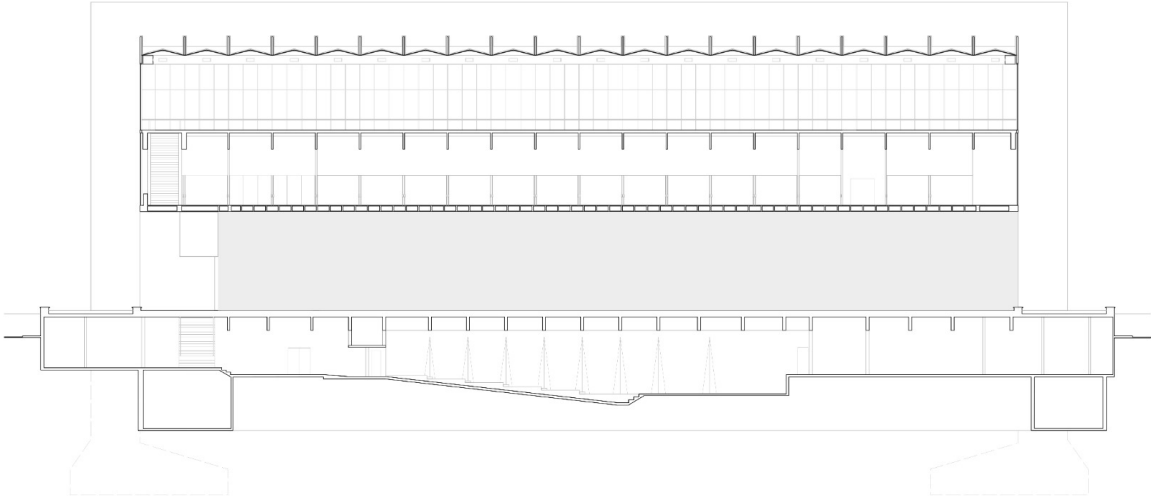
Rendering of the workshop.

Museu de arte de São Paulo (MASP), designed by Lina Bo Bardi, features an overhanging structure that gives rise to an outside space beneath its suspended mass.



Lina Bo Bardi, MASP, São Paulo Museum of Art (Wilfred Or, 2015).

The similarity can be seen when comparing the longitudinal sections of MASP and the new M HKA, revealing the space that is formed by their suspended volumes.





Roof terrace of the Stavros Niarchos Foundation Cultural Centre (Michel Denancé, n.d.).



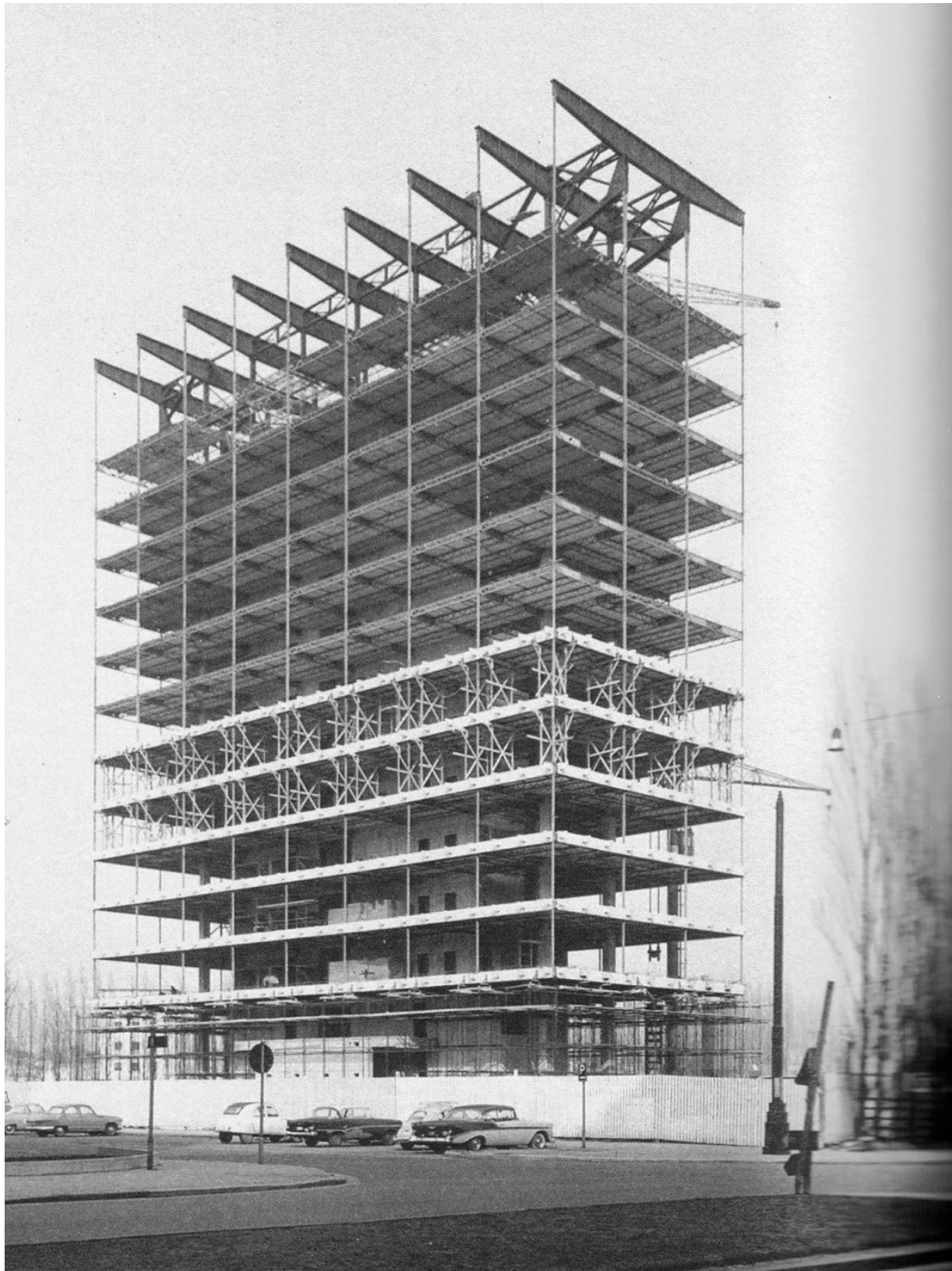
Rendering of the roof terrace.



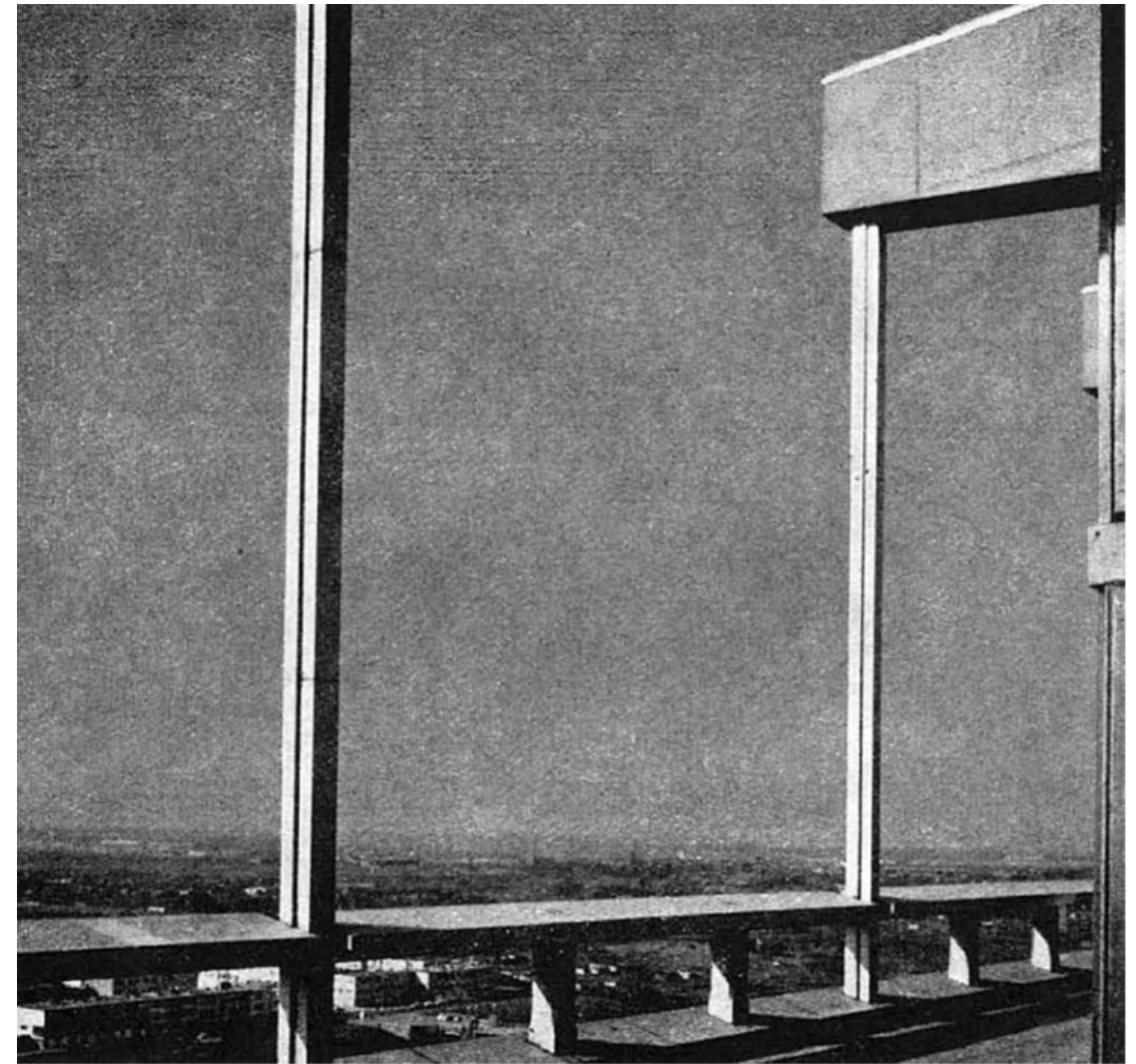
Lina Bo Bardi's sketch of the open space of the MASP.



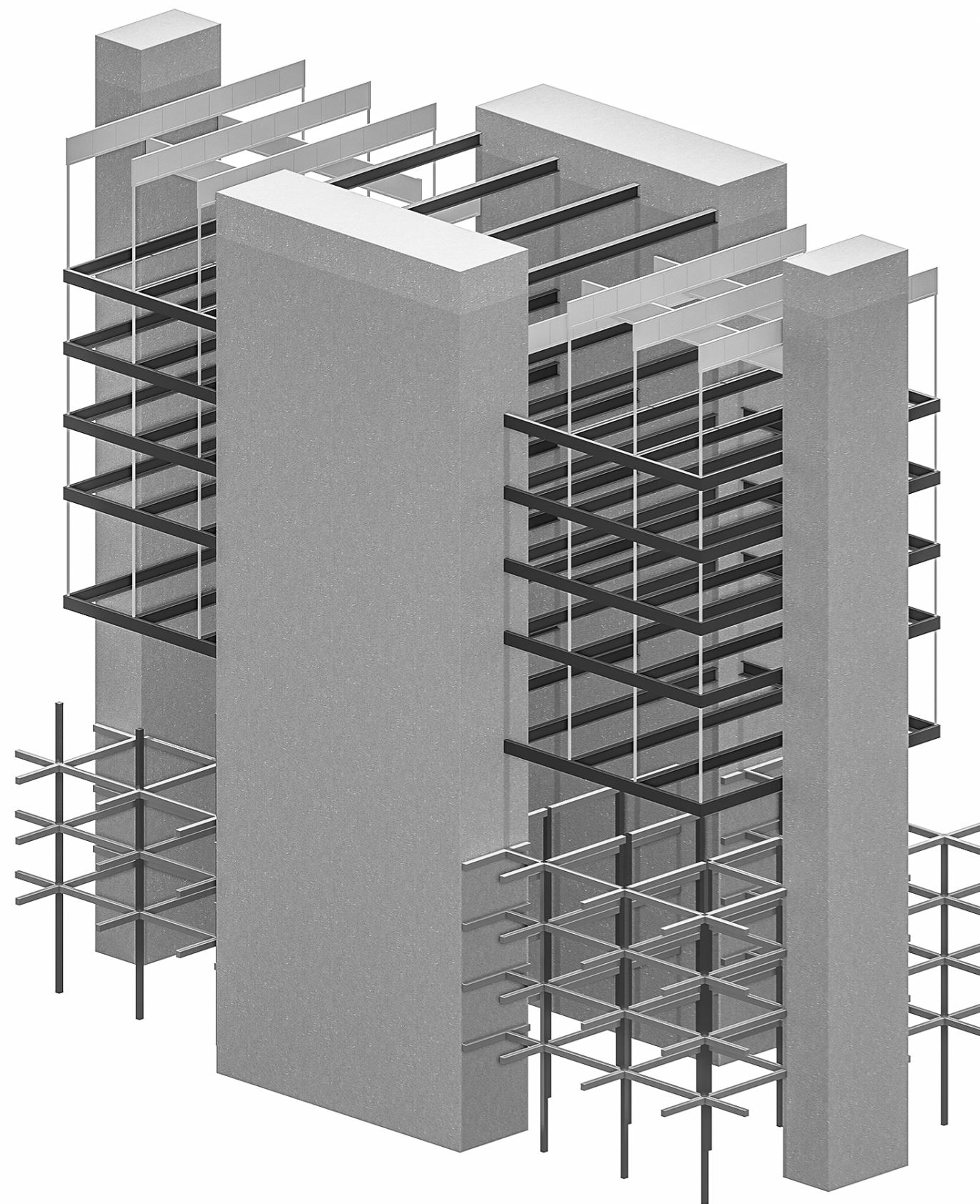
Rendering of the roof terrace.



Hanging structure of the BP building by Léon Stynen (Archive Van Coillie, Anne Gorlé).



(Archive Van Coillie, Anne Gorlé).

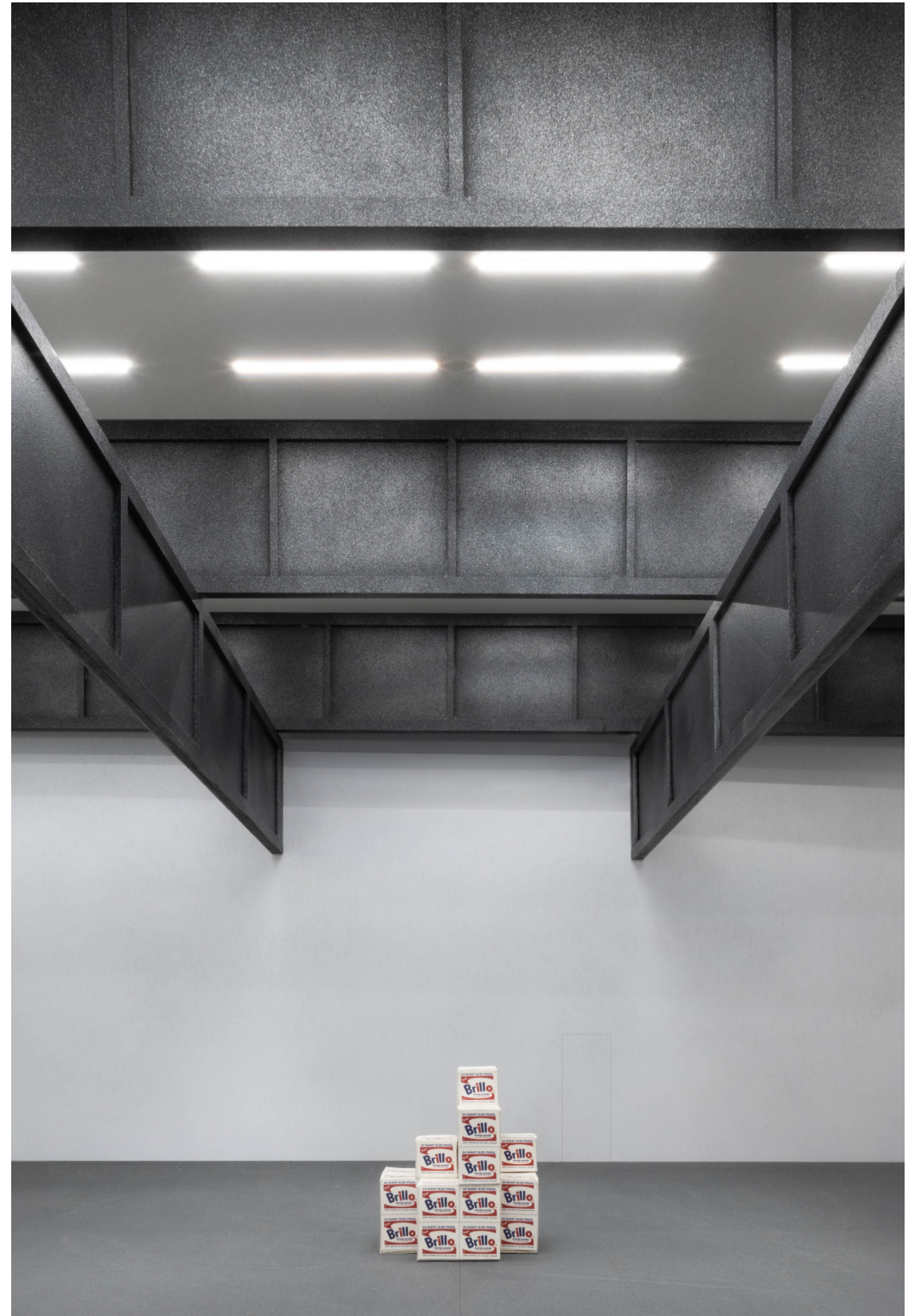


hanging structure

ground supported structure

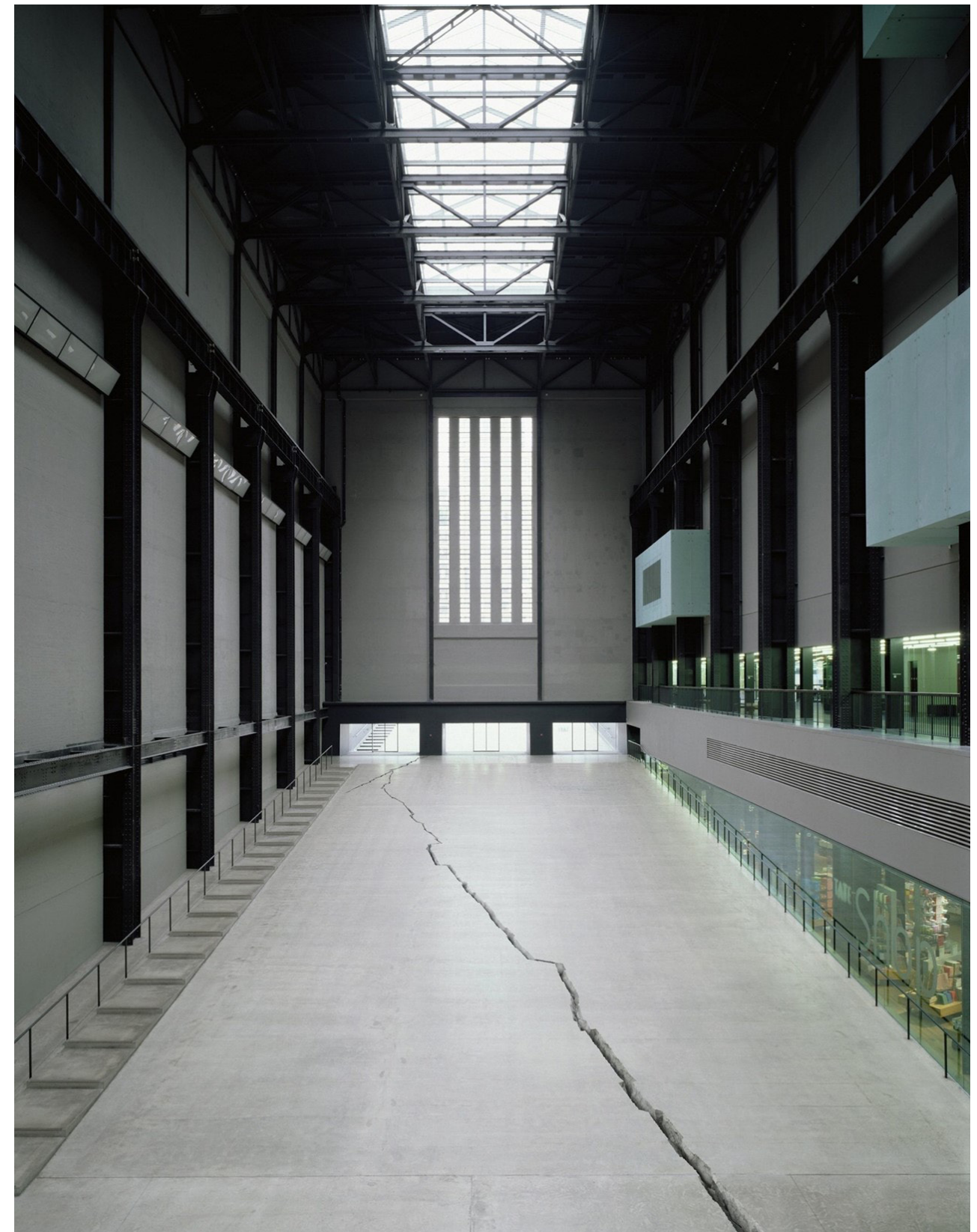


Model picture of the top floor in which the hanging construction is unveiled.





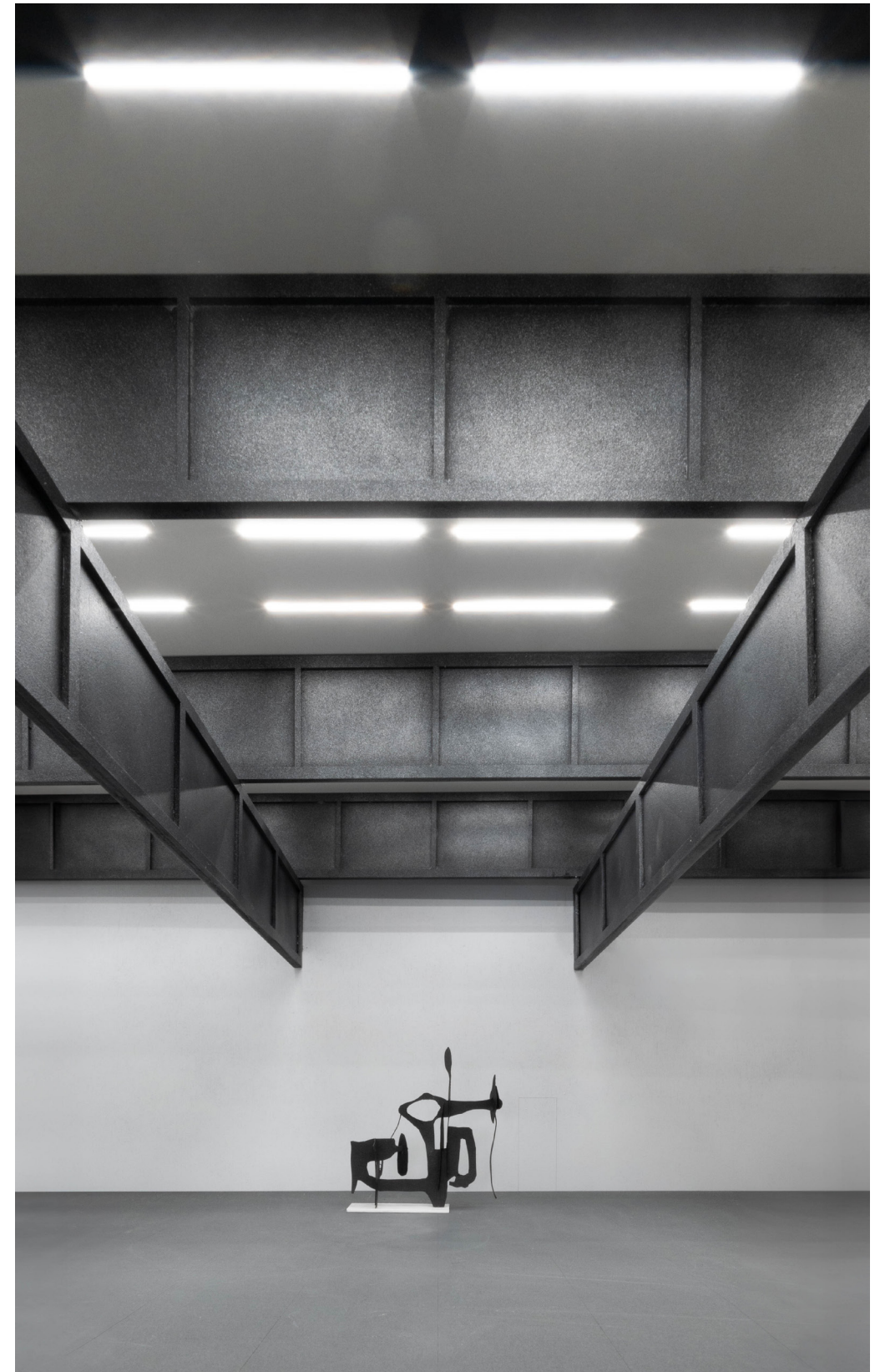
Construction of the BP building (Archive Van Coillie, Anne Gorlé).



Like the turbine hall in Tate Modern in London the construction is made visible, framing the space (Doris Salcedo, Shibboleth, 2007).



Model picture: A triptych of artworks on the top floor exhibition space.



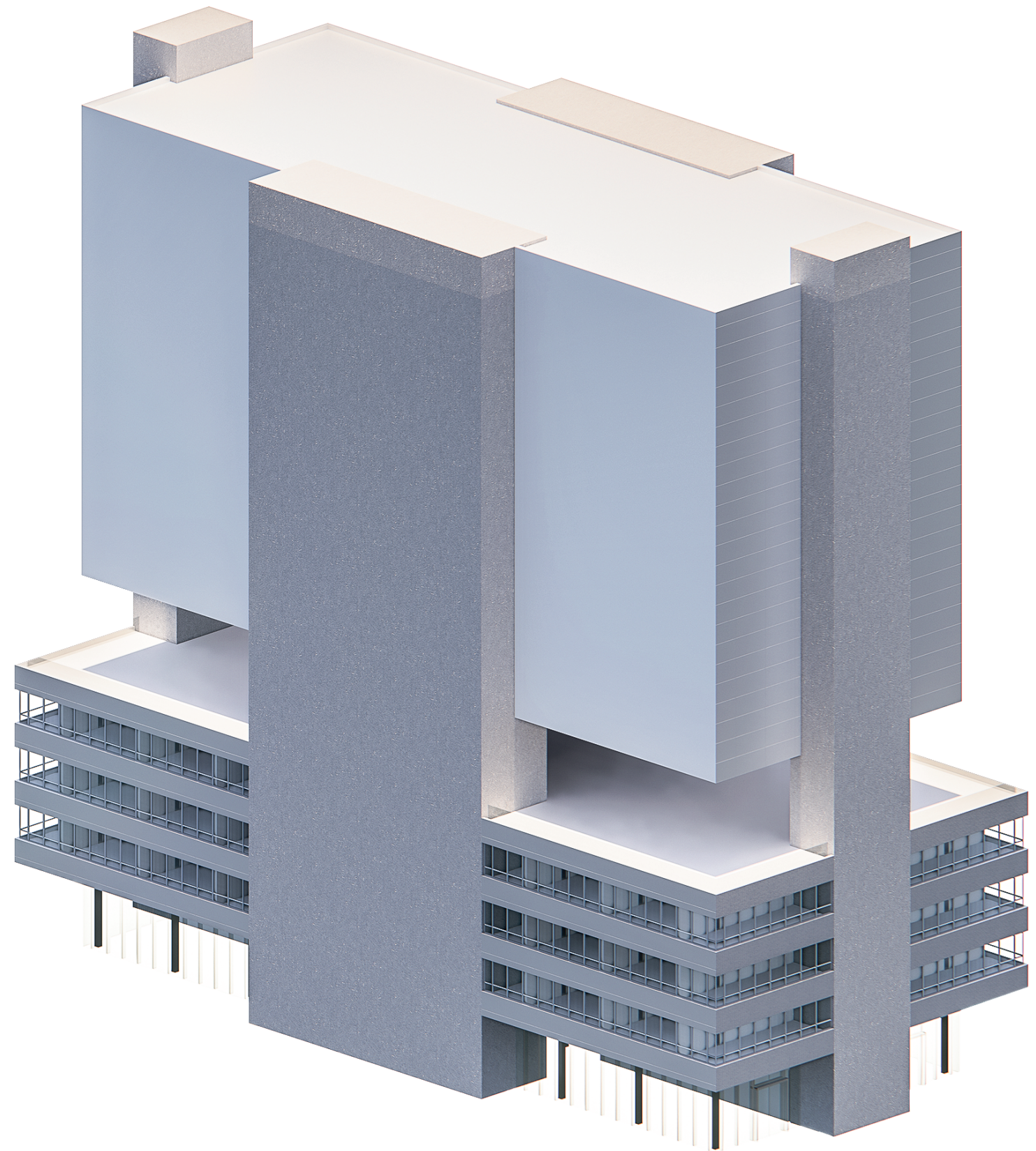
Model pictures: exhibition on the top floor.



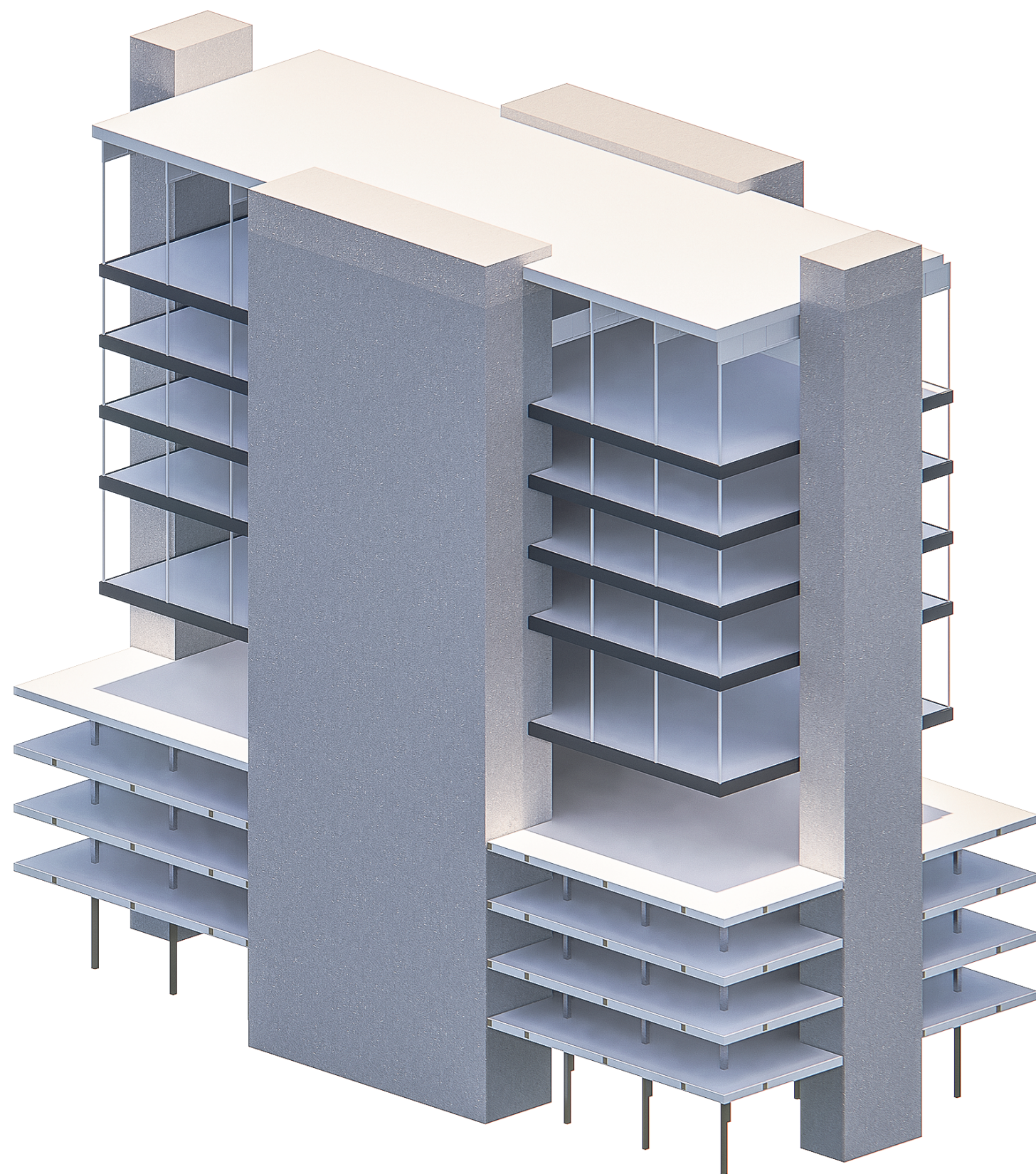
M HKA's new design along the Scheldt river banks.



Fabrikstrasse 10, Basel by Yoshio Taniguchi (Photo by Johannes Marburg)



Isometric view of the building.

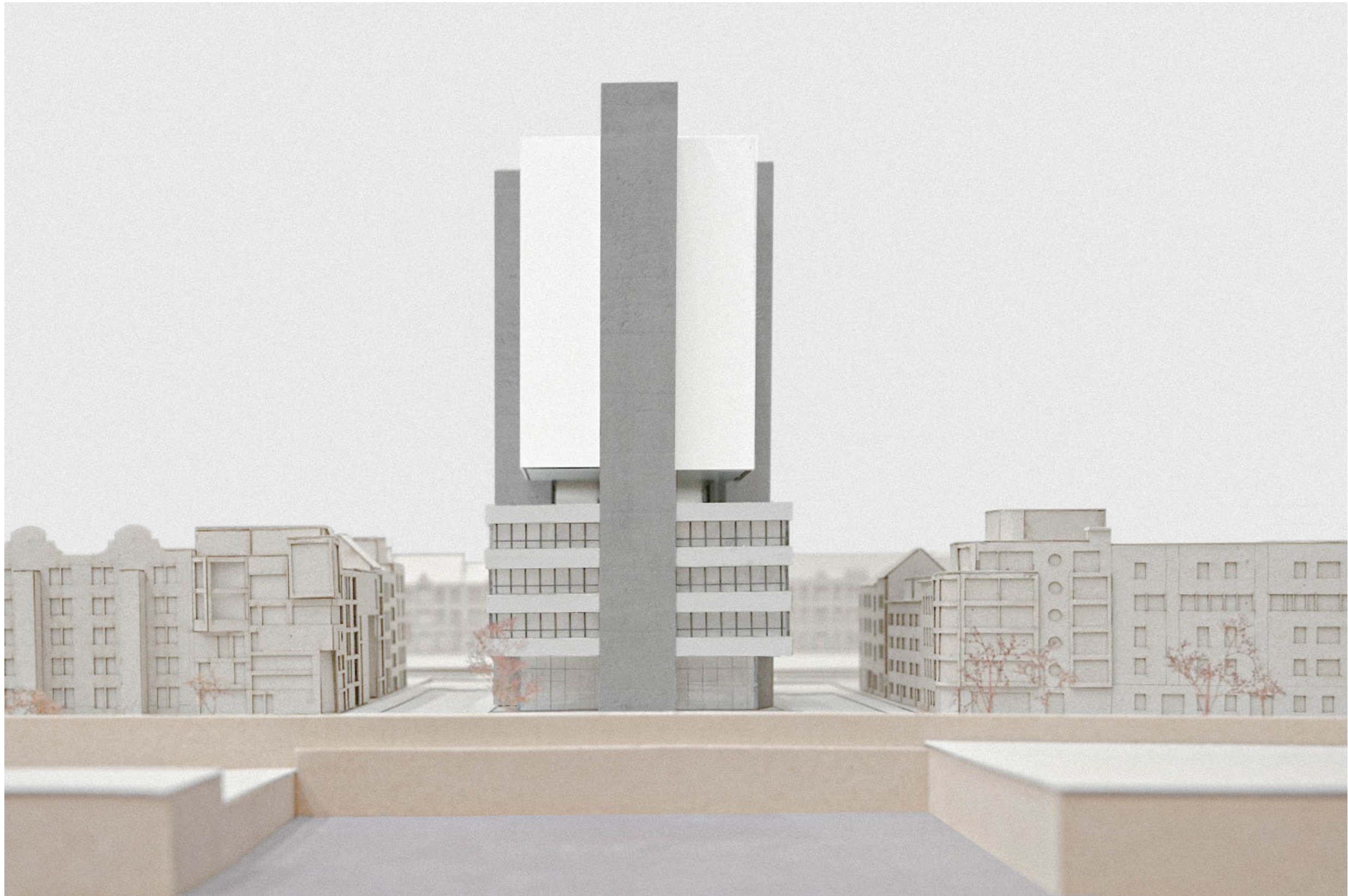


exhibition and collection floors

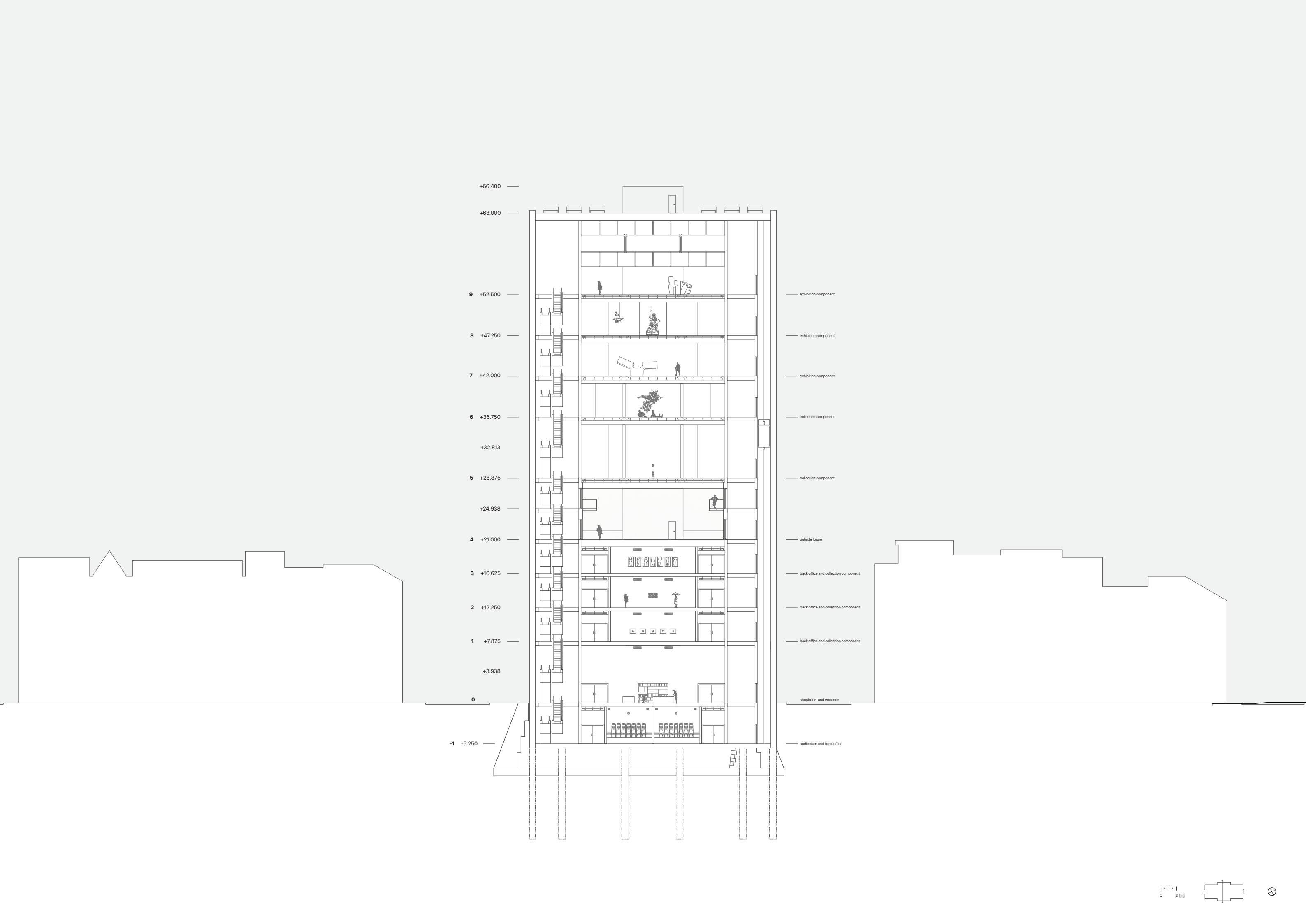
open forum space

back office and small exhibition component

entrance and shop component

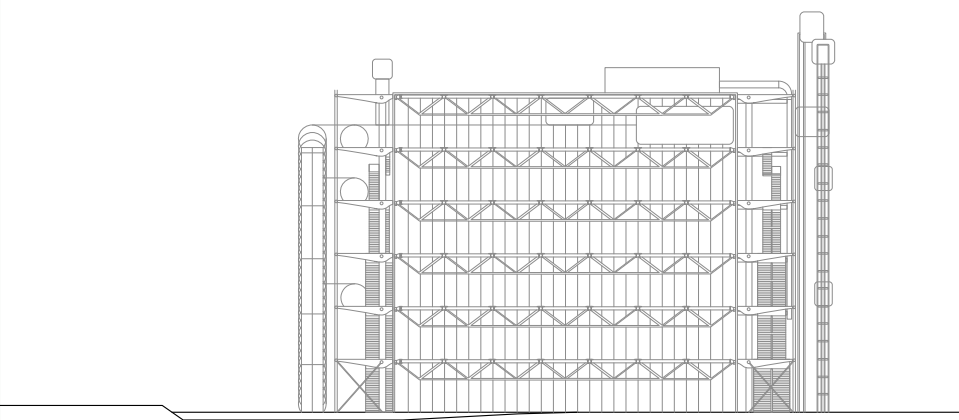


Model picture of the building and site.

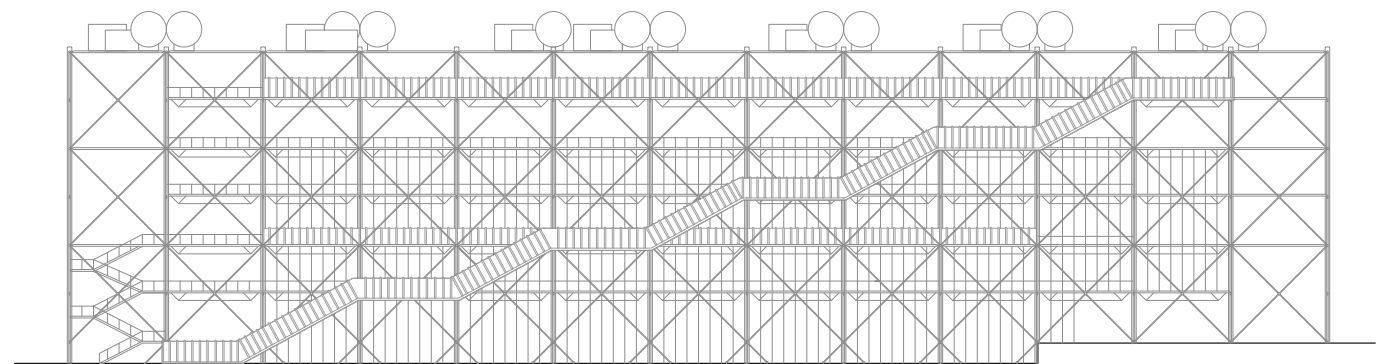


+66.400
+63.000
9 +52.500
8 +47.250
7 +42.000
6 +36.750
+32.813
5 +28.875
+24.938
4 +21.000
3 +16.625
2 +12.250
1 +7.875
+3.938
0
-1 -5.250

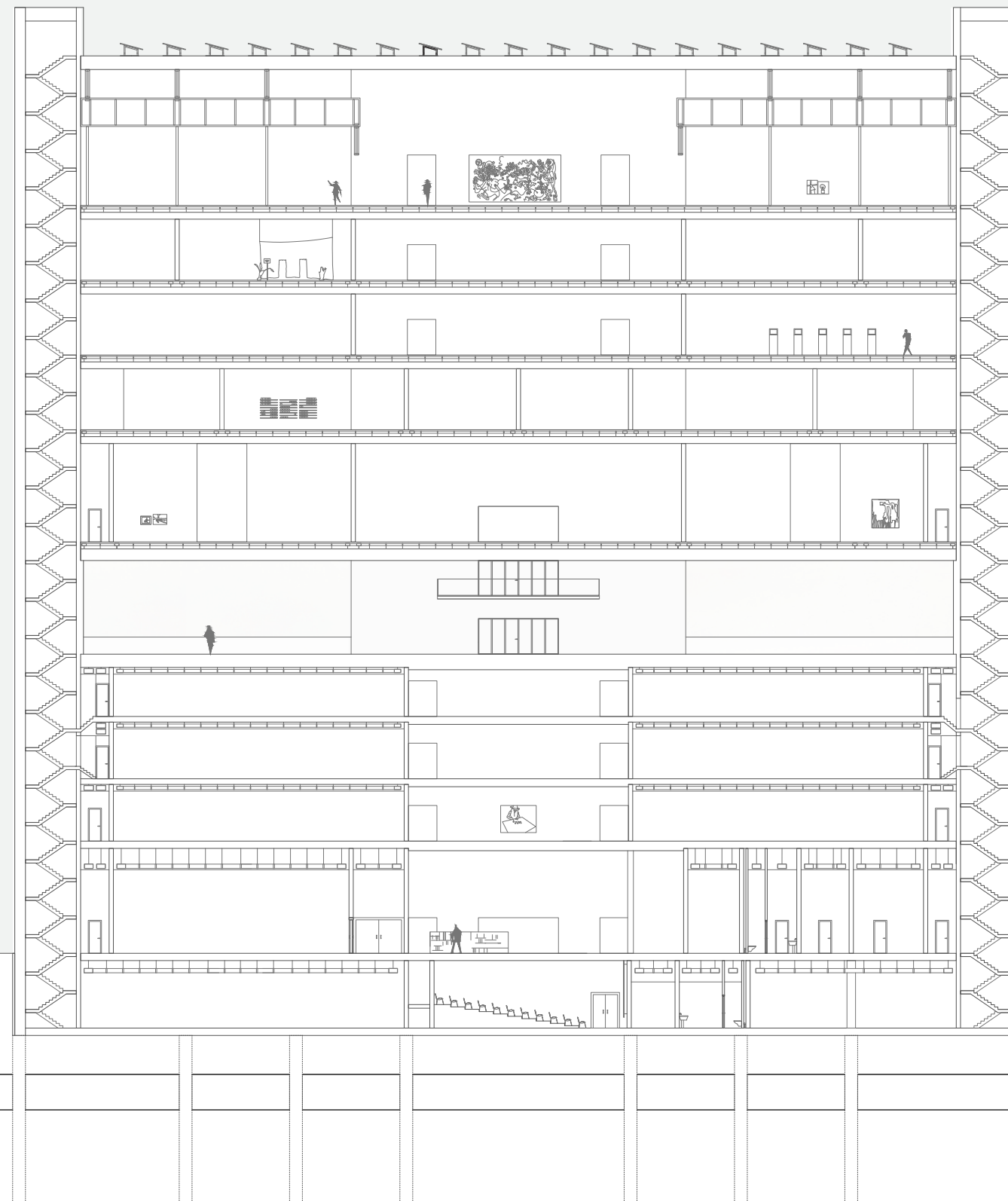
exhibition component
exhibition component
exhibition component
collection component
collection component
outside forum
back office and collection component
back office and collection component
back office and collection component
shopfronts and entrance
auditorium and back office



Similar to Centre Pompidou, the escalators are prominently positioned on one side of the building, creating a recognizable feature.



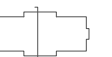
Longitudinal section and elevation of Centre Pompidou (1:1000)

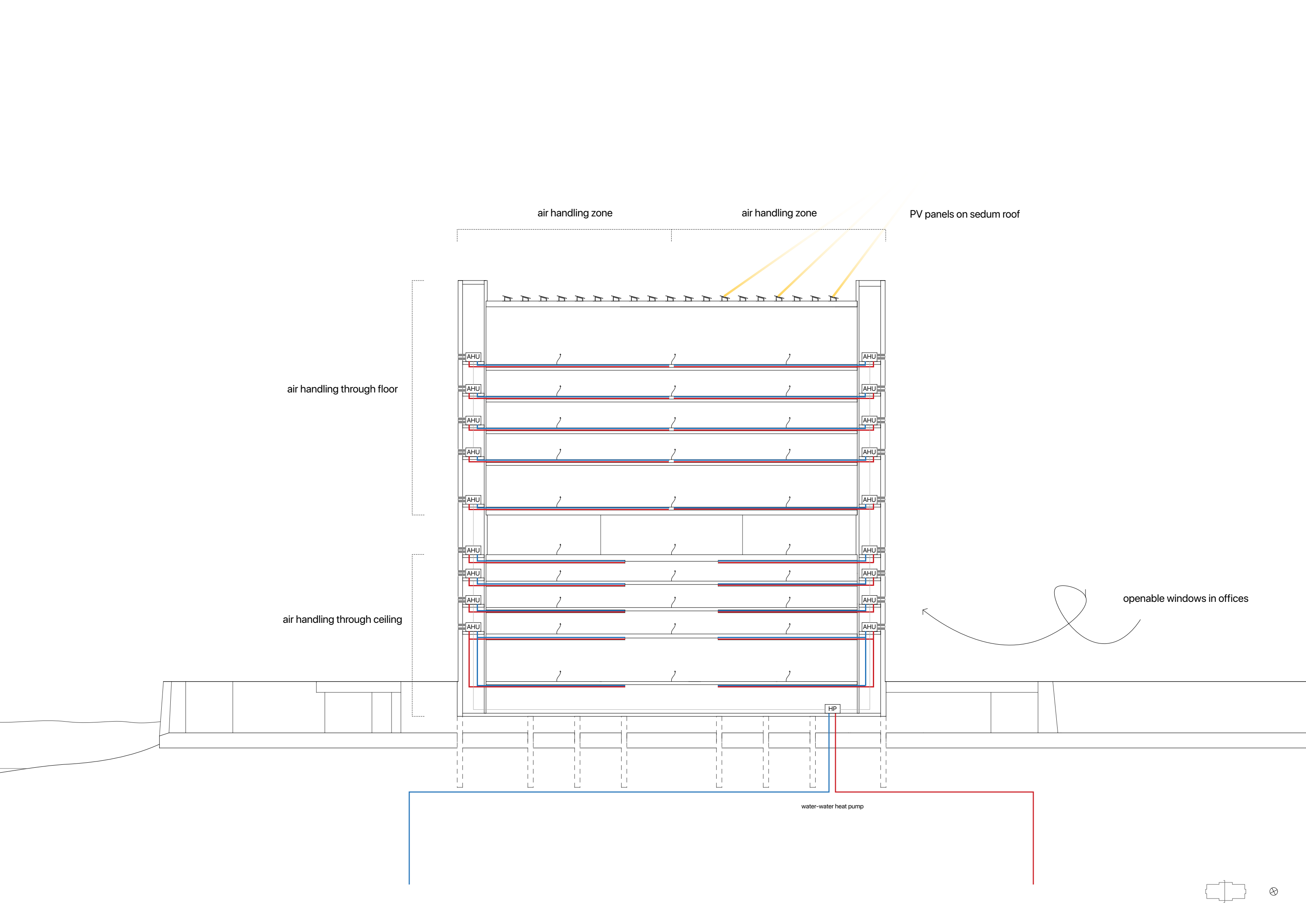


- +66.400
- +63.000
- 9 exhibition component +52.500
- 8 exhibition component +47.250
- 7 exhibition component +42.000
- 6 collection component +36.750
- 5 collection component +28.875
- 4 outside forum +21.000
- 3 back office and collection component +16.625
- 2 back office and collection component +12.250
- 1 back office and collection component +7.875
- 0 shopfronts and entrance
- 1 auditorium and back office -5.250



0 2 [m]





air handling zone

air handling zone

PV panels on sedum roof

air handling through floor

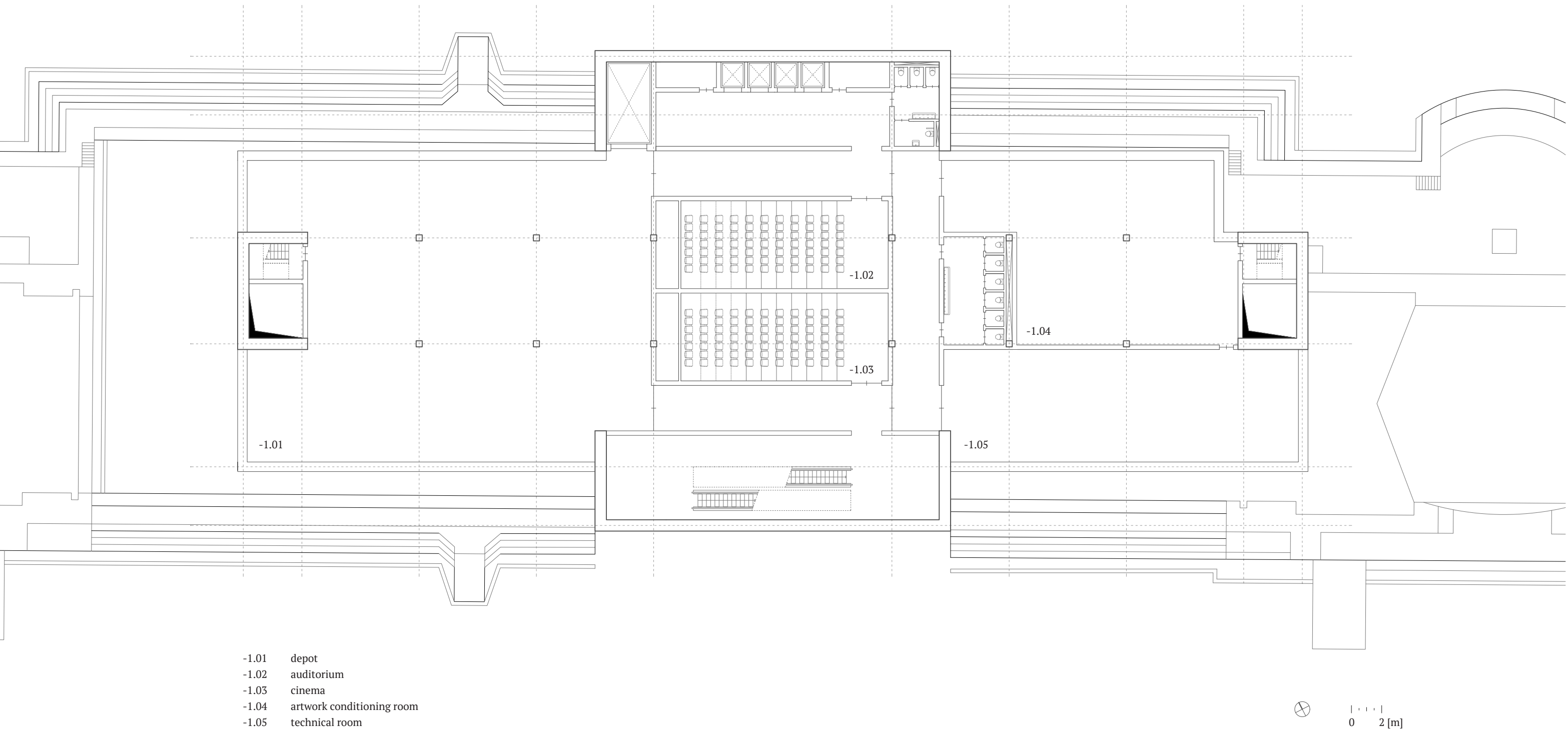
air handling through ceiling

openable windows in offices

water-water heat pump

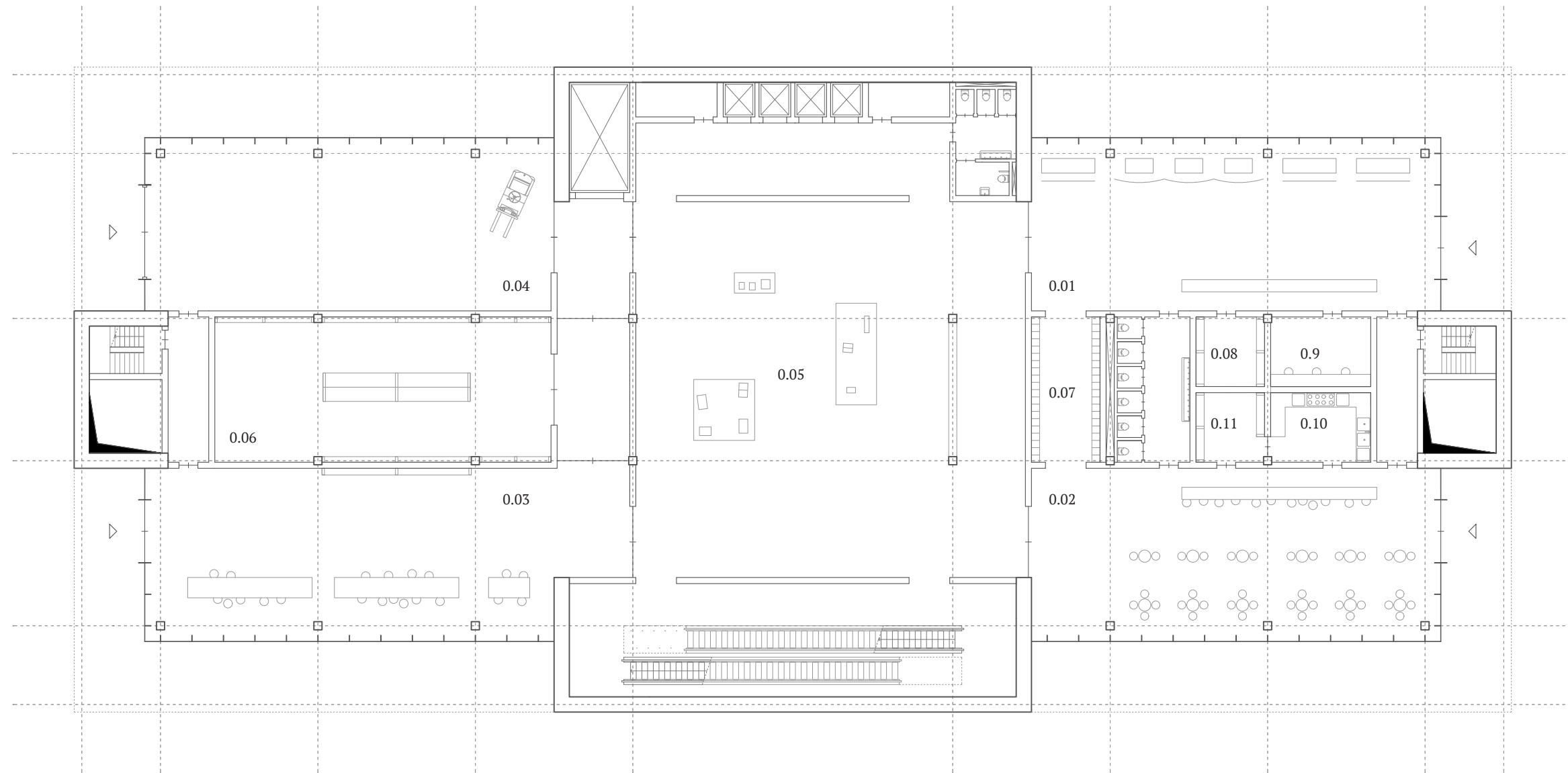


-1 forum and back office
1:250 -5,250 [mm]



0 shopfronts and entrance

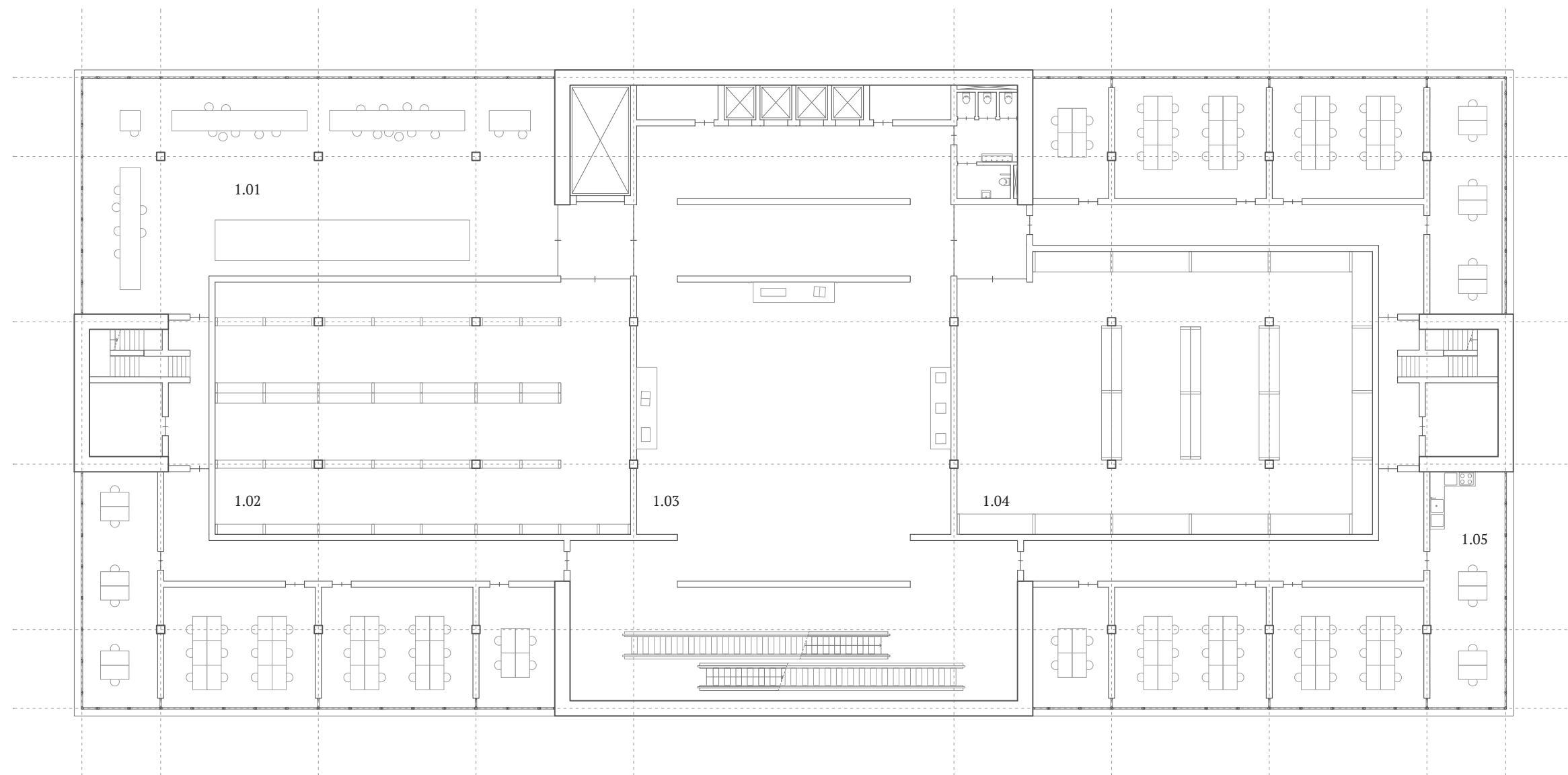
1:250 0 [mm]



- | | | | |
|------|---------------|------|---------------------|
| 0.01 | main entrance | 0.07 | lockers |
| 0.02 | cafe | 0.08 | storage reception |
| 0.03 | workshop | 0.09 | building management |
| 0.04 | art entrance | 0.10 | kitchen |
| 0.05 | shop | 0.11 | storage cafe |
| 0.06 | storage | | |

0 2 [m]

1 back office and collection component
1:250 +7,875 [mm]

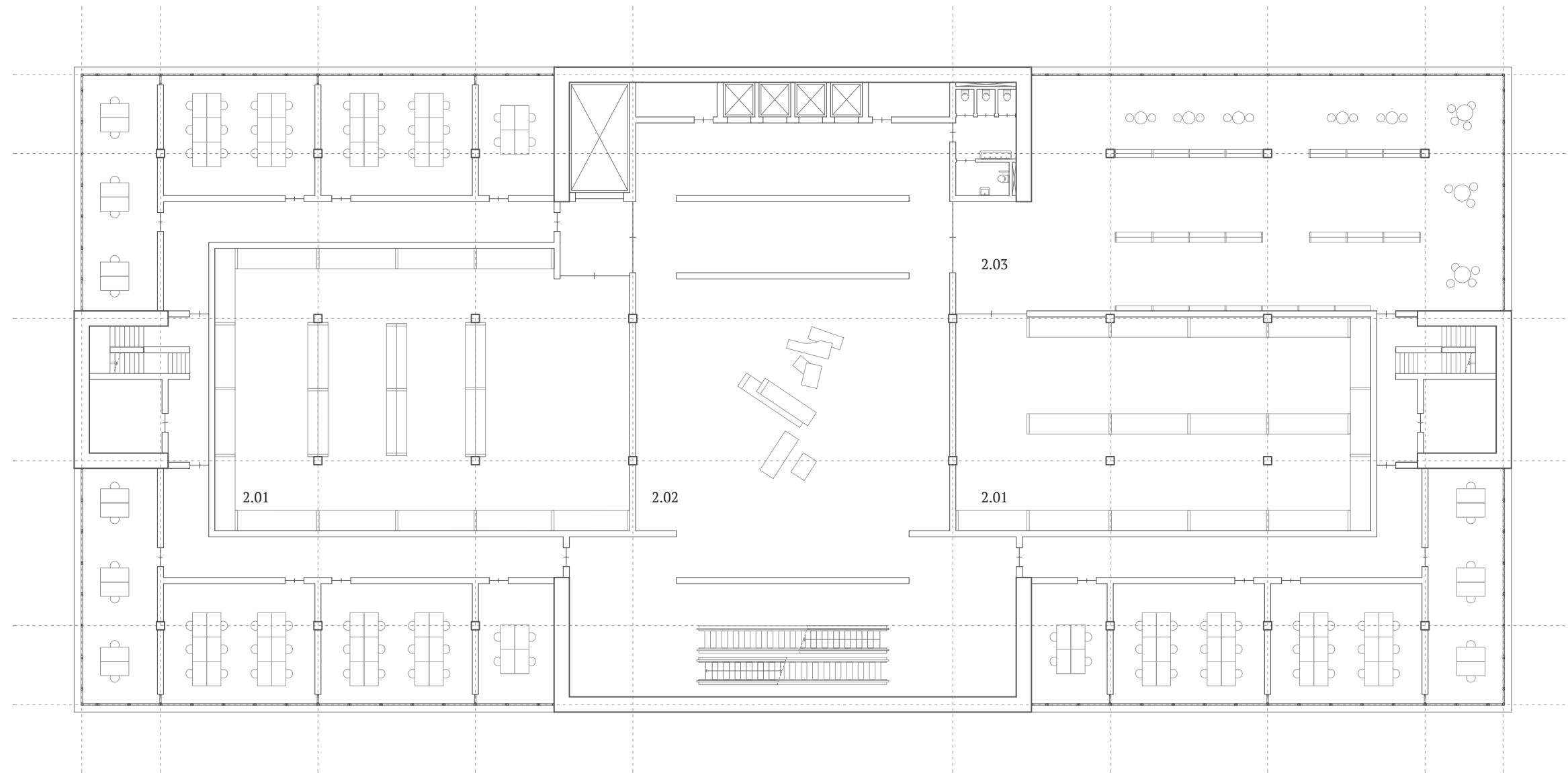


- 1.01 workshop
- 1.02 storage
- 1.03 collection exhibition room
- 1.04 documentation centre
- 1.05 kitchenette

0 2 [m]

2 back office and collection component

1:250 +12,250 [mm]

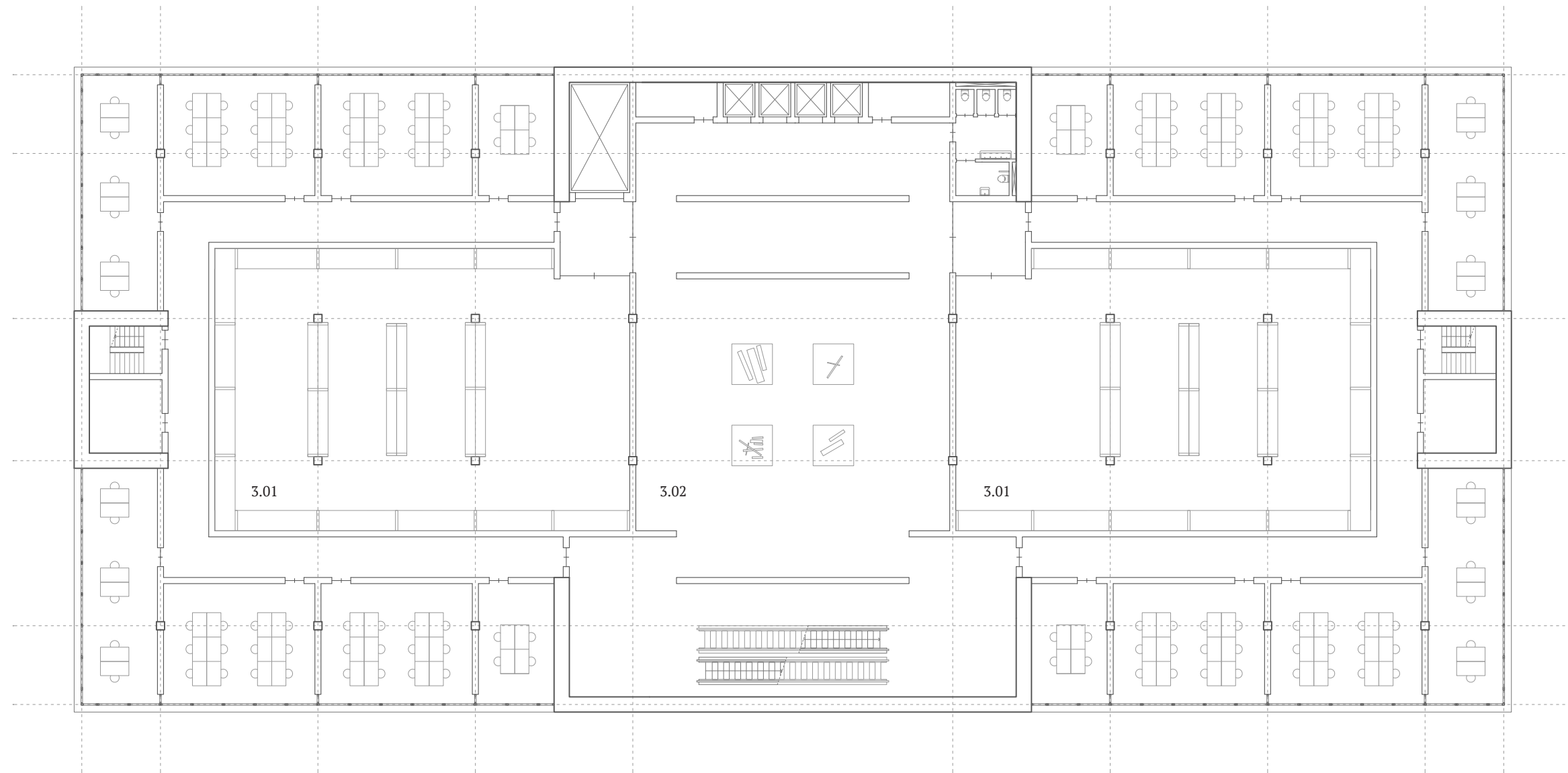


- 2.01 documentation centre
- 2.02 collection exhibition room
- 2.03 library

0 2 [m]

3 back office and collection component

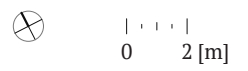
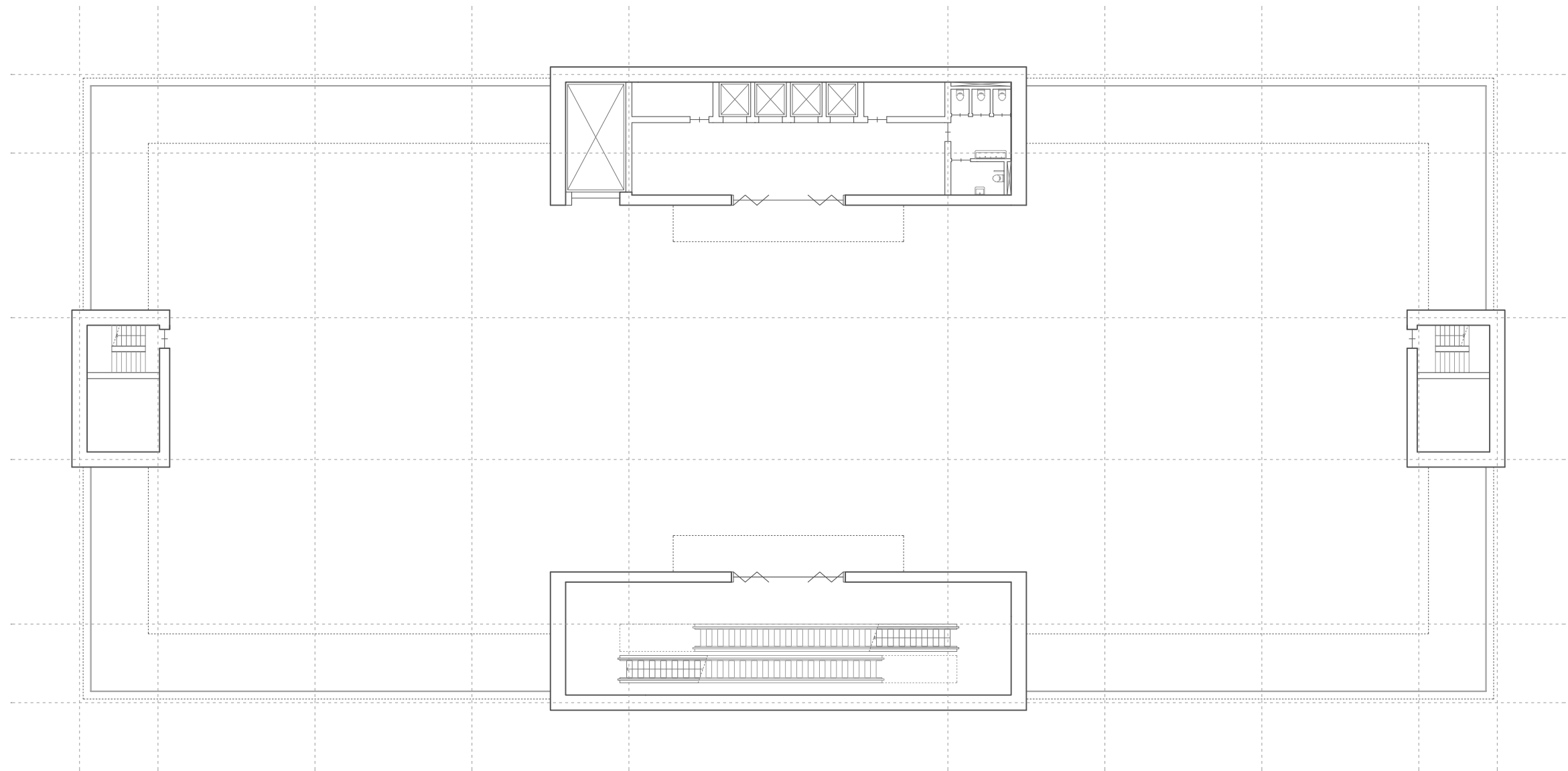
1:250 +16,625 [mm]



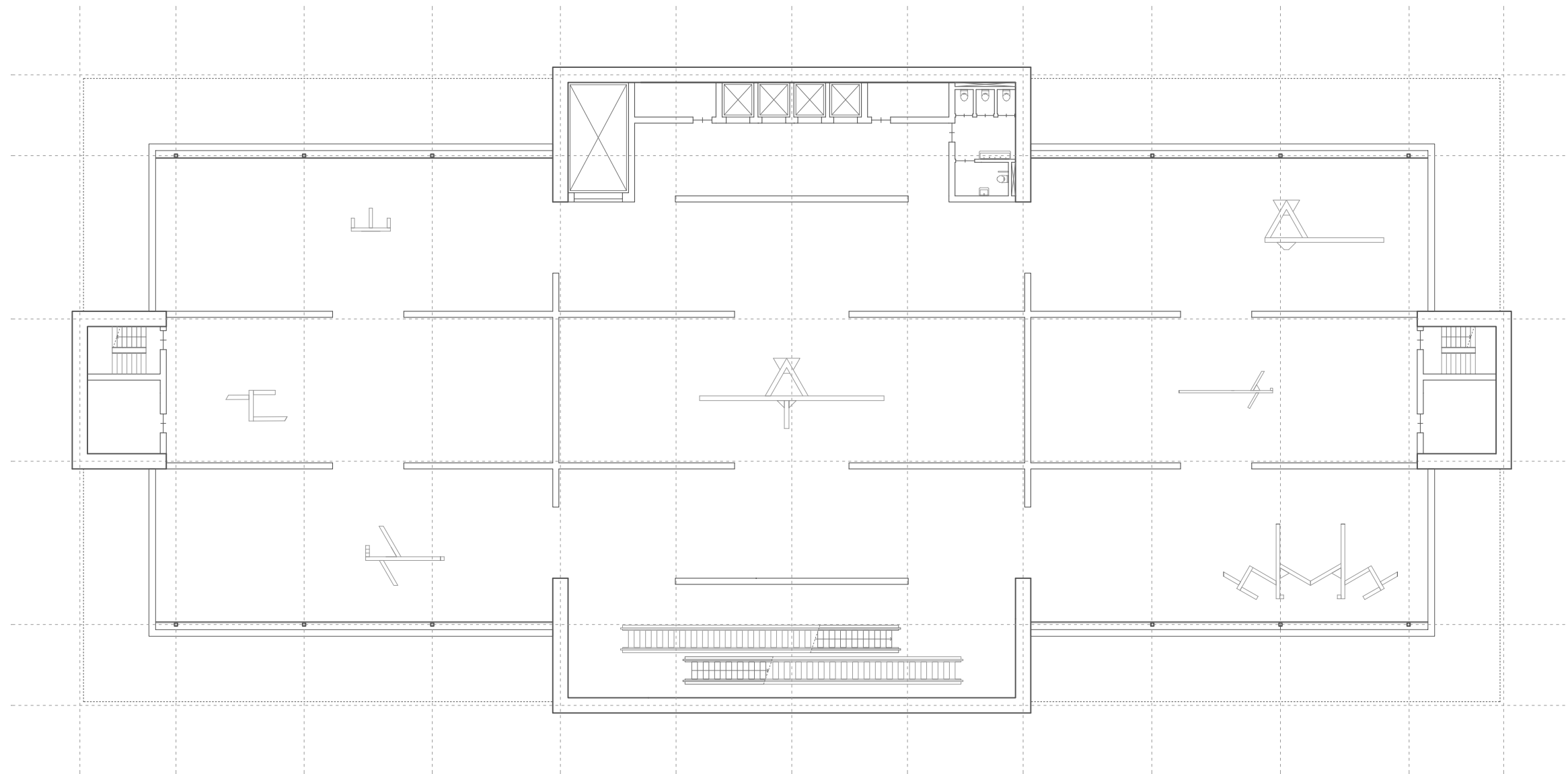
3.01 archive
3.02 collection exhibition room

0 2 [m]

4 outside forum
1:250 +21,000 [mm]

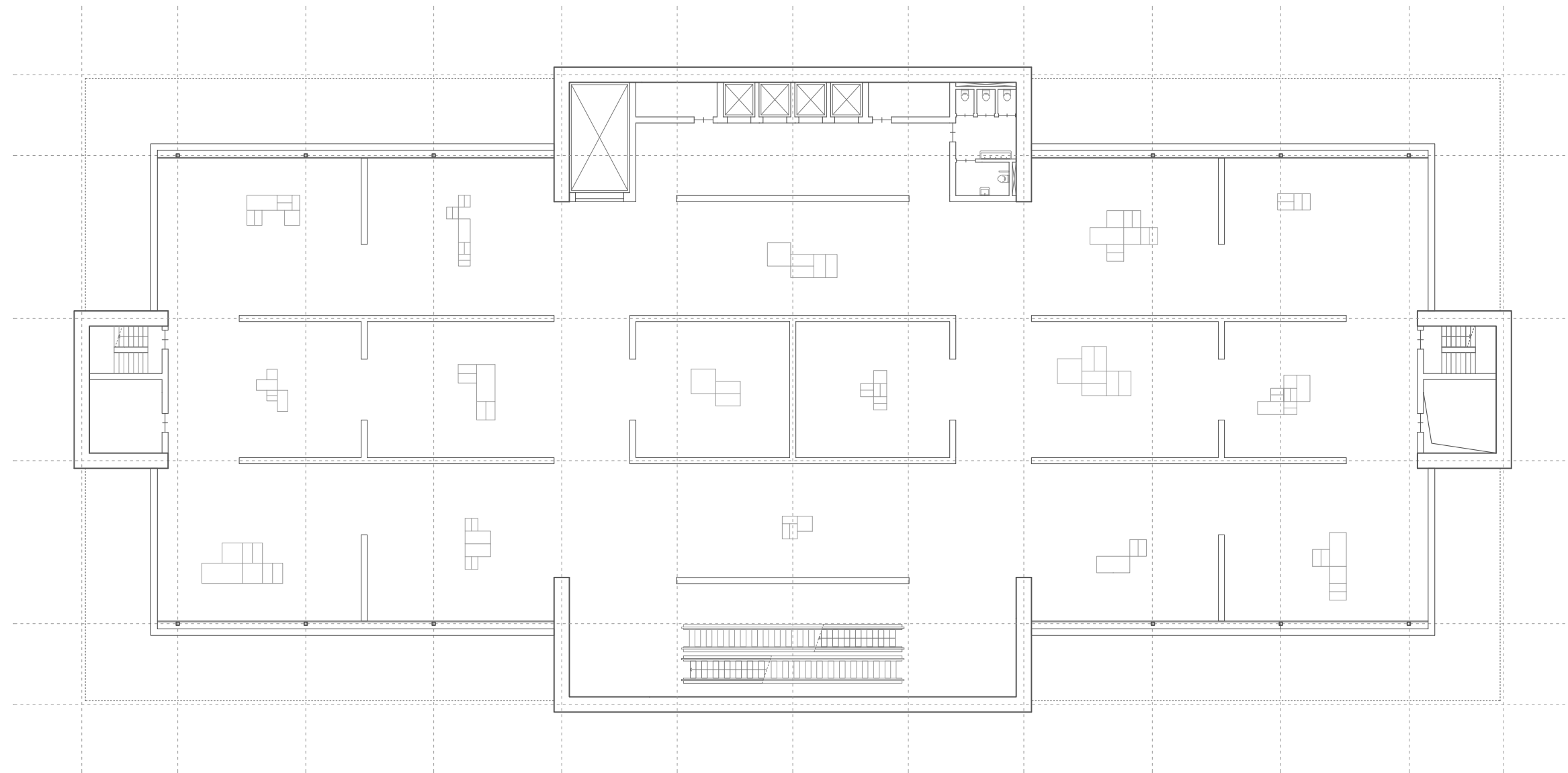


5 collection component
1:250 +28,875 [mm]



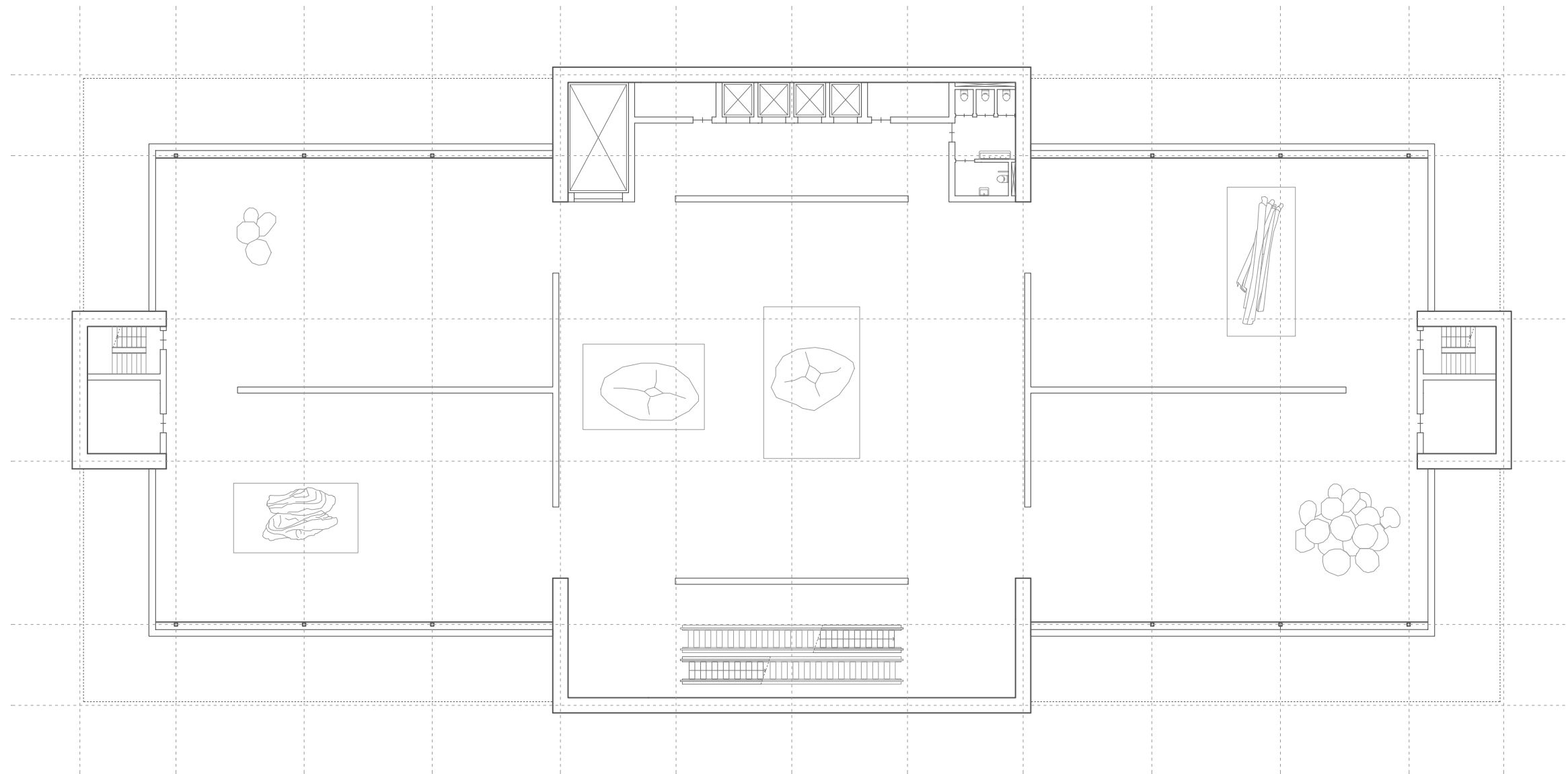
0 2[m]

6 collection component
1:250 +36.750 [mm]



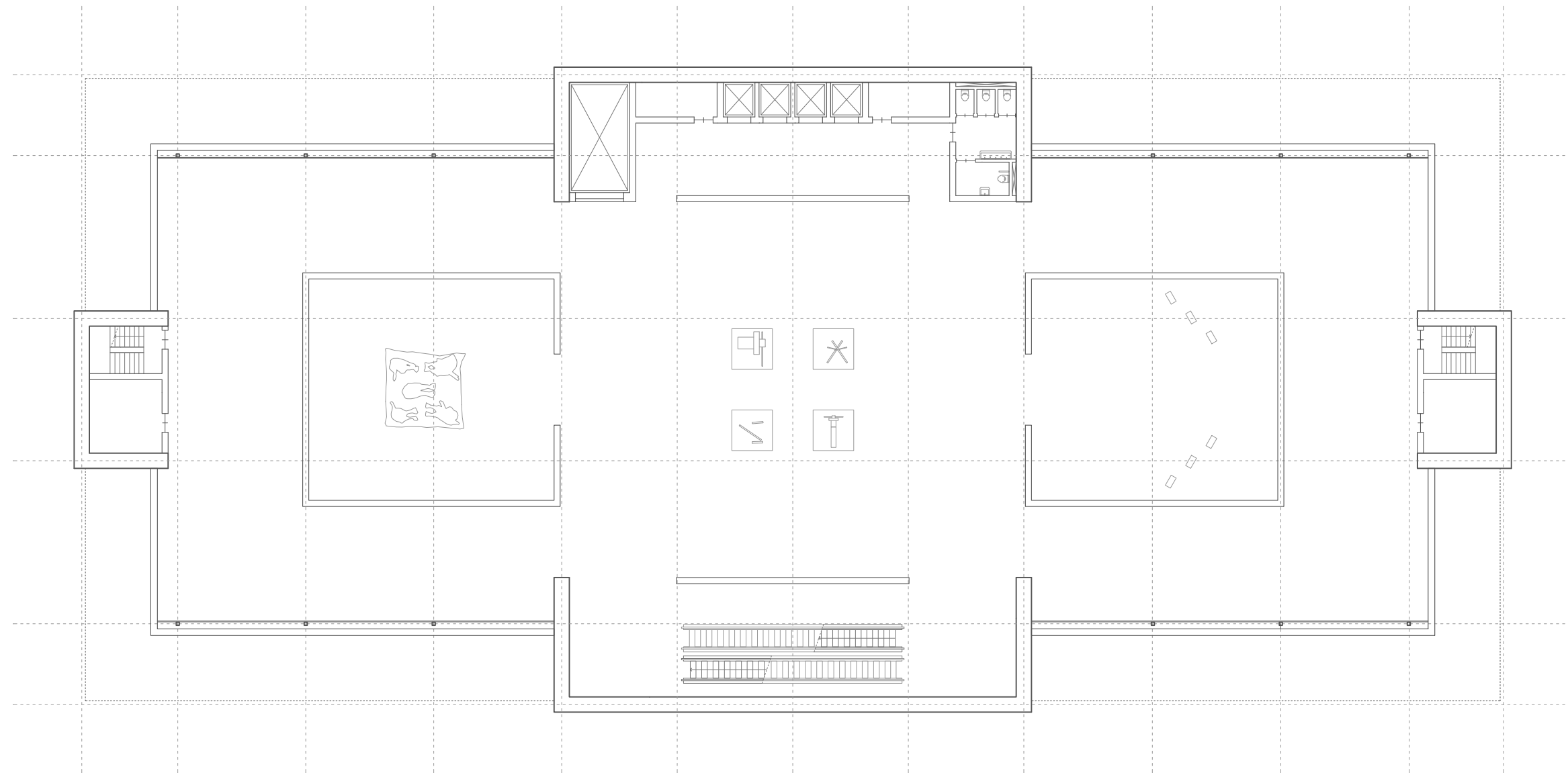
0 2[m]

7 exhibition component
1:250 +42,000 [mm]



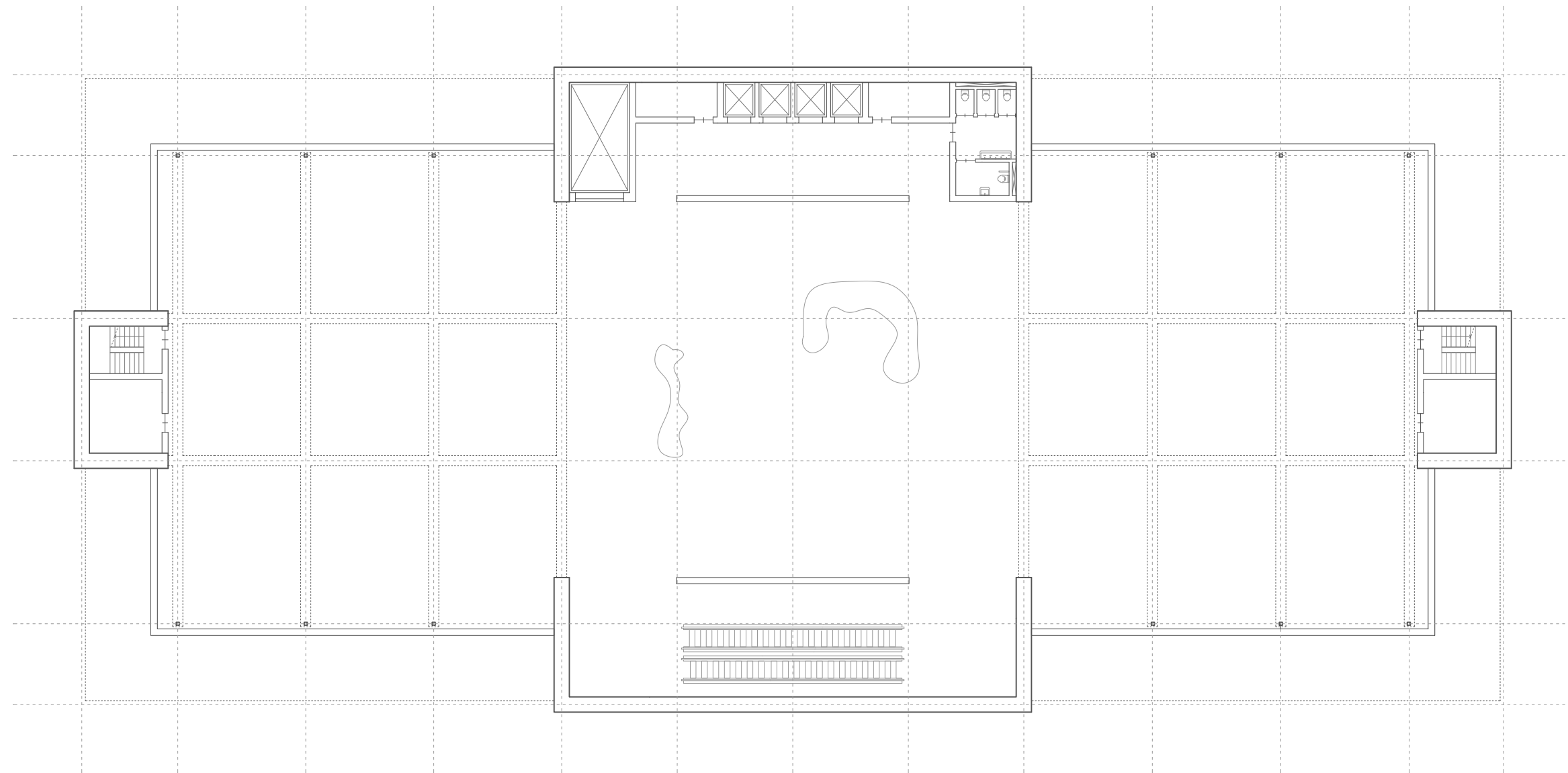
0 2[m]

8 exhibition component
1:250 +47,250 [mm]



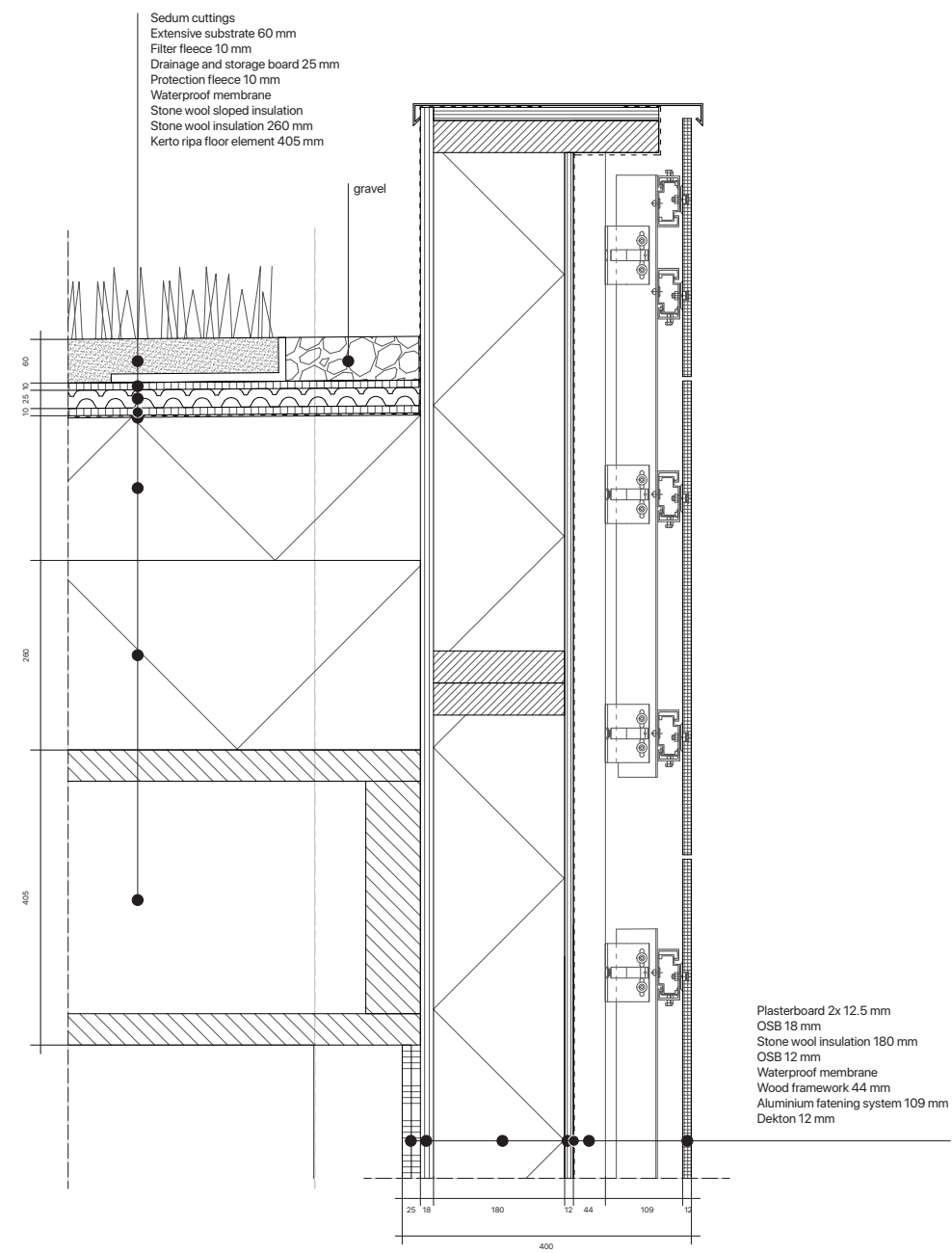
0 2[m]

9 exhibition component
1:250 +52,500 [mm]



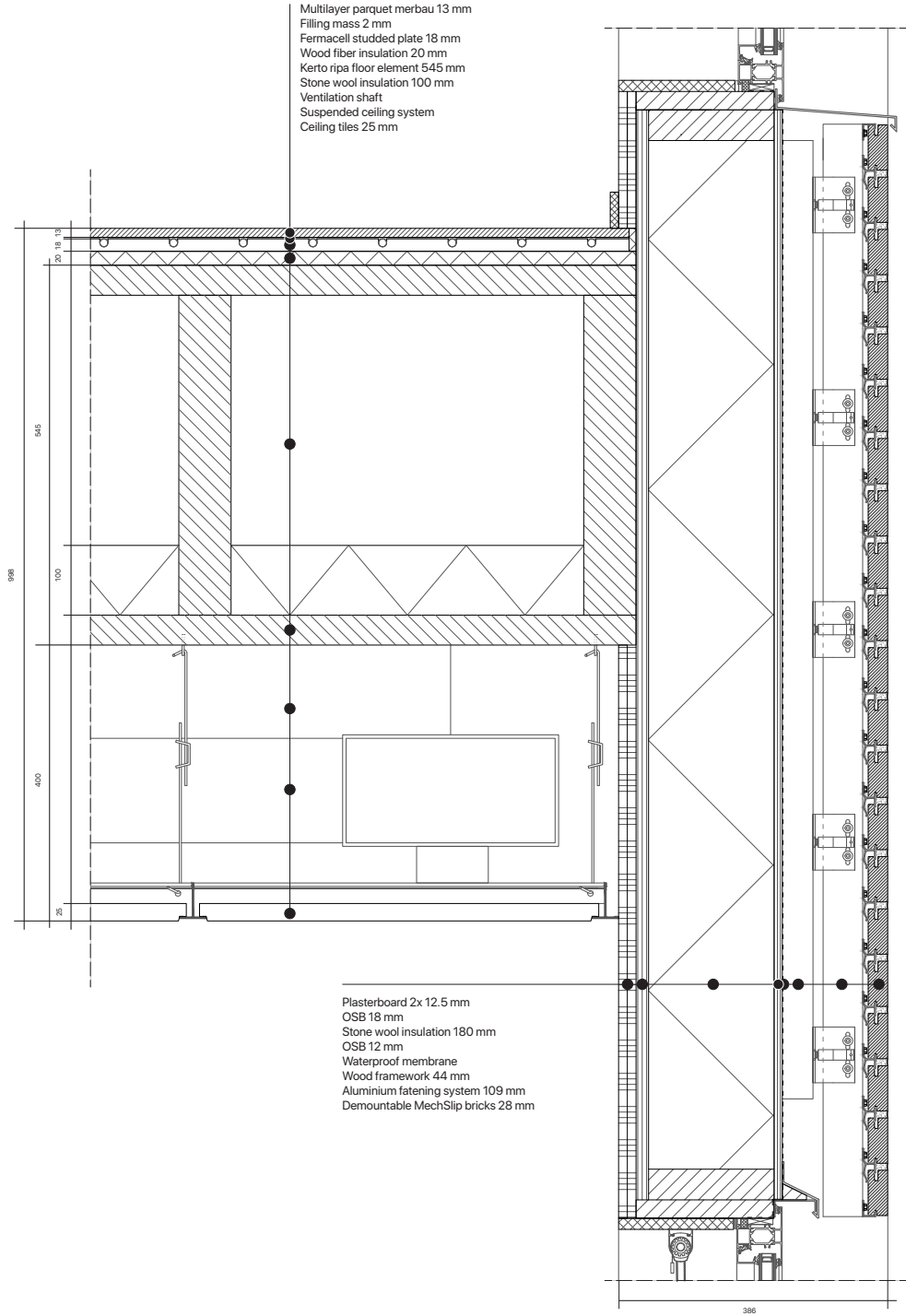
0 2[m]

detail 1



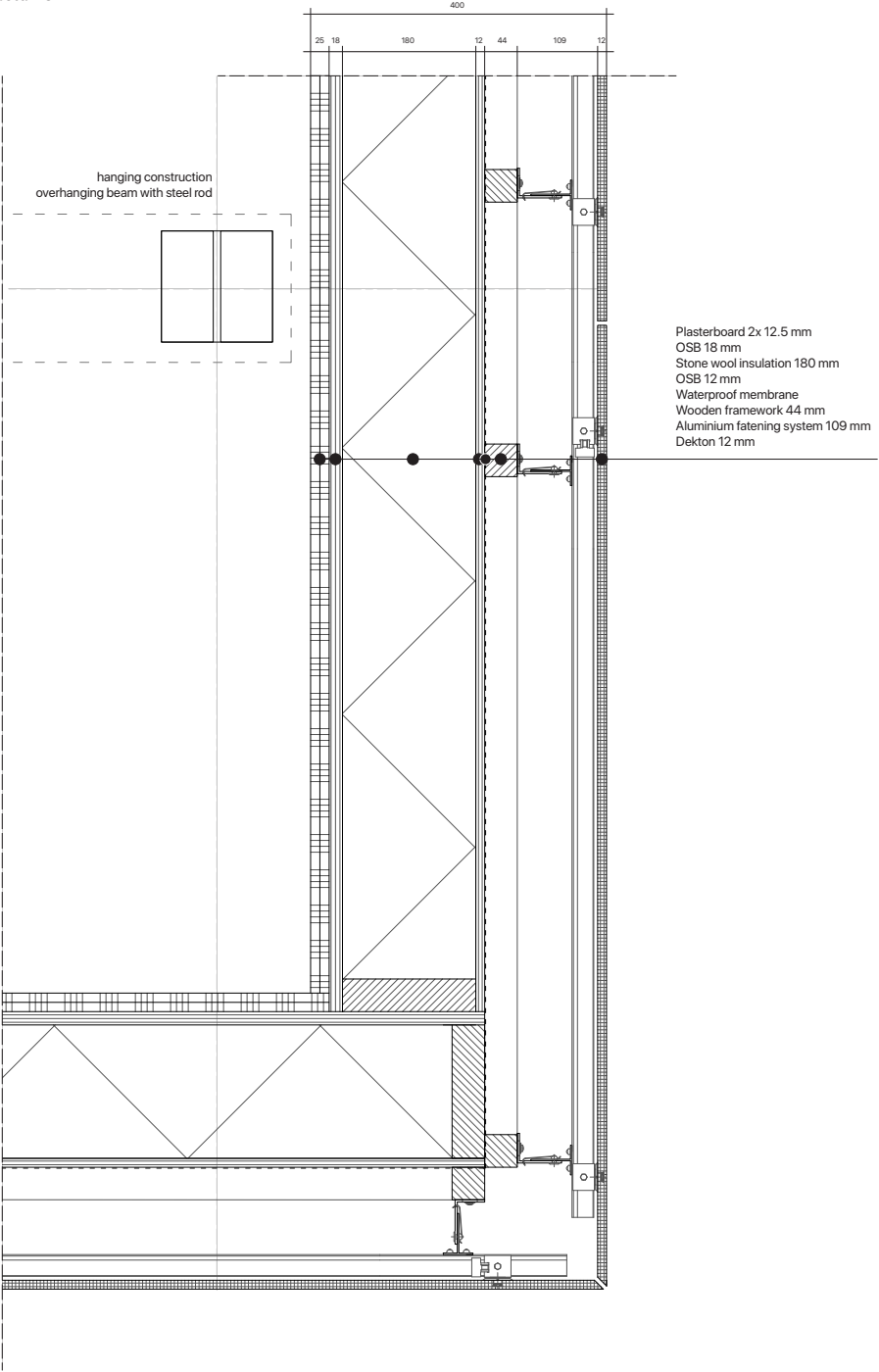
Detail of the roof (1:10).

detail 2



Detail of the facade with windows (1:10).

detail 3



Detail of the facade (1:10).

