



Electricity



Power Line, Münster, Photo by Author

Up in the sky



Electrical Routing Enters Transformer Station, Münster, Photo by Author



Maintenance Electrical Grid, s'Gravendijkswal, Rotterdam, Photo by Author

Down under ground



Maintenance Electrical Grid, s'Gravendijkswal, Rotterdam, Photo by Author



Companionship

Transformer house Putseplein, Afrikaanderwijk, Rotterdam. Photo by Author



Transformer house Putselaan, Afrikaanderwijk, Rotterdam. Photo by Author



Consumption



Housing at Aksa Energy Company, Tema, Istanbul. Photo by Gökçe Günel

The Dream of a Home



Construction Site Tweebosstraat, Rotterdam. Photo by Author



Mariëtte Verhoeven
gedupeerde bewoner

Dit is hem. Het huis waarin ik niet kan wonen omdat ik geen energie heb
This is it, the house i cannot live in because i don't have power



Maintenance Electrical Grid, s'Gravendijkswal, Rotterdam, Photo by Author

Decennial Display





Friends from Work

Installation of Transformer, Place Unknown, Website of Transformer Producer trafohuis.nl



Installation of Transformer, Ameide, ca. 1913, Photo by Unknown

Connections



Phone Addicts, Photo by m_yea, flickr



Installation of Transformer, Place Unknown, Photo by EdBasqueMaster, Reddit



Transformer Rotterdamse Weg, Photo by Author



Transformer Station Münster, Photo by Author



Transformer Station Sloopboomplein, Photo by Author

Ook opvallen?





Cozy

Transformer Station Putselaan, Photo by Author



Transformer Station Sloopboomplein, Photo by Author



Transformer Station Putselaan, Photo by Author

Come In!



Transformer Station Sloopboomplein, Photo by Author



Paranoia





Transformers



Transformer Afrikaanderwijk, Photo by Author



Distribution Board, Putselaan, Photo by Author



Transformer Afrikaanderwijk, Photo by Author



Transformer Almina, Photo by Author



Transformer Media Markt Feyenoord, Photo by Author



Transformer De Hilleviet, Photo by Author



Transformer Afrikaanderwijk, Photo by Author



Transformer Afrikaanderplein, Photo by Author

MATERIAL INDEX

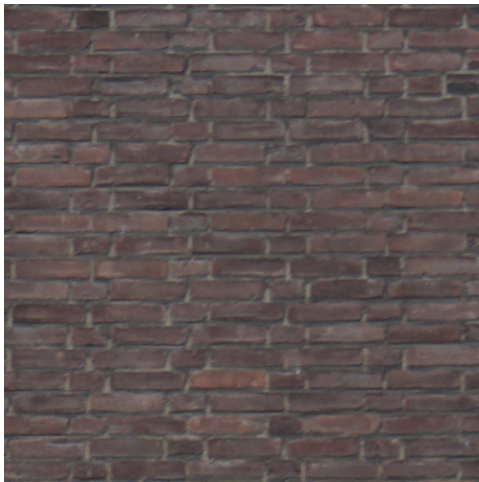
Construction Materials



Brick, dark brown
unknown
Plot wall north-east



Brick, light brown
depending on # of new cuts
24KV



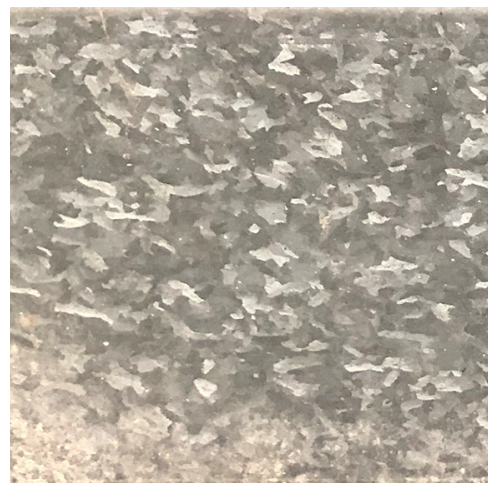
Brick, red
≤ 984 m²
Rectifier, Cells



Concrete pavers
1.426 m²
Exterior paving



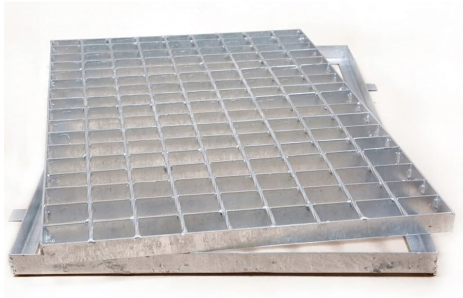
Concrete Rubble
34 m³
Floor rectifier, floor 24KV



Steel, galvanized
≤ 185m²
Transformer sheeting

MATERIAL INDEX

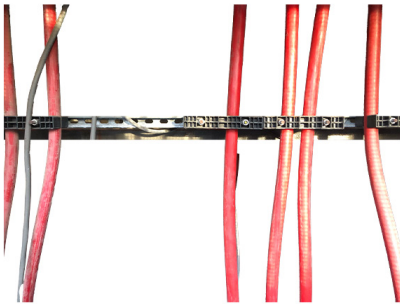
Raw Materials



Aluminum grills, 80cm x 120cm
125 m²
Plateaus & false floors



Steel stairs, height 72cm - 122 cm
8; h_{total} = 728cm
Terrain mediation exterior



Aluminum rails, organisers
unknown
Organising connections pre-machinery (in basements)



Aluminum grills, 70 x 480 cm
15
Windows machine hall

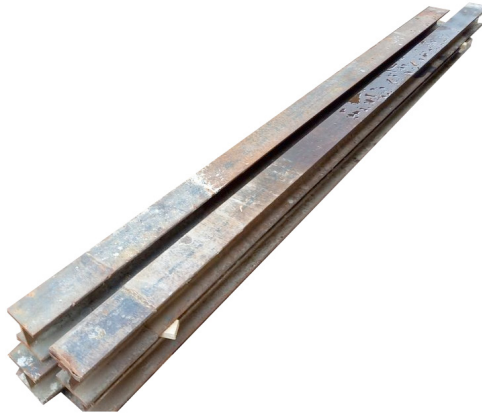


Steel frames
depending on # high voltage lines demounted
Rural transmission



Overhead cranes
2
7m x 20m / 15,9m x 7,9m
alternatively demountable

MATERIAL INDEX



I-Beams, steel, 120x200 - 200x300
unknown
Roof and floor rectifier

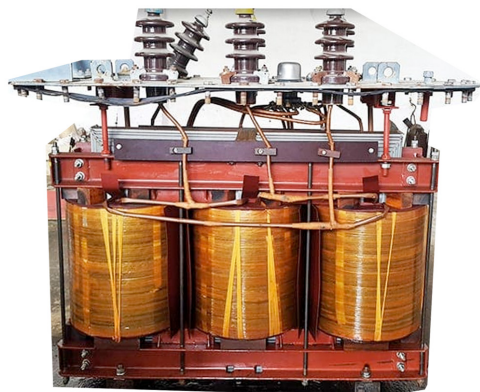
Raw Materials



Tube cables, stripped
depending on m cables demounted



Copper from high-voltage cables
~ 556 m3 in referenced site



Transformers, varying
 ≤ 35
alternatively demountable,
3% of transformer weight (between 13 and 1500 kg per
transformer)