

The Other Side of the Table: the Countryside's role in the Brandenburg-Berlin Food System

09.07.2020

Jan Fries
MSc AUBS - Urbanism track
488 28 22

Final presentation

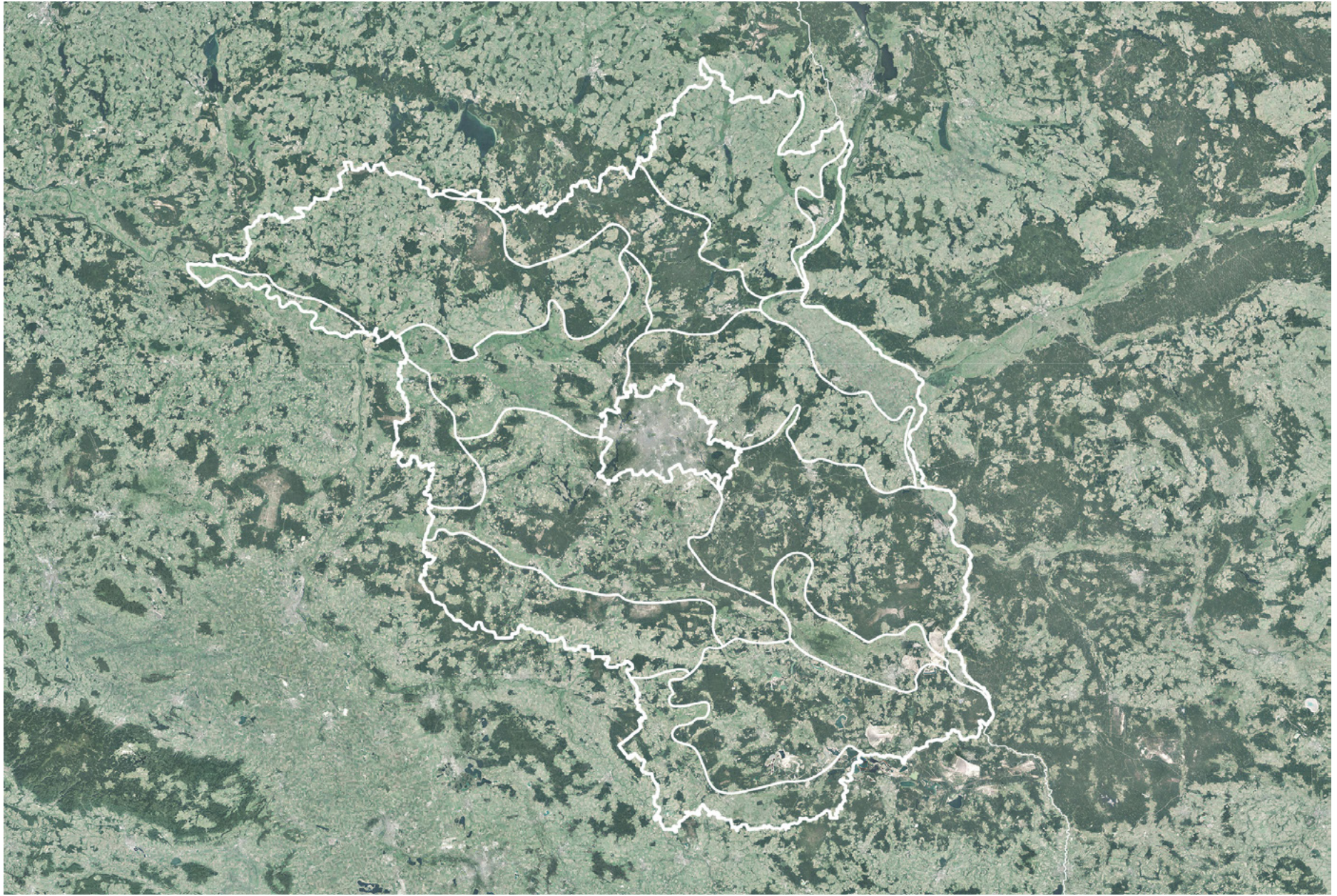
agriculture

&

rural areas

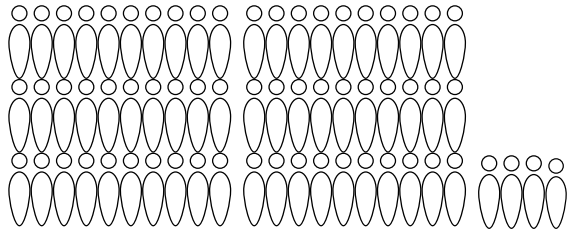


Brandenburg within Germany.

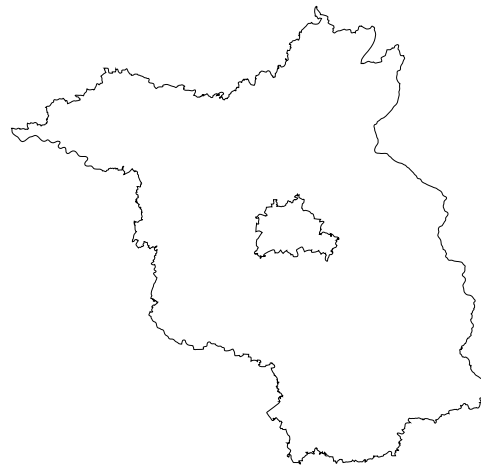
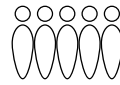


Brandenburg & Berlin: two separate states.

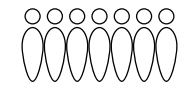
The Netherlands
16,98 million (2016)



Brandenburg
2,50 million (2016)



Berlin
3,57 million (2016)



Brandenburg & Berlin: two separate states.

Why agriculture, why rural areas, why
Brandenburg?

10 things you need to know about the global food system

There is enough food for everyone on the planet to lead a healthy and nutritious life, but the global food supply is deeply inequitable

Evan Fraser and Elizabeth Fraser

Thu 1 May 2014 10.31 BST



Food

This article is more than 1 year old

Global food system is broken, say world's science academies

Radical overhaul in farming and consumption, with less meat eating, needed to avoid hunger and climate catastrophe

Damian Carrington
Environment editor

@dpcarrington

Wed 28 Nov 2018 19.01 GMT



▲ A family cooking amid floodwater in Lalmonirhat, Bangladesh, 2017. Photograph: Zakir Chowdhury/Barcroft

Food system: global externalities.

Trockenheit bereitet Brandenburgs Bauern Probleme

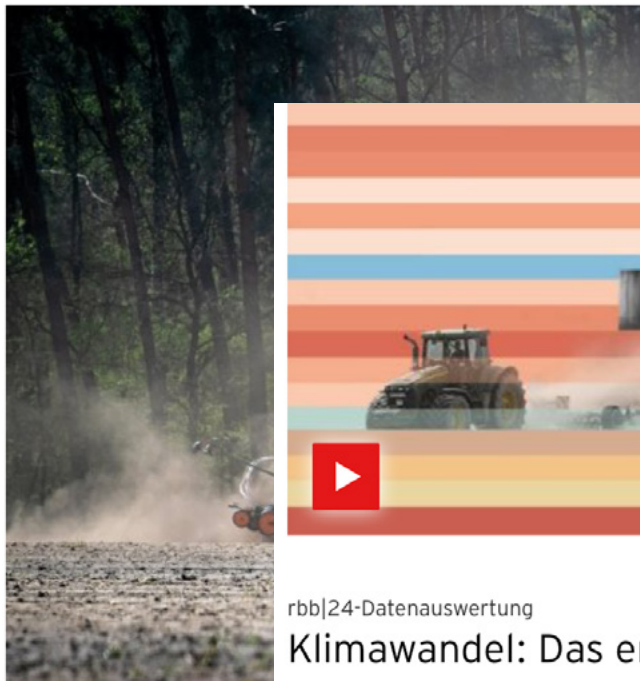
Fehlt weiterhin der Regen, könnte das wie im vergangenen gravierende Folgen für die Ernte haben.

26.04.2019, 05:00 Rita Schulze

Behörden gegen Landgrabbing

Brandenburg holt sich das Land zurück

Der Konzern Munich Re hatte mehr als 2.000 Hektar Ackerfläche gekauft. Nun haben die Behörden einen Teil der Verkaufsgenehmigungen kassiert.



Staubwolken: Den Böden in Branden



Die brandenburgischen Behörden haben Bauern gefunden, die für insgesamt 5 Millionen Euro einen Teil der Flächen kaufen wollen (Symbolbild) Foto: dpa

Öko / Ökonomie

5. 11. 2017



JOST MAURIN

Redakteur für Wirtschaft und Umwelt



THEMEN

#Landgrabbing #Brandenburg

rbb|24-Datenauswertung

Klimawandel: Das erwartet Berlin und Brandenburg bis 2100

08.04.19 | 14:56 Uhr

Hitze, Dürre, extreme Regenfälle: Das Klima in Berlin und Brandenburg hat sich bereits deutlich geändert. rbb|24 zeigt jetzt in einer Datenauswertung, welche drastischen Folgen in Zukunft auf uns zukommen könnten - dass Klimaschutz aber noch helfen kann.

92 Kommentare



Agriculture: environmental threats.

Große regionale Ungleichheit bei Lebensbedingungen

Handyempfang, Arbeit, Verkehr: Eine Regierung Bericht zufolge noch immer sehr unterschiedlich Deutschland aus.

8. Juli 2019, 4:35 Uhr / Quelle: ZEIT ONLINE, AFP, dpa, jj / 190 K

Zwischen Schrumpfung und Speckgürtel: Kritik an Landesplanung



ERGEBNISSE IM ÜBERBLICK

SPD gewinnt in Brandenburg, AfD auf Platz 2

Bei der Landtagswahl in Brandenburg hat die SPD die stärkste Kraft behauptet. Hinter den Sozialdemokraten zulegen konnte. Die bisher mitregierende CDU ist auf ein historisches Tief.



Vorlesen

Planungsgemeinschaften und die Kommunen. Es gibt bereits eine ganze Reihe von Initiativen, die versuchen, die Lücke zu schließen.

UPDATE 16.11.2019,

Proteste gegen Landwirtschaftspolitik

Sind die Bauern die neuen Gelbwesten?

Traktoren und Misthaufen auf den Bauernprotesten waren zahme Warnungen. Die aktuellen Aufstände aber zeigen eine neue Wucht. Sie wollen endlich Anerkennung. VON HEIKE JAHBERG, RALF BIRNBAUM UND SELINA BETTENDORF



Rural areas: socio-economic threats.

o-Lebensmittel

Brandenburg soll Berlin satt machen

Die Ernährungsstrategie des Senats sieht für Schulmensen und Kantinen gesunde Alternativen vor. Doch Brandenburgs Landwirte liefern zu wenig. VON HEIKE JAHNKE



Maßnahme 1 - Gemeinschaftsverpflegung als Vorbild

Ein Ziel der Ernährungsstrategie ist die Qualitätsverbesserung der Gemeinschaftsverpflegung.

[Weitere Informationen](#)

Maßnahme 2 - Wertschöpfung in der Region fördern

Der Ausbau der regionalen Marktbeziehungen zwischen Berlin und Brandenburg ist ein wichtiges Ziel.

[Weitere Informationen](#)

Maßnahme 3 - Innovationen für ein zukunftsfähiges Ernährungssystem fördern

Die Förderung von Innovationen für ein zukunftsfähiges Ernährungssystem fördern.

[Weitere Informationen](#)

Maßnahme 4 - Lebendige und produktive Kieze

Die Förderung von sog. Lebensmittel-Punkten in den Berliner Kiezen.

[Weitere Informationen](#)

er pflücken p

Maßnahme 5 - Ernährungsbildung

Die Förderung von Ernährungsbildung gibt es bereits viele öffentliche Projekte, Initiativen und Verbände in den verschiedenen Bildungsbereichen.

[Weitere Informationen](#)

Maßnahme 6 - Lebensmittelverschwendung vermeiden - Lebensmittelabfälle reduzieren

Die Förderung von Maßnahmen zur Vermeidbarkeit von Lebensmittelabfällen möglich.

[Weitere Informationen](#)

Maßnahme 7 - Öffentliche Verwaltung mit Vorbildfunktion

Die Förderung von öffentlichen Einrichtungen haben eine besondere Vorbildfunktion gegenüber den Bürgerinnen und Bürgern.

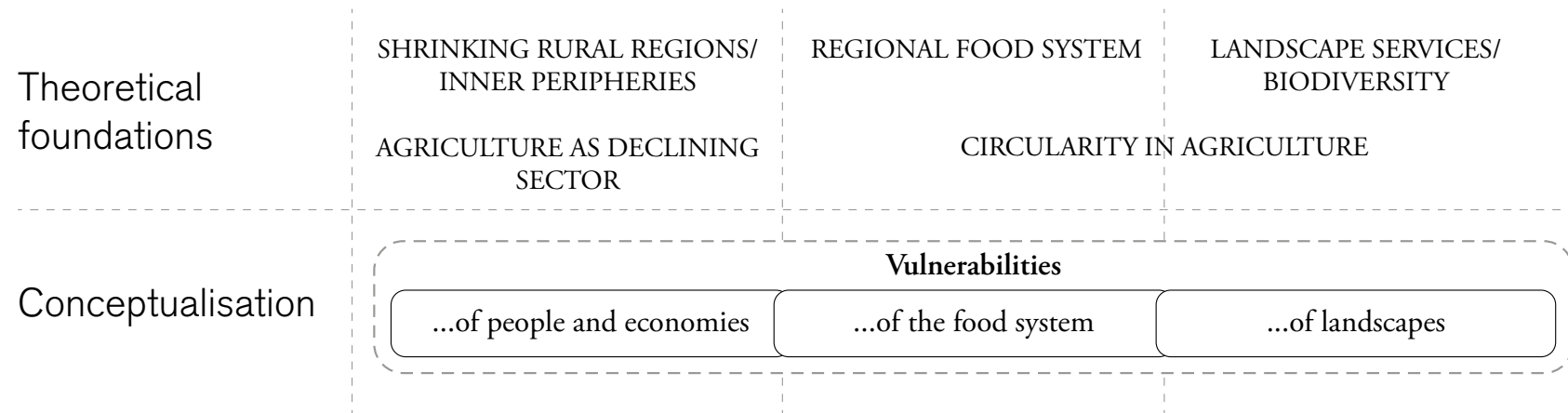
[Weitere Informationen](#)

Maßnahme 8 - Mehr Transparenz für die Verbraucherinnen und Verbraucher

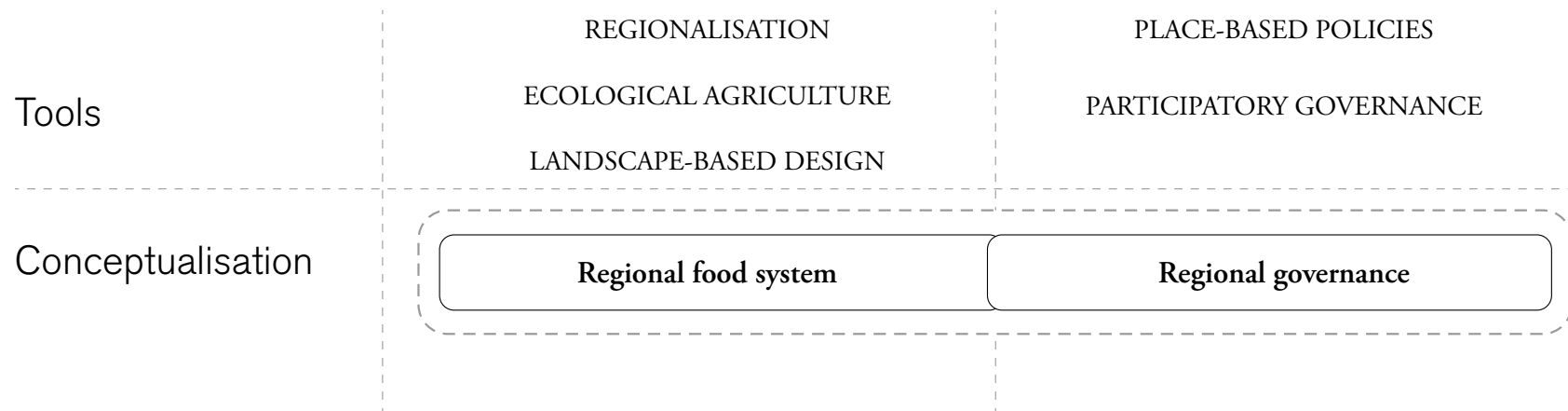
Die Förderung von Maßnahmen, die Verbraucherinnen und Verbraucher ist wichtig zu wissen, „was drin ist“ und wie es um die Qualität der Lebensmittelbetriebe steht, bei denen sie essen.



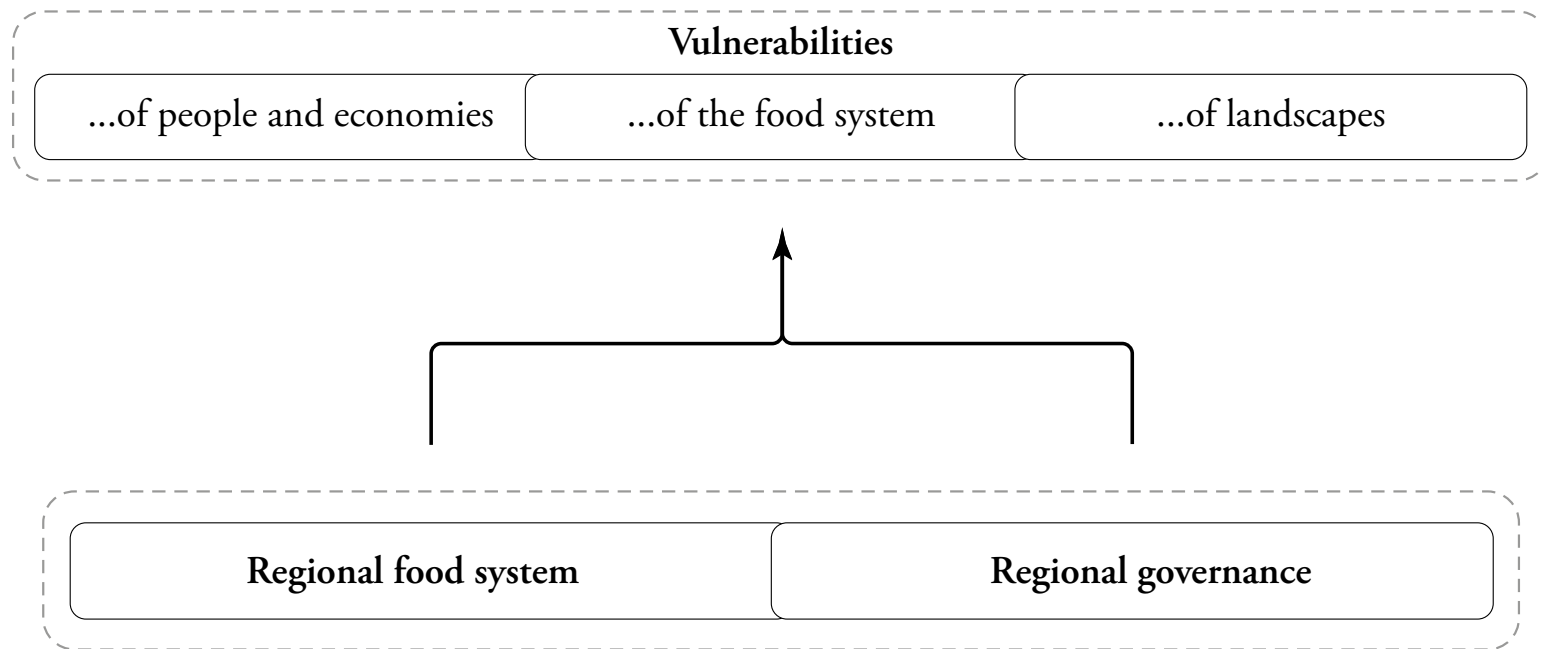
Rural areas: socio-economic threats.



Conceptual framework.



Conceptual framework.



Conceptual framework.

Primary
project goal

Develop a working method to build a **regionalised food system** based in an **ecologically responsible agricultural practice** to lessen current **negative externalities** on **multiple scales** and provide **socio-economic opportunities** in the **neglected rural areas** of Brandenburg, Germany.

Project goals.

Primary
project goal

Develop a working method to build a **regionalised food system** based in an **ecologically responsible agricultural practice** to lessen current **negative externalities** on **multiple scales** and provide **socio-economic opportunities** in the **neglected rural areas** of Brandenburg, Germany.

Secondary
research goals

Be able to assess the food system and its impacts between regional and local scales.

Develop an understanding of the social, political, and economic challenges facing agriculture and rural areas.

Understand the current state of the food policy processes in Berlin and Brandenburg.

Gather a body of literature that allows to base design proposals in recent scientific expertise.

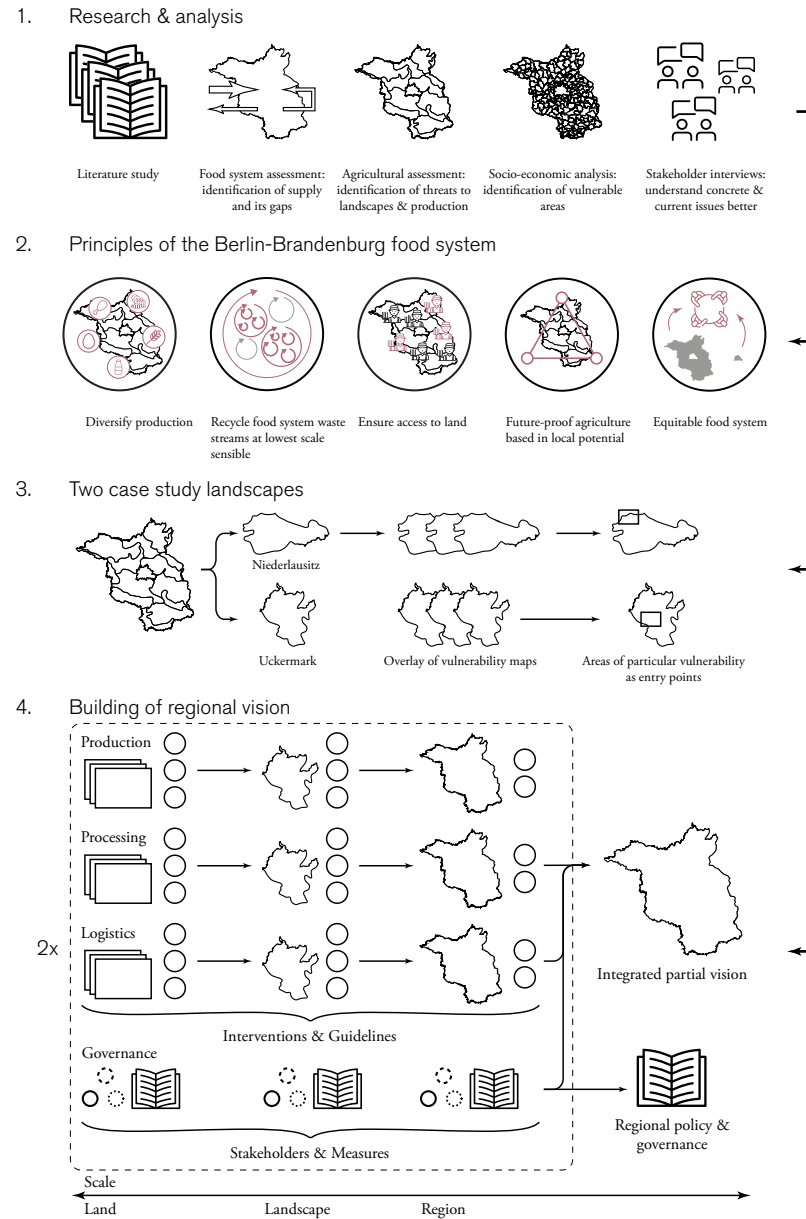
Secondary
design goals

Develop principles of a regional food system in response to research & analysis conducted.

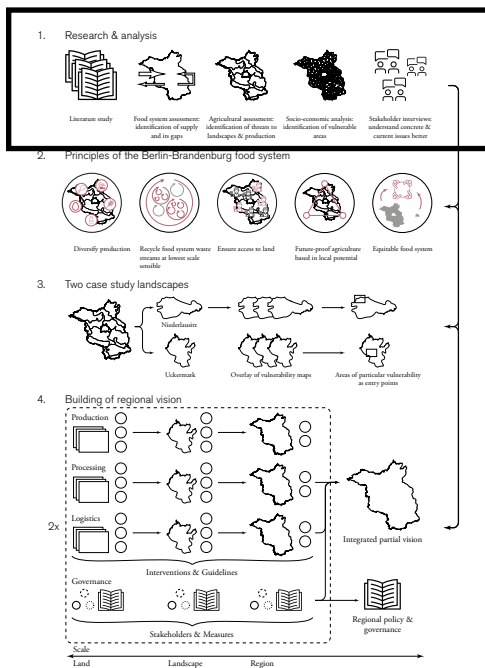
Develop design proposals and related guidelines from the local up to the regional level.

Develop governance proposals for the food system that involve stakeholders from Berlin and Brandenburg equitably.

Project goals.



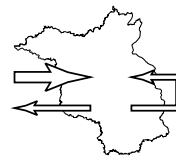
Working method.



1. Research & analysis



Literature study



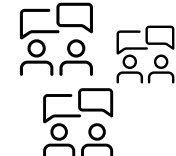
Food system assessment:
identification of supply
and its gaps



Agricultural assessment:
identification of threats to
landscapes & production

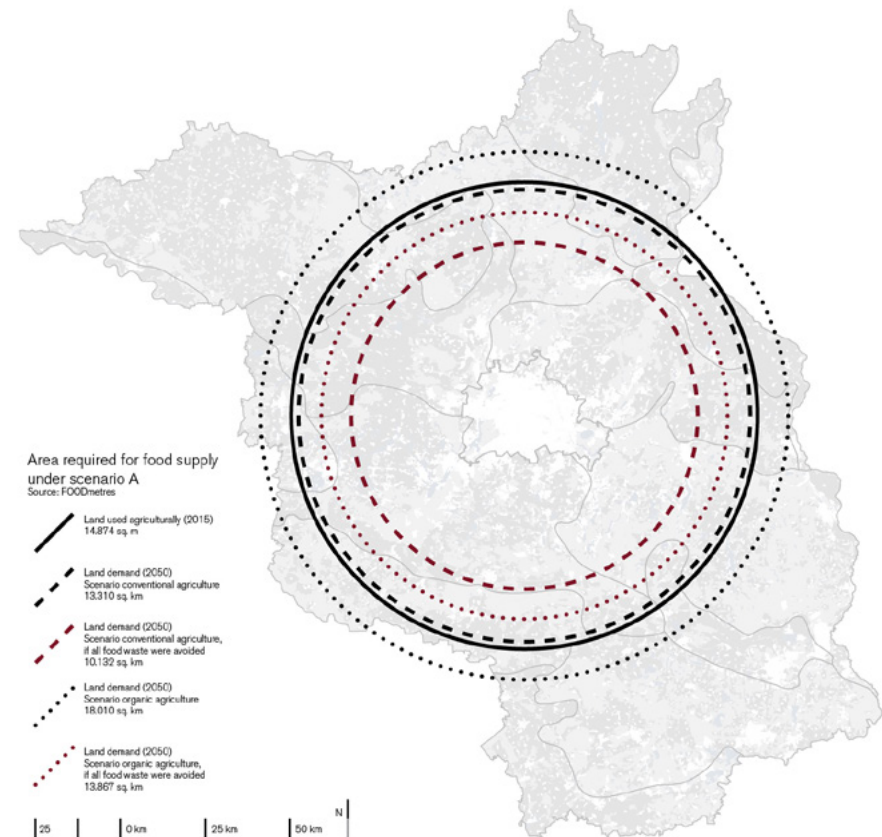
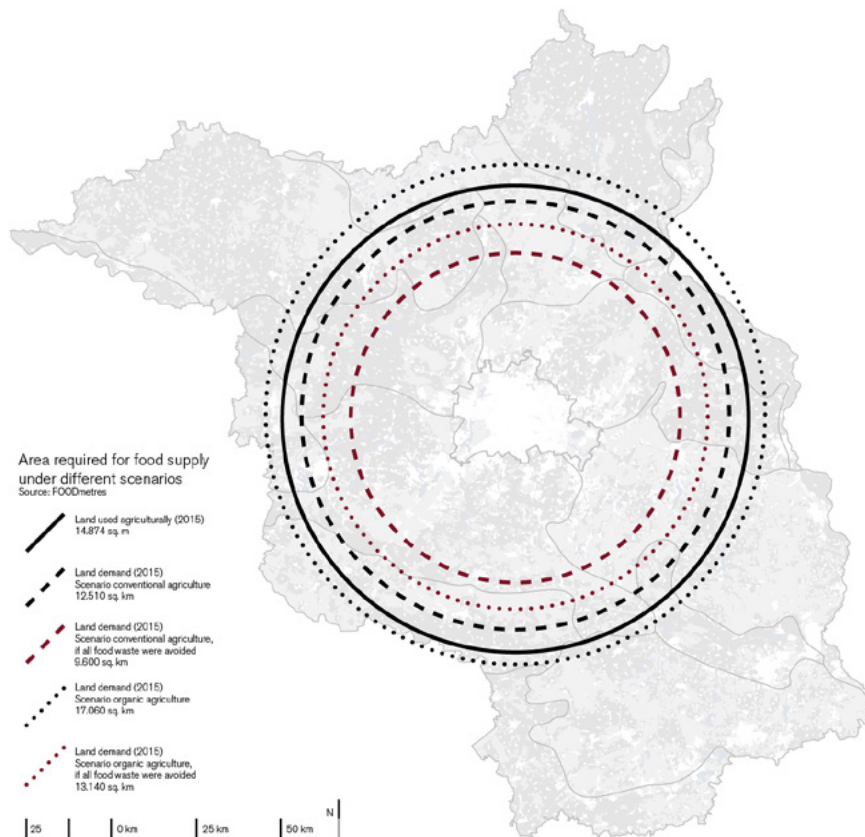


Socio-economic analysis:
identification of vulnerable
areas



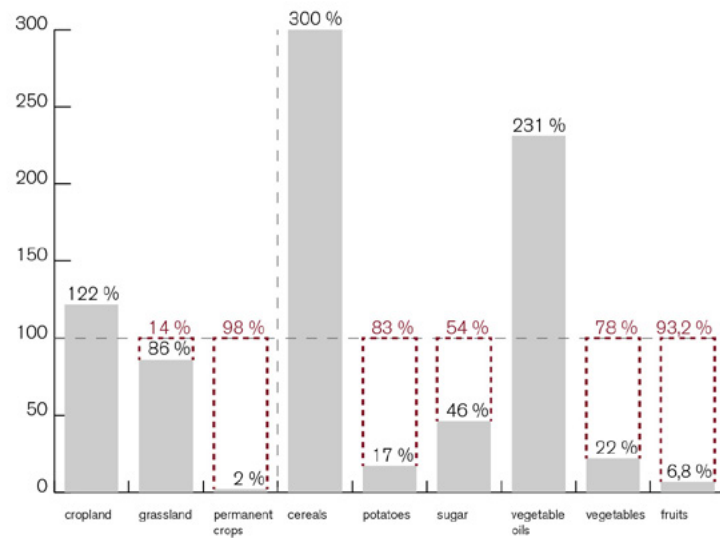
Stakeholder interviews:
understand concrete &
current issues better

Step 1: Research & Analysis.



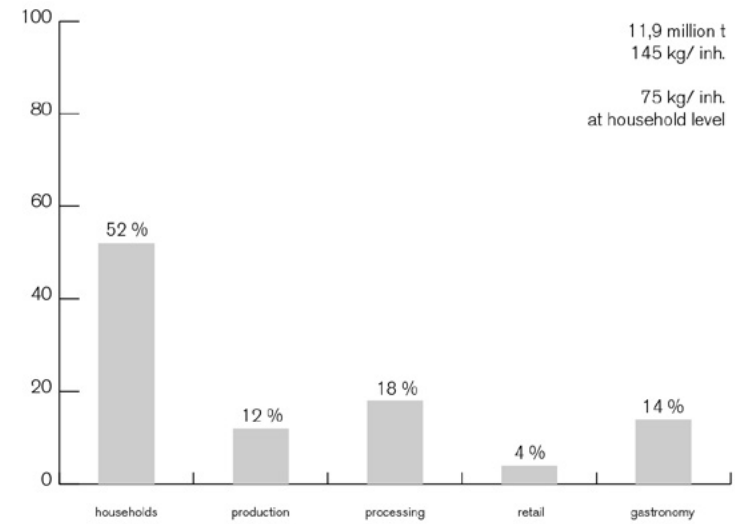
Land demand now ...

... and in 2050.



(Theoretical) food self sufficiency by type of production (2014)
Source: Hönle et al. (2017)

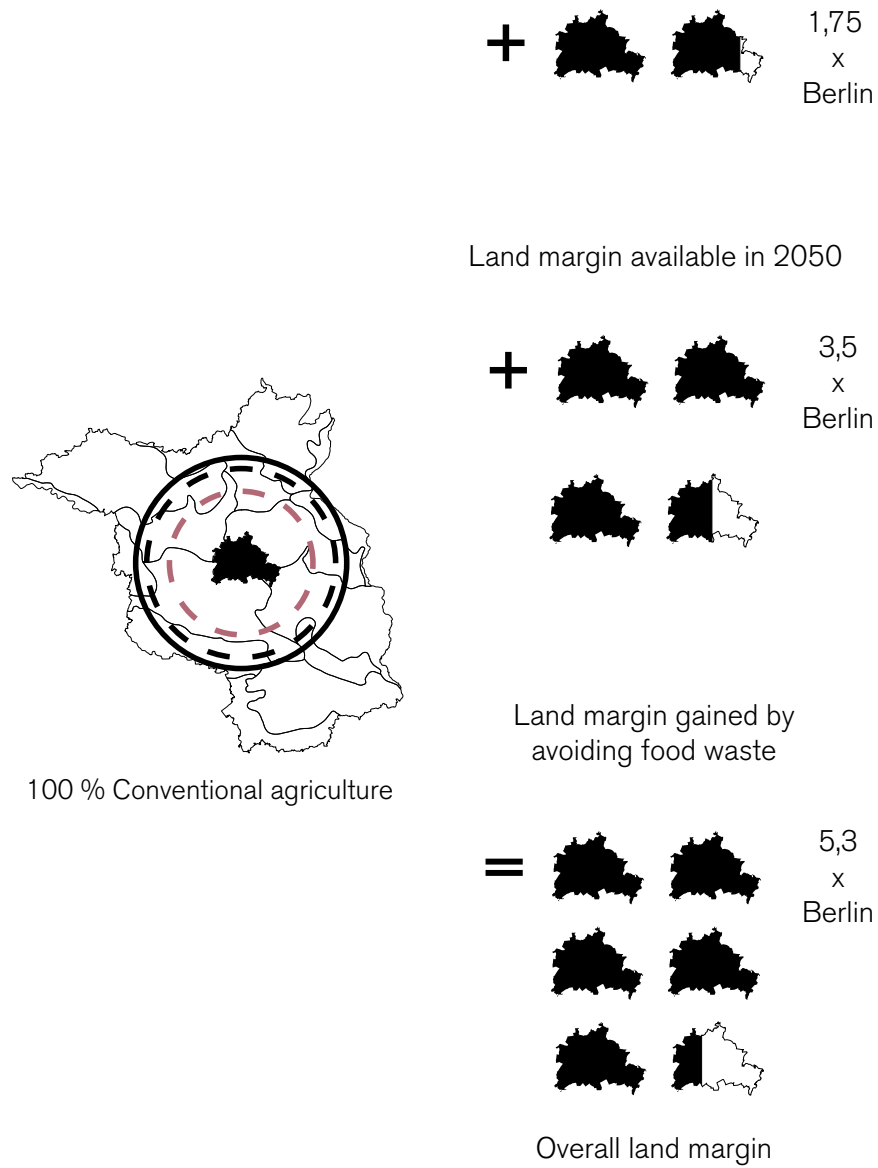
--- Gaps to close



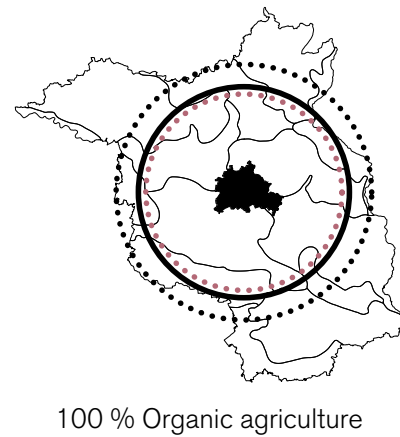
Food waste in Germany per source (2015 data)
Source: Schmidt et al. (2019)

Self-sufficiency by type of production.

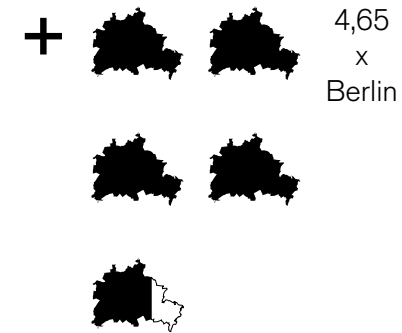
Food waste by source.



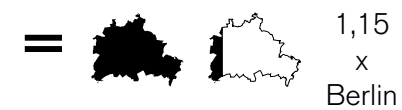
Available land in 2050.



Land margin missing in 2050



Land margin gained by
avoiding food waste

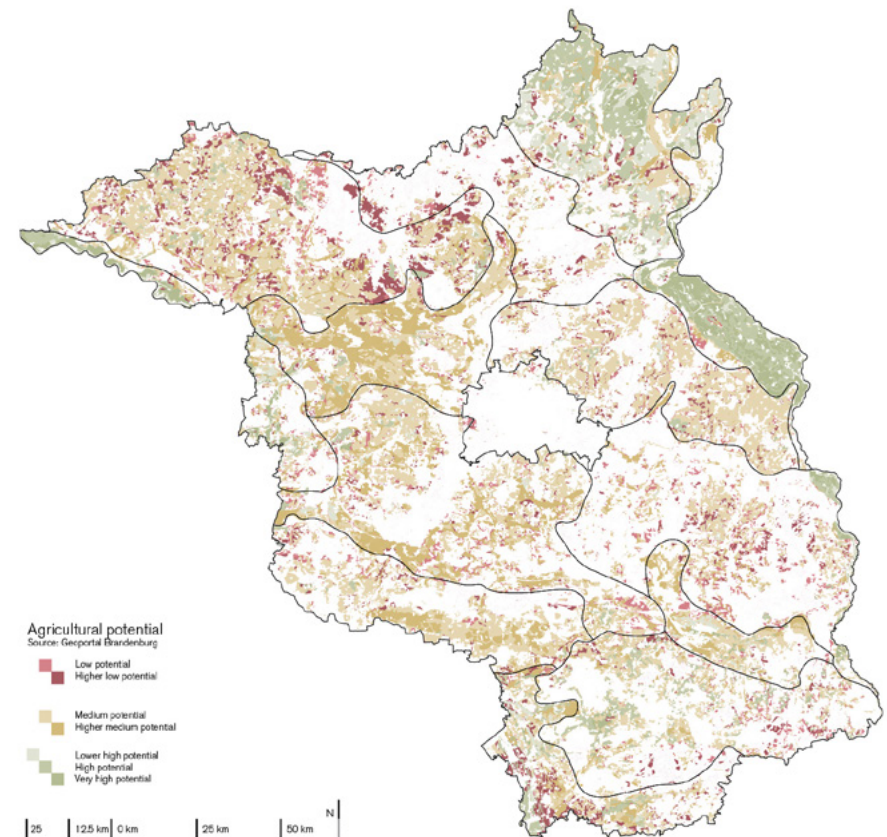
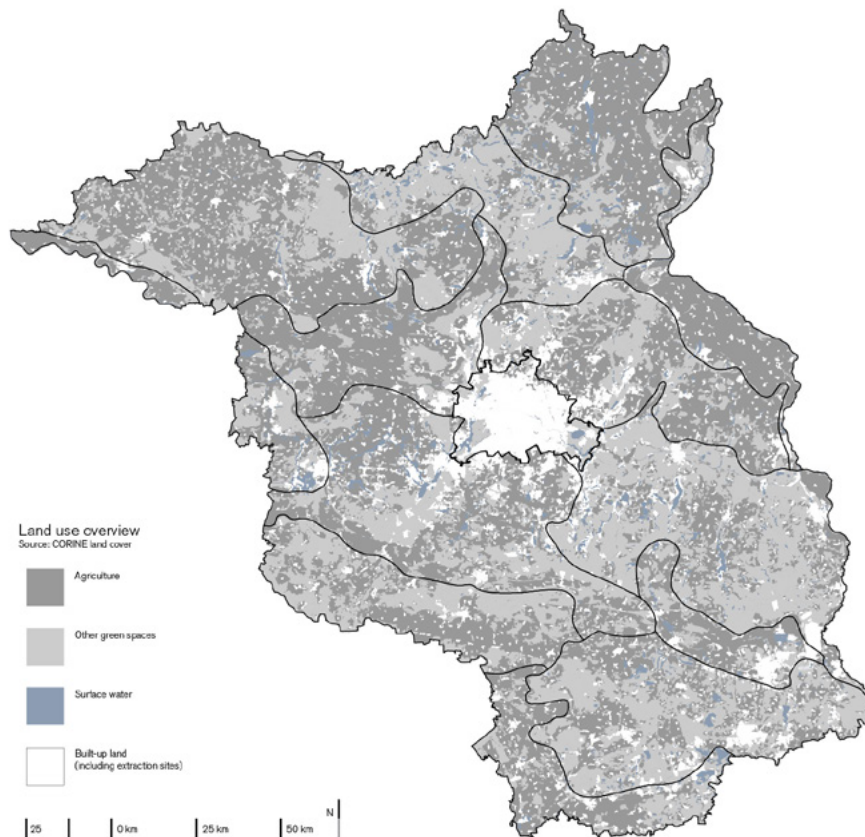


Overall land margin

Available land in 2050.



Need for diversification of production.

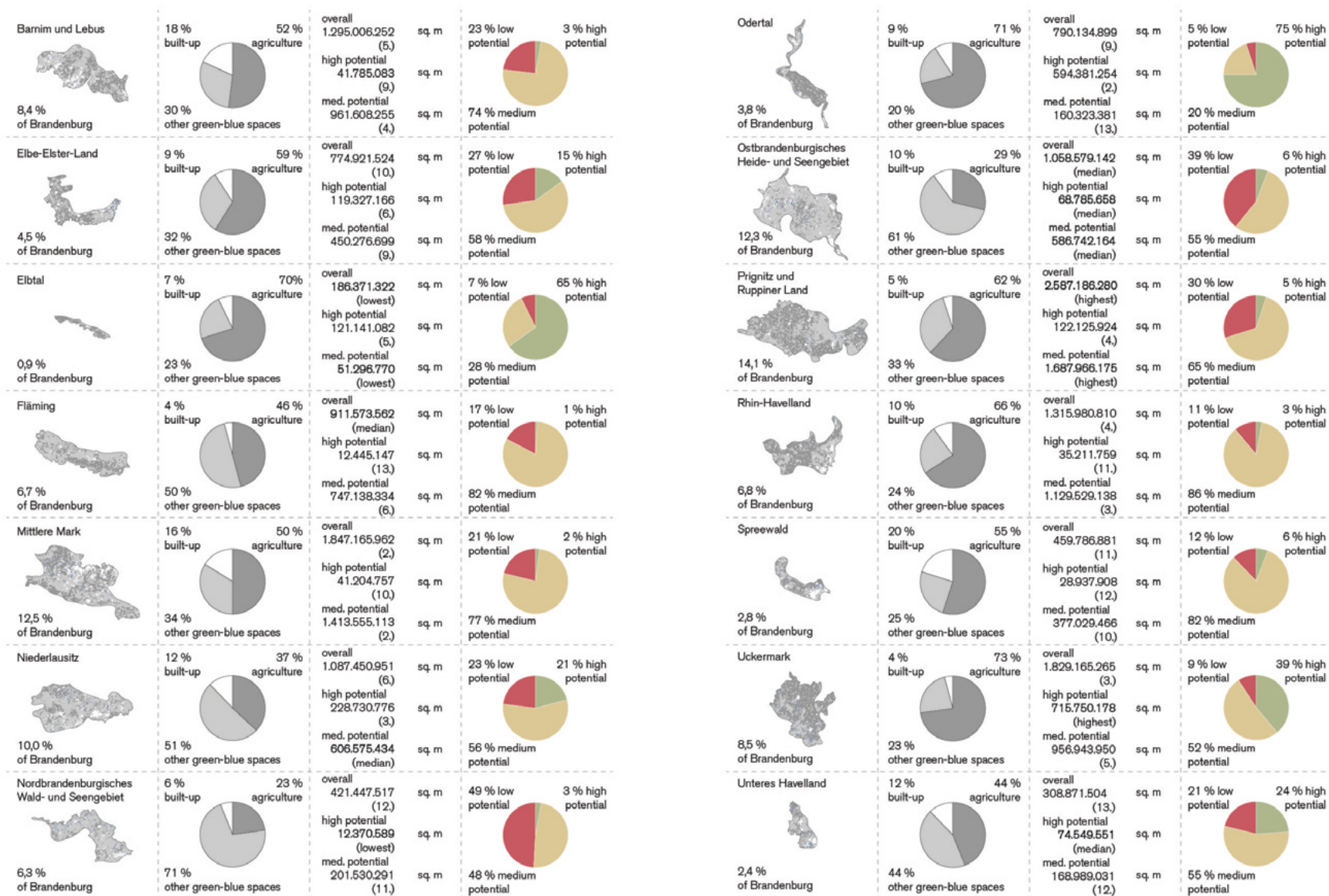


Land use.

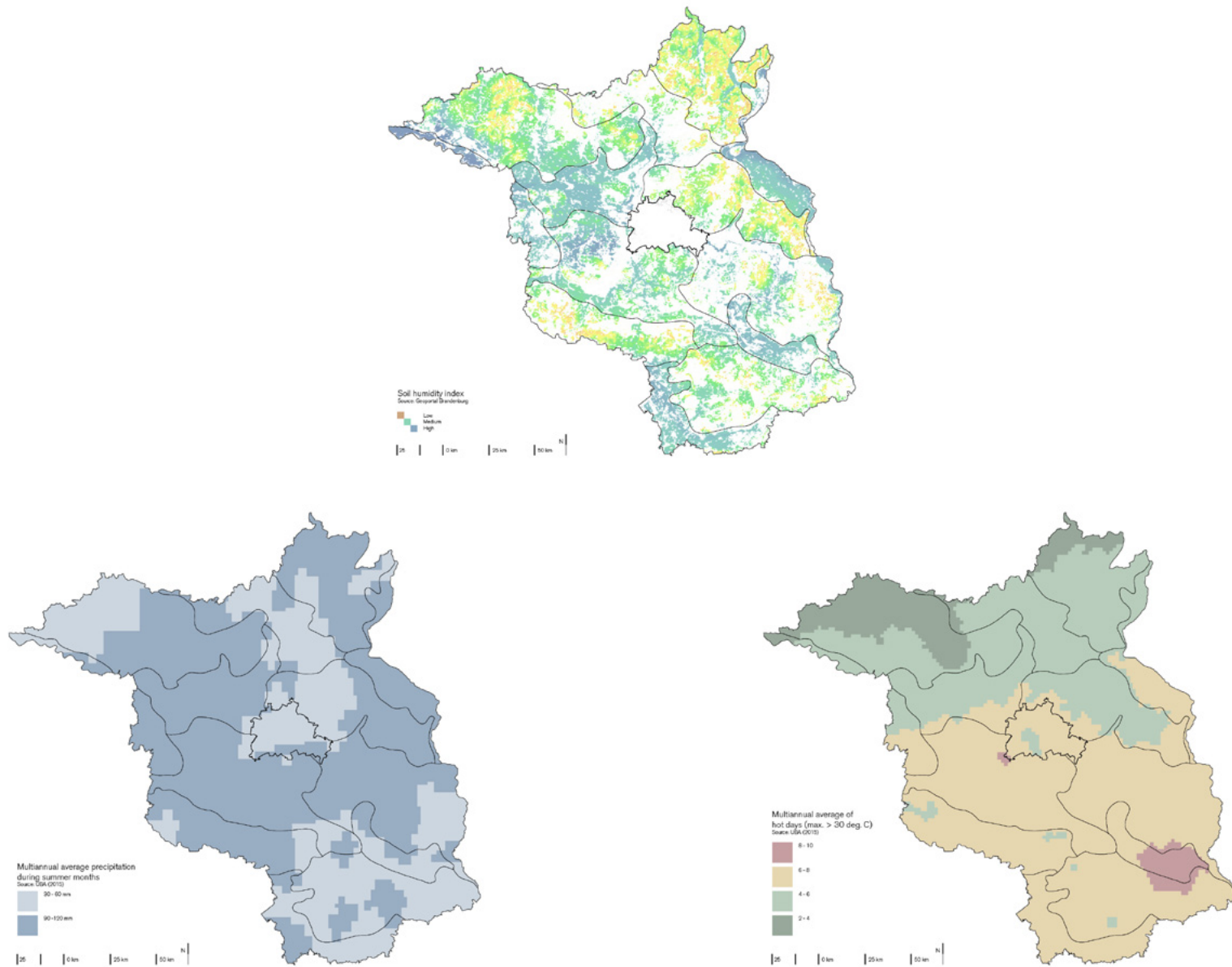
23 / 79

Agricultural productive potential.

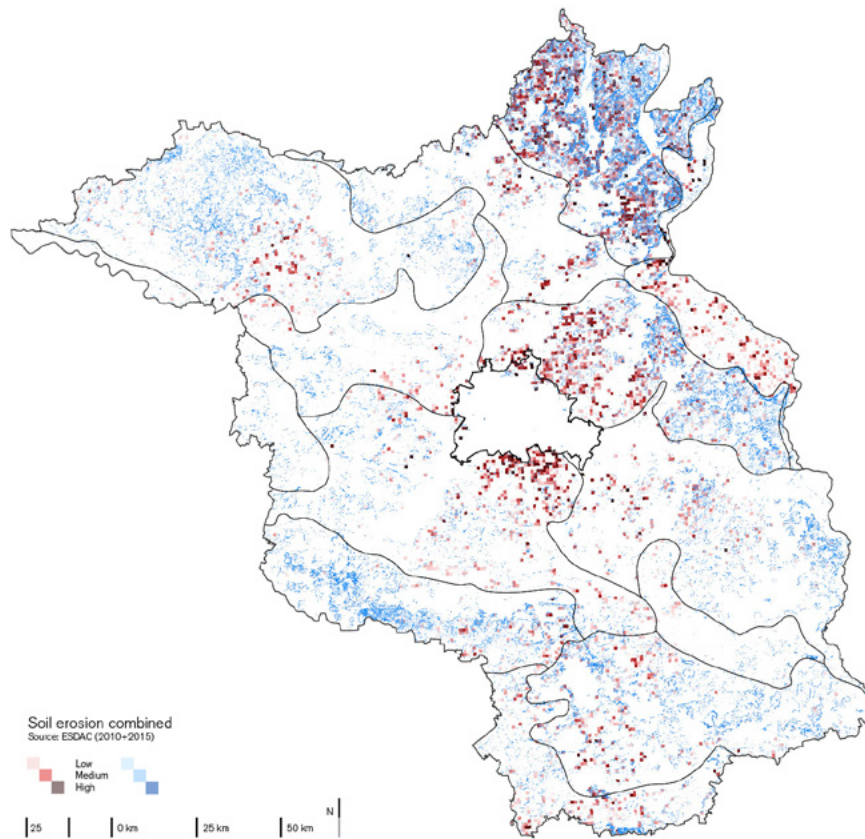
Sources: own work, data adapted from CORINE land cover; Geoportal Brandenburg.



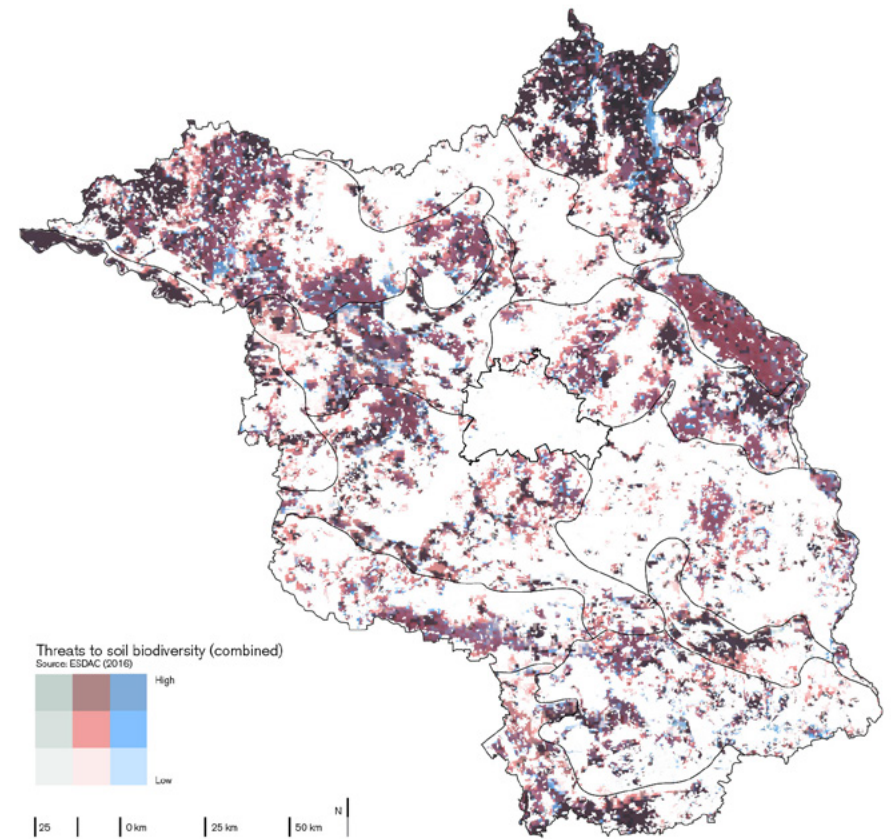
Overview of assessment.



Drought risk.



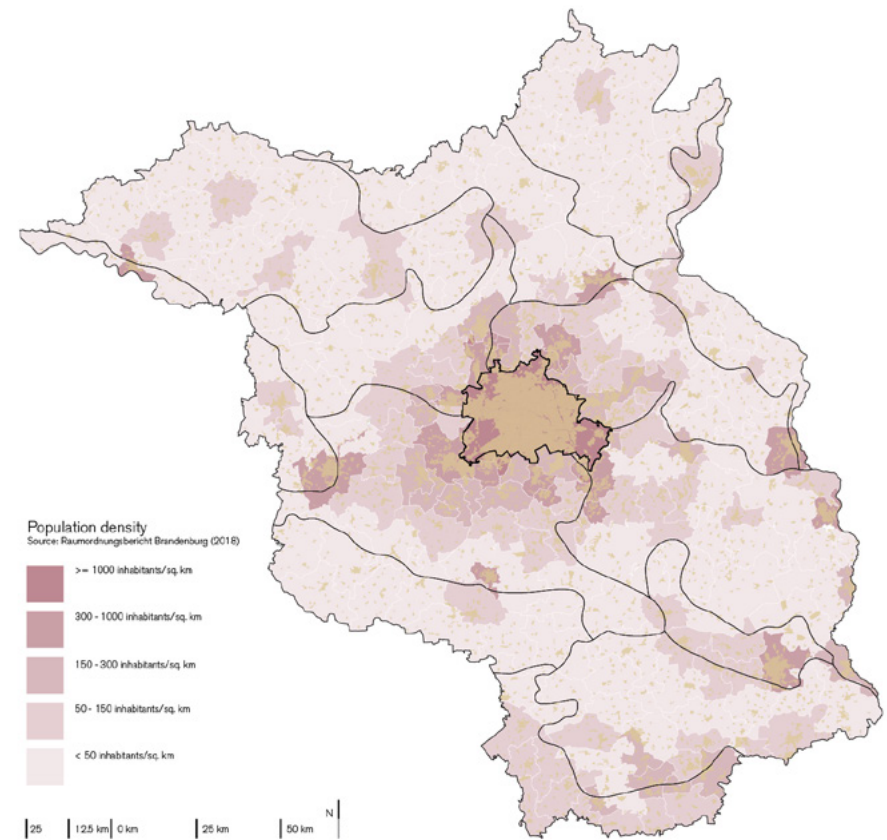
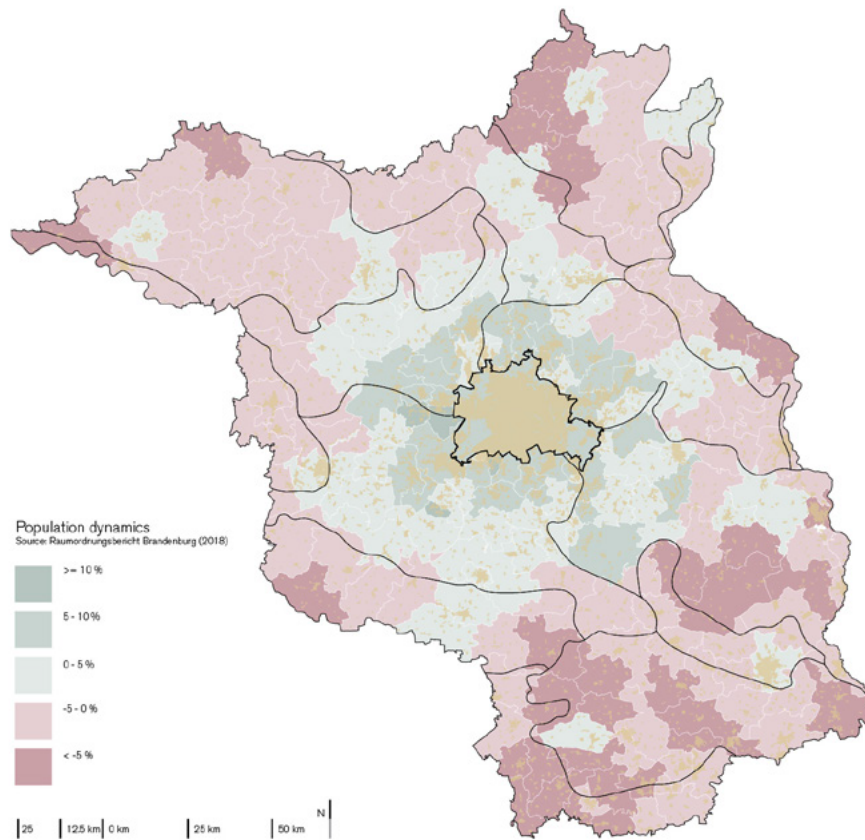
Soil erosion by wind and water.



Threats to soil biodiversity.

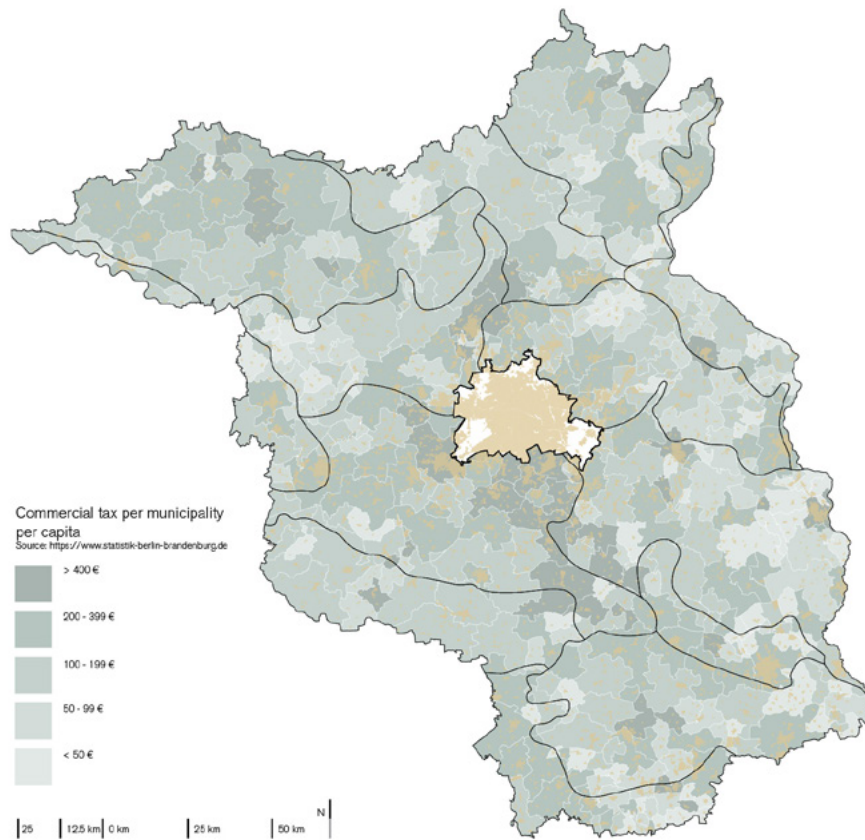


Overview of assessment.



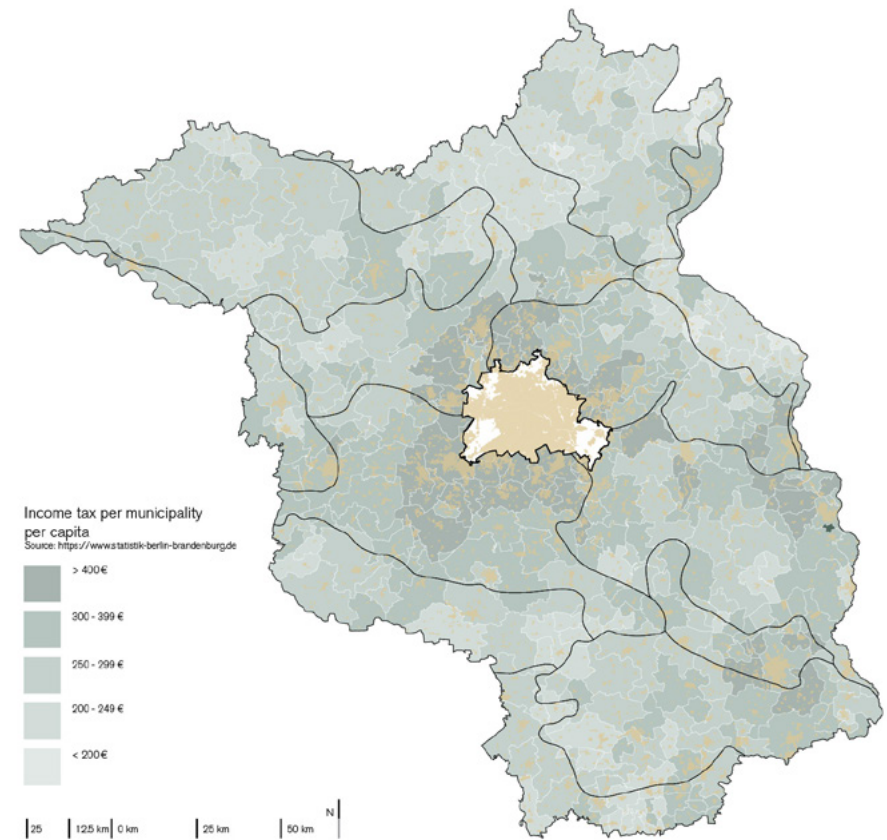
Population dynamics.

Population density.



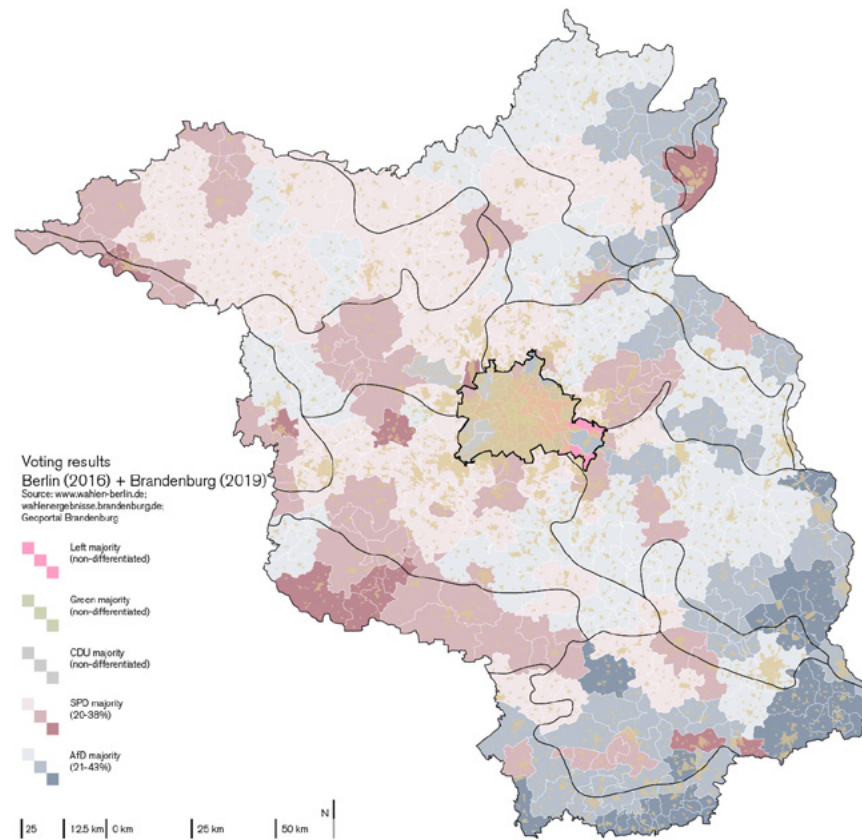
Commercial tax levels.

29 / 79

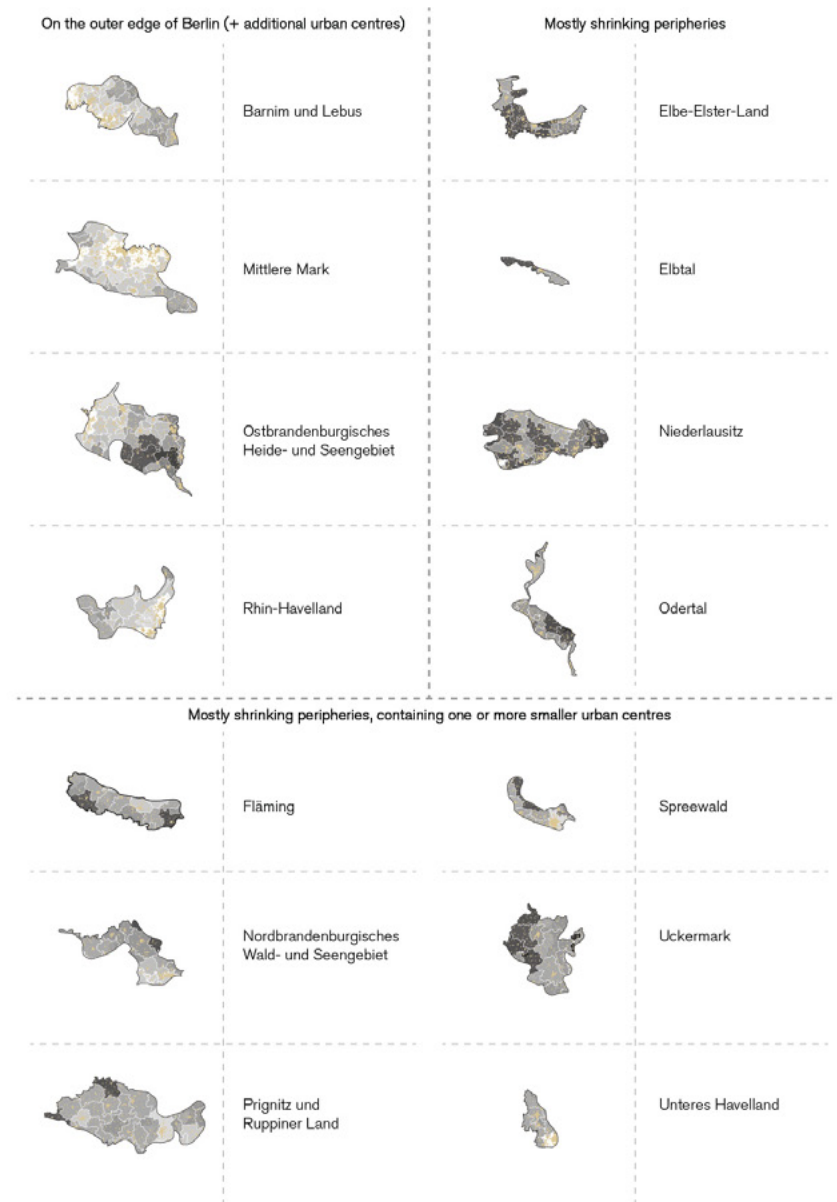
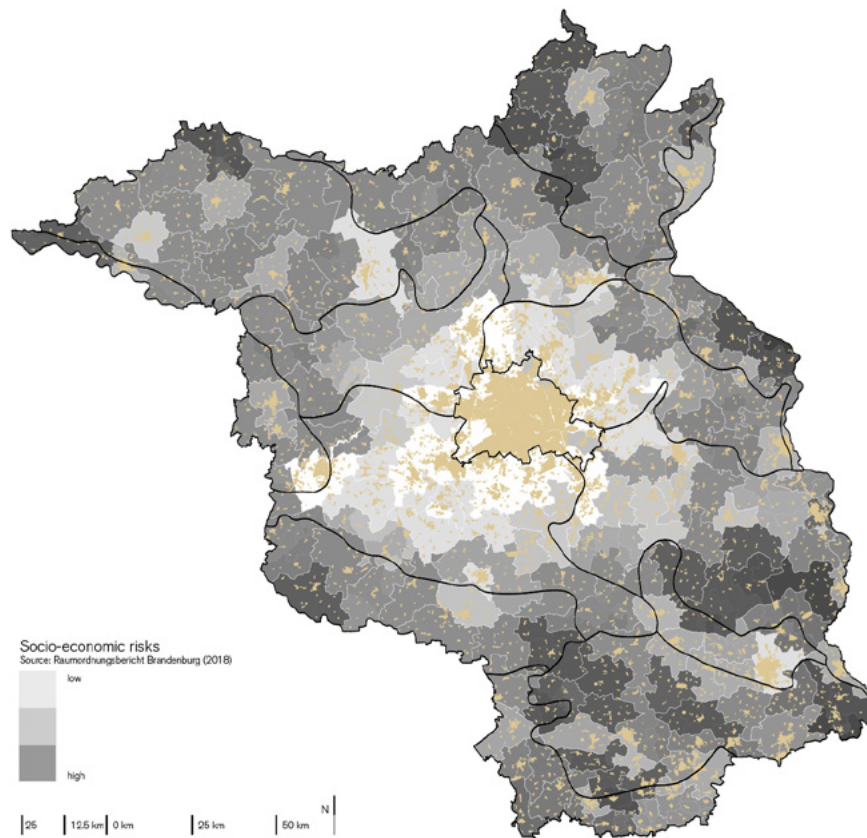


Income tax levels.

Sources: own work, data adapted from Statistikportal Berlin Brandenburg.



Recent voting results.



Overview of assessment.



Berlin food policy process.

Handlungsfeld 1 - Gemeinschaftsverpflegung als Vorbild

Kernziel der Ernährungsstrategie ist die Qualitätsverbesserung der Gemeinschaftsverpflegung.

► [Weitere Informationen](#)

Handlungsfeld 2 - Wertschöpfung in der Region fördern

Ein Ausbau der regionalen Marktbeziehungen zwischen Berlin und Brandenburg ist angestrebtes Ziel.

► [Weitere Informationen](#)

Handlungsfeld 3 - Innovationen für ein zukunftsfähiges Ernährungssystem fördern

Innovationen für ein zukunftsfähiges Ernährungssystem fördern.

► [Weitere Informationen](#)

Handlungsfeld 4 - Lebendige und produktive Kieze

Förderung von sog. LebensmittelPunkten in den Berliner Kiezen.

► [Weitere Informationen](#)

Handlungsfeld 5 - Ernährungsbildung

Im Bereich Ernährungsbildung gibt es bereits viele öffentliche Projekte, Initiativen und Vorgaben in den verschiedenen Bildungsbereichen.

► [Weitere Informationen](#)

Handlungsfeld 6 - Lebensmittelverschwendung vermeiden - Lebensmittelabfälle reduzieren

Studienergebnissen zufolge ist die Vermeidbarkeit von Lebensmittelabfällen möglich.

► [Weitere Informationen](#)

Handlungsfeld 7 - Öffentliche Verwaltung mit Vorbildfunktion

Verwaltungen haben eine besondere Vorbildfunktion gegenüber den Bürgerinnen und Bürgern.

► [Weitere Informationen](#)

Handlungsfeld 8 - Mehr Transparenz für die Verbraucherinnen und Verbraucher

Für Verbraucherinnen und Verbraucher ist wichtig zu wissen, „was drin ist“ und wie es um die Hygiene der Lebensmittelbetriebe steht, bei denen sie essen.

► [Weitere Informationen](#)

Berlin food policy result.



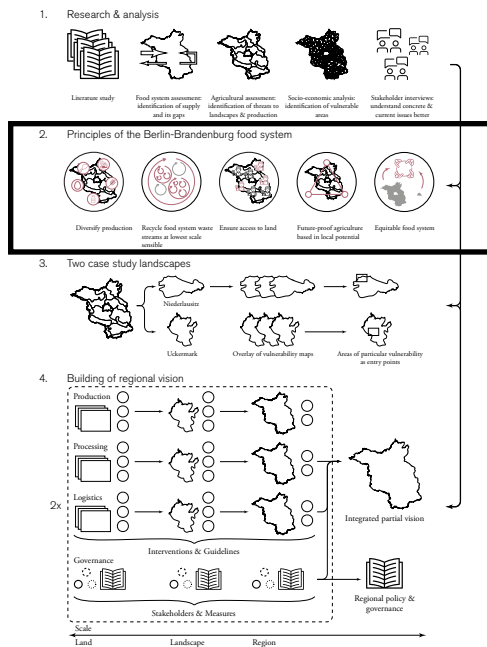
Berlin food policy: core project.



Food policy beginnings in Brandenburg.

35 / 79

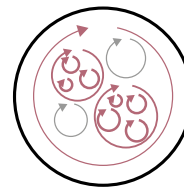
Source: Anonymous (2020); adapted by author.



2. Principles of the Berlin-Brandenburg food system



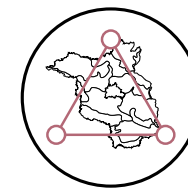
Diversify production



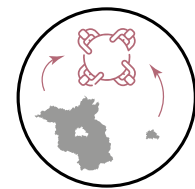
Recycle food system waste streams at lowest scale sensible



Ensure access to land



Future-proof agriculture based in local potential

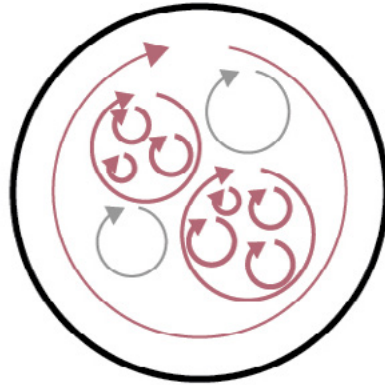


Equitable food system

Step 2: Principles.



Diversify production



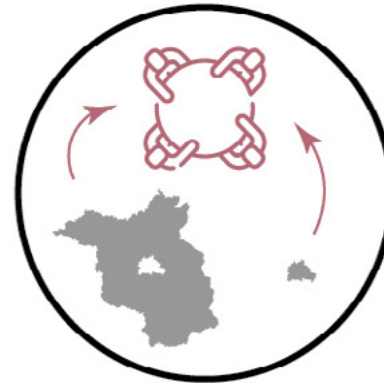
Recycle food system waste streams at lowest scale sensible



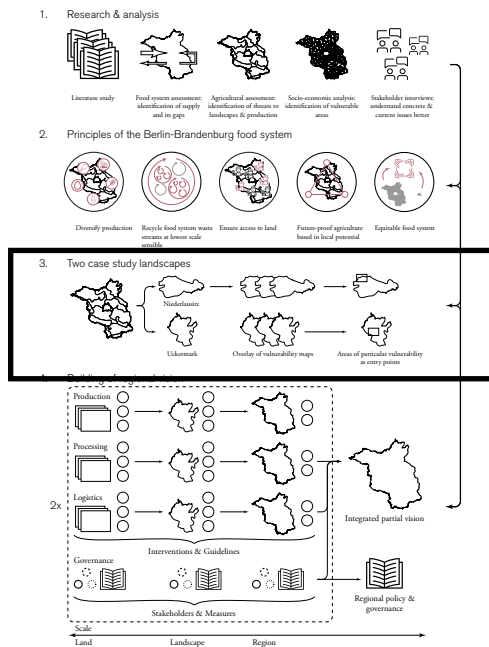
Future-proof agriculture based in local potential



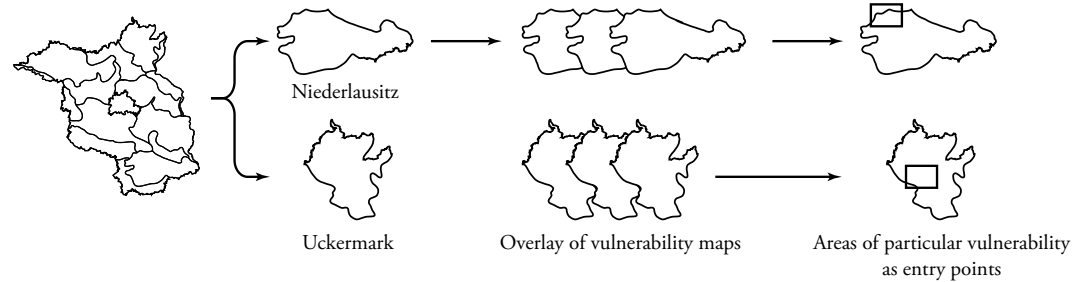
Ensure access to land



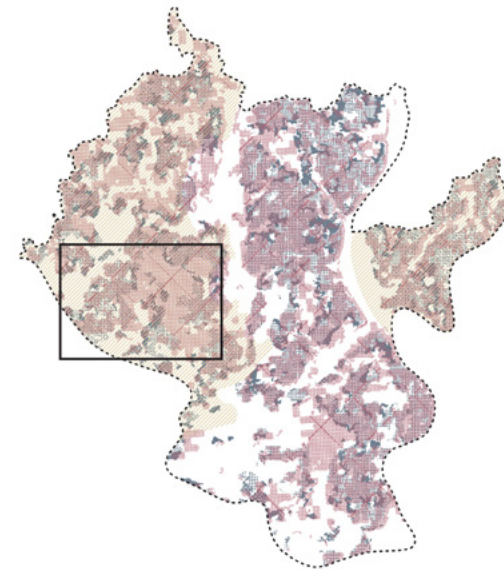
Equitable food system



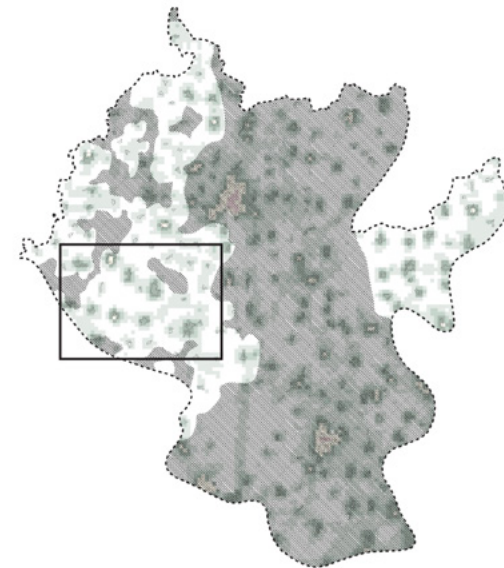
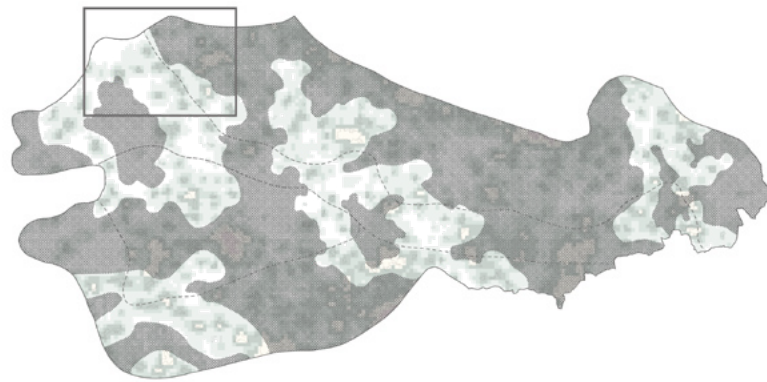
3. Two case study landscapes



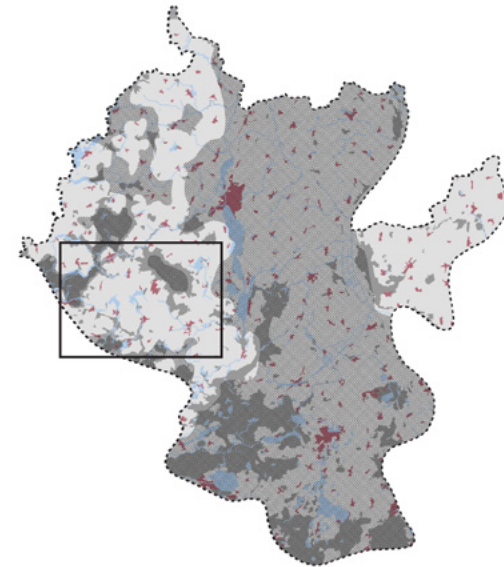
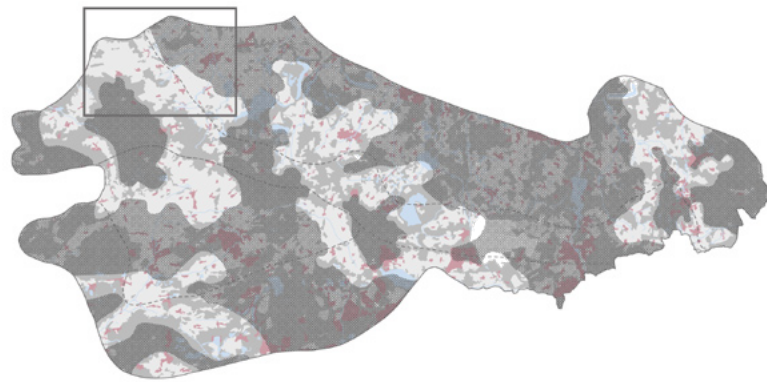
Step 3: Case Study Landscapes.



Overlay of threats.



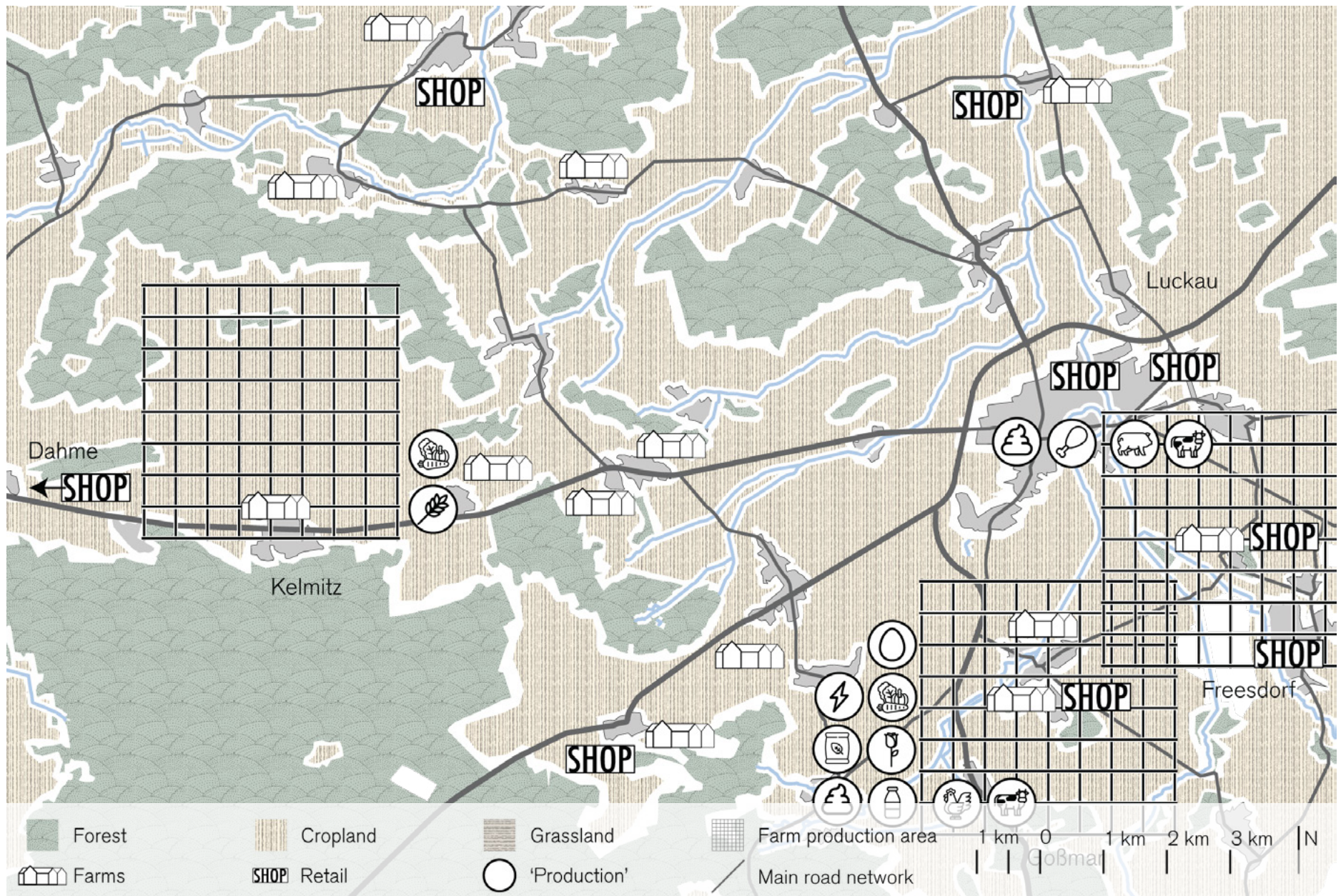
Analysis of population densities.



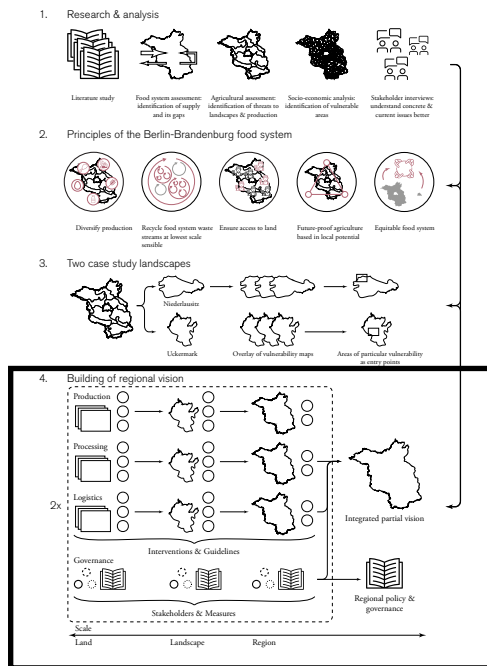
Analysis of land use.



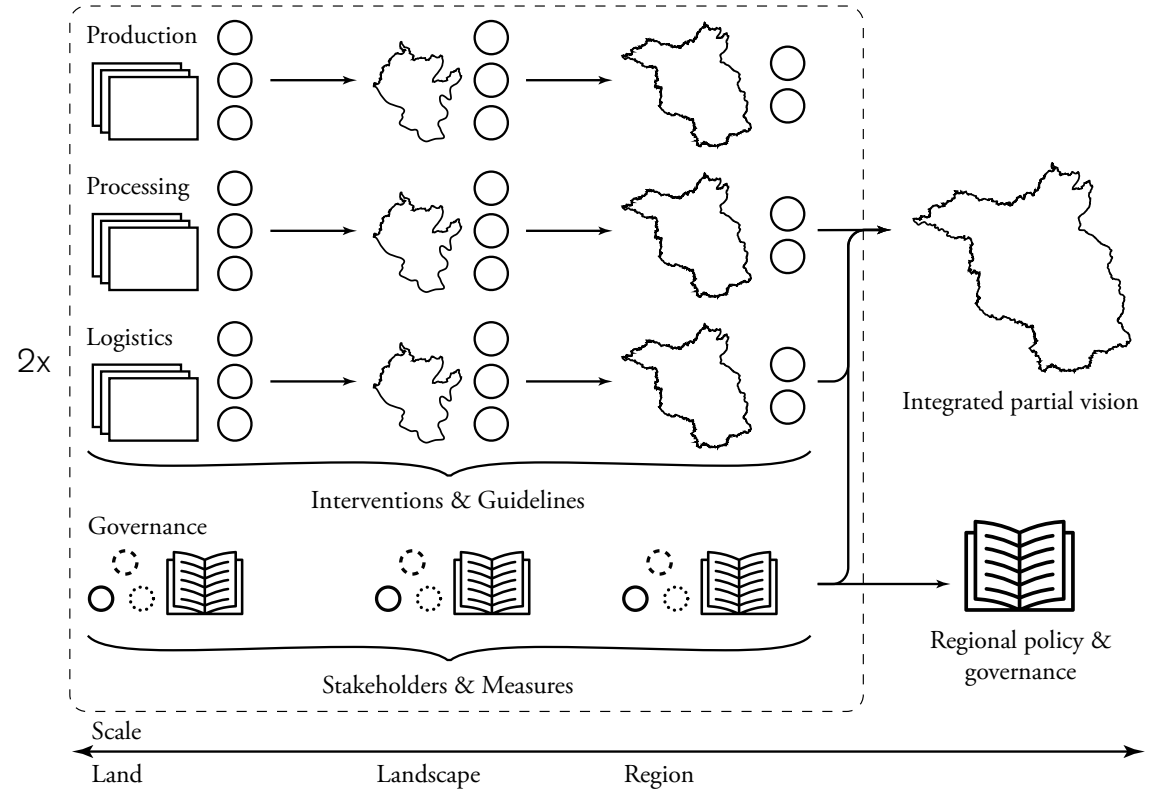
Aerial photo: zoom-in Niederlausitz



Entry point: Niederlausitz.

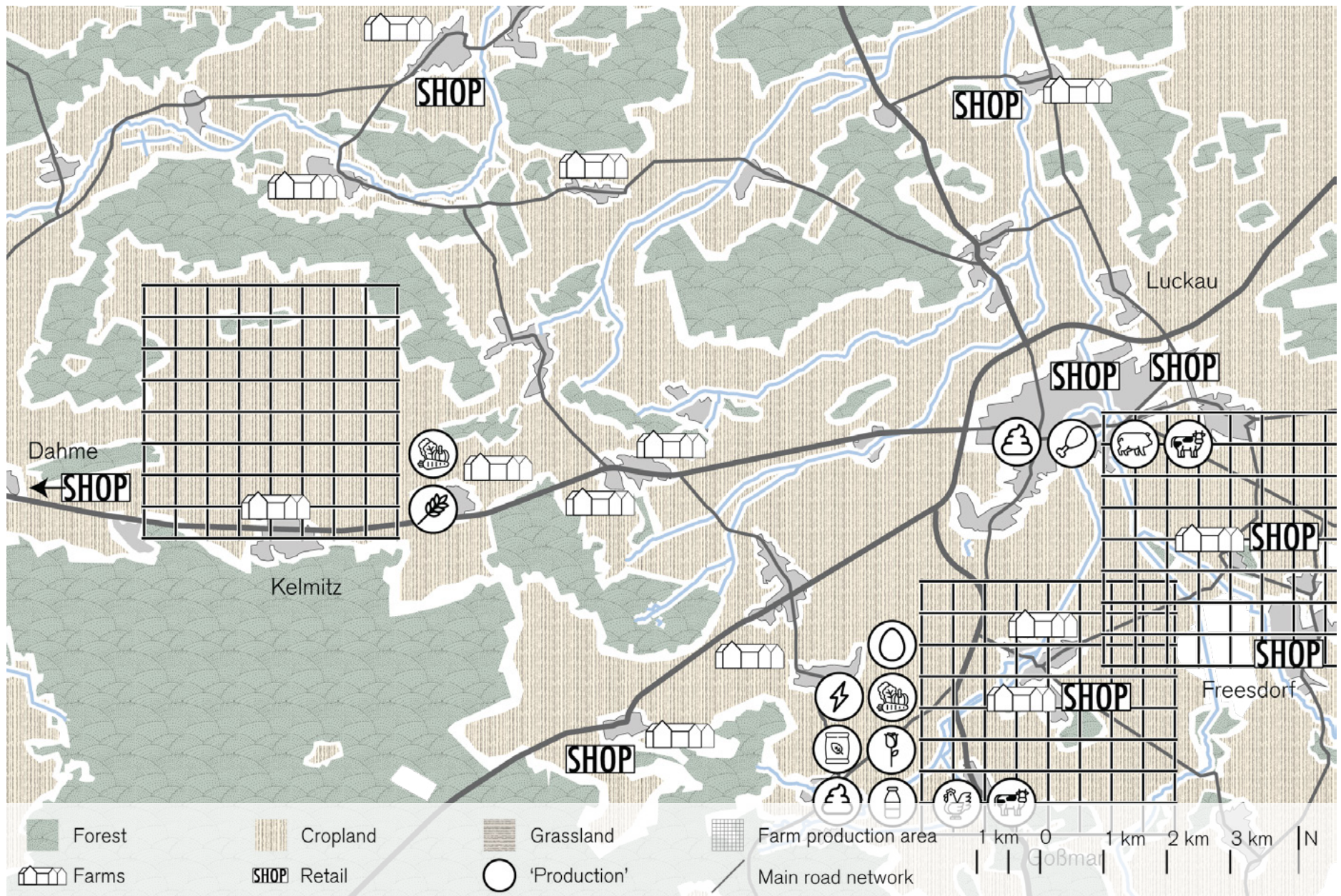


4. Building of regional vision



Step 4: Building of Regional Vision.

Logistics



Entry point: Niederlausitz.



Shop on farm.

47 179

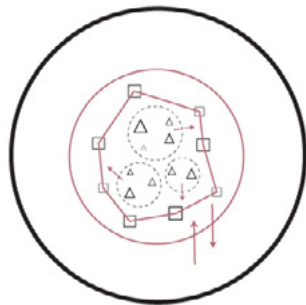
Source: adapted from Google Maps by author.



Shop on farm.

48 / 79

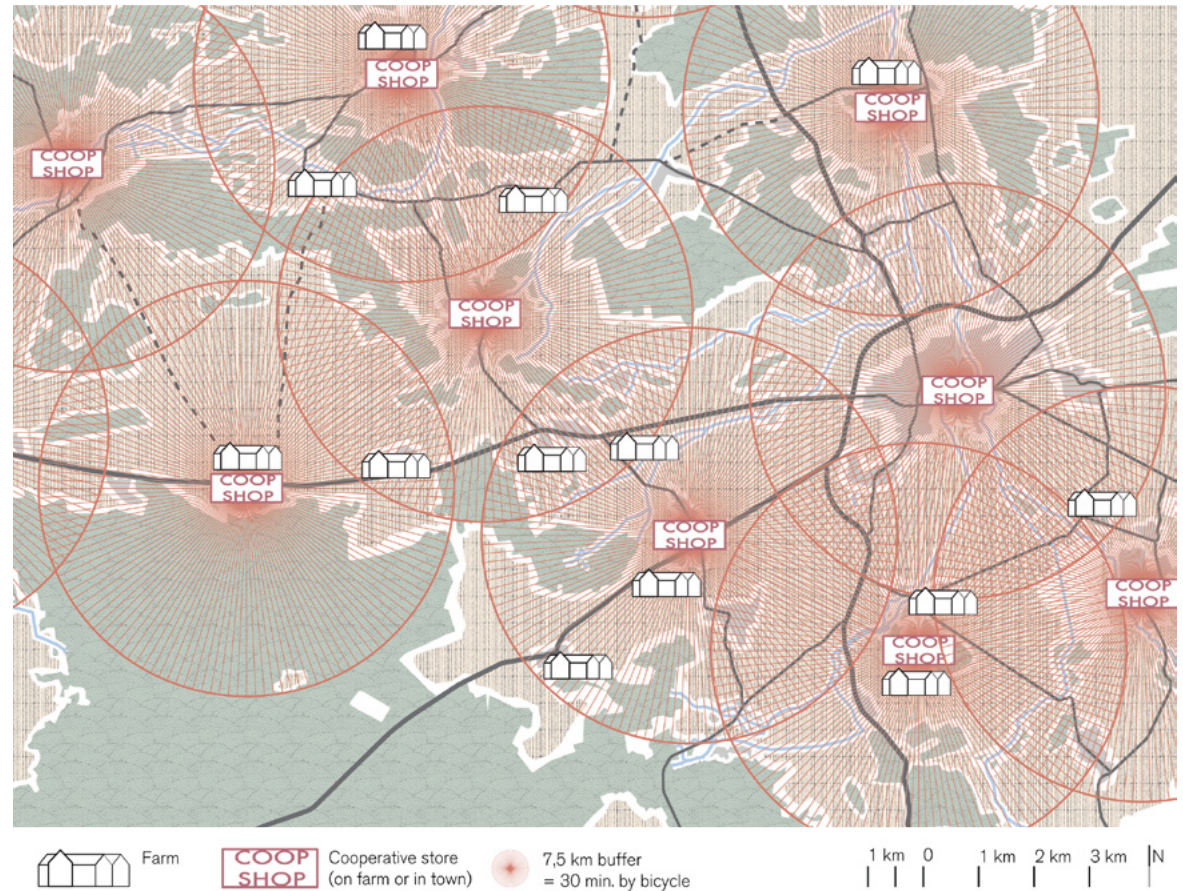
Source: adapted from Google Maps by author.



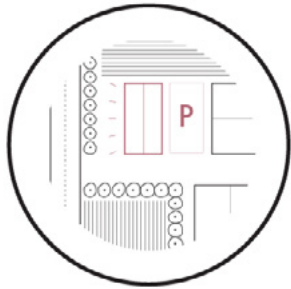
1. Form cooperative chain of stores with unified logistics



2. Distribute stores at soft-mode friendly densities



Proposal: shop cooperative.



1. Create spatial quality on farm level



2. Multifunctionality and diversified offer in stores



3. Clear branding



4. Climate-friendly delivery to surroundings



Proposal: shop cooperative.



1. Create spatial quality on farm level



2. Multifunctionality and diversified offer in stores



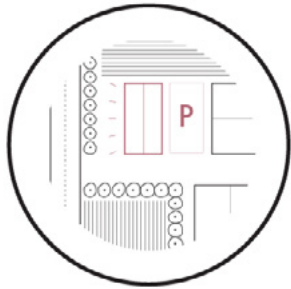
3. Clear branding



4. Climate-friendly delivery to surroundings



Proposal: shop cooperative.



1. Create spatial quality on farm level



2. Multifunctionality and diversified offer in stores



3. Clear branding



4. Climate-friendly delivery to surroundings



Proposal: shop cooperative.



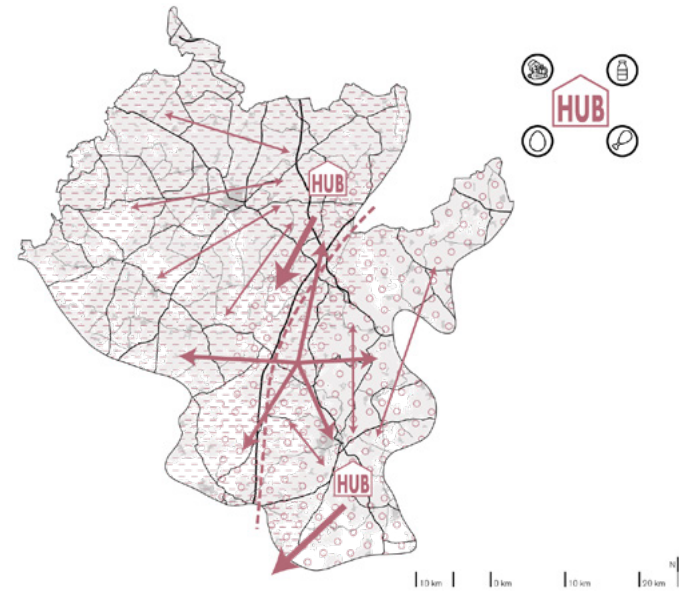
1. Store cooperatives sized based in landscape and settlement patterns



2. Exchange between cooperatives, supply for Berlin



3. Logistics hubs placed centrally and close to road network nodes



Shop cooperative on landscape level.



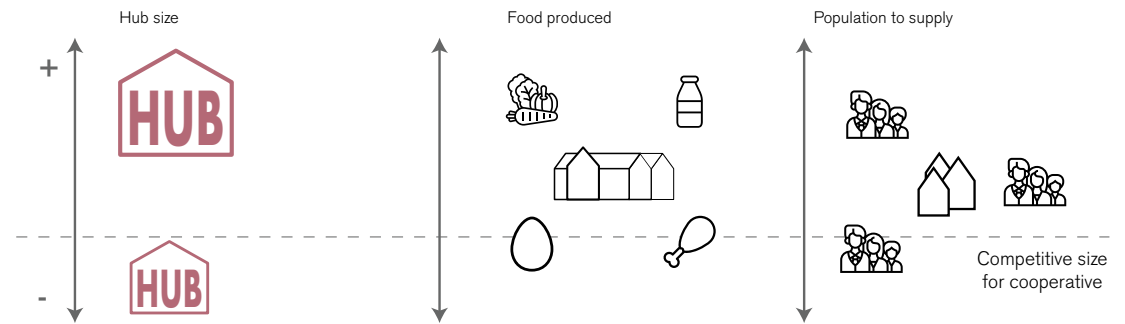
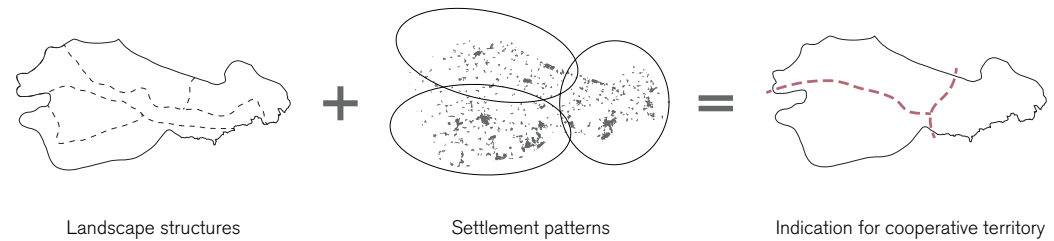
1. Store cooperatives sized based in landscape and settlement patterns



2. Exchange between cooperatives, supply for Berlin



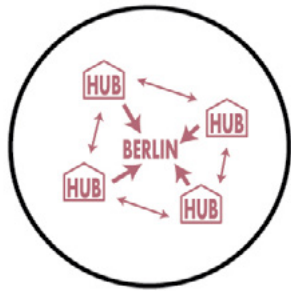
3. Logistics hubs placed centrally and close to road network nodes



Shop cooperative on landscape level.



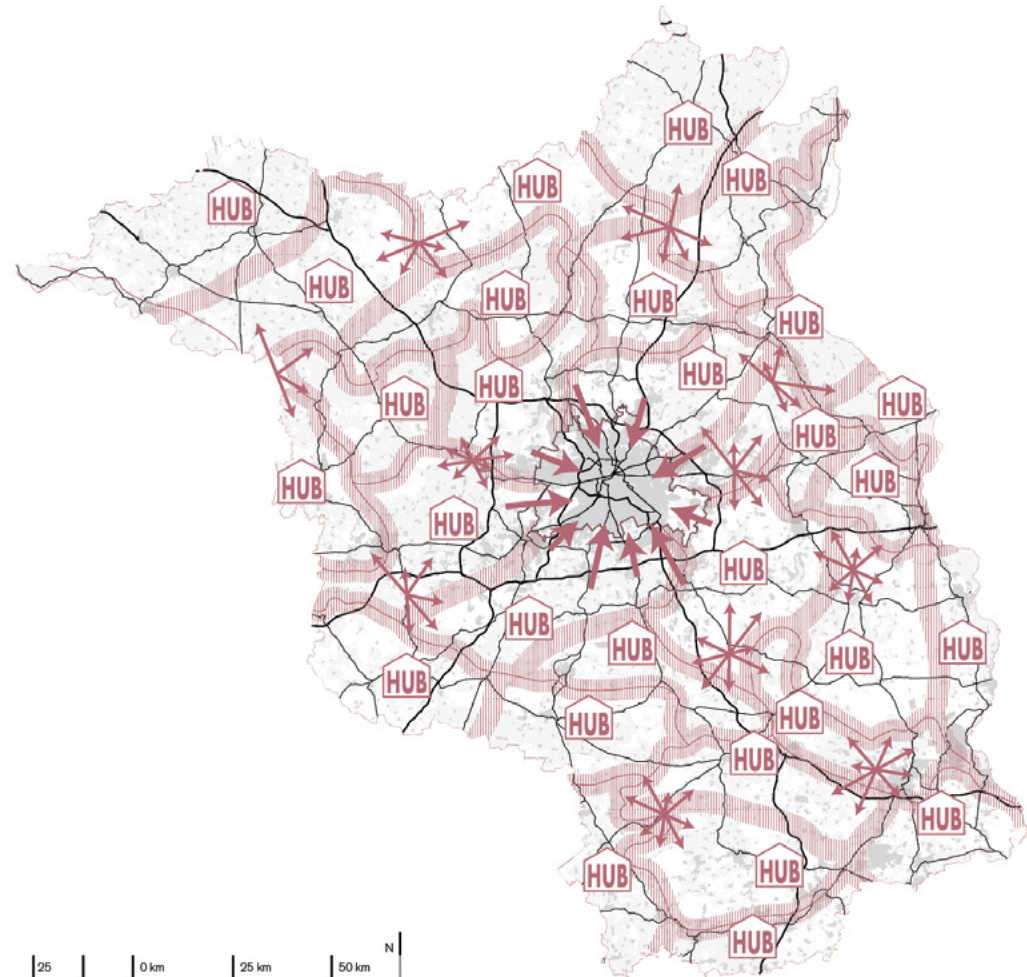
1. Store cooperatives sized based in landscape and settlement patterns



2. Exchange between cooperatives, supply for Berlin

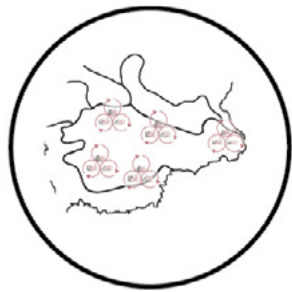


3. Logistics hubs placed centrally and close to road network nodes

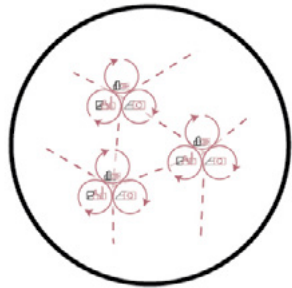


Shop cooperative on region level.

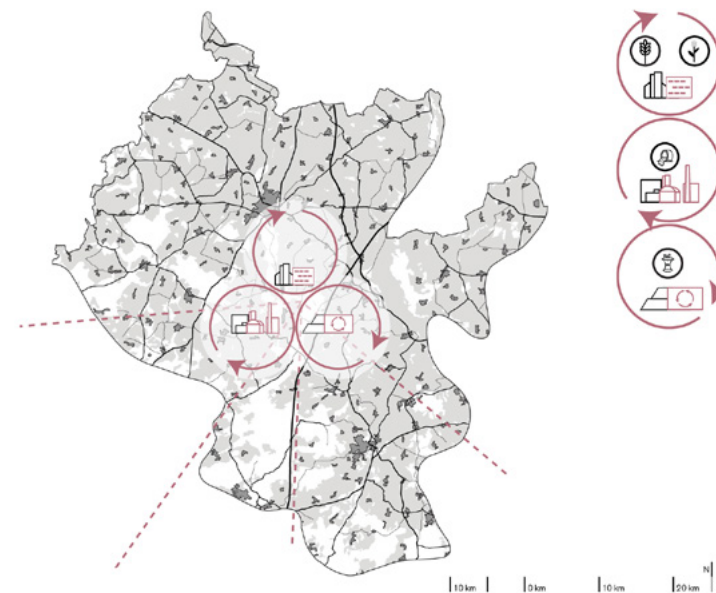
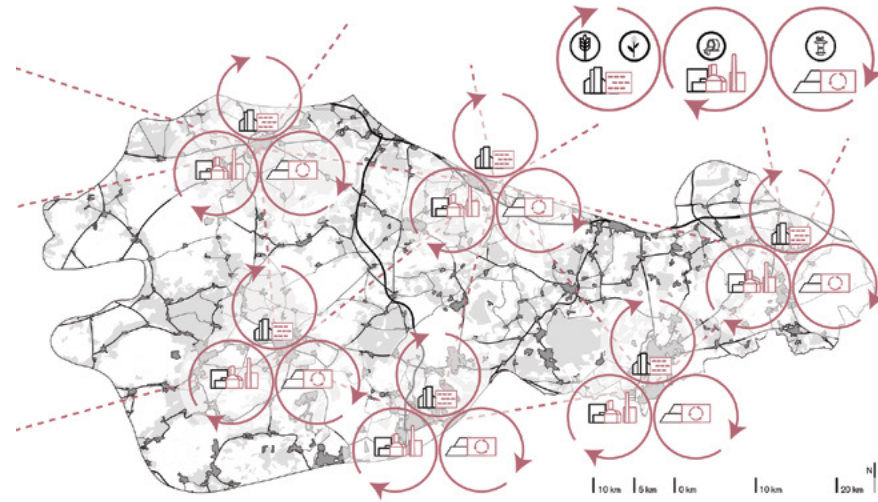
Processing



1. Processing clusters around
(clusters of) larger towns



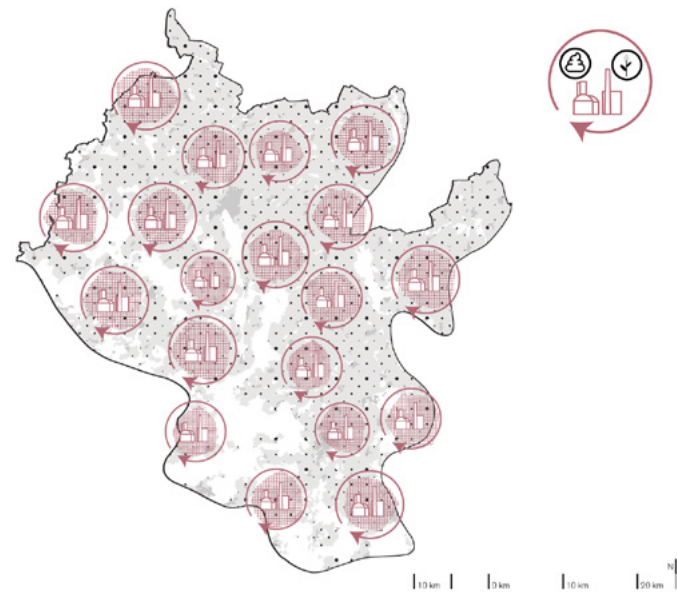
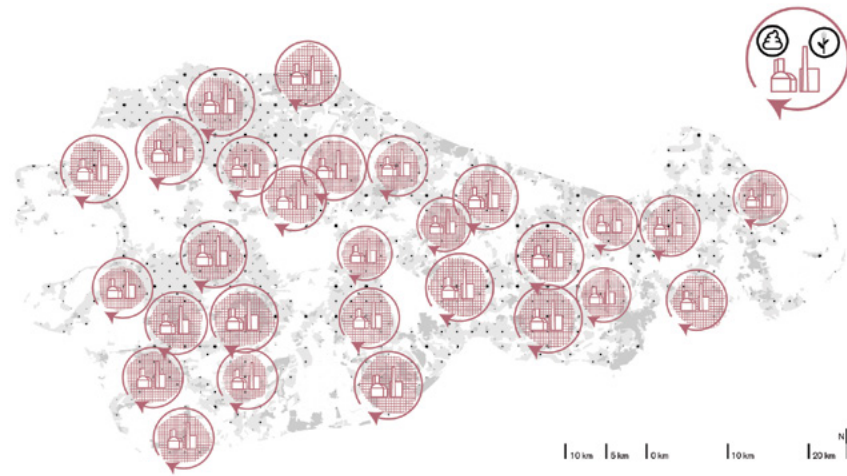
2. Exchange between clusters
only if necessary



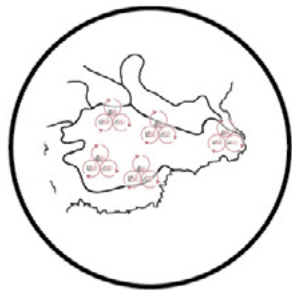
Processing clusters on landscape level.



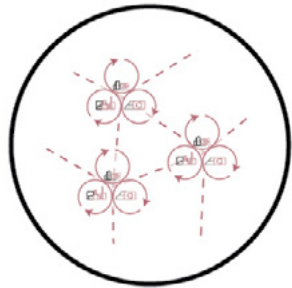
2. Biogas plants for local use only



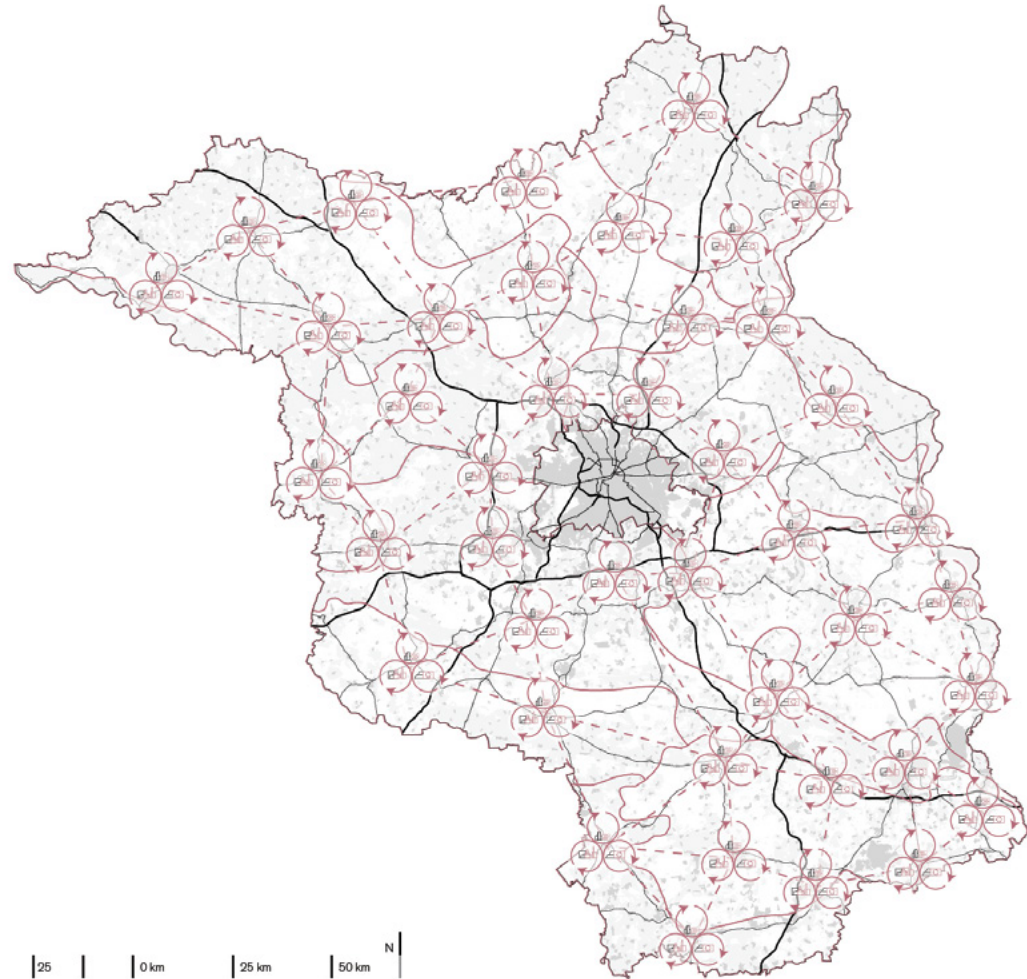
Biogas plants on landscape level.



1. Processing clusters around
(clusters of) larger towns



2. Exchange between clusters
only if necessary

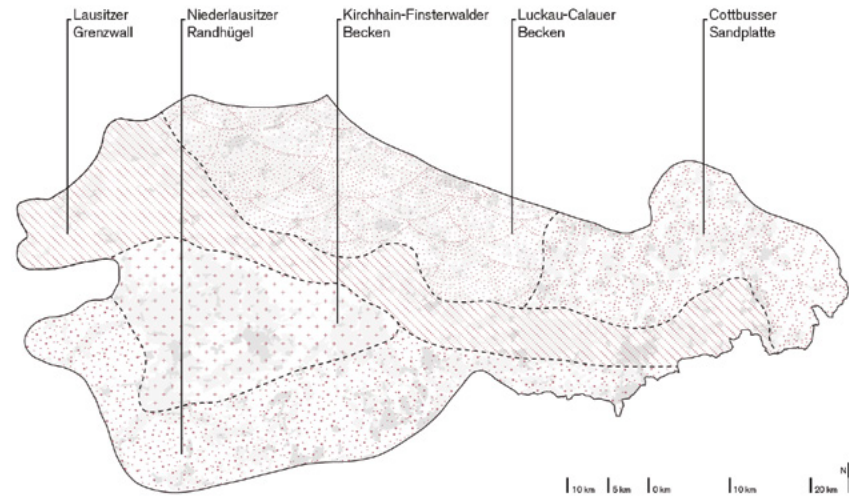


Processing clusters on region level.

Production

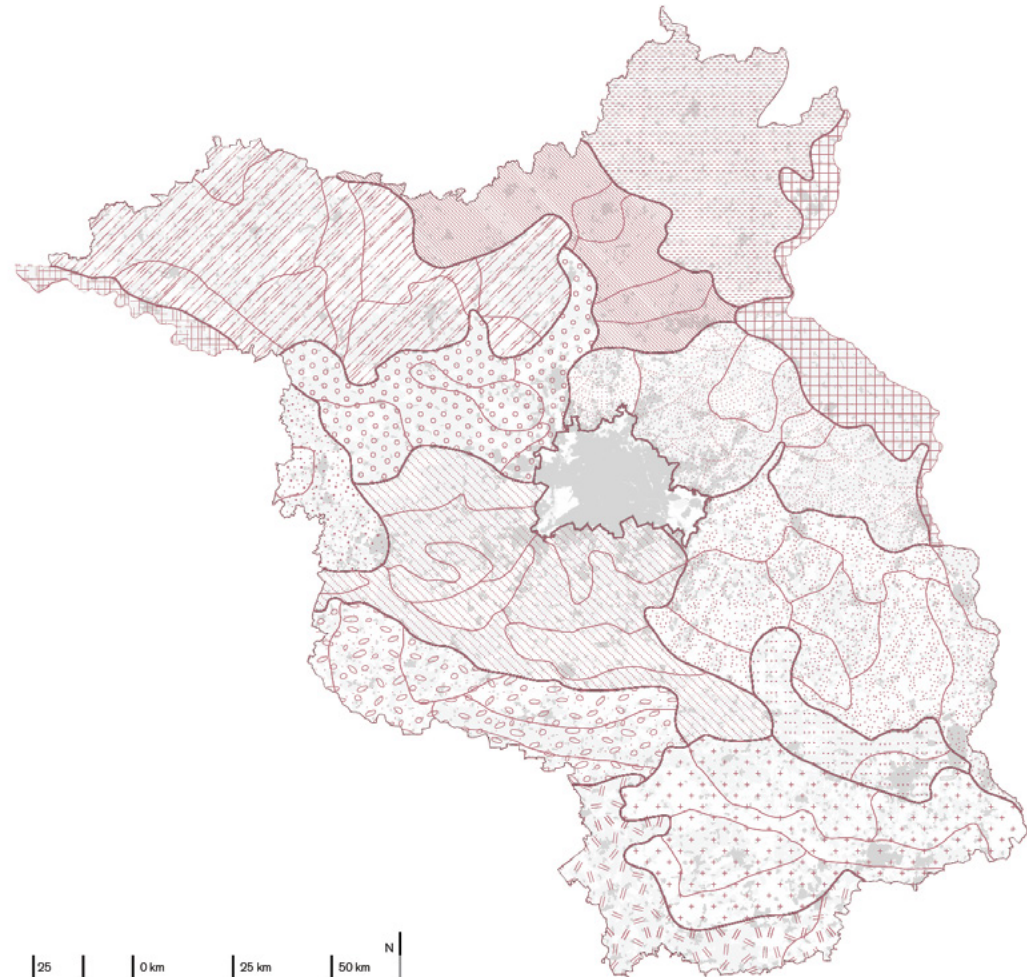


1. Landscape-based production





1. Landscape-based
production



Landscape-based production on region level.

Integrated Partial Vision



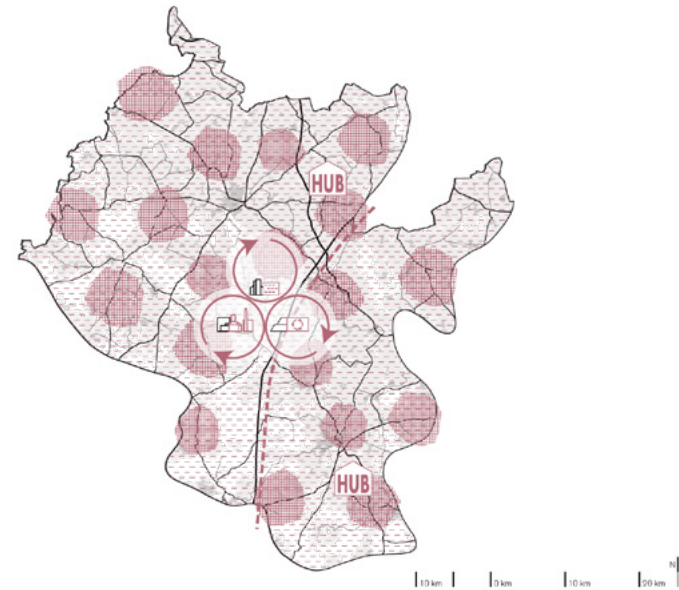
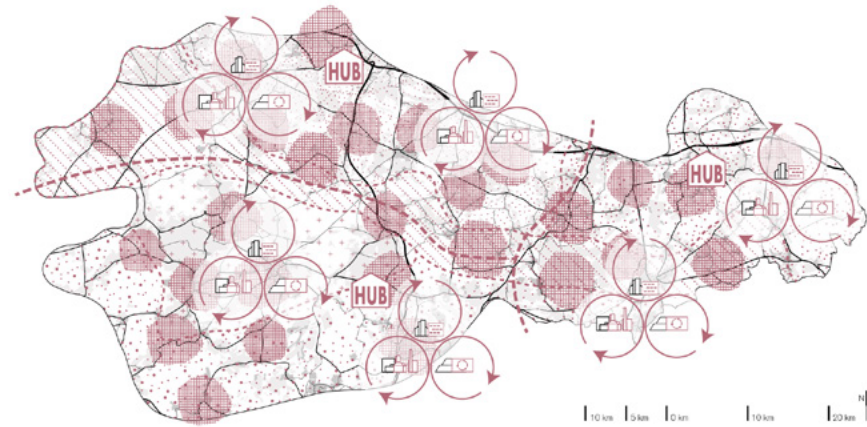
1. Diversify production



2. Recycle food system waste streams at lowest scale sensible



4. Future-proof agriculture based in local potential



Integrated partial vision on landscape level.



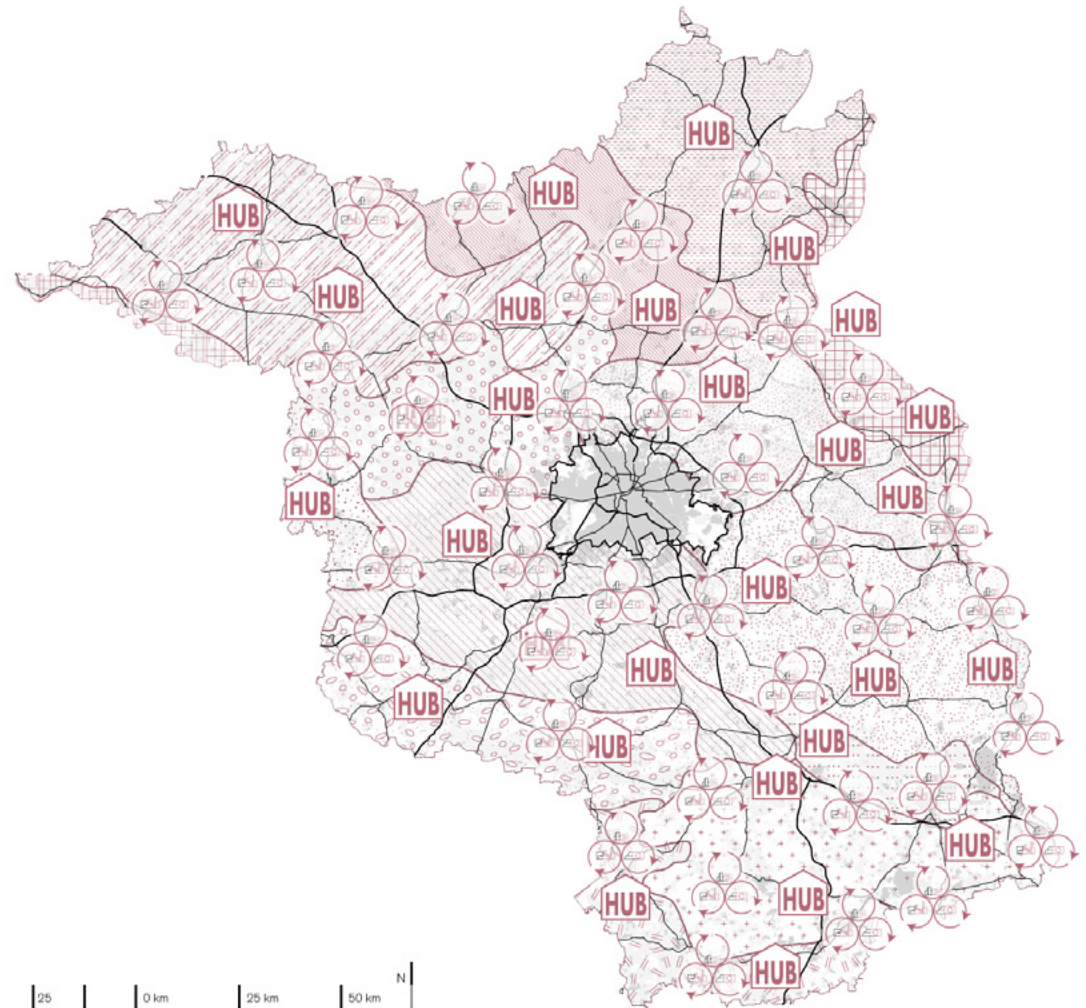
1. Diversify production



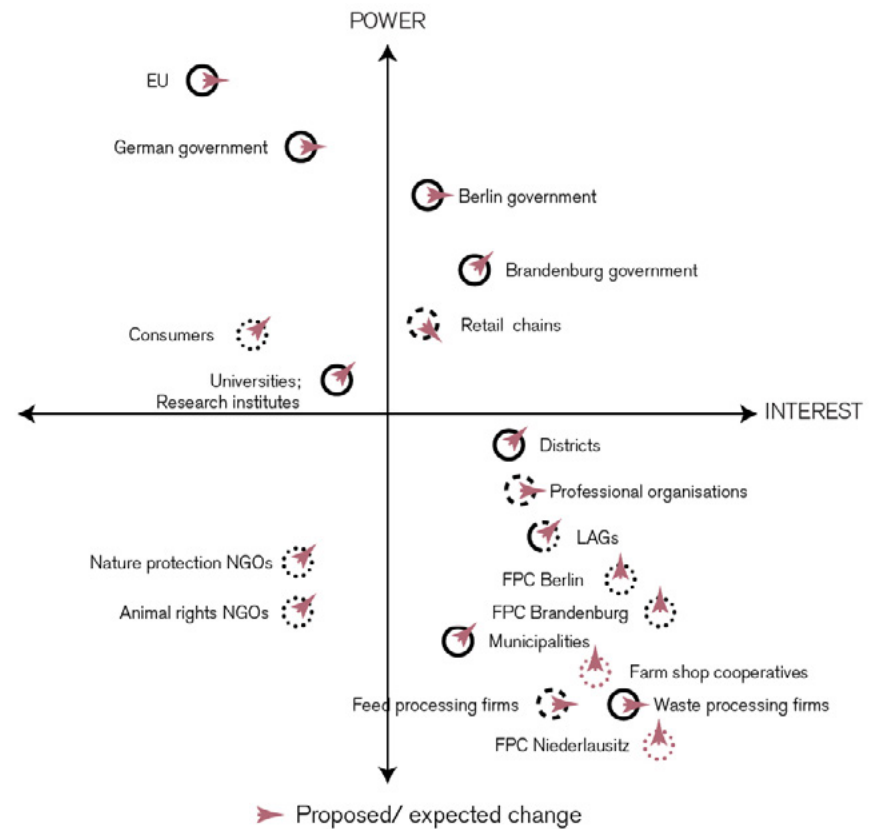
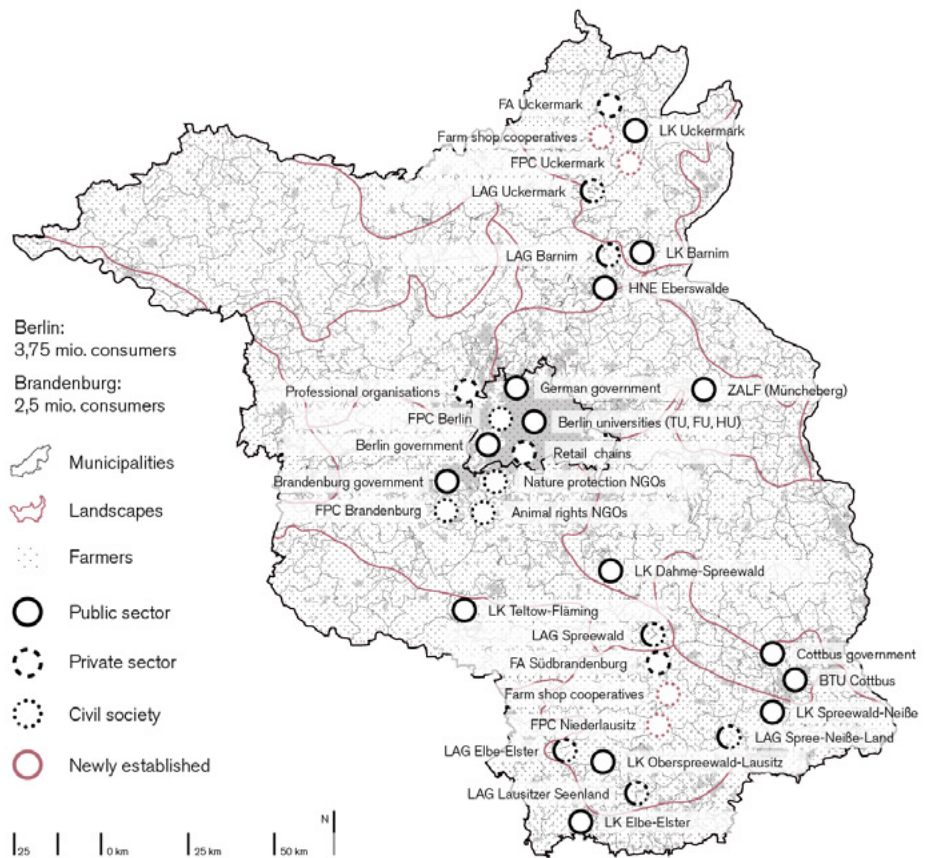
2. Recycle food system waste streams at lowest scale sensible



4. Future-proof agriculture based in local potential



Integrated partial vision on region level.



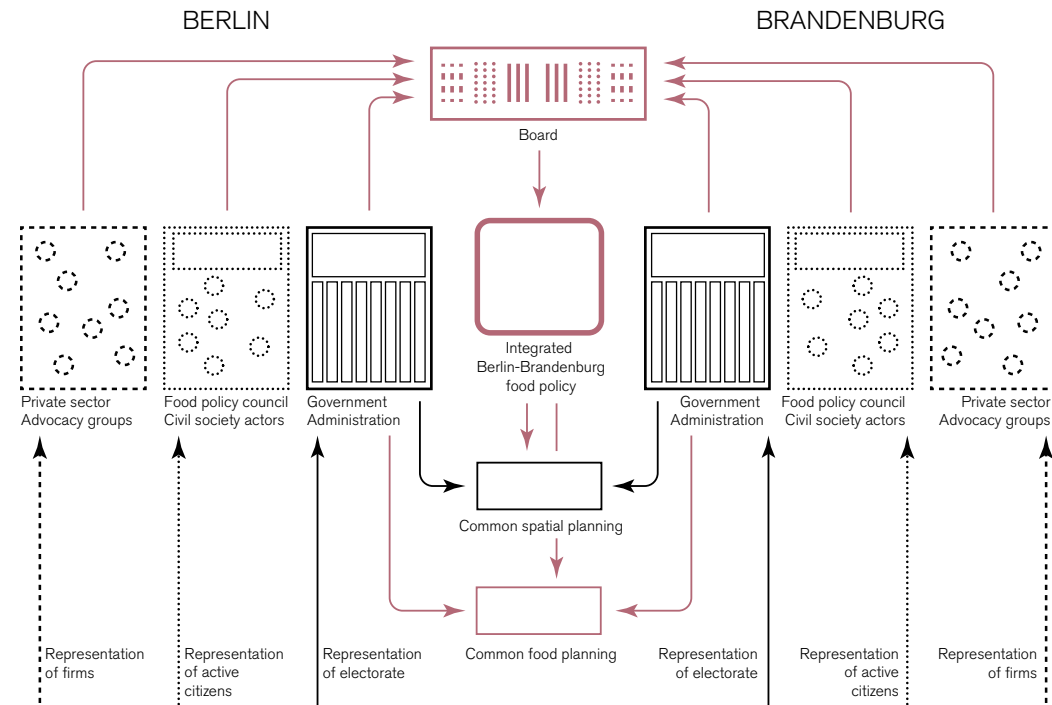
Stakeholder engagement from local to regional.



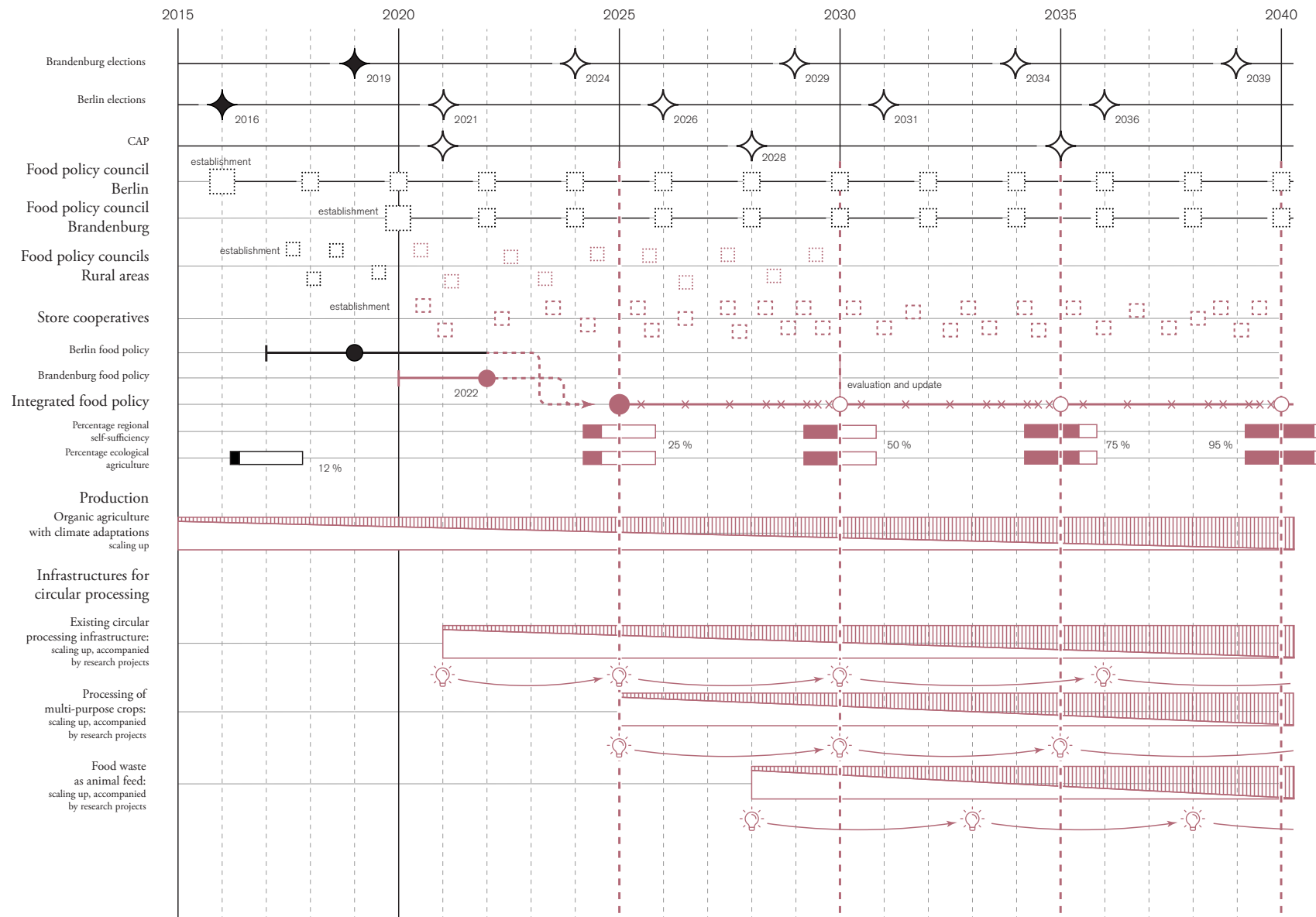
3. Ensure access to land



5. Equitable food system




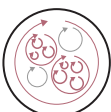



Governance structures on regional level.



Phasing of interventions & policies.



Summary of guidelines & principles.

	Principles	Vulnerabilities		
		...of people and economies	...of the food system	...of landscapes
Regional food system	 Diversify production		diversifying of production contributes to economic resilience and attractiveness of offer	diversifying of production contributes to biodiversity
	 Recycle waste streams	contributing added value on local scale	lessening dependance on external inputs	lessening transport emissions and waste closing nutrient cycles
	 Future-proof agriculture	building upon locally existing economic potential	maintaining basis (landscapes, people, economies) of regional food system	ensuring the continued productivity of landscapes
Regional governance	 Ensure access to land	ensuring continued existence of regional farmers	maintaining basis (land, people) of regional food system	
	 Equitable food system	ensuring representation of rural stakeholders	taking food system of entire region into account	

Matrix placing principles in conceptual framework.

1. For a regional food system,
rural areas matter more than cities and towns do.

They are the areas with the necessary amounts of
productive land, and also where most of the
infrastructure would need to be placed.

2. Currently, the initiative still comes from cities, and that is a problem.

Besides the necessity of rural areas to regional food systems, the socio-economic issues and prevalence of populism in rural areas makes it clear that they need to be given more voice than is currently the case.

3. The chosen approach shows that it is possible to develop opportunities “from the other side of the table”.

In reality, a broader participatory process could yield better and more diverse results.

The central advantage of the chosen approach is that it makes opportunities of a regional food system explicit to rural stakeholders.

4. Brandenburg and Berlin have uniquely favourable conditions for the establishment of a regional food system.

The spatial configuration, the existing initiatives, and the economic potentials would make an almost ideal case study.

5. The project-based approach currently taken in Berlin should be started also for supply-side projects in Brandenburg.

The project-based approach is the best short-term strategy
to capitalise on current momentum
and begin transformation.
Much of the necessary change beyond that depends on
policy at EU and national level.

6. Next to projects, a participatory process toward a truly strategic, common food policy for Brandenburg and Berlin should be begun as soon as possible.

This should include measurable long-term goals and strong agreements and institutions that are resilient beyond political cycles.

7. Considerable potential in circular, regional food systems so far lies untapped.

This is an important avenue to explore further:
it offers incentive for research and economic development
at the same time.

Circularity and regionality have
a mutually beneficial relationship that should be utilised.

8. The solutions arrived at through the approach might not be directly transferable, but the working method is.

Concrete solutions and governance structures should be place-based: in the potentials of landscapes and existing socio-economic and political configurations. The central principles of the developed working method, however, hold true for other food systems also.

Thank you!