

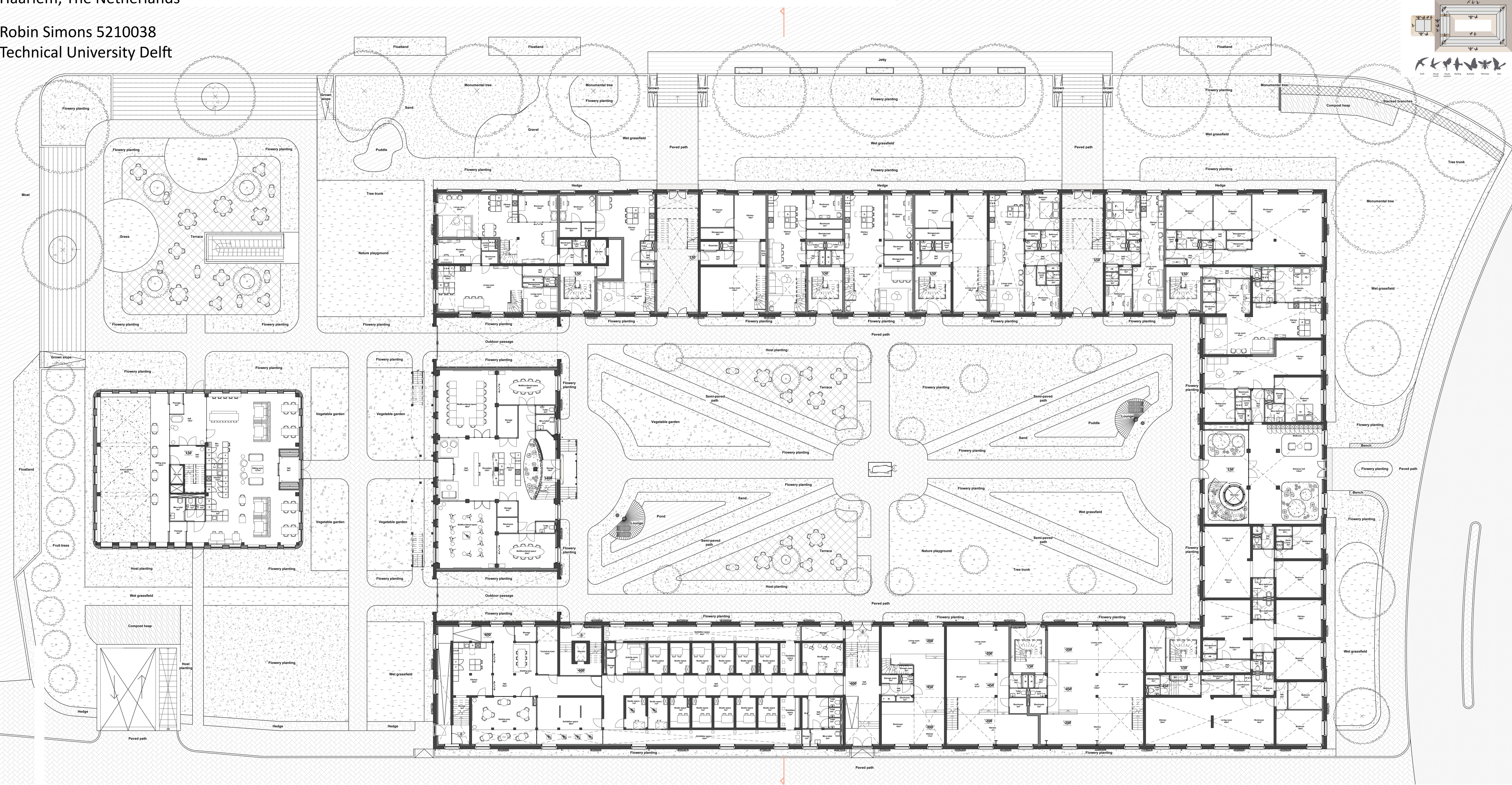
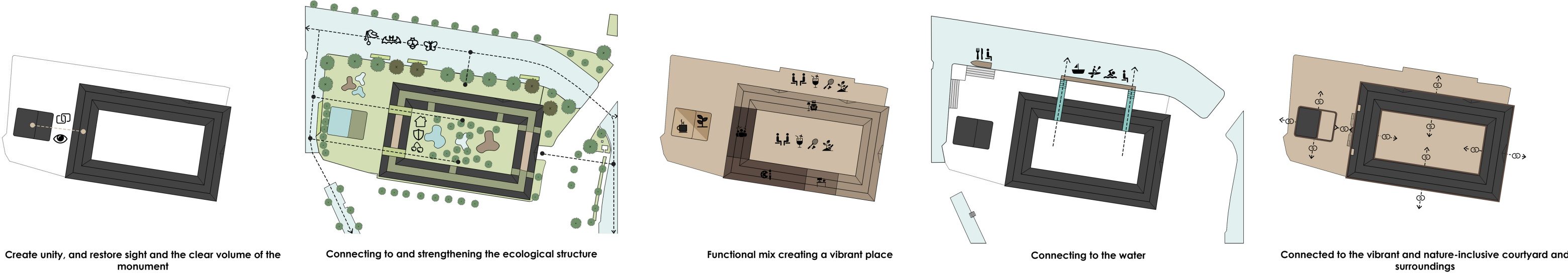
The Nature-Inclusive Redesign



The redesign of the old deaconry house

Koudenhorn 2
Haarlem, The Netherlands

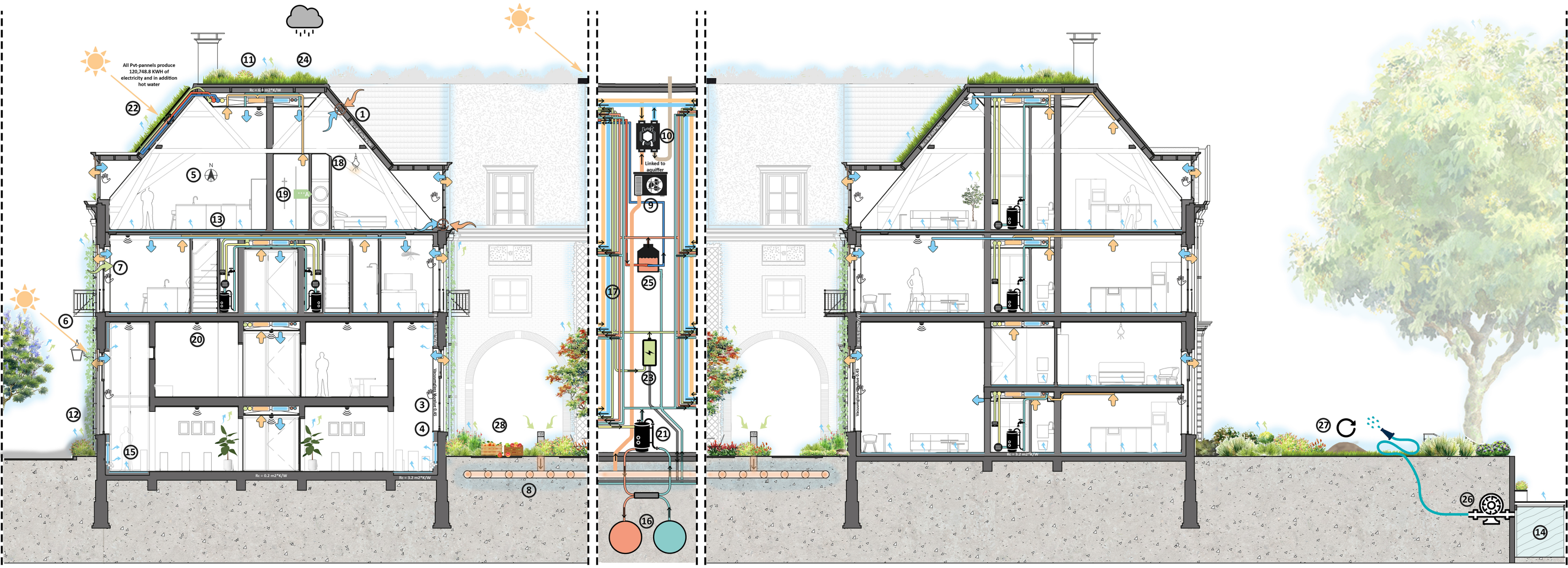
Robin Simons 5210038
Technical University Delft



Plan groundfloor 0 10m



Cross section 0 5m



Climateplan summer 0 5m

- Cool fresh air
 - Warm fresh air
 - Cool waste air
 - Warm waste air
 - Green electricity
 - Electricity
 - Cold water
 - Lukewarm water
 - Warm water
- Measures cooling, heating and ventilating
- 1. Thermal insulation
 - 2. Air tightness
 - 3. Glazing type
 - 4. Window frames and doors
 - 5. Organisation floorplans
 - 6. Shading
 - 7. Openable windows
 - 8. Earth tube ventilation
 - 9. Hybrid ventilation
 - 10. Heat recovery system
 - 11. Green roofs
 - 12. In and outdoor vegetation
 - 13. Large water buffer
 - 14. Underfloor (and wall) heating and cooling
 - 15. Radiators
 - 16. Aquifer
 - 17. Short insulated pipes
- Measures electricity
- 18. LED-lighting
 - 19. Energy efficient equipment
 - 20. Domotics
 - 21. Heatpump
 - 22. Pvt-pannels
 - 23. Home battery storage
- Measures water
- 24. Greenery prevents problems heavy rainfall
 - 25. Use of nearby water to water plants
 - 13. Large water buffer
 - 22. Pvt-pannels
 - 26. Short term storage tanks
- Measures re-use flows
- 27. Making use of residual flows
 - 28. Vegetable and fruit growing



Elevation East 0 10m

Elevation West 0 10m

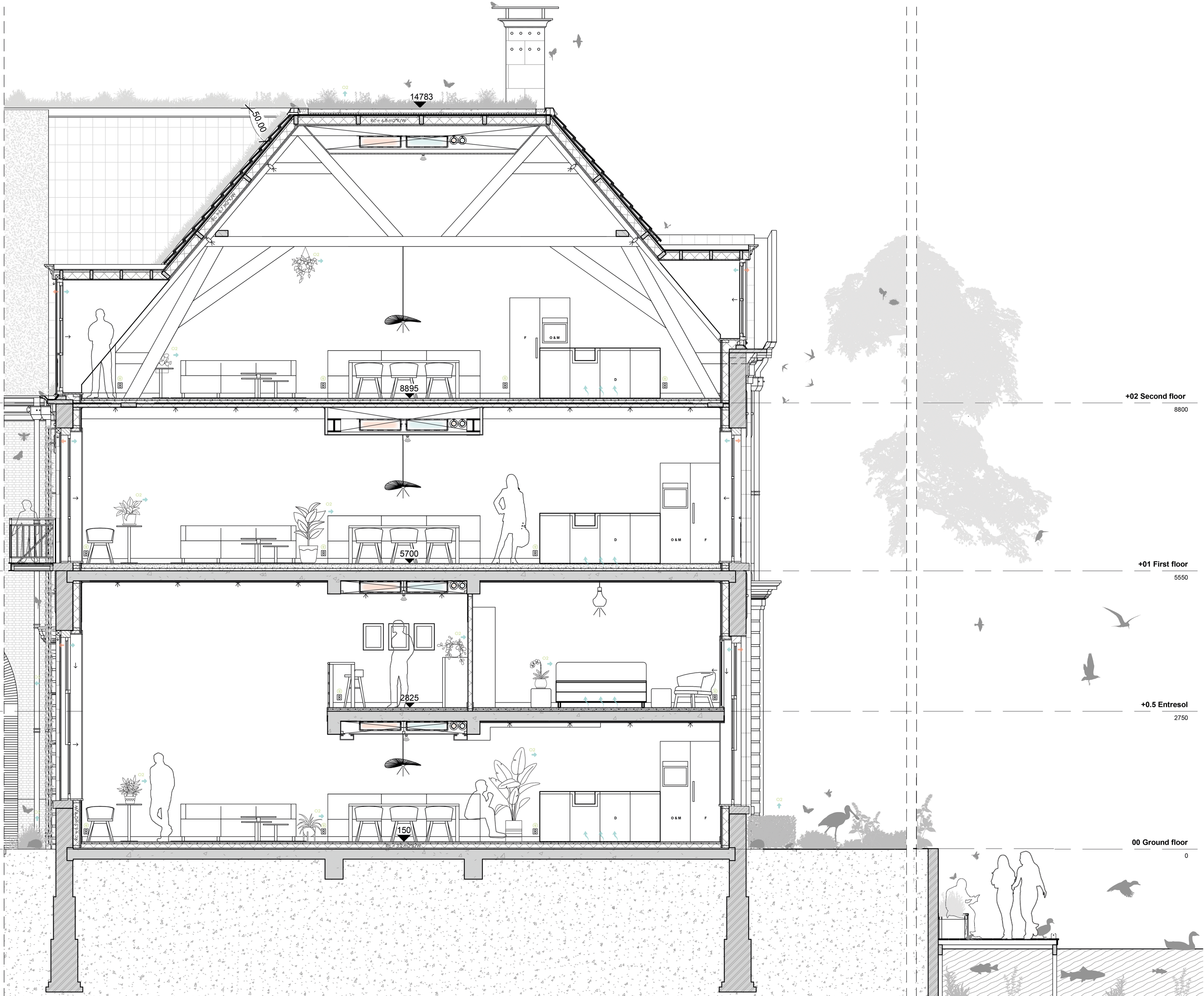
The Nature-Inclusive Redesign



The redesign of the old deaconry house

Koudenhorn 2
Haarlem, The Netherlands

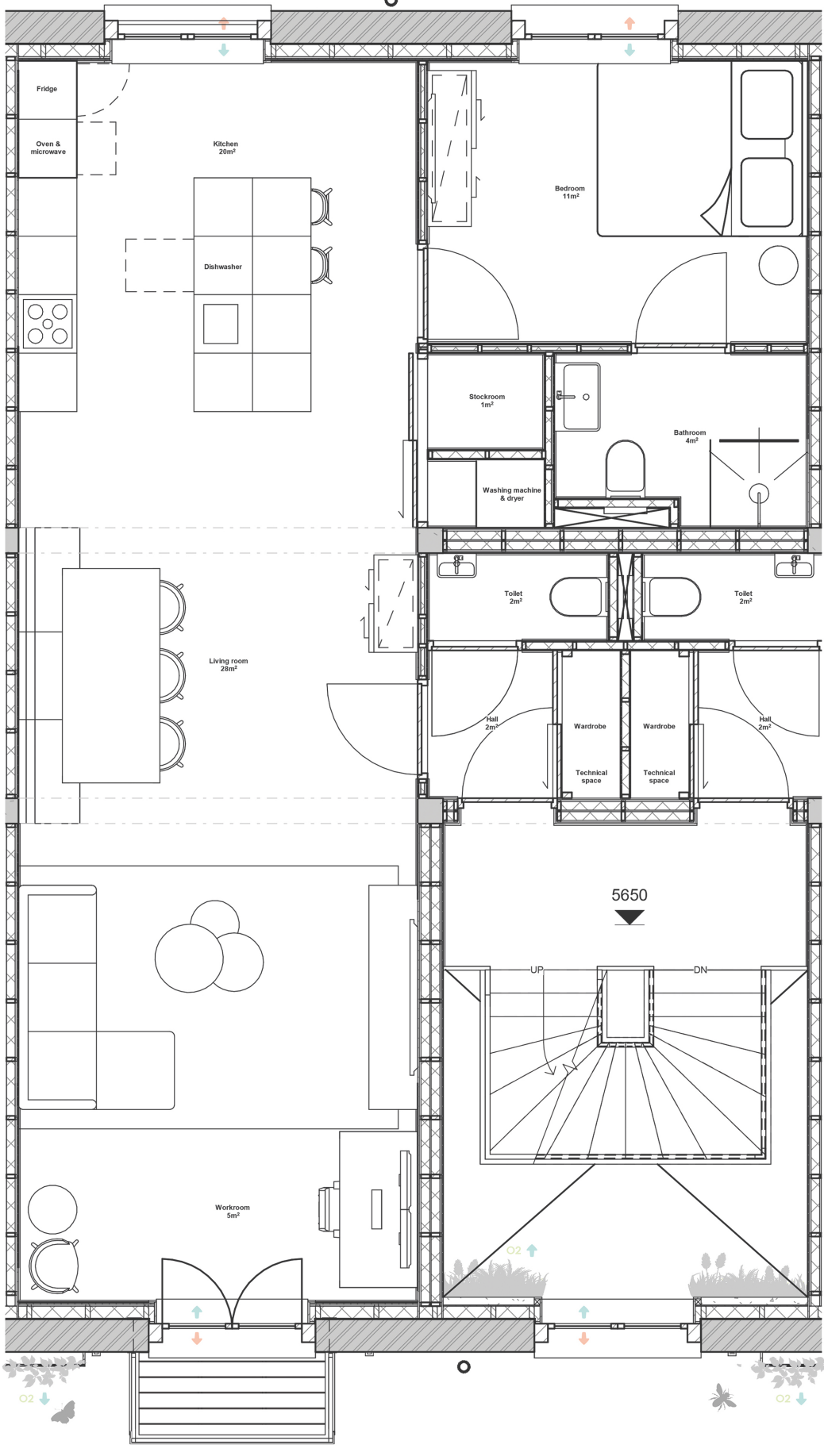
Robin Simons 5210038
Technical University Delft



Fragment vertical 0 2m



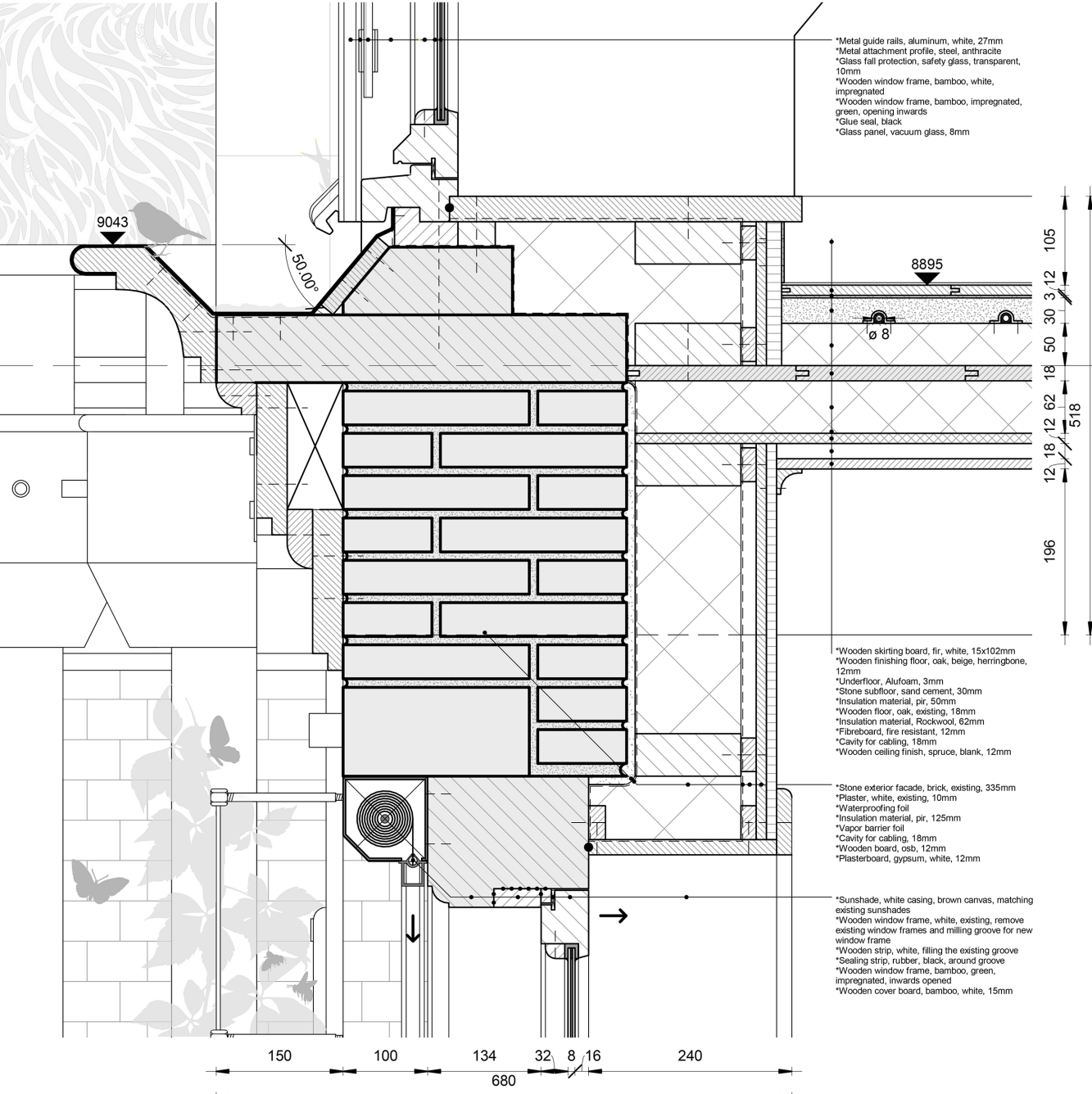
Fragment exterior 0 2m



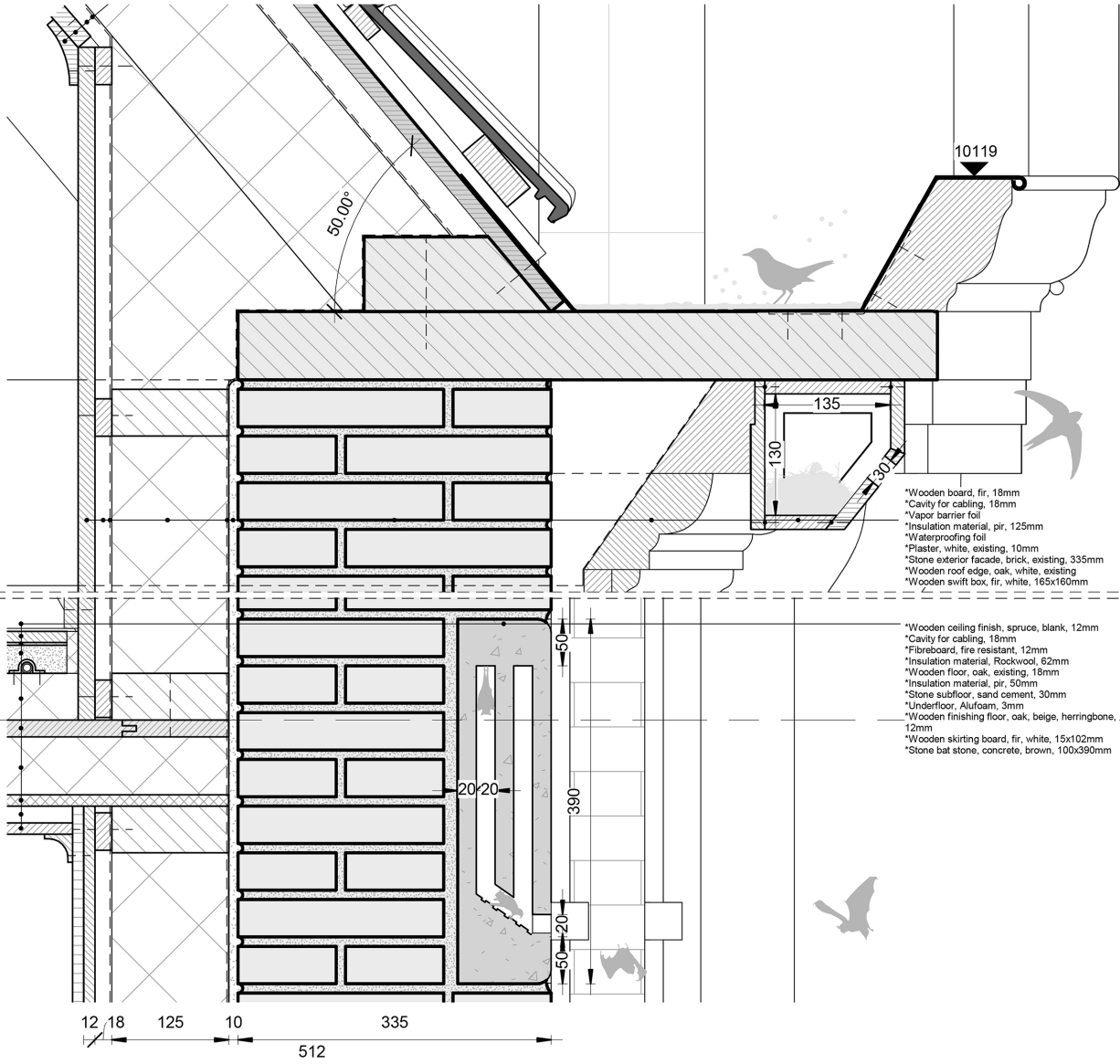
Fragment horizontal 0 2m



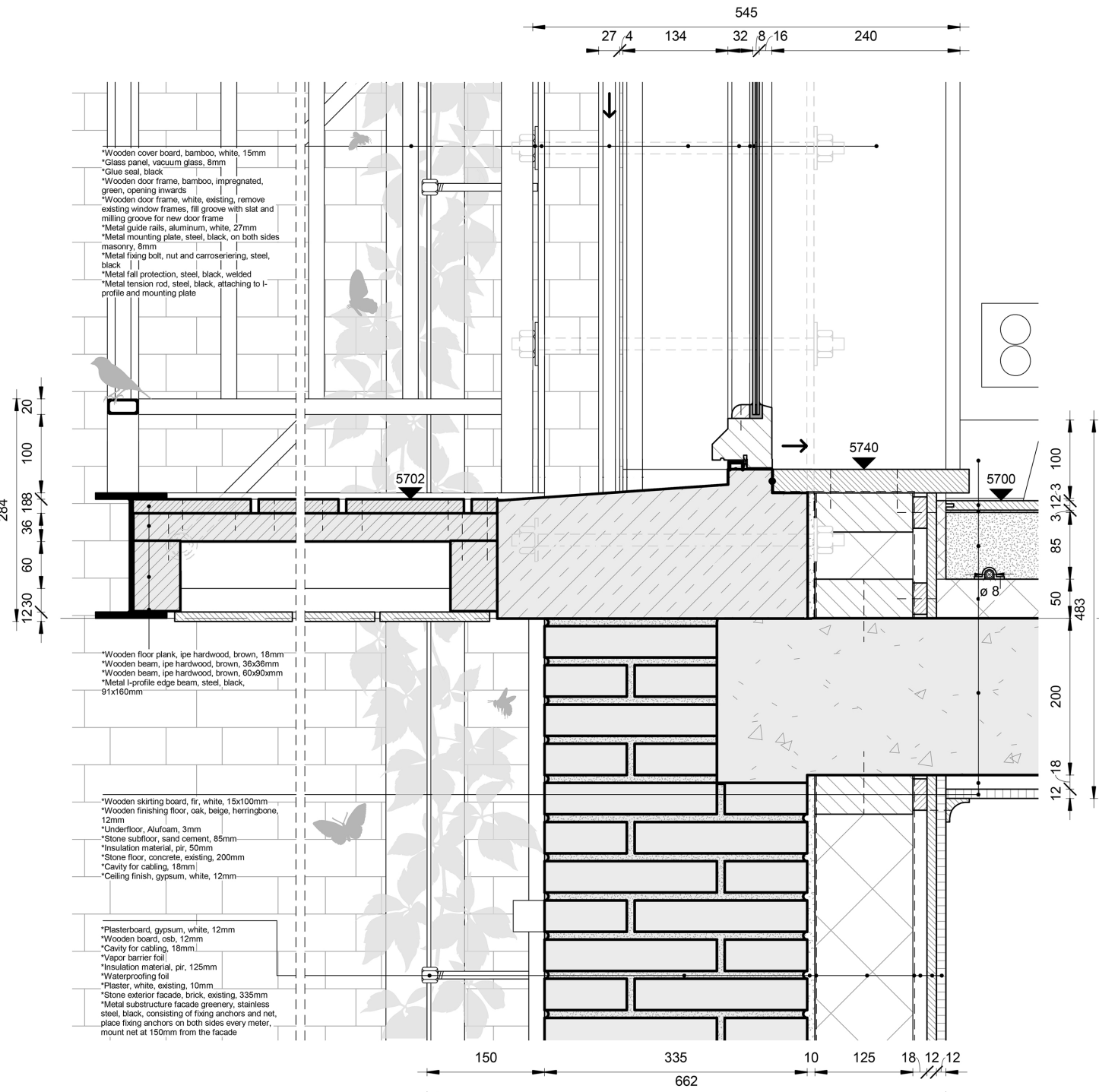
Fragment interior 0 2m



Detail roof edge courtyard



Detail roof edge outside



Detail balcony courtyard